

Data Path : Z:\VOASRV\HPCHEM1\MSVOA_L\DATA\VL111919\
 Data File : VL034392.D
 Acq On : 19 Nov 2019 23:32
 Operator : SY/AP
 Sample : K5924-01DL2 40X
 Misc : 400ml/MSVOA_L
 ALS Vial : 1 Sample Multiplier: 1

Instrument :
 MSVOA_L
 ClientSampleId :
 IA1DL

Quant Time: Nov 20 04:06:48 2019
 Quant Method : Z:\VOASRV\HPCHEM1\MSVOA_L\METHODS\VL111919AIR.M
 Quant Title : AIR ANALYSIS BY METHOD TO-15 Instrument: MSVOA_LWed Nov 20 03:30:54 2019
 QLast Update : Wed Nov 20 03:30:54 2019
 Response via : Initial Calibration

Internal Standards	R.T.	QIon	Response	Conc	Units	Dev(Min)
1) Bromochloromethane	5.67	49	966299	10.00	ppbv	0.00
33) 1,4-Difluorobenzene	7.20	114	1900046	10.00	ppbv	0.00
55) Chlorobenzene-d5	12.13	117	1864928	10.00	ppbv	0.00

System Monitoring Compounds

68) 1-Bromo-4-Fluorobenzene	14.47	95	1585603	10.11	ppbv	0.00
Spiked Amount	10.000	Range	65 - 135	Recovery	=	101.10%

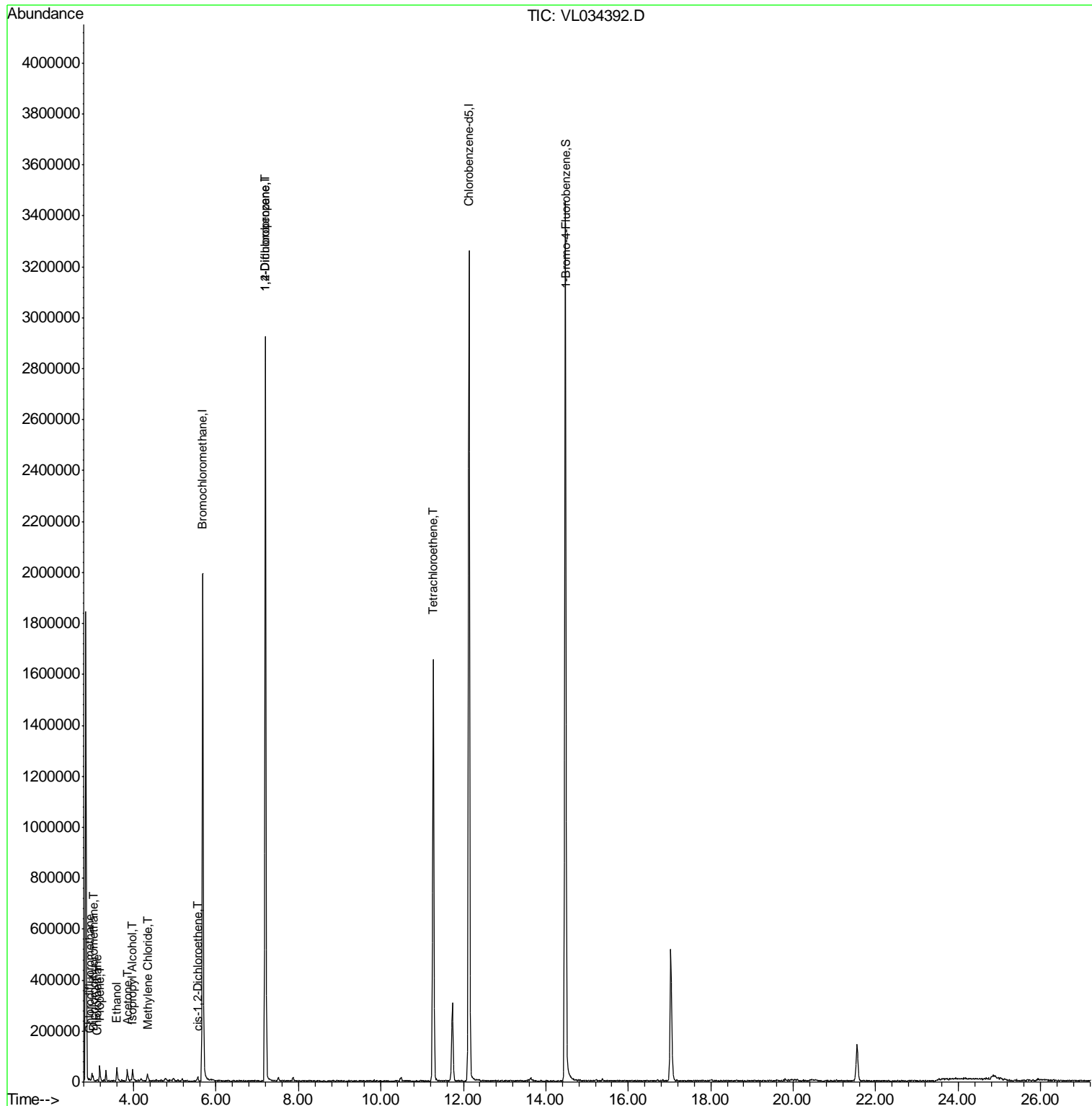
Target Compounds	R.T.	QIon	Response	Conc	Units	Qvalue
2) Dichlorodifluoromethane	3.02	85	10492	0.060	ppbv	92
3) Chlorodifluoromethane	2.95	51	7015	0.058	ppbv #	74
4) Chloromethane	3.11	50	2293	0.032	ppbv #	68
9) Propene	3.18	41	14100	0.263	ppbv	95
13) Ethanol	3.59	45	44123	2.814	ppbv	90
15) Acetone	3.85	43	27930	0.202	ppbv #	66
19) Isopropyl Alcohol	3.97	45	41899	0.416	ppbv #	93
20) Methylene Chloride	4.34	84	8440	0.172	ppbv #	80
31) cis-1,2-Dichloroethene	5.56	61	8253	0.075	ppbv #	89
39) 1,2-Dichloropropane	7.20	63	565985	7.029	ppbv #	23
52) Tetrachloroethene	11.28	164	390230	4.748	ppbv	96

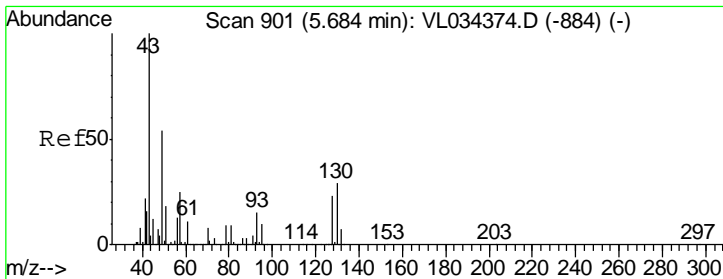
(#) = qualifier out of range (m) = manual integration (+) = signals summed

Data Path : Z:\VOASRV\HPCHEM1\MSVOA_L\DATA\VL111919\
 Data File : VL034392.D
 Acq On : 19 Nov 2019 23:32
 Operator : SY/AP
 Sample : K5924-01DL2 40X
 Misc : 400ml/MSVOA_L
 ALS Vial : 1 Sample Multiplier: 1

Instrument :
 MSVOA_L
 ClientSampleID :
 IA1DL

Quant Time: Nov 20 04:06:48 2019
 Quant Method : Z:\VOASRV\HPCHEM1\MSVOA_L\METHODS\VL111919AIR.M
 Quant Title : AIR ANALYSIS BY METHOD TO-15 Instrument: MSVOA_L Wed Nov 20 03:30:54 2019
 QLast Update : Wed Nov 20 03:30:54 2019
 Response via : Initial Calibration

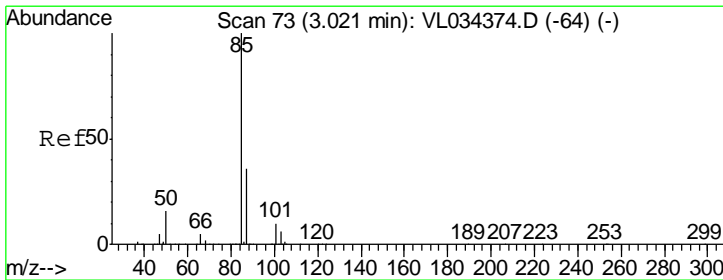
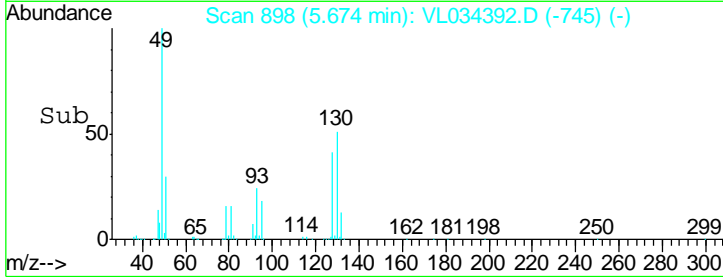
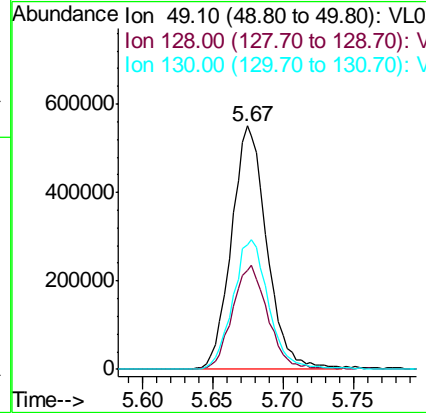
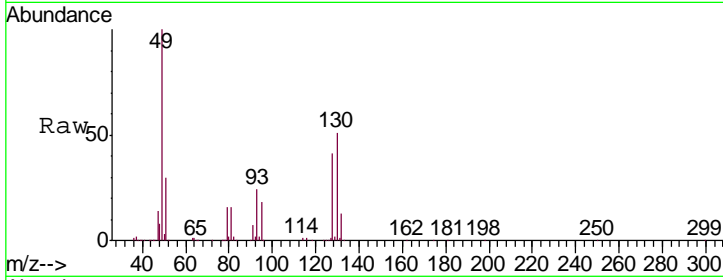




#1
 Bromochloromethane
 Concen: 10.000 ppbv
 RT: 5.67 min Scan# 898
 Delta R.T. -0.01 min
 Lab File: VL034392.D
 Acq: 19 Nov 2019 23:32

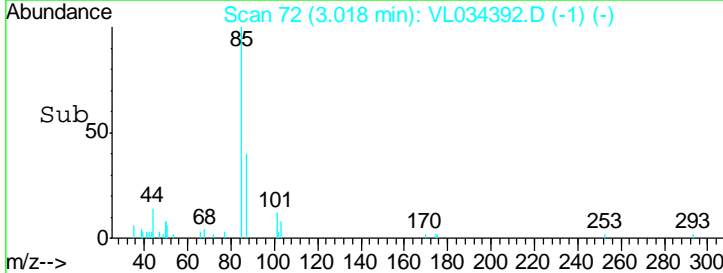
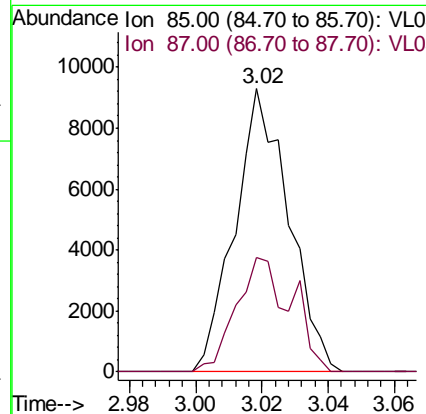
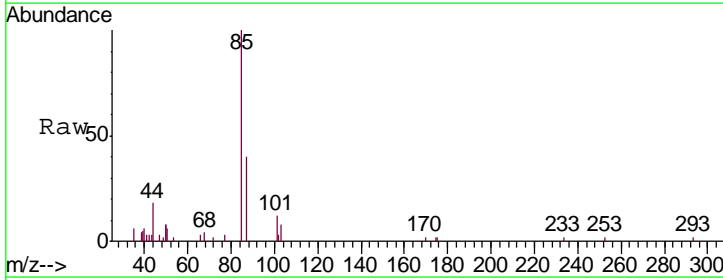
Instrument :
 MSVOA_L
 ClientSampled :
 IA1DL

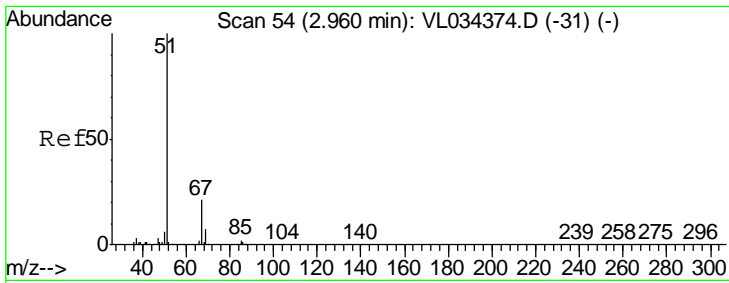
Tgt Ion	Resp	Lower	Upper
49	100		
128	42.8	21.8	65.3
130	54.1	28.0	84.0



#2
 Dichlorodifluoromethane
 Concen: 0.060 ppbv
 RT: 3.02 min Scan# 72
 Delta R.T. -0.00 min
 Lab File: VL034392.D
 Acq: 19 Nov 2019 23:32

Tgt Ion	Resp	Lower	Upper
85	100		
87	40.5	28.5	42.7

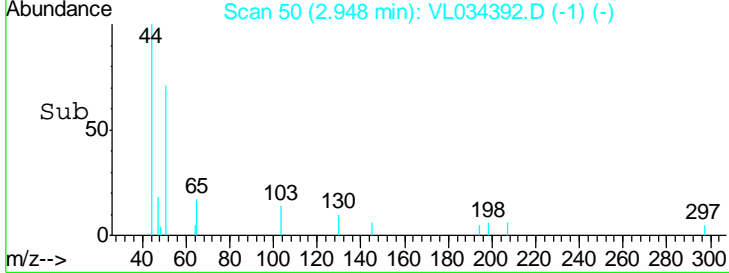
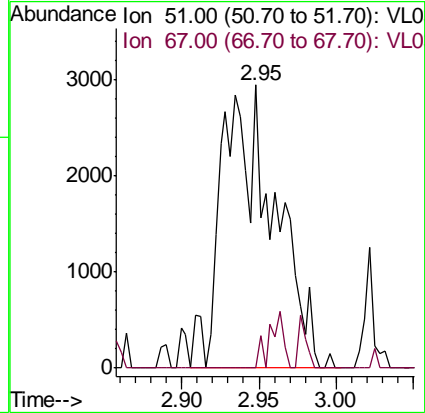
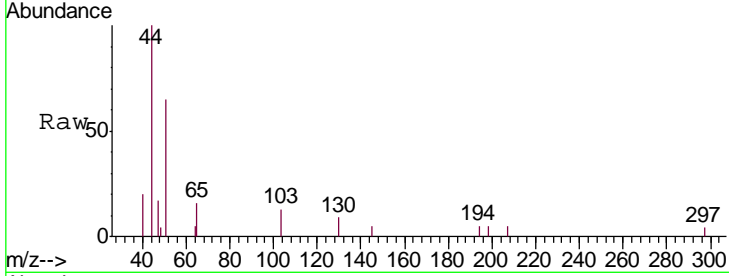




#3
 Chlorodifluoromethane
 Concen: 0.058 ppbv
 RT: 2.95 min Scan# 50
 Delta R.T. -0.01 min
 Lab File: VL034392.D
 Acq: 19 Nov 2019 23:32

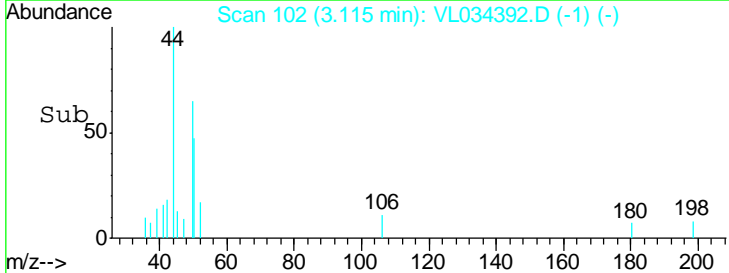
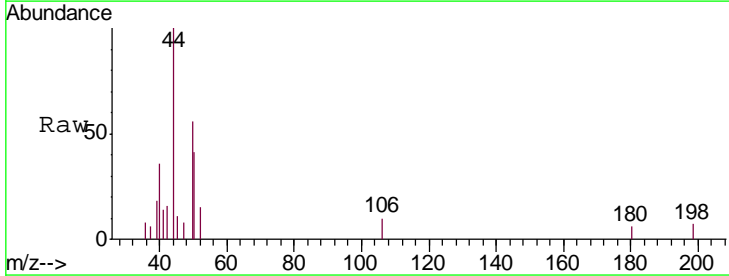
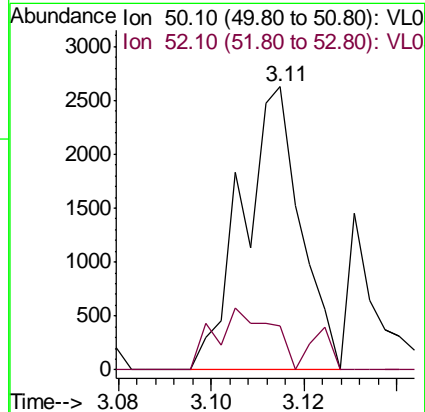
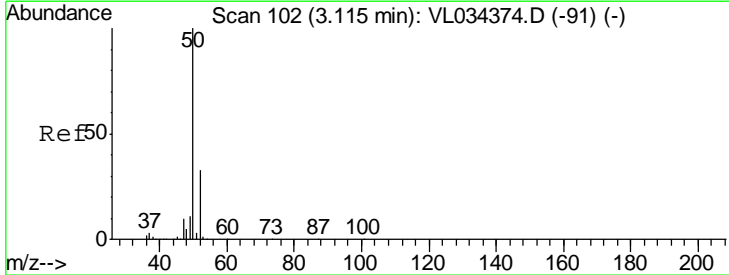
Instrument :
 MSVOA_L
ClientSampled :
 IA1DL

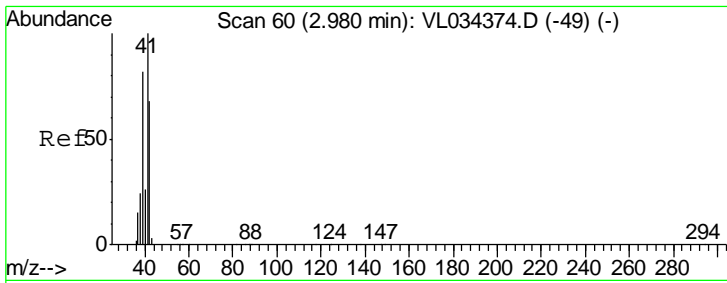
Tgt Ion: 51 Resp: 7015
 Ion Ratio Lower Upper
 51 100
 67 8.1 16.2 24.2#



#4
 Chloromethane
 Concen: 0.032 ppbv
 RT: 3.11 min Scan# 102
 Delta R.T. 0.00 min
 Lab File: VL034392.D
 Acq: 19 Nov 2019 23:32

Tgt Ion: 50 Resp: 2293
 Ion Ratio Lower Upper
 50 100
 52 15.5 26.8 40.2#

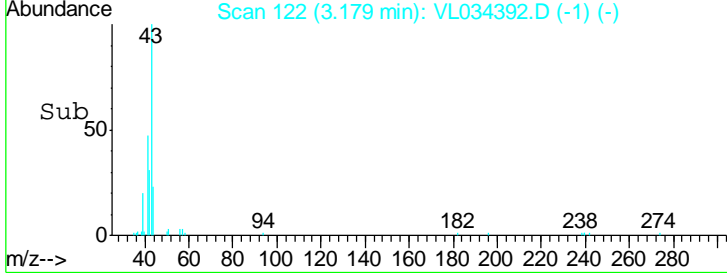
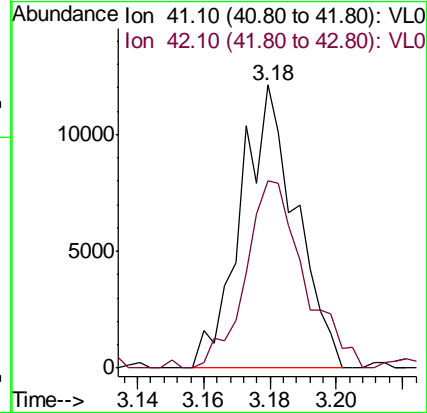
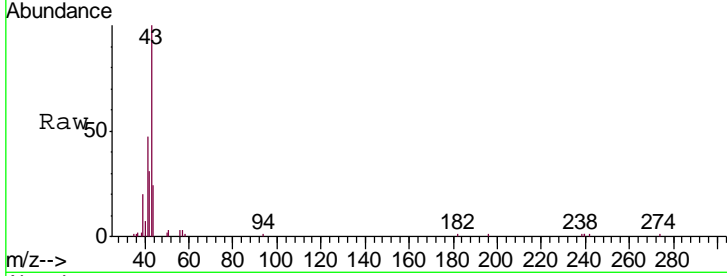




#9
 Propene
 Concen: 0.263 ppbv
 RT: 3.18 min Scan# 122
 Delta R.T. 0.20 min
 Lab File: VL034392.D
 Acq: 19 Nov 2019 23:32

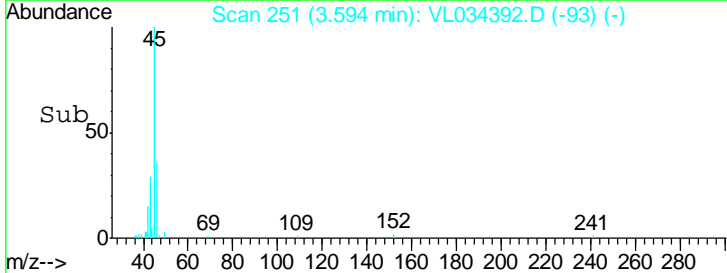
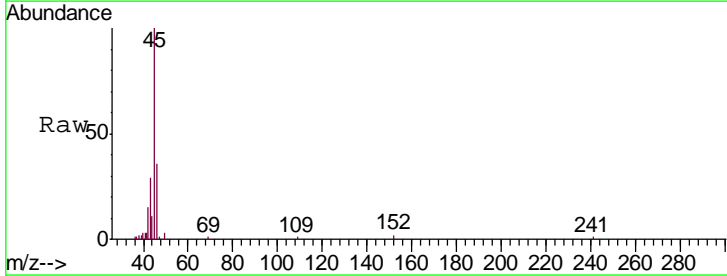
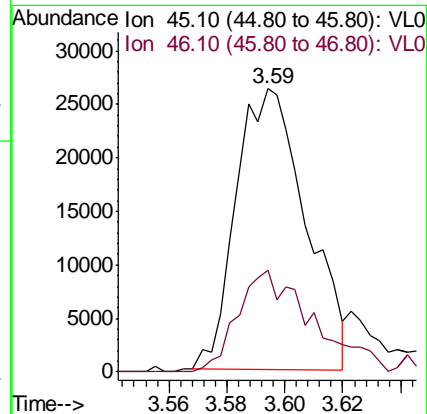
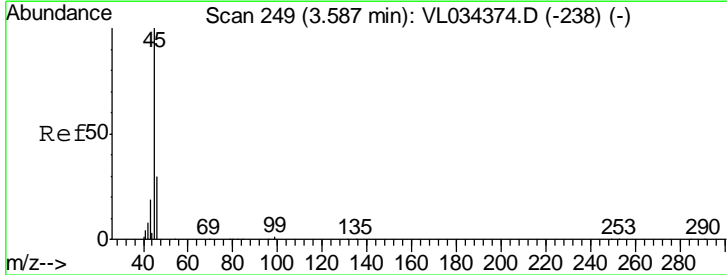
Instrument :
 MSVOA_L
ClientSampled :
 IA1DL

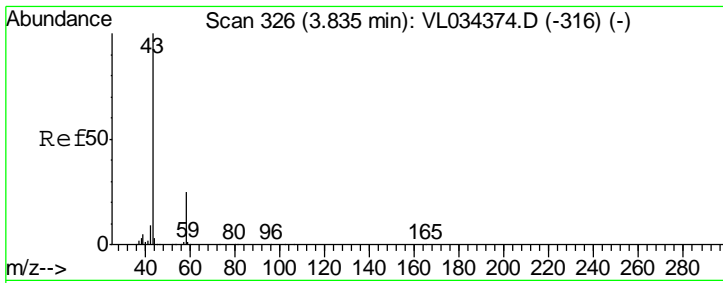
Tgt Ion: 41 Resp: 14100
 Ion Ratio Lower Upper
 41 100
 42 72.0 54.6 82.0



#13
 Ethanol
 Concen: 2.814 ppbv
 RT: 3.59 min Scan# 251
 Delta R.T. 0.01 min
 Lab File: VL034392.D
 Acq: 19 Nov 2019 23:32

Tgt Ion: 45 Resp: 44123
 Ion Ratio Lower Upper
 45 100
 46 40.2 13.8 55.4

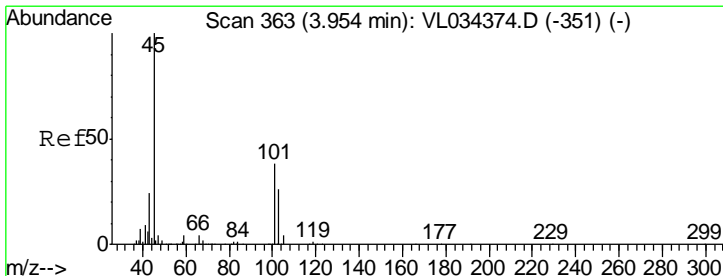
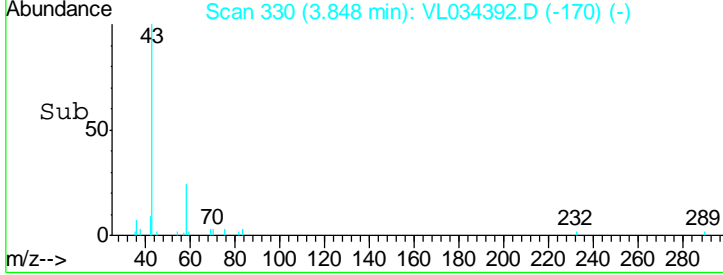
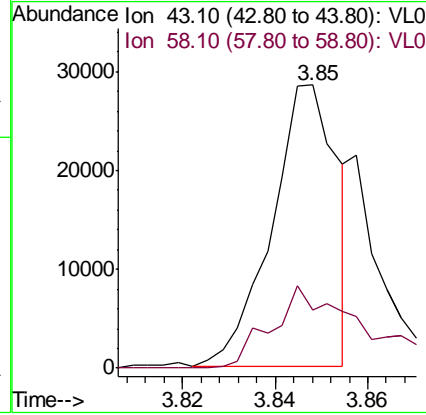
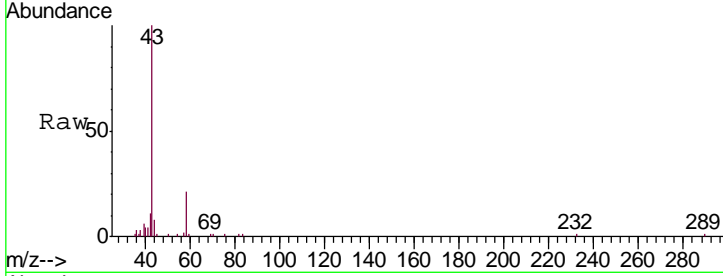




#15
 Acetone
 Concen: 0.202 ppbv
 RT: 3.85 min Scan# 330
 Delta R.T. 0.01 min
 Lab File: VL034392.D
 Acq: 19 Nov 2019 23:32

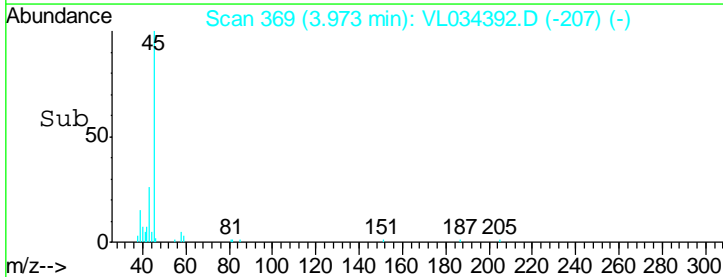
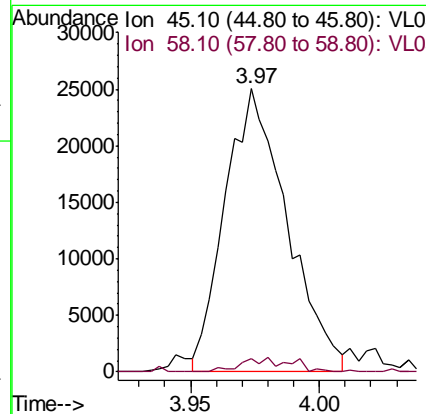
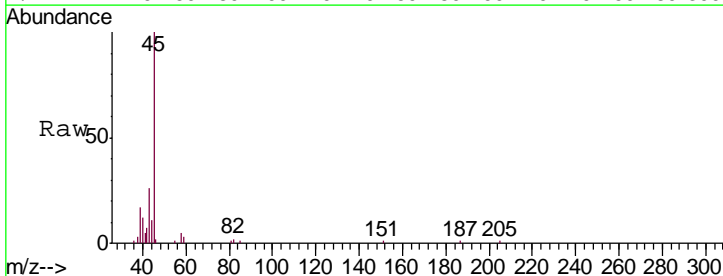
Instrument :
 MSVOA_L
 ClientSampled :
 IA1DL

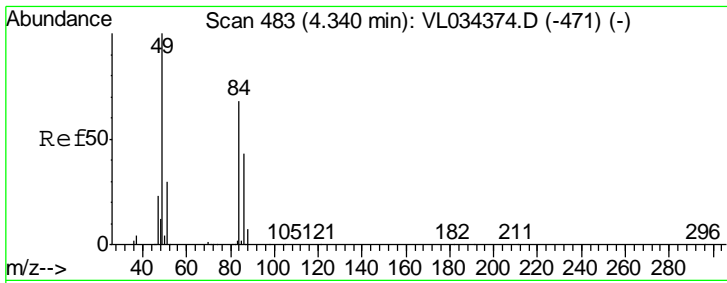
Tgt Ion: 43 Resp: 27930
 Ion Ratio Lower Upper
 43 100
 58 42.5 20.2 30.4#



#19
 Isopropyl Alcohol
 Concen: 0.416 ppbv
 RT: 3.97 min Scan# 369
 Delta R.T. 0.02 min
 Lab File: VL034392.D
 Acq: 19 Nov 2019 23:32

Tgt Ion: 45 Resp: 41899
 Ion Ratio Lower Upper
 45 100
 58 4.2 1.3 1.9#

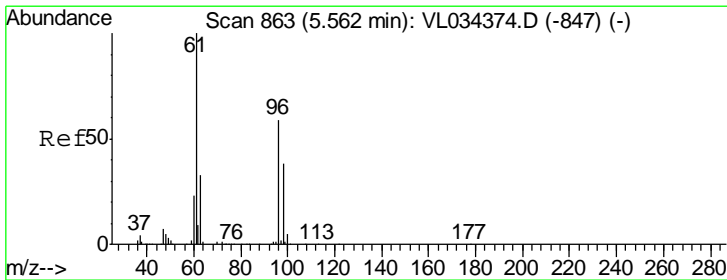
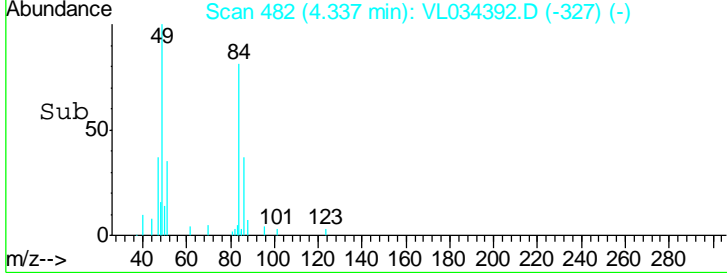
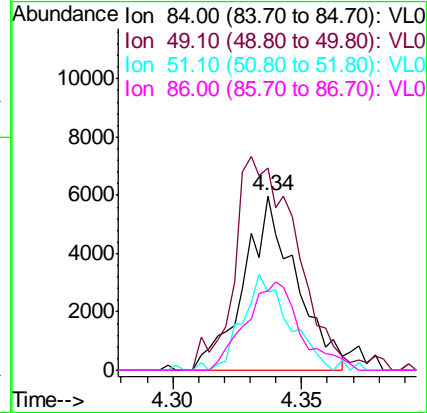
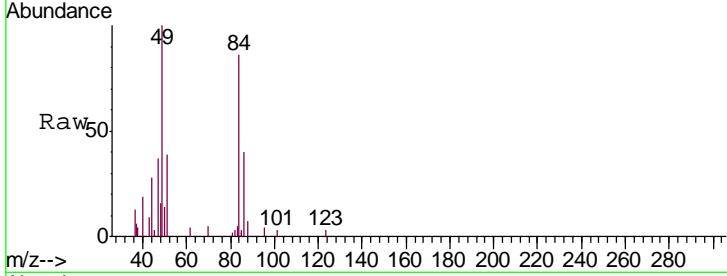




#20
 Methylene Chloride
 Concen: 0.172 ppbv
 RT: 4.34 min Scan# 482
 Delta R.T. -0.00 min
 Lab File: VL034392.D
 Acq: 19 Nov 2019 23:32

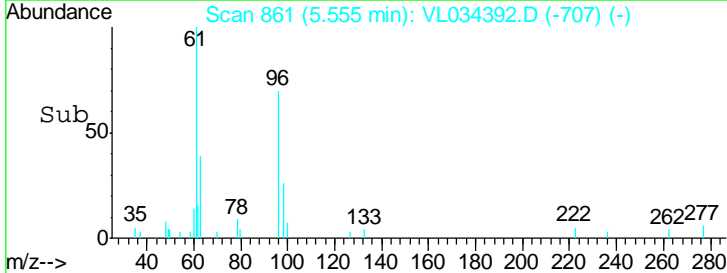
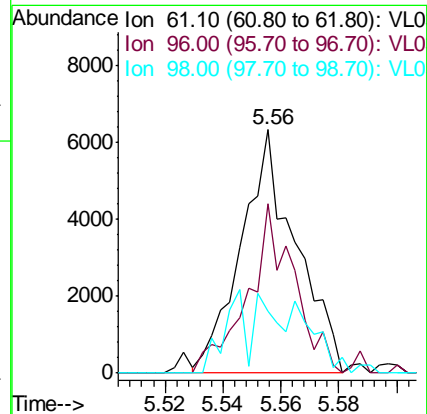
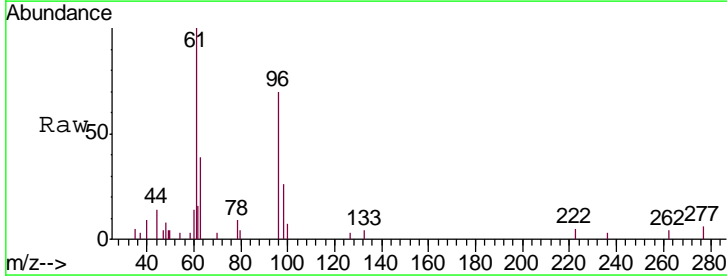
Instrument :
 MSVOA_L
 ClientSampled :
 IA1DL

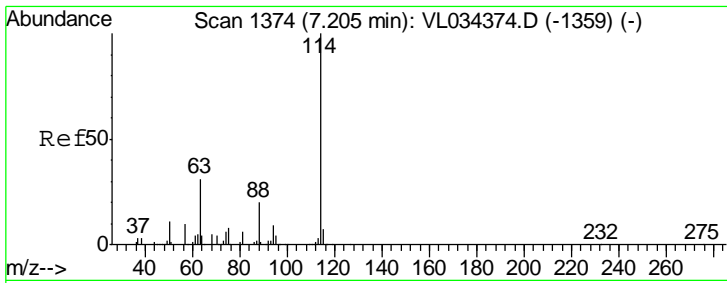
Tgt Ion	Resp	Lower	Upper
84	100		
49	116.0	116.8	175.2#
51	44.8	35.6	53.4
86	45.8	50.7	76.1#



#31
 cis-1,2-Dichloroethene
 Concen: 0.075 ppbv
 RT: 5.56 min Scan# 861
 Delta R.T. -0.01 min
 Lab File: VL034392.D
 Acq: 19 Nov 2019 23:32

Tgt Ion	Resp	Lower	Upper
61	100		
96	60.2	47.4	71.2
98	22.0	30.6	45.8#

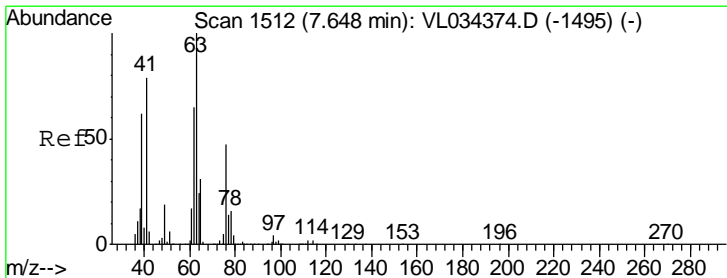
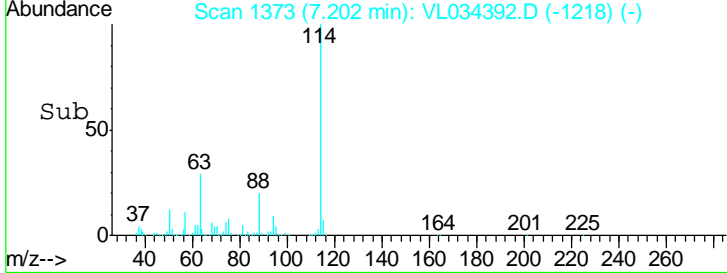
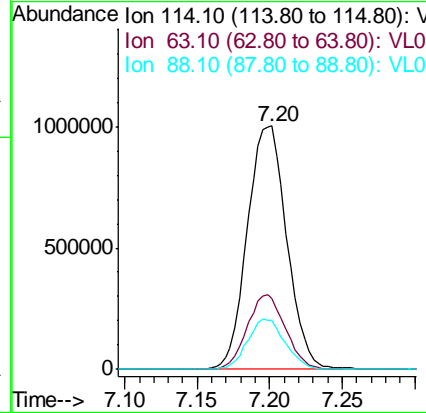
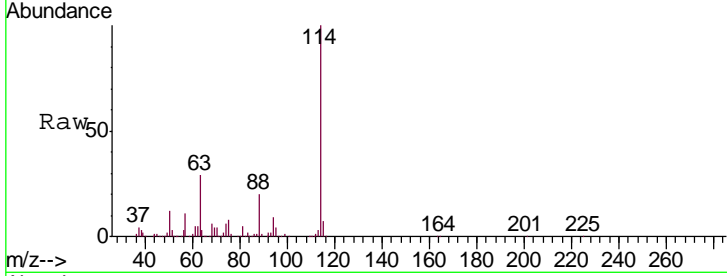




#33
 1,4-Difluorobenzene
 Concen: 10.000 ppbv
 RT: 7.20 min Scan# 1373
 Delta R.T. -0.00 min
 Lab File: VL034392.D
 Acq: 19 Nov 2019 23:32

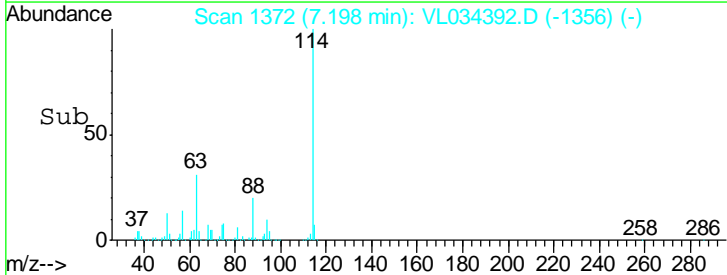
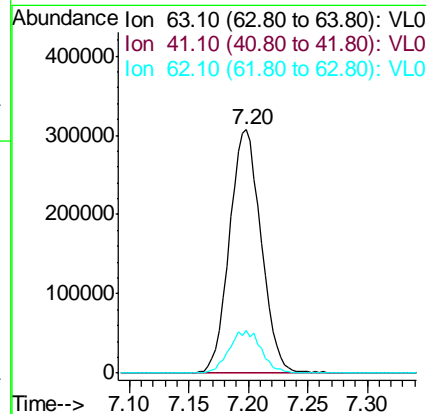
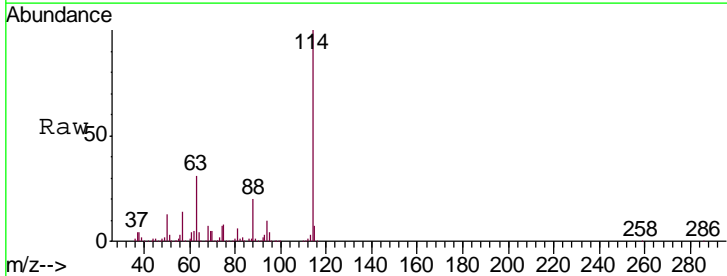
Instrument :
 MSVOA_L
 ClientSampled :
 IA1DL

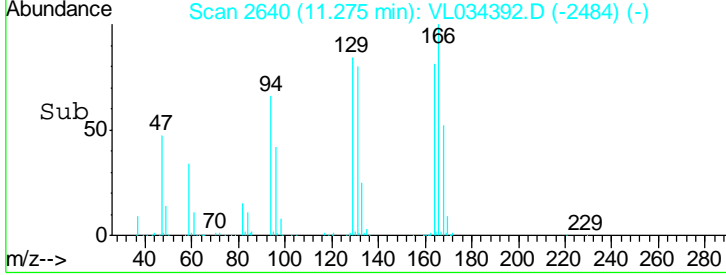
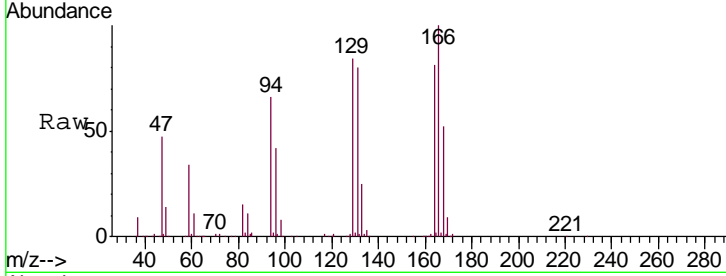
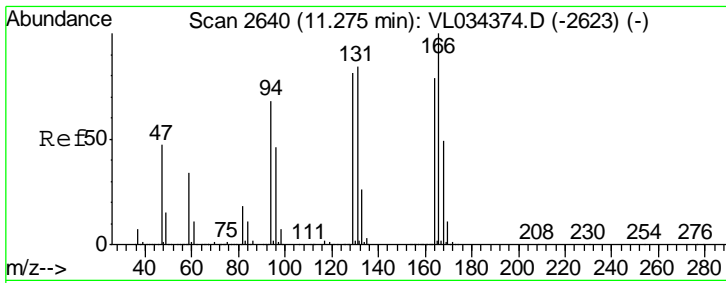
Tgt Ion	Resp	Lower	Upper
114	100		
63	29.9	24.2	36.4
88	19.7	15.9	23.9



#39
 1,2-Dichloropropane
 Concen: 7.029 ppbv
 RT: 7.20 min Scan# 1372
 Delta R.T. -0.45 min
 Lab File: VL034392.D
 Acq: 19 Nov 2019 23:32

Tgt Ion	Resp	Lower	Upper
63	100		
41	0.0	63.1	94.7#
62	17.4	52.3	78.5#

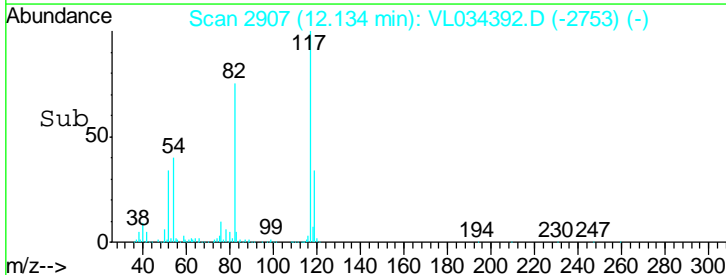
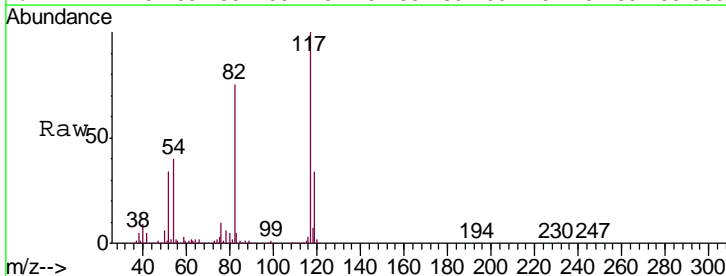
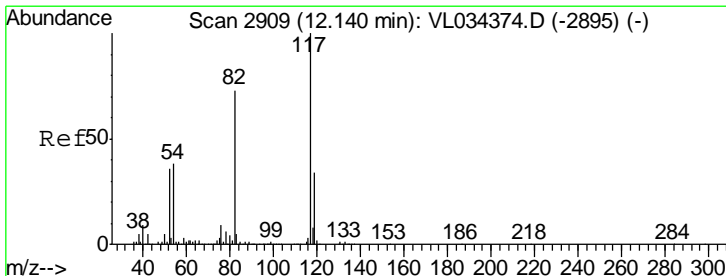
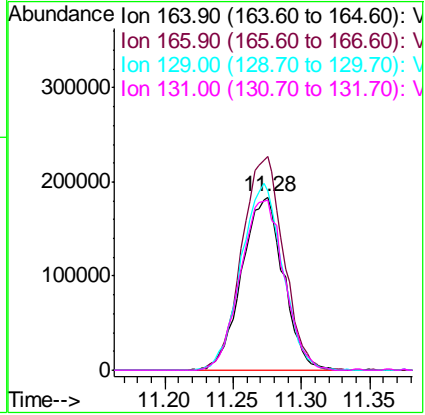




#52
 Tetrachloroethene
 Concen: 4.748 ppbv
 RT: 11.28 min Scan# 2640
 Delta R.T. 0.00 min
 Lab File: VL034392.D
 Acq: 19 Nov 2019 23:32

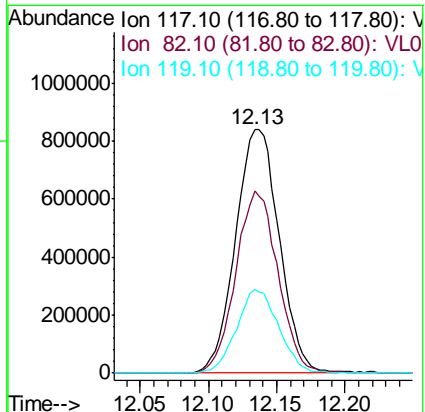
Instrument : MSVOA_L
 ClientSampled : IA1DL

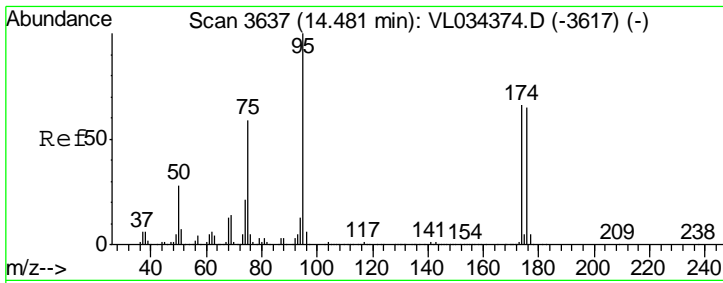
Tgt Ion	Resp	Lower	Upper
164	100		
166	123.4	101.7	152.5
129	103.3	82.6	123.8
131	98.3	85.2	127.8



#55
 Chlorobenzene-d5
 Concen: 10.000 ppbv
 RT: 12.13 min Scan# 2907
 Delta R.T. -0.01 min
 Lab File: VL034392.D
 Acq: 19 Nov 2019 23:32

Tgt Ion	Resp	Lower	Upper
117	100		
82	72.7	57.5	86.3
119	33.4	25.4	38.2





#68
 1-Bromo-4-Fluorobenzene
 Concen: 10.106 ppbv
 RT: 14.47 min Scan# 3635
 Delta R.T. -0.01 min
 Lab File: VL034392.D
 Acq: 19 Nov 2019 23:32

Instrument : MSVOA_L
 ClientSampleID : IA1DL

Tgt Ion: 95 Resp: 1585603

Ion	Ratio	Lower	Upper
95	100		
174	65.3	52.2	78.2
175	4.6	3.8	5.8

