

Data Path : Z:\voasrv\HPCHEM1\MSVOA_L\Data\VL112122\
 Data File : VL039909.D
 Acq On : 21 Nov 2022 14:15
 Operator : SY/AP
 Sample : N5724-01DUP
 Misc : 400mL/MSVOA_L
 ALS Vial : 1 Sample Multiplier: 1

Instrument :
 MSVOA_L
 ClientSampleId :
 IA1DUP

Quant Time: Nov 22 03:48:17 2022
 Quant Method : Z:\voasrv\HPCHEM1\MSVOA_L\methods\VL111822AIR.M
 Quant Title : AIR ANALYSIS BY METHOD TO-15 Instrument: MSVOA_L Fri Aug 26 06:05:16 2022
 QLast Update : Tue Nov 22 03:45:31 2022
 Response via : Initial Calibration

Compound	R.T.	QIon	Response	Conc	Units	Dev(Min)

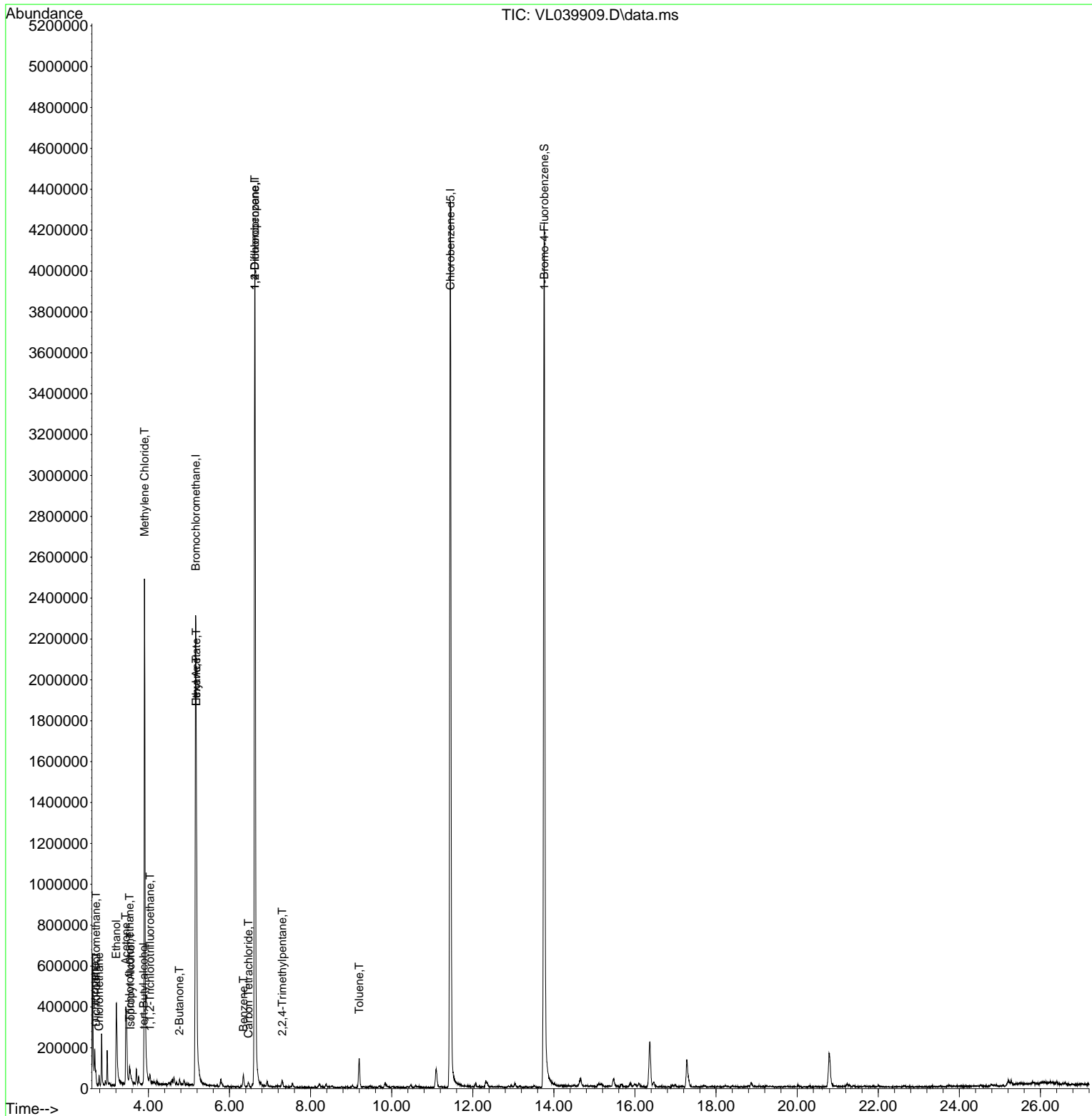
Internal Standards						
1) Bromochloromethane	5.166	49	1042781	10.000	ppbv	0.00
33) 1,4-Difluorobenzene	6.626	114	3230848	10.000	ppbv	0.00
55) Chlorobenzene-d5	11.445	117	2817763	10.000	ppbv	0.00
System Monitoring Compounds						
68) 1-Bromo-4-Fluorobenzene	13.764	95	2209298	10.265	ppbv	0.00
Spiked Amount	10.000	Range	65 - 135	Recovery	=	102.700%
Target Compounds						
						Qvalue
2) Dichlorodifluoromethane	2.703	85	39101	0.262	ppbv	90
4) Chloromethane	2.783	50	36090	0.392	ppbv	90
9) Propene	2.674	41	32049	0.473	ppbv #	82
11) Trichlorofluoromethane	3.536	101	44728	0.246	ppbv	94
12) 1,1,2-Trichlorotrifluo...	4.037	101	7762	0.056	ppbv #	12
13) Ethanol	3.208	45	499719	96.564	ppbv	99
15) Acetone	3.443	43	429089	3.102	ppbv	97
17) tert-Butyl alcohol	3.880	59	5464	0.034	ppbv #	72
19) Isopropyl Alcohol	3.558	45	40128	0.536	ppbv #	1
20) Methylene Chloride	3.906	84	841257	12.554	ppbv	94
25) Ethyl Acetate	5.182	43	269615	1.062	ppbv #	78
26) Hexane	5.182	57	375779	3.387	ppbv #	39
34) 2-Butanone	4.764	43	9507	0.061	ppbv #	1
35) Carbon Tetrachloride	6.468	117	8698	0.047	ppbv	87
36) Benzene	6.346	78	41505	0.151	ppbv	94
39) 1,2-Dichloropropane	6.626	63	795384	7.434	ppbv #	26
44) 2,2,4-Trimethylpentane	7.301	57	19950	0.044	ppbv #	40
53) Toluene	9.201	91	103338	0.330	ppbv	100

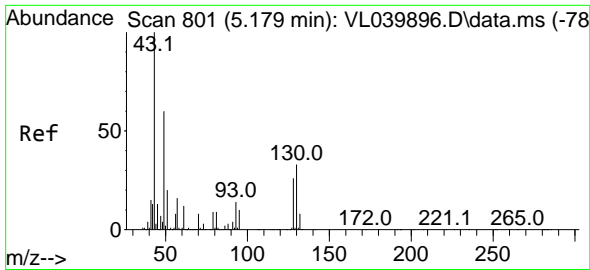
(#) = qualifier out of range (m) = manual integration (+) = signals summed

Data Path : Z:\voasrv\HPCHEM1\MSVOA_L\Data\VL112122\
 Data File : VL039909.D
 Acq On : 21 Nov 2022 14:15
 Operator : SY/AP
 Sample : N5724-01DUP
 Misc : 400mL/MSVOA_L
 ALS Vial : 1 Sample Multiplier: 1

Instrument :
 MSVOA_L
 ClientSampleId :
 IA1DUP

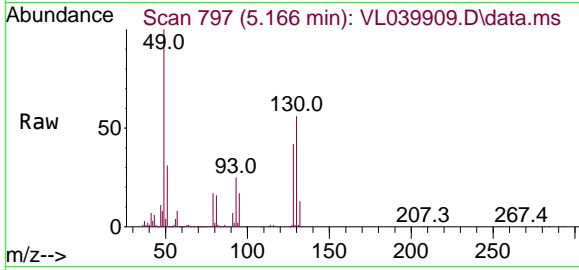
Quant Time: Nov 22 03:48:17 2022
 Quant Method : Z:\voasrv\HPCHEM1\MSVOA_L\methods\VL11822AIR.M
 Quant Title : AIR ANALYSIS BY METHOD TO-15 Instrument: MSVOA_L Fri Aug 26 06:05:16 2022
 QLast Update : Tue Nov 22 03:45:31 2022
 Response via : Initial Calibration



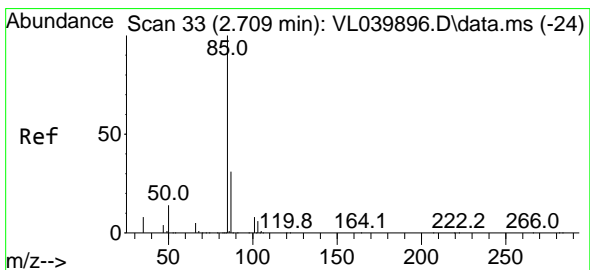
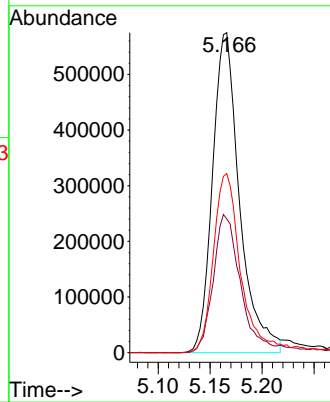
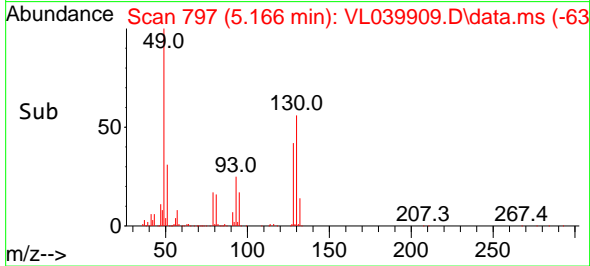


#1
 Bromochloromethane
 Concen: 10.000 ppbv
 RT: 5.166 min Scan# 71
 Delta R.T. 0.010 min
 Lab File: VL039909.D
 Acq: 21 Nov 2022 14:15

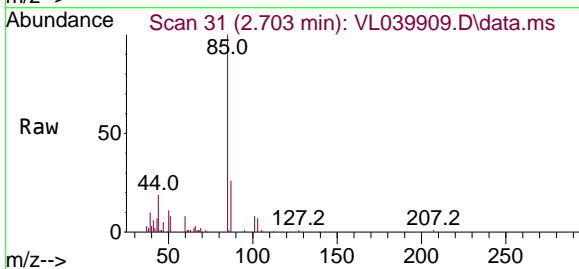
Instrument :
 MSVOA_L
 ClientSampleId :
 IA1DUP



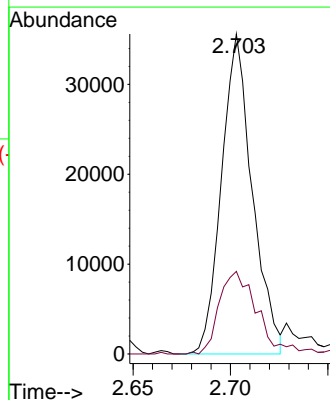
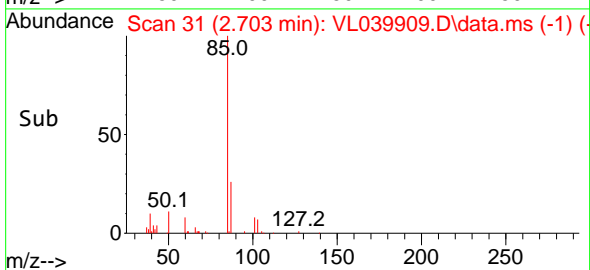
Tgt Ion: 49 Resp: 1042781
 Ion Ratio Lower Upper
 49 100
 128 45.8 22.1 66.3
 130 59.2 27.7 83.1

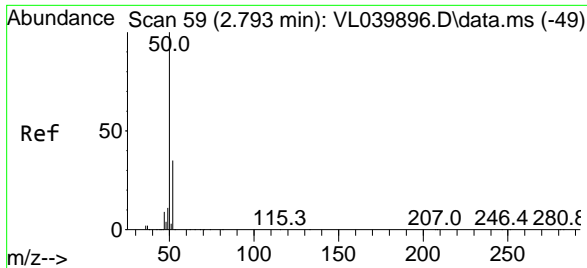


#2
 Dichlorodifluoromethane
 Concen: 0.262 ppbv
 RT: 2.703 min Scan# 31
 Delta R.T. 0.006 min
 Lab File: VL039909.D
 Acq: 21 Nov 2022 14:15



Tgt Ion: 85 Resp: 39101
 Ion Ratio Lower Upper
 85 100
 87 25.8 25.0 37.4

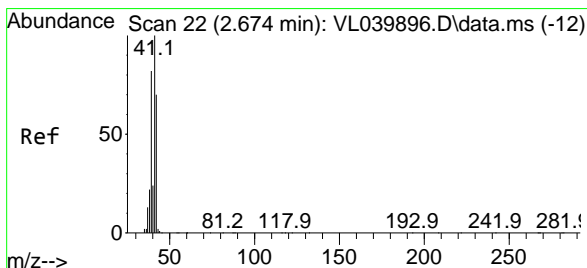
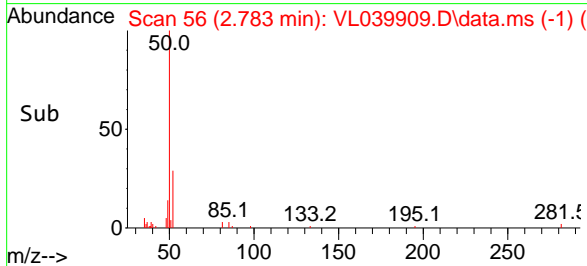
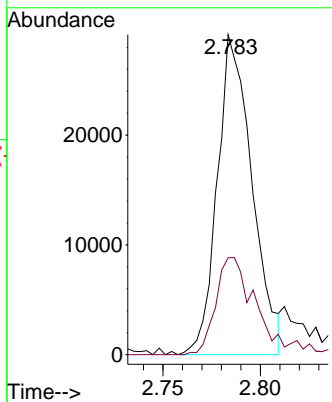
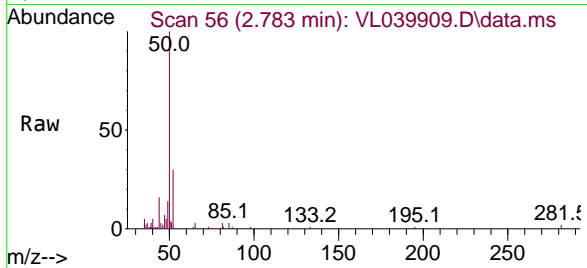




#4
 Chloromethane
 Concen: 0.392 ppbv
 RT: 2.783 min Scan# 50
 Delta R.T. 0.003 min
 Lab File: VL039909.D
 Acq: 21 Nov 2022 14:15

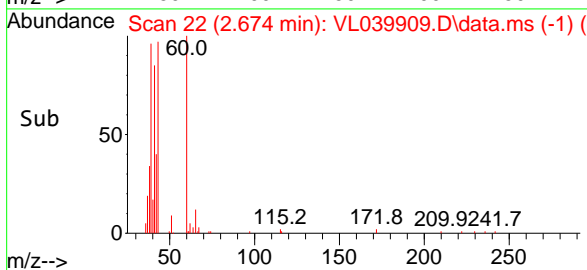
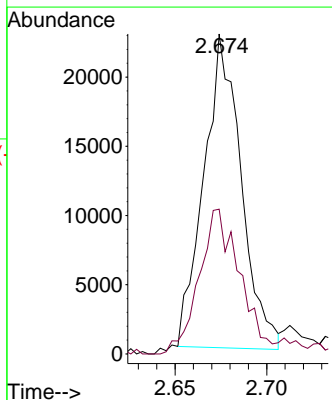
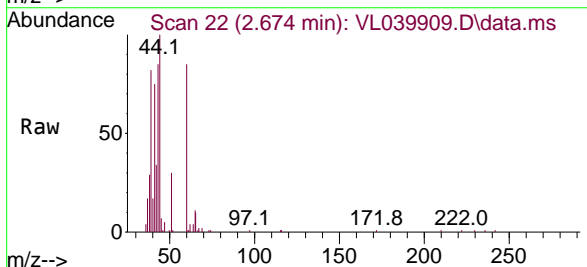
Instrument :
 MSVOA_L
 ClientSampleId :
 IA1DUP

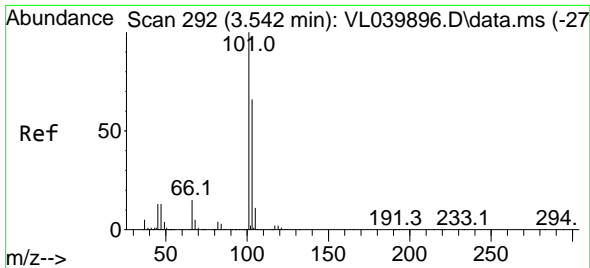
Tgt Ion: 50 Resp: 36090
 Ion Ratio Lower Upper
 50 100
 52 29.2 27.8 41.8



#9
 Propene
 Concen: 0.473 ppbv
 RT: 2.674 min Scan# 22
 Delta R.T. 0.013 min
 Lab File: VL039909.D
 Acq: 21 Nov 2022 14:15

Tgt Ion: 41 Resp: 32049
 Ion Ratio Lower Upper
 41 100
 42 54.8 55.8 83.6#

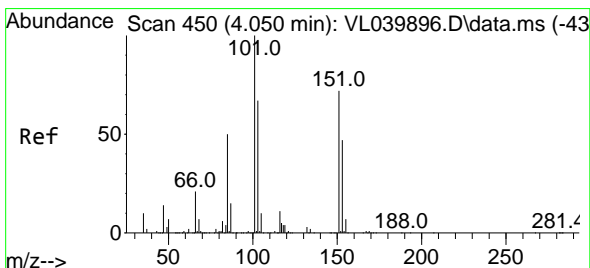
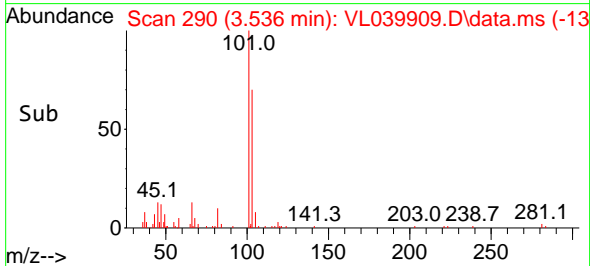
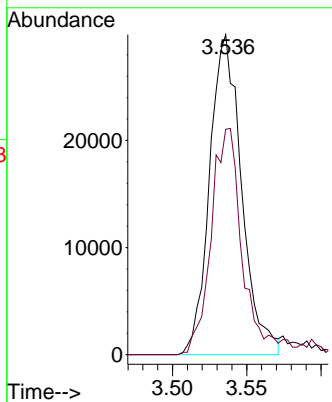
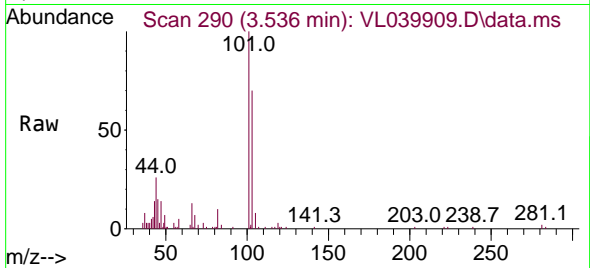




#11
 Trichlorofluoromethane
 Concen: 0.246 ppbv
 RT: 3.536 min Scan# 291
 Delta R.T. 0.006 min
 Lab File: VL039909.D
 Acq: 21 Nov 2022 14:15

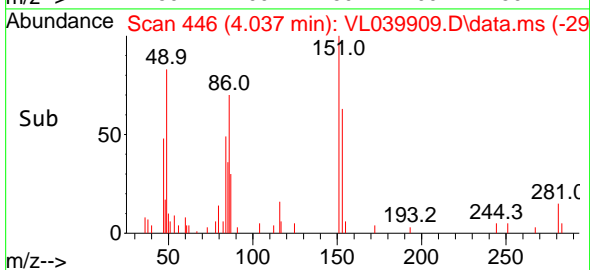
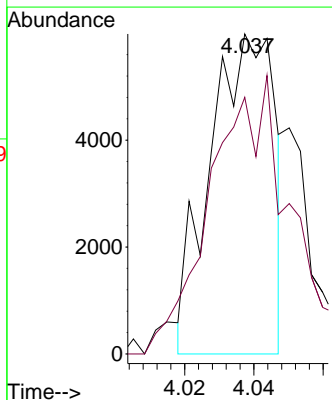
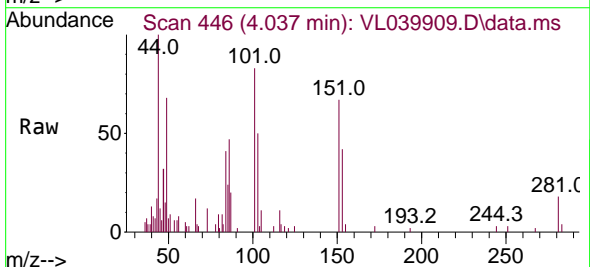
Instrument :
 MSVOA_L
 ClientSampleId :
 IA1DUP

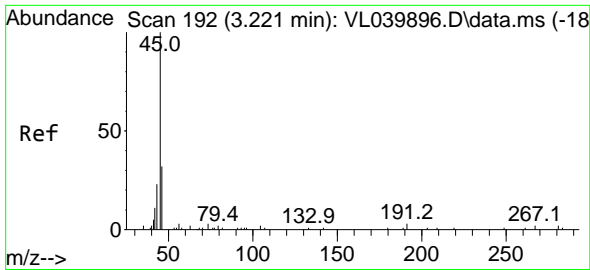
Tgt Ion:101 Resp: 44728
 Ion Ratio Lower Upper
 101 100
 103 70.5 52.6 78.8



#12
 1,1,2-Trichlorotrifluoroethane
 Concen: 0.056 ppbv
 RT: 4.037 min Scan# 446
 Delta R.T. 0.003 min
 Lab File: VL039909.D
 Acq: 21 Nov 2022 14:15

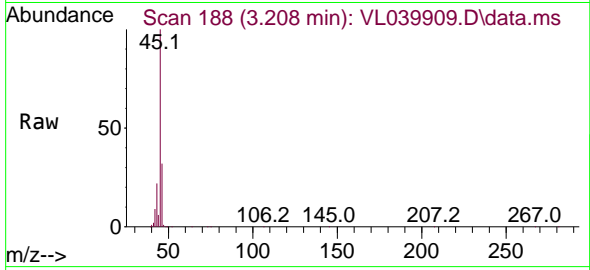
Tgt Ion:101 Resp: 7762
 Ion Ratio Lower Upper
 101 100
 151 0.0 59.6 89.4#



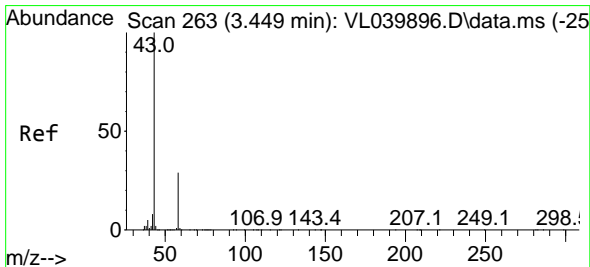
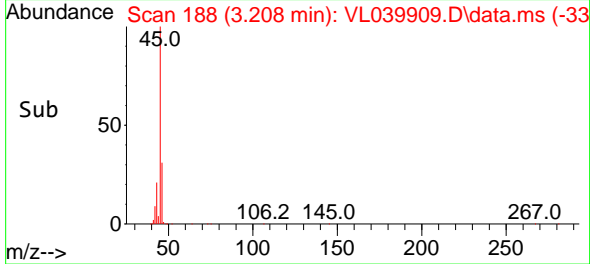
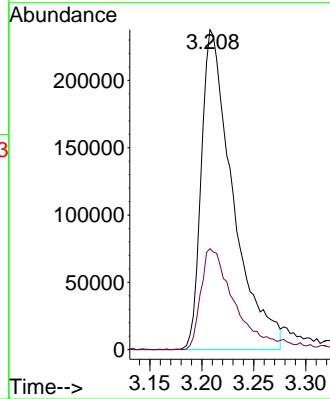


#13
 Ethanol
 Concen: 96.564 ppbv
 RT: 3.208 min Scan# 11
 Delta R.T. -0.000 min
 Lab File: VL039909.D
 Acq: 21 Nov 2022 14:15

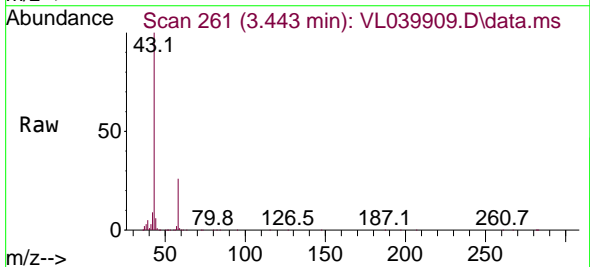
Instrument :
 MSVOA_L
 ClientSampleId :
 IA1DUP



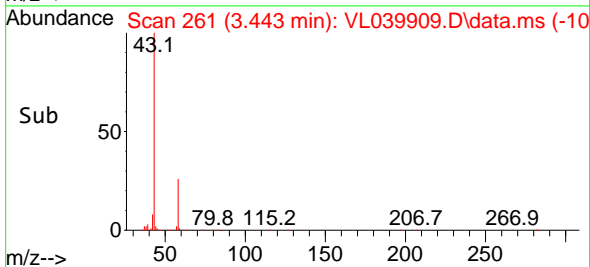
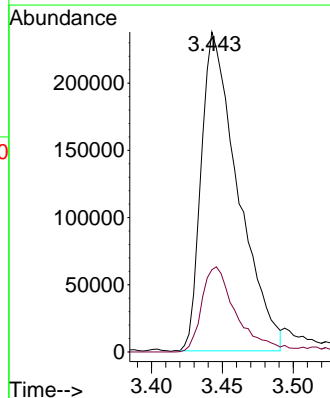
Tgt Ion: 45 Resp: 499719
 Ion Ratio Lower Upper
 45 100
 46 35.7 14.6 58.2

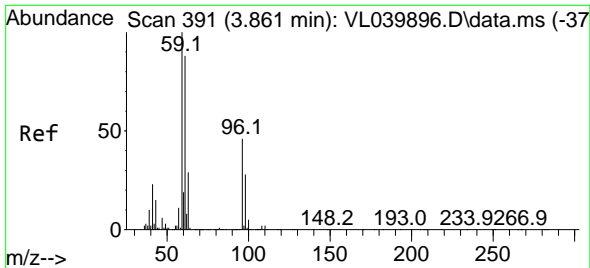


#15
 Acetone
 Concen: 3.102 ppbv
 RT: 3.443 min Scan# 261
 Delta R.T. 0.010 min
 Lab File: VL039909.D
 Acq: 21 Nov 2022 14:15



Tgt Ion: 43 Resp: 429089
 Ion Ratio Lower Upper
 43 100
 58 26.8 22.9 34.3

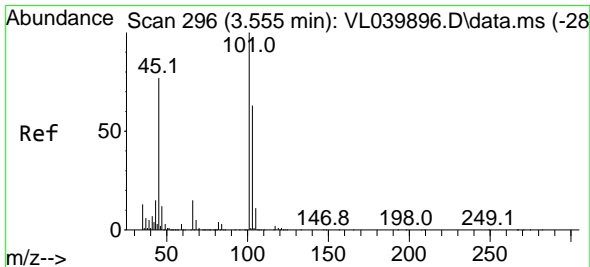
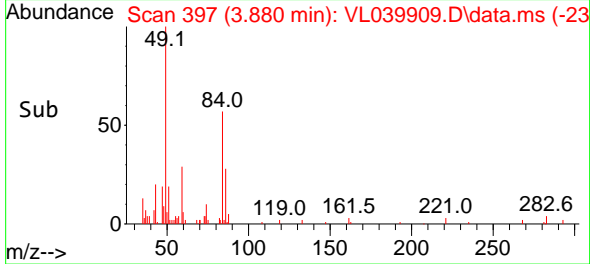
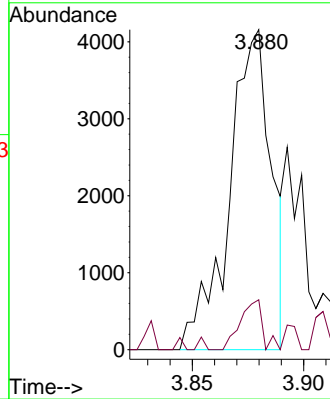
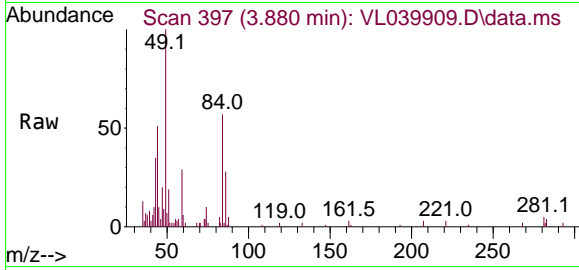




#17
 tert-Butyl alcohol
 Concen: 0.034 ppbv
 RT: 3.880 min Scan# 391
 Delta R.T. 0.035 min
 Lab File: VL039909.D
 Acq: 21 Nov 2022 14:15

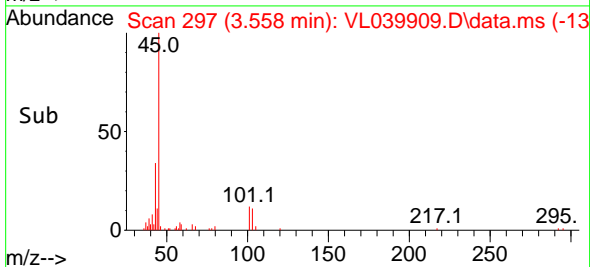
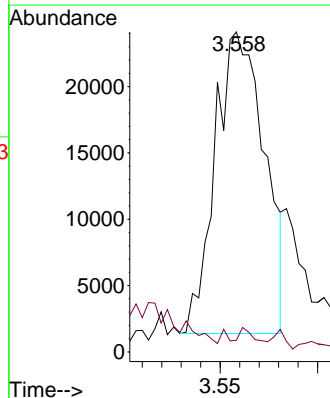
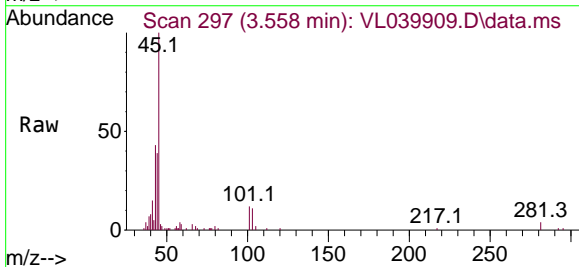
Instrument : MSVOA_L
 ClientSampleId : IA1DUP

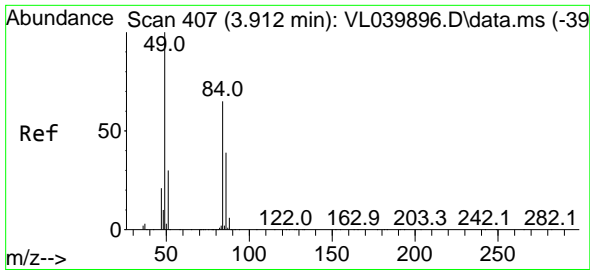
Tgt Ion: 59 Resp: 5464
 Ion Ratio Lower Upper
 59 100
 57 0.0 8.3 12.5#



#19
 Isopropyl Alcohol
 Concen: 0.536 ppbv
 RT: 3.558 min Scan# 297
 Delta R.T. 0.016 min
 Lab File: VL039909.D
 Acq: 21 Nov 2022 14:15

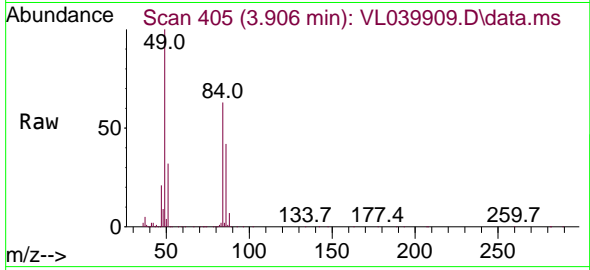
Tgt Ion: 45 Resp: 40128
 Ion Ratio Lower Upper
 45 100
 58 285.1 38.7 58.1#



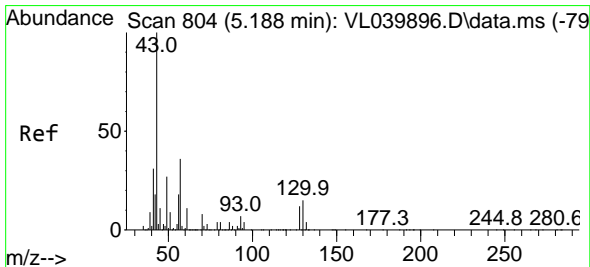
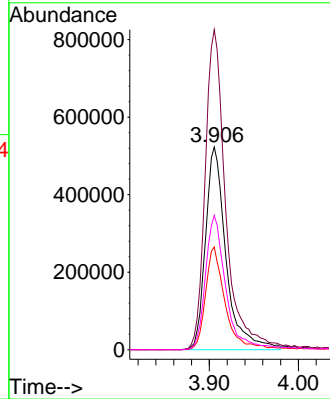
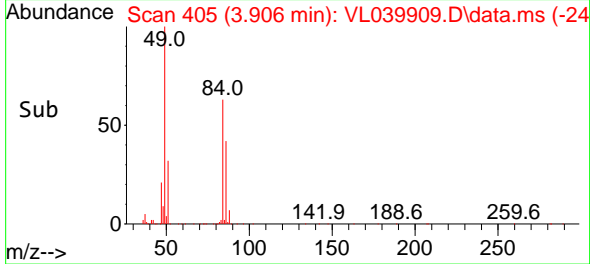


#20
 Methylene Chloride
 Concen: 12.554 ppbv
 RT: 3.906 min Scan# 407
 Delta R.T. 0.006 min
 Lab File: VL039909.D
 Acq: 21 Nov 2022 14:15

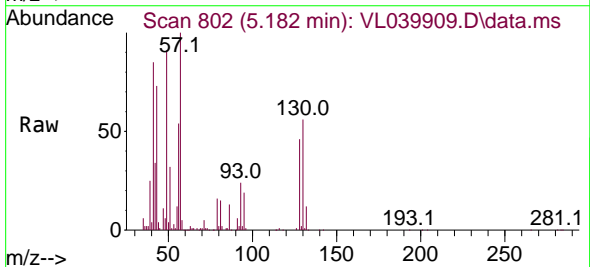
Instrument :
 MSVOA_L
 ClientSampleId :
 IA1DUP



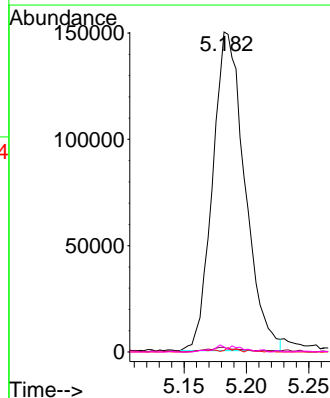
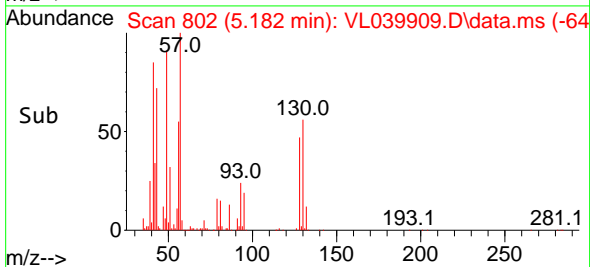
Tgt Ion: 84 Resp: 841257
 Ion Ratio Lower Upper
 84 100
 49 157.8 122.2 183.4
 51 50.6 36.3 54.5
 86 66.2 47.2 70.8

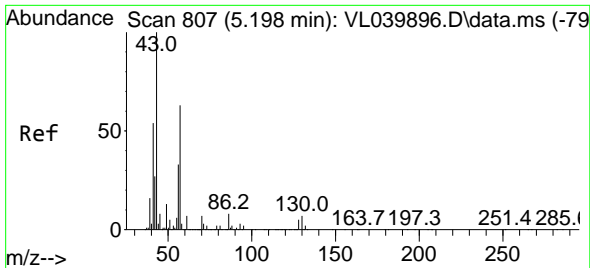


#25
 Ethyl Acetate
 Concen: 1.062 ppbv
 RT: 5.182 min Scan# 802
 Delta R.T. 0.013 min
 Lab File: VL039909.D
 Acq: 21 Nov 2022 14:15



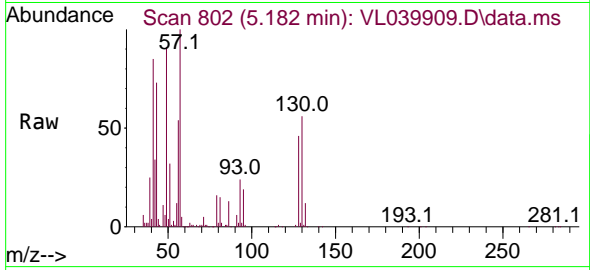
Tgt Ion: 43 Resp: 269615
 Ion Ratio Lower Upper
 43 100
 45 1.9 8.4 12.6#
 61 1.0 8.5 12.7#
 70 1.8 5.9 8.9#



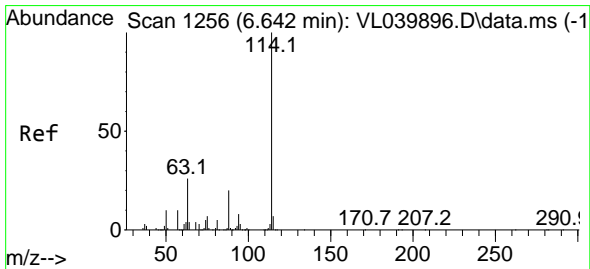
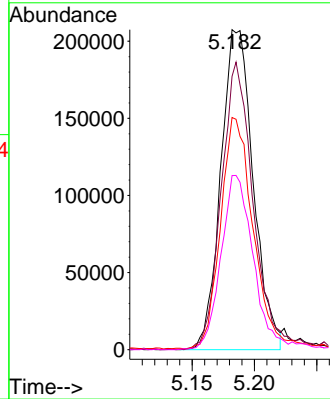
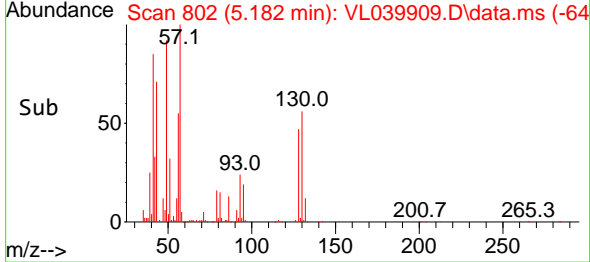


#26
 Hexane
 Concen: 3.387 ppbv
 RT: 5.182 min Scan# 807
 Delta R.T. -0.000 min
 Lab File: VL039909.D
 Acq: 21 Nov 2022 14:15

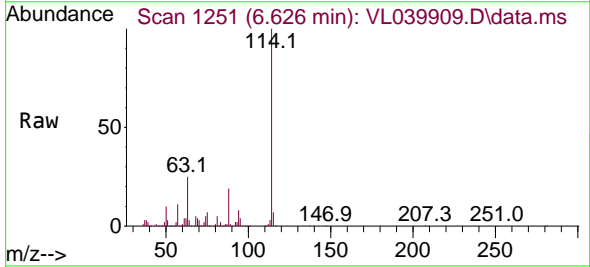
Instrument : MSVOA_L
 ClientSampleId : IA1DUP



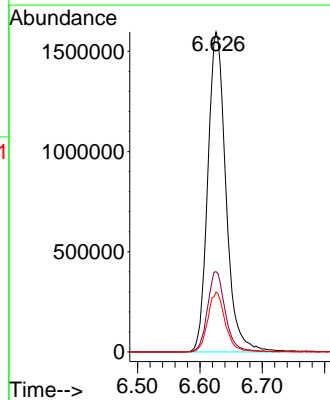
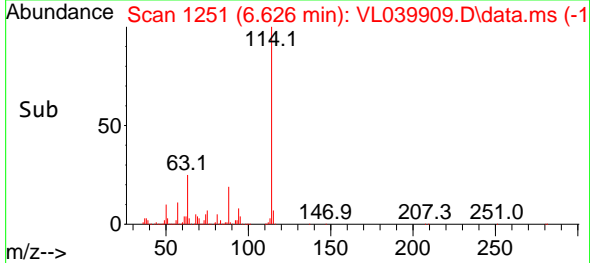
Tgt Ion: 57 Resp: 375779
 Ion Ratio Lower Upper
 57 100
 41 91.0 72.3 108.5
 43 73.6 188.7 283.1#
 56 55.6 42.4 63.6

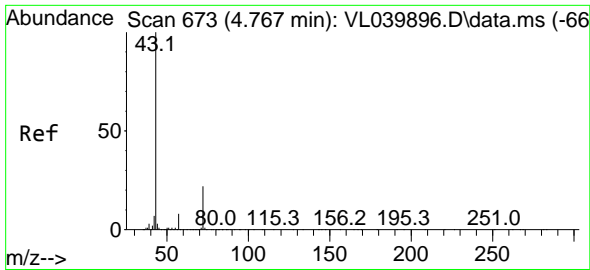


#33
 1,4-Difluorobenzene
 Concen: 10.000 ppbv
 RT: 6.626 min Scan# 1251
 Delta R.T. 0.006 min
 Lab File: VL039909.D
 Acq: 21 Nov 2022 14:15



Tgt Ion: 114 Resp: 3230848
 Ion Ratio Lower Upper
 114 100
 63 24.8 21.4 32.0
 88 18.1 15.3 22.9

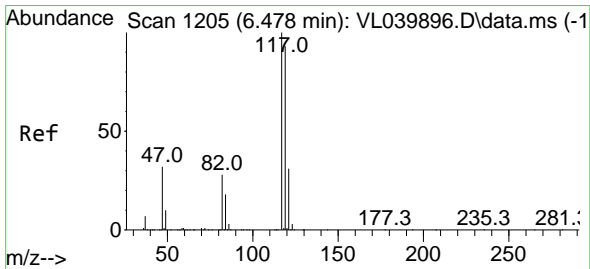
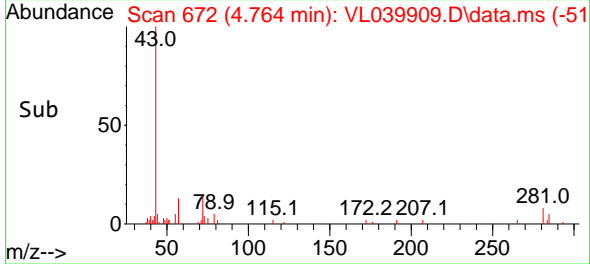
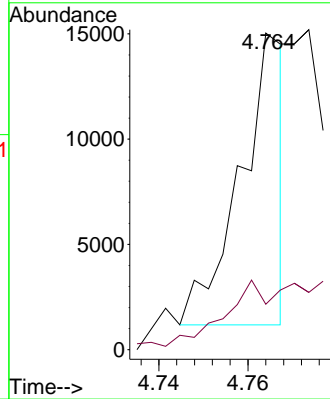
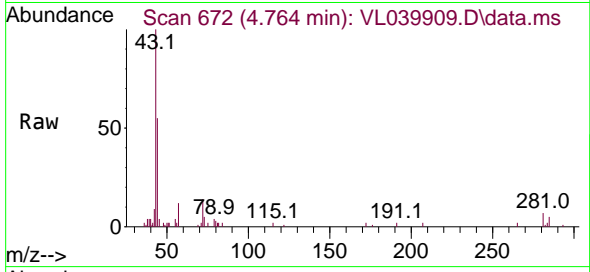




#34
 2-Butanone
 Concen: 0.061 ppbv
 RT: 4.764 min Scan# 61
 Delta R.T. 0.013 min
 Lab File: VL039909.D
 Acq: 21 Nov 2022 14:15

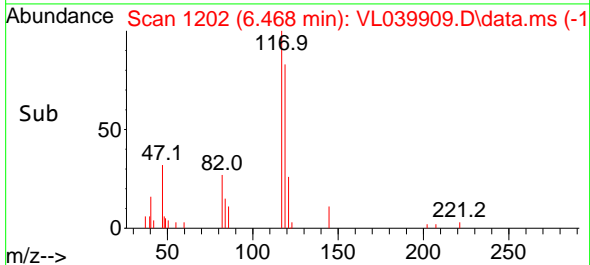
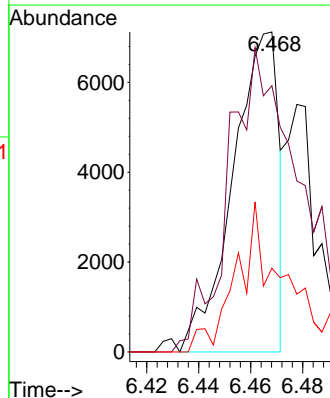
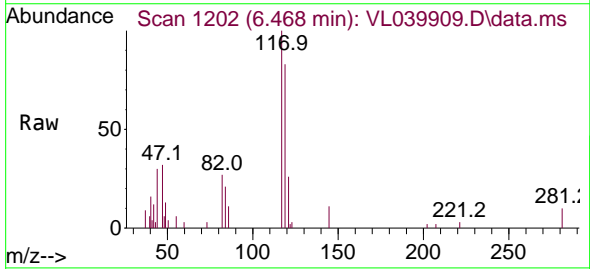
Instrument :
 MSVOA_L
 ClientSampleId :
 IA1DUP

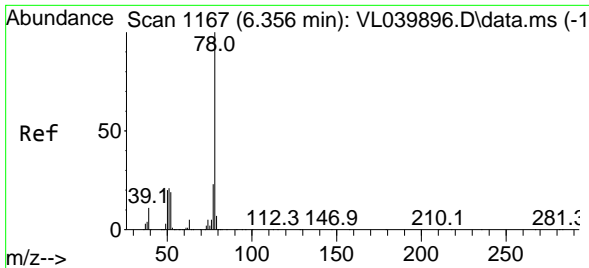
Tgt Ion: 43 Resp: 9507
 Ion Ratio Lower Upper
 43 100
 72 80.6 17.4 26.2#



#35
 Carbon Tetrachloride
 Concen: 0.047 ppbv
 RT: 6.468 min Scan# 1202
 Delta R.T. 0.006 min
 Lab File: VL039909.D
 Acq: 21 Nov 2022 14:15

Tgt Ion: 117 Resp: 8698
 Ion Ratio Lower Upper
 117 100
 119 79.7 74.7 112.1
 121 26.1 24.5 36.7

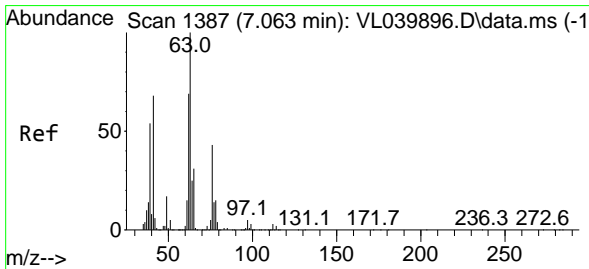
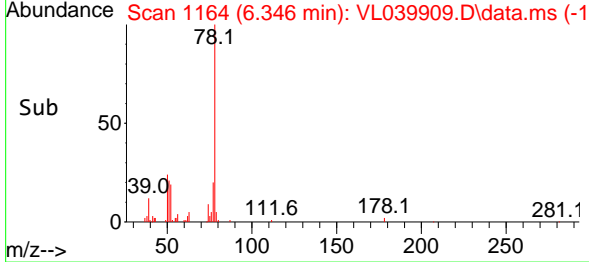
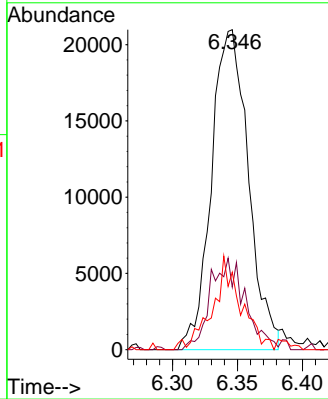
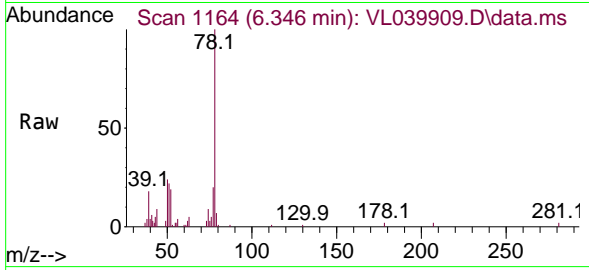




#36
 Benzene
 Concen: 0.151 ppbv
 RT: 6.346 min Scan# 1164
 Delta R.T. 0.010 min
 Lab File: VL039909.D
 Acq: 21 Nov 2022 14:15

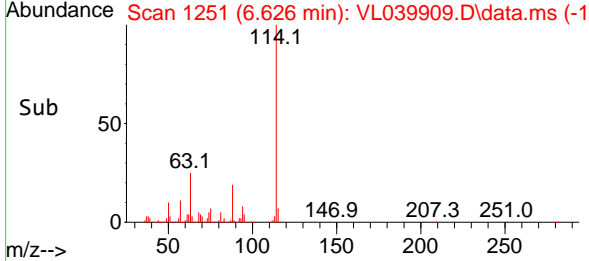
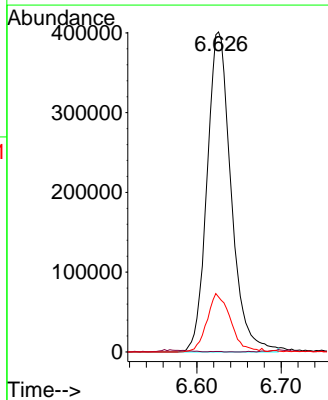
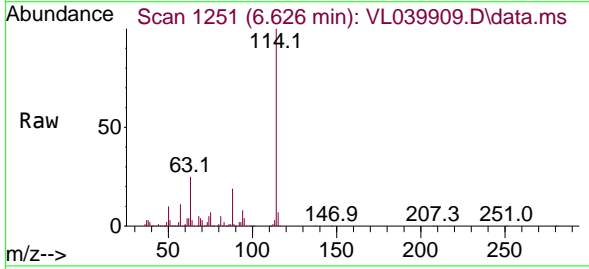
Instrument : MSVOA_L
 ClientSampleId : IA1DUP

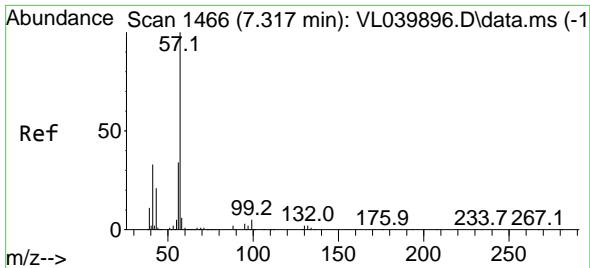
Tgt Ion	Resp	Lower	Upper
78	41505		
77	19.6	18.2	27.2
50	22.2	15.8	23.8



#39
 1,2-Dichloropropane
 Concen: 7.434 ppbv
 RT: 6.626 min Scan# 1251
 Delta R.T. -0.415 min
 Lab File: VL039909.D
 Acq: 21 Nov 2022 14:15

Tgt Ion	Resp	Lower	Upper
63	795384		
41	0.0	54.7	82.1#
62	17.2	55.0	82.6#

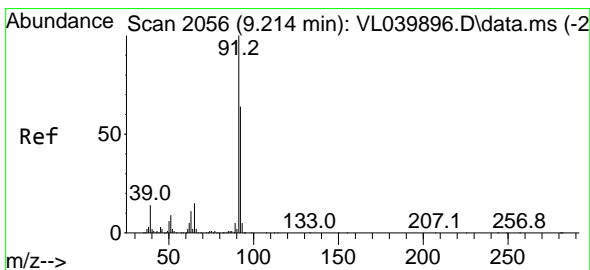
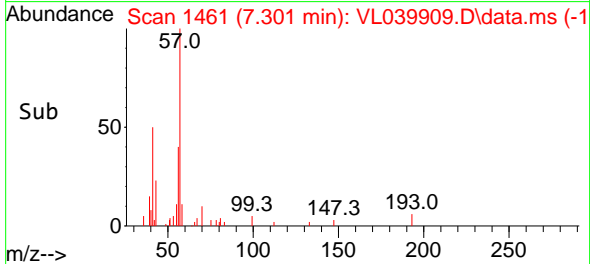
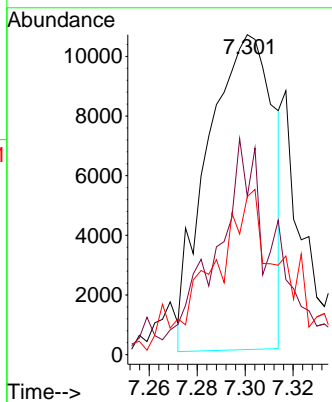
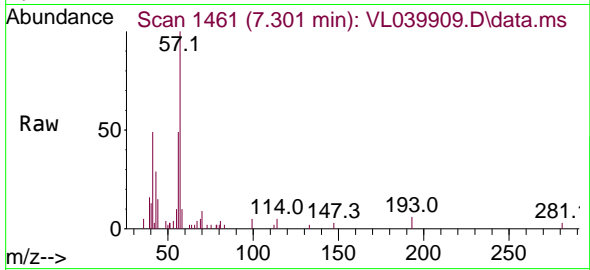




#44
 2,2,4-Trimethylpentane
 Concen: 0.044 ppbv
 RT: 7.301 min Scan# 1461
 Delta R.T. 0.006 min
 Lab File: VL039909.D
 Acq: 21 Nov 2022 14:15

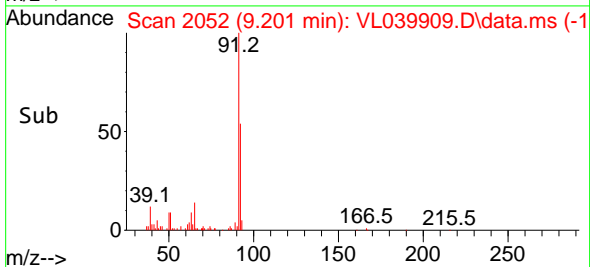
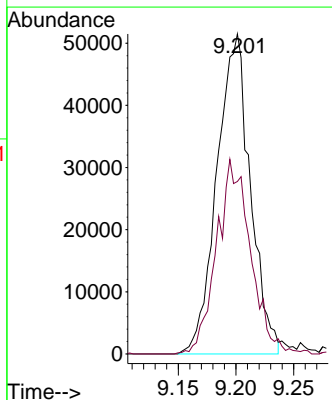
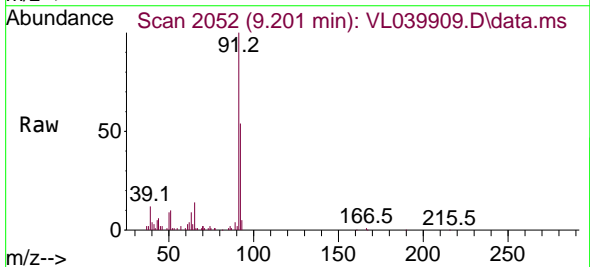
Instrument :
 MSVOA_L
 ClientSampleId :
 IA1DUP

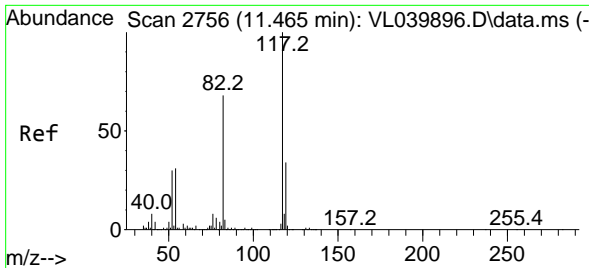
Tgt Ion	Resp	Lower	Upper
57	19950		
41	68.1	26.2	39.2#
56	63.8	25.5	38.3#



#53
 Toluene
 Concen: 0.330 ppbv
 RT: 9.201 min Scan# 2052
 Delta R.T. 0.009 min
 Lab File: VL039909.D
 Acq: 21 Nov 2022 14:15

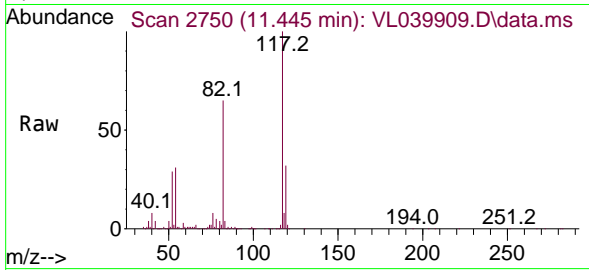
Tgt Ion	Resp	Lower	Upper
91	103338		
92	62.0	49.8	74.6



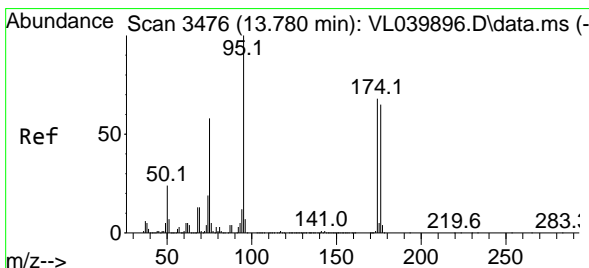
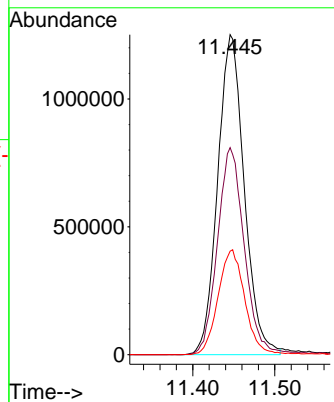
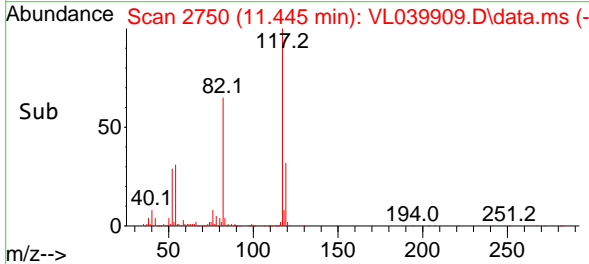


#55
 Chlorobenzene-d5
 Concen: 10.000 ppbv
 RT: 11.445 min Scan# 21
 Delta R.T. 0.006 min
 Lab File: VL039909.D
 Acq: 21 Nov 2022 14:15

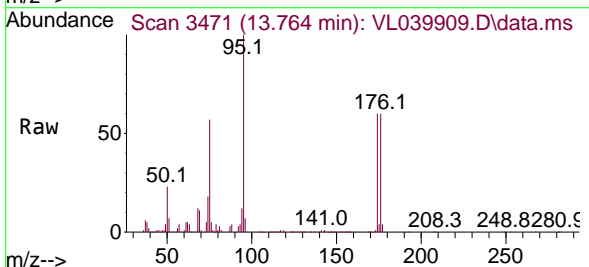
Instrument :
 MSVOA_L
 ClientSampleId :
 IA1DUP



Tgt Ion:117 Resp: 2817763
 Ion Ratio Lower Upper
 117 100
 82 66.8 52.3 78.5
 119 33.4 25.7 38.5



#68
 1-Bromo-4-Fluorobenzene
 Concen: 10.265 ppbv
 RT: 13.764 min Scan# 3471
 Delta R.T. 0.010 min
 Lab File: VL039909.D
 Acq: 21 Nov 2022 14:15



Tgt Ion: 95 Resp: 2209298
 Ion Ratio Lower Upper
 95 100
 174 62.7 53.7 80.5
 175 4.6 4.0 6.0

