

Data Path : Z:\voasrv\HPCHEM1\MSVOA_L\Data\VL112122\
 Data File : VL039915.D
 Acq On : 21 Nov 2022 18:21
 Operator : SY/AP
 Sample : N5724-04 4X
 Misc : 400mL/MSVOA_L
 ALS Vial : 1 Sample Multiplier: 1

Instrument :
 MSVOA_L
 ClientSampleId :
 SV2

Quant Time: Nov 22 03:50:10 2022
 Quant Method : Z:\voasrv\HPCHEM1\MSVOA_L\methods\VL111822AIR.M
 Quant Title : AIR ANALYSIS BY METHOD TO-15 Instrument: MSVOA_L Fri Aug 26 06:05:16 2022
 QLast Update : Tue Nov 22 03:45:31 2022
 Response via : Initial Calibration

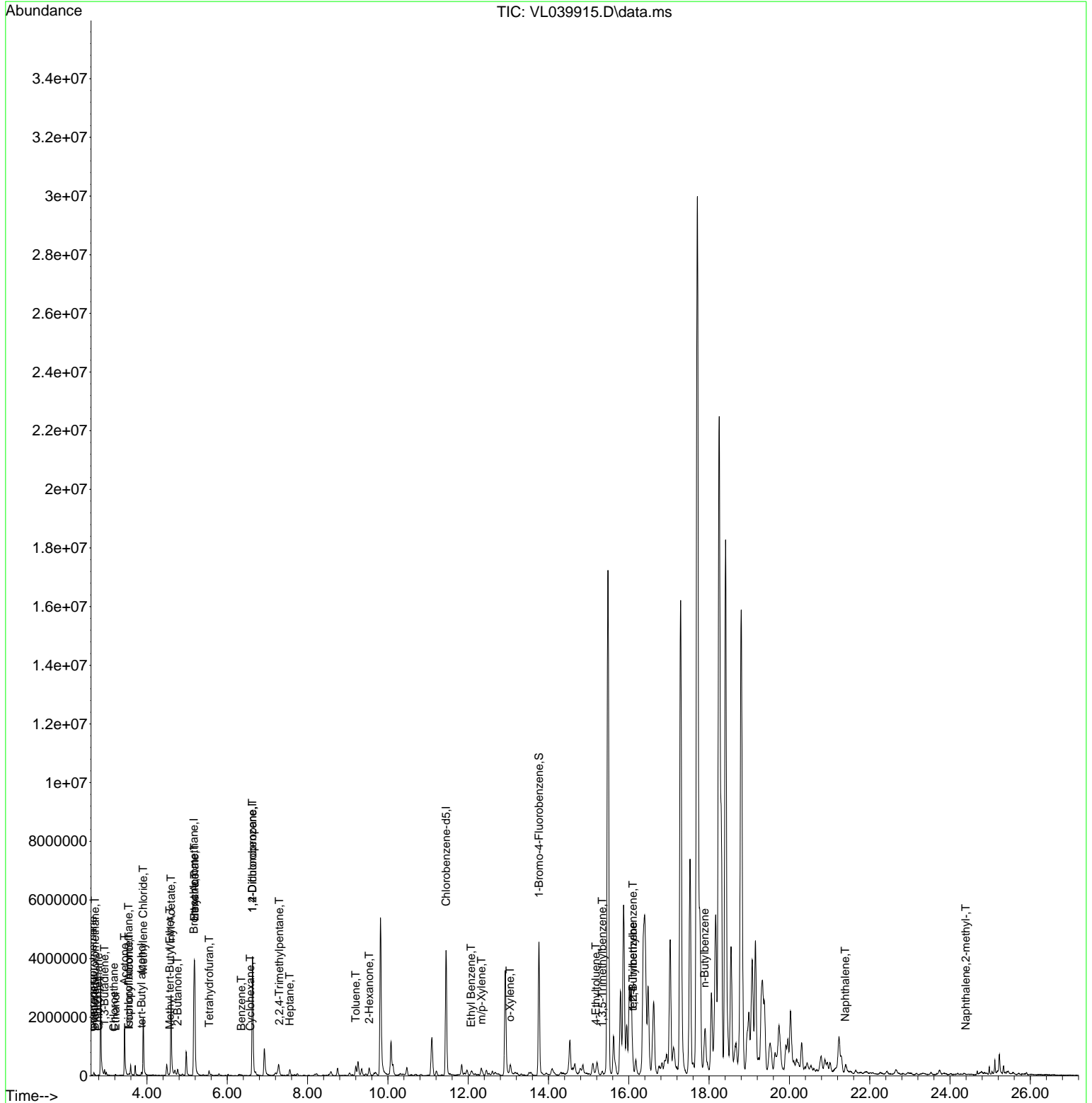
Compound	R.T.	QIon	Response	Conc	Units	Dev(Min)
Internal Standards						
1) Bromochloromethane	5.169	49	1072320	10.000	ppbv	0.01
33) 1,4-Difluorobenzene	6.629	114	3160642	10.000	ppbv	0.00
55) Chlorobenzene-d5	11.449	117	2841486	10.000	ppbv	0.00
System Monitoring Compounds						
68) 1-Bromo-4-Fluorobenzene	13.764	95	2262984	10.427	ppbv	0.00
Spiked Amount	10.000	Range	65 - 135	Recovery	=	104.300%
Target Compounds						
						Qvalue
2) Dichlorodifluoromethane	2.706	85	20303	0.132	ppbv	95
3) Chlorodifluoromethane	2.648	51	15268	0.103	ppbv	97
4) Chloromethane	2.790	50	17653	0.187	ppbv #	81
7) Chloroethane	3.176	64	3434	0.118	ppbv #	72
9) Propene	2.677	41	30684	0.440	ppbv	86
10) Heptane	7.555	43	88603	0.527	ppbv	88
11) Trichlorofluoromethane	3.539	101	10287	0.055	ppbv	95
13) Ethanol	3.217	45	22365	4.203	ppbv	73
15) Acetone	3.439	43	1621933	11.404	ppbv	95
16) 1,3-Butadiene	2.941	39	44047	0.621	ppbv #	18
17) tert-Butyl alcohol	3.864	59	88323	0.540	ppbv	97
19) Isopropyl Alcohol	3.555	45	39401	0.512	ppbv #	29
20) Methylene Chloride	3.909	84	663216	9.625	ppbv	96
23) Vinyl Acetate	4.600	43	3763125	64.402	ppbv	98
25) Ethyl Acetate	5.188	43	910043	3.485	ppbv #	77
26) Hexane	5.188	57	1296655	11.366	ppbv #	35
28) Methyl tert-Butyl Ether	4.568	73	27775	0.194	ppbv #	52
30) Cyclohexane	6.574	84	4911	0.044	ppbv #	1
34) 2-Butanone	4.764	43	100934	0.667	ppbv #	40
36) Benzene	6.349	78	22277	0.083	ppbv #	88
39) 1,2-Dichloropropane	6.629	63	771903	7.375	ppbv #	27
41) Tetrahydrofuran	5.549	42	82850	0.794	ppbv	92
44) 2,2,4-Trimethylpentane	7.298	57	19545	0.044	ppbv #	42
51) 2-Hexanone	9.532	43	219050	1.042	ppbv #	99
53) Toluene	9.201	91	231728	0.757	ppbv	96
58) Ethyl Benzene	12.072	91	43304	0.112	ppbv	98
59) m/p-Xylene	12.330	91	150065	0.465	ppbv #	51
60) o-Xylene	13.043	91	142428	0.463	ppbv	99
65) tert-Butylbenzene	16.101	119	29577	0.076	ppbv #	21
70) n-Butylbenzene	17.889	91	28106	0.064	ppbv #	52
72) 4-Ethyltoluene	15.178	105	66464	0.192	ppbv #	93
73) 1,3,5-Trimethylbenzene	15.342	105	50572	0.160	ppbv	97
74) 1,2,4-Trimethylbenzene	16.101	105	345223	1.030	ppbv #	68
79) Naphthalene	21.394	128	8112	0.040	ppbv #	81
80) Naphthalene,2-methyl-	24.390	142	2638	0.047	ppbv #	74

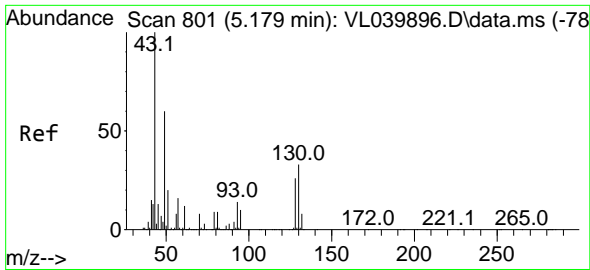
(#) = qualifier out of range (m) = manual integration (+) = signals summed

Data Path : Z:\voasrv\HPCHEM1\MSVOA_L\Data\VL112122\
 Data File : VL039915.D
 Acq On : 21 Nov 2022 18:21
 Operator : SY/AP
 Sample : N5724-04 4X
 Misc : 400mL/MSVOA_L
 ALS Vial : 1 Sample Multiplier: 1

Instrument :
 MSVOA_L
 ClientSampleId :
 SV2

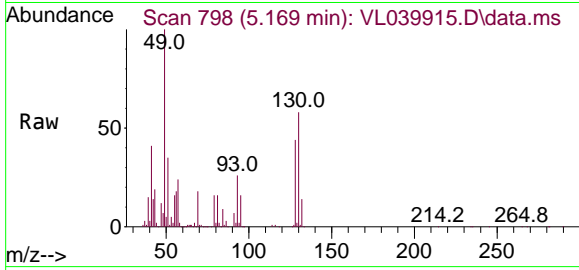
Quant Time: Nov 22 03:50:10 2022
 Quant Method : Z:\voasrv\HPCHEM1\MSVOA_L\methods\VL111822AIR.M
 Quant Title : AIR ANALYSIS BY METHOD TO-15 Instrument: MSVOA_L Fri Aug 26 06:05:16 2022
 QLast Update : Tue Nov 22 03:45:31 2022
 Response via : Initial Calibration



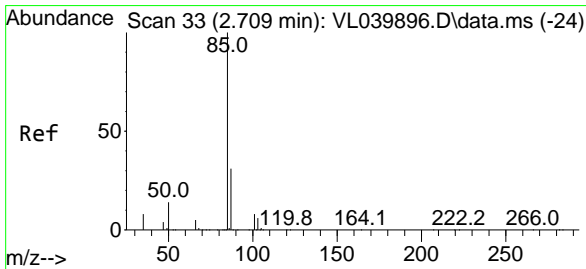
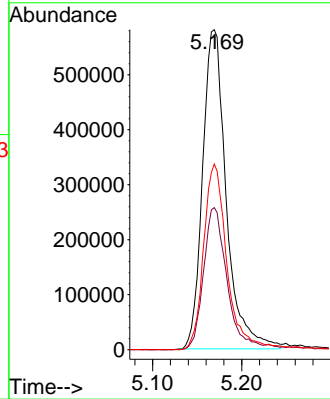
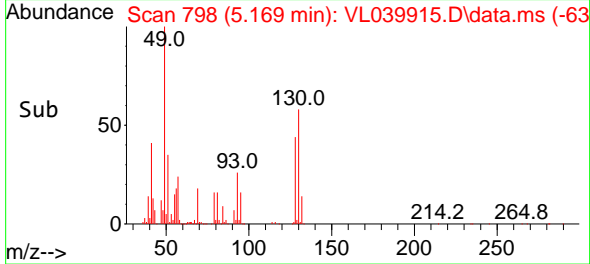


#1
 Bromochloromethane
 Concen: 10.000 ppbv
 RT: 5.169 min Scan# 71
 Delta R.T. 0.013 min
 Lab File: VL039915.D
 Acq: 21 Nov 2022 18:21

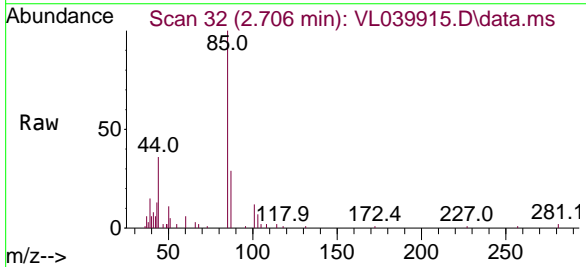
Instrument :
 MSVOA_L
 ClientSampleId :
 SV2



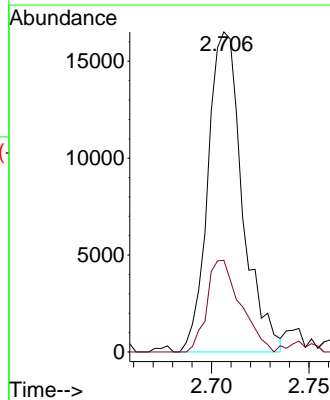
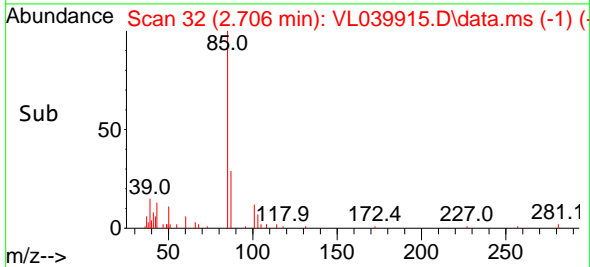
Tgt Ion: 49 Resp: 1072320
 Ion Ratio Lower Upper
 49 100
 128 45.3 22.1 66.3
 130 58.6 27.7 83.1

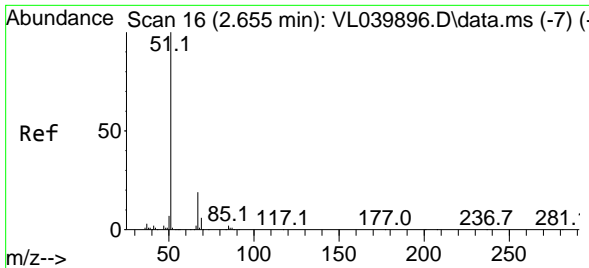


#2
 Dichlorodifluoromethane
 Concen: 0.132 ppbv
 RT: 2.706 min Scan# 32
 Delta R.T. 0.010 min
 Lab File: VL039915.D
 Acq: 21 Nov 2022 18:21



Tgt Ion: 85 Resp: 20303
 Ion Ratio Lower Upper
 85 100
 87 28.6 25.0 37.4

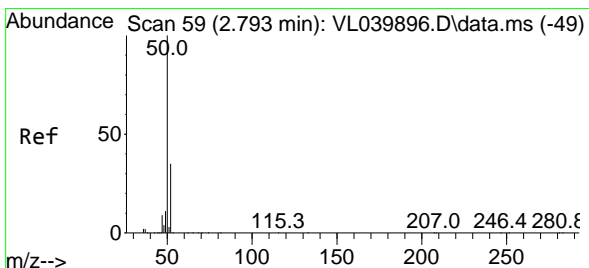
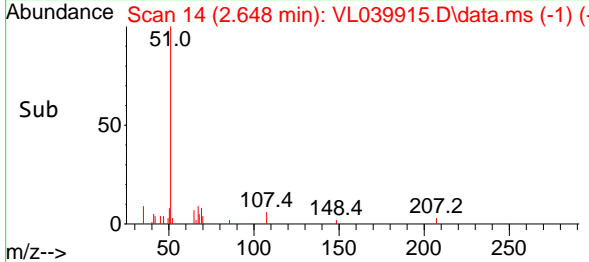
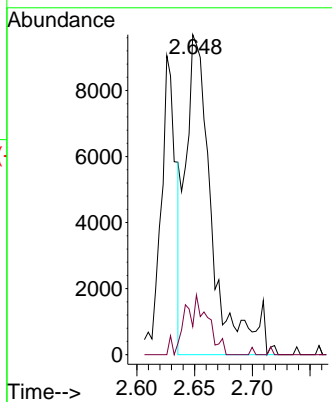
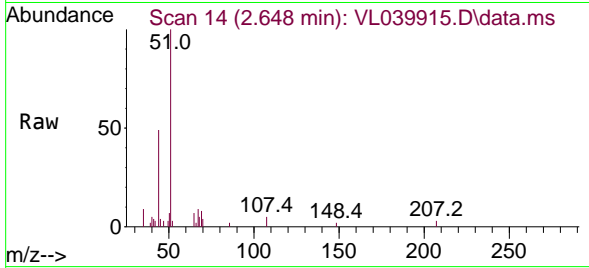




#3
 Chlorodifluoromethane
 Concen: 0.103 ppbv
 RT: 2.648 min Scan# 14
 Delta R.T. 0.006 min
 Lab File: VL039915.D
 Acq: 21 Nov 2022 18:21

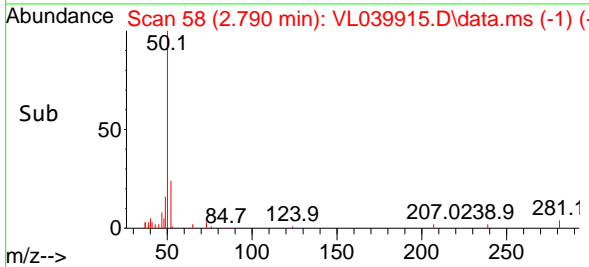
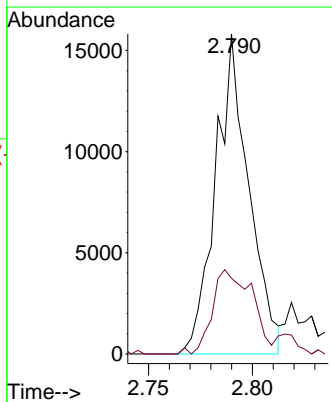
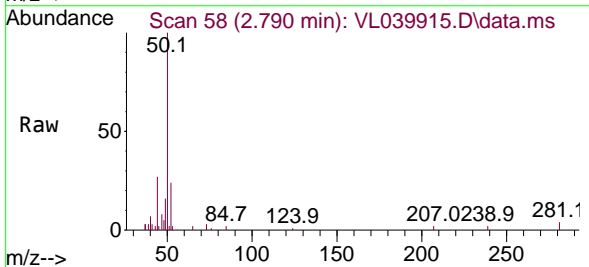
Instrument :
 MSVOA_L
 ClientSampleId :
 SV2

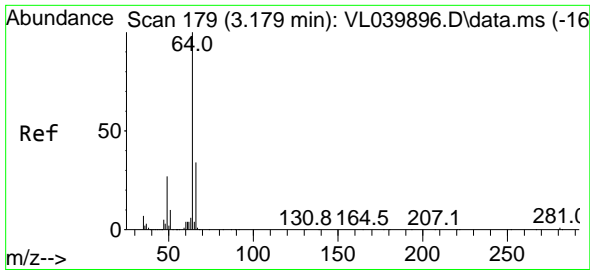
Tgt Ion: 51 Resp: 15268
 Ion Ratio Lower Upper
 51 100
 67 16.3 14.2 21.4



#4
 Chloromethane
 Concen: 0.187 ppbv
 RT: 2.790 min Scan# 58
 Delta R.T. 0.010 min
 Lab File: VL039915.D
 Acq: 21 Nov 2022 18:21

Tgt Ion: 50 Resp: 17653
 Ion Ratio Lower Upper
 50 100
 52 23.6 27.8 41.8#

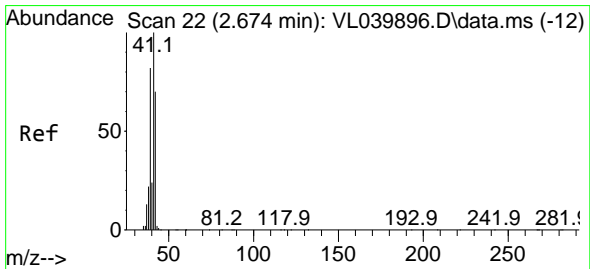
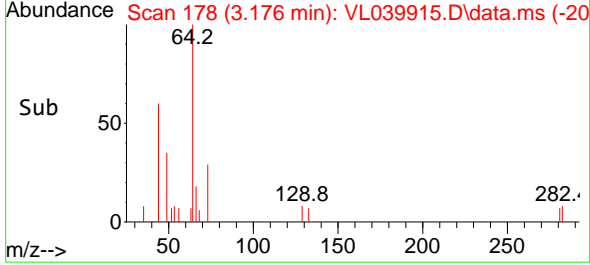
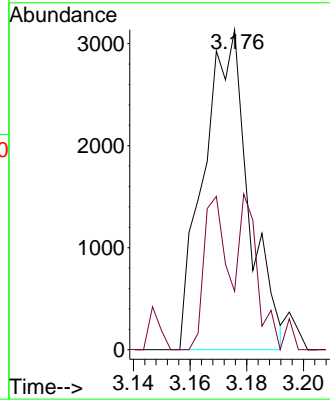
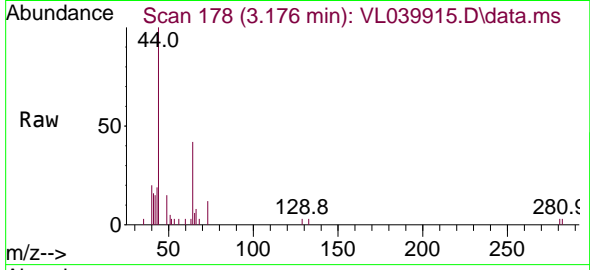




#7
 Chloroethane
 Concen: 0.118 ppbv
 RT: 3.176 min Scan# 11
 Delta R.T. 0.010 min
 Lab File: VL039915.D
 Acq: 21 Nov 2022 18:21

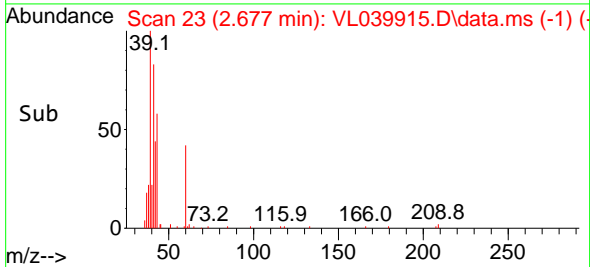
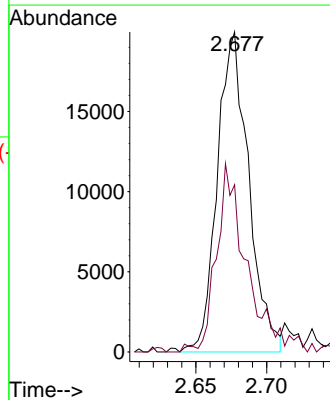
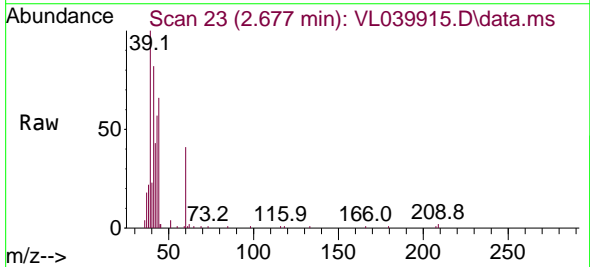
Instrument :
 MSVOA_L
 ClientSampleId :
 SV2

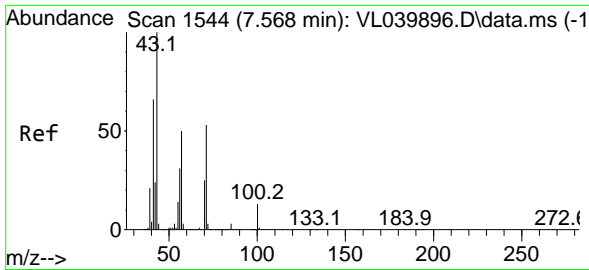
Tgt Ion: 64 Resp: 3434
 Ion Ratio Lower Upper
 64 100
 66 18.2 27.3 40.9#



#9
 Propene
 Concen: 0.440 ppbv
 RT: 2.677 min Scan# 23
 Delta R.T. 0.016 min
 Lab File: VL039915.D
 Acq: 21 Nov 2022 18:21

Tgt Ion: 41 Resp: 30684
 Ion Ratio Lower Upper
 41 100
 42 58.6 55.8 83.6

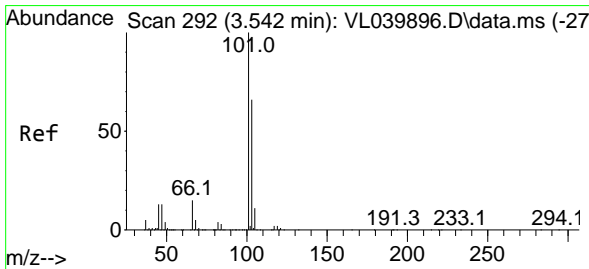
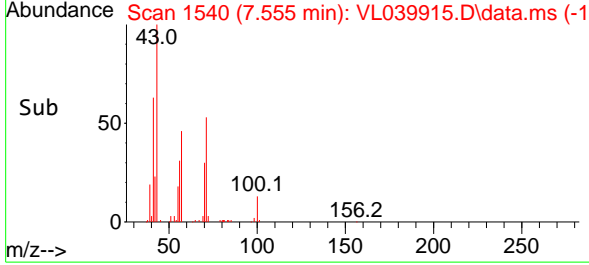
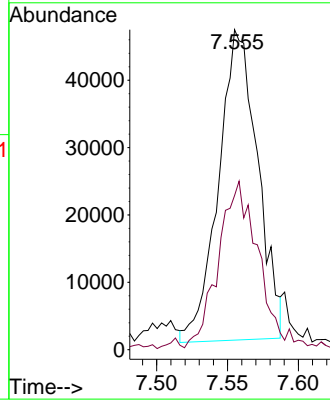
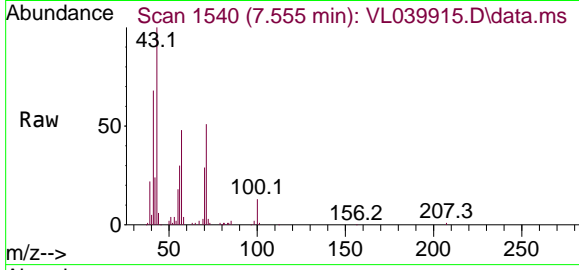




#10
 Heptane
 Concen: 0.527 ppbv
 RT: 7.555 min Scan# 11
 Delta R.T. 0.010 min
 Lab File: VL039915.D
 Acq: 21 Nov 2022 18:21

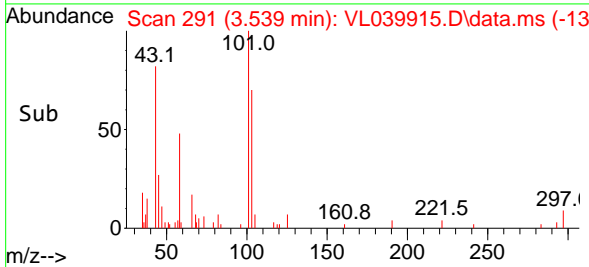
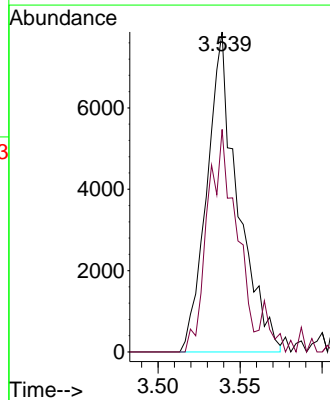
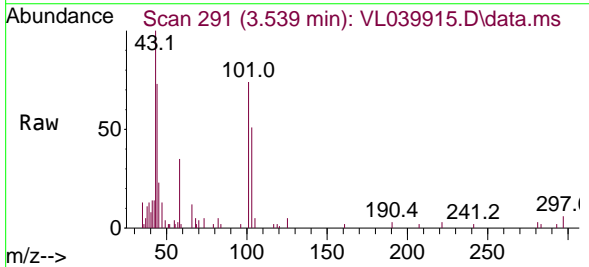
Instrument :
 MSVOA_L
 ClientSampleId :
 SV2

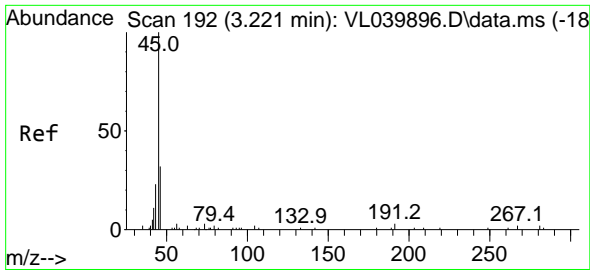
Tgt Ion: 43 Resp: 88603
 Ion Ratio Lower Upper
 43 100
 57 59.4 40.7 61.1



#11
 Trichlorofluoromethane
 Concen: 0.055 ppbv
 RT: 3.539 min Scan# 291
 Delta R.T. 0.010 min
 Lab File: VL039915.D
 Acq: 21 Nov 2022 18:21

Tgt Ion: 101 Resp: 10287
 Ion Ratio Lower Upper
 101 100
 103 69.6 52.6 78.8

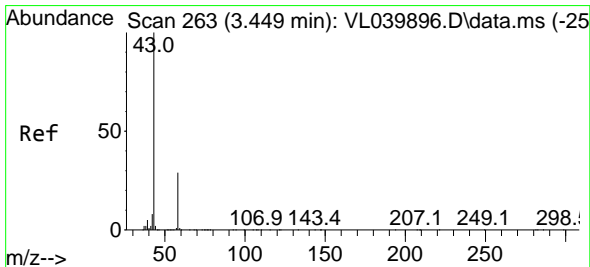
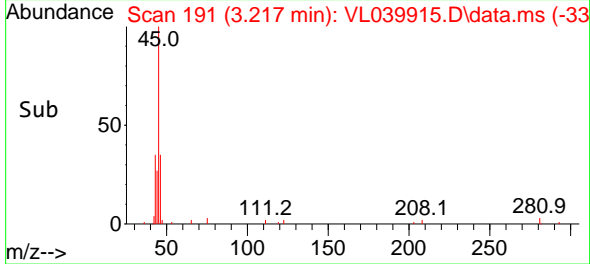
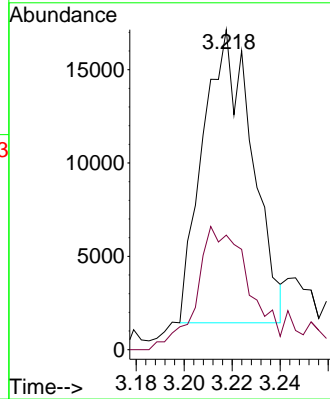
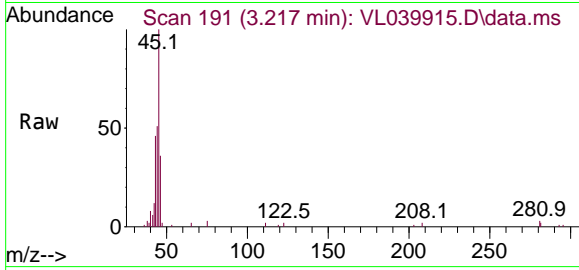




#13
 Ethanol
 Concen: 4.203 ppbv
 RT: 3.217 min Scan# 19
 Delta R.T. 0.010 min
 Lab File: VL039915.D
 Acq: 21 Nov 2022 18:21

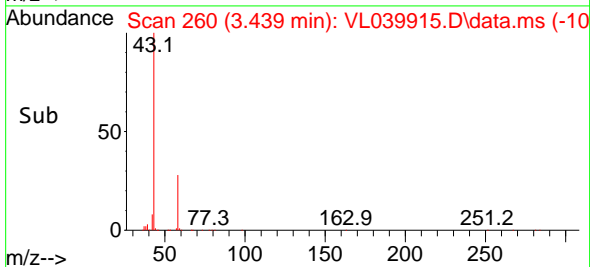
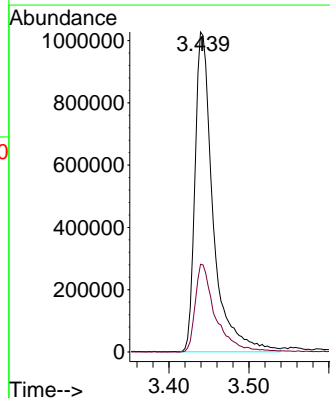
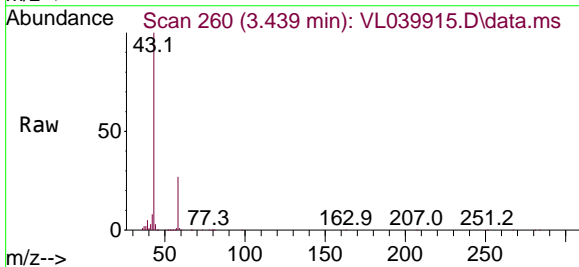
Instrument :
 MSVOA_L
 ClientSampleId :
 SV2

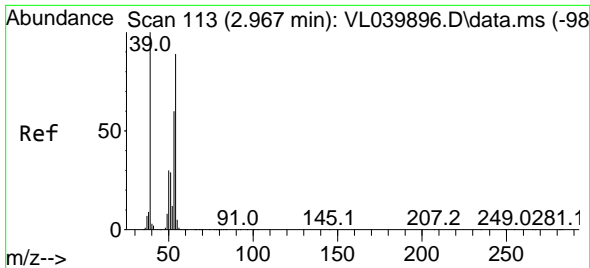
Tgt Ion: 45 Resp: 22365
 Ion Ratio Lower Upper
 45 100
 46 52.1 14.6 58.2



#15
 Acetone
 Concen: 11.404 ppbv
 RT: 3.439 min Scan# 260
 Delta R.T. 0.006 min
 Lab File: VL039915.D
 Acq: 21 Nov 2022 18:21

Tgt Ion: 43 Resp: 1621933
 Ion Ratio Lower Upper
 43 100
 58 31.1 22.9 34.3

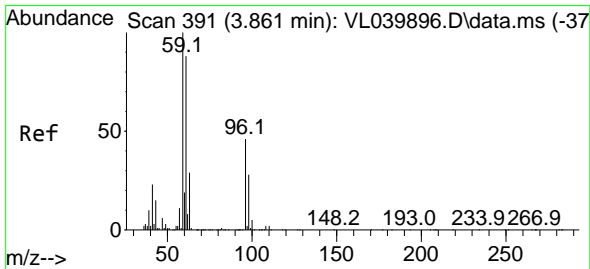
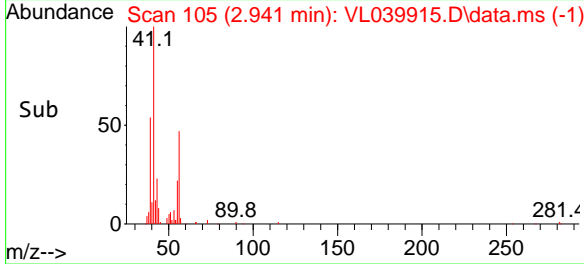
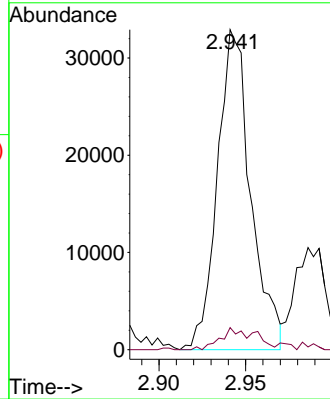
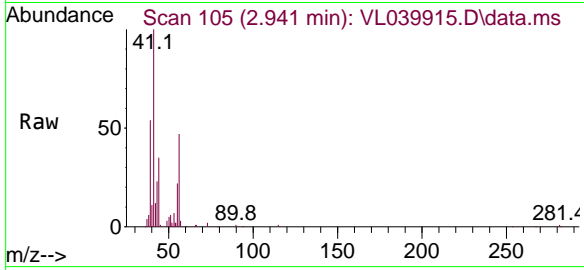




#16
 1,3-Butadiene
 Concen: 0.621 ppbv
 RT: 2.941 min Scan# 105
 Delta R.T. -0.013 min
 Lab File: VL039915.D
 Acq: 21 Nov 2022 18:21

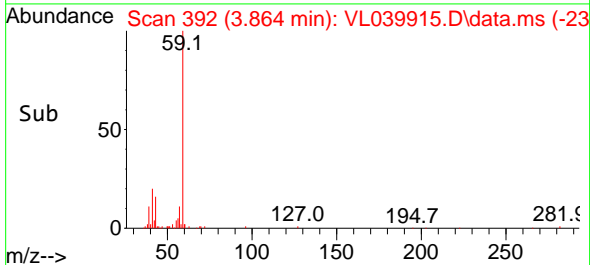
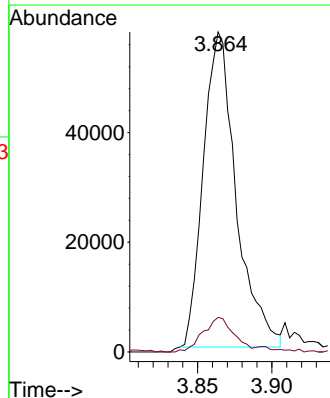
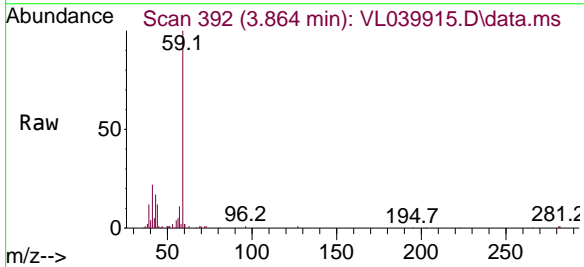
Instrument : MSVOA_L
 ClientSampleId : SV2

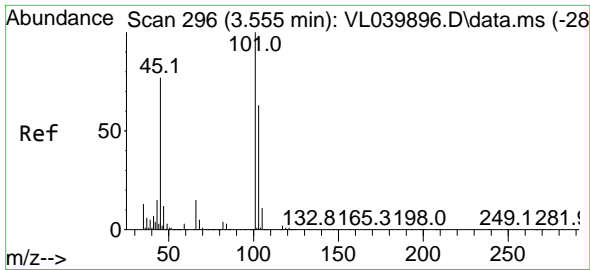
Tgt Ion: 39 Resp: 44047
 Ion Ratio Lower Upper
 39 100
 54 8.8 66.6 99.8#



#17
 tert-Butyl alcohol
 Concen: 0.540 ppbv
 RT: 3.864 min Scan# 392
 Delta R.T. 0.019 min
 Lab File: VL039915.D
 Acq: 21 Nov 2022 18:21

Tgt Ion: 59 Resp: 88323
 Ion Ratio Lower Upper
 59 100
 57 11.5 8.3 12.5

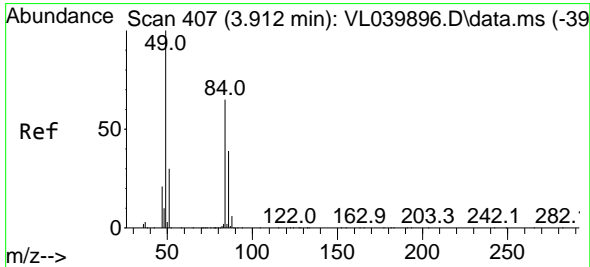
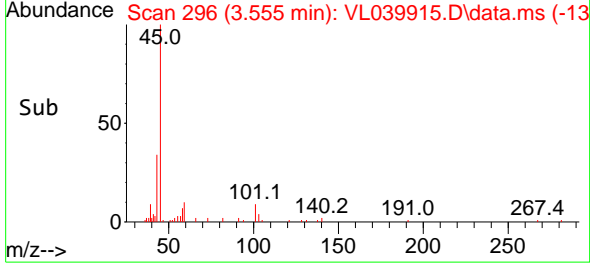
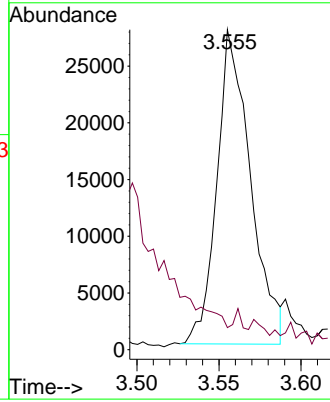
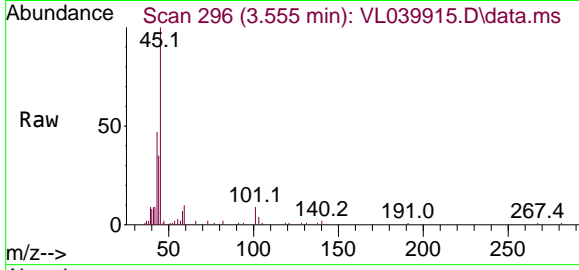




#19
 Isopropyl Alcohol
 Concen: 0.512 ppbv
 RT: 3.555 min Scan# 296
 Delta R.T. 0.013 min
 Lab File: VL039915.D
 Acq: 21 Nov 2022 18:21

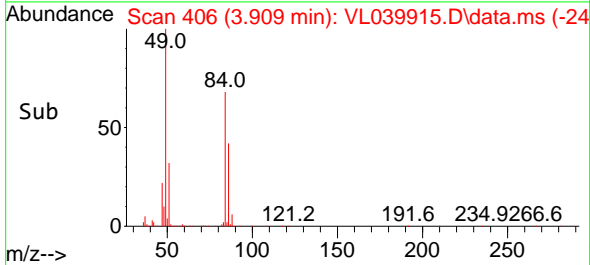
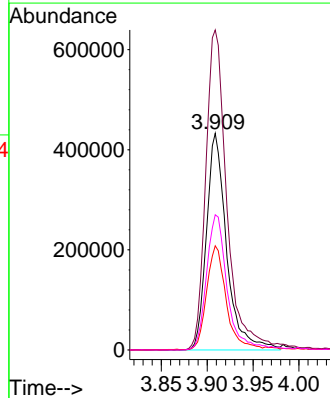
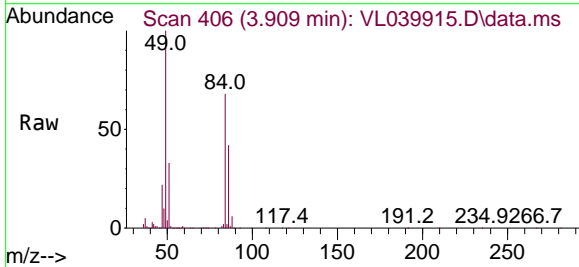
Instrument : MSVOA_L
 ClientSampleId : SV2

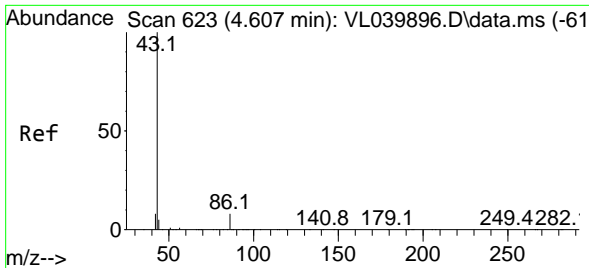
Tgt Ion: 45 Resp: 39401
 Ion Ratio Lower Upper
 45 100
 58 0.0 38.7 58.1#



#20
 Methylene Chloride
 Concen: 9.625 ppbv
 RT: 3.909 min Scan# 406
 Delta R.T. 0.010 min
 Lab File: VL039915.D
 Acq: 21 Nov 2022 18:21

Tgt Ion: 84 Resp: 663216
 Ion Ratio Lower Upper
 84 100
 49 147.7 122.2 183.4
 51 47.9 36.3 54.5
 86 62.4 47.2 70.8



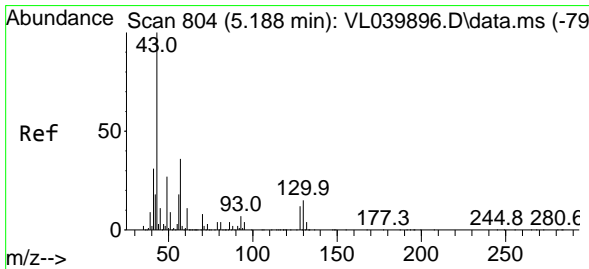
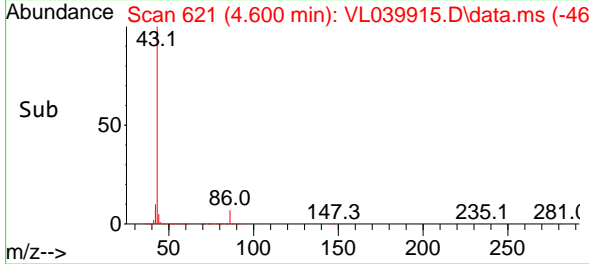
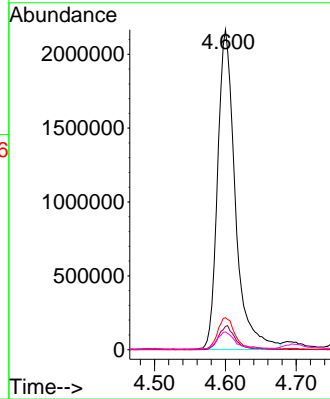
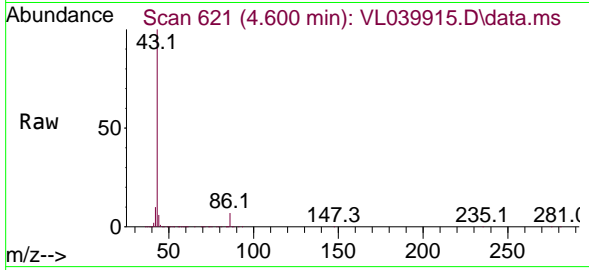


#23
 Vinyl Acetate
 Concen: 64.402 ppbv
 RT: 4.600 min Scan# 61
 Delta R.T. 0.010 min
 Lab File: VL039915.D
 Acq: 21 Nov 2022 18:21

Instrument :
 MSVOA_L
 ClientSampleId :
 SV2

Tgt Ion: 43 Resp: 3763125

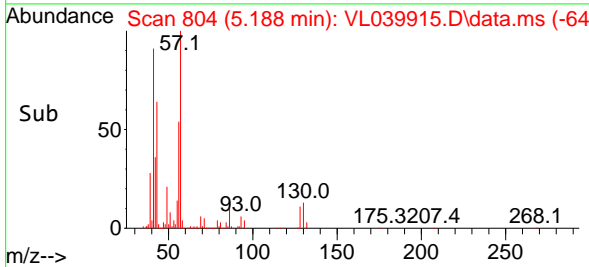
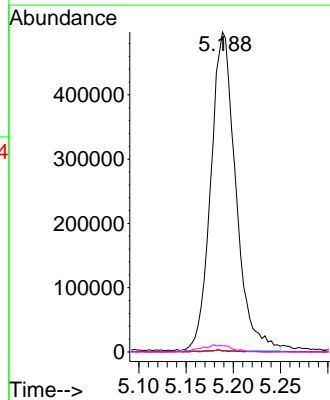
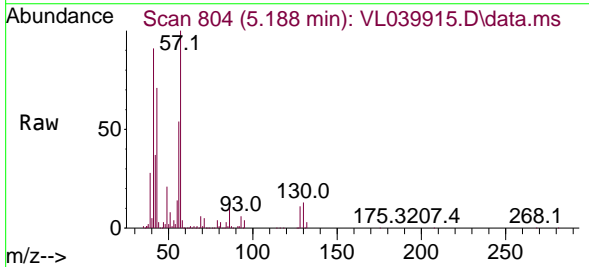
Ion	Ratio	Lower	Upper
43	100		
86	7.3	5.0	7.4
42	10.0	7.6	11.4
44	5.3	3.8	5.6

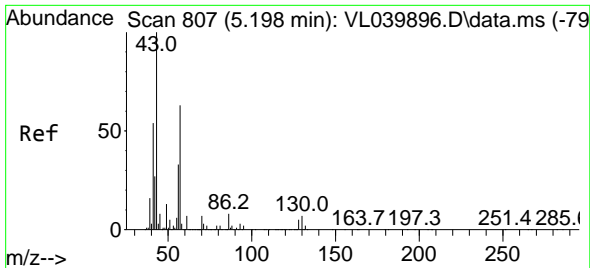


#25
 Ethyl Acetate
 Concen: 3.485 ppbv
 RT: 5.188 min Scan# 804
 Delta R.T. 0.019 min
 Lab File: VL039915.D
 Acq: 21 Nov 2022 18:21

Tgt Ion: 43 Resp: 910043

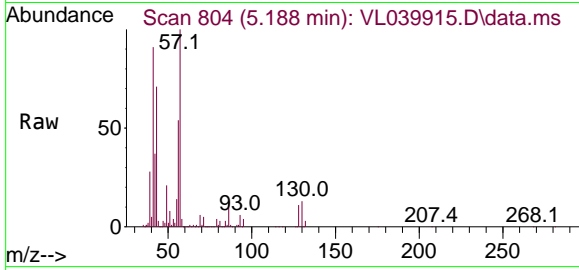
Ion	Ratio	Lower	Upper
43	100		
45	0.4	8.4	12.6#
61	0.6	8.5	12.7#
70	2.8	5.9	8.9#



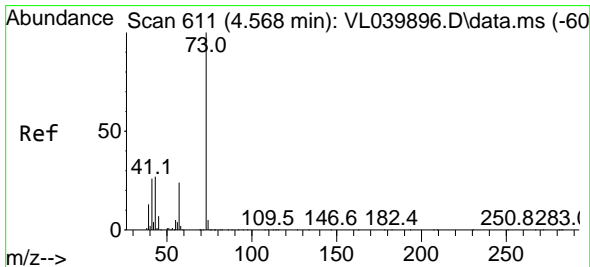
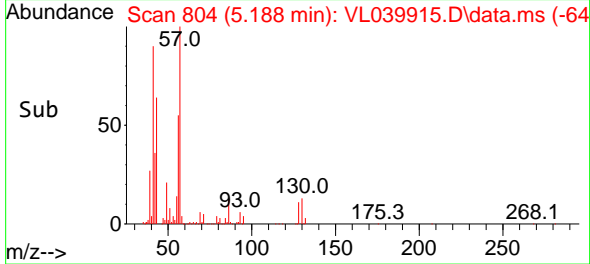
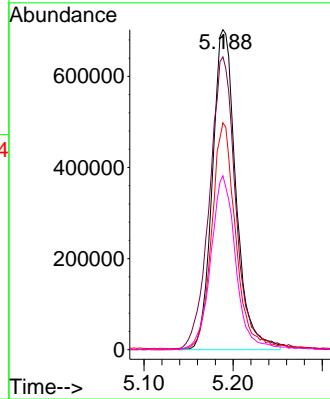


#26
 Hexane
 Concen: 11.366 ppbv
 RT: 5.188 min Scan# 807
 Delta R.T. 0.006 min
 Lab File: VL039915.D
 Acq: 21 Nov 2022 18:21

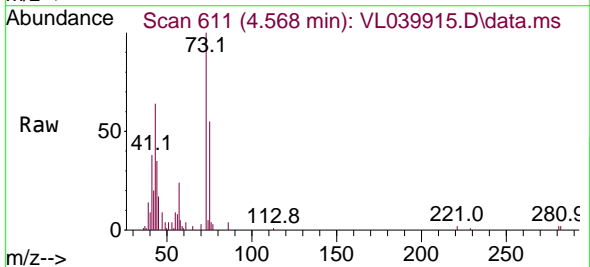
Instrument : MSVOA_L
 ClientSampleId : SV2



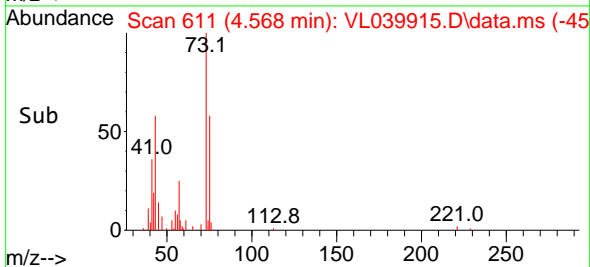
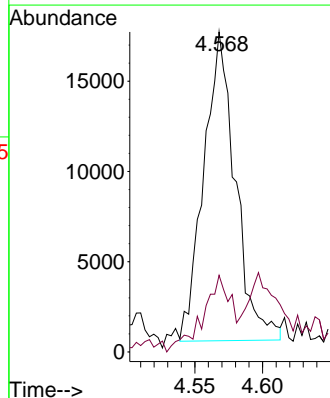
Tgt Ion: 57 Resp: 1296655
 Ion Ratio Lower Upper
 57 100
 41 103.3 72.3 108.5
 43 71.3 188.7 283.1#
 56 57.3 42.4 63.6

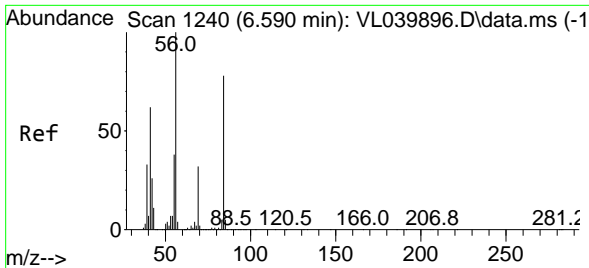


#28
 Methyl tert-Butyl Ether
 Concen: 0.194 ppbv
 RT: 4.568 min Scan# 611
 Delta R.T. 0.016 min
 Lab File: VL039915.D
 Acq: 21 Nov 2022 18:21



Tgt Ion: 73 Resp: 27775
 Ion Ratio Lower Upper
 73 100
 57 0.0 18.9 28.3#



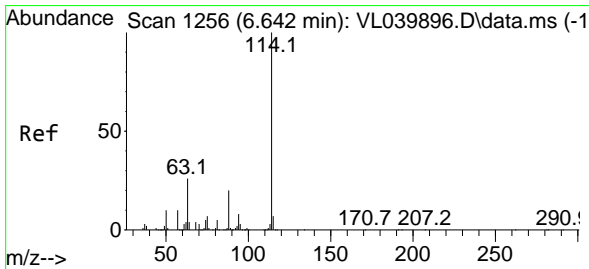
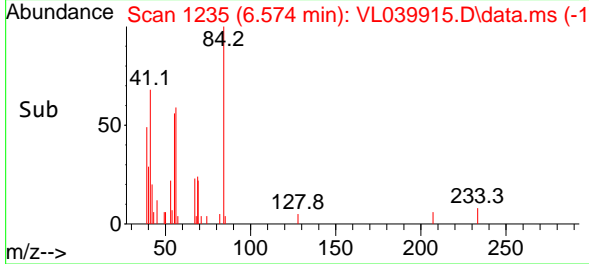
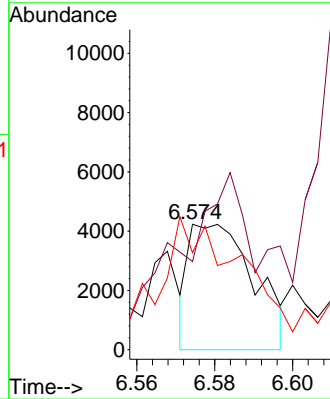
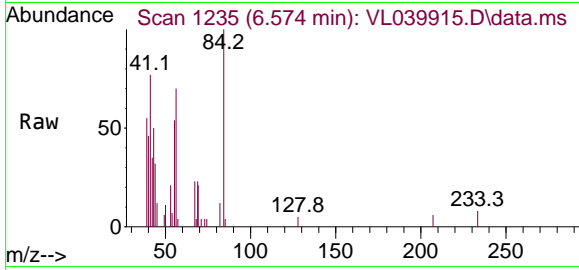


#30
 Cyclohexane
 Concen: 0.044 ppbv
 RT: 6.574 min Scan# 11
 Delta R.T. 0.006 min
 Lab File: VL039915.D
 Acq: 21 Nov 2022 18:21

Instrument :
 MSVOA_L
 ClientSampleId :
 SV2

Tgt Ion: 84 Resp: 4911

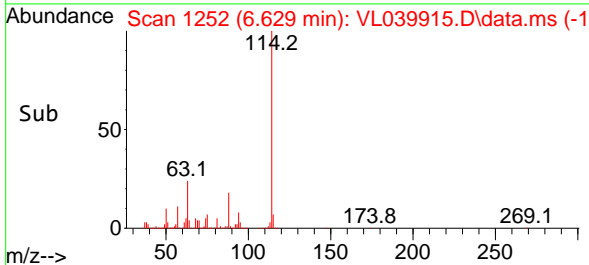
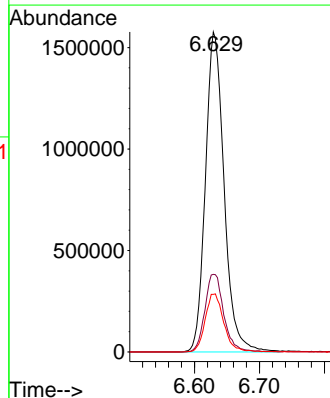
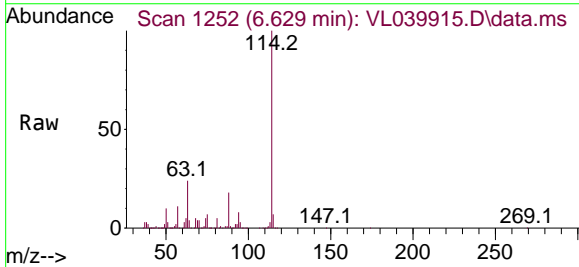
Ion	Ratio	Lower	Upper
84	100		
56	0.0	112.5	168.7#
41	0.0	67.8	101.8#

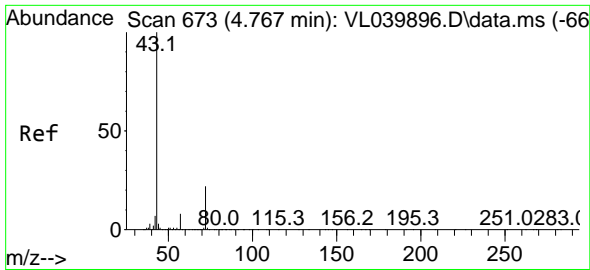


#33
 1,4-Difluorobenzene
 Concen: 10.000 ppbv
 RT: 6.629 min Scan# 1252
 Delta R.T. 0.010 min
 Lab File: VL039915.D
 Acq: 21 Nov 2022 18:21

Tgt Ion: 114 Resp: 3160642

Ion	Ratio	Lower	Upper
114	100		
63	24.7	21.4	32.0
88	18.2	15.3	22.9

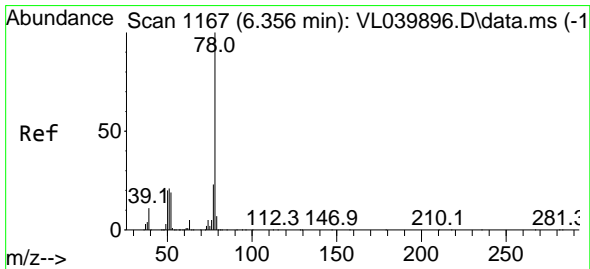
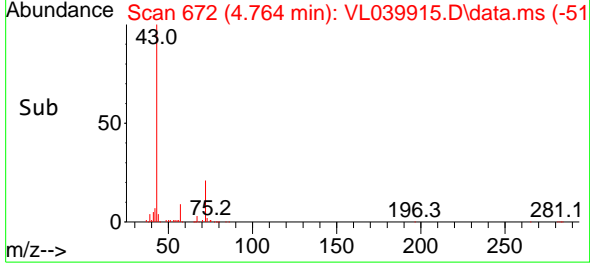
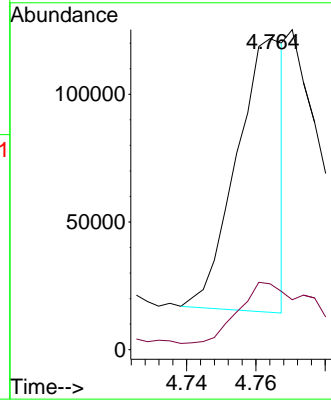
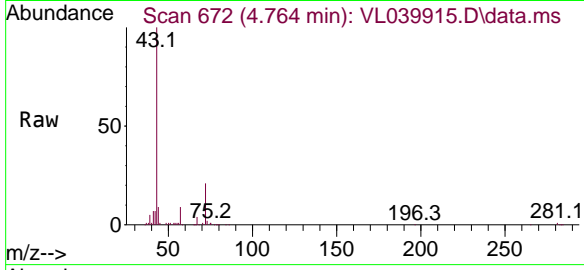




#34
 2-Butanone
 Concen: 0.667 ppbv
 RT: 4.764 min Scan# 61
 Delta R.T. 0.013 min
 Lab File: VL039915.D
 Acq: 21 Nov 2022 18:21

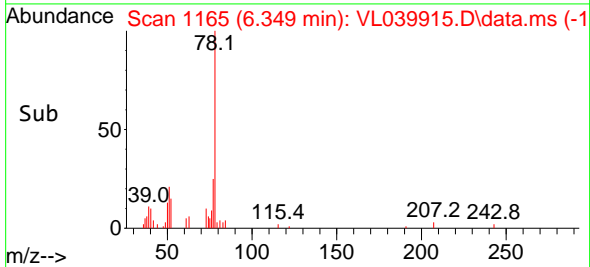
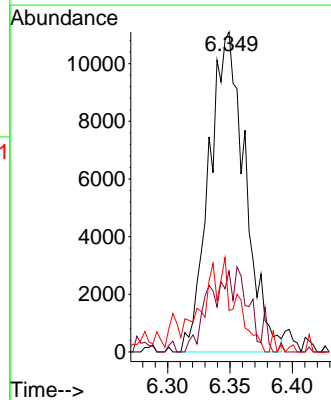
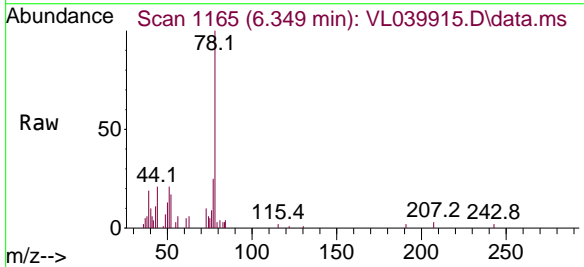
Instrument :
 MSVOA_L
 ClientSampleId :
 SV2

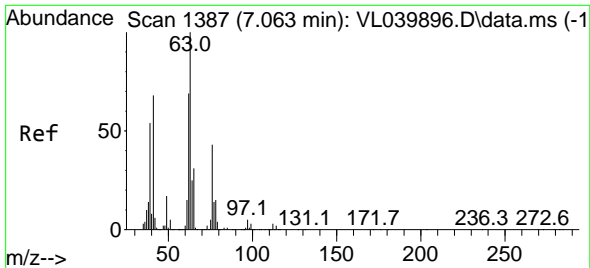
Tgt Ion: 43 Resp: 100934
 Ion Ratio Lower Upper
 43 100
 72 50.2 17.4 26.2#



#36
 Benzene
 Concen: 0.083 ppbv
 RT: 6.349 min Scan# 1165
 Delta R.T. 0.013 min
 Lab File: VL039915.D
 Acq: 21 Nov 2022 18:21

Tgt Ion: 78 Resp: 22277
 Ion Ratio Lower Upper
 78 100
 77 25.3 18.2 27.2
 50 10.8 15.8 23.8#

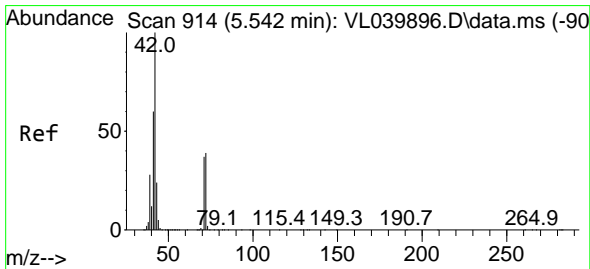
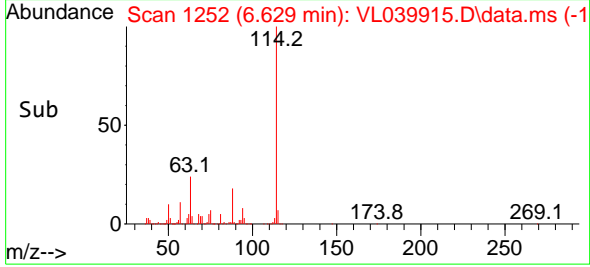
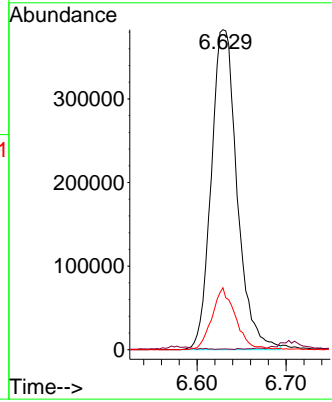
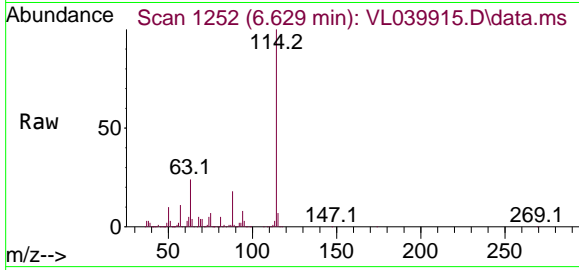




#39
 1,2-Dichloropropane
 Concen: 7.375 ppbv
 RT: 6.629 min Scan# 111
 Delta R.T. -0.412 min
 Lab File: VL039915.D
 Acq: 21 Nov 2022 18:21

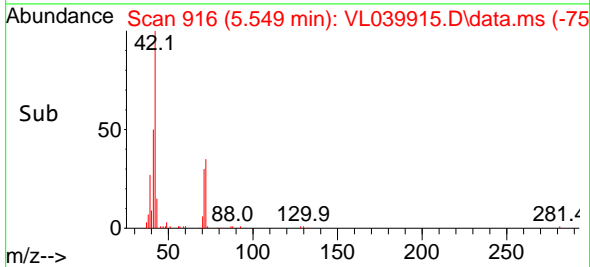
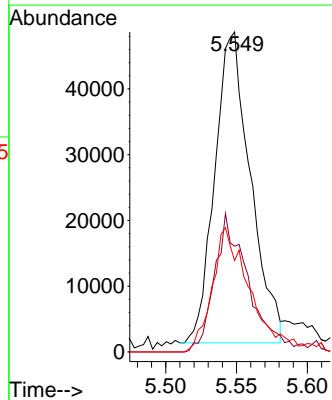
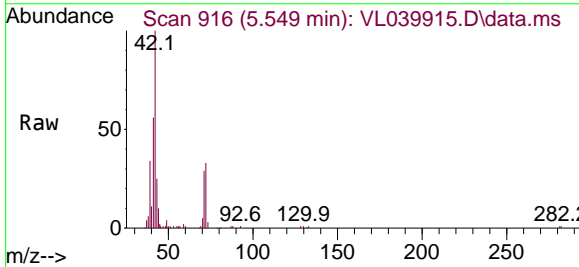
Instrument : MSVOA_L
 ClientSampleId : SV2

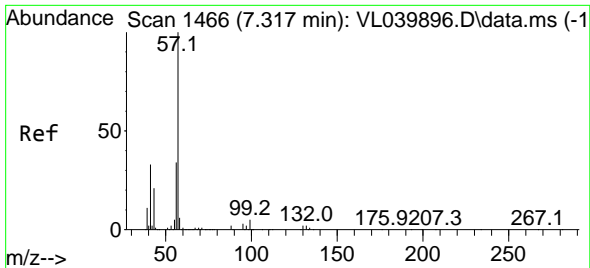
Tgt Ion: 63 Resp: 771903
 Ion Ratio Lower Upper
 63 100
 41 0.0 54.7 82.1#
 62 19.4 55.0 82.6#



#41
 Tetrahydrofuran
 Concen: 0.794 ppbv
 RT: 5.549 min Scan# 916
 Delta R.T. 0.026 min
 Lab File: VL039915.D
 Acq: 21 Nov 2022 18:21

Tgt Ion: 42 Resp: 82850
 Ion Ratio Lower Upper
 42 100
 72 44.3 31.6 47.4
 71 43.7 31.2 46.8

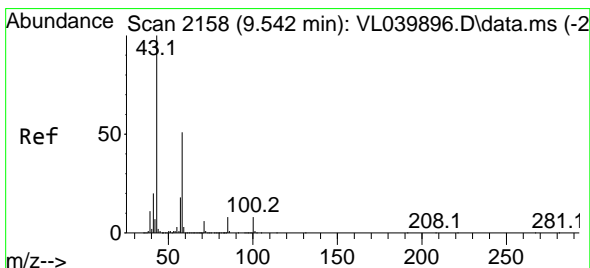
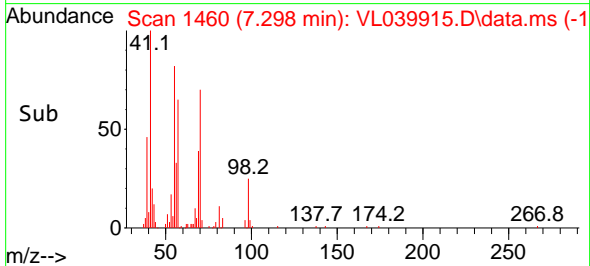
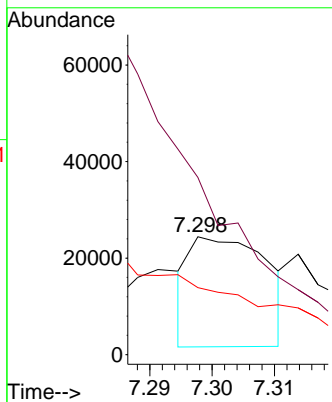
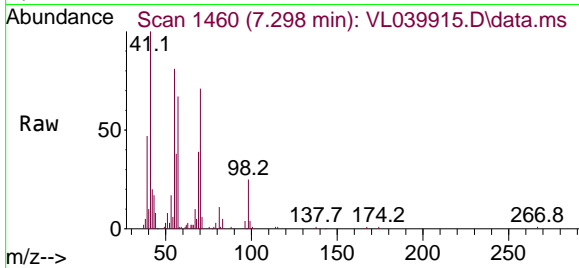




#44
 2,2,4-Trimethylpentane
 Concen: 0.044 ppbv
 RT: 7.298 min Scan# 1460
 Delta R.T. 0.003 min
 Lab File: VL039915.D
 Acq: 21 Nov 2022 18:21

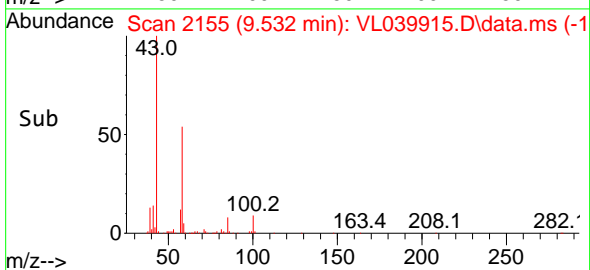
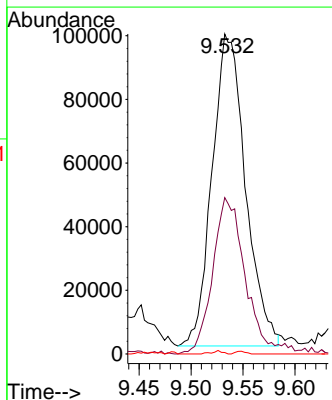
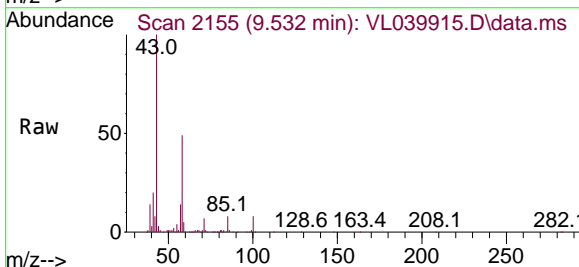
Instrument :
 MSVOA_L
 ClientSampleId :
 SV2

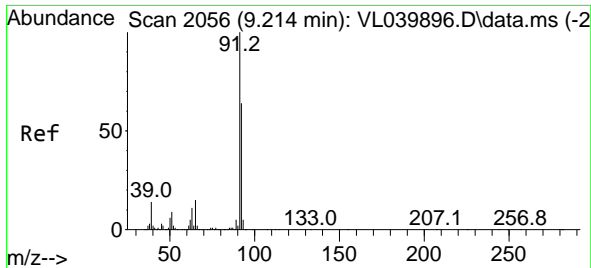
Tgt Ion	Resp	Lower	Upper
57	19545		
41	100	0.0	26.2
56	100	0.0	25.5



#51
 2-Hexanone
 Concen: 1.042 ppbv
 RT: 9.532 min Scan# 2155
 Delta R.T. 0.006 min
 Lab File: VL039915.D
 Acq: 21 Nov 2022 18:21

Tgt Ion	Resp	Lower	Upper
43	219050		
58	49.9	40.2	60.4
98	0.6	0.1	0.1#

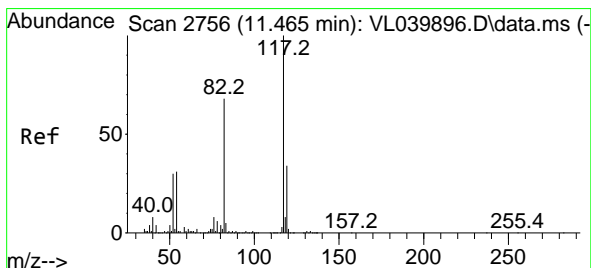
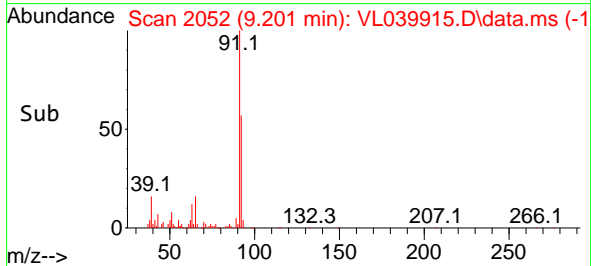
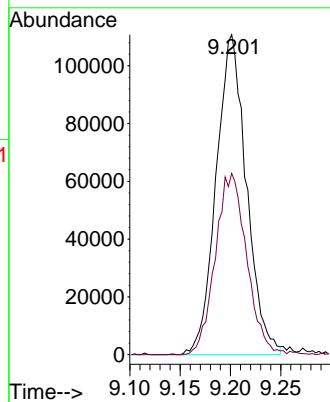
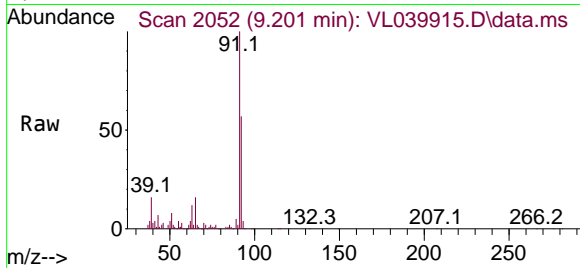




#53
 Toluene
 Concen: 0.757 ppbv
 RT: 9.201 min Scan# 2052
 Delta R.T. 0.010 min
 Lab File: VL039915.D
 Acq: 21 Nov 2022 18:21

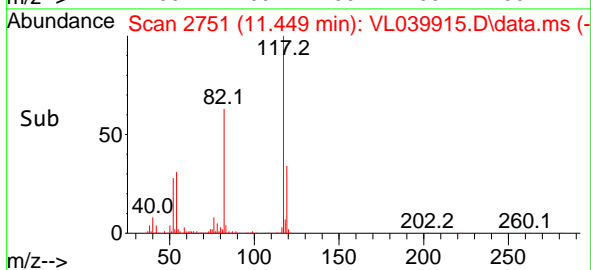
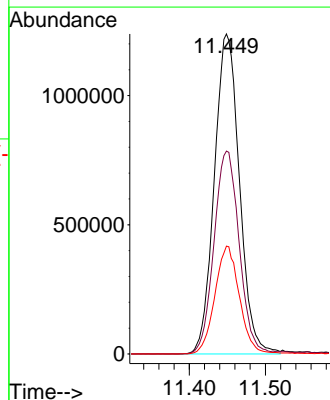
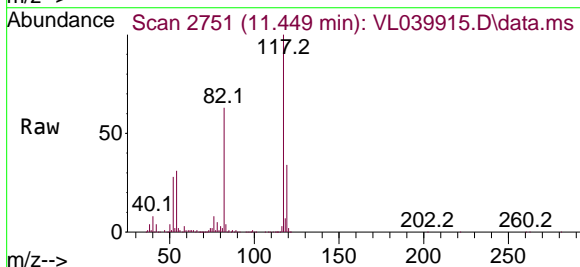
Instrument : MSVOA_L
 ClientSampleId : SV2

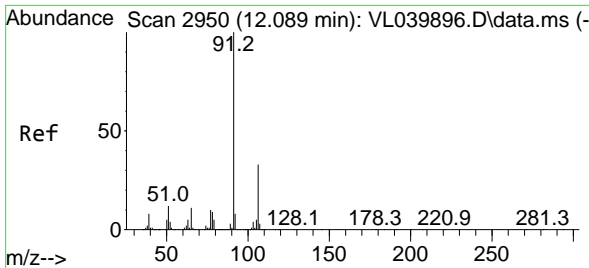
Tgt Ion: 91 Resp: 231728
 Ion Ratio Lower Upper
 91 100
 92 59.2 49.8 74.6



#55
 Chlorobenzene-d5
 Concen: 10.000 ppbv
 RT: 11.449 min Scan# 2751
 Delta R.T. 0.010 min
 Lab File: VL039915.D
 Acq: 21 Nov 2022 18:21

Tgt Ion: 117 Resp: 2841486
 Ion Ratio Lower Upper
 117 100
 82 65.0 52.3 78.5
 119 33.2 25.7 38.5

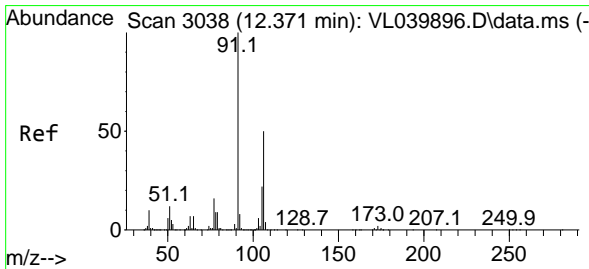
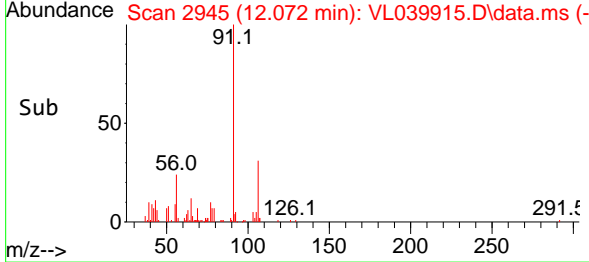
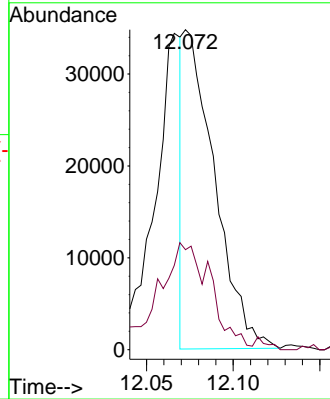
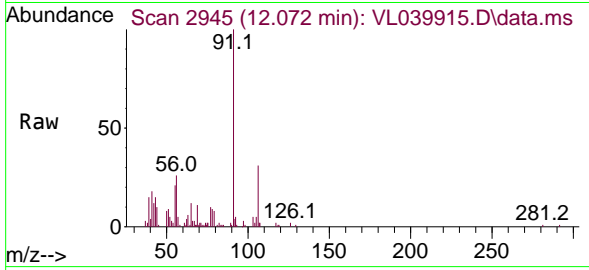




#58
 Ethyl Benzene
 Concen: 0.112 ppbv
 RT: 12.072 min Scan# 2945
 Delta R.T. 0.010 min
 Lab File: VL039915.D
 Acq: 21 Nov 2022 18:21

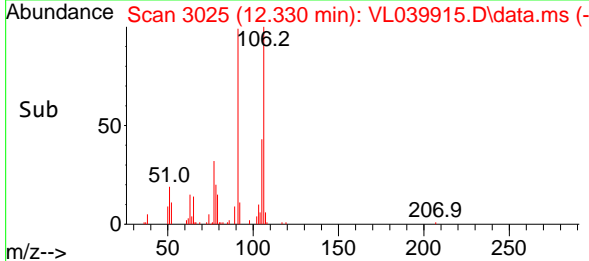
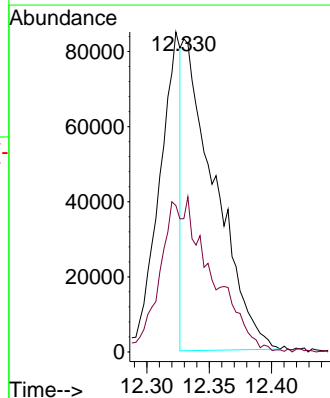
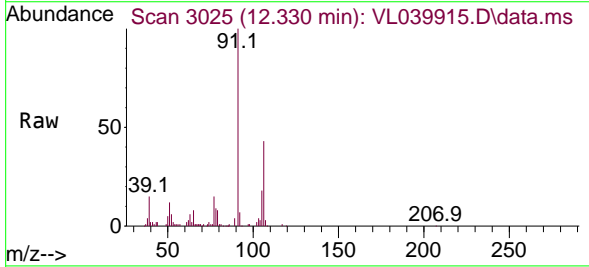
Instrument :
 MSVOA_L
 ClientSampleId :
 SV2

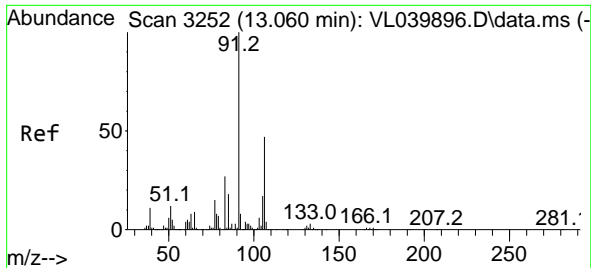
Tgt Ion: 91 Resp: 43304
 Ion Ratio Lower Upper
 91 100
 106 31.4 26.1 39.1



#59
 m/p-Xylene
 Concen: 0.465 ppbv
 RT: 12.330 min Scan# 3025
 Delta R.T. -0.016 min
 Lab File: VL039915.D
 Acq: 21 Nov 2022 18:21

Tgt Ion: 91 Resp: 150065
 Ion Ratio Lower Upper
 91 100
 106 78.6 37.0 55.6#

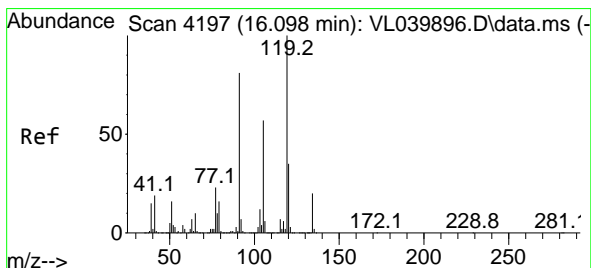
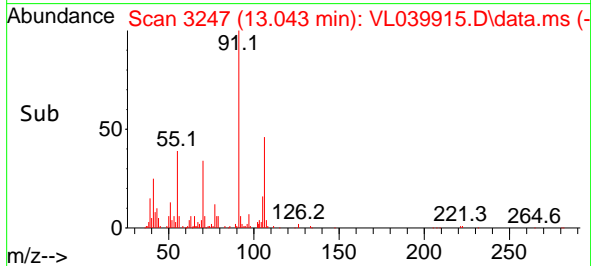
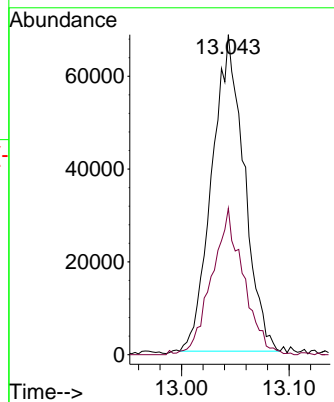
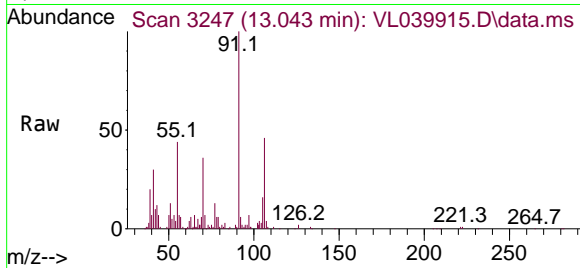




#60
 o-Xylene
 Concen: 0.463 ppbv
 RT: 13.043 min Scan# 31
 Delta R.T. 0.006 min
 Lab File: VL039915.D
 Acq: 21 Nov 2022 18:21

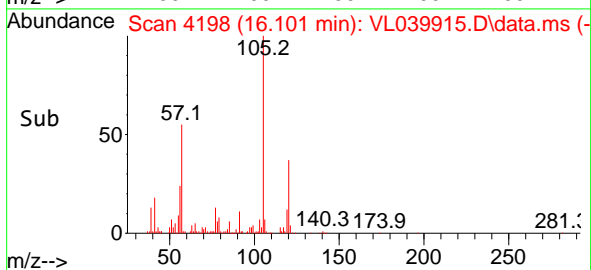
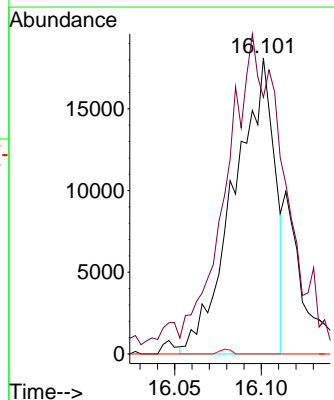
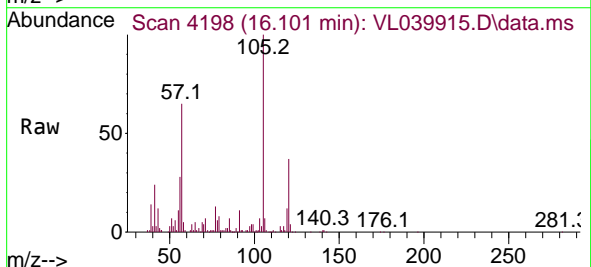
Instrument :
 MSVOA_L
 ClientSampleId :
 SV2

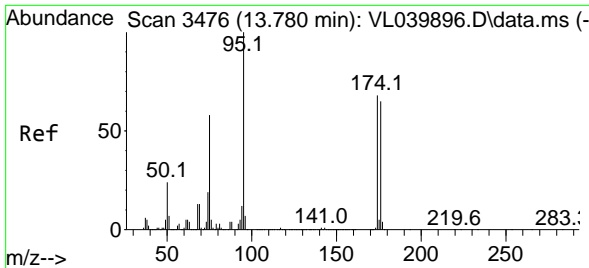
Tgt Ion: 91 Resp: 142428
 Ion Ratio Lower Upper
 91 100
 106 45.5 23.2 69.6



#65
 tert-Butylbenzene
 Concen: 0.076 ppbv
 RT: 16.101 min Scan# 4198
 Delta R.T. 0.029 min
 Lab File: VL039915.D
 Acq: 21 Nov 2022 18:21

Tgt Ion: 119 Resp: 29577
 Ion Ratio Lower Upper
 119 100
 91 160.9 65.8 98.8#
 134 0.0 16.1 24.1#



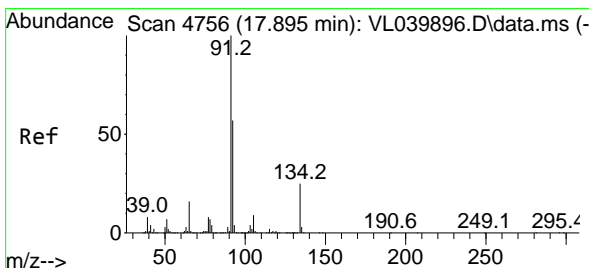
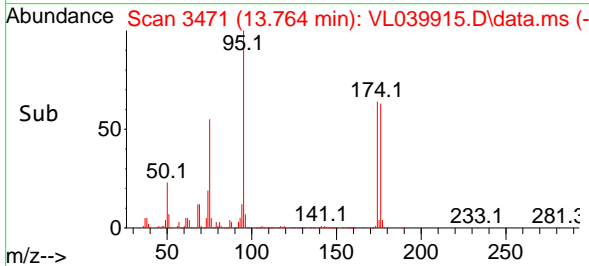
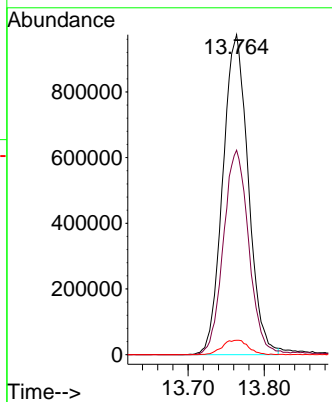
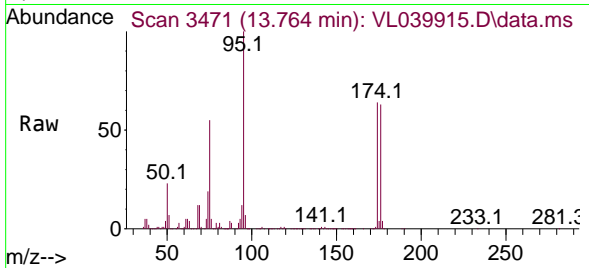


#68
 1-Bromo-4-Fluorobenzene
 Concen: 10.427 ppbv
 RT: 13.764 min Scan# 34
 Delta R.T. 0.010 min
 Lab File: VL039915.D
 Acq: 21 Nov 2022 18:21

Instrument :
 MSVOA_L
 ClientSampleId :
 SV2

Tgt Ion: 95 Resp: 2262984

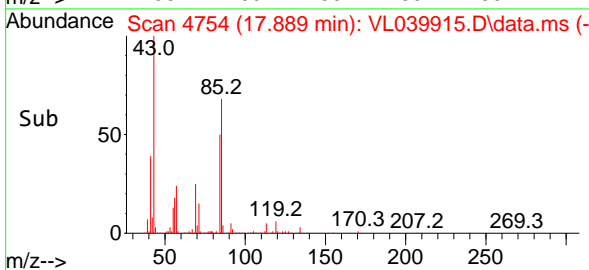
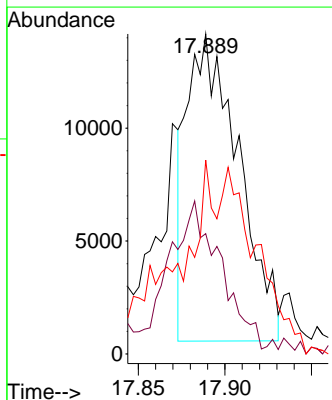
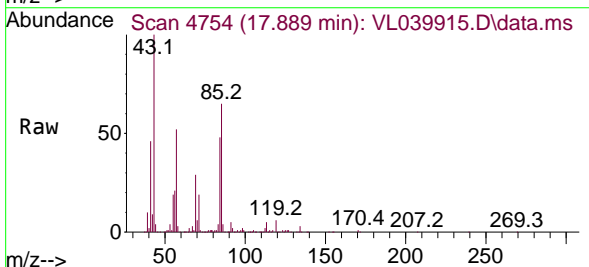
Ion	Ratio	Lower	Upper
95	100		
174	64.5	53.7	80.5
175	4.7	4.0	6.0

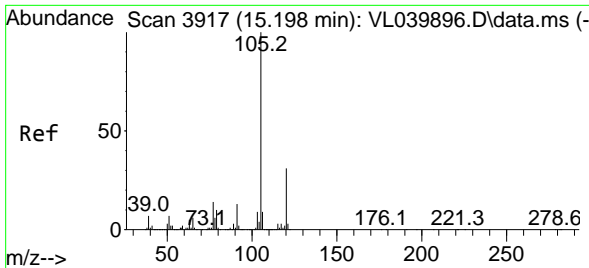


#70
 n-Butylbenzene
 Concen: 0.064 ppbv
 RT: 17.889 min Scan# 4754
 Delta R.T. 0.016 min
 Lab File: VL039915.D
 Acq: 21 Nov 2022 18:21

Tgt Ion: 91 Resp: 28106

Ion	Ratio	Lower	Upper
91	100		
92	58.5	44.2	66.2
134	97.6	18.8	28.2#



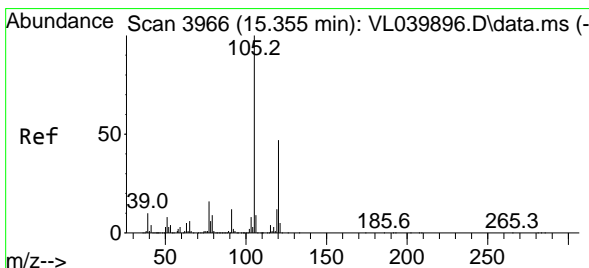
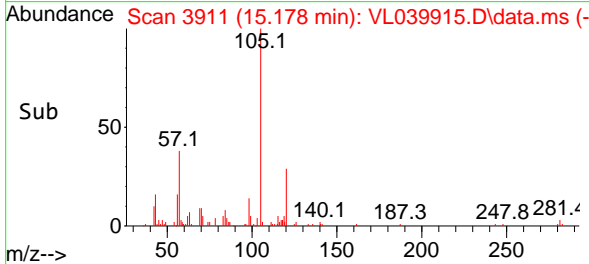
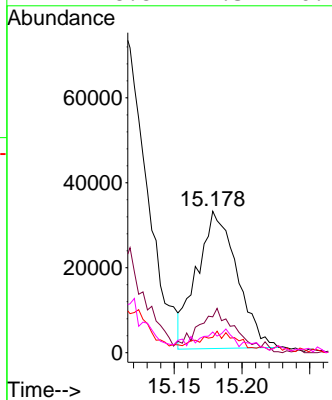
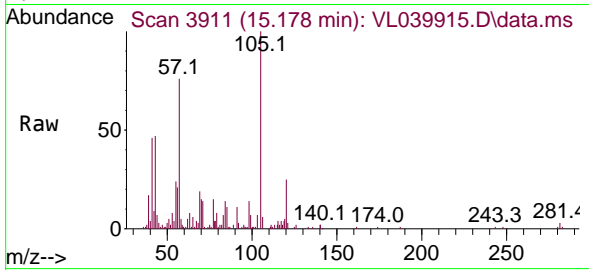


#72
 4-Ethyltoluene
 Concen: 0.192 ppbv
 RT: 15.178 min Scan# 3917
 Delta R.T. 0.003 min
 Lab File: VL039915.D
 Acq: 21 Nov 2022 18:21

Instrument :
 MSVOA_L
 ClientSampleId :
 SV2

Tgt Ion:105 Resp: 66464

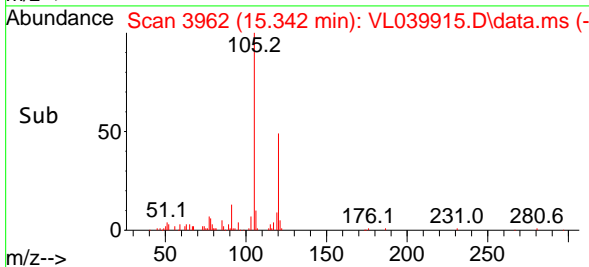
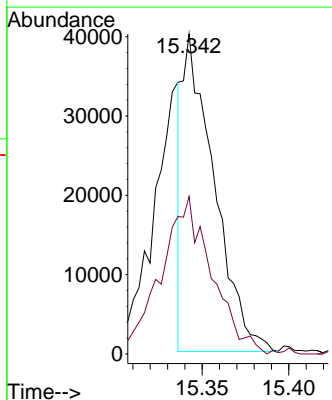
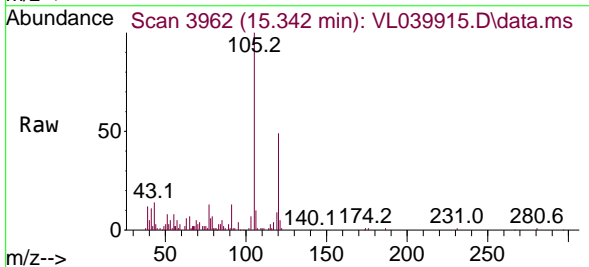
Ion	Ratio	Lower	Upper
105	100		
120	32.0	24.5	36.7
91	17.5	10.4	15.6#
77	18.8	11.3	16.9#

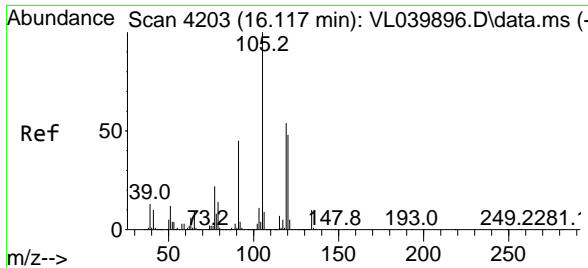


#73
 1,3,5-Trimethylbenzene
 Concen: 0.160 ppbv
 RT: 15.342 min Scan# 3962
 Delta R.T. 0.010 min
 Lab File: VL039915.D
 Acq: 21 Nov 2022 18:21

Tgt Ion:105 Resp: 50572

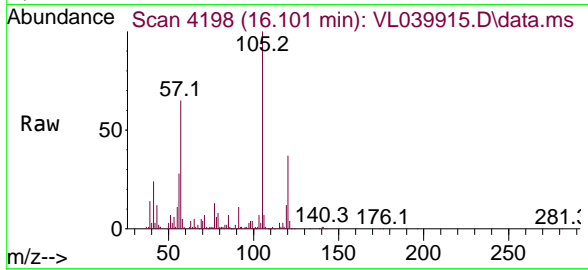
Ion	Ratio	Lower	Upper
105	100		
120	49.2	37.9	56.9





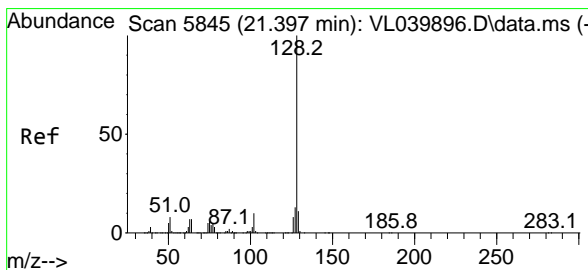
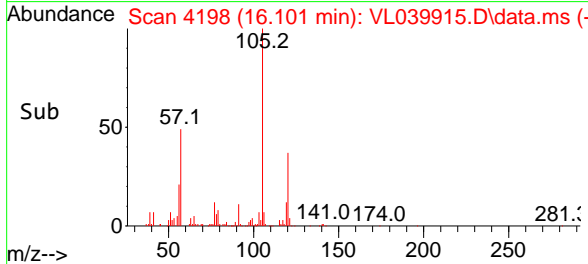
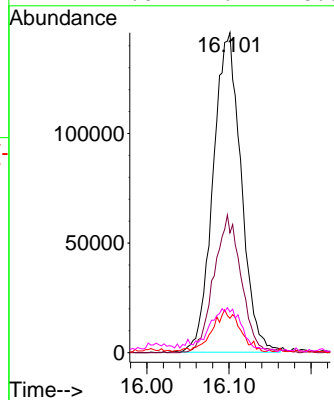
#74
 1,2,4-Trimethylbenzene
 Concen: 1.030 ppbv
 RT: 16.101 min Scan# 4198
 Delta R.T. 0.010 min
 Lab File: VL039915.D
 Acq: 21 Nov 2022 18:21

Instrument : MSVOA_L
 ClientSampleId : SV2



Tgt Ion:105 Resp: 345223

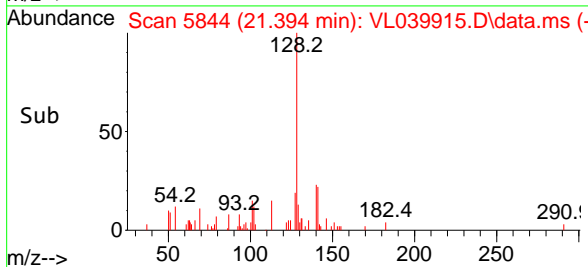
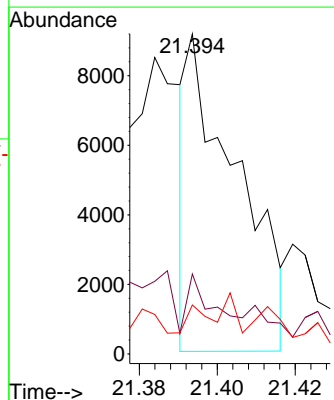
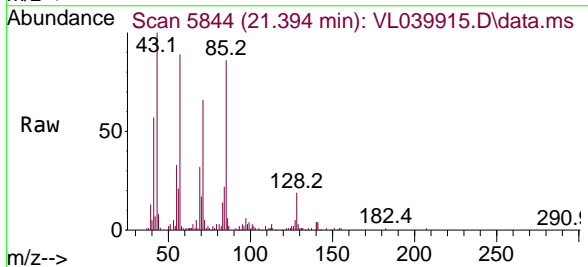
Ion	Ratio	Lower	Upper
105	100		
120	37.5	38.7	58.1#
91	10.2	36.4	54.6#
77	12.0	17.4	26.0#

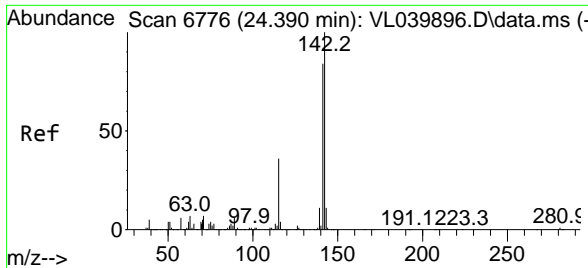


#79
 Naphthalene
 Concen: 0.040 ppbv
 RT: 21.394 min Scan# 5844
 Delta R.T. 0.022 min
 Lab File: VL039915.D
 Acq: 21 Nov 2022 18:21

Tgt Ion:128 Resp: 8112

Ion	Ratio	Lower	Upper
128	100		
127	25.4	10.0	15.0#
129	11.9	8.8	13.2





#80
 Naphthalene,2-methyl-
 Concen: 0.047 ppbv
 RT: 24.390 min Scan# 61
 Delta R.T. 0.022 min
 Lab File: VL039915.D
 Acq: 21 Nov 2022 18:21

Instrument : MSVOA_L
 ClientSampleId : SV2

Tgt Ion:142 Resp: 2638

Ion	Ratio	Lower	Upper
142	100		
141	81.8	69.1	103.7
115	81.9	29.6	44.4#

