

Data Path : Z:\VOASRV\HPCHEM1\MSVOA L\DATA\VL120820\  
 Data File : VL036112.D  
 Acq On : 9 Dec 2020 2:18  
 Operator : SY/AP  
 Sample : L4948-10 10X  
 Misc : 400ml/MSVOA L  
 ALS Vial : 1 Sample Multiplier: 1

Instrument :  
 MSVOA\_L  
 ClientSampleId :  
 SS-7BDL

Quant Time: Dec 09 07:23:42 2020  
 Quant Method : Z:\VOASRV\HPCHEM1\MSVOA L\METHODS\VL120720AIR.M  
 Quant Title : AIR ANALYSIS BY METHOD TO-15 Instrument: MSVOA\_L Mon Dec 07 16:56:49 2020  
 QLast Update : Mon Dec 07 16:56:49 2020  
 Response via : Initial Calibration

Internal Standards	R.T.	QIon	Response	Conc	Units	Dev(Min)
1) Bromochloromethane	5.67	49	1133553	10.00	ppbv	-0.01
33) 1,4-Difluorobenzene	7.18	114	2449869	10.00	ppbv	-0.02
55) Chlorobenzene-d5	12.10	117	2216554	10.00	ppbv	-0.02

System Monitoring Compounds  
 68) 1-Bromo-4-Fluorobenzene 14.43 95 1885401 10.71 ppbv -0.02  
 Spiked Amount 10.000 Range 65 - 135 Recovery = 107.10%

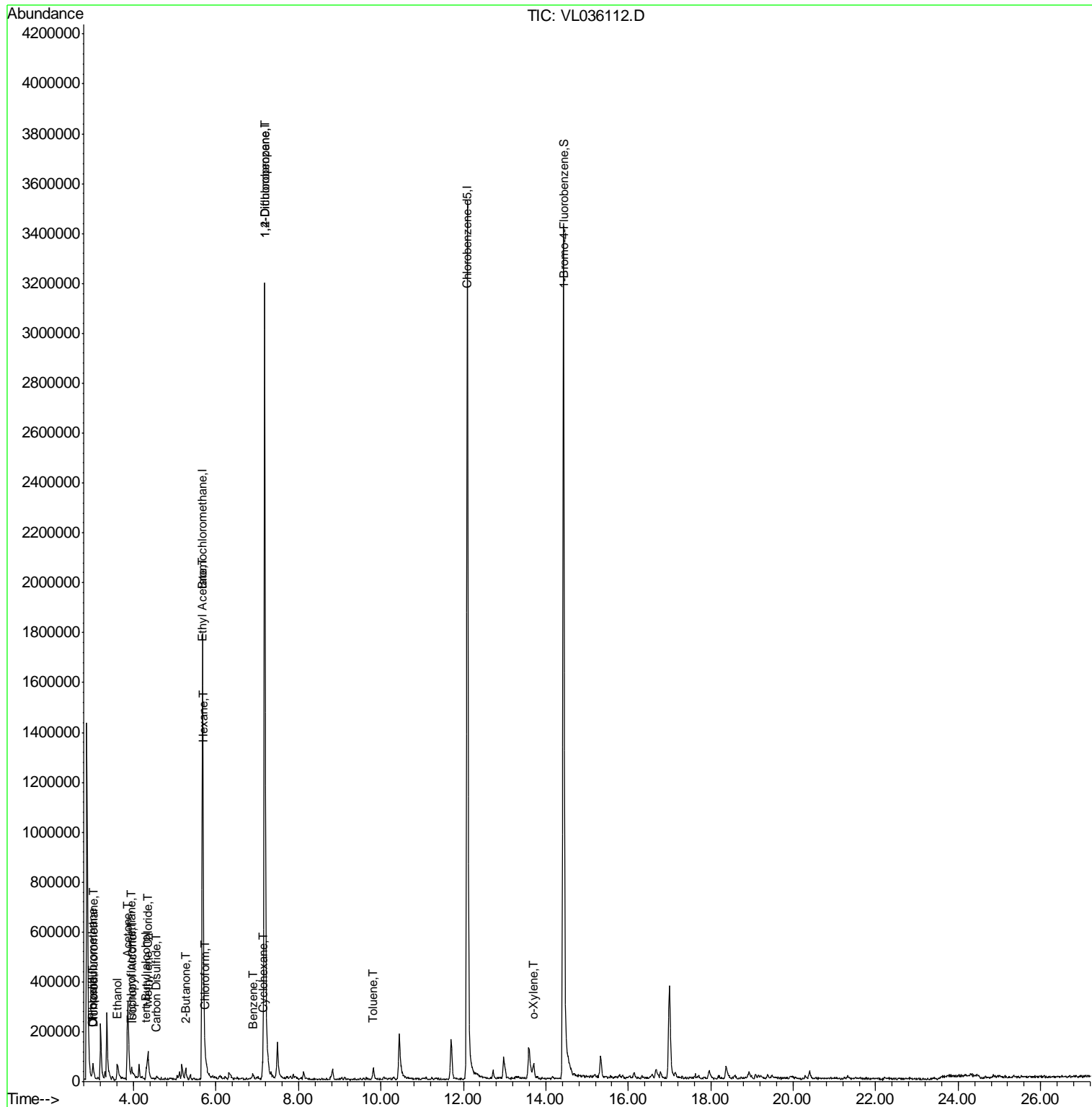
Target Compounds	R.T.	QIon	Response	Conc	Units	Ovalue
2) Dichlorodifluoromethane	3.04	85	7042	0.053	ppbv #	60
3) Chlorodifluoromethane	2.99	51	19737	0.153	ppbv	98
9) Propene	3.01	41	6727	0.104	ppbv #	14
11) Trichlorofluoromethane	3.95	101	24741	0.159	ppbv	92
13) Ethanol	3.61	45	47971	5.371	ppbv #	29
15) Acetone	3.86	43	420913	3.090	ppbv	99
17) tert-Butyl alcohol	4.31	59	24818	0.188	ppbv #	77
19) Isopropyl Alcohol	3.97	45	4653	0.056	ppbv #	100
20) Methylene Chloride	4.35	84	30831	0.552	ppbv #	90
25) Ethyl Acetate	5.69	43	12876	0.047	ppbv #	82
26) Hexane	5.69	57	22037	0.180	ppbv #	45
27) Carbon Disulfide	4.55	76	6100	0.050	ppbv #	1
29) Chloroform	5.75	83	5472	0.034	ppbv	88
30) Cyclohexane	7.13	84	9040	0.100	ppbv #	1
34) 2-Butanone	5.25	43	25947	0.160	ppbv #	19
36) Benzene	6.90	78	9687	0.047	ppbv	96
39) 1,2-Dichloropropane	7.18	63	743451	9.067	ppbv #	24
53) Toluene	9.81	91	21513	0.092	ppbv #	53
60) o-Xylene	13.70	91	18098	0.075	ppbv #	43

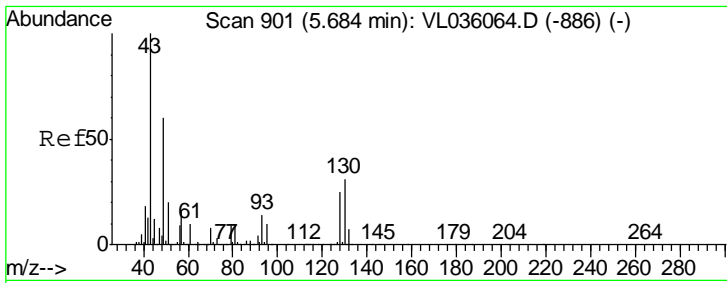
(#) = qualifier out of range (m) = manual integration (+) = signals summed

Data Path : Z:\VOASRV\HPCHEM1\MSVOA L\DATA\VL120820\  
 Data File : VL036112.D  
 Acq On : 9 Dec 2020 2:18  
 Operator : SY/AP  
 Sample : L4948-10 10X  
 Misc : 400ml/MSVOA L  
 ALS Vial : 1 Sample Multiplier: 1

Instrument :  
 MSVOA\_L  
 ClientSampleId :  
 SS-7BDL

Quant Time: Dec 09 07:23:42 2020  
 Quant Method : Z:\VOASRV\HPCHEM1\MSVOA L\METHODS\VL120720AIR.M  
 Quant Title : AIR ANALYSIS BY METHOD TO-15 Instrument: MSVOA\_L Mon Dec 07 16:56:49 2020  
 QLast Update : Mon Dec 07 16:56:49 2020  
 Response via : Initial Calibration

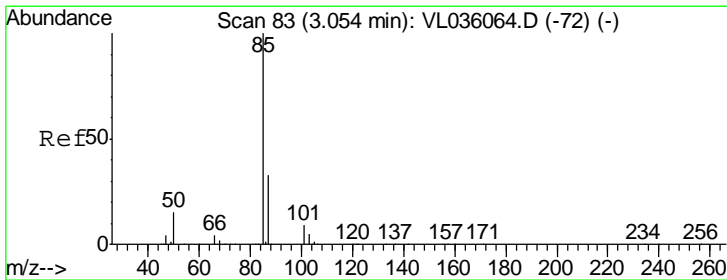
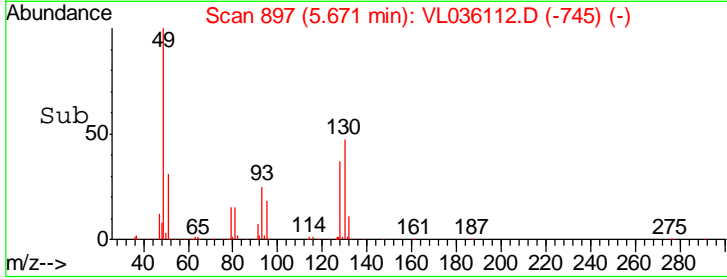
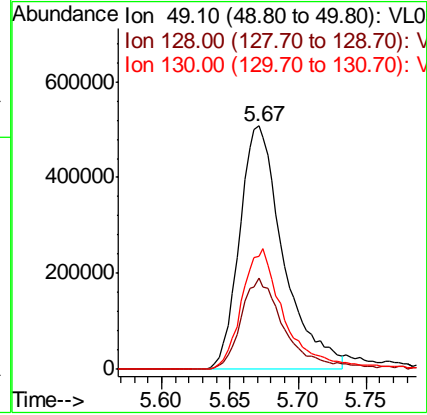
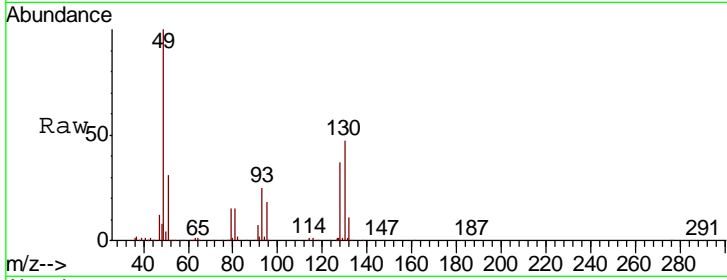




#1  
 Bromochloromethane  
 Concen: 10.000 ppbv  
 RT: 5.67 min Scan# 897  
 Delta R.T. -0.01 min  
 Lab File: VL036112.D  
 Acq: 9 Dec 2020 2:18

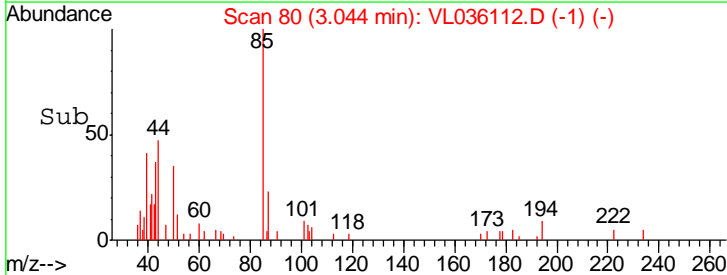
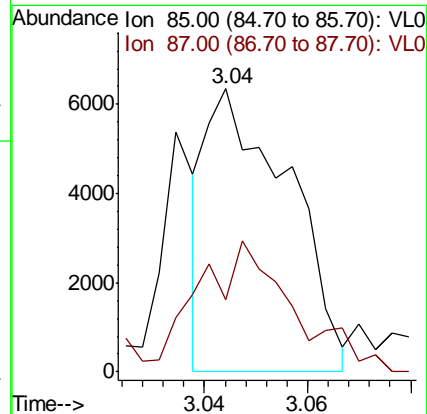
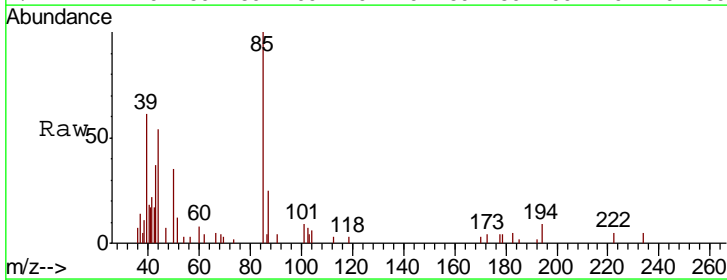
Instrument :  
 MSVOA\_L  
 ClientSampled :  
 SS-7BDL

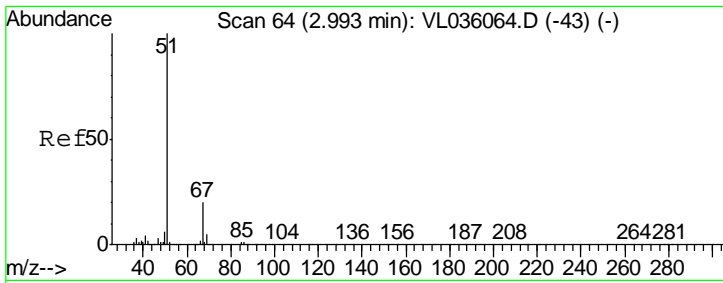
Tgt Ion	Resp	Lower	Upper
49	100		
128	37.7	21.1	63.1
130	50.3	27.1	81.3



#2  
 Dichlorodifluoromethane  
 Concen: 0.053 ppbv  
 RT: 3.04 min Scan# 80  
 Delta R.T. -0.01 min  
 Lab File: VL036112.D  
 Acq: 9 Dec 2020 2:18

Tgt Ion	Resp	Lower	Upper
85	100		
87	10.5	26.5	39.7#

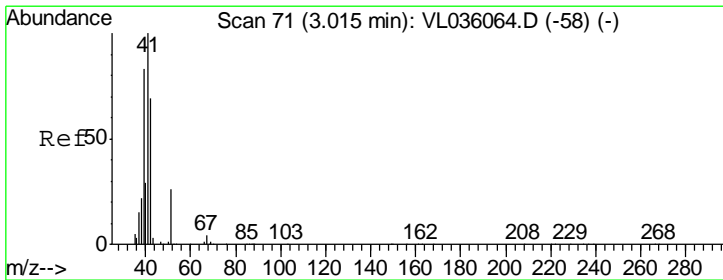
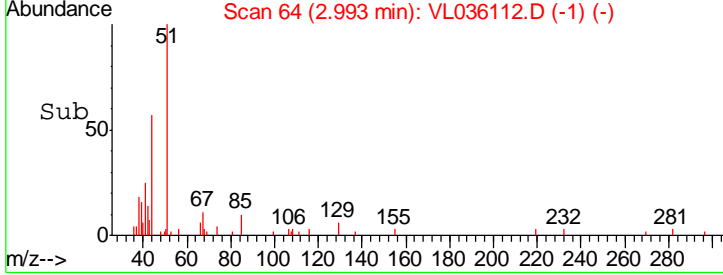
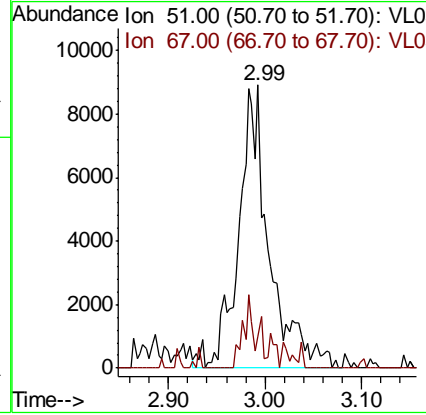
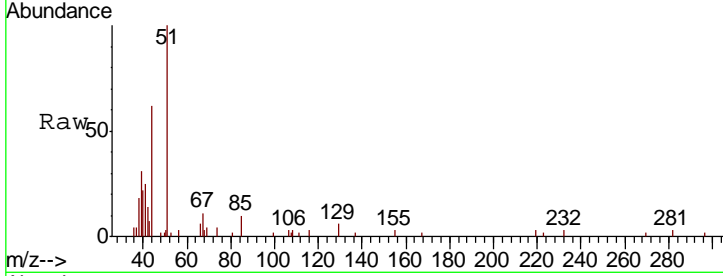




#3  
 Chlorodifluoromethane  
 Concen: 0.153 ppbv  
 RT: 2.99 min Scan# 64  
 Delta R.T. 0.00 min  
 Lab File: VL036112.D  
 Acq: 9 Dec 2020 2:18

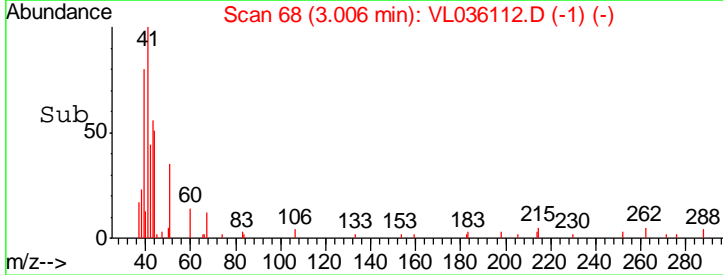
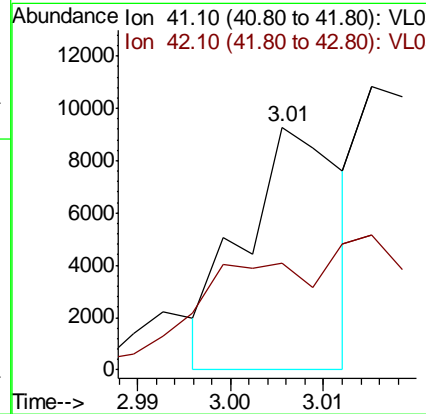
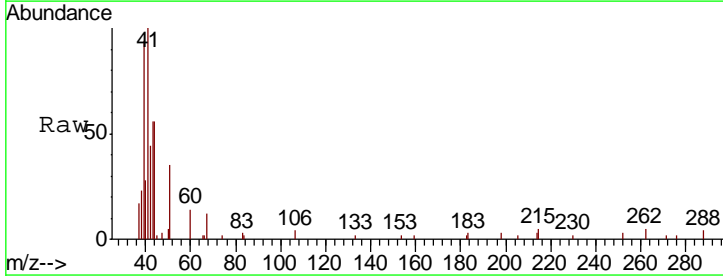
**Instrument :**  
 MSVOA\_L  
**ClientSampled :**  
 SS-7BDL

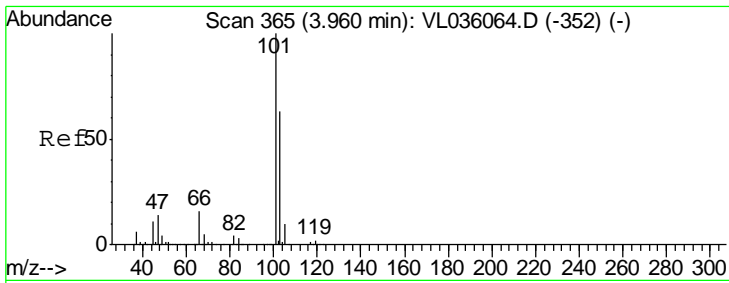
Tgt Ion	Resp	Lower	Upper
51	19737		
67	16.9	14.3	21.5



#9  
 Propene  
 Concen: 0.104 ppbv  
 RT: 3.01 min Scan# 68  
 Delta R.T. -0.01 min  
 Lab File: VL036112.D  
 Acq: 9 Dec 2020 2:18

Tgt Ion	Resp	Lower	Upper
41	6727		
42	0.0	57.0	85.6#

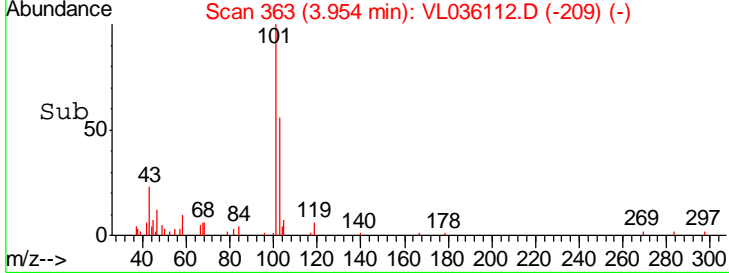
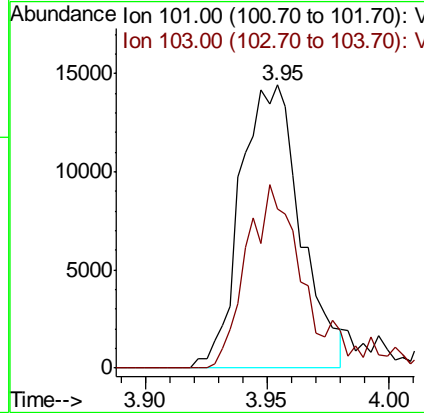
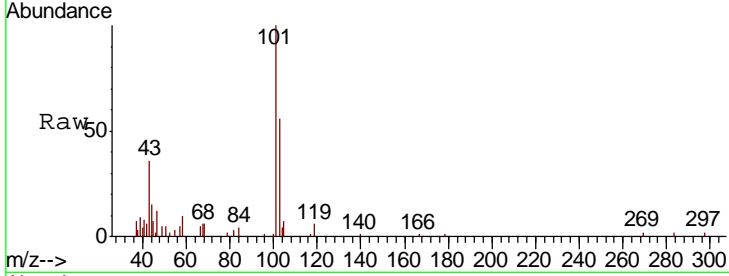




#11  
 Trichlorofluoromethane  
 Concen: 0.159 ppbv  
 RT: 3.95 min Scan# 363  
 Delta R.T. -0.01 min  
 Lab File: VL036112.D  
 Acq: 9 Dec 2020 2:18

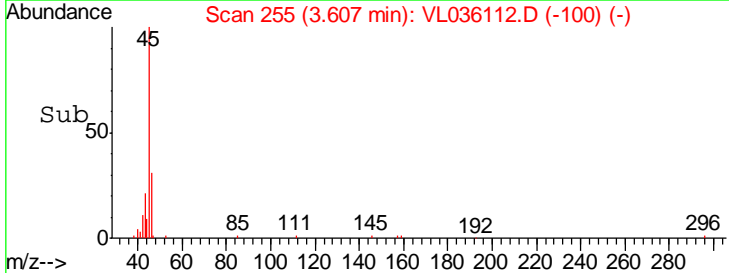
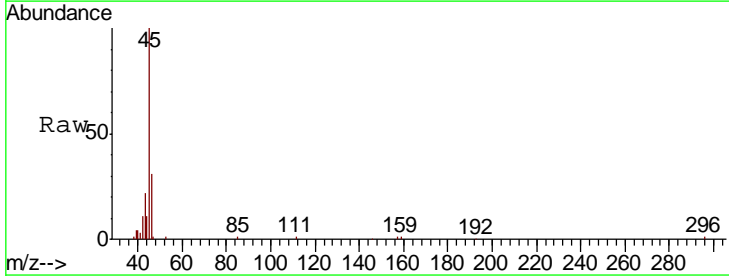
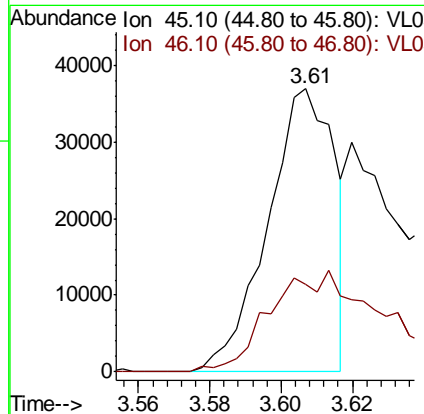
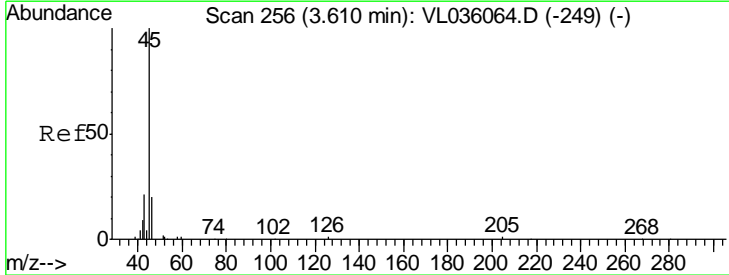
**Instrument :**  
 MSVOA\_L  
**ClientSampled :**  
 SS-7BDL

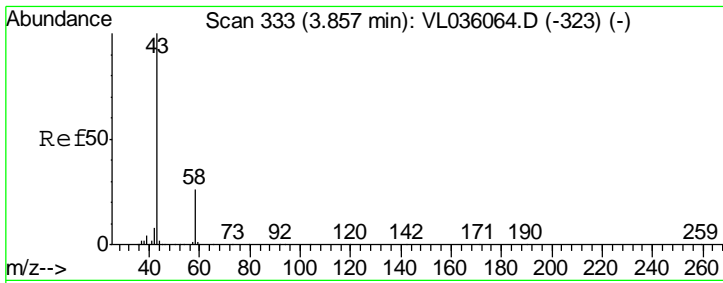
Tgt Ion	Resp	Lower	Upper
101	24741		
103	56.4	50.3	75.5



#13  
 Ethanol  
 Concen: 5.371 ppbv  
 RT: 3.61 min Scan# 255  
 Delta R.T. -0.00 min  
 Lab File: VL036112.D  
 Acq: 9 Dec 2020 2:18

Tgt Ion	Resp	Lower	Upper
45	47971		
46	0.0	19.0	75.8#

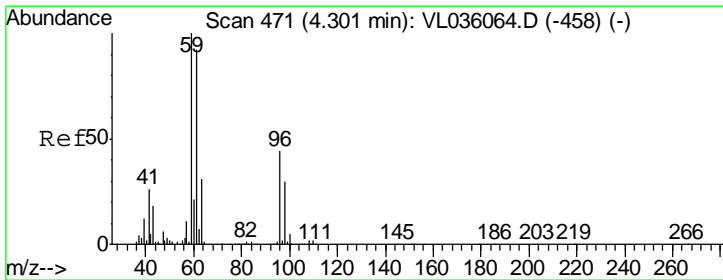
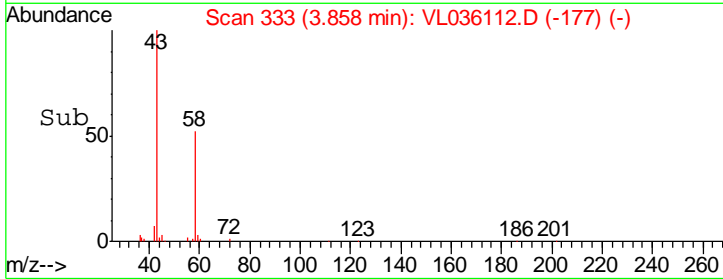
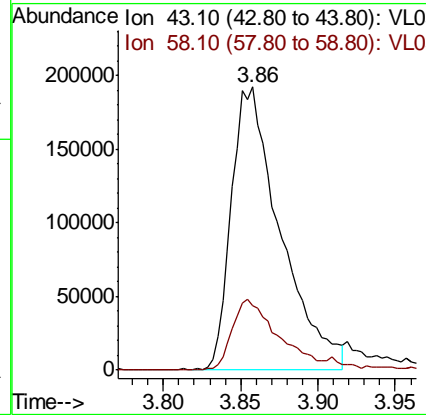
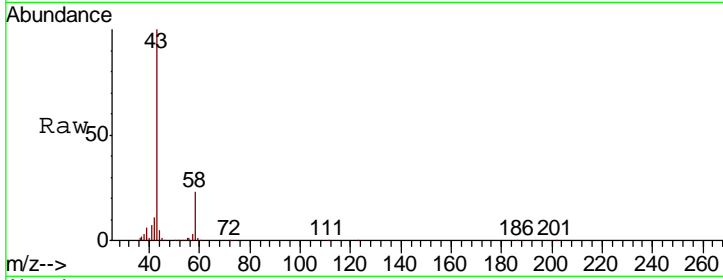




#15  
 Acetone  
 Concen: 3.090 ppbv  
 RT: 3.86 min Scan# 333  
 Delta R.T. 0.00 min  
 Lab File: VL036112.D  
 Acq: 9 Dec 2020 2:18

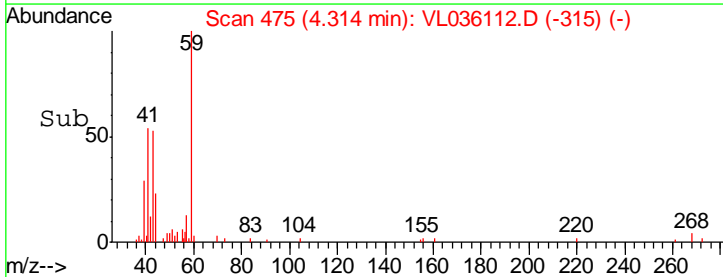
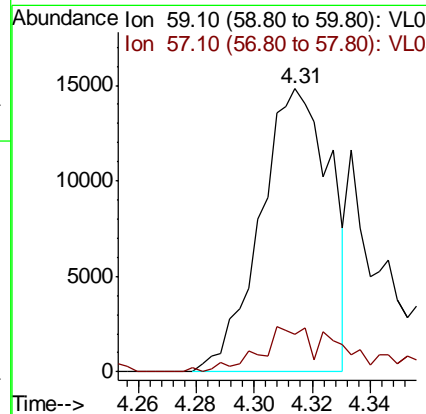
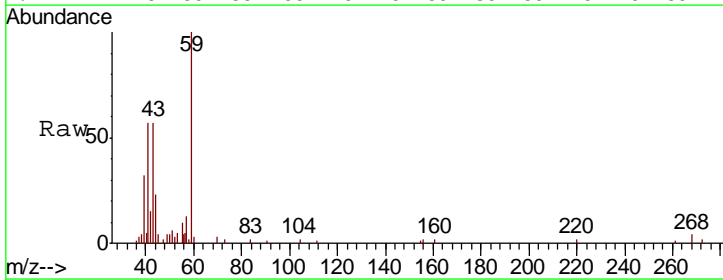
**Instrument :**  
 MSVOA\_L  
**ClientSampled :**  
 SS-7BDL

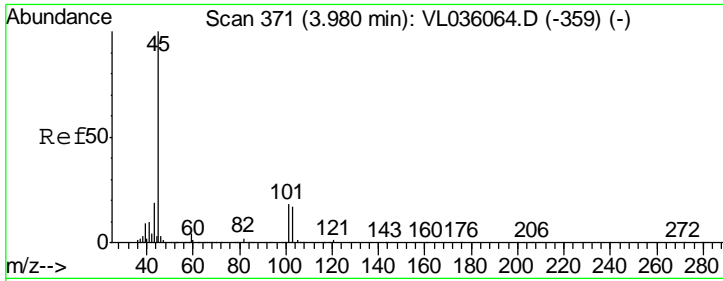
Tgt Ion	Resp	Lower	Upper
43	100		
58	26.8	20.9	31.3



#17  
 tert-Butyl alcohol  
 Concen: 0.188 ppbv  
 RT: 4.31 min Scan# 475  
 Delta R.T. 0.01 min  
 Lab File: VL036112.D  
 Acq: 9 Dec 2020 2:18

Tgt Ion	Resp	Lower	Upper
59	100		
57	19.8	8.7	13.1#

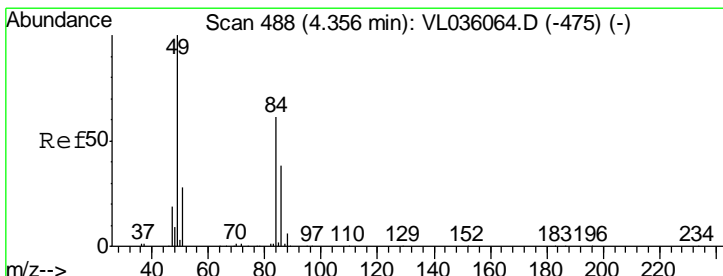
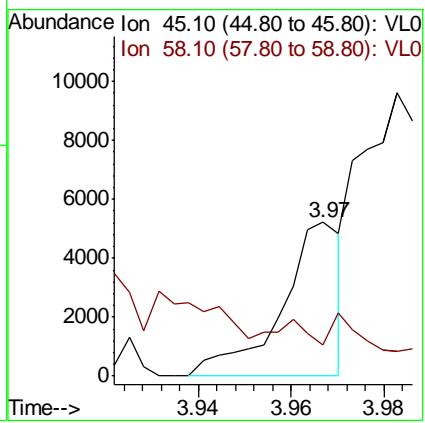
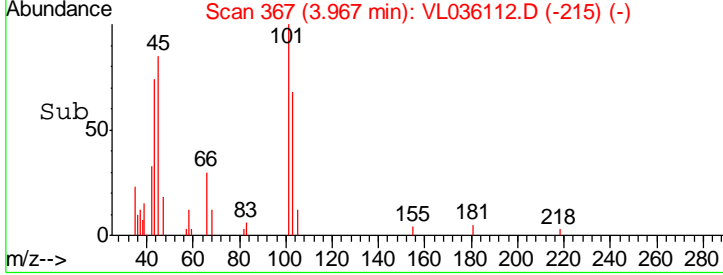
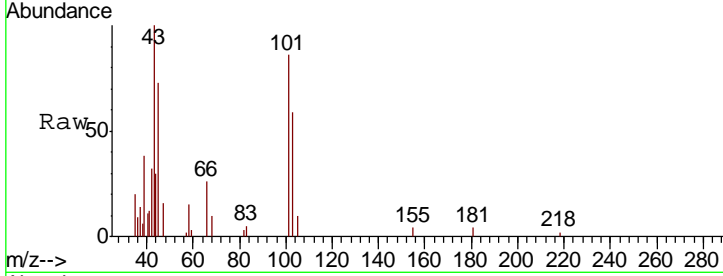




#19  
 Isopropyl Alcohol  
 Concen: 0.056 ppbv  
 RT: 3.97 min Scan# 367  
 Delta R.T. -0.01 min  
 Lab File: VL036112.D  
 Acq: 9 Dec 2020 2:18

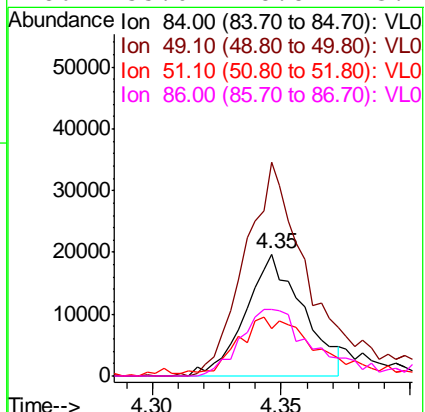
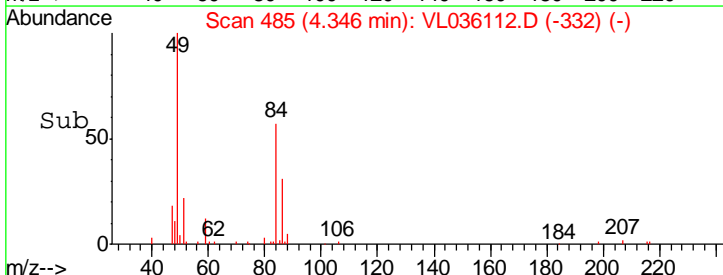
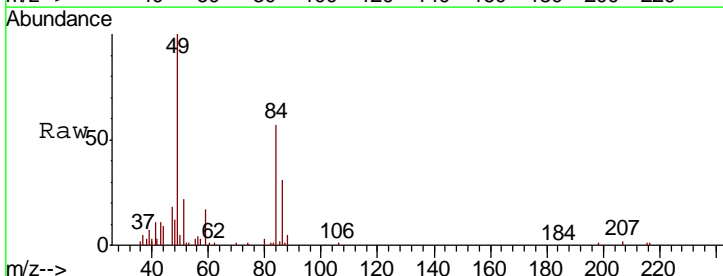
**Instrument :**  
 MSVOA\_L  
**ClientSampled :**  
 SS-7BDL

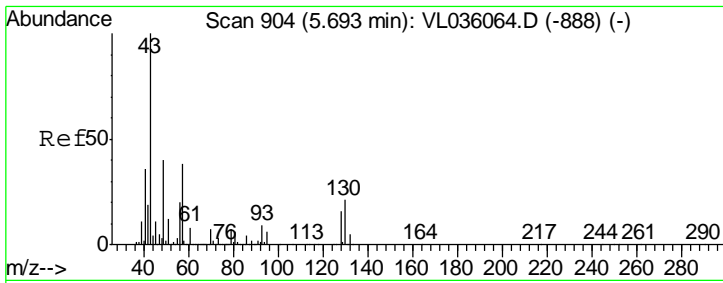
Tgt Ion	Resp	Lower	Upper
45	100		
58	0.0	0.0	0.0



#20  
 Methylene Chloride  
 Concen: 0.552 ppbv  
 RT: 4.35 min Scan# 485  
 Delta R.T. -0.01 min  
 Lab File: VL036112.D  
 Acq: 9 Dec 2020 2:18

Tgt Ion	Resp	Lower	Upper
84	100		
49	175.2	133.0	199.4
51	32.4	38.9	58.3#
86	55.0	48.8	73.2

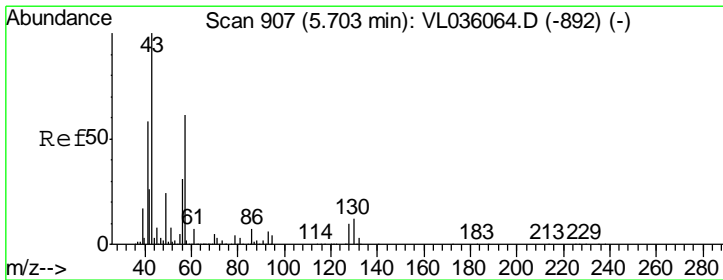
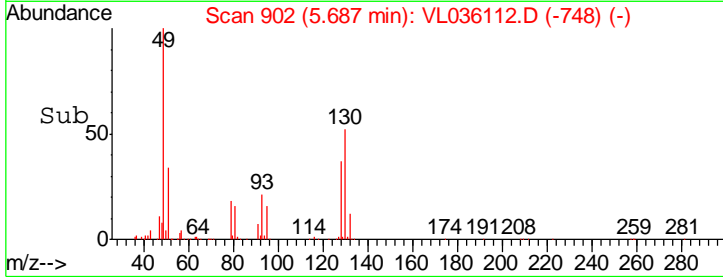
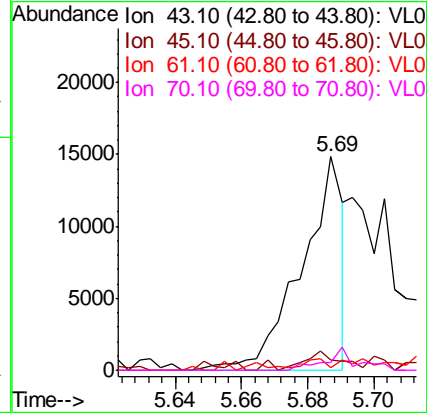
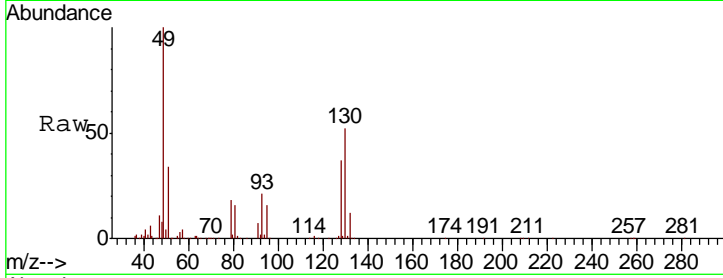




#25  
Ethyl Acetate  
Concen: 0.047 ppbv  
RT: 5.69 min Scan# 902  
Delta R.T. -0.01 min  
Lab File: VL036112.D  
Acq: 9 Dec 2020 2:18

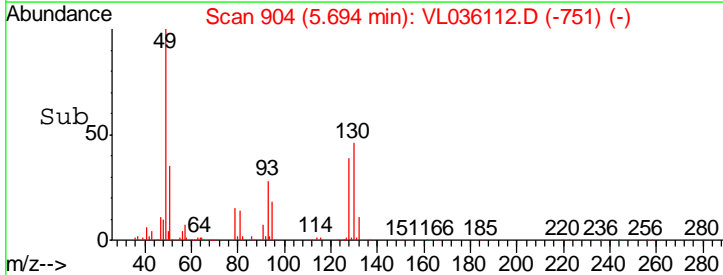
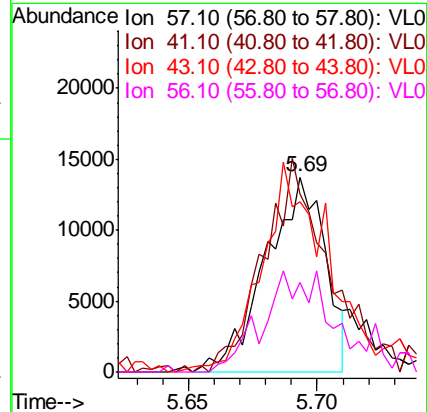
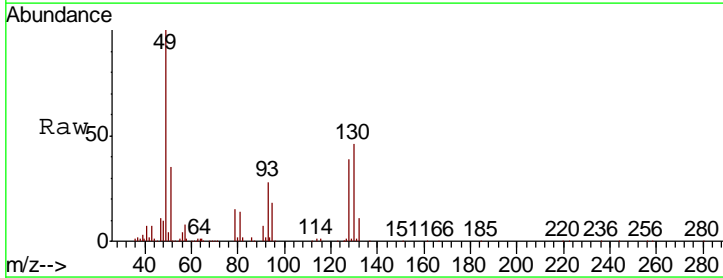
Instrument :  
MSVOA\_L  
ClientSampleID :  
SS-7BDL

Tgt Ion	Resp	Lower	Upper
43	12876		
45	17.8	8.2	12.4#
61	3.6	7.4	11.2#
70	0.0	5.4	8.0#

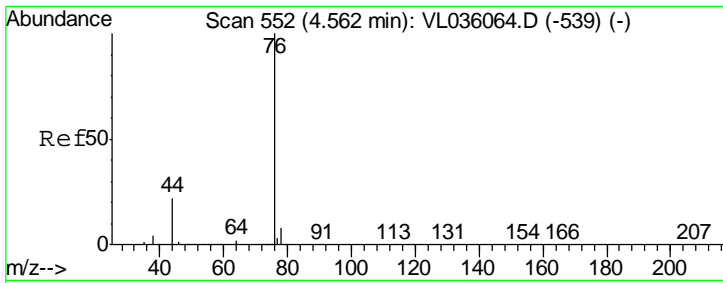


#26  
Hexane  
Concen: 0.180 ppbv  
RT: 5.69 min Scan# 904  
Delta R.T. -0.01 min  
Lab File: VL036112.D  
Acq: 9 Dec 2020 2:18

Tgt Ion	Resp	Lower	Upper
57	22037		
41	120.2	82.9	124.3
43	133.9	199.9	299.9#
56	0.0	43.1	64.7#



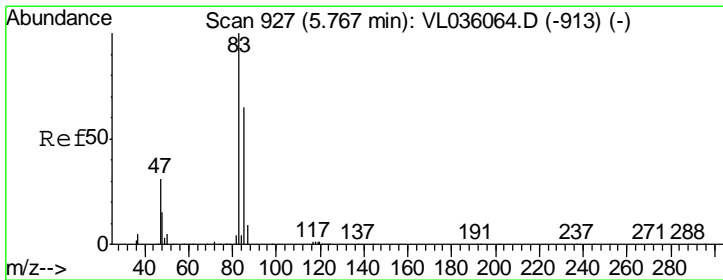
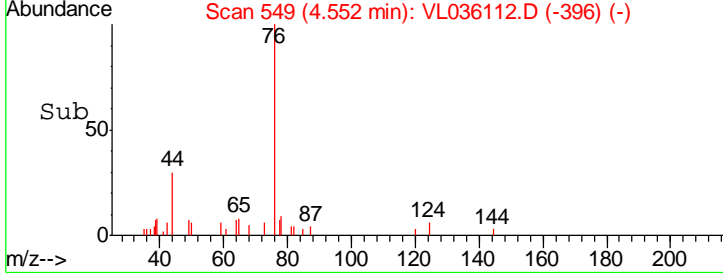
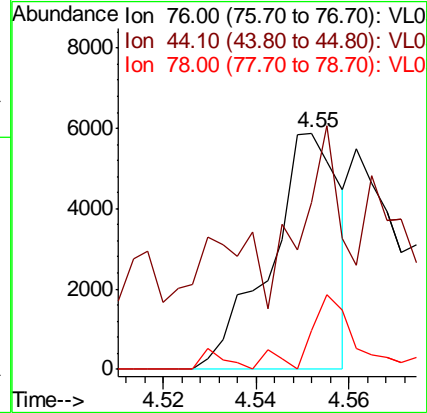
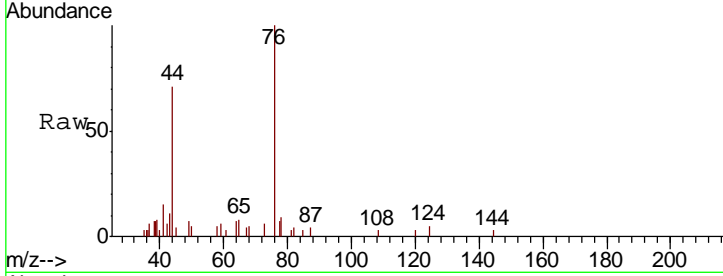




#27  
 Carbon Disulfide  
 Concen: 0.050 ppbv  
 RT: 4.55 min Scan# 549  
 Delta R.T. -0.01 min  
 Lab File: VL036112.D  
 Acq: 9 Dec 2020 2:18

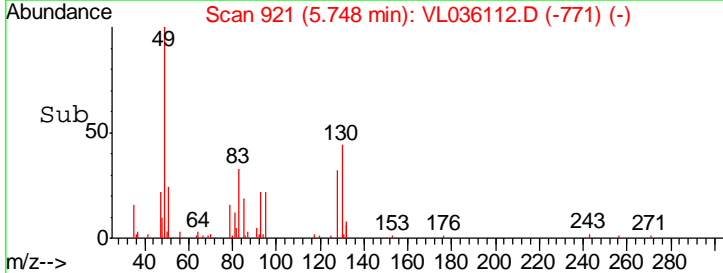
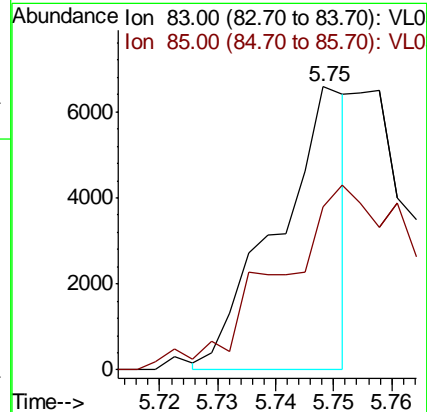
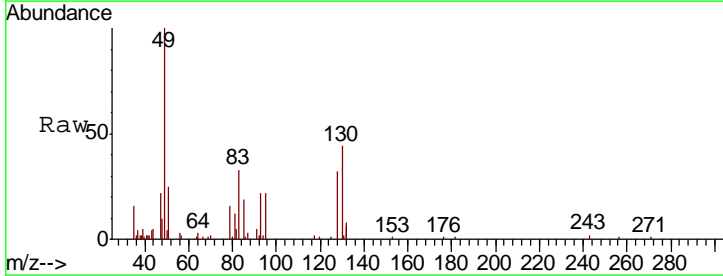
Instrument :  
 MSVOA\_L  
 ClientSampled :  
 SS-7BDL

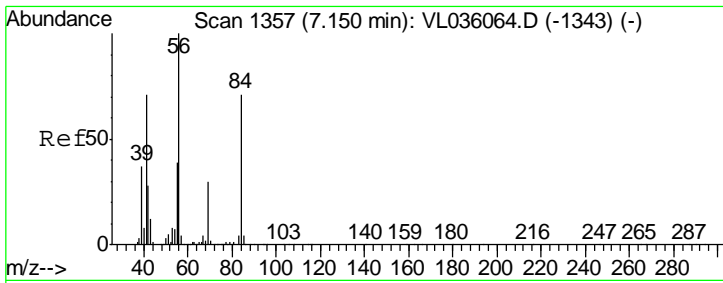
Tgt Ion	Resp	Lower	Upper
76	6100		
44	87.5	17.9	26.9#
78	30.1	7.8	11.8#



#29  
 Chloroform  
 Concen: 0.034 ppbv  
 RT: 5.75 min Scan# 921  
 Delta R.T. -0.02 min  
 Lab File: VL036112.D  
 Acq: 9 Dec 2020 2:18

Tgt Ion	Resp	Lower	Upper
83	5472		
85	55.3	51.8	77.6

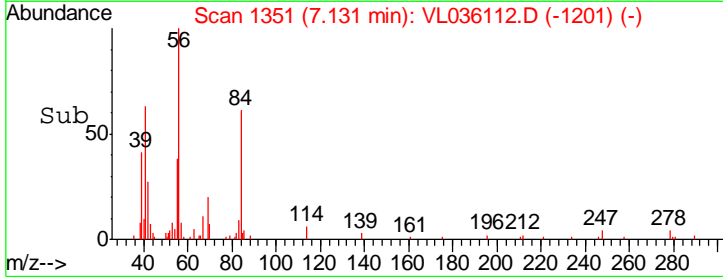
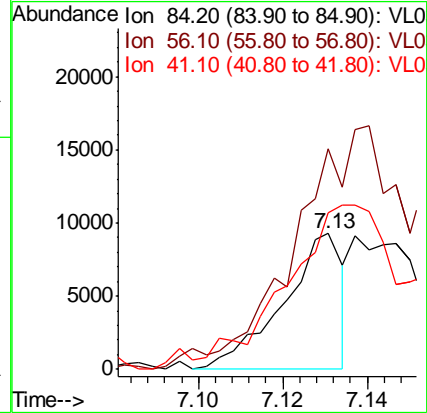
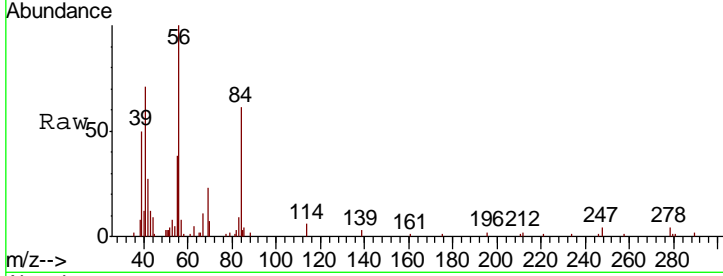




#30  
 Cyclohexane  
 Concen: 0.100 ppbv  
 RT: 7.13 min Scan# 1351  
 Delta R.T. -0.02 min  
 Lab File: VL036112.D  
 Acq: 9 Dec 2020 2:18

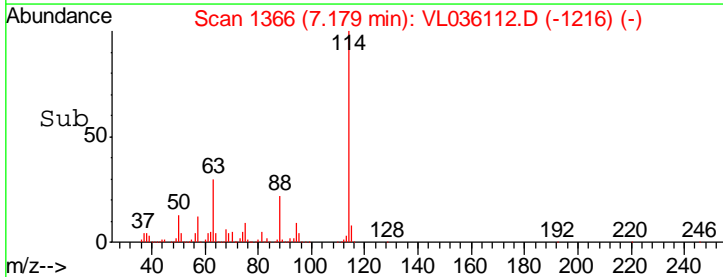
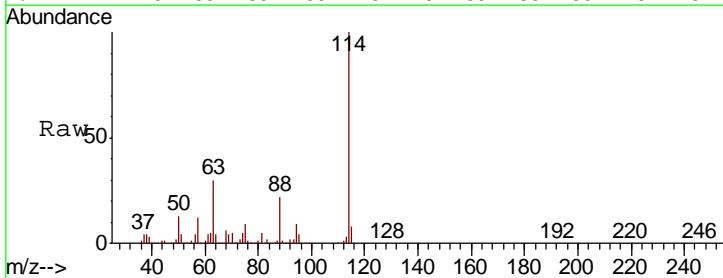
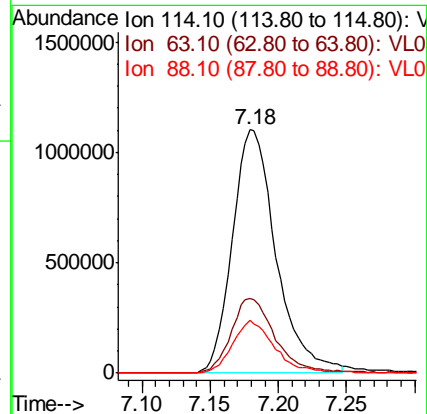
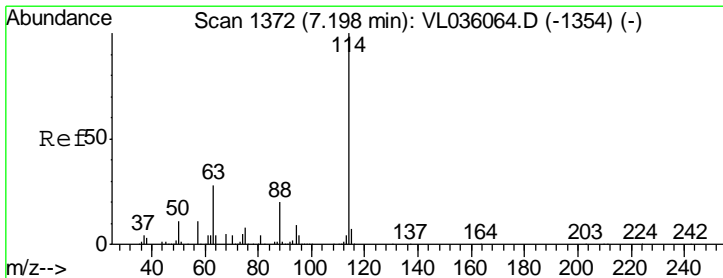
Instrument :  
 MSVOA\_L  
 ClientSampled :  
 SS-7BDL

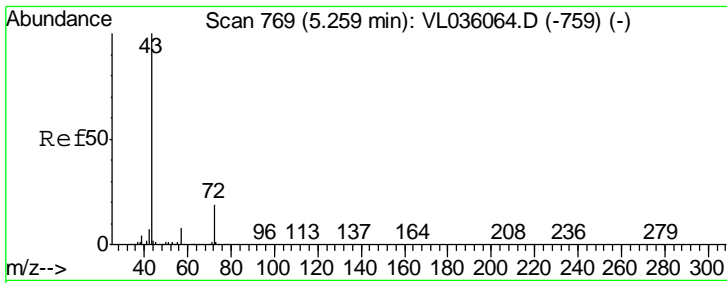
Tgt Ion	Resp	Lower	Upper
84	100		
56	0.0	128.0	192.0#
41	0.0	81.3	121.9#



#33  
 1,4-Difluorobenzene  
 Concen: 10.000 ppbv  
 RT: 7.18 min Scan# 1366  
 Delta R.T. -0.02 min  
 Lab File: VL036112.D  
 Acq: 9 Dec 2020 2:18

Tgt Ion	Resp	Lower	Upper
114	100		
63	31.5	23.6	35.4
88	21.2	15.8	23.6

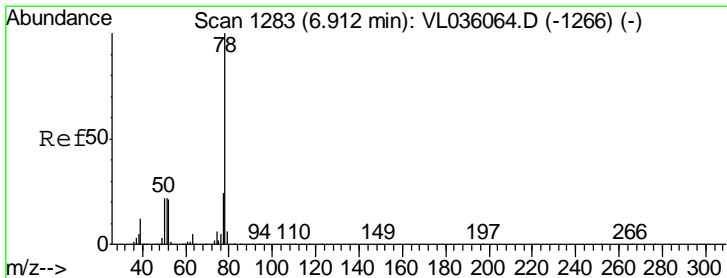
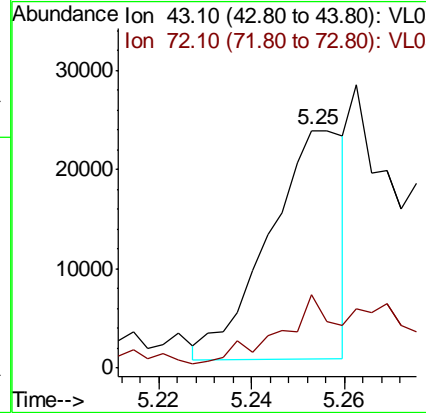
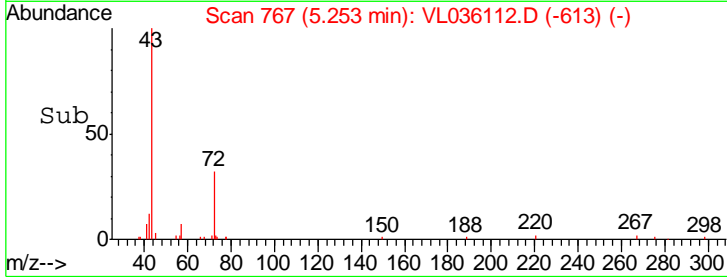
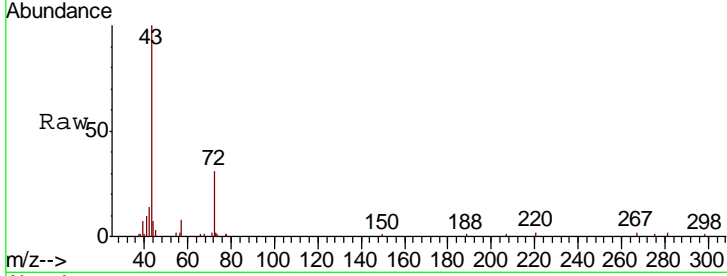




#34  
 2-Butanone  
 Concen: 0.160 ppbv  
 RT: 5.25 min Scan# 767  
 Delta R.T. -0.01 min  
 Lab File: VL036112.D  
 Acq: 9 Dec 2020 2:18

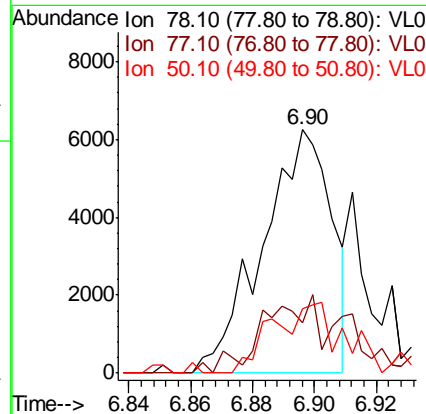
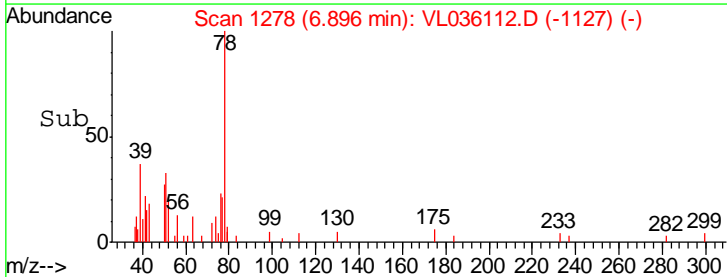
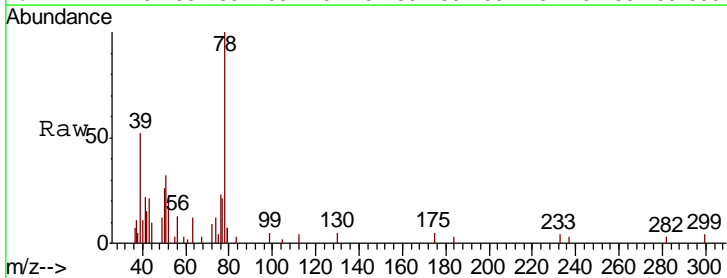
Instrument :  
 MSVOA\_L  
 ClientSampled :  
 SS-7BDL

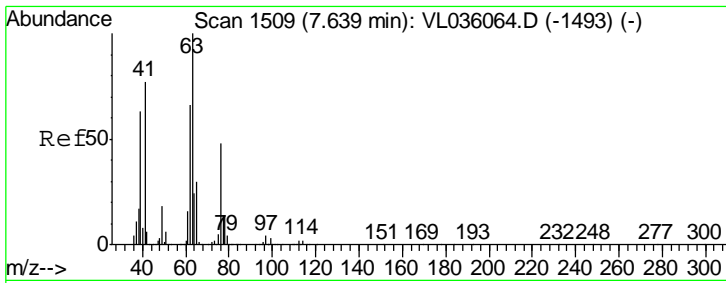
Tgt Ion	Resp	Lower	Upper
43	100		
72	58.4	16.5	24.7#



#36  
 Benzene  
 Concen: 0.047 ppbv  
 RT: 6.90 min Scan# 1278  
 Delta R.T. -0.02 min  
 Lab File: VL036112.D  
 Acq: 9 Dec 2020 2:18

Tgt Ion	Resp	Lower	Upper
78	100		
77	20.7	19.4	29.2
50	21.9	17.8	26.8

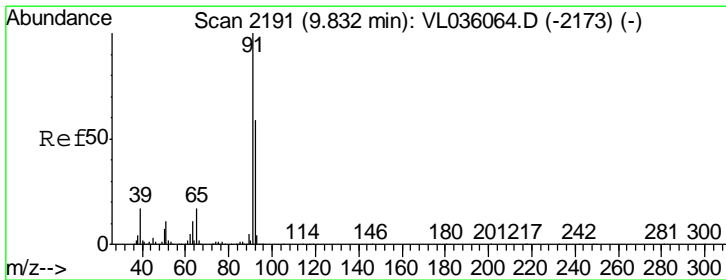
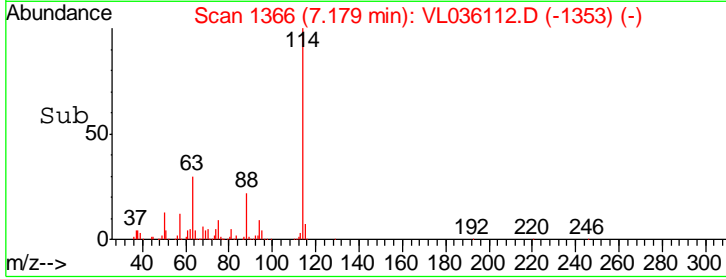
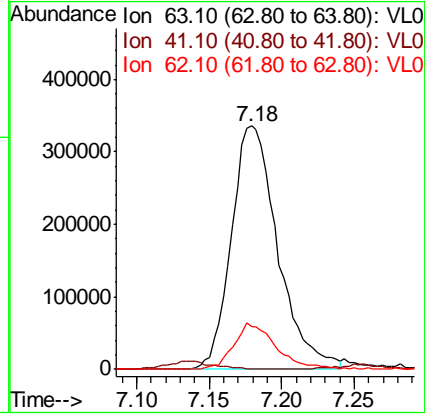
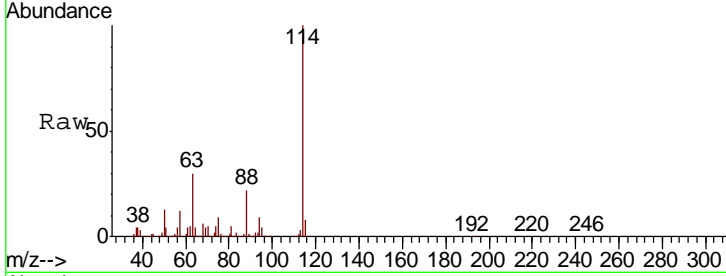




#39  
 1,2-Dichloropropane  
 Concen: 9.067 ppbv  
 RT: 7.18 min Scan# 1366  
 Delta R.T. -0.46 min  
 Lab File: VL036112.D  
 Acq: 9 Dec 2020 2:18

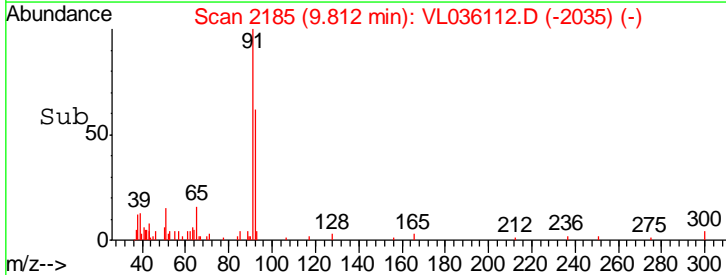
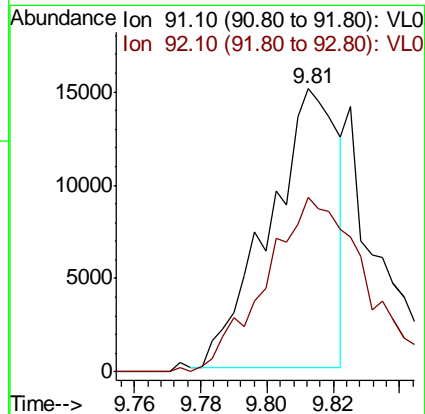
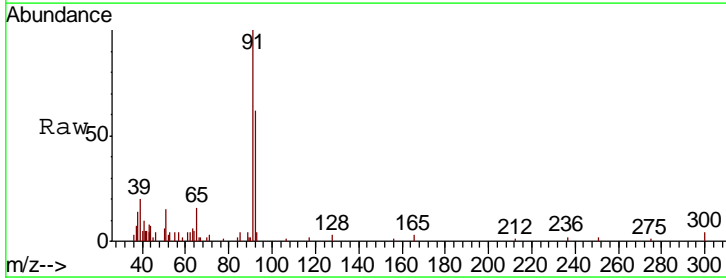
**Instrument :**  
 MSVOA\_L  
**ClientSampled :**  
 SS-7BDL

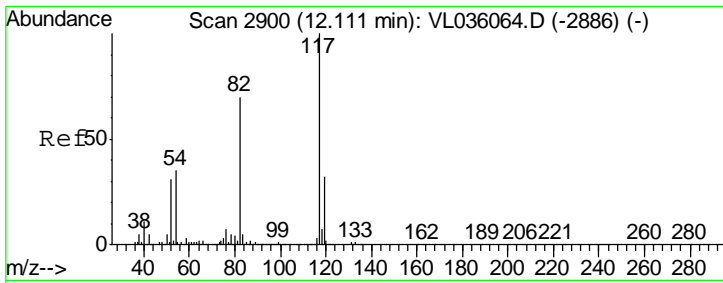
Tgt Ion	Resp	Lower	Upper
63	100		
41	0.0	61.9	92.9#
62	17.3	52.5	78.7#



#53  
 Toluene  
 Concen: 0.092 ppbv  
 RT: 9.81 min Scan# 2185  
 Delta R.T. -0.02 min  
 Lab File: VL036112.D  
 Acq: 9 Dec 2020 2:18

Tgt Ion	Resp	Lower	Upper
91	100		
92	95.8	48.2	72.2#

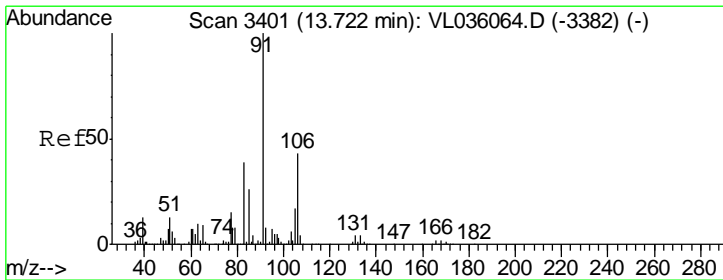
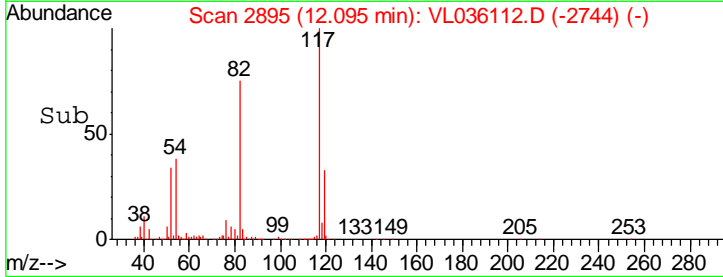
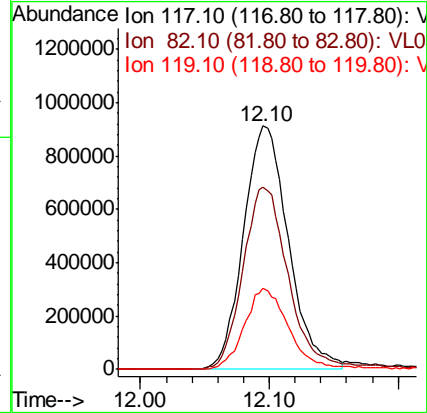
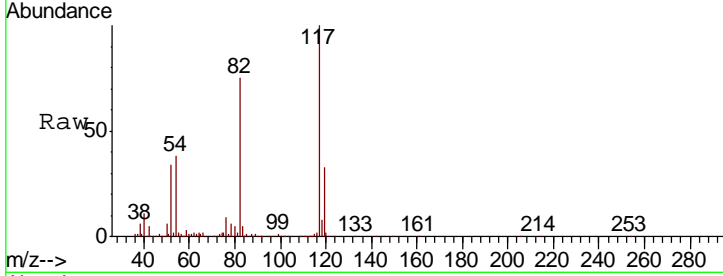




#55  
 Chlorobenzene-d5  
 Concen: 10.000 ppbv  
 RT: 12.10 min Scan# 2895  
 Delta R.T. -0.02 min  
 Lab File: VL036112.D  
 Acq: 9 Dec 2020 2:18

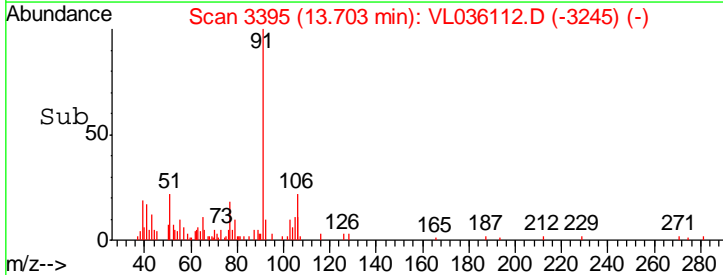
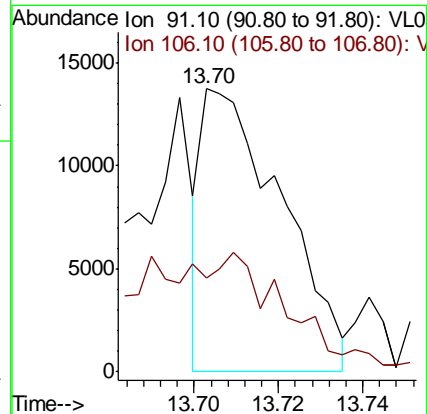
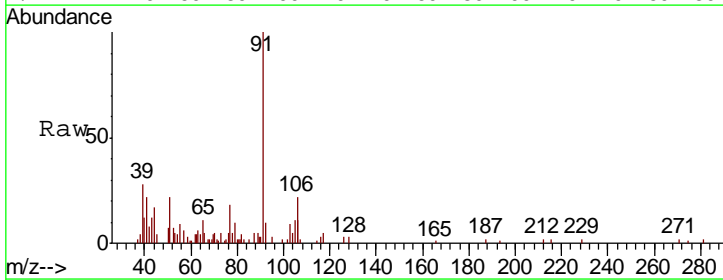
Instrument : MSVOA\_L  
 ClientSampled : SS-7BDL

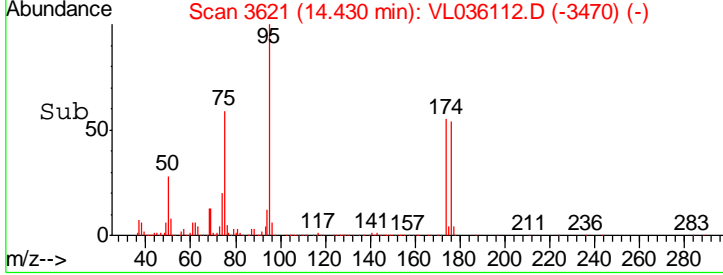
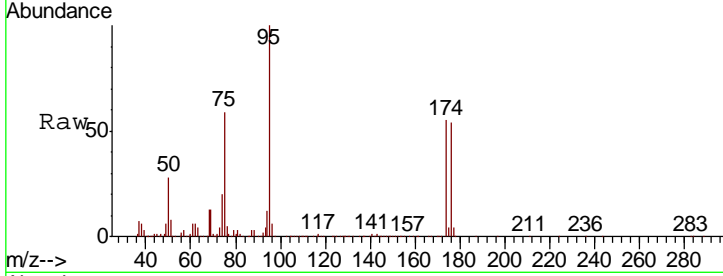
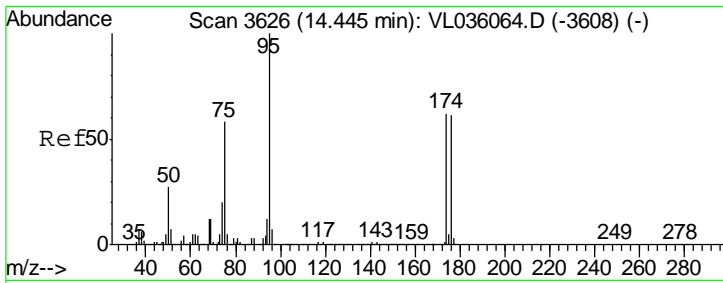
Tgt Ion	Resp	Lower	Upper
117	100		
82	77.7	0.0	0.0#
119	33.8	0.0	0.0#



#60  
 o-Xylene  
 Concen: 0.075 ppbv  
 RT: 13.70 min Scan# 3395  
 Delta R.T. -0.02 min  
 Lab File: VL036112.D  
 Acq: 9 Dec 2020 2:18

Tgt Ion	Resp	Lower	Upper
91	100		
106	79.6	21.6	64.6#





#68  
 1-Bromo-4-Fluorobenzene  
 Concen: 10.712 ppbv  
 RT: 14.43 min Scan# 3621  
 Delta R.T. -0.02 min  
 Lab File: VL036112.D  
 Acq: 9 Dec 2020 2:18

Instrument : MSVOA\_L  
 ClientSampleID : SS-7BDL

Tot Ion: 95 Resp: 1885401

Ion	Ratio	Lower	Upper
95	100		
174	59.2	50.7	76.1
175	4.2	4.0	6.0

