

Data Path : Z:\VOASRV\HPCHEM1\MSVOA L\DATA\VL120820\  
 Data File : VL036113.D  
 Acq On : 9 Dec 2020 2:56  
 Operator : SY/AP  
 Sample : L4948-10DL 40X  
 Misc : 400ml/MSVOA L  
 ALS Vial : 1 Sample Multiplier: 1

Instrument :  
 MSVOA\_L  
 ClientSampleId :  
 SS-7BDL

Quant Time: Dec 09 07:23:57 2020  
 Quant Method : Z:\VOASRV\HPCHEM1\MSVOA L\METHODS\VL120720AIR.M  
 Quant Title : AIR ANALYSIS BY METHOD TO-15 Instrument: MSVOA\_L Mon Dec 07 16:56:49 2020  
 QLast Update : Mon Dec 07 16:56:49 2020  
 Response via : Initial Calibration

Internal Standards	R.T.	QIon	Response	Conc	Units	Dev(Min)
1) Bromochloromethane	5.67	49	1144553	10.00	ppbv	-0.01
33) 1,4-Difluorobenzene	7.18	114	2490634	10.00	ppbv	-0.02
55) Chlorobenzene-d5	12.10	117	2187953	10.00	ppbv	-0.01

System Monitoring Compounds  
 68) 1-Bromo-4-Fluorobenzene 14.43 95 1871124 10.77 ppbv -0.02  
 Spiked Amount 10.000 Range 65 - 135 Recovery = 107.70%

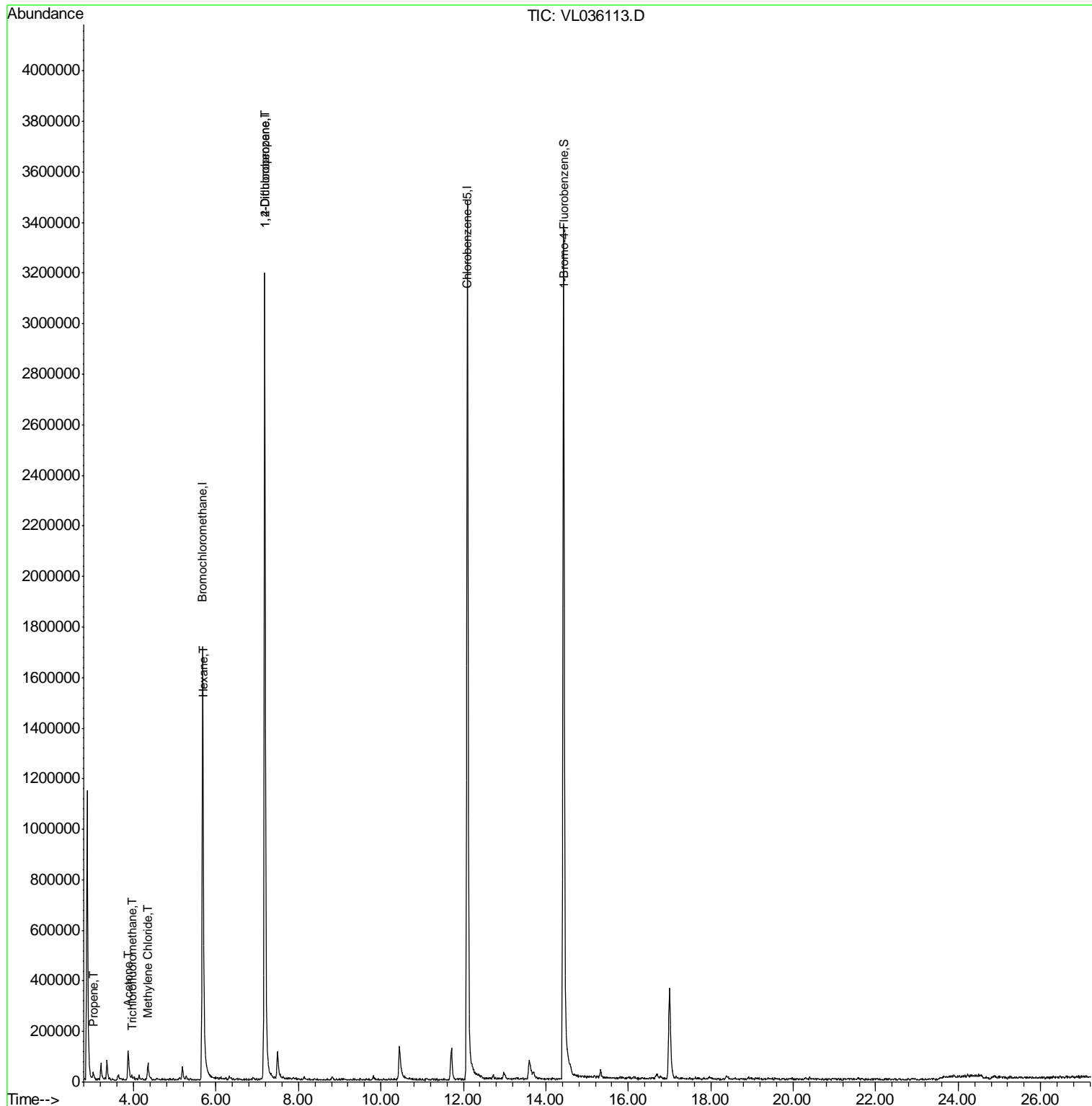
Target Compounds	R.T.	QIon	Response	Conc	Units	Ovalue
9) Propene	3.02	41	6226	0.095	ppbv	94
11) Trichlorofluoromethane	3.95	101	6420	0.041	ppbv	95
15) Acetone	3.86	43	118338	0.860	ppbv #	82
20) Methylene Chloride	4.35	84	14849	0.263	ppbv #	81
26) Hexane	5.69	57	9064	0.073	ppbv #	1
39) 1,2-Dichloropropane	7.18	63	735983	8.829	ppbv #	23

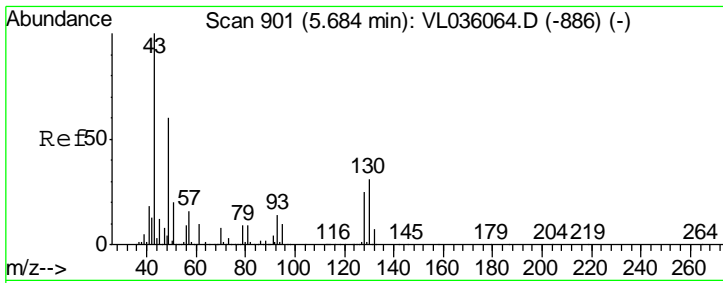
(#) = qualifier out of range (m) = manual integration (+) = signals summed

Data Path : Z:\VOASRV\HPCHEM1\MSVOA L\DATA\VL120820\  
 Data File : VL036113.D  
 Acq On : 9 Dec 2020 2:56  
 Operator : SY/AP  
 Sample : L4948-10DL 40X  
 Misc : 400ml/MSVOA L  
 ALS Vial : 1 Sample Multiplier: 1

Instrument :  
 MSVOA\_L  
 ClientSampleId :  
 SS-7BDL

Quant Time: Dec 09 07:23:57 2020  
 Quant Method : Z:\VOASRV\HPCHEM1\MSVOA L\METHODS\VL120720AIR.M  
 Quant Title : AIR ANALYSIS BY METHOD TO-15 Instrument: MSVOA\_L Mon Dec 07 16:56:49 2020  
 QLast Update : Mon Dec 07 16:56:49 2020  
 Response via : Initial Calibration



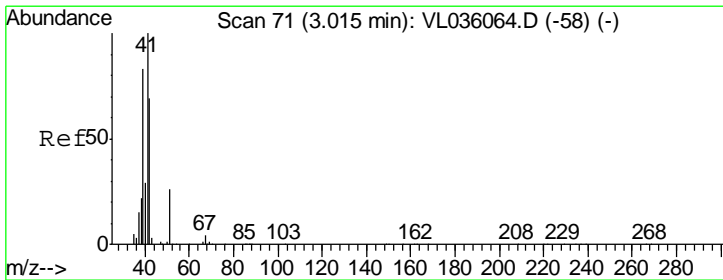
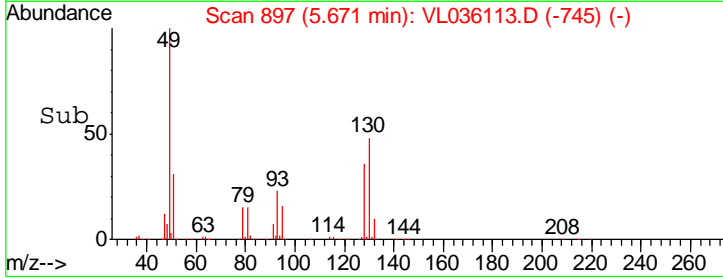
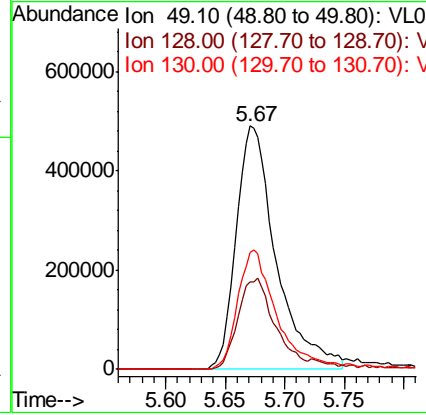
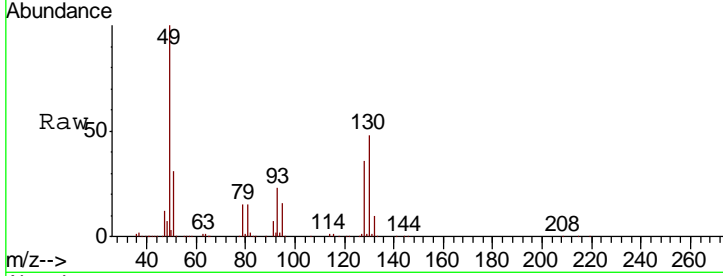


#1  
 Bromochloromethane  
 Concen: 10.000 ppbv  
 RT: 5.67 min Scan# 897  
 Delta R.T. -0.01 min  
 Lab File: VL036113.D  
 Acq: 9 Dec 2020 2:56

Instrument :  
 MSVOA\_L  
 ClientSampled :  
 SS-7BDL

Tgt Ion: 49 Resp: 1144553

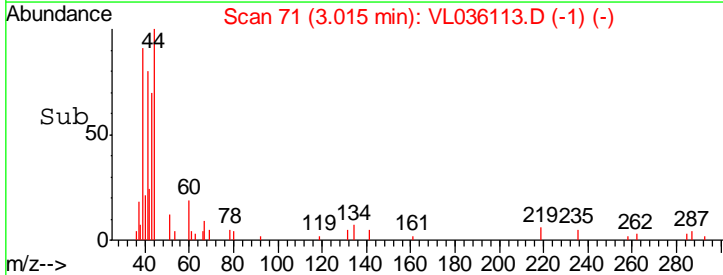
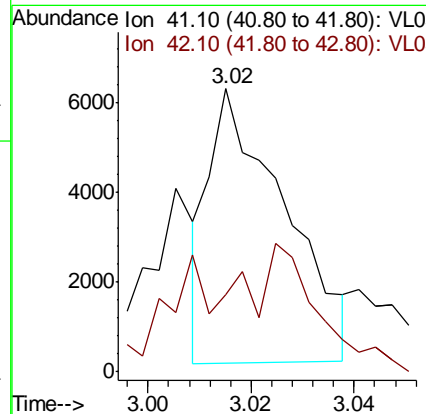
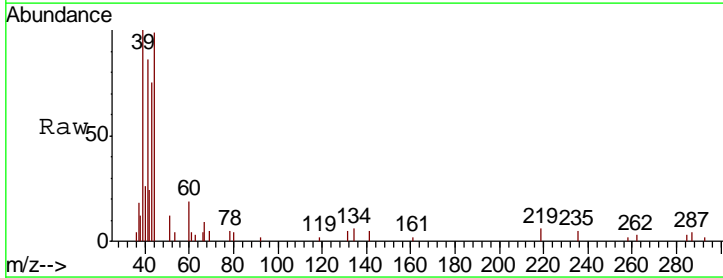
Ion	Ratio	Lower	Upper
49	100		
128	37.0	21.1	63.1
130	49.8	27.1	81.3

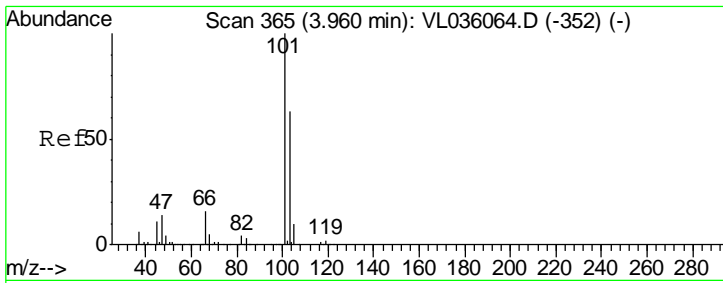


#9  
 Propene  
 Concen: 0.095 ppbv  
 RT: 3.02 min Scan# 71  
 Delta R.T. 0.00 min  
 Lab File: VL036113.D  
 Acq: 9 Dec 2020 2:56

Tgt Ion: 41 Resp: 6226

Ion	Ratio	Lower	Upper
41	100		
42	76.3	57.0	85.6

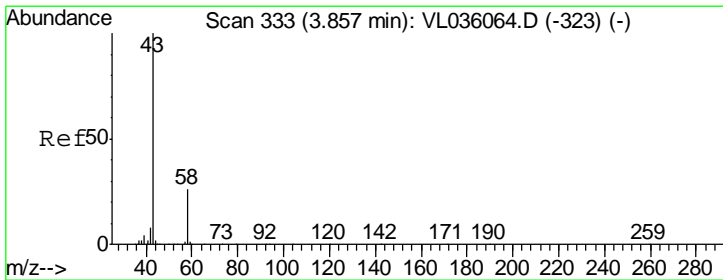
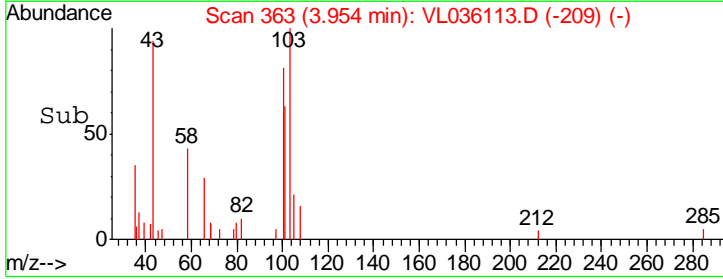
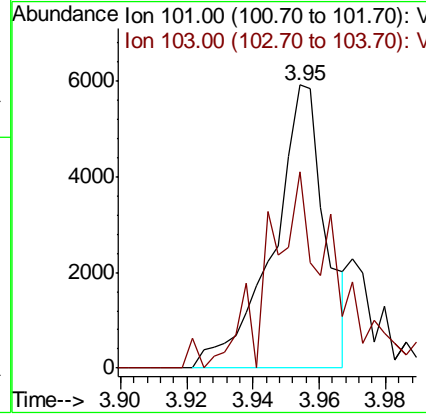
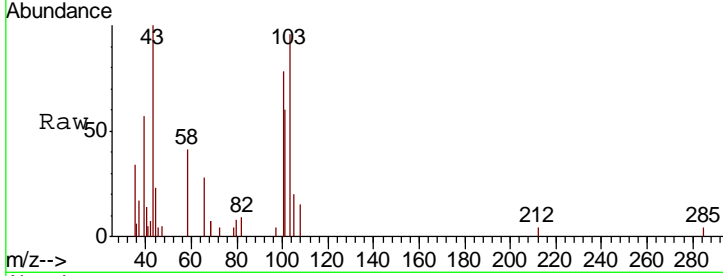




#11  
 Trichlorofluoromethane  
 Concen: 0.041 ppbv  
 RT: 3.95 min Scan# 363  
 Delta R.T. -0.01 min  
 Lab File: VL036113.D  
 Acq: 9 Dec 2020 2:56

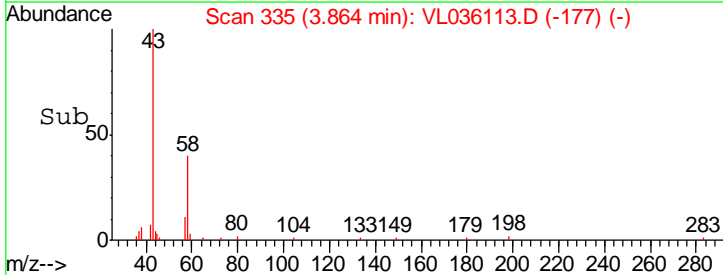
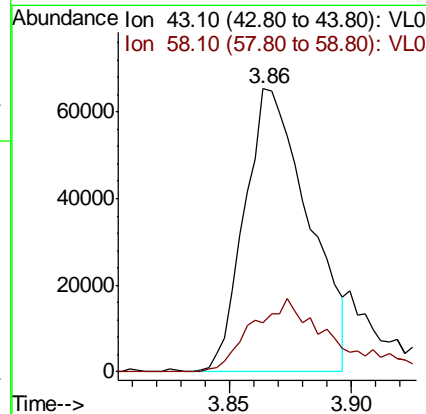
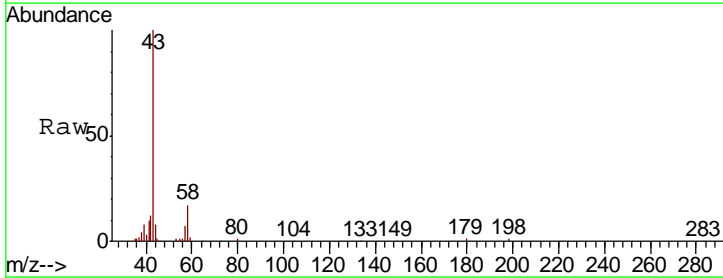
Instrument :  
 MSVOA\_L  
 ClientSampleId :  
 SS-7BDL

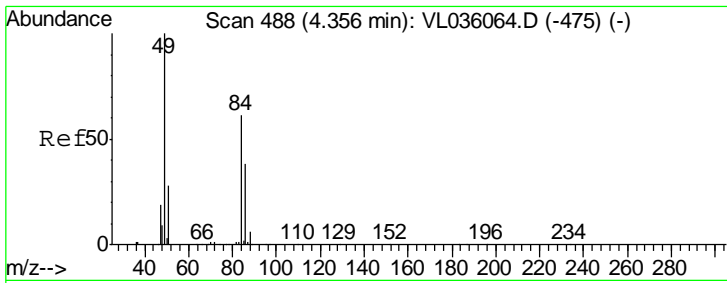
Tgt Ion	Resp	Lower	Upper
101	6420		
101	100		
103	58.9	50.3	75.5



#15  
 Acetone  
 Concen: 0.860 ppbv  
 RT: 3.86 min Scan# 335  
 Delta R.T. 0.01 min  
 Lab File: VL036113.D  
 Acq: 9 Dec 2020 2:56

Tgt Ion	Resp	Lower	Upper
43	118338		
43	100		
58	35.5	20.9	31.3#

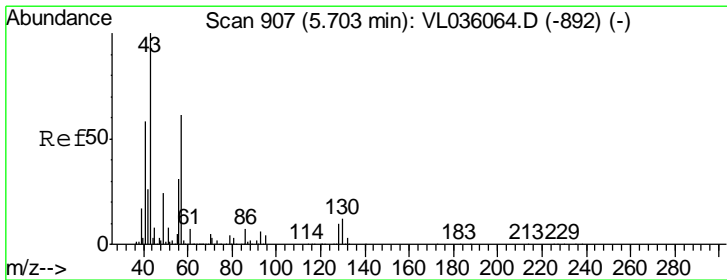
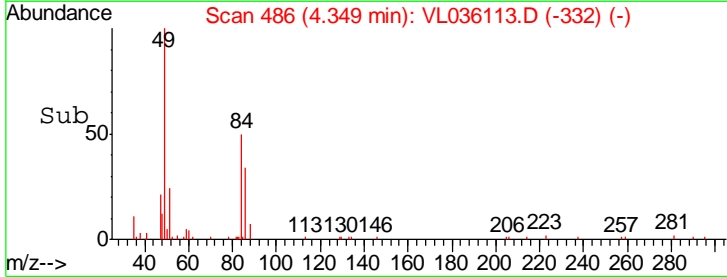
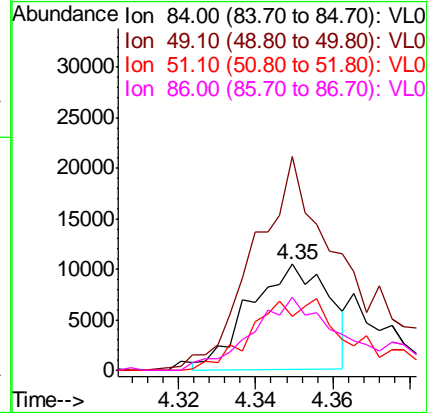
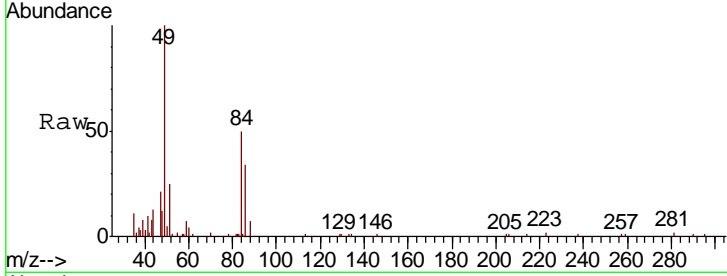




#20  
 Methylene Chloride  
 Concen: 0.263 ppbv  
 RT: 4.35 min Scan# 486  
 Delta R.T. -0.01 min  
 Lab File: VL036113.D  
 Acq: 9 Dec 2020 2:56

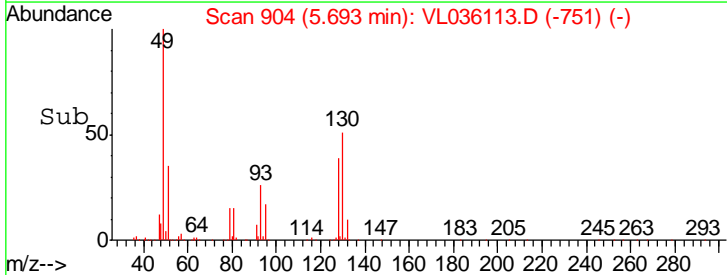
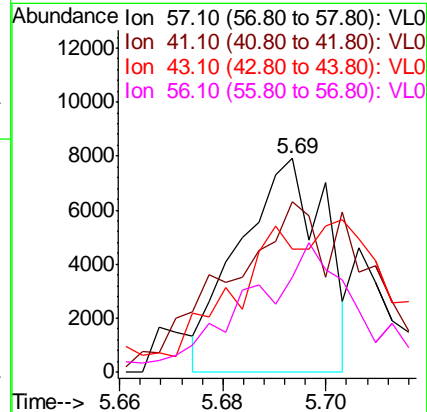
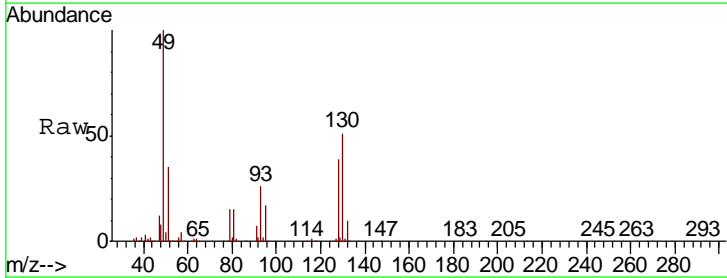
Instrument :  
 MSVOA\_L  
 ClientSampled :  
 SS-7BDL

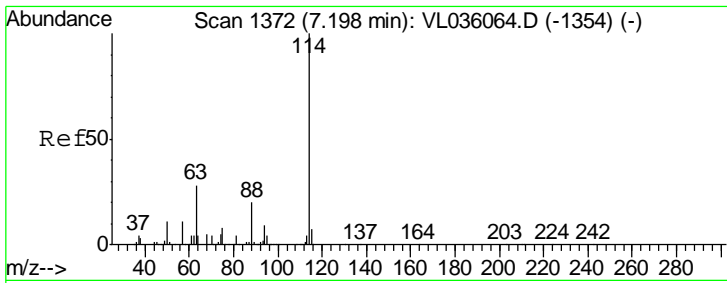
Tgt Ion	Resp	Lower	Upper
84	14849		
84	100		
49	201.8	133.0	199.4#
51	53.5	38.9	58.3
86	66.7	48.8	73.2



#26  
 Hexane  
 Concen: 0.073 ppbv  
 RT: 5.69 min Scan# 904  
 Delta R.T. -0.01 min  
 Lab File: VL036113.D  
 Acq: 9 Dec 2020 2:56

Tgt Ion	Resp	Lower	Upper
57	9064		
57	100		
41	153.0	82.9	124.3#
43	0.0	199.9	299.9#
56	86.1	43.1	64.7#

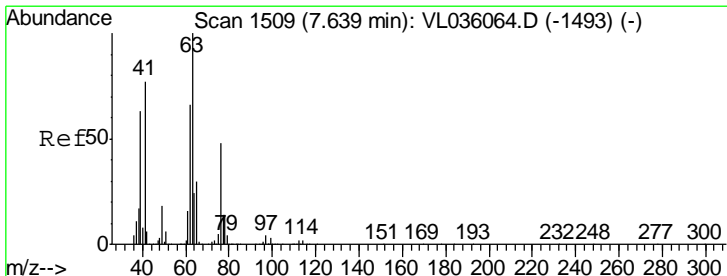
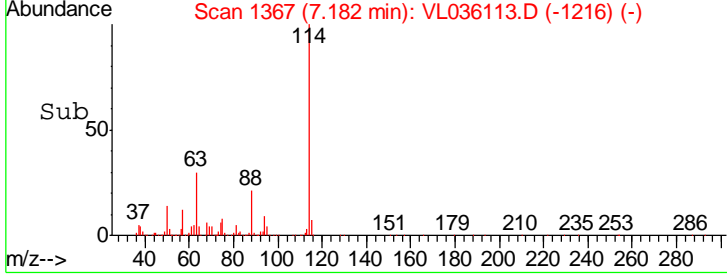
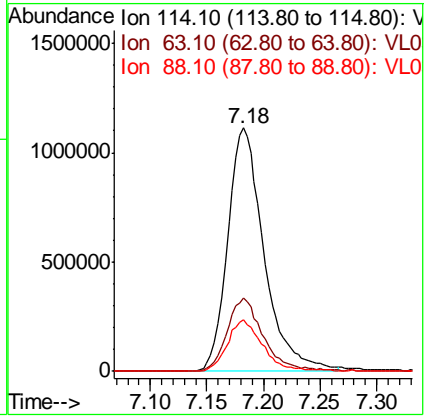
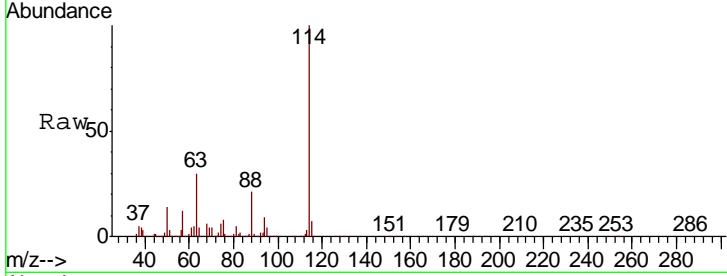




#33  
 1,4-Difluorobenzene  
 Concen: 10.000 ppbv  
 RT: 7.18 min Scan# 1367  
 Delta R.T. -0.02 min  
 Lab File: VL036113.D  
 Acq: 9 Dec 2020 2:56

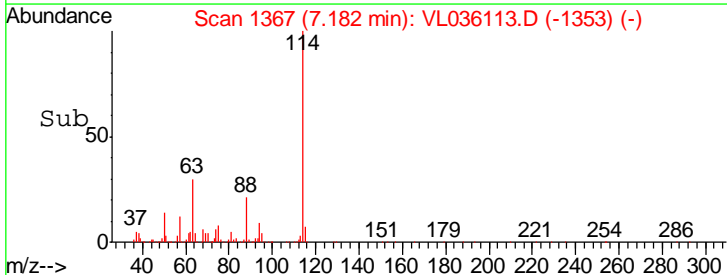
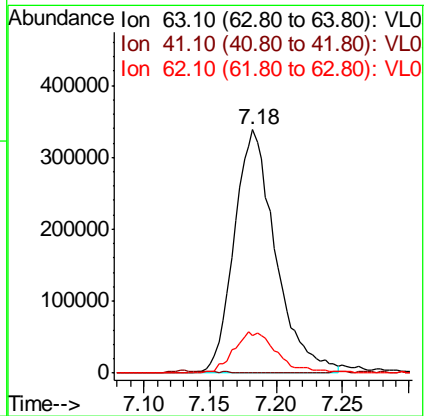
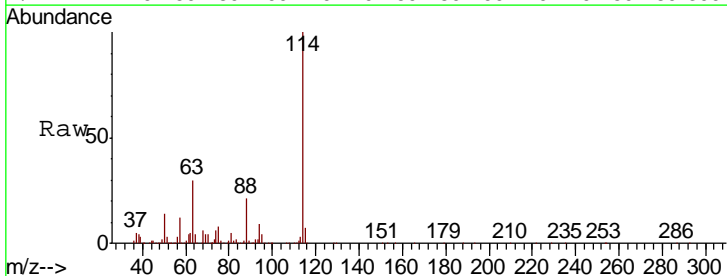
**Instrument :**  
 MSVOA\_L  
**ClientSampled :**  
 SS-7BDL

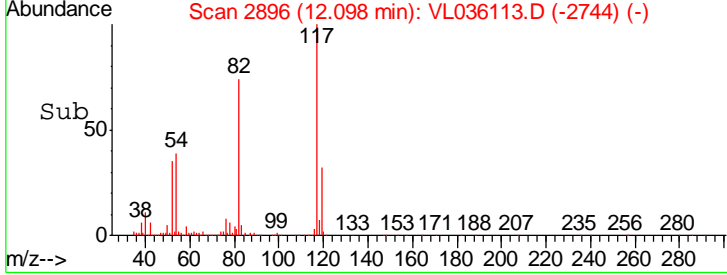
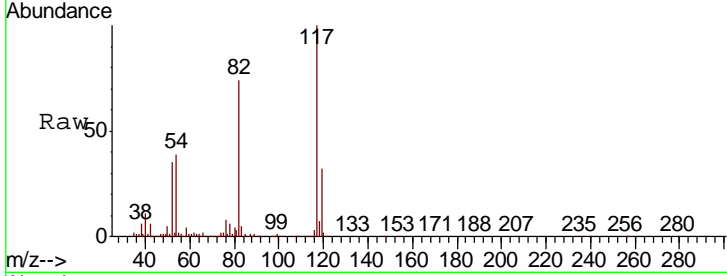
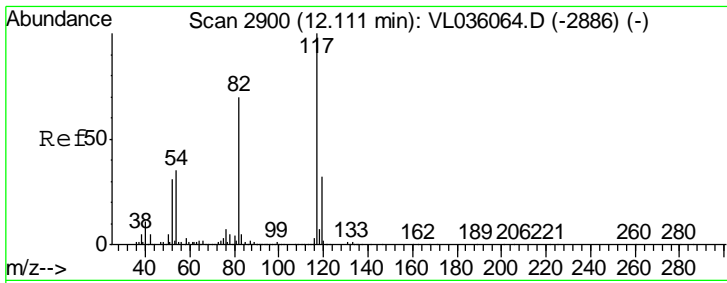
Tgt Ion	Resp	Lower	Upper
114	100		
63	30.4	23.6	35.4
88	20.8	15.8	23.6



#39  
 1,2-Dichloropropane  
 Concen: 8.829 ppbv  
 RT: 7.18 min Scan# 1367  
 Delta R.T. -0.46 min  
 Lab File: VL036113.D  
 Acq: 9 Dec 2020 2:56

Tgt Ion	Resp	Lower	Upper
63	100		
41	0.0	61.9	92.9#
62	15.5	52.5	78.7#

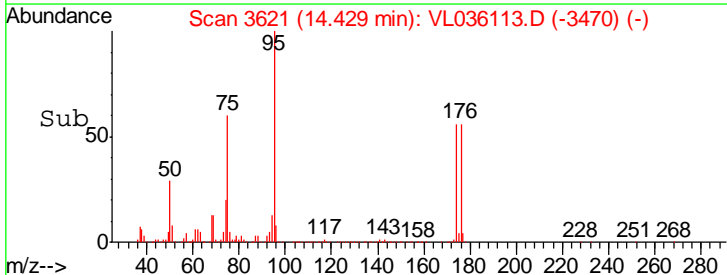
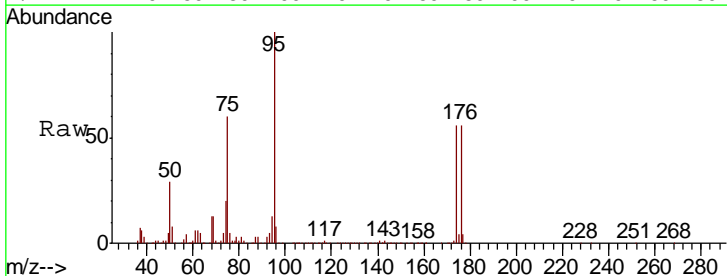
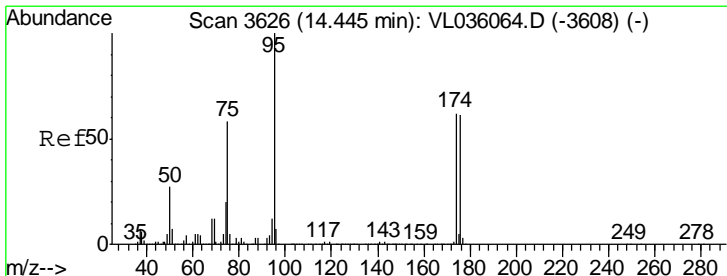
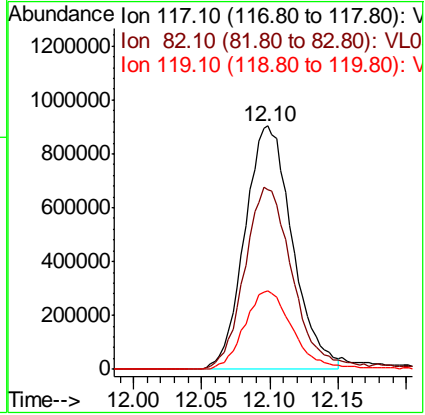




#55  
 Chlorobenzene-d5  
 Concen: 10.000 ppbv  
 RT: 12.10 min Scan# 2896  
 Delta R.T. -0.01 min  
 Lab File: VL036113.D  
 Acq: 9 Dec 2020 2:56

Instrument : MSVOA\_L  
 ClientSampled : SS-7BDL

Tgt Ion	Resp	Lower	Upper
117	2187953		
82	77.4	0.0	0.0#
119	33.2	0.0	0.0#



#68  
 1-Bromo-4-Fluorobenzene  
 Concen: 10.770 ppbv  
 RT: 14.43 min Scan# 3621  
 Delta R.T. -0.02 min  
 Lab File: VL036113.D  
 Acq: 9 Dec 2020 2:56

Tgt Ion	Resp	Lower	Upper
95	1871124		
174	58.3	50.7	76.1
175	4.2	4.0	6.0

