

Data Path : Z:\VOASRV\HPCHEM1\MSVOA L\DATA\VL011321\  
 Data File : VL036226.D  
 Acq On : 13 Jan 2021 15:18  
 Operator : SY/AP  
 Sample : VIBLK  
 Misc : 400ml/MSVOA L  
 ALS Vial : 11 Sample Multiplier: 1

Instrument :  
 MSVOA\_L  
 ClientSampleId :  
 VIBLK

Quant Time: Jan 13 22:07:28 2021  
 Quant Method : Z:\VOASRV\HPCHEM1\MSVOA L\METHODS\VL011321AIR.M  
 Quant Title : AIR ANALYSIS BY METHOD TO-15 Instrument: MSVOA\_LWed Jan 13 07:53:51 2021  
 QLast Update : Wed Jan 13 07:53:51 2021  
 Response via : Initial Calibration

Internal Standards	R.T.	QIon	Response	Conc	Units	Dev(Min)
1) Bromochloromethane	5.67	49	1534951	10.00	ppbv	0.00
33) 1,4-Difluorobenzene	7.18	114	3217726	10.00	ppbv	0.00
55) Chlorobenzene-d5	12.09	117	2932108	10.00	ppbv	0.00

System Monitoring Compounds

68) 1-Bromo-4-Fluorobenzene	14.42	95	2381174	9.81	ppbv	0.00
Spiked Amount	10.000	Range	65 - 135	Recovery	=	98.10%

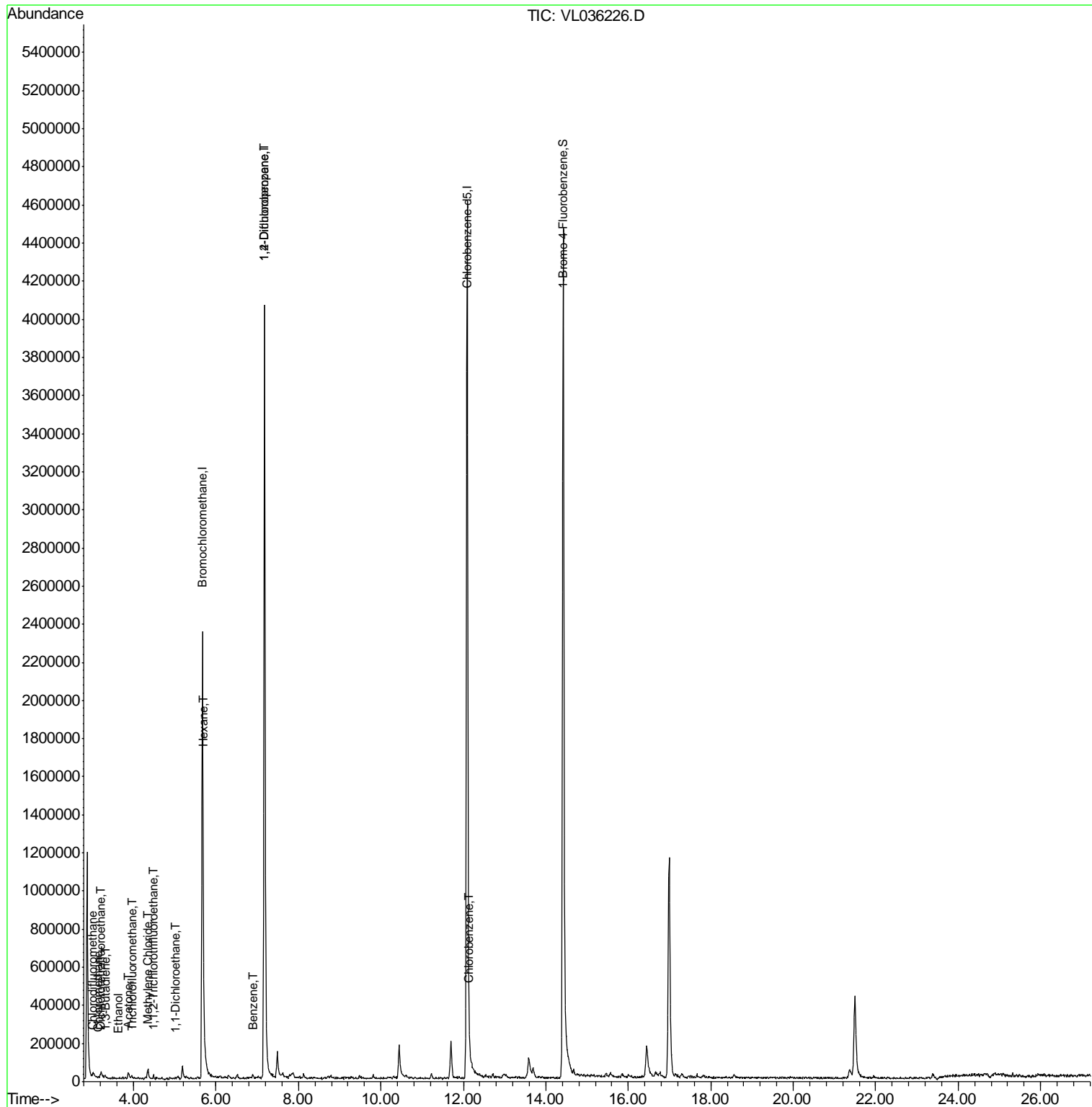
Target Compounds	R.T.	QIon	Response	Conc	Units	Ovalue
3) Chlorodifluoromethane	2.99	51	8749	0.046	ppbv	93
4) Chloromethane	3.14	50	6030	0.064	ppbv #	74
8) Dichlorotetrafluoroethane	3.19	85	8413	0.044	ppbv	85
11) Trichlorofluoromethane	3.95	101	7765	0.038	ppbv #	66
12) 1,1,2-Trichlorotrifluoroet	4.49	101	4587	0.036	ppbv #	56
13) Ethanol	3.62	45	1483	0.078	ppbv #	29
15) Acetone	3.86	43	27686	0.152	ppbv #	49
16) 1,3-Butadiene	3.33	39	3424	0.039	ppbv	88
20) Methylene Chloride	4.35	84	17451	0.313	ppbv #	55
24) 1,1-Dichloroethane	5.01	63	5181	0.032	ppbv #	95
26) Hexane	5.69	57	7312	0.047	ppbv #	23
36) Benzene	6.89	78	9476	0.032	ppbv #	69
39) 1,2-Dichloropropane	7.17	63	953202	7.963	ppbv #	21
57) Chlorobenzene	12.15	112	8447	0.037	ppbv #	55

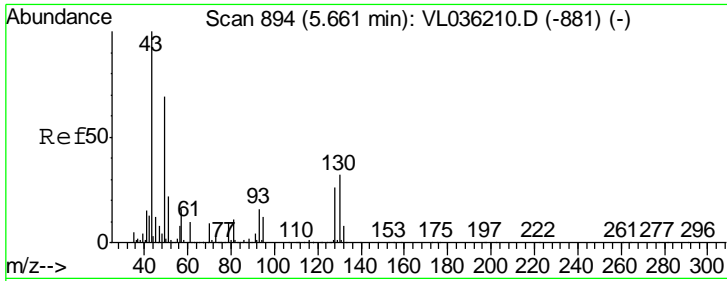
(#) = qualifier out of range (m) = manual integration (+) = signals summed

Data Path : Z:\VOASRV\HPCHEM1\MSVOA L\DATA\VL011321\  
 Data File : VL036226.D  
 Acq On : 13 Jan 2021 15:18  
 Operator : SY/AP  
 Sample : VIBLK  
 Misc : 400ml/MSVOA L  
 ALS Vial : 11 Sample Multiplier: 1

Instrument :  
 MSVOA\_L  
 ClientSampled :  
 VIBLK

Quant Time: Jan 13 22:07:28 2021  
 Quant Method : Z:\VOASRV\HPCHEM1\MSVOA L\METHODS\VL011321AIR.M  
 Quant Title : AIR ANALYSIS BY METHOD TO-15 Instrument: MSVOA\_L Wed Jan 13 07:53:51 2021  
 QLast Update : Wed Jan 13 07:53:51 2021  
 Response via : Initial Calibration



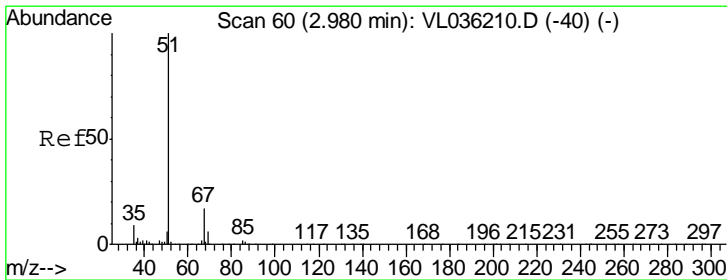
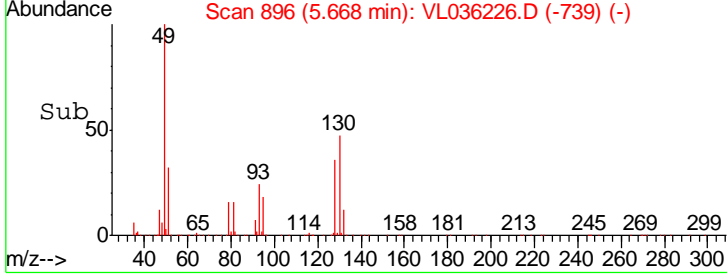
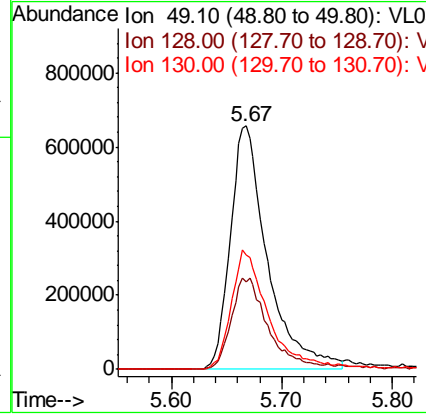
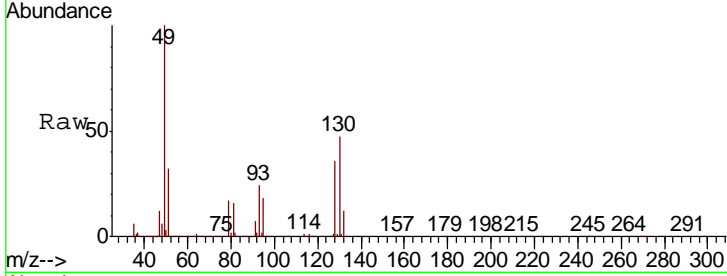


#1  
 Bromochloromethane  
 Concen: 10.000 ppbv  
 RT: 5.67 min Scan# 896  
 Delta R.T. 0.01 min  
 Lab File: VL036226.D  
 Acq: 13 Jan 2021 15:18

Instrument : MSVOA\_L  
 ClientSampled : VIBLK

Tgt Ion: 49 Resp: 1534951

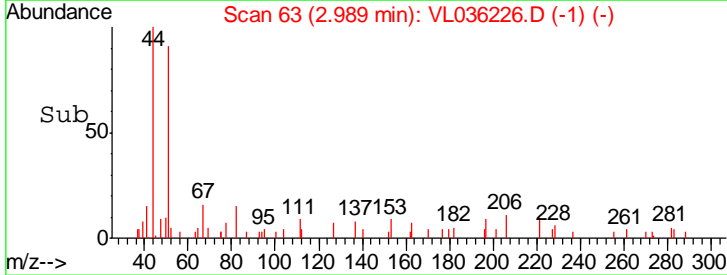
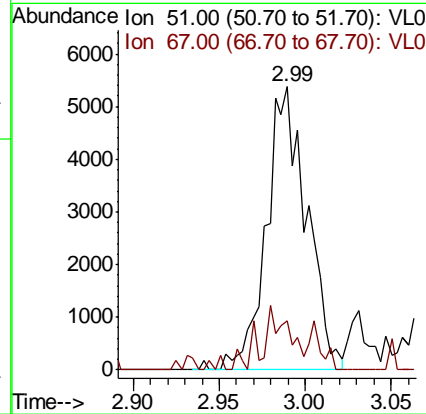
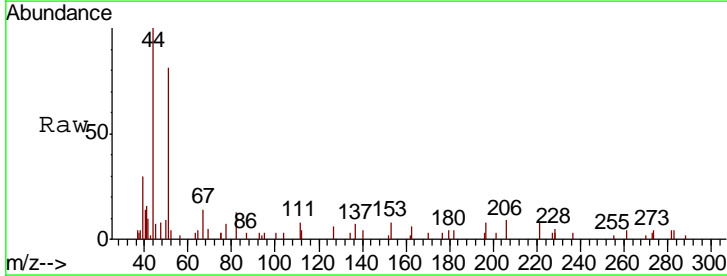
Ion	Ratio	Lower	Upper
49	100		
128	39.4	20.1	60.2
130	49.8	25.3	75.9

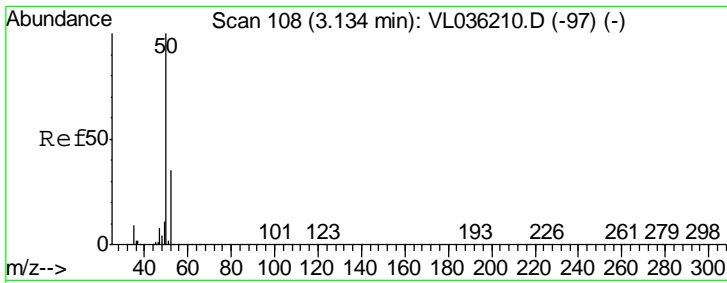


#3  
 Chlorodifluoromethane  
 Concen: 0.046 ppbv  
 RT: 2.99 min Scan# 63  
 Delta R.T. 0.01 min  
 Lab File: VL036226.D  
 Acq: 13 Jan 2021 15:18

Tgt Ion: 51 Resp: 8749

Ion	Ratio	Lower	Upper
51	100		
67	20.5	14.0	21.0

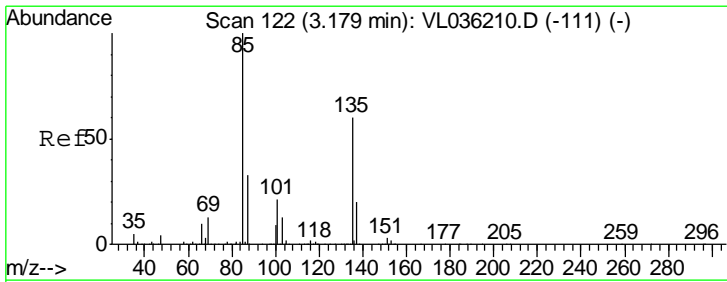
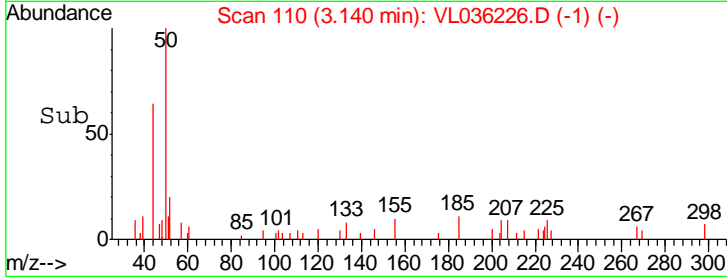
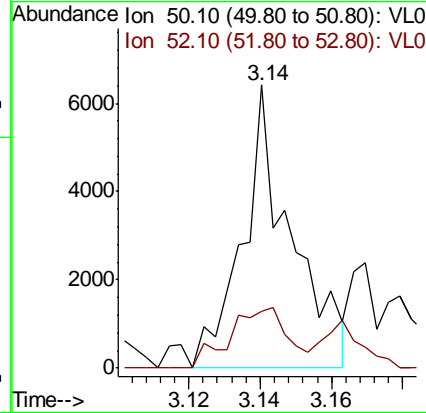
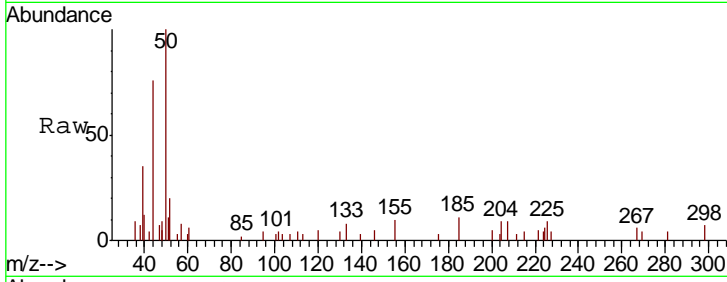




#4  
 Chloromethane  
 Concen: 0.064 ppbv  
 RT: 3.14 min Scan# 110  
 Delta R.T. 0.01 min  
 Lab File: VL036226.D  
 Acq: 13 Jan 2021 15:18

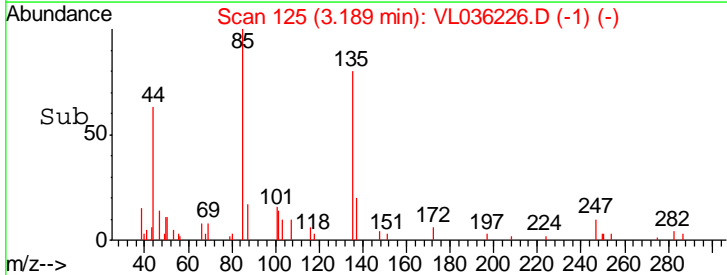
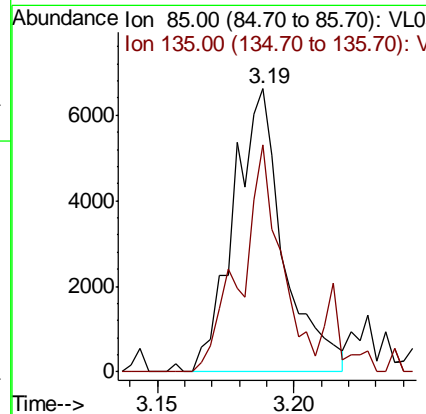
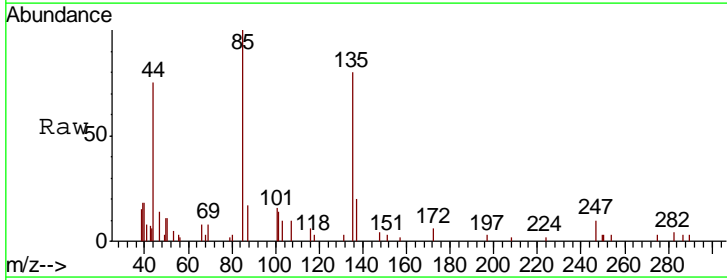
Instrument :  
 MSVOA\_L  
 ClientSampled :  
 VIBLK

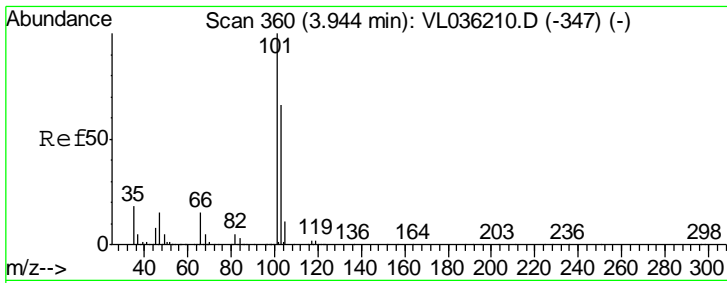
Tgt Ion: 50 Resp: 6030  
 Ion Ratio Lower Upper  
 50 100  
 52 19.9 27.8 41.8#



#8  
 Dichlorotetrafluoroethane  
 Concen: 0.044 ppbv  
 RT: 3.19 min Scan# 125  
 Delta R.T. 0.01 min  
 Lab File: VL036226.D  
 Acq: 13 Jan 2021 15:18

Tgt Ion: 85 Resp: 8413  
 Ion Ratio Lower Upper  
 85 100  
 135 75.8 51.5 77.3

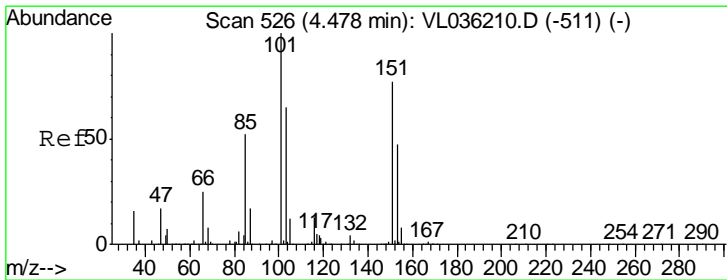
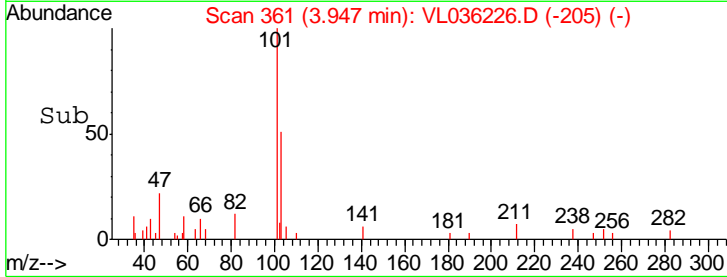
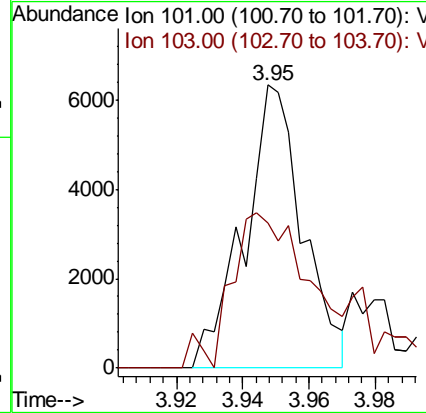
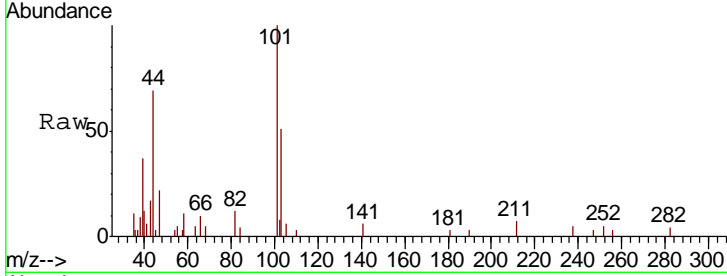




#11  
 Trichlorofluoromethane  
 Concen: 0.038 ppbv  
 RT: 3.95 min Scan# 361  
 Delta R.T. 0.00 min  
 Lab File: VL036226.D  
 Acq: 13 Jan 2021 15:18

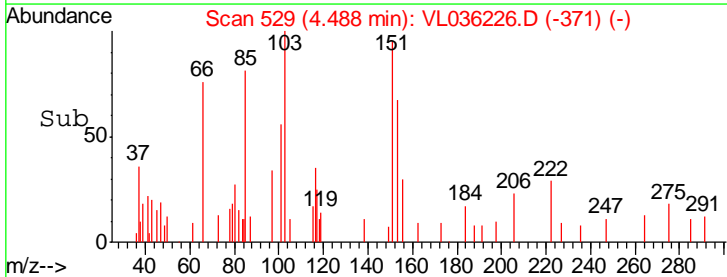
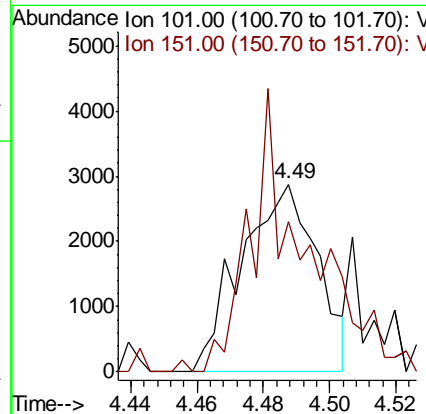
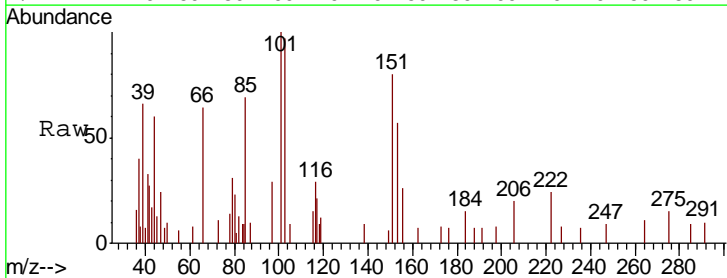
Instrument :  
 MSVOA\_L  
 ClientSampled :  
 VIBLK

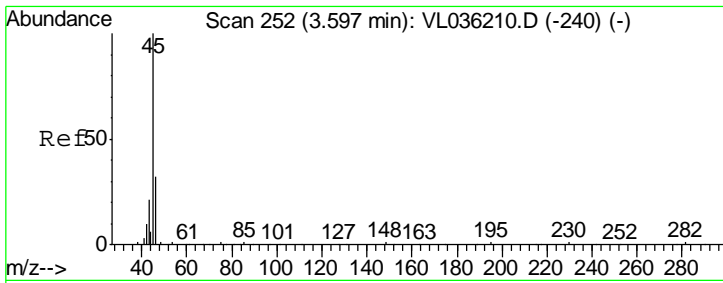
Tgt Ion:101 Resp: 7765  
 Ion Ratio Lower Upper  
 101 100  
 103 39.0 52.6 78.8#



#12  
 1,1,2-Trichlorotrifluoroethane  
 Concen: 0.036 ppbv  
 RT: 4.49 min Scan# 529  
 Delta R.T. 0.01 min  
 Lab File: VL036226.D  
 Acq: 13 Jan 2021 15:18

Tgt Ion:101 Resp: 4587  
 Ion Ratio Lower Upper  
 101 100  
 151 111.8 59.8 89.6#

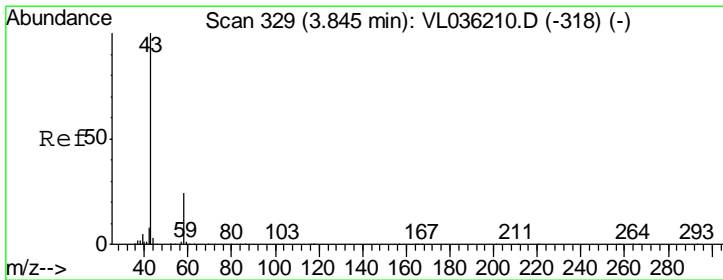
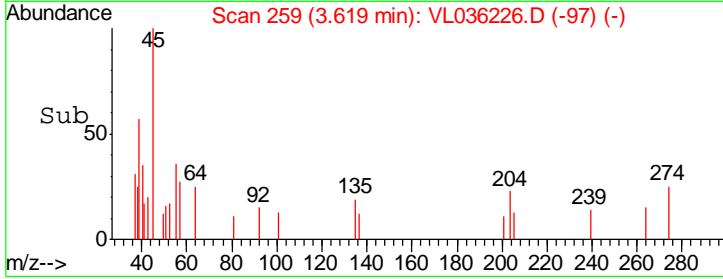
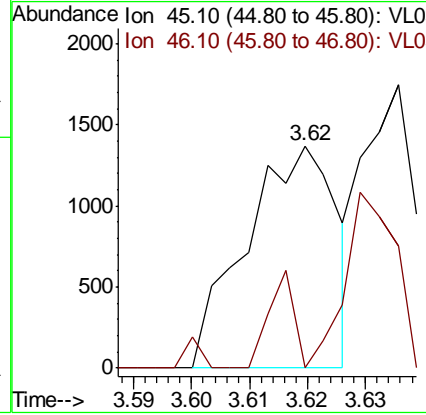
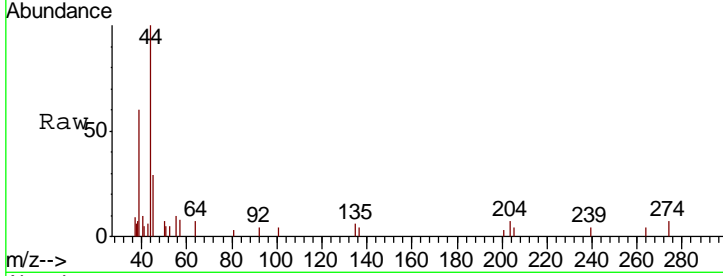




#13  
 Ethanol  
 Concen: 0.078 ppbv  
 RT: 3.62 min Scan# 259  
 Delta R.T. 0.02 min  
 Lab File: VL036226.D  
 Acq: 13 Jan 2021 15:18

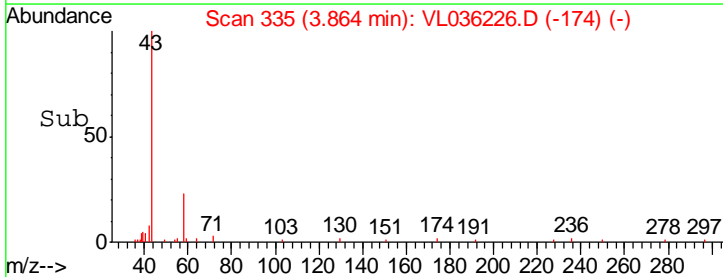
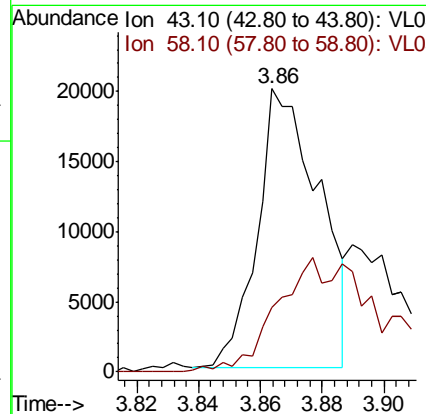
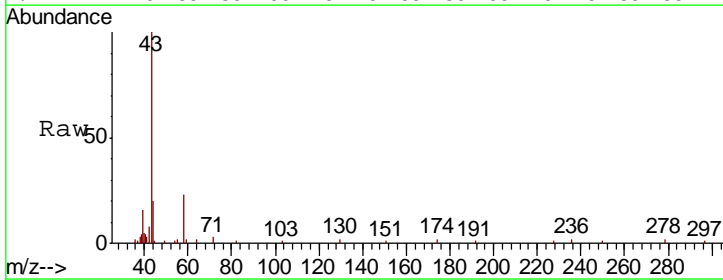
Instrument :  
 MSVOA\_L  
 ClientSampled :  
 VIBLK

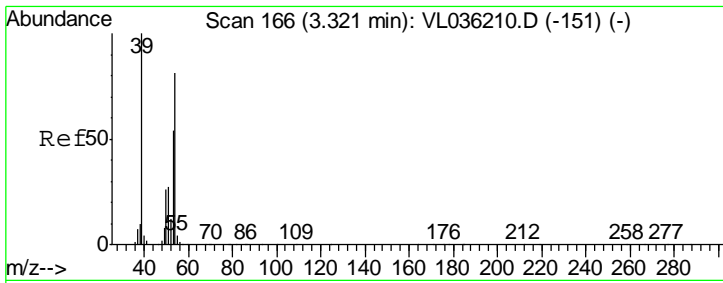
Tgt Ion: 45 Resp: 1483  
 Ion Ratio Lower Upper  
 45 100  
 46 0.0 19.2 77.0#



#15  
 Acetone  
 Concen: 0.152 ppbv  
 RT: 3.86 min Scan# 335  
 Delta R.T. 0.02 min  
 Lab File: VL036226.D  
 Acq: 13 Jan 2021 15:18

Tgt Ion: 43 Resp: 27686  
 Ion Ratio Lower Upper  
 43 100  
 58 0.0 20.9 31.3#

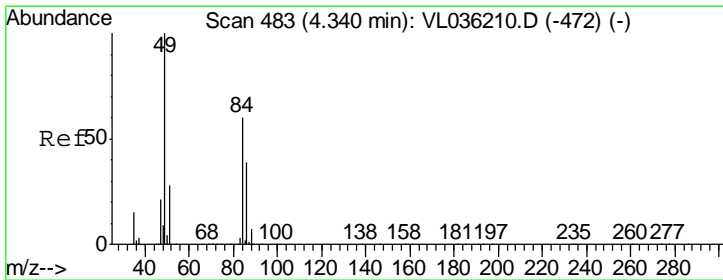
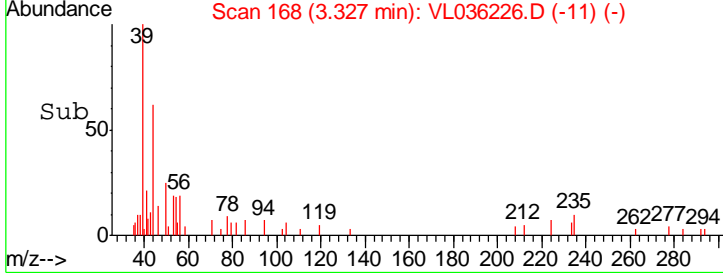
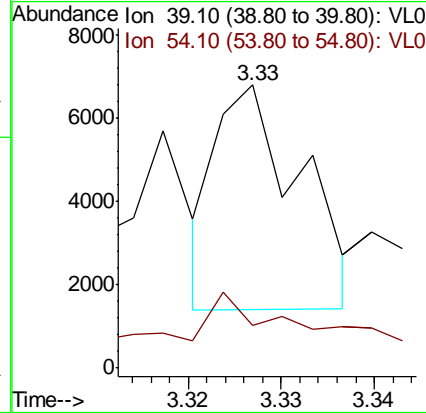
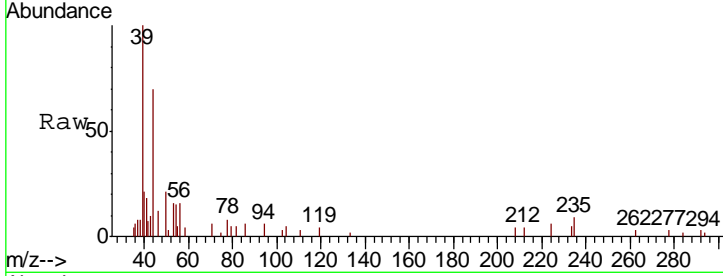




#16  
 1,3-Butadiene  
 Concen: 0.039 ppbv  
 RT: 3.33 min Scan# 168  
 Delta R.T. 0.01 min  
 Lab File: VL036226.D  
 Acq: 13 Jan 2021 15:18

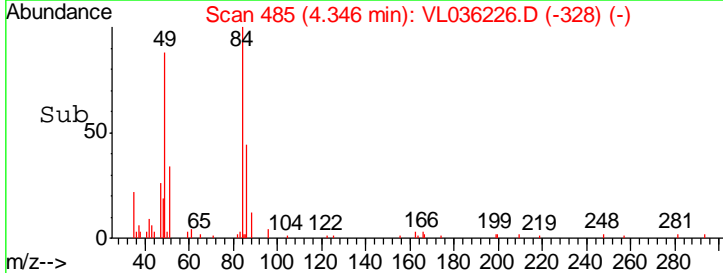
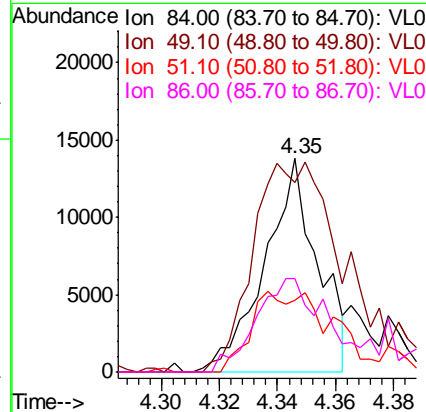
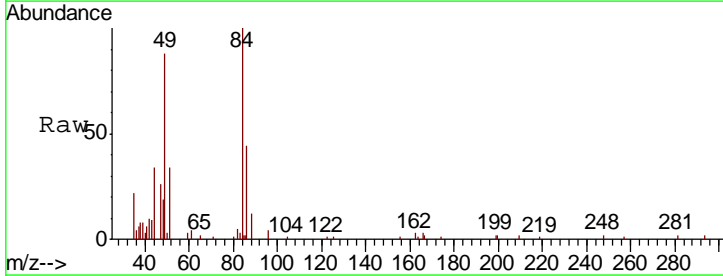
Instrument :  
 MSVOA\_L  
 ClientSampled :  
 VIBLK

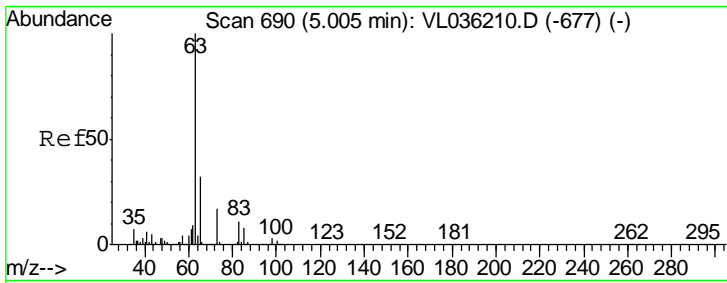
Tgt Ion	Resp	Lower	Upper
39	100		
54	88.5	62.5	93.7



#20  
 Methylene Chloride  
 Concen: 0.313 ppbv  
 RT: 4.35 min Scan# 485  
 Delta R.T. 0.01 min  
 Lab File: VL036226.D  
 Acq: 13 Jan 2021 15:18

Tgt Ion	Resp	Lower	Upper
84	100		
49	88.5	134.1	201.1#
51	33.7	37.4	56.0#
86	43.5	52.6	78.8#

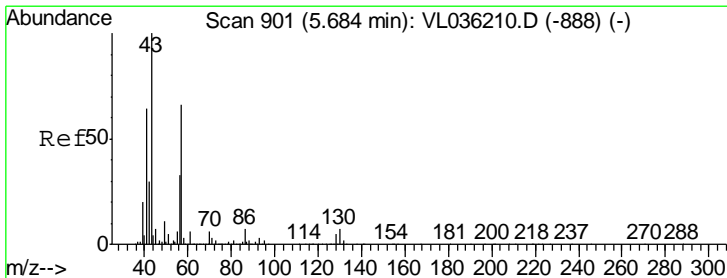
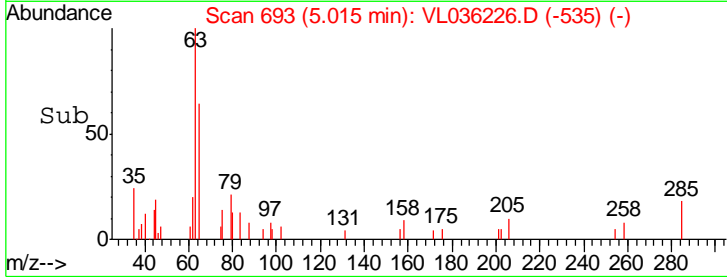
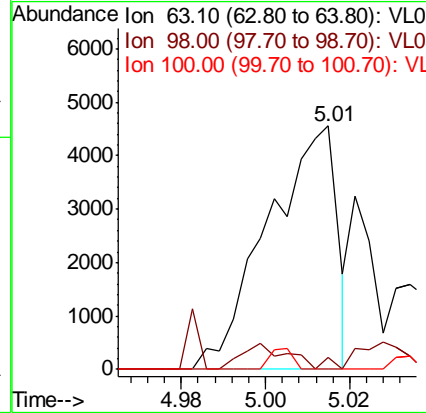
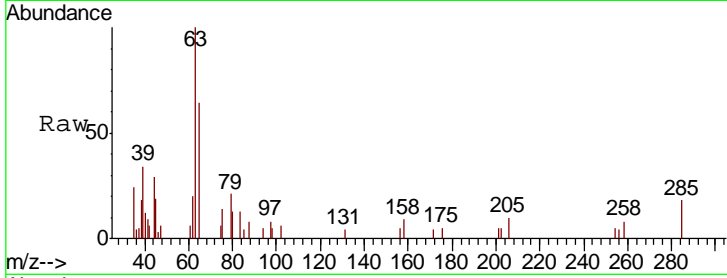




#24  
 1,1-Dichloroethane  
 Concen: 0.032 ppbv  
 RT: 5.01 min Scan# 693  
 Delta R.T. 0.01 min  
 Lab File: VL036226.D  
 Acq: 13 Jan 2021 15:18

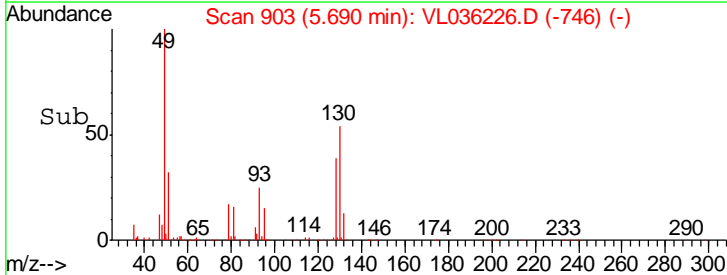
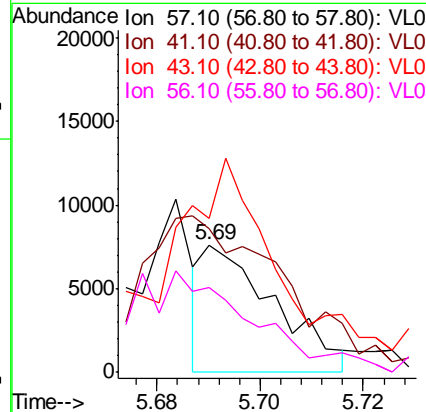
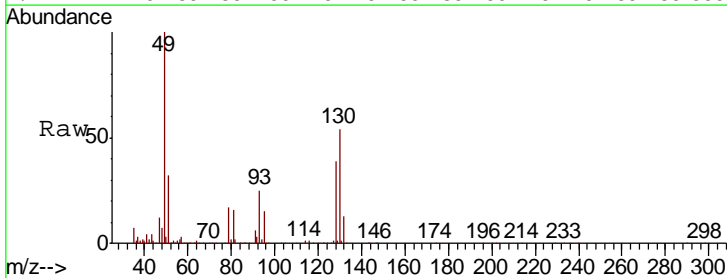
Instrument :  
 MSVOA\_L  
 ClientSampled :  
 VIBLK

Tgt Ion	Ratio	Lower	Upper
63	100		
98	5.0	1.7	5.1
100	0.0	1.1	3.1#

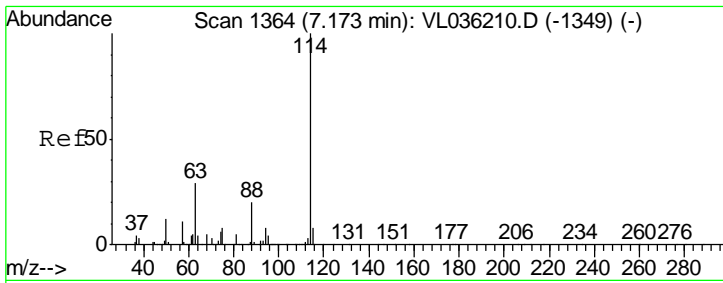


#26  
 Hexane  
 Concen: 0.047 ppbv  
 RT: 5.69 min Scan# 903  
 Delta R.T. 0.01 min  
 Lab File: VL036226.D  
 Acq: 13 Jan 2021 15:18

Tgt Ion	Ratio	Lower	Upper
57	100		
41	289.2	83.0	124.6#
43	313.3	202.4	303.6#
56	0.0	43.4	65.0#



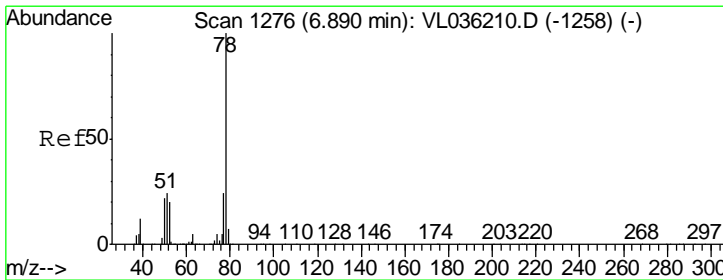
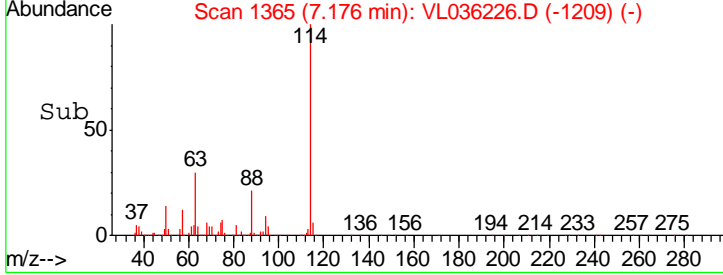
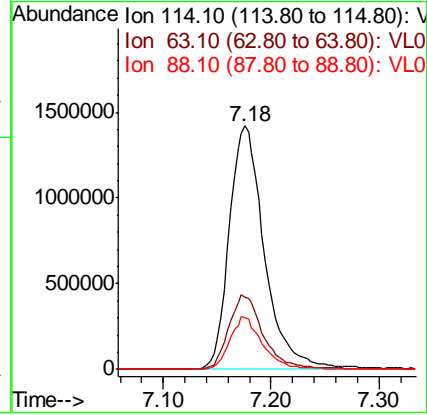
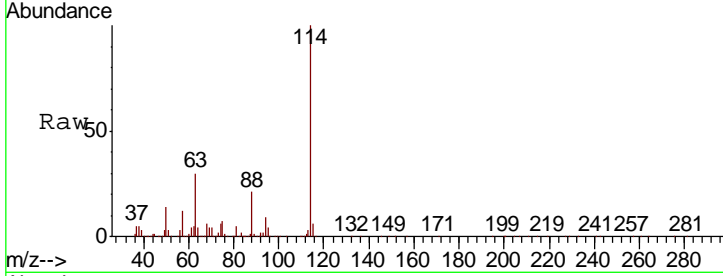




#33  
 1,4-Difluorobenzene  
 Concen: 10.000 ppbv  
 RT: 7.18 min Scan# 1365  
 Delta R.T. 0.00 min  
 Lab File: VL036226.D  
 Acq: 13 Jan 2021 15:18

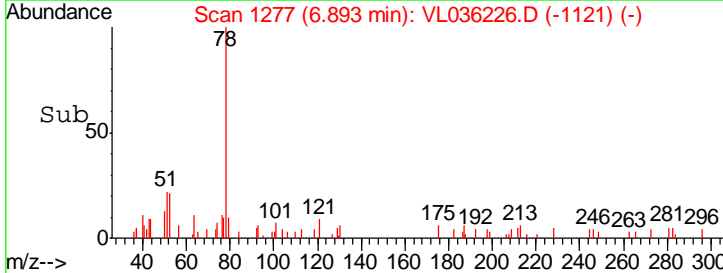
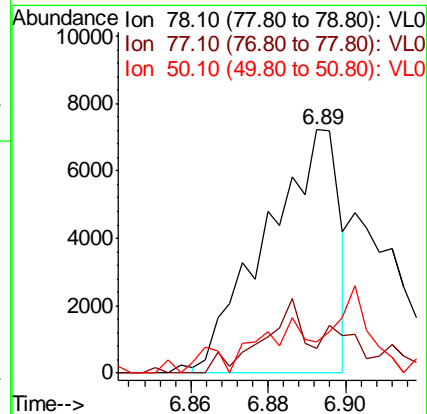
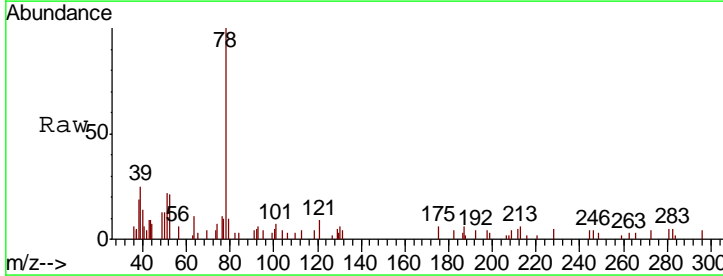
Instrument : MSVOA\_L  
 ClientSampled : VIBLK

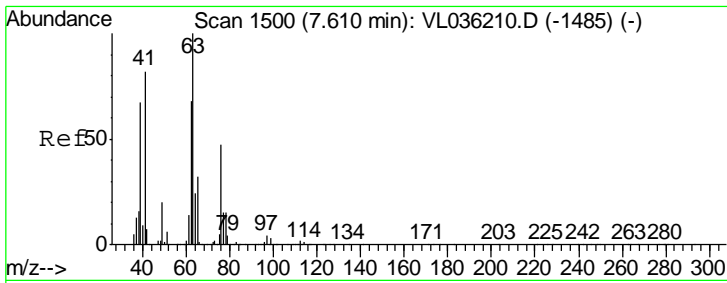
Tgt Ion	Resp	Lower	Upper
114	3217726		
63	30.5	24.7	37.1
88	20.4	16.6	24.8



#36  
 Benzene  
 Concen: 0.032 ppbv  
 RT: 6.89 min Scan# 1277  
 Delta R.T. 0.00 min  
 Lab File: VL036226.D  
 Acq: 13 Jan 2021 15:18

Tgt Ion	Resp	Lower	Upper
78	9476		
77	7.7	19.4	29.0#
50	8.7	17.4	26.2#

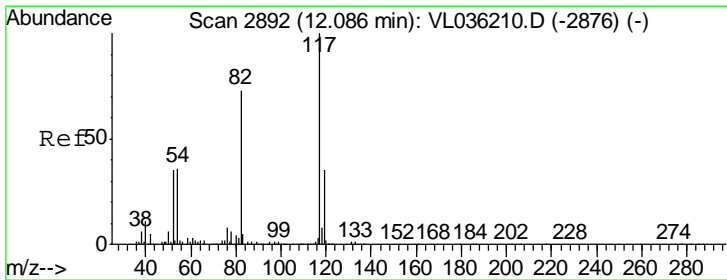
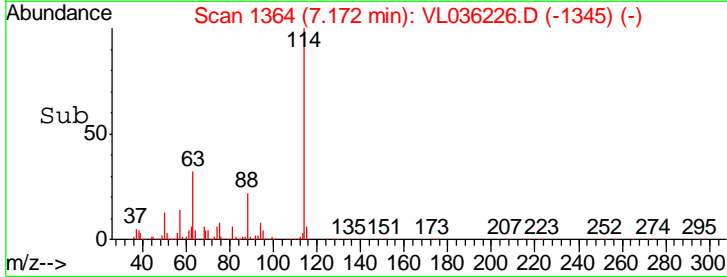
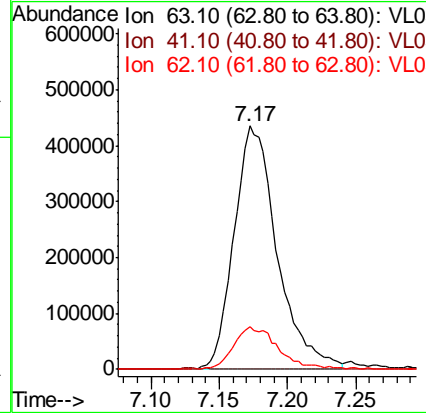
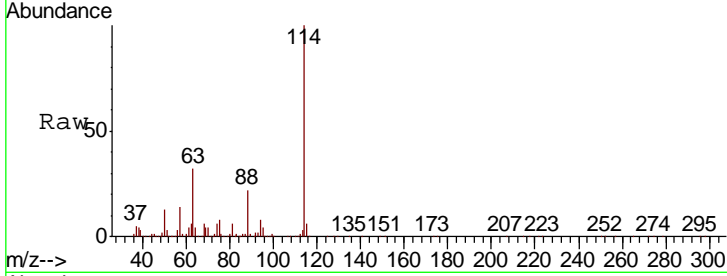




#39  
 1,2-Dichloropropane  
 Concen: 7.963 ppbv  
 RT: 7.17 min Scan# 1364  
 Delta R.T. -0.44 min  
 Lab File: VL036226.D  
 Acq: 13 Jan 2021 15:18

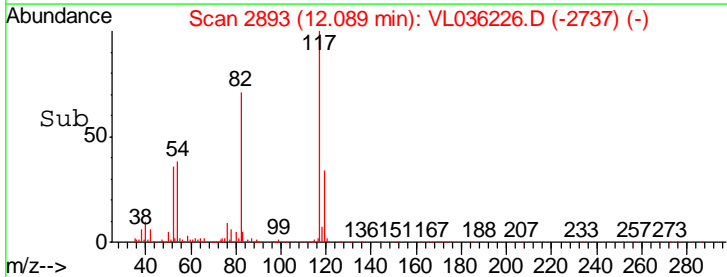
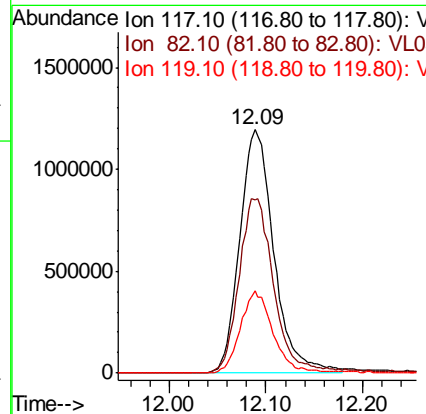
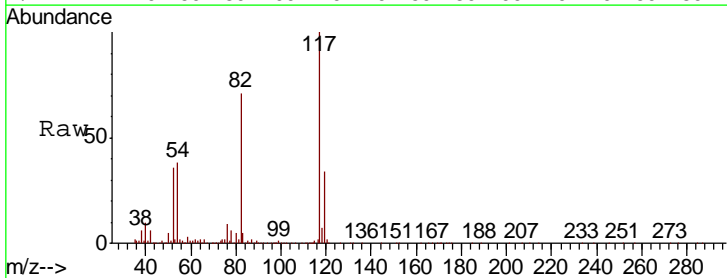
Instrument : MSVOA\_L  
 ClientSampled : VIBLK

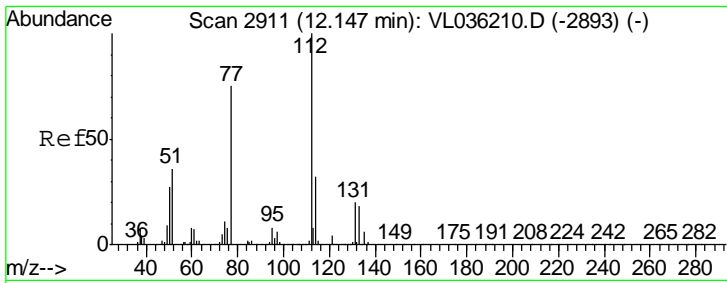
Tgt Ion	Resp	Lower	Upper
63	100		
41	0.1	66.1	99.1#
62	17.4	54.8	82.2#



#55  
 Chlorobenzene-d5  
 Concen: 10.000 ppbv  
 RT: 12.09 min Scan# 2893  
 Delta R.T. 0.00 min  
 Lab File: VL036226.D  
 Acq: 13 Jan 2021 15:18

Tgt Ion	Resp	Lower	Upper
117	100		
82	74.9	59.7	89.5
119	33.2	28.6	43.0

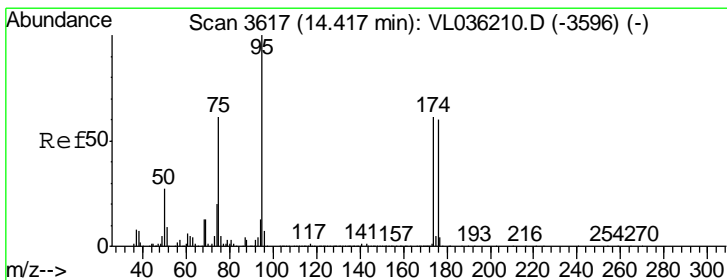
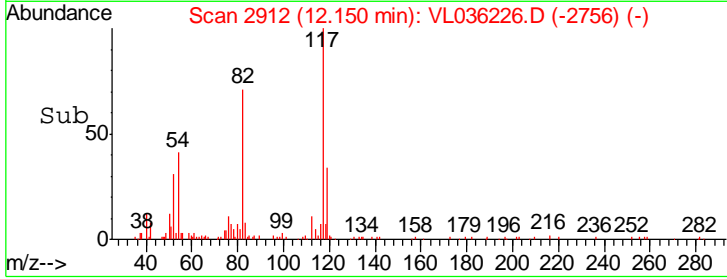
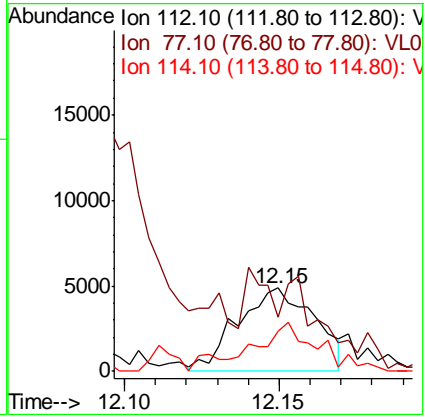
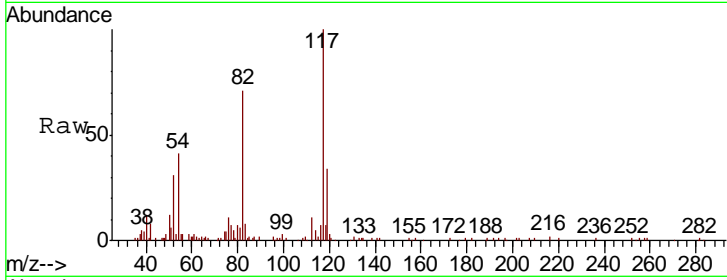




#57  
 Chlorobenzene  
 Concen: 0.037 ppbv  
 RT: 12.15 min Scan# 2912  
 Delta R.T. 0.00 min  
 Lab File: VL036226.D  
 Acq: 13 Jan 2021 15:18

Instrument : MSVOA\_L  
 ClientSampled : VIBLK

Tgt Ion	Resp	Lower	Upper
112	8447		
77	33.4	59.6	89.4#
114	53.3	28.7	35.1#



#68  
 1-Bromo-4-Fluorobenzene  
 Concen: 9.811 ppbv  
 RT: 14.42 min Scan# 3619  
 Delta R.T. 0.01 min  
 Lab File: VL036226.D  
 Acq: 13 Jan 2021 15:18

Tgt Ion	Resp	Lower	Upper
95	2381174		
174	62.7	49.4	74.0
175	4.6	3.8	5.8

