

Data Path : Z:\VOASRV\HPCHEM1\MSVOA_L\DATA\VL022322\
 Data File : VL038415.D
 Acq On : 23 Feb 2022 19:43
 Operator : SY/AP
 Sample : N1607-06 4X
 Misc : 400mL/MSVOA_L
 ALS Vial : 1 Sample Multiplier: 1

Instrument :
 MSVOA_L
ClientSampleId :
 MP-10

Quant Time: Feb 24 07:29:56 2022
 Quant Method : Z:\VOASRV\HPCHEM1\MSVOA_L\METHODS\VL022222AIR.M
 Quant Title : AIR ANALYSIS BY METHOD TO-15 Instrument: MSVOA_LTue Feb 22 19:45:51 2022
 QLast Update : Tue Feb 22 19:45:51 2022
 Response via : Initial Calibration

Internal Standards	R.T.	QIon	Response	Conc	Units	Dev(Min)
1) Bromochloromethane	5.65	49	932544	10.00	ppbv	0.00
33) 1,4-Difluorobenzene	7.16	114	2531519	10.00	ppbv	0.00
55) Chlorobenzene-d5	12.07	117	2238203	10.00	ppbv	0.01

System Monitoring Compounds

68) 1-Bromo-4-Fluorobenzene	14.40	95	1772970	9.57	ppbv	0.00
Spiked Amount	10.000	Range	65 - 135	Recovery	=	95.70%

Target Compounds	R.T.	QIon	Response	Conc	Units	Qvalue
2) Dichlorodifluoromethane	3.04	85	12852	0.09	ppbv #	79
3) Chlorodifluoromethane	3.02	51	47940	0.29	ppbv #	68
4) Chloromethane	3.14	50	3263	0.06	ppbv	90
9) Propene	3.35	41	7866	0.14	ppbv	91
10) Heptane	8.11	43	841841	6.36	ppbv	100
11) Trichlorofluoromethane	3.94	101	6951	0.05	ppbv	88
13) Ethanol	3.61	45	36909	6.80	ppbv	72
15) Acetone	3.85	43	498108	6.28	ppbv	98
16) 1,3-Butadiene	3.34	39	8608	0.16	ppbv #	12
17) tert-Butyl alcohol	4.29	59	32052	0.41	ppbv #	72
19) Isopropyl Alcohol	3.97	45	117852	2.57	ppbv #	1
20) Methylene Chloride	4.33	84	7341	0.19	ppbv #	91
23) Vinyl Acetate	5.05	43	37758	0.36	ppbv #	1
25) Ethyl Acetate	5.67	43	203395	0.95	ppbv #	78
26) Hexane	5.67	57	286646	2.97	ppbv #	42
30) Cyclohexane	7.12	84	311336	3.95	ppbv	94
34) 2-Butanone	5.24	43	52413	0.66	ppbv	91
36) Benzene	6.88	78	132941	0.60	ppbv	93
39) 1,2-Dichloropropane	7.16	63	595956	6.71	ppbv #	25
42) Bromodichloromethane	7.77	83	18150	0.10	ppbv #	27
44) 2,2,4-Trimethylpentane	7.85	57	381575	1.00	ppbv #	40
50) 4-Methyl-2-Pentanone	8.75	43	18269	0.13	ppbv #	40
51) 2-Hexanone	10.10	43	438547	6.96	ppbv #	44
53) Toluene	9.79	91	4267932	17.64	ppbv	98
58) Ethyl Benzene	12.69	91	999127	3.26	ppbv	98
59) m/p-Xylene	12.95	91	2053344	7.81	ppbv	91
60) o-Xylene	13.67	91	911760	3.67	ppbv	98
62) Isopropylbenzene	14.64	105	239007	0.72	ppbv	98
64) n-propylbenzene	15.54	120	124682	1.51	ppbv	97
65) tert-Butylbenzene	16.74	119	134665	0.47	ppbv #	69
66) Benzyl Chloride	17.19	91	32298	2.07	ppbv #	79
67) sec-Butylbenzene	17.27	105	234608	0.57	ppbv	100
69) p-Isopropyltoluene	17.63	119	111746	0.35	ppbv	98
70) n-Butylbenzene	18.53	91	259100	0.78	ppbv #	57
71) 2-Chlorotoluene	15.54	91	586984	2.29	ppbv #	47
72) 4-Ethyltoluene	15.82	105	493395	1.80	ppbv	93
73) 1,3,5-Trimethylbenzene	15.98	105	427858	1.72	ppbv	98
74) 1,2,4-Trimethylbenzene	16.74	105	1255898	4.78	ppbv #	68
79) Naphthalene	22.18	128	20635	0.15	ppbv #	92
80) Naphthalene,2-methyl-	24.95	142	10126	0.36	ppbv #	46

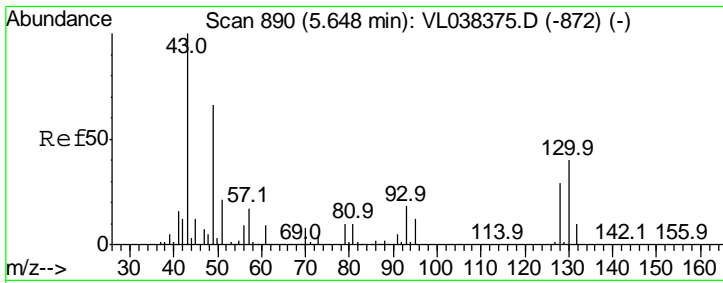
Data Path : Z:\VOASRV\HPCHEM1\MSVOA_L\DATA\VL022322\
 Data File : VL038415.D
 Acq On : 23 Feb 2022 19:43
 Operator : SY/AP
 Sample : N1607-06 4X
 Misc : 400mL/MSVOA_L
 ALS Vial : 1 Sample Multiplier: 1

Instrument :
 MSVOA_L
 ClientSampleId :
 MP-10

Quant Time: Feb 24 07:29:56 2022
 Quant Method : Z:\VOASRV\HPCHEM1\MSVOA_L\METHODS\VL022222AIR.M
 Quant Title : AIR ANALYSIS BY METHOD TO-15 Instrument: MSVOA_LTue Feb 22 19:45:51 2022
 QLast Update : Tue Feb 22 19:45:51 2022
 Response via : Initial Calibration

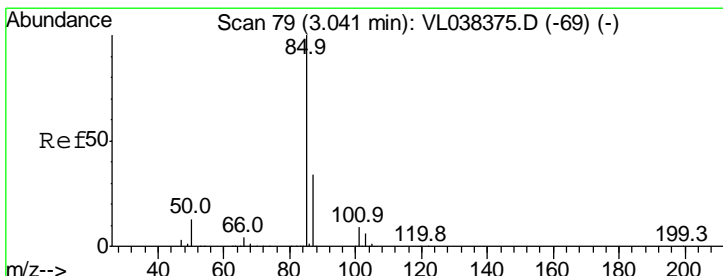
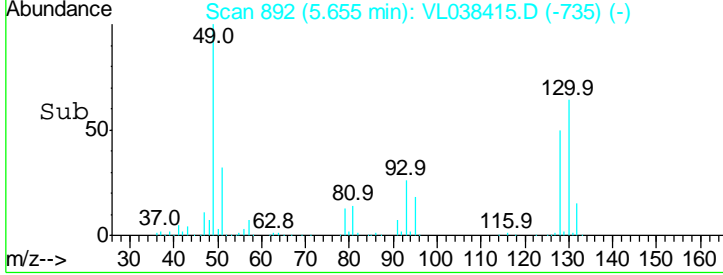
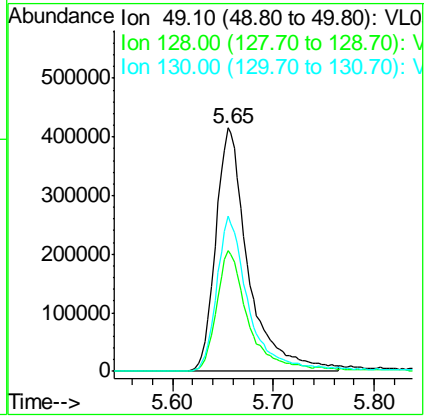
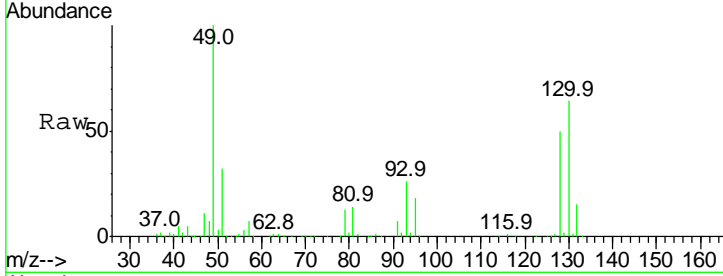
Internal Standards	R.T.	QIon	Response	Conc	Units	Dev(Min)
--------------------	------	------	----------	------	-------	----------

(#) = qualifier out of range (m) = manual integration (+) = signals summed



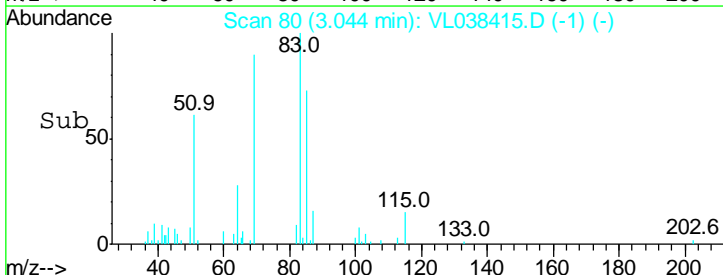
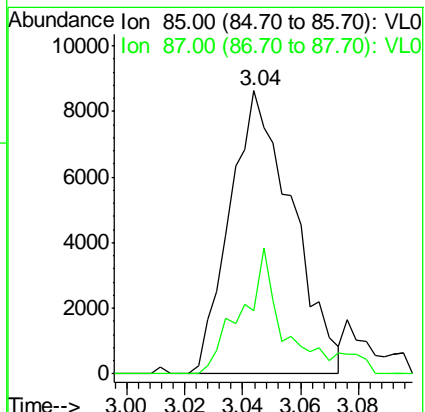
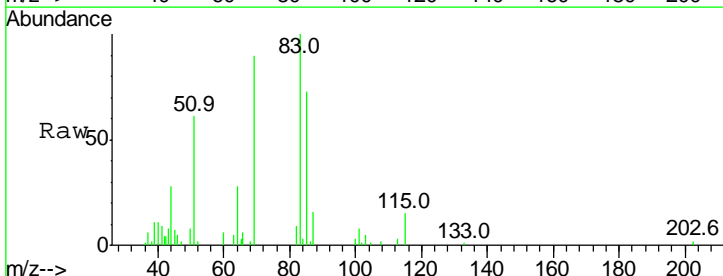
#1
 Bromochloromethane
 Concen: 10.00 ppbv
 RT: 5.65
 Delta R.T. MSVOA_L
 Lab File: ClientSampled :
 MP-10
 Acq: 23 Feb 2022 19:43

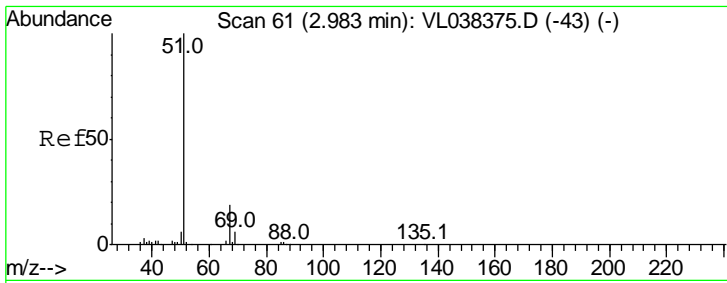
Tgt Ion	Resp	Lower	Upper
49	100		
128	50.1	24.3	72.9
130	63.3	30.1	90.5



#2
 Dichlorodifluoromethane
 Concen: 0.09 ppbv
 RT: 3.04 min Scan# 80
 Delta R.T. 0.00 min
 Lab File: VL038415.D
 Acq: 23 Feb 2022 19:43

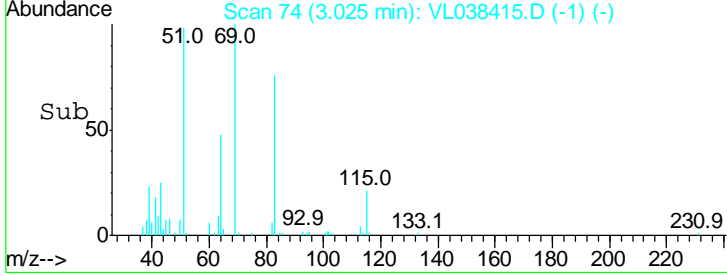
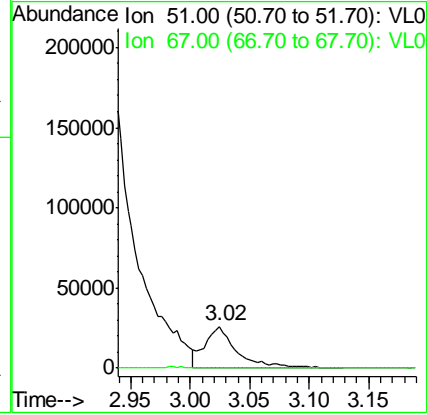
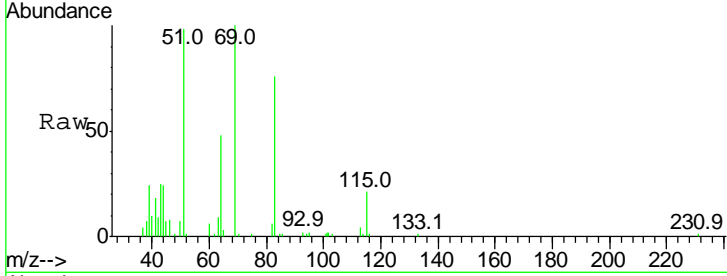
Tgt Ion	Resp	Lower	Upper
85	100		
87	22.2	27.4	41.0#





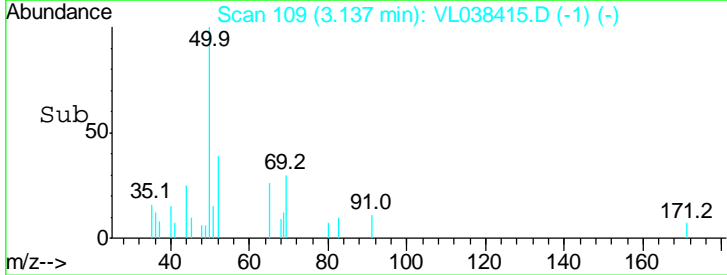
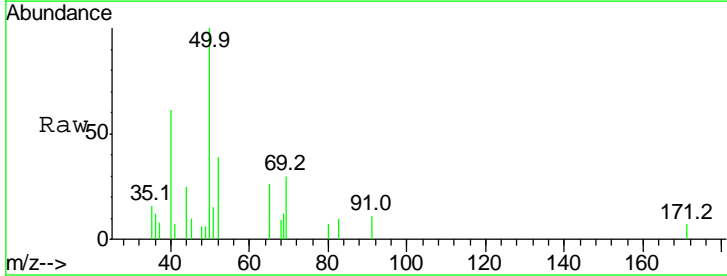
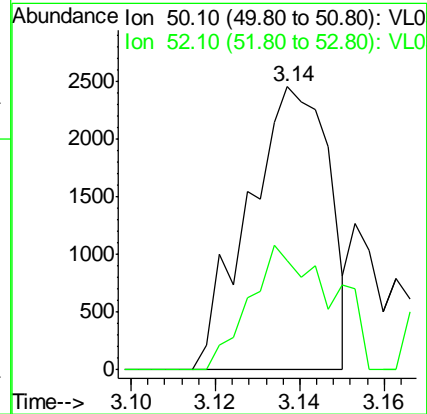
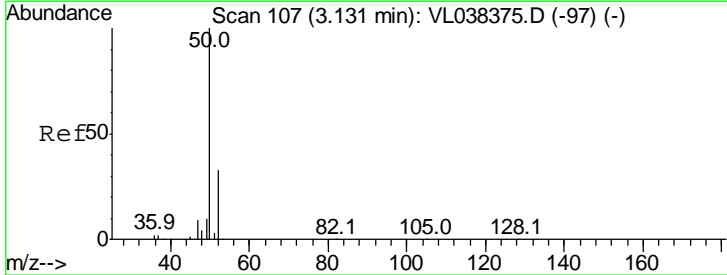
#3
 Chlorodifluoromethane
 Concen: 0.29 ppbv
 RT: 3.02
 Delta R.T. MSVOA_L
 Lab File: ClientSampleId :
 MP-10
 Acq: 23 Feb 2022 19:43

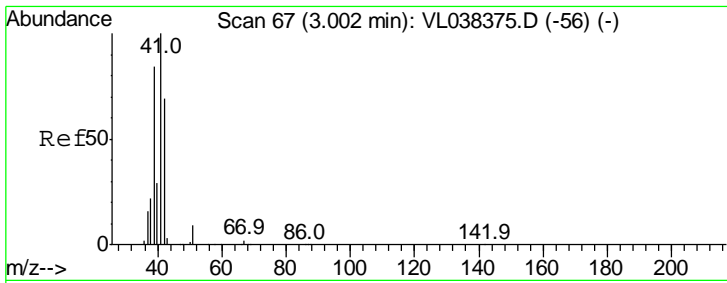
Tgt Ion	Resp	Lower	Upper
51	100		
67	4.2	14.7	22.1#



#4
 Chloromethane
 Concen: 0.06 ppbv
 RT: 3.14 min Scan# 109
 Delta R.T. 0.01 min
 Lab File: VL038415.D
 Acq: 23 Feb 2022 19:43

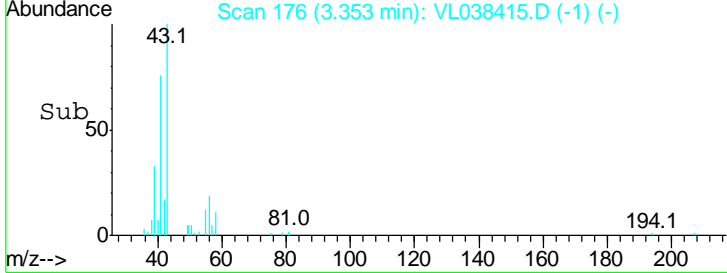
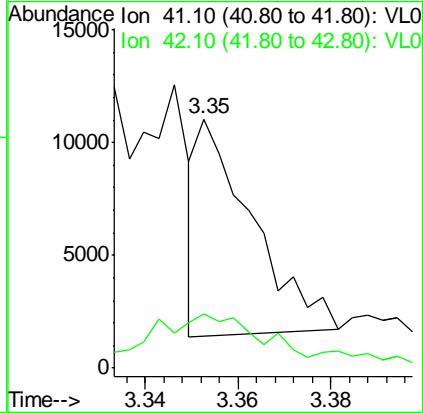
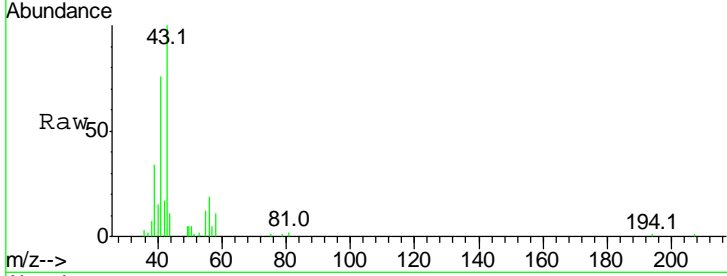
Tgt Ion	Resp	Lower	Upper
50	100		
52	38.7	26.5	39.7





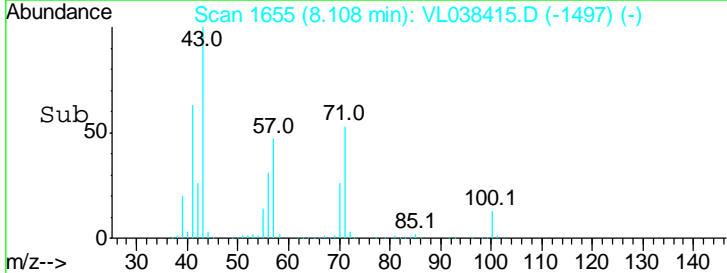
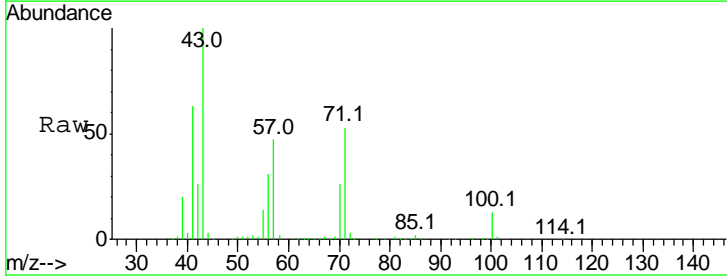
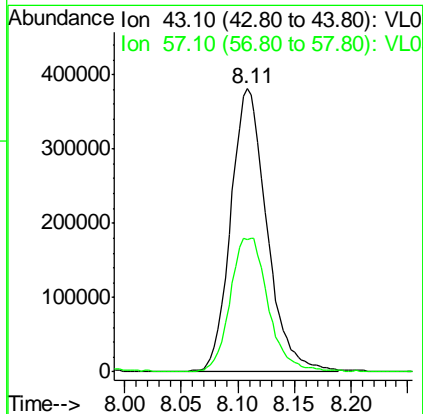
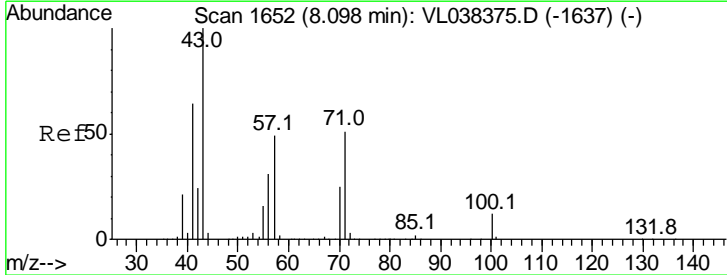
#9
 Propene
 Concen: 0.14 ppbv
 RT: 3.35
 Delta R.T. MSVOA_L
 Lab File: ClientSampleId :
 Acq: 23 Feb 2022 19:43

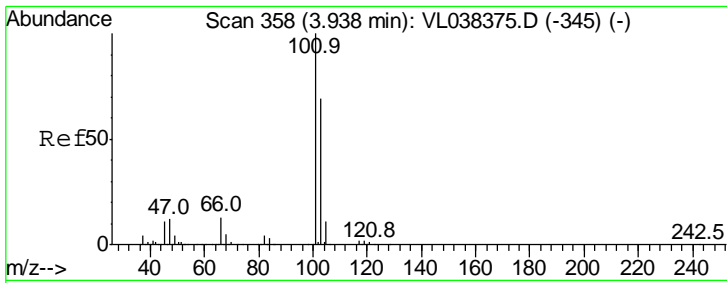
Tgt Ion	Resp	Lower	Upper
41	100		
42	61.4	54.6	82.0



#10
 Heptane
 Concen: 6.36 ppbv
 RT: 8.11 min Scan# 1655
 Delta R.T. 0.01 min
 Lab File: VL038415.D
 Acq: 23 Feb 2022 19:43

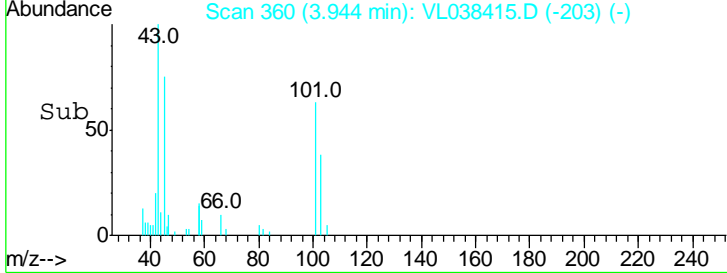
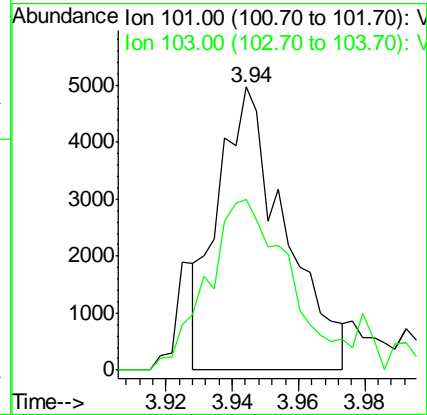
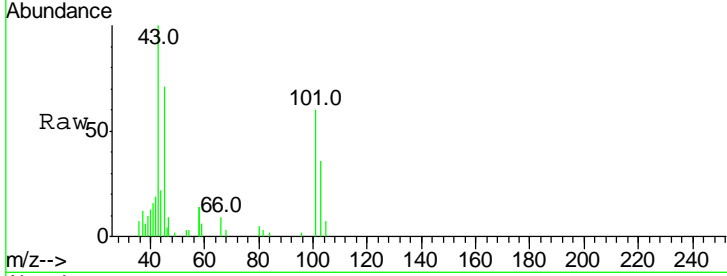
Tgt Ion	Resp	Lower	Upper
43	100		
57	50.1	39.8	59.8





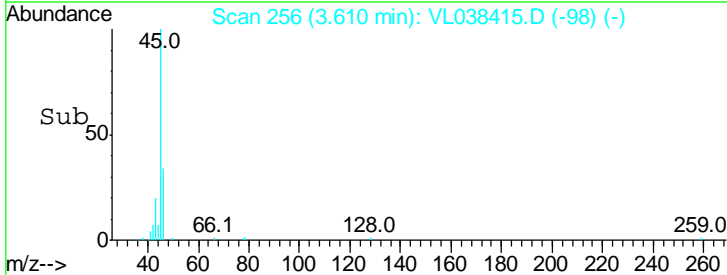
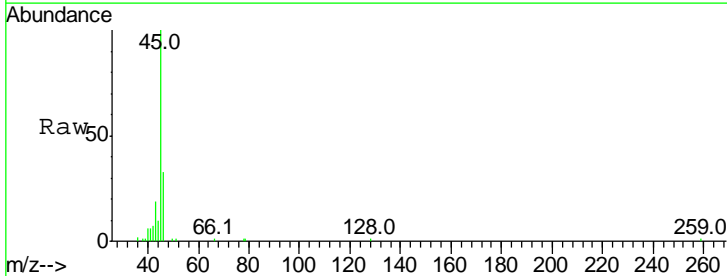
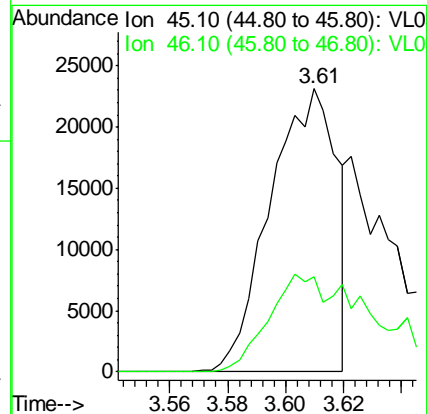
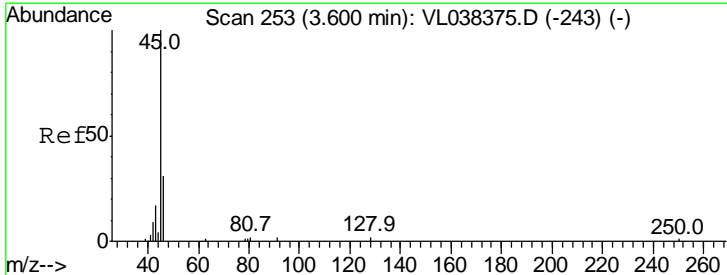
#11
 Trichlorofluoromethane
 Concen: 0.05 ppbv
 RT: 3.94
 Instrument: MSVOA_L
 Delta R.T.:
 Lab File: ClientSampled :
 MP-10
 Acq: 23 Feb 2022 19:43

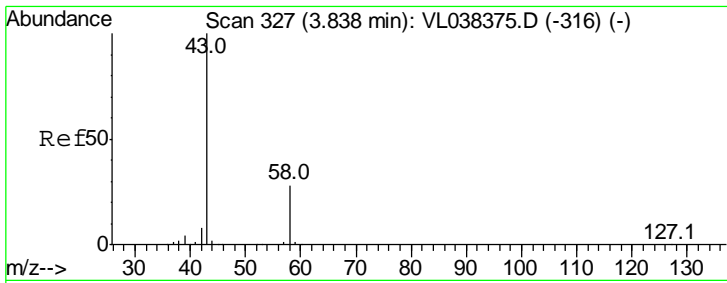
Tgt Ion	Resp	Lower	Upper
101	6951		
101	100		
103	59.2	55.0	82.4



#13
 Ethanol
 Concen: 6.80 ppbv
 RT: 3.61 min Scan# 256
 Delta R.T. 0.01 min
 Lab File: VL038415.D
 Acq: 23 Feb 2022 19:43

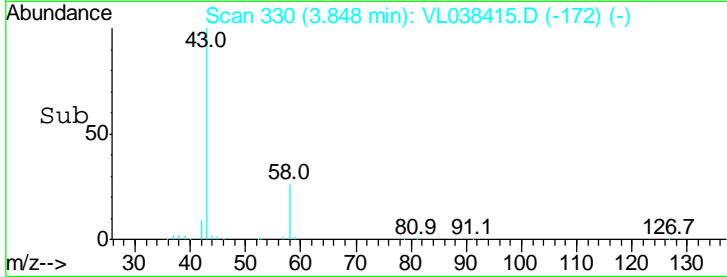
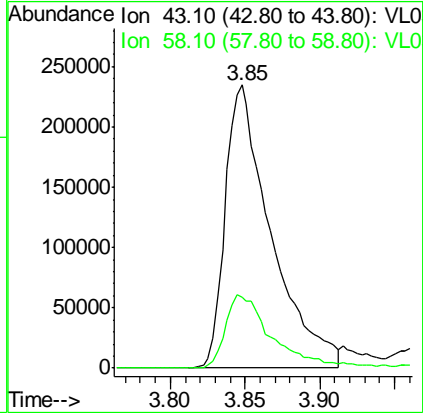
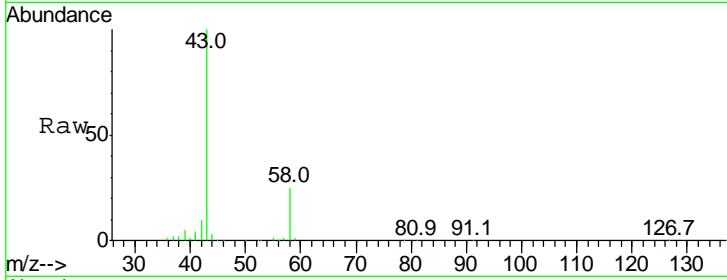
Tgt Ion	Resp	Lower	Upper
45	36909		
45	100		
46	64.2	18.2	72.8





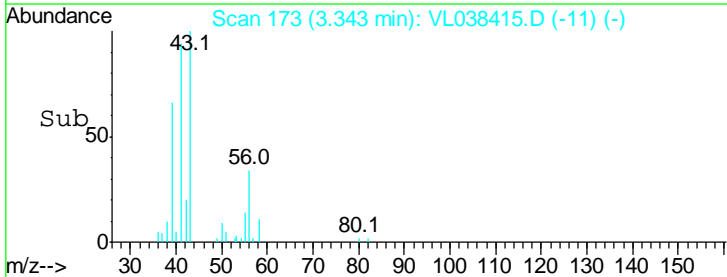
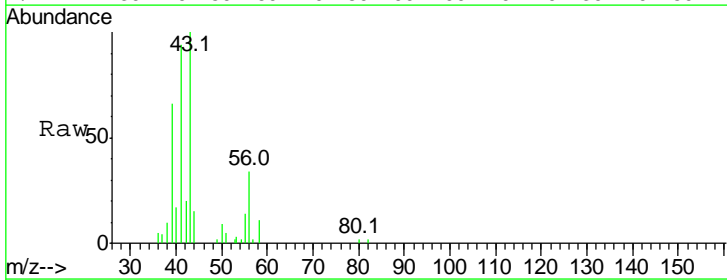
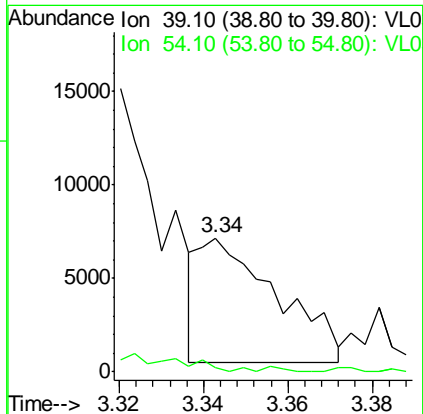
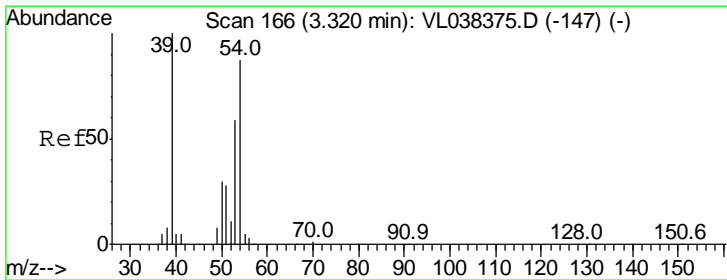
#15
 Acetone
 Concen: 6.28 ppbv
 RT: 3.85
 Delta R.T. MSVOA_L
 Lab File: ClientSampled :
 MP-10
 Acq: 23 Feb 2022 19:43

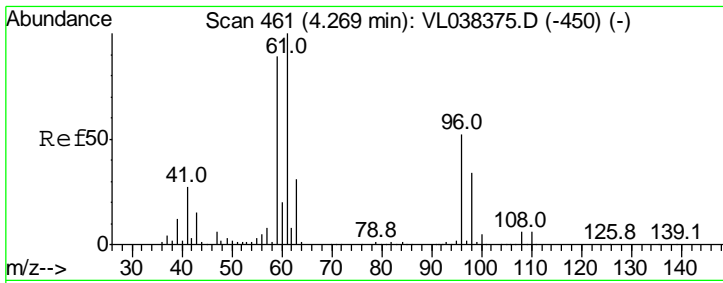
Tgt Ion	Resp	Lower	Upper
43	100		
58	28.1	21.7	32.5



#16
 1,3-Butadiene
 Concen: 0.16 ppbv
 RT: 3.34 min Scan# 173
 Delta R.T. 0.02 min
 Lab File: VL038415.D
 Acq: 23 Feb 2022 19:43

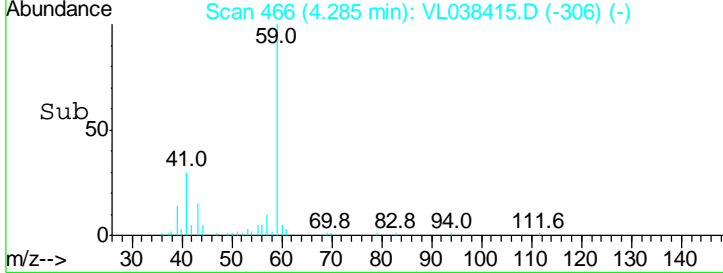
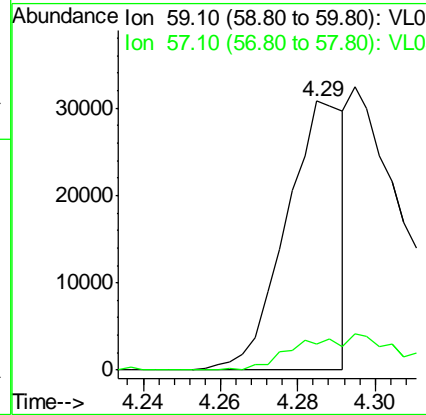
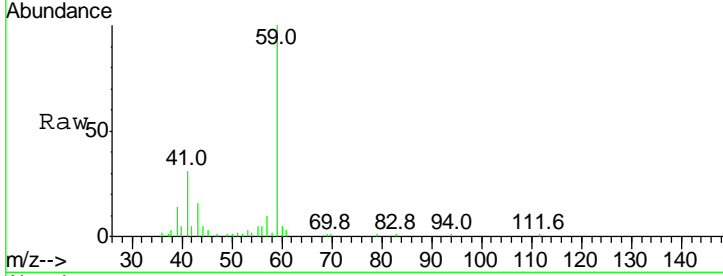
Tgt Ion	Resp	Lower	Upper
39	100		
54	0.0	60.3	90.5#





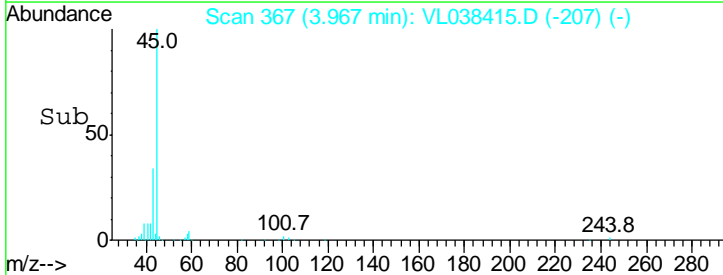
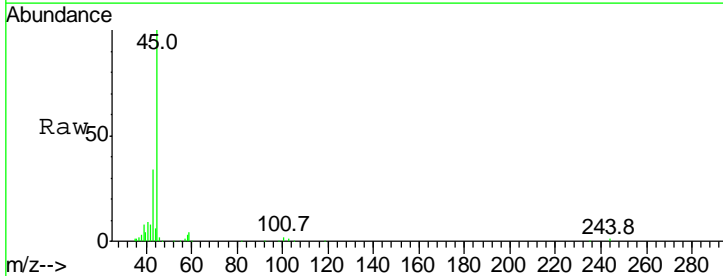
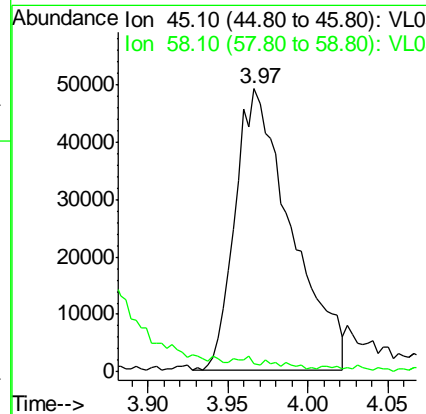
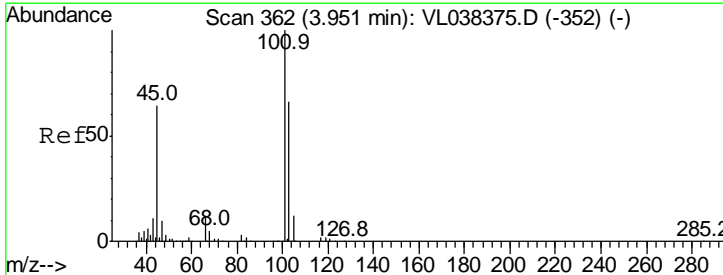
#17
 tert-Butyl alcohol
 Concen: 0.41 ppbv
 RT: 4.29 Instrument : MSVOA_L
 Delta R.T. ClientSampleId :
 Lab File: MP-10
 Acq: 23 Feb 2022 19:43

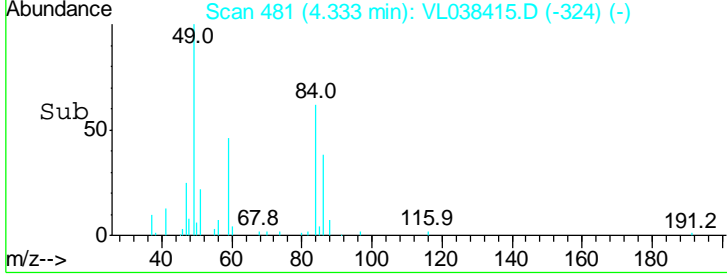
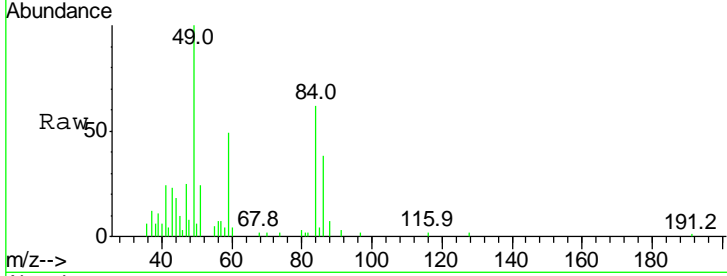
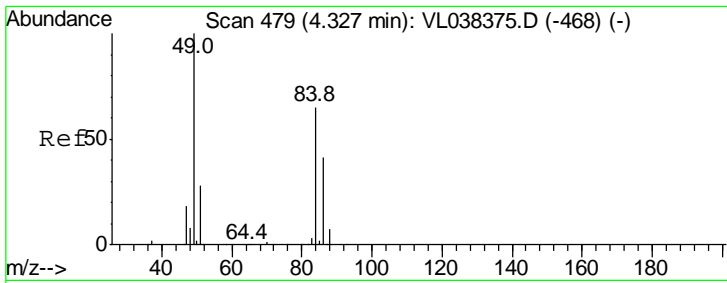
Tgt Ion: 59 Resp: 32052
 Ion Ratio Lower Upper
 59 100
 57 0.0 8.4 12.6#



#19
 Isopropyl Alcohol
 Concen: 2.57 ppbv
 RT: 3.97 min Scan# 367
 Delta R.T. 0.02 min
 Lab File: VL038415.D
 Acq: 23 Feb 2022 19:43

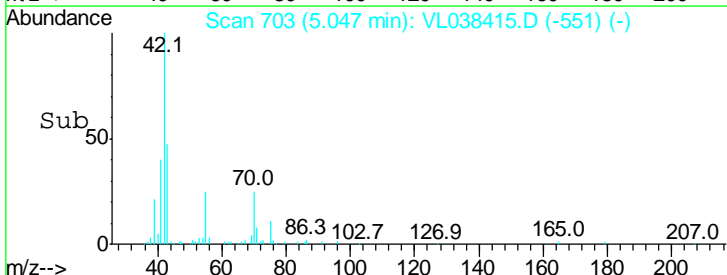
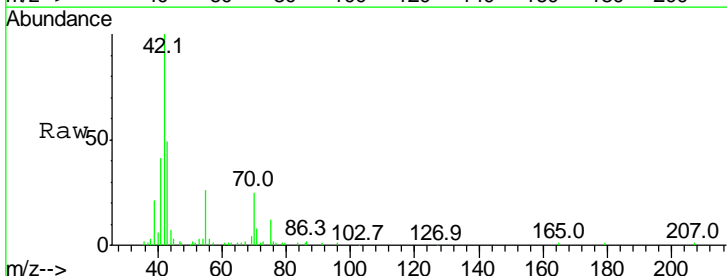
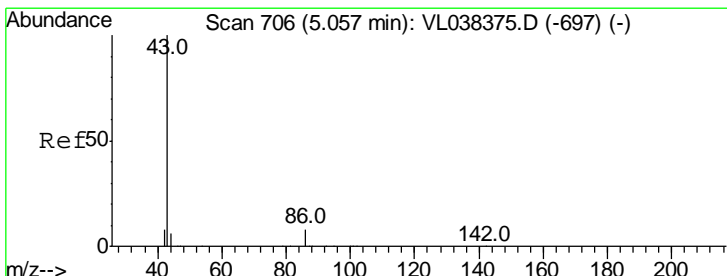
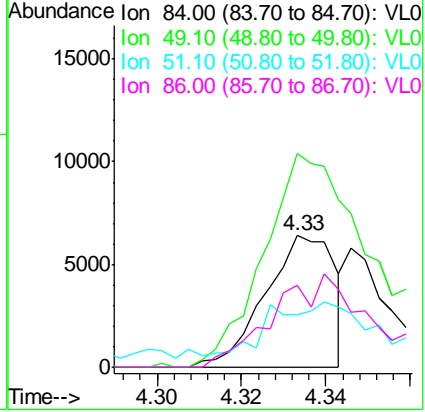
Tgt Ion: 45 Resp: 117852
 Ion Ratio Lower Upper
 45 100
 58 119.6 1.8 2.8#





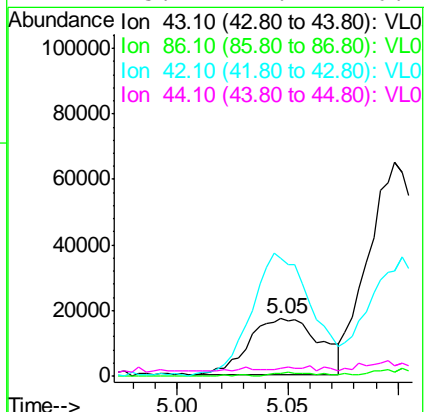
#20
 Methylene Chloride
 Concen: 0.19 ppbv
 RT: 4.33
 Delta R.T. MSVOA_L
 Lab File: ClientSampled :
 MP-10
 Acq: 23 Feb 2022 19:43

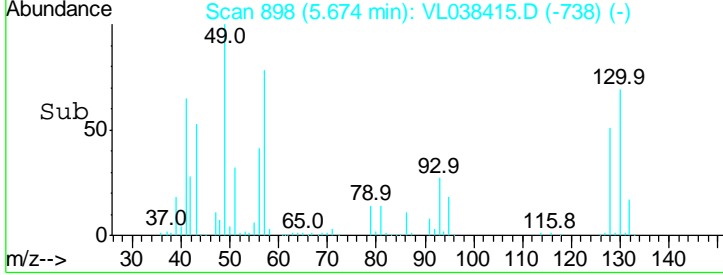
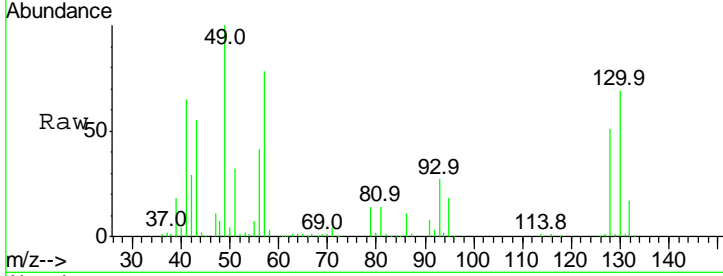
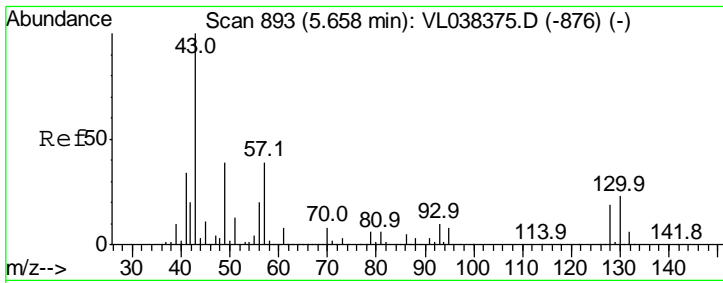
Tgt Ion	Resp	Lower	Upper
84	100		
49	162.4	122.4	183.6
51	26.2	33.3	49.9#
86	61.9	50.7	76.1



#23
 Vinyl Acetate
 Concen: 0.36 ppbv
 RT: 5.05 min Scan# 703
 Delta R.T. -0.01 min
 Lab File: VL038415.D
 Acq: 23 Feb 2022 19:43

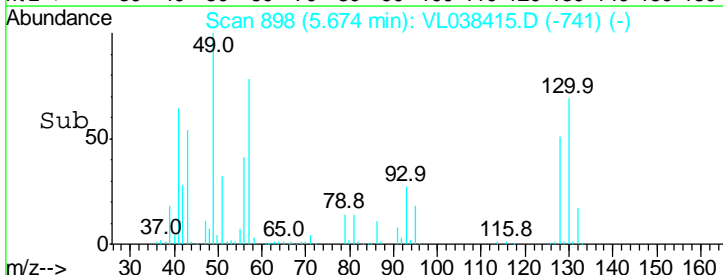
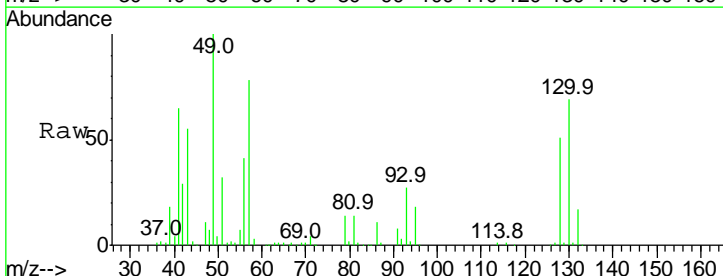
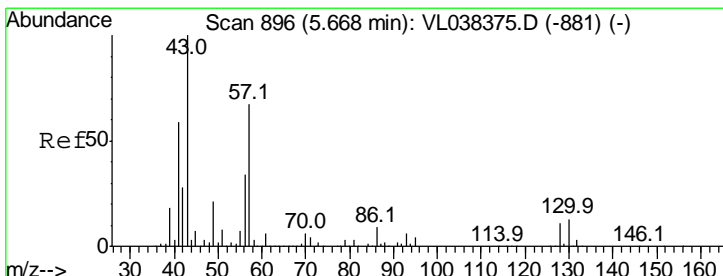
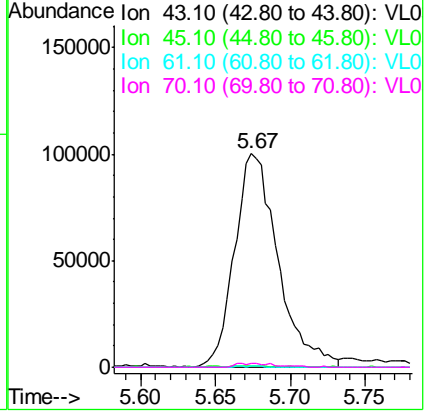
Tgt Ion	Resp	Lower	Upper
43	100		
86	5.0	5.8	8.6#
42	210.6	7.4	11.0#
44	5.1	4.2	6.2





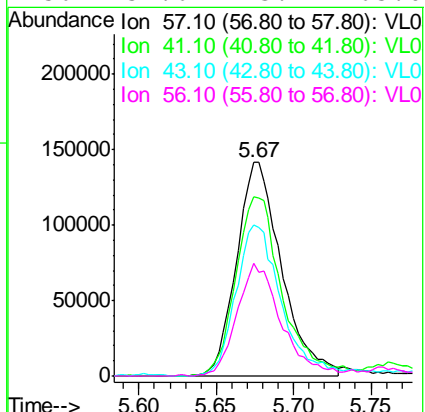
#25
 Ethyl Acetate
 Concen: 0.95 ppbv
 RT: 5.67 min
 Delta R.T. MSVOA_L
 Lab File: ClientSampled :
 MP-10
 Acq: 23 Feb 2022 19:43

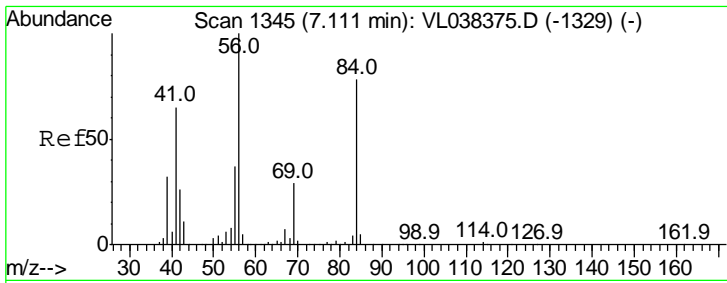
Tgt Ion	Resp	Lower	Upper
43	100		
45	0.7	7.8	11.6#
61	0.2	7.5	11.3#
70	1.9	5.4	8.0#



#26
 Hexane
 Concen: 2.97 ppbv
 RT: 5.67 min Scan# 898
 Delta R.T. 0.01 min
 Lab File: VL038415.D
 Acq: 23 Feb 2022 19:43

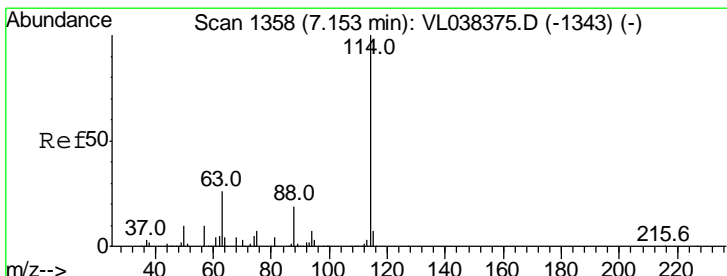
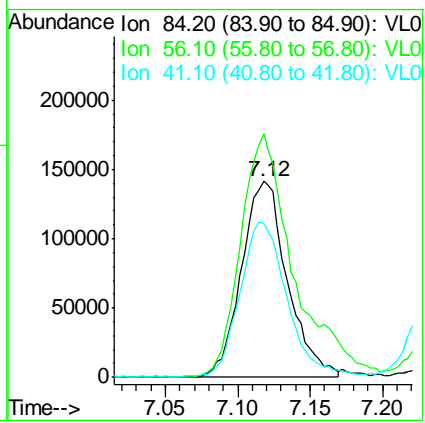
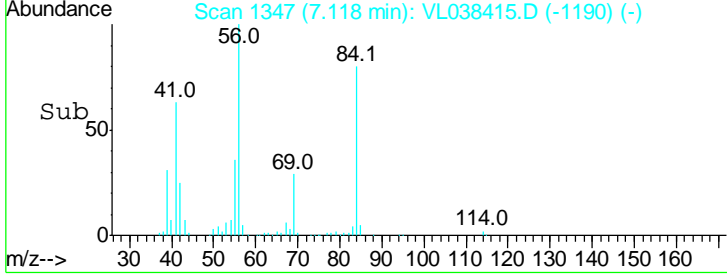
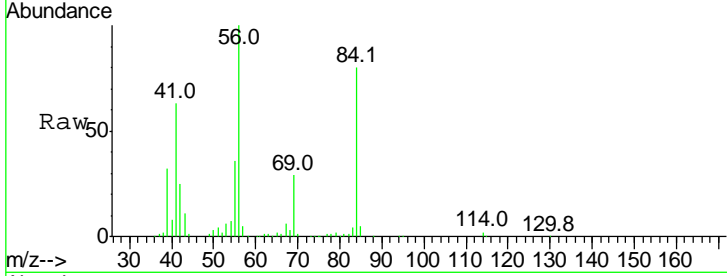
Tgt Ion	Resp	Lower	Upper
57	100		
41	86.8	73.1	109.7
43	75.2	181.0	271.4#
56	52.6	43.4	65.0





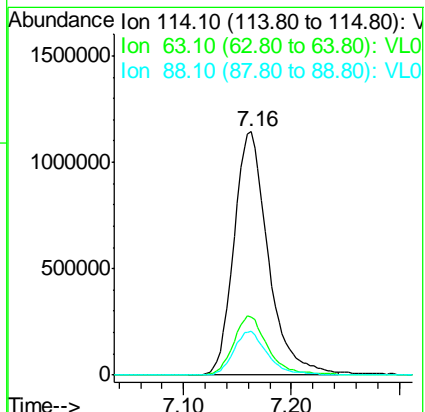
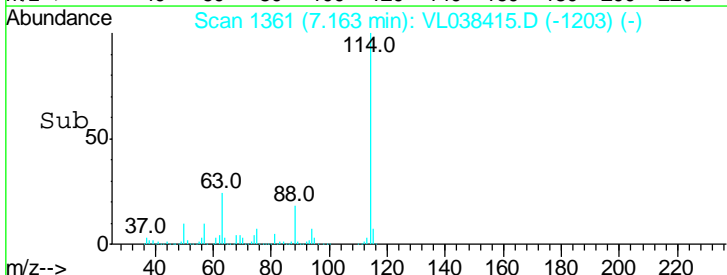
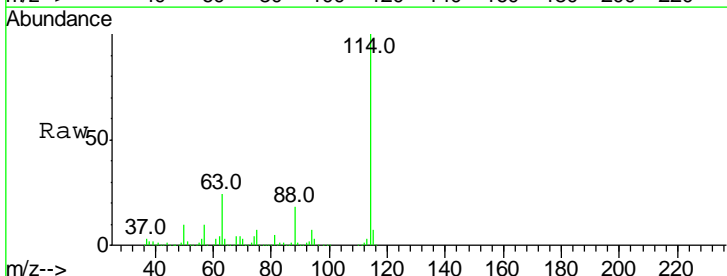
#30
 Cyclohexane
 Concen: 3.95 ppbv
 RT: 7.12
 Delta R.T. MSVOA_L
 Lab File: ClientSampled :
 MP-10
 Acq: 23 Feb 2022 19:43

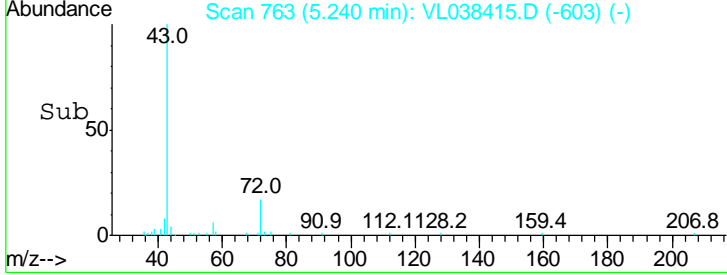
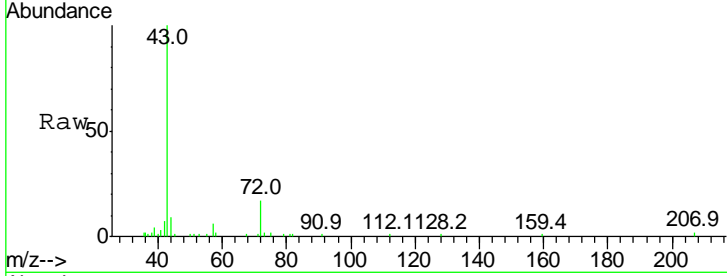
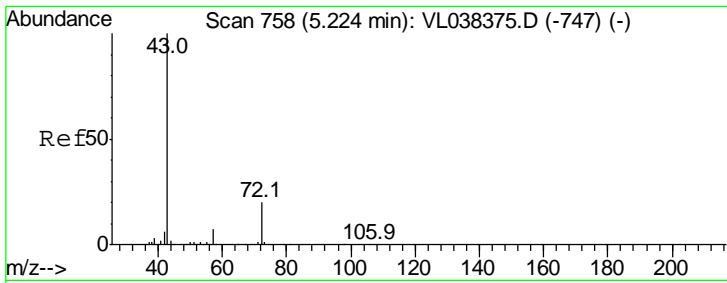
Tgt Ion	Resp	Lower	Upper
84	100		
56	144.3	116.2	174.4
41	80.4	74.3	111.5



#33
 1,4-Difluorobenzene
 Concen: 10.00 ppbv
 RT: 7.16 min Scan# 1361
 Delta R.T. 0.01 min
 Lab File: VL038415.D
 Acq: 23 Feb 2022 19:43

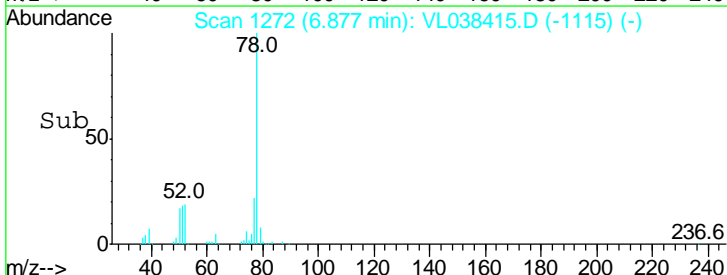
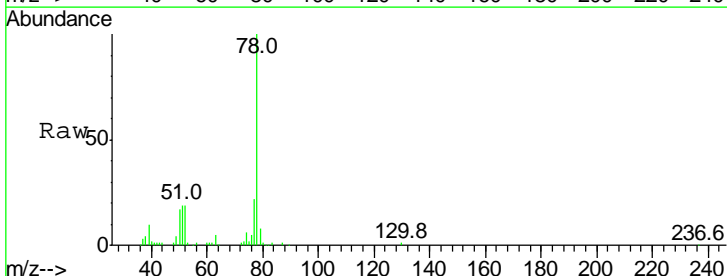
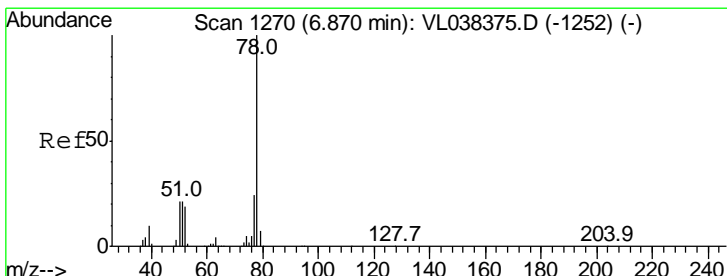
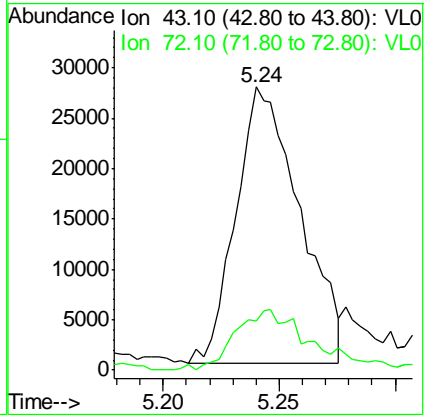
Tgt Ion	Resp	Lower	Upper
114	100		
63	24.4	22.2	33.2
88	18.1	15.2	22.8





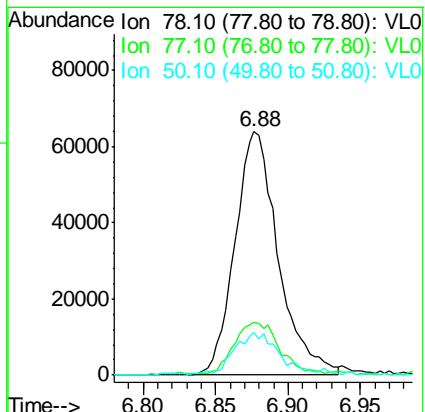
#34
 2-Butanone
 Concen: 0.66 ppbv
 RT: 5.24
 Delta R.T. MSVOA_L
 Lab File: ClientSampled :
 MP-10
 Acq: 23 Feb 2022 19:43

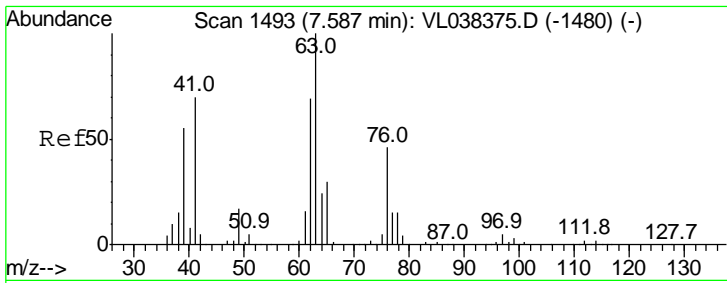
Tgt Ion	Resp	Lower	Upper
43	100		
72	25.8	17.4	26.2



#36
 Benzene
 Concen: 0.60 ppbv
 RT: 6.88 min Scan# 1272
 Delta R.T. 0.01 min
 Lab File: VL038415.D
 Acq: 23 Feb 2022 19:43

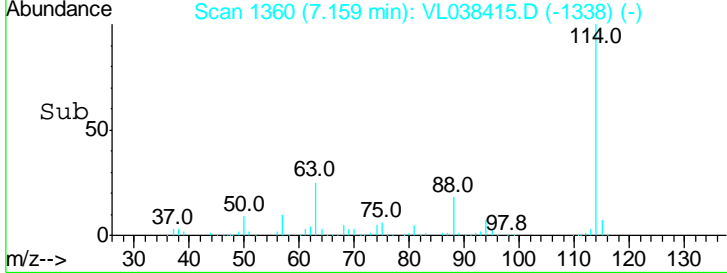
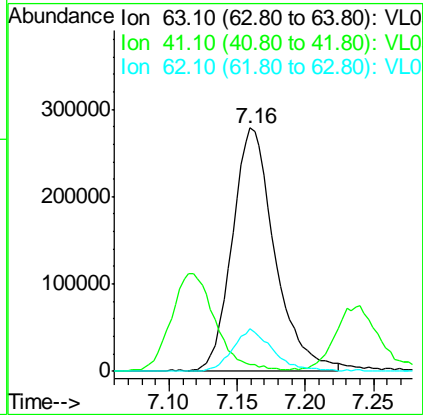
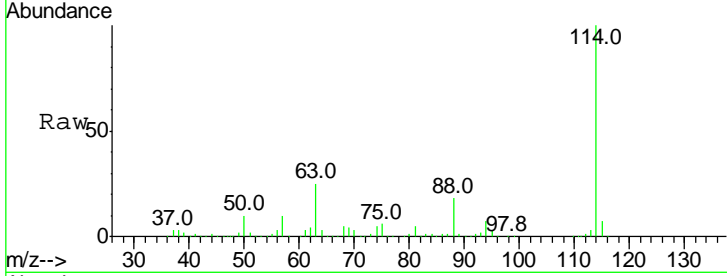
Tgt Ion	Resp	Lower	Upper
78	100		
77	21.1	19.0	28.6
50	16.9	16.6	24.8





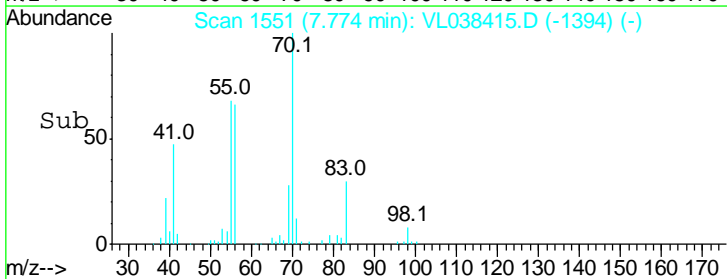
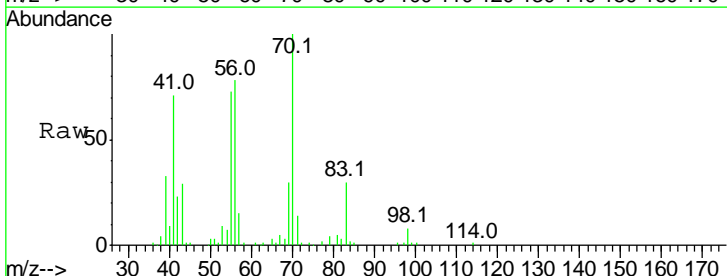
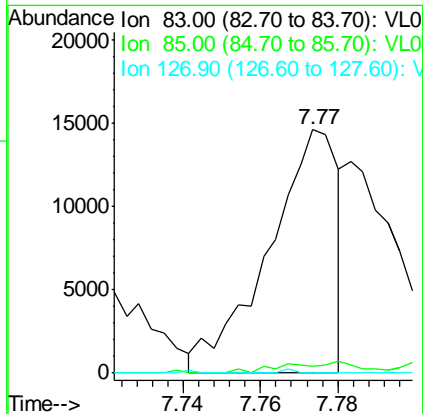
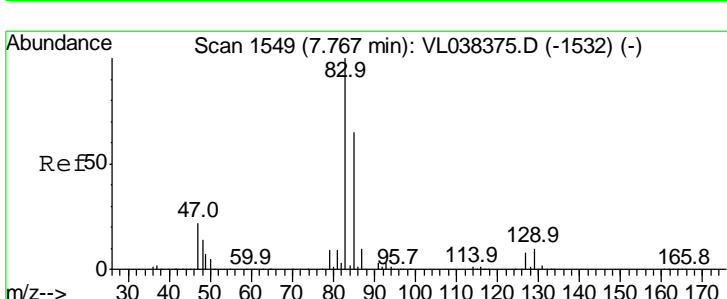
#39
 1,2-Dichloropropane
 Concen: 6.71 ppbv
 RT: 7.16
 Delta R.T. MSVOA_L
 Lab File: ClientSampleId :
 MP-10
 Acq: 23 Feb 2022 19:43

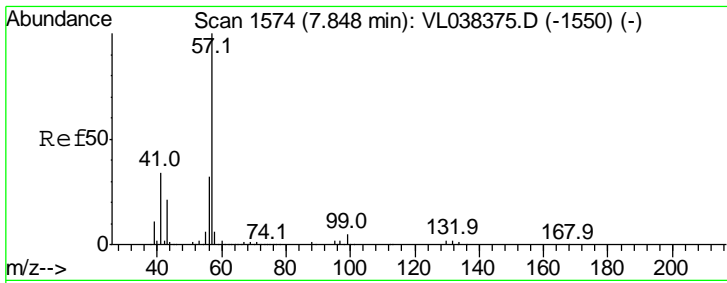
Tgt Ion	Resp	Lower	Upper
63	100		
41	0.0	56.1	84.1#
62	17.4	55.5	83.3#



#42
 Bromodichloromethane
 Concen: 0.10 ppbv
 RT: 7.77 min Scan# 1551
 Delta R.T. 0.01 min
 Lab File: VL038415.D
 Acq: 23 Feb 2022 19:43

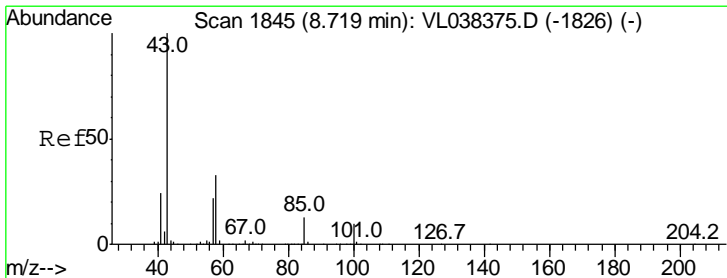
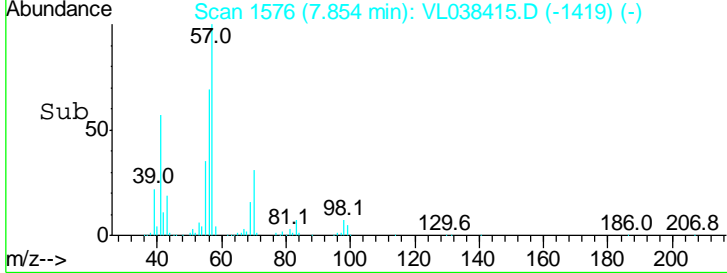
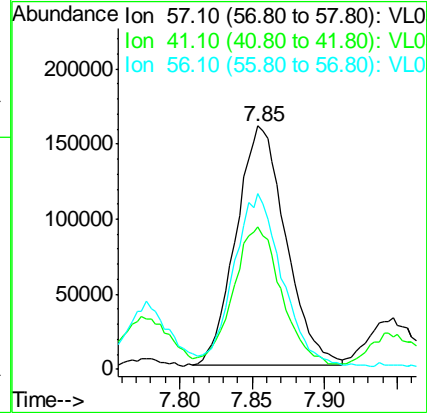
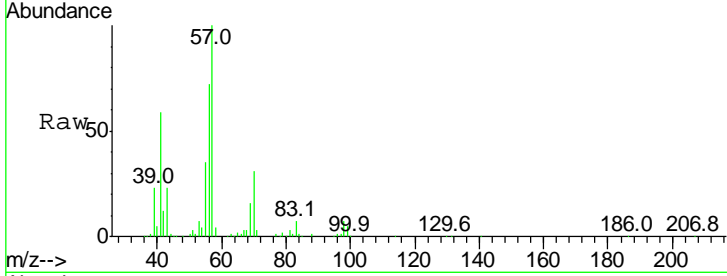
Tgt Ion	Resp	Lower	Upper
83	100		
85	3.1	52.2	78.4#
127	0.0	6.2	9.4#





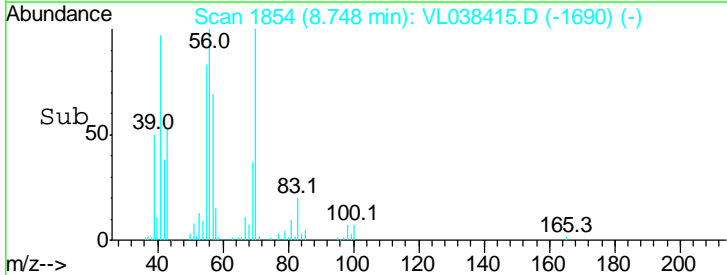
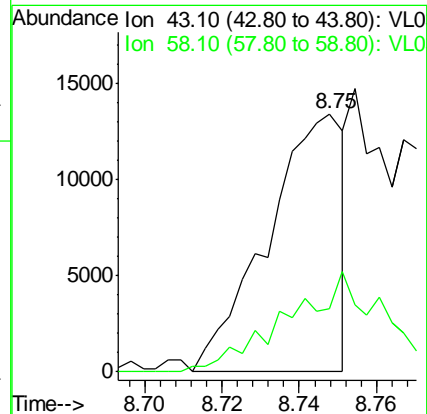
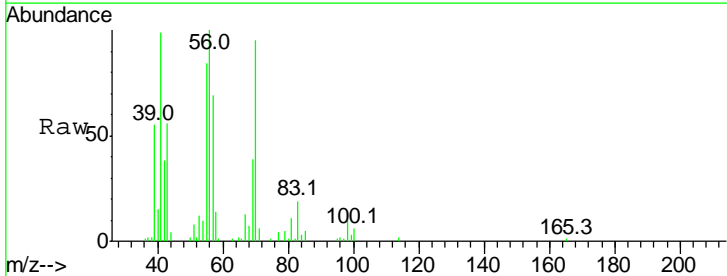
#44
 2,2,4-Trimethylpentane
 Concen: 1.00 ppbv
 RT: 7.85
 Delta R.T. MSVOA_L
 Lab File: ClientSampleId :
 Acq: 23 Feb 2022 19:43

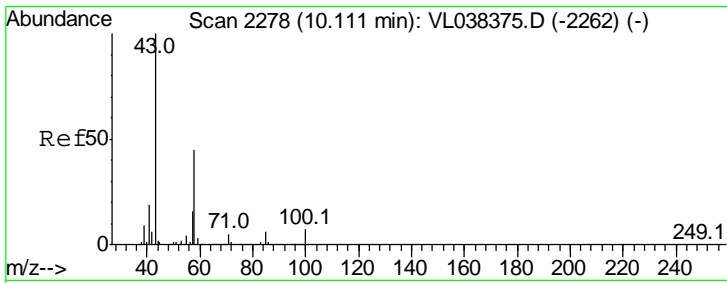
Tgt Ion	Resp	Lower	Upper
57	100		
41	58.1	26.6	39.8#
56	73.5	25.0	37.6#



#50
 4-Methyl-2-Pentanone
 Concen: 0.13 ppbv
 RT: 8.75 min Scan# 1854
 Delta R.T. 0.03 min
 Lab File: VL038415.D
 Acq: 23 Feb 2022 19:43

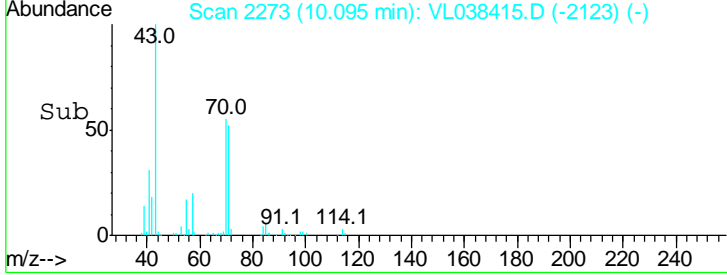
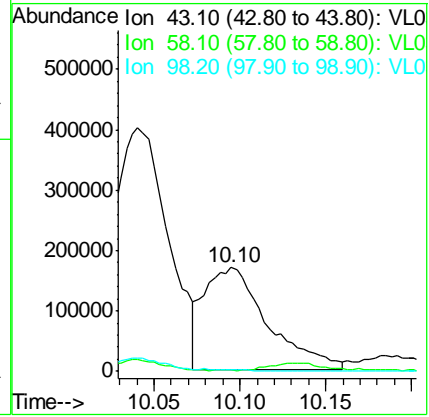
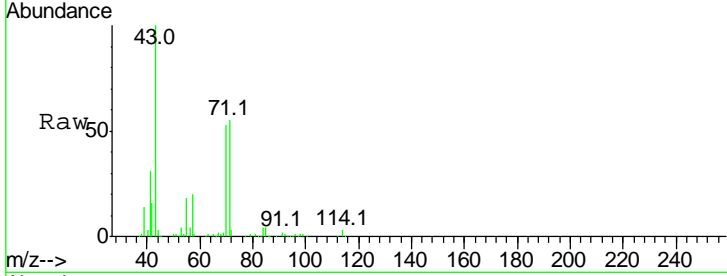
Tgt Ion	Resp	Lower	Upper
43	100		
58	0.0	27.7	41.5#





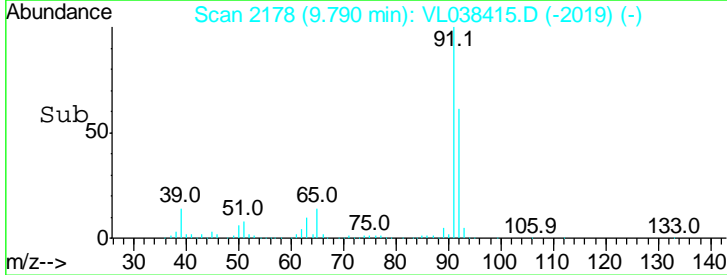
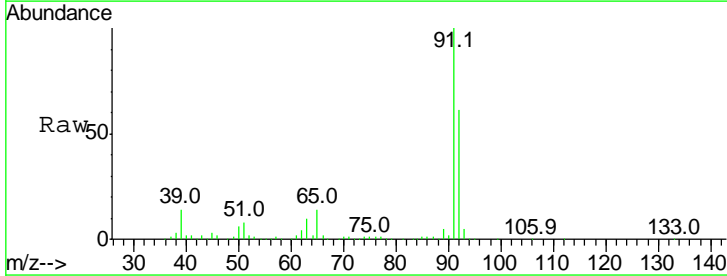
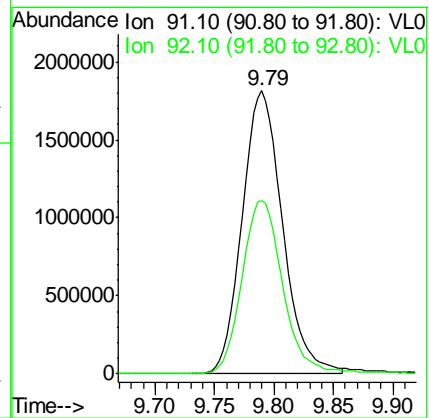
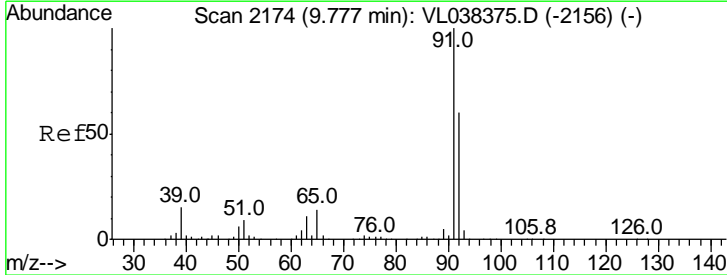
#51
 2-Hexanone
 Concen: 6.96 ppbv
 RT: 10.10
 Delta R.T. MSVOA_L
 Lab File: ClientSampled :
 Acq: 23 Feb 2022 19:43

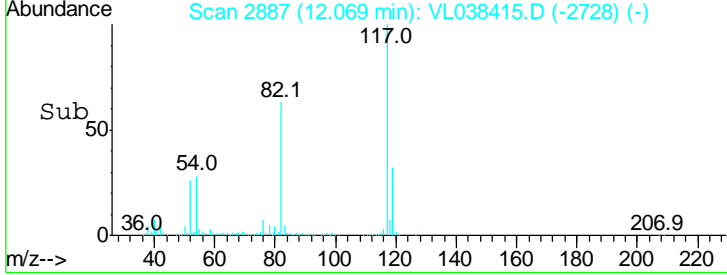
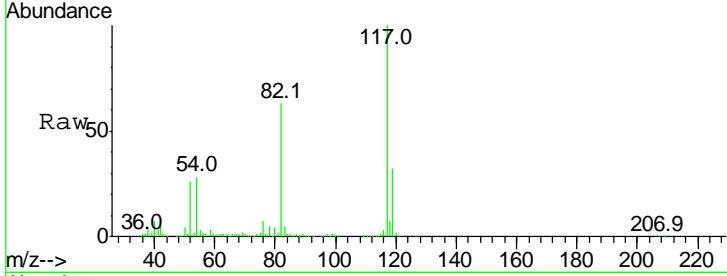
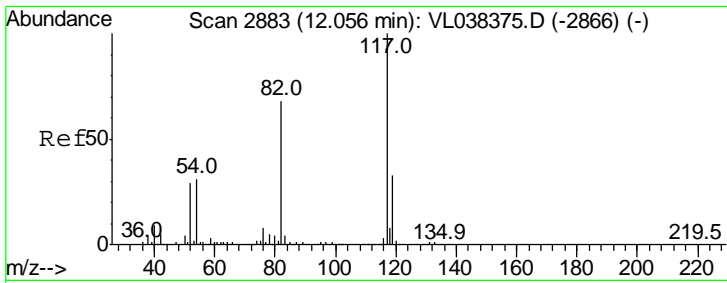
Tgt Ion	Resp	Lower	Upper
43	100		
58	9.2	37.4	56.0#
98	0.0	0.1	0.1#



#53
 Toluene
 Concen: 17.64 ppbv
 RT: 9.79 min Scan# 2178
 Delta R.T. 0.01 min
 Lab File: VL038415.D
 Acq: 23 Feb 2022 19:43

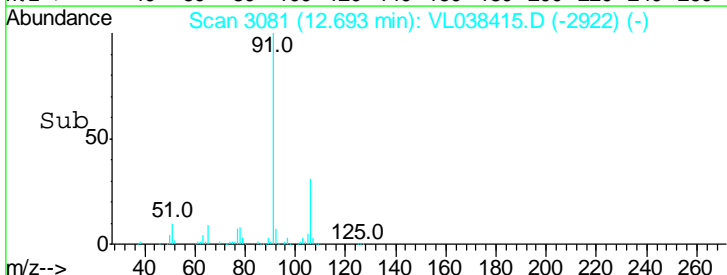
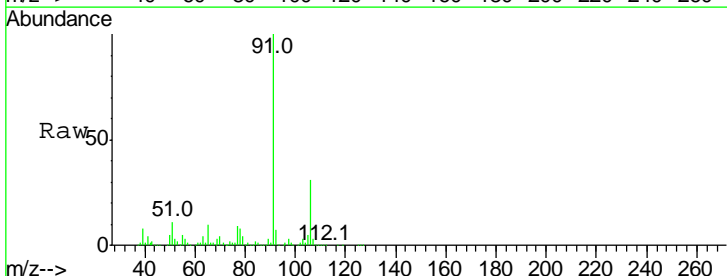
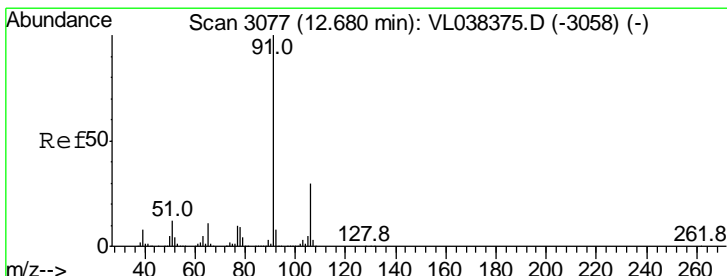
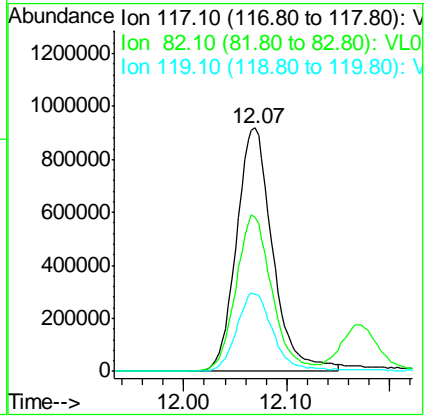
Tgt Ion	Resp	Lower	Upper
91	100		
92	62.1	48.2	72.4





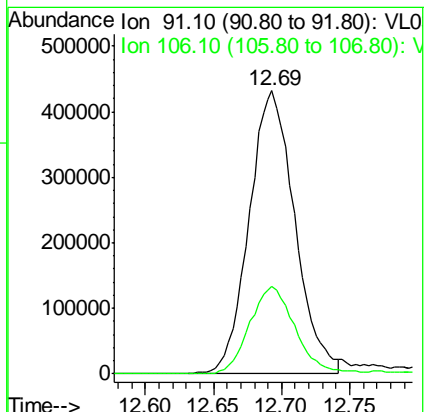
#55
 Chlorobenzene-d5
 Concen: 10.00 ppbv
 RT: 12.07
 Delta R.T. MSVOA_L
 Lab File: ClientSampleId :
 Acq: 23 Feb 2022 19:43

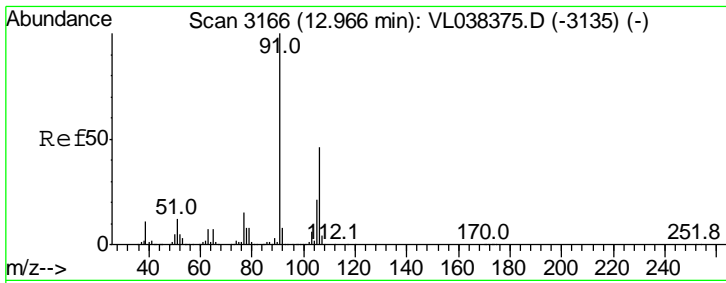
Tgt Ion	Resp	Lower	Upper
117	100		
82	64.0	54.9	82.3
119	33.3	46.1	69.1#



#58
 Ethyl Benzene
 Concen: 3.26 ppbv
 RT: 12.69 min Scan# 3081
 Delta R.T. 0.01 min
 Lab File: VL038415.D
 Acq: 23 Feb 2022 19:43

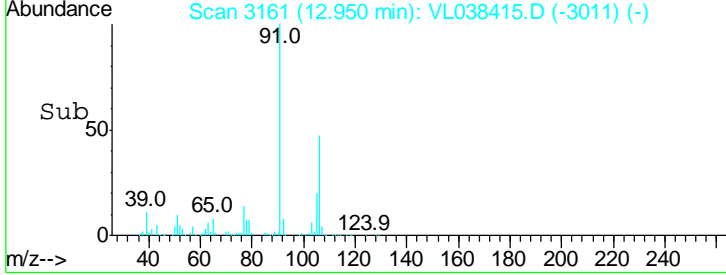
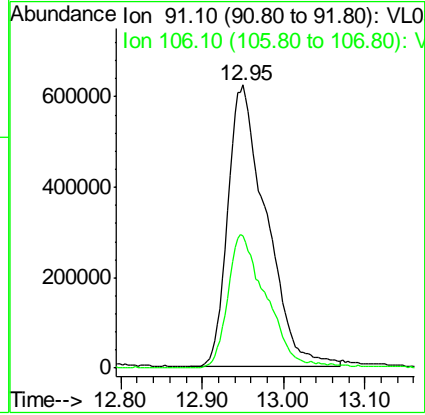
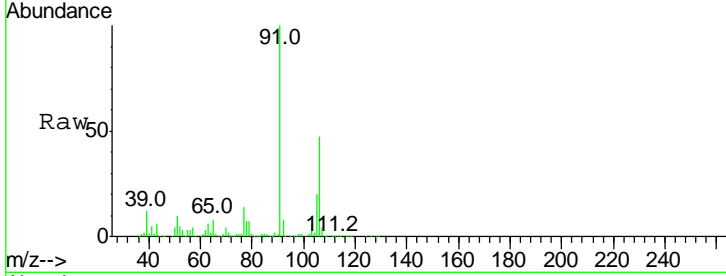
Tgt Ion	Resp	Lower	Upper
91	100		
106	31.2	24.0	36.0





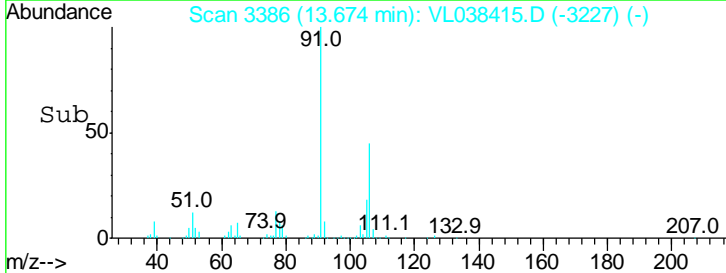
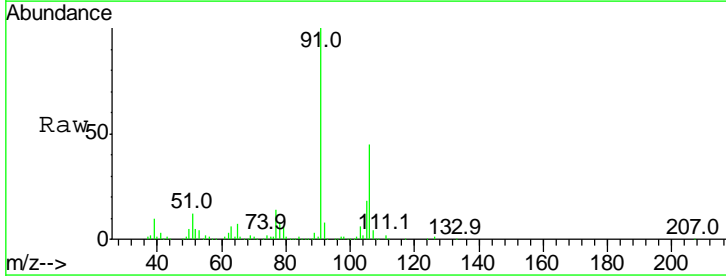
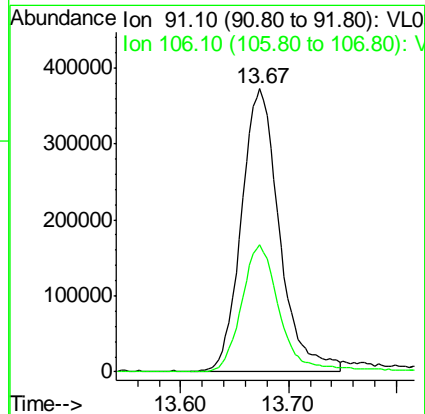
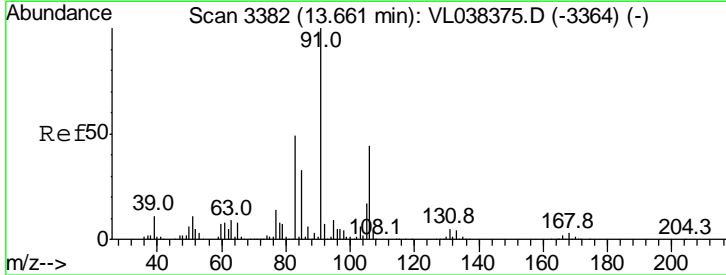
#59
 m/p-Xylene
 Concen: 7.81 ppbv
 RT: 12.95
 Delta R.T. MSVOA_L
 Lab File: ClientSampled :
 Acq: 23 Feb 2022 19:43

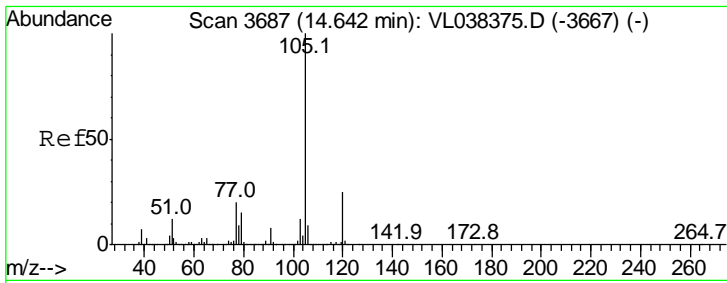
Tgt Ion: 91 Resp: 2053344
 Ion Ratio Lower Upper
 91 100
 106 48.9 34.4 51.6



#60
 o-Xylene
 Concen: 3.67 ppbv
 RT: 13.67 min Scan# 3386
 Delta R.T. 0.01 min
 Lab File: VL038415.D
 Acq: 23 Feb 2022 19:43

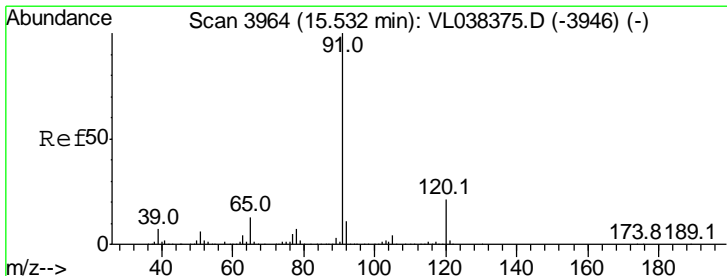
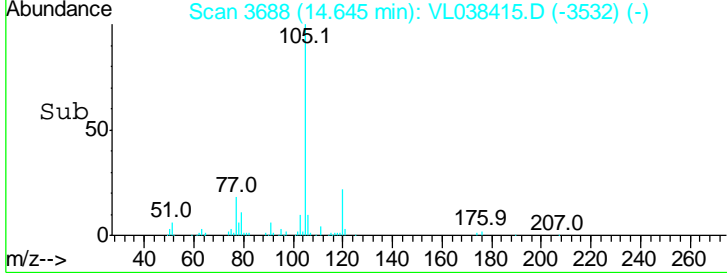
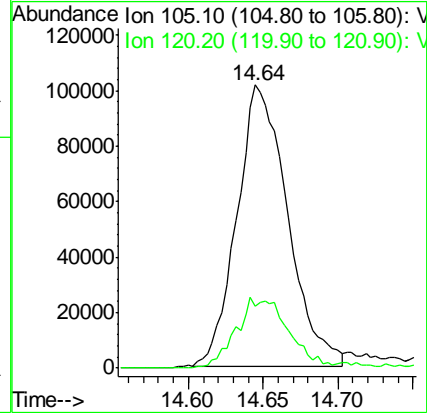
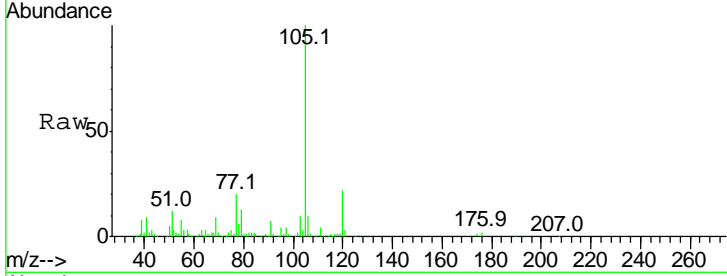
Tgt Ion: 91 Resp: 911760
 Ion Ratio Lower Upper
 91 100
 106 45.0 21.9 65.5





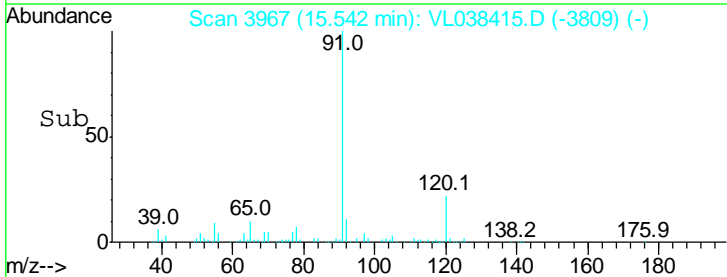
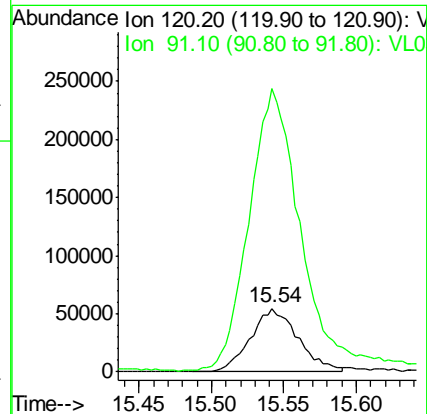
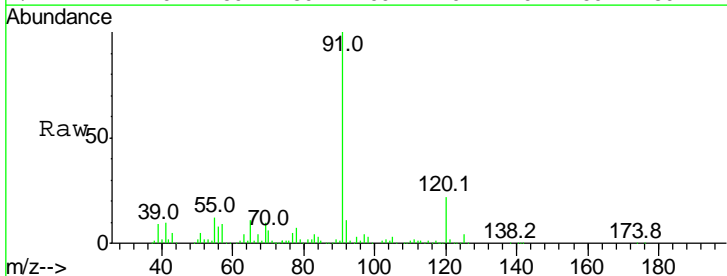
#62
 Isopropylbenzene
 Concen: 0.72 ppbv
 RT: 14.64
 Delta R.T. MSVOA_L
 Lab File: ClientSampleId :
 MP-10
 Acq: 23 Feb 2022 19:43

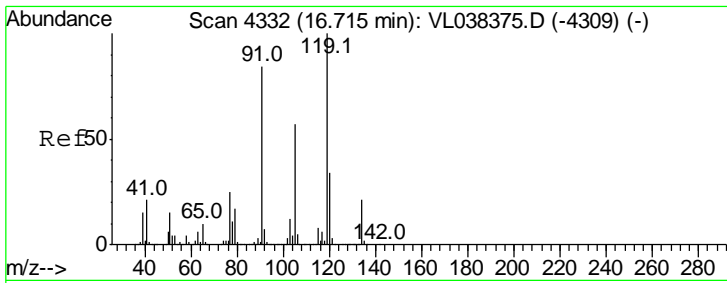
Tgt Ion	Resp	Lower	Upper
105	100		
120	26.6	20.6	30.8



#64
 n-propylbenzene
 Concen: 1.51 ppbv
 RT: 15.54 min Scan# 3967
 Delta R.T. 0.01 min
 Lab File: VL038415.D
 Acq: 23 Feb 2022 19:43

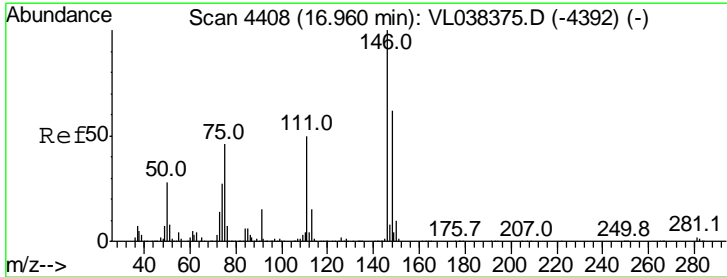
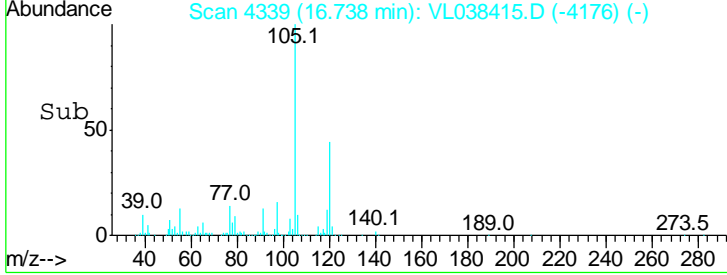
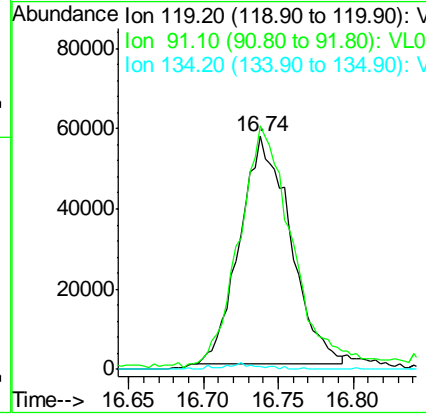
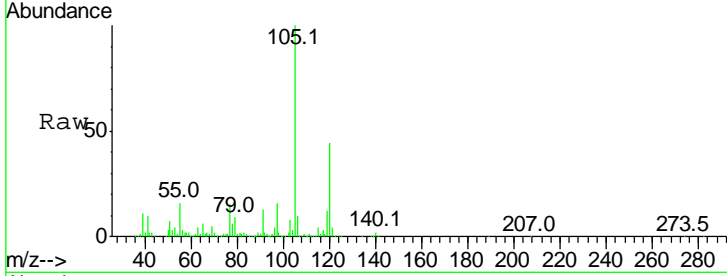
Tgt Ion	Resp	Lower	Upper
120	100		
91	492.0	388.1	582.1





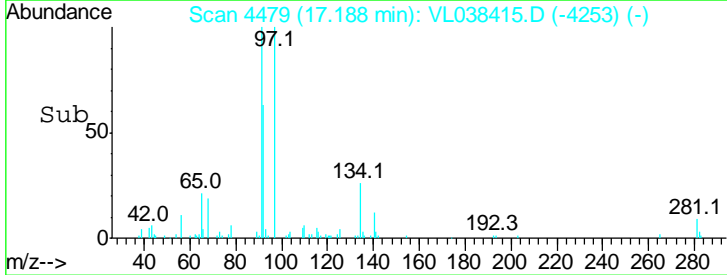
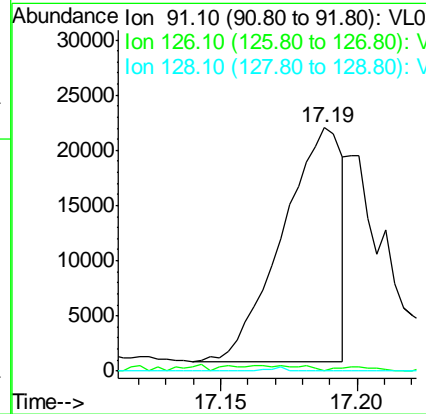
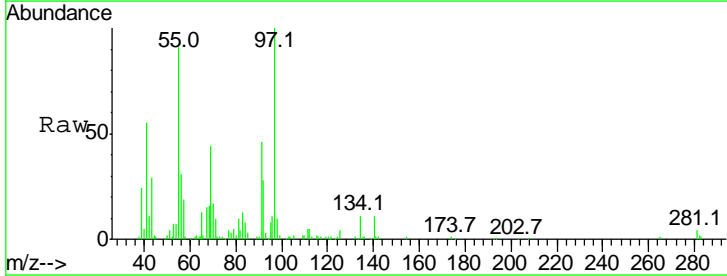
#65
 tert-Butylbenzene
 Concen: 0.47 ppbv
 RT: 16.74
 Delta R.T. MSVOA_L
 Lab File: ClientSampled :
 MP-10
 Acq: 23 Feb 2022 19:43

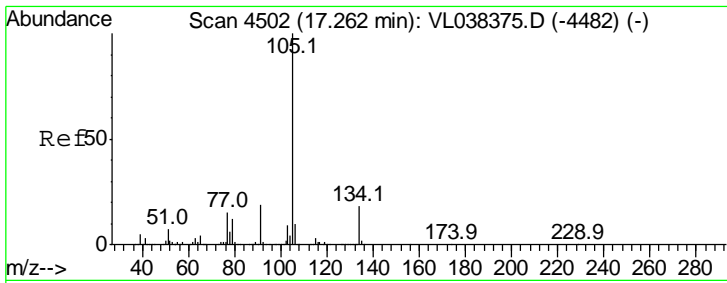
Tgt Ion	Resp	Lower	Upper
119	100		
91	111.3	68.0	102.0#
134	2.0	15.8	23.8#



#66
 Benzyl Chloride
 Concen: 2.07 ppbv
 RT: 17.19 min Scan# 4479
 Delta R.T. 0.23 min
 Lab File: VL038415.D
 Acq: 23 Feb 2022 19:43

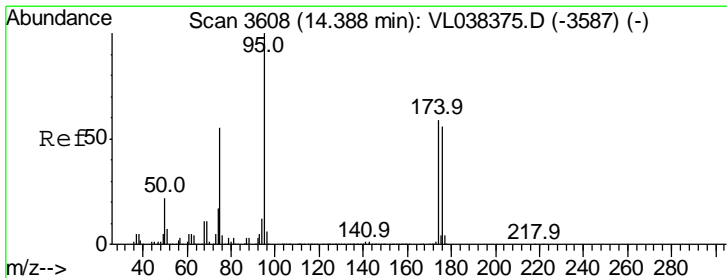
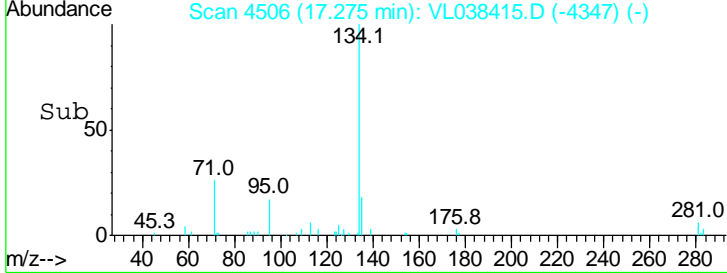
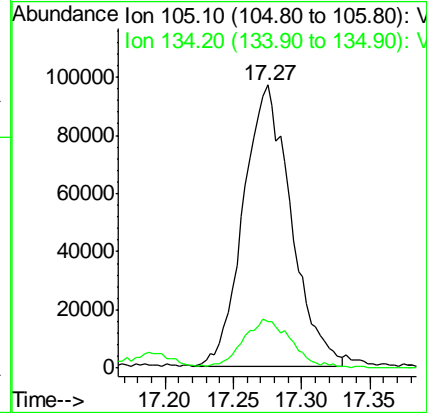
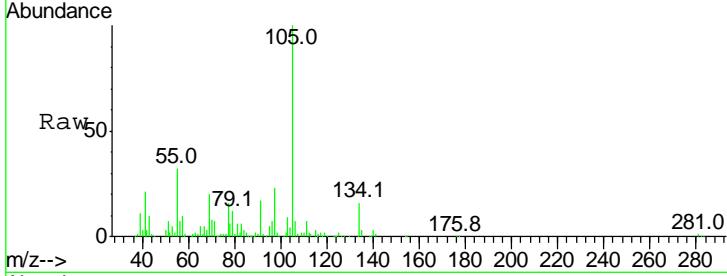
Tgt Ion	Resp	Lower	Upper
91	100		
126	5.8	12.3	18.5#
128	0.4	4.2	6.4#





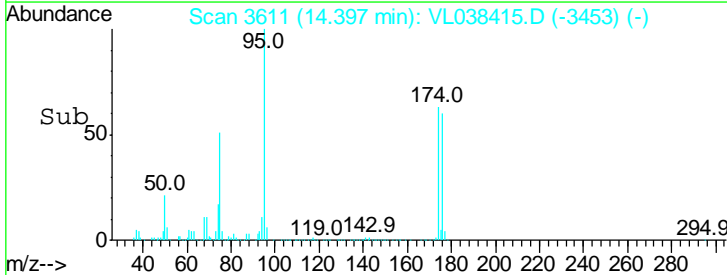
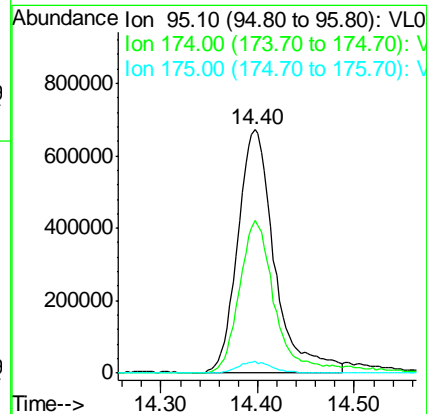
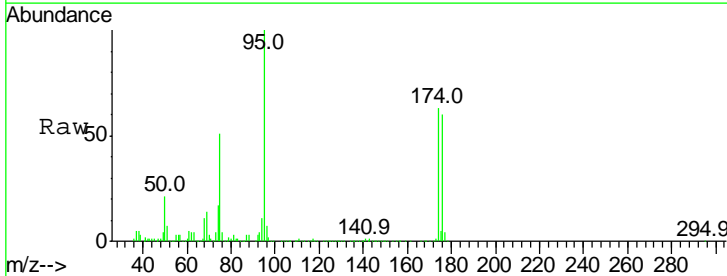
#67
 sec-Butylbenzene
 Concen: 0.57 ppbv
 RT: 17.27
 Delta R.T. MSVOA_L
 Lab File: ClientSampleId :
 MP-10
 Acq: 23 Feb 2022 19:43

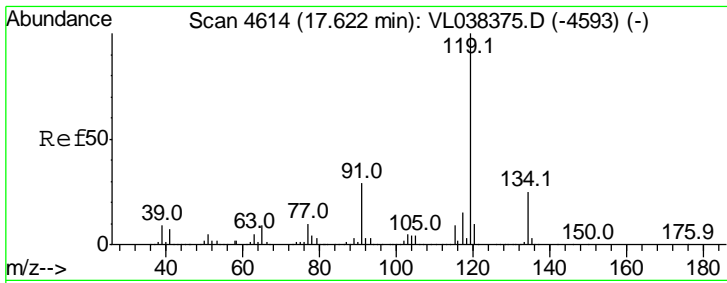
Tgt Ion	Resp	Lower	Upper
105	100		
134	18.1	14.6	21.8



#68
 1-Bromo-4-Fluorobenzene
 Concen: 9.57 ppbv
 RT: 14.40 min Scan# 3611
 Delta R.T. 0.01 min
 Lab File: VL038415.D
 Acq: 23 Feb 2022 19:43

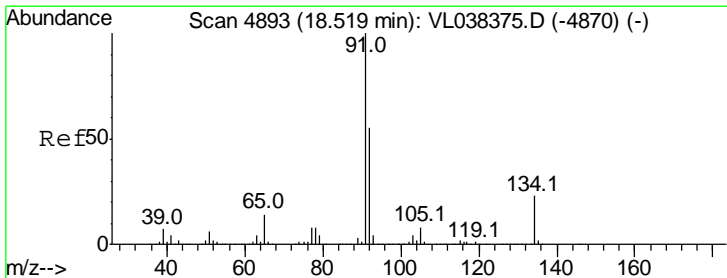
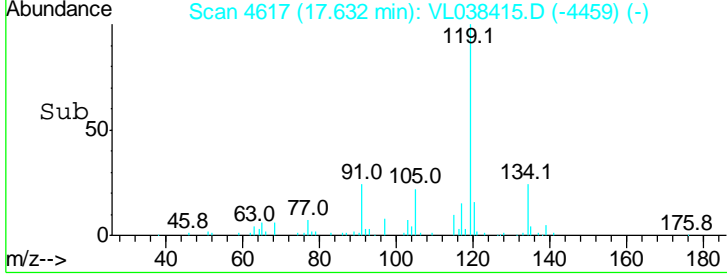
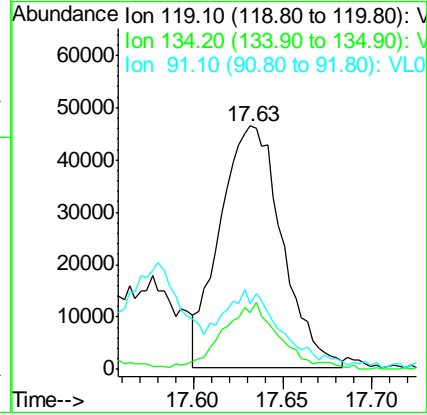
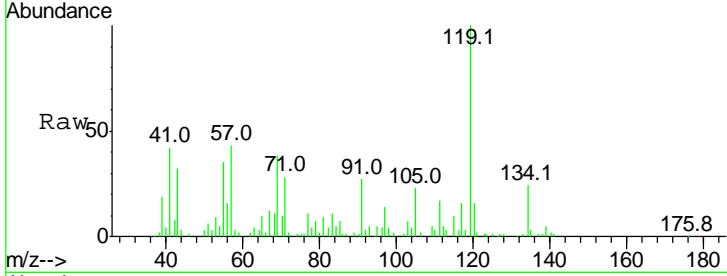
Tgt Ion	Resp	Lower	Upper
95	100		
174	63.8	49.0	73.4
175	4.7	3.6	5.4





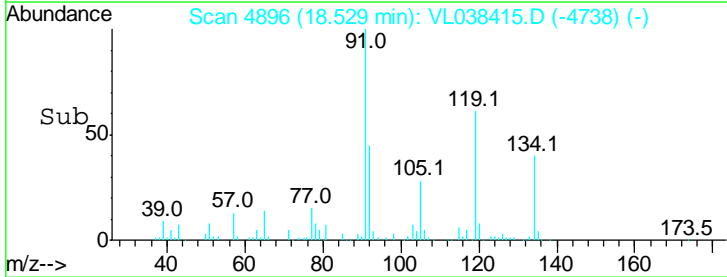
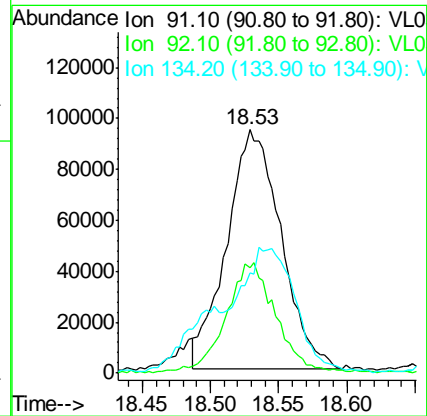
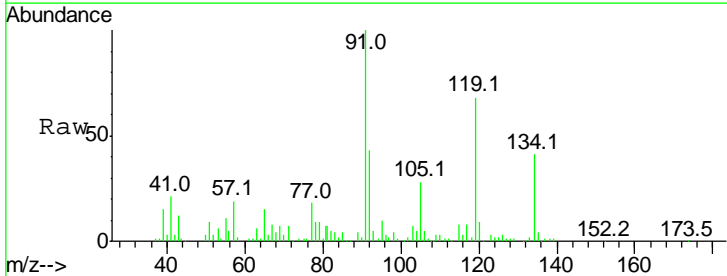
#69
 p-Isopropyltoluene
 Concen: 0.35 ppbv
 RT: 17.63
 Delta R.T. MSVOA_L
 Lab File: ClientSampled :
 MP-10
 Acq: 23 Feb 2022 19:43

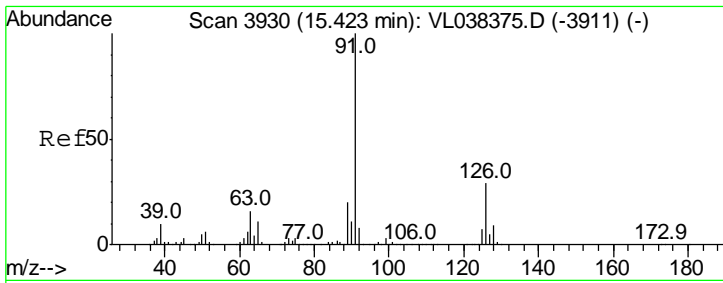
Tgt Ion	Resp	Lower	Upper
119	100		
134	24.7	20.4	30.6
91	28.8	23.8	35.8



#70
 n-Butylbenzene
 Concen: 0.78 ppbv
 RT: 18.53 min Scan# 4896
 Delta R.T. 0.01 min
 Lab File: VL038415.D
 Acq: 23 Feb 2022 19:43

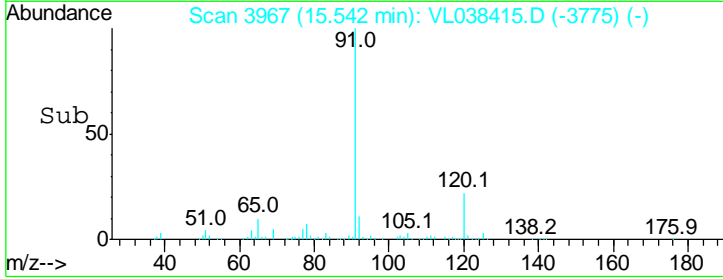
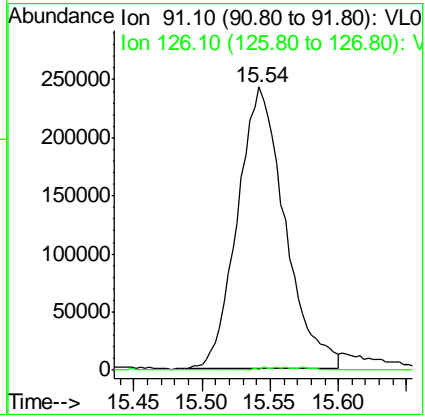
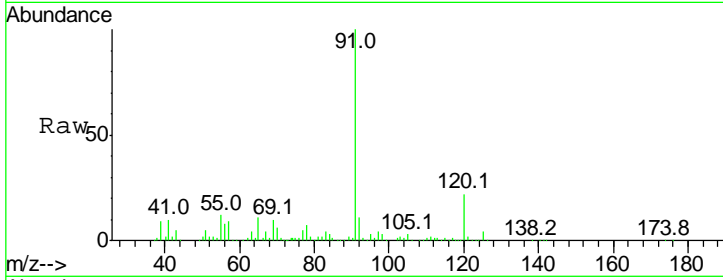
Tgt Ion	Resp	Lower	Upper
91	100		
92	42.2	43.1	64.7#
134	73.1	17.4	26.0#





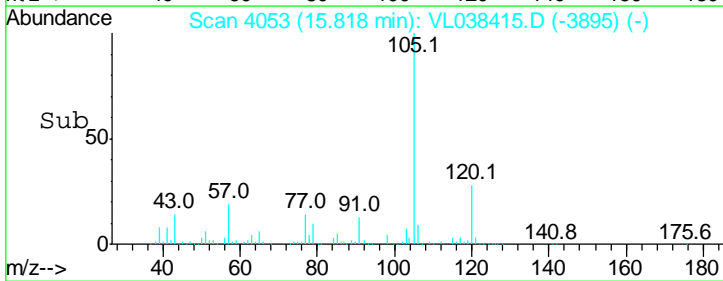
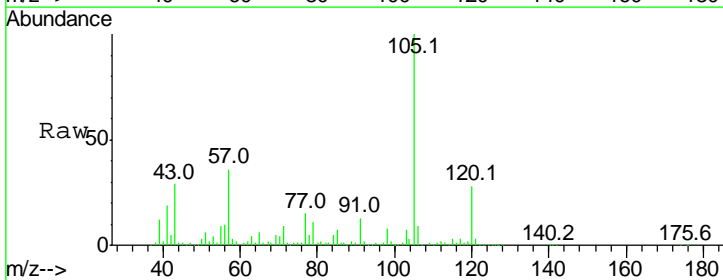
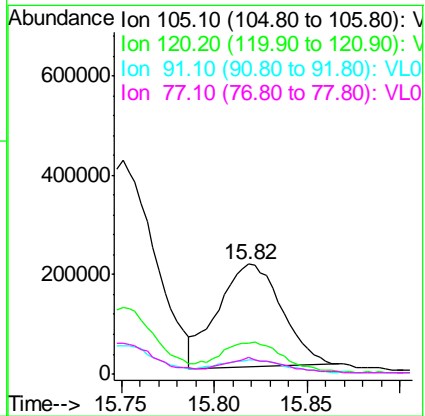
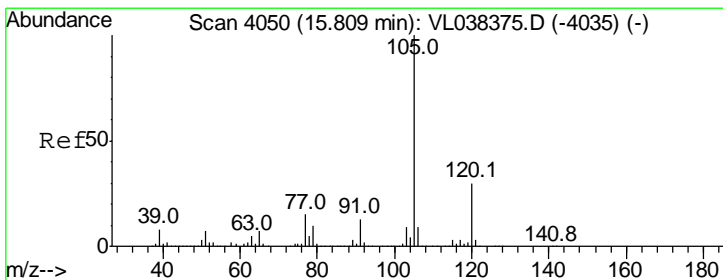
#71
 2-Chlorotoluene
 Concen: 2.29 ppbv
 RT: 15.54
 Delta R.T. MSVOA_L
 Lab File: ClientSampleId :
 MP-10
 Acq: 23 Feb 2022 19:43

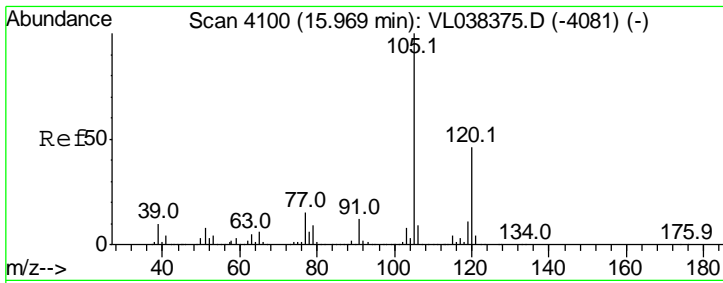
Tgt Ion	Resp	Lower	Upper
91	100		
126	1.1	11.9	47.7#



#72
 4-Ethyltoluene
 Concen: 1.80 ppbv
 RT: 15.82 min Scan# 4053
 Delta R.T. 0.01 min
 Lab File: VL038415.D
 Acq: 23 Feb 2022 19:43

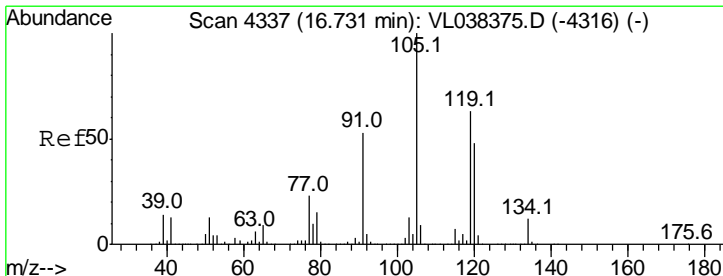
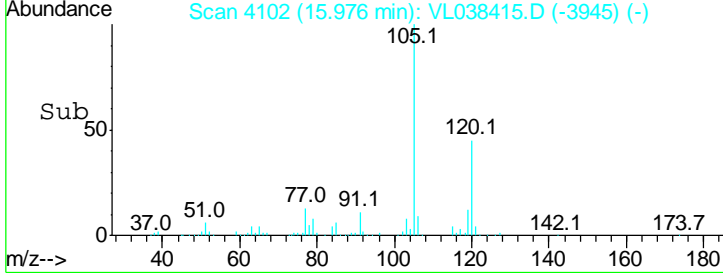
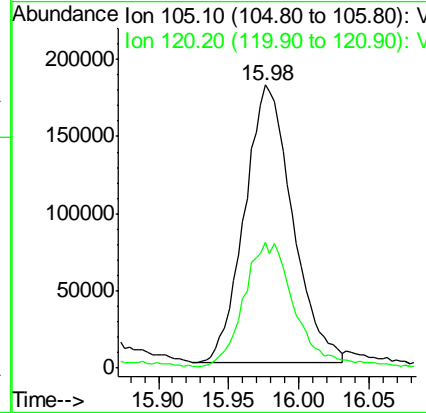
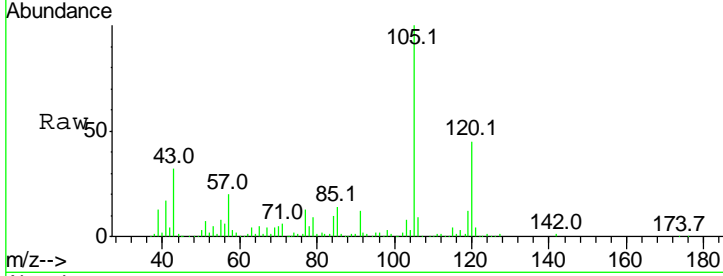
Tgt Ion	Resp	Lower	Upper
105	100		
120	34.6	23.4	35.2
91	14.8	10.4	15.6
77	15.3	11.6	17.4





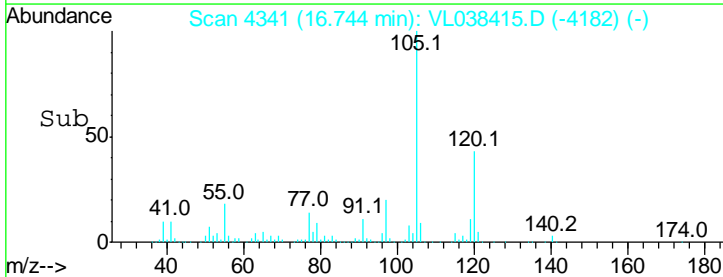
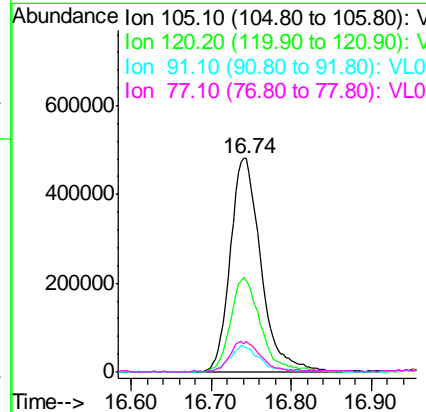
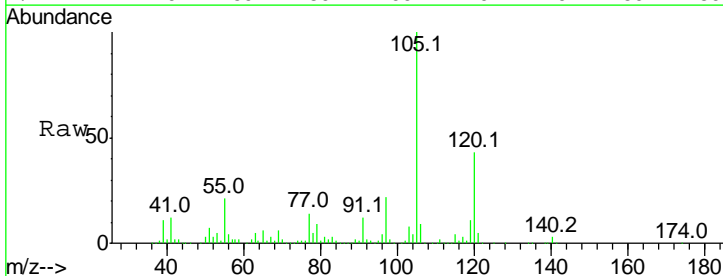
#73
 1,3,5-Trimethylbenzene
 Concen: 1.72 ppbv
 RT: 15.98
 Delta R.T. MSVOA_L
 Lab File: ClientSampled :
 MP-10
 Acq: 23 Feb 2022 19:43

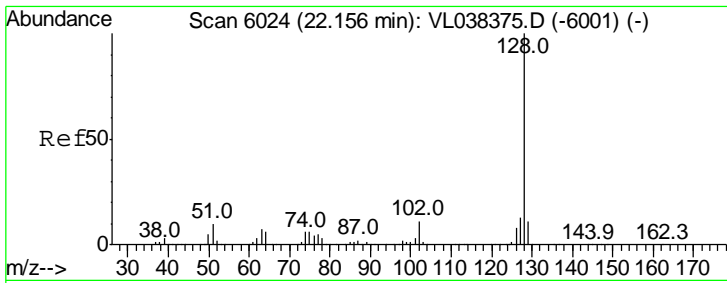
Tgt Ion	Resp	Lower	Upper
105	100		
120	44.8	36.6	55.0



#74
 1,2,4-Trimethylbenzene
 Concen: 4.78 ppbv
 RT: 16.74 min Scan# 4341
 Delta R.T. 0.01 min
 Lab File: VL038415.D
 Acq: 23 Feb 2022 19:43

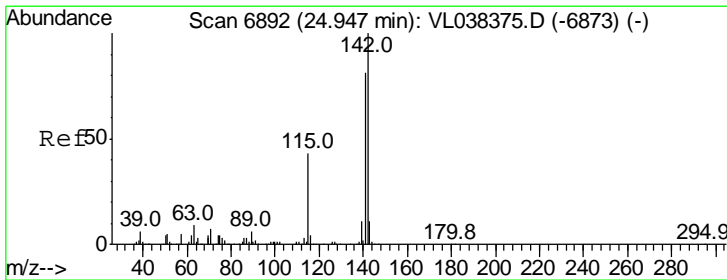
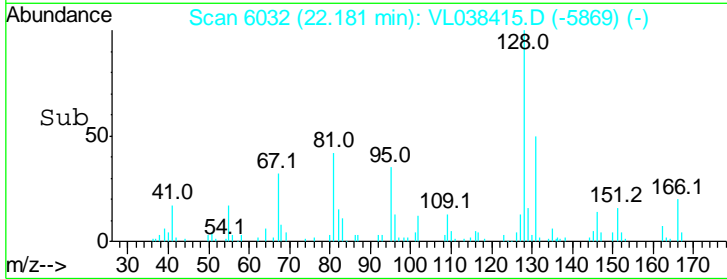
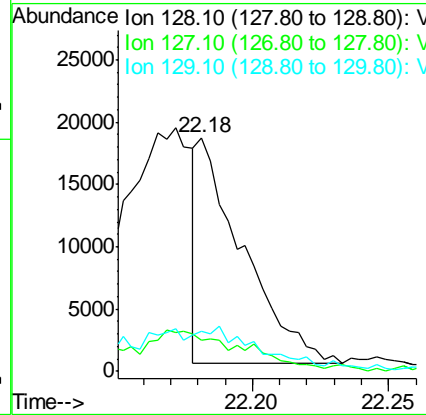
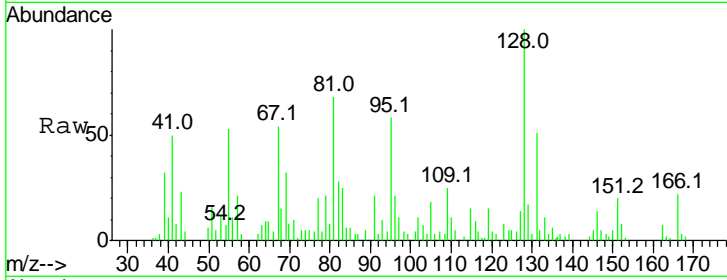
Tgt Ion	Resp	Lower	Upper
105	100		
120	42.9	38.2	57.4
91	11.4	42.7	64.1#
77	13.9	18.5	27.7#





#79
 Naphthalene
 Concen: 0.15 ppbv
 RT: 22.18
 Delta R.T. MSVOA_L
 Lab File: ClientSampled :
 Acq: 23 Feb 2022 19:43

Tgt Ion	Resp	Lower	Upper
128	100		
127	11.1	10.7	16.1
129	15.1	8.8	13.2#



#80
 Naphthalene, 2-methyl-
 Concen: 0.36 ppbv
 RT: 24.95 min Scan# 6893
 Delta R.T. 0.00 min
 Lab File: VL038415.D
 Acq: 23 Feb 2022 19:43

Tgt Ion	Resp	Lower	Upper
142	100		
141	95.2	69.8	104.6
115	135.3	33.0	49.6#

