

Data Path : Z:\voasrv\HPCHEM1\MSVOA_L\Data\VL022322\
 Data File : VL038414.D
 Acq On : 23 Feb 2022 19:04
 Operator : SY/AP
 Sample : N1607-02
 Misc : 400mL/MSVOA_L
 ALS Vial : 1 Sample Multiplier: 1

Instrument :
 MSVOA_L
 ClientSampleId :
 MP-6

Manual Integrations
 APPROVED

Reviewed By :Semsettin Yesilyurt 02/24/2022
 Supervised By :Mahesh Dadoda 02/25/2022

Quant Time: Feb 24 07:30:31 2022
 Quant Method : Z:\VOASRV\HPCHEM1\MSVOA_L\METHODS\VL022222AIR.M
 Quant Title : AIR ANALYSIS BY METHOD TO-15 Instrument: MSVOA_L Tue Feb 22 19:45:51 2022
 QLast Update : Tue Feb 22 19:45:51 2022
 Response via : Initial Calibration

Compound	R.T.	QIon	Response	Conc	Units	Dev(Min)	
Internal Standards							
1) Bromochloromethane	5.655	49	615168	10.000	ppbv	0.00	
33) 1,4-Difluorobenzene	7.163	114	2291889	10.000	ppbv	0.00	
55) Chlorobenzene-d5	12.070	117	1989375	10.000	ppbv	# 0.01	
System Monitoring Compounds							
68) 1-Bromo-4-Fluorobenzene	14.397	95	1577330	9.583	ppbv	0.00	
Spiked Amount	10.000	Range	65 - 135	Recovery	=	95.800%	
Target Compounds							
							Qvalue
4) Chloromethane	3.128	50	23196m	0.615	ppbv		
9) Propene	2.999	41	10843m	0.302	ppbv		
10) Heptane	8.108	43	420510	4.816	ppbv		99
11) Trichlorofluoromethane	4.002	101	43280m	0.464	ppbv		
12) 1,1,2-Trichlorotrifluo...	4.478	101	7123m	0.104	ppbv		
13) Ethanol	3.597	45	146821	41.018	ppbv		91
15) Acetone	3.842	43	408129	7.802	ppbv		94
17) tert-Butyl alcohol	4.282	59	334299	6.405	ppbv		97
19) Isopropyl Alcohol	3.996	45	149366m	4.931	ppbv		
20) Methylene Chloride	4.337	84	536126	20.684	ppbv		97
26) Hexane	5.674	57	457876	7.194	ppbv	#	43
29) Chloroform	5.739	83	31300	0.301	ppbv		88
30) Cyclohexane	7.121	84	175675	3.375	ppbv		91
34) 2-Butanone	5.234	43	32951	0.457	ppbv	#	86
35) Carbon Tetrachloride	7.005	117	6760m	0.042	ppbv		
36) Benzene	6.877	78	36587	0.181	ppbv		91
38) Trichloroethene	7.825	130	12167m	0.166	ppbv		
44) 2,2,4-Trimethylpentane	7.857	57	874952	2.523	ppbv	#	78
52) Tetrachloroethene	11.214	164	15849m	0.237	ppbv		
53) Toluene	9.790	91	415508	1.897	ppbv		99
57) Chlorobenzene	12.176	112	313864m	2.045	ppbv		
58) Ethyl Benzene	12.697	91	79545	0.292	ppbv		97
59) m/p-Xylene	12.954	91	145378	0.622	ppbv		88
60) o-Xylene	13.677	91	81088m	0.367	ppbv		
62) Isopropylbenzene	14.651	105	313730	1.058	ppbv		96
64) n-propylbenzene	15.548	120	49389	0.673	ppbv		71
65) tert-Butylbenzene	16.738	119	26277m	0.102	ppbv		
67) sec-Butylbenzene	17.275	105	208654	0.574	ppbv		98
69) p-Isopropyltoluene	17.635	119	61221m	0.214	ppbv		
70) n-Butylbenzene	18.545	91	104663m	0.354	ppbv		
71) 2-Chlorotoluene	15.542	91	268003m	1.176	ppbv		
72) 4-Ethyltoluene	15.825	105	292417m	1.202	ppbv		
73) 1,3,5-Trimethylbenzene	15.979	105	773133	3.499	ppbv		97
74) 1,2,4-Trimethylbenzene	16.748	105	142040m	0.609	ppbv		
79) Naphthalene	22.172	128	37702m	0.298	ppbv		

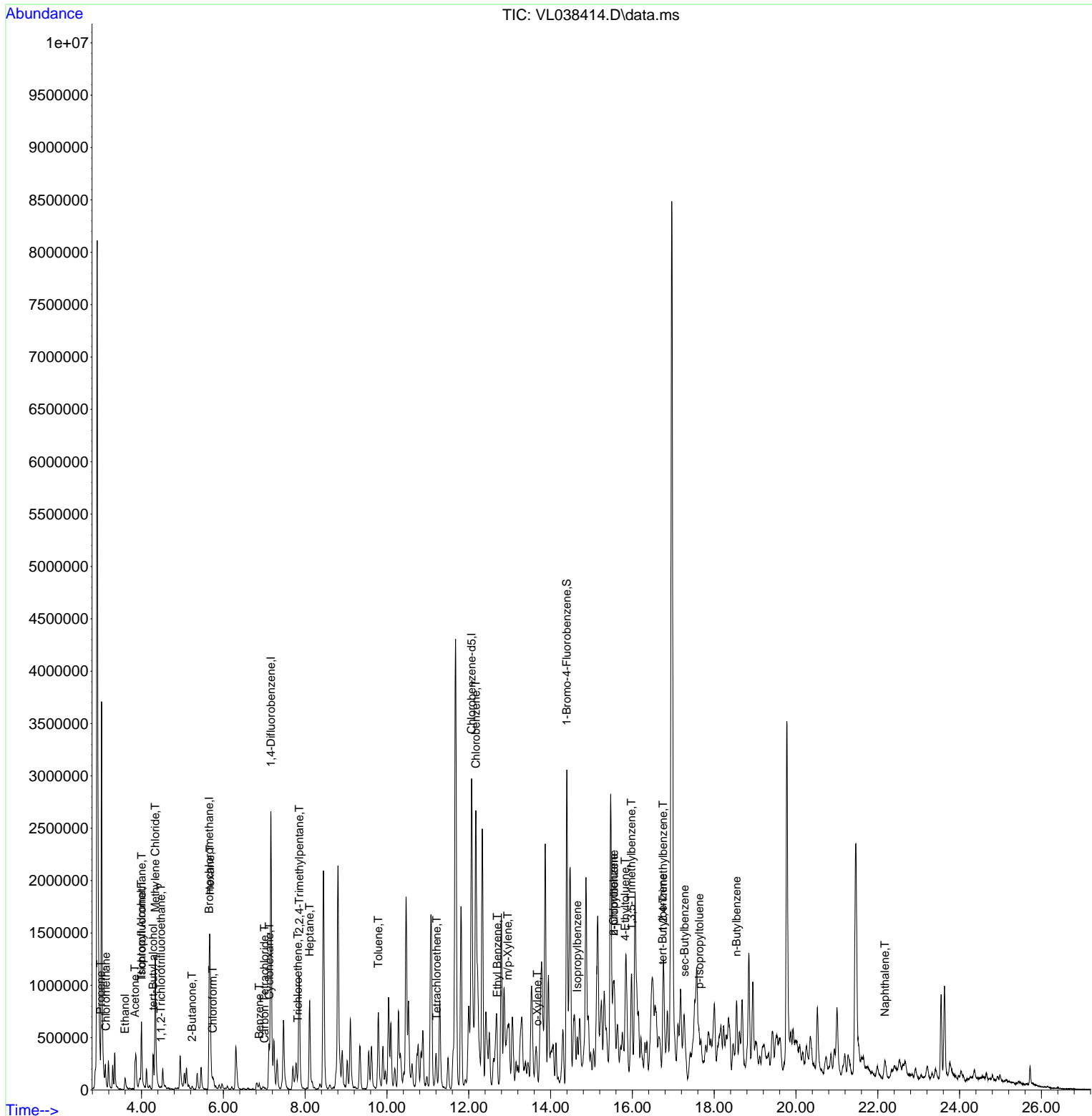
(#) = qualifier out of range (m) = manual integration (+) = signals summed

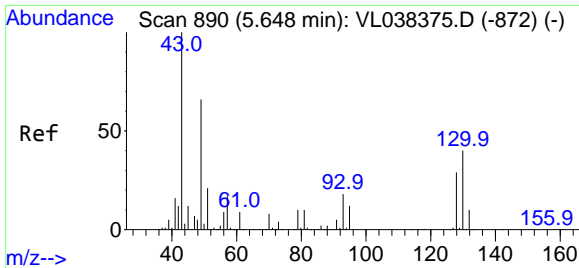
Data Path : Z:\voasrv\HPCHEM1\MSVOA_L\Data\VL022322\
 Data File : VL038414.D
 Acq On : 23 Feb 2022 19:04
 Operator : SY/AP
 Sample : N1607-02
 Misc : 400mL/MSVOA_L
 ALS Vial : 1 Sample Multiplier: 1

Instrument :
 MSVOA_L
ClientSampleId :
 MP-6

Quant Time: Feb 24 07:30:31 2022
 Quant Method : Z:\VOASRV\HPCHEM1\MSVOA_L\METHODS\VL022222AIR.M
 Quant Title : AIR ANALYSIS BY METHOD TO-15 Instrument: MSVOA_LTue Feb
 QLast Update : Tue Feb 22 19:45:51 2022
 Response via : Initial Calibration

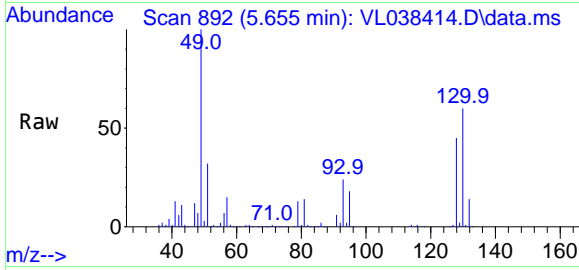
Manual Integrations
APPROVED
 Reviewed By :Semsettin Yesilyurt 02/24/2022
 Supervised By :Mahesh Dadoda 02/25/2022





#1
 Bromochloromethane
 Concen: 10.000 ppbv
 RT: 5.655 min Scan# 890
 Delta R.T. 0.007 min
 Lab File: VL038414.D
 Acq: 23 Feb 2022 19:04

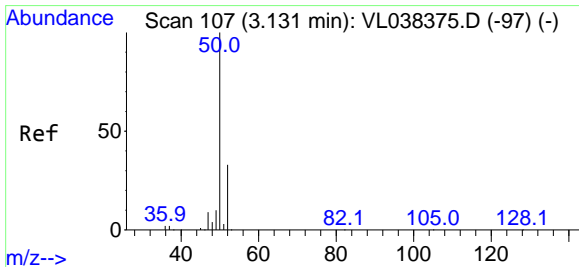
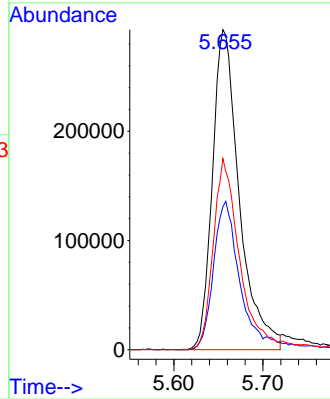
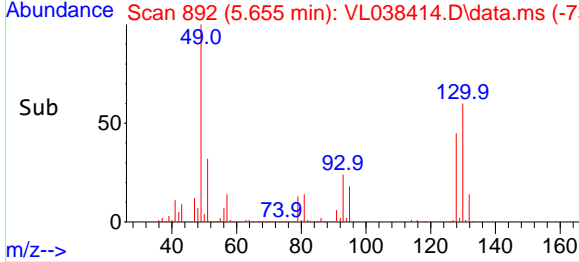
Instrument :
 MSVOA_L
 ClientSampleId :
 MP-6



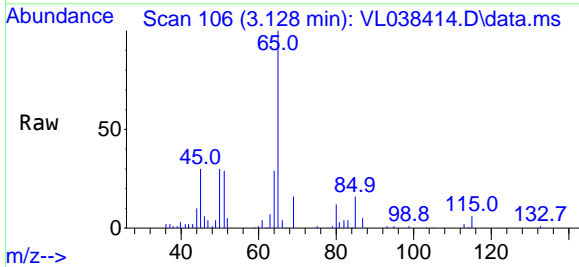
Tgt Ion: 49 Resp: 61516
 Ion Ratio Lower Upper
 49 100
 128 47.3 24.3 72.9
 130 60.6 30.1 90.5

Manual Integrations
 APPROVED

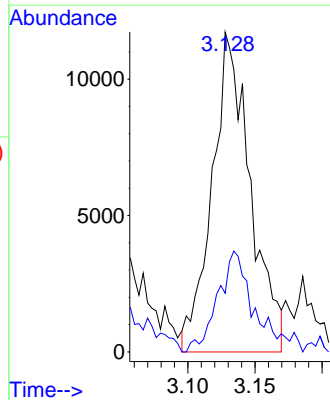
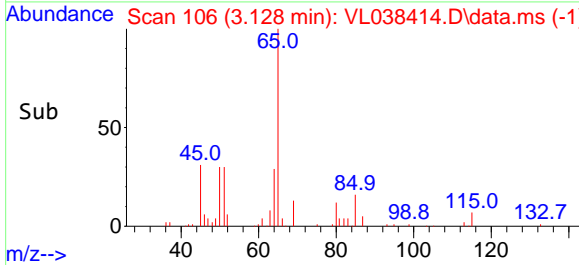
Reviewed By :Semsettin Yesilyurt 02/24/2022
 Supervised By :Mahesh Dadoda 02/25/2022

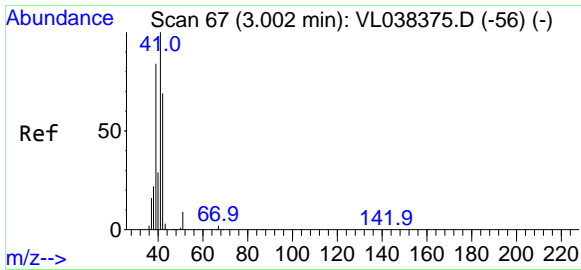


#4
 Chloromethane
 Concen: 0.615 ppbv m
 RT: 3.128 min Scan# 106
 Delta R.T. -0.003 min
 Lab File: VL038414.D
 Acq: 23 Feb 2022 19:04



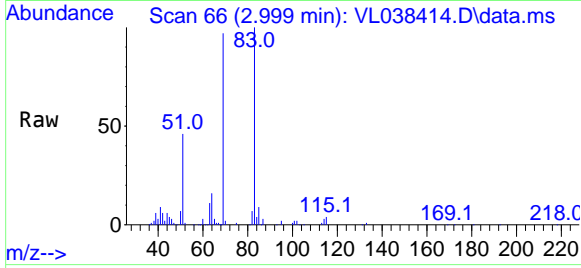
Tgt Ion: 50 Resp: 23196
 Ion Ratio Lower Upper
 50 100
 52 18.4 26.5 39.7#





#9
 Propene
 Concen: 0.302 ppbv m
 RT: 2.999 min Scan# 6
 Delta R.T. -0.003 min
 Lab File: VL038414.D
 Acq: 23 Feb 2022 19:04

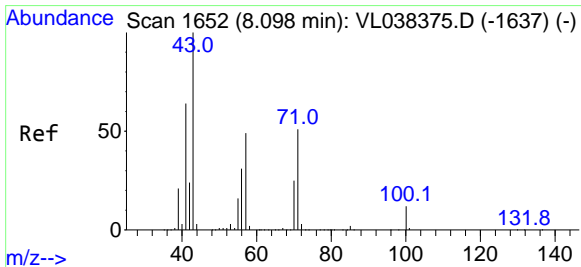
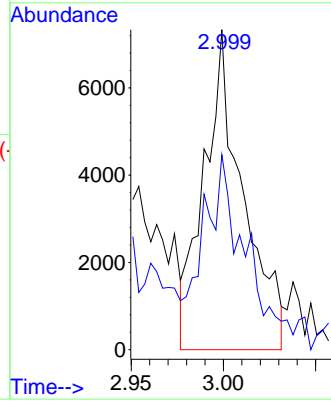
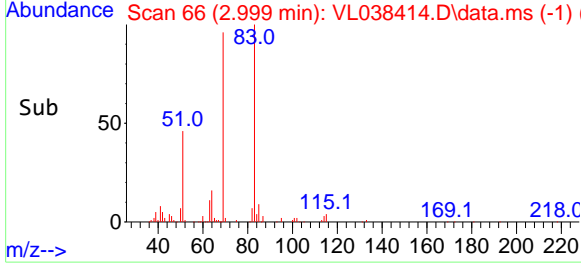
Instrument :
 MSVOA_L
 ClientSampleId :
 MP-6



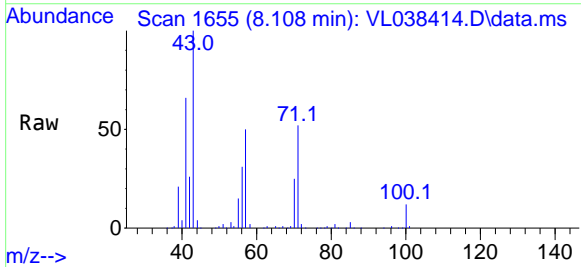
Tgt Ion: 41 Resp: 1084
 Ion Ratio Lower Upper
 41 100
 42 73.0 54.6 82.0

Manual Integrations
APPROVED

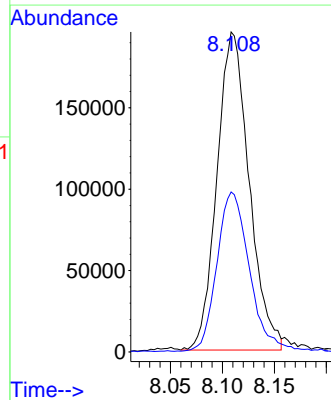
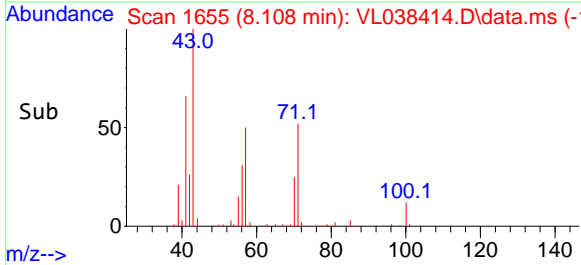
Reviewed By :Semsettin Yesilyurt 02/24/2022
 Supervised By :Mahesh Dadoda 02/25/2022

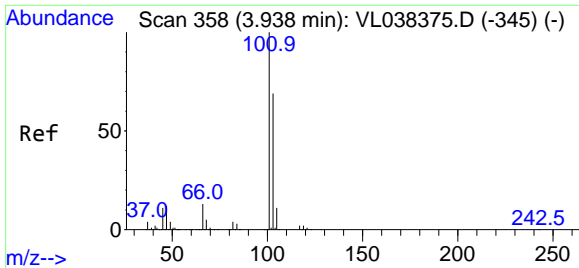


#10
 Heptane
 Concen: 4.816 ppbv
 RT: 8.108 min Scan# 1655
 Delta R.T. 0.010 min
 Lab File: VL038414.D
 Acq: 23 Feb 2022 19:04



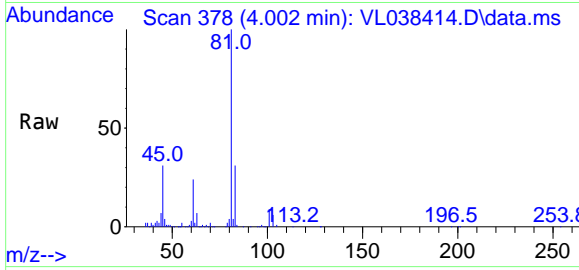
Tgt Ion: 43 Resp: 420510
 Ion Ratio Lower Upper
 43 100
 57 50.8 39.8 59.8





#11
 Trichlorofluoromethane
 Concen: 0.464 ppbv m
 RT: 4.002 min Scan# 31
 Delta R.T. 0.065 min
 Lab File: VL038414.D
 Acq: 23 Feb 2022 19:04

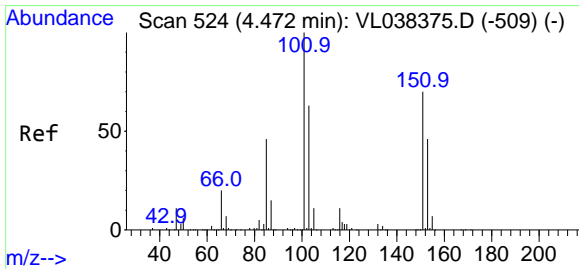
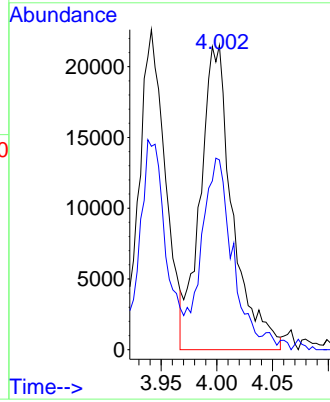
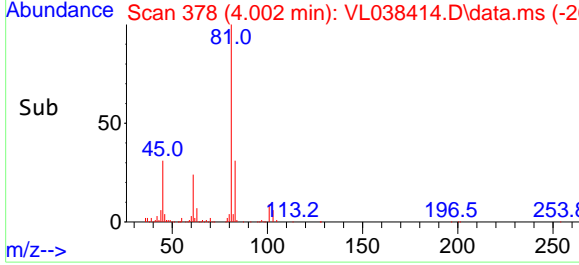
Instrument :
 MSVOA_L
 ClientSampleId :
 MP-6



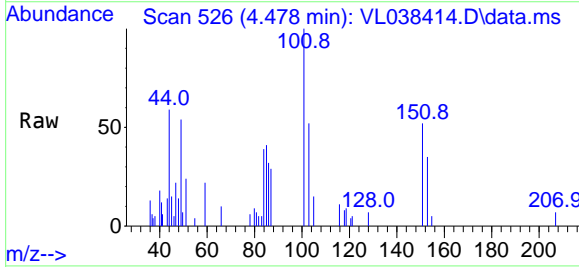
Tgt Ion:101 Resp: 43280
 Ion Ratio Lower Upper
 101 100
 103 62.4 55.0 82.4

Manual Integrations
APPROVED

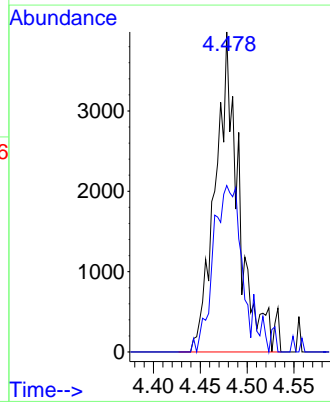
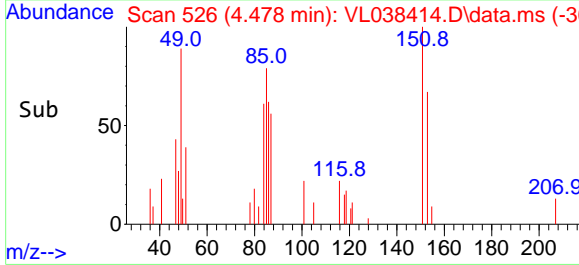
Reviewed By :Semsettin Yesilyurt 02/24/2022
 Supervised By :Mahesh Dadoda 02/25/2022

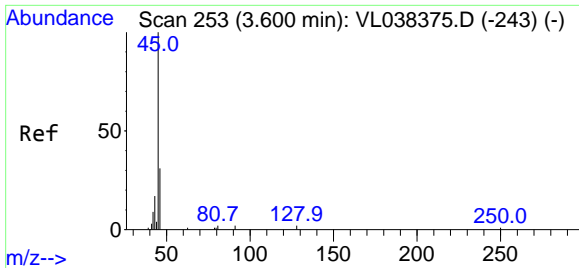


#12
 1,1,2-Trichlorotrifluoroethane
 Concen: 0.104 ppbv m
 RT: 4.478 min Scan# 526
 Delta R.T. 0.007 min
 Lab File: VL038414.D
 Acq: 23 Feb 2022 19:04



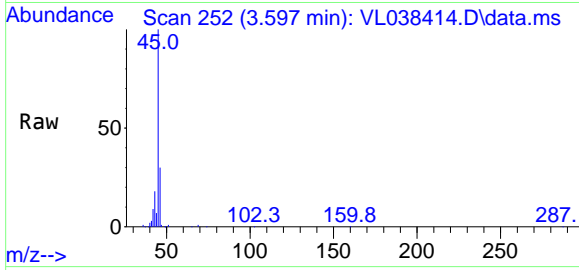
Tgt Ion:101 Resp: 7123
 Ion Ratio Lower Upper
 101 100
 151 65.3 55.9 83.9





#13
 Ethanol
 Concen: 41.018 ppbv
 RT: 3.597 min Scan# 21
 Delta R.T. -0.003 min
 Lab File: VL038414.D
 Acq: 23 Feb 2022 19:04

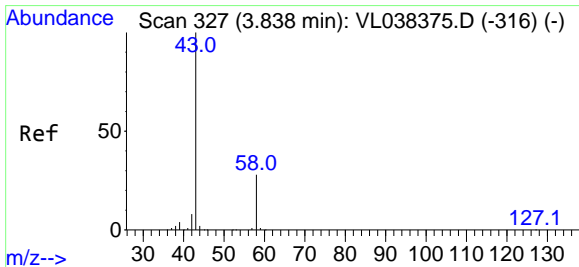
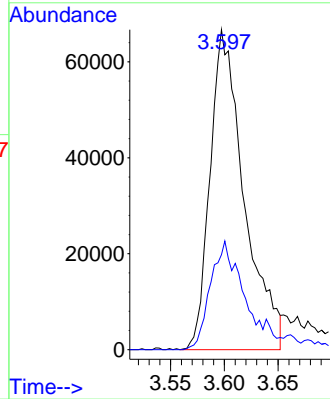
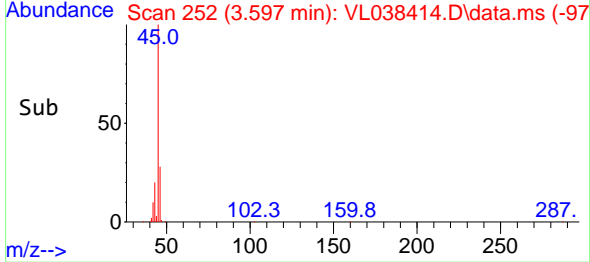
Instrument :
 MSVOA_L
 ClientSampleId :
 MP-6



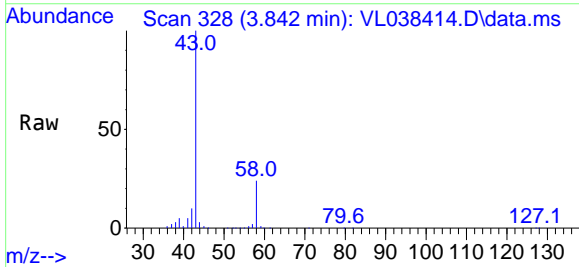
Tgt Ion: 45 Resp: 14682
 Ion Ratio Lower Upper
 45 100
 46 39.3 18.2 72.8

Manual Integrations
 APPROVED

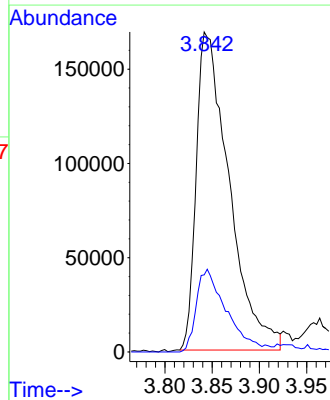
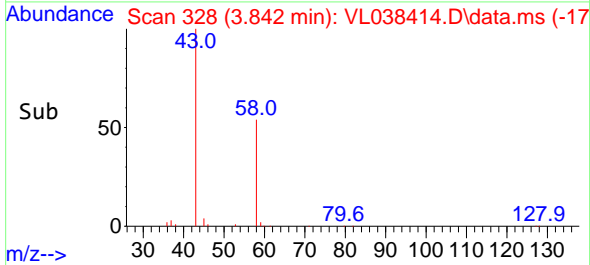
Reviewed By :Semsettin Yesilyurt 02/24/2022
 Supervised By :Mahesh Dadoda 02/25/2022

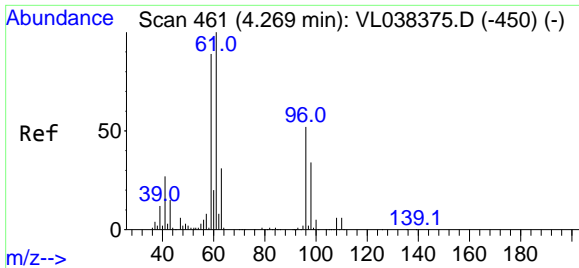


#15
 Acetone
 Concen: 7.802 ppbv
 RT: 3.842 min Scan# 328
 Delta R.T. 0.003 min
 Lab File: VL038414.D
 Acq: 23 Feb 2022 19:04



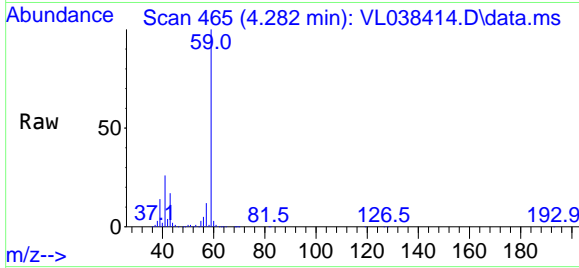
Tgt Ion: 43 Resp: 408129
 Ion Ratio Lower Upper
 43 100
 58 24.1 21.7 32.5





#17
 tert-Butyl alcohol
 Concen: 6.405 ppbv
 RT: 4.282 min Scan# 40
 Delta R.T. 0.013 min
 Lab File: VL038414.D
 Acq: 23 Feb 2022 19:04

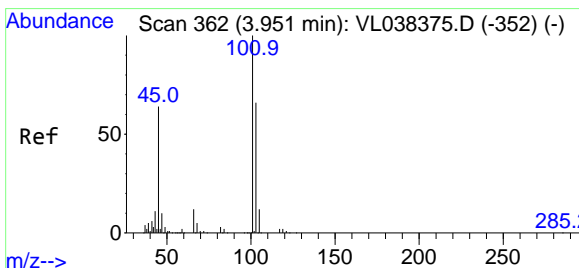
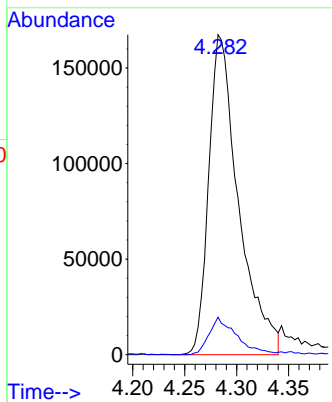
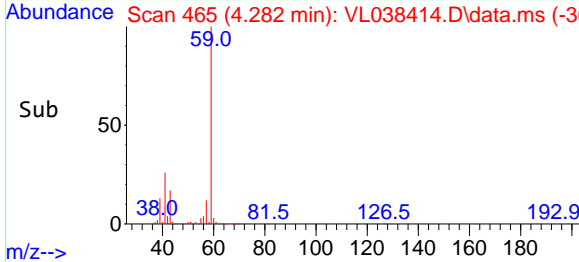
Instrument : MSVOA_L
 ClientSampleId : MP-6



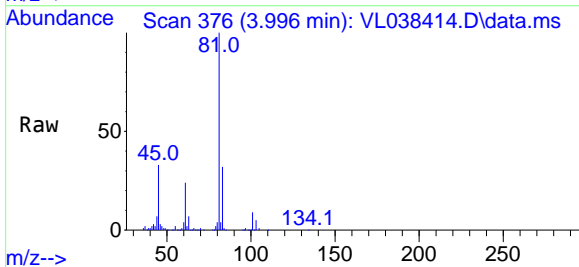
Tgt Ion: 59 Resp: 334299
 Ion Ratio Lower Upper
 59 100
 57 11.7 8.4 12.6

Manual Integrations
APPROVED

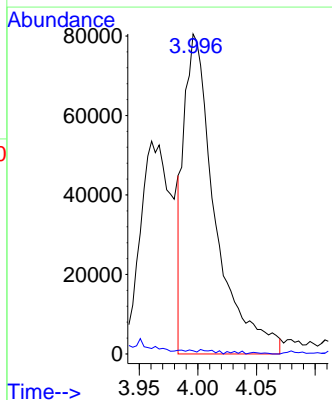
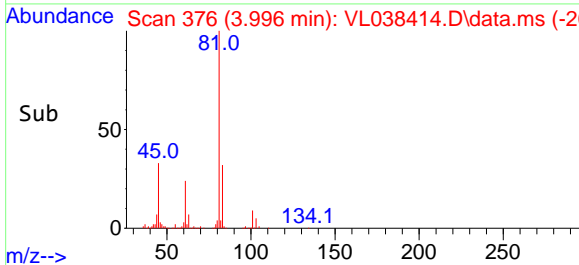
Reviewed By :Semsettin Yesilyurt 02/24/2022
 Supervised By :Mahesh Dadoda 02/25/2022

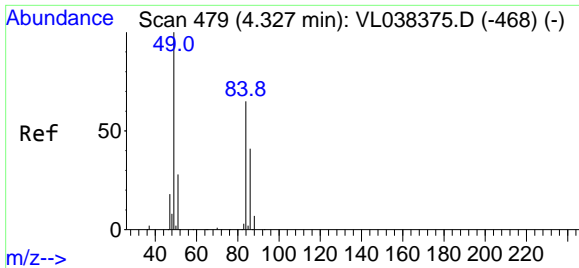


#19
 Isopropyl Alcohol
 Concen: 4.931 ppbv m
 RT: 3.996 min Scan# 376
 Delta R.T. 0.045 min
 Lab File: VL038414.D
 Acq: 23 Feb 2022 19:04



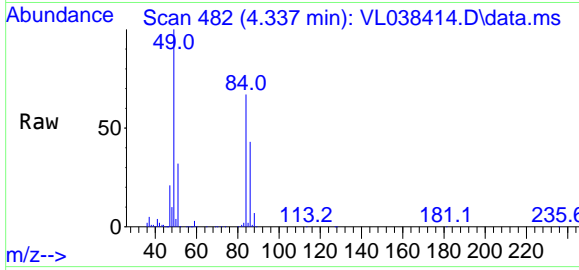
Tgt Ion: 45 Resp: 149366
 Ion Ratio Lower Upper
 45 100
 58 8.5 1.8 2.8#





#20
Methylene Chloride
Concen: 20.684 ppbv
RT: 4.337 min Scan# 482
Delta R.T. 0.010 min
Lab File: VL038414.D
Acq: 23 Feb 2022 19:04

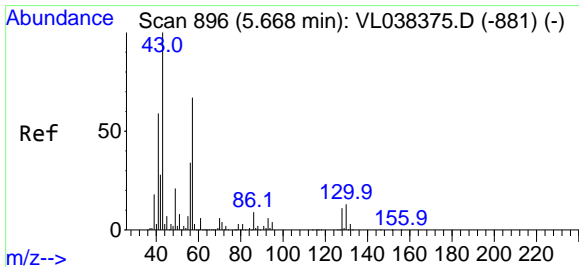
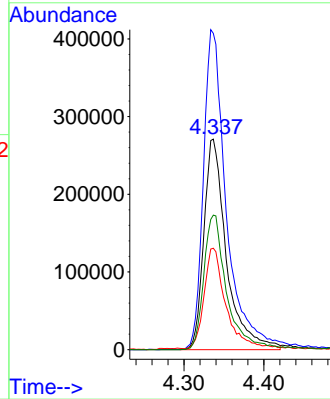
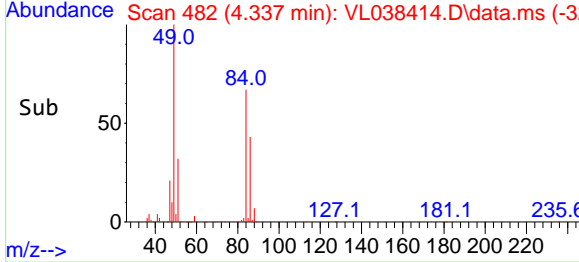
Instrument : MSVOA_L
ClientSampleId : MP-6



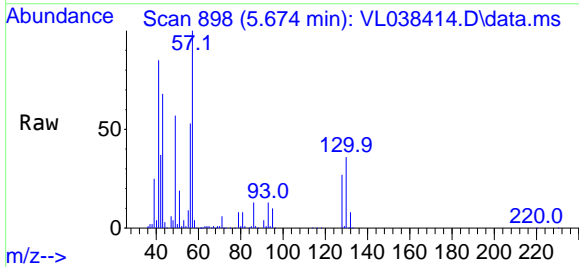
Tgt Ion: 84 Resp: 536120
Ion Ratio Lower Upper
84 100
49 150.0 122.4 183.6
51 47.6 33.3 49.9
86 63.9 50.7 76.1

Manual Integrations
APPROVED

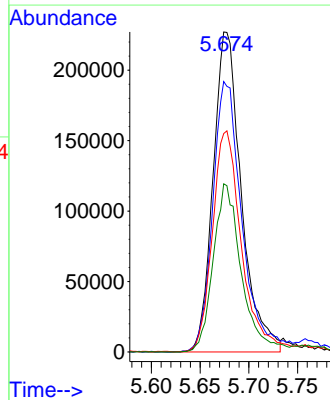
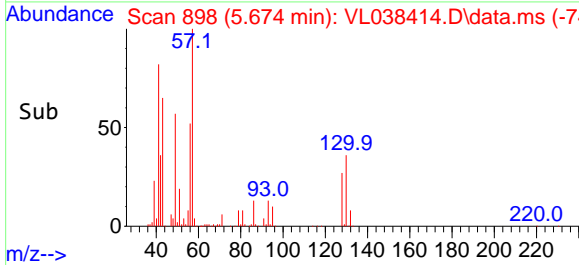
Reviewed By :Semsettin Yesilyurt 02/24/2022
Supervised By :Mahesh Dadoda 02/25/2022

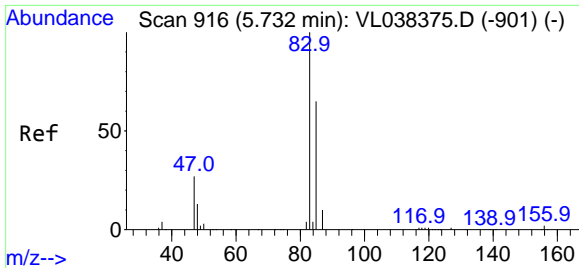


#26
Hexane
Concen: 7.194 ppbv
RT: 5.674 min Scan# 898
Delta R.T. 0.007 min
Lab File: VL038414.D
Acq: 23 Feb 2022 19:04



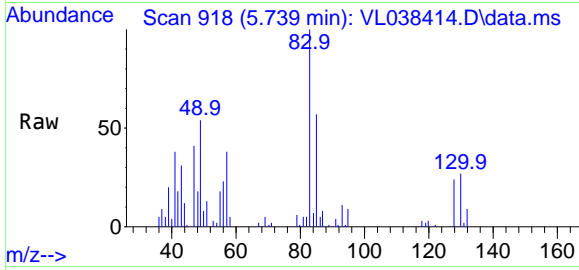
Tgt Ion: 57 Resp: 457876
Ion Ratio Lower Upper
57 100
41 91.5 73.1 109.7
43 73.7 181.0 271.4#
56 52.3 43.4 65.0





#29
 Chloroform
 Concen: 0.301 ppbv
 RT: 5.739 min Scan# 916
 Delta R.T. 0.007 min
 Lab File: VL038414.D
 Acq: 23 Feb 2022 19:04

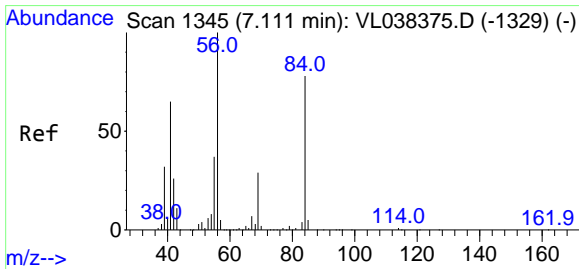
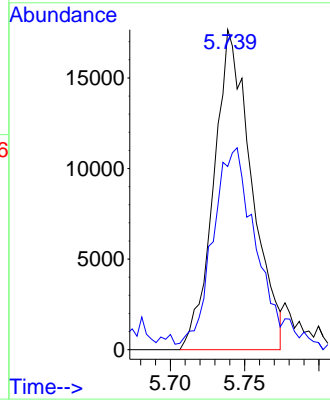
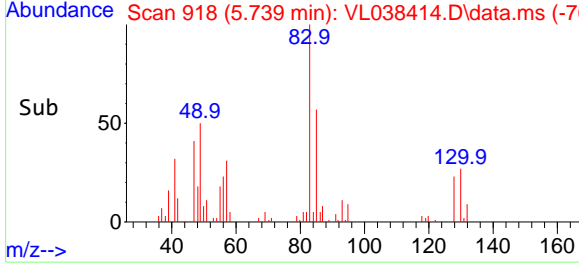
Instrument : MSVOA_L
 ClientSampleId : MP-6



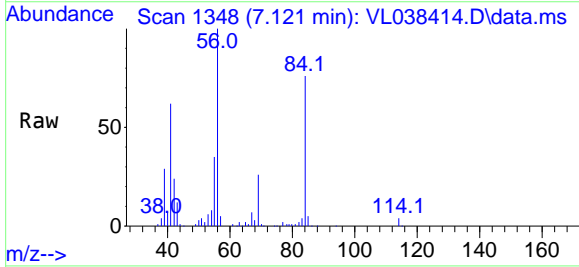
Tgt Ion: 83 Resp: 31300
 Ion Ratio Lower Upper
 83 100
 85 55.2 51.6 77.4

Manual Integrations
APPROVED

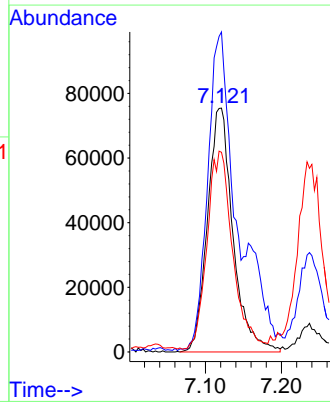
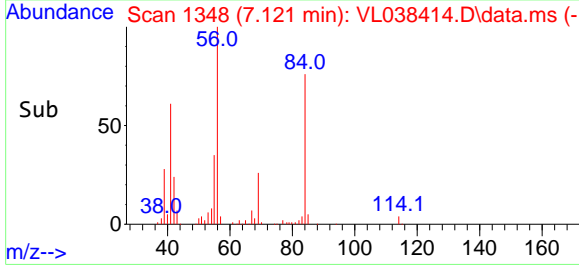
Reviewed By :Semsettin Yesilyurt 02/24/2022
 Supervised By :Mahesh Dadoda 02/25/2022

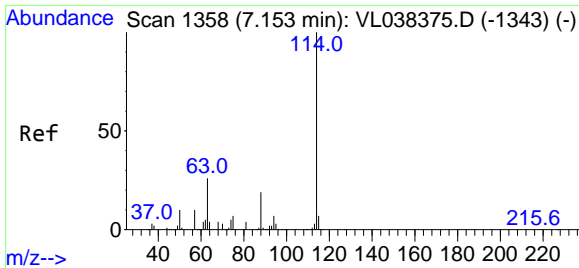


#30
 Cyclohexane
 Concen: 3.375 ppbv
 RT: 7.121 min Scan# 1348
 Delta R.T. 0.010 min
 Lab File: VL038414.D
 Acq: 23 Feb 2022 19:04



Tgt Ion: 84 Resp: 175675
 Ion Ratio Lower Upper
 84 100
 56 153.9 116.2 174.4
 41 81.1 74.3 111.5





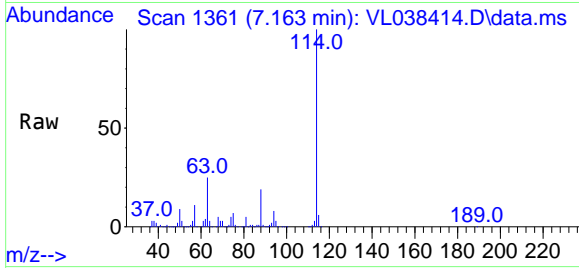
#33
 1,4-Difluorobenzene
 Concen: 10.000 ppbv
 RT: 7.163 min Scan# 111
 Delta R.T. 0.010 min
 Lab File: VL038414.D
 Acq: 23 Feb 2022 19:04

Instrument :

MSVOA_L

ClientSampleId :

MP-6

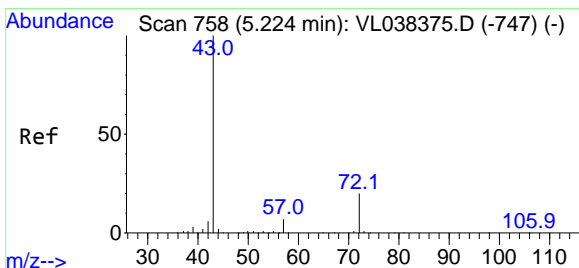
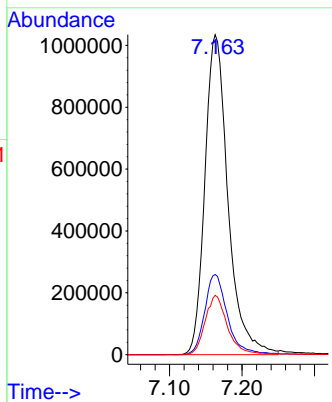
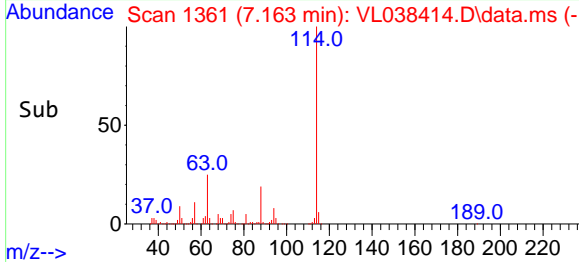


Tgt Ion:114 Resp: 2291889
 Ion Ratio Lower Upper
 114 100
 63 24.9 22.2 33.2
 88 18.2 15.2 22.8

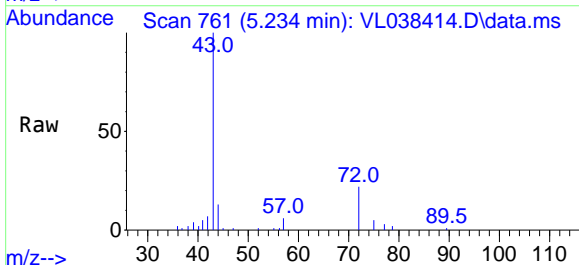
Manual Integrations

APPROVED

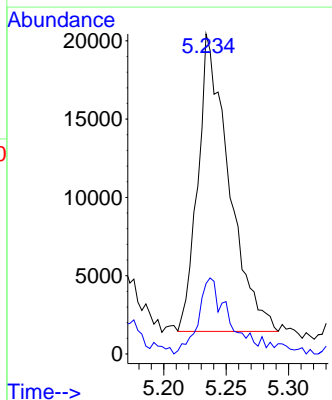
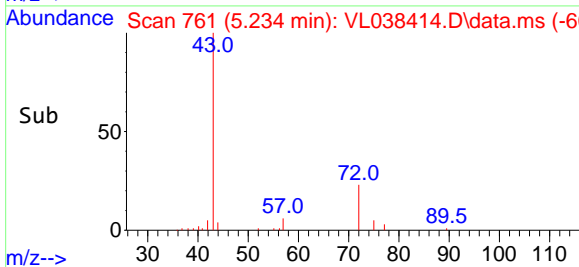
Reviewed By :Semsettin Yesilyurt 02/24/2022
 Supervised By :Mahesh Dadoda 02/25/2022

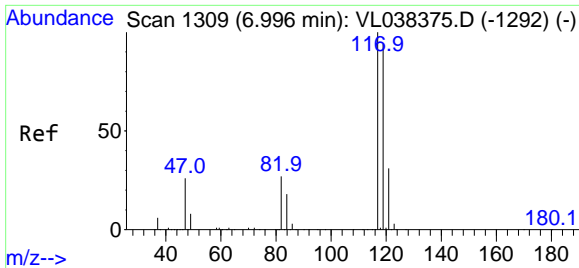


#34
 2-Butanone
 Concen: 0.457 ppbv
 RT: 5.234 min Scan# 761
 Delta R.T. 0.010 min
 Lab File: VL038414.D
 Acq: 23 Feb 2022 19:04



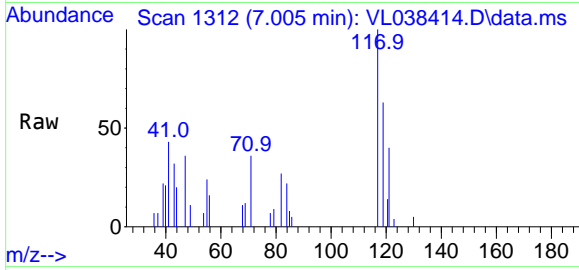
Tgt Ion: 43 Resp: 32951
 Ion Ratio Lower Upper
 43 100
 72 28.2 17.4 26.2#





#35
 Carbon Tetrachloride
 Concen: 0.042 ppbv m
 RT: 7.005 min Scan# 111
 Delta R.T. 0.010 min
 Lab File: VL038414.D
 Acq: 23 Feb 2022 19:04

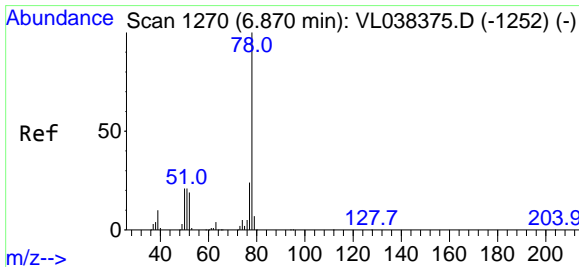
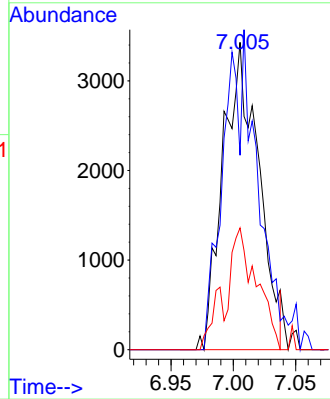
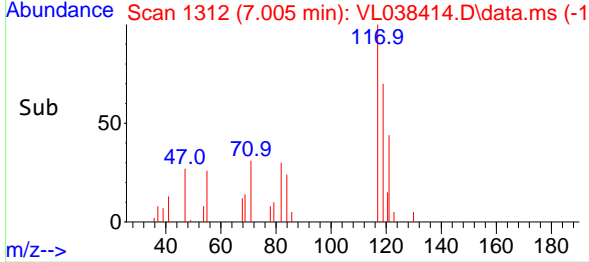
Instrument : MSVOA_L
 ClientSampleId : MP-6



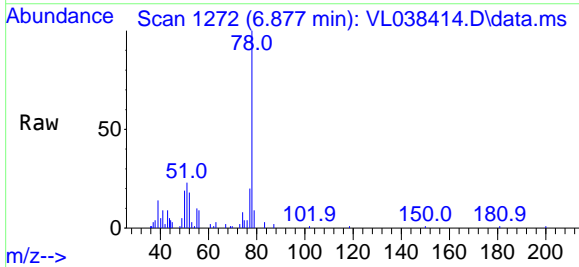
Tgt Ion:117 Resp: 6760
 Ion Ratio Lower Upper
 117 100
 119 63.2 74.9 112.3
 121 39.6 24.8 37.2

Manual Integrations
 APPROVED

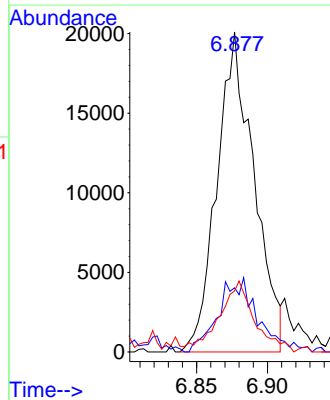
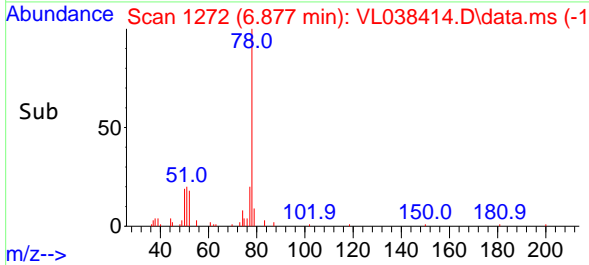
Reviewed By :Semsettin Yesilyurt 02/24/2022
 Supervised By :Mahesh Dadoda 02/25/2022

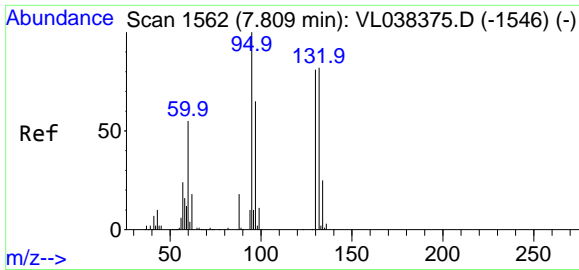


#36
 Benzene
 Concen: 0.181 ppbv
 RT: 6.877 min Scan# 1272
 Delta R.T. 0.007 min
 Lab File: VL038414.D
 Acq: 23 Feb 2022 19:04



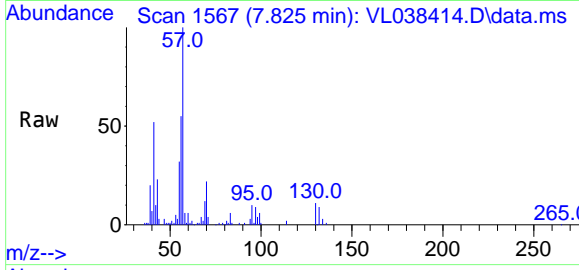
Tgt Ion: 78 Resp: 36587
 Ion Ratio Lower Upper
 78 100
 77 19.1 19.0 28.6
 50 17.3 16.6 24.8





#38
 Trichloroethene
 Concen: 0.166 ppbv m
 RT: 7.825 min Scan# 1567
 Delta R.T. 0.016 min
 Lab File: VL038414.D
 Acq: 23 Feb 2022 19:04

Instrument : MSVOA_L
 ClientSampleID : MP-6

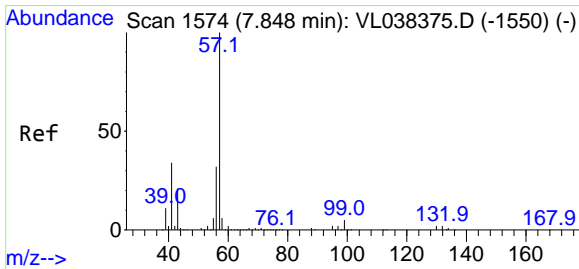
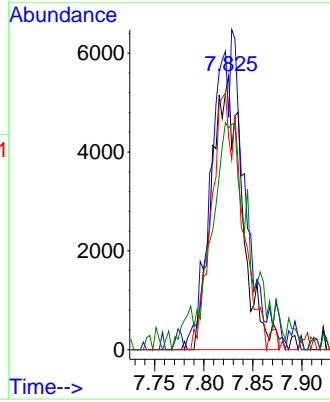
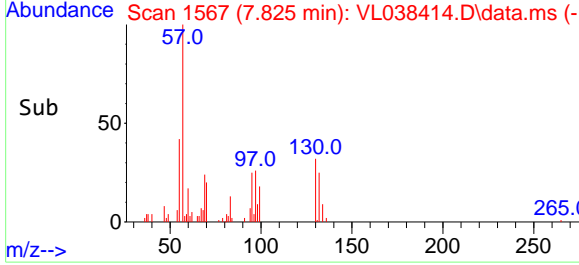


Tgt Ion:130 Resp: 1216

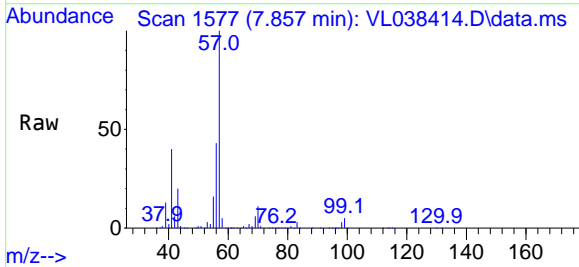
Ion	Ratio	Lower	Upper
130	100		
95	84.8	98.1	147.1
132	77.5	80.3	120.5
97	81.0	63.5	95.3

Manual Integrations
 APPROVED

Reviewed By :Semsettin Yesilyurt 02/24/2022
 Supervised By :Mahesh Dadoda 02/25/2022

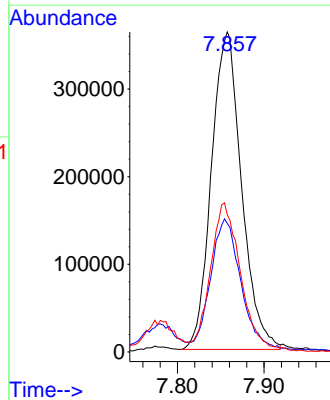
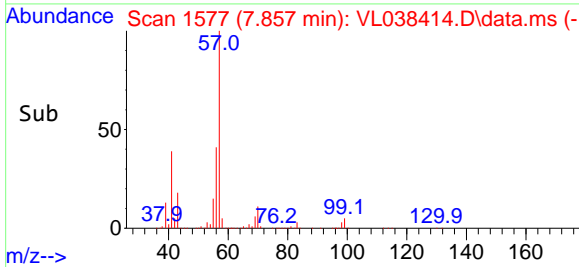


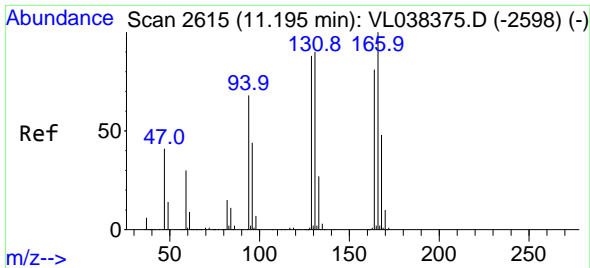
#44
 2,2,4-Trimethylpentane
 Concen: 2.523 ppbv
 RT: 7.857 min Scan# 1577
 Delta R.T. 0.010 min
 Lab File: VL038414.D
 Acq: 23 Feb 2022 19:04



Tgt Ion: 57 Resp: 874952

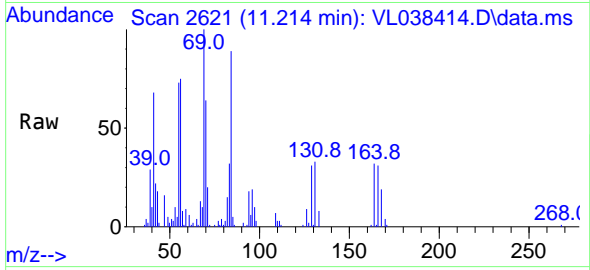
Ion	Ratio	Lower	Upper
57	100		
41	42.0	26.6	39.8#
56	47.8	25.0	37.6#





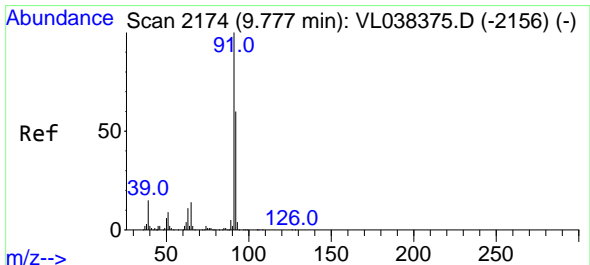
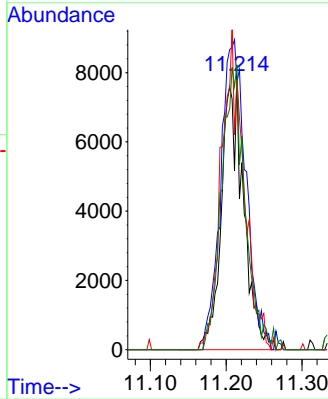
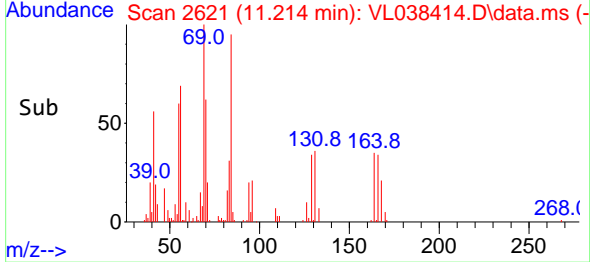
#52
 Tetrachloroethene
 Concen: 0.237 ppbv m
 RT: 11.214 min Scan# 2
 Delta R.T. 0.020 min
 Lab File: VL038414.D
 Acq: 23 Feb 2022 19:04

Instrument : MSVOA_L
 ClientSampleId : MP-6

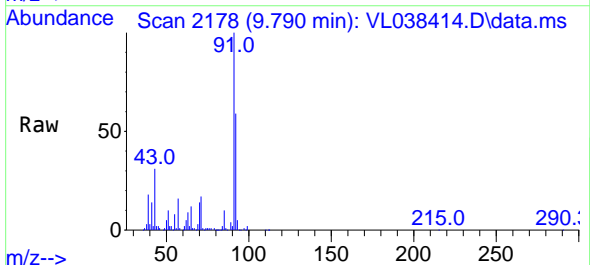


Tgt Ion:164 Resp: 15849
 Ion Ratio Lower Upper
 164 100
 166 97.6 98.6 148.0
 129 98.6 86.9 130.3
 131 104.1 88.6 133.0

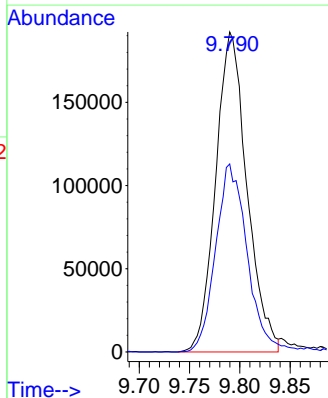
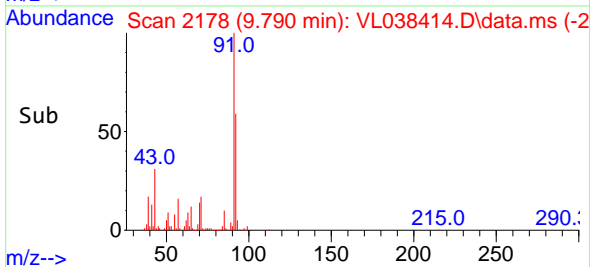
Manual Integrations
APPROVED
 Reviewed By :Semsettin Yesilyurt 02/24/2022
 Supervised By :Mahesh Dadoda 02/25/2022

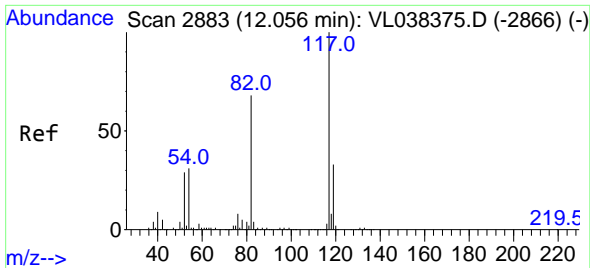


#53
 Toluene
 Concen: 1.897 ppbv
 RT: 9.790 min Scan# 2178
 Delta R.T. 0.013 min
 Lab File: VL038414.D
 Acq: 23 Feb 2022 19:04



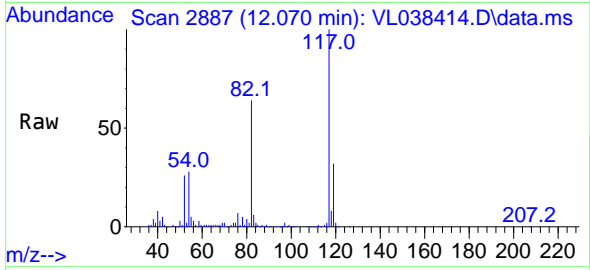
Tgt Ion: 91 Resp: 415508
 Ion Ratio Lower Upper
 91 100
 92 60.8 48.2 72.4





#55
 Chlorobenzene-d5
 Concen: 10.000 ppbv
 RT: 12.070 min Scan# 2887
 Delta R.T. 0.013 min
 Lab File: VL038414.D
 Acq: 23 Feb 2022 19:04

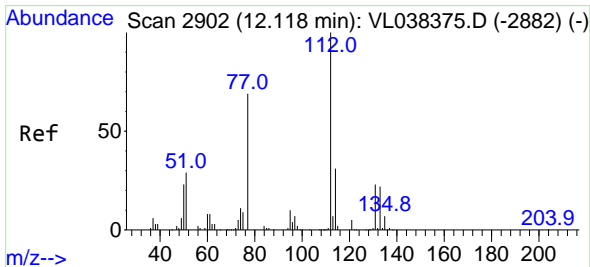
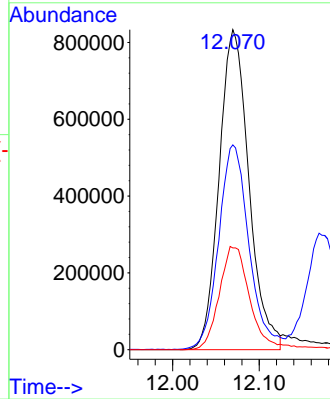
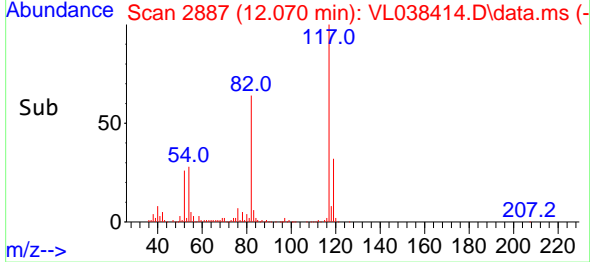
Instrument : MSVOA_L
 ClientSampleId : MP-6



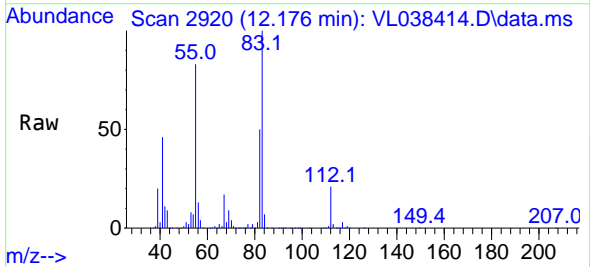
Tgt Ion:117 Resp: 198937
 Ion Ratio Lower Upper
 117 100
 82 65.7 54.9 82.3
 119 34.5 46.1 69.1

Manual Integrations
 APPROVED

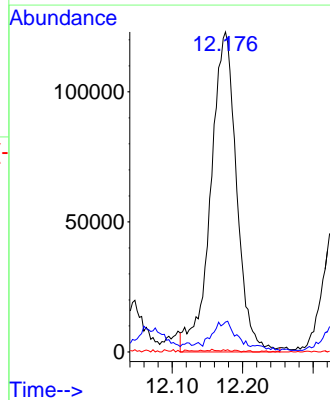
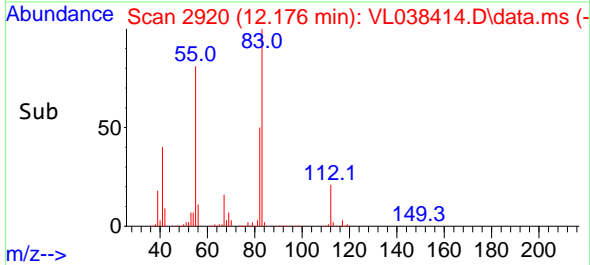
Reviewed By :Semsettin Yesilyurt 02/24/2022
 Supervised By :Mahesh Dadoda 02/25/2022

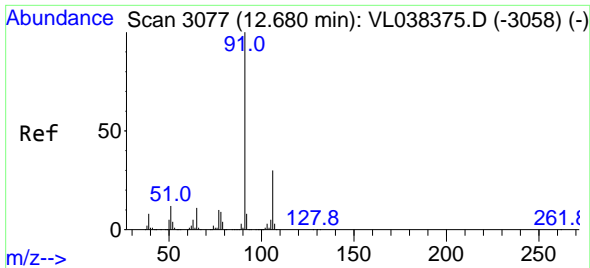


#57
 Chlorobenzene
 Concen: 2.045 ppbv m
 RT: 12.176 min Scan# 2920
 Delta R.T. 0.058 min
 Lab File: VL038414.D
 Acq: 23 Feb 2022 19:04



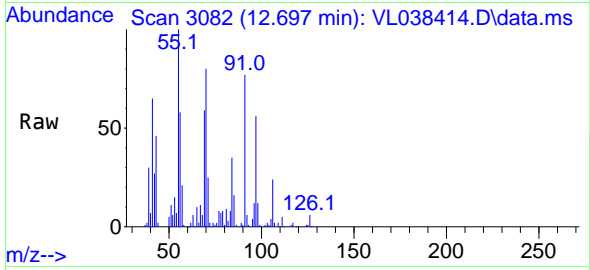
Tgt Ion:112 Resp: 313864
 Ion Ratio Lower Upper
 112 100
 77 9.3 55.2 82.8#
 114 0.5 27.9 34.1#





#58
 Ethyl Benzene
 Concen: 0.292 ppbv
 RT: 12.697 min Scan# 3077
 Delta R.T. 0.016 min
 Lab File: VL038414.D
 Acq: 23 Feb 2022 19:04

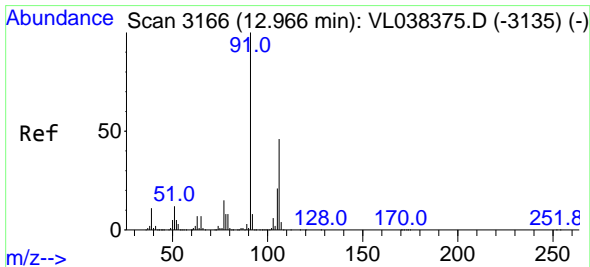
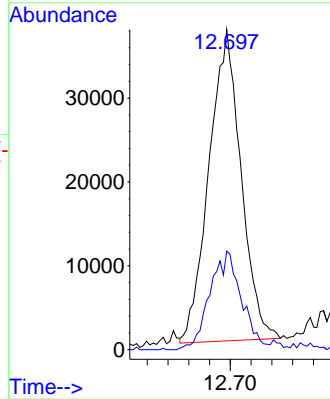
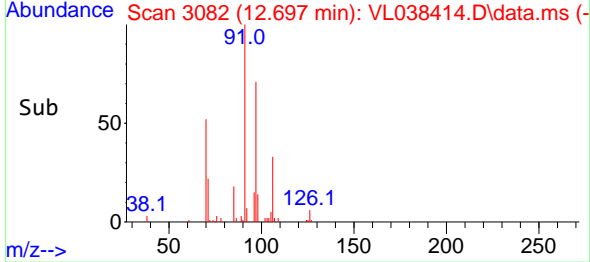
Instrument : MSVOA_L
 ClientSampleId : MP-6



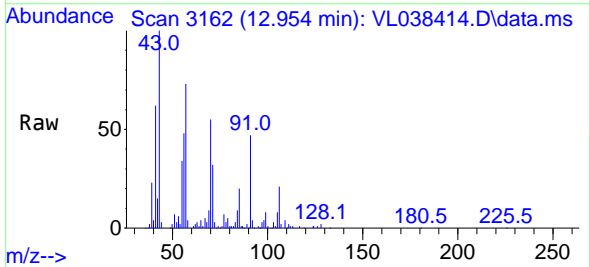
Tgt Ion: 91 Resp: 7954
 Ion Ratio Lower Upper
 91 100
 106 31.5 24.0 36.0

Manual Integrations
 APPROVED

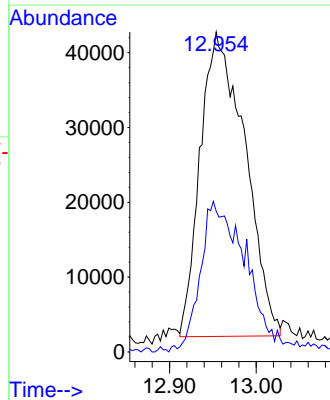
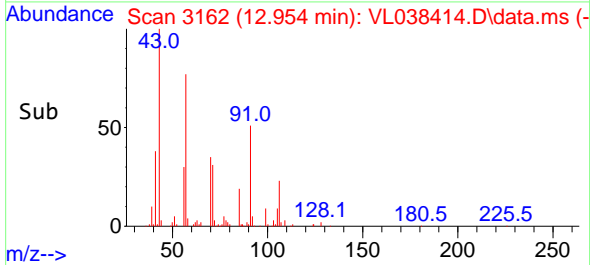
Reviewed By :Semsettin Yesilyurt 02/24/2022
 Supervised By :Mahesh Dadoda 02/25/2022

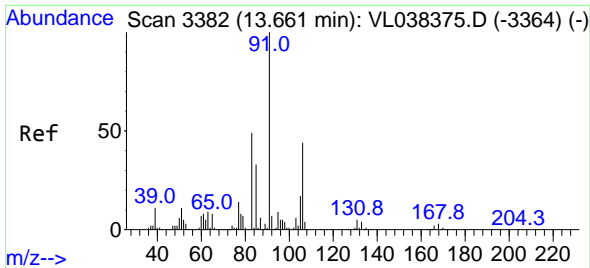


#59
 m/p-Xylene
 Concen: 0.622 ppbv
 RT: 12.954 min Scan# 3162
 Delta R.T. -0.013 min
 Lab File: VL038414.D
 Acq: 23 Feb 2022 19:04



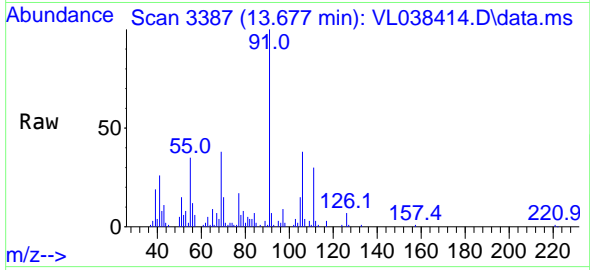
Tgt Ion: 91 Resp: 145378
 Ion Ratio Lower Upper
 91 100
 106 51.0 34.4 51.6





#60
 o-Xylene
 Concen: 0.367 ppbv m
 RT: 13.677 min Scan# 31
 Delta R.T. 0.016 min
 Lab File: VL038414.D
 Acq: 23 Feb 2022 19:04

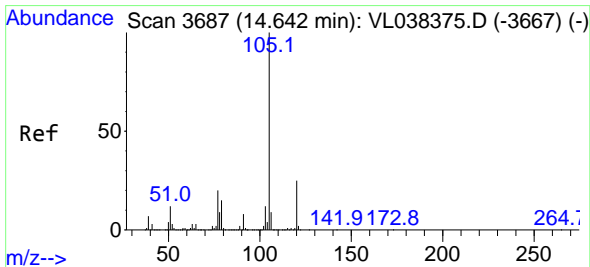
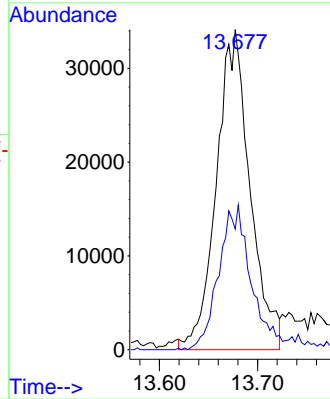
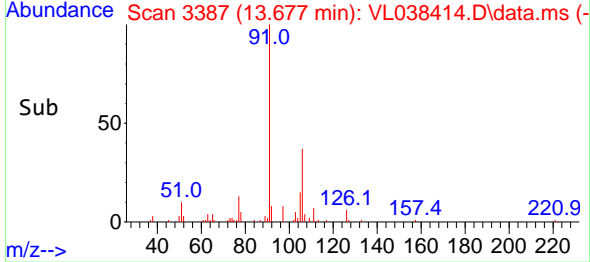
Instrument :
 MSVOA_L
 ClientSampleId :
 MP-6



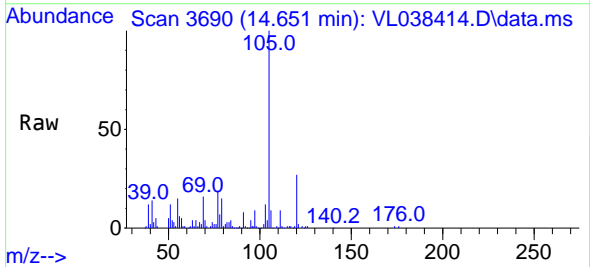
Tgt Ion: 91 Resp: 81088
 Ion Ratio Lower Upper
 91 100
 106 46.8 21.9 65.5

Manual Integrations
APPROVED

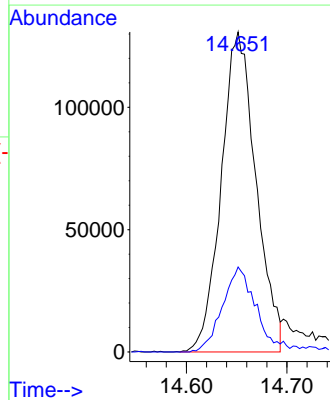
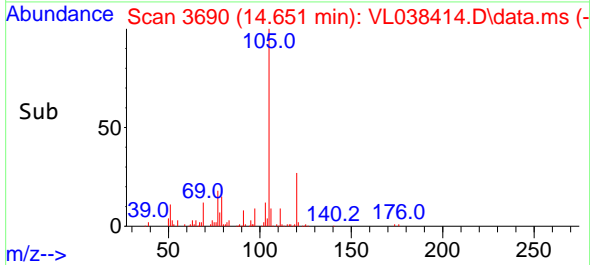
Reviewed By :Semsettin Yesilyurt 02/24/2022
 Supervised By :Mahesh Dadoda 02/25/2022

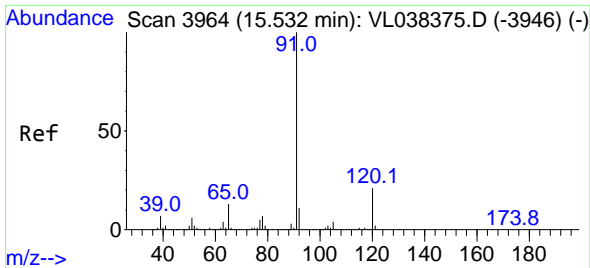


#62
 Isopropylbenzene
 Concen: 1.058 ppbv
 RT: 14.651 min Scan# 3690
 Delta R.T. 0.010 min
 Lab File: VL038414.D
 Acq: 23 Feb 2022 19:04



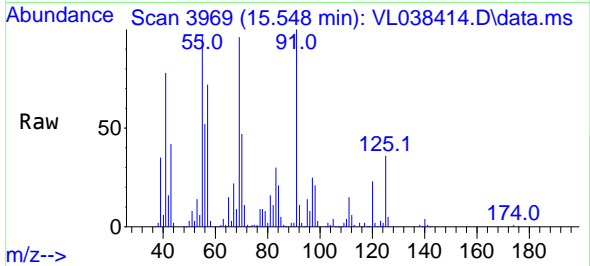
Tgt Ion:105 Resp: 313730
 Ion Ratio Lower Upper
 105 100
 120 27.6 20.6 30.8





#64
 n-propylbenzene
 Concen: 0.673 ppbv
 RT: 15.548 min Scan# 3969
 Delta R.T. 0.016 min
 Lab File: VL038414.D
 Acq: 23 Feb 2022 19:04

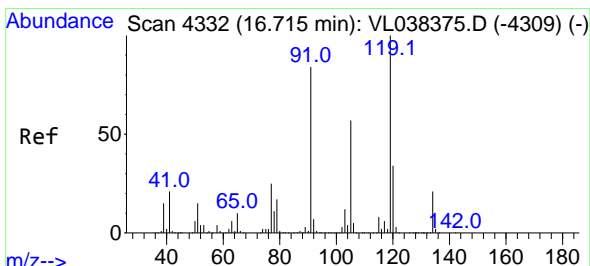
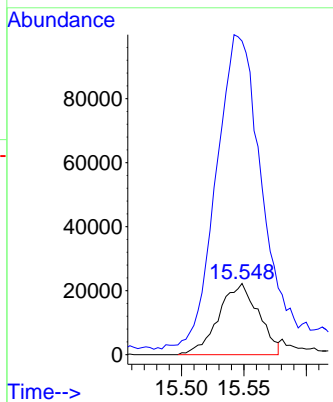
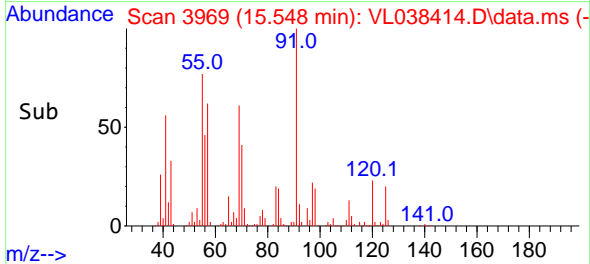
Instrument : MSVOA_L
 ClientSampleId : MP-6



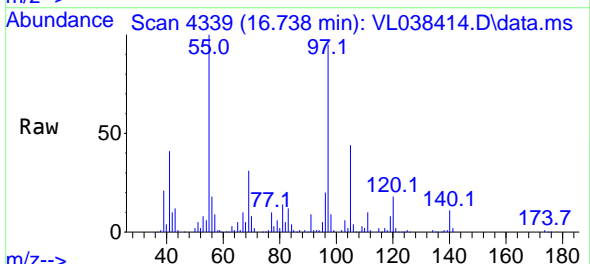
Tgt Ion:120 Resp: 49389
 Ion Ratio Lower Upper
 120 100
 91 564.5 388.1 582.1

Manual Integrations
 APPROVED

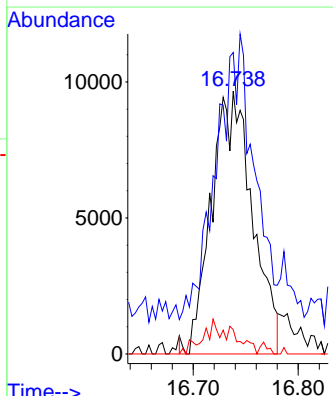
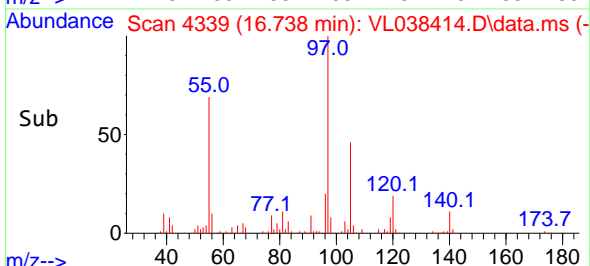
Reviewed By :Semsettin Yesilyurt 02/24/2022
 Supervised By :Mahesh Dadoda 02/25/2022

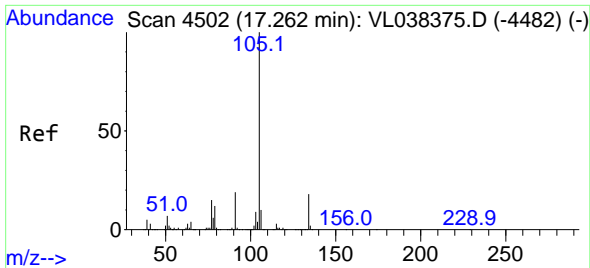


#65
 tert-Butylbenzene
 Concen: 0.102 ppbv m
 RT: 16.738 min Scan# 4339
 Delta R.T. 0.023 min
 Lab File: VL038414.D
 Acq: 23 Feb 2022 19:04



Tgt Ion:119 Resp: 26277
 Ion Ratio Lower Upper
 119 100
 91 0.0 68.0 102.0#
 134 0.0 15.8 23.8#





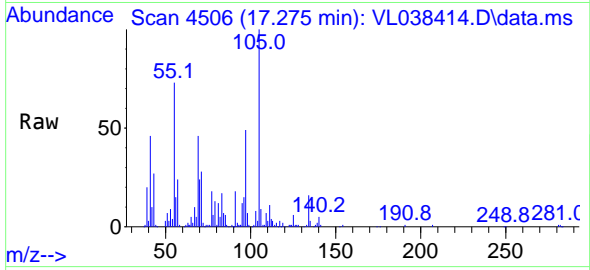
#67
 sec-Butylbenzene
 Concen: 0.574 ppbv
 RT: 17.275 min Scan# 411
 Delta R.T. 0.013 min
 Lab File: VL038414.D
 Acq: 23 Feb 2022 19:04

Instrument :

MSVOA_L

ClientSampleID :

MP-6

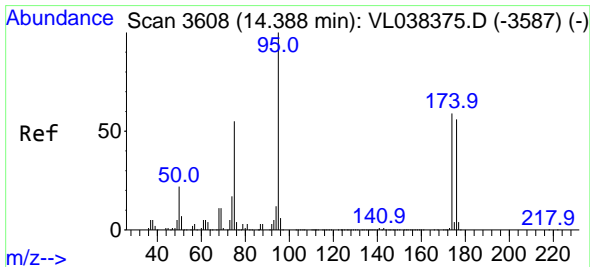
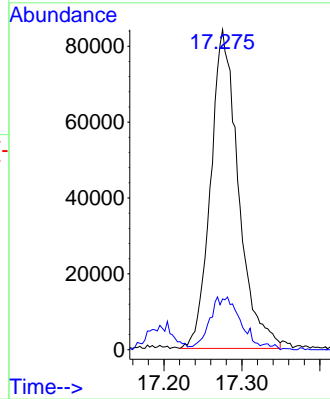
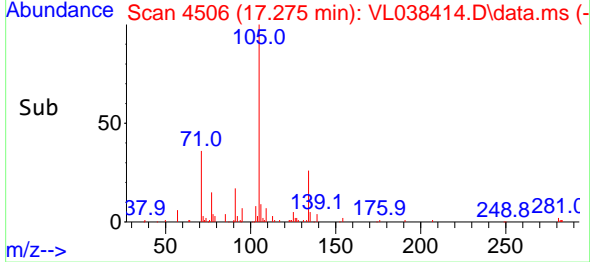


Tgt Ion:105 Resp: 208654
 Ion Ratio Lower Upper
 105 100
 134 18.9 14.6 21.8

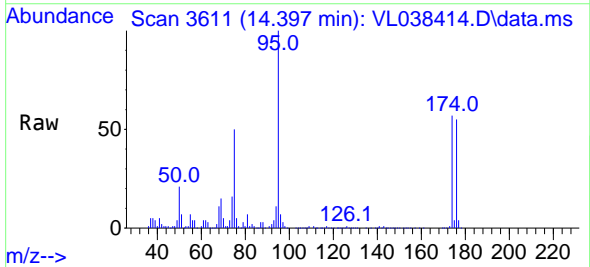
Manual Integrations

APPROVED

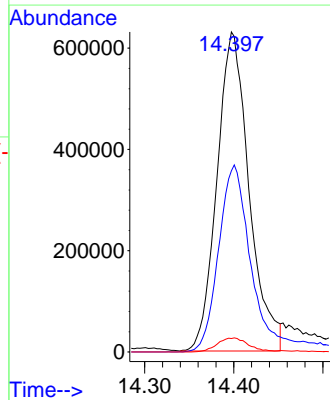
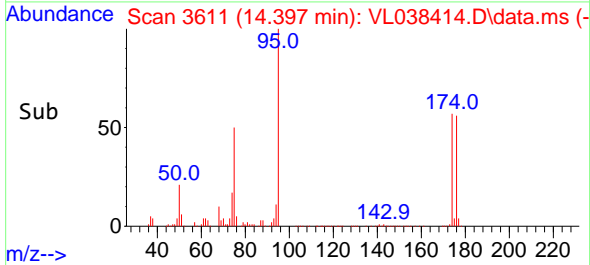
Reviewed By :Semsettin Yesilyurt 02/24/2022
 Supervised By :Mahesh Dadoda 02/25/2022

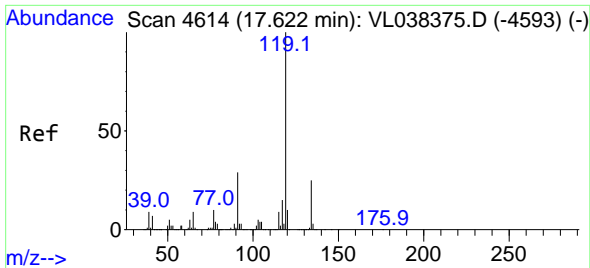


#68
 1-Bromo-4-Fluorobenzene
 Concen: 9.583 ppbv
 RT: 14.397 min Scan# 3611
 Delta R.T. 0.010 min
 Lab File: VL038414.D
 Acq: 23 Feb 2022 19:04



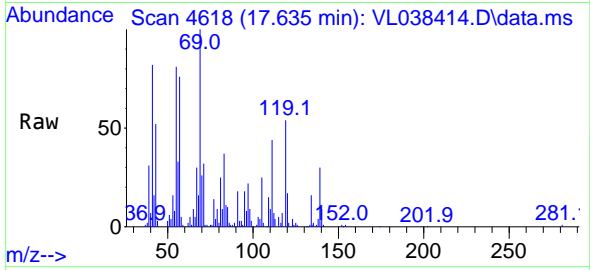
Tgt Ion: 95 Resp: 1577330
 Ion Ratio Lower Upper
 95 100
 174 63.7 49.0 73.4
 175 4.7 3.6 5.4





#69
 p-Isopropyltoluene
 Concen: 0.214 ppbv m
 RT: 17.635 min Scan# 401
 Delta R.T. 0.013 min
 Lab File: VL038414.D
 Acq: 23 Feb 2022 19:04

Instrument : MSVOA_L
 ClientSampleId : MP-6

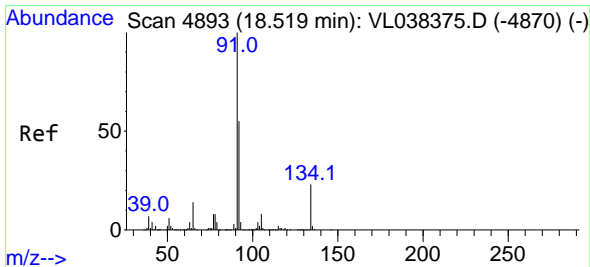
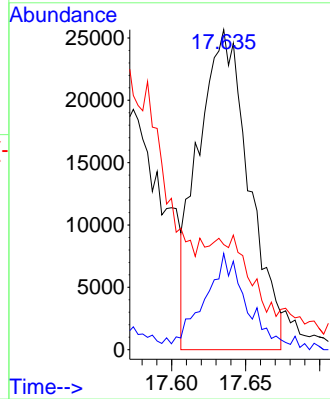
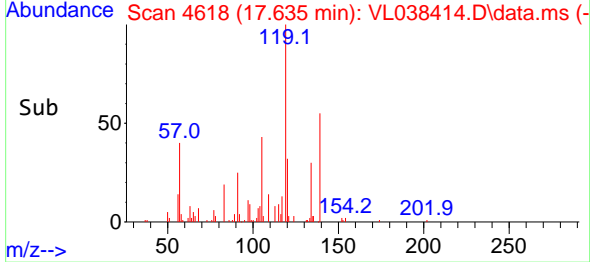


Tgt Ion: 119 Resp: 6122

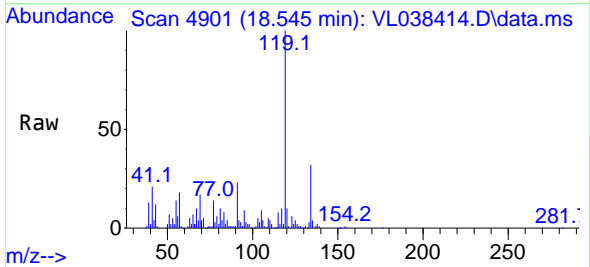
Ion	Ratio	Lower	Upper
119	100		
134	130.6	20.4	30.6
91	144.5	23.8	35.8

Manual Integrations
 APPROVED

Reviewed By :Semsettin Yesilyurt 02/24/2022
 Supervised By :Mahesh Dadoda 02/25/2022

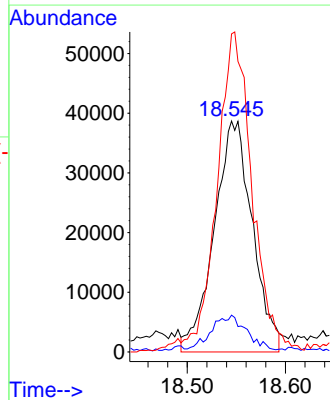
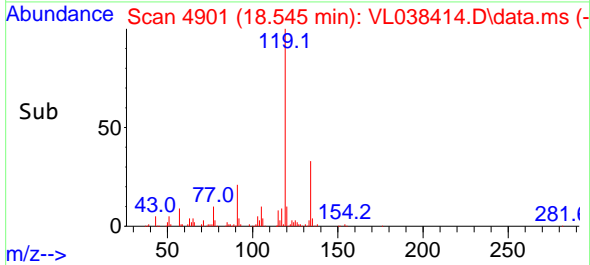


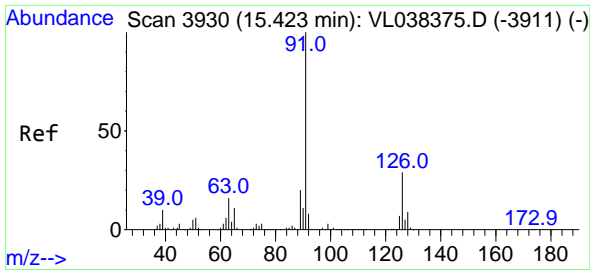
#70
 n-Butylbenzene
 Concen: 0.354 ppbv m
 RT: 18.545 min Scan# 4901
 Delta R.T. 0.026 min
 Lab File: VL038414.D
 Acq: 23 Feb 2022 19:04



Tgt Ion: 91 Resp: 104663

Ion	Ratio	Lower	Upper
91	100		
92	15.8	43.1	64.7#
134	0.0	17.4	26.0#





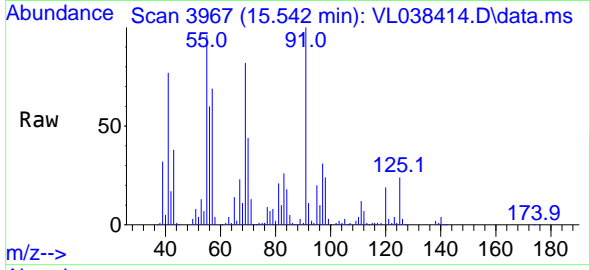
#71
 2-Chlorotoluene
 Concen: 1.176 ppbv m
 RT: 15.542 min Scan# 3930
 Delta R.T. 0.119 min
 Lab File: VL038414.D
 Acq: 23 Feb 2022 19:04

Instrument :

MSVOA_L

ClientSampleId :

MP-6

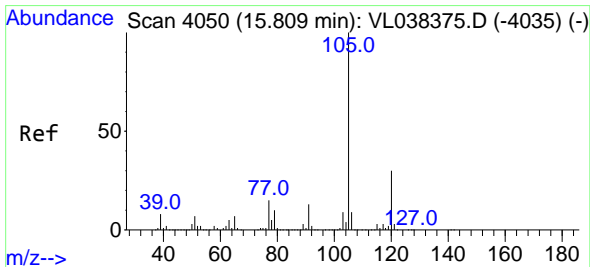
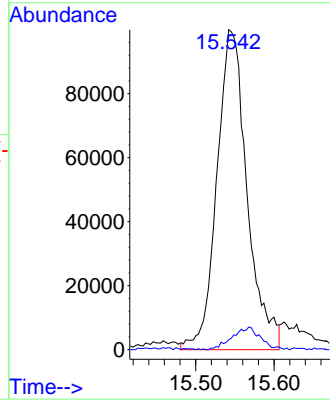
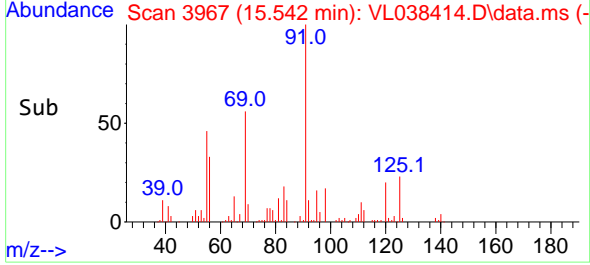


Tgt Ion: 91 Resp: 26800
 Ion Ratio Lower Upper
 91 100
 126 1.2 11.9 47.7

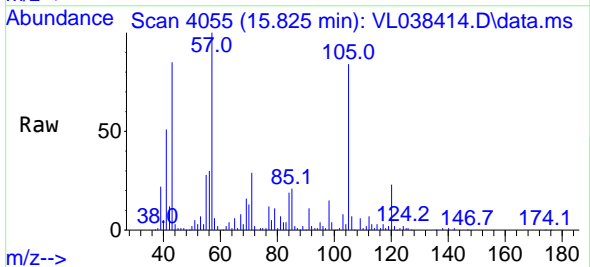
Manual Integrations

APPROVED

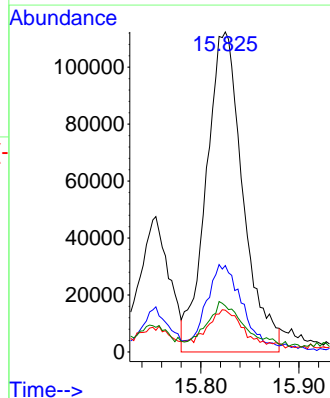
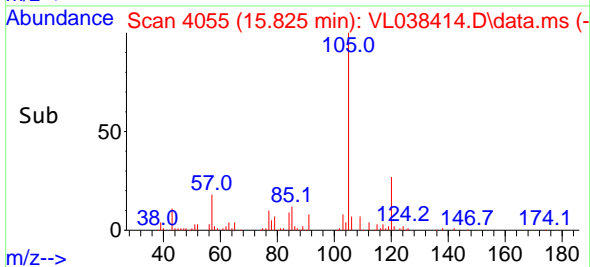
Reviewed By :Semsettin Yesilyurt 02/24/2022
 Supervised By :Mahesh Dadoda 02/25/2022

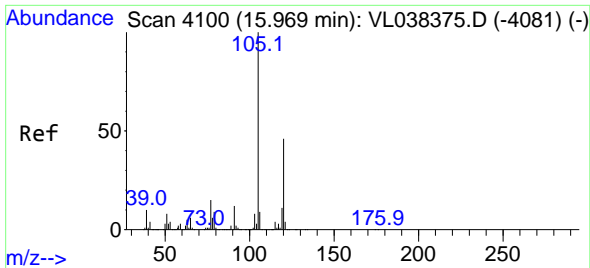


#72
 4-Ethyltoluene
 Concen: 1.202 ppbv m
 RT: 15.825 min Scan# 4055
 Delta R.T. 0.016 min
 Lab File: VL038414.D
 Acq: 23 Feb 2022 19:04



Tgt Ion:105 Resp: 292417
 Ion Ratio Lower Upper
 105 100
 120 0.0 23.4 35.2#
 91 12.3 10.4 15.6
 77 0.0 11.6 17.4#





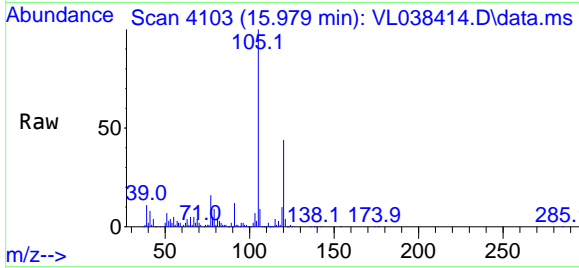
#73
 1,3,5-Trimethylbenzene
 Concen: 3.499 ppbv
 RT: 15.979 min Scan# 4100
 Delta R.T. 0.010 min
 Lab File: VL038414.D
 Acq: 23 Feb 2022 19:04

Instrument :

MSVOA_L

ClientSampleId :

MP-6

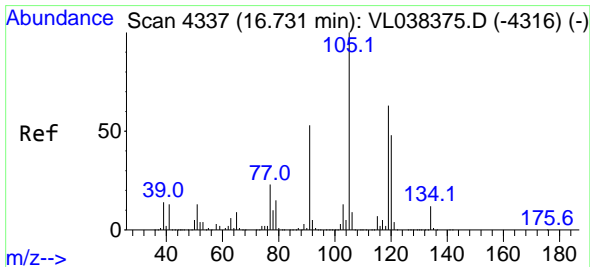
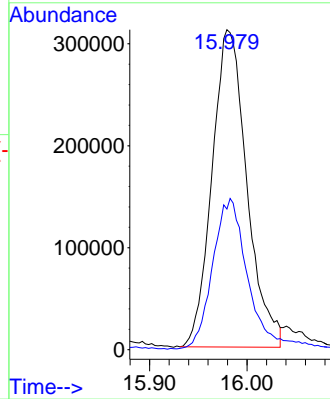
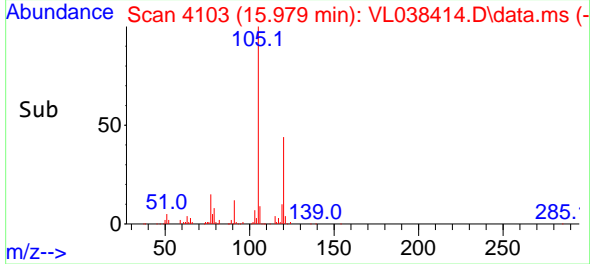


Tgt Ion:105 Resp: 77313
 Ion Ratio Lower Upper
 105 100
 120 43.9 36.6 55.0

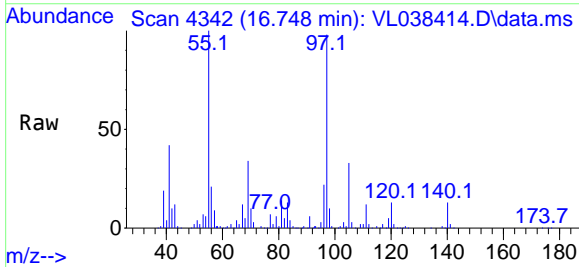
Manual Integrations

APPROVED

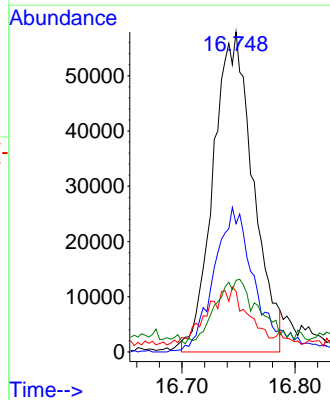
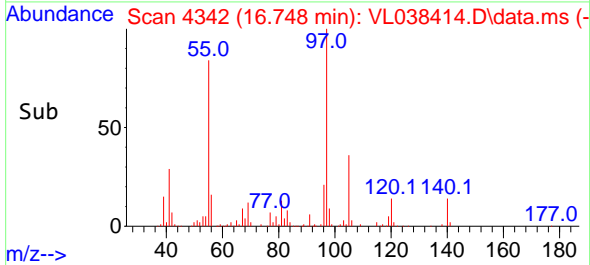
Reviewed By :Semsettin Yesilyurt 02/24/2022
 Supervised By :Mahesh Dadoda 02/25/2022

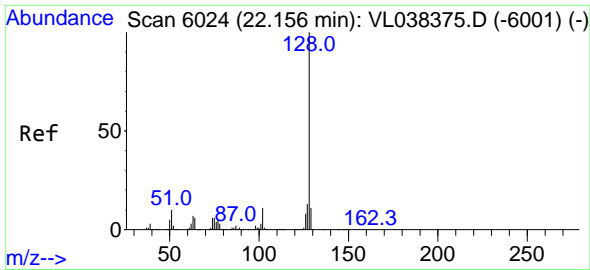


#74
 1,2,4-Trimethylbenzene
 Concen: 0.609 ppbv m
 RT: 16.748 min Scan# 4342
 Delta R.T. 0.016 min
 Lab File: VL038414.D
 Acq: 23 Feb 2022 19:04



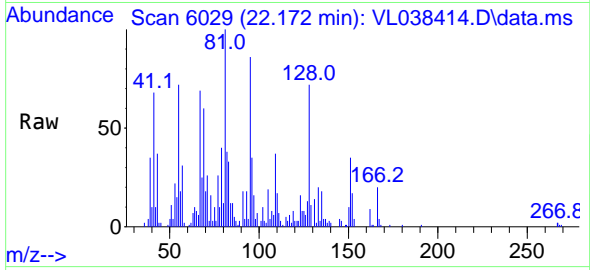
Tgt Ion:105 Resp: 142040
 Ion Ratio Lower Upper
 105 100
 120 40.1 38.2 57.4
 91 19.0 42.7 64.1#
 77 22.4 18.5 27.7





#79
 Naphthalene
 Concen: 0.298 ppbv m
 RT: 22.172 min Scan# 6029
 Delta R.T. 0.016 min
 Lab File: VL038414.D
 Acq: 23 Feb 2022 19:04

Instrument :
 MSVOA_L
 ClientSampleId :
 MP-6



Tgt Ion:128 Resp: 3770

Ion	Ratio	Lower	Upper
128	100		
127	18.7	10.7	16.1
129	15.4	8.8	13.2

Manual Integrations
 APPROVED

Reviewed By :Semsettin Yesilyurt 02/24/2022
 Supervised By :Mahesh Dadoda 02/25/2022

