

Data Path : Z:\VOASRV\HPCHEM1\MSVOA_L\DATA\VL022322\
 Data File : VL038418.D
 Acq On : 23 Feb 2022 21:47
 Operator : SY/AP
 Sample : N1605-01DL 10X
 Misc : 400mL/MSVOA_L
 ALS Vial : 1 Sample Multiplier: 1

Instrument :
 MSVOA_L
ClientSampleId :
 BG-GCDL

Manual Integrations
APPROVED
 Reviewed By :Semsettin Yesilyurt 02/24/2022
 Supervised By :Mahesh Dadoda 02/25/2022

Quant Time: Feb 26 15:53:44 2022
 Quant Method : Z:\VOASRV\HPCHEM1\MSVOA_L\METHODS\VL022222A
 Quant Title : AIR ANALYSIS BY METHOD TO-15 Instrument:
 QLast Update : Tue Feb 22 19:45:51 2022
 Response via : Initial Calibration

Internal Standards	R.T.	QIon	Response	Conc	Units	Dev(Min)
1) Bromochloromethane	5.65	49	869603	10.00	ppbv	0.00
33) 1,4-Difluorobenzene	7.15	114	2283302	10.00	ppbv	0.00
55) Chlorobenzene-d5	12.06	117	1937457	10.00	ppbv	0.00

System Monitoring Compounds
 68) 1-Bromo-4-Fluorobenzene 14.39 95 1470066 9.17 ppbv 0.00
 Spiked Amount 10.000 Range 65 - 135 Recovery = 91.70%

Target Compounds	R.T.	QIon	Response	Conc	Units	Qvalue
9) Propene	3.01	41	8319m	0.16	ppbv	
13) Ethanol	3.62	45	14457m	2.86	ppbv	

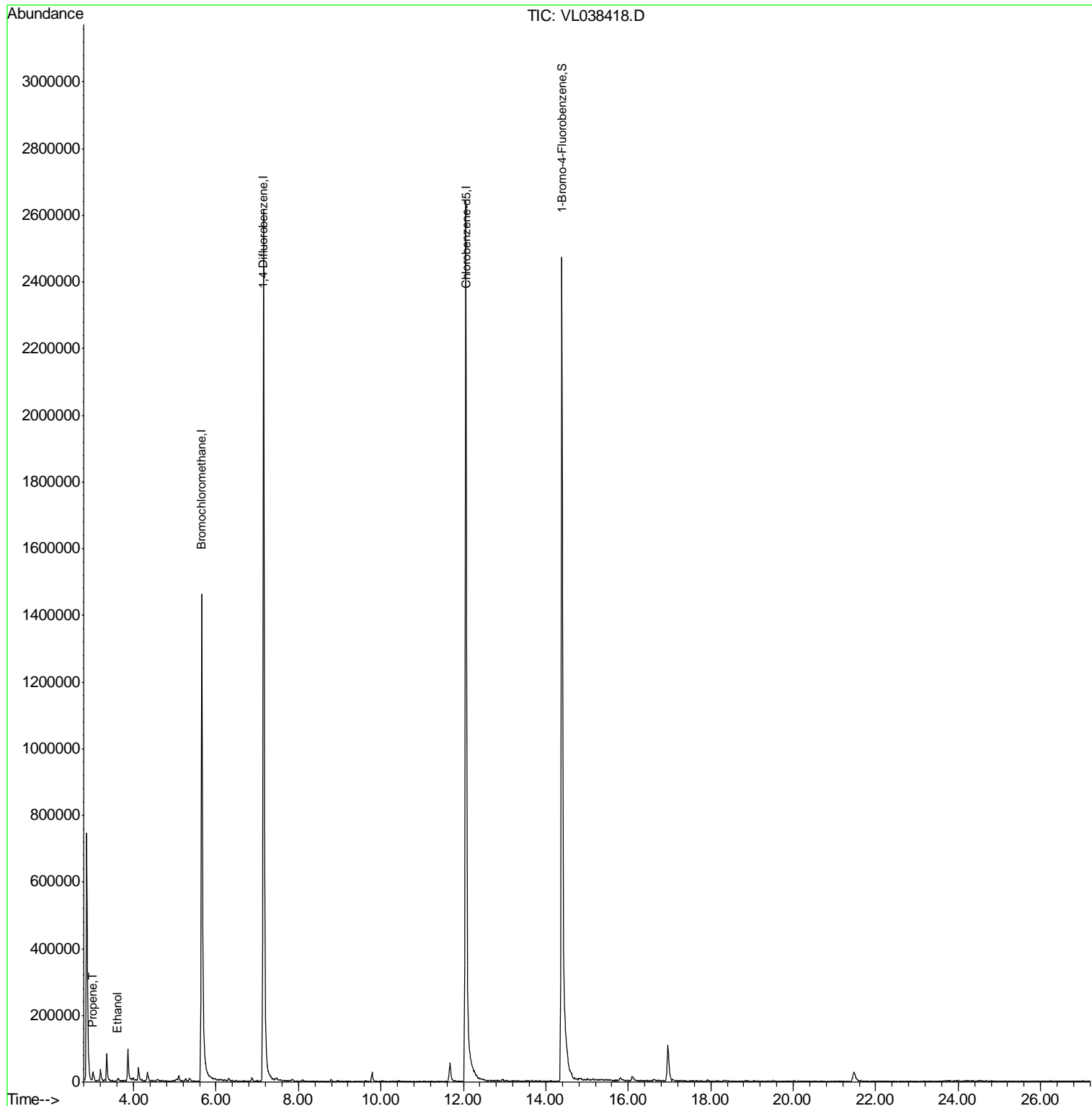
(#) = qualifier out of range (m) = manual integration (+) = signals summed

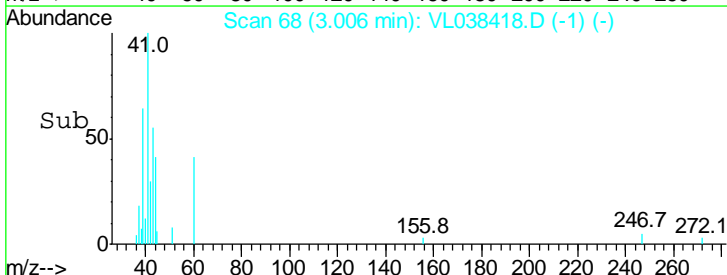
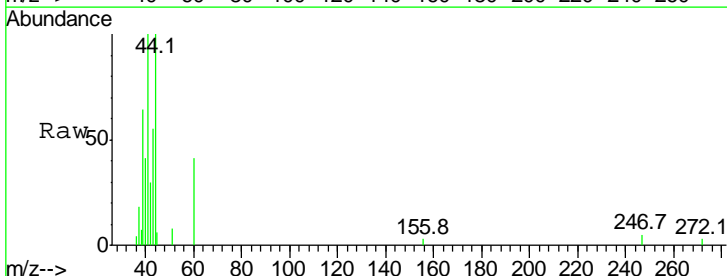
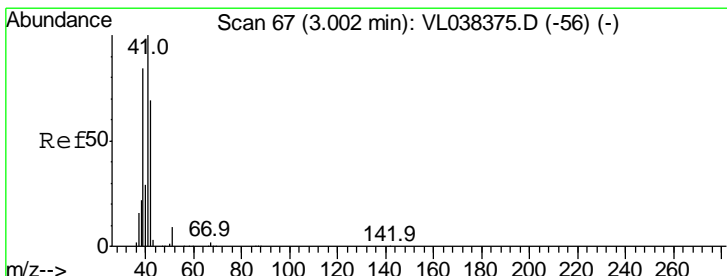
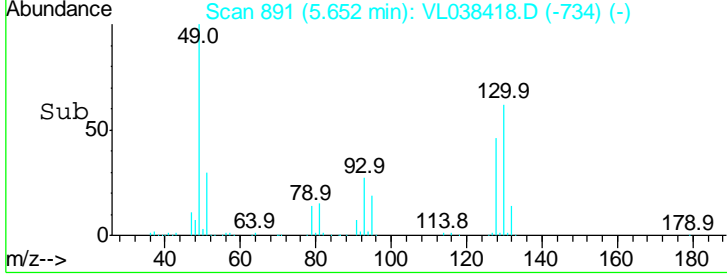
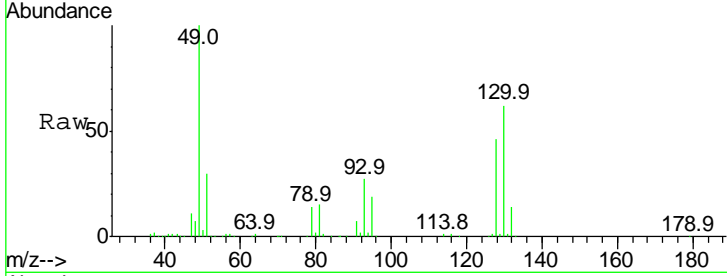
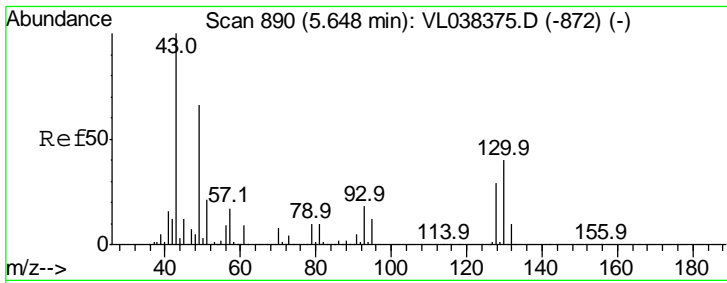
Data Path : Z:\VOASRV\HPCHEM1\MSVOA_L\DATA\VL022322\
 Data File : VL038418.D
 Acq On : 23 Feb 2022 21:47
 Operator : SY/AP
 Sample : N1605-01DL 10X
 Misc : 400mL/MSVOA_L
 ALS Vial : 1 Sample Multiplier: 1

Instrument :
 MSVOA_L
ClientSampleId :
 BG-GCDL

Manual Integrations
APPROVED
 Reviewed By :Semsettin Yesilyurt 02/24/2022
 Supervised By :Mahesh Dadoda 02/25/2022

Quant Time: Feb 26 15:53:44 2022
 Quant Method : Z:\VOASRV\HPCHEM1\MSVOA_L\METHODS\VL022222.
 Quant Title : AIR ANALYSIS BY METHOD TO-15 Instrument:
 QLast Update : Tue Feb 22 19:45:51 2022
 Response via : Initial Calibration

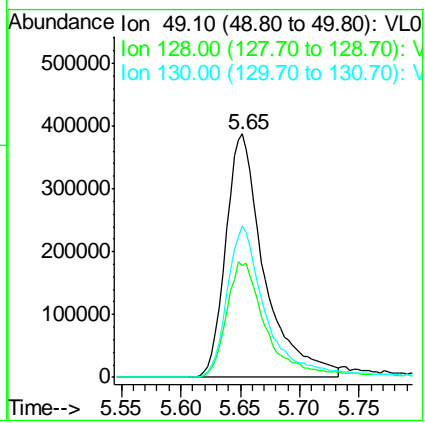




#1
 Bromochloromethane
 Concen: 10.00 ppbv
 RT: 5.65
 Delta R.T. MSVOA_L
 Lab File: ClientSampled :
 Acq: 23 Feb 2022 21:47

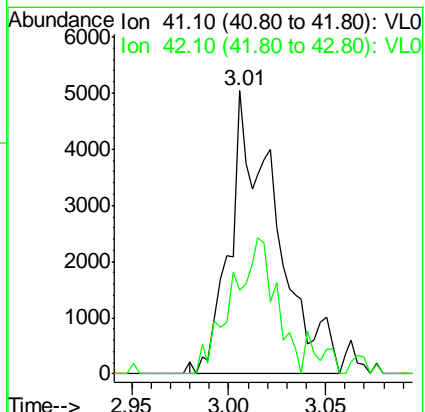
Manual Integrations
APPROVED
 Reviewed By :Semsettin Yesilyurt 02/24/2022
 Supervised By :Mahesh Dadoda 02/25/2022

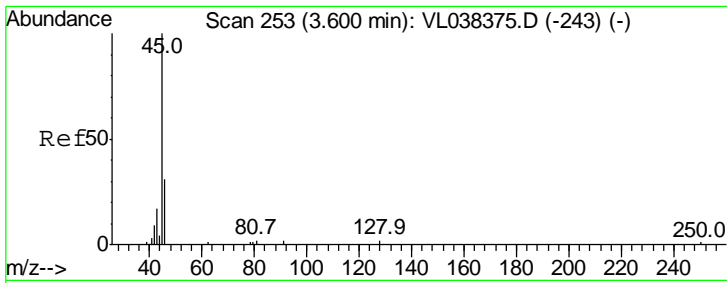
Tgt Ion:
 Ion Rati
 49 100
 128 51.
 130 65.



#9
 Propene
 Concen: 0.16 ppbv m
 RT: 3.01 min Scan# 68
 Delta R.T. 0.00 min
 Lab File: VL038418.D
 Acq: 23 Feb 2022 21:47

Tgt Ion: 41 Resp: 8319
 Ion Ratio Lower Upper
 41 100
 42 115.4 54.6 82.0#





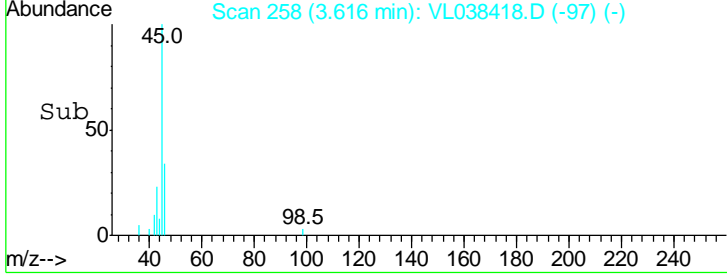
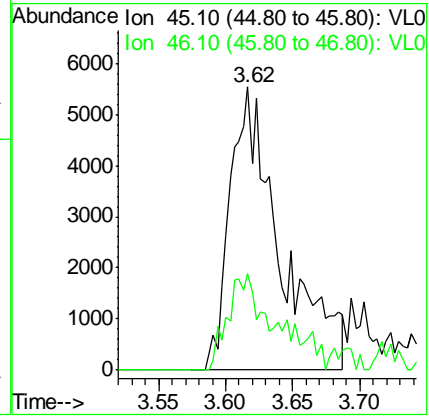
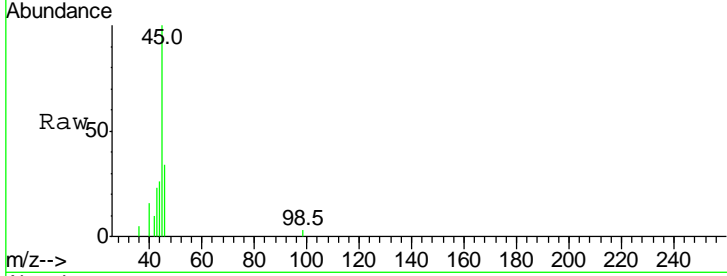
#13
 Ethanol
 Concen: 2.86 ppbv m
 RT: 3.62
 Delta R.T. MSVOA_L
 Lab File: ClientSampleId :
 Acq: 23 Feb 2022 21:47

Instrument :
 MSVOA_L
 ClientSampleId :
 BG-GCDL

Tgt Ion:
 Ion Ratio
 45 100
 46 0.

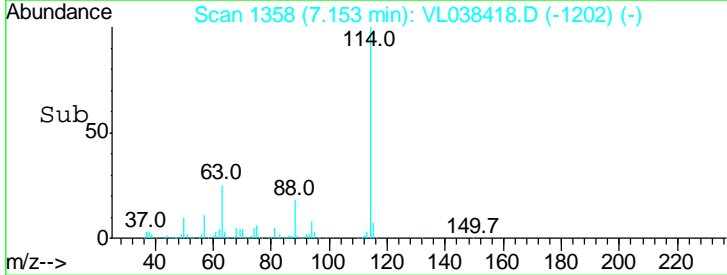
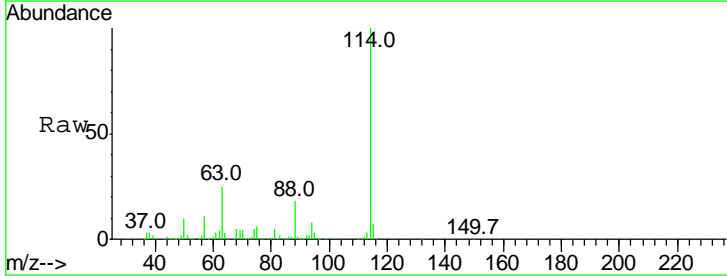
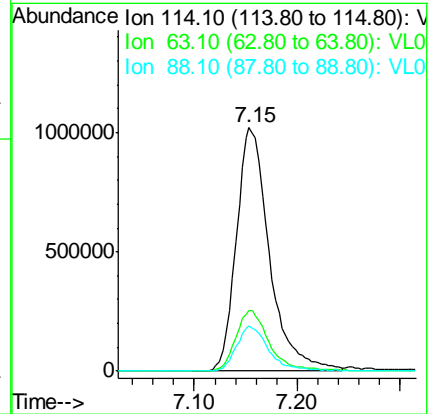
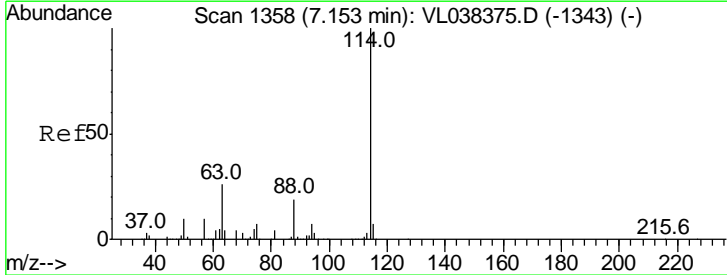
Manual Integrations
 APPROVED

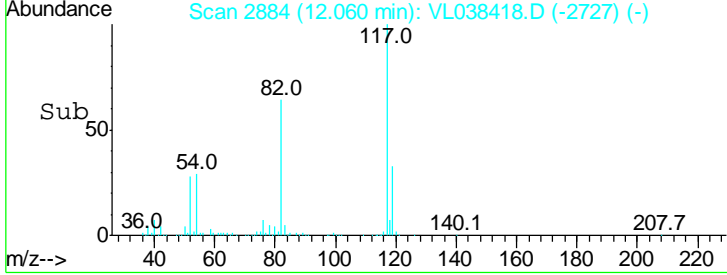
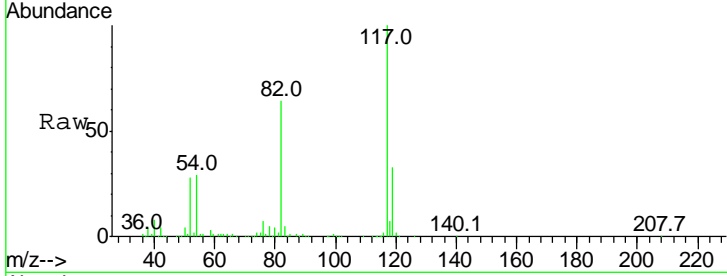
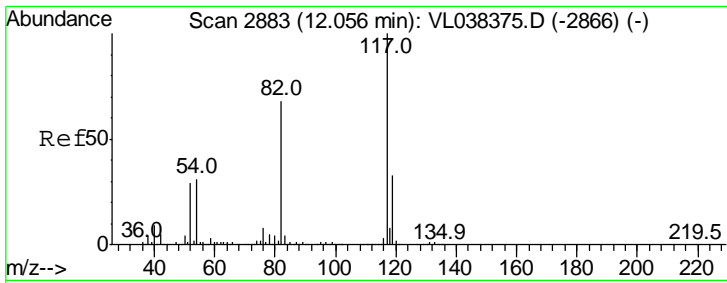
Reviewed By :Semsettin Yesilyurt 02/24/2022
 Supervised By :Mahesh Dadoda 02/25/2022



#33
 1,4-Difluorobenzene
 Concen: 10.00 ppbv
 RT: 7.15 min Scan# 1358
 Delta R.T. 0.00 min
 Lab File: VL038418.D
 Acq: 23 Feb 2022 21:47

Tgt Ion:114 Resp: 2283302
 Ion Ratio Lower Upper
 114 100
 63 25.6 22.2 33.2
 88 18.4 15.2 22.8

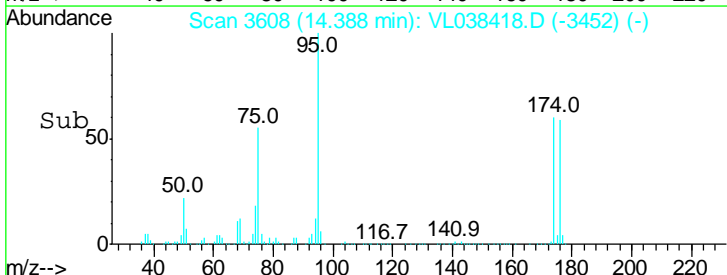
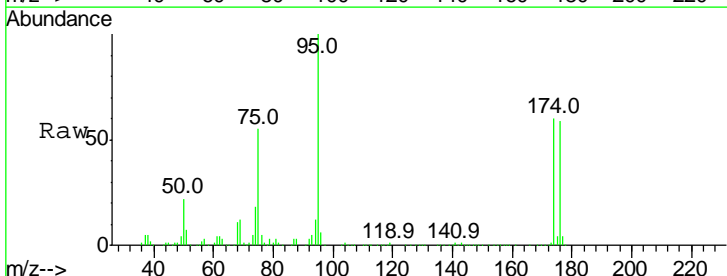
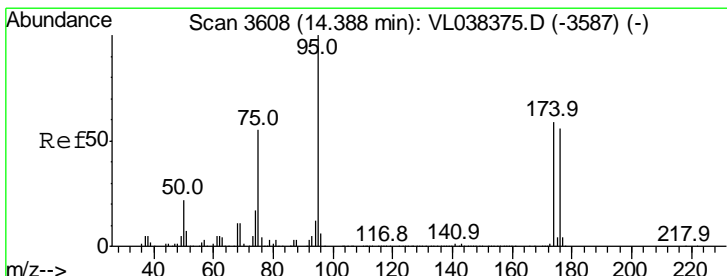
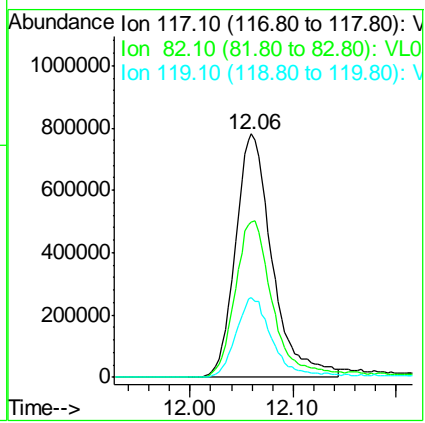




#55
 Chlorobenzene-d5
 Concen: 10.00 ppbv
 RT: 12.06
 Delta R.T. MSVOA_L
 Lab File: ClientSampled :
 Acq: 23 Feb 2022 21:47

Manual Integrations
APPROVED
 Reviewed By :Semsettin Yesilyurt 02/24/2022
 Supervised By :Mahesh Dadoda 02/25/2022

Tgt Ion	Ratio
117	100
82	70.
119	34.



#68
 1-Bromo-4-Fluorobenzene
 Concen: 9.17 ppbv
 RT: 14.39 min Scan# 3608
 Delta R.T. 0.00 min
 Lab File: VL038418.D
 Acq: 23 Feb 2022 21:47

Tgt Ion	Resp	Lower	Upper
95	1470066		
174	64.6	49.0	73.4
175	4.2	3.6	5.4

