

Data Path : Z:\voasrv\HPCHEM1\MSVOA_L\Data\VL022322\
 Data File : VL038420.D
 Acq On : 23 Feb 2022 23:12
 Operator : SY/AP
 Sample : N1605-02DUP
 Misc : 400mL/MSVOA_L
 ALS Vial : 1 Sample Multiplier: 1

Instrument :
 MSVOA_L
 ClientSampleId :
 IA-3DUP

Manual Integrations
 APPROVED

Reviewed By :Semsettin Yesilyurt 02/24/2022
 Supervised By :Mahesh Dadoda 02/25/2022

Quant Time: Feb 24 07:32:43 2022
 Quant Method : Z:\VOASRV\HPCHEM1\MSVOA_L\METHODS\VL022222AIR.M
 Quant Title : AIR ANALYSIS BY METHOD TO-15 Instrument: MSVOA_LTue Feb 24 07:32:43 2022
 QLast Update : Tue Feb 22 19:45:51 2022
 Response via : Initial Calibration

Compound	R.T.	QIon	Response	Conc	Units	Dev(Min)	
Internal Standards							
1) Bromochloromethane	5.648	49	786456	10.000	ppbv	0.00	
33) 1,4-Difluorobenzene	7.153	114	1904796	10.000	ppbv	0.00	
55) Chlorobenzene-d5	12.057	117	1613947	10.000	ppbv	# 0.00	
System Monitoring Compounds							
68) 1-Bromo-4-Fluorobenzene	14.388	95	1233554	9.237	ppbv	0.00	
Spiked Amount	10.000	Range	65 - 135	Recovery	=	92.400%	
Target Compounds							
							Qvalue
2) Dichlorodifluoromethane	3.041	85	27339	0.219	ppbv		99
3) Chlorodifluoromethane	2.980	51	40989	0.295	ppbv	#	88
4) Chloromethane	3.131	50	25165	0.522	ppbv		94
9) Propene	3.012	41	87748m	1.914	ppbv		
10) Heptane	8.098	43	99434	0.891	ppbv		97
11) Trichlorofluoromethane	3.935	101	23796	0.200	ppbv		85
13) Ethanol	3.594	45	3344597	730.894	ppbv		87
15) Acetone	3.838	43	283051	4.232	ppbv	#	51
17) tert-Butyl alcohol	4.295	59	17416m	0.261	ppbv		
19) Isopropyl Alcohol	3.954	45	6807960	175.786	ppbv	#	96
20) Methylene Chloride	4.333	84	33789	1.020	ppbv	#	82
26) Hexane	5.668	57	560762	6.892	ppbv	#	44
29) Chloroform	5.732	83	28105	0.212	ppbv	#	80
30) Cyclohexane	7.108	84	16495m	0.248	ppbv		
34) 2-Butanone	5.227	43	90134	1.505	ppbv		93
35) Carbon Tetrachloride	6.996	117	8535	0.064	ppbv		87
36) Benzene	6.867	78	135979	0.811	ppbv		94
44) 2,2,4-Trimethylpentane	7.844	57	87941m	0.305	ppbv		
50) 4-Methyl-2-Pentanone	8.732	43	11000m	0.104	ppbv		
53) Toluene	9.780	91	994073	5.460	ppbv		99
58) Ethyl Benzene	12.680	91	33678m	0.153	ppbv		
59) m/p-Xylene	12.941	91	79115m	0.417	ppbv		
60) o-Xylene	13.661	91	30977m	0.173	ppbv		
74) 1,2,4-Trimethylbenzene	16.738	105	34586m	0.183	ppbv		

(#) = qualifier out of range (m) = manual integration (+) = signals summed

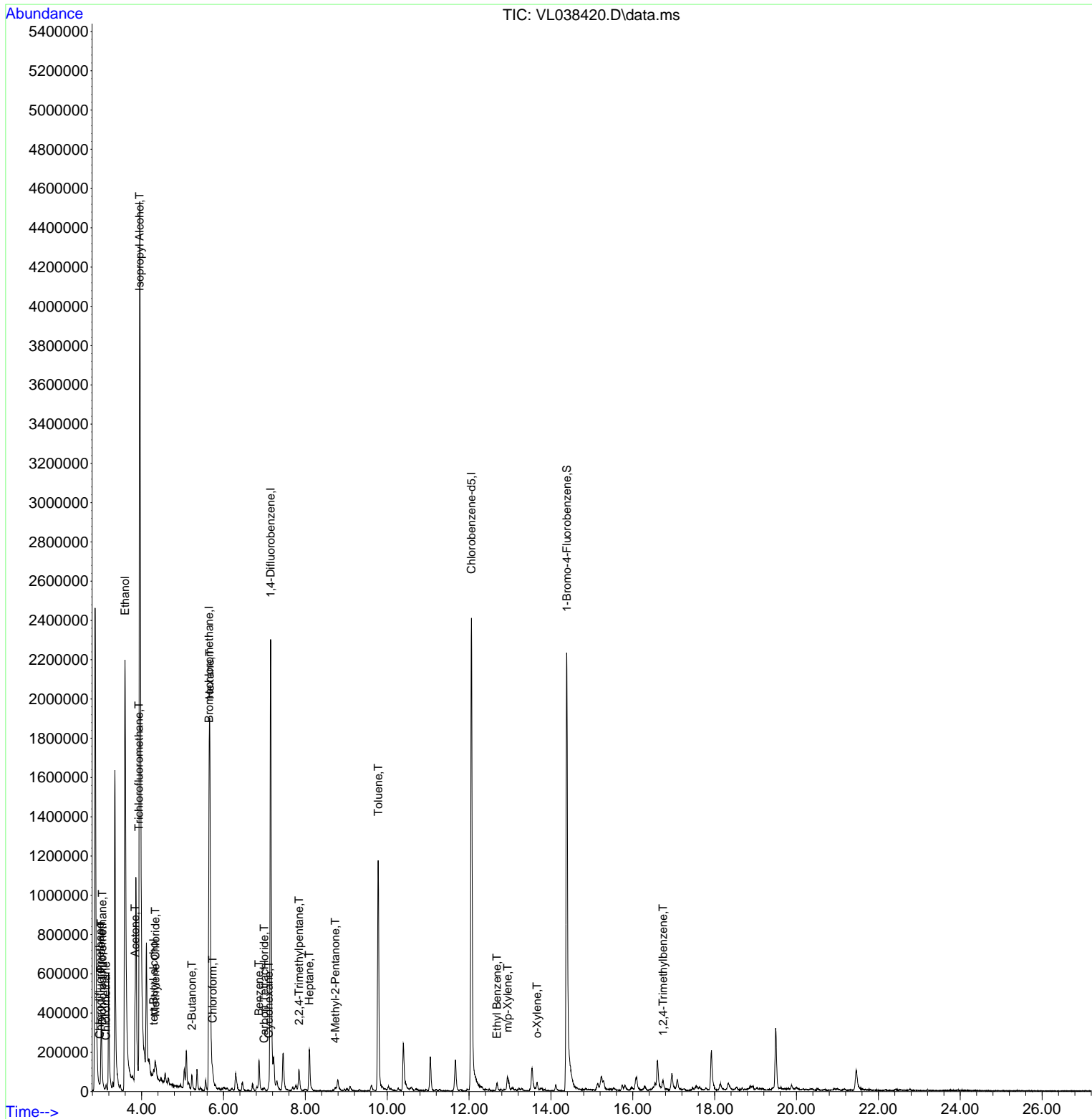
Data Path : Z:\voasrv\HPCHEM1\MSVOA_L\Data\VL022322\
 Data File : VL038420.D
 Acq On : 23 Feb 2022 23:12
 Operator : SY/AP
 Sample : N1605-02DUP
 Misc : 400mL/MSVOA_L
 ALS Vial : 1 Sample Multiplier: 1

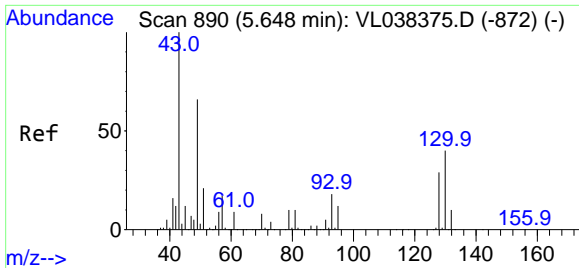
Instrument :
 MSVOA_L
 ClientSampleId :
 IA-3DUP

Quant Time: Feb 24 07:32:43 2022
 Quant Method : Z:\VOASRV\HPCHEM1\MSVOA_L\METHODS\VL022222AIR.M
 Quant Title : AIR ANALYSIS BY METHOD TO-15 Instrument: MSVOA_LTue Feb
 QLast Update : Tue Feb 22 19:45:51 2022
 Response via : Initial Calibration

Manual Integrations
APPROVED

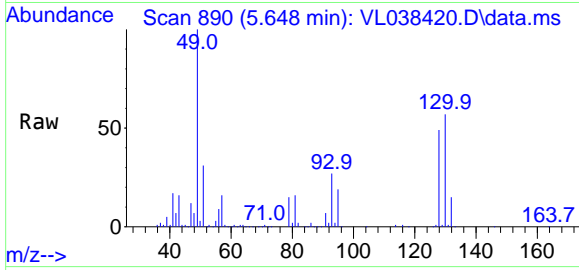
Reviewed By :Semsettin Yesilyurt 02/24/2022
 Supervised By :Mahesh Dadoda 02/25/2022





#1
 Bromochloromethane
 Concen: 10.000 ppbv
 RT: 5.648 min Scan# 890
 Delta R.T. 0.000 min
 Lab File: VL038420.D
 Acq: 23 Feb 2022 23:12

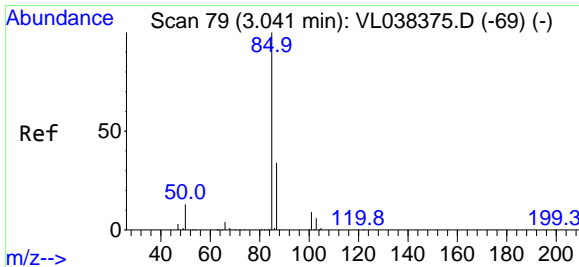
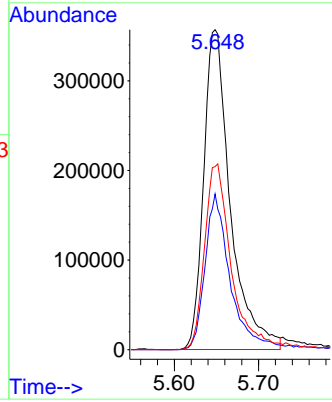
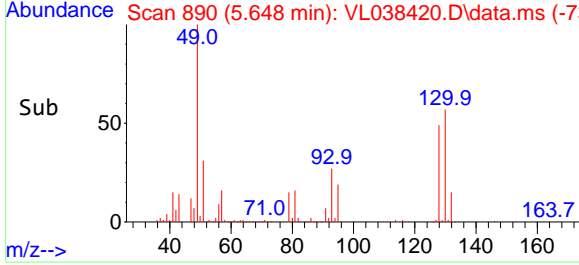
Instrument : MSVOA_L
 ClientSampleId : IA-3DUP



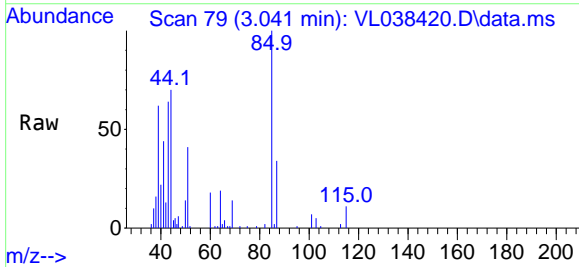
Tgt Ion: 49 Resp: 786450
 Ion Ratio Lower Upper
 49 100
 128 47.3 24.3 72.9
 130 60.6 30.1 90.5

Manual Integrations
 APPROVED

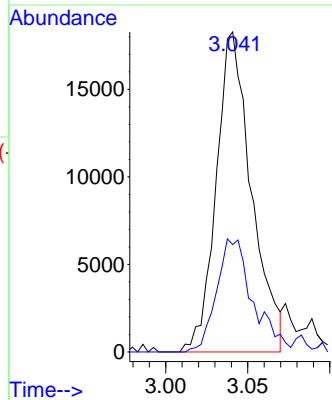
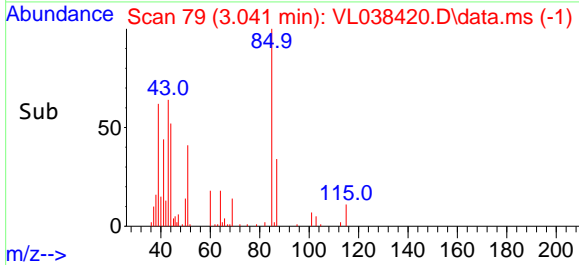
Reviewed By :Semsettin Yesilyurt 02/24/2022
 Supervised By :Mahesh Dadoda 02/25/2022

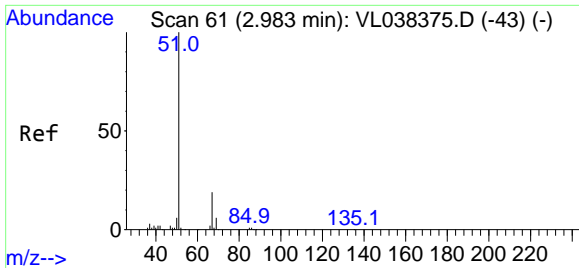


#2
 Dichlorodifluoromethane
 Concen: 0.219 ppbv
 RT: 3.041 min Scan# 79
 Delta R.T. 0.000 min
 Lab File: VL038420.D
 Acq: 23 Feb 2022 23:12



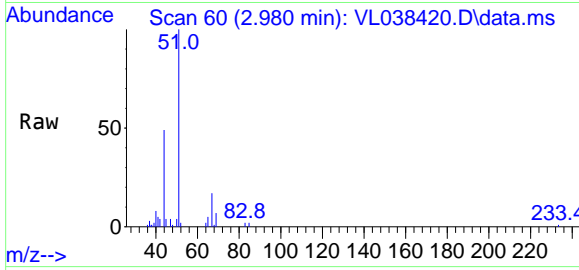
Tgt Ion: 85 Resp: 27339
 Ion Ratio Lower Upper
 85 100
 87 33.6 27.4 41.0





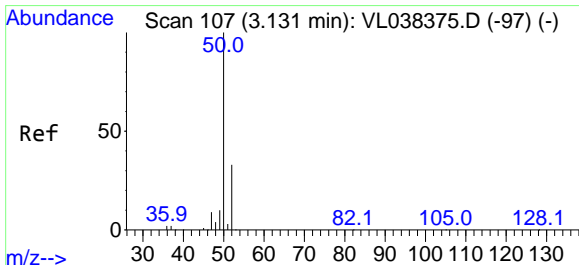
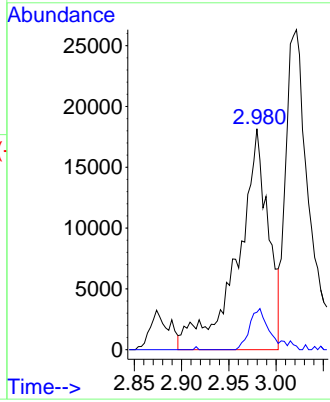
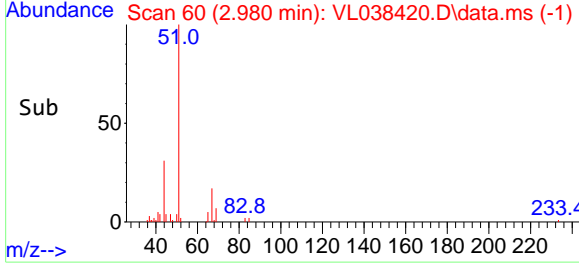
#3
 Chlorodifluoromethane
 Concen: 0.295 ppbv
 RT: 2.980 min Scan# 60
 Delta R.T. -0.003 min
 Lab File: VL038420.D
 Acq: 23 Feb 2022 23:12

Instrument : MSVOA_L
 ClientSampleId : IA-3DUP

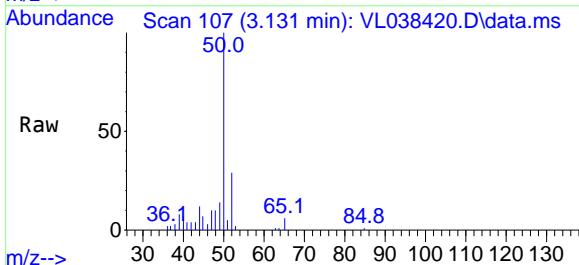


Tgt Ion: 51 Resp: 40989
 Ion Ratio Lower Upper
 51 100
 67 13.0 14.7 22.1

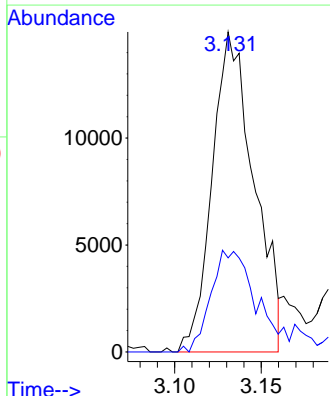
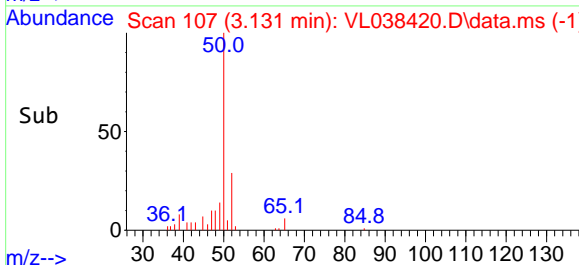
Manual Integrations
APPROVED
 Reviewed By :Semsettin Yesilyurt 02/24/2022
 Supervised By :Mahesh Dadoda 02/25/2022

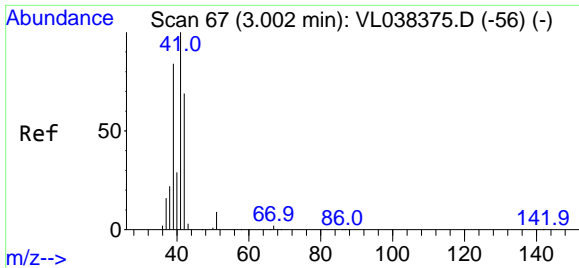


#4
 Chloromethane
 Concen: 0.522 ppbv
 RT: 3.131 min Scan# 107
 Delta R.T. 0.000 min
 Lab File: VL038420.D
 Acq: 23 Feb 2022 23:12



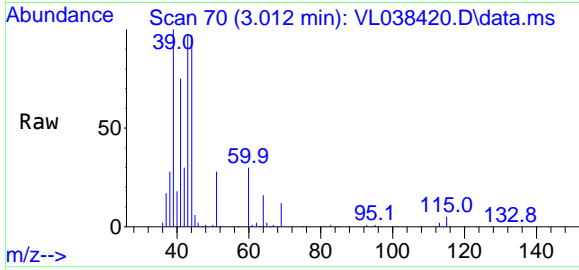
Tgt Ion: 50 Resp: 25165
 Ion Ratio Lower Upper
 50 100
 52 29.4 26.5 39.7





#9
 Propene
 Concen: 1.914 ppbv m
 RT: 3.012 min Scan# 70
 Delta R.T. 0.010 min
 Lab File: VL038420.D
 Acq: 23 Feb 2022 23:12

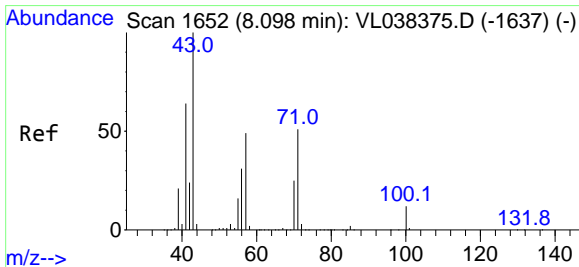
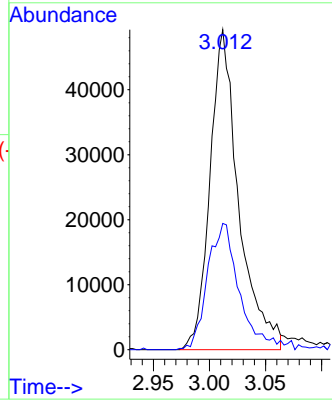
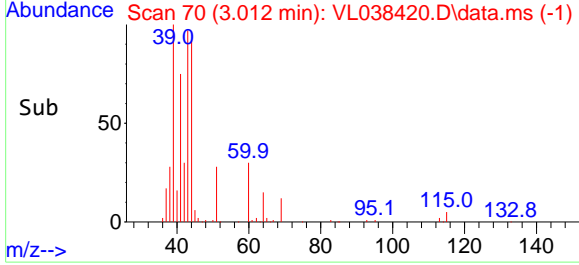
Instrument :
 MSVOA_L
 ClientSampleId :
 IA-3DUP



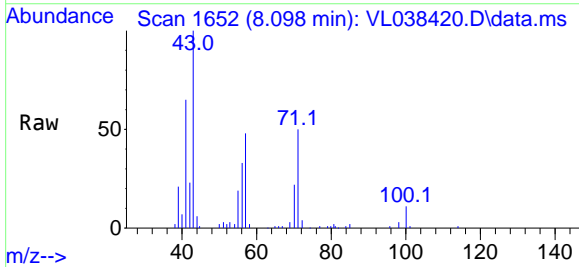
Tgt Ion: 41 Resp: 8774
 Ion Ratio Lower Upper
 41 100
 42 154.9 54.6 82.0

Manual Integrations
 APPROVED

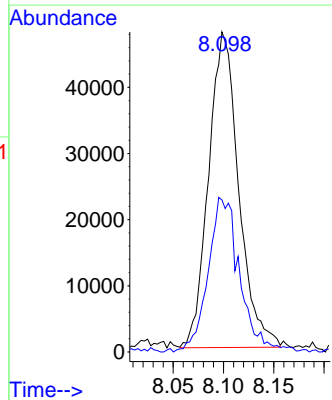
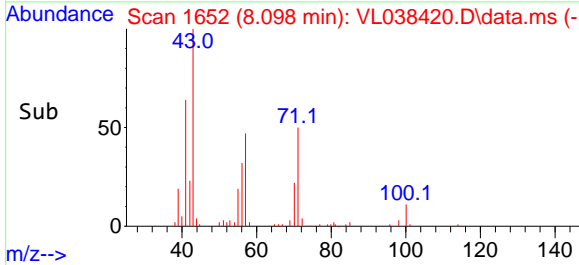
Reviewed By :Semsettin Yesilyurt 02/24/2022
 Supervised By :Mahesh Dadoda 02/25/2022

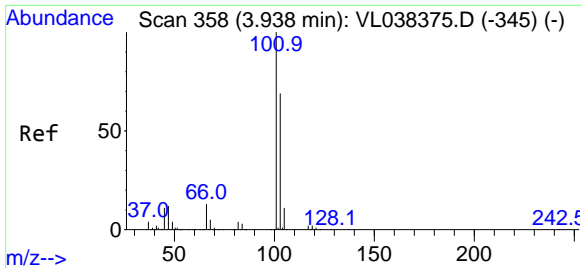


#10
 Heptane
 Concen: 0.891 ppbv
 RT: 8.098 min Scan# 1652
 Delta R.T. 0.000 min
 Lab File: VL038420.D
 Acq: 23 Feb 2022 23:12



Tgt Ion: 43 Resp: 99434
 Ion Ratio Lower Upper
 43 100
 57 51.8 39.8 59.8





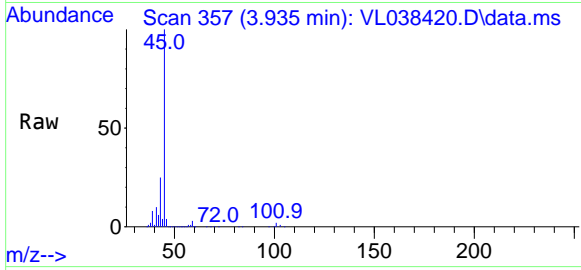
#11
 Trichlorofluoromethane
 Concen: 0.200 ppbv
 RT: 3.935 min Scan# 311
 Delta R.T. -0.003 min
 Lab File: VL038420.D
 Acq: 23 Feb 2022 23:12

Instrument :

MSVOA_L

ClientSampleId :

IA-3DUP

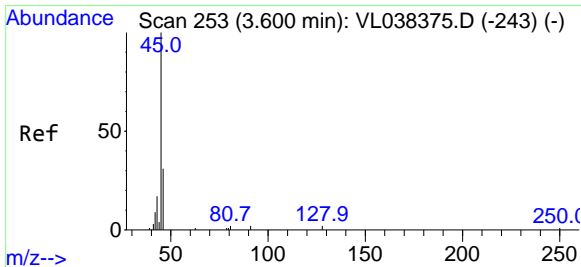
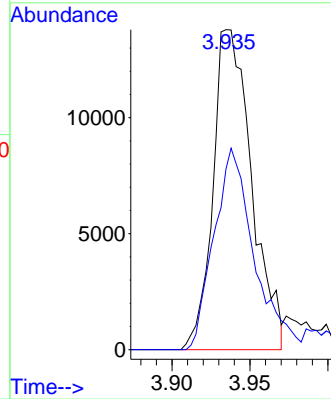
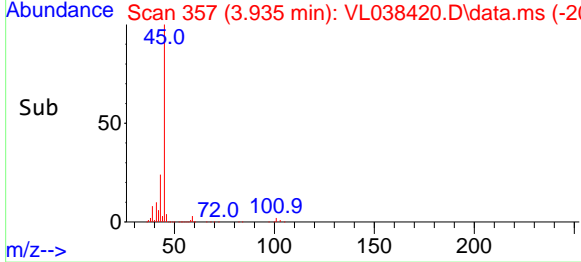


Tgt Ion:101 Resp: 23790
 Ion Ratio Lower Upper
 101 100
 103 56.5 55.0 82.4

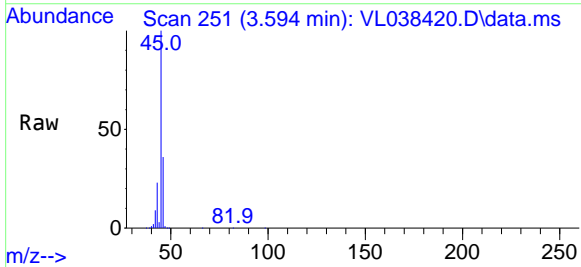
Manual Integrations

APPROVED

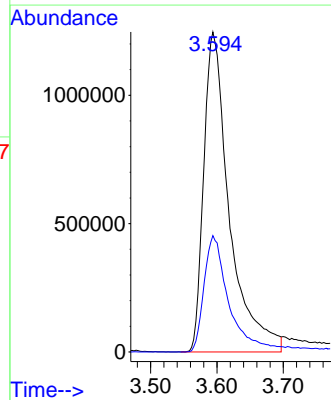
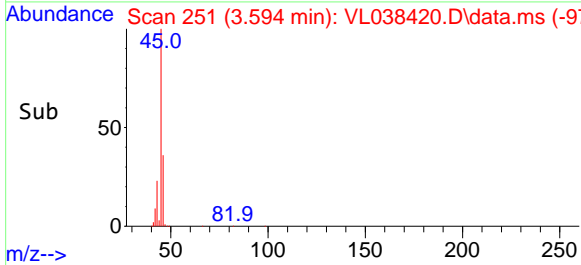
Reviewed By :Semsettin Yesilyurt 02/24/2022
 Supervised By :Mahesh Dadoda 02/25/2022

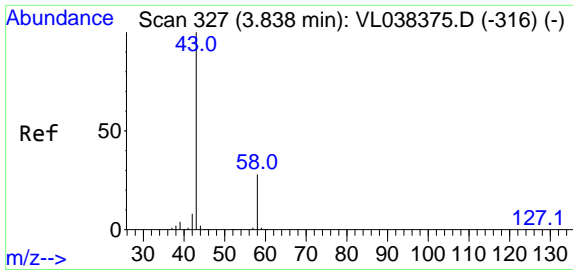


#13
 Ethanol
 Concen: 730.894 ppbv
 RT: 3.594 min Scan# 251
 Delta R.T. -0.006 min
 Lab File: VL038420.D
 Acq: 23 Feb 2022 23:12



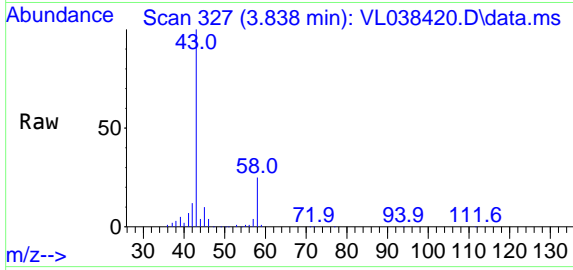
Tgt Ion: 45 Resp: 3344597
 Ion Ratio Lower Upper
 45 100
 46 37.0 18.2 72.8





#15
 Acetone
 Concen: 4.232 ppbv
 RT: 3.838 min Scan# 316
 Delta R.T. 0.000 min
 Lab File: VL038420.D
 Acq: 23 Feb 2022 23:12

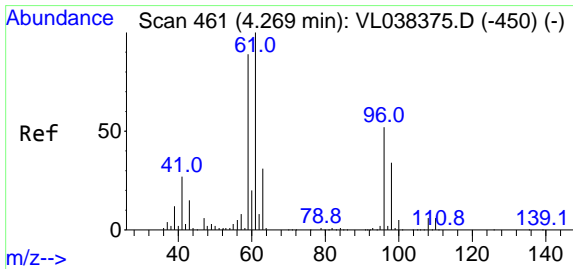
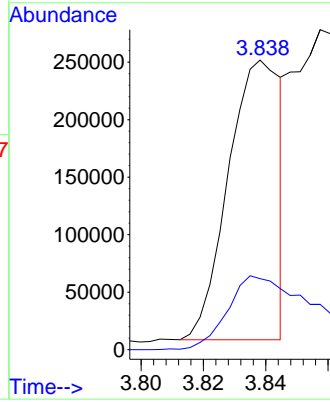
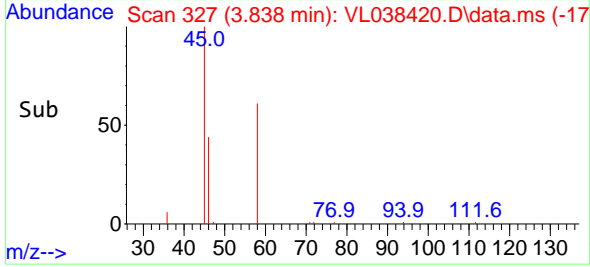
Instrument : MSVOA_L
 ClientSampleId : IA-3DUP



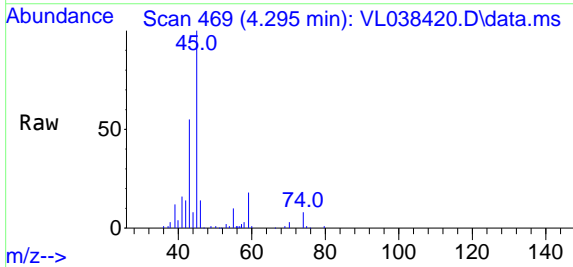
Tgt Ion: 43 Resp: 28305
 Ion Ratio Lower Upper
 43 100
 58 52.4 21.7 32.5

Manual Integrations
 APPROVED

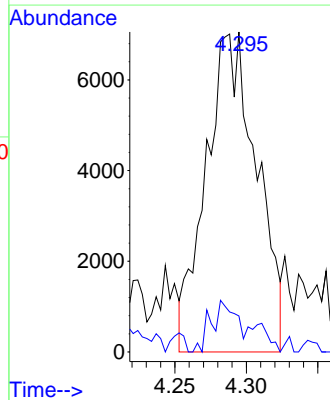
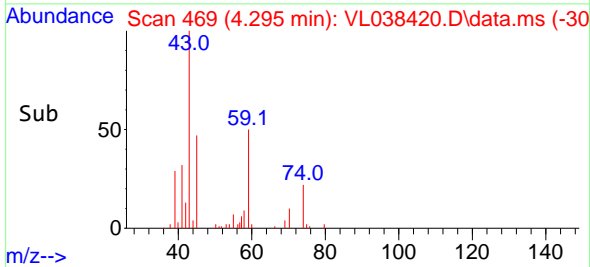
Reviewed By :Semsettin Yesilyurt 02/24/2022
 Supervised By :Mahesh Dadoda 02/25/2022

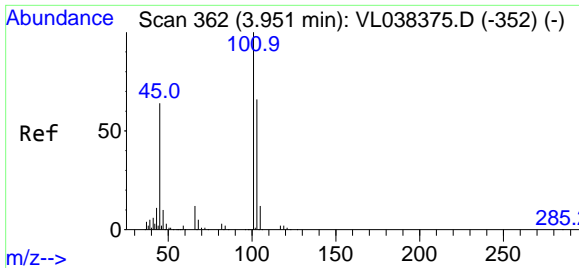


#17
 tert-Butyl alcohol
 Concen: 0.261 ppbv m
 RT: 4.295 min Scan# 469
 Delta R.T. 0.026 min
 Lab File: VL038420.D
 Acq: 23 Feb 2022 23:12



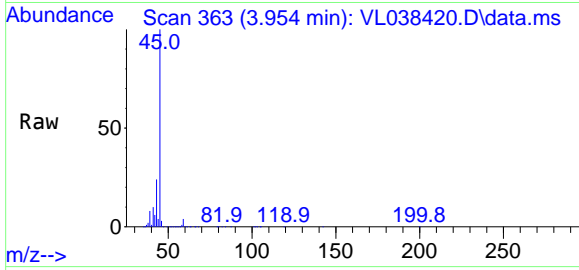
Tgt Ion: 59 Resp: 17416
 Ion Ratio Lower Upper
 59 100
 57 173.7 8.4 12.6#





#19
 Isopropyl Alcohol
 Concen: 175.786 ppbv
 RT: 3.954 min Scan# 30
 Delta R.T. 0.003 min
 Lab File: VL038420.D
 Acq: 23 Feb 2022 23:12

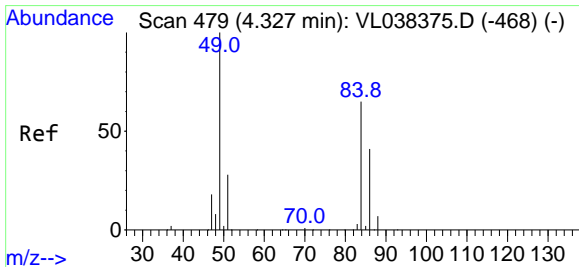
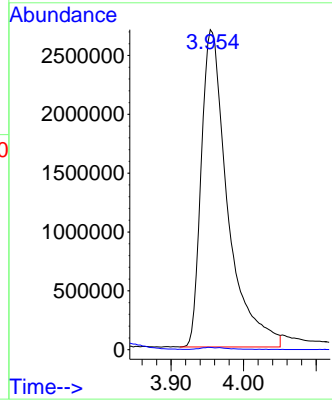
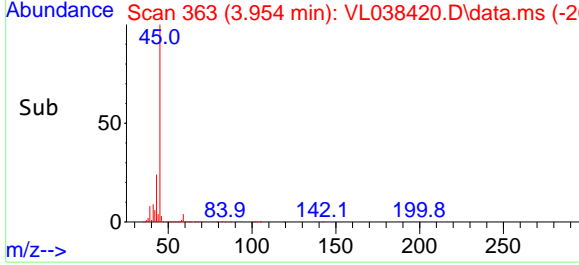
Instrument :
 MSVOA_L
 ClientSampleId :
 IA-3DUP



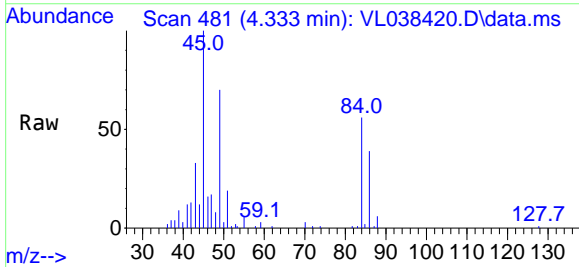
Tgt Ion: 45 Resp: 6807960
 Ion Ratio Lower Upper
 45 100
 58 0.9 1.8 2.8

Manual Integrations
APPROVED

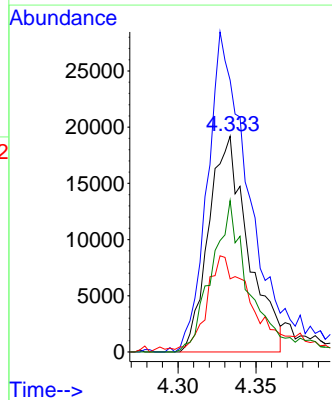
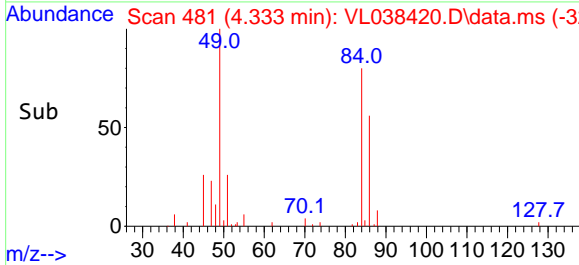
Reviewed By :Semsettin Yesilyurt 02/24/2022
 Supervised By :Mahesh Dadoda 02/25/2022

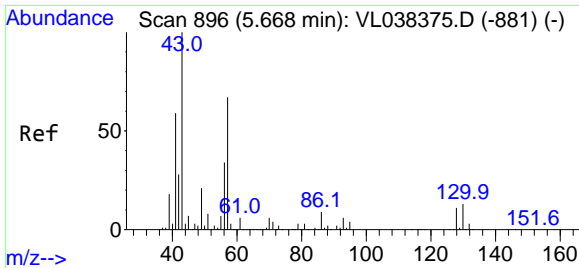


#20
 Methylene Chloride
 Concen: 1.020 ppbv
 RT: 4.333 min Scan# 481
 Delta R.T. 0.006 min
 Lab File: VL038420.D
 Acq: 23 Feb 2022 23:12



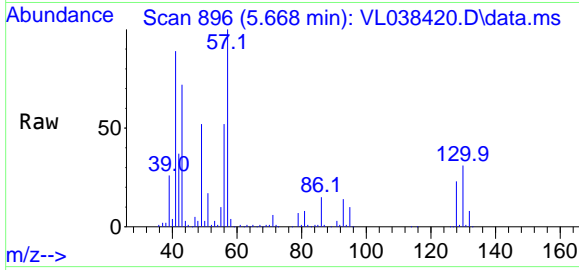
Tgt Ion: 84 Resp: 33789
 Ion Ratio Lower Upper
 84 100
 49 124.2 122.4 183.6
 51 31.5 33.3 49.9#
 86 69.3 50.7 76.1





#26
 Hexane
 Concen: 6.892 ppbv
 RT: 5.668 min Scan# 896
 Delta R.T. 0.000 min
 Lab File: VL038420.D
 Acq: 23 Feb 2022 23:12

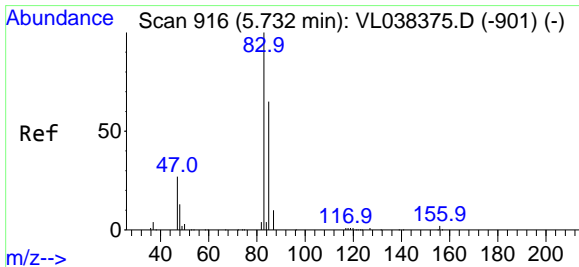
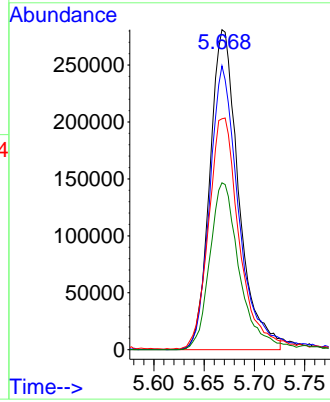
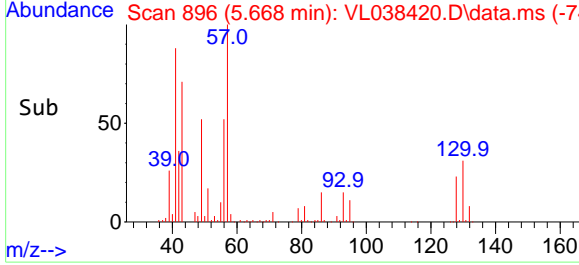
Instrument : MSVOA_L
 ClientSampleId : IA-3DUP



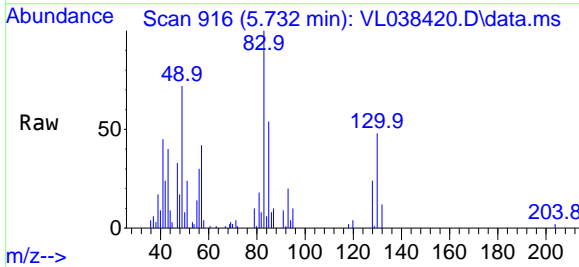
Tgt Ion: 57 Resp: 56076
 Ion Ratio Lower Upper
 57 100
 41 90.3 73.1 109.7
 43 78.1 181.0 271.4
 56 55.1 43.4 65.0

Manual Integrations
APPROVED

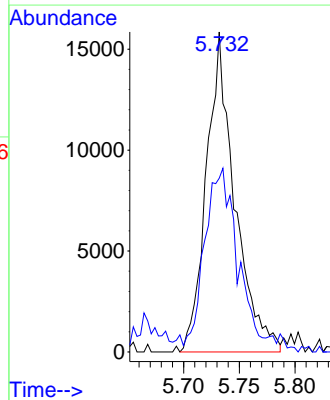
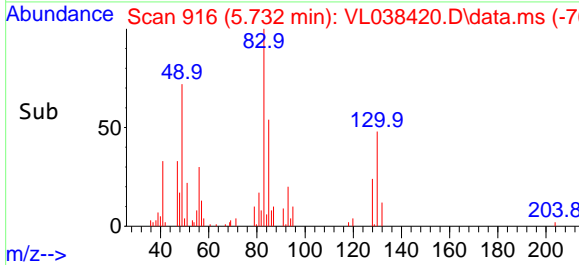
Reviewed By :Semsettin Yesilyurt 02/24/2022
 Supervised By :Mahesh Dadoda 02/25/2022

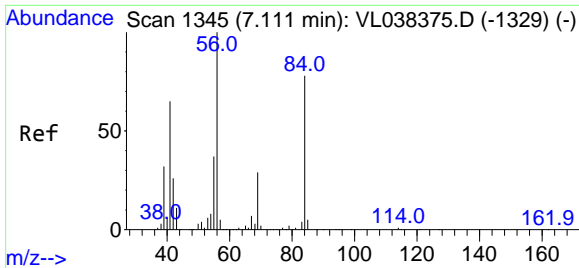


#29
 Chloroform
 Concen: 0.212 ppbv
 RT: 5.732 min Scan# 916
 Delta R.T. 0.000 min
 Lab File: VL038420.D
 Acq: 23 Feb 2022 23:12



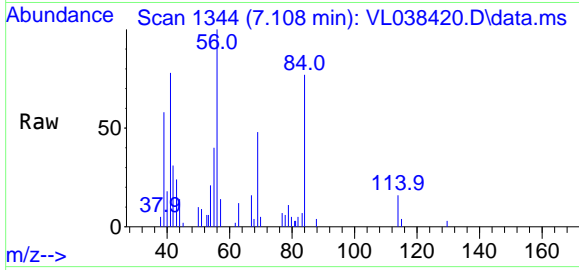
Tgt Ion: 83 Resp: 28105
 Ion Ratio Lower Upper
 83 100
 85 49.0 51.6 77.4





#30
 Cyclohexane
 Concen: 0.248 ppbv m
 RT: 7.108 min Scan# 1344
 Delta R.T. -0.003 min
 Lab File: VL038420.D
 Acq: 23 Feb 2022 23:12

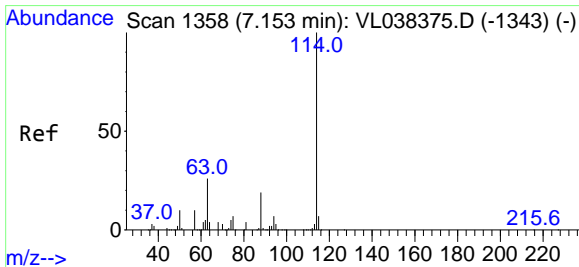
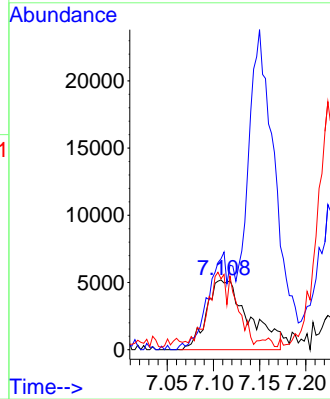
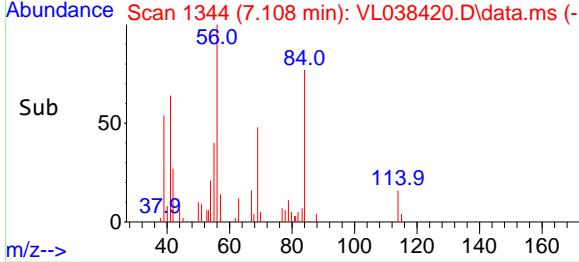
Instrument : MSVOA_L
 ClientSampleId : IA-3DUP



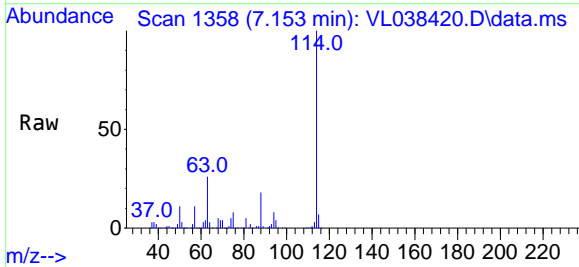
Tgt Ion: 84 Resp: 1649
 Ion Ratio Lower Upper
 84 100
 56 0.0 116.2 174.4
 41 76.9 74.3 111.5

Manual Integrations
APPROVED

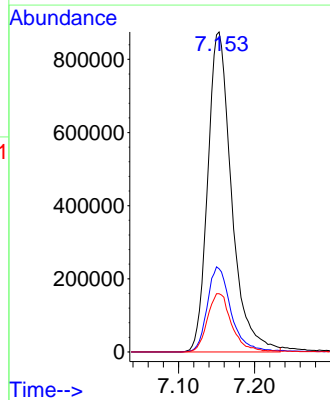
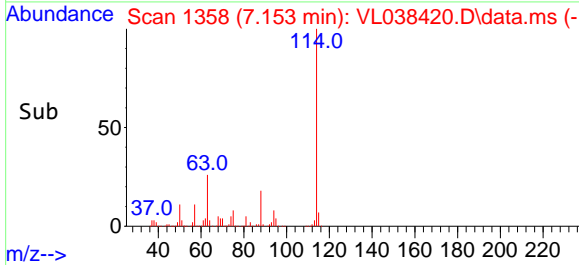
Reviewed By :Semsettin Yesilyurt 02/24/2022
 Supervised By :Mahesh Dadoda 02/25/2022

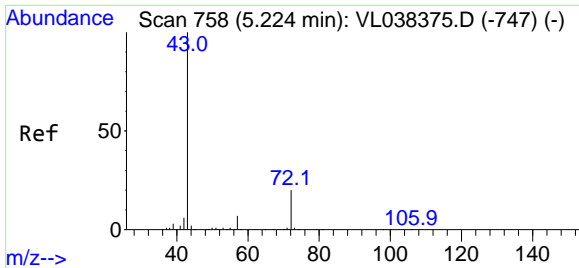


#33
 1,4-Difluorobenzene
 Concen: 10.000 ppbv
 RT: 7.153 min Scan# 1358
 Delta R.T. 0.000 min
 Lab File: VL038420.D
 Acq: 23 Feb 2022 23:12



Tgt Ion:114 Resp: 1904796
 Ion Ratio Lower Upper
 114 100
 63 26.8 22.2 33.2
 88 18.7 15.2 22.8





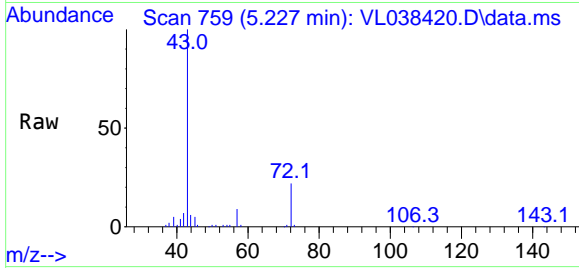
#34
 2-Butanone
 Concen: 1.505 ppbv
 RT: 5.227 min Scan# 71
 Delta R.T. 0.003 min
 Lab File: VL038420.D
 Acq: 23 Feb 2022 23:12

Instrument :

MSVOA_L

ClientSampleId :

IA-3DUP

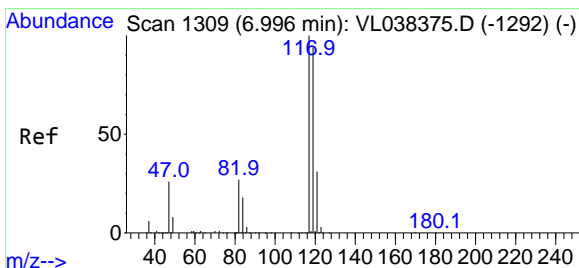
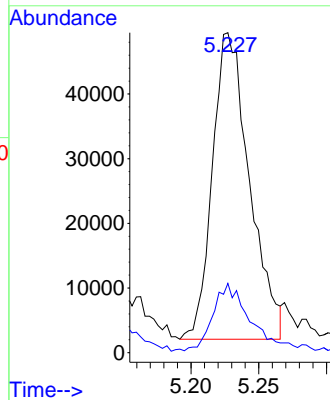
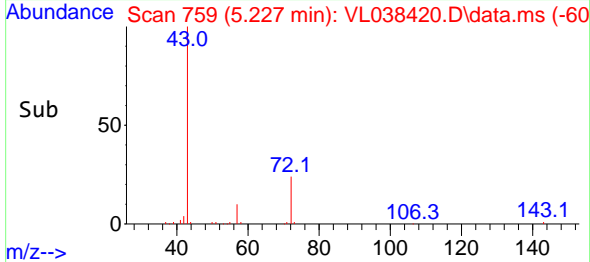


Tgt Ion: 43 Resp: 90134
 Ion Ratio Lower Upper
 43 100
 72 25.2 17.4 26.2

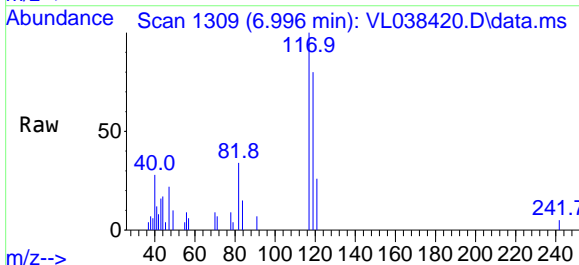
Manual Integrations

APPROVED

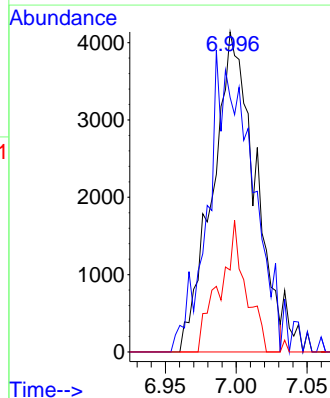
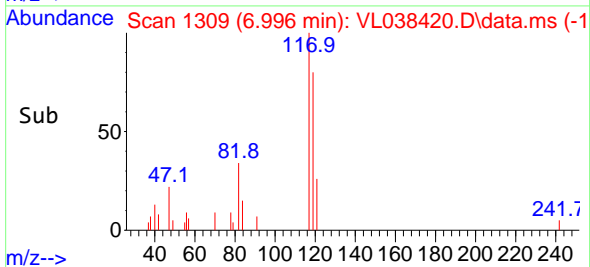
Reviewed By :Semsettin Yesilyurt 02/24/2022
 Supervised By :Mahesh Dadoda 02/25/2022

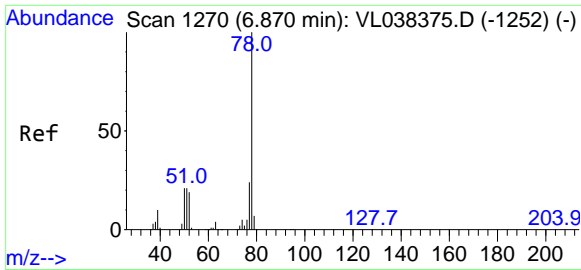


#35
 Carbon Tetrachloride
 Concen: 0.064 ppbv
 RT: 6.996 min Scan# 1309
 Delta R.T. 0.000 min
 Lab File: VL038420.D
 Acq: 23 Feb 2022 23:12



Tgt Ion:117 Resp: 8535
 Ion Ratio Lower Upper
 117 100
 119 79.6 74.9 112.3
 121 25.6 24.8 37.2





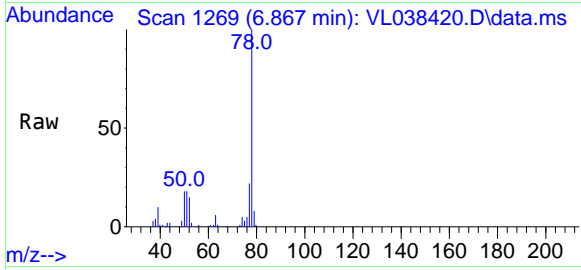
#36
Benzene
Concen: 0.811 ppbv
RT: 6.867 min Scan# 11
Delta R.T. -0.003 min
Lab File: VL038420.D
Acq: 23 Feb 2022 23:12

Instrument :

MSVOA_L

ClientSampleId :

IA-3DUP

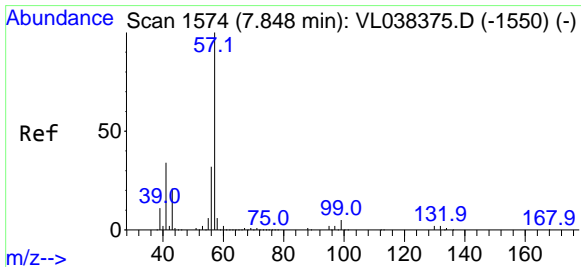
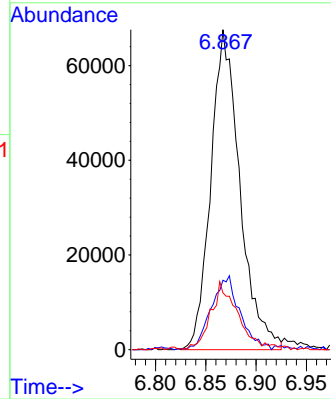
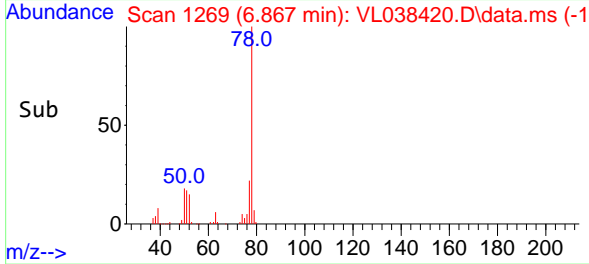


Tgt Ion: 78 Resp: 135979
Ion Ratio Lower Upper
78 100
77 21.4 19.0 28.6
50 17.5 16.6 24.8

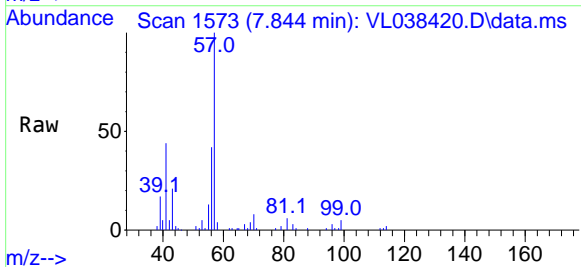
Manual Integrations

APPROVED

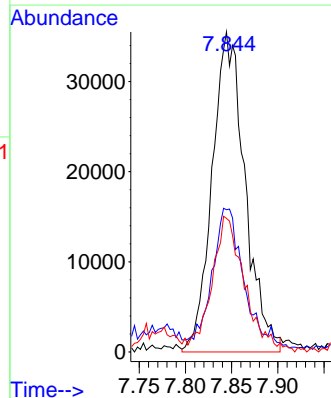
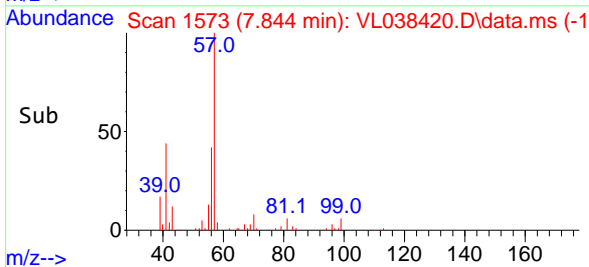
Reviewed By :Semsettin Yesilyurt 02/24/2022
Supervised By :Mahesh Dadoda 02/25/2022

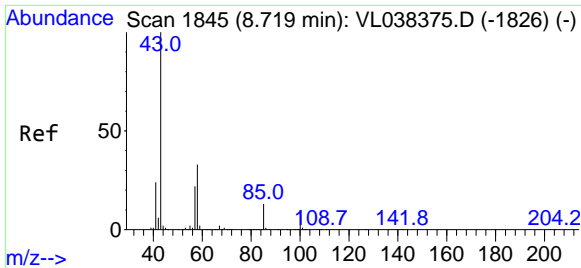


#44
2,2,4-Trimethylpentane
Concen: 0.305 ppbv m
RT: 7.844 min Scan# 1573
Delta R.T. -0.003 min
Lab File: VL038420.D
Acq: 23 Feb 2022 23:12



Tgt Ion: 57 Resp: 87941
Ion Ratio Lower Upper
57 100
41 0.0 26.6 39.8#
56 0.0 25.0 37.6#





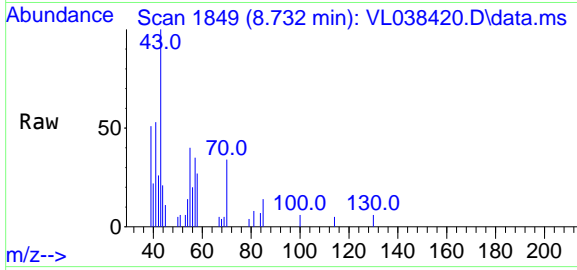
#50
 4-Methyl-2-Pentanone
 Concen: 0.104 ppbv m
 RT: 8.732 min Scan# 1845
 Delta R.T. 0.013 min
 Lab File: VL038420.D
 Acq: 23 Feb 2022 23:12

Instrument :

MSVOA_L

ClientSampleId :

IA-3DUP

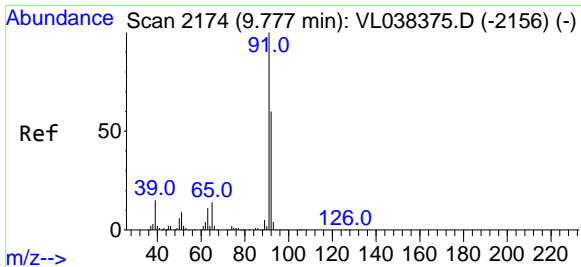
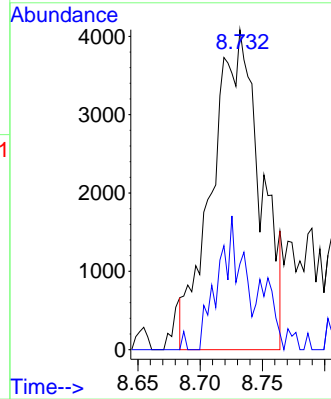
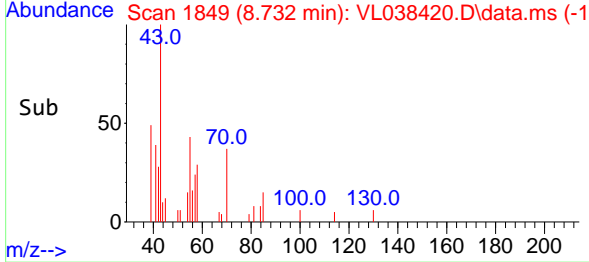


Tgt Ion: 43 Resp: 11000
 Ion Ratio Lower Upper
 43 100
 58 0.0 27.7 41.5

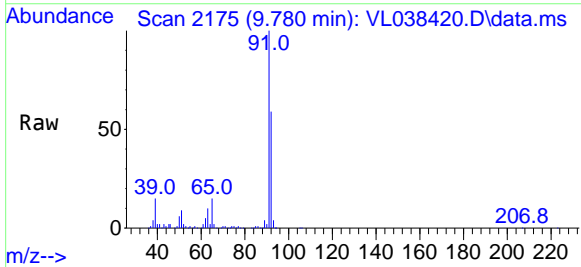
Manual Integrations

APPROVED

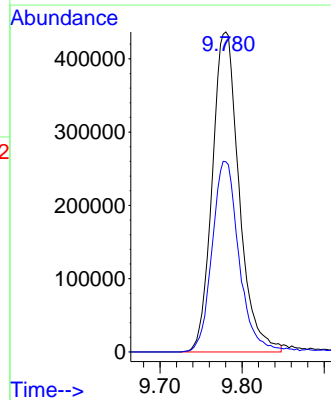
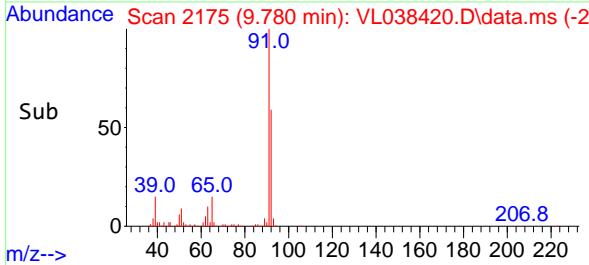
Reviewed By :Semsettin Yesilyurt 02/24/2022
 Supervised By :Mahesh Dadoda 02/25/2022

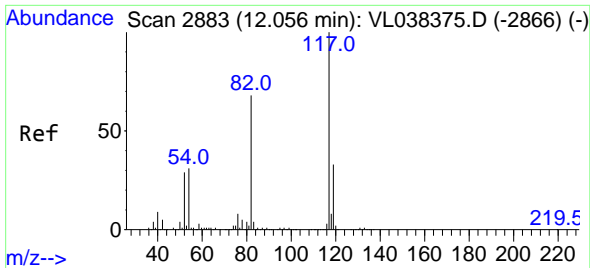


#53
 Toluene
 Concen: 5.460 ppbv
 RT: 9.780 min Scan# 2175
 Delta R.T. 0.003 min
 Lab File: VL038420.D
 Acq: 23 Feb 2022 23:12



Tgt Ion: 91 Resp: 994073
 Ion Ratio Lower Upper
 91 100
 92 60.8 48.2 72.4





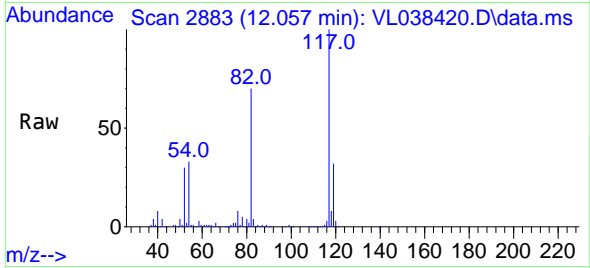
#55
 Chlorobenzene-d5
 Concen: 10.000 ppbv
 RT: 12.057 min Scan# 2883
 Delta R.T. 0.000 min
 Lab File: VL038420.D
 Acq: 23 Feb 2022 23:12

Instrument :

MSVOA_L

ClientSampleId :

IA-3DUP

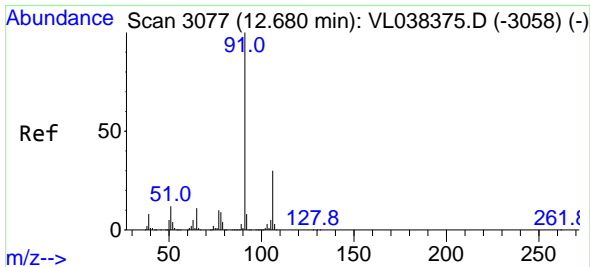
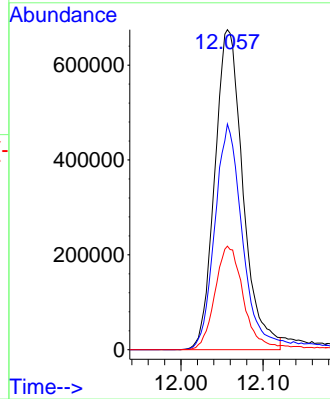
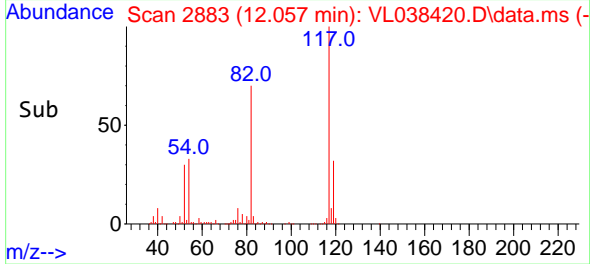


Tgt Ion: 117 Resp: 161394
 Ion Ratio Lower Upper
 117 100
 82 74.3 54.9 82.3
 119 34.2 46.1 69.1

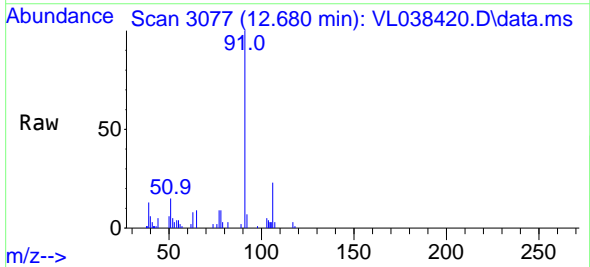
Manual Integrations

APPROVED

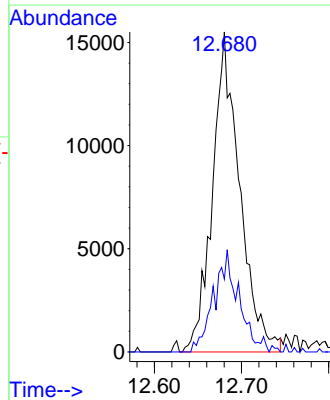
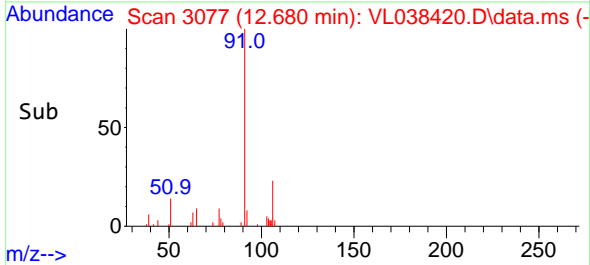
Reviewed By :Semsettin Yesilyurt 02/24/2022
 Supervised By :Mahesh Dadoda 02/25/2022

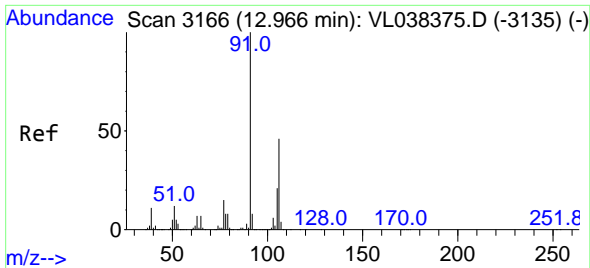


#58
 Ethyl Benzene
 Concen: 0.153 ppbv m
 RT: 12.680 min Scan# 3077
 Delta R.T. 0.000 min
 Lab File: VL038420.D
 Acq: 23 Feb 2022 23:12



Tgt Ion: 91 Resp: 33678
 Ion Ratio Lower Upper
 91 100
 106 22.7 24.0 36.0





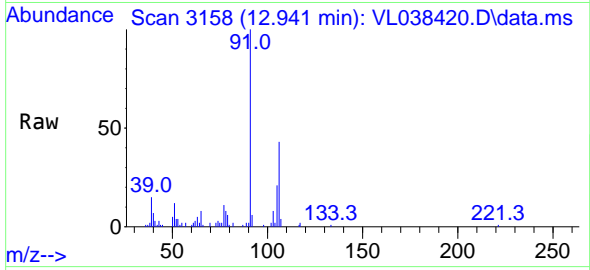
#59
 m/p-Xylene
 Concen: 0.417 ppbv m
 RT: 12.941 min Scan# 3166
 Delta R.T. -0.026 min
 Lab File: VL038420.D
 Acq: 23 Feb 2022 23:12

Instrument :

MSVOA_L

ClientSampleId :

IA-3DUP

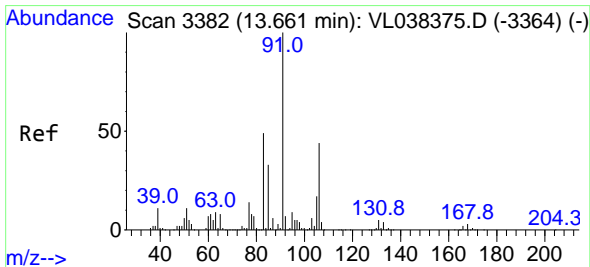
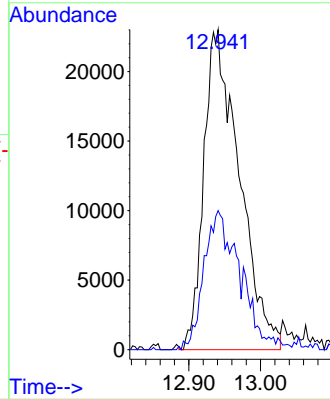
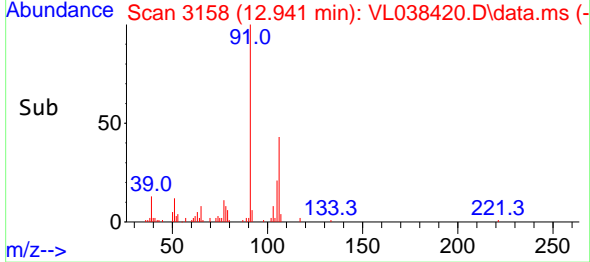


Tgt Ion: 91 Resp: 7911
 Ion Ratio Lower Upper
 91 100
 106 0.0 34.4 51.6

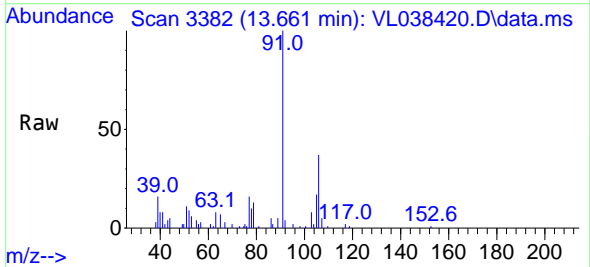
Manual Integrations

APPROVED

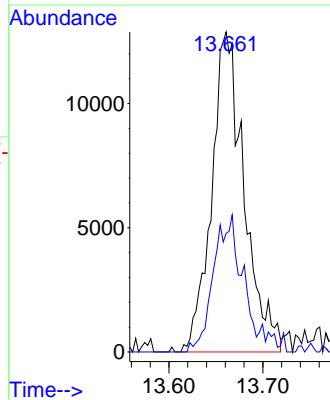
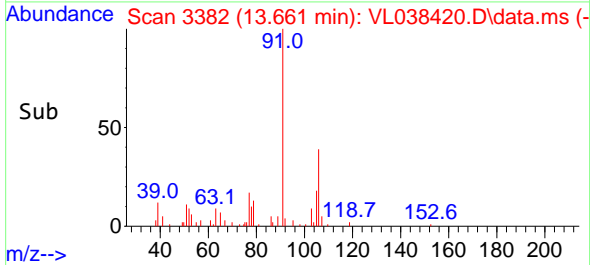
Reviewed By :Semsettin Yesilyurt 02/24/2022
 Supervised By :Mahesh Dadoda 02/25/2022

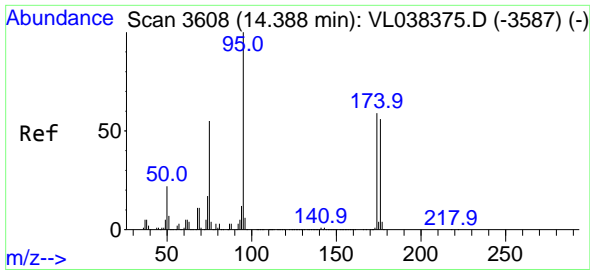


#60
 o-Xylene
 Concen: 0.173 ppbv m
 RT: 13.661 min Scan# 3382
 Delta R.T. 0.000 min
 Lab File: VL038420.D
 Acq: 23 Feb 2022 23:12



Tgt Ion: 91 Resp: 30977
 Ion Ratio Lower Upper
 91 100
 106 0.0 21.9 65.5





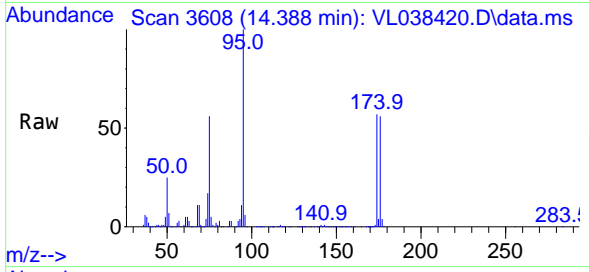
#68
 1-Bromo-4-Fluorobenzene
 Concen: 9.237 ppbv
 RT: 14.388 min Scan# 30
 Delta R.T. 0.000 min
 Lab File: VL038420.D
 Acq: 23 Feb 2022 23:12

Instrument :

MSVOA_L

ClientSampleId :

IA-3DUP

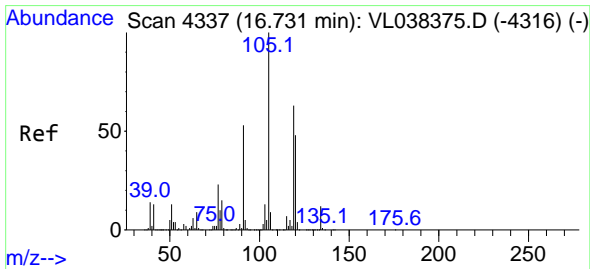
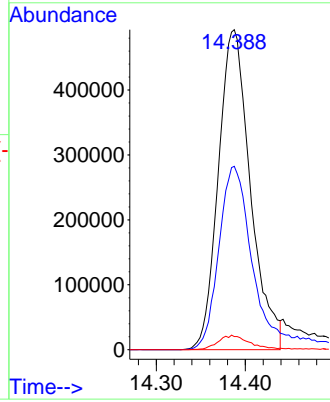
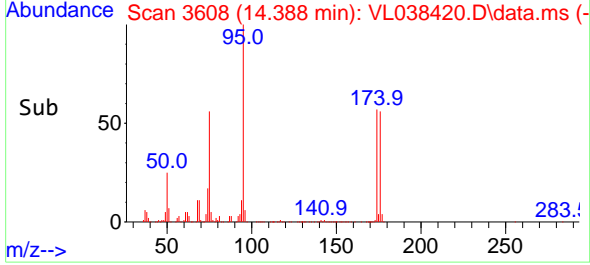


Tgt Ion: 95 Resp: 123355
 Ion Ratio Lower Upper
 95 100
 174 64.9 49.0 73.4
 175 4.8 3.6 5.4

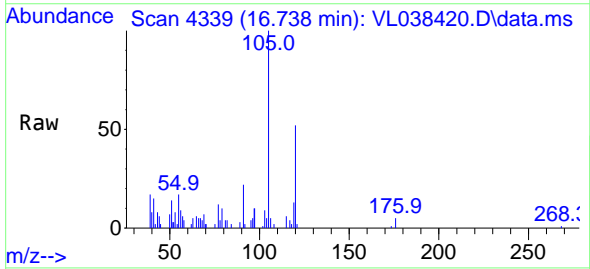
Manual Integrations

APPROVED

Reviewed By :Semsettin Yesilyurt 02/24/2022
 Supervised By :Mahesh Dadoda 02/25/2022



#74
 1,2,4-Trimethylbenzene
 Concen: 0.183 ppbv m
 RT: 16.738 min Scan# 4339
 Delta R.T. 0.006 min
 Lab File: VL038420.D
 Acq: 23 Feb 2022 23:12



Tgt Ion:105 Resp: 34586
 Ion Ratio Lower Upper
 105 100
 120 51.5 38.2 57.4
 91 22.5 42.7 64.1#
 77 12.4 18.5 27.7#

