

Data Path : Z:\VOASRV\HPCHEM1\MSVOA_L\DATA\VL030122\
 Data File : VL038447.D
 Acq On : 1 Mar 2022 12:21
 Operator : SY/AP
 Sample : QC022822 CAN 10158
 Misc : 400mL/MSVOA_L
 ALS Vial : 1 Sample Multiplier: 1

Instrument :
 MSVOA_L
ClientSampleId :
 QC022822 CAN 10158

Quant Time: Mar 02 03:03:29 2022
 Quant Method : Z:\VOASRV\HPCHEM1\MSVOA_L\METHODS\VL022222AIR.M
 Quant Title : AIR ANALYSIS BY METHOD TO-15 Instrument: MSVOA_LTue Feb 22 19:45:51 2022
 QLast Update : Tue Feb 22 19:45:51 2022
 Response via : Initial Calibration

Internal Standards	R.T.	QIon	Response	Conc	Units	Dev(Min)
1) Bromochloromethane	5.66	49	859888	10.00	ppbv	0.00
33) 1,4-Difluorobenzene	7.16	114	2067581	10.00	ppbv	0.00
55) Chlorobenzene-d5	12.07	117	1702496	10.00	ppbv	0.01

System Monitoring Compounds
 68) 1-Bromo-4-Fluorobenzene 14.40 95 1337924 9.50 ppbv 0.01
 Spiked Amount 10.000 Range 65 - 135 Recovery = 95.00%

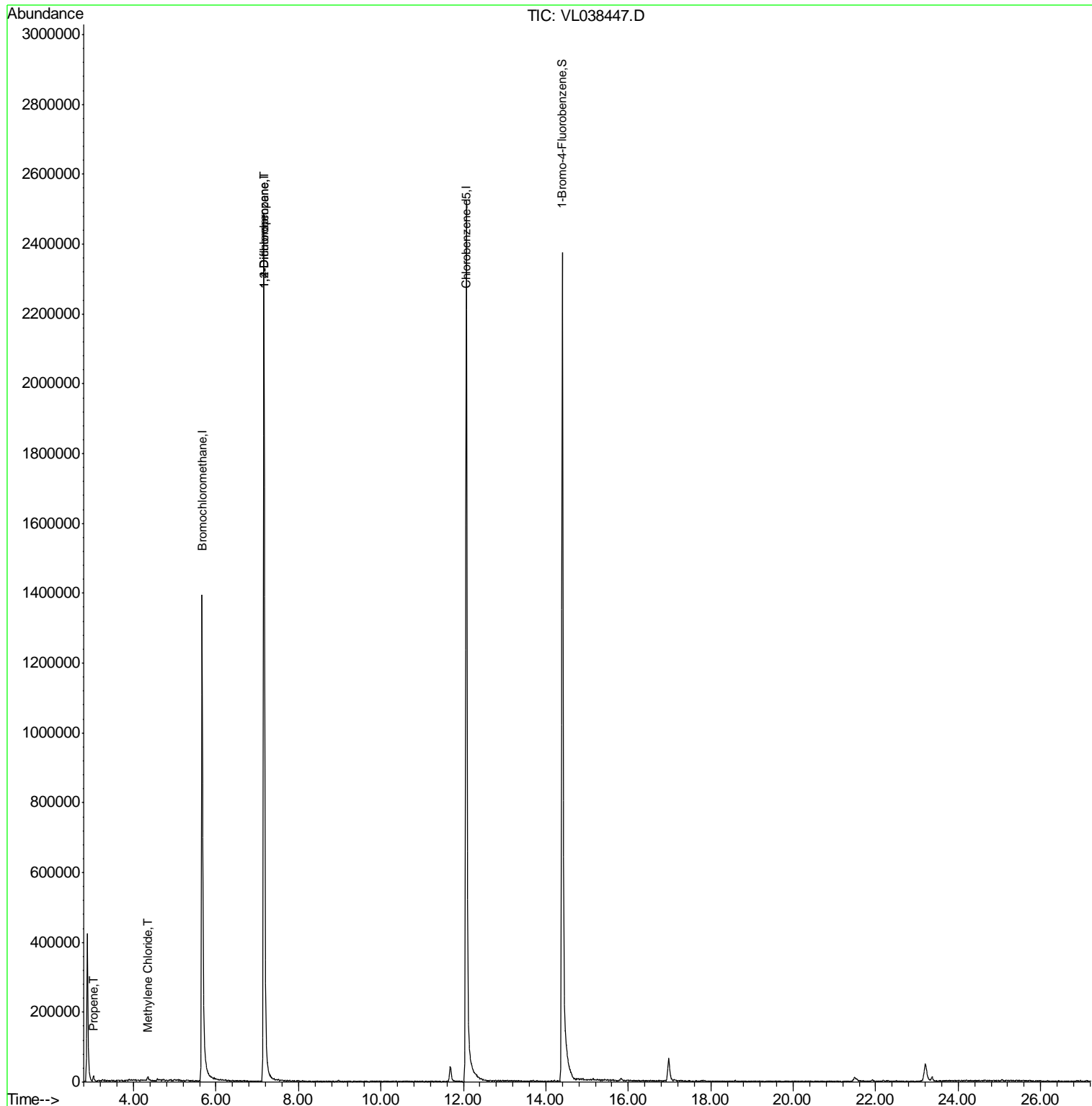
Target Compounds	R.T.	QIon	Response	Conc	Units	Qvalue
9) Propene	3.03	41	4420	0.09	ppbv	89
20) Methylene Chloride	4.34	84	1555	0.04	ppbv #	72
39) 1,2-Dichloropropane	7.17	63	558538	7.70	ppbv #	24

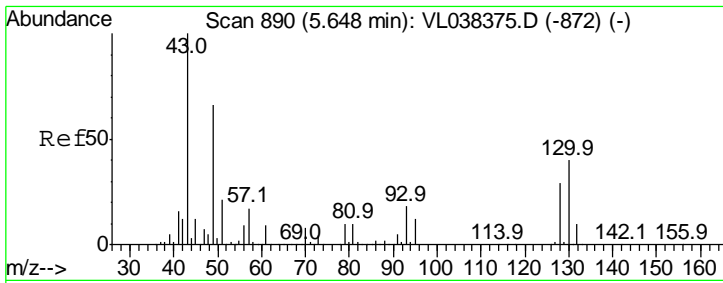
(#) = qualifier out of range (m) = manual integration (+) = signals summed

Data Path : Z:\VOASRV\HPCHEM1\MSVOA_L\DATA\VL030122\
Data File : VL038447.D
Acq On : 1 Mar 2022 12:21
Operator : SY/AP
Sample : QC022822 CAN 10158
Misc : 400mL/MSVOA_L
ALS Vial : 1 Sample Multiplier: 1

Instrument :
MSVOA_L
ClientSampleId :
QC022822 CAN 10158

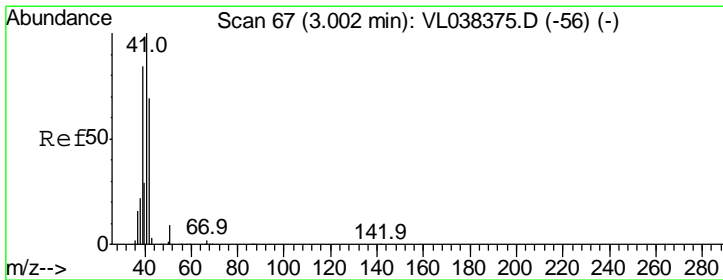
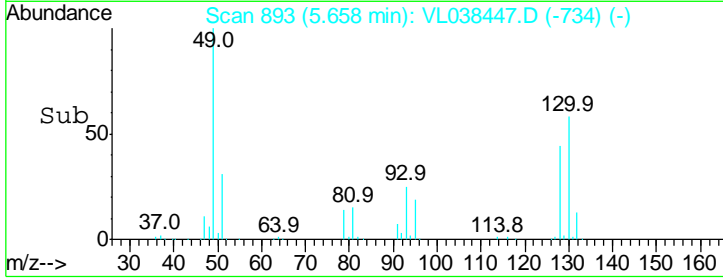
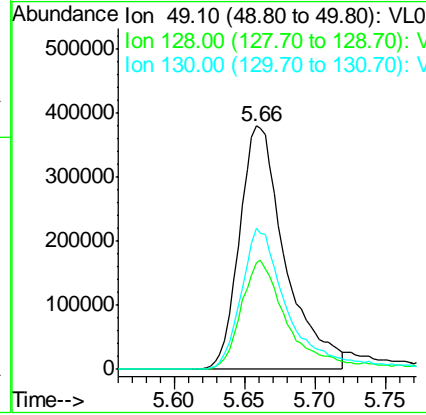
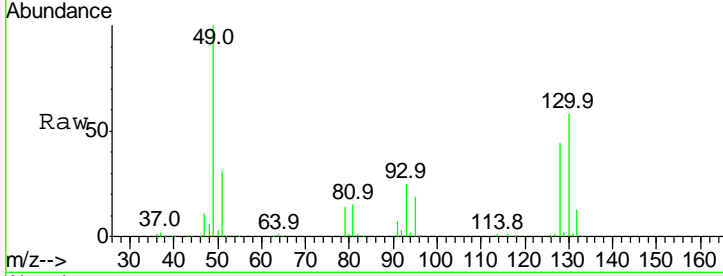
Quant Time: Mar 02 03:03:29 2022
Quant Method : Z:\VOASRV\HPCHEM1\MSVOA_L\METHODS\VL022222AIR.M
Quant Title : AIR ANALYSIS BY METHOD TO-15 Instrument: MSVOA_L Tue Feb 22 19:45:51 2022
QLast Update : Tue Feb 22 19:45:51 2022
Response via : Initial Calibration





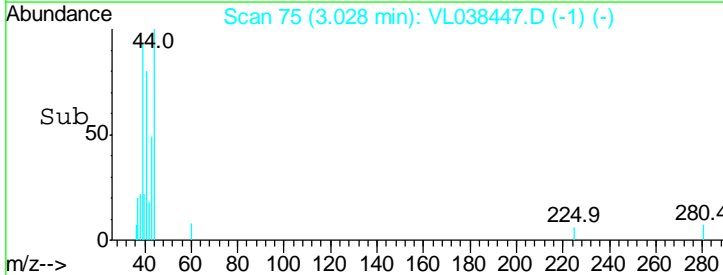
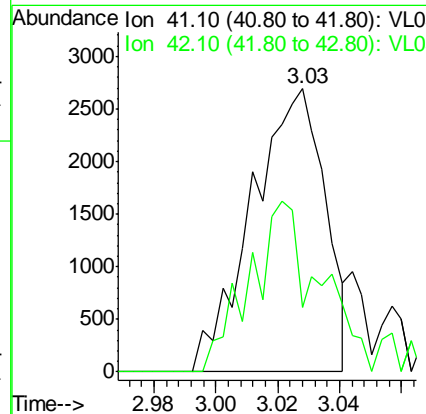
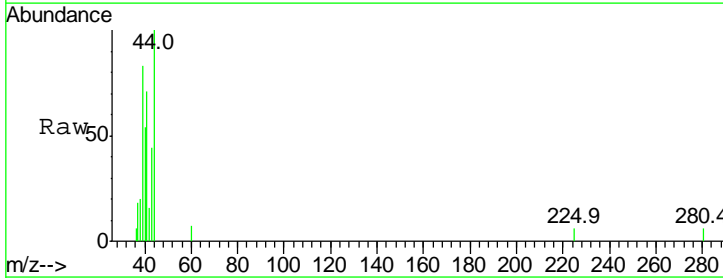
#1
 Bromochloromethane
 Concen: 10.00 ppbv
 RT: 5.66
 Delta R.T. MSVOA_L
 Lab File: ClientSampleId :
 QC022822 CAN 10158
 Acq: 1 Mar 2022 12:21

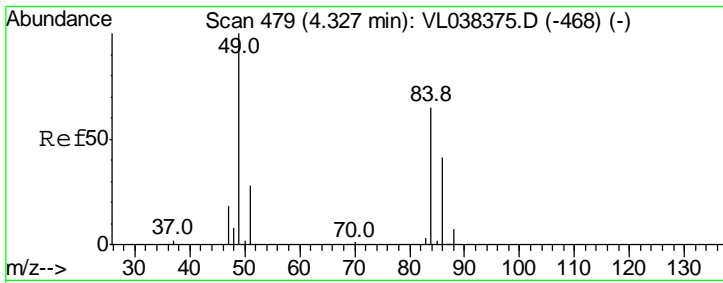
Tgt Ion	Resp	Lower	Upper
49	100		
128	48.1	24.3	72.9
130	62.3	30.1	90.5



#9
 Propene
 Concen: 0.09 ppbv
 RT: 3.03 min Scan# 75
 Delta R.T. 0.03 min
 Lab File: VL038447.D
 Acq: 1 Mar 2022 12:21

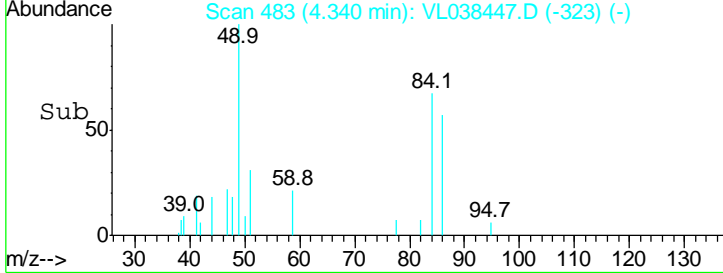
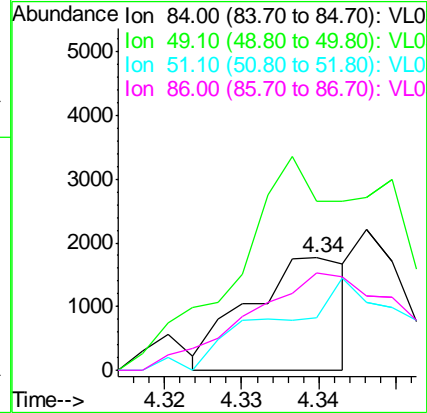
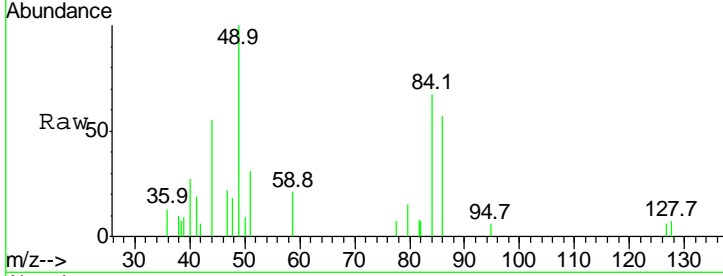
Tgt Ion	Resp	Lower	Upper
41	100		
42	59.8	54.6	82.0





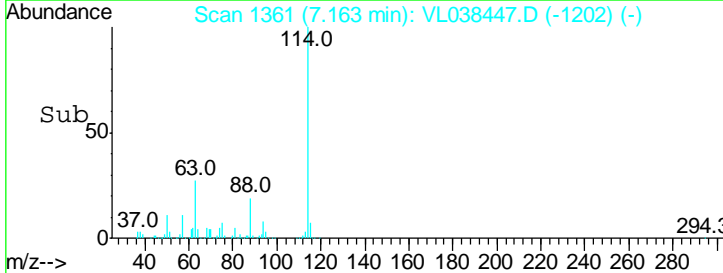
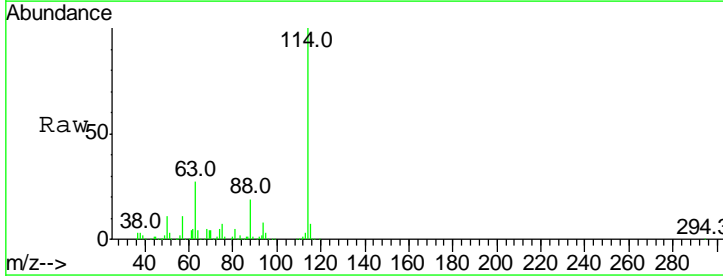
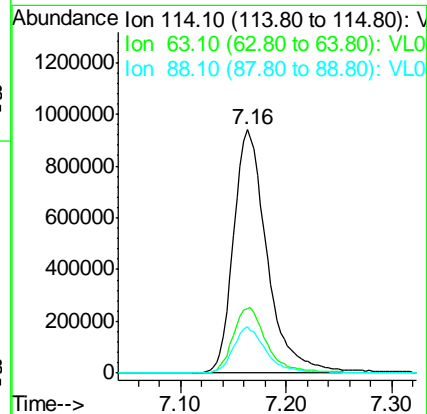
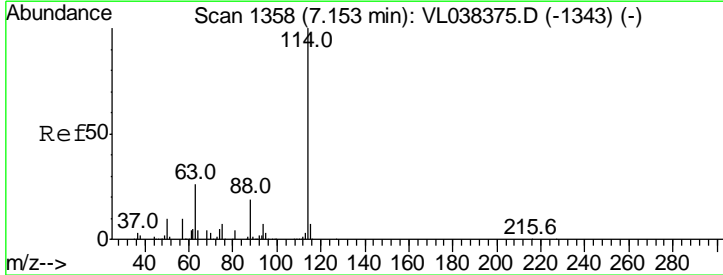
#20
 Methylene Chloride
 Concen: 0.04 ppbv
 RT: 4.34
 Delta R.T. MSVOA_L
 Lab File: ClientSampled :
 QC022822 CAN 10158
 Acq: 1 Mar 2022 12:21

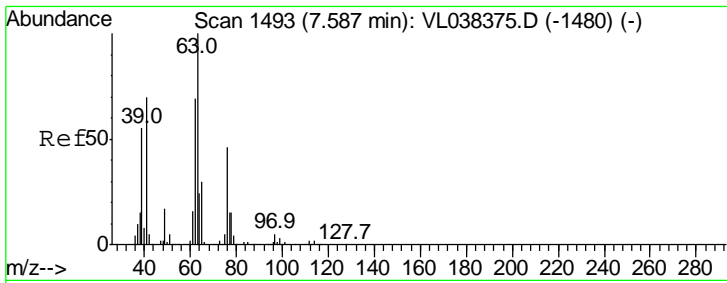
Tgt Ion	Resp	Lower	Upper
84	100		
49	109.0	122.4	183.6#
51	54.1	33.3	49.9#
86	77.3	50.7	76.1#



#33
 1,4-Difluorobenzene
 Concen: 10.00 ppbv
 RT: 7.16 min Scan# 1361
 Delta R.T. 0.01 min
 Lab File: VL038447.D
 Acq: 1 Mar 2022 12:21

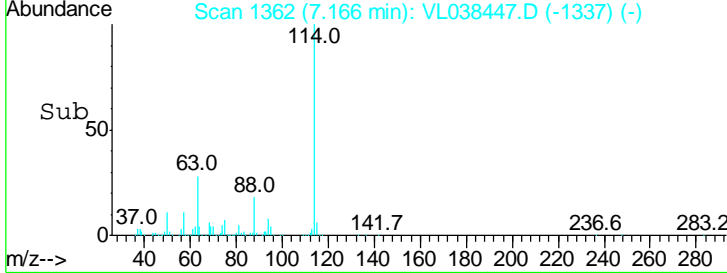
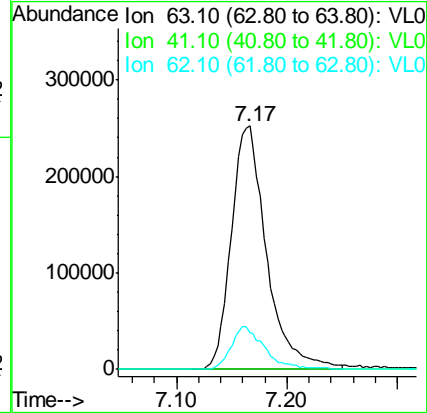
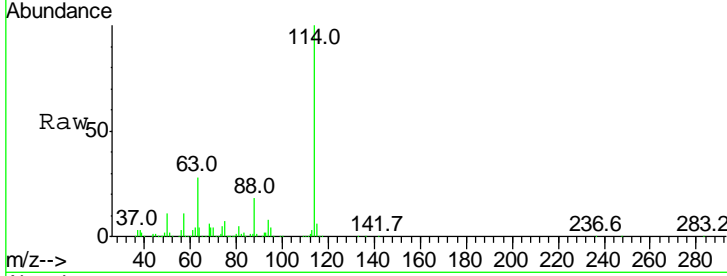
Tgt Ion	Resp	Lower	Upper
114	100		
63	27.6	22.2	33.2
88	18.9	15.2	22.8





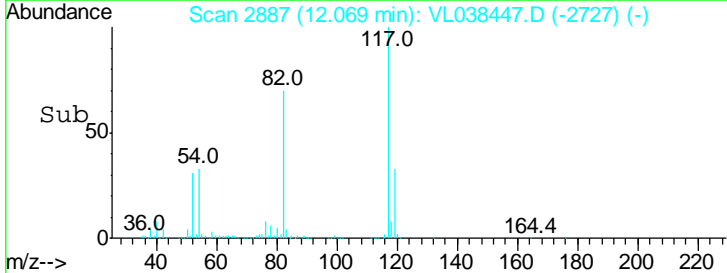
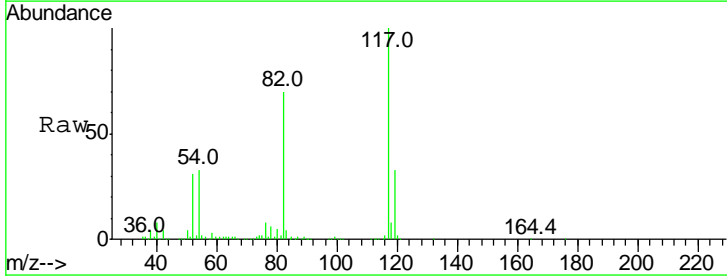
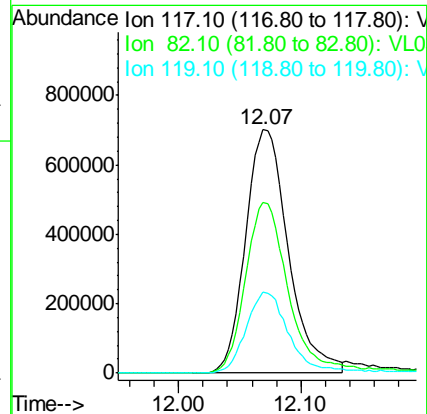
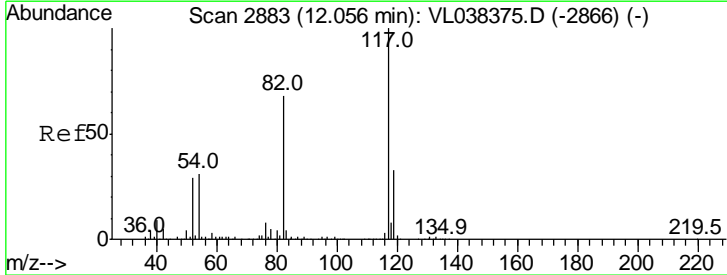
#39
 1,2-Dichloropropane
 Concen: 7.70 ppbv
 RT: 7.17
 Delta R.T. MSVOA_L
 Lab File: ClientSampleId :
 QC022822 CAN 10158
 Acq: 1 Mar 2022 12:21

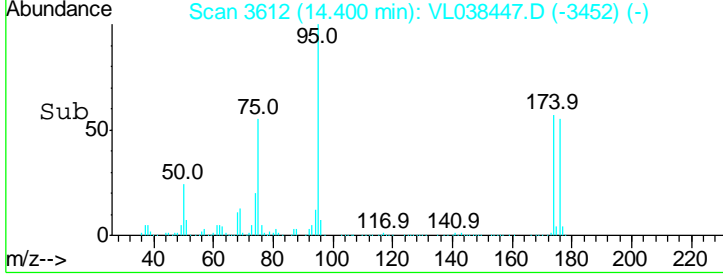
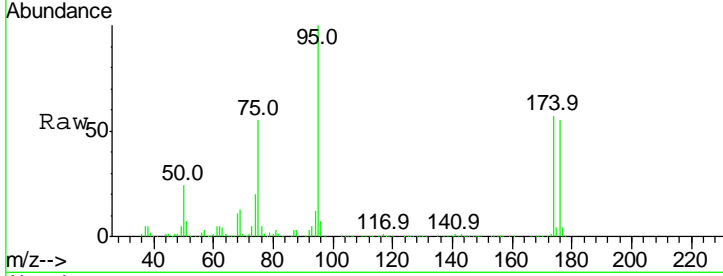
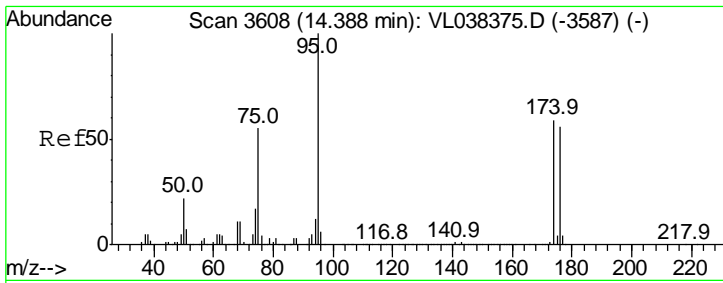
Tgt Ion	Resp	Lower	Upper
63	100		
41	0.0	56.1	84.1#
62	14.8	55.5	83.3#



#55
 Chlorobenzene-d5
 Concen: 10.00 ppbv
 RT: 12.07 min Scan# 2887
 Delta R.T. 0.01 min
 Lab File: VL038447.D
 Acq: 1 Mar 2022 12:21

Tgt Ion	Resp	Lower	Upper
117	100		
82	73.4	54.9	82.3
119	35.1	46.1	69.1#





#68
 1-Bromo-4-Fluorobenzene
 Concen: 9.50 ppbv
 RT: 14.40
 Delta R.T: MSVOA_L
 Lab File: ClientSampleId :
 Acq: 1 Mar 2022 12:21
 QC022822 CAN 10158

Tgt Ion: 95 Resp: 1337924

Ion	Ratio	Lower	Upper
95	100		
174	62.2	49.0	73.4
175	4.5	3.6	5.4

