

Data Path : Z:\VOASRV\HPCHEM1\MSVOA L\DATA\VL041322\
 Data File : VL038908.D
 Acq On : 13 Apr 2022 18:16
 Operator : SY/AP
 Sample : N2383-01DUP
 Misc : 400mL/MSVOA L
 ALS Vial : 1 Sample Multiplier: 1

Instrument :
 MSVOA_L
 ClientSampleId :
 1DUP

Quant Time: Apr 14 08:24:41 2022
 Quant Method : Z:\VOASRV\HPCHEM1\MSVOA L\METHODS\VL040522AIR.M
 Quant Title : AIR ANALYSIS BY METHOD TO-15 Instrument: MSVOA_LWed Apr 06 06:12:53 2022
 QLast Update : Wed Apr 06 06:12:53 2022
 Response via : Initial Calibration

Internal Standards	R.T.	QIon	Response	Conc	Units	Dev(Min)
1) Bromochloromethane	5.67	49	990780	10.00	ppbv	0.00
33) 1,4-Difluorobenzene	7.18	114	2292211	10.00	ppbv	0.00
55) Chlorobenzene-d5	12.09	117	2022807	10.00	ppbv	0.00

System Monitoring Compounds

68) 1-Bromo-4-Fluorobenzene	14.42	95	1721451	11.22	ppbv	0.00
Spiked Amount	10.000	Range	65 - 135	Recovery	=	112.20%

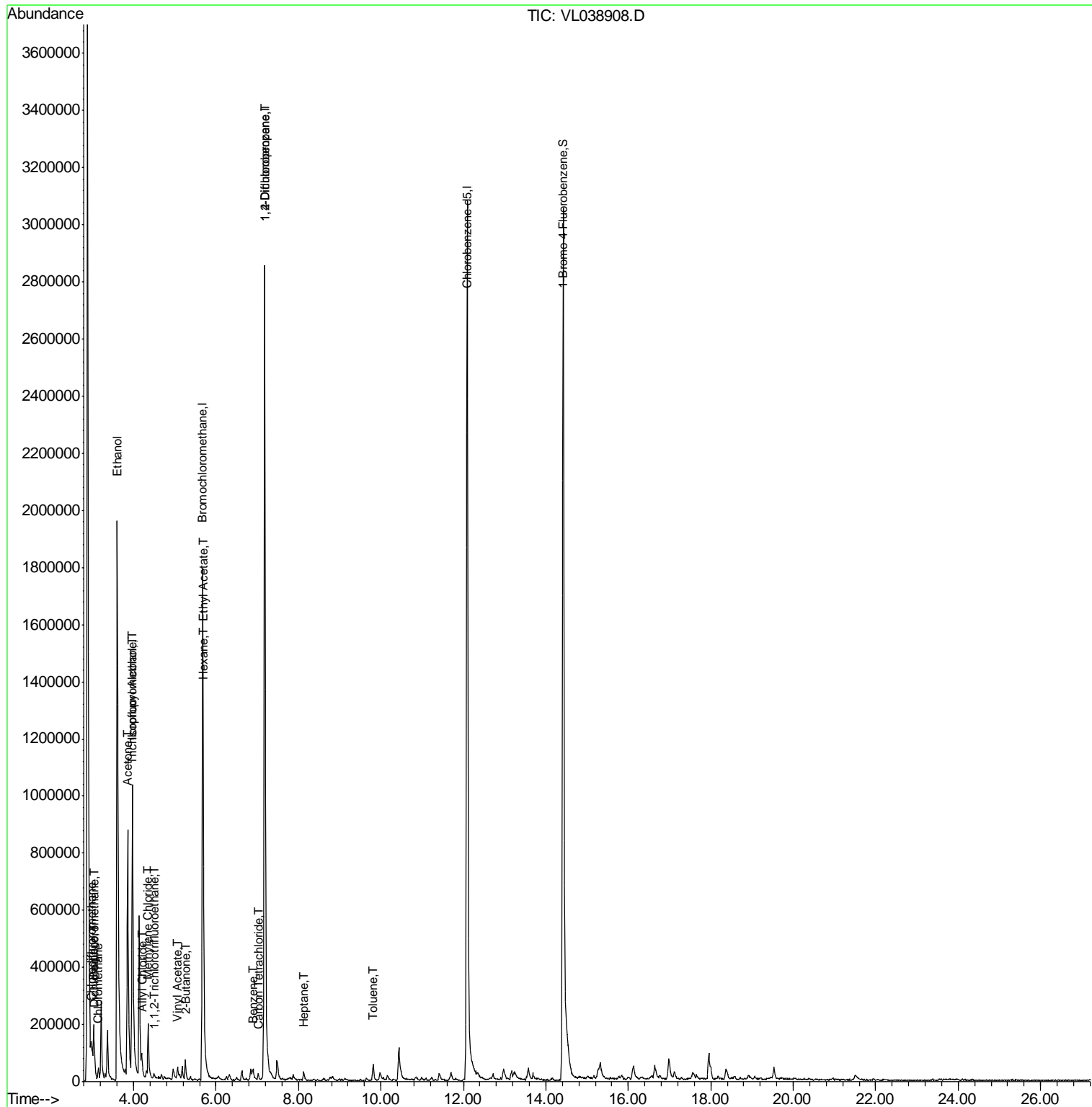
Target Compounds	R.T.	QIon	Response	Conc	Units	Ovalue
2) Dichlorodifluoromethane	3.06	85	47062	0.335	ppbv	99
3) Chlorodifluoromethane	3.00	51	166501	1.377	ppbv #	88
4) Chloromethane	3.14	50	15588	0.249	ppbv	99
9) Propene	3.02	41	22873	0.358	ppbv #	82
10) Heptane	8.13	43	7603	0.047	ppbv #	36
11) Trichlorofluoromethane	3.95	101	54290	0.481	ppbv	89
12) 1,1,2-Trichlorotrifluoroet	4.49	101	4344	0.050	ppbv #	73
13) Ethanol	3.60	45	2628154	675.998	ppbv #	100
15) Acetone	3.85	43	1081839	10.967	ppbv	100
19) Isopropyl Alcohol	3.97	45	1276798	25.326	ppbv #	100
20) Methylene Chloride	4.36	84	74202	2.074	ppbv	94
21) Allyl Chloride	4.21	41	3759	0.051	ppbv #	31
23) Vinyl Acetate	5.07	43	32690	0.340	ppbv #	73
25) Ethyl Acetate	5.69	43	80460	0.321	ppbv #	89
26) Hexane	5.70	57	61908	0.543	ppbv #	47
34) 2-Butanone	5.25	43	88156	0.973	ppbv #	89
35) Carbon Tetrachloride	7.02	117	4224	0.031	ppbv #	72
36) Benzene	6.89	78	15694	0.075	ppbv #	85
39) 1,2-Dichloropropane	7.18	63	639799	8.022	ppbv #	27
53) Toluene	9.82	91	21261	0.088	ppbv #	20

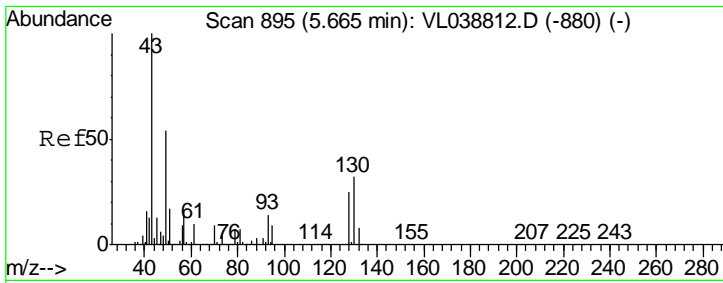
(#) = qualifier out of range (m) = manual integration (+) = signals summed

Data Path : Z:\VOASRV\HPCHEM1\MSVOA L\DATA\VL041322\
 Data File : VL038908.D
 Acq On : 13 Apr 2022 18:16
 Operator : SY/AP
 Sample : N2383-01DUP
 Misc : 400mL/MSVOA L
 ALS Vial : 1 Sample Multiplier: 1

Instrument :
 MSVOA_L
 ClientSampleId :
 1DUP

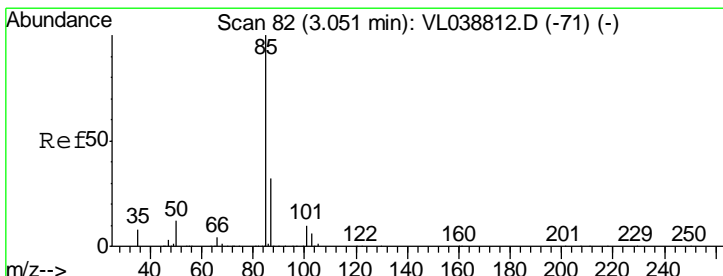
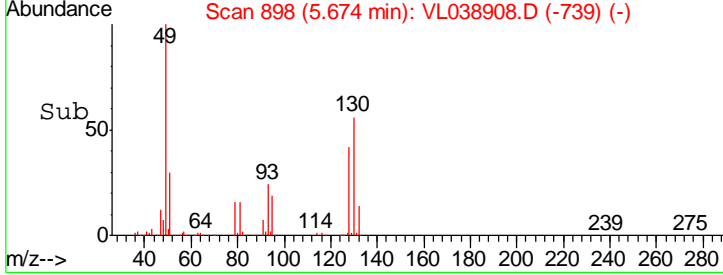
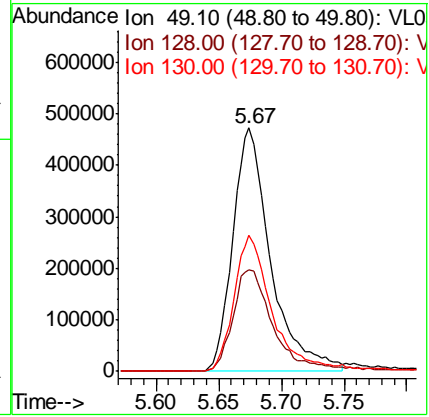
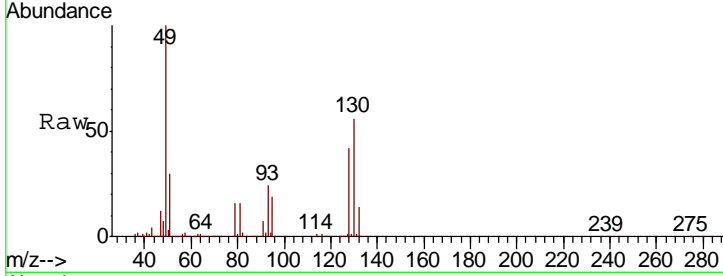
Quant Time: Apr 14 08:24:41 2022
 Quant Method : Z:\VOASRV\HPCHEM1\MSVOA L\METHODS\VL040522AIR.M
 Quant Title : AIR ANALYSIS BY METHOD TO-15 Instrument: MSVOA_L Wed Apr 06 06:12:53 2022
 QLast Update : Wed Apr 06 06:12:53 2022
 Response via : Initial Calibration





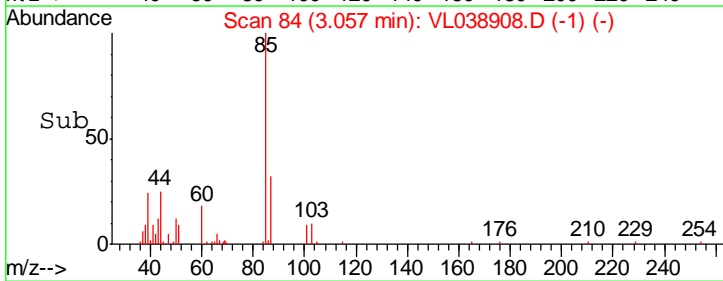
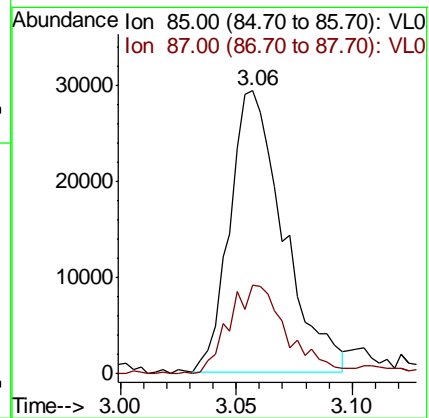
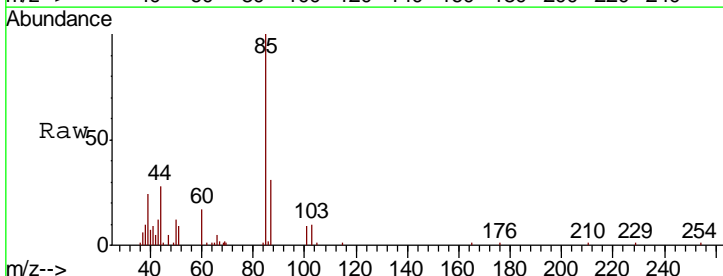
#1
 Bromochloromethane
 Concen: 10.000 ppbv
 RT: 5.67
 Delta R.T. MSVOA_L
 Lab File: ClientSampled :
 1DUP
 Acq: 13 Apr 2022 18:16

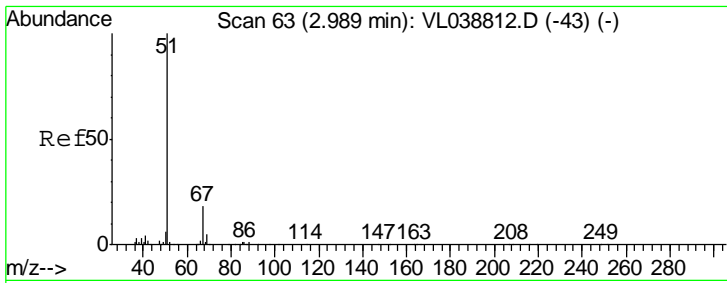
Tgt Ion	Resp	Lower	Upper
49	100		
128	46.3	24.1	72.3
130	57.9	30.9	92.8



#2
 Dichlorodifluoromethane
 Concen: 0.335 ppbv
 RT: 3.06 min Scan# 84
 Delta R.T. 0.01 min
 Lab File: VL038908.D
 Acq: 13 Apr 2022 18:16

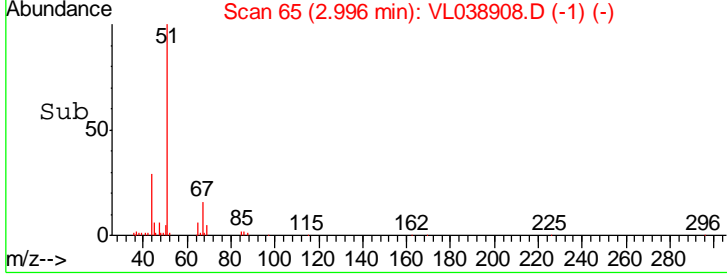
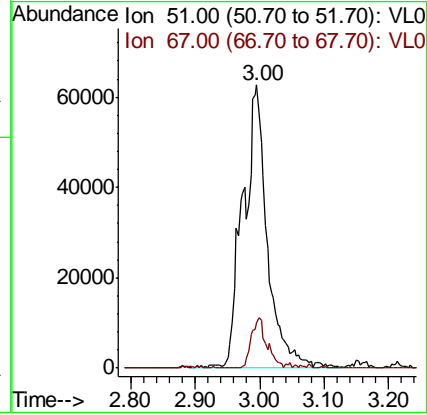
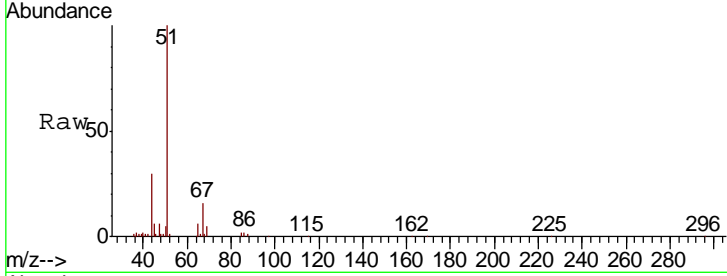
Tgt Ion	Resp	Lower	Upper
85	100		
87	31.7	25.9	38.9





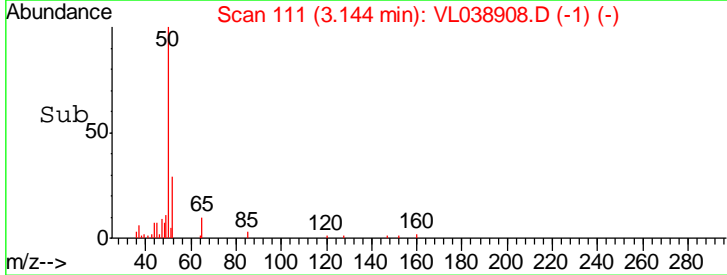
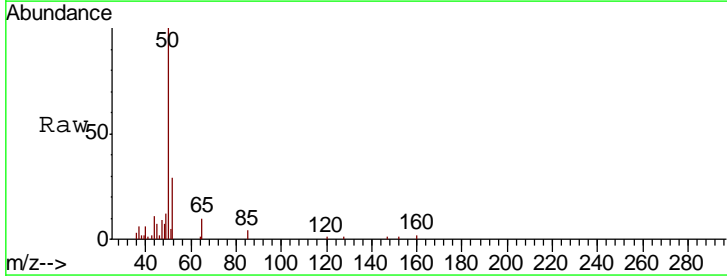
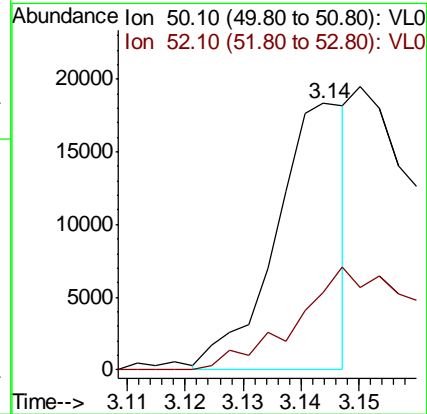
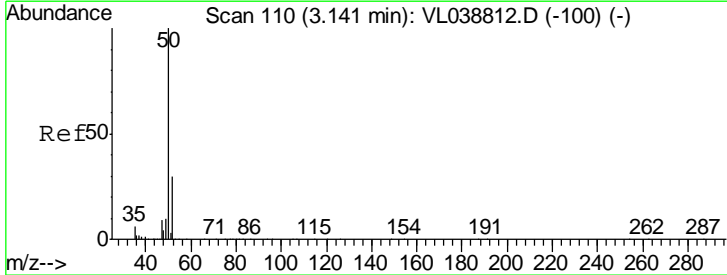
#3
 Chlorodifluoromethane
 Concen: 1.377 ppbv
 RT: 3.00
 Delta R.T. MSVOA_L
 Lab File: ClientSampleId : 1DUP
 Acq: 13 Apr 2022 18:18

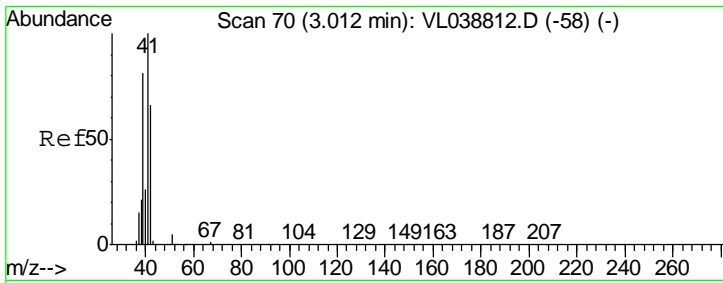
Tgt Ion	Resp	Lower	Upper
51	166501		
67	11.7	13.4	20.0#



#4
 Chloromethane
 Concen: 0.249 ppbv
 RT: 3.14 min Scan# 111
 Delta R.T. 0.00 min
 Lab File: VL038908.D
 Acq: 13 Apr 2022 18:16

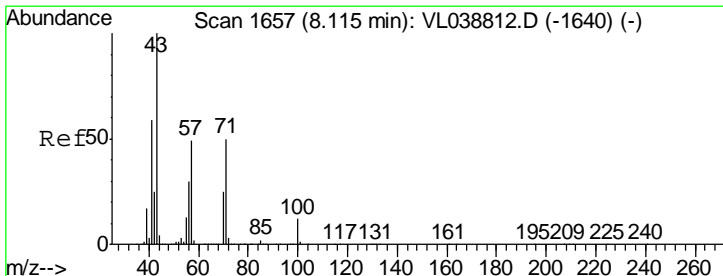
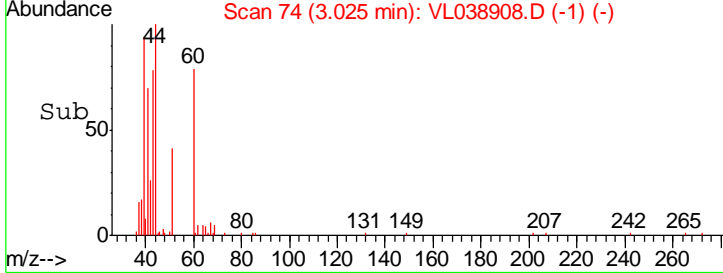
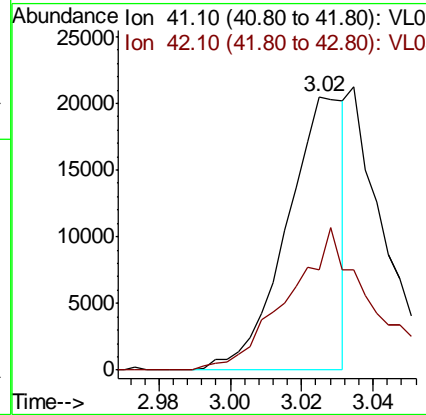
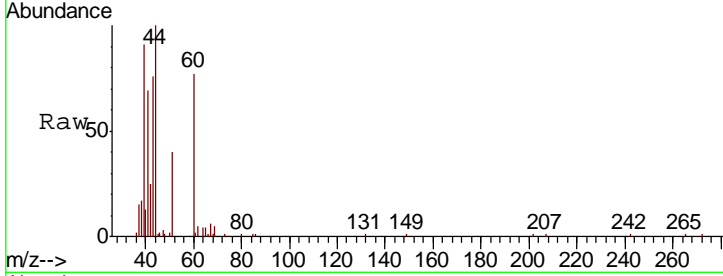
Tgt Ion	Resp	Lower	Upper
50	15588		
52	29.7	24.3	36.5





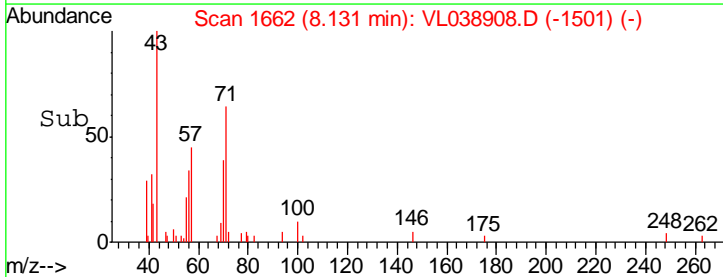
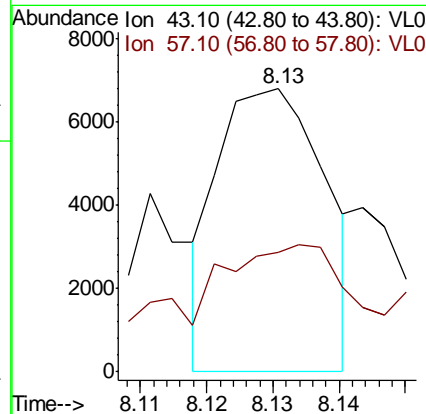
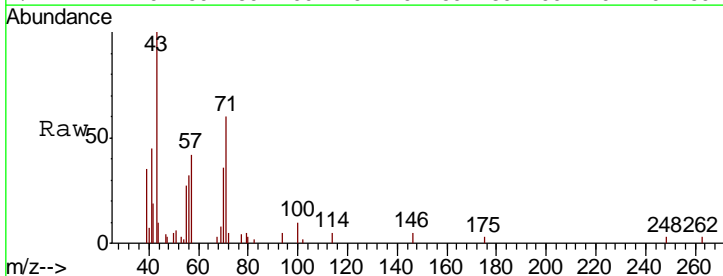
#9
 Propene
 Concen: 0.358 ppbv
 RT: 3.02
 Delta R.T. MSVOA_L
 Lab File: ClientSampled :
 1DUP
 Acq: 13 Apr 2022 18:16

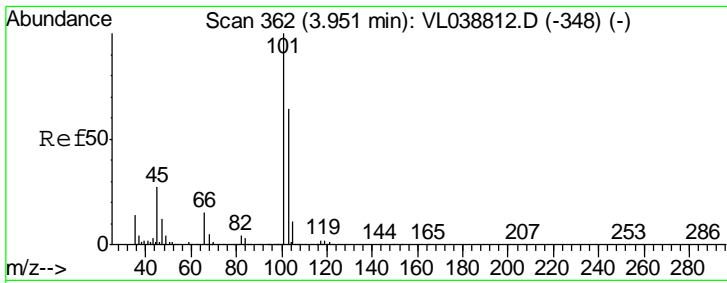
Tgt Ion	Resp	Lower	Upper
41	100		
42	82.1	54.2	81.4#



#10
 Heptane
 Concen: 0.047 ppbv
 RT: 8.13 min Scan# 1662
 Delta R.T. 0.02 min
 Lab File: VL038908.D
 Acq: 13 Apr 2022 18:16

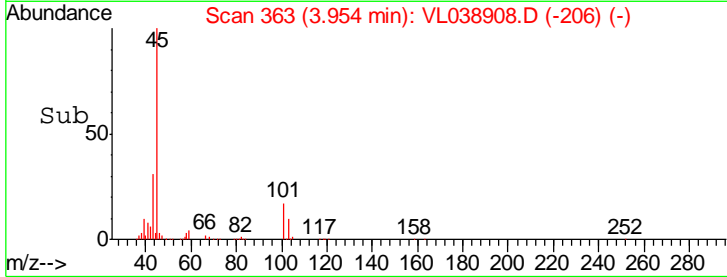
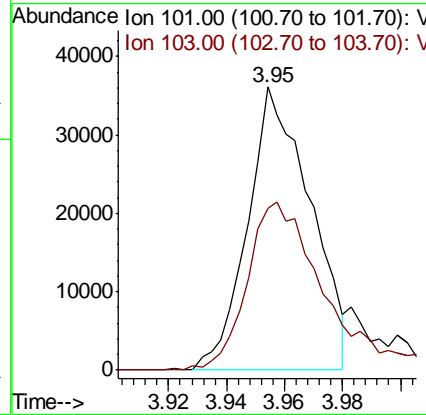
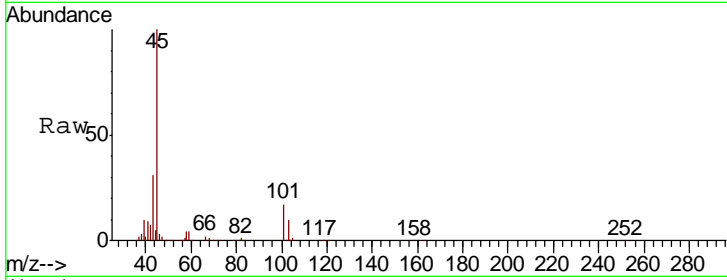
Tgt Ion	Resp	Lower	Upper
43	100		
57	93.1	39.3	58.9#





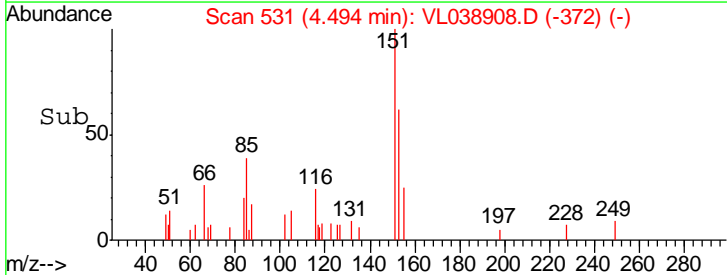
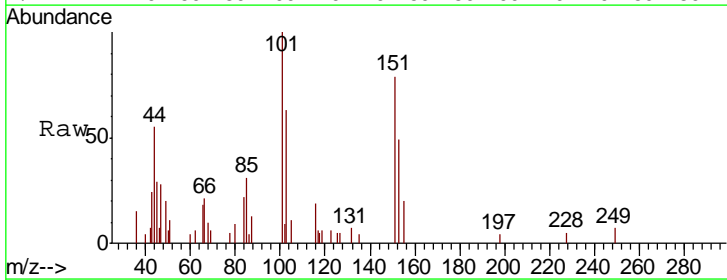
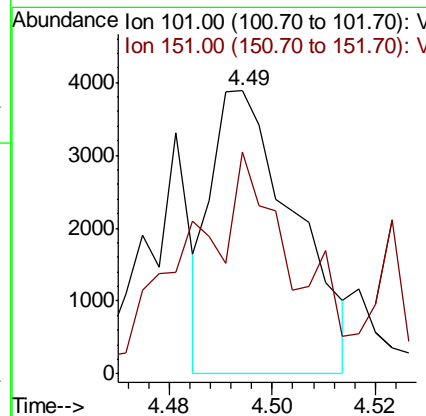
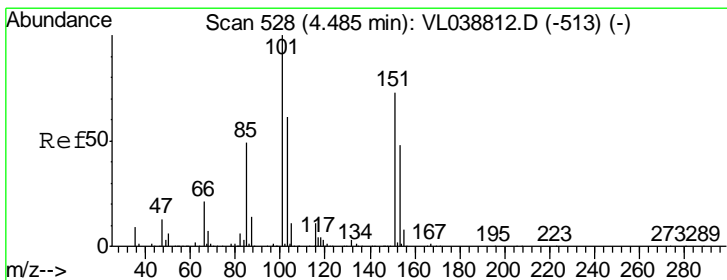
#11
 Trichlorofluoromethane
 Concen: 0.481 ppbv
 RT: 3.95 Instrument : MSVOA_L
 Delta R.T. ClientSampled :
 Lab File: 1DUP
 Acq: 13 Apr 2022 18:18

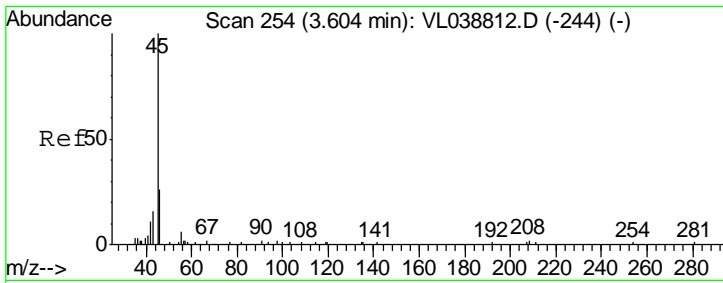
Tgt Ion:101 Resp: 54290
 Ion Ratio Lower Upper
 101 100
 103 55.6 51.4 77.0



#12
 1,1,2-Trichlorotrifluoroethane
 Concen: 0.050 ppbv
 RT: 4.49 min Scan# 531
 Delta R.T. 0.01 min
 Lab File: VL038908.D
 Acq: 13 Apr 2022 18:16

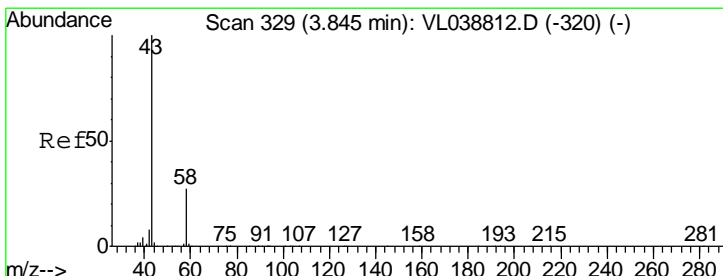
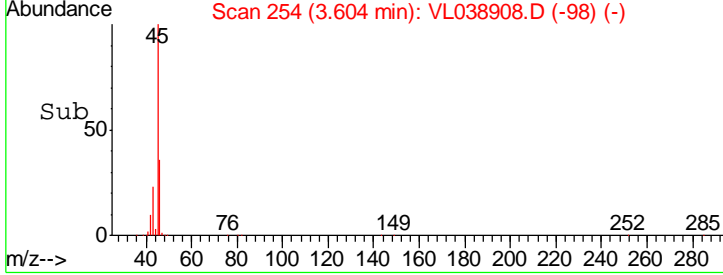
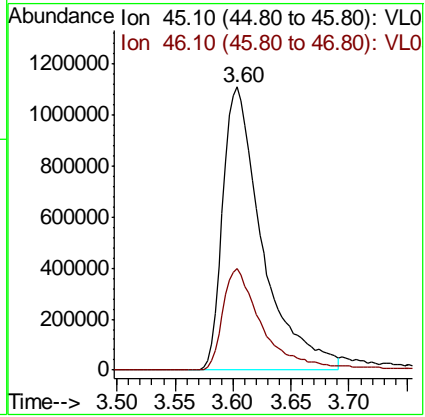
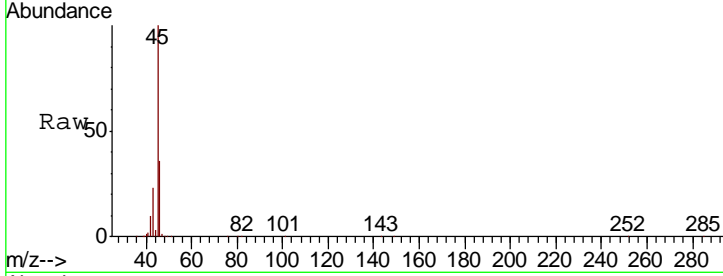
Tgt Ion:101 Resp: 4344
 Ion Ratio Lower Upper
 101 100
 151 98.3 59.9 89.9#





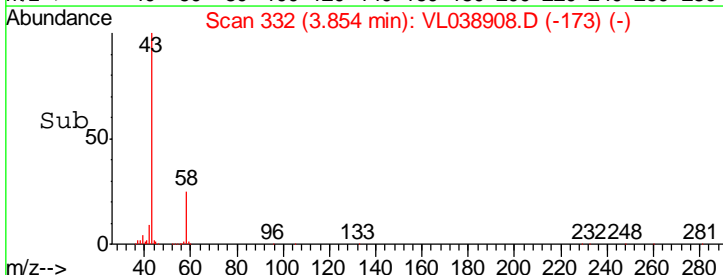
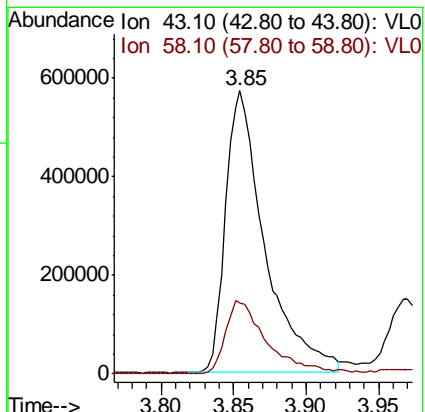
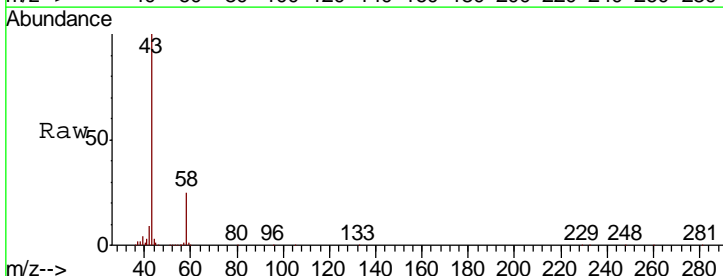
#13
 Ethanol
 Concen: 675.998 ppbv
 RT: 3.60
 Delta R.T. MSVOA_L
 Lab File: ClientSampleId :
 1DUP
 Acq: 13 Apr 2022 18:16

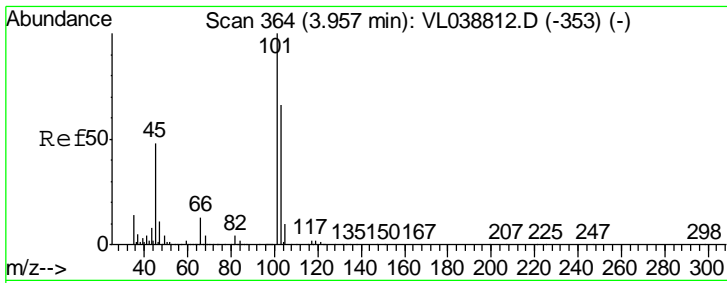
Tgt Ion	Resp	Lower	Upper
45	100		
46	36.7	0.0	0.0#



#15
 Acetone
 Concen: 10.967 ppbv
 RT: 3.85 min Scan# 332
 Delta R.T. 0.01 min
 Lab File: VL038908.D
 Acq: 13 Apr 2022 18:16

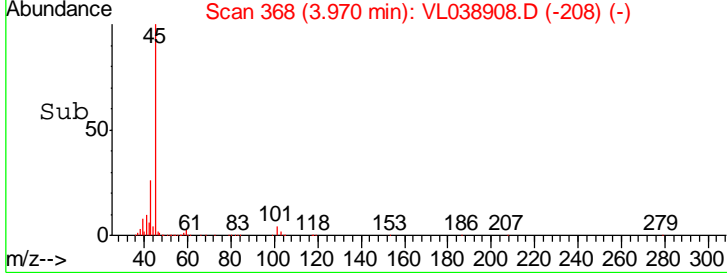
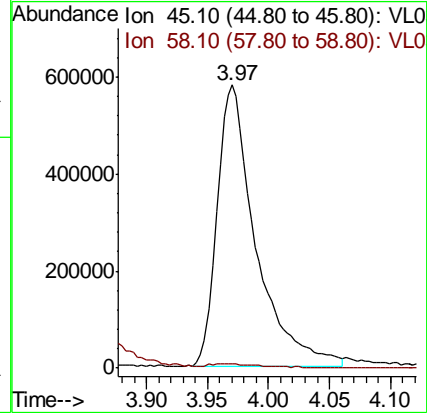
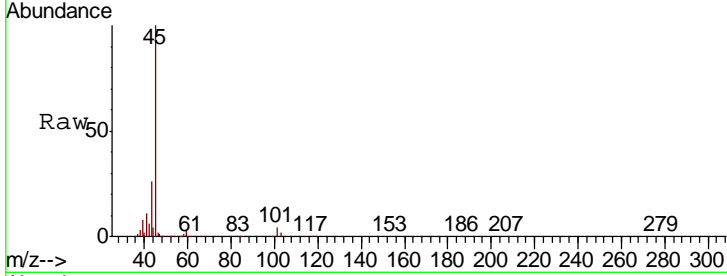
Tgt Ion	Resp	Lower	Upper
43	100		
58	28.0	22.5	33.7





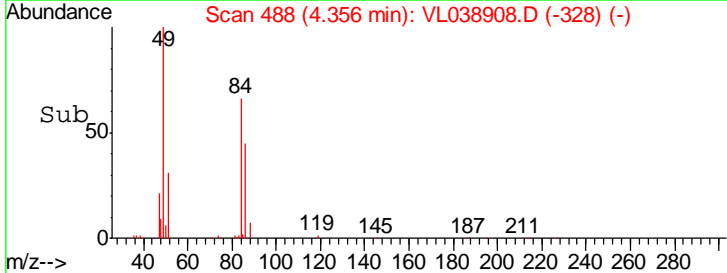
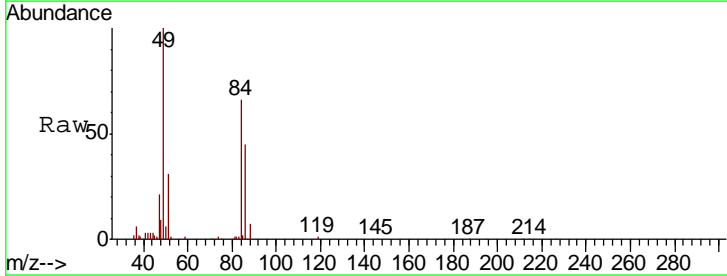
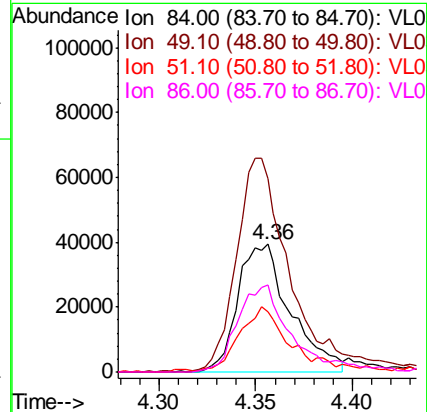
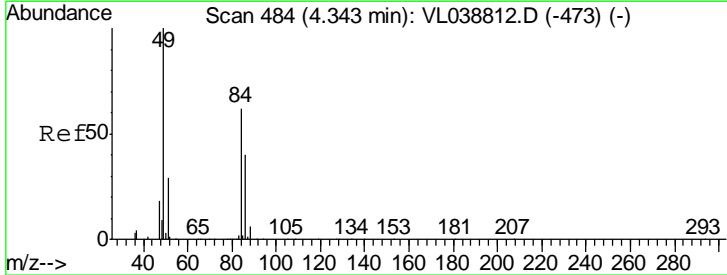
#19
 Isopropyl Alcohol
 Concen: 25.326 ppbv
 RT: 3.97
 Delta R.T. MSVOA_L
 Lab File: ClientSampleId :
 1DUP
 Acq: 13 Apr 2022 18:16

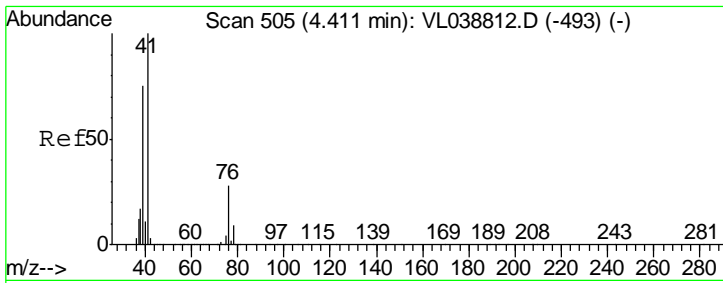
Tgt Ion	Resp	Lower	Upper
45	100		
58	2.4	0.0	0.0#



#20
 Methylene Chloride
 Concen: 2.074 ppbv
 RT: 4.36 min Scan# 488
 Delta R.T. 0.01 min
 Lab File: VL038908.D
 Acq: 13 Apr 2022 18:16

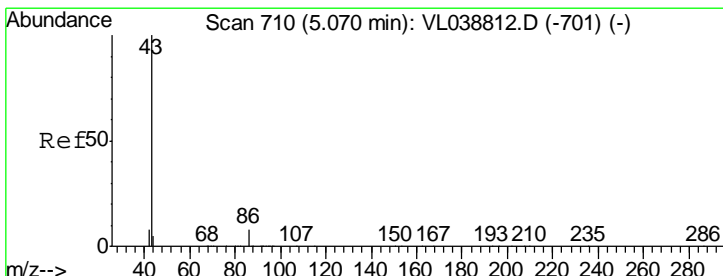
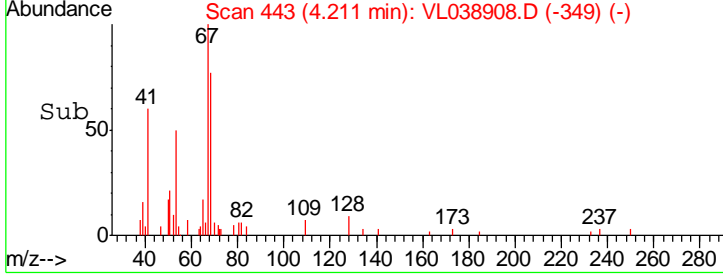
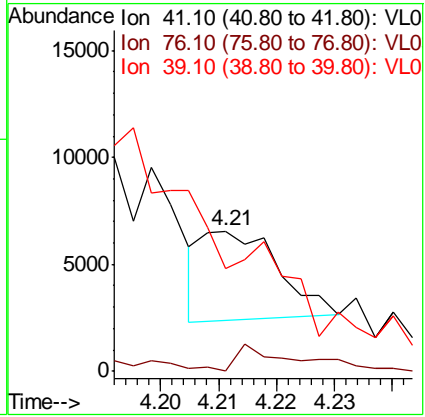
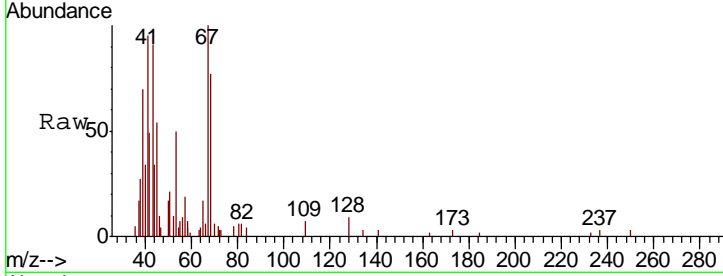
Tgt Ion	Resp	Lower	Upper
84	100		
49	149.8	129.4	194.0
51	46.7	37.4	56.2
86	67.3	51.4	77.2





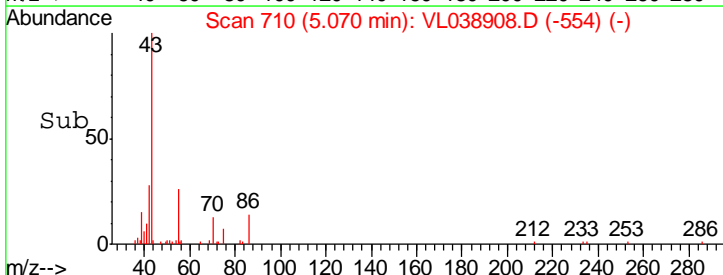
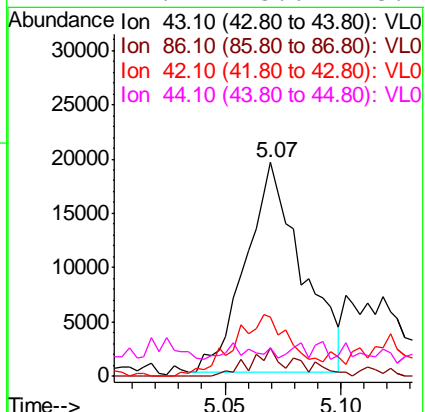
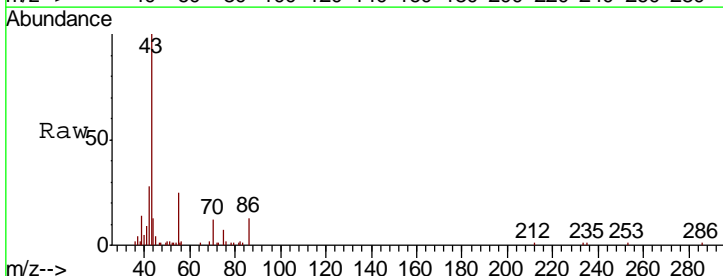
#21
 Allyl Chloride
 Concen: 0.051 ppbv
 RT: 4.21
 Delta R.T. MSVOA_L
 Lab File: ClientSampled :
 1DUP
 Acq: 13 Apr 2022 18:16

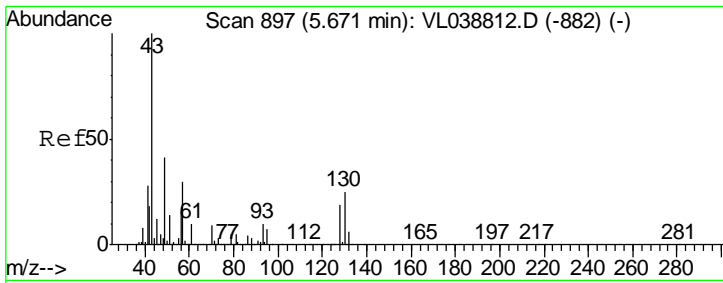
Tgt Ion	Resp	Lower	Upper
41	100		
76	38.5	23.7	35.5#
39	0.0	62.0	93.0#



#23
 Vinyl Acetate
 Concen: 0.340 ppbv
 RT: 5.07 min Scan# 710
 Delta R.T. 0.00 min
 Lab File: VL038908.D
 Acq: 13 Apr 2022 18:16

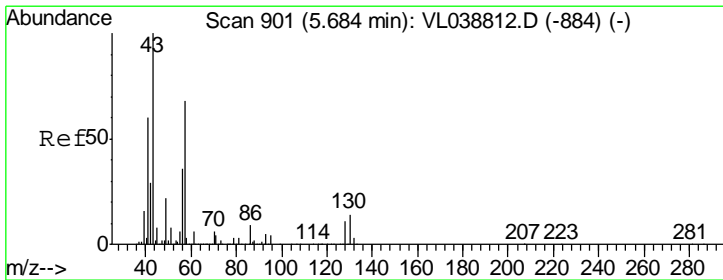
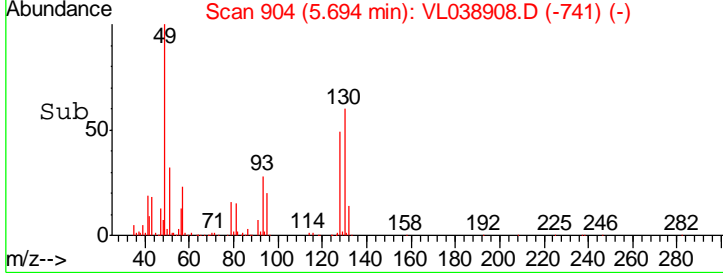
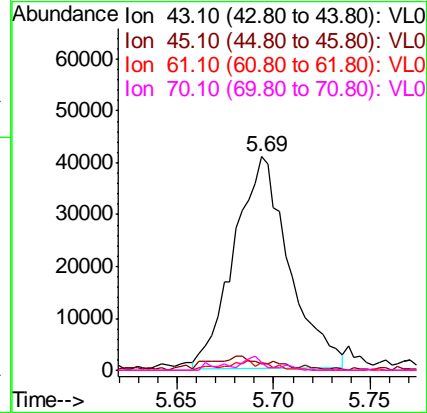
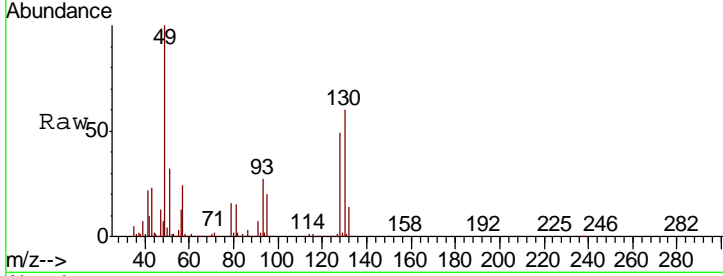
Tgt Ion	Resp	Lower	Upper
43	100		
86	13.3	5.8	8.6#
42	26.8	7.8	11.6#
44	4.1	3.6	5.4





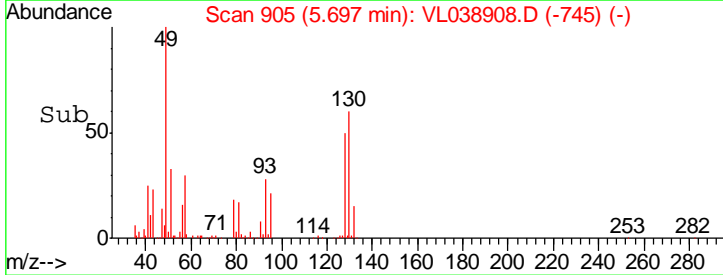
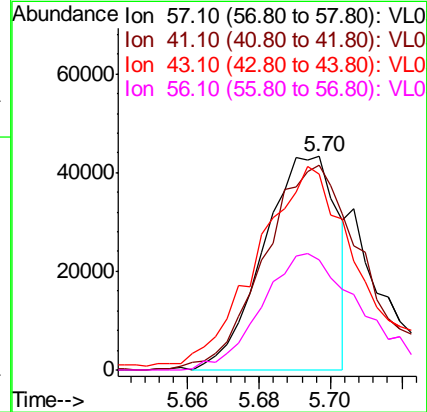
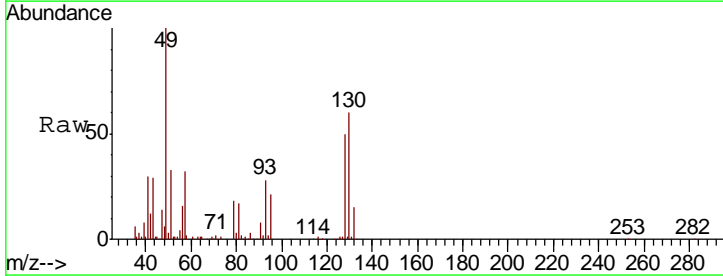
#25
 Ethyl Acetate
 Concen: 0.321 ppbv
 RT: 5.69
 Delta R.T. MSVOA_L
 Lab File: ClientSampled :
 1DUP
 Acq: 13 Apr 2022 18:16

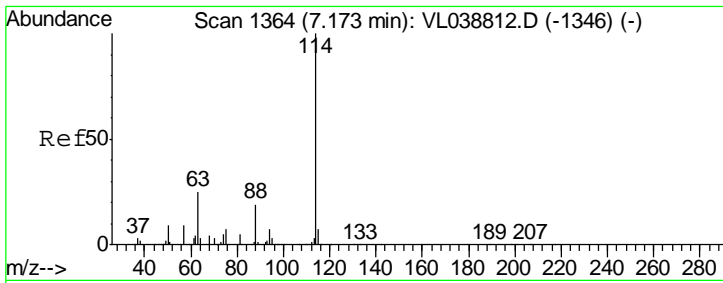
Tgt Ion	Resp	Lower	Upper
43	100		
45	8.1	8.4	12.6#
61	3.5	7.9	11.9#
70	4.1	5.6	8.4#



#26
 Hexane
 Concen: 0.543 ppbv
 RT: 5.70 min Scan# 905
 Delta R.T. 0.01 min
 Lab File: VL038908.D
 Acq: 13 Apr 2022 18:16

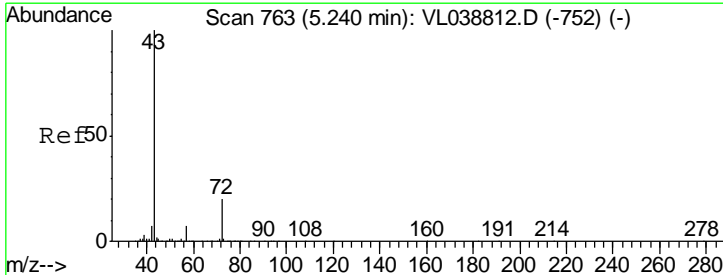
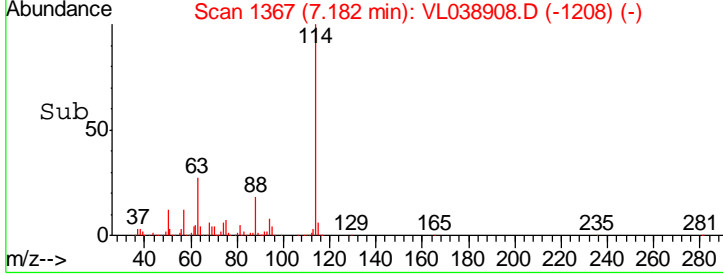
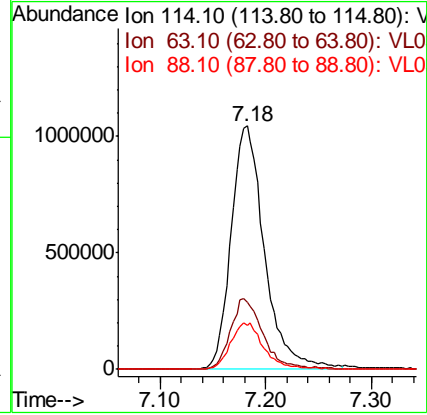
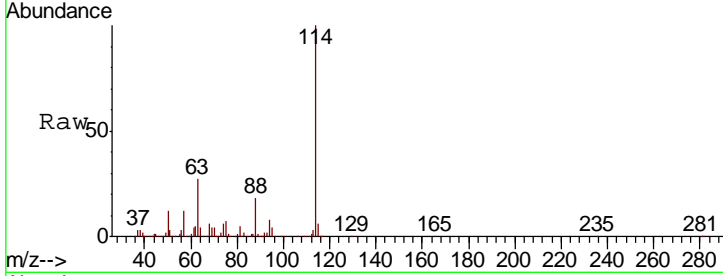
Tgt Ion	Resp	Lower	Upper
57	100		
41	138.5	72.0	108.0#
43	138.8	186.6	280.0#
56	79.5	42.8	64.2#





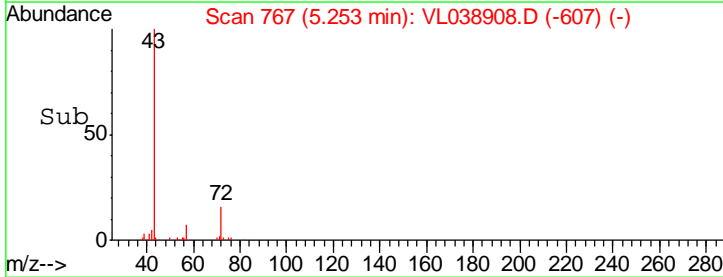
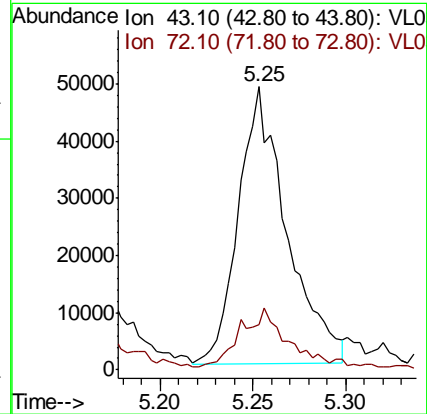
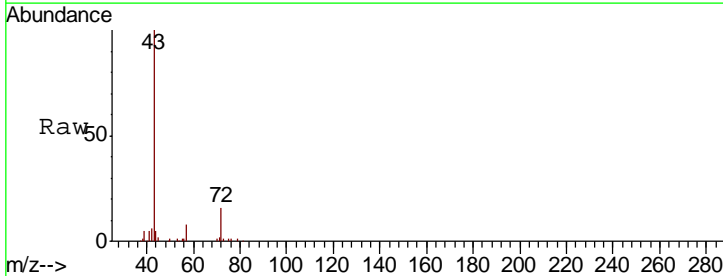
#33
 1,4-Difluorobenzene
 Concen: 10.000 ppbv
 RT: 7.18 Instrument :
 Delta R.T. MSVOA_L
 Lab File: ClientSampled :
 1DUP
 Acq: 13 Apr 2022 18:18

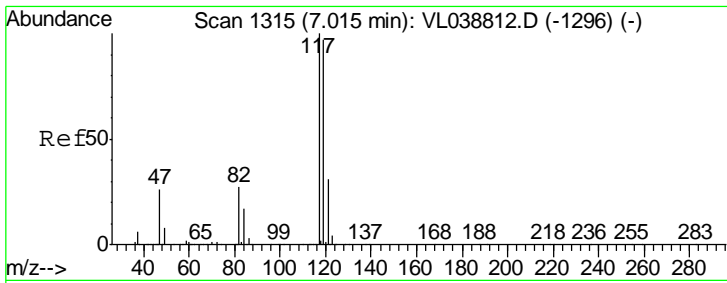
Tgt Ion	Resp	Lower	Upper
114	100		
63	28.6	19.8	29.8
88	19.4	14.2	21.4



#34
 2-Butanone
 Concen: 0.973 ppbv
 RT: 5.25 min Scan# 767
 Delta R.T. 0.01 min
 Lab File: VL038908.D
 Acq: 13 Apr 2022 18:16

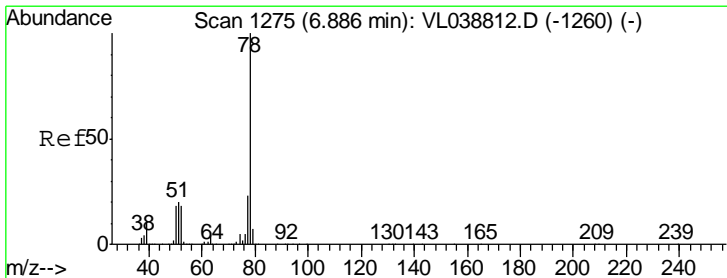
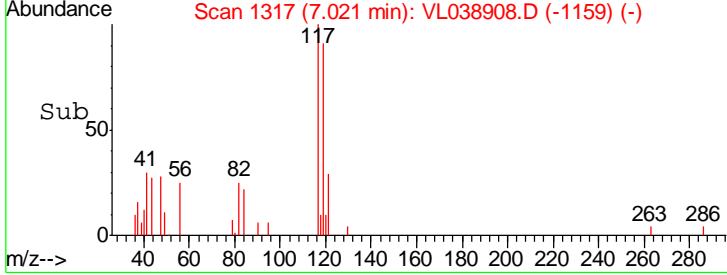
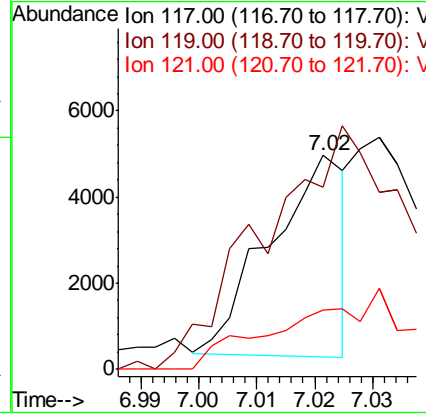
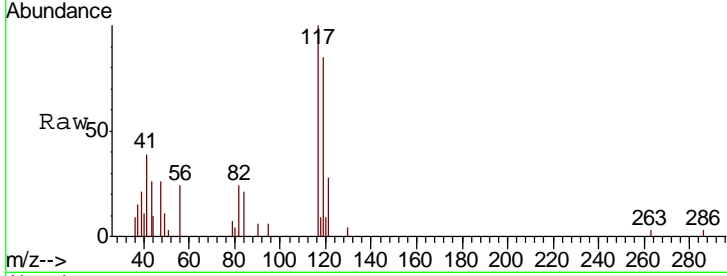
Tgt Ion	Resp	Lower	Upper
43	100		
72	26.4	16.9	25.3#





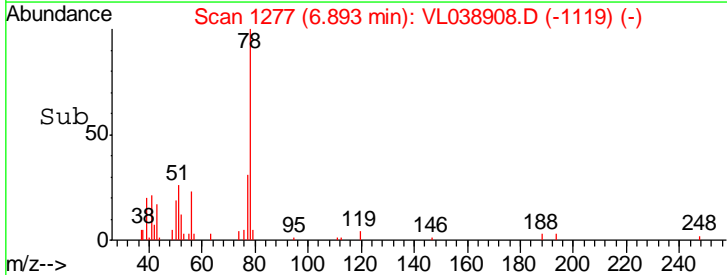
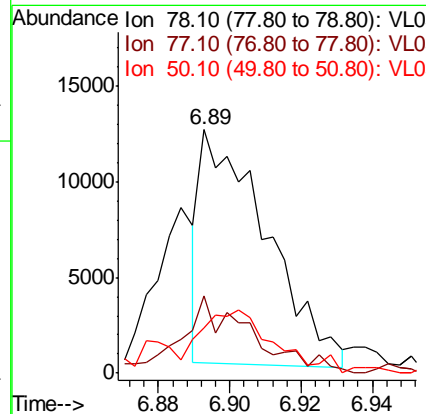
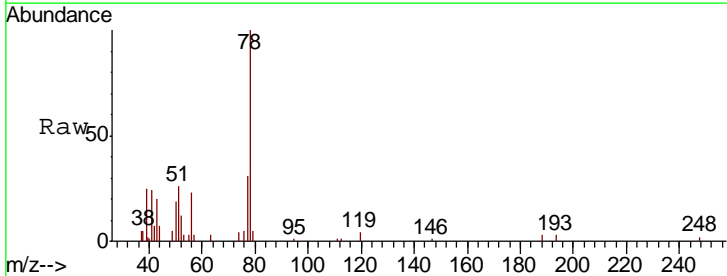
#35
 Carbon Tetrachloride
 Concen: 0.031 ppbv
 RT: 7.02
 Delta R.T. MSVOA_L
 Lab File: ClientSampled :
 1DUP
 Acq: 13 Apr 2022 18:18

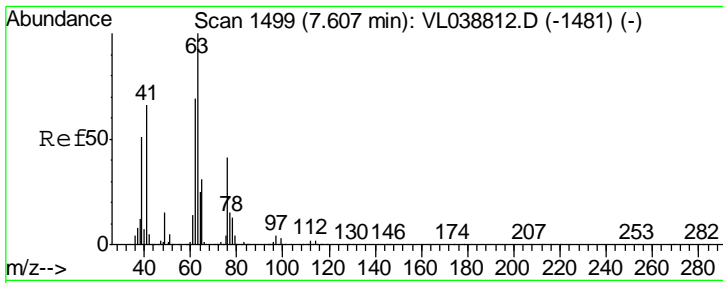
Tgt Ion	Resp	Lower	Upper
117	100		
119	63.4	77.7	116.5#
121	27.2	24.5	36.7



#36
 Benzene
 Concen: 0.075 ppbv
 RT: 6.89 min Scan# 1277
 Delta R.T. 0.01 min
 Lab File: VL038908.D
 Acq: 13 Apr 2022 18:16

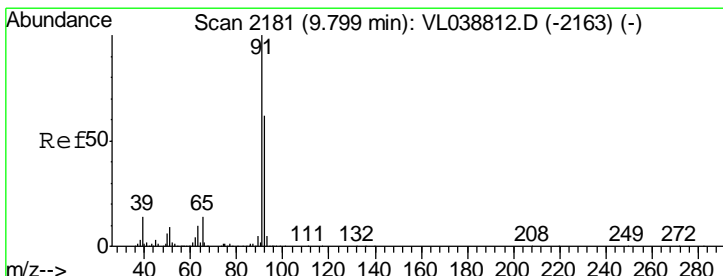
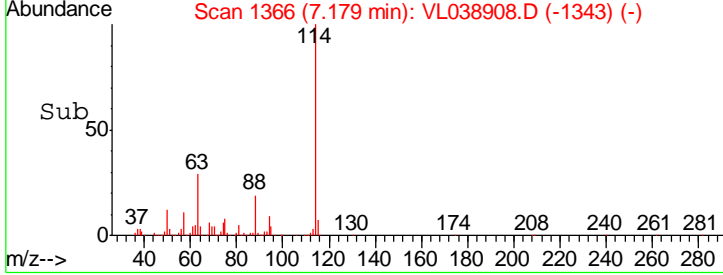
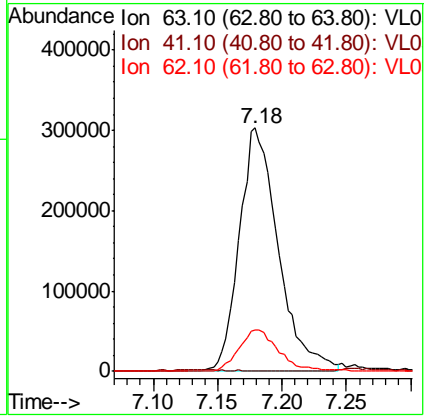
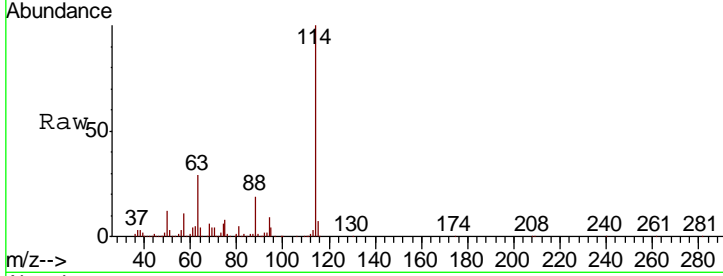
Tgt Ion	Resp	Lower	Upper
78	100		
77	32.7	18.2	27.2#
50	20.8	14.0	21.0





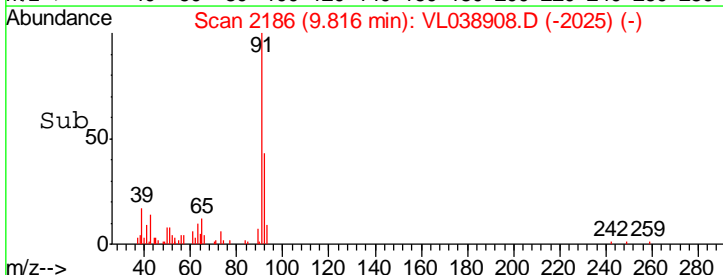
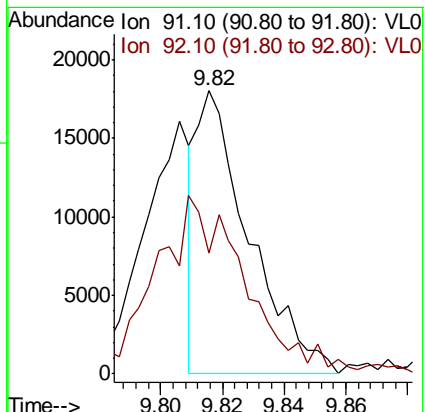
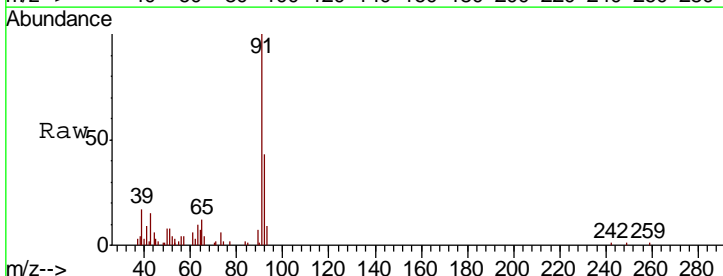
#39
 1,2-Dichloropropane
 Concen: 8.022 ppbv
 RT: 7.18
 Delta R.T. MSVOA_L
 Lab File: ClientSampleId :
 1DUP
 Acq: 13 Apr 2022 18:16

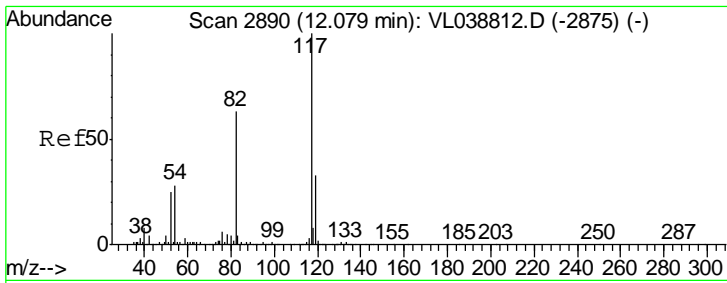
Tgt Ion	Resp	Lower	Upper
63	100		
41	0.0	53.0	79.6#
62	17.2	55.0	82.4#



#53
 Toluene
 Concen: 0.088 ppbv
 RT: 9.82 min Scan# 2186
 Delta R.T. 0.02 min
 Lab File: VL038908.D
 Acq: 13 Apr 2022 18:16

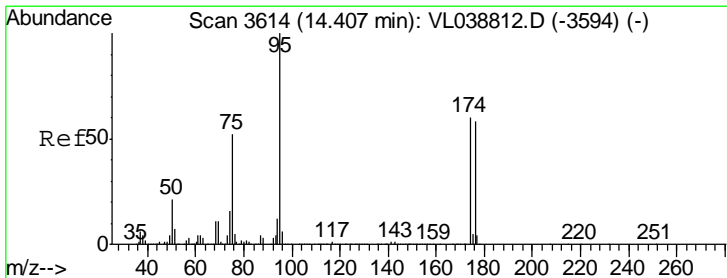
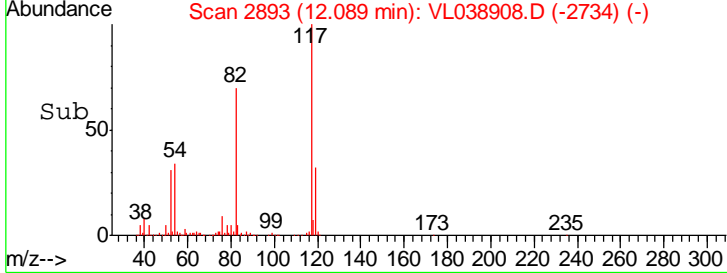
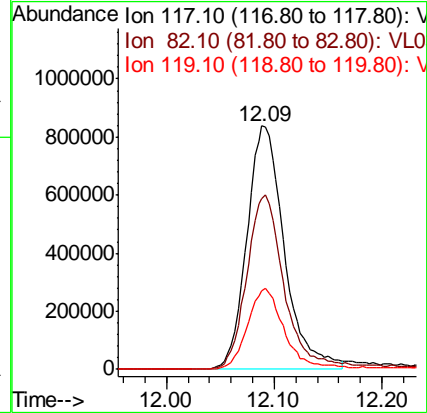
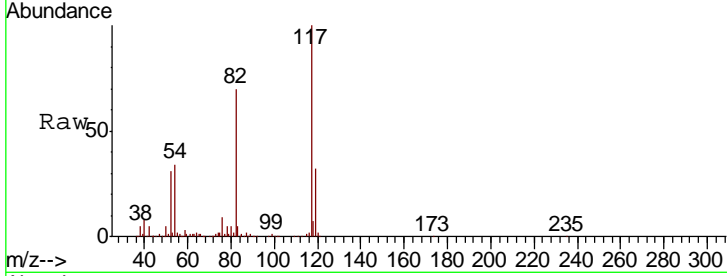
Tgt Ion	Resp	Lower	Upper
91	100		
92	0.0	49.2	73.8#





#55
 Chlorobenzene-d5
 Concen: 10.000 ppbv
 RT: 12.09
 Delta R.T. MSVOA_L
 Lab File: ClientSampled :
 1DUP
 Acq: 13 Apr 2022 18:18

Tgt Ion	Resp	Lower	Upper
117	100		
82	74.4	53.0	79.6
119	33.3	24.9	37.3



#68
 1-Bromo-4-Fluorobenzene
 Concen: 11.219 ppbv
 RT: 14.42 min Scan# 3617
 Delta R.T. 0.01 min
 Lab File: VL038908.D
 Acq: 13 Apr 2022 18:16

Tgt Ion	Resp	Lower	Upper
95	100		
174	62.2	52.0	78.0
175	4.5	4.0	6.0

