

Data Path : Z:\VOASRV\HPCHEM1\MSVOA L\DATA\VL041322\  
 Data File : VL038909.D  
 Acq On : 13 Apr 2022 18:54  
 Operator : SY/AP  
 Sample : N2383-01DL 10X  
 Misc : 400mL/MSVOA L  
 ALS Vial : 1 Sample Multiplier: 1

**Instrument :**  
 MSVOA\_L  
**ClientSampleId :**  
 1DL

Quant Time: Apr 14 08:24:59 2022  
 Quant Method : Z:\VOASRV\HPCHEM1\MSVOA L\METHODS\VL040522AIR.M  
 Quant Title : AIR ANALYSIS BY METHOD TO-15 Instrument: MSVOA\_LWed Apr 06 06:12:53 2022  
 QLast Update : Wed Apr 06 06:12:53 2022  
 Response via : Initial Calibration

Internal Standards	R.T.	QIon	Response	Conc	Units	Dev(Min)
1) Bromochloromethane	5.68	49	1162899	10.00	ppbv	0.01
33) 1,4-Difluorobenzene	7.18	114	2696266	10.00	ppbv	0.00
55) Chlorobenzene-d5	12.09	117	2338475	10.00	ppbv	0.01

System Monitoring Compounds  
 68) 1-Bromo-4-Fluorobenzene 14.42 95 1918819 10.82 ppbv 0.01  
 Spiked Amount 10.000 Range 65 - 135 Recovery = 108.20%

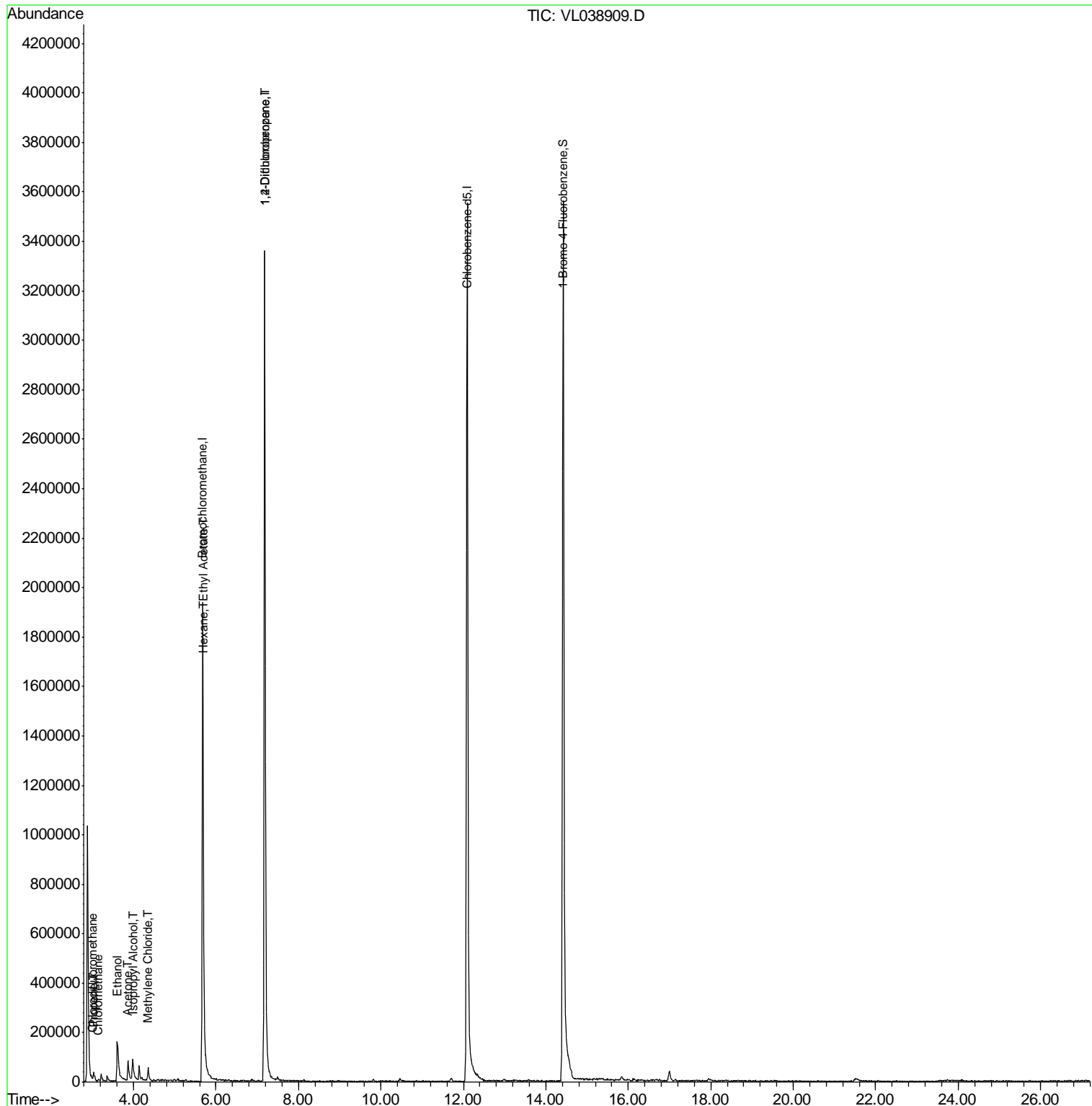
Target Compounds	R.T.	QIon	Response	Conc	Units	Ovalue
3) Chlorodifluoromethane	3.00	51	17772	0.125	ppbv	95
4) Chloromethane	3.15	50	2503	0.034	ppbv #	68
9) Propene	3.03	41	8303	0.111	ppbv	92
13) Ethanol	3.61	45	193323	42.366	ppbv #	100
15) Acetone	3.86	43	95825	0.828	ppbv	98
19) Isopropyl Alcohol	3.98	45	99693	1.685	ppbv #	100
20) Methylene Chloride	4.35	84	10642	0.253	ppbv	89
25) Ethyl Acetate	5.69	43	9573	0.033	ppbv #	86
26) Hexane	5.69	57	10392	0.078	ppbv #	47
39) 1,2-Dichloropropane	7.18	63	755482	8.053	ppbv #	26

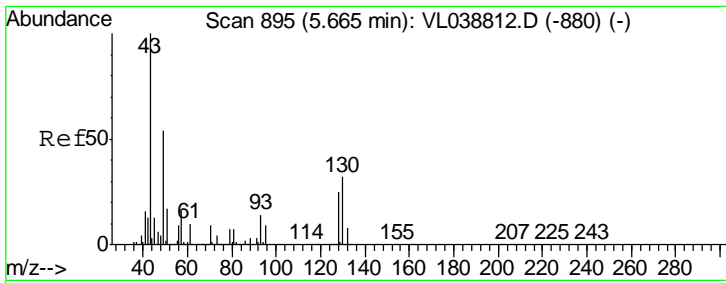
(#) = qualifier out of range (m) = manual integration (+) = signals summed

Data Path : Z:\VOASRV\HPCHEM1\MSVOA L\DATA\VL041322\  
 Data File : VL038909.D  
 Acq On : 13 Apr 2022 18:54  
 Operator : SY/AP  
 Sample : N2383-01DL 10X  
 Misc : 400mL/MSVOA L  
 ALS Vial : 1 Sample Multiplier: 1

Instrument :  
 MSVOA\_L  
 ClientSampleId :  
 1DL

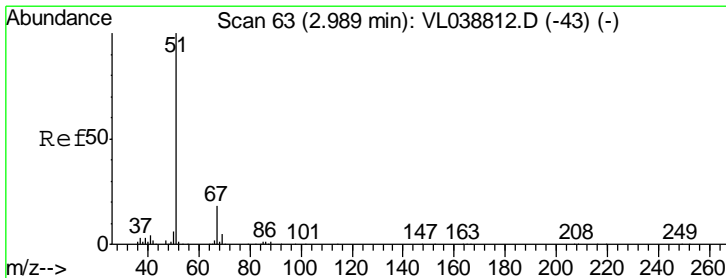
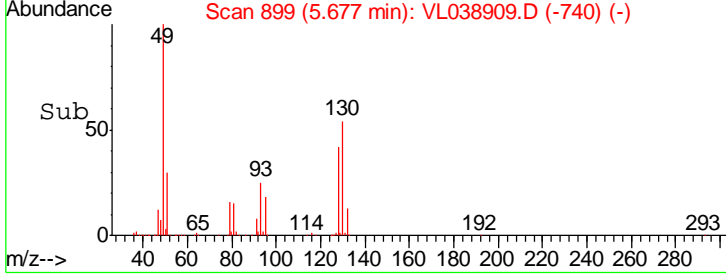
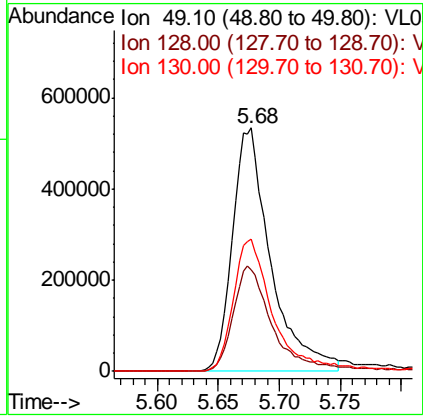
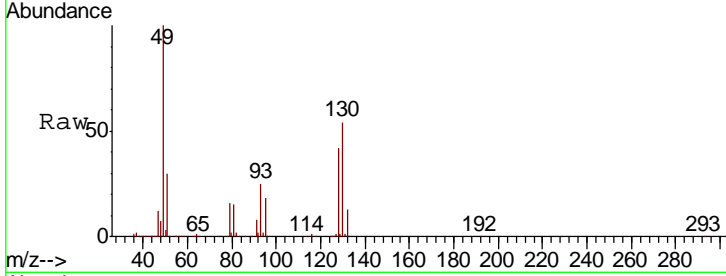
Quant Time: Apr 14 08:24:59 2022  
 Quant Method : Z:\VOASRV\HPCHEM1\MSVOA L\METHODS\VL040522AIR.M  
 Quant Title : AIR ANALYSIS BY METHOD TO-15 Instrument: MSVOA\_L Wed Apr 06 06:12:53 2022  
 QLast Update : Wed Apr 06 06:12:53 2022  
 Response via : Initial Calibration





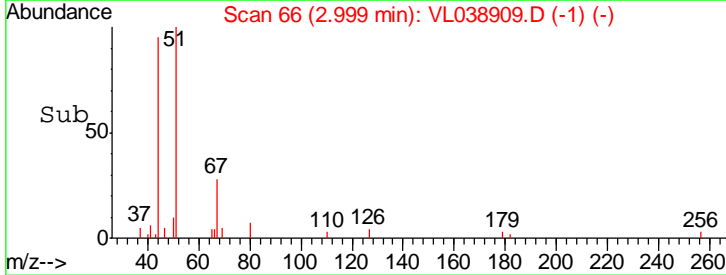
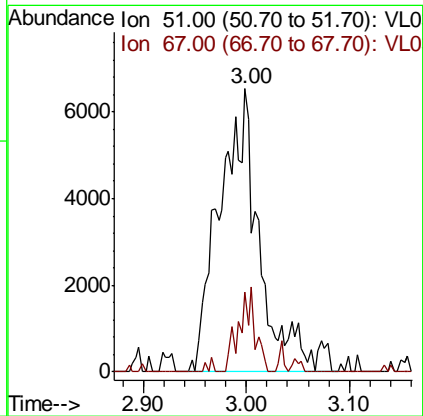
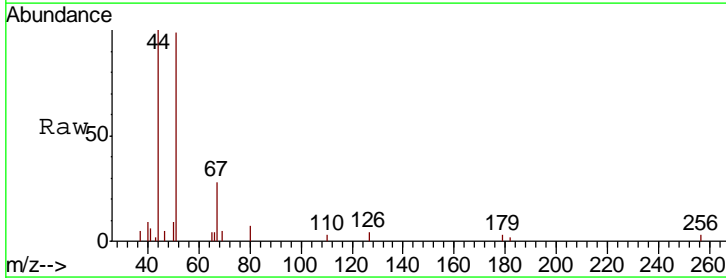
#1  
 Bromochloromethane  
 Concen: 10.000 ppbv  
 RT: 5.68  
 Delta R.T. MSVOA\_L  
 Lab File: ClientSampled :  
 1DL  
 Acq: 13 Apr 2022 18:54

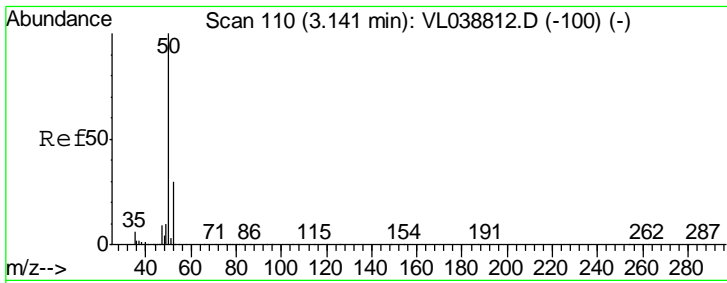
Tgt Ion	Resp	Lower	Upper
49	100		
128	46.4	24.1	72.3
130	59.0	30.9	92.8



#3  
 Chlorodifluoromethane  
 Concen: 0.125 ppbv  
 RT: 3.00 min Scan# 66  
 Delta R.T. 0.01 min  
 Lab File: VL038909.D  
 Acq: 13 Apr 2022 18:54

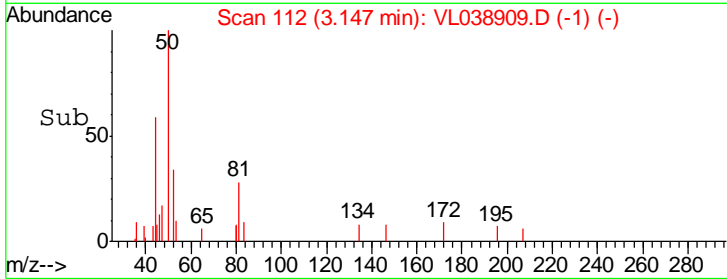
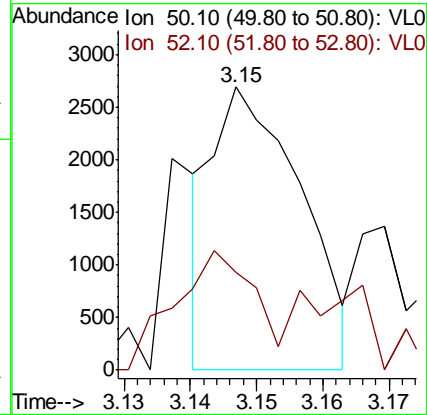
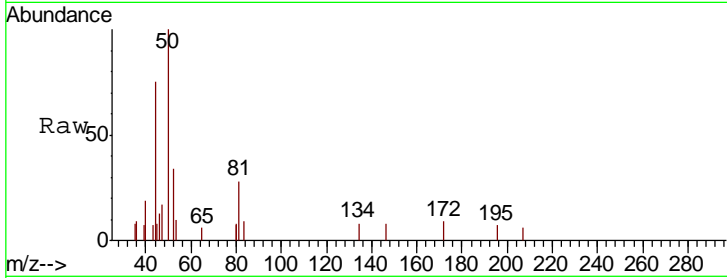
Tgt Ion	Resp	Lower	Upper
51	100		
67	14.4	13.4	20.0





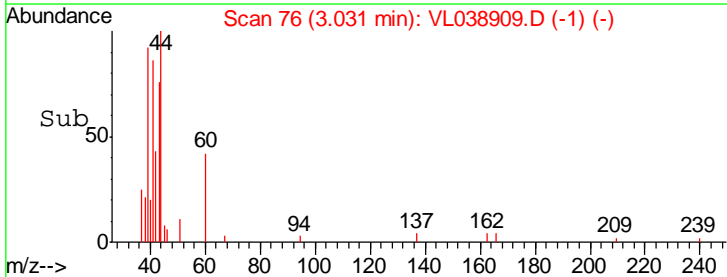
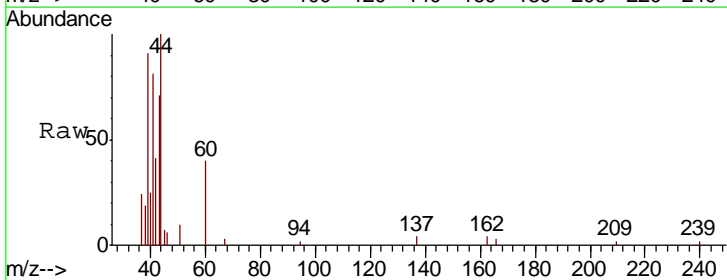
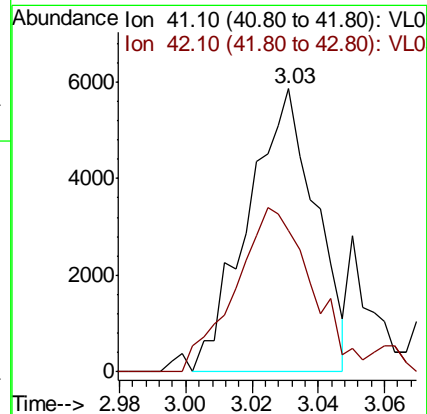
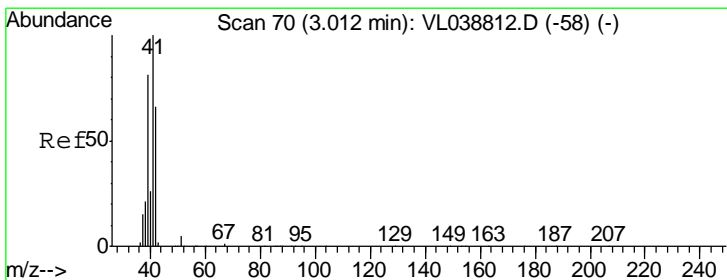
#4  
 Chloromethane  
 Concen: 0.034 ppbv  
 RT: 3.15 Instrument : MSVOA\_L  
 Delta R.T. ClientSampled :  
 Lab File: 1DL  
 Acq: 13 Apr 2022 18:54

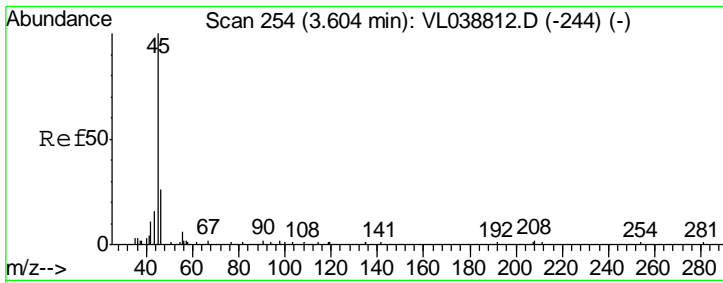
Tgt Ion: 50 Resp: 2503  
 Ion Ratio Lower Upper  
 50 100  
 52 12.9 24.3 36.5#



#9  
 Propene  
 Concen: 0.111 ppbv  
 RT: 3.03 min Scan# 76  
 Delta R.T. 0.02 min  
 Lab File: VL038909.D  
 Acq: 13 Apr 2022 18:54

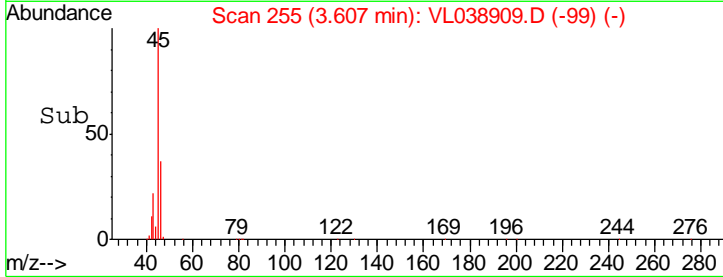
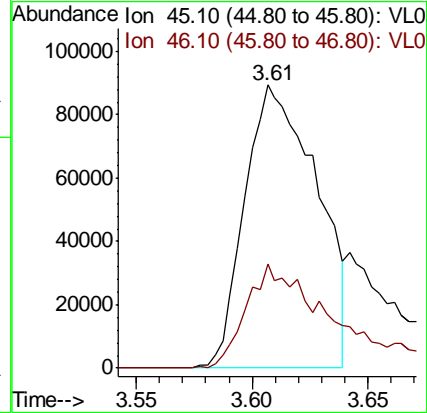
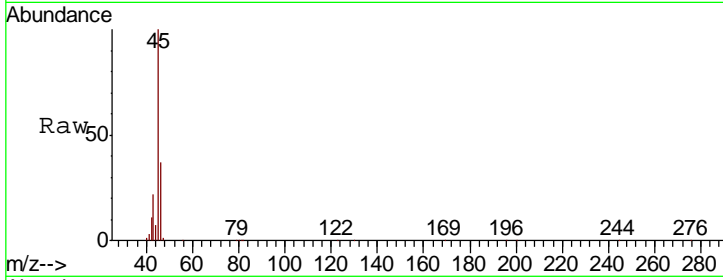
Tgt Ion: 41 Resp: 8303  
 Ion Ratio Lower Upper  
 41 100  
 42 74.2 54.2 81.4





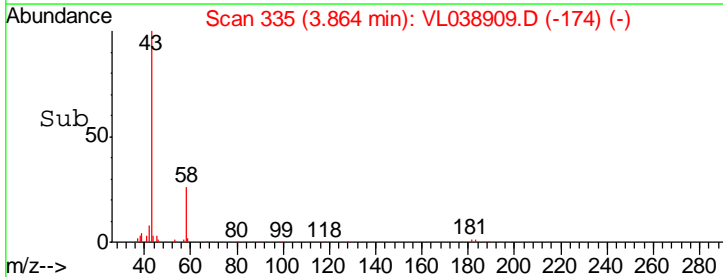
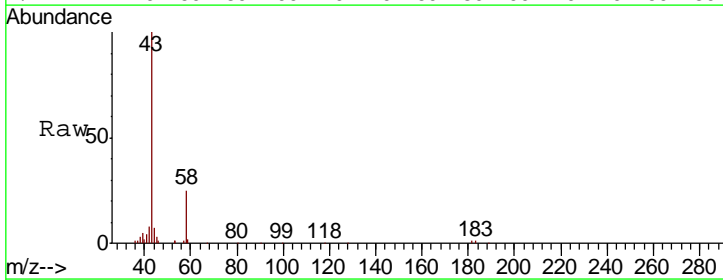
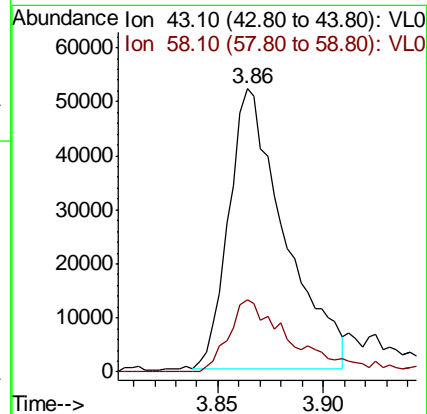
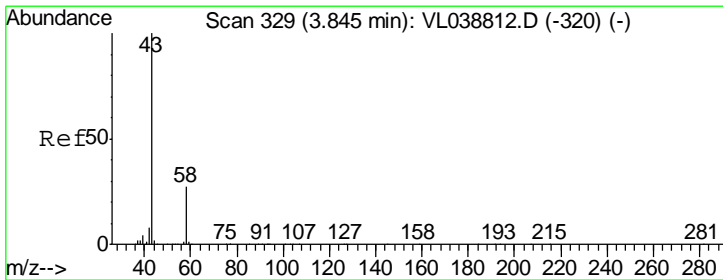
#13  
 Ethanol  
 Concen: 42.366 ppbv  
 RT: 3.61  
 Delta R.T. MSVOA\_L  
 Lab File: ClientSampled :  
 1DL  
 Acq: 13 Apr 2022 18:54

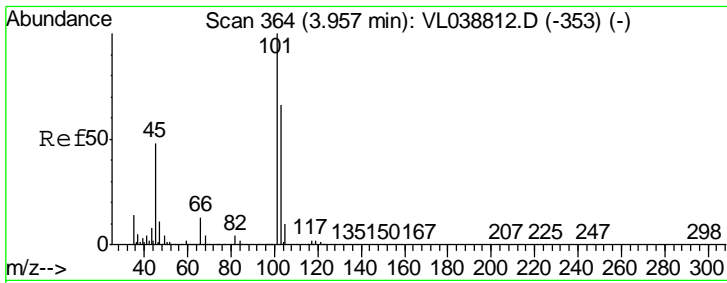
Tgt Ion	Resp	Lower	Upper
45	193323		
46	50.7	0.0	0.0#



#15  
 Acetone  
 Concen: 0.828 ppbv  
 RT: 3.86 min Scan# 335  
 Delta R.T. 0.02 min  
 Lab File: VL038909.D  
 Acq: 13 Apr 2022 18:54

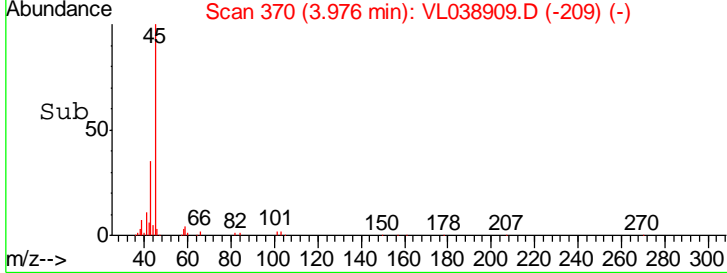
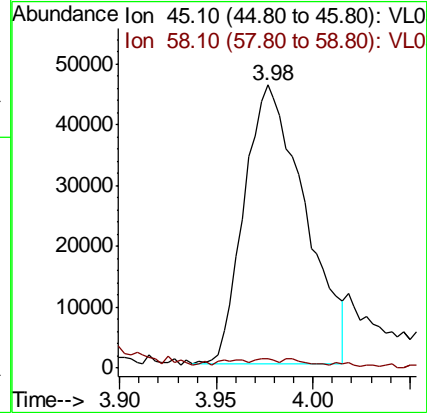
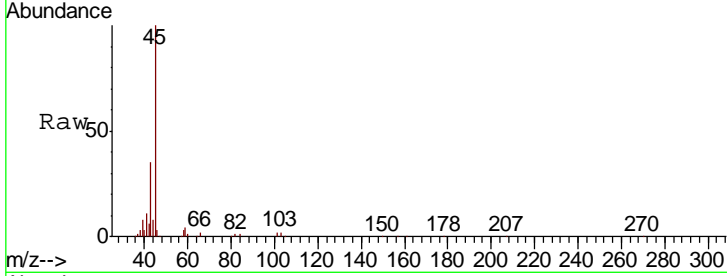
Tgt Ion	Resp	Lower	Upper
43	95825		
58	29.1	22.5	33.7





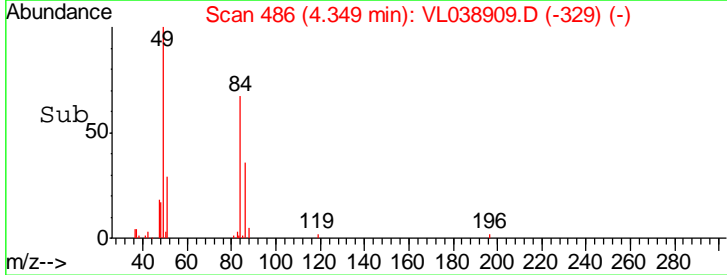
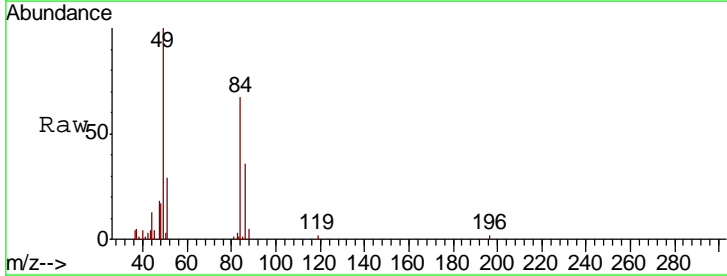
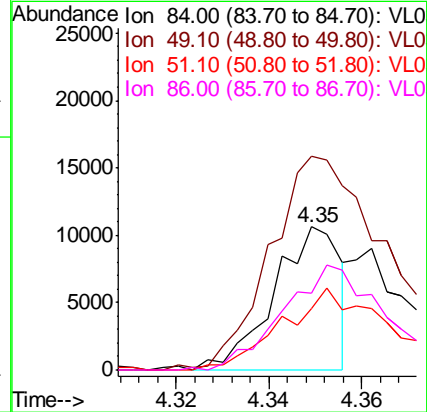
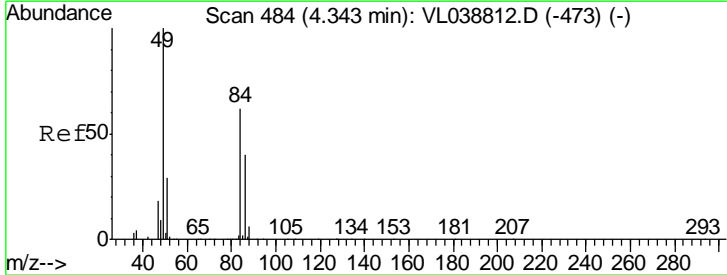
#19  
 Isopropyl Alcohol  
 Concen: 1.685 ppbv  
 RT: 3.98  
 Delta R.T. MSVOA\_L  
 Lab File: ClientSampled :  
 1DL  
 Acq: 13 Apr 2022 18:54

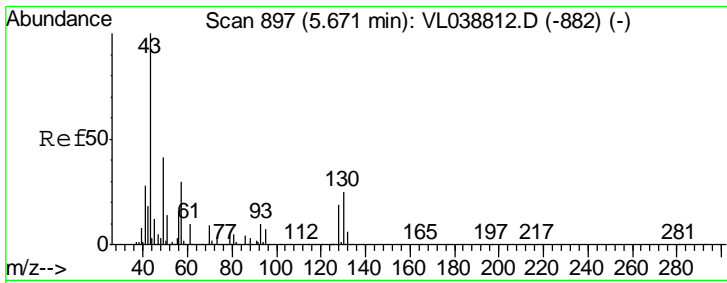
Tgt Ion	Resp	Lower	Upper
45	100	0.0	0.0#
58	5.3	0.0	0.0#



#20  
 Methylene Chloride  
 Concen: 0.253 ppbv  
 RT: 4.35 min Scan# 486  
 Delta R.T. 0.01 min  
 Lab File: VL038909.D  
 Acq: 13 Apr 2022 18:54

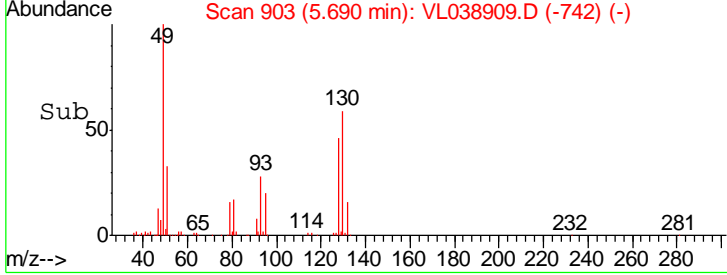
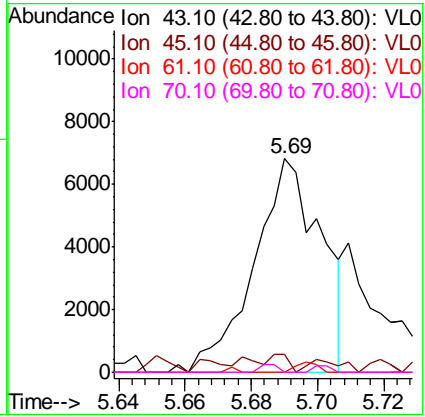
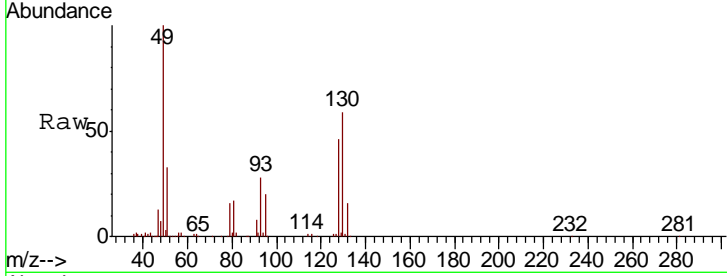
Tgt Ion	Resp	Lower	Upper
84	100	129.4	194.0
49	147.6	37.4	56.2
51	43.3	51.4	77.2
86	51.7		





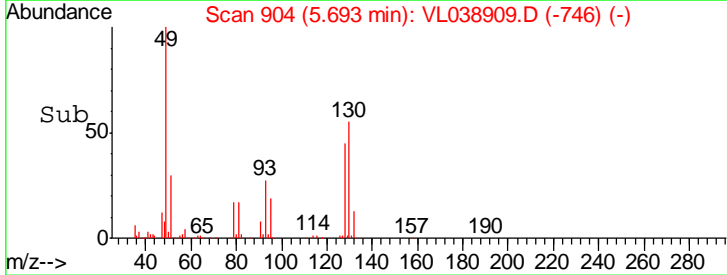
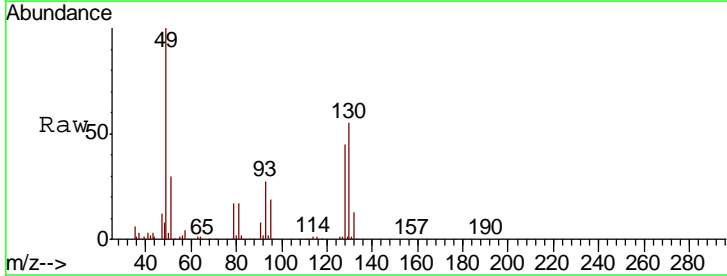
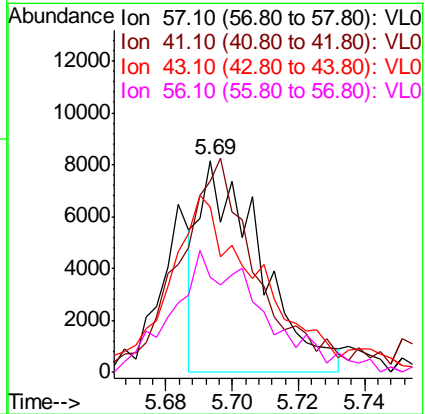
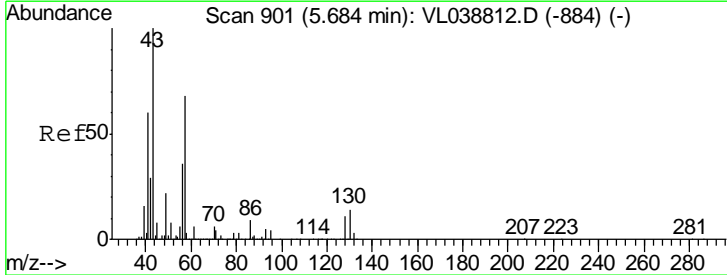
#25  
 Ethyl Acetate  
 Concen: 0.033 ppbv  
 RT: 5.69  
 Delta R.T. MSVOA\_L  
 Lab File: ClientSampled :  
 1DL  
 Acq: 13 Apr 2022 18:54

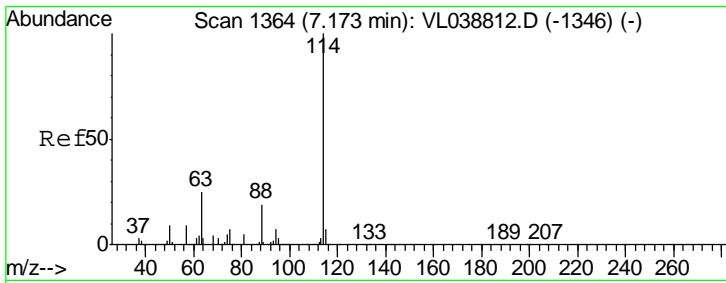
Tgt Ion	Resp	Lower	Upper
43	100		
45	9.5	8.4	12.6
61	0.3	7.9	11.9#
70	1.7	5.6	8.4#



#26  
 Hexane  
 Concen: 0.078 ppbv  
 RT: 5.69 min Scan# 904  
 Delta R.T. 0.01 min  
 Lab File: VL038909.D  
 Acq: 13 Apr 2022 18:54

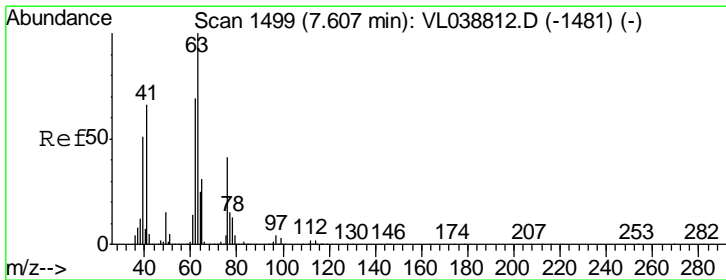
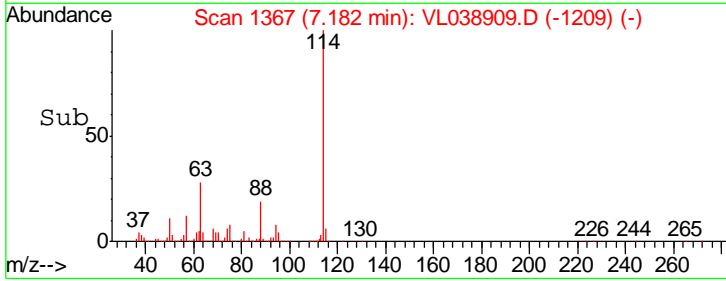
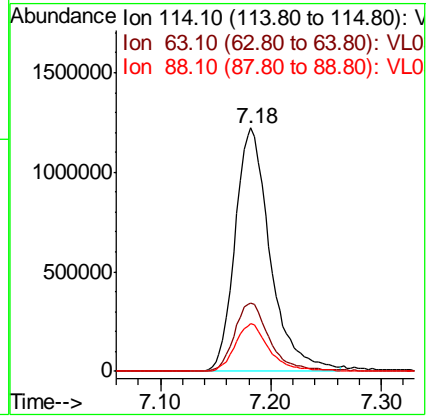
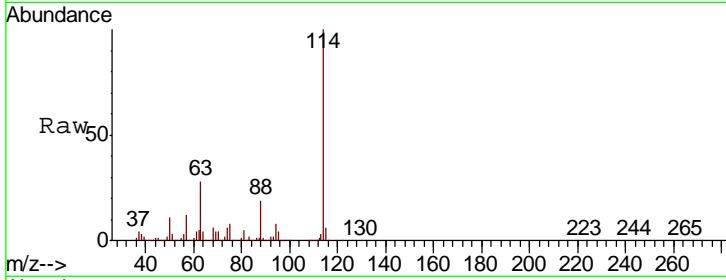
Tgt Ion	Resp	Lower	Upper
57	100		
41	129.8	72.0	108.0#
43	134.1	186.6	280.0#
56	85.8	42.8	64.2#





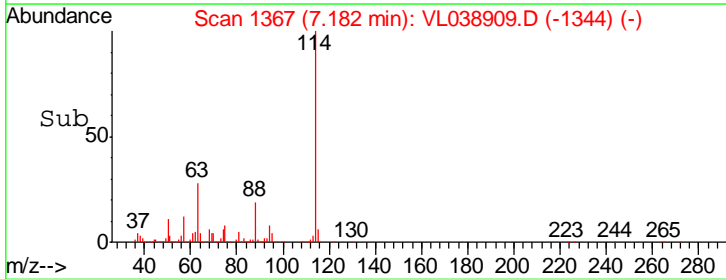
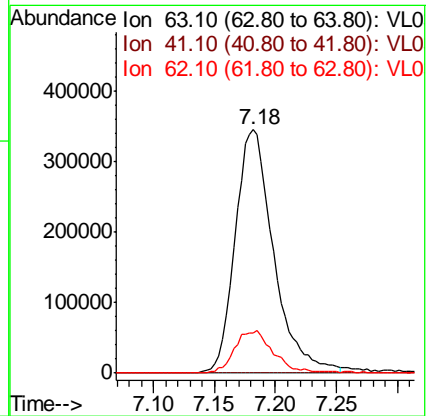
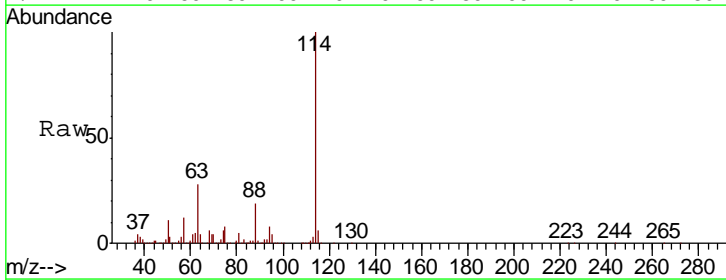
#33  
 1,4-Difluorobenzene  
 Concen: 10.000 ppbv  
 RT: 7.18 Instrument :  
 Delta R.T. MSVOA\_L  
 Lab File: ClientSampleId :  
 1DL  
 Acq: 13 Apr 2022 18:54

Tgt Ion	Resp	Lower	Upper
114	100		
63	28.9	19.8	29.8
88	19.3	14.2	21.4

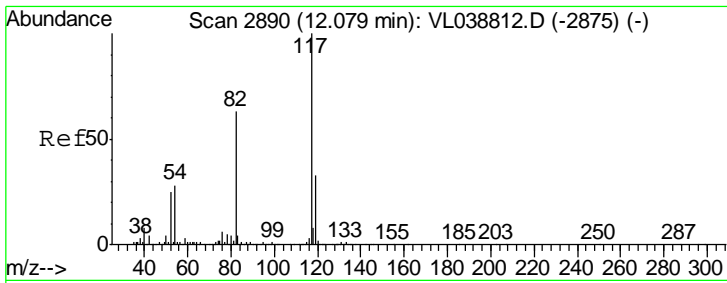


#39  
 1,2-Dichloropropane  
 Concen: 8.053 ppbv  
 RT: 7.18 min Scan# 1367  
 Delta R.T. -0.42 min  
 Lab File: VL038909.D  
 Acq: 13 Apr 2022 18:54

Tgt Ion	Resp	Lower	Upper
63	100		
41	0.0	53.0	79.6#
62	16.5	55.0	82.4#

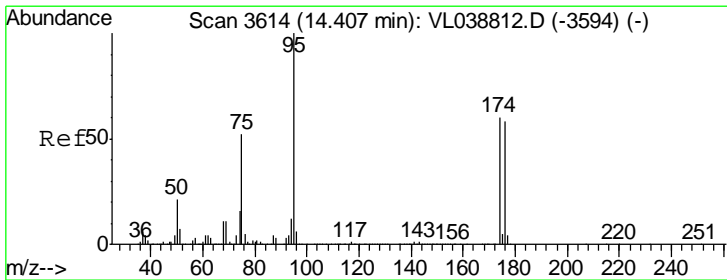
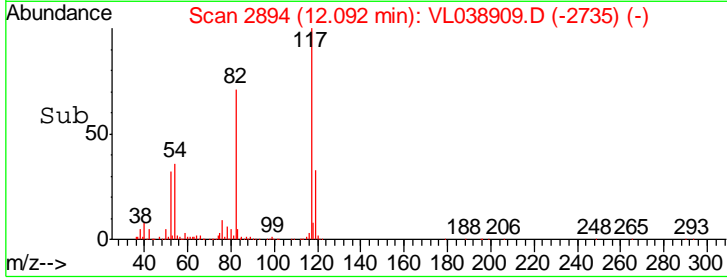
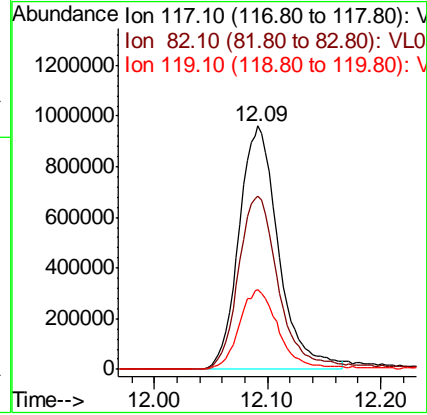
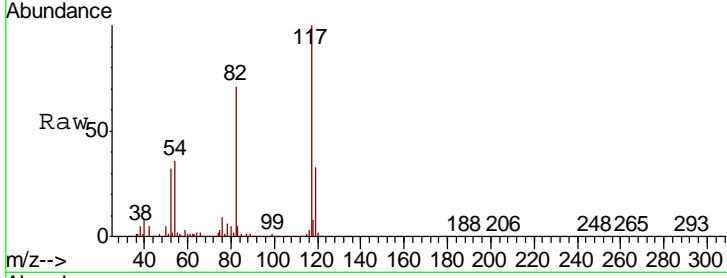






#55  
 Chlorobenzene-d5  
 Concen: 10.000 ppbv  
 RT: 12.09 Instrument : MSVOA\_L  
 Delta R.T. ClientSampled : 1DL  
 Lab File: 1DL  
 Acq: 13 Apr 2022 18:54

Tgt Ion	Resp	Lower	Upper
117	2338475		
82	74.9	53.0	79.6
119	34.1	24.9	37.3



#68  
 1-Bromo-4-Fluorobenzene  
 Concen: 10.818 ppbv  
 RT: 14.42 min Scan# 3618  
 Delta R.T. 0.01 min  
 Lab File: VL038909.D  
 Acq: 13 Apr 2022 18:54

Tgt Ion	Resp	Lower	Upper
95	1918819		
174	63.6	52.0	78.0
175	4.5	4.0	6.0

