

Data Path : Z:\voasrv\HPCHEM1\MSVOA_L\Data\VL041222\
 Data File : VL038897.D
 Acq On : 12 Apr 2022 18:26
 Operator : SY/AP
 Sample : MDL 0.1 NAPHT.
 Misc : 400mL/MSVOA_L
 ALS Vial : 1 Sample Multiplier: 1

Instrument :
 MSVOA_L
ClientSampleId :
 MDL 0.1 NAPHT.

Quant Time: Apr 13 01:18:59 2022
 Quant Method : Z:\VOASRV\HPCHEM1\MSVOA_L\METHODS\VL040522AIR.M
 Quant Title : AIR ANALYSIS BY METHOD TO-15 Instrument: MSVOA_LWed Apr 0
 QLast Update : Wed Apr 06 06:12:53 2022
 Response via : Initial Calibration

Manual Integrations
APPROVED
 Reviewed By :Semsettin Yesilyurt 04/13/2022
 Supervised By :Mahesh Dadoda 04/14/2022

Compound	R.T.	QIon	Response	Conc	Units	Dev(Min)

Internal Standards						
1) Bromochloromethane	5.664	49	1117098	10.000	ppbv	0.00
33) 1,4-Difluorobenzene	7.166	114	2739988	10.000	ppbv	0.00
55) Chlorobenzene-d5	12.073	117	2368967	10.000	ppbv	0.00
System Monitoring Compounds						
68) 1-Bromo-4-Fluorobenzene	14.407	95	1840071	10.240	ppbv	0.00
Spiked Amount	10.000	Range	65 - 135	Recovery	=	102.400%
Target Compounds						
79) Naphthalene	22.198	128	12914m	0.055	ppbv	Qvalue

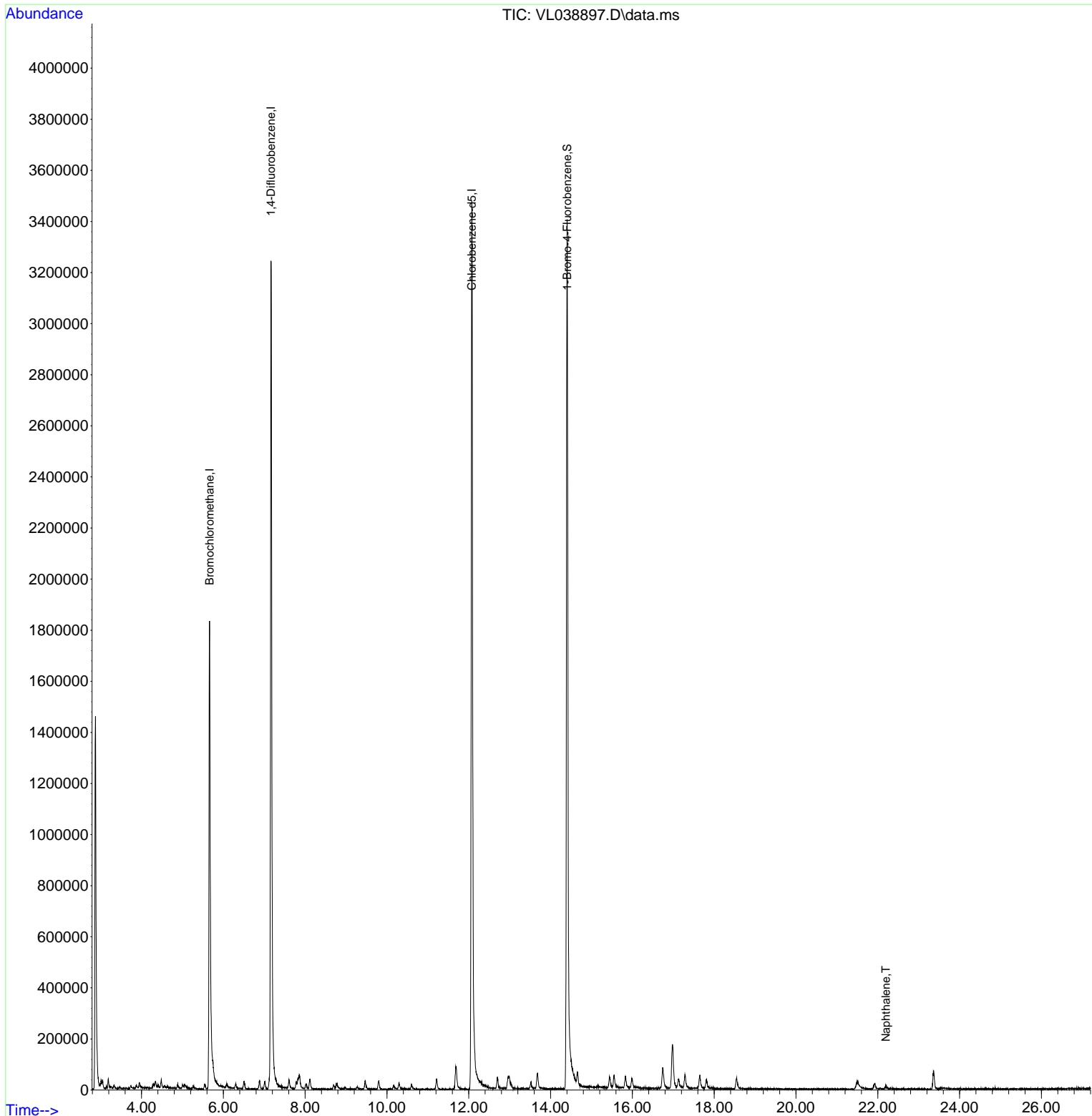
(#) = qualifier out of range (m) = manual integration (+) = signals summed

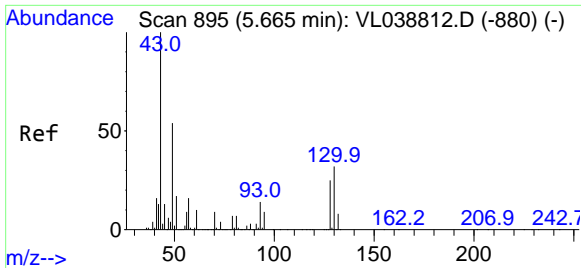
Data Path : Z:\voasrv\HPCHEM1\MSVOA_L\Data\VL041222\
 Data File : VL038897.D
 Acq On : 12 Apr 2022 18:26
 Operator : SY/AP
 Sample : MDL 0.1 NAPHT.
 Misc : 400mL/MSVOA_L
 ALS Vial : 1 Sample Multiplier: 1

Instrument :
 MSVOA_L
ClientSampleId :
 MDL 0.1 NAPHT.

Quant Time: Apr 13 01:18:59 2022
 Quant Method : Z:\VOASRV\HPCHEM1\MSVOA_L\METHODS\VL040522AIR.M
 Quant Title : AIR ANALYSIS BY METHOD TO-15 Instrument: MSVOA_LWed Apr
 QLast Update : Wed Apr 06 06:12:53 2022
 Response via : Initial Calibration

Manual Integrations
APPROVED
 Reviewed By :Semsettin Yesilyurt 04/13/2022
 Supervised By :Mahesh Dadoda 04/14/2022





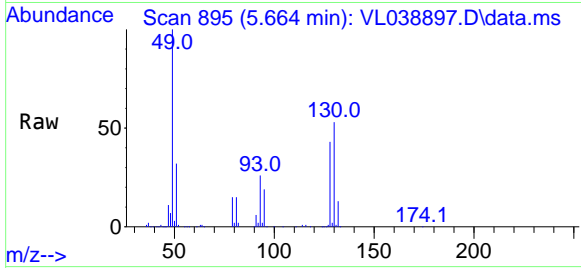
#1
 Bromochloromethane
 Concen: 10.000 ppbv
 RT: 5.664 min Scan# 895
 Delta R.T. -0.000 min
 Lab File: VL038897.D
 Acq: 12 Apr 2022 18:26

Instrument :

MSVOA_L

Client Sample Id :

MDL 0.1 NAPHT.

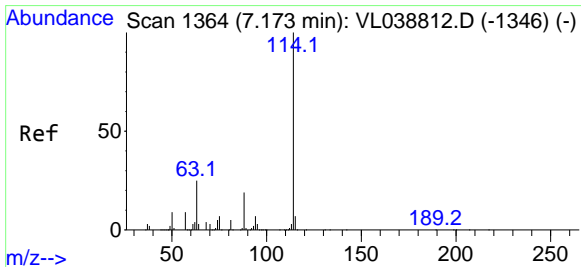
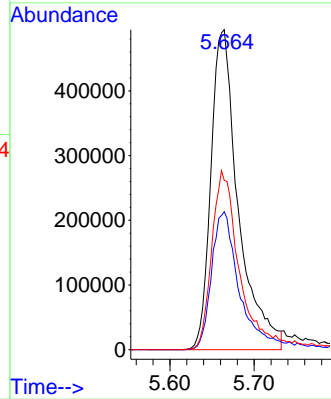
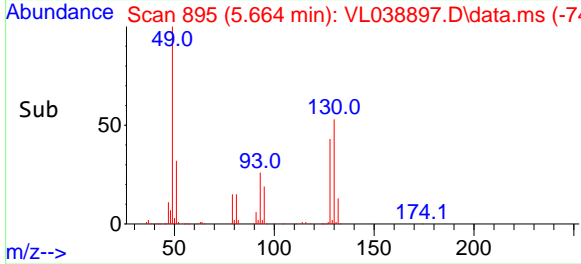


Tgt Ion: 49 Resp: 1117098
 Ion Ratio Lower Upper
 49 100
 128 46.3 24.1 72.3
 130 60.3 30.9 92.8

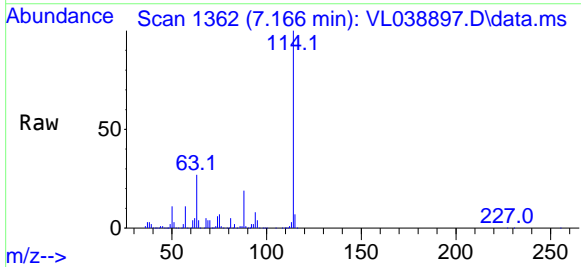
Manual Integrations

APPROVED

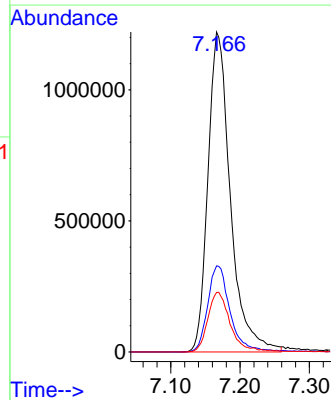
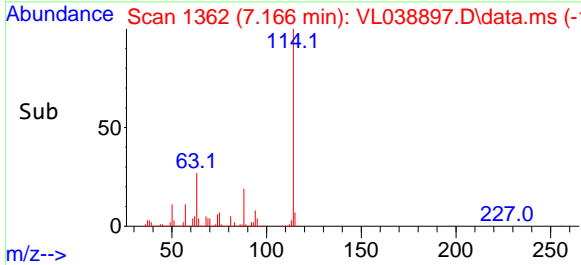
Reviewed By :Semsettin Yesilyurt 04/13/2022
 Supervised By :Mahesh Dadoda 04/14/2022

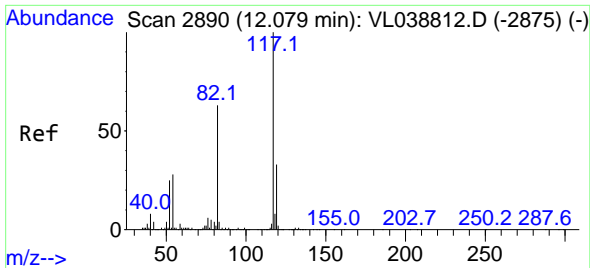


#33
 1,4-Difluorobenzene
 Concen: 10.000 ppbv
 RT: 7.166 min Scan# 1362
 Delta R.T. -0.007 min
 Lab File: VL038897.D
 Acq: 12 Apr 2022 18:26



Tgt Ion:114 Resp: 2739988
 Ion Ratio Lower Upper
 114 100
 63 27.3 19.8 29.8
 88 19.0 14.2 21.4





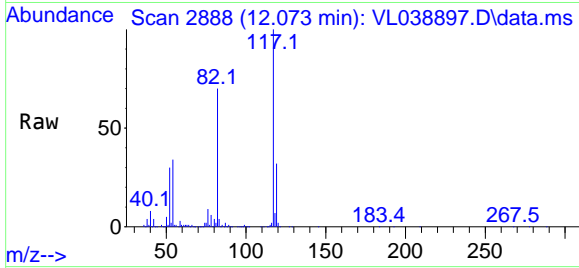
#55
 Chlorobenzene-d5
 Concen: 10.000 ppbv
 RT: 12.073 min Scan# 21
 Delta R.T. -0.007 min
 Lab File: VL038897.D
 Acq: 12 Apr 2022 18:26

Instrument :

MSVOA_L

ClientSampleId :

MDL 0.1 NAPHT.

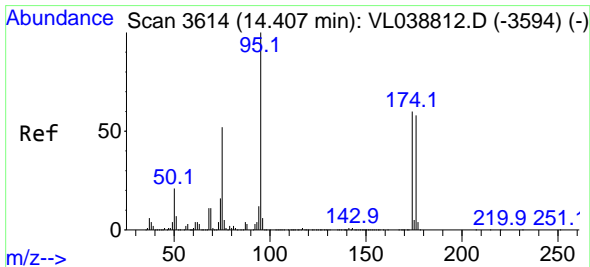
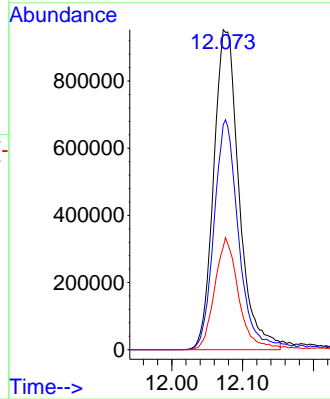
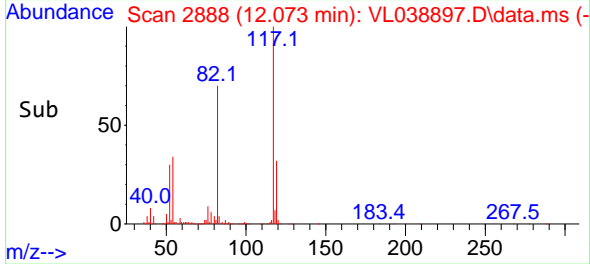


Tgt Ion:117 Resp: 236896
 Ion Ratio Lower Upper
 117 100
 82 70.1 53.0 79.6
 119 33.4 24.9 37.3

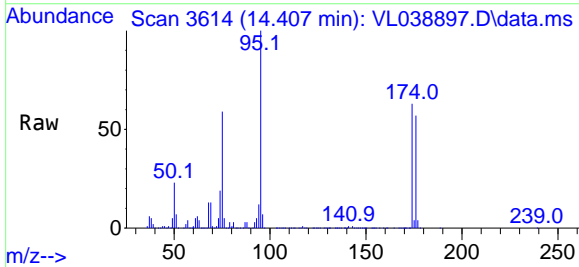
Manual Integrations

APPROVED

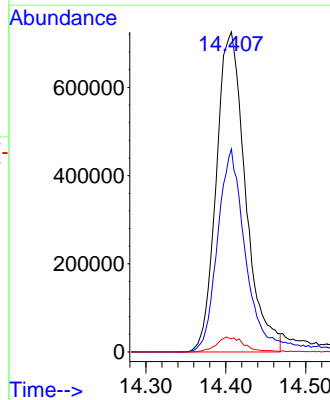
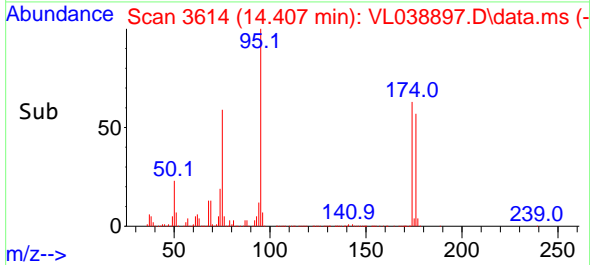
Reviewed By :Semsettin Yesilyurt 04/13/2022
 Supervised By :Mahesh Dadoda 04/14/2022

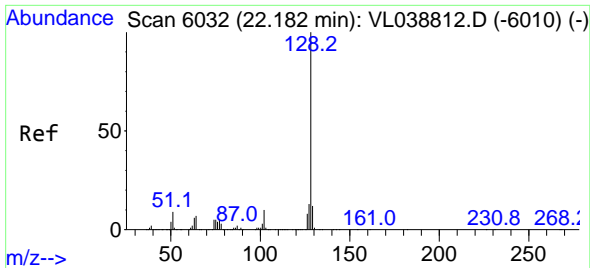


#68
 1-Bromo-4-Fluorobenzene
 Concen: 10.240 ppbv
 RT: 14.407 min Scan# 3614
 Delta R.T. -0.000 min
 Lab File: VL038897.D
 Acq: 12 Apr 2022 18:26



Tgt Ion: 95 Resp: 1840071
 Ion Ratio Lower Upper
 95 100
 174 64.6 52.0 78.0
 175 4.6 4.0 6.0





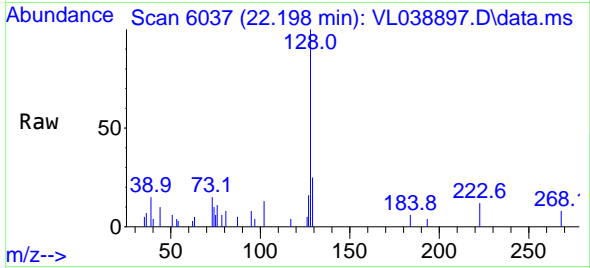
#79
 Naphthalene
 Concen: 0.055 ppbv m
 RT: 22.198 min Scan# 6037
 Delta R.T. 0.016 min
 Lab File: VL038897.D
 Acq: 12 Apr 2022 18:26

Instrument :

MSVOA_L

ClientSampleID :

MDL 0.1 NAPHT.



Tgt Ion:128 Resp: 12914

Ion	Ratio	Lower	Upper
128	100		
127	15.9	10.6	15.8
129	25.4	9.4	14.0

Manual Integrations

APPROVED

Reviewed By :Semsettin Yesilyurt 04/13/2022
 Supervised By :Mahesh Dadoda 04/14/2022

