

Data Path : Z:\voasrv\HPCHEM1\MSVOA_L\Data\VL051425\
 Data File : VL042542.D
 Acq On : 14 May 2025 14:50
 Operator : SY/MD
 Sample : Q2037-02DUP
 Misc : 400mL/MSVOA_L
 ALS Vial : 6 Sample Multiplier: 1

Instrument :
 MSVOA_L
 ClientSampleId :
 IA1DUP

Quant Time: May 15 01:35:31 2025
 Quant Method : Z:\voasrv\HPCHEM1\MSVOA_L\methods\VL051225AIR.M
 Quant Title : AIR ANALYSIS BY METHOD TO-15 Instrument: MSVOA_L Fri Aug 26 06:05:16 2022
 QLast Update : Tue May 13 02:07:03 2025
 Response via : Initial Calibration

Compound	R.T.	QIon	Response	Conc	Units	Dev(Min)
Internal Standards						
1) Bromochloromethane	2.790	49	128941	10.000	ppbv	0.01
33) 1,4-Difluorobenzene	3.965	114	393473	10.000	ppbv	0.02
55) Chlorobenzene-d5	8.888	117	334639	10.000	ppbv	0.02

System Monitoring Compounds						
68) 1-Bromo-4-Fluorobenzene	10.380	95	292296	10.039	ppbv	0.02
Spiked Amount	10.000	Range	65 - 135	Recovery	=	100.400%

Target Compounds	R.T.	QIon	Response	Conc	Units	Qvalue
2) Dichlorodifluoromethane	1.499	85	9815	0.469	ppbv	97
3) Chlorodifluoromethane	1.480	51	64532	3.024	ppbv #	85
4) Chloromethane	1.535	50	6528	0.764	ppbv	92
7) Chloroethane	1.709	64	273	0.079	ppbv #	46
9) Propene	1.489	41	25741	5.563	ppbv #	85
10) Heptane	4.985	43	2371	0.134	ppbv #	26
11) Trichlorofluoromethane	1.881	101	4544	0.226	ppbv	93
12) 1,1,2-Trichlorotrifluo...	2.146	101	1277	0.079	ppbv	83
13) Ethanol	1.726	45	399061	320.622	ppbv	99
15) Acetone	1.849	43	1404730	67.589	ppbv #	66
16) 1,3-Butadiene	1.603	39	5927	0.640	ppbv #	55
17) tert-Butyl alcohol	2.049	59	10067	0.529	ppbv #	72
19) Isopropyl Alcohol	1.887	45	236447	21.125	ppbv #	1
20) Methylene Chloride	2.065	84	6594	0.919	ppbv	87
21) Allyl Chloride	1.968	41	34217	2.508	ppbv #	26
22) trans-1,2-Dichloroethene	2.347	96	283	0.034	ppbv #	7
23) Vinyl Acetate	2.457	43	17385	0.806	ppbv #	89
25) Ethyl Acetate	2.836	43	56690	1.567	ppbv #	83
26) Hexane	2.833	57	54531	3.671	ppbv #	52
27) Carbon Disulfide	2.156	76	2988	0.156	ppbv #	1
29) Chloroform	2.852	83	51478	1.671	ppbv	91
30) Cyclohexane	3.865	84	17618	1.445	ppbv	96
34) 2-Butanone	2.561	43	23581	0.909	ppbv	95
35) Carbon Tetrachloride	3.768	117	3745	0.106	ppbv #	71
36) Benzene	3.661	78	17331	0.497	ppbv #	91
37) 1,2-Dichloroethane	3.224	62	6459	0.260	ppbv #	94
39) 1,2-Dichloropropane	3.965	63	97619	7.516	ppbv #	15
41) Tetrahydrofuran	3.062	42	5254	0.468	ppbv	89
44) 2,2,4-Trimethylpentane	4.648	57	7588	0.137	ppbv #	28
52) Tetrachloroethene	8.231	164	2460	0.184	ppbv #	83
53) Toluene	6.946	91	96387	2.817	ppbv	97
58) Ethyl Benzene	9.364	91	14843	0.325	ppbv	96
59) m/p-Xylene	9.536	91	39401	0.973	ppbv #	100
60) o-Xylene	9.969	91	18271	0.462	ppbv	96
61) Styrene	9.882	104	9239	0.631	ppbv #	30
62) Isopropylbenzene	10.539	105	2006	0.034	ppbv	92
65) tert-Butylbenzene	11.542	119	3754	0.069	ppbv #	17
66) Benzyl Chloride	11.539	91	4987	0.686	ppbv #	70
69) p-Isopropyltoluene	11.927	119	7642	0.119	ppbv #	85
70) n-Butylbenzene	12.675	91	2818	0.044	ppbv	92
72) 4-Ethyltoluene	11.128	105	10247	0.209	ppbv #	89
73) 1,3,5-Trimethylbenzene	11.209	105	10686	0.250	ppbv #	81
74) 1,2,4-Trimethylbenzene	11.539	105	32828	0.624	ppbv #	62

Data Path : Z:\voasrv\HPCHEM1\MSVOA_L\Data\VL051425\
 Data File : VL042542.D
 Acq On : 14 May 2025 14:50
 Operator : SY/MD
 Sample : Q2037-02DUP
 Misc : 400mL/MSVOA_L
 ALS Vial : 6 Sample Multiplier: 1

Instrument :
 MSVOA_L
 ClientSampleId :
 IA1DUP

Quant Time: May 15 01:35:31 2025
 Quant Method : Z:\voasrv\HPCHEM1\MSVOA_L\methods\VL051225AIR.M
 Quant Title : AIR ANALYSIS BY METHOD TO-15 Instrument: MSVOA_L Fri Aug 26 06:05:16 2022
 QLast Update : Tue May 13 02:07:03 2025
 Response via : Initial Calibration

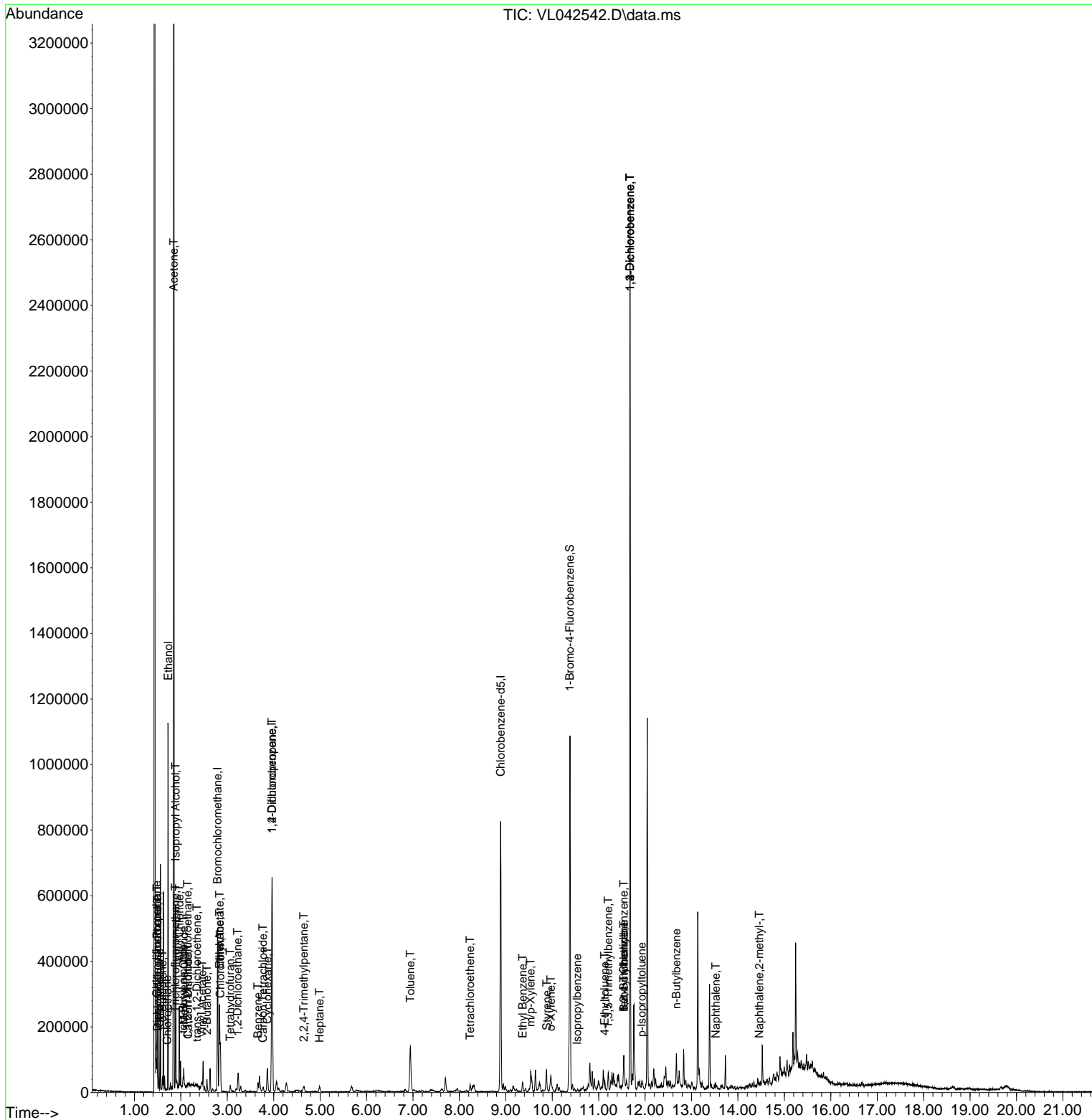
Compound	R.T.	QIon	Response	Conc	Units	Dev(Min)
75) 1,3-Dichlorobenzene	11.678	146	639635	19.420	ppbv	99
76) 1,4-Dichlorobenzene	11.678	146	639635	20.411	ppbv	99
77) 1,2-Dichlorobenzene	11.678	146	639635	18.800	ppbv	97
79) Naphthalene	13.520	128	7230	0.198	ppbv #	95
80) Naphthalene,2-methyl-	14.462	142	2256	0.107	ppbv #	74

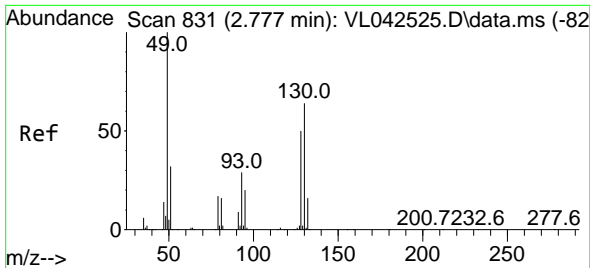
(#) = qualifier out of range (m) = manual integration (+) = signals summed

Data Path : Z:\voasrv\HPCHEM1\MSVOA_L\Data\VL051425\
 Data File : VL042542.D
 Acq On : 14 May 2025 14:50
 Operator : SY/MD
 Sample : Q2037-02DUP
 Misc : 400mL/MSVOA_L
 ALS Vial : 6 Sample Multiplier: 1

Instrument :
 MSVOA_L
 ClientSampleId :
 IA1DUP

Quant Time: May 15 01:35:31 2025
 Quant Method : Z:\voasrv\HPCHEM1\MSVOA_L\methods\VL051225AIR.M
 Quant Title : AIR ANALYSIS BY METHOD TO-15 Instrument: MSVOA_L Fri Aug 26 06:05:16 2022
 QLast Update : Tue May 13 02:07:03 2025
 Response via : Initial Calibration



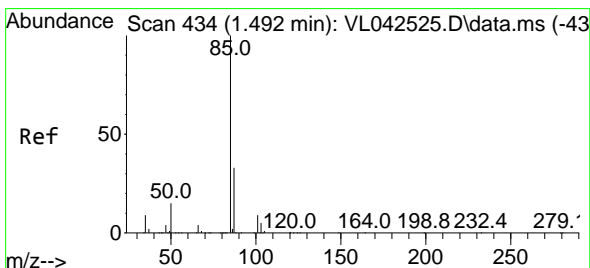
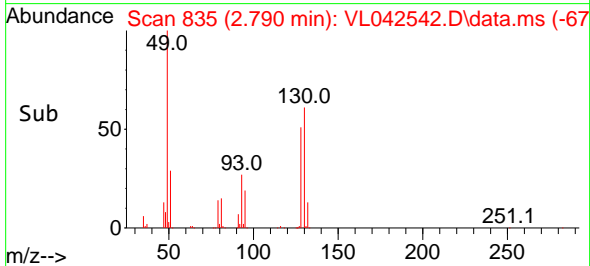
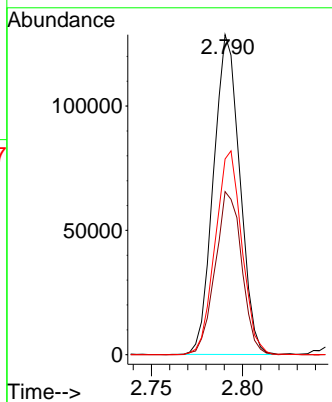
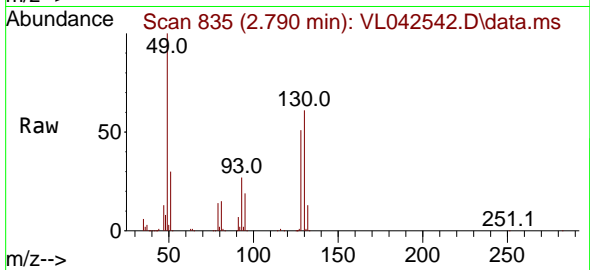


#1
 Bromochloromethane
 Concen: 10.000 ppbv
 RT: 2.790 min Scan# 81
 Delta R.T. 0.013 min
 Lab File: VL042542.D
 Acq: 14 May 2025 14:50

Instrument :
 MSVOA_L
 ClientSampleId :
 IA1DUP

Tgt Ion: 49 Resp: 128941

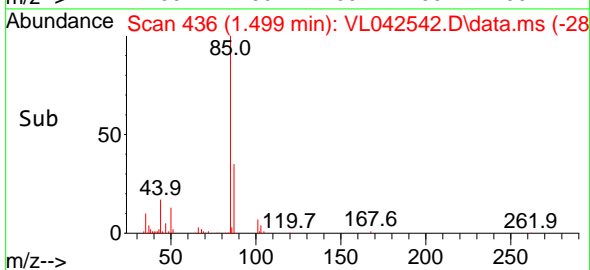
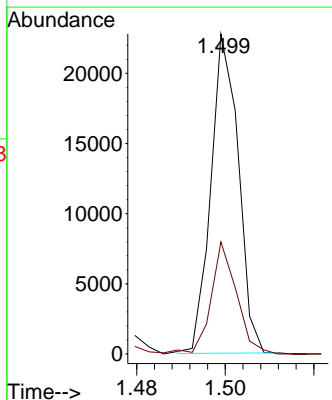
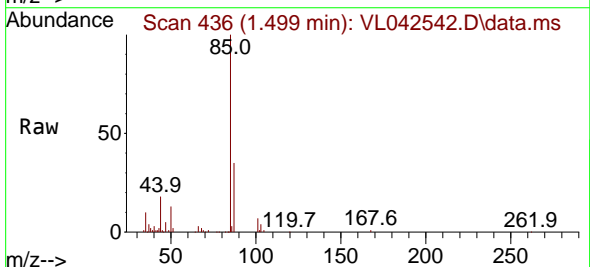
Ion	Ratio	Lower	Upper
49	100		
128	51.5	24.9	74.6
130	64.8	32.5	97.5

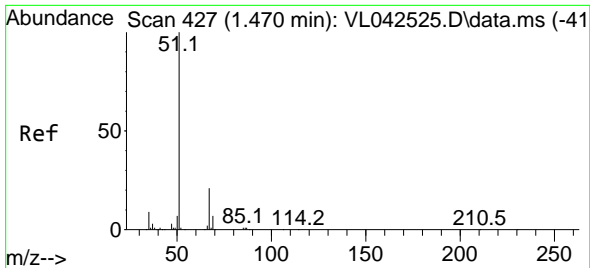


#2
 Dichlorodifluoromethane
 Concen: 0.469 ppbv
 RT: 1.499 min Scan# 436
 Delta R.T. 0.007 min
 Lab File: VL042542.D
 Acq: 14 May 2025 14:50

Tgt Ion: 85 Resp: 9815

Ion	Ratio	Lower	Upper
85	100		
87	35.1	26.8	40.2

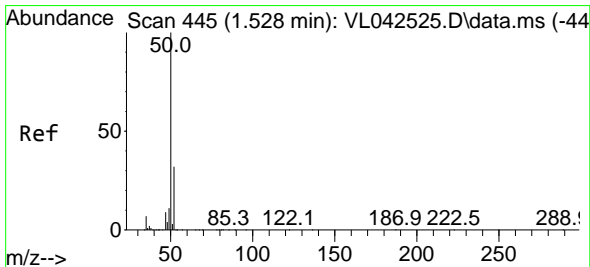
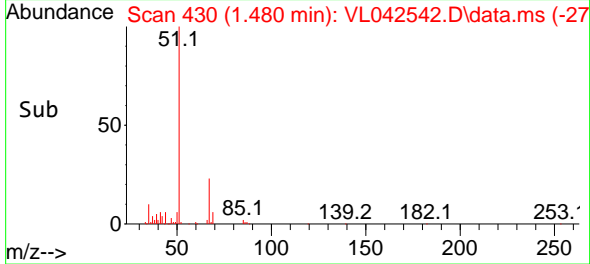
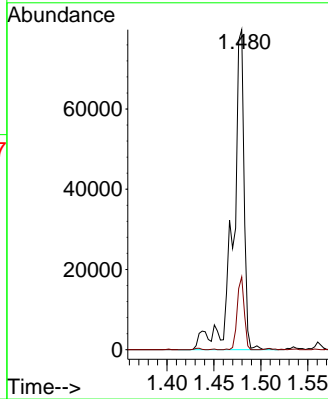
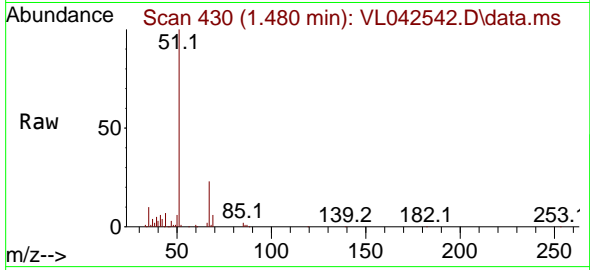




#3
 Chlorodifluoromethane
 Concen: 3.024 ppbv
 RT: 1.480 min Scan# 41
 Delta R.T. 0.010 min
 Lab File: VL042542.D
 Acq: 14 May 2025 14:50

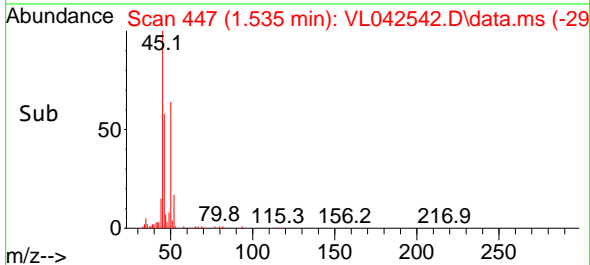
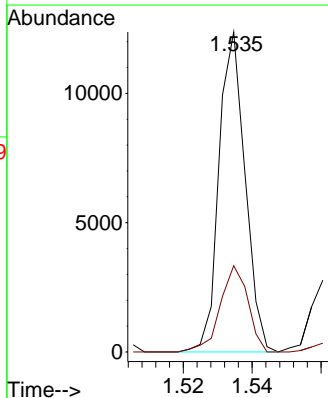
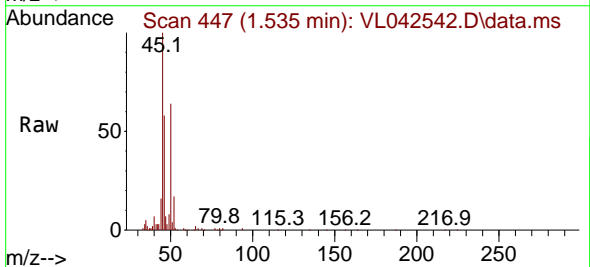
Instrument : MSVOA_L
 ClientSampleId : IA1DUP

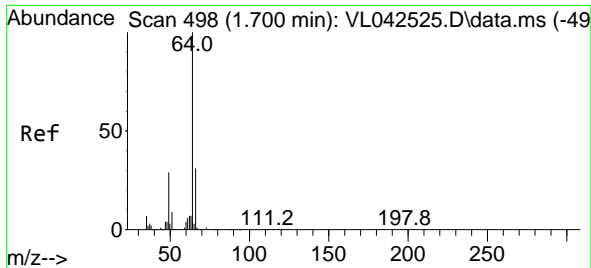
Tgt Ion: 51 Resp: 64532
 Ion Ratio Lower Upper
 51 100
 67 14.6 17.4 26.0#



#4
 Chloromethane
 Concen: 0.764 ppbv
 RT: 1.535 min Scan# 447
 Delta R.T. 0.007 min
 Lab File: VL042542.D
 Acq: 14 May 2025 14:50

Tgt Ion: 50 Resp: 6528
 Ion Ratio Lower Upper
 50 100
 52 28.0 25.9 38.9

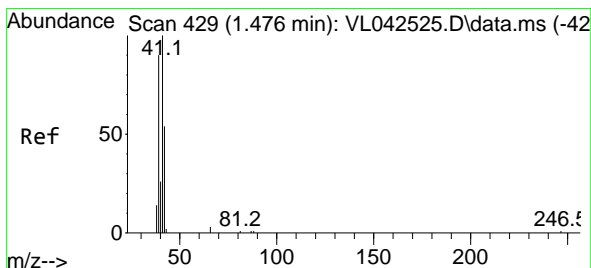
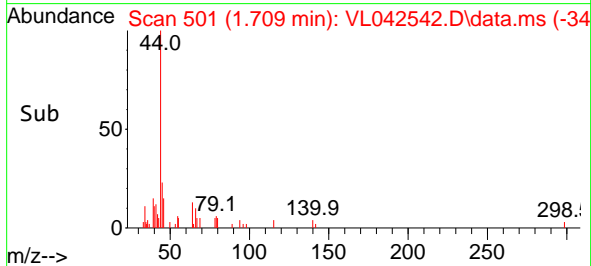
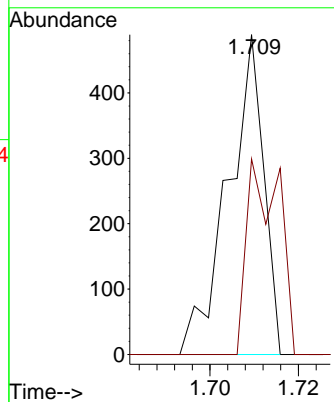
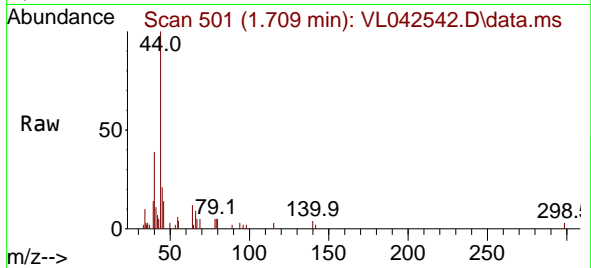




#7
 Chloroethane
 Concen: 0.079 ppbv
 RT: 1.709 min Scan# 501
 Delta R.T. 0.010 min
 Lab File: VL042542.D
 Acq: 14 May 2025 14:50

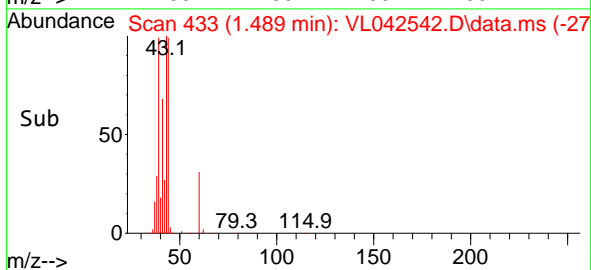
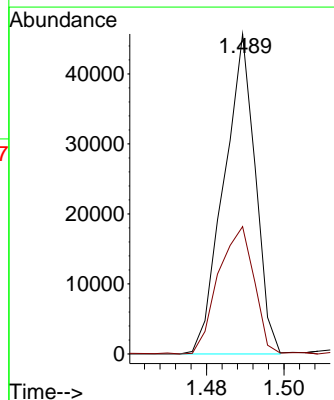
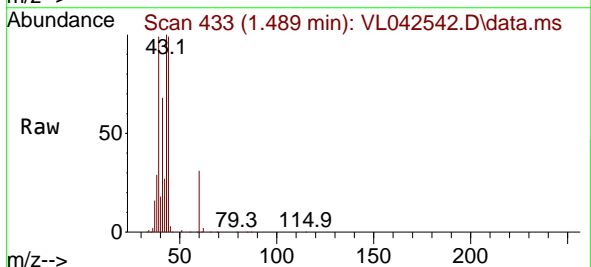
Instrument : MSVOA_L
 ClientSampleId : IA1DUP

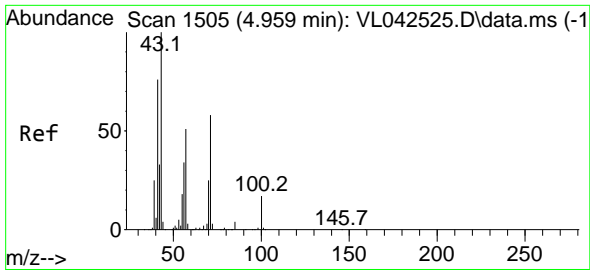
Tgt Ion: 64 Resp: 273
 Ion Ratio Lower Upper
 64 100
 66 61.1 25.1 37.7#



#9
 Propene
 Concen: 5.563 ppbv
 RT: 1.489 min Scan# 433
 Delta R.T. 0.013 min
 Lab File: VL042542.D
 Acq: 14 May 2025 14:50

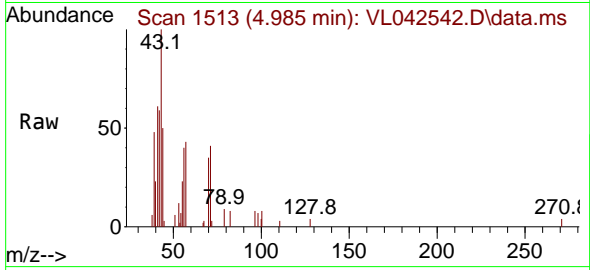
Tgt Ion: 41 Resp: 25741
 Ion Ratio Lower Upper
 41 100
 42 0.0 4.1 6.1#



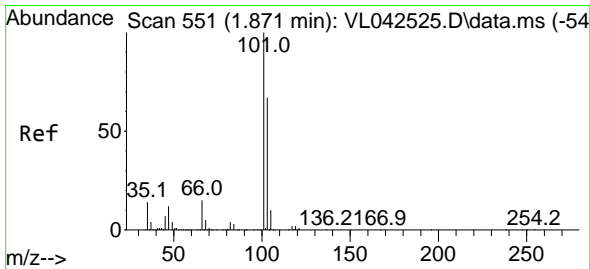
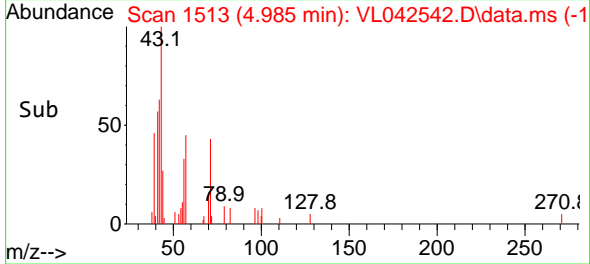
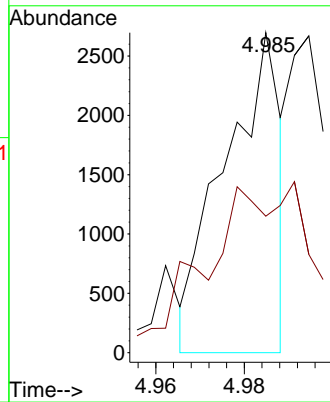


#10
 Heptane
 Concen: 0.134 ppbv
 RT: 4.985 min Scan# 11
 Delta R.T. 0.026 min
 Lab File: VL042542.D
 Acq: 14 May 2025 14:50

Instrument :
 MSVOA_L
 ClientSampleId :
 IA1DUP

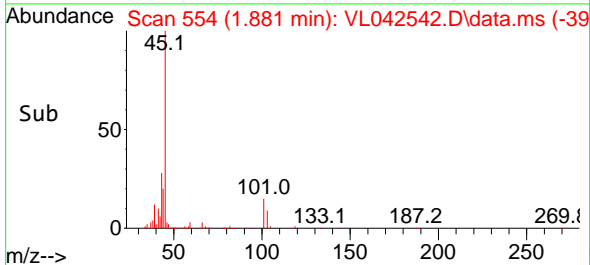
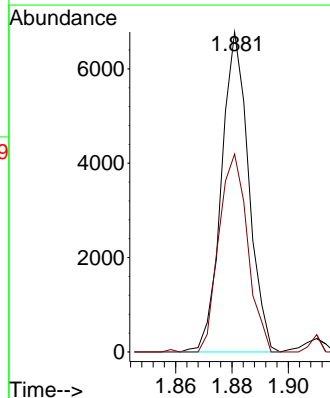
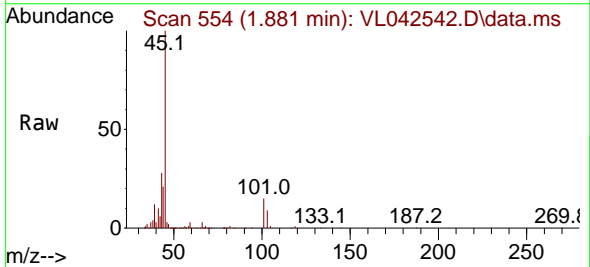


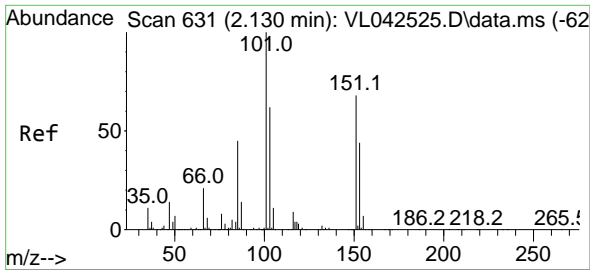
Tgt Ion: 43 Resp: 2371
 Ion Ratio Lower Upper
 43 100
 57 0.0 42.1 63.1#



#11
 Trichlorofluoromethane
 Concen: 0.226 ppbv
 RT: 1.881 min Scan# 554
 Delta R.T. 0.010 min
 Lab File: VL042542.D
 Acq: 14 May 2025 14:50

Tgt Ion: 101 Resp: 4544
 Ion Ratio Lower Upper
 101 100
 103 61.9 53.8 80.6

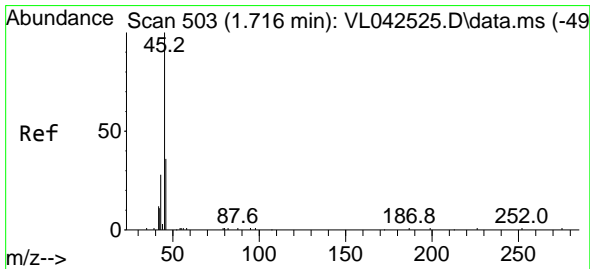
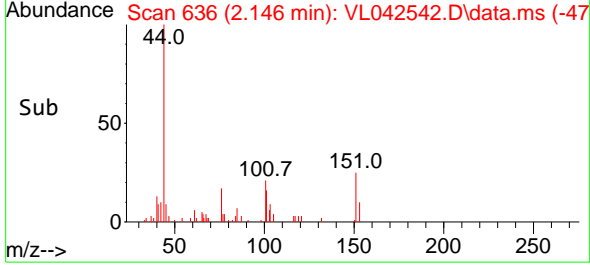
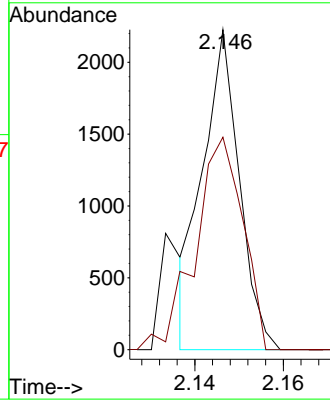
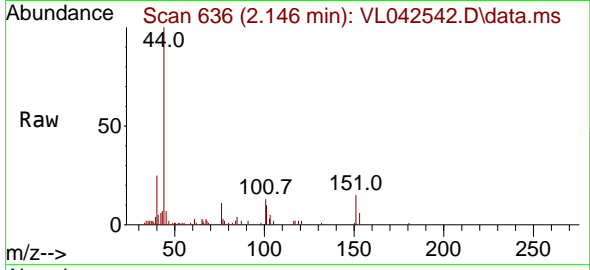




#12
 1,1,2-Trichlorotrifluoroethane
 Concen: 0.079 ppbv
 RT: 2.146 min Scan# 61
 Delta R.T. 0.016 min
 Lab File: VL042542.D
 Acq: 14 May 2025 14:50

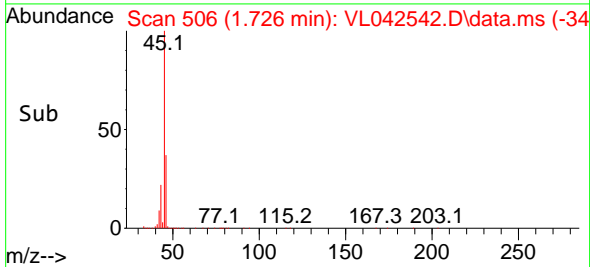
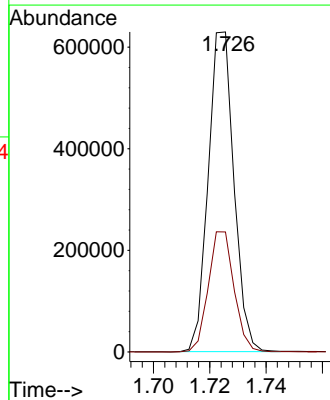
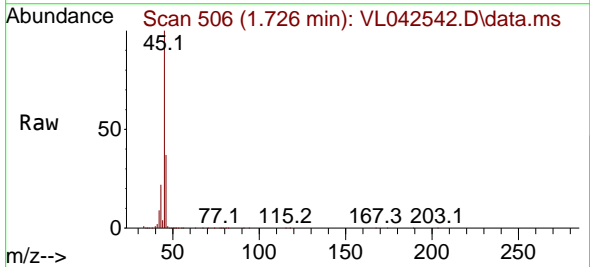
Instrument :
 MSVOA_L
 ClientSampleId :
 IA1DUP

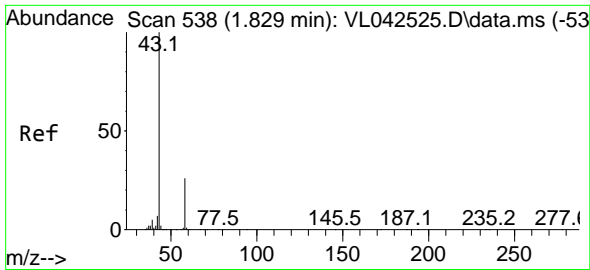
Tgt Ion:101 Resp: 1277
 Ion Ratio Lower Upper
 101 100
 151 86.7 57.8 86.8



#13
 Ethanol
 Concen: 320.622 ppbv
 RT: 1.726 min Scan# 506
 Delta R.T. 0.010 min
 Lab File: VL042542.D
 Acq: 14 May 2025 14:50

Tgt Ion: 45 Resp: 399061
 Ion Ratio Lower Upper
 45 100
 46 37.9 14.8 59.4

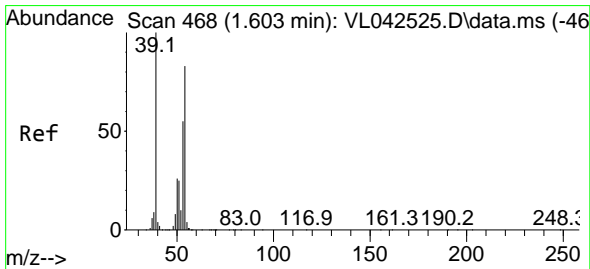
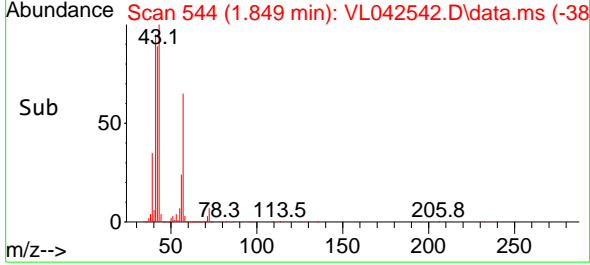
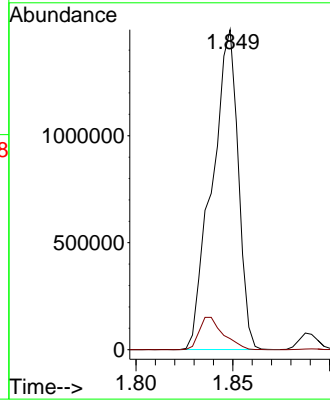
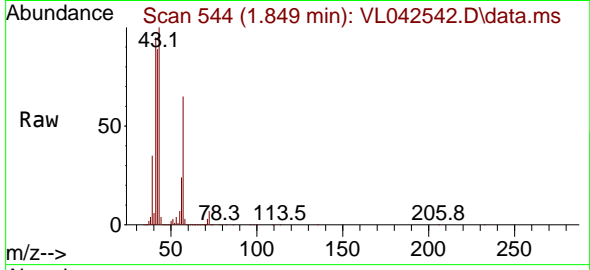




#15
 Acetone
 Concen: 67.589 ppbv
 RT: 1.849 min Scan# 54
 Delta R.T. 0.019 min
 Lab File: VL042542.D
 Acq: 14 May 2025 14:50

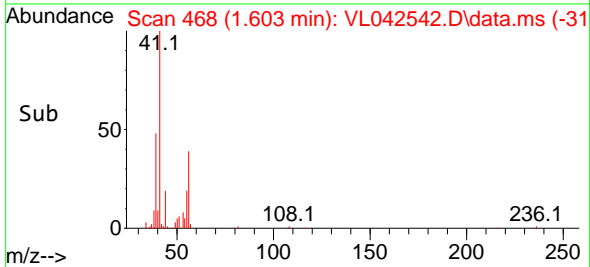
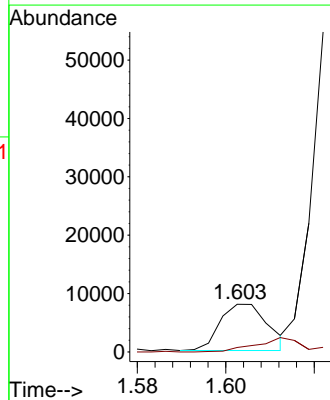
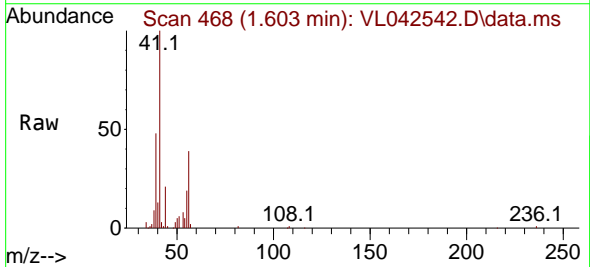
Instrument :
 MSVOA_L
 ClientSampleId :
 IA1DUP

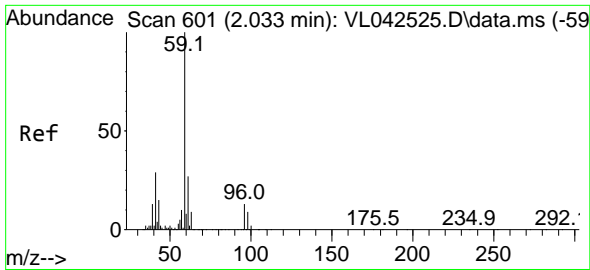
Tgt Ion: 43 Resp: 1404730
 Ion Ratio Lower Upper
 43 100
 58 9.3 21.3 31.9#



#16
 1,3-Butadiene
 Concen: 0.640 ppbv
 RT: 1.603 min Scan# 468
 Delta R.T. 0.000 min
 Lab File: VL042542.D
 Acq: 14 May 2025 14:50

Tgt Ion: 39 Resp: 5927
 Ion Ratio Lower Upper
 39 100
 54 34.4 57.8 86.6#

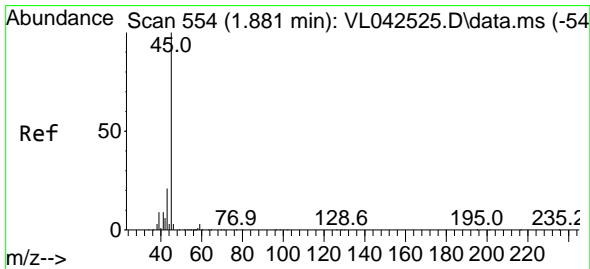
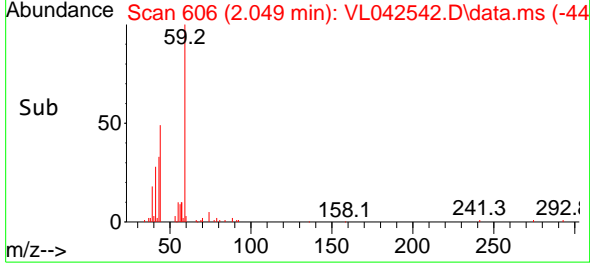
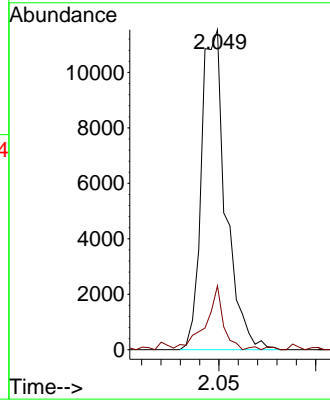
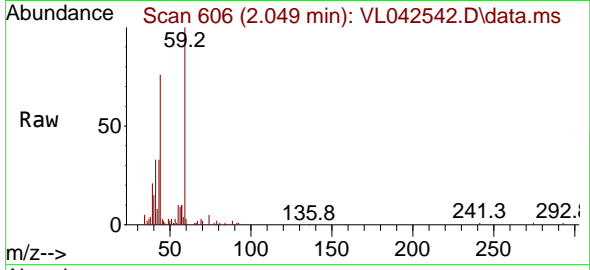




#17
 tert-Butyl alcohol
 Concen: 0.529 ppbv
 RT: 2.049 min Scan# 601
 Delta R.T. 0.016 min
 Lab File: VL042542.D
 Acq: 14 May 2025 14:50

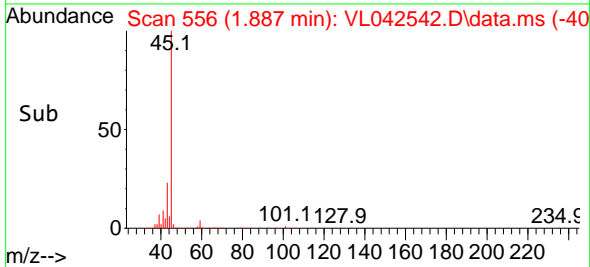
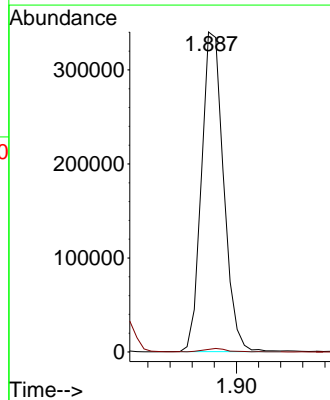
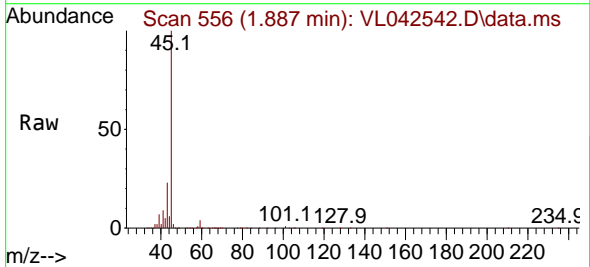
Instrument :
 MSVOA_L
 ClientSampleId :
 IA1DUP

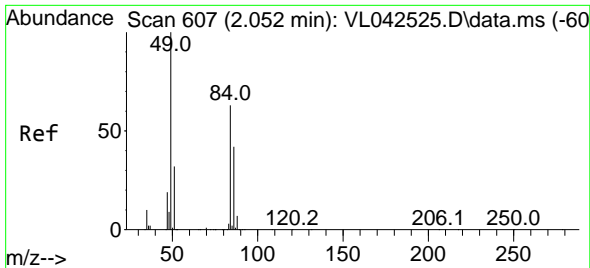
Tgt Ion: 59 Resp: 10067
 Ion Ratio Lower Upper
 59 100
 57 0.0 8.2 12.4#



#19
 Isopropyl Alcohol
 Concen: 21.125 ppbv
 RT: 1.887 min Scan# 556
 Delta R.T. 0.007 min
 Lab File: VL042542.D
 Acq: 14 May 2025 14:50

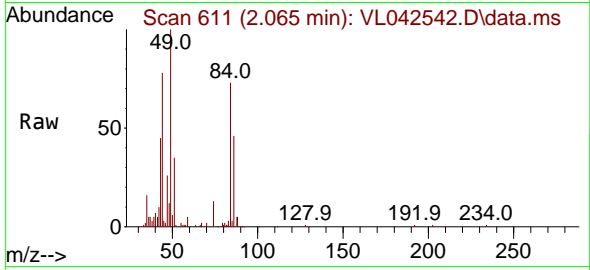
Tgt Ion: 45 Resp: 236447
 Ion Ratio Lower Upper
 45 100
 58 55.4 1.5 2.3#





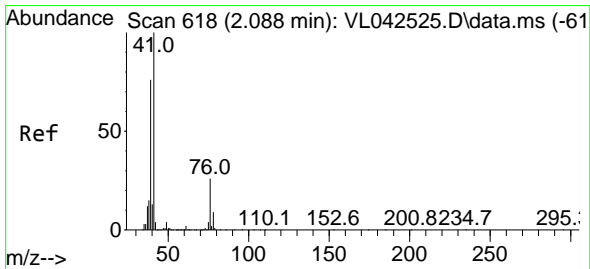
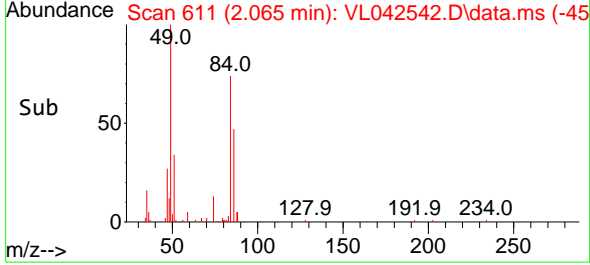
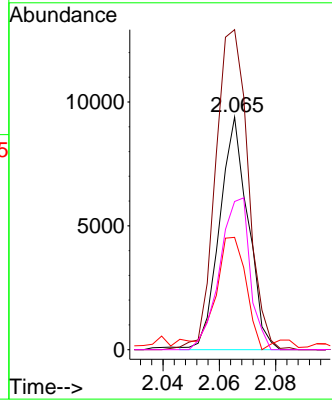
#20
 Methylene Chloride
 Concen: 0.919 ppbv
 RT: 2.065 min Scan# 611
 Delta R.T. 0.013 min
 Lab File: VL042542.D
 Acq: 14 May 2025 14:50

Instrument :
 MSVOA_L
 ClientSampleId :
 IA1DUP

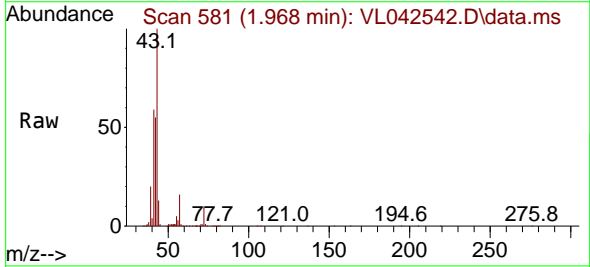


Tgt Ion: 84 Resp: 6594

Ion	Ratio	Lower	Upper
84	100		
49	137.0	128.2	192.4
51	44.1	41.7	62.5
86	63.7	52.6	79.0

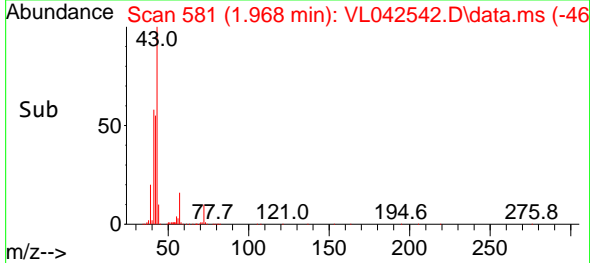
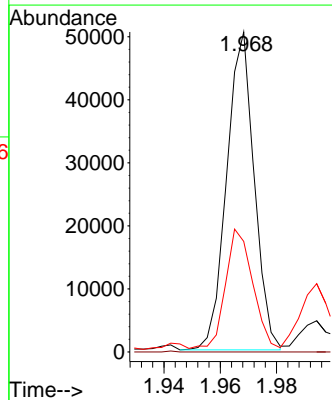


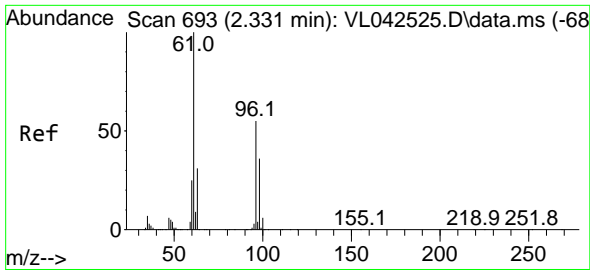
#21
 Allyl Chloride
 Concen: 2.508 ppbv
 RT: 1.968 min Scan# 581
 Delta R.T. -0.120 min
 Lab File: VL042542.D
 Acq: 14 May 2025 14:50



Tgt Ion: 41 Resp: 34217

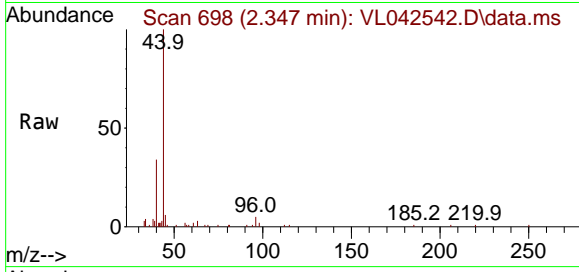
Ion	Ratio	Lower	Upper
41	100		
76	8.7	22.0	33.0#
39	0.0	59.5	89.3#



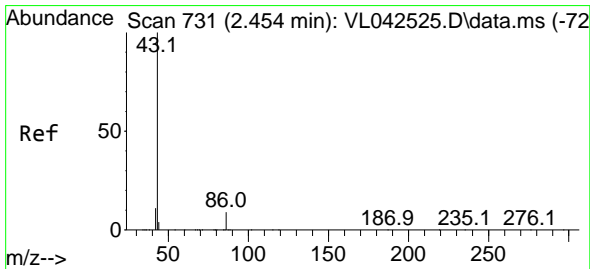
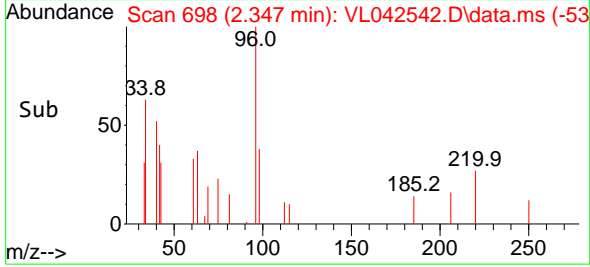
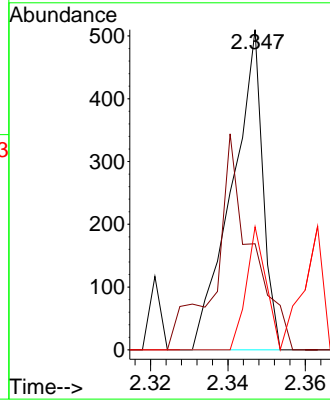


#22
 trans-1,2-Dichloroethene
 Concen: 0.034 ppbv
 RT: 2.347 min Scan# 694
 Delta R.T. 0.016 min
 Lab File: VL042542.D
 Acq: 14 May 2025 14:50

Instrument : MSVOA_L
 ClientSampleId : IA1DUP

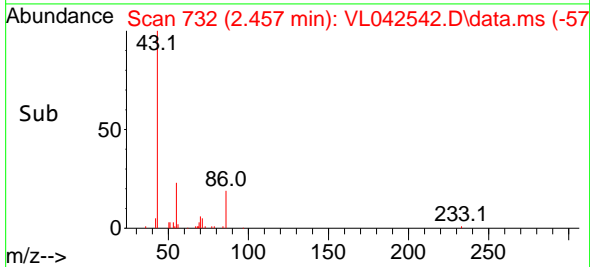
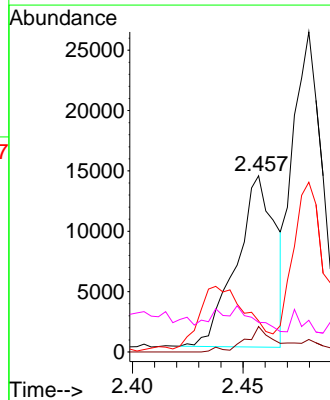
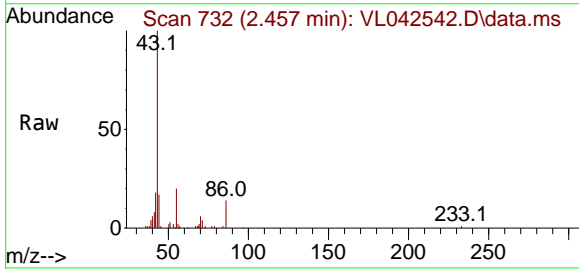


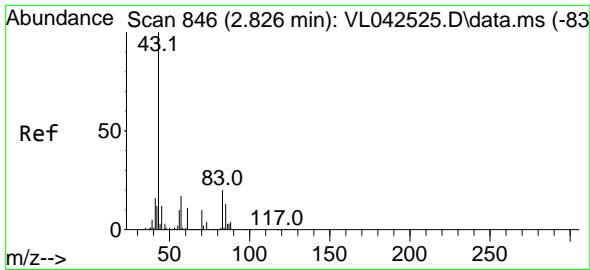
Tgt Ion: 96 Resp: 283
 Ion Ratio Lower Upper
 96 100
 61 19.6 145.9 218.9#
 98 38.4 52.2 78.4#



#23
 Vinyl Acetate
 Concen: 0.806 ppbv
 RT: 2.457 min Scan# 732
 Delta R.T. 0.003 min
 Lab File: VL042542.D
 Acq: 14 May 2025 14:50

Tgt Ion: 43 Resp: 17385
 Ion Ratio Lower Upper
 43 100
 86 14.9 6.8 10.2#
 42 14.9 8.8 13.2#
 44 5.3 4.2 6.4



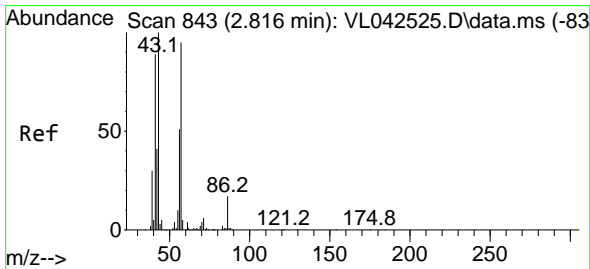
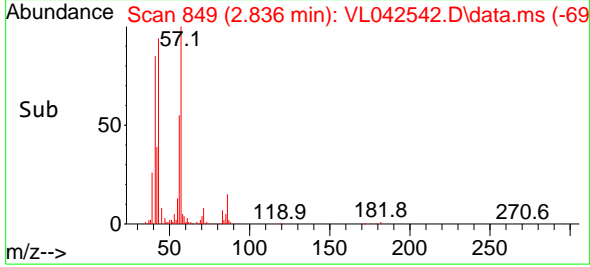
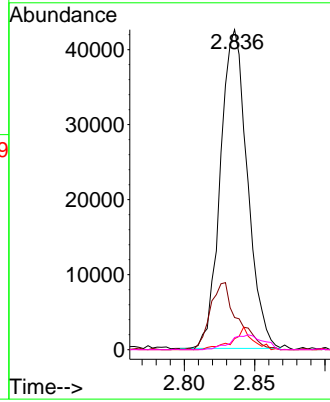
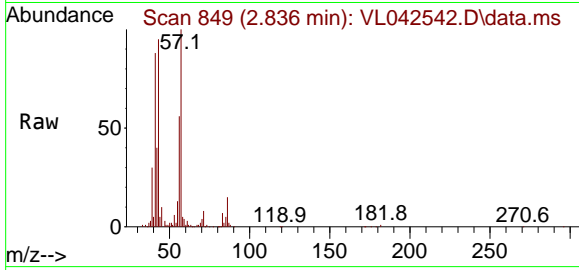


#25
 Ethyl Acetate
 Concen: 1.567 ppbv
 RT: 2.836 min Scan# 846
 Delta R.T. 0.010 min
 Lab File: VL042542.D
 Acq: 14 May 2025 14:50

Instrument :
 MSVOA_L
 ClientSampleId :
 IA1DUP

Tgt Ion: 43 Resp: 56690

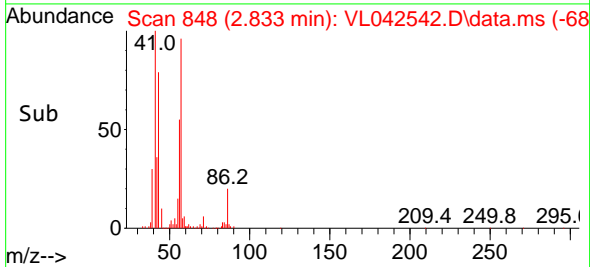
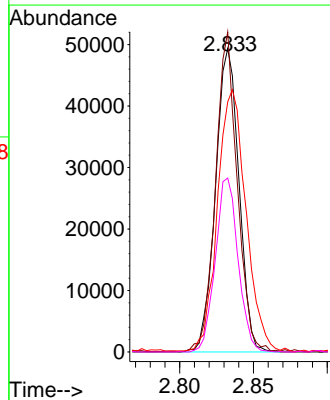
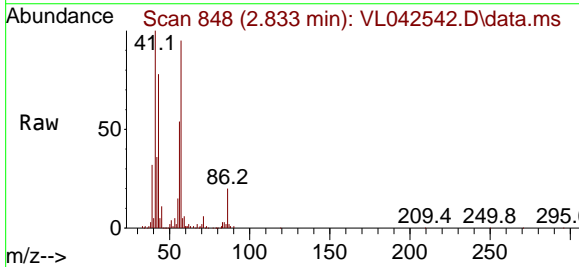
Ion	Ratio	Lower	Upper
43	100		
45	21.5	7.9	11.9#
61	5.1	7.1	10.7#
70	5.6	6.9	10.3#

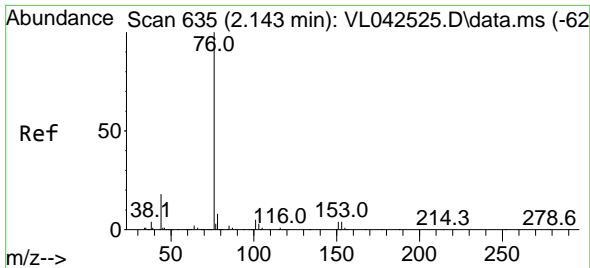


#26
 Hexane
 Concen: 3.671 ppbv
 RT: 2.833 min Scan# 848
 Delta R.T. 0.016 min
 Lab File: VL042542.D
 Acq: 14 May 2025 14:50

Tgt Ion: 57 Resp: 54531

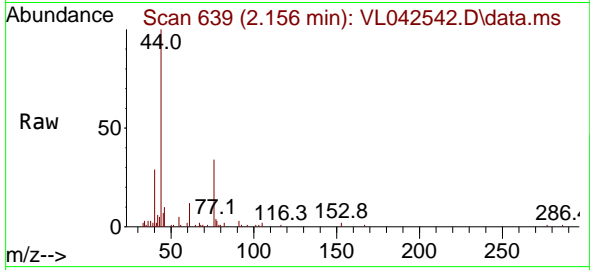
Ion	Ratio	Lower	Upper
57	100		
41	97.8	76.1	114.1
43	106.7	188.9	283.3#
56	55.9	45.2	67.8



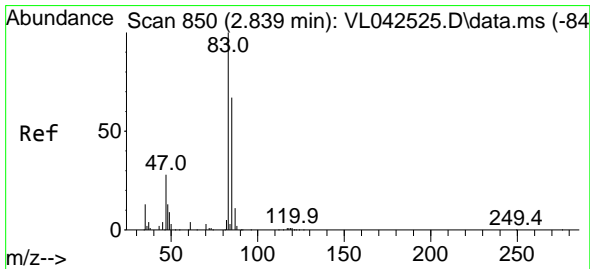
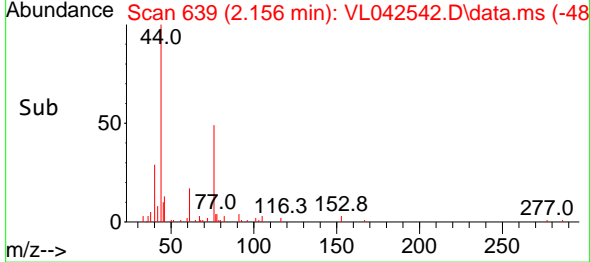
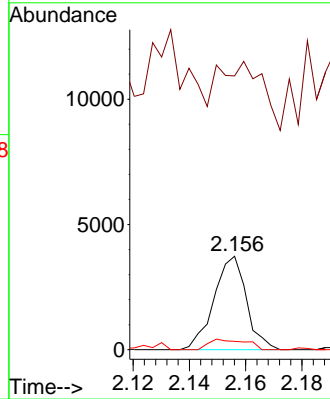


#27
 Carbon Disulfide
 Concen: 0.156 ppbv
 RT: 2.156 min Scan# 61
 Delta R.T. 0.013 min
 Lab File: VL042542.D
 Acq: 14 May 2025 14:50

Instrument : MSVOA_L
 ClientSampleId : IA1DUP

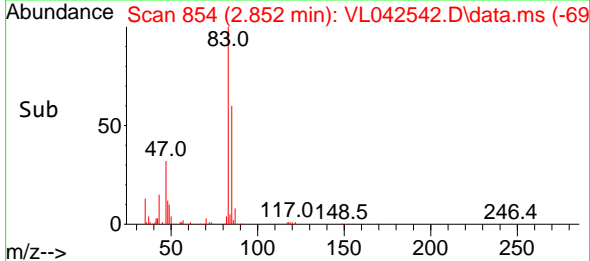
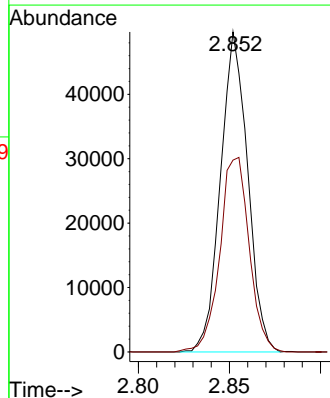
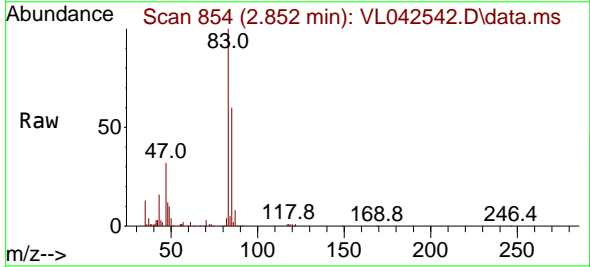


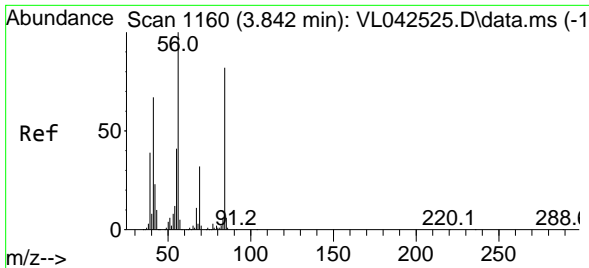
Tgt Ion: 76 Resp: 2988
 Ion Ratio Lower Upper
 76 100
 44 88.2 17.1 25.7#
 78 17.8 8.6 12.8#



#29
 Chloroform
 Concen: 1.671 ppbv
 RT: 2.852 min Scan# 854
 Delta R.T. 0.013 min
 Lab File: VL042542.D
 Acq: 14 May 2025 14:50

Tgt Ion: 83 Resp: 51478
 Ion Ratio Lower Upper
 83 100
 85 59.6 53.5 80.3



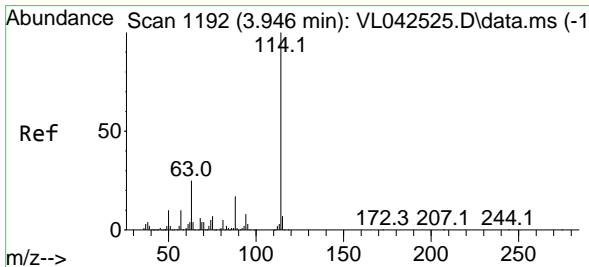
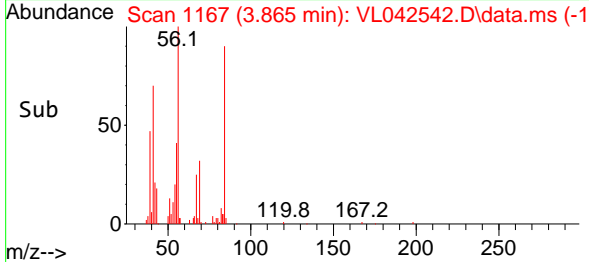
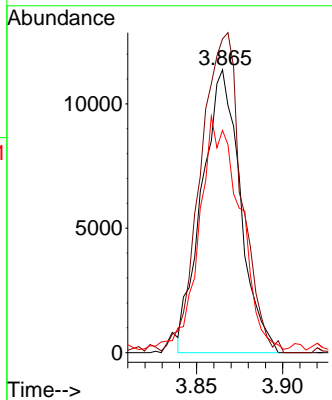
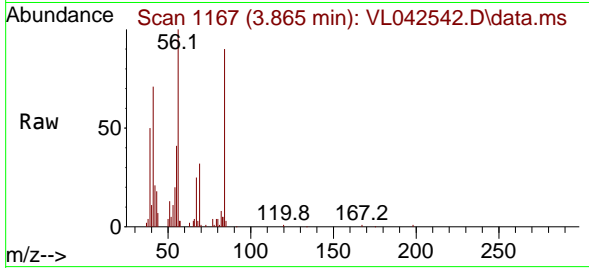


#30
 Cyclohexane
 Concen: 1.445 ppbv
 RT: 3.865 min Scan# 1160
 Delta R.T. 0.023 min
 Lab File: VL042542.D
 Acq: 14 May 2025 14:50

Instrument : MSVOA_L
 ClientSampleId : IA1DUP

Tgt Ion: 84 Resp: 17618

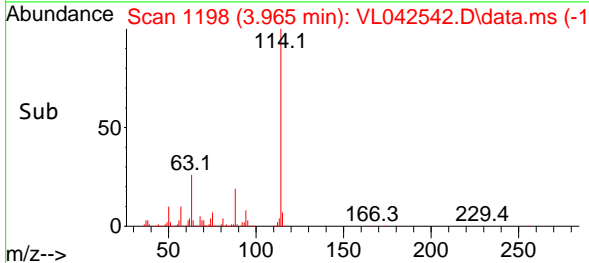
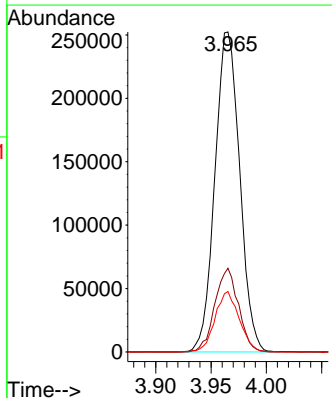
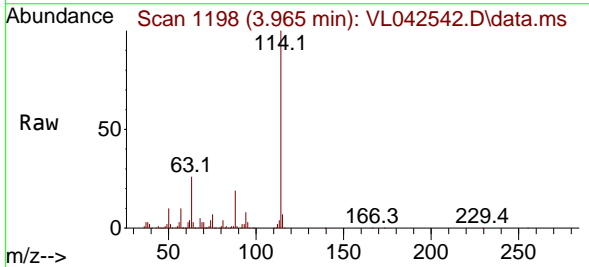
Ion	Ratio	Lower	Upper
84	100		
56	122.7	97.1	145.7
41	90.6	66.6	99.8

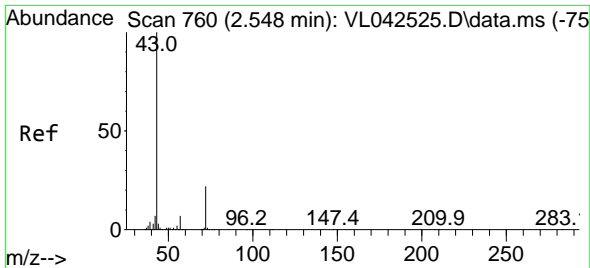


#33
 1,4-Difluorobenzene
 Concen: 10.000 ppbv
 RT: 3.965 min Scan# 1198
 Delta R.T. 0.019 min
 Lab File: VL042542.D
 Acq: 14 May 2025 14:50

Tgt Ion: 114 Resp: 393473

Ion	Ratio	Lower	Upper
114	100		
63	24.9	20.4	30.6
88	18.4	14.5	21.7

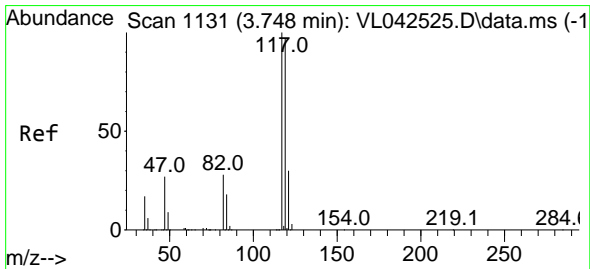
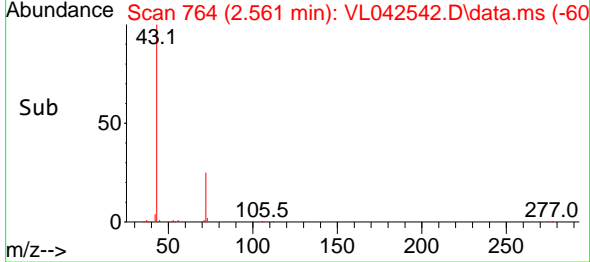
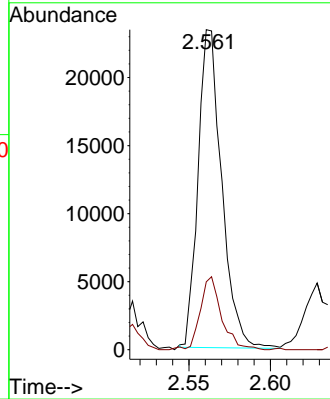
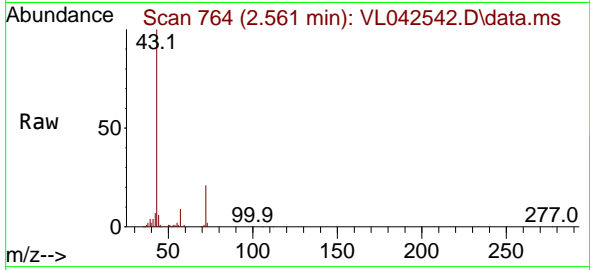




#34
 2-Butanone
 Concen: 0.909 ppbv
 RT: 2.561 min Scan# 764
 Delta R.T. 0.013 min
 Lab File: VL042542.D
 Acq: 14 May 2025 14:50

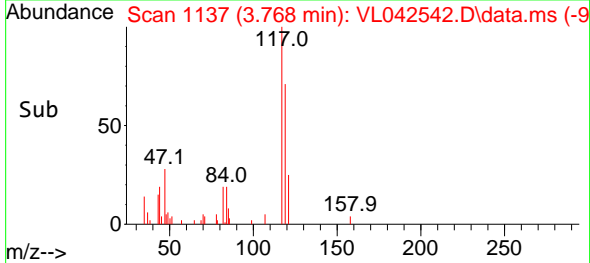
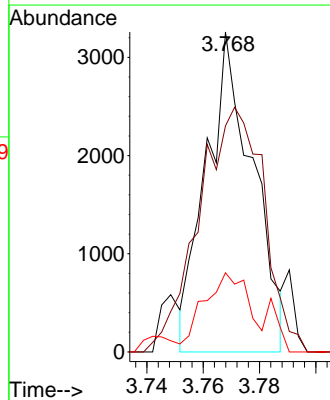
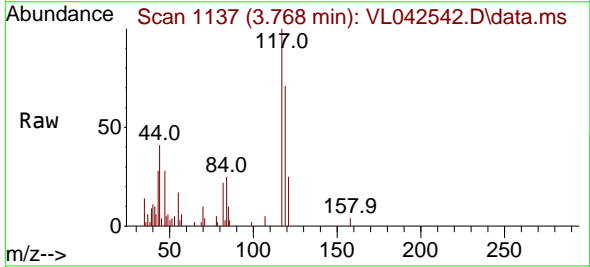
Instrument :
 MSVOA_L
 ClientSampleId :
 IA1DUP

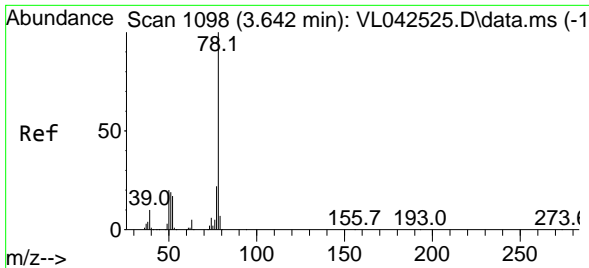
Tgt Ion: 43 Resp: 23581
 Ion Ratio Lower Upper
 43 100
 72 20.8 18.7 28.1



#35
 Carbon Tetrachloride
 Concen: 0.106 ppbv
 RT: 3.768 min Scan# 1137
 Delta R.T. 0.019 min
 Lab File: VL042542.D
 Acq: 14 May 2025 14:50

Tgt Ion: 117 Resp: 3745
 Ion Ratio Lower Upper
 117 100
 119 61.7 77.7 116.5#
 121 25.6 24.0 36.0

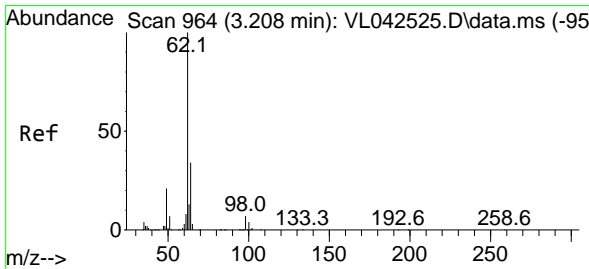
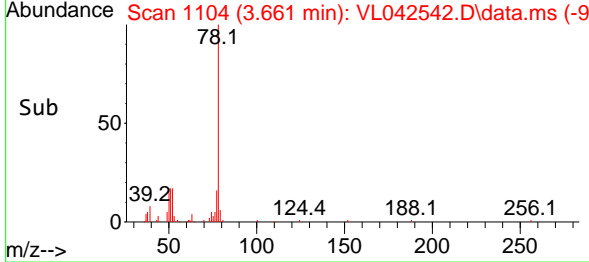
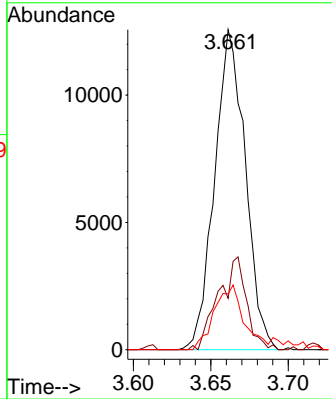
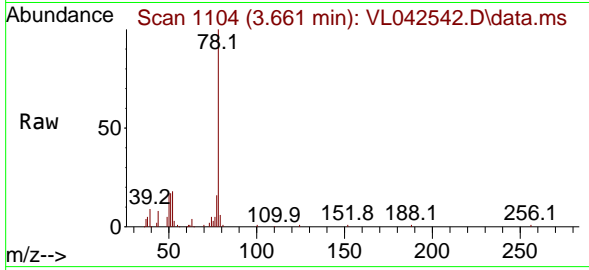




#36
Benzene
Concen: 0.497 ppbv
RT: 3.661 min Scan# 1104
Delta R.T. 0.019 min
Lab File: VL042542.D
Acq: 14 May 2025 14:50

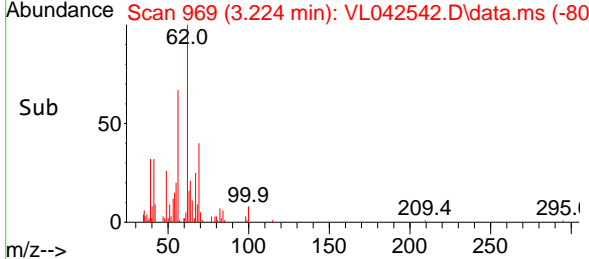
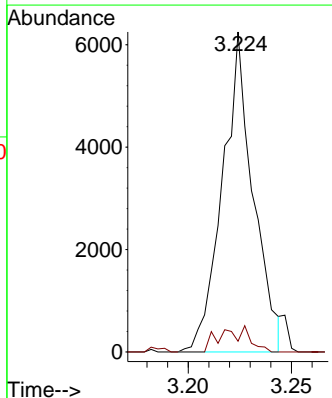
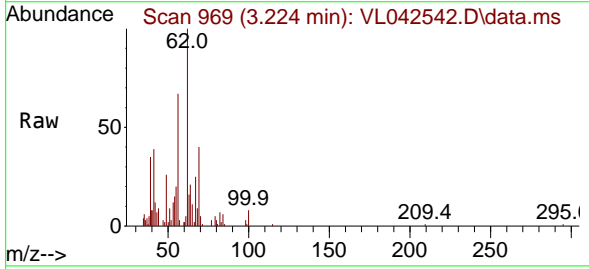
Instrument : MSVOA_L
ClientSampleId : IA1DUP

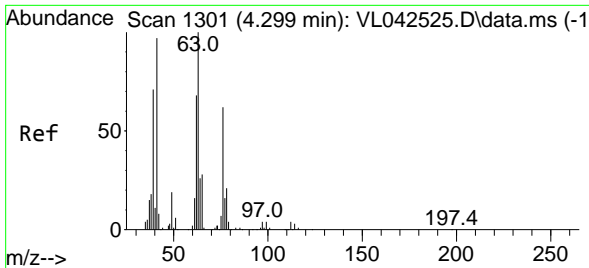
Tgt Ion: 78	Resp: 17331	
Ion Ratio	Lower Upper	
78	100	
77	16.1	17.4 26.2#
50	17.4	16.3 24.5



#37
1,2-Dichloroethane
Concen: 0.260 ppbv
RT: 3.224 min Scan# 969
Delta R.T. 0.016 min
Lab File: VL042542.D
Acq: 14 May 2025 14:50

Tgt Ion: 62	Resp: 6459	
Ion Ratio	Lower Upper	
62	100	
98	8.1	5.0 7.4#

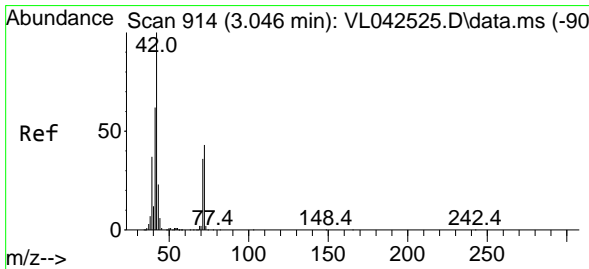
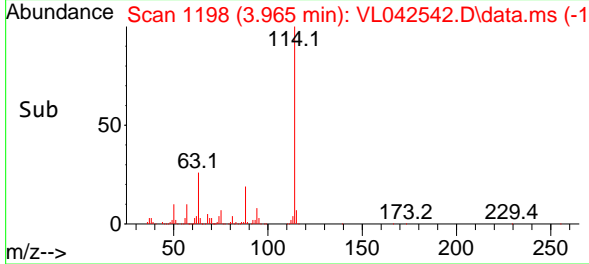
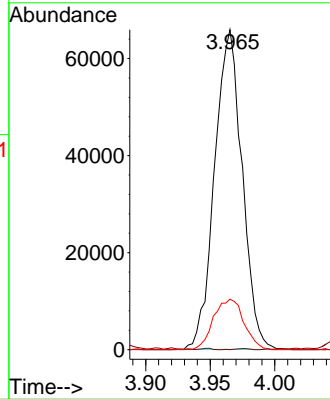
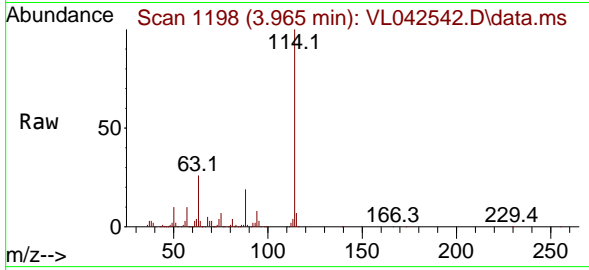




#39
 1,2-Dichloropropane
 Concen: 7.516 ppbv
 RT: 3.965 min Scan# 1198
 Delta R.T. -0.333 min
 Lab File: VL042542.D
 Acq: 14 May 2025 14:50

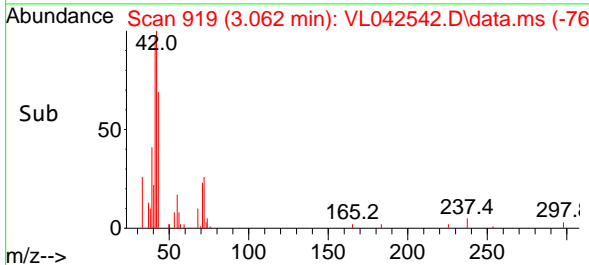
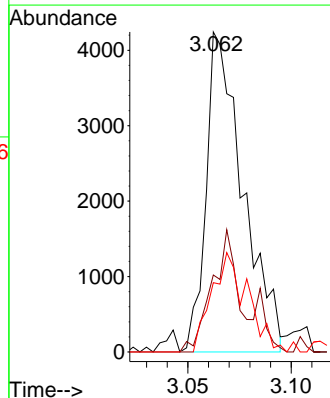
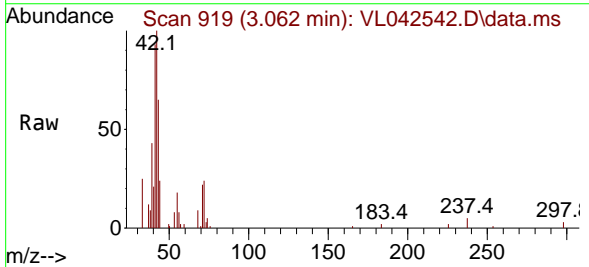
Instrument : MSVOA_L
 ClientSampleId : IA1DUP

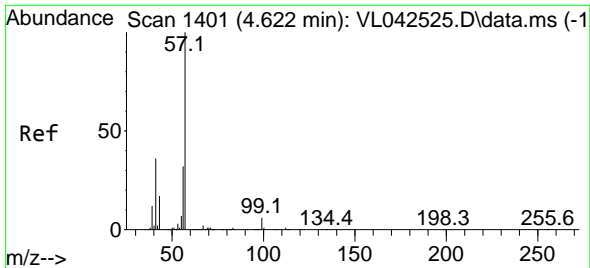
Tgt Ion: 63 Resp: 97619
 Ion Ratio Lower Upper
 63 100
 41 0.0 77.5 116.3#
 62 15.7 54.6 82.0#



#41
 Tetrahydrofuran
 Concen: 0.468 ppbv
 RT: 3.062 min Scan# 919
 Delta R.T. 0.016 min
 Lab File: VL042542.D
 Acq: 14 May 2025 14:50

Tgt Ion: 42 Resp: 5254
 Ion Ratio Lower Upper
 42 100
 72 33.5 32.7 49.1
 71 31.9 30.4 45.6



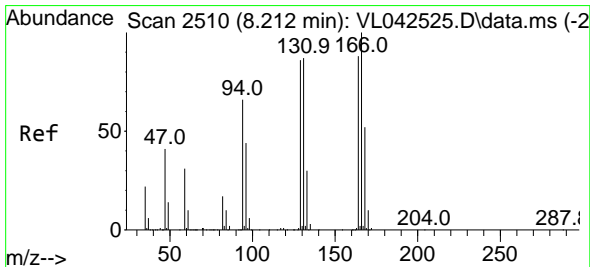
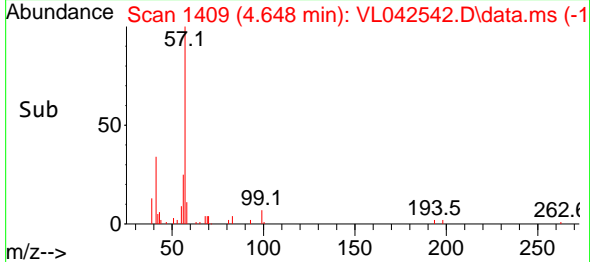
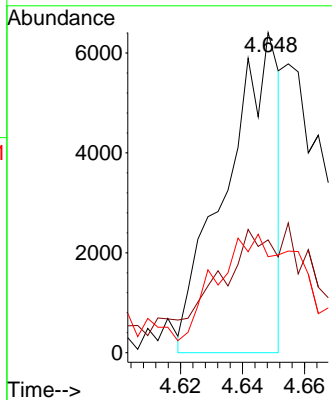
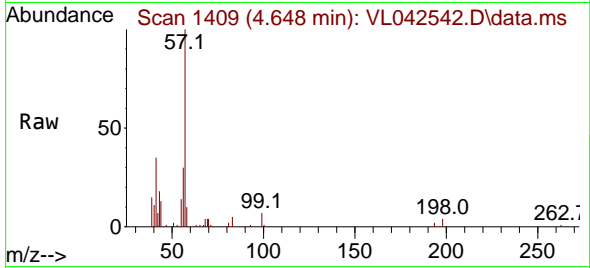


#44
 2,2,4-Trimethylpentane
 Concen: 0.137 ppbv
 RT: 4.648 min Scan# 1409
 Delta R.T. 0.026 min
 Lab File: VL042542.D
 Acq: 14 May 2025 14:50

Instrument : MSVOA_L
 ClientSampleId : IA1DUP

Tgt Ion: 57 Resp: 7588

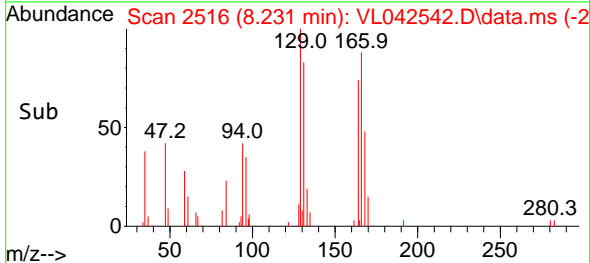
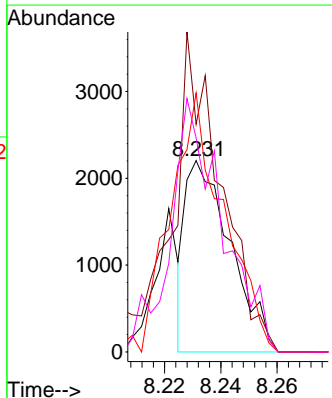
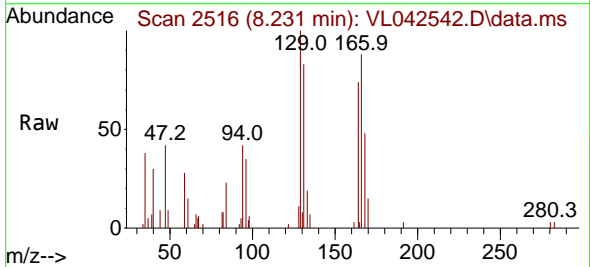
Ion	Ratio	Lower	Upper
57	100		
41	0.0	28.3	42.5#
56	79.3	25.9	38.9#

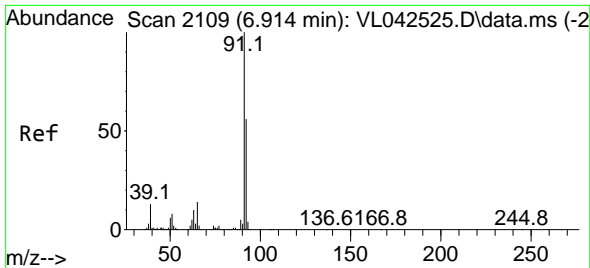


#52
 Tetrachloroethene
 Concen: 0.184 ppbv
 RT: 8.231 min Scan# 2516
 Delta R.T. 0.019 min
 Lab File: VL042542.D
 Acq: 14 May 2025 14:50

Tgt Ion: 164 Resp: 2460

Ion	Ratio	Lower	Upper
164	100		
166	118.9	91.3	136.9
129	135.3	78.9	118.3#
131	111.8	79.6	119.4

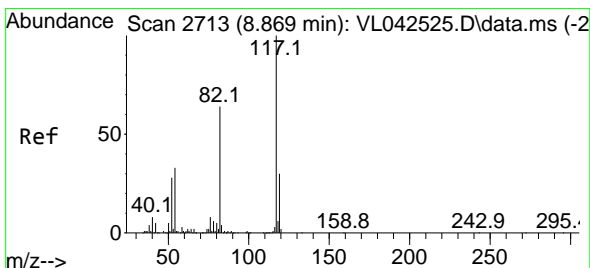
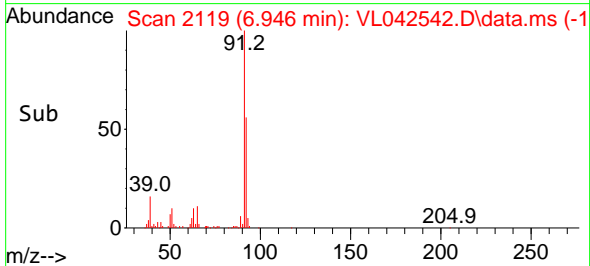
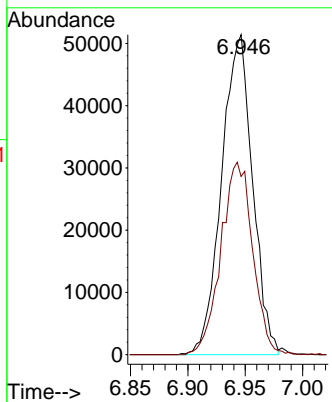
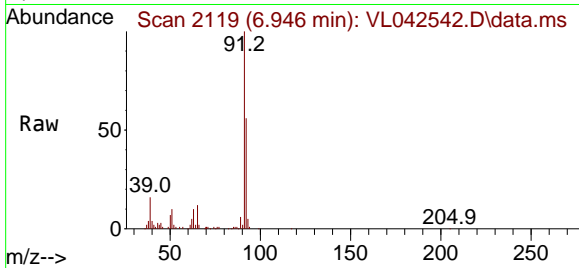




#53
 Toluene
 Concen: 2.817 ppbv
 RT: 6.946 min Scan# 2119
 Delta R.T. 0.032 min
 Lab File: VL042542.D
 Acq: 14 May 2025 14:50

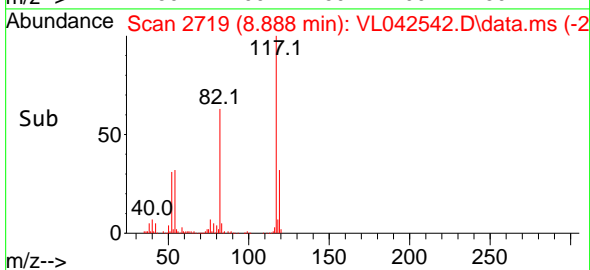
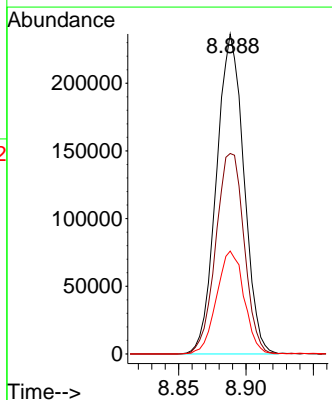
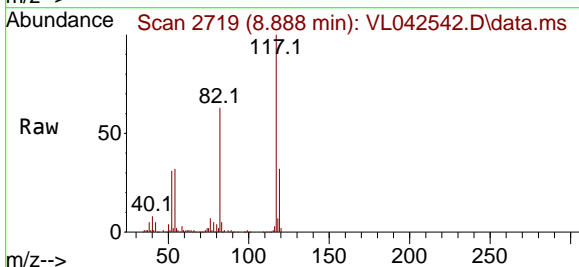
Instrument : MSVOA_L
 ClientSampleId : IA1DUP

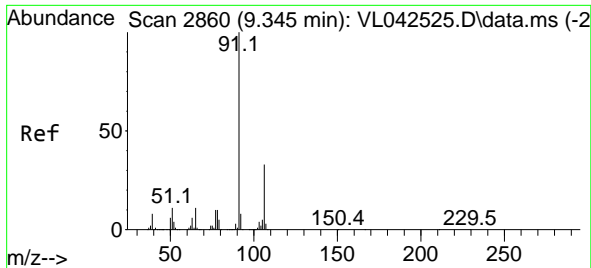
Tgt Ion: 91 Resp: 96387
 Ion Ratio Lower Upper
 91 100
 92 62.0 47.8 71.6



#55
 Chlorobenzene-d5
 Concen: 10.000 ppbv
 RT: 8.888 min Scan# 2719
 Delta R.T. 0.019 min
 Lab File: VL042542.D
 Acq: 14 May 2025 14:50

Tgt Ion: 117 Resp: 334639
 Ion Ratio Lower Upper
 117 100
 82 64.9 55.0 82.4
 119 32.5 25.8 38.6

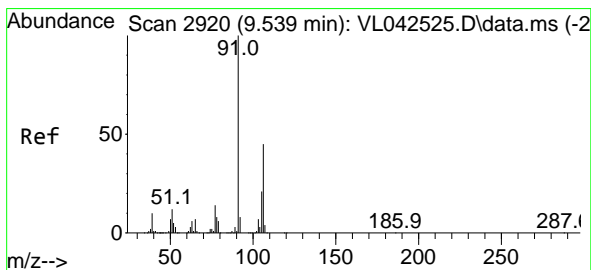
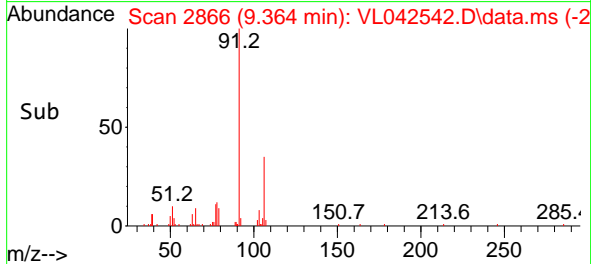
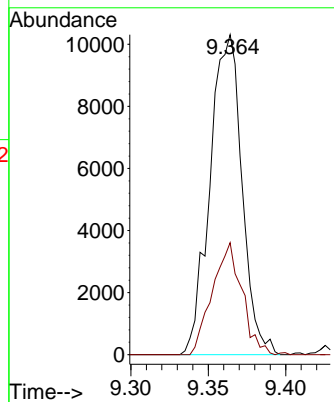
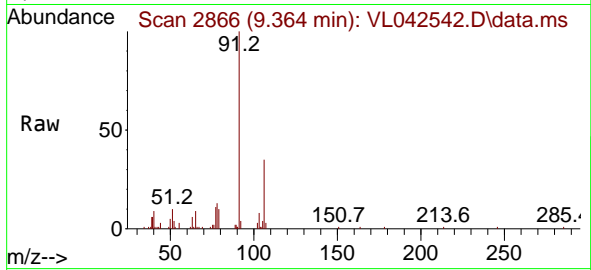




#58
 Ethyl Benzene
 Concen: 0.325 ppbv
 RT: 9.364 min Scan# 2199
 Delta R.T. 0.019 min
 Lab File: VL042542.D
 Acq: 14 May 2025 14:50

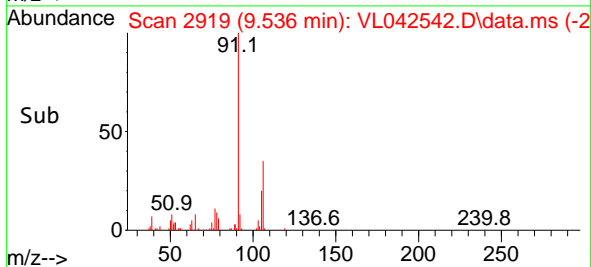
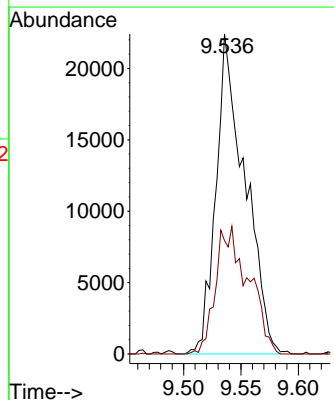
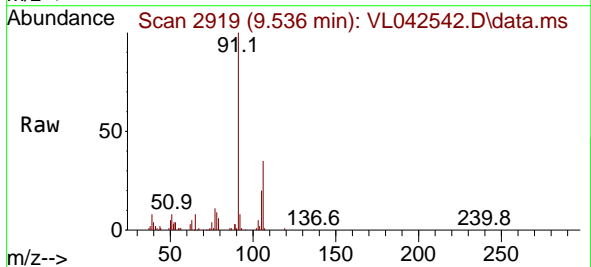
Instrument : MSVOA_L
 ClientSampleId : IA1DUP

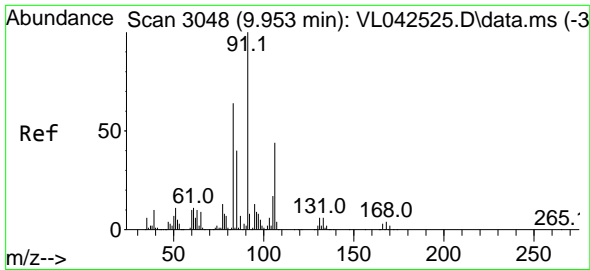
Tgt Ion: 91 Resp: 14843
 Ion Ratio Lower Upper
 91 100
 106 35.0 26.0 39.0



#59
 m/p-Xylene
 Concen: 0.973 ppbv
 RT: 9.536 min Scan# 2919
 Delta R.T. -0.003 min
 Lab File: VL042542.D
 Acq: 14 May 2025 14:50

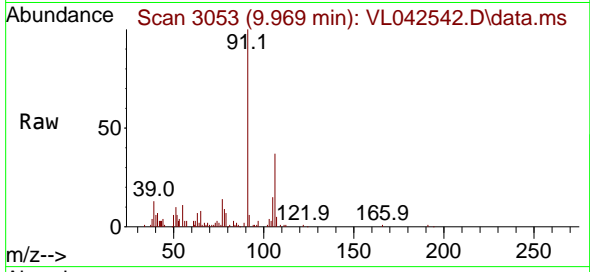
Tgt Ion: 91 Resp: 39401
 Ion Ratio Lower Upper
 91 100
 106 45.1 0.0 0.0#



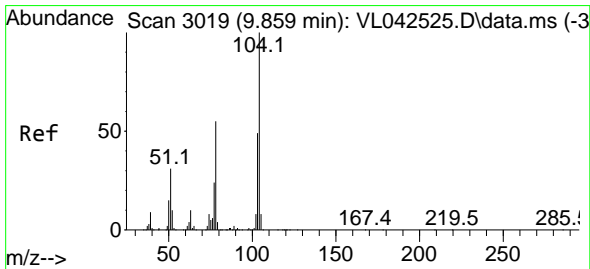
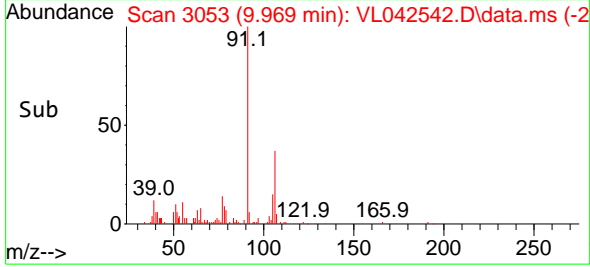
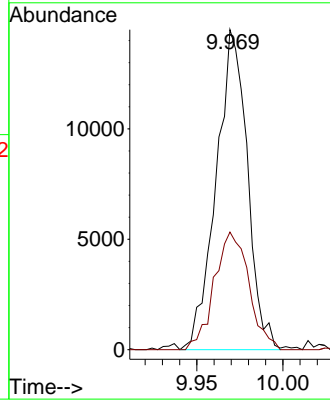


#60
 o-Xylene
 Concen: 0.462 ppbv
 RT: 9.969 min Scan# 3026
 Delta R.T. 0.016 min
 Lab File: VL042542.D
 Acq: 14 May 2025 14:50

Instrument : MSVOA_L
 ClientSampleId : IA1DUP

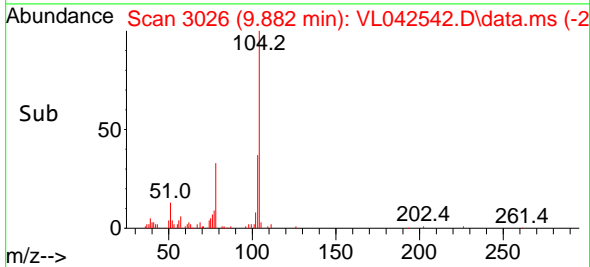
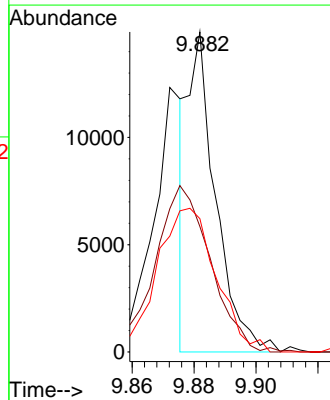
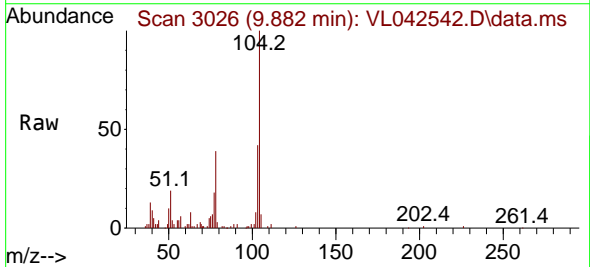


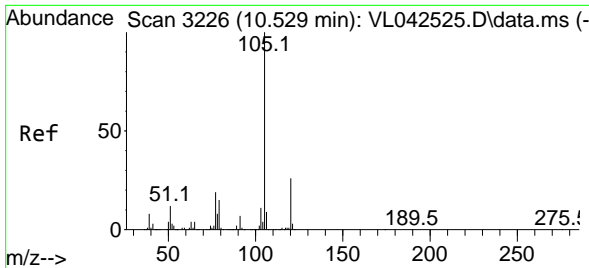
Tgt Ion: 91 Resp: 18271
 Ion Ratio Lower Upper
 91 100
 106 40.6 21.6 64.6



#61
 Styrene
 Concen: 0.631 ppbv
 RT: 9.882 min Scan# 3026
 Delta R.T. 0.023 min
 Lab File: VL042542.D
 Acq: 14 May 2025 14:50

Tgt Ion: 104 Resp: 9239
 Ion Ratio Lower Upper
 104 100
 78 105.5 44.7 67.1#
 103 96.5 38.6 58.0#

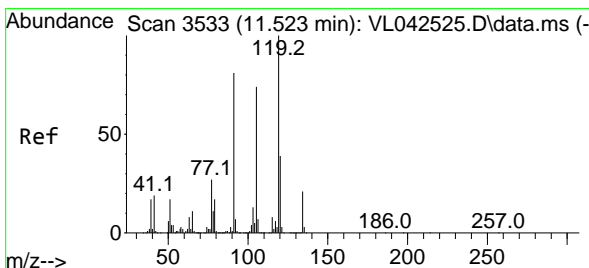
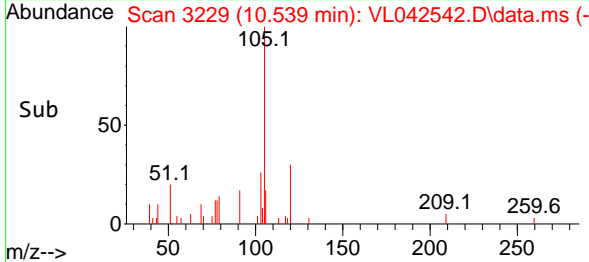
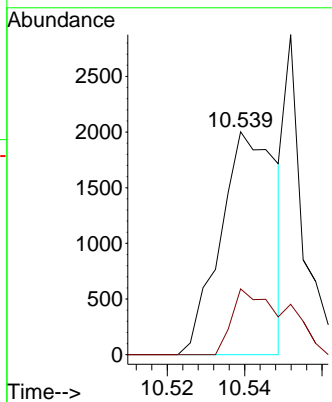
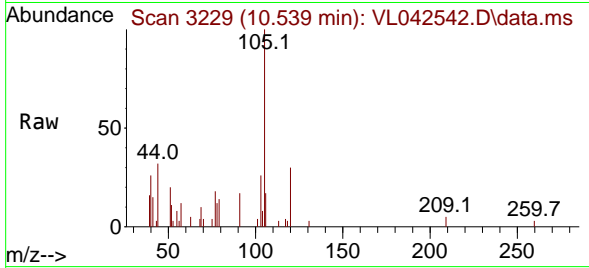




#62
 Isopropylbenzene
 Concen: 0.034 ppbv
 RT: 10.539 min Scan# 31
 Delta R.T. 0.010 min
 Lab File: VL042542.D
 Acq: 14 May 2025 14:50

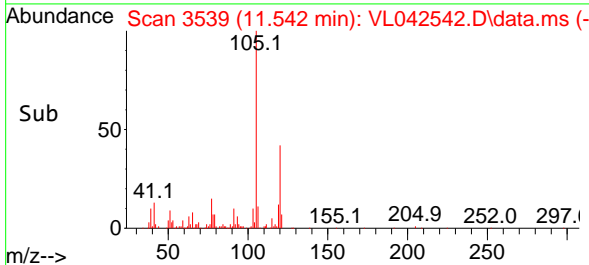
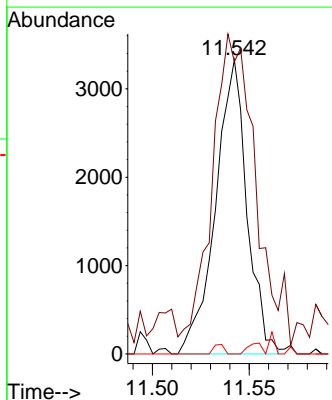
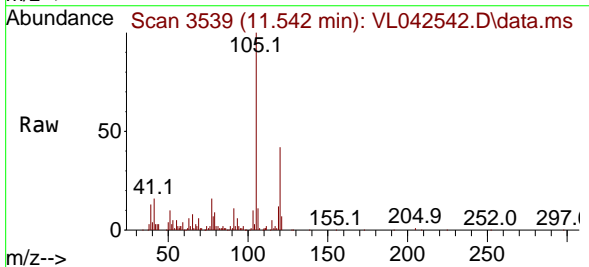
Instrument :
 MSVOA_L
 ClientSampleId :
 IA1DUP

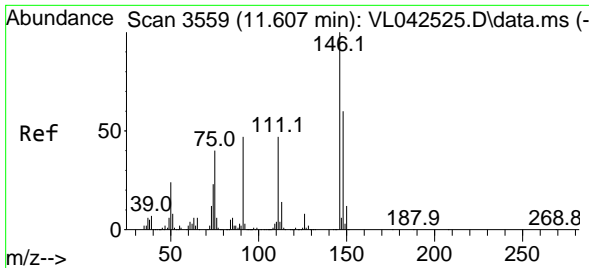
Tgt Ion:105 Resp: 2006
 Ion Ratio Lower Upper
 105 100
 120 29.1 20.1 30.1



#65
 tert-Butylbenzene
 Concen: 0.069 ppbv
 RT: 11.542 min Scan# 3539
 Delta R.T. 0.019 min
 Lab File: VL042542.D
 Acq: 14 May 2025 14:50

Tgt Ion:119 Resp: 3754
 Ion Ratio Lower Upper
 119 100
 91 168.7 66.6 99.8#
 134 4.4 16.3 24.5#

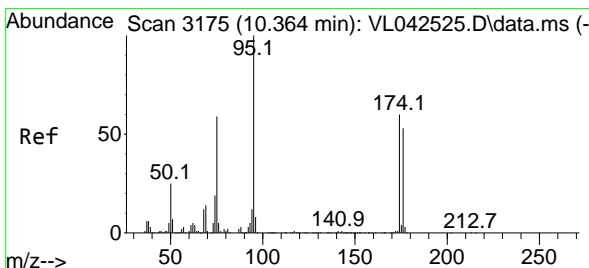
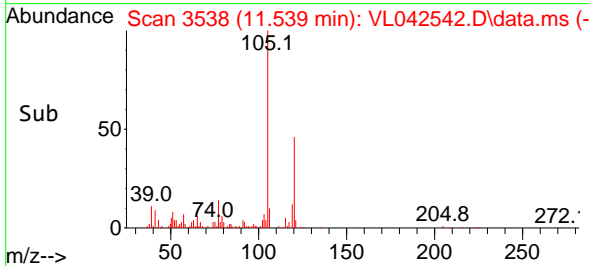
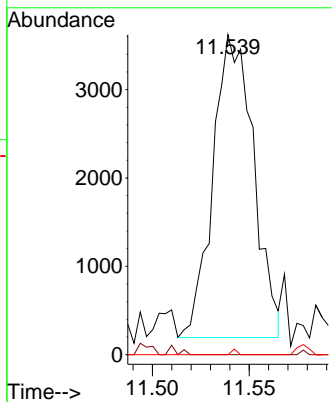
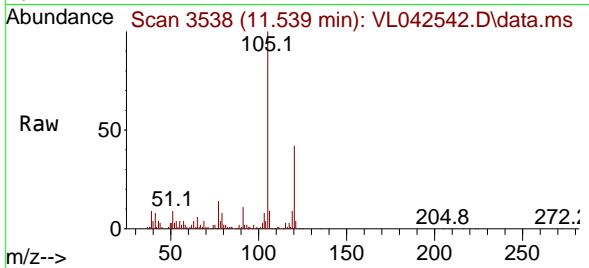




#66
 Benzyl Chloride
 Concen: 0.686 ppbv
 RT: 11.539 min Scan# 3180
 Delta R.T. -0.068 min
 Lab File: VL042542.D
 Acq: 14 May 2025 14:50

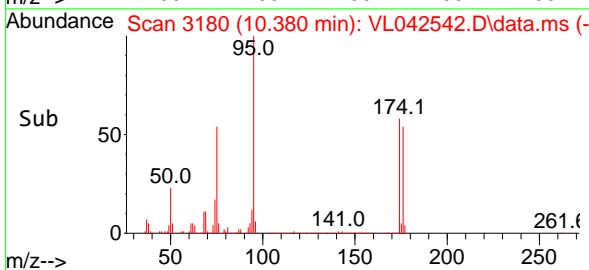
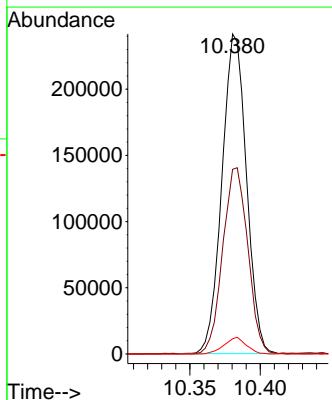
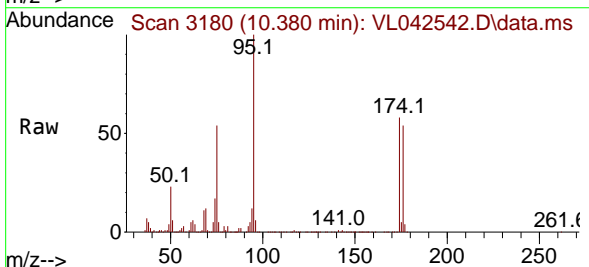
Instrument :
 MSVOA_L
 ClientSampleId :
 IA1DUP

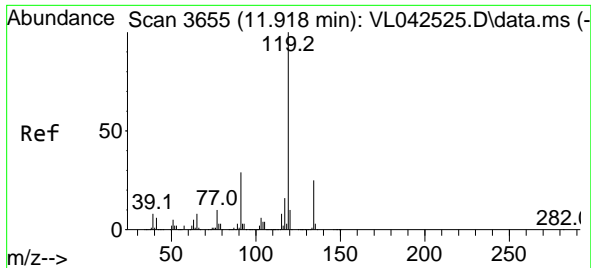
Tgt Ion: 91 Resp: 4987
 Ion Ratio Lower Upper
 91 100
 126 1.8 13.7 20.5#
 128 1.0 4.2 6.2#



#68
 1-Bromo-4-Fluorobenzene
 Concen: 10.039 ppbv
 RT: 10.380 min Scan# 3180
 Delta R.T. 0.016 min
 Lab File: VL042542.D
 Acq: 14 May 2025 14:50

Tgt Ion: 95 Resp: 292296
 Ion Ratio Lower Upper
 95 100
 174 59.8 48.0 72.0
 175 4.7 3.5 5.3

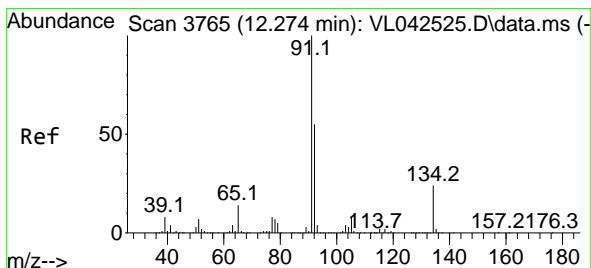
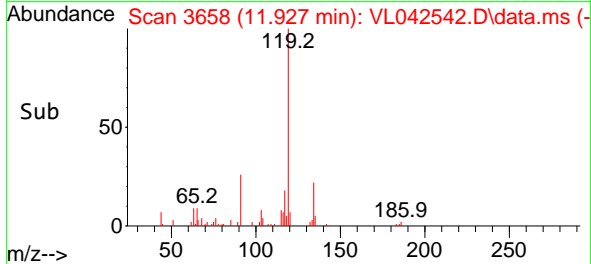
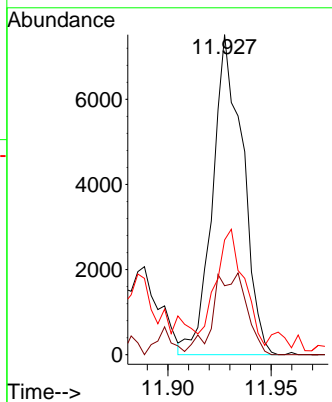
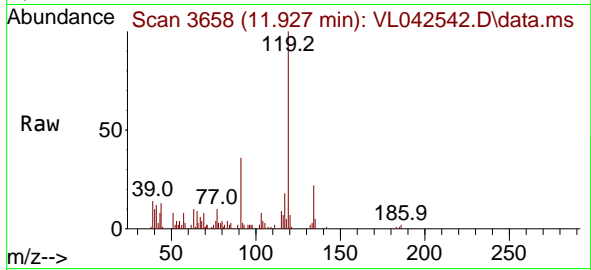




#69
 p-Isopropyltoluene
 Concen: 0.119 ppbv
 RT: 11.927 min Scan# 3088
 Delta R.T. 0.010 min
 Lab File: VL042542.D
 Acq: 14 May 2025 14:50

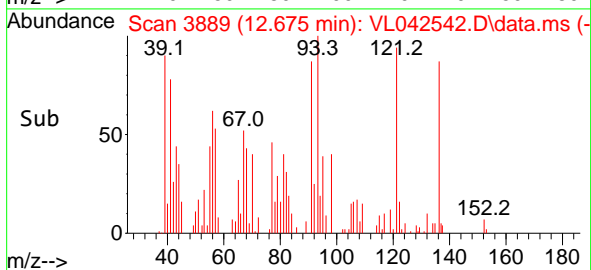
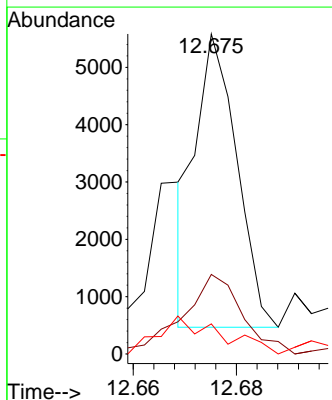
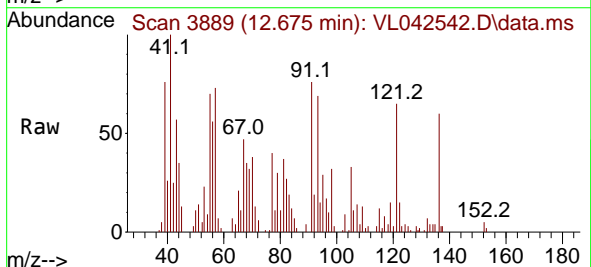
Instrument :
 MSVOA_L
 ClientSampleId :
 IA1DUP

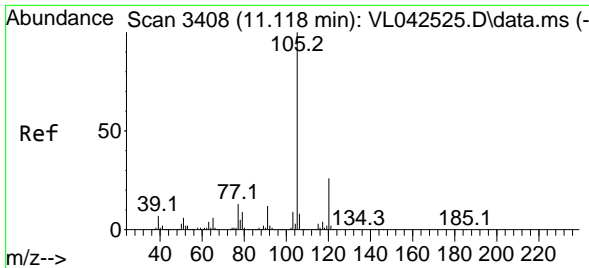
Tgt Ion	Resp	Lower	Upper
119	100		
134	35.5	19.8	29.6#
91	34.8	23.6	35.4



#70
 n-Butylbenzene
 Concen: 0.044 ppbv
 RT: 12.675 min Scan# 3889
 Delta R.T. 0.401 min
 Lab File: VL042542.D
 Acq: 14 May 2025 14:50

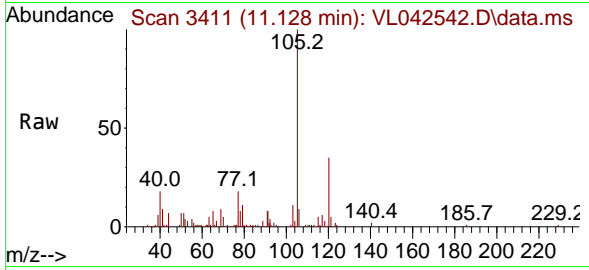
Tgt Ion	Resp	Lower	Upper
91	100		
92	47.0	43.7	65.5
134	24.3	18.9	28.3





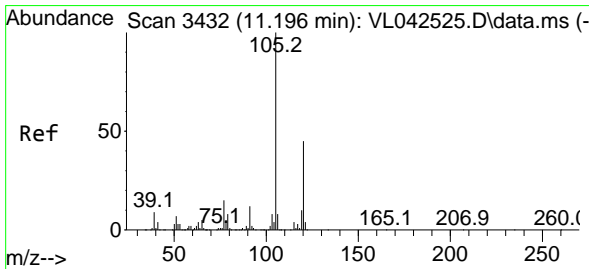
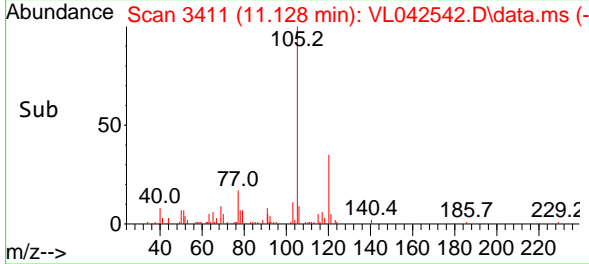
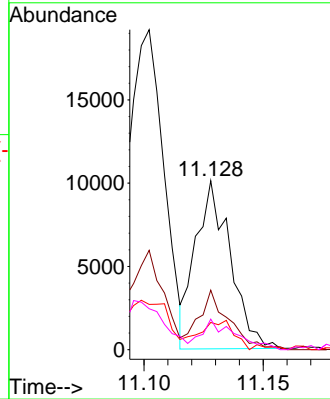
#72
 4-Ethyltoluene
 Concen: 0.209 ppbv
 RT: 11.128 min Scan# 3408
 Delta R.T. 0.010 min
 Lab File: VL042542.D
 Acq: 14 May 2025 14:50

Instrument : MSVOA_L
 ClientSampleId : IA1DUP



Tgt Ion:105 Resp: 10247

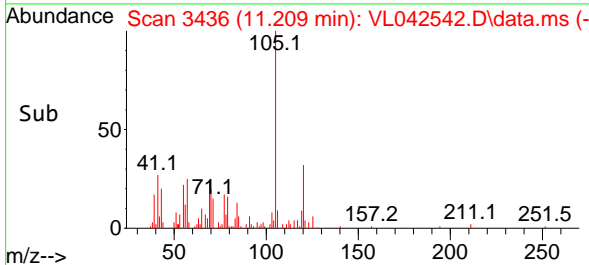
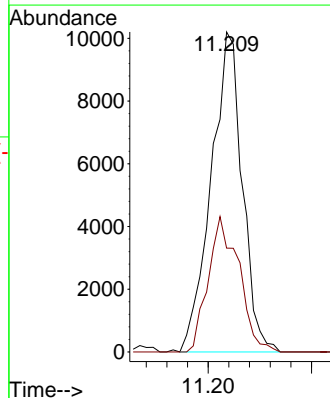
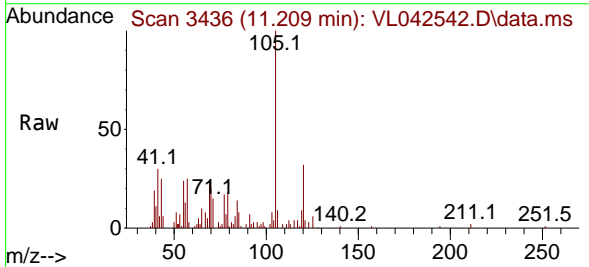
Ion	Ratio	Lower	Upper
105	100		
120	29.5	22.9	34.3
91	0.0	10.9	16.3#
77	17.5	11.5	17.3#

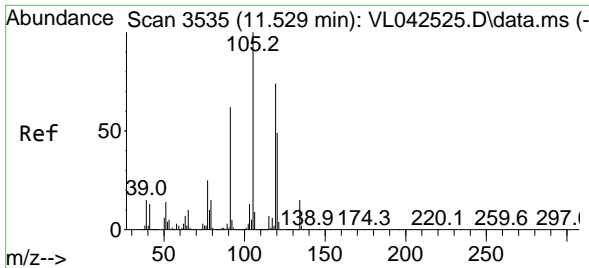


#73
 1,3,5-Trimethylbenzene
 Concen: 0.250 ppbv
 RT: 11.209 min Scan# 3436
 Delta R.T. 0.013 min
 Lab File: VL042542.D
 Acq: 14 May 2025 14:50

Tgt Ion:105 Resp: 10686

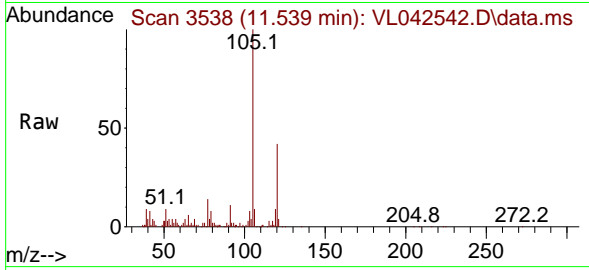
Ion	Ratio	Lower	Upper
105	100		
120	32.4	36.0	54.0#





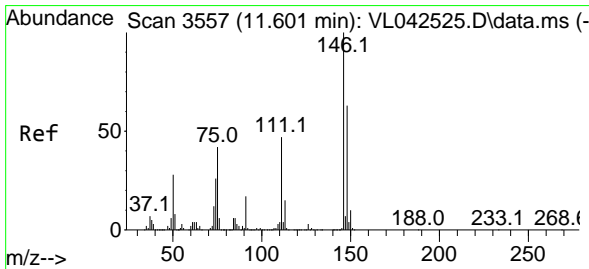
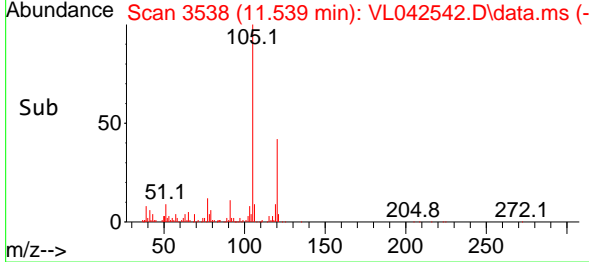
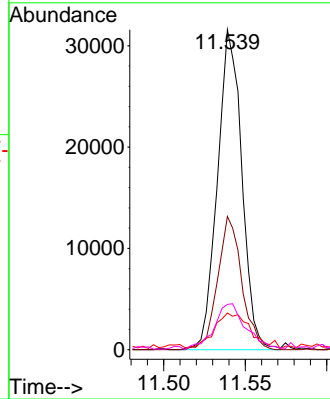
#74
 1,2,4-Trimethylbenzene
 Concen: 0.624 ppbv
 RT: 11.539 min Scan# 3535
 Delta R.T. 0.010 min
 Lab File: VL042542.D
 Acq: 14 May 2025 14:50

Instrument : MSVOA_L
 ClientSampleId : IA1DUP

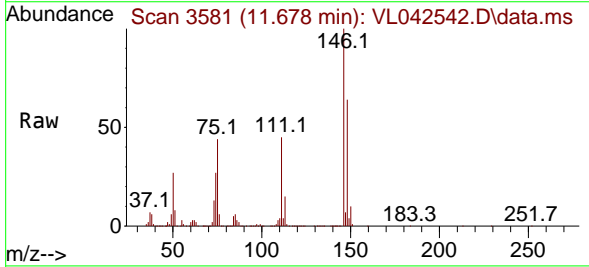


Tgt Ion:105 Resp: 32828

Ion	Ratio	Lower	Upper
105	100		
120	41.7	39.0	58.6
91	11.2	49.4	74.2#
77	13.2	19.8	29.6#

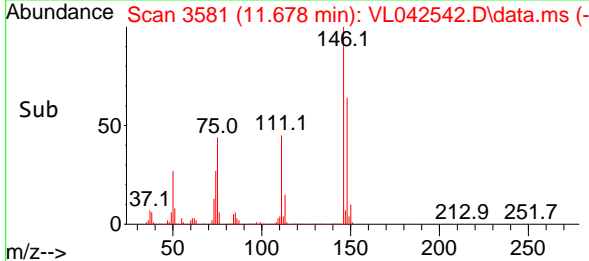
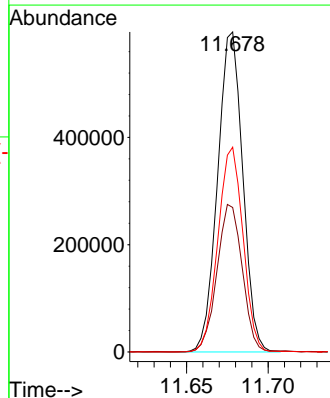


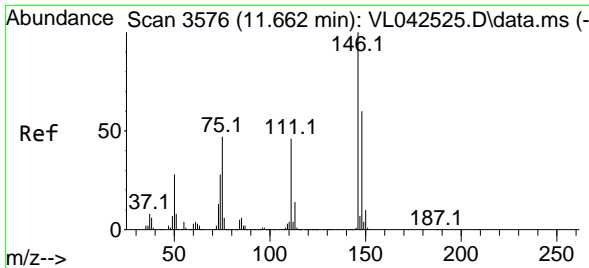
#75
 1,3-Dichlorobenzene
 Concen: 19.420 ppbv
 RT: 11.678 min Scan# 3581
 Delta R.T. 0.078 min
 Lab File: VL042542.D
 Acq: 14 May 2025 14:50



Tgt Ion:146 Resp: 639635

Ion	Ratio	Lower	Upper
146	100		
111	46.7	23.6	71.0
148	64.0	31.6	94.8



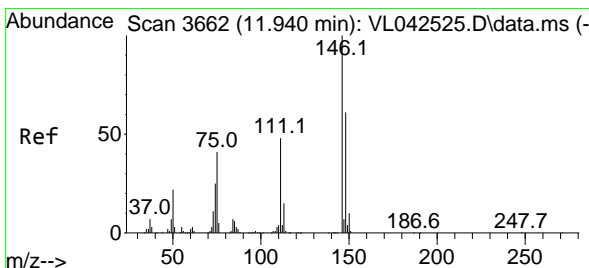
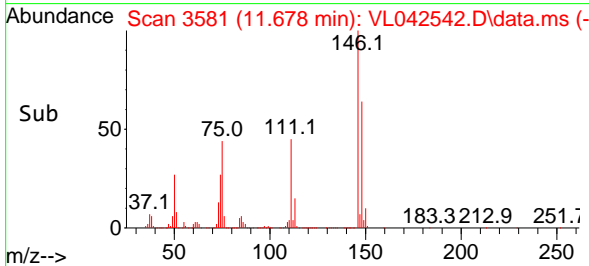
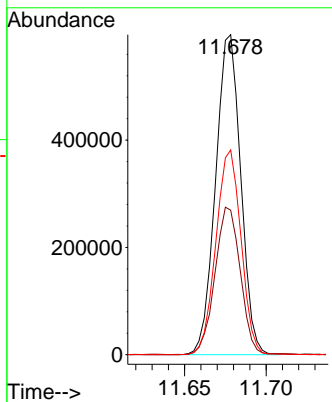
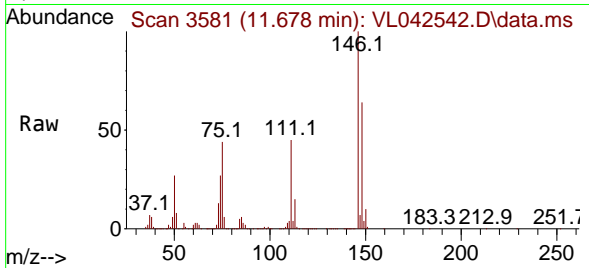


#76
 1,4-Dichlorobenzene
 Concen: 20.411 ppbv
 RT: 11.678 min Scan# 3581
 Delta R.T. 0.016 min
 Lab File: VL042542.D
 Acq: 14 May 2025 14:50

Instrument :
 MSVOA_L
 ClientSampleId :
 IA1DUP

Tgt Ion:146 Resp: 639635

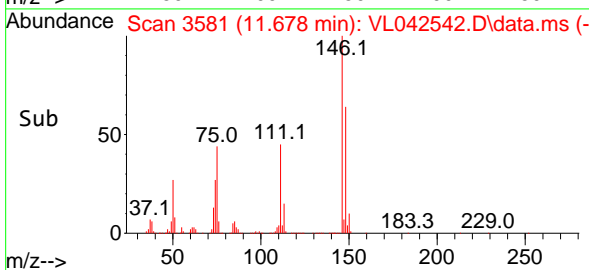
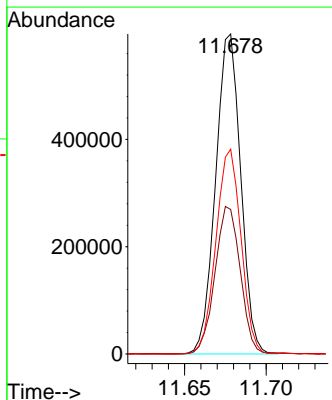
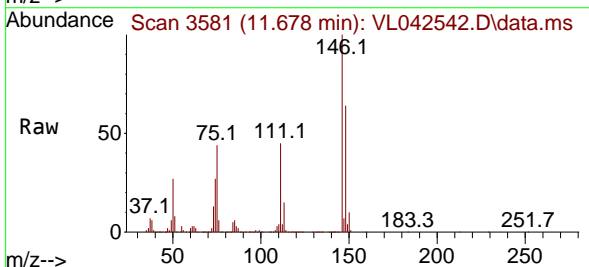
Ion	Ratio	Lower	Upper
146	100		
111	46.7	23.4	70.3
148	64.0	31.6	94.7

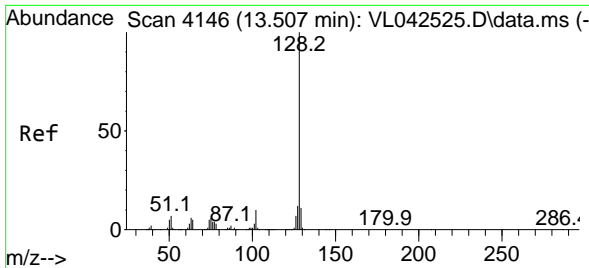


#77
 1,2-Dichlorobenzene
 Concen: 18.800 ppbv
 RT: 11.678 min Scan# 3581
 Delta R.T. -0.262 min
 Lab File: VL042542.D
 Acq: 14 May 2025 14:50

Tgt Ion:146 Resp: 639635

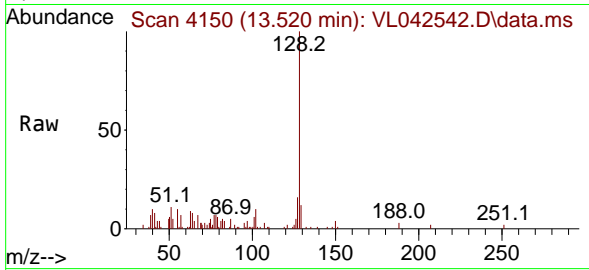
Ion	Ratio	Lower	Upper
146	100		
111	46.7	24.9	74.8
148	64.0	31.4	94.2



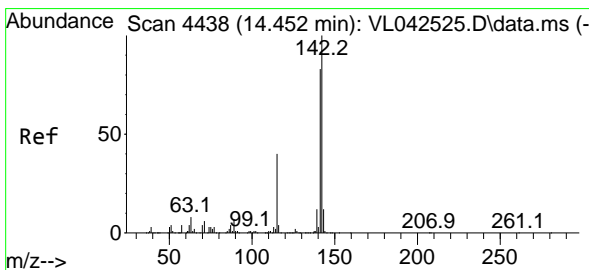
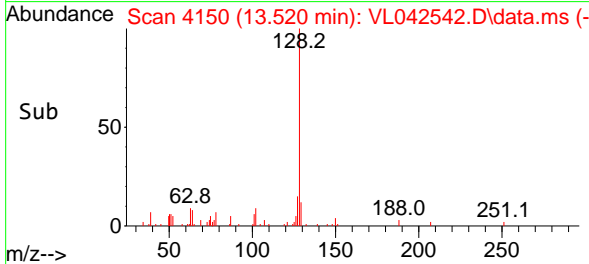
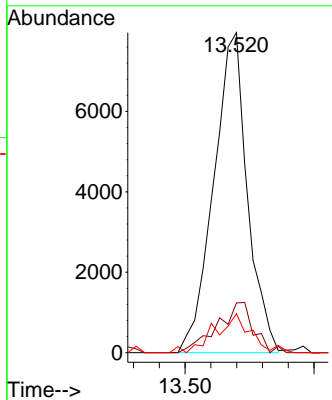


#79
 Naphthalene
 Concen: 0.198 ppbv
 RT: 13.520 min Scan# 4141
 Delta R.T. 0.013 min
 Lab File: VL042542.D
 Acq: 14 May 2025 14:50

Instrument : MSVOA_L
 ClientSampleId : IA1DUP



Tgt Ion:128 Resp: 7230
 Ion Ratio Lower Upper
 128 100
 127 15.5 9.8 14.8#
 129 10.3 8.6 12.8



#80
 Naphthalene,2-methyl-
 Concen: 0.107 ppbv
 RT: 14.462 min Scan# 4441
 Delta R.T. 0.010 min
 Lab File: VL042542.D
 Acq: 14 May 2025 14:50

Tgt Ion:142 Resp: 2256
 Ion Ratio Lower Upper
 142 100
 141 112.9 66.8 100.2#
 115 49.5 33.0 49.6

