

Data Path : Z:\VOASRV\HPCHEM1\MSVOA_L\DATA\VL062918\
 Data File : VL032160.D
 Acq On : 30 Jun 2018 7:53
 Operator : SY/AP
 Sample : J3601-02DL 10X
 Misc : 400ml/MSVOA_L
 ALS Vial : 1 Sample Multiplier: 1

Instrument :
 MSVOA_L
ClientSampleId :
 RESIDENT-A-INDOORDL

Quant Time: Jul 02 00:48:52 2018
 Quant Method : Z:\VOASRV\HPCHEM1\MSVOA_L\METHODS\VL062918AIR.M
 Quant Title : AIR ANALYSIS BY METHOD TO-15 Instrument: MSVOA_L Fri Jun 29 22:27:58 2018
 QLast Update : Fri Jun 29 22:27:58 2018
 Response via : Initial Calibration

Internal Standards	R.T.	QIon	Response	Conc	Units	Dev(Min)
1) Bromochloromethane	5.84	49	1581331	10.00	ppbv	-0.02
33) 1,4-Difluorobenzene	7.38	114	3820227	10.00	ppbv	-0.02
55) Chlorobenzene-d5	12.34	117	3995824	10.00	ppbv	-0.02

System Monitoring Compounds
 68) 1-Bromo-4-Fluorobenzene 14.67 95 3091937 10.12 ppbv -0.02
 Spiked Amount 10.000 Range 65 - 135 Recovery = 101.20%

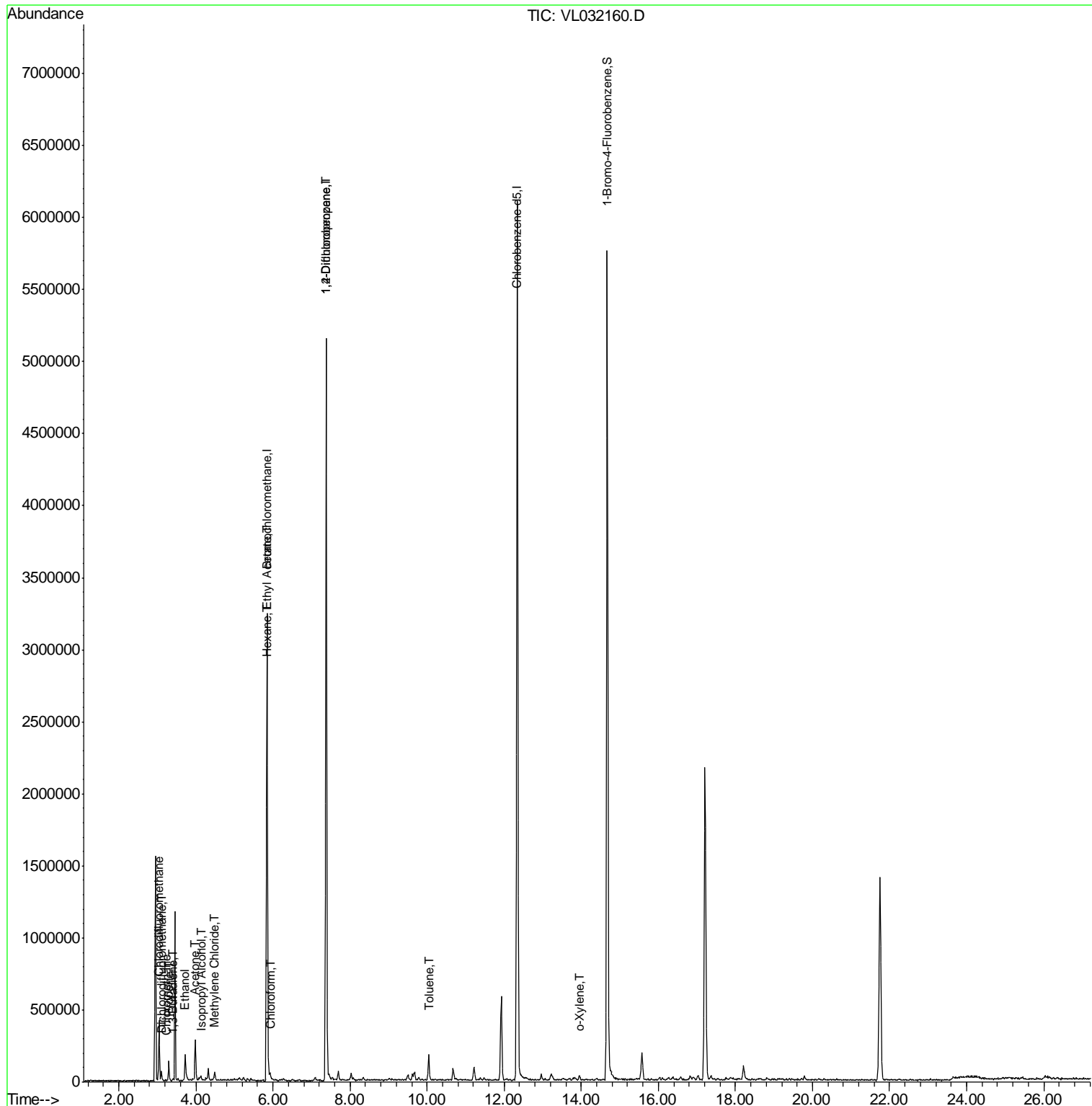
Target Compounds	R.T.	QIon	Response	Conc	Units	Qvalue
2) Dichlorodifluoromethane	3.13	85	9395	0.045	ppbv	92
3) Chlorodifluoromethane	3.04	51	265314	1.373	ppbv #	62
4) Chloromethane	3.23	50	5463	0.053	ppbv #	74
9) Propene	3.30	41	32703	0.363	ppbv	88
13) Ethanol	3.72	45	208868	7.651	ppbv	100
15) Acetone	3.98	43	304826	1.649	ppbv	94
16) 1,3-Butadiene	3.40	39	2758	0.031	ppbv #	2
19) Isopropyl Alcohol	4.13	45	6475	0.042	ppbv #	38
20) Methylene Chloride	4.49	84	17180	0.254	ppbv	88
25) Ethyl Acetate	5.86	43	54212	0.142	ppbv #	91
26) Hexane	5.86	57	5832	0.033	ppbv #	1
29) Chloroform	5.93	83	20942	0.082	ppbv	92
39) 1,2-Dichloropropane	7.38	63	987292	6.770	ppbv #	27
53) Toluene	10.04	91	76253	0.171	ppbv #	20
60) o-Xylene	13.95	91	18079	0.035	ppbv	93

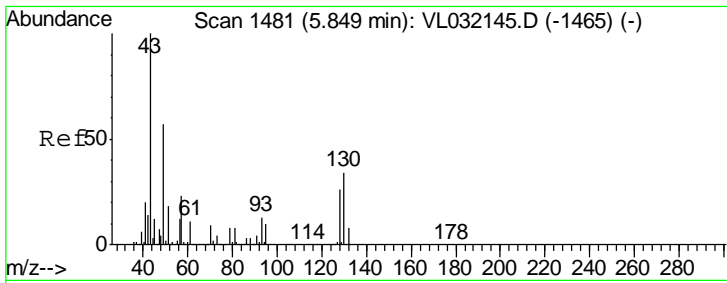
(#) = qualifier out of range (m) = manual integration (+) = signals summed

Data Path : Z:\VOASRV\HPCHEM1\MSVOA_L\DATA\VL062918\
 Data File : VL032160.D
 Acq On : 30 Jun 2018 7:53
 Operator : SY/AP
 Sample : J3601-02DL 10X
 Misc : 400ml/MSVOA_L
 ALS Vial : 1 Sample Multiplier: 1

Instrument :
 MSVOA_L
ClientSampleId :
 RESIDENT-A-INDOORDL

Quant Time: Jul 02 00:48:52 2018
 Quant Method : Z:\VOASRV\HPCHEM1\MSVOA_L\METHODS\VL062918AIR.M
 Quant Title : AIR ANALYSIS BY METHOD TO-15 Instrument: MSVOA_L Fri Jun 29 22:27:58 2018
 QLast Update : Fri Jun 29 22:27:58 2018
 Response via : Initial Calibration

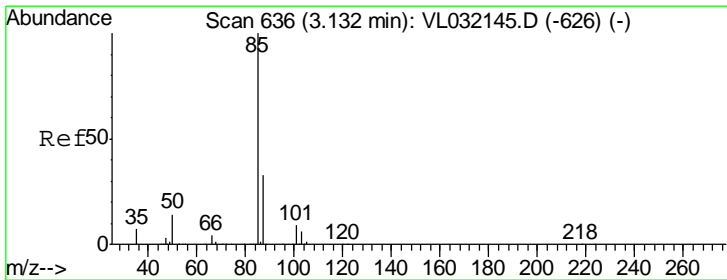
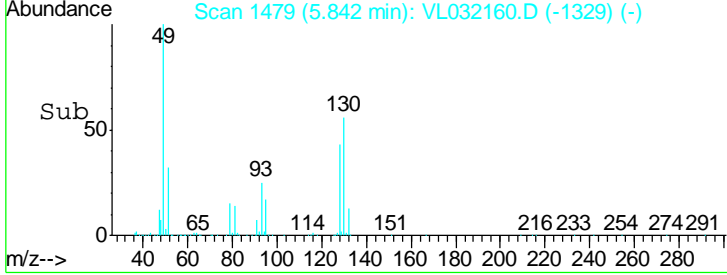
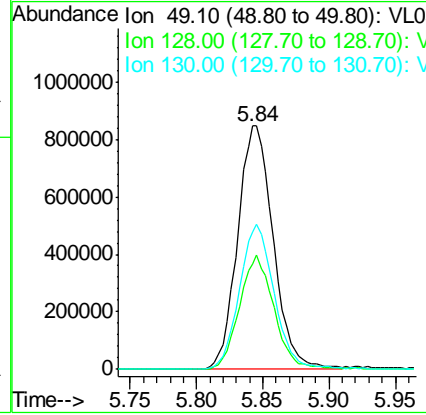
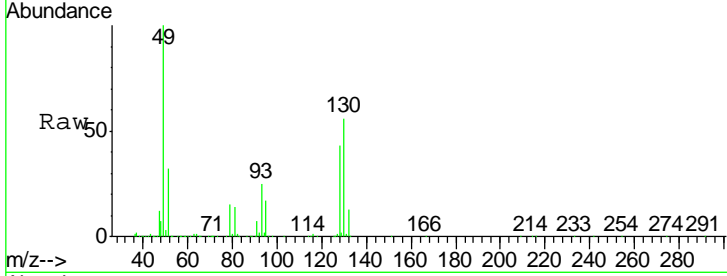




#1
 Bromochloromethane
 Concen: 10.000 ppbv
 RT: 5.84 min Scan# 1479
 Delta R.T. -0.02 min
 Lab File: VL032160.D
 Acq: 30 Jun 2018 7:53

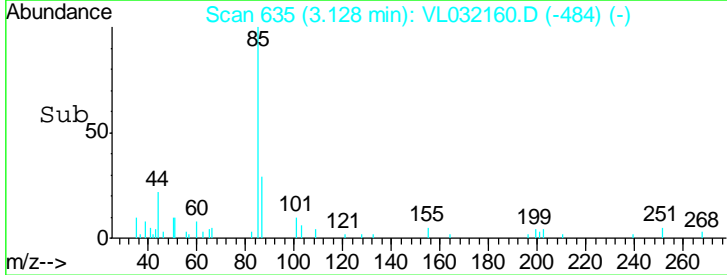
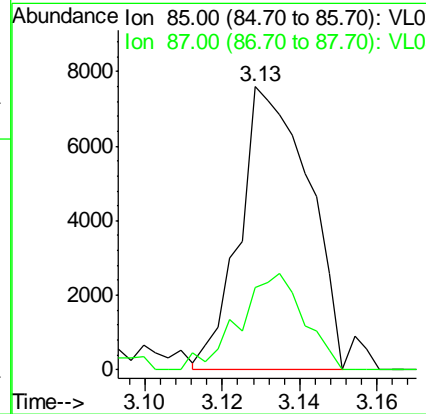
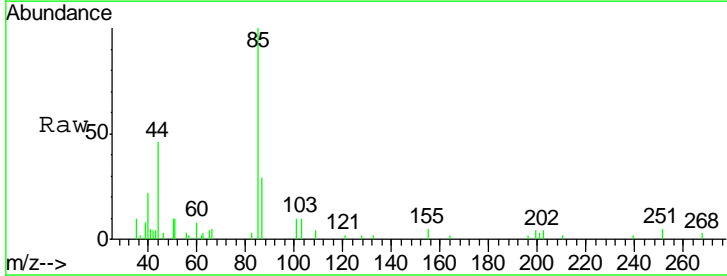
Instrument :
 MSVOA_L
ClientSampleId :
 RESIDENT-A-INDOORDL

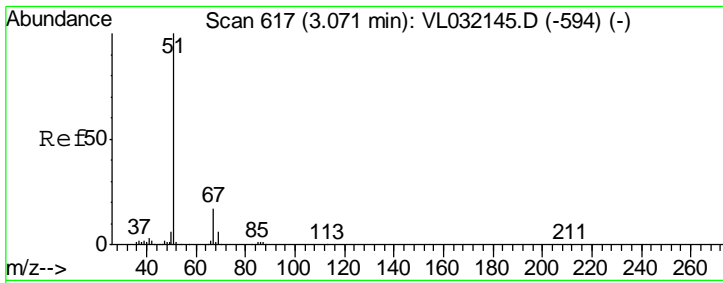
Tgt Ion	Resp	Lower	Upper
49	100		
128	45.7	23.4	70.0
130	58.3	30.3	90.9



#2
 Dichlorodifluoromethane
 Concen: 0.045 ppbv
 RT: 3.13 min Scan# 635
 Delta R.T. -0.01 min
 Lab File: VL032160.D
 Acq: 30 Jun 2018 7:53

Tgt Ion	Resp	Lower	Upper
85	100		
87	29.0	26.7	40.1

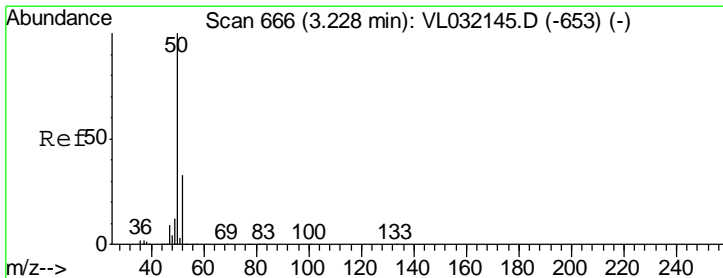
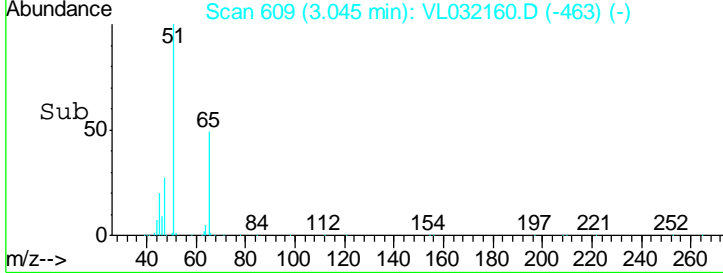
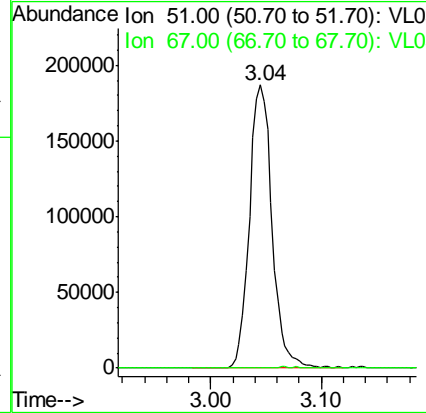
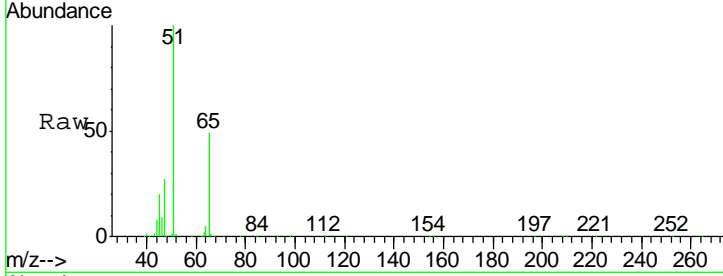




#3
 Chlorodifluoromethane
 Concen: 1.373 ppbv
 RT: 3.04 min Scan# 609
 Delta R.T. -0.03 min
 Lab File: VL032160.D
 Acq: 30 Jun 2018 7:53

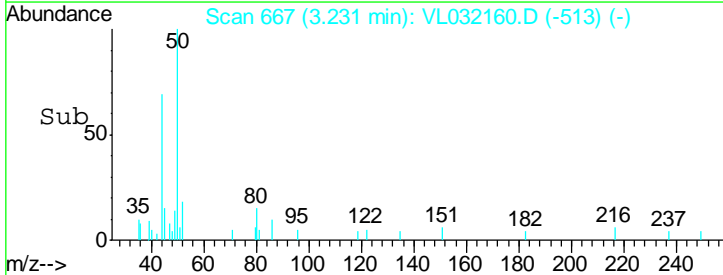
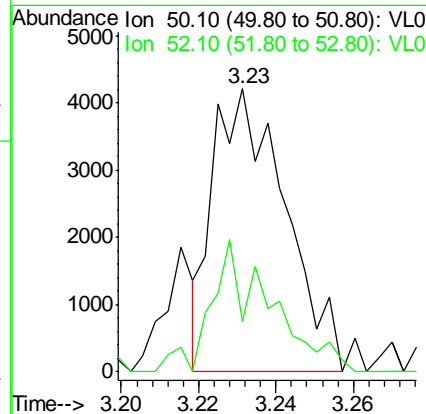
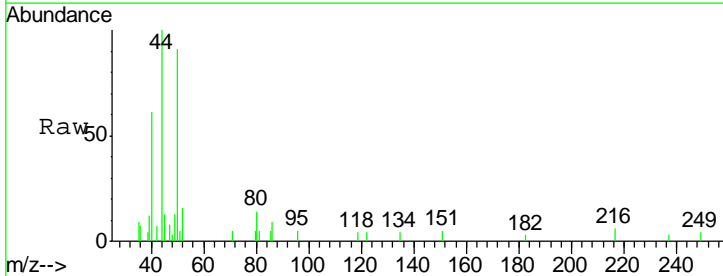
Instrument :
 MSVOA_L
ClientSampled :
 RESIDENT-A-INDOORDL

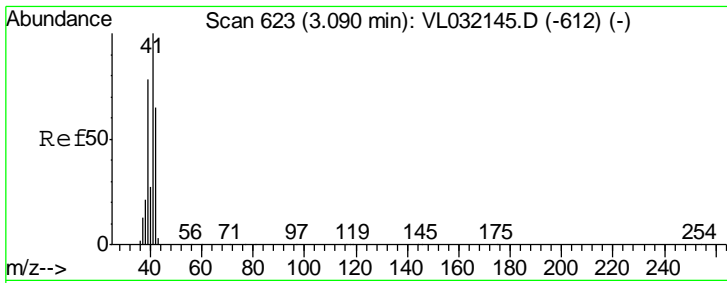
Tgt Ion: 51 Resp: 265314
 Ion Ratio Lower Upper
 51 100
 67 0.0 13.2 19.8#



#4
 Chloromethane
 Concen: 0.053 ppbv
 RT: 3.23 min Scan# 667
 Delta R.T. -0.01 min
 Lab File: VL032160.D
 Acq: 30 Jun 2018 7:53

Tgt Ion: 50 Resp: 5463
 Ion Ratio Lower Upper
 50 100
 52 17.9 26.0 39.0#

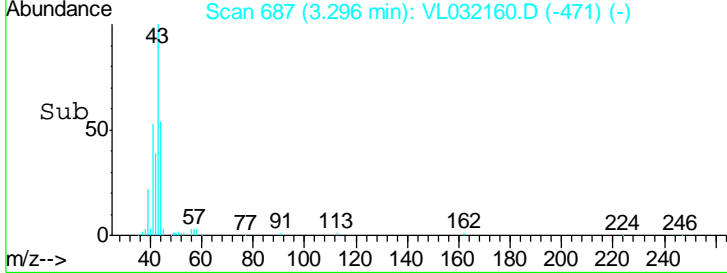
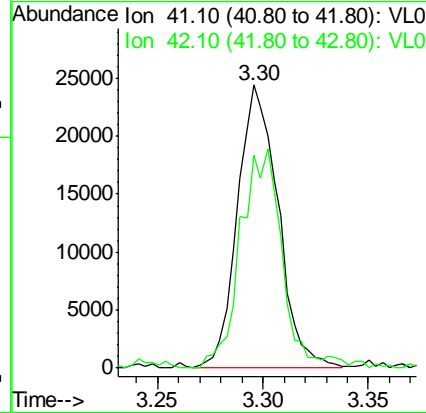
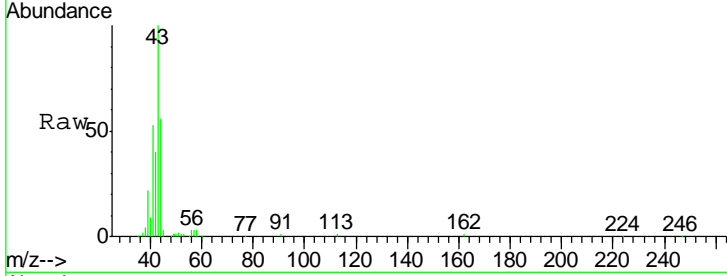




#9
 Propene
 Concen: 0.363 ppbv
 RT: 3.30 min Scan# 687
 Delta R.T. 0.20 min
 Lab File: VL032160.D
 Acq: 30 Jun 2018 7:53

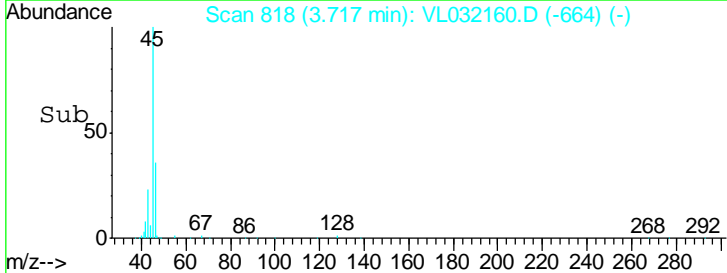
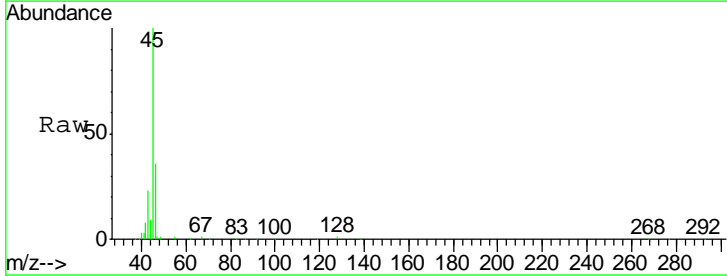
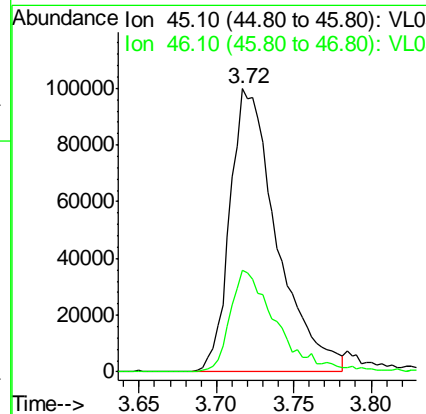
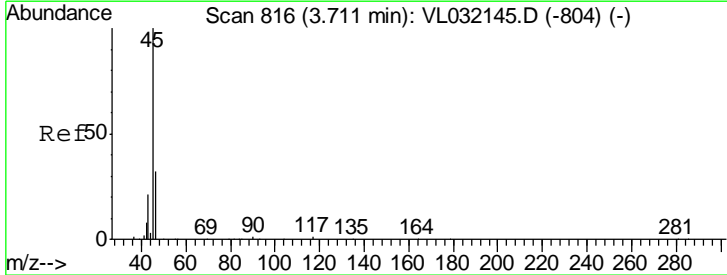
Instrument :
 MSVOA_L
ClientSampleId :
 RESIDENT-A-INDOORDL

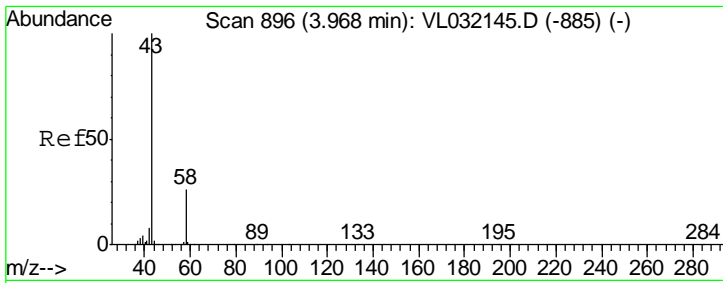
Tgt Ion: 41 Resp: 32703
 Ion Ratio Lower Upper
 41 100
 42 80.5 56.2 84.4



#13
 Ethanol
 Concen: 7.651 ppbv
 RT: 3.72 min Scan# 818
 Delta R.T. -0.01 min
 Lab File: VL032160.D
 Acq: 30 Jun 2018 7:53

Tgt Ion: 45 Resp: 208868
 Ion Ratio Lower Upper
 45 100
 46 36.2 14.6 58.4

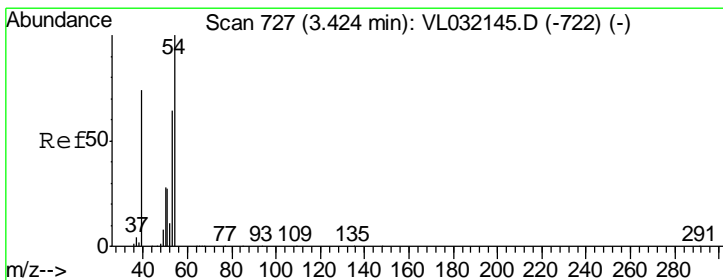
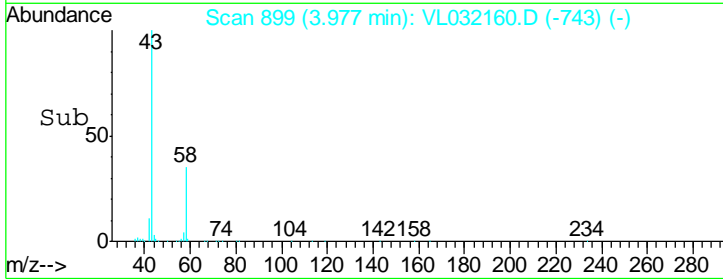
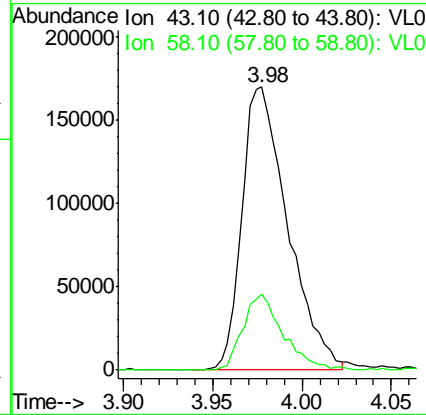
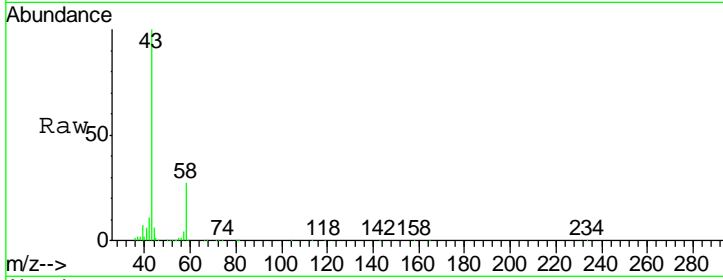




#15
 Acetone
 Concen: 1.649 ppbv
 RT: 3.98 min Scan# 899
 Delta R.T. -0.00 min
 Lab File: VL032160.D
 Acq: 30 Jun 2018 7:53

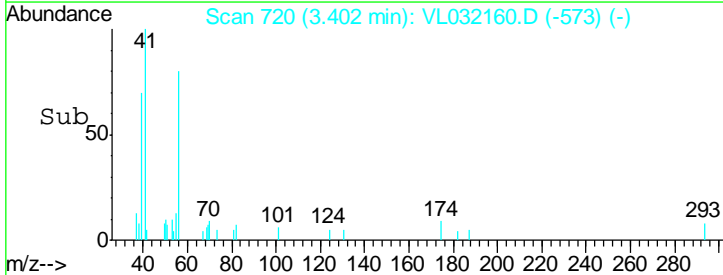
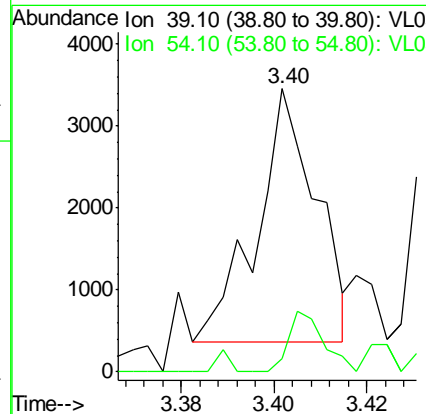
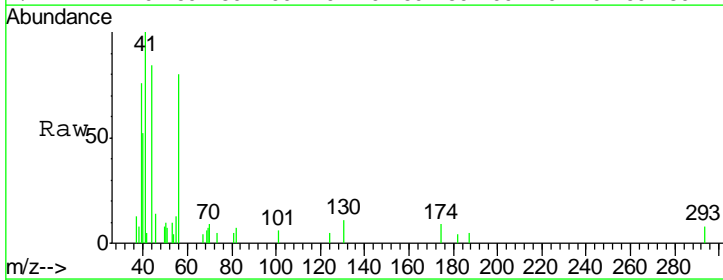
Instrument :
 MSVOA_L
ClientSampled :
 RESIDENT-A-INDOORDL

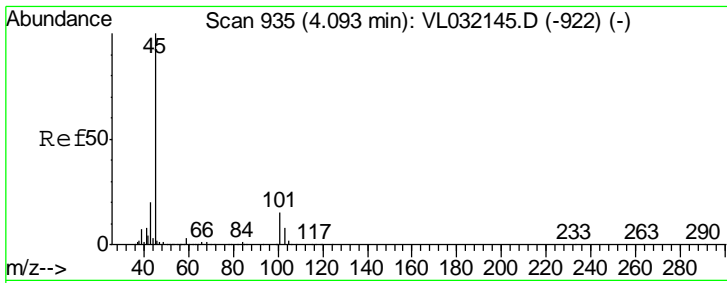
Tgt Ion	Resp	Lower	Upper
43	100		
58	23.6	21.4	32.0



#16
 1,3-Butadiene
 Concen: 0.031 ppbv
 RT: 3.40 min Scan# 720
 Delta R.T. -0.03 min
 Lab File: VL032160.D
 Acq: 30 Jun 2018 7:53

Tgt Ion	Resp	Lower	Upper
39	100		
54	0.0	75.8	113.6#

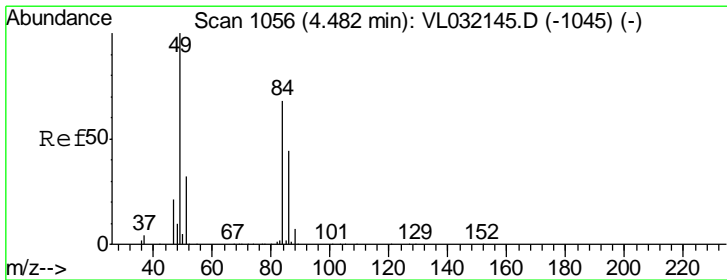
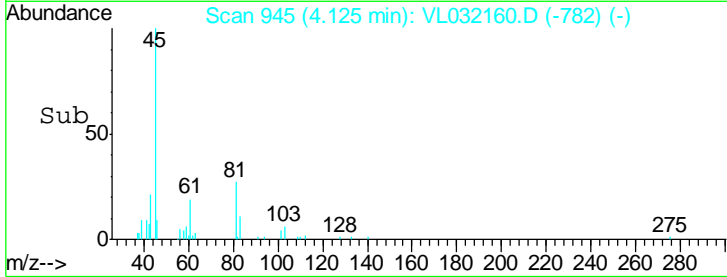
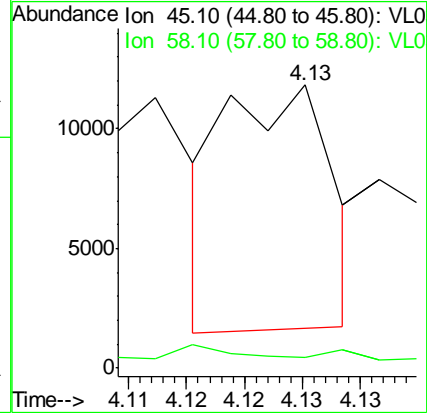
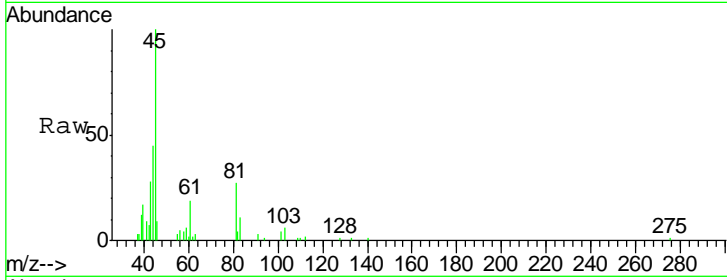




#19
 Isopropyl Alcohol
 Concen: 0.042 ppbv
 RT: 4.13 min Scan# 945
 Delta R.T. 0.02 min
 Lab File: VL032160.D
 Acq: 30 Jun 2018 7:53

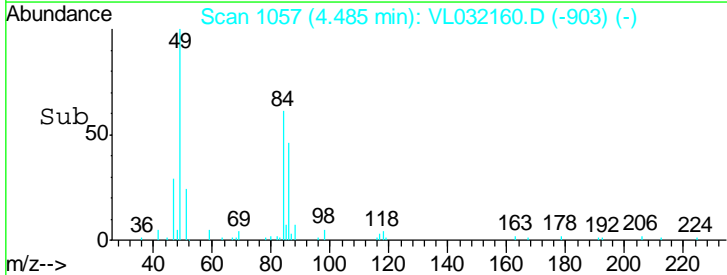
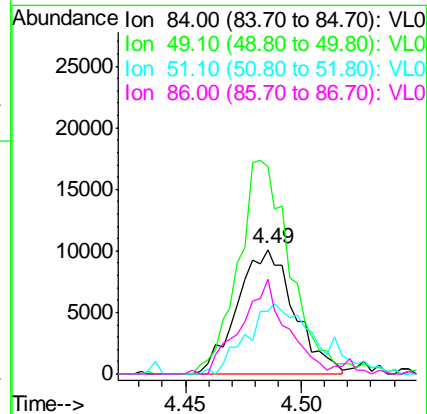
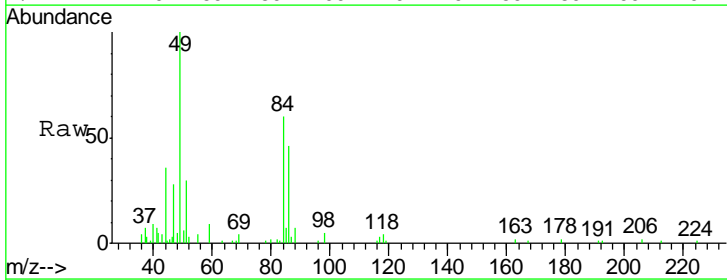
Instrument :
 MSVOA_L
 ClientSampled :
 RESIDENT-A-INDOORDL

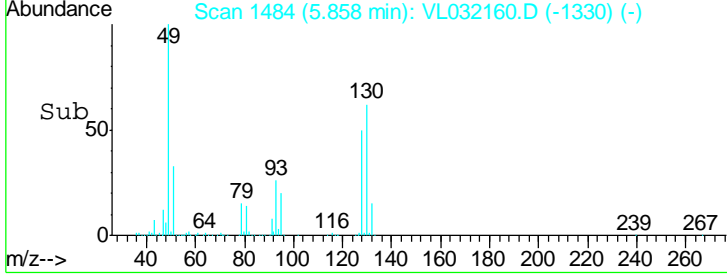
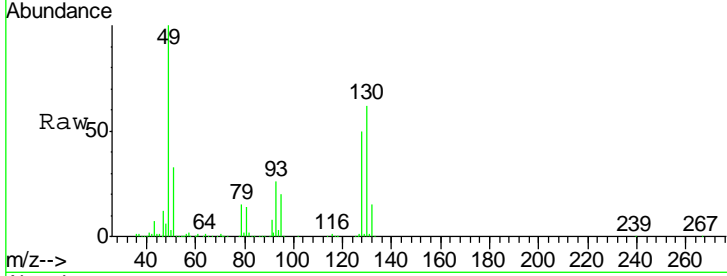
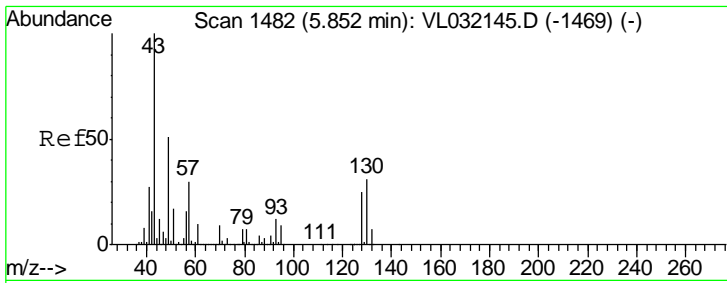
Tgt Ion: 45 Resp: 6475
 Ion Ratio Lower Upper
 45 100
 58 0.0 29.4 44.0#



#20
 Methylene Chloride
 Concen: 0.254 ppbv
 RT: 4.49 min Scan# 1057
 Delta R.T. -0.01 min
 Lab File: VL032160.D
 Acq: 30 Jun 2018 7:53

Tgt Ion: 84 Resp: 17180
 Ion Ratio Lower Upper
 84 100
 49 166.4 119.6 179.4
 51 50.0 36.3 54.5
 86 73.1 49.7 74.5



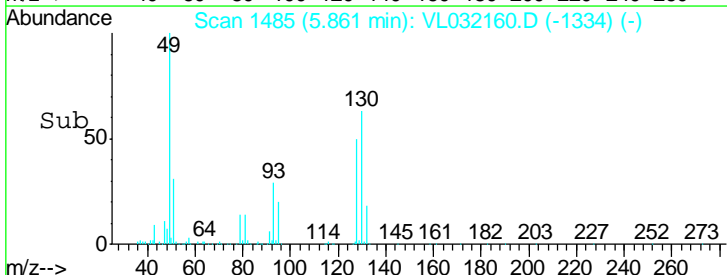
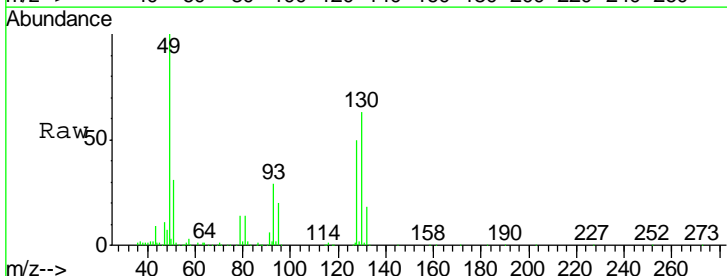
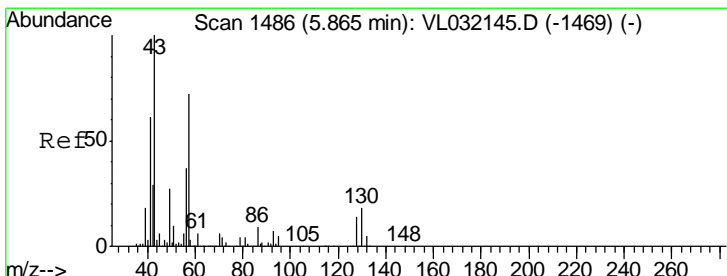
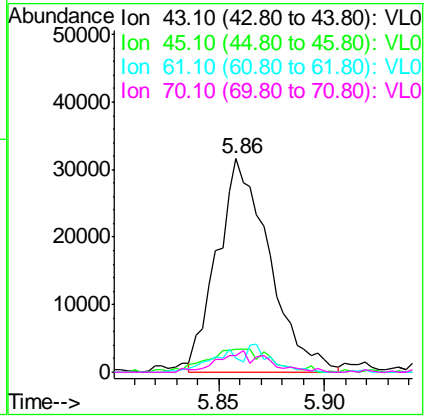


#25
 Ethyl Acetate
 Concen: 0.142 ppbv
 RT: 5.86 min Scan# 1484
 Delta R.T. -0.01 min
 Lab File: VL032160.D
 Acq: 30 Jun 2018 7:53

Instrument :
 MSVOA_L
ClientSampleId :
 RESIDENT-A-INDOORDL

Tgt Ion: 43 Resp: 54212

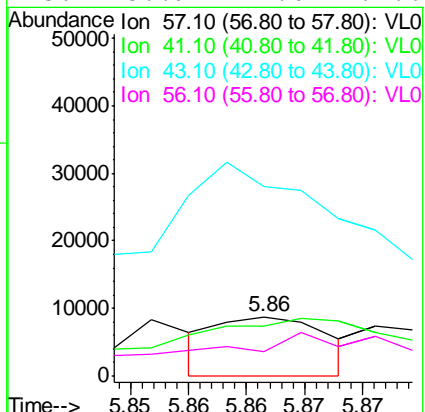
Ion	Ratio	Lower	Upper
43	100		
45	13.9	7.8	11.8#
61	12.2	7.4	11.0#
70	9.5	6.1	9.1#

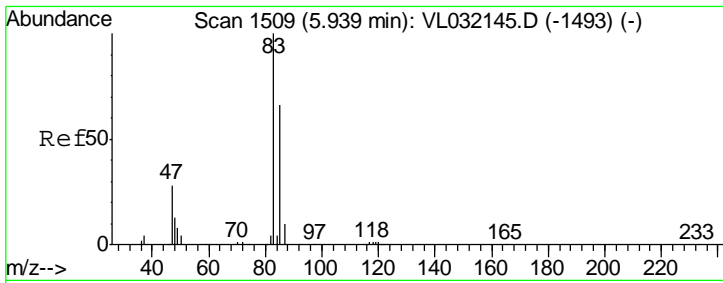


#26
 Hexane
 Concen: 0.033 ppbv
 RT: 5.86 min Scan# 1485
 Delta R.T. -0.02 min
 Lab File: VL032160.D
 Acq: 30 Jun 2018 7:53

Tgt Ion: 57 Resp: 5832

Ion	Ratio	Lower	Upper
57	100		
41	278.8	68.6	103.0#
43	977.3	168.6	252.8#
56	186.9	41.0	61.6#

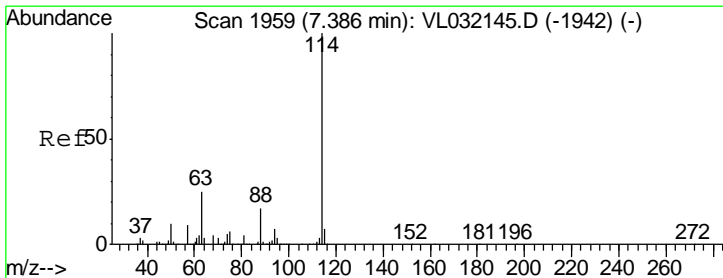
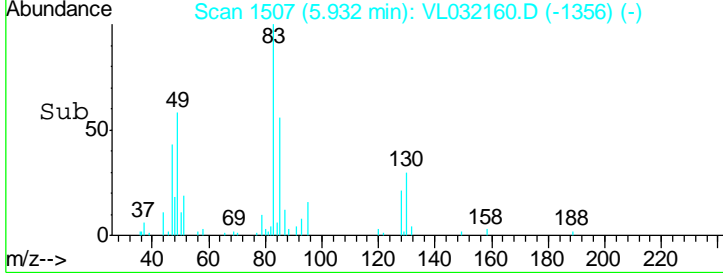
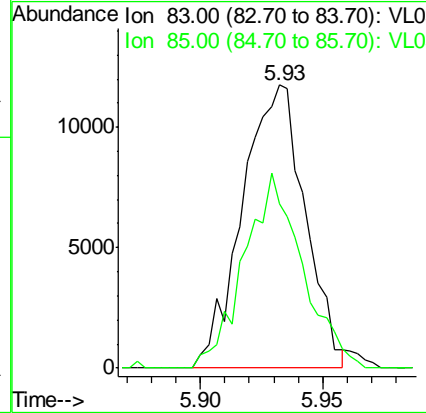
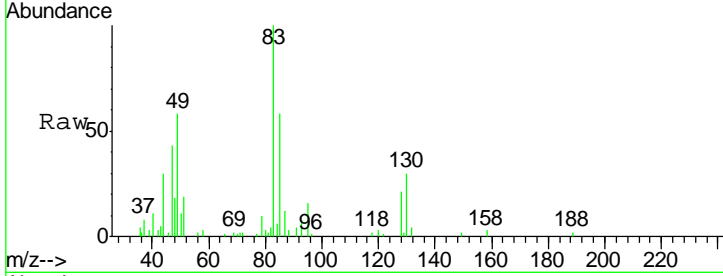




#29
 Chloroform
 Concen: 0.082 ppbv
 RT: 5.93 min Scan# 1507
 Delta R.T. -0.02 min
 Lab File: VL032160.D
 Acq: 30 Jun 2018 7:53

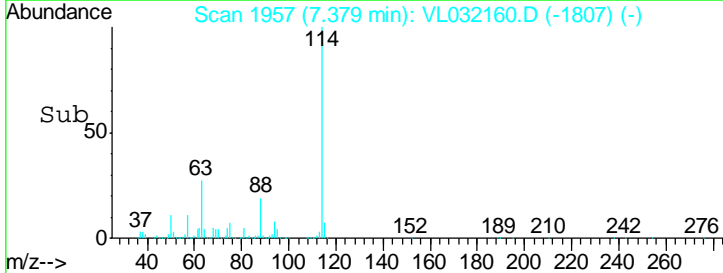
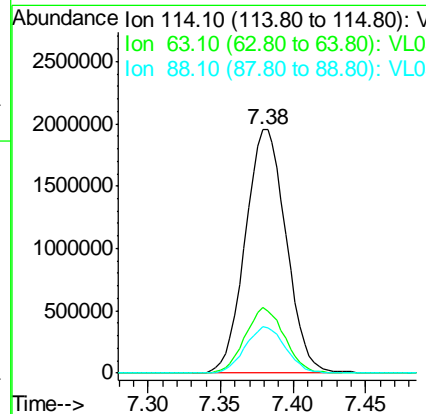
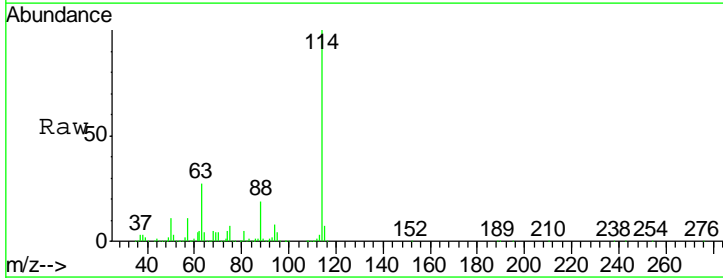
Instrument :
 MSVOA_L
ClientSampleId :
 RESIDENT-A-INDOORDL

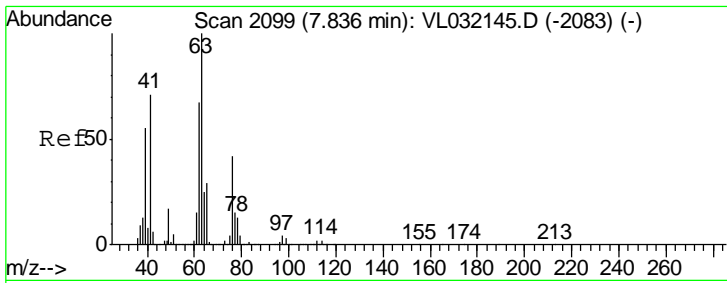
Tgt Ion: 83 Resp: 20942
 Ion Ratio Lower Upper
 83 100
 85 58.0 51.6 77.4



#33
 1,4-Difluorobenzene
 Concen: 10.000 ppbv
 RT: 7.38 min Scan# 1957
 Delta R.T. -0.02 min
 Lab File: VL032160.D
 Acq: 30 Jun 2018 7:53

Tgt Ion: 114 Resp: 3820227
 Ion Ratio Lower Upper
 114 100
 63 26.2 19.1 28.7
 88 18.8 13.9 20.9

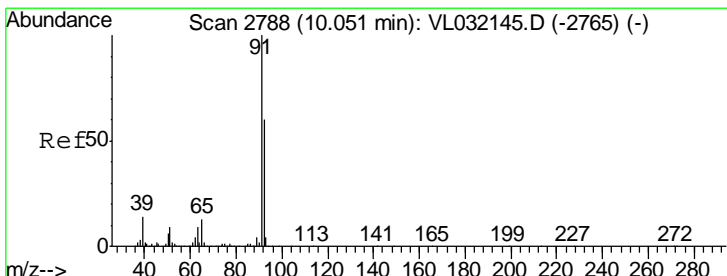
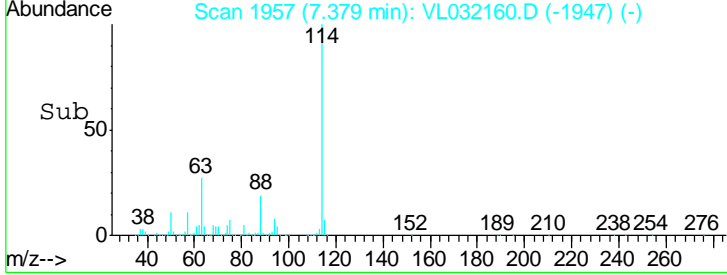
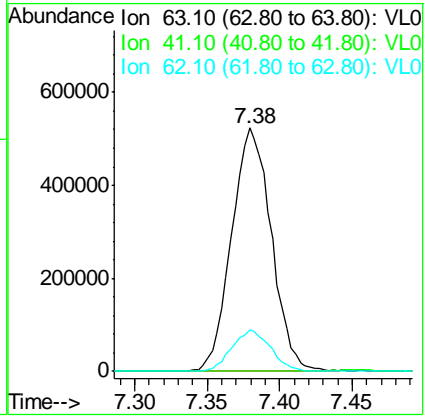
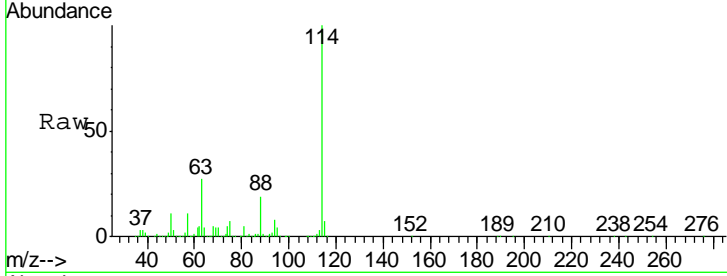




#39
 1,2-Dichloropropane
 Concen: 6.770 ppbv
 RT: 7.38 min Scan# 1957
 Delta R.T. -0.47 min
 Lab File: VL032160.D
 Acq: 30 Jun 2018 7:53

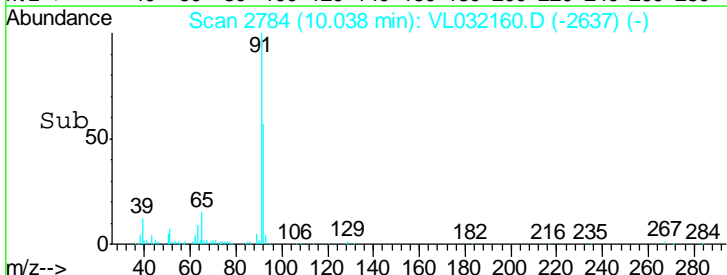
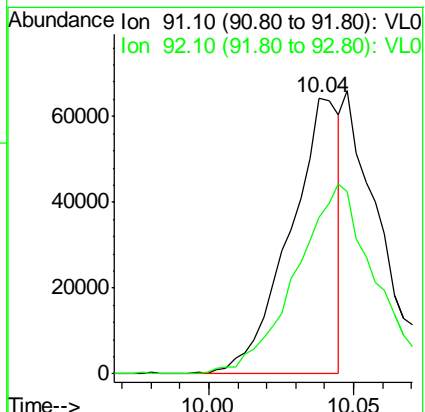
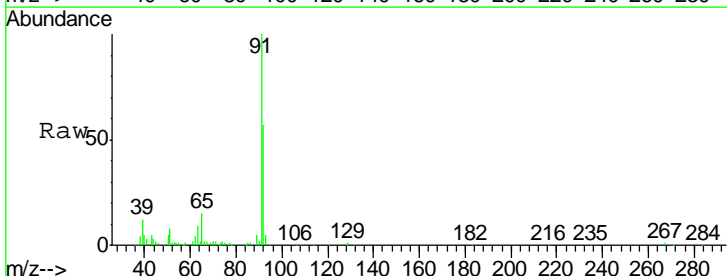
Instrument :
 MSVOA_L
ClientSampled :
 RESIDENT-A-INDOORDL

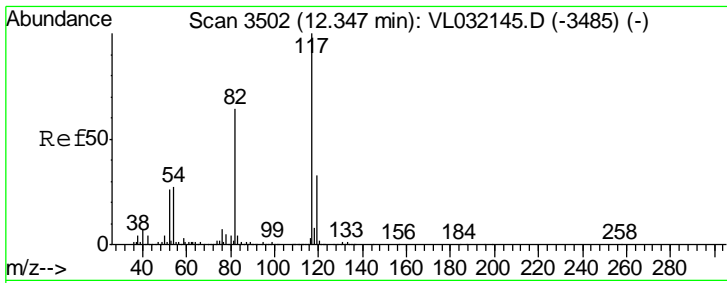
Tgt Ion	Resp	Lower	Upper
63	100		
41	0.0	53.3	79.9#
62	17.0	54.8	82.2#



#53
 Toluene
 Concen: 0.171 ppbv
 RT: 10.04 min Scan# 2784
 Delta R.T. -0.03 min
 Lab File: VL032160.D
 Acq: 30 Jun 2018 7:53

Tgt Ion	Resp	Lower	Upper
91	100		
92	0.0	49.2	73.8#

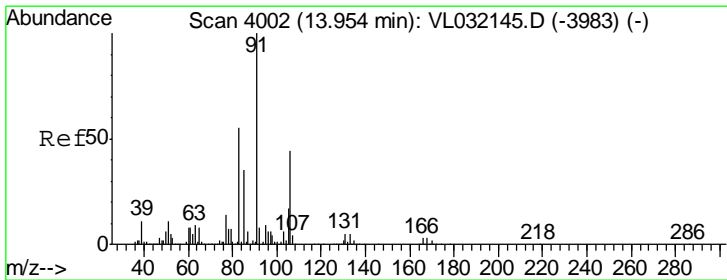
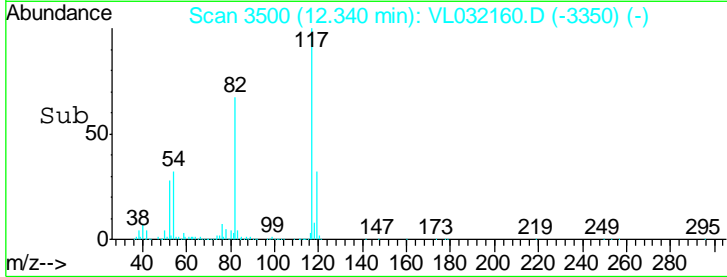
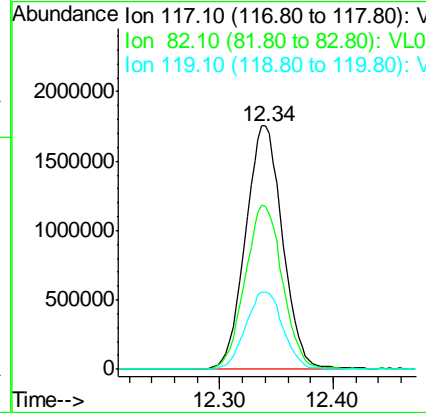
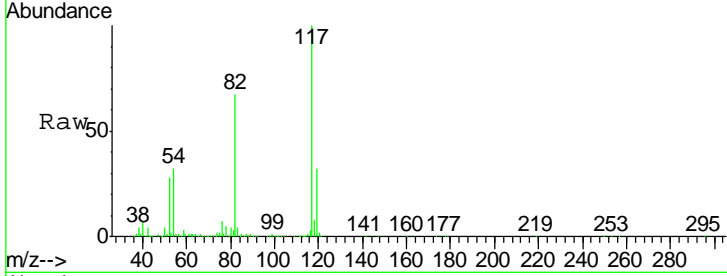




#55
 Chlorobenzene-d5
 Concen: 10.000 ppbv
 RT: 12.34 min Scan# 3500
 Delta R.T. -0.02 min
 Lab File: VL032160.D
 Acq: 30 Jun 2018 7:53

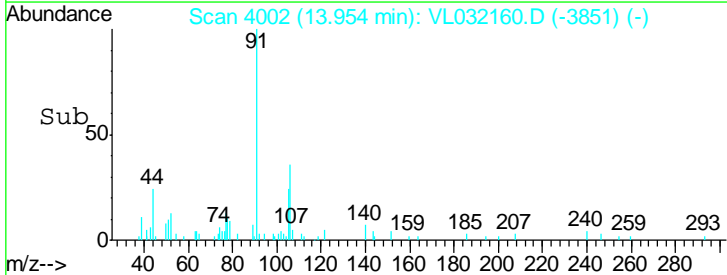
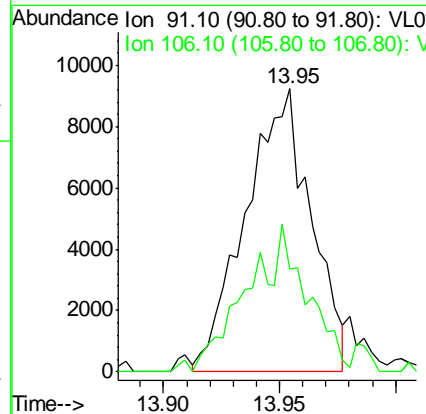
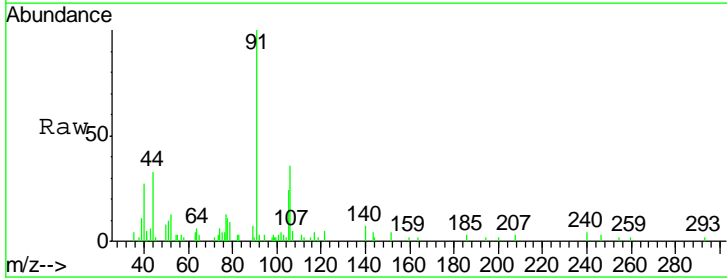
Instrument :
 MSVOA_L
ClientSampled :
 RESIDENT-A-INDOORDL

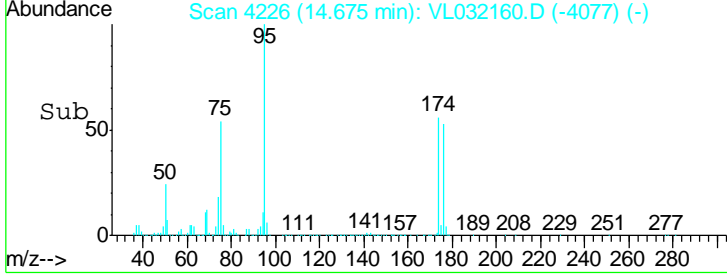
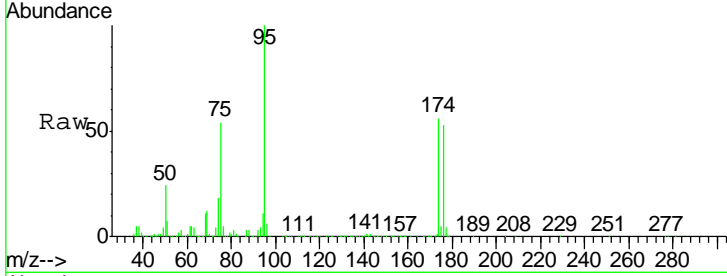
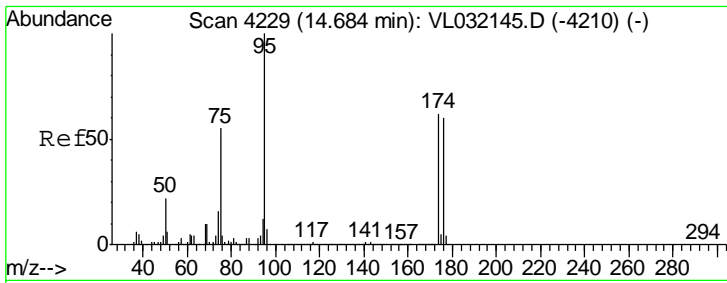
Tgt Ion	Resp	Lower	Upper
117	100		
82	68.9	47.8	71.8
119	32.4	43.3	64.9#



#60
 o-Xylene
 Concen: 0.035 ppbv
 RT: 13.95 min Scan# 4002
 Delta R.T. -0.02 min
 Lab File: VL032160.D
 Acq: 30 Jun 2018 7:53

Tgt Ion	Resp	Lower	Upper
91	100		
106	51.0	23.3	69.8





#68
 1-Bromo-4-Fluorobenzene
 Concen: 10.123 ppbv
 RT: 14.67 min Scan# 4226
 Delta R.T. -0.02 min
 Lab File: VL032160.D
 Acq: 30 Jun 2018 7:53

Instrument :
 MSVOA_L
 ClientSampled :
 RESIDENT-A-INDOORDL

Tgt Ion: 95 Resp: 3091937

Ion	Ratio	Lower	Upper
95	100		
174	56.7	52.1	78.1
175	4.3	4.0	6.0

