

Data Path : Z:\VOASRV\HPCHEM1\MSVOA_L\DATA\VL070820\
 Data File : VL035179.D
 Acq On : 8 Jul 2020 11:21
 Operator : SY/AP
 Sample : L3190-03DL 10X
 Misc : 400ml/MSVOA_L
 ALS Vial : 1 Sample Multiplier: 1

Instrument :
 MSVOA_L
 ClientSampleId :

Quant Time: Jul 08 13:38:49 2020
 Quant Method : Z:\VOASRV\HPCHEM1\MSVOA_L\METHODS\VL070820AIR.M
 Quant Title : AIR ANALYSIS BY METHOD TO-15 Instrument: MSVOA_LWed Jul 08 07:05:23 2020
 QLast Update : Wed Jul 08 07:05:23 2020
 Response via : Initial Calibration

Internal Standards	R.T.	QIon	Response	Conc	Units	Dev(Min)
1) Bromochloromethane	5.65	49	1345962	10.00	ppbv	0.00
33) 1,4-Difluorobenzene	7.17	114	3142200	10.00	ppbv	0.00
55) Chlorobenzene-d5	12.10	117	2857348	10.00	ppbv	0.00

System Monitoring Compounds

68) 1-Bromo-4-Fluorobenzene	14.45	95	2337372	10.07	ppbv	0.00
Spiked Amount	10.000	Range	65 - 135	Recovery	=	100.70%

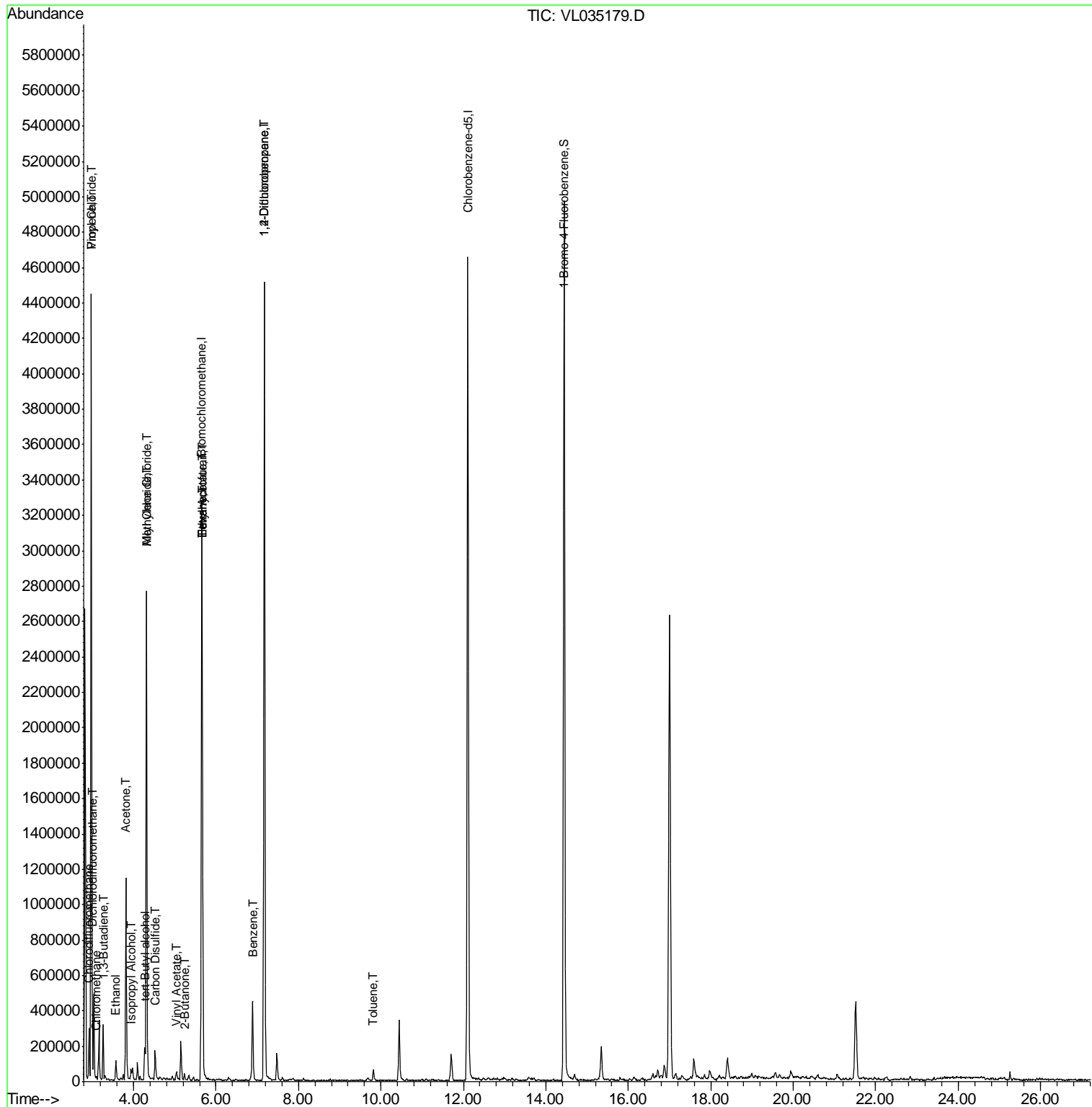
Target Compounds	R.T.	QIon	Response	Conc	Units	Qvalue
2) Dichlorodifluoromethane	3.00	85	10445	0.055	ppbv #	87
3) Chlorodifluoromethane	2.92	51	168438	1.133	ppbv #	56
4) Chloromethane	3.10	50	6719	0.080	ppbv #	86
5) Vinyl Chloride	2.97	62	308148	3.441	ppbv #	47
9) Propene	2.96	41	103104	1.835	ppbv	90
13) Ethanol	3.57	45	107101	5.987	ppbv	94
15) Acetone	3.81	43	1097184	6.021	ppbv	92
16) 1,3-Butadiene	3.26	39	78629	1.124	ppbv #	14
17) tert-Butyl alcohol	4.27	59	163883	1.016	ppbv	99
19) Isopropyl Alcohol	3.94	45	37631	0.342	ppbv #	92
20) Methylene Chloride	4.31	84	902002	11.377	ppbv	94
21) Allyl Chloride	4.32	41	15889	0.150	ppbv #	35
23) Vinyl Acetate	5.04	43	40999	0.208	ppbv #	87
25) Ethyl Acetate	5.67	43	330132	1.167	ppbv #	80
26) Hexane	5.67	57	421426	3.380	ppbv #	46
27) Carbon Disulfide	4.52	76	160051	0.919	ppbv	98
34) 2-Butanone	5.23	43	33381	0.199	ppbv	92
36) Benzene	6.89	78	364524	1.603	ppbv	96
39) 1,2-Dichloropropane	7.17	63	847505	9.371	ppbv #	22
41) Tetrahydrofuran	5.67	42	166994	1.990	ppbv #	46
53) Toluene	9.82	91	23424	0.098	ppbv #	43

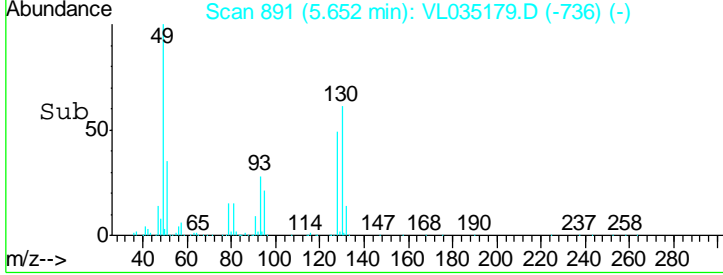
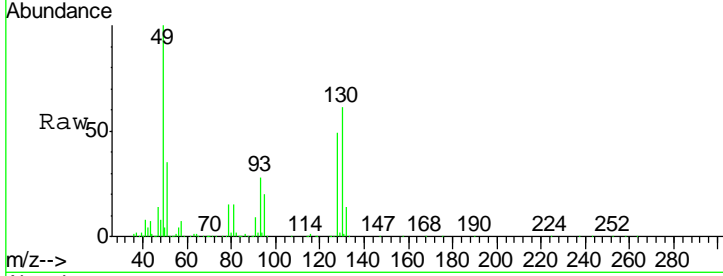
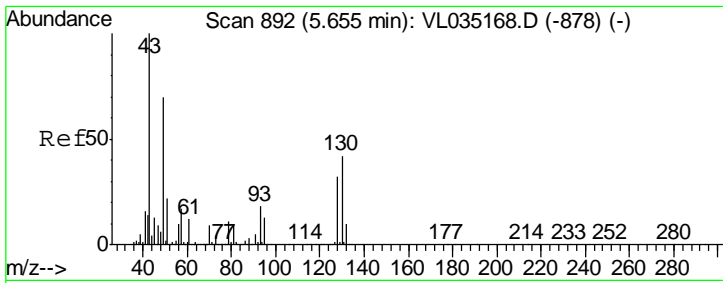
(#) = qualifier out of range (m) = manual integration (+) = signals summed

Data Path : Z:\VOASRV\HPCHEM1\MSVOA_L\DATA\VL070820\
 Data File : VL035179.D
 Acq On : 8 Jul 2020 11:21
 Operator : SY/AP
 Sample : L3190-03DL 10X
 Misc : 400ml/MSVOA_L
 ALS Vial : 1 Sample Multiplier: 1

Instrument :
 MSVOA_L
 ClientSampled :

Quant Time: Jul 08 13:38:49 2020
 Quant Method : Z:\VOASRV\HPCHEM1\MSVOA_L\METHODS\VL070820AIR.M
 Quant Title : AIR ANALYSIS BY METHOD TO-15 Instrument: MSVOA_L Wed Jul 08 07:05:23 2020
 QLast Update : Wed Jul 08 07:05:23 2020
 Response via : Initial Calibration

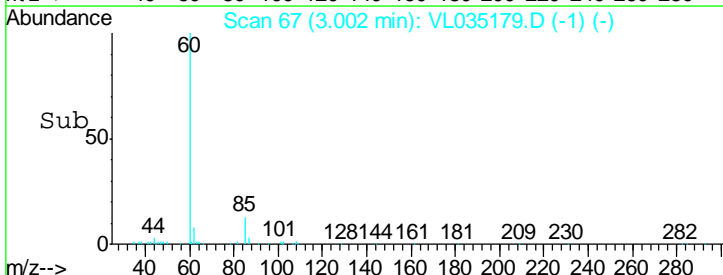
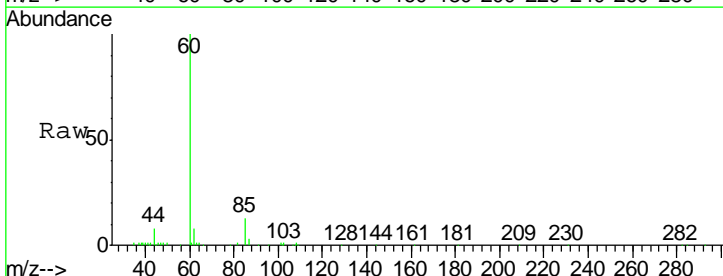
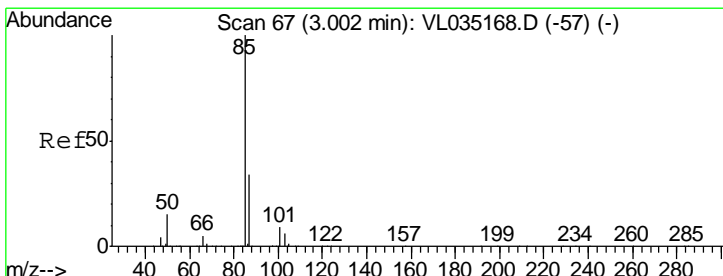
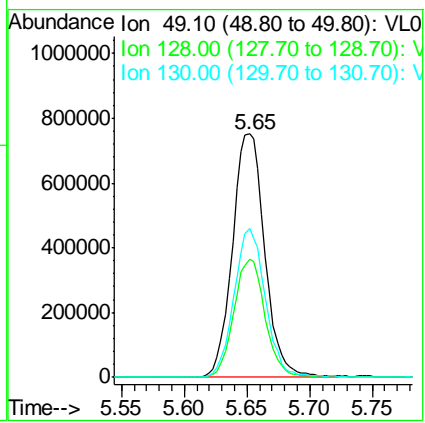




#1
 Bromochloromethane
 Concen: 10.000 ppbv
 RT: 5.65 min Scan# 891
 Delta R.T. -0.00 min
 Lab File: VL035179.D
 Acq: 8 Jul 2020 11:21

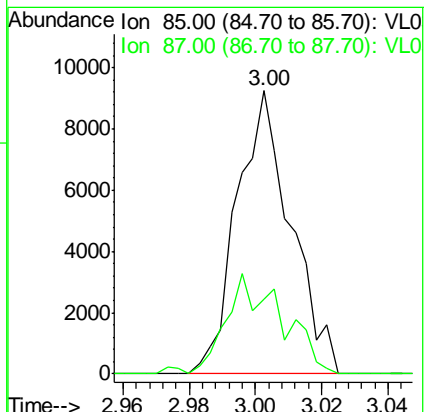
Instrument :
 MSVOA_L
 ClientSampled :

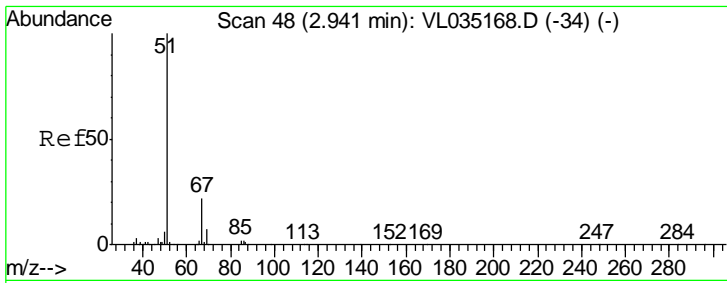
Tgt Ion	Resp	Lower	Upper
49	100		
128	47.5	23.8	71.4
130	59.6	29.9	89.8



#2
 Dichlorodifluoromethane
 Concen: 0.055 ppbv
 RT: 3.00 min Scan# 67
 Delta R.T. 0.00 min
 Lab File: VL035179.D
 Acq: 8 Jul 2020 11:21

Tgt Ion	Resp	Lower	Upper
85	100		
87	26.4	27.0	40.6#

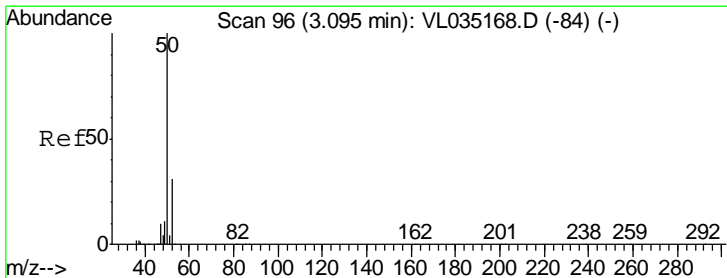
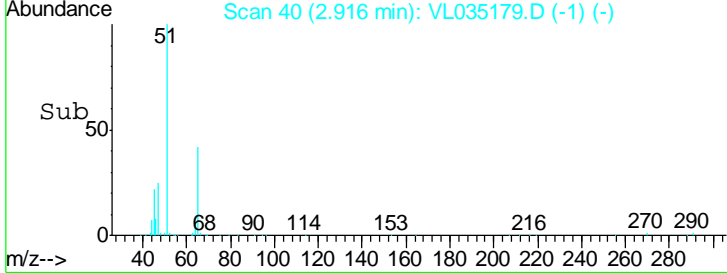
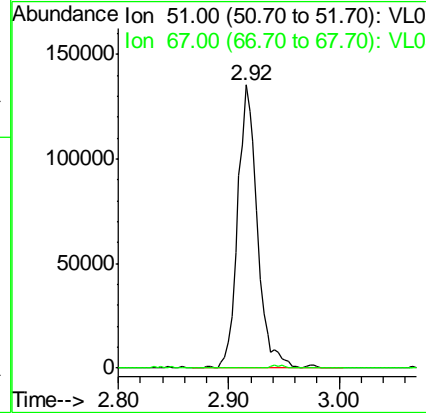
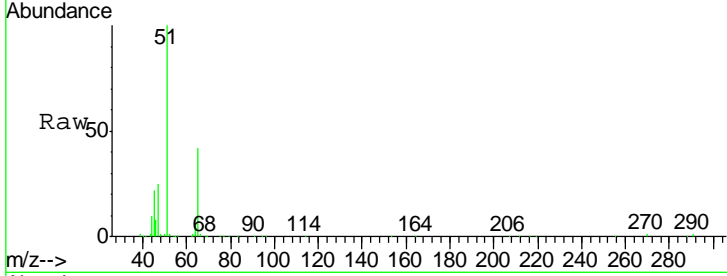




#3
 Chlorodifluoromethane
 Concen: 1.133 ppbv
 RT: 2.92 min Scan# 40
 Delta R.T. -0.03 min
 Lab File: VL035179.D
 Acq: 8 Jul 2020 11:21

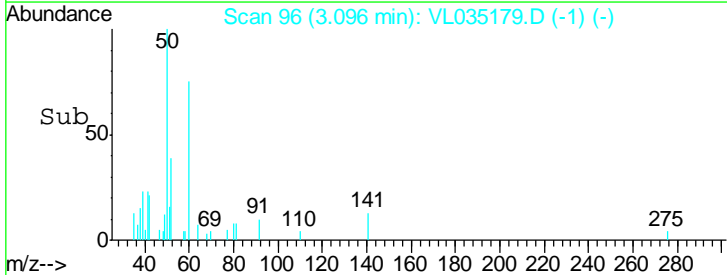
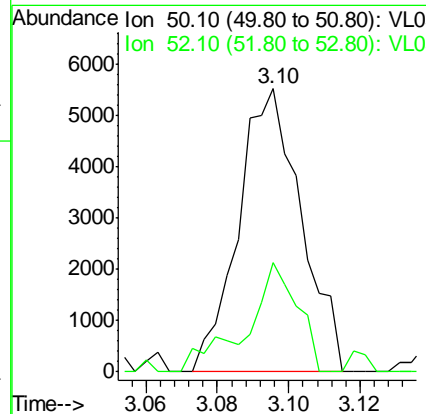
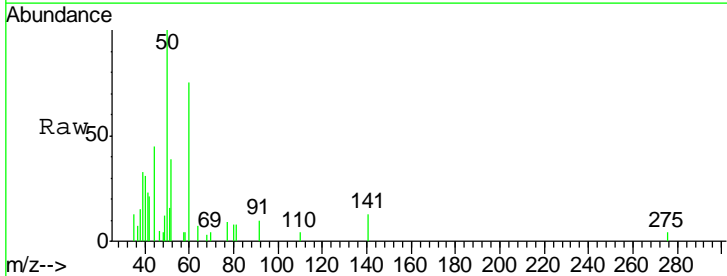
Instrument :
 MSVOA_L
 ClientSampled :

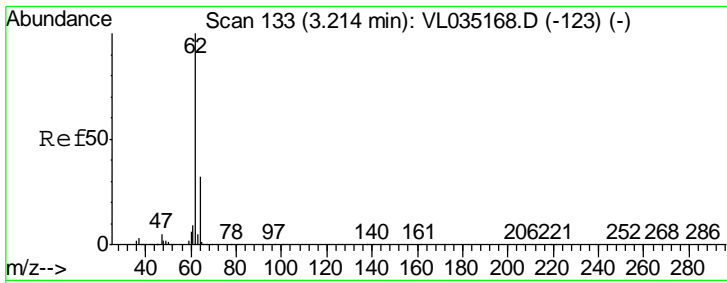
Tgt Ion: 51 Resp: 168438
 Ion Ratio Lower Upper
 51 100
 67 0.1 16.6 24.8#



#4
 Chloromethane
 Concen: 0.080 ppbv
 RT: 3.10 min Scan# 96
 Delta R.T. 0.00 min
 Lab File: VL035179.D
 Acq: 8 Jul 2020 11:21

Tgt Ion: 50 Resp: 6719
 Ion Ratio Lower Upper
 50 100
 52 38.8 25.0 37.6#

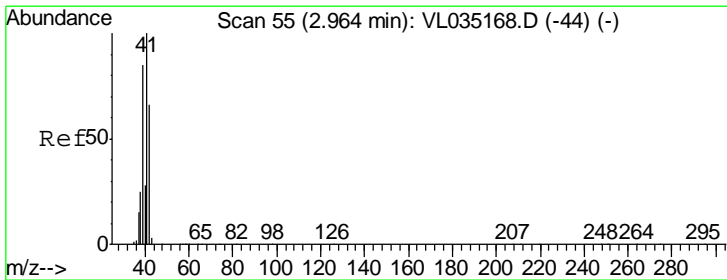
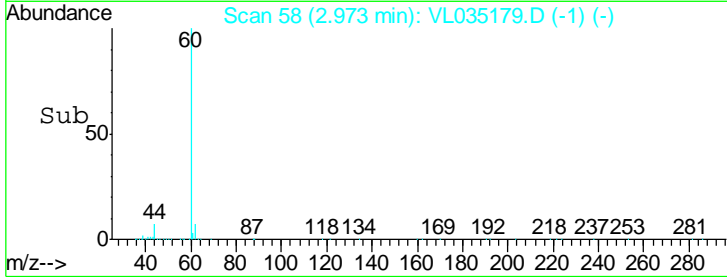
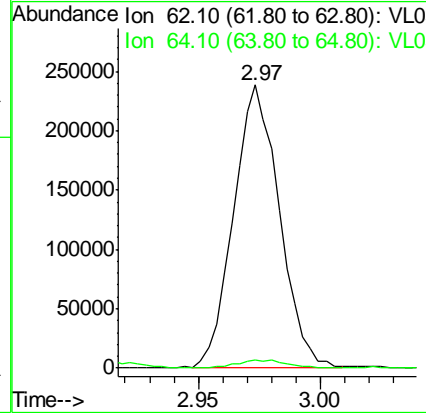
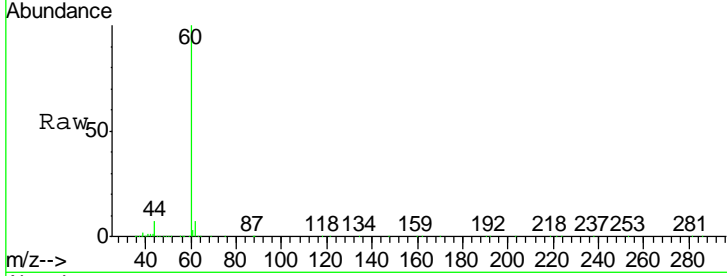




#5
 Vinyl Chloride
 Concen: 3.441 ppbv
 RT: 2.97 min Scan# 58
 Delta R.T. -0.24 min
 Lab File: VL035179.D
 Acq: 8 Jul 2020 11:21

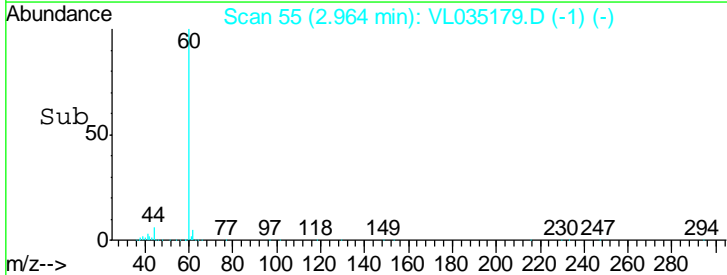
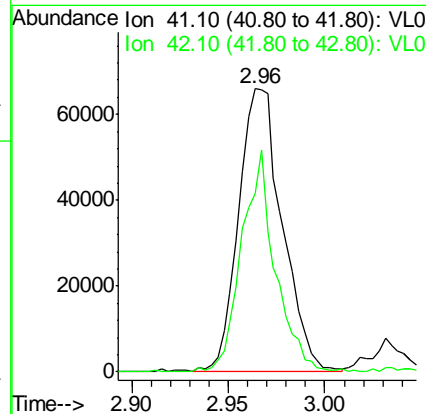
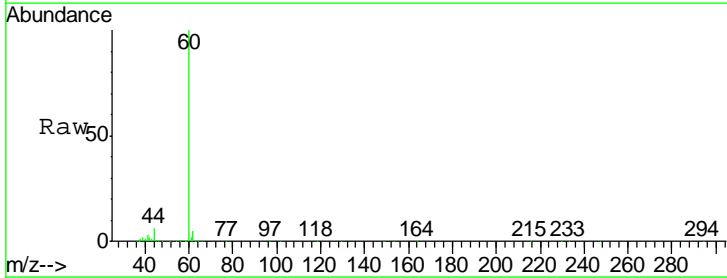
Instrument :
 MSVOA_L
 ClientSampled :

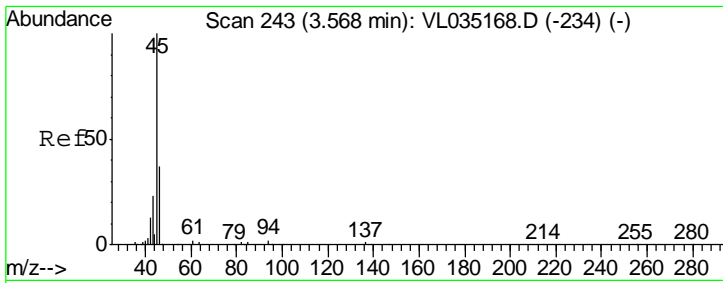
Tgt Ion: 62 Resp: 308148
 Ion Ratio Lower Upper
 62 100
 64 2.7 25.9 38.9#



#9
 Propene
 Concen: 1.835 ppbv
 RT: 2.96 min Scan# 55
 Delta R.T. 0.00 min
 Lab File: VL035179.D
 Acq: 8 Jul 2020 11:21

Tgt Ion: 41 Resp: 103104
 Ion Ratio Lower Upper
 41 100
 42 60.4 54.6 81.8

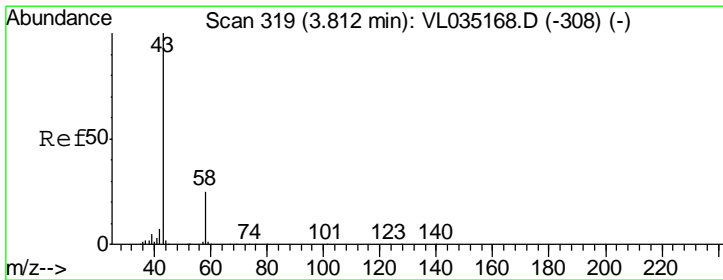
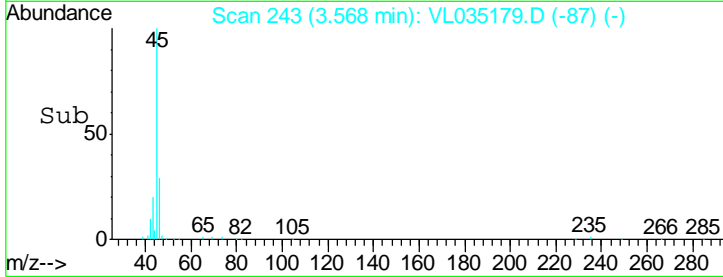
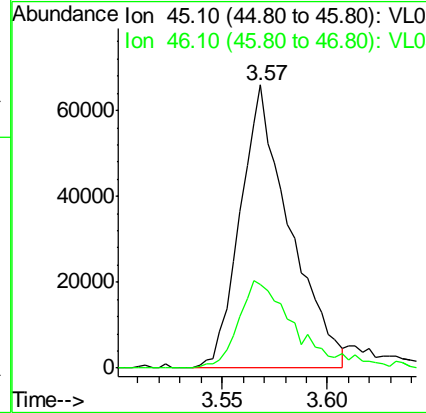
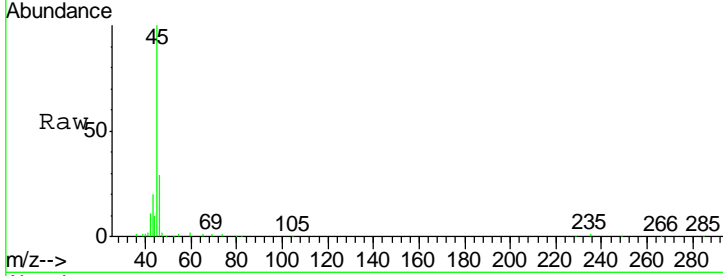




#13
 Ethanol
 Concen: 5.987 ppbv
 RT: 3.57 min Scan# 243
 Delta R.T. 0.00 min
 Lab File: VL035179.D
 Acq: 8 Jul 2020 11:21

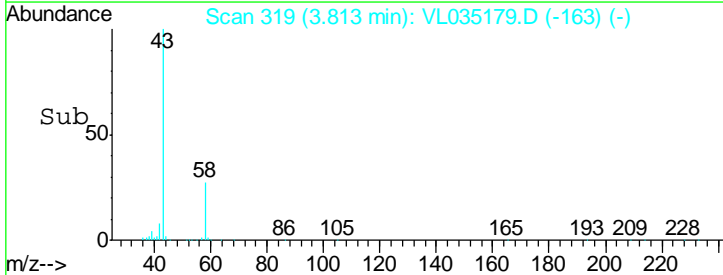
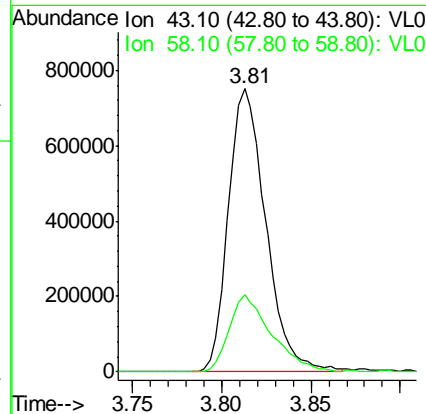
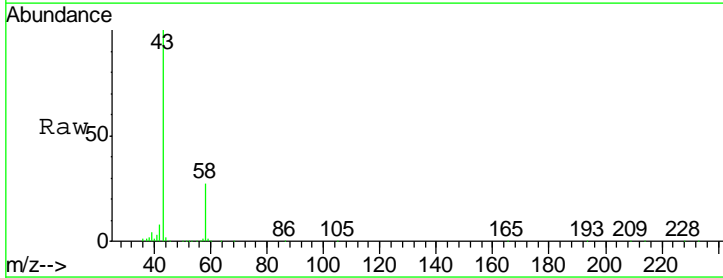
Instrument :
 MSVOA_L
 ClientSampled :

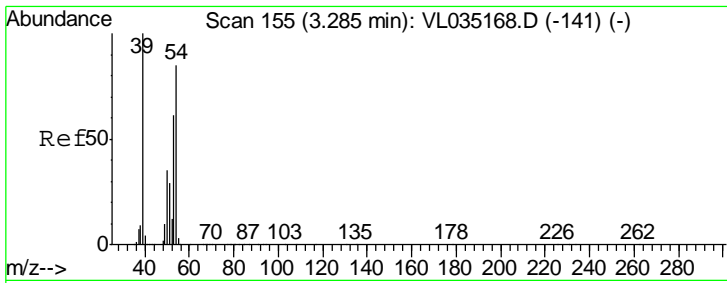
Tgt Ion: 45 Resp: 107101
 Ion Ratio Lower Upper
 45 100
 46 36.8 16.2 65.0



#15
 Acetone
 Concen: 6.021 ppbv
 RT: 3.81 min Scan# 319
 Delta R.T. 0.00 min
 Lab File: VL035179.D
 Acq: 8 Jul 2020 11:21

Tgt Ion: 43 Resp: 1097184
 Ion Ratio Lower Upper
 43 100
 58 30.9 21.3 31.9

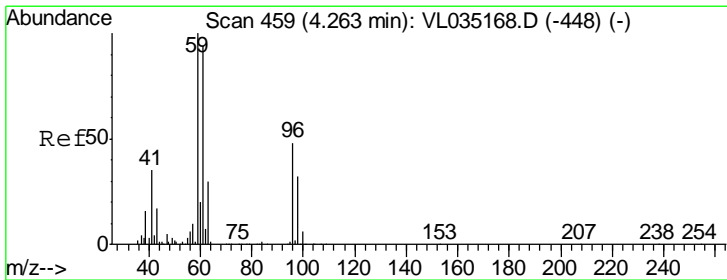
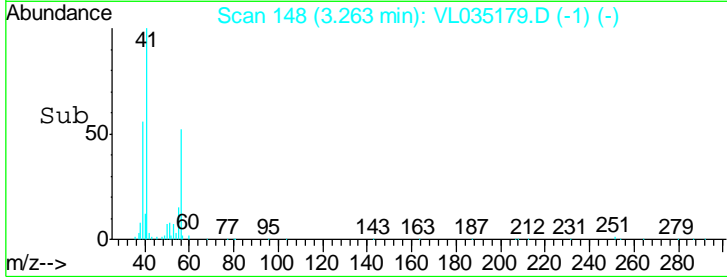
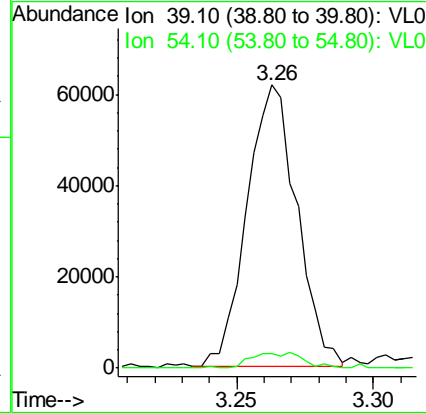
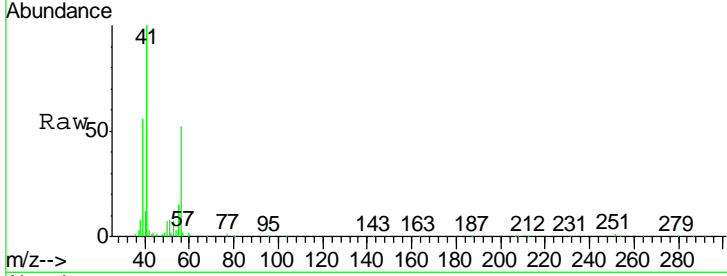




#16
 1,3-Butadiene
 Concen: 1.124 ppbv
 RT: 3.26 min Scan# 148
 Delta R.T. -0.02 min
 Lab File: VL035179.D
 Acq: 8 Jul 2020 11:21

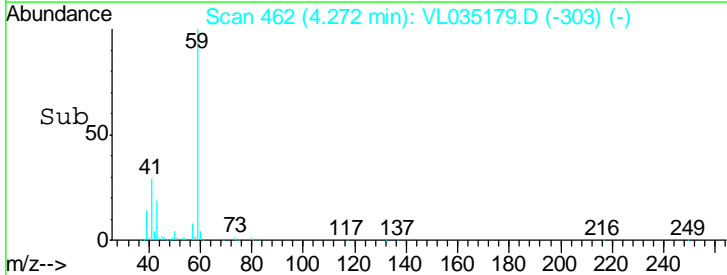
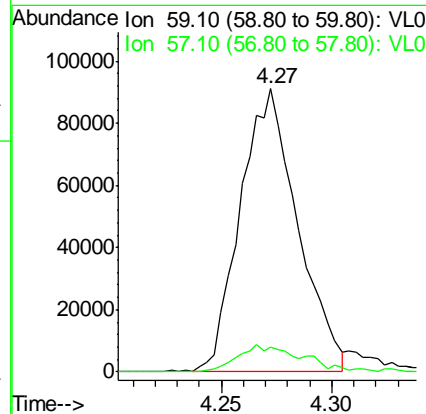
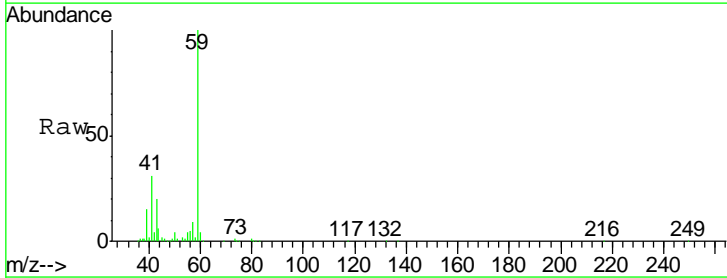
Instrument :
 MSVOA_L
 ClientSampled :

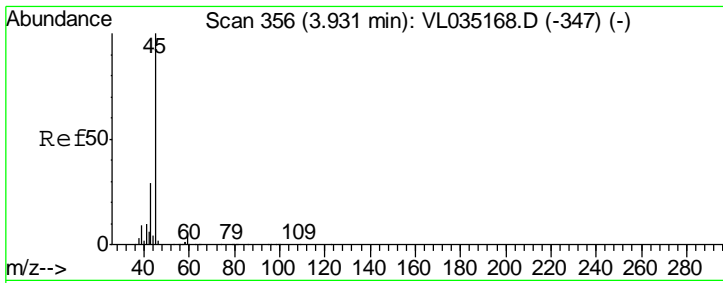
Tgt Ion: 39 Resp: 78629
 Ion Ratio Lower Upper
 39 100
 54 6.1 67.2 100.8#



#17
 tert-Butyl alcohol
 Concen: 1.016 ppbv
 RT: 4.27 min Scan# 462
 Delta R.T. 0.01 min
 Lab File: VL035179.D
 Acq: 8 Jul 2020 11:21

Tgt Ion: 59 Resp: 163883
 Ion Ratio Lower Upper
 59 100
 57 11.2 8.6 12.8

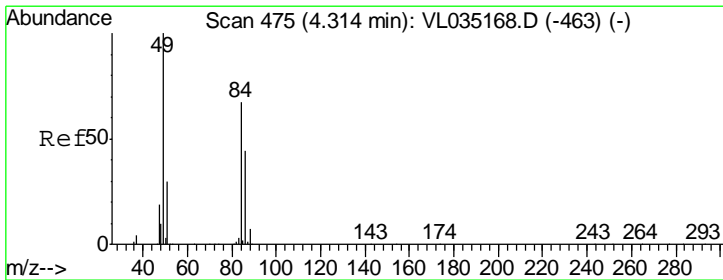
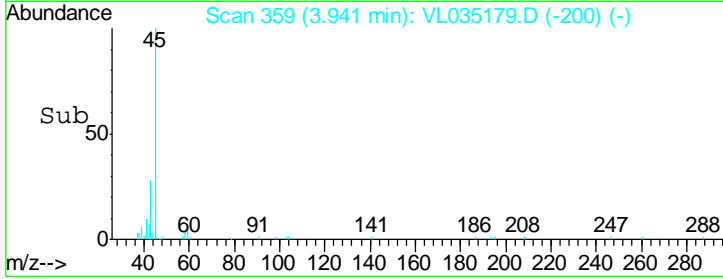
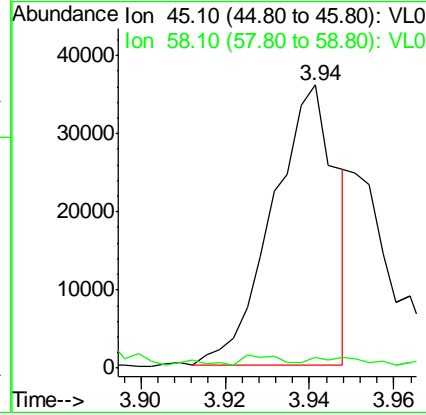
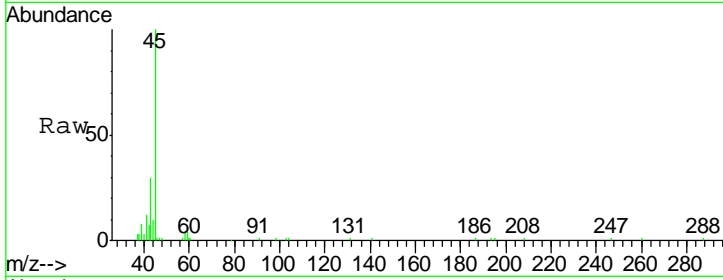




#19
 Isopropyl Alcohol
 Concen: 0.342 ppbv
 RT: 3.94 min Scan# 359
 Delta R.T. 0.01 min
 Lab File: VL035179.D
 Acq: 8 Jul 2020 11:21

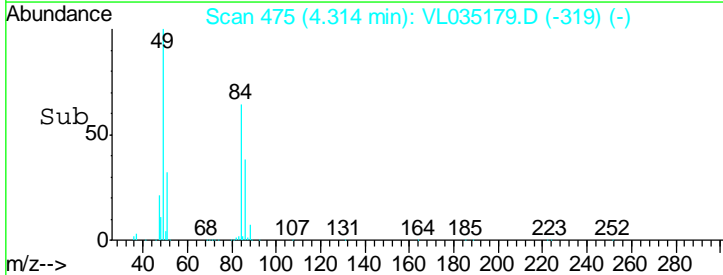
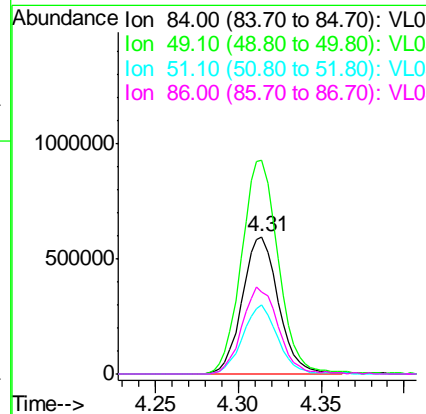
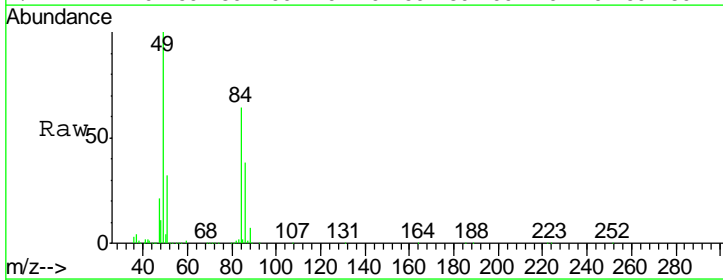
Instrument :
 MSVOA_L
 ClientSampled :

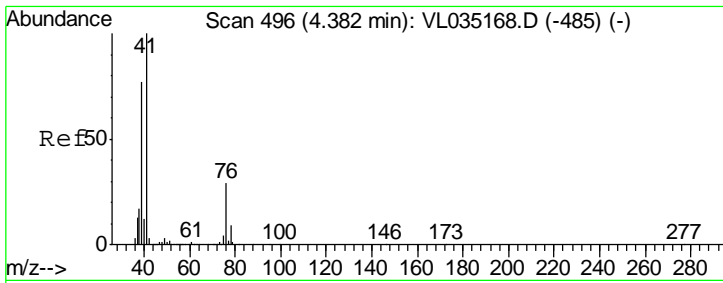
Tgt Ion: 45 Resp: 37631
 Ion Ratio Lower Upper
 45 100
 58 0.0 2.1 3.1#



#20
 Methylene Chloride
 Concen: 11.377 ppbv
 RT: 4.31 min Scan# 475
 Delta R.T. 0.00 min
 Lab File: VL035179.D
 Acq: 8 Jul 2020 11:21

Tgt Ion: 84 Resp: 902002
 Ion Ratio Lower Upper
 84 100
 49 155.4 119.4 179.0
 51 49.8 36.6 55.0
 86 59.4 52.5 78.7

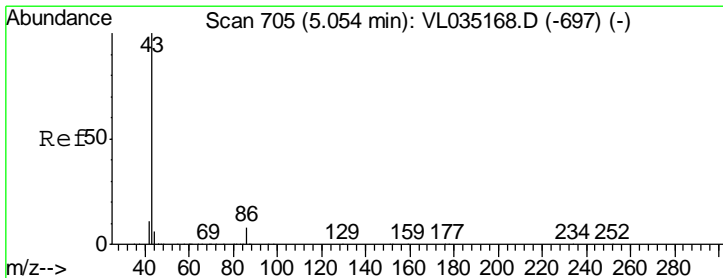
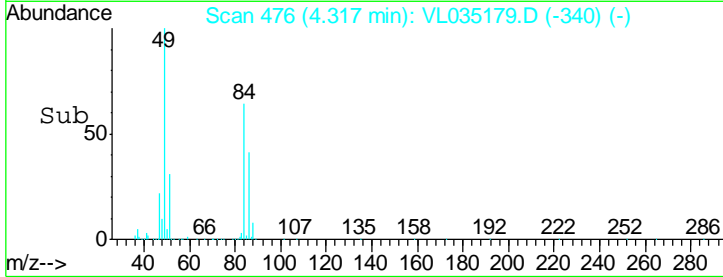
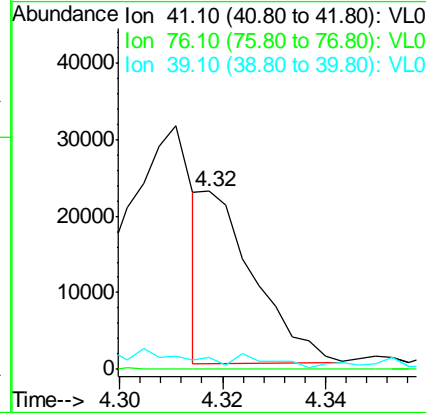
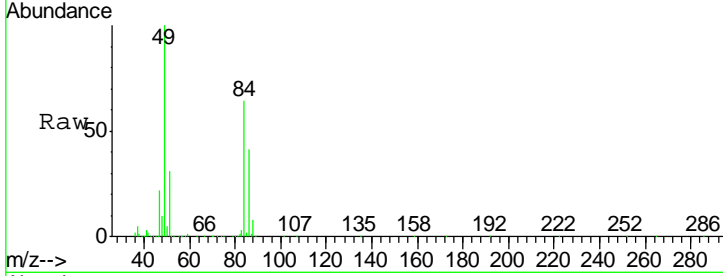




#21
 Allyl Chloride
 Concen: 0.150 ppbv
 RT: 4.32 min Scan# 476
 Delta R.T. -0.06 min
 Lab File: VL035179.D
 Acq: 8 Jul 2020 11:21

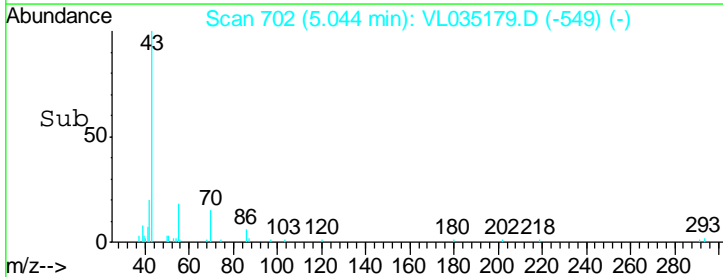
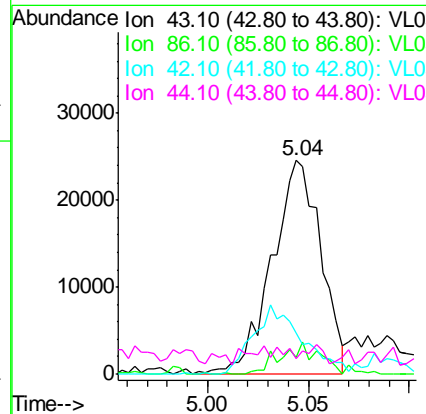
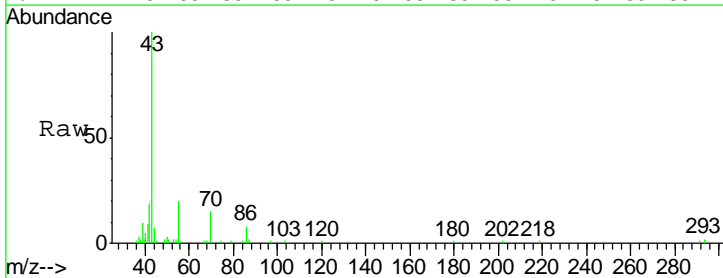
Instrument :
 MSVOA_L
 ClientSampled :

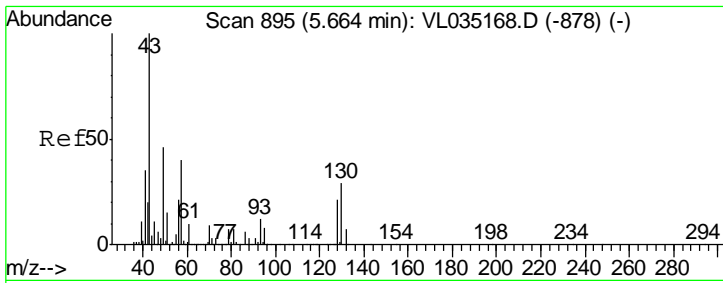
Tgt Ion	Resp	Lower	Upper
41	15889		
76	0.0	23.5	35.3#
39	19.4	63.4	95.0#



#23
 Vinyl Acetate
 Concen: 0.208 ppbv
 RT: 5.04 min Scan# 702
 Delta R.T. -0.01 min
 Lab File: VL035179.D
 Acq: 8 Jul 2020 11:21

Tgt Ion	Resp	Lower	Upper
43	40999		
86	7.7	6.2	9.2
42	19.2	9.1	13.7#
44	0.0	4.6	6.8#



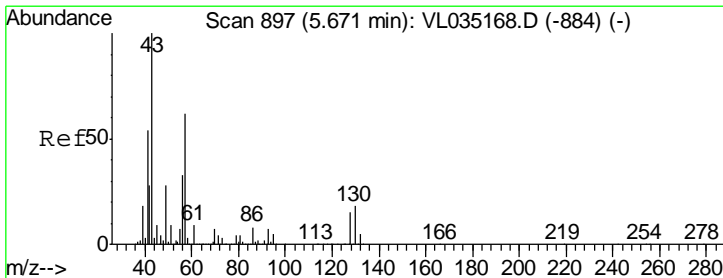
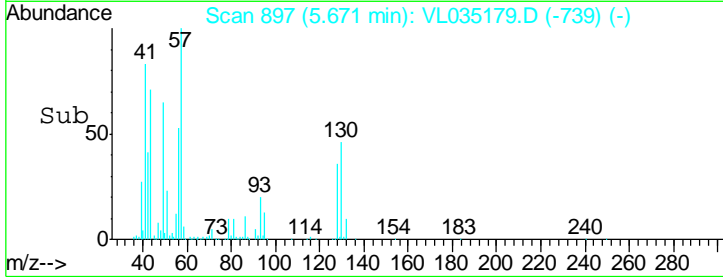
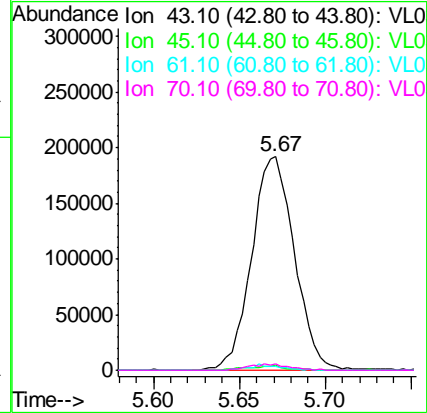
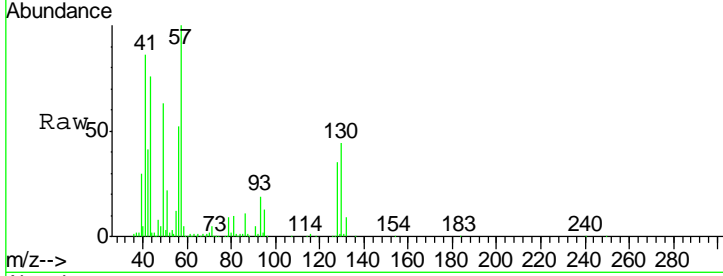


#25
Ethyl Acetate
Concen: 1.167 ppbv
RT: 5.67 min Scan# 897
Delta R.T. 0.01 min
Lab File: VL035179.D
Acq: 8 Jul 2020 11:21

Instrument :
MSVOA_L
ClientSampled :

Tgt Ion: 43 Resp: 330132

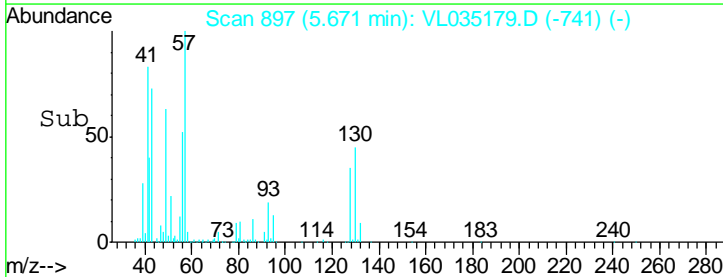
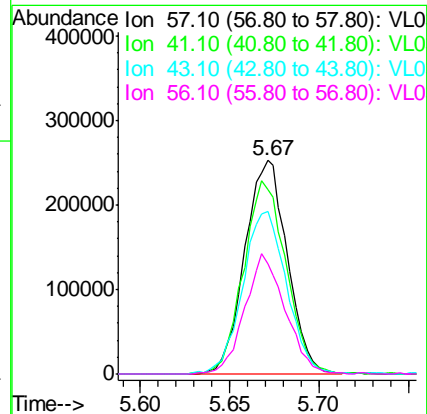
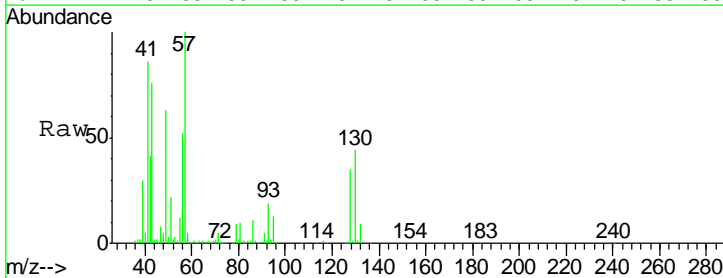
Ion	Ratio	Lower	Upper
43	100		
45	2.0	8.5	12.7#
61	2.1	8.1	12.1#
70	2.8	6.3	9.5#

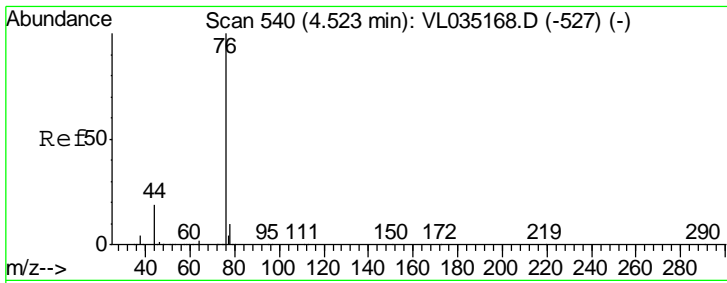


#26
Hexane
Concen: 3.380 ppbv
RT: 5.67 min Scan# 897
Delta R.T. 0.00 min
Lab File: VL035179.D
Acq: 8 Jul 2020 11:21

Tgt Ion: 57 Resp: 421426

Ion	Ratio	Lower	Upper
57	100		
41	91.2	72.9	109.3
43	79.1	179.5	269.3#
56	53.6	42.9	64.3

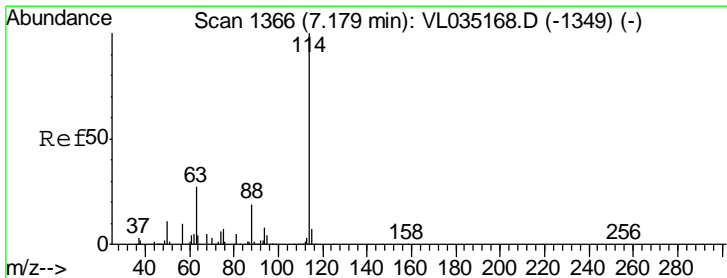
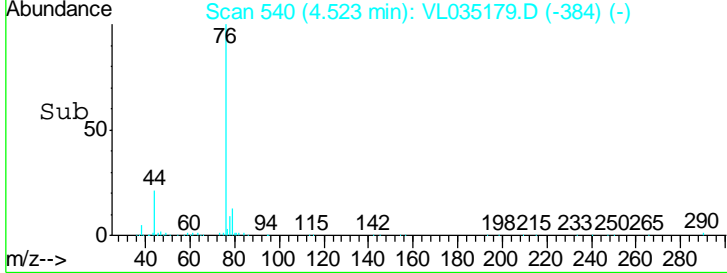
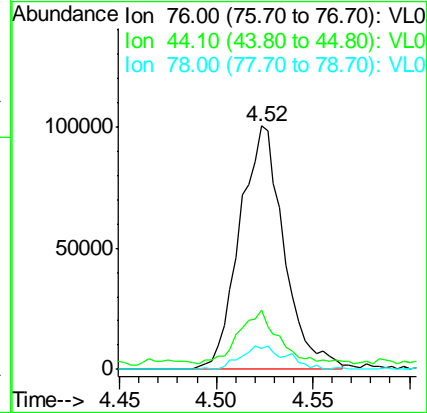
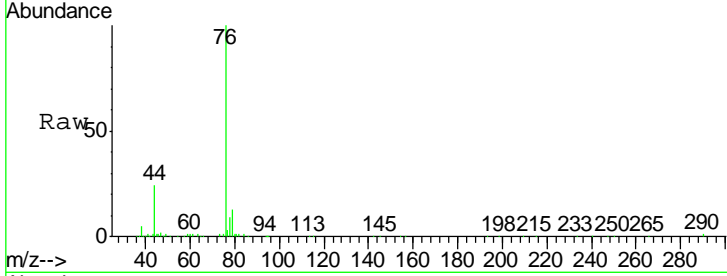




#27
 Carbon Disulfide
 Concen: 0.919 ppbv
 RT: 4.52 min Scan# 540
 Delta R.T. 0.00 min
 Lab File: VL035179.D
 Acq: 8 Jul 2020 11:21

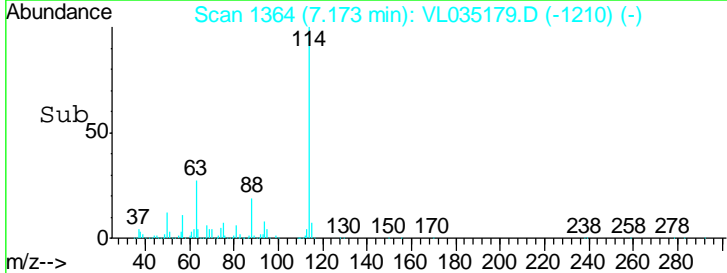
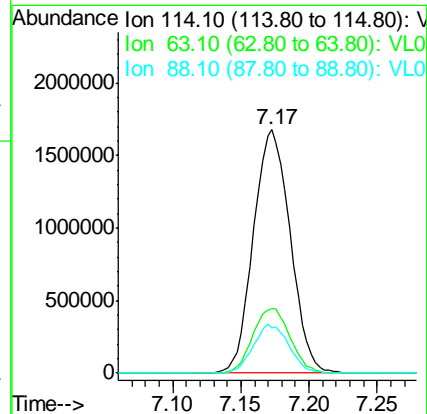
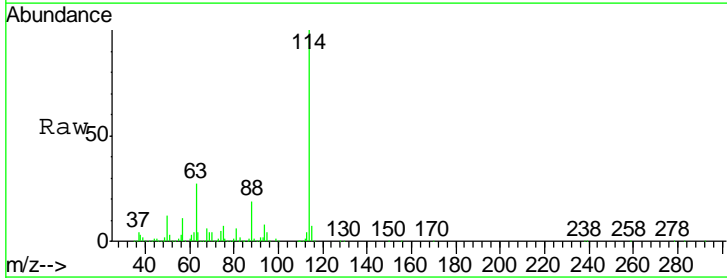
Instrument :
 MSVOA_L
 ClientSampled :

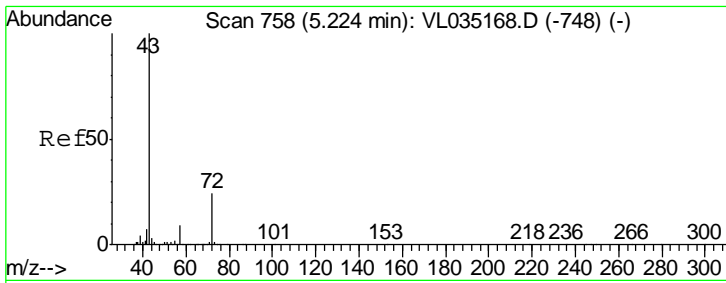
Tgt Ion	Resp	Lower	Upper
76	160051		
44	19.4	14.9	22.3
78	10.1	7.5	11.3



#33
 1,4-Difluorobenzene
 Concen: 10.000 ppbv
 RT: 7.17 min Scan# 1364
 Delta R.T. -0.01 min
 Lab File: VL035179.D
 Acq: 8 Jul 2020 11:21

Tgt Ion	Resp	Lower	Upper
114	3142200		
63	27.1	22.0	33.0
88	19.6	15.4	23.0

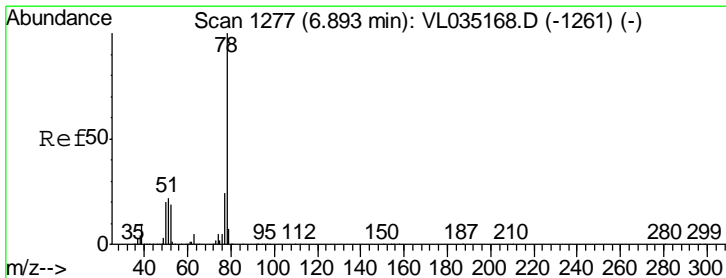
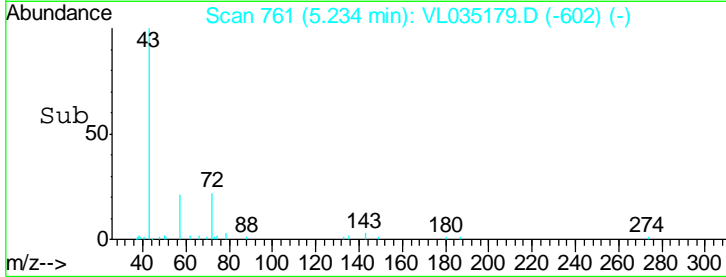
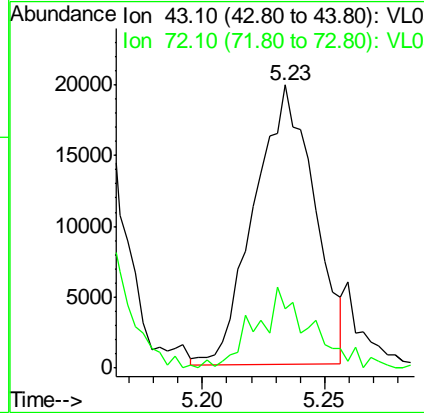
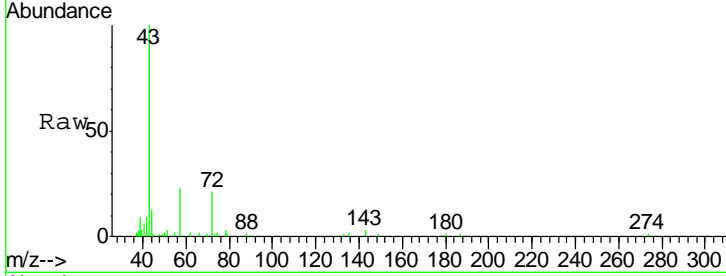




#34
 2-Butanone
 Concen: 0.199 ppbv
 RT: 5.23 min Scan# 761
 Delta R.T. 0.01 min
 Lab File: VL035179.D
 Acq: 8 Jul 2020 11:21

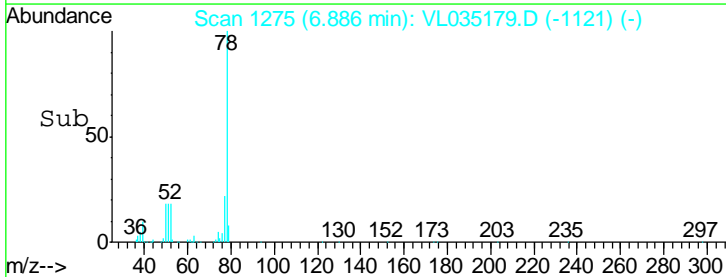
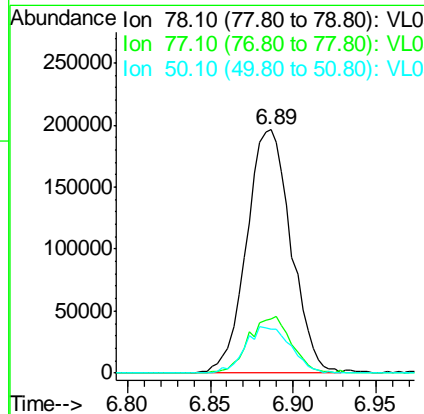
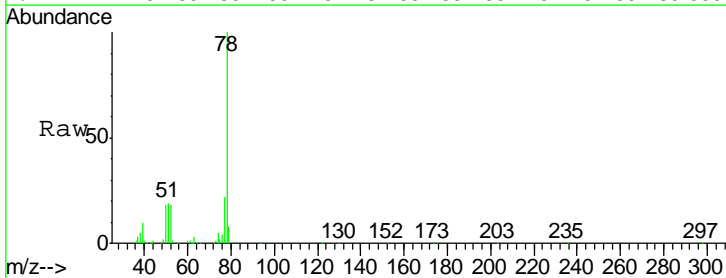
Instrument :
 MSVOA_L
 ClientSampled :

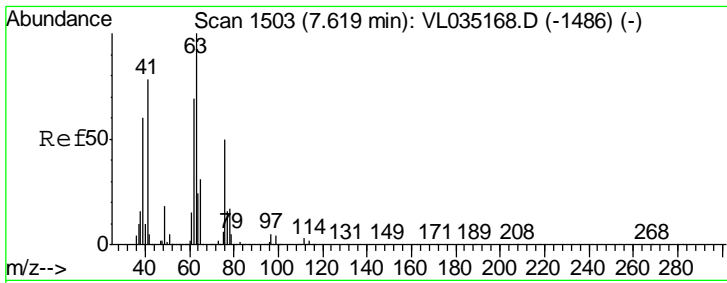
Tgt Ion	Resp	Lower	Upper
43	33381		
72	27.1	18.6	28.0



#36
 Benzene
 Concen: 1.603 ppbv
 RT: 6.89 min Scan# 1275
 Delta R.T. -0.01 min
 Lab File: VL035179.D
 Acq: 8 Jul 2020 11:21

Tgt Ion	Resp	Lower	Upper
78	364524		
77	22.3	19.3	28.9
50	17.9	16.0	24.0

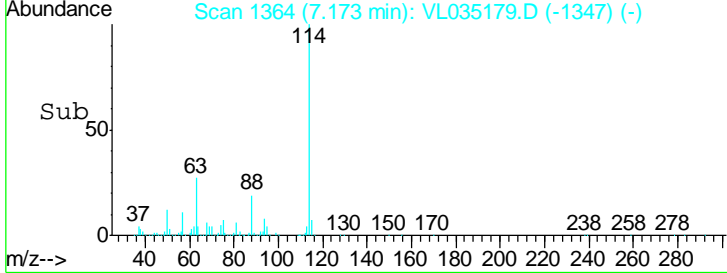
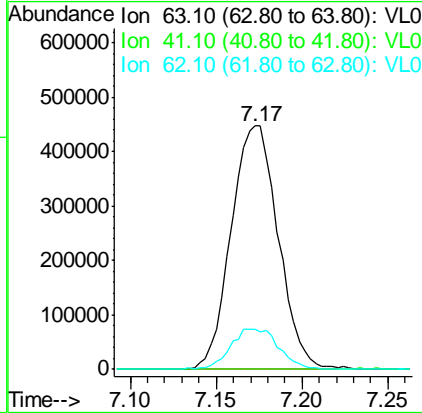
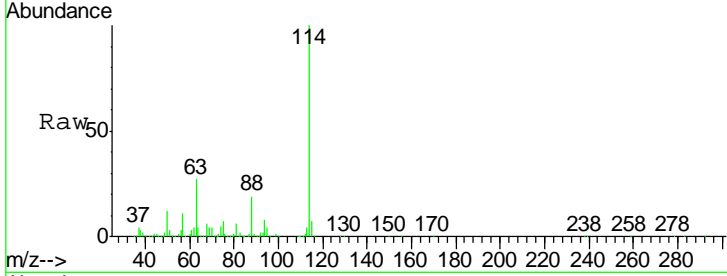




#39
 1,2-Dichloropropane
 Concen: 9.371 ppbv
 RT: 7.17 min Scan# 1364
 Delta R.T. -0.45 min
 Lab File: VL035179.D
 Acq: 8 Jul 2020 11:21

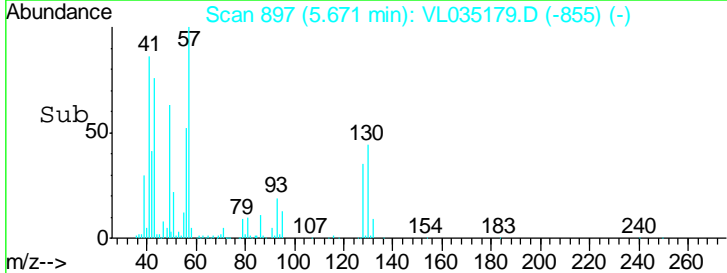
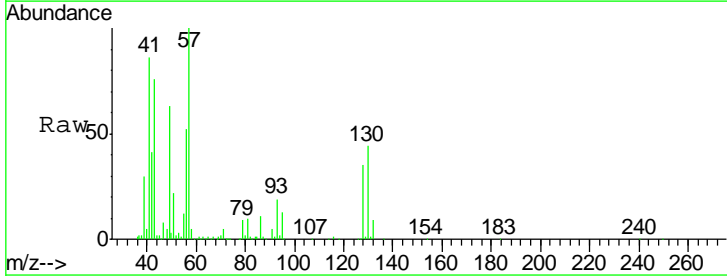
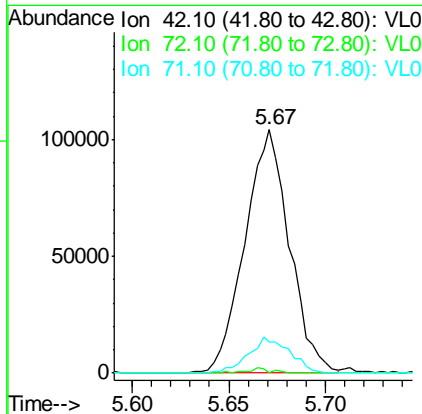
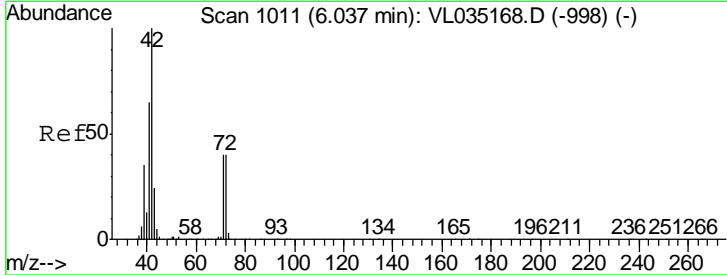
Instrument :
 MSVOA_L
 ClientSampled :

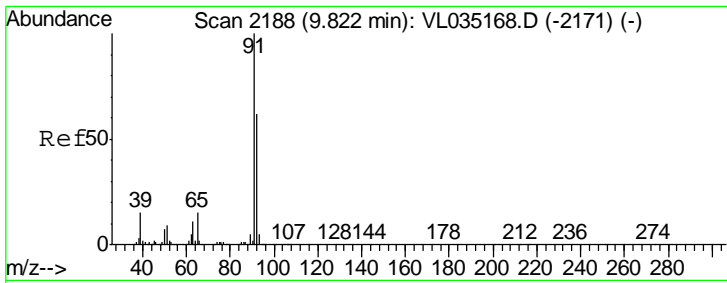
Tgt Ion	Resp	Lower	Upper
63	100		
41	0.0	62.6	94.0#
62	16.1	55.0	82.6#



#41
 Tetrahydrofuran
 Concen: 1.990 ppbv
 RT: 5.67 min Scan# 897
 Delta R.T. -0.37 min
 Lab File: VL035179.D
 Acq: 8 Jul 2020 11:21

Tgt Ion	Resp	Lower	Upper
42	100		
72	1.2	33.4	50.2#
71	13.7	31.9	47.9#

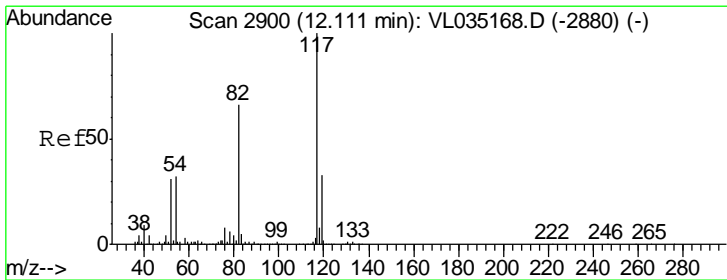
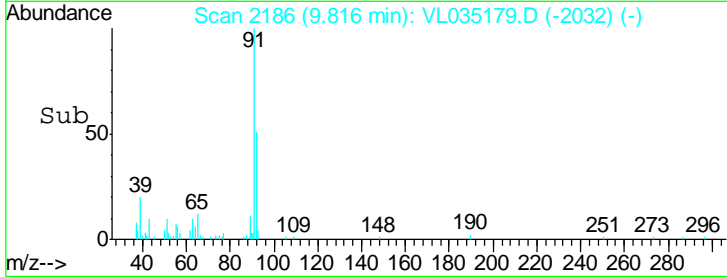
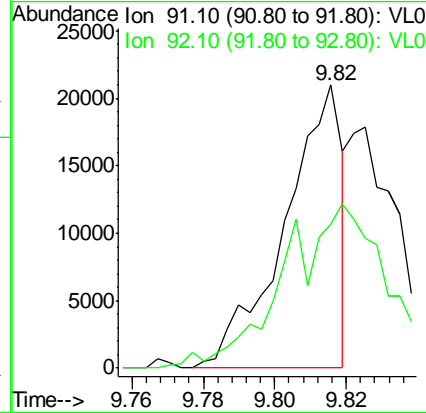
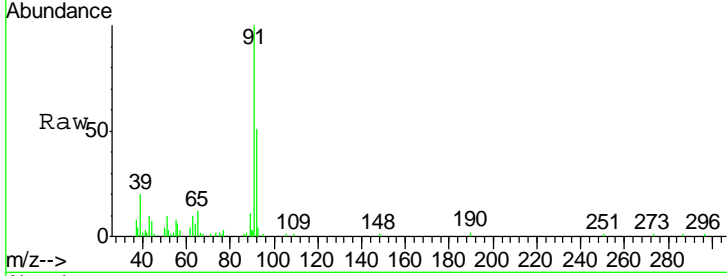




#53
 Toluene
 Concen: 0.098 ppbv
 RT: 9.82 min Scan# 2186
 Delta R.T. -0.01 min
 Lab File: VL035179.D
 Acq: 8 Jul 2020 11:21

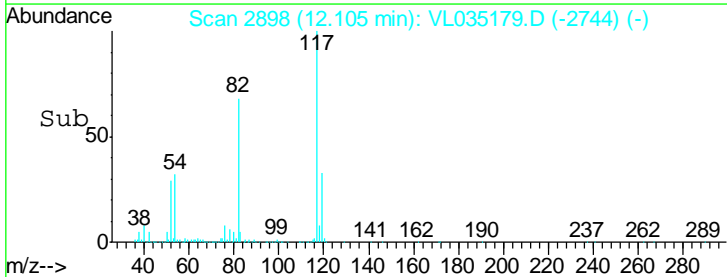
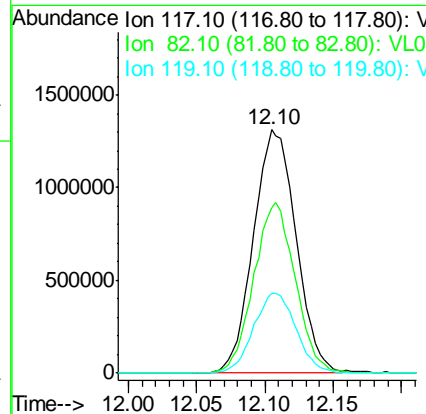
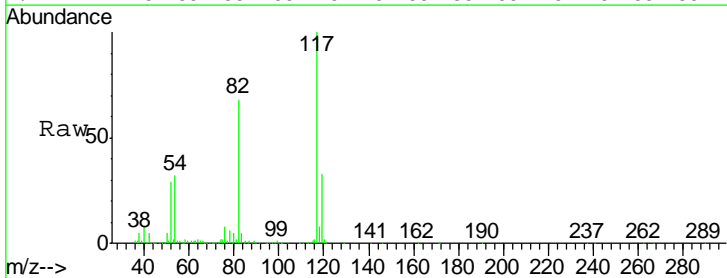
Instrument :
 MSVOA_L
 ClientSampled :

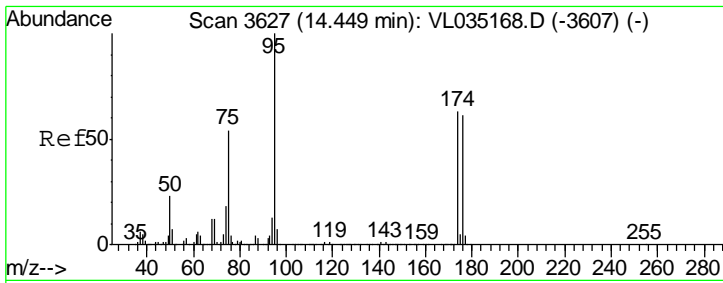
Tgt Ion: 91 Resp: 23424
 Ion Ratio Lower Upper
 91 100
 92 104.0 48.4 72.6#



#55
 Chlorobenzene-d5
 Concen: 10.000 ppbv
 RT: 12.10 min Scan# 2898
 Delta R.T. -0.01 min
 Lab File: VL035179.D
 Acq: 8 Jul 2020 11:21

Tgt Ion: 117 Resp: 2857348
 Ion Ratio Lower Upper
 117 100
 82 68.1 52.3 78.5
 119 32.8 24.9 37.3





#68
 1-Bromo-4-Fluorobenzene
 Concen: 10.070 ppbv
 RT: 14.45 min Scan# 3626
 Delta R.T. -0.00 min
 Lab File: VL035179.D
 Acq: 8 Jul 2020 11:21

Instrument :
 MSVOA_L
 ClientSampled :

Tgt Ion: 95 Resp: 2337372

Ion	Ratio	Lower	Upper
95	100		
174	65.6	52.2	78.2
175	4.7	4.0	6.0

