

Data Path : Z:\VOASRV\HPCHEM1\MSVOA L\DATA\VL072320\  
 Data File : VL035226.D  
 Acq On : 23 Jul 2020 13:18  
 Operator : SY/AP  
 Sample : L3216-14 0.5 PPB LOQ  
 Misc : 400ml/MSVOA L  
 ALS Vial : 1 Sample Multiplier: 1

Instrument :  
 MSVOA\_L  
 ClientSampleId :

Quant Time: Jul 24 05:53:41 2020  
 Quant Method : Z:\VOASRV\HPCHEM1\MSVOA L\METHODS\VL070820AIR.M  
 Quant Title : AIR ANALYSIS BY METHOD TO-15 Instrument: MSVOA\_LWed Jul 08 07:05:23 2020  
 QLast Update : Wed Jul 08 07:05:23 2020  
 Response via : Initial Calibration

Internal Standards	R.T.	QIon	Response	Conc	Units	Dev(Min)
1) Bromochloromethane	5.65	49	1226351	10.00	ppbv	0.00
33) 1,4-Difluorobenzene	7.17	114	3082706	10.00	ppbv	0.00
55) Chlorobenzene-d5	12.11	117	2807874	10.00	ppbv	0.00

System Monitoring Compounds

68) 1-Bromo-4-Fluorobenzene	14.44	95	2315051	10.15	ppbv	0.00
Spiked Amount	10.000	Range	65 - 135	Recovery	=	101.50%

Target Compounds	R.T.	QIon	Response	Conc	Units	Ovalue
2) Dichlorodifluoromethane	3.00	85	114945	0.669	ppbv	97
3) Chlorodifluoromethane	2.94	51	79569	0.587	ppbv	99
4) Chloromethane	3.09	50	46511	0.609	ppbv	94
5) Vinyl Chloride	3.21	62	39221	0.481	ppbv	98
6) Bromomethane	3.43	94	29425	0.635	ppbv	90
7) Chloroethane	3.51	64	14482	0.502	ppbv #	89
8) Dichlorotetrafluoroethane	3.14	85	115472	0.613	ppbv	99
9) Propene	2.96	41	24610	0.481	ppbv	92
10) Heptane	8.12	43	52383	0.399	ppbv	99
11) Trichlorofluoromethane	3.91	101	123506	0.636	ppbv	97
12) 1,1,2-Trichlorotrifluoroet	4.46	101	85872	0.630	ppbv	97
13) Ethanol	3.57	45	5384	0.330	ppbv #	35
14) Bromoethene	3.71	108	32191	0.574	ppbv	97
15) Acetone	3.82	43	118329	0.713	ppbv #	89
16) 1,3-Butadiene	3.29	39	31062	0.487	ppbv	97
17) tert-Butyl alcohol	4.27	59	34596	0.236	ppbv #	39
18) 1,1-Dichloroethene	4.26	96	37143	0.615	ppbv	78
19) Isopropyl Alcohol	3.94	45	23694	0.237	ppbv #	56
20) Methylene Chloride	4.32	84	21744	0.301	ppbv	94
21) Allyl Chloride	4.38	41	49509	0.512	ppbv	87
22) trans-1,2-Dichloroethene	4.85	96	18223	0.302	ppbv	90
23) Vinyl Acetate	5.05	43	86342	0.480	ppbv #	95
24) 1,1-Dichloroethane	4.98	63	91734	0.594	ppbv #	95
25) Ethyl Acetate	5.66	43	133621	0.519	ppbv	99
26) Hexane	5.66	57	27060	0.238	ppbv #	1
27) Carbon Disulfide	4.52	76	90453	0.570	ppbv #	90
28) Methyl tert-Butyl Ether	5.02	73	74434	0.430	ppbv	96
29) Chloroform	5.74	83	115936	0.609	ppbv	99
30) Cyclohexane	7.13	84	16352	0.195	ppbv #	1
31) cis-1,2-Dichloroethene	5.54	61	45437	0.423	ppbv #	86
32) 1,1,1-Trichloroethane	6.50	97	103596	0.543	ppbv	97
34) 2-Butanone	5.23	43	77462	0.471	ppbv	98
35) Carbon Tetrachloride	7.01	117	104528	0.522	ppbv	97
36) Benzene	6.89	78	94719	0.425	ppbv	93
37) 1,2-Dichloroethane	6.30	62	38558	0.258	ppbv #	76
38) Trichloroethene	7.83	130	18972	0.209	ppbv	90
39) 1,2-Dichloropropane	7.61	63	17768	0.200	ppbv	91
42) Bromodichloromethane	7.79	83	104254	0.521	ppbv #	92
43) Methyl Methacrylate	8.02	69	33397	0.354	ppbv	90
44) 2,2,4-Trimethylpentane	7.87	57	153681	0.399	ppbv #	89
45) t-1,3-Dichloropropene	9.28	75	16441	0.166	ppbv	95

Data Path : Z:\VOASRV\HPCHEM1\MSVOA L\DATA\VL072320\  
 Data File : VL035226.D  
 Acq On : 23 Jul 2020 13:18  
 Operator : SY/AP  
 Sample : L3216-14 0.5 PPB LOQ  
 Misc : 400ml/MSVOA L  
 ALS Vial : 1 Sample Multiplier: 1

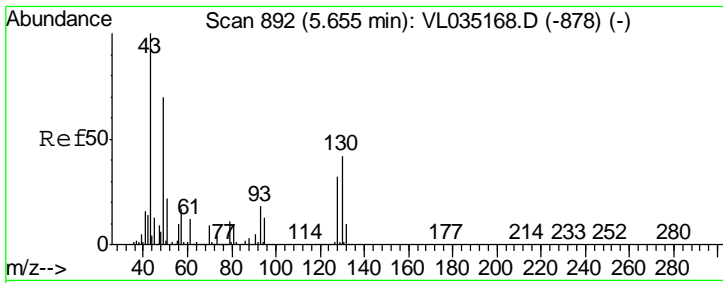
Instrument :  
 MSVOA\_L  
 ClientSampled :

Quant Time: Jul 24 05:53:41 2020  
 Quant Method : Z:\VOASRV\HPCHEM1\MSVOA L\METHODS\VL070820AIR.M  
 Quant Title : AIR ANALYSIS BY METHOD TO-15 Instrument: MSVOA\_LWed Jul 08 07:05:23 2020  
 QLast Update : Wed Jul 08 07:05:23 2020  
 Response via : Initial Calibration

Internal Standards	R.T.	QIon	Response	Conc	Units	Dev(Min)
46) cis-1,3-Dichloropropene	8.72	75	39696	0.338	ppbv #	86
47) 1,1,2-Trichloroethane	9.48	97	52092	0.536	ppbv #	92
48) Dibromochloromethane	10.32	129	74374	0.471	ppbv	100
49) Bromoform	13.06	173	27287	0.197	ppbv #	27
50) 4-Methyl-2-Pentanone	8.76	43	49267	0.209	ppbv #	38
52) Tetrachloroethene	11.23	164	13780	0.165	ppbv #	84
53) Toluene	9.82	91	76535	0.325	ppbv	98
54) 1,2-Dibromoethane	10.62	107	28607	0.198	ppbv	88
56) 1,1,1,2-Tetrachloroethane	12.15	131	41483	0.333	ppbv #	31
57) Chlorobenzene	12.17	112	120028	0.580	ppbv #	95
58) Ethyl Benzene	12.73	91	33973	0.109	ppbv	98
59) m/p-Xylene	13.02	91	78204	0.283	ppbv #	1
60) o-Xylene	13.72	91	115997	0.420	ppbv	95
61) Styrene	13.55	104	25783	0.151	ppbv #	27
62) Isopropylbenzene	14.70	105	175085	0.428	ppbv	98
63) 1,1,2,2-Tetrachloroethane	13.70	83	83396	0.362	ppbv	62
64) n-propylbenzene	15.60	120	39380	0.373	ppbv #	46
65) tert-Butylbenzene	16.78	119	77630	0.211	ppbv #	17
66) Benzyl Chloride	17.02	91	48736	0.372	ppbv #	75
67) sec-Butylbenzene	17.33	105	250001	0.467	ppbv	97
69) p-Isopropyltoluene	17.69	119	168636	0.402	ppbv	95
70) n-Butylbenzene	18.59	91	191825	0.431	ppbv	93
71) 2-Chlorotoluene	15.48	91	73380	0.237	ppbv #	45
72) 4-Ethyltoluene	15.87	105	117596	0.378	ppbv #	94
73) 1,3,5-Trimethylbenzene	16.03	105	115985	0.387	ppbv	87
74) 1,2,4-Trimethylbenzene	16.79	105	155666	0.470	ppbv	94
75) 1,3-Dichlorobenzene	17.03	146	127492	0.608	ppbv	92
76) 1,4-Dichlorobenzene	17.17	146	96249	0.494	ppbv	98
77) 1,2-Dichlorobenzene	17.86	146	65577	0.347	ppbv #	61
78) Hexachloro-1,3-Butadiene	23.41	225	22720	0.152	ppbv #	19
79) Naphthalene	22.25	128	27375	0.128	ppbv #	93
80) Naphthalene,2-methyl-	25.02	142	9047	0.179	ppbv #	89
81) 1,2,4-Trichlorobenzene	21.98	180	20700	0.152	ppbv #	12

(#) = qualifier out of range (m) = manual integration (+) = signals summed

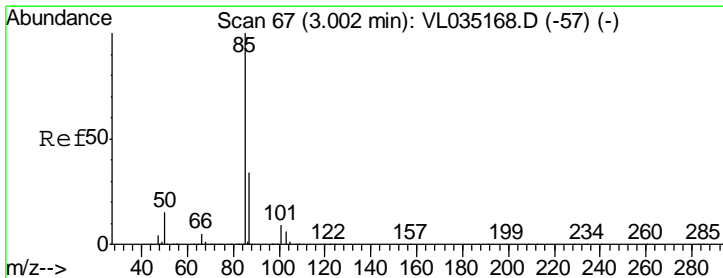
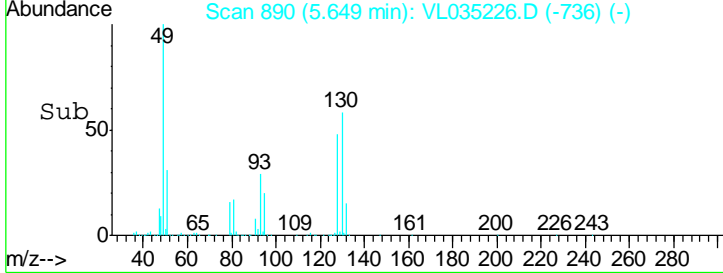
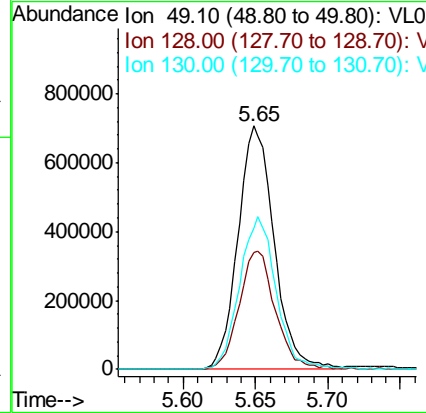
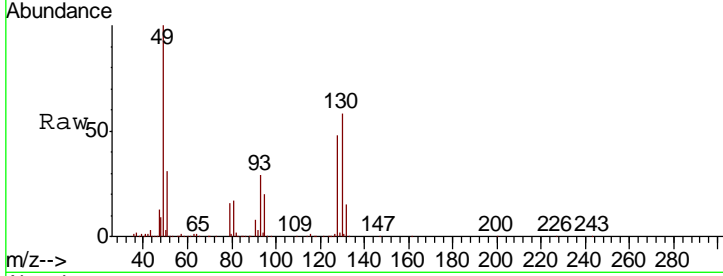




#1  
 Bromochloromethane  
 Concen: 10.000 ppbv  
 RT: 5.65 min Scan# 890  
 Delta R.T. -0.01 min  
 Lab File: VL035226.D  
 Acq: 23 Jul 2020 13:18

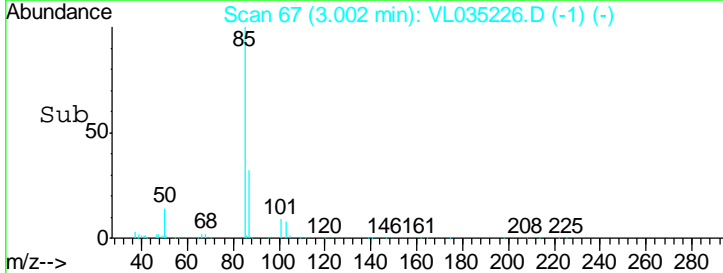
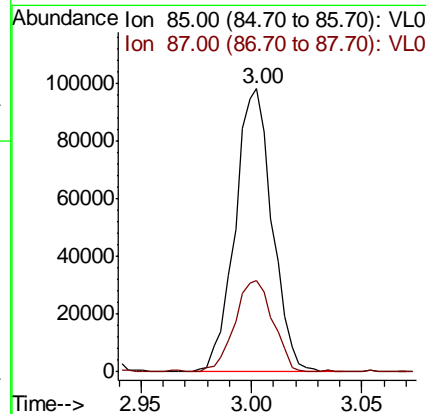
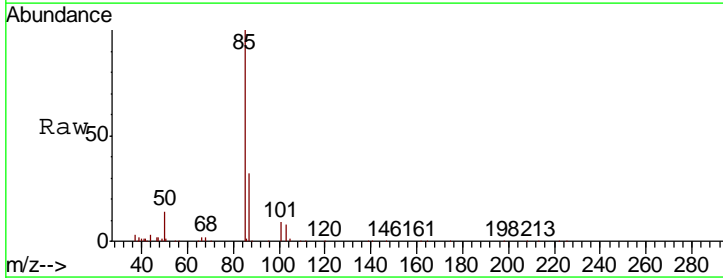
Instrument :  
 MSVOA\_L  
 ClientSampled :

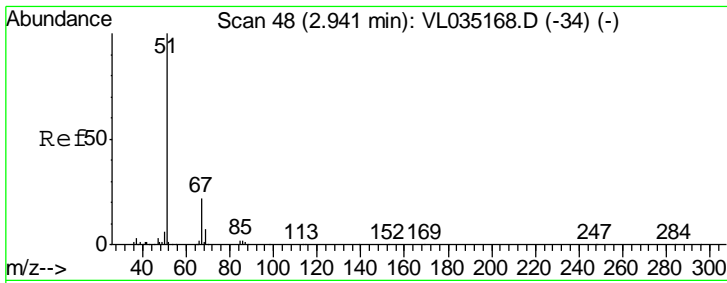
Tgt Ion	Resp	Lower	Upper
49	100		
128	48.6	23.8	71.4
130	63.7	29.9	89.8



#2  
 Dichlorodifluoromethane  
 Concen: 0.669 ppbv  
 RT: 3.00 min Scan# 67  
 Delta R.T. 0.00 min  
 Lab File: VL035226.D  
 Acq: 23 Jul 2020 13:18

Tgt Ion	Resp	Lower	Upper
85	100		
87	32.2	27.0	40.6

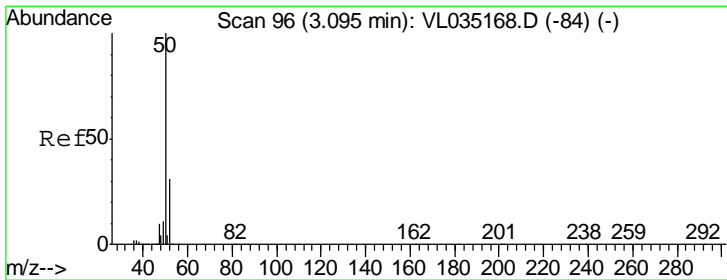
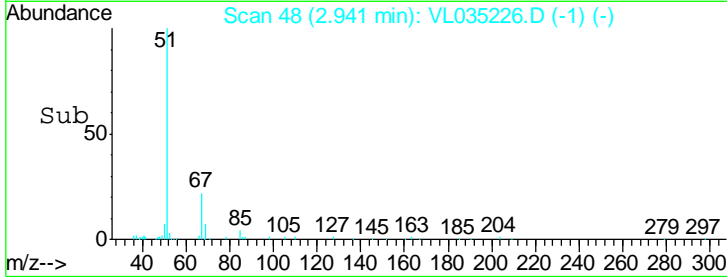
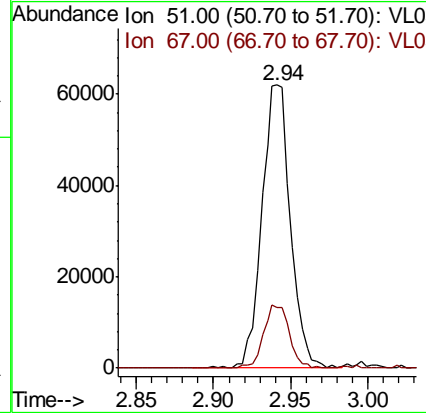
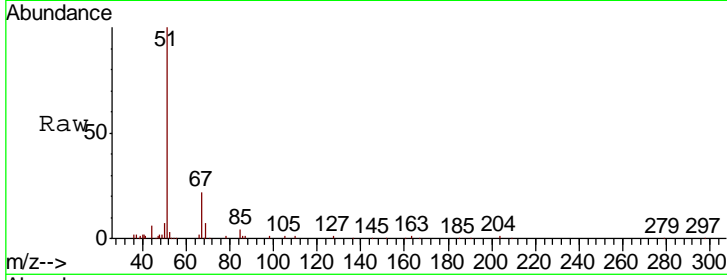




#3  
 Chlorodifluoromethane  
 Concen: 0.587 ppbv  
 RT: 2.94 min Scan# 48  
 Delta R.T. 0.00 min  
 Lab File: VL035226.D  
 Acq: 23 Jul 2020 13:18

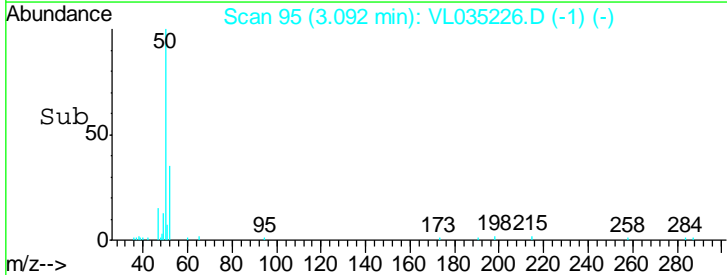
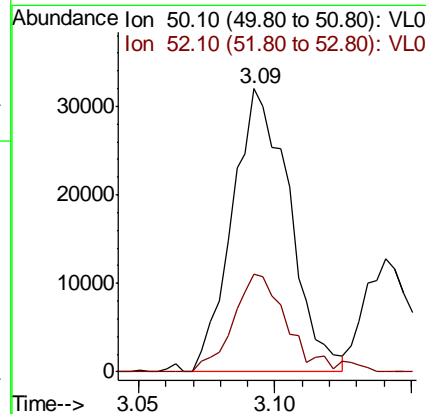
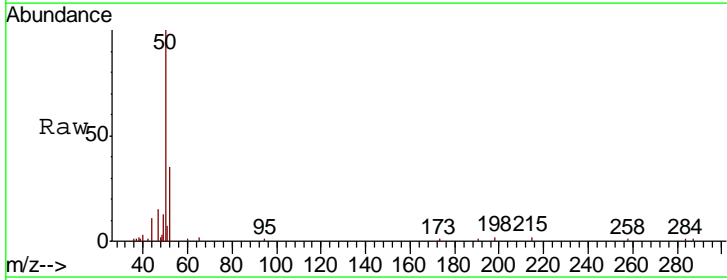
Instrument :  
 MSVOA\_L  
 ClientSampled :

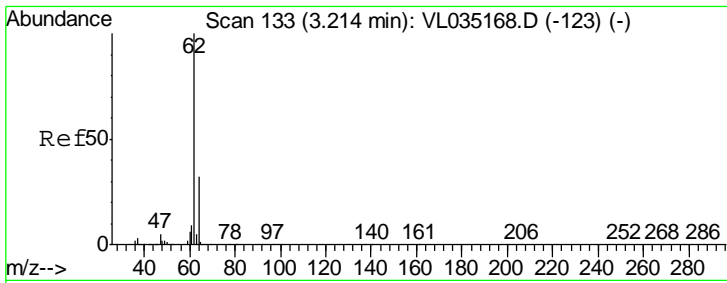
Tgt Ion	Resp	Lower	Upper
51	100		
67	20.1	16.6	24.8



#4  
 Chloromethane  
 Concen: 0.609 ppbv  
 RT: 3.09 min Scan# 95  
 Delta R.T. -0.00 min  
 Lab File: VL035226.D  
 Acq: 23 Jul 2020 13:18

Tgt Ion	Resp	Lower	Upper
50	100		
52	34.8	25.0	37.6

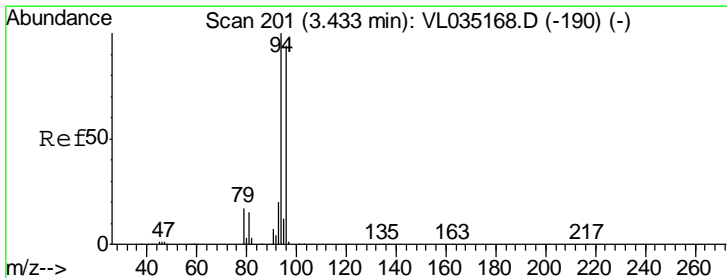
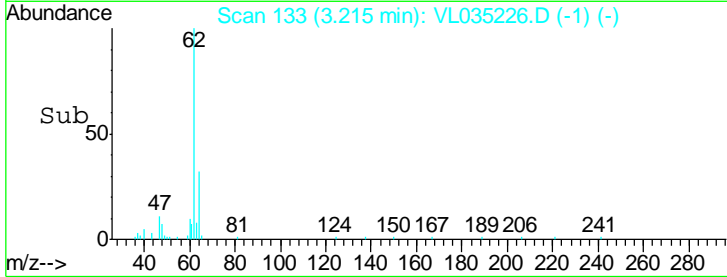
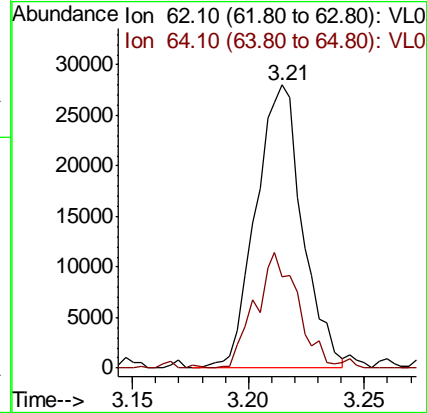
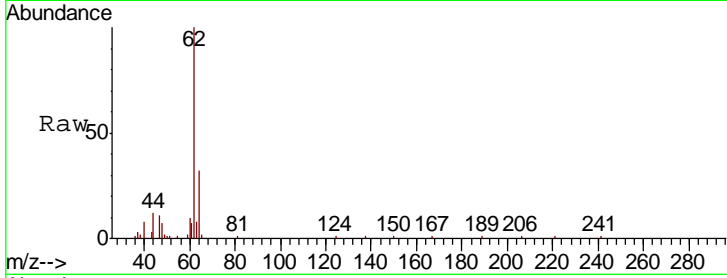




#5  
 Vinyl Chloride  
 Concen: 0.481 ppbv  
 RT: 3.21 min Scan# 133  
 Delta R.T. 0.00 min  
 Lab File: VL035226.D  
 Acq: 23 Jul 2020 13:18

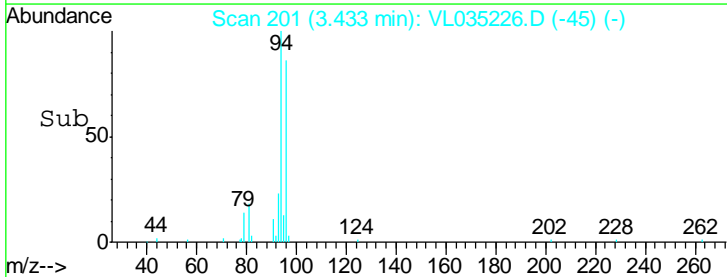
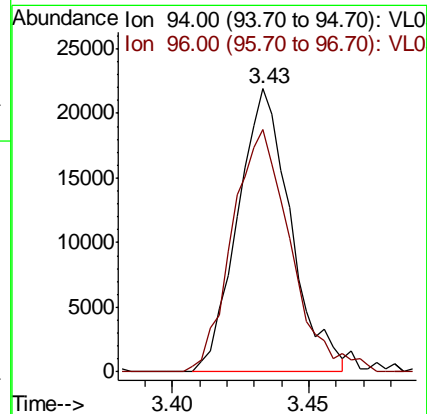
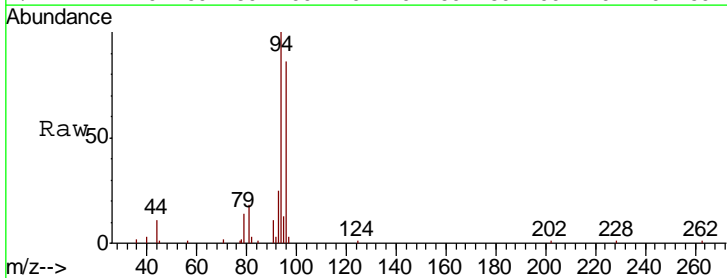
Instrument :  
 MSVOA\_L  
 ClientSampled :

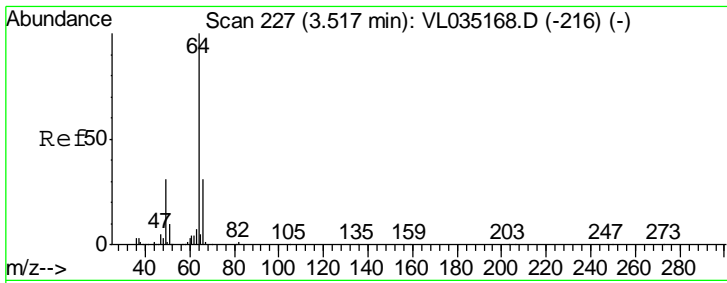
Tgt Ion	Resp	Lower	Upper
62	39221		
64	100	31.4	38.9



#6  
 Bromomethane  
 Concen: 0.635 ppbv  
 RT: 3.43 min Scan# 201  
 Delta R.T. 0.00 min  
 Lab File: VL035226.D  
 Acq: 23 Jul 2020 13:18

Tgt Ion	Resp	Lower	Upper
94	29425		
96	100	83.5	112.2

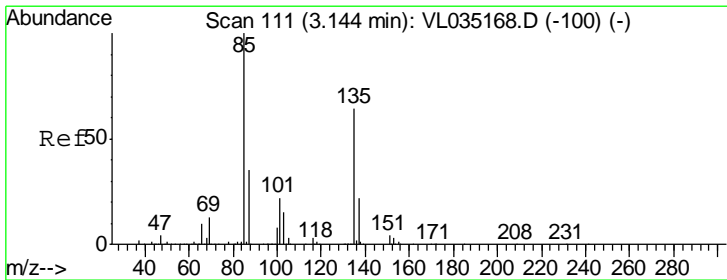
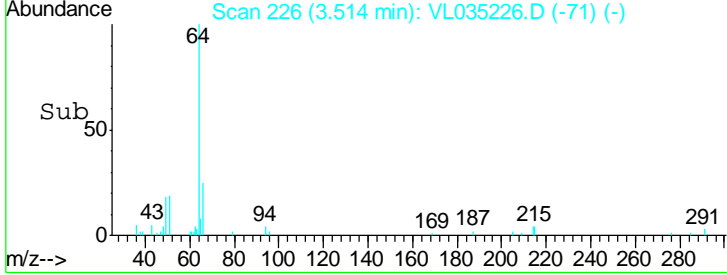
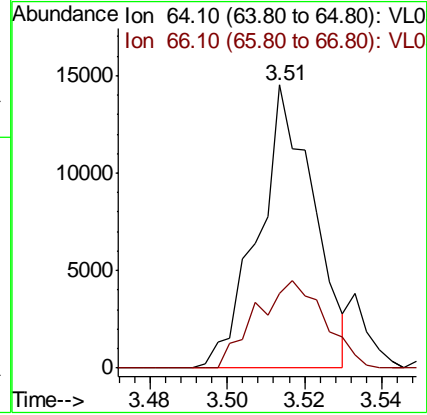
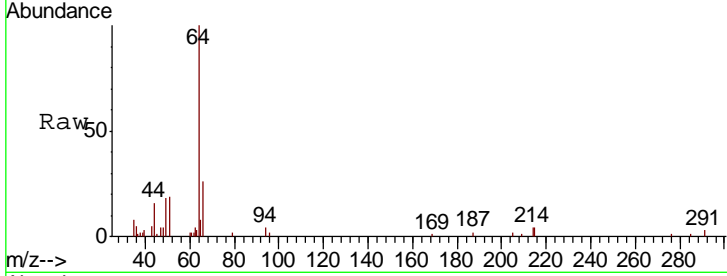




#7  
 Chloroethane  
 Concen: 0.502 ppbv  
 RT: 3.51 min Scan# 226  
 Delta R.T. -0.00 min  
 Lab File: VL035226.D  
 Acq: 23 Jul 2020 13:18

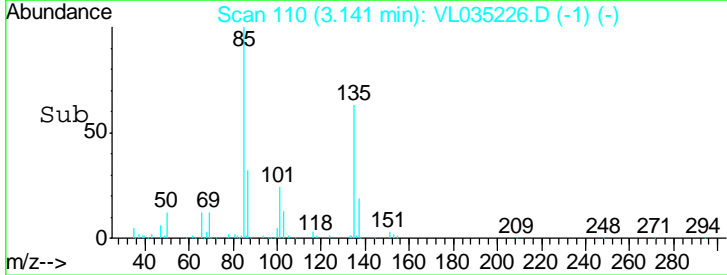
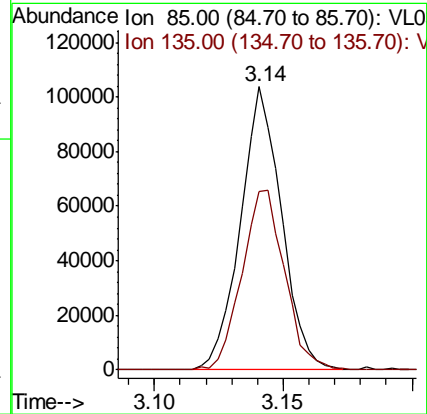
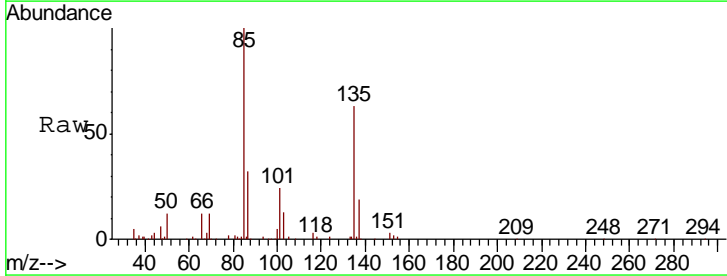
Instrument :  
 MSVOA\_L  
 ClientSampled :

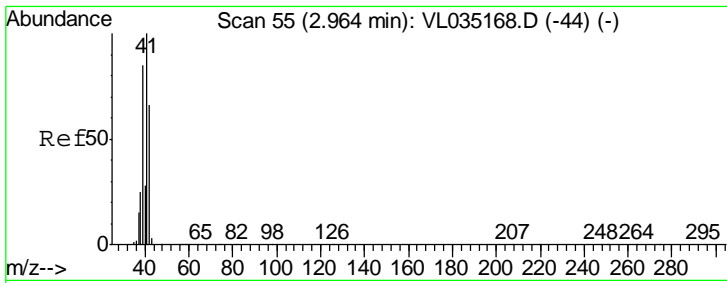
Tgt Ion: 64 Resp: 14482  
 Ion Ratio Lower Upper  
 64 100  
 66 24.5 24.6 36.8#



#8  
 Dichlorotetrafluoroethane  
 Concen: 0.613 ppbv  
 RT: 3.14 min Scan# 110  
 Delta R.T. -0.00 min  
 Lab File: VL035226.D  
 Acq: 23 Jul 2020 13:18

Tgt Ion: 85 Resp: 115472  
 Ion Ratio Lower Upper  
 85 100  
 135 66.0 52.1 78.1

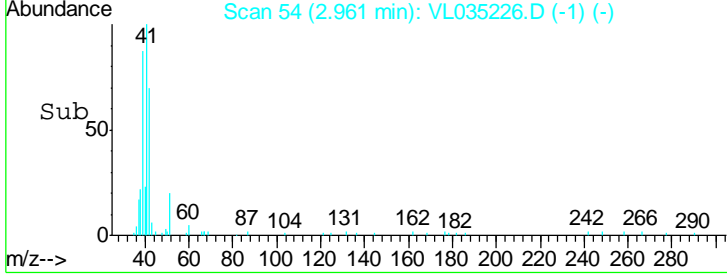
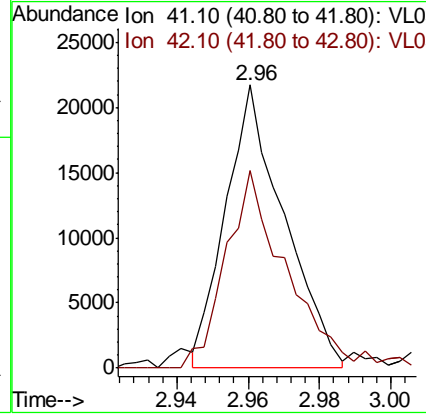
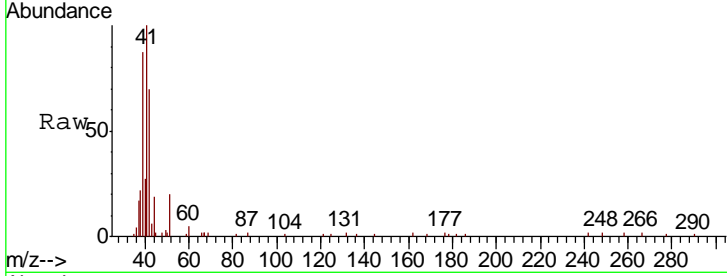




#9  
 Propene  
 Concen: 0.481 ppbv  
 RT: 2.96 min Scan# 54  
 Delta R.T. -0.00 min  
 Lab File: VL035226.D  
 Acq: 23 Jul 2020 13:18

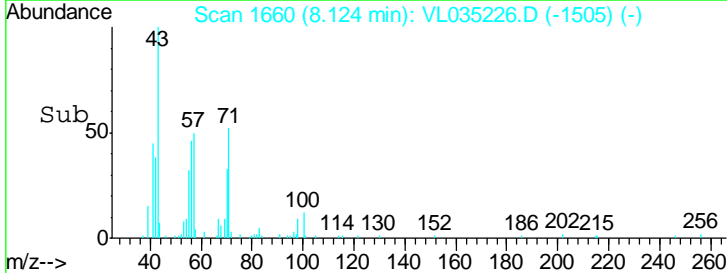
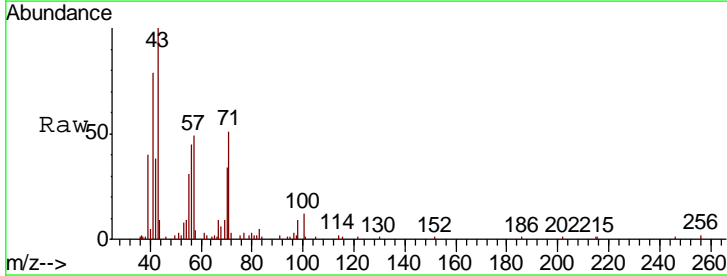
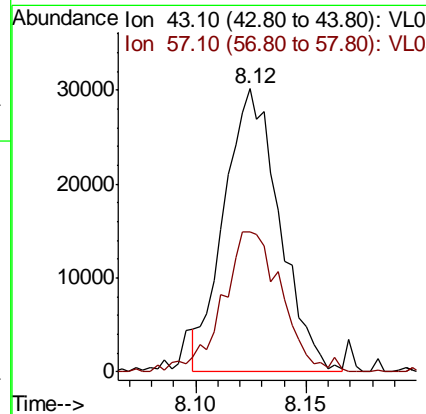
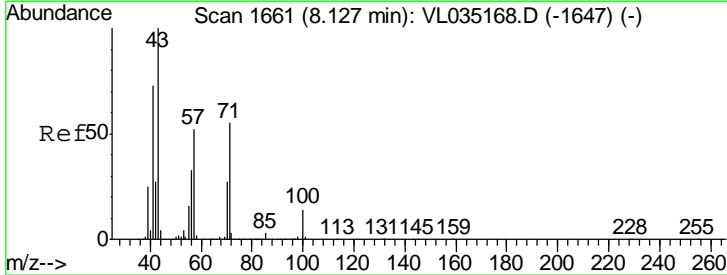
Instrument :  
 MSVOA\_L  
 ClientSampled :

Tgt Ion	Resp	Lower	Upper
41	100		
42	74.4	54.6	81.8

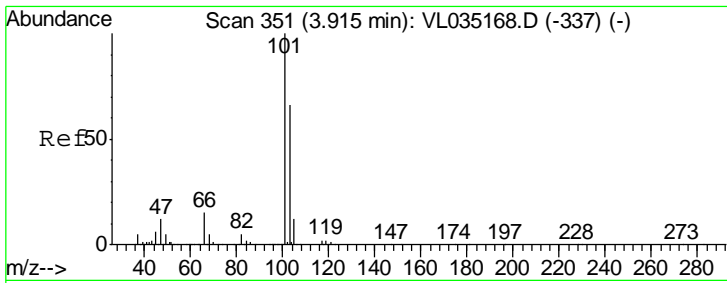


#10  
 Heptane  
 Concen: 0.399 ppbv  
 RT: 8.12 min Scan# 1660  
 Delta R.T. -0.00 min  
 Lab File: VL035226.D  
 Acq: 23 Jul 2020 13:18

Tgt Ion	Resp	Lower	Upper
43	100		
57	53.1	41.8	62.6



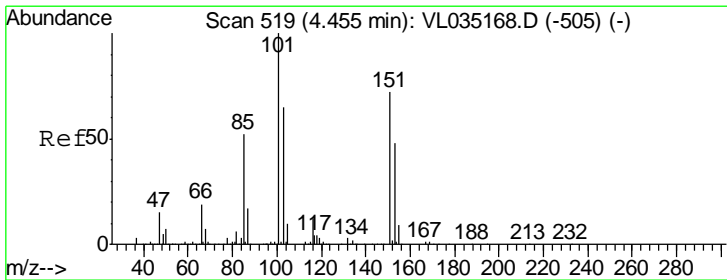
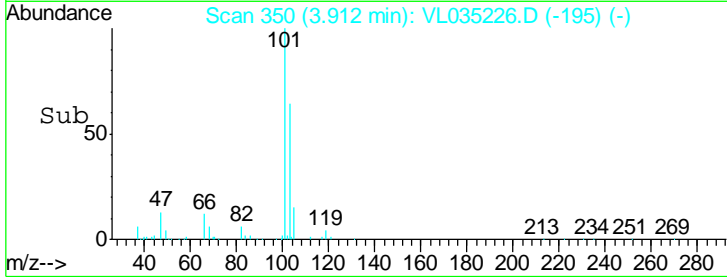
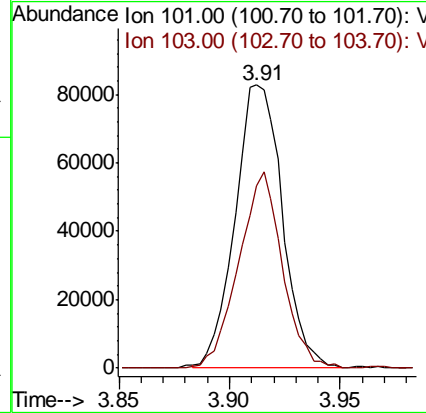
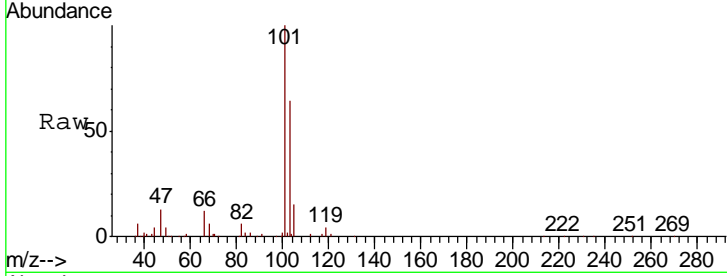




#11  
 Trichlorofluoromethane  
 Concen: 0.636 ppbv  
 RT: 3.91 min Scan# 350  
 Delta R.T. -0.00 min  
 Lab File: VL035226.D  
 Acq: 23 Jul 2020 13:18

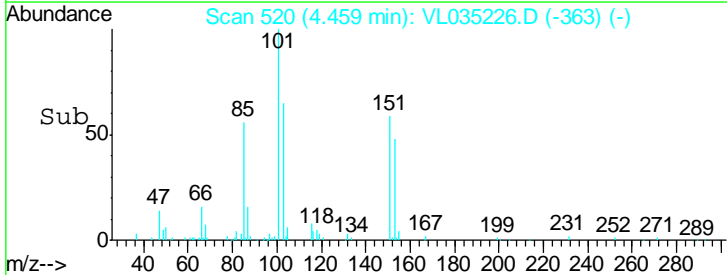
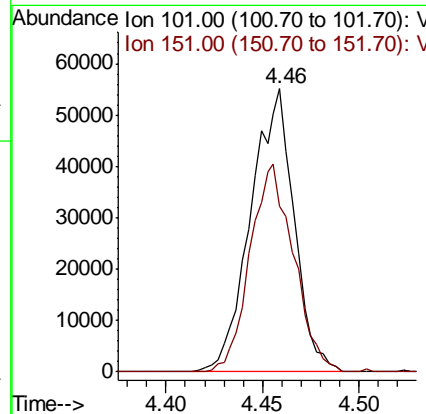
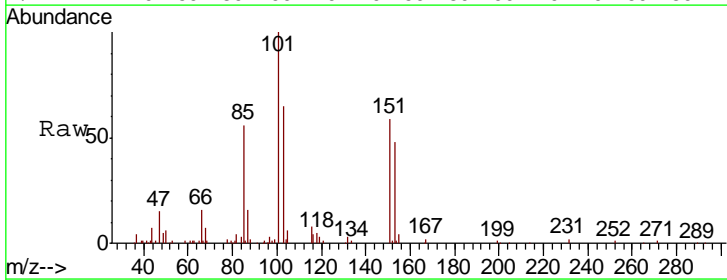
Instrument :  
 MSVOA\_L  
 ClientSampled :

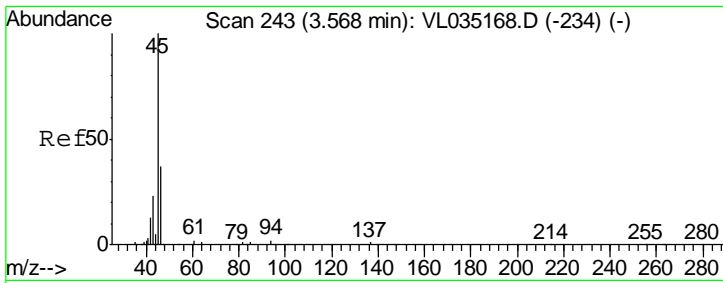
Tgt Ion	Resp	Lower	Upper
101	100		
103	63.9	53.1	79.7



#12  
 1,1,2-Trichlorotrifluoroethane  
 Concen: 0.630 ppbv  
 RT: 4.46 min Scan# 520  
 Delta R.T. 0.00 min  
 Lab File: VL035226.D  
 Acq: 23 Jul 2020 13:18

Tgt Ion	Resp	Lower	Upper
101	100		
151	73.6	57.0	85.4

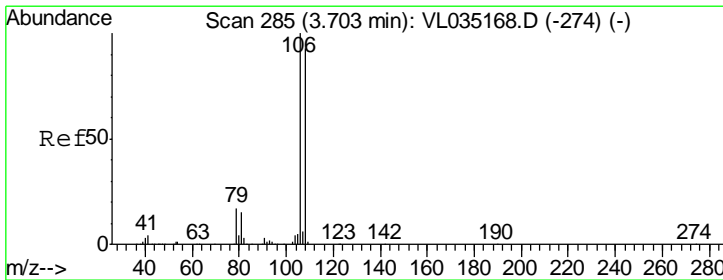
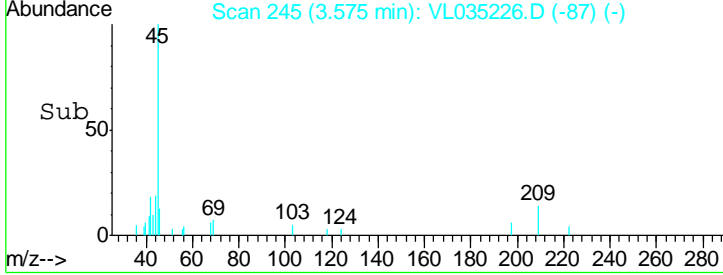
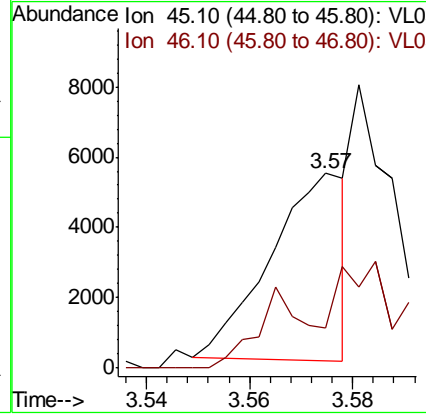
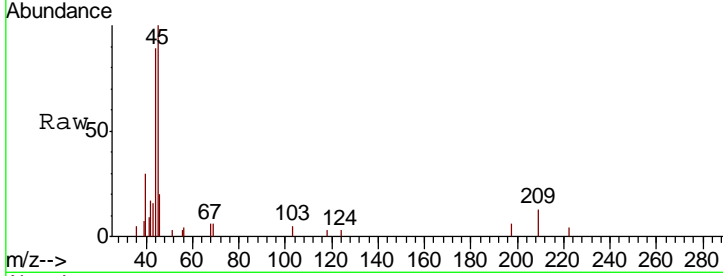




#13  
 Ethanol  
 Concen: 0.330 ppbv  
 RT: 3.57 min Scan# 245  
 Delta R.T. 0.01 min  
 Lab File: VL035226.D  
 Acq: 23 Jul 2020 13:18

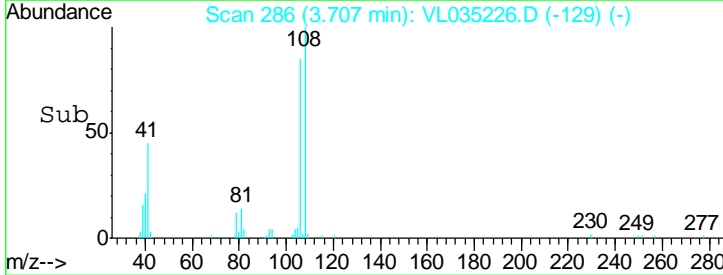
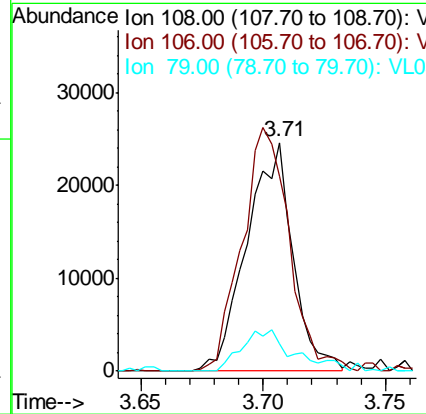
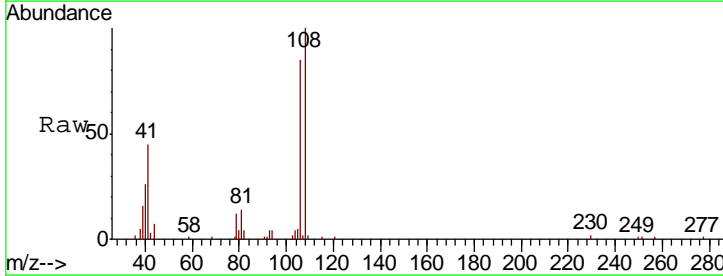
Instrument :  
 MSVOA\_L  
 ClientSampled :

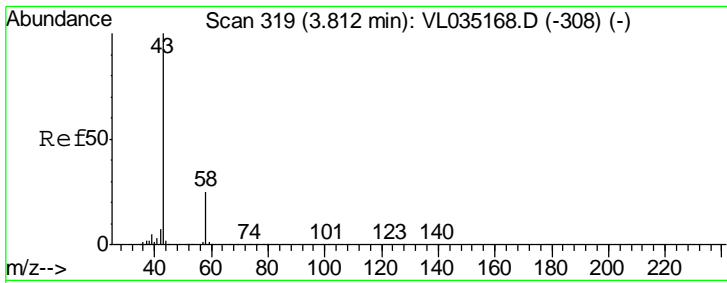
Tgt Ion	Resp	Lower	Upper
45	100		
46	0.0	16.2	65.0#



#14  
 Bromoethene  
 Concen: 0.574 ppbv  
 RT: 3.71 min Scan# 286  
 Delta R.T. 0.00 min  
 Lab File: VL035226.D  
 Acq: 23 Jul 2020 13:18

Tgt Ion	Resp	Lower	Upper
108	100		
106	110.6	86.2	129.2
79	21.2	15.0	22.6

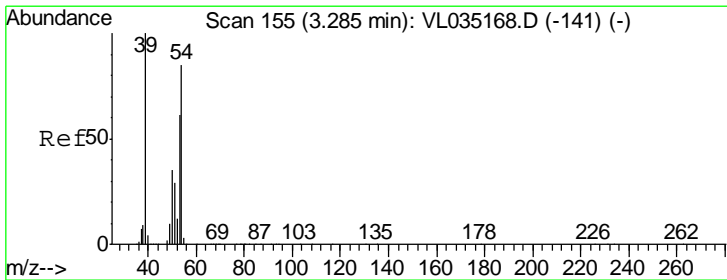
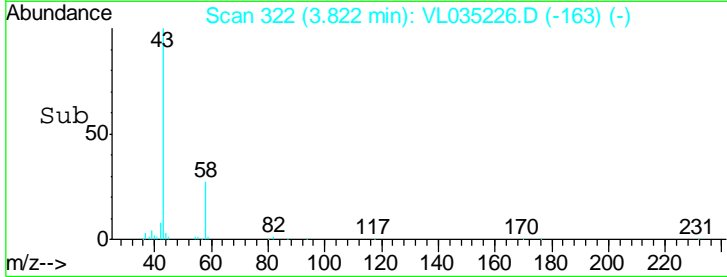
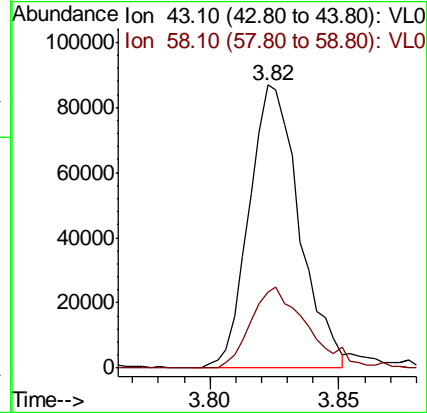
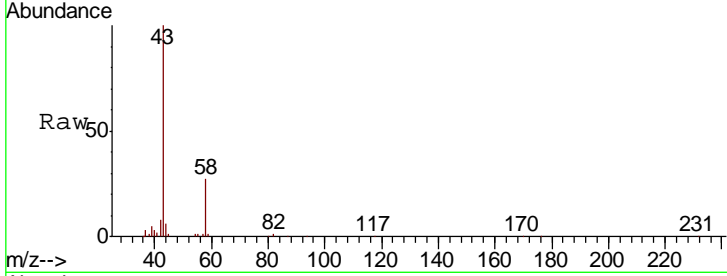




#15  
 Acetone  
 Concen: 0.713 ppbv  
 RT: 3.82 min Scan# 322  
 Delta R.T. 0.01 min  
 Lab File: VL035226.D  
 Acq: 23 Jul 2020 13:18

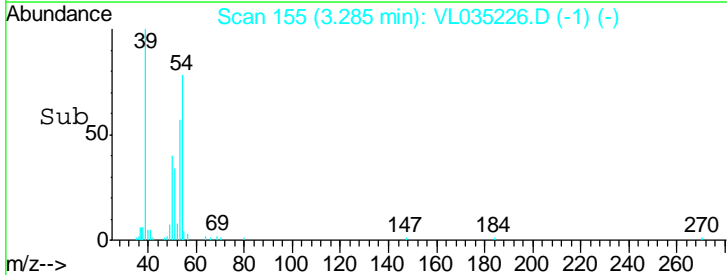
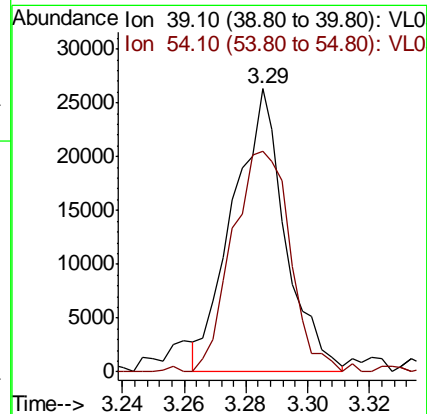
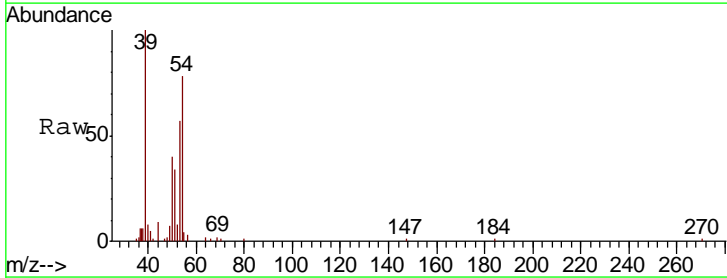
Instrument :  
 MSVOA\_L  
 ClientSampled :

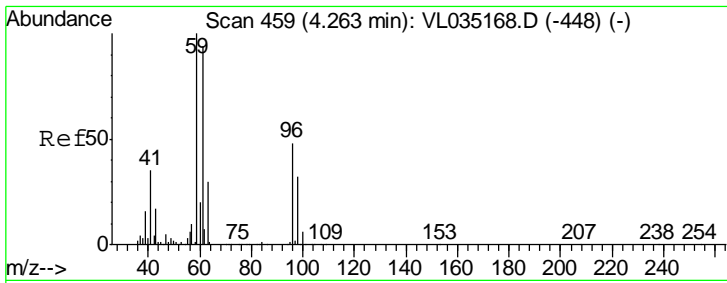
Tgt Ion: 43 Resp: 118329  
 Ion Ratio Lower Upper  
 43 100  
 58 32.5 21.3 31.9#



#16  
 1,3-Butadiene  
 Concen: 0.487 ppbv  
 RT: 3.29 min Scan# 155  
 Delta R.T. 0.00 min  
 Lab File: VL035226.D  
 Acq: 23 Jul 2020 13:18

Tgt Ion: 39 Resp: 31062  
 Ion Ratio Lower Upper  
 39 100  
 54 86.4 67.2 100.8

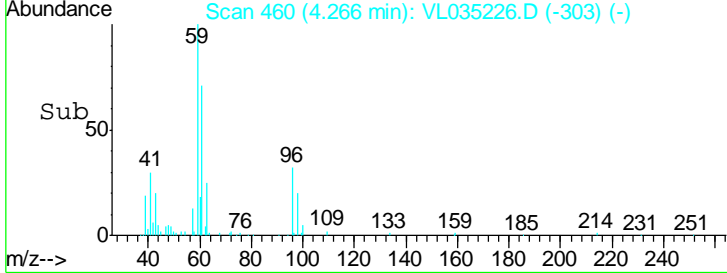
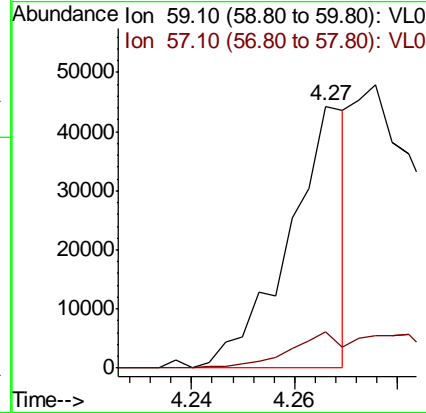
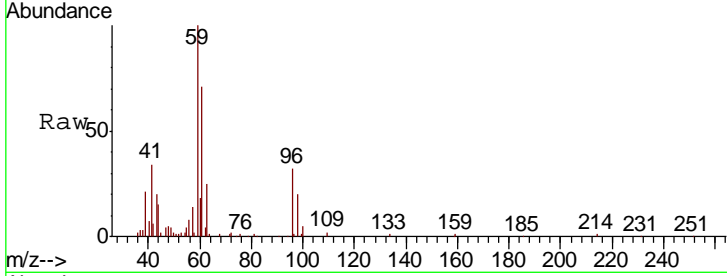




#17  
 tert-Butyl alcohol  
 Concen: 0.236 ppbv  
 RT: 4.27 min Scan# 460  
 Delta R.T. 0.00 min  
 Lab File: VL035226.D  
 Acq: 23 Jul 2020 13:18

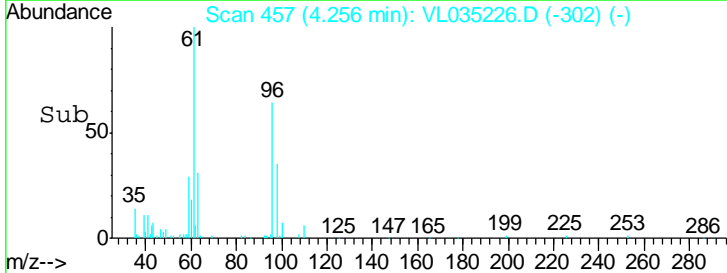
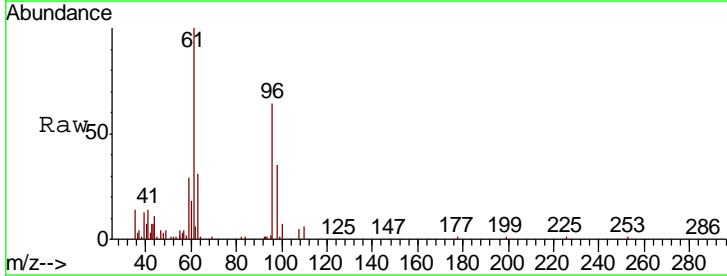
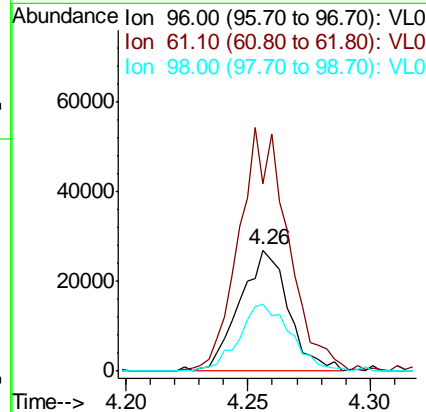
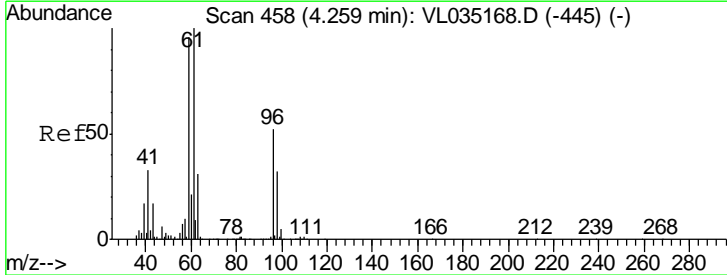
Instrument :  
 MSVOA\_L  
 ClientSampled :

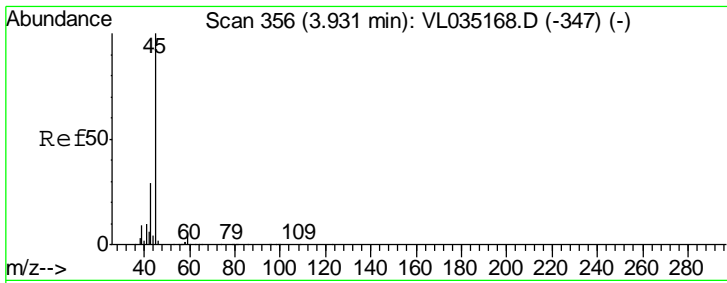
Tgt Ion	Resp	Lower	Upper
59	100		
57	33.5	8.6	12.8#



#18  
 1,1-Dichloroethene  
 Concen: 0.615 ppbv  
 RT: 4.26 min Scan# 457  
 Delta R.T. -0.00 min  
 Lab File: VL035226.D  
 Acq: 23 Jul 2020 13:18

Tgt Ion	Resp	Lower	Upper
96	100		
61	153.0	152.9	229.3
98	54.3	48.7	73.1

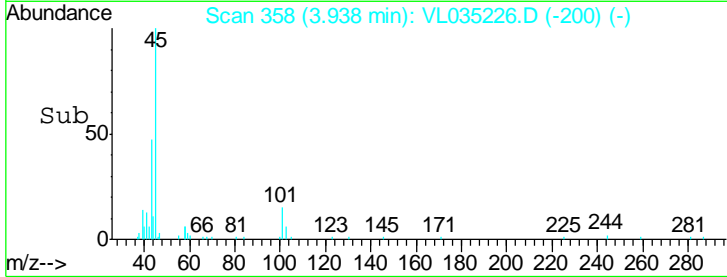
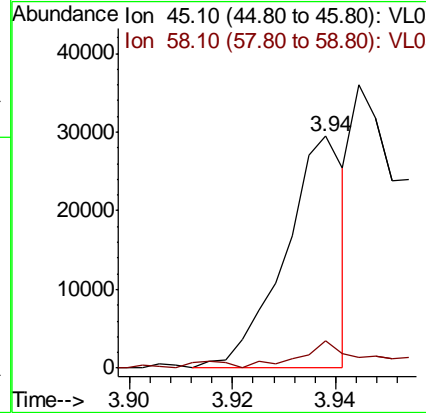
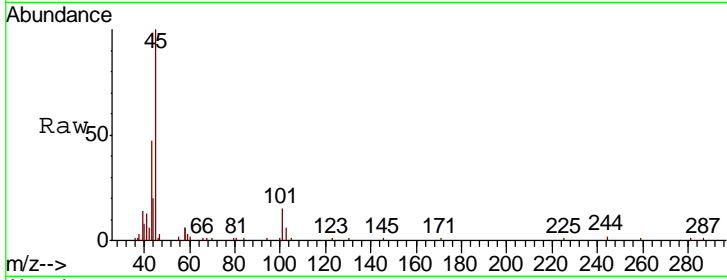




#19  
 Isopropyl Alcohol  
 Concen: 0.237 ppbv  
 RT: 3.94 min Scan# 358  
 Delta R.T. 0.01 min  
 Lab File: VL035226.D  
 Acq: 23 Jul 2020 13:18

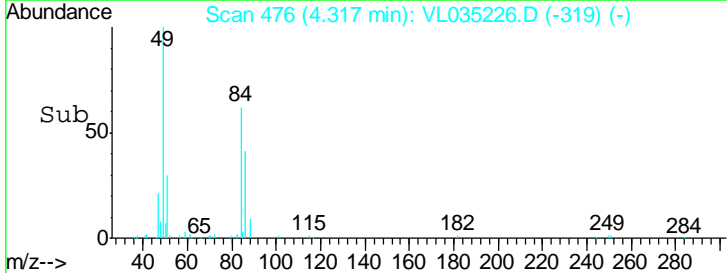
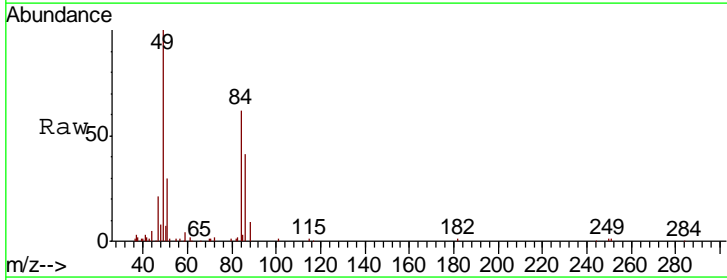
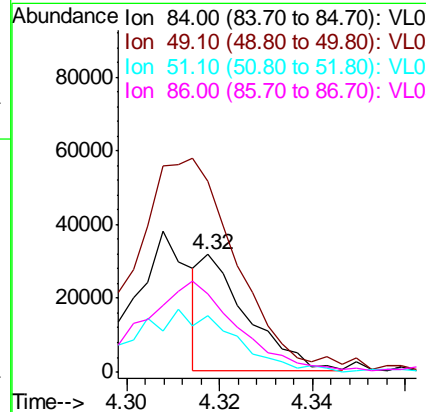
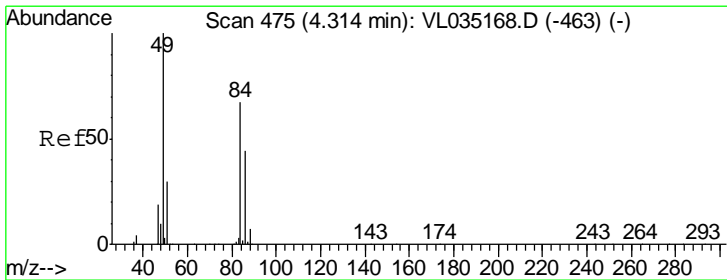
Instrument :  
 MSVOA\_L  
 ClientSampled :

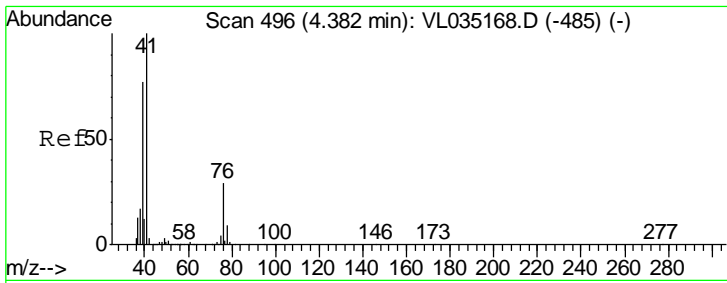
Tgt Ion	Resp	Lower	Upper
45	100		
58	17.3	2.1	3.1#



#20  
 Methylene Chloride  
 Concen: 0.301 ppbv  
 RT: 4.32 min Scan# 476  
 Delta R.T. 0.00 min  
 Lab File: VL035226.D  
 Acq: 23 Jul 2020 13:18

Tgt Ion	Resp	Lower	Upper
84	100		
49	158.7	119.4	179.0
51	50.0	36.6	55.0
86	65.1	52.5	78.7

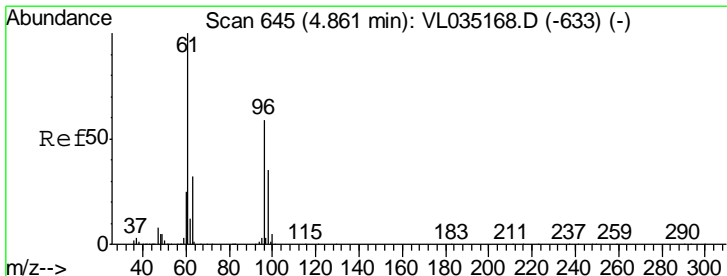
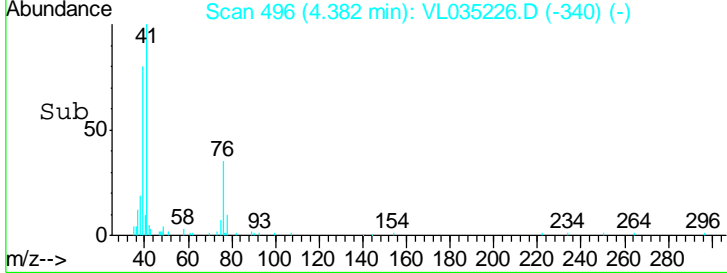
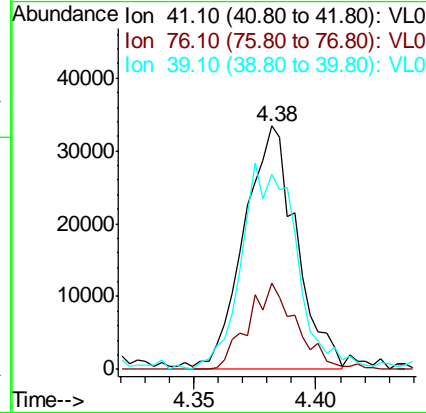
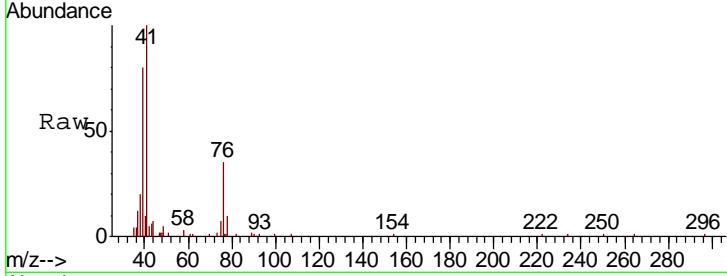




#21  
 Allyl Chloride  
 Concen: 0.512 ppbv  
 RT: 4.38 min Scan# 496  
 Delta R.T. 0.00 min  
 Lab File: VL035226.D  
 Acq: 23 Jul 2020 13:18

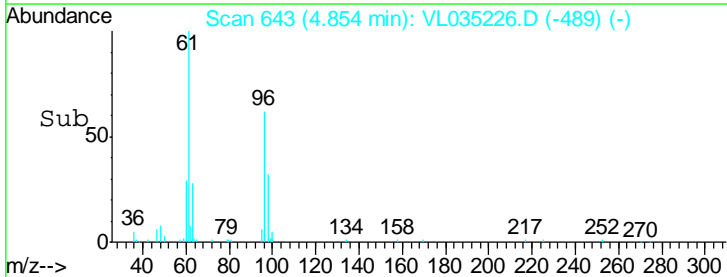
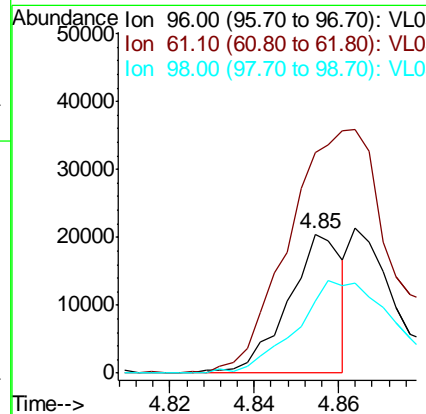
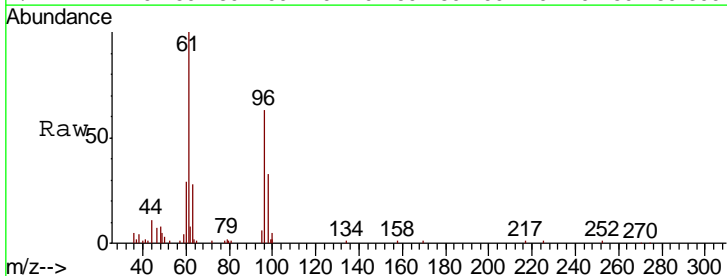
Instrument :  
 MSVOA\_L  
 ClientSampled :

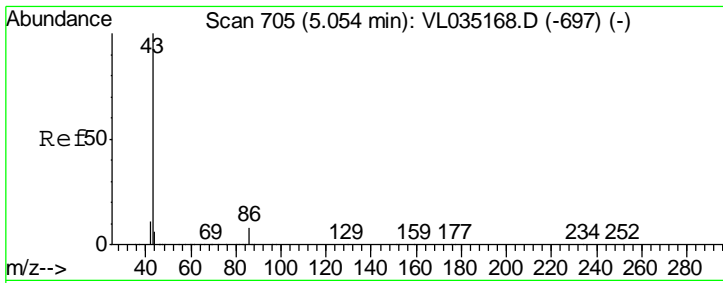
Tgt Ion	Resp	Lower	Upper
41	100		
76	33.0	23.5	35.3
39	92.7	63.4	95.0



#22  
 trans-1,2-Dichloroethene  
 Concen: 0.302 ppbv  
 RT: 4.85 min Scan# 643  
 Delta R.T. -0.01 min  
 Lab File: VL035226.D  
 Acq: 23 Jul 2020 13:18

Tgt Ion	Resp	Lower	Upper
96	100		
61	157.2	136.5	204.7
98	51.8	47.5	71.3

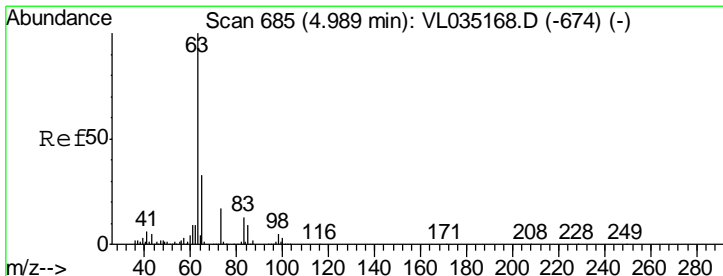
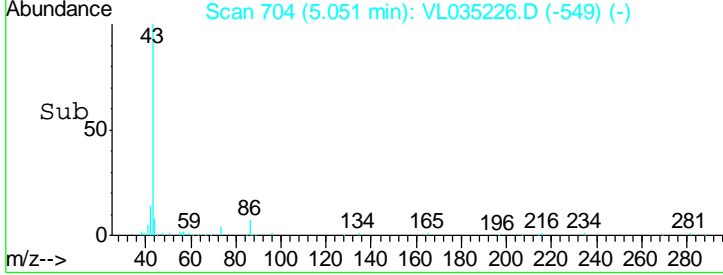
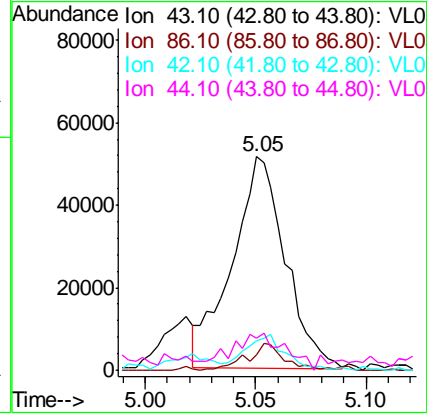
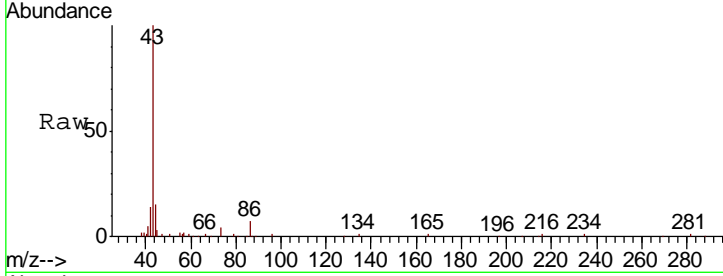




#23  
 Vinyl Acetate  
 Concen: 0.480 ppbv  
 RT: 5.05 min Scan# 704  
 Delta R.T. -0.00 min  
 Lab File: VL035226.D  
 Acq: 23 Jul 2020 13:18

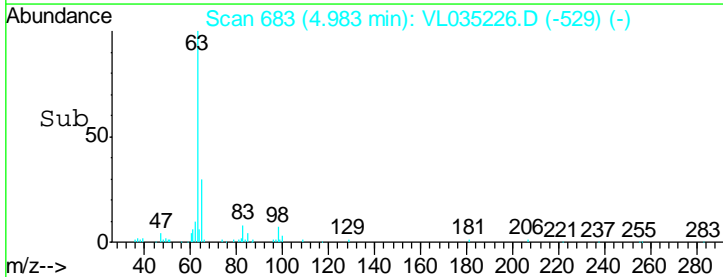
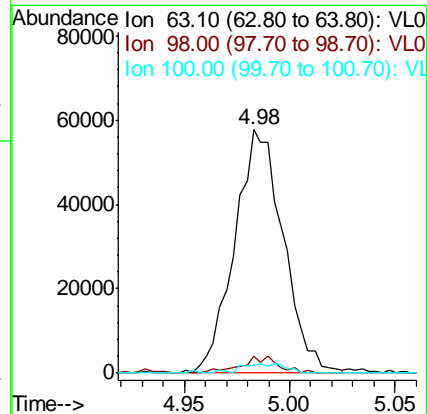
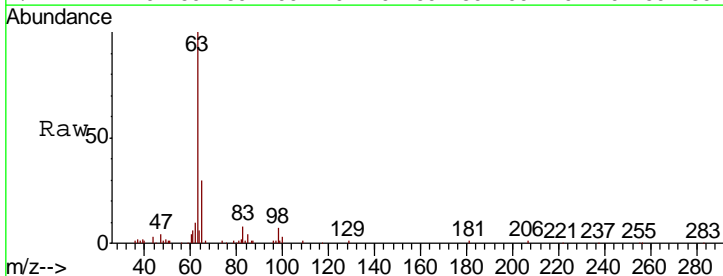
Instrument :  
 MSVOA\_L  
 ClientSampled :

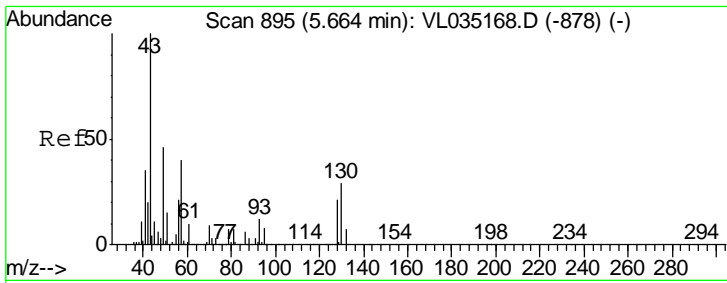
Tgt Ion	Resp	Lower	Upper
43	100		
86	6.5	6.2	9.2
42	11.7	9.1	13.7
44	11.1	4.6	6.8#



#24  
 1,1-Dichloroethane  
 Concen: 0.594 ppbv  
 RT: 4.98 min Scan# 683  
 Delta R.T. -0.01 min  
 Lab File: VL035226.D  
 Acq: 23 Jul 2020 13:18

Tgt Ion	Resp	Lower	Upper
63	100		
98	7.1	2.4	7.1#
100	3.4	1.4	4.0

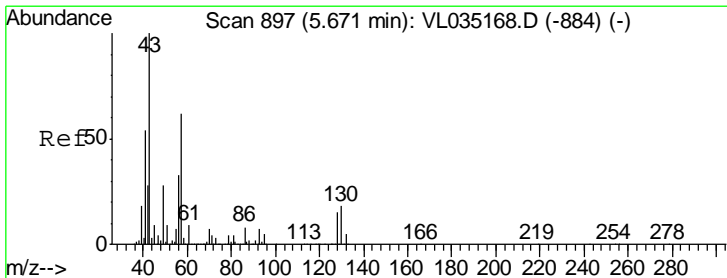
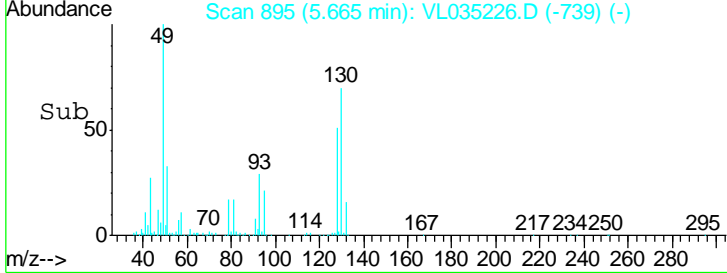
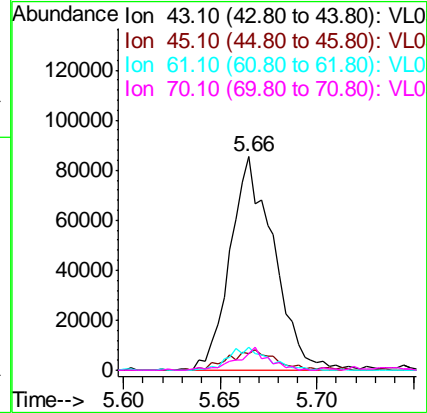
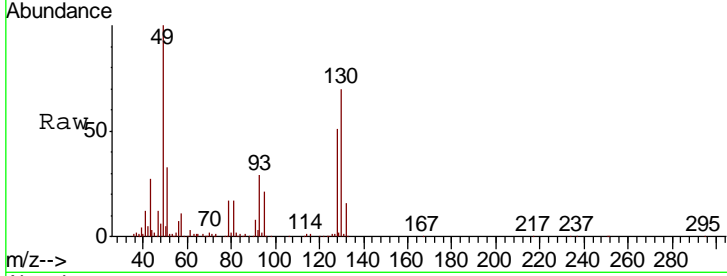




#25  
Ethyl Acetate  
Concen: 0.519 ppbv  
RT: 5.66 min Scan# 895  
Delta R.T. 0.00 min  
Lab File: VL035226.D  
Acq: 23 Jul 2020 13:18

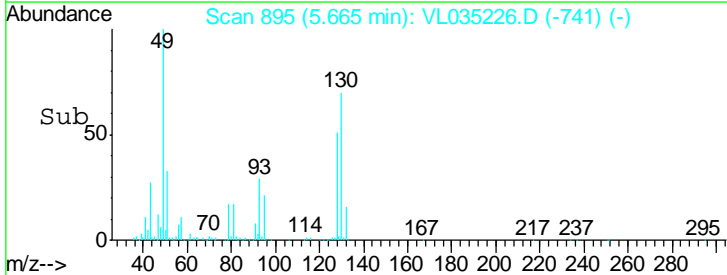
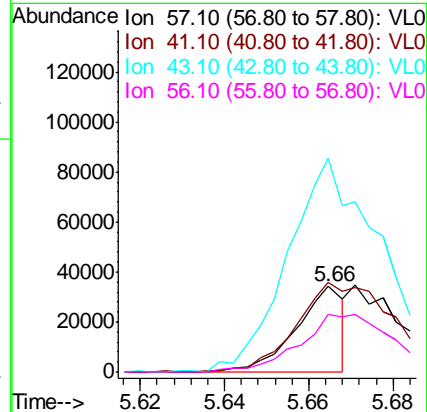
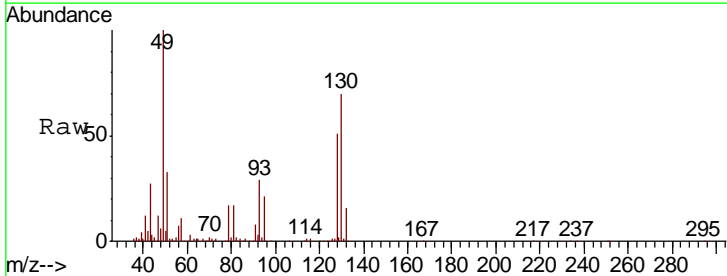
Instrument :  
MSVOA\_L  
ClientSampled :

Tgt Ion	Resp	Lower	Upper
43	133621		
45	11.2	8.5	12.7
61	10.1	8.1	12.1
70	7.6	6.3	9.5

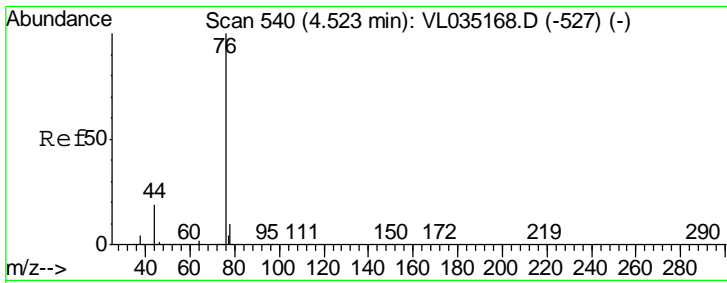


#26  
Hexane  
Concen: 0.238 ppbv  
RT: 5.66 min Scan# 895  
Delta R.T. -0.01 min  
Lab File: VL035226.D  
Acq: 23 Jul 2020 13:18

Tgt Ion	Resp	Lower	Upper
57	27060		
41	220.4	72.9	109.3#
43	499.2	179.5	269.3#
56	0.0	42.9	64.3#



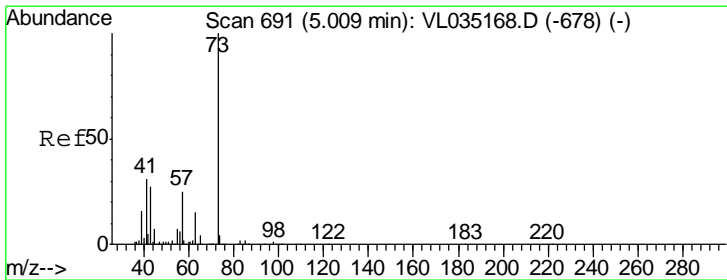
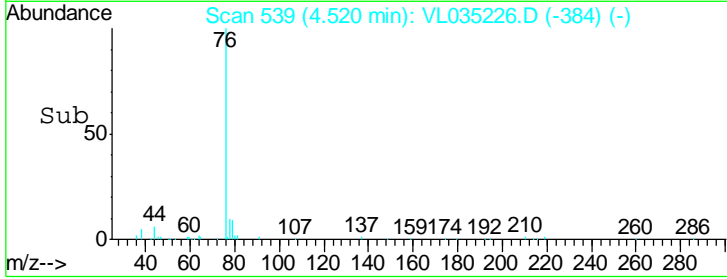
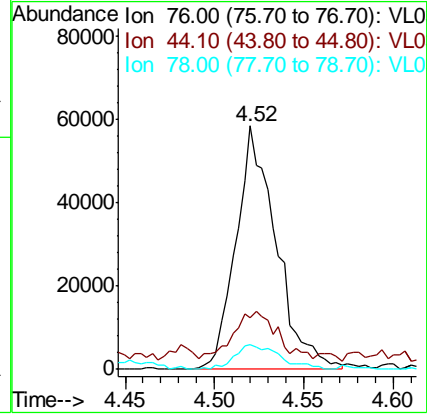
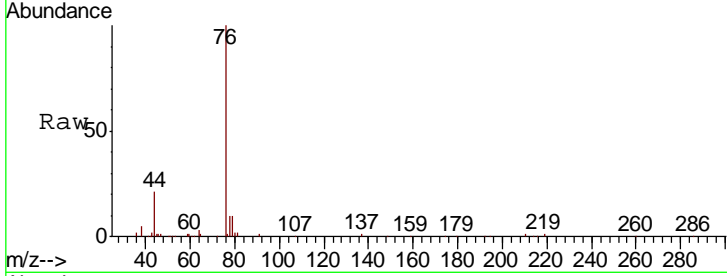




#27  
 Carbon Disulfide  
 Concen: 0.570 ppbv  
 RT: 4.52 min Scan# 539  
 Delta R.T. -0.00 min  
 Lab File: VL035226.D  
 Acq: 23 Jul 2020 13:18

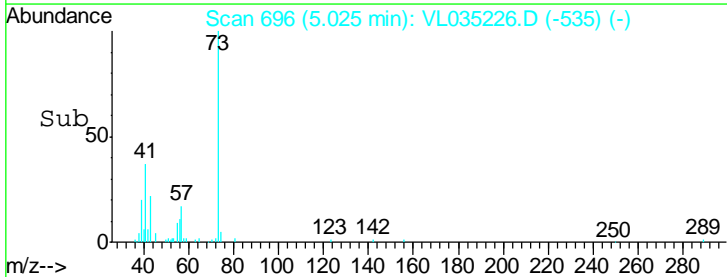
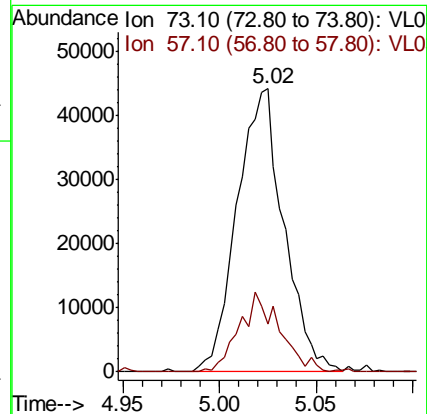
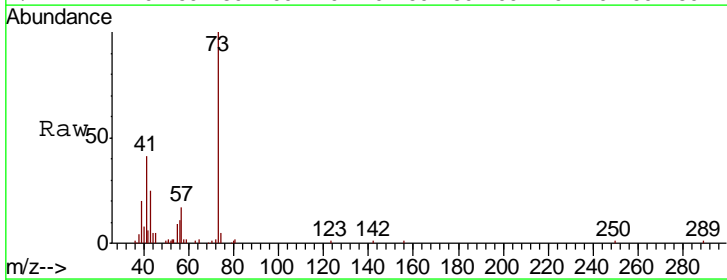
Instrument :  
 MSVOA\_L  
 ClientSampled :

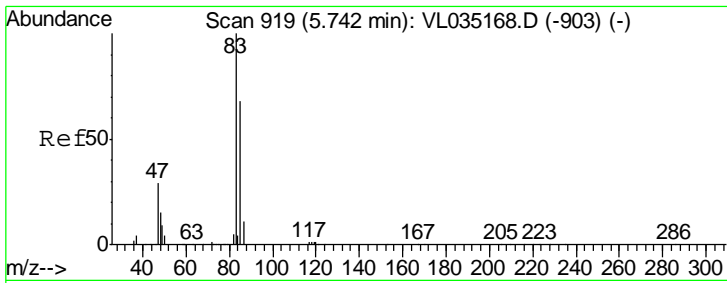
Tgt Ion	Resp	Lower	Upper
76	90453		
44	24.3	14.9	22.3#
78	11.5	7.5	11.3#



#28  
 Methyl tert-Butyl Ether  
 Concen: 0.430 ppbv  
 RT: 5.02 min Scan# 696  
 Delta R.T. 0.02 min  
 Lab File: VL035226.D  
 Acq: 23 Jul 2020 13:18

Tgt Ion	Resp	Lower	Upper
73	74434		
57	24.4	18.1	27.1

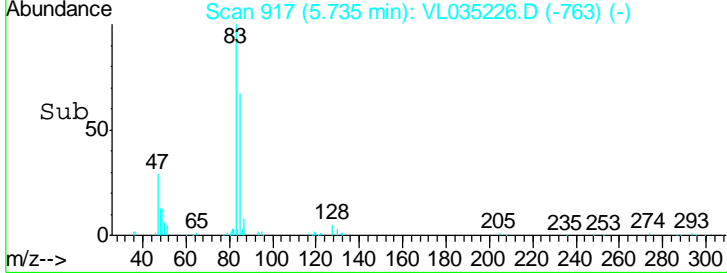
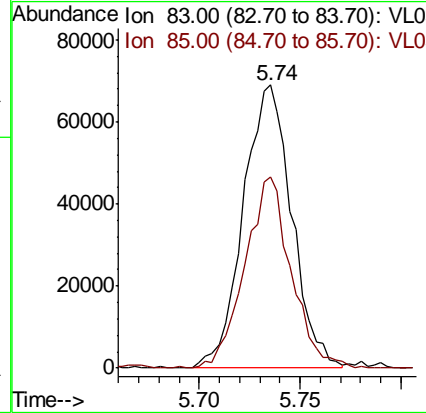
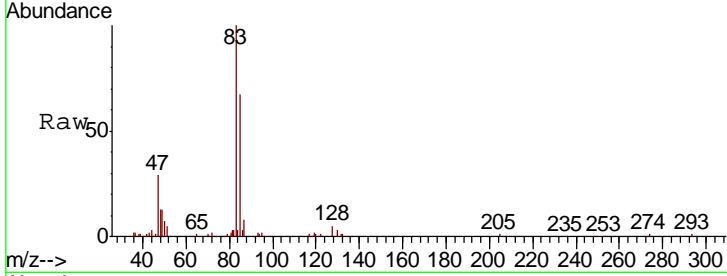




#29  
 Chloroform  
 Concen: 0.609 ppbv  
 RT: 5.74 min Scan# 917  
 Delta R.T. -0.01 min  
 Lab File: VL035226.D  
 Acq: 23 Jul 2020 13:18

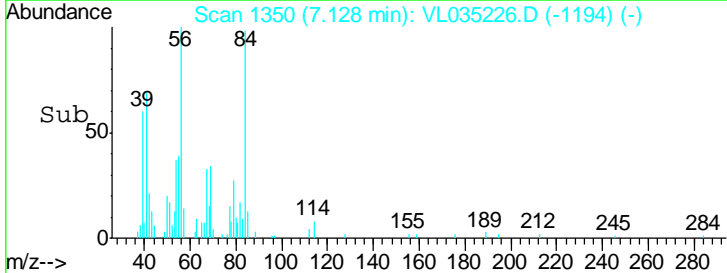
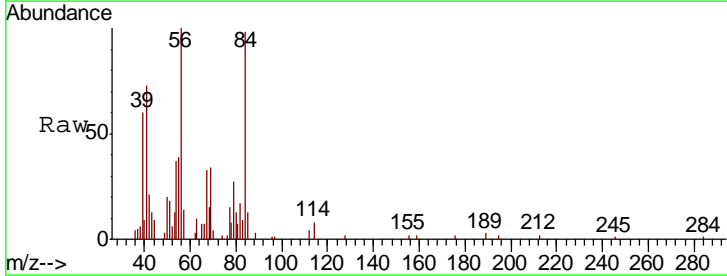
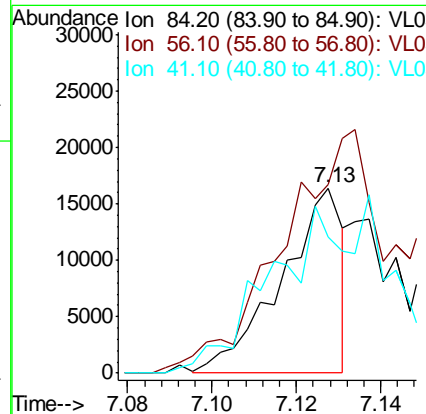
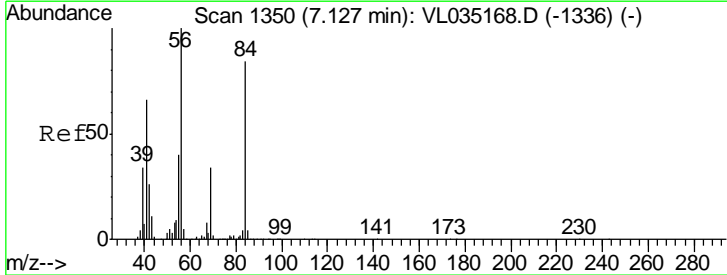
Instrument :  
 MSVOA\_L  
 ClientSampled :

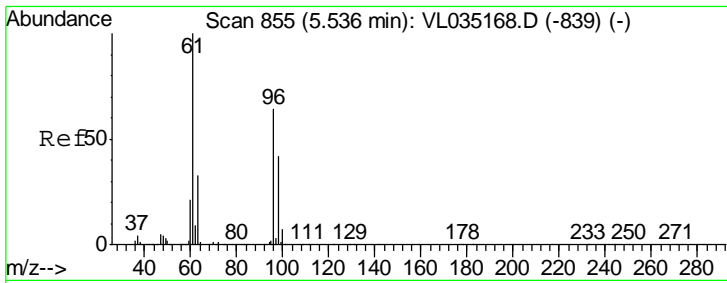
Tgt Ion	Resp	Lower	Upper
83	115936		
85	67.3	54.3	81.5



#30  
 Cyclohexane  
 Concen: 0.195 ppbv  
 RT: 7.13 min Scan# 1350  
 Delta R.T. 0.00 min  
 Lab File: VL035226.D  
 Acq: 23 Jul 2020 13:18

Tgt Ion	Resp	Lower	Upper
84	16352		
56	0.0	105.6	158.4#
41	0.0	64.9	97.3#

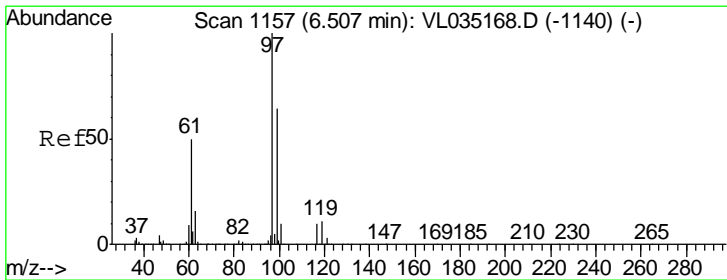
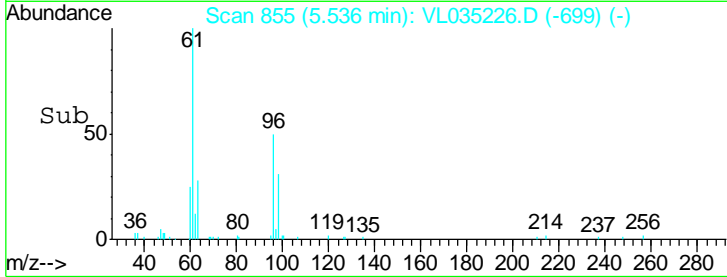
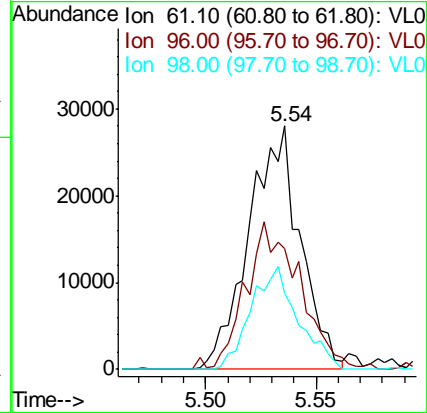
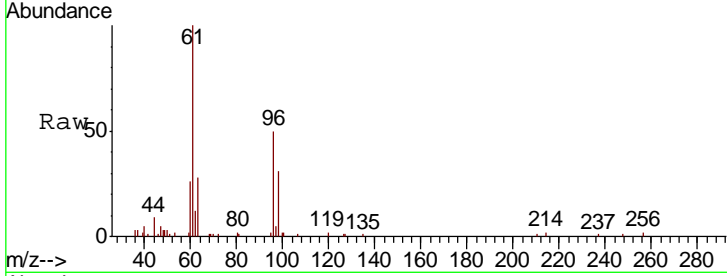




#31  
 cis-1,2-Dichloroethene  
 Concen: 0.423 ppbv  
 RT: 5.54 min Scan# 855  
 Delta R.T. 0.00 min  
 Lab File: VL035226.D  
 Acq: 23 Jul 2020 13:18

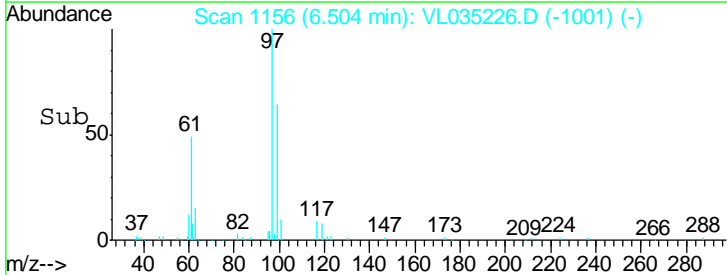
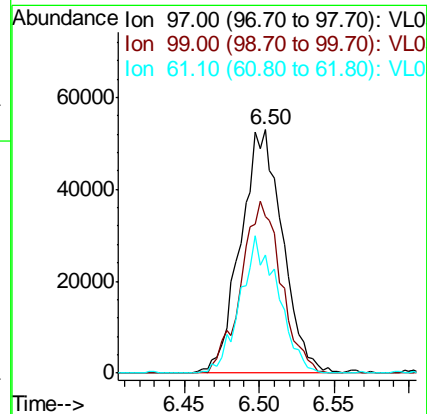
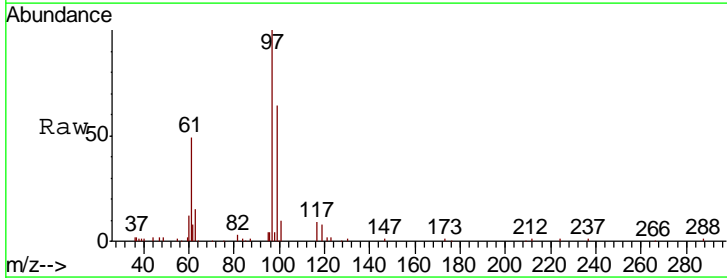
Instrument :  
 MSVOA\_L  
 ClientSampled :

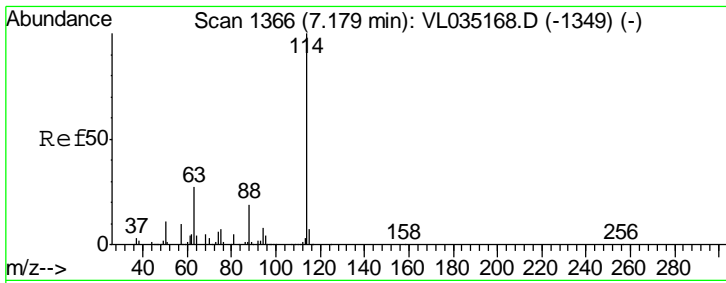
Tgt Ion	Resp	Lower	Upper
61	100		
96	54.7	51.3	76.9
98	31.1	33.8	50.8#



#32  
 1,1,1-Trichloroethane  
 Concen: 0.543 ppbv  
 RT: 6.50 min Scan# 1156  
 Delta R.T. -0.00 min  
 Lab File: VL035226.D  
 Acq: 23 Jul 2020 13:18

Tgt Ion	Resp	Lower	Upper
97	100		
99	67.6	51.2	76.8
61	50.9	40.9	61.3

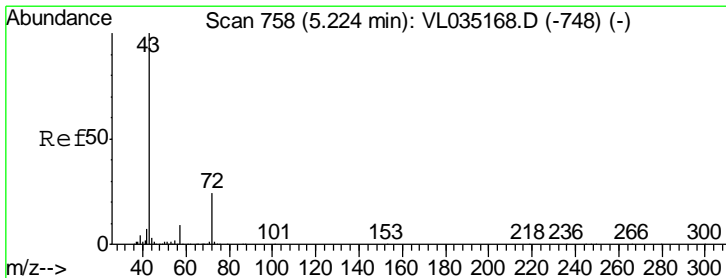
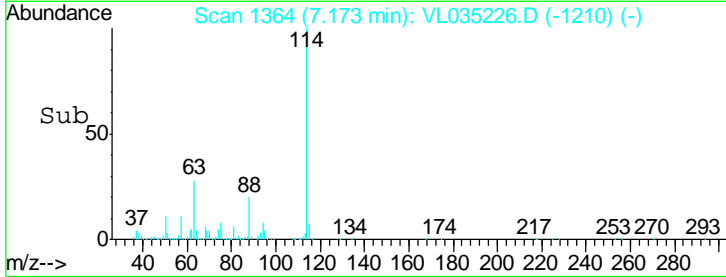
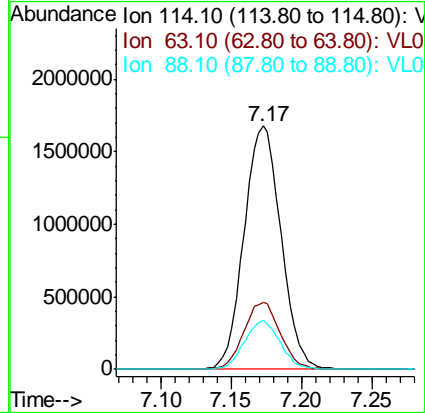
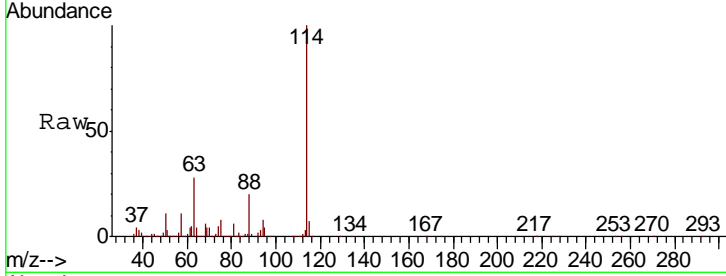




#33  
 1,4-Difluorobenzene  
 Concen: 10.000 ppbv  
 RT: 7.17 min Scan# 1364  
 Delta R.T. -0.01 min  
 Lab File: VL035226.D  
 Acq: 23 Jul 2020 13:18

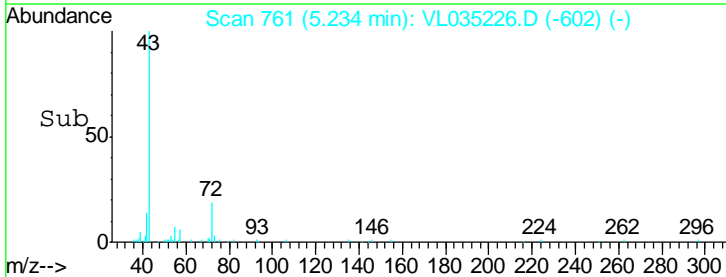
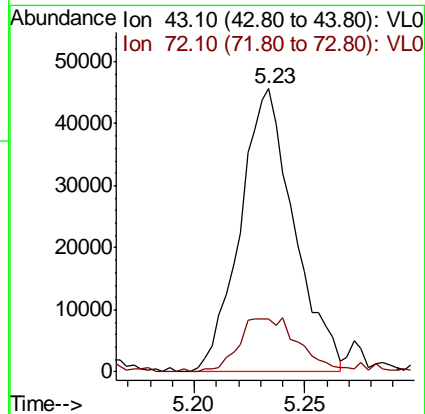
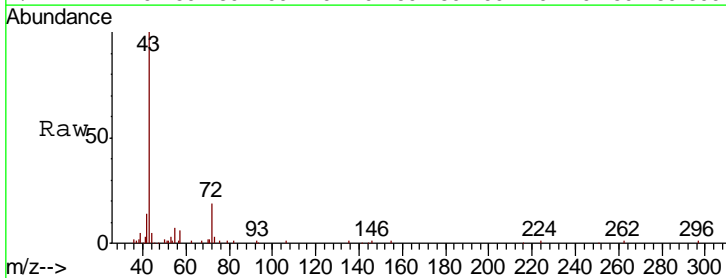
Instrument :  
 MSVOA\_L  
 ClientSampled :

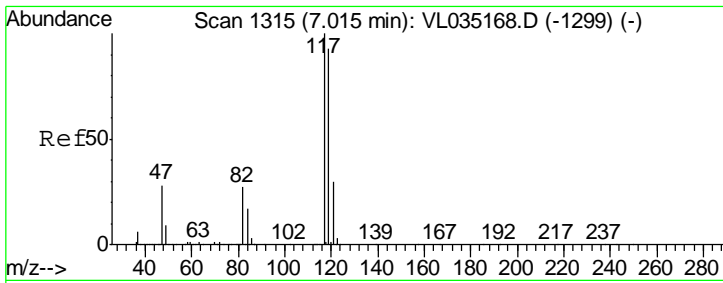
Tgt Ion	Resp	Lower	Upper
114	3082706		
63	27.4	22.0	33.0
88	19.4	15.4	23.0



#34  
 2-Butanone  
 Concen: 0.471 ppbv  
 RT: 5.23 min Scan# 761  
 Delta R.T. 0.01 min  
 Lab File: VL035226.D  
 Acq: 23 Jul 2020 13:18

Tgt Ion	Resp	Lower	Upper
43	77462		
72	22.4	18.6	28.0

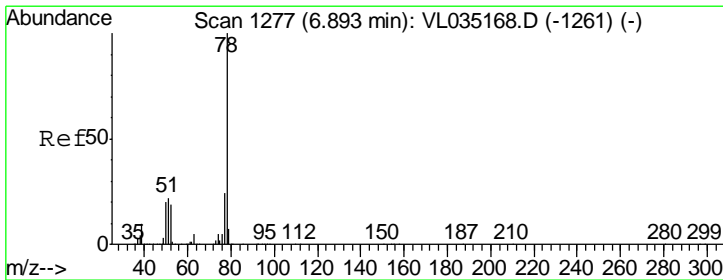
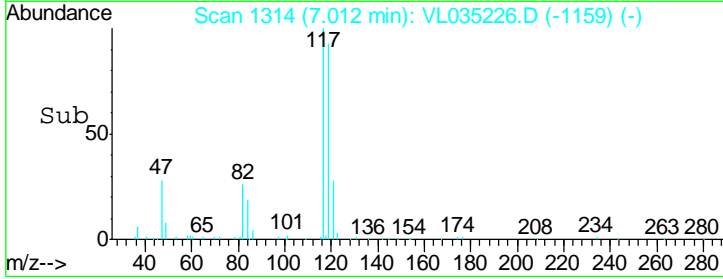
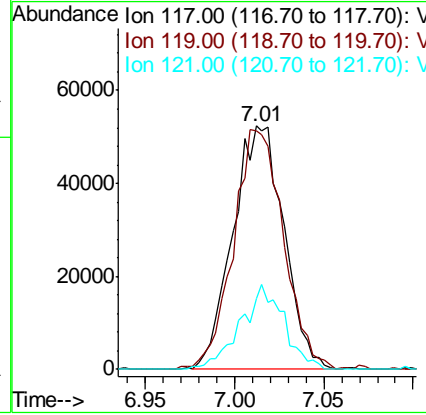
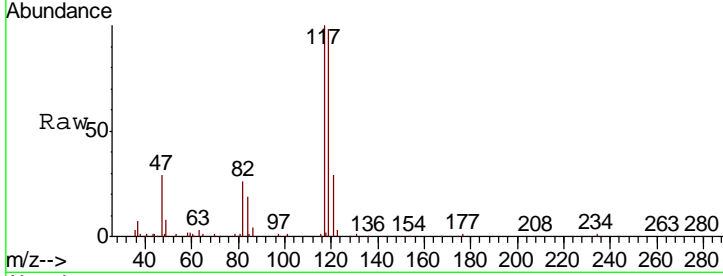




#35  
 Carbon Tetrachloride  
 Concen: 0.522 ppbv  
 RT: 7.01 min Scan# 1314  
 Delta R.T. -0.00 min  
 Lab File: VL035226.D  
 Acq: 23 Jul 2020 13:18

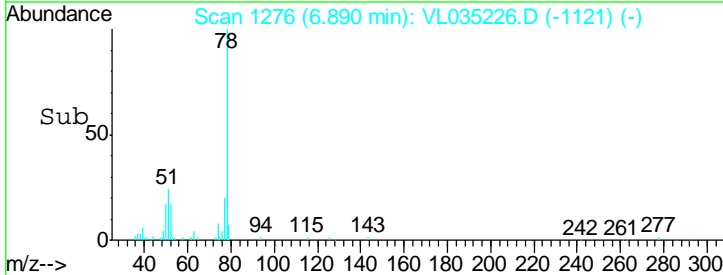
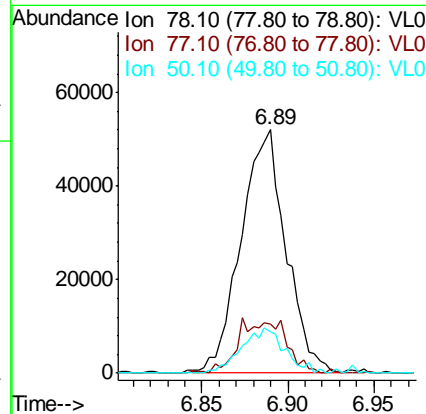
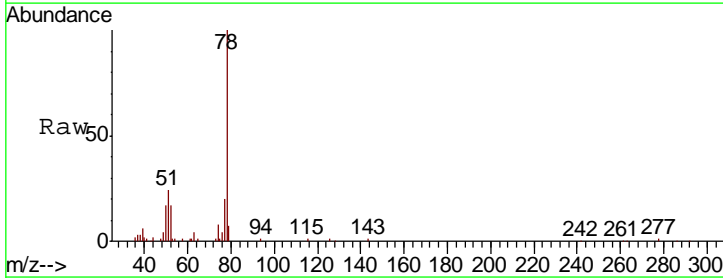
Instrument :  
 MSVOA\_L  
 ClientSampled :

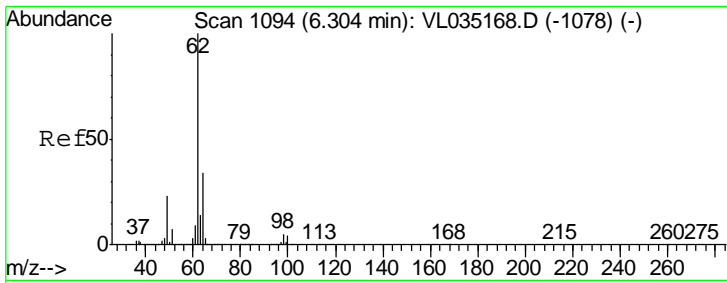
Tgt Ion	Resp	Lower	Upper
117	104528		
119	97.4	74.8	112.2
121	29.3	24.2	36.2



#36  
 Benzene  
 Concen: 0.425 ppbv  
 RT: 6.89 min Scan# 1276  
 Delta R.T. -0.00 min  
 Lab File: VL035226.D  
 Acq: 23 Jul 2020 13:18

Tgt Ion	Resp	Lower	Upper
78	94719		
77	20.3	19.3	28.9
50	17.1	16.0	24.0

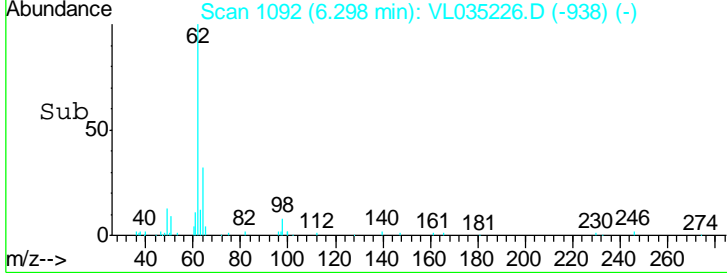
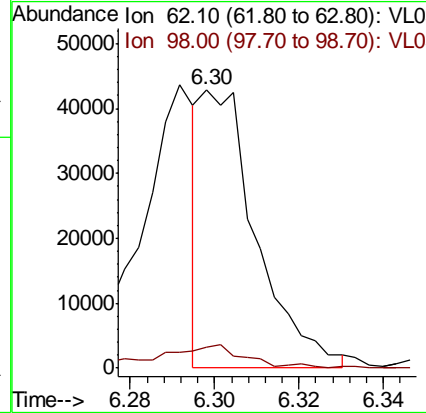
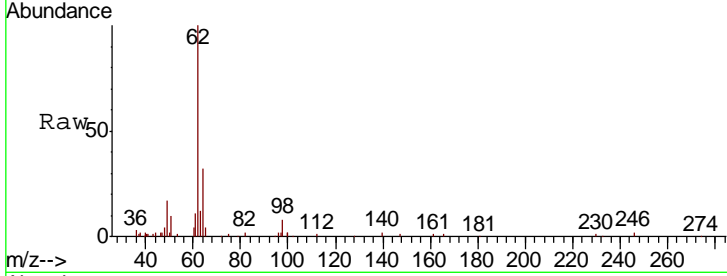




#37  
 1,2-Dichloroethane  
 Concen: 0.258 ppbv  
 RT: 6.30 min Scan# 1092  
 Delta R.T. -0.01 min  
 Lab File: VL035226.D  
 Acq: 23 Jul 2020 13:18

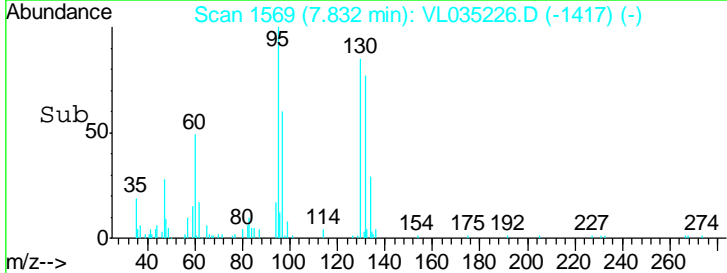
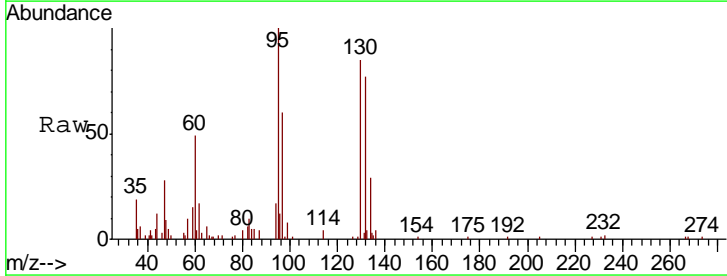
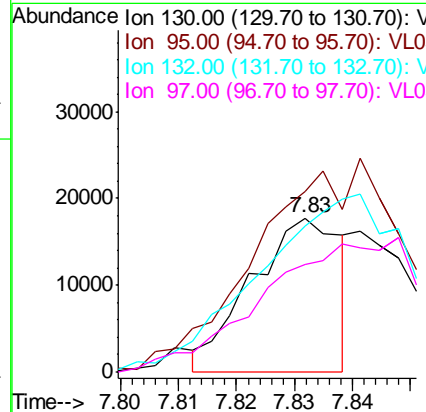
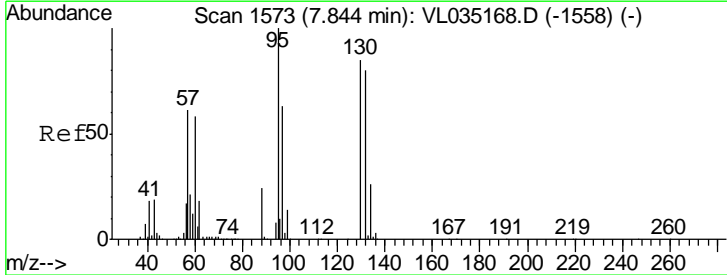
Instrument :  
 MSVOA\_L  
 ClientSampled :

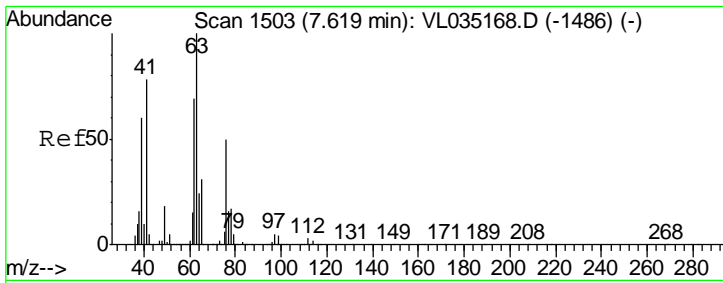
Tgt Ion	Resp	Lower	Upper
62	100		
98	13.7	4.6	6.8#



#38  
 Trichloroethene  
 Concen: 0.209 ppbv  
 RT: 7.83 min Scan# 1569  
 Delta R.T. -0.01 min  
 Lab File: VL035226.D  
 Acq: 23 Jul 2020 13:18

Tgt Ion	Resp	Lower	Upper
130	100		
95	104.6	93.8	140.8
132	87.0	75.0	112.4
97	64.4	59.5	89.3

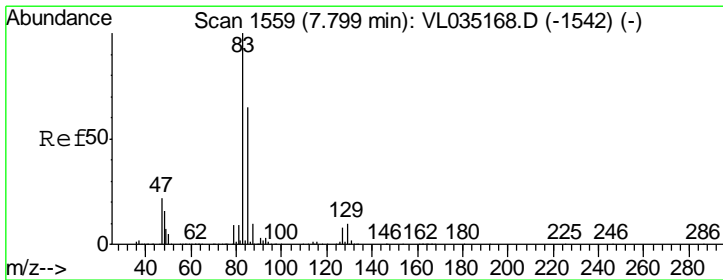
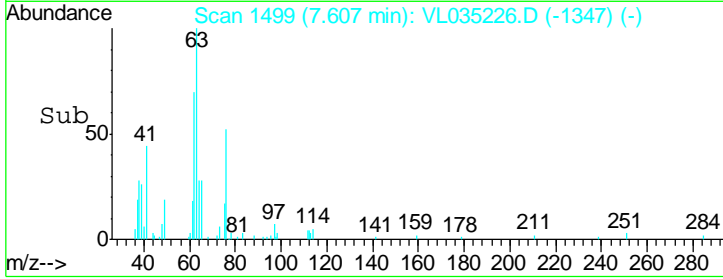
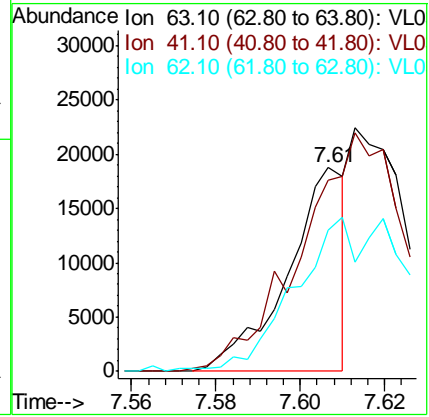
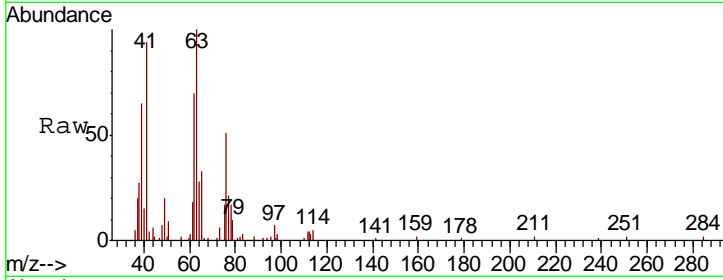




#39  
 1,2-Dichloropropane  
 Concen: 0.200 ppbv  
 RT: 7.61 min Scan# 1499  
 Delta R.T. -0.01 min  
 Lab File: VL035226.D  
 Acq: 23 Jul 2020 13:18

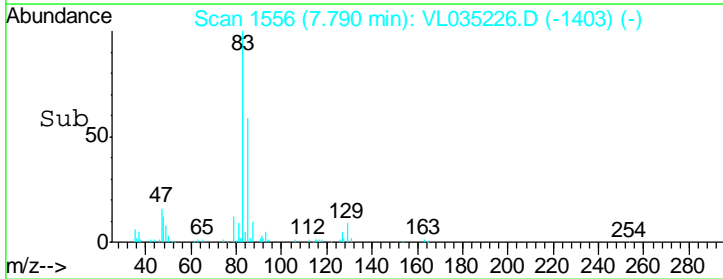
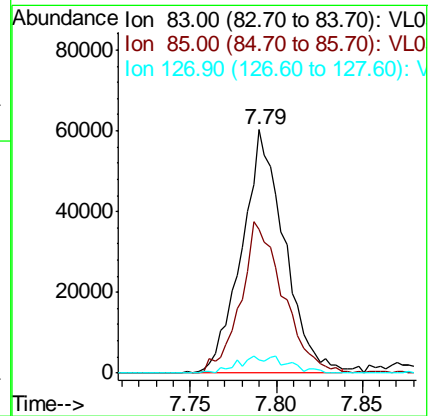
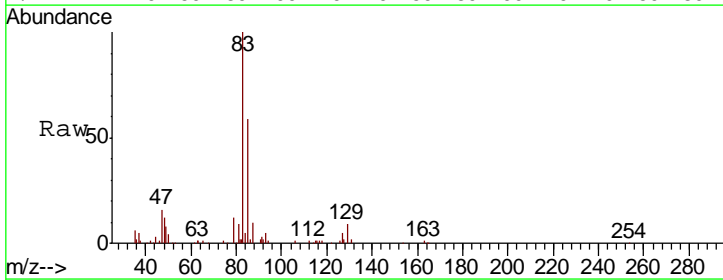
Instrument :  
 MSVOA\_L  
 ClientSampled :

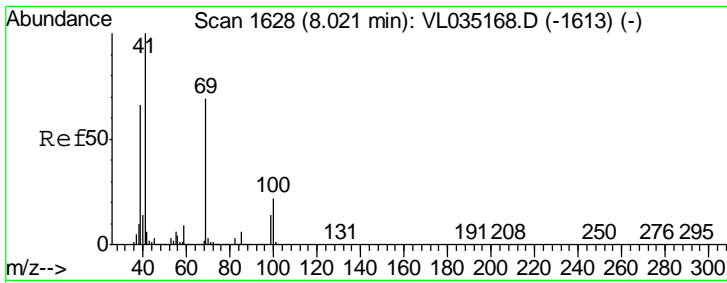
Tgt Ion	Resp	Lower	Upper
63	17768		
41	92.1	62.6	94.0
62	67.8	55.0	82.6



#42  
 Bromodichloromethane  
 Concen: 0.521 ppbv  
 RT: 7.79 min Scan# 1556  
 Delta R.T. -0.01 min  
 Lab File: VL035226.D  
 Acq: 23 Jul 2020 13:18

Tgt Ion	Resp	Lower	Upper
83	104254		
85	58.6	52.2	78.4
127	5.2	6.3	9.5#

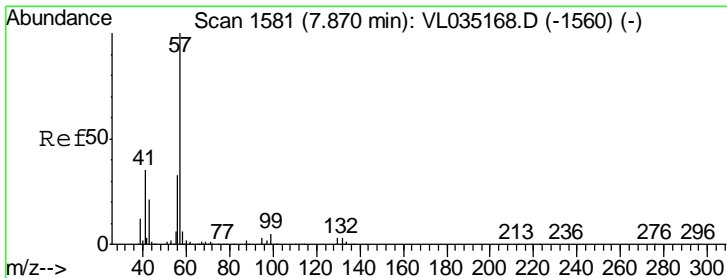
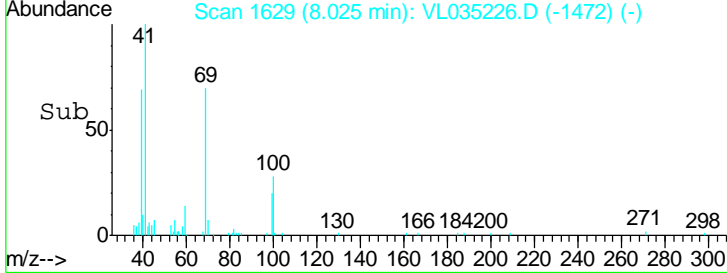
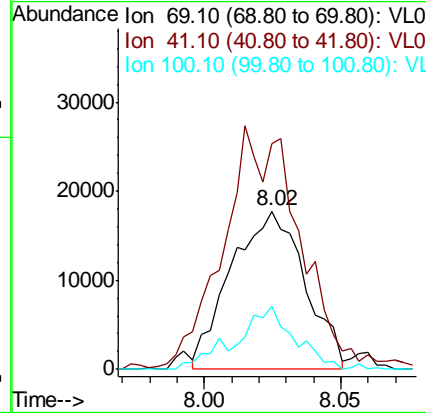
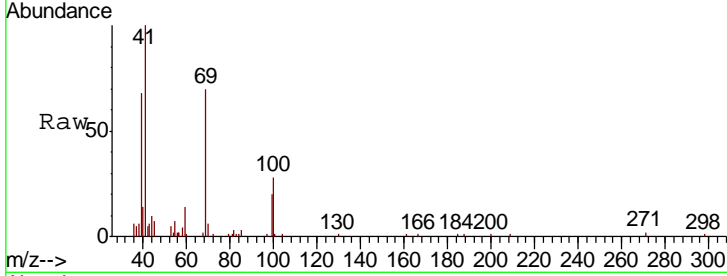




#43  
 Methyl Methacrylate  
 Concen: 0.354 ppbv  
 RT: 8.02 min Scan# 1629  
 Delta R.T. 0.00 min  
 Lab File: VL035226.D  
 Acq: 23 Jul 2020 13:18

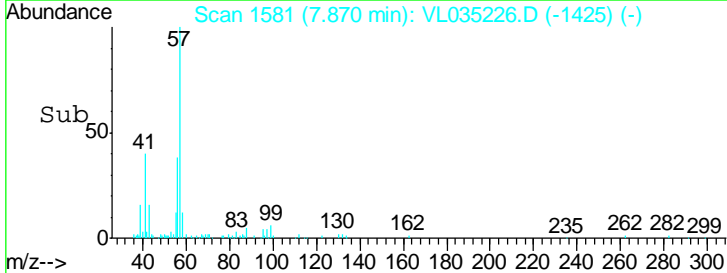
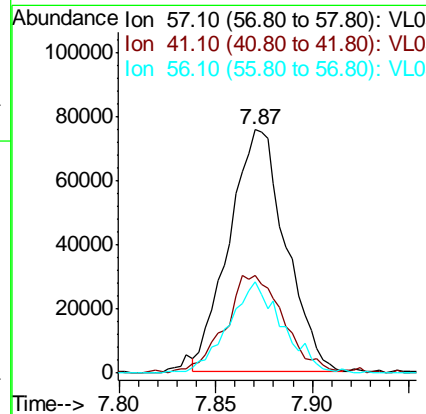
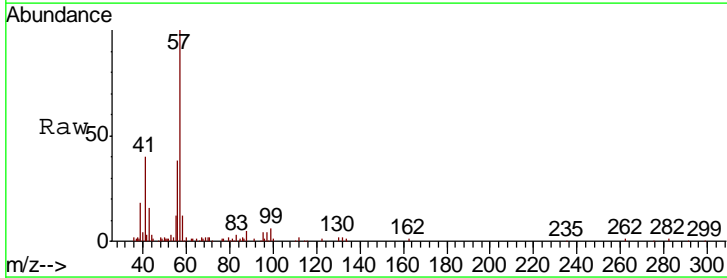
Instrument :  
 MSVOA\_L  
 ClientSampled :

Tgt Ion	Resp	Lower	Upper
69	33397		
Ion Ratio			
69	100		
41	160.9	116.3	174.5
100	31.9	25.6	38.4

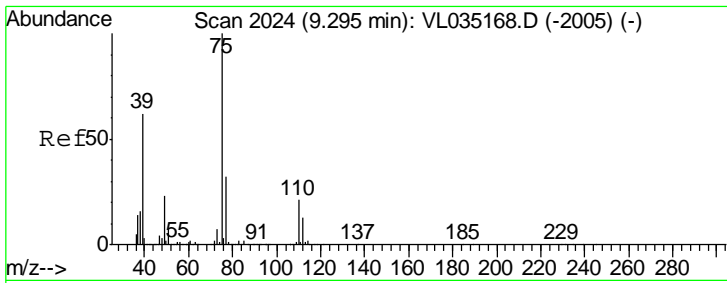


#44  
 2,2,4-Trimethylpentane  
 Concen: 0.399 ppbv  
 RT: 7.87 min Scan# 1581  
 Delta R.T. 0.00 min  
 Lab File: VL035226.D  
 Acq: 23 Jul 2020 13:18

Tgt Ion	Resp	Lower	Upper
57	153681		
Ion Ratio			
57	100		
41	42.5	27.0	40.6#
56	35.9	25.5	38.3



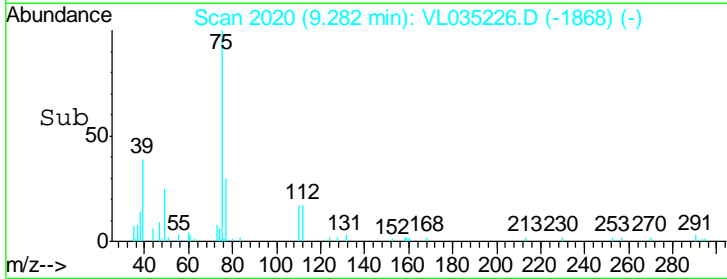
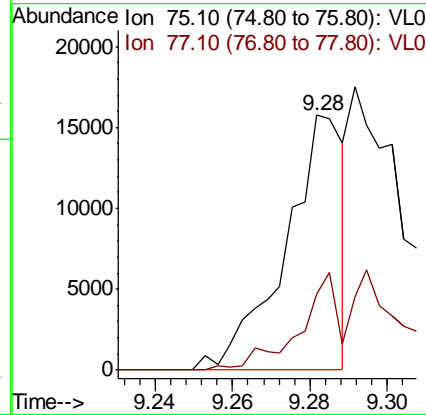
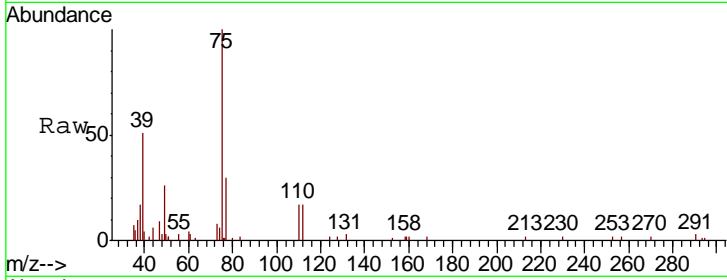




#45  
 t-1,3-Dichloropropene  
 Concen: 0.166 ppbv  
 RT: 9.28 min Scan# 2020  
 Delta R.T. -0.01 min  
 Lab File: VL035226.D  
 Acq: 23 Jul 2020 13:18

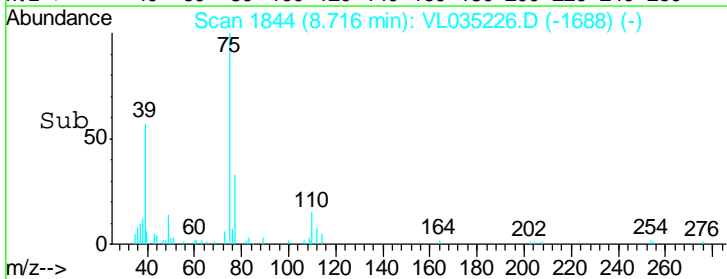
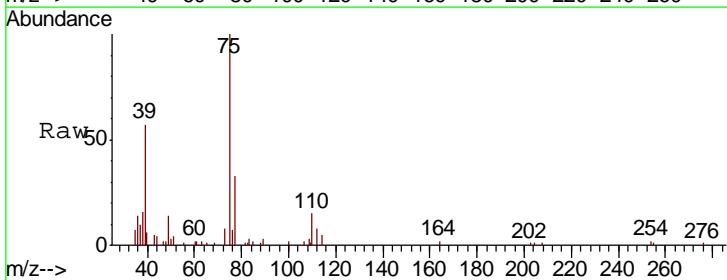
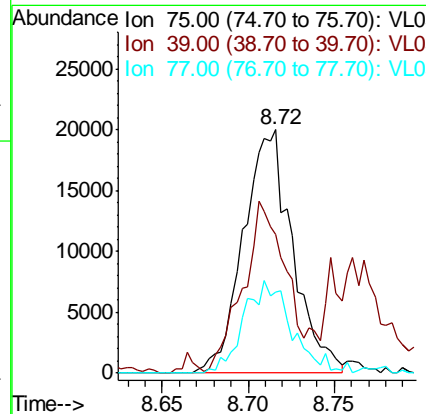
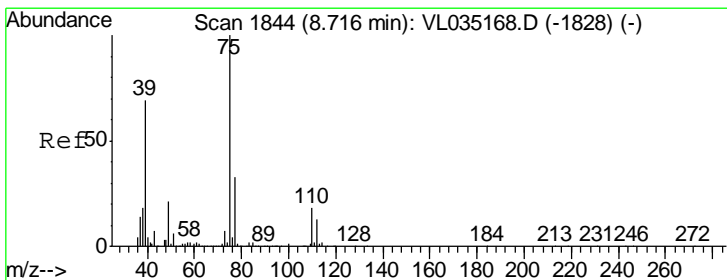
Instrument :  
 MSVOA\_L  
 ClientSampled :

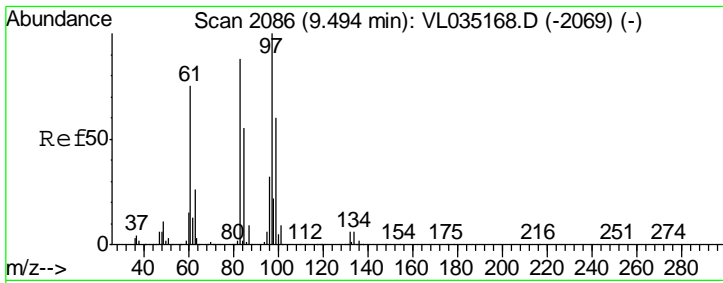
Tgt Ion	Resp	Lower	Upper
75	16441		
77	29.6	25.8	38.8



#46  
 cis-1,3-Dichloropropene  
 Concen: 0.338 ppbv  
 RT: 8.72 min Scan# 1844  
 Delta R.T. 0.00 min  
 Lab File: VL035226.D  
 Acq: 23 Jul 2020 13:18

Tgt Ion	Resp	Lower	Upper
75	39696		
39	52.6	55.2	82.8#
77	33.1	26.0	39.0

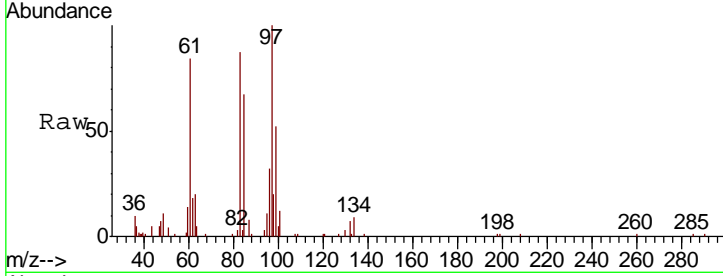




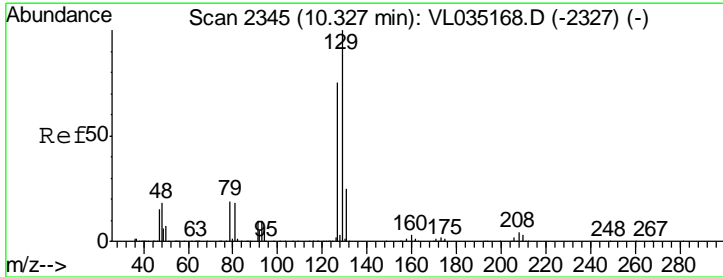
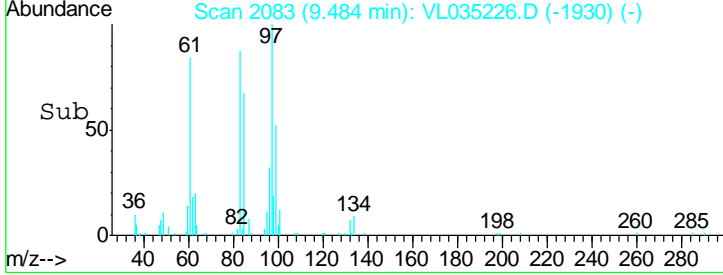
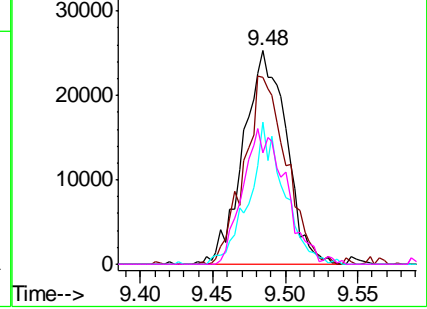
#47  
 1,1,2-Trichloroethane  
 Concen: 0.536 ppbv  
 RT: 9.48 min Scan# 2083  
 Delta R.T. -0.01 min  
 Lab File: VL035226.D  
 Acq: 23 Jul 2020 13:18

Instrument :  
 MSVOA\_L  
 ClientSampled :

Tgt Ion	Resp	Lower	Upper
97	52092		
83	87.3	70.3	105.5
85	66.8	44.3	66.5#
99	52.1	47.8	71.6

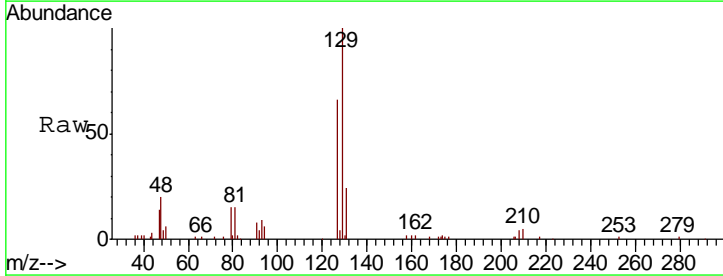


Abundance Ion 97.00 (96.70 to 97.70): VL0  
 Ion 83.00 (82.70 to 83.70): VL0  
 Ion 85.00 (84.70 to 85.70): VL0  
 Ion 99.00 (98.70 to 99.70): VL0

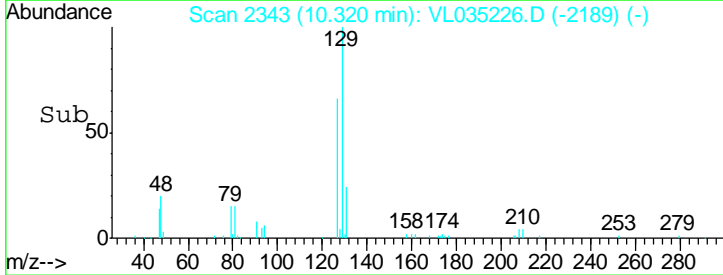
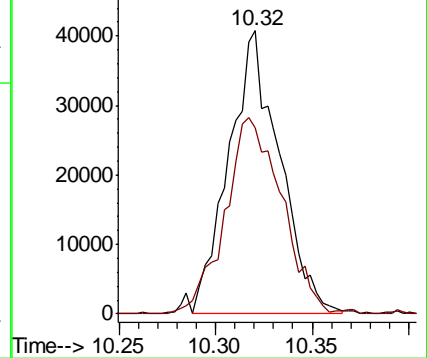


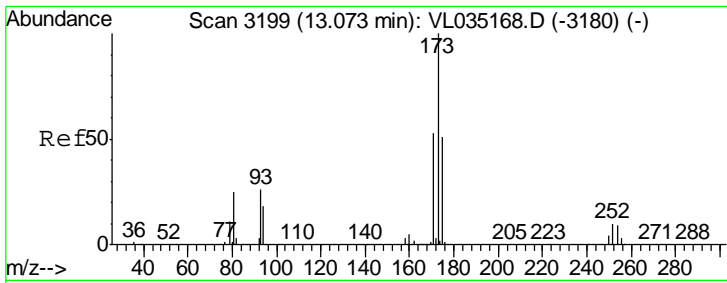
#48  
 Dibromochloromethane  
 Concen: 0.471 ppbv  
 RT: 10.32 min Scan# 2343  
 Delta R.T. -0.01 min  
 Lab File: VL035226.D  
 Acq: 23 Jul 2020 13:18

Tgt Ion	Resp	Lower	Upper
129	74374		
127	77.7	38.8	116.3



Abundance Ion 129.00 (128.70 to 129.70): V  
 Ion 127.00 (126.70 to 127.70): V

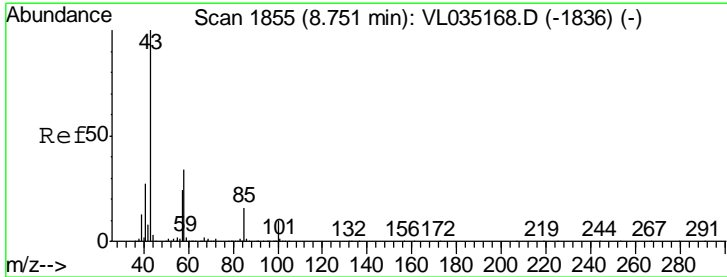
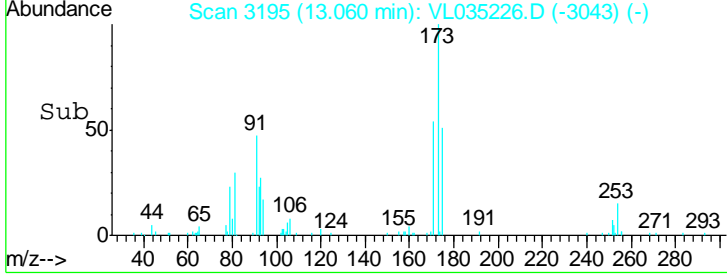
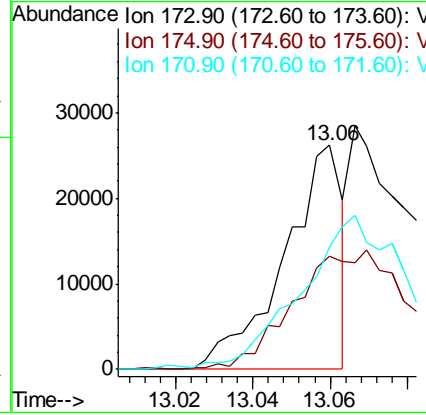
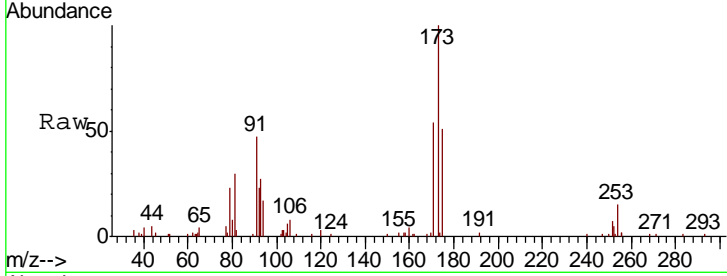




#49  
 Bromoform  
 Concen: 0.197 ppbv  
 RT: 13.06 min Scan# 3195  
 Delta R.T. -0.01 min  
 Lab File: VL035226.D  
 Acq: 23 Jul 2020 13:18

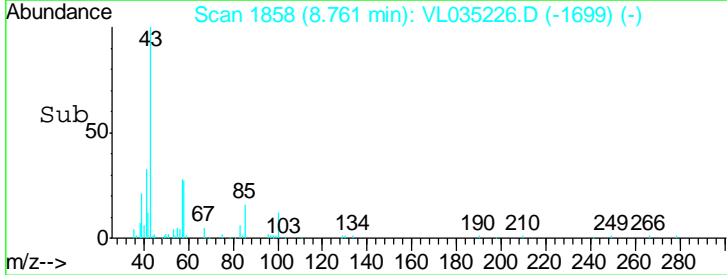
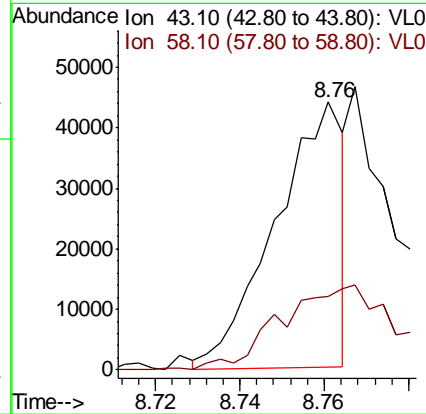
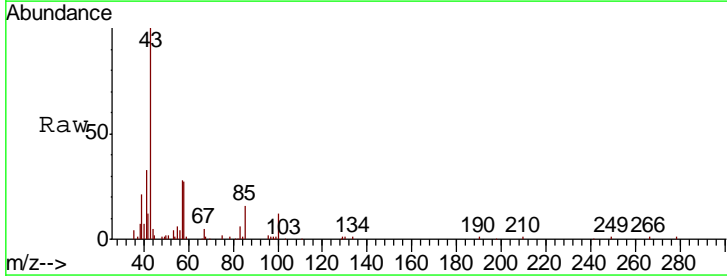
Instrument : MSVOA\_L  
 ClientSampled :

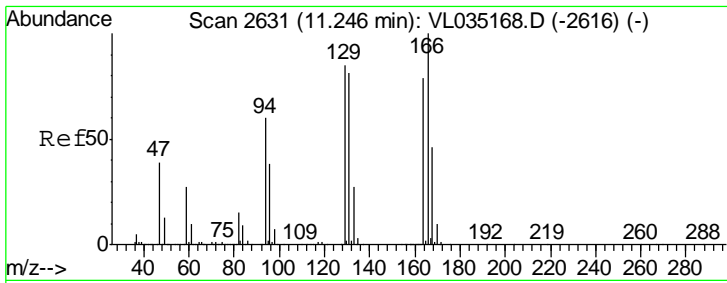
Tgt Ion	Resp	Lower	Upper
173	100		
175	0.0	39.7	59.5#
171	0.0	41.6	62.4#



#50  
 4-Methyl-2-Pentanone  
 Concen: 0.209 ppbv  
 RT: 8.76 min Scan# 1858  
 Delta R.T. 0.01 min  
 Lab File: VL035226.D  
 Acq: 23 Jul 2020 13:18

Tgt Ion	Resp	Lower	Upper
43	100		
58	0.0	29.4	44.2#

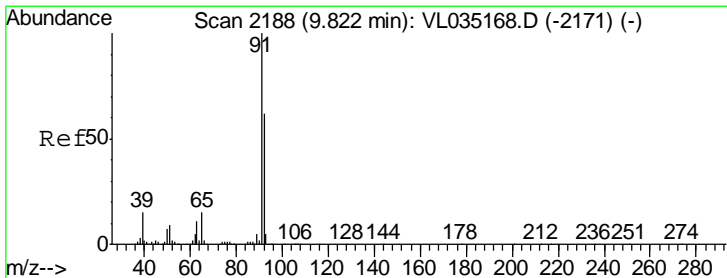
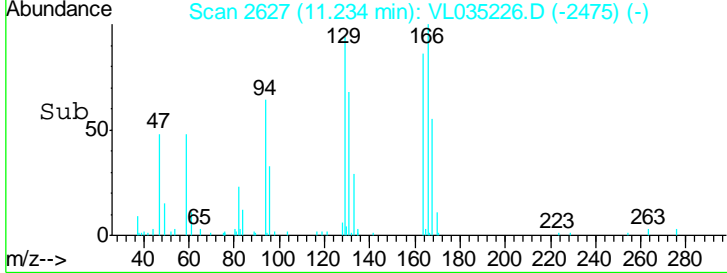
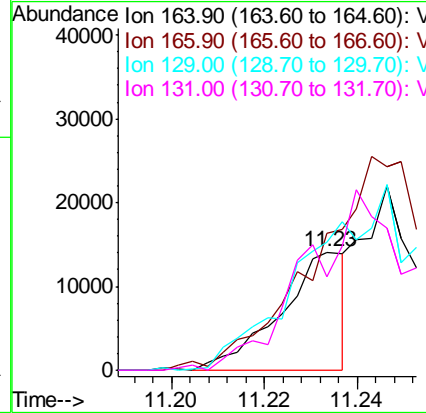
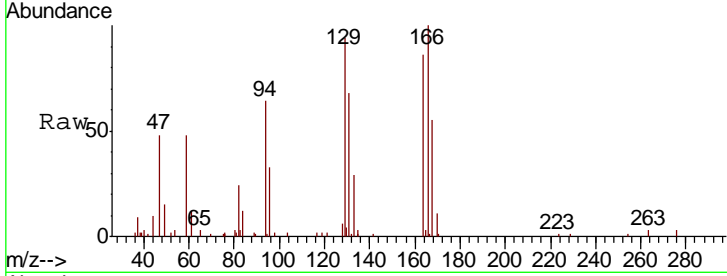




#52  
 Tetrachloroethene  
 Concen: 0.165 ppbv  
 RT: 11.23 min Scan# 2627  
 Delta R.T. -0.01 min  
 Lab File: VL035226.D  
 Acq: 23 Jul 2020 13:18

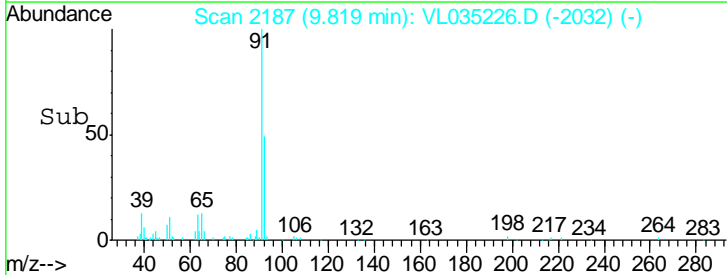
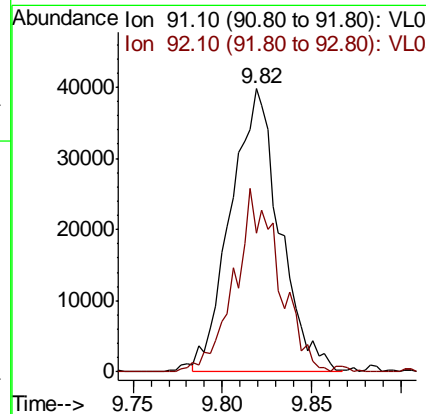
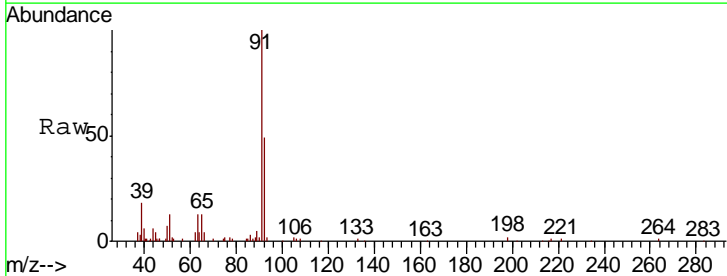
Instrument :  
 MSVOA\_L  
 ClientSampled :

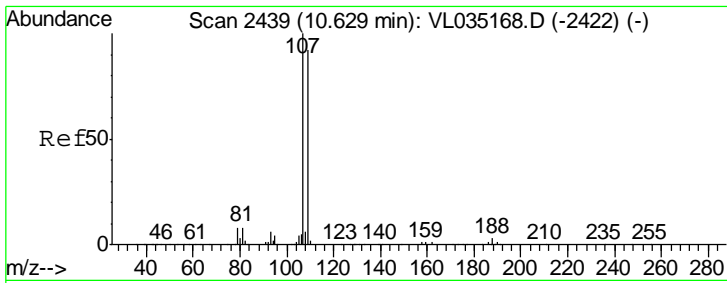
Tgt Ion	Resp	Lower	Upper
164	100		
166	105.3	100.7	151.1
129	108.2	85.8	128.6
131	72.8	82.0	123.0#



#53  
 Toluene  
 Concen: 0.325 ppbv  
 RT: 9.82 min Scan# 2187  
 Delta R.T. -0.00 min  
 Lab File: VL035226.D  
 Acq: 23 Jul 2020 13:18

Tgt Ion	Resp	Lower	Upper
91	100		
92	58.7	48.4	72.6

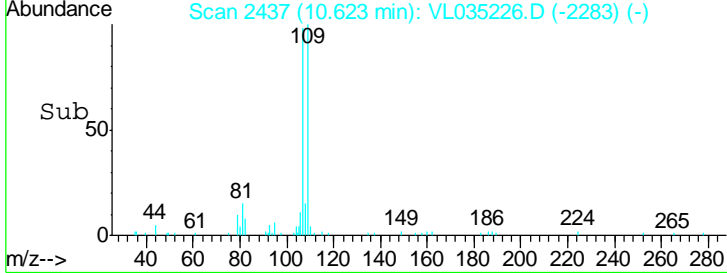
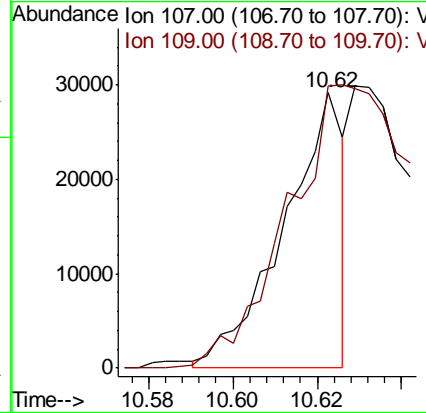
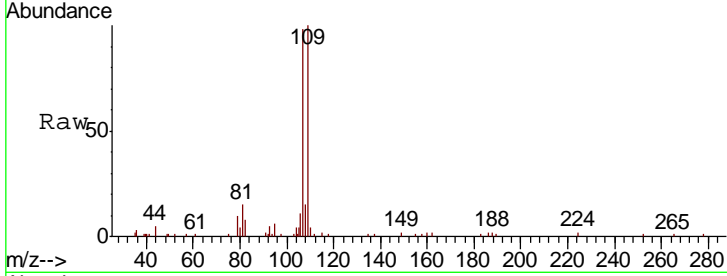




#54  
 1,2-Dibromoethane  
 Concen: 0.198 ppbv  
 RT: 10.62 min Scan# 2437  
 Delta R.T. -0.01 min  
 Lab File: VL035226.D  
 Acq: 23 Jul 2020 13:18

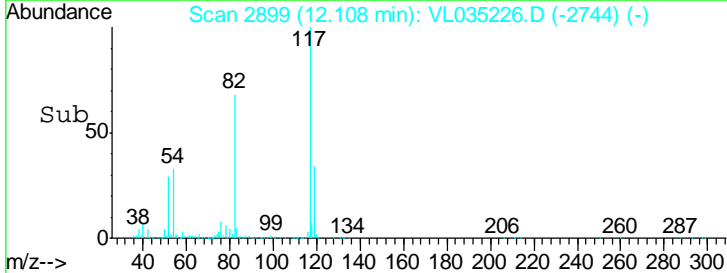
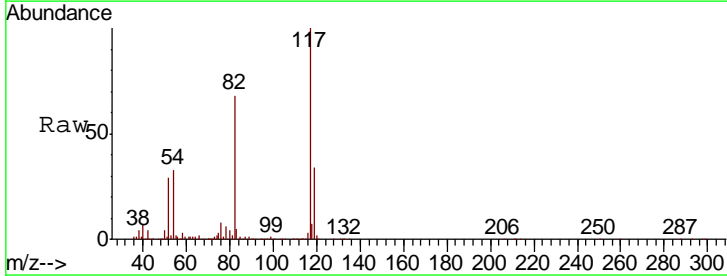
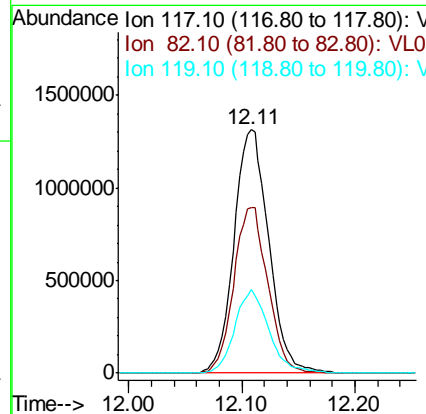
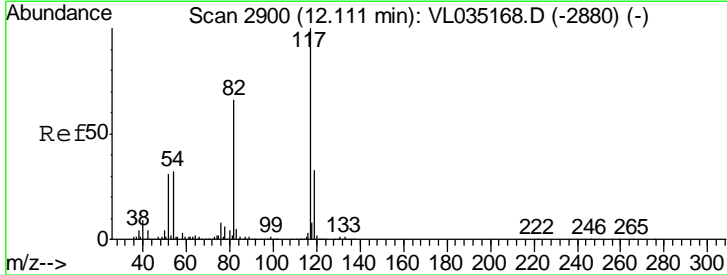
Instrument : MSVOA\_L  
 ClientSampled :

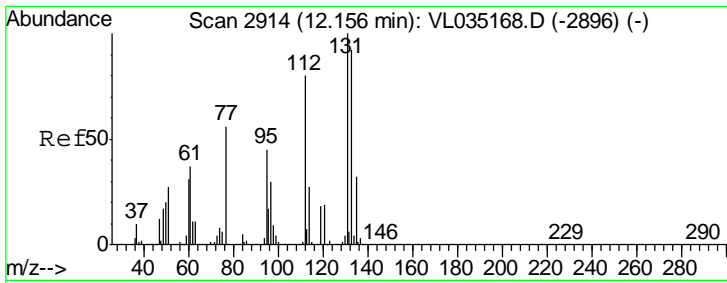
Tgt Ion	Resp	Lower	Upper
107	100		
109	103.9	74.0	111.0



#55  
 Chlorobenzene-d5  
 Concen: 10.000 ppbv  
 RT: 12.11 min Scan# 2899  
 Delta R.T. -0.00 min  
 Lab File: VL035226.D  
 Acq: 23 Jul 2020 13:18

Tgt Ion	Resp	Lower	Upper
117	100		
82	66.9	52.3	78.5
119	33.8	24.9	37.3

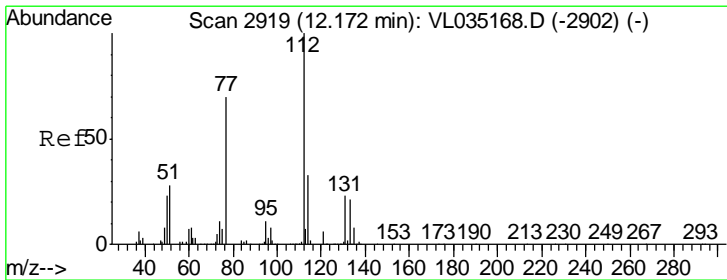
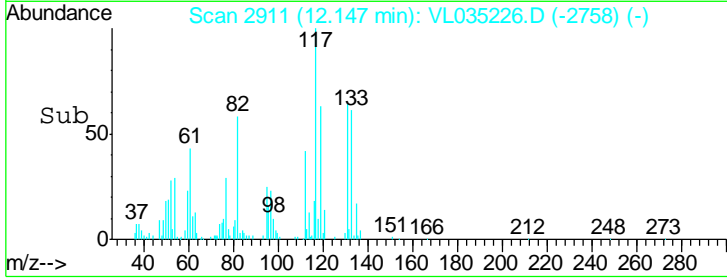
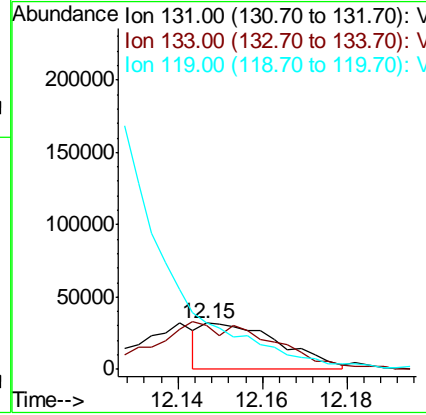
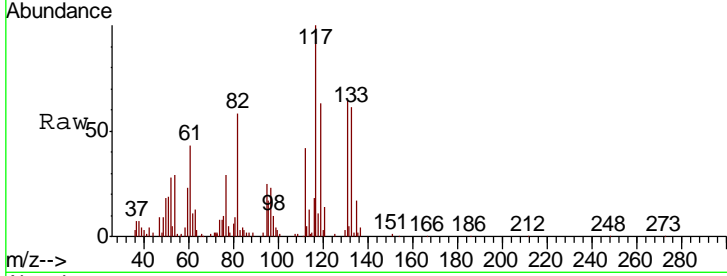




#56  
 1,1,1,2-Tetrachloroethane  
 Concen: 0.333 ppbv  
 RT: 12.15 min Scan# 2911  
 Delta R.T. -0.01 min  
 Lab File: VL035226.D  
 Acq: 23 Jul 2020 13:18

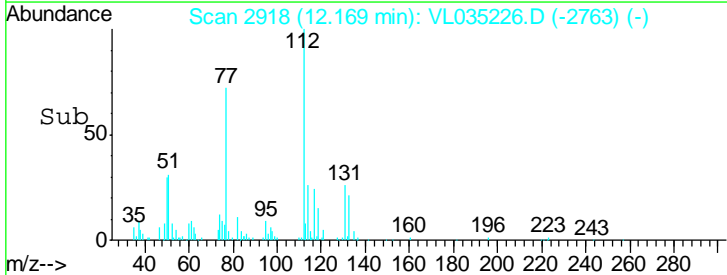
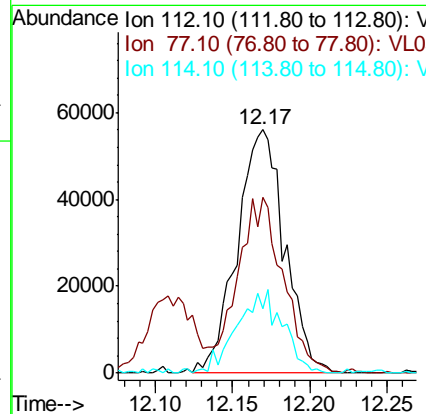
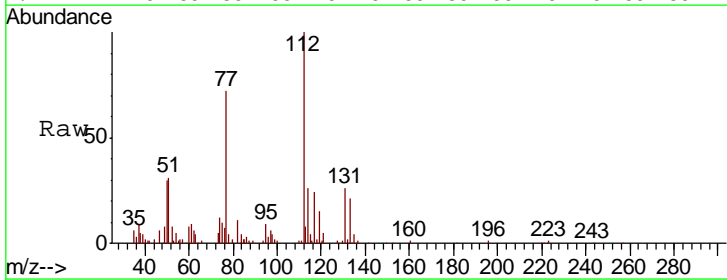
Instrument :  
 MSVOA\_L  
 ClientSampled :

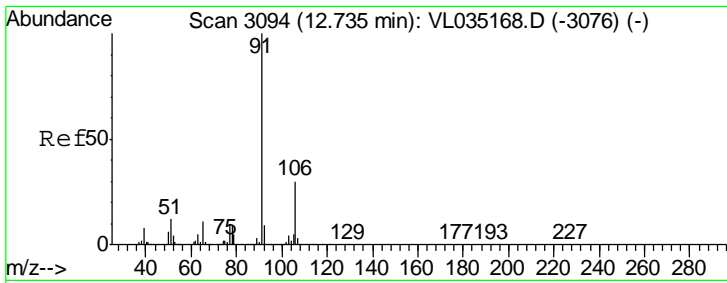
Tgt Ion	Resp	Lower	Upper
131	41483		
131	100		
133	158.5	75.4	113.2#
119	0.0	42.4	63.6#



#57  
 Chlorobenzene  
 Concen: 0.580 ppbv  
 RT: 12.17 min Scan# 2918  
 Delta R.T. -0.00 min  
 Lab File: VL035226.D  
 Acq: 23 Jul 2020 13:18

Tgt Ion	Resp	Lower	Upper
112	120028		
112	100		
77	71.8	57.0	85.4
114	26.4	30.2	37.0#

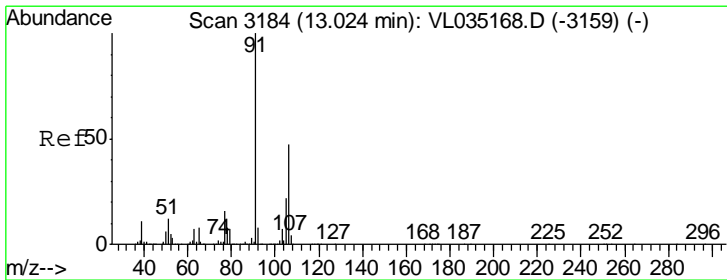
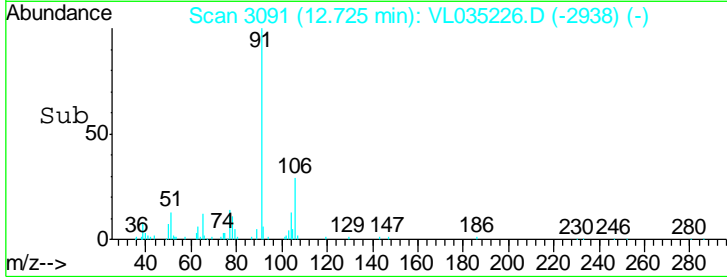
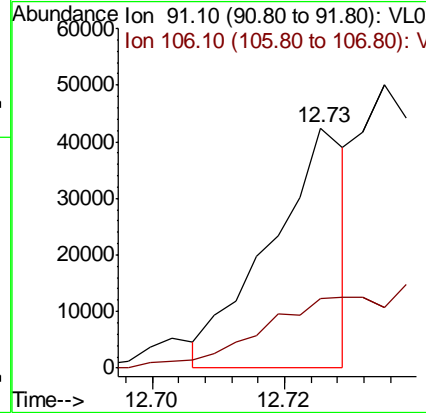
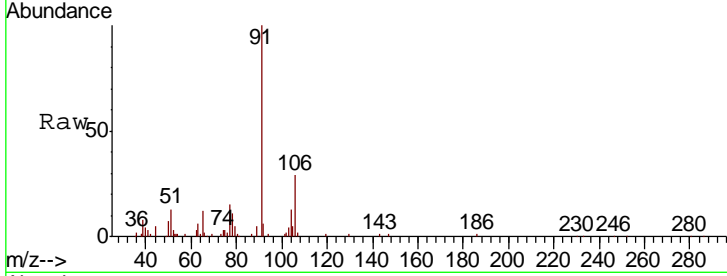




#58  
 Ethyl Benzene  
 Concen: 0.109 ppbv  
 RT: 12.73 min Scan# 3091  
 Delta R.T. -0.01 min  
 Lab File: VL035226.D  
 Acq: 23 Jul 2020 13:18

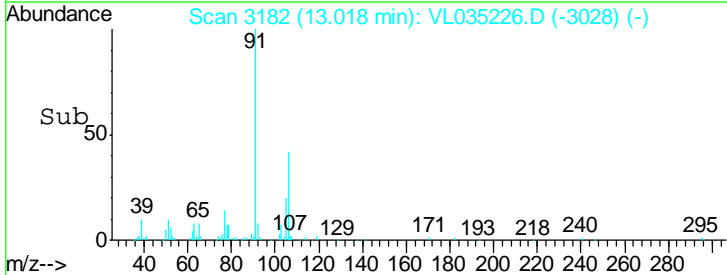
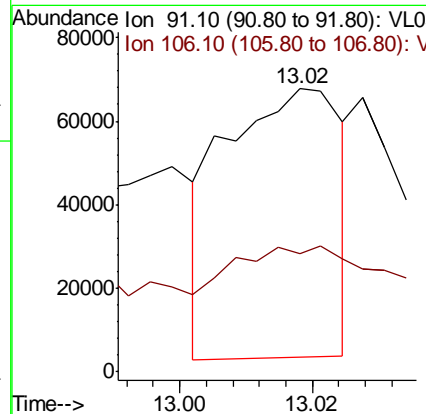
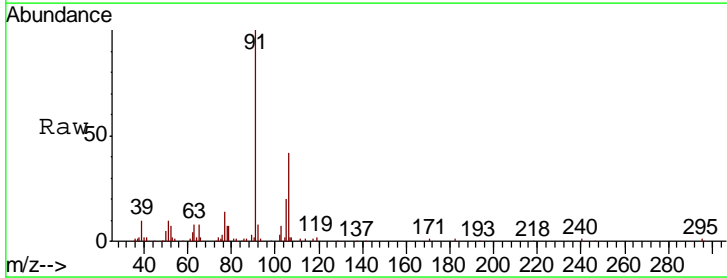
Instrument : MSVOA\_L  
 Client Sampled :

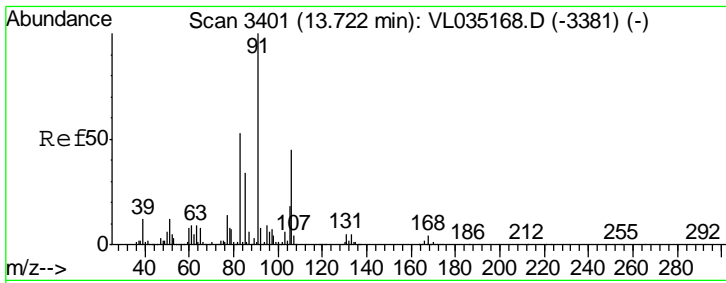
Tgt Ion: 91 Resp: 33973  
 Ion Ratio Lower Upper  
 91 100  
 106 28.9 24.2 36.2



#59  
 m/p-Xylene  
 Concen: 0.283 ppbv  
 RT: 13.02 min Scan# 3182  
 Delta R.T. -0.01 min  
 Lab File: VL035226.D  
 Acq: 23 Jul 2020 13:18

Tgt Ion: 91 Resp: 78204  
 Ion Ratio Lower Upper  
 91 100  
 106 126.0 36.2 54.2#

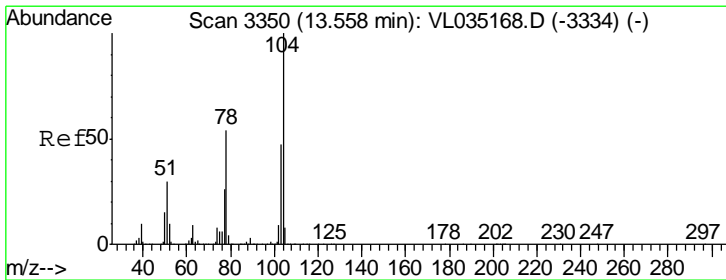
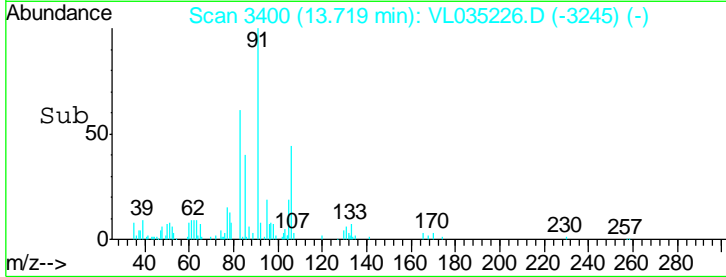
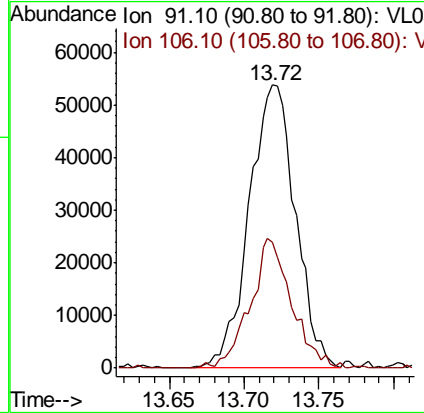
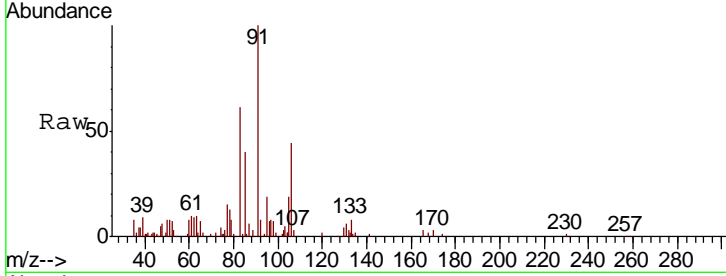




#60  
 o-Xylene  
 Concen: 0.420 ppbv  
 RT: 13.72 min Scan# 3400  
 Delta R.T. -0.00 min  
 Lab File: VL035226.D  
 Acq: 23 Jul 2020 13:18

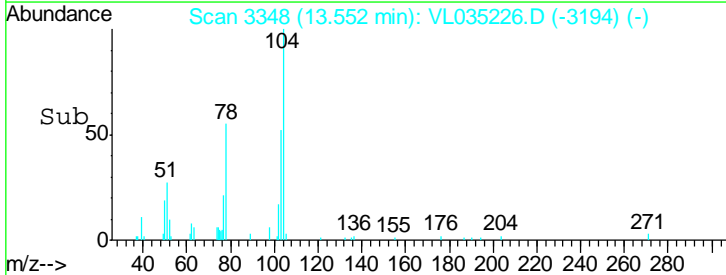
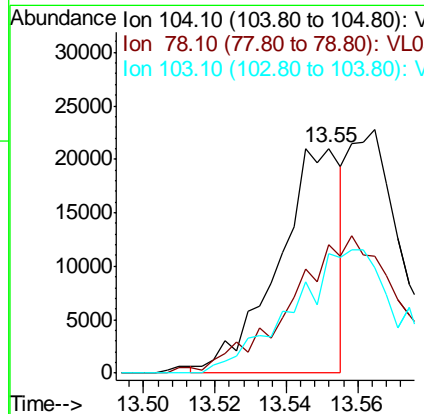
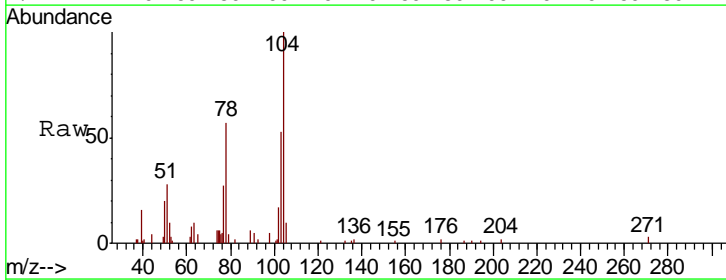
Instrument :  
 MSVOA\_L  
 ClientSampled :

Tgt Ion	Resp	Lower	Upper
91	115997		
106	41.2	22.1	66.3

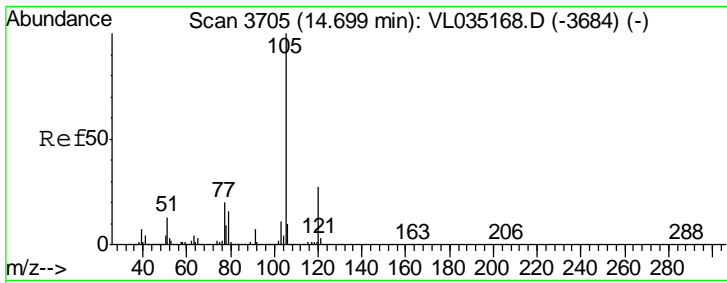


#61  
 Styrene  
 Concen: 0.151 ppbv  
 RT: 13.55 min Scan# 3348  
 Delta R.T. -0.01 min  
 Lab File: VL035226.D  
 Acq: 23 Jul 2020 13:18

Tgt Ion	Resp	Lower	Upper
104	25783		
78	0.0	43.4	65.0#
103	0.0	37.4	56.0#



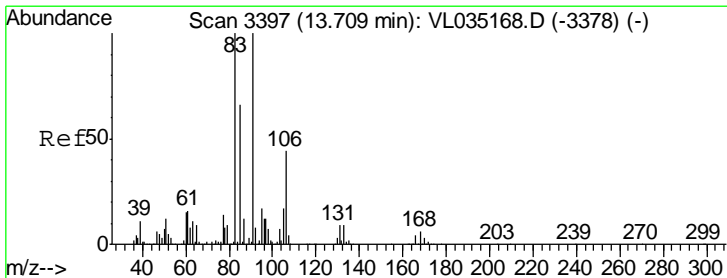
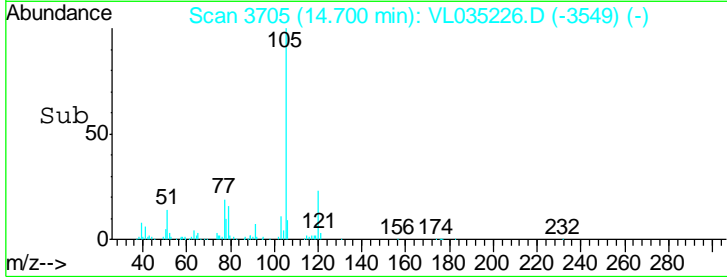
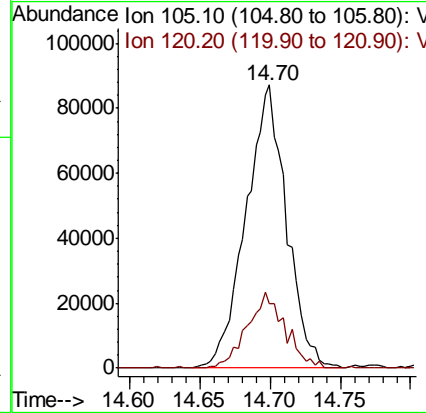
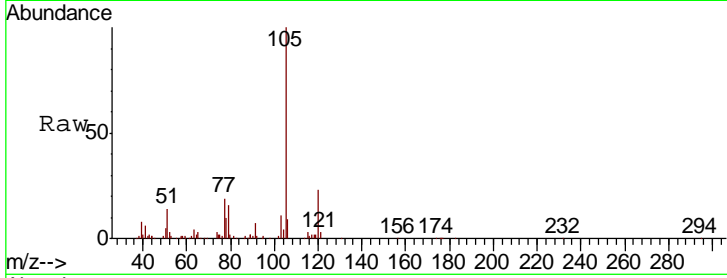




#62  
 Isopropylbenzene  
 Concen: 0.428 ppbv  
 RT: 14.70 min Scan# 3705  
 Delta R.T. 0.00 min  
 Lab File: VL035226.D  
 Acq: 23 Jul 2020 13:18

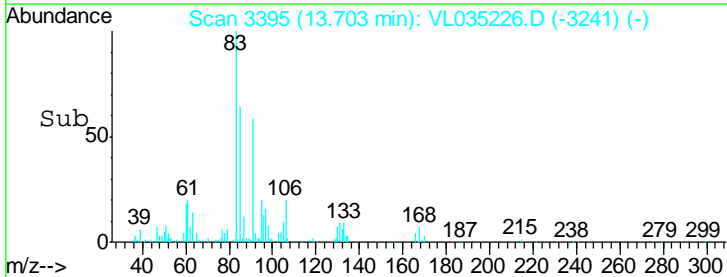
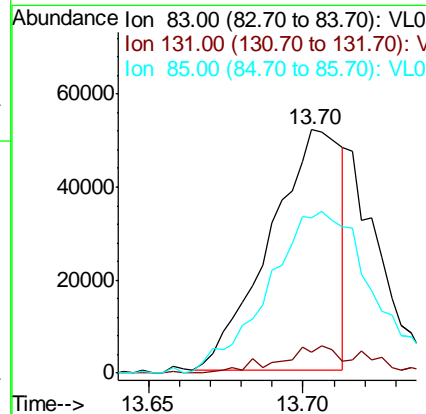
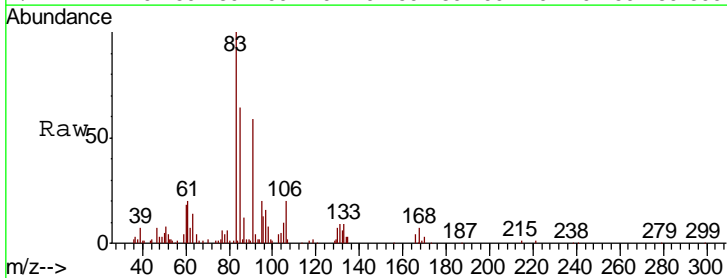
Instrument :  
 MSVOA\_L  
 ClientSampled :

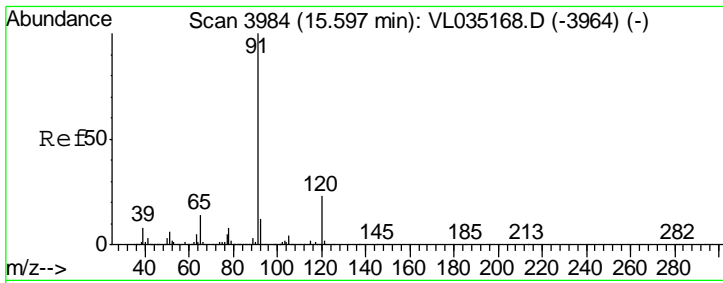
Tgt Ion	Resp	Lower	Upper
105	175085		
120	25.0	20.7	31.1



#63  
 1,1,2,2-Tetrachloroethane  
 Concen: 0.362 ppbv  
 RT: 13.70 min Scan# 3395  
 Delta R.T. -0.01 min  
 Lab File: VL035226.D  
 Acq: 23 Jul 2020 13:18

Tgt Ion	Resp	Lower	Upper
83	83396		
131	13.7	4.7	14.0
85	98.8	33.0	99.0

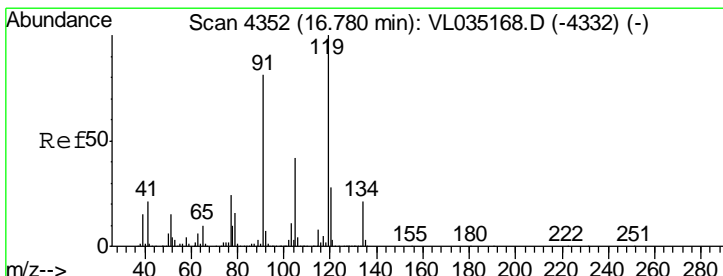
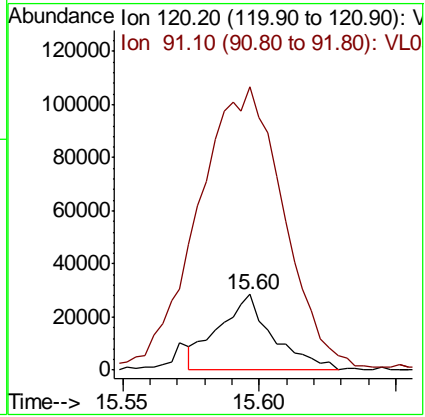
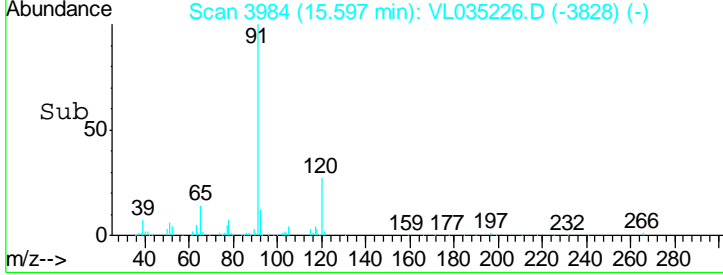
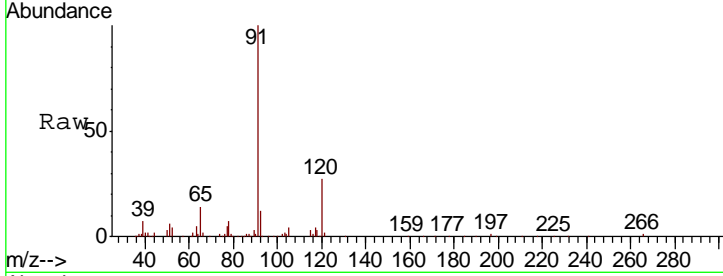




#64  
 n-propylbenzene  
 Concen: 0.373 ppbv  
 RT: 15.60 min Scan# 3984  
 Delta R.T. 0.00 min  
 Lab File: VL035226.D  
 Acq: 23 Jul 2020 13:18

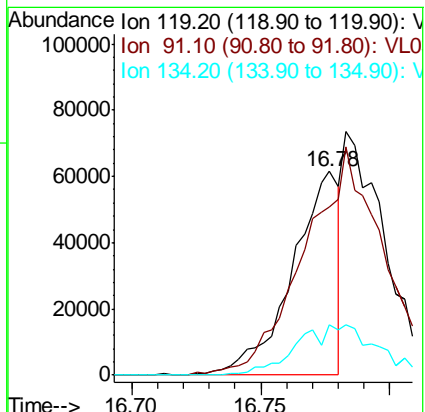
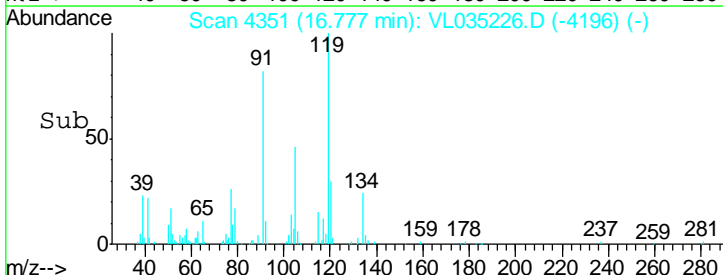
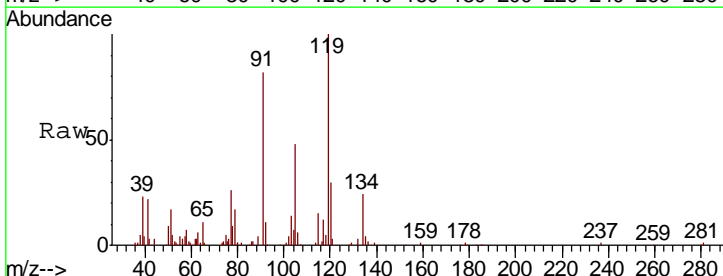
Instrument :  
 MSVOA\_L  
 ClientSampled :

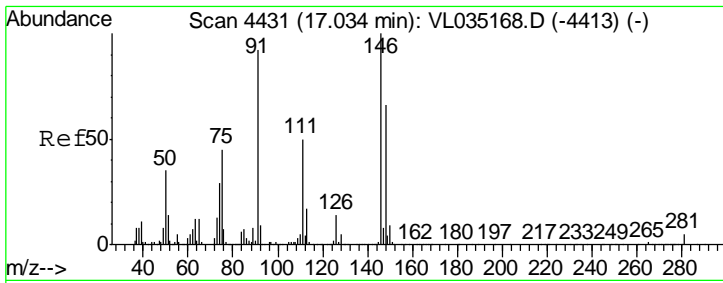
Tgt Ion	Resp	Lower	Upper
120	39380		
91	606.4	372.4	558.6#



#65  
 tert-Butylbenzene  
 Concen: 0.211 ppbv  
 RT: 16.78 min Scan# 4351  
 Delta R.T. -0.00 min  
 Lab File: VL035226.D  
 Acq: 23 Jul 2020 13:18

Tgt Ion	Resp	Lower	Upper
119	77630		
91	0.0	67.5	101.3#
134	0.0	16.0	24.0#

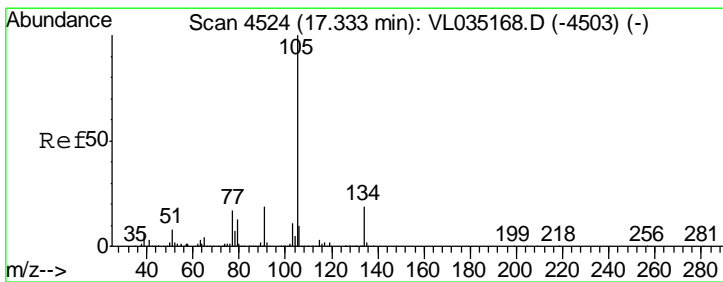
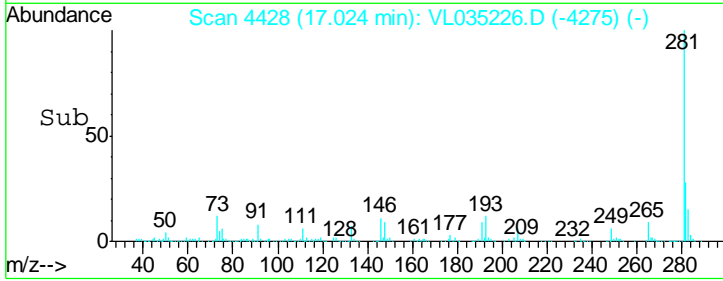
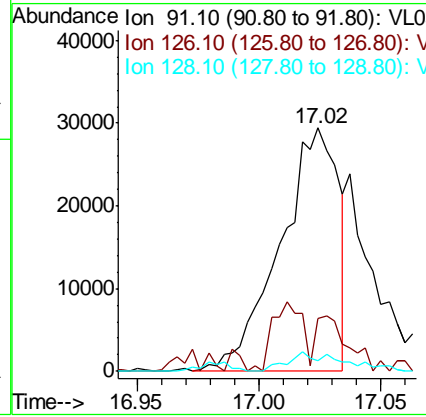
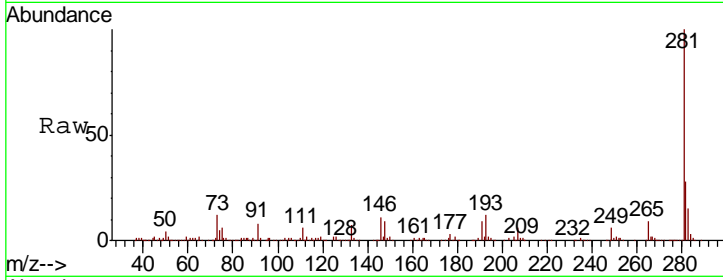




#66  
 Benzyl Chloride  
 Concen: 0.372 ppbv  
 RT: 17.02 min Scan# 4428  
 Delta R.T. -0.01 min  
 Lab File: VL035226.D  
 Acq: 23 Jul 2020 13:18

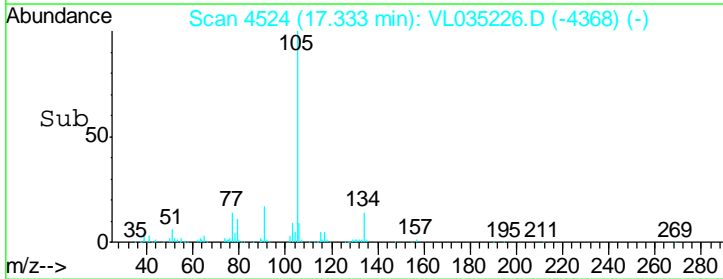
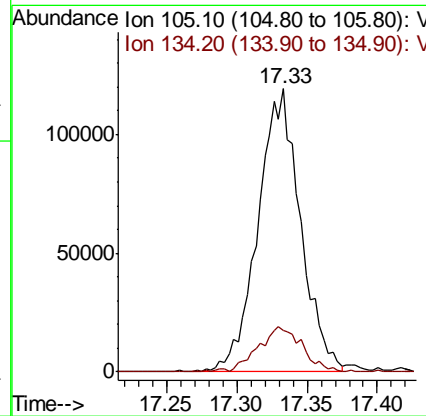
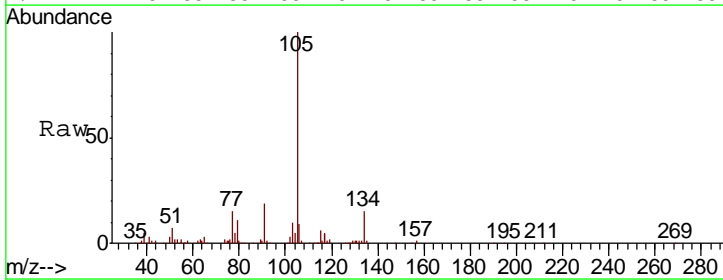
Instrument :  
 MSVOA\_L  
 ClientSampled :

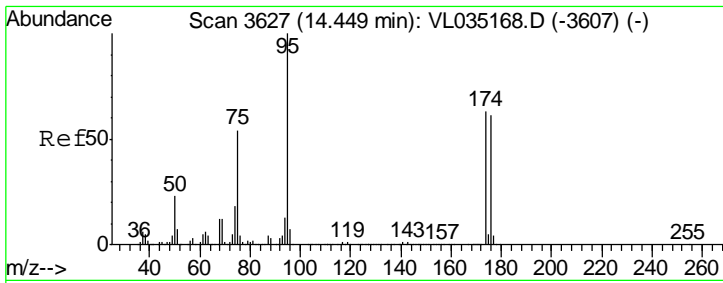
Tgt Ion	Resp	Lower	Upper
91	48736		
126	30.5	13.9	20.9#
128	7.7	4.2	6.4#



#67  
 sec-Butylbenzene  
 Concen: 0.467 ppbv  
 RT: 17.33 min Scan# 4524  
 Delta R.T. 0.00 min  
 Lab File: VL035226.D  
 Acq: 23 Jul 2020 13:18

Tgt Ion	Resp	Lower	Upper
105	250001		
134	16.8	14.6	21.8

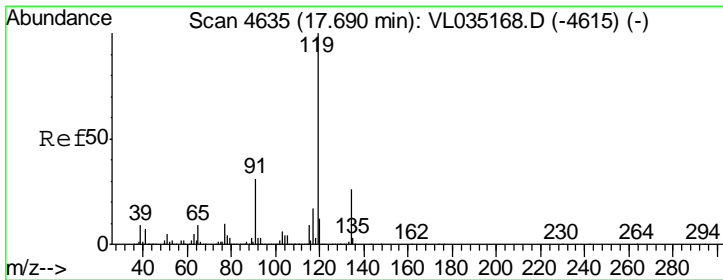
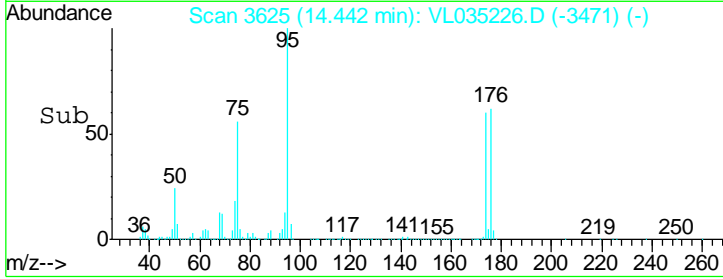
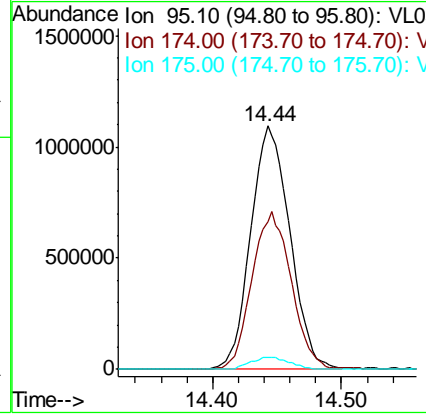
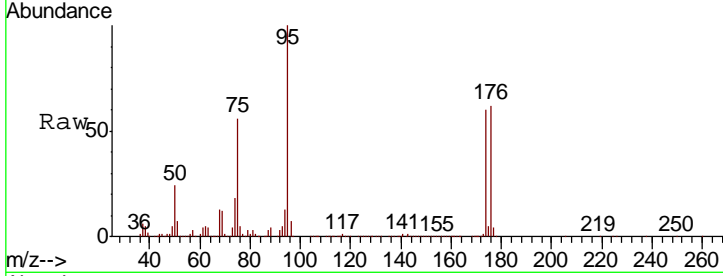




#68  
 1-Bromo-4-Fluorobenzene  
 Concen: 10.149 ppbv  
 RT: 14.44 min Scan# 3625  
 Delta R.T. -0.01 min  
 Lab File: VL035226.D  
 Acq: 23 Jul 2020 13:18

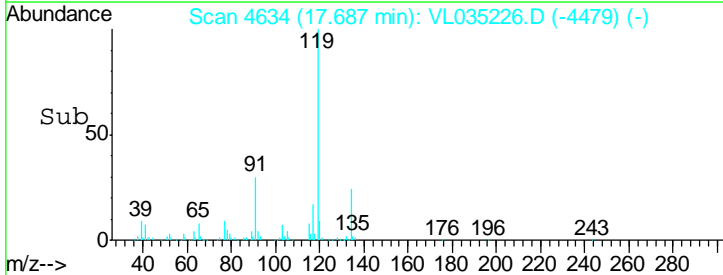
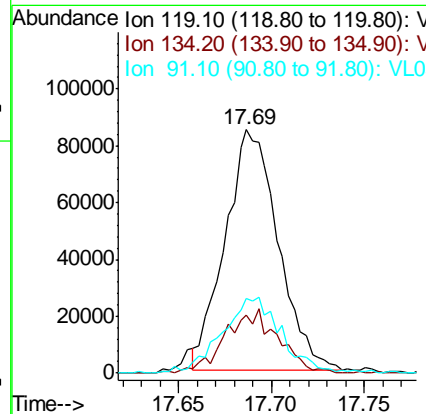
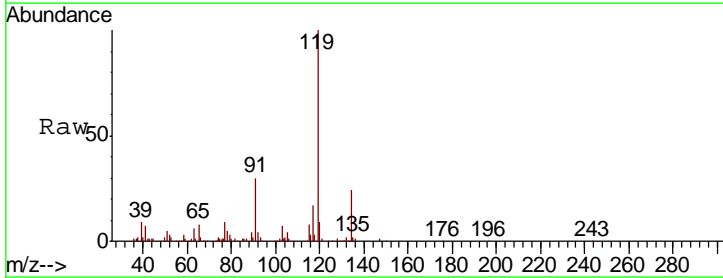
Instrument :  
 MSVOA\_L  
 ClientSampled :

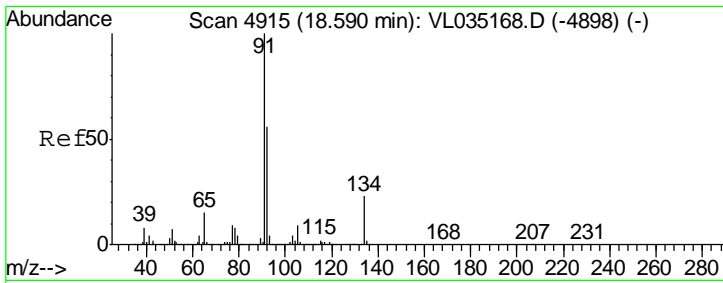
Tgt Ion	Resp	Lower	Upper
95	2315051		
174	65.4	52.2	78.2
175	5.1	4.0	6.0



#69  
 p-Isopropyltoluene  
 Concen: 0.402 ppbv  
 RT: 17.69 min Scan# 4634  
 Delta R.T. -0.00 min  
 Lab File: VL035226.D  
 Acq: 23 Jul 2020 13:18

Tgt Ion	Resp	Lower	Upper
119	168636		
134	26.8	20.8	31.2
91	35.6	24.9	37.3

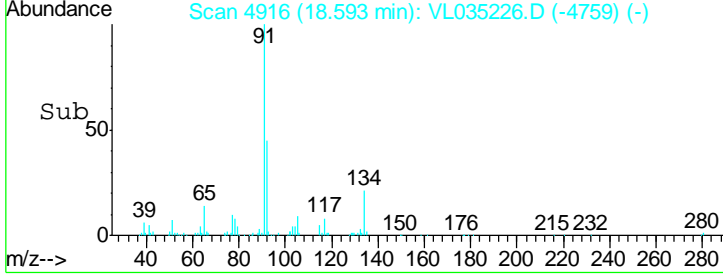
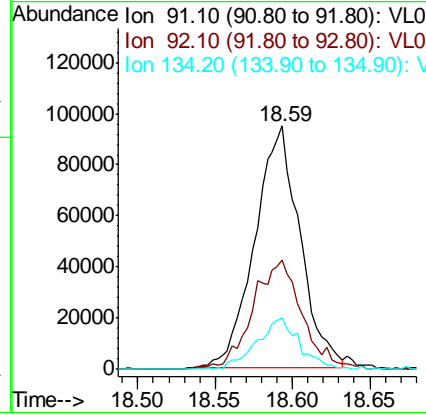
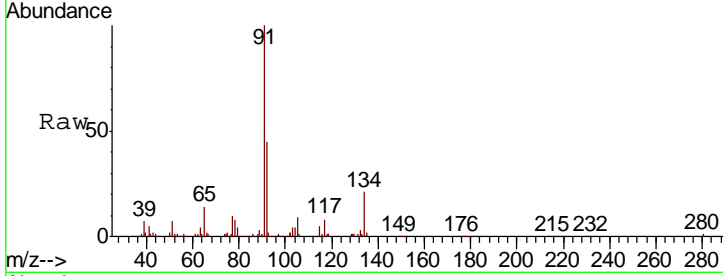




#70  
 n-Butylbenzene  
 Concen: 0.431 ppbv  
 RT: 18.59 min Scan# 4916  
 Delta R.T. 0.00 min  
 Lab File: VL035226.D  
 Acq: 23 Jul 2020 13:18

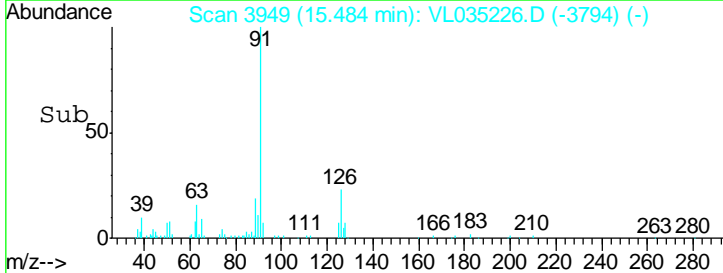
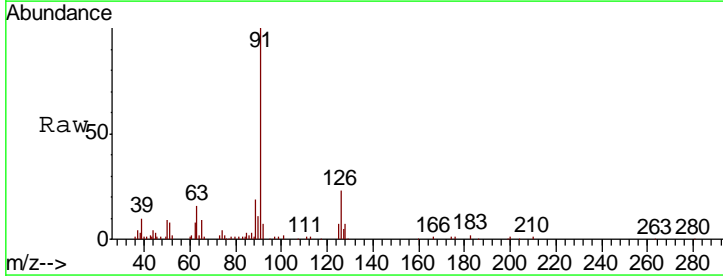
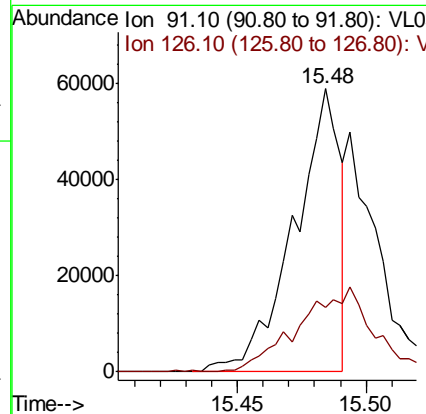
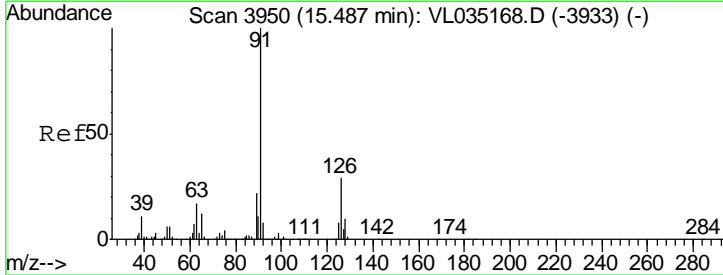
Instrument : MSVOA\_L  
 ClientSampled :

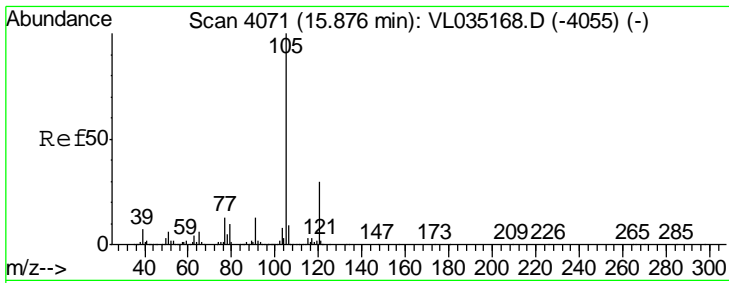
Tgt Ion	Resp	Lower	Upper
91	191825		
92	49.7	44.0	66.0
134	20.4	18.0	27.0



#71  
 2-Chlorotoluene  
 Concen: 0.237 ppbv  
 RT: 15.48 min Scan# 3949  
 Delta R.T. -0.00 min  
 Lab File: VL035226.D  
 Acq: 23 Jul 2020 13:18

Tgt Ion	Resp	Lower	Upper
91	73380		
126	0.0	12.0	48.0#

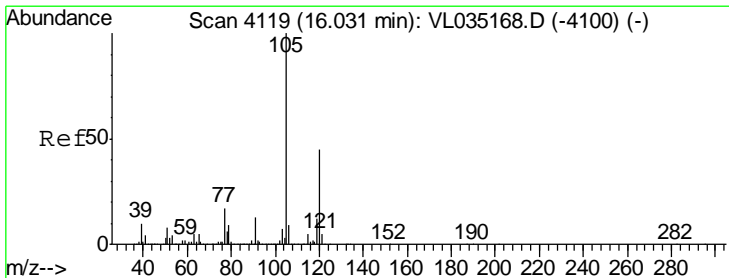
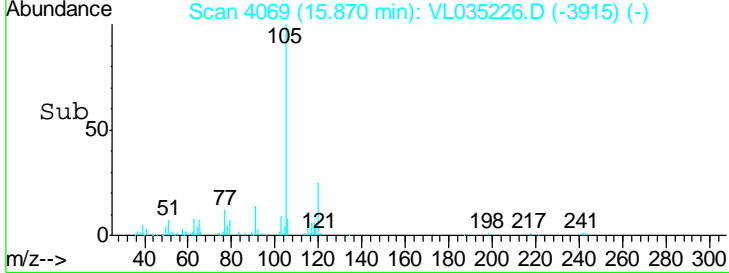
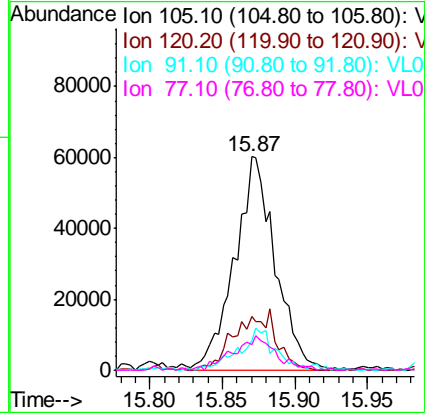
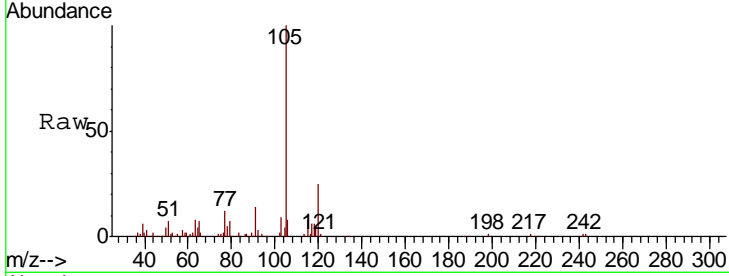




#72  
 4-Ethyltoluene  
 Concen: 0.378 ppbv  
 RT: 15.87 min Scan# 4069  
 Delta R.T. -0.01 min  
 Lab File: VL035226.D  
 Acq: 23 Jul 2020 13:18

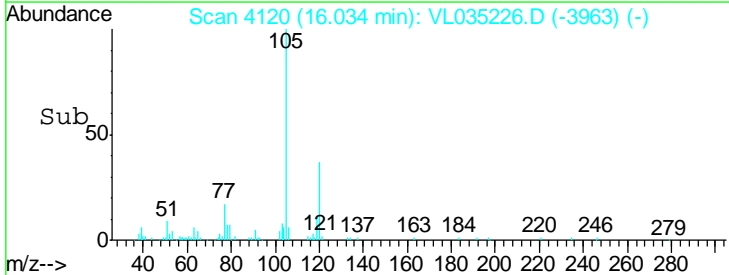
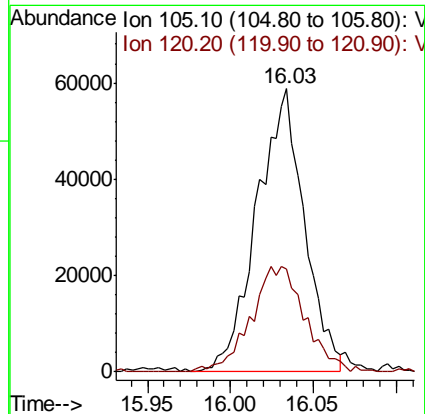
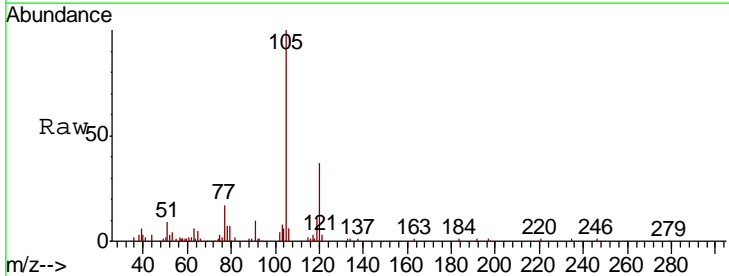
Instrument :  
 MSVOA\_L  
 ClientSampled :

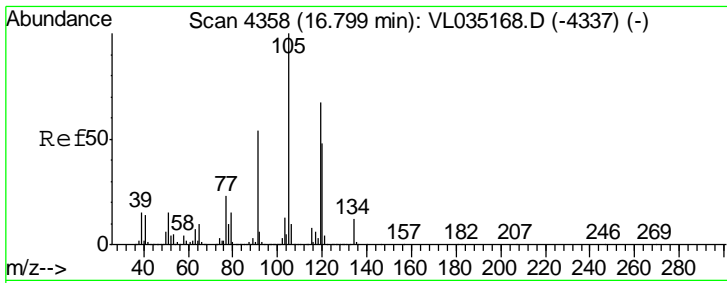
Tgt Ion	Resp	Lower	Upper
105	117596		
120	28.0	23.2	34.8
91	19.6	10.9	16.3#
77	17.5	11.8	17.6



#73  
 1,3,5-Trimethylbenzene  
 Concen: 0.387 ppbv  
 RT: 16.03 min Scan# 4120  
 Delta R.T. 0.00 min  
 Lab File: VL035226.D  
 Acq: 23 Jul 2020 13:18

Tgt Ion	Resp	Lower	Upper
105	115985		
120	36.6	36.2	54.2

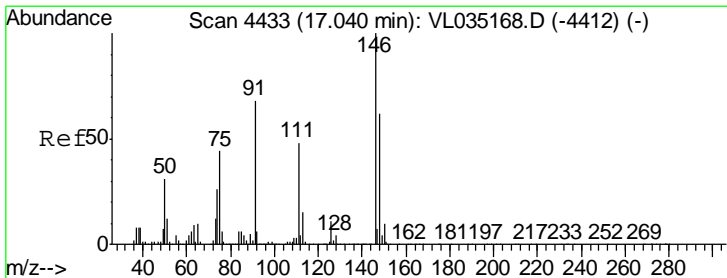
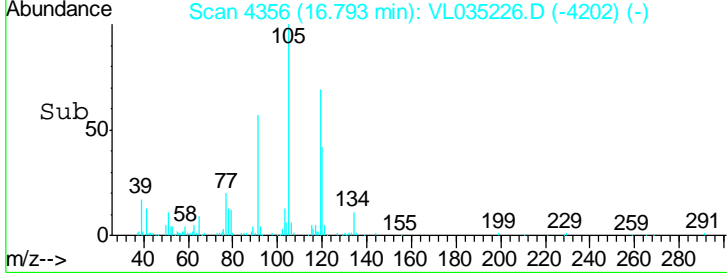
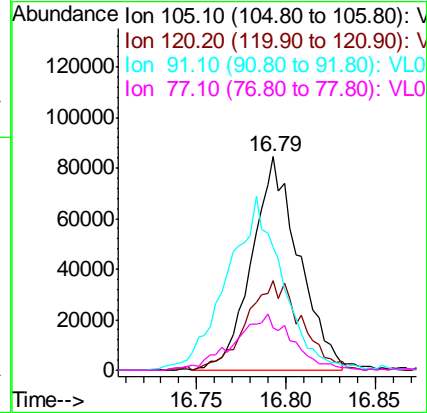
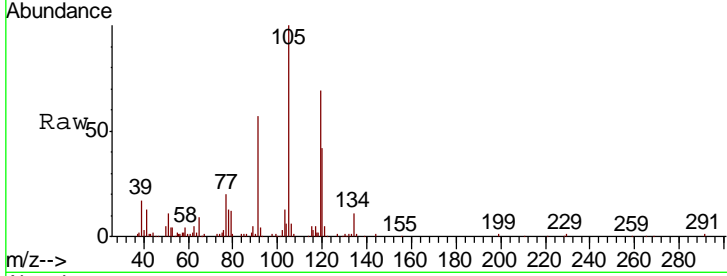




#74  
 1,2,4-Trimethylbenzene  
 Concen: 0.470 ppbv  
 RT: 16.79 min Scan# 4356  
 Delta R.T. -0.01 min  
 Lab File: VL035226.D  
 Acq: 23 Jul 2020 13:18

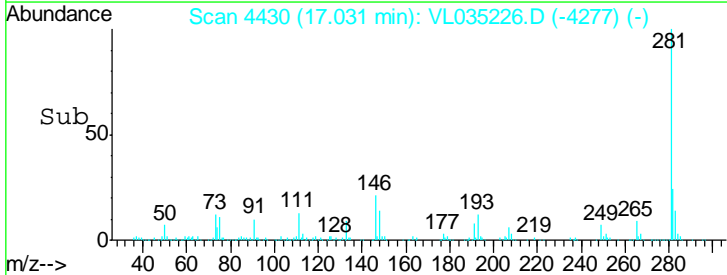
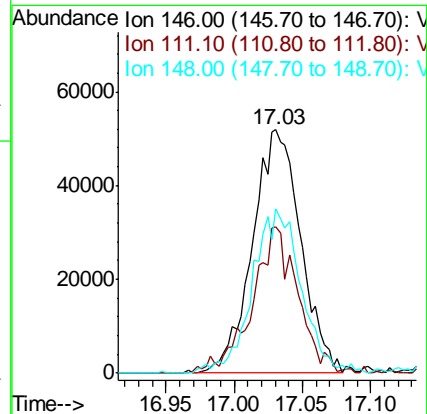
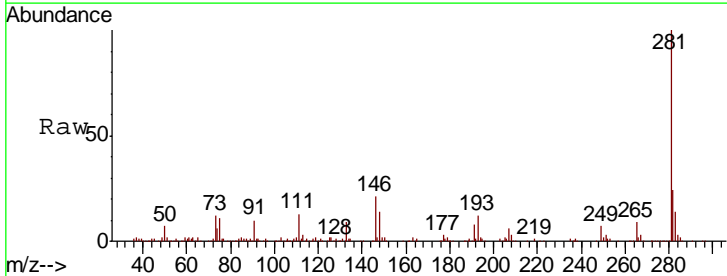
Instrument :  
 MSVOA\_L  
 ClientSampled :

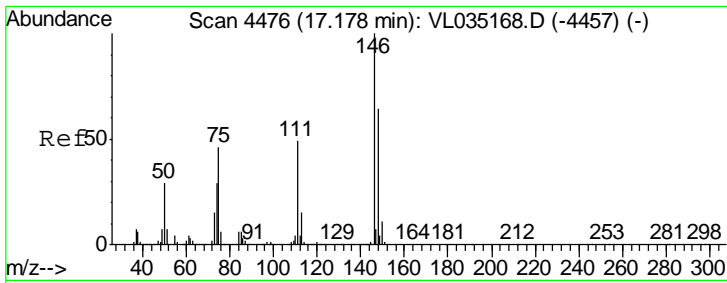
Tgt Ion	Resp	Lower	Upper
105	155666		
120	41.8	38.6	57.8
91	55.0	43.6	65.4
77	18.6	18.3	27.5



#75  
 1,3-Dichlorobenzene  
 Concen: 0.608 ppbv  
 RT: 17.03 min Scan# 4430  
 Delta R.T. -0.01 min  
 Lab File: VL035226.D  
 Acq: 23 Jul 2020 13:18

Tgt Ion	Resp	Lower	Upper
146	127492		
111	57.2	24.7	74.1
148	68.6	32.4	97.0

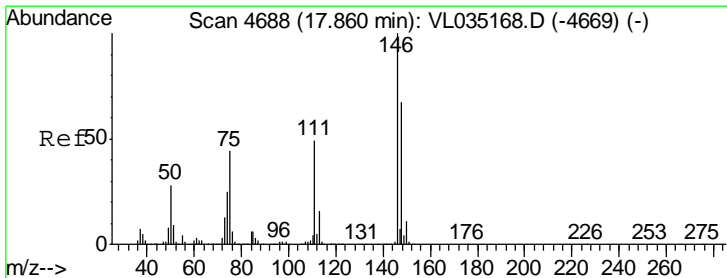
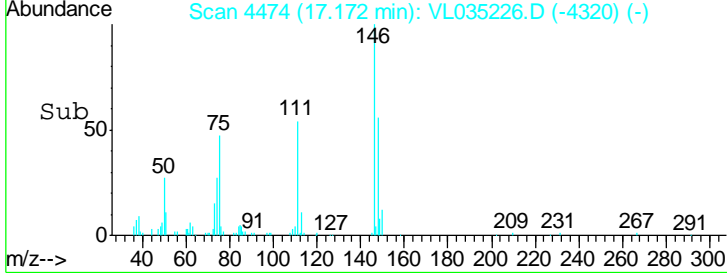
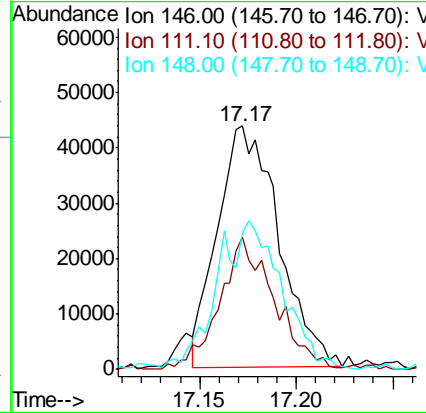
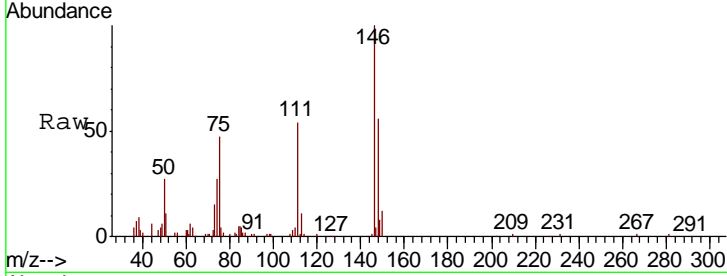




#76  
 1,4-Dichlorobenzene  
 Concen: 0.494 ppbv  
 RT: 17.17 min Scan# 4474  
 Delta R.T. -0.01 min  
 Lab File: VL035226.D  
 Acq: 23 Jul 2020 13:18

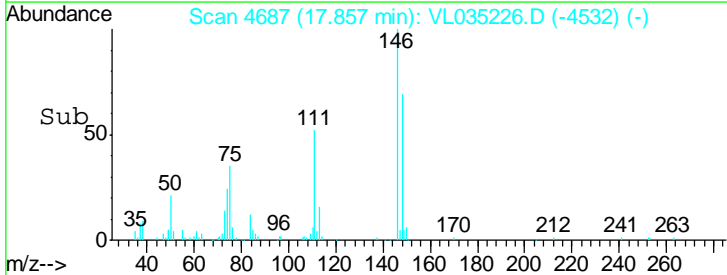
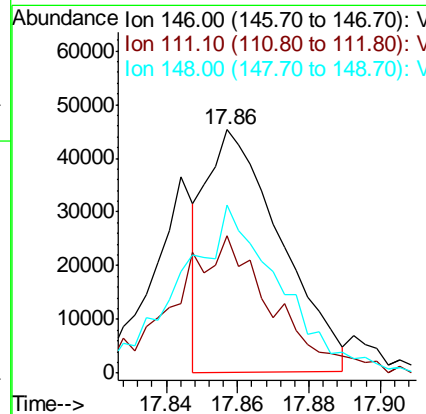
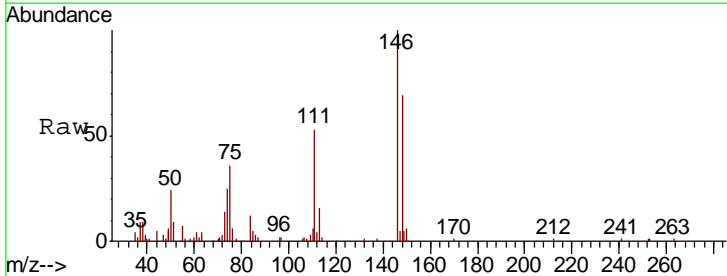
Instrument :  
 MSVOA\_L  
 ClientSampled :

Tgt Ion	Resp	Lower	Upper
146	100		
111	49.4	23.8	71.2
148	66.0	32.3	96.9

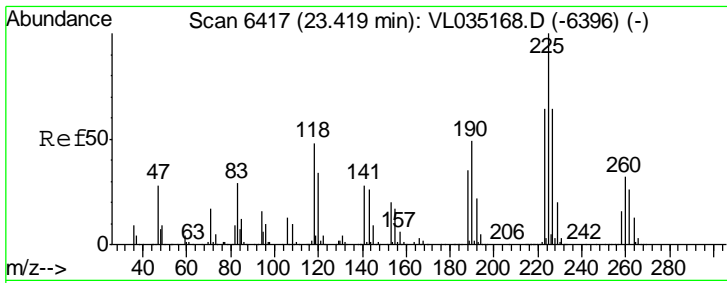


#77  
 1,2-Dichlorobenzene  
 Concen: 0.347 ppbv  
 RT: 17.86 min Scan# 4687  
 Delta R.T. -0.00 min  
 Lab File: VL035226.D  
 Acq: 23 Jul 2020 13:18

Tgt Ion	Resp	Lower	Upper
146	100		
111	76.5	25.1	75.2#
148	96.2	32.4	97.0



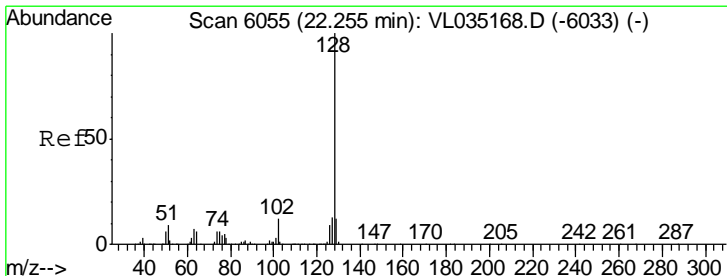
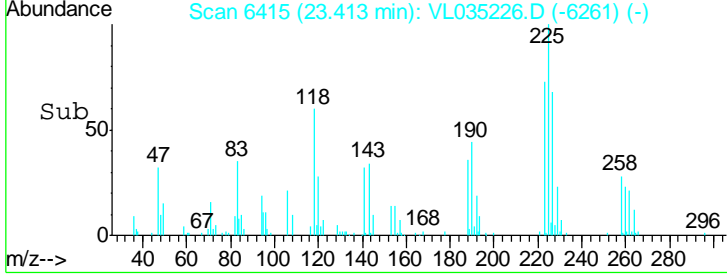
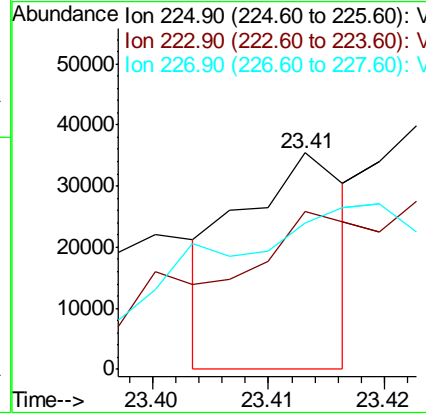
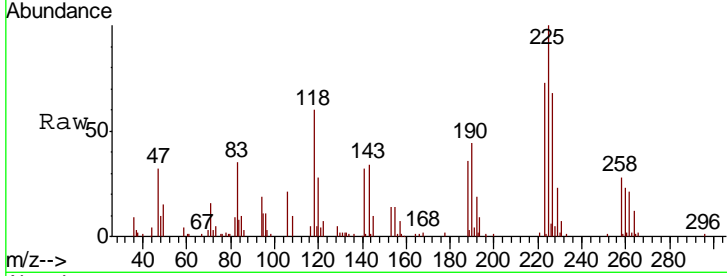




#78  
 Hexachloro-1,3-Butadiene  
 Concen: 0.152 ppbv  
 RT: 23.41 min Scan# 6415  
 Delta R.T. -0.01 min  
 Lab File: VL035226.D  
 Acq: 23 Jul 2020 13:18

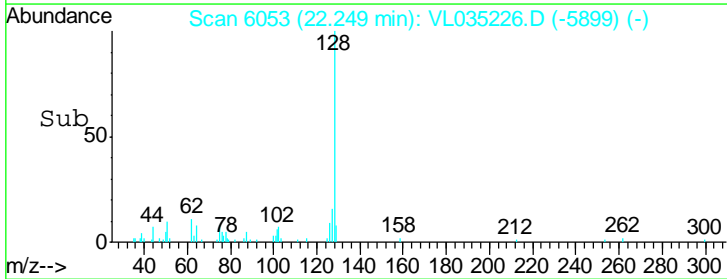
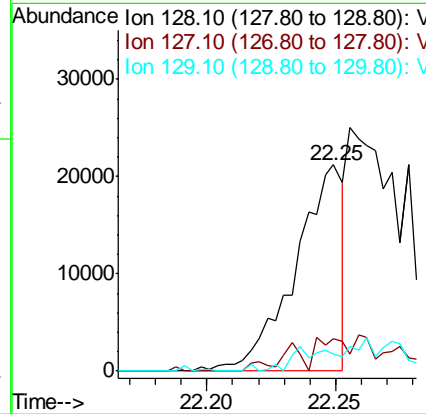
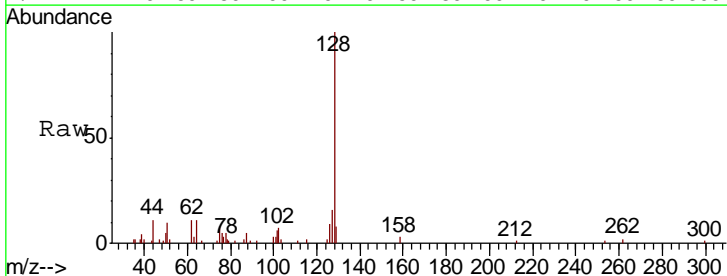
Instrument :  
 MSVOA\_L  
 ClientSampleId :

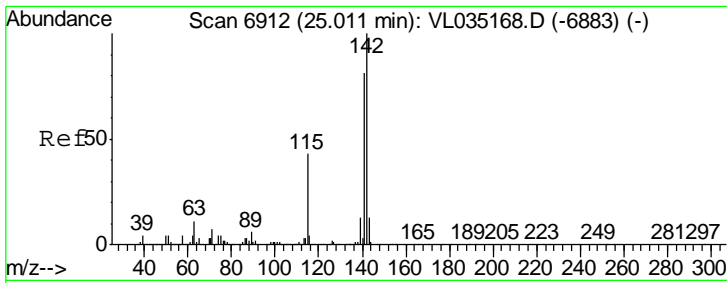
Tgt Ion	Resp	Lower	Upper
225	22720		
223	0.0	50.2	75.2#
227	0.0	51.2	76.8#



#79  
 Naphthalene  
 Concen: 0.128 ppbv  
 RT: 22.25 min Scan# 6053  
 Delta R.T. -0.01 min  
 Lab File: VL035226.D  
 Acq: 23 Jul 2020 13:18

Tgt Ion	Resp	Lower	Upper
128	27375		
127	15.6	10.8	16.2
129	8.0	9.4	14.2#

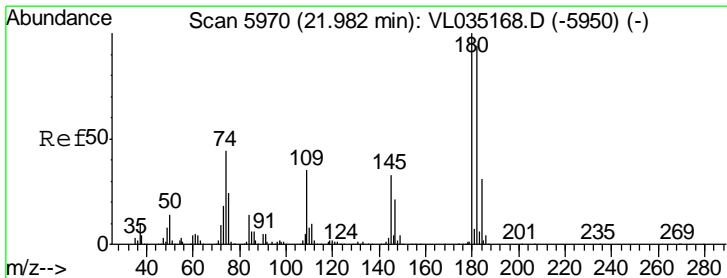
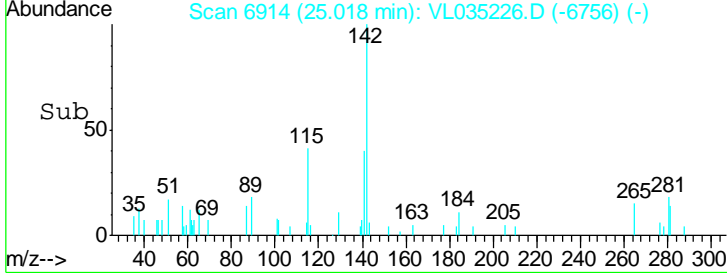
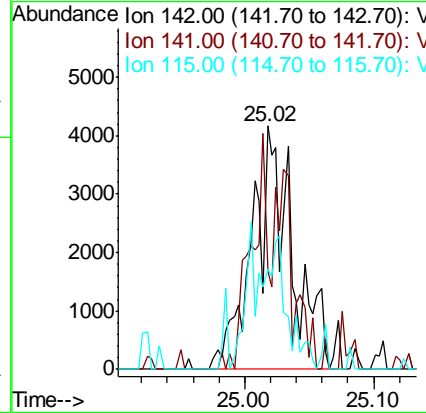
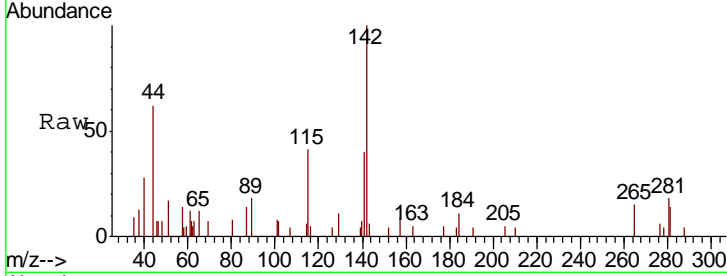




#80  
 Naphthalene, 2-methyl-  
 Concen: 0.179 ppbv  
 RT: 25.02 min Scan# 6914  
 Delta R.T. 0.01 min  
 Lab File: VL035226.D  
 Acq: 23 Jul 2020 13:18

Instrument : MSVOA\_L  
 ClientSampled :

Tgt Ion	Resp	Lower	Upper
142	9047		
141	76.4	68.2	102.4
115	52.1	34.4	51.6#



#81  
 1,2,4-Trichlorobenzene  
 Concen: 0.152 ppbv  
 RT: 21.98 min Scan# 5969  
 Delta R.T. -0.00 min  
 Lab File: VL035226.D  
 Acq: 23 Jul 2020 13:18

Tgt Ion	Resp	Lower	Upper
180	20700		
182	0.0	76.7	115.1#
184	0.0	25.0	37.6#

