

Data Path : Z:\VOASRV\HPCHEM1\MSVOA L\DATA\VL081820\
 Data File : VL035450.D
 Acq On : 18 Aug 2020 20:28
 Operator : SY/AP
 Sample : L3725-03 10X
 Misc : 400ml/MSVOA L
 ALS Vial : 1 Sample Multiplier: 1

Instrument :
 MSVOA_L
 ClientSampled :

Quant Time: Aug 19 02:44:57 2020
 Quant Method : Z:\VOASRV\HPCHEM1\MSVOA L\METHODS\VL081720AIR.M
 Quant Title : AIR ANALYSIS BY METHOD TO-15 Instrument: MSVOA_L Mon Aug 17 19:28:30 2020
 QLast Update : Mon Aug 17 19:28:30 2020
 Response via : Initial Calibration

Internal Standards	R.T.	QIon	Response	Conc	Units	Dev(Min)
1) Bromochloromethane	5.68	49	1134919	10.00	ppbv	0.00
33) 1,4-Difluorobenzene	7.19	114	5165239	10.00	ppbv	0.00
55) Chlorobenzene-d5	12.11	117	5143483	10.00	ppbv	0.00

System Monitoring Compounds	R.T.	QIon	Response	Conc	Units	Dev(Min)
68) 1-Bromo-4-Fluorobenzene	14.44	95	3743941	10.40	ppbv	0.00
Spiked Amount	10.000	Range	65 - 135	Recovery	=	104.00%

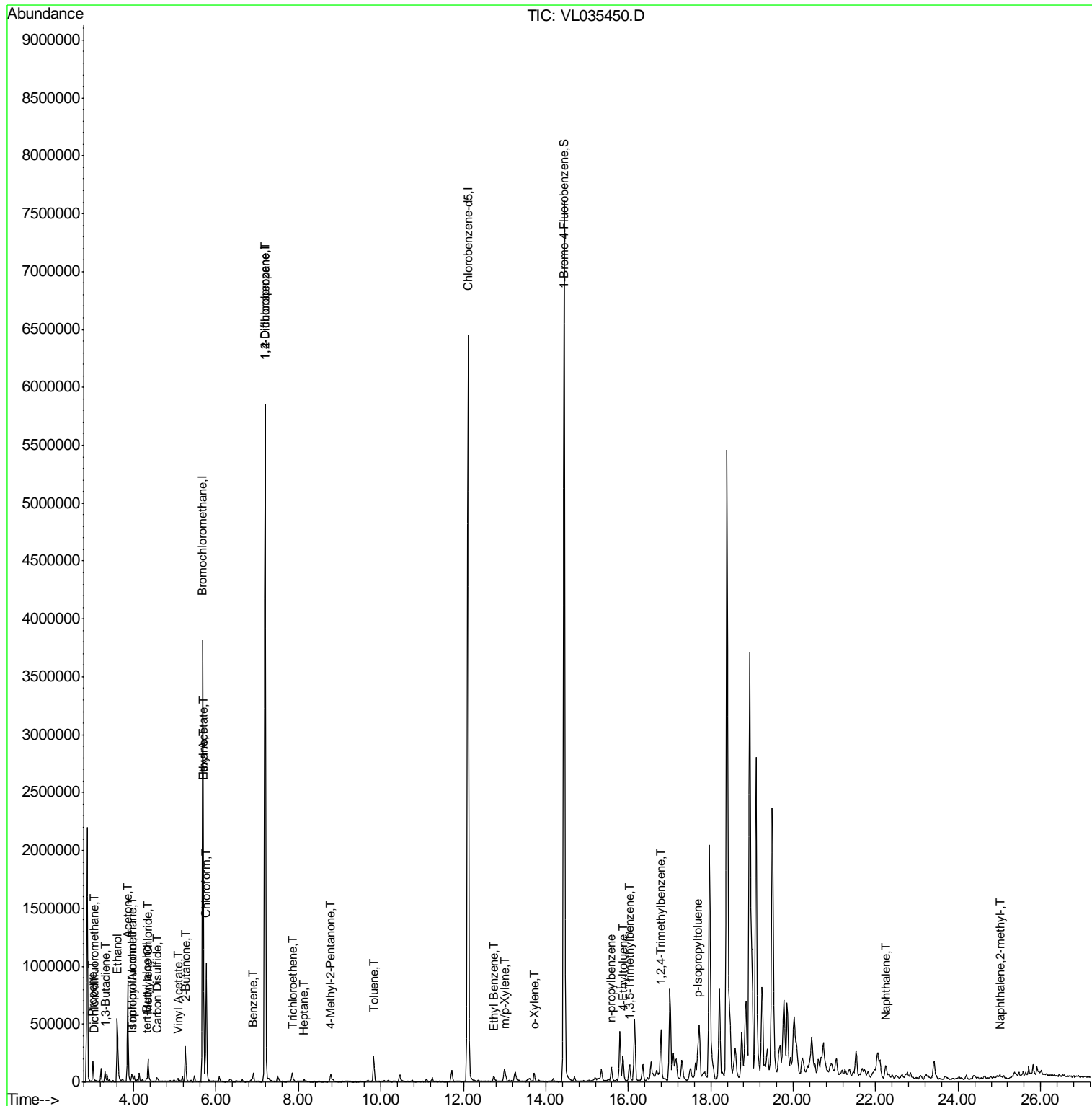
Target Compounds	R.T.	QIon	Response	Conc	Units	Ovalue
2) Dichlorodifluoromethane	3.05	85	16200	0.077	ppbv	92
9) Propene	3.01	41	72893	1.274	ppbv	93
10) Heptane	8.14	43	7033	0.047	ppbv #	79
11) Trichlorofluoromethane	3.96	101	40165	0.122	ppbv	94
13) Ethanol	3.61	45	577092	27.539	ppbv	98
15) Acetone	3.86	43	755749	5.785	ppbv #	81
16) 1,3-Butadiene	3.31	39	26997	0.510	ppbv #	43
17) tert-Butyl alcohol	4.31	59	11289	0.067	ppbv #	71
19) Isopropyl Alcohol	3.98	45	29798	0.331	ppbv #	1
20) Methylene Chloride	4.35	84	81364	0.772	ppbv #	64
23) Vinyl Acetate	5.08	43	7687	0.041	ppbv #	72
25) Ethyl Acetate	5.70	43	26031	0.102	ppbv #	87
26) Hexane	5.70	57	39088	0.272	ppbv #	37
27) Carbon Disulfide	4.56	76	18551	0.089	ppbv #	93
29) Chloroform	5.76	83	722188	2.506	ppbv	98
34) 2-Butanone	5.26	43	296790	1.720	ppbv #	70
36) Benzene	6.90	78	66240	0.175	ppbv #	86
38) Trichloroethene	7.85	130	26656	0.126	ppbv #	75
39) 1,2-Dichloropropane	7.19	63	906851	7.258	ppbv #	22
50) 4-Methyl-2-Pentanone	8.78	43	47434	0.192	ppbv #	80
53) Toluene	9.83	91	189889	0.389	ppbv	97
58) Ethyl Benzene	12.74	91	20730	0.033	ppbv	96
59) m/p-Xylene	13.02	91	27382	0.052	ppbv #	33
60) o-Xylene	13.72	91	36572	0.072	ppbv #	41
64) n-propylbenzene	15.59	120	14927	0.058	ppbv #	1
69) p-Isopropyltoluene	17.68	119	205702	0.217	ppbv #	90
72) 4-Ethyltoluene	15.87	105	191472	0.286	ppbv #	92
73) 1,3,5-Trimethylbenzene	16.03	105	119704	0.192	ppbv #	84
74) 1,2,4-Trimethylbenzene	16.79	105	353474	0.522	ppbv #	69
79) Naphthalene	22.24	128	82131	0.086	ppbv	97
80) Naphthalene,2-methyl-	25.00	142	23656	0.060	ppbv	93

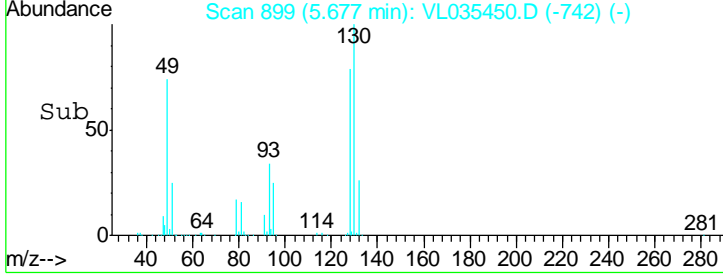
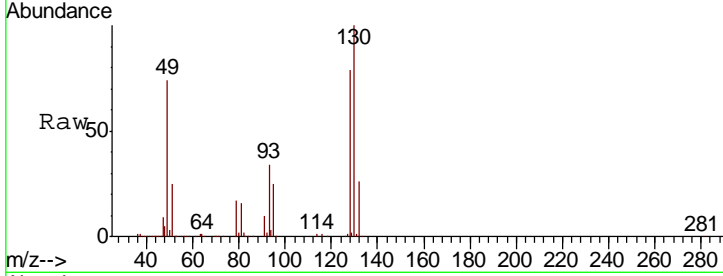
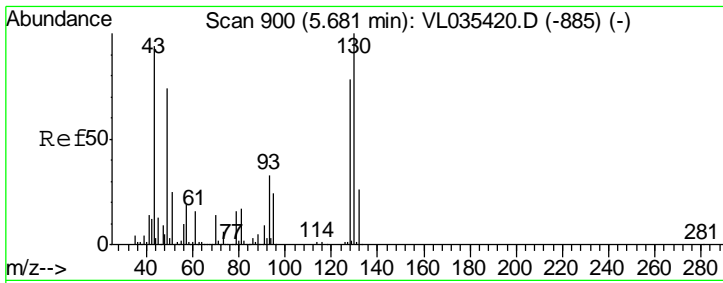
(#) = qualifier out of range (m) = manual integration (+) = signals summed

Data Path : Z:\VOASRV\HPCHEM1\MSVOA L\DATA\VL081820\
 Data File : VL035450.D
 Acq On : 18 Aug 2020 20:28
 Operator : SY/AP
 Sample : L3725-03 10X
 Misc : 400ml/MSVOA L
 ALS Vial : 1 Sample Multiplier: 1

Instrument :
 MSVOA_L
 ClientSampled :

Quant Time: Aug 19 02:44:57 2020
 Quant Method : Z:\VOASRV\HPCHEM1\MSVOA L\METHODS\VL081720AIR.M
 Quant Title : AIR ANALYSIS BY METHOD TO-15 Instrument: MSVOA_L Mon Aug 17 19:28:30 2020
 QLast Update : Mon Aug 17 19:28:30 2020
 Response via : Initial Calibration

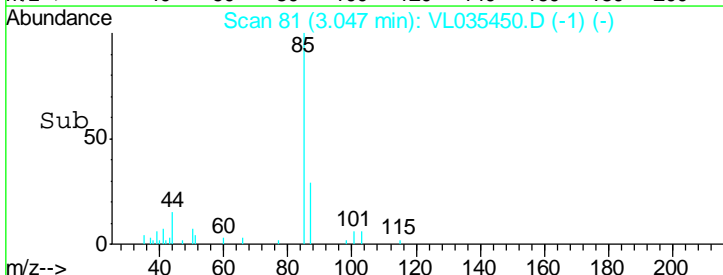
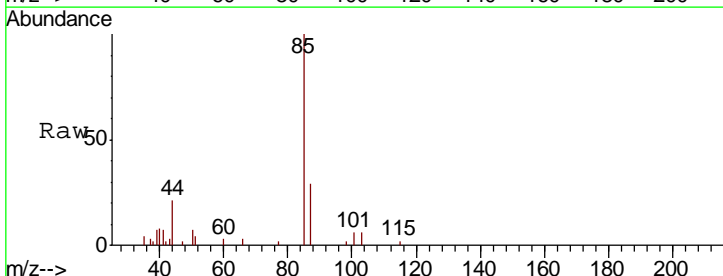
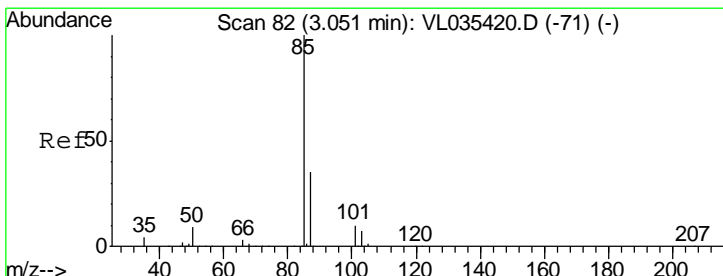
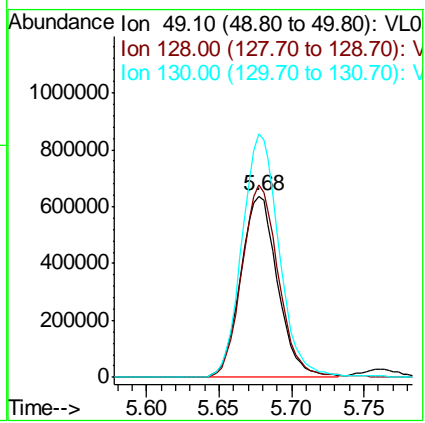




#1
 Bromochloromethane
 Concen: 10.000 ppbv
 RT: 5.68 min Scan# 899
 Delta R.T. 0.00 min
 Lab File: VL035450.D
 Acq: 18 Aug 2020 20:28

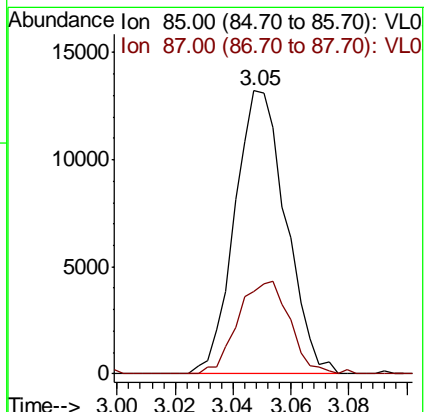
Instrument :
 MSVOA_L
 ClientSampled :

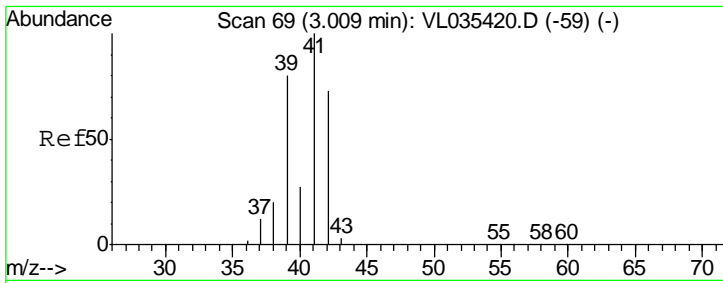
Tgt Ion	Resp	Lower	Upper
49	100		
128	105.8	20.9	62.7#
130	135.1	26.7	80.1#



#2
 Dichlorodifluoromethane
 Concen: 0.077 ppbv
 RT: 3.05 min Scan# 81
 Delta R.T. 0.00 min
 Lab File: VL035450.D
 Acq: 18 Aug 2020 20:28

Tgt Ion	Resp	Lower	Upper
85	100		
87	29.3	27.1	40.7

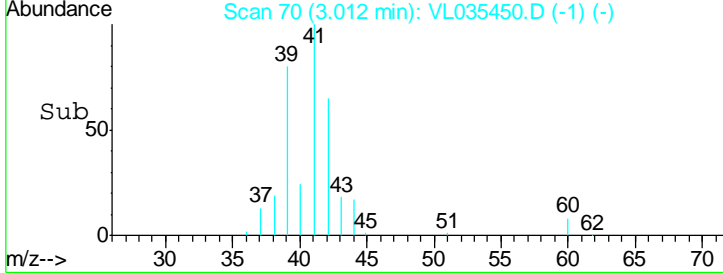
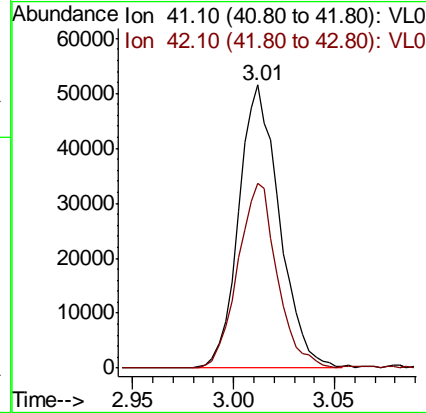
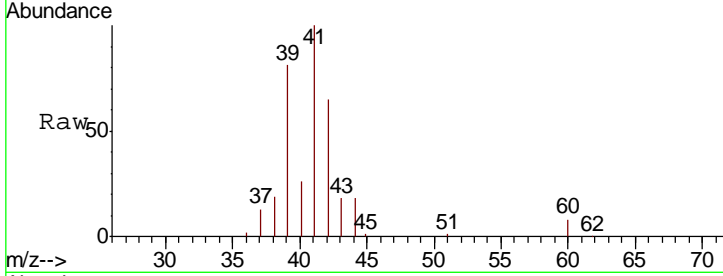




#9
 Propene
 Concen: 1.274 ppbv
 RT: 3.01 min Scan# 70
 Delta R.T. 0.01 min
 Lab File: VL035450.D
 Acq: 18 Aug 2020 20:28

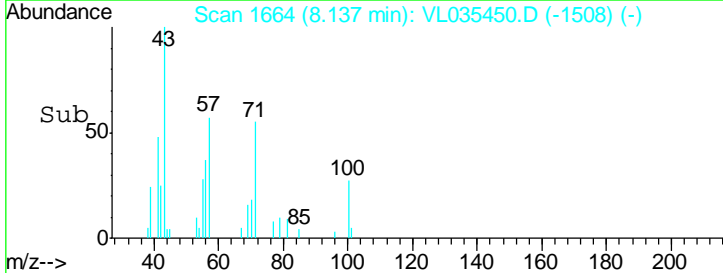
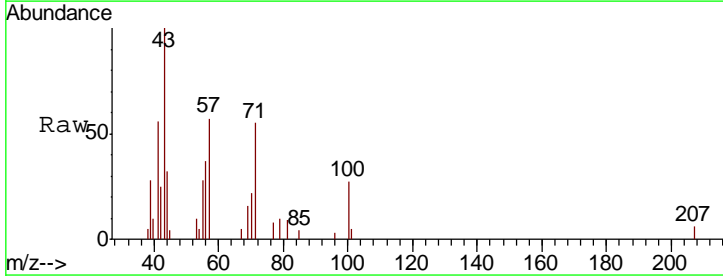
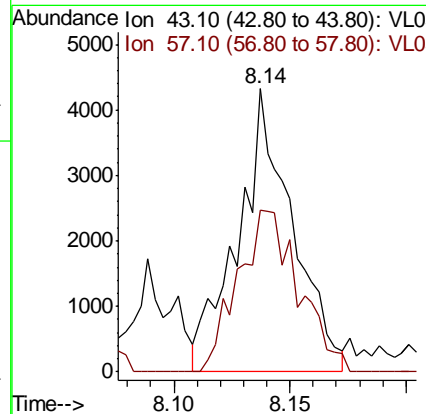
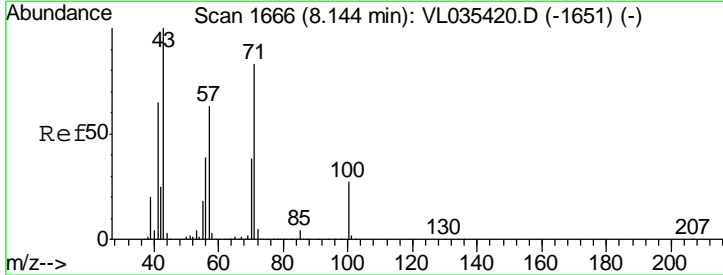
Instrument :
 MSVOA_L
 ClientSampled :

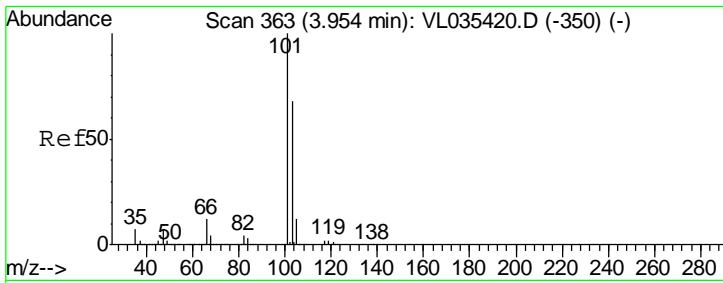
Tgt Ion	Resp	Lower	Upper
41	100		
42	64.0	55.5	83.3



#10
 Heptane
 Concen: 0.047 ppbv
 RT: 8.14 min Scan# 1664
 Delta R.T. 0.00 min
 Lab File: VL035450.D
 Acq: 18 Aug 2020 20:28

Tgt Ion	Resp	Lower	Upper
43	100		
57	64.2	39.8	59.6#

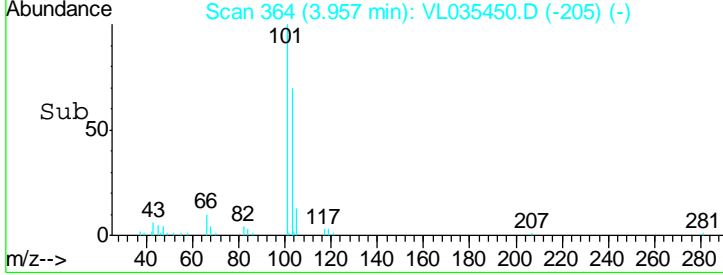
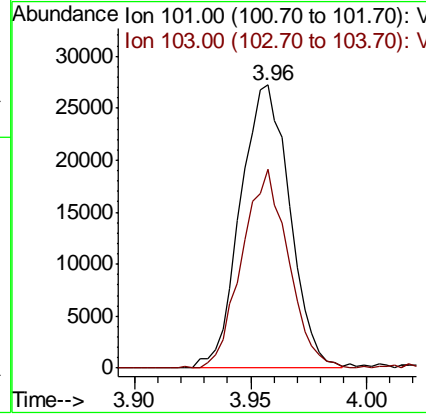
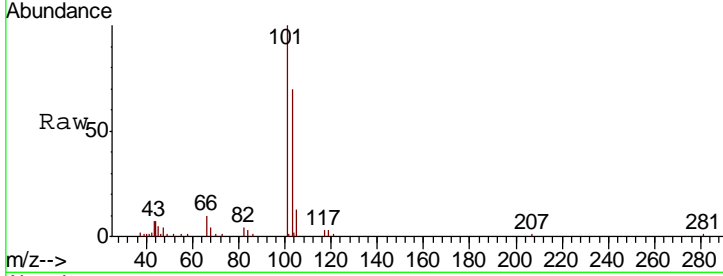




#11
 Trichlorofluoromethane
 Concen: 0.122 ppbv
 RT: 3.96 min Scan# 364
 Delta R.T. 0.01 min
 Lab File: VL035450.D
 Acq: 18 Aug 2020 20:28

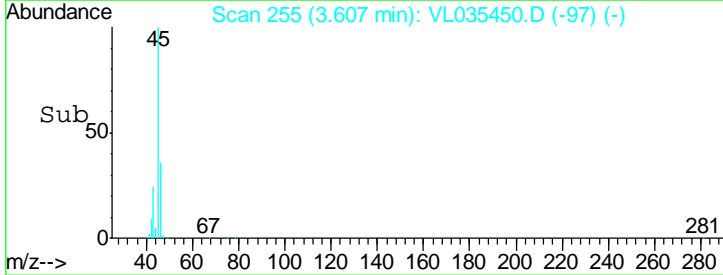
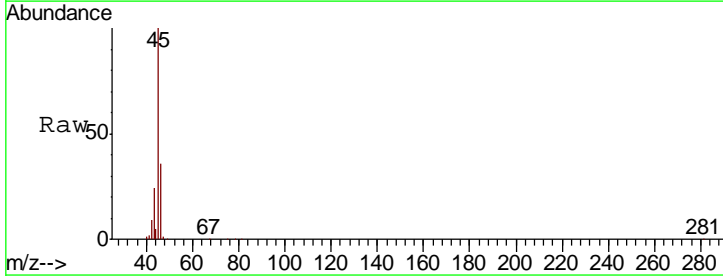
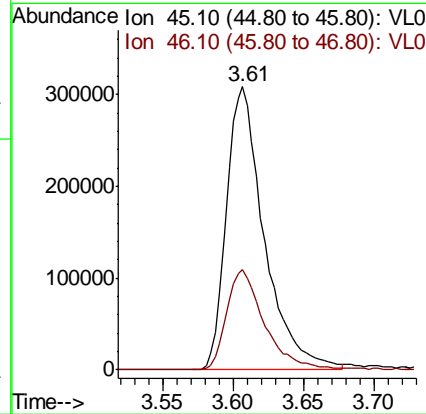
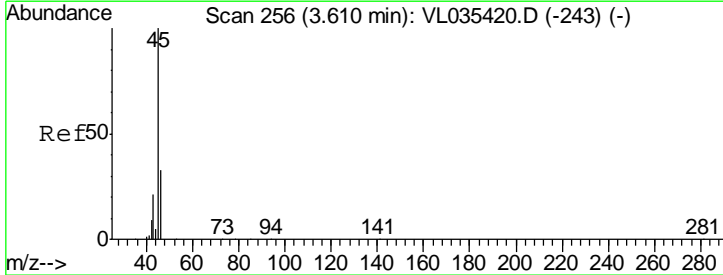
Instrument :
 MSVOA_L
 ClientSampled :

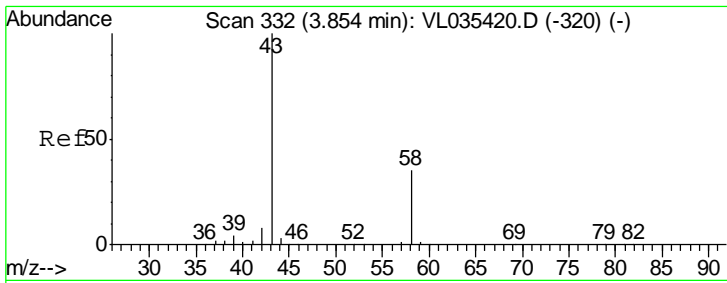
Tgt Ion	Resp	Lower	Upper
101	40165		
103	70.2	52.6	78.8



#13
 Ethanol
 Concen: 27.539 ppbv
 RT: 3.61 min Scan# 255
 Delta R.T. 0.01 min
 Lab File: VL035450.D
 Acq: 18 Aug 2020 20:28

Tgt Ion	Resp	Lower	Upper
45	577092		
46	36.3	14.2	56.6

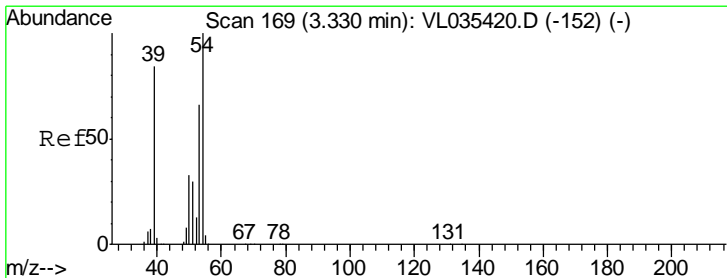
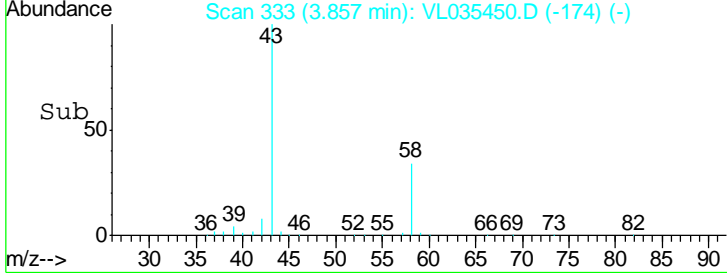
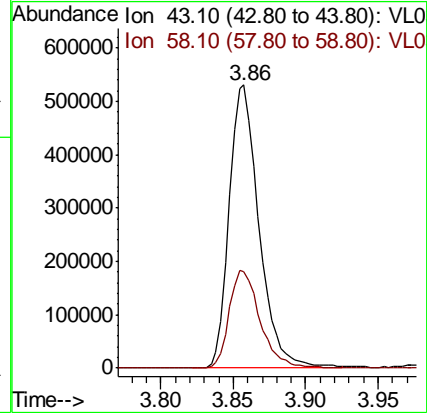
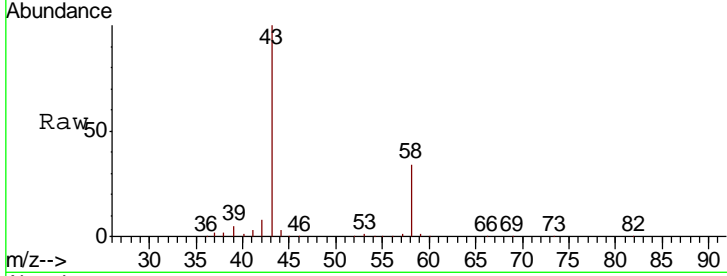




#15
 Acetone
 Concen: 5.785 ppbv
 RT: 3.86 min Scan# 333
 Delta R.T. 0.01 min
 Lab File: VL035450.D
 Acq: 18 Aug 2020 20:28

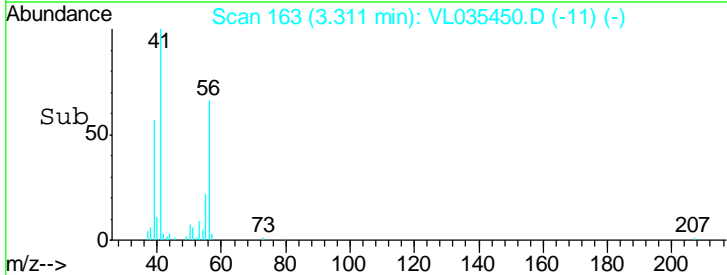
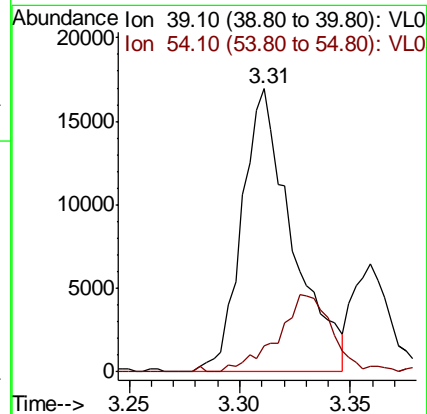
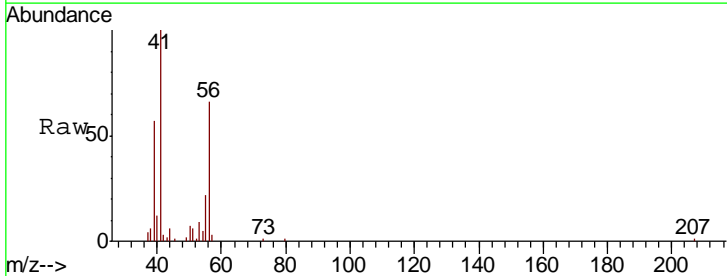
Instrument :
 MSVOA_L
 ClientSampled :

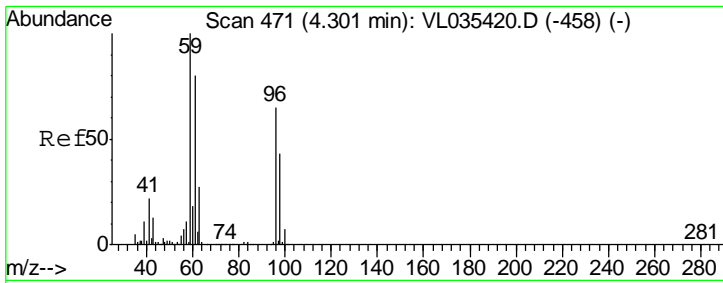
Tgt Ion	Resp	Lower	Upper
43	100		
58	36.0	21.0	31.6#



#16
 1,3-Butadiene
 Concen: 0.510 ppbv
 RT: 3.31 min Scan# 163
 Delta R.T. -0.01 min
 Lab File: VL035450.D
 Acq: 18 Aug 2020 20:28

Tgt Ion	Resp	Lower	Upper
39	100		
54	29.8	64.4	96.6#

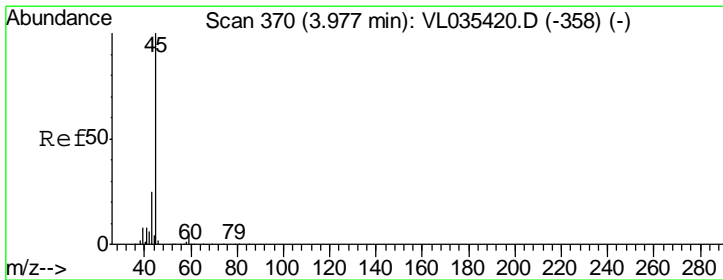
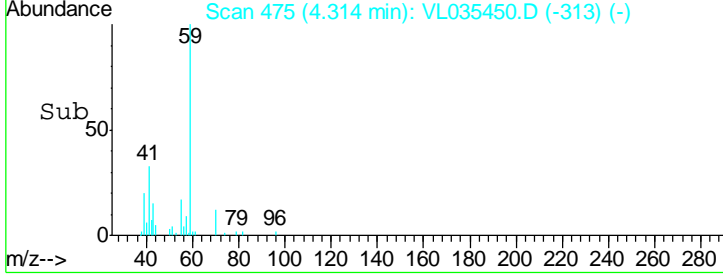
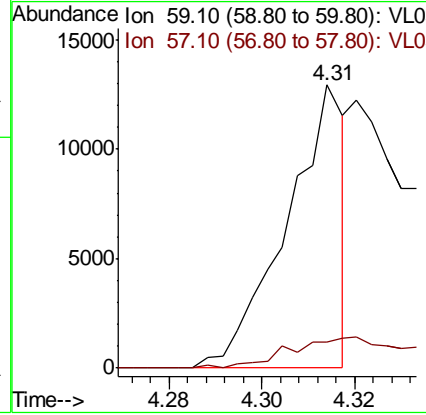
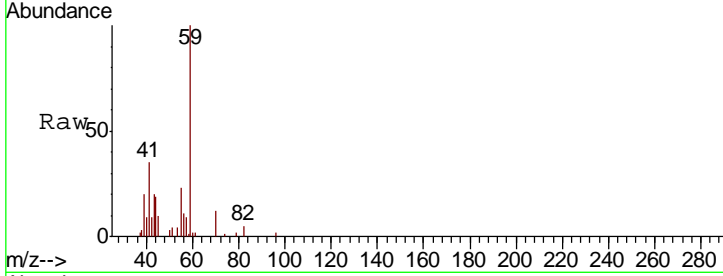




#17
 tert-Butyl alcohol
 Concen: 0.067 ppbv
 RT: 4.31 min Scan# 475
 Delta R.T. 0.02 min
 Lab File: VL035450.D
 Acq: 18 Aug 2020 20:28

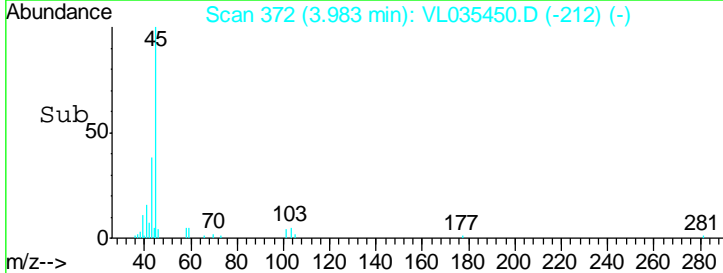
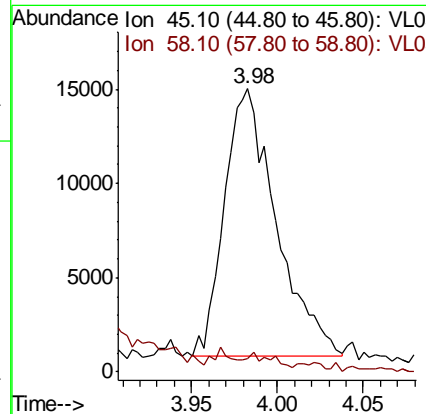
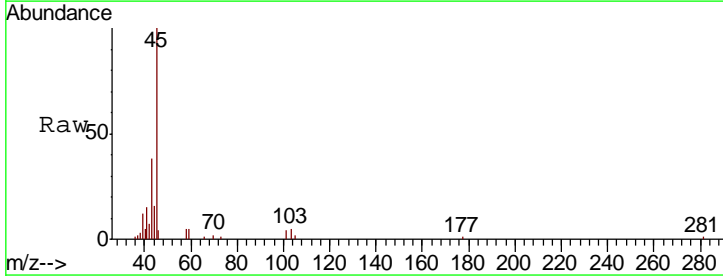
Instrument :
 MSVOA_L
 ClientSampled :

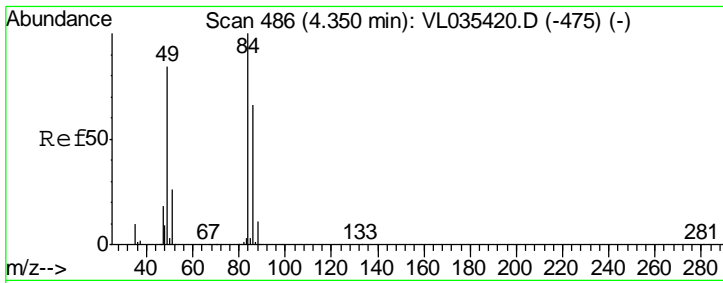
Tgt Ion	Resp	Lower	Upper
59	100		
57	0.0	8.9	13.3#



#19
 Isopropyl Alcohol
 Concen: 0.331 ppbv
 RT: 3.98 min Scan# 372
 Delta R.T. 0.01 min
 Lab File: VL035450.D
 Acq: 18 Aug 2020 20:28

Tgt Ion	Resp	Lower	Upper
45	100		
58	911.8	1.0	1.6#

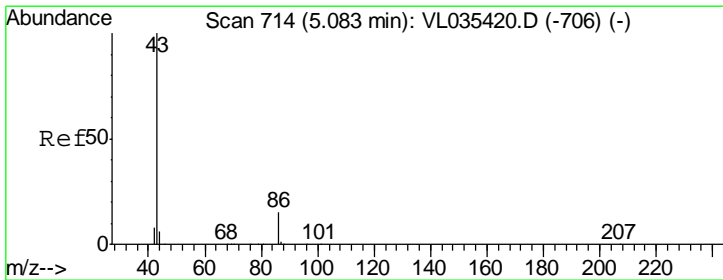
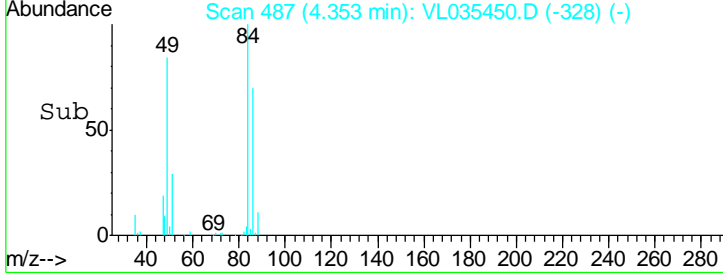
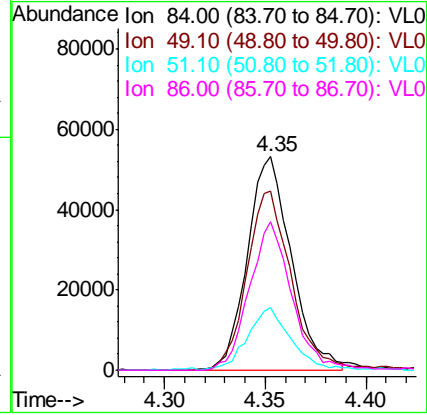
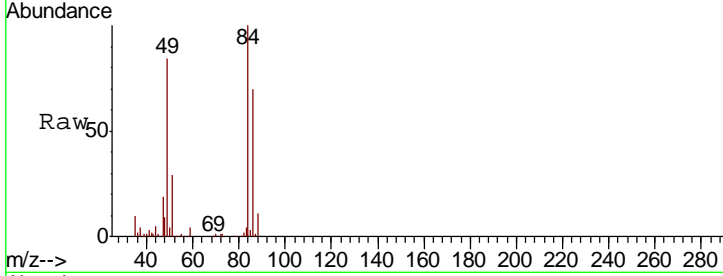




#20
 Methylene Chloride
 Concen: 0.772 ppbv
 RT: 4.35 min Scan# 487
 Delta R.T. 0.01 min
 Lab File: VL035450.D
 Acq: 18 Aug 2020 20:28

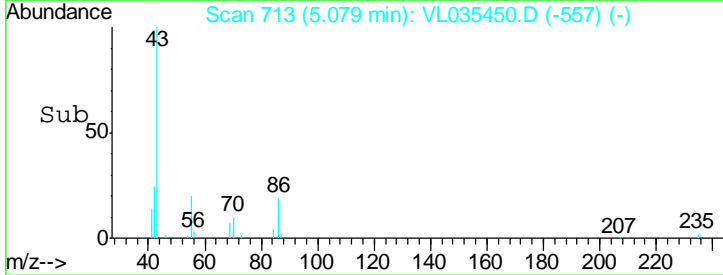
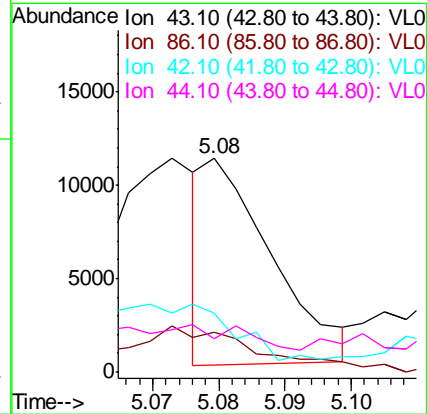
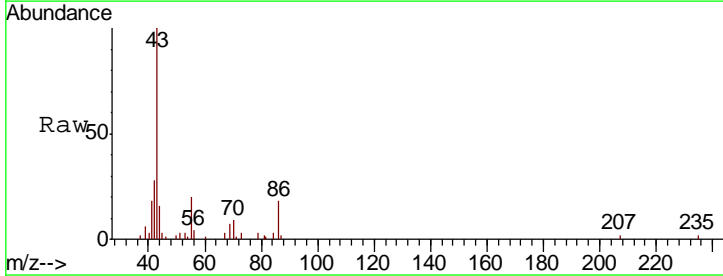
Instrument :
 MSVOA_L
 ClientSampled :

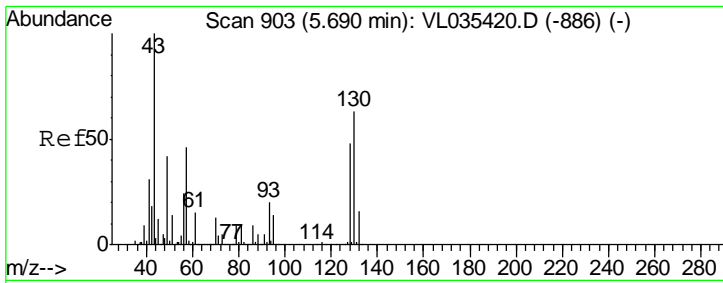
Tgt Ion	Resp	Lower	Upper
84	81364		
49	83.6	118.6	177.8#
51	28.3	36.4	54.6#
86	69.8	50.2	75.4



#23
 Vinyl Acetate
 Concen: 0.041 ppbv
 RT: 5.08 min Scan# 713
 Delta R.T. 0.00 min
 Lab File: VL035450.D
 Acq: 18 Aug 2020 20:28

Tgt Ion	Resp	Lower	Upper
43	7687		
86	17.2	6.5	9.7#
42	25.8	8.3	12.5#
44	3.3	4.0	6.0#

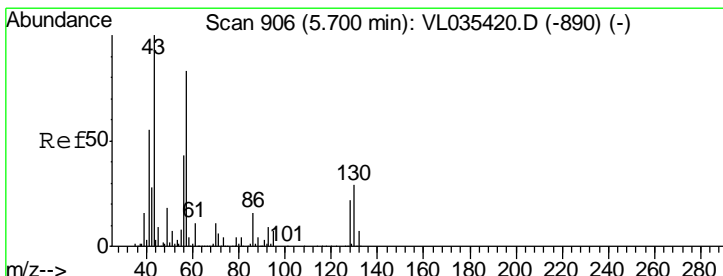
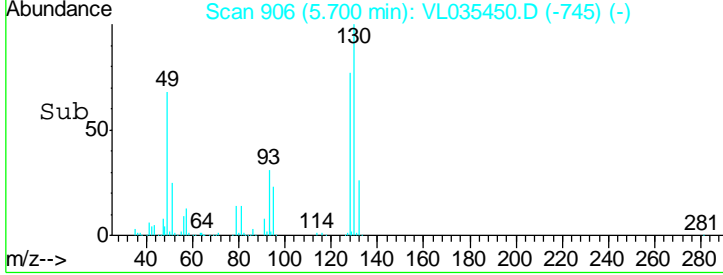
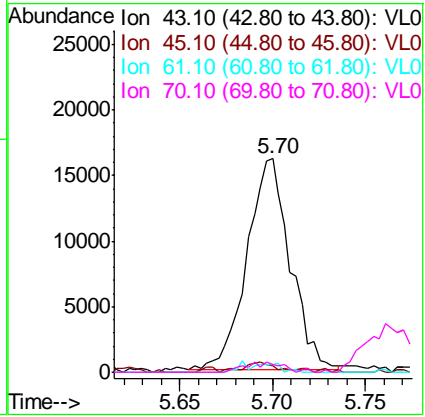
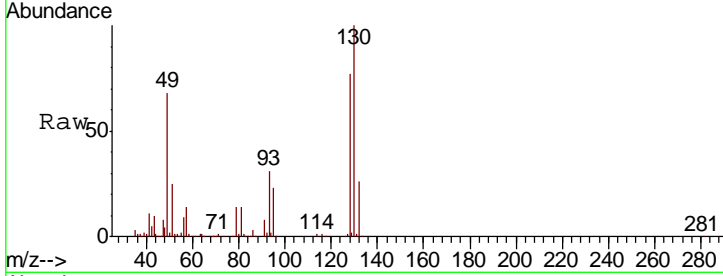




#25
Ethyl Acetate
Concen: 0.102 ppbv
RT: 5.70 min Scan# 906
Delta R.T. 0.02 min
Lab File: VL035450.D
Acq: 18 Aug 2020 20:28

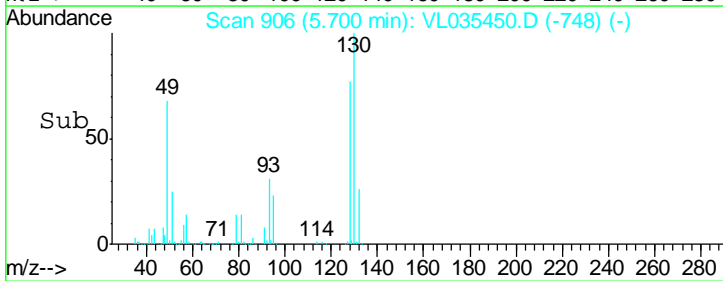
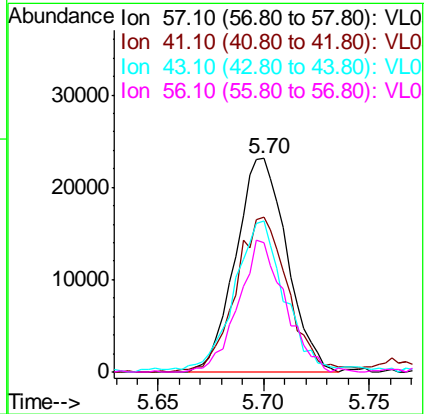
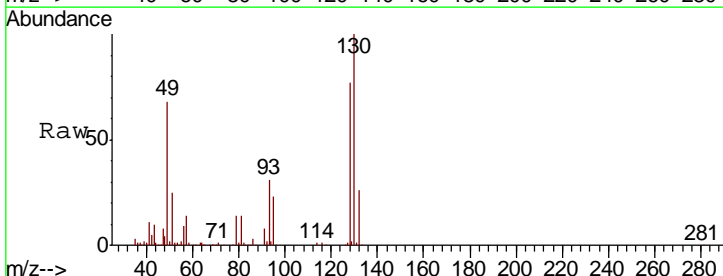
Instrument :
MSVOA_L
ClientSampled :

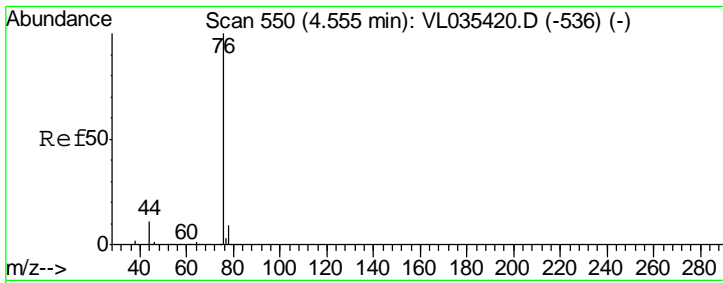
Tgt Ion	Resp	Lower	Upper
43	100		
45	5.3	8.3	12.5#
61	3.6	7.6	11.4#
70	4.4	6.0	9.0#



#26
Hexane
Concen: 0.272 ppbv
RT: 5.70 min Scan# 906
Delta R.T. 0.01 min
Lab File: VL035450.D
Acq: 18 Aug 2020 20:28

Tgt Ion	Resp	Lower	Upper
57	100		
41	74.3	75.5	113.3#
43	72.1	181.7	272.5#
56	56.8	42.4	63.6

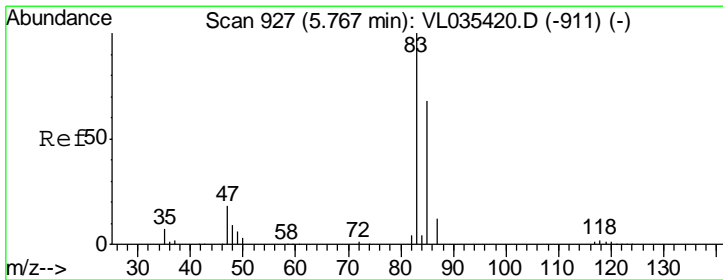
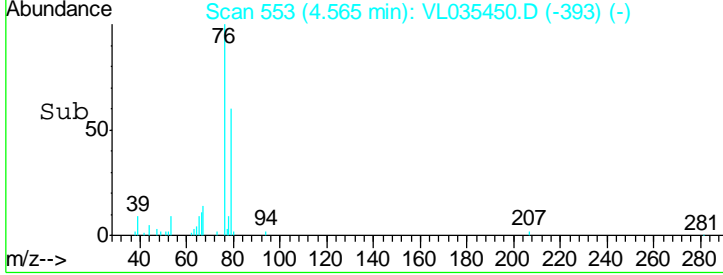
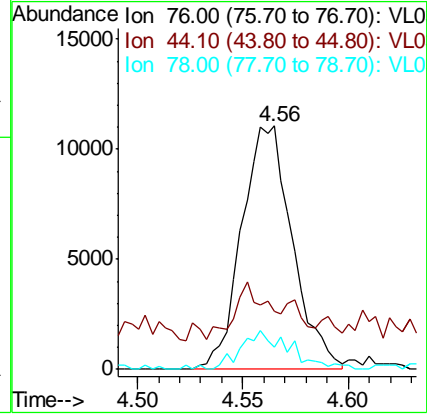
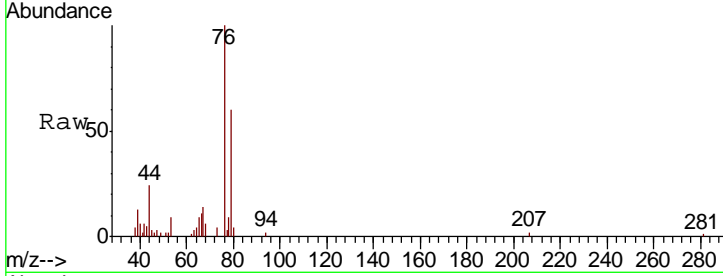




#27
 Carbon Disulfide
 Concen: 0.089 ppbv
 RT: 4.56 min Scan# 553
 Delta R.T. 0.01 min
 Lab File: VL035450.D
 Acq: 18 Aug 2020 20:28

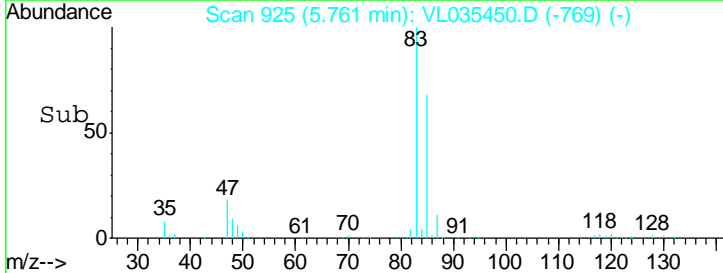
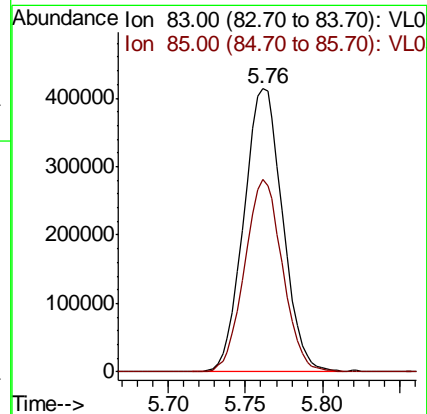
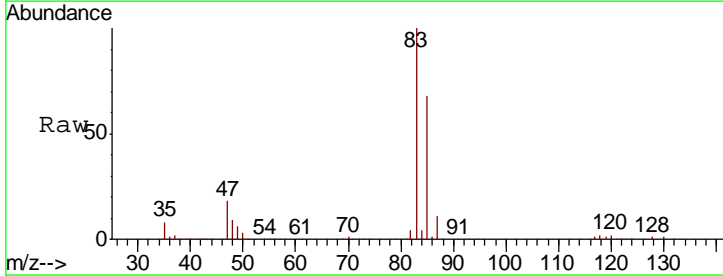
Instrument :
 MSVOA_L
 ClientSampled :

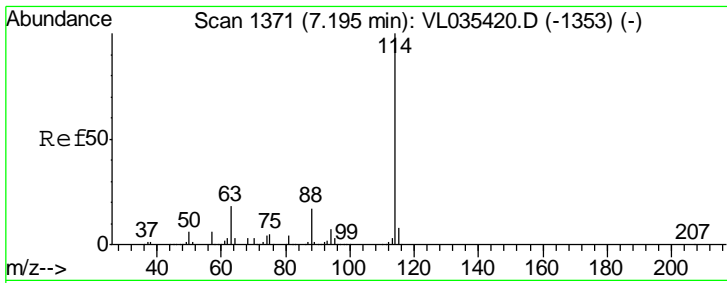
Tgt Ion	Resp	Lower	Upper
76	18551		
44	20.2	16.8	25.2
78	15.5	7.3	10.9#



#29
 Chloroform
 Concen: 2.506 ppbv
 RT: 5.76 min Scan# 925
 Delta R.T. 0.00 min
 Lab File: VL035450.D
 Acq: 18 Aug 2020 20:28

Tgt Ion	Resp	Lower	Upper
83	722188		
85	67.8	52.7	79.1

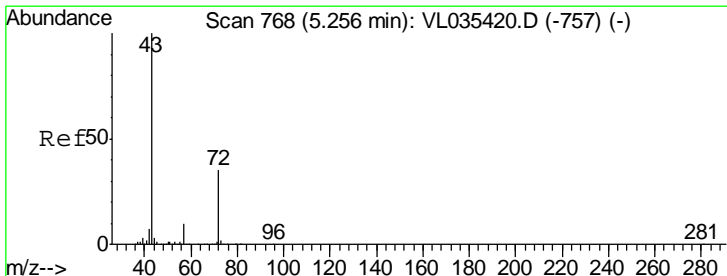
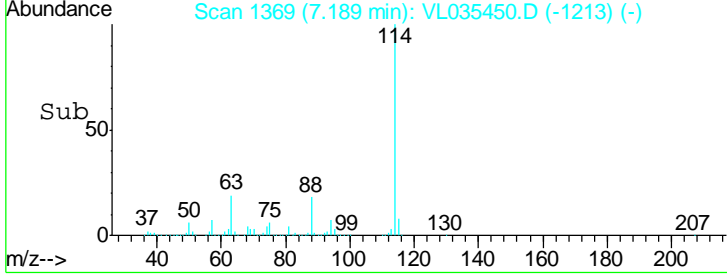
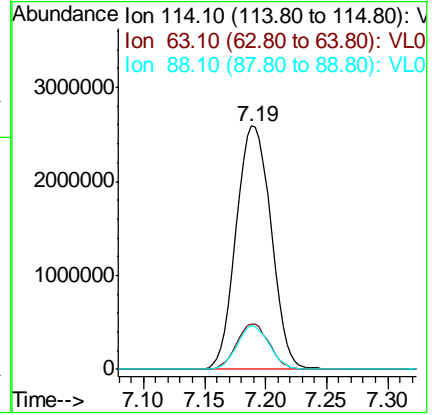
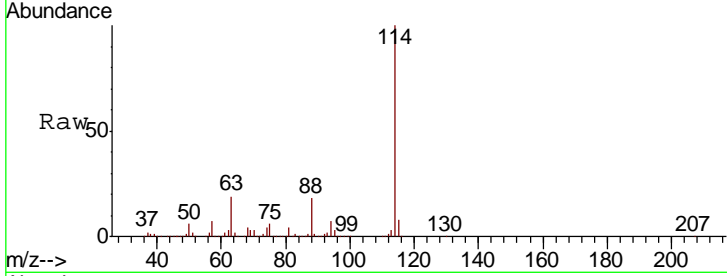




#33
 1,4-Difluorobenzene
 Concen: 10.000 ppbv
 RT: 7.19 min Scan# 1369
 Delta R.T. 0.00 min
 Lab File: VL035450.D
 Acq: 18 Aug 2020 20:28

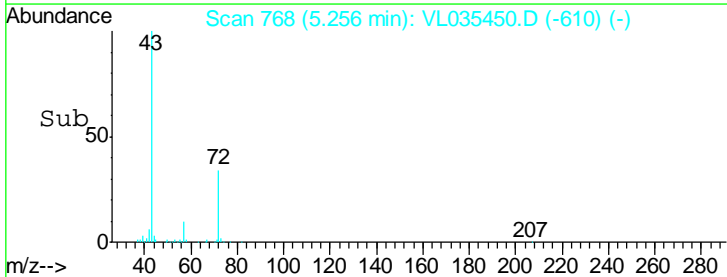
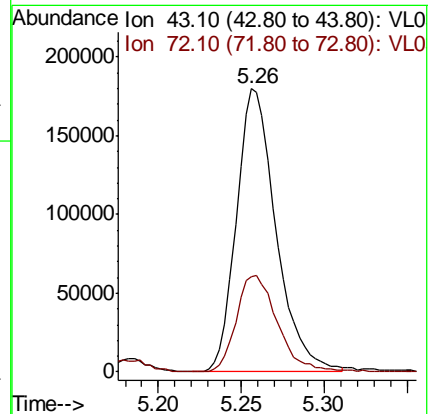
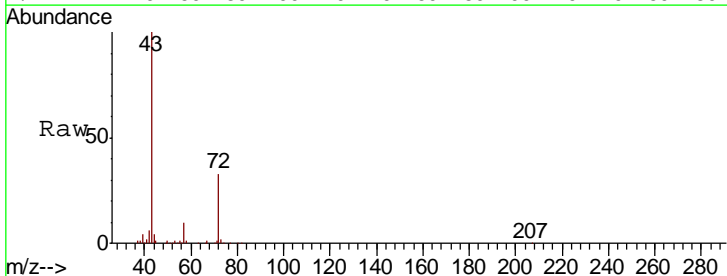
Instrument :
 MSVOA_L
 ClientSampled :

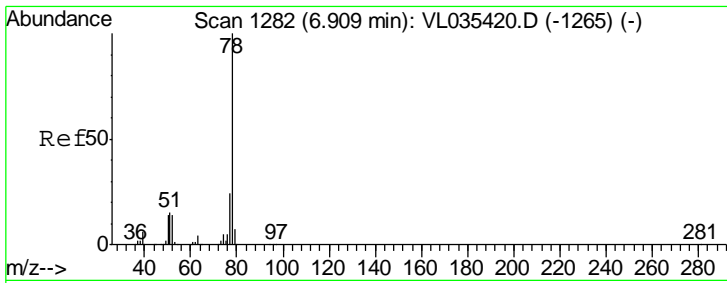
Tgt Ion	Resp	Lower	Upper
114	100		
63	17.6	23.1	34.7#
88	16.6	15.9	23.9



#34
 2-Butanone
 Concen: 1.720 ppbv
 RT: 5.26 min Scan# 768
 Delta R.T. 0.01 min
 Lab File: VL035450.D
 Acq: 18 Aug 2020 20:28

Tgt Ion	Resp	Lower	Upper
43	100		
72	36.1	17.6	26.4#

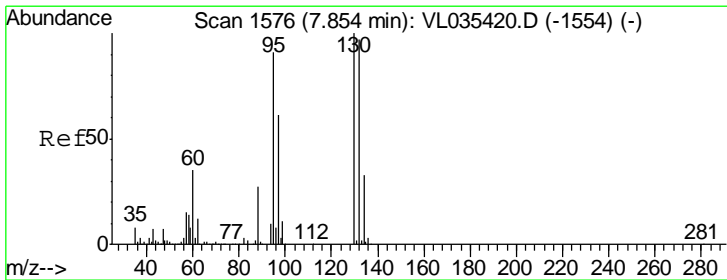
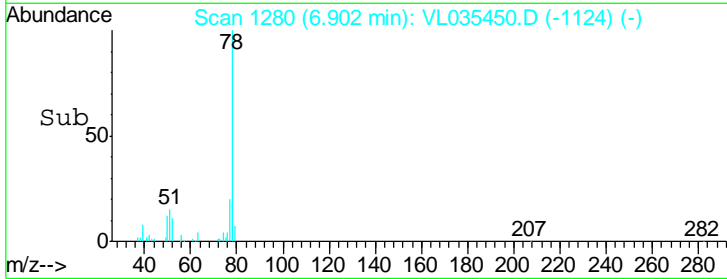
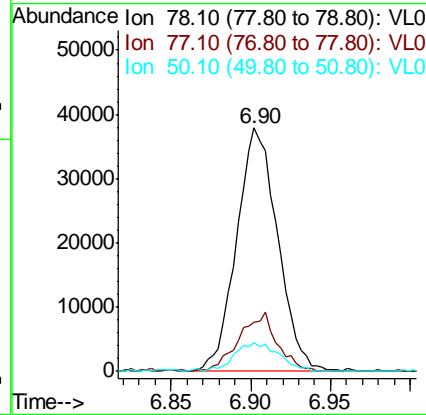
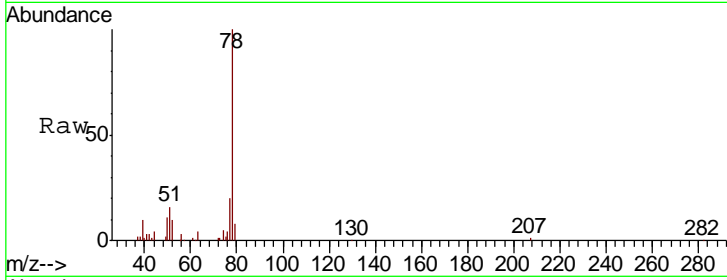




#36
Benzene
Concen: 0.175 ppbv
RT: 6.90 min Scan# 1280
Delta R.T. 0.00 min
Lab File: VL035450.D
Acq: 18 Aug 2020 20:28

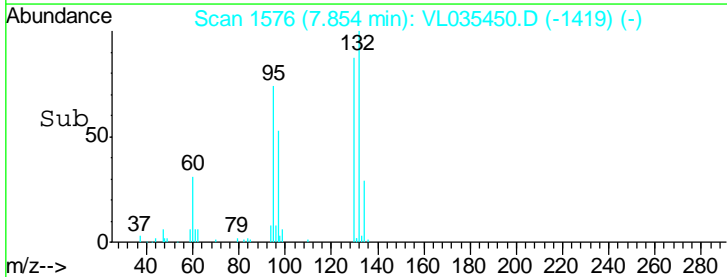
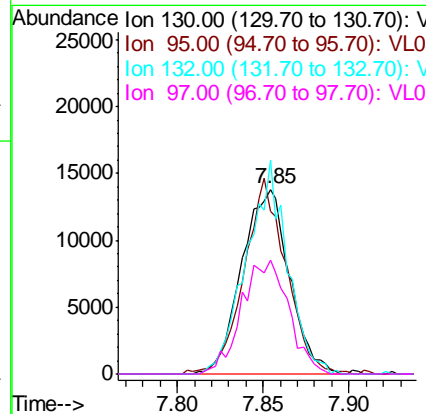
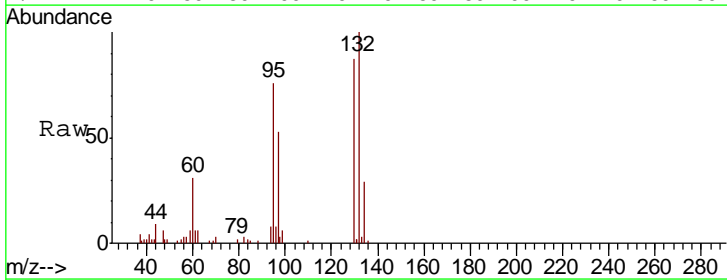
Instrument :
MSVOA_L
ClientSampled :

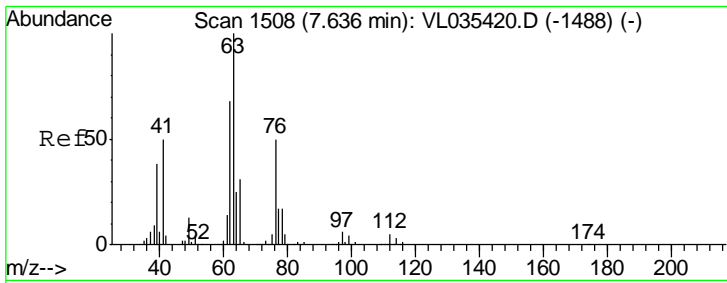
Tgt Ion	Resp	Lower	Upper
78	100		
77	20.0	19.6	29.4
50	11.5	16.3	24.5#



#38
Trichloroethene
Concen: 0.126 ppbv
RT: 7.85 min Scan# 1576
Delta R.T. 0.00 min
Lab File: VL035450.D
Acq: 18 Aug 2020 20:28

Tgt Ion	Resp	Lower	Upper
130	100		
95	86.4	95.8	143.8#
132	115.5	74.3	111.5#
97	61.6	62.6	94.0#

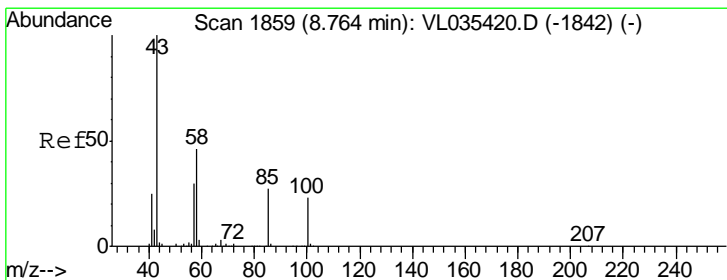
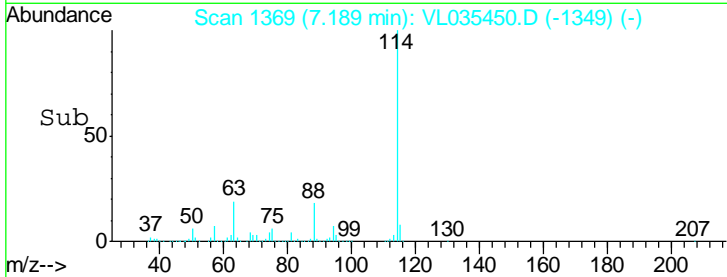
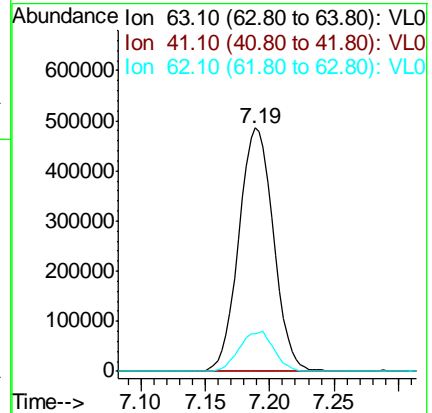
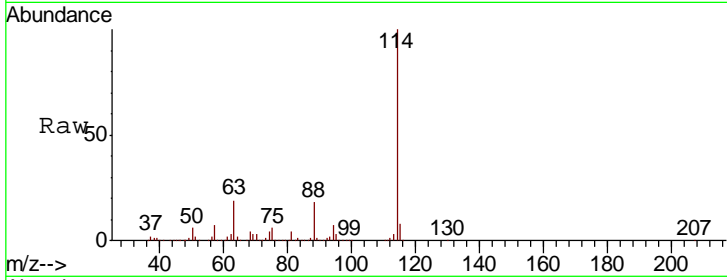




#39
 1,2-Dichloropropane
 Concen: 7.258 ppbv
 RT: 7.19 min Scan# 1369
 Delta R.T. -0.44 min
 Lab File: VL035450.D
 Acq: 18 Aug 2020 20:28

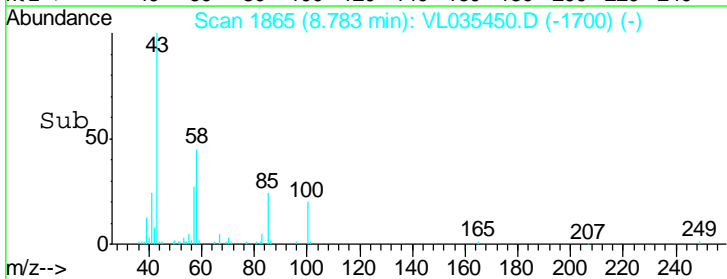
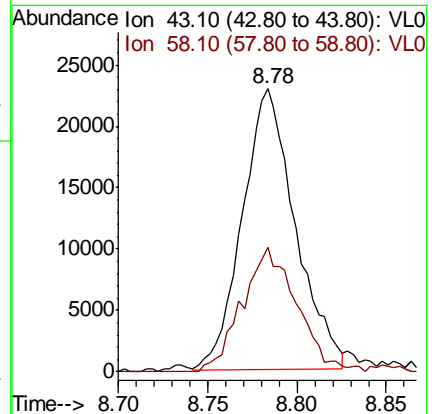
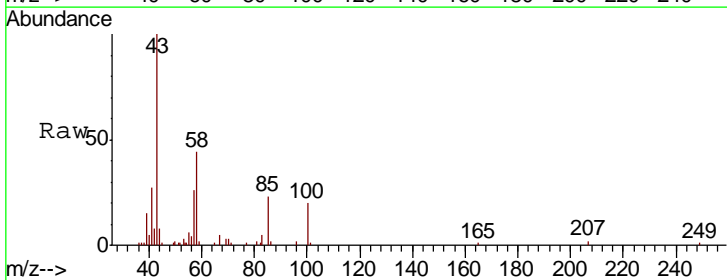
Instrument :
 MSVOA_L
 ClientSampled :

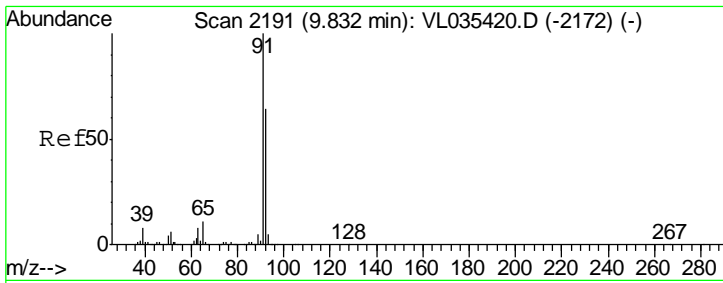
Tgt Ion	Resp	Lower	Upper
63	100		
41	0.0	61.1	91.7#
62	15.6	55.3	82.9#



#50
 4-Methyl-2-Pentanone
 Concen: 0.192 ppbv
 RT: 8.78 min Scan# 1865
 Delta R.T. 0.03 min
 Lab File: VL035450.D
 Acq: 18 Aug 2020 20:28

Tgt Ion	Resp	Lower	Upper
43	100		
58	47.6	28.7	43.1#

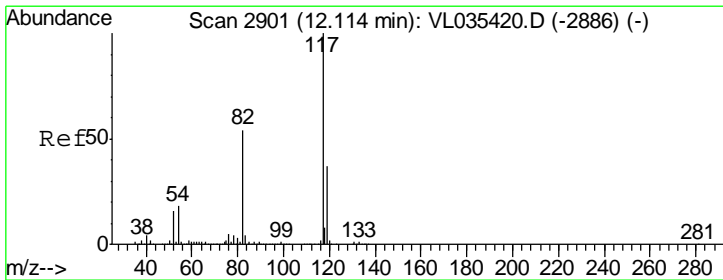
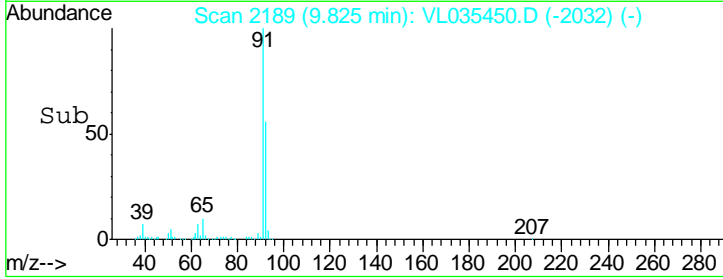
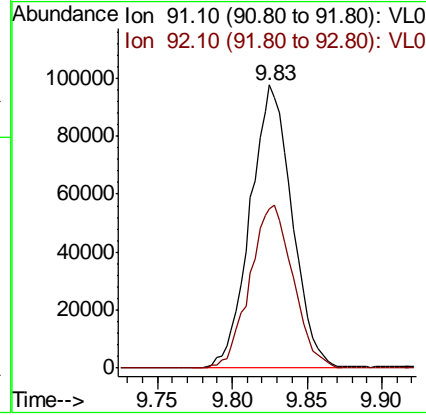
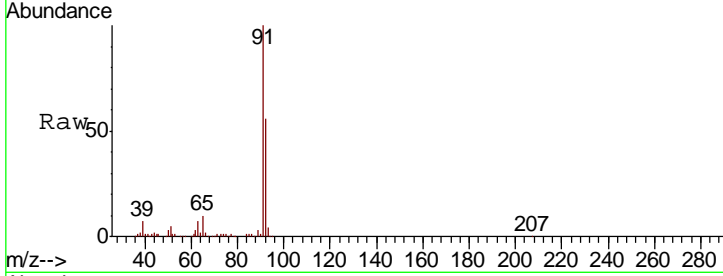




#53
 Toluene
 Concen: 0.389 ppbv
 RT: 9.83 min Scan# 2189
 Delta R.T. 0.00 min
 Lab File: VL035450.D
 Acq: 18 Aug 2020 20:28

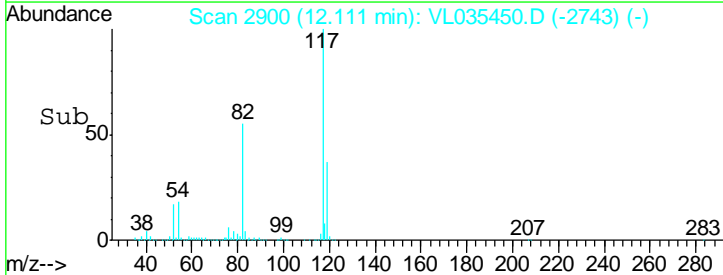
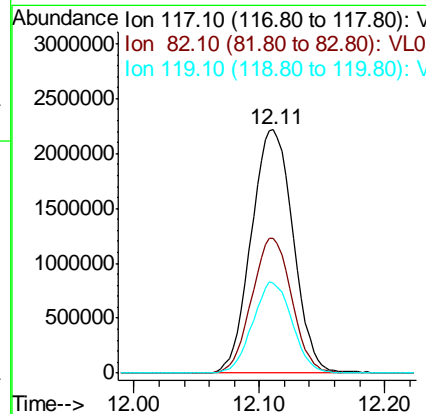
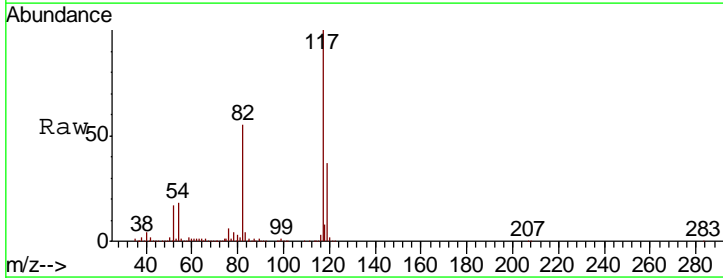
Instrument :
 MSVOA_L
 ClientSampled :

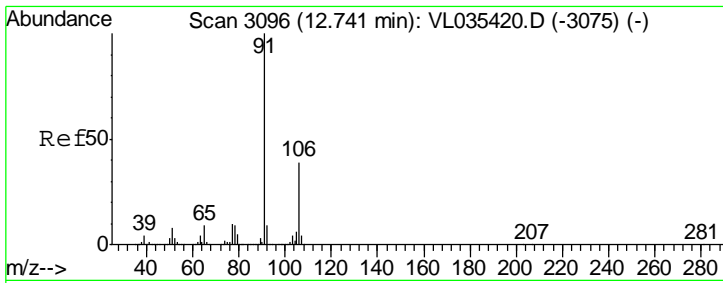
Tgt Ion	Resp	Lower	Upper
91	189889		
92	59.3	49.1	73.7



#55
 Chlorobenzene-d5
 Concen: 10.000 ppbv
 RT: 12.11 min Scan# 2900
 Delta R.T. 0.00 min
 Lab File: VL035450.D
 Acq: 18 Aug 2020 20:28

Tgt Ion	Resp	Lower	Upper
117	5143483		
82	53.4	57.4	86.0#
119	35.6	28.4	42.6

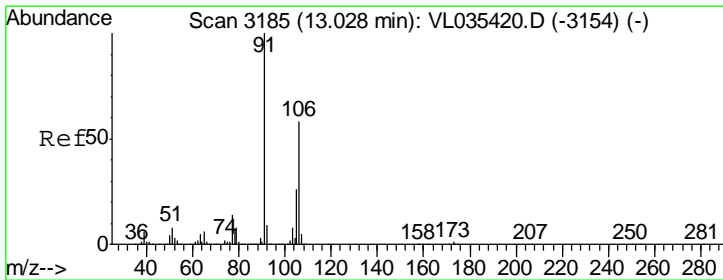
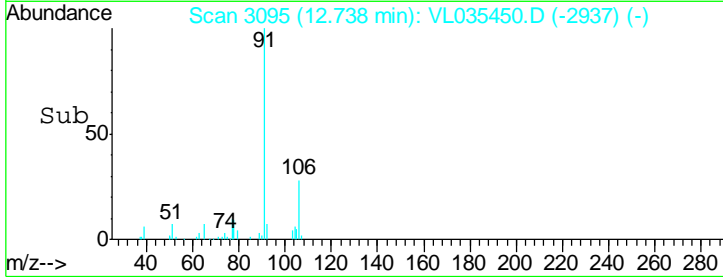
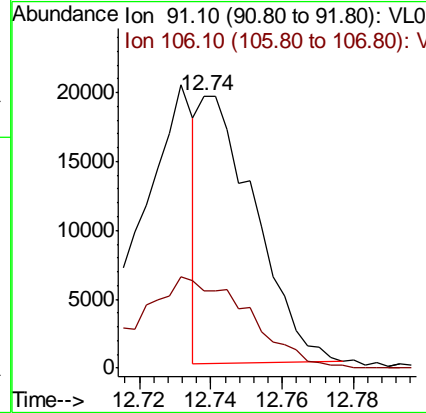
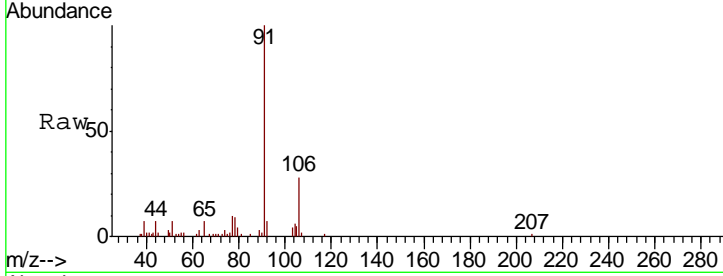




#58
 Ethyl Benzene
 Concen: 0.033 ppbv
 RT: 12.74 min Scan# 3095
 Delta R.T. 0.01 min
 Lab File: VL035450.D
 Acq: 18 Aug 2020 20:28

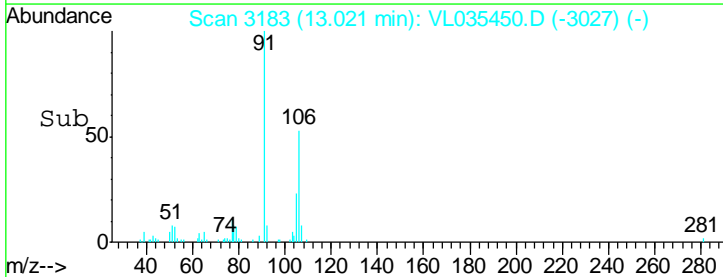
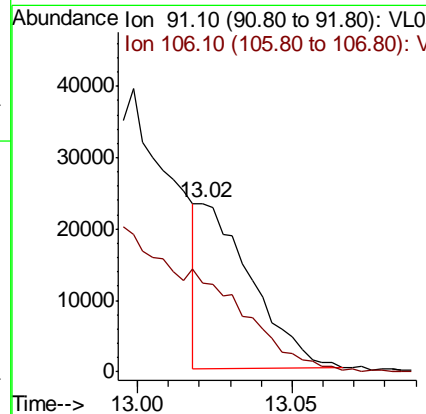
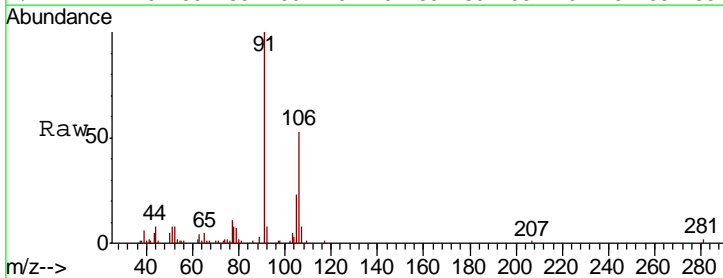
Instrument :
 MSVOA_L
 ClientSampled :

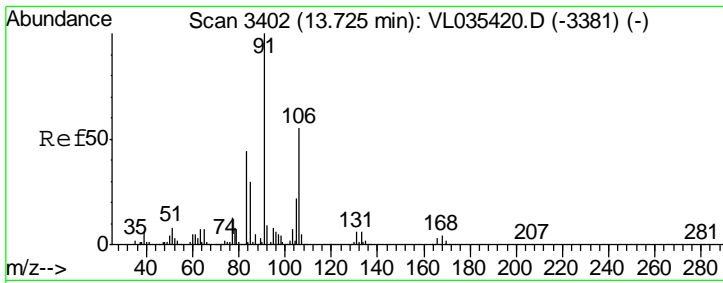
Tgt Ion: 91 Resp: 20730
 Ion Ratio Lower Upper
 91 100
 106 28.1 24.1 36.1



#59
 m/p-Xylene
 Concen: 0.052 ppbv
 RT: 13.02 min Scan# 3183
 Delta R.T. 0.00 min
 Lab File: VL035450.D
 Acq: 18 Aug 2020 20:28

Tgt Ion: 91 Resp: 27382
 Ion Ratio Lower Upper
 91 100
 106 0.0 34.0 51.0#

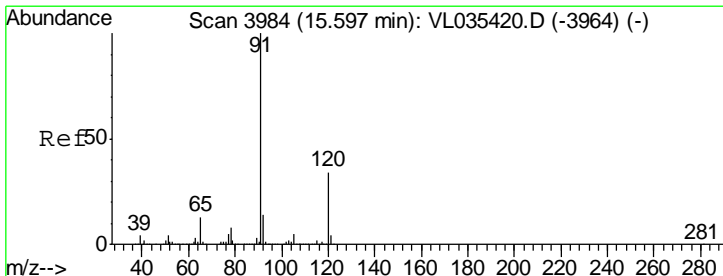
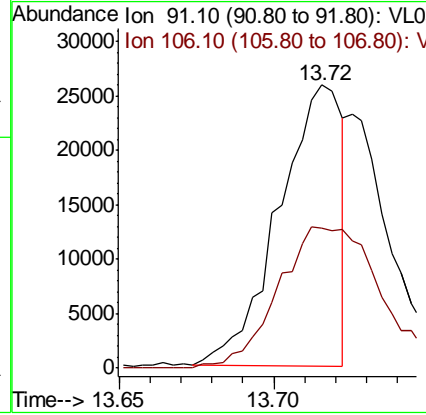
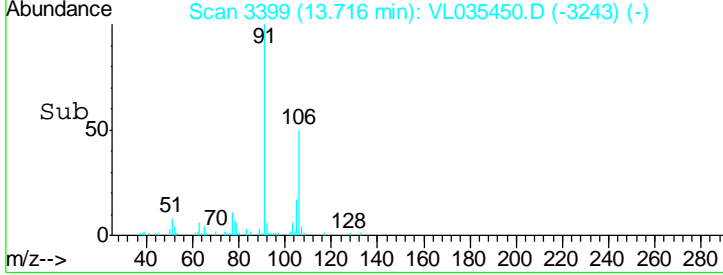
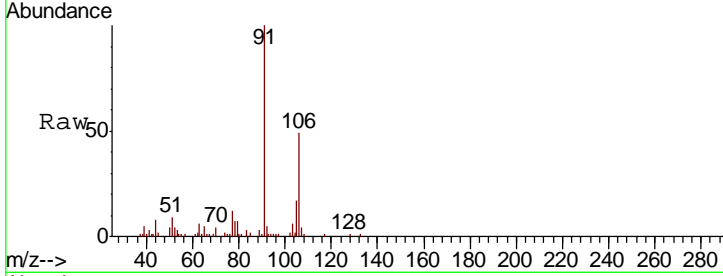




#60
 o-Xylene
 Concen: 0.072 ppbv
 RT: 13.72 min Scan# 3399
 Delta R.T. 0.00 min
 Lab File: VL035450.D
 Acq: 18 Aug 2020 20:28

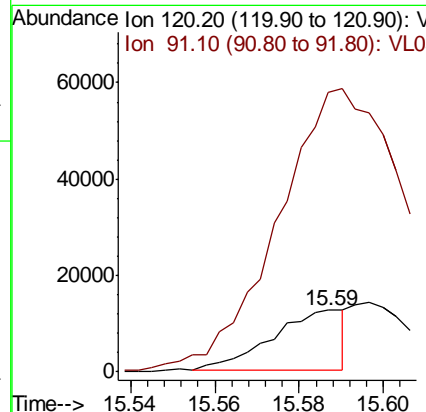
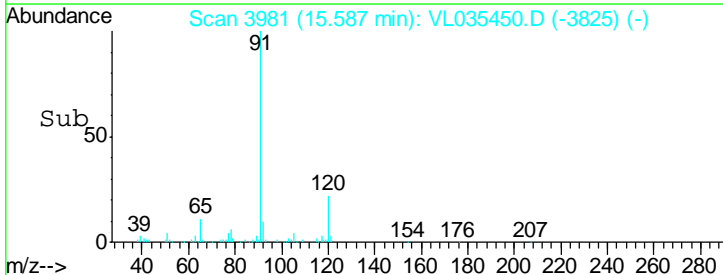
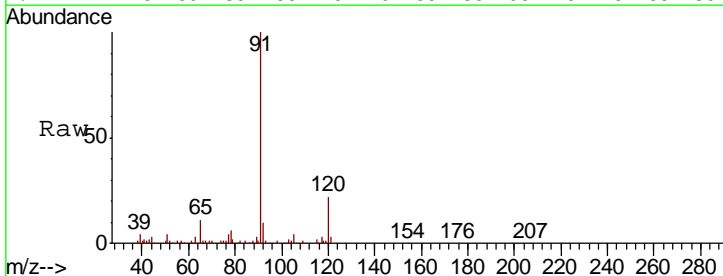
Instrument : MSVOA_L
 ClientSampled :

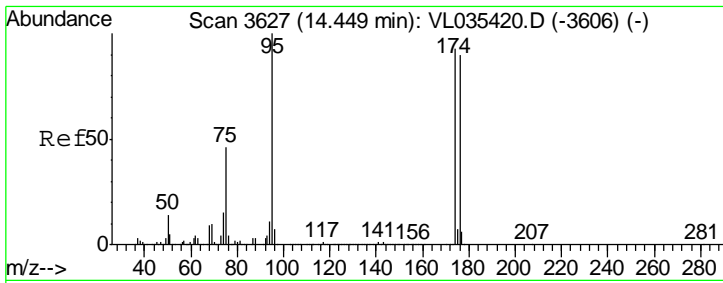
Tgt Ion: 91 Resp: 36572
 Ion Ratio Lower Upper
 91 100
 106 81.7 21.8 65.3#



#64
 n-propylbenzene
 Concen: 0.058 ppbv
 RT: 15.59 min Scan# 3981
 Delta R.T. 0.00 min
 Lab File: VL035450.D
 Acq: 18 Aug 2020 20:28

Tgt Ion: 120 Resp: 14927
 Ion Ratio Lower Upper
 120 100
 91 866.5 385.5 578.3#

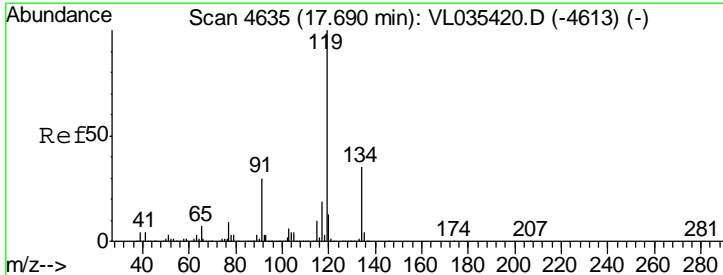
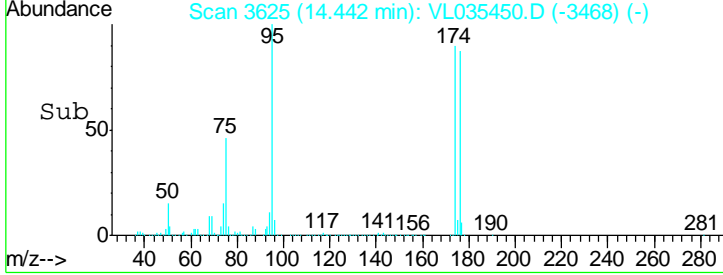
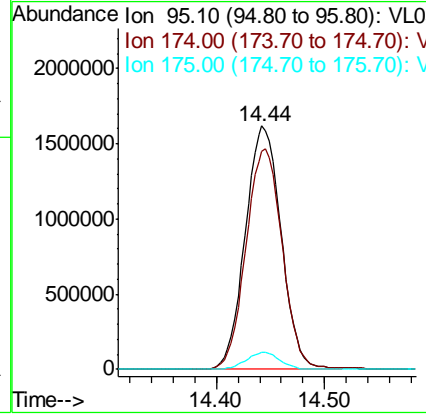
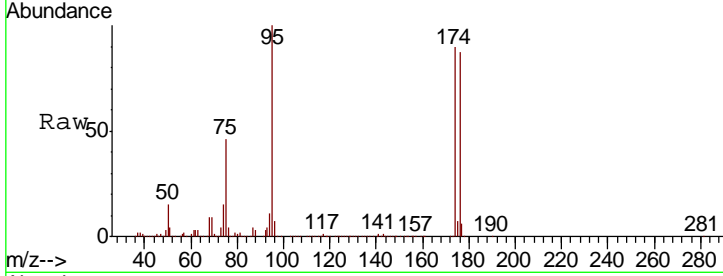




#68
 1-Bromo-4-Fluorobenzene
 Concen: 10.397 ppbv
 RT: 14.44 min Scan# 3625
 Delta R.T. 0.00 min
 Lab File: VL035450.D
 Acq: 18 Aug 2020 20:28

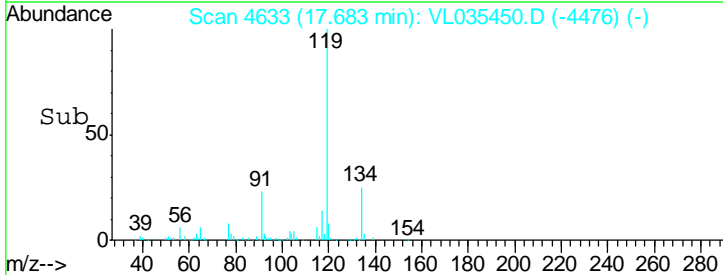
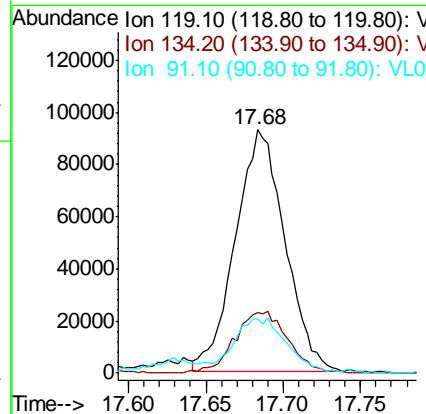
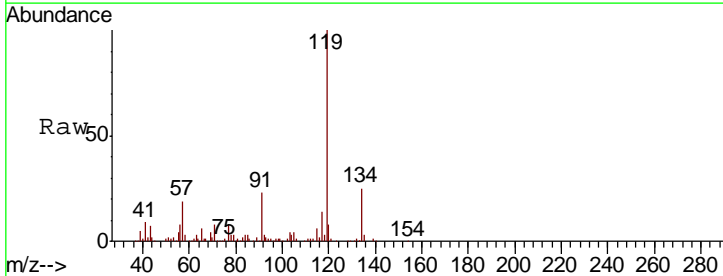
Instrument :
 MSVOA_L
 ClientSampled :

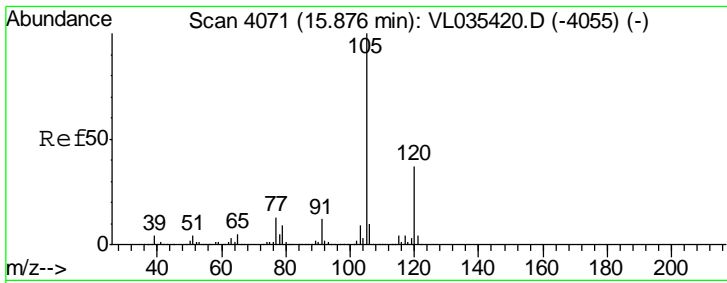
Tgt Ion	Resp	Lower	Upper
95	100		
174	91.7	44.0	66.0#
175	6.7	3.2	4.8#



#69
 p-Isopropyltoluene
 Concen: 0.217 ppbv
 RT: 17.68 min Scan# 4633
 Delta R.T. 0.00 min
 Lab File: VL035450.D
 Acq: 18 Aug 2020 20:28

Tgt Ion	Resp	Lower	Upper
119	100		
134	27.5	20.6	30.8
91	24.7	26.6	39.8#

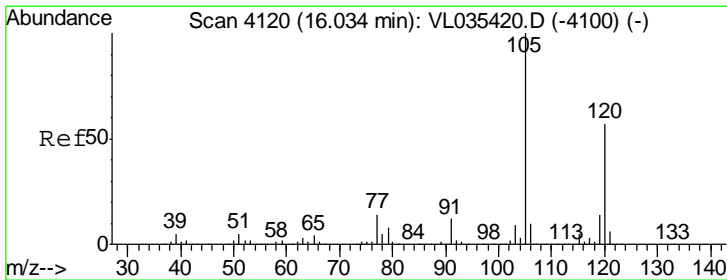
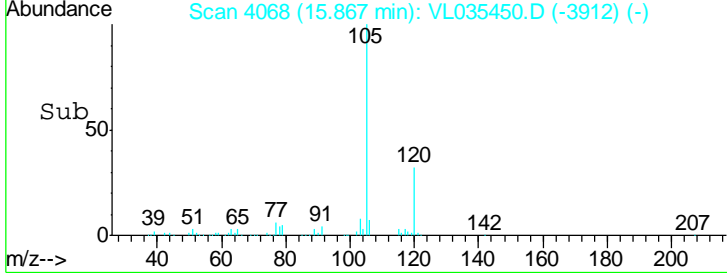
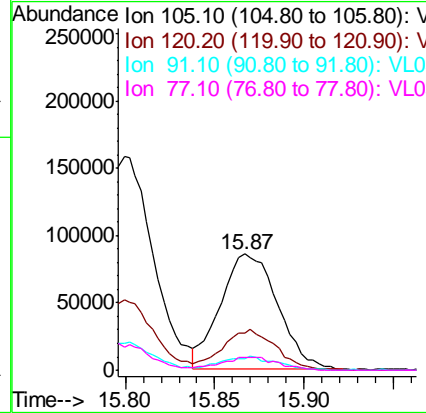
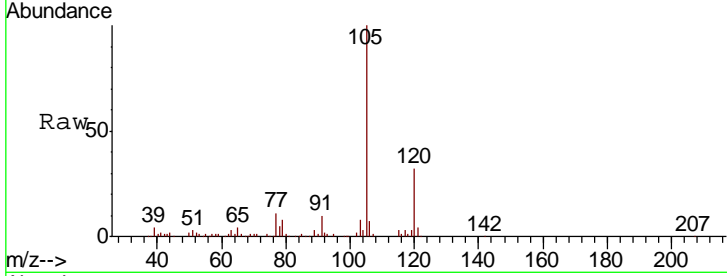




#72
 4-Ethyltoluene
 Concen: 0.286 ppbv
 RT: 15.87 min Scan# 4068
 Delta R.T. 0.00 min
 Lab File: VL035450.D
 Acq: 18 Aug 2020 20:28

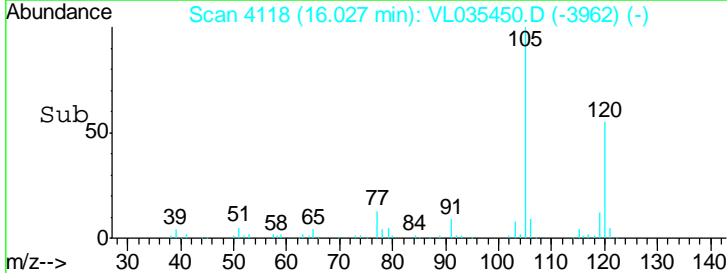
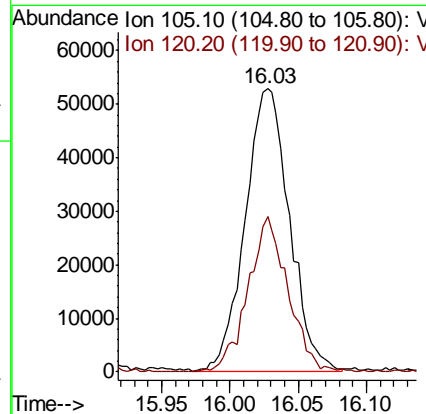
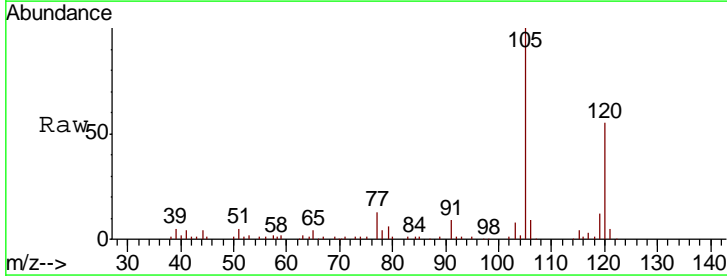
Instrument : MSVOA_L
 Client Sampled :

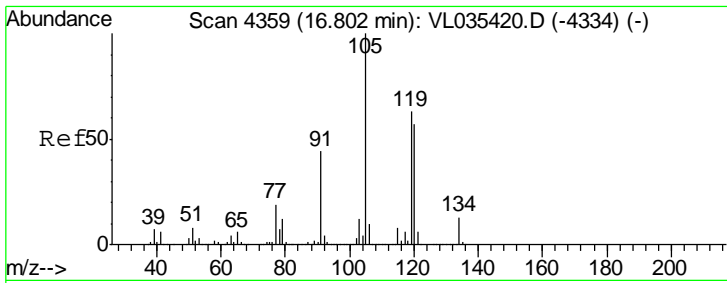
Tgt Ion	Resp	Lower	Upper
105	191472		
120	33.9	22.7	34.1
91	12.3	10.8	16.2
77	11.4	11.9	17.9#



#73
 1,3,5-Trimethylbenzene
 Concen: 0.192 ppbv
 RT: 16.03 min Scan# 4118
 Delta R.T. 0.00 min
 Lab File: VL035450.D
 Acq: 18 Aug 2020 20:28

Tgt Ion	Resp	Lower	Upper
105	119704		
120	54.9	35.6	53.4#

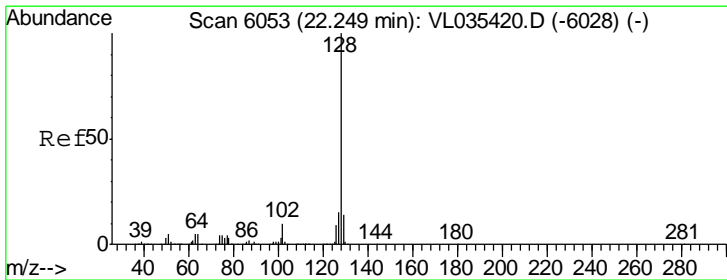
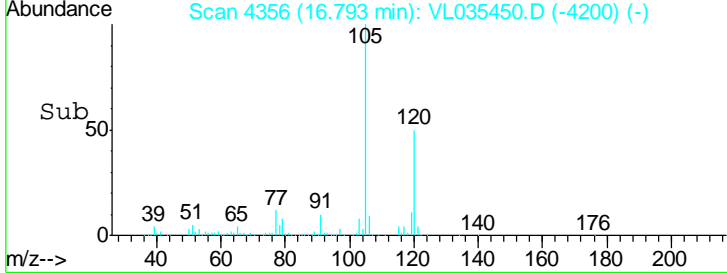
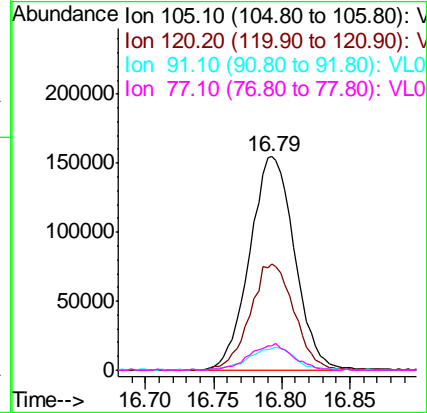
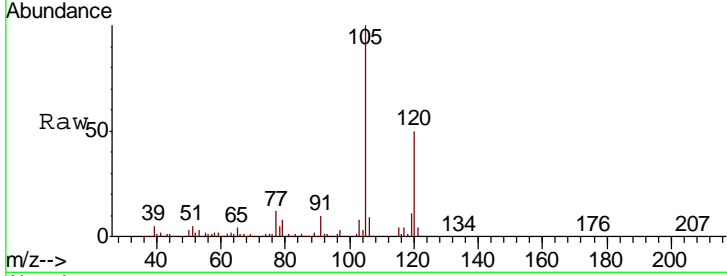




#74
 1,2,4-Trimethylbenzene
 Concen: 0.522 ppbv
 RT: 16.79 min Scan# 4356
 Delta R.T. 0.00 min
 Lab File: VL035450.D
 Acq: 18 Aug 2020 20:28

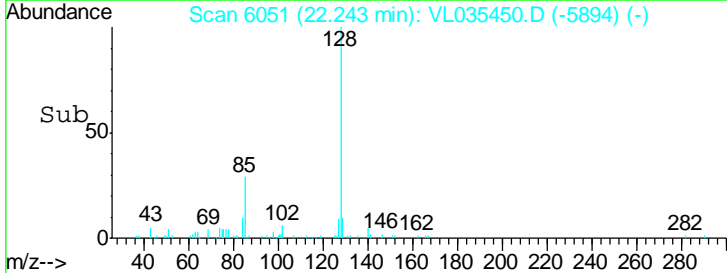
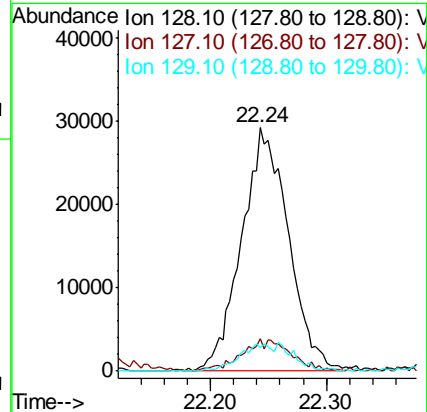
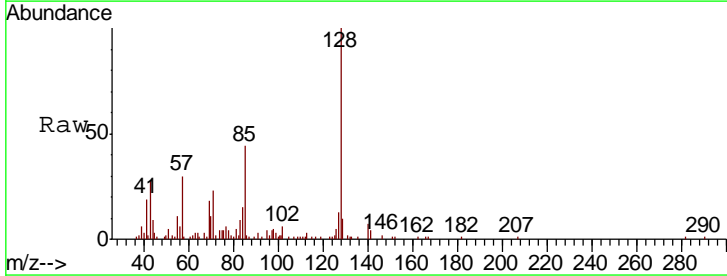
Instrument :
 MSVOA_L
 ClientSampled :

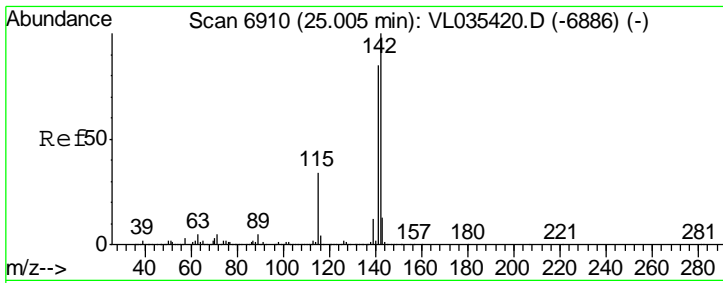
Tgt Ion	Resp	Lower	Upper
105	100		
120	50.0	37.8	56.8
91	9.8	40.0	60.0#
77	11.4	18.8	28.2#



#79
 Naphthalene
 Concen: 0.086 ppbv
 RT: 22.24 min Scan# 6051
 Delta R.T. 0.00 min
 Lab File: VL035450.D
 Acq: 18 Aug 2020 20:28

Tgt Ion	Resp	Lower	Upper
128	100		
127	13.4	11.4	17.0
129	9.8	9.5	14.3





#80
 Naphthalene, 2-methyl-
 Concen: 0.060 ppbv
 RT: 25.00 min Scan# 6910
 Delta R.T. 0.01 min
 Lab File: VL035450.D
 Acq: 18 Aug 2020 20:28

Instrument : MSVOA_L
 ClientSampled :

Tot Ion: 142 Resp: 23656

Ion	Ratio	Lower	Upper
142	100		
141	79.6	67.1	100.7
115	37.6	36.1	54.1

