

Data Path : Z:\VOASRV\HPCHEM1\MSVOA L\DATA\VL090320\  
 Data File : VL035547.D  
 Acq On : 4 Sep 2020 1:47  
 Operator : SY/AP  
 Sample : L3898-07DL 40X  
 Misc : 400ml/MSVOA L  
 ALS Vial : 1 Sample Multiplier: 1

Instrument :  
 MSVOA\_L  
 ClientSampleId :  
 SS-5DL

Quant Time: Sep 04 06:50:08 2020  
 Quant Method : Z:\VOASRV\HPCHEM1\MSVOA L\METHODS\VL082720AIR.M  
 Quant Title : AIR ANALYSIS BY METHOD TO-15 Instrument: MSVOA\_LThu Aug 27 06:46:28 2020  
 QLast Update : Thu Aug 27 06:46:28 2020  
 Response via : Initial Calibration

Internal Standards	R.T.	QIon	Response	Conc	Units	Dev(Min)
1) Bromochloromethane	5.69	49	1019819	10.00	ppbv	0.00
33) 1,4-Difluorobenzene	7.20	114	4231421	10.00	ppbv	0.00
55) Chlorobenzene-d5	12.12	117	4236958	10.00	ppbv	0.00

System Monitoring Compounds	R.T.	QIon	Response	Conc	Units	Dev(Min)
68) 1-Bromo-4-Fluorobenzene	14.46	95	3058683	10.17	ppbv	0.00
Spiked Amount	10.000	Range	65 - 135	Recovery	=	101.70%

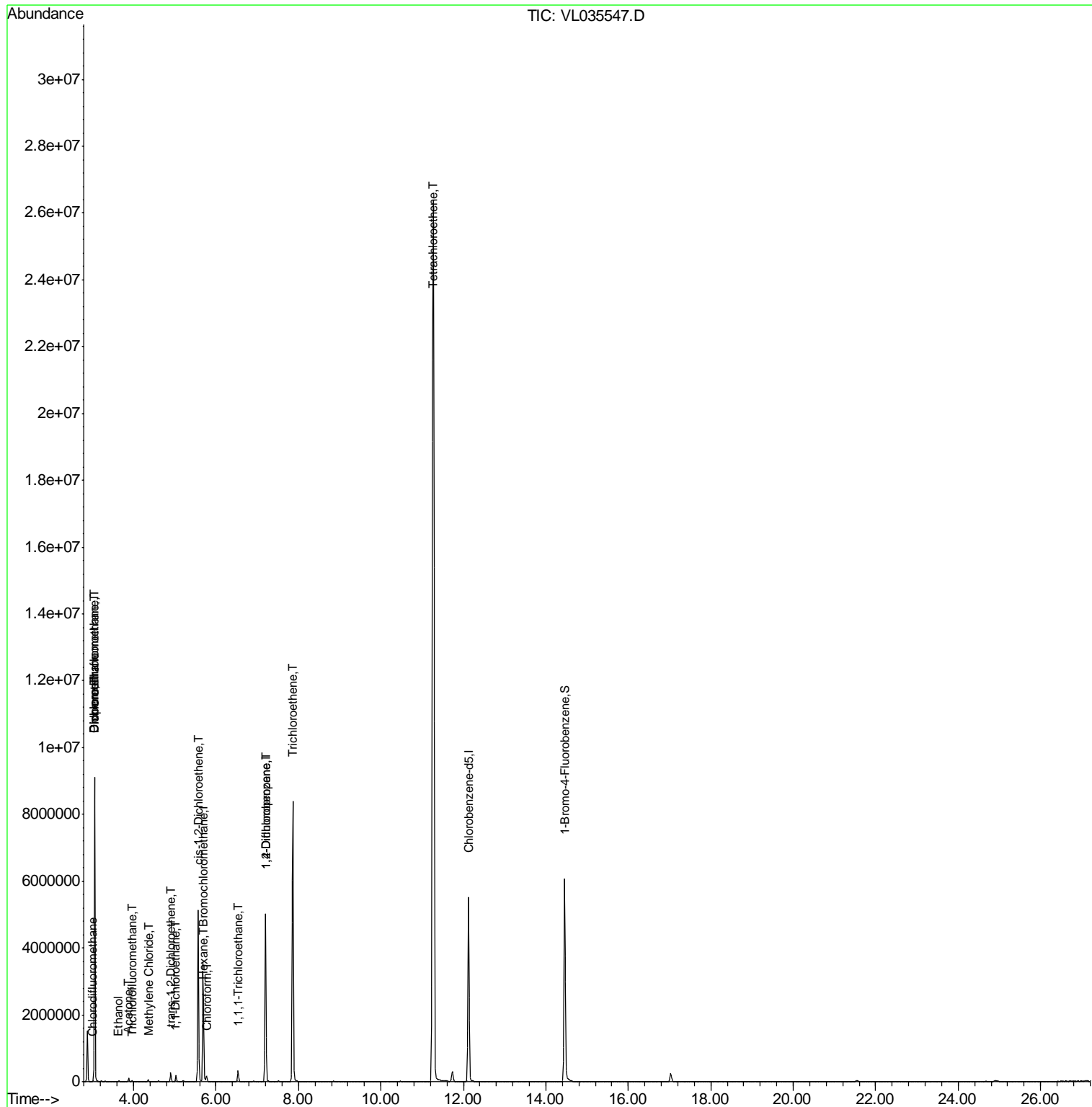
Target Compounds	R.T.	QIon	Response	Conc	Units	Ovalue
2) Dichlorodifluoromethane	3.06	85	6152008	34.810	ppbv #	69
3) Chlorodifluoromethane	3.00	51	7069	0.063	ppbv #	90
4) Chloromethane	3.06	50	821711	13.598	ppbv #	40
8) Dichlorotetrafluoroethane	3.06	85	6152008	28.743	ppbv #	5
9) Propene	3.06	41	8459	0.195	ppbv #	1
11) Trichlorofluoromethane	3.96	101	18548	0.072	ppbv	90
13) Ethanol	3.63	45	26838	2.489	ppbv	99
15) Acetone	3.88	43	93366	0.830	ppbv	91
20) Methylene Chloride	4.36	84	20819	0.249	ppbv	96
22) trans-1,2-Dichloroethene	4.90	96	108389	1.189	ppbv	97
24) 1,1-Dichloroethane	5.03	63	138313	0.931	ppbv	98
26) Hexane	5.71	57	4761	0.042	ppbv #	49
29) Chloroform	5.77	83	115287	0.503	ppbv	100
31) cis-1,2-Dichloroethene	5.57	61	2384389	20.643	ppbv	97
32) 1,1,1-Trichloroethane	6.54	97	194970	0.876	ppbv	98
38) Trichloroethene	7.86	130	3070384	19.298	ppbv	97
39) 1,2-Dichloropropane	7.20	63	766293	8.282	ppbv #	32
52) Tetrachloroethene	11.26	164	5349332	33.430	ppbv #	81

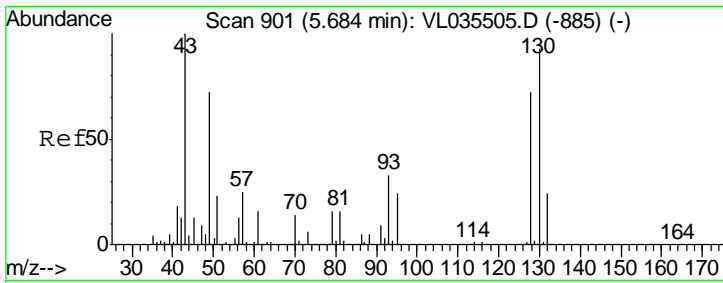
(#) = qualifier out of range (m) = manual integration (+) = signals summed

Data Path : Z:\VOASRV\HPCHEM1\MSVOA L\DATA\VL090320\  
 Data File : VL035547.D  
 Acq On : 4 Sep 2020 1:47  
 Operator : SY/AP  
 Sample : L3898-07DL 40X  
 Misc : 400ml/MSVOA L  
 ALS Vial : 1 Sample Multiplier: 1

Instrument :  
 MSVOA\_L  
 ClientSampled :  
 SS-5DL

Quant Time: Sep 04 06:50:08 2020  
 Quant Method : Z:\VOASRV\HPCHEM1\MSVOA L\METHODS\VL082720AIR.M  
 Quant Title : AIR ANALYSIS BY METHOD TO-15 Instrument: MSVOA\_L Thu Aug 27 06:46:28 2020  
 QLast Update : Thu Aug 27 06:46:28 2020  
 Response via : Initial Calibration

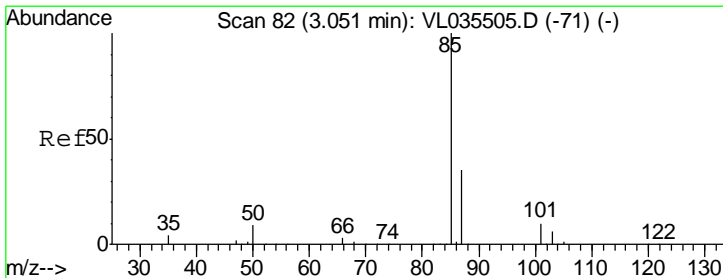
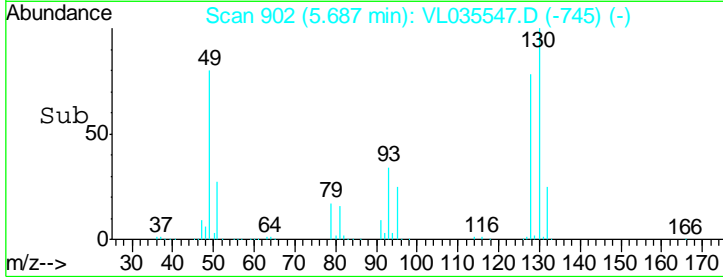
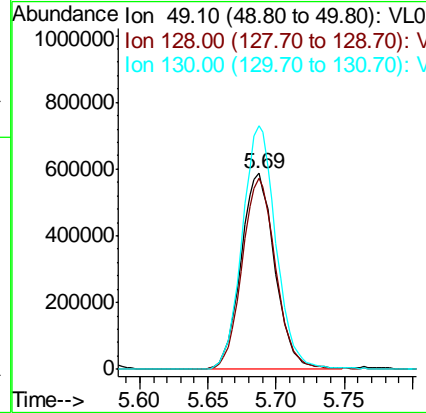
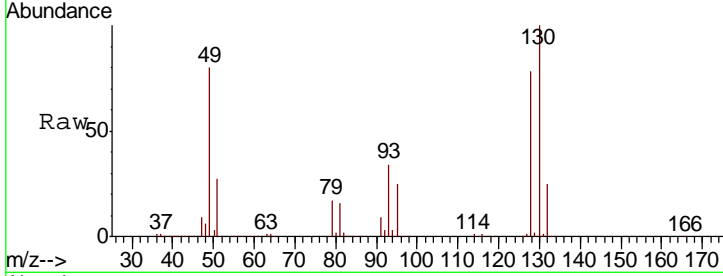




#1  
 Bromochloromethane  
 Concen: 10.000 ppbv  
 RT: 5.69 min Scan# 902  
 Delta R.T. 0.00 min  
 Lab File: VL035547.D  
 Acq: 4 Sep 2020 1:47

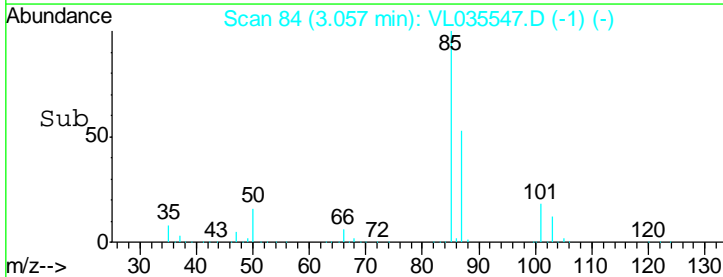
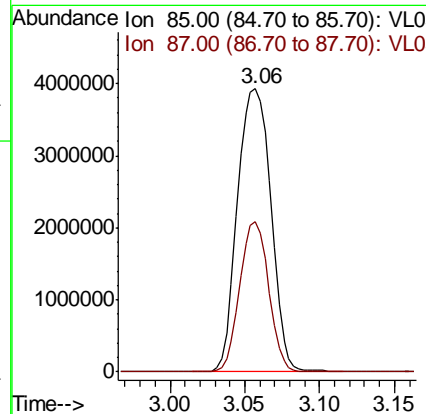
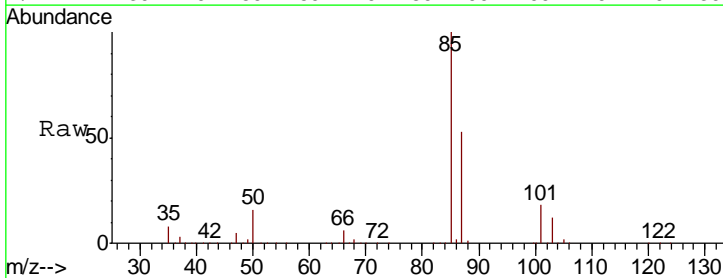
**Instrument :**  
 MSVOA\_L  
**ClientSampled :**  
 SS-5DL

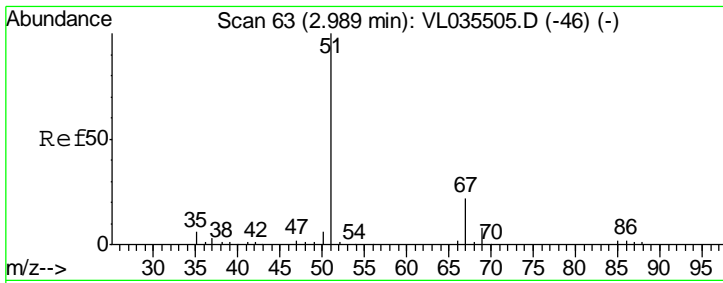
Tgt Ion	Resp	Lower	Upper
49	100		
128	97.0	50.0	150.1
130	124.4	64.4	193.2



#2  
 Dichlorodifluoromethane  
 Concen: 34.810 ppbv  
 RT: 3.06 min Scan# 84  
 Delta R.T. 0.01 min  
 Lab File: VL035547.D  
 Acq: 4 Sep 2020 1:47

Tgt Ion	Resp	Lower	Upper
85	100		
87	52.9	28.0	42.0#

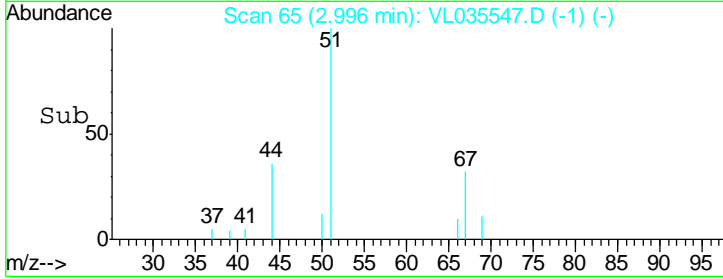
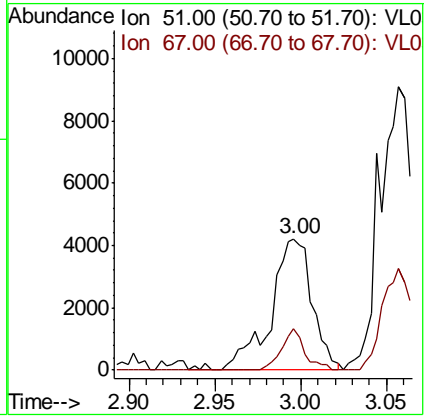
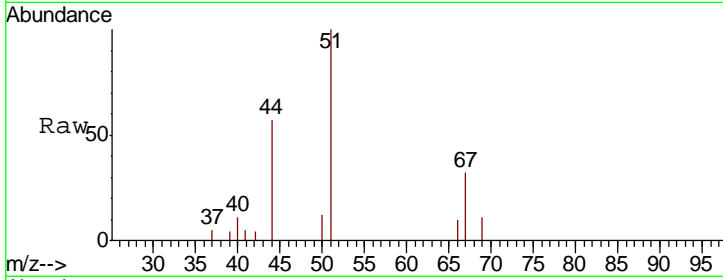




#3  
 Chlorodifluoromethane  
 Concen: 0.063 ppbv  
 RT: 3.00 min Scan# 65  
 Delta R.T. 0.01 min  
 Lab File: VL035547.D  
 Acq: 4 Sep 2020 1:47

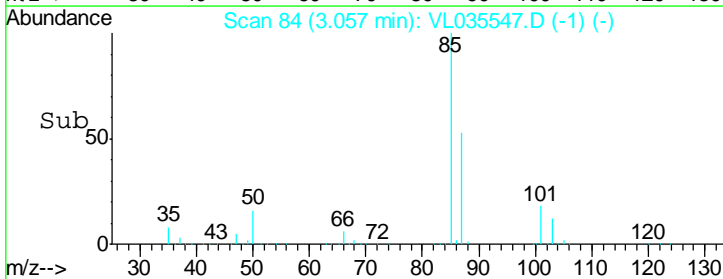
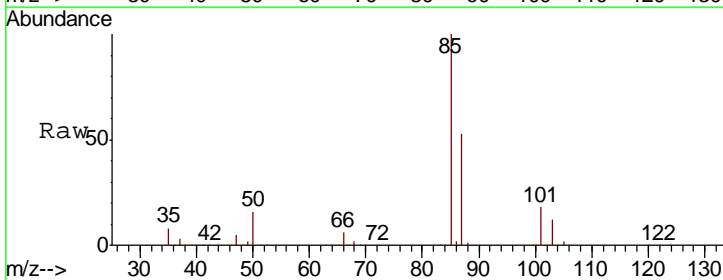
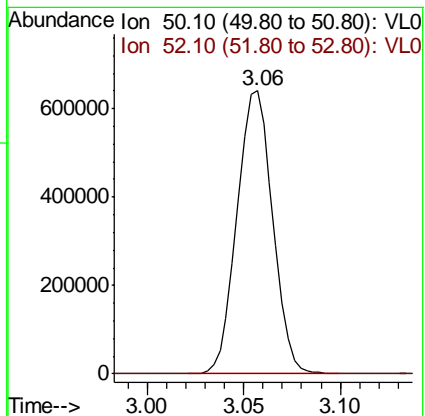
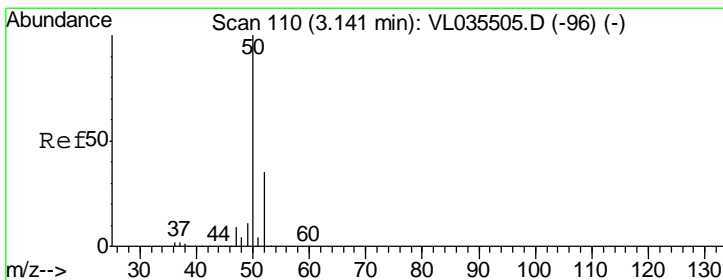
**Instrument :**  
 MSVOA\_L  
**ClientSampled :**  
 SS-5DL

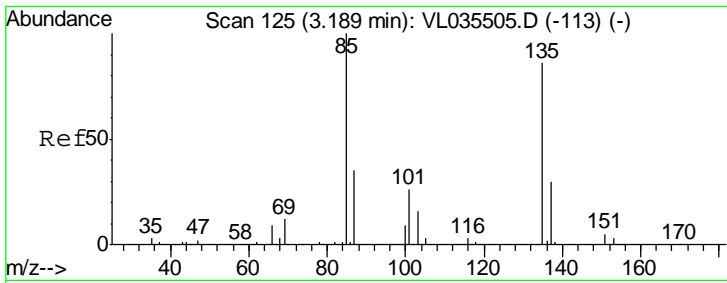
Tgt Ion: 51 Resp: 7069  
 Ion Ratio Lower Upper  
 51 100  
 67 17.6 17.8 26.8#



#4  
 Chloromethane  
 Concen: 13.598 ppbv  
 RT: 3.06 min Scan# 84  
 Delta R.T. -0.08 min  
 Lab File: VL035547.D  
 Acq: 4 Sep 2020 1:47

Tgt Ion: 50 Resp: 821711  
 Ion Ratio Lower Upper  
 50 100  
 52 0.2 27.7 41.5#

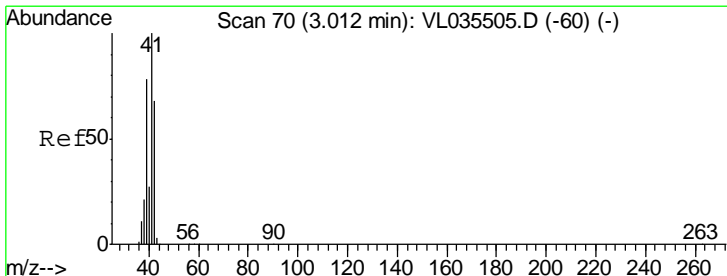
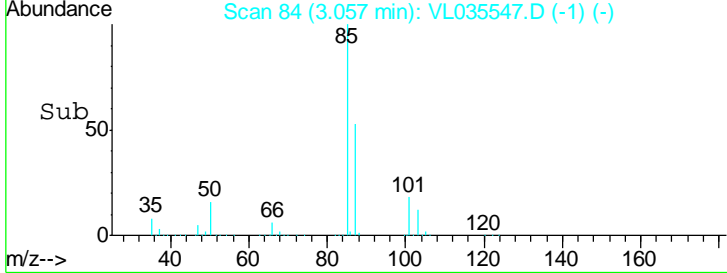
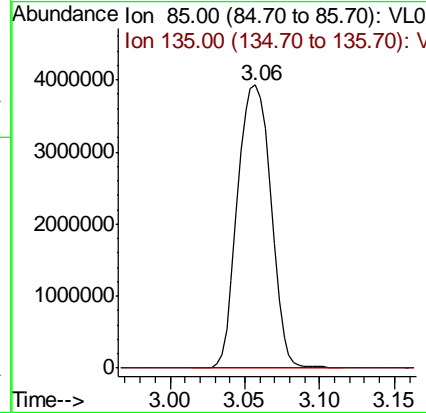
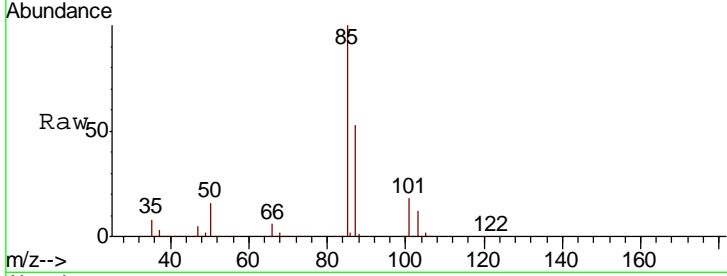




#8  
 Dichlorotetrafluoroethane  
 Concen: 28.743 ppbv  
 RT: 3.06 min Scan# 84  
 Delta R.T. -0.13 min  
 Lab File: VL035547.D  
 Acq: 4 Sep 2020 1:47

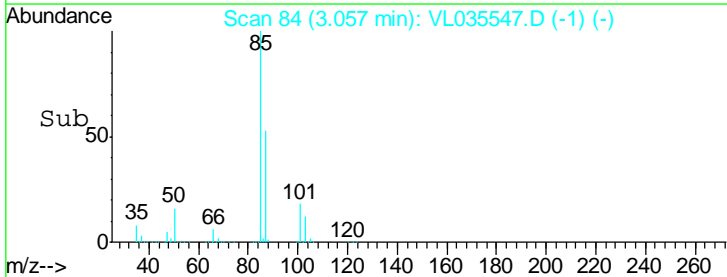
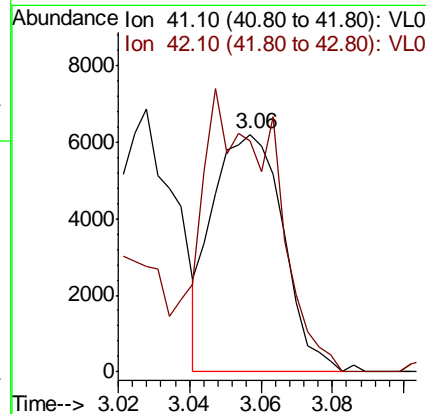
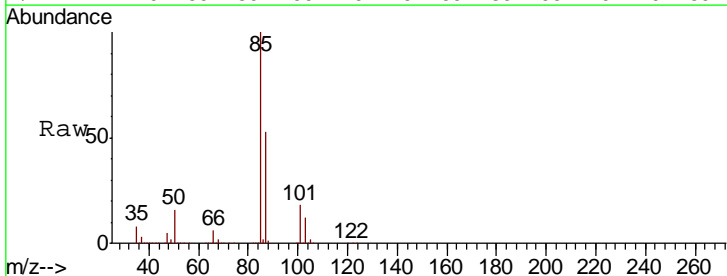
Instrument :  
 MSVOA\_L  
 ClientSampled :  
 SS-5DL

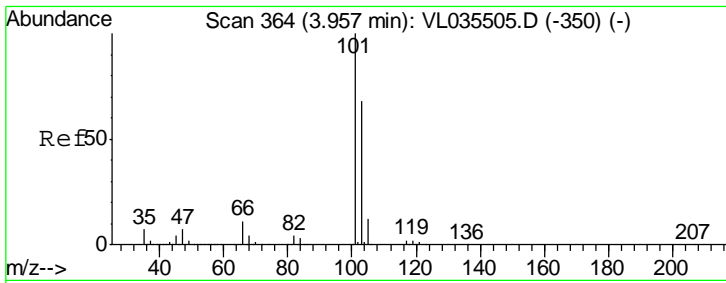
Tgt Ion: 85 Resp: 6152008  
 Ion Ratio Lower Upper  
 85 100  
 135 0.0 70.4 105.6#



#9  
 Propene  
 Concen: 0.195 ppbv  
 RT: 3.06 min Scan# 84  
 Delta R.T. 0.05 min  
 Lab File: VL035547.D  
 Acq: 4 Sep 2020 1:47

Tgt Ion: 41 Resp: 8459  
 Ion Ratio Lower Upper  
 41 100  
 42 178.4 56.3 84.5#

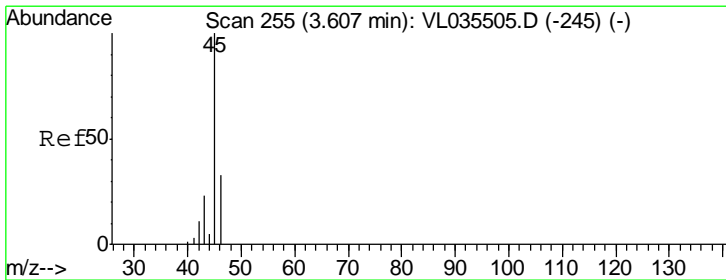
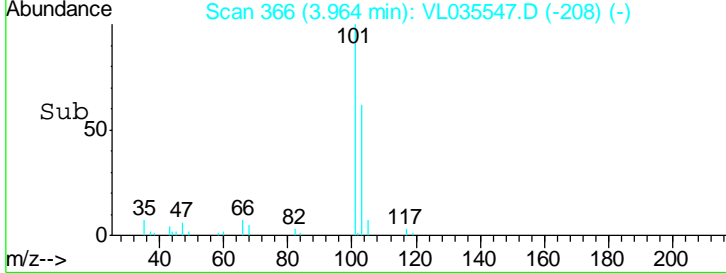
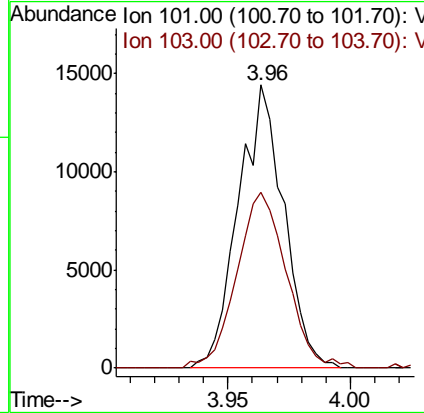
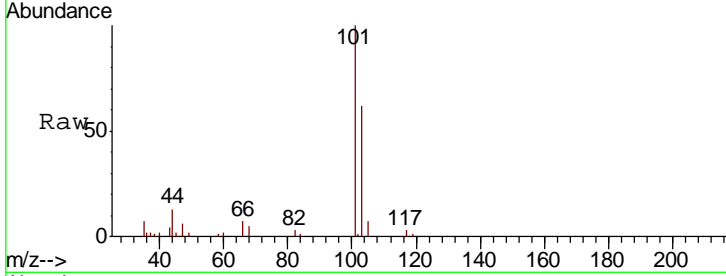




#11  
 Trichlorofluoromethane  
 Concen: 0.072 ppbv  
 RT: 3.96 min Scan# 366  
 Delta R.T. 0.01 min  
 Lab File: VL035547.D  
 Acq: 4 Sep 2020 1:47

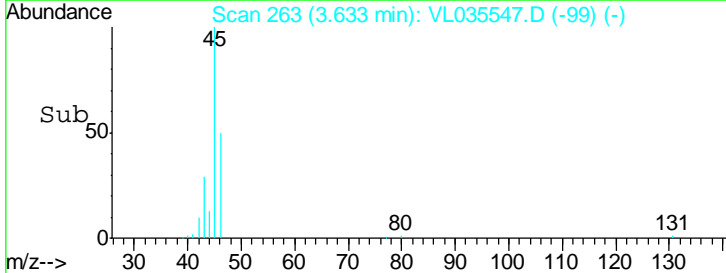
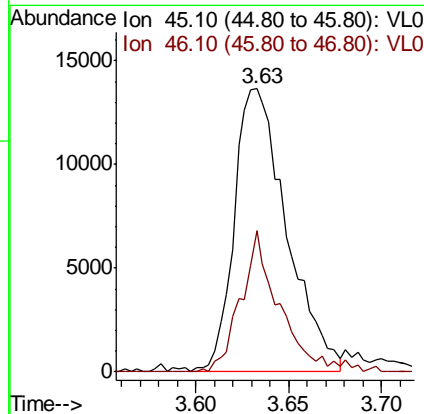
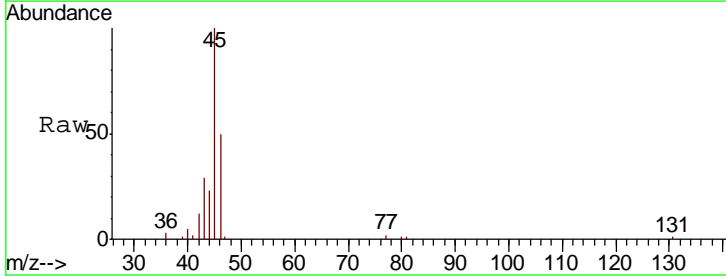
**Instrument :**  
 MSVOA\_L  
**ClientSampled :**  
 SS-5DL

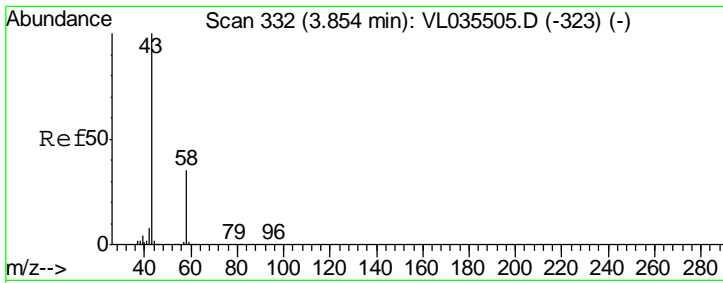
Tgt Ion	Resp	Lower	Upper
101	18548		
103	60.2	54.5	81.7



#13  
 Ethanol  
 Concen: 2.489 ppbv  
 RT: 3.63 min Scan# 263  
 Delta R.T. 0.03 min  
 Lab File: VL035547.D  
 Acq: 4 Sep 2020 1:47

Tgt Ion	Resp	Lower	Upper
45	26838		
46	37.3	15.2	60.6

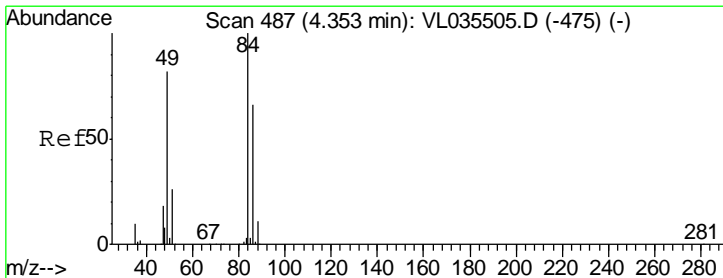
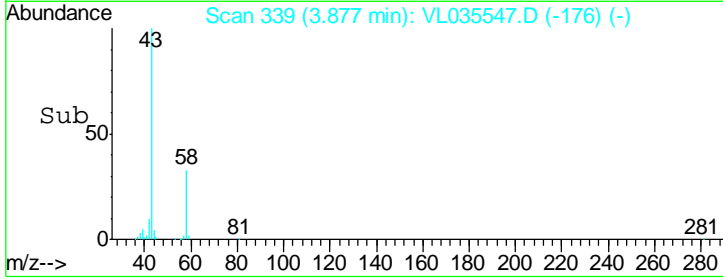
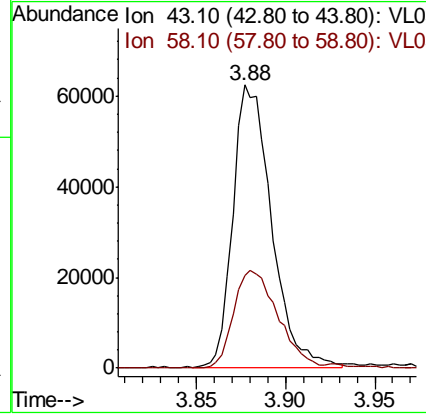
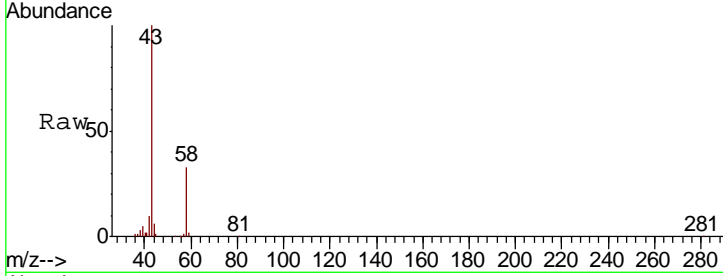




#15  
 Acetone  
 Concen: 0.830 ppbv  
 RT: 3.88 min Scan# 339  
 Delta R.T. 0.02 min  
 Lab File: VL035547.D  
 Acq: 4 Sep 2020 1:47

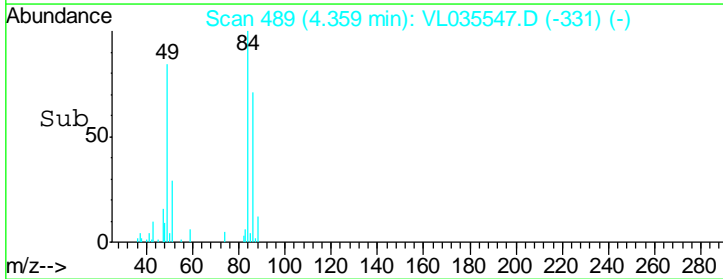
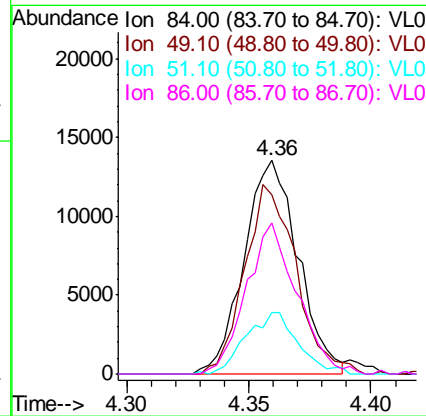
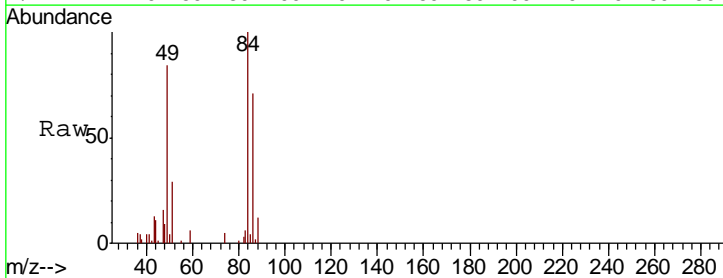
**Instrument :**  
 MSVOA\_L  
**ClientSampled :**  
 SS-5DL

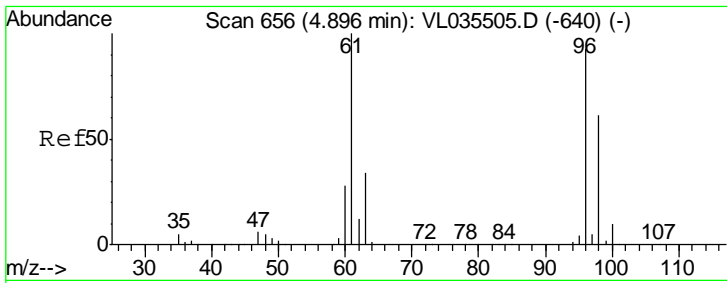
Tgt Ion	Resp	Lower	Upper
43	100		
58	41.0	28.4	42.6



#20  
 Methylene Chloride  
 Concen: 0.249 ppbv  
 RT: 4.36 min Scan# 489  
 Delta R.T. 0.01 min  
 Lab File: VL035547.D  
 Acq: 4 Sep 2020 1:47

Tgt Ion	Resp	Lower	Upper
84	100		
49	83.9	65.4	98.0
51	29.0	21.5	32.3
86	70.7	52.9	79.3

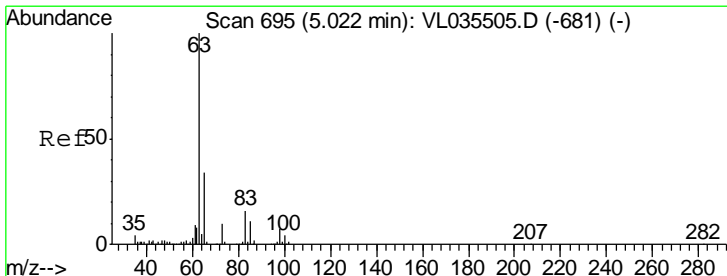
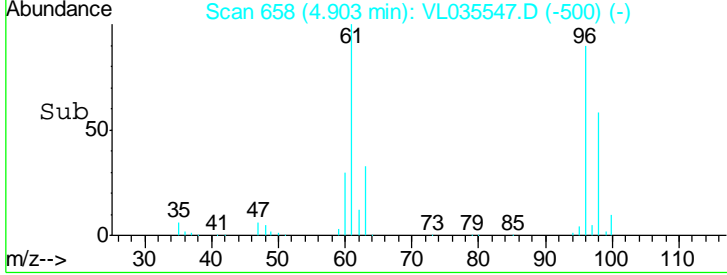
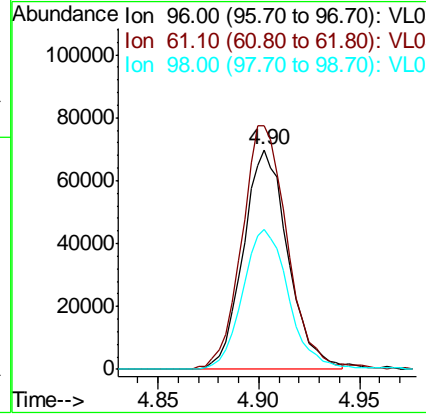
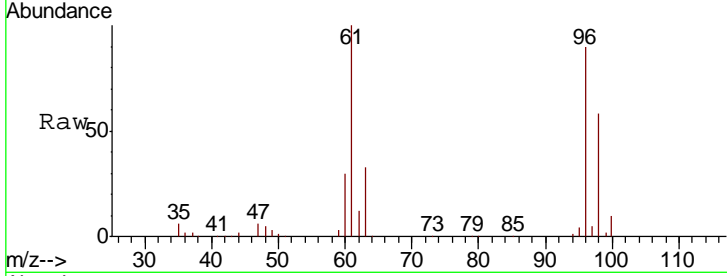




#22  
 trans-1,2-Dichloroethene  
 Concen: 1.189 ppbv  
 RT: 4.90 min Scan# 658  
 Delta R.T. 0.01 min  
 Lab File: VL035547.D  
 Acq: 4 Sep 2020 1:47

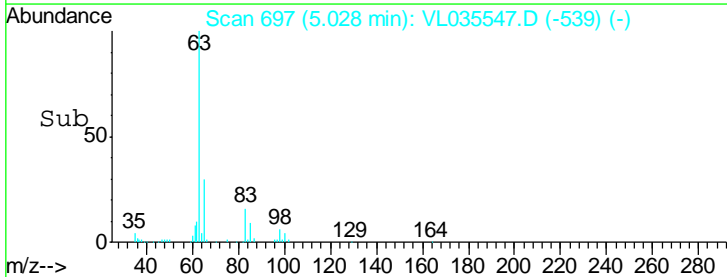
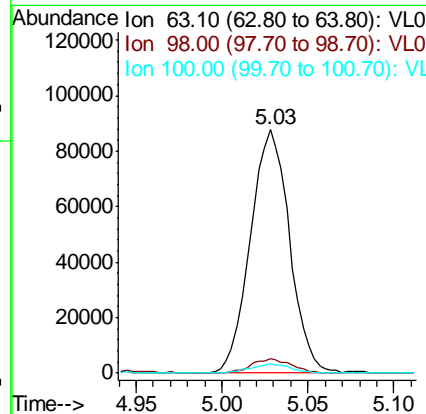
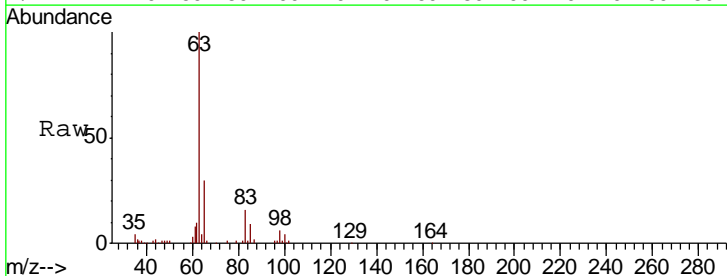
**Instrument :**  
 MSVOA\_L  
**ClientSampled :**  
 SS-5DL

Tgt Ion	Resp	Lower	Upper
96	108389		
61	110.8	86.0	129.0
98	63.8	52.3	78.5

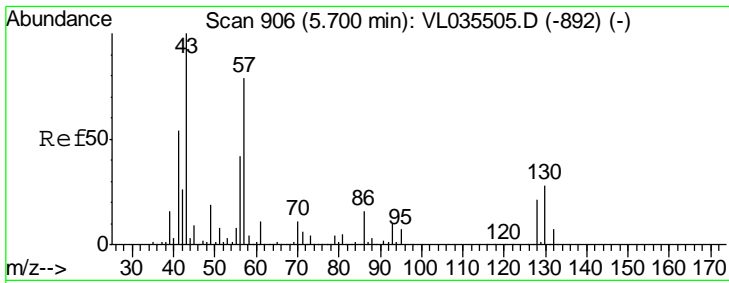


#24  
 1,1-Dichloroethane  
 Concen: 0.931 ppbv  
 RT: 5.03 min Scan# 697  
 Delta R.T. 0.01 min  
 Lab File: VL035547.D  
 Acq: 4 Sep 2020 1:47

Tgt Ion	Resp	Lower	Upper
63	138313		
98	5.8	3.4	10.1
100	3.9	2.1	6.5



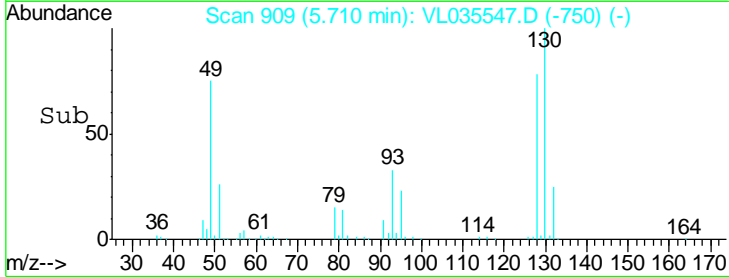
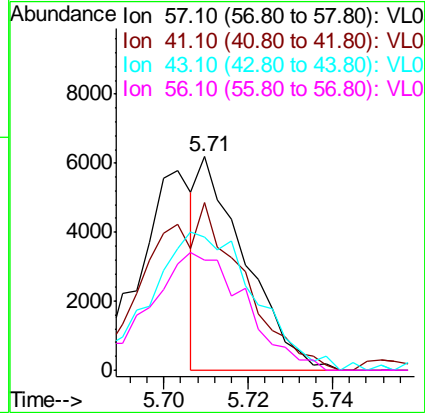
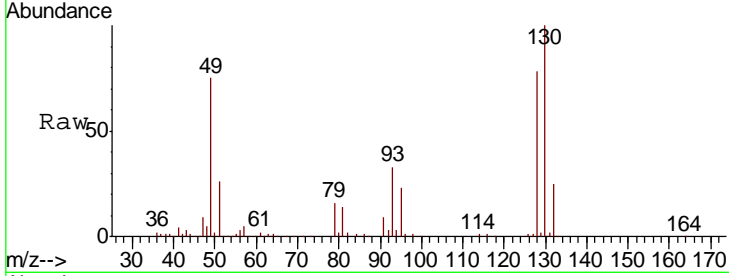




#26  
 Hexane  
 Concen: 0.042 ppbv  
 RT: 5.71 min Scan# 909  
 Delta R.T. 0.01 min  
 Lab File: VL035547.D  
 Acq: 4 Sep 2020 1:47

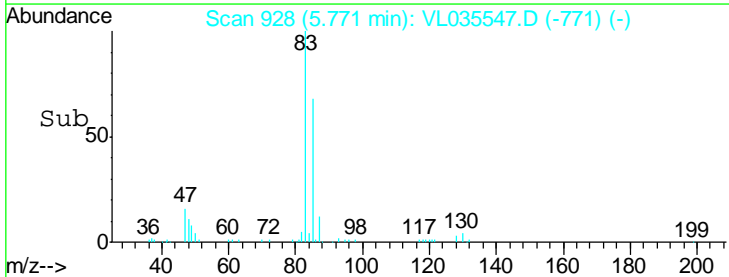
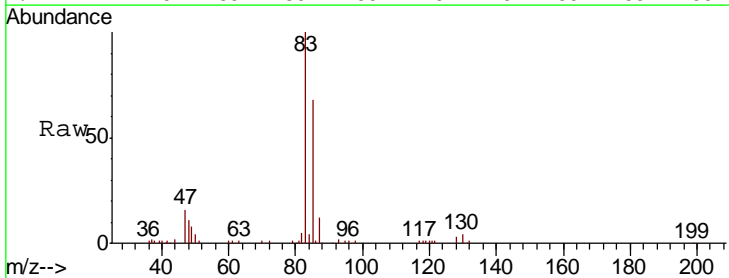
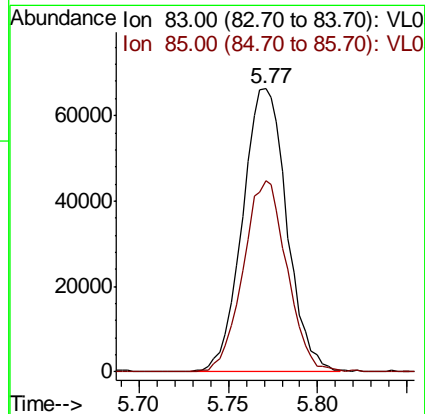
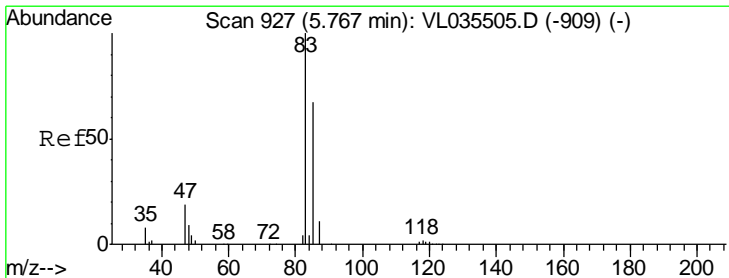
**Instrument :**  
 MSVOA\_L  
**ClientSampled :**  
 SS-5DL

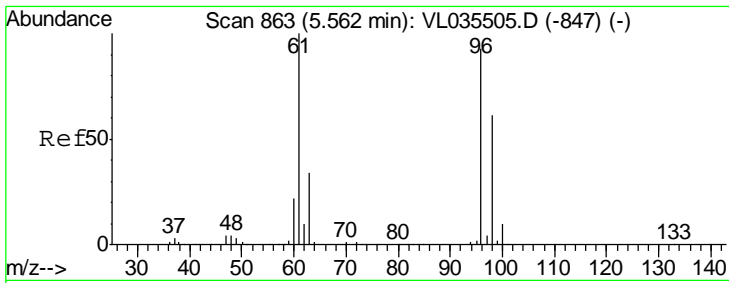
Tgt Ion	Resp	Lower	Upper
57	100		
41	158.7	55.9	83.9#
43	153.3	141.8	212.8
56	114.8	41.8	62.8#



#29  
 Chloroform  
 Concen: 0.503 ppbv  
 RT: 5.77 min Scan# 928  
 Delta R.T. 0.00 min  
 Lab File: VL035547.D  
 Acq: 4 Sep 2020 1:47

Tgt Ion	Resp	Lower	Upper
83	100		
85	67.7	53.9	80.9



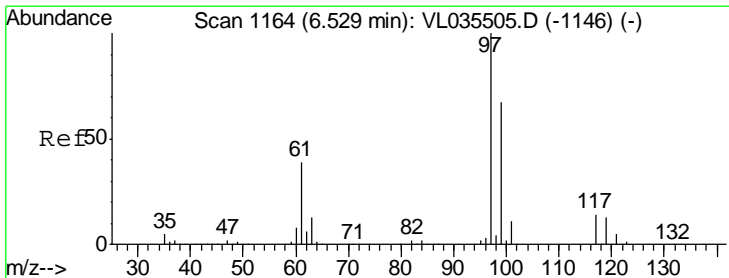
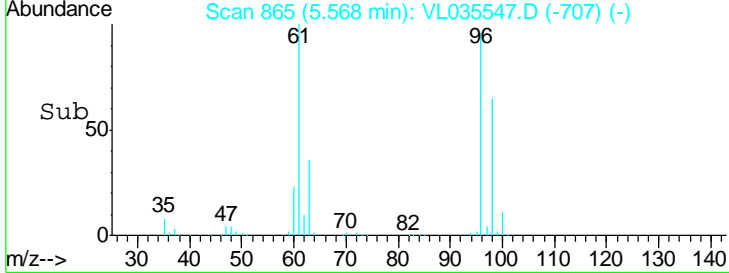
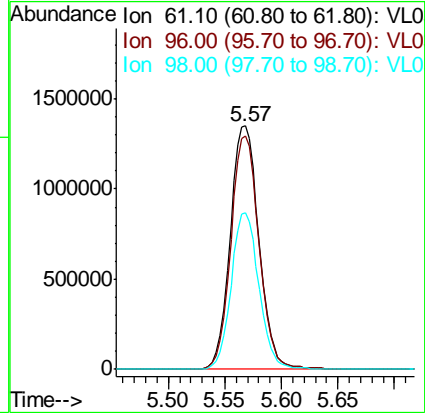
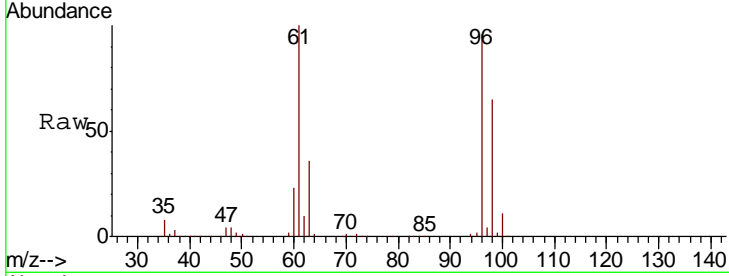


#31  
 cis-1,2-Dichloroethene  
 Concen: 20.643 ppbv  
 RT: 5.57 min Scan# 865  
 Delta R.T. 0.01 min  
 Lab File: VL035547.D  
 Acq: 4 Sep 2020 1:47

Instrument :  
 MSVOA\_L  
 ClientSampled :  
 SS-5DL

Tgt Ion: 61 Resp: 2384389

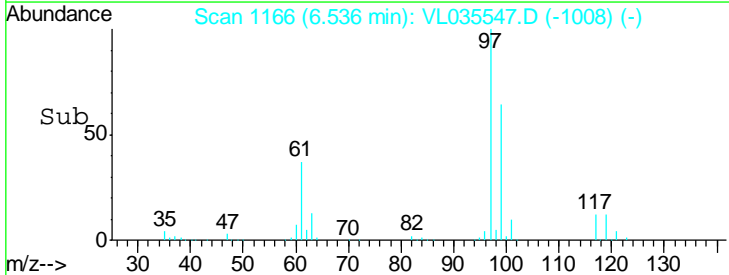
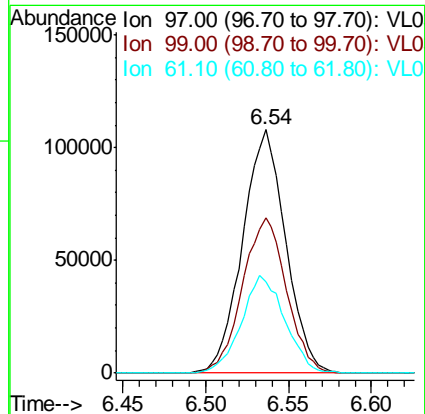
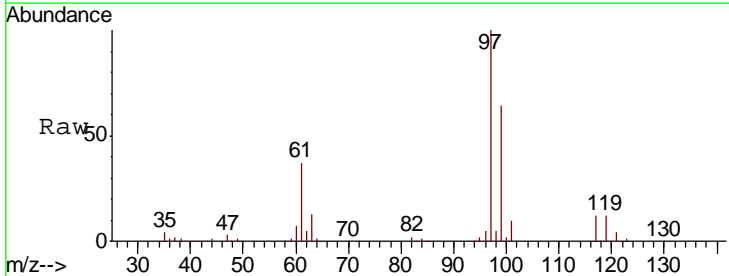
Ion	Ratio	Lower	Upper
61	100		
96	95.9	74.4	111.6
98	64.5	49.2	73.8

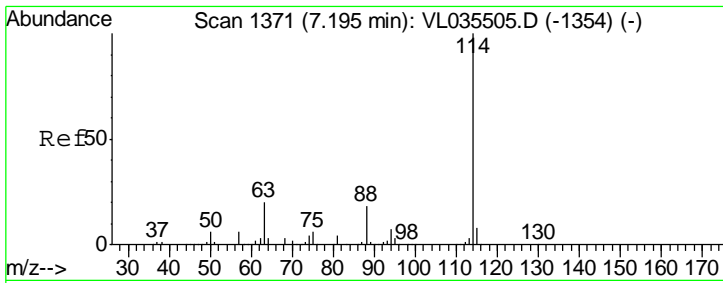


#32  
 1,1,1-Trichloroethane  
 Concen: 0.876 ppbv  
 RT: 6.54 min Scan# 1166  
 Delta R.T. 0.01 min  
 Lab File: VL035547.D  
 Acq: 4 Sep 2020 1:47

Tgt Ion: 97 Resp: 194970

Ion	Ratio	Lower	Upper
97	100		
99	65.2	53.3	79.9
61	40.5	30.6	46.0



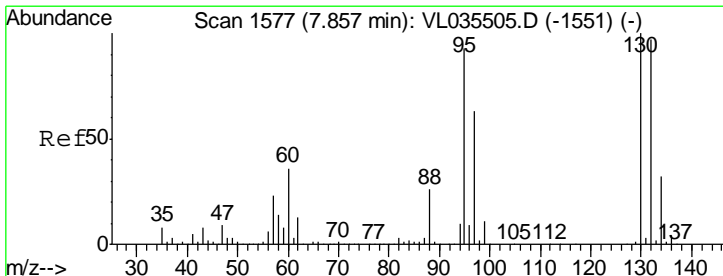
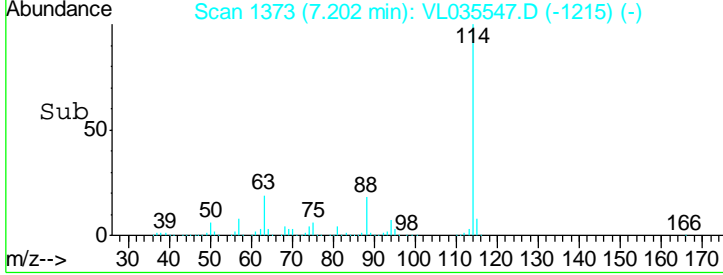
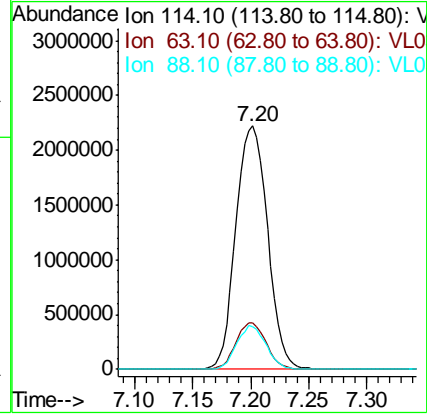
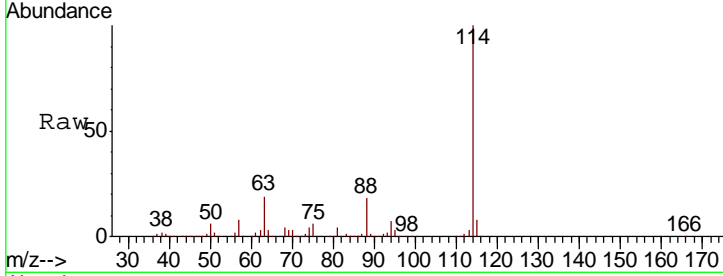


#33  
 1,4-Difluorobenzene  
 Concen: 10.000 ppbv  
 RT: 7.20 min Scan# 1373  
 Delta R.T. 0.01 min  
 Lab File: VL035547.D  
 Acq: 4 Sep 2020 1:47

Instrument :  
 MSVOA\_L  
 ClientSampleId :  
 SS-5DL

Tgt Ion:114 Resp: 4231421

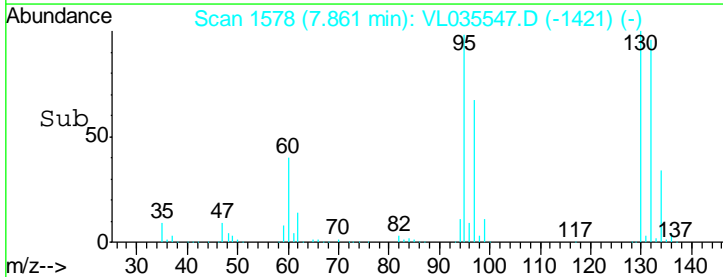
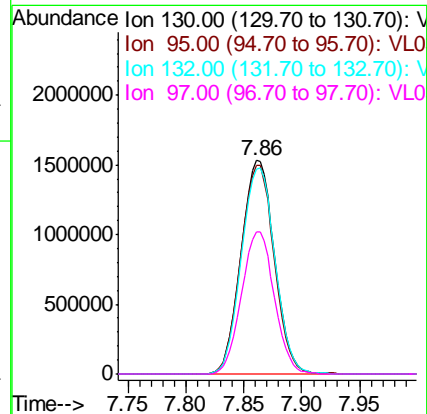
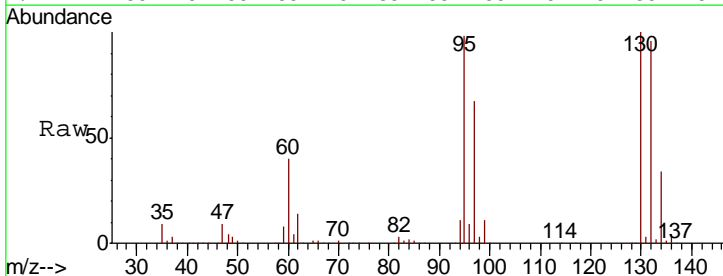
Ion	Ratio	Lower	Upper
114	100		
63	18.2	14.7	22.1
88	16.6	13.4	20.2

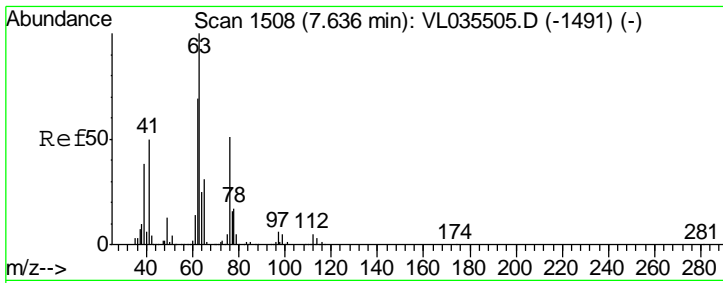


#38  
 Trichloroethene  
 Concen: 19.298 ppbv  
 RT: 7.86 min Scan# 1578  
 Delta R.T. 0.00 min  
 Lab File: VL035547.D  
 Acq: 4 Sep 2020 1:47

Tgt Ion:130 Resp: 3070384

Ion	Ratio	Lower	Upper
130	100		
95	98.0	74.6	112.0
132	95.8	77.6	116.4
97	66.8	50.6	76.0

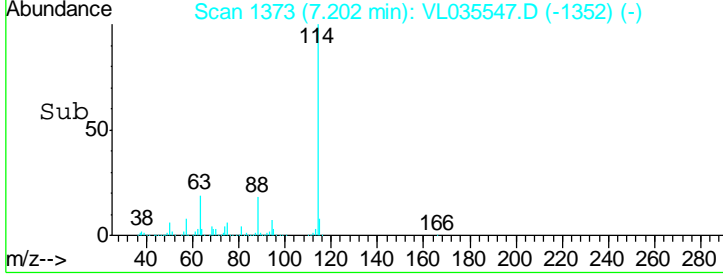
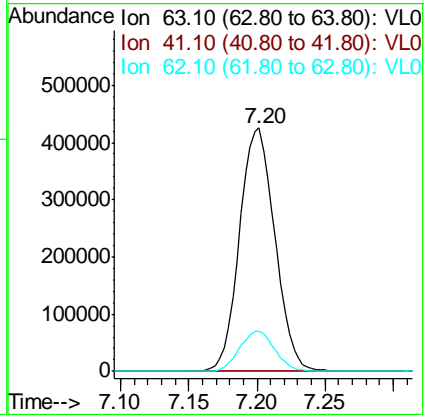
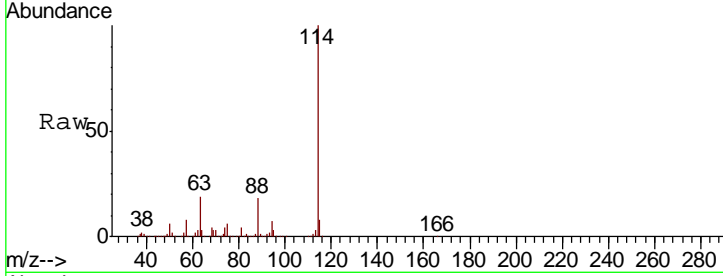




#39  
 1,2-Dichloropropane  
 Concen: 8.282 ppbv  
 RT: 7.20 min Scan# 1373  
 Delta R.T. -0.43 min  
 Lab File: VL035547.D  
 Acq: 4 Sep 2020 1:47

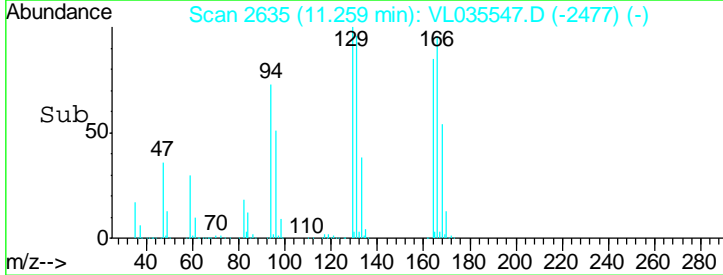
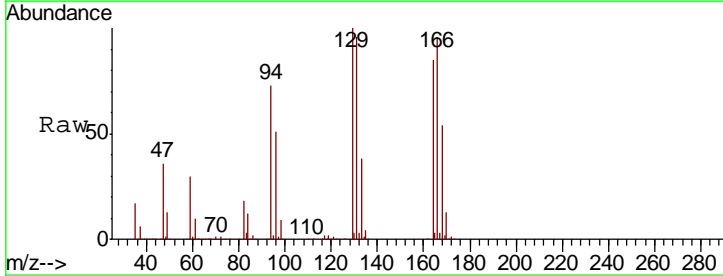
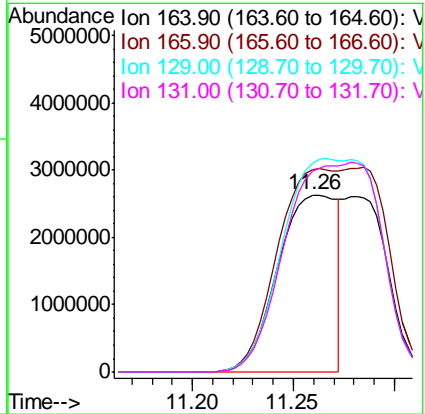
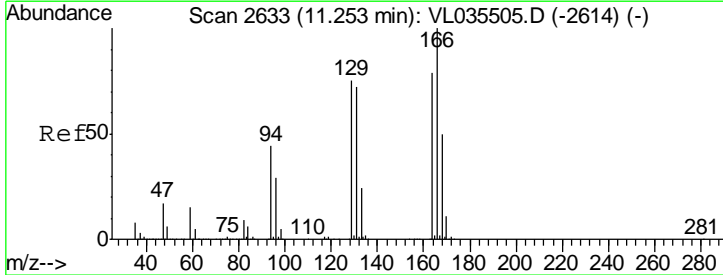
Instrument : MSVOA\_L  
 ClientSampled : SS-5DL

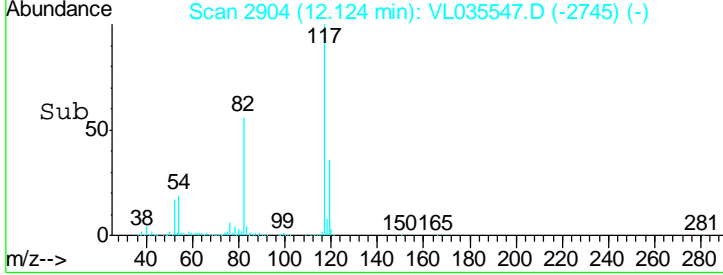
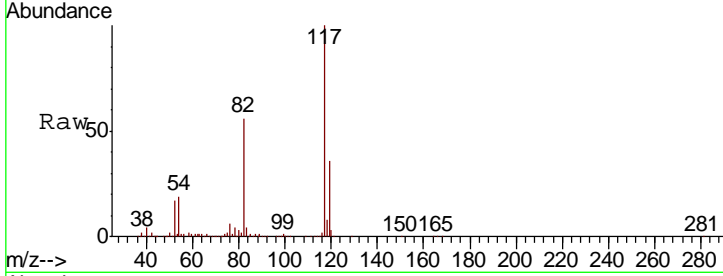
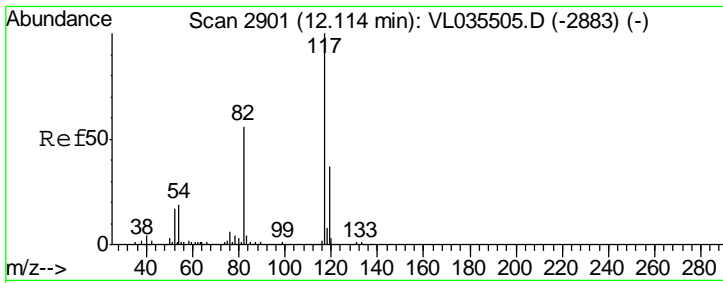
Tgt Ion	Resp	Lower	Upper
63	100		
41	0.1	40.0	60.0#
62	16.4	55.4	83.0#



#52  
 Tetrachloroethene  
 Concen: 33.430 ppbv  
 RT: 11.26 min Scan# 2635  
 Delta R.T. 0.01 min  
 Lab File: VL035547.D  
 Acq: 4 Sep 2020 1:47

Tgt Ion	Resp	Lower	Upper
164	100		
166	113.8	100.9	151.3
129	118.1	75.3	112.9#
131	113.3	73.0	109.4#



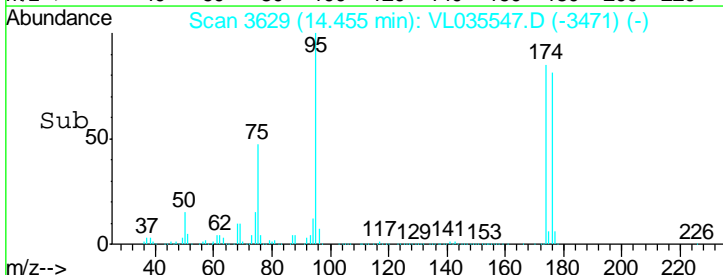
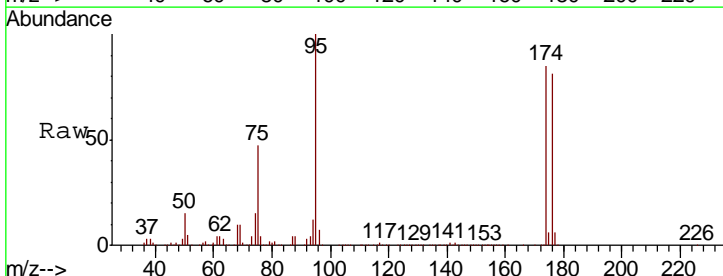
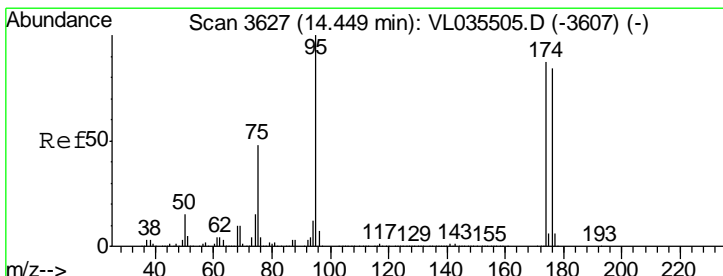
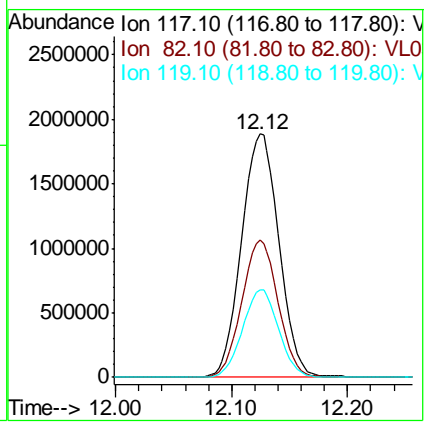


#55  
 Chlorobenzene-d5  
 Concen: 10.000 ppbv  
 RT: 12.12 min Scan# 2904  
 Delta R.T. 0.01 min  
 Lab File: VL035547.D  
 Acq: 4 Sep 2020 1:47

Instrument : MSVOA\_L  
 ClientSampled : SS-5DL

Tgt Ion: 117 Resp: 4236958

Ion	Ratio	Lower	Upper
117	100		
82	55.0	41.6	62.4
119	34.8	29.3	43.9



#68  
 1-Bromo-4-Fluorobenzene  
 Concen: 10.166 ppbv  
 RT: 14.46 min Scan# 3629  
 Delta R.T. 0.01 min  
 Lab File: VL035547.D  
 Acq: 4 Sep 2020 1:47

Tgt Ion: 95 Resp: 3058683

Ion	Ratio	Lower	Upper
95	100		
174	86.4	69.6	104.4
175	6.2	5.1	7.7

