

Data Path : Z:\voasrv\HPCHEM1\MSVOA\_L\Data\VL101722\  
 Data File : VL039736.D  
 Acq On : 18 Oct 2022 9:38  
 Operator : SY/AP  
 Sample : QC101722 CAN 10306  
 Misc : 400mL/MSVOA\_L  
 ALS Vial : 1 Sample Multiplier: 1

Instrument :  
 MSVOA\_L  
 ClientSampleId :  
 QC101722 CAN 10306

Quant Time: Oct 19 05:10:04 2022  
 Quant Method : Z:\voasrv\HPCHEM1\MSVOA\_L\methods\VL091922AIR.M  
 Quant Title : AIR ANALYSIS BY METHOD TO-15 Instrument: MSVOA\_L Fri Aug 26 06:05:16 2022  
 QLast Update : Tue Oct 18 05:23:57 2022  
 Response via : Initial Calibration

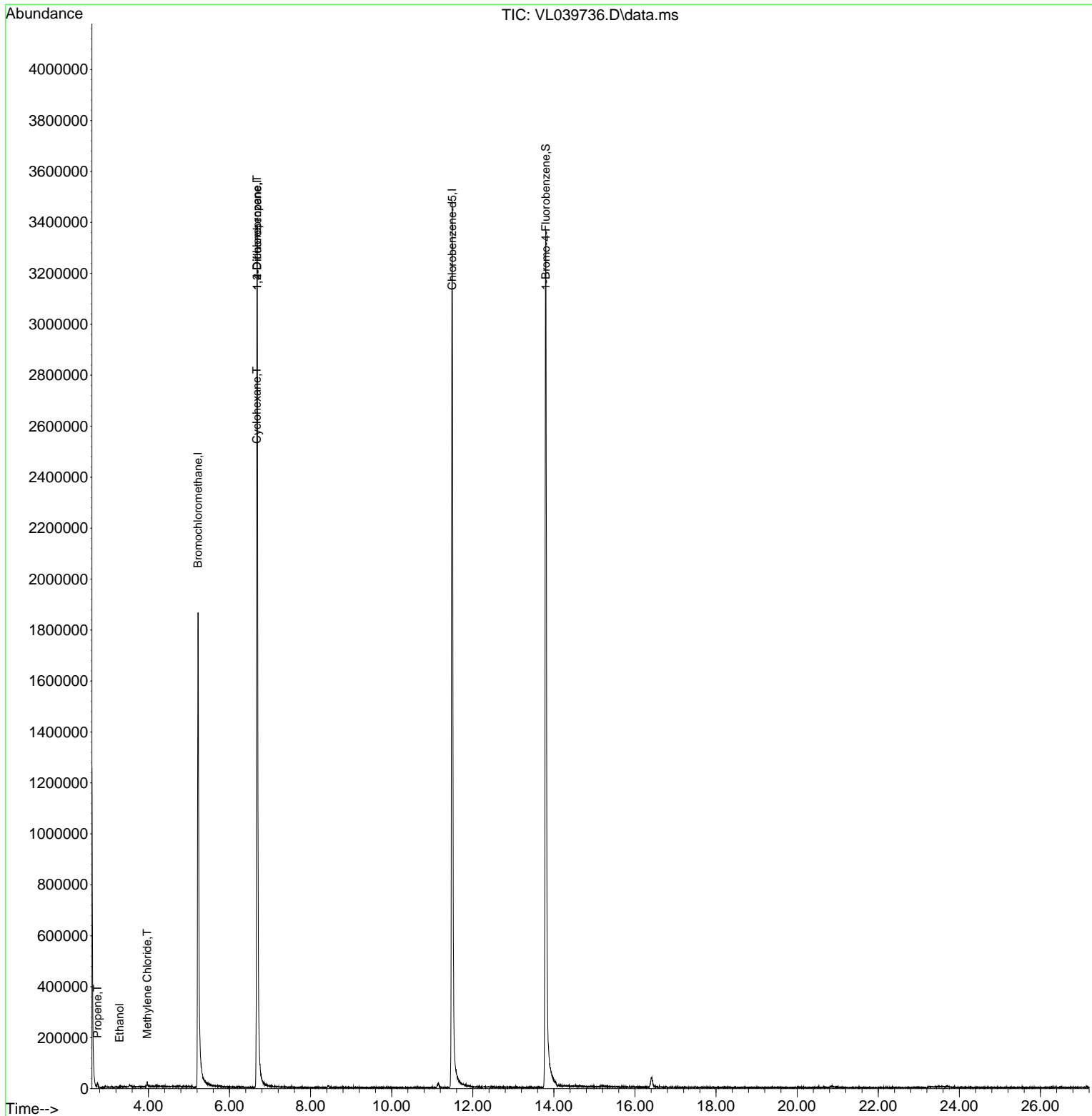
Compound	R.T.	QIon	Response	Conc	Units	Dev(Min)
-----						
Internal Standards						
1) Bromochloromethane	5.224	49	1060931	10.000	ppbv	0.00
33) 1,4-Difluorobenzene	6.684	114	2745731	10.000	ppbv	0.00
55) Chlorobenzene-d5	11.491	117	2389833	10.000	ppbv	0.00
System Monitoring Compounds						
68) 1-Bromo-4-Fluorobenzene	13.799	95	1656621	9.286	ppbv	0.00
Spiked Amount	10.000	Range	65 - 135	Recovery	=	92.900%
Target Compounds						
						Qvalue
9) Propene	2.742	41	4552	0.079	ppbv	92
13) Ethanol	3.288	45	151	0.034	ppbv	57
20) Methylene Chloride	3.970	84	2782	0.051	ppbv #	63
30) Cyclohexane	6.671	84	3641	0.043	ppbv #	1
39) 1,2-Dichloropropane	6.680	63	667281	8.232	ppbv #	25
-----						

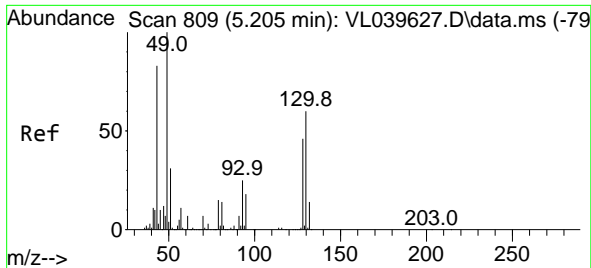
(#) = qualifier out of range (m) = manual integration (+) = signals summed

Data Path : Z:\voasrv\HPCHEM1\MSVOA\_L\Data\VL101722\  
 Data File : VL039736.D  
 Acq On : 18 Oct 2022 9:38  
 Operator : SY/AP  
 Sample : QC101722 CAN 10306  
 Misc : 400mL/MSVOA\_L  
 ALS Vial : 1 Sample Multiplier: 1

Instrument :  
 MSVOA\_L  
 ClientSampleId :  
 QC101722 CAN 10306

Quant Time: Oct 19 05:10:04 2022  
 Quant Method : Z:\voasrv\HPCHEM1\MSVOA\_L\methods\VL091922AIR.M  
 Quant Title : AIR ANALYSIS BY METHOD TO-15 Instrument: MSVOA\_L Fri Aug 26 06:05:16 2022  
 QLast Update : Tue Oct 18 05:23:57 2022  
 Response via : Initial Calibration



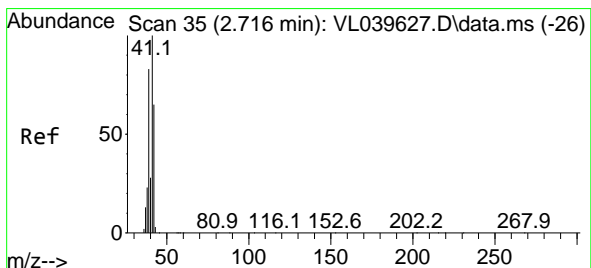
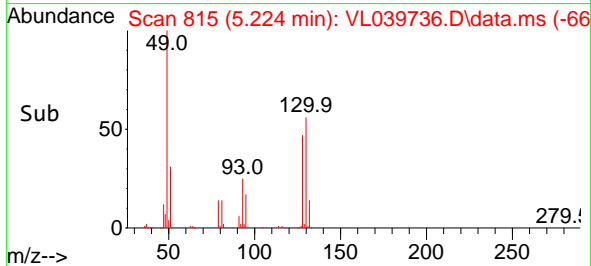
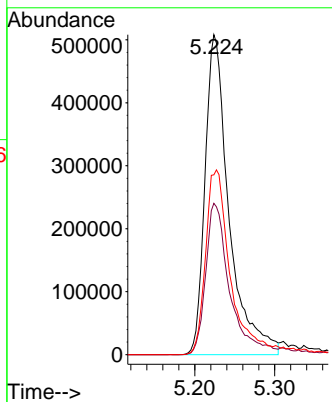
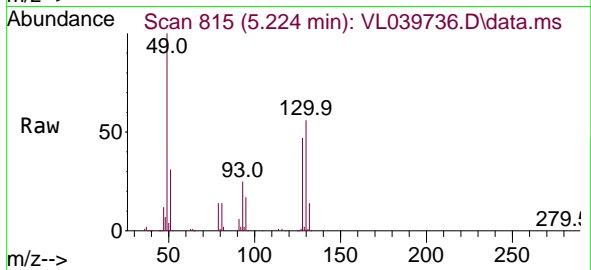


#1  
 Bromochloromethane  
 Concen: 10.000 ppbv  
 RT: 5.224 min Scan# 81  
 Delta R.T. -0.000 min  
 Lab File: VL039736.D  
 Acq: 18 Oct 2022 9:38

Instrument :  
 MSVOA\_L  
 ClientSampleId :  
 QC101722 CAN 10306

Tgt Ion: 49 Resp: 1060931

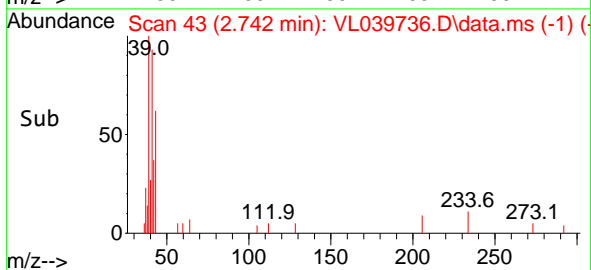
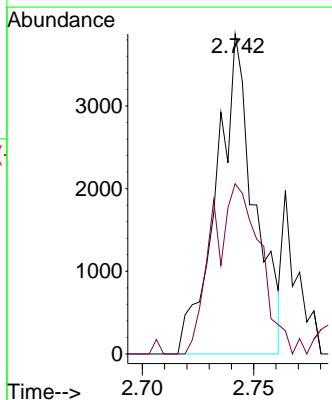
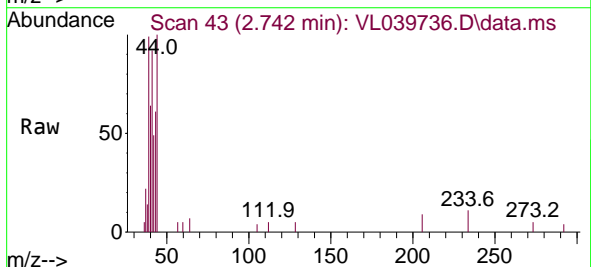
Ion	Ratio	Lower	Upper
49	100		
128	49.9	26.7	80.0
130	62.8	34.3	102.8

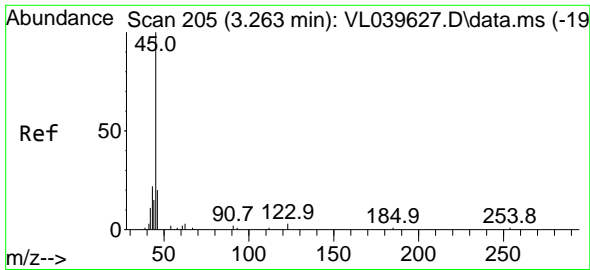


#9  
 Propene  
 Concen: 0.079 ppbv  
 RT: 2.742 min Scan# 43  
 Delta R.T. 0.010 min  
 Lab File: VL039736.D  
 Acq: 18 Oct 2022 9:38

Tgt Ion: 41 Resp: 4552

Ion	Ratio	Lower	Upper
41	100		
42	75.5	55.2	82.8

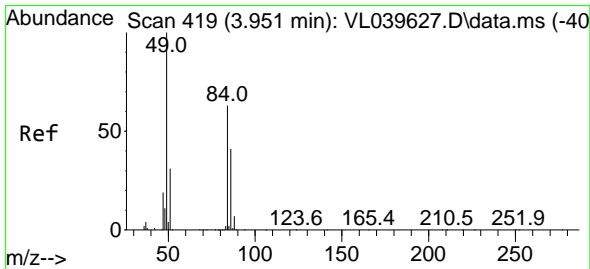
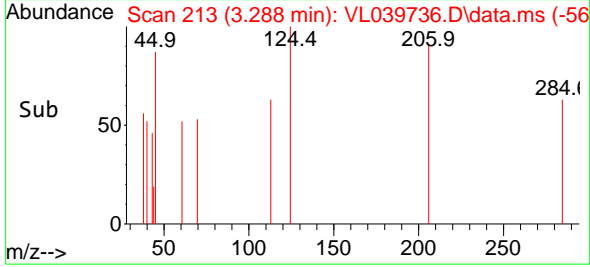
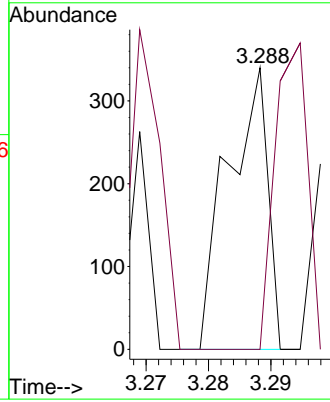
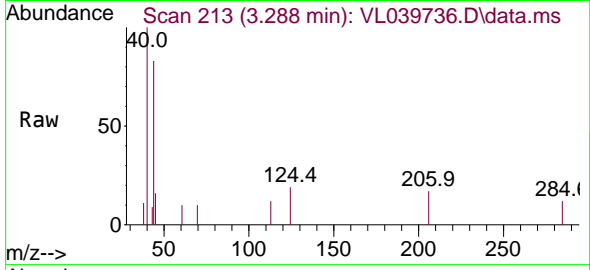




#13  
 Ethanol  
 Concen: 0.034 ppbv  
 RT: 3.288 min Scan# 211  
 Delta R.T. 0.006 min  
 Lab File: VL039736.D  
 Acq: 18 Oct 2022 9:38

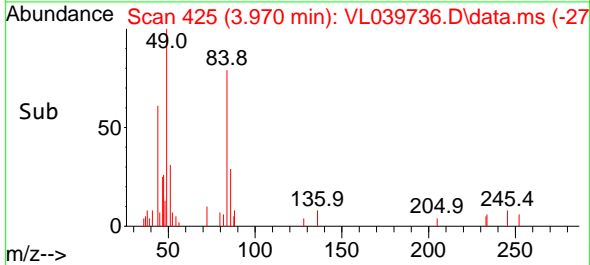
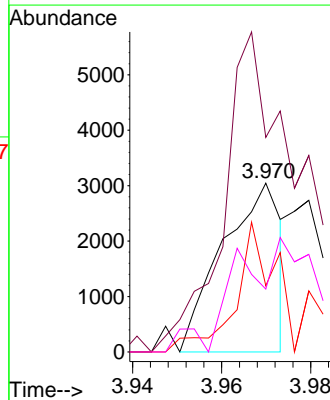
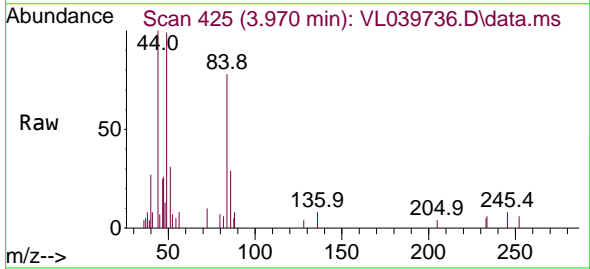
Instrument : MSVOA\_L  
 ClientSampleId : QC101722 CAN 10306

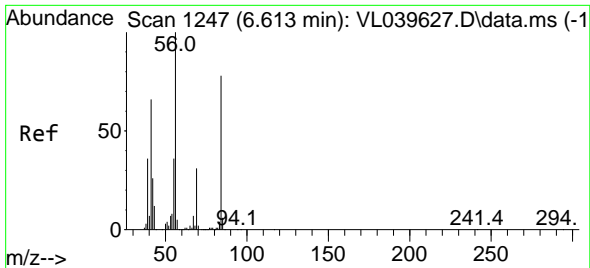
Tgt Ion: 45 Resp: 151  
 Ion Ratio Lower Upper  
 45 100  
 46 88.7 22.8 91.2



#20  
 Methylene Chloride  
 Concen: 0.051 ppbv  
 RT: 3.970 min Scan# 425  
 Delta R.T. -0.000 min  
 Lab File: VL039736.D  
 Acq: 18 Oct 2022 9:38

Tgt Ion: 84 Resp: 2782  
 Ion Ratio Lower Upper  
 84 100  
 49 107.9 123.1 184.7#  
 51 31.1 34.4 51.6#  
 86 23.8 51.1 76.7#

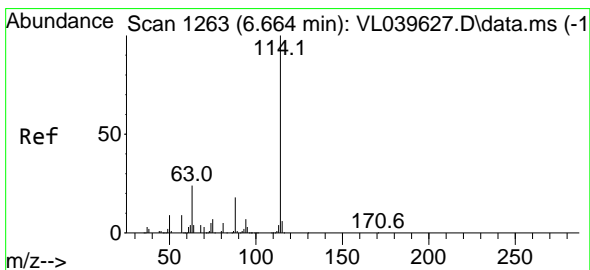
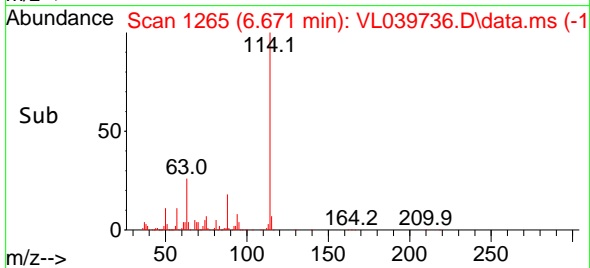
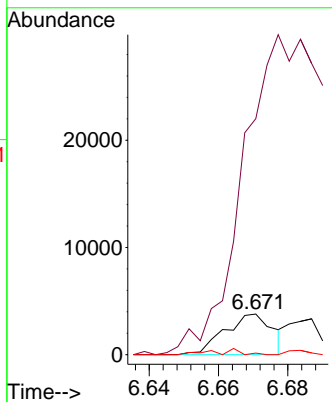
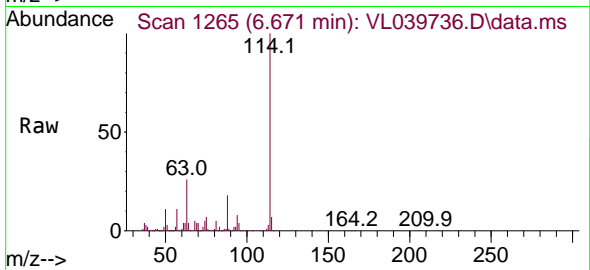




#30  
 Cyclohexane  
 Concen: 0.043 ppbv  
 RT: 6.671 min Scan# 11  
 Delta R.T. 0.038 min  
 Lab File: VL039736.D  
 Acq: 18 Oct 2022 9:38

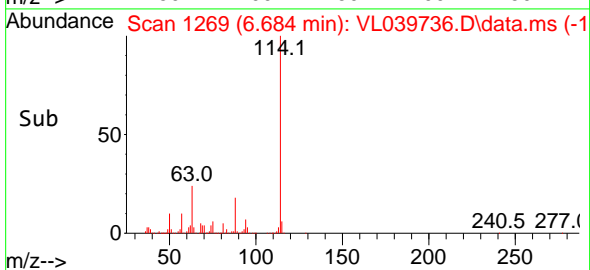
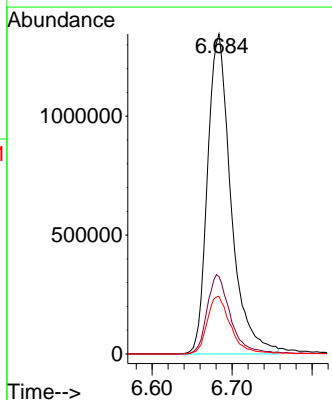
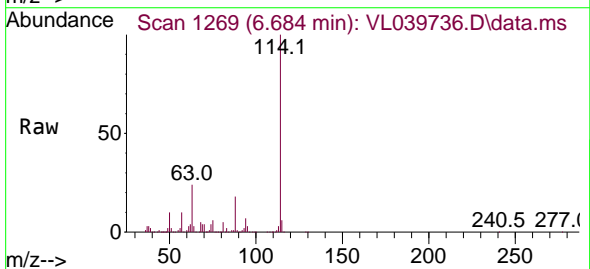
Instrument : MSVOA\_L  
 ClientSampleId : QC101722 CAN 10306

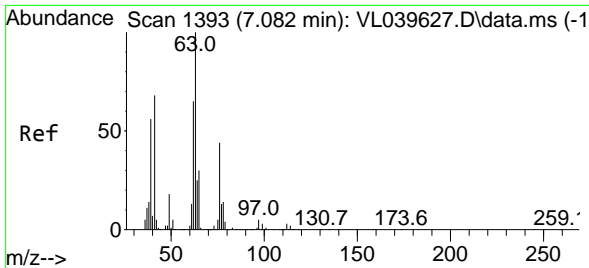
Tgt Ion: 84 Resp: 3641  
 Ion Ratio Lower Upper  
 84 100  
 56 1839.4 107.7 161.5#  
 41 14.1 67.7 101.5#



#33  
 1,4-Difluorobenzene  
 Concen: 10.000 ppbv  
 RT: 6.684 min Scan# 1269  
 Delta R.T. -0.003 min  
 Lab File: VL039736.D  
 Acq: 18 Oct 2022 9:38

Tgt Ion:114 Resp: 2745731  
 Ion Ratio Lower Upper  
 114 100  
 63 25.2 20.2 30.4  
 88 18.4 14.5 21.7



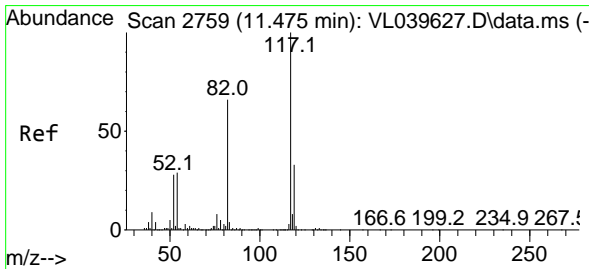
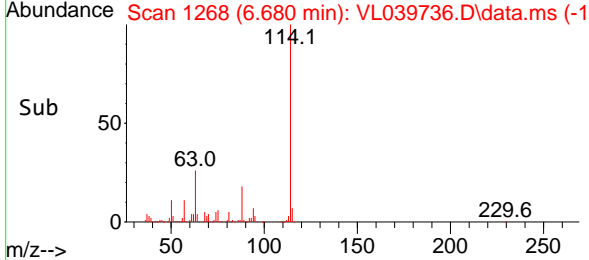
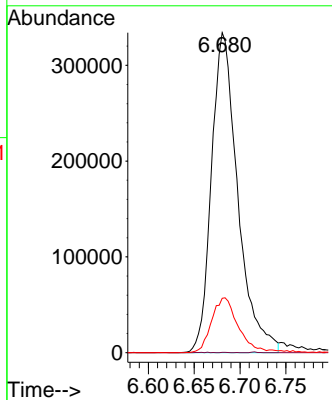
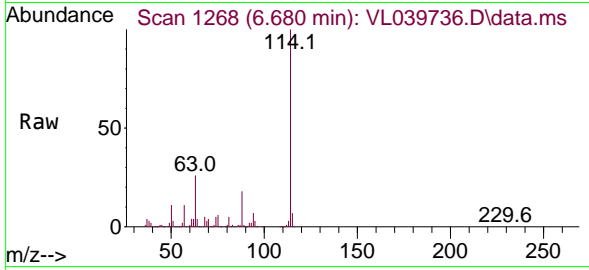


#39  
 1,2-Dichloropropane  
 Concen: 8.232 ppbv  
 RT: 6.680 min Scan# 11  
 Delta R.T. -0.425 min  
 Lab File: VL039736.D  
 Acq: 18 Oct 2022 9:38

Instrument : MSVOA\_L  
 ClientSampleId : QC101722 CAN 10306

Tgt Ion: 63 Resp: 667281

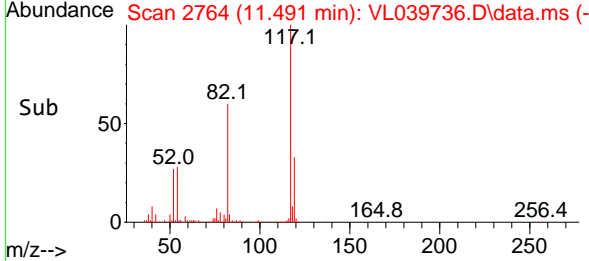
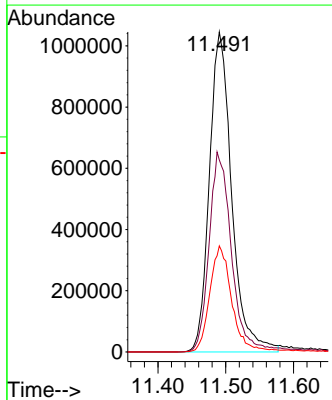
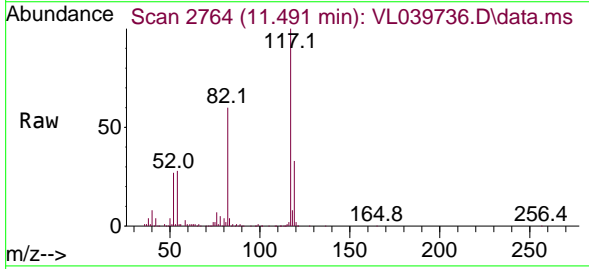
Ion	Ratio	Lower	Upper
63	100		
41	0.1	59.6	89.4#
62	17.0	51.4	77.0#

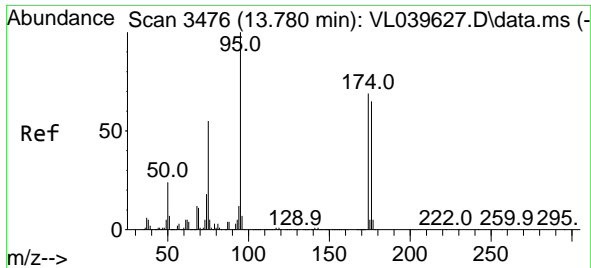


#55  
 Chlorobenzene-d5  
 Concen: 10.000 ppbv  
 RT: 11.491 min Scan# 2764  
 Delta R.T. -0.000 min  
 Lab File: VL039736.D  
 Acq: 18 Oct 2022 9:38

Tgt Ion: 117 Resp: 2389833

Ion	Ratio	Lower	Upper
117	100		
82	63.1	50.8	76.2
119	33.3	24.1	36.1





#68  
 1-Bromo-4-Fluorobenzene  
 Concen: 9.286 ppbv  
 RT: 13.799 min Scan# 34  
 Delta R.T. -0.000 min  
 Lab File: VL039736.D  
 Acq: 18 Oct 2022 9:38

Instrument :  
 MSVOA\_L  
 ClientSampleId :  
 QC101722 CAN 10306

Tgt Ion: 95 Resp: 1656621  
 Ion Ratio Lower Upper  
 95 100  
 174 74.1 55.9 83.9  
 175 5.7 4.2 6.4

