

Data Path : Z:\voasrv\HPCHEM1\MSVOA_L\Data\VL101722\
 Data File : VL039720.D
 Acq On : 17 Oct 2022 15:27
 Operator : SY/AP
 Sample : VL1017ABS01
 Misc : 400mL/MSVOA_L
 ALS Vial : 1 Sample Multiplier: 1

Instrument :
 MSVOA_L
 ClientSampleId :
 VL1017ABS01

Manual Integrations
 APPROVED

Reviewed By :Semsettin Yesilyurt 10/19/2022
 Supervised By :Mahesh Dadoda 10/19/2022

Quant Time: Oct 18 05:26:27 2022
 Quant Method : Z:\voasrv\HPCHEM1\MSVOA_L\methods\VL091922AIR.M
 Quant Title : AIR ANALYSIS BY METHOD TO-15 Instrument: MSVOA_L Fri Aug
 QLast Update : Tue Oct 18 05:23:57 2022
 Response via : Initial Calibration

Compound	R.T.	QIon	Response	Conc	Units	Dev(Min)
Internal Standards						
1) Bromochloromethane	5.227	49	1070927	10.000	ppbv	0.00
33) 1,4-Difluorobenzene	6.690	114	2807817	10.000	ppbv	0.00
55) Chlorobenzene-d5	11.500	117	2795684m	10.000	ppbv	0.00
System Monitoring Compounds						
68) 1-Bromo-4-Fluorobenzene	13.806	95	1941297	9.302	ppbv	0.00
Spiked Amount	10.000	Range	65 - 135	Recovery	=	93.000%
Target Compounds						
						Qvalue
2) Dichlorodifluoromethane	2.767	85	935117	7.532	ppbv	97
3) Chlorodifluoromethane	2.713	51	1136911	8.946	ppbv	97
4) Chloromethane	2.851	50	702838	9.164	ppbv	100
5) Vinyl Chloride	2.957	62	604866	9.462	ppbv	98
6) Bromomethane	3.156	94	219661	9.318	ppbv	100
7) Chloroethane	3.237	64	222209	9.505	ppbv	93
8) Dichlorotetrafluoroethane	2.896	85	1348115	9.052	ppbv	95
9) Propene	2.732	41	501033	8.632	ppbv	98
10) Heptane	7.613	43	1331804	9.833	ppbv	100
11) Trichlorofluoromethane	3.603	101	1416197	9.211	ppbv	98
12) 1,1,2-Trichlorotrifluo...	4.105	101	1094796	9.427	ppbv	97
13) Ethanol	3.275	45	38523m	8.711	ppbv	
14) Bromoethene	3.404	108	434162	9.365	ppbv	96
15) Acetone	3.507	43	1079688	9.060	ppbv	99
16) 1,3-Butadiene	3.025	39	569436	9.420	ppbv	98
17) tert-Butyl alcohol	3.915	59	933553	8.729	ppbv	100
18) 1,1-Dichloroethene	3.922	96	477381	9.343	ppbv	97
19) Isopropyl Alcohol	3.613	45	519797	8.557	ppbv	99
20) Methylene Chloride	3.973	84	414539	7.524	ppbv	97
21) Allyl Chloride	4.037	41	764847	9.426	ppbv	97
22) trans-1,2-Dichloroethene	4.484	96	499214	9.876	ppbv	93
23) Vinyl Acetate	4.668	43	506140m	9.396	ppbv	
24) 1,1-Dichloroethane	4.603	63	1023199	9.538	ppbv	98
25) Ethyl Acetate	5.243	43	2360456	9.084	ppbv	99
26) Hexane	5.253	57	957130	8.680	ppbv	95
27) Carbon Disulfide	4.163	76	1211617	10.455	ppbv	99
28) Methyl tert-Butyl Ether	4.626	73	836280	9.027	ppbv	99
29) Chloroform	5.314	83	1501161	9.430	ppbv	97
30) Cyclohexane	6.639	84	825648	9.669	ppbv	97
31) cis-1,2-Dichloroethene	5.118	61	922204	9.245	ppbv	96
32) 1,1,1-Trichloroethane	6.041	97	1431113	9.930	ppbv	98
34) 2-Butanone	4.825	43	1176202	8.528	ppbv	98
35) Carbon Tetrachloride	6.529	117	1532360	10.280	ppbv	100
36) Benzene	6.407	78	2044064	9.522	ppbv	98
37) 1,2-Dichloroethane	5.844	62	1113150	9.527	ppbv	100
38) Trichloroethene	7.327	130	1184609	10.211	ppbv	98
39) 1,2-Dichloropropane	7.111	63	758721	9.153	ppbv	96
40) 1,4-Dioxane	7.320	88	309625m	9.148	ppbv	
41) Tetrahydrofuran	5.597	42	828719	9.795	ppbv	95
42) Bromodichloromethane	7.285	83	1580026	9.723	ppbv	99
43) Methyl Methacrylate	7.510	69	796154	10.174	ppbv	98
44) 2,2,4-Trimethylpentane	7.362	57	3453985	9.335	ppbv	99
45) t-1,3-Dichloropropene	8.745	75	733890	11.098	ppbv	99

Data Path : Z:\voasrv\HPCHEM1\MSVOA_L\Data\VL101722\
 Data File : VL039720.D
 Acq On : 17 Oct 2022 15:27
 Operator : SY/AP
 Sample : VL1017ABS01
 Misc : 400mL/MSVOA_L
 ALS Vial : 1 Sample Multiplier: 1

Instrument :
 MSVOA_L
 ClientSampleId :
 VL1017ABS01

Manual Integrations
 APPROVED

Reviewed By :Semsettin Yesilyurt 10/19/2022
 Supervised By :Mahesh Dadoda 10/19/2022

Quant Time: Oct 18 05:26:27 2022
 Quant Method : Z:\voasrv\HPCHEM1\MSVOA_L\methods\VL091922AIR.M
 Quant Title : AIR ANALYSIS BY METHOD TO-15 Instrument: MSVOA_L Fri Aug
 QLast Update : Tue Oct 18 05:23:57 2022
 Response via : Initial Calibration

Compound	R.T.	QIon	Response	Conc	Units	Dev(Min)
46) cis-1,3-Dichloropropene	8.179	75	1017545	10.809	ppbv	96
47) 1,1,2-Trichloroethane	8.934	97	835747	9.224	ppbv	96
48) Dibromochloromethane	9.745	129	1370818	10.047	ppbv	99
49) Bromoform	12.436	173	1111173	9.847	ppbv	99
50) 4-Methyl-2-Pentanone	8.217	43	2182961	10.073	ppbv	98
51) 2-Hexanone	9.584	43	1646574	10.264	ppbv #	100
52) Tetrachloroethene	10.648	164	753463	9.200	ppbv	97
53) Toluene	9.253	91	2388409	10.004	ppbv	100
54) 1,2-Dibromoethane	10.044	107	952814	9.830	ppbv	99
56) 1,1,1,2-Tetrachloroethane	11.539	131	1010640	8.945	ppbv	98
57) Chlorobenzene	11.561	112	1794203	8.727	ppbv	99
58) Ethyl Benzene	12.121	91	3108215	9.643	ppbv	99
59) m/p-Xylene	12.404	91	5267803m	18.363	ppbv	99
60) o-Xylene	13.089	91	2493446	9.102	ppbv	99
61) Styrene	12.928	104	1479444	10.028	ppbv	99
62) Isopropylbenzene	14.060	105	3641024	8.833	ppbv	99
63) 1,1,2,2-Tetrachloroethane	13.079	83	917573	8.397	ppbv	99
64) n-propylbenzene	14.947	120	935384	8.861	ppbv	94
65) tert-Butylbenzene	16.121	119	3186593	8.750	ppbv	100
66) Benzyl Chloride	16.358	91	245109m	8.453	ppbv	
67) sec-Butylbenzene	16.667	105	4449268	8.710	ppbv	99
69) p-Isopropyltoluene	17.027	119	3717153	8.856	ppbv	99
70) n-Butylbenzene	17.915	91	3736788	9.082	ppbv	99
71) 2-Chlorotoluene	14.831	91	2629853	8.836	ppbv	100
72) 4-Ethyltoluene	15.223	105	2833737	9.061	ppbv	98
73) 1,3,5-Trimethylbenzene	15.381	105	2596947	9.075	ppbv	97
74) 1,2,4-Trimethylbenzene	16.140	105	2797810	8.722	ppbv	98
75) 1,3-Dichlorobenzene	16.362	146	1671000	8.730	ppbv	100
76) 1,4-Dichlorobenzene	16.503	146	1599742	8.355	ppbv	100
77) 1,2-Dichlorobenzene	17.175	146	1601806	8.582	ppbv	99
78) Hexachloro-1,3-Butadiene	22.670	225	1293379	9.069	ppbv	99
79) Naphthalene	21.416	128	2732304	12.907	ppbv	98
80) Naphthalene,2-methyl-	24.400	142	786028	9.875	ppbv	99
81) 1,2,4-Trichlorobenzene	21.172	180	1517835	10.916	ppbv	100

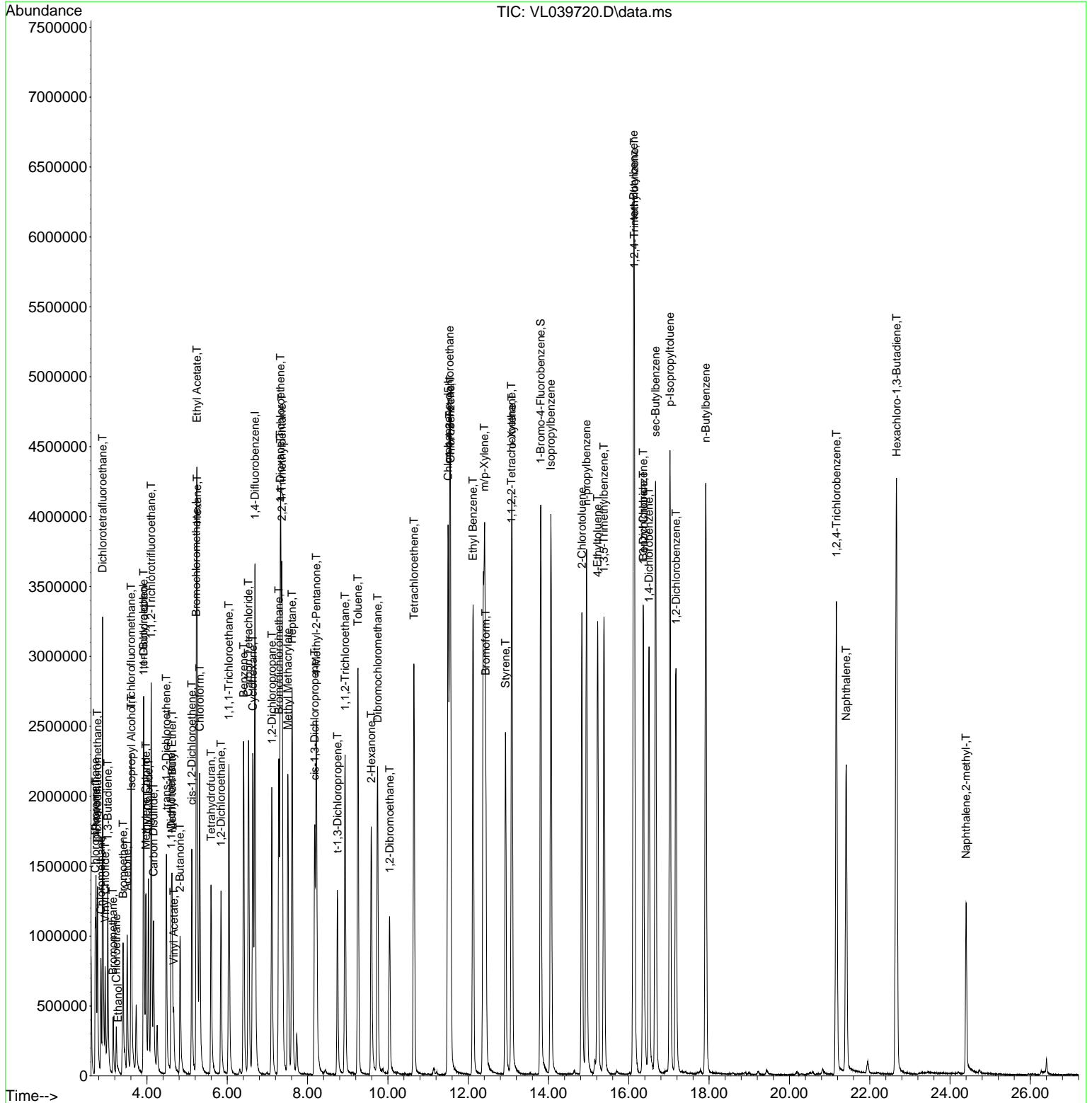
(#) = qualifier out of range (m) = manual integration (+) = signals summed

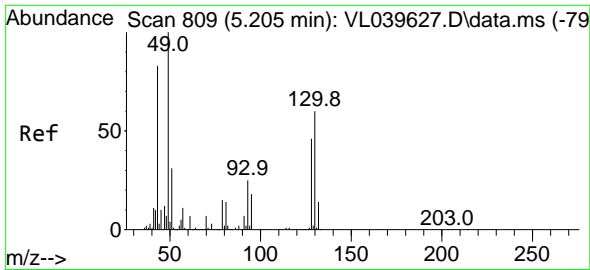
Data Path : Z:\voasrv\HPCHEM1\MSVOA_L\Data\VL101722\
 Data File : VL039720.D
 Acq On : 17 Oct 2022 15:27
 Operator : SY/AP
 Sample : VL1017ABS01
 Misc : 400mL/MSVOA_L
 ALS Vial : 1 Sample Multiplier: 1

Instrument :
 MSVOA_L
 ClientSampleId :
 VL1017ABS01

Quant Time: Oct 18 05:26:27 2022
 Quant Method : Z:\voasrv\HPCHEM1\MSVOA_L\methods\VL091922AIR.M
 Quant Title : AIR ANALYSIS BY METHOD TO-15 Instrument: MSVOA_L Fri Aug
 QLast Update : Tue Oct 18 05:23:57 2022
 Response via : Initial Calibration

Manual Integrations
APPROVED
 Reviewed By : Semsettin Yesilyurt 10/19/2022
 Supervised By : Mahesh Dadoda 10/19/2022





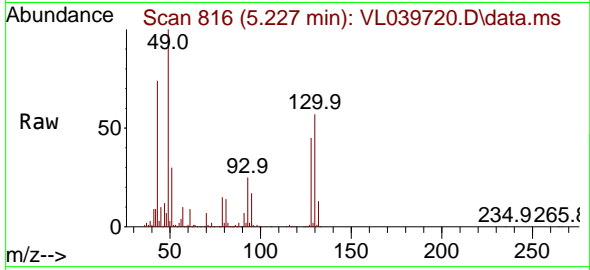
#1
 Bromochloromethane
 Concen: 10.000 ppbv
 RT: 5.227 min Scan# 81
 Delta R.T. 0.003 min
 Lab File: VL039720.D
 Acq: 17 Oct 2022 15:27

Instrument :

MSVOA_L

Client Sample Id :

VL1017ABS01

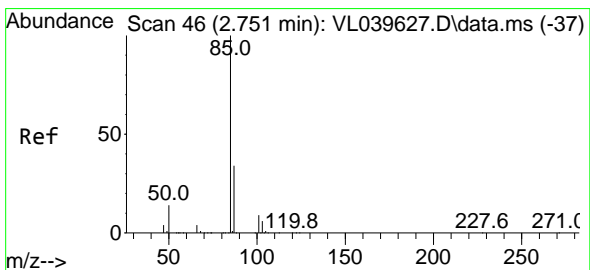
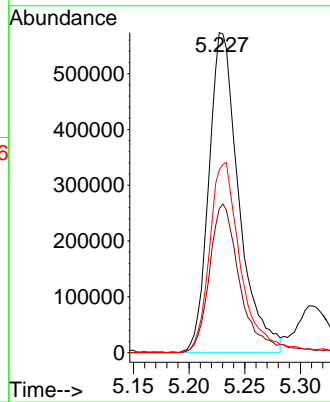
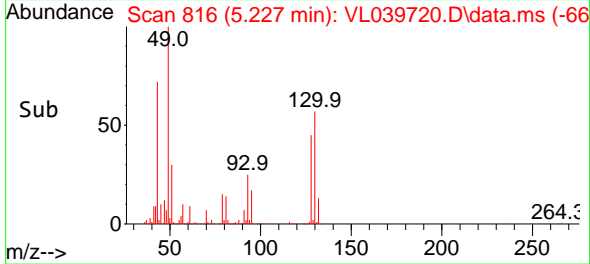


Tgt Ion: 49 Resp: 107092
 Ion Ratio Lower Upper
 49 100
 128 49.4 26.7 80.0
 130 63.5 34.3 102.8

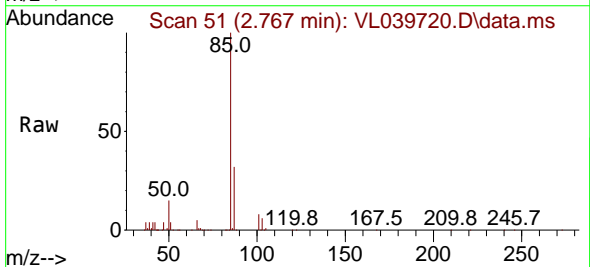
Manual Integrations

APPROVED

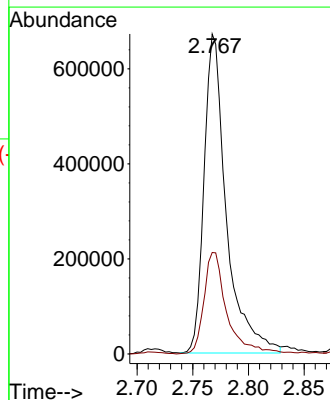
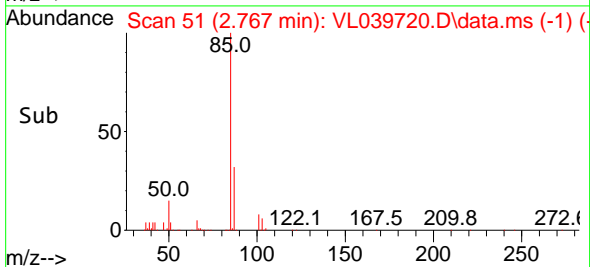
Reviewed By :Semsettin Yesilyurt 10/19/2022
 Supervised By :Mahesh Dadoda 10/19/2022

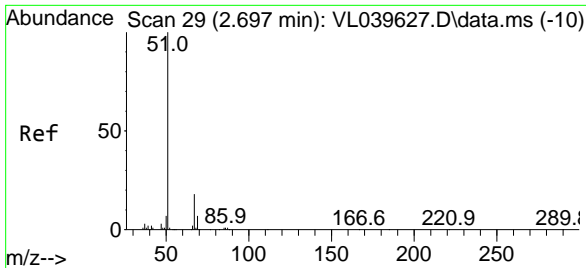


#2
 Dichlorodifluoromethane
 Concen: 7.532 ppbv
 RT: 2.767 min Scan# 51
 Delta R.T. -0.000 min
 Lab File: VL039720.D
 Acq: 17 Oct 2022 15:27



Tgt Ion: 85 Resp: 935117
 Ion Ratio Lower Upper
 85 100
 87 31.7 26.7 40.1





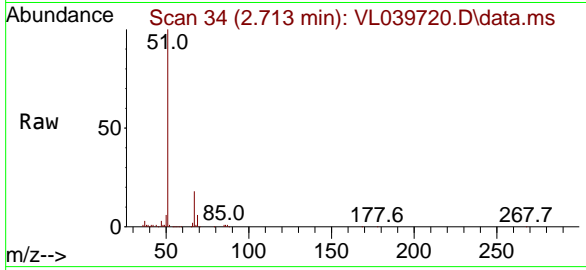
#3
 Chlorodifluoromethane
 Concen: 8.946 ppbv
 RT: 2.713 min Scan# 34
 Delta R.T. -0.000 min
 Lab File: VL039720.D
 Acq: 17 Oct 2022 15:27

Instrument :

MSVOA_L

ClientSampleId :

VL1017ABS01

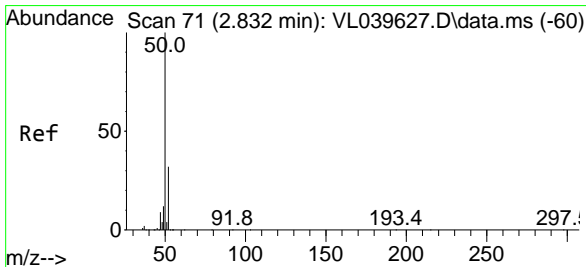
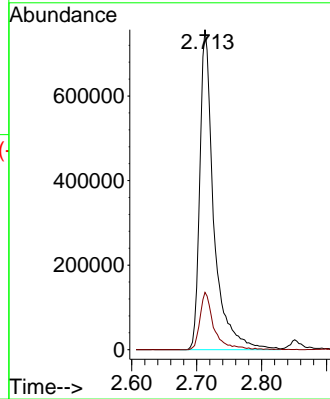
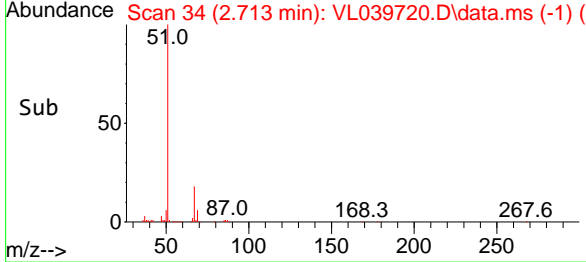


Tgt Ion: 51 Resp: 113691
 Ion Ratio Lower Upper
 51 100
 67 18.1 15.7 23.5

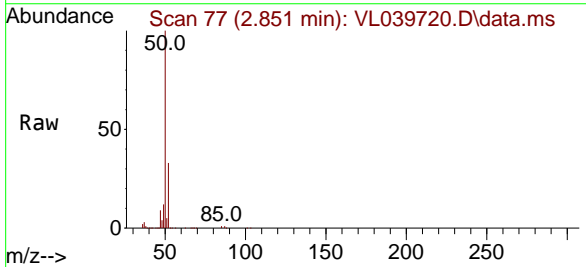
Manual Integrations

APPROVED

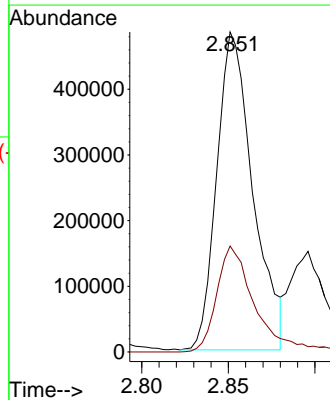
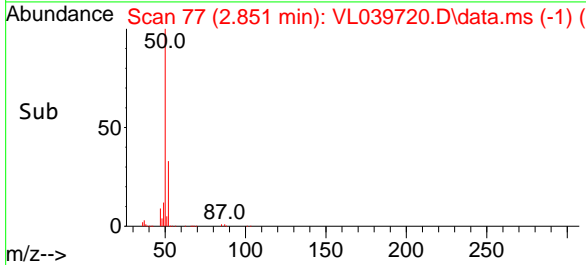
Reviewed By :Semsettin Yesilyurt 10/19/2022
 Supervised By :Mahesh Dadoda 10/19/2022

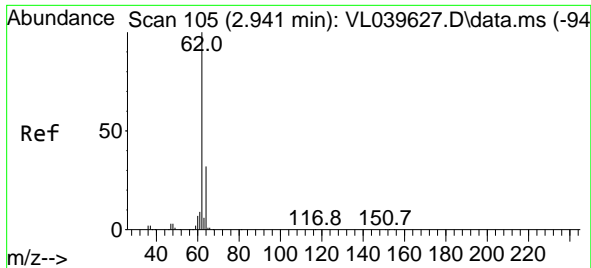


#4
 Chloromethane
 Concen: 9.164 ppbv
 RT: 2.851 min Scan# 77
 Delta R.T. -0.000 min
 Lab File: VL039720.D
 Acq: 17 Oct 2022 15:27



Tgt Ion: 50 Resp: 702838
 Ion Ratio Lower Upper
 50 100
 52 33.3 26.5 39.7





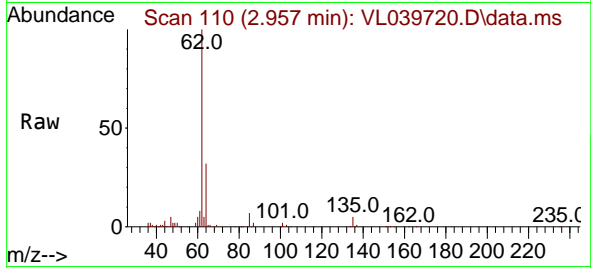
#5
 Vinyl Chloride
 Concen: 9.462 ppbv
 RT: 2.957 min Scan# 110
 Delta R.T. -0.000 min
 Lab File: VL039720.D
 Acq: 17 Oct 2022 15:27

Instrument :

MSVOA_L

ClientSampleId :

VL1017ABS01

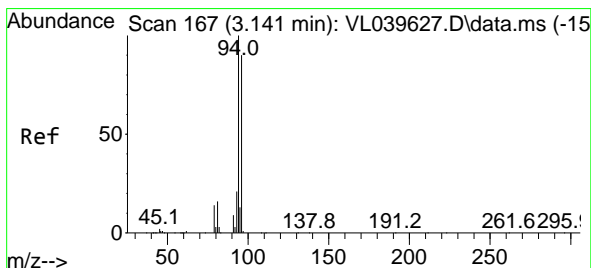
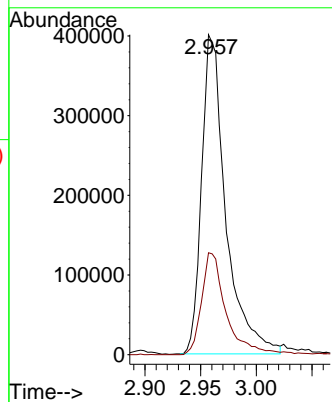
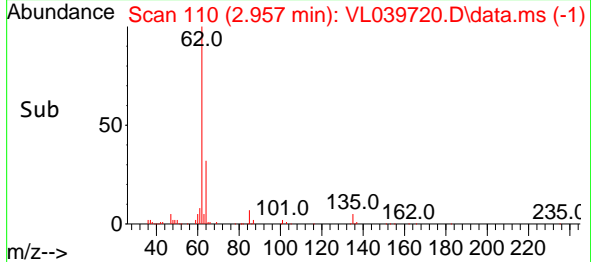


Tgt Ion: 62 Resp: 604860
 Ion Ratio Lower Upper
 62 100
 64 31.9 24.6 36.8

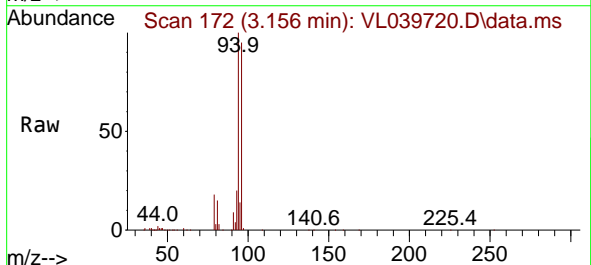
Manual Integrations

APPROVED

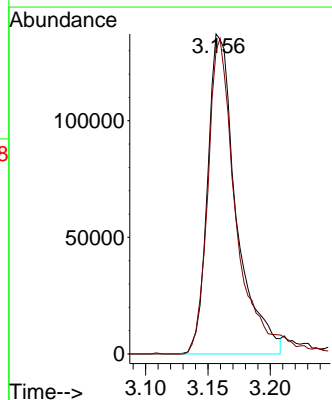
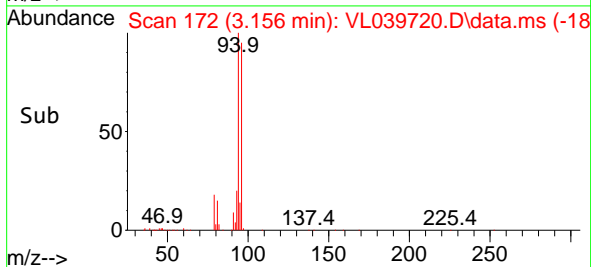
Reviewed By :Semsettin Yesilyurt 10/19/2022
 Supervised By :Mahesh Dadoda 10/19/2022

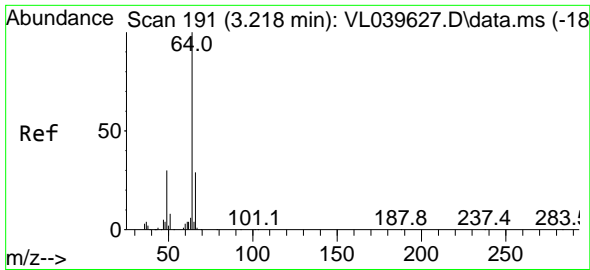


#6
 Bromomethane
 Concen: 9.318 ppbv
 RT: 3.156 min Scan# 172
 Delta R.T. -0.003 min
 Lab File: VL039720.D
 Acq: 17 Oct 2022 15:27



Tgt Ion: 94 Resp: 219661
 Ion Ratio Lower Upper
 94 100
 96 94.7 75.6 113.4





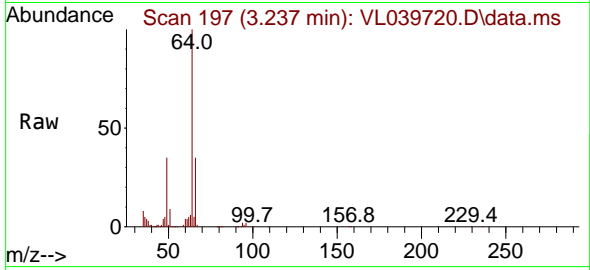
#7
 Chloroethane
 Concen: 9.505 ppbv
 RT: 3.237 min Scan# 191
 Delta R.T. 0.003 min
 Lab File: VL039720.D
 Acq: 17 Oct 2022 15:27

Instrument :

MSVOA_L

Client Sample Id :

VL1017ABS01

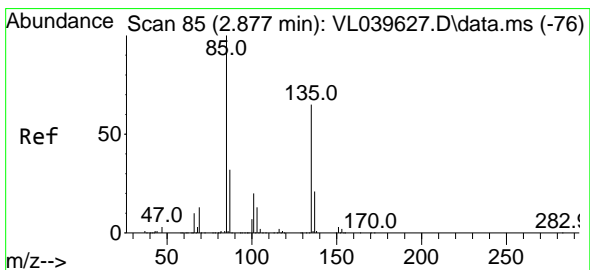
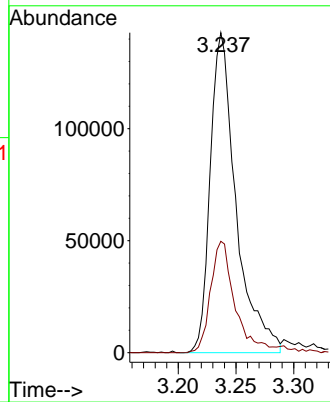
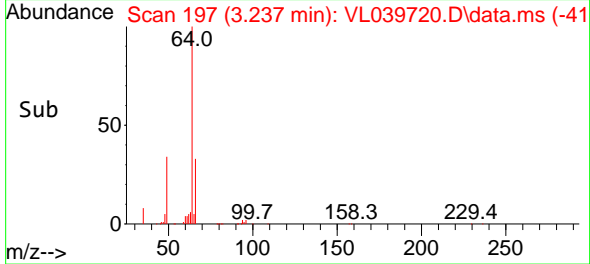


Tgt Ion: 64 Resp: 222209
 Ion Ratio Lower Upper
 64 100
 66 34.8 24.7 37.1

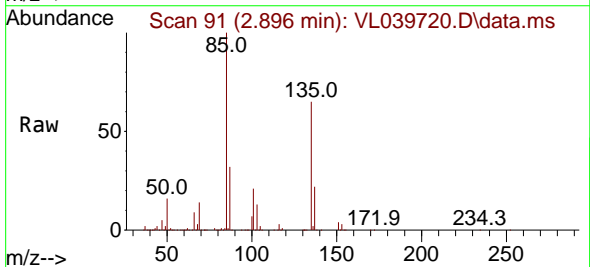
Manual Integrations

APPROVED

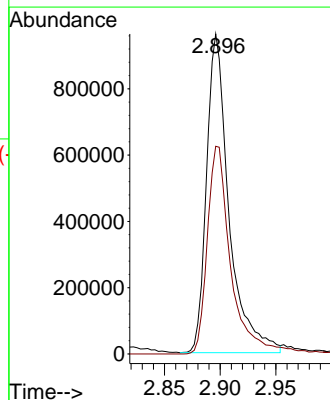
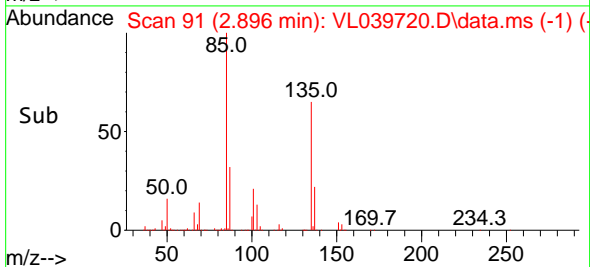
Reviewed By :Semsettin Yesilyurt 10/19/2022
 Supervised By :Mahesh Dadoda 10/19/2022

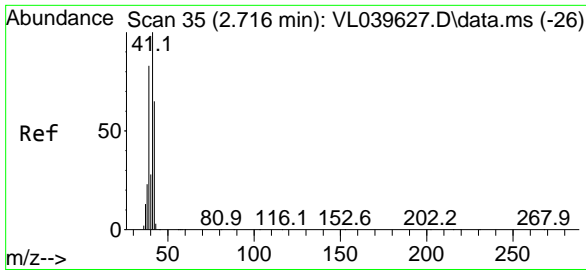


#8
 Dichlorotetrafluoroethane
 Concen: 9.052 ppbv
 RT: 2.896 min Scan# 91
 Delta R.T. -0.000 min
 Lab File: VL039720.D
 Acq: 17 Oct 2022 15:27



Tgt Ion: 85 Resp: 1348115
 Ion Ratio Lower Upper
 85 100
 135 69.7 59.0 88.4





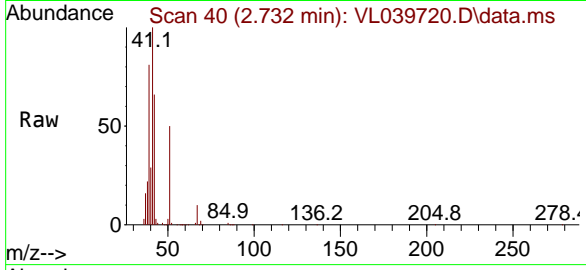
#9
 Propene
 Concen: 8.632 ppbv
 RT: 2.732 min Scan# 40
 Delta R.T. -0.000 min
 Lab File: VL039720.D
 Acq: 17 Oct 2022 15:27

Instrument :

MSVOA_L

Client Sample Id :

VL1017ABS01

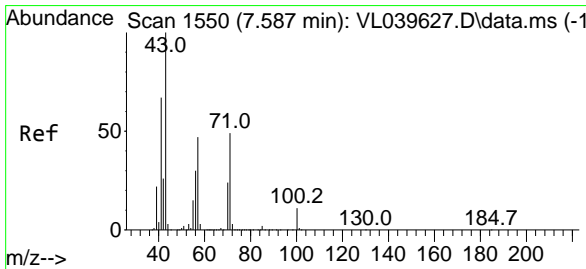
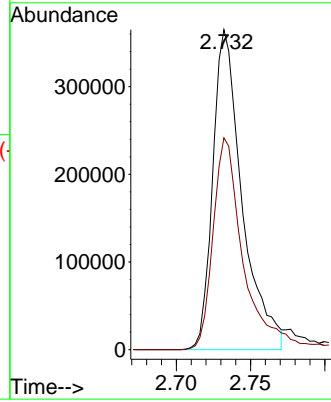
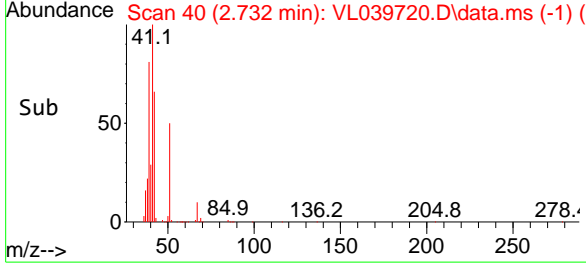


Tgt Ion: 41 Resp: 50103
 Ion Ratio Lower Upper
 41 100
 42 70.4 55.2 82.8

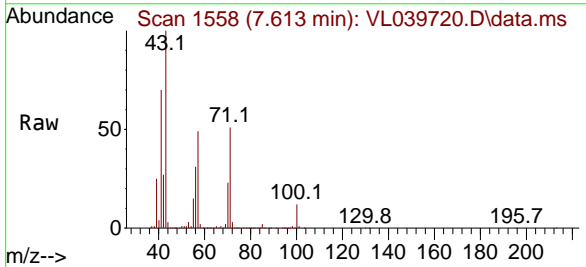
Manual Integrations

APPROVED

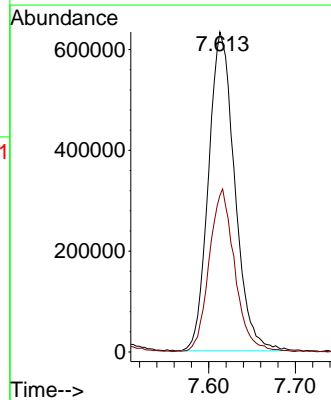
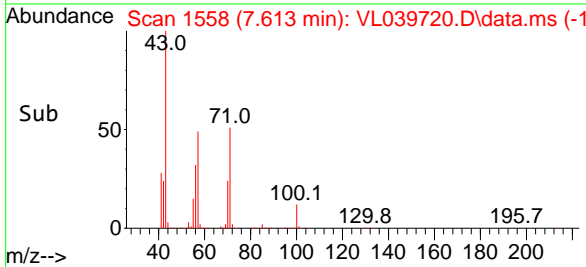
Reviewed By :Semsettin Yesilyurt 10/19/2022
 Supervised By :Mahesh Dadoda 10/19/2022

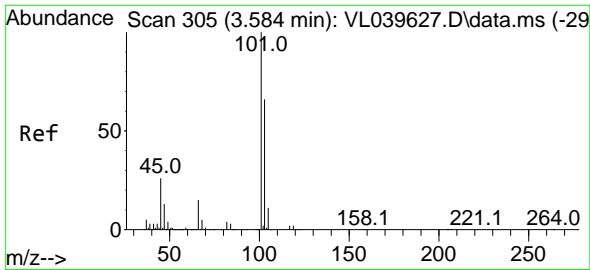


#10
 Heptane
 Concen: 9.833 ppbv
 RT: 7.613 min Scan# 1558
 Delta R.T. 0.003 min
 Lab File: VL039720.D
 Acq: 17 Oct 2022 15:27



Tgt Ion: 43 Resp: 1331804
 Ion Ratio Lower Upper
 43 100
 57 50.4 40.5 60.7





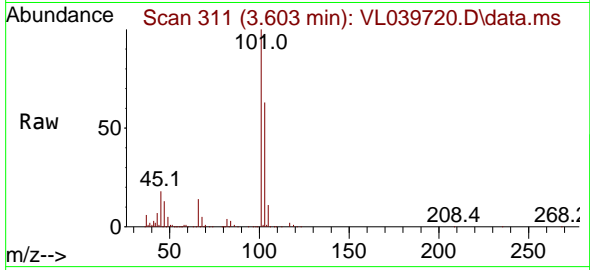
#11
 Trichlorofluoromethane
 Concen: 9.211 ppbv
 RT: 3.603 min Scan# 311
 Delta R.T. 0.003 min
 Lab File: VL039720.D
 Acq: 17 Oct 2022 15:27

Instrument :

MSVOA_L

ClientSampleId :

VL1017ABS01

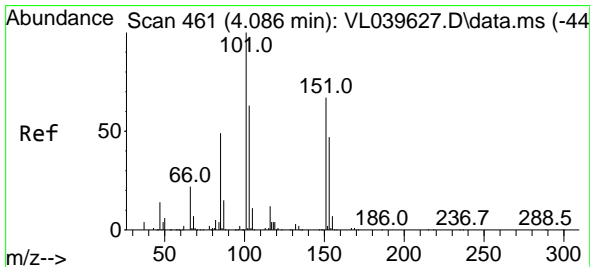
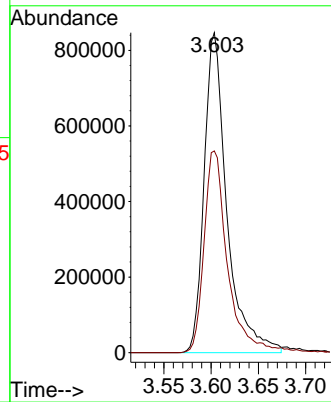
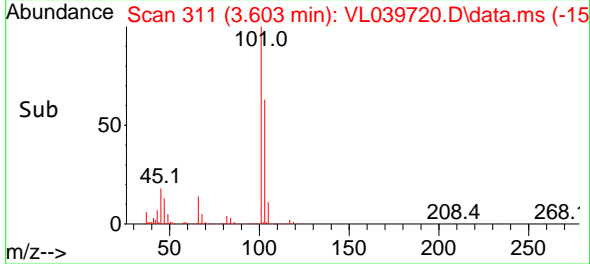


Tgt Ion:101 Resp: 141619
 Ion Ratio Lower Upper
 101 100
 103 63.0 51.8 77.8

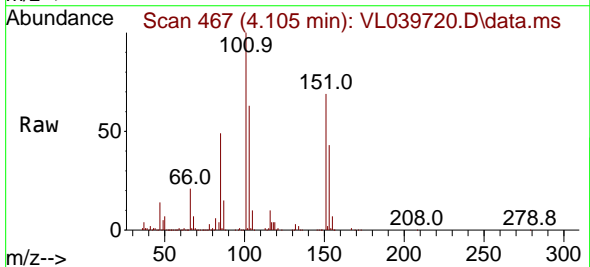
Manual Integrations

APPROVED

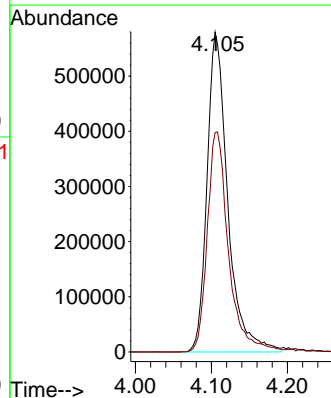
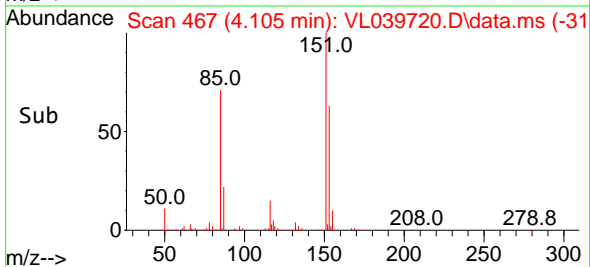
Reviewed By :Semsettin Yesilyurt 10/19/2022
 Supervised By :Mahesh Dadoda 10/19/2022

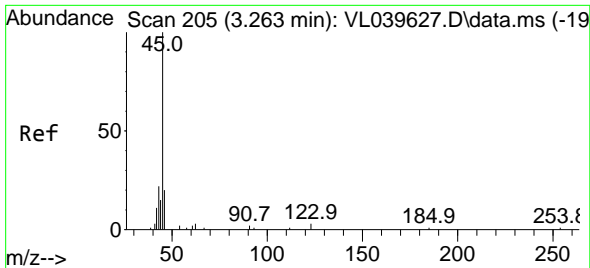


#12
 1,1,2-Trichlorotrifluoroethane
 Concen: 9.427 ppbv
 RT: 4.105 min Scan# 467
 Delta R.T. -0.000 min
 Lab File: VL039720.D
 Acq: 17 Oct 2022 15:27



Tgt Ion:101 Resp: 1094796
 Ion Ratio Lower Upper
 101 100
 151 71.4 58.9 88.3





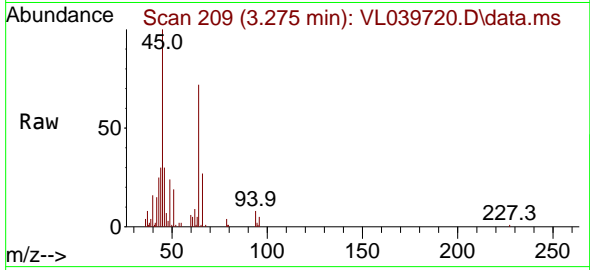
#13
 Ethanol
 Concen: 8.711 ppbv m
 RT: 3.275 min Scan# 205
 Delta R.T. -0.007 min
 Lab File: VL039720.D
 Acq: 17 Oct 2022 15:27

Instrument :

MSVOA_L

ClientSampleId :

VL1017ABS01

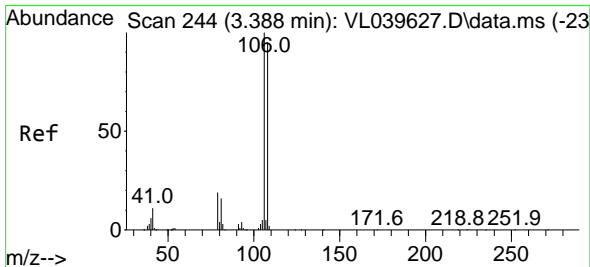
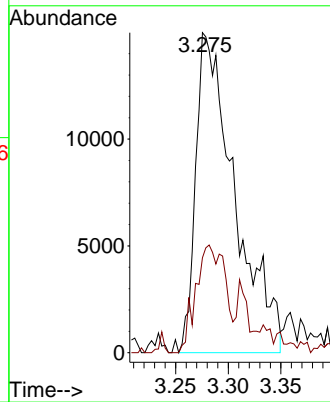
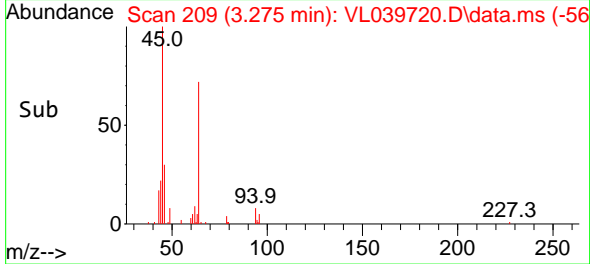


Tgt Ion: 45 Resp: 3852
 Ion Ratio Lower Upper
 45 100
 46 38.7 22.8 91.2

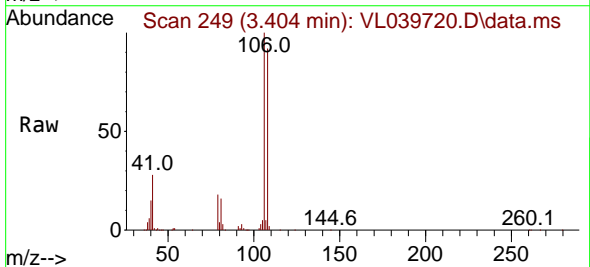
Manual Integrations

APPROVED

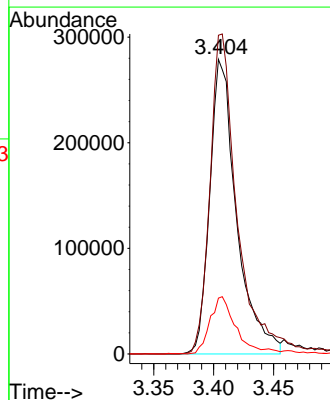
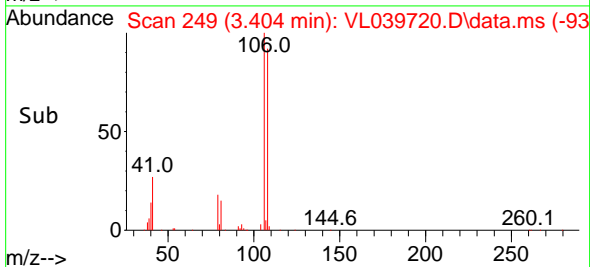
Reviewed By :Semsettin Yesilyurt 10/19/2022
 Supervised By :Mahesh Dadoda 10/19/2022

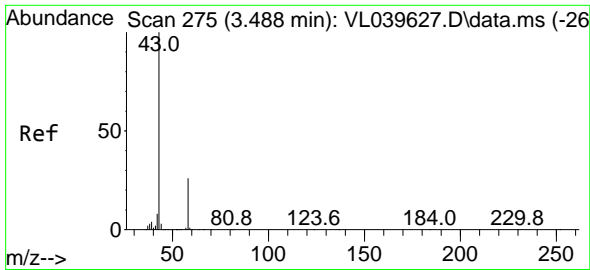


#14
 Bromoethene
 Concen: 9.365 ppbv
 RT: 3.404 min Scan# 249
 Delta R.T. 0.003 min
 Lab File: VL039720.D
 Acq: 17 Oct 2022 15:27



Tgt Ion:108 Resp: 434162
 Ion Ratio Lower Upper
 108 100
 106 112.6 87.1 130.7
 79 19.9 14.6 22.0





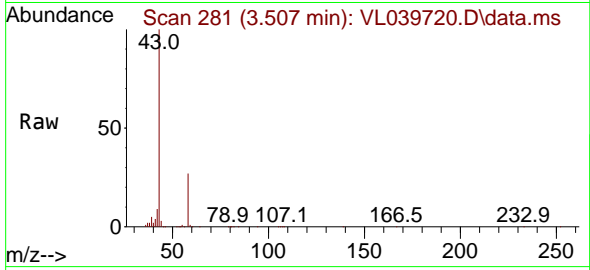
#15
 Acetone
 Concen: 9.060 ppbv
 RT: 3.507 min Scan# 21
 Delta R.T. 0.003 min
 Lab File: VL039720.D
 Acq: 17 Oct 2022 15:27

Instrument :

MSVOA_L

Client Sample Id :

VL1017ABS01

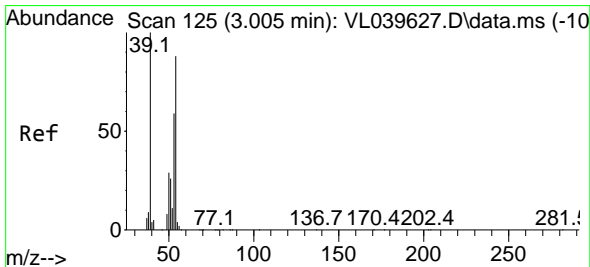
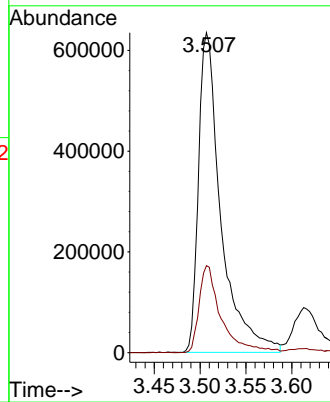
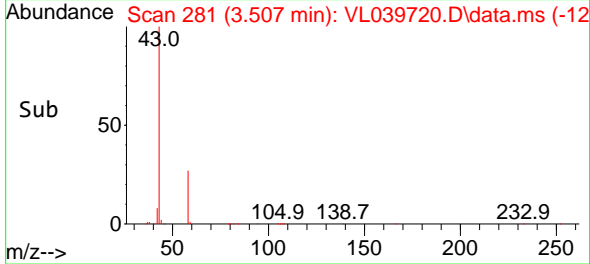


Tgt Ion: 43 Resp: 1079688
 Ion Ratio Lower Upper
 43 100
 58 26.8 21.0 31.6

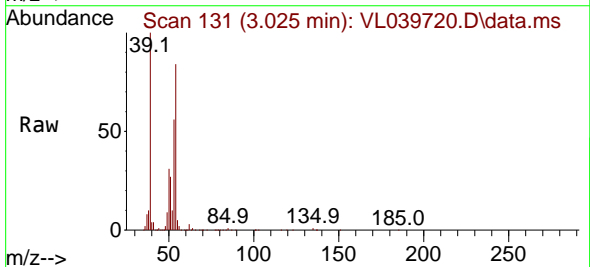
Manual Integrations

APPROVED

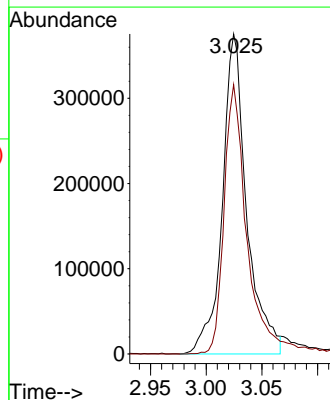
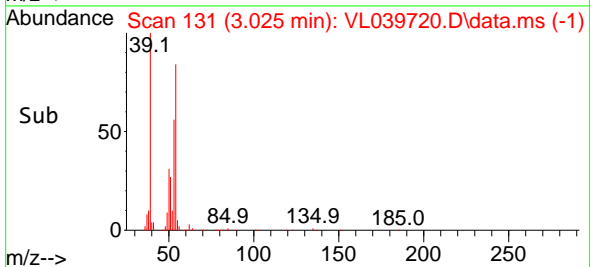
Reviewed By :Semsettin Yesilyurt 10/19/2022
 Supervised By :Mahesh Dadoda 10/19/2022

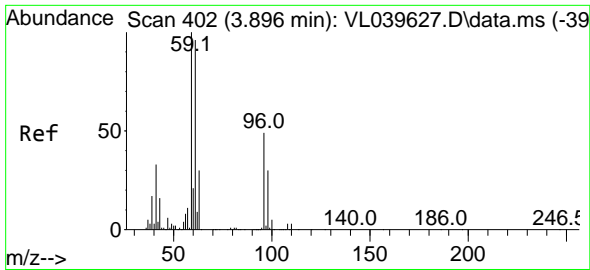


#16
 1,3-Butadiene
 Concen: 9.420 ppbv
 RT: 3.025 min Scan# 131
 Delta R.T. 0.003 min
 Lab File: VL039720.D
 Acq: 17 Oct 2022 15:27



Tgt Ion: 39 Resp: 569436
 Ion Ratio Lower Upper
 39 100
 54 81.5 63.7 95.5





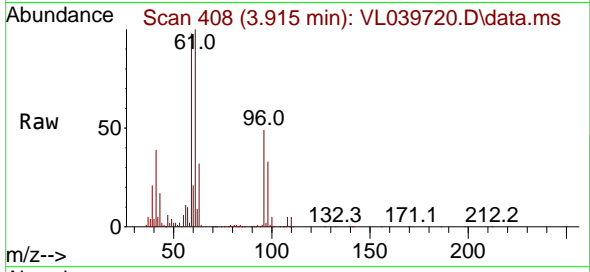
#17
 tert-Butyl alcohol
 Concen: 8.729 ppbv
 RT: 3.915 min Scan# 408
 Delta R.T. -0.000 min
 Lab File: VL039720.D
 Acq: 17 Oct 2022 15:27

Instrument :

MSVOA_L

Client Sample Id :

VL1017ABS01

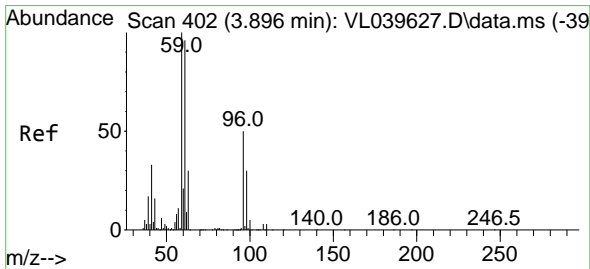
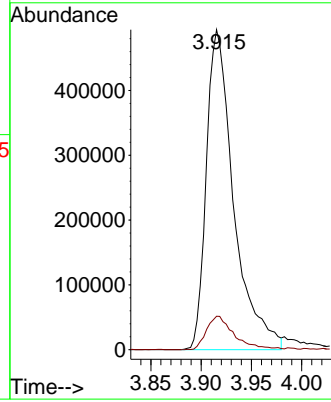
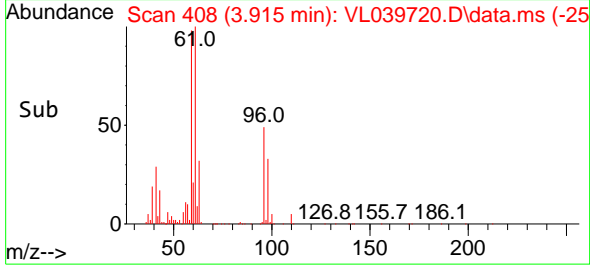


Tgt Ion: 59 Resp: 93355
 Ion Ratio Lower Upper
 59 100
 57 11.0 8.7 13.1

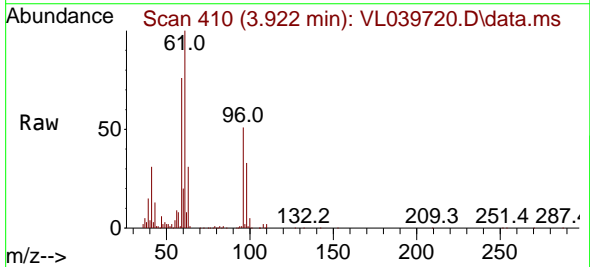
Manual Integrations

APPROVED

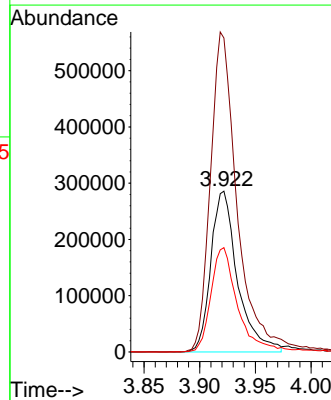
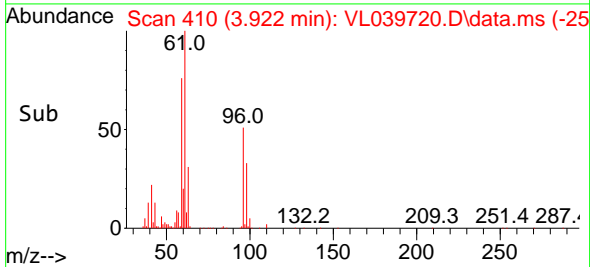
Reviewed By :Semsettin Yesilyurt 10/19/2022
 Supervised By :Mahesh Dadoda 10/19/2022

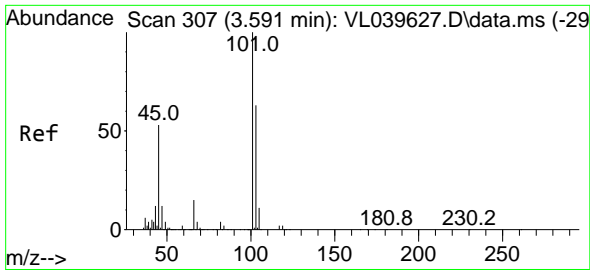


#18
 1,1-Dichloroethene
 Concen: 9.343 ppbv
 RT: 3.922 min Scan# 410
 Delta R.T. 0.006 min
 Lab File: VL039720.D
 Acq: 17 Oct 2022 15:27



Tgt Ion: 96 Resp: 477381
 Ion Ratio Lower Upper
 96 100
 61 195.1 152.2 228.4
 98 64.9 51.8 77.6





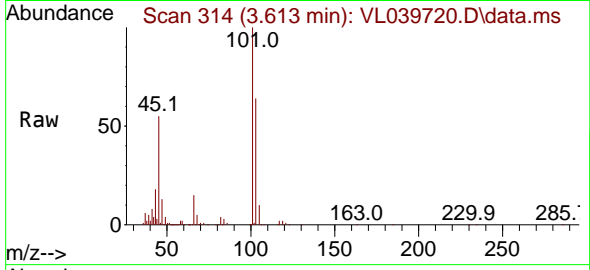
#19
 Isopropyl Alcohol
 Concen: 8.557 ppbv
 RT: 3.613 min Scan# 314
 Delta R.T. -0.000 min
 Lab File: VL039720.D
 Acq: 17 Oct 2022 15:27

Instrument :

MSVOA_L

Client Sample Id :

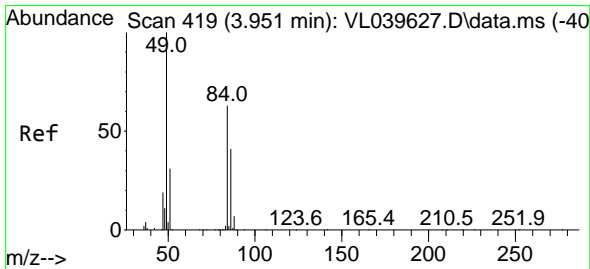
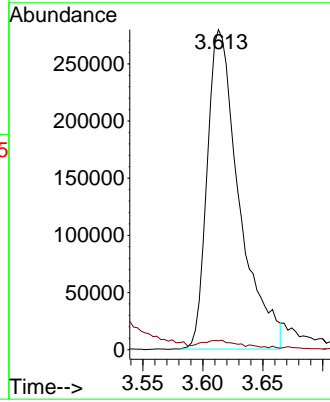
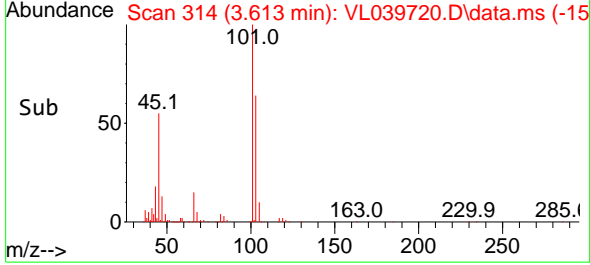
VL1017ABS01



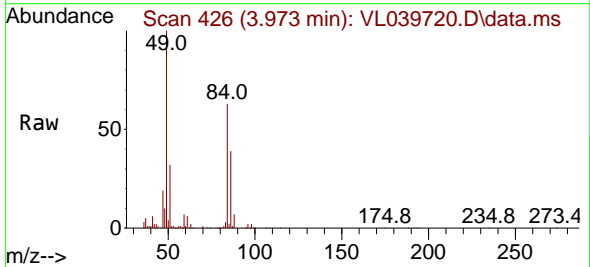
Tgt Ion: 45 Resp: 51979
 Ion Ratio Lower Upper
 45 100
 58 4.4 3.2 4.8

Manual Integrations
 APPROVED

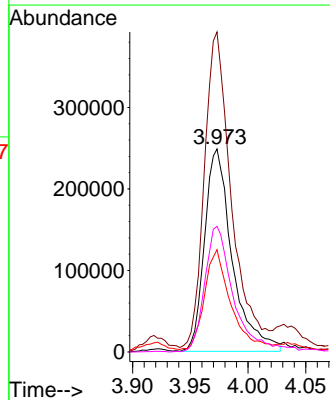
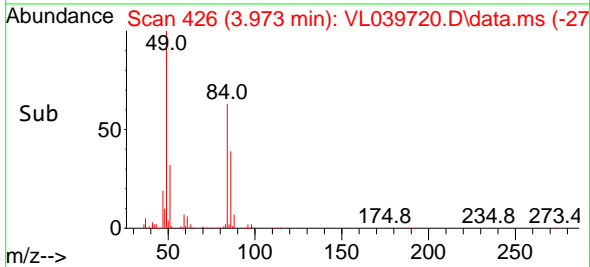
Reviewed By :Semsettin Yesilyurt 10/19/2022
 Supervised By :Mahesh Dadoda 10/19/2022

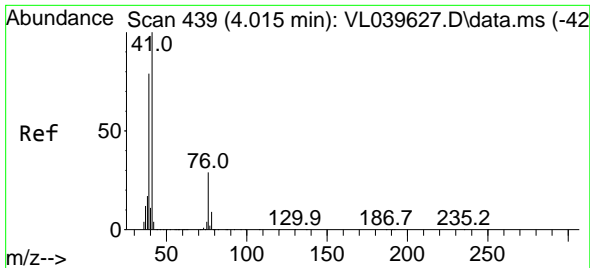


#20
 Methylene Chloride
 Concen: 7.524 ppbv
 RT: 3.973 min Scan# 426
 Delta R.T. 0.003 min
 Lab File: VL039720.D
 Acq: 17 Oct 2022 15:27



Tgt Ion: 84 Resp: 414539
 Ion Ratio Lower Upper
 84 100
 49 155.9 123.1 184.7
 51 49.2 34.4 51.6
 86 61.8 51.1 76.7





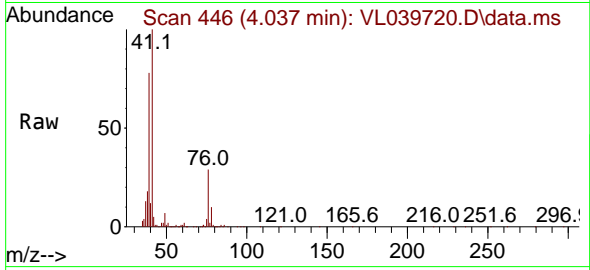
#21
 Allyl Chloride
 Concen: 9.426 ppbv
 RT: 4.037 min Scan# 446
 Delta R.T. 0.003 min
 Lab File: VL039720.D
 Acq: 17 Oct 2022 15:27

Instrument :

MSVOA_L

Client Sample Id :

VL1017ABS01

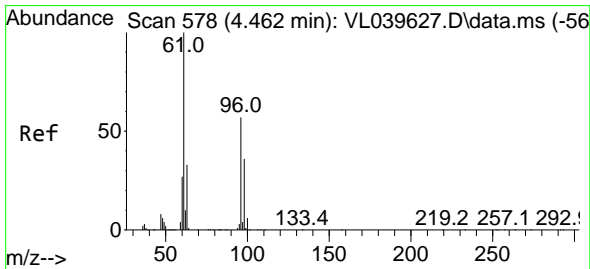
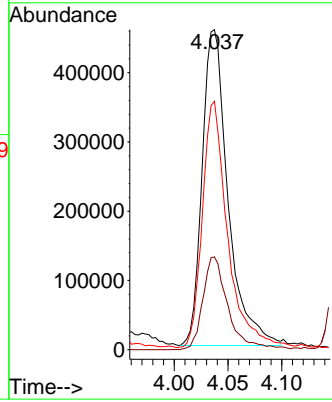
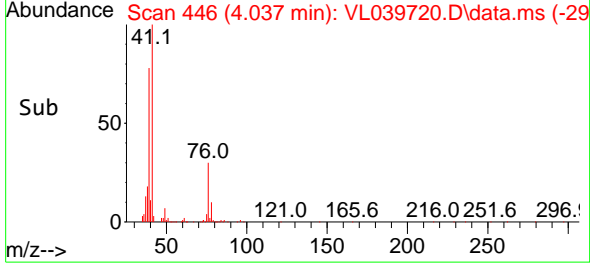


Tgt Ion: 41 Resp: 76484
 Ion Ratio Lower Upper
 41 100
 76 28.9 24.4 36.6
 39 77.2 63.5 95.3

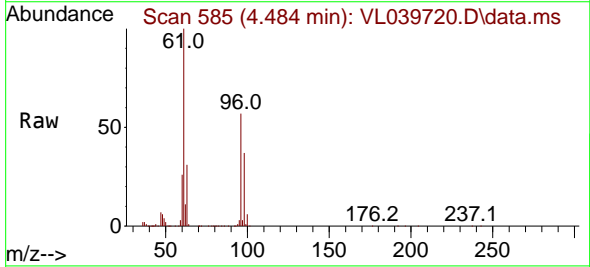
Manual Integrations

APPROVED

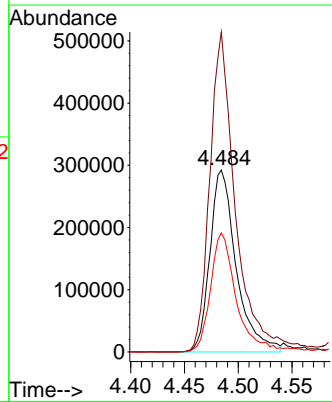
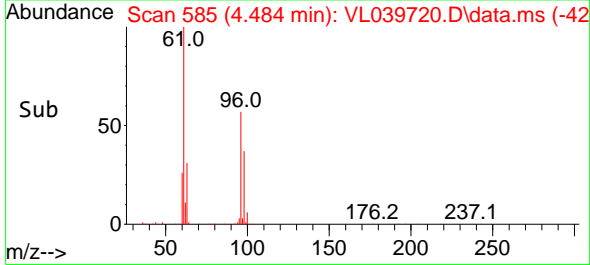
Reviewed By :Semsettin Yesilyurt 10/19/2022
 Supervised By :Mahesh Dadoda 10/19/2022

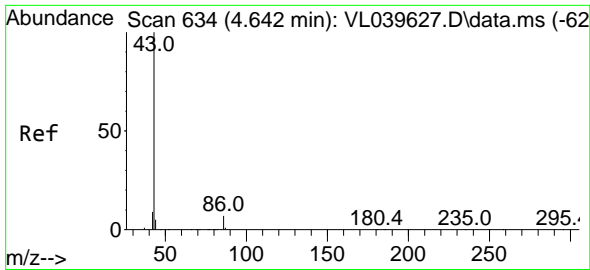


#22
 trans-1,2-Dichloroethene
 Concen: 9.876 ppbv
 RT: 4.484 min Scan# 585
 Delta R.T. 0.003 min
 Lab File: VL039720.D
 Acq: 17 Oct 2022 15:27



Tgt Ion: 96 Resp: 499214
 Ion Ratio Lower Upper
 96 100
 61 175.7 130.6 195.8
 98 65.4 53.4 80.0





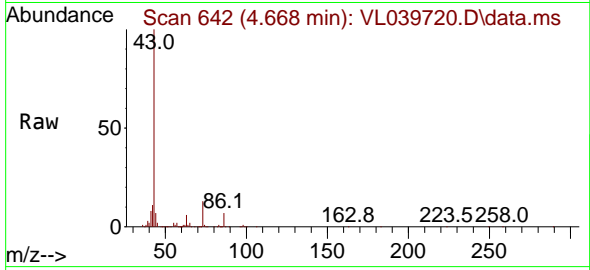
#23
 Vinyl Acetate
 Concen: 9.396 ppbv m
 RT: 4.668 min Scan# 642
 Delta R.T. 0.006 min
 Lab File: VL039720.D
 Acq: 17 Oct 2022 15:27

Instrument :

MSVOA_L

Client Sample Id :

VL1017ABS01

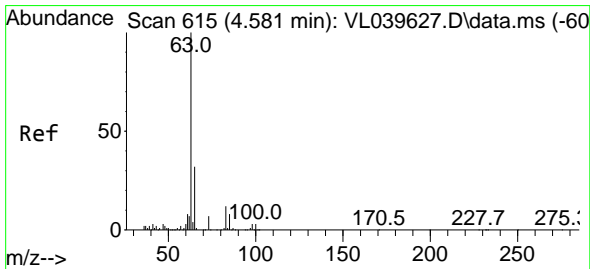
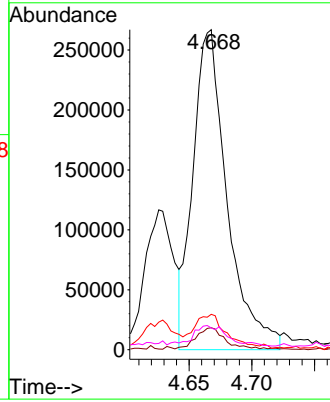
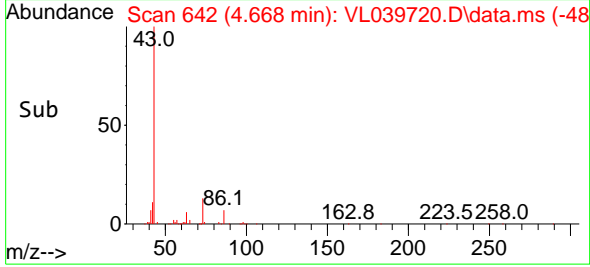


Tgt Ion: 43 Resp: 506140
 Ion Ratio Lower Upper
 43 100
 86 6.9 5.0 7.6
 42 11.1 7.7 11.5
 44 6.8 4.6 7.0

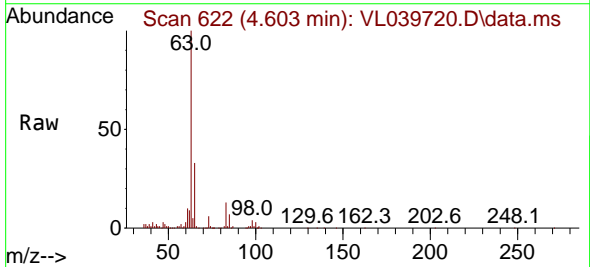
Manual Integrations

APPROVED

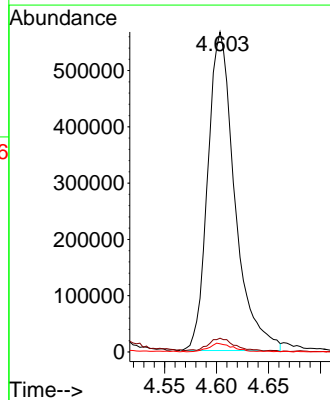
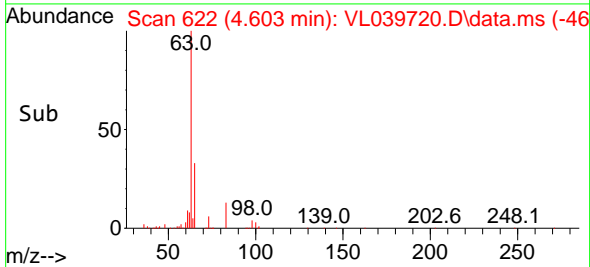
Reviewed By :Semsettin Yesilyurt 10/19/2022
 Supervised By :Mahesh Dadoda 10/19/2022

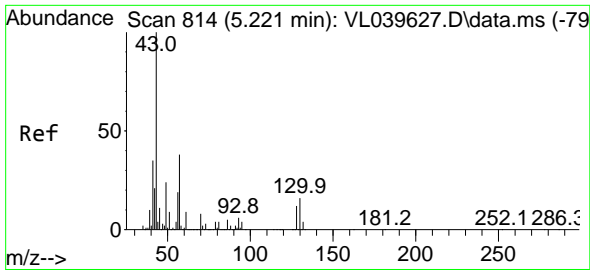


#24
 1,1-Dichloroethane
 Concen: 9.538 ppbv
 RT: 4.603 min Scan# 622
 Delta R.T. 0.003 min
 Lab File: VL039720.D
 Acq: 17 Oct 2022 15:27



Tgt Ion: 63 Resp: 1023199
 Ion Ratio Lower Upper
 63 100
 98 4.2 1.8 5.3
 100 2.5 1.5 4.4





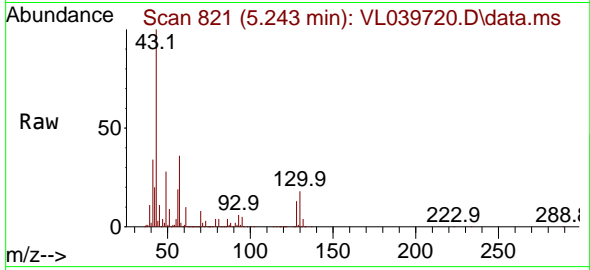
#25
 Ethyl Acetate
 Concen: 9.084 ppbv
 RT: 5.243 min Scan# 814
 Delta R.T. 0.003 min
 Lab File: VL039720.D
 Acq: 17 Oct 2022 15:27

Instrument :

MSVOA_L

Client Sample Id :

VL1017ABS01



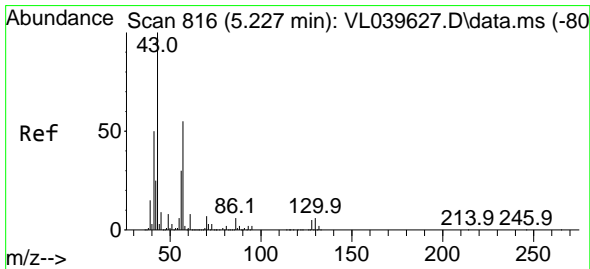
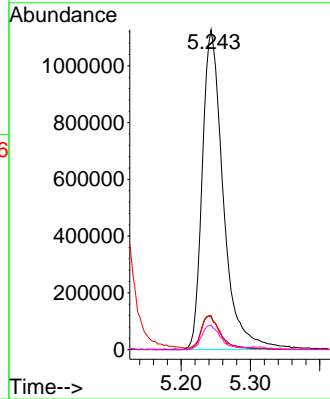
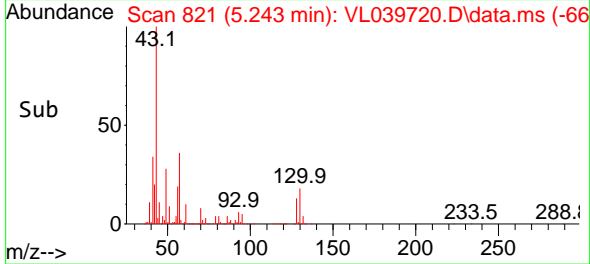
Tgt Ion: 43 Resp: 236045

Ion	Ratio	Lower	Upper
43	100		
45	10.3	8.2	12.4
61	10.1	8.3	12.5
70	7.1	5.9	8.9

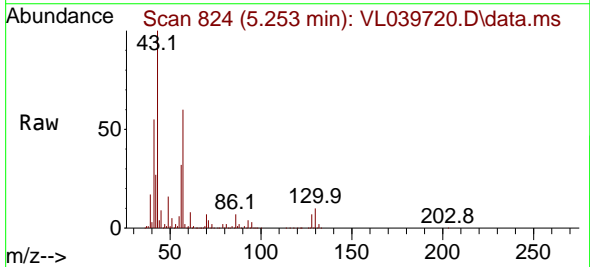
Manual Integrations

APPROVED

Reviewed By :Semsettin Yesilyurt 10/19/2022
 Supervised By :Mahesh Dadoda 10/19/2022

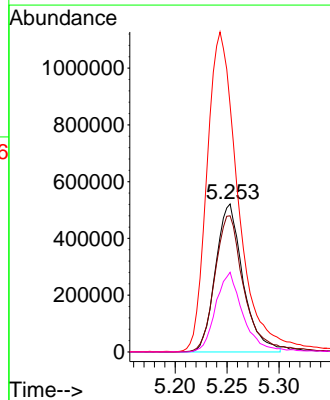
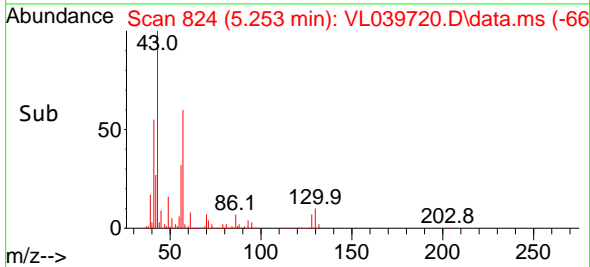


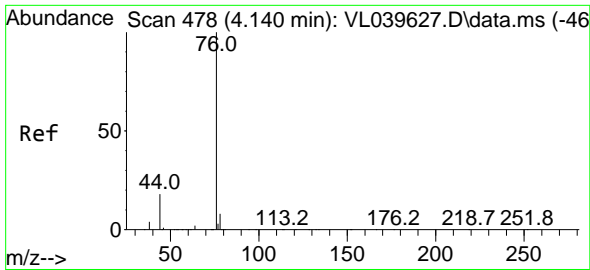
#26
 Hexane
 Concen: 8.680 ppbv
 RT: 5.253 min Scan# 824
 Delta R.T. 0.006 min
 Lab File: VL039720.D
 Acq: 17 Oct 2022 15:27



Tgt Ion: 57 Resp: 957130

Ion	Ratio	Lower	Upper
57	100		
41	99.6	76.9	115.3
43	249.7	191.0	286.6
56	54.8	43.2	64.8





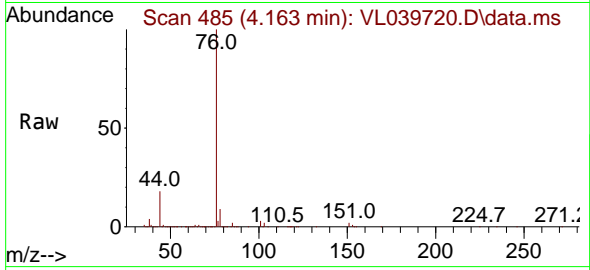
#27
 Carbon Disulfide
 Concen: 10.455 ppbv
 RT: 4.163 min Scan# 411
 Delta R.T. 0.003 min
 Lab File: VL039720.D
 Acq: 17 Oct 2022 15:27

Instrument :

MSVOA_L

Client Sample Id :

VL1017ABS01

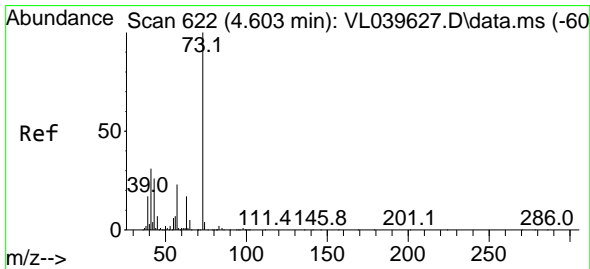
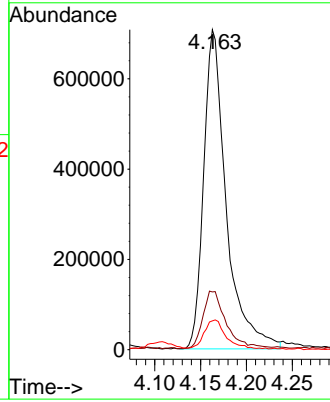
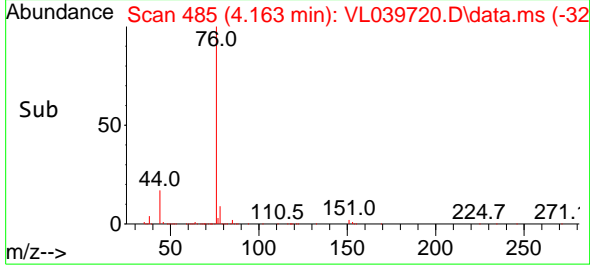


Tgt Ion: 76 Resp: 121161
 Ion Ratio Lower Upper
 76 100
 44 18.9 14.6 21.8
 78 10.1 7.8 11.6

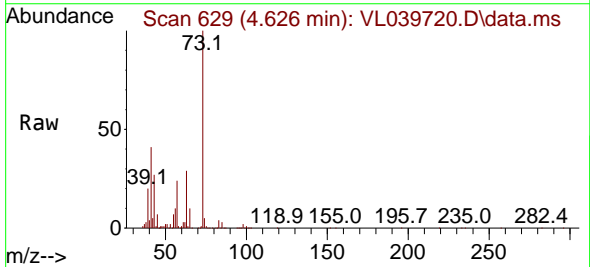
Manual Integrations

APPROVED

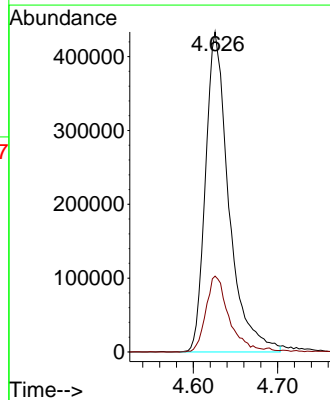
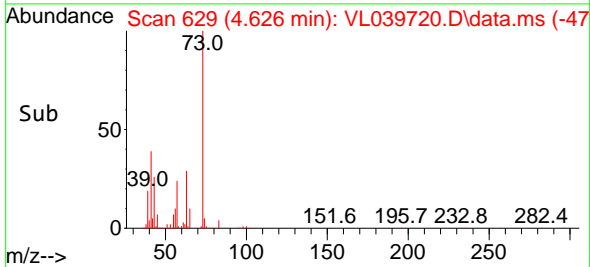
Reviewed By :Semsettin Yesilyurt 10/19/2022
 Supervised By :Mahesh Dadoda 10/19/2022

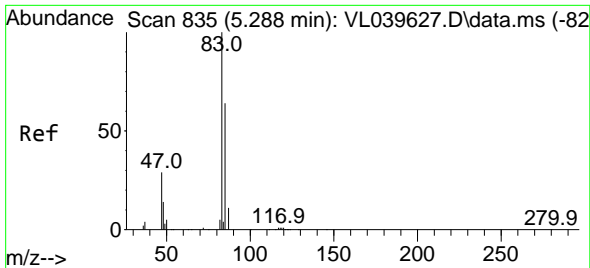


#28
 Methyl tert-Butyl Ether
 Concen: 9.027 ppbv
 RT: 4.626 min Scan# 629
 Delta R.T. 0.003 min
 Lab File: VL039720.D
 Acq: 17 Oct 2022 15:27



Tgt Ion: 73 Resp: 836280
 Ion Ratio Lower Upper
 73 100
 57 24.2 19.8 29.8





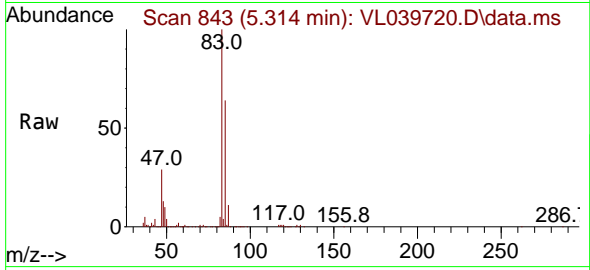
#29
 Chloroform
 Concen: 9.430 ppbv
 RT: 5.314 min Scan# 84
 Delta R.T. 0.006 min
 Lab File: VL039720.D
 Acq: 17 Oct 2022 15:27

Instrument :

MSVOA_L

ClientSampleId :

VL1017ABS01

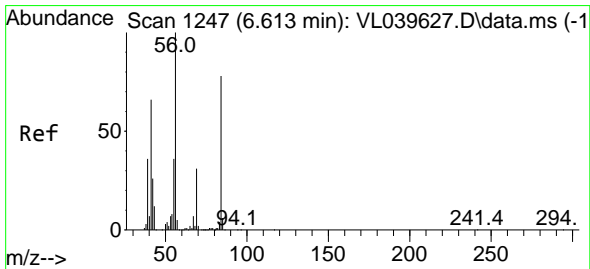
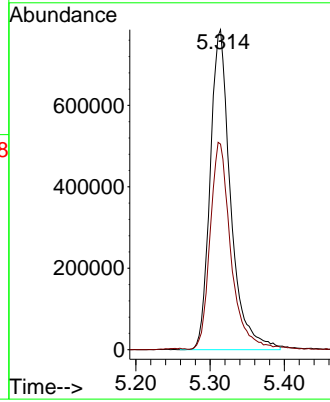
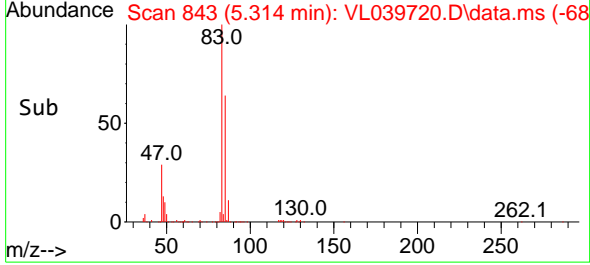


Tgt Ion: 83 Resp: 150116
 Ion Ratio Lower Upper
 83 100
 85 63.8 52.8 79.2

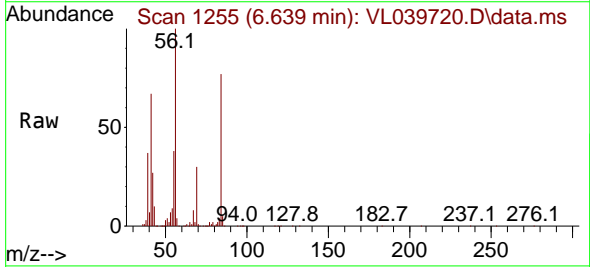
Manual Integrations

APPROVED

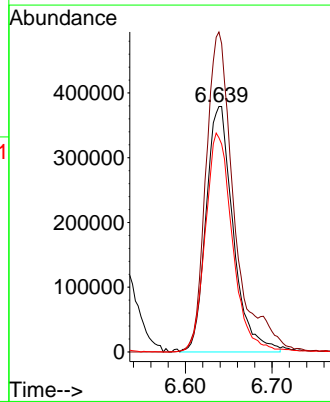
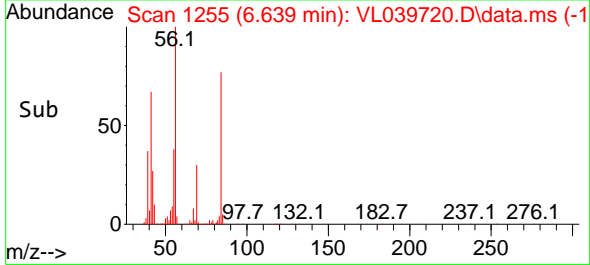
Reviewed By :Semsettin Yesilyurt 10/19/2022
 Supervised By :Mahesh Dadoda 10/19/2022

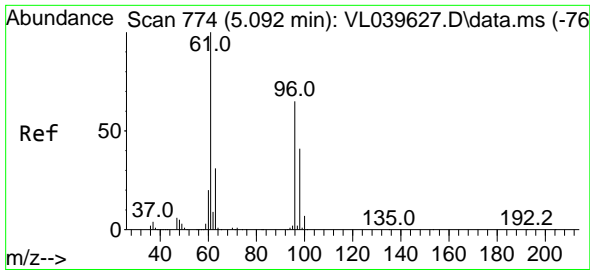


#30
 Cyclohexane
 Concen: 9.669 ppbv
 RT: 6.639 min Scan# 1255
 Delta R.T. 0.006 min
 Lab File: VL039720.D
 Acq: 17 Oct 2022 15:27



Tgt Ion: 84 Resp: 825648
 Ion Ratio Lower Upper
 84 100
 56 136.4 107.7 161.5
 41 89.7 67.7 101.5





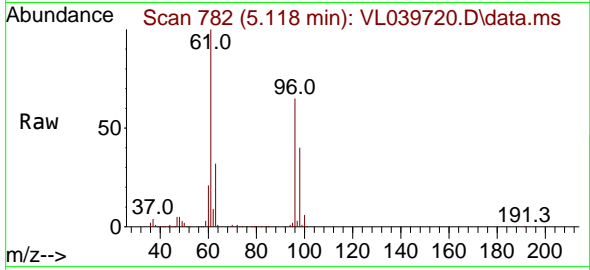
#31
 cis-1,2-Dichloroethene
 Concen: 9.245 ppbv
 RT: 5.118 min Scan# 774
 Delta R.T. 0.006 min
 Lab File: VL039720.D
 Acq: 17 Oct 2022 15:27

Instrument :

MSVOA_L

Client Sample Id :

VL1017ABS01

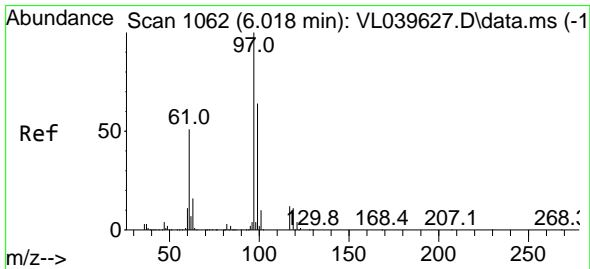
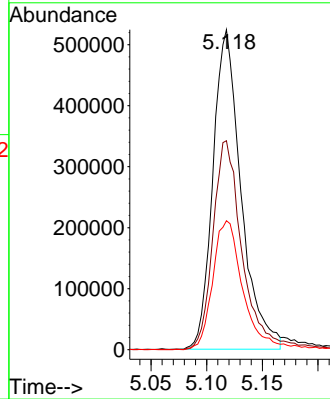
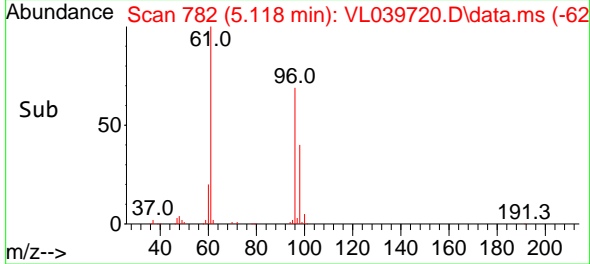


Tgt Ion: 61 Resp: 922024
 Ion Ratio Lower Upper
 61 100
 96 65.3 54.1 81.1
 98 40.3 34.6 52.0

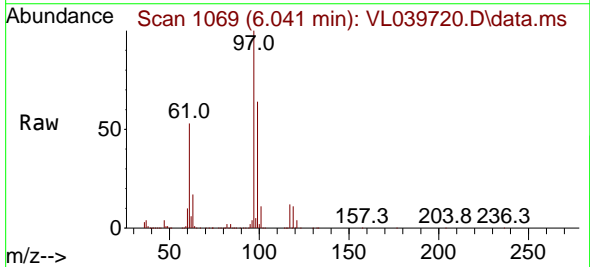
Manual Integrations

APPROVED

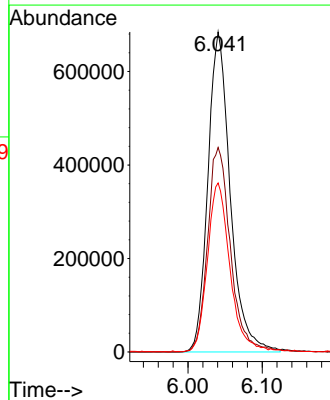
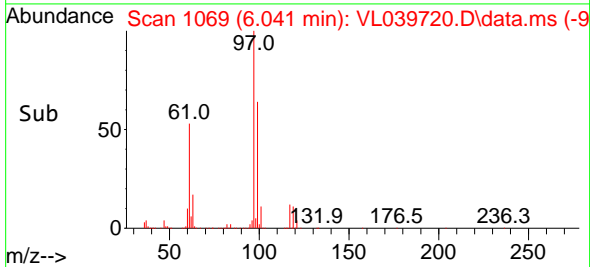
Reviewed By :Semsettin Yesilyurt 10/19/2022
 Supervised By :Mahesh Dadoda 10/19/2022

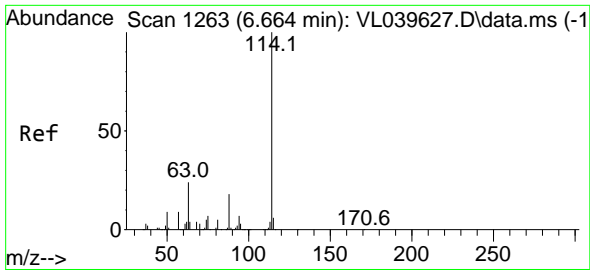


#32
 1,1,1-Trichloroethane
 Concen: 9.930 ppbv
 RT: 6.041 min Scan# 1069
 Delta R.T. 0.003 min
 Lab File: VL039720.D
 Acq: 17 Oct 2022 15:27



Tgt Ion: 97 Resp: 1431113
 Ion Ratio Lower Upper
 97 100
 99 65.9 52.3 78.5
 61 53.7 40.9 61.3





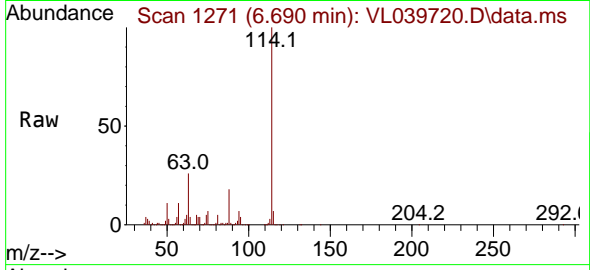
#33
 1,4-Difluorobenzene
 Concen: 10.000 ppbv
 RT: 6.690 min Scan# 111
 Delta R.T. 0.003 min
 Lab File: VL039720.D
 Acq: 17 Oct 2022 15:27

Instrument :

MSVOA_L

Client Sample Id :

VL1017ABS01

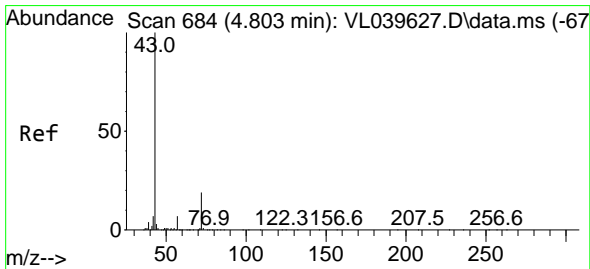
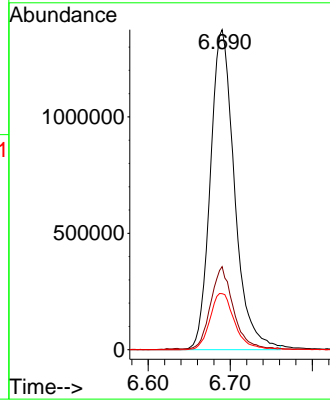
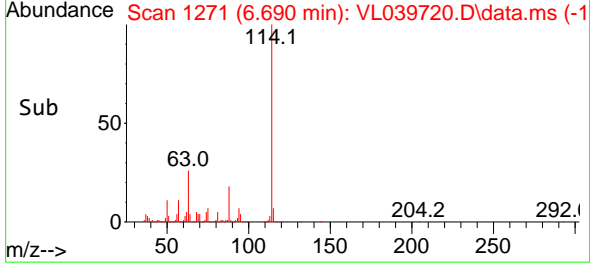


Tgt Ion:114 Resp: 280781
 Ion Ratio Lower Upper
 114 100
 63 25.2 20.2 30.4
 88 18.1 14.5 21.7

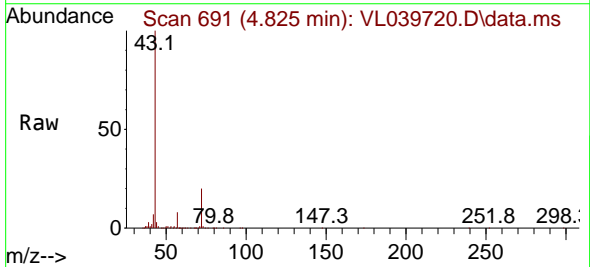
Manual Integrations

APPROVED

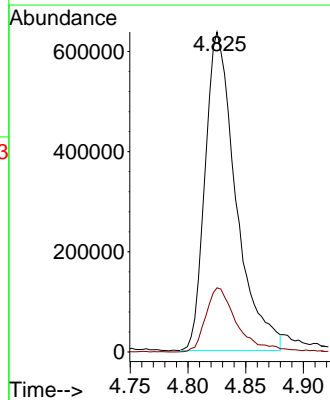
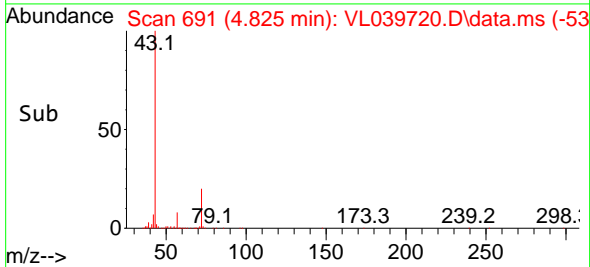
Reviewed By :Semsettin Yesilyurt 10/19/2022
 Supervised By :Mahesh Dadoda 10/19/2022

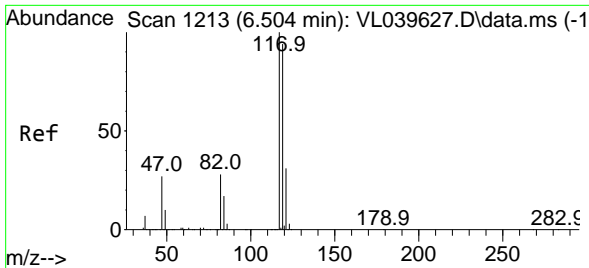


#34
 2-Butanone
 Concen: 8.528 ppbv
 RT: 4.825 min Scan# 691
 Delta R.T. 0.003 min
 Lab File: VL039720.D
 Acq: 17 Oct 2022 15:27



Tgt Ion: 43 Resp: 1176202
 Ion Ratio Lower Upper
 43 100
 72 21.4 17.9 26.9





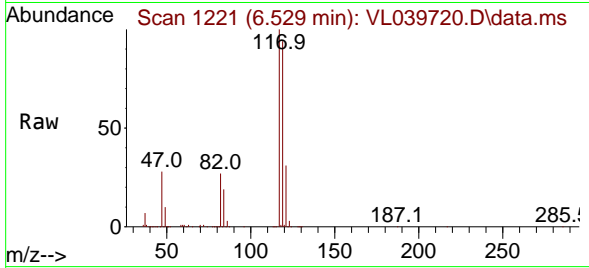
#35
 Carbon Tetrachloride
 Concen: 10.280 ppbv
 RT: 6.529 min Scan# 1183
 Delta R.T. 0.003 min
 Lab File: VL039720.D
 Acq: 17 Oct 2022 15:27

Instrument :

MSVOA_L

Client Sample Id :

VL1017ABS01

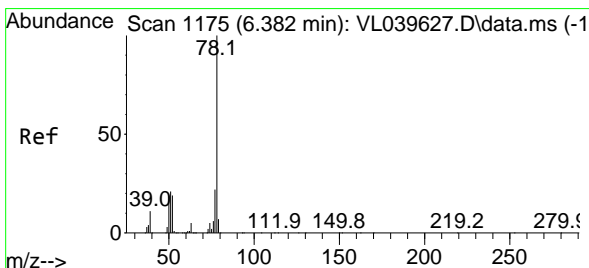
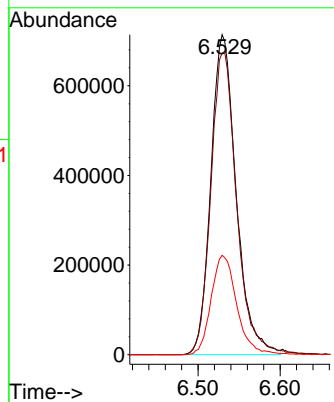
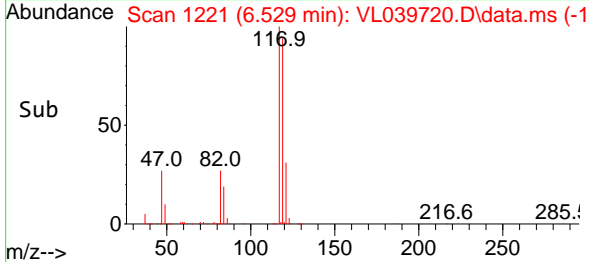


Tgt Ion: 117 Resp: 1532360
 Ion Ratio Lower Upper
 117 100
 119 94.3 75.4 113.2
 121 31.1 24.2 36.2

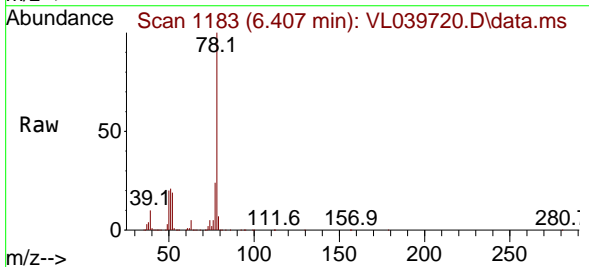
Manual Integrations

APPROVED

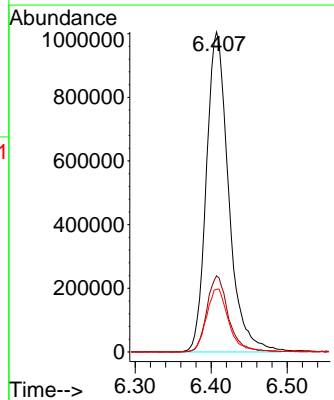
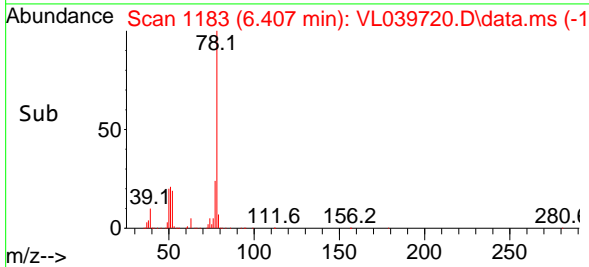
Reviewed By :Semsettin Yesilyurt 10/19/2022
 Supervised By :Mahesh Dadoda 10/19/2022

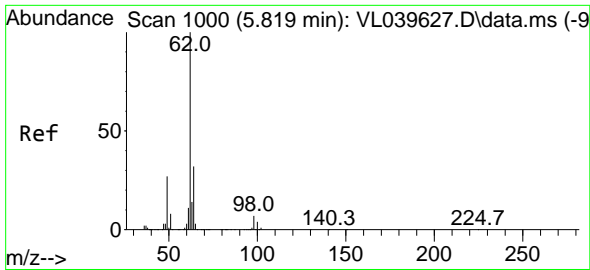


#36
 Benzene
 Concen: 9.522 ppbv
 RT: 6.407 min Scan# 1183
 Delta R.T. 0.006 min
 Lab File: VL039720.D
 Acq: 17 Oct 2022 15:27



Tgt Ion: 78 Resp: 2044064
 Ion Ratio Lower Upper
 78 100
 77 23.8 20.3 30.5
 50 19.6 15.5 23.3





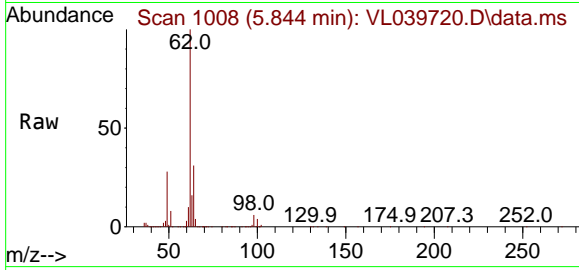
#37
 1,2-Dichloroethane
 Concen: 9.527 ppbv
 RT: 5.844 min Scan# 1008
 Delta R.T. 0.006 min
 Lab File: VL039720.D
 Acq: 17 Oct 2022 15:27

Instrument :

MSVOA_L

Client Sample Id :

VL1017ABS01

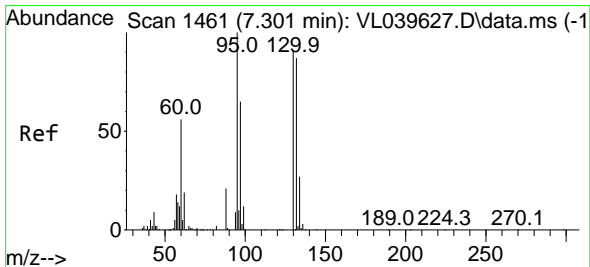
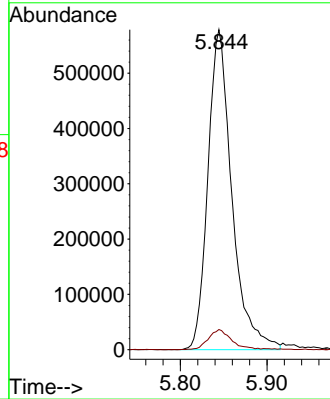
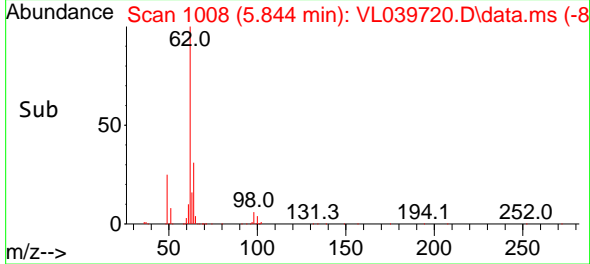


Tgt Ion: 62 Resp: 1113150
 Ion Ratio Lower Upper
 62 100
 98 6.4 5.1 7.7

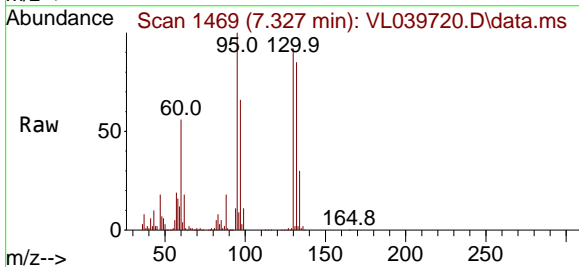
Manual Integrations

APPROVED

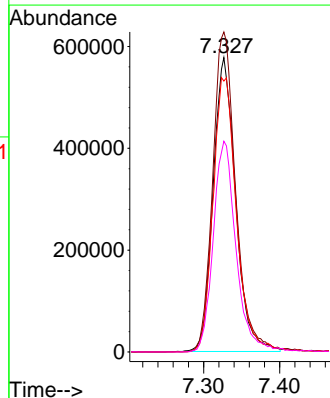
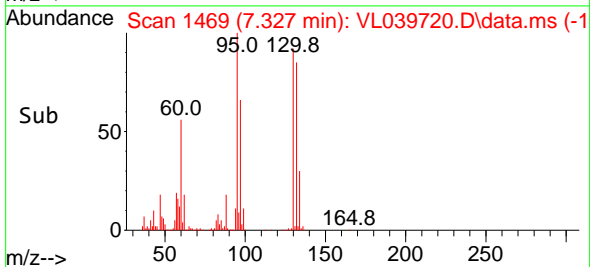
Reviewed By :Semsettin Yesilyurt 10/19/2022
 Supervised By :Mahesh Dadoda 10/19/2022

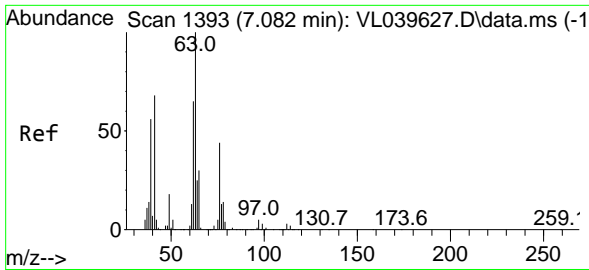


#38
 Trichloroethene
 Concen: 10.211 ppbv
 RT: 7.327 min Scan# 1469
 Delta R.T. 0.003 min
 Lab File: VL039720.D
 Acq: 17 Oct 2022 15:27



Tgt Ion:130 Resp: 1184609
 Ion Ratio Lower Upper
 130 100
 95 108.9 87.3 130.9
 132 92.1 76.7 115.1
 97 71.7 56.5 84.7





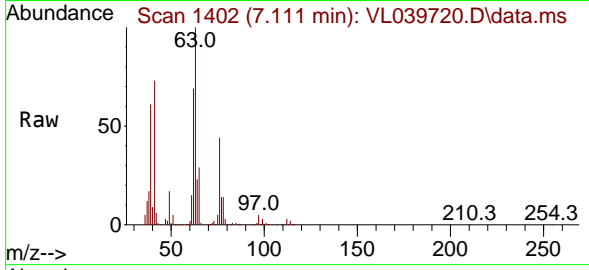
#39
 1,2-Dichloropropane
 Concen: 9.153 ppbv
 RT: 7.111 min Scan# 1402
 Delta R.T. 0.006 min
 Lab File: VL039720.D
 Acq: 17 Oct 2022 15:27

Instrument :

MSVOA_L

ClientSampleId :

VL1017ABS01

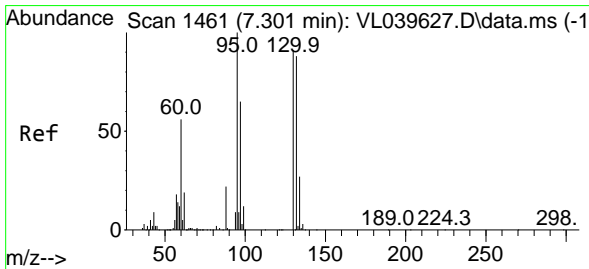
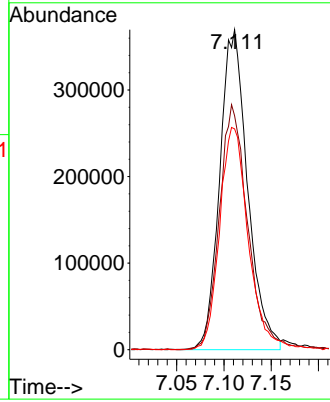
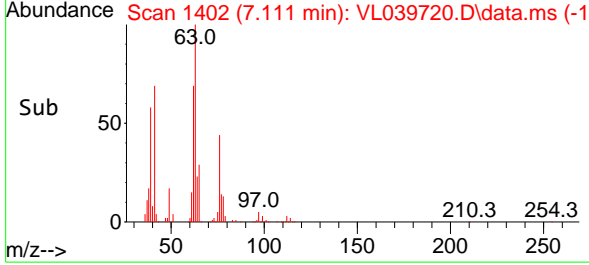


Tgt Ion: 63 Resp: 75872
 Ion Ratio Lower Upper
 63 100
 41 73.0 59.6 89.4
 62 69.0 51.4 77.0

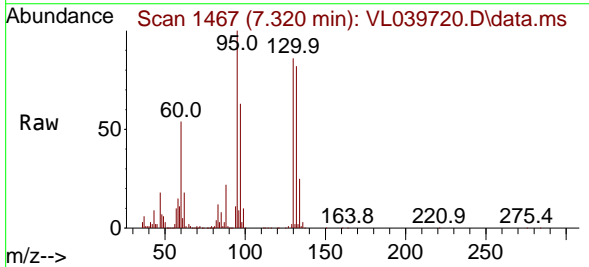
Manual Integrations

APPROVED

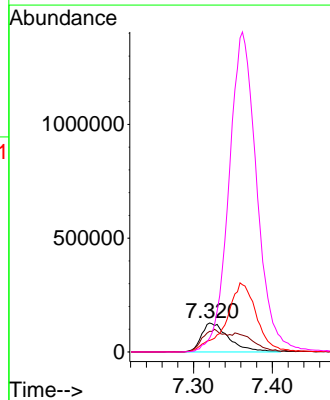
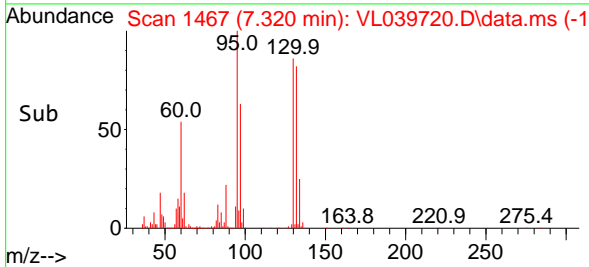
Reviewed By :Semsettin Yesilyurt 10/19/2022
 Supervised By :Mahesh Dadoda 10/19/2022

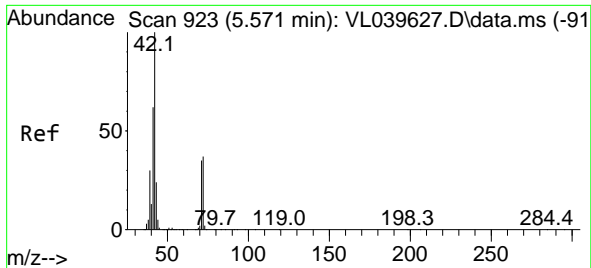


#40
 1,4-Dioxane
 Concen: 9.148 ppbv m
 RT: 7.320 min Scan# 1467
 Delta R.T. -0.000 min
 Lab File: VL039720.D
 Acq: 17 Oct 2022 15:27



Tgt Ion: 88 Resp: 309625
 Ion Ratio Lower Upper
 88 100
 58 0.0 100.2 150.4#
 43 0.0 205.8 308.6#
 57 0.0 879.1 1318.7#





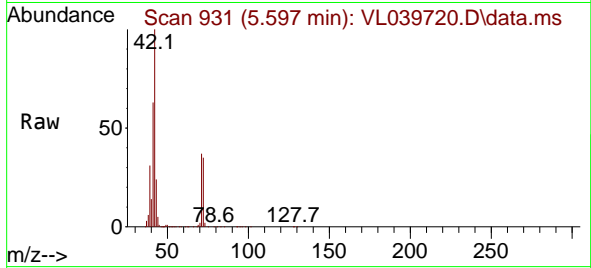
#41
 Tetrahydrofuran
 Concen: 9.795 ppbv
 RT: 5.597 min Scan# 91
 Delta R.T. 0.006 min
 Lab File: VL039720.D
 Acq: 17 Oct 2022 15:27

Instrument :

MSVOA_L

ClientSampleId :

VL1017ABS01

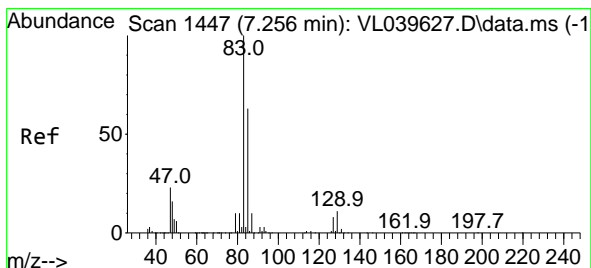
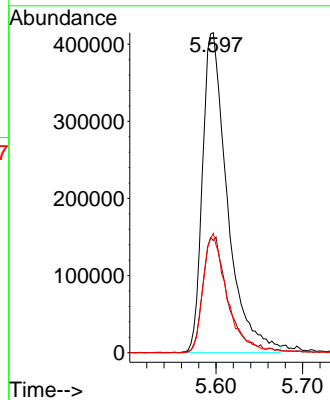
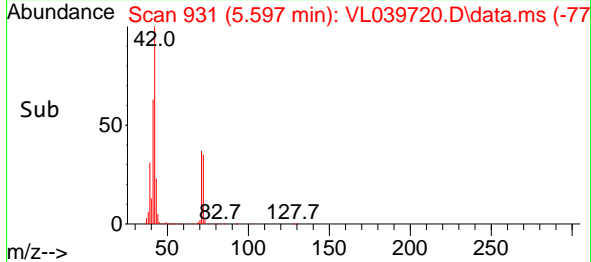


Tgt Ion: 42 Resp: 828719
 Ion Ratio Lower Upper
 42 100
 72 37.1 31.8 47.8
 71 36.7 31.8 47.8

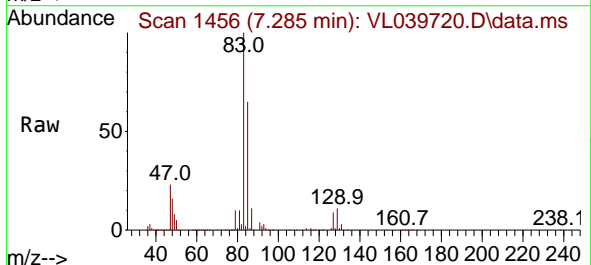
Manual Integrations

APPROVED

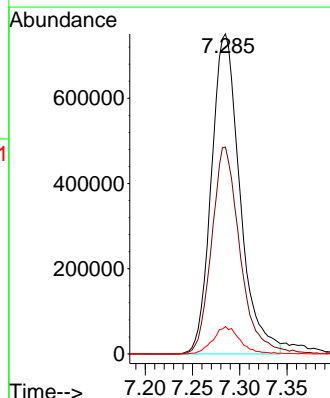
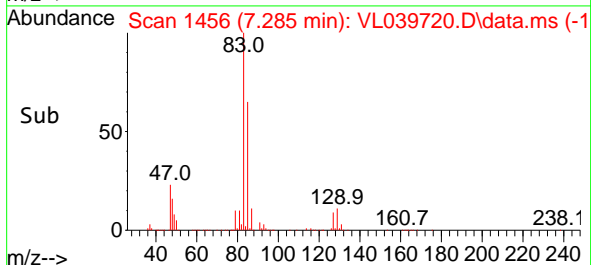
Reviewed By :Semsettin Yesilyurt 10/19/2022
 Supervised By :Mahesh Dadoda 10/19/2022

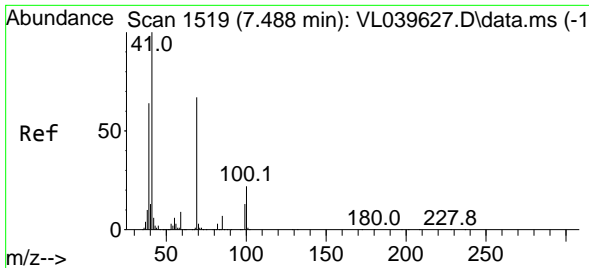


#42
 Bromodichloromethane
 Concen: 9.723 ppbv
 RT: 7.285 min Scan# 1456
 Delta R.T. 0.006 min
 Lab File: VL039720.D
 Acq: 17 Oct 2022 15:27



Tgt Ion: 83 Resp: 1580026
 Ion Ratio Lower Upper
 83 100
 85 64.6 50.7 76.1
 127 8.5 6.6 9.8





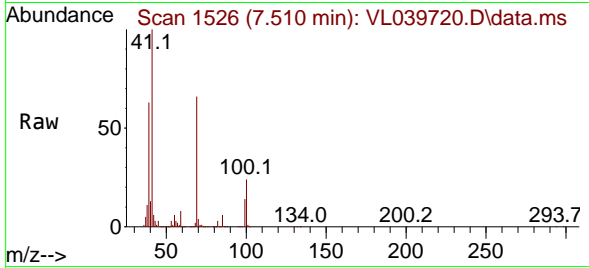
#43
 Methyl Methacrylate
 Concen: 10.174 ppbv
 RT: 7.510 min Scan# 11
 Delta R.T. 0.006 min
 Lab File: VL039720.D
 Acq: 17 Oct 2022 15:27

Instrument :

MSVOA_L

ClientSampleId :

VL1017ABS01

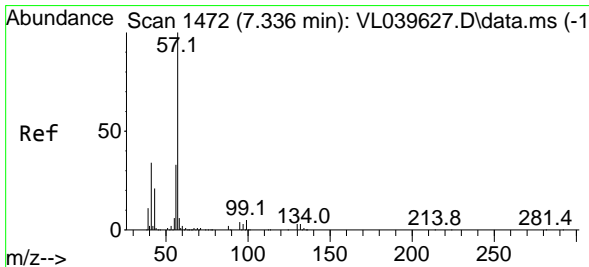
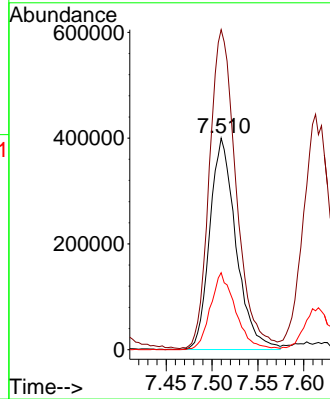
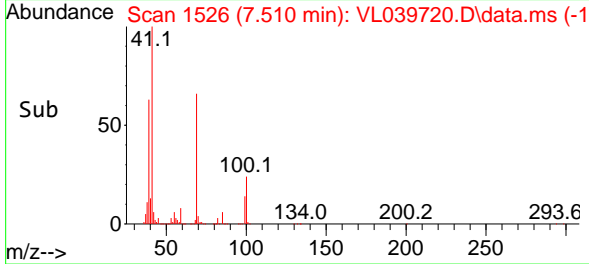


Tgt Ion: 69 Resp: 796154
 Ion Ratio Lower Upper
 69 100
 41 153.5 120.8 181.2
 100 35.1 27.8 41.6

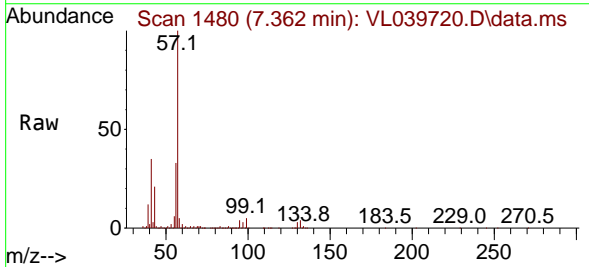
Manual Integrations

APPROVED

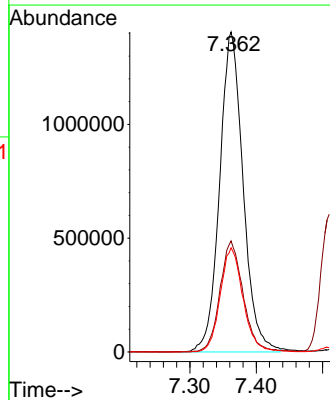
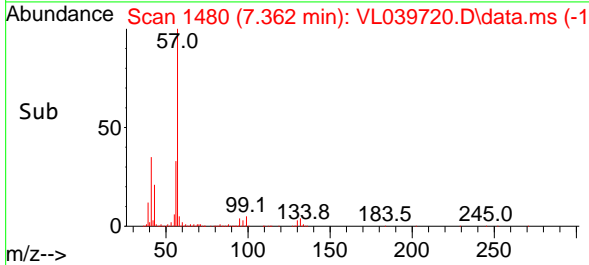
Reviewed By :Semsettin Yesilyurt 10/19/2022
 Supervised By :Mahesh Dadoda 10/19/2022

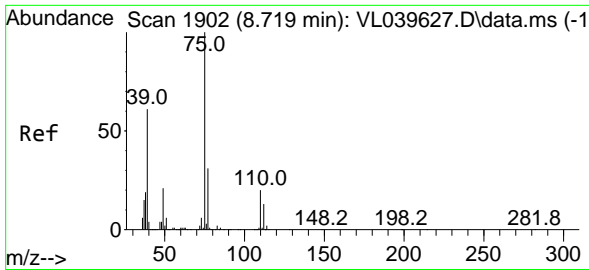


#44
 2,2,4-Trimethylpentane
 Concen: 9.335 ppbv
 RT: 7.362 min Scan# 1480
 Delta R.T. 0.006 min
 Lab File: VL039720.D
 Acq: 17 Oct 2022 15:27



Tgt Ion: 57 Resp: 3453985
 Ion Ratio Lower Upper
 57 100
 41 34.3 27.4 41.2
 56 31.7 24.5 36.7





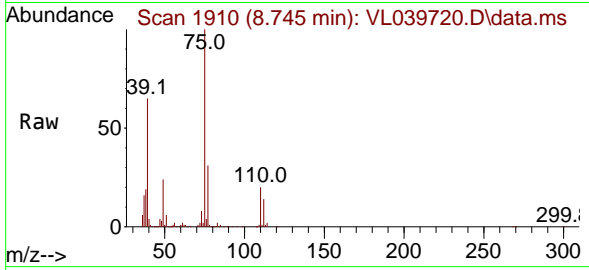
#45
 t-1,3-Dichloropropene
 Concen: 11.098 ppbv
 RT: 8.745 min Scan# 1902
 Delta R.T. 0.006 min
 Lab File: VL039720.D
 Acq: 17 Oct 2022 15:27

Instrument :

MSVOA_L

ClientSampleId :

VL1017ABS01

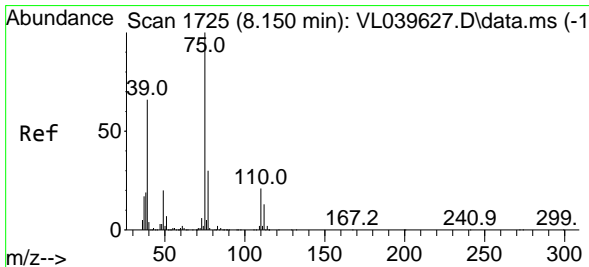
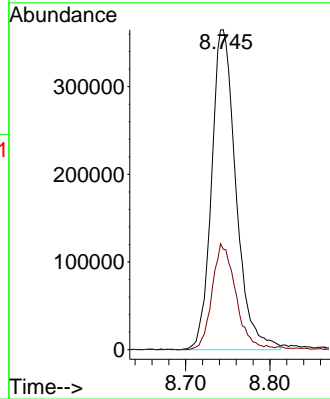
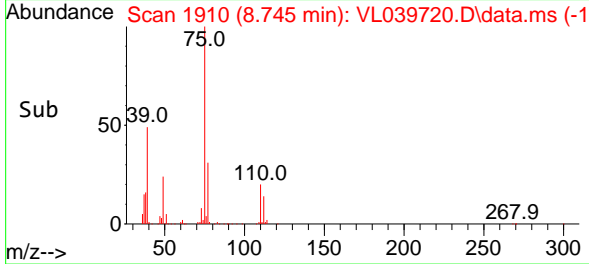


Tgt Ion: 75 Resp: 733890
 Ion Ratio Lower Upper
 75 100
 77 31.4 24.6 36.8

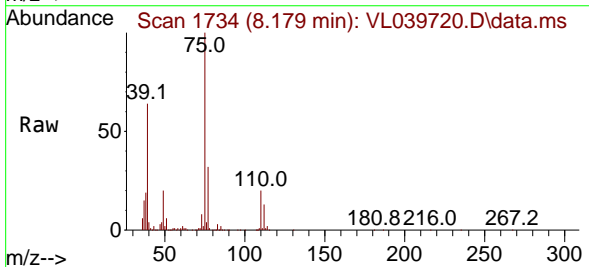
Manual Integrations

APPROVED

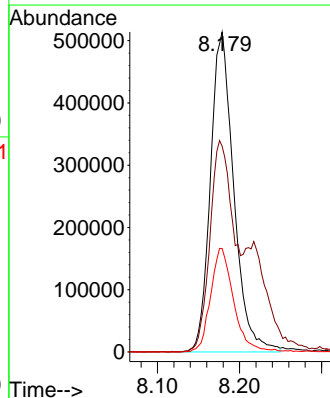
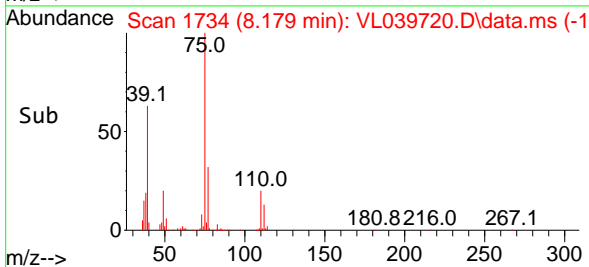
Reviewed By :Semsettin Yesilyurt 10/19/2022
 Supervised By :Mahesh Dadoda 10/19/2022

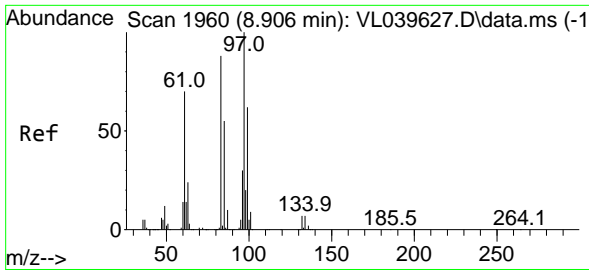


#46
 cis-1,3-Dichloropropene
 Concen: 10.809 ppbv
 RT: 8.179 min Scan# 1734
 Delta R.T. 0.006 min
 Lab File: VL039720.D
 Acq: 17 Oct 2022 15:27



Tgt Ion: 75 Resp: 1017545
 Ion Ratio Lower Upper
 75 100
 39 64.2 55.0 82.4
 77 32.4 25.7 38.5





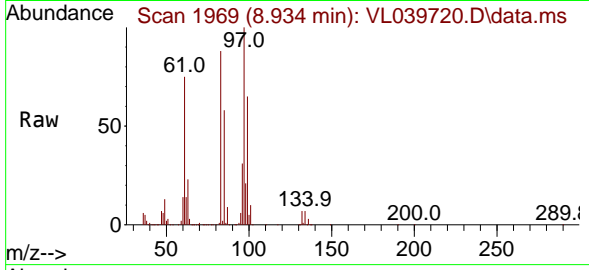
#47
 1,1,2-Trichloroethane
 Concen: 9.224 ppbv
 RT: 8.934 min Scan# 1969
 Delta R.T. 0.006 min
 Lab File: VL039720.D
 Acq: 17 Oct 2022 15:27

Instrument :

MSVOA_L

ClientSampleId :

VL1017ABS01



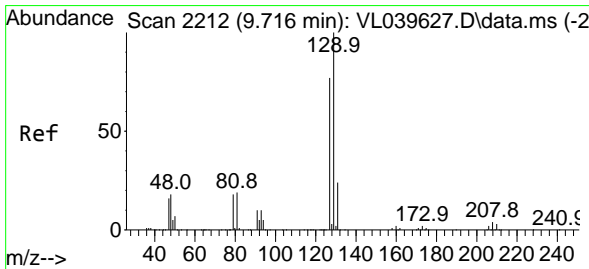
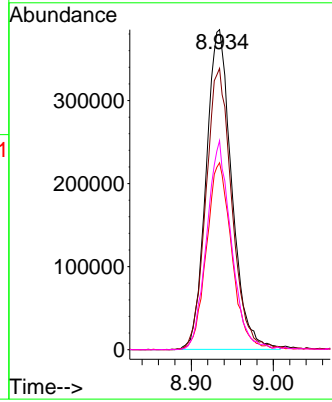
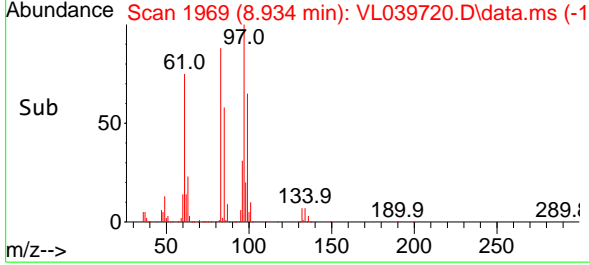
Tgt Ion: 97 Resp: 83574

Ion	Ratio	Lower	Upper
97	100		
83	87.7	67.4	101.0
85	58.3	45.1	67.7
99	65.1	48.6	73.0

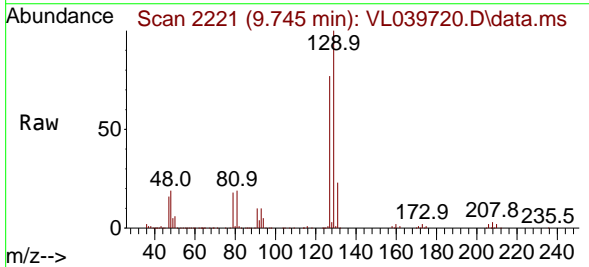
Manual Integrations

APPROVED

Reviewed By :Semsettin Yesilyurt 10/19/2022
 Supervised By :Mahesh Dadoda 10/19/2022

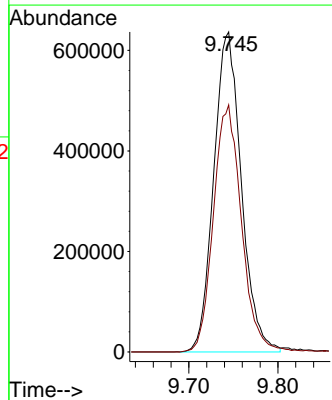
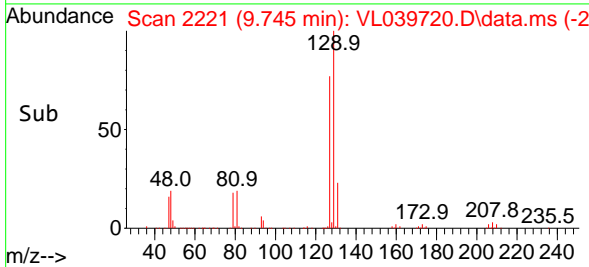


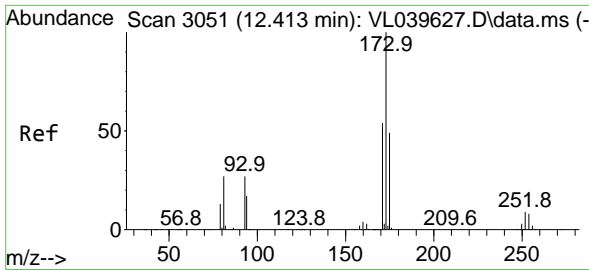
#48
 Dibromochloromethane
 Concen: 10.047 ppbv
 RT: 9.745 min Scan# 2221
 Delta R.T. 0.006 min
 Lab File: VL039720.D
 Acq: 17 Oct 2022 15:27



Tgt Ion:129 Resp: 1370818

Ion	Ratio	Lower	Upper
129	100		
127	79.0	39.3	117.9





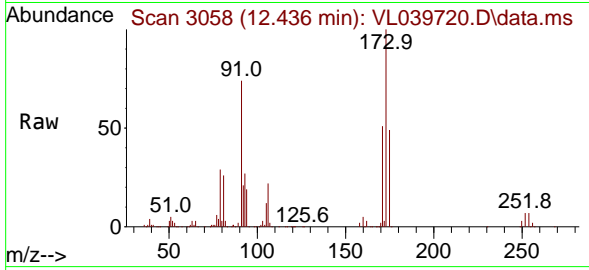
#49
 Bromoform
 Concen: 9.847 ppbv
 RT: 12.436 min Scan# 3051
 Delta R.T. 0.003 min
 Lab File: VL039720.D
 Acq: 17 Oct 2022 15:27

Instrument :

MSVOA_L

Client Sample Id :

VL1017ABS01

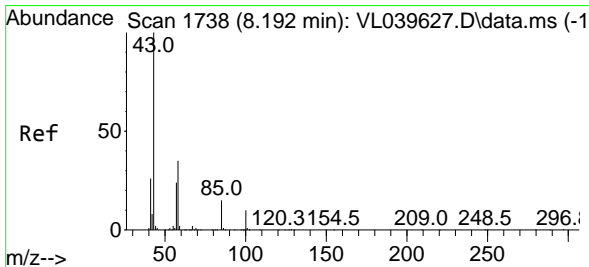
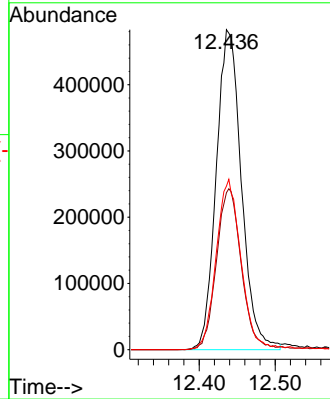
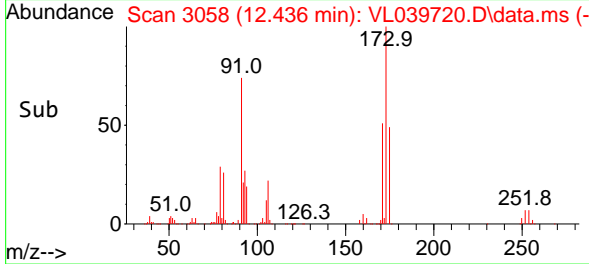


Tgt Ion: 173 Resp: 111117
 Ion Ratio Lower Upper
 173 100
 175 50.2 40.3 60.5
 171 52.7 42.9 64.3

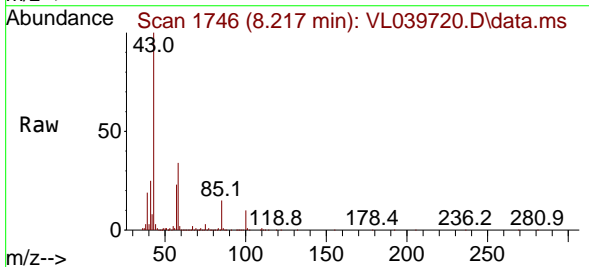
Manual Integrations

APPROVED

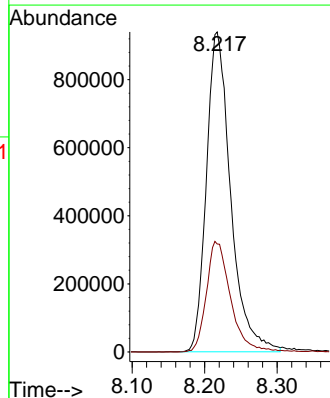
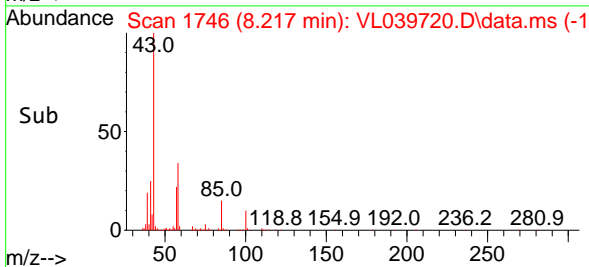
Reviewed By :Semsettin Yesilyurt 10/19/2022
 Supervised By :Mahesh Dadoda 10/19/2022

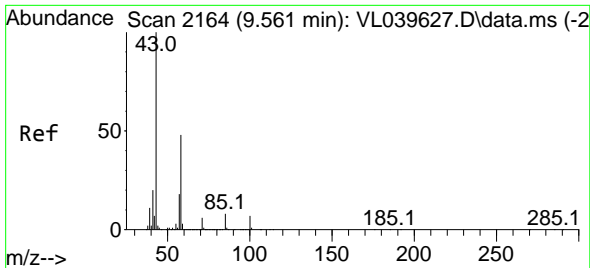


#50
 4-Methyl-2-Pentanone
 Concen: 10.073 ppbv
 RT: 8.217 min Scan# 1746
 Delta R.T. 0.003 min
 Lab File: VL039720.D
 Acq: 17 Oct 2022 15:27



Tgt Ion: 43 Resp: 2182961
 Ion Ratio Lower Upper
 43 100
 58 34.7 28.8 43.2





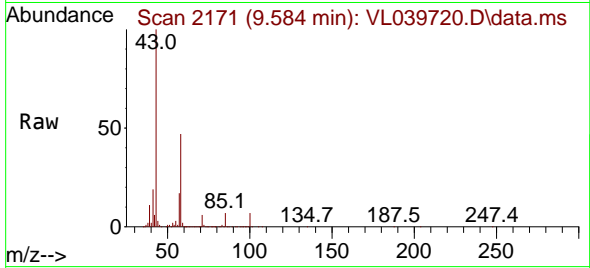
#51
 2-Hexanone
 Concen: 10.264 ppbv
 RT: 9.584 min Scan# 2164
 Delta R.T. 0.006 min
 Lab File: VL039720.D
 Acq: 17 Oct 2022 15:27

Instrument :

MSVOA_L

Client Sample Id :

VL1017ABS01

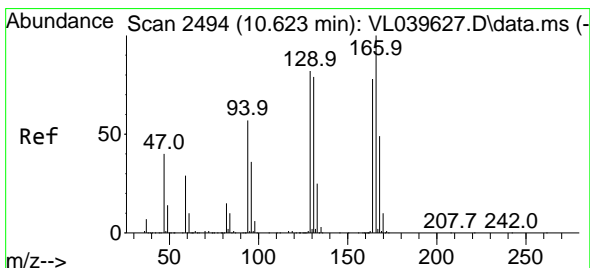
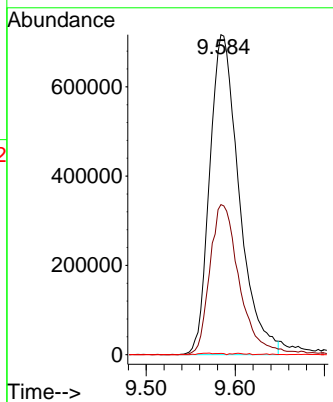
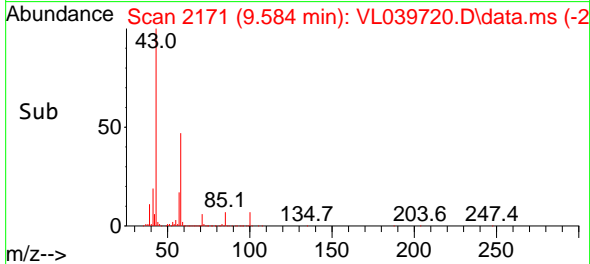


Tgt Ion: 43 Resp: 1646574
 Ion Ratio Lower Upper
 43 100
 58 48.1 38.4 57.6
 98 0.5 0.3 0.5

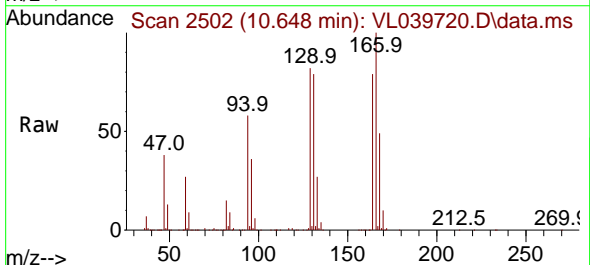
Manual Integrations

APPROVED

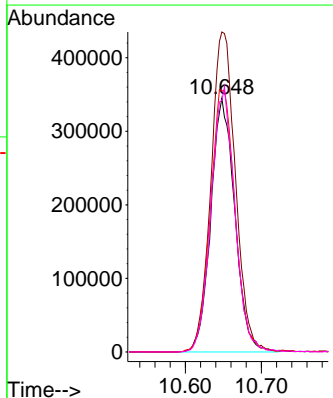
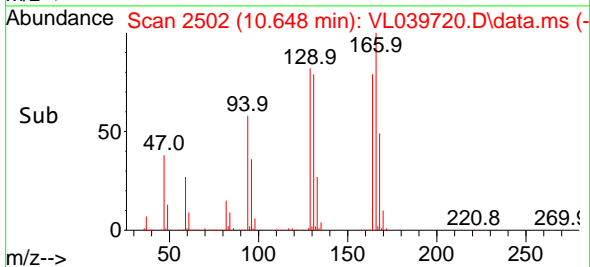
Reviewed By :Semsettin Yesilyurt 10/19/2022
 Supervised By :Mahesh Dadoda 10/19/2022

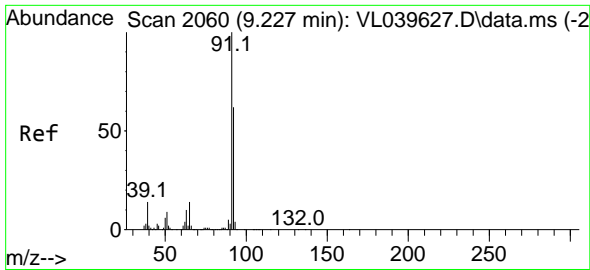


#52
 Tetrachloroethene
 Concen: 9.200 ppbv
 RT: 10.648 min Scan# 2502
 Delta R.T. 0.003 min
 Lab File: VL039720.D
 Acq: 17 Oct 2022 15:27



Tgt Ion:164 Resp: 753463
 Ion Ratio Lower Upper
 164 100
 166 126.2 102.2 153.2
 129 102.9 85.8 128.8
 131 99.2 83.3 124.9





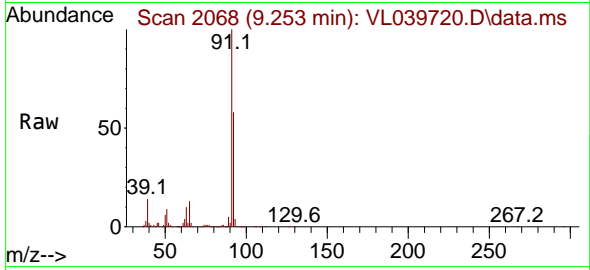
#53
 Toluene
 Concen: 10.004 ppbv
 RT: 9.253 min Scan# 2060
 Delta R.T. 0.003 min
 Lab File: VL039720.D
 Acq: 17 Oct 2022 15:27

Instrument :

MSVOA_L

Client Sample Id :

VL1017ABS01

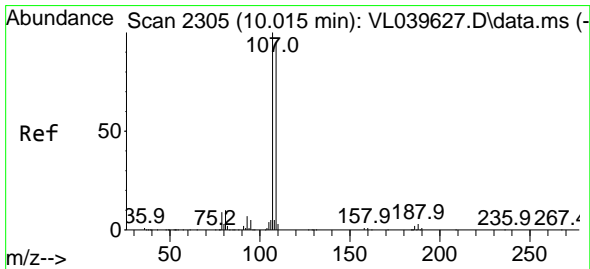
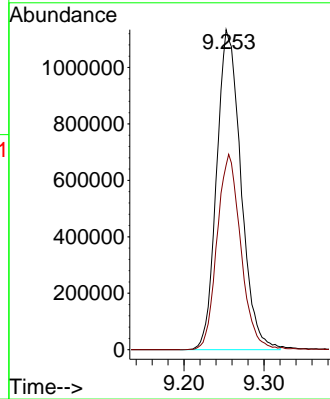
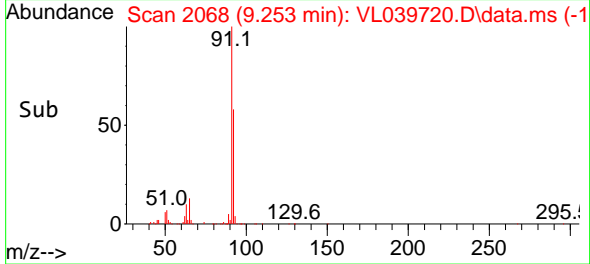


Tgt Ion: 91 Resp: 2388409
 Ion Ratio Lower Upper
 91 100
 92 60.1 48.2 72.2

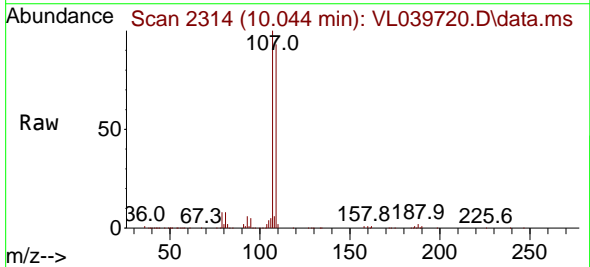
Manual Integrations

APPROVED

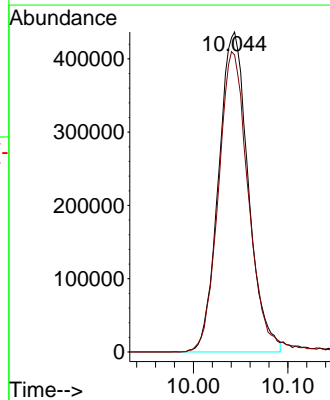
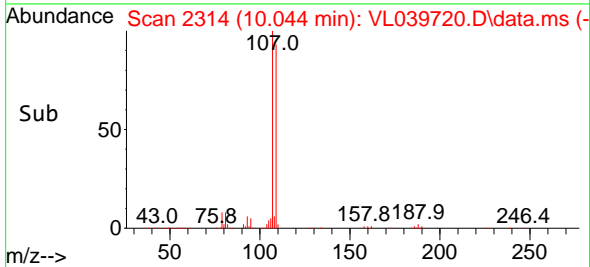
Reviewed By :Semsettin Yesilyurt 10/19/2022
 Supervised By :Mahesh Dadoda 10/19/2022

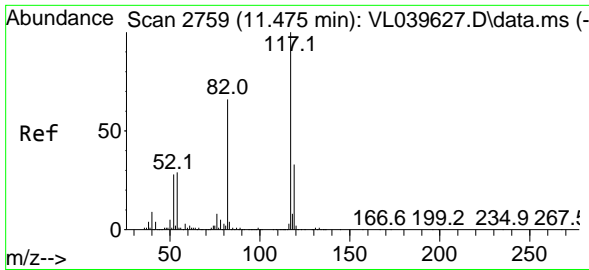


#54
 1,2-Dibromoethane
 Concen: 9.830 ppbv
 RT: 10.044 min Scan# 2314
 Delta R.T. 0.006 min
 Lab File: VL039720.D
 Acq: 17 Oct 2022 15:27



Tgt Ion:107 Resp: 952814
 Ion Ratio Lower Upper
 107 100
 109 92.8 74.8 112.2





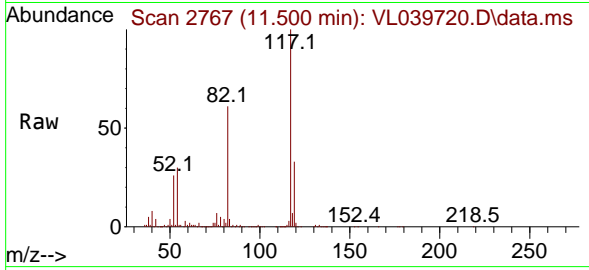
#55
 Chlorobenzene-d5
 Concen: 10.000 ppbv m
 RT: 11.500 min Scan# 2759
 Delta R.T. 0.009 min
 Lab File: VL039720.D
 Acq: 17 Oct 2022 15:27

Instrument :

MSVOA_L

ClientSampleId :

VL1017ABS01

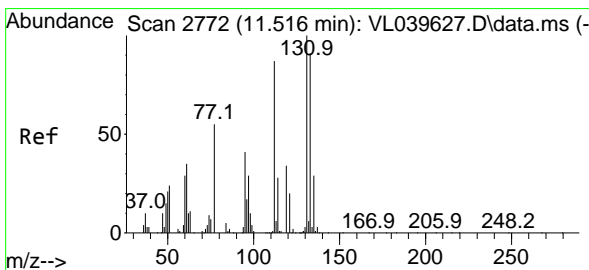
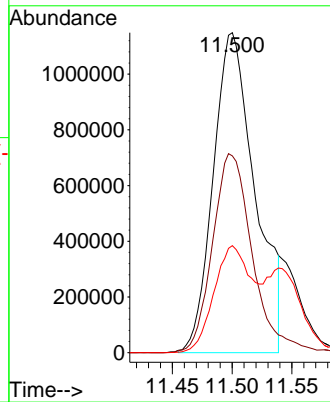
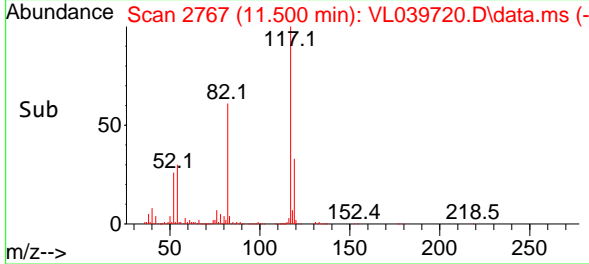


Tgt Ion:117 Resp: 279568
 Ion Ratio Lower Upper
 117 100
 82 59.9 50.8 76.2
 119 32.0 24.1 36.1

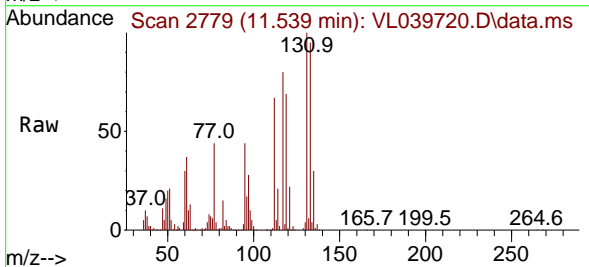
Manual Integrations

APPROVED

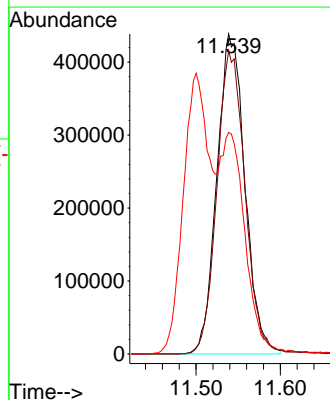
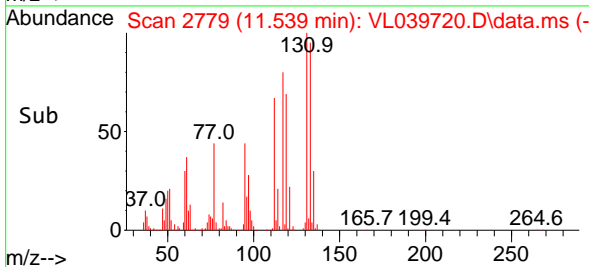
Reviewed By :Semsettin Yesilyurt 10/19/2022
 Supervised By :Mahesh Dadoda 10/19/2022

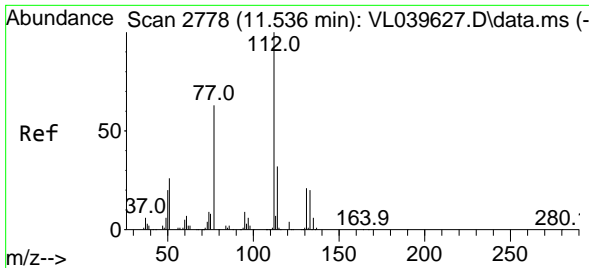


#56
 1,1,1,2-Tetrachloroethane
 Concen: 8.945 ppbv
 RT: 11.539 min Scan# 2779
 Delta R.T. 0.003 min
 Lab File: VL039720.D
 Acq: 17 Oct 2022 15:27



Tgt Ion:131 Resp: 1010640
 Ion Ratio Lower Upper
 131 100
 133 95.4 76.8 115.2
 119 60.4 46.2 69.4





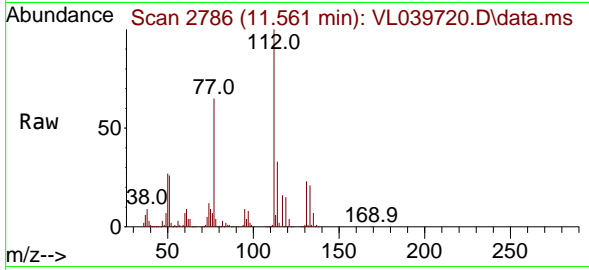
#57
 Chlorobenzene
 Concen: 8.727 ppbv
 RT: 11.561 min Scan# 21
 Delta R.T. 0.003 min
 Lab File: VL039720.D
 Acq: 17 Oct 2022 15:27

Instrument :

MSVOA_L

ClientSampleId :

VL1017ABS01

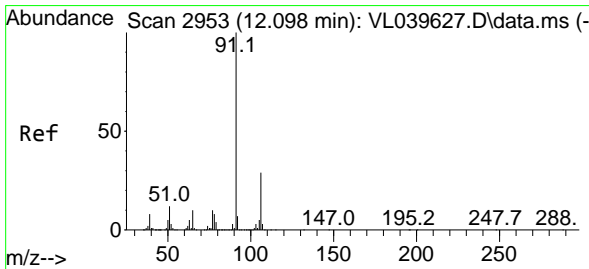
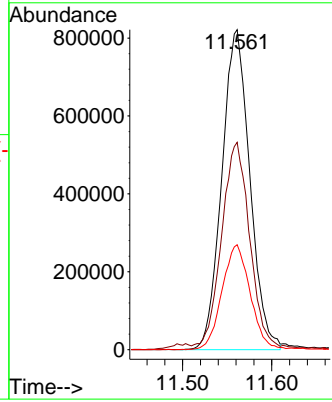
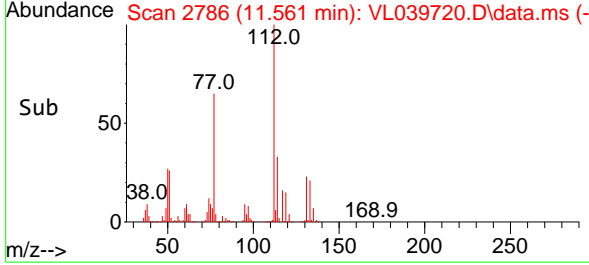


Tgt Ion:112 Resp: 179420
 Ion Ratio Lower Upper
 112 100
 77 63.7 51.0 76.4
 114 32.7 27.5 33.6

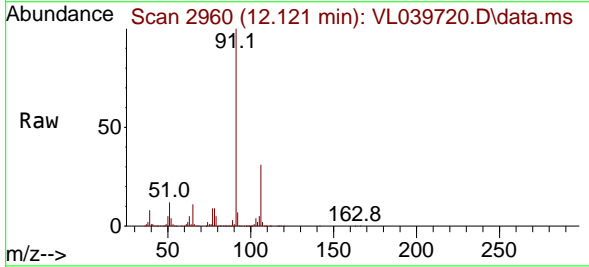
Manual Integrations

APPROVED

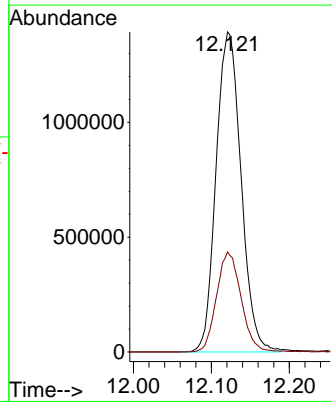
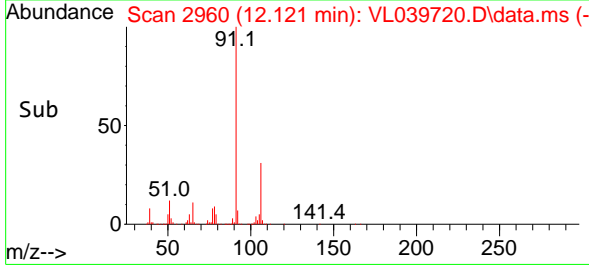
Reviewed By :Semsettin Yesilyurt 10/19/2022
 Supervised By :Mahesh Dadoda 10/19/2022

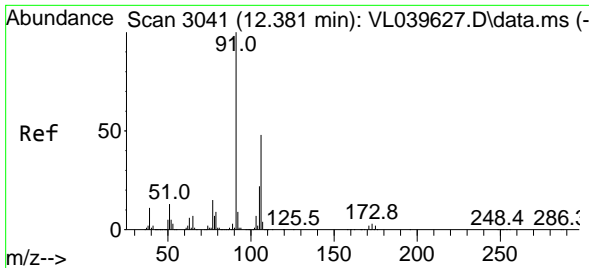


#58
 Ethyl Benzene
 Concen: 9.643 ppbv
 RT: 12.121 min Scan# 2960
 Delta R.T. 0.006 min
 Lab File: VL039720.D
 Acq: 17 Oct 2022 15:27



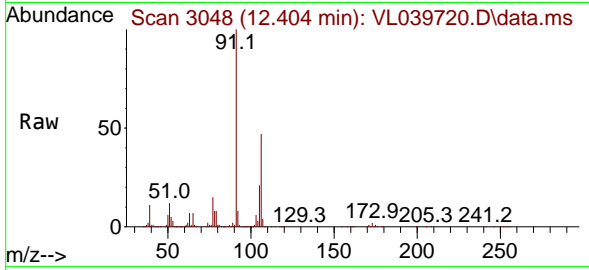
Tgt Ion: 91 Resp: 3108215
 Ion Ratio Lower Upper
 91 100
 106 31.3 25.4 38.0





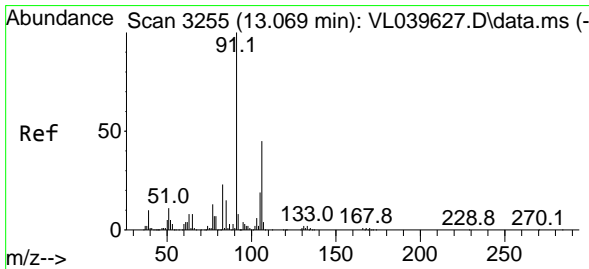
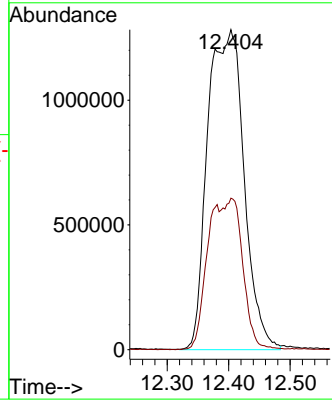
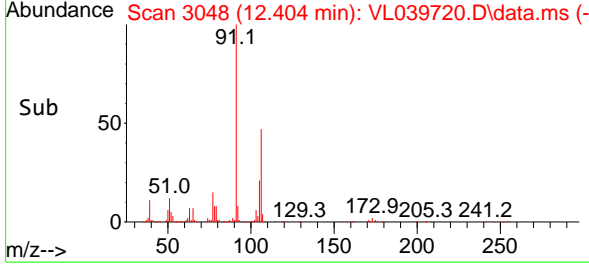
#59
 m/p-Xylene
 Concen: 18.363 ppbv m
 RT: 12.404 min Scan# 3048
 Delta R.T. 0.003 min
 Lab File: VL039720.D
 Acq: 17 Oct 2022 15:27

Instrument :
 MSVOA_L
Client Sample Id :
 VL1017ABS01

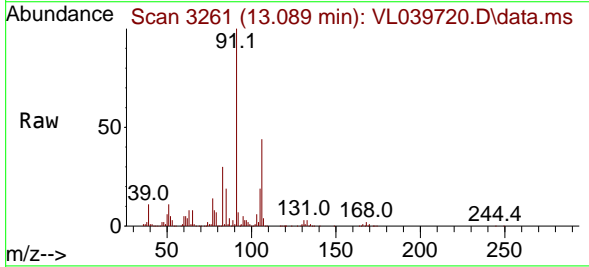


Tgt Ion: 91 Resp: 526780
 Ion Ratio Lower Upper
 91 100
 106 45.0 35.4 53.2

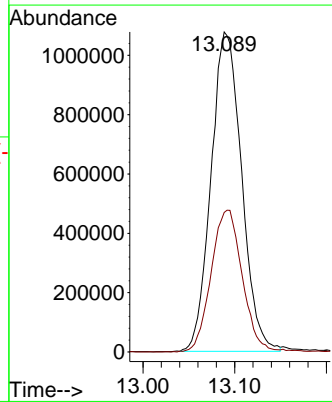
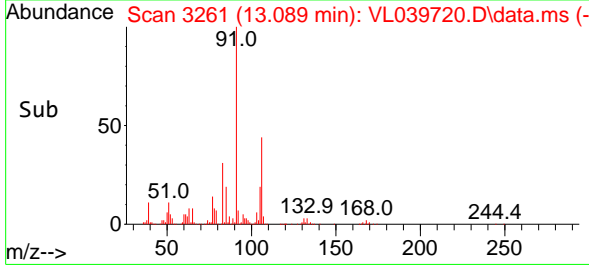
Manual Integrations
APPROVED
 Reviewed By :Semsettin Yesilyurt 10/19/2022
 Supervised By :Mahesh Dadoda 10/19/2022

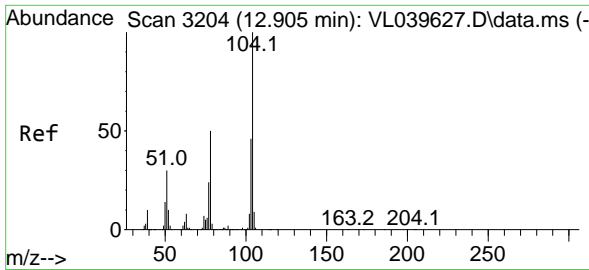


#60
 o-Xylene
 Concen: 9.102 ppbv
 RT: 13.089 min Scan# 3261
 Delta R.T. 0.003 min
 Lab File: VL039720.D
 Acq: 17 Oct 2022 15:27



Tgt Ion: 91 Resp: 2493446
 Ion Ratio Lower Upper
 91 100
 106 45.8 22.4 67.3





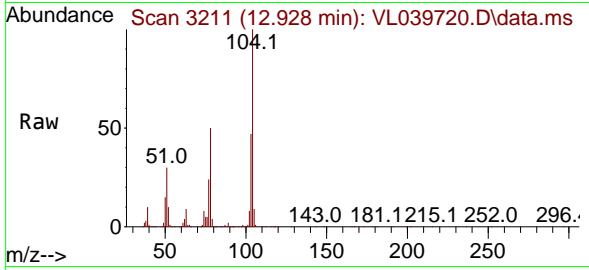
#61
 Styrene
 Concen: 10.028 ppbv
 RT: 12.928 min Scan# 31
 Delta R.T. 0.003 min
 Lab File: VL039720.D
 Acq: 17 Oct 2022 15:27

Instrument :

MSVOA_L

ClientSampleId :

VL1017ABS01

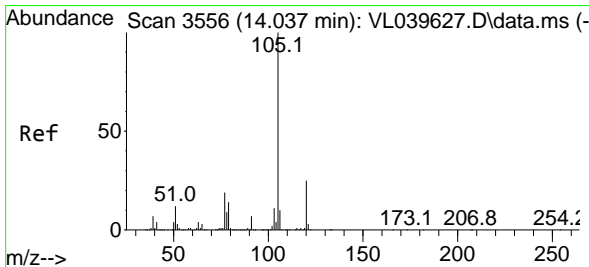
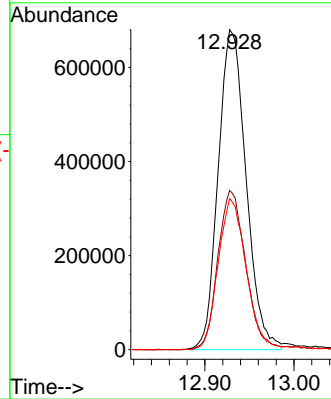
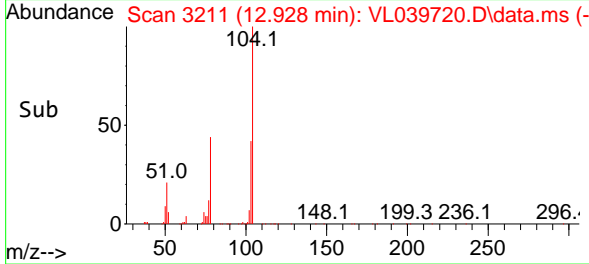


Tgt Ion:104 Resp: 147944
 Ion Ratio Lower Upper
 104 100
 78 50.6 41.2 61.8
 103 48.1 38.7 58.1

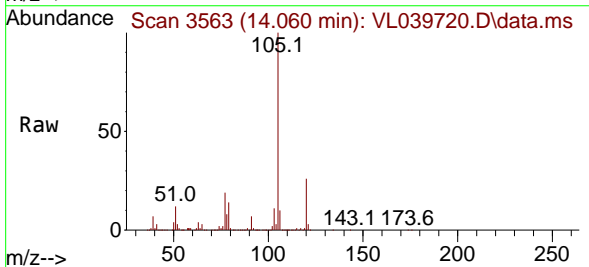
Manual Integrations

APPROVED

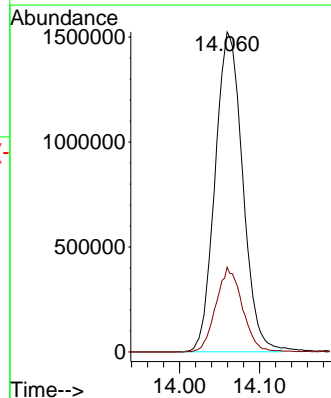
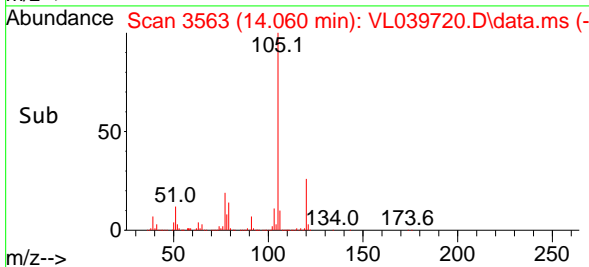
Reviewed By :Semsettin Yesilyurt 10/19/2022
 Supervised By :Mahesh Dadoda 10/19/2022

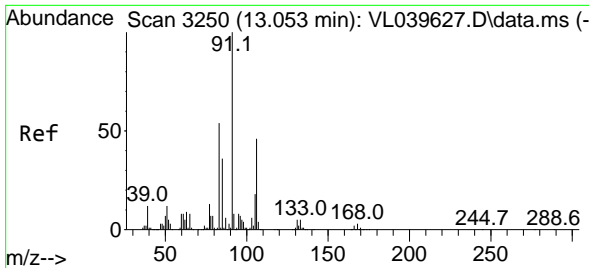


#62
 Isopropylbenzene
 Concen: 8.833 ppbv
 RT: 14.060 min Scan# 3563
 Delta R.T. 0.003 min
 Lab File: VL039720.D
 Acq: 17 Oct 2022 15:27



Tgt Ion:105 Resp: 3641024
 Ion Ratio Lower Upper
 105 100
 120 25.6 20.7 31.1





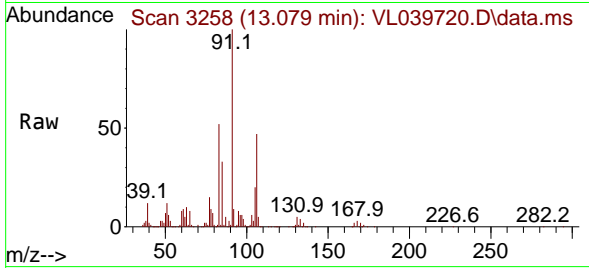
#63
 1,1,2,2-Tetrachloroethane
 Concen: 8.397 ppbv
 RT: 13.079 min Scan# 31
 Delta R.T. 0.006 min
 Lab File: VL039720.D
 Acq: 17 Oct 2022 15:27

Instrument :

MSVOA_L

ClientSampleId :

VL1017ABS01

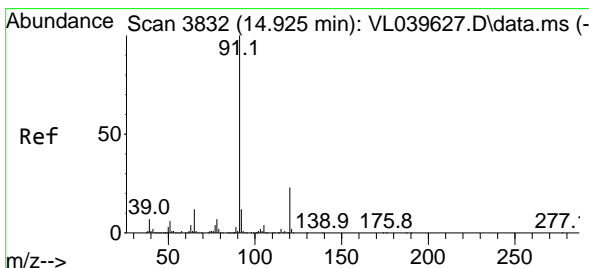
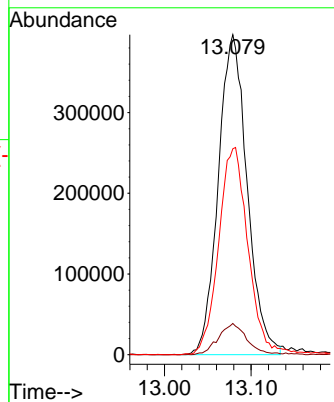
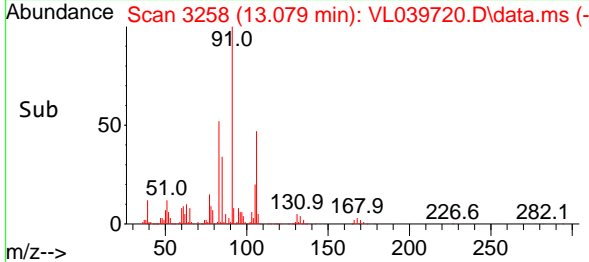


Tgt Ion: 83 Resp: 91757
 Ion Ratio Lower Upper
 83 100
 131 9.8 5.3 15.8
 85 67.2 33.1 99.5

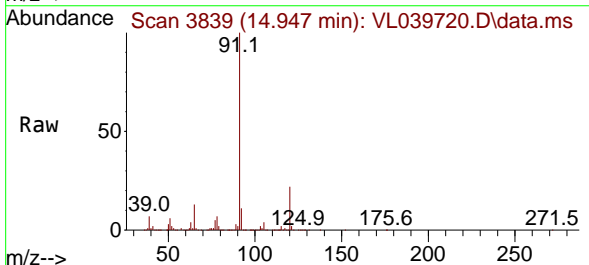
Manual Integrations

APPROVED

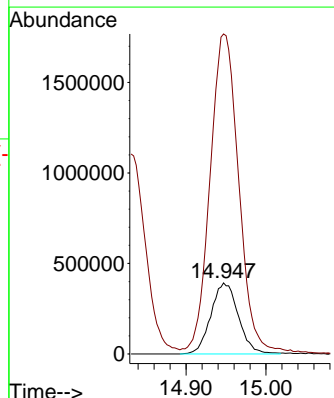
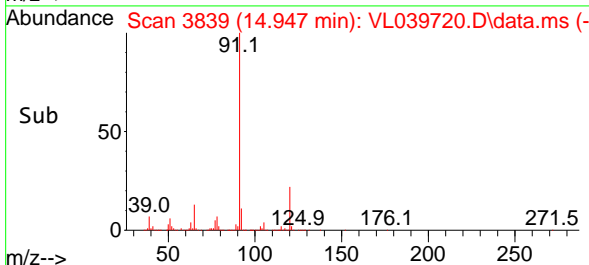
Reviewed By :Semsettin Yesilyurt 10/19/2022
 Supervised By :Mahesh Dadoda 10/19/2022

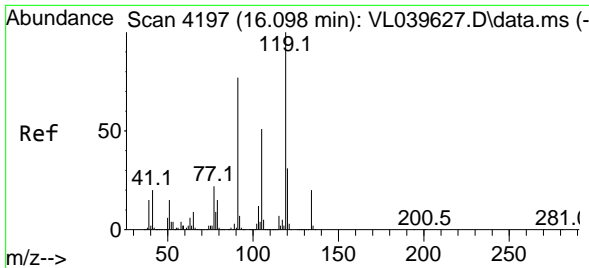


#64
 n-propylbenzene
 Concen: 8.861 ppbv
 RT: 14.947 min Scan# 3839
 Delta R.T. 0.006 min
 Lab File: VL039720.D
 Acq: 17 Oct 2022 15:27



Tgt Ion:120 Resp: 935384
 Ion Ratio Lower Upper
 120 100
 91 474.2 367.2 550.8





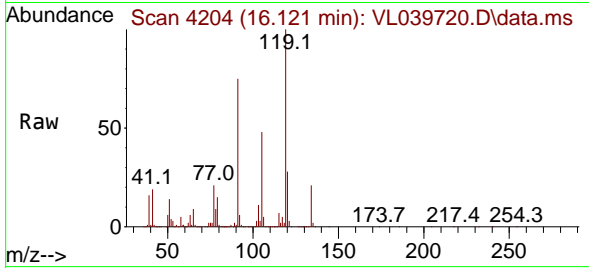
#65
 tert-Butylbenzene
 Concen: 8.750 ppbv
 RT: 16.121 min Scan# 4197
 Delta R.T. 0.003 min
 Lab File: VL039720.D
 Acq: 17 Oct 2022 15:27

Instrument :

MSVOA_L

ClientSampleId :

VL1017ABS01

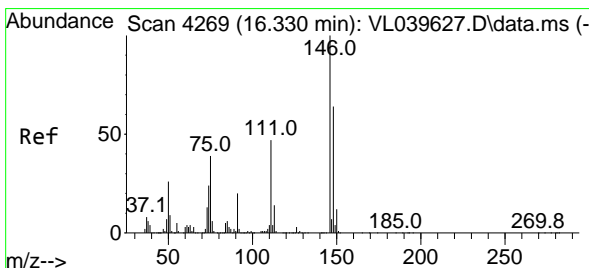
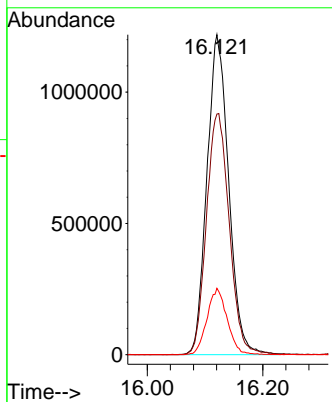
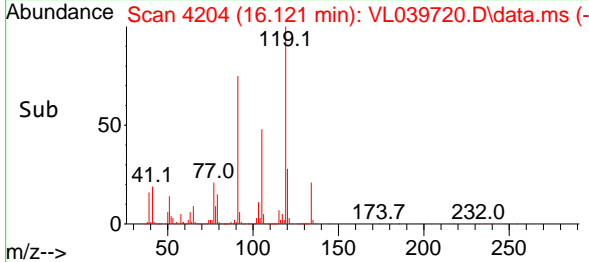


Tgt Ion:119 Resp: 318659
 Ion Ratio Lower Upper
 119 100
 91 79.1 63.4 95.2
 134 19.3 15.9 23.9

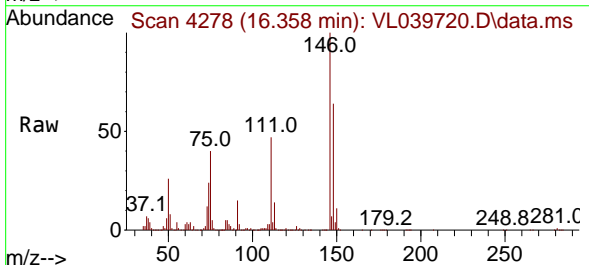
Manual Integrations

APPROVED

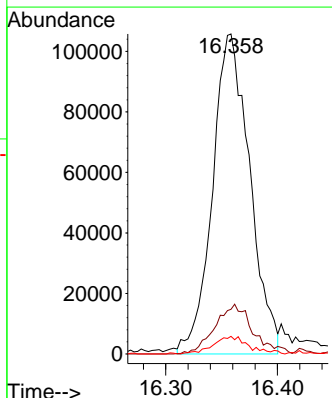
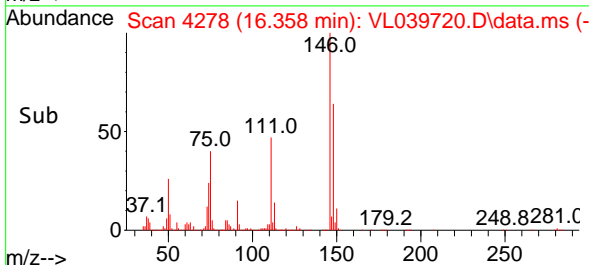
Reviewed By :Semsettin Yesilyurt 10/19/2022
 Supervised By :Mahesh Dadoda 10/19/2022

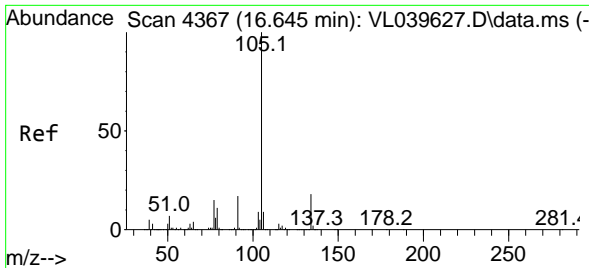


#66
 Benzyl Chloride
 Concen: 8.453 ppbv m
 RT: 16.358 min Scan# 4278
 Delta R.T. 0.003 min
 Lab File: VL039720.D
 Acq: 17 Oct 2022 15:27



Tgt Ion: 91 Resp: 245109
 Ion Ratio Lower Upper
 91 100
 126 16.6 13.1 19.7
 128 5.3 4.4 6.6





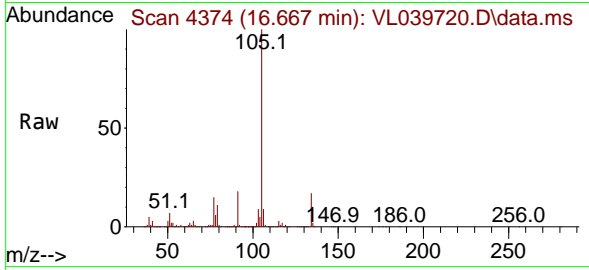
#67
 sec-Butylbenzene
 Concen: 8.710 ppbv
 RT: 16.667 min Scan# 41
 Delta R.T. 0.003 min
 Lab File: VL039720.D
 Acq: 17 Oct 2022 15:27

Instrument :

MSVOA_L

ClientSampleId :

VL1017ABS01

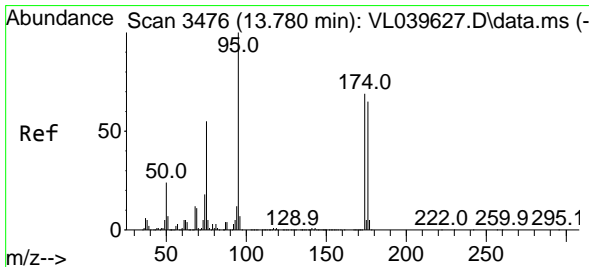
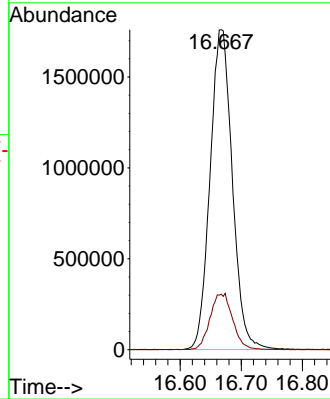
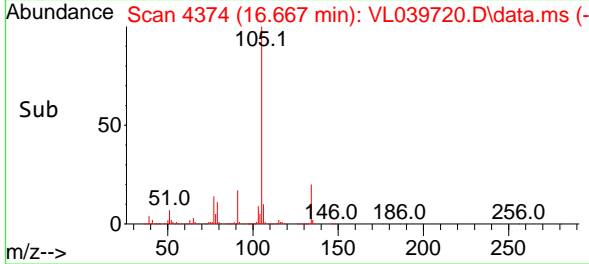


Tgt Ion:105 Resp: 444926
 Ion Ratio Lower Upper
 105 100
 134 17.9 14.8 22.2

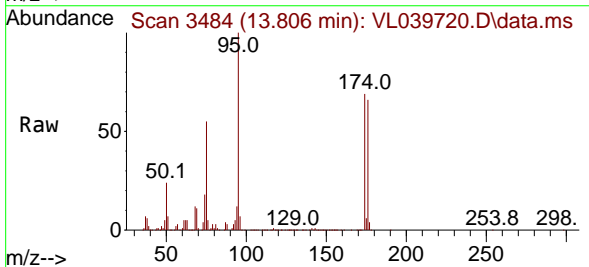
Manual Integrations

APPROVED

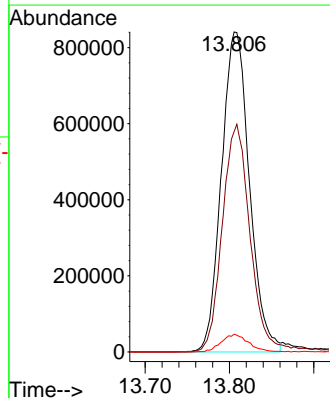
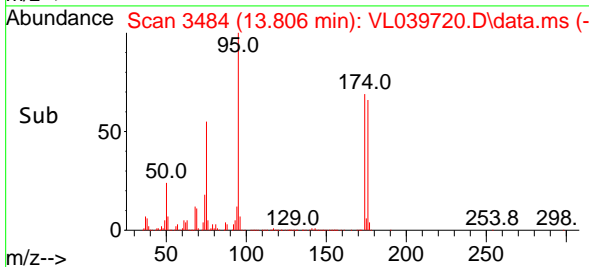
Reviewed By :Semsettin Yesilyurt 10/19/2022
 Supervised By :Mahesh Dadoda 10/19/2022

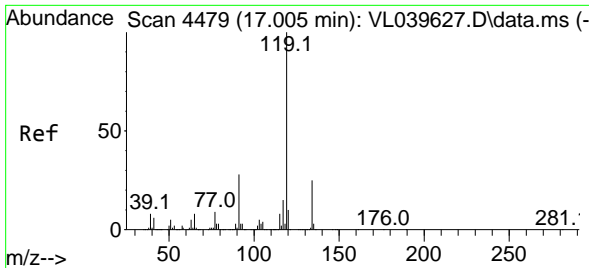


#68
 1-Bromo-4-Fluorobenzene
 Concen: 9.302 ppbv
 RT: 13.806 min Scan# 3484
 Delta R.T. 0.006 min
 Lab File: VL039720.D
 Acq: 17 Oct 2022 15:27



Tgt Ion: 95 Resp: 1941297
 Ion Ratio Lower Upper
 95 100
 174 71.8 55.9 83.9
 175 5.6 4.2 6.4





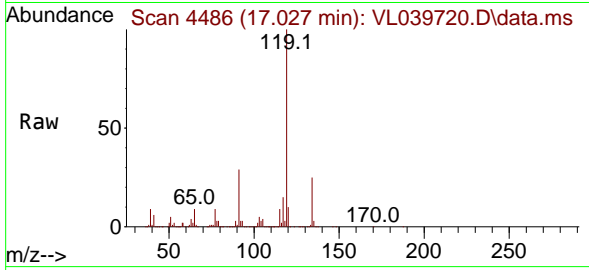
#69
 p-Isopropyltoluene
 Concen: 8.856 ppbv
 RT: 17.027 min Scan# 4479
 Delta R.T. 0.006 min
 Lab File: VL039720.D
 Acq: 17 Oct 2022 15:27

Instrument :

MSVOA_L

ClientSampleId :

VL1017ABS01

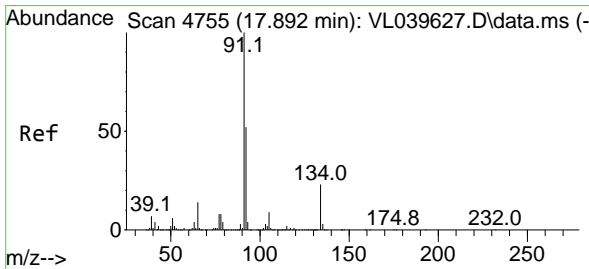
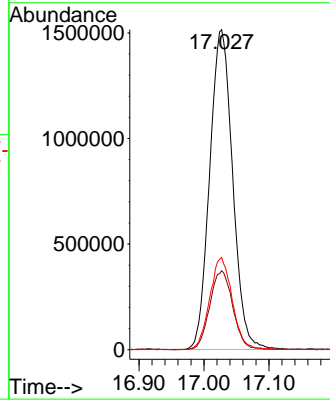
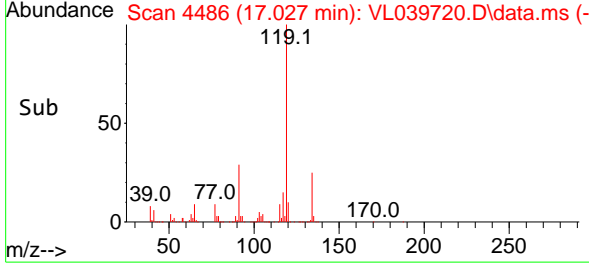


Tgt Ion:119 Resp: 371715
 Ion Ratio Lower Upper
 119 100
 134 24.9 20.3 30.5
 91 28.3 22.9 34.3

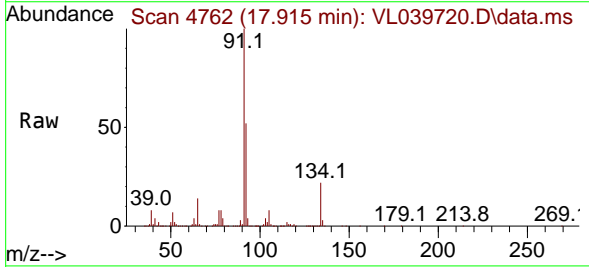
Manual Integrations

APPROVED

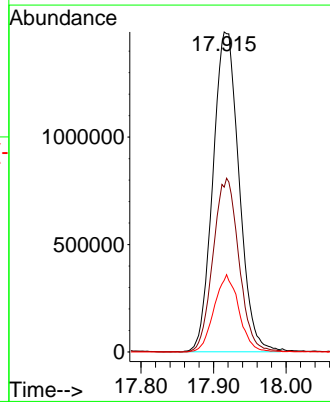
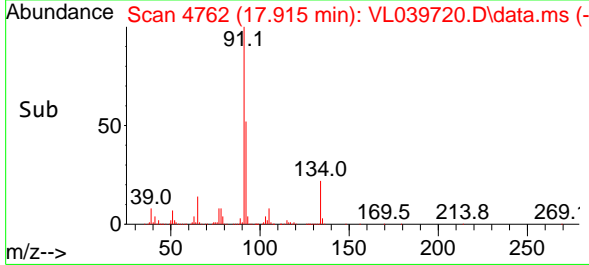
Reviewed By :Semsettin Yesilyurt 10/19/2022
 Supervised By :Mahesh Dadoda 10/19/2022

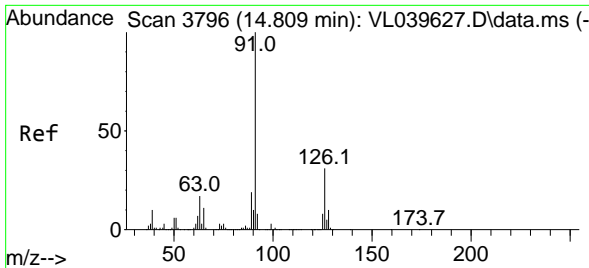


#70
 n-Butylbenzene
 Concen: 9.082 ppbv
 RT: 17.915 min Scan# 4762
 Delta R.T. 0.003 min
 Lab File: VL039720.D
 Acq: 17 Oct 2022 15:27



Tgt Ion: 91 Resp: 3736788
 Ion Ratio Lower Upper
 91 100
 92 53.8 43.4 65.2
 134 23.0 18.9 28.3





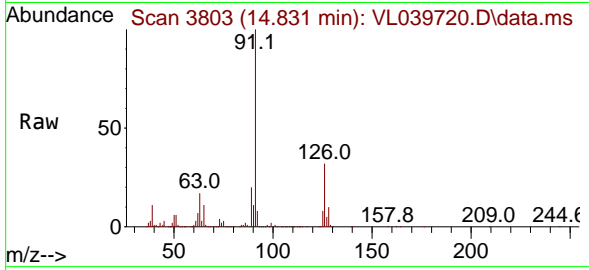
#71
 2-Chlorotoluene
 Concen: 8.836 ppbv
 RT: 14.831 min Scan# 3803
 Delta R.T. 0.003 min
 Lab File: VL039720.D
 Acq: 17 Oct 2022 15:27

Instrument :

MSVOA_L

ClientSampleId :

VL1017ABS01

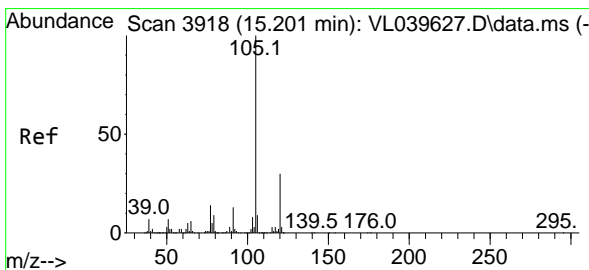
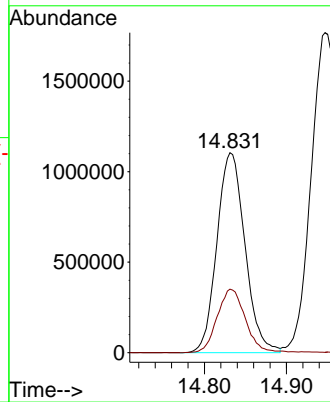
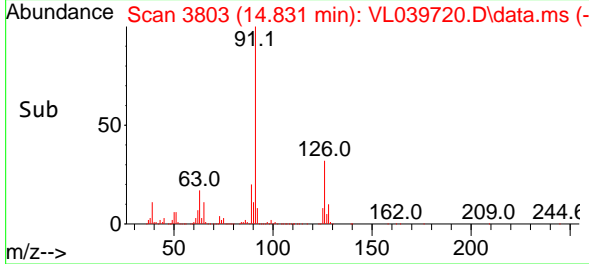


Tgt Ion: 91 Resp: 262985
 Ion Ratio Lower Upper
 91 100
 126 32.3 13.0 51.8

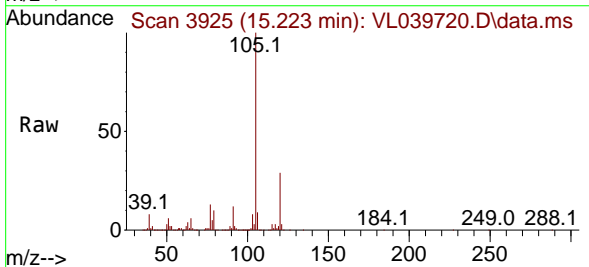
Manual Integrations

APPROVED

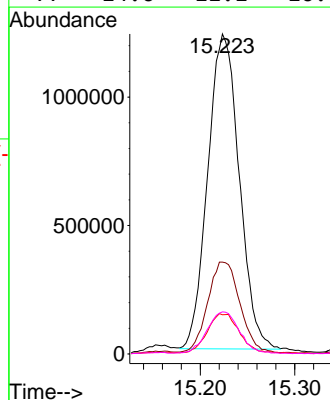
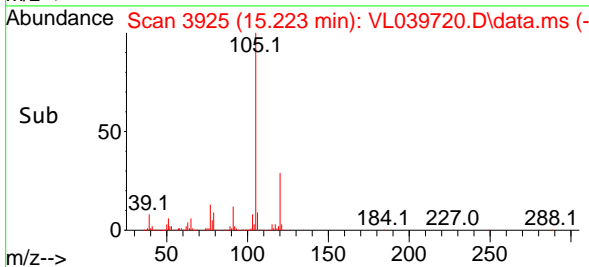
Reviewed By :Semsettin Yesilyurt 10/19/2022
 Supervised By :Mahesh Dadoda 10/19/2022

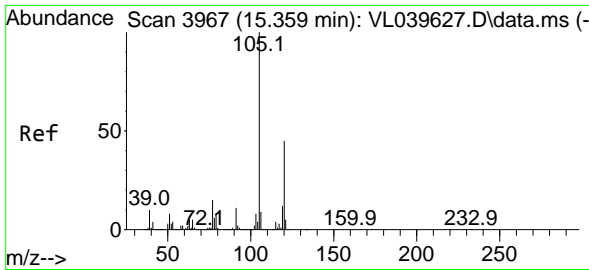


#72
 4-Ethyltoluene
 Concen: 9.061 ppbv
 RT: 15.223 min Scan# 3925
 Delta R.T. 0.003 min
 Lab File: VL039720.D
 Acq: 17 Oct 2022 15:27



Tgt Ion:105 Resp: 2833737
 Ion Ratio Lower Upper
 105 100
 120 31.3 24.2 36.2
 91 13.2 10.2 15.4
 77 14.6 11.1 16.7





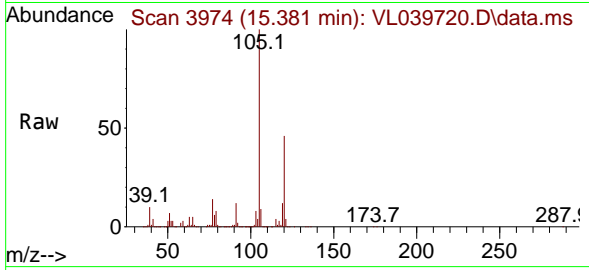
#73
 1,3,5-Trimethylbenzene
 Concen: 9.075 ppbv
 RT: 15.381 min Scan# 3967
 Delta R.T. 0.003 min
 Lab File: VL039720.D
 Acq: 17 Oct 2022 15:27

Instrument :

MSVOA_L

Client Sample Id :

VL1017ABS01

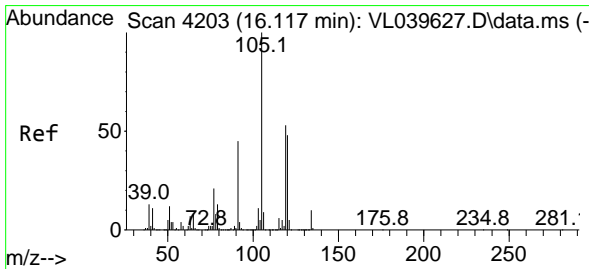
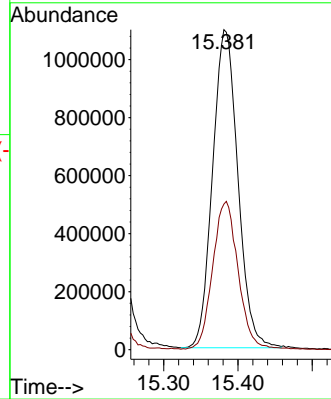
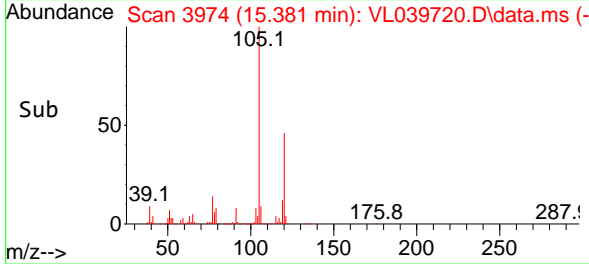


Tgt Ion:105 Resp: 259694
 Ion Ratio Lower Upper
 105 100
 120 45.6 38.2 57.4

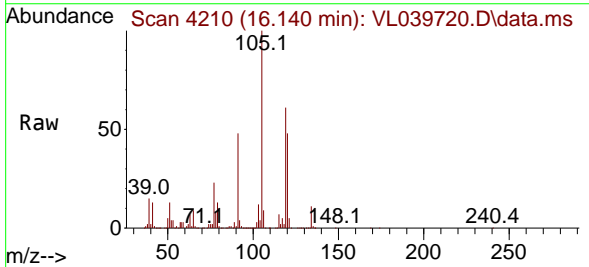
Manual Integrations

APPROVED

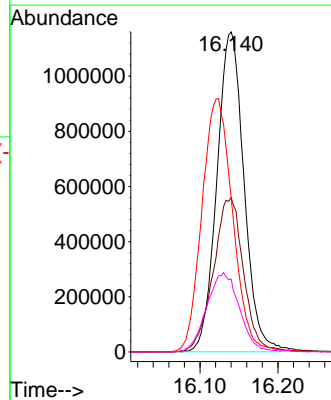
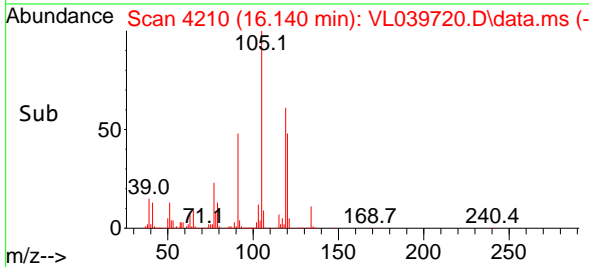
Reviewed By :Semsettin Yesilyurt 10/19/2022
 Supervised By :Mahesh Dadoda 10/19/2022

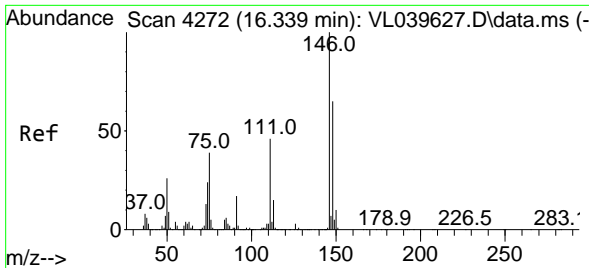


#74
 1,2,4-Trimethylbenzene
 Concen: 8.722 ppbv
 RT: 16.140 min Scan# 4210
 Delta R.T. 0.006 min
 Lab File: VL039720.D
 Acq: 17 Oct 2022 15:27



Tgt Ion:105 Resp: 2797810
 Ion Ratio Lower Upper
 105 100
 120 48.0 39.5 59.3
 91 47.6 39.2 58.8
 77 22.5 17.2 25.8





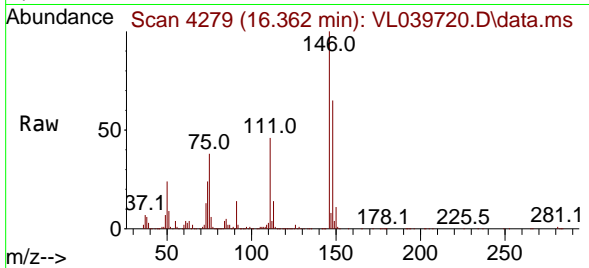
#75
 1,3-Dichlorobenzene
 Concen: 8.730 ppbv
 RT: 16.362 min Scan# 41
 Delta R.T. 0.006 min
 Lab File: VL039720.D
 Acq: 17 Oct 2022 15:27

Instrument :

MSVOA_L

ClientSampleId :

VL1017ABS01

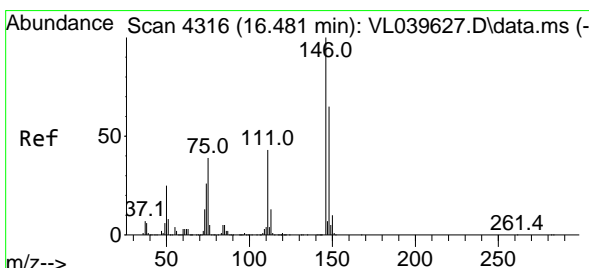
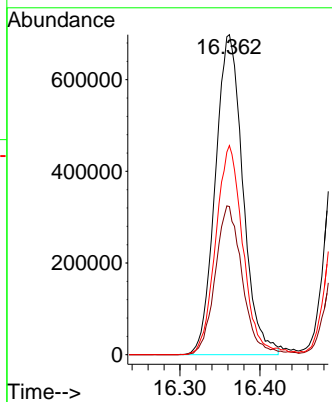
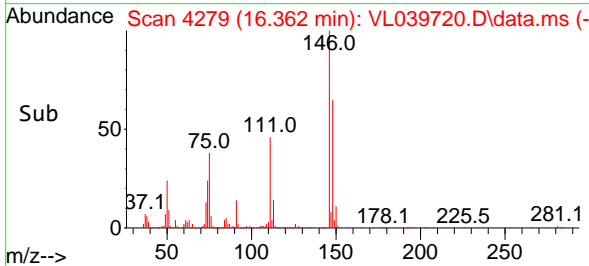


Tgt Ion:146 Resp: 1671000
 Ion Ratio Lower Upper
 146 100
 111 45.8 22.9 68.7
 148 64.9 32.1 96.5

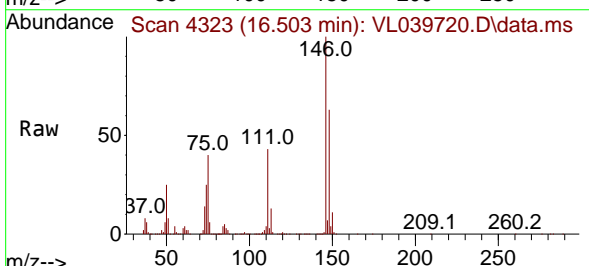
Manual Integrations

APPROVED

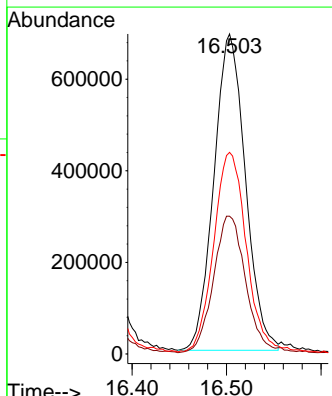
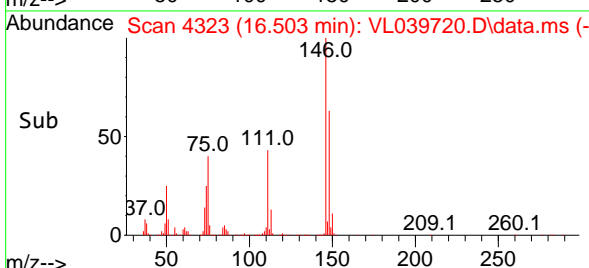
Reviewed By :Semsettin Yesilyurt 10/19/2022
 Supervised By :Mahesh Dadoda 10/19/2022

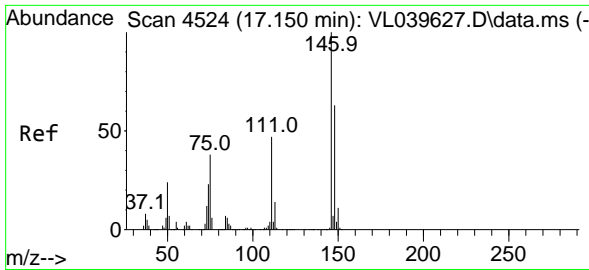


#76
 1,4-Dichlorobenzene
 Concen: 8.355 ppbv
 RT: 16.503 min Scan# 4323
 Delta R.T. 0.003 min
 Lab File: VL039720.D
 Acq: 17 Oct 2022 15:27



Tgt Ion:146 Resp: 1599742
 Ion Ratio Lower Upper
 146 100
 111 45.7 22.9 68.8
 148 67.7 33.6 100.8





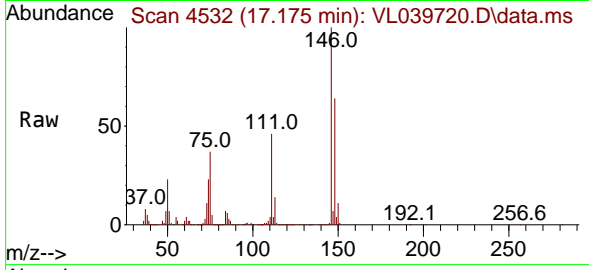
#77
 1,2-Dichlorobenzene
 Concen: 8.582 ppbv
 RT: 17.175 min Scan# 41
 Delta R.T. 0.006 min
 Lab File: VL039720.D
 Acq: 17 Oct 2022 15:27

Instrument :

MSVOA_L

ClientSampleId :

VL1017ABS01

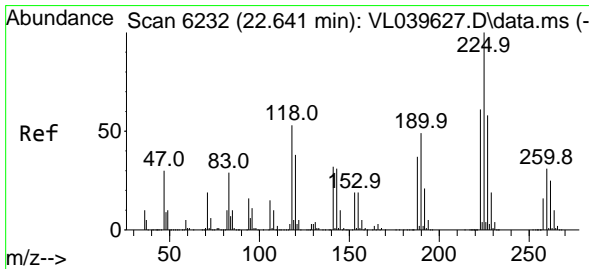
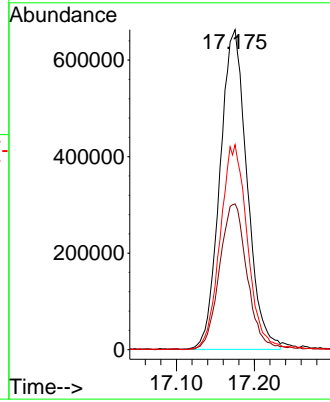
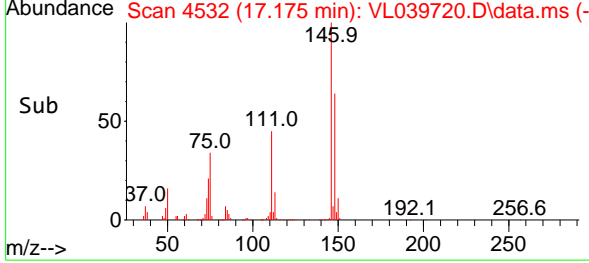


Tgt Ion:146 Resp: 1601800
 Ion Ratio Lower Upper
 146 100
 111 47.0 23.8 71.5
 148 64.8 32.3 96.8

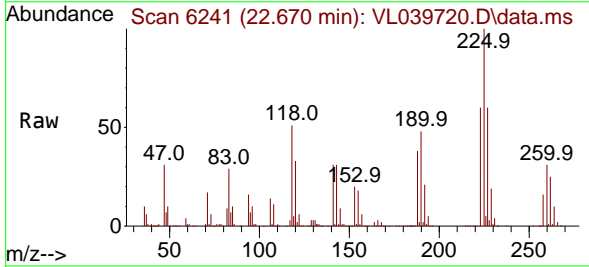
Manual Integrations

APPROVED

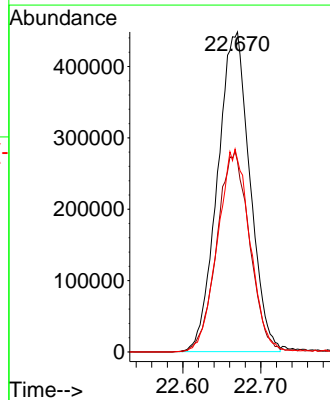
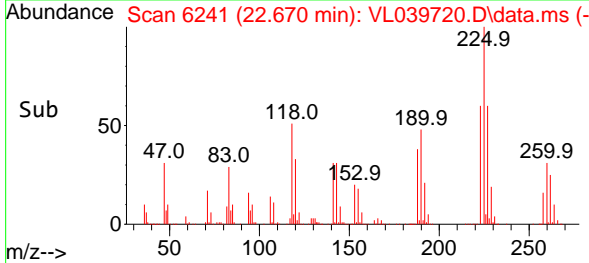
Reviewed By :Semsettin Yesilyurt 10/19/2022
 Supervised By :Mahesh Dadoda 10/19/2022

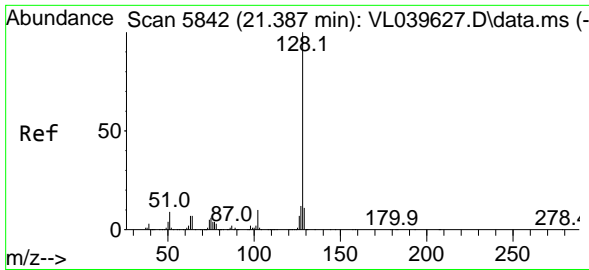


#78
 Hexachloro-1,3-Butadiene
 Concen: 9.069 ppbv
 RT: 22.670 min Scan# 6241
 Delta R.T. 0.009 min
 Lab File: VL039720.D
 Acq: 17 Oct 2022 15:27



Tgt Ion:225 Resp: 1293379
 Ion Ratio Lower Upper
 225 100
 223 63.8 51.8 77.6
 227 64.1 51.4 77.2





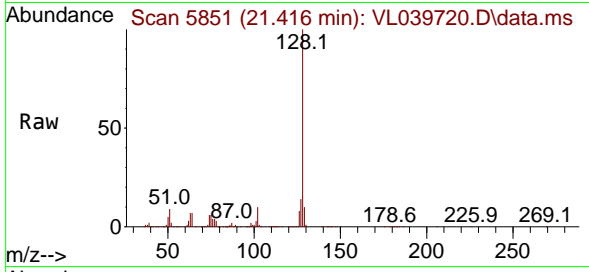
#79
 Naphthalene
 Concen: 12.907 ppbv
 RT: 21.416 min Scan# 5851
 Delta R.T. 0.009 min
 Lab File: VL039720.D
 Acq: 17 Oct 2022 15:27

Instrument :

MSVOA_L

ClientSampleId :

VL1017ABS01

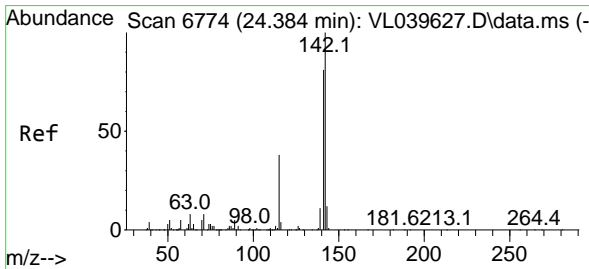
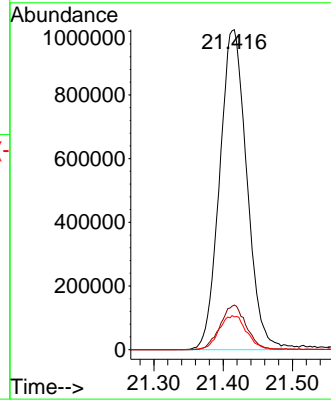
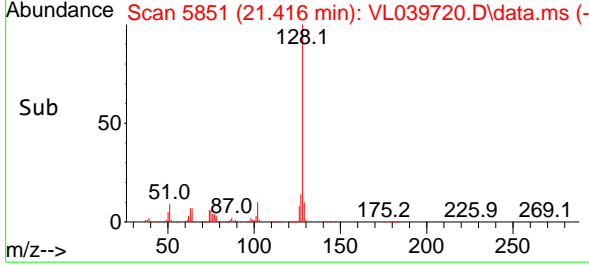


Tgt Ion:128 Resp: 2732304
 Ion Ratio Lower Upper
 128 100
 127 13.9 10.6 15.8
 129 10.3 8.8 13.2

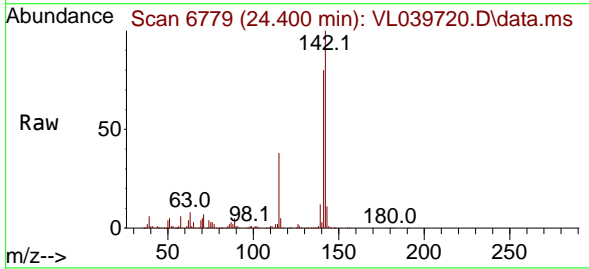
Manual Integrations

APPROVED

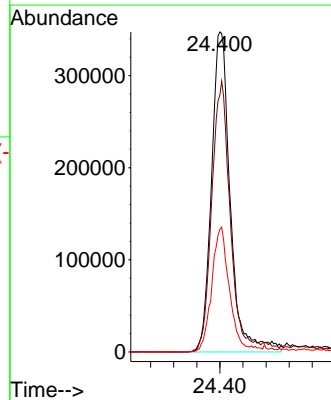
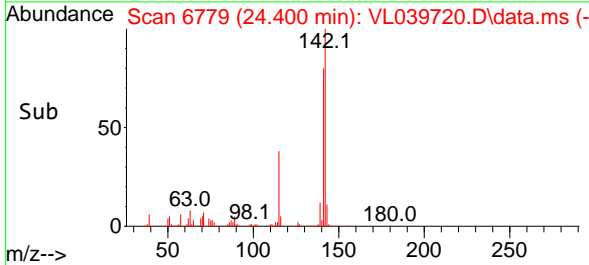
Reviewed By :Semsettin Yesilyurt 10/19/2022
 Supervised By :Mahesh Dadoda 10/19/2022

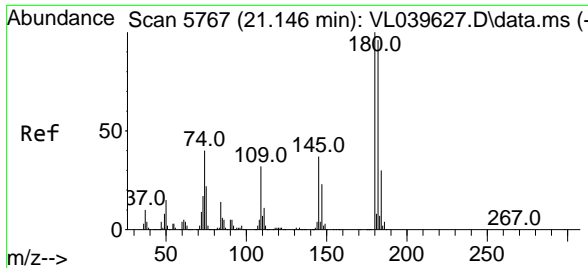


#80
 Naphthalene,2-methyl-
 Concen: 9.875 ppbv
 RT: 24.400 min Scan# 6779
 Delta R.T. 0.003 min
 Lab File: VL039720.D
 Acq: 17 Oct 2022 15:27



Tgt Ion:142 Resp: 786028
 Ion Ratio Lower Upper
 142 100
 141 87.1 68.9 103.3
 115 37.0 30.0 45.0





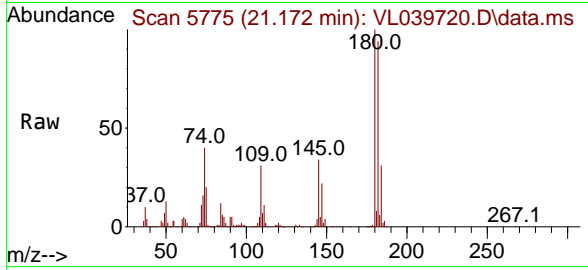
#81
 1,2,4-Trichlorobenzene
 Concen: 10.916 ppbv
 RT: 21.172 min Scan# 51
 Delta R.T. 0.006 min
 Lab File: VL039720.D
 Acq: 17 Oct 2022 15:27

Instrument :

MSVOA_L

ClientSampleId :

VL1017ABS01



Tgt Ion:180 Resp: 151783

Ion	Ratio	Lower	Upper
180	100		
182	96.4	77.1	115.7
184	31.0	24.3	36.5

Manual Integrations

APPROVED

Reviewed By :Semsettin Yesilyurt 10/19/2022
 Supervised By :Mahesh Dadoda 10/19/2022

