

Data Path : Z:\voasrv\HPCHEM1\MSVOA_L\Data\VL101722\
 Data File : VL039721.D
 Acq On : 17 Oct 2022 16:07
 Operator : SY/AP
 Sample : N5169-03
 Misc : 400mL/MSVOA_L
 ALS Vial : 1 Sample Multiplier: 1

Instrument :
 MSVOA_L
 ClientSampleId :
 IA1

Manual Integrations
 APPROVED

Reviewed By :Semsettin Yesilyurt 10/18/2022
 Supervised By :Mahesh Dadoda 10/19/2022

Quant Time: Oct 18 05:27:07 2022
 Quant Method : Z:\voasrv\HPCHEM1\MSVOA_L\methods\VL091922AIR.M
 Quant Title : AIR ANALYSIS BY METHOD TO-15 Instrument: MSVOA_L Fri Aug 19 2022
 QLast Update : Tue Oct 18 05:23:57 2022
 Response via : Initial Calibration

Compound	R.T.	QIon	Response	Conc	Units	Dev(Min)	

Internal Standards							
1) Bromochloromethane	5.230	49	1019444	10.000	ppbv	0.00	
33) 1,4-Difluorobenzene	6.687	114	2628582	10.000	ppbv	0.00	
55) Chlorobenzene-d5	11.497	117	2322380	10.000	ppbv	0.00	
System Monitoring Compounds							
68) 1-Bromo-4-Fluorobenzene	13.802	95	1688650	9.740	ppbv	0.00	
Spiked Amount	10.000	Range	65 - 135	Recovery	=	97.400%	
Target Compounds							
							Qvalue
2) Dichlorodifluoromethane	2.771	85	82278	0.696	ppbv		100
3) Chlorodifluoromethane	2.713	51	40594m	0.336	ppbv		
4) Chloromethane	2.851	50	33556m	0.460	ppbv		
9) Propene	2.745	41	193740m	3.506	ppbv		
10) Heptane	7.613	43	82394m	0.639	ppbv		
11) Trichlorofluoromethane	3.600	101	31488	0.215	ppbv		92
13) Ethanol	3.279	45	243178m	57.763	ppbv		
15) Acetone	3.510	43	713656m	6.291	ppbv		
19) Isopropyl Alcohol	3.623	45	185788	3.213	ppbv #		97
20) Methylene Chloride	3.970	84	99573	1.899	ppbv		97
26) Hexane	5.253	57	191722	1.826	ppbv #		57
29) Chloroform	5.308	83	25393m	0.168	ppbv		
30) Cyclohexane	6.648	84	14600m	0.180	ppbv		
34) 2-Butanone	4.835	43	63531	0.492	ppbv		95
35) Carbon Tetrachloride	6.533	117	8803m	0.063	ppbv		
36) Benzene	6.401	78	151749	0.755	ppbv #		92
44) 2,2,4-Trimethylpentane	7.359	57	111571m	0.322	ppbv		
52) Tetrachloroethene	10.645	164	2071718	27.021	ppbv		95
53) Toluene	9.253	91	835475	3.738	ppbv		100
58) Ethyl Benzene	12.124	91	294526m	1.100	ppbv		
59) m/p-Xylene	12.375	91	1058176	4.441	ppbv		94
60) o-Xylene	13.089	91	269307	1.183	ppbv		98
72) 4-Ethyltoluene	15.224	105	34136m	0.131	ppbv		
73) 1,3,5-Trimethylbenzene	15.375	105	26125m	0.110	ppbv		
74) 1,2,4-Trimethylbenzene	16.140	105	92698	0.348	ppbv #		67

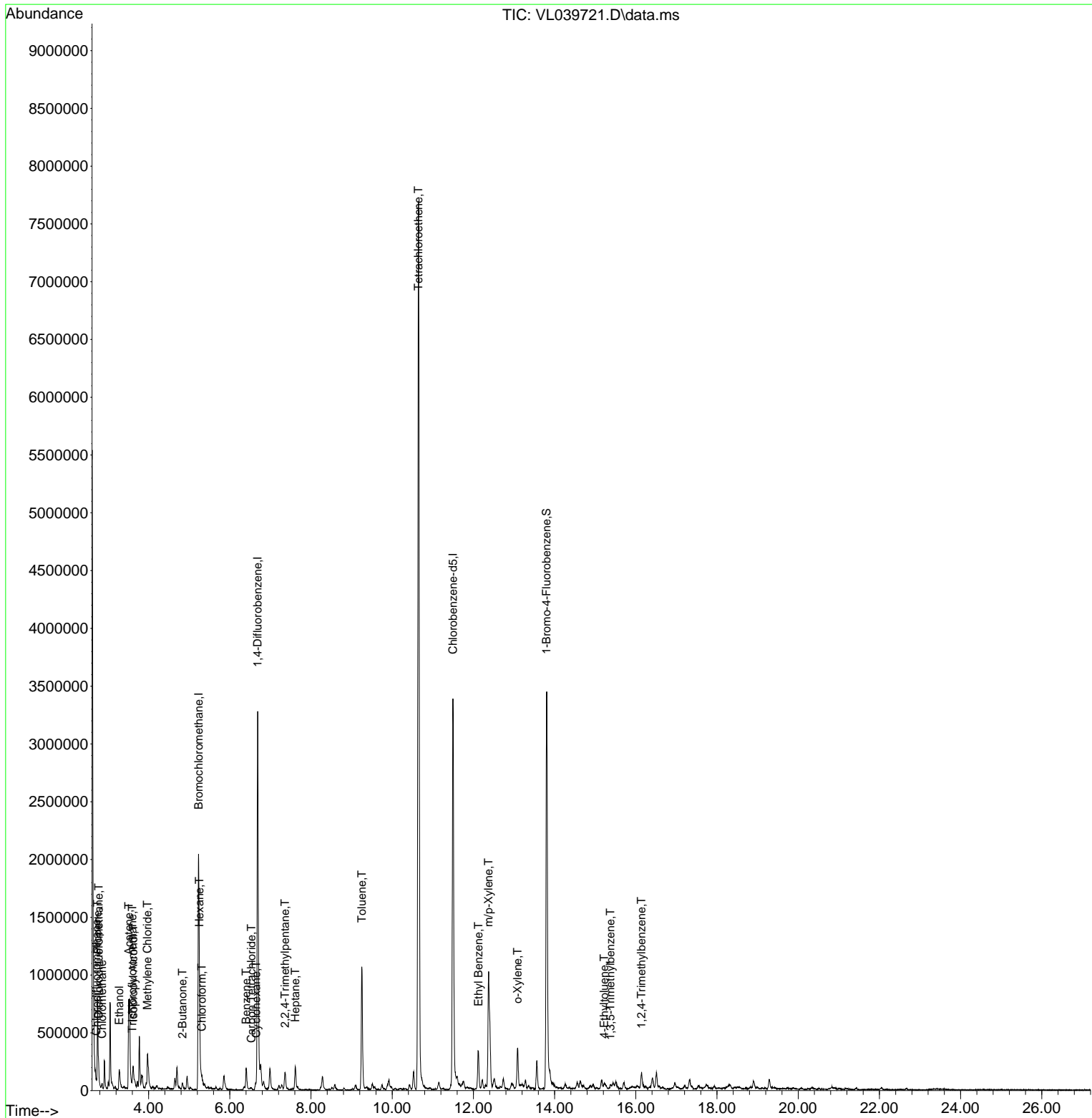
(#) = qualifier out of range (m) = manual integration (+) = signals summed

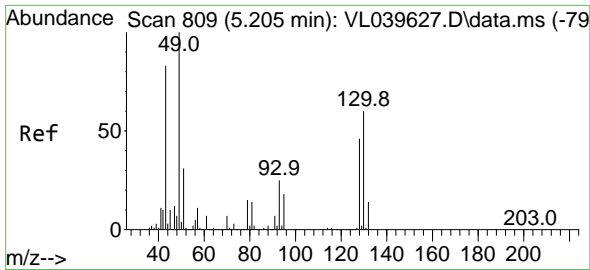
Data Path : Z:\voasrv\HPCHEM1\MSVOA_L\Data\VL101722\
 Data File : VL039721.D
 Acq On : 17 Oct 2022 16:07
 Operator : SY/AP
 Sample : N5169-03
 Misc : 400mL/MSVOA_L
 ALS Vial : 1 Sample Multiplier: 1

Instrument :
 MSVOA_L
ClientSampleId :
 IA1

Quant Time: Oct 18 05:27:07 2022
 Quant Method : Z:\voasrv\HPCHEM1\MSVOA_L\methods\VL091922AIR.M
 Quant Title : AIR ANALYSIS BY METHOD TO-15 Instrument: MSVOA_L Fri Aug
 QLast Update : Tue Oct 18 05:23:57 2022
 Response via : Initial Calibration

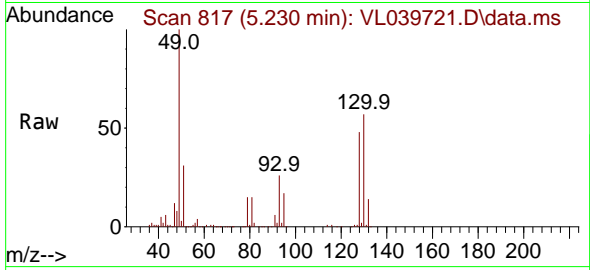
Manual Integrations
APPROVED
 Reviewed By :Semsettin Yesilyurt 10/18/2022
 Supervised By :Mahesh Dadoda 10/19/2022





#1
 Bromochloromethane
 Concen: 10.000 ppbv
 RT: 5.230 min Scan# 81
 Delta R.T. 0.006 min
 Lab File: VL039721.D
 Acq: 17 Oct 2022 16:07

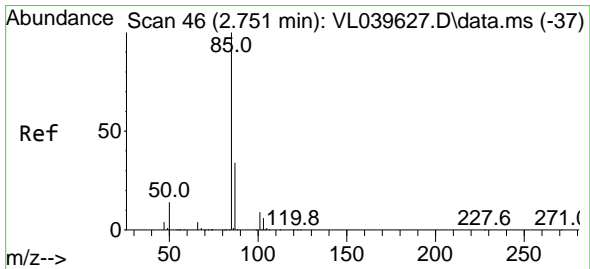
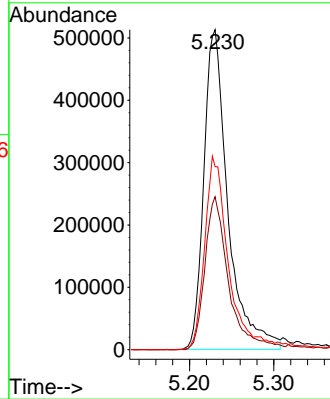
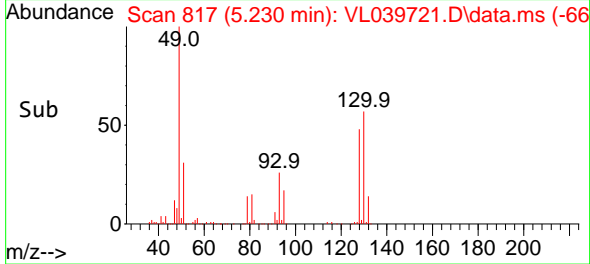
Instrument :
 MSVOA_L
 ClientSampleId :
 IA1



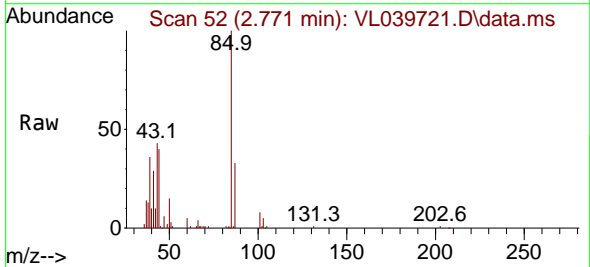
Tgt Ion: 49 Resp: 101944
 Ion Ratio Lower Upper
 49 100
 128 48.9 26.7 80.0
 130 62.7 34.3 102.8

Manual Integrations
 APPROVED

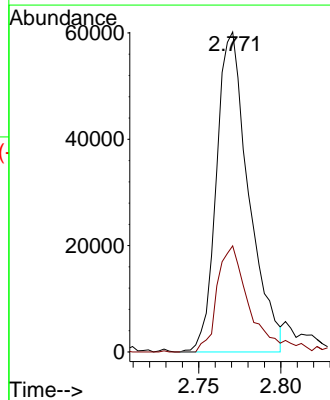
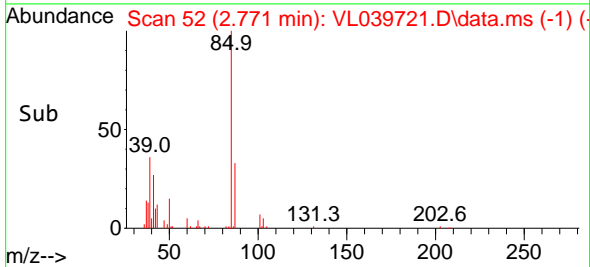
Reviewed By :Semsettin Yesilyurt 10/18/2022
 Supervised By :Mahesh Dadoda 10/19/2022

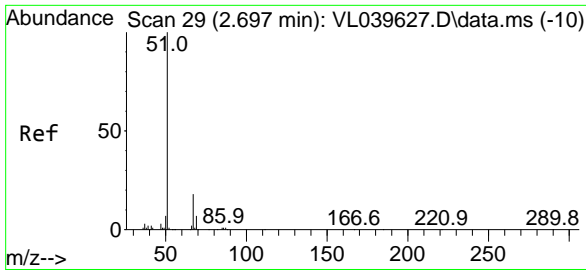


#2
 Dichlorodifluoromethane
 Concen: 0.696 ppbv
 RT: 2.771 min Scan# 52
 Delta R.T. 0.003 min
 Lab File: VL039721.D
 Acq: 17 Oct 2022 16:07



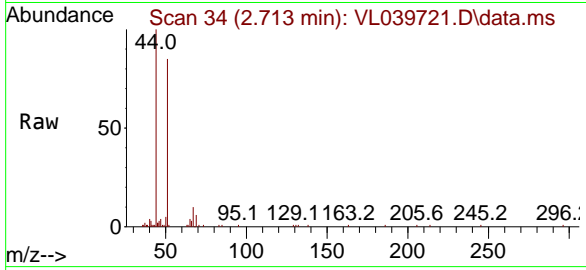
Tgt Ion: 85 Resp: 82278
 Ion Ratio Lower Upper
 85 100
 87 33.2 26.7 40.1





#3
 Chlorodifluoromethane
 Concen: 0.336 ppbv m
 RT: 2.713 min Scan# 34
 Delta R.T. -0.000 min
 Lab File: VL039721.D
 Acq: 17 Oct 2022 16:07

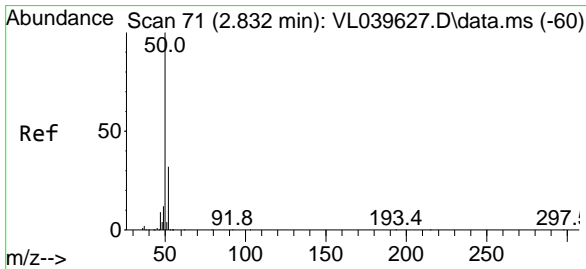
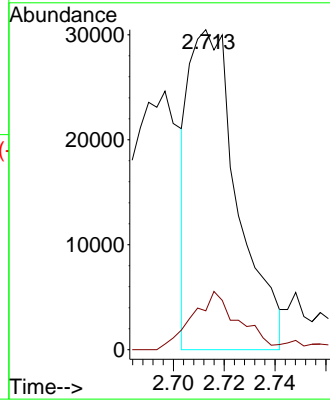
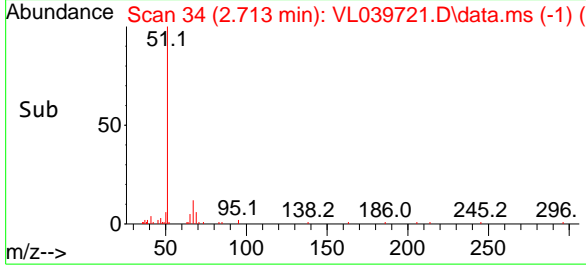
Instrument : MSVOA_L
 ClientSampleId : IA1



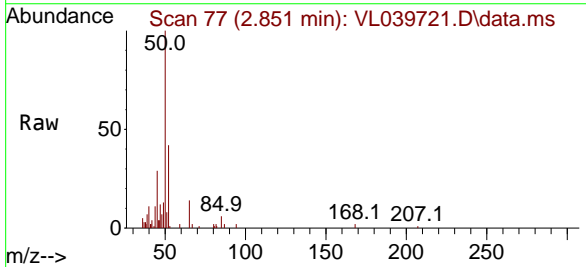
Tgt Ion: 51 Resp: 40594
 Ion Ratio Lower Upper
 51 100
 67 18.3 15.7 23.5

Manual Integrations
 APPROVED

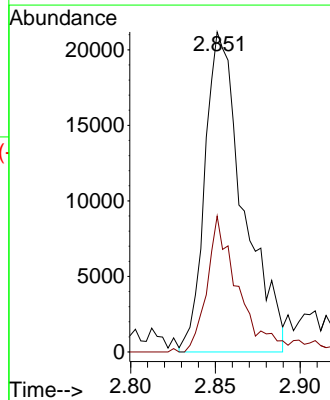
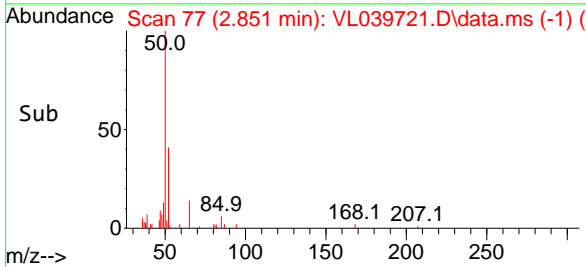
Reviewed By :Semsettin Yesilyurt 10/18/2022
 Supervised By :Mahesh Dadoda 10/19/2022

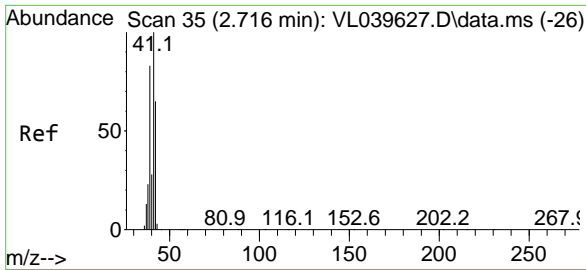


#4
 Chloromethane
 Concen: 0.460 ppbv m
 RT: 2.851 min Scan# 77
 Delta R.T. -0.000 min
 Lab File: VL039721.D
 Acq: 17 Oct 2022 16:07



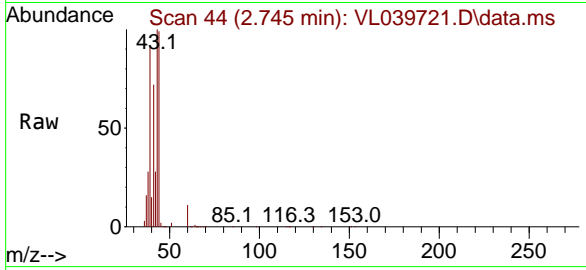
Tgt Ion: 50 Resp: 33556
 Ion Ratio Lower Upper
 50 100
 52 42.5 26.5 39.7#





#9
 Propene
 Concen: 3.506 ppbv m
 RT: 2.745 min Scan# 41
 Delta R.T. 0.013 min
 Lab File: VL039721.D
 Acq: 17 Oct 2022 16:07

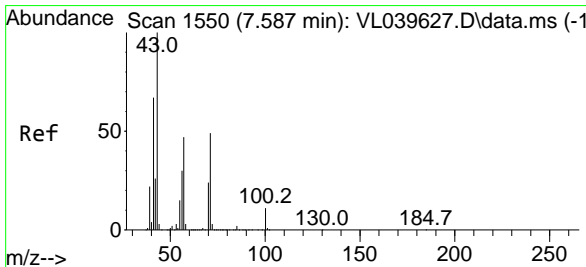
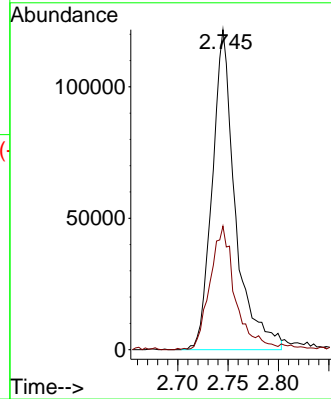
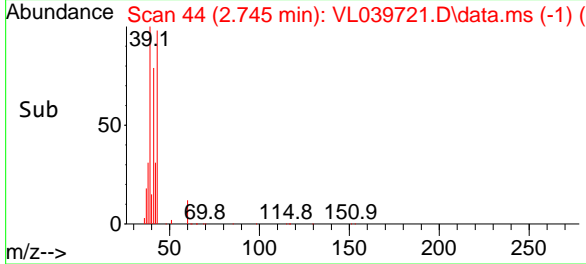
Instrument : MSVOA_L
 ClientSampleId : IA1



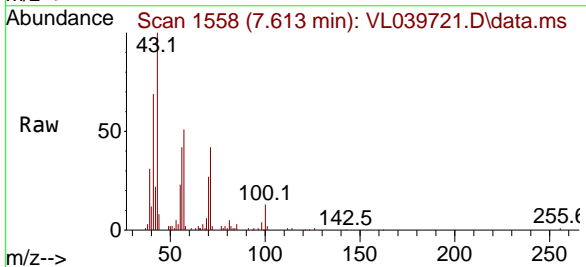
Tgt Ion: 41 Resp: 193740
 Ion Ratio Lower Upper
 41 100
 42 25.2 55.2 82.8

Manual Integrations
 APPROVED

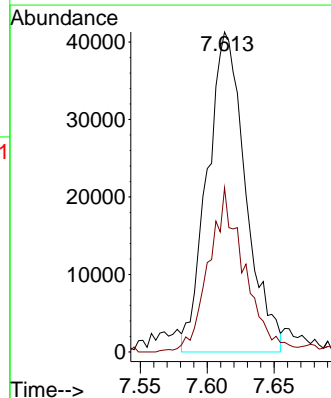
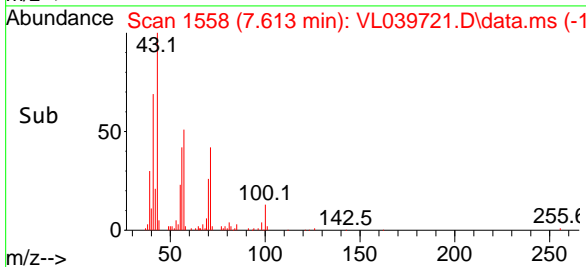
Reviewed By :Semsettin Yesilyurt 10/18/2022
 Supervised By :Mahesh Dadoda 10/19/2022

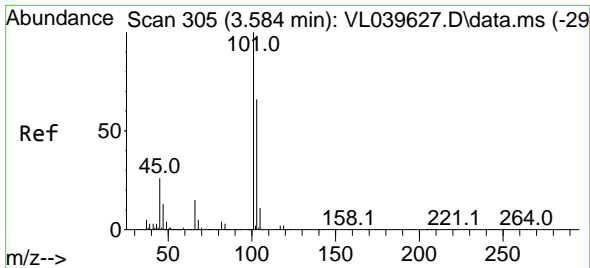


#10
 Heptane
 Concen: 0.639 ppbv m
 RT: 7.613 min Scan# 1558
 Delta R.T. 0.003 min
 Lab File: VL039721.D
 Acq: 17 Oct 2022 16:07



Tgt Ion: 43 Resp: 82394
 Ion Ratio Lower Upper
 43 100
 57 49.7 40.5 60.7





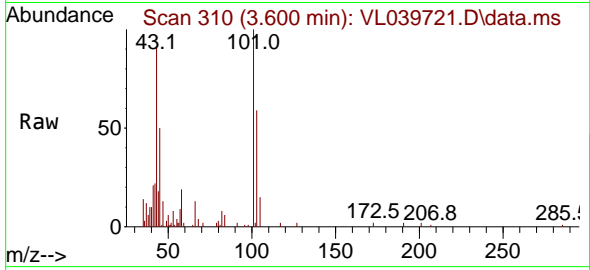
#11
 Trichlorofluoromethane
 Concen: 0.215 ppbv
 RT: 3.600 min Scan# 310
 Delta R.T. -0.000 min
 Lab File: VL039721.D
 Acq: 17 Oct 2022 16:07

Instrument :

MSVOA_L

ClientSampleId :

IA1

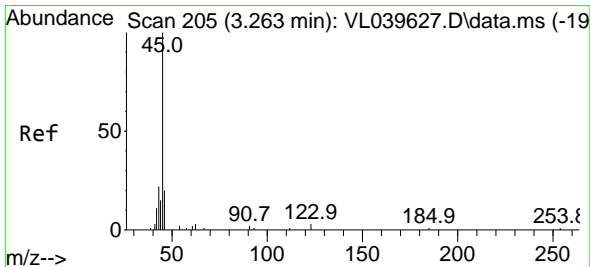
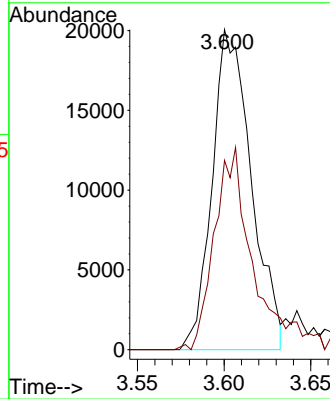
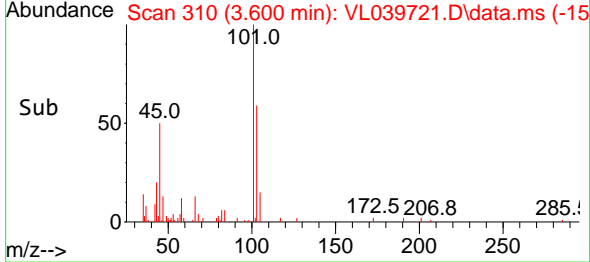


Tgt Ion:101 Resp: 31488
 Ion Ratio Lower Upper
 101 100
 103 58.3 51.8 77.8

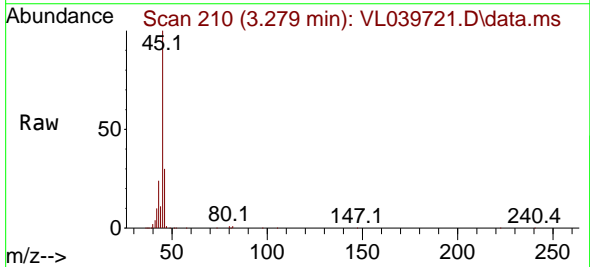
Manual Integrations

APPROVED

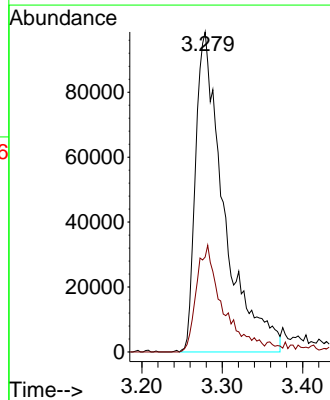
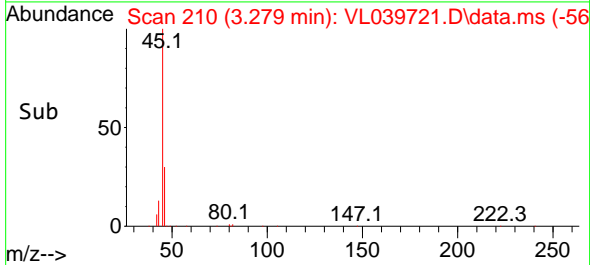
Reviewed By :Semsettin Yesilyurt 10/18/2022
 Supervised By :Mahesh Dadoda 10/19/2022

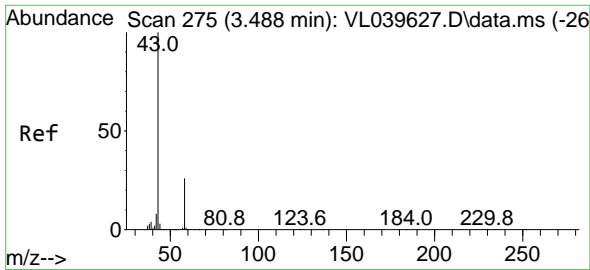


#13
 Ethanol
 Concen: 57.763 ppbv m
 RT: 3.279 min Scan# 210
 Delta R.T. -0.003 min
 Lab File: VL039721.D
 Acq: 17 Oct 2022 16:07



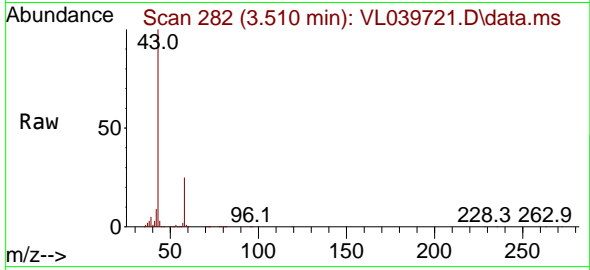
Tgt Ion: 45 Resp: 243178
 Ion Ratio Lower Upper
 45 100
 46 31.9 22.8 91.2





#15
 Acetone
 Concen: 6.291 ppbv m
 RT: 3.510 min Scan# 282
 Delta R.T. 0.006 min
 Lab File: VL039721.D
 Acq: 17 Oct 2022 16:07

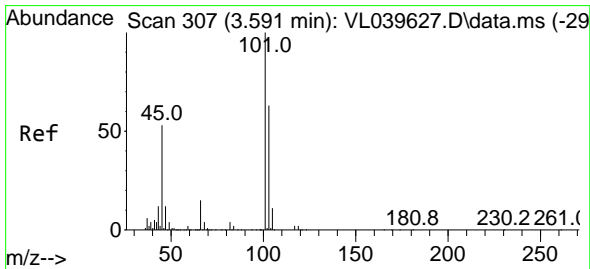
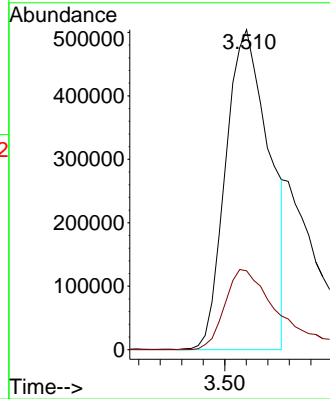
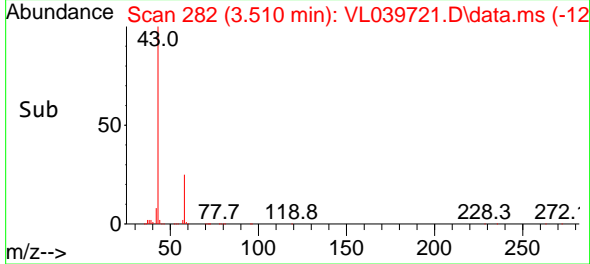
Instrument : MSVOA_L
 ClientSampleId : IA1



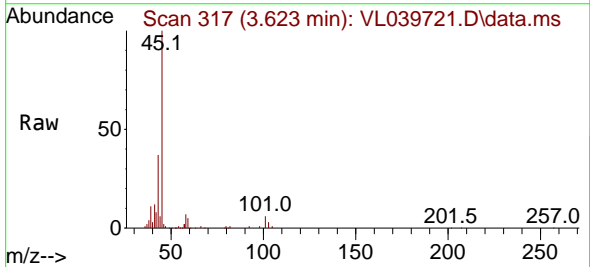
Tgt Ion: 43 Resp: 713650
 Ion Ratio Lower Upper
 43 100
 58 33.4 21.0 31.6

Manual Integrations
 APPROVED

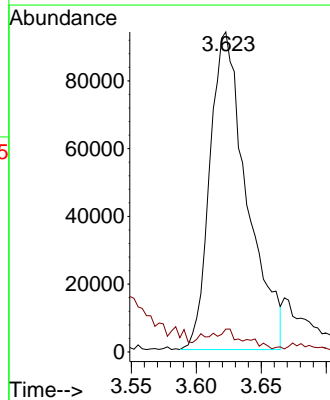
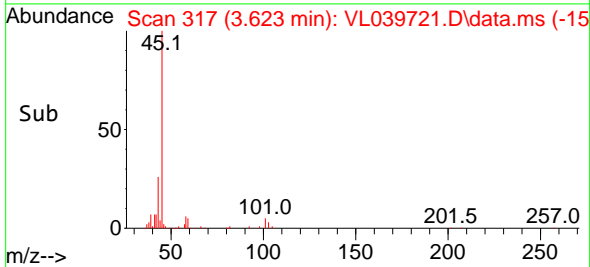
Reviewed By :Semsettin Yesilyurt 10/18/2022
 Supervised By :Mahesh Dadoda 10/19/2022

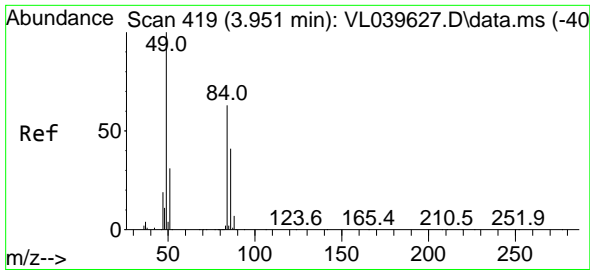


#19
 Isopropyl Alcohol
 Concen: 3.213 ppbv
 RT: 3.623 min Scan# 317
 Delta R.T. 0.010 min
 Lab File: VL039721.D
 Acq: 17 Oct 2022 16:07



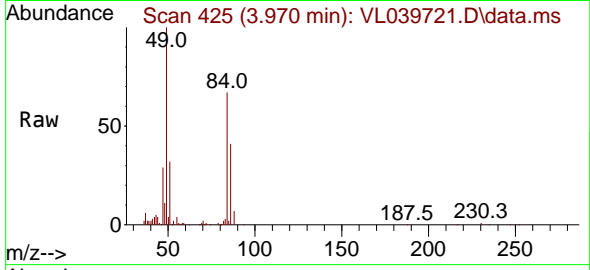
Tgt Ion: 45 Resp: 185788
 Ion Ratio Lower Upper
 45 100
 58 4.9 3.2 4.8





#20
Methylene Chloride
Concen: 1.899 ppbv
RT: 3.970 min Scan# 419
Delta R.T. -0.000 min
Lab File: VL039721.D
Acq: 17 Oct 2022 16:07

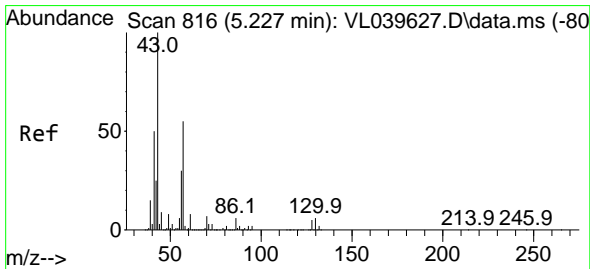
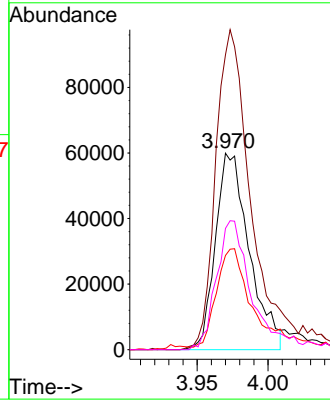
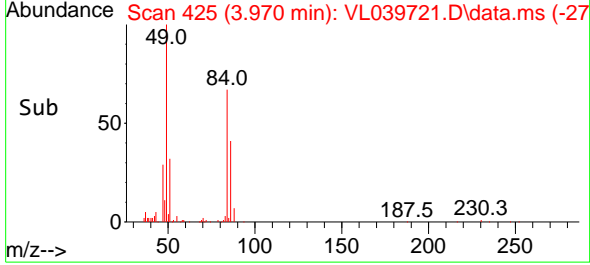
Instrument : MSVOA_L
ClientSampleId : IA1



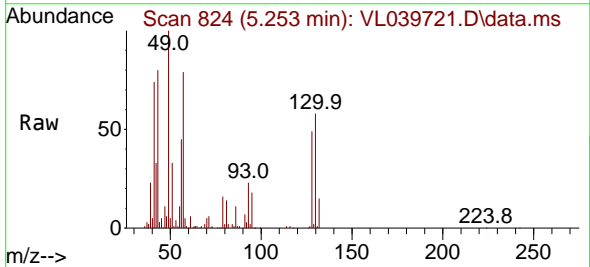
Tgt Ion: 84 Resp: 9957
Ion Ratio Lower Upper
84 100
49 150.1 123.1 184.7
51 45.8 34.4 51.6
86 61.8 51.1 76.7

Manual Integrations
APPROVED

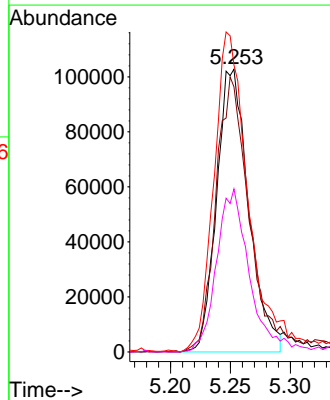
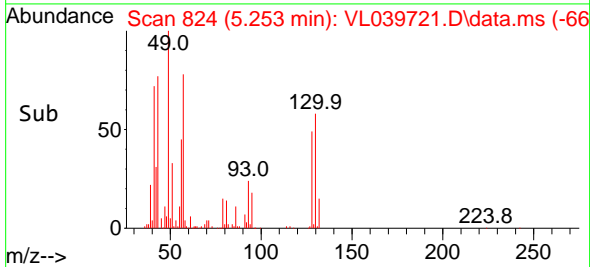
Reviewed By :Semsettin Yesilyurt 10/18/2022
Supervised By :Mahesh Dadoda 10/19/2022

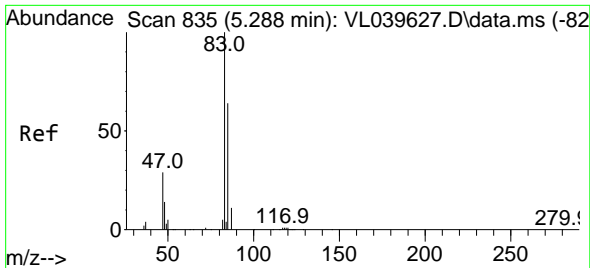


#26
Hexane
Concen: 1.826 ppbv
RT: 5.253 min Scan# 824
Delta R.T. 0.006 min
Lab File: VL039721.D
Acq: 17 Oct 2022 16:07



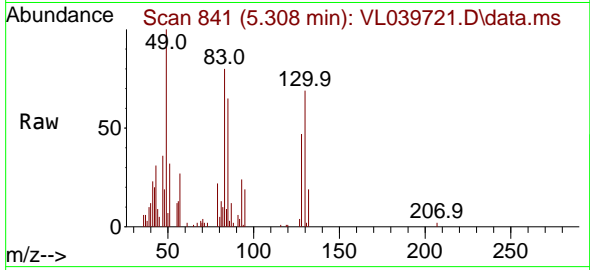
Tgt Ion: 57 Resp: 191722
Ion Ratio Lower Upper
57 100
41 101.3 76.9 115.3
43 126.1 191.0 286.6#
56 59.1 43.2 64.8





#29
 Chloroform
 Concen: 0.168 ppbv m
 RT: 5.308 min Scan# 841
 Delta R.T. -0.000 min
 Lab File: VL039721.D
 Acq: 17 Oct 2022 16:07

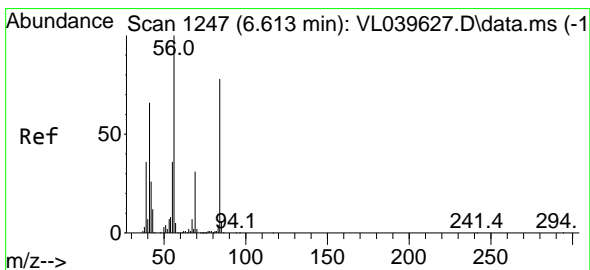
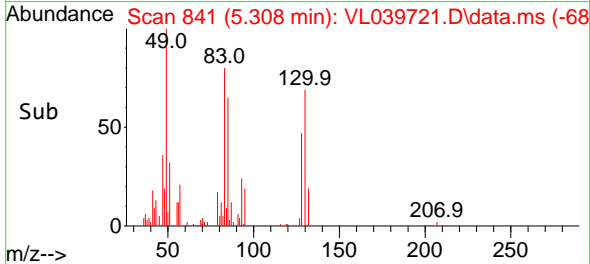
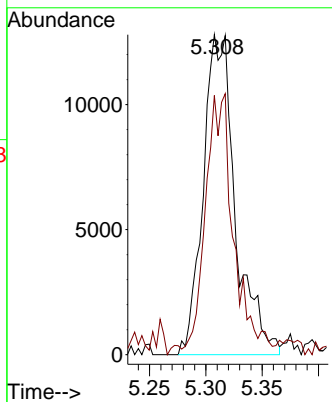
Instrument : MSVOA_L
 ClientSampleId : IA1



Tgt Ion: 83 Resp: 2539
 Ion Ratio Lower Upper
 83 100
 85 81.0 52.8 79.2

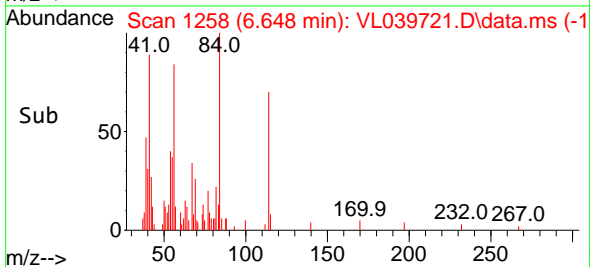
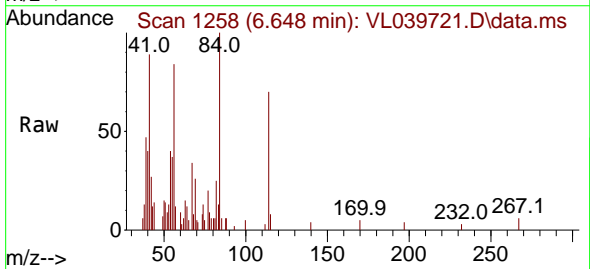
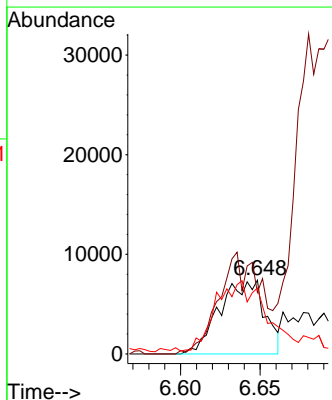
Manual Integrations
 APPROVED

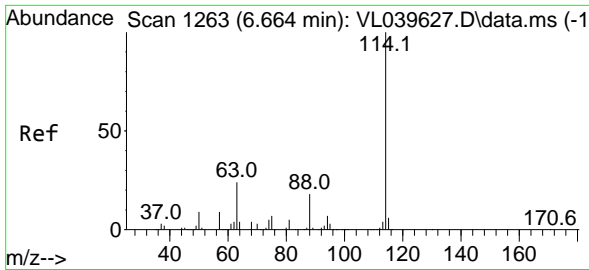
Reviewed By :Semsettin Yesilyurt 10/18/2022
 Supervised By :Mahesh Dadoda 10/19/2022



#30
 Cyclohexane
 Concen: 0.180 ppbv m
 RT: 6.648 min Scan# 1258
 Delta R.T. 0.016 min
 Lab File: VL039721.D
 Acq: 17 Oct 2022 16:07

Tgt Ion: 84 Resp: 14600
 Ion Ratio Lower Upper
 84 100
 56 132.6 107.7 161.5
 41 119.1 67.7 101.5#





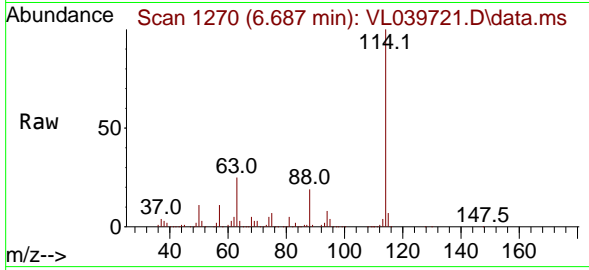
#33
 1,4-Difluorobenzene
 Concen: 10.000 ppbv
 RT: 6.687 min Scan# 1114
 Delta R.T. -0.000 min
 Lab File: VL039721.D
 Acq: 17 Oct 2022 16:07

Instrument :

MSVOA_L

ClientSampleId :

IA1

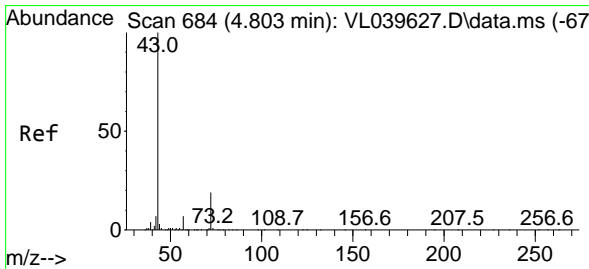
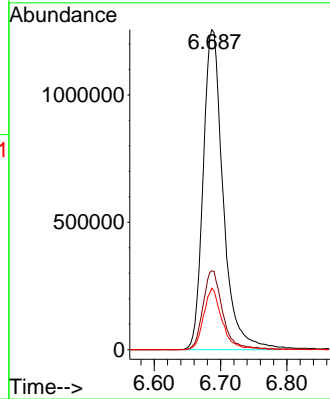
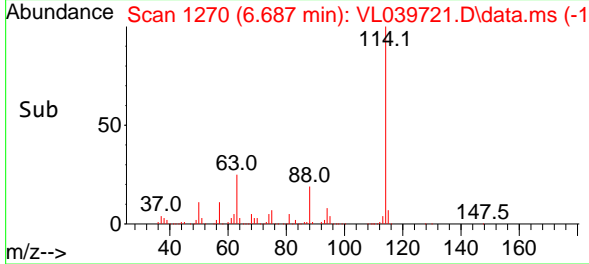


Tgt Ion:114 Resp: 262858
 Ion Ratio Lower Upper
 114 100
 63 24.6 20.2 30.4
 88 18.1 14.5 21.7

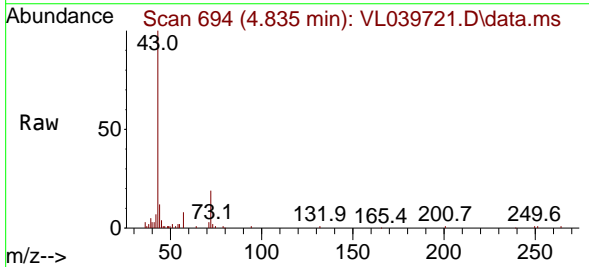
Manual Integrations

APPROVED

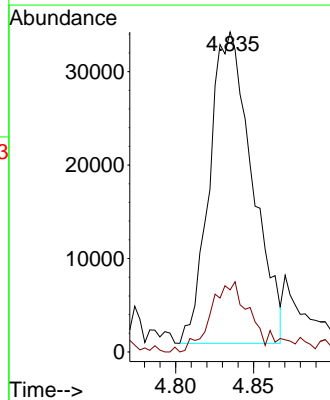
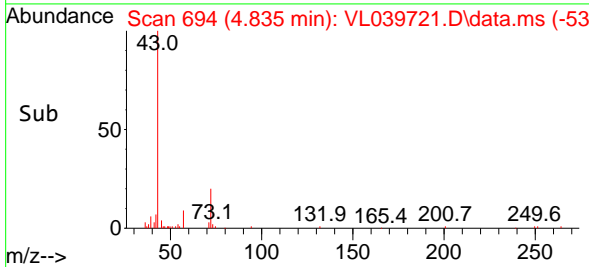
Reviewed By :Semsettin Yesilyurt 10/18/2022
 Supervised By :Mahesh Dadoda 10/19/2022

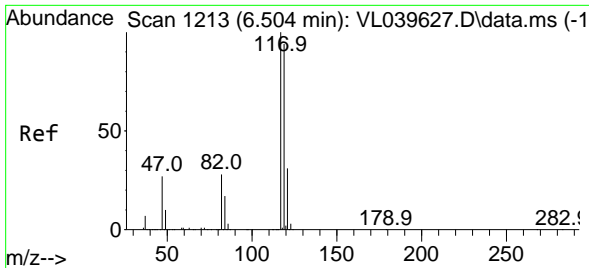


#34
 2-Butanone
 Concen: 0.492 ppbv
 RT: 4.835 min Scan# 694
 Delta R.T. 0.013 min
 Lab File: VL039721.D
 Acq: 17 Oct 2022 16:07



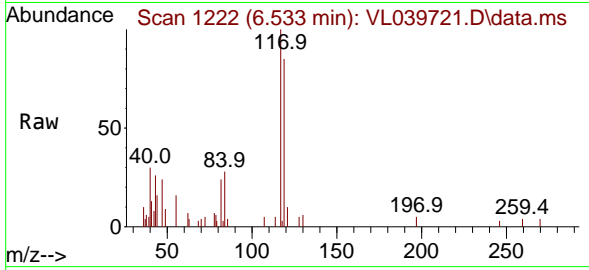
Tgt Ion: 43 Resp: 63531
 Ion Ratio Lower Upper
 43 100
 72 24.9 17.9 26.9





#35
 Carbon Tetrachloride
 Concen: 0.063 ppbv m
 RT: 6.533 min Scan# 1181
 Delta R.T. 0.006 min
 Lab File: VL039721.D
 Acq: 17 Oct 2022 16:07

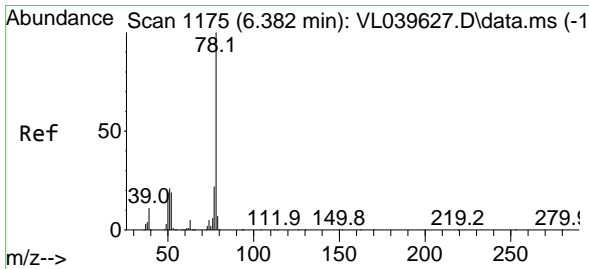
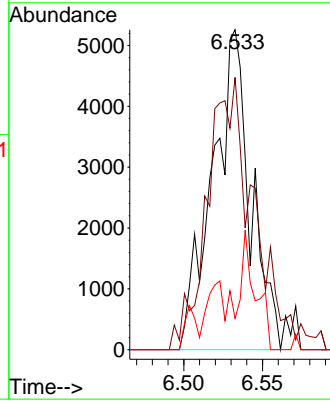
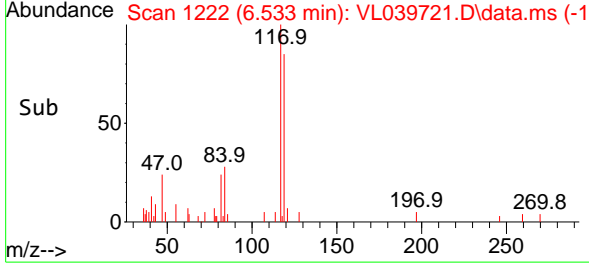
Instrument : MSVOA_L
 ClientSampleId : IA1



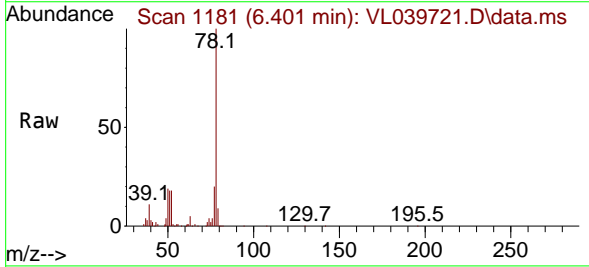
Tgt Ion: 117 Resp: 880
 Ion Ratio Lower Upper
 117 100
 119 85.1 75.4 113.2
 121 9.8 24.2 36.2

Manual Integrations
APPROVED

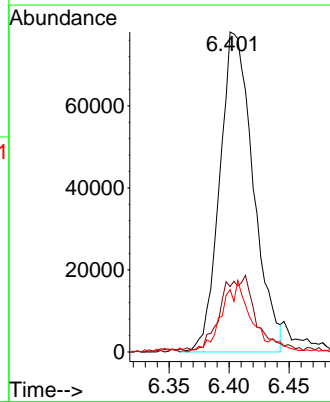
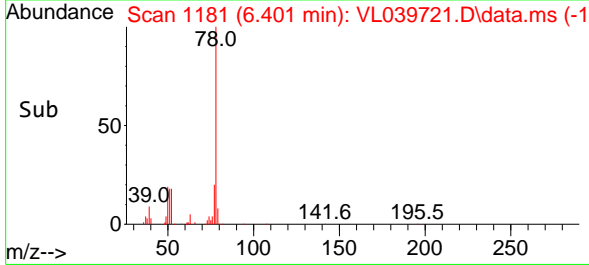
Reviewed By :Semsettin Yesilyurt 10/18/2022
 Supervised By :Mahesh Dadoda 10/19/2022

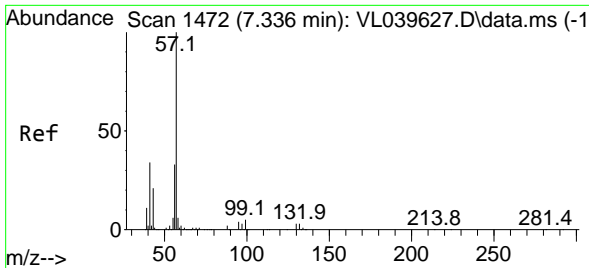


#36
 Benzene
 Concen: 0.755 ppbv
 RT: 6.401 min Scan# 1181
 Delta R.T. -0.000 min
 Lab File: VL039721.D
 Acq: 17 Oct 2022 16:07



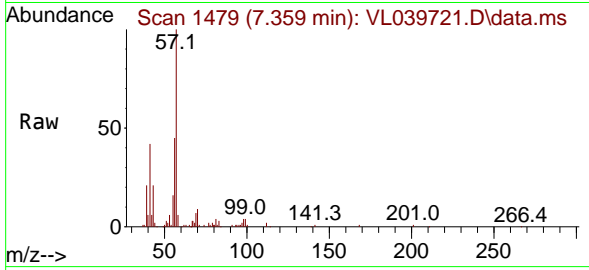
Tgt Ion: 78 Resp: 151749
 Ion Ratio Lower Upper
 78 100
 77 19.6 20.3 30.5#
 50 18.2 15.5 23.3





#44
 2,2,4-Trimethylpentane
 Concen: 0.322 ppbv m
 RT: 7.359 min Scan# 1472
 Delta R.T. 0.003 min
 Lab File: VL039721.D
 Acq: 17 Oct 2022 16:07

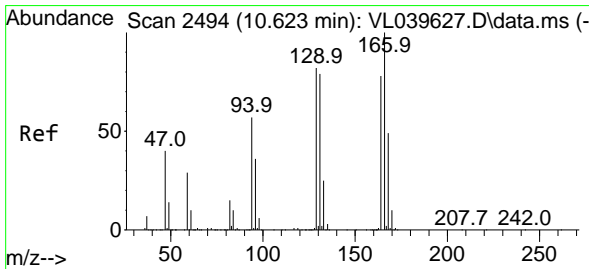
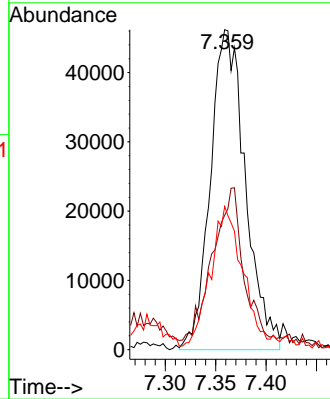
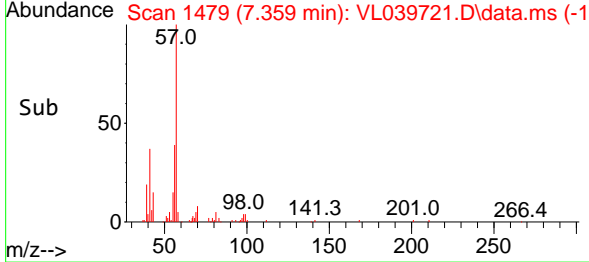
Instrument : MSVOA_L
 ClientSampleId : IA1



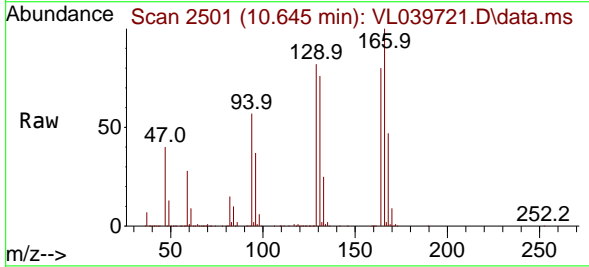
Tgt Ion: 57 Resp: 11157
 Ion Ratio Lower Upper
 57 100
 41 0.0 27.4 41.2
 56 45.7 24.5 36.7

Manual Integrations
 APPROVED

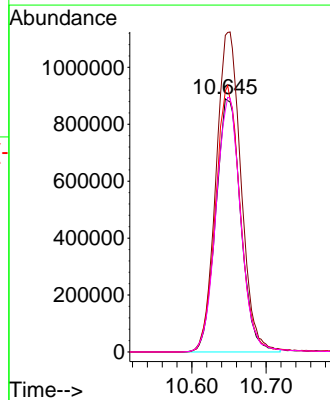
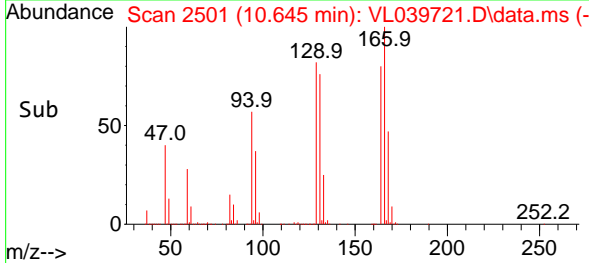
Reviewed By :Semsettin Yesilyurt 10/18/2022
 Supervised By :Mahesh Dadoda 10/19/2022

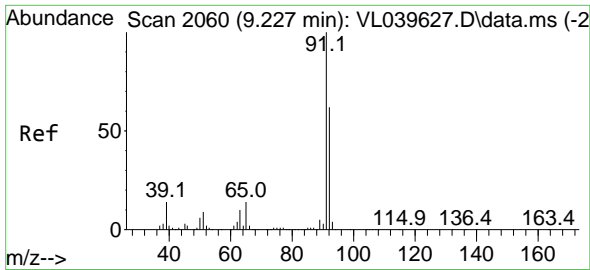


#52
 Tetrachloroethene
 Concen: 27.021 ppbv
 RT: 10.645 min Scan# 2501
 Delta R.T. -0.000 min
 Lab File: VL039721.D
 Acq: 17 Oct 2022 16:07



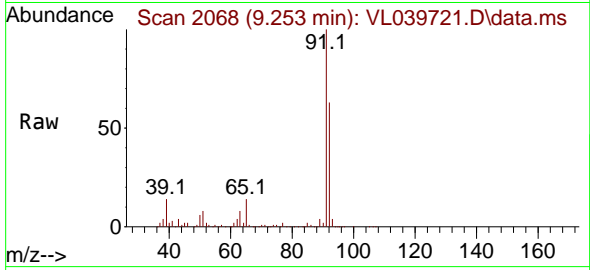
Tgt Ion:164 Resp: 2071718
 Ion Ratio Lower Upper
 164 100
 166 125.1 102.2 153.2
 129 103.0 85.8 128.8
 131 95.4 83.3 124.9





#53
 Toluene
 Concen: 3.738 ppbv
 RT: 9.253 min Scan# 2068
 Delta R.T. 0.003 min
 Lab File: VL039721.D
 Acq: 17 Oct 2022 16:07

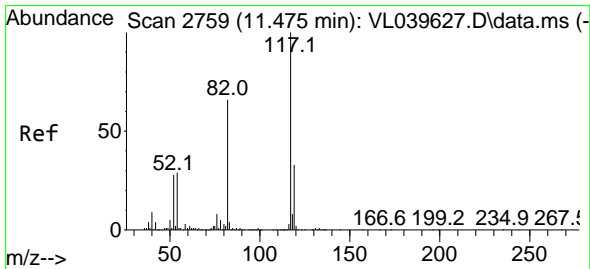
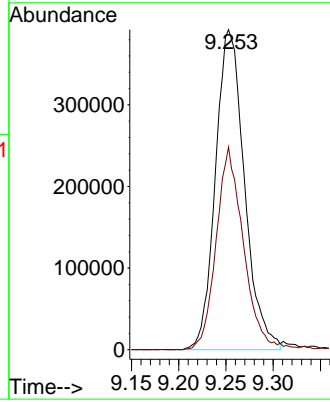
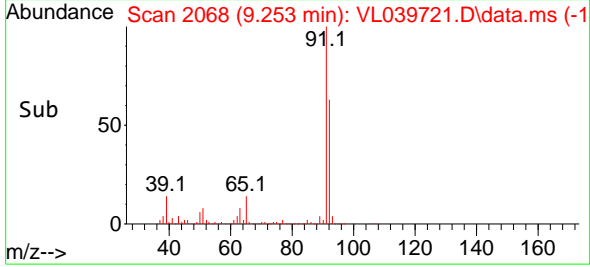
Instrument : MSVOA_L
 ClientSampleId : IA1



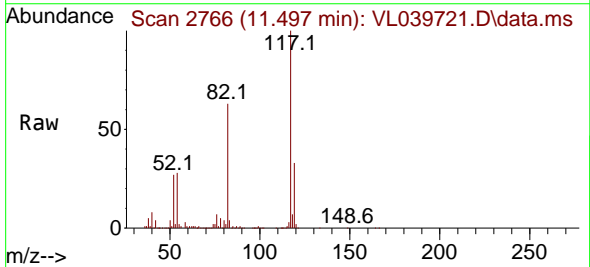
Tgt Ion: 91 Resp: 83547
 Ion Ratio Lower Upper
 91 100
 92 60.0 48.2 72.2

Manual Integrations
APPROVED

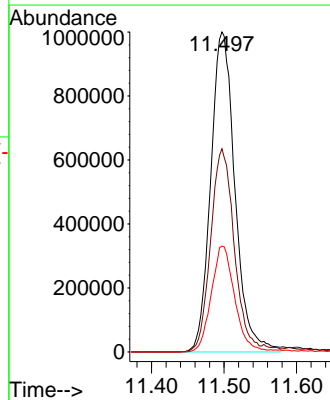
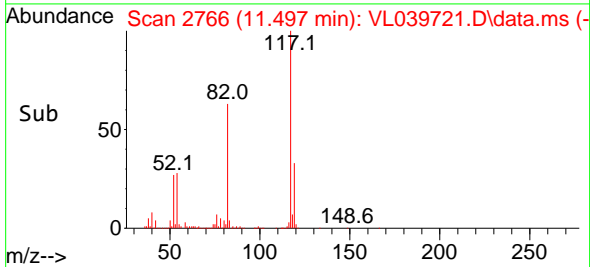
Reviewed By :Semsettin Yesilyurt 10/18/2022
 Supervised By :Mahesh Dadoda 10/19/2022

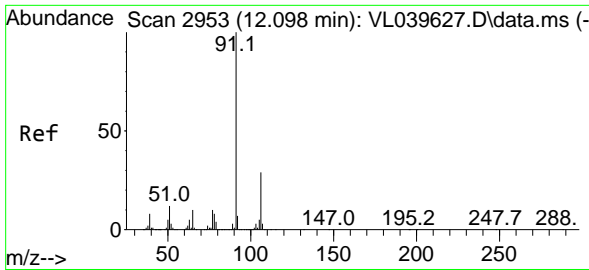


#55
 Chlorobenzene-d5
 Concen: 10.000 ppbv
 RT: 11.497 min Scan# 2766
 Delta R.T. 0.006 min
 Lab File: VL039721.D
 Acq: 17 Oct 2022 16:07



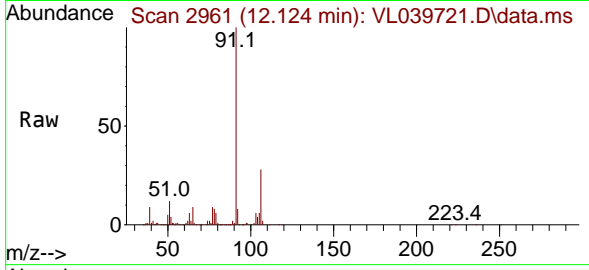
Tgt Ion:117 Resp: 2322380
 Ion Ratio Lower Upper
 117 100
 82 62.7 50.8 76.2
 119 32.6 24.1 36.1





#58
 Ethyl Benzene
 Concen: 1.100 ppbv m
 RT: 12.124 min Scan# 2953
 Delta R.T. 0.010 min
 Lab File: VL039721.D
 Acq: 17 Oct 2022 16:07

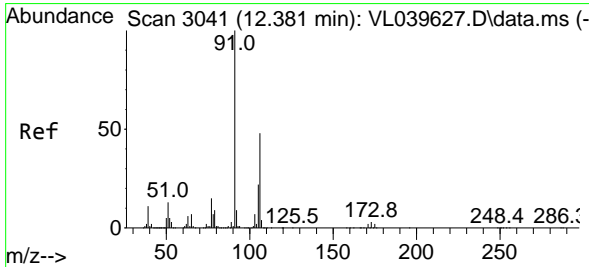
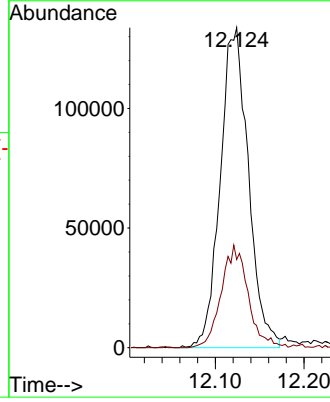
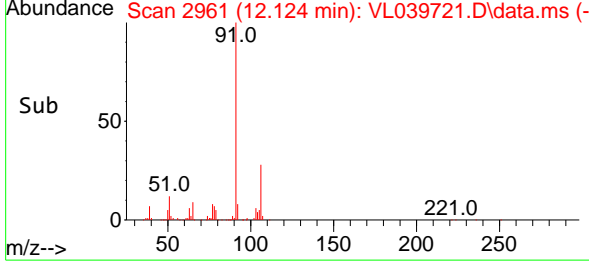
Instrument : MSVOA_L
 ClientSampleId : IA1



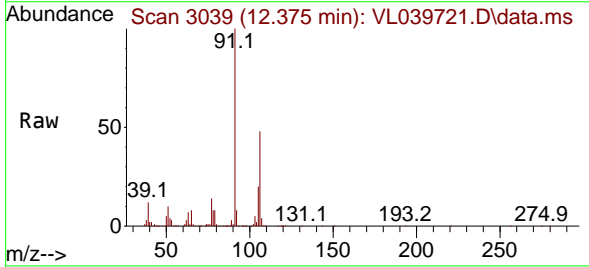
Tgt Ion: 91 Resp: 294520
 Ion Ratio Lower Upper
 91 100
 106 27.5 25.4 38.0

Manual Integrations
APPROVED

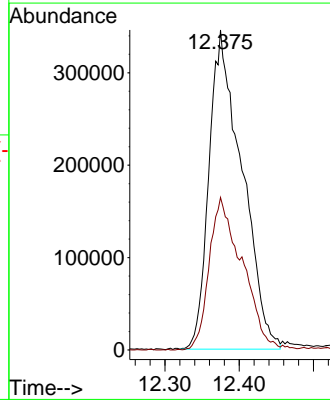
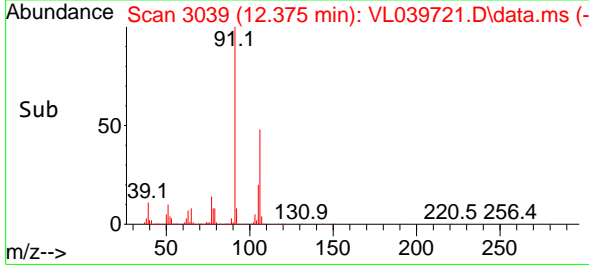
Reviewed By :Semsettin Yesilyurt 10/18/2022
 Supervised By :Mahesh Dadoda 10/19/2022

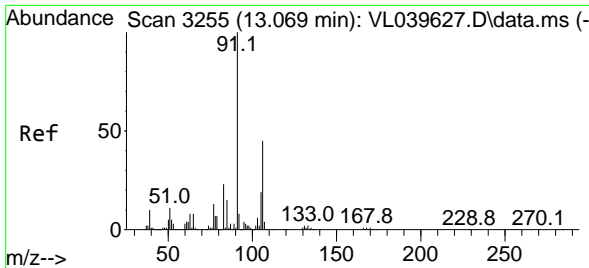


#59
 m/p-Xylene
 Concen: 4.441 ppbv
 RT: 12.375 min Scan# 3039
 Delta R.T. -0.026 min
 Lab File: VL039721.D
 Acq: 17 Oct 2022 16:07



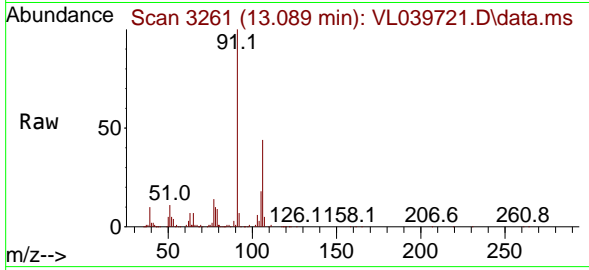
Tgt Ion: 91 Resp: 1058176
 Ion Ratio Lower Upper
 91 100
 106 48.3 35.4 53.2





#60
 o-Xylene
 Concen: 1.183 ppbv
 RT: 13.089 min Scan# 31
 Delta R.T. 0.003 min
 Lab File: VL039721.D
 Acq: 17 Oct 2022 16:07

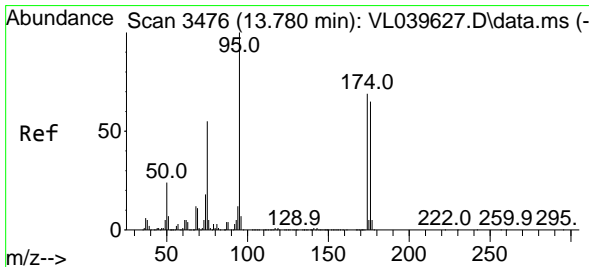
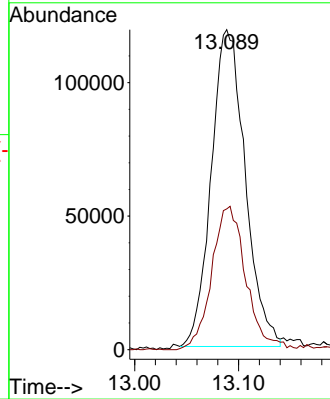
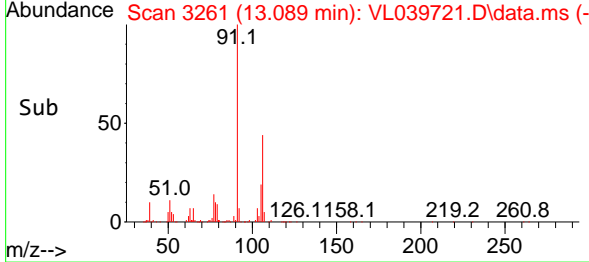
Instrument :
 MSVOA_L
 ClientSampleId :
 IA1



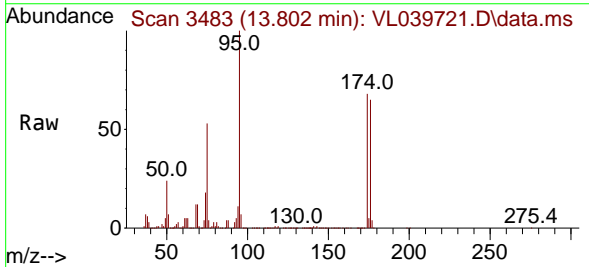
Tgt Ion: 91 Resp: 26930
 Ion Ratio Lower Upper
 91 100
 106 46.0 22.4 67.3

Manual Integrations
 APPROVED

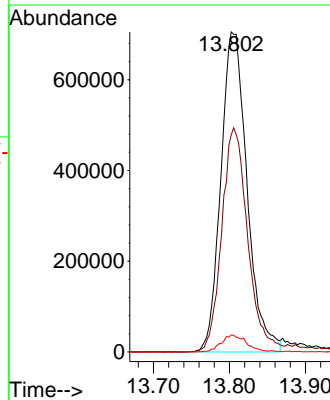
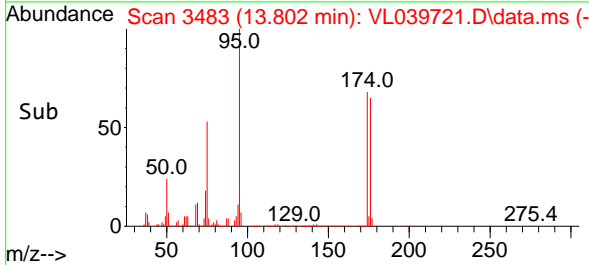
Reviewed By :Semsettin Yesilyurt 10/18/2022
 Supervised By :Mahesh Dadoda 10/19/2022

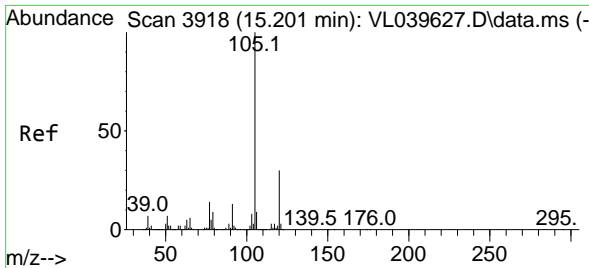


#68
 1-Bromo-4-Fluorobenzene
 Concen: 9.740 ppbv
 RT: 13.802 min Scan# 3483
 Delta R.T. 0.003 min
 Lab File: VL039721.D
 Acq: 17 Oct 2022 16:07



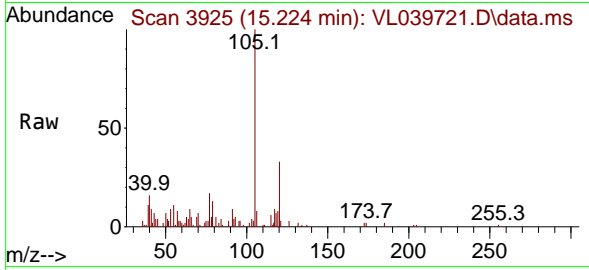
Tgt Ion: 95 Resp: 1688650
 Ion Ratio Lower Upper
 95 100
 174 73.2 55.9 83.9
 175 5.4 4.2 6.4





#72
 4-Ethyltoluene
 Concen: 0.131 ppbv m
 RT: 15.224 min Scan# 3918
 Delta R.T. 0.003 min
 Lab File: VL039721.D
 Acq: 17 Oct 2022 16:07

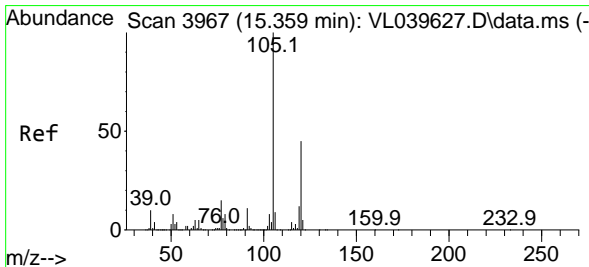
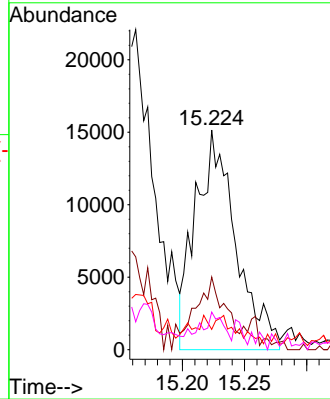
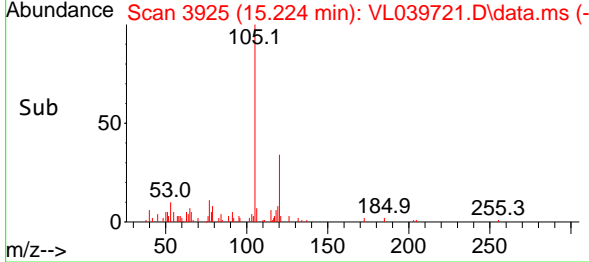
Instrument : MSVOA_L
 ClientSampleId : IA1



Tgt Ion:105 Resp: 34130
 Ion Ratio Lower Upper
 105 100
 120 32.0 24.2 36.2
 91 21.3 10.2 15.4
 77 15.6 11.1 16.7

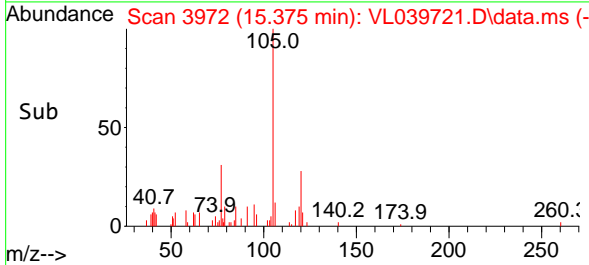
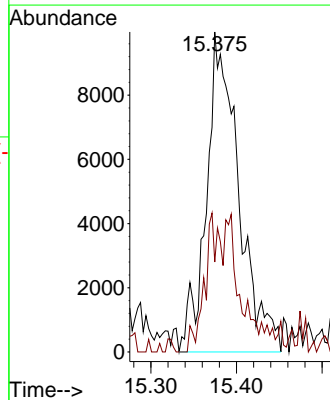
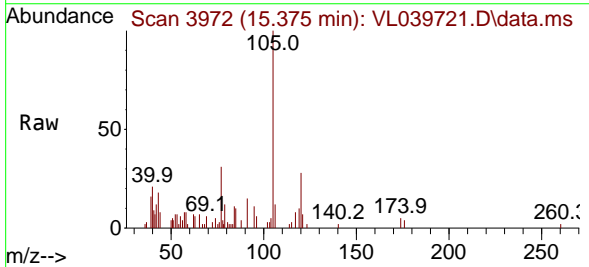
Manual Integrations
APPROVED

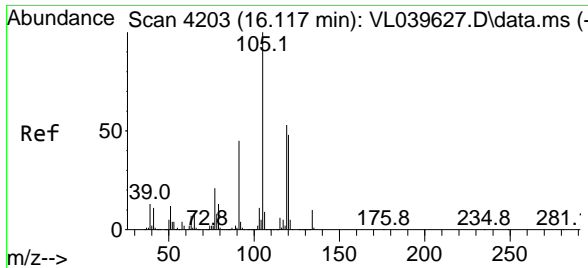
Reviewed By :Semsettin Yesilyurt 10/18/2022
 Supervised By :Mahesh Dadoda 10/19/2022



#73
 1,3,5-Trimethylbenzene
 Concen: 0.110 ppbv m
 RT: 15.375 min Scan# 3972
 Delta R.T. -0.003 min
 Lab File: VL039721.D
 Acq: 17 Oct 2022 16:07

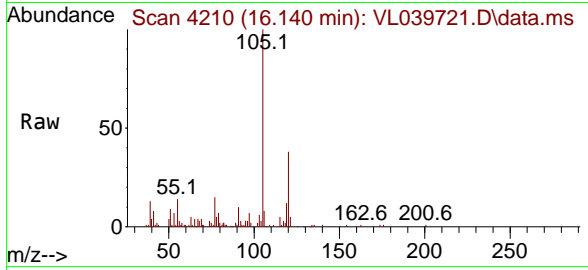
Tgt Ion:105 Resp: 26125
 Ion Ratio Lower Upper
 105 100
 120 28.1 38.2 57.4#





#74
 1,2,4-Trimethylbenzene
 Concen: 0.348 ppbv
 RT: 16.140 min Scan# 41
 Delta R.T. 0.006 min
 Lab File: VL039721.D
 Acq: 17 Oct 2022 16:07

Instrument :
 MSVOA_L
 ClientSampleId :
 IA1



Tgt Ion:105 Resp: 92698

Ion	Ratio	Lower	Upper
105	100		
120	37.7	39.5	59.3
91	9.4	39.2	58.8
77	14.9	17.2	25.8

Manual Integrations
APPROVED
 Reviewed By :Semsettin Yesilyurt 10/18/2022
 Supervised By :Mahesh Dadoda 10/19/2022

