

Data Path : Z:\voasrv\HPCHEM1\MSVOA_L\Data\VL110222\
 Data File : VL039813.D
 Acq On : 2 Nov 2022 12:39
 Operator : SY/AP
 Sample : VSTDIC0.5
 Misc : 400mL/MSVOA_L
 ALS Vial : 1 Sample Multiplier: 1

Instrument :
 MSVOA_L
 ClientSampleId :

Quant Time: Nov 03 09:14:33 2022
 Quant Method : Z:\voasrv\HPCHEM1\MSVOA_L\methods\VL110222AIR.M
 Quant Title : AIR ANALYSIS BY METHOD TO-15 Instrument: MSVOA_L Fri Aug 26 06:05:16 2022
 QLast Update : Wed Nov 02 15:18:40 2022
 Response via : Initial Calibration

Compound	R.T.	QIon	Response	Conc	Units	Dev(Min)
Internal Standards						
1) Bromochloromethane	5.189	49	1086280	10.000	ppbv	0.00
33) 1,4-Difluorobenzene	6.645	114	2957924	10.000	ppbv	0.00
55) Chlorobenzene-d5	11.449	117	2753224	10.000	ppbv	0.00
System Monitoring Compounds						
68) 1-Bromo-4-Fluorobenzene	13.761	95	2067625	10.033	ppbv	0.00
Spiked Amount	10.000	Range	65 - 135	Recovery	=	100.300%
Target Compounds						
						Qvalue
2) Dichlorodifluoromethane	2.742	85	94931	0.518	ppbv	91
3) Chlorodifluoromethane	2.687	51	66774	0.516	ppbv	100
4) Chloromethane	2.822	50	39147	0.485	ppbv	97
5) Vinyl Chloride	2.928	62	31527	0.483	ppbv	90
6) Bromomethane	3.131	94	10091	0.433	ppbv	94
7) Chloroethane	3.211	64	5455	0.223	ppbv	93
8) Dichlorotetrafluoroethane	2.867	85	76454	0.489	ppbv	98
9) Propene	2.706	41	30899	0.458	ppbv	84
10) Heptane	7.571	43	76146	0.471	ppbv	92
11) Trichlorofluoromethane	3.571	101	67620	0.452	ppbv	96
12) 1,1,2-Trichlorotrifluo...	4.070	101	51226	0.474	ppbv	95
13) Ethanol	3.263	45	1730	0.363	ppbv #	34
14) Bromoethene	3.375	108	20253	0.419	ppbv #	83
15) Acetone	3.488	43	65246	0.493	ppbv	92
16) 1,3-Butadiene	2.996	39	29013	0.472	ppbv	92
17) tert-Butyl alcohol	3.902	59	51191	0.407	ppbv #	85
18) 1,1-Dichloroethene	3.883	96	21164	0.427	ppbv	92
19) Isopropyl Alcohol	3.578	45	551	0.008	ppbv #	29
20) Methylene Chloride	3.938	84	25223	0.533	ppbv	95
21) Allyl Chloride	3.999	41	43422	0.519	ppbv	98
22) trans-1,2-Dichloroethene	4.446	96	22994	0.457	ppbv #	79
23) Vinyl Acetate	4.632	43	19509	0.370	ppbv #	84
24) 1,1-Dichloroethane	4.565	63	38807	0.361	ppbv	99
25) Ethyl Acetate	5.211	43	126518	0.465	ppbv #	92
26) Hexane	5.214	57	60235	0.496	ppbv	95
27) Carbon Disulfide	4.124	76	55688	0.437	ppbv #	44
28) Methyl tert-Butyl Ether	4.603	73	53493	0.487	ppbv	91
29) Chloroform	5.272	83	84037	0.492	ppbv	90
30) Cyclohexane	6.597	84	29755	0.293	ppbv #	37
31) cis-1,2-Dichloroethene	5.073	61	46950	0.424	ppbv	98
32) 1,1,1-Trichloroethane	5.999	97	84090	0.495	ppbv	98
34) 2-Butanone	4.799	43	50776	0.416	ppbv #	86
35) Carbon Tetrachloride	6.481	117	48179	0.279	ppbv	91
36) Benzene	6.362	78	121054	0.485	ppbv	96
37) 1,2-Dichloroethane	5.799	62	55390	0.463	ppbv #	92
38) Trichloroethene	7.278	130	35012	0.255	ppbv	92
39) 1,2-Dichloropropane	7.063	63	26494	0.273	ppbv	86
40) 1,4-Dioxane	7.272	88	208	0.006	ppbv #	1
41) Tetrahydrofuran	5.574	42	17942	0.176	ppbv #	7
42) Bromodichloromethane	7.230	83	35585	0.186	ppbv	99
43) Methyl Methacrylate	7.465	69	18371	0.186	ppbv #	1
44) 2,2,4-Trimethylpentane	7.317	57	212897	0.506	ppbv	98
45) t-1,3-Dichloropropene	8.700	75	38703	0.410	ppbv	99

Data Path : Z:\voasrv\HPCHEM1\MSVOA_L\Data\VL110222\
 Data File : VL039813.D
 Acq On : 2 Nov 2022 12:39
 Operator : SY/AP
 Sample : VSTDIC0.5
 Misc : 400mL/MSVOA_L
 ALS Vial : 1 Sample Multiplier: 1

Instrument :
 MSVOA_L
 ClientSampleId :

Quant Time: Nov 03 09:14:33 2022
 Quant Method : Z:\voasrv\HPCHEM1\MSVOA_L\methods\VL110222AIR.M
 Quant Title : AIR ANALYSIS BY METHOD TO-15 Instrument: MSVOA_L Fri Aug 26 06:05:16 2022
 QLast Update : Wed Nov 02 15:18:40 2022
 Response via : Initial Calibration

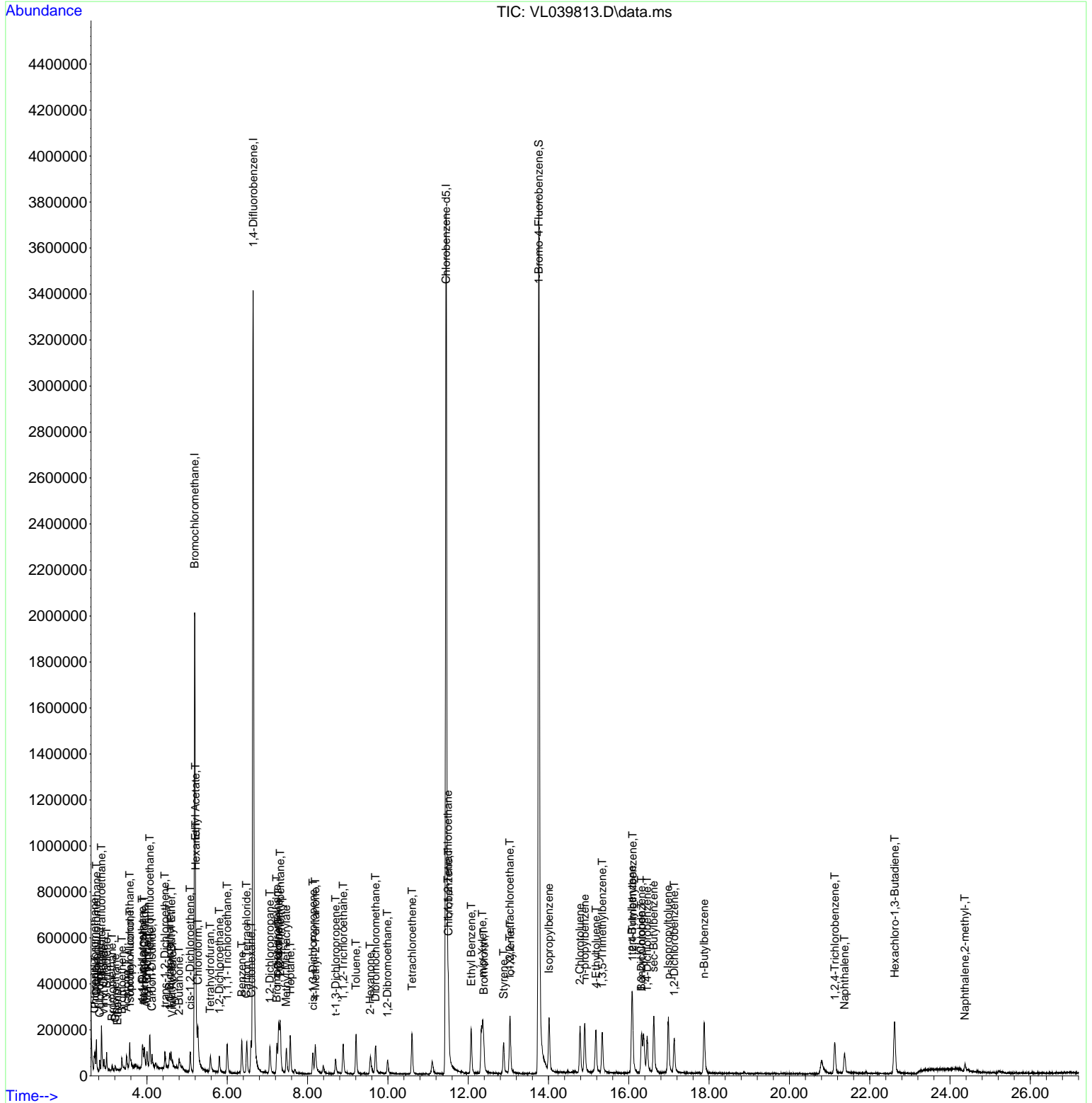
Compound	R.T.	QIon	Response	Conc	Units	Dev(Min)	
46) cis-1,3-Dichloropropene	8.134	75	56812	0.441	ppbv	#	93
47) 1,1,2-Trichloroethane	8.889	97	46610	0.473	ppbv	#	95
48) Dibromochloromethane	9.696	129	35241	0.210	ppbv	#	1
49) Bromoform	12.388	173	59669	0.443	ppbv		94
50) 4-Methyl-2-Pentanone	8.192	43	109764	0.439	ppbv		99
51) 2-Hexanone	9.558	43	28894	0.148	ppbv	#	27
52) Tetrachloroethene	10.603	164	43829	0.465	ppbv		90
53) Toluene	9.208	91	140075	0.489	ppbv		98
54) 1,2-Dibromoethane	9.989	107	24044	0.220	ppbv		95
56) 1,1,1,2-Tetrachloroethane	11.497	131	15771	0.134	ppbv	#	1
57) Chlorobenzene	11.507	112	108774	0.521	ppbv	#	87
58) Ethyl Benzene	12.076	91	186489	0.501	ppbv	#	88
59) m/p-Xylene	12.355	91	81008	0.261	ppbv	#	30
60) o-Xylene	13.047	91	152878	0.519	ppbv		99
61) Styrene	12.883	104	86814	0.479	ppbv		99
62) Isopropylbenzene	14.015	105	217942	0.507	ppbv		99
63) 1,1,2,2-Tetrachloroethane	13.034	83	48648	0.444	ppbv		83
64) n-propylbenzene	14.902	120	12681	0.110	ppbv	#	1
65) tert-Butylbenzene	16.076	119	194576	0.516	ppbv		97
66) Benzyl Chloride	16.310	91	3134	0.071	ppbv	#	63
67) sec-Butylbenzene	16.622	105	262799	0.512	ppbv		100
69) p-Isopropyltoluene	16.979	119	96543	0.227	ppbv	#	47
70) n-Butylbenzene	17.876	91	200407	0.487	ppbv		98
71) 2-Chlorotoluene	14.783	91	166206	0.515	ppbv		99
72) 4-Ethyltoluene	15.185	105	162307	0.490	ppbv		98
73) 1,3,5-Trimethylbenzene	15.339	105	146436	0.498	ppbv		99
74) 1,2,4-Trimethylbenzene	16.095	105	155871	0.499	ppbv		94
75) 1,3-Dichlorobenzene	16.310	146	36531	0.200	ppbv	#	23
76) 1,4-Dichlorobenzene	16.458	146	4792	0.027	ppbv	#	1
77) 1,2-Dichlorobenzene	17.130	146	84341	0.491	ppbv		95
78) Hexachloro-1,3-Butadiene	22.622	225	66220	0.520	ppbv		94
79) Naphthalene	21.371	128	69783	0.307	ppbv	#	92
80) Naphthalene,2-methyl-	24.371	142	34461	0.358	ppbv		99
81) 1,2,4-Trichlorobenzene	21.133	180	58135	0.458	ppbv		94

(#) = qualifier out of range (m) = manual integration (+) = signals summed

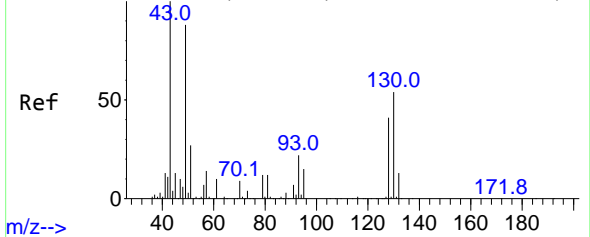
Data Path : Z:\voasrv\HPCHEM1\MSVOA_L\Data\VL110222\
 Data File : VL039813.D
 Acq On : 2 Nov 2022 12:39
 Operator : SY/AP
 Sample : VSTDIC0.5
 Misc : 400mL/MSVOA_L
 ALS Vial : 1 Sample Multiplier: 1

Instrument :
 MSVOA_L
 ClientSampleId :

Quant Time: Nov 03 09:14:33 2022
 Quant Method : Z:\voasrv\HPCHEM1\MSVOA_L\methods\VL110222AIR.M
 Quant Title : AIR ANALYSIS BY METHOD TO-15 Instrument: MSVOA_L Fri Aug 26 06:05:16 2022
 QLast Update : Wed Nov 02 15:18:40 2022
 Response via : Initial Calibration

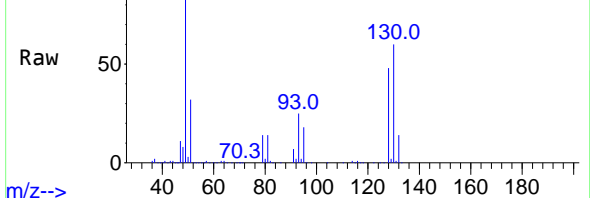


Abundance Scan 804 (5.188 min): VL039810.D\data.ms (-78)



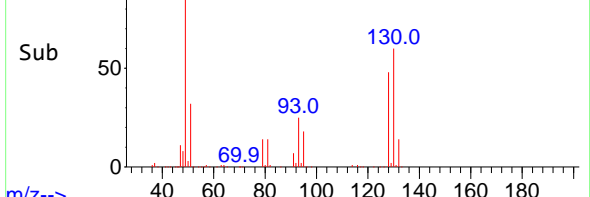
m/z-->

Abundance Scan 804 (5.189 min): VL039813.D\data.ms



m/z-->

Abundance Scan 804 (5.189 min): VL039813.D\data.ms (-64)



m/z-->

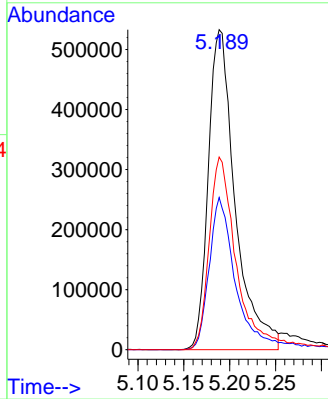
#1

Bromochloromethane
Concen: 10.000 ppbv
RT: 5.189 min Scan# 80
Delta R.T. 0.001 min
Lab File: VL039813.D
Acq: 2 Nov 2022 12:39

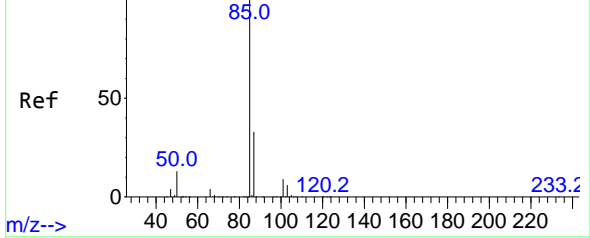
Instrument :
MSVOA_L
ClientSampleId :

Tgt Ion: 49 Resp: 1086280

Ion	Ratio	Lower	Upper
49	100		
128	49.5	24.6	73.6
130	63.3	31.1	93.2

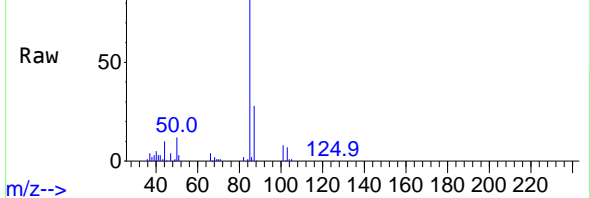


Abundance Scan 43 (2.742 min): VL039810.D\data.ms (-33)



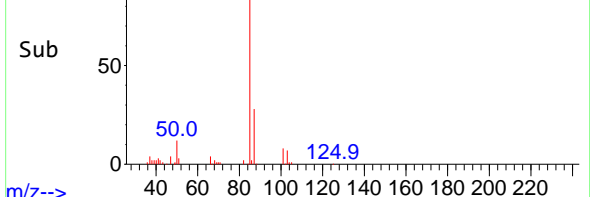
m/z-->

Abundance Scan 43 (2.742 min): VL039813.D\data.ms



m/z-->

Abundance Scan 43 (2.742 min): VL039813.D\data.ms (-1)



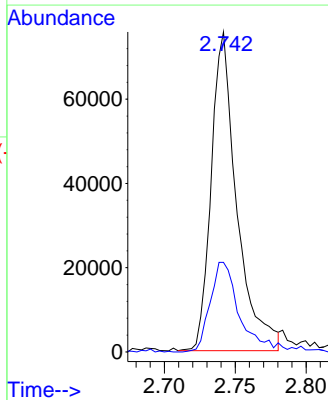
m/z-->

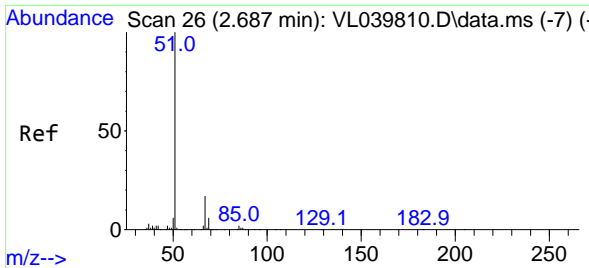
#2

Dichlorodifluoromethane
Concen: 0.518 ppbv
RT: 2.742 min Scan# 43
Delta R.T. 0.000 min
Lab File: VL039813.D
Acq: 2 Nov 2022 12:39

Tgt Ion: 85 Resp: 94931

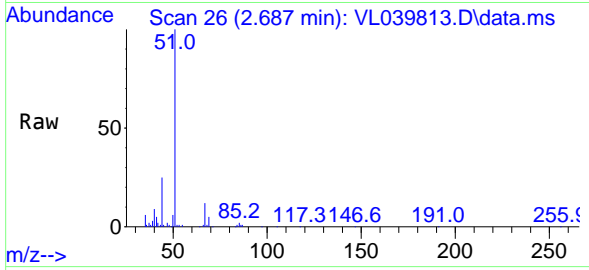
Ion	Ratio	Lower	Upper
85	100		
87	28.1	26.4	39.6



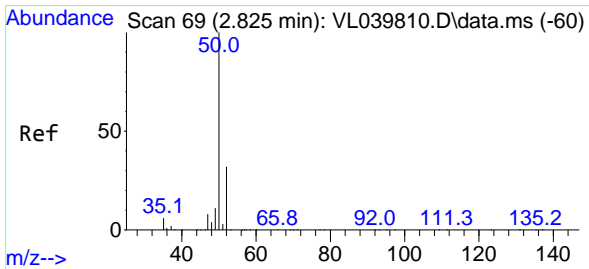
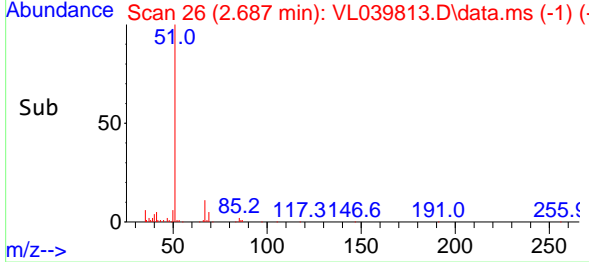
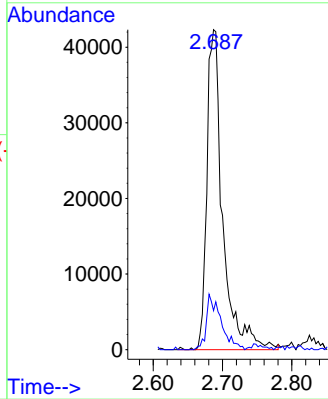


#3
 Chlorodifluoromethane
 Concen: 0.516 ppbv
 RT: 2.687 min Scan# 20
 Delta R.T. 0.000 min
 Lab File: VL039813.D
 Acq: 2 Nov 2022 12:39

Instrument :
 MSVOA_L
 ClientSampleId :

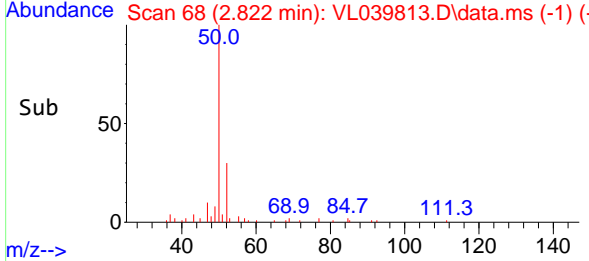
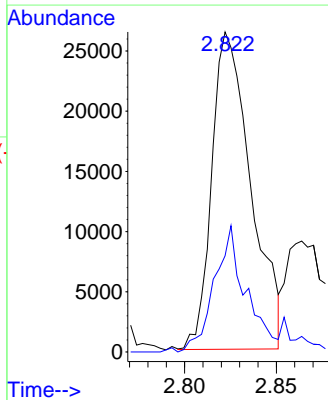
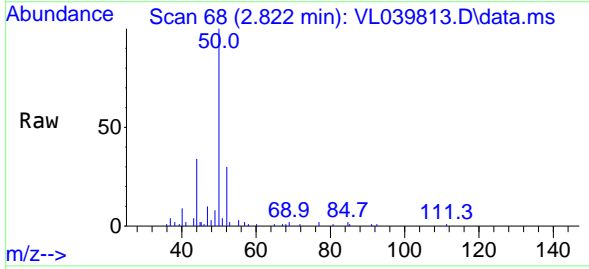


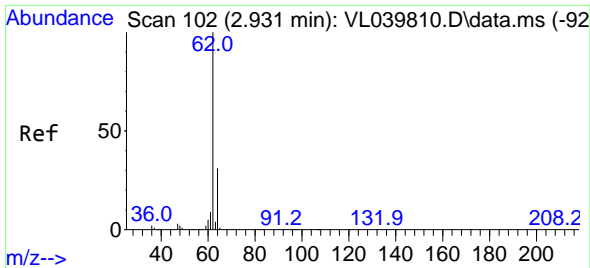
Tgt Ion: 51 Resp: 66774
 Ion Ratio Lower Upper
 51 100
 67 16.3 13.2 19.8



#4
 Chloromethane
 Concen: 0.485 ppbv
 RT: 2.822 min Scan# 68
 Delta R.T. -0.003 min
 Lab File: VL039813.D
 Acq: 2 Nov 2022 12:39

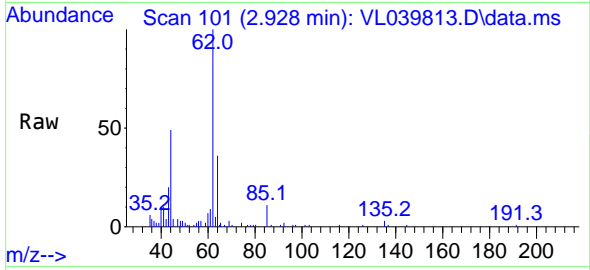
Tgt Ion: 50 Resp: 39147
 Ion Ratio Lower Upper
 50 100
 52 30.3 25.5 38.3



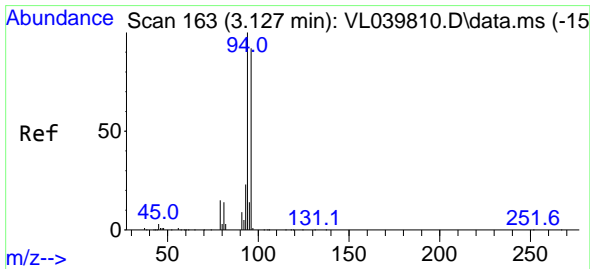
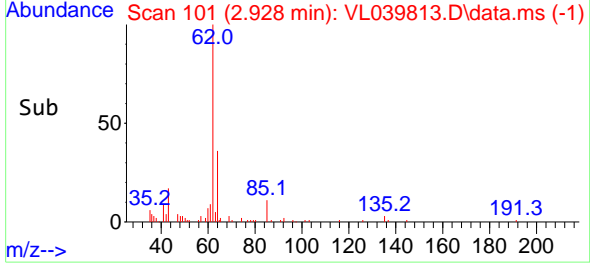
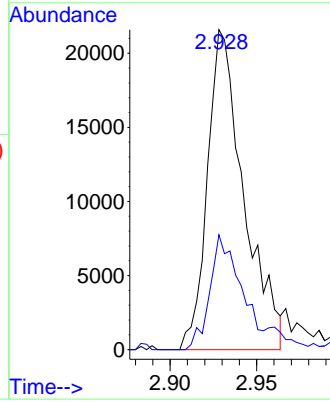


#5
 Vinyl Chloride
 Concen: 0.483 ppbv
 RT: 2.928 min Scan# 101
 Delta R.T. -0.003 min
 Lab File: VL039813.D
 Acq: 2 Nov 2022 12:39

Instrument : MSVOA_L
 ClientSampleId :

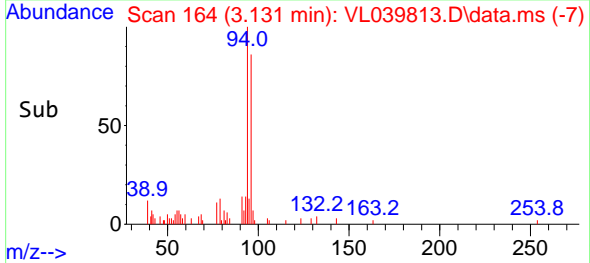
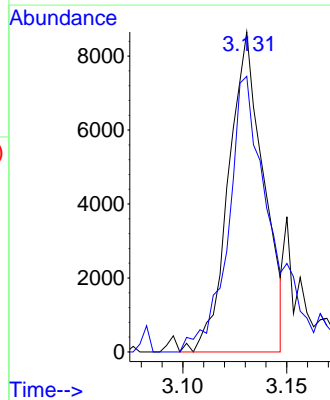
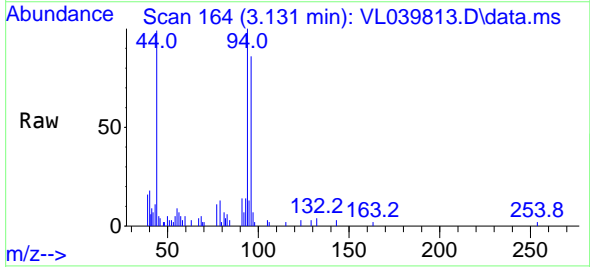


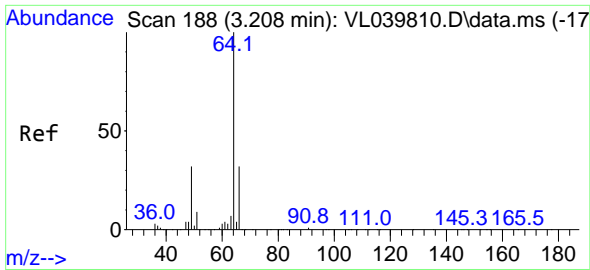
Tgt Ion: 62 Resp: 31527
 Ion Ratio Lower Upper
 62 100
 64 36.8 25.0 37.4



#6
 Bromomethane
 Concen: 0.433 ppbv
 RT: 3.131 min Scan# 164
 Delta R.T. 0.003 min
 Lab File: VL039813.D
 Acq: 2 Nov 2022 12:39

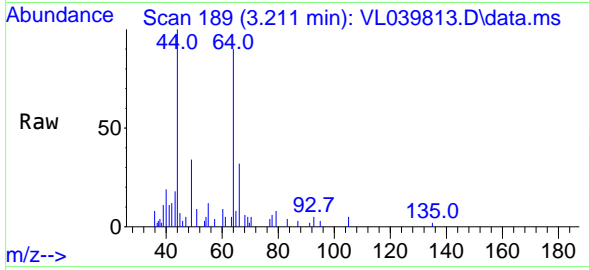
Tgt Ion: 94 Resp: 10091
 Ion Ratio Lower Upper
 94 100
 96 86.2 73.5 110.3



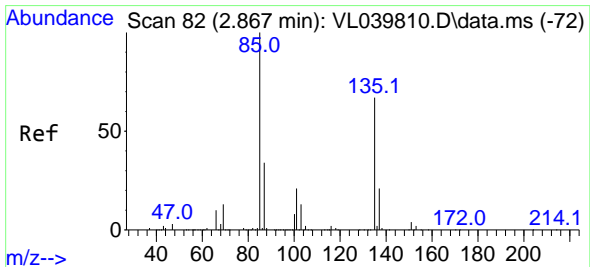
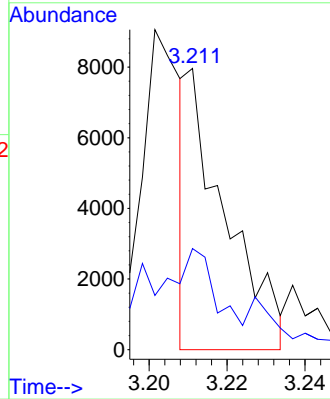
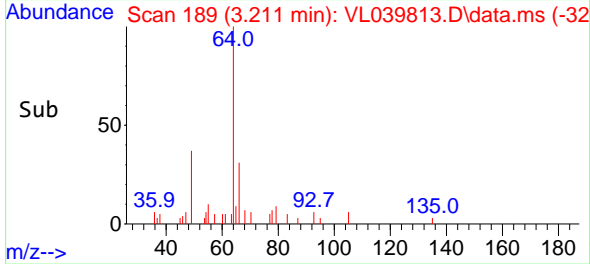


#7
 Chloroethane
 Concen: 0.223 ppbv
 RT: 3.211 min Scan# 11
 Delta R.T. 0.003 min
 Lab File: VL039813.D
 Acq: 2 Nov 2022 12:39

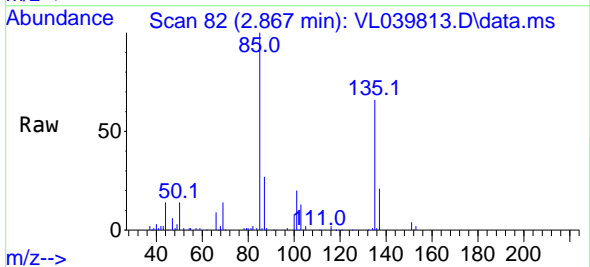
Instrument :
 MSVOA_L
 ClientSampleId :



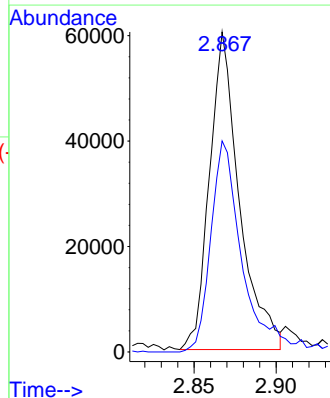
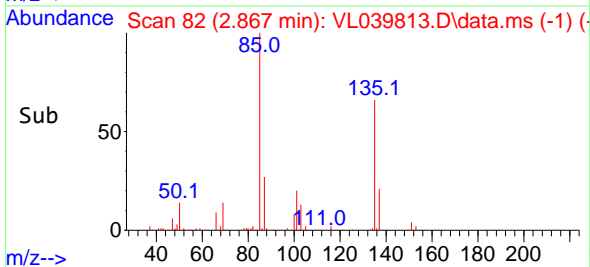
Tgt Ion: 64 Resp: 5455
 Ion Ratio Lower Upper
 64 100
 66 36.0 25.5 38.3

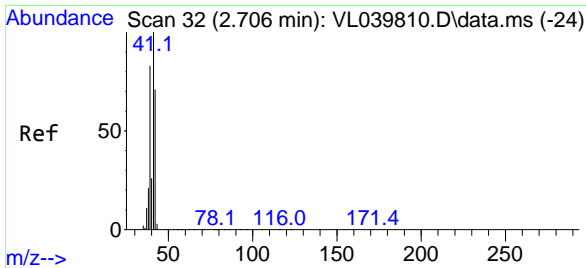


#8
 Dichlorotetrafluoroethane
 Concen: 0.489 ppbv
 RT: 2.867 min Scan# 82
 Delta R.T. 0.000 min
 Lab File: VL039813.D
 Acq: 2 Nov 2022 12:39



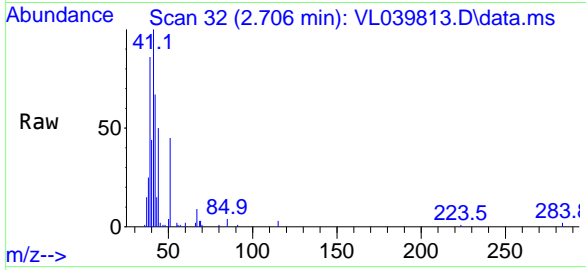
Tgt Ion: 85 Resp: 76454
 Ion Ratio Lower Upper
 85 100
 135 72.4 56.7 85.1



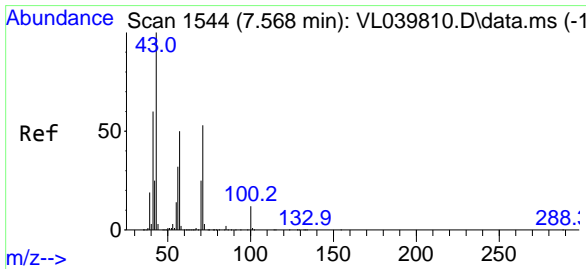
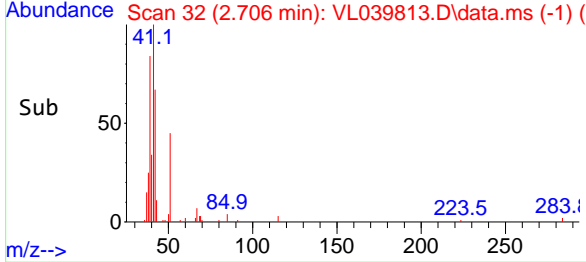
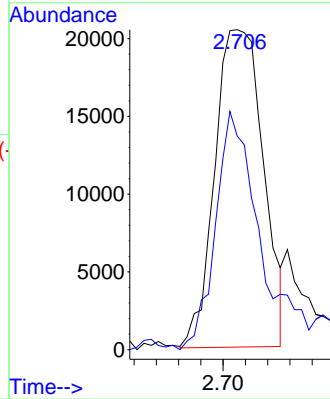


#9
 Propene
 Concen: 0.458 ppbv
 RT: 2.706 min Scan# 31
 Delta R.T. 0.000 min
 Lab File: VL039813.D
 Acq: 2 Nov 2022 12:39

Instrument :
 MSVOA_L
 ClientSampleId :

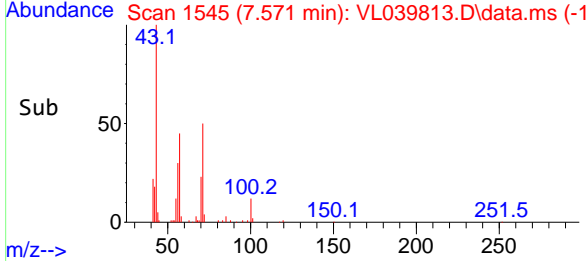
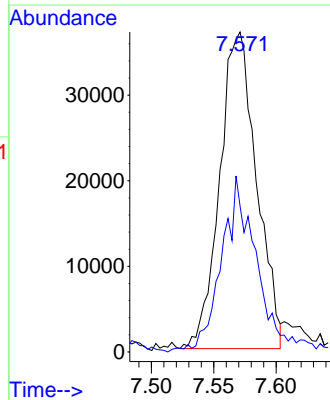
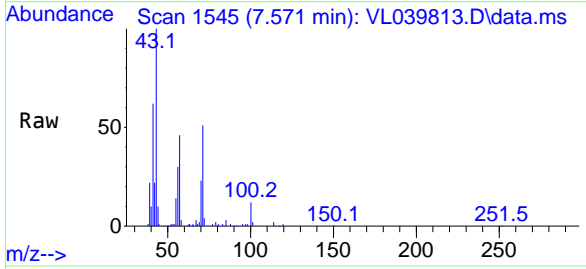


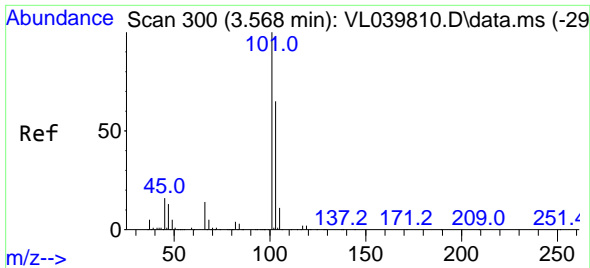
Tgt Ion: 41 Resp: 30899
 Ion Ratio Lower Upper
 41 100
 42 83.6 56.3 84.5



#10
 Heptane
 Concen: 0.471 ppbv
 RT: 7.571 min Scan# 1545
 Delta R.T. 0.003 min
 Lab File: VL039813.D
 Acq: 2 Nov 2022 12:39

Tgt Ion: 43 Resp: 76146
 Ion Ratio Lower Upper
 43 100
 57 55.9 40.5 60.7

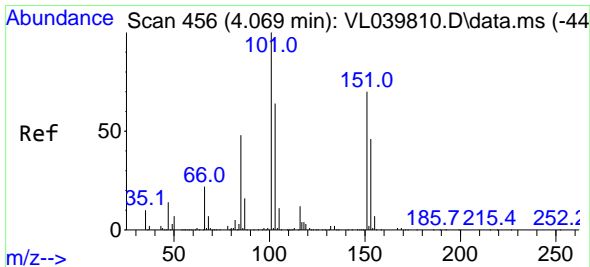
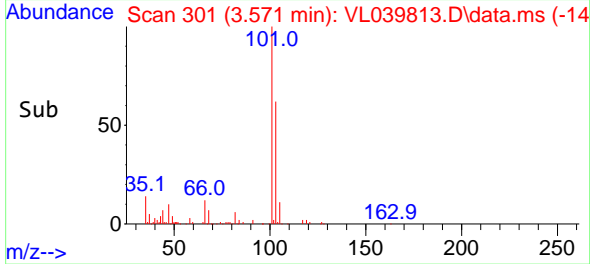
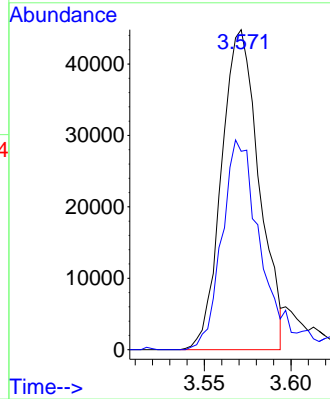
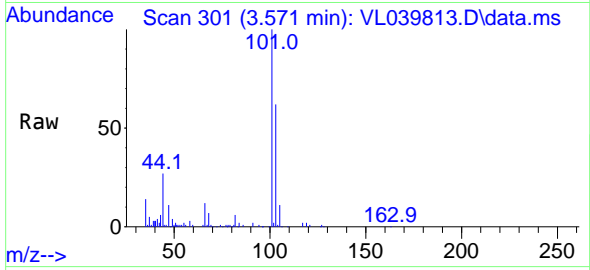




#11
 Trichlorofluoromethane
 Concen: 0.452 ppbv
 RT: 3.571 min Scan# 300
 Delta R.T. 0.003 min
 Lab File: VL039813.D
 Acq: 2 Nov 2022 12:39

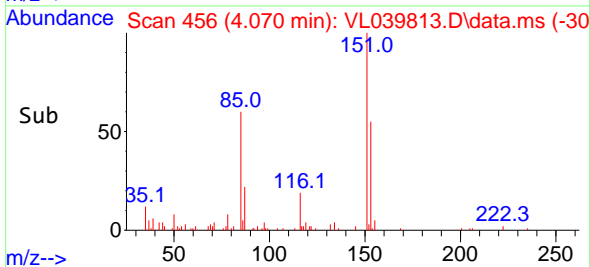
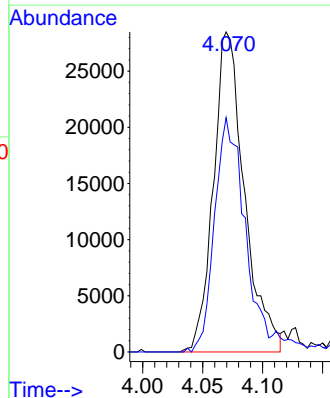
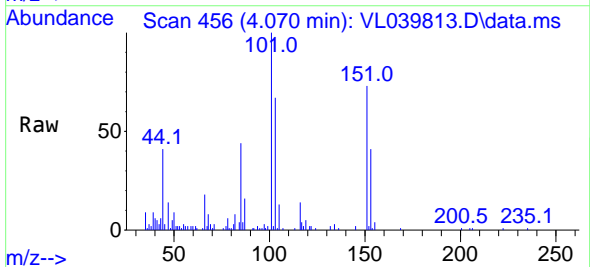
Instrument :
 MSVOA_L
 ClientSampleId :

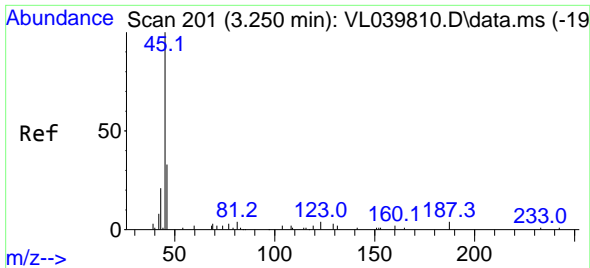
Tgt Ion:101 Resp: 67620
 Ion Ratio Lower Upper
 101 100
 103 62.0 52.2 78.2



#12
 1,1,2-Trichlorotrifluoroethane
 Concen: 0.474 ppbv
 RT: 4.070 min Scan# 456
 Delta R.T. 0.000 min
 Lab File: VL039813.D
 Acq: 2 Nov 2022 12:39

Tgt Ion:101 Resp: 51226
 Ion Ratio Lower Upper
 101 100
 151 76.0 57.2 85.8

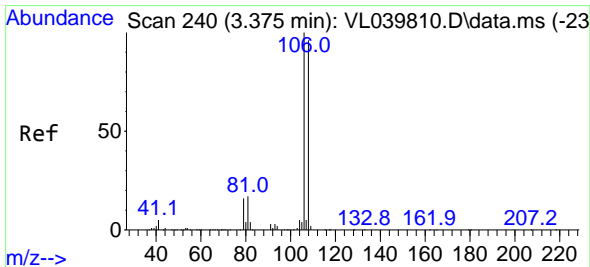
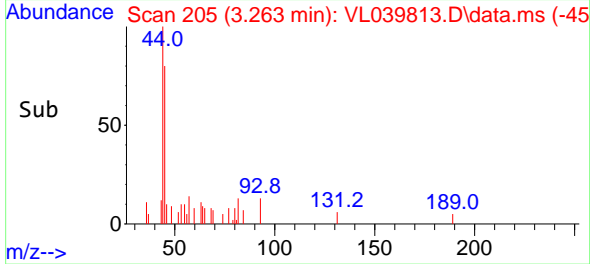
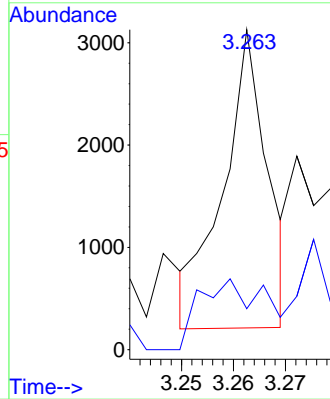
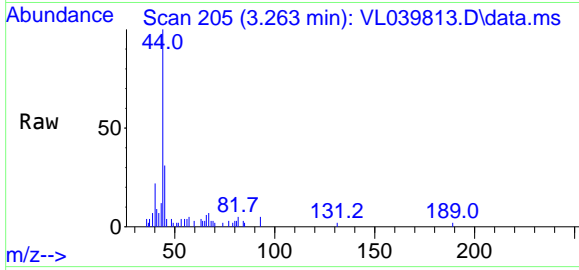




#13
 Ethanol
 Concen: 0.363 ppbv
 RT: 3.263 min Scan# 20
 Delta R.T. 0.013 min
 Lab File: VL039813.D
 Acq: 2 Nov 2022 12:39

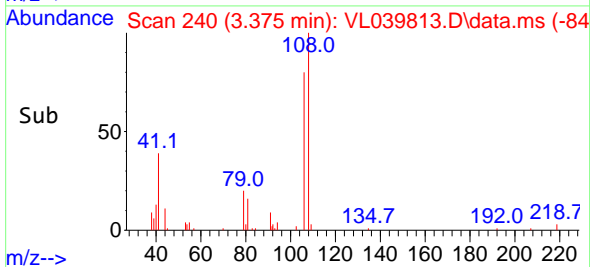
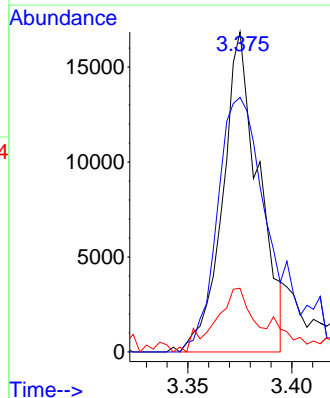
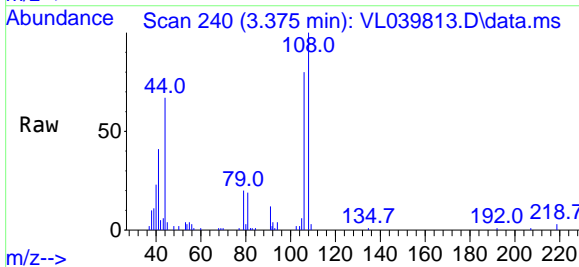
Instrument :
 MSVOA_L
 ClientSampleId :

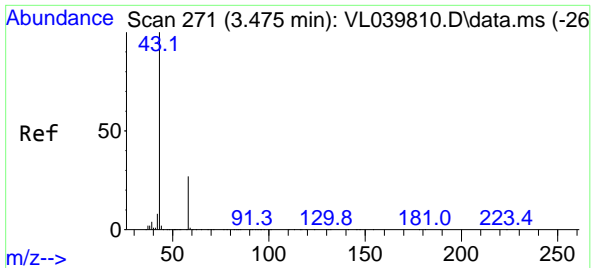
Tgt Ion: 45 Resp: 1730
 Ion Ratio Lower Upper
 45 100
 46 0.0 16.5 65.9#



#14
 Bromoethene
 Concen: 0.419 ppbv
 RT: 3.375 min Scan# 240
 Delta R.T. 0.000 min
 Lab File: VL039813.D
 Acq: 2 Nov 2022 12:39

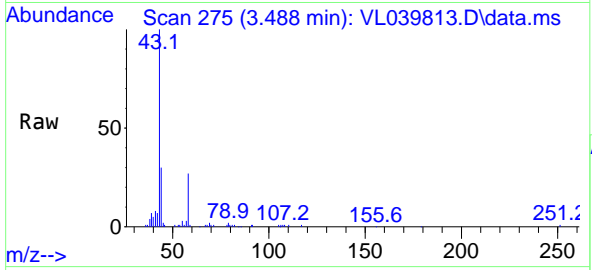
Tgt Ion: 108 Resp: 20253
 Ion Ratio Lower Upper
 108 100
 106 126.4 87.8 131.8
 79 29.9 14.5 21.7#



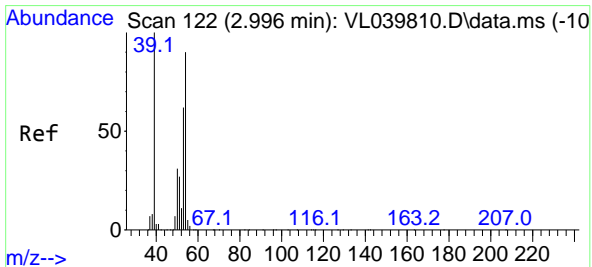
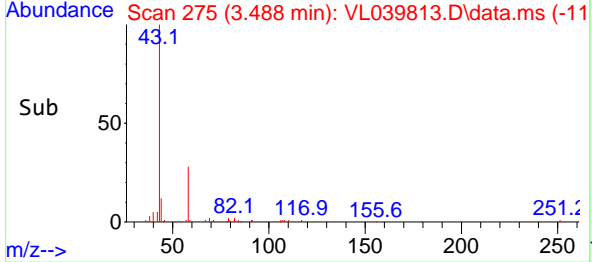
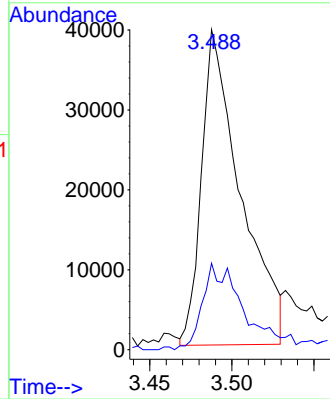


#15
 Acetone
 Concen: 0.493 ppbv
 RT: 3.488 min Scan# 21
 Delta R.T. 0.013 min
 Lab File: VL039813.D
 Acq: 2 Nov 2022 12:39

Instrument :
 MSVOA_L
 ClientSampleId :

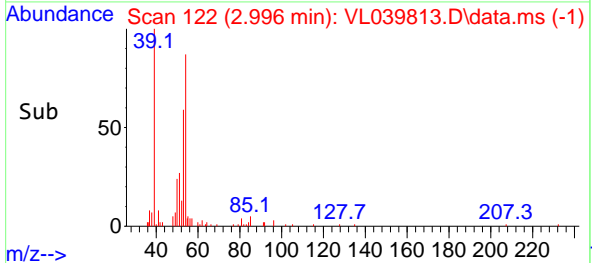
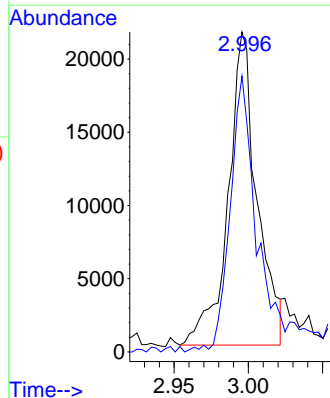
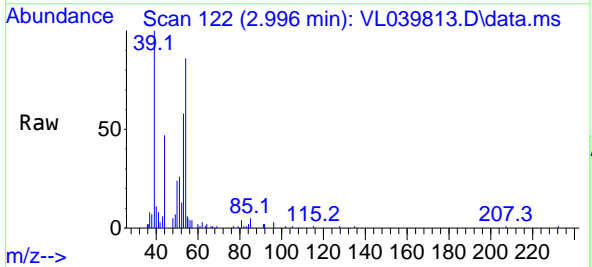


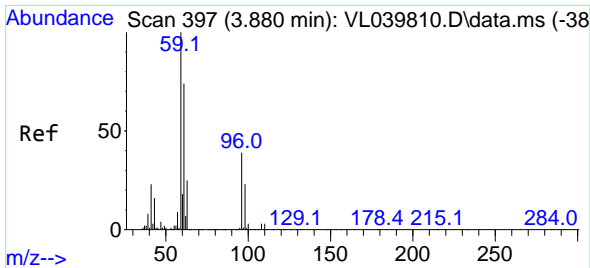
Tgt Ion: 43 Resp: 65246
 Ion Ratio Lower Upper
 43 100
 58 33.5 23.2 34.8



#16
 1,3-Butadiene
 Concen: 0.472 ppbv
 RT: 2.996 min Scan# 122
 Delta R.T. 0.000 min
 Lab File: VL039813.D
 Acq: 2 Nov 2022 12:39

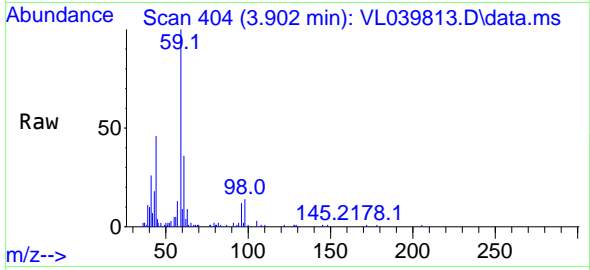
Tgt Ion: 39 Resp: 29013
 Ion Ratio Lower Upper
 39 100
 54 96.5 71.0 106.4



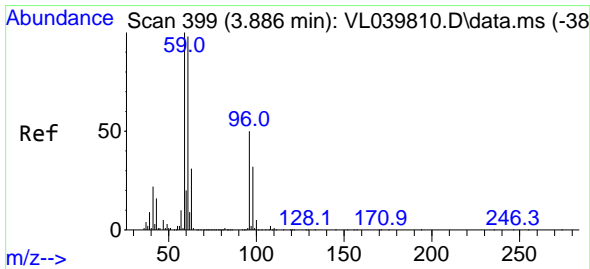
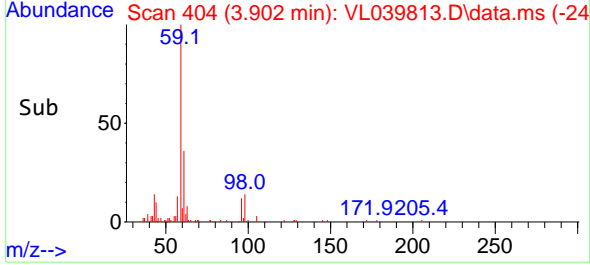
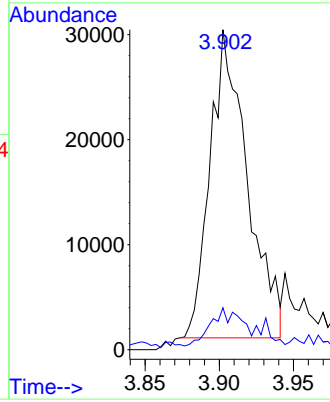


#17
 tert-Butyl alcohol
 Concen: 0.407 ppbv
 RT: 3.902 min Scan# 404
 Delta R.T. 0.023 min
 Lab File: VL039813.D
 Acq: 2 Nov 2022 12:39

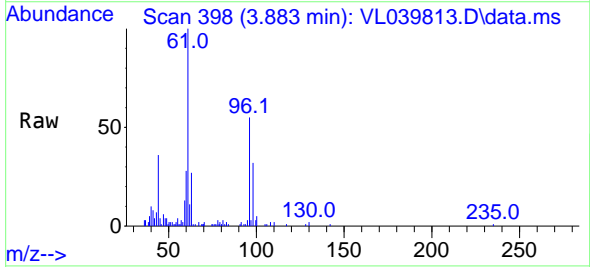
Instrument :
 MSVOA_L
 ClientSampleId :



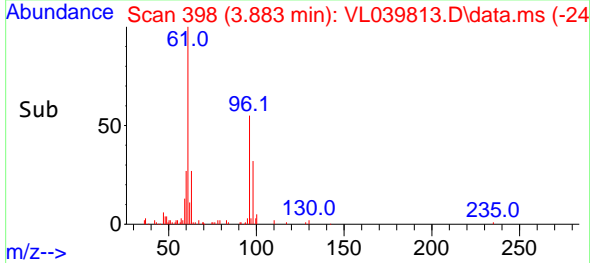
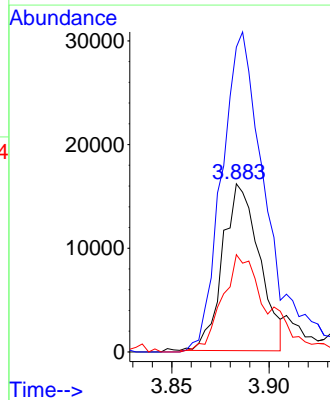
Tgt Ion: 59 Resp: 51191
 Ion Ratio Lower Upper
 59 100
 57 17.1 9.0 13.6#

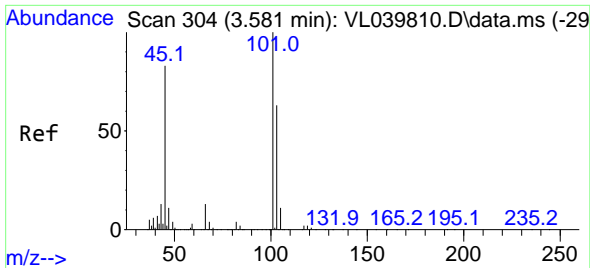


#18
 1,1-Dichloroethene
 Concen: 0.427 ppbv
 RT: 3.883 min Scan# 398
 Delta R.T. -0.003 min
 Lab File: VL039813.D
 Acq: 2 Nov 2022 12:39



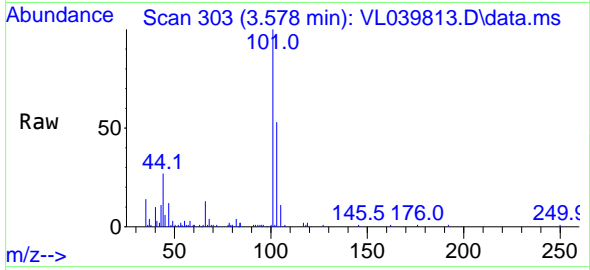
Tgt Ion: 96 Resp: 21164
 Ion Ratio Lower Upper
 96 100
 61 183.1 156.9 235.3
 98 58.5 50.6 75.8



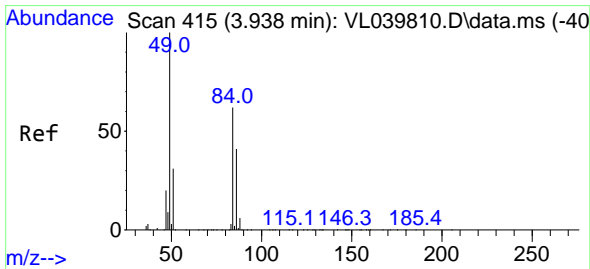
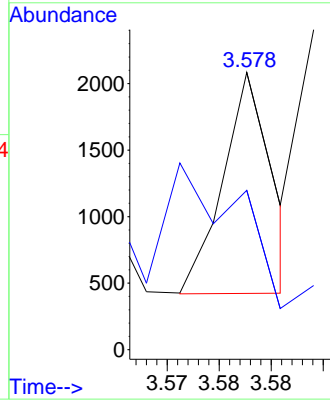
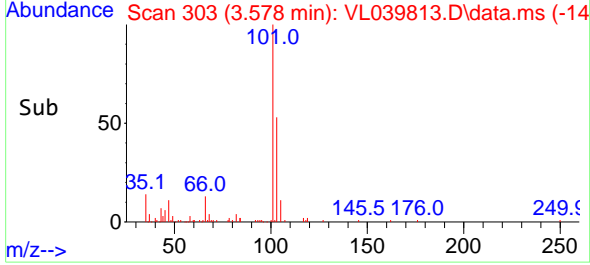


#19
 Isopropyl Alcohol
 Concen: 0.008 ppbv
 RT: 3.578 min Scan# 304
 Delta R.T. -0.003 min
 Lab File: VL039813.D
 Acq: 2 Nov 2022 12:39

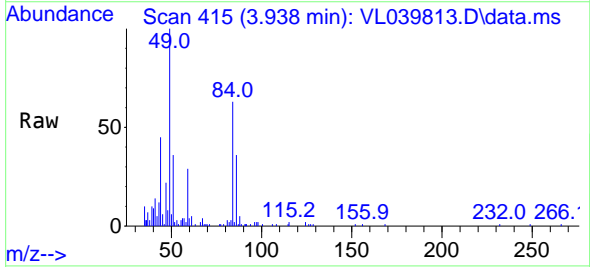
Instrument : MSVOA_L
 ClientSampleId :



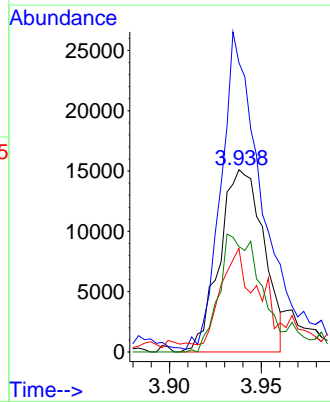
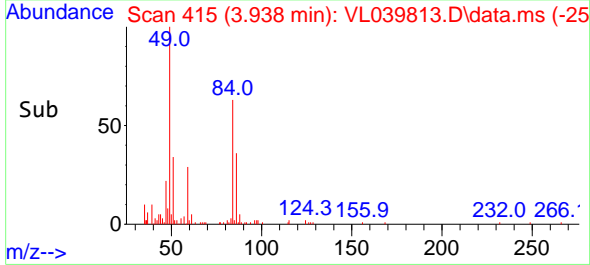
Tgt Ion: 45 Resp: 551
 Ion Ratio Lower Upper
 45 100
 58 0.0 38.3 57.5#

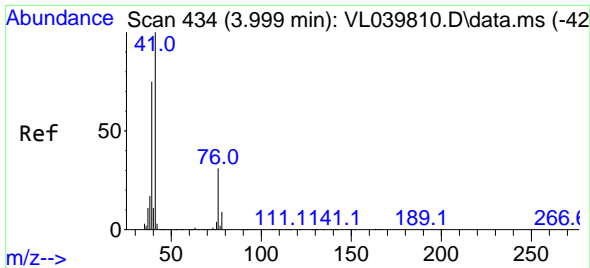


#20
 Methylene Chloride
 Concen: 0.533 ppbv
 RT: 3.938 min Scan# 415
 Delta R.T. 0.000 min
 Lab File: VL039813.D
 Acq: 2 Nov 2022 12:39



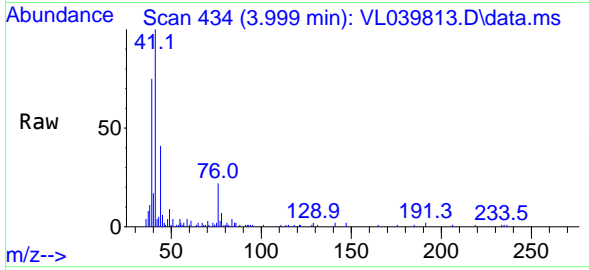
Tgt Ion: 84 Resp: 25223
 Ion Ratio Lower Upper
 84 100
 49 156.4 128.6 192.8
 51 54.9 40.2 60.4
 86 57.8 52.2 78.2



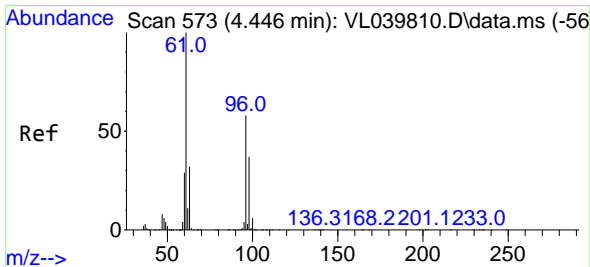
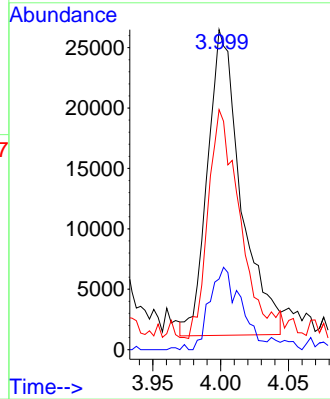
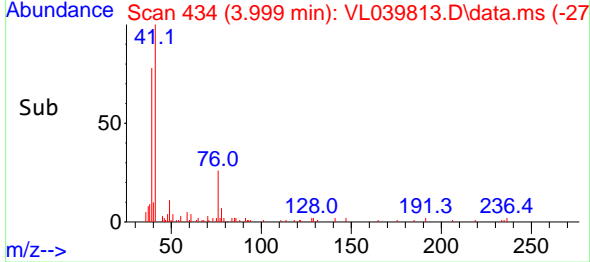


#21
 Allyl Chloride
 Concen: 0.519 ppbv
 RT: 3.999 min Scan# 41
 Delta R.T. 0.000 min
 Lab File: VL039813.D
 Acq: 2 Nov 2022 12:39

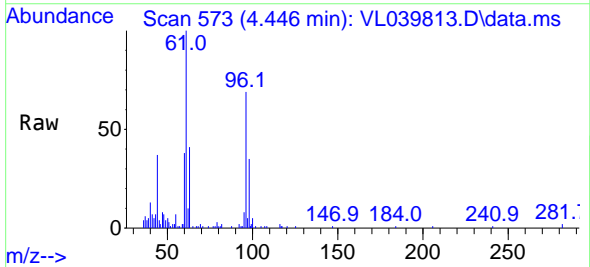
Instrument :
 MSVOA_L
 ClientSampleId :



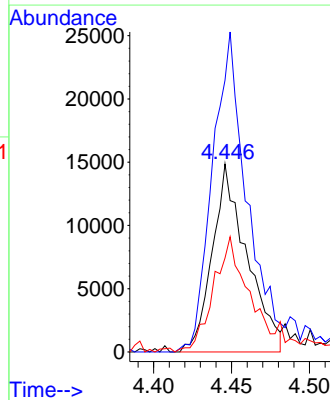
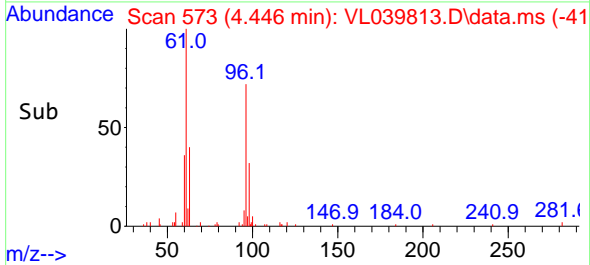
Tgt Ion: 41 Resp: 43422
 Ion Ratio Lower Upper
 41 100
 76 28.2 24.1 36.1
 39 79.4 64.3 96.5

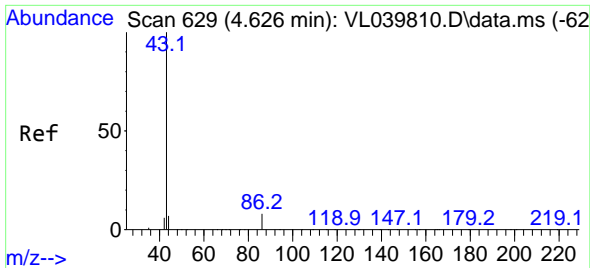


#22
 trans-1,2-Dichloroethene
 Concen: 0.457 ppbv
 RT: 4.446 min Scan# 573
 Delta R.T. 0.000 min
 Lab File: VL039813.D
 Acq: 2 Nov 2022 12:39



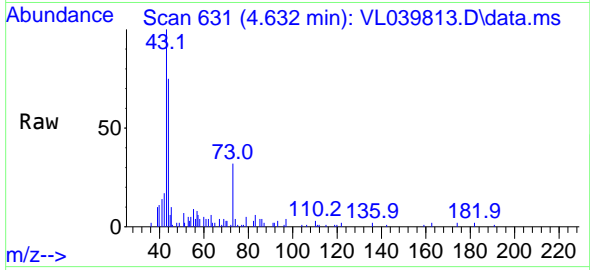
Tgt Ion: 96 Resp: 22994
 Ion Ratio Lower Upper
 96 100
 61 142.6 137.6 206.4
 98 48.4 51.2 76.8#



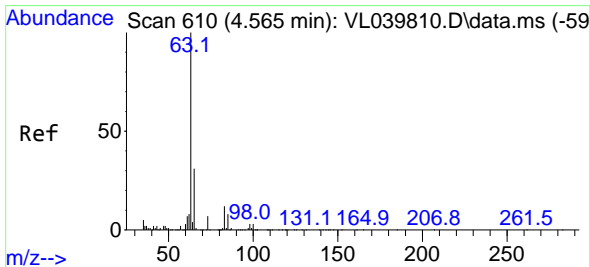
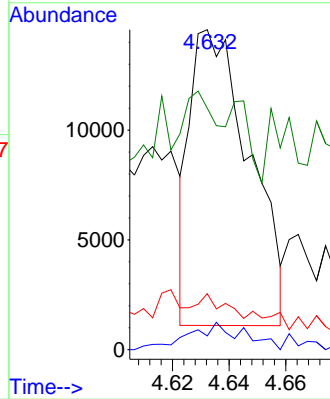
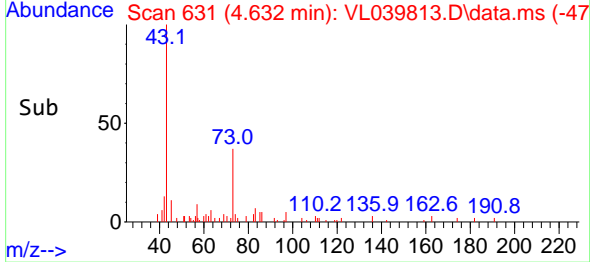


#23
 Vinyl Acetate
 Concen: 0.370 ppbv
 RT: 4.632 min Scan# 610
 Delta R.T. 0.007 min
 Lab File: VL039813.D
 Acq: 2 Nov 2022 12:39

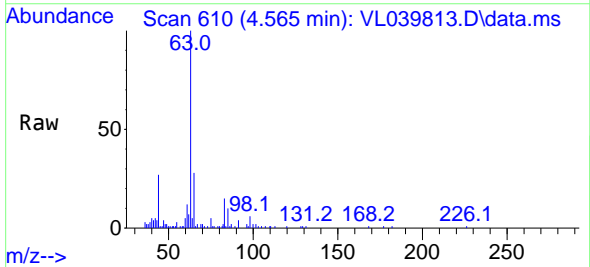
Instrument :
 MSVOA_L
 ClientSampleId :



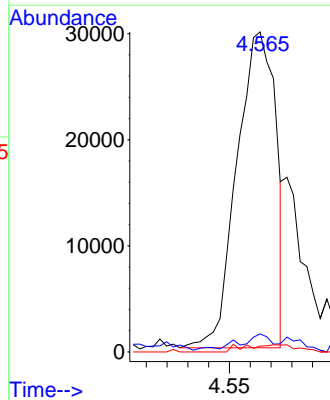
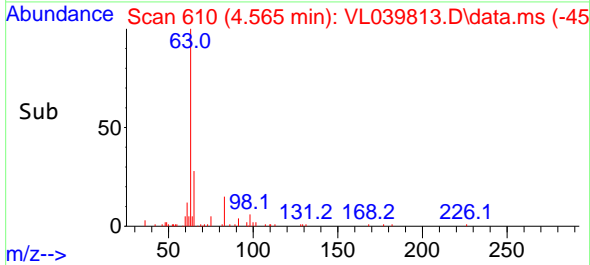
Tgt Ion: 43 Resp: 19509
 Ion Ratio Lower Upper
 43 100
 86 5.8 5.0 7.4
 42 7.9 6.8 10.2
 44 24.6 4.0 6.0#

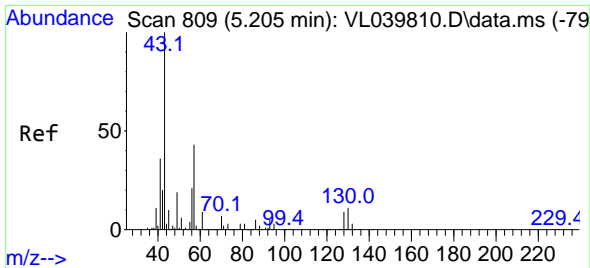


#24
 1,1-Dichloroethane
 Concen: 0.361 ppbv
 RT: 4.565 min Scan# 610
 Delta R.T. 0.000 min
 Lab File: VL039813.D
 Acq: 2 Nov 2022 12:39



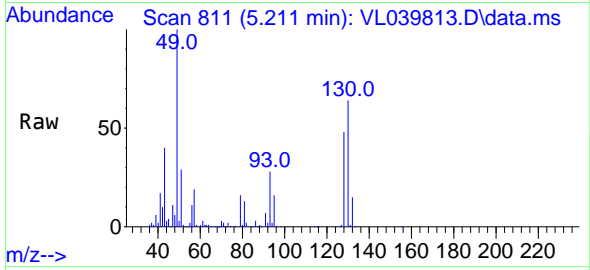
Tgt Ion: 63 Resp: 38807
 Ion Ratio Lower Upper
 63 100
 98 3.6 1.8 5.4
 100 1.9 1.5 4.4



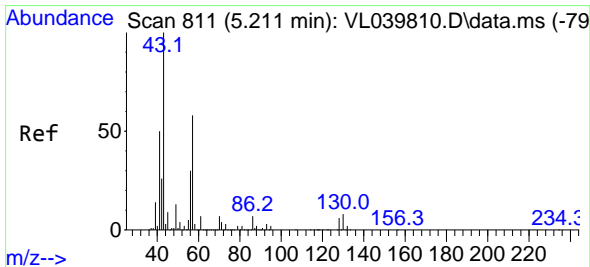
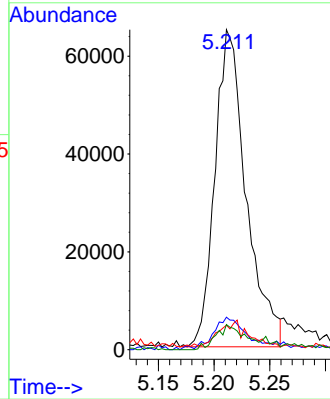
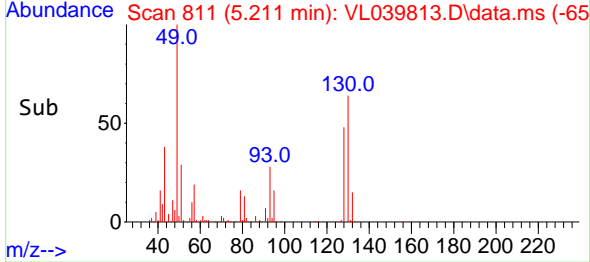


#25
 Ethyl Acetate
 Concen: 0.465 ppbv
 RT: 5.211 min Scan# 811
 Delta R.T. 0.007 min
 Lab File: VL039813.D
 Acq: 2 Nov 2022 12:39

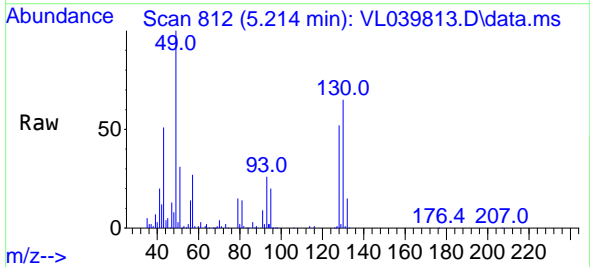
Instrument :
 MSVOA_L
 ClientSampleId :



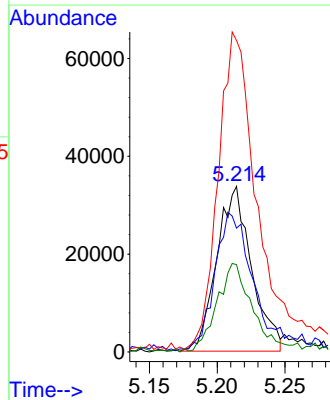
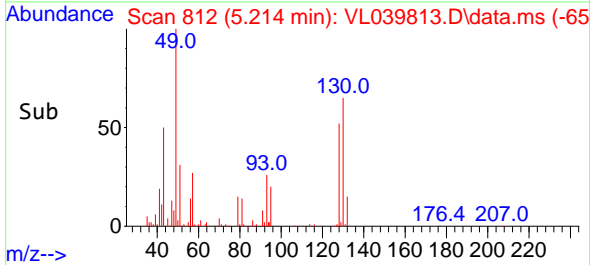
Tgt Ion: 43 Resp: 126518
 Ion Ratio Lower Upper
 43 100
 45 12.8 8.2 12.2#
 61 12.9 8.1 12.1#
 70 10.7 5.9 8.9#

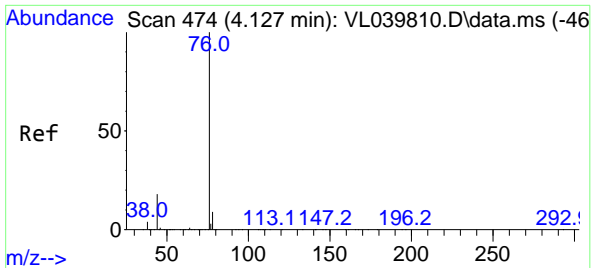


#26
 Hexane
 Concen: 0.496 ppbv
 RT: 5.214 min Scan# 812
 Delta R.T. 0.003 min
 Lab File: VL039813.D
 Acq: 2 Nov 2022 12:39



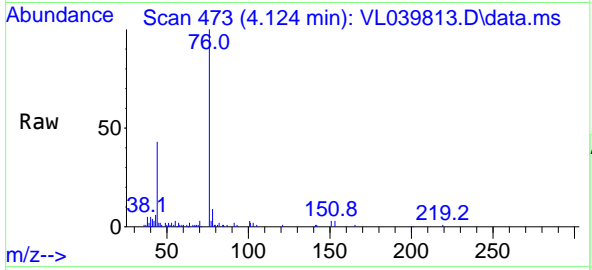
Tgt Ion: 57 Resp: 60235
 Ion Ratio Lower Upper
 57 100
 41 100.4 73.7 110.5
 43 229.8 189.8 284.8
 56 54.5 43.1 64.7





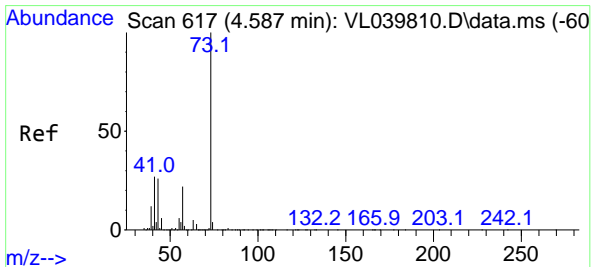
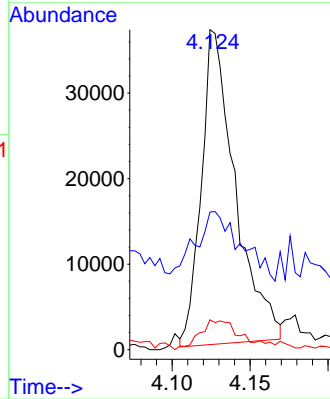
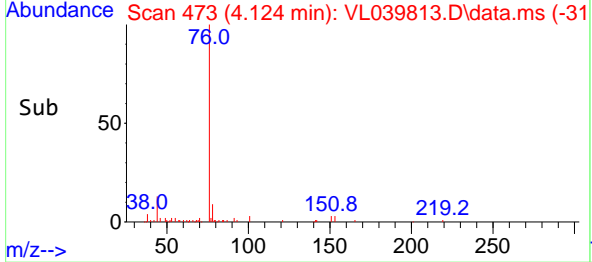
#27
 Carbon Disulfide
 Concen: 0.437 ppbv
 RT: 4.124 min Scan# 411
 Delta R.T. -0.003 min
 Lab File: VL039813.D
 Acq: 2 Nov 2022 12:39

Instrument :
 MSVOA_L
 ClientSampleId :

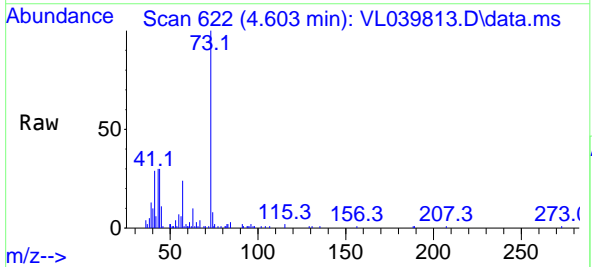


Tgt Ion: 76 Resp: 55688

Ion	Ratio	Lower	Upper
76	100		
44	53.8	14.6	22.0#
78	12.8	7.6	11.4#

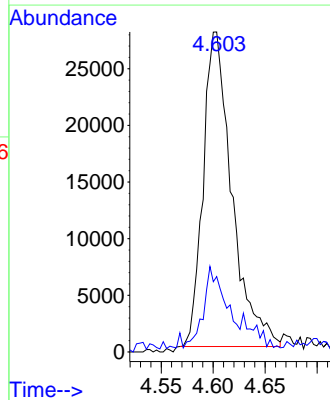
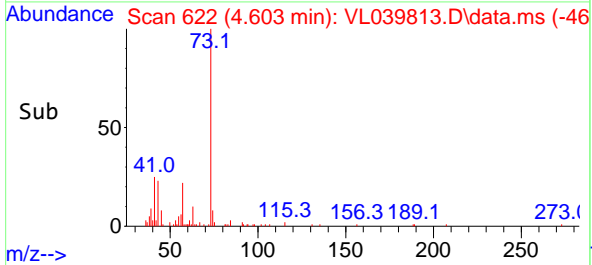


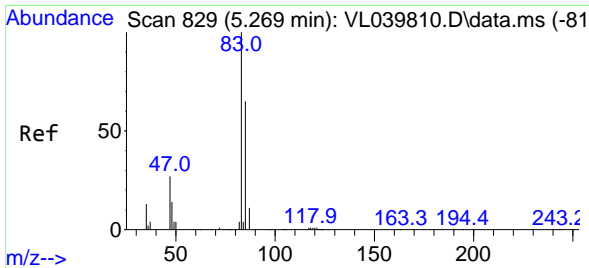
#28
 Methyl tert-Butyl Ether
 Concen: 0.487 ppbv
 RT: 4.603 min Scan# 622
 Delta R.T. 0.016 min
 Lab File: VL039813.D
 Acq: 2 Nov 2022 12:39



Tgt Ion: 73 Resp: 53493

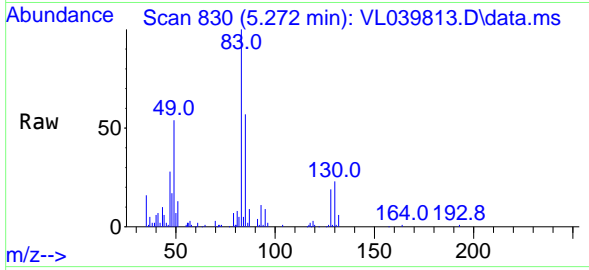
Ion	Ratio	Lower	Upper
73	100		
57	28.9	19.4	29.2



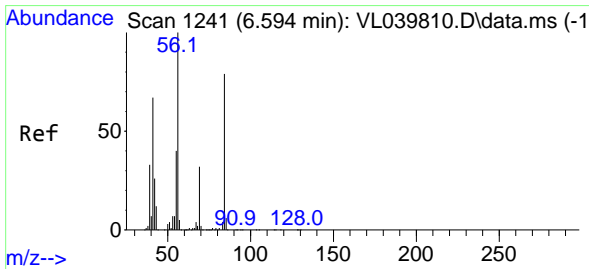
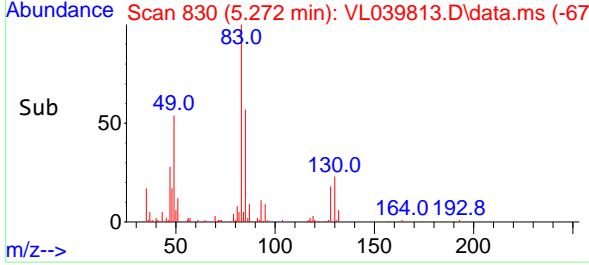
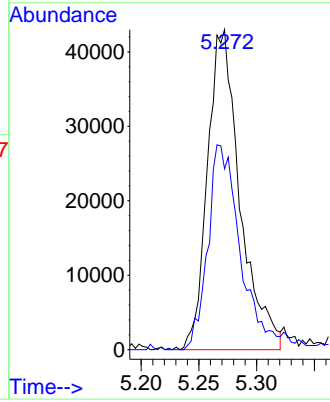


#29
 Chloroform
 Concen: 0.492 ppbv
 RT: 5.272 min Scan# 81
 Delta R.T. 0.003 min
 Lab File: VL039813.D
 Acq: 2 Nov 2022 12:39

Instrument :
 MSVOA_L
 ClientSampleId :

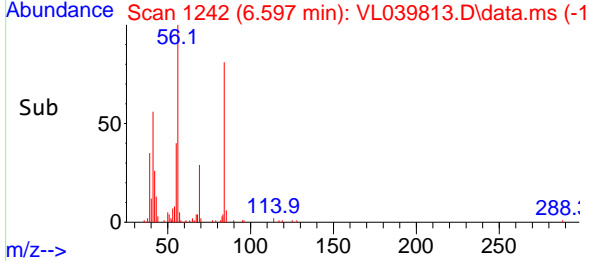
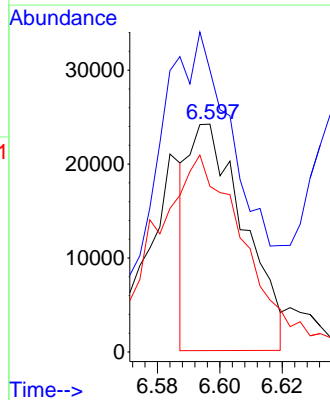
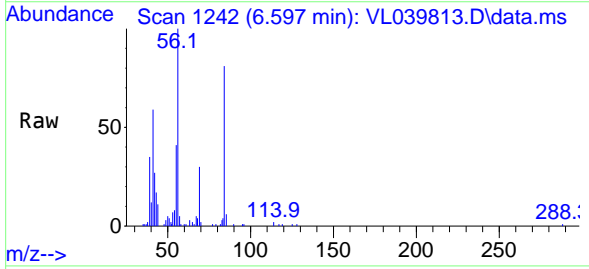


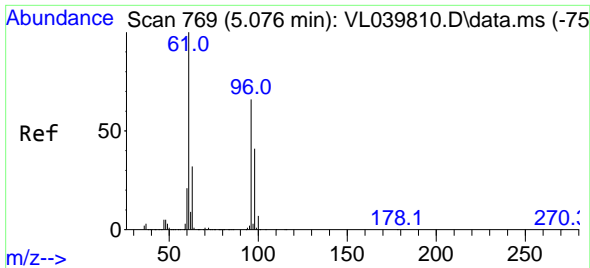
Tgt Ion: 83 Resp: 84037
 Ion Ratio Lower Upper
 83 100
 85 56.5 51.6 77.4



#30
 Cyclohexane
 Concen: 0.293 ppbv
 RT: 6.597 min Scan# 1242
 Delta R.T. 0.003 min
 Lab File: VL039813.D
 Acq: 2 Nov 2022 12:39

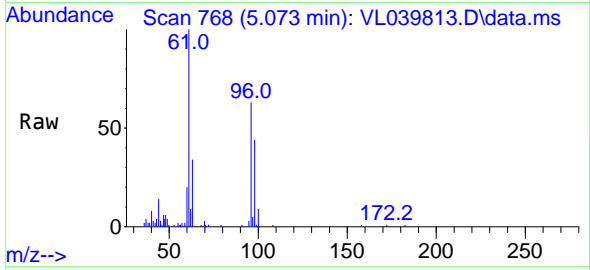
Tgt Ion: 84 Resp: 29755
 Ion Ratio Lower Upper
 84 100
 56 217.8 114.8 172.2#
 41 147.5 68.6 103.0#



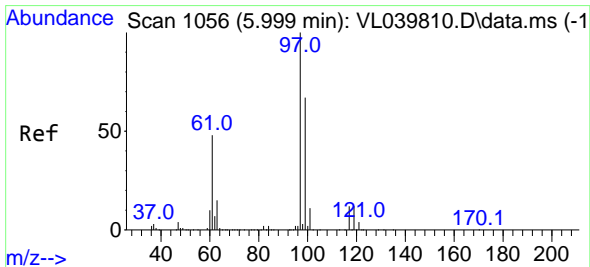
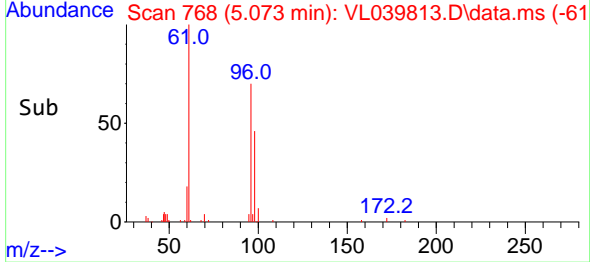
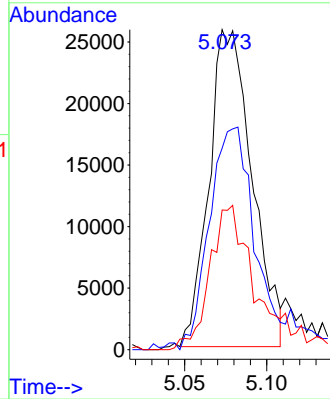


#31
 cis-1,2-Dichloroethene
 Concen: 0.424 ppbv
 RT: 5.073 min Scan# 769
 Delta R.T. -0.003 min
 Lab File: VL039813.D
 Acq: 2 Nov 2022 12:39

Instrument :
 MSVOA_L
 ClientSampleId :

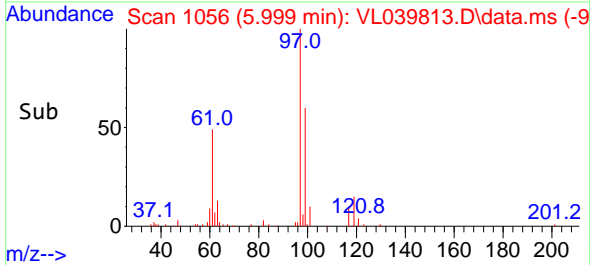
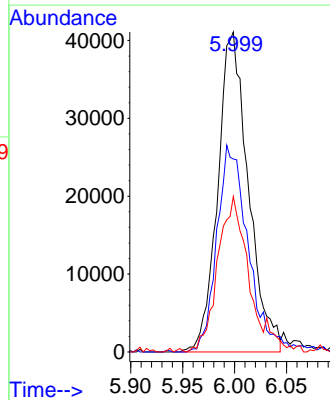
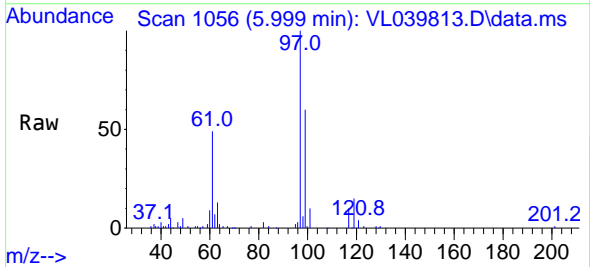


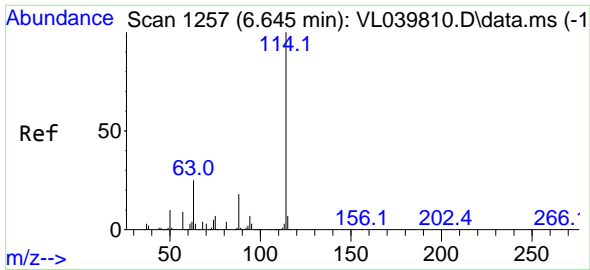
Tgt Ion: 61 Resp: 46950
 Ion Ratio Lower Upper
 61 100
 96 63.6 52.6 78.8
 98 40.8 32.6 48.8



#32
 1,1,1-Trichloroethane
 Concen: 0.495 ppbv
 RT: 5.999 min Scan# 1056
 Delta R.T. 0.000 min
 Lab File: VL039813.D
 Acq: 2 Nov 2022 12:39

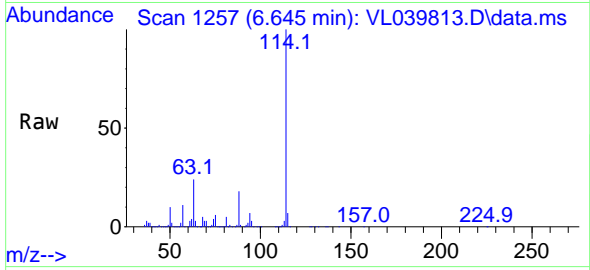
Tgt Ion: 97 Resp: 84090
 Ion Ratio Lower Upper
 97 100
 99 67.4 52.7 79.1
 61 50.8 38.9 58.3





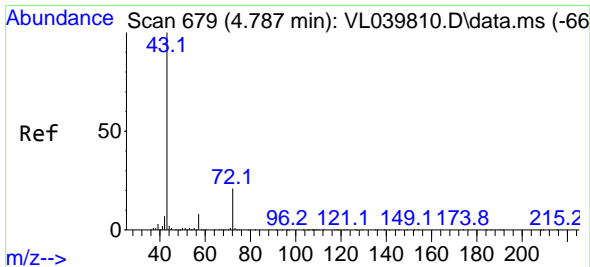
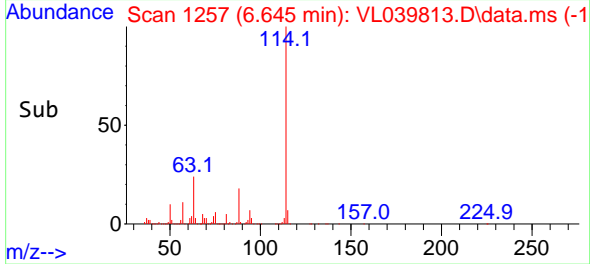
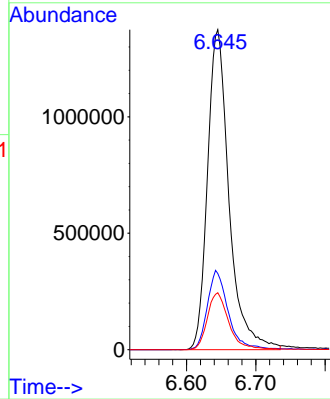
#33
 1,4-Difluorobenzene
 Concen: 10.000 ppbv
 RT: 6.645 min Scan# 111
 Delta R.T. 0.000 min
 Lab File: VL039813.D
 Acq: 2 Nov 2022 12:39

Instrument : MSVOA_L
 ClientSampleId :



Tgt Ion:114 Resp: 2957924

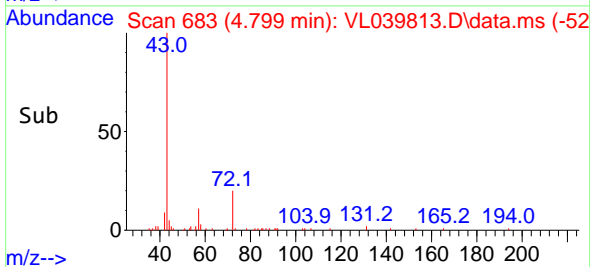
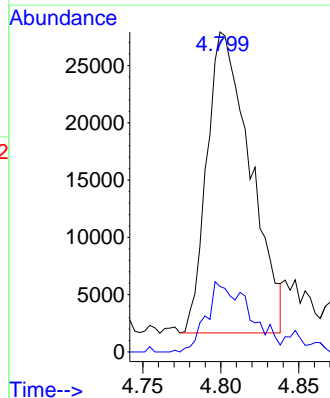
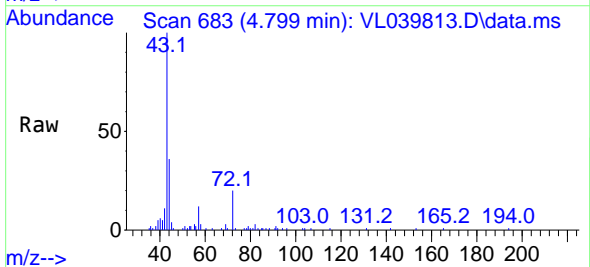
Ion	Ratio	Lower	Upper
114	100		
63	24.3	19.8	29.6
88	18.0	14.4	21.6

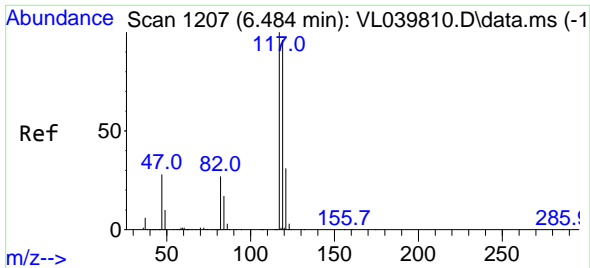


#34
 2-Butanone
 Concen: 0.416 ppbv
 RT: 4.799 min Scan# 683
 Delta R.T. 0.013 min
 Lab File: VL039813.D
 Acq: 2 Nov 2022 12:39

Tgt Ion: 43 Resp: 50776

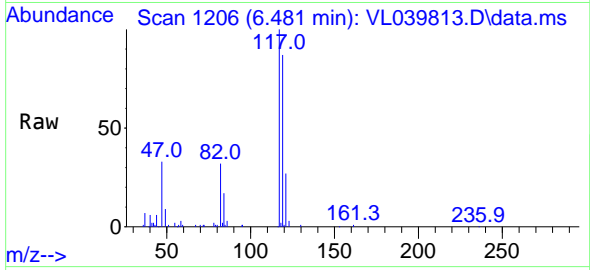
Ion	Ratio	Lower	Upper
43	100		
72	28.4	17.5	26.3#



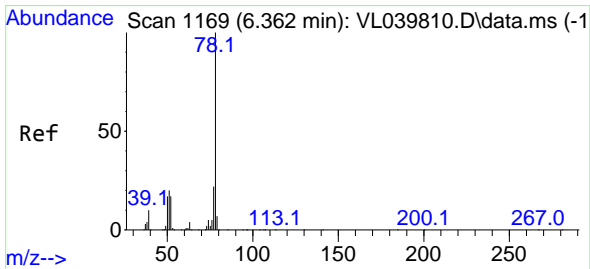
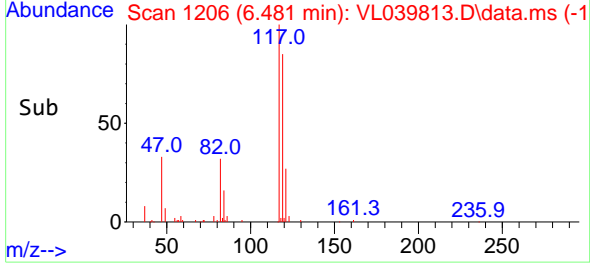
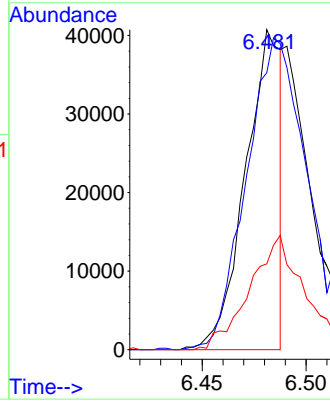


#35
 Carbon Tetrachloride
 Concen: 0.279 ppbv
 RT: 6.481 min Scan# 1117
 Delta R.T. -0.003 min
 Lab File: VL039813.D
 Acq: 2 Nov 2022 12:39

Instrument :
 MSVOA_L
 ClientSampleId :

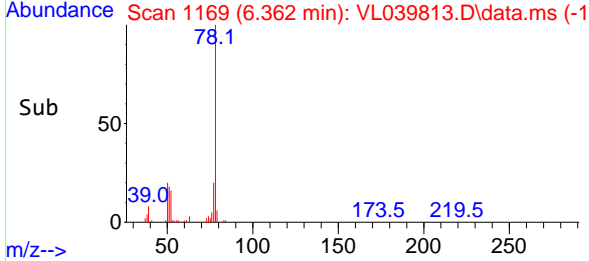
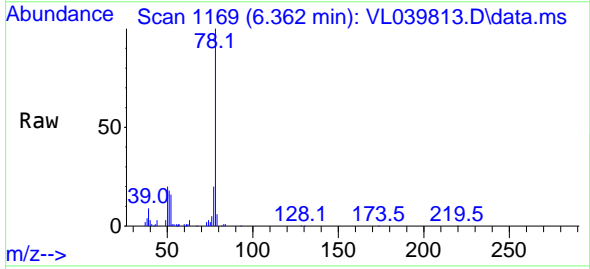
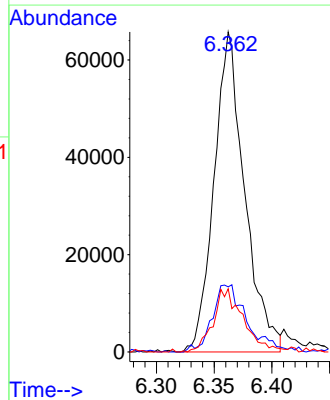


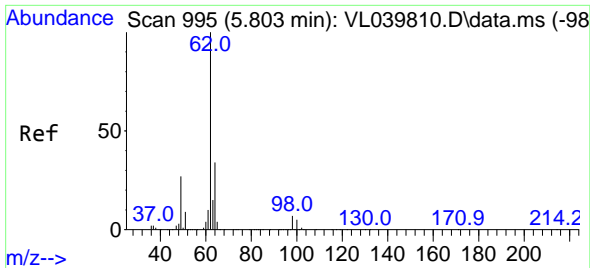
Tgt Ion:117 Resp: 48179
 Ion Ratio Lower Upper
 117 100
 119 86.6 76.5 114.7
 121 26.8 25.2 37.8



#36
 Benzene
 Concen: 0.485 ppbv
 RT: 6.362 min Scan# 1169
 Delta R.T. 0.000 min
 Lab File: VL039813.D
 Acq: 2 Nov 2022 12:39

Tgt Ion: 78 Resp: 121054
 Ion Ratio Lower Upper
 78 100
 77 20.3 17.4 26.2
 50 19.8 13.9 20.9

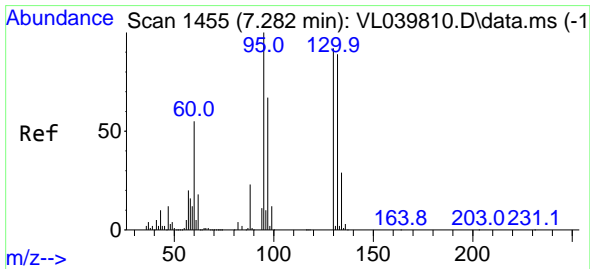
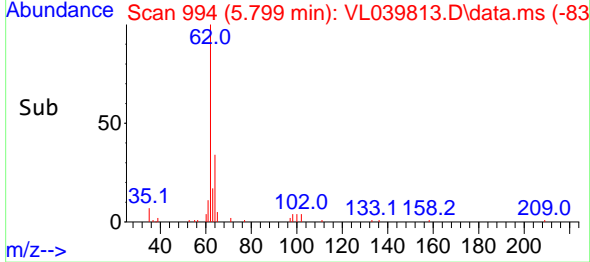
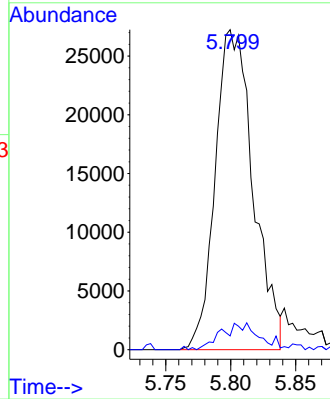
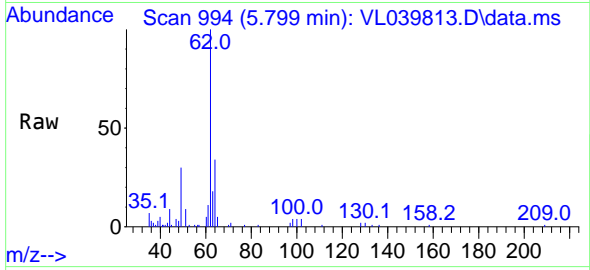




#37
 1,2-Dichloroethane
 Concen: 0.463 ppbv
 RT: 5.799 min Scan# 995
 Delta R.T. -0.003 min
 Lab File: VL039813.D
 Acq: 2 Nov 2022 12:39

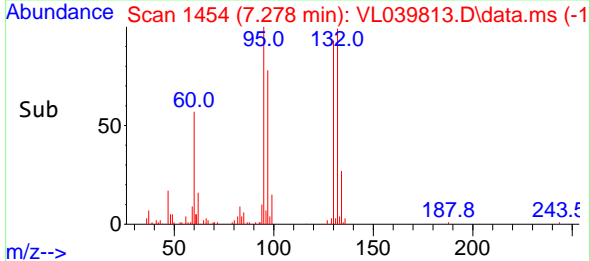
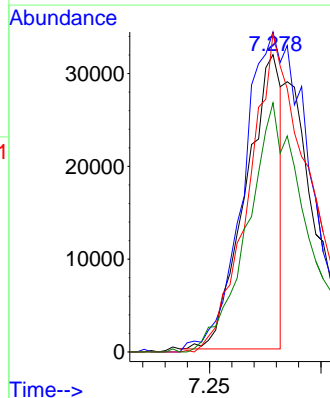
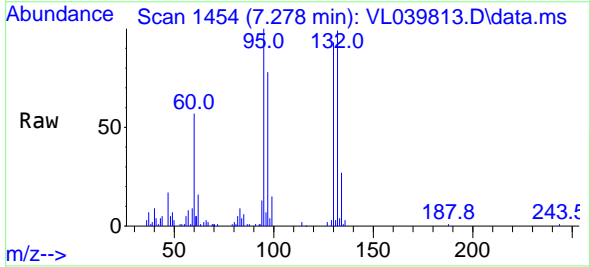
Instrument : MSVOA_L
 ClientSampleId :

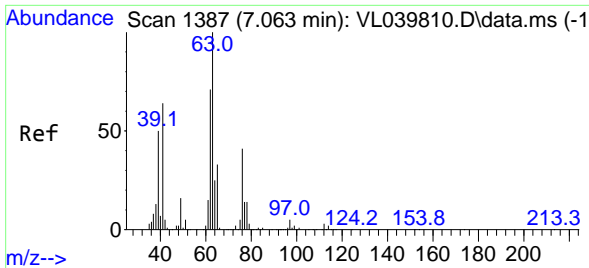
Tgt Ion: 62 Resp: 55390
 Ion Ratio Lower Upper
 62 100
 98 9.4 5.4 8.2#



#38
 Trichloroethene
 Concen: 0.255 ppbv
 RT: 7.278 min Scan# 1454
 Delta R.T. -0.003 min
 Lab File: VL039813.D
 Acq: 2 Nov 2022 12:39

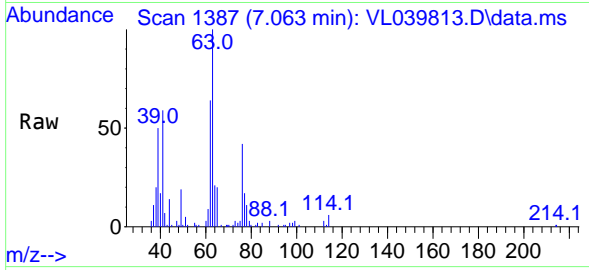
Tgt Ion: 130 Resp: 35012
 Ion Ratio Lower Upper
 130 100
 95 108.7 87.4 131.2
 132 108.1 77.7 116.5
 97 84.6 58.6 87.8



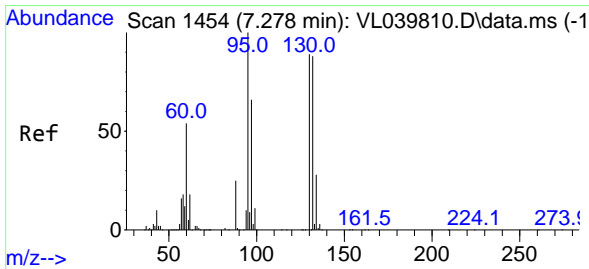
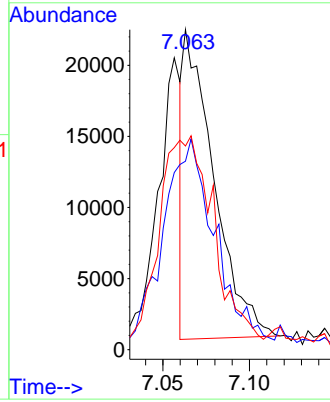
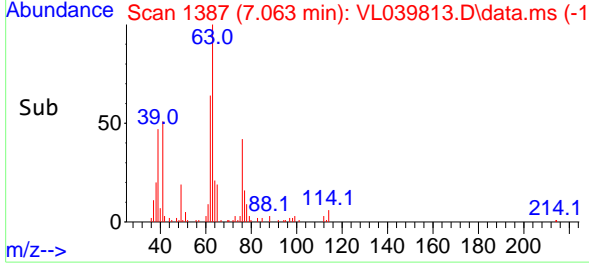


#39
 1,2-Dichloropropane
 Concen: 0.273 ppbv
 RT: 7.063 min Scan# 11
 Delta R.T. 0.000 min
 Lab File: VL039813.D
 Acq: 2 Nov 2022 12:39

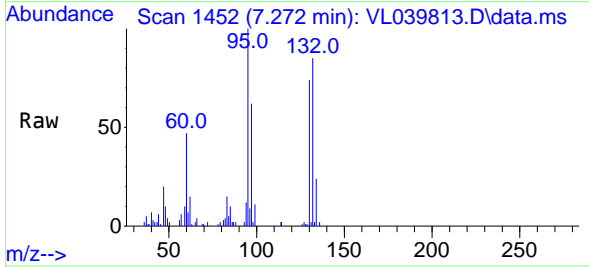
Instrument :
 MSVOA_L
 ClientSampleId :



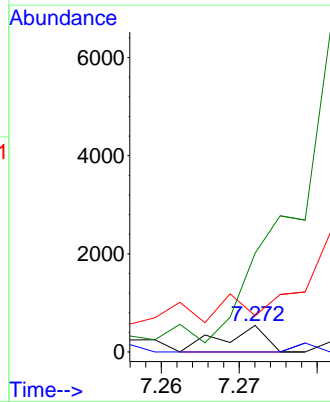
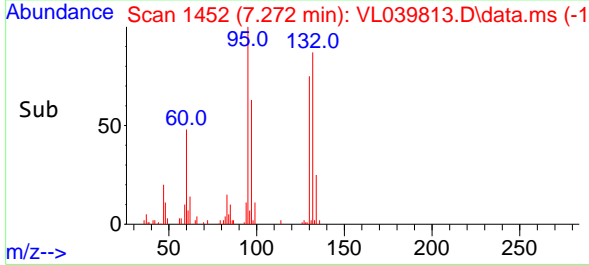
Tgt Ion: 63 Resp: 26494
 Ion Ratio Lower Upper
 63 100
 41 53.5 51.0 76.4
 62 59.0 56.6 85.0

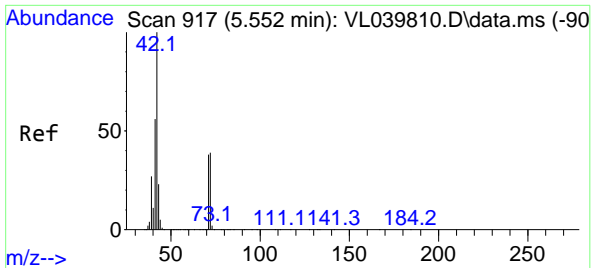


#40
 1,4-Dioxane
 Concen: 0.006 ppbv
 RT: 7.272 min Scan# 1452
 Delta R.T. -0.006 min
 Lab File: VL039813.D
 Acq: 2 Nov 2022 12:39



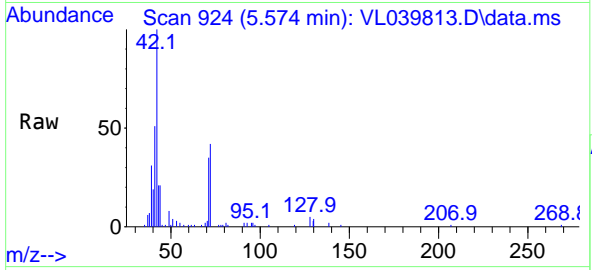
Tgt Ion: 88 Resp: 208
 Ion Ratio Lower Upper
 88 100
 58 0.0 99.5 149.3#
 43 0.0 189.7 284.5#
 57 0.0 846.5 1269.7#



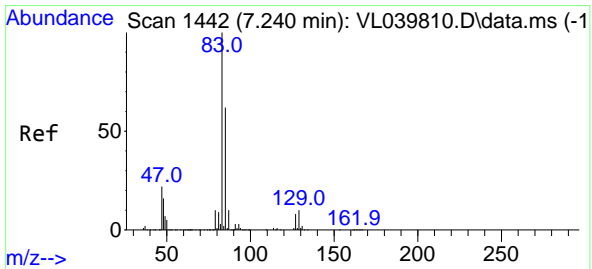
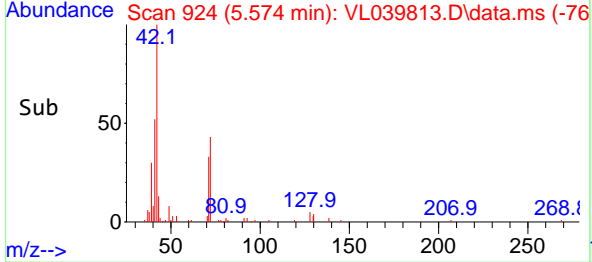
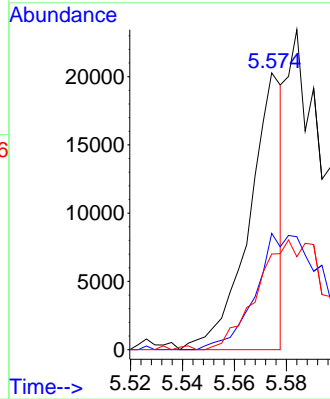


#41
 Tetrahydrofuran
 Concen: 0.176 ppbv
 RT: 5.574 min Scan# 917
 Delta R.T. 0.023 min
 Lab File: VL039813.D
 Acq: 2 Nov 2022 12:39

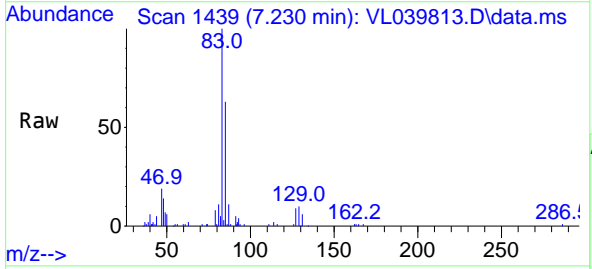
Instrument :
 MSVOA_L
 ClientSampleId :



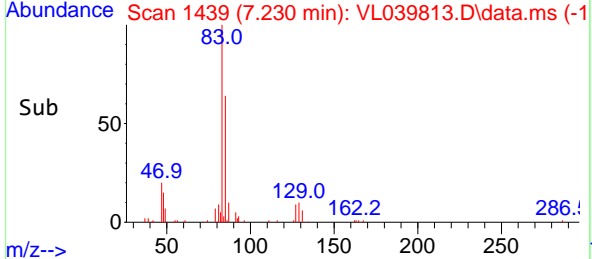
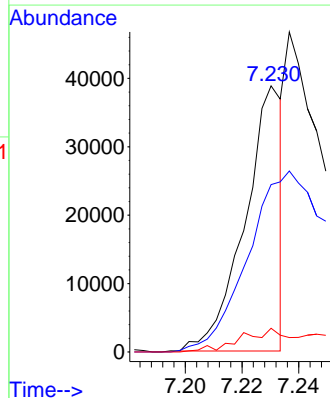
Tgt Ion: 42 Resp: 17942
 Ion Ratio Lower Upper
 42 100
 72 114.2 31.4 47.2#
 71 0.0 31.5 47.3#

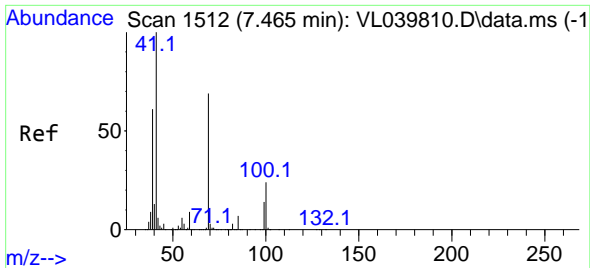


#42
 Bromodichloromethane
 Concen: 0.186 ppbv
 RT: 7.230 min Scan# 1439
 Delta R.T. -0.010 min
 Lab File: VL039813.D
 Acq: 2 Nov 2022 12:39



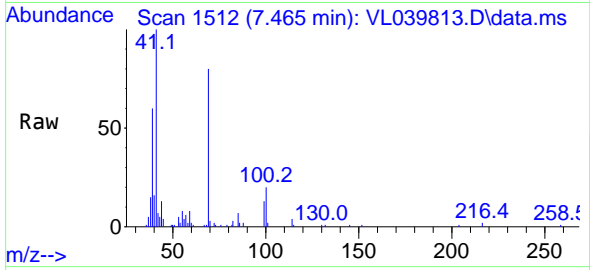
Tgt Ion: 83 Resp: 35585
 Ion Ratio Lower Upper
 83 100
 85 62.6 49.9 74.9
 127 8.9 6.4 9.6



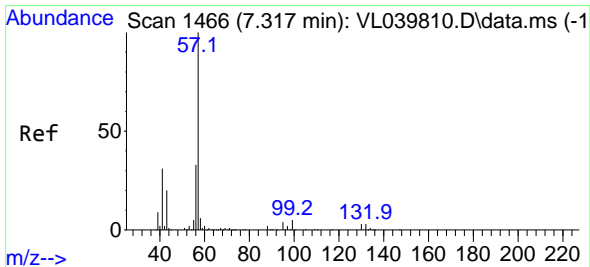
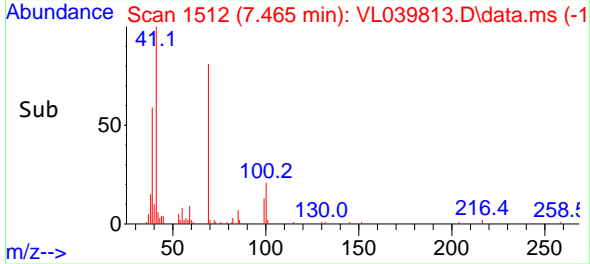
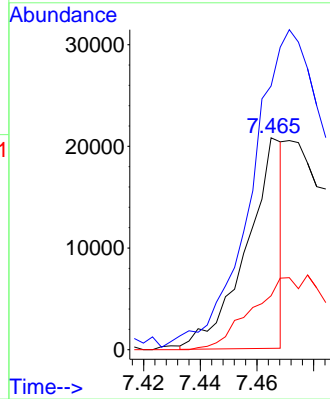


#43
 Methyl Methacrylate
 Concen: 0.186 ppbv
 RT: 7.465 min Scan# 11
 Delta R.T. 0.000 min
 Lab File: VL039813.D
 Acq: 2 Nov 2022 12:39

Instrument :
 MSVOA_L
 ClientSampleId :

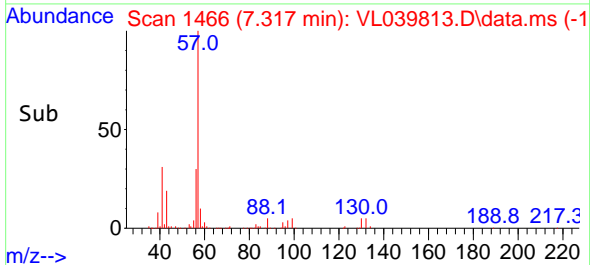
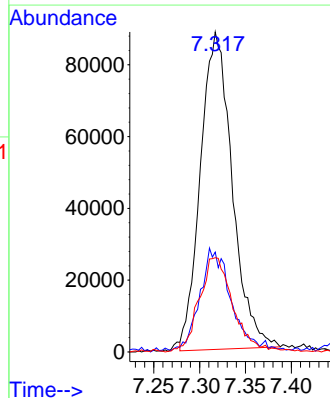
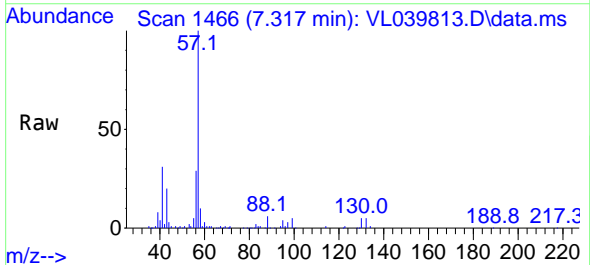


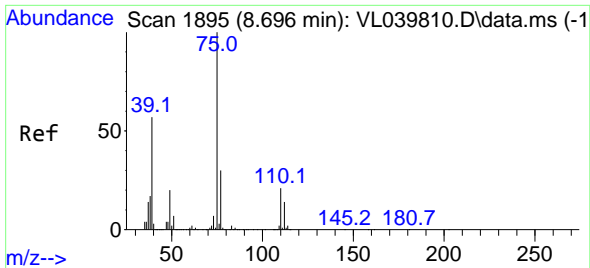
Tgt Ion: 69 Resp: 18371
 Ion Ratio Lower Upper
 69 100
 41 0.0 115.7 173.5#
 100 0.0 25.9 38.9#



#44
 2,2,4-Trimethylpentane
 Concen: 0.506 ppbv
 RT: 7.317 min Scan# 1466
 Delta R.T. 0.000 min
 Lab File: VL039813.D
 Acq: 2 Nov 2022 12:39

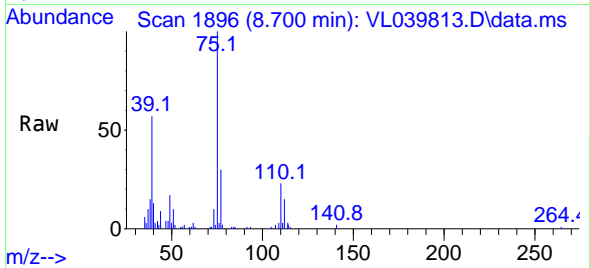
Tgt Ion: 57 Resp: 212897
 Ion Ratio Lower Upper
 57 100
 41 32.3 24.6 36.8
 56 32.4 25.4 38.0



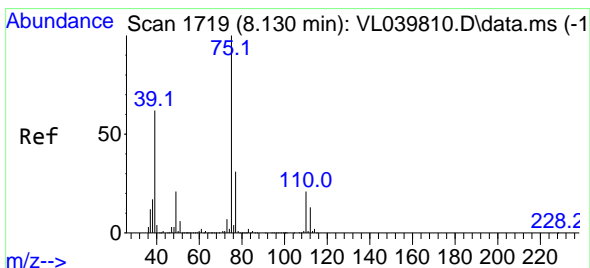
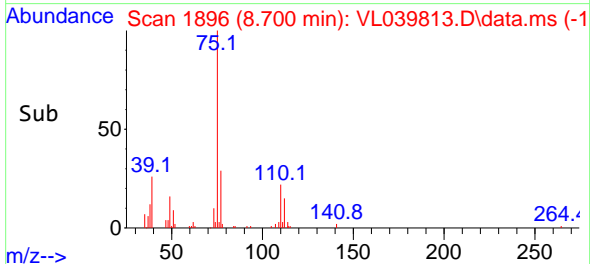
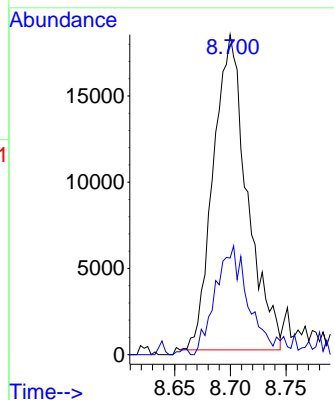


#45
 t-1,3-Dichloropropene
 Concen: 0.410 ppbv
 RT: 8.700 min Scan# 1720
 Delta R.T. 0.003 min
 Lab File: VL039813.D
 Acq: 2 Nov 2022 12:39

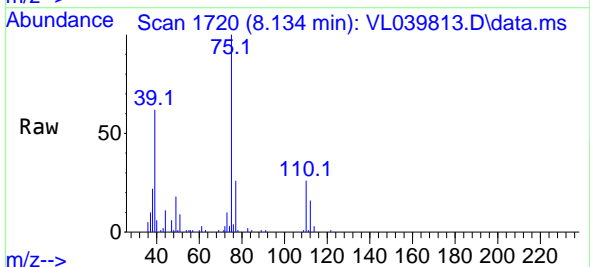
Instrument :
 MSVOA_L
 ClientSampleId :



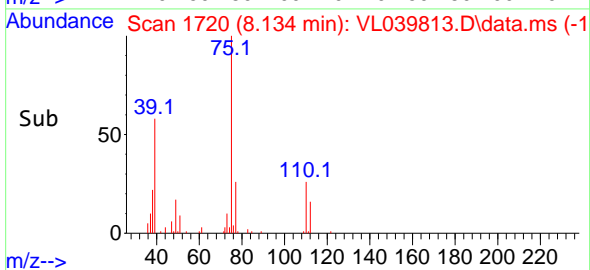
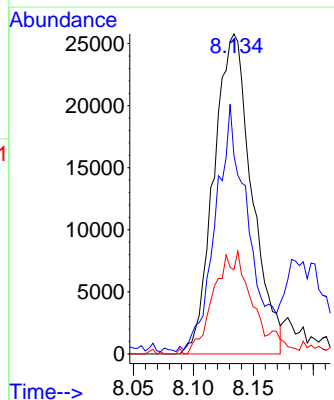
Tgt Ion: 75 Resp: 38703
 Ion Ratio Lower Upper
 75 100
 77 30.2 24.4 36.6

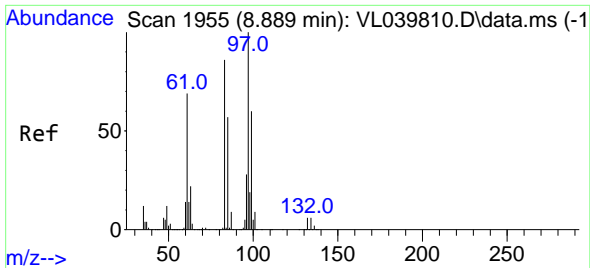


#46
 cis-1,3-Dichloropropene
 Concen: 0.441 ppbv
 RT: 8.134 min Scan# 1720
 Delta R.T. 0.003 min
 Lab File: VL039813.D
 Acq: 2 Nov 2022 12:39



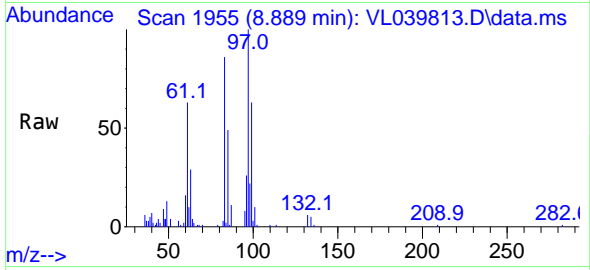
Tgt Ion: 75 Resp: 56812
 Ion Ratio Lower Upper
 75 100
 39 59.6 50.0 75.0
 77 24.7 25.1 37.7#



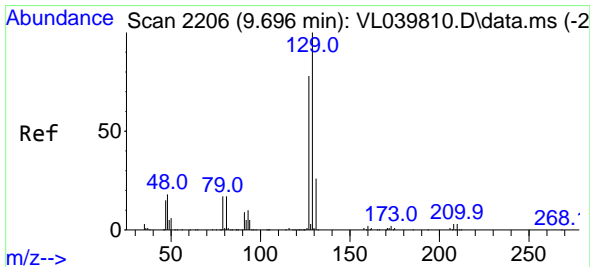
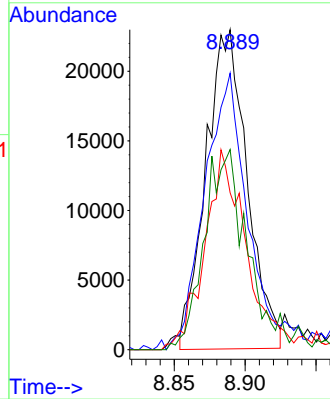
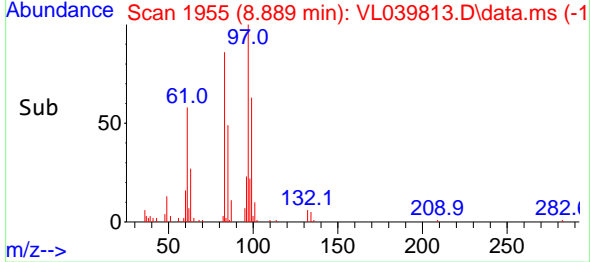


#47
 1,1,2-Trichloroethane
 Concen: 0.473 ppbv
 RT: 8.889 min Scan# 1955
 Delta R.T. 0.000 min
 Lab File: VL039813.D
 Acq: 2 Nov 2022 12:39

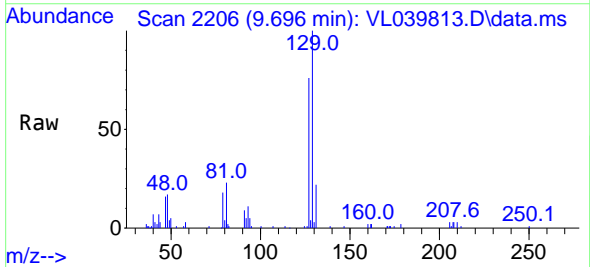
Instrument :
 MSVOA_L
 ClientSampleId :



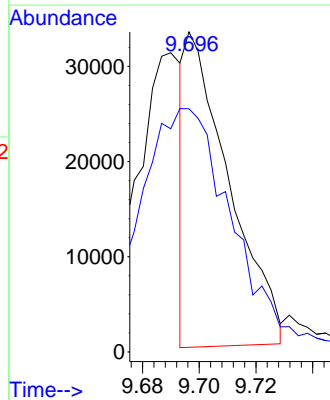
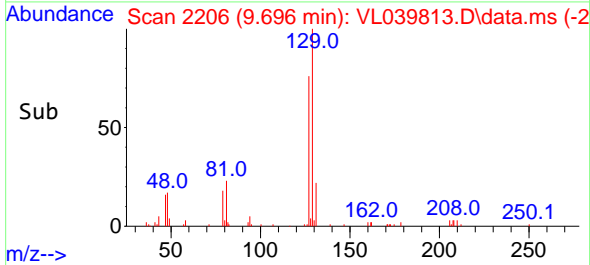
Tgt Ion: 97 Resp: 46610
 Ion Ratio Lower Upper
 97 100
 83 85.8 68.8 103.2
 85 45.3 45.8 68.6#
 99 62.0 48.3 72.5

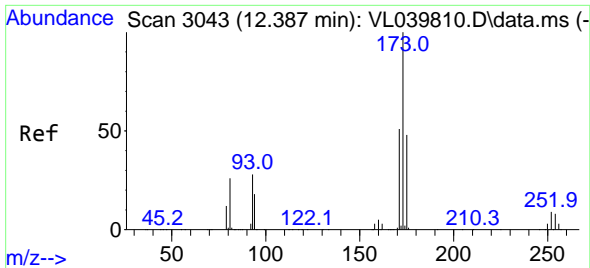


#48
 Dibromochloromethane
 Concen: 0.210 ppbv
 RT: 9.696 min Scan# 2206
 Delta R.T. 0.000 min
 Lab File: VL039813.D
 Acq: 2 Nov 2022 12:39



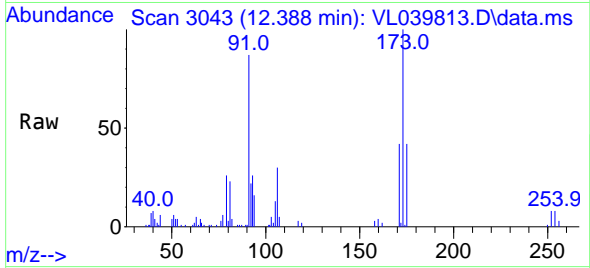
Tgt Ion: 129 Resp: 35241
 Ion Ratio Lower Upper
 129 100
 127 174.8 39.4 118.1#



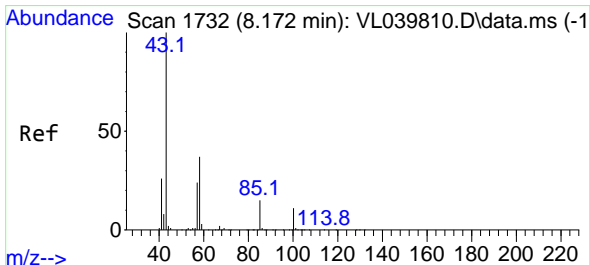
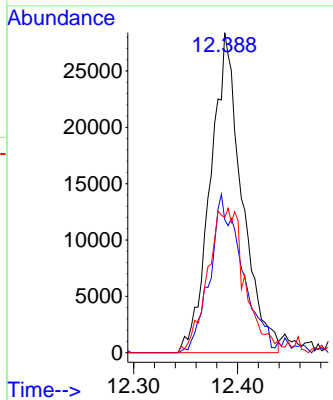
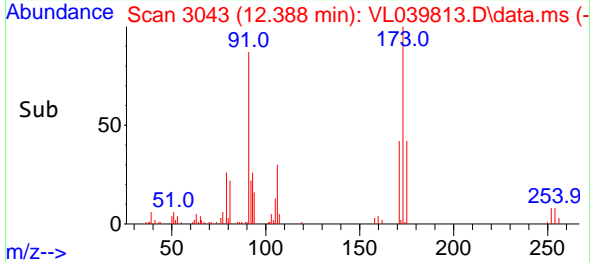


#49
 Bromoform
 Concen: 0.443 ppbv
 RT: 12.388 min Scan# 3043
 Delta R.T. 0.000 min
 Lab File: VL039813.D
 Acq: 2 Nov 2022 12:39

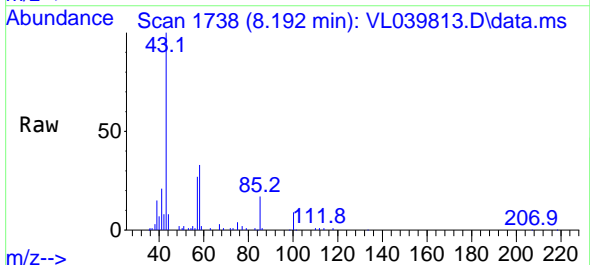
Instrument : MSVOA_L
 ClientSampleId :



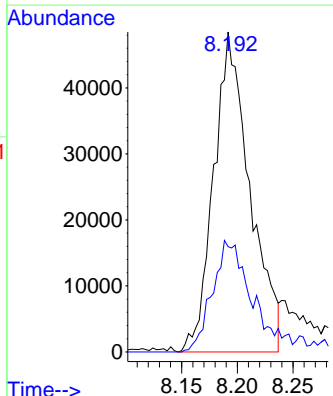
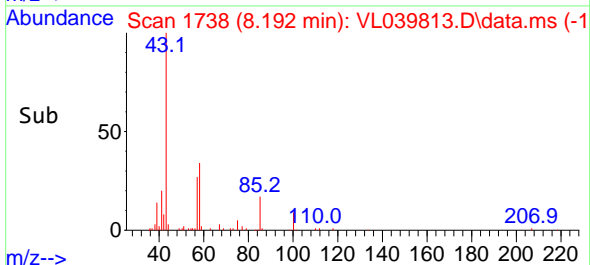
Tgt Ion:173 Resp: 59669
 Ion Ratio Lower Upper
 173 100
 175 54.5 39.7 59.5
 171 55.5 41.7 62.5

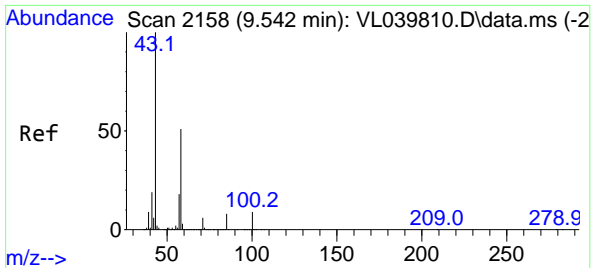


#50
 4-Methyl-2-Pentanone
 Concen: 0.439 ppbv
 RT: 8.192 min Scan# 1738
 Delta R.T. 0.019 min
 Lab File: VL039813.D
 Acq: 2 Nov 2022 12:39



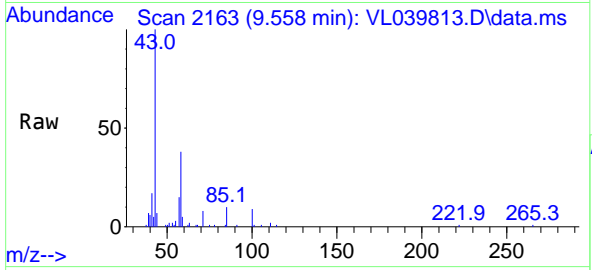
Tgt Ion: 43 Resp: 109764
 Ion Ratio Lower Upper
 43 100
 58 37.9 29.8 44.6



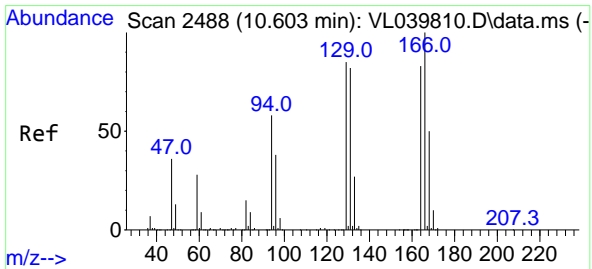
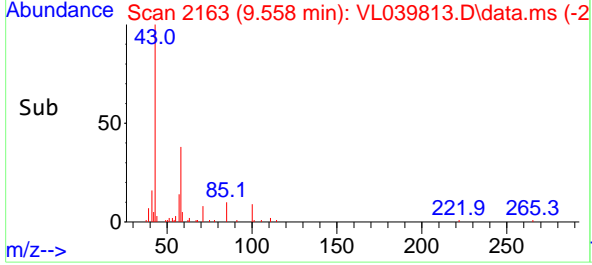
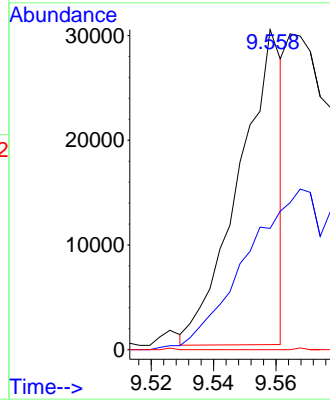


#51
 2-Hexanone
 Concen: 0.148 ppbv
 RT: 9.558 min Scan# 2158
 Delta R.T. 0.016 min
 Lab File: VL039813.D
 Acq: 2 Nov 2022 12:39

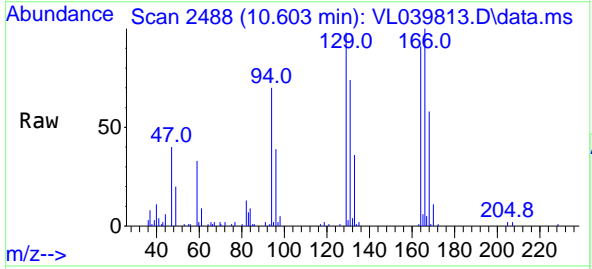
Instrument : MSVOA_L
 ClientSampleId :



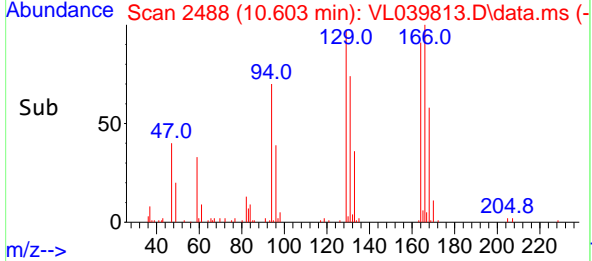
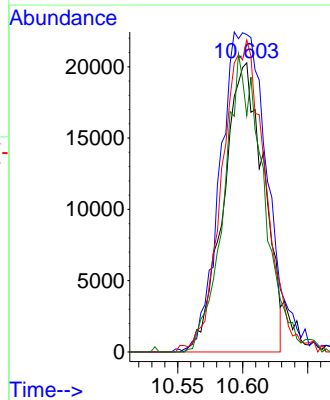
Tgt Ion: 43 Resp: 28894
 Ion Ratio Lower Upper
 43 100
 58 0.0 40.5 60.7#
 98 0.0 0.1 0.1#

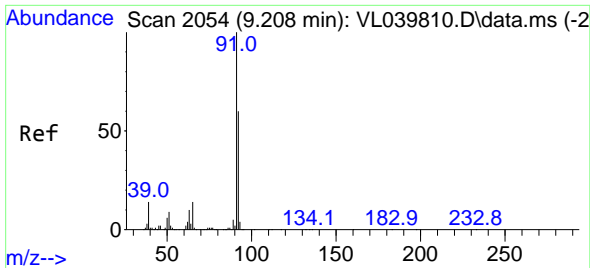


#52
 Tetrachloroethene
 Concen: 0.465 ppbv
 RT: 10.603 min Scan# 2488
 Delta R.T. 0.000 min
 Lab File: VL039813.D
 Acq: 2 Nov 2022 12:39



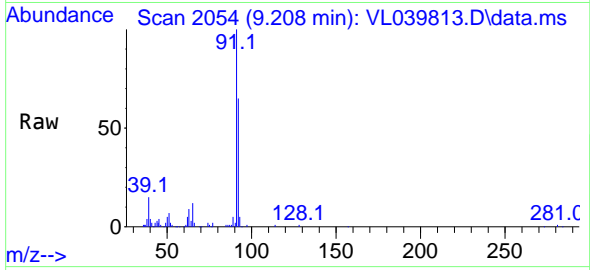
Tgt Ion: 164 Resp: 43829
 Ion Ratio Lower Upper
 164 100
 166 109.0 96.0 144.0
 129 105.7 81.4 122.2
 131 81.8 78.6 117.8



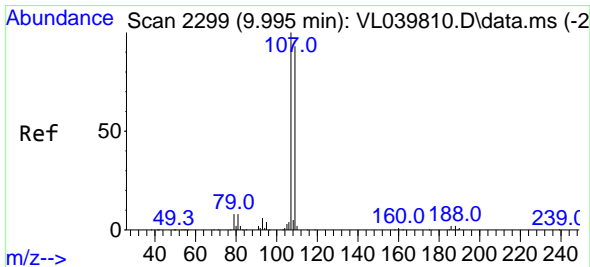
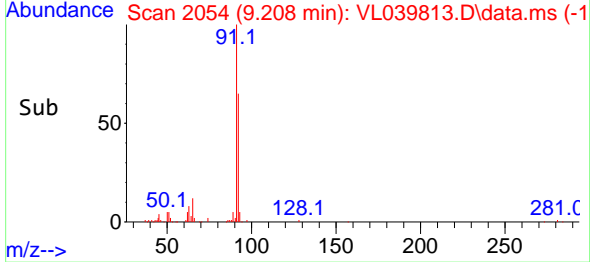
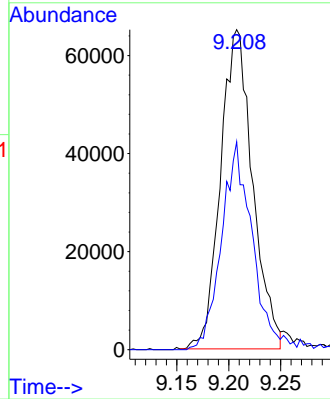


#53
 Toluene
 Concen: 0.489 ppbv
 RT: 9.208 min Scan# 2054
 Delta R.T. 0.000 min
 Lab File: VL039813.D
 Acq: 2 Nov 2022 12:39

Instrument : MSVOA_L
 ClientSampleId :

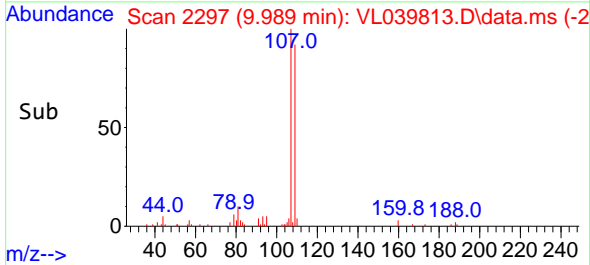
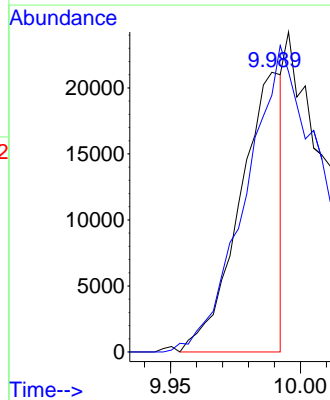
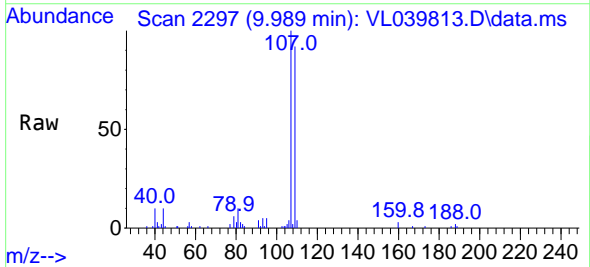


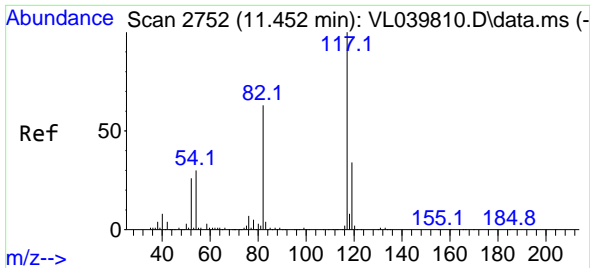
Tgt Ion: 91 Resp: 140075
 Ion Ratio Lower Upper
 91 100
 92 63.6 49.6 74.4



#54
 1,2-Dibromoethane
 Concen: 0.220 ppbv
 RT: 9.989 min Scan# 2297
 Delta R.T. -0.006 min
 Lab File: VL039813.D
 Acq: 2 Nov 2022 12:39

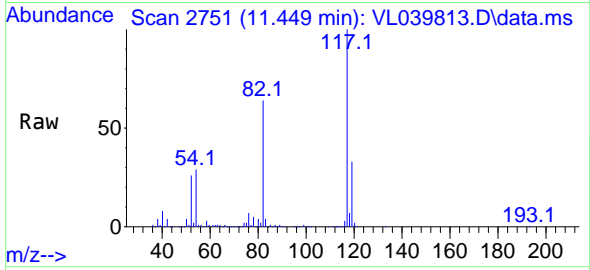
Tgt Ion: 107 Resp: 24044
 Ion Ratio Lower Upper
 107 100
 109 88.7 74.5 111.7



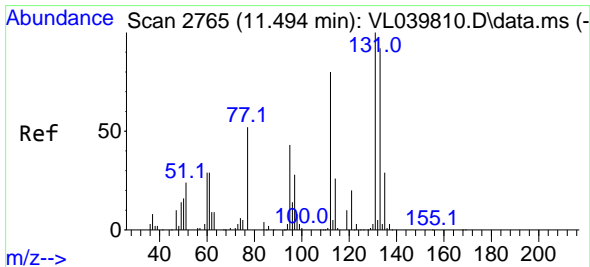
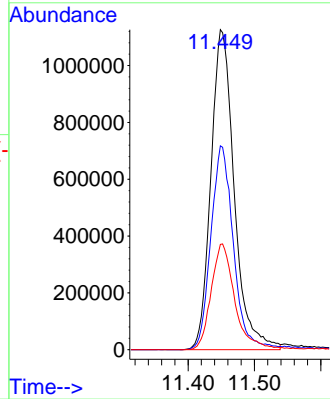
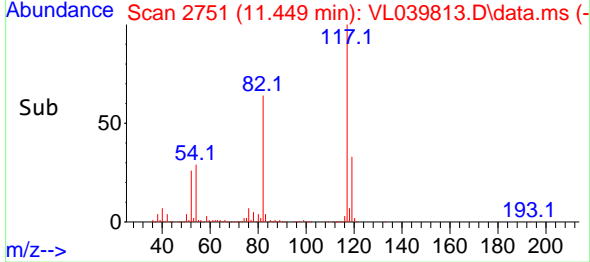


#55
 Chlorobenzene-d5
 Concen: 10.000 ppbv
 RT: 11.449 min Scan# 21
 Delta R.T. -0.003 min
 Lab File: VL039813.D
 Acq: 2 Nov 2022 12:39

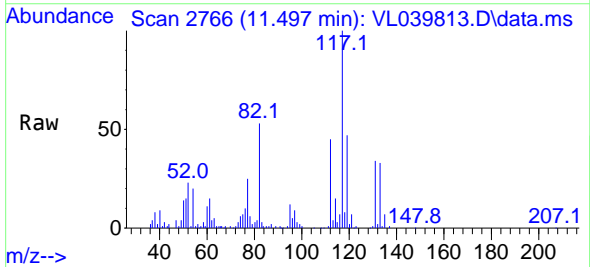
Instrument : MSVOA_L
 ClientSampleId :



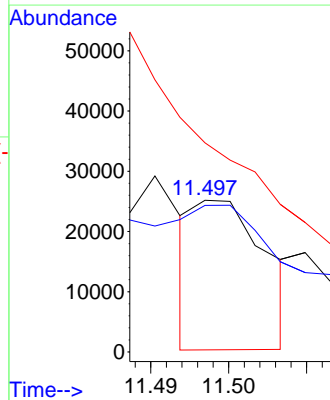
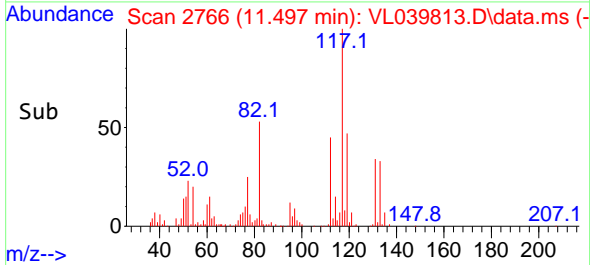
Tgt Ion:117 Resp: 2753224
 Ion Ratio Lower Upper
 117 100
 82 62.8 51.0 76.6
 119 33.7 24.7 37.1

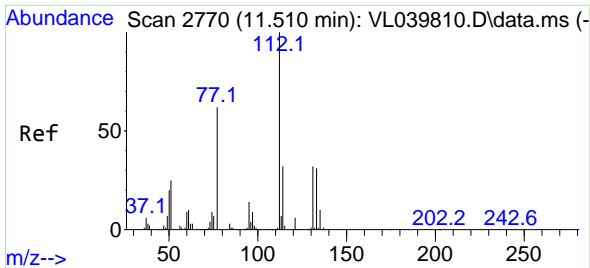


#56
 1,1,1,2-Tetrachloroethane
 Concen: 0.134 ppbv
 RT: 11.497 min Scan# 2766
 Delta R.T. 0.003 min
 Lab File: VL039813.D
 Acq: 2 Nov 2022 12:39



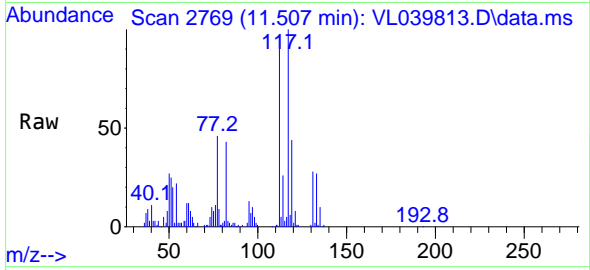
Tgt Ion:131 Resp: 15771
 Ion Ratio Lower Upper
 131 100
 133 364.3 76.9 115.3#
 119 0.0 52.2 78.2#



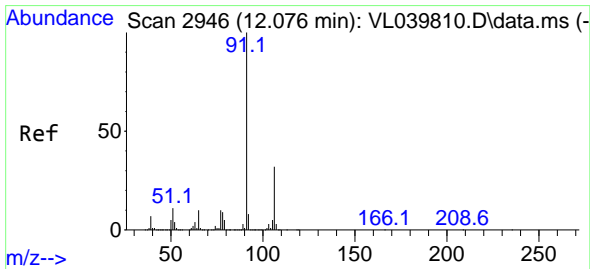
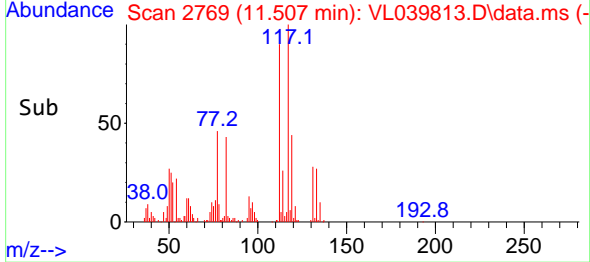
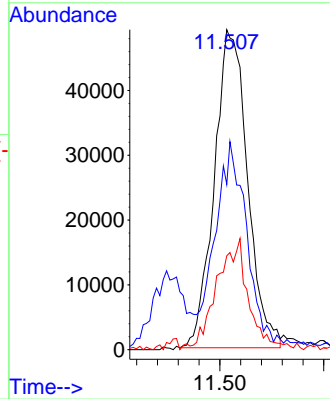


#57
 Chlorobenzene
 Concen: 0.521 ppbv
 RT: 11.507 min Scan# 21
 Delta R.T. -0.003 min
 Lab File: VL039813.D
 Acq: 2 Nov 2022 12:39

Instrument :
 MSVOA_L
 ClientSampleId :

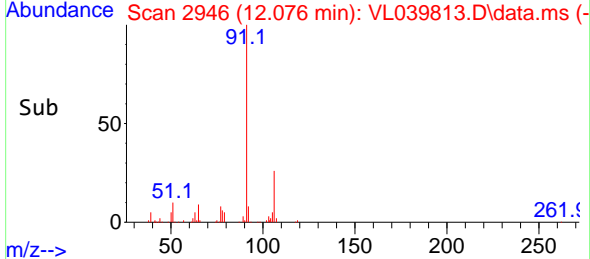
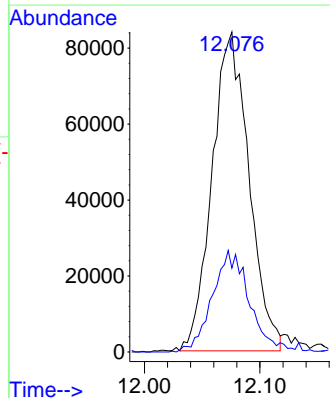
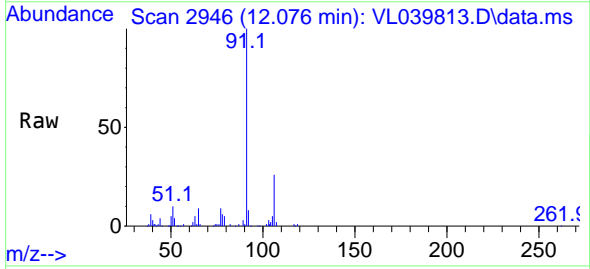


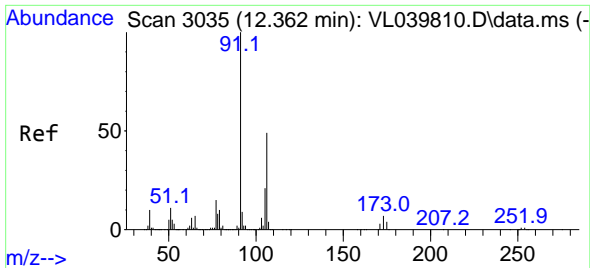
Tgt Ion:112 Resp: 108774
 Ion Ratio Lower Upper
 112 100
 77 48.7 49.8 74.6#
 114 29.5 29.0 35.4



#58
 Ethyl Benzene
 Concen: 0.501 ppbv
 RT: 12.076 min Scan# 2946
 Delta R.T. 0.000 min
 Lab File: VL039813.D
 Acq: 2 Nov 2022 12:39

Tgt Ion: 91 Resp: 186489
 Ion Ratio Lower Upper
 91 100
 106 25.7 25.9 38.9#

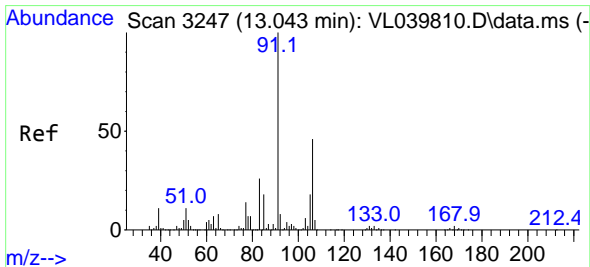
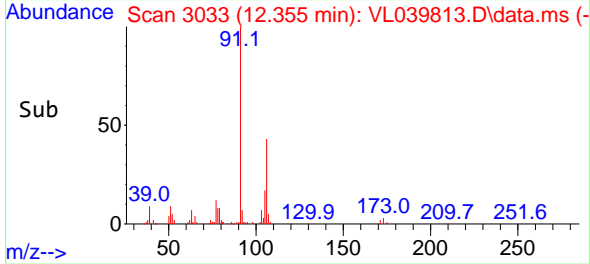
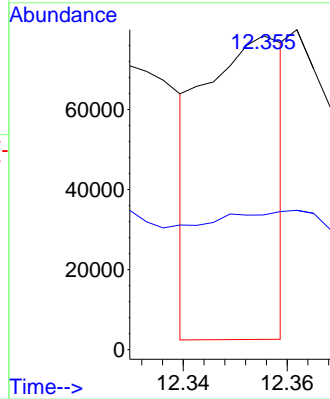
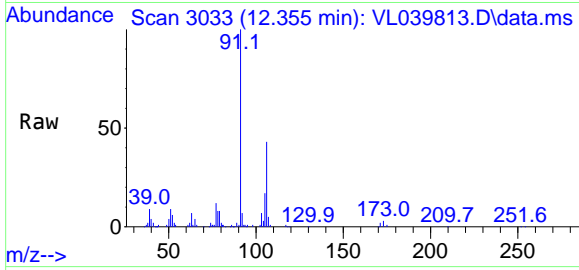




#59
 m/p-Xylene
 Concen: 0.261 ppbv
 RT: 12.355 min Scan# 3033
 Delta R.T. -0.006 min
 Lab File: VL039813.D
 Acq: 2 Nov 2022 12:39

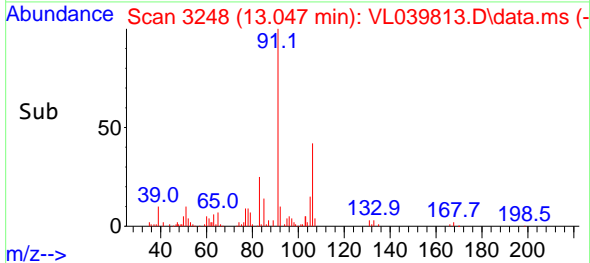
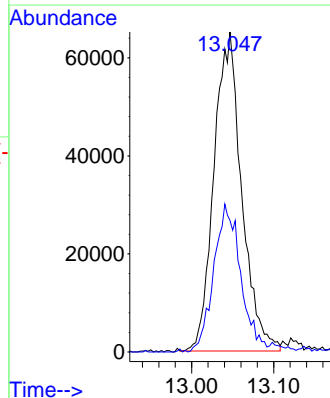
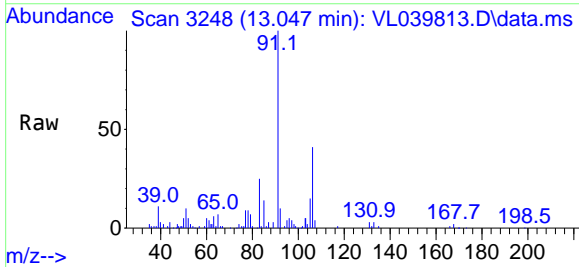
Instrument : MSVOA_L
 ClientSampleId :

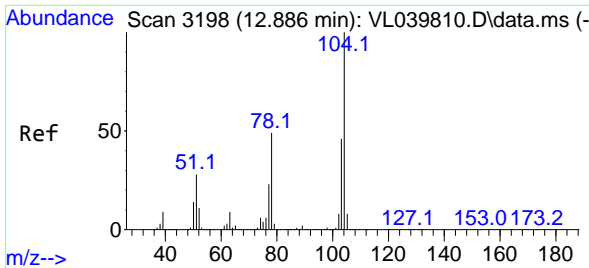
Tgt Ion: 91 Resp: 81008
 Ion Ratio Lower Upper
 91 100
 106 0.0 37.6 56.4#



#60
 o-Xylene
 Concen: 0.519 ppbv
 RT: 13.047 min Scan# 3248
 Delta R.T. 0.003 min
 Lab File: VL039813.D
 Acq: 2 Nov 2022 12:39

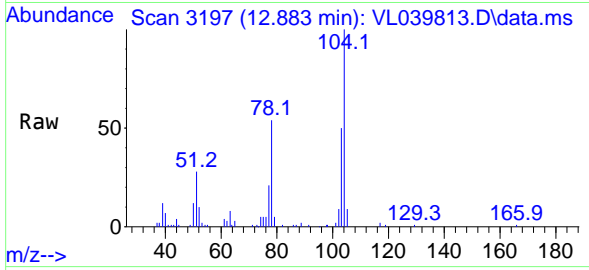
Tgt Ion: 91 Resp: 152878
 Ion Ratio Lower Upper
 91 100
 106 46.4 23.6 70.8



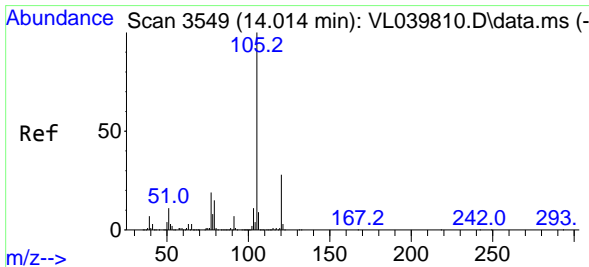
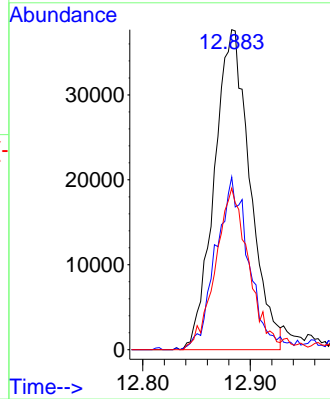
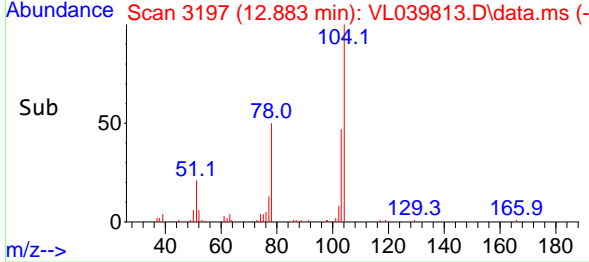


#61
 Styrene
 Concen: 0.479 ppbv
 RT: 12.883 min Scan# 3198
 Delta R.T. -0.003 min
 Lab File: VL039813.D
 Acq: 2 Nov 2022 12:39

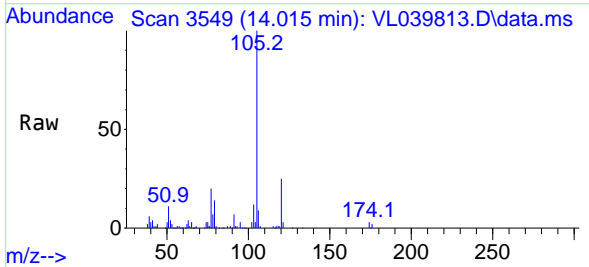
Instrument : MSVOA_L
 ClientSampleId :



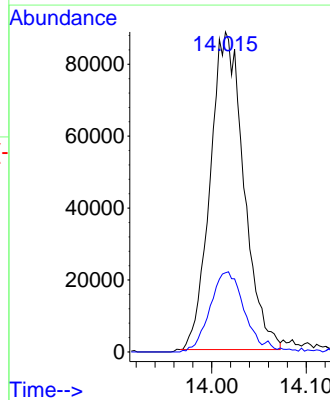
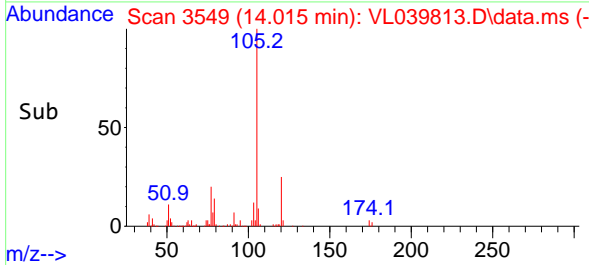
Tgt Ion:104 Resp: 86814
 Ion Ratio Lower Upper
 104 100
 78 50.1 40.2 60.2
 103 48.1 37.5 56.3

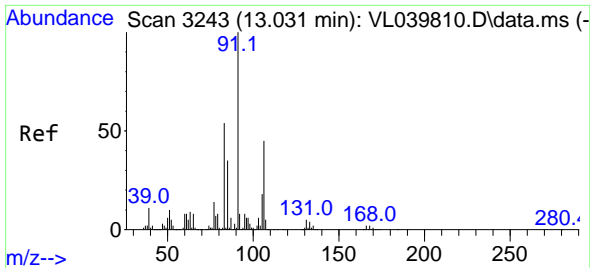


#62
 Isopropylbenzene
 Concen: 0.507 ppbv
 RT: 14.015 min Scan# 3549
 Delta R.T. 0.000 min
 Lab File: VL039813.D
 Acq: 2 Nov 2022 12:39



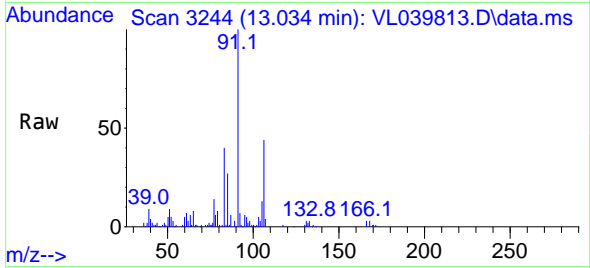
Tgt Ion:105 Resp: 217942
 Ion Ratio Lower Upper
 105 100
 120 26.6 21.7 32.5



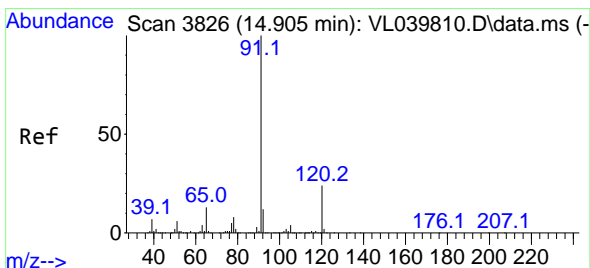
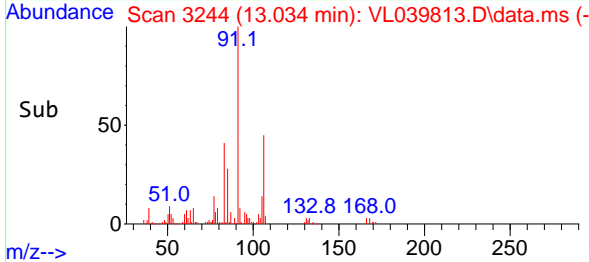
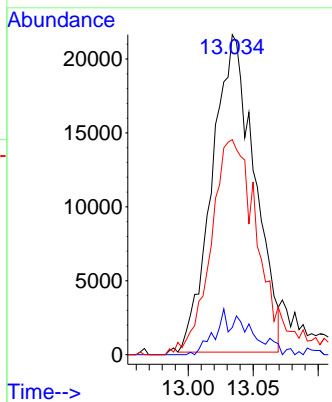


#63
 1,1,2,2-Tetrachloroethane
 Concen: 0.444 ppbv
 RT: 13.034 min Scan# 31
 Delta R.T. 0.003 min
 Lab File: VL039813.D
 Acq: 2 Nov 2022 12:39

Instrument :
 MSVOA_L
 ClientSampleId :

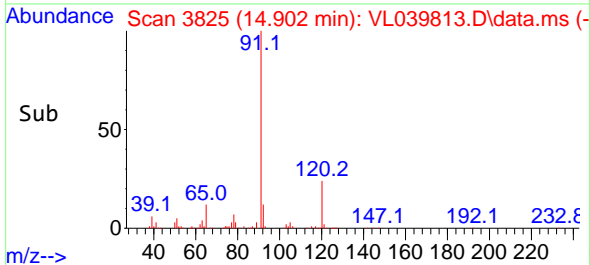
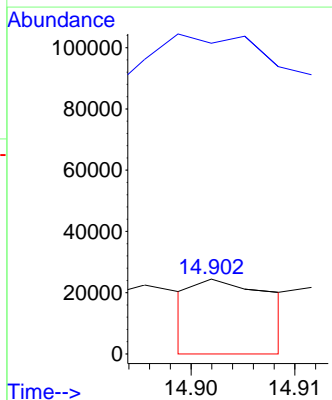
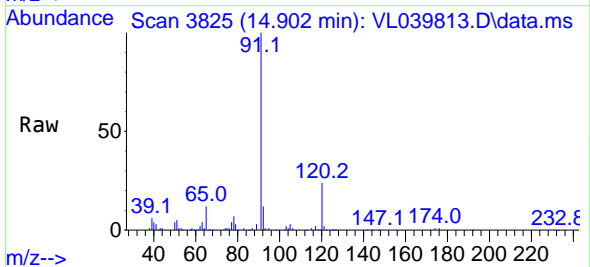


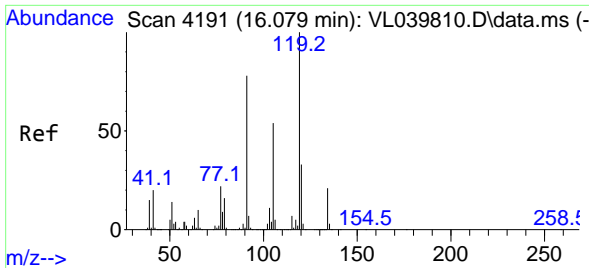
Tgt Ion: 83 Resp: 48648
 Ion Ratio Lower Upper
 83 100
 131 12.2 4.6 13.8
 85 80.8 33.3 99.9



#64
 n-propylbenzene
 Concen: 0.110 ppbv
 RT: 14.902 min Scan# 3825
 Delta R.T. -0.003 min
 Lab File: VL039813.D
 Acq: 2 Nov 2022 12:39

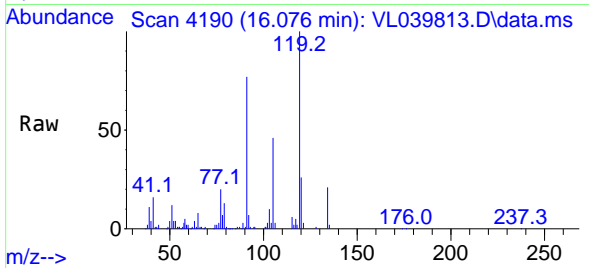
Tgt Ion: 120 Resp: 12681
 Ion Ratio Lower Upper
 120 100
 91 2221.8 354.9 532.3#



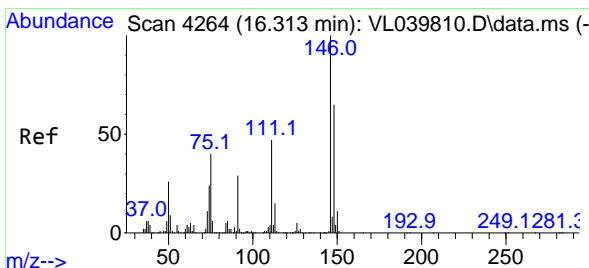
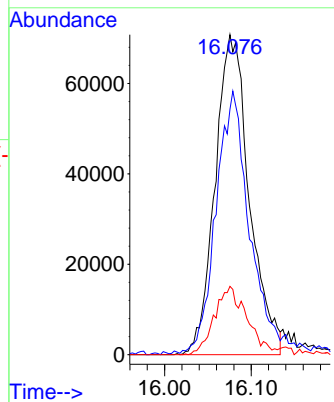
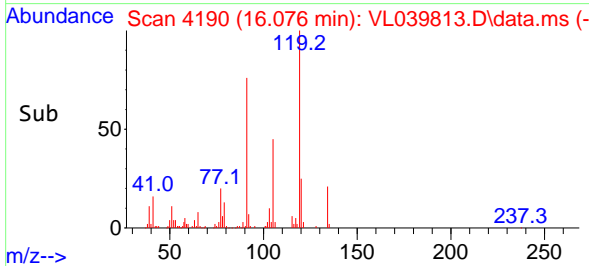


#65
 tert-Butylbenzene
 Concen: 0.516 ppbv
 RT: 16.076 min Scan# 4191
 Delta R.T. -0.003 min
 Lab File: VL039813.D
 Acq: 2 Nov 2022 12:39

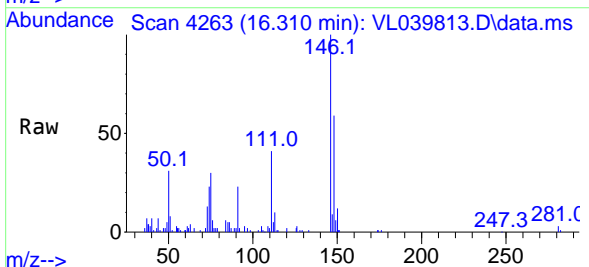
Instrument :
 MSVOA_L
 ClientSampleId :



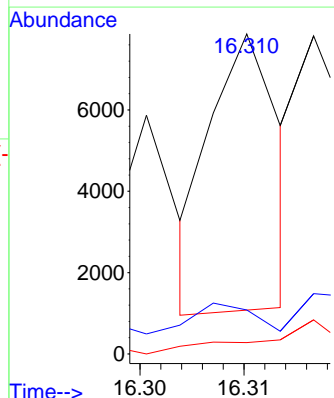
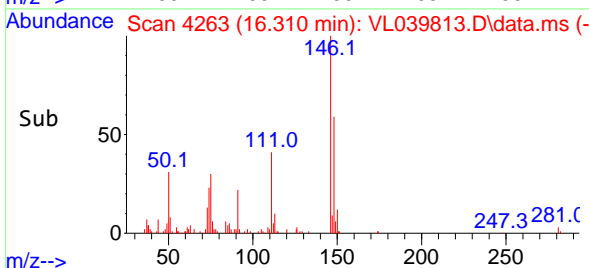
Tgt Ion:119 Resp: 194576
 Ion Ratio Lower Upper
 119 100
 91 81.8 63.7 95.5
 134 21.7 16.2 24.4

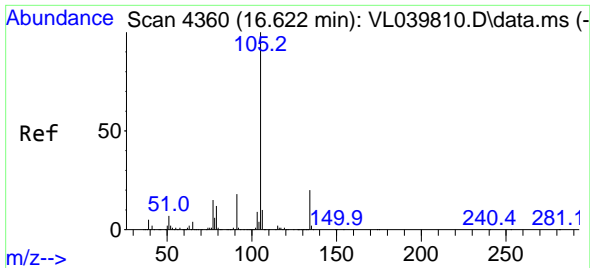


#66
 Benzyl Chloride
 Concen: 0.071 ppbv
 RT: 16.310 min Scan# 4263
 Delta R.T. -0.003 min
 Lab File: VL039813.D
 Acq: 2 Nov 2022 12:39



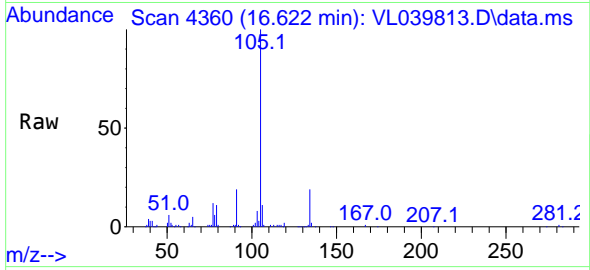
Tgt Ion: 91 Resp: 3134
 Ion Ratio Lower Upper
 91 100
 126 0.0 15.6 23.4#
 128 0.0 4.9 7.3#



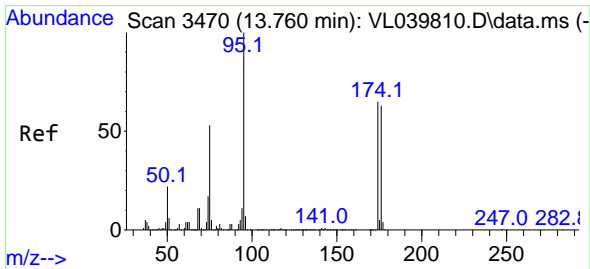
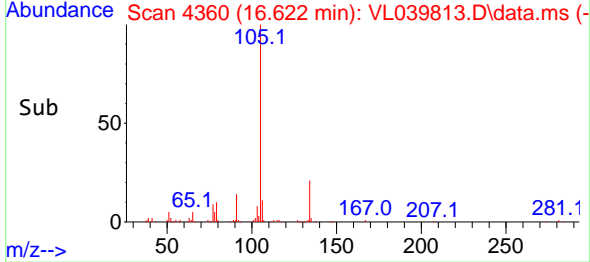
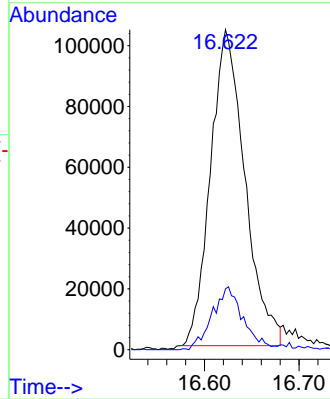


#67
 sec-Butylbenzene
 Concen: 0.512 ppbv
 RT: 16.622 min Scan# 41
 Delta R.T. 0.000 min
 Lab File: VL039813.D
 Acq: 2 Nov 2022 12:39

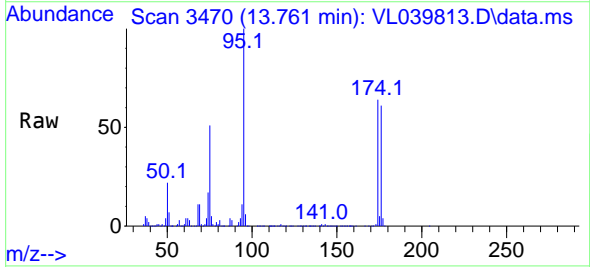
Instrument :
 MSVOA_L
 ClientSampleId :



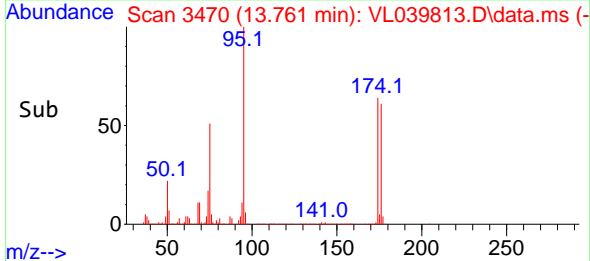
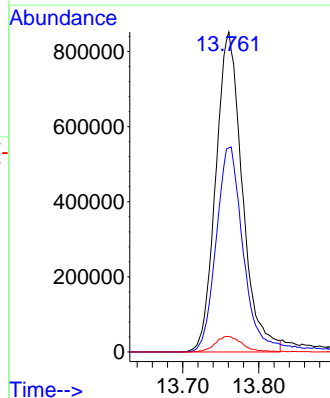
Tgt Ion:105 Resp: 262799
 Ion Ratio Lower Upper
 105 100
 134 19.0 15.1 22.7

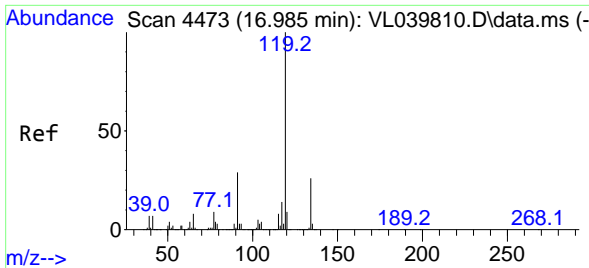


#68
 1-Bromo-4-Fluorobenzene
 Concen: 10.033 ppbv
 RT: 13.761 min Scan# 3470
 Delta R.T. 0.000 min
 Lab File: VL039813.D
 Acq: 2 Nov 2022 12:39



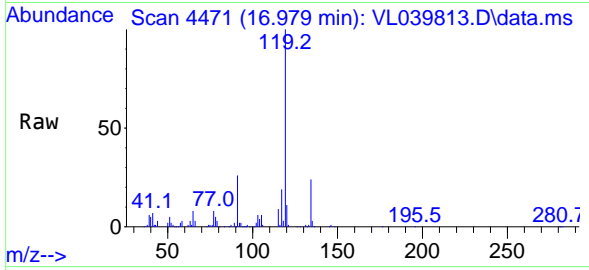
Tgt Ion: 95 Resp: 2067625
 Ion Ratio Lower Upper
 95 100
 174 68.5 53.4 80.0
 175 5.1 4.1 6.1



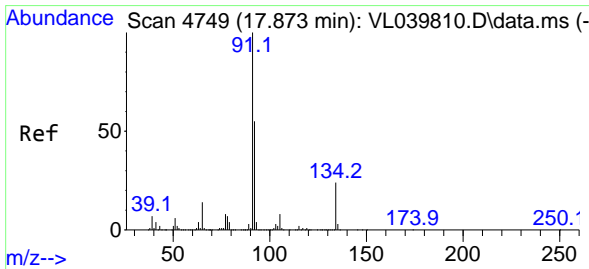
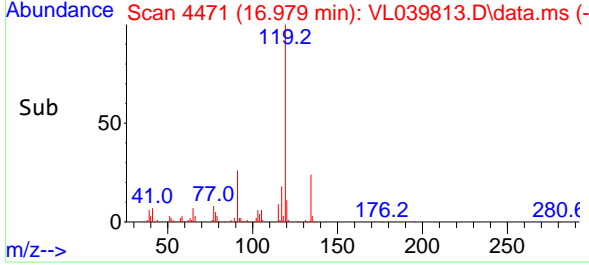
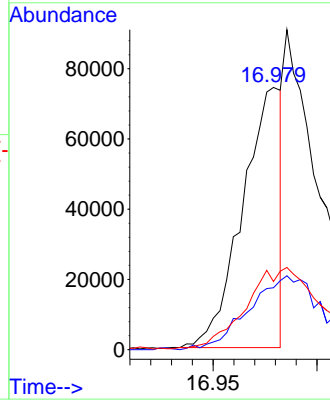


#69
 p-Isopropyltoluene
 Concen: 0.227 ppbv
 RT: 16.979 min Scan# 4473
 Delta R.T. -0.006 min
 Lab File: VL039813.D
 Acq: 2 Nov 2022 12:39

Instrument : MSVOA_L
 ClientSampleId :

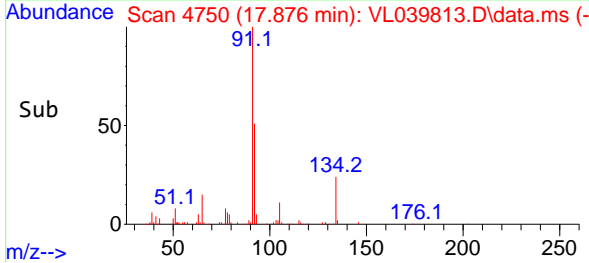
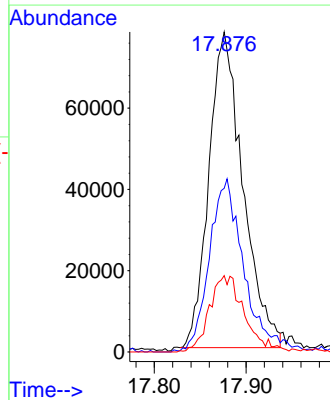
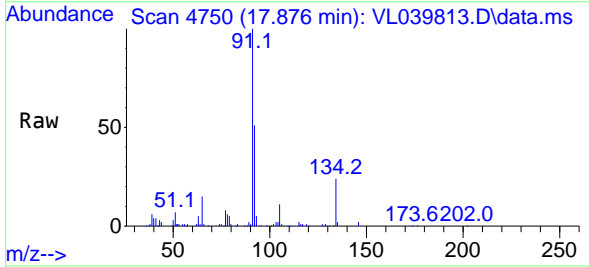


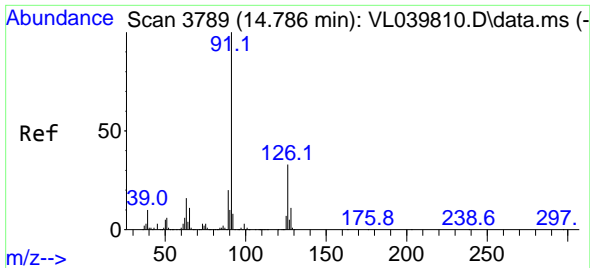
Tgt Ion:119 Resp: 96543
 Ion Ratio Lower Upper
 119 100
 134 0.0 21.0 31.6#
 91 0.0 22.8 34.2#



#70
 n-Butylbenzene
 Concen: 0.487 ppbv
 RT: 17.876 min Scan# 4750
 Delta R.T. 0.003 min
 Lab File: VL039813.D
 Acq: 2 Nov 2022 12:39

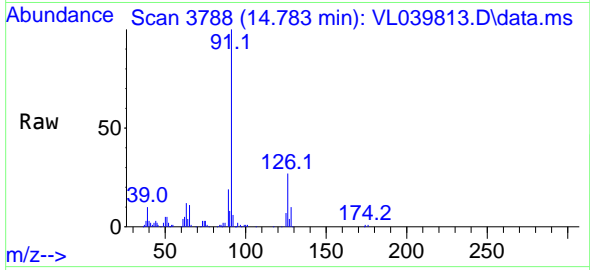
Tgt Ion: 91 Resp: 200407
 Ion Ratio Lower Upper
 91 100
 92 56.4 44.1 66.1
 134 25.1 19.0 28.6



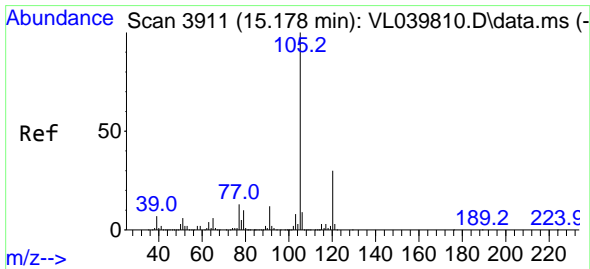
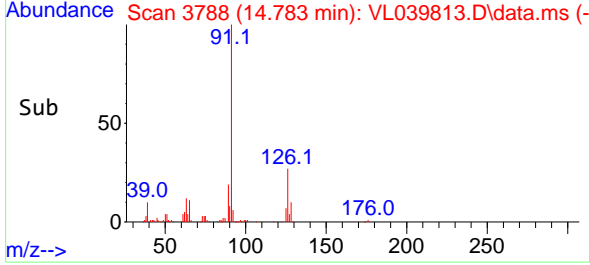
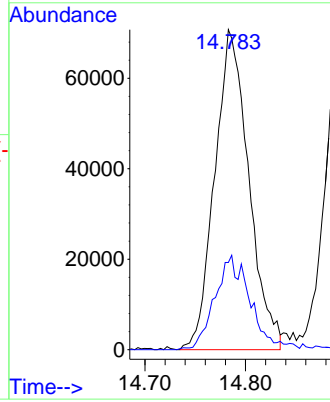


#71
 2-Chlorotoluene
 Concen: 0.515 ppbv
 RT: 14.783 min Scan# 31
 Delta R.T. -0.003 min
 Lab File: VL039813.D
 Acq: 2 Nov 2022 12:39

Instrument :
 MSVOA_L
 ClientSampleId :

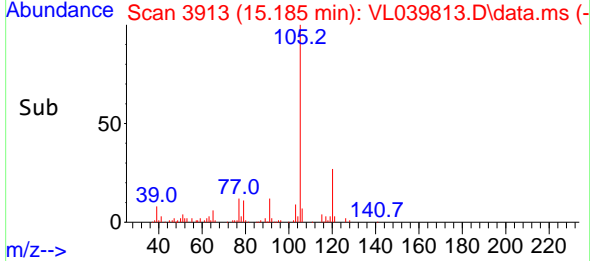
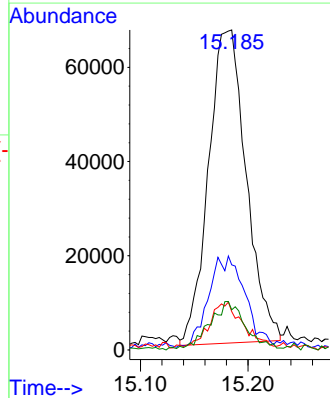
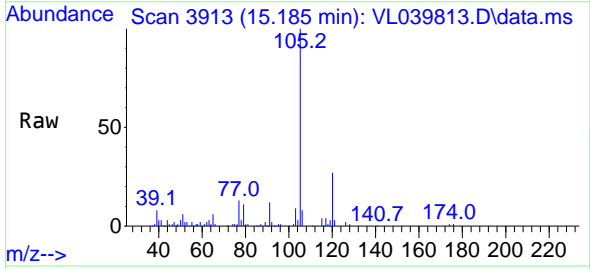


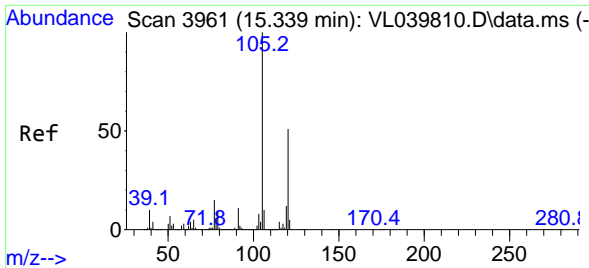
Tgt Ion: 91 Resp: 166206
 Ion Ratio Lower Upper
 91 100
 126 31.4 12.9 51.5



#72
 4-Ethyltoluene
 Concen: 0.490 ppbv
 RT: 15.185 min Scan# 3913
 Delta R.T. 0.007 min
 Lab File: VL039813.D
 Acq: 2 Nov 2022 12:39

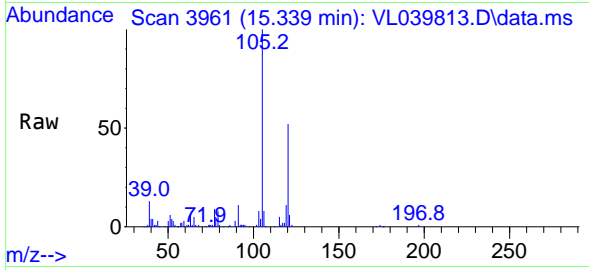
Tgt Ion: 105 Resp: 162307
 Ion Ratio Lower Upper
 105 100
 120 31.4 26.0 39.0
 91 13.9 10.5 15.7
 77 15.3 11.2 16.8



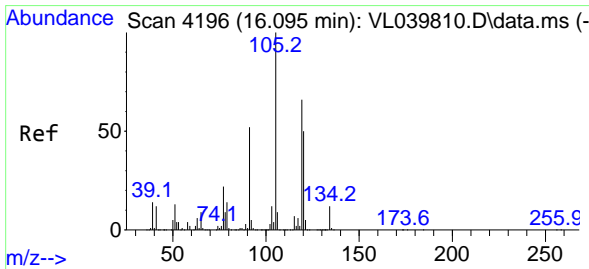
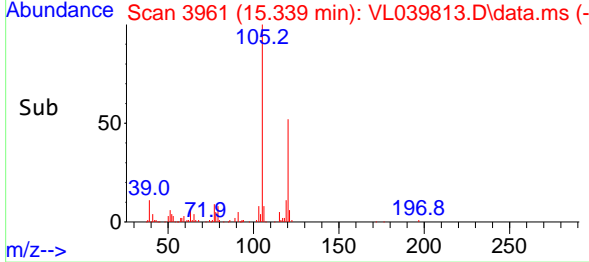
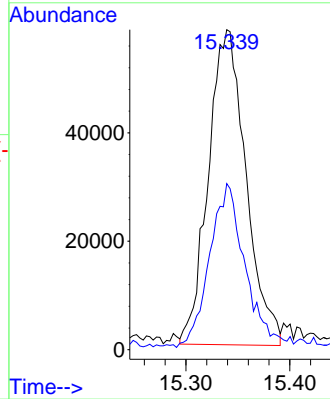


#73
 1,3,5-Trimethylbenzene
 Concen: 0.498 ppbv
 RT: 15.339 min Scan# 3961
 Delta R.T. 0.000 min
 Lab File: VL039813.D
 Acq: 2 Nov 2022 12:39

Instrument :
 MSVOA_L
 ClientSampleId :

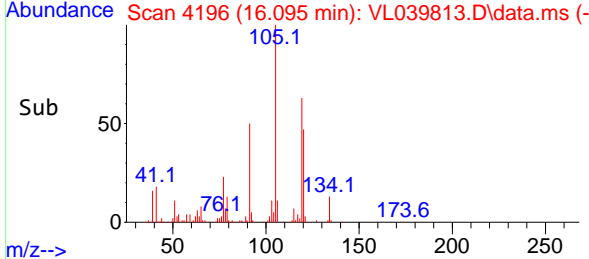
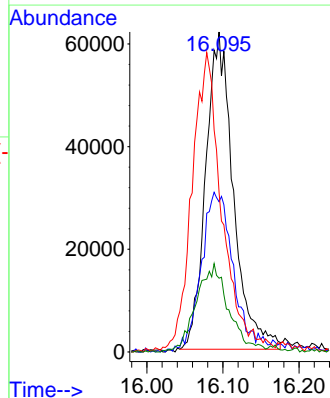
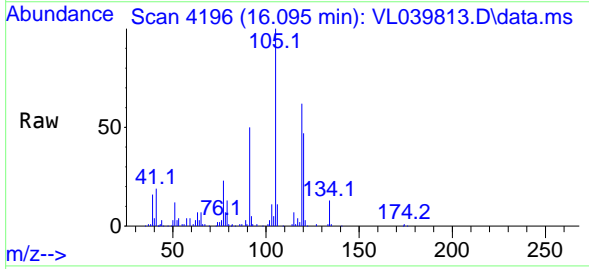


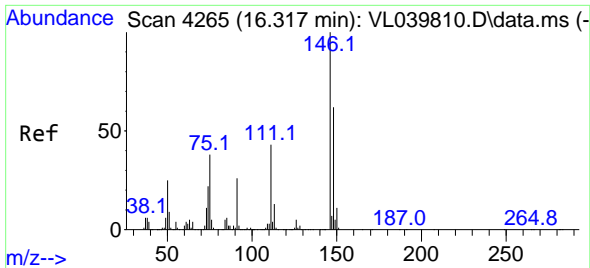
Tgt Ion:105 Resp: 146436
 Ion Ratio Lower Upper
 105 100
 120 51.6 41.0 61.4



#74
 1,2,4-Trimethylbenzene
 Concen: 0.499 ppbv
 RT: 16.095 min Scan# 4196
 Delta R.T. 0.000 min
 Lab File: VL039813.D
 Acq: 2 Nov 2022 12:39

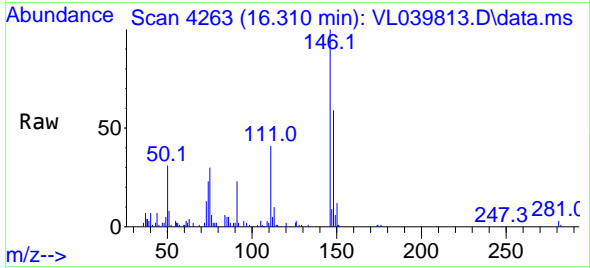
Tgt Ion:105 Resp: 155871
 Ion Ratio Lower Upper
 105 100
 120 45.8 40.2 60.4
 91 47.7 42.6 64.0
 77 22.6 17.8 26.8



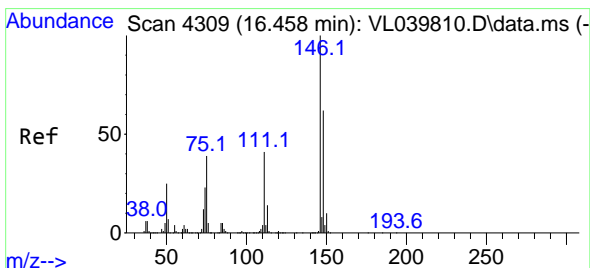
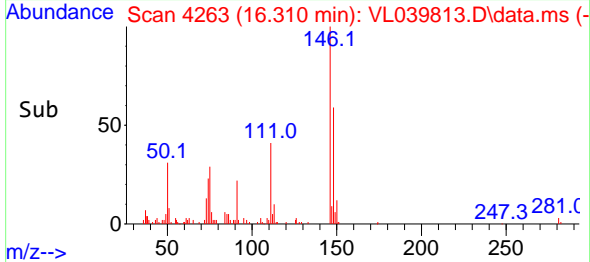
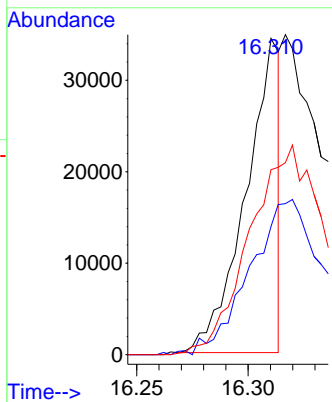


#75
 1,3-Dichlorobenzene
 Concen: 0.200 ppbv
 RT: 16.310 min Scan# 41
 Delta R.T. -0.006 min
 Lab File: VL039813.D
 Acq: 2 Nov 2022 12:39

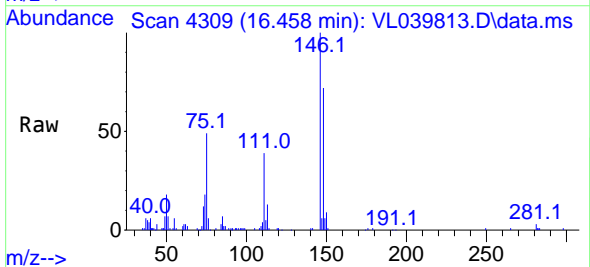
Instrument :
 MSVOA_L
 ClientSampleId :



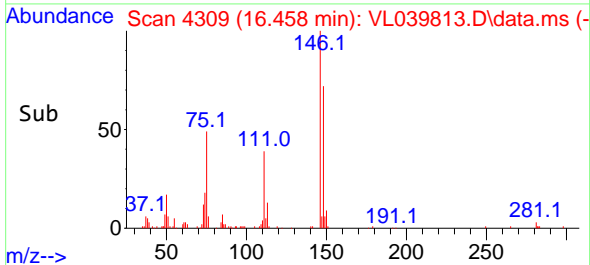
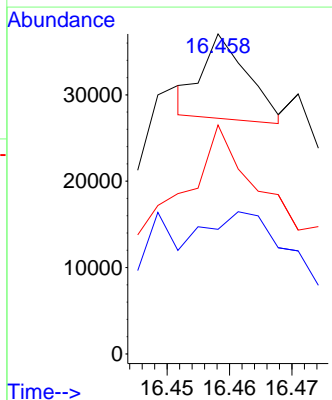
Tgt Ion:146 Resp: 36531
 Ion Ratio Lower Upper
 146 100
 111 0.0 22.9 68.8#
 148 0.0 32.3 96.9#

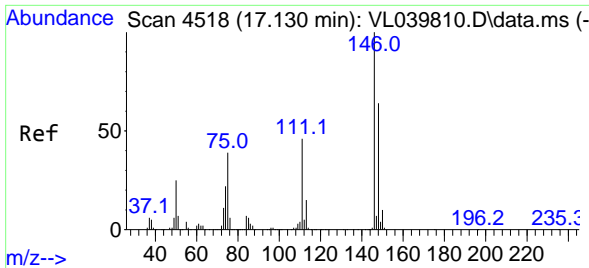


#76
 1,4-Dichlorobenzene
 Concen: 0.027 ppbv
 RT: 16.458 min Scan# 4309
 Delta R.T. 0.000 min
 Lab File: VL039813.D
 Acq: 2 Nov 2022 12:39



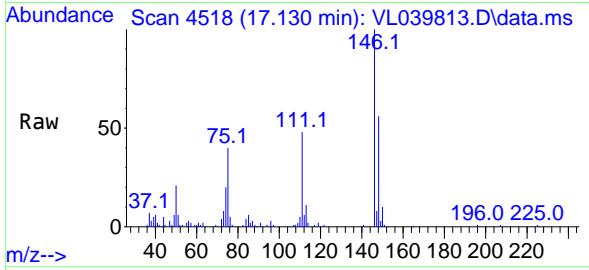
Tgt Ion:146 Resp: 4792
 Ion Ratio Lower Upper
 146 100
 111 887.7 22.7 68.1#
 148 1237.8 33.1 99.3#



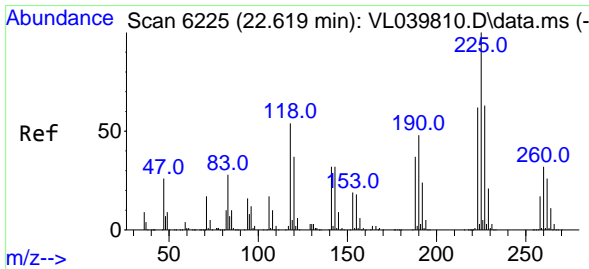
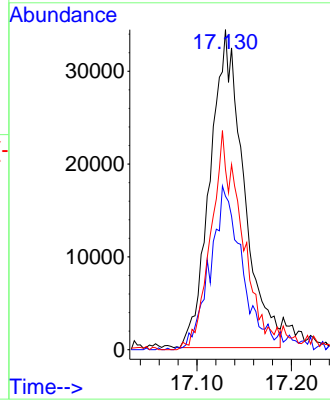
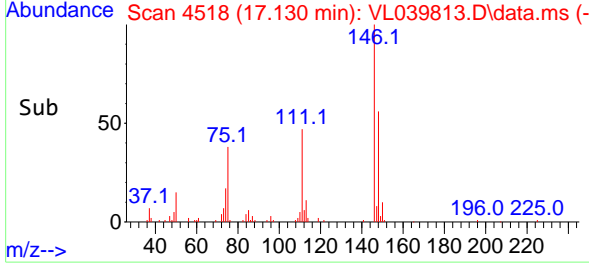


#77
 1,2-Dichlorobenzene
 Concen: 0.491 ppbv
 RT: 17.130 min Scan# 41
 Delta R.T. 0.000 min
 Lab File: VL039813.D
 Acq: 2 Nov 2022 12:39

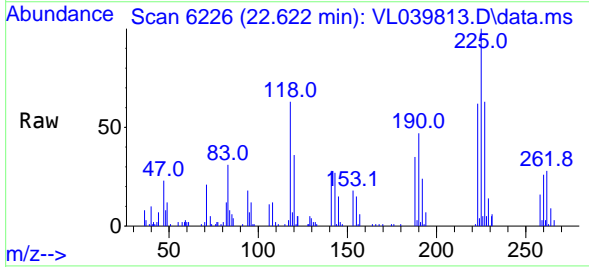
Instrument :
 MSVOA_L
 ClientSampleId :



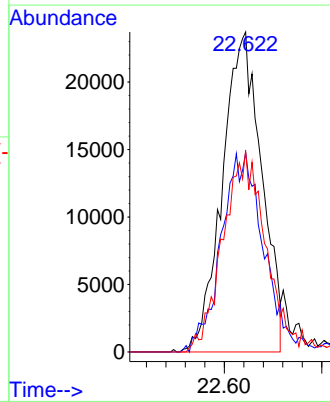
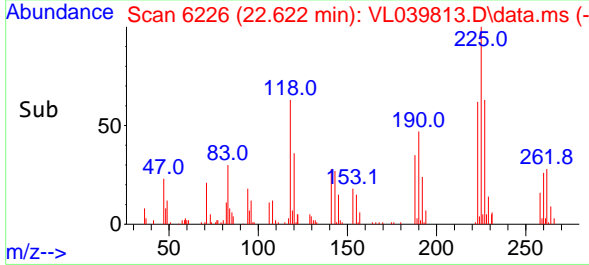
Tgt Ion:146 Resp: 84341
 Ion Ratio Lower Upper
 146 100
 111 52.1 23.9 71.8
 148 68.4 32.4 97.2

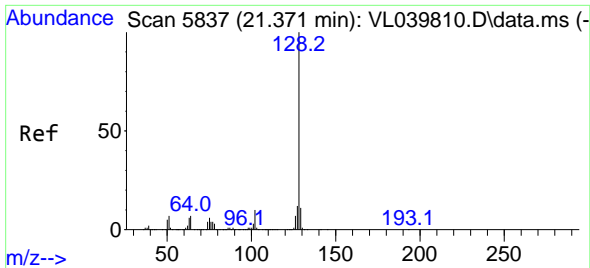


#78
 Hexachloro-1,3-Butadiene
 Concen: 0.520 ppbv
 RT: 22.622 min Scan# 6226
 Delta R.T. 0.003 min
 Lab File: VL039813.D
 Acq: 2 Nov 2022 12:39



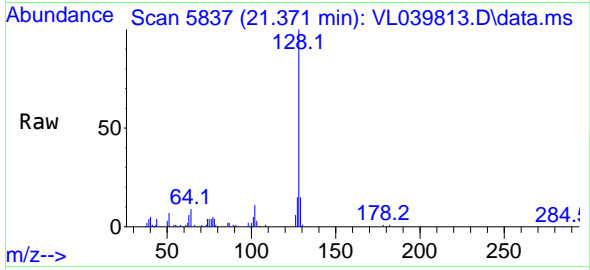
Tgt Ion:225 Resp: 66220
 Ion Ratio Lower Upper
 225 100
 223 67.7 50.6 75.8
 227 69.3 51.6 77.4



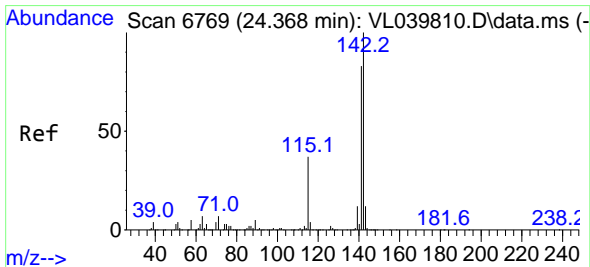
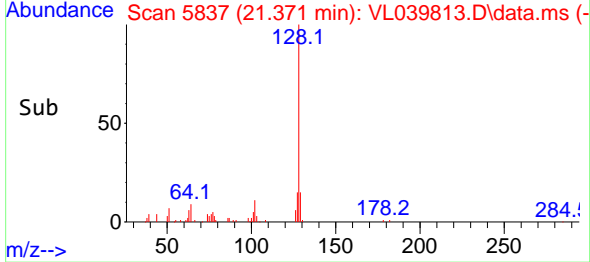
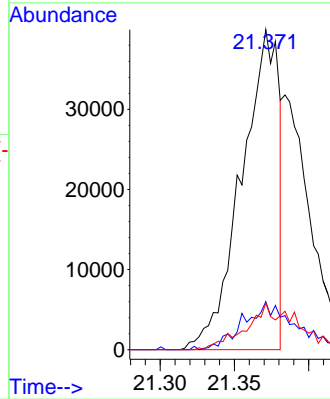


#79
 Naphthalene
 Concen: 0.307 ppbv
 RT: 21.371 min Scan# 5837
 Delta R.T. 0.000 min
 Lab File: VL039813.D
 Acq: 2 Nov 2022 12:39

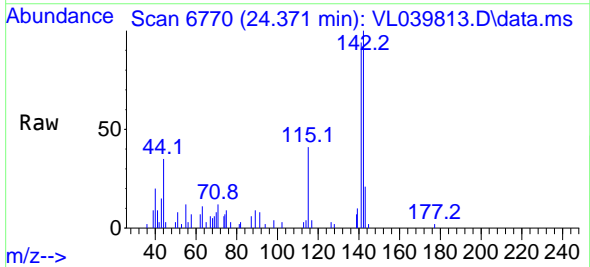
Instrument : MSVOA_L
 ClientSampleId :



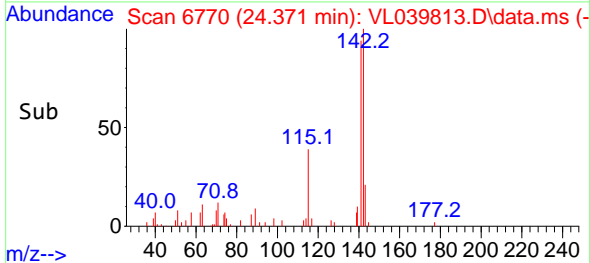
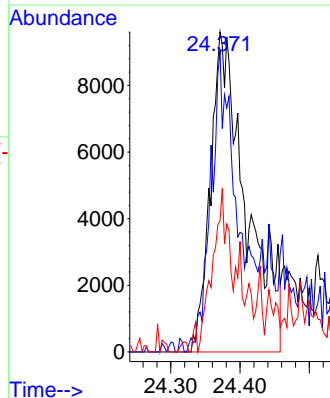
Tgt Ion:128 Resp: 69783
 Ion Ratio Lower Upper
 128 100
 127 15.0 9.8 14.6#
 129 14.6 8.6 13.0#

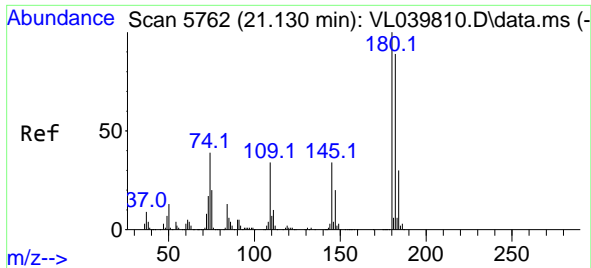


#80
 Naphthalene,2-methyl-
 Concen: 0.358 ppbv
 RT: 24.371 min Scan# 6770
 Delta R.T. 0.003 min
 Lab File: VL039813.D
 Acq: 2 Nov 2022 12:39



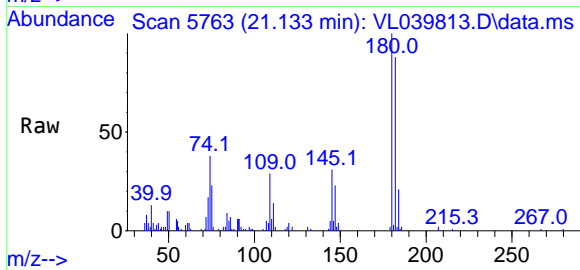
Tgt Ion:142 Resp: 34461
 Ion Ratio Lower Upper
 142 100
 141 80.9 65.1 97.7
 115 34.8 29.1 43.7





#81
 1,2,4-Trichlorobenzene
 Concen: 0.458 ppbv
 RT: 21.133 min Scan# 51
 Delta R.T. 0.003 min
 Lab File: VL039813.D
 Acq: 2 Nov 2022 12:39

Instrument :
 MSVOA_L
 ClientSampleId :



Tgt Ion:180 Resp: 58135

Ion	Ratio	Lower	Upper
180	100		
182	103.1	78.1	117.1
184	33.8	24.5	36.7

