

Data Path : Z:\voasrv\HPCHEM1\MSVOA\_L\Data\VL110222\  
 Data File : VL039817.D  
 Acq On : 2 Nov 2022 15:13  
 Operator : SY/AP  
 Sample : VSTDICV010  
 Misc : 400mL/MSVOA\_L  
 ALS Vial : 1 Sample Multiplier: 1

Instrument :  
 MSVOA\_L  
 ClientSampleId :

Quant Time: Nov 03 09:15:47 2022  
 Quant Method : Z:\voasrv\HPCHEM1\MSVOA\_L\methods\VL110222AIR.M  
 Quant Title : AIR ANALYSIS BY METHOD TO-15 Instrument: MSVOA\_L Fri Aug 26 06:05:16 2022  
 QLast Update : Wed Nov 02 15:18:40 2022  
 Response via : Initial Calibration

| Compound                | R.T.   | QIon | Response | Conc   | Units | Dev(Min) |
|-------------------------|--------|------|----------|--------|-------|----------|
| Internal Standards      |        |      |          |        |       |          |
| 1) Bromochloromethane   | 5.189  | 49   | 1069867  | 10.000 | ppbv  | 0.00     |
| 33) 1,4-Difluorobenzene | 6.648  | 114  | 2931541  | 10.000 | ppbv  | 0.00     |
| 55) Chlorobenzene-d5    | 11.455 | 117  | 3465297  | 10.000 | ppbv  | # 0.00   |

|                             |        |       |          |          |      |         |
|-----------------------------|--------|-------|----------|----------|------|---------|
| System Monitoring Compounds |        |       |          |          |      |         |
| 68) 1-Bromo-4-Fluorobenzene | 13.764 | 95    | 2150854  | 8.292    | ppbv | 0.00    |
| Spiked Amount               | 10.000 | Range | 65 - 135 | Recovery | =    | 82.900% |

| Target Compounds              | R.T.  | QIon | Response | Conc  | Units | Qvalue |
|-------------------------------|-------|------|----------|-------|-------|--------|
| 2) Dichlorodifluoromethane    | 2.742 | 85   | 1507952  | 8.349 | ppbv  | 100    |
| 3) Chlorodifluoromethane      | 2.687 | 51   | 1151725  | 9.030 | ppbv  | 100    |
| 4) Chloromethane              | 2.825 | 50   | 714729   | 9.000 | ppbv  | 98     |
| 5) Vinyl Chloride             | 2.932 | 62   | 610898   | 9.501 | ppbv  | 99     |
| 6) Bromomethane               | 3.128 | 94   | 213912   | 9.327 | ppbv  | 95     |
| 7) Chloroethane               | 3.208 | 64   | 204898   | 8.504 | ppbv  | 99     |
| 8) Dichlorotetrafluoroethane  | 2.870 | 85   | 1361457  | 8.844 | ppbv  | 99     |
| 9) Propene                    | 2.706 | 41   | 586365   | 8.824 | ppbv  | 99     |
| 10) Heptane                   | 7.571 | 43   | 1425745  | 8.956 | ppbv  | 100    |
| 11) Trichlorofluoromethane    | 3.571 | 101  | 1324196  | 8.989 | ppbv  | 99     |
| 12) 1,1,2-Trichlorotrifluo... | 4.073 | 101  | 934477   | 8.783 | ppbv  | 97     |
| 13) Ethanol                   | 3.253 | 45   | 20862    | 4.442 | ppbv  | 61     |
| 14) Bromoethene               | 3.375 | 108  | 430477   | 9.036 | ppbv  | 100    |
| 15) Acetone                   | 3.478 | 43   | 1007378  | 7.736 | ppbv  | 100    |
| 16) 1,3-Butadiene             | 2.996 | 39   | 573072   | 9.463 | ppbv  | 94     |
| 17) tert-Butyl alcohol        | 3.883 | 59   | 1110577  | 8.955 | ppbv  | 98     |
| 18) 1,1-Dichloroethene        | 3.886 | 96   | 442069   | 9.062 | ppbv  | 97     |
| 19) Isopropyl Alcohol         | 3.584 | 45   | 554120   | 8.597 | ppbv  | 93     |
| 20) Methylene Chloride        | 3.938 | 84   | 372030   | 7.986 | ppbv  | 98     |
| 21) Allyl Chloride            | 4.002 | 41   | 752476   | 9.135 | ppbv  | 96     |
| 22) trans-1,2-Dichloroethene  | 4.449 | 96   | 444692   | 8.982 | ppbv  | 97     |
| 23) Vinyl Acetate             | 4.629 | 43   | 429575   | 8.280 | ppbv  | 97     |
| 24) 1,1-Dichloroethane        | 4.565 | 63   | 941298   | 8.883 | ppbv  | 99     |
| 25) Ethyl Acetate             | 5.205 | 43   | 2414787  | 9.002 | ppbv  | 99     |
| 26) Hexane                    | 5.211 | 57   | 1047768  | 8.761 | ppbv  | 99     |
| 27) Carbon Disulfide          | 4.128 | 76   | 1129178  | 8.991 | ppbv  | 98     |
| 28) Methyl tert-Butyl Ether   | 4.591 | 73   | 947366   | 8.751 | ppbv  | 100    |
| 29) Chloroform                | 5.272 | 83   | 1554892  | 9.246 | ppbv  | 98     |
| 30) Cyclohexane               | 6.597 | 84   | 899791   | 8.997 | ppbv  | 99     |
| 31) cis-1,2-Dichloroethene    | 5.076 | 61   | 1018252  | 9.337 | ppbv  | 96     |
| 32) 1,1,1-Trichloroethane     | 6.002 | 97   | 1567352  | 9.362 | ppbv  | 99     |
| 34) 2-Butanone                | 4.790 | 43   | 1072919  | 8.872 | ppbv  | 98     |
| 35) Carbon Tetrachloride      | 6.488 | 117  | 1627427  | 9.524 | ppbv  | 99     |
| 36) Benzene                   | 6.365 | 78   | 2241051  | 9.063 | ppbv  | 98     |
| 37) 1,2-Dichloroethane        | 5.803 | 62   | 1135714  | 9.572 | ppbv  | 99     |
| 38) Trichloroethene           | 7.285 | 130  | 1237905  | 9.112 | ppbv  | 98     |
| 39) 1,2-Dichloropropane       | 7.066 | 63   | 870821   | 9.038 | ppbv  | 96     |
| 40) 1,4-Dioxane               | 7.279 | 88   | 333766   | 9.046 | ppbv  | # 1    |
| 41) Tetrahydrofuran           | 5.555 | 42   | 910953   | 9.013 | ppbv  | 99     |
| 42) Bromodichloromethane      | 7.240 | 83   | 1760259  | 9.289 | ppbv  | 99     |
| 43) Methyl Methacrylate       | 7.468 | 69   | 927413   | 9.490 | ppbv  | 99     |
| 44) 2,2,4-Trimethylpentane    | 7.317 | 57   | 3724361  | 8.923 | ppbv  | 100    |
| 45) t-1,3-Dichloropropene     | 8.700 | 75   | 921757   | 9.846 | ppbv  | 100    |

Data Path : Z:\voasrv\HPCHEM1\MSVOA\_L\Data\VL110222\  
 Data File : VL039817.D  
 Acq On : 2 Nov 2022 15:13  
 Operator : SY/AP  
 Sample : VSTDICV010  
 Misc : 400mL/MSVOA\_L  
 ALS Vial : 1 Sample Multiplier: 1

Instrument :  
 MSVOA\_L  
 ClientSampleId :

Quant Time: Nov 03 09:15:47 2022  
 Quant Method : Z:\voasrv\HPCHEM1\MSVOA\_L\methods\VL110222AIR.M  
 Quant Title : AIR ANALYSIS BY METHOD TO-15 Instrument: MSVOA\_LFri Aug 26 06:05:16 2022  
 QLast Update : Wed Nov 02 15:18:40 2022  
 Response via : Initial Calibration

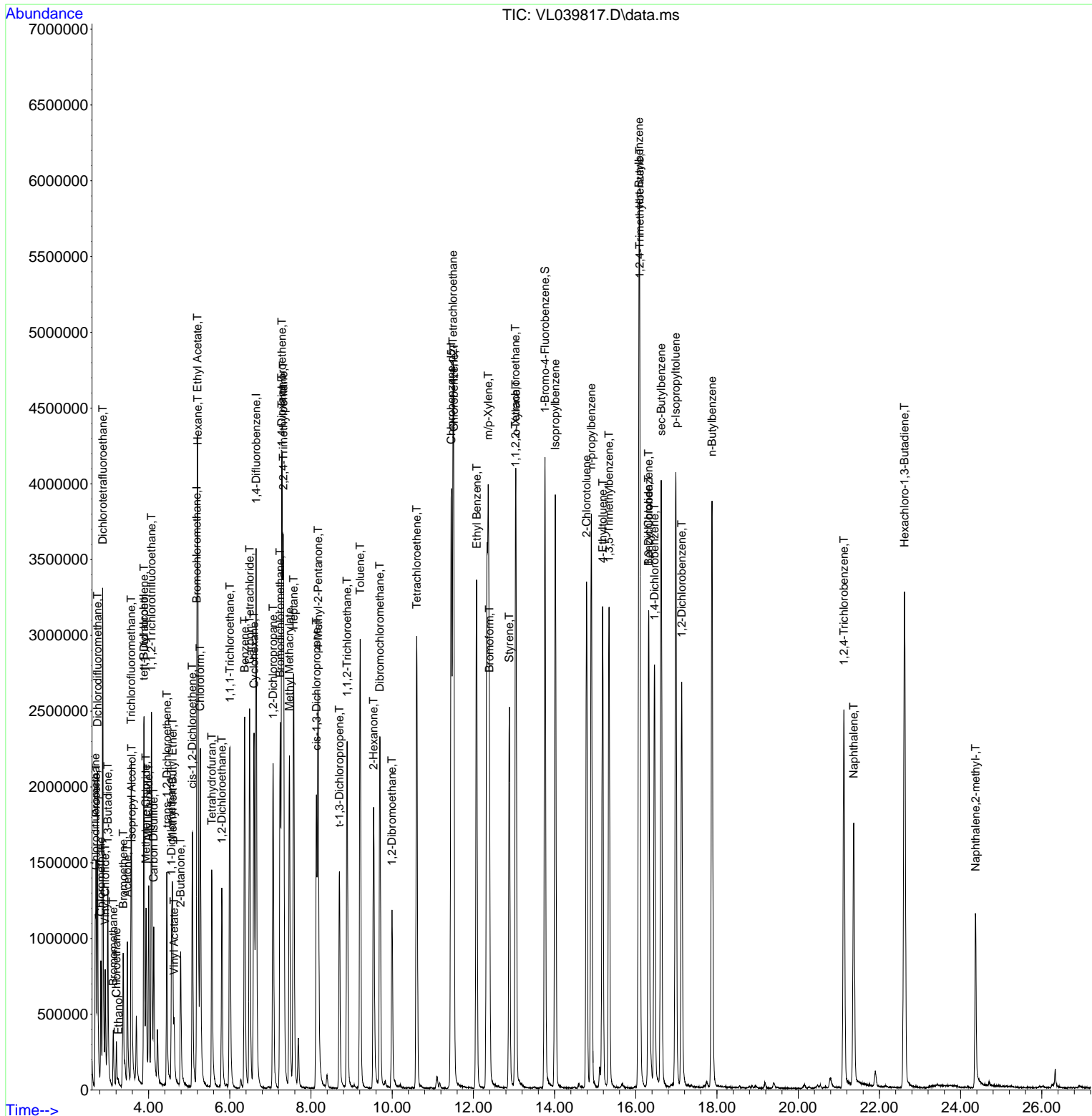
| Compound                      | R.T.   | QIon | Response | Conc  | Units  | Dev(Min) |
|-------------------------------|--------|------|----------|-------|--------|----------|
| 46) cis-1,3-Dichloropropene   | 8.134  | 75   | 1233398  | 9.652 | ppbv   | 100      |
| 47) 1,1,2-Trichloroethane     | 8.890  | 97   | 884642   | 9.067 | ppbv   | 96       |
| 48) Dibromochloromethane      | 9.697  | 129  | 1512853  | 9.100 | ppbv   | 100      |
| 49) Bromoform                 | 12.394 | 173  | 1165076  | 8.719 | ppbv   | 100      |
| 50) 4-Methyl-2-Pentanone      | 8.176  | 43   | 2309265  | 9.327 | ppbv   | 99       |
| 51) 2-Hexanone                | 9.539  | 43   | 1819599  | 9.425 | ppbv # | 98       |
| 52) Tetrachloroethene         | 10.600 | 164  | 776891   | 8.320 | ppbv   | 99       |
| 53) Toluene                   | 9.211  | 91   | 2548324  | 8.983 | ppbv   | 100      |
| 54) 1,2-Dibromoethane         | 9.996  | 107  | 1043656  | 9.639 | ppbv   | 98       |
| 56) 1,1,1,2-Tetrachloroethane | 11.497 | 131  | 1047760  | 7.072 | ppbv   | 98       |
| 57) Chlorobenzene             | 11.516 | 112  | 1880728  | 7.155 | ppbv   | 98       |
| 58) Ethyl Benzene             | 12.082 | 91   | 1419614  | 3.030 | ppbv   | 99       |
| 59) m/p-Xylene                | 12.365 | 91   | 1986177  | 5.078 | ppbv # | 30       |
| 60) o-Xylene                  | 13.047 | 91   | 2581146  | 6.966 | ppbv   | 100      |
| 61) Styrene                   | 12.886 | 104  | 1644515  | 7.212 | ppbv   | 100      |
| 62) Isopropylbenzene          | 14.018 | 105  | 3729512  | 6.900 | ppbv   | 99       |
| 63) 1,1,2,2-Tetrachloroethane | 13.037 | 83   | 902263   | 6.539 | ppbv   | 100      |
| 64) n-propylbenzene           | 14.905 | 120  | 996363   | 6.891 | ppbv   | 98       |
| 65) tert-Butylbenzene         | 16.079 | 119  | 3131534  | 6.598 | ppbv   | 99       |
| 66) Benzyl Chloride           | 16.317 | 91   | 353430   | 6.405 | ppbv   | 99       |
| 67) sec-Butylbenzene          | 16.626 | 105  | 4319136  | 6.686 | ppbv   | 99       |
| 69) p-Isopropyltoluene        | 16.986 | 119  | 3559191  | 6.642 | ppbv   | 100      |
| 70) n-Butylbenzene            | 17.876 | 91   | 3541985  | 6.837 | ppbv   | 99       |
| 71) 2-Chlorotoluene           | 14.786 | 91   | 2770651  | 6.822 | ppbv   | 99       |
| 72) 4-Ethyltoluene            | 15.185 | 105  | 2941093  | 7.049 | ppbv   | 98       |
| 73) 1,3,5-Trimethylbenzene    | 15.343 | 105  | 2570736  | 6.950 | ppbv   | 97       |
| 74) 1,2,4-Trimethylbenzene    | 16.098 | 105  | 2697635  | 6.864 | ppbv   | 96       |
| 75) 1,3-Dichlorobenzene       | 16.317 | 146  | 1555608  | 6.779 | ppbv   | 99       |
| 76) 1,4-Dichlorobenzene       | 16.462 | 146  | 1511765  | 6.714 | ppbv   | 99       |
| 77) 1,2-Dichlorobenzene       | 17.130 | 146  | 1478646  | 6.836 | ppbv   | 99       |
| 78) Hexachloro-1,3-Butadiene  | 22.619 | 225  | 1033107  | 6.446 | ppbv   | 99       |
| 79) Naphthalene               | 21.368 | 128  | 2290547  | 8.017 | ppbv   | 98       |
| 80) Naphthalene,2-methyl-     | 24.368 | 142  | 872884   | 7.206 | ppbv   | 98       |
| 81) 1,2,4-Trichlorobenzene    | 21.127 | 180  | 1178450  | 7.373 | ppbv   | 99       |

(#) = qualifier out of range (m) = manual integration (+) = signals summed

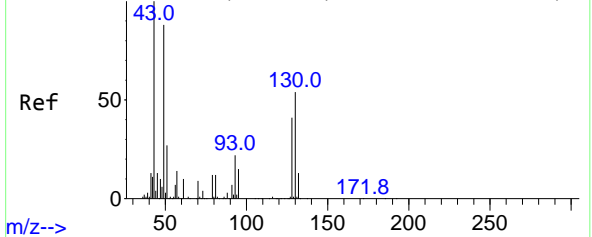
Data Path : Z:\voasrv\HPCHEM1\MSVOA\_L\Data\VL110222\  
 Data File : VL039817.D  
 Acq On : 2 Nov 2022 15:13  
 Operator : SY/AP  
 Sample : VSTDICV010  
 Misc : 400mL/MSVOA\_L  
 ALS Vial : 1 Sample Multiplier: 1

Instrument :  
 MSVOA\_L  
 ClientSampleId :

Quant Time: Nov 03 09:15:47 2022  
 Quant Method : Z:\voasrv\HPCHEM1\MSVOA\_L\methods\VL110222AIR.M  
 Quant Title : AIR ANALYSIS BY METHOD TO-15 Instrument: MSVOA\_L Fri Aug 26 06:05:16 2022  
 QLast Update : Wed Nov 02 15:18:40 2022  
 Response via : Initial Calibration

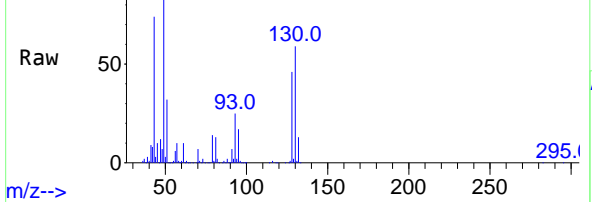


Abundance Scan 804 (5.188 min): VL039810.D\data.ms (-78)



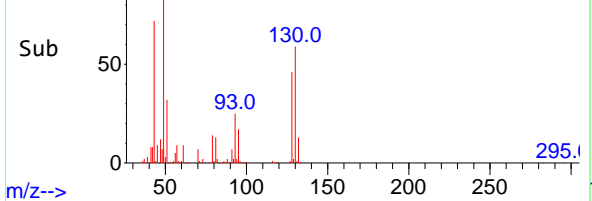
m/z-->

Abundance Scan 804 (5.189 min): VL039817.D\data.ms



m/z-->

Abundance Scan 804 (5.189 min): VL039817.D\data.ms (-64)



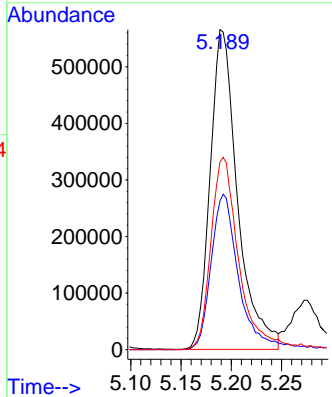
m/z-->

#1

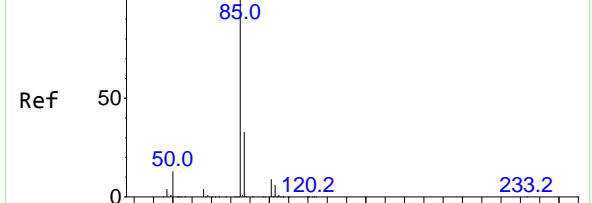
Bromochloromethane  
Concen: 10.000 ppbv  
RT: 5.189 min Scan# 80  
Delta R.T. 0.001 min  
Lab File: VL039817.D  
Acq: 2 Nov 2022 15:13

Instrument : MSVOA\_L  
ClientSampleId :

| Tgt Ion | Resp    | Lower | Upper |
|---------|---------|-------|-------|
| 49      | 1069867 |       |       |
| 49      | 100     |       |       |
| 128     | 50.4    | 24.6  | 73.6  |
| 130     | 63.5    | 31.1  | 93.2  |

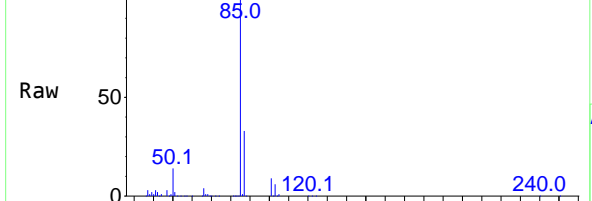


Abundance Scan 43 (2.742 min): VL039810.D\data.ms (-33)



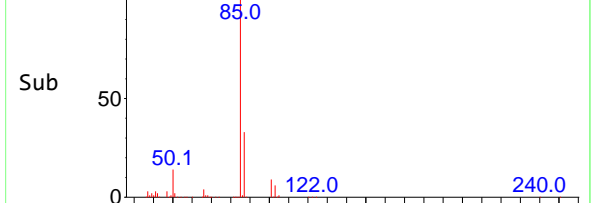
m/z-->

Abundance Scan 43 (2.742 min): VL039817.D\data.ms



m/z-->

Abundance Scan 43 (2.742 min): VL039817.D\data.ms (-1)

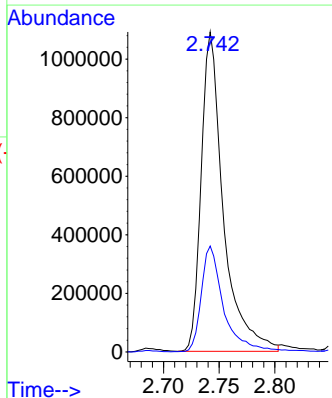


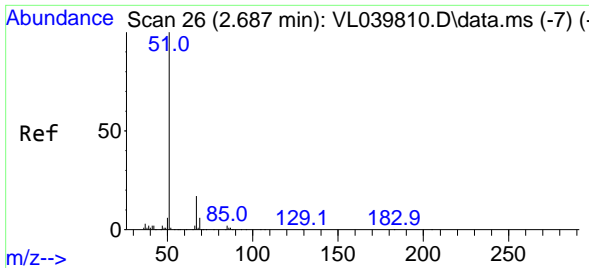
m/z-->

#2

Dichlorodifluoromethane  
Concen: 8.349 ppbv  
RT: 2.742 min Scan# 43  
Delta R.T. 0.000 min  
Lab File: VL039817.D  
Acq: 2 Nov 2022 15:13

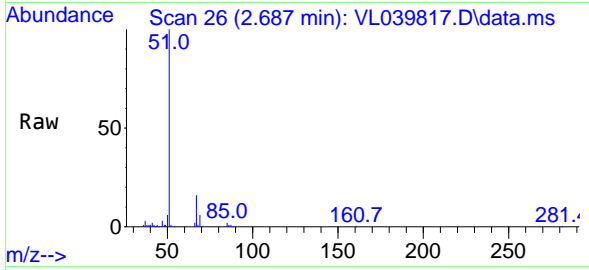
| Tgt Ion | Resp    | Lower | Upper |
|---------|---------|-------|-------|
| 85      | 1507952 |       |       |
| 85      | 100     |       |       |
| 87      | 33.1    | 26.4  | 39.6  |



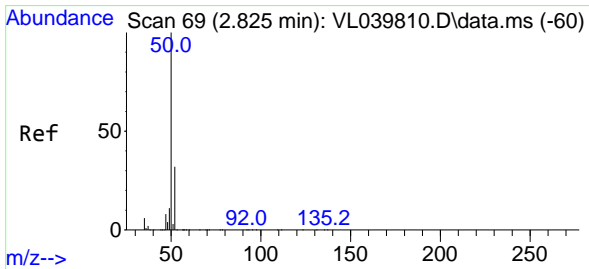
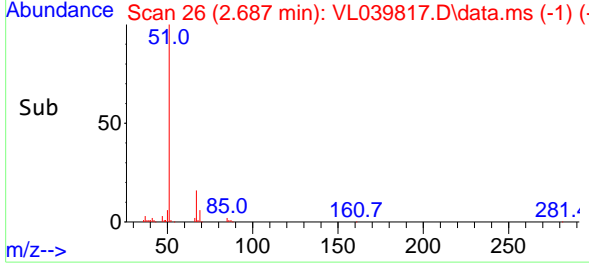
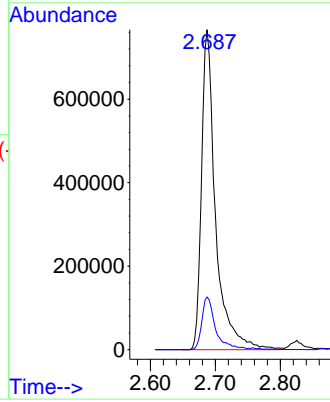


#3  
 Chlorodifluoromethane  
 Concen: 9.030 ppbv  
 RT: 2.687 min Scan# 20  
 Delta R.T. 0.000 min  
 Lab File: VL039817.D  
 Acq: 2 Nov 2022 15:13

Instrument :  
 MSVOA\_L  
 ClientSampleId :

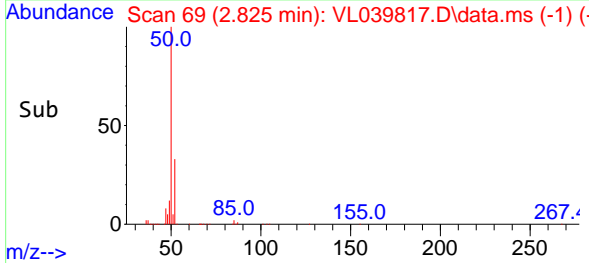
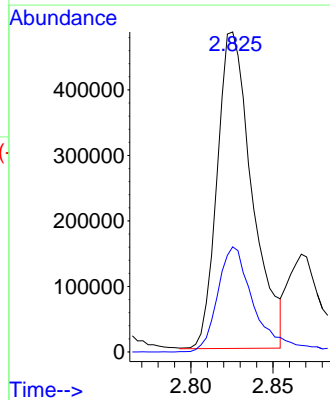
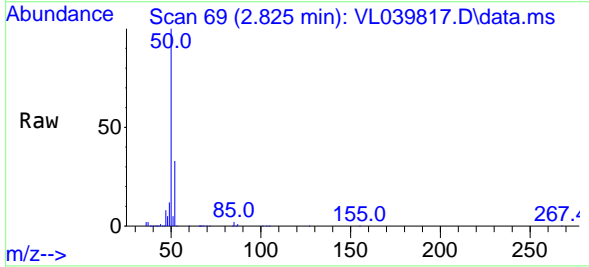


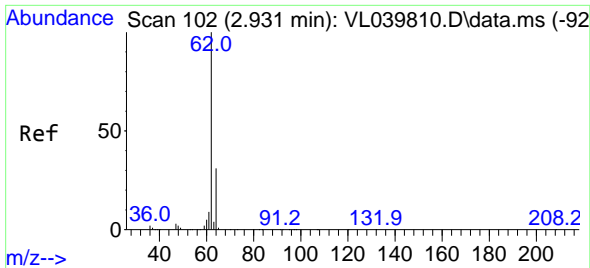
Tgt Ion: 51 Resp: 1151725  
 Ion Ratio Lower Upper  
 51 100  
 67 16.6 13.2 19.8



#4  
 Chloromethane  
 Concen: 9.000 ppbv  
 RT: 2.825 min Scan# 69  
 Delta R.T. 0.000 min  
 Lab File: VL039817.D  
 Acq: 2 Nov 2022 15:13

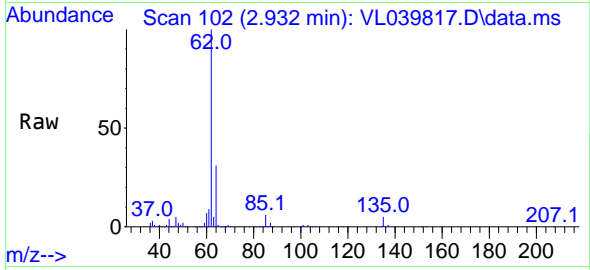
Tgt Ion: 50 Resp: 714729  
 Ion Ratio Lower Upper  
 50 100  
 52 33.2 25.5 38.3



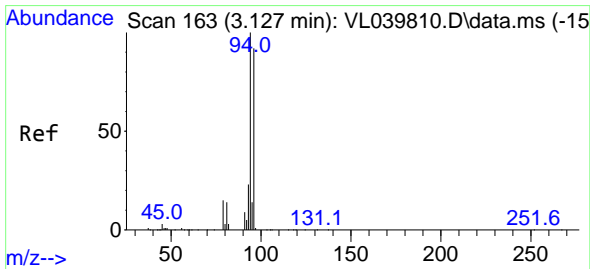
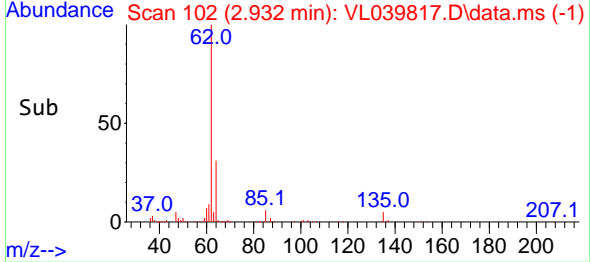
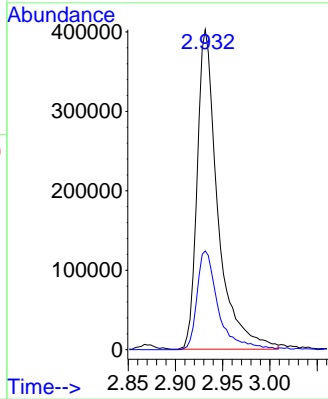


#5  
 Vinyl Chloride  
 Concen: 9.501 ppbv  
 RT: 2.932 min Scan# 10  
 Delta R.T. 0.000 min  
 Lab File: VL039817.D  
 Acq: 2 Nov 2022 15:13

Instrument : MSVOA\_L  
 ClientSampleId :

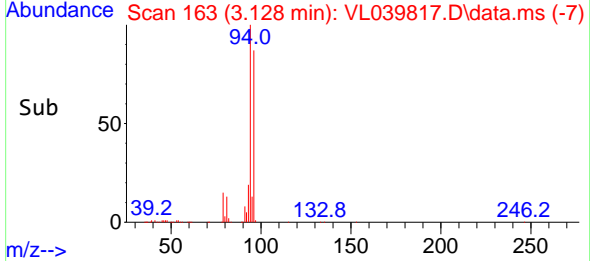
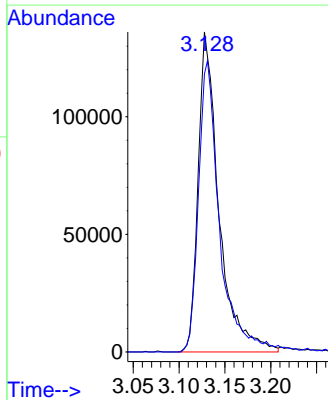
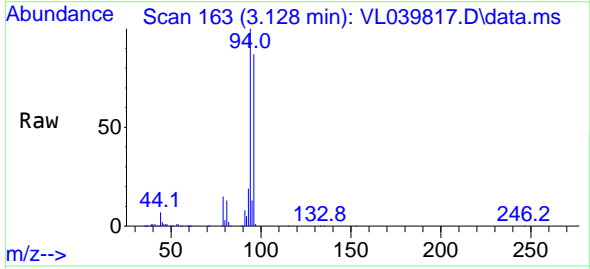


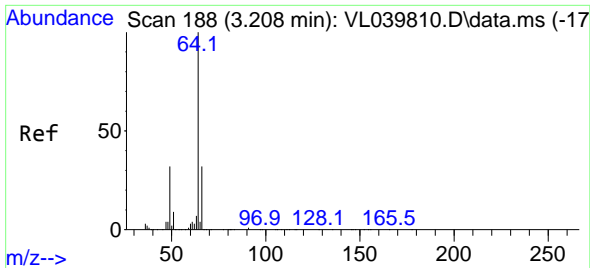
Tgt Ion: 62 Resp: 610898  
 Ion Ratio Lower Upper  
 62 100  
 64 30.9 25.0 37.4



#6  
 Bromomethane  
 Concen: 9.327 ppbv  
 RT: 3.128 min Scan# 163  
 Delta R.T. 0.000 min  
 Lab File: VL039817.D  
 Acq: 2 Nov 2022 15:13

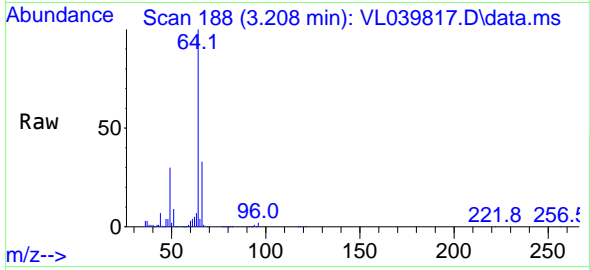
Tgt Ion: 94 Resp: 213912  
 Ion Ratio Lower Upper  
 94 100  
 96 86.9 73.5 110.3



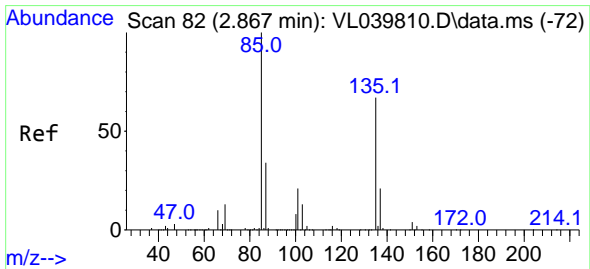
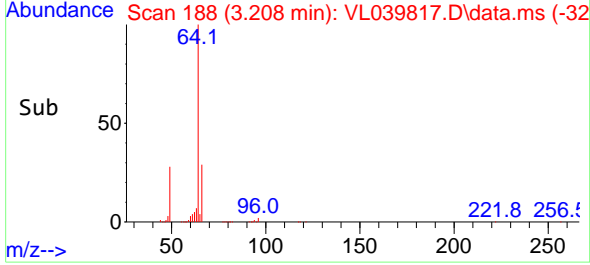
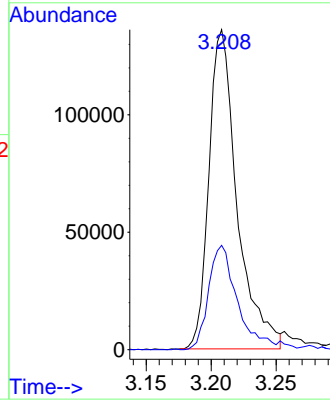


#7  
 Chloroethane  
 Concen: 8.504 ppbv  
 RT: 3.208 min Scan# 11  
 Delta R.T. 0.000 min  
 Lab File: VL039817.D  
 Acq: 2 Nov 2022 15:13

Instrument :  
 MSVOA\_L  
 ClientSampleId :

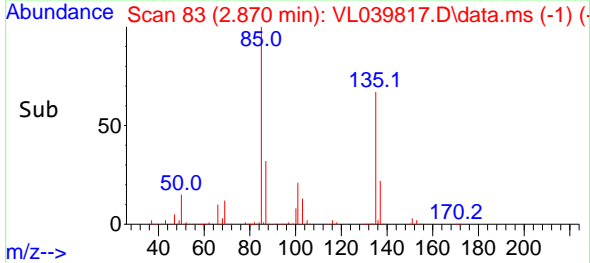
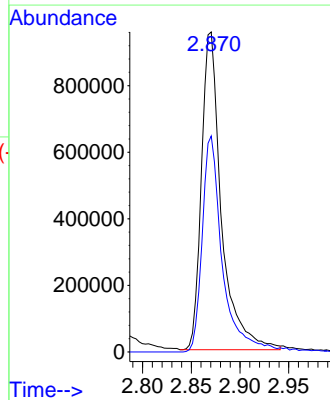
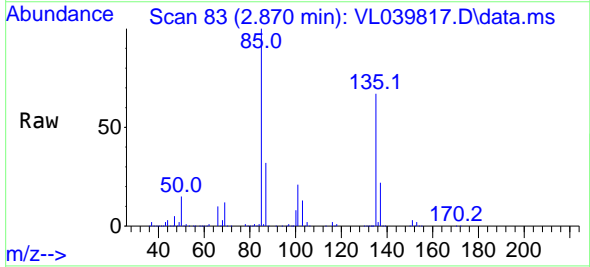


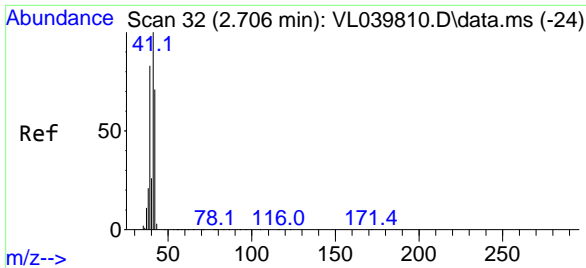
Tgt Ion: 64 Resp: 204898  
 Ion Ratio Lower Upper  
 64 100  
 66 32.6 25.5 38.3



#8  
 Dichlorotetrafluoroethane  
 Concen: 8.844 ppbv  
 RT: 2.870 min Scan# 83  
 Delta R.T. 0.003 min  
 Lab File: VL039817.D  
 Acq: 2 Nov 2022 15:13

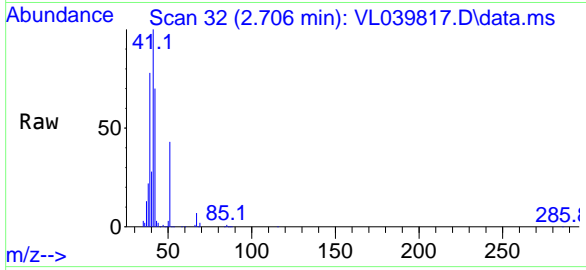
Tgt Ion: 85 Resp: 1361457  
 Ion Ratio Lower Upper  
 85 100  
 135 69.8 56.7 85.1



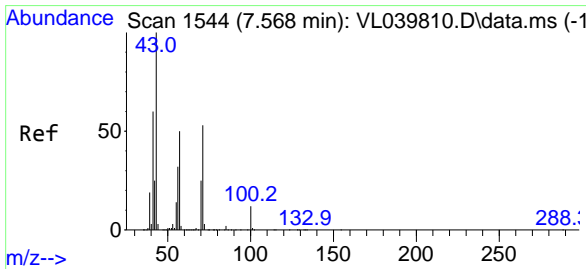
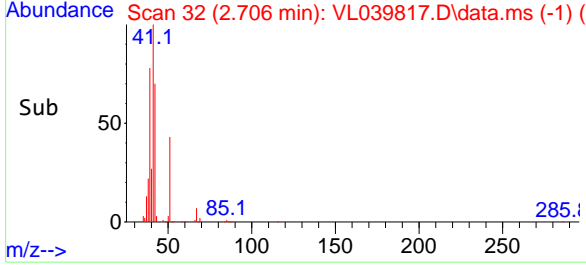
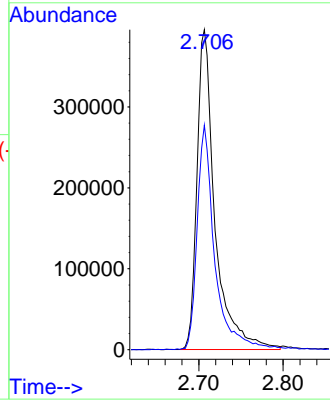


#9  
 Propene  
 Concen: 8.824 ppbv  
 RT: 2.706 min Scan# 31  
 Delta R.T. 0.000 min  
 Lab File: VL039817.D  
 Acq: 2 Nov 2022 15:13

Instrument :  
 MSVOA\_L  
 ClientSampleId :

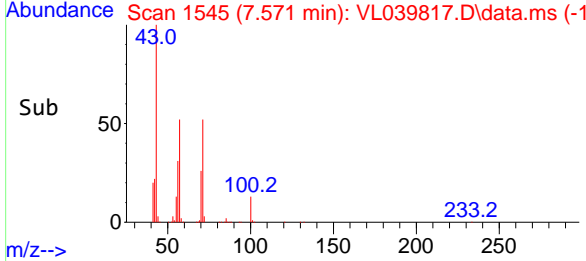
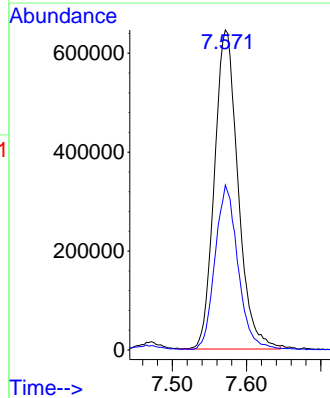
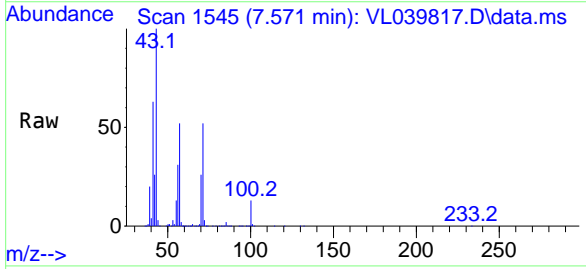


Tgt Ion: 41 Resp: 586365  
 Ion Ratio Lower Upper  
 41 100  
 42 69.4 56.3 84.5

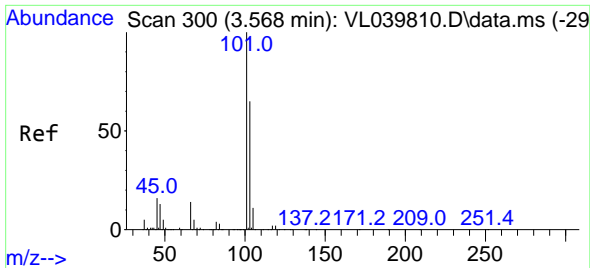


#10  
 Heptane  
 Concen: 8.956 ppbv  
 RT: 7.571 min Scan# 1545  
 Delta R.T. 0.003 min  
 Lab File: VL039817.D  
 Acq: 2 Nov 2022 15:13

Tgt Ion: 43 Resp: 1425745  
 Ion Ratio Lower Upper  
 43 100  
 57 50.7 40.5 60.7

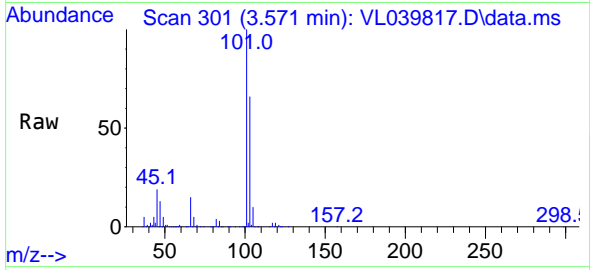




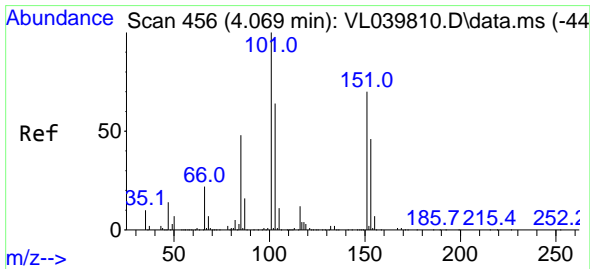
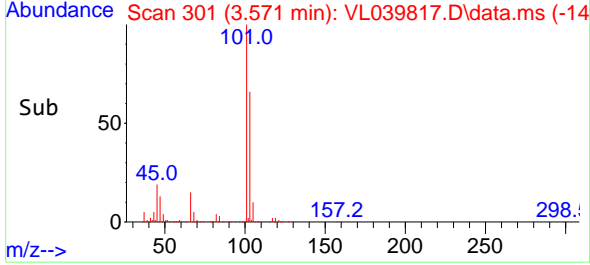
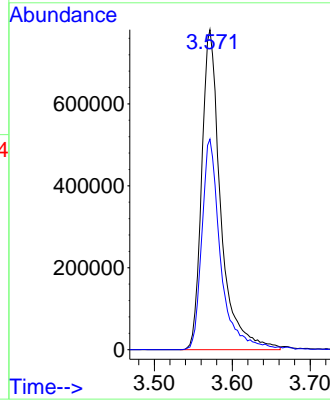


#11  
 Trichlorofluoromethane  
 Concen: 8.989 ppbv  
 RT: 3.571 min Scan# 300  
 Delta R.T. 0.003 min  
 Lab File: VL039817.D  
 Acq: 2 Nov 2022 15:13

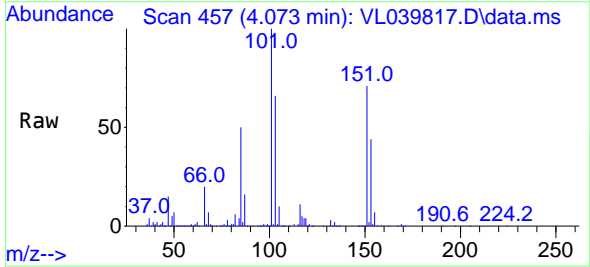
Instrument :  
 MSVOA\_L  
 ClientSampleId :



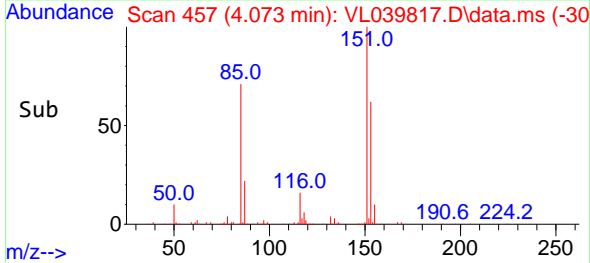
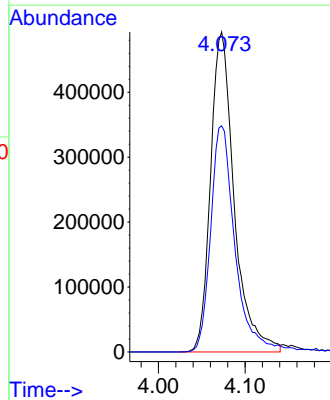
Tgt Ion:101 Resp: 1324196  
 Ion Ratio Lower Upper  
 101 100  
 103 65.8 52.2 78.2

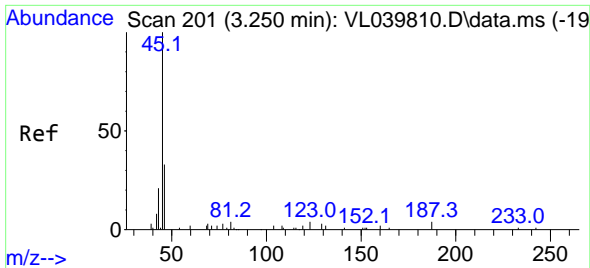


#12  
 1,1,2-Trichlorotrifluoroethane  
 Concen: 8.783 ppbv  
 RT: 4.073 min Scan# 457  
 Delta R.T. 0.003 min  
 Lab File: VL039817.D  
 Acq: 2 Nov 2022 15:13



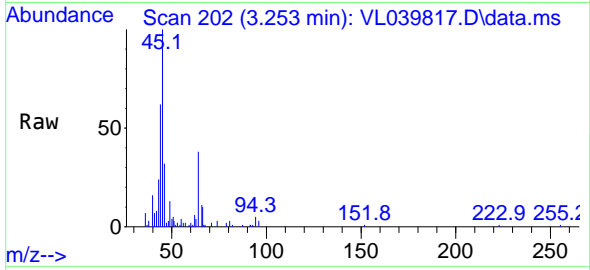
Tgt Ion:101 Resp: 934477  
 Ion Ratio Lower Upper  
 101 100  
 151 73.8 57.2 85.8



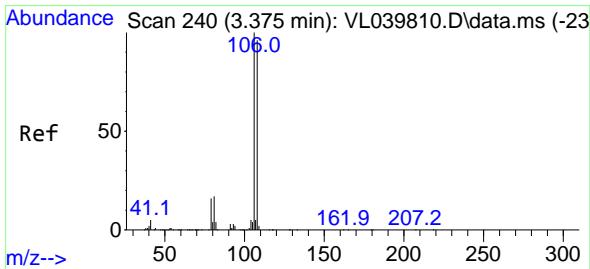
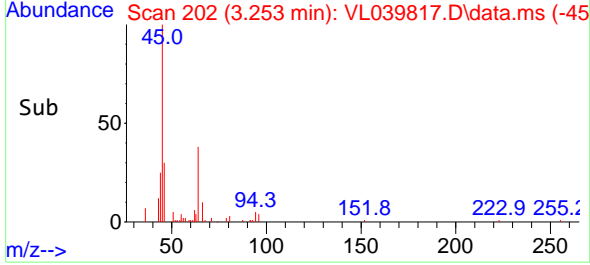
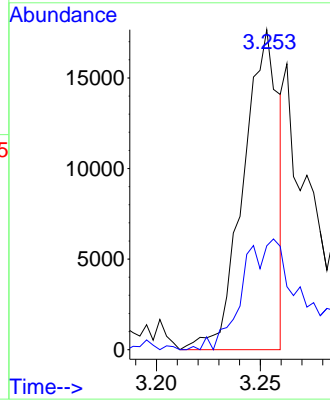


#13  
 Ethanol  
 Concen: 4.442 ppbv  
 RT: 3.253 min Scan# 20  
 Delta R.T. 0.003 min  
 Lab File: VL039817.D  
 Acq: 2 Nov 2022 15:13

Instrument :  
 MSVOA\_L  
 ClientSampleId :

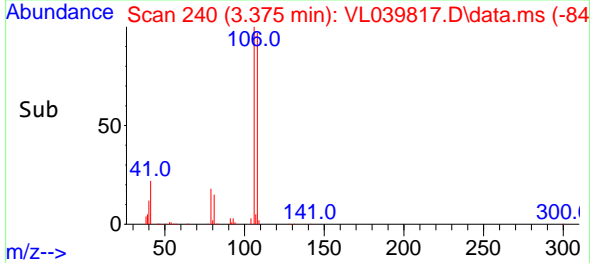
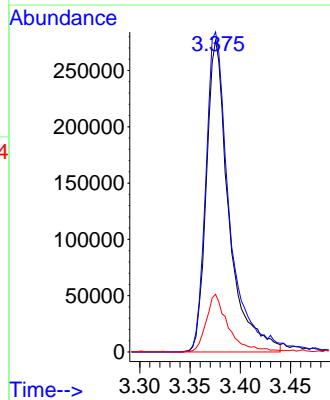
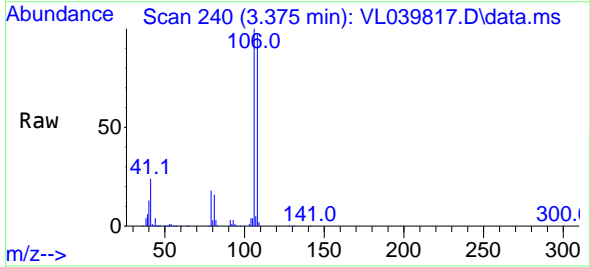


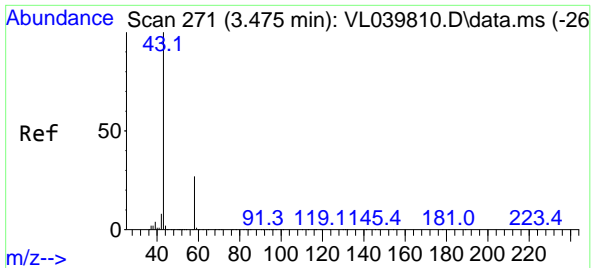
Tgt Ion: 45 Resp: 20862  
 Ion Ratio Lower Upper  
 45 100  
 46 65.6 16.5 65.9



#14  
 Bromoethene  
 Concen: 9.036 ppbv  
 RT: 3.375 min Scan# 240  
 Delta R.T. 0.000 min  
 Lab File: VL039817.D  
 Acq: 2 Nov 2022 15:13

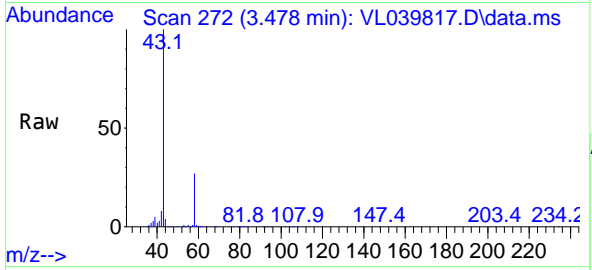
Tgt Ion: 108 Resp: 430477  
 Ion Ratio Lower Upper  
 108 100  
 106 110.0 87.8 131.8  
 79 18.9 14.5 21.7



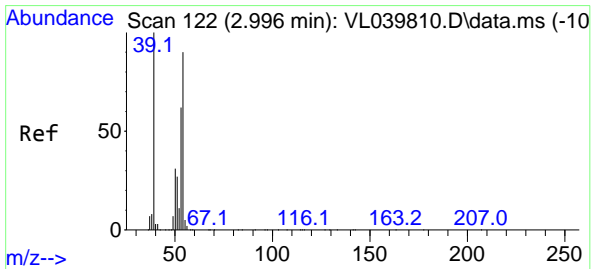
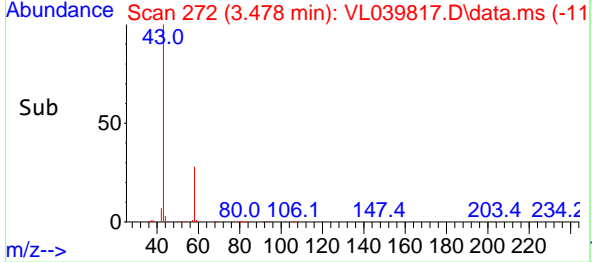
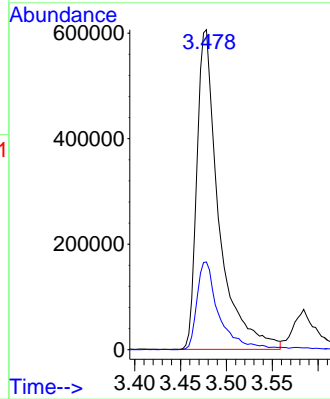


#15  
 Acetone  
 Concen: 7.736 ppbv  
 RT: 3.478 min Scan# 21  
 Delta R.T. 0.003 min  
 Lab File: VL039817.D  
 Acq: 2 Nov 2022 15:13

Instrument :  
 MSVOA\_L  
 ClientSampleId :

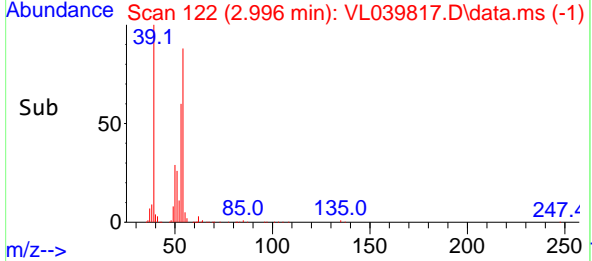
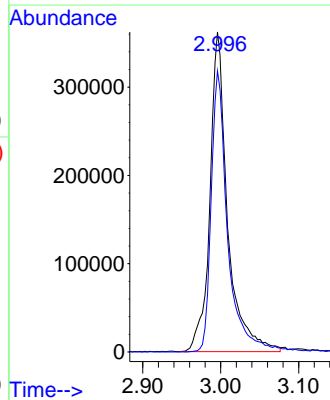
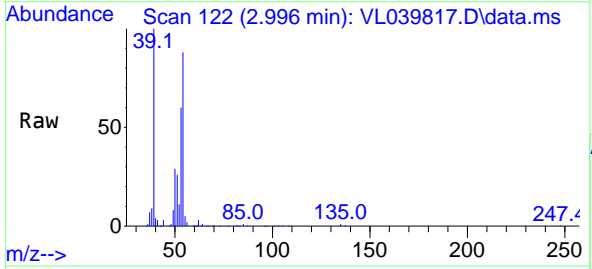


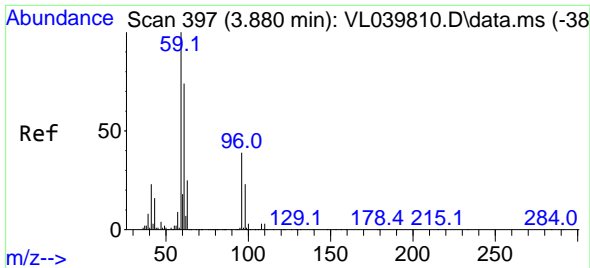
Tgt Ion: 43 Resp: 1007378  
 Ion Ratio Lower Upper  
 43 100  
 58 28.9 23.2 34.8



#16  
 1,3-Butadiene  
 Concen: 9.463 ppbv  
 RT: 2.996 min Scan# 122  
 Delta R.T. 0.000 min  
 Lab File: VL039817.D  
 Acq: 2 Nov 2022 15:13

Tgt Ion: 39 Resp: 573072  
 Ion Ratio Lower Upper  
 39 100  
 54 83.0 71.0 106.4

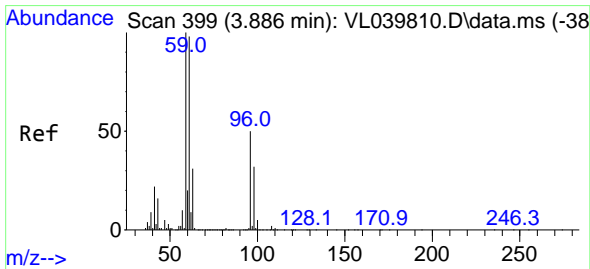
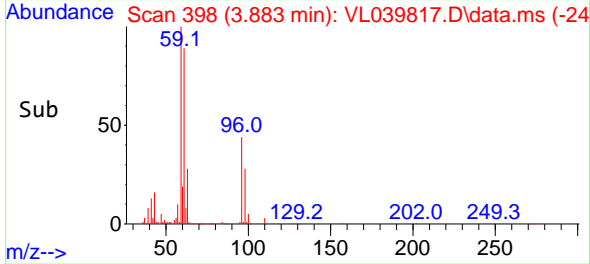
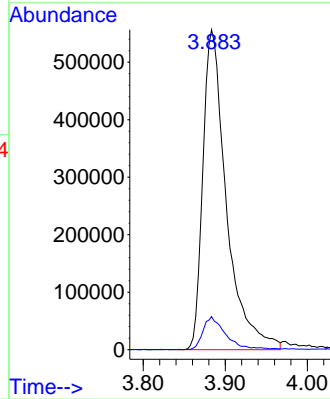
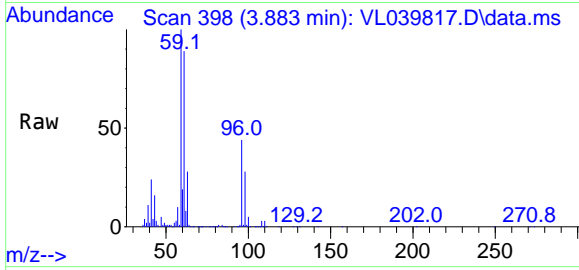




#17  
 tert-Butyl alcohol  
 Concen: 8.955 ppbv  
 RT: 3.883 min Scan# 397  
 Delta R.T. 0.003 min  
 Lab File: VL039817.D  
 Acq: 2 Nov 2022 15:13

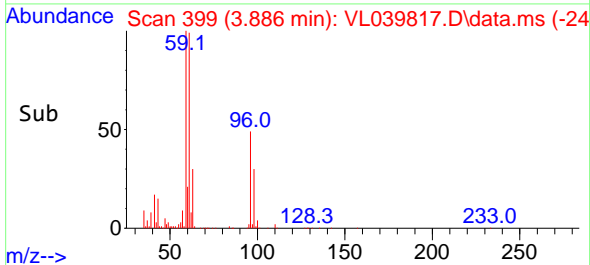
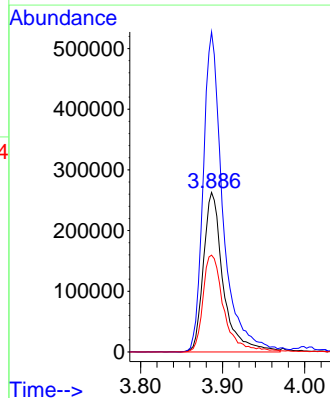
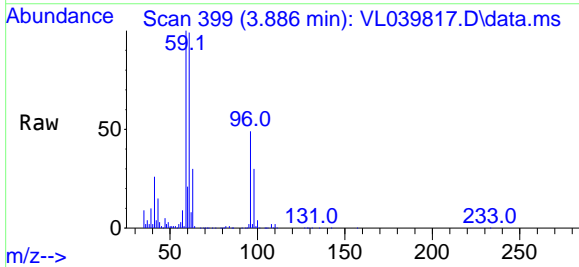
Instrument :  
 MSVOA\_L  
 ClientSampleId :

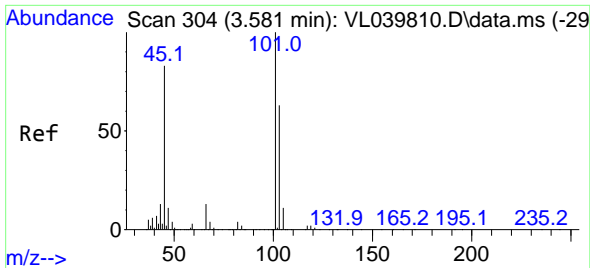
Tgt Ion: 59 Resp: 1110577  
 Ion Ratio Lower Upper  
 59 100  
 57 10.5 9.0 13.6



#18  
 1,1-Dichloroethene  
 Concen: 9.062 ppbv  
 RT: 3.886 min Scan# 399  
 Delta R.T. 0.000 min  
 Lab File: VL039817.D  
 Acq: 2 Nov 2022 15:13

Tgt Ion: 96 Resp: 442069  
 Ion Ratio Lower Upper  
 96 100  
 61 200.6 156.9 235.3  
 98 60.7 50.6 75.8

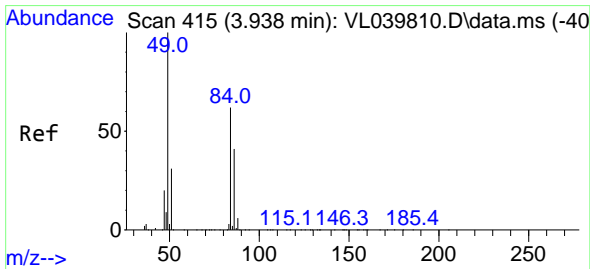
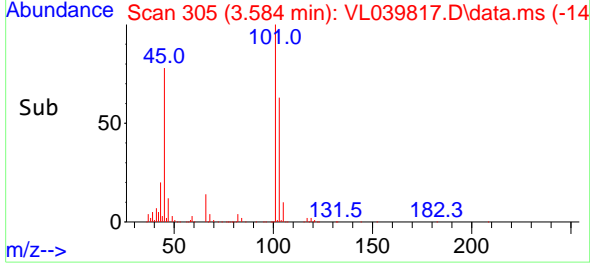
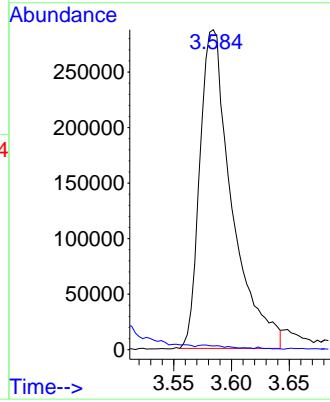
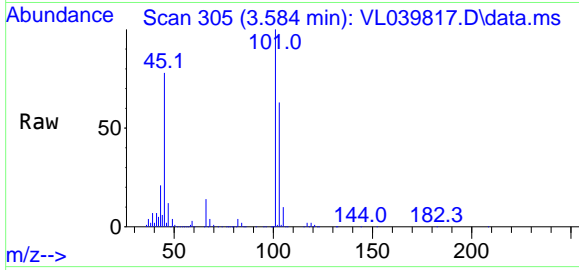




#19  
 Isopropyl Alcohol  
 Concen: 8.597 ppbv  
 RT: 3.584 min Scan# 304  
 Delta R.T. 0.003 min  
 Lab File: VL039817.D  
 Acq: 2 Nov 2022 15:13

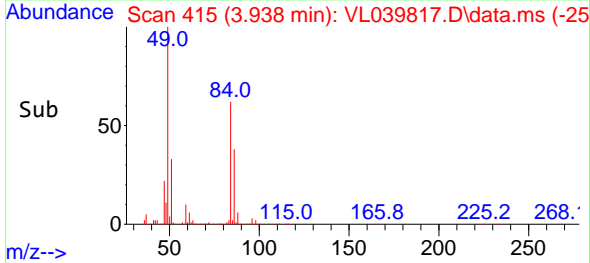
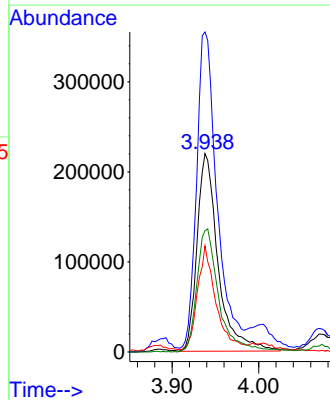
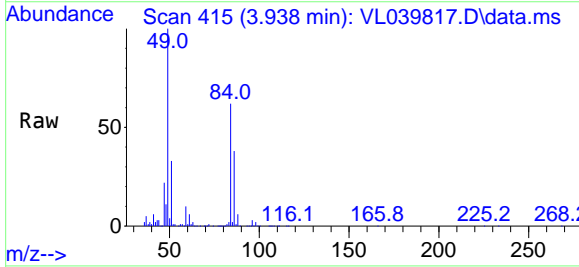
Instrument :  
 MSVOA\_L  
 ClientSampleId :

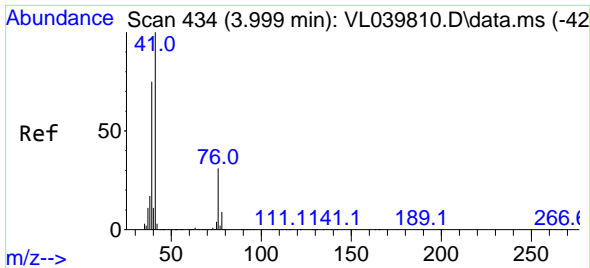
Tgt Ion: 45 Resp: 554120  
 Ion Ratio Lower Upper  
 45 100  
 58 52.5 38.3 57.5



#20  
 Methylene Chloride  
 Concen: 7.986 ppbv  
 RT: 3.938 min Scan# 415  
 Delta R.T. 0.000 min  
 Lab File: VL039817.D  
 Acq: 2 Nov 2022 15:13

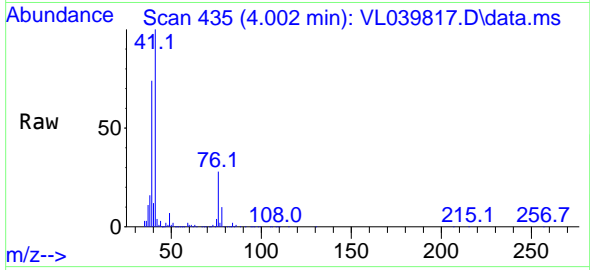
Tgt Ion: 84 Resp: 372030  
 Ion Ratio Lower Upper  
 84 100  
 49 160.0 128.6 192.8  
 51 52.4 40.2 60.4  
 86 61.2 52.2 78.2



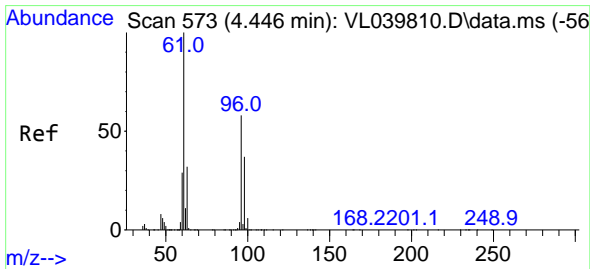
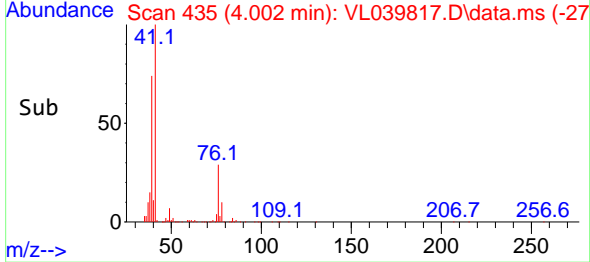
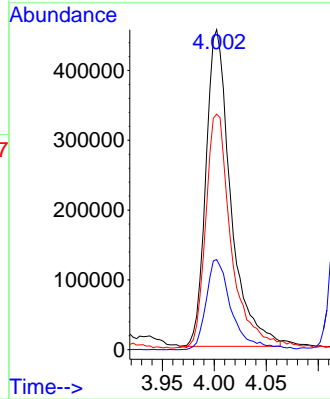


#21  
 Allyl Chloride  
 Concen: 9.135 ppbv  
 RT: 4.002 min Scan# 41  
 Delta R.T. 0.003 min  
 Lab File: VL039817.D  
 Acq: 2 Nov 2022 15:13

Instrument :  
 MSVOA\_L  
 ClientSampleId :

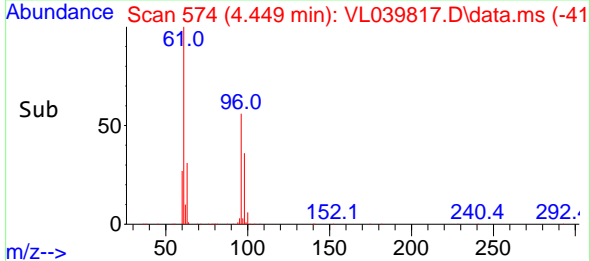
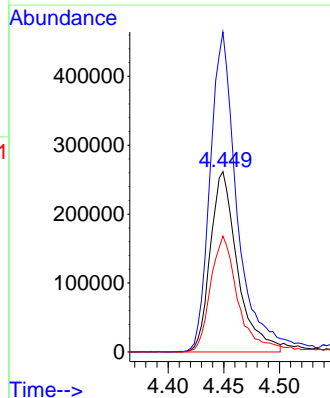
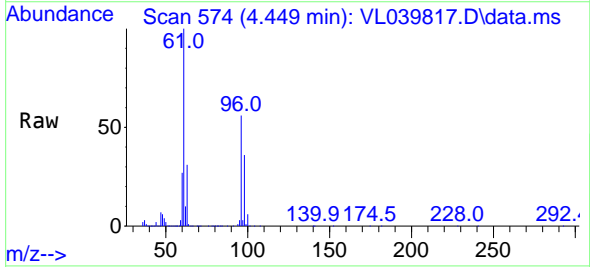


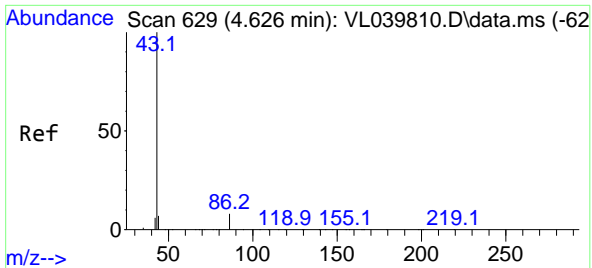
Tgt Ion: 41 Resp: 752476  
 Ion Ratio Lower Upper  
 41 100  
 76 29.3 24.1 36.1  
 39 76.6 64.3 96.5



#22  
 trans-1,2-Dichloroethene  
 Concen: 8.982 ppbv  
 RT: 4.449 min Scan# 574  
 Delta R.T. 0.003 min  
 Lab File: VL039817.D  
 Acq: 2 Nov 2022 15:13

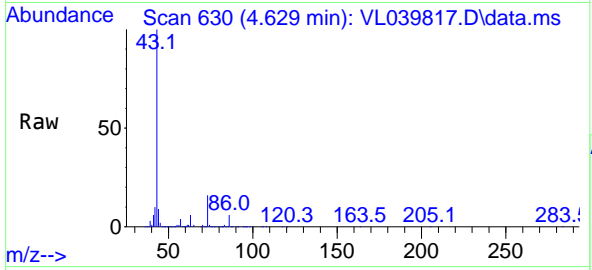
Tgt Ion: 96 Resp: 444692  
 Ion Ratio Lower Upper  
 96 100  
 61 177.1 137.6 206.4  
 98 64.2 51.2 76.8





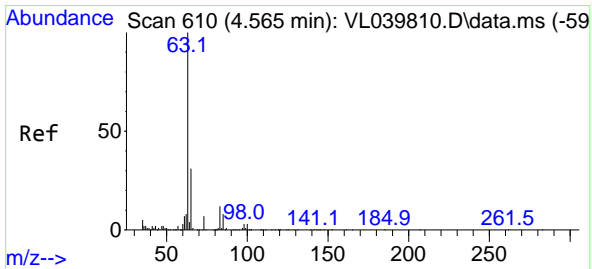
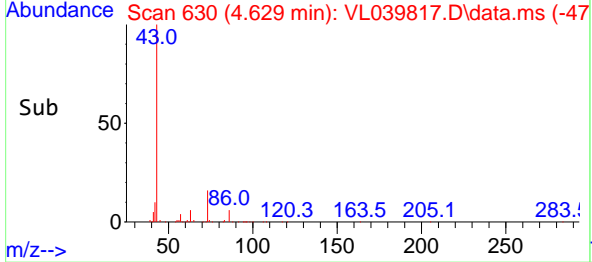
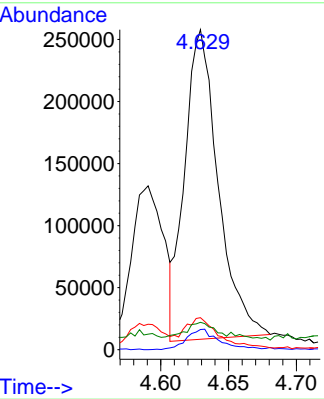
#23  
 Vinyl Acetate  
 Concen: 8.280 ppbv  
 RT: 4.629 min Scan# 61  
 Delta R.T. 0.003 min  
 Lab File: VL039817.D  
 Acq: 2 Nov 2022 15:13

Instrument :  
 MSVOA\_L  
 ClientSampleId :

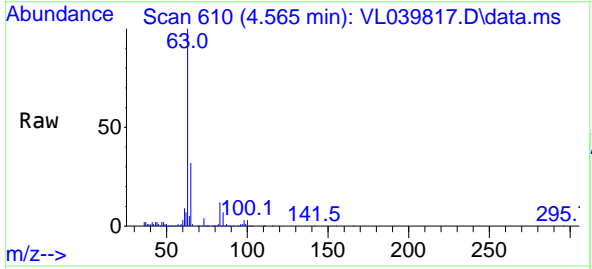


Tgt Ion: 43 Resp: 429575

| Ion | Ratio | Lower | Upper |
|-----|-------|-------|-------|
| 43  | 100   |       |       |
| 86  | 5.9   | 5.0   | 7.4   |
| 42  | 9.9   | 6.8   | 10.2  |
| 44  | 5.8   | 4.0   | 6.0   |

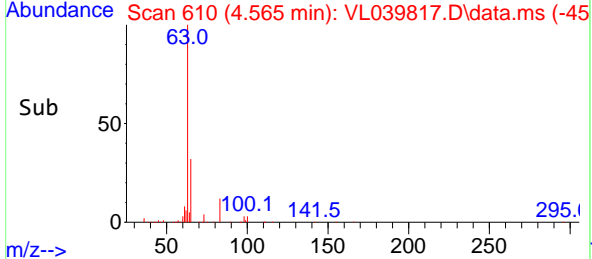
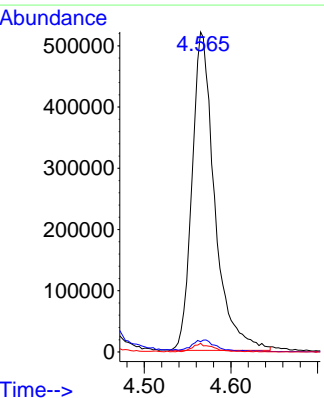


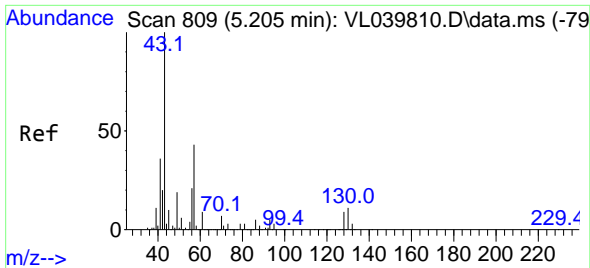
#24  
 1,1-Dichloroethane  
 Concen: 8.883 ppbv  
 RT: 4.565 min Scan# 610  
 Delta R.T. 0.000 min  
 Lab File: VL039817.D  
 Acq: 2 Nov 2022 15:13



Tgt Ion: 63 Resp: 941298

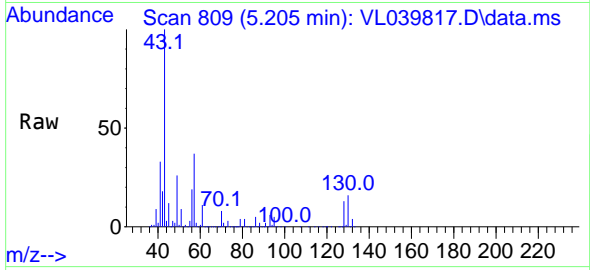
| Ion | Ratio | Lower | Upper |
|-----|-------|-------|-------|
| 63  | 100   |       |       |
| 98  | 3.1   | 1.8   | 5.4   |
| 100 | 2.6   | 1.5   | 4.4   |



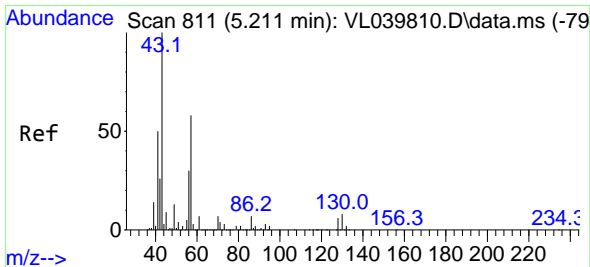
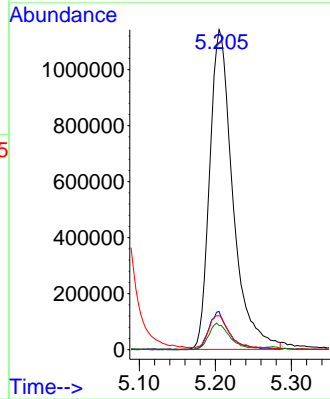
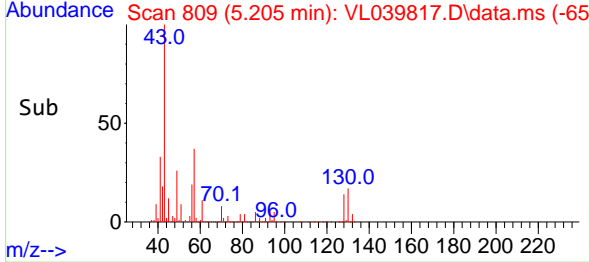


#25  
 Ethyl Acetate  
 Concen: 9.002 ppbv  
 RT: 5.205 min Scan# 809  
 Delta R.T. 0.000 min  
 Lab File: VL039817.D  
 Acq: 2 Nov 2022 15:13

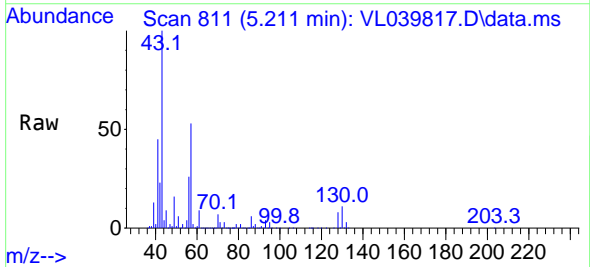
Instrument :  
 MSVOA\_L  
 ClientSampleId :



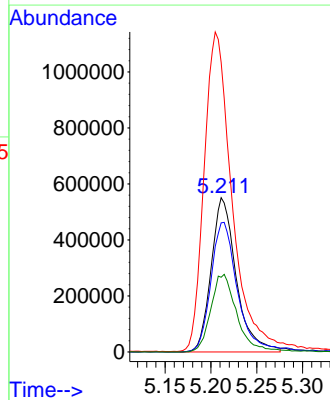
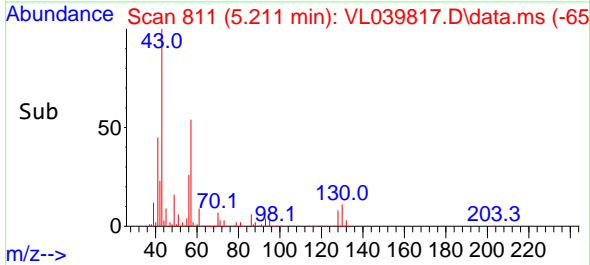
Tgt Ion: 43 Resp: 2414787  
 Ion Ratio Lower Upper  
 43 100  
 45 10.7 8.2 12.2  
 61 10.3 8.1 12.1  
 70 7.6 5.9 8.9



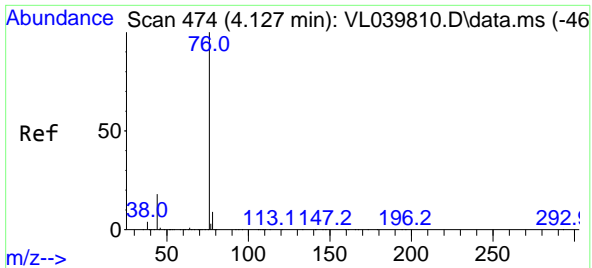
#26  
 Hexane  
 Concen: 8.761 ppbv  
 RT: 5.211 min Scan# 811  
 Delta R.T. 0.000 min  
 Lab File: VL039817.D  
 Acq: 2 Nov 2022 15:13



Tgt Ion: 57 Resp: 1047768  
 Ion Ratio Lower Upper  
 57 100  
 41 90.3 73.7 110.5  
 43 234.7 189.8 284.8  
 56 53.5 43.1 64.7

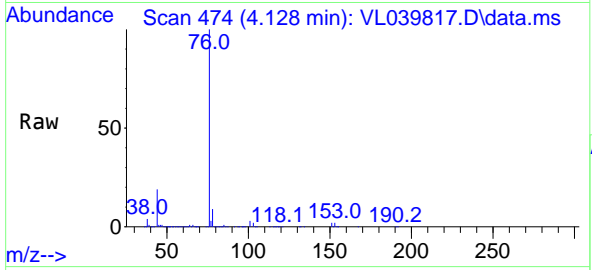




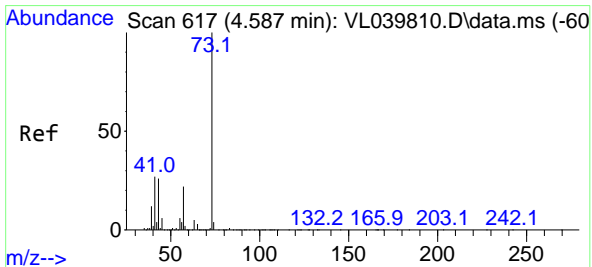
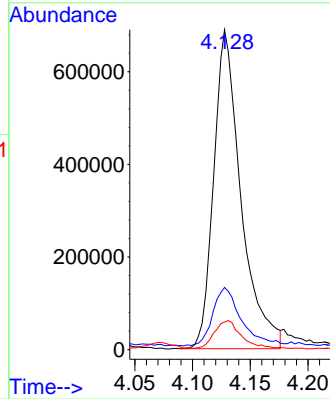
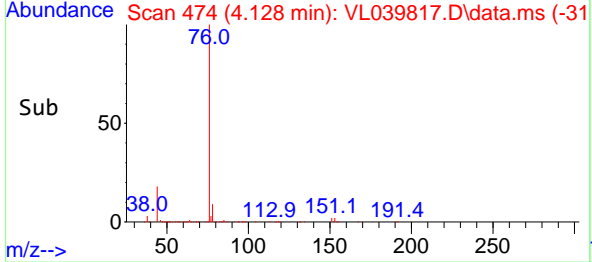


#27  
 Carbon Disulfide  
 Concen: 8.991 ppbv  
 RT: 4.128 min Scan# 41  
 Delta R.T. 0.000 min  
 Lab File: VL039817.D  
 Acq: 2 Nov 2022 15:13

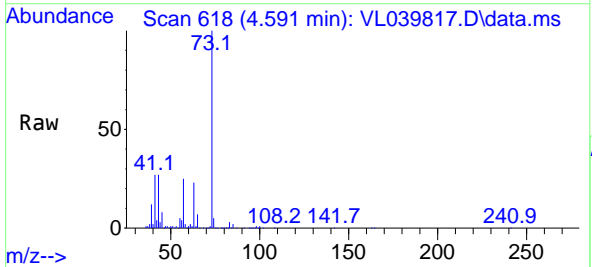
Instrument :  
 MSVOA\_L  
 ClientSampleId :



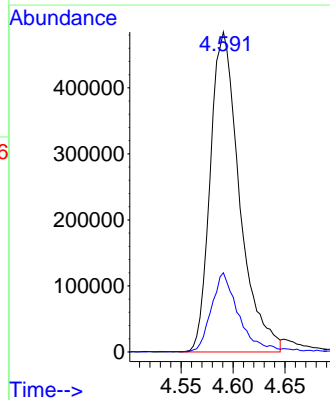
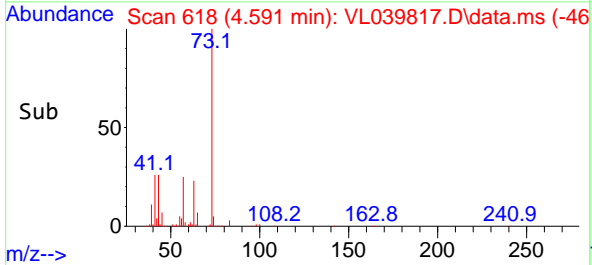
Tgt Ion: 76 Resp: 1129178  
 Ion Ratio Lower Upper  
 76 100  
 44 19.8 14.6 22.0  
 78 9.7 7.6 11.4

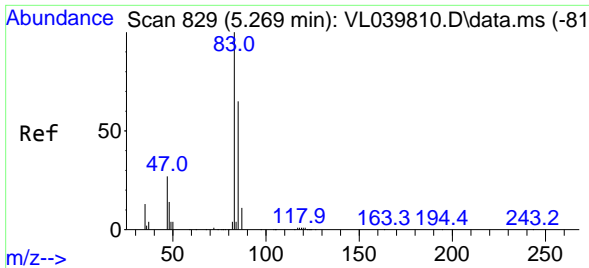


#28  
 Methyl tert-Butyl Ether  
 Concen: 8.751 ppbv  
 RT: 4.591 min Scan# 618  
 Delta R.T. 0.003 min  
 Lab File: VL039817.D  
 Acq: 2 Nov 2022 15:13



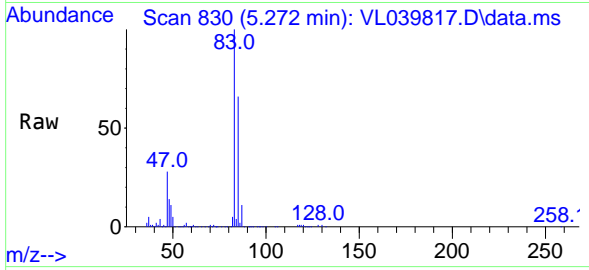
Tgt Ion: 73 Resp: 947366  
 Ion Ratio Lower Upper  
 73 100  
 57 24.2 19.4 29.2



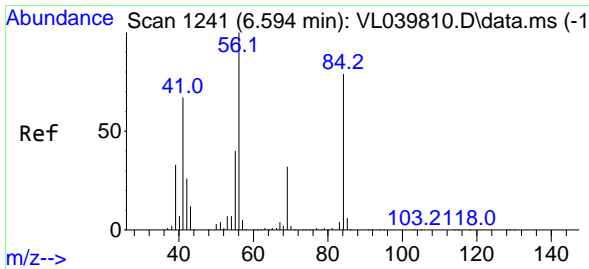
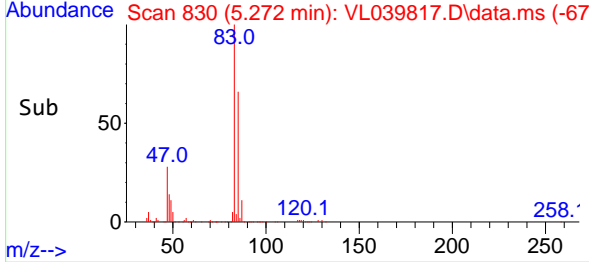
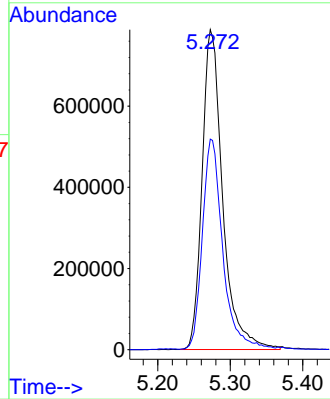


#29  
 Chloroform  
 Concen: 9.246 ppbv  
 RT: 5.272 min Scan# 81  
 Delta R.T. 0.003 min  
 Lab File: VL039817.D  
 Acq: 2 Nov 2022 15:13

Instrument :  
 MSVOA\_L  
 ClientSampleId :

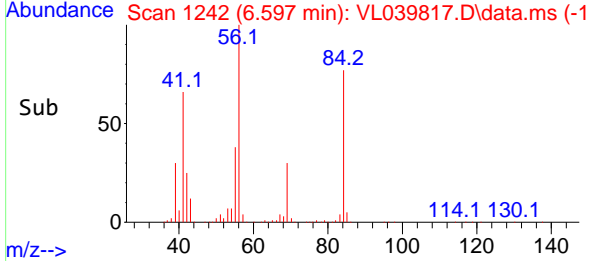
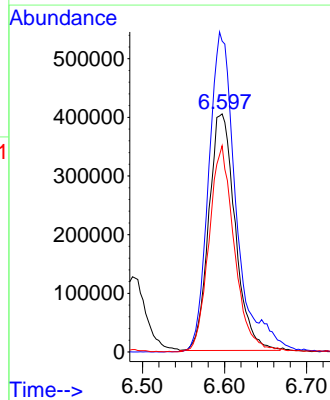
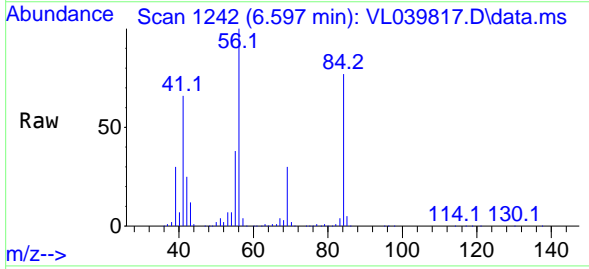


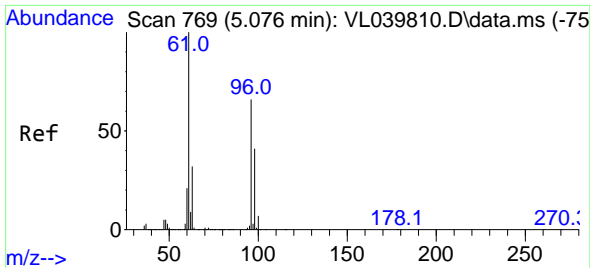
Tgt Ion: 83 Resp: 1554892  
 Ion Ratio Lower Upper  
 83 100  
 85 65.7 51.6 77.4



#30  
 Cyclohexane  
 Concen: 8.997 ppbv  
 RT: 6.597 min Scan# 1242  
 Delta R.T. 0.003 min  
 Lab File: VL039817.D  
 Acq: 2 Nov 2022 15:13

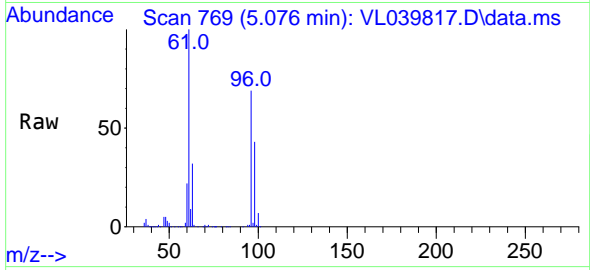
Tgt Ion: 84 Resp: 899791  
 Ion Ratio Lower Upper  
 84 100  
 56 142.4 114.8 172.2  
 41 84.6 68.6 103.0



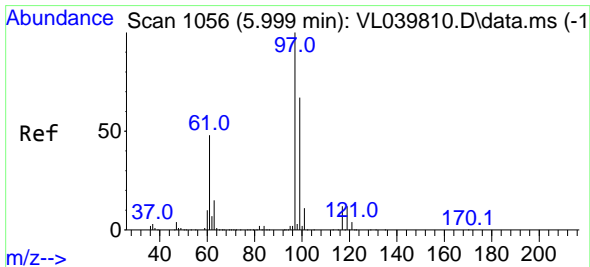
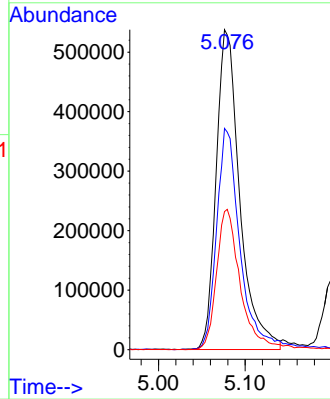
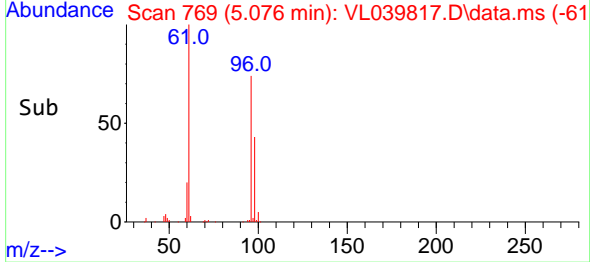


#31  
 cis-1,2-Dichloroethene  
 Concen: 9.337 ppbv  
 RT: 5.076 min Scan# 769  
 Delta R.T. 0.000 min  
 Lab File: VL039817.D  
 Acq: 2 Nov 2022 15:13

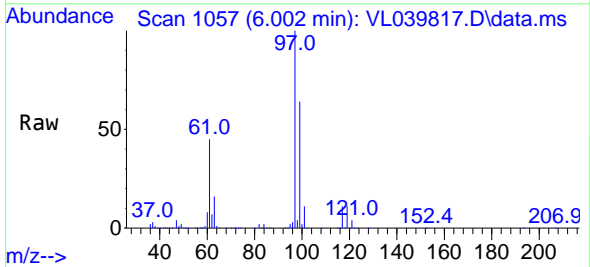
Instrument : MSVOA\_L  
 ClientSampleId :



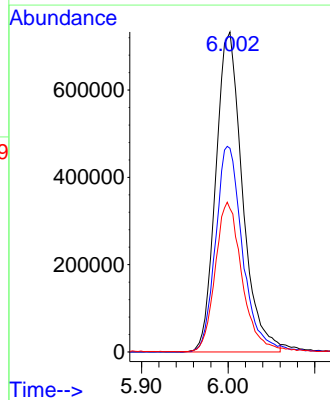
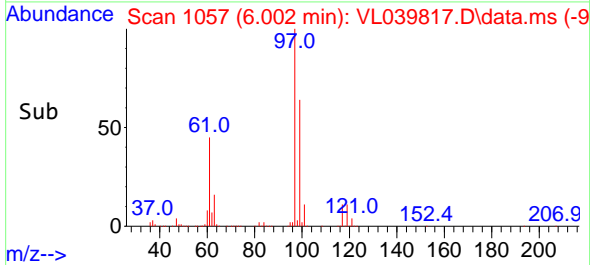
Tgt Ion: 61 Resp: 1018252  
 Ion Ratio Lower Upper  
 61 100  
 96 69.1 52.6 78.8  
 98 43.2 32.6 48.8

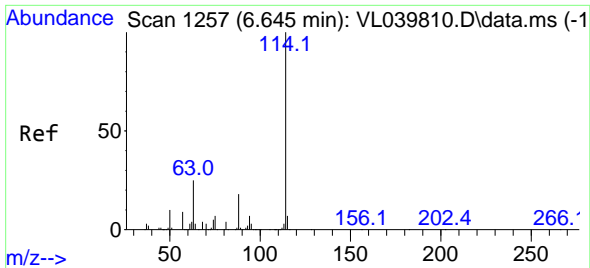


#32  
 1,1,1-Trichloroethane  
 Concen: 9.362 ppbv  
 RT: 6.002 min Scan# 1057  
 Delta R.T. 0.003 min  
 Lab File: VL039817.D  
 Acq: 2 Nov 2022 15:13



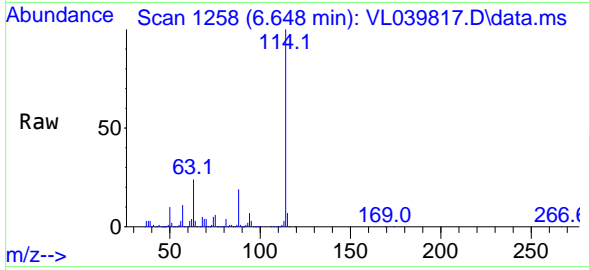
Tgt Ion: 97 Resp: 1567352  
 Ion Ratio Lower Upper  
 97 100  
 99 65.8 52.7 79.1  
 61 47.7 38.9 58.3



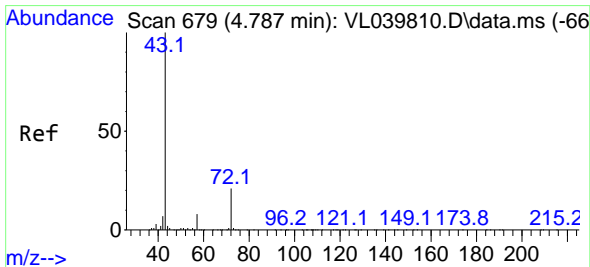
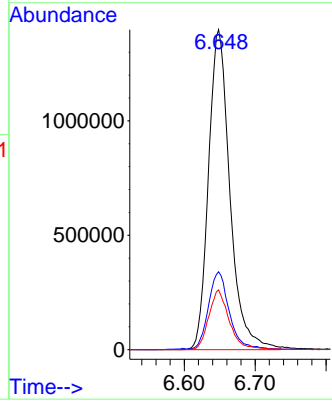
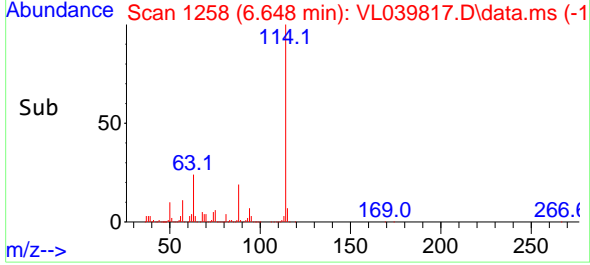


#33  
 1,4-Difluorobenzene  
 Concen: 10.000 ppbv  
 RT: 6.648 min Scan# 11  
 Delta R.T. 0.003 min  
 Lab File: VL039817.D  
 Acq: 2 Nov 2022 15:13

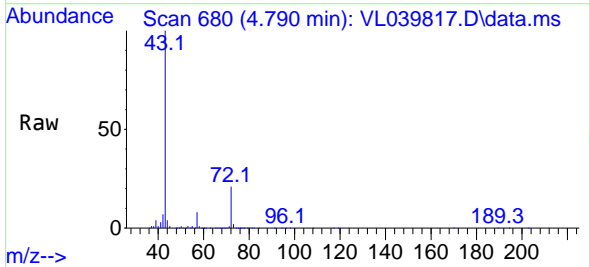
Instrument :  
 MSVOA\_L  
 ClientSampleId :



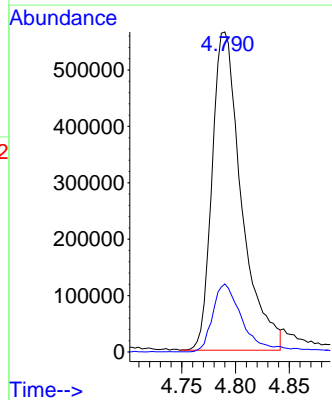
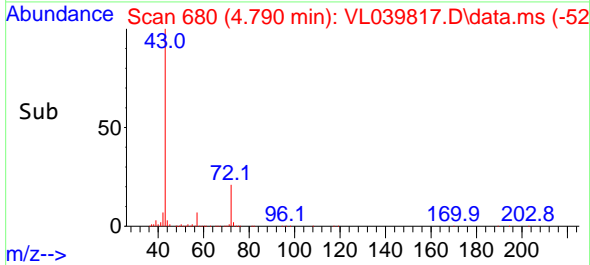
Tgt Ion:114 Resp: 2931541  
 Ion Ratio Lower Upper  
 114 100  
 63 24.2 19.8 29.6  
 88 18.0 14.4 21.6

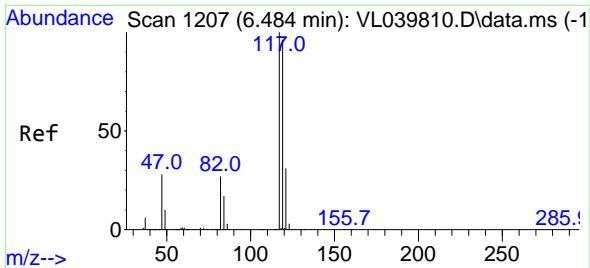


#34  
 2-Butanone  
 Concen: 8.872 ppbv  
 RT: 4.790 min Scan# 680  
 Delta R.T. 0.003 min  
 Lab File: VL039817.D  
 Acq: 2 Nov 2022 15:13



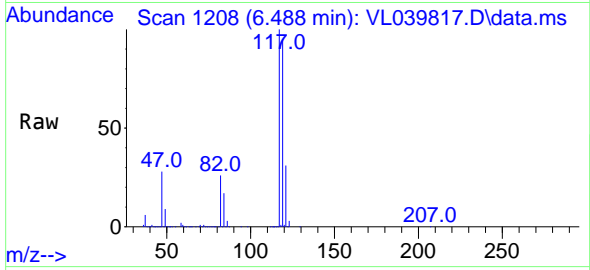
Tgt Ion: 43 Resp: 1072919  
 Ion Ratio Lower Upper  
 43 100  
 72 22.6 17.5 26.3



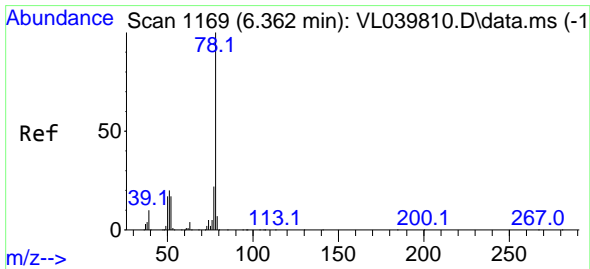
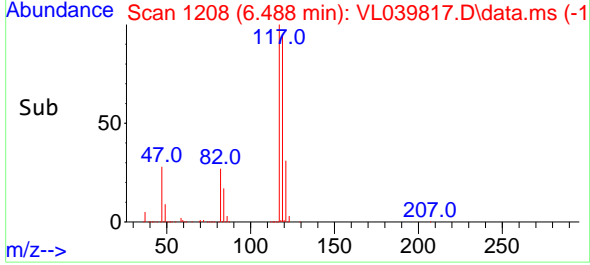
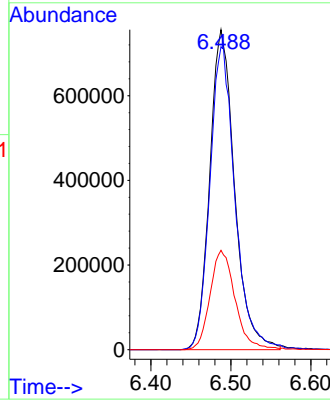


#35  
 Carbon Tetrachloride  
 Concen: 9.524 ppbv  
 RT: 6.488 min Scan# 1170  
 Delta R.T. 0.003 min  
 Lab File: VL039817.D  
 Acq: 2 Nov 2022 15:13

Instrument : MSVOA\_L  
 ClientSampleId :

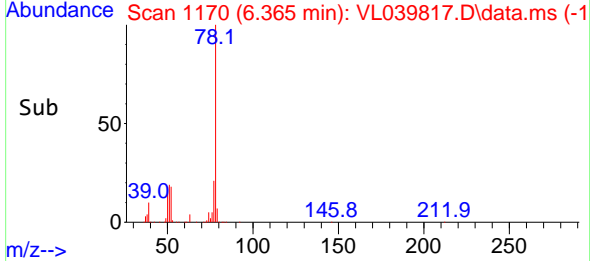
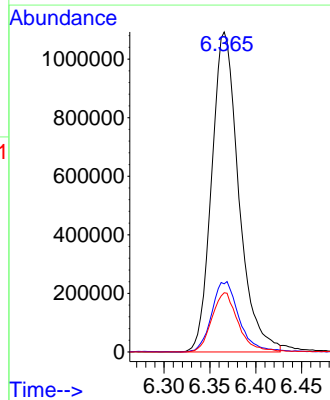
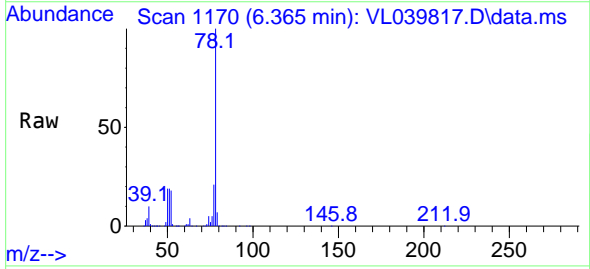


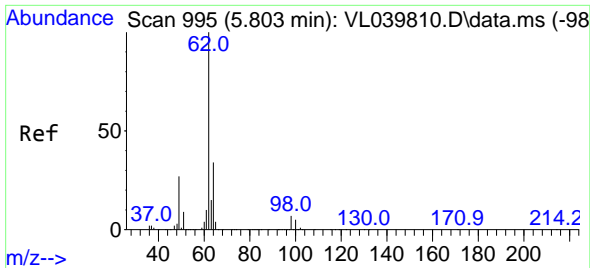
Tgt Ion:117 Resp: 1627427  
 Ion Ratio Lower Upper  
 117 100  
 119 94.7 76.5 114.7  
 121 31.1 25.2 37.8



#36  
 Benzene  
 Concen: 9.063 ppbv  
 RT: 6.365 min Scan# 1170  
 Delta R.T. 0.003 min  
 Lab File: VL039817.D  
 Acq: 2 Nov 2022 15:13

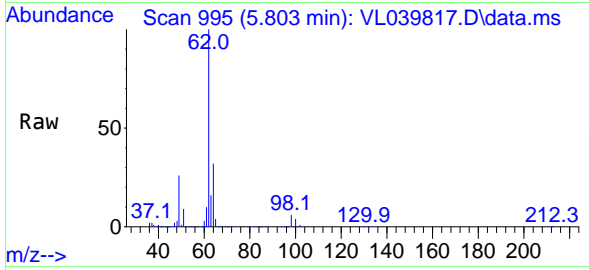
Tgt Ion: 78 Resp: 2241051  
 Ion Ratio Lower Upper  
 78 100  
 77 21.3 17.4 26.2  
 50 18.5 13.9 20.9



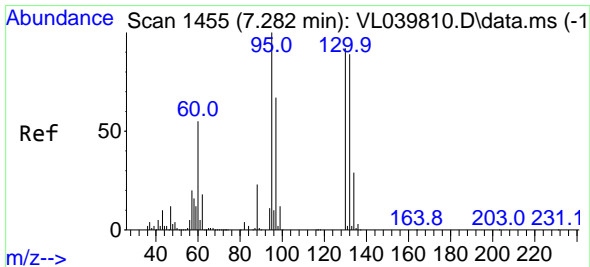
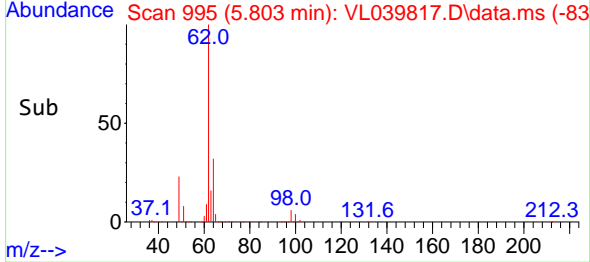
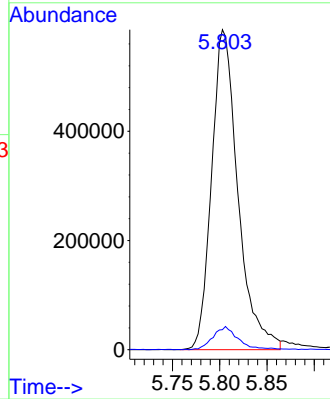


#37  
 1,2-Dichloroethane  
 Concen: 9.572 ppbv  
 RT: 5.803 min Scan# 995  
 Delta R.T. 0.000 min  
 Lab File: VL039817.D  
 Acq: 2 Nov 2022 15:13

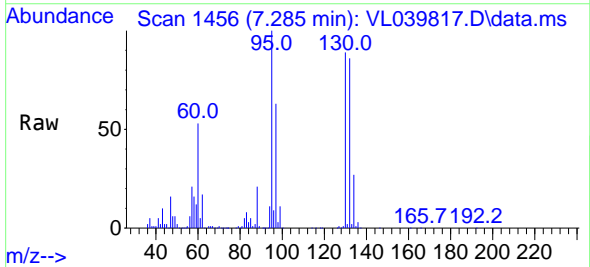
Instrument : MSVOA\_L  
 ClientSampleId :



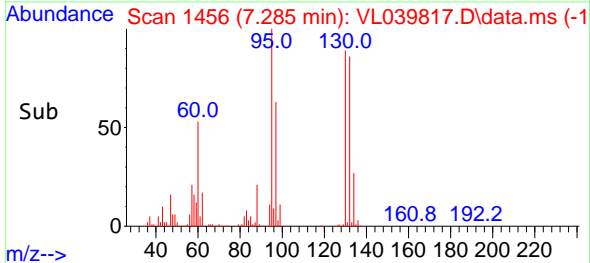
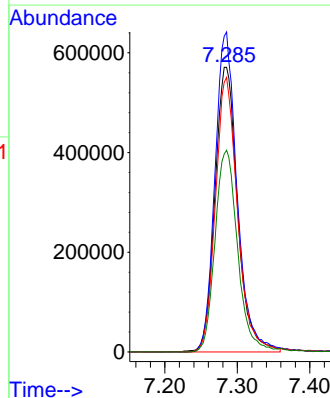
Tgt Ion: 62 Resp: 1135714  
 Ion Ratio Lower Upper  
 62 100  
 98 7.0 5.4 8.2

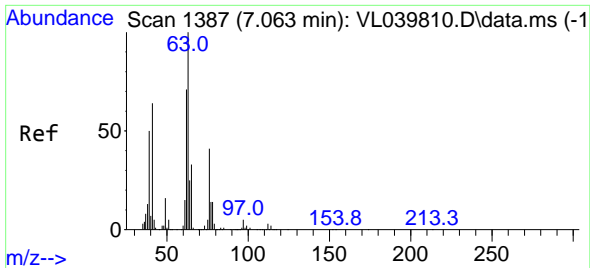


#38  
 Trichloroethene  
 Concen: 9.112 ppbv  
 RT: 7.285 min Scan# 1456  
 Delta R.T. 0.003 min  
 Lab File: VL039817.D  
 Acq: 2 Nov 2022 15:13



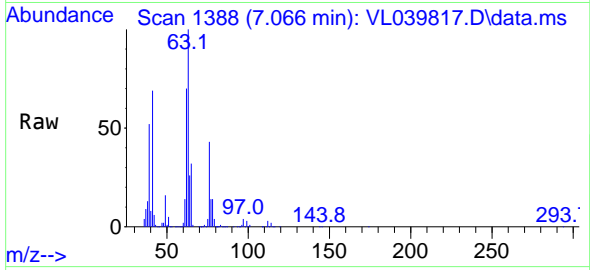
Tgt Ion: 130 Resp: 1237905  
 Ion Ratio Lower Upper  
 130 100  
 95 112.4 87.4 131.2  
 132 96.5 77.7 116.5  
 97 70.9 58.6 87.8



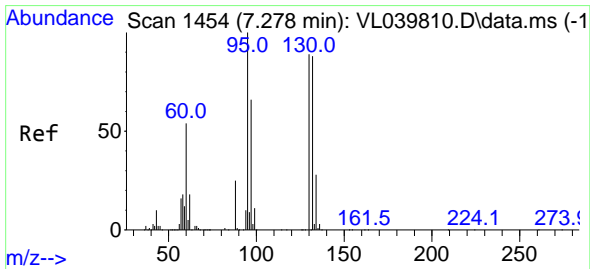
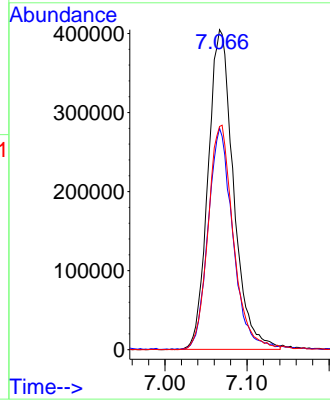
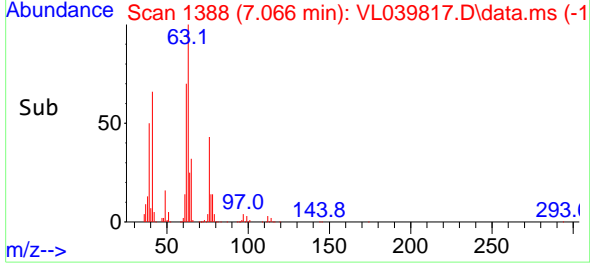


#39  
 1,2-Dichloropropane  
 Concen: 9.038 ppbv  
 RT: 7.066 min Scan# 11  
 Delta R.T. 0.003 min  
 Lab File: VL039817.D  
 Acq: 2 Nov 2022 15:13

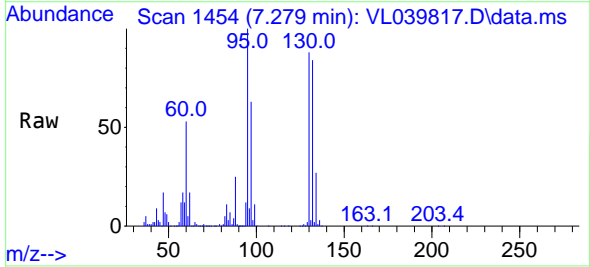
Instrument :  
 MSVOA\_L  
 ClientSampleId :



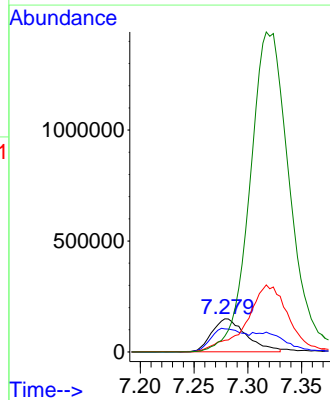
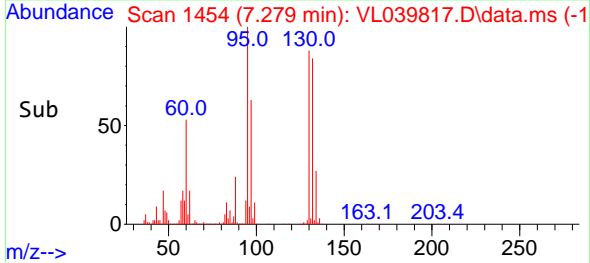
Tgt Ion: 63 Resp: 870821  
 Ion Ratio Lower Upper  
 63 100  
 41 69.2 51.0 76.4  
 62 69.8 56.6 85.0

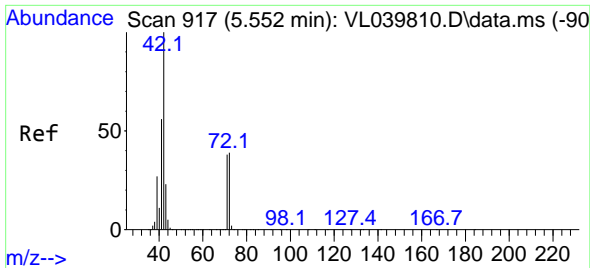


#40  
 1,4-Dioxane  
 Concen: 9.046 ppbv  
 RT: 7.279 min Scan# 1454  
 Delta R.T. 0.000 min  
 Lab File: VL039817.D  
 Acq: 2 Nov 2022 15:13



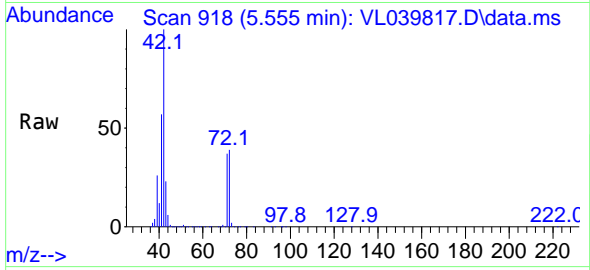
Tgt Ion: 88 Resp: 333766  
 Ion Ratio Lower Upper  
 88 100  
 58 127.9 99.5 149.3  
 43 0.0 189.7 284.5#  
 57 0.0 846.5 1269.7#



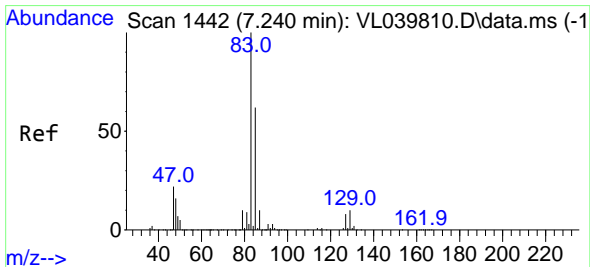
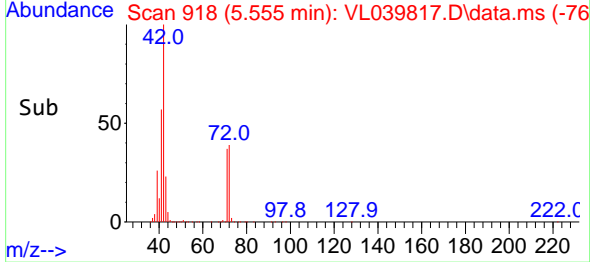
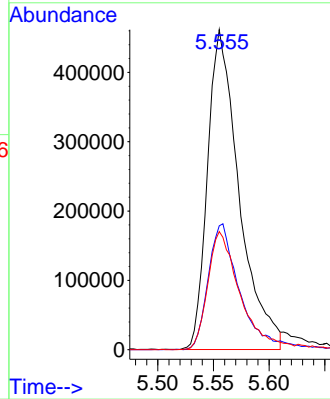


#41  
 Tetrahydrofuran  
 Concen: 9.013 ppbv  
 RT: 5.555 min Scan# 917  
 Delta R.T. 0.003 min  
 Lab File: VL039817.D  
 Acq: 2 Nov 2022 15:13

Instrument :  
 MSVOA\_L  
 ClientSampleId :

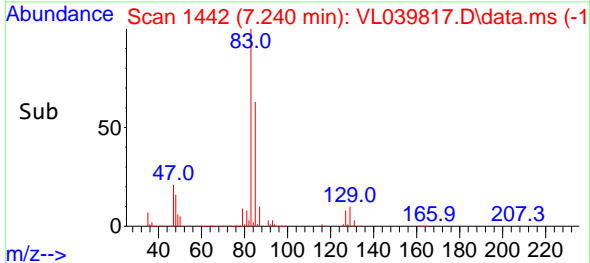
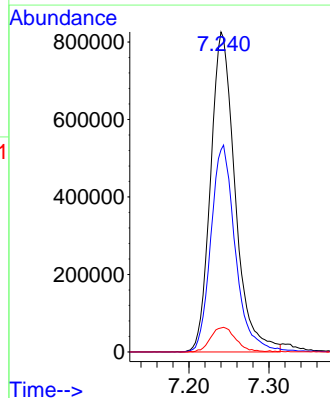
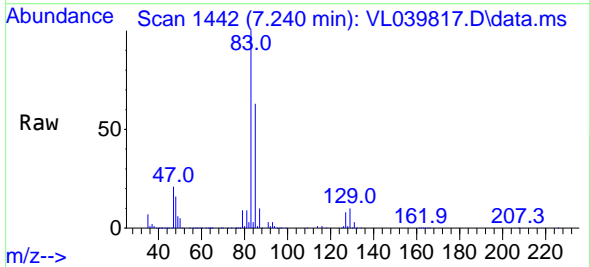


Tgt Ion: 42 Resp: 910953  
 Ion Ratio Lower Upper  
 42 100  
 72 40.4 31.4 47.2  
 71 39.3 31.5 47.3

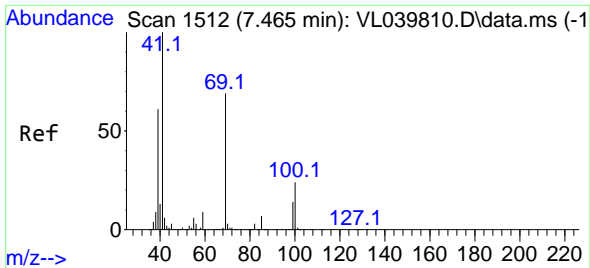


#42  
 Bromodichloromethane  
 Concen: 9.289 ppbv  
 RT: 7.240 min Scan# 1442  
 Delta R.T. 0.000 min  
 Lab File: VL039817.D  
 Acq: 2 Nov 2022 15:13

Tgt Ion: 83 Resp: 1760259  
 Ion Ratio Lower Upper  
 83 100  
 85 63.2 49.9 74.9  
 127 7.5 6.4 9.6

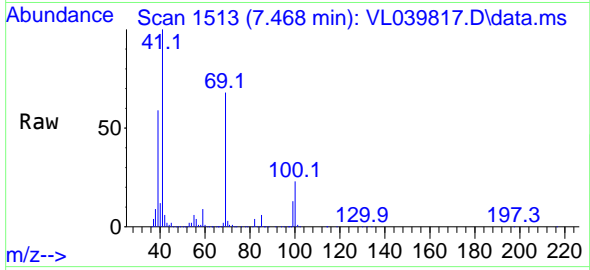




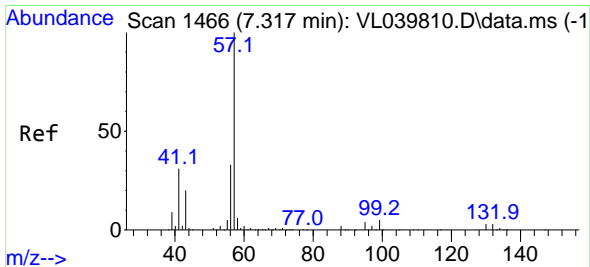
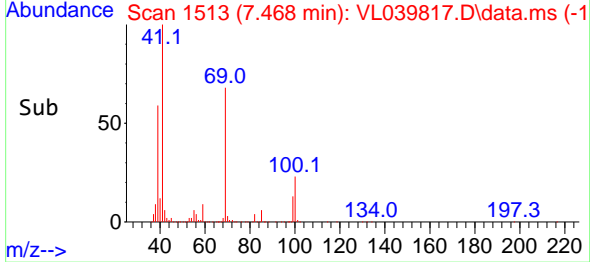
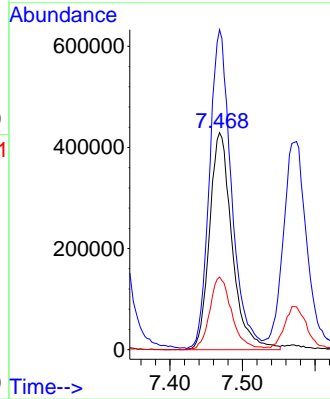


#43  
 Methyl Methacrylate  
 Concen: 9.490 ppbv  
 RT: 7.468 min Scan# 11  
 Delta R.T. 0.003 min  
 Lab File: VL039817.D  
 Acq: 2 Nov 2022 15:13

Instrument :  
 MSVOA\_L  
 ClientSampleId :

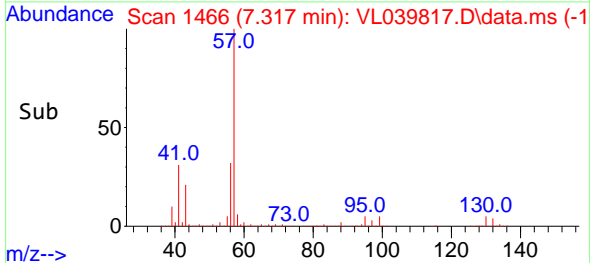
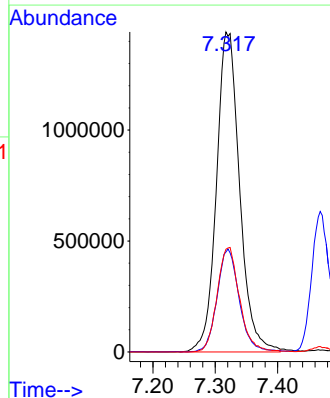
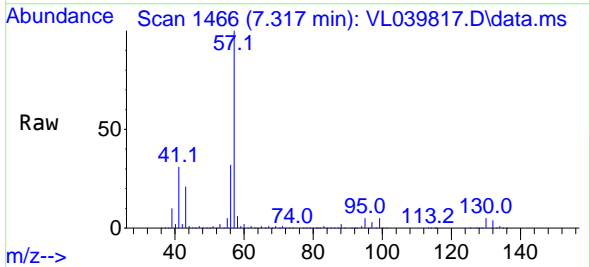


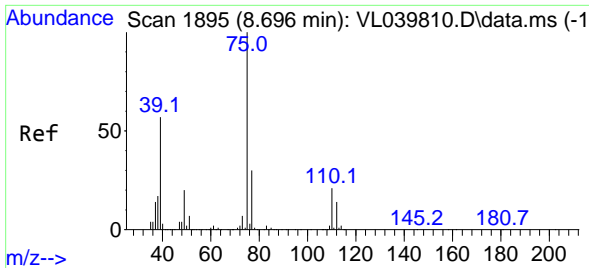
Tgt Ion: 69 Resp: 927413  
 Ion Ratio Lower Upper  
 69 100  
 41 143.1 115.7 173.5  
 100 32.6 25.9 38.9



#44  
 2,2,4-Trimethylpentane  
 Concen: 8.923 ppbv  
 RT: 7.317 min Scan# 1466  
 Delta R.T. 0.000 min  
 Lab File: VL039817.D  
 Acq: 2 Nov 2022 15:13

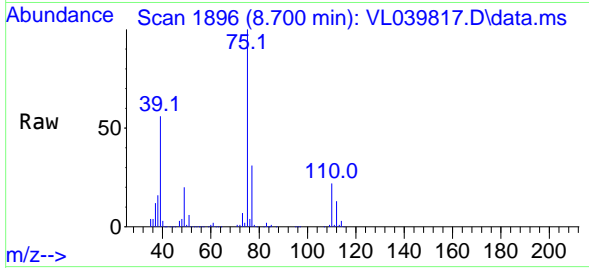
Tgt Ion: 57 Resp: 3724361  
 Ion Ratio Lower Upper  
 57 100  
 41 30.7 24.6 36.8  
 56 31.6 25.4 38.0



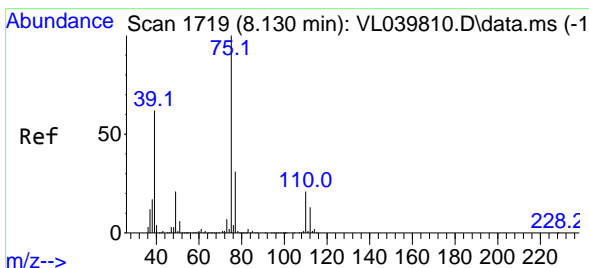
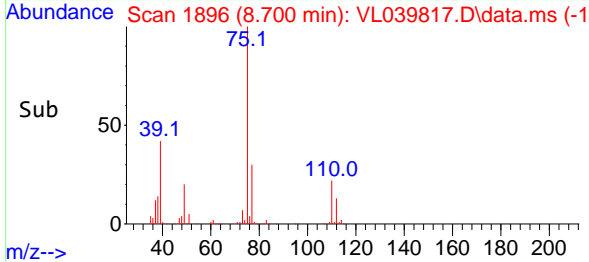
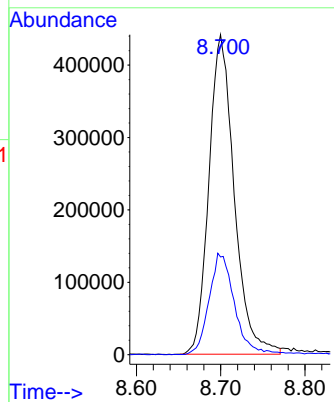


#45  
 t-1,3-Dichloropropene  
 Concen: 9.846 ppbv  
 RT: 8.700 min Scan# 11  
 Delta R.T. 0.003 min  
 Lab File: VL039817.D  
 Acq: 2 Nov 2022 15:13

Instrument :  
 MSVOA\_L  
 ClientSampleId :

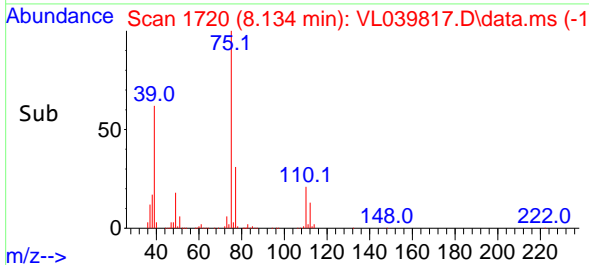
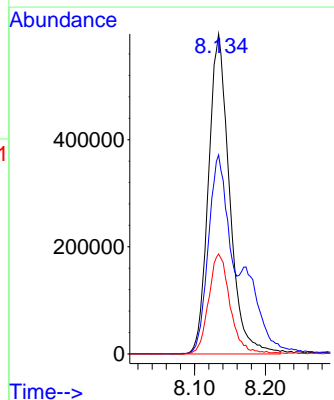
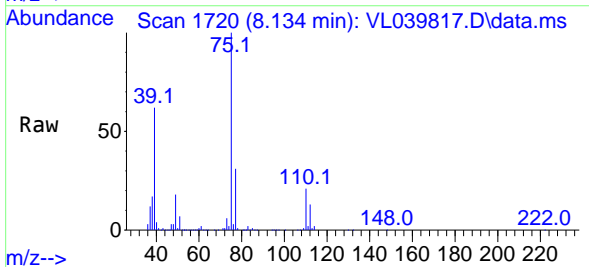


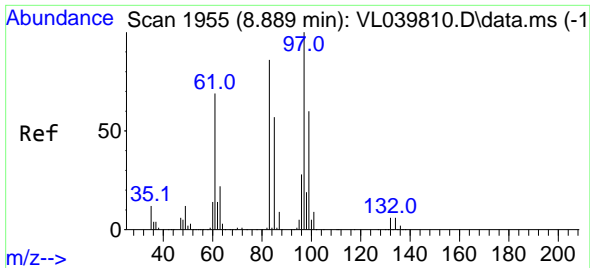
Tgt Ion: 75 Resp: 921757  
 Ion Ratio Lower Upper  
 75 100  
 77 30.5 24.4 36.6



#46  
 cis-1,3-Dichloropropene  
 Concen: 9.652 ppbv  
 RT: 8.134 min Scan# 1720  
 Delta R.T. 0.003 min  
 Lab File: VL039817.D  
 Acq: 2 Nov 2022 15:13

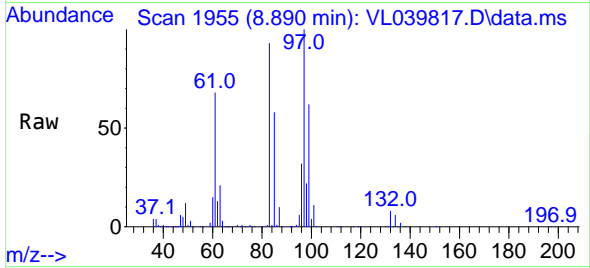
Tgt Ion: 75 Resp: 1233398  
 Ion Ratio Lower Upper  
 75 100  
 39 62.2 50.0 75.0  
 77 31.2 25.1 37.7





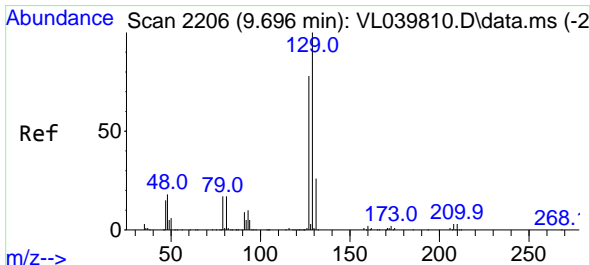
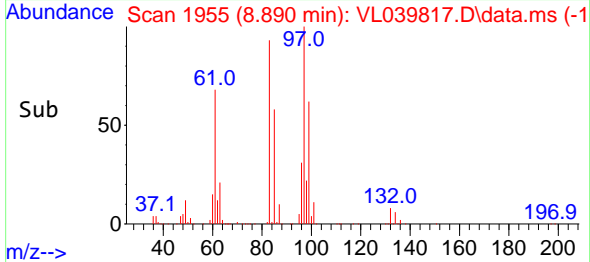
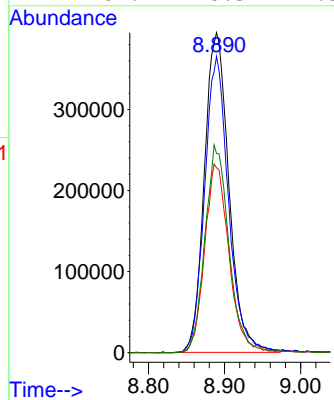
#47  
 1,1,2-Trichloroethane  
 Concen: 9.067 ppbv  
 RT: 8.890 min Scan# 1955  
 Delta R.T. 0.000 min  
 Lab File: VL039817.D  
 Acq: 2 Nov 2022 15:13

Instrument : MSVOA\_L  
 ClientSampleId :



Tgt Ion: 97 Resp: 884642

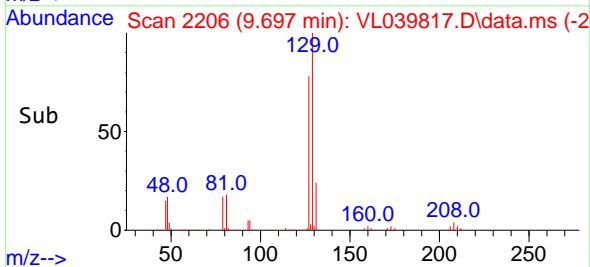
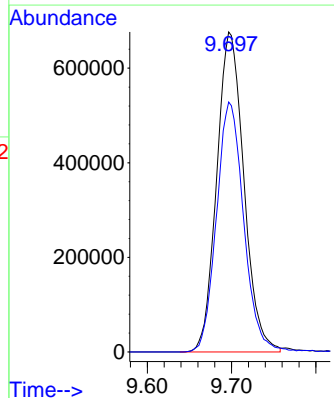
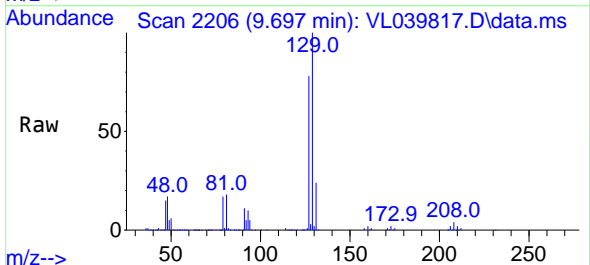
| Ion | Ratio | Lower | Upper |
|-----|-------|-------|-------|
| 97  | 100   |       |       |
| 83  | 92.4  | 68.8  | 103.2 |
| 85  | 57.8  | 45.8  | 68.6  |
| 99  | 62.2  | 48.3  | 72.5  |

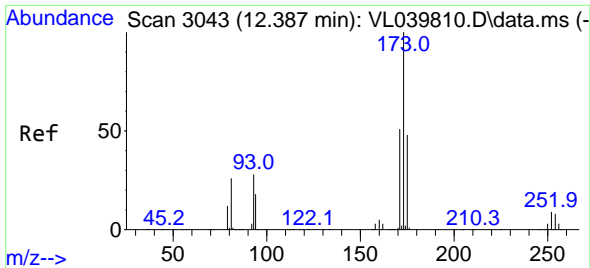


#48  
 Dibromochloromethane  
 Concen: 9.100 ppbv  
 RT: 9.697 min Scan# 2206  
 Delta R.T. 0.000 min  
 Lab File: VL039817.D  
 Acq: 2 Nov 2022 15:13

Tgt Ion: 129 Resp: 1512853

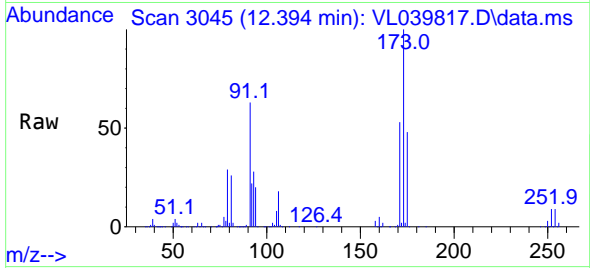
| Ion | Ratio | Lower | Upper |
|-----|-------|-------|-------|
| 129 | 100   |       |       |
| 127 | 78.7  | 39.4  | 118.1 |



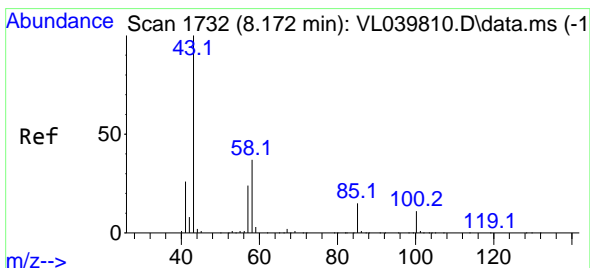
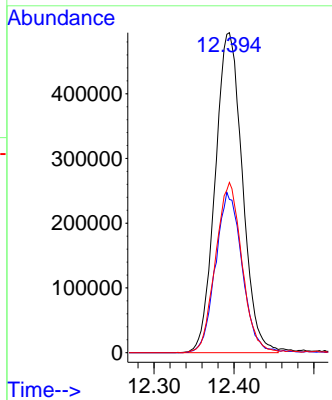
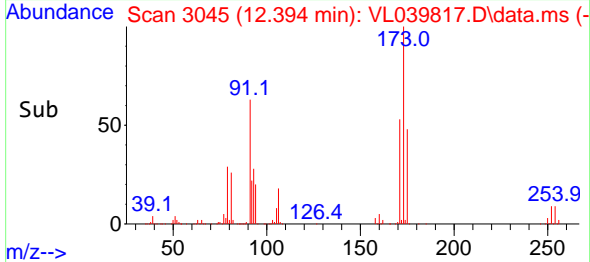


#49  
 Bromoform  
 Concen: 8.719 ppbv  
 RT: 12.394 min Scan# 3043  
 Delta R.T. 0.007 min  
 Lab File: VL039817.D  
 Acq: 2 Nov 2022 15:13

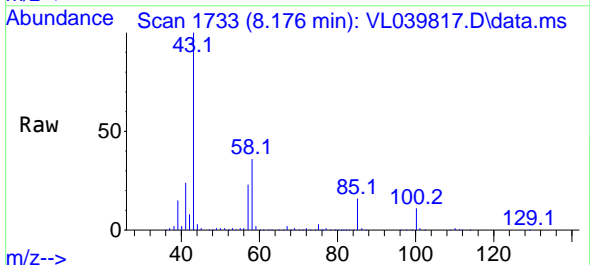
Instrument :  
 MSVOA\_L  
 ClientSampleId :



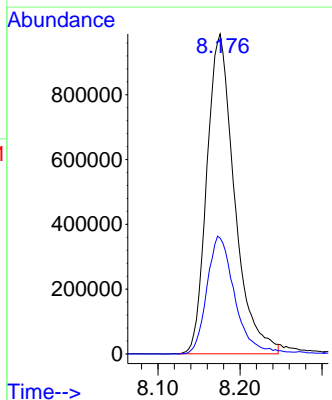
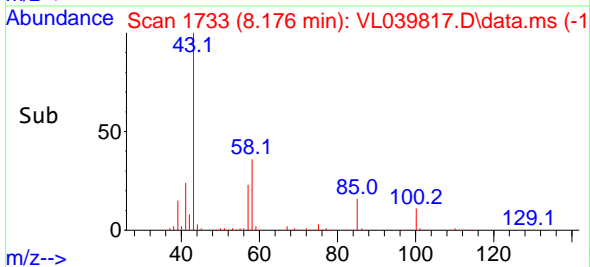
Tgt Ion:173 Resp: 1165076  
 Ion Ratio Lower Upper  
 173 100  
 175 49.5 39.7 59.5  
 171 52.2 41.7 62.5

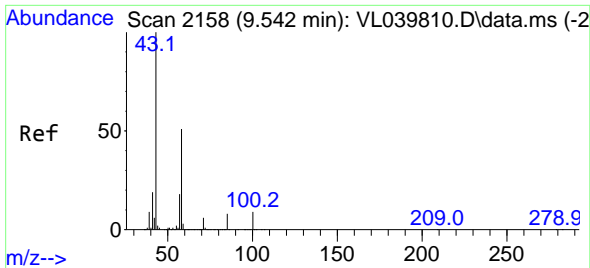


#50  
 4-Methyl-2-Pentanone  
 Concen: 9.327 ppbv  
 RT: 8.176 min Scan# 1733  
 Delta R.T. 0.003 min  
 Lab File: VL039817.D  
 Acq: 2 Nov 2022 15:13



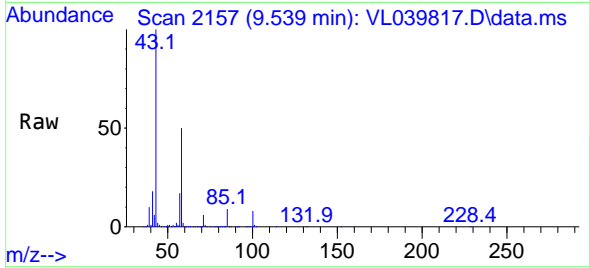
Tgt Ion: 43 Resp: 2309265  
 Ion Ratio Lower Upper  
 43 100  
 58 37.6 29.8 44.6



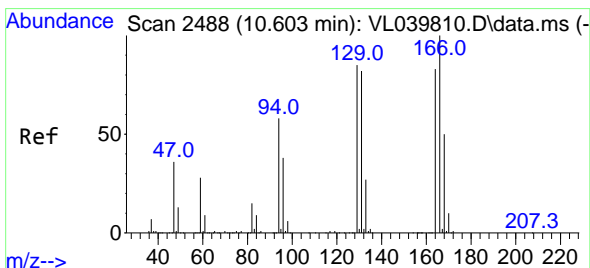
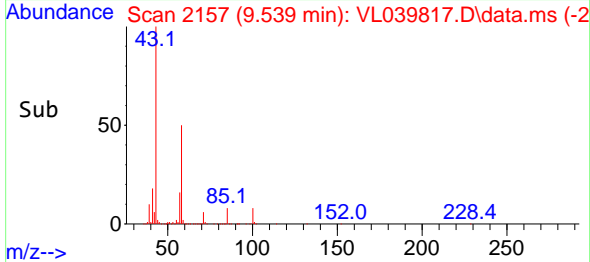
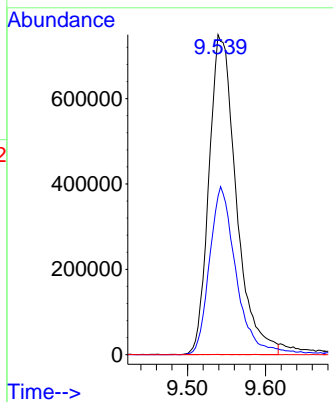


#51  
 2-Hexanone  
 Concen: 9.425 ppbv  
 RT: 9.539 min Scan# 2158  
 Delta R.T. -0.003 min  
 Lab File: VL039817.D  
 Acq: 2 Nov 2022 15:13

Instrument : MSVOA\_L  
 ClientSampleId :

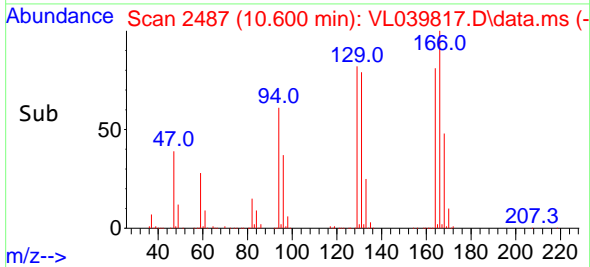
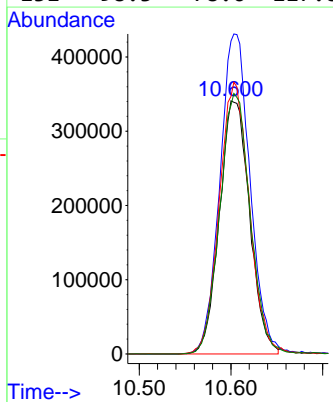
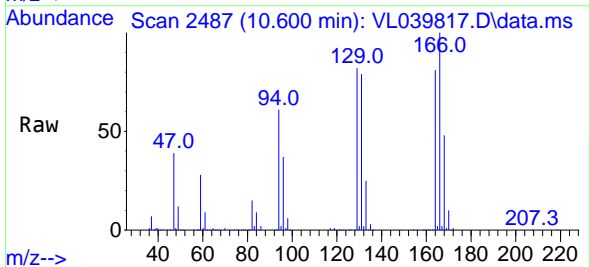


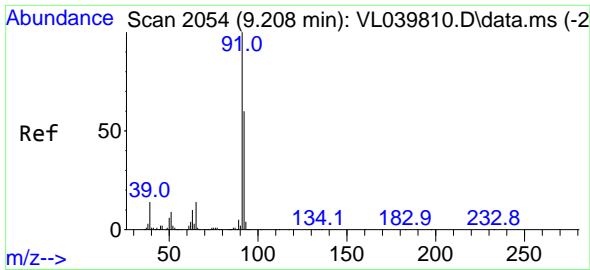
Tgt Ion: 43 Resp: 1819599  
 Ion Ratio Lower Upper  
 43 100  
 58 52.2 40.5 60.7  
 98 0.0 0.1 0.1#



#52  
 Tetrachloroethene  
 Concen: 8.320 ppbv  
 RT: 10.600 min Scan# 2487  
 Delta R.T. -0.003 min  
 Lab File: VL039817.D  
 Acq: 2 Nov 2022 15:13

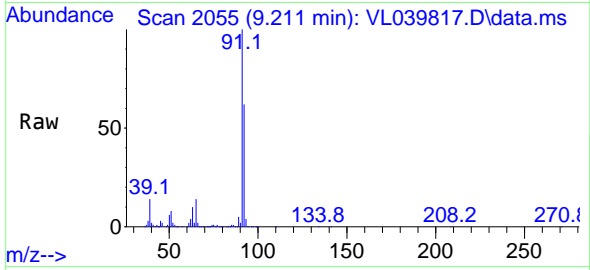
Tgt Ion:164 Resp: 776891  
 Ion Ratio Lower Upper  
 164 100  
 166 123.7 96.0 144.0  
 129 101.8 81.4 122.2  
 131 98.3 78.6 117.8



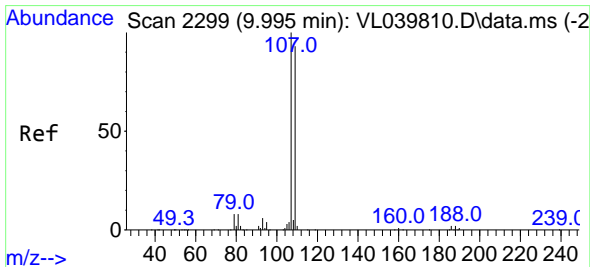
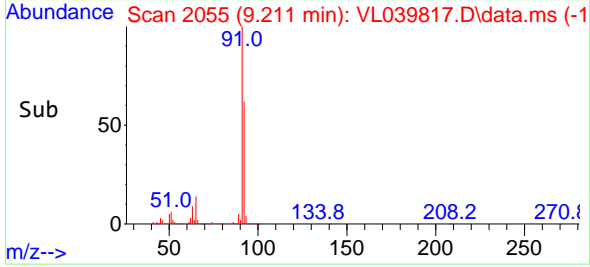
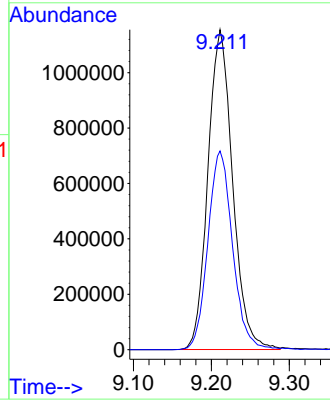


#53  
 Toluene  
 Concen: 8.983 ppbv  
 RT: 9.211 min Scan# 2055  
 Delta R.T. 0.003 min  
 Lab File: VL039817.D  
 Acq: 2 Nov 2022 15:13

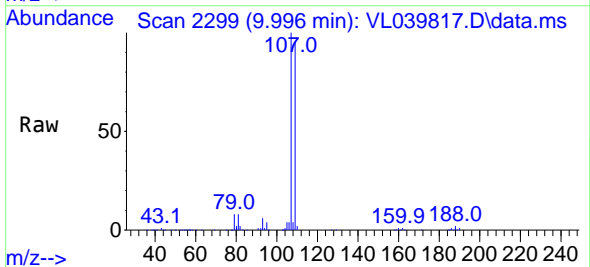
Instrument :  
 MSVOA\_L  
 ClientSampleId :



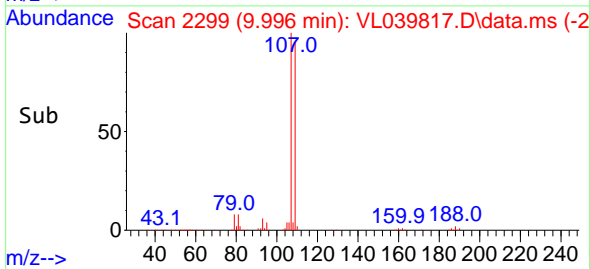
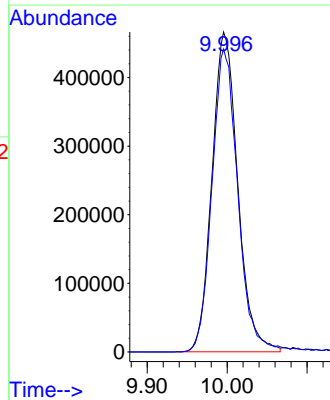
Tgt Ion: 91 Resp: 2548324  
 Ion Ratio Lower Upper  
 91 100  
 92 62.3 49.6 74.4

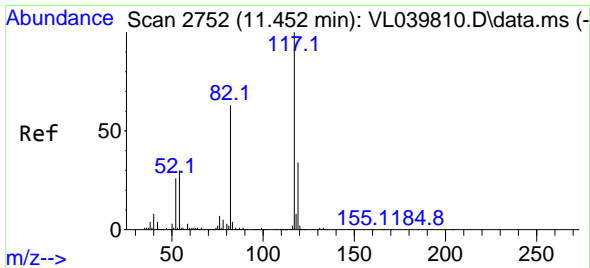


#54  
 1,2-Dibromoethane  
 Concen: 9.639 ppbv  
 RT: 9.996 min Scan# 2299  
 Delta R.T. 0.000 min  
 Lab File: VL039817.D  
 Acq: 2 Nov 2022 15:13



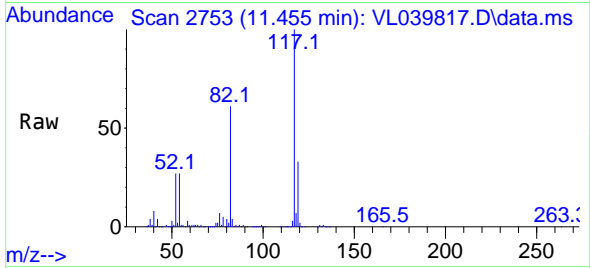
Tgt Ion: 107 Resp: 1043656  
 Ion Ratio Lower Upper  
 107 100  
 109 94.7 74.5 111.7



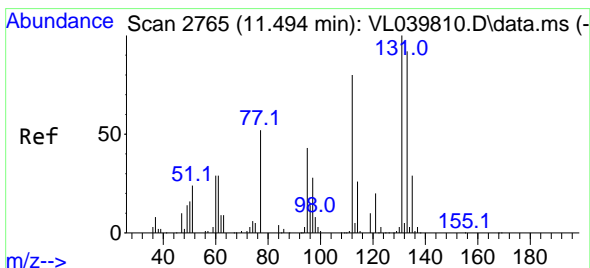
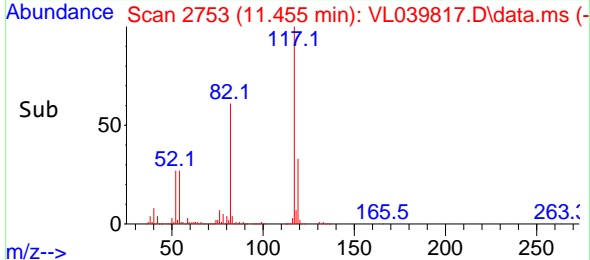
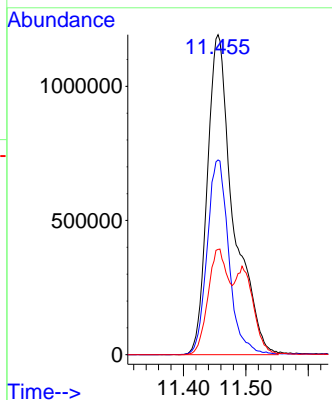


#55  
 Chlorobenzene-d5  
 Concen: 10.000 ppbv  
 RT: 11.455 min Scan# 21  
 Delta R.T. 0.003 min  
 Lab File: VL039817.D  
 Acq: 2 Nov 2022 15:13

Instrument :  
 MSVOA\_L  
 ClientSampleId :

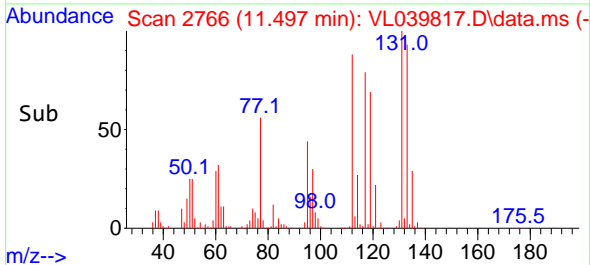
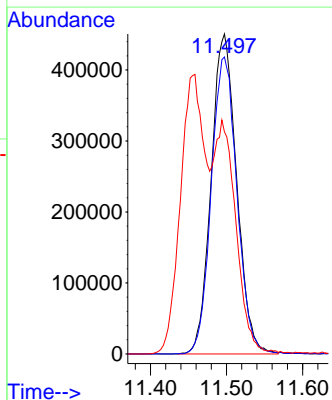
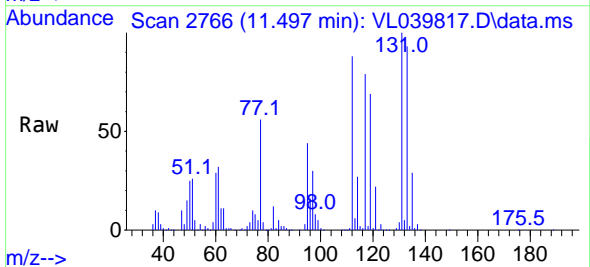


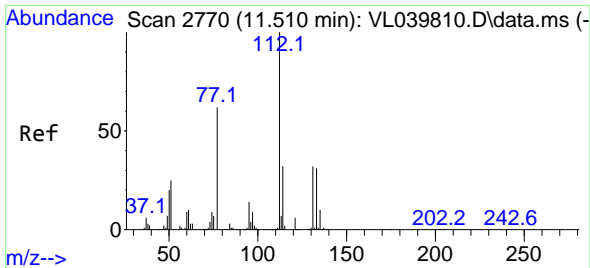
Tgt Ion:117 Resp: 3465297  
 Ion Ratio Lower Upper  
 117 100  
 82 50.9 51.0 76.6#  
 119 26.1 24.7 37.1



#56  
 1,1,1,2-Tetrachloroethane  
 Concen: 7.072 ppbv  
 RT: 11.497 min Scan# 2766  
 Delta R.T. 0.003 min  
 Lab File: VL039817.D  
 Acq: 2 Nov 2022 15:13

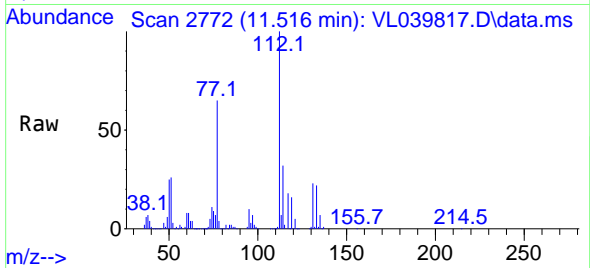
Tgt Ion:131 Resp: 1047760  
 Ion Ratio Lower Upper  
 131 100  
 133 94.0 76.9 115.3  
 119 64.7 52.2 78.2



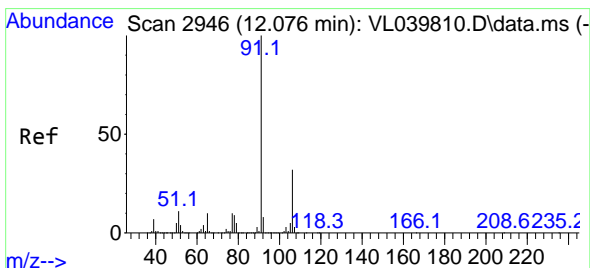
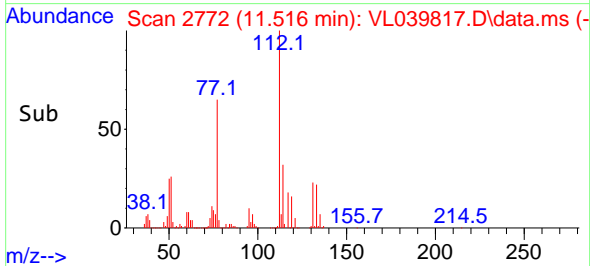
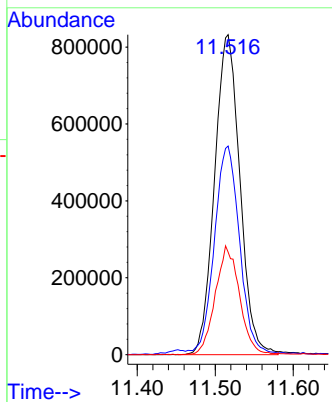


#57  
 Chlorobenzene  
 Concen: 7.155 ppbv  
 RT: 11.516 min Scan# 21  
 Delta R.T. 0.007 min  
 Lab File: VL039817.D  
 Acq: 2 Nov 2022 15:13

Instrument :  
 MSVOA\_L  
 ClientSampleId :

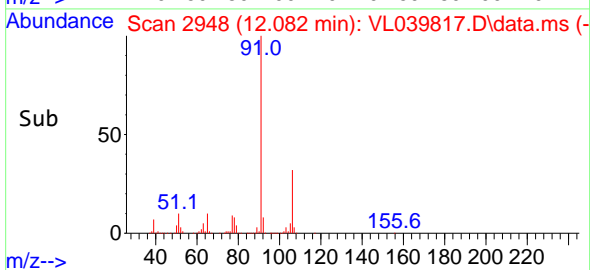
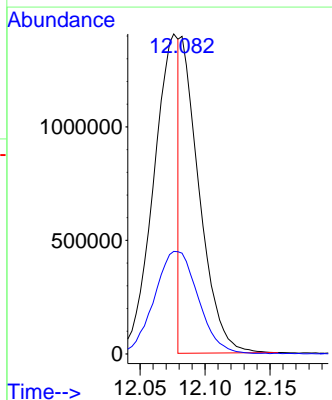
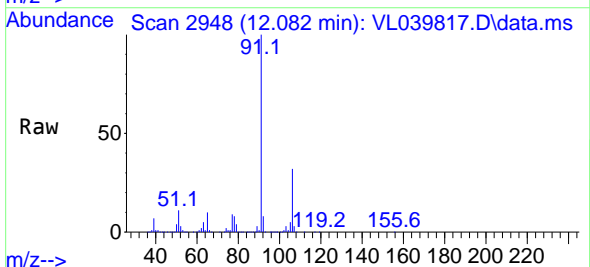


Tgt Ion:112 Resp: 1880728  
 Ion Ratio Lower Upper  
 112 100  
 77 64.7 49.8 74.6  
 114 32.0 29.0 35.4

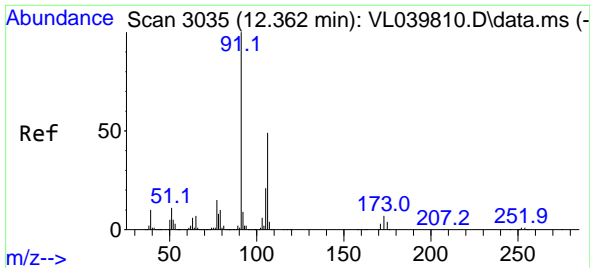


#58  
 Ethyl Benzene  
 Concen: 3.030 ppbv  
 RT: 12.082 min Scan# 2948  
 Delta R.T. 0.007 min  
 Lab File: VL039817.D  
 Acq: 2 Nov 2022 15:13

Tgt Ion: 91 Resp: 1419614  
 Ion Ratio Lower Upper  
 91 100  
 106 31.7 25.9 38.9

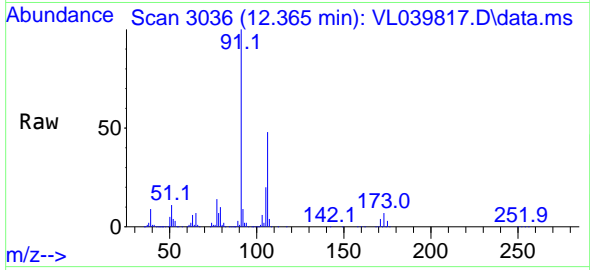




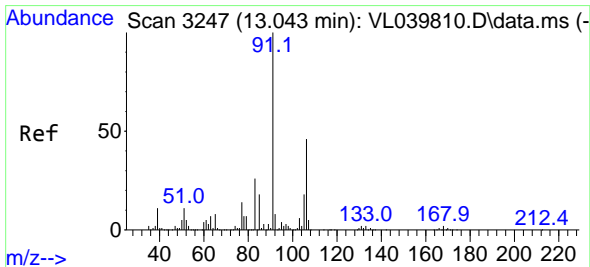
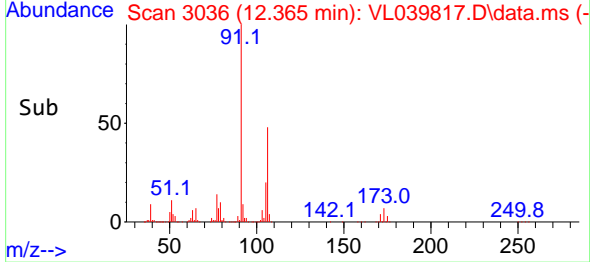
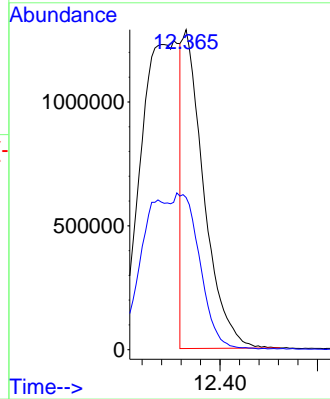


#59  
 m/p-Xylene  
 Concen: 5.078 ppbv  
 RT: 12.365 min Scan# 3035  
 Delta R.T. 0.003 min  
 Lab File: VL039817.D  
 Acq: 2 Nov 2022 15:13

Instrument :  
 MSVOA\_L  
 ClientSampleId :

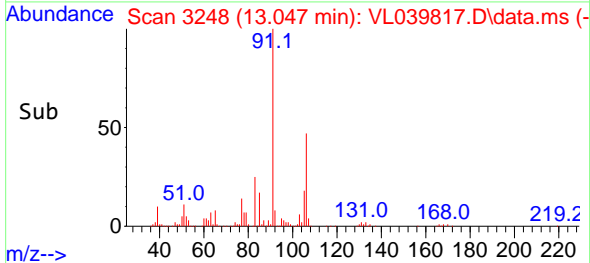
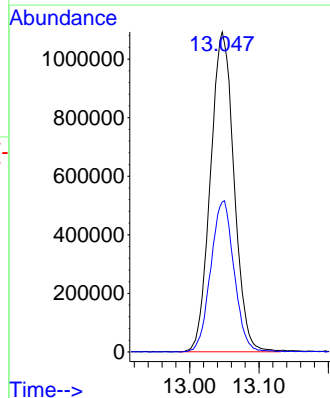
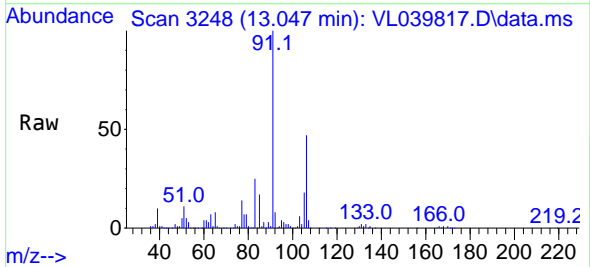


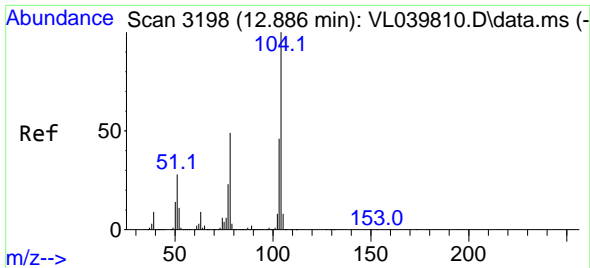
Tgt Ion: 91 Resp: 1986177  
 Ion Ratio Lower Upper  
 91 100  
 106 0.0 37.6 56.4#



#60  
 o-Xylene  
 Concen: 6.966 ppbv  
 RT: 13.047 min Scan# 3248  
 Delta R.T. 0.003 min  
 Lab File: VL039817.D  
 Acq: 2 Nov 2022 15:13

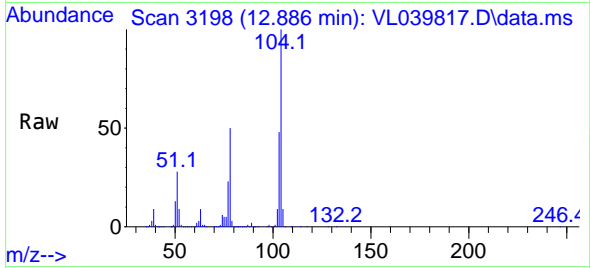
Tgt Ion: 91 Resp: 2581146  
 Ion Ratio Lower Upper  
 91 100  
 106 47.0 23.6 70.8



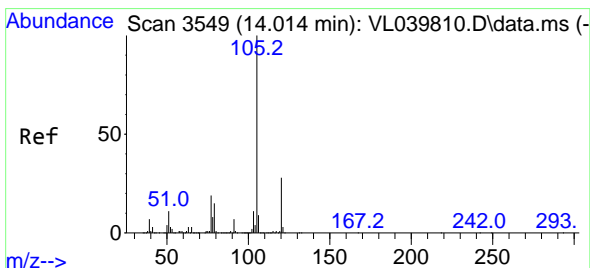
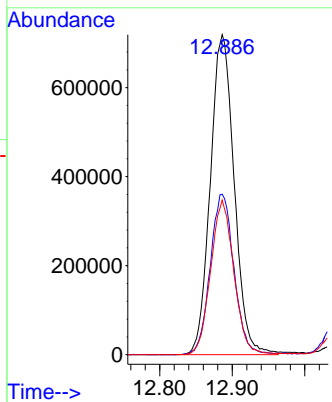
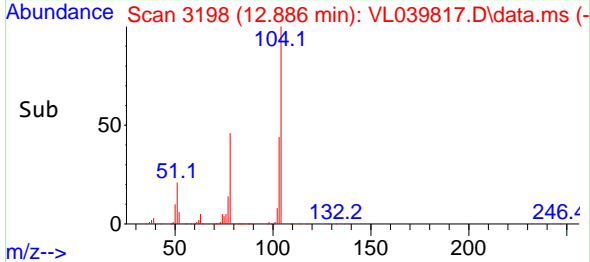


#61  
 Styrene  
 Concen: 7.212 ppbv  
 RT: 12.886 min Scan# 3198  
 Delta R.T. 0.000 min  
 Lab File: VL039817.D  
 Acq: 2 Nov 2022 15:13

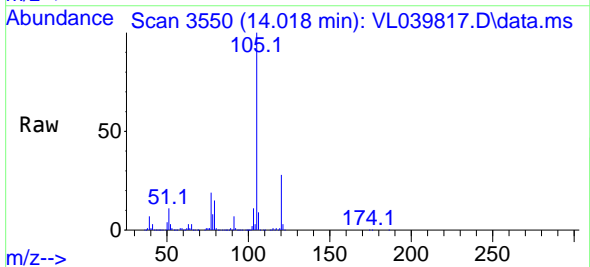
Instrument :  
 MSVOA\_L  
 ClientSampleId :



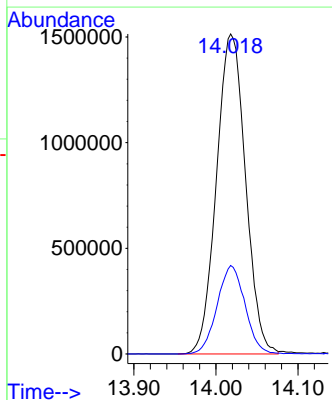
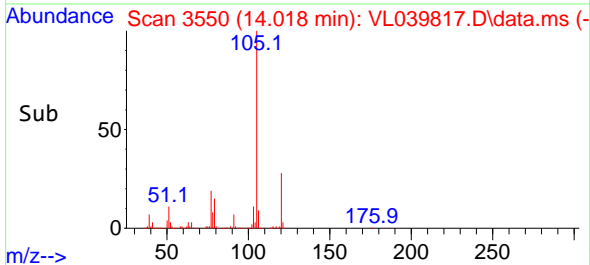
Tgt Ion:104 Resp: 1644515  
 Ion Ratio Lower Upper  
 104 100  
 78 50.3 40.2 60.2  
 103 47.2 37.5 56.3

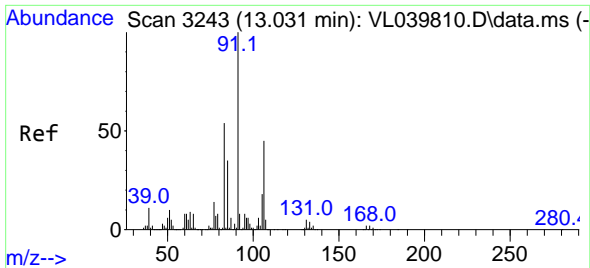


#62  
 Isopropylbenzene  
 Concen: 6.900 ppbv  
 RT: 14.018 min Scan# 3550  
 Delta R.T. 0.003 min  
 Lab File: VL039817.D  
 Acq: 2 Nov 2022 15:13



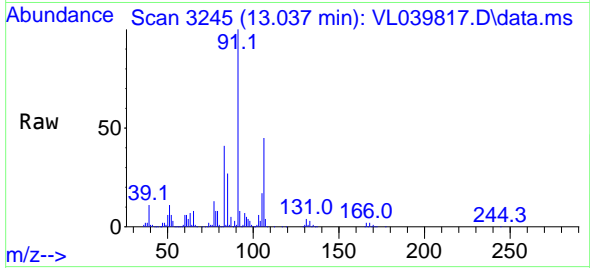
Tgt Ion:105 Resp: 3729512  
 Ion Ratio Lower Upper  
 105 100  
 120 26.7 21.7 32.5



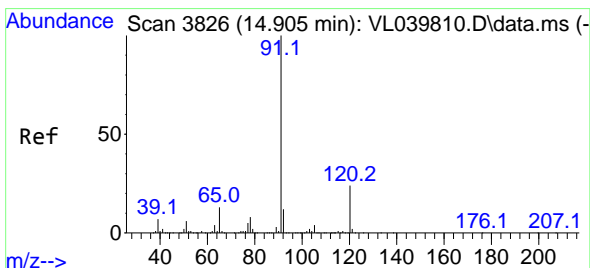
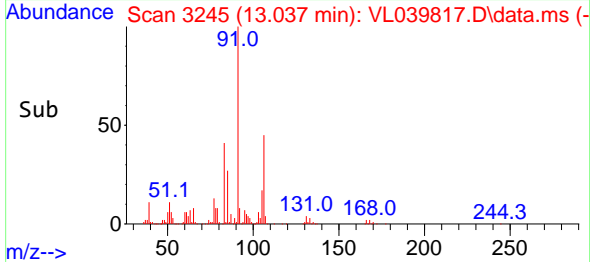
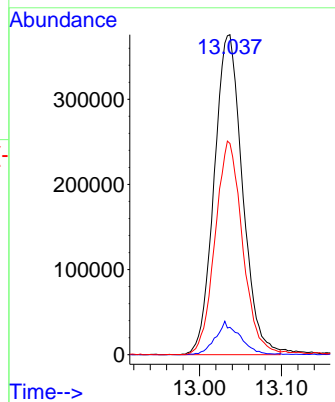


#63  
 1,1,2,2-Tetrachloroethane  
 Concen: 6.539 ppbv  
 RT: 13.037 min Scan# 31  
 Delta R.T. 0.007 min  
 Lab File: VL039817.D  
 Acq: 2 Nov 2022 15:13

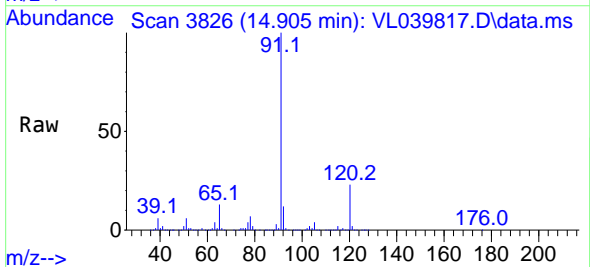
Instrument :  
 MSVOA\_L  
 ClientSampleId :



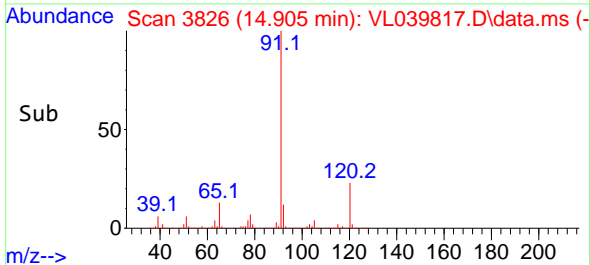
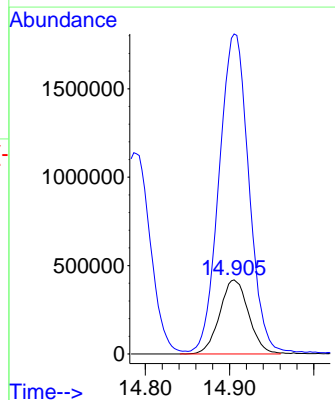
Tgt Ion: 83 Resp: 902263  
 Ion Ratio Lower Upper  
 83 100  
 131 9.1 4.6 13.8  
 85 66.3 33.3 99.9

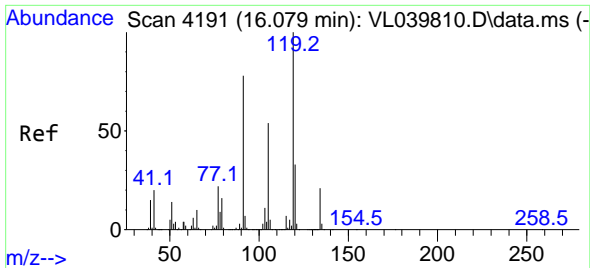


#64  
 n-propylbenzene  
 Concen: 6.891 ppbv  
 RT: 14.905 min Scan# 3826  
 Delta R.T. 0.000 min  
 Lab File: VL039817.D  
 Acq: 2 Nov 2022 15:13



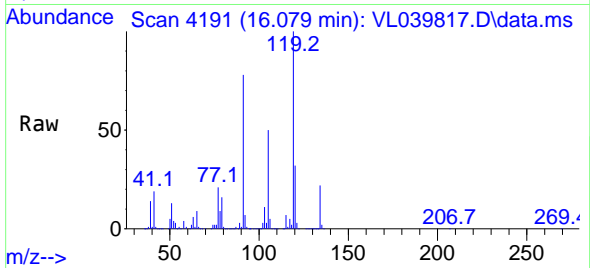
Tgt Ion:120 Resp: 996363  
 Ion Ratio Lower Upper  
 120 100  
 91 449.3 354.9 532.3



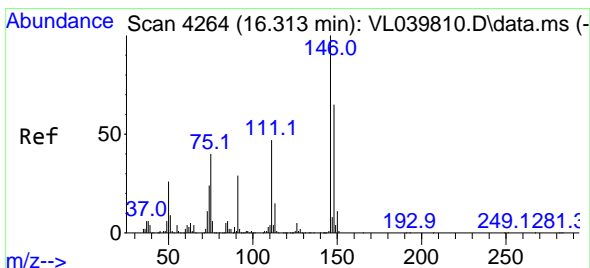
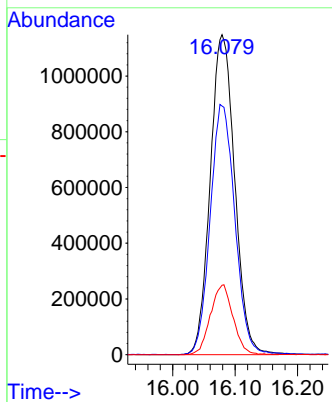
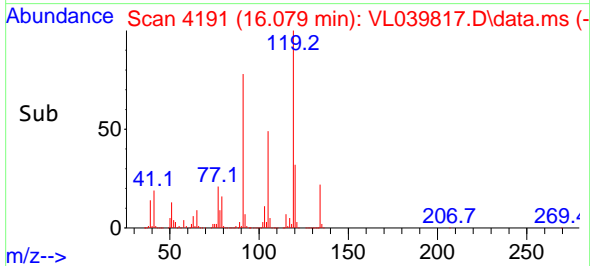


#65  
 tert-Butylbenzene  
 Concen: 6.598 ppbv  
 RT: 16.079 min Scan# 4191  
 Delta R.T. 0.000 min  
 Lab File: VL039817.D  
 Acq: 2 Nov 2022 15:13

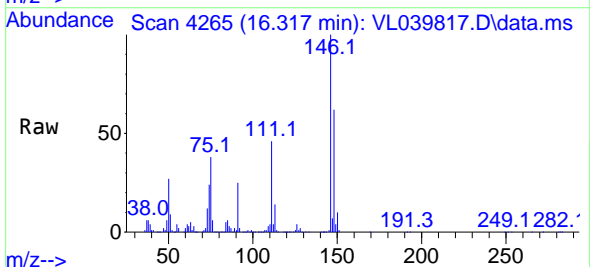
Instrument :  
 MSVOA\_L  
 ClientSampleId :



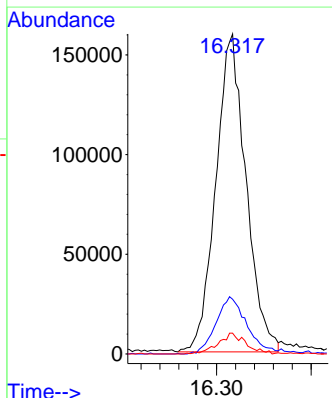
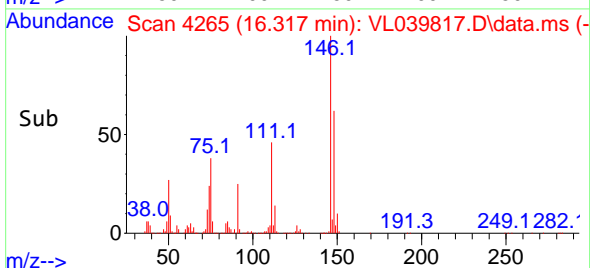
Tgt Ion:119 Resp: 3131534  
 Ion Ratio Lower Upper  
 119 100  
 91 78.7 63.7 95.5  
 134 20.2 16.2 24.4

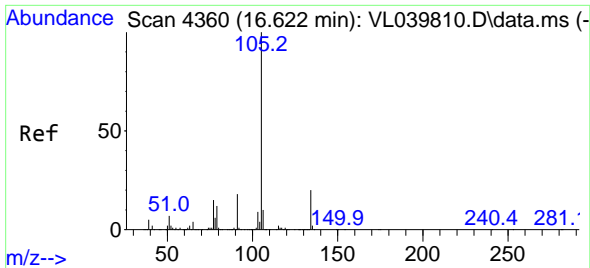


#66  
 Benzyl Chloride  
 Concen: 6.405 ppbv  
 RT: 16.317 min Scan# 4265  
 Delta R.T. 0.003 min  
 Lab File: VL039817.D  
 Acq: 2 Nov 2022 15:13



Tgt Ion: 91 Resp: 353430  
 Ion Ratio Lower Upper  
 91 100  
 126 18.8 15.6 23.4  
 128 6.1 4.9 7.3

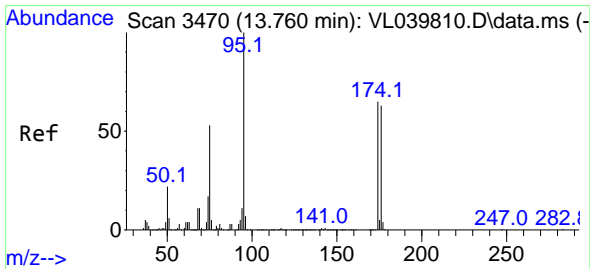
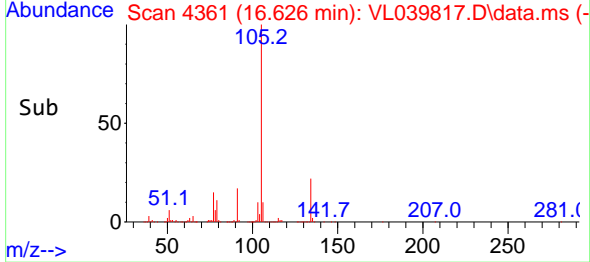
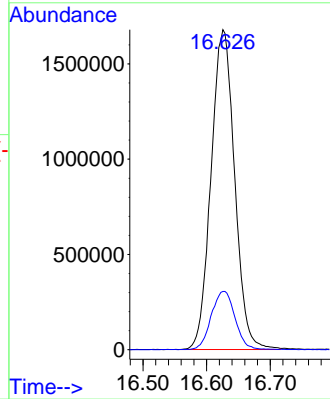
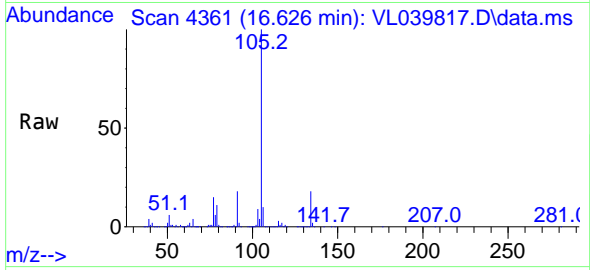




#67  
 sec-Butylbenzene  
 Concen: 6.686 ppbv  
 RT: 16.626 min Scan# 41  
 Delta R.T. 0.003 min  
 Lab File: VL039817.D  
 Acq: 2 Nov 2022 15:13

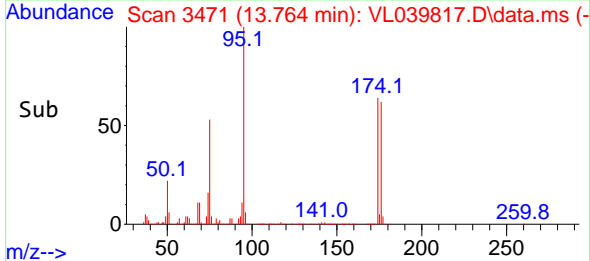
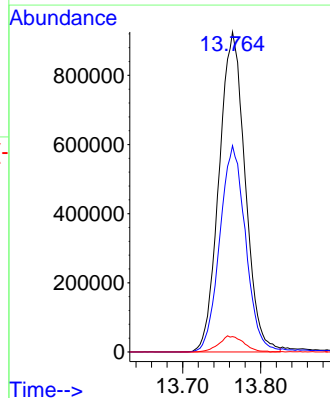
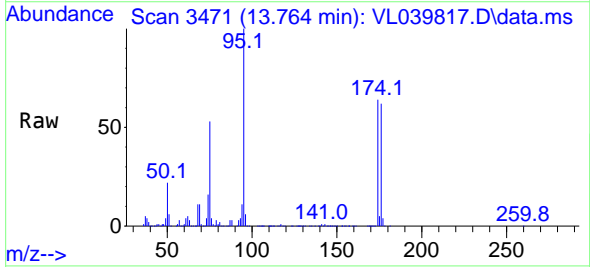
Instrument :  
 MSVOA\_L  
 ClientSampleId :

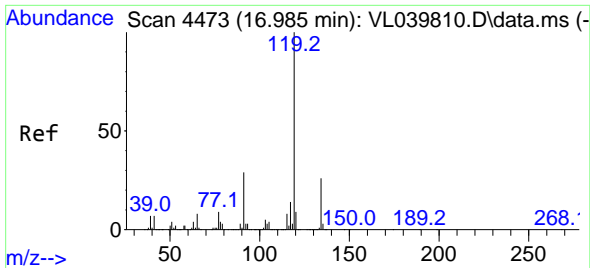
Tgt Ion:105 Resp: 4319136  
 Ion Ratio Lower Upper  
 105 100  
 134 18.6 15.1 22.7



#68  
 1-Bromo-4-Fluorobenzene  
 Concen: 8.292 ppbv  
 RT: 13.764 min Scan# 3471  
 Delta R.T. 0.003 min  
 Lab File: VL039817.D  
 Acq: 2 Nov 2022 15:13

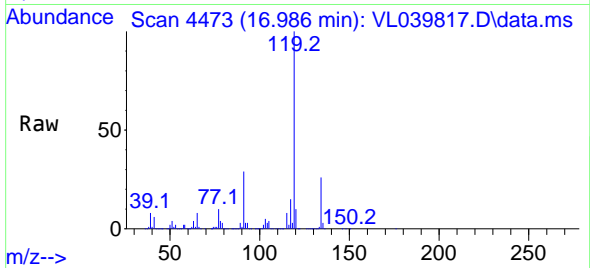
Tgt Ion: 95 Resp: 2150854  
 Ion Ratio Lower Upper  
 95 100  
 174 65.0 53.4 80.0  
 175 4.9 4.1 6.1



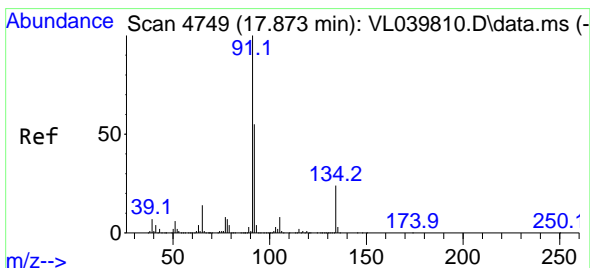
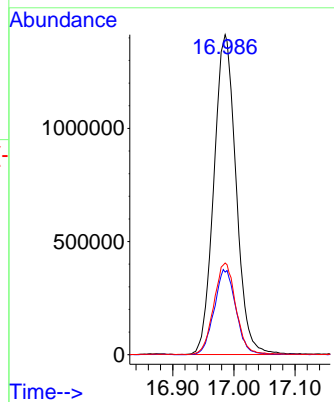
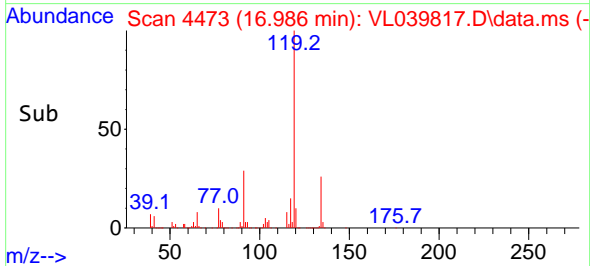


#69  
 p-Isopropyltoluene  
 Concen: 6.642 ppbv  
 RT: 16.986 min Scan# 4473  
 Delta R.T. 0.000 min  
 Lab File: VL039817.D  
 Acq: 2 Nov 2022 15:13

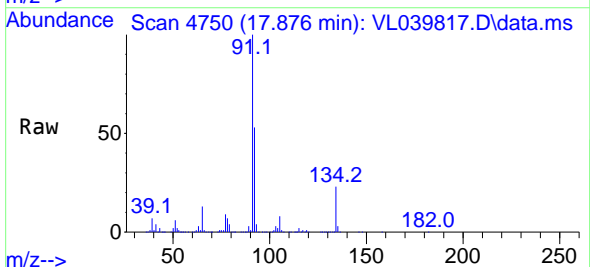
Instrument :  
 MSVOA\_L  
 ClientSampleId :



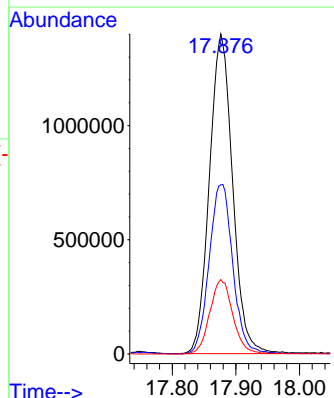
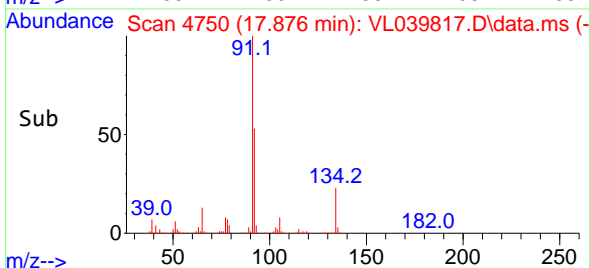
Tgt Ion:119 Resp: 3559191  
 Ion Ratio Lower Upper  
 119 100  
 134 26.1 21.0 31.6  
 91 28.4 22.8 34.2

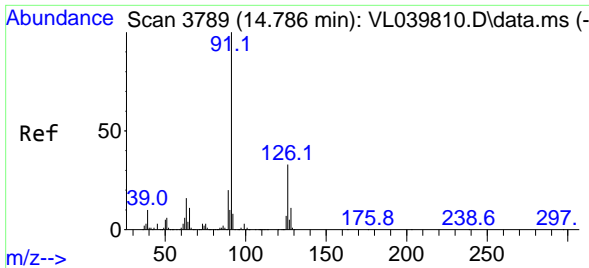


#70  
 n-Butylbenzene  
 Concen: 6.837 ppbv  
 RT: 17.876 min Scan# 4750  
 Delta R.T. 0.003 min  
 Lab File: VL039817.D  
 Acq: 2 Nov 2022 15:13



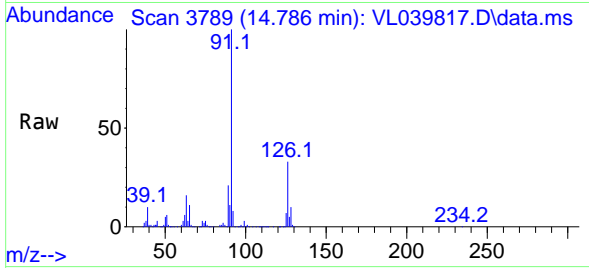
Tgt Ion: 91 Resp: 3541985  
 Ion Ratio Lower Upper  
 91 100  
 92 54.3 44.1 66.1  
 134 23.2 19.0 28.6



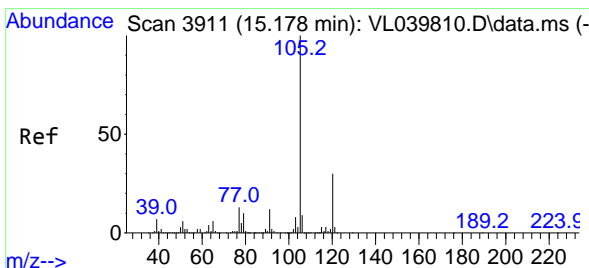
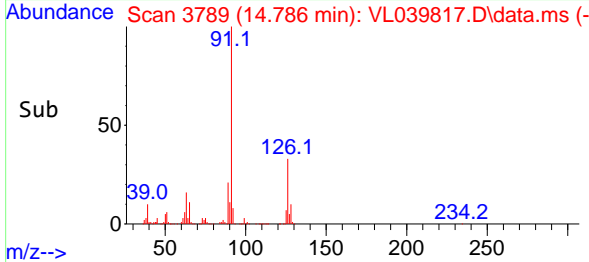
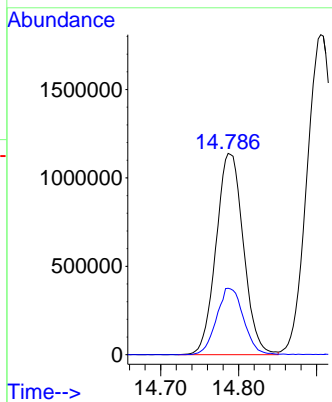


#71  
 2-Chlorotoluene  
 Concen: 6.822 ppbv  
 RT: 14.786 min Scan# 31  
 Delta R.T. 0.000 min  
 Lab File: VL039817.D  
 Acq: 2 Nov 2022 15:13

Instrument :  
 MSVOA\_L  
 ClientSampleId :

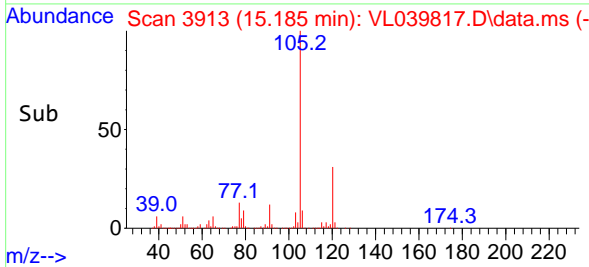
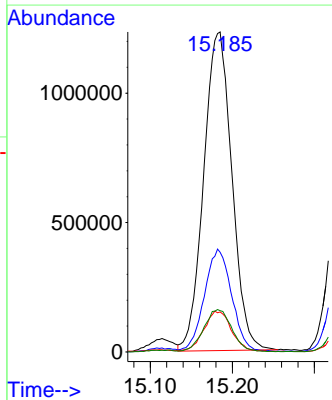
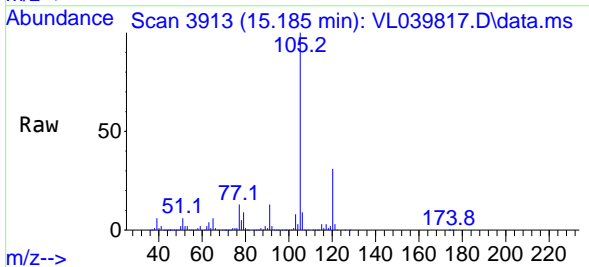


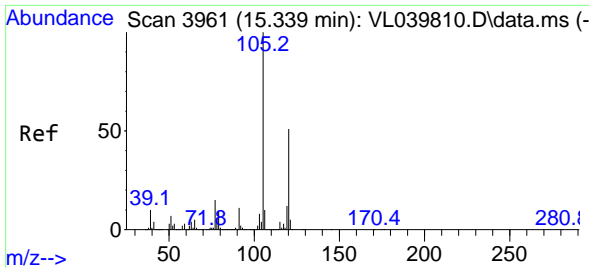
Tgt Ion: 91 Resp: 2770651  
 Ion Ratio Lower Upper  
 91 100  
 126 32.8 12.9 51.5



#72  
 4-Ethyltoluene  
 Concen: 7.049 ppbv  
 RT: 15.185 min Scan# 3913  
 Delta R.T. 0.007 min  
 Lab File: VL039817.D  
 Acq: 2 Nov 2022 15:13

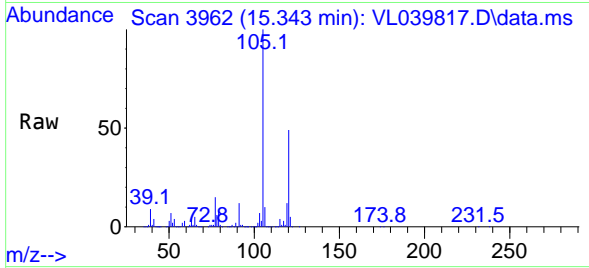
Tgt Ion: 105 Resp: 2941093  
 Ion Ratio Lower Upper  
 105 100  
 120 31.7 26.0 39.0  
 91 12.3 10.5 15.7  
 77 13.4 11.2 16.8



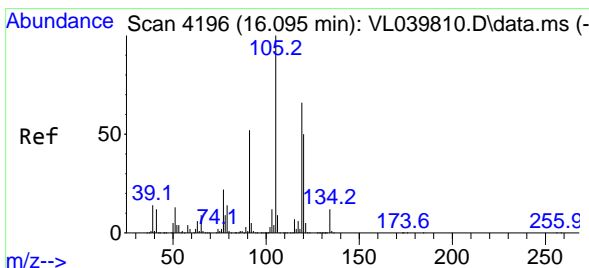
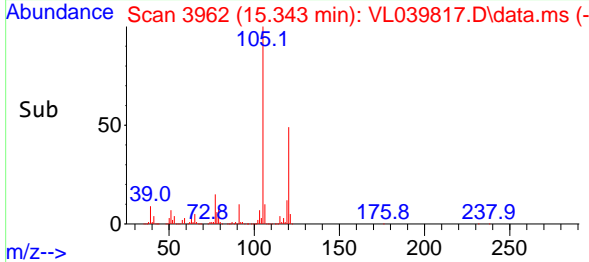
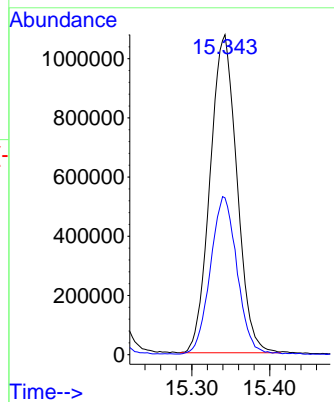


#73  
 1,3,5-Trimethylbenzene  
 Concen: 6.950 ppbv  
 RT: 15.343 min Scan# 3962  
 Delta R.T. 0.003 min  
 Lab File: VL039817.D  
 Acq: 2 Nov 2022 15:13

Instrument :  
 MSVOA\_L  
 ClientSampleId :

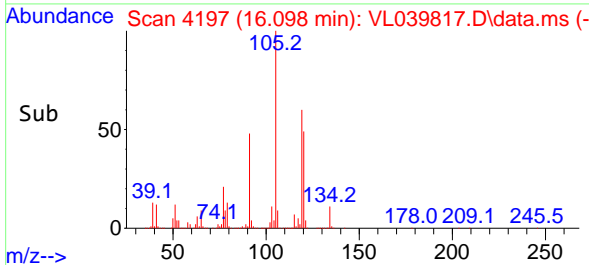
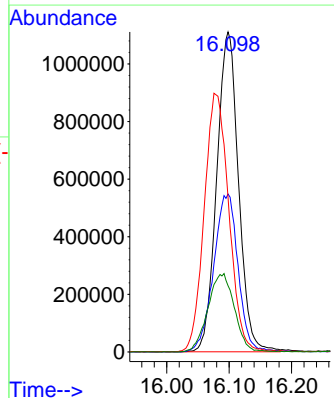
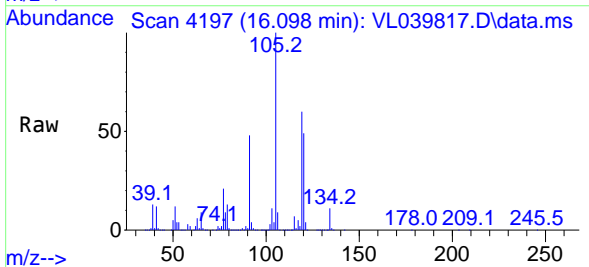


Tgt Ion:105 Resp: 2570736  
 Ion Ratio Lower Upper  
 105 100  
 120 49.1 41.0 61.4

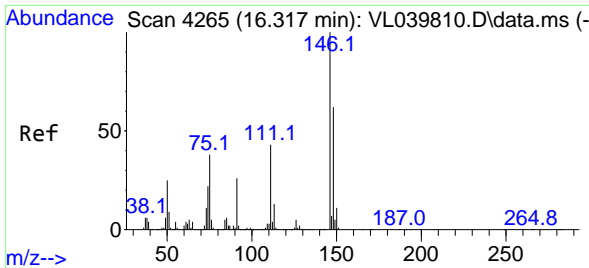


#74  
 1,2,4-Trimethylbenzene  
 Concen: 6.864 ppbv  
 RT: 16.098 min Scan# 4197  
 Delta R.T. 0.003 min  
 Lab File: VL039817.D  
 Acq: 2 Nov 2022 15:13

Tgt Ion:105 Resp: 2697635  
 Ion Ratio Lower Upper  
 105 100  
 120 49.3 40.2 60.4  
 91 48.0 42.6 64.0  
 77 20.7 17.8 26.8

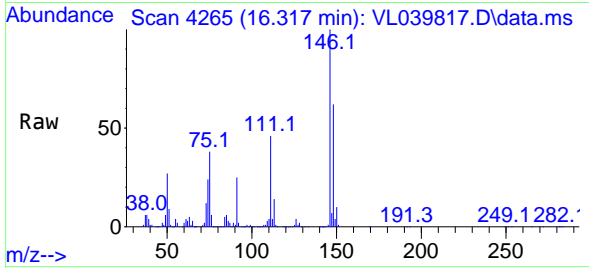




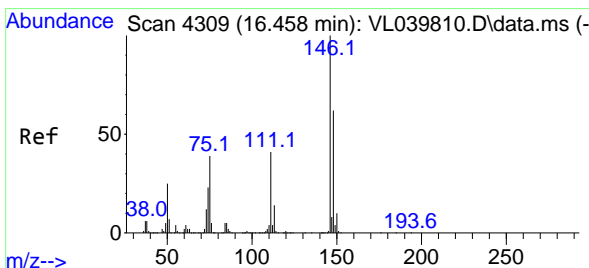
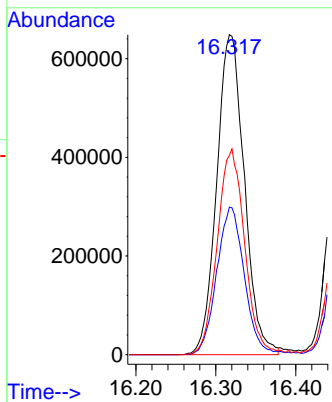
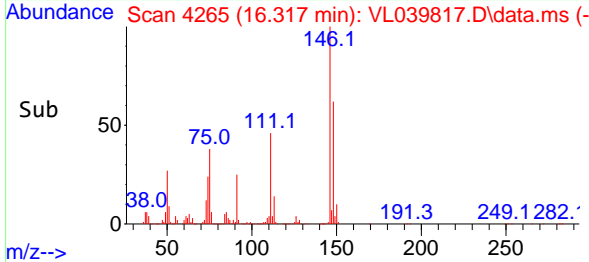


#75  
 1,3-Dichlorobenzene  
 Concen: 6.779 ppbv  
 RT: 16.317 min Scan# 4310  
 Delta R.T. 0.000 min  
 Lab File: VL039817.D  
 Acq: 2 Nov 2022 15:13

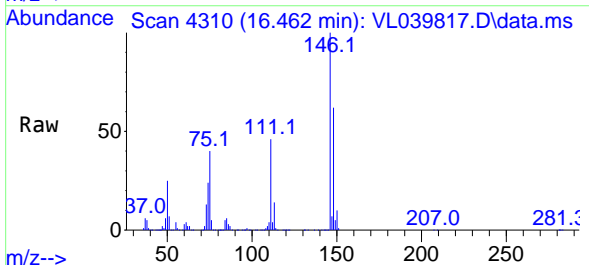
Instrument :  
 MSVOA\_L  
 ClientSampleId :



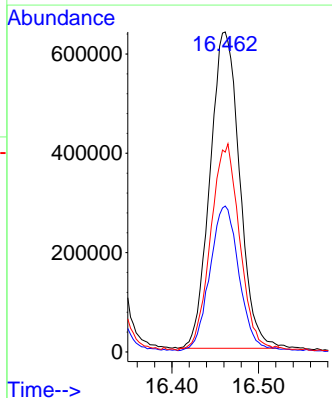
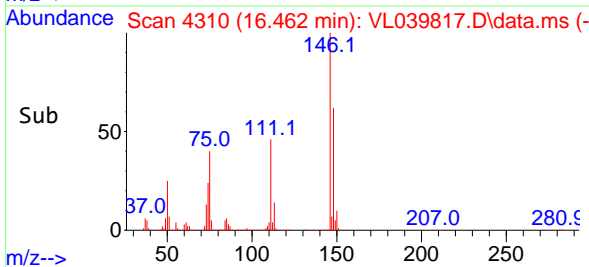
Tgt Ion:146 Resp: 1555608  
 Ion Ratio Lower Upper  
 146 100  
 111 46.5 22.9 68.8  
 148 64.2 32.3 96.9

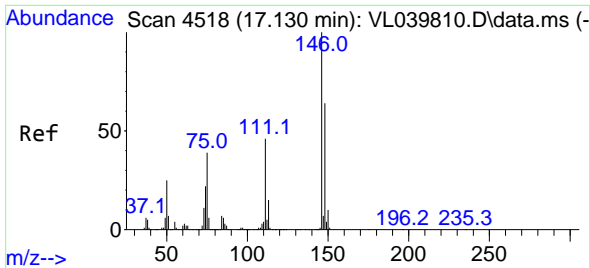


#76  
 1,4-Dichlorobenzene  
 Concen: 6.714 ppbv  
 RT: 16.462 min Scan# 4310  
 Delta R.T. 0.003 min  
 Lab File: VL039817.D  
 Acq: 2 Nov 2022 15:13



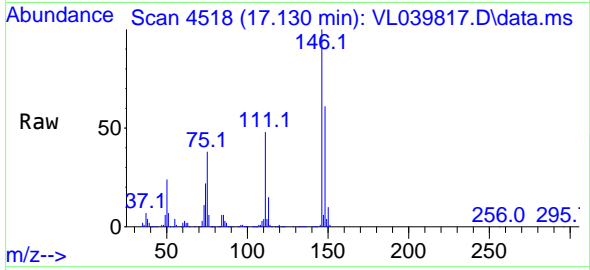
Tgt Ion:146 Resp: 1511765  
 Ion Ratio Lower Upper  
 146 100  
 111 46.7 22.7 68.1  
 148 66.1 33.1 99.3



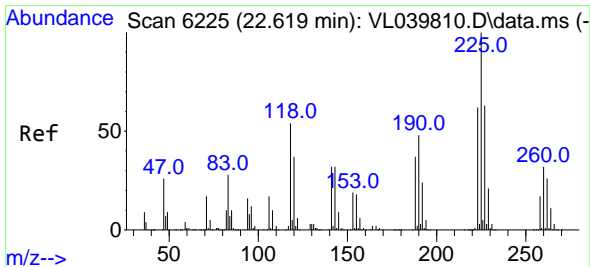
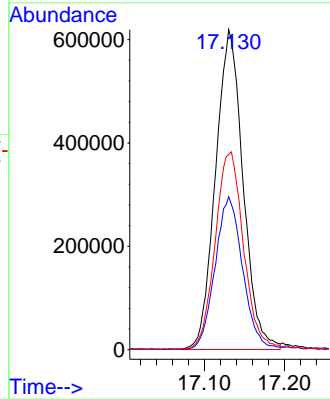
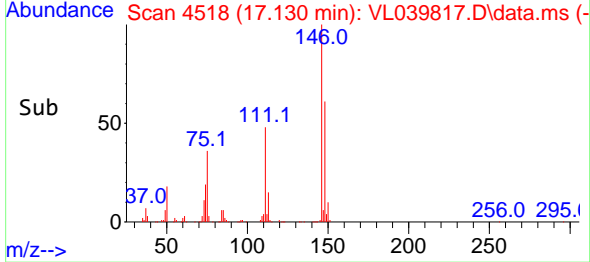


#77  
 1,2-Dichlorobenzene  
 Concen: 6.836 ppbv  
 RT: 17.130 min Scan# 4518  
 Delta R.T. 0.000 min  
 Lab File: VL039817.D  
 Acq: 2 Nov 2022 15:13

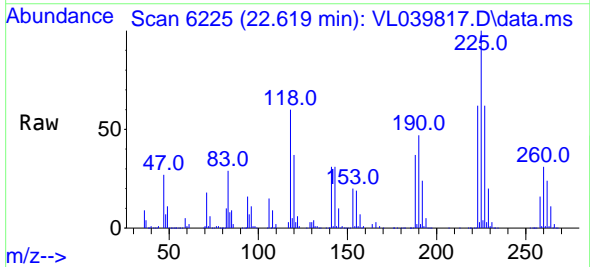
Instrument : MSVOA\_L  
 ClientSampleId :



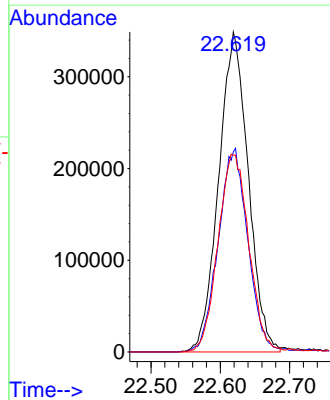
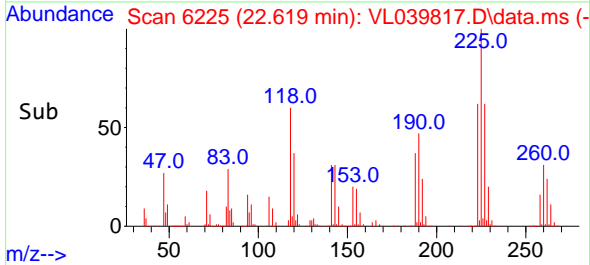
Tgt Ion:146 Resp: 1478646  
 Ion Ratio Lower Upper  
 146 100  
 111 48.4 23.9 71.8  
 148 64.3 32.4 97.2

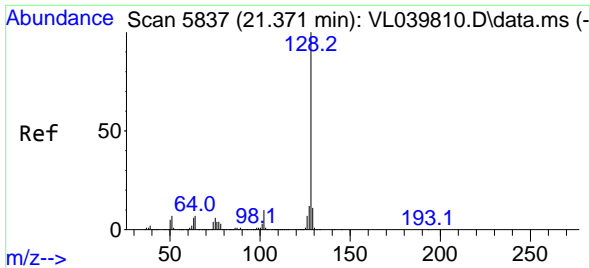


#78  
 Hexachloro-1,3-Butadiene  
 Concen: 6.446 ppbv  
 RT: 22.619 min Scan# 6225  
 Delta R.T. 0.000 min  
 Lab File: VL039817.D  
 Acq: 2 Nov 2022 15:13



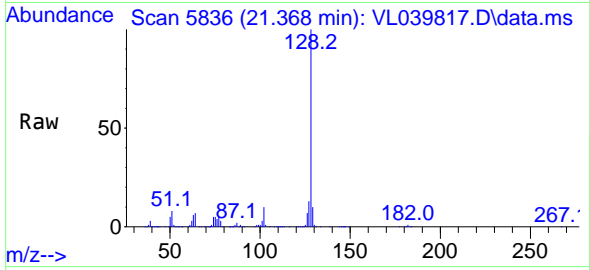
Tgt Ion:225 Resp: 1033107  
 Ion Ratio Lower Upper  
 225 100  
 223 64.1 50.6 75.8  
 227 64.8 51.6 77.4



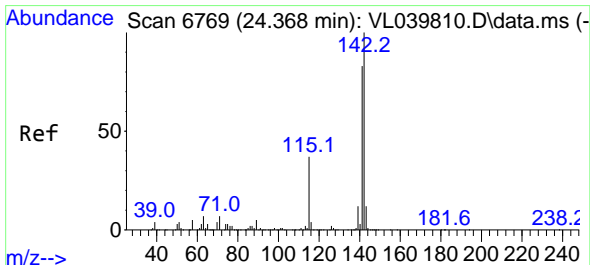
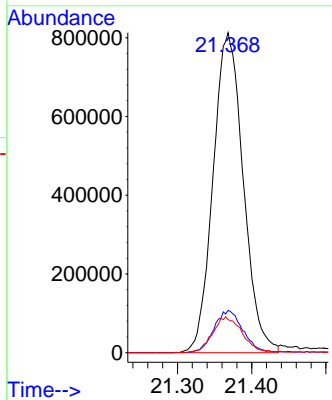
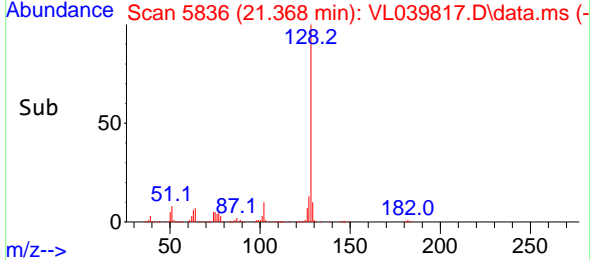


#79  
 Naphthalene  
 Concen: 8.017 ppbv  
 RT: 21.368 min Scan# 5836  
 Delta R.T. -0.003 min  
 Lab File: VL039817.D  
 Acq: 2 Nov 2022 15:13

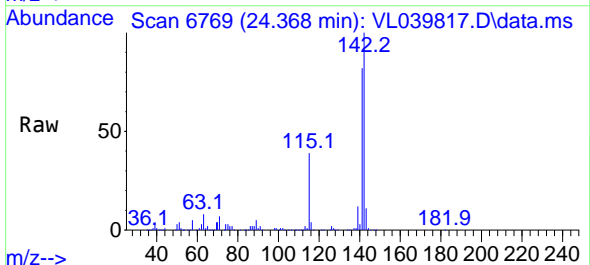
Instrument : MSVOA\_L  
 ClientSampleId :



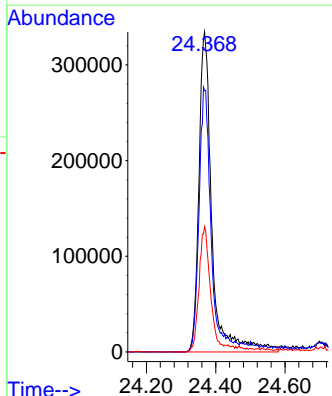
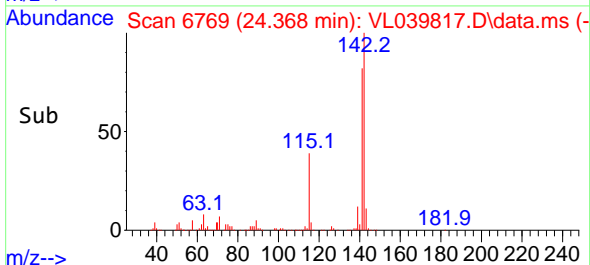
Tgt Ion:128 Resp: 2290547  
 Ion Ratio Lower Upper  
 128 100  
 127 13.1 9.8 14.6  
 129 10.3 8.6 13.0

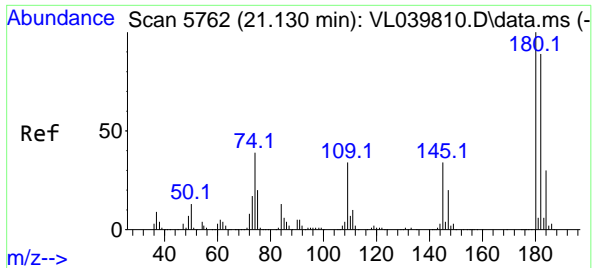


#80  
 Naphthalene,2-methyl-  
 Concen: 7.206 ppbv  
 RT: 24.368 min Scan# 6769  
 Delta R.T. 0.000 min  
 Lab File: VL039817.D  
 Acq: 2 Nov 2022 15:13



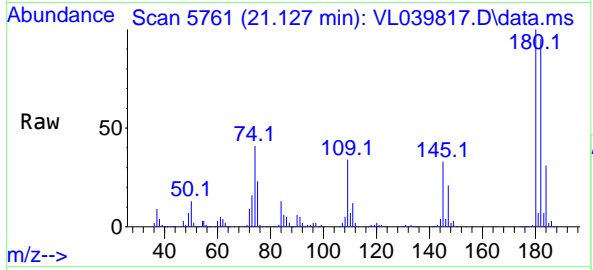
Tgt Ion:142 Resp: 872884  
 Ion Ratio Lower Upper  
 142 100  
 141 80.2 65.1 97.7  
 115 35.2 29.1 43.7





#81  
 1,2,4-Trichlorobenzene  
 Concen: 7.373 ppbv  
 RT: 21.127 min Scan# 51  
 Delta R.T. -0.003 min  
 Lab File: VL039817.D  
 Acq: 2 Nov 2022 15:13

Instrument :  
 MSVOA\_L  
 ClientSampleId :



Tgt Ion:180 Resp: 1178450  
 Ion Ratio Lower Upper  
 180 100  
 182 96.0 78.1 117.1  
 184 30.8 24.5 36.7

