

Data Path : Z:\VOASRV\HPCHEM1\MSVOA L\DATA\VL110520\  
 Data File : VL035876.D  
 Acq On : 6 Nov 2020 1:46  
 Operator : SY/AP  
 Sample : L4618-03  
 Misc : 400ml/MSVOA L  
 ALS Vial : 1 Sample Multiplier: 1

Instrument :  
 MSVOA\_L  
 ClientSampleId :  
 BFB

Quant Time: Nov 06 05:50:46 2020  
 Quant Method : Z:\VOASRV\HPCHEM1\MSVOA L\METHODS\VL110320AIR.M  
 Quant Title : AIR ANALYSIS BY METHOD TO-15 Instrument: MSVOA\_LWed Nov 04 02:40:06 2020  
 QLast Update : Wed Nov 04 02:40:06 2020  
 Response via : Initial Calibration

Internal Standards	R.T.	QIon	Response	Conc	Units	Dev(Min)
1) Bromochloromethane	5.65	49	1076490	10.00	ppbv	-0.02
33) 1,4-Difluorobenzene	7.16	114	3991873	10.00	ppbv	-0.02
55) Chlorobenzene-d5	12.06	117	3706624	10.00	ppbv	-0.03

## System Monitoring Compounds

68) 1-Bromo-4-Fluorobenzene	14.40	95	2639900	10.02	ppbv	-0.03
Spiked Amount	10.000	Range	65 - 135	Recovery	=	100.20%

## Target Compounds

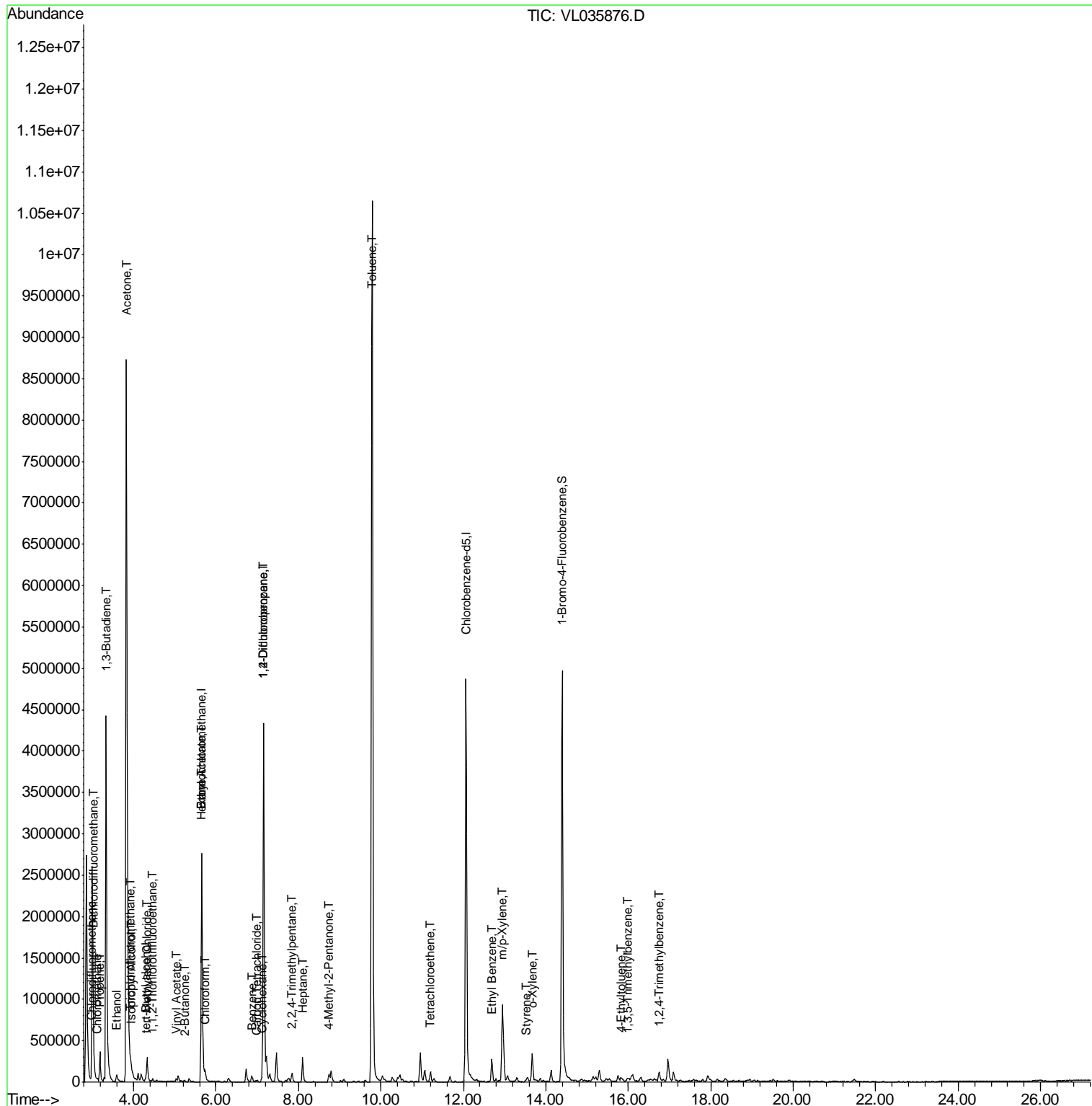
Target Compounds	R.T.	QIon	Response	Conc	Units	Ovalue
2) Dichlorodifluoromethane	3.02	85	55257	0.273	ppbv	94
3) Chlorodifluoromethane	2.97	51	44178	0.343	ppbv #	90
4) Chloromethane	3.12	50	29226	0.467	ppbv	95
9) Propene	3.18	41	126201	2.675	ppbv	93
10) Heptane	8.10	43	99829	0.766	ppbv	98
11) Trichlorofluoromethane	3.93	101	57177	0.225	ppbv	98
12) 1,1,2-Trichlorotrifluoroet	4.47	101	6941	0.037	ppbv #	13
13) Ethanol	3.59	45	62778	6.133	ppbv #	47
15) Acetone	3.82	43	12310462	106.967	ppbv #	82
16) 1,3-Butadiene	3.33	39	752295	15.183	ppbv #	1
17) tert-Butyl alcohol	4.29	59	8598	0.056	ppbv #	1
19) Isopropyl Alcohol	3.96	45	36074	0.510	ppbv #	90
20) Methylene Chloride	4.33	84	146751	1.811	ppbv	98
23) Vinyl Acetate	5.03	43	16305	0.101	ppbv #	15
25) Ethyl Acetate	5.66	43	101371	0.447	ppbv #	77
26) Hexane	5.66	57	163845	1.310	ppbv #	48
29) Chloroform	5.73	83	74166	0.302	ppbv	98
30) Cyclohexane	7.10	84	13341	0.098	ppbv #	21
34) 2-Butanone	5.23	43	11727	0.091	ppbv #	42
35) Carbon Tetrachloride	6.99	117	6408	0.030	ppbv	94
36) Benzene	6.87	78	70393	0.237	ppbv	96
39) 1,2-Dichloropropane	7.15	63	797472	7.982	ppbv #	30
44) 2,2,4-Trimethylpentane	7.85	57	29566	0.075	ppbv #	1
50) 4-Methyl-2-Pentanone	8.73	43	64273	0.324	ppbv	98
52) Tetrachloroethene	11.20	164	19557	0.139	ppbv	93
53) Toluene	9.78	91	9986618	27.888	ppbv	90
58) Ethyl Benzene	12.69	91	255901	0.567	ppbv	92
59) m/p-Xylene	12.94	91	1032586	2.703	ppbv	99
60) o-Xylene	13.67	91	280764	0.756	ppbv	98
61) Styrene	13.51	104	8779	0.032	ppbv #	90
72) 4-Ethyltoluene	15.82	105	13949	0.031	ppbv #	35
73) 1,3,5-Trimethylbenzene	15.98	105	12423	0.030	ppbv	94
74) 1,2,4-Trimethylbenzene	16.75	105	79221	0.179	ppbv #	63

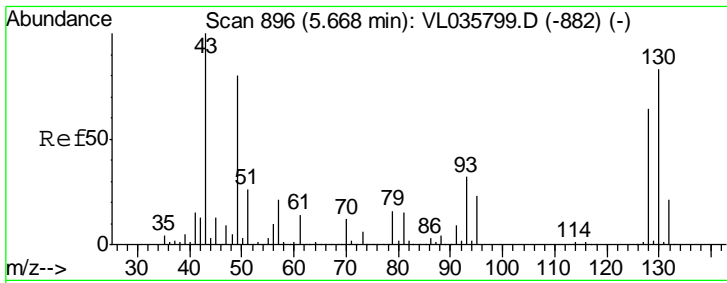
(#) = qualifier out of range (m) = manual integration (+) = signals summed

Data Path : Z:\VOASRV\HPCHEM1\MSVOA L\DATA\VL110520\  
 Data File : VL035876.D  
 Acq On : 6 Nov 2020 1:46  
 Operator : SY/AP  
 Sample : L4618-03  
 Misc : 400ml/MSVOA L  
 ALS Vial : 1 Sample Multiplier: 1

Instrument :  
 MSVOA\_L  
 ClientSampleId :  
 BFB

Quant Time: Nov 06 05:50:46 2020  
 Quant Method : Z:\VOASRV\HPCHEM1\MSVOA L\METHODS\VL110320AIR.M  
 Quant Title : AIR ANALYSIS BY METHOD TO-15 Instrument: MSVOA\_L Wed Nov 04 02:40:06 2020  
 QLast Update : Wed Nov 04 02:40:06 2020  
 Response via : Initial Calibration

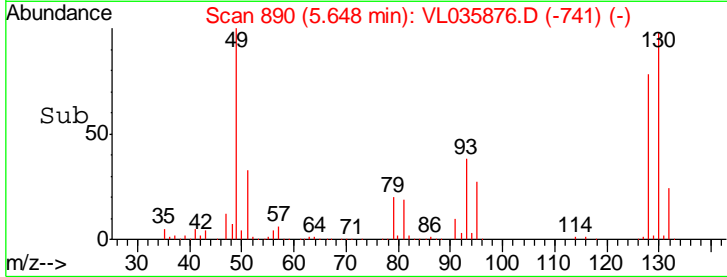
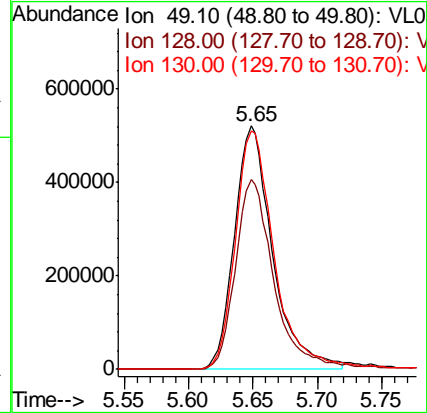
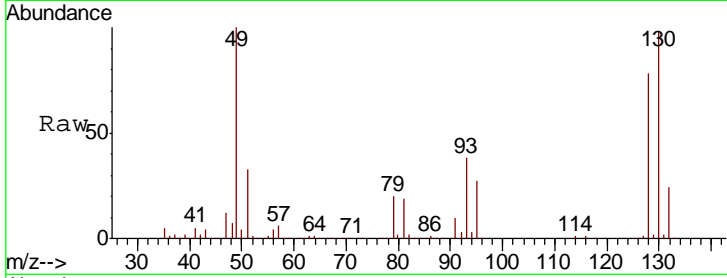




#1  
 Bromochloromethane  
 Concen: 10.000 ppbv  
 RT: 5.65 min Scan# 890  
 Delta R.T. -0.02 min  
 Lab File: VL035876.D  
 Acq: 6 Nov 2020 1:46

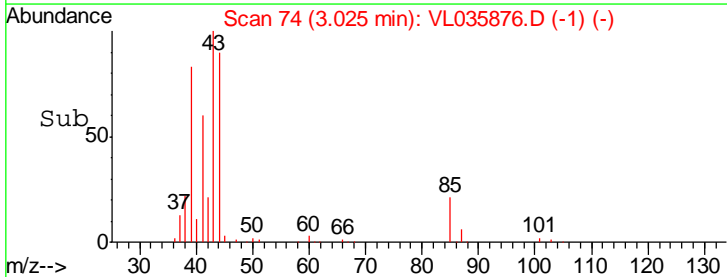
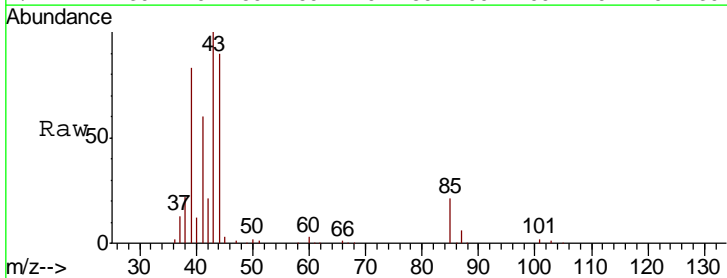
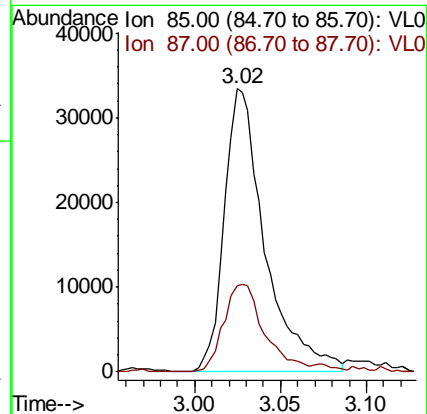
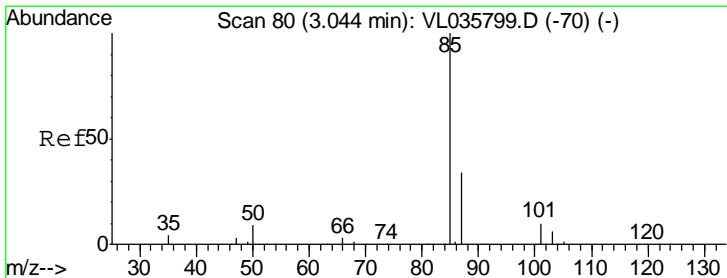
Instrument :  
 MSVOA\_L  
 ClientSampled :  
 BFB

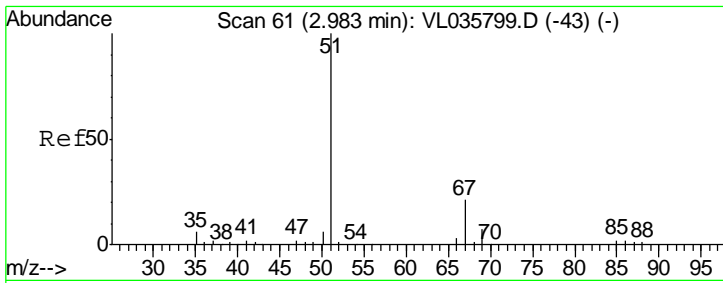
Tgt Ion	Resp	Lower	Upper
49	100		
128	80.1	41.5	124.6
130	101.5	53.7	161.1



#2  
 Dichlorodifluoromethane  
 Concen: 0.273 ppbv  
 RT: 3.02 min Scan# 74  
 Delta R.T. -0.02 min  
 Lab File: VL035876.D  
 Acq: 6 Nov 2020 1:46

Tgt Ion	Resp	Lower	Upper
85	100		
87	30.5	27.1	40.7

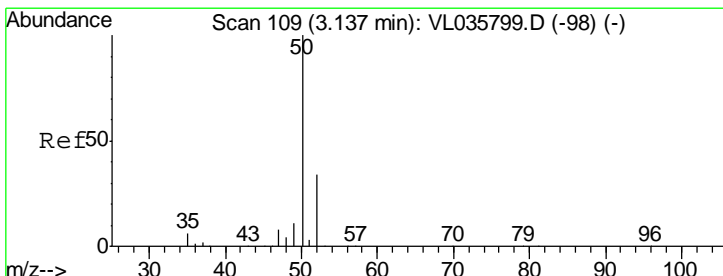
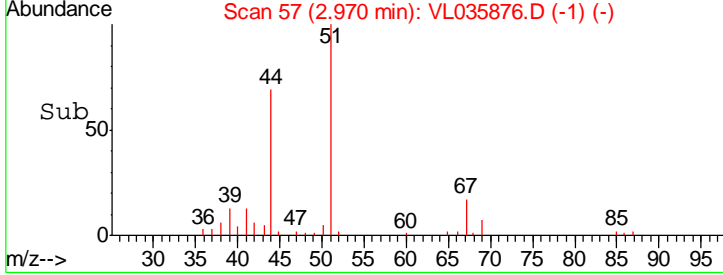
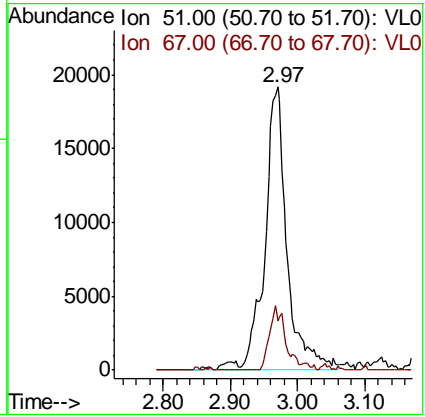
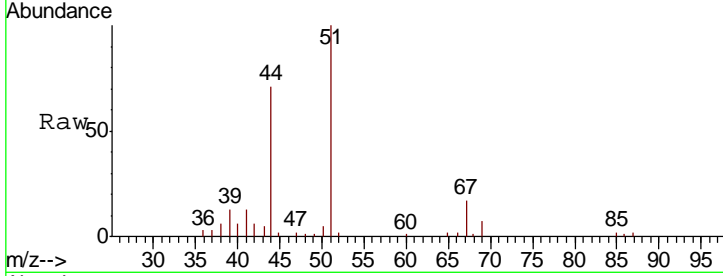




#3  
 Chlorodifluoromethane  
 Concen: 0.343 ppbv  
 RT: 2.97 min Scan# 57  
 Delta R.T. -0.01 min  
 Lab File: VL035876.D  
 Acq: 6 Nov 2020 1:46

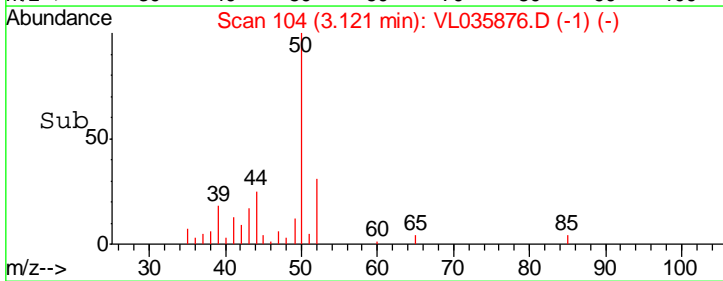
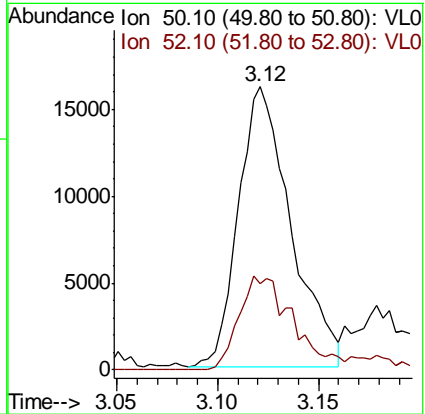
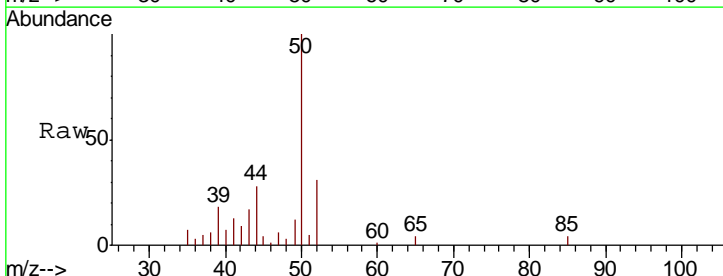
Instrument : MSVOA\_L  
 ClientSampled : BFB

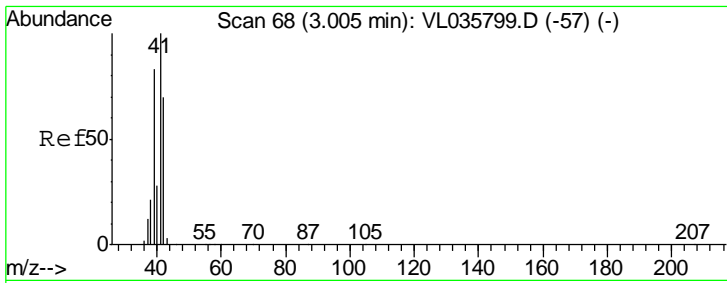
Tgt Ion	Resp	Lower	Upper
51	44178		
67	16.7	17.0	25.4#



#4  
 Chloromethane  
 Concen: 0.467 ppbv  
 RT: 3.12 min Scan# 104  
 Delta R.T. -0.02 min  
 Lab File: VL035876.D  
 Acq: 6 Nov 2020 1:46

Tgt Ion	Resp	Lower	Upper
50	29226		
52	30.9	27.1	40.7

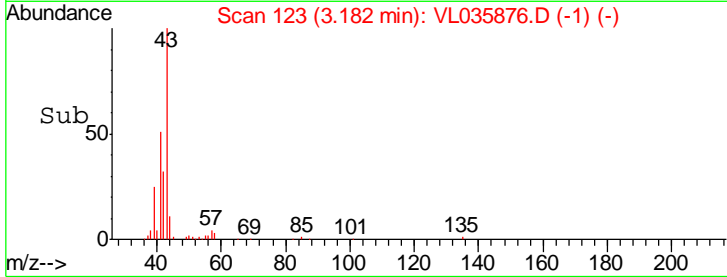
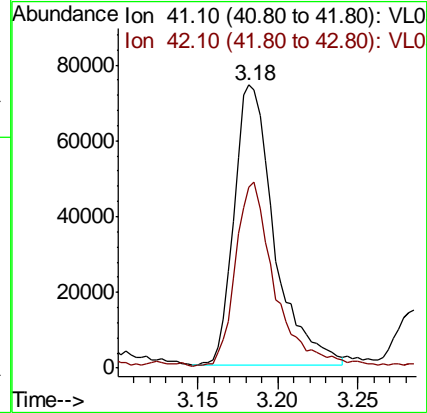
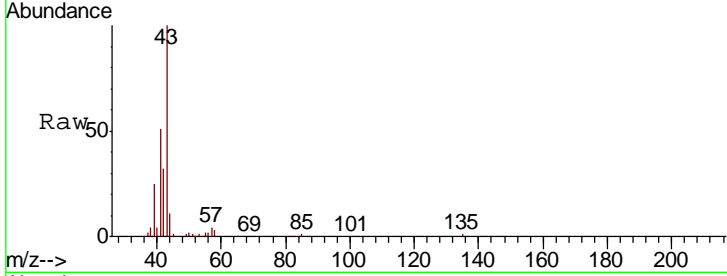




#9  
 Propene  
 Concen: 2.675 ppbv  
 RT: 3.18 min Scan# 123  
 Delta R.T. 0.18 min  
 Lab File: VL035876.D  
 Acq: 6 Nov 2020 1:46

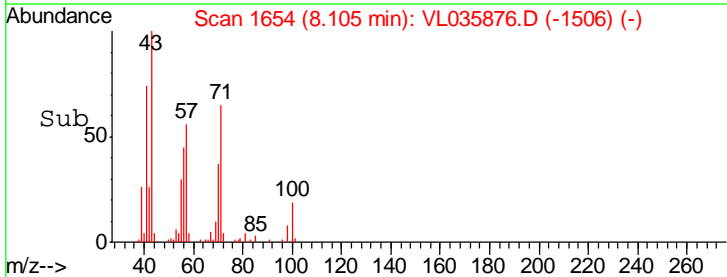
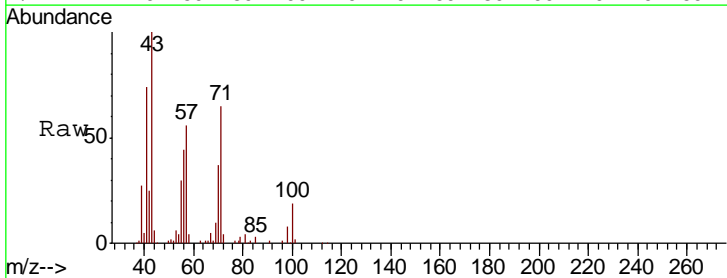
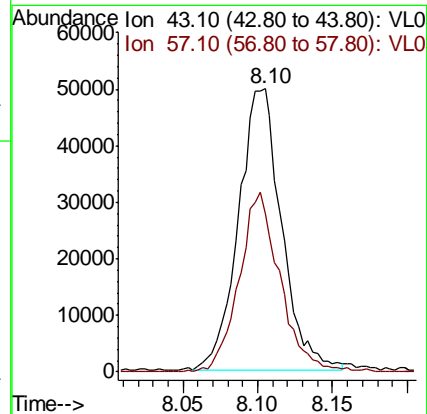
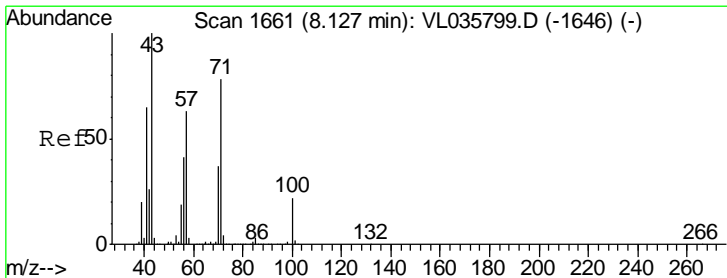
Instrument :  
 MSVOA\_L  
 ClientSampled :  
 BFB

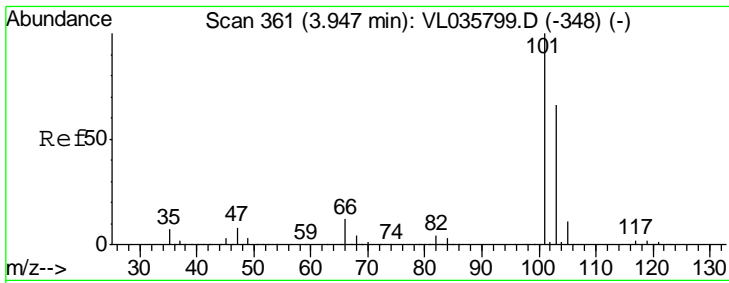
Tgt Ion: 41 Resp: 126201  
 Ion Ratio Lower Upper  
 41 100  
 42 64.3 56.2 84.4



#10  
 Heptane  
 Concen: 0.766 ppbv  
 RT: 8.10 min Scan# 1654  
 Delta R.T. -0.02 min  
 Lab File: VL035876.D  
 Acq: 6 Nov 2020 1:46

Tgt Ion: 43 Resp: 99829  
 Ion Ratio Lower Upper  
 43 100  
 57 61.0 50.0 75.0

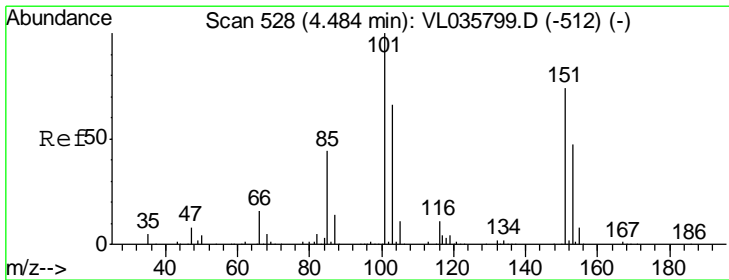
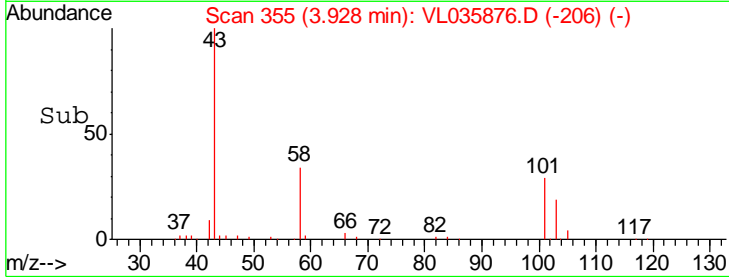
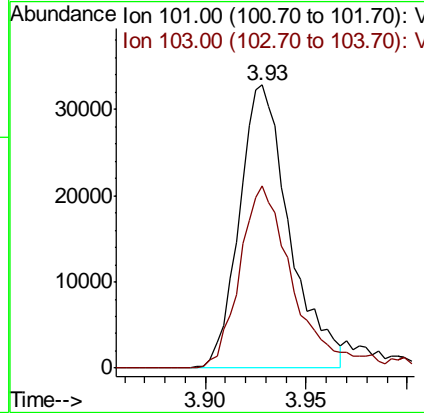
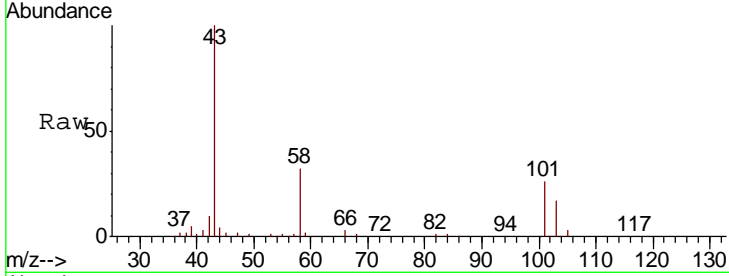




#11  
 Trichlorofluoromethane  
 Concen: 0.225 ppbv  
 RT: 3.93 min Scan# 355  
 Delta R.T. -0.02 min  
 Lab File: VL035876.D  
 Acq: 6 Nov 2020 1:46

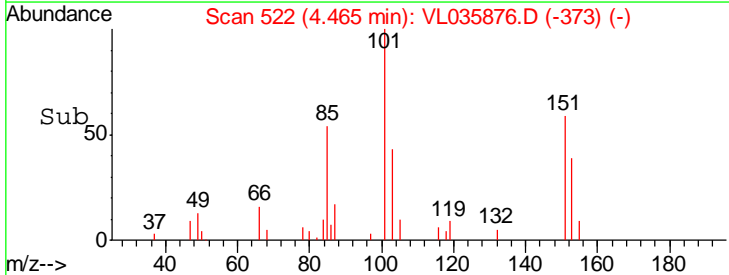
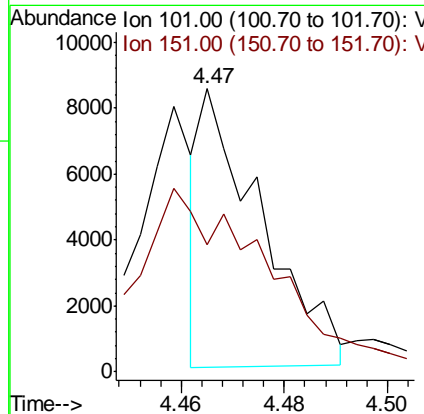
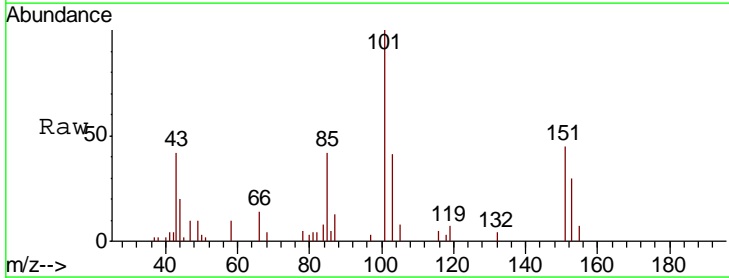
Instrument : MSVOA\_L  
 ClientSampled : BFB

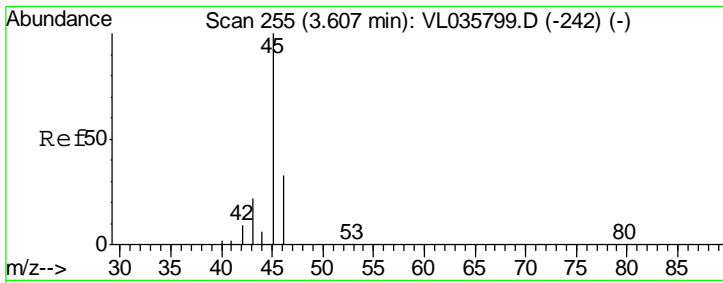
Tgt Ion:101 Resp: 57177  
 Ion Ratio Lower Upper  
 101 100  
 103 64.4 53.0 79.4



#12  
 1,1,2-Trichlorotrifluoroethane  
 Concen: 0.037 ppbv  
 RT: 4.47 min Scan# 522  
 Delta R.T. -0.02 min  
 Lab File: VL035876.D  
 Acq: 6 Nov 2020 1:46

Tgt Ion:101 Resp: 6941  
 Ion Ratio Lower Upper  
 101 100  
 151 0.0 58.9 88.3#

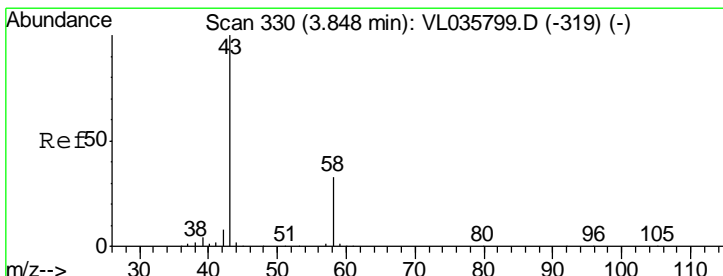
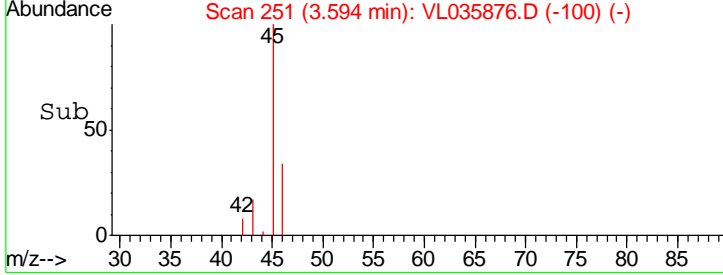
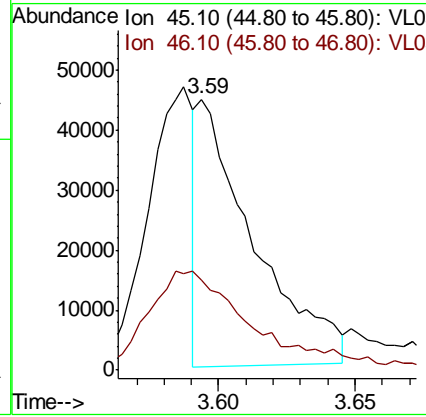
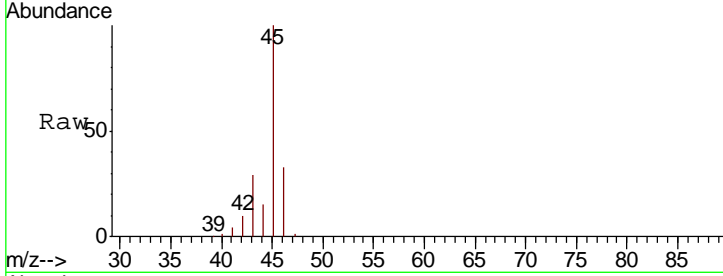




#13  
 Ethanol  
 Concen: 6.133 ppbv  
 RT: 3.59 min Scan# 251  
 Delta R.T. -0.01 min  
 Lab File: VL035876.D  
 Acq: 6 Nov 2020 1:46

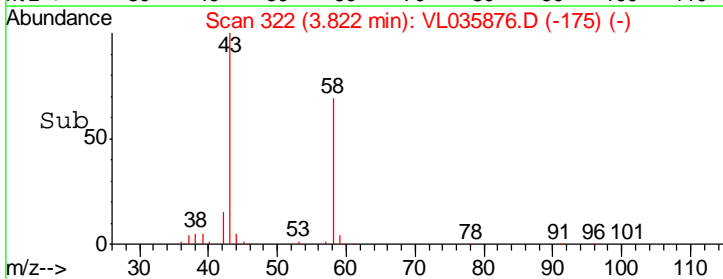
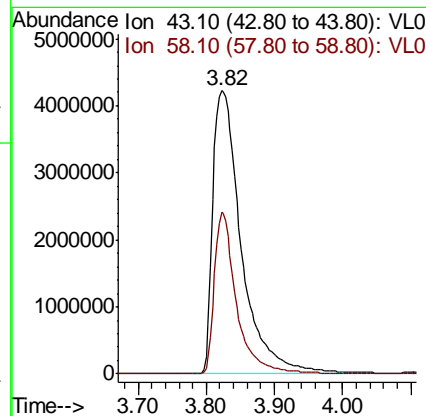
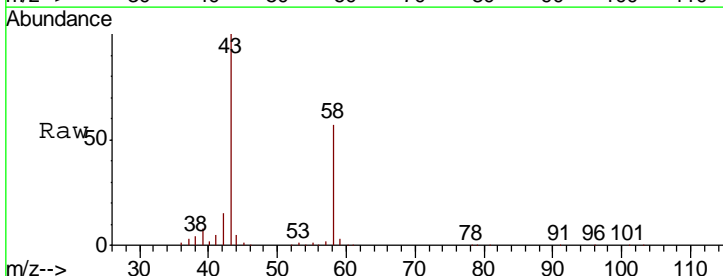
Instrument :  
 MSVOA\_L  
 ClientSampled :  
 BFB

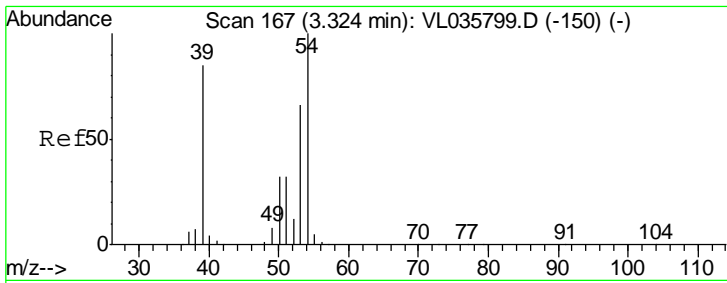
Tgt Ion	Resp	Lower	Upper
45	62778		
46	73.2	16.1	64.5#



#15  
 Acetone  
 Concen: 106.967 ppbv  
 RT: 3.82 min Scan# 322  
 Delta R.T. -0.03 min  
 Lab File: VL035876.D  
 Acq: 6 Nov 2020 1:46

Tgt Ion	Resp	Lower	Upper
43	12310462		
58	44.7	27.5	41.3#

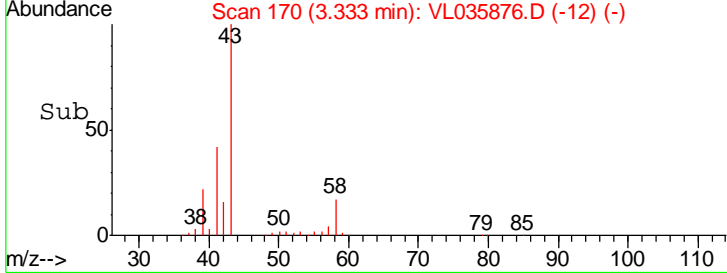
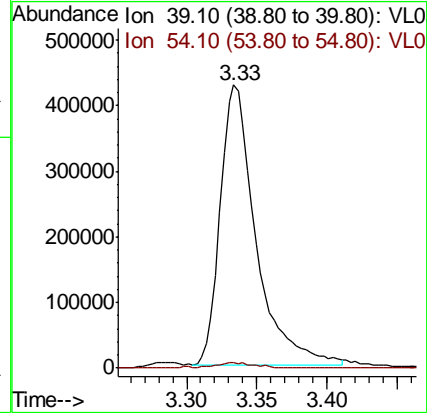
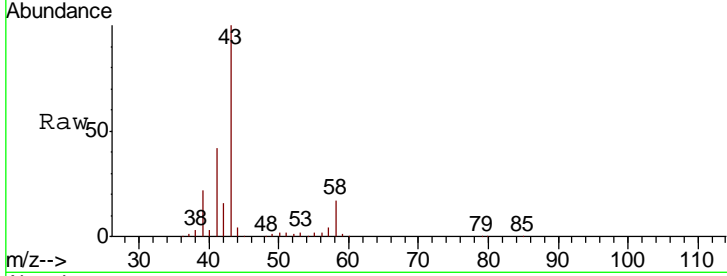




#16  
 1,3-Butadiene  
 Concen: 15.183 ppbv  
 RT: 3.33 min Scan# 170  
 Delta R.T. 0.01 min  
 Lab File: VL035876.D  
 Acq: 6 Nov 2020 1:46

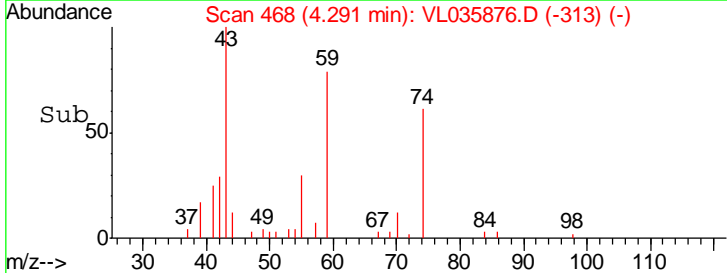
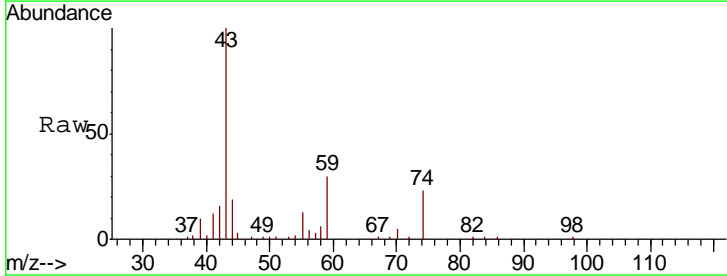
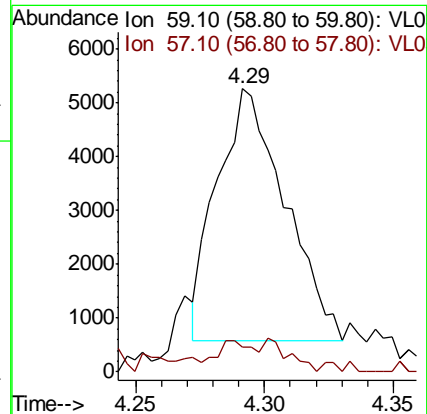
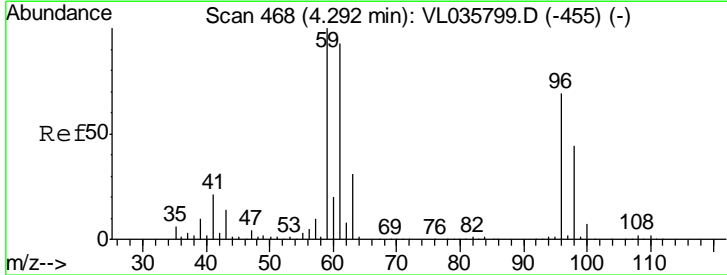
Instrument :  
 MSVOA\_L  
 ClientSampled :  
 BFB

Tgt Ion: 39 Resp: 752295  
 Ion Ratio Lower Upper  
 39 100  
 54 2.8 87.1 130.7#

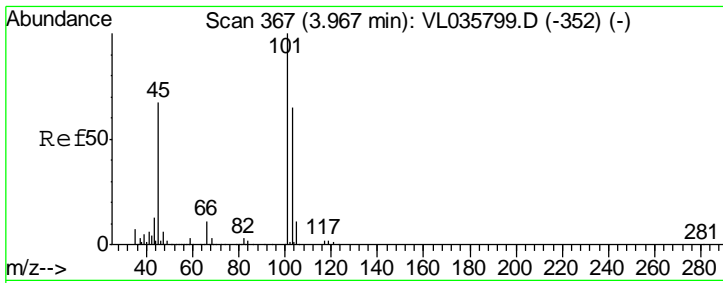


#17  
 tert-Butyl alcohol  
 Concen: 0.056 ppbv  
 RT: 4.29 min Scan# 468  
 Delta R.T. -0.00 min  
 Lab File: VL035876.D  
 Acq: 6 Nov 2020 1:46

Tgt Ion: 59 Resp: 8598  
 Ion Ratio Lower Upper  
 59 100  
 57 116.6 8.2 12.4#



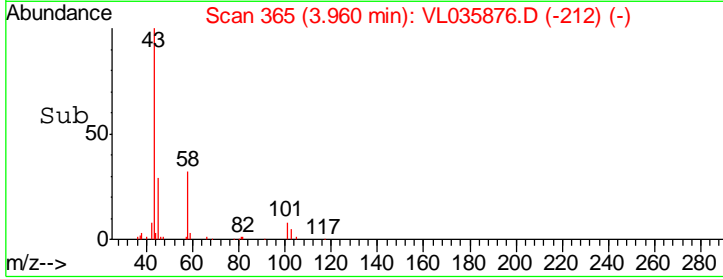
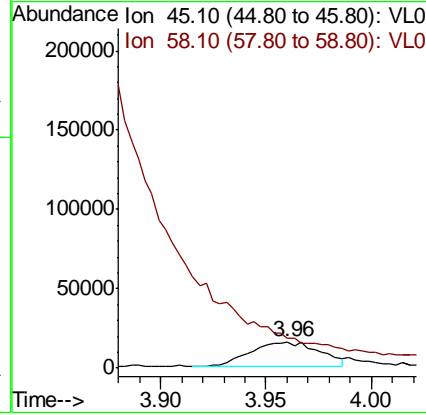
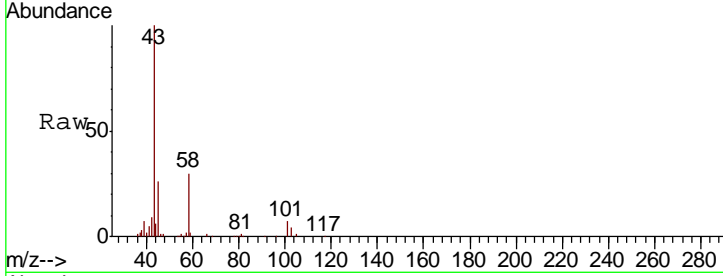




#19  
 Isopropyl Alcohol  
 Concen: 0.510 ppbv  
 RT: 3.96 min Scan# 365  
 Delta R.T. -0.01 min  
 Lab File: VL035876.D  
 Acq: 6 Nov 2020 1:46

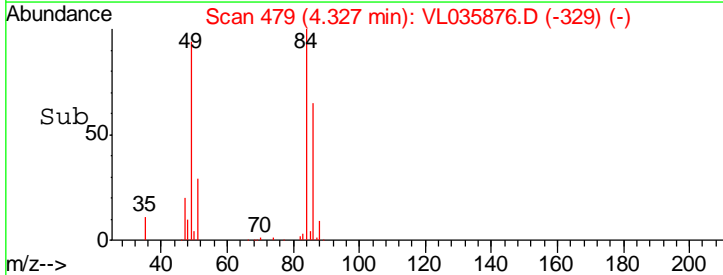
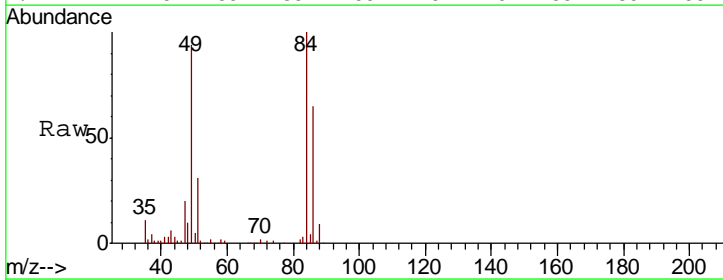
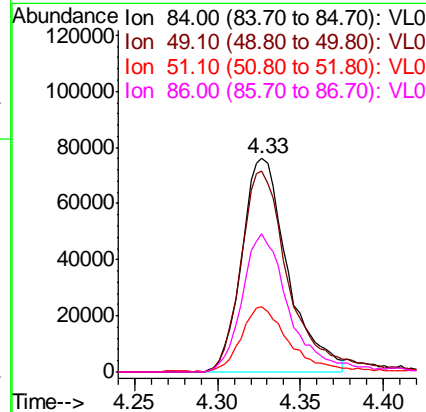
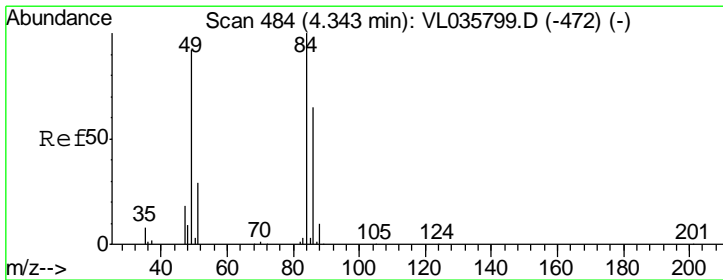
Instrument :  
 MSVOA\_L  
 ClientSampled :  
 BFB

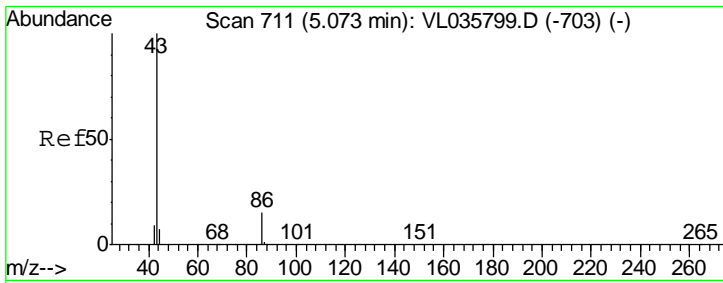
Tgt Ion	Resp	Lower	Upper
45	100		
58	0.0	2.6	3.8#



#20  
 Methylene Chloride  
 Concen: 1.811 ppbv  
 RT: 4.33 min Scan# 479  
 Delta R.T. -0.02 min  
 Lab File: VL035876.D  
 Acq: 6 Nov 2020 1:46

Tgt Ion	Resp	Lower	Upper
84	100		
49	94.1	73.8	110.8
51	30.7	23.0	34.4
86	64.8	52.1	78.1

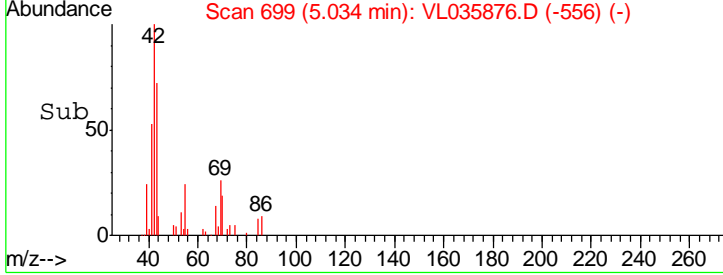
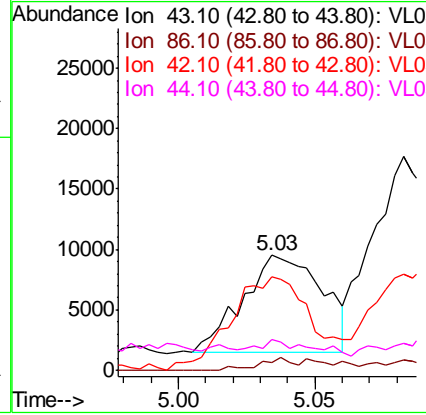
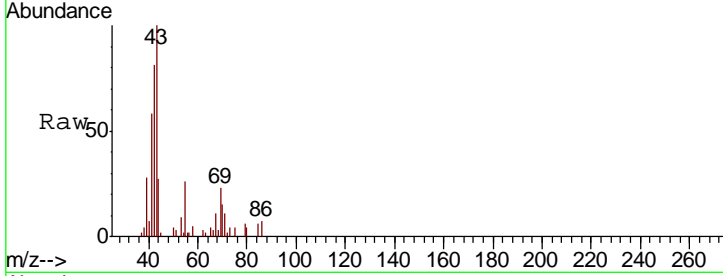




#23  
 Vinyl Acetate  
 Concen: 0.101 ppbv  
 RT: 5.03 min Scan# 699  
 Delta R.T. -0.04 min  
 Lab File: VL035876.D  
 Acq: 6 Nov 2020 1:46

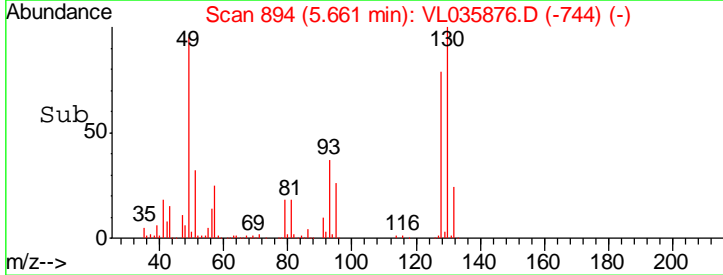
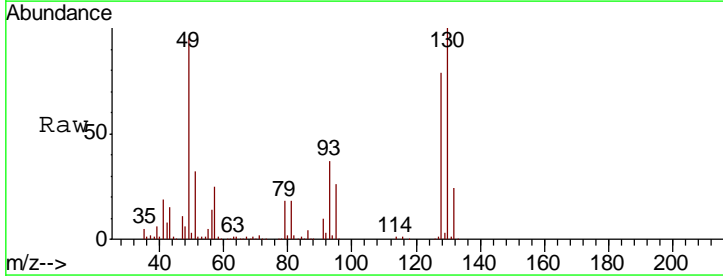
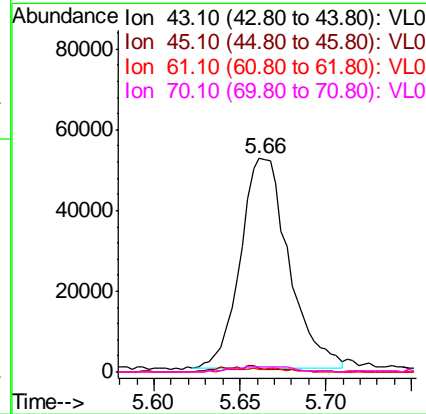
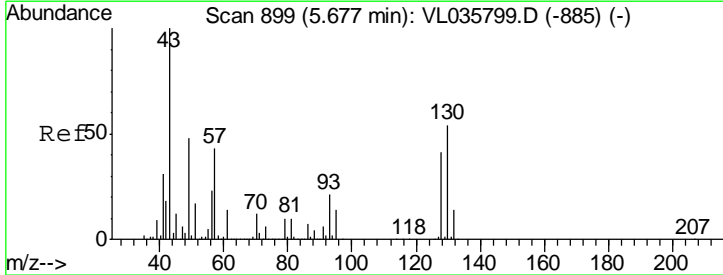
Instrument : MSVOA\_L  
 ClientSampled : BFB

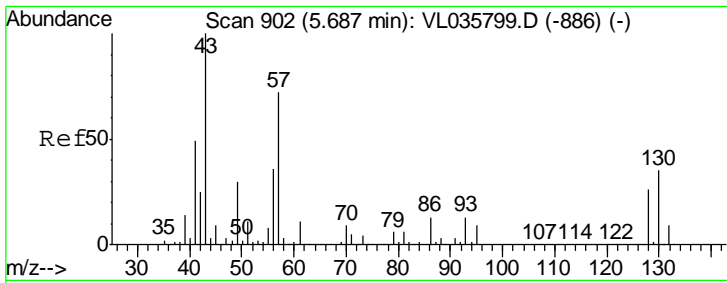
Tgt Ion	Resp	Lower	Upper
43	16305		
86	8.3	9.8	14.6#
42	87.2	8.1	12.1#
44	13.1	4.2	6.4#



#25  
 Ethyl Acetate  
 Concen: 0.447 ppbv  
 RT: 5.66 min Scan# 894  
 Delta R.T. -0.02 min  
 Lab File: VL035876.D  
 Acq: 6 Nov 2020 1:46

Tgt Ion	Resp	Lower	Upper
43	101371		
45	3.1	8.5	12.7#
61	1.9	10.7	16.1#
70	3.3	8.6	12.8#

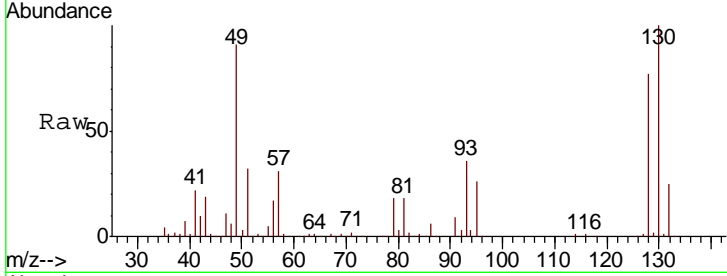




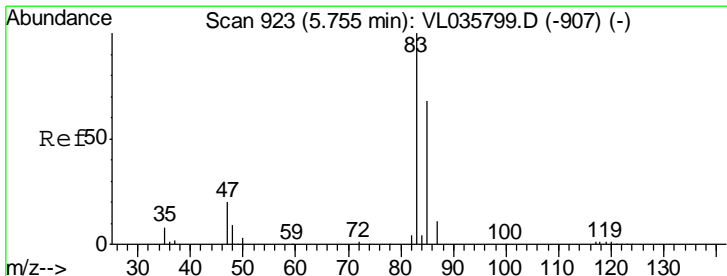
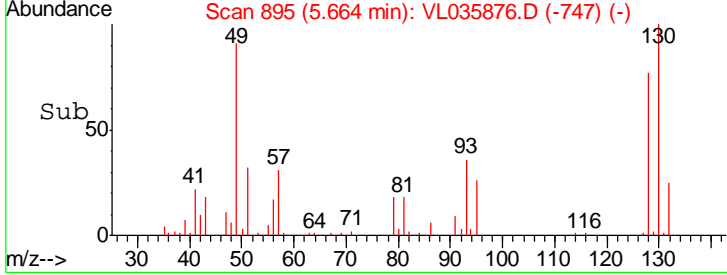
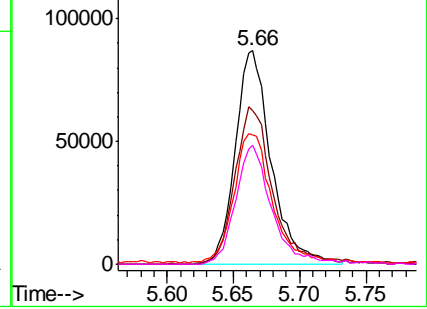
#26  
 Hexane  
 Concen: 1.310 ppbv  
 RT: 5.66 min Scan# 895  
 Delta R.T. -0.02 min  
 Lab File: VL035876.D  
 Acq: 6 Nov 2020 1:46

Instrument :  
 MSVOA\_L  
 ClientSampled :  
 BFB

Tgt Ion	Resp	Lower	Upper
57	100		
41	78.6	58.9	88.3
43	66.2	150.2	225.2#
56	56.6	42.4	63.6

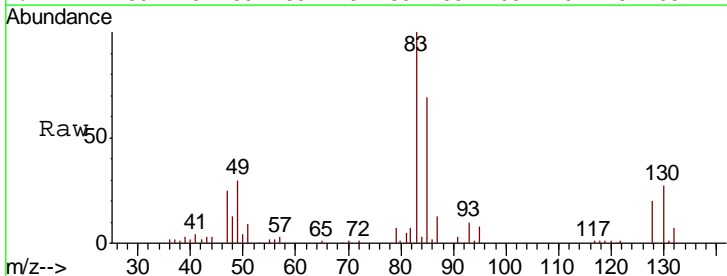


Abundance Ion 57.10 (56.80 to 57.80): VL0  
 Ion 41.10 (40.80 to 41.80): VL0  
 Ion 43.10 (42.80 to 43.80): VL0  
 Ion 56.10 (55.80 to 56.80): VL0

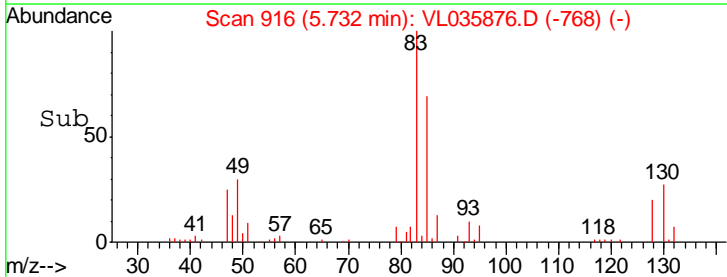
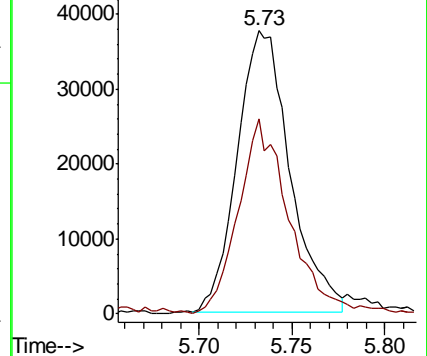


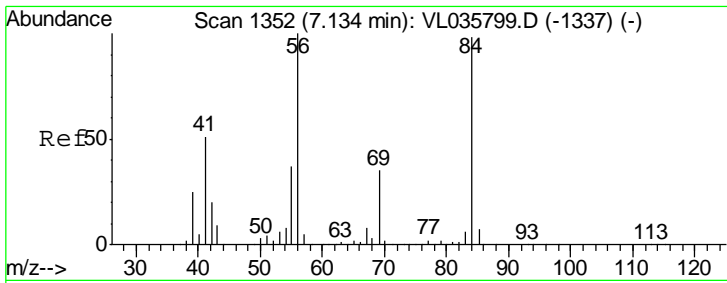
#29  
 Chloroform  
 Concen: 0.302 ppbv  
 RT: 5.73 min Scan# 916  
 Delta R.T. -0.02 min  
 Lab File: VL035876.D  
 Acq: 6 Nov 2020 1:46

Tgt Ion	Resp	Lower	Upper
83	100		
85	69.5	54.6	81.8



Abundance Ion 83.00 (82.70 to 83.70): VL0  
 Ion 85.00 (84.70 to 85.70): VL0

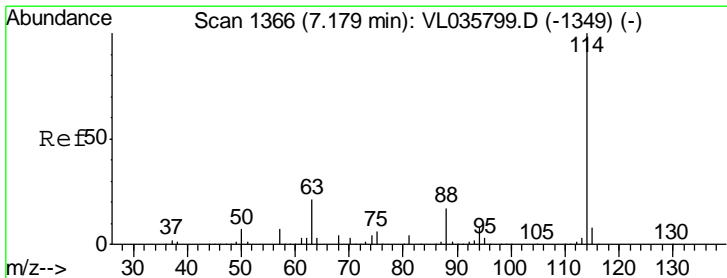
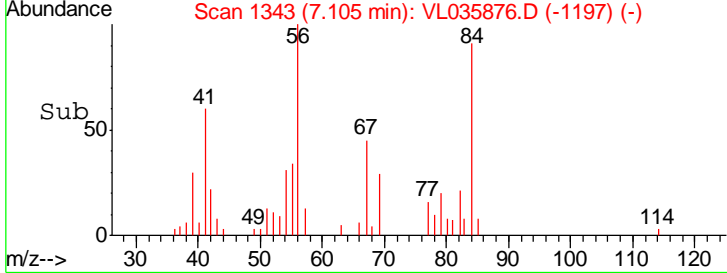
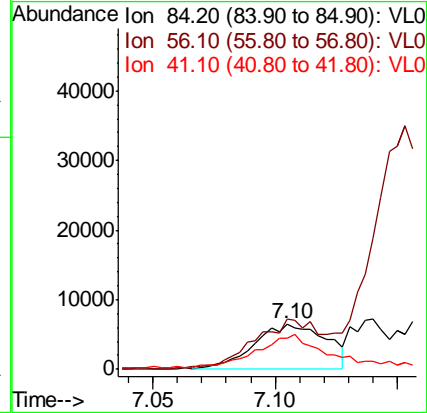
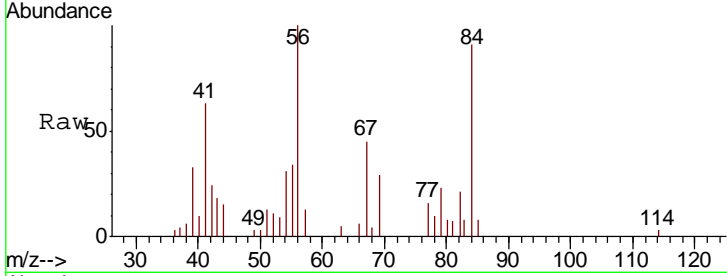




#30  
 Cyclohexane  
 Concen: 0.098 ppbv  
 RT: 7.10 min Scan# 1343  
 Delta R.T. -0.03 min  
 Lab File: VL035876.D  
 Acq: 6 Nov 2020 1:46

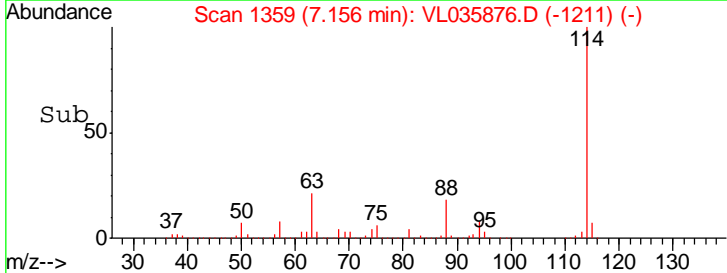
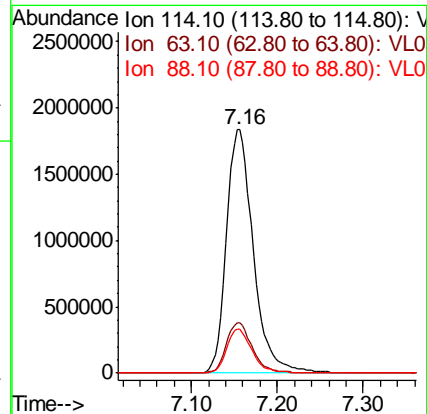
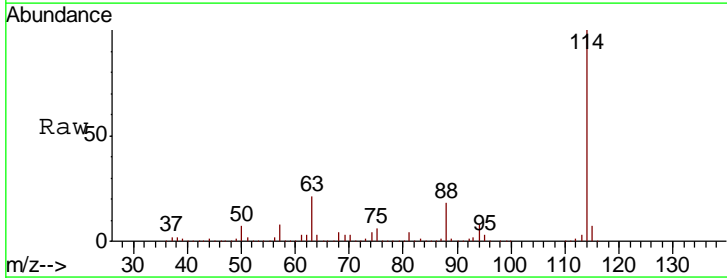
**Instrument :**  
 MSVOA\_L  
**ClientSampled :**  
 BFB

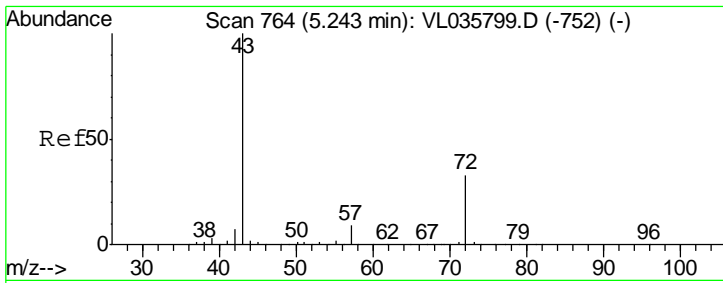
Tgt Ion	Resp	Lower	Upper
84	100		
56	0.0	86.4	129.6#
41	73.1	42.1	63.1#



#33  
 1,4-Difluorobenzene  
 Concen: 10.000 ppbv  
 RT: 7.16 min Scan# 1359  
 Delta R.T. -0.02 min  
 Lab File: VL035876.D  
 Acq: 6 Nov 2020 1:46

Tgt Ion	Resp	Lower	Upper
114	100		
63	20.4	16.1	24.1
88	17.3	13.7	20.5

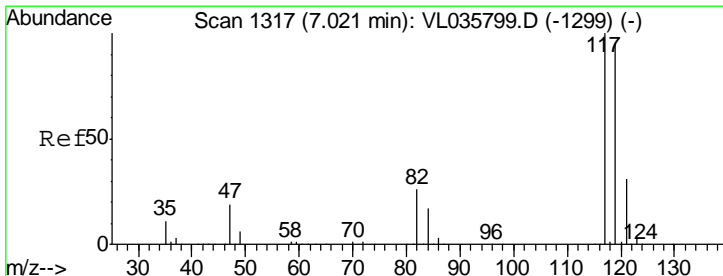
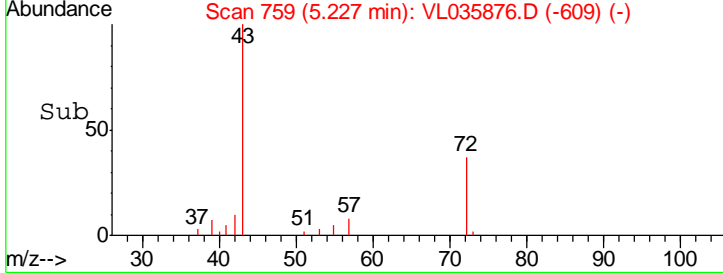
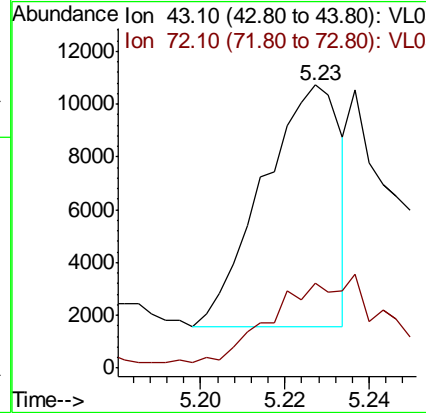
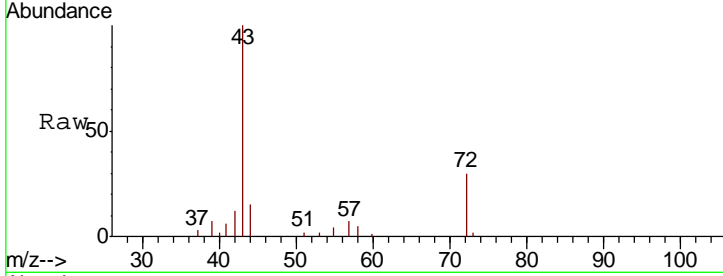




#34  
 2-Butanone  
 Concen: 0.091 ppbv  
 RT: 5.23 min Scan# 759  
 Delta R.T. -0.02 min  
 Lab File: VL035876.D  
 Acq: 6 Nov 2020 1:46

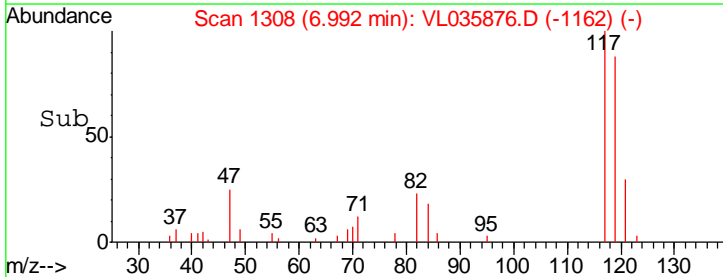
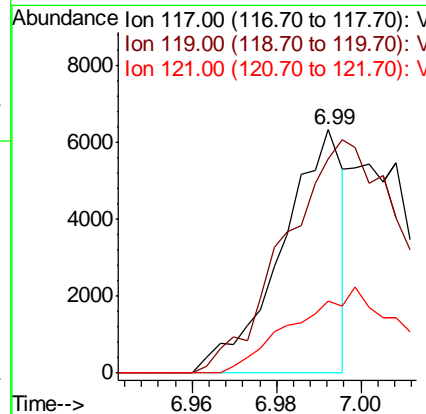
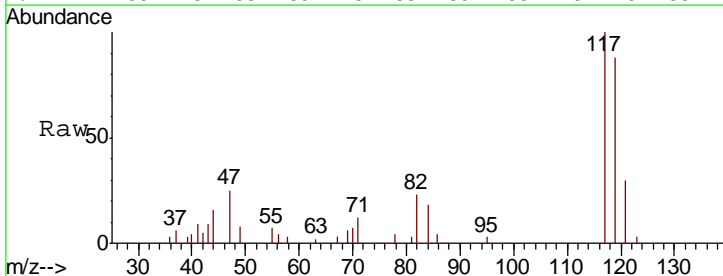
Instrument :  
 MSVOA\_L  
 ClientSampled :  
 BFB

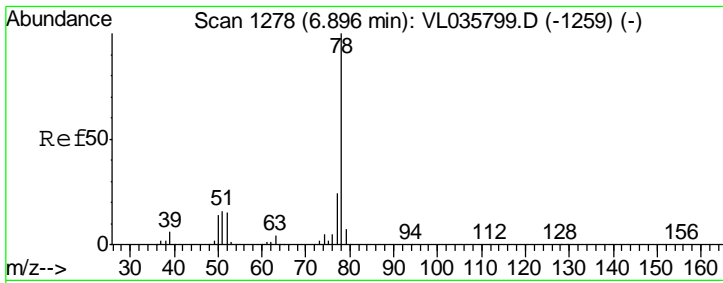
Tgt Ion: 43 Resp: 11727  
 Ion Ratio Lower Upper  
 43 100  
 72 0.0 26.5 39.7#



#35  
 Carbon Tetrachloride  
 Concen: 0.030 ppbv  
 RT: 6.99 min Scan# 1308  
 Delta R.T. -0.03 min  
 Lab File: VL035876.D  
 Acq: 6 Nov 2020 1:46

Tgt Ion: 117 Resp: 6408  
 Ion Ratio Lower Upper  
 117 100  
 119 88.0 75.6 113.4  
 121 29.7 25.1 37.7

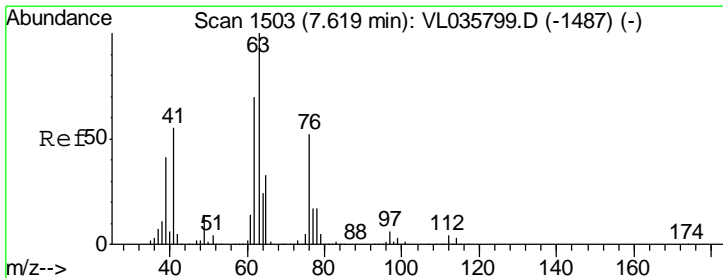
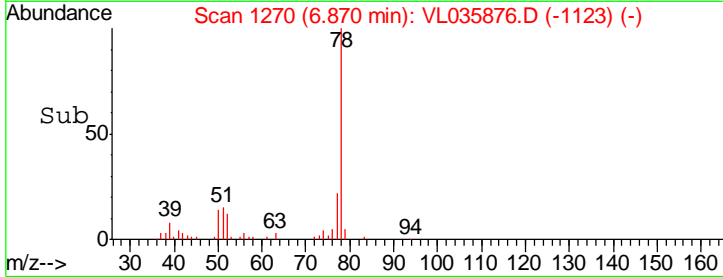
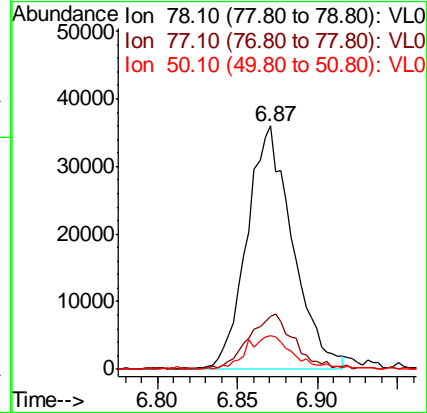
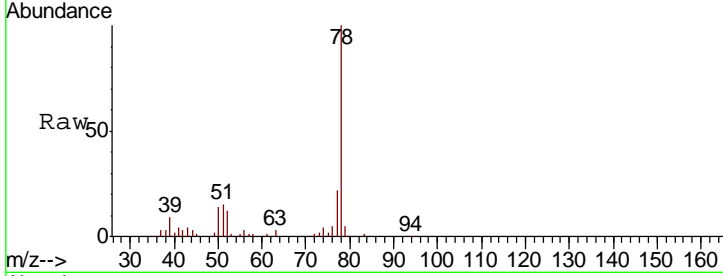




#36  
Benzene  
Concen: 0.237 ppbv  
RT: 6.87 min Scan# 1270  
Delta R.T. -0.03 min  
Lab File: VL035876.D  
Acq: 6 Nov 2020 1:46

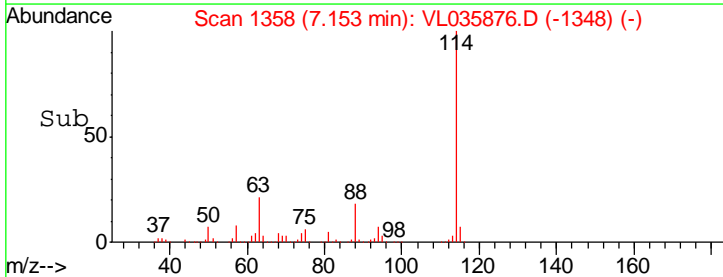
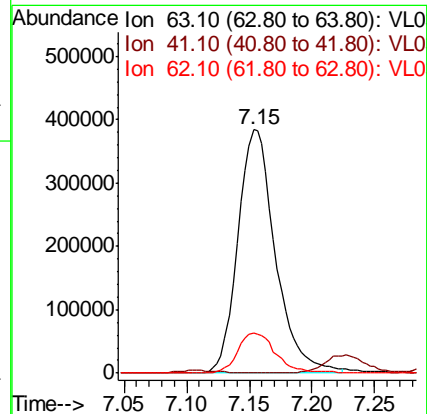
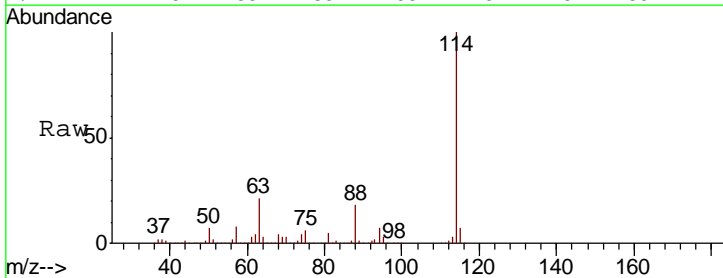
Instrument :  
MSVOA\_L  
ClientSampled :  
BFB

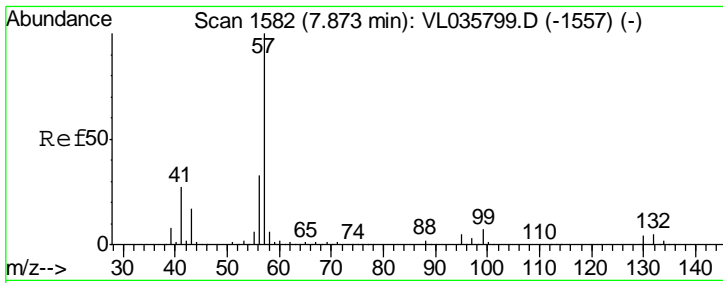
Tgt Ion	Resp	Lower	Upper
78	70393		
77	22.0	19.3	28.9
50	13.3	11.4	17.2



#39  
1,2-Dichloropropane  
Concen: 7.982 ppbv  
RT: 7.15 min Scan# 1358  
Delta R.T. -0.47 min  
Lab File: VL035876.D  
Acq: 6 Nov 2020 1:46

Tgt Ion	Resp	Lower	Upper
63	797472		
41	0.0	43.8	65.6#
62	16.7	56.2	84.2#

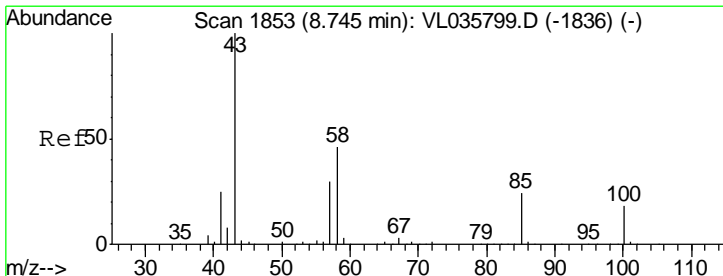
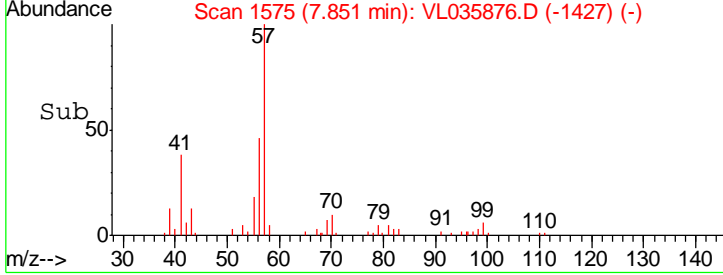
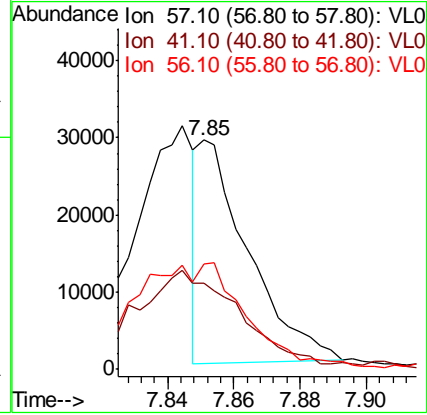
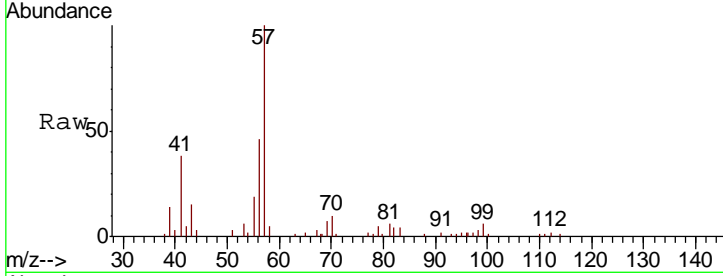




#44  
 2,2,4-Trimethylpentane  
 Concen: 0.075 ppbv  
 RT: 7.85 min Scan# 1575  
 Delta R.T. -0.02 min  
 Lab File: VL035876.D  
 Acq: 6 Nov 2020 1:46

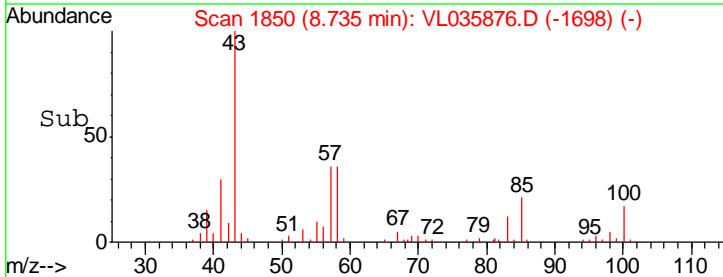
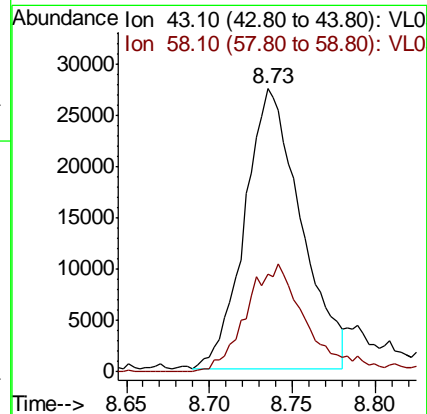
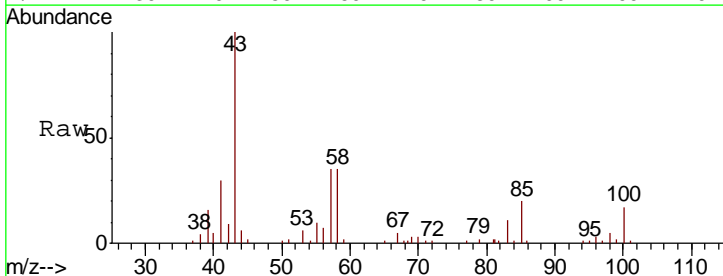
Instrument :  
 MSVOA\_L  
 ClientSampled :  
 BFB

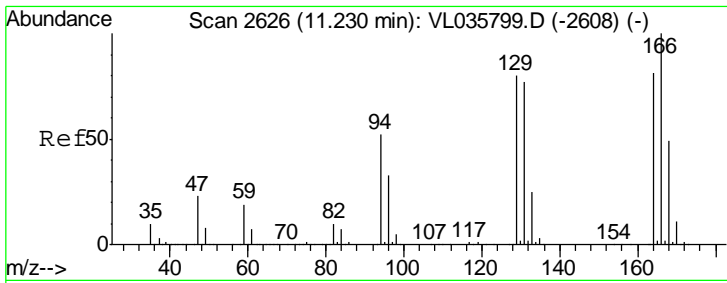
Tgt Ion	Resp	Lower	Upper
57	100		
41	0.0	21.0	31.4#
56	116.4	25.4	38.0#



#50  
 4-Methyl-2-Pentanone  
 Concen: 0.324 ppbv  
 RT: 8.73 min Scan# 1850  
 Delta R.T. -0.01 min  
 Lab File: VL035876.D  
 Acq: 6 Nov 2020 1:46

Tgt Ion	Resp	Lower	Upper
43	100		
58	43.5	36.0	54.0

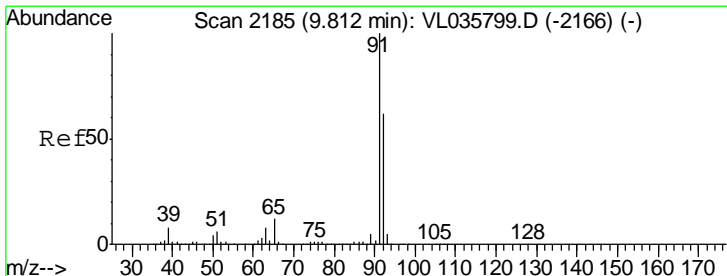
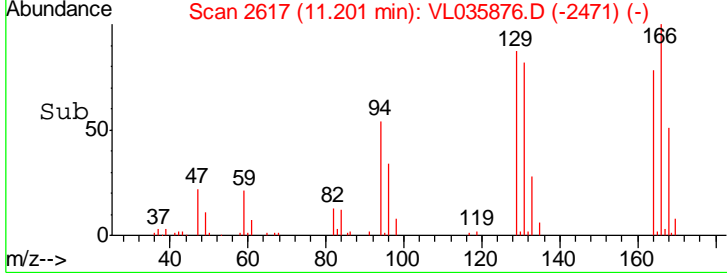
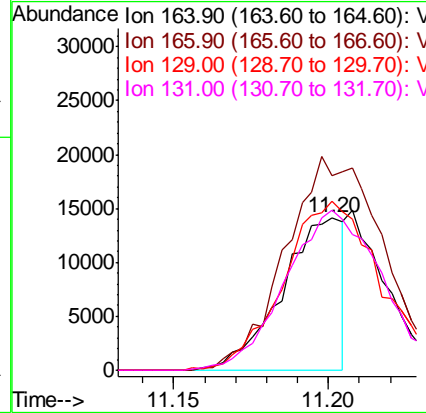
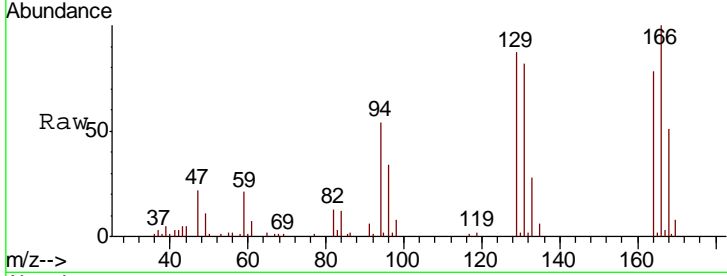




#52  
 Tetrachloroethene  
 Concen: 0.139 ppbv  
 RT: 11.20 min Scan# 2617  
 Delta R.T. -0.03 min  
 Lab File: VL035876.D  
 Acq: 6 Nov 2020 1:46

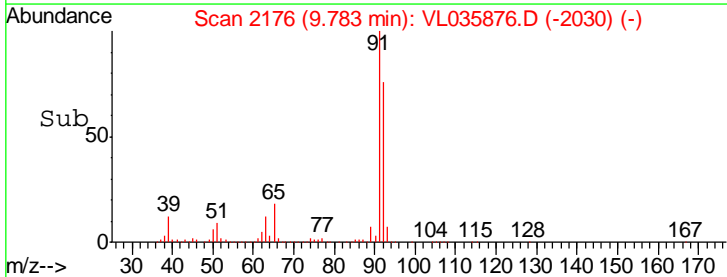
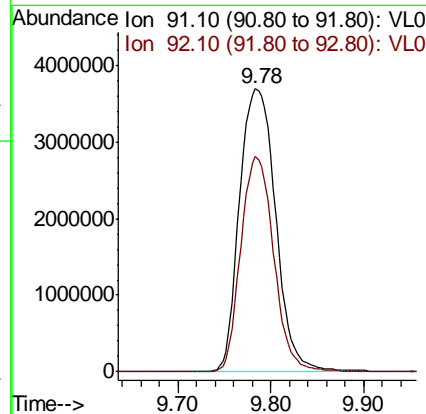
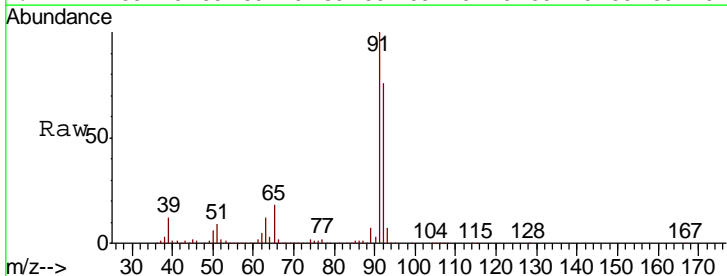
Instrument :  
 MSVOA\_L  
 ClientSampled :  
 BFB

Tgt Ion	Resp	Lower	Upper
164	100		
166	127.7	99.3	148.9
129	108.6	79.3	118.9
131	103.8	76.5	114.7

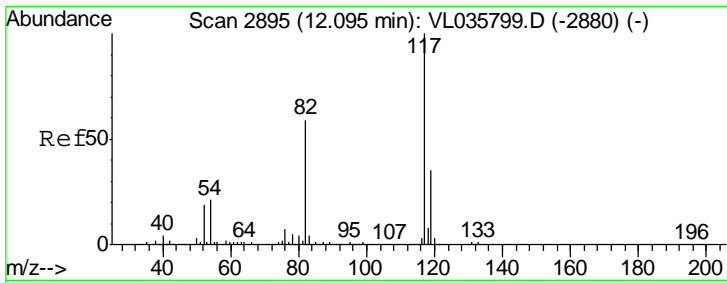


#53  
 Toluene  
 Concen: 27.888 ppbv  
 RT: 9.78 min Scan# 2176  
 Delta R.T. -0.03 min  
 Lab File: VL035876.D  
 Acq: 6 Nov 2020 1:46

Tgt Ion	Resp	Lower	Upper
91	100		
92	69.9	49.8	74.6



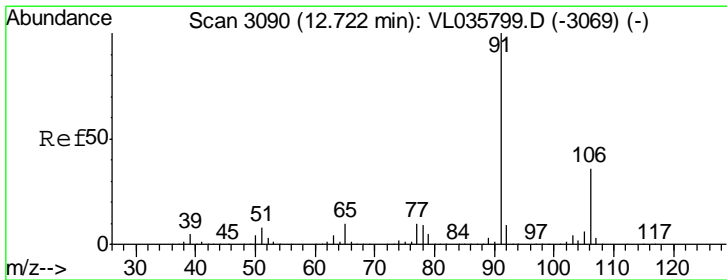
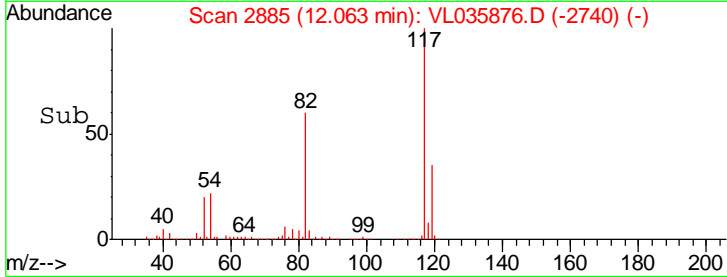
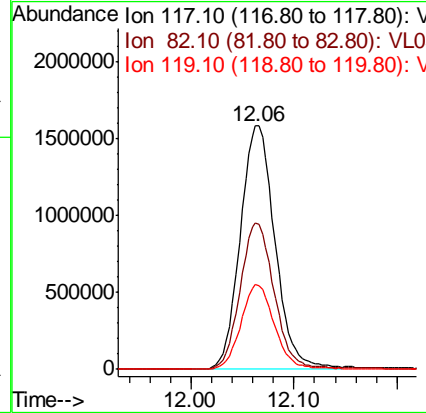
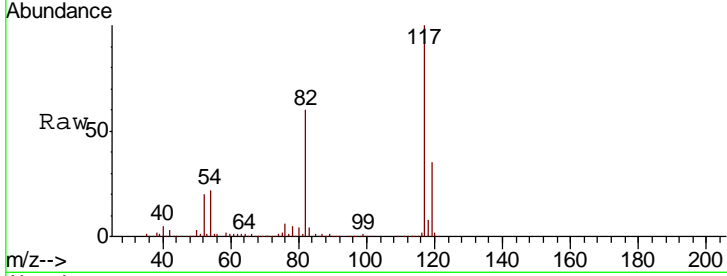




#55  
 Chlorobenzene-d5  
 Concen: 10.000 ppbv  
 RT: 12.06 min Scan# 2885  
 Delta R.T. -0.03 min  
 Lab File: VL035876.D  
 Acq: 6 Nov 2020 1:46

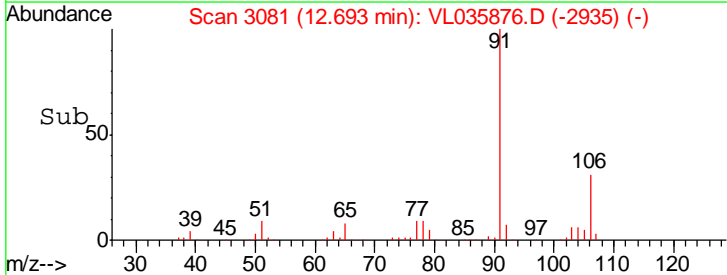
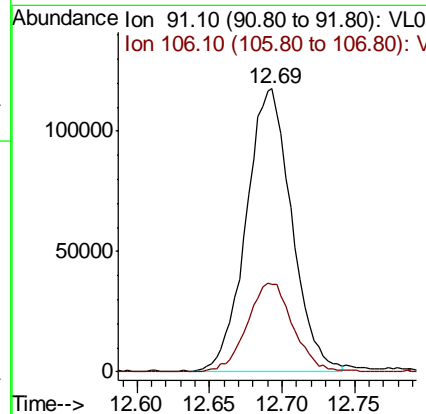
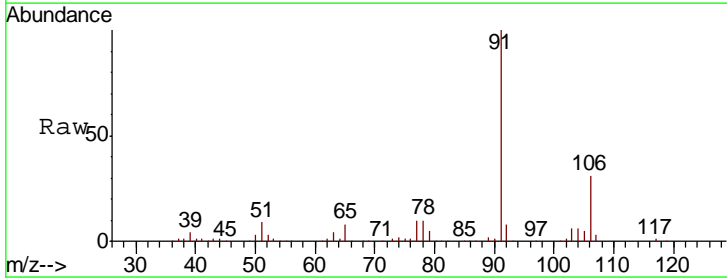
Instrument : MSVOA\_L  
 ClientSampled : BFB

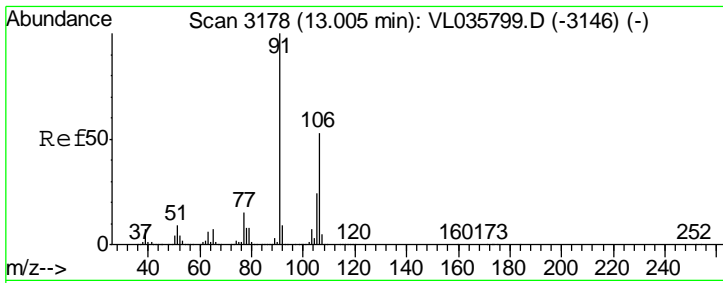
Tgt Ion	Resp	Lower	Upper
117	100		
82	60.5	50.6	76.0
119	34.1	52.6	78.8#



#58  
 Ethyl Benzene  
 Concen: 0.567 ppbv  
 RT: 12.69 min Scan# 3081  
 Delta R.T. -0.03 min  
 Lab File: VL035876.D  
 Acq: 6 Nov 2020 1:46

Tgt Ion	Resp	Lower	Upper
91	100		
106	31.2	28.6	43.0

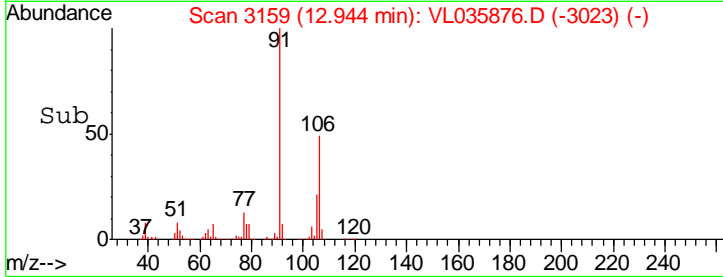
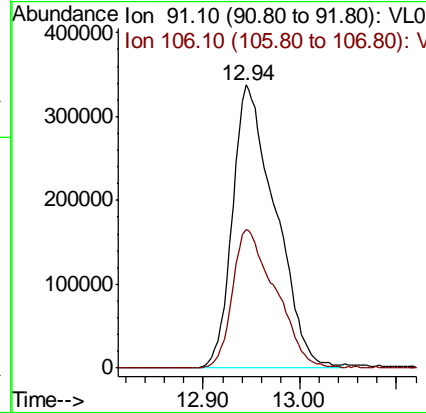
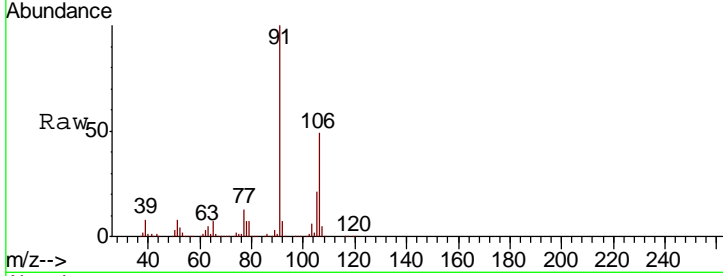




#59  
 m/p-Xylene  
 Concen: 2.703 ppbv  
 RT: 12.94 min Scan# 3159  
 Delta R.T. -0.06 min  
 Lab File: VL035876.D  
 Acq: 6 Nov 2020 1:46

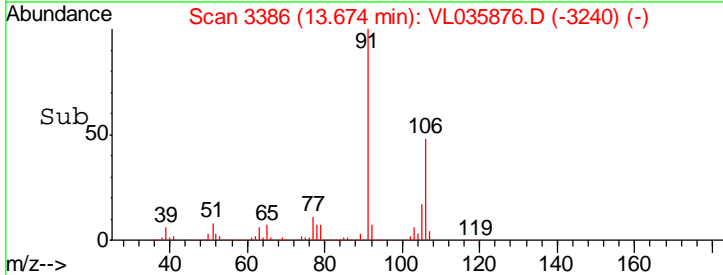
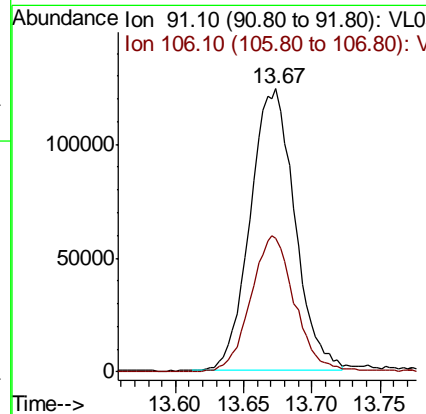
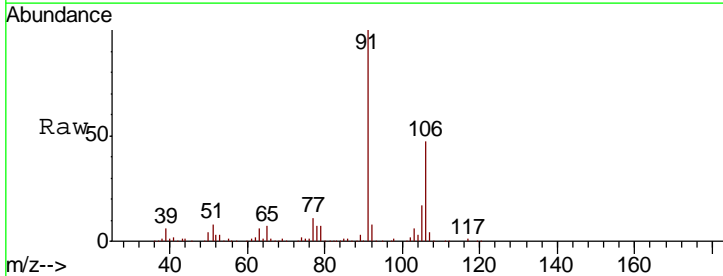
Instrument : MSVOA\_L  
 Client Sampled : BFB

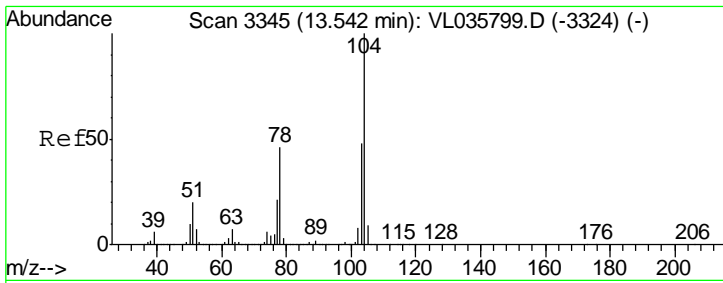
Tgt Ion: 91 Resp: 1032586  
 Ion Ratio Lower Upper  
 91 100  
 106 49.8 39.5 59.3



#60  
 o-Xylene  
 Concen: 0.756 ppbv  
 RT: 13.67 min Scan# 3386  
 Delta R.T. -0.03 min  
 Lab File: VL035876.D  
 Acq: 6 Nov 2020 1:46

Tgt Ion: 91 Resp: 280764  
 Ion Ratio Lower Upper  
 91 100  
 106 48.3 24.8 74.4

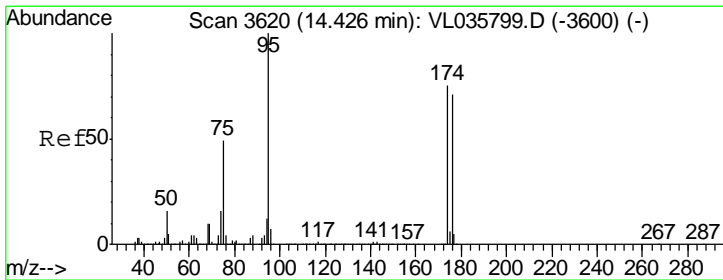
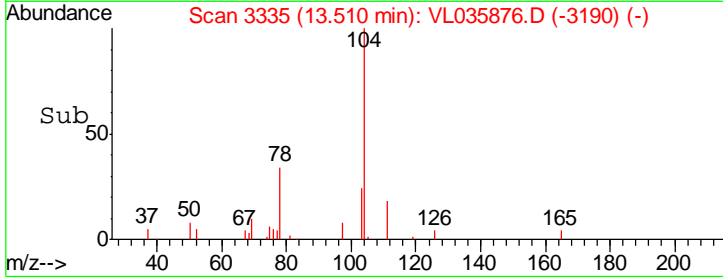
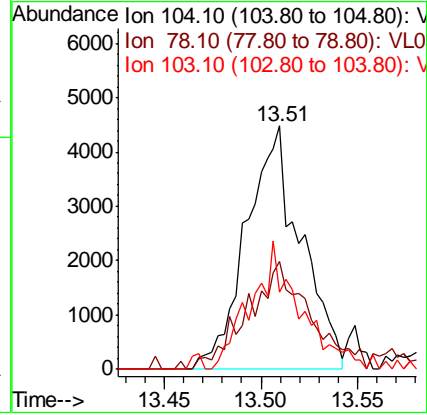
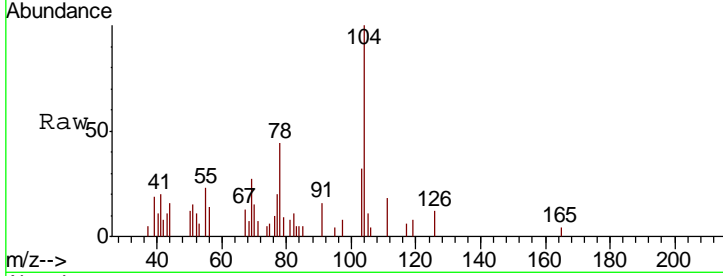




#61  
 Styrene  
 Concen: 0.032 ppbv  
 RT: 13.51 min Scan# 3335  
 Delta R.T. -0.03 min  
 Lab File: VL035876.D  
 Acq: 6 Nov 2020 1:46

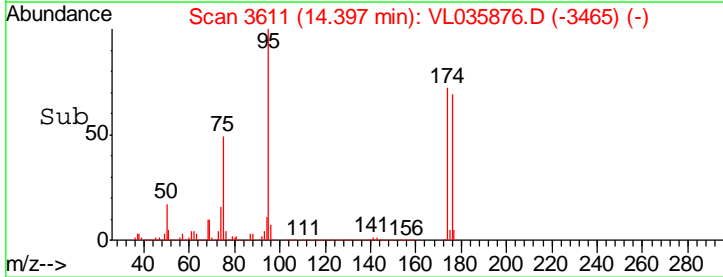
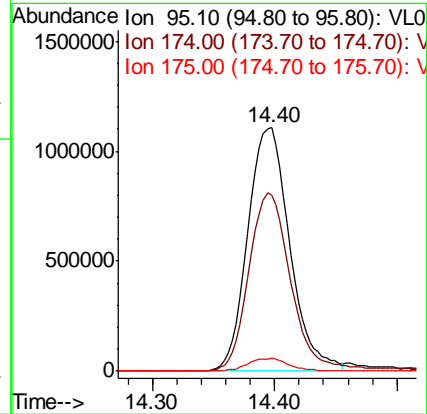
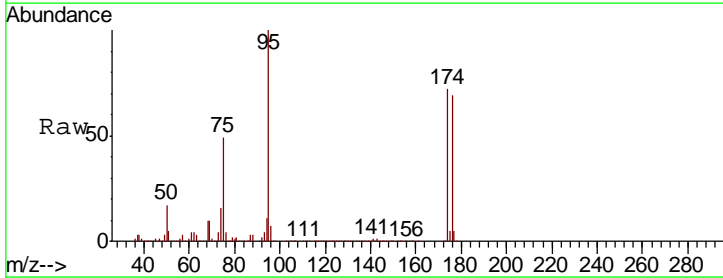
Instrument :  
 MSVOA\_L  
 ClientSampled :  
 BFB

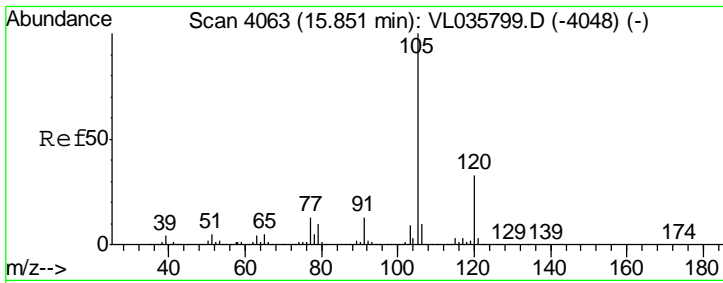
Tgt Ion	Resp	Lower	Upper
104	100		
78	57.9	37.1	55.7#
103	49.5	37.9	56.9



#68  
 1-Bromo-4-Fluorobenzene  
 Concen: 10.024 ppbv  
 RT: 14.40 min Scan# 3611  
 Delta R.T. -0.03 min  
 Lab File: VL035876.D  
 Acq: 6 Nov 2020 1:46

Tgt Ion	Resp	Lower	Upper
95	100		
174	75.2	59.8	89.6
175	5.3	4.3	6.5

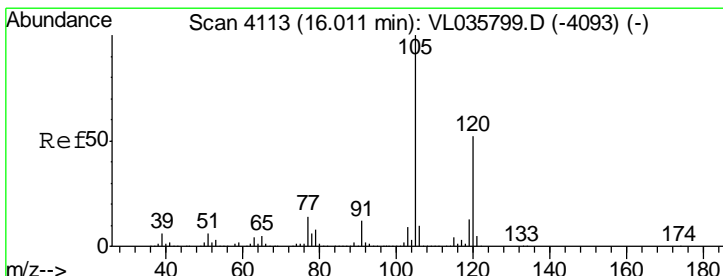
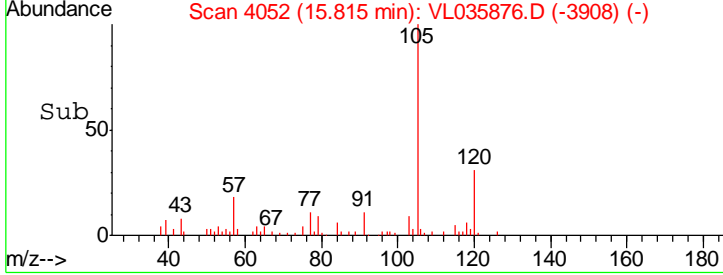
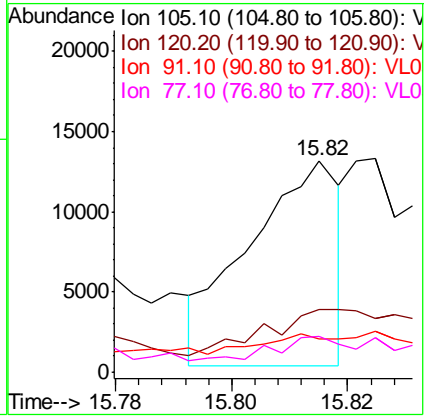
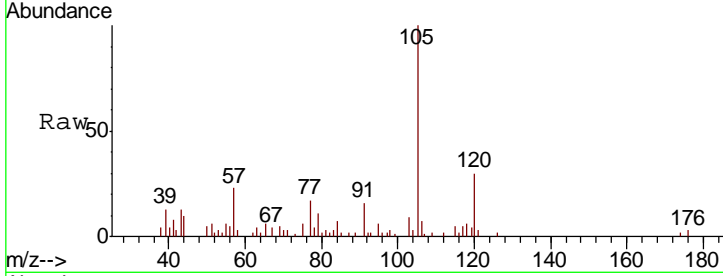




#72  
 4-Ethyltoluene  
 Concen: 0.031 ppbv  
 RT: 15.82 min Scan# 4052  
 Delta R.T. -0.04 min  
 Lab File: VL035876.D  
 Acq: 6 Nov 2020 1:46

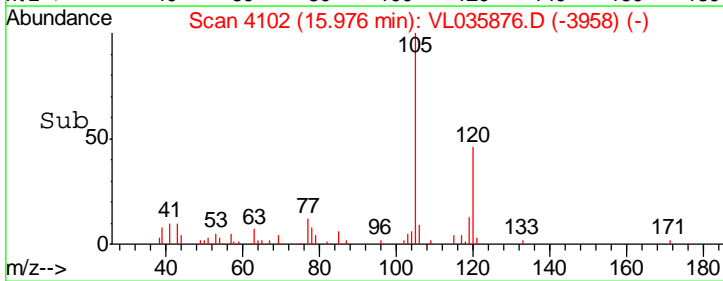
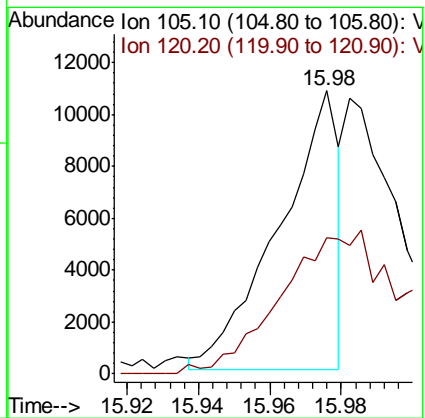
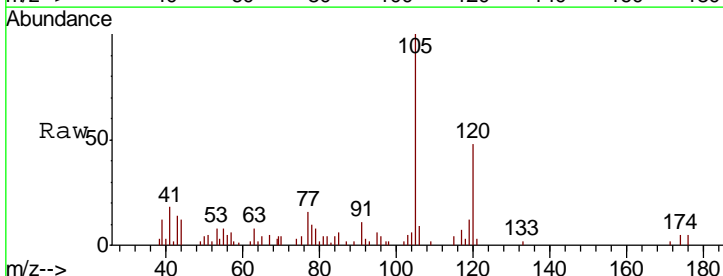
Instrument : MSVOA\_L  
 ClientSampled : BFB

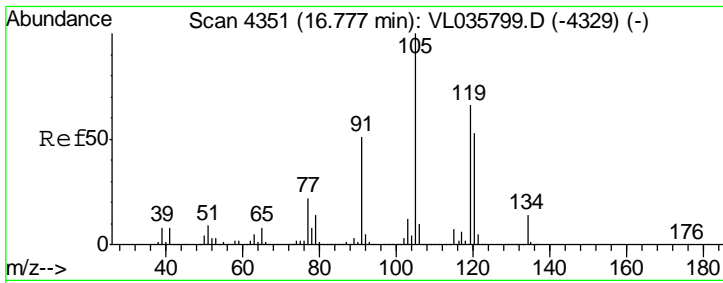
Tgt Ion	Resp	Lower	Upper
105	100		
120	72.5	25.9	38.9#
91	0.0	9.9	14.9#
77	44.2	10.2	15.2#



#73  
 1,3,5-Trimethylbenzene  
 Concen: 0.030 ppbv  
 RT: 15.98 min Scan# 4102  
 Delta R.T. -0.04 min  
 Lab File: VL035876.D  
 Acq: 6 Nov 2020 1:46

Tgt Ion	Resp	Lower	Upper
105	100		
120	47.6	41.4	62.2



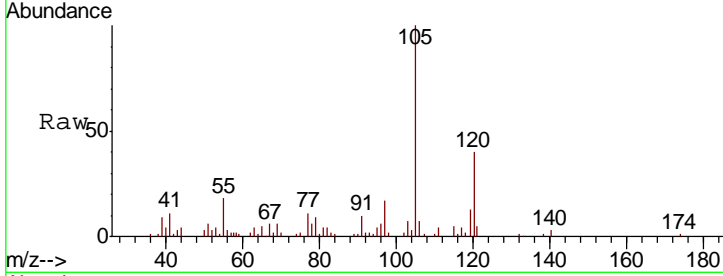


#74  
 1,2,4-Trimethylbenzene  
 Concen: 0.179 ppbv  
 RT: 16.75 min Scan# 4343  
 Delta R.T. -0.03 min  
 Lab File: VL035876.D  
 Acq: 6 Nov 2020 1:46

Instrument : MSVOA\_L  
 ClientSampled : BFB

Tot Ion:105 Resp: 79221

Ion	Ratio	Lower	Upper
105	100		
120	39.8	42.0	63.0#
91	8.5	41.0	61.6#
77	10.5	17.3	25.9#



Abundance Ion 105.10 (104.80 to 105.80): V  
 Ion 120.20 (119.90 to 120.90): V  
 Ion 91.10 (90.80 to 91.80): VL0  
 Ion 77.10 (76.80 to 77.80): VL0

