

Data Path : Z:\VOASRV\HPCHEM1\MSVOA L\DATA\VL111220\  
 Data File : VL035936.D  
 Acq On : 13 Nov 2020 5:49  
 Operator : SY/AP  
 Sample : VSTDCCC010  
 Misc : 400ml/MSVOA L  
 ALS Vial : 1 Sample Multiplier: 1

Instrument :  
 MSVOA\_L  
 ClientSampleId :

Quant Time: Nov 13 07:29:53 2020  
 Quant Method : Z:\VOASRV\HPCHEM1\MSVOA L\METHODS\VL110320AIR.M  
 Quant Title : AIR ANALYSIS BY METHOD TO-15 Instrument: MSVOA\_LWed Nov 04 02:40:06 2020  
 QLast Update : Wed Nov 04 02:40:06 2020  
 Response via : Initial Calibration

| Internal Standards      | R.T.  | QIon | Response | Conc  | Units | Dev(Min) |
|-------------------------|-------|------|----------|-------|-------|----------|
| 1) Bromochloromethane   | 5.66  | 49   | 1069273  | 10.00 | ppbv  | 0.00     |
| 33) 1,4-Difluorobenzene | 7.17  | 114  | 3679557  | 10.00 | ppbv  | 0.00     |
| 55) Chlorobenzene-d5    | 12.09 | 117  | 3385940  | 10.00 | ppbv  | 0.00     |

System Monitoring Compounds

|                             |        |       |          |          |      |         |
|-----------------------------|--------|-------|----------|----------|------|---------|
| 68) 1-Bromo-4-Fluorobenzene | 14.42  | 95    | 2500185  | 10.39    | ppbv | 0.00    |
| Spiked Amount               | 10.000 | Range | 65 - 135 | Recovery | =    | 103.90% |

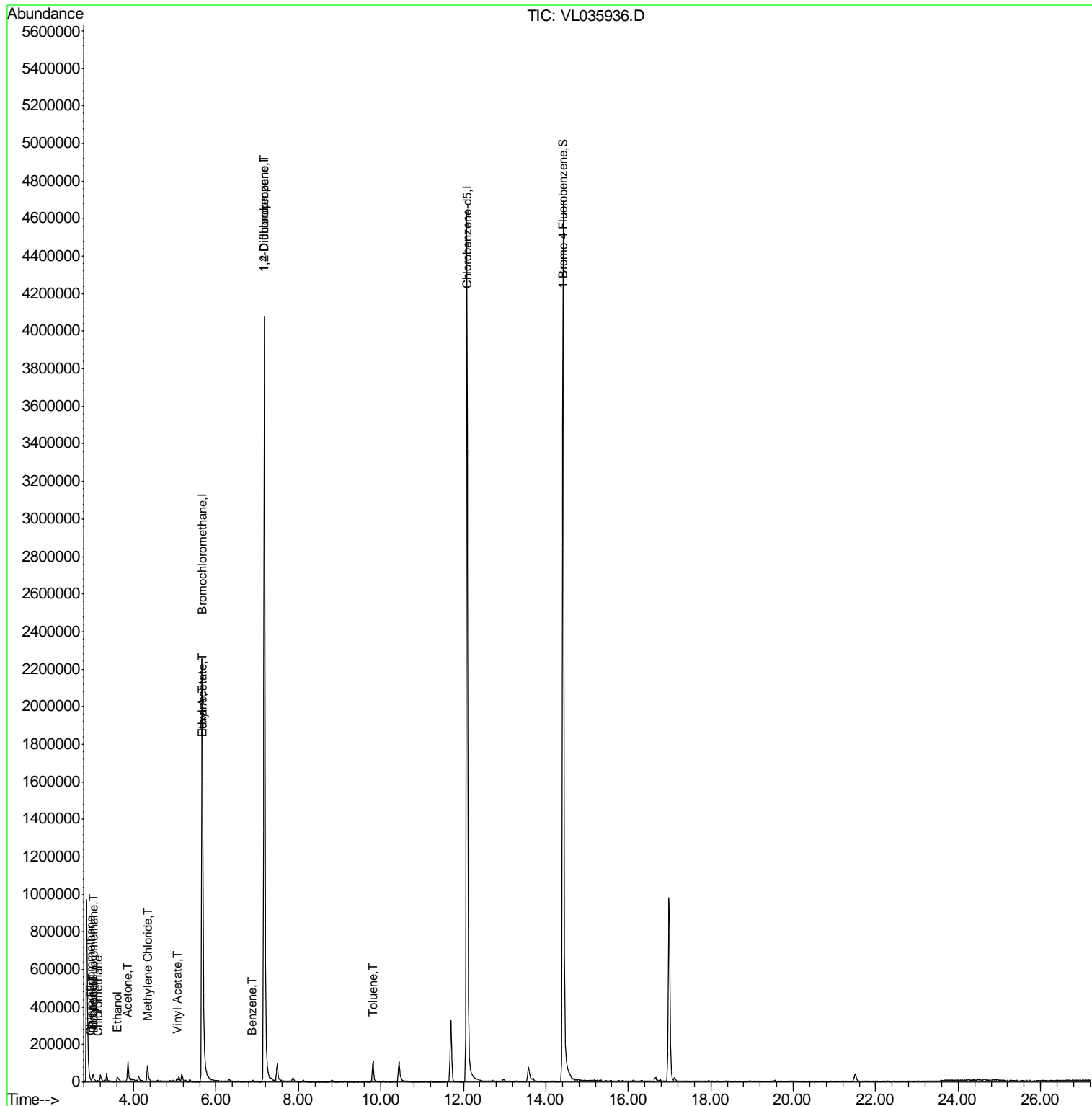
| Target Compounds           | R.T. | QIon | Response | Conc  | Units  | Ovalue |
|----------------------------|------|------|----------|-------|--------|--------|
| 2) Dichlorodifluoromethane | 3.04 | 85   | 9040     | 0.045 | ppbv   | 96     |
| 3) Chlorodifluoromethane   | 2.98 | 51   | 8984     | 0.070 | ppbv # | 81     |
| 4) Chloromethane           | 3.13 | 50   | 4549     | 0.073 | ppbv   | 99     |
| 9) Propene                 | 3.01 | 41   | 4499     | 0.096 | ppbv # | 15     |
| 13) Ethanol                | 3.61 | 45   | 14755    | 1.451 | ppbv # | 35     |
| 15) Acetone                | 3.86 | 43   | 85853    | 0.751 | ppbv # | 87     |
| 20) Methylene Chloride     | 4.34 | 84   | 43320    | 0.538 | ppbv   | 94     |
| 23) Vinyl Acetate          | 5.06 | 43   | 4976     | 0.031 | ppbv # | 74     |
| 25) Ethyl Acetate          | 5.68 | 43   | 33043    | 0.147 | ppbv # | 75     |
| 26) Hexane                 | 5.68 | 57   | 48778    | 0.393 | ppbv # | 44     |
| 36) Benzene                | 6.89 | 78   | 8381     | 0.031 | ppbv   | 97     |
| 39) 1,2-Dichloropropane    | 7.17 | 63   | 760001   | 8.252 | ppbv # | 31     |
| 53) Toluene                | 9.81 | 91   | 94411    | 0.286 | ppbv   | 98     |

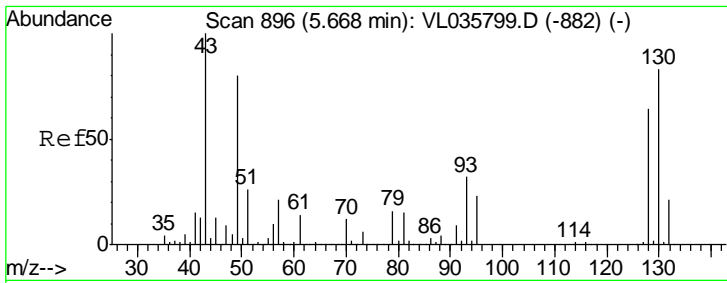
(#) = qualifier out of range (m) = manual integration (+) = signals summed

Data Path : Z:\VOASRV\HPCHEM1\MSVOA L\DATA\VL111220\  
 Data File : VL035936.D  
 Acq On : 13 Nov 2020 5:49  
 Operator : SY/AP  
 Sample : VSTDCCC010  
 Misc : 400ml/MSVOA L  
 ALS Vial : 1 Sample Multiplier: 1

Instrument :  
 MSVOA\_L  
 ClientSampleId :

Quant Time: Nov 13 07:29:53 2020  
 Quant Method : Z:\VOASRV\HPCHEM1\MSVOA L\METHODS\VL110320AIR.M  
 Quant Title : AIR ANALYSIS BY METHOD TO-15 Instrument: MSVOA\_L Wed Nov 04 02:40:06 2020  
 QLast Update : Wed Nov 04 02:40:06 2020  
 Response via : Initial Calibration



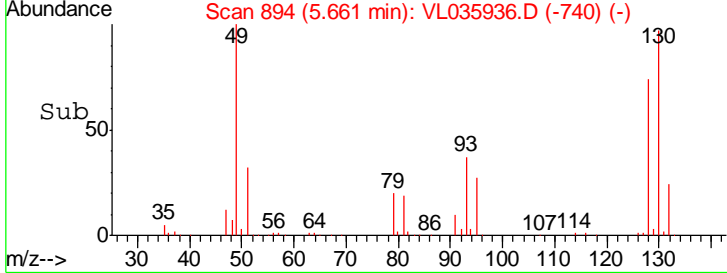
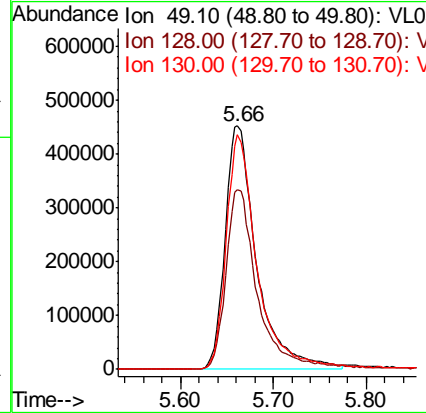
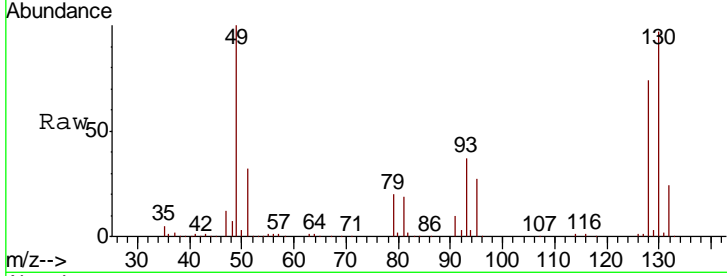


#1  
 Bromochloromethane  
 Concen: 10.000 ppbv  
 RT: 5.66 min Scan# 894  
 Delta R.T. -0.01 min  
 Lab File: VL035936.D  
 Acq: 13 Nov 2020 5:49

Instrument :  
 MSVOA\_L  
 ClientSampled :

Tgt Ion: 49 Resp: 1069273

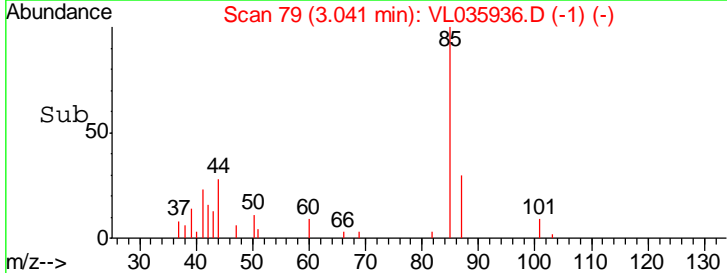
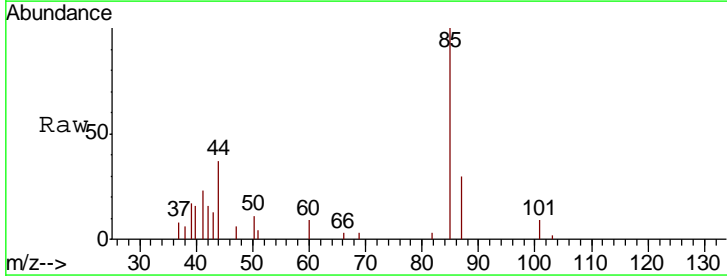
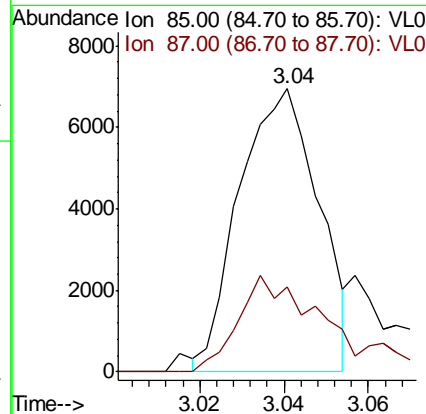
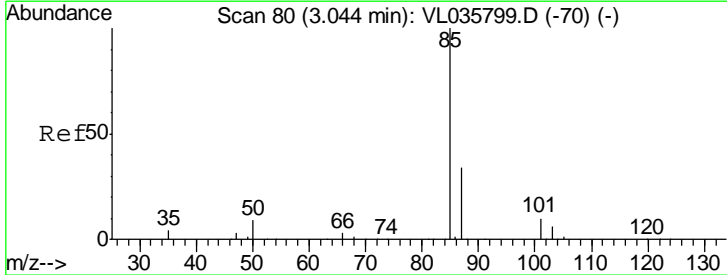
| Ion | Ratio | Lower | Upper |
|-----|-------|-------|-------|
| 49  | 100   |       |       |
| 128 | 75.7  | 41.5  | 124.6 |
| 130 | 97.2  | 53.7  | 161.1 |

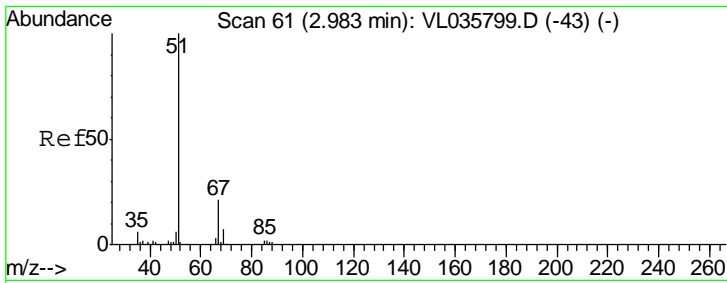


#2  
 Dichlorodifluoromethane  
 Concen: 0.045 ppbv  
 RT: 3.04 min Scan# 79  
 Delta R.T. -0.00 min  
 Lab File: VL035936.D  
 Acq: 13 Nov 2020 5:49

Tgt Ion: 85 Resp: 9040

| Ion | Ratio | Lower | Upper |
|-----|-------|-------|-------|
| 85  | 100   |       |       |
| 87  | 31.5  | 27.1  | 40.7  |

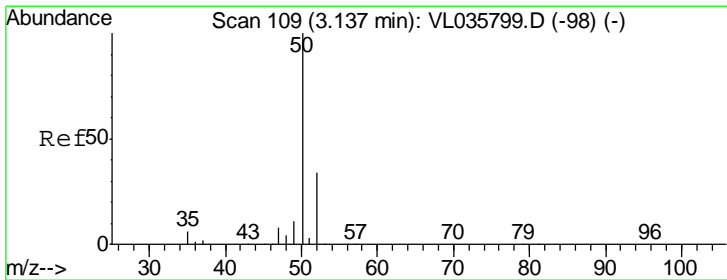
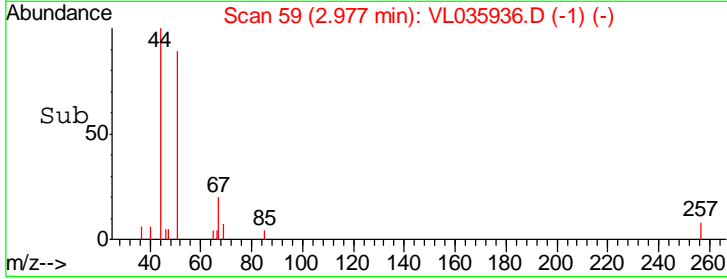
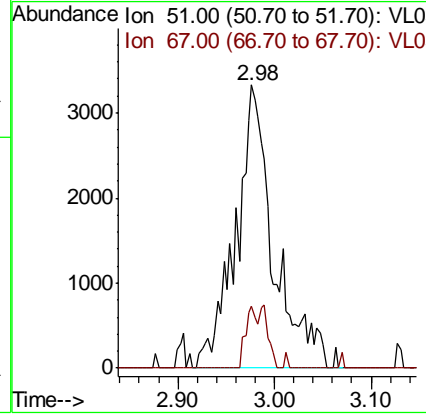
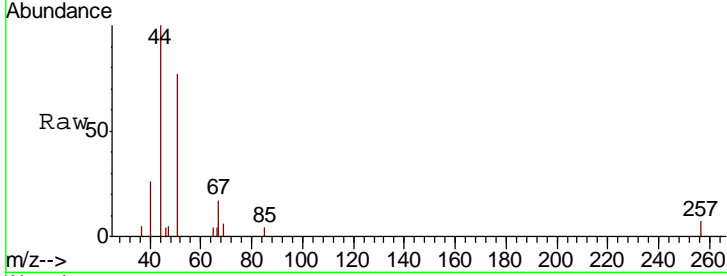




#3  
 Chlorodifluoromethane  
 Concen: 0.070 ppbv  
 RT: 2.98 min Scan# 59  
 Delta R.T. -0.01 min  
 Lab File: VL035936.D  
 Acq: 13 Nov 2020 5:49

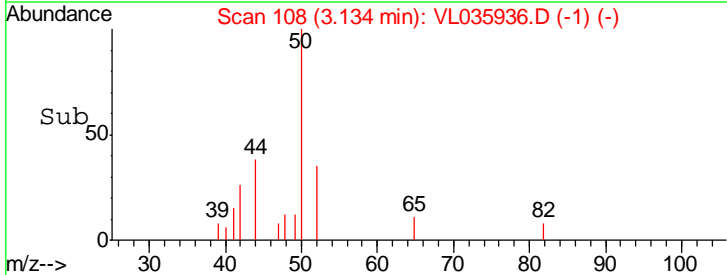
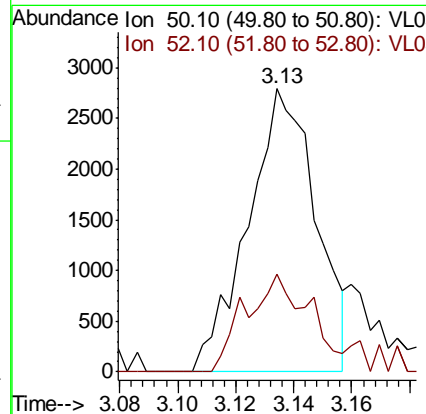
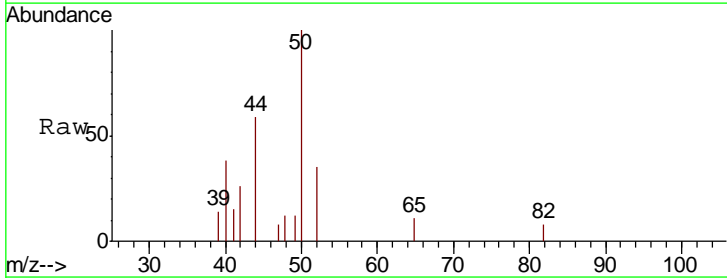
Instrument : MSVOA\_L  
 ClientSampled :

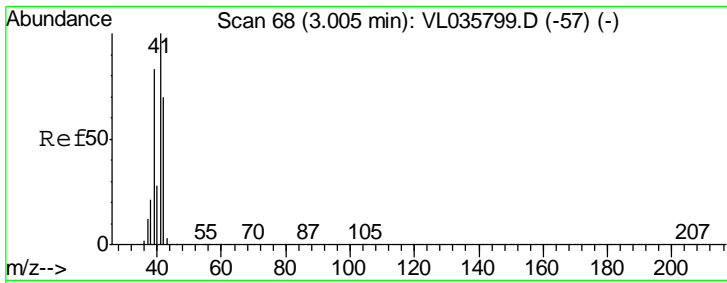
Tgt Ion: 51 Resp: 8984  
 Ion Ratio Lower Upper  
 51 100  
 67 12.2 17.0 25.4#



#4  
 Chloromethane  
 Concen: 0.073 ppbv  
 RT: 3.13 min Scan# 108  
 Delta R.T. -0.00 min  
 Lab File: VL035936.D  
 Acq: 13 Nov 2020 5:49

Tgt Ion: 50 Resp: 4549  
 Ion Ratio Lower Upper  
 50 100  
 52 34.5 27.1 40.7

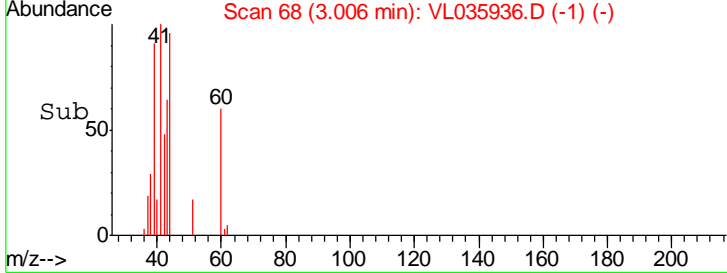
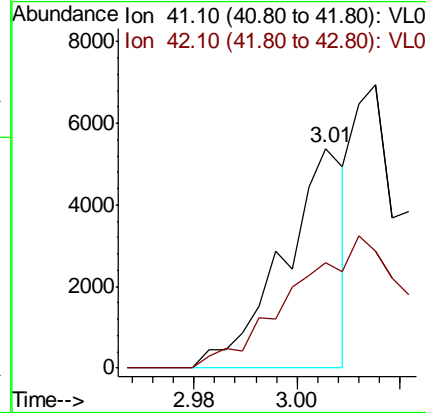
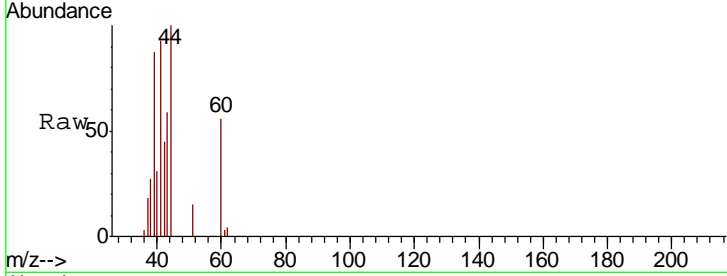




#9  
 Propene  
 Concen: 0.096 ppbv  
 RT: 3.01 min Scan# 68  
 Delta R.T. 0.00 min  
 Lab File: VL035936.D  
 Acq: 13 Nov 2020 5:49

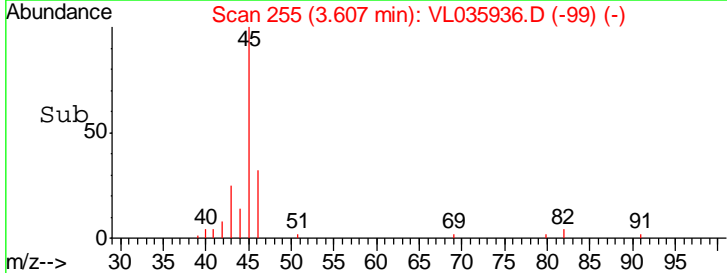
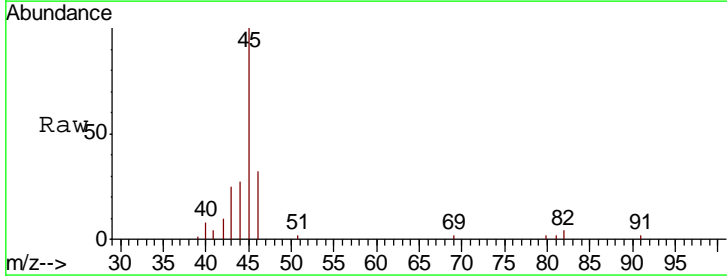
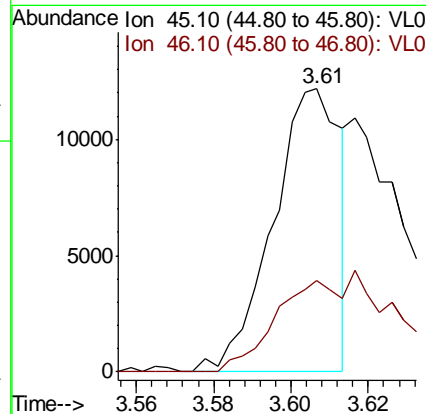
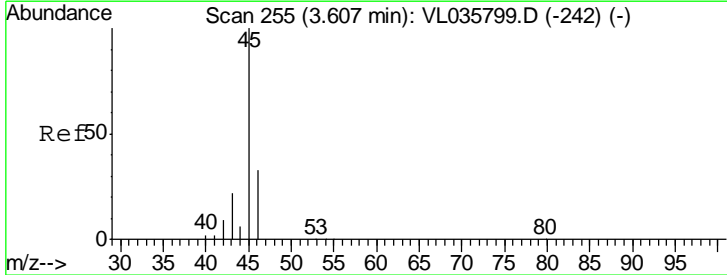
Instrument : MSVOA\_L  
 ClientSampled :

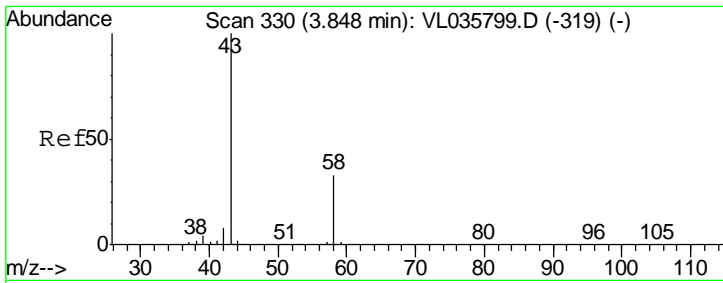
Tgt Ion: 41 Resp: 4499  
 Ion Ratio Lower Upper  
 41 100  
 42 0.0 56.2 84.4#



#13  
 Ethanol  
 Concen: 1.451 ppbv  
 RT: 3.61 min Scan# 255  
 Delta R.T. 0.00 min  
 Lab File: VL035936.D  
 Acq: 13 Nov 2020 5:49

Tgt Ion: 45 Resp: 14755  
 Ion Ratio Lower Upper  
 45 100  
 46 0.0 16.1 64.5#

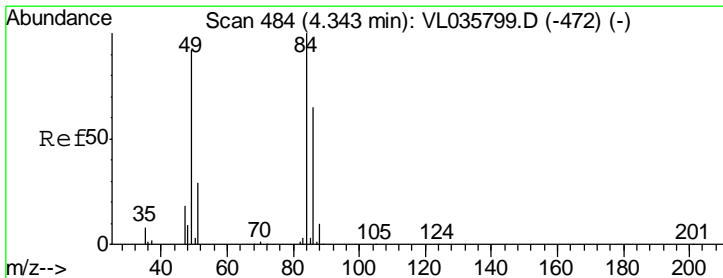
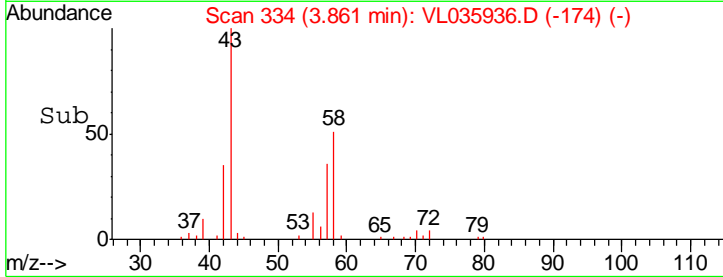
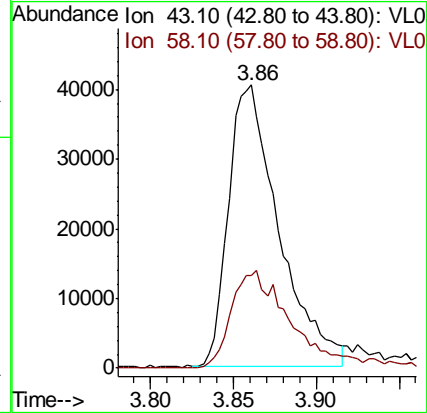
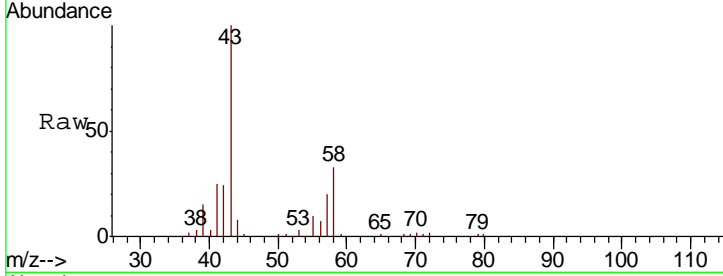




#15  
 Acetone  
 Concen: 0.751 ppbv  
 RT: 3.86 min Scan# 334  
 Delta R.T. 0.01 min  
 Lab File: VL035936.D  
 Acq: 13 Nov 2020 5:49

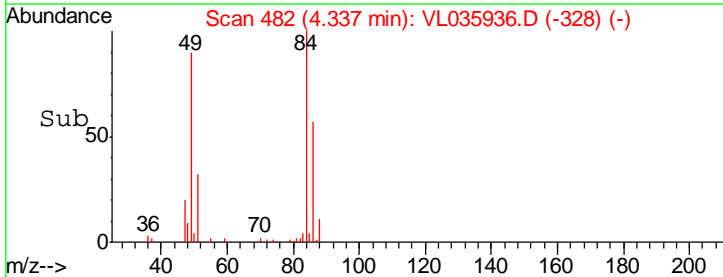
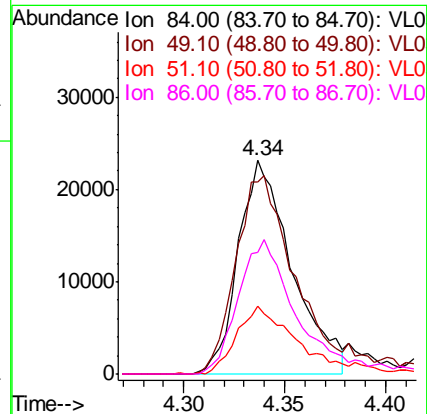
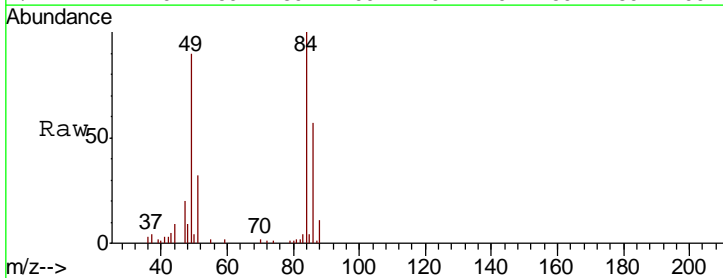
Instrument :  
 MSVOA\_L  
 ClientSampleId :

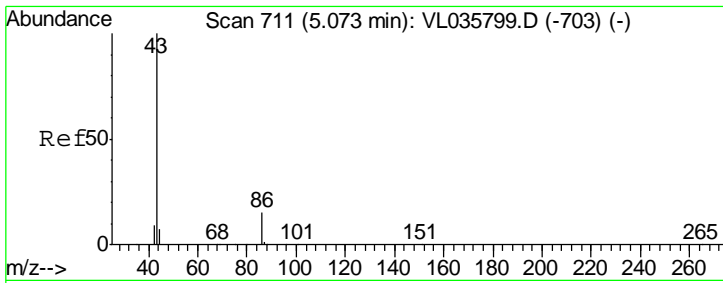
| Tgt Ion | Resp | Lower | Upper |
|---------|------|-------|-------|
| 43      | 100  |       |       |
| 58      | 41.7 | 27.5  | 41.3# |



#20  
 Methylene Chloride  
 Concen: 0.538 ppbv  
 RT: 4.34 min Scan# 482  
 Delta R.T. -0.01 min  
 Lab File: VL035936.D  
 Acq: 13 Nov 2020 5:49

| Tgt Ion | Resp | Lower | Upper |
|---------|------|-------|-------|
| 84      | 100  |       |       |
| 49      | 89.7 | 73.8  | 110.8 |
| 51      | 31.7 | 23.0  | 34.4  |
| 86      | 57.1 | 52.1  | 78.1  |

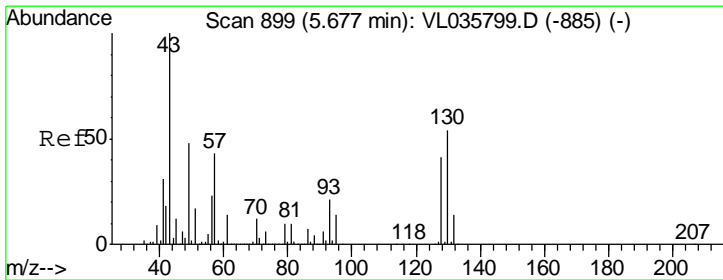
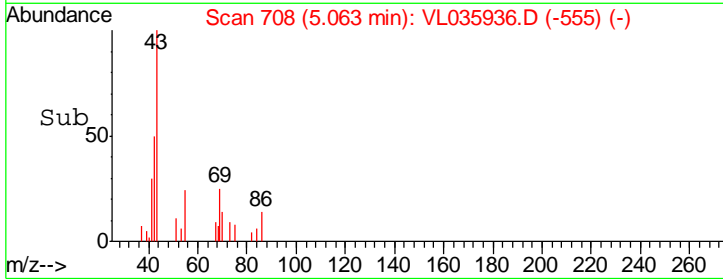
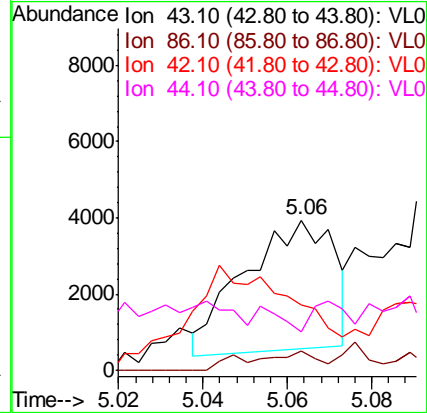
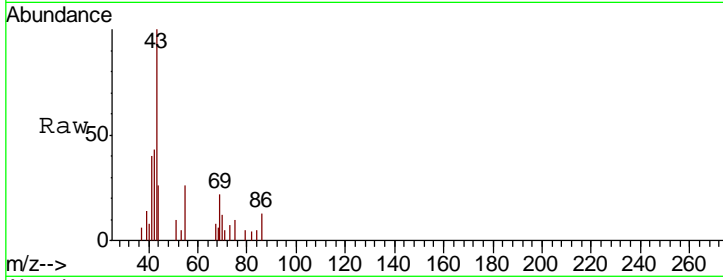




#23  
 Vinyl Acetate  
 Concen: 0.031 ppbv  
 RT: 5.06 min Scan# 708  
 Delta R.T. -0.01 min  
 Lab File: VL035936.D  
 Acq: 13 Nov 2020 5:49

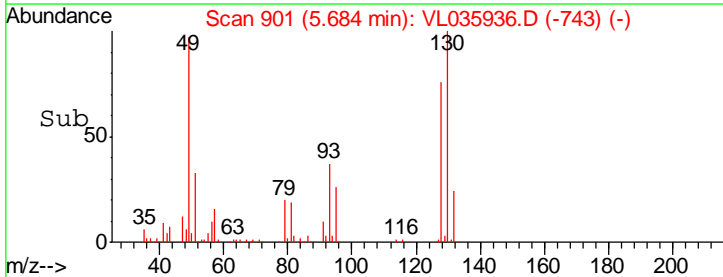
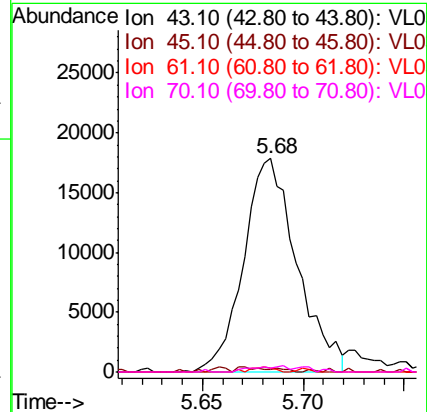
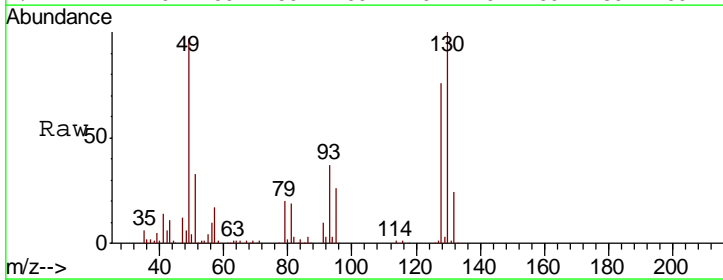
Instrument :  
 MSVOA\_L  
 ClientSampled :

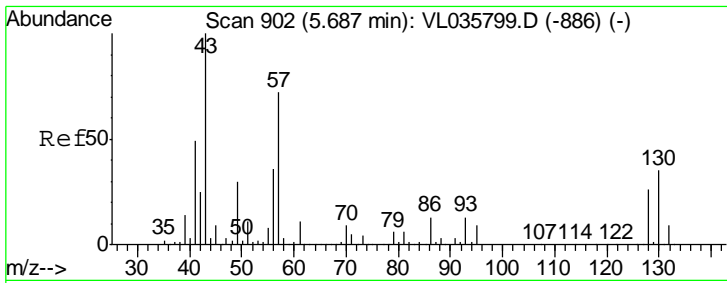
| Tgt Ion | Resp | Lower | Upper |
|---------|------|-------|-------|
| 43      | 4976 |       |       |
| 86      | 16.5 | 9.8   | 14.6# |
| 42      | 28.4 | 8.1   | 12.1# |
| 44      | 0.0  | 4.2   | 6.4#  |



#25  
 Ethyl Acetate  
 Concen: 0.147 ppbv  
 RT: 5.68 min Scan# 901  
 Delta R.T. 0.01 min  
 Lab File: VL035936.D  
 Acq: 13 Nov 2020 5:49

| Tgt Ion | Resp  | Lower | Upper |
|---------|-------|-------|-------|
| 43      | 33043 |       |       |
| 45      | 2.3   | 8.5   | 12.7# |
| 61      | 1.5   | 10.7  | 16.1# |
| 70      | 2.7   | 8.6   | 12.8# |

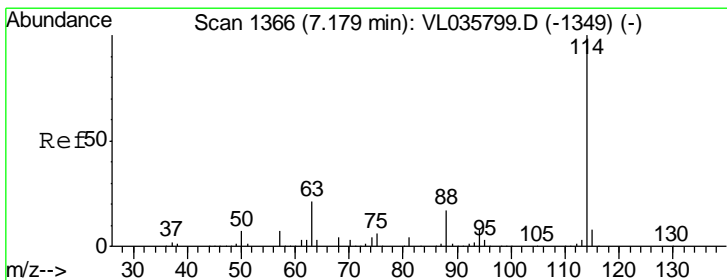
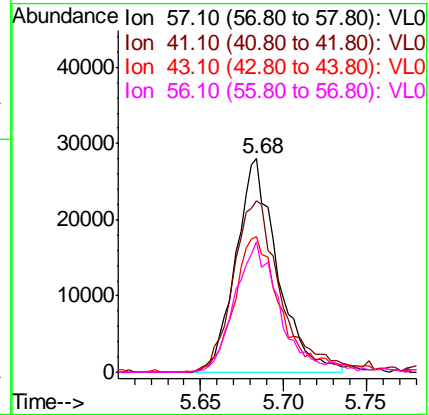
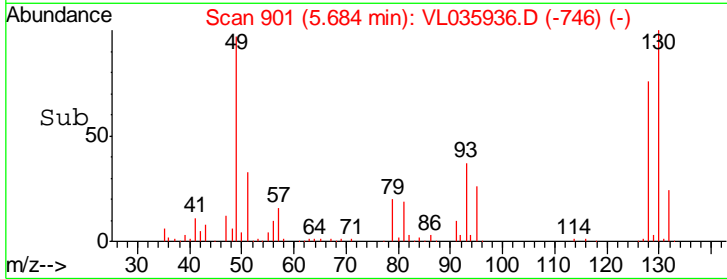
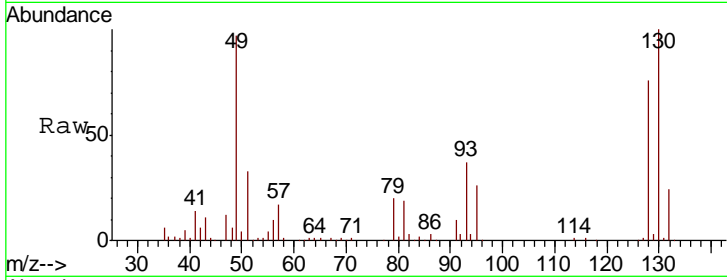




#26  
 Hexane  
 Concen: 0.393 ppbv  
 RT: 5.68 min Scan# 901  
 Delta R.T. -0.00 min  
 Lab File: VL035936.D  
 Acq: 13 Nov 2020 5:49

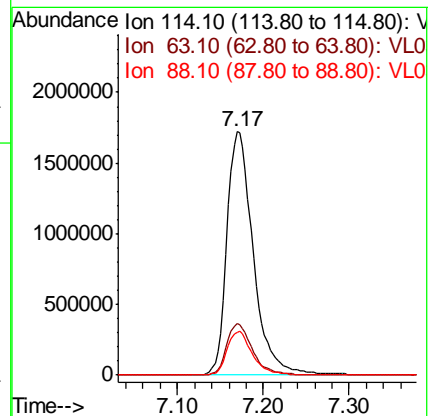
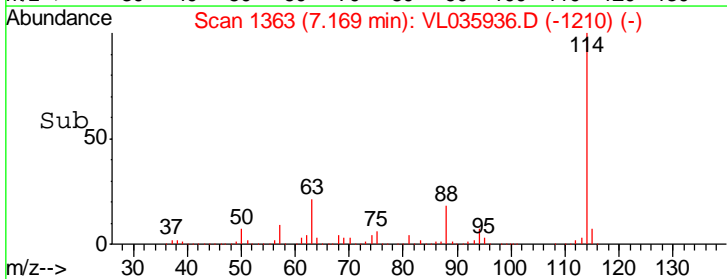
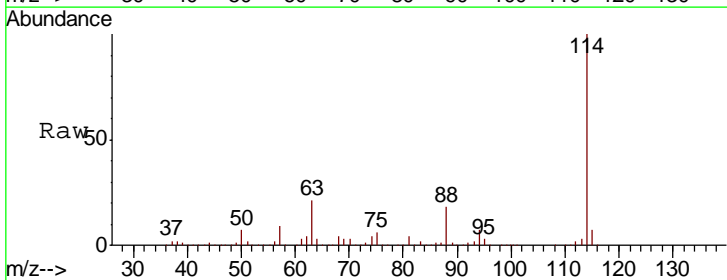
Instrument :  
 MSVOA\_L  
 ClientSampled :

| Tgt Ion | Resp | Lower | Upper  |
|---------|------|-------|--------|
| 57      | 100  |       |        |
| 41      | 94.2 | 58.9  | 88.3#  |
| 43      | 72.9 | 150.2 | 225.2# |
| 56      | 67.4 | 42.4  | 63.6#  |

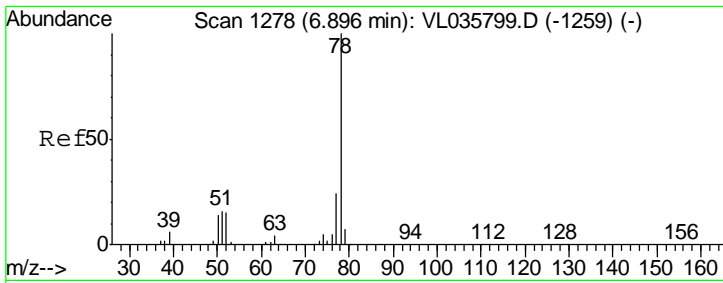


#33  
 1,4-Difluorobenzene  
 Concen: 10.000 ppbv  
 RT: 7.17 min Scan# 1363  
 Delta R.T. -0.01 min  
 Lab File: VL035936.D  
 Acq: 13 Nov 2020 5:49

| Tgt Ion | Resp | Lower | Upper |
|---------|------|-------|-------|
| 114     | 100  |       |       |
| 63      | 20.8 | 16.1  | 24.1  |
| 88      | 17.5 | 13.7  | 20.5  |



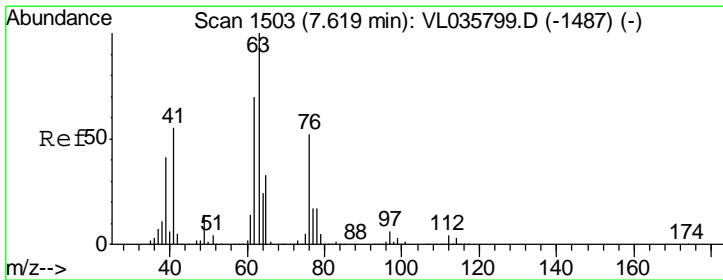
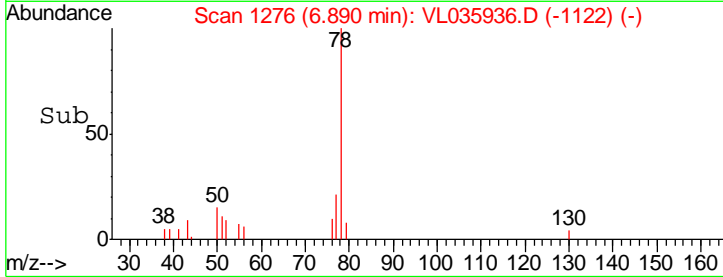
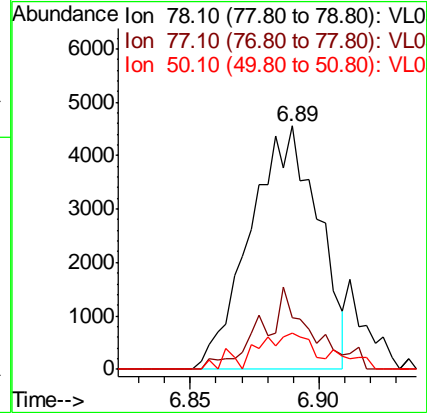
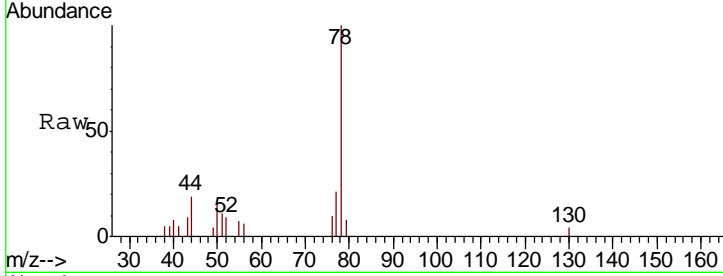




#36  
Benzene  
Concen: 0.031 ppbv  
RT: 6.89 min Scan# 1276  
Delta R.T. -0.01 min  
Lab File: VL035936.D  
Acq: 13 Nov 2020 5:49

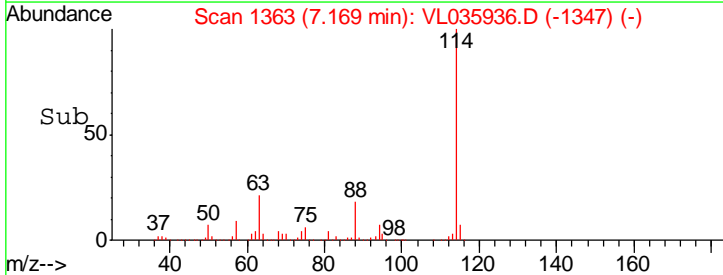
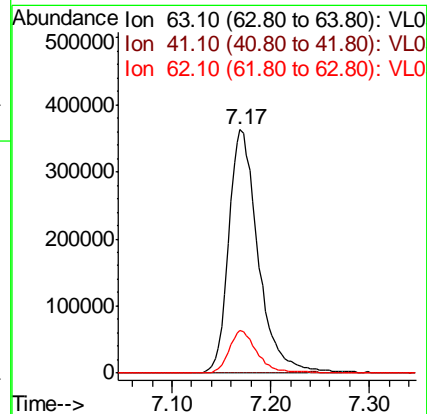
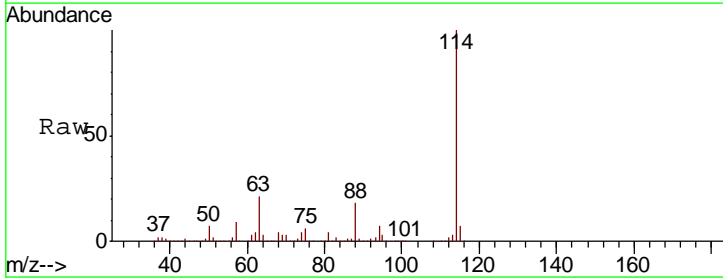
Instrument :  
MSVOA\_L  
ClientSampled :

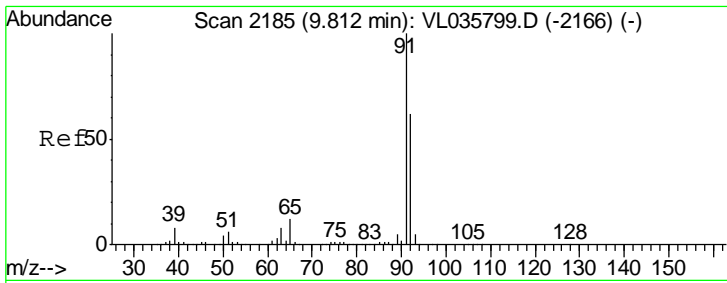
| Tgt Ion | Resp | Lower | Upper |
|---------|------|-------|-------|
| 78      | 100  |       |       |
| 77      | 22.3 | 19.3  | 28.9  |
| 50      | 15.6 | 11.4  | 17.2  |



#39  
1,2-Dichloropropane  
Concen: 8.252 ppbv  
RT: 7.17 min Scan# 1363  
Delta R.T. -0.45 min  
Lab File: VL035936.D  
Acq: 13 Nov 2020 5:49

| Tgt Ion | Resp | Lower | Upper |
|---------|------|-------|-------|
| 63      | 100  |       |       |
| 41      | 0.0  | 43.8  | 65.6# |
| 62      | 17.6 | 56.2  | 84.2# |

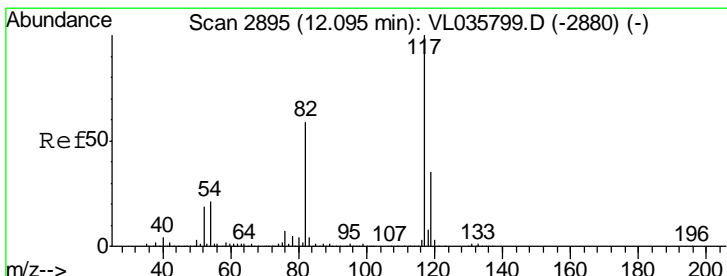
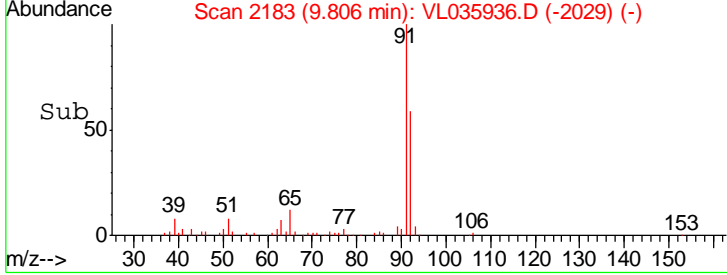
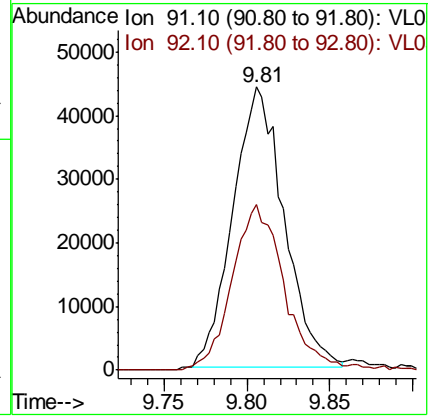
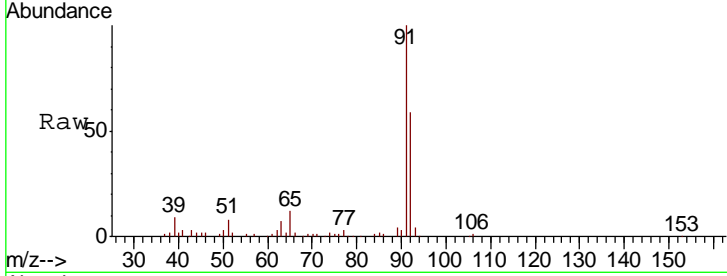




#53  
 Toluene  
 Concen: 0.286 ppbv  
 RT: 9.81 min Scan# 2183  
 Delta R.T. -0.01 min  
 Lab File: VL035936.D  
 Acq: 13 Nov 2020 5:49

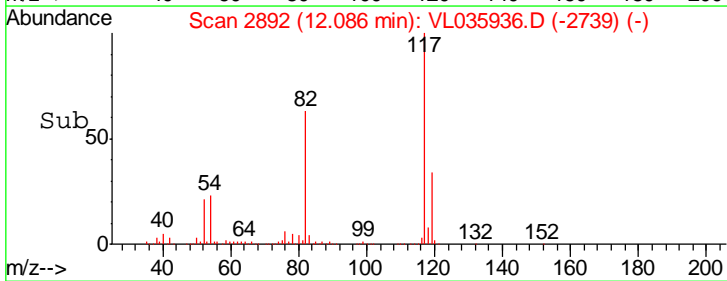
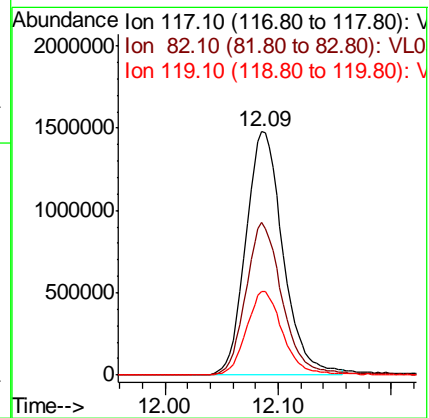
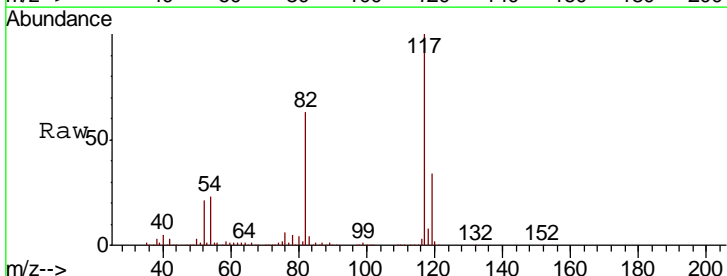
Instrument :  
 MSVOA\_L  
 ClientSampled :

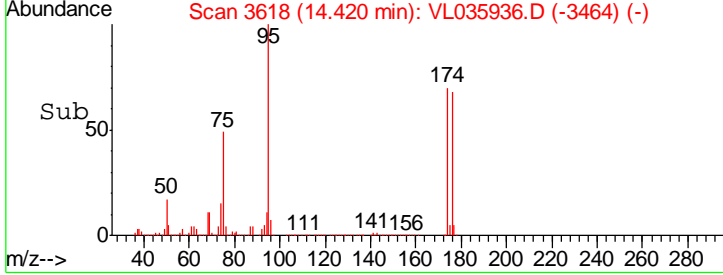
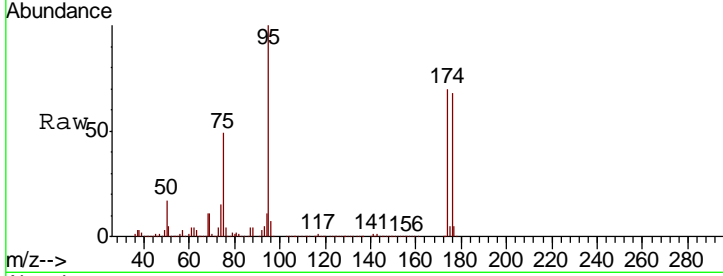
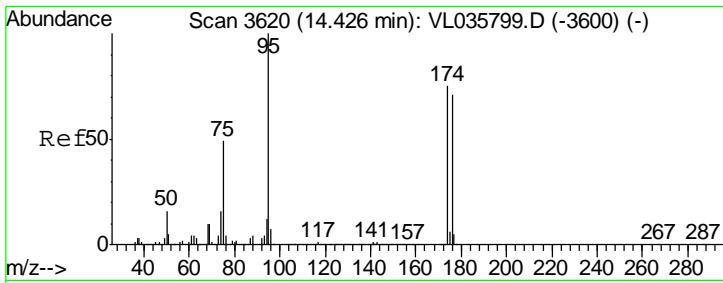
| Tgt Ion | Resp | Lower | Upper |
|---------|------|-------|-------|
| 91      | 100  |       |       |
| 92      | 60.8 | 49.8  | 74.6  |



#55  
 Chlorobenzene-d5  
 Concen: 10.000 ppbv  
 RT: 12.09 min Scan# 2892  
 Delta R.T. -0.01 min  
 Lab File: VL035936.D  
 Acq: 13 Nov 2020 5:49

| Tgt Ion | Resp | Lower | Upper |
|---------|------|-------|-------|
| 117     | 100  |       |       |
| 82      | 62.7 | 50.6  | 76.0  |
| 119     | 34.4 | 52.6  | 78.8# |





#68  
 1-Bromo-4-Fluorobenzene  
 Concen: 10.393 ppbv  
 RT: 14.42 min Scan# 3618  
 Delta R.T. -0.01 min  
 Lab File: VL035936.D  
 Acq: 13 Nov 2020 5:49

Instrument :  
 MSVOA\_L  
 ClientSampled :

Tot Ion: 95 Resp: 2500185

| Ion | Ratio | Lower | Upper |
|-----|-------|-------|-------|
| 95  | 100   |       |       |
| 174 | 72.1  | 59.8  | 89.6  |
| 175 | 5.0   | 4.3   | 6.5   |

