

Data File : VL032769.D
Acq On : 14 Nov 2018 21:45
Operator : SY/AP
Sample : QC110818 CAN 10607
Misc : 400ml/MSVOA_L
ALS Vial : 1 Sample Multiplier: 1

Instrument :
MSVOA_L
ClientSampleId :
QC110818 CAN 10607

Quant Time: Nov 15 04:59:20 2018
Quant Method : Z:\VOASRV\HPCHEM1\MSVOA_L\METHODS\VL111418AIR.M
Quant Title : AIR ANALYSIS BY METHOD TO-15 Instrument: MSVOA_LWed Nov 14 07:00:23 2018
QLast Update : Wed Nov 14 07:00:23 2018
Response via : Initial Calibration

| Internal Standards | R.T. | QIon | Response | Conc | Units | Dev(Min) |
|-------------------------|-------|------|----------|-------|-------|----------|
| 1) Bromochloromethane | 5.77 | 49 | 1379909 | 10.00 | ppbv | 0.00 |
| 33) 1,4-Difluorobenzene | 7.30 | 114 | 3411845 | 10.00 | ppbv | 0.00 |
| 55) Chlorobenzene-d5 | 12.24 | 117 | 3047699 | 10.00 | ppbv | 0.00 |

System Monitoring Compounds
68) 1-Bromo-4-Fluorobenzene 14.58 95 2288927 10.04 ppbv 0.00
Spiked Amount 10.000 Range 65 - 135 Recovery = 100.40%

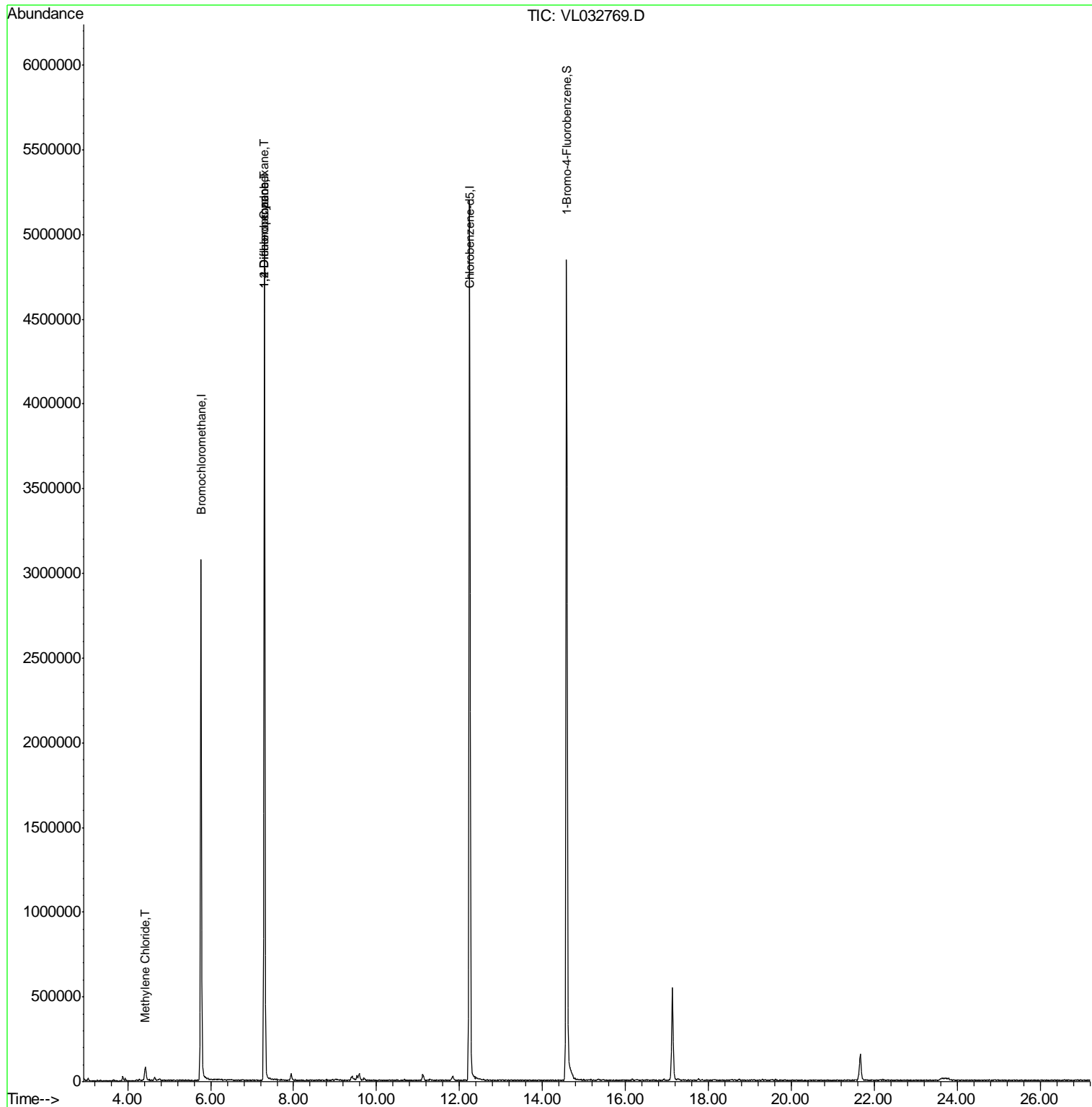
| Target Compounds | R.T. | QIon | Response | Conc | Units | Qvalue |
|-------------------------|------|------|----------|-------|--------|--------|
| 20) Methylene Chloride | 4.42 | 84 | 22103 | 0.339 | ppbv | 96 |
| 30) Cyclohexane | 7.28 | 84 | 6732 | 0.059 | ppbv # | 1 |
| 39) 1,2-Dichloropropane | 7.29 | 63 | 891768 | 8.615 | ppbv # | 23 |

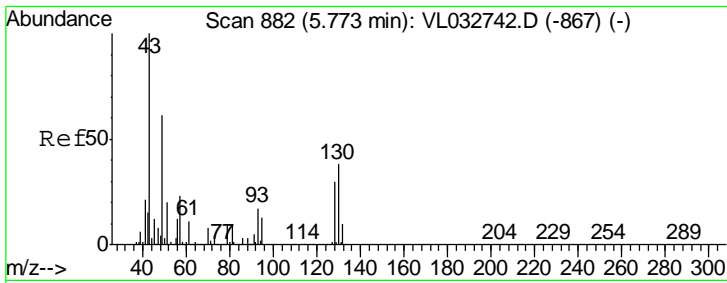
(#) = qualifier out of range (m) = manual integration (+) = signals summed

Data File : VL032769.D
Acq On : 14 Nov 2018 21:45
Operator : SY/AP
Sample : QC110818 CAN 10607
Misc : 400ml/MSVOA_L
ALS Vial : 1 Sample Multiplier: 1

Instrument :
MSVOA_L
ClientSampleId :
QC110818 CAN 10607

Quant Time: Nov 15 04:59:20 2018
Quant Method : Z:\VOASRV\HPCHEM1\MSVOA_L\METHODS\VL111418AIR.M
Quant Title : AIR ANALYSIS BY METHOD TO-15 Instrument: MSVOA_L Wed Nov 14 07:00:23 2018
QLast Update : Wed Nov 14 07:00:23 2018
Response via : Initial Calibration

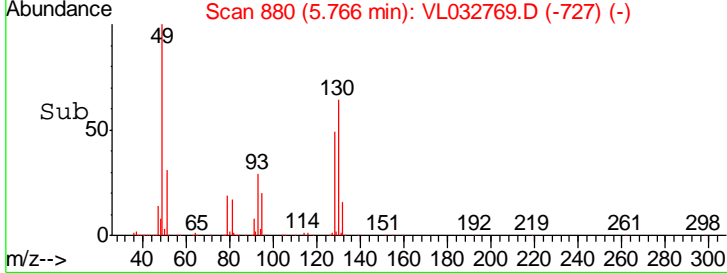
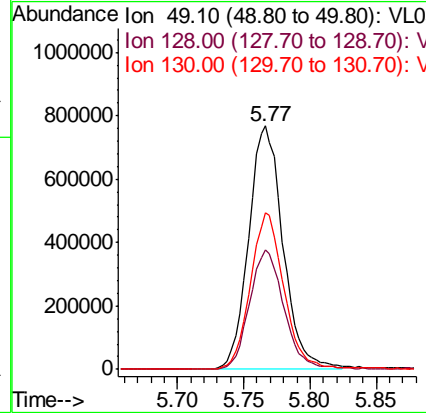
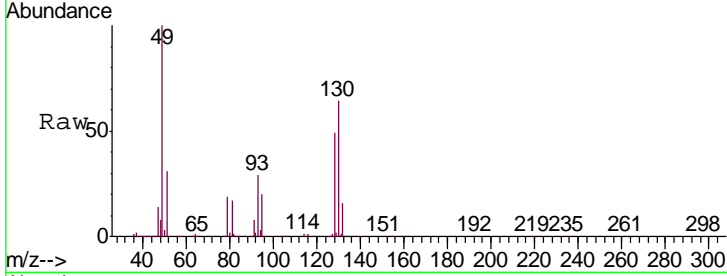




#1
 Bromochloromethane
 Concen: 10.000 ppbv
 RT: 5.77 min Scan# 880
 Delta R.T. -0.01 min
 Lab File: VL032769.D
 Acq: 14 Nov 2018 21:45

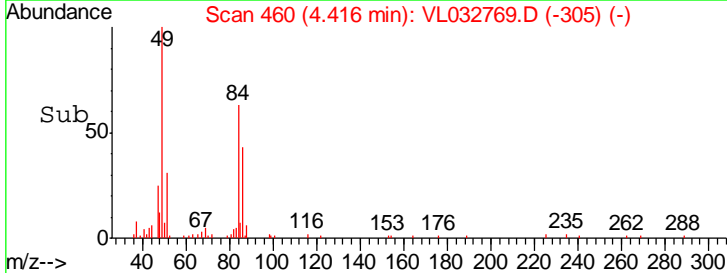
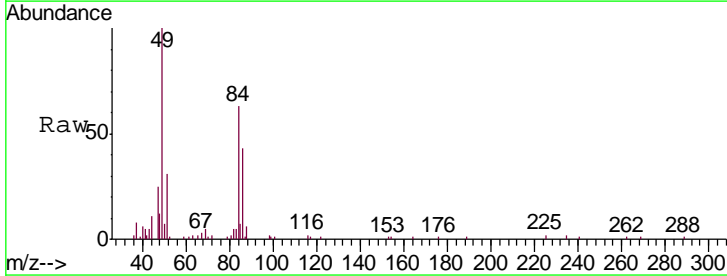
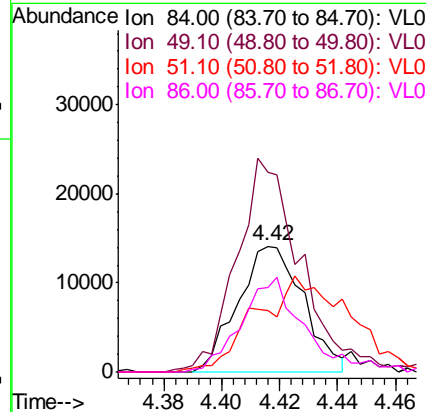
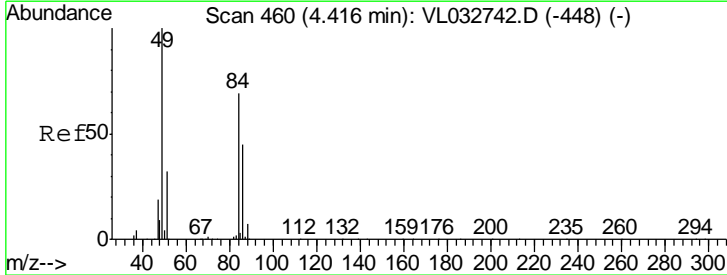
Instrument :
 MSVOA_L
 ClientSampleId :
 QC110818 CAN 10607

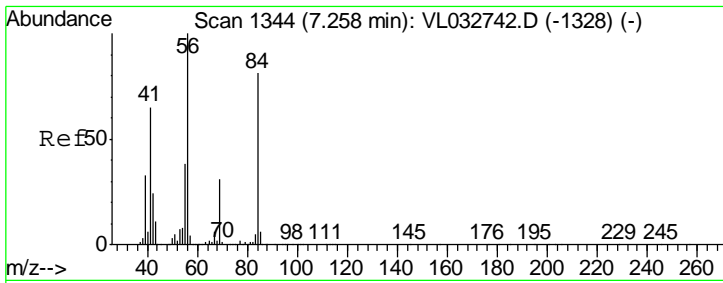
| Tgt Ion | Resp | Lower | Upper |
|---------|------|-------|-------|
| 49 | 100 | | |
| 128 | 49.6 | 24.9 | 74.6 |
| 130 | 64.3 | 31.4 | 94.2 |



#20
 Methylene Chloride
 Concen: 0.339 ppbv
 RT: 4.42 min Scan# 460
 Delta R.T. -0.00 min
 Lab File: VL032769.D
 Acq: 14 Nov 2018 21:45

| Tgt Ion | Resp | Lower | Upper |
|---------|-------|-------|-------|
| 84 | 100 | | |
| 49 | 153.2 | 115.8 | 173.6 |
| 51 | 45.6 | 36.9 | 55.3 |
| 86 | 65.1 | 52.4 | 78.6 |

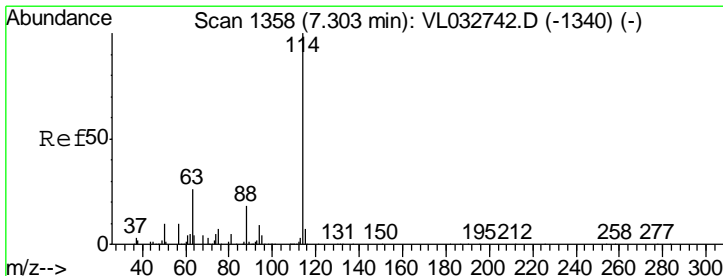
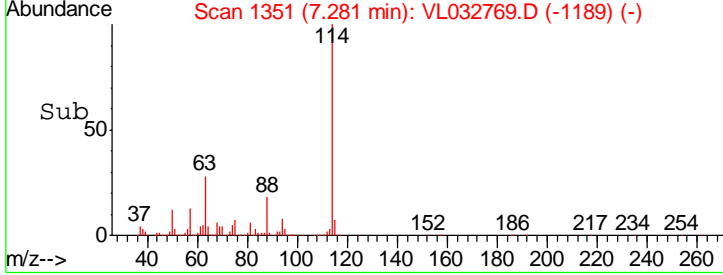
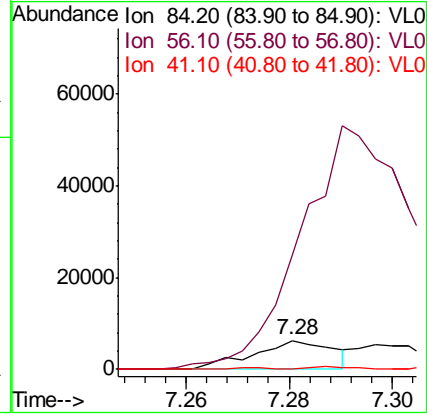
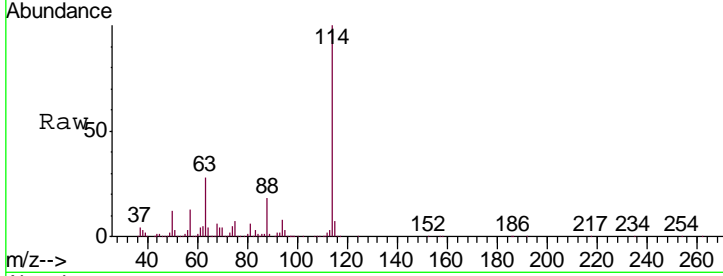




#30
 Cyclohexane
 Concen: 0.059 ppbv
 RT: 7.28 min Scan# 1351
 Delta R.T. 0.02 min
 Lab File: VL032769.D
 Acq: 14 Nov 2018 21:45

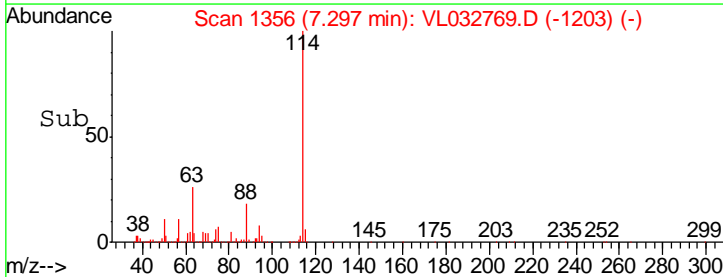
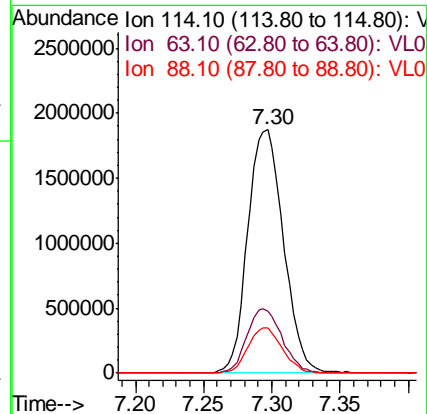
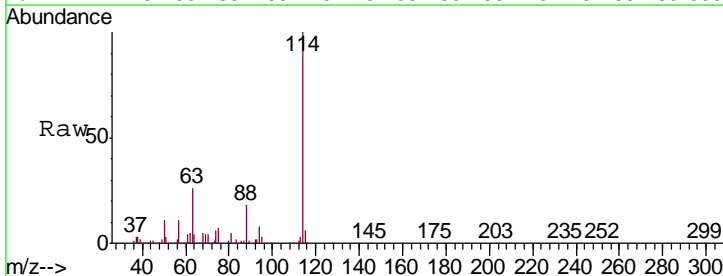
Instrument :
 MSVOA_L
 ClientSampleId :
 QC110818 CAN 10607

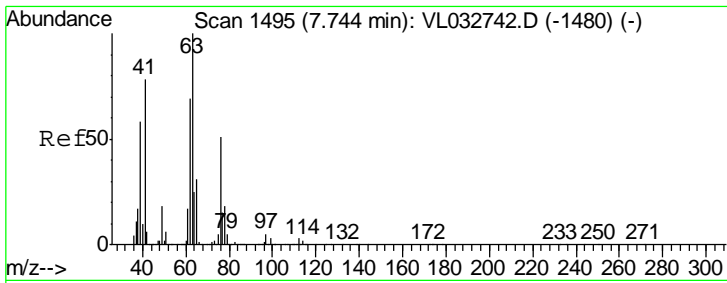
| Tgt Ion | Resp | Lower | Upper |
|---------|------|-------|--------|
| 84 | 100 | | |
| 56 | 0.0 | 105.0 | 157.4# |
| 41 | 2.3 | 65.3 | 97.9# |



#33
 1,4-Difluorobenzene
 Concen: 10.000 ppbv
 RT: 7.30 min Scan# 1356
 Delta R.T. -0.01 min
 Lab File: VL032769.D
 Acq: 14 Nov 2018 21:45

| Tgt Ion | Resp | Lower | Upper |
|---------|------|-------|-------|
| 114 | 100 | | |
| 63 | 26.3 | 20.9 | 31.3 |
| 88 | 18.0 | 14.4 | 21.6 |

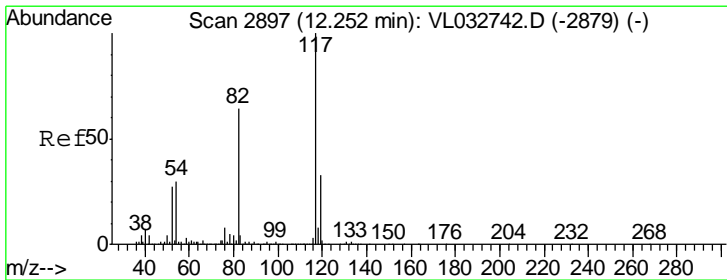
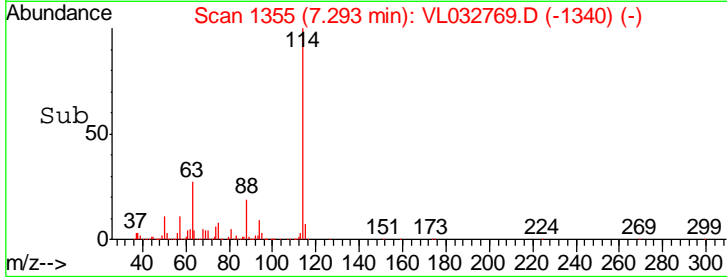
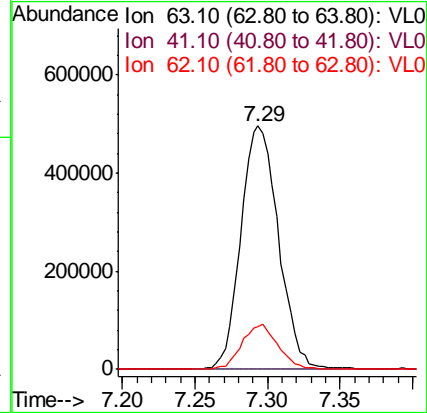
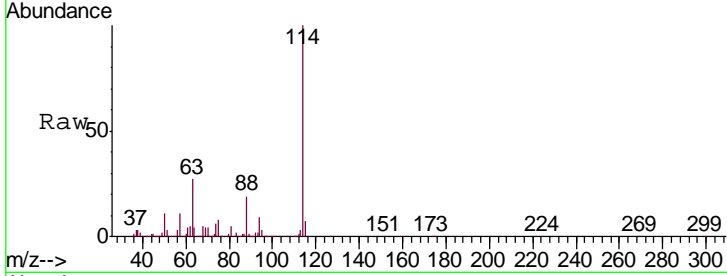




#39
 1,2-Dichloropropane
 Concen: 8.615 ppbv
 RT: 7.29 min Scan# 1355
 Delta R.T. -0.45 min
 Lab File: VL032769.D
 Acq: 14 Nov 2018 21:45

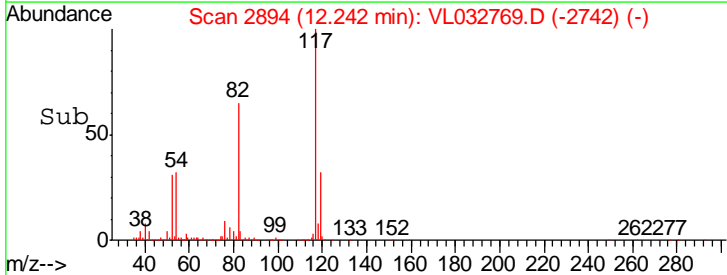
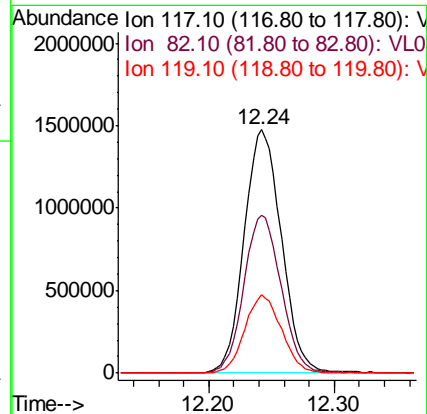
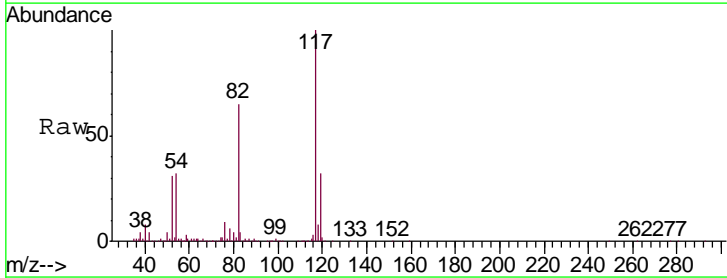
Instrument :
 MSVOA_L
 ClientSampled :
 QC110818 CAN 10607

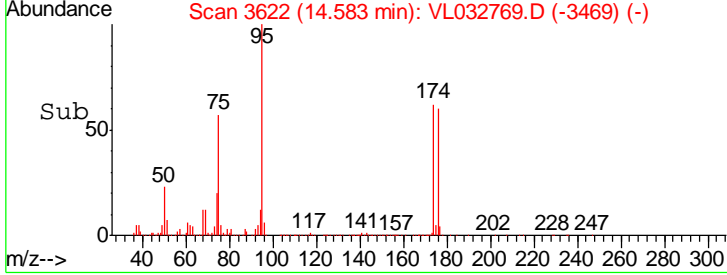
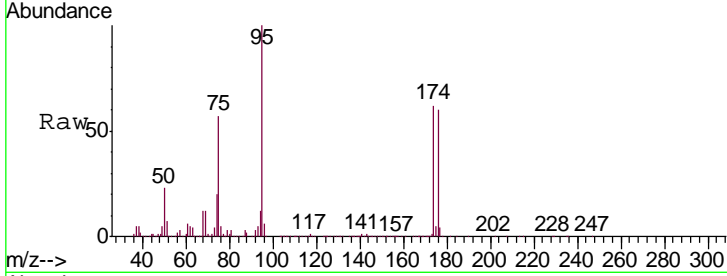
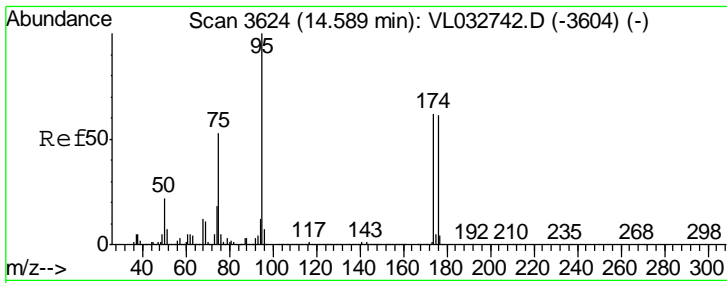
| Tgt Ion | Resp | Lower | Upper |
|---------|------|-------|-------|
| 63 | 100 | | |
| 41 | 0.1 | 62.0 | 93.0# |
| 62 | 17.5 | 55.4 | 83.2# |



#55
 Chlorobenzene-d5
 Concen: 10.000 ppbv
 RT: 12.24 min Scan# 2894
 Delta R.T. -0.01 min
 Lab File: VL032769.D
 Acq: 14 Nov 2018 21:45

| Tgt Ion | Resp | Lower | Upper |
|---------|------|-------|-------|
| 117 | 100 | | |
| 82 | 65.3 | 51.0 | 76.6 |
| 119 | 32.0 | 28.0 | 42.0 |





#68
 1-Bromo-4-Fluorobenzene
 Concen: 10.041 ppbv
 RT: 14.58 min Scan# 3622
 Delta R.T. -0.01 min
 Lab File: VL032769.D
 Acq: 14 Nov 2018 21:45

Instrument : MSVOA_L
 ClientSampleId : QC110818 CAN 10607

Tgt Ion: 95 Resp: 2288927

| Ion | Ratio | Lower | Upper |
|-----|-------|-------|-------|
| 95 | 100 | | |
| 174 | 64.0 | 50.7 | 76.1 |
| 175 | 4.7 | 3.8 | 5.6 |

