

Data Path : Z:\VOASRV\HPCHEM1\MSVOA L\DATA\VL111821\
 Data File : VL038069.D
 Acq On : 19 Nov 2021 1:03
 Operator : SY/AP
 Sample : M4704-04
 Misc : 400mL/MSVOA L
 ALS Vial : 1 Sample Multiplier: 1

Instrument :
 MSVOA_L
 ClientSampleId :
 TRANS-SHOP

Quant Time: Nov 19 07:32:33 2021
 Quant Method : Z:\VOASRV\HPCHEM1\MSVOA L\METHODS\VL111821AIR.M
 Quant Title : AIR ANALYSIS BY METHOD TO-15 Instrument: MSVOA_LThu Nov 18 13:16:09 2021
 QLast Update : Thu Nov 18 13:16:09 2021
 Response via : Initial Calibration

Internal Standards	R.T.	QIon	Response	Conc	Units	Dev(Min)
1) Bromochloromethane	5.67	49	826060	10.00	ppbv	0.00
33) 1,4-Difluorobenzene	7.18	114	2383378	10.00	ppbv	0.00
55) Chlorobenzene-d5	12.08	117	1991477	10.00	ppbv	0.00

System Monitoring Compounds

68) 1-Bromo-4-Fluorobenzene	14.41	95	1449133	10.09	ppbv	0.00
Spiked Amount	10.000	Range	65 - 135	Recovery	=	100.90%

Target Compounds	R.T.	QIon	Response	Conc	Units	Ovalue
2) Dichlorodifluoromethane	3.05	85	29696	0.218	ppbv	93
3) Chlorodifluoromethane	3.00	51	30593	0.176	ppbv	93
4) Chloromethane	3.15	50	25639	0.434	ppbv	97
9) Propene	3.02	41	2476412	38.761	ppbv	97
10) Heptane	8.12	43	86084	0.545	ppbv	97
11) Trichlorofluoromethane	3.96	101	28060	0.216	ppbv	85
12) 1,1,2-Trichlorotrifluoroet	4.48	101	2844	0.031	ppbv #	13
13) Ethanol	3.61	45	442055	71.599	ppbv	89
15) Acetone	3.85	43	9436596	131.758	ppbv	92
16) 1,3-Butadiene	3.31	39	1294759	23.172	ppbv #	23
17) tert-Butyl alcohol	4.30	59	132322	1.523	ppbv	99
19) Isopropyl Alcohol	3.97	45	130088	2.514	ppbv #	95
20) Methylene Chloride	4.35	84	403939	10.069	ppbv	95
21) Allyl Chloride	4.41	41	3833	0.058	ppbv #	19
23) Vinyl Acetate	5.06	43	32563	0.314	ppbv #	1
25) Ethyl Acetate	5.69	43	288111	1.210	ppbv #	78
26) Hexane	5.69	57	405599	3.535	ppbv #	43
27) Carbon Disulfide	4.56	76	77264	0.752	ppbv #	79
29) Chloroform	5.76	83	16520	0.098	ppbv	94
30) Cyclohexane	7.13	84	26877	0.258	ppbv #	73
34) 2-Butanone	5.24	43	408933	4.255	ppbv	97
35) Carbon Tetrachloride	7.02	117	5539	0.033	ppbv #	71
36) Benzene	6.89	78	110451	0.465	ppbv #	92
39) 1,2-Dichloropropane	7.18	63	566720	6.214	ppbv #	26
41) Tetrahydrofuran	5.98	42	2484	0.042	ppbv #	34
43) Methyl Methacrylate	8.04	69	5276	0.065	ppbv #	1
44) 2,2,4-Trimethylpentane	7.87	57	147346	0.370	ppbv #	79
50) 4-Methyl-2-Pentanone	8.75	43	6516	0.045	ppbv #	38
51) 2-Hexanone	10.14	43	52597	0.766	ppbv #	96
53) Toluene	9.80	91	695601	2.543	ppbv	98
58) Ethyl Benzene	12.71	91	132953	0.404	ppbv	100
59) m/p-Xylene	12.97	91	195851	0.707	ppbv #	29
60) o-Xylene	13.69	91	120651	0.469	ppbv	100
61) Styrene	13.52	104	3850	0.028	ppbv #	28
62) Isopropylbenzene	14.66	105	10345	0.028	ppbv	92
64) n-propylbenzene	15.55	120	5279	0.057	ppbv #	1
72) 4-Ethyltoluene	15.83	105	10221	0.034	ppbv #	1
73) 1,3,5-Trimethylbenzene	15.99	105	21782	0.080	ppbv	99
74) 1,2,4-Trimethylbenzene	16.76	105	104653	0.373	ppbv #	67

Data Path : Z:\VOASRV\HPCHEM1\MSVOA L\DATA\VL111821\
Data File : VL038069.D
Acq On : 19 Nov 2021 1:03
Operator : SY/AP
Sample : M4704-04
Misc : 400mL/MSVOA L
ALS Vial : 1 Sample Multiplier: 1

Instrument :
MSVOA_L
ClientSampleId :
TRANS-SHOP

Quant Time: Nov 19 07:32:33 2021
Quant Method : Z:\VOASRV\HPCHEM1\MSVOA L\METHODS\VL111821AIR.M
Quant Title : AIR ANALYSIS BY METHOD TO-15 Instrument: MSVOA_LThu Nov 18 13:16:09 2021
QLast Update : Thu Nov 18 13:16:09 2021
Response via : Initial Calibration

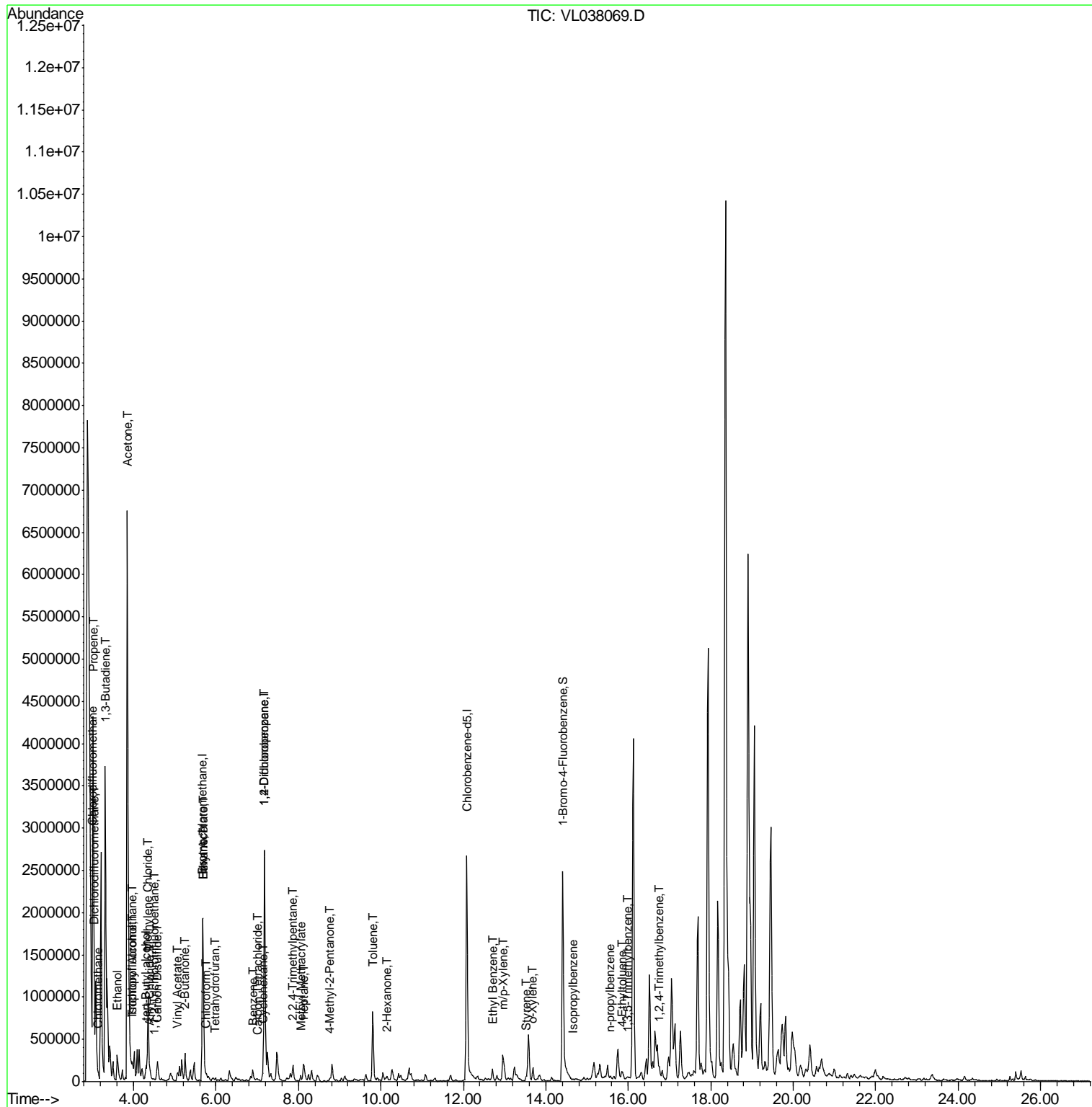
Internal Standards	R.T.	QIon	Response	Conc	Units	Dev(Min)
--------------------	------	------	----------	------	-------	----------

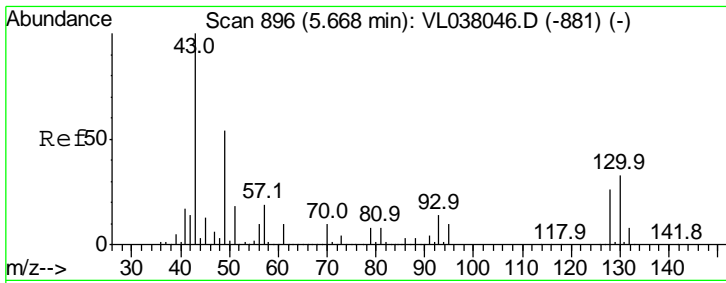
(#) = qualifier out of range (m) = manual integration (+) = signals summed

Data Path : Z:\VOASRV\HPCHEM1\MSVOA L\DATA\VL111821\
 Data File : VL038069.D
 Acq On : 19 Nov 2021 1:03
 Operator : SY/AP
 Sample : M4704-04
 Misc : 400mL/MSVOA L
 ALS Vial : 1 Sample Multiplier: 1

Instrument :
 MSVOA_L
 ClientSampleId :
 TRANS-SHOP

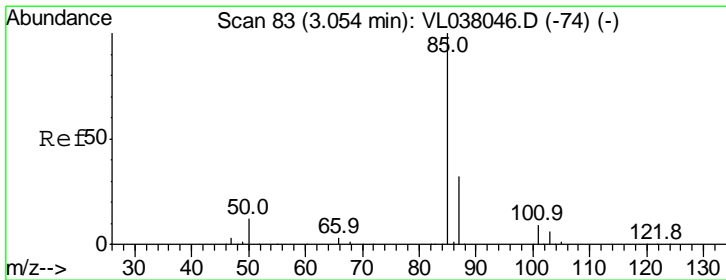
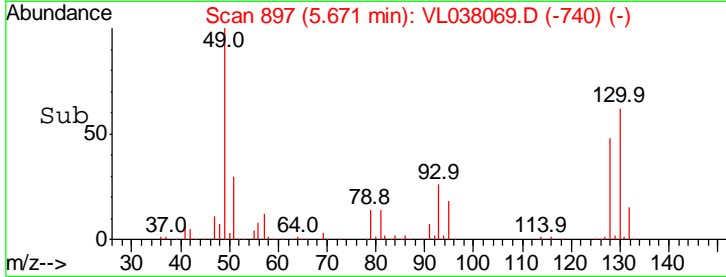
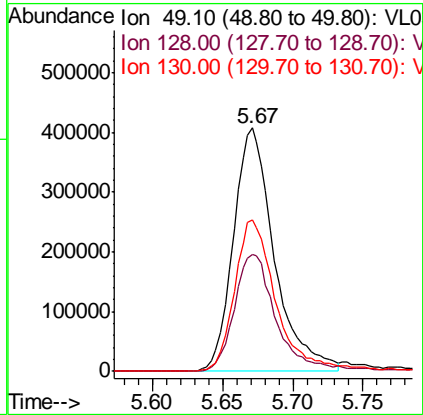
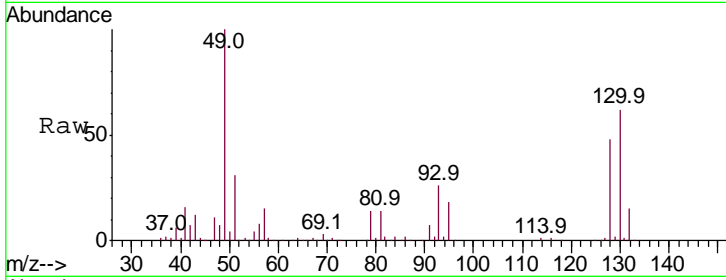
Quant Time: Nov 19 07:32:33 2021
 Quant Method : Z:\VOASRV\HPCHEM1\MSVOA L\METHODS\VL111821AIR.M
 Quant Title : AIR ANALYSIS BY METHOD TO-15 Instrument: MSVOA_L Thu Nov 18 13:16:09 2021
 QLast Update : Thu Nov 18 13:16:09 2021
 Response via : Initial Calibration





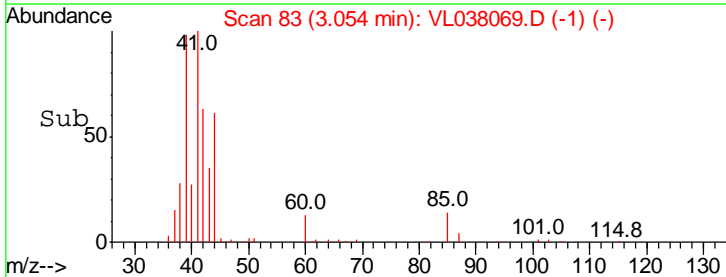
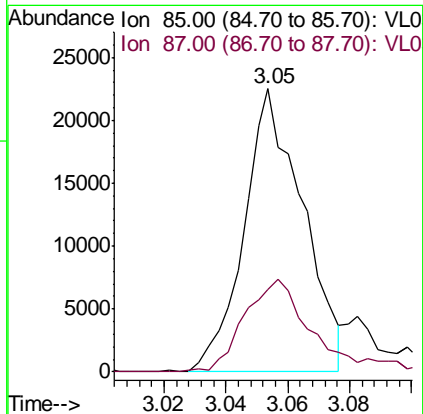
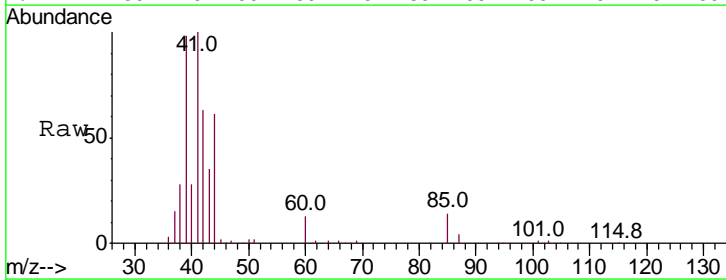
#1
 Bromochloromethane
 Concen: 10.000 ppbv
 RT: 5.67 Instrument : MSVOA_L
 Delta R.T. ClientSampleId :
 Lab File: TRANS-SHOP
 Acq: 19 Nov 2021 1:03

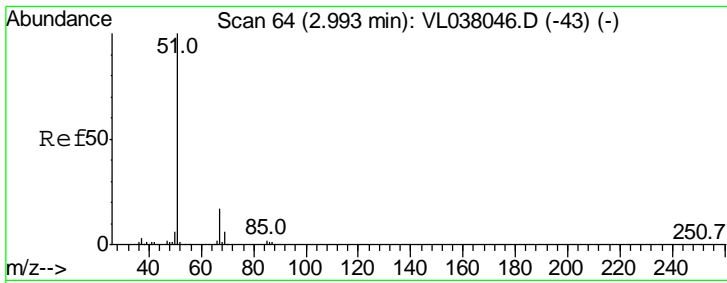
Tgt Ion	Resp	Lower	Upper
49	100		
128	50.5	26.5	79.5
130	64.4	32.5	97.4



#2
 Dichlorodifluoromethane
 Concen: 0.218 ppbv
 RT: 3.05 min Scan# 83
 Delta R.T. 0.00 min
 Lab File: VL038069.D
 Acq: 19 Nov 2021 1:03

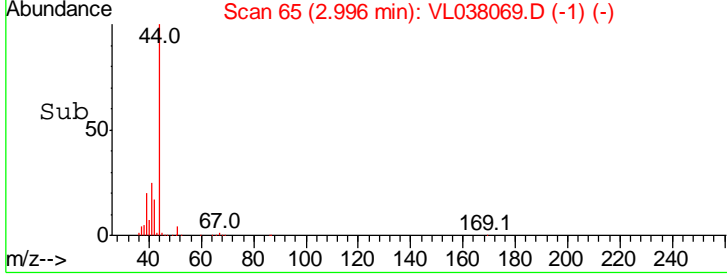
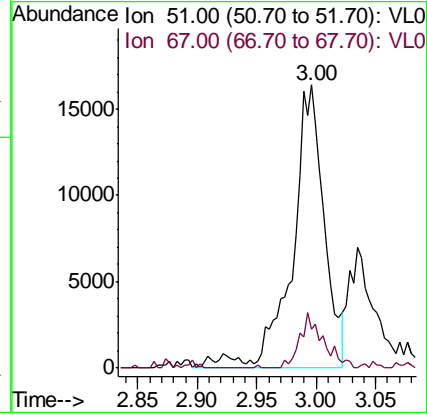
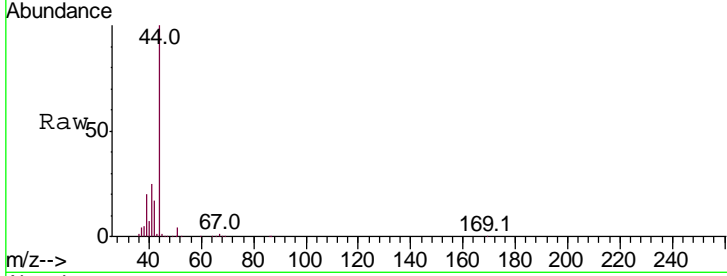
Tgt Ion	Resp	Lower	Upper
85	100		
87	28.3	25.8	38.6





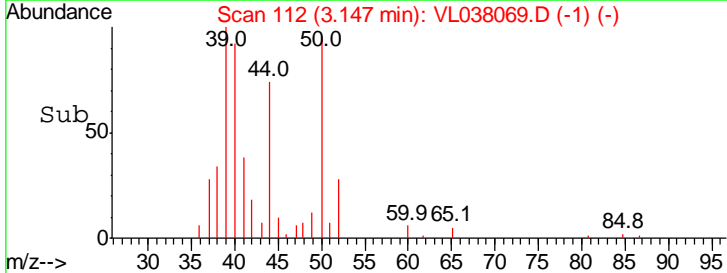
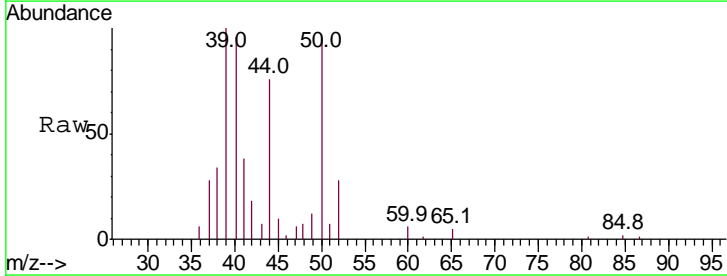
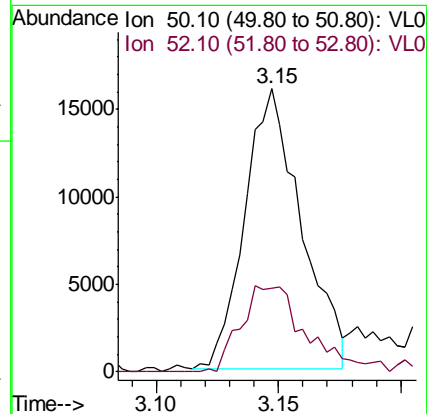
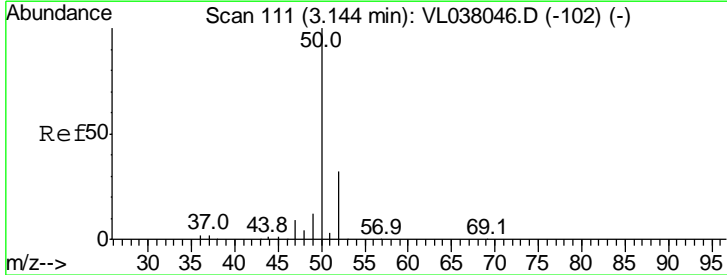
#3
 Chlorodifluoromethane
 Concen: 0.176 ppbv
 RT: 3.00
 Delta R.T. MSVOA_L
 Lab File: ClientSampleId :
 Acq: 19 Nov 2021 1:03

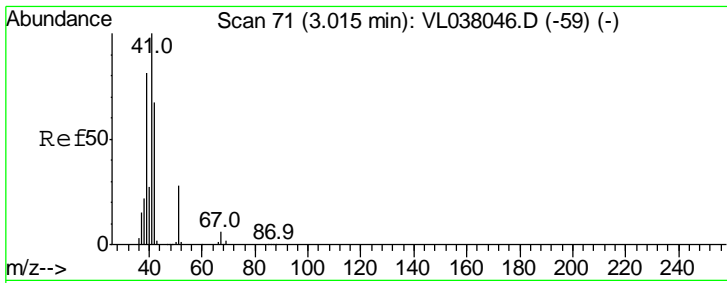
Tgt Ion	Resp	Lower	Upper
51	100		
67	14.2	13.8	20.8



#4
 Chloromethane
 Concen: 0.434 ppbv
 RT: 3.15 min Scan# 112
 Delta R.T. 0.00 min
 Lab File: VL038069.D
 Acq: 19 Nov 2021 1:03

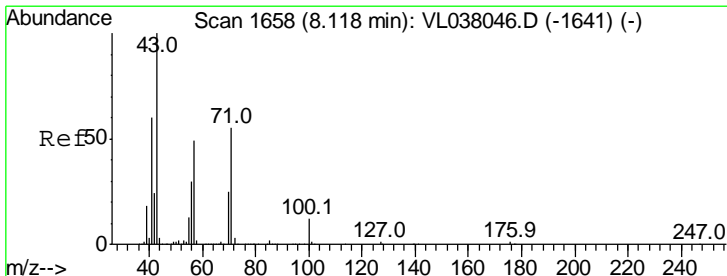
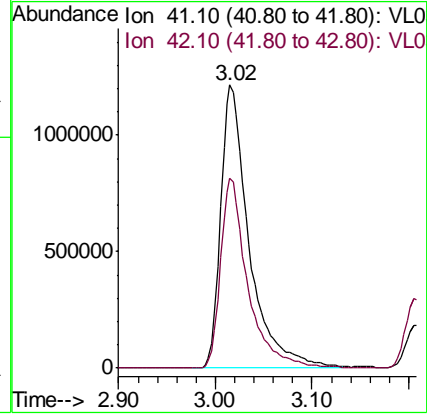
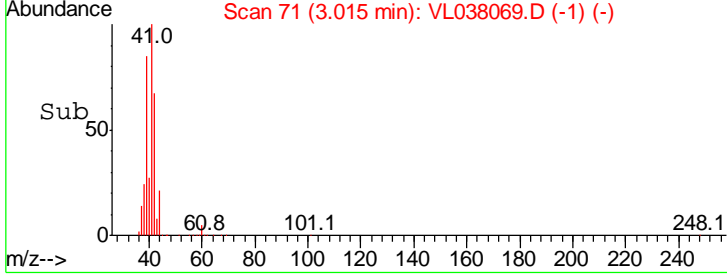
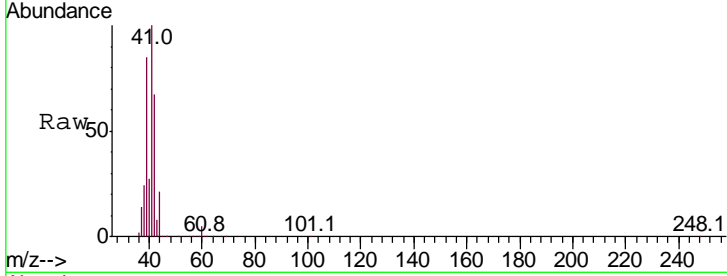
Tgt Ion	Resp	Lower	Upper
50	100		
52	29.9	25.4	38.0





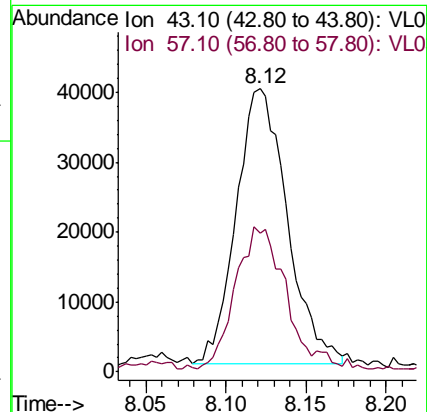
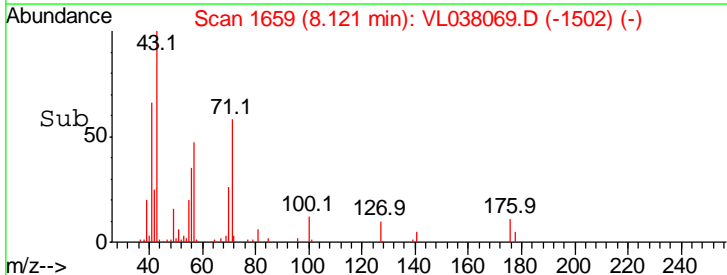
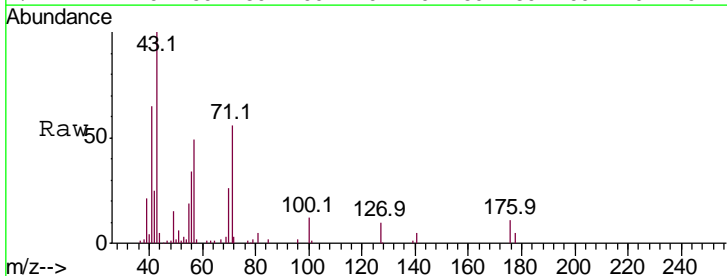
#9
 Propene
 Concen: 38.761 ppbv
 RT: 3.02
 Delta R.T. MSVOA_L
 Lab File: ClientSampled :
 TRANS-SHOP
 Acq: 19 Nov 2021 1:03

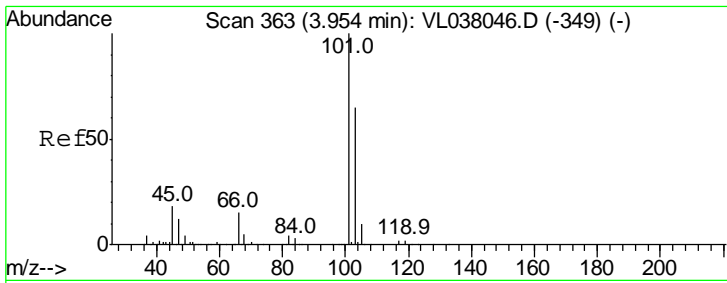
Tgt Ion: 41 Resp: 2476412
 Ion Ratio Lower Upper
 41 100
 42 64.6 53.8 80.8



#10
 Heptane
 Concen: 0.545 ppbv
 RT: 8.12 min Scan# 1659
 Delta R.T. 0.00 min
 Lab File: VL038069.D
 Acq: 19 Nov 2021 1:03

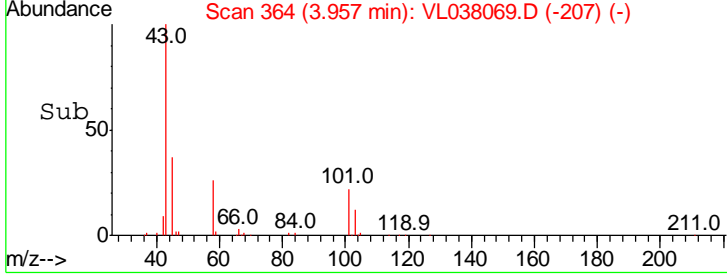
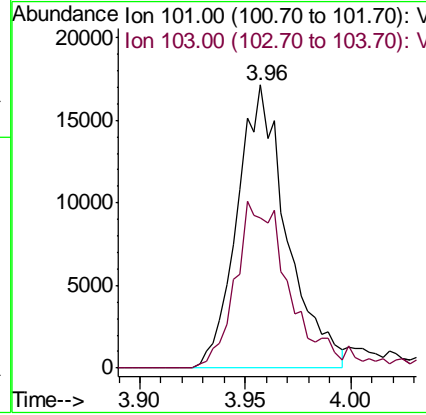
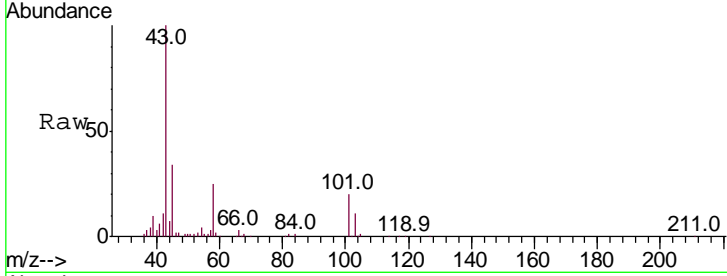
Tgt Ion: 43 Resp: 86084
 Ion Ratio Lower Upper
 43 100
 57 52.6 40.4 60.6





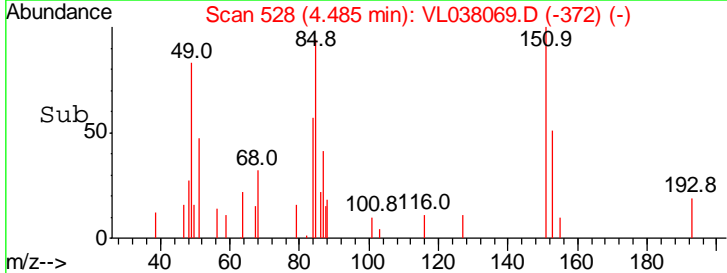
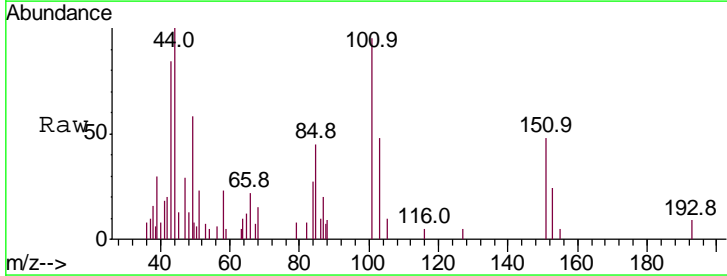
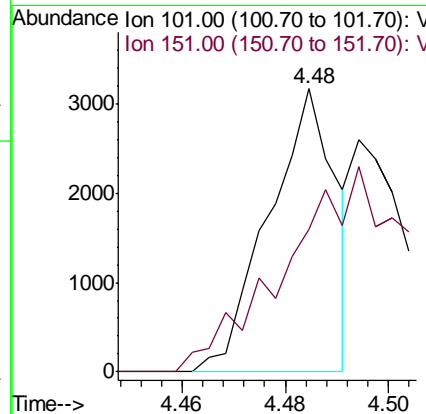
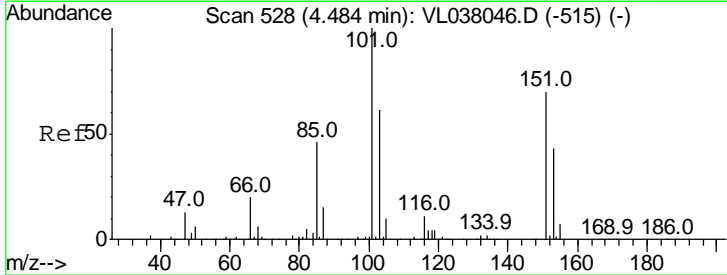
#11
 Trichlorofluoromethane
 Concen: 0.216 ppbv
 RT: 3.96
 Instrument : MSVOA_L
 Delta R.T. :
 Lab File: ClientSampleId :
 TRANS-SHOP
 Acq: 19 Nov 2021 1:03

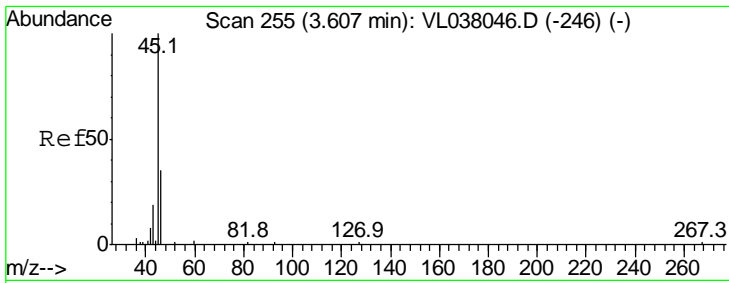
Tgt Ion:101 Resp: 28060
 Ion Ratio Lower Upper
 101 100
 103 53.2 51.8 77.6



#12
 1,1,2-Trichlorotrifluoroethane
 Concen: 0.031 ppbv
 RT: 4.48 min Scan# 528
 Delta R.T. 0.00 min
 Lab File: VL038069.D
 Acq: 19 Nov 2021 1:03

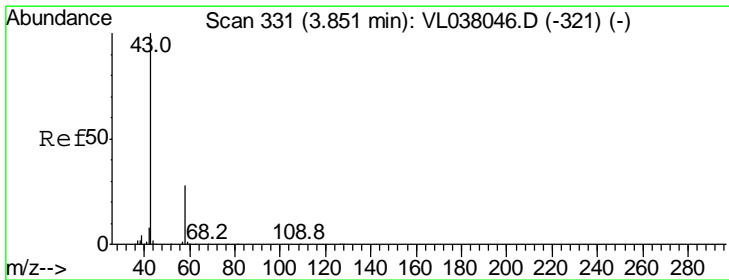
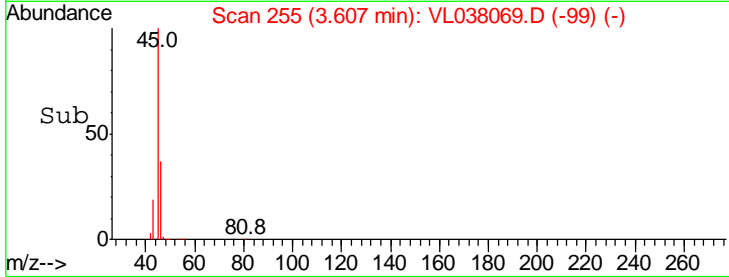
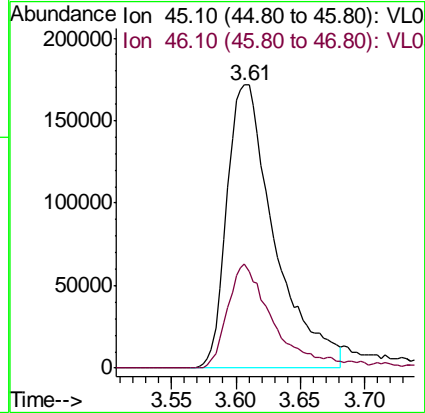
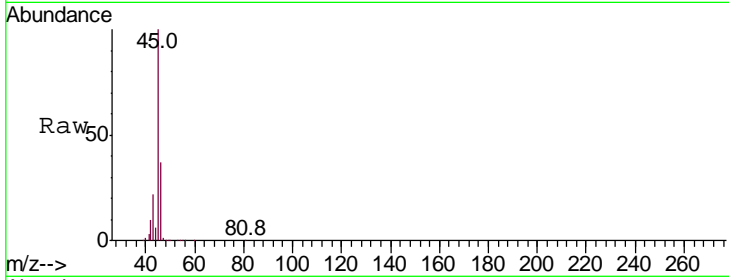
Tgt Ion:101 Resp: 2844
 Ion Ratio Lower Upper
 101 100
 151 0.0 59.0 88.4#





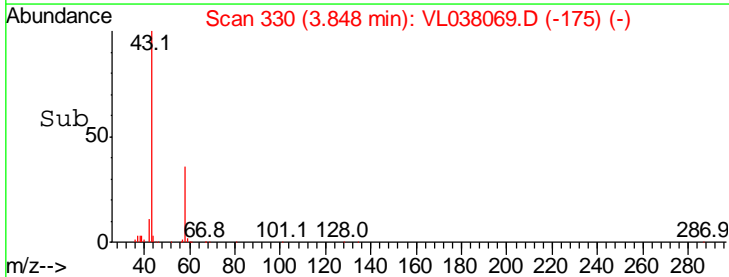
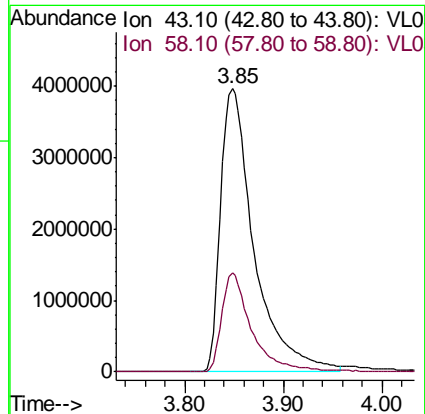
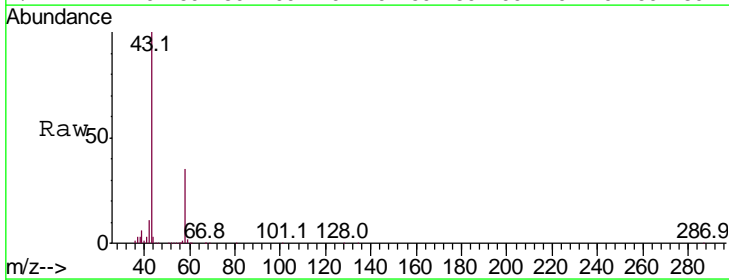
#13
 Ethanol
 Concen: 71.599 ppbv
 RT: 3.61
 Delta R.T. MSVOA_L
 Lab File: ClientSampleId :
 Acq: 19 Nov 2021 1:03

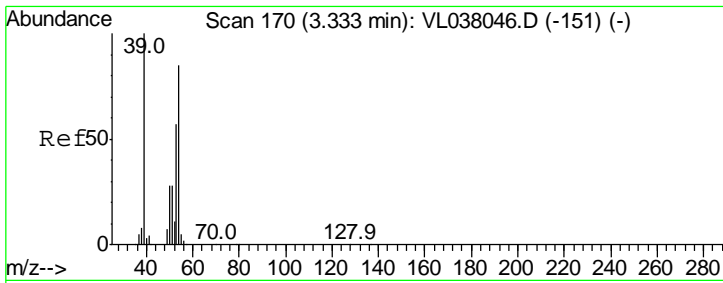
Tgt Ion	Resp	Lower	Upper
45	100		
46	36.8	17.6	70.2



#15
 Acetone
 Concen: 131.758 ppbv
 RT: 3.85 min Scan# 330
 Delta R.T. -0.00 min
 Lab File: VL038069.D
 Acq: 19 Nov 2021 1:03

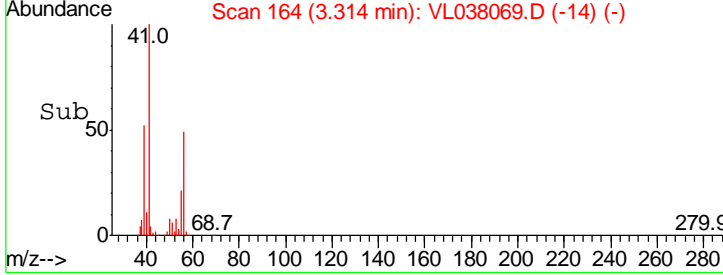
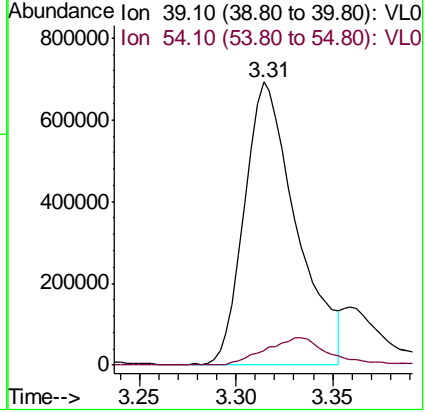
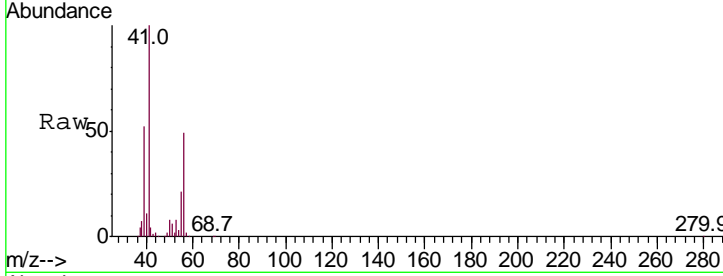
Tgt Ion	Resp	Lower	Upper
43	100		
58	31.9	22.4	33.6





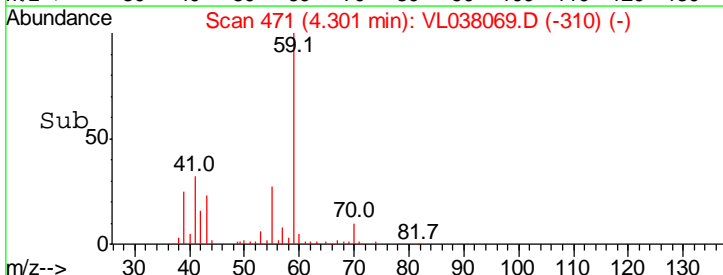
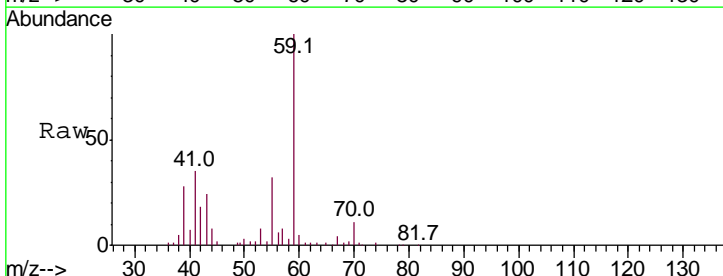
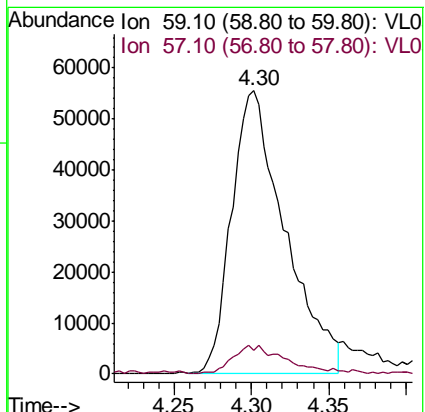
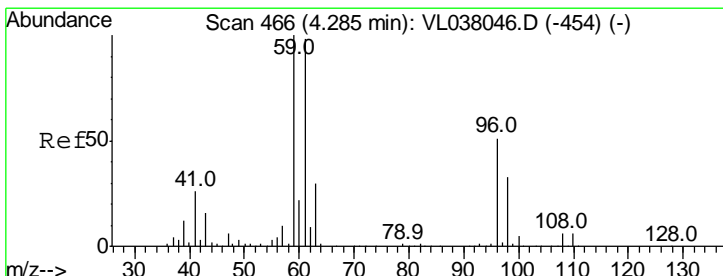
#16
 1,3-Butadiene
 Concen: 23.172 ppbv
 RT: 3.31 Instrument : MSVOA_L
 Delta R.T. ClientSampleId :
 Lab File: TRANS-SHOP
 Acq: 19 Nov 2021 1:03

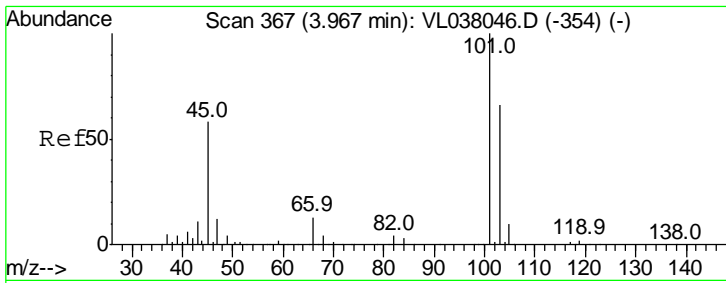
Tgt Ion	Resp	Lower	Upper
39	100		
54	12.0	64.4	96.6#



#17
 tert-Butyl alcohol
 Concen: 1.523 ppbv
 RT: 4.30 min Scan# 471
 Delta R.T. 0.02 min
 Lab File: VL038069.D
 Acq: 19 Nov 2021 1:03

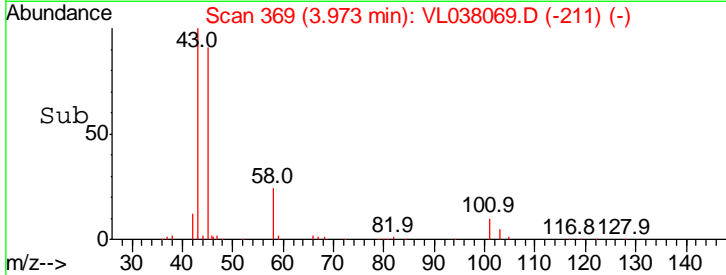
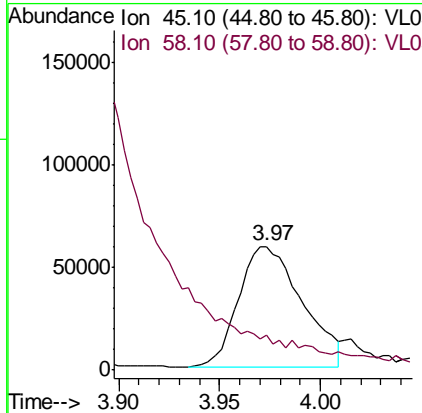
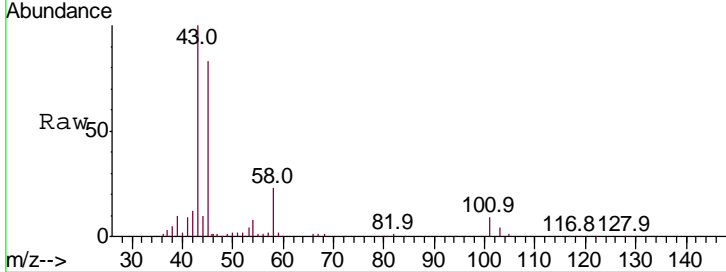
Tgt Ion	Resp	Lower	Upper
59	100		
57	11.1	8.6	13.0





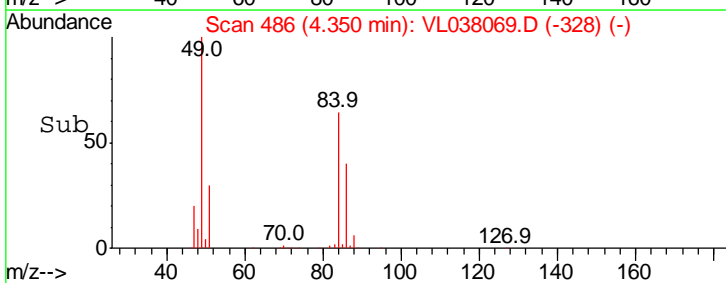
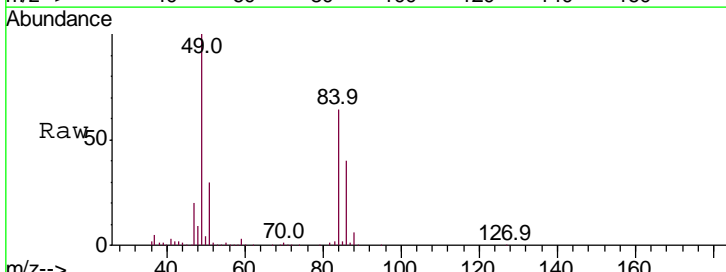
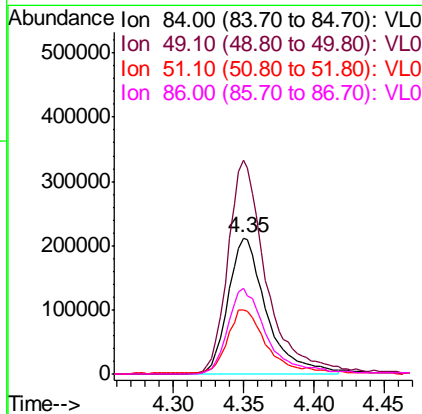
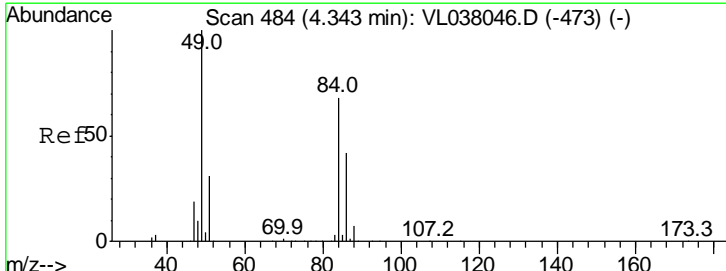
#19
 Isopropyl Alcohol
 Concen: 2.514 ppbv
 RT: 3.97
 Delta R.T. MSVOA_L
 Lab File: ClientSampleId :
 TRANS-SHOP
 Acq: 19 Nov 2021 1:03

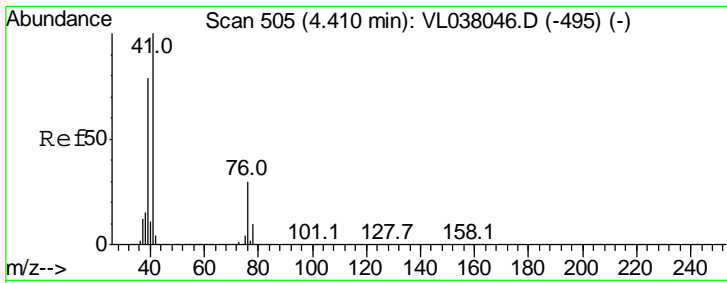
Tgt Ion	Resp	Lower	Upper
45	100		
58	0.0	1.4	2.0#



#20
 Methylene Chloride
 Concen: 10.069 ppbv
 RT: 4.35 min Scan# 486
 Delta R.T. 0.01 min
 Lab File: VL038069.D
 Acq: 19 Nov 2021 1:03

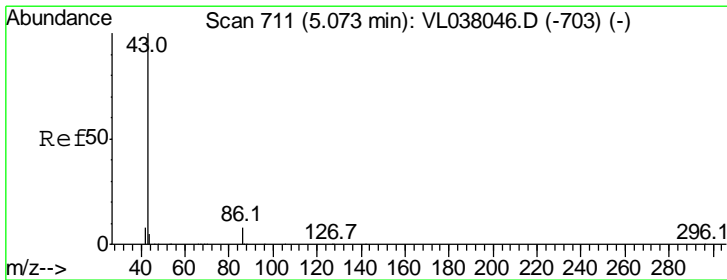
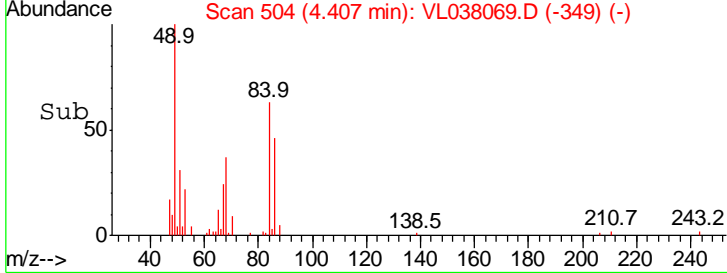
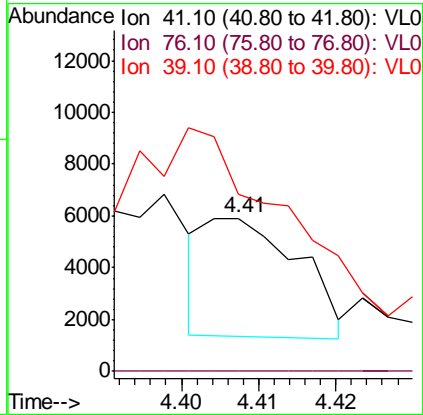
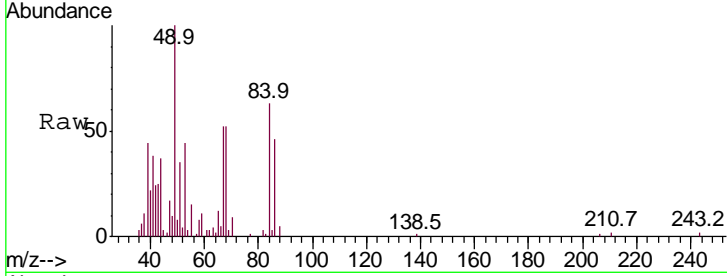
Tgt Ion	Resp	Lower	Upper
84	100		
49	156.7	118.2	177.2
51	45.5	36.8	55.2
86	63.2	49.0	73.6





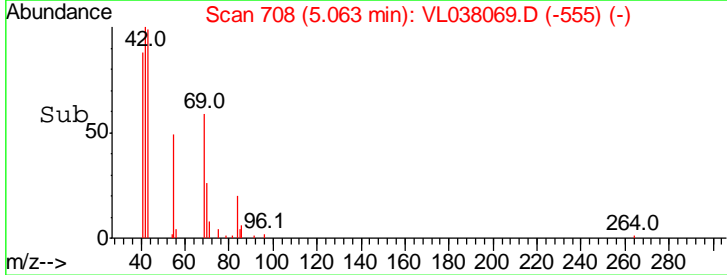
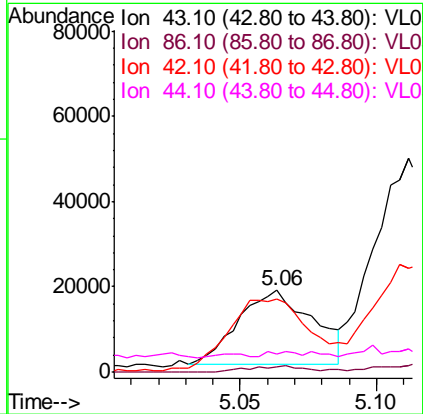
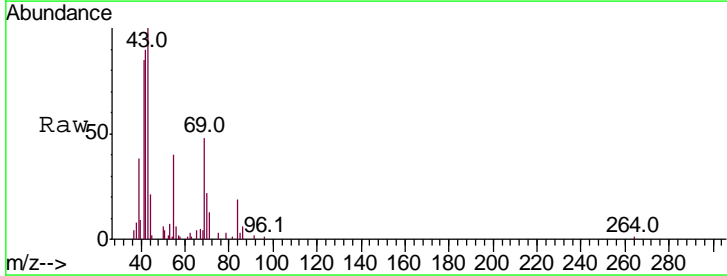
#21
 Allyl Chloride
 Concen: 0.058 ppbv
 RT: 4.41
 Delta R.T. MSVOA_L
 Lab File: ClientSampled :
 TRANS-SHOP
 Acq: 19 Nov 2021 1:03

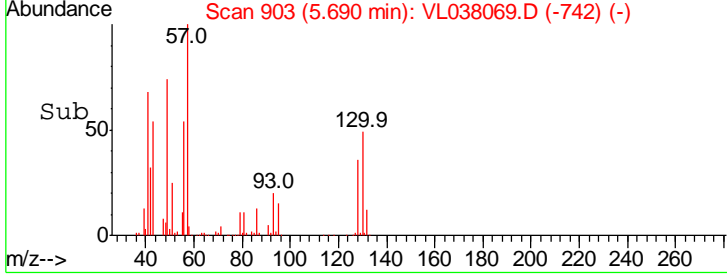
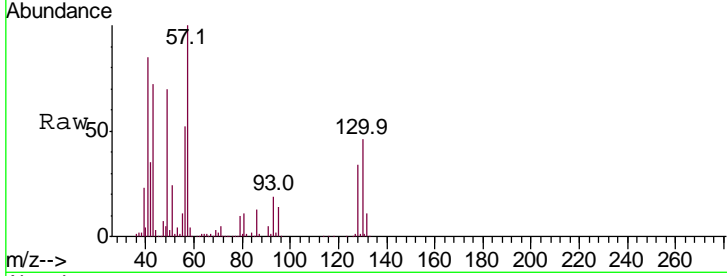
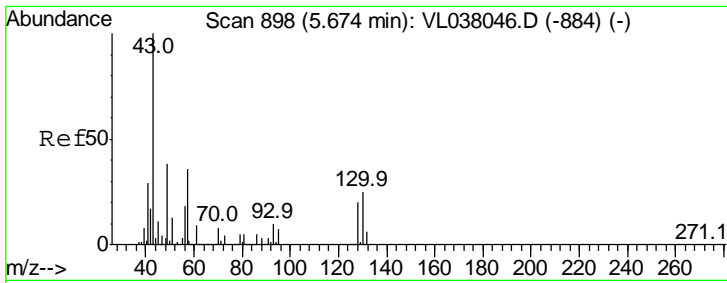
Tgt Ion	Ratio	Lower	Upper
41	100		
76	0.0	24.6	36.8#
39	0.0	63.4	95.0#



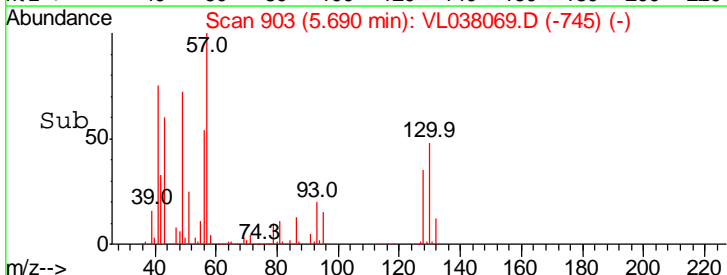
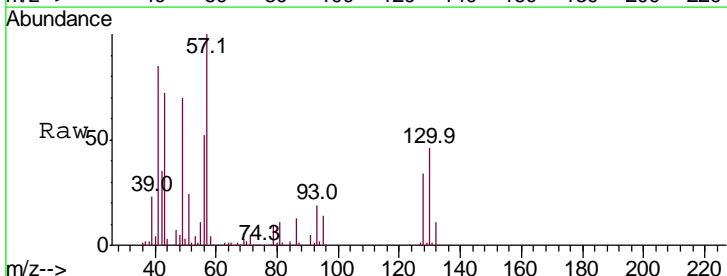
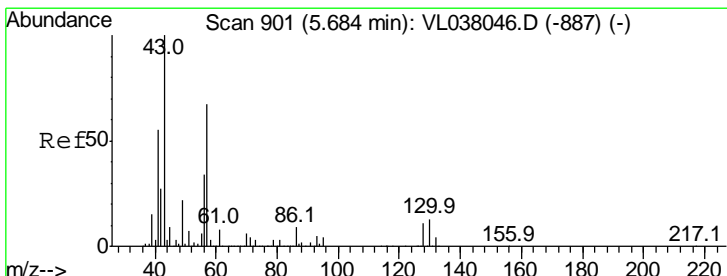
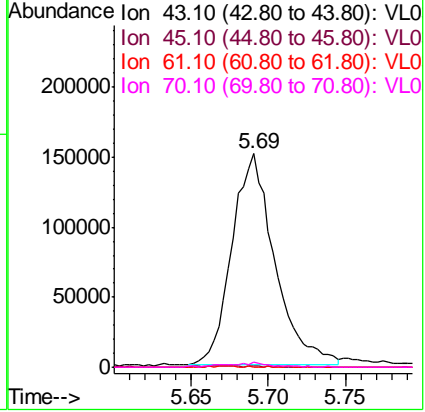
#23
 Vinyl Acetate
 Concen: 0.314 ppbv
 RT: 5.06 min Scan# 708
 Delta R.T. -0.01 min
 Lab File: VL038069.D
 Acq: 19 Nov 2021 1:03

Tgt Ion	Ratio	Lower	Upper
43	100		
86	7.0	5.3	7.9
42	93.9	7.0	10.6#
44	2.7	4.0	6.0#

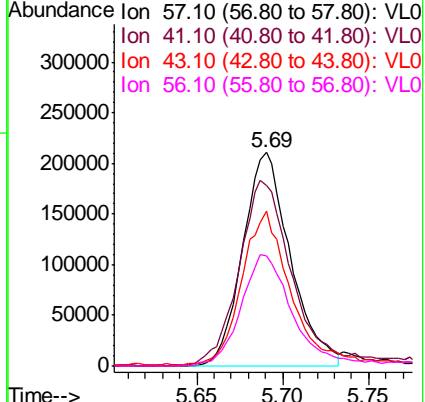


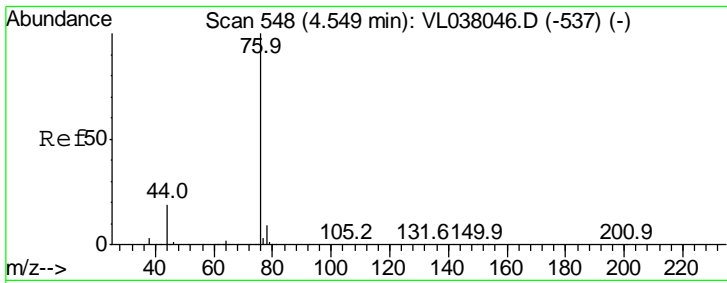


#25
Ethyl Acetate
Concen: 1.210 ppbv
RT: 5.69
Delta R.T. MSVOA_L
Lab File: ClientSampleId :
Acq: 19 Nov 2021 1:03
Tgt Ion: 43 Resp: 288111
Ion Ratio Lower Upper
43 100
45 0.7 7.9 11.9#
61 0.6 7.8 11.6#
70 2.5 5.8 8.8#



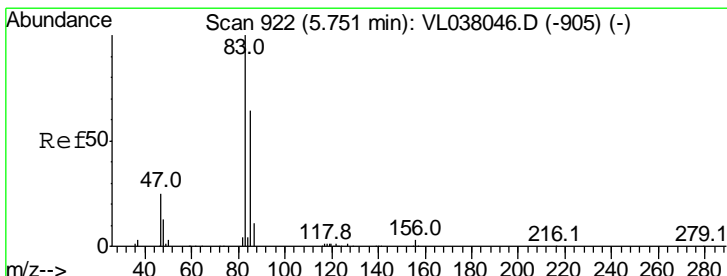
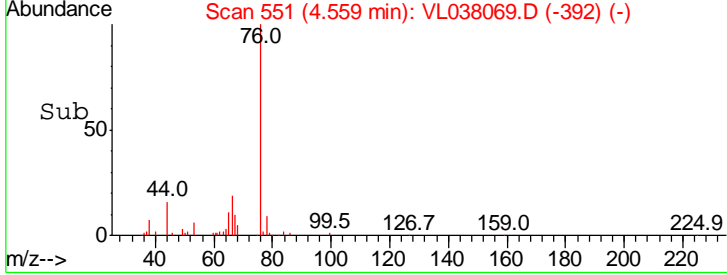
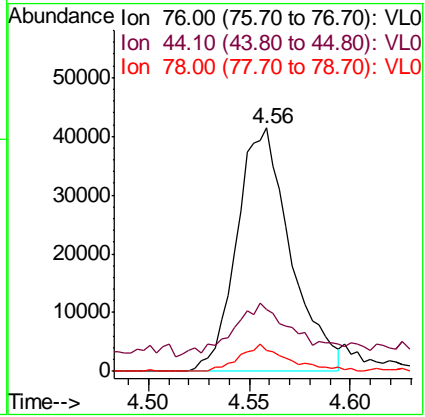
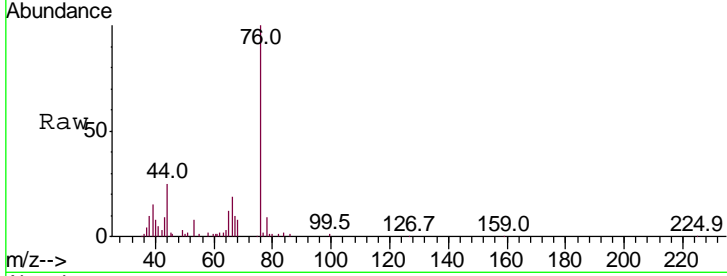
#26
Hexane
Concen: 3.535 ppbv
RT: 5.69 min Scan# 903
Delta R.T. 0.01 min
Lab File: VL038069.D
Acq: 19 Nov 2021 1:03
Tgt Ion: 57 Resp: 405599
Ion Ratio Lower Upper
57 100
41 100.1 71.4 107.2
43 76.7 174.6 261.8#
56 59.3 43.2 64.8





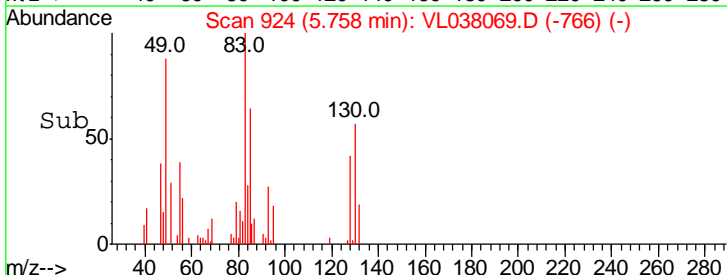
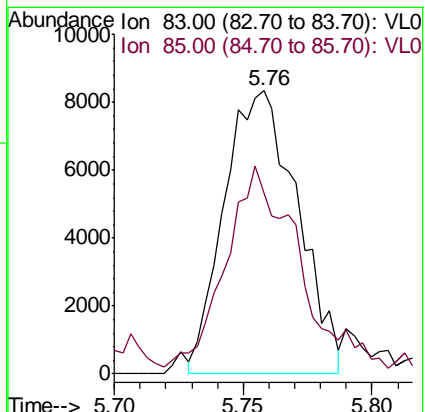
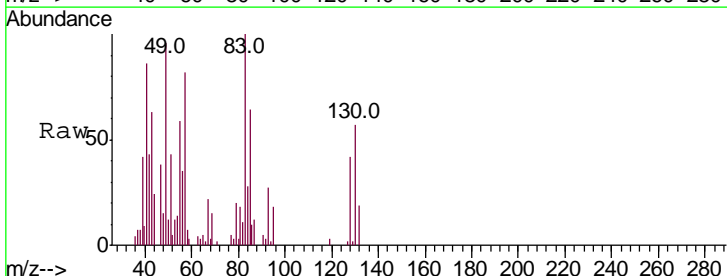
#27
 Carbon Disulfide
 Concen: 0.752 ppbv
 RT: 4.56
 Delta R.T. MSVOA_L
 Lab File: ClientSampleId :
 TRANS-SHOP
 Acq: 19 Nov 2021 1:03

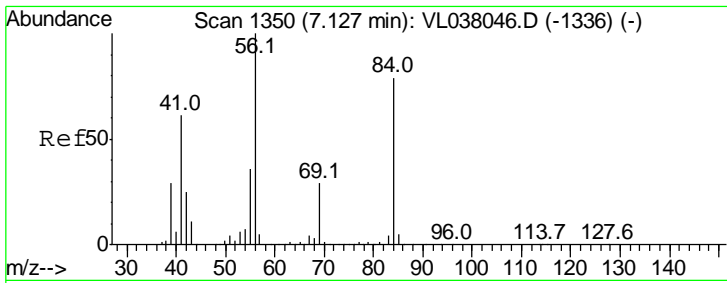
Tgt Ion	Ratio	Lower	Upper
76	100		
44	32.5	14.9	22.3#
78	10.4	7.6	11.4



#29
 Chloroform
 Concen: 0.098 ppbv
 RT: 5.76 min Scan# 924
 Delta R.T. 0.01 min
 Lab File: VL038069.D
 Acq: 19 Nov 2021 1:03

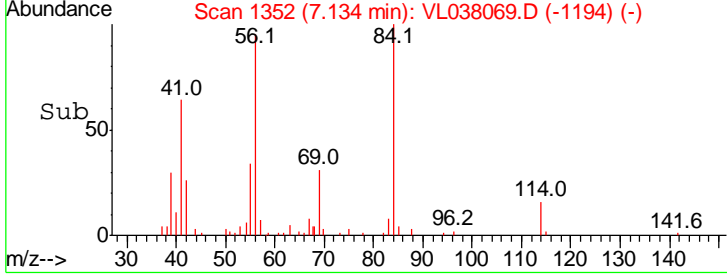
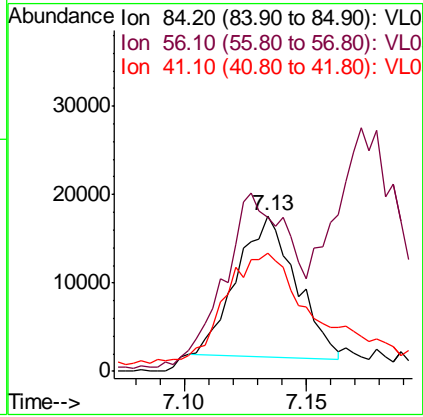
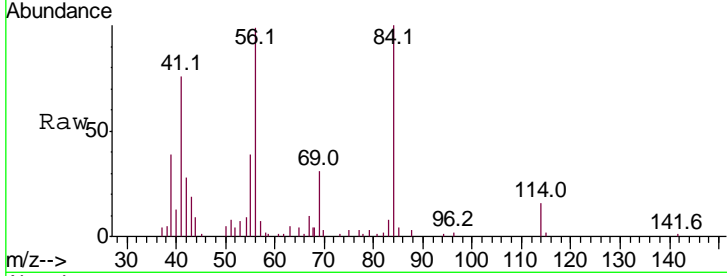
Tgt Ion	Ratio	Lower	Upper
83	100		
85	59.1	51.0	76.6





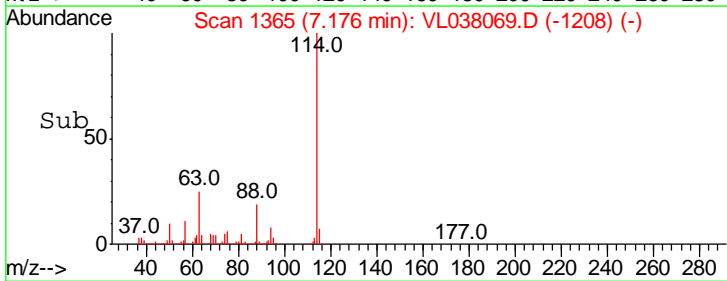
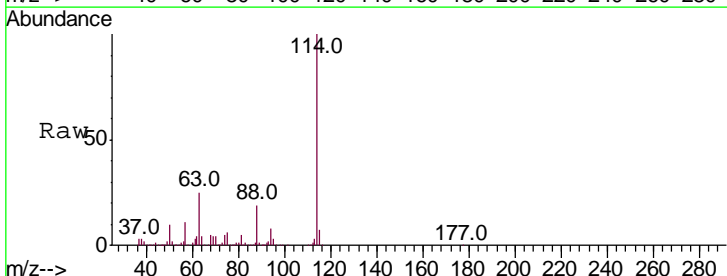
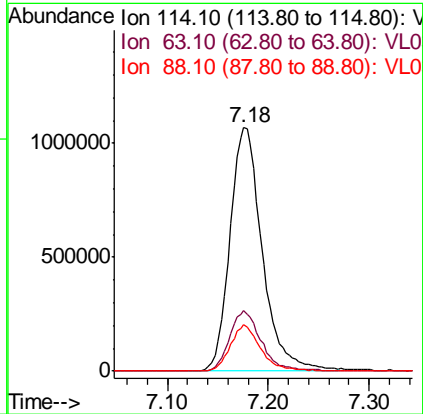
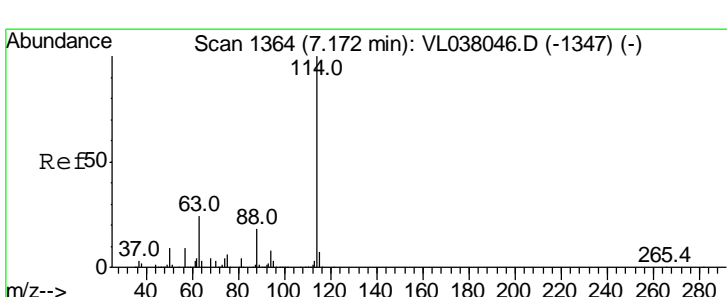
#30
 Cyclohexane
 Concen: 0.258 ppbv
 RT: 7.13
 Delta R.T. MSVOA_L
 Lab File: ClientSampled : TRANS-SHOP
 Acq: 19 Nov 2021 1:03

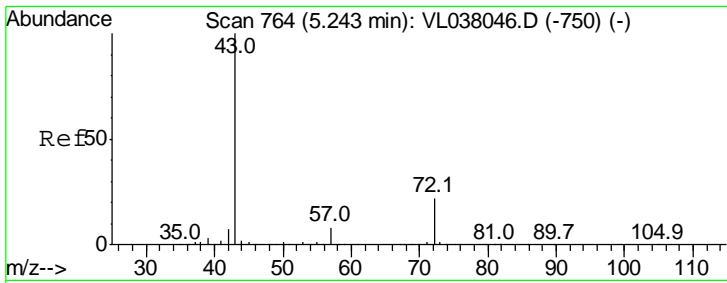
Tgt Ion	Resp	Lower	Upper
84	100		
56	150.9	108.1	162.1
41	125.8	64.4	96.6#



#33
 1,4-Difluorobenzene
 Concen: 10.000 ppbv
 RT: 7.18 min Scan# 1365
 Delta R.T. 0.00 min
 Lab File: VL038069.D
 Acq: 19 Nov 2021 1:03

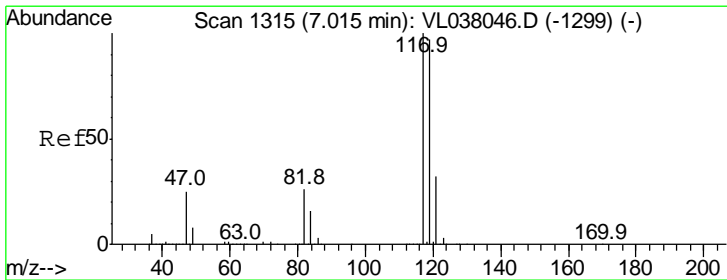
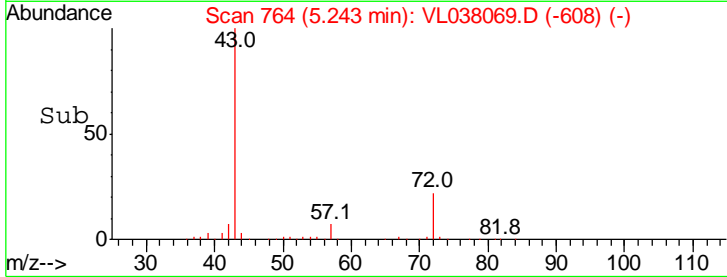
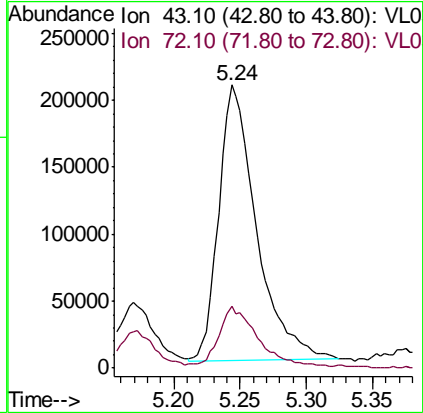
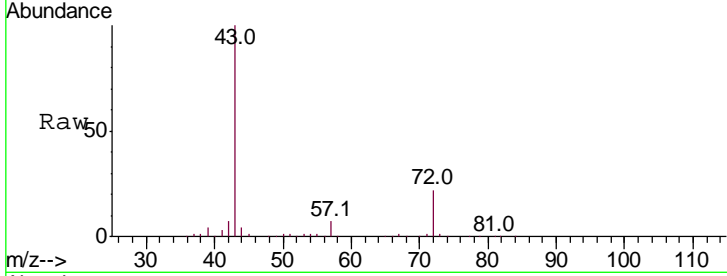
Tgt Ion	Resp	Lower	Upper
114	100		
63	24.4	19.7	29.5
88	18.2	14.4	21.6





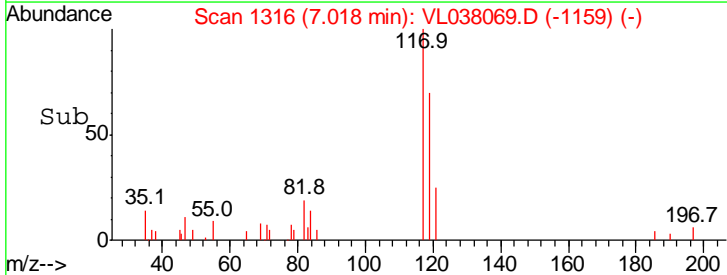
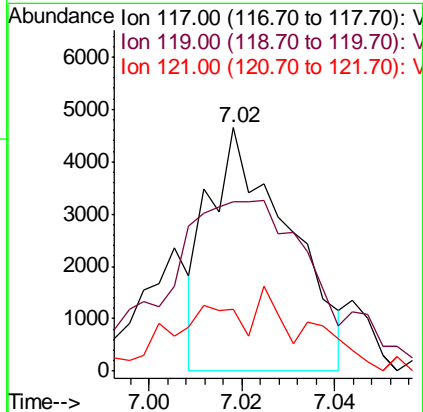
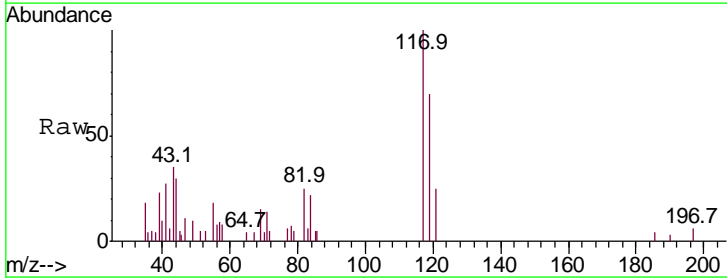
#34
 2-Butanone
 Concen: 4.255 ppbv
 RT: 5.24
 Delta R.T. MSVOA_L
 Lab File: ClientSampleId:
 TRANS-SHOP
 Acq: 19 Nov 2021 1:03

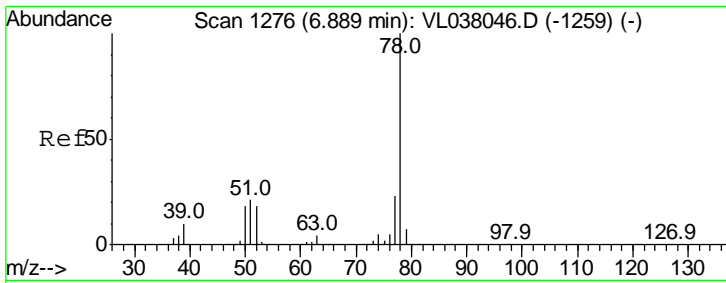
Tgt Ion	Resp	Lower	Upper
43	100		
72	24.9	18.8	28.2



#35
 Carbon Tetrachloride
 Concen: 0.033 ppbv
 RT: 7.02 min Scan# 1316
 Delta R.T. 0.00 min
 Lab File: VL038069.D
 Acq: 19 Nov 2021 1:03

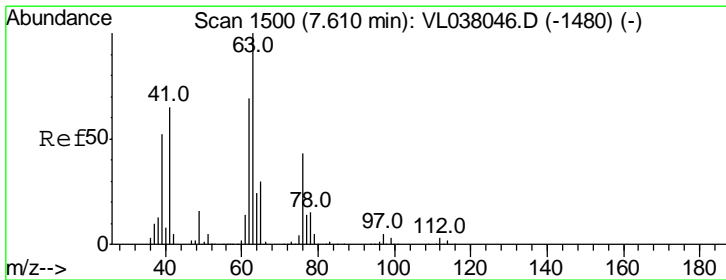
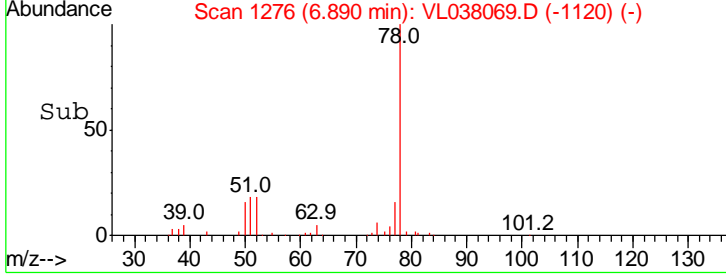
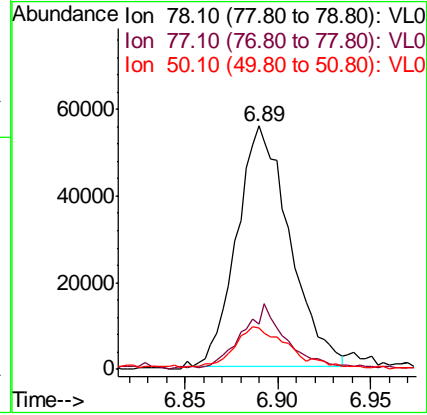
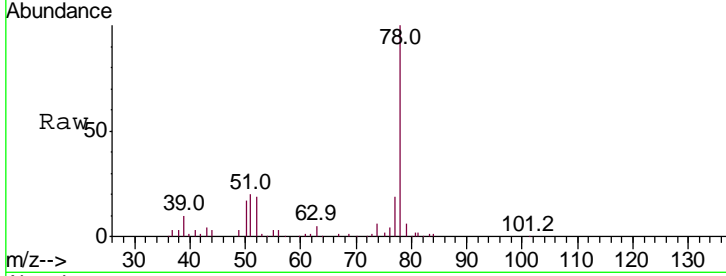
Tgt Ion	Resp	Lower	Upper
117	100		
119	68.2	77.7	116.5#
121	15.7	25.6	38.4#





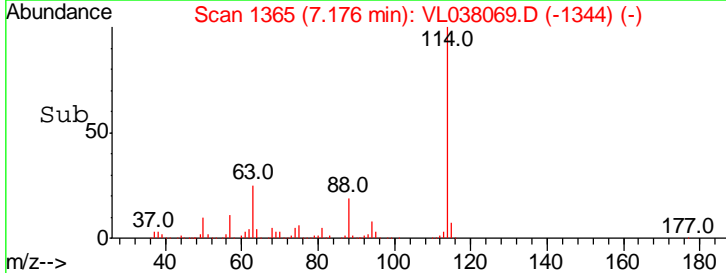
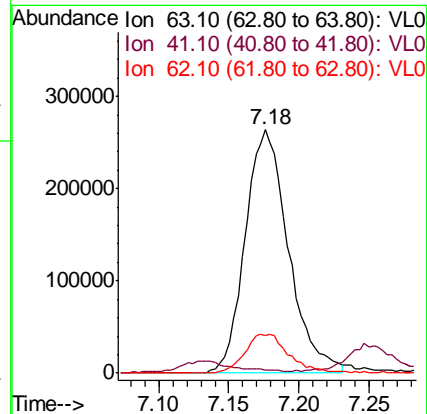
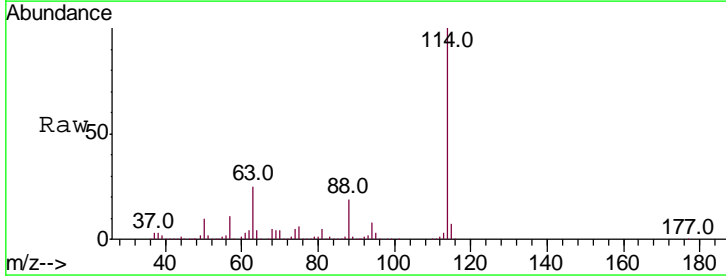
#36
 Benzene
 Concen: 0.465 ppbv
 RT: 6.89
 Delta R.T. MSVOA_L
 Lab File: ClientSampleId :
 TRANS-SHOP
 Acq: 19 Nov 2021 1:03

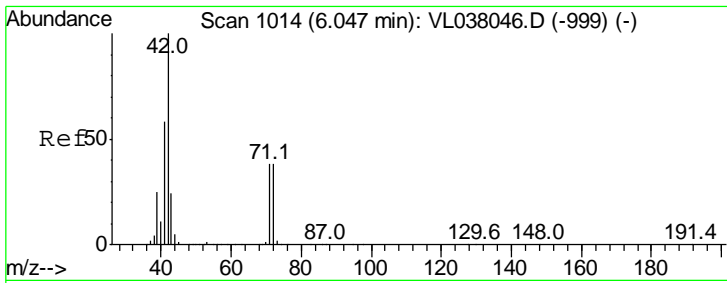
Tgt Ion	Resp	Lower	Upper
78	110451		
77	17.8	18.2	27.4#
50	16.0	14.7	22.1



#39
 1,2-Dichloropropane
 Concen: 6.214 ppbv
 RT: 7.18 min Scan# 1365
 Delta R.T. -0.43 min
 Lab File: VL038069.D
 Acq: 19 Nov 2021 1:03

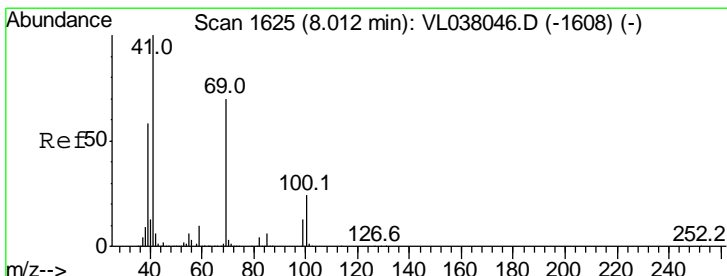
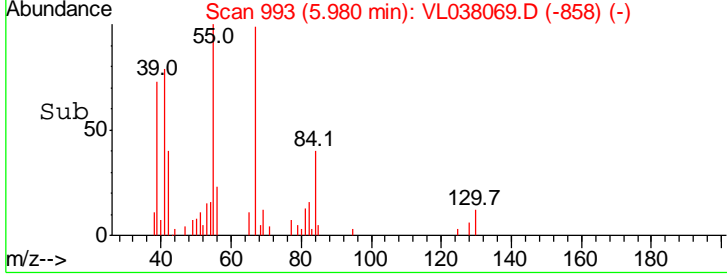
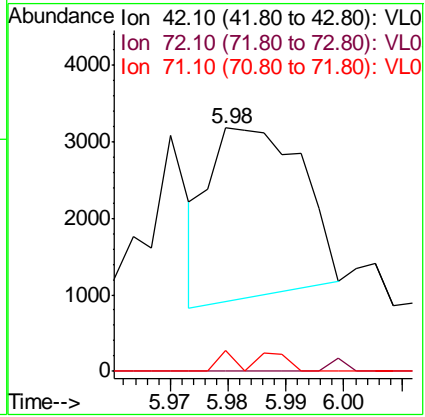
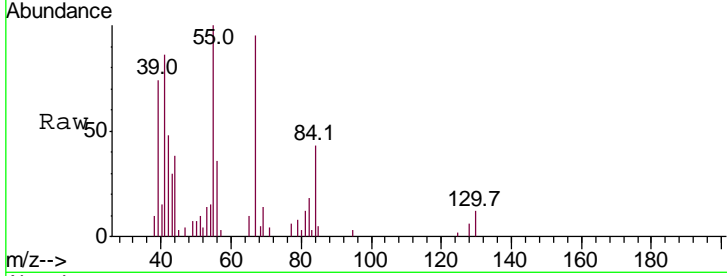
Tgt Ion	Resp	Lower	Upper
63	566720		
41	0.0	52.3	78.5#
62	15.6	55.1	82.7#





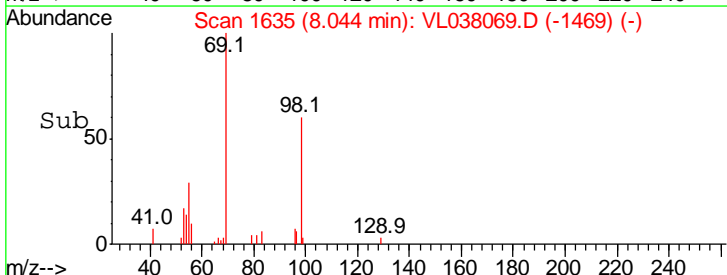
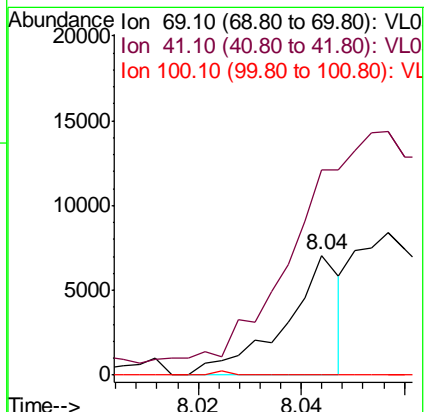
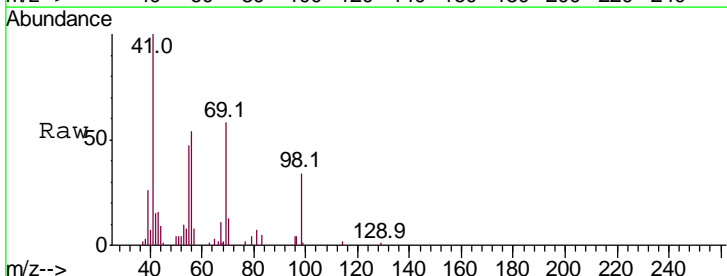
#41
 Tetrahydrofuran
 Concen: 0.042 ppbv
 RT: 5.98
 Delta R.T. MSVOA_L
 Lab File: ClientSampled :
 TRANS-SHOP
 Acq: 19 Nov 2021 1:03

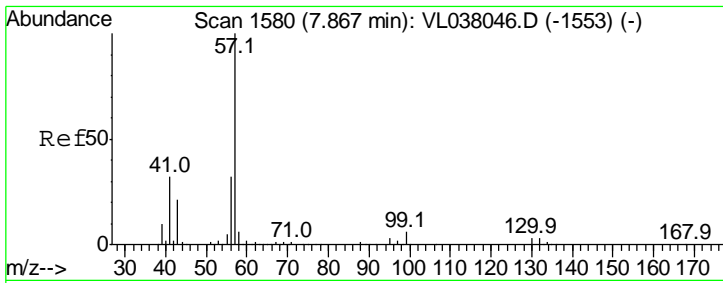
Tgt Ion	Ratio	Lower	Upper
42	100		
72	84.5	31.7	47.5#
71	73.8	30.6	46.0#



#43
 Methyl Methacrylate
 Concen: 0.065 ppbv
 RT: 8.04 min Scan# 1635
 Delta R.T. 0.03 min
 Lab File: VL038069.D
 Acq: 19 Nov 2021 1:03

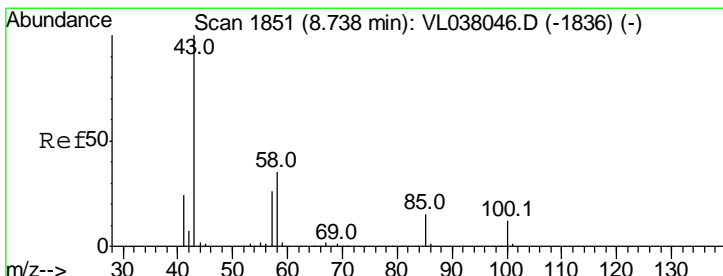
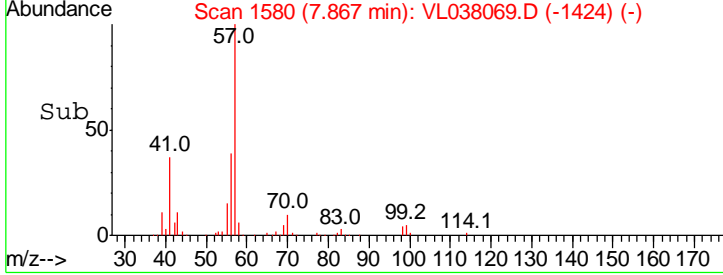
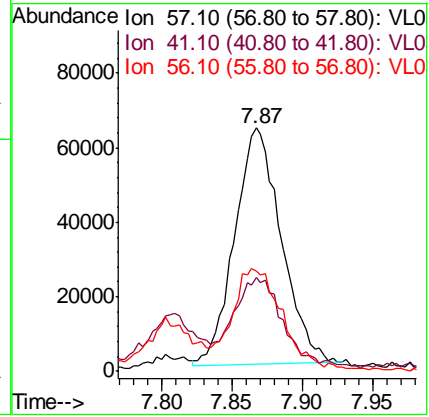
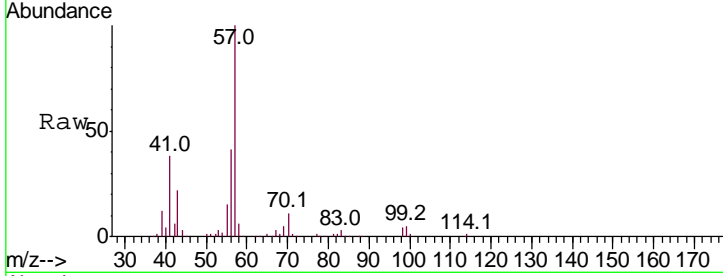
Tgt Ion	Ratio	Lower	Upper
69	100		
41	0.0	116.7	175.1#
100	0.0	27.3	40.9#





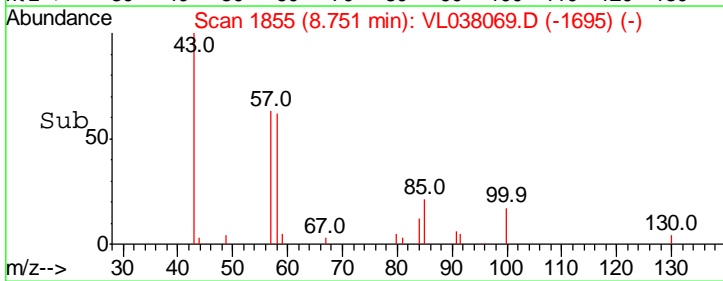
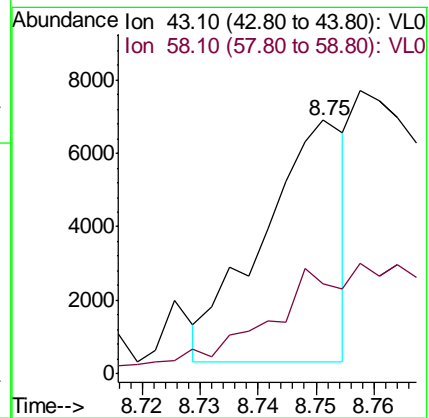
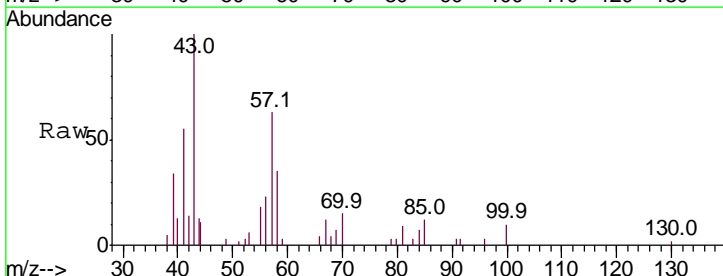
#44
 2,2,4-Trimethylpentane
 Concen: 0.370 ppbv
 RT: 7.87
 Delta R.T. MSVOA_L
 Lab File: ClientSampleId :
 TRANS-SHOP
 Acq: 19 Nov 2021 1:03

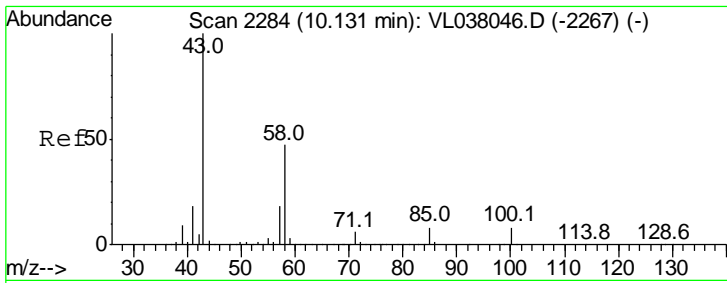
Tgt Ion	Resp	Lower	Upper
57	147346		
41	41.3	25.8	38.6#
56	45.9	25.6	38.4#



#50
 4-Methyl-2-Pentanone
 Concen: 0.045 ppbv
 RT: 8.75 min Scan# 1855
 Delta R.T. 0.01 min
 Lab File: VL038069.D
 Acq: 19 Nov 2021 1:03

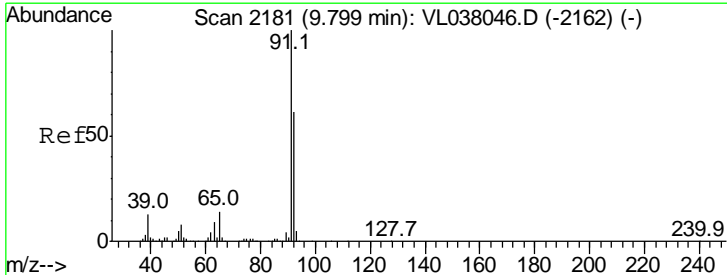
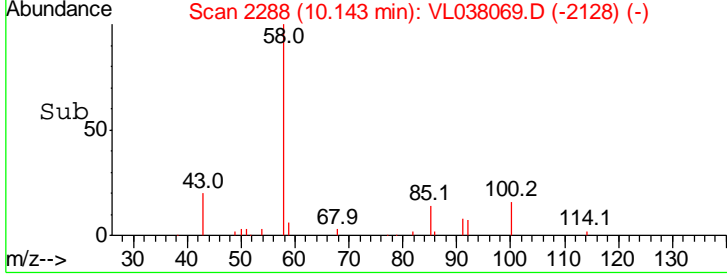
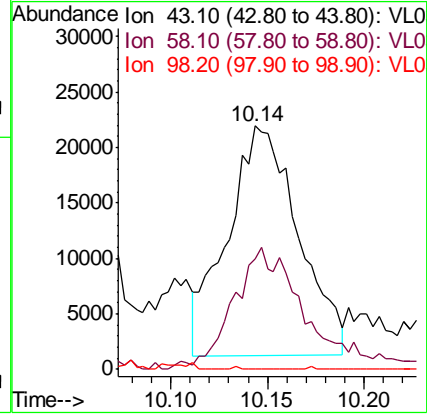
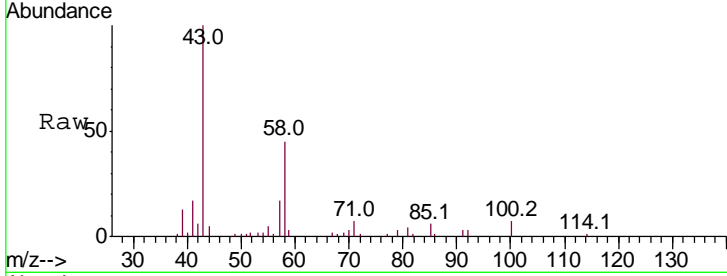
Tgt Ion	Resp	Lower	Upper
43	6516		
58	0.0	29.4	44.2#





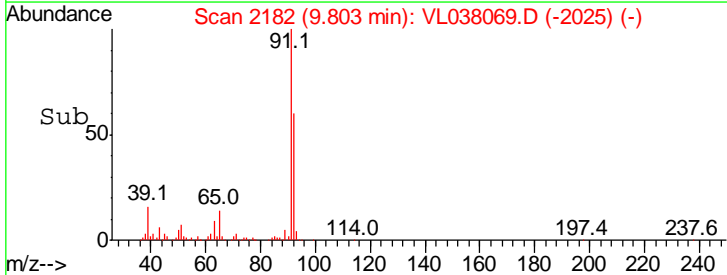
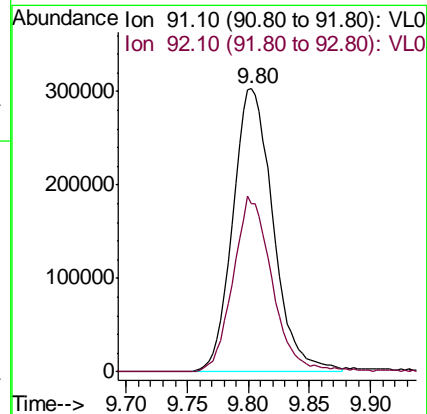
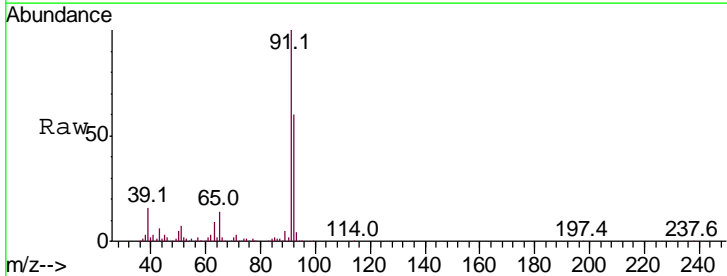
#51
 2-Hexanone
 Concen: 0.766 ppbv
 RT: 10.14
 Delta R.T. MSVOA_L
 Lab File: ClientSampleId :
 TRANS-SHOP
 Acq: 19 Nov 2021 1:03

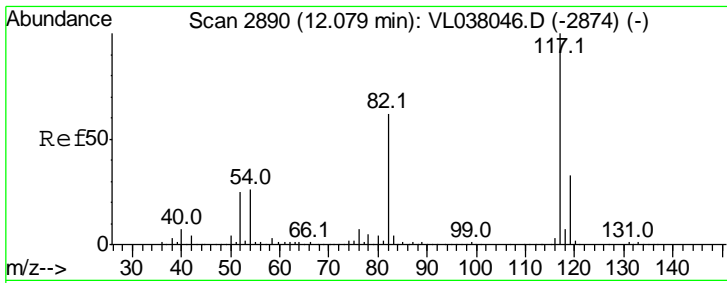
Tgt Ion	Ratio	Lower	Upper
43	100		
58	54.4	41.1	61.7
98	0.0	0.1	0.1#



#53
 Toluene
 Concen: 2.543 ppbv
 RT: 9.80 min Scan# 2182
 Delta R.T. 0.00 min
 Lab File: VL038069.D
 Acq: 19 Nov 2021 1:03

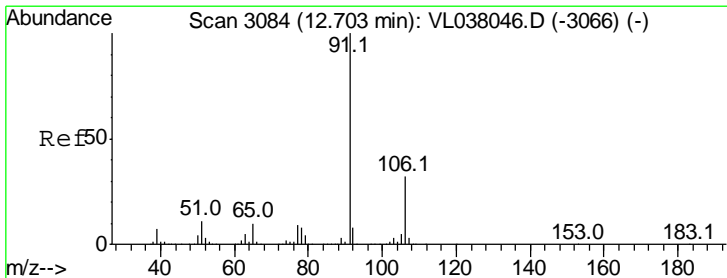
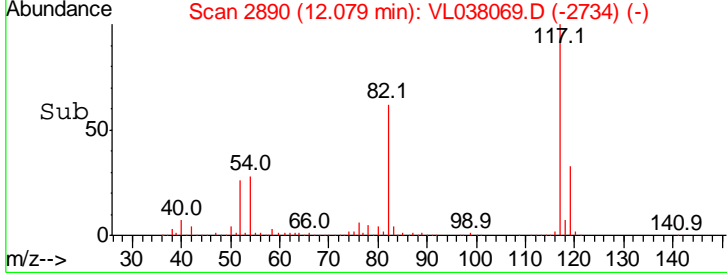
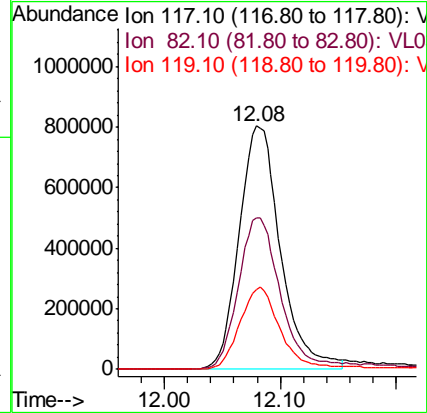
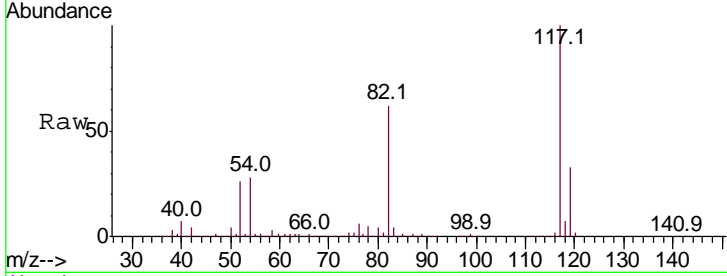
Tgt Ion	Ratio	Lower	Upper
91	100		
92	60.6	49.7	74.5





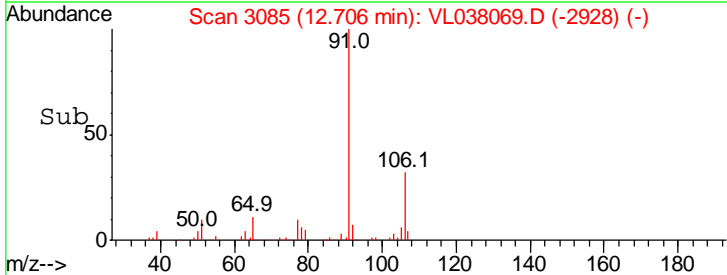
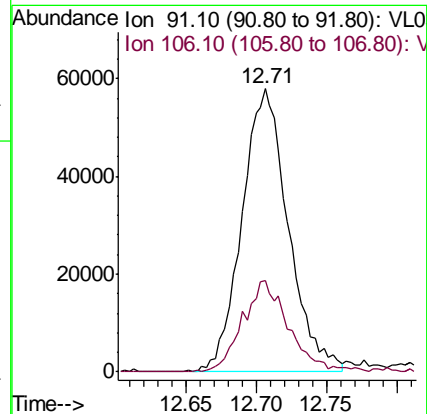
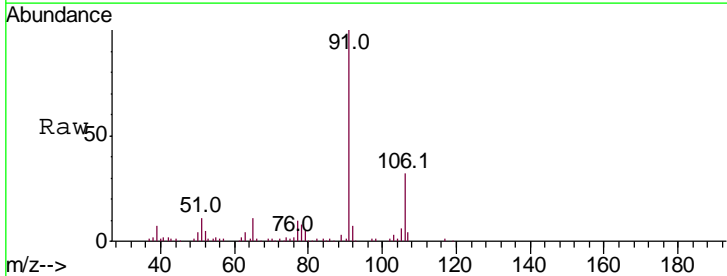
#55
 Chlorobenzene-d5
 Concen: 10.000 ppbv
 RT: 12.08
 Instrument: MSVOA_1
 Delta R.T.:
 Lab File: ClientSampled:
 TRANS-SHOP
 Acq: 19 Nov 2021 1:03

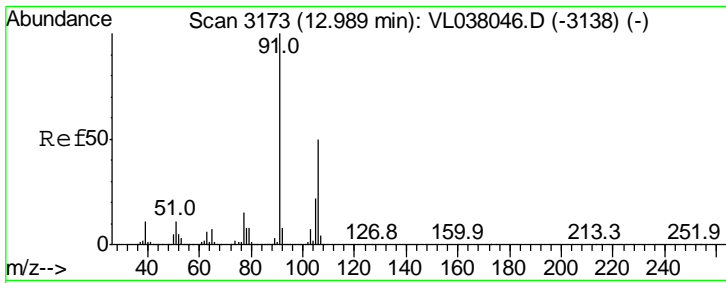
Tgt Ion	Resp	Lower	Upper
117	100		
82	67.8	52.8	79.2
119	34.1	26.8	40.2



#58
 Ethyl Benzene
 Concen: 0.404 ppbv
 RT: 12.71 min Scan# 3085
 Delta R.T.: 0.00 min
 Lab File: VL038069.D
 Acq: 19 Nov 2021 1:03

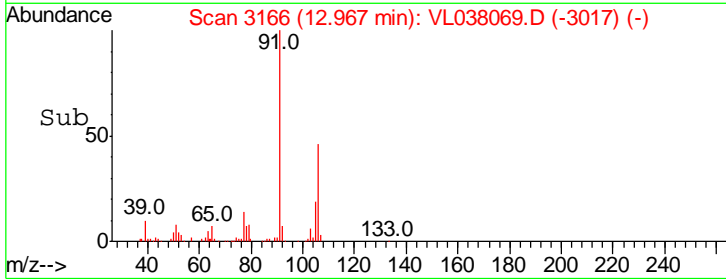
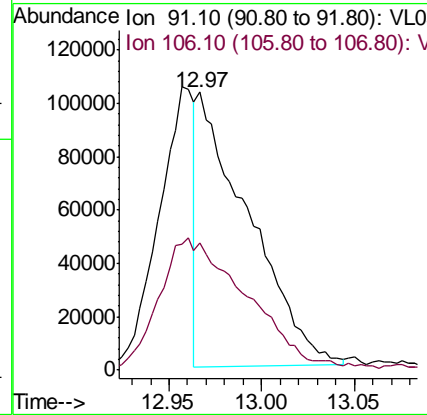
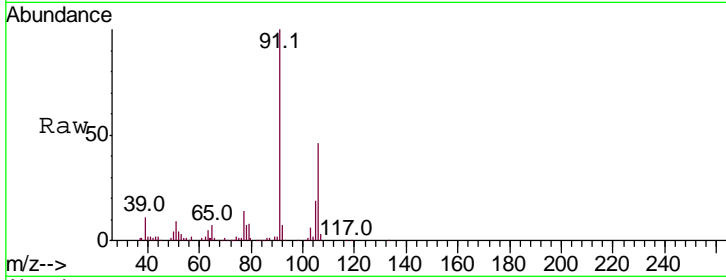
Tgt Ion	Resp	Lower	Upper
91	100		
106	32.1	25.8	38.6





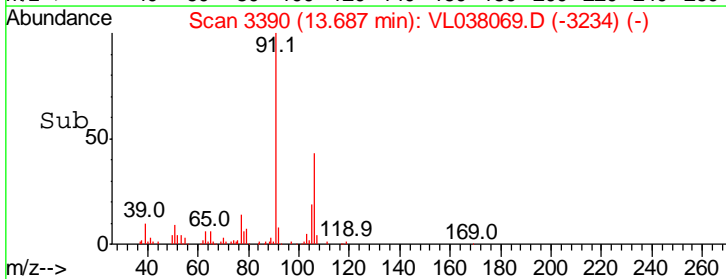
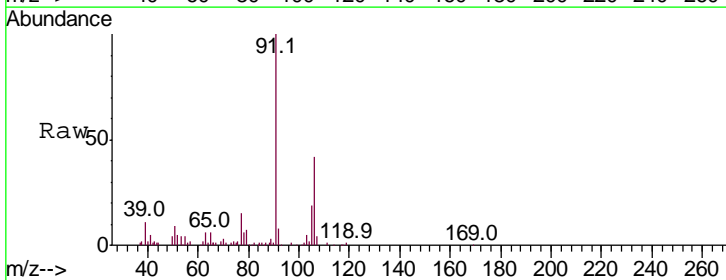
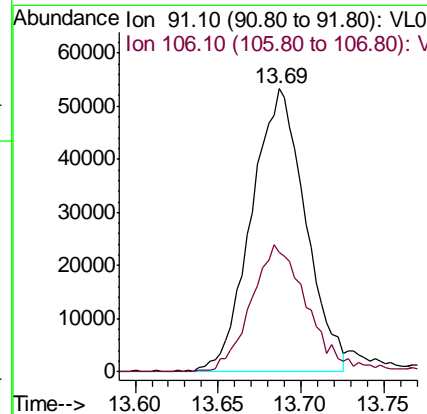
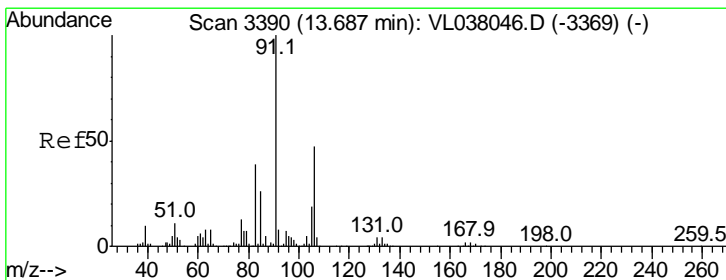
#59
 m/p-Xylene
 Concen: 0.707 ppbv
 RT: 12.97
 Delta R.T. MSVOA_L
 Lab File: ClientSampleId :
 TRANS-SHOP
 Acq: 19 Nov 2021 1:03

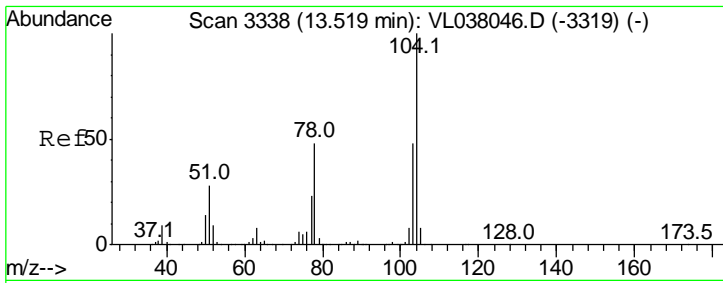
Tgt Ion	Resp	Lower	Upper
91	100		
106	0.0	38.1	57.1#



#60
 o-Xylene
 Concen: 0.469 ppbv
 RT: 13.69 min Scan# 3390
 Delta R.T. 0.00 min
 Lab File: VL038069.D
 Acq: 19 Nov 2021 1:03

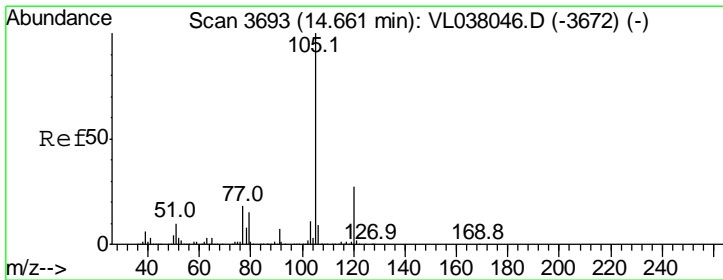
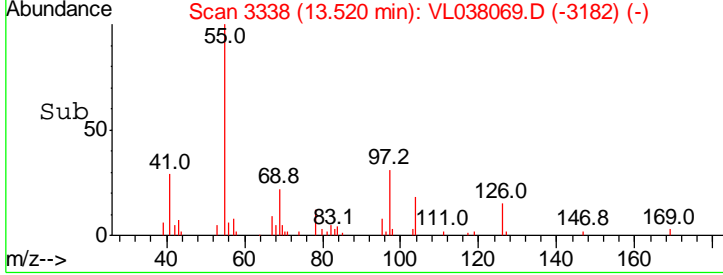
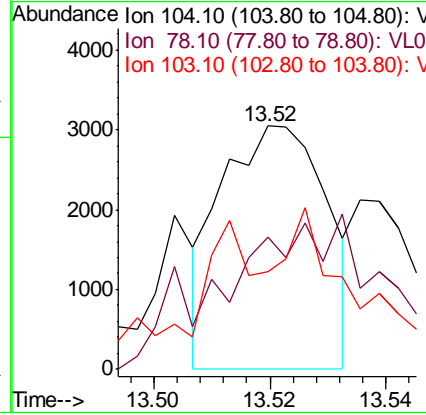
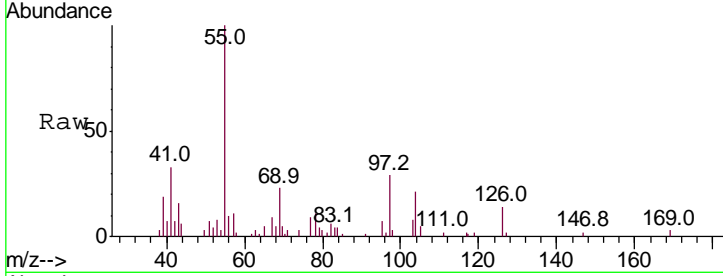
Tgt Ion	Resp	Lower	Upper
91	100		
106	48.2	24.2	72.6





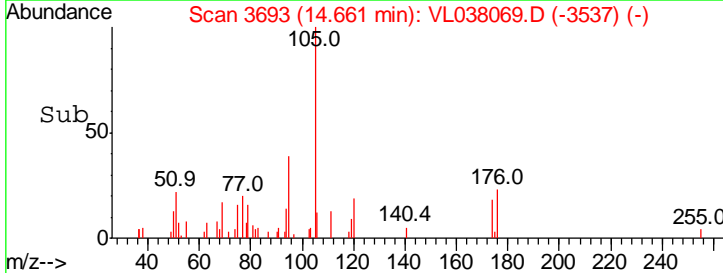
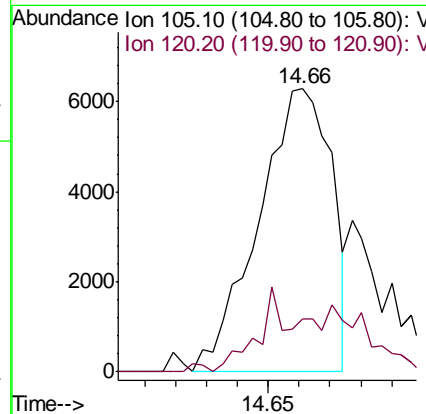
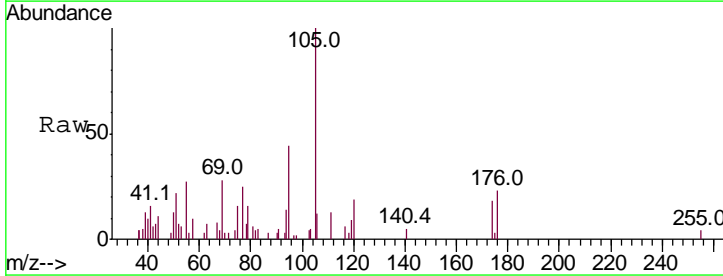
#61
 Styrene
 Concen: 0.028 ppbv
 RT: 13.52
 Delta R.T. MSVOA_L
 Lab File: ClientSampled :
 Acq: 19 Nov 2021 1:03
 TRANS-SHOP

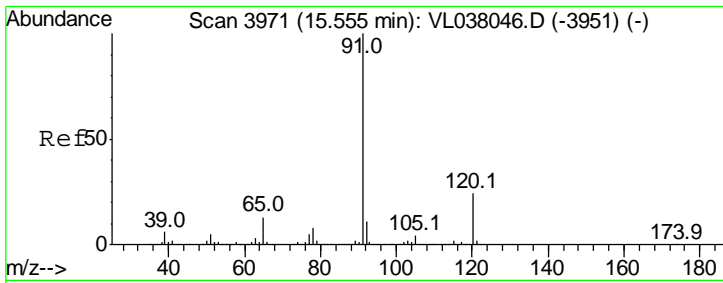
Tgt Ion	Resp	Lower	Upper
104	100		
78	0.0	39.8	59.6#
103	0.0	38.2	57.2#



#62
 Isopropylbenzene
 Concen: 0.028 ppbv
 RT: 14.66 min Scan# 3693
 Delta R.T. 0.00 min
 Lab File: VL038069.D
 Acq: 19 Nov 2021 1:03

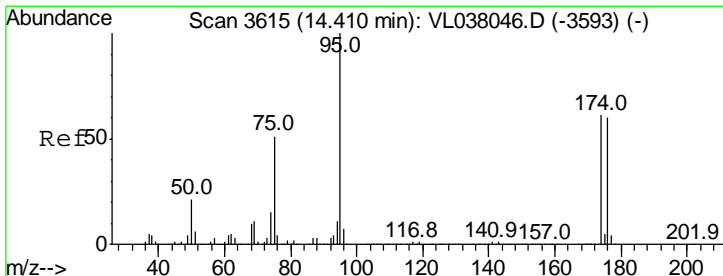
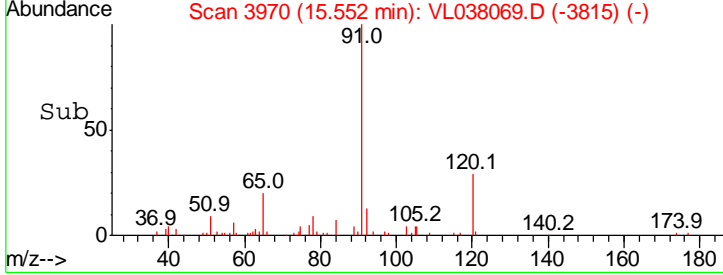
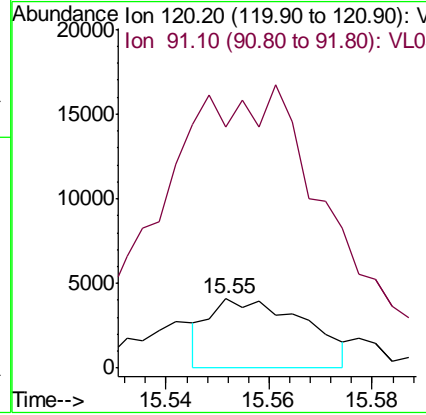
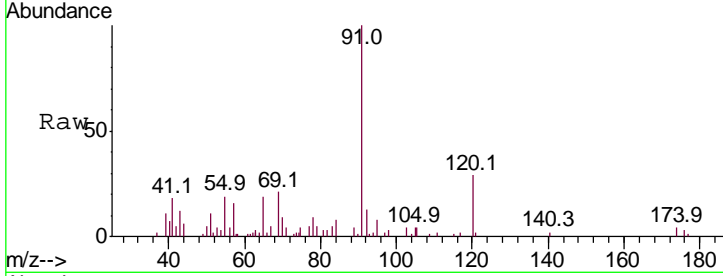
Tgt Ion	Resp	Lower	Upper
105	100		
120	31.4	21.8	32.6





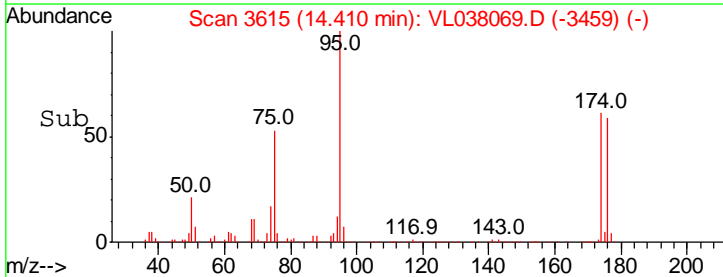
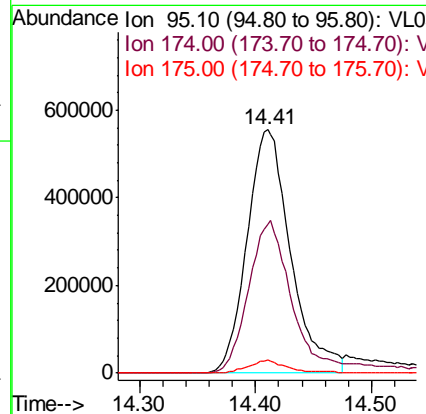
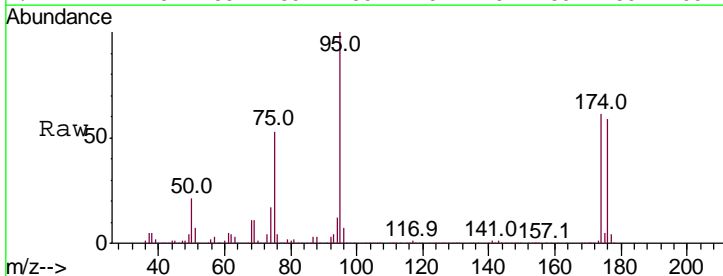
#64
 n-propylbenzene
 Concen: 0.057 ppbv
 RT: 15.55
 Delta R.T. MSVOA_L
 Lab File: ClientSampled :
 TRANS-SHOP
 Acq: 19 Nov 2021 1:03

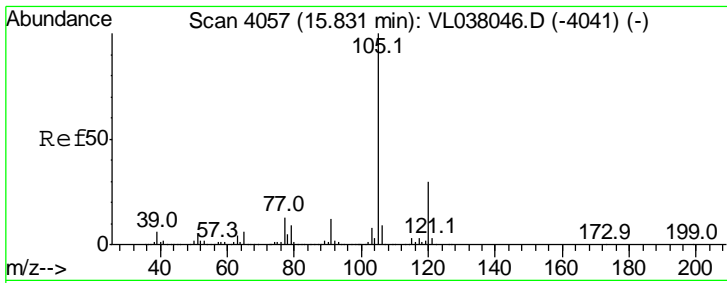
Tgt Ion	Resp	Lower	Upper
120	100		
91	832.1	371.7	557.5#



#68
 1-Bromo-4-Fluorobenzene
 Concen: 10.088 ppbv
 RT: 14.41 min Scan# 3615
 Delta R.T. 0.00 min
 Lab File: VL038069.D
 Acq: 19 Nov 2021 1:03

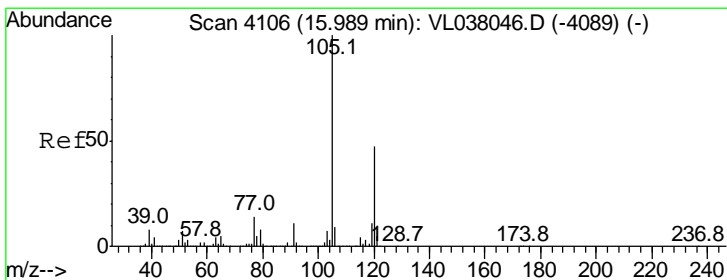
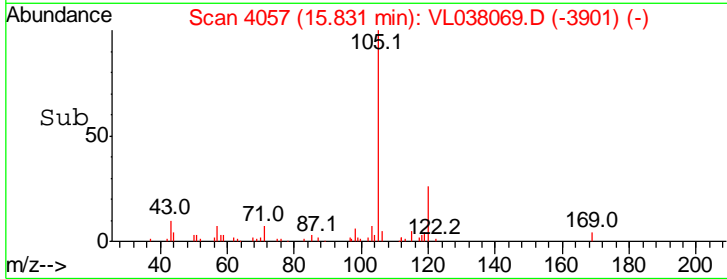
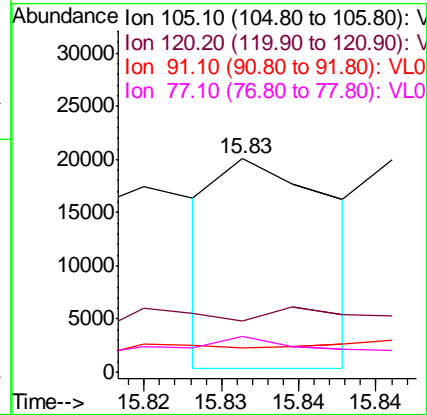
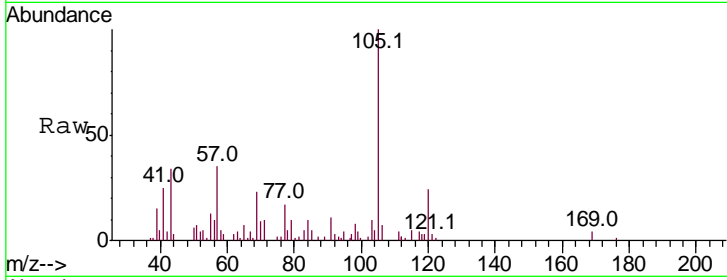
Tgt Ion	Resp	Lower	Upper
95	100		
174	67.6	53.1	79.7
175	5.1	4.0	6.0





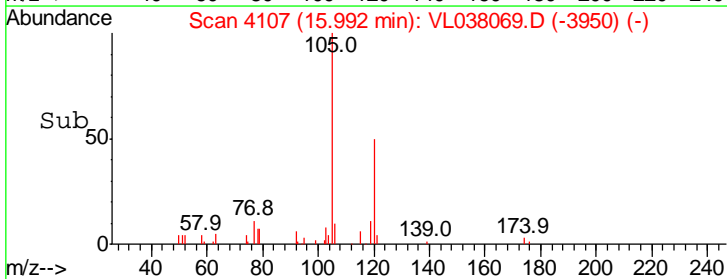
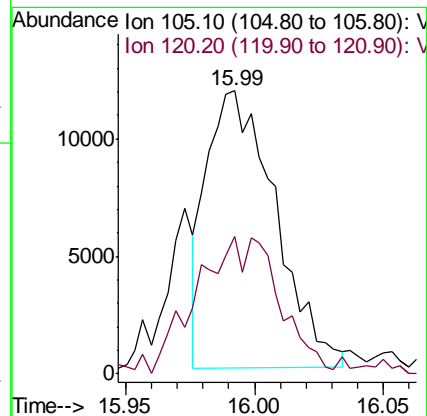
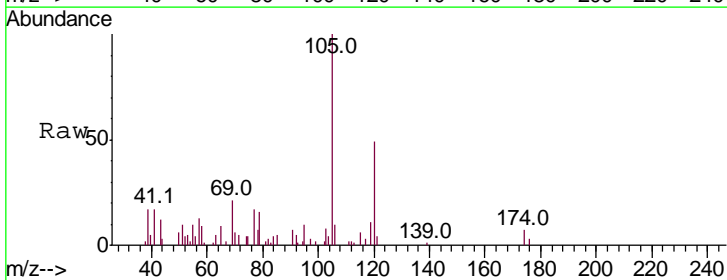
#72
 4-Ethyltoluene
 Concen: 0.034 ppbv
 RT: 15.83
 Delta R.T. MSVOA_L
 Lab File: ClientSampled :
 TRANS-SHOP
 Acq: 19 Nov 2021 1:03

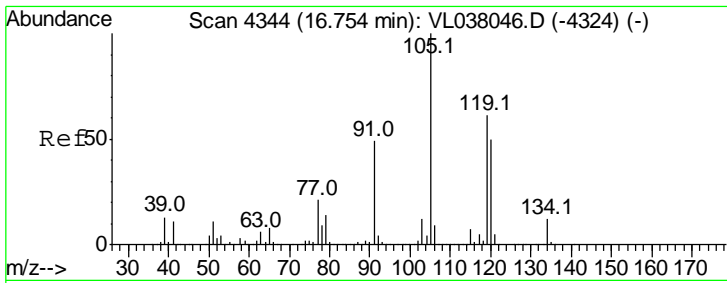
Tgt Ion	Resp	Lower	Upper
105	100		
120	140.1	25.1	37.7#
91	0.0	9.7	14.5#
77	82.2	10.6	16.0#



#73
 1,3,5-Trimethylbenzene
 Concen: 0.080 ppbv
 RT: 15.99 min Scan# 4107
 Delta R.T. 0.00 min
 Lab File: VL038069.D
 Acq: 19 Nov 2021 1:03

Tgt Ion	Resp	Lower	Upper
105	100		
120	46.5	37.8	56.6





#74
 1,2,4-Trimethylbenzene
 Concen: 0.373 ppbv
 RT: 16.76
 Delta R.T: MSVOA_L
 Lab File: ClientSampleId:
 TRANS-SHOP
 Acq: 19 Nov 2021 1:03

Tot Ion	105	Resp	104653
Ion Ratio	Lower	Upper	
105	100		
120	43.0	40.1	60.1
91	9.5	39.8	59.8#
77	9.8	16.6	25.0#

