

Data Path : Z:\VOASRV\HPCHEM1\MSVOA L\DATA\VL112420\
 Data File : VL036011.D
 Acq On : 25 Nov 2020 2:18
 Operator : SY/AP
 Sample : L4883-01DL 10X
 Misc : 400ml/MSVOA L
 ALS Vial : 1 Sample Multiplier: 1

Instrument :
 MSVOA_L
 ClientSampleId :

Quant Time: Nov 25 07:18:18 2020
 Quant Method : Z:\VOASRV\HPCHEM1\MSVOA L\METHODS\VL110320AIR.M
 Quant Title : AIR ANALYSIS BY METHOD TO-15 Instrument: MSVOA_LWed Nov 04 02:40:06 2020
 QLast Update : Wed Nov 04 02:40:06 2020
 Response via : Initial Calibration

Internal Standards	R.T.	QIon	Response	Conc	Units	Dev(Min)
1) Bromochloromethane	5.64	49	1406572	10.00	ppbv	-0.03
33) 1,4-Difluorobenzene	7.15	114	4923912	10.00	ppbv	-0.03
55) Chlorobenzene-d5	12.06	117	4516537	10.00	ppbv	-0.04

System Monitoring Compounds

68) 1-Bromo-4-Fluorobenzene	14.39	95	3385149	10.55	ppbv	-0.04
Spiked Amount	10.000	Range	65 - 135	Recovery	=	105.50%

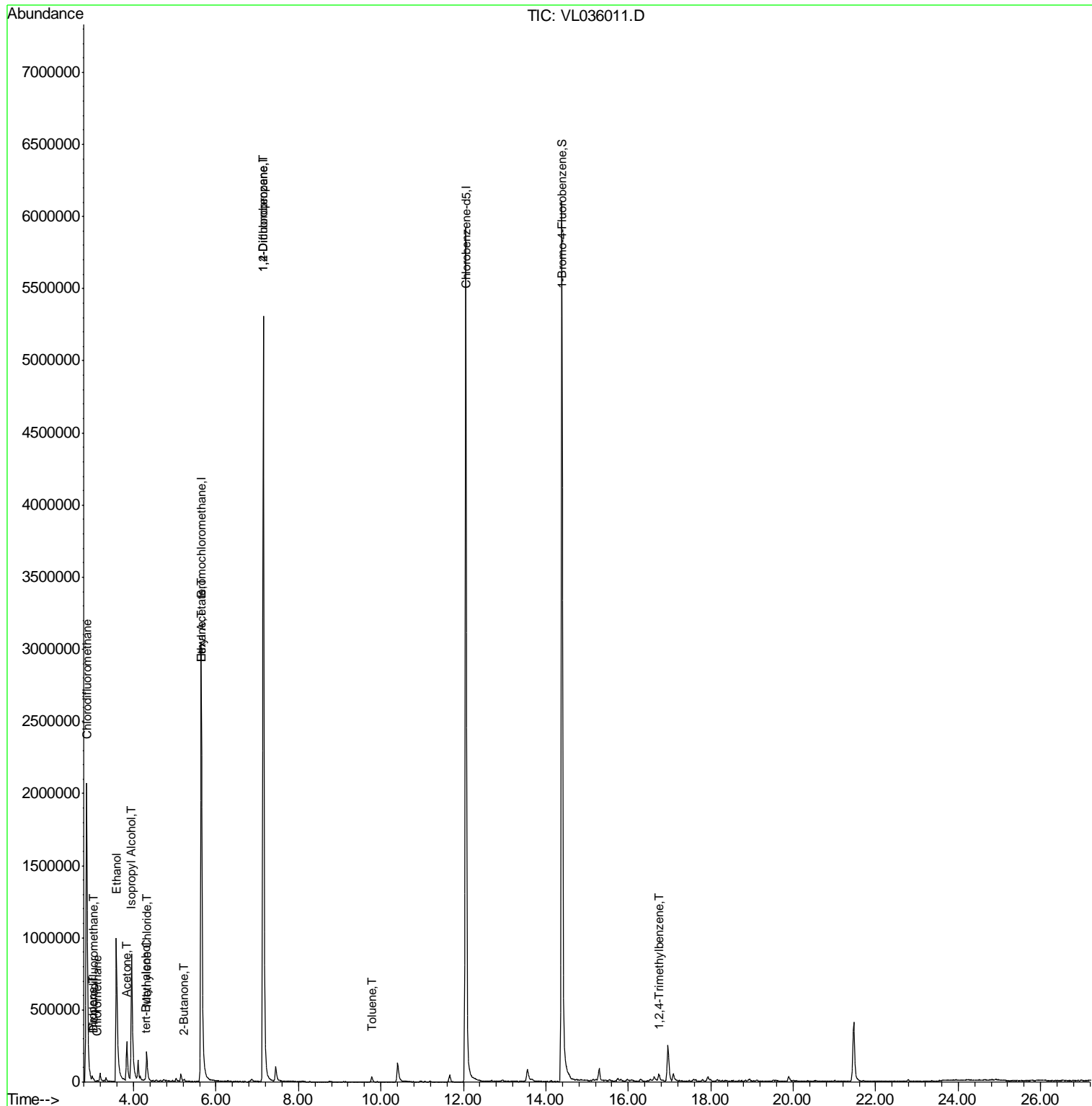
Target Compounds	R.T.	QIon	Response	Conc	Units	Ovalue
2) Dichlorodifluoromethane	3.02	85	13196	0.050	ppbv #	84
3) Chlorodifluoromethane	2.87	51	1486387	8.824	ppbv #	55
4) Chloromethane	3.11	50	3677	0.045	ppbv #	86
9) Propene	3.00	41	8322	0.135	ppbv	98
13) Ethanol	3.58	45	1395262	104.319	ppbv	98
15) Acetone	3.83	43	328661	2.186	ppbv	98
17) tert-Butyl alcohol	4.28	59	9654	0.048	ppbv #	69
19) Isopropyl Alcohol	3.95	45	1318398	14.267	ppbv	99
20) Methylene Chloride	4.32	84	106516	1.006	ppbv	99
25) Ethyl Acetate	5.66	43	36486	0.123	ppbv #	89
26) Hexane	5.66	57	37897	0.232	ppbv #	60
34) 2-Butanone	5.22	43	8116	0.051	ppbv #	42
39) 1,2-Dichloropropane	7.15	63	1028518	8.345	ppbv #	30
53) Toluene	9.78	91	31685	0.072	ppbv	99
74) 1,2,4-Trimethylbenzene	16.74	105	31801	0.059	ppbv #	74

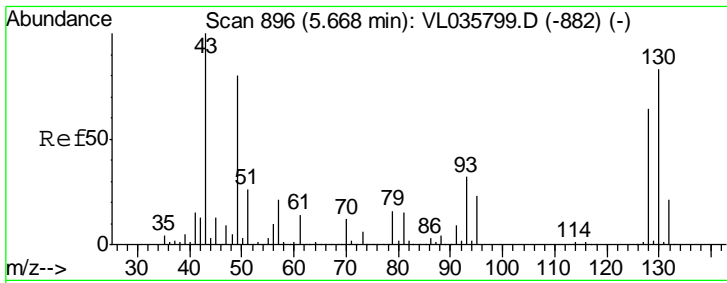
(#) = qualifier out of range (m) = manual integration (+) = signals summed

Data Path : Z:\VOASRV\HPCHEM1\MSVOA L\DATA\VL112420\
 Data File : VL036011.D
 Acq On : 25 Nov 2020 2:18
 Operator : SY/AP
 Sample : L4883-01DL 10X
 Misc : 400ml/MSVOA L
 ALS Vial : 1 Sample Multiplier: 1

Instrument :
 MSVOA_L
 ClientSampled :

Quant Time: Nov 25 07:18:18 2020
 Quant Method : Z:\VOASRV\HPCHEM1\MSVOA L\METHODS\VL110320AIR.M
 Quant Title : AIR ANALYSIS BY METHOD TO-15 Instrument: MSVOA_L Wed Nov 04 02:40:06 2020
 QLast Update : Wed Nov 04 02:40:06 2020
 Response via : Initial Calibration



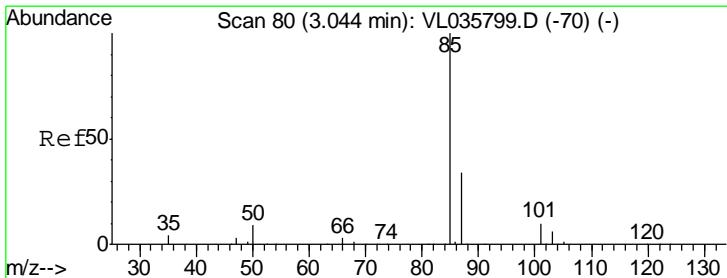
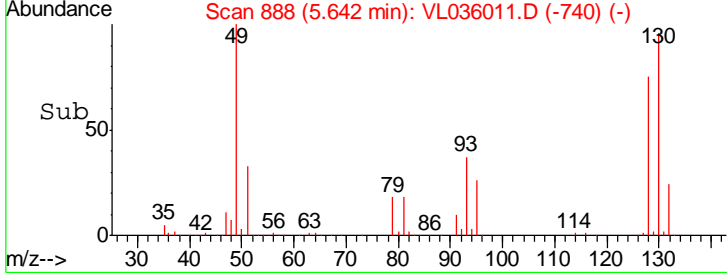
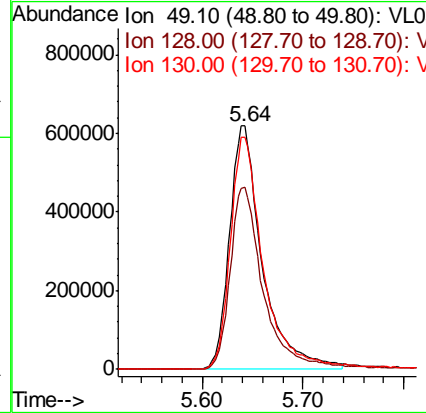
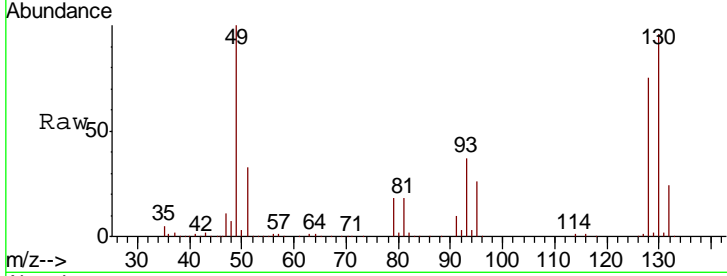


#1
 Bromochloromethane
 Concen: 10.000 ppbv
 RT: 5.64 min Scan# 888
 Delta R.T. -0.03 min
 Lab File: VL036011.D
 Acq: 25 Nov 2020 2:18

Instrument :
 MSVOA_L
 ClientSampled :

Tgt Ion: 49 Resp: 1406572

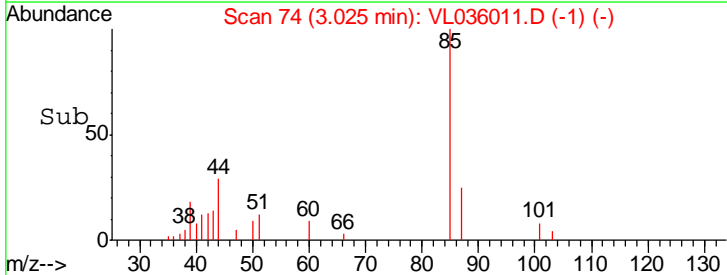
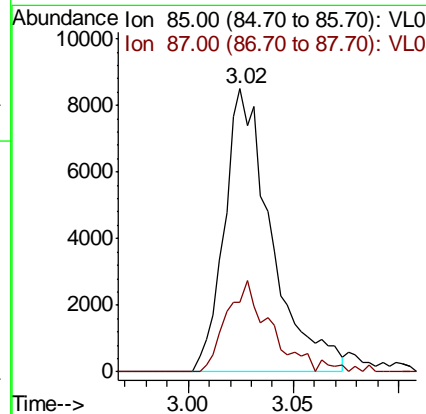
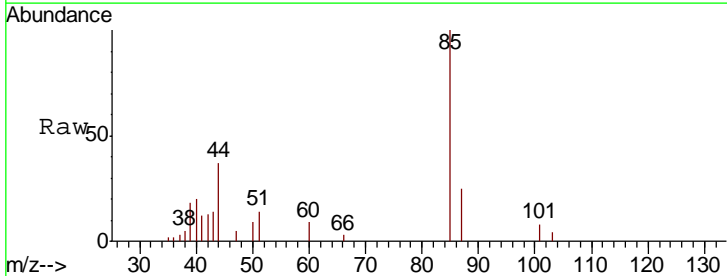
Ion	Ratio	Lower	Upper
49	100		
128	77.0	41.5	124.6
130	98.6	53.7	161.1

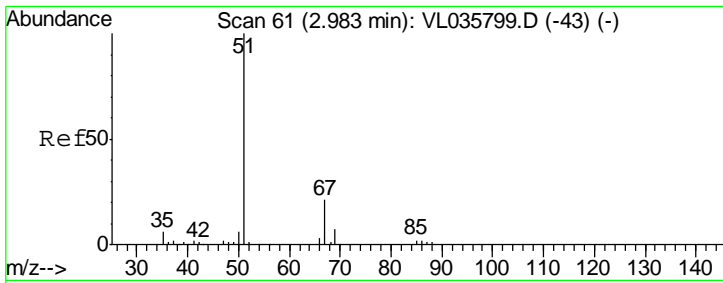


#2
 Dichlorodifluoromethane
 Concen: 0.050 ppbv
 RT: 3.02 min Scan# 74
 Delta R.T. -0.02 min
 Lab File: VL036011.D
 Acq: 25 Nov 2020 2:18

Tgt Ion: 85 Resp: 13196

Ion	Ratio	Lower	Upper
85	100		
87	24.6	27.1	40.7#

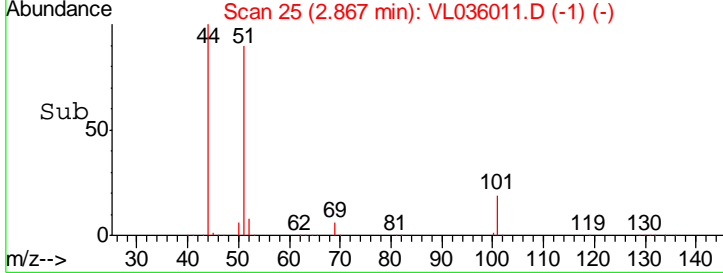
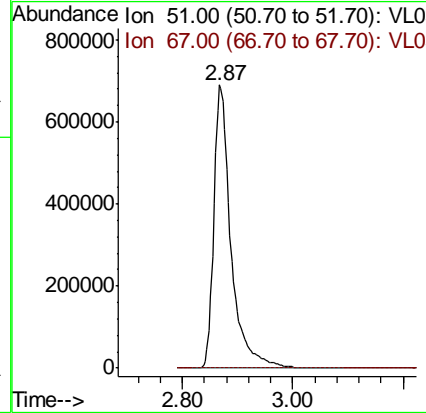
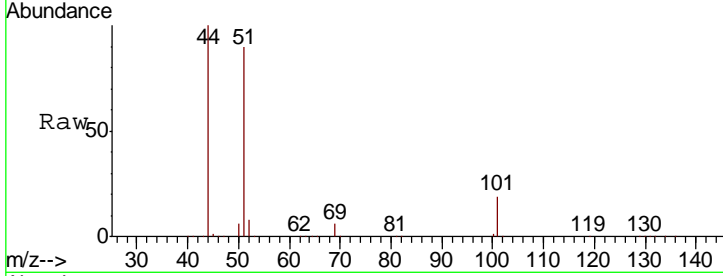




#3
 Chlorodifluoromethane
 Concen: 8.824 ppbv
 RT: 2.87 min Scan# 25
 Delta R.T. -0.12 min
 Lab File: VL036011.D
 Acq: 25 Nov 2020 2:18

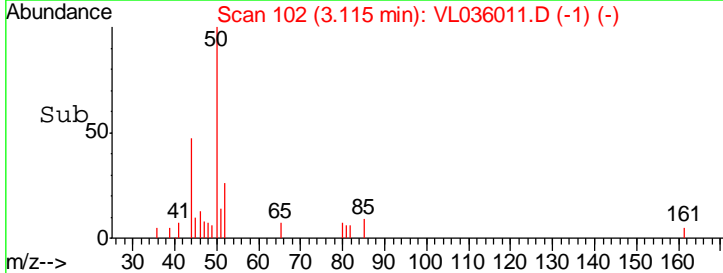
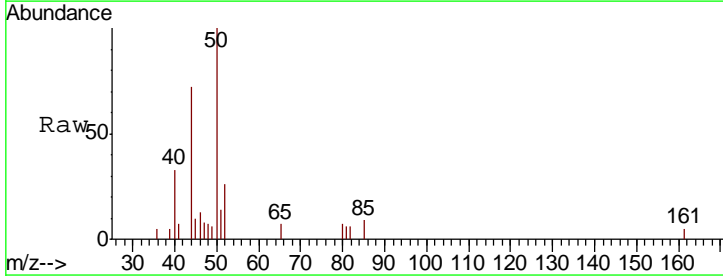
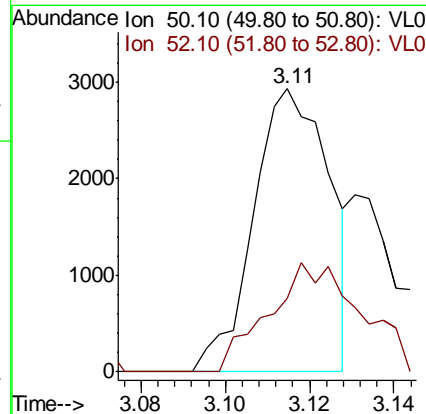
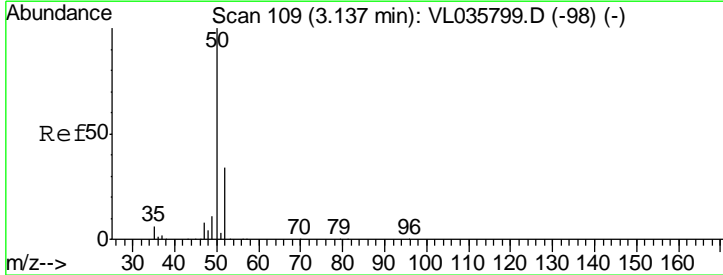
Instrument :
 MSVOA_L
 ClientSampled :

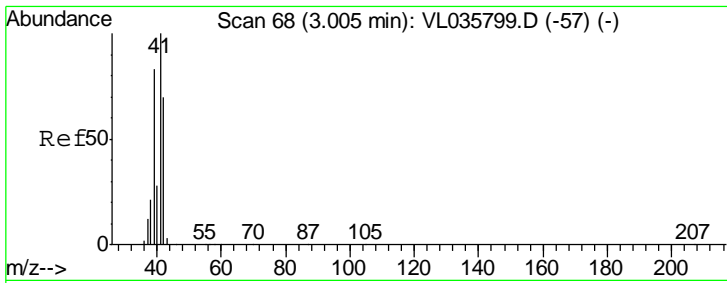
Tgt Ion	Resp	Lower	Upper
51	100		
67	0.1	17.0	25.4#



#4
 Chloromethane
 Concen: 0.045 ppbv
 RT: 3.11 min Scan# 102
 Delta R.T. -0.02 min
 Lab File: VL036011.D
 Acq: 25 Nov 2020 2:18

Tgt Ion	Resp	Lower	Upper
50	100		
52	25.9	27.1	40.7#

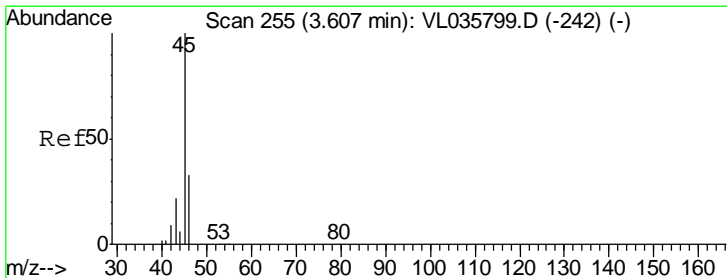
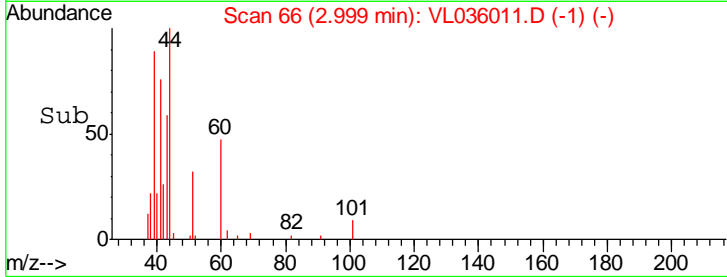
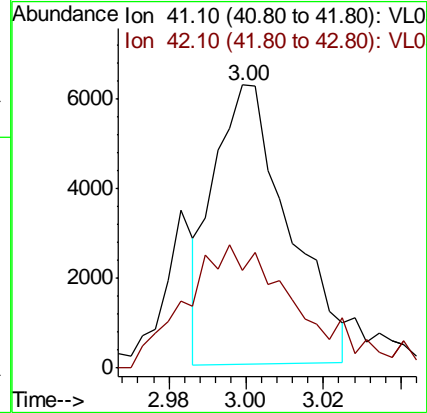
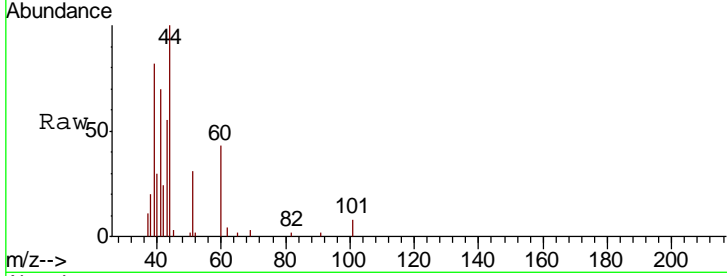




#9
 Propene
 Concen: 0.135 ppbv
 RT: 3.00 min Scan# 66
 Delta R.T. -0.01 min
 Lab File: VL036011.D
 Acq: 25 Nov 2020 2:18

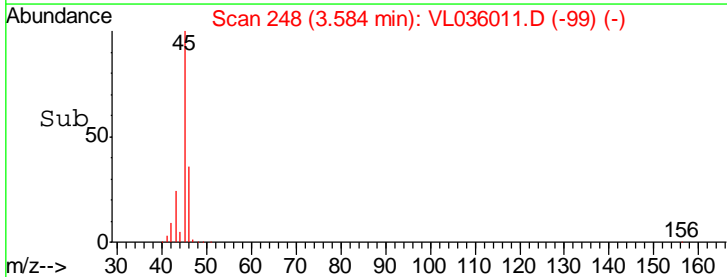
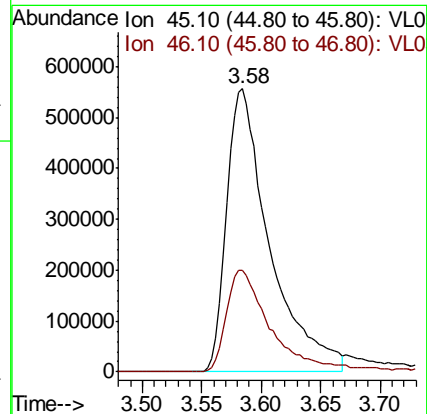
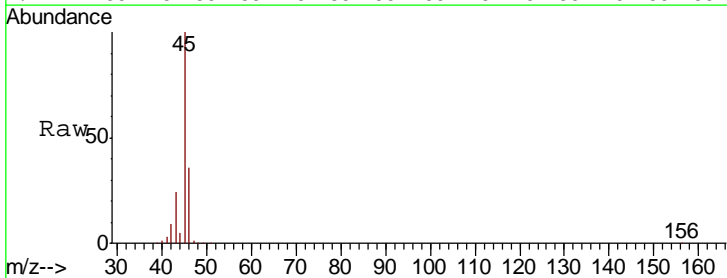
Instrument :
 MSVOA_L
 ClientSampled :

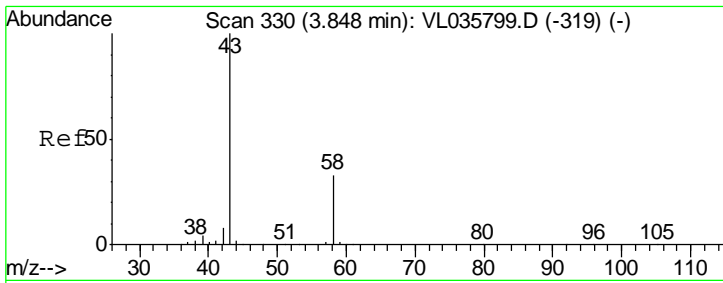
Tgt Ion	Resp	Lower	Upper
41	100		
42	72.1	56.2	84.4



#13
 Ethanol
 Concen: 104.319 ppbv
 RT: 3.58 min Scan# 248
 Delta R.T. -0.02 min
 Lab File: VL036011.D
 Acq: 25 Nov 2020 2:18

Tgt Ion	Resp	Lower	Upper
45	100		
46	39.0	16.1	64.5

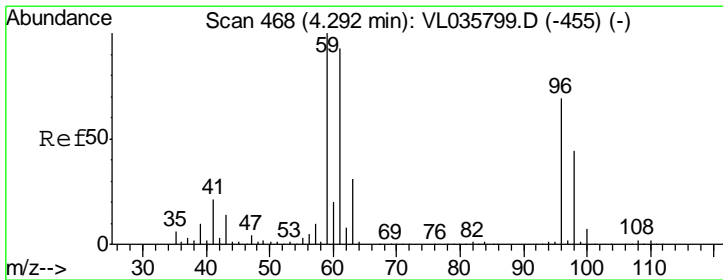
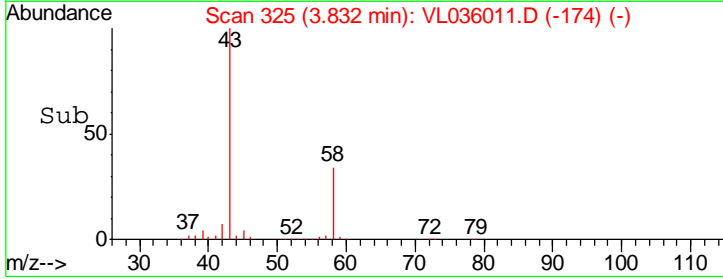
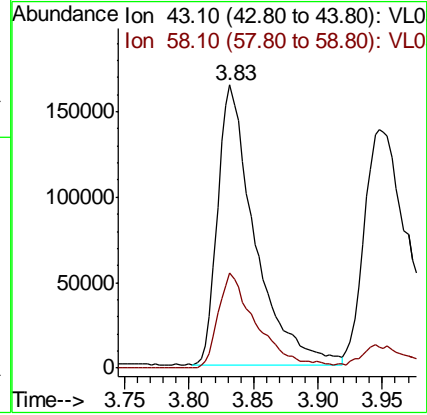
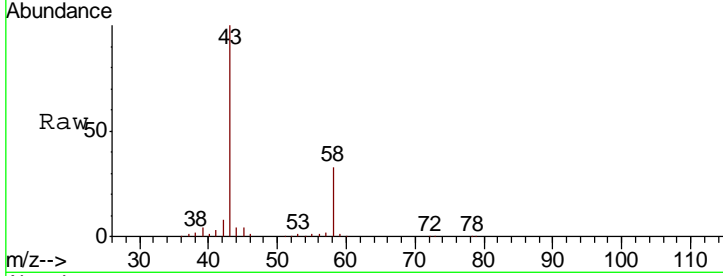




#15
 Acetone
 Concen: 2.186 ppbv
 RT: 3.83 min Scan# 325
 Delta R.T. -0.02 min
 Lab File: VL036011.D
 Acq: 25 Nov 2020 2:18

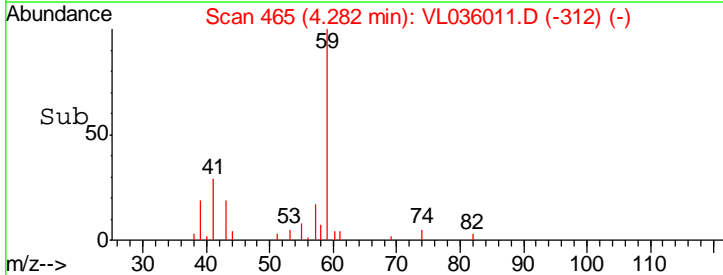
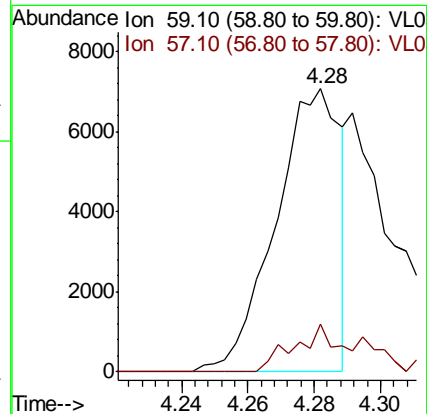
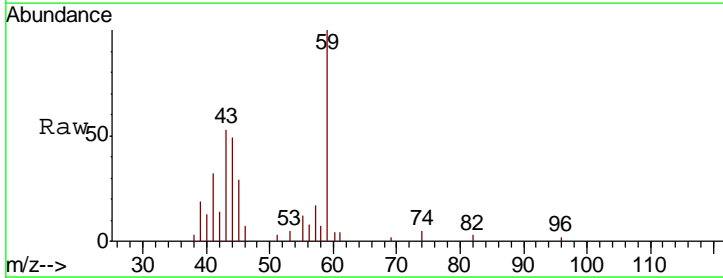
Instrument :
 MSVOA_L
 ClientSampled :

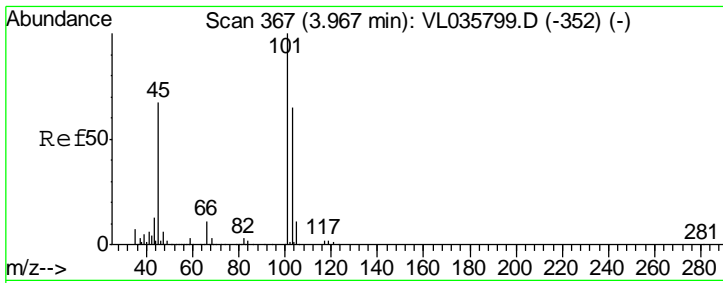
Tgt Ion	Resp	Lower	Upper
43	100		
58	35.8	27.5	41.3



#17
 tert-Butyl alcohol
 Concen: 0.048 ppbv
 RT: 4.28 min Scan# 465
 Delta R.T. -0.01 min
 Lab File: VL036011.D
 Acq: 25 Nov 2020 2:18

Tgt Ion	Resp	Lower	Upper
59	100		
57	21.8	8.2	12.4#



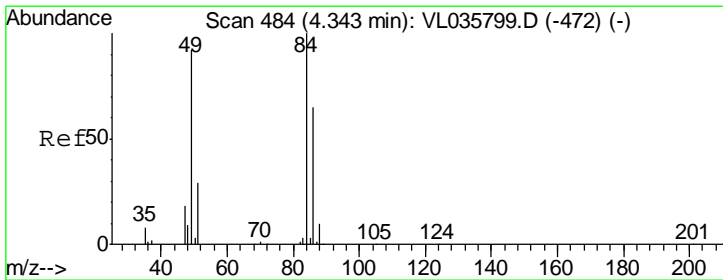
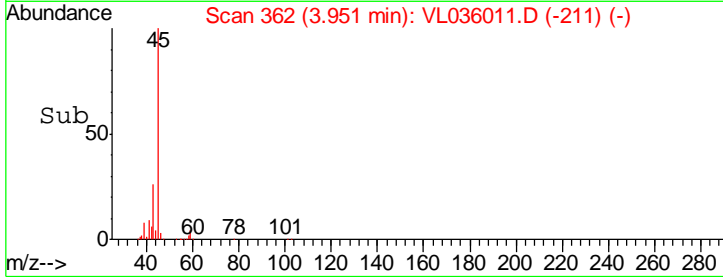
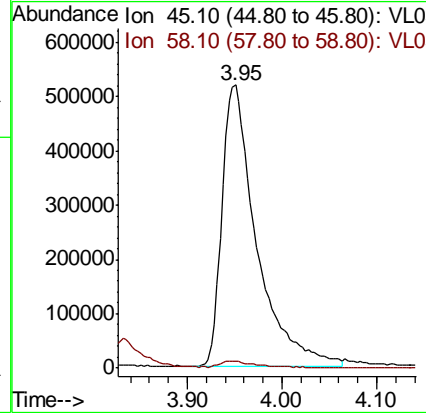
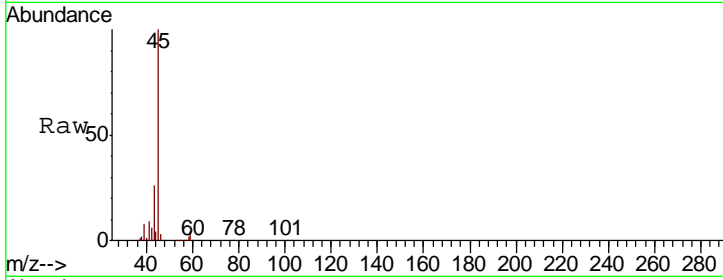


#19
 Isopropyl Alcohol
 Concen: 14.267 ppbv
 RT: 3.95 min Scan# 362
 Delta R.T. -0.02 min
 Lab File: VL036011.D
 Acq: 25 Nov 2020 2:18

Instrument :
 MSVOA_L
 ClientSampled :

Tgt Ion: 45 Resp: 1318398

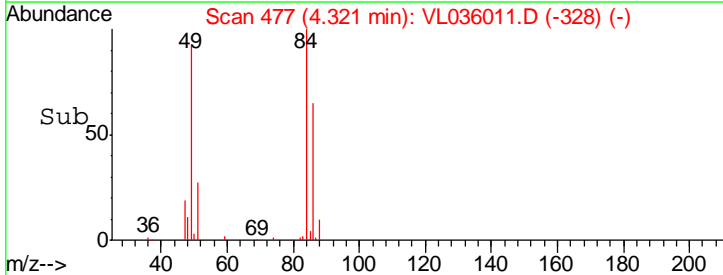
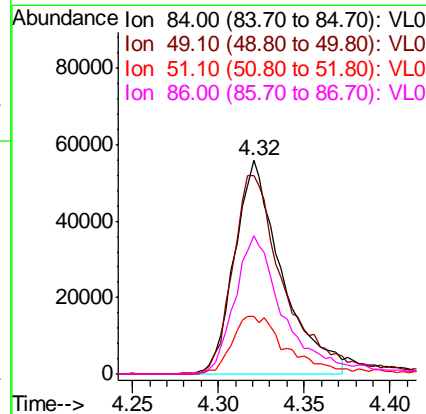
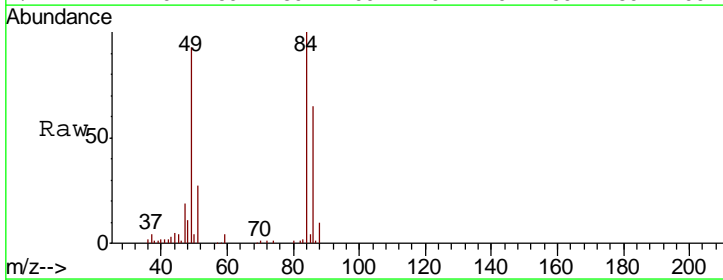
Ion	Ratio	Lower	Upper
45	100		
58	2.7	2.6	3.8

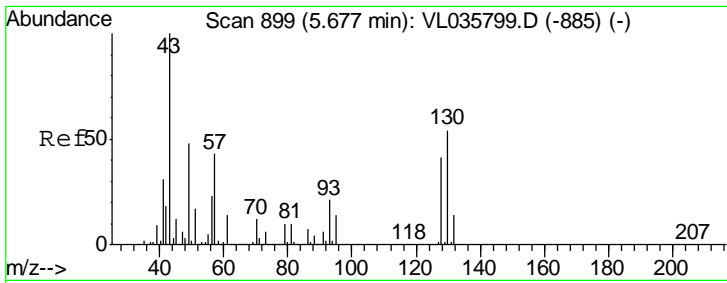


#20
 Methylene Chloride
 Concen: 1.006 ppbv
 RT: 4.32 min Scan# 477
 Delta R.T. -0.02 min
 Lab File: VL036011.D
 Acq: 25 Nov 2020 2:18

Tgt Ion: 84 Resp: 106516

Ion	Ratio	Lower	Upper
84	100		
49	93.1	73.8	110.8
51	26.9	23.0	34.4
86	64.7	52.1	78.1

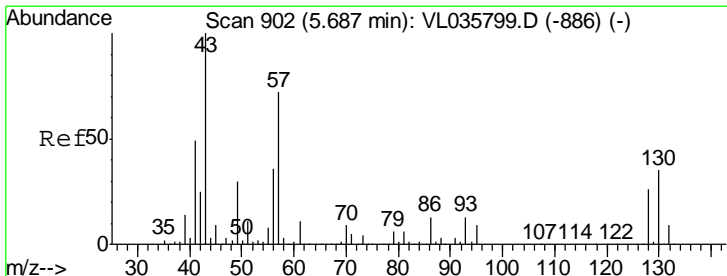
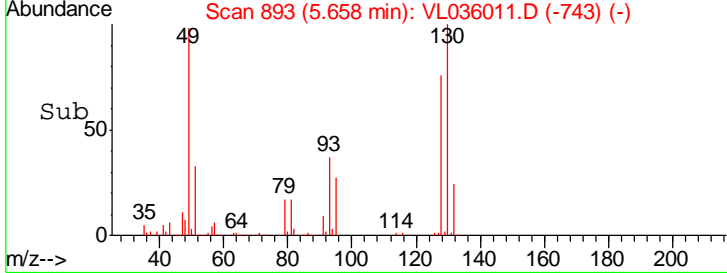
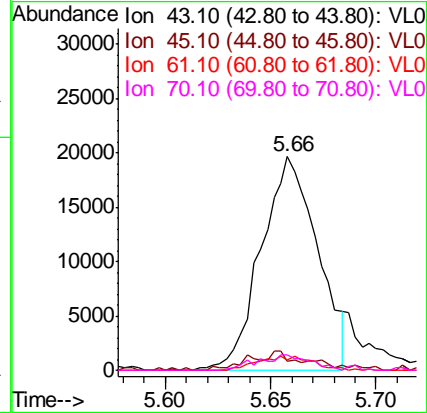
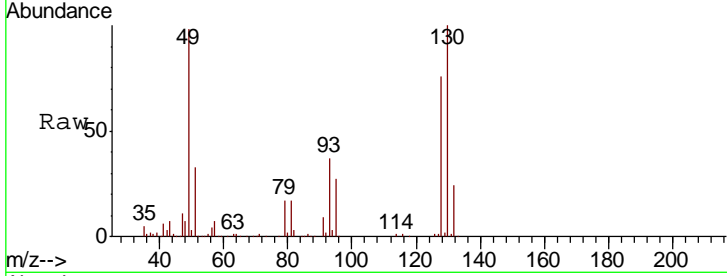




#25
Ethyl Acetate
Concen: 0.123 ppbv
RT: 5.66 min Scan# 893
Delta R.T. -0.02 min
Lab File: VL036011.D
Acq: 25 Nov 2020 2:18

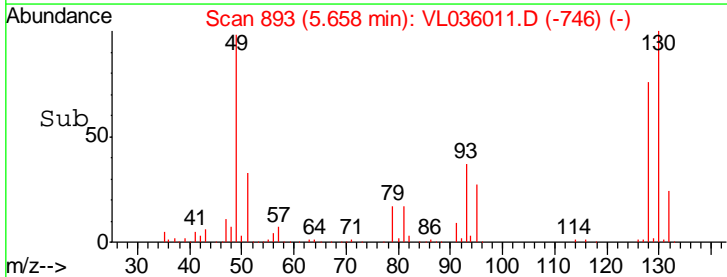
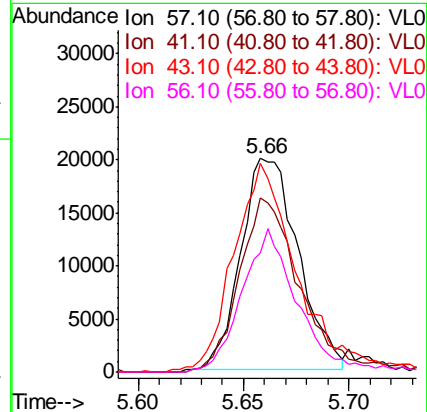
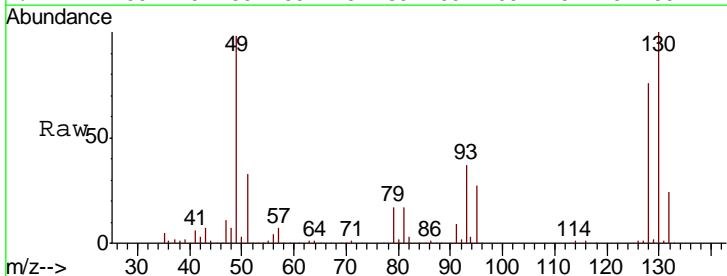
Instrument :
MSVOA_L
ClientSampled :

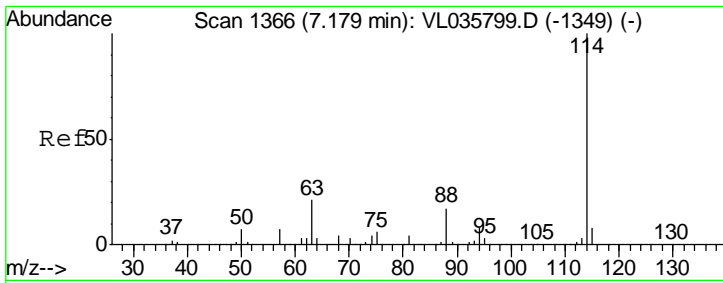
Tgt Ion	Resp	Lower	Upper
43	100		
45	9.4	8.5	12.7
61	6.4	10.7	16.1#
70	7.0	8.6	12.8#



#26
Hexane
Concen: 0.232 ppbv
RT: 5.66 min Scan# 893
Delta R.T. -0.03 min
Lab File: VL036011.D
Acq: 25 Nov 2020 2:18

Tgt Ion	Resp	Lower	Upper
57	100		
41	90.7	58.9	88.3#
43	108.8	150.2	225.2#
56	66.0	42.4	63.6#

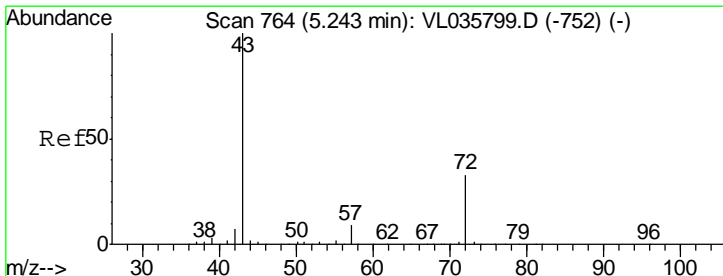
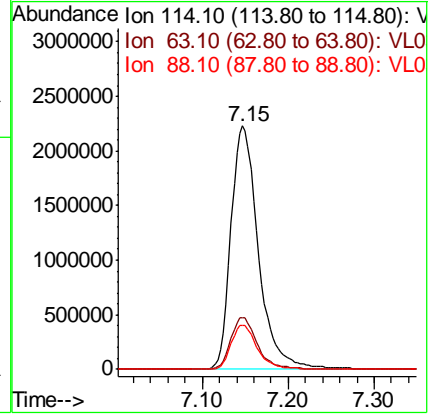
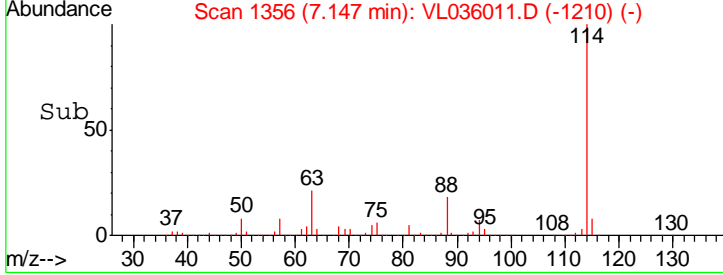
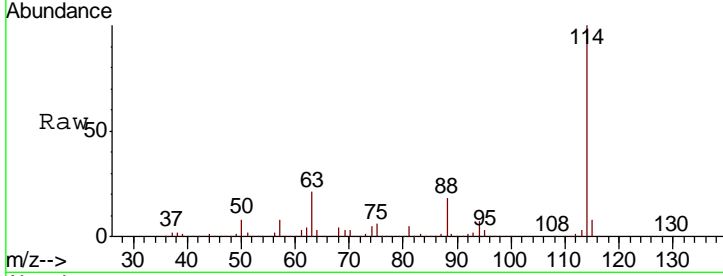




#33
 1,4-Difluorobenzene
 Concen: 10.000 ppbv
 RT: 7.15 min Scan# 1356
 Delta R.T. -0.03 min
 Lab File: VL036011.D
 Acq: 25 Nov 2020 2:18

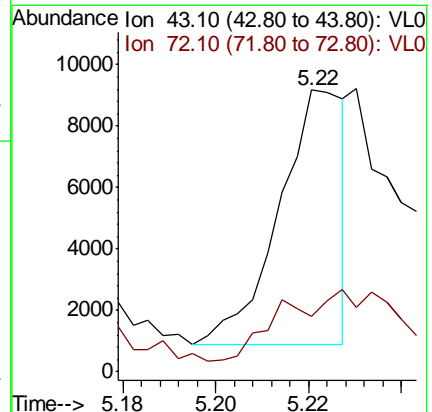
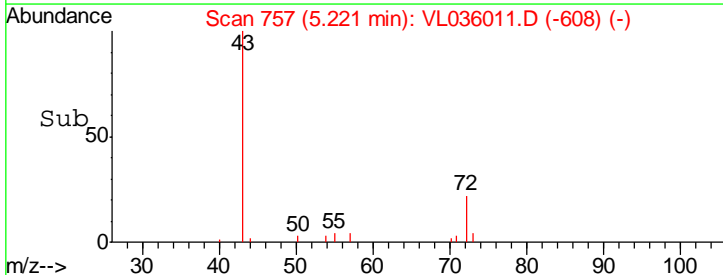
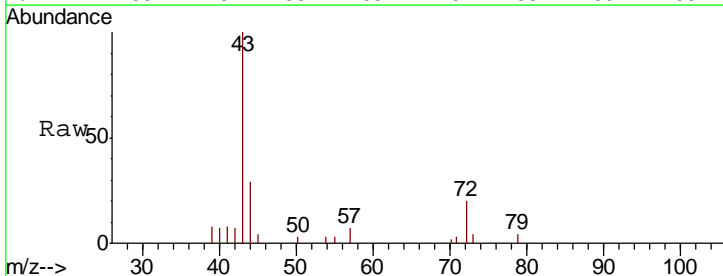
Instrument :
 MSVOA_L
 ClientSampled :

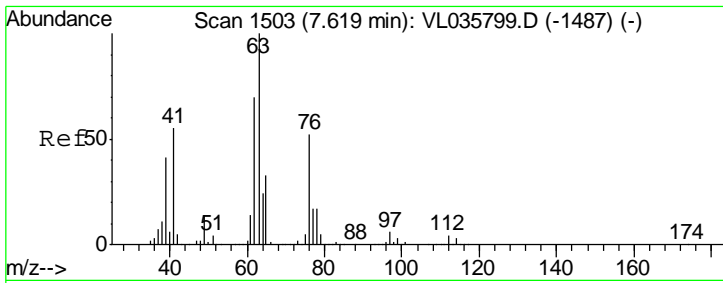
Tgt Ion	Resp	Lower	Upper
114	4923912		
63	21.0	16.1	24.1
88	17.7	13.7	20.5



#34
 2-Butanone
 Concen: 0.051 ppbv
 RT: 5.22 min Scan# 757
 Delta R.T. -0.02 min
 Lab File: VL036011.D
 Acq: 25 Nov 2020 2:18

Tgt Ion	Resp	Lower	Upper
43	8116		
72	0.0	26.5	39.7#

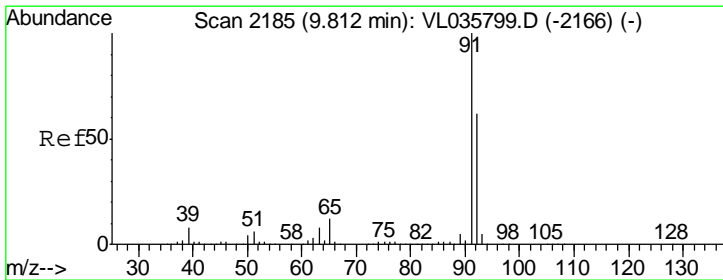
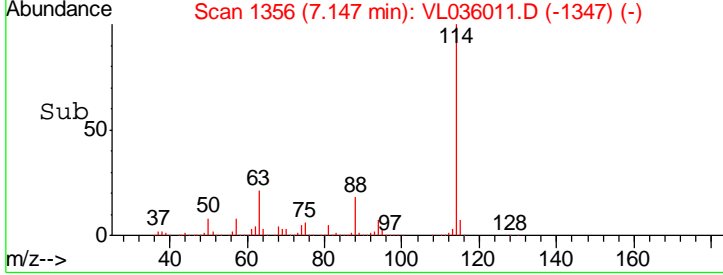
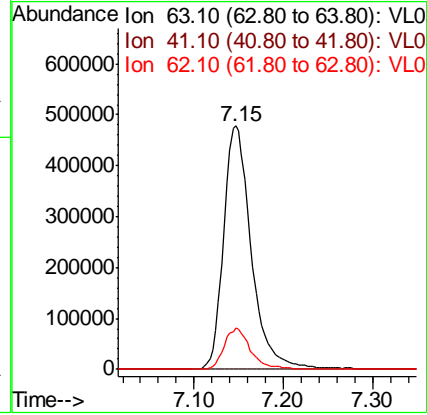
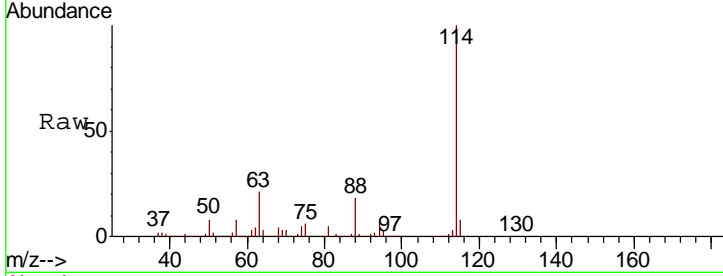




#39
 1,2-Dichloropropane
 Concen: 8.345 ppbv
 RT: 7.15 min Scan# 1356
 Delta R.T. -0.47 min
 Lab File: VL036011.D
 Acq: 25 Nov 2020 2:18

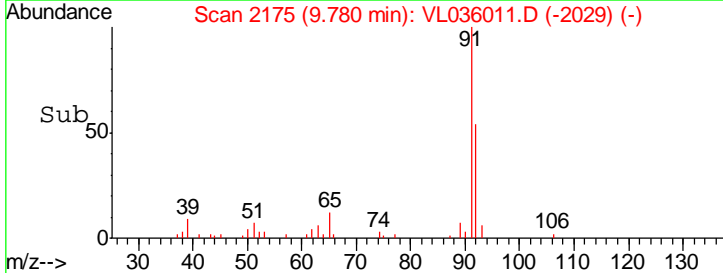
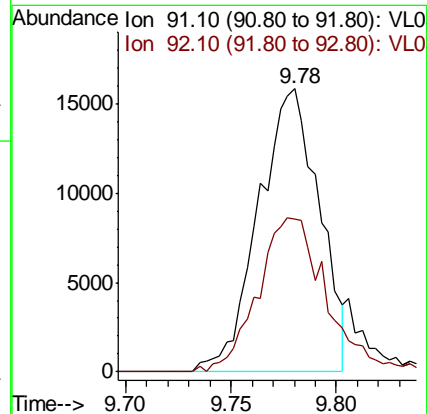
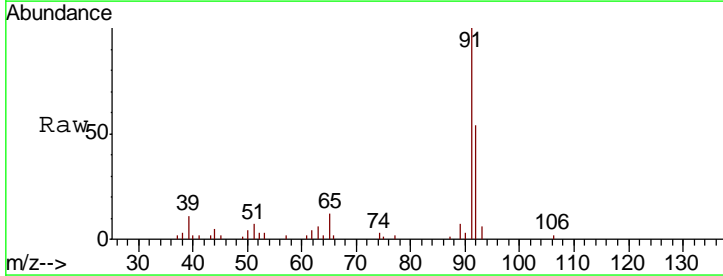
Instrument :
 MSVOA_L
 ClientSampled :

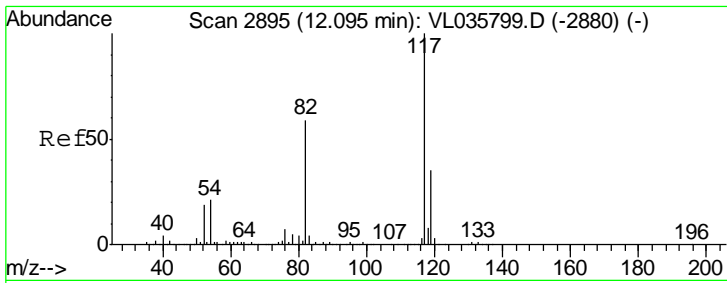
Tgt Ion	Resp	Lower	Upper
63	1028518		
41	0.0	43.8	65.6#
62	16.9	56.2	84.2#



#53
 Toluene
 Concen: 0.072 ppbv
 RT: 9.78 min Scan# 2175
 Delta R.T. -0.03 min
 Lab File: VL036011.D
 Acq: 25 Nov 2020 2:18

Tgt Ion	Resp	Lower	Upper
91	31685		
92	61.5	49.8	74.6



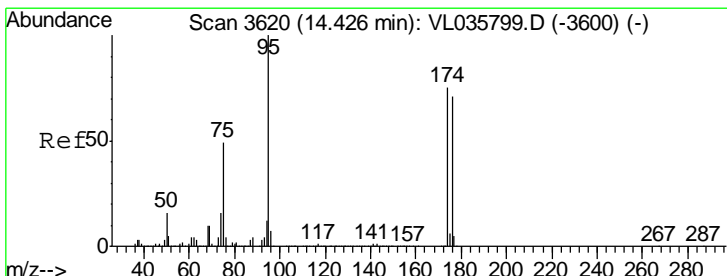
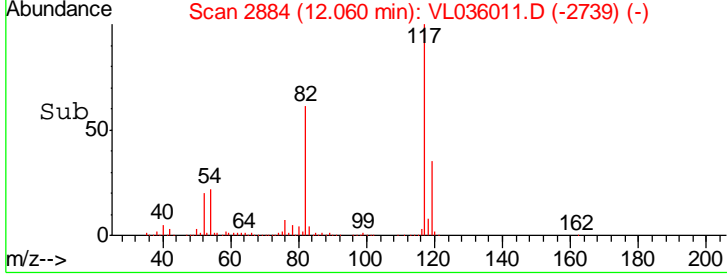
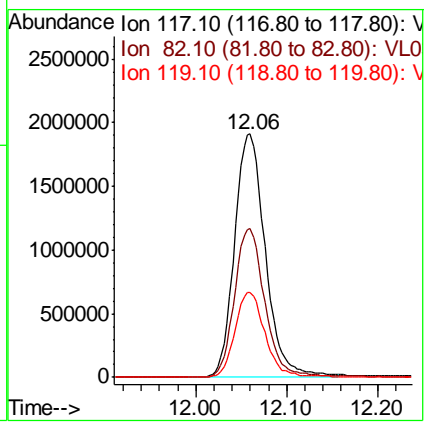
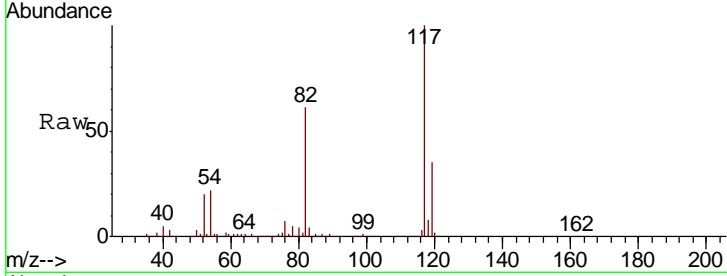


#55
 Chlorobenzene-d5
 Concen: 10.000 ppbv
 RT: 12.06 min Scan# 2884
 Delta R.T. -0.04 min
 Lab File: VL036011.D
 Acq: 25 Nov 2020 2:18

Instrument :
 MSVOA_L
 ClientSampled :

Tgt Ion: 117 Resp: 4516537

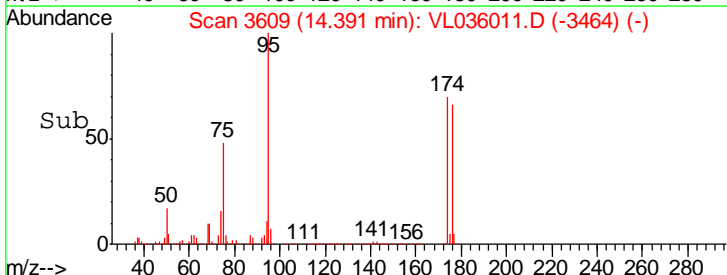
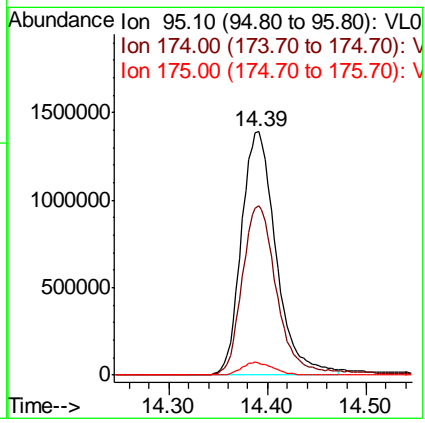
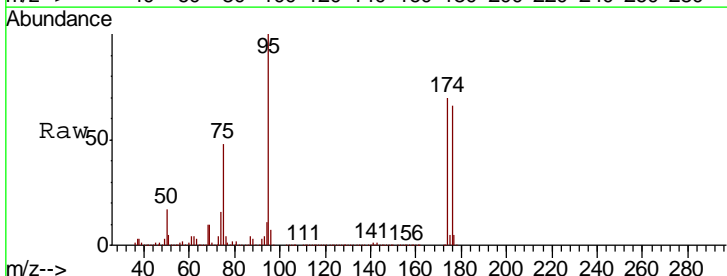
Ion	Ratio	Lower	Upper
117	100		
82	61.3	50.6	76.0
119	34.4	52.6	78.8#

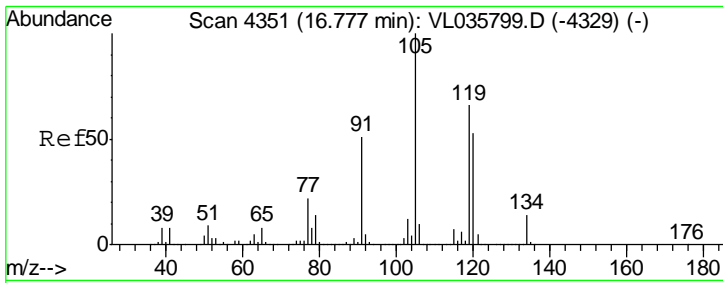


#68
 1-Bromo-4-Fluorobenzene
 Concen: 10.549 ppbv
 RT: 14.39 min Scan# 3609
 Delta R.T. -0.04 min
 Lab File: VL036011.D
 Acq: 25 Nov 2020 2:18

Tgt Ion: 95 Resp: 3385149

Ion	Ratio	Lower	Upper
95	100		
174	71.3	59.8	89.6
175	5.1	4.3	6.5



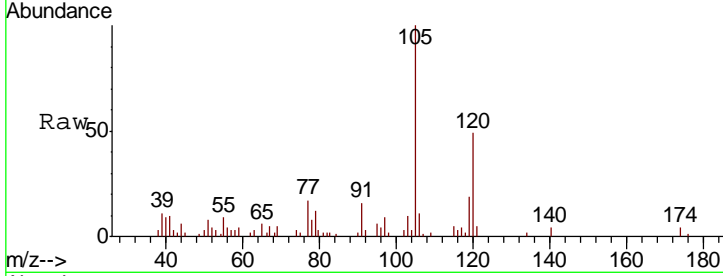


#74
 1,2,4-Trimethylbenzene
 Concen: 0.059 ppbv
 RT: 16.74 min Scan# 4340
 Delta R.T. -0.04 min
 Lab File: VL036011.D
 Acq: 25 Nov 2020 2:18

Instrument : MSVOA_L
 ClientSampled :

Tot Ion:105 Resp: 31801

Ion	Ratio	Lower	Upper
105	100		
120	50.0	42.0	63.0
91	12.4	41.0	61.6#
77	17.5	17.3	25.9



Abundance Ion 105.10 (104.80 to 105.80): V
 Ion 120.20 (119.90 to 120.90): V
 Ion 91.10 (90.80 to 91.80): VL0
 Ion 77.10 (76.80 to 77.80): VL0

