

Data Path : Z:\VOASRV\HPCHEM1\MSVOA L\DATA\VL113018\
 Data File : VL032856.D
 Acq On : 30 Nov 2018 19:41
 Operator : SY/AP
 Sample : J6132-03DL 10X
 Misc : 400ml/MSVOA L
 ALS Vial : 1 Sample Multiplier: 1

Instrument :
 MSVOA_L
ClientSampled :
 DSV-02DL

Manual Integrations
APPROVED
 apatel
 12/4/2018 4:11:14 PM

Quant Time: Dec 03 15:00:02 2018
 Quant Method : Z:\VOASRV\HPCHEM1\MSVOA L\METHODS\VL111418AIR.M
 Quant Title : AIR ANALYSIS BY METHOD TO-15 Instrument: MSVOA_LWed Nov 1
 QLast Update : Wed Nov 14 07:00:23 2018
 Response via : Initial Calibration

Internal Standards	R.T.	QIon	Response	Conc	Units	Dev(Min)
1) Bromochloromethane	5.77	49	1519164	10.00	ppbv	0.00
33) 1,4-Difluorobenzene	7.30	114	3784008	10.00	ppbv	0.00
55) Chlorobenzene-d5	12.25	117	3561709	10.00	ppbv	0.00

System Monitoring Compounds
 68) 1-Bromo-4-Fluorobenzene 14.59 95 2677067 10.05 ppbv 0.00
 Spiked Amount 10.000 Range 65 - 135 Recovery = 100.50%

Target Compounds	R.T.	QIon	Response	Conc	Units	Ovalue
9) Propene	3.04	41	358459	7.437	ppbv	93
13) Ethanol	3.66	45	86629	5.487	ppbv	94
15) Acetone	3.91	43	201320m	1.451	ppbv	
27) Carbon Disulfide	4.63	76	55219	0.303	ppbv #	72
30) Cyclohexane	7.25	84	23234m	0.185	ppbv	
34) 2-Butanone	5.34	43	181853	0.927	ppbv	99
36) Benzene	7.01	78	69443	0.230	ppbv	98
53) Toluene	9.96	91	65060m	0.207	ppbv	

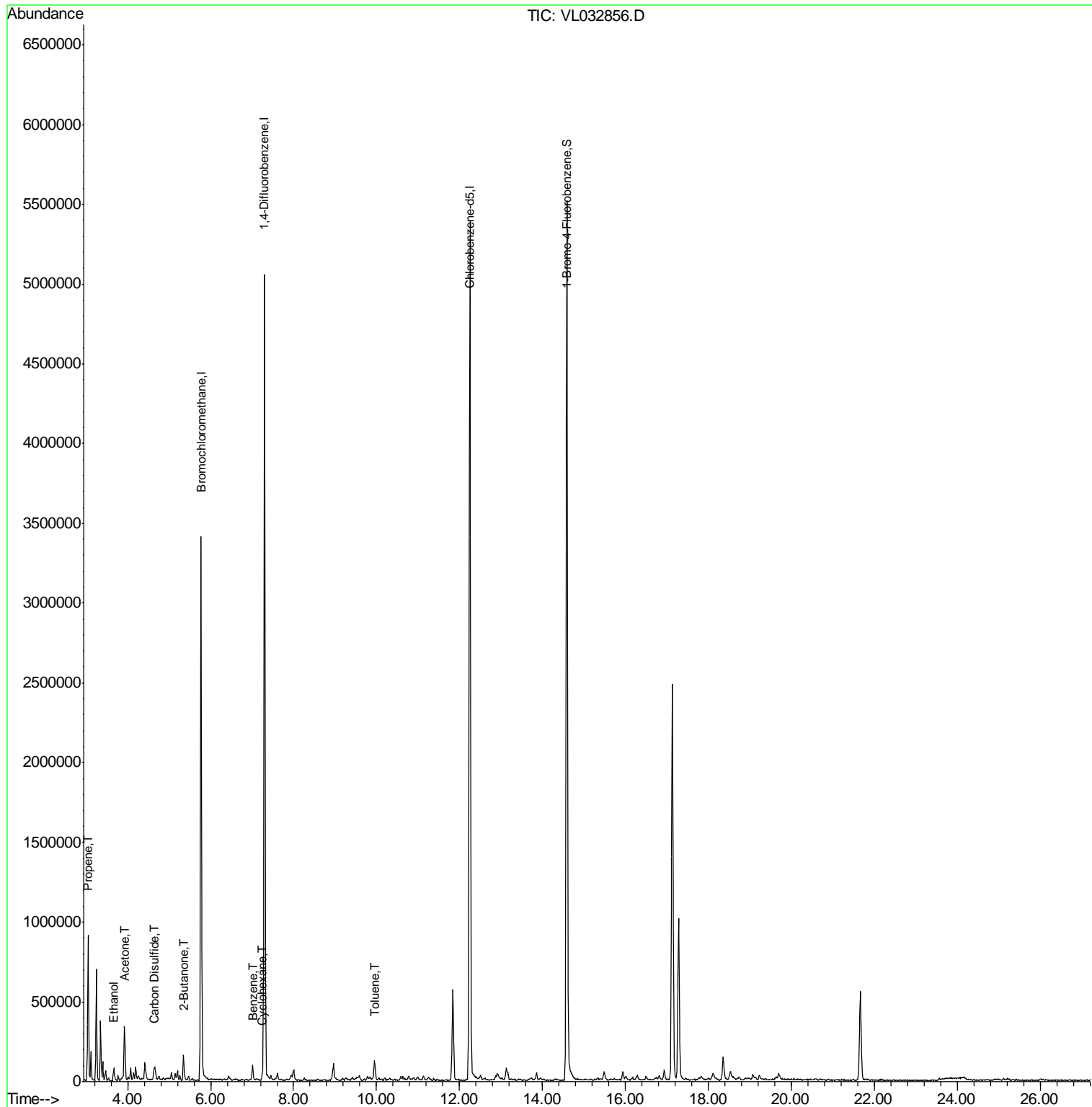
(#) = qualifier out of range (m) = manual integration (+) = signals summed

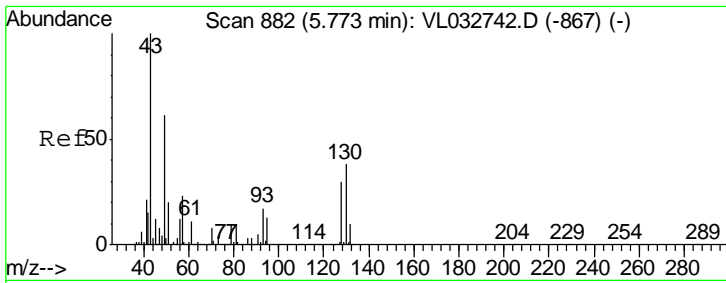
Data Path : Z:\VOASRV\HPCHEM1\MSVOA L\DATA\VL113018\
 Data File : VL032856.D
 Acq On : 30 Nov 2018 19:41
 Operator : SY/AP
 Sample : J6132-03DL 10X
 Misc : 400ml/MSVOA L
 ALS Vial : 1 Sample Multiplier: 1

Instrument :
 MSVOA_L
ClientSampled :
 DSV-02DL

Manual Integrations
APPROVED
 apatel
 12/4/2018 4:11:14 PM

Quant Time: Dec 03 15:00:02 2018
 Quant Method : Z:\VOASRV\HPCHEM1\MSVOA L\METHODS\VL111418AIR.M
 Quant Title : AIR ANALYSIS BY METHOD TO-15 Instrument: MSVOA_L Wed Nov
 QLast Update : Wed Nov 14 07:00:23 2018
 Response via : Initial Calibration





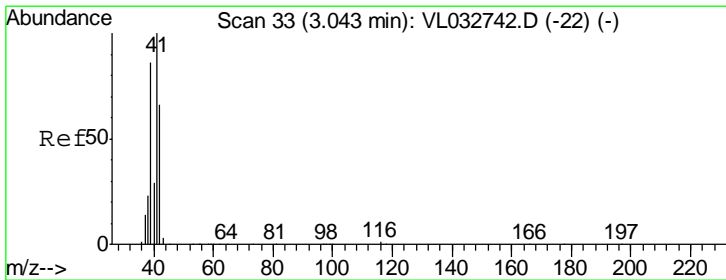
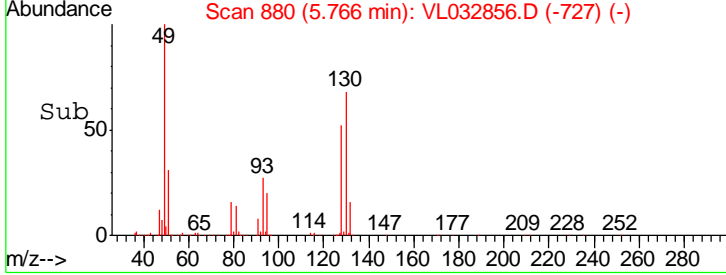
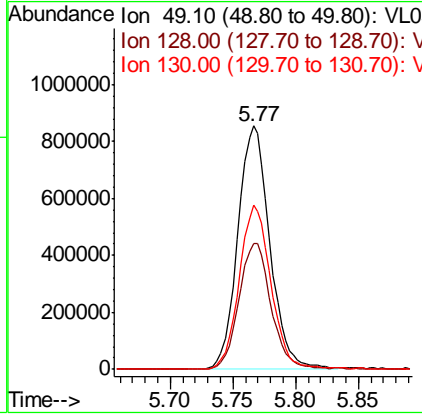
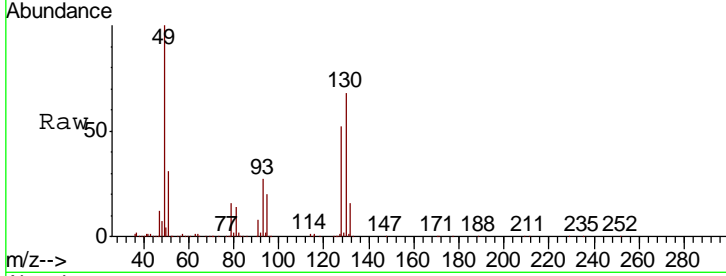
#1
 Bromochloromethane
 Concen: 10.000 ppbv
 RT: 5.77 min Scan# 880
 Delta R.T. -0.01 min
 Lab File: VL032856.D
 Acq: 30 Nov 2018 19:41

Instrument : MSVOA_L
 ClientSampled : DSV-02DL

Tgt Ion: 49 Resp: 1519164

Ion	Ratio	Lower	Upper
49	100		
128	52.7	24.9	74.6
130	67.3	31.4	94.2

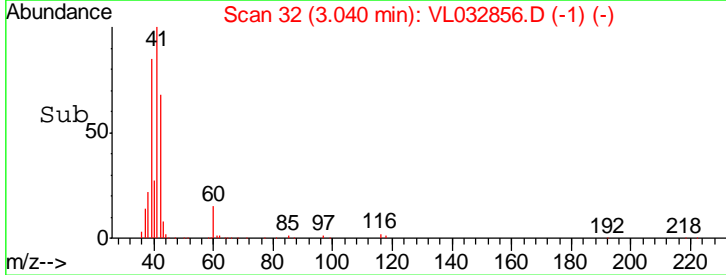
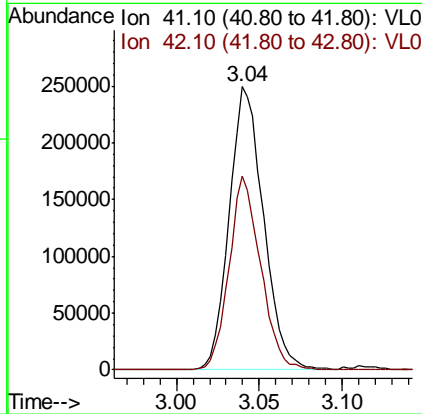
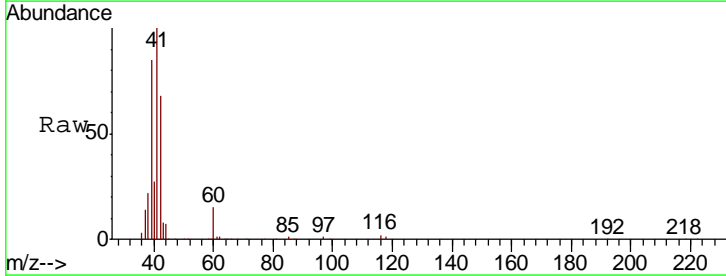
Manual Integrations APPROVED
 apatel
 12/4/2018 4:11:14 PM

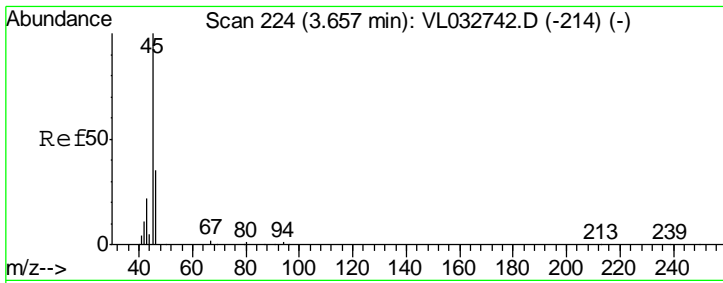


#9
 Propene
 Concen: 7.437 ppbv
 RT: 3.04 min Scan# 32
 Delta R.T. -0.00 min
 Lab File: VL032856.D
 Acq: 30 Nov 2018 19:41

Tgt Ion: 41 Resp: 358459

Ion	Ratio	Lower	Upper
41	100		
42	63.3	55.0	82.6





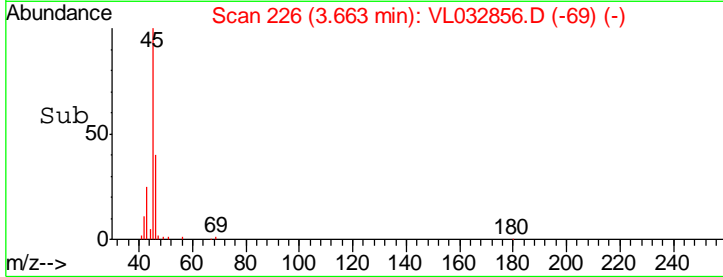
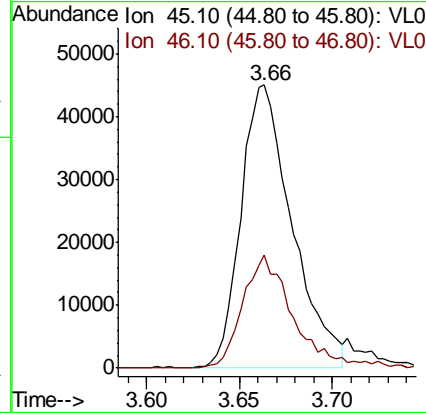
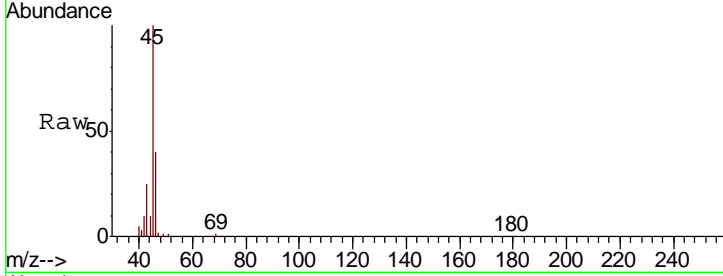
#13
 Ethanol
 Concen: 5.487 ppbv
 RT: 3.66 min Scan# 226
 Delta R.T. 0.01 min
 Lab File: VL032856.D
 Acq: 30 Nov 2018 19:41

Instrument :
 MSVOA_L
ClientSampled :
 DSV-02DL

Tgt Ion	Resp	Lower	Upper
45	100		
46	39.6	14.5	57.9

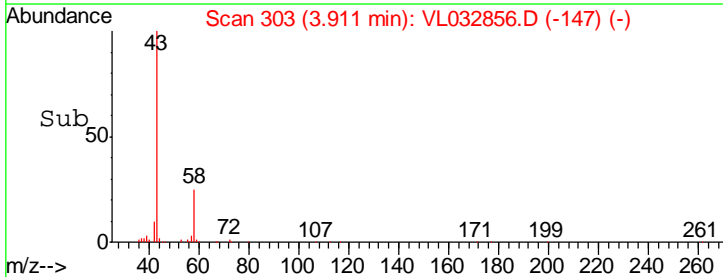
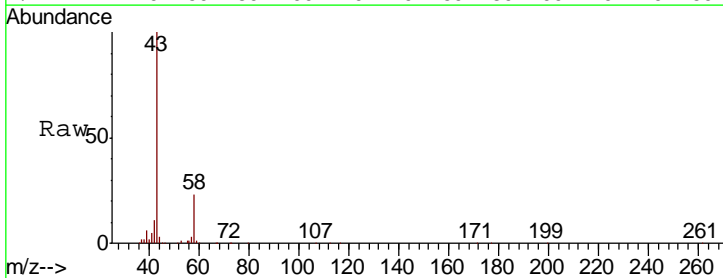
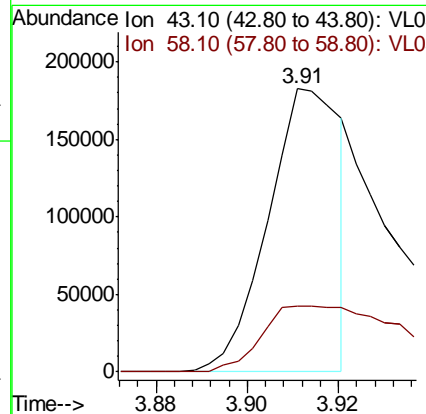
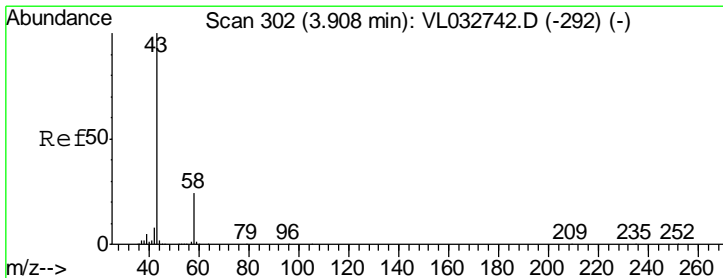
Manual Integrations
APPROVED

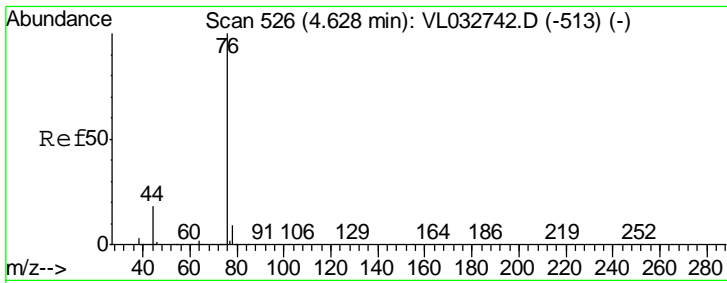
apatel
 12/4/2018 4:11:14 PM



#15
 Acetone
 Concen: 1.451 ppbv m
 RT: 3.91 min Scan# 303
 Delta R.T. 0.00 min
 Lab File: VL032856.D
 Acq: 30 Nov 2018 19:41

Tgt Ion	Resp	Lower	Upper
43	100		
58	47.6	21.1	31.7#





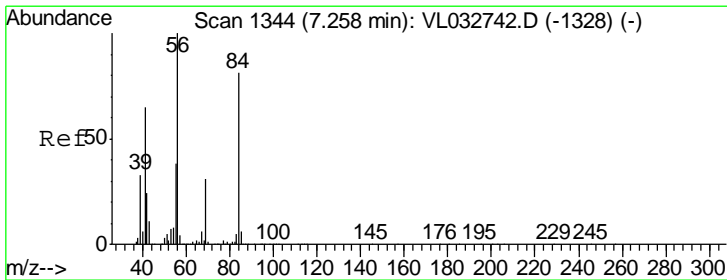
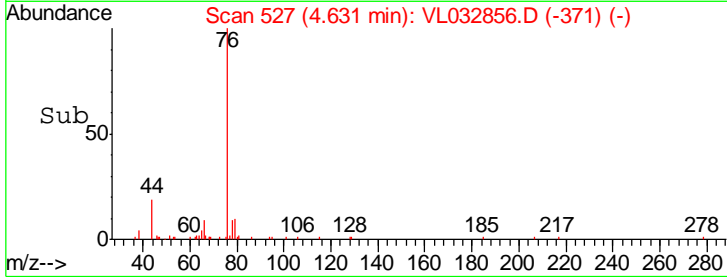
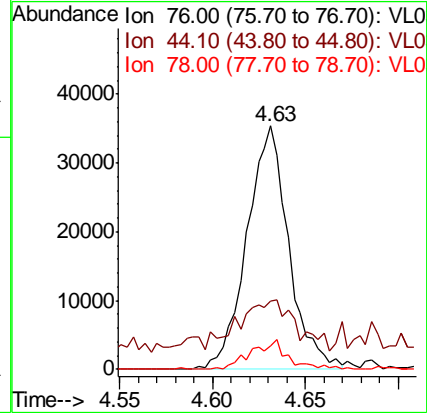
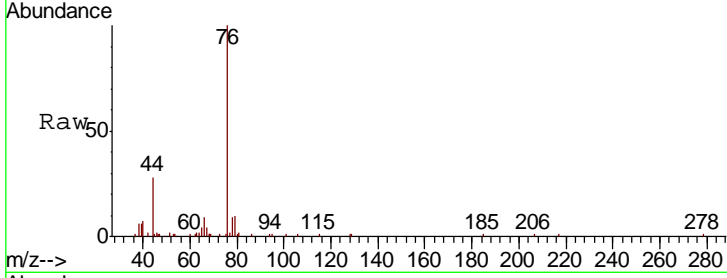
#27
 Carbon Disulfide
 Concen: 0.303 ppbv
 RT: 4.63 min Scan# 527
 Delta R.T. 0.00 min
 Lab File: VL032856.D
 Acq: 30 Nov 2018 19:41

Instrument :
 MSVOA_L
 ClientSampled :
 DSV-02DL

Tgt Ion	Resp	Lower	Upper
76	55219		
44	36.0	14.4	21.6#
78	11.0	7.7	11.5

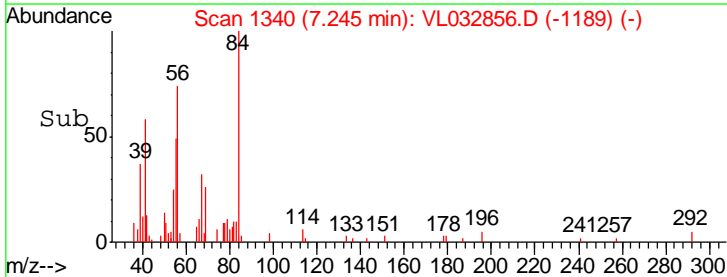
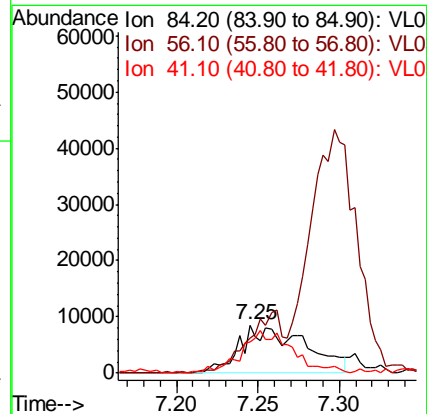
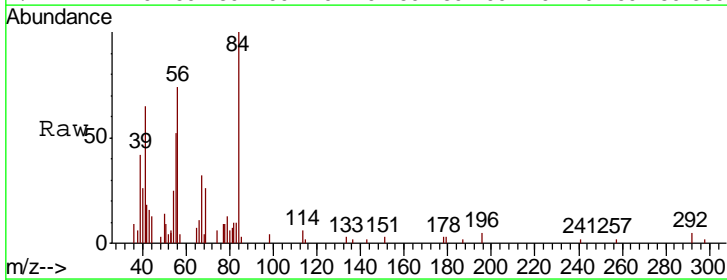
Manual Integrations
 APPROVED

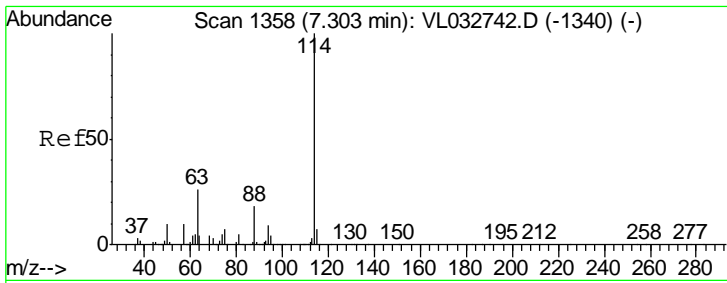
apatel
 12/4/2018 4:11:14 PM



#30
 Cyclohexane
 Concen: 0.185 ppbv m
 RT: 7.25 min Scan# 1340
 Delta R.T. -0.01 min
 Lab File: VL032856.D
 Acq: 30 Nov 2018 19:41

Tgt Ion	Resp	Lower	Upper
84	23234		
56	0.0	105.0	157.4#
41	71.7	65.3	97.9





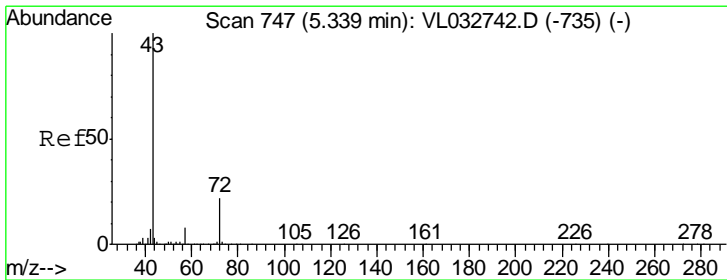
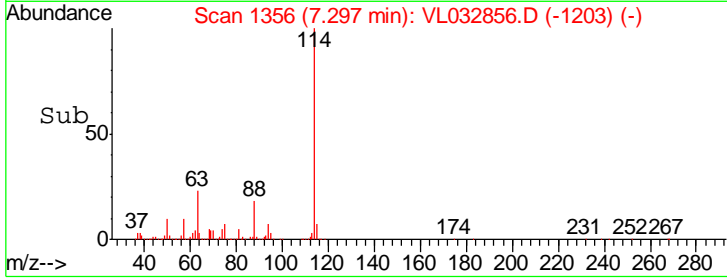
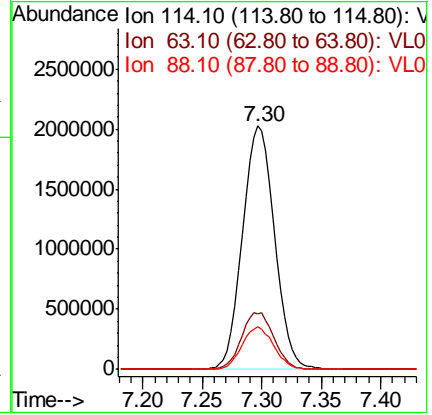
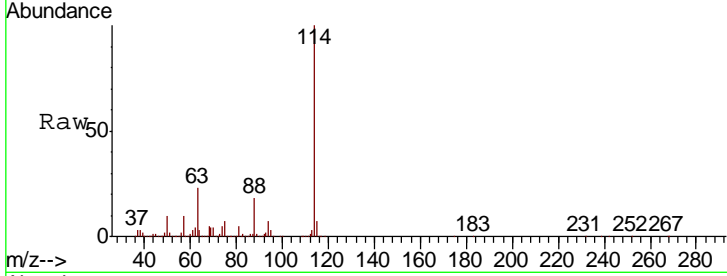
#33
 1,4-Difluorobenzene
 Concen: 10.000 ppbv
 RT: 7.30 min Scan# 1356
 Delta R.T. -0.01 min
 Lab File: VL032856.D
 Acq: 30 Nov 2018 19:41

Instrument : MSVOA_L
 ClientSampled : DSV-02DL

Tgt Ion	Resp	Lower	Upper
114	100		
63	23.7	20.9	31.3
88	17.3	14.4	21.6

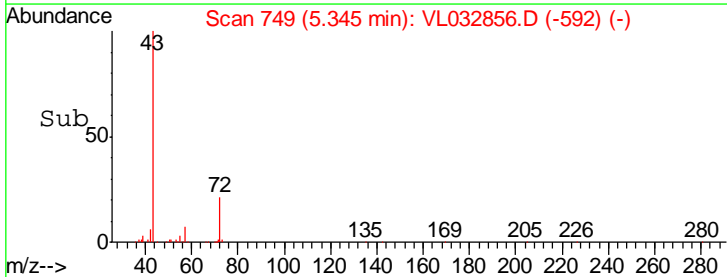
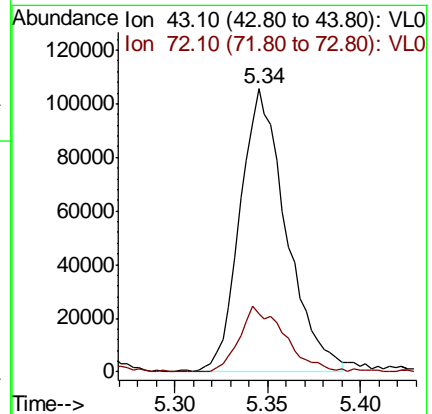
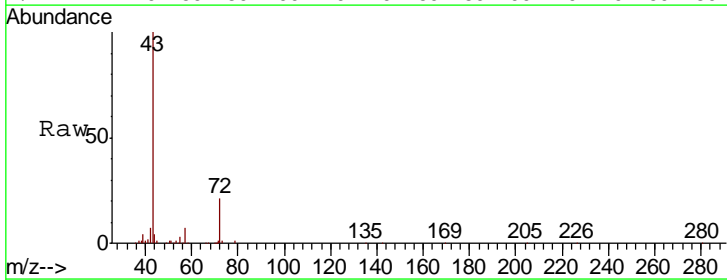
Manual Integrations
 APPROVED

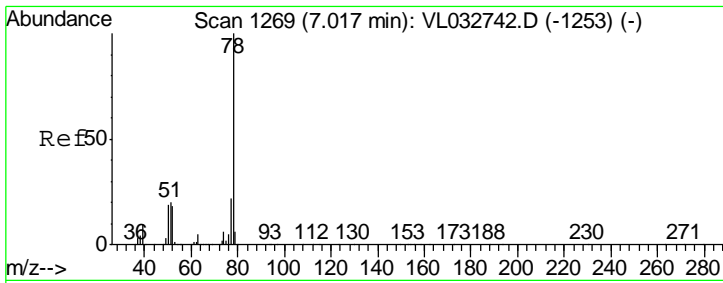
apatel
 12/4/2018 4:11:14 PM



#34
 2-Butanone
 Concen: 0.927 ppbv
 RT: 5.34 min Scan# 749
 Delta R.T. 0.01 min
 Lab File: VL032856.D
 Acq: 30 Nov 2018 19:41

Tgt Ion	Resp	Lower	Upper
43	100		
72	23.6	18.4	27.6





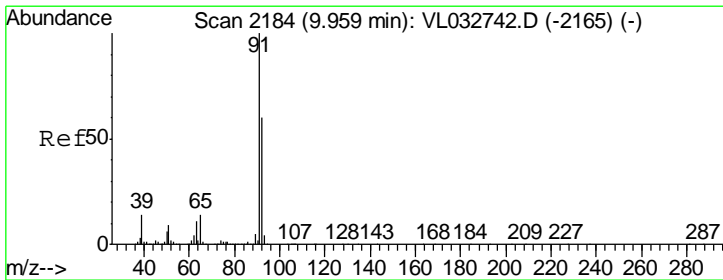
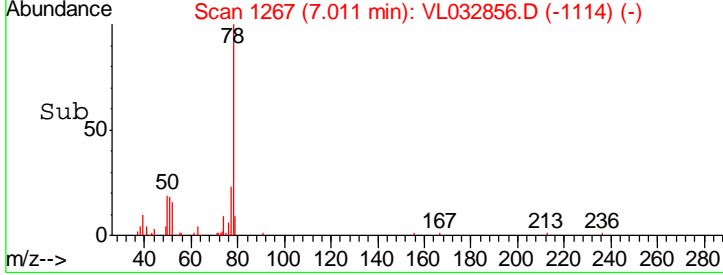
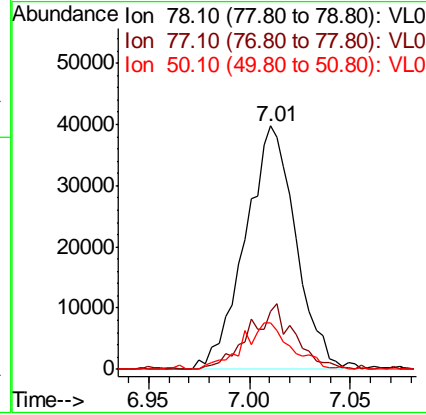
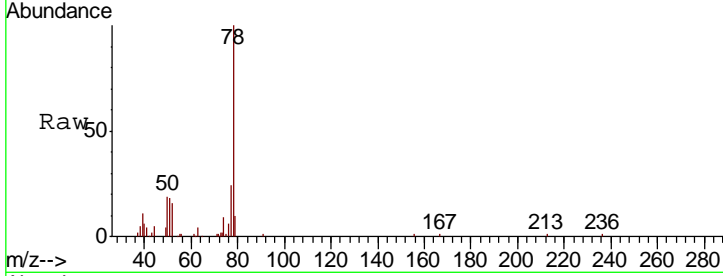
#36
Benzene
Concen: 0.230 ppbv
RT: 7.01 min Scan# 1267
Delta R.T. -0.01 min
Lab File: VL032856.D
Acq: 30 Nov 2018 19:41

Instrument : MSVOA_L
ClientSampled : DSV-02DL

Tgt Ion:	78	Resp:	69443
Ion Ratio		Lower	Upper
78	100		
77	23.9	17.8	26.8
50	19.2	15.4	23.0

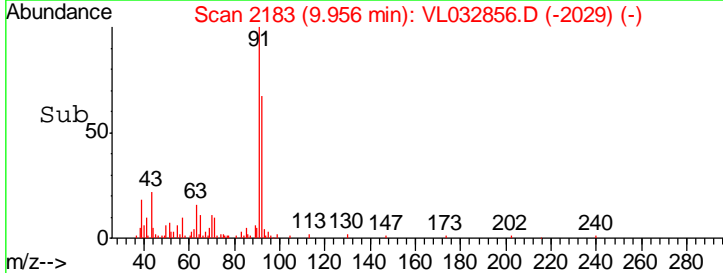
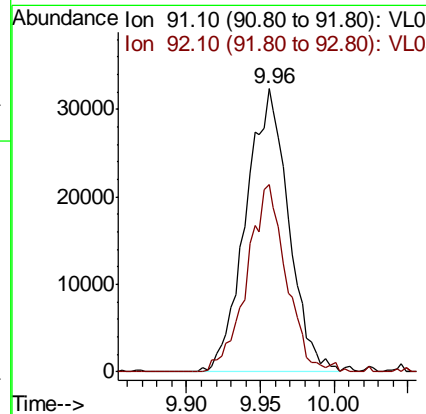
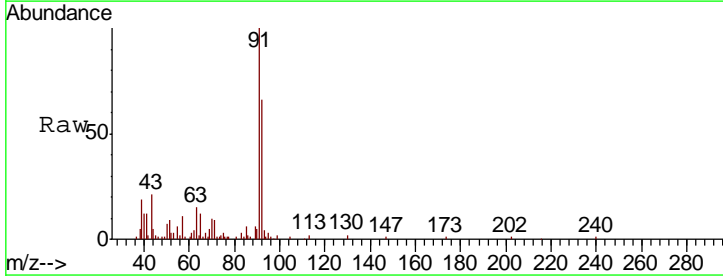
Manual Integrations APPROVED

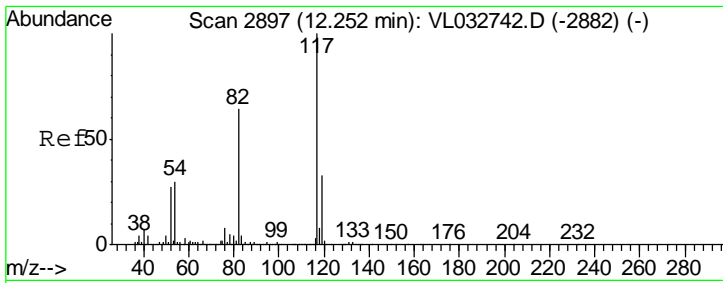
apatel
12/4/2018 4:11:14 PM



#53
Toluene
Concen: 0.207 ppbv m
RT: 9.96 min Scan# 2183
Delta R.T. -0.00 min
Lab File: VL032856.D
Acq: 30 Nov 2018 19:41

Tgt Ion:	91	Resp:	65060
Ion Ratio		Lower	Upper
91	100		
92	0.0	47.9	71.9#





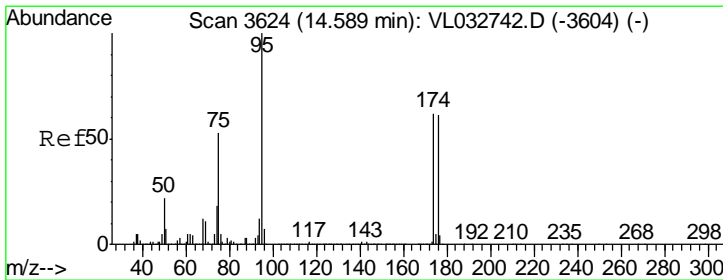
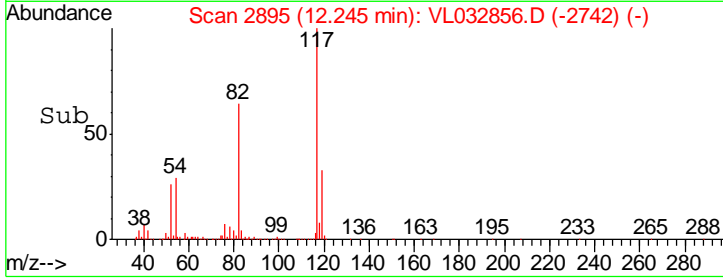
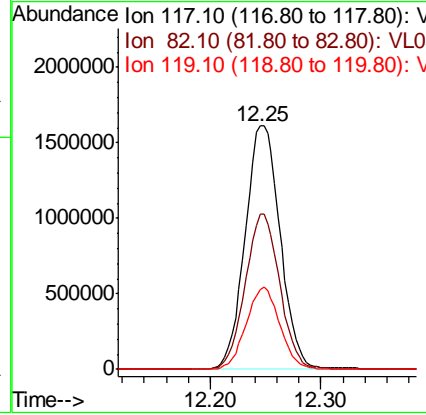
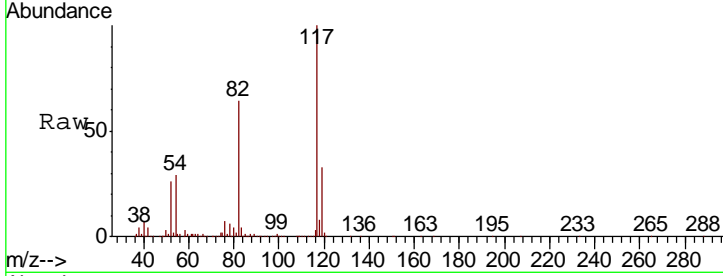
#55
 Chlorobenzene-d5
 Concen: 10.000 ppbv
 RT: 12.25 min Scan# 2895
 Delta R.T. -0.01 min
 Lab File: VL032856.D
 Acq: 30 Nov 2018 19:41

Instrument :
 MSVOA_L
 ClientSampled :
 DSV-02DL

Tgt Ion	Resp	Lower	Upper
117	100		
82	63.0	51.0	76.6
119	32.5	28.0	42.0

Manual Integrations
 APPROVED

apatel
 12/4/2018 4:11:14 PM



#68
 1-Bromo-4-Fluorobenzene
 Concen: 10.049 ppbv
 RT: 14.59 min Scan# 3623
 Delta R.T. -0.00 min
 Lab File: VL032856.D
 Acq: 30 Nov 2018 19:41

Tgt Ion	Resp	Lower	Upper
95	100		
174	66.6	50.7	76.1
175	4.8	3.8	5.6

