

Data Path : Z:\VOASRV\HPCHEM1\MSVOA L\DATA\VL113018\  
 Data File : VL032860.D  
 Acq On : 30 Nov 2018 22:18  
 Operator : SY/AP  
 Sample : J6132-04  
 Misc : 400ml/MSVOA L  
 ALS Vial : 1 Sample Multiplier: 1

**Instrument :**  
 MSVOA\_L  
**Client Sampled :**  
 DSV-03

**Manual Integrations**  
**APPROVED**  
 MMDadoda  
 12/3/2018 4:16:13 PM

Quant Time: Dec 03 16:22:43 2018  
 Quant Method : Z:\VOASRV\HPCHEM1\MSVOA L\METHODS\VL111418AIR.M  
 Quant Title : AIR ANALYSIS BY METHOD TO-15 Instrument: MSVOA\_LWed Nov 1  
 QLast Update : Wed Nov 14 07:00:23 2018  
 Response via : Initial Calibration

Internal Standards	R.T.	QIon	Response	Conc	Units	Dev(Min)
1) Bromochloromethane	5.78	49	1501251	10.00	ppbv	0.00
33) 1,4-Difluorobenzene	7.31	114	3749208	10.00	ppbv	0.00
55) Chlorobenzene-d5	12.25	117	4066094	10.00	ppbv	0.00

System Monitoring Compounds  
 68) 1-Bromo-4-Fluorobenzene 14.59 95 3281170 10.79 ppbv 0.00  
 Spiked Amount 10.000 Range 65 - 135 Recovery = 107.90%

Target Compounds	R.T.	QIon	Response	Conc	Units	Ovalue
2) Dichlorodifluoromethane	3.08	85	23644	0.110	ppbv	94
4) Chloromethane	3.17	50	38520	0.584	ppbv	93
9) Propene	3.05	41	12269576m	257.603	ppbv	
10) Heptane	8.27	43	2234011	12.286	ppbv	99
11) Trichlorofluoromethane	4.02	101	51437	0.253	ppbv	92
13) Ethanol	3.66	45	733598	47.023	ppbv	99
15) Acetone	3.90	43	3761552	27.437	ppbv #	50
20) Methylene Chloride	4.42	84	276773	3.900	ppbv	94
26) Hexane	5.80	57	4861189	34.176	ppbv #	44
27) Carbon Disulfide	4.63	76	13991482	77.574	ppbv #	89
30) Cyclohexane	7.27	84	16991528	136.579	ppbv	92
34) 2-Butanone	5.34	43	2031574	10.447	ppbv	97
35) Carbon Tetrachloride	7.15	117	14924m	0.050	ppbv	
36) Benzene	7.02	78	21985251	73.639	ppbv #	67
44) 2,2,4-Trimethylpentane	8.01	57	2481109	4.973	ppbv #	1
52) Tetrachloroethene	11.39	164	24075	0.232	ppbv #	80
53) Toluene	9.97	91	15082287	48.424	ppbv	93
58) Ethyl Benzene	12.88	91	3928200	8.027	ppbv	98
59) m/p-Xylene	13.14	91	9880367	22.681	ppbv	94
60) o-Xylene	13.86	91	4920397	11.233	ppbv	96
61) Styrene	13.70	104	208432	0.731	ppbv	96
62) Isopropylbenzene	14.84	105	590272	0.997	ppbv	99
64) n-propylbenzene	15.74	120	164858	1.059	ppbv	97
67) sec-Butylbenzene	17.47	105	164441	0.215	ppbv	96
69) p-Isopropyltoluene	17.83	119	221042	0.363	ppbv	99
70) n-Butylbenzene	18.73	91	296999	0.481	ppbv #	34
72) 4-Ethyltoluene	16.01	105	1124182	2.342	ppbv	99
73) 1,3,5-Trimethylbenzene	16.17	105	1616279	3.443	ppbv	99
74) 1,2,4-Trimethylbenzene	16.94	105	3669443	7.305	ppbv #	69
79) Naphthalene	22.42	128	203968	0.618	ppbv #	95

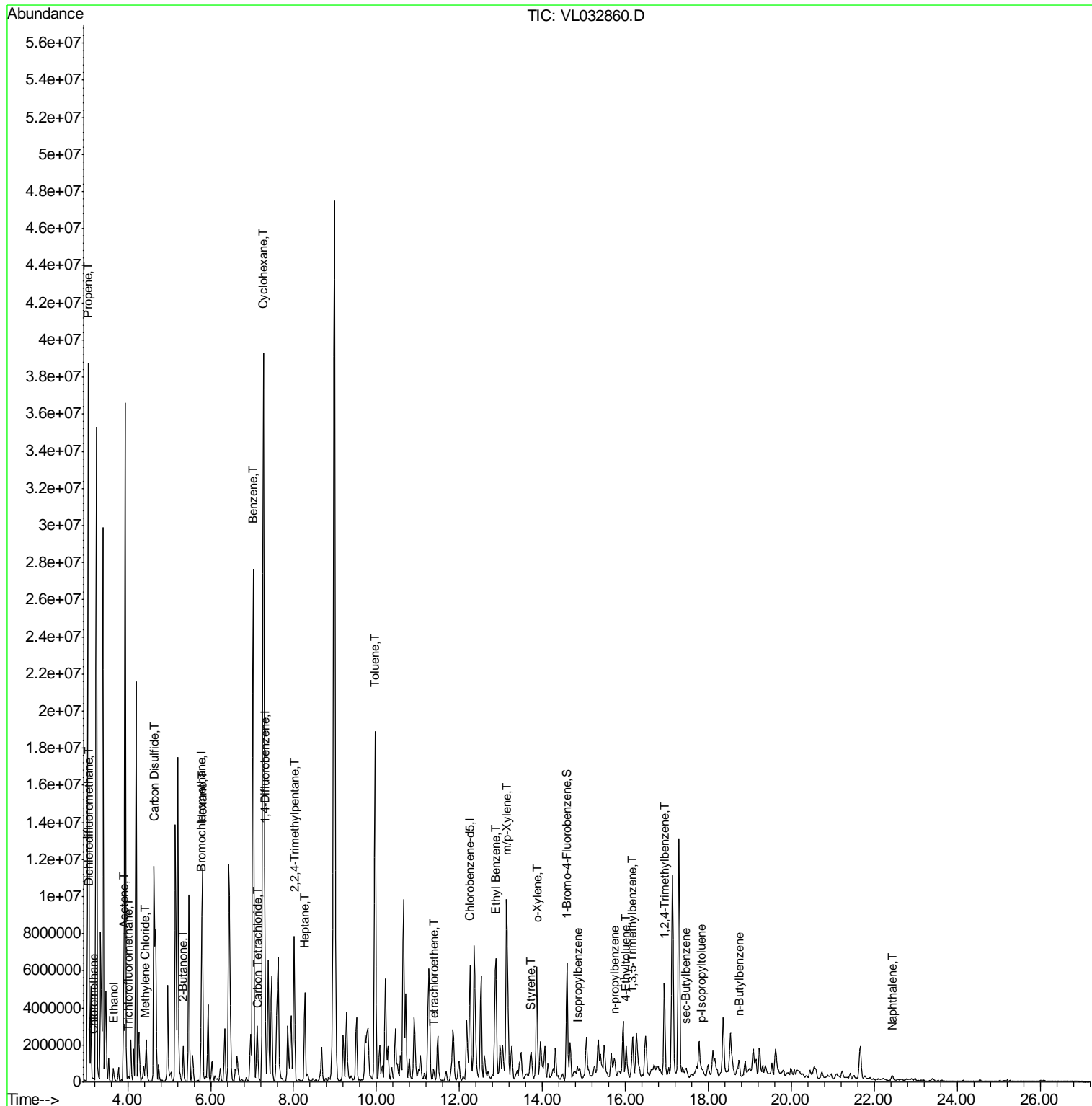
(#) = qualifier out of range (m) = manual integration (+) = signals summed

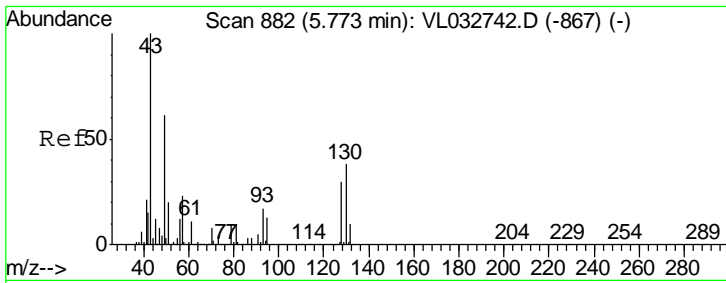
Data Path : Z:\VOASRV\HPCHEM1\MSVOA L\DATA\VL113018\  
 Data File : VL032860.D  
 Acq On : 30 Nov 2018 22:18  
 Operator : SY/AP  
 Sample : J6132-04  
 Misc : 400ml/MSVOA L  
 ALS Vial : 1 Sample Multiplier: 1

Instrument :  
 MSVOA\_L  
 ClientSampled :  
 DSV-03

Manual Integrations  
 APPROVED  
 MMDadoda  
 12/3/2018 4:16:13 PM

Quant Time: Dec 03 16:22:43 2018  
 Quant Method : Z:\VOASRV\HPCHEM1\MSVOA L\METHODS\VL111418AIR.M  
 Quant Title : AIR ANALYSIS BY METHOD TO-15 Instrument: MSVOA\_LWed Nov  
 QLast Update : Wed Nov 14 07:00:23 2018  
 Response via : Initial Calibration





#1  
 Bromochloromethane  
 Concen: 10.000 ppbv  
 RT: 5.78 min Scan# 883  
 Delta R.T. 0.00 min  
 Lab File: VL032860.D  
 Acq: 30 Nov 2018 22:18

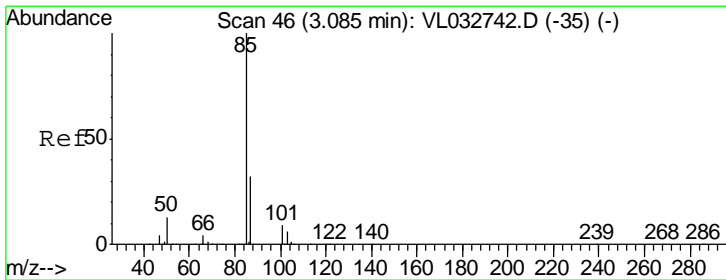
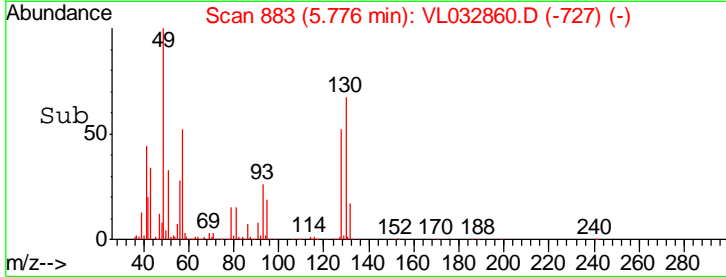
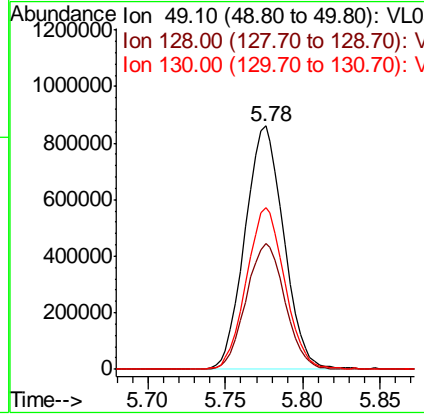
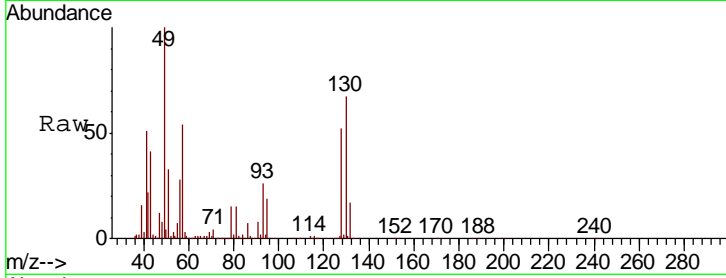
Instrument :  
 MSVOA\_L  
 ClientSampled :  
 DSV-03

Tgt Ion: 49 Resp: 1501251

Ion	Ratio	Lower	Upper
49	100		
128	52.2	24.9	74.6
130	66.3	31.4	94.2

Manual Integrations  
 APPROVED

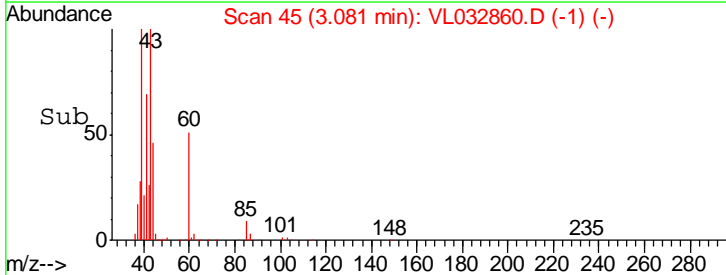
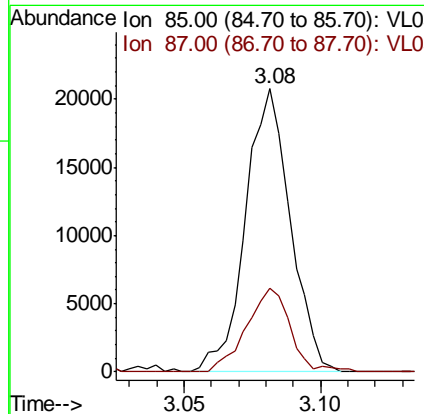
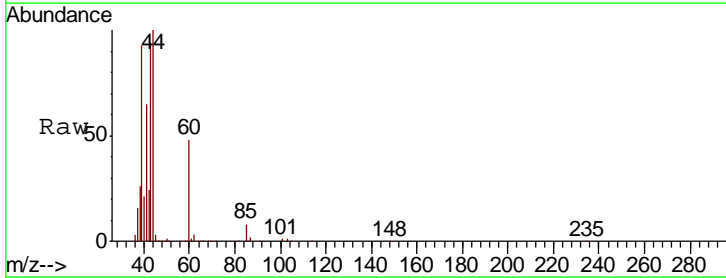
MMDadoda  
 12/3/2018 4:16:13 PM

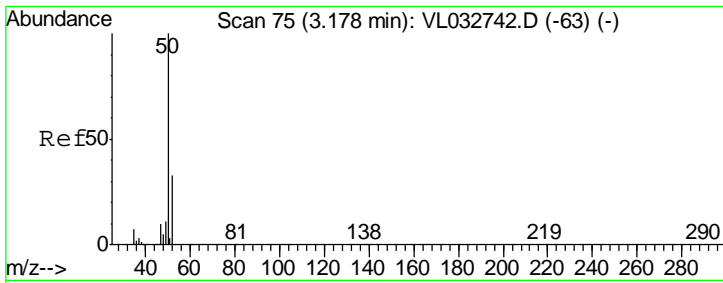


#2  
 Dichlorodifluoromethane  
 Concen: 0.110 ppbv  
 RT: 3.08 min Scan# 45  
 Delta R.T. -0.00 min  
 Lab File: VL032860.D  
 Acq: 30 Nov 2018 22:18

Tgt Ion: 85 Resp: 23644

Ion	Ratio	Lower	Upper
85	100		
87	29.4	26.0	39.0





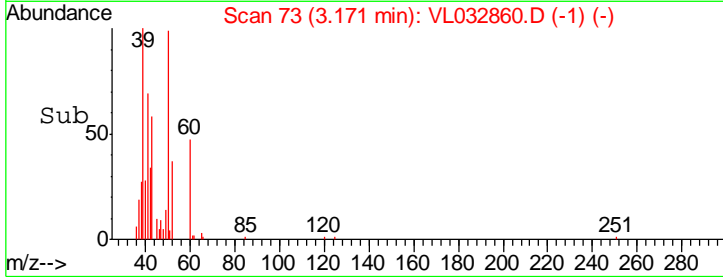
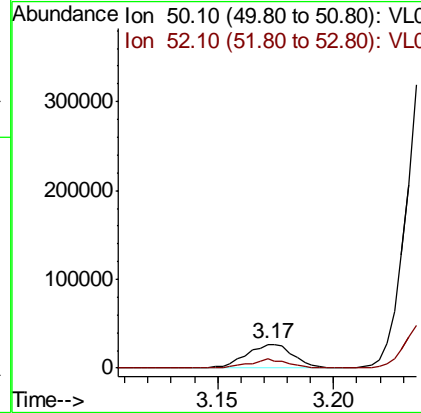
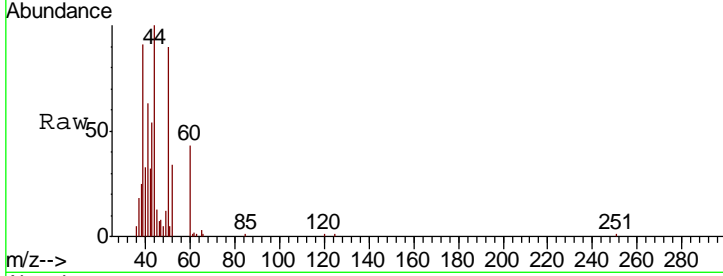
#4  
 Chloromethane  
 Concen: 0.584 ppbv  
 RT: 3.17 min Scan# 73  
 Delta R.T. -0.01 min  
 Lab File: VL032860.D  
 Acq: 30 Nov 2018 22:18

**Instrument :**  
 MSVOA\_L  
**ClientSampled :**  
 DSV-03

Tgt Ion	Resp	Lower	Upper
50	38520	100	
52	37.3	26.6	40.0

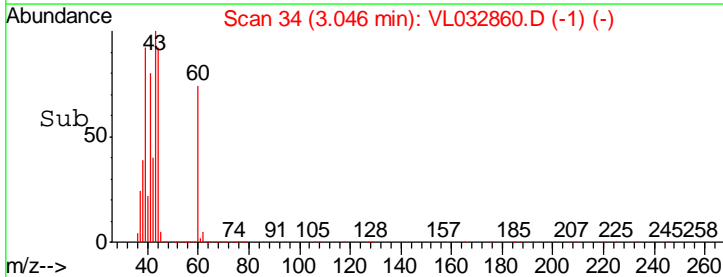
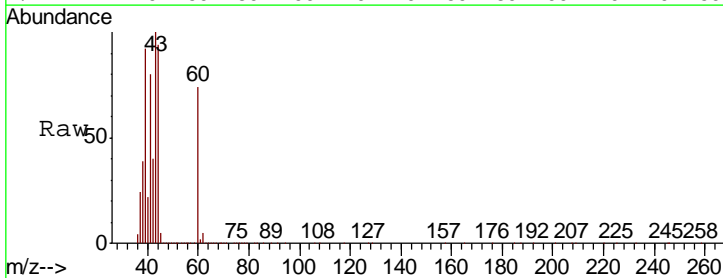
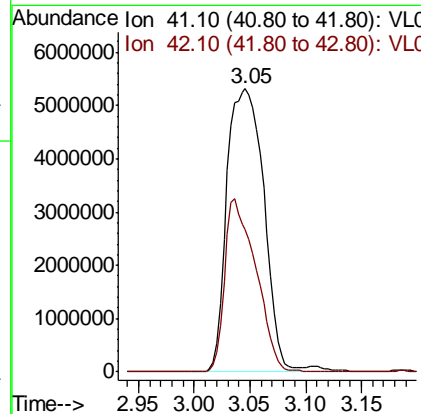
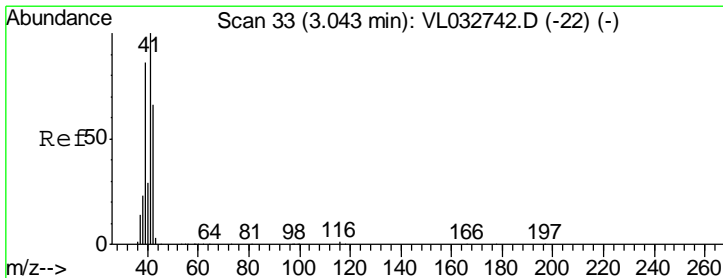
**Manual Integrations**  
**APPROVED**

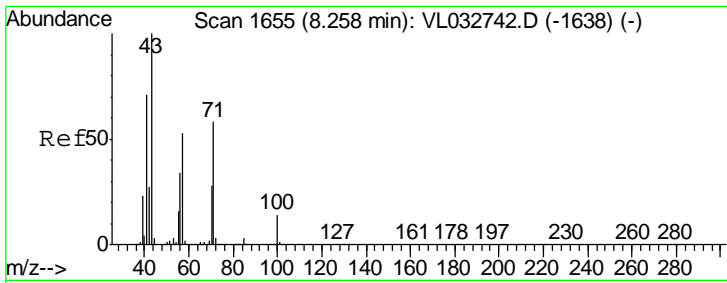
MMDadoda  
 12/3/2018 4:16:13 PM



#9  
 Propene  
 Concen: 257.603 ppbv m  
 RT: 3.05 min Scan# 34  
 Delta R.T. 0.00 min  
 Lab File: VL032860.D  
 Acq: 30 Nov 2018 22:18

Tgt Ion	Resp	Lower	Upper
41	12269576	100	
42	90.7	55.0	82.6#





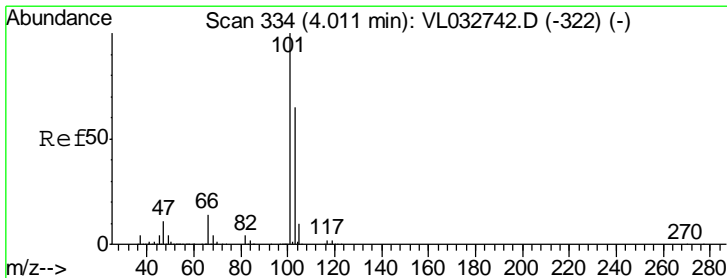
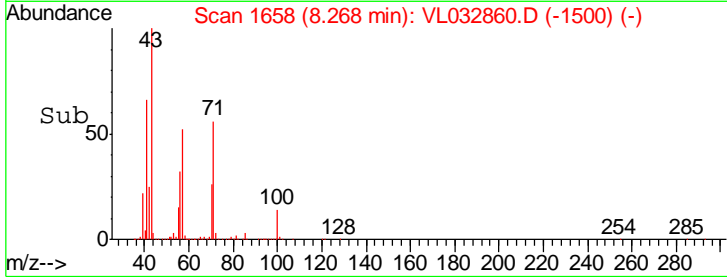
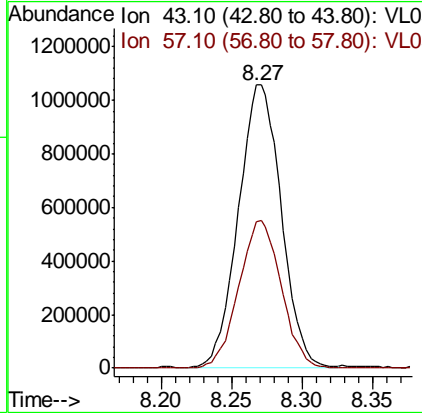
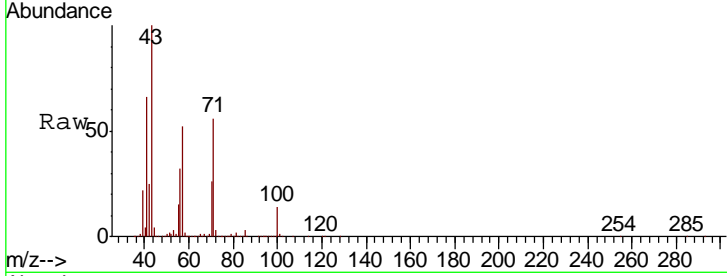
#10  
 Heptane  
 Concen: 12.286 ppbv  
 RT: 8.27 min Scan# 1658  
 Delta R.T. 0.01 min  
 Lab File: VL032860.D  
 Acq: 30 Nov 2018 22:18

Instrument : MSVOA\_L  
 ClientSampled : DSV-03

Tgt Ion	Resp	Lower	Upper
43	100		
57	51.8	41.8	62.8

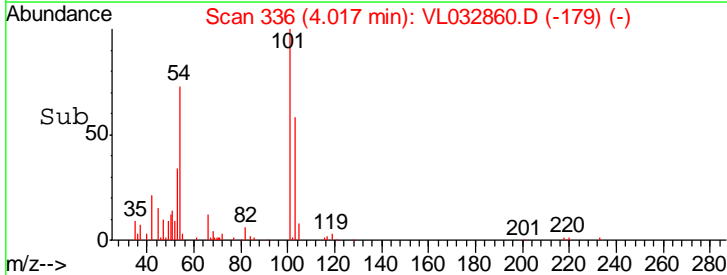
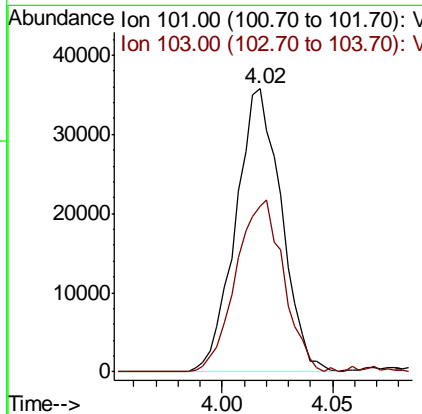
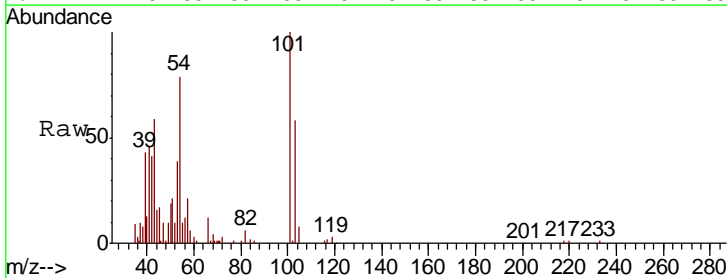
Manual Integrations  
 APPROVED

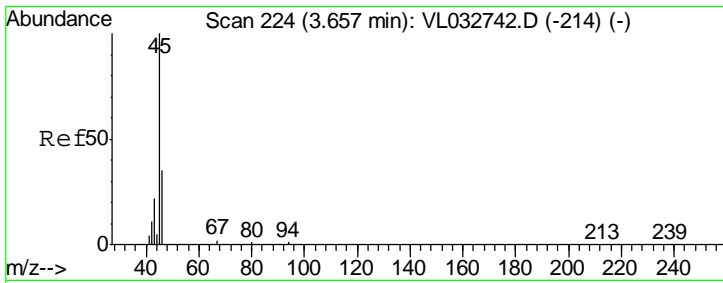
MMDadoda  
 12/3/2018 4:16:13 PM



#11  
 Trichlorofluoromethane  
 Concen: 0.253 ppbv  
 RT: 4.02 min Scan# 336  
 Delta R.T. 0.01 min  
 Lab File: VL032860.D  
 Acq: 30 Nov 2018 22:18

Tgt Ion	Resp	Lower	Upper
101	100		
103	58.5	51.6	77.4



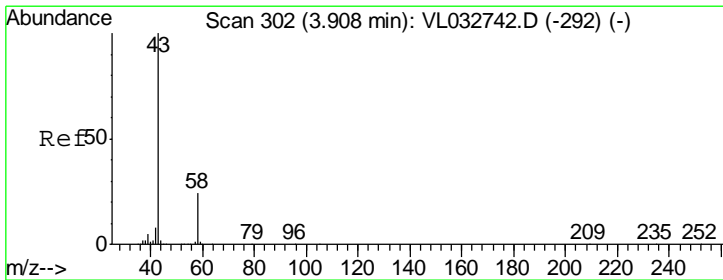
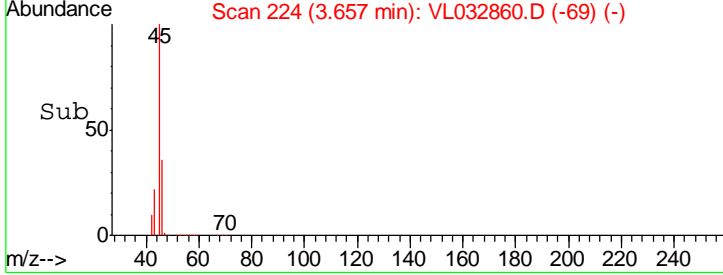
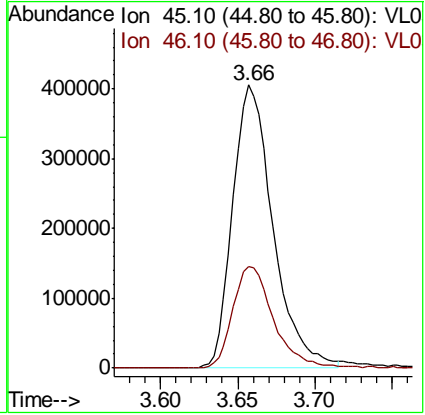
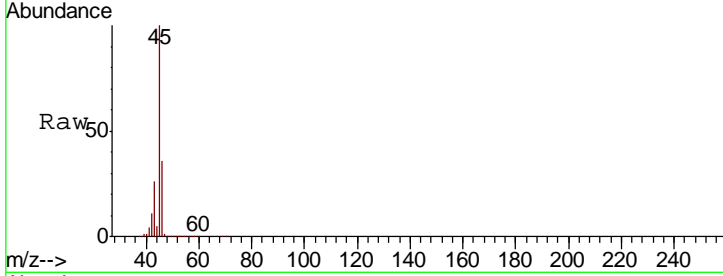


#13  
 Ethanol  
 Concen: 47.023 ppbv  
 RT: 3.66 min Scan# 224  
 Delta R.T. -0.00 min  
 Lab File: VL032860.D  
 Acq: 30 Nov 2018 22:18

Instrument : MSVOA\_L  
 ClientSampled : DSV-03

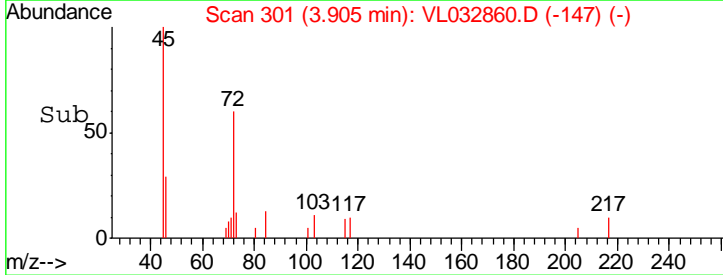
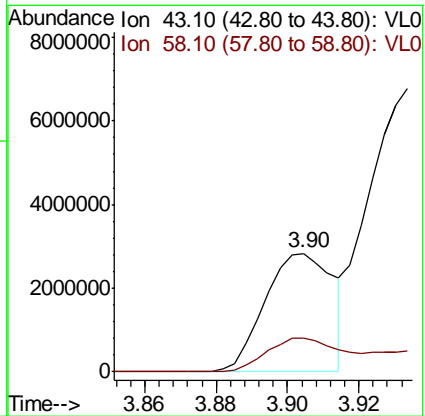
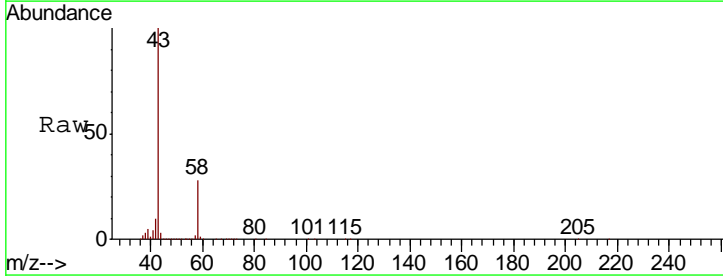
Tgt Ion	Resp	Lower	Upper
45	100		
46	36.7	14.5	57.9

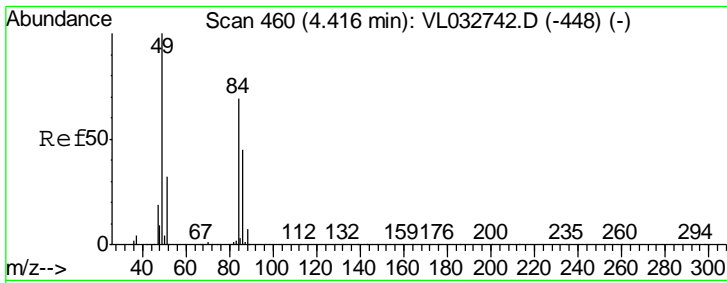
Manual Integrations  
**APPROVED**  
 MMDadoda  
 12/3/2018 4:16:13 PM



#15  
 Acetone  
 Concen: 27.437 ppbv  
 RT: 3.90 min Scan# 301  
 Delta R.T. -0.00 min  
 Lab File: VL032860.D  
 Acq: 30 Nov 2018 22:18

Tgt Ion	Resp	Lower	Upper
43	100		
58	52.1	21.1	31.7#





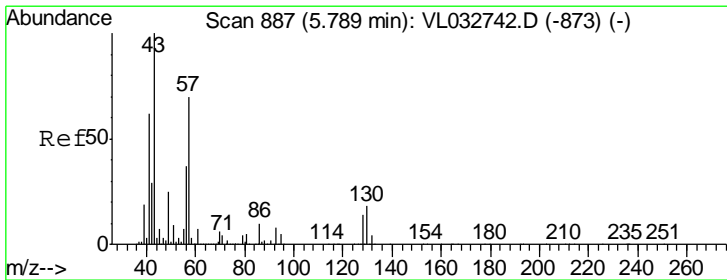
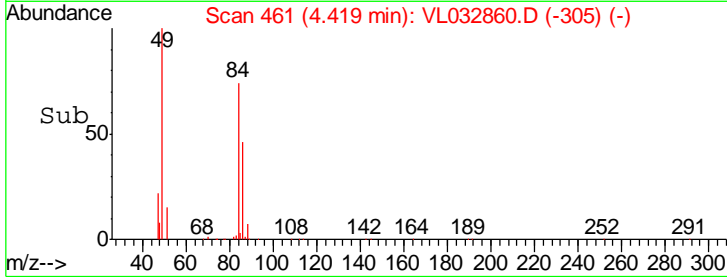
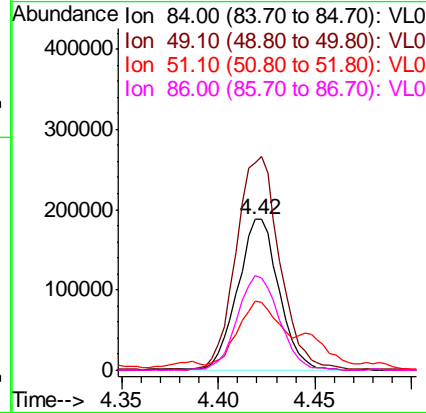
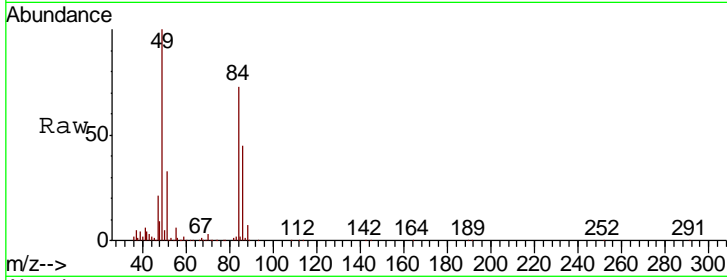
#20  
 Methylene Chloride  
 Concen: 3.900 ppbv  
 RT: 4.42 min Scan# 461  
 Delta R.T. 0.00 min  
 Lab File: VL032860.D  
 Acq: 30 Nov 2018 22:18

Instrument :  
 MSVOA\_L  
 ClientSampled :  
 DSV-03

Tgt Ion	Resp	Lower	Upper
84	276773		
84	100		
49	137.1	115.8	173.6
51	39.6	36.9	55.3
86	62.5	52.4	78.6

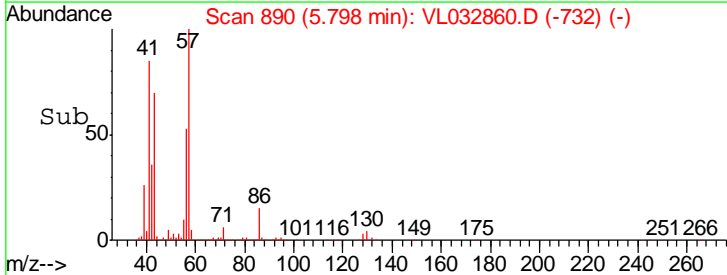
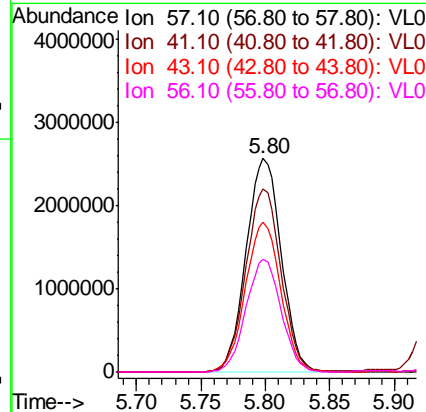
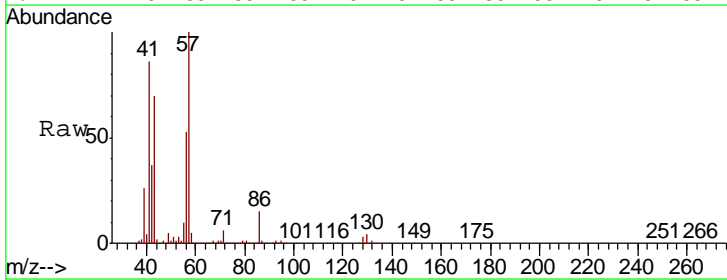
Manual Integrations  
 APPROVED

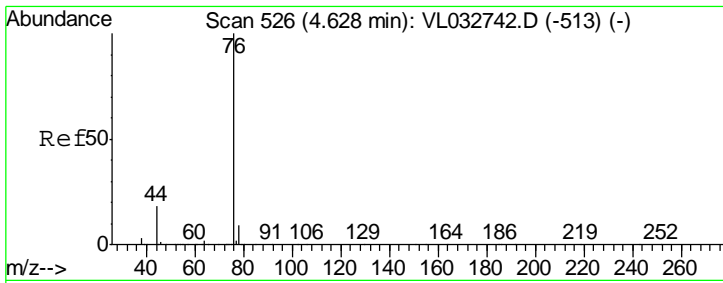
MMDadoda  
 12/3/2018 4:16:13 PM



#26  
 Hexane  
 Concen: 34.176 ppbv  
 RT: 5.80 min Scan# 890  
 Delta R.T. 0.01 min  
 Lab File: VL032860.D  
 Acq: 30 Nov 2018 22:18

Tgt Ion	Resp	Lower	Upper
57	4861189		
57	100		
41	86.2	70.3	105.5
43	70.3	174.0	261.0#
56	52.7	42.3	63.5





#27  
 Carbon Disulfide  
 Concen: 77.574 ppbv  
 RT: 4.63 min Scan# 528  
 Delta R.T. 0.01 min  
 Lab File: VL032860.D  
 Acq: 30 Nov 2018 22:18

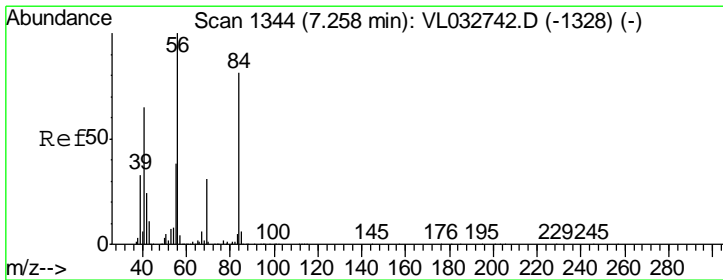
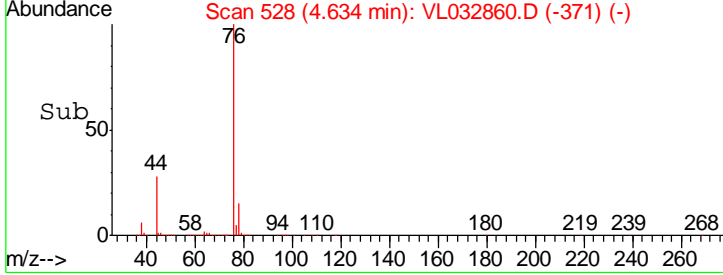
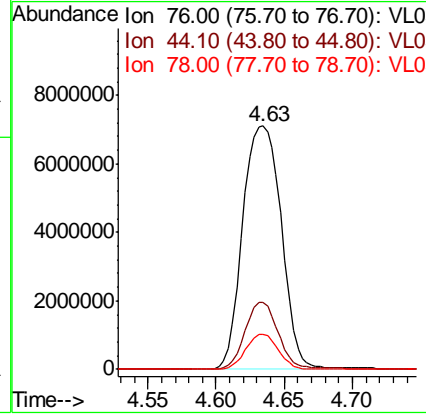
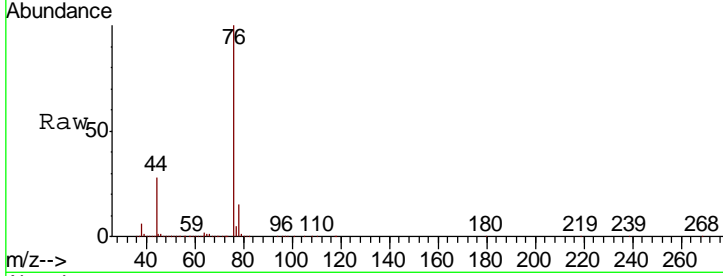
**Instrument :**  
 MSVOA\_L  
**ClientSampled :**  
 DSV-03

Tgt Ion: 76 Resp:13991482

Ion	Ratio	Lower	Upper
76	100		
44	24.1	14.4	21.6#
78	12.1	7.7	11.5#

**Manual Integrations**  
**APPROVED**

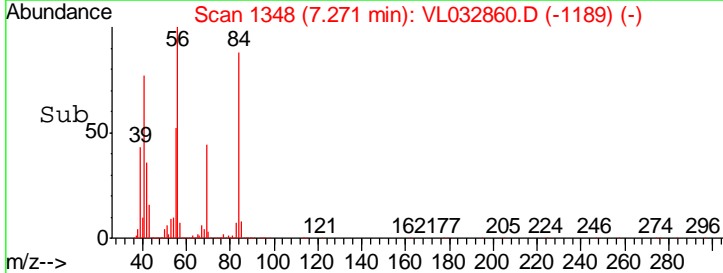
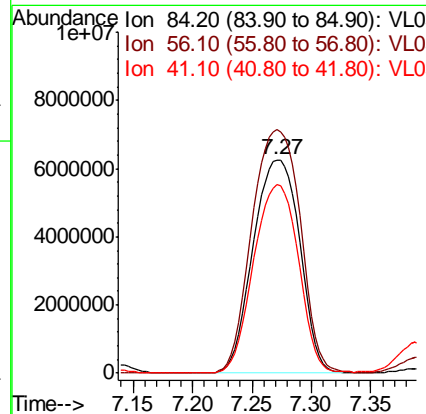
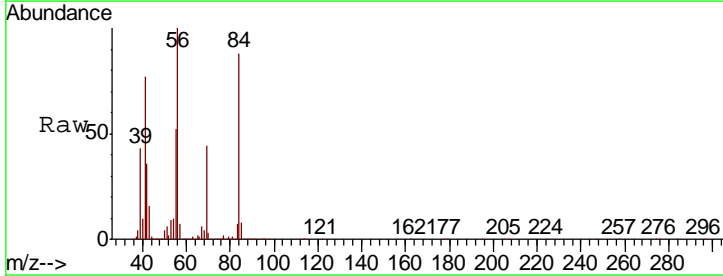
MMDadoda  
 12/3/2018 4:16:13 PM



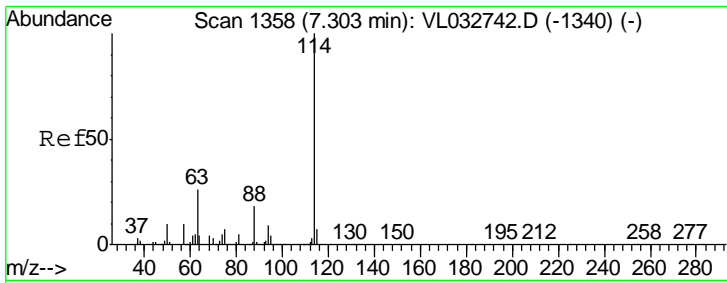
#30  
 Cyclohexane  
 Concen: 136.579 ppbv  
 RT: 7.27 min Scan# 1348  
 Delta R.T. 0.01 min  
 Lab File: VL032860.D  
 Acq: 30 Nov 2018 22:18

Tgt Ion: 84 Resp:16991528

Ion	Ratio	Lower	Upper
84	100		
56	118.7	105.0	157.4
41	85.1	65.3	97.9





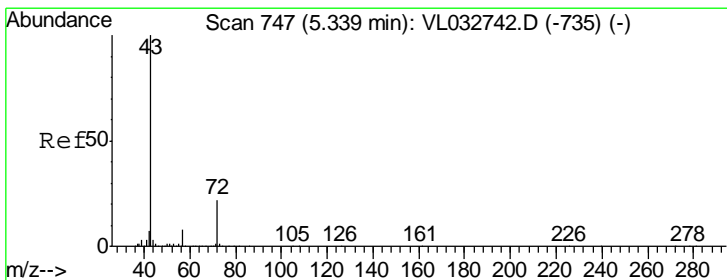
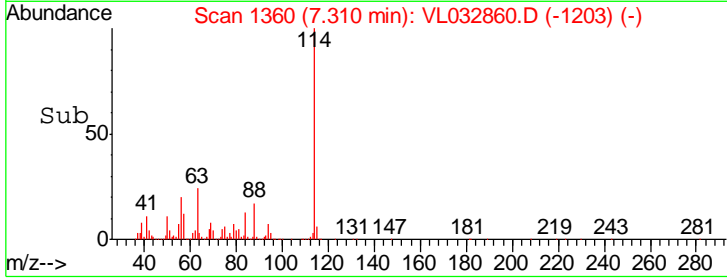
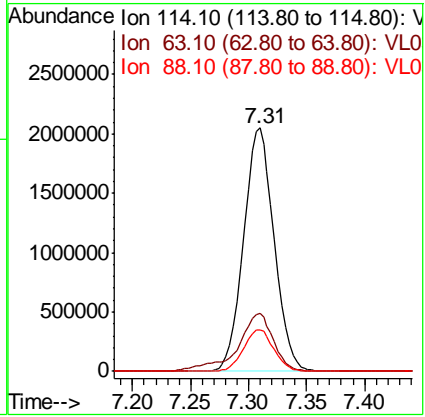
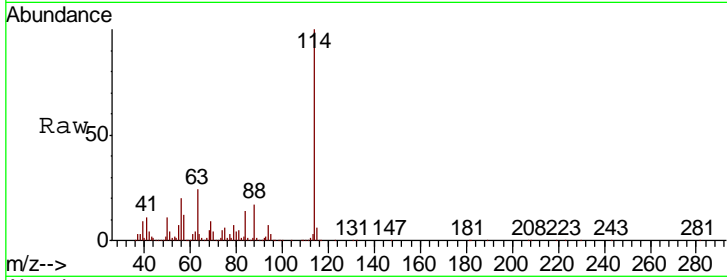


#33  
 1,4-Difluorobenzene  
 Concen: 10.000 ppbv  
 RT: 7.31 min Scan# 1360  
 Delta R.T. 0.01 min  
 Lab File: VL032860.D  
 Acq: 30 Nov 2018 22:18

Instrument : MSVOA\_L  
 ClientSampled : DSV-03

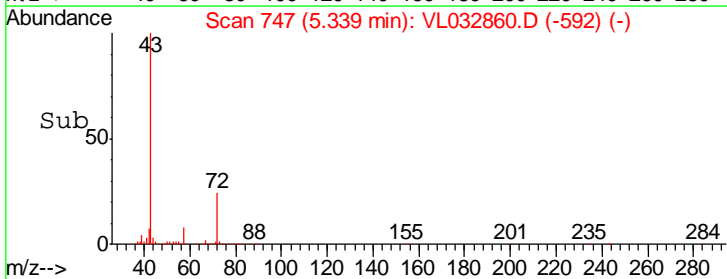
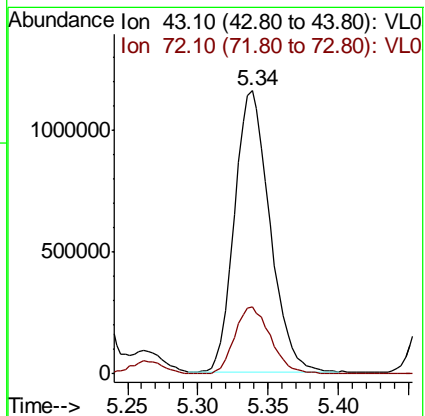
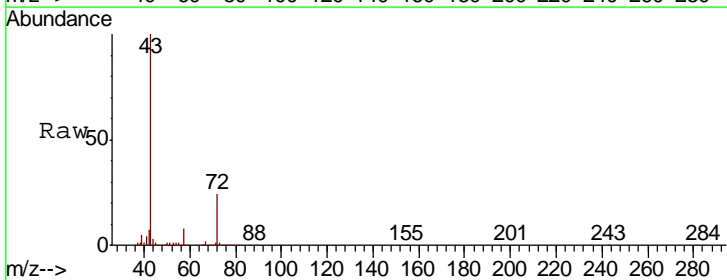
Tgt Ion	Resp	Lower	Upper
114	100		
63	28.2	20.9	31.3
88	17.1	14.4	21.6

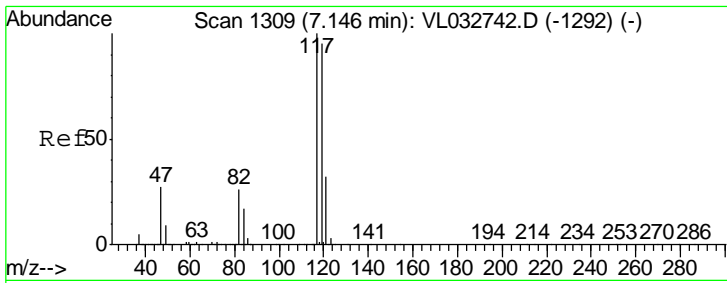
Manual Integrations  
**APPROVED**  
 MMDadoda  
 12/3/2018 4:16:13 PM



#34  
 2-Butanone  
 Concen: 10.447 ppbv  
 RT: 5.34 min Scan# 747  
 Delta R.T. -0.00 min  
 Lab File: VL032860.D  
 Acq: 30 Nov 2018 22:18

Tgt Ion	Resp	Lower	Upper
43	100		
72	24.4	18.4	27.6





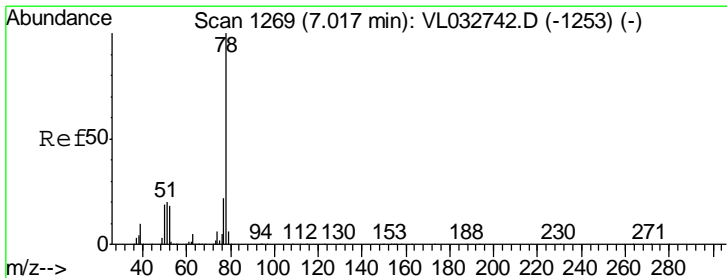
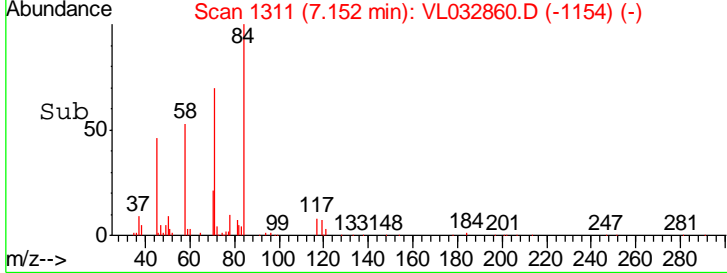
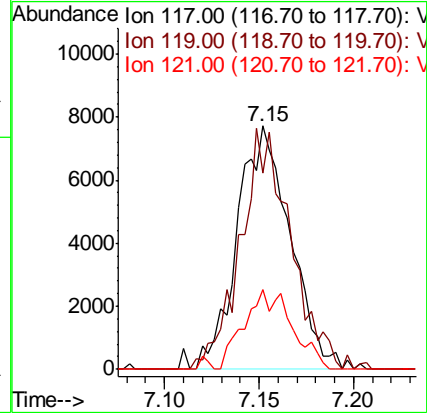
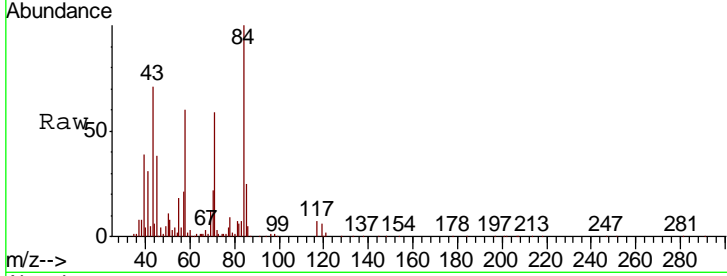
#35  
 Carbon Tetrachloride  
 Concen: 0.050 ppbv m  
 RT: 7.15 min Scan# 1311  
 Delta R.T. 0.01 min  
 Lab File: VL032860.D  
 Acq: 30 Nov 2018 22:18

Instrument :  
 MSVOA\_L  
 ClientSampled :  
 DSV-03

Tgt Ion	Resp	Lower	Upper
117	14924		
117	100		
119	80.8	76.1	114.1
121	32.6	25.4	38.0

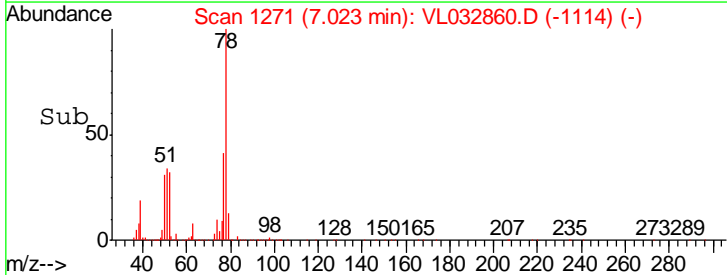
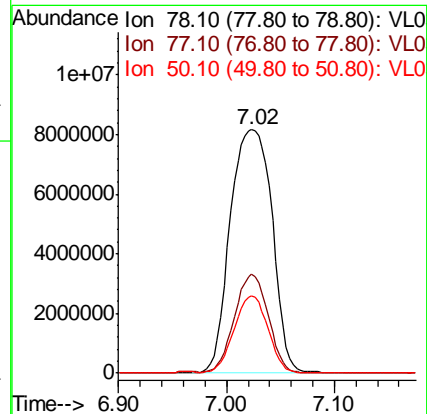
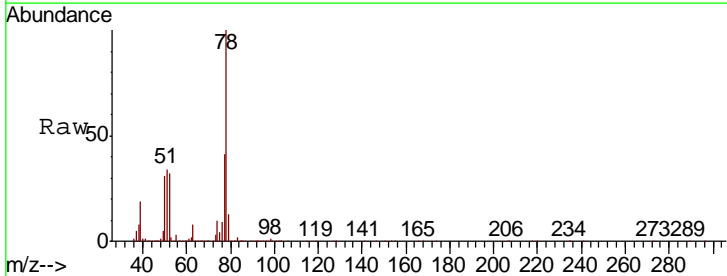
Manual Integrations  
 APPROVED

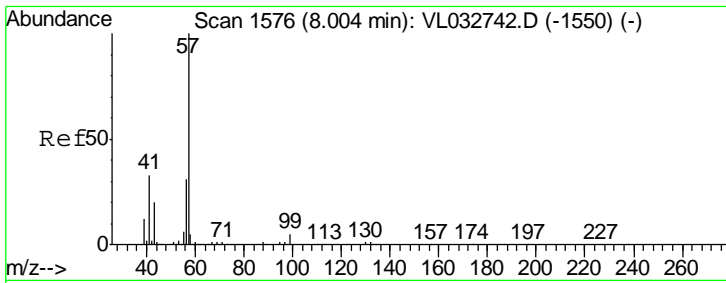
MMDadoda  
 12/3/2018 4:16:13 PM



#36  
 Benzene  
 Concen: 73.639 ppbv  
 RT: 7.02 min Scan# 1271  
 Delta R.T. 0.01 min  
 Lab File: VL032860.D  
 Acq: 30 Nov 2018 22:18

Tgt Ion	Resp	Lower	Upper
78	21985251		
78	100		
77	40.8	17.8	26.8#
50	31.4	15.4	23.0#





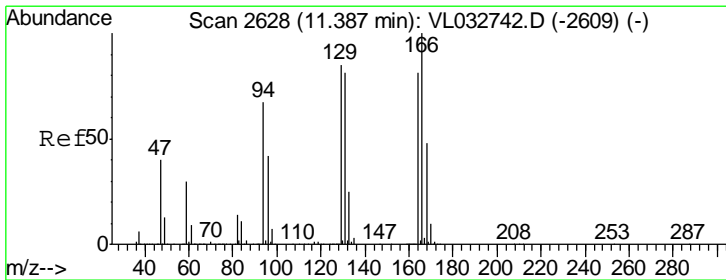
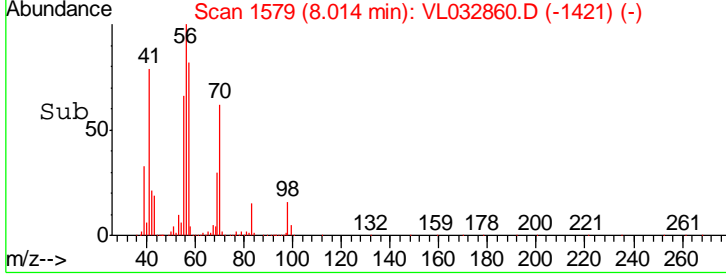
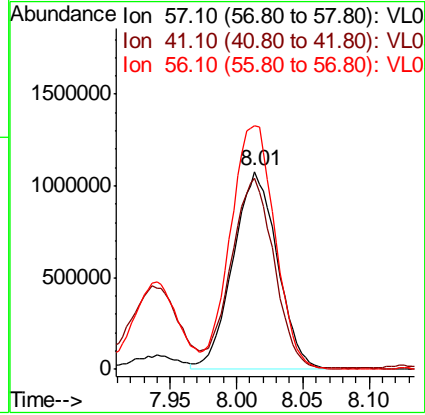
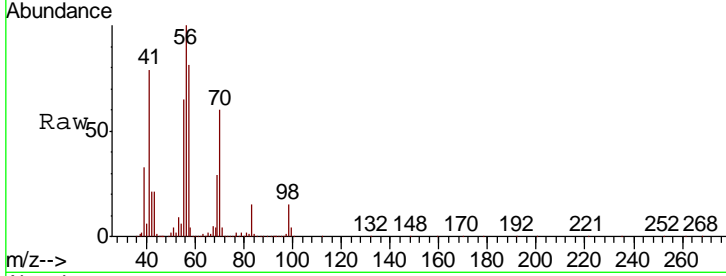
#44  
 2,2,4-Trimethylpentane  
 Concen: 4.973 ppbv  
 RT: 8.01 min Scan# 1579  
 Delta R.T. 0.01 min  
 Lab File: VL032860.D  
 Acq: 30 Nov 2018 22:18

Instrument :  
 MSVOA\_L  
 ClientSampled :  
 DSV-03

Tgt Ion	Resp	Lower	Upper
57	100		
41	94.1	26.6	39.8#
56	124.6	24.8	37.2#

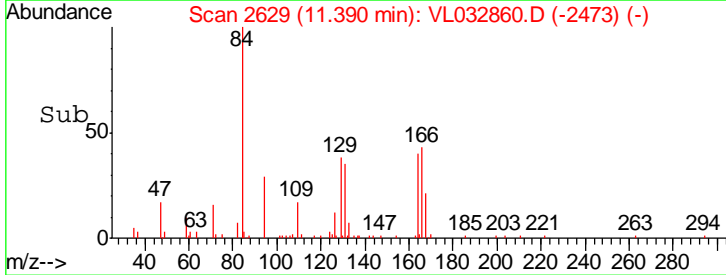
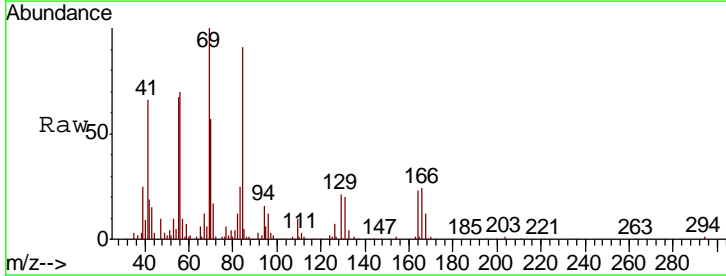
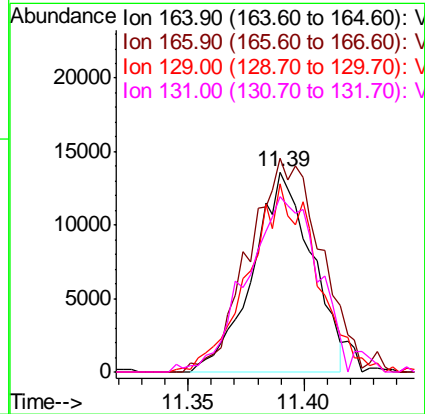
Manual Integrations  
 APPROVED

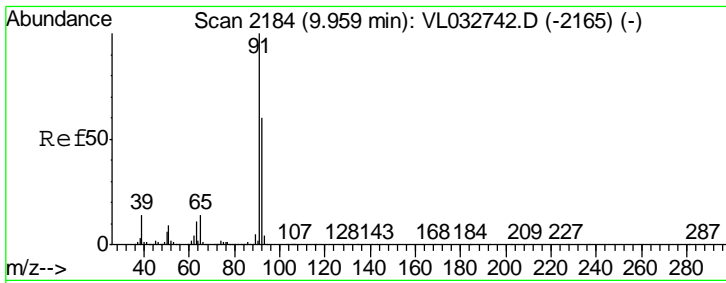
MMDadoda  
 12/3/2018 4:16:13 PM



#52  
 Tetrachloroethene  
 Concen: 0.232 ppbv  
 RT: 11.39 min Scan# 2629  
 Delta R.T. 0.00 min  
 Lab File: VL032860.D  
 Acq: 30 Nov 2018 22:18

Tgt Ion	Resp	Lower	Upper
164	100		
166	97.7	99.3	148.9#
129	88.9	83.9	125.9
131	80.8	80.8	121.2#





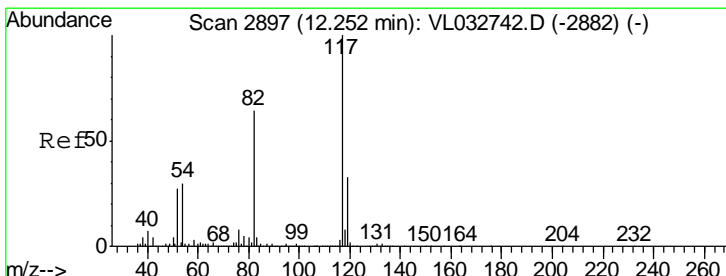
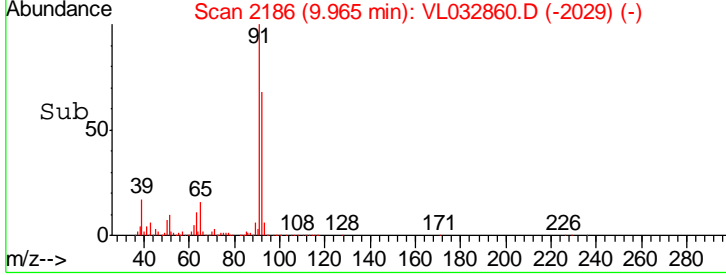
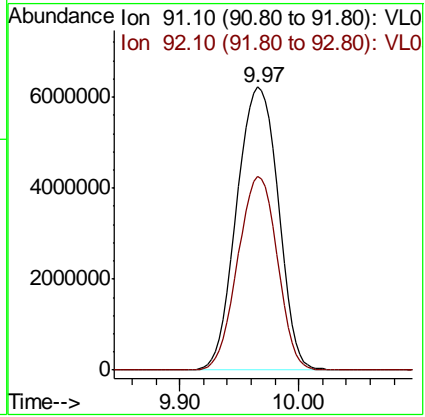
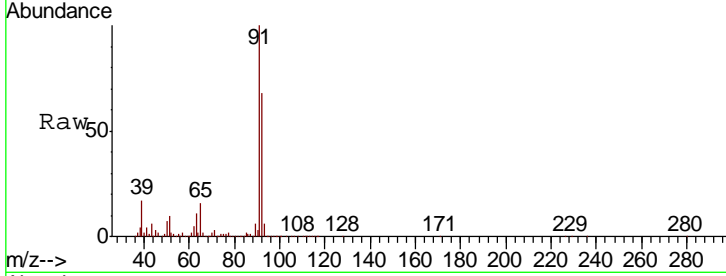
#53  
 Toluene  
 Concen: 48.424 ppbv  
 RT: 9.97 min Scan# 2186  
 Delta R.T. 0.01 min  
 Lab File: VL032860.D  
 Acq: 30 Nov 2018 22:18

**Instrument :**  
 MSVOA\_L  
**ClientSampled :**  
 DSV-03

Tgt Ion: 91 Resp: 15082287

Ion	Ratio	Lower	Upper
91	100		
92	65.3	47.9	71.9

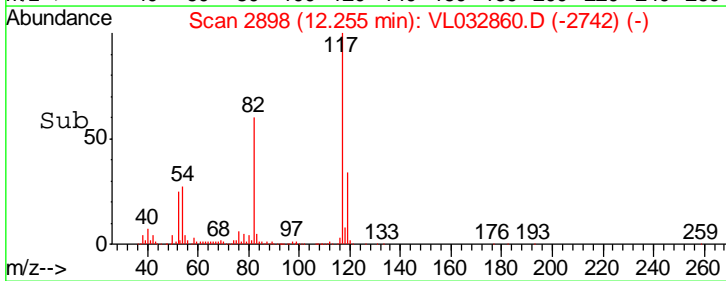
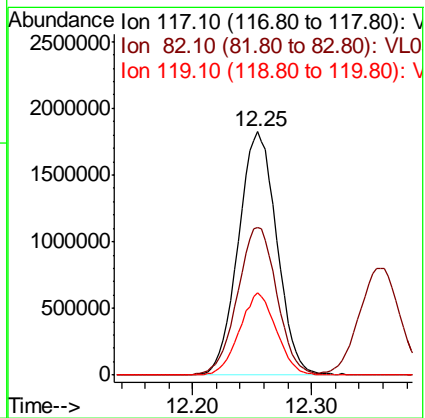
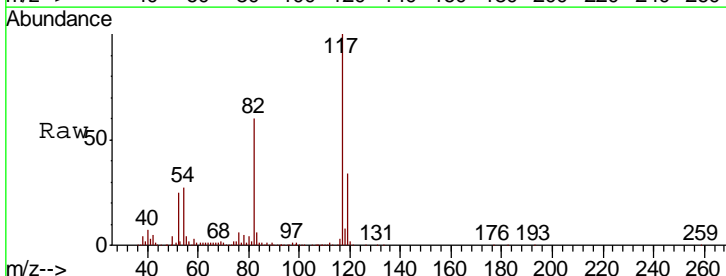
**Manual Integrations**  
**APPROVED**  
 MMDadoda  
 12/3/2018 4:16:13 PM

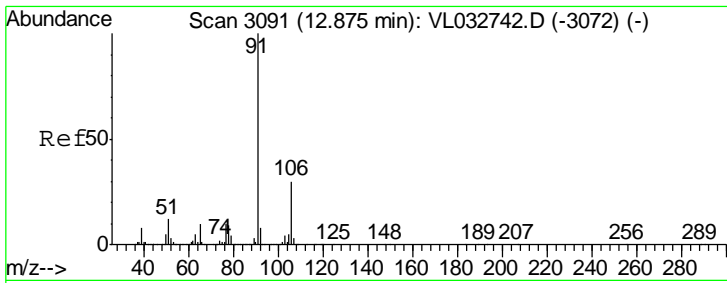


#55  
 Chlorobenzene-d5  
 Concen: 10.000 ppbv  
 RT: 12.25 min Scan# 2898  
 Delta R.T. 0.00 min  
 Lab File: VL032860.D  
 Acq: 30 Nov 2018 22:18

Tgt Ion: 117 Resp: 4066094

Ion	Ratio	Lower	Upper
117	100		
82	62.1	51.0	76.6
119	32.6	28.0	42.0





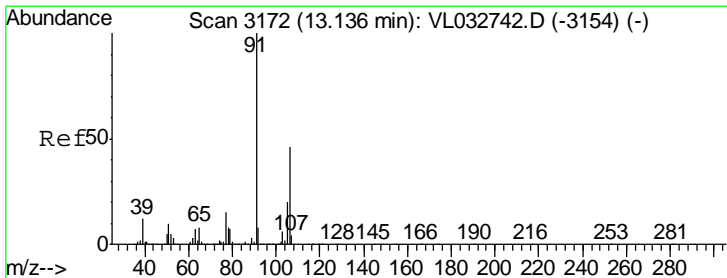
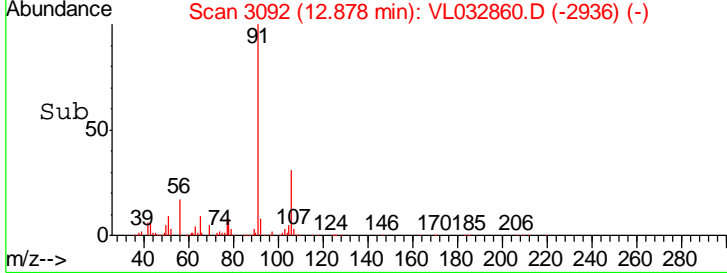
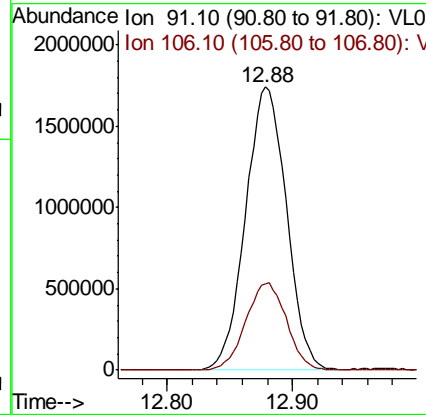
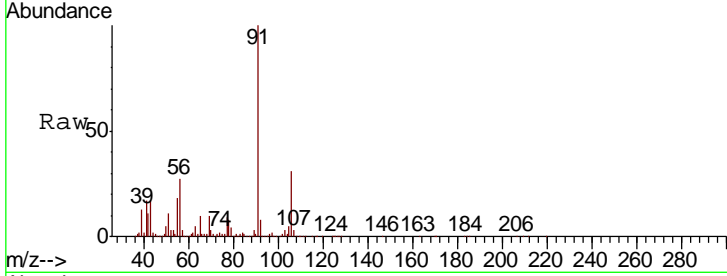
#58  
Ethyl Benzene  
Concen: 8.027 ppbv  
RT: 12.88 min Scan# 3092  
Delta R.T. 0.00 min  
Lab File: VL032860.D  
Acq: 30 Nov 2018 22:18

Instrument : MSVOA\_L  
ClientSampled : DSV-03

Tgt Ion: 91 Resp: 3928200

Ion	Ratio	Lower	Upper
91	100		
106	30.5	23.6	35.4

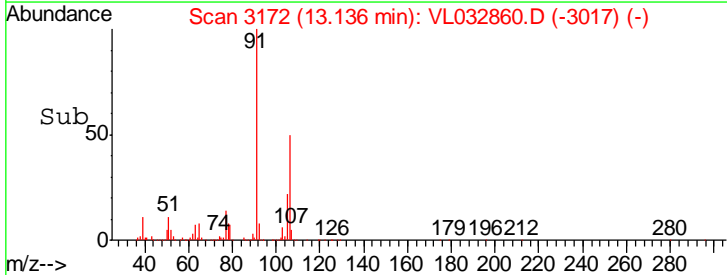
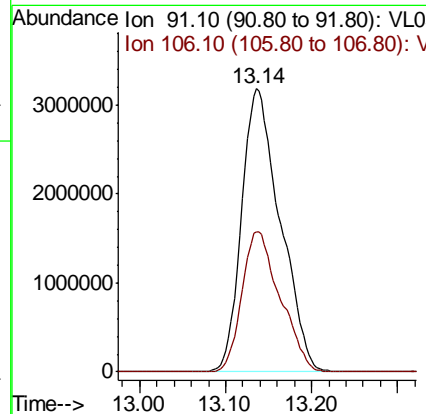
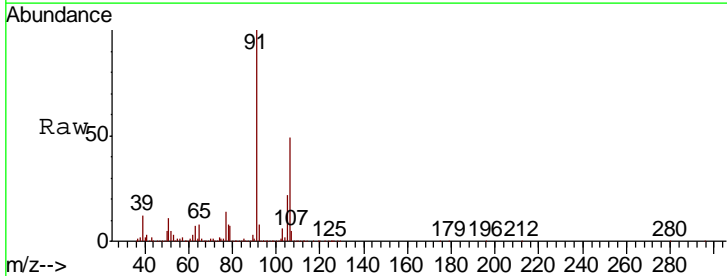
Manual Integrations  
**APPROVED**  
MMDadoda  
12/3/2018 4:16:13 PM

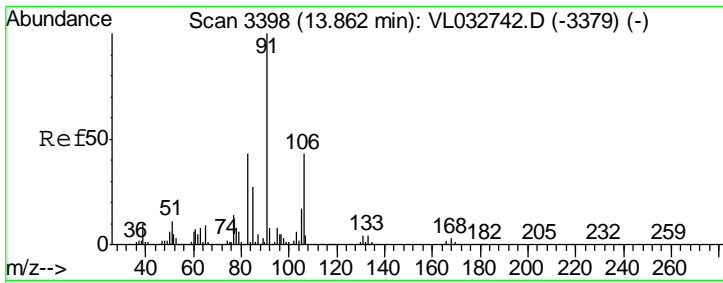


#59  
m/p-Xylene  
Concen: 22.681 ppbv  
RT: 13.14 min Scan# 3172  
Delta R.T. -0.00 min  
Lab File: VL032860.D  
Acq: 30 Nov 2018 22:18

Tgt Ion: 91 Resp: 9880367

Ion	Ratio	Lower	Upper
91	100		
106	49.3	36.1	54.1





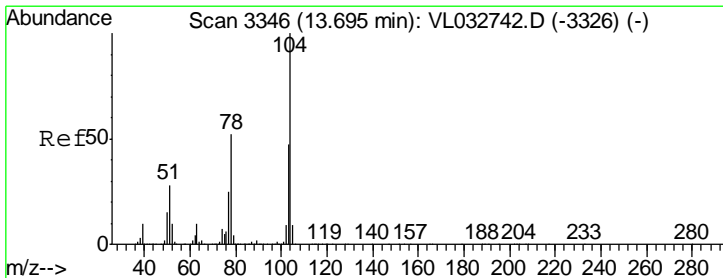
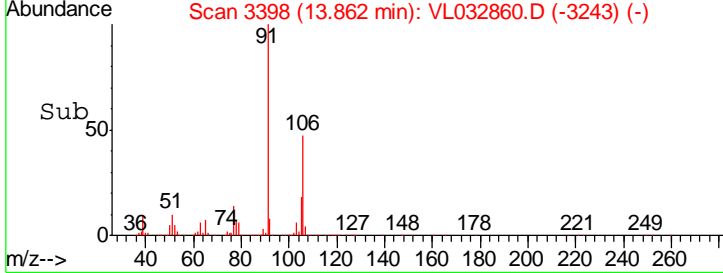
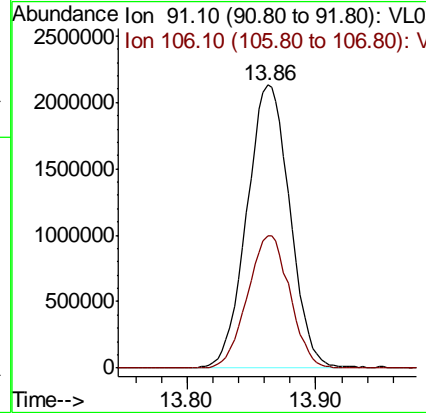
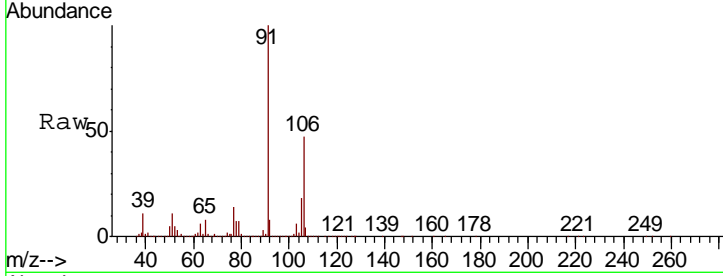
#60  
 o-Xylene  
 Concen: 11.233 ppbv  
 RT: 13.86 min Scan# 3398  
 Delta R.T. -0.00 min  
 Lab File: VL032860.D  
 Acq: 30 Nov 2018 22:18

Instrument : MSVOA\_L  
 ClientSampled : DSV-03

Tgt Ion: 91 Resp: 4920397

Ion	Ratio	Lower	Upper
91	100		
106	46.3	21.9	65.7

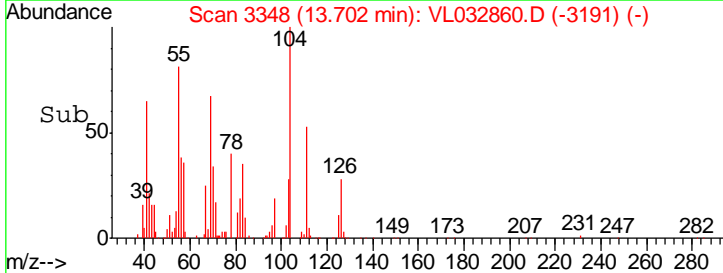
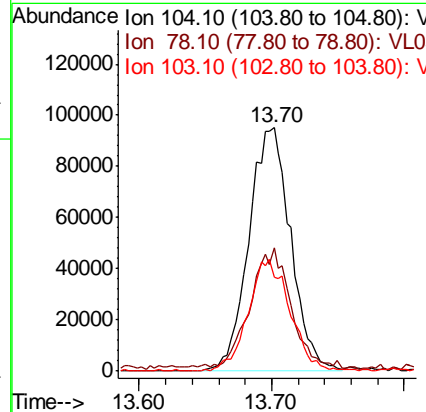
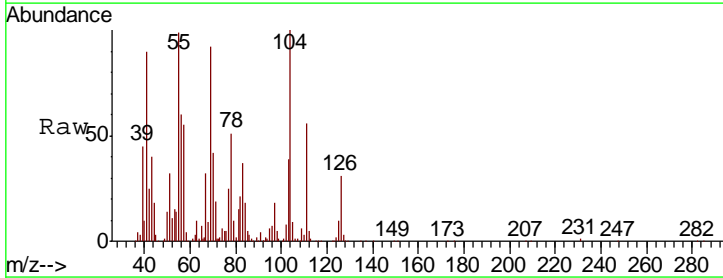
Manual Integrations APPROVED  
 MMDadoda  
 12/3/2018 4:16:13 PM

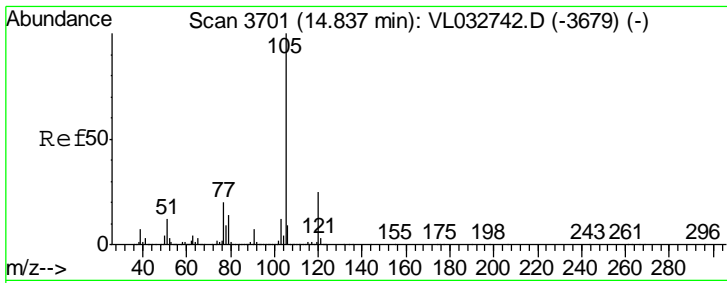


#61  
 Styrene  
 Concen: 0.731 ppbv  
 RT: 13.70 min Scan# 3348  
 Delta R.T. 0.01 min  
 Lab File: VL032860.D  
 Acq: 30 Nov 2018 22:18

Tgt Ion: 104 Resp: 208432

Ion	Ratio	Lower	Upper
104	100		
78	49.8	42.2	63.4
103	45.2	38.2	57.2



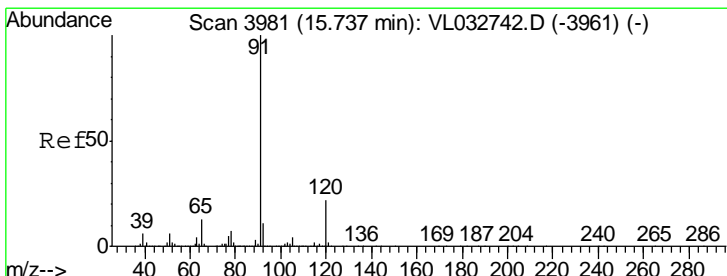
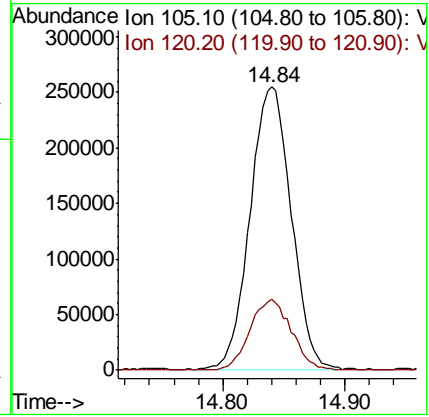
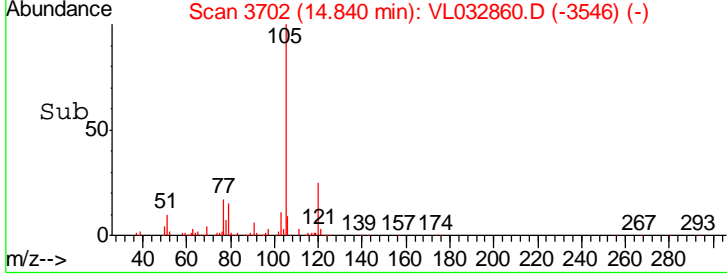
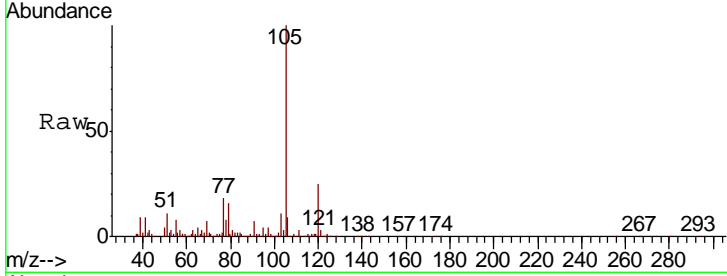


#62  
 Isopropylbenzene  
 Concen: 0.997 ppbv  
 RT: 14.84 min Scan# 3702  
 Delta R.T. 0.00 min  
 Lab File: VL032860.D  
 Acq: 30 Nov 2018 22:18

Instrument : MSVOA\_L  
 ClientSampled : DSV-03

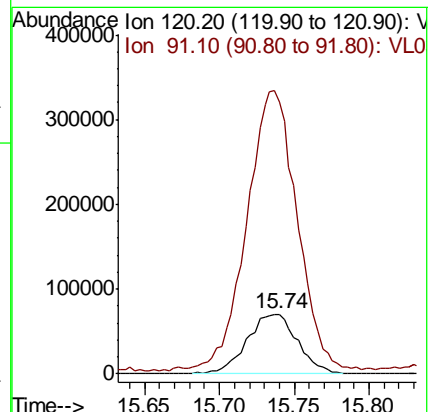
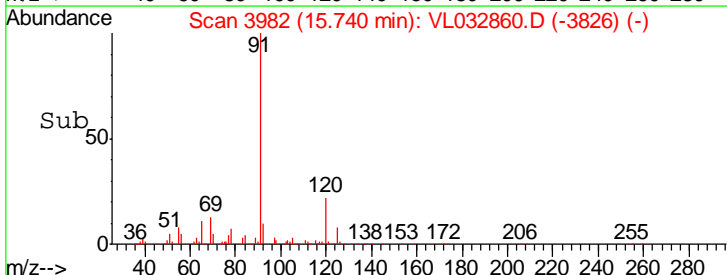
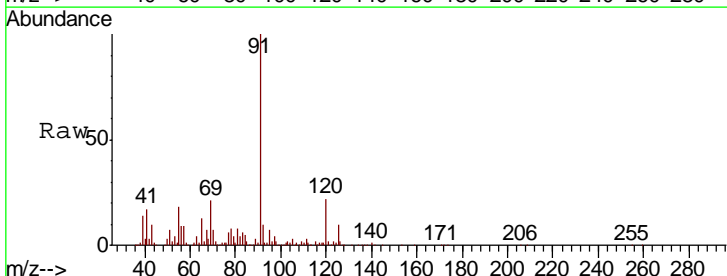
Tgt Ion	Resp	Lower	Upper
105	590272		
120	25.5	20.1	30.1

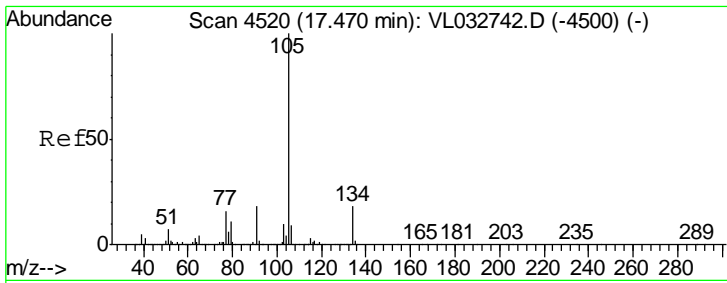
Manual Integrations  
**APPROVED**  
 MMDadoda  
 12/3/2018 4:16:13 PM



#64  
 n-propylbenzene  
 Concen: 1.059 ppbv  
 RT: 15.74 min Scan# 3982  
 Delta R.T. 0.00 min  
 Lab File: VL032860.D  
 Acq: 30 Nov 2018 22:18

Tgt Ion	Resp	Lower	Upper
120	164858		
91	467.8	381.7	572.5



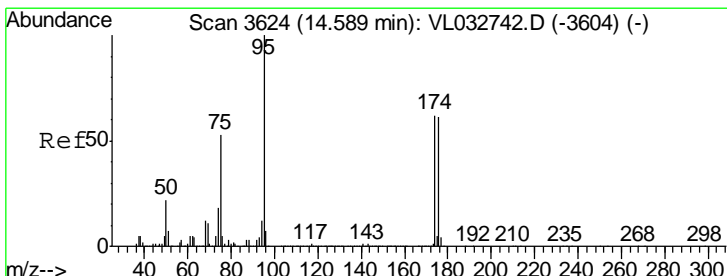
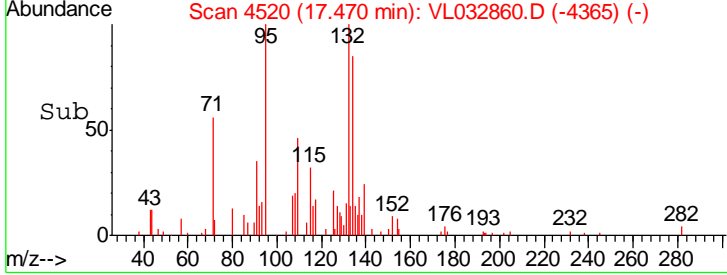
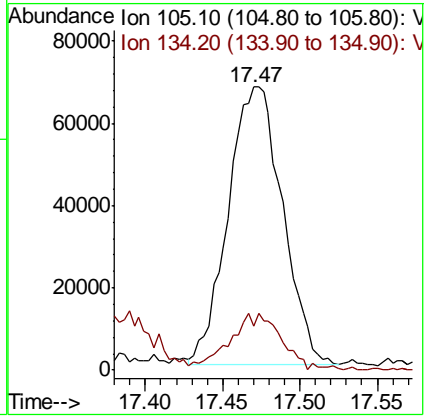
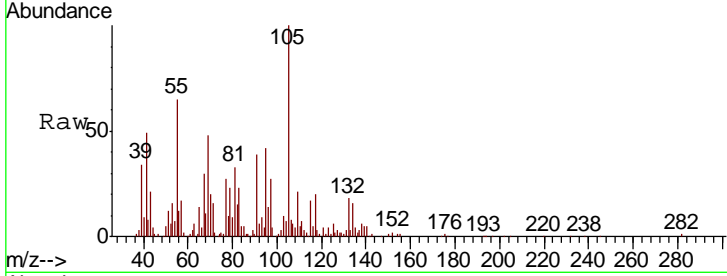


#67  
 sec-Butylbenzene  
 Concen: 0.215 ppbv  
 RT: 17.47 min Scan# 4520  
 Delta R.T. -0.00 min  
 Lab File: VL032860.D  
 Acq: 30 Nov 2018 22:18

Instrument : MSVOA\_L  
 ClientSampled : DSV-03

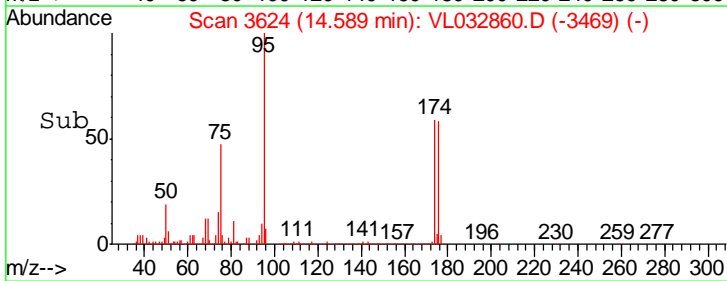
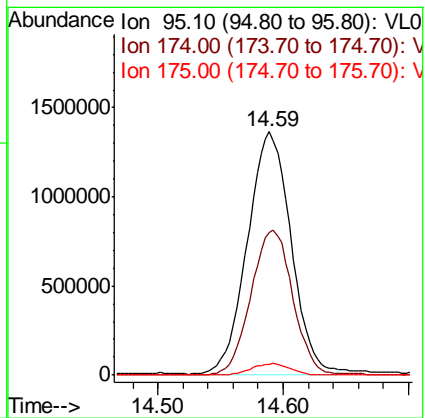
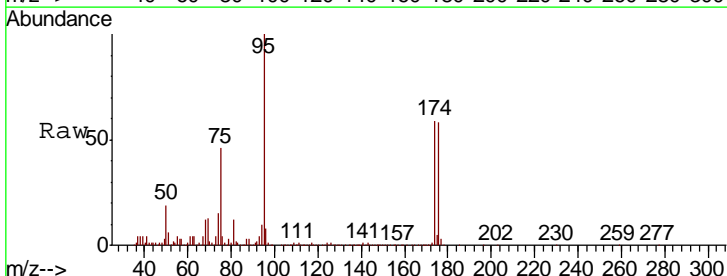
Tgt Ion	Resp	Lower	Upper
105	164441		
134	20.1	14.6	21.8

Manual Integrations  
**APPROVED**  
 MMDadoda  
 12/3/2018 4:16:13 PM

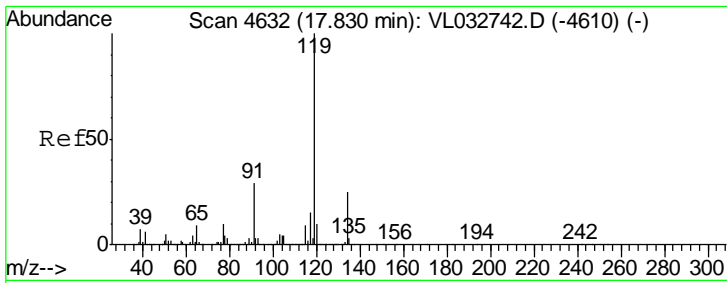


#68  
 1-Bromo-4-Fluorobenzene  
 Concen: 10.789 ppbv  
 RT: 14.59 min Scan# 3624  
 Delta R.T. -0.00 min  
 Lab File: VL032860.D  
 Acq: 30 Nov 2018 22:18

Tgt Ion	Resp	Lower	Upper
95	3281170		
174	58.3	50.7	76.1
175	4.4	3.8	5.6







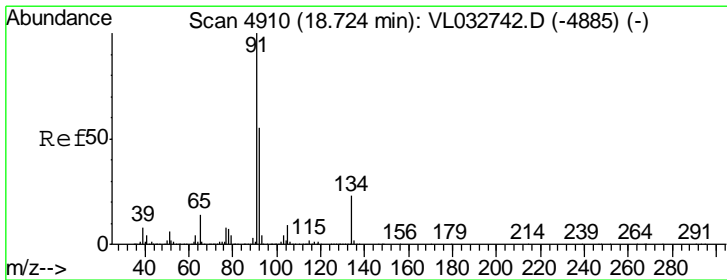
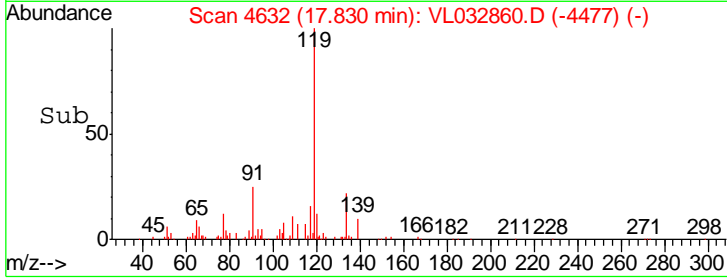
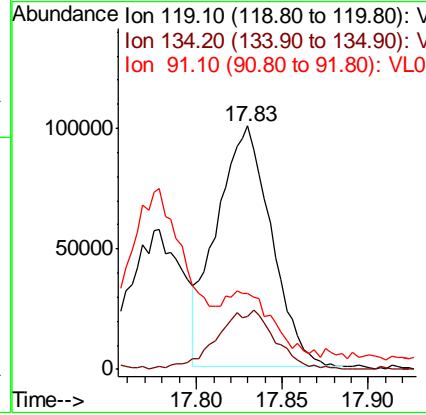
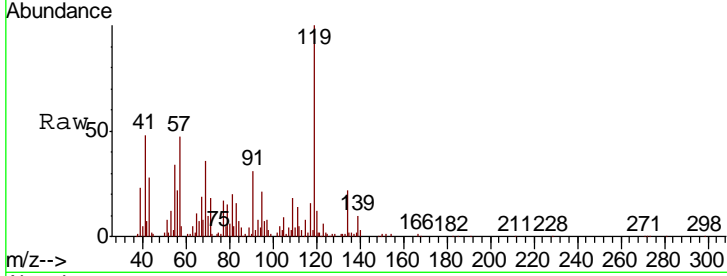
#69  
 p-Isopropyltoluene  
 Concen: 0.363 ppbv  
 RT: 17.83 min Scan# 4632  
 Delta R.T. -0.00 min  
 Lab File: VL032860.D  
 Acq: 30 Nov 2018 22:18

Instrument : MSVOA\_L  
 ClientSampled : DSV-03

Tgt Ion	Resp	Lower	Upper
119	100		
134	26.2	20.2	30.4
91	28.8	23.5	35.3

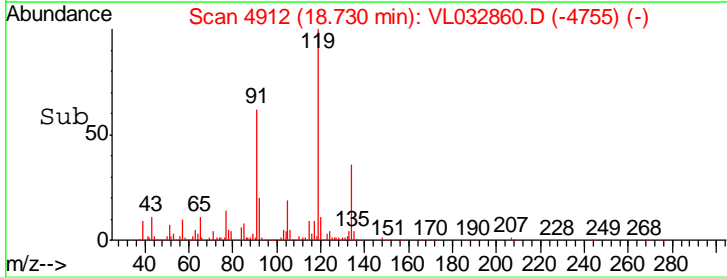
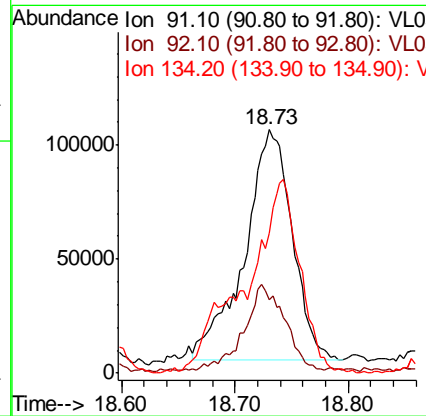
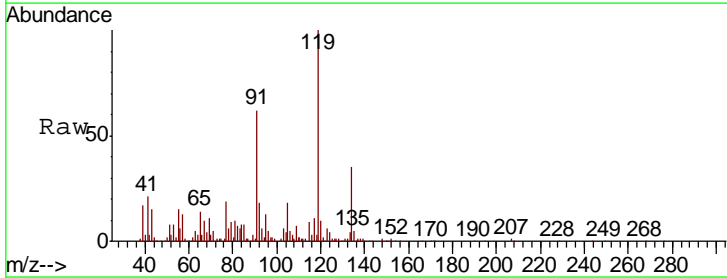
Manual Integrations  
 APPROVED

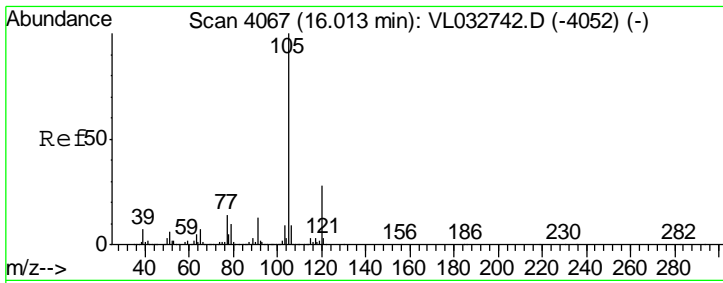
MMDadoda  
 12/3/2018 4:16:13 PM



#70  
 n-Butylbenzene  
 Concen: 0.481 ppbv  
 RT: 18.73 min Scan# 4912  
 Delta R.T. 0.01 min  
 Lab File: VL032860.D  
 Acq: 30 Nov 2018 22:18

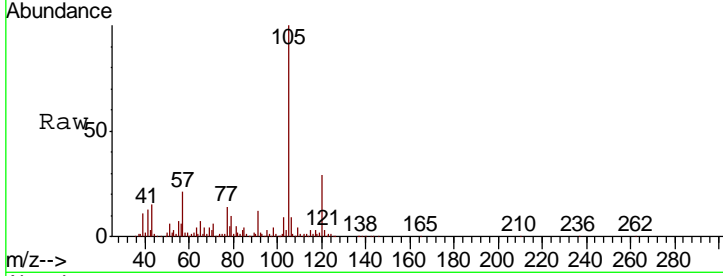
Tgt Ion	Resp	Lower	Upper
91	100		
92	32.2	42.9	64.3#
134	95.5	17.8	26.8#





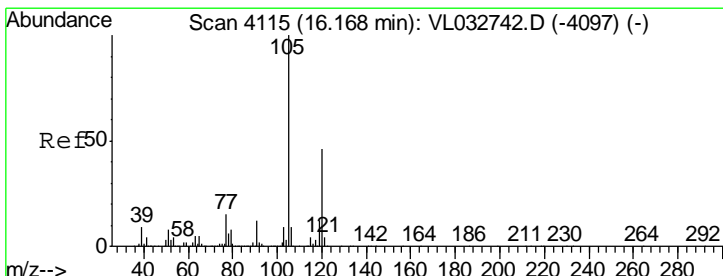
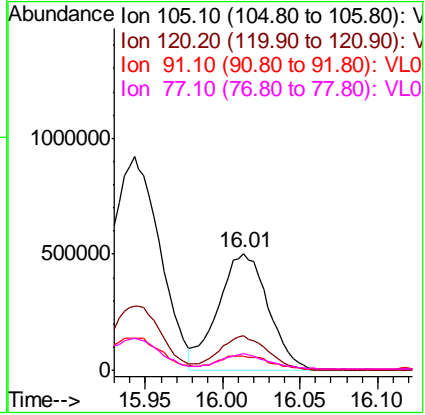
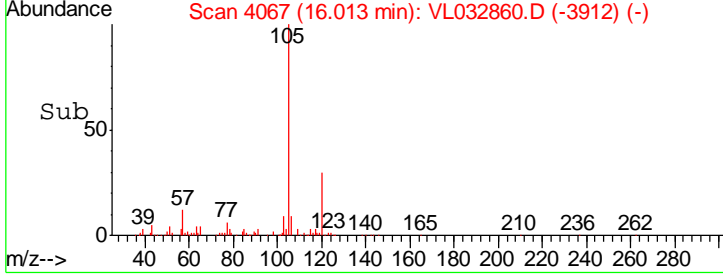
#72  
 4-Ethyltoluene  
 Concen: 2.342 ppbv  
 RT: 16.01 min Scan# 4067  
 Delta R.T. -0.00 min  
 Lab File: VL032860.D  
 Acq: 30 Nov 2018 22:18

Instrument : MSVOA\_L  
 ClientSampled : DSV-03

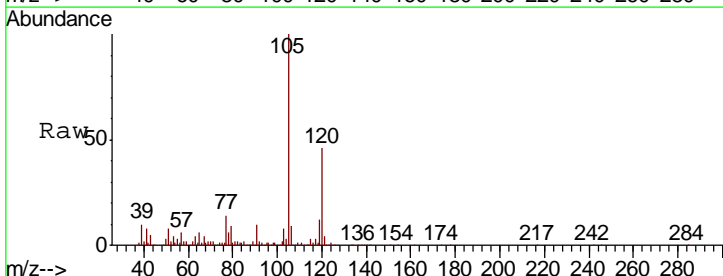


Tgt Ion	Resp	Lower	Upper
105	100		
120	28.9	22.9	34.3
91	12.4	10.6	15.8
77	14.0	11.4	17.2

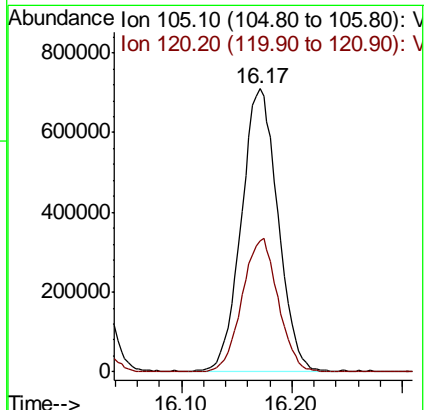
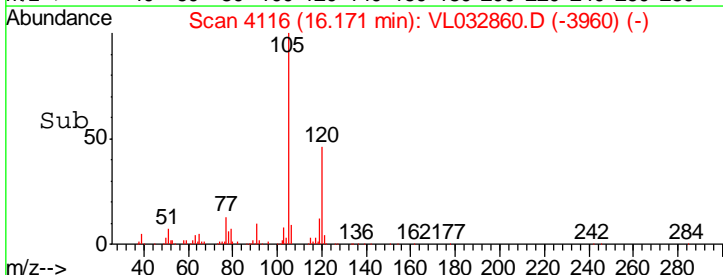
Manual Integrations APPROVED  
 MMDadoda  
 12/3/2018 4:16:13 PM

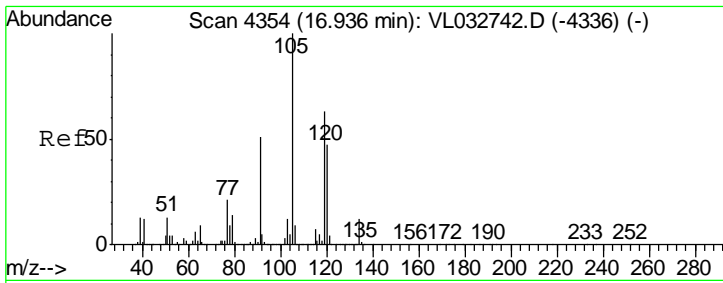


#73  
 1,3,5-Trimethylbenzene  
 Concen: 3.443 ppbv  
 RT: 16.17 min Scan# 4116  
 Delta R.T. 0.00 min  
 Lab File: VL032860.D  
 Acq: 30 Nov 2018 22:18



Tgt Ion	Resp	Lower	Upper
105	100		
120	46.4	36.6	55.0



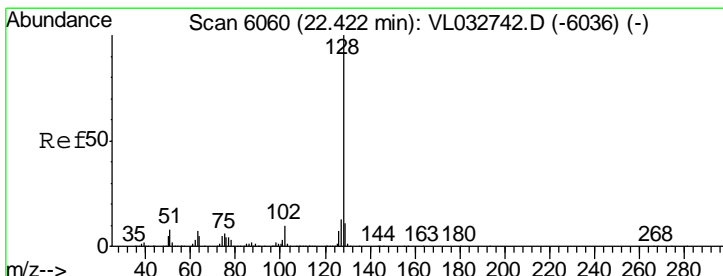
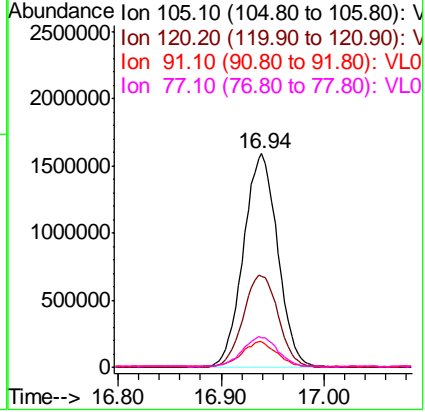
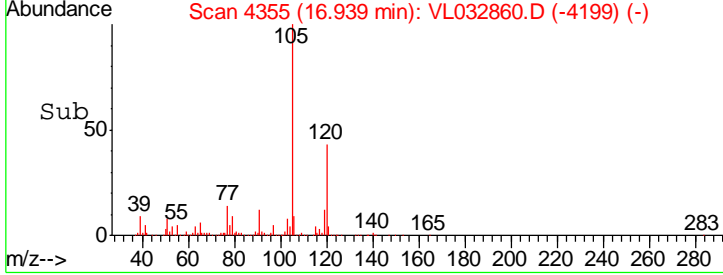
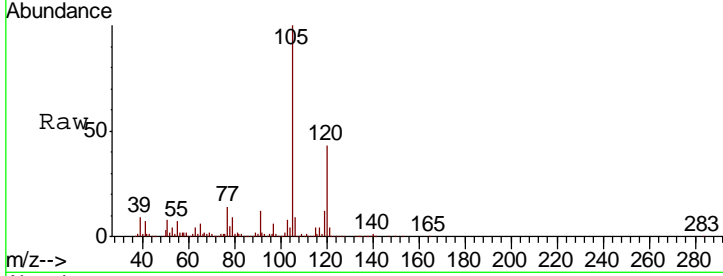


#74  
 1,2,4-Trimethylbenzene  
 Concen: 7.305 ppbv  
 RT: 16.94 min Scan# 4355  
 Delta R.T. 0.00 min  
 Lab File: VL032860.D  
 Acq: 30 Nov 2018 22:18

Instrument : MSVOA\_L  
 ClientSampled : DSV-03

Tgt Ion	Resp	Lower	Upper
105	3669443		
120	42.5	37.6	56.4
91	11.4	42.5	63.7#
77	13.7	17.4	26.2#

Manual Integrations  
**APPROVED**  
 MMDadoda  
 12/3/2018 4:16:13 PM



#79  
 Naphthalene  
 Concen: 0.618 ppbv  
 RT: 22.42 min Scan# 6061  
 Delta R.T. 0.00 min  
 Lab File: VL032860.D  
 Acq: 30 Nov 2018 22:18

Tgt Ion	Resp	Lower	Upper
128	203968		
127	11.3	10.1	15.1
129	13.5	8.9	13.3#

