

Data Path : Z:\voasrv\HPCHEM1\MSVOA_L\Data\VL121924\
 Data File : VL041821.D
 Acq On : 19 Dec 2024 15:32
 Operator : SY/MD
 Sample : VI BLK
 Misc : 400mL/MSVOA_L
 ALS Vial : 1 Sample Multiplier: 1

Instrument :
 MSVOA_L
ClientSampleId :

Quant Time: Dec 20 01:44:39 2024
 Quant Method : Z:\voasrv\HPCHEM1\MSVOA_L\methods\VL121624AIR.M
 Quant Title : AIR ANALYSIS BY METHOD T0-15 Instrument: MSVOA_L Fri Aug 26 06:05:16 2022
 QLast Update : Thu Dec 19 07:32:09 2024
 Response via : Initial Calibration

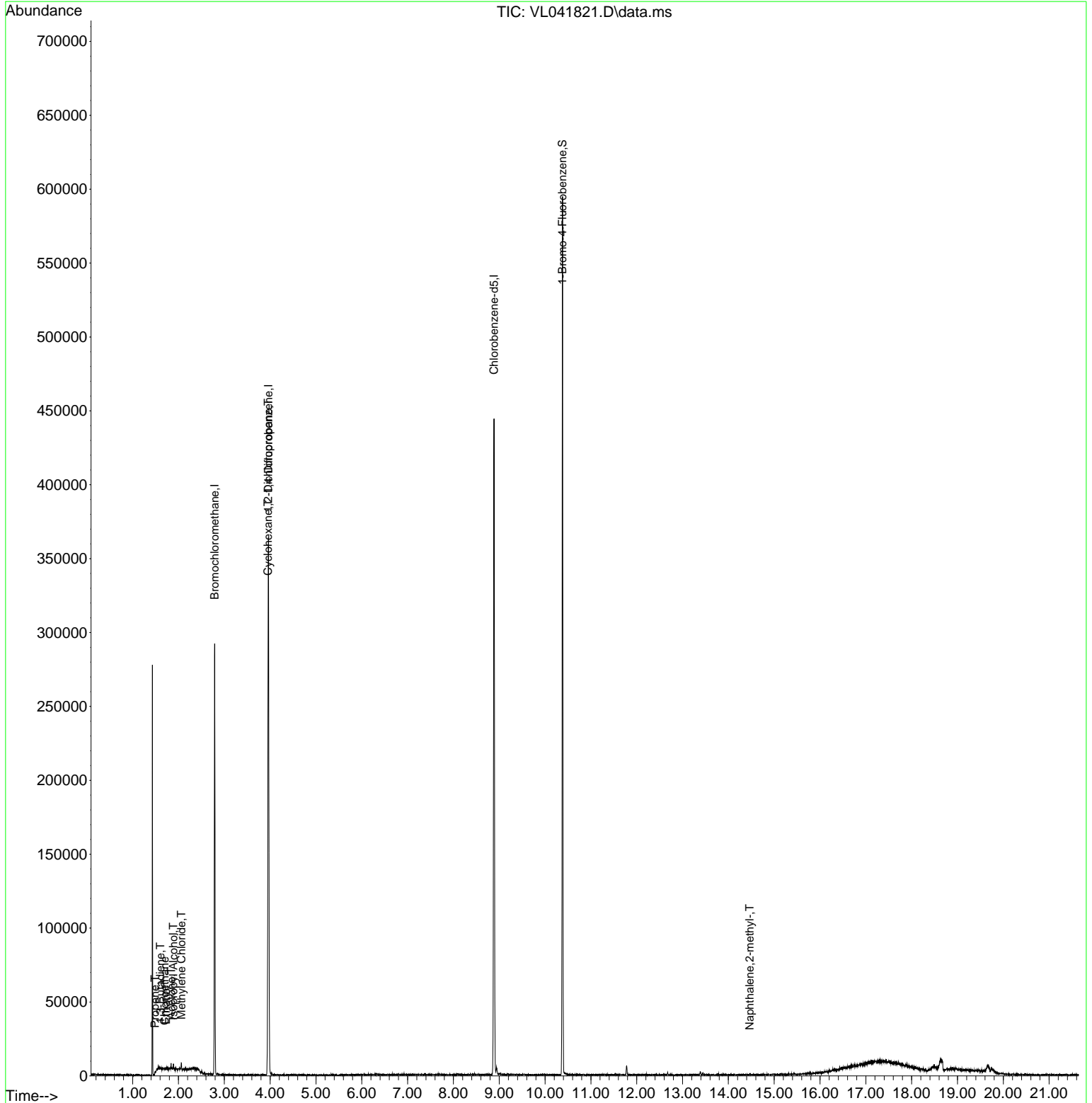
Compound	R. T.	QI on	Response	Conc	Units	Dev(Min)
Internal Standards						
1) Bromochloromethane	2.790	49	81499	10.000	ppbv	0.00
33) 1,4-Difluorobenzene	3.962	114	191750	10.000	ppbv	0.00
55) Chlorobenzene-d5	8.885	117	160950	10.000	ppbv	0.00
System Monitoring Compounds						
68) 1-Bromo-4-Fluorobenzene	10.380	95	132478	9.877	ppbv	0.00
Spiked Amount	10.000	Range	65 - 135	Recovery	=	98.800%
Target Compounds						
					Qvalue	
7) Chloroethane	1.699	64	84	0.038	ppbv #	40
9) Propene	1.486	41	298	0.052	ppbv #	70
13) Ethanol	1.725	45	196	0.411	ppbv	84
15) Acetone	1.839	43	1771	0.112	ppbv	94
16) 1,3-Butadiene	1.602	39	271	0.043	ppbv #	13
19) Isopropyl Alcohol	1.887	45	1940	0.204	ppbv #	34
20) Methylene Chloride	2.065	84	625	0.138	ppbv #	75
30) Cyclohexane	3.955	84	968	0.102	ppbv #	1
39) 1,2-Dichloropropane	3.959	63	52907	7.375	ppbv #	17
80) Naphthalene, 2-methyl -	14.468	142	226	0.043	ppbv #	79

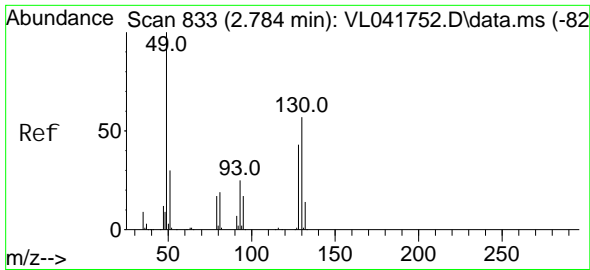
(#) = qualifier out of range (m) = manual integration (+) = signals summed

Data Path : Z:\voasrv\HPCHEM1\MSVOA_L\Data\VL121924\
Data File : VL041821.D
Acq On : 19 Dec 2024 15:32
Operator : SY/MD
Sample : VI BLK
Misc : 400mL/MSVOA_L
ALS Vial : 1 Sample Multiplier: 1

Instrument :
MSVOA_L
ClientSampleId :

Quant Time: Dec 20 01:44:39 2024
Quant Method : Z:\voasrv\HPCHEM1\MSVOA_L\methods\VL121624AIR.M
Quant Title : AIR ANALYSIS BY METHOD T0-15 Instrument: MSVOA_LFri Aug 26 06:05:16 2022
QLast Update : Thu Dec 19 07:32:09 2024
Response via : Initial Calibration

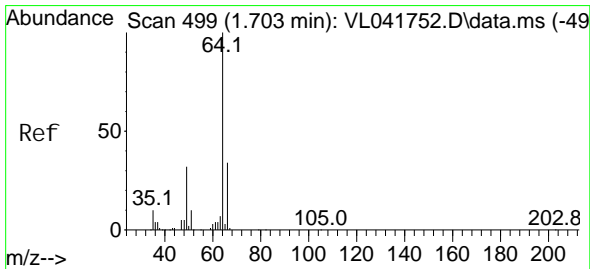
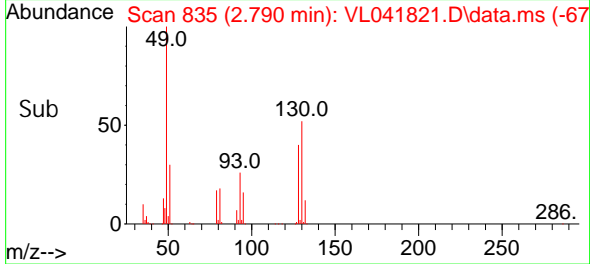
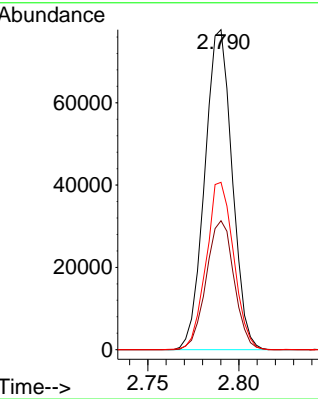
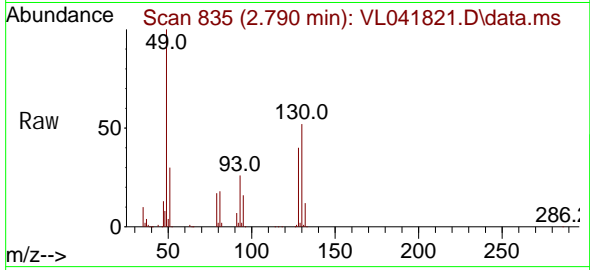




#1
 Bromochloromethane
 Concen: 10.000 ppbv
 RT: 2.790 min Scan# 81
 Delta R.T. 0.006 min
 Lab File: VL041821.D
 Acq: 19 Dec 2024 15:32

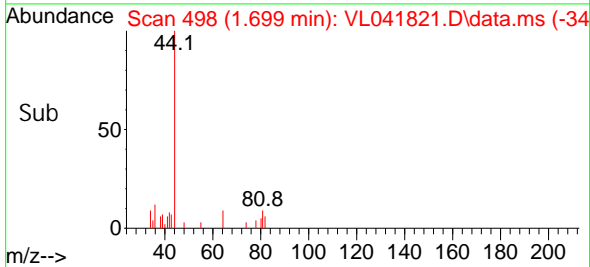
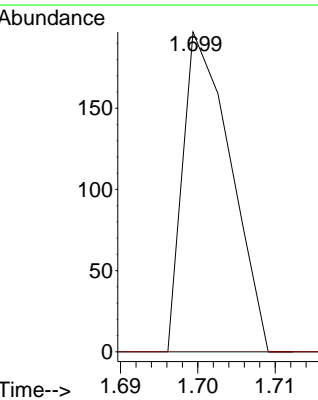
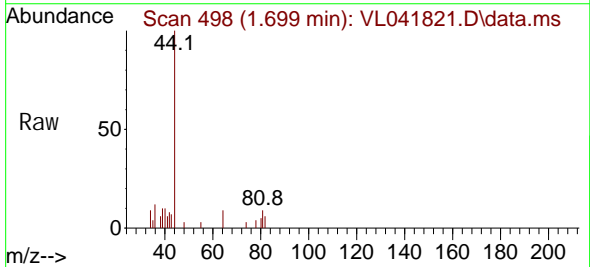
Instrument :
 MSVOA_L
 ClientSampleId :

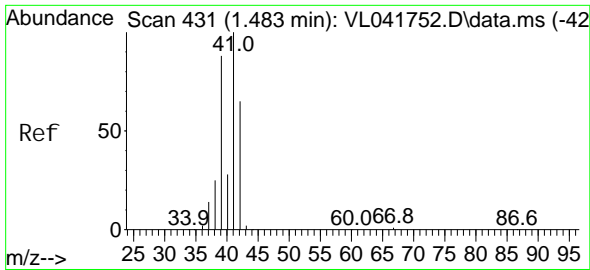
Tgt Ion: 49 Resp: 81499
 Ion Ratio Lower Upper
 49 100
 128 40.9 21.6 64.6
 130 52.5 28.3 85.0



#7
 Chloroethane
 Concen: 0.038 ppbv
 RT: 1.699 min Scan# 498
 Delta R.T. -0.004 min
 Lab File: VL041821.D
 Acq: 19 Dec 2024 15:32

Tgt Ion: 64 Resp: 84
 Ion Ratio Lower Upper
 64 100
 66 0.0 27.5 41.3#





#9

Propene

Concen: 0.052 ppbv

RT: 1.486 min Scan# 41

Delta R.T. 0.003 min

Lab File: VL041821.D

Acq: 19 Dec 2024 15:32

Instrument :

MSVOA_L

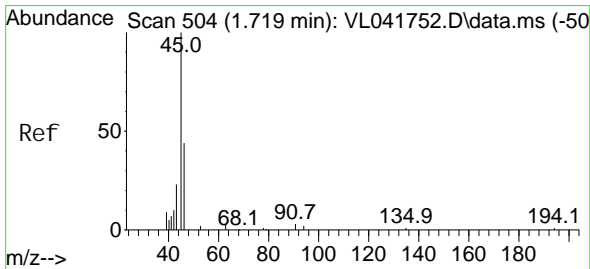
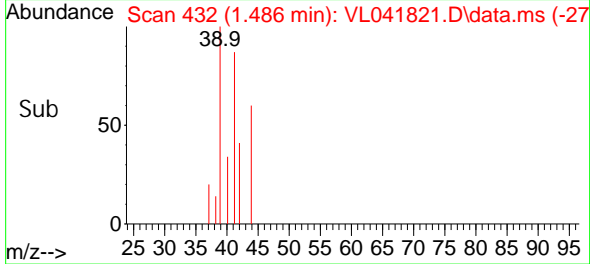
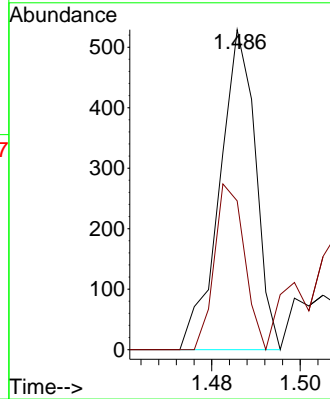
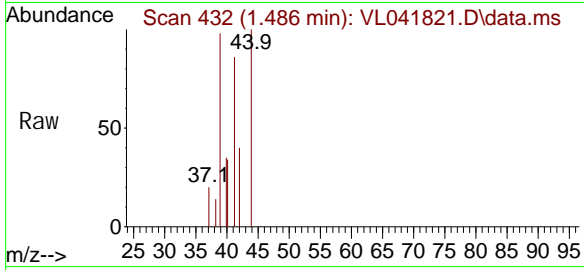
ClientSampleId :

Tgt Ion: 41 Resp: 298

Ion Ratio Lower Upper

41 100

42 89.6 52.4 78.6#



#13

Ethanol

Concen: 0.411 ppbv

RT: 1.725 min Scan# 506

Delta R.T. 0.006 min

Lab File: VL041821.D

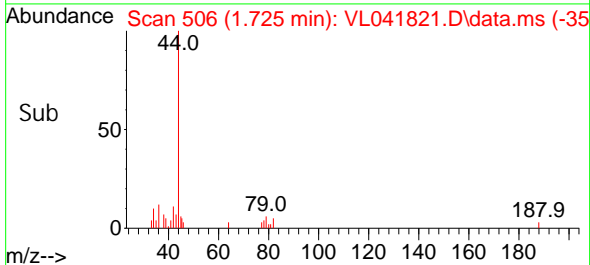
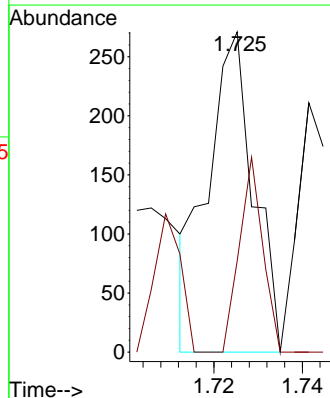
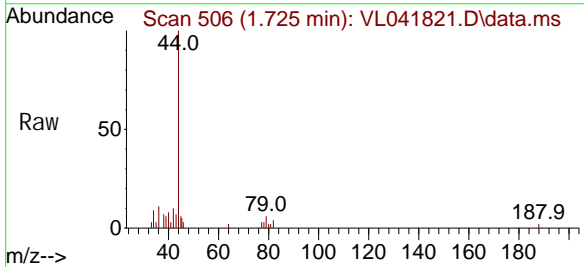
Acq: 19 Dec 2024 15:32

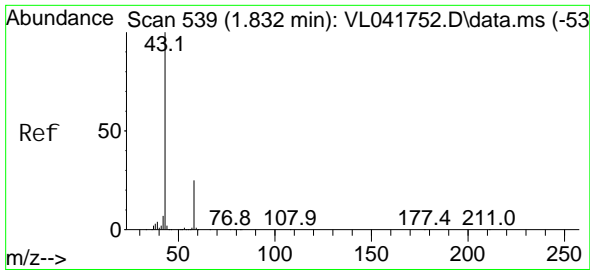
Tgt Ion: 45 Resp: 196

Ion Ratio Lower Upper

45 100

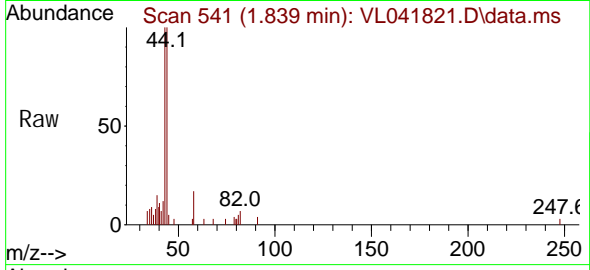
46 31.1 16.4 65.8



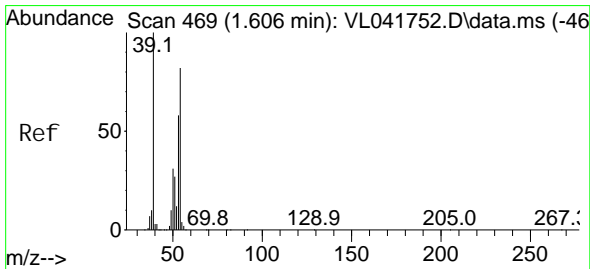
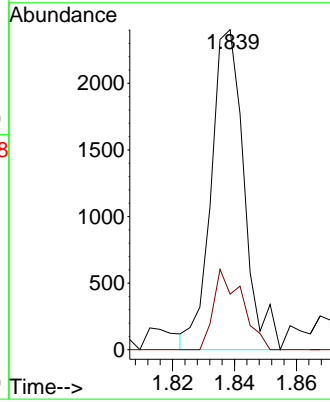
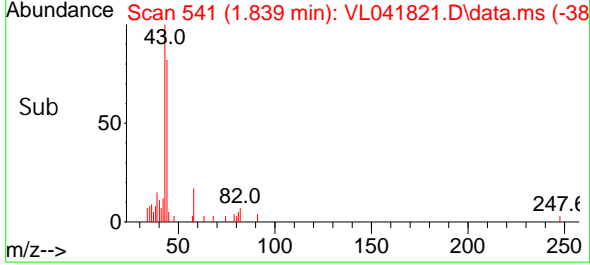


#15
 Acetone
 Concen: 0.112 ppbv
 RT: 1.839 min Scan# 541
 Delta R.T. 0.006 min
 Lab File: VL041821.D
 Acq: 19 Dec 2024 15:32

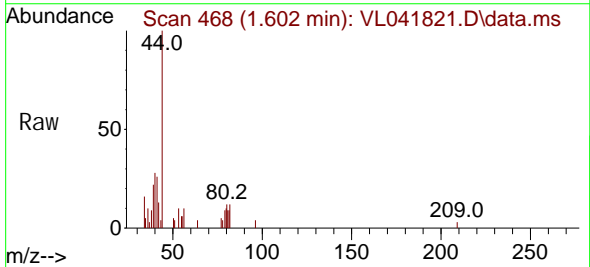
Instrument :
 MSVOA_L
 ClientSampleId :



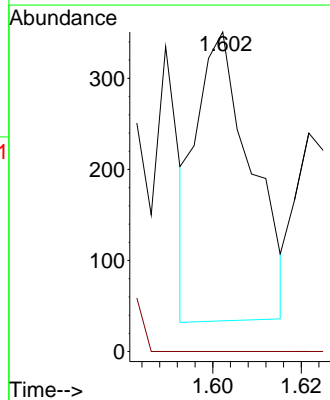
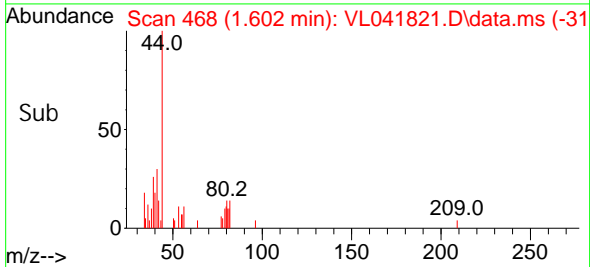
Tgt Ion: 43 Resp: 1771
 Ion Ratio Lower Upper
 43 100
 58 21.9 19.7 29.5

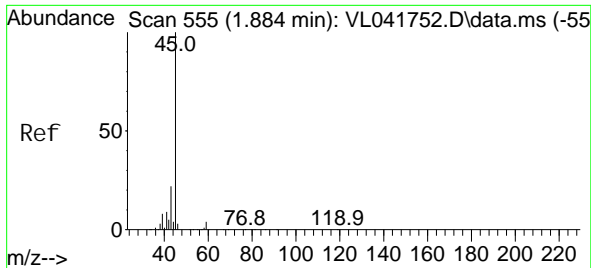


#16
 1,3-Butadiene
 Concen: 0.043 ppbv
 RT: 1.602 min Scan# 468
 Delta R.T. -0.004 min
 Lab File: VL041821.D
 Acq: 19 Dec 2024 15:32



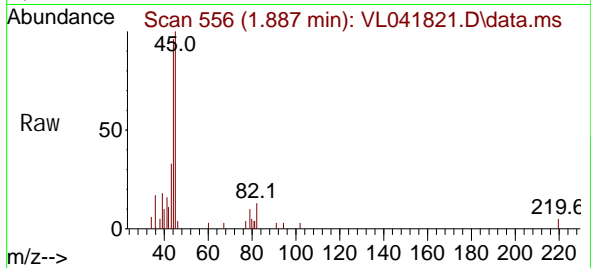
Tgt Ion: 39 Resp: 271
 Ion Ratio Lower Upper
 39 100
 54 0.0 58.4 87.6#



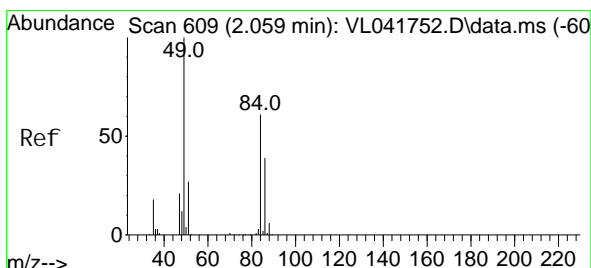
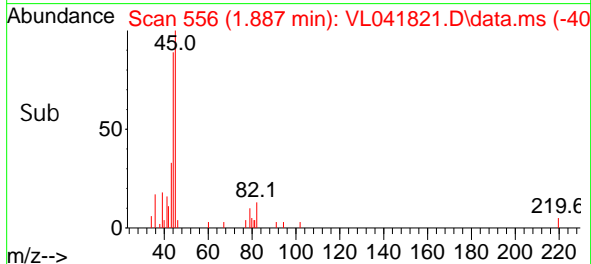
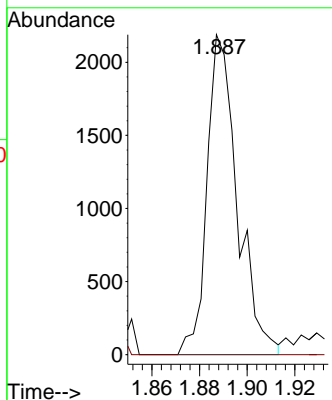


#19
 Isopropyl Alcohol
 Concen: 0.204 ppbv
 RT: 1.887 min Scan# 511
 Delta R.T. 0.003 min
 Lab File: VL041821.D
 Acq: 19 Dec 2024 15:32

Instrument :
 MSVOA_L
 ClientSampleId :

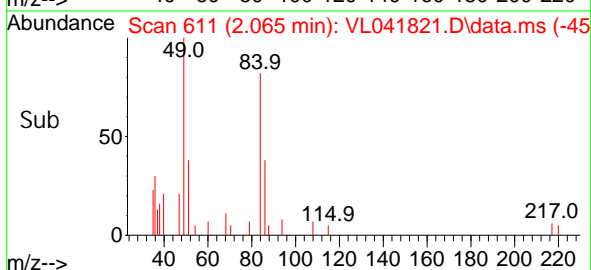
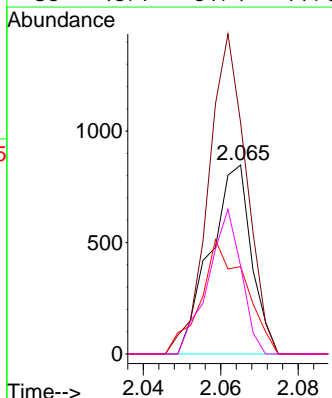
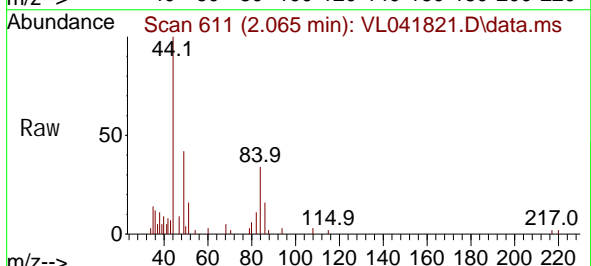


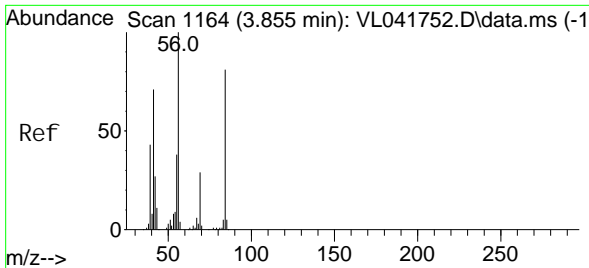
Tgt Ion: 45 Resp: 1940
 Ion Ratio Lower Upper
 45 100
 58 0.0 33.3 49.9#



#20
 Methylene Chloride
 Concen: 0.138 ppbv
 RT: 2.065 min Scan# 611
 Delta R.T. 0.006 min
 Lab File: VL041821.D
 Acq: 19 Dec 2024 15:32

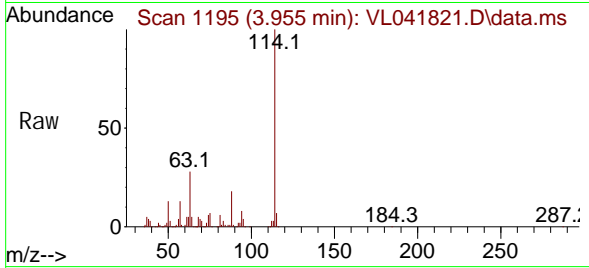
Tgt Ion: 84 Resp: 625
 Ion Ratio Lower Upper
 84 100
 49 122.4 132.6 198.8#
 51 46.2 37.6 56.4
 86 46.7 51.4 77.0#





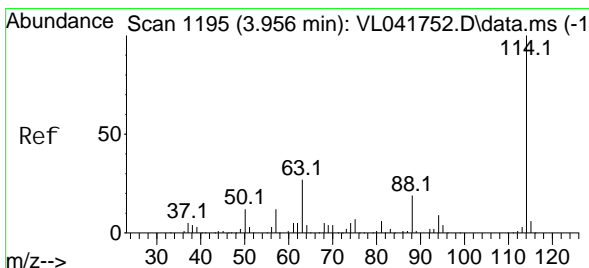
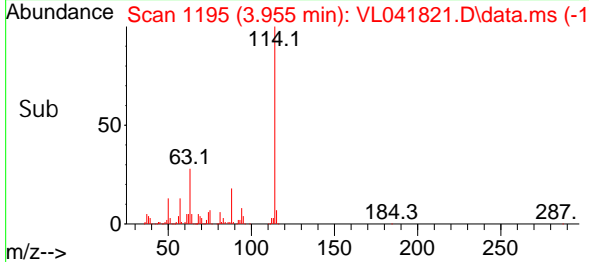
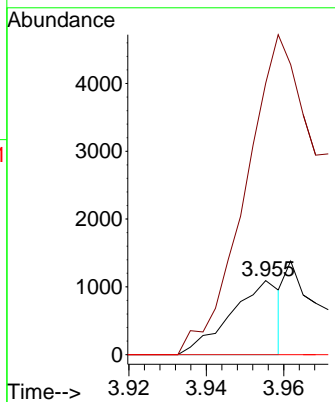
#30
 Cycl ohexane
 Concen: 0.102 ppbv
 RT: 3.955 min Scan# 1195
 Del ta R.T. 0.100 min
 Lab File: VL041821.D
 Acq: 19 Dec 2024 15:32

Instrument : MSVOA_L
 ClientSampleId :



Tgt Ion: 84 Resp: 968

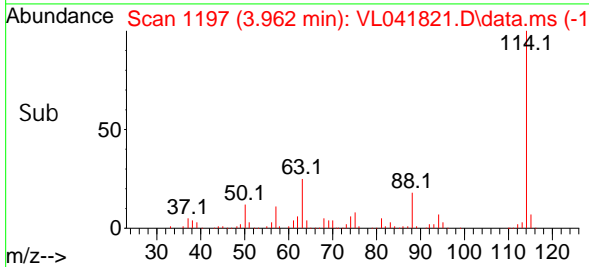
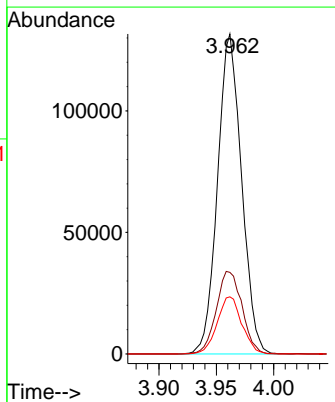
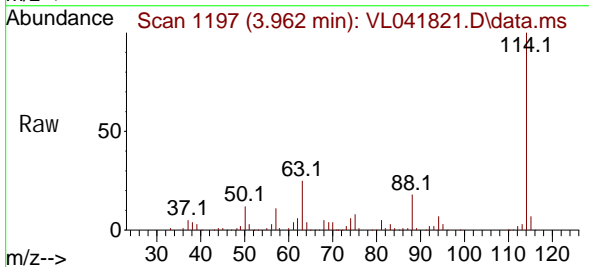
Ion	Ratio	Lower	Upper
84	100		
56	0.0	102.3	153.5#
41	2.3	74.0	111.0#

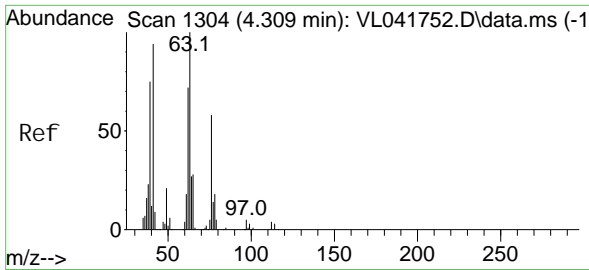


#33
 1,4-Di fluorobenzene
 Concen: 10.000 ppbv
 RT: 3.962 min Scan# 1197
 Del ta R.T. 0.006 min
 Lab File: VL041821.D
 Acq: 19 Dec 2024 15:32

Tgt Ion: 114 Resp: 191750

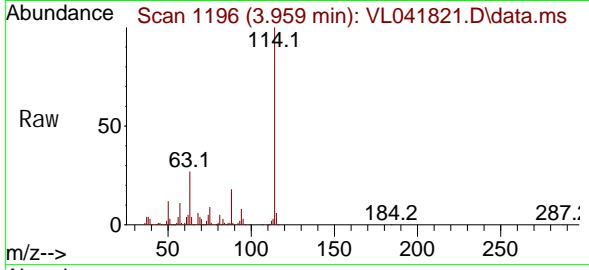
Ion	Ratio	Lower	Upper
114	100		
63	27.7	21.8	32.8
88	18.4	14.8	22.2



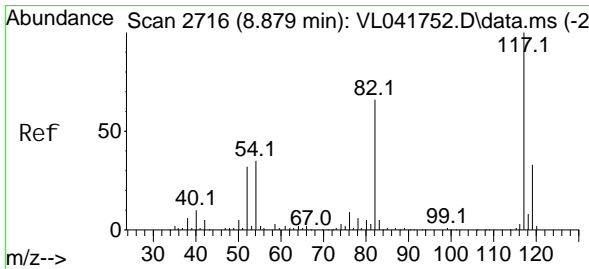
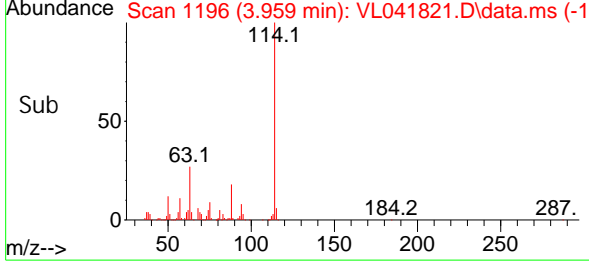
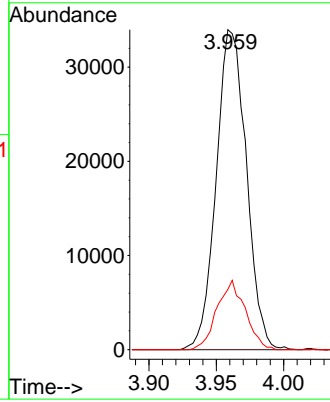


#39
 1, 2-Di chl oropropane
 Concen: 7.375 ppbv
 RT: 3.959 min Scan# 1196
 Delta R.T. -0.350 min
 Lab File: VL041821.D
 Acq: 19 Dec 2024 15:32

Instrument : MSVOA_L
 ClientSampleId :

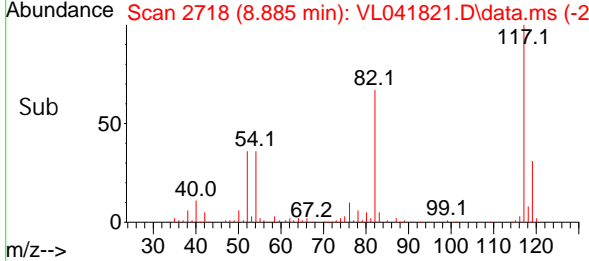
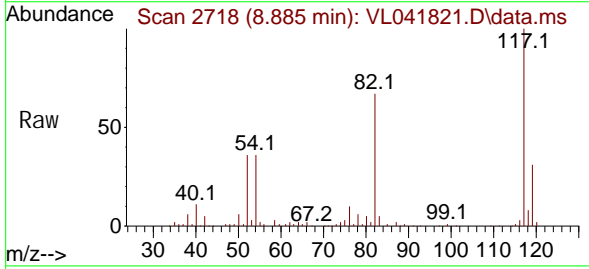
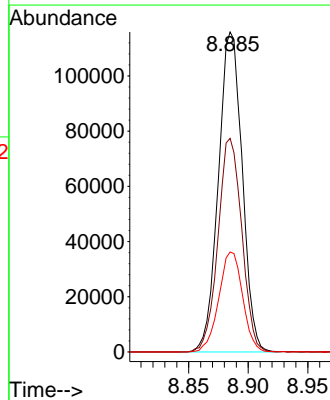


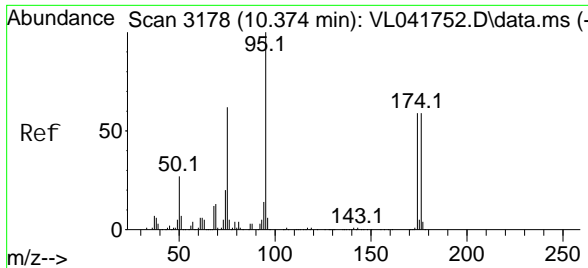
Tgt Ion: 63 Resp: 52907
 Ion Ratio Lower Upper
 63 100
 41 0.0 75.3 112.9#
 62 18.8 57.3 85.9#



#55
 Chl orobenzene-d5
 Concen: 10.000 ppbv
 RT: 8.885 min Scan# 2718
 Delta R.T. 0.006 min
 Lab File: VL041821.D
 Acq: 19 Dec 2024 15:32

Tgt Ion: 117 Resp: 160950
 Ion Ratio Lower Upper
 117 100
 82 66.6 53.8 80.8
 119 31.3 26.7 40.1

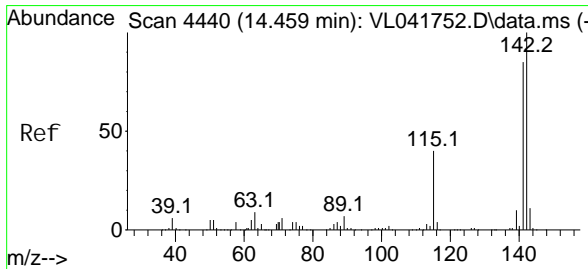
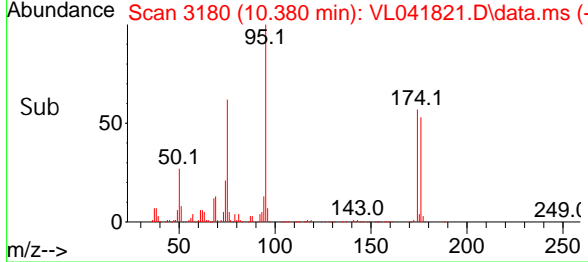
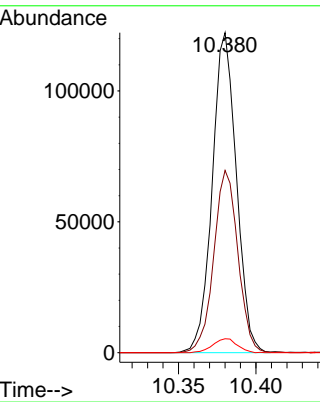
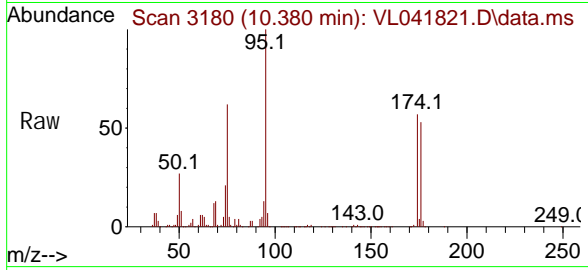




#68
 1-Bromo-4-Fluorobenzene
 Concen: 9.877 ppbv
 RT: 10.380 min Scan# 3178
 Delta R.T. 0.006 min
 Lab File: VL041821.D
 Acq: 19 Dec 2024 15:32

Instrument : MSVOA_L
 ClientSampleId :

Tgt Ion	Resp	Lower	Upper
95	132478	100	
174	57.0	47.6	71.4
175	4.4	3.7	5.5



#80
 Naphthalene, 2-methyl -
 Concen: 0.043 ppbv
 RT: 14.468 min Scan# 4443
 Delta R.T. 0.009 min
 Lab File: VL041821.D
 Acq: 19 Dec 2024 15:32

Tgt Ion	Resp	Lower	Upper
142	226	100	
141	60.2	68.4	102.6
115	37.2	32.5	48.7

