

Data Path : Z:\voasrv\HPCHEM1\MSVOA\_X\Data\VX010224\  
 Data File : VX039577.D  
 Acq On : 02 Jan 2024 17:17  
 Operator : JC/MD  
 Sample : P1002-02 50X  
 Misc : 5.0mL/MSVOA\_X/WATER  
 ALS Vial : 20 Sample Multiplier: 1

Instrument :  
 MSVOA\_X  
 ClientSampleId :

Quant Time: Jan 03 04:15:44 2024  
 Quant Method : Z:\voasrv\HPCHEM1\MSVOA\_X\Method\82X121323W.M  
 Quant Title : SW846 8260  
 QLast Update : Thu Dec 14 01:28:15 2023  
 Response via : Initial Calibration

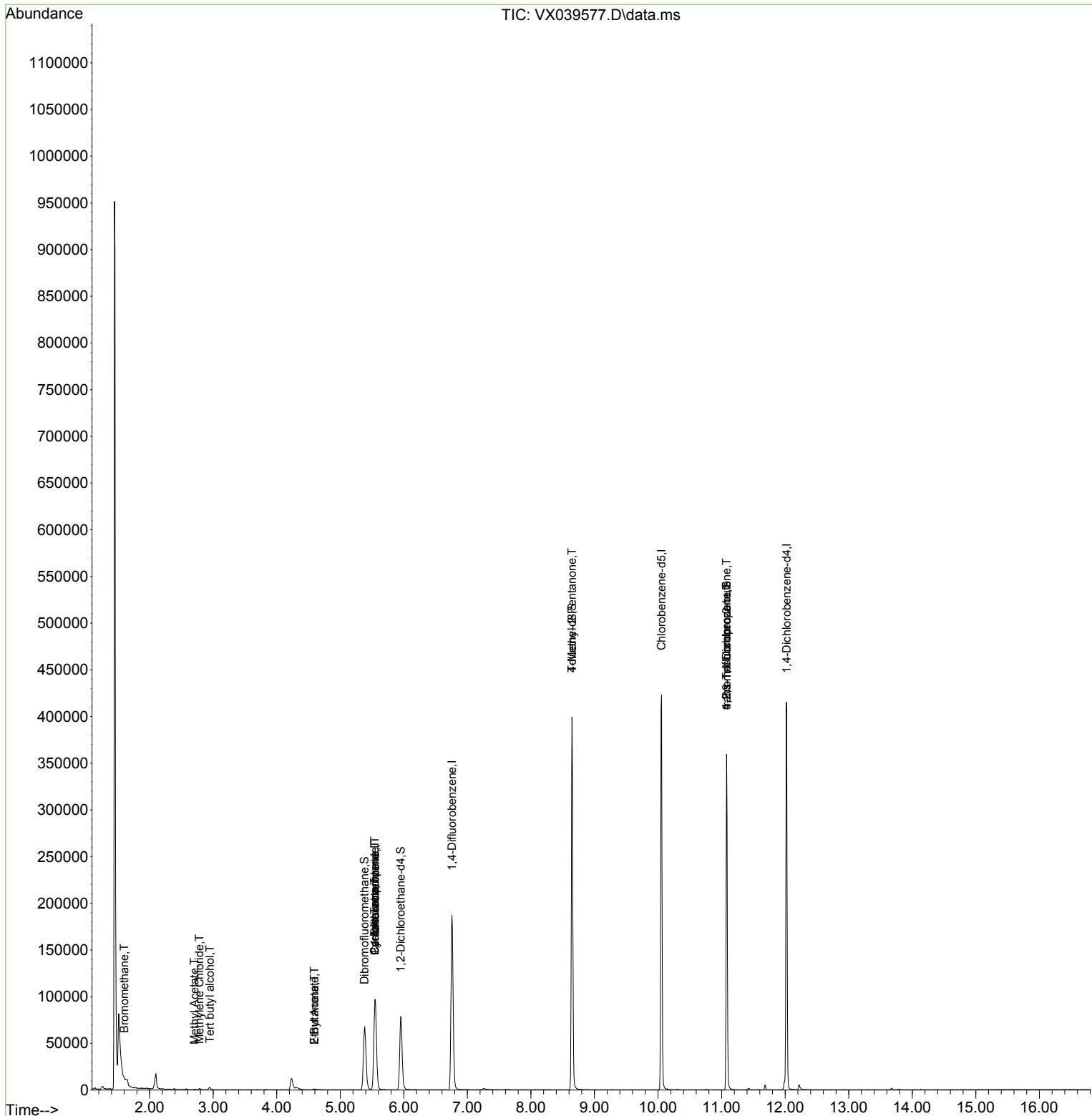
Compound	R.T.	QIon	Response	Conc	Units	Dev(Min)
-----						
Internal Standards						
1) Pentafluorobenzene	5.550	168	86188	50.000	ug/l	0.00
34) 1,4-Difluorobenzene	6.757	114	181719	50.000	ug/l	0.00
63) Chlorobenzene-d5	10.055	117	185167	50.000	ug/l	0.00
72) 1,4-Dichlorobenzene-d4	12.024	152	80684	50.000	ug/l	0.00
System Monitoring Compounds						
33) 1,2-Dichloroethane-d4	5.952	65	74908	47.443	ug/l	0.00
Spiked Amount	50.000	Range 78 - 117	Recovery =	94.880%		
35) Dibromofluoromethane	5.379	113	58719	46.773	ug/l	0.00
Spiked Amount	50.000	Range 75 - 124	Recovery =	93.540%		
50) Toluene-d8	8.647	98	230214	49.395	ug/l	0.00
Spiked Amount	50.000	Range 92 - 112	Recovery =	98.780%		
62) 4-Bromofluorobenzene	11.079	95	96876	50.378	ug/l	0.00
Spiked Amount	50.000	Range 83 - 123	Recovery =	100.760%		
Target Compounds						
					Qvalue	
5) Bromomethane	1.599	94	187	0.260	ug/l #	62
11) Tert butyl alcohol	2.947	59	1640	4.136	ug/l #	78
16) Acetone	2.386	43	1397	Below Cal	#	87
18) Methyl Acetate	2.703	43	960	0.281	ug/l #	69
20) Methylene Chloride	2.782	84	732	0.556	ug/l #	86
25) 2-Butanone	4.593	43	1591	1.168	ug/l	95
31) Cyclohexane	5.544	56	2453	1.203	ug/l #	9
36) 1,1-Dichloropropene	5.544	75	8677	4.380	ug/l #	49
37) Ethyl Acetate	4.593	43	1591	0.650	ug/l #	69
38) Carbon Tetrachloride	5.544	117	9964	5.270	ug/l #	14
51) 4-Methyl-2-Pentanone	8.647	43	1235	0.487	ug/l #	1
76) 1,2,3-Trichloropropane	11.079	75	52987	25.384	ug/l #	39
81) trans-1,4-Dichloro-2-b...	11.079	75	52987	71.607	ug/l #	5
-----						

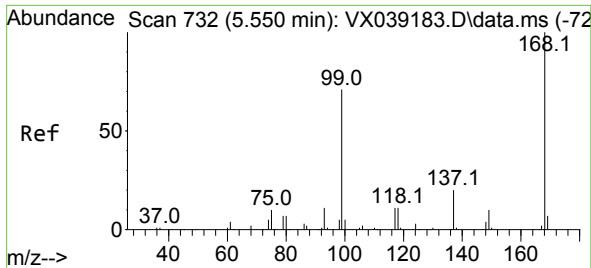
(#) = qualifier out of range (m) = manual integration (+) = signals summed

Data Path : Z:\voasrv\HPCHEM1\MSVOA\_X\Data\VX010224\  
 Data File : VX039577.D  
 Acq On : 02 Jan 2024 17:17  
 Operator : JC/MD  
 Sample : P1002-02 50X  
 Misc : 5.0mL/MSVOA\_X/WATER  
 ALS Vial : 20 Sample Multiplier: 1

Instrument :  
 MSVOA\_X  
 ClientSampleId :

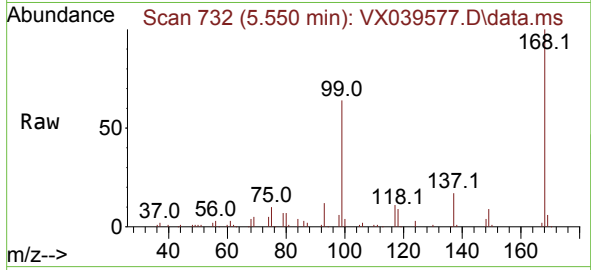
Quant Time: Jan 03 04:15:44 2024  
 Quant Method : Z:\voasrv\HPCHEM1\MSVOA\_X\Method\82X121323W.M  
 Quant Title : SW846 8260  
 QLast Update : Thu Dec 14 01:28:15 2023  
 Response via : Initial Calibration



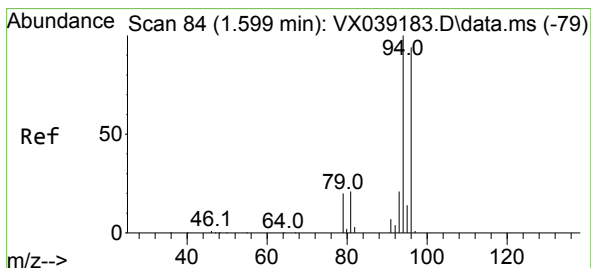
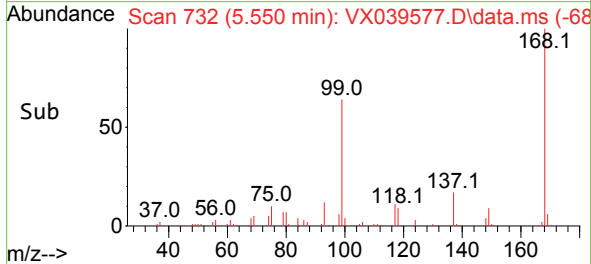
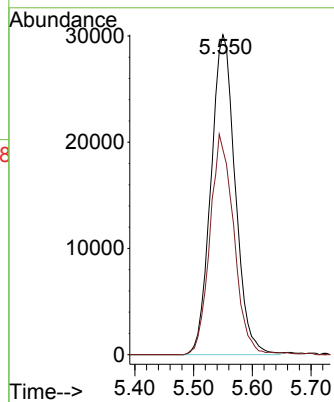


#1  
 Pentafluorobenzene  
 Concen: 50.000 ug/l  
 RT: 5.550 min Scan# 71  
 Delta R.T. -0.000 min  
 Lab File: VX039577.D  
 Acq: 02 Jan 2024 17:17

Instrument :  
 MSVOA\_X  
 ClientSampleId :

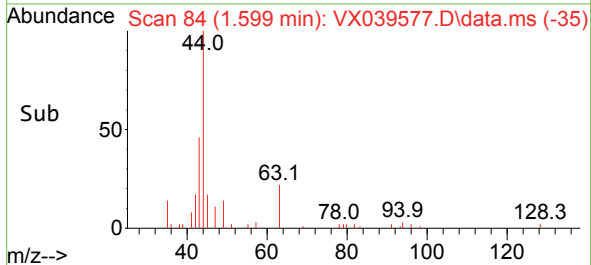
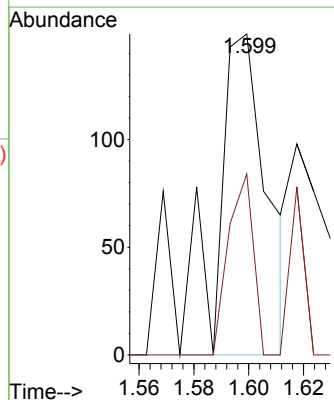
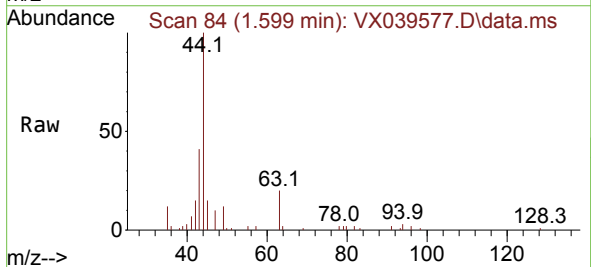


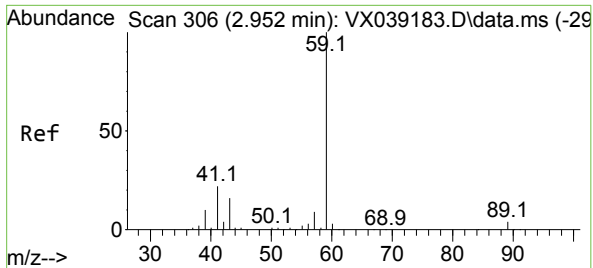
Tgt Ion:168 Resp: 86188  
 Ion Ratio Lower Upper  
 168 100  
 99 64.1 56.6 85.0



#5  
 Bromomethane  
 Concen: 0.260 ug/l  
 RT: 1.599 min Scan# 84  
 Delta R.T. 0.000 min  
 Lab File: VX039577.D  
 Acq: 02 Jan 2024 17:17

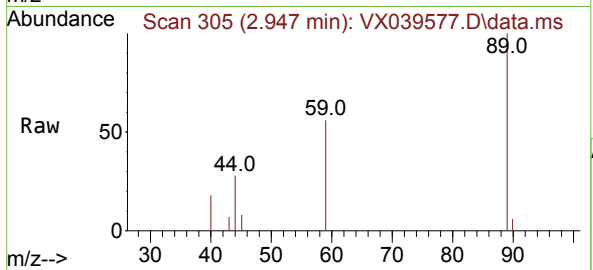
Tgt Ion: 94 Resp: 187  
 Ion Ratio Lower Upper  
 94 100  
 96 56.4 74.6 111.8#



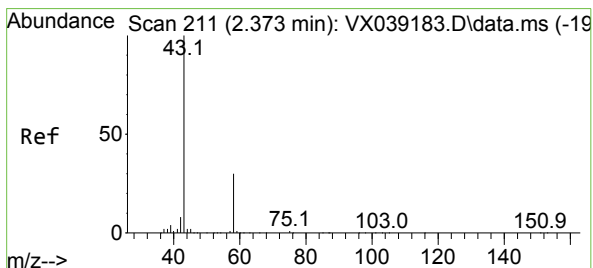
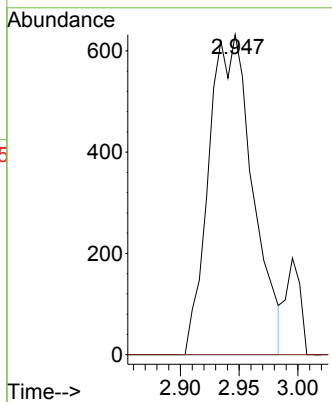
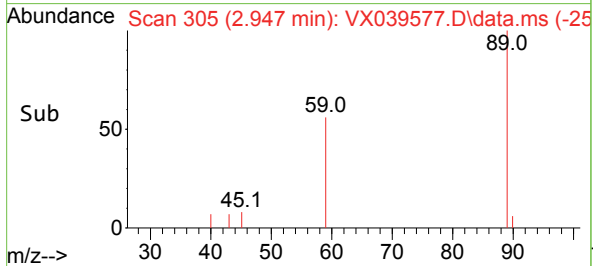


#11  
 Tert butyl alcohol  
 Concen: 4.136 ug/l  
 RT: 2.947 min Scan# 306  
 Delta R.T. -0.006 min  
 Lab File: VX039577.D  
 Acq: 02 Jan 2024 17:17

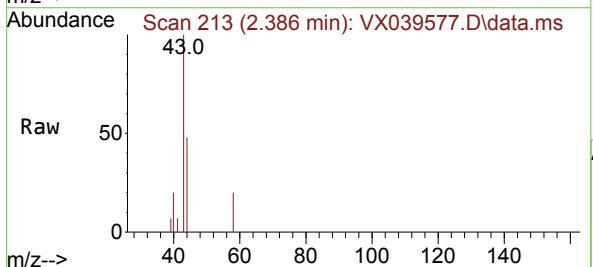
Instrument : MSVOA\_X  
 ClientSampleId :



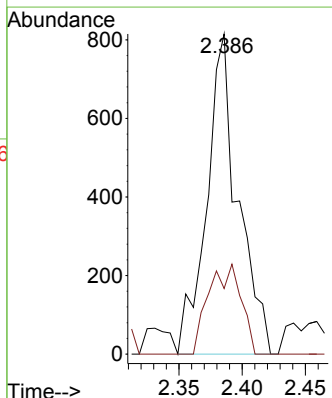
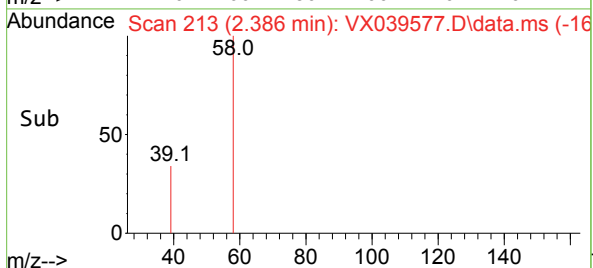
Tgt Ion: 59 Resp: 1640  
 Ion Ratio Lower Upper  
 59 100  
 57 0.0 6.0 9.0#

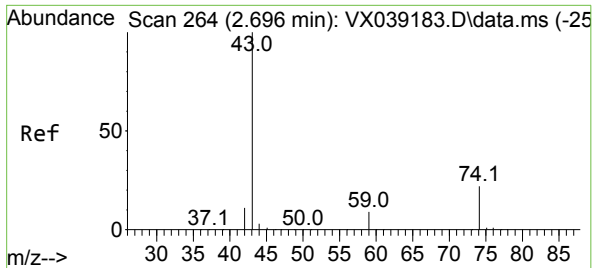


#16  
 Acetone  
 Concen: Below Cal  
 RT: 2.386 min Scan# 213  
 Delta R.T. 0.013 min  
 Lab File: VX039577.D  
 Acq: 02 Jan 2024 17:17



Tgt Ion: 43 Resp: 1397  
 Ion Ratio Lower Upper  
 43 100  
 58 20.5 21.9 32.9#

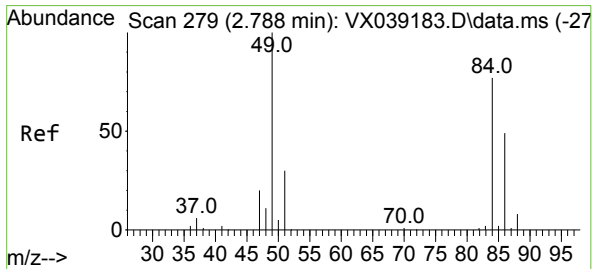
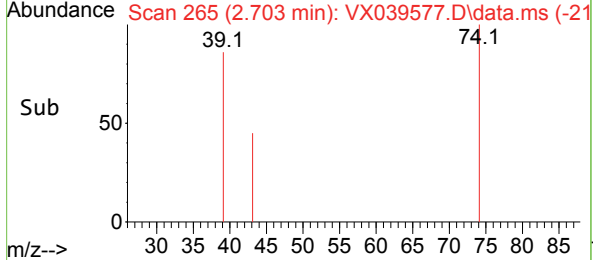
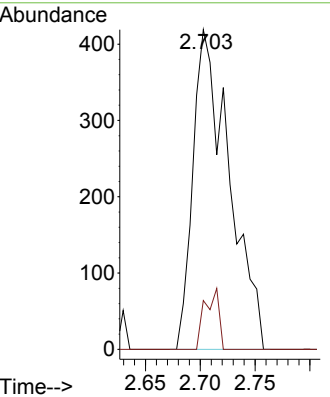
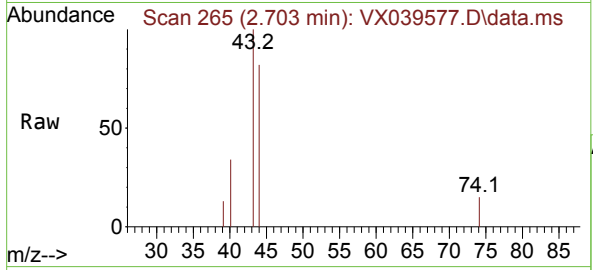




#18  
 Methyl Acetate  
 Concen: 0.281 ug/l  
 RT: 2.703 min Scan# 20  
 Delta R.T. 0.006 min  
 Lab File: VX039577.D  
 Acq: 02 Jan 2024 17:17

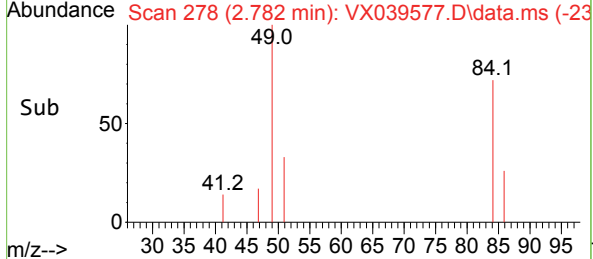
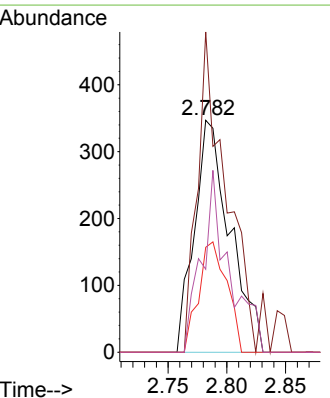
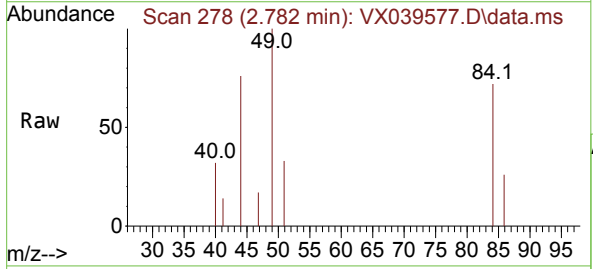
Instrument : MSVOA\_X  
 ClientSampleId :

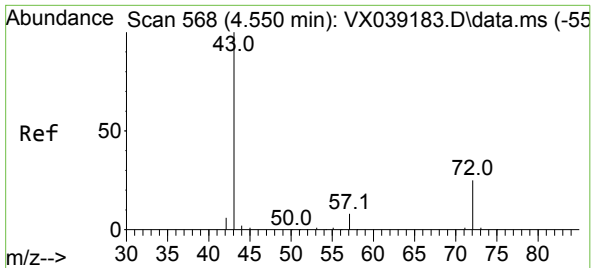
Tgt Ion	Resp	Lower	Upper
43	100		
74	7.5	17.8	26.8#



#20  
 Methylene Chloride  
 Concen: 0.556 ug/l  
 RT: 2.782 min Scan# 278  
 Delta R.T. -0.006 min  
 Lab File: VX039577.D  
 Acq: 02 Jan 2024 17:17

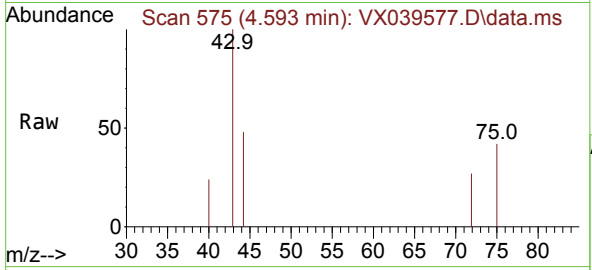
Tgt Ion	Resp	Lower	Upper
84	100		
49	138.0	103.6	155.4
51	45.2	33.8	50.6
86	35.7	49.4	74.0#



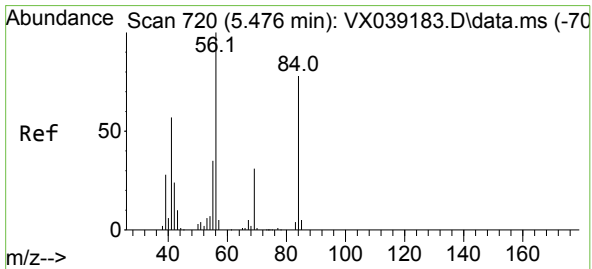
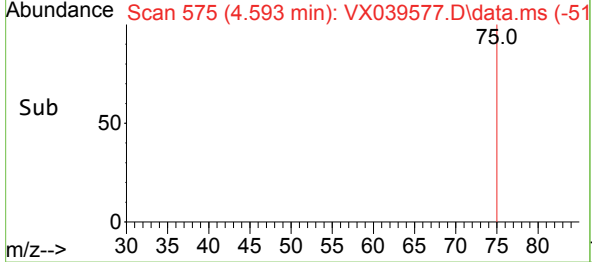
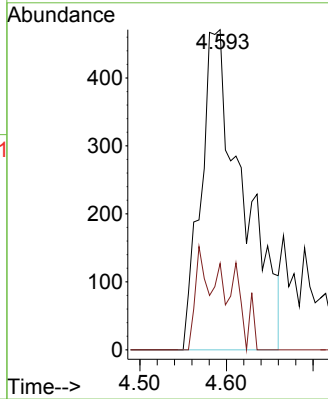


#25  
 2-Butanone  
 Concen: 1.168 ug/l  
 RT: 4.593 min Scan# 51  
 Delta R.T. 0.043 min  
 Lab File: VX039577.D  
 Acq: 02 Jan 2024 17:17

Instrument :  
 MSVOA\_X  
 ClientSampleId :

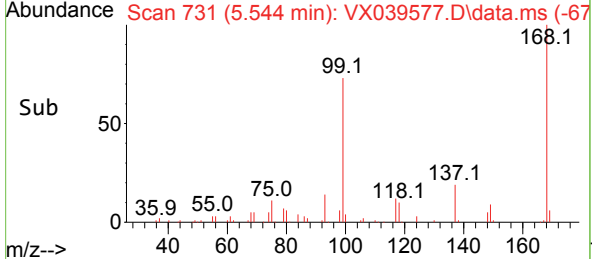
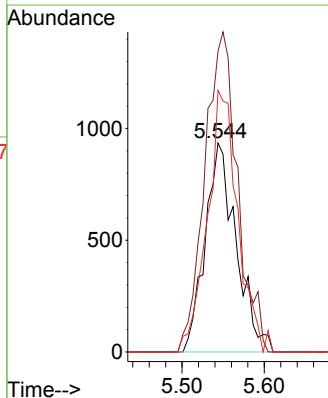
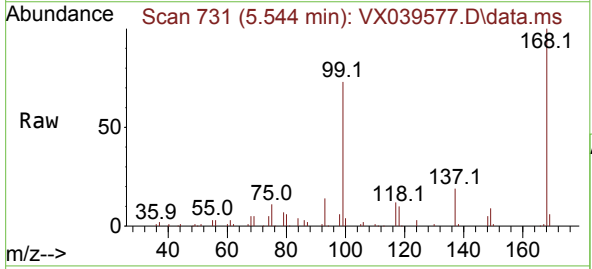


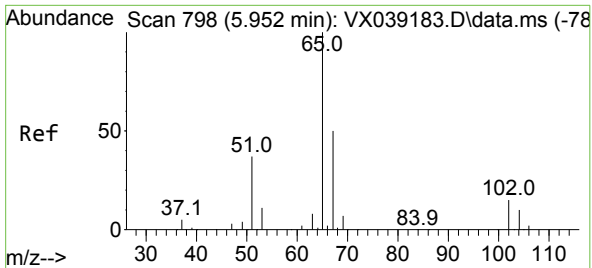
Tgt Ion: 43 Resp: 1591  
 Ion Ratio Lower Upper  
 43 100  
 72 27.0 19.4 29.2



#31  
 Cyclohexane  
 Concen: 1.203 ug/l  
 RT: 5.544 min Scan# 731  
 Delta R.T. 0.067 min  
 Lab File: VX039577.D  
 Acq: 02 Jan 2024 17:17

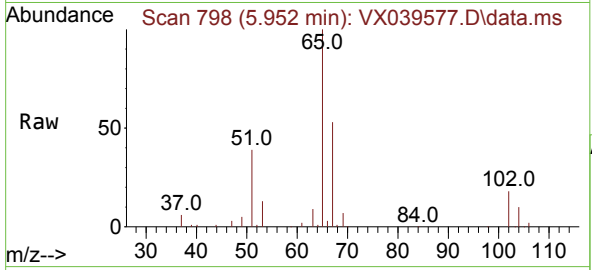
Tgt Ion: 56 Resp: 2453  
 Ion Ratio Lower Upper  
 56 100  
 69 144.1 23.4 35.2#  
 84 125.1 65.9 98.9#



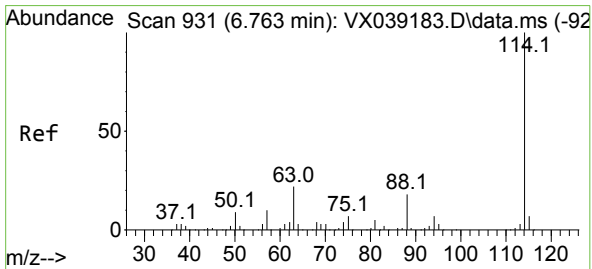
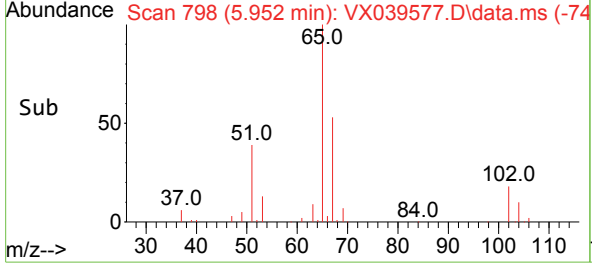
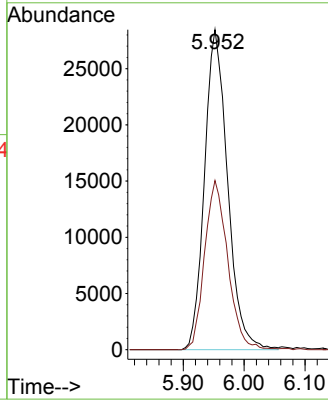


#33  
 1,2-Dichloroethane-d4  
 Concen: 47.443 ug/l  
 RT: 5.952 min Scan# 749  
 Delta R.T. 0.000 min  
 Lab File: VX039577.D  
 Acq: 02 Jan 2024 17:17

Instrument : MSVOA\_X  
 ClientSampleId :

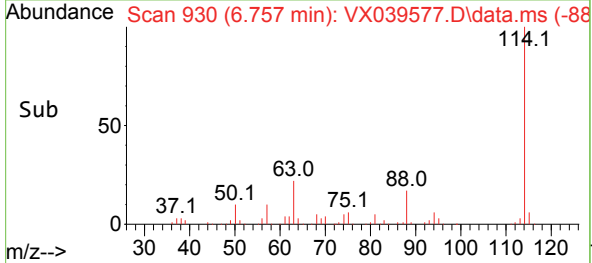
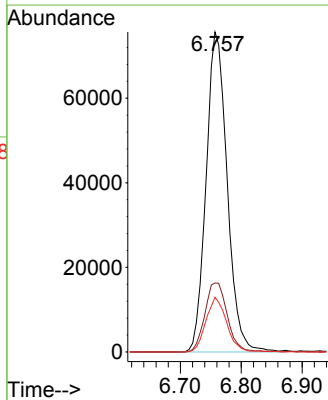
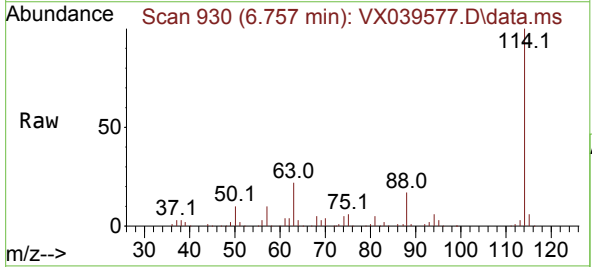


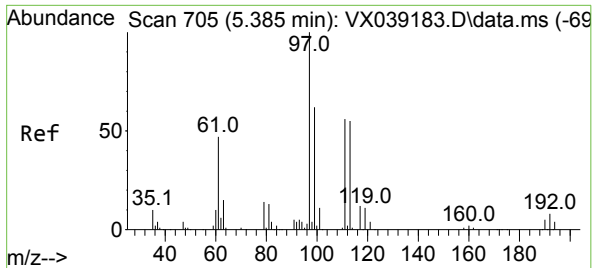
Tgt Ion: 65 Resp: 74908  
 Ion Ratio Lower Upper  
 65 100  
 67 53.1 0.0 100.2



#34  
 1,4-Difluorobenzene  
 Concen: 50.000 ug/l  
 RT: 6.757 min Scan# 930  
 Delta R.T. -0.006 min  
 Lab File: VX039577.D  
 Acq: 02 Jan 2024 17:17

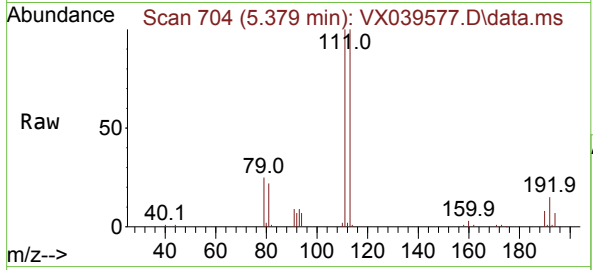
Tgt Ion: 114 Resp: 181719  
 Ion Ratio Lower Upper  
 114 100  
 63 21.5 0.0 45.0  
 88 17.1 0.0 36.6



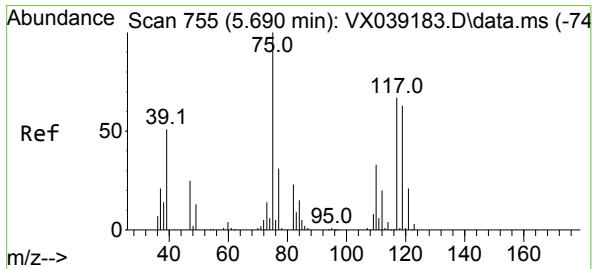
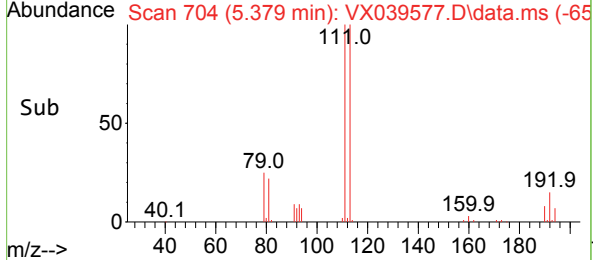
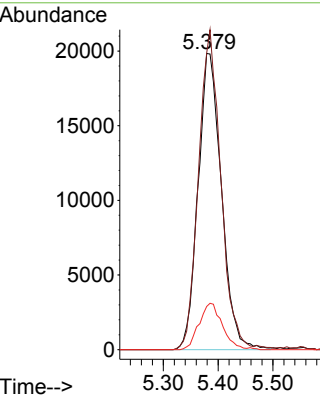


#35  
 Dibromofluoromethane  
 Concen: 46.773 ug/l  
 RT: 5.379 min Scan# 704  
 Delta R.T. -0.006 min  
 Lab File: VX039577.D  
 Acq: 02 Jan 2024 17:17

Instrument : MSVOA\_X  
 ClientSampleId :

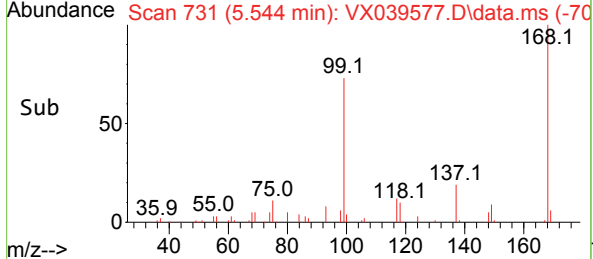
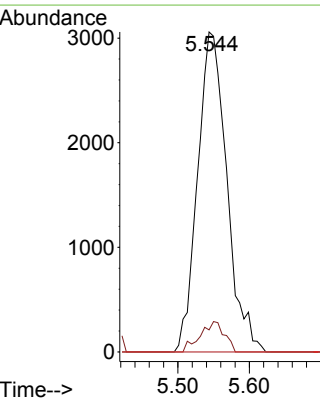
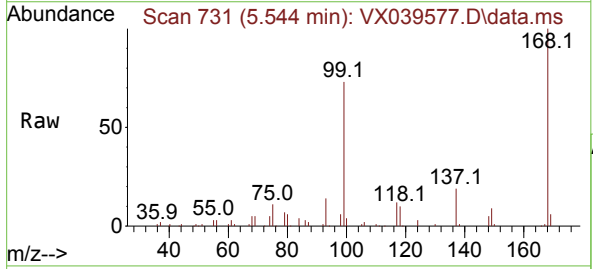


Tgt Ion:113 Resp: 58719  
 Ion Ratio Lower Upper  
 113 100  
 111 102.6 82.9 124.3  
 192 15.5 13.3 19.9

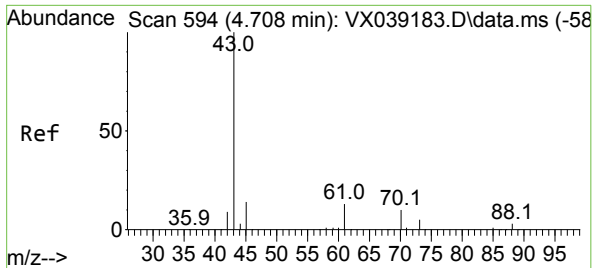


#36  
 1,1-Dichloropropene  
 Concen: 4.380 ug/l  
 RT: 5.544 min Scan# 731  
 Delta R.T. -0.146 min  
 Lab File: VX039577.D  
 Acq: 02 Jan 2024 17:17

Tgt Ion: 75 Resp: 8677  
 Ion Ratio Lower Upper  
 75 100  
 110 7.9 17.0 50.9#  
 77 0.0 24.7 37.1#

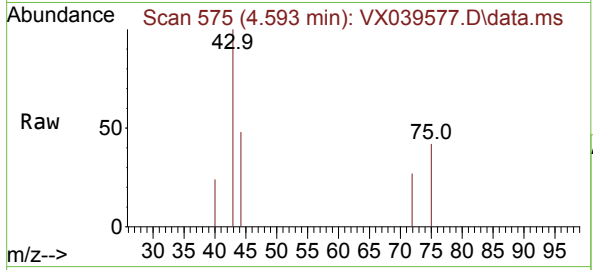






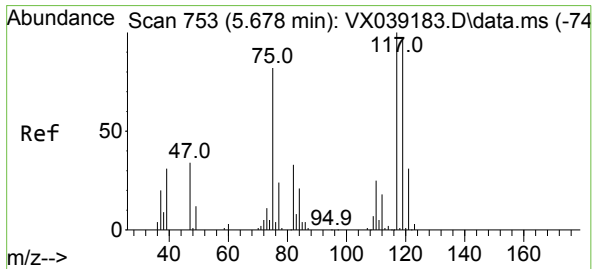
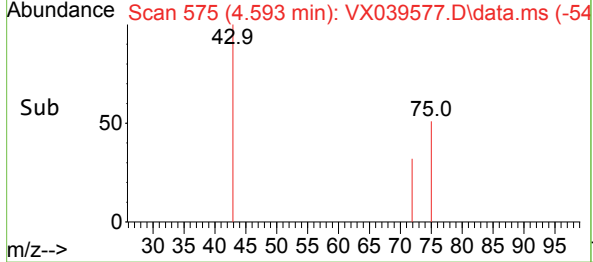
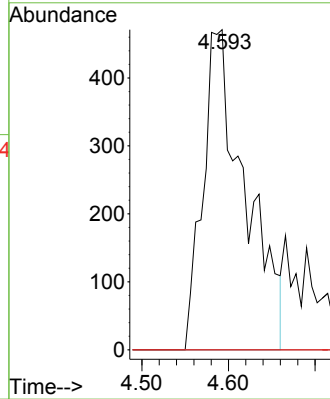
#37  
 Ethyl Acetate  
 Concen: 0.650 ug/l  
 RT: 4.593 min Scan# 51  
 Delta R.T. -0.116 min  
 Lab File: VX039577.D  
 Acq: 02 Jan 2024 17:17

Instrument : MSVOA\_X  
 ClientSampleId :



Tgt Ion: 43 Resp: 1591

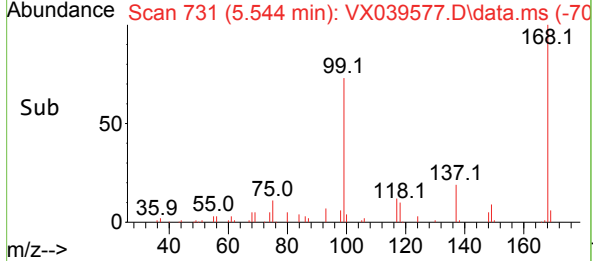
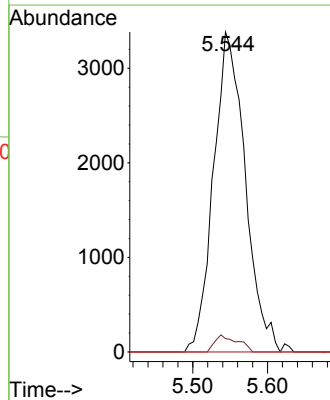
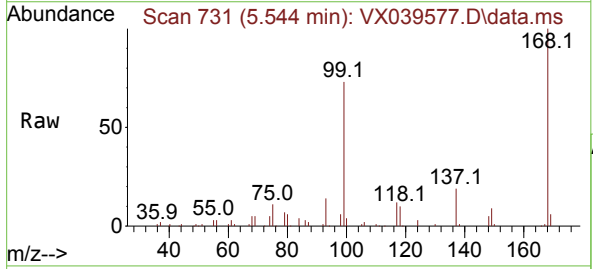
Ion	Ratio	Lower	Upper
43	100		
61	0.0	10.6	16.0#
70	0.0	8.3	12.5#

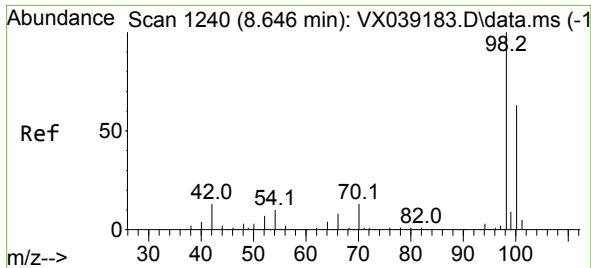


#38  
 Carbon Tetrachloride  
 Concen: 5.270 ug/l  
 RT: 5.544 min Scan# 731  
 Delta R.T. -0.134 min  
 Lab File: VX039577.D  
 Acq: 02 Jan 2024 17:17

Tgt Ion: 117 Resp: 9964

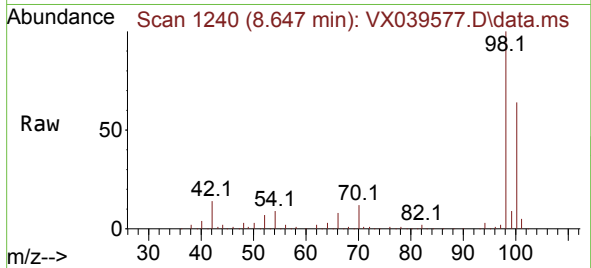
Ion	Ratio	Lower	Upper
117	100		
119	4.1	78.2	117.2#
121	0.0	24.4	36.6#



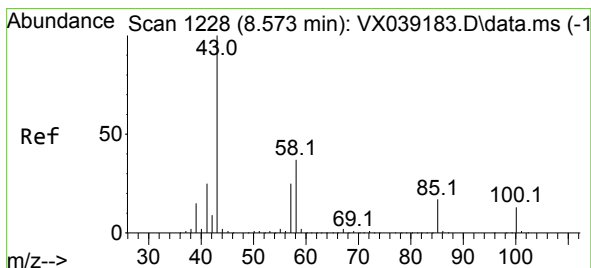
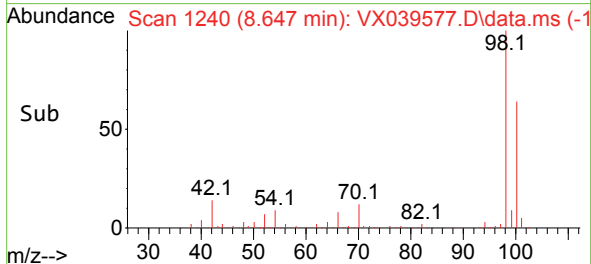
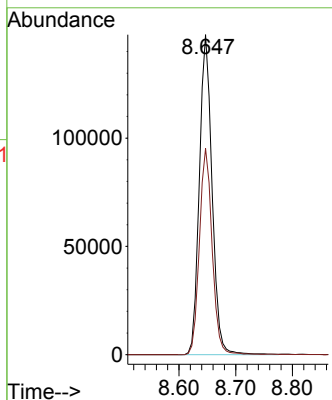


#50  
 Toluene-d8  
 Concen: 49.395 ug/l  
 RT: 8.647 min Scan# 1240  
 Delta R.T. 0.000 min  
 Lab File: VX039577.D  
 Acq: 02 Jan 2024 17:17

Instrument :  
 MSVOA\_X  
 ClientSampleId :

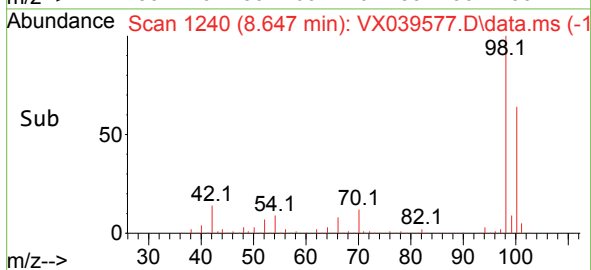
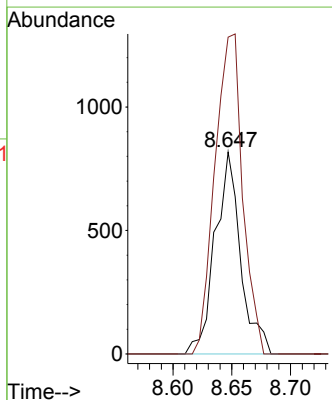
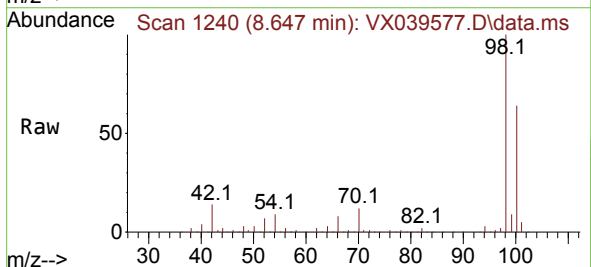


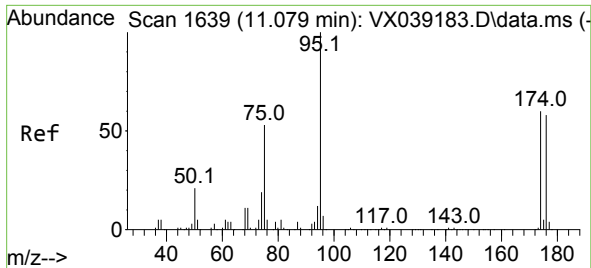
Tgt Ion: 98 Resp: 230214  
 Ion Ratio Lower Upper  
 98 100  
 100 64.6 53.1 79.7



#51  
 4-Methyl-2-Pentanone  
 Concen: 0.487 ug/l  
 RT: 8.647 min Scan# 1240  
 Delta R.T. 0.073 min  
 Lab File: VX039577.D  
 Acq: 02 Jan 2024 17:17

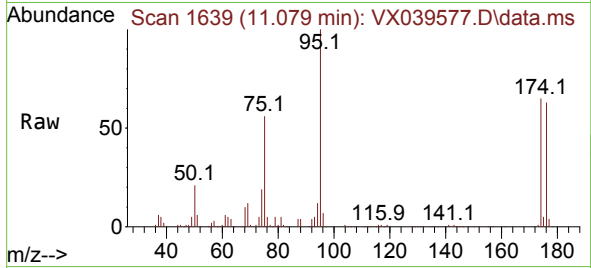
Tgt Ion: 43 Resp: 1235  
 Ion Ratio Lower Upper  
 43 100  
 58 172.6 30.4 45.6#



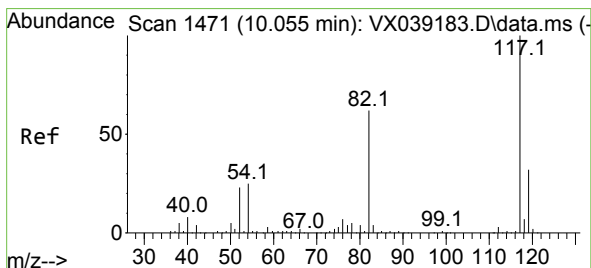
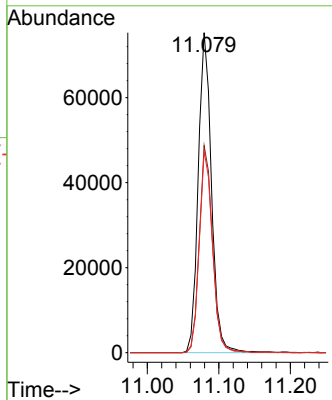
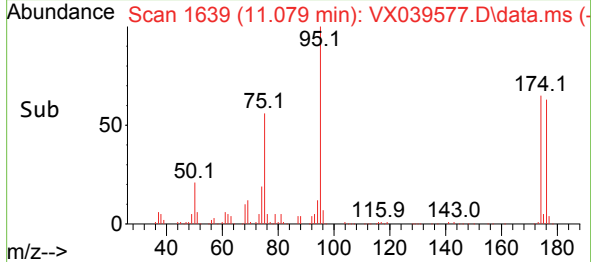


#62  
 4-Bromofluorobenzene  
 Concen: 50.378 ug/l  
 RT: 11.079 min Scan# 1639  
 Delta R.T. 0.000 min  
 Lab File: VX039577.D  
 Acq: 02 Jan 2024 17:17

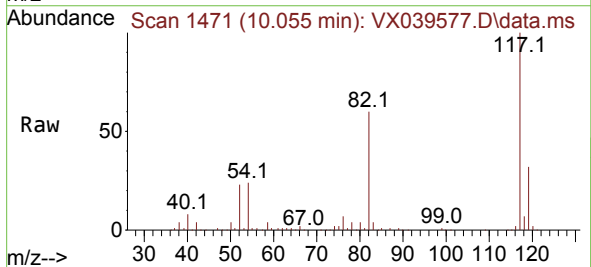
Instrument :  
 MSVOA\_X  
 ClientSampleId :



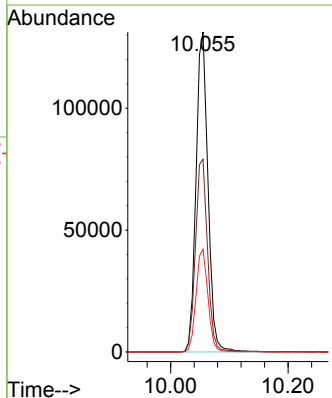
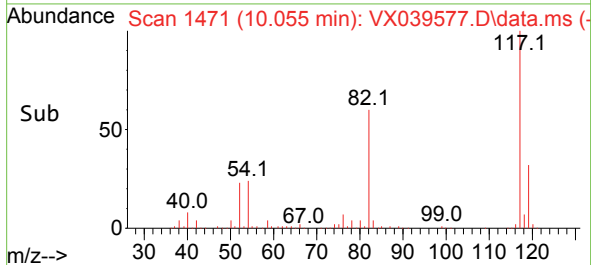
Tgt Ion: 95 Resp: 96876  
 Ion Ratio Lower Upper  
 95 100  
 174 64.6 0.0 135.6  
 176 62.8 0.0 131.0

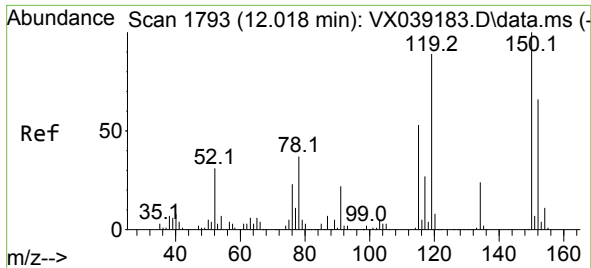


#63  
 Chlorobenzene-d5  
 Concen: 50.000 ug/l  
 RT: 10.055 min Scan# 1471  
 Delta R.T. 0.000 min  
 Lab File: VX039577.D  
 Acq: 02 Jan 2024 17:17



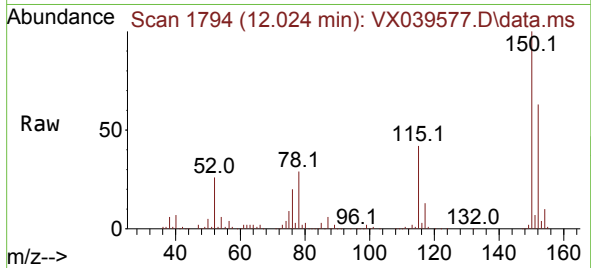
Tgt Ion: 117 Resp: 185167  
 Ion Ratio Lower Upper  
 117 100  
 82 60.2 46.2 69.4  
 119 32.1 25.5 38.3



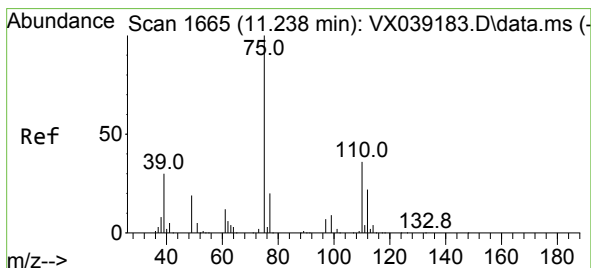
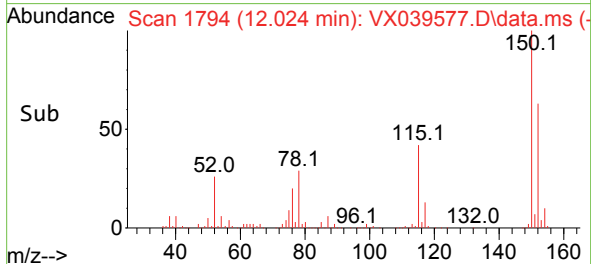
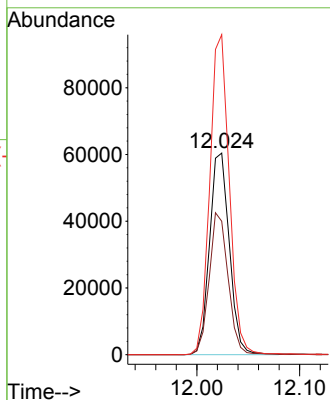


#72  
 1,4-Dichlorobenzene-d4  
 Concen: 50.000 ug/l  
 RT: 12.024 min Scan# 11  
 Delta R.T. 0.006 min  
 Lab File: VX039577.D  
 Acq: 02 Jan 2024 17:17

Instrument :  
 MSVOA\_X  
 ClientSampleId :

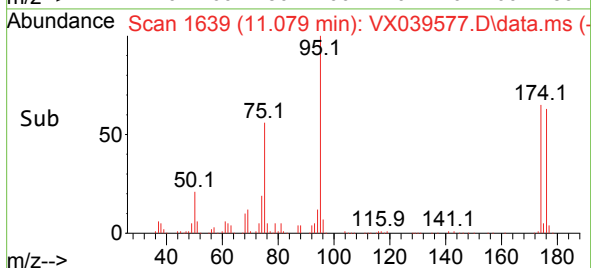
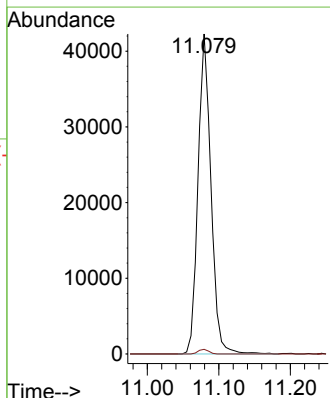
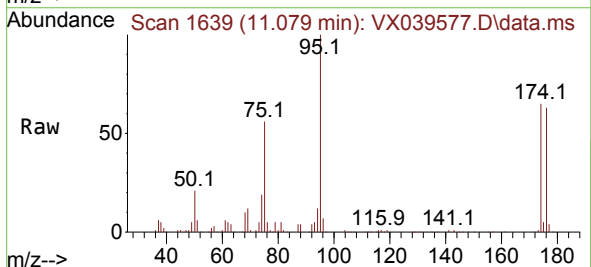


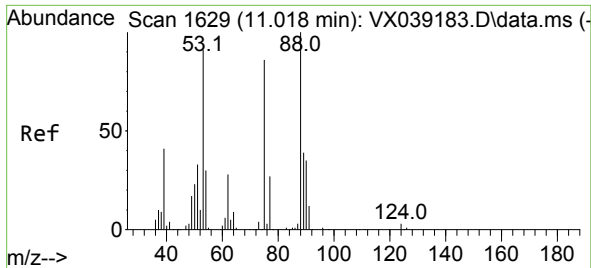
Tgt Ion:152 Resp: 80684  
 Ion Ratio Lower Upper  
 152 100  
 115 67.5 43.3 129.9  
 150 156.3 0.0 345.0



#76  
 1,2,3-Trichloropropane  
 Concen: 25.384 ug/l  
 RT: 11.079 min Scan# 1639  
 Delta R.T. -0.158 min  
 Lab File: VX039577.D  
 Acq: 02 Jan 2024 17:17

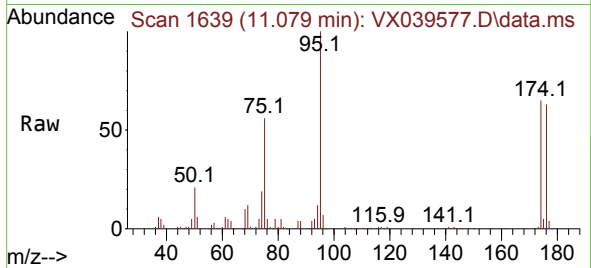
Tgt Ion: 75 Resp: 52987  
 Ion Ratio Lower Upper  
 75 100  
 77 1.2 19.1 57.5#





#81  
 trans-1,4-Dichloro-2-butene  
 Concen: 71.607 ug/l  
 RT: 11.079 min Scan# 1  
 Delta R.T. 0.061 min  
 Lab File: VX039577.D  
 Acq: 02 Jan 2024 17:17

Instrument :  
 MSVOA\_X  
 ClientSampleId :



Tgt Ion: 75 Resp: 52987  
 Ion Ratio Lower Upper  
 75 100  
 53 0.0 90.5 135.7#  
 89 0.0 36.9 55.3#

