

Data Path : Z:\VOASRV\HPCHEM1\MSVOA X\DATA\VX010320\
 Data File : VX014397.D
 Acq On : 03 Jan 2020 13:54
 Operator : JC/SP
 Sample : K6482-11
 Misc : 5.0mL/MSVOA X/WATER
 ALS Vial : 8 Sample Multiplier: 1

Instrument :
 MSVOA_X
 ClientSampleId :

Quant Time: Jan 06 02:30:32 2020
 Quant Method : Z:\VOASRV\HPCHEM1\MSVOA_X\METHOD\82X121319W.M
 Quant Title : SW846 8260
 QLast Update : Tue Dec 17 03:01:07 2019
 Response via : Initial Calibration

Internal Standards	R.T.	QIon	Response	Conc	Units	Dev(Min)
1) Pentafluorobenzene	5.65	168	556237	50.00	ug/l	0.00
34) 1,4-Difluorobenzene	6.85	114	844729	50.00	ug/l	0.00
63) Chlorobenzene-d5	10.11	117	748374	50.00	ug/l	0.00
72) 1,4-Dichlorobenzene-d4	12.07	152	323950	50.00	ug/l	0.00

System Monitoring Compounds

33) 1,2-Dichloroethane-d4	6.05	65	301654	47.85	ug/l	0.00
Spiked Amount				50.000		
			Recovery	=	95.70%	
35) Dibromofluoromethane	5.49	113	249821	48.65	ug/l	0.00
Spiked Amount				50.000		
			Recovery	=	97.30%	
50) Toluene-d8	8.71	98	1002271	50.13	ug/l	0.00
Spiked Amount				50.000		
			Recovery	=	100.26%	
62) 4-Bromofluorobenzene	11.13	95	325933	44.60	ug/l	0.00
Spiked Amount				50.000		
			Recovery	=	89.20%	

Target Compounds

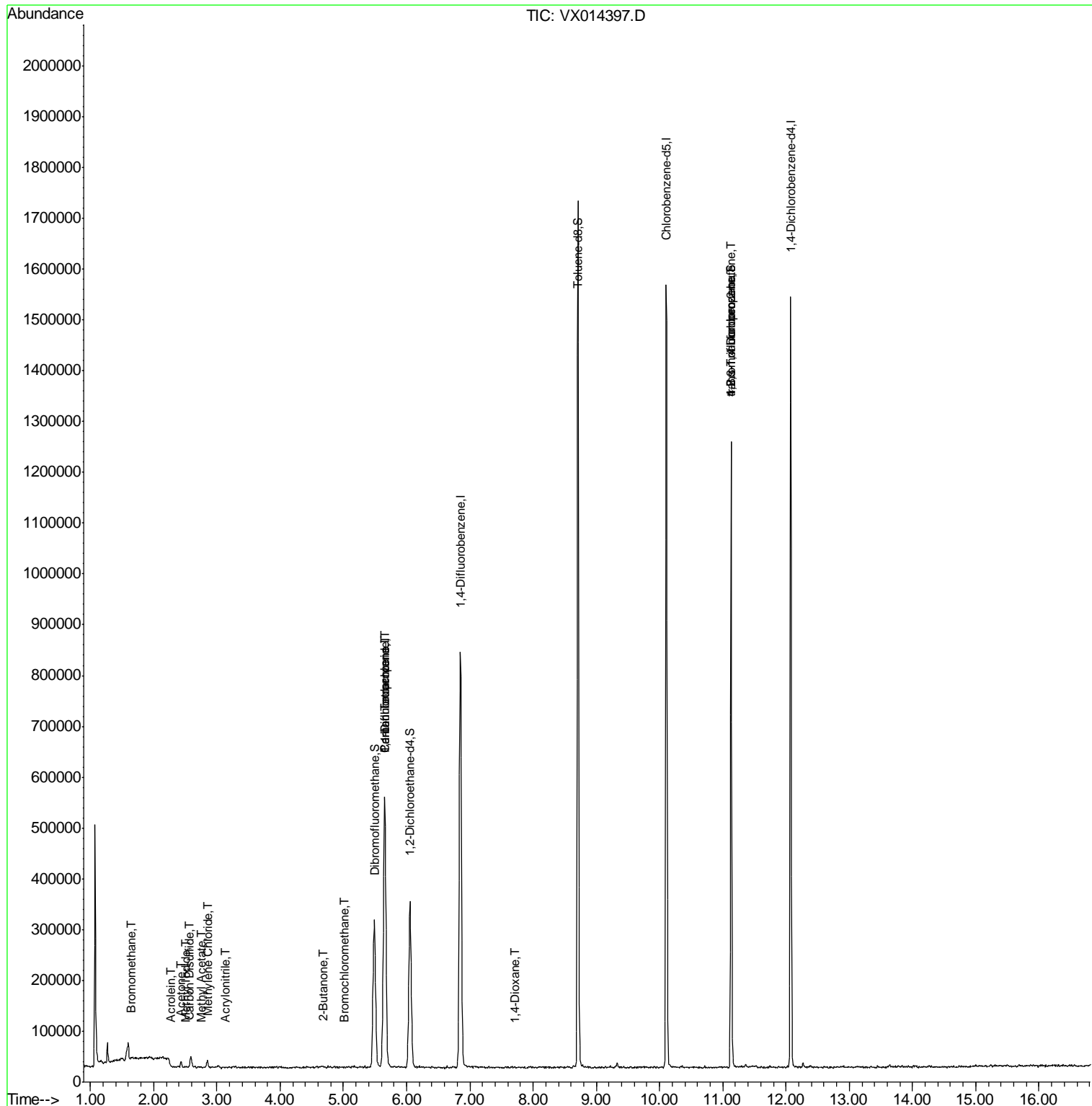
						Qvalue
5) Bromomethane	1.65	94	1832	0.366	ug/l #	57
10) Methyl Iodide	2.51	142	1725	2.857	ug/l #	76
13) Acrolein	2.28	56	628	0.805	ug/l #	14
15) Acrylonitrile	3.14	53	879	0.276	ug/l #	34
16) Acetone	2.43	43	13719	3.352	ug/l	99
17) Carbon Disulfide	2.56	76	2287	0.902	ug/l	99
18) Methyl Acetate	2.76	43	1689	0.208	ug/l #	74
20) Methylene Chloride	2.85	84	7663	1.189	ug/l	87
25) 2-Butanone	4.67	43	3462	0.686	ug/l #	34
28) Bromochloromethane	5.01	49	863	0.664	ug/l #	63
36) 1,1-Dichloropropene	5.65	75	37505	4.839	ug/l #	41
38) Carbon Tetrachloride	5.65	117	48877	6.922	ug/l #	16
49) 1,4-Dioxane	7.72	88	186	1.318	ug/l #	23
76) 1,2,3-Trichloropropane	11.13	75	159715	22.710	ug/l #	39
81) trans-1,4-Dichloro-2-buten	11.13	75	159715	64.099	ug/l #	11

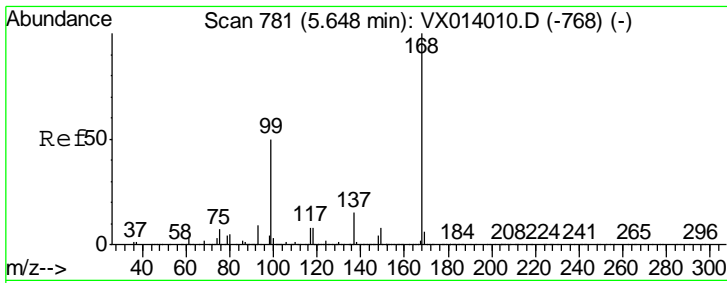
(#) = qualifier out of range (m) = manual integration (+) = signals summed

Data Path : Z:\VOASRV\HPCHEM1\MSVOA X\DATA\VX010320\
 Data File : VX014397.D
 Acq On : 03 Jan 2020 13:54
 Operator : JC/SP
 Sample : K6482-11
 Misc : 5.0mL/MSVOA X/WATER
 ALS Vial : 8 Sample Multiplier: 1

Instrument :
 MSVOA_X
 ClientSampled :

Quant Time: Jan 06 02:30:32 2020
 Quant Method : Z:\VOASRV\HPCHEM1\MSVOA_X\METHOD\82X121319W.M
 Quant Title : SW846 8260
 QLast Update : Tue Dec 17 03:01:07 2019
 Response via : Initial Calibration

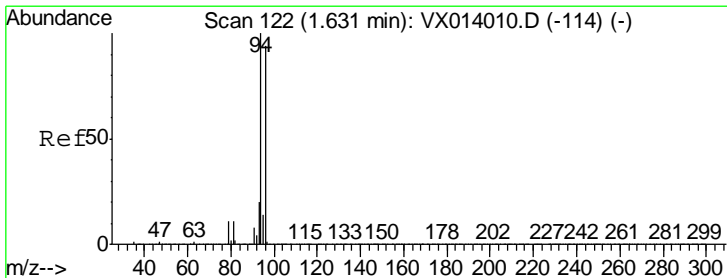
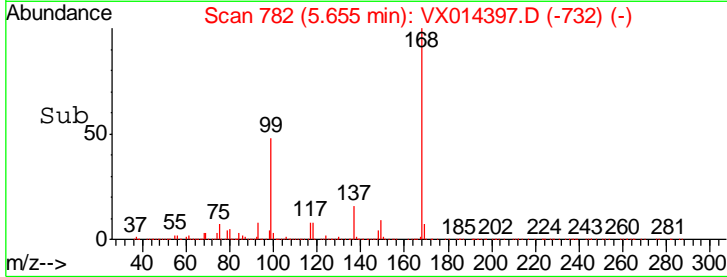
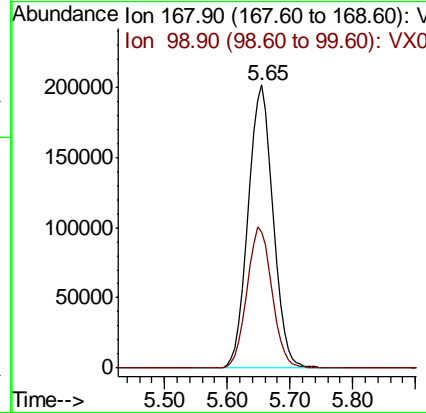
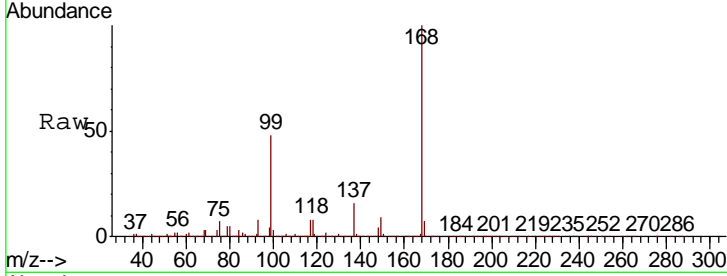




#1
 Pentafluorobenzene
 Concen: 50.000 ug/l
 RT: 5.65 min Scan# 782
 Delta R.T. 0.01 min
 Lab File: VX014397.D
 Acq: 03 Jan 2020 13:54

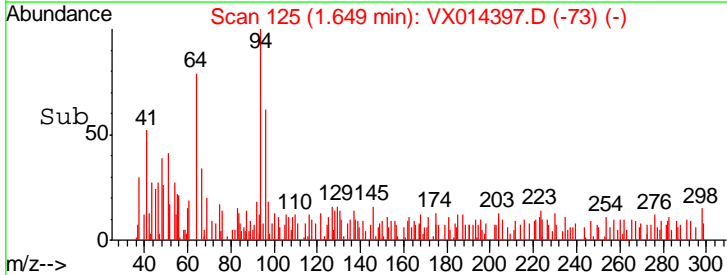
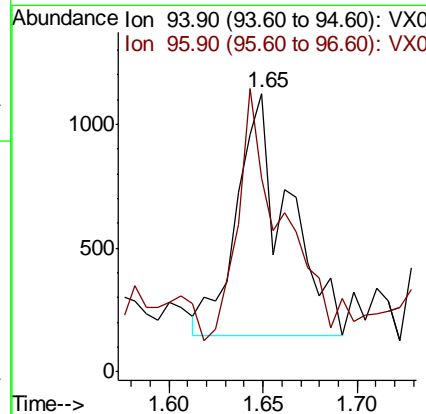
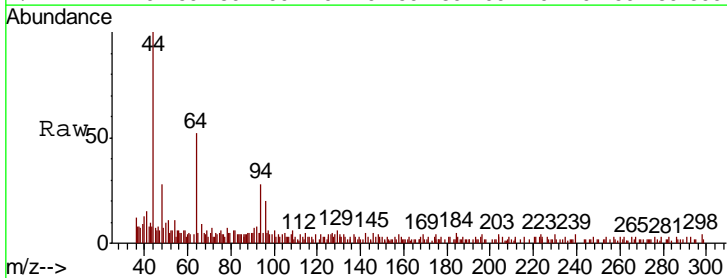
Instrument : MSVOA_X
 ClientSampled :

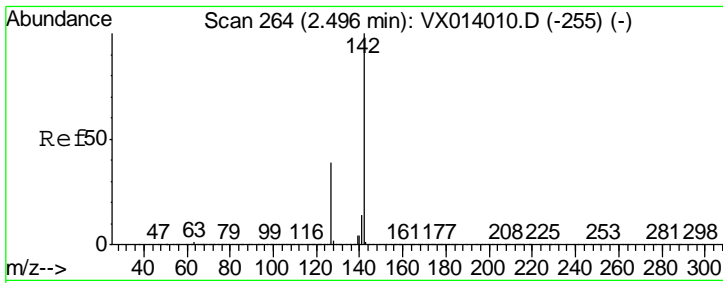
Tgt Ion	Resp	Lower	Upper
168	100		
99	47.9	40.3	60.5



#5
 Bromomethane
 Concen: 0.366 ug/l
 RT: 1.65 min Scan# 125
 Delta R.T. 0.02 min
 Lab File: VX014397.D
 Acq: 03 Jan 2020 13:54

Tgt Ion	Resp	Lower	Upper
94	100		
96	52.0	75.2	112.8#

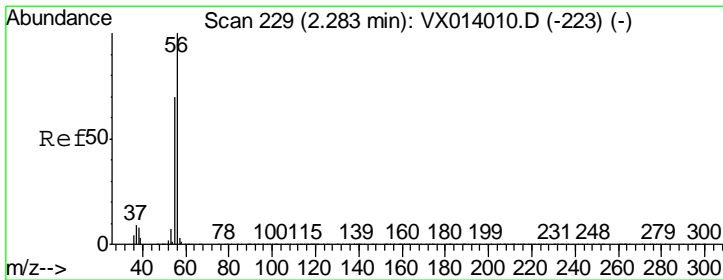
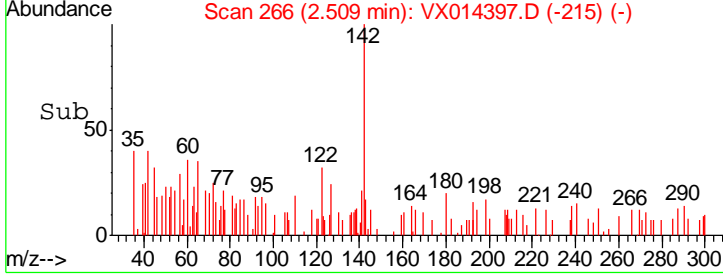
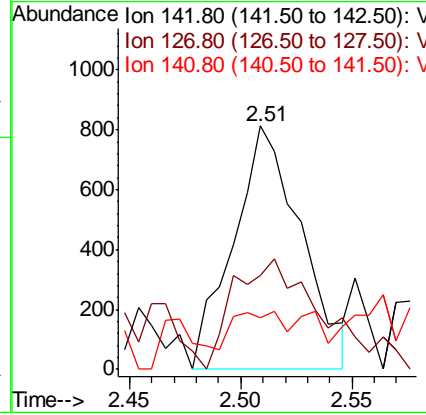
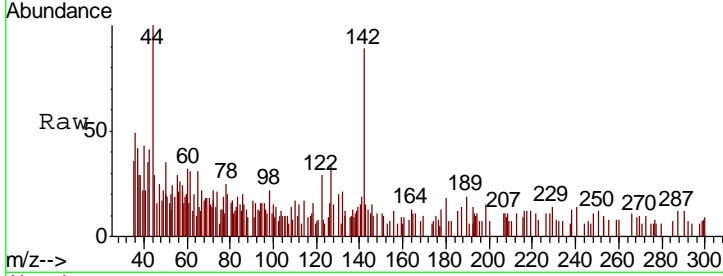




#10
Methyl Iodide
Concen: 2.857 ug/l
RT: 2.51 min Scan# 266
Delta R.T. 0.01 min
Lab File: VX014397.D
Acq: 03 Jan 2020 13:54

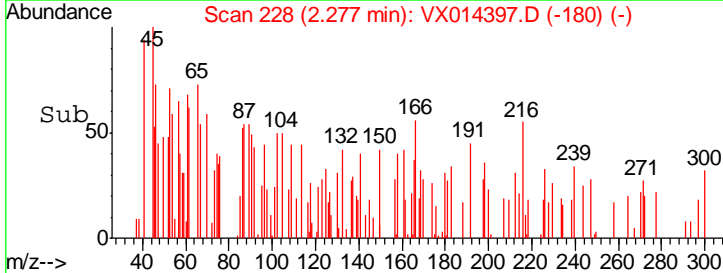
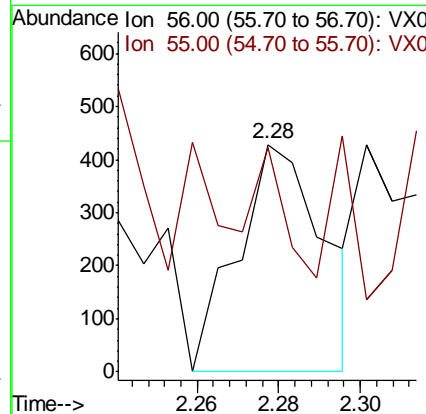
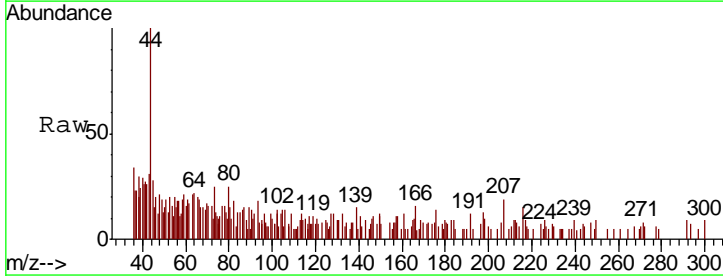
Instrument :
MSVOA_X
ClientSampled :

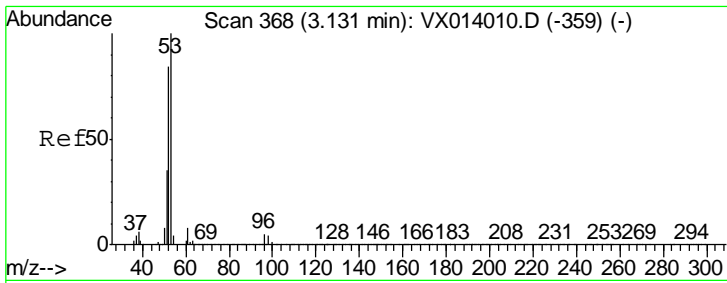
Tgt Ion	Resp	Lower	Upper
142	1725		
127	59.7	31.6	47.4#
141	14.3	11.6	17.4



#13
Acrolein
Concen: 0.805 ug/l
RT: 2.28 min Scan# 228
Delta R.T. -0.01 min
Lab File: VX014397.D
Acq: 03 Jan 2020 13:54

Tgt Ion	Resp	Lower	Upper
56	628		
55	0.0	56.9	85.3#

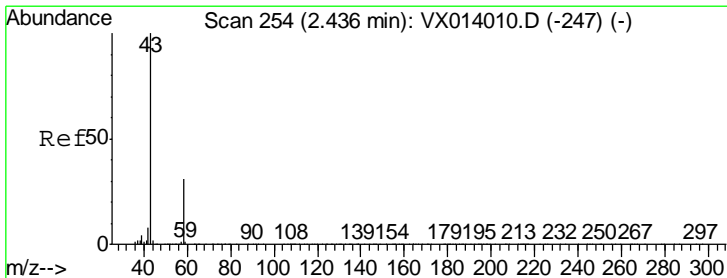
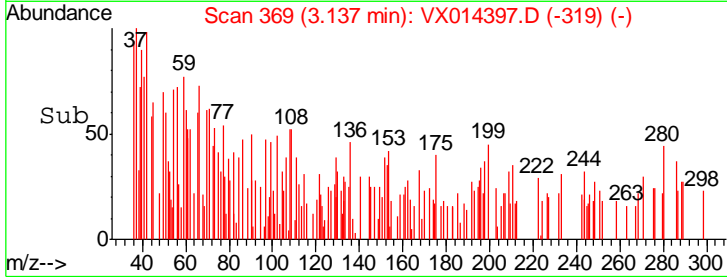
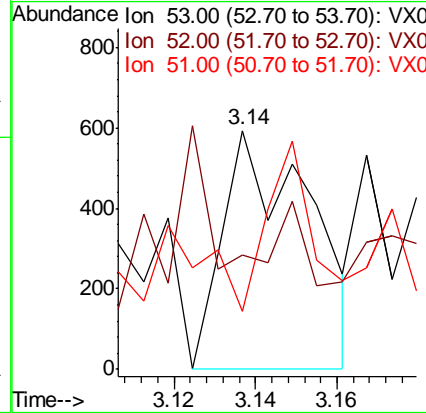
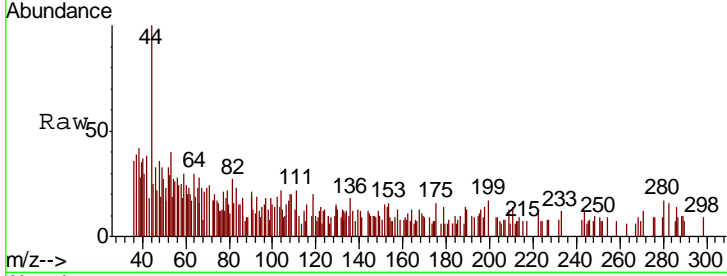




#15
 Acrylonitrile
 Concen: 0.276 ug/l
 RT: 3.14 min Scan# 369
 Delta R.T. 0.01 min
 Lab File: VX014397.D
 Acq: 03 Jan 2020 13:54

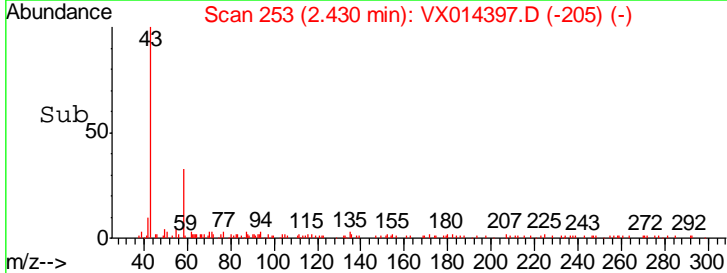
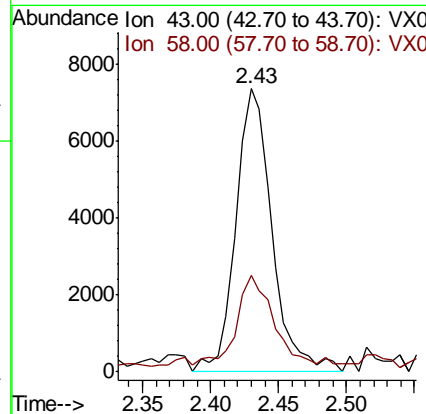
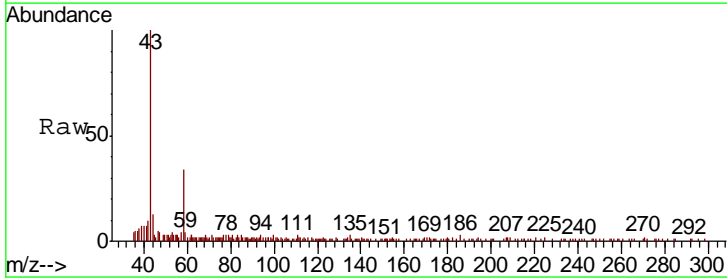
Instrument :
 MSVOA_X
 ClientSampled :

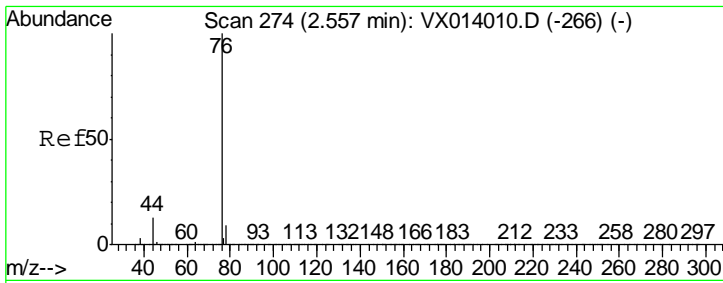
Tgt Ion	Resp	Lower	Upper
53	100		
52	0.0	66.5	99.7#
51	36.9	28.1	42.1



#16
 Acetone
 Concen: 3.352 ug/l
 RT: 2.43 min Scan# 253
 Delta R.T. -0.01 min
 Lab File: VX014397.D
 Acq: 03 Jan 2020 13:54

Tgt Ion	Resp	Lower	Upper
43	100		
58	31.7	24.9	37.3

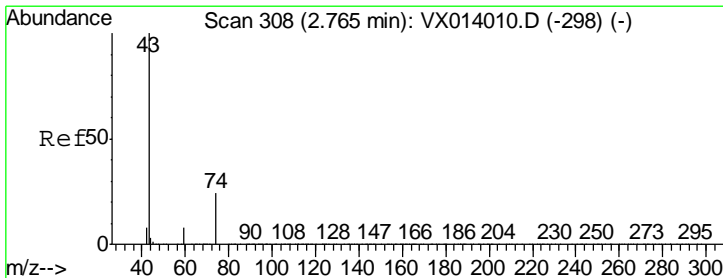
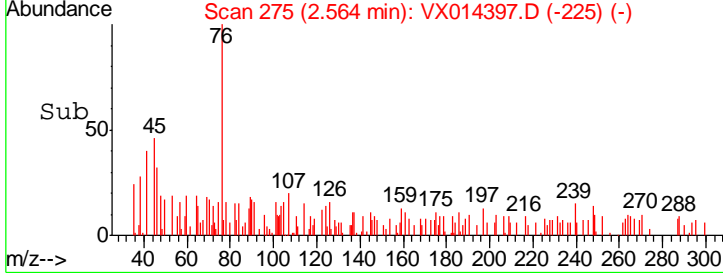
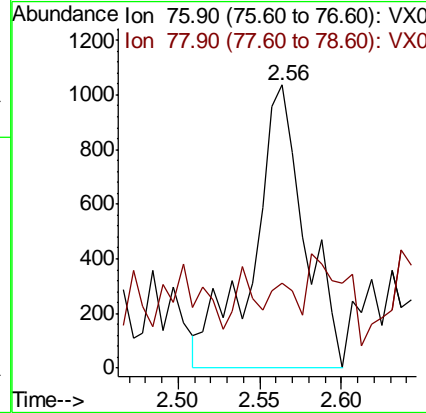
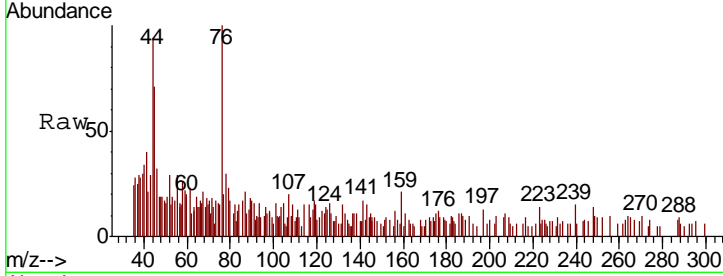




#17
 Carbon Disulfide
 Concen: 0.902 ug/l
 RT: 2.56 min Scan# 275
 Delta R.T. 0.01 min
 Lab File: VX014397.D
 Acq: 03 Jan 2020 13:54

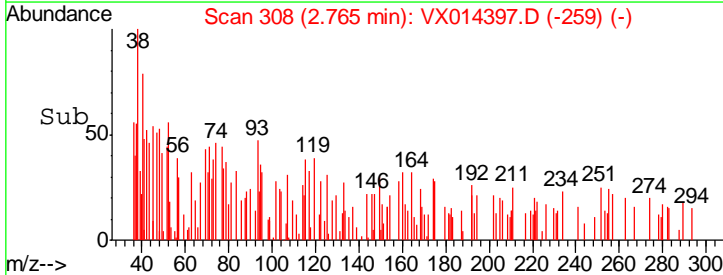
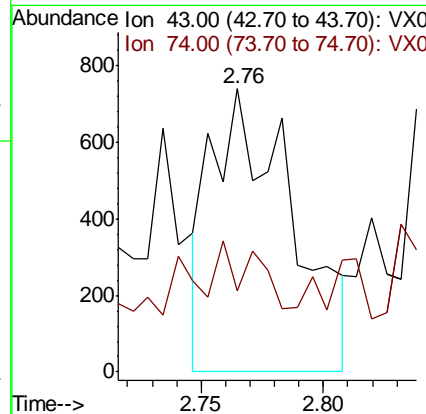
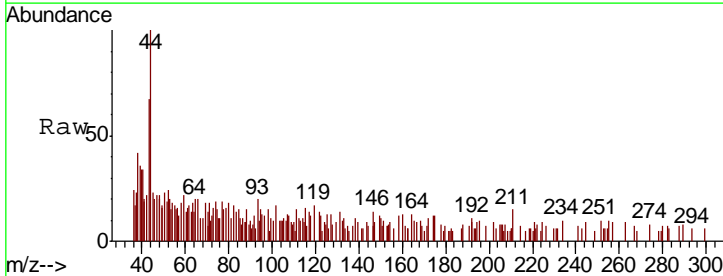
Instrument :
 MSVOA_X
 ClientSampled :

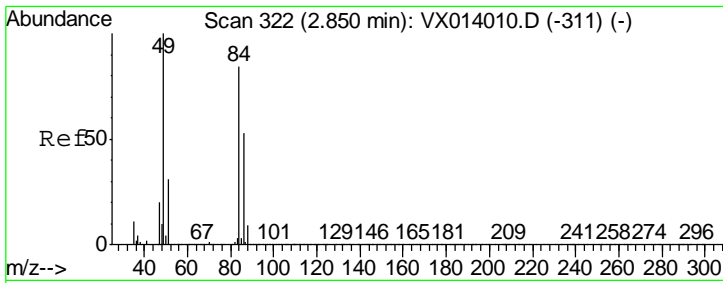
Tgt Ion	Resp	Lower	Upper
76	100		
78	8.5	7.2	10.8



#18
 Methyl Acetate
 Concen: 0.208 ug/l
 RT: 2.76 min Scan# 308
 Delta R.T. 0.00 min
 Lab File: VX014397.D
 Acq: 03 Jan 2020 13:54

Tgt Ion	Resp	Lower	Upper
43	100		
74	11.3	19.5	29.3#

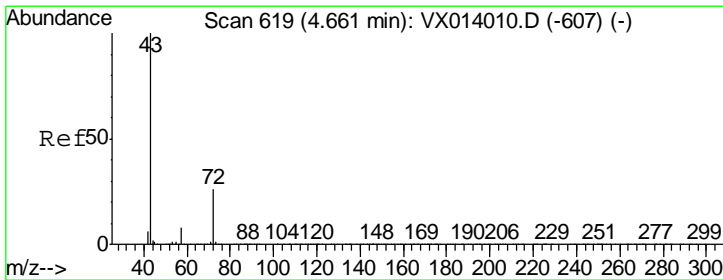
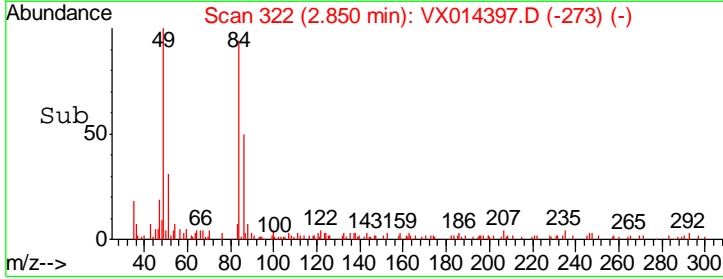
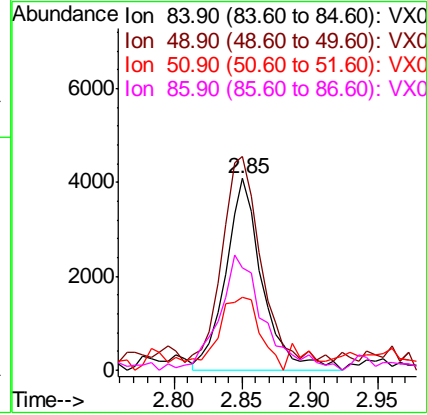
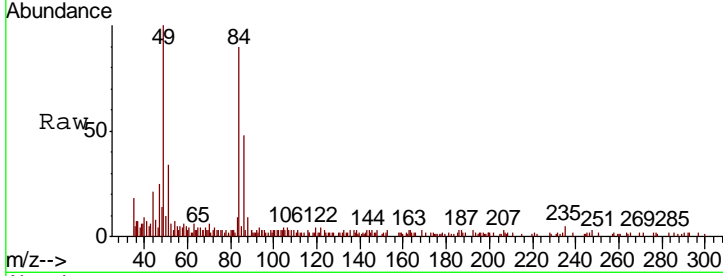




#20
 Methylene Chloride
 Concen: 1.189 ug/l
 RT: 2.85 min Scan# 322
 Delta R.T. 0.00 min
 Lab File: VX014397.D
 Acq: 03 Jan 2020 13:54

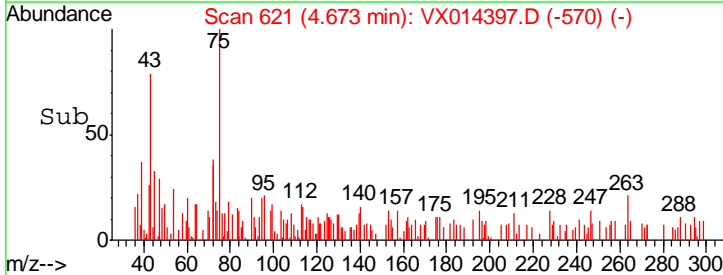
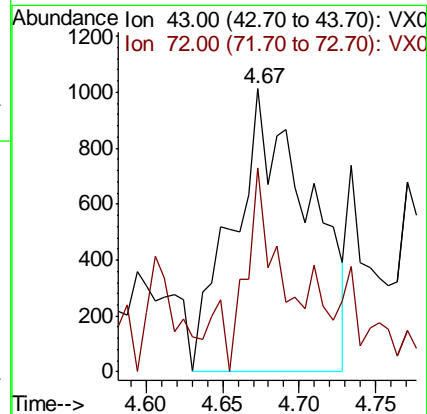
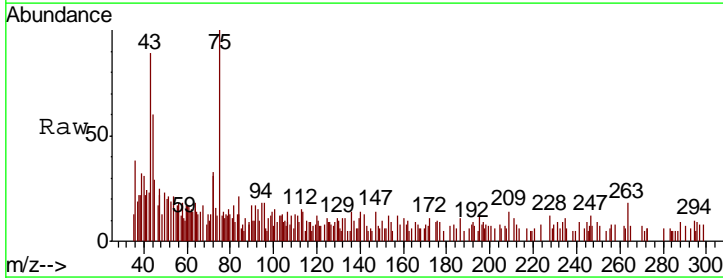
Instrument :
 MSVOA_X
 ClientSampled :

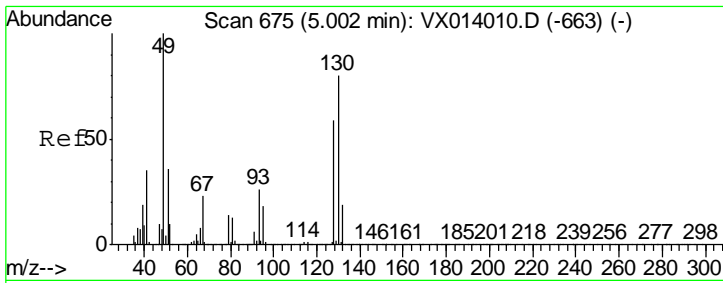
Tgt Ion	Resp	Lower	Upper
84	7663		
49	103.6	95.8	143.6
51	32.1	29.8	44.8
86	53.5	50.8	76.2



#25
 2-Butanone
 Concen: 0.686 ug/l
 RT: 4.67 min Scan# 621
 Delta R.T. 0.01 min
 Lab File: VX014397.D
 Acq: 03 Jan 2020 13:54

Tgt Ion	Resp	Lower	Upper
43	3462		
72	59.8	21.0	31.4#

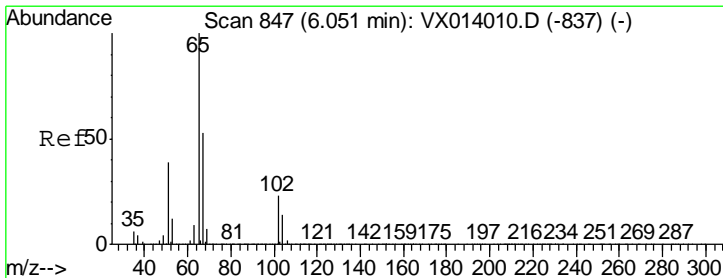
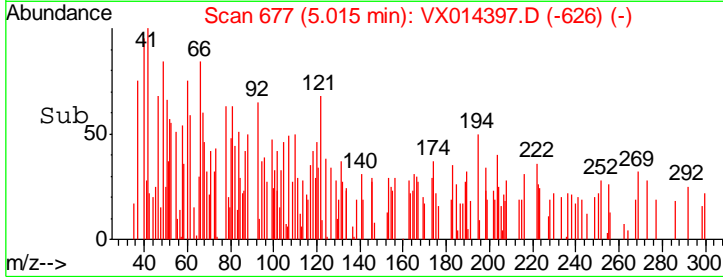
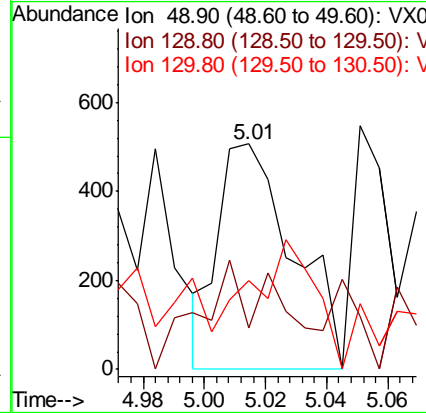
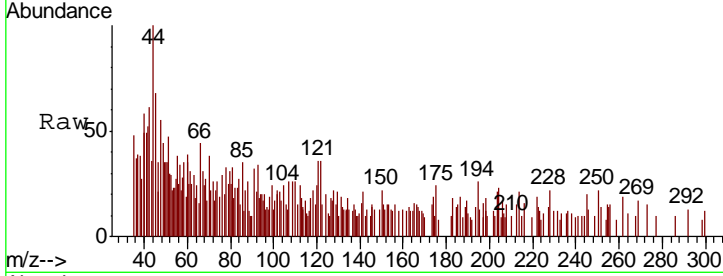




#28
 Bromochloromethane
 Concen: 0.664 ug/l
 RT: 5.01 min Scan# 677
 Delta R.T. 0.01 min
 Lab File: VX014397.D
 Acq: 03 Jan 2020 13:54

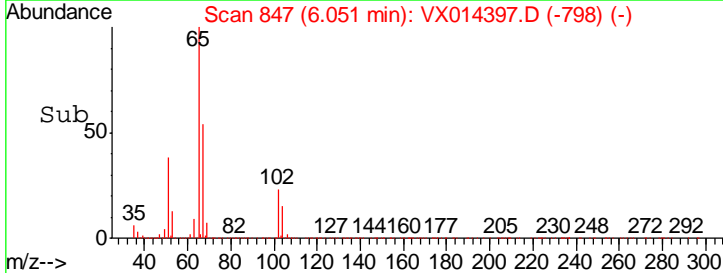
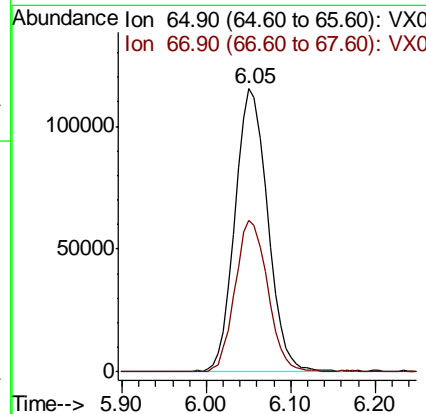
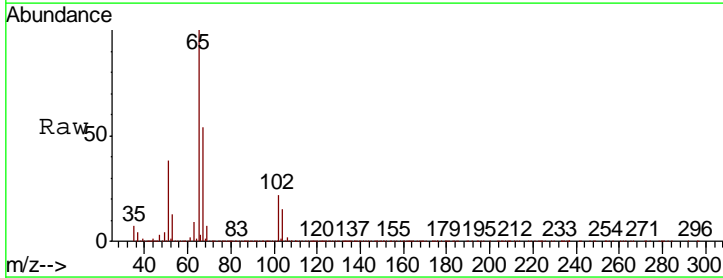
Instrument :
 MSVOA_X
 ClientSampled :

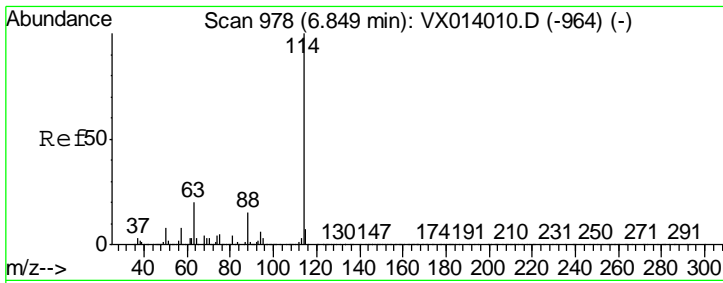
Tgt Ion	Resp	Lower	Upper
49	100		
129	51.7	0.0	5.0#
130	50.5	64.6	97.0#



#33
 1,2-Dichloroethane-d4
 Concen: 47.850 ug/l
 RT: 6.05 min Scan# 847
 Delta R.T. 0.00 min
 Lab File: VX014397.D
 Acq: 03 Jan 2020 13:54

Tgt Ion	Resp	Lower	Upper
65	100		
67	53.3	0.0	106.4

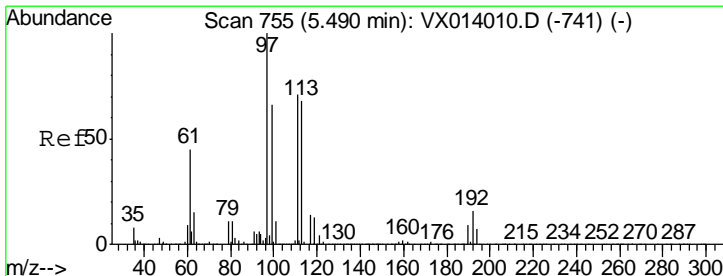
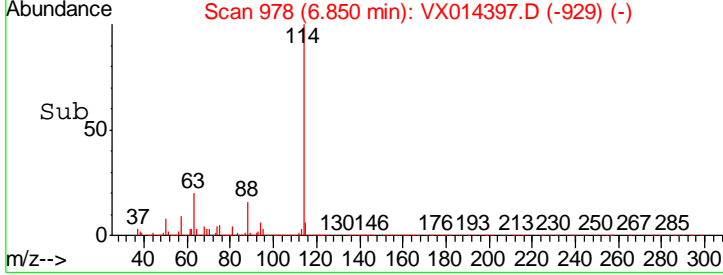
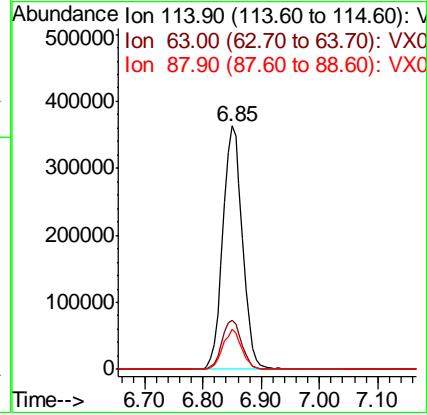
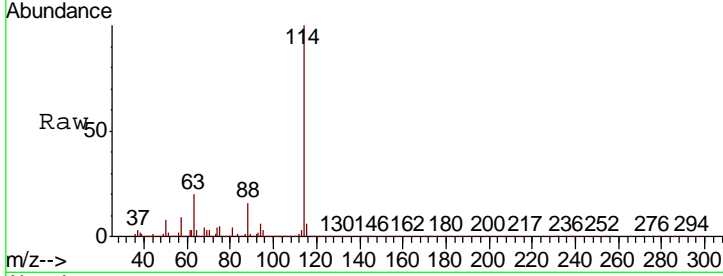




#34
 1,4-Difluorobenzene
 Concen: 50.000 ug/l
 RT: 6.85 min Scan# 978
 Delta R.T. 0.00 min
 Lab File: VX014397.D
 Acq: 03 Jan 2020 13:54

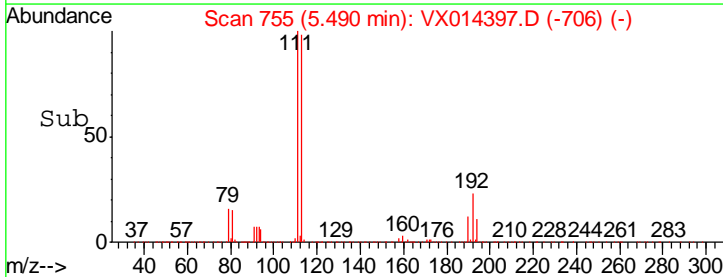
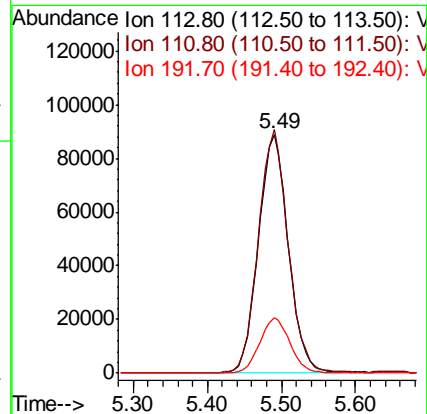
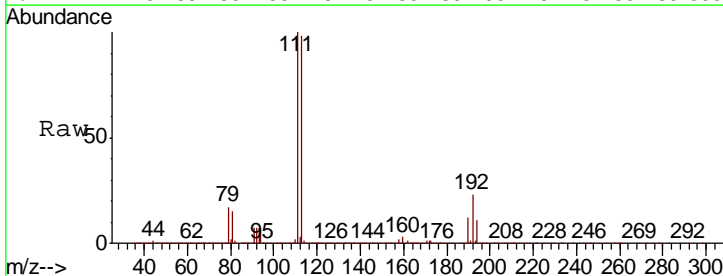
Instrument : MSVOA_X
 ClientSampled :

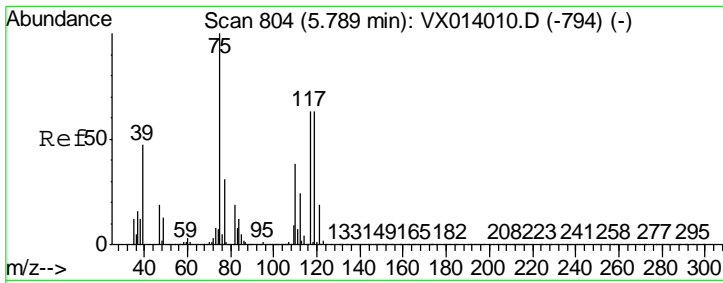
Tgt Ion	Resp	Lower	Upper
114	100		
63	19.9	0.0	40.8
88	16.4	0.0	30.4



#35
 Dibromofluoromethane
 Concen: 48.650 ug/l
 RT: 5.49 min Scan# 755
 Delta R.T. 0.00 min
 Lab File: VX014397.D
 Acq: 03 Jan 2020 13:54

Tgt Ion	Resp	Lower	Upper
113	100		
111	101.7	82.0	123.0
192	23.3	19.3	28.9

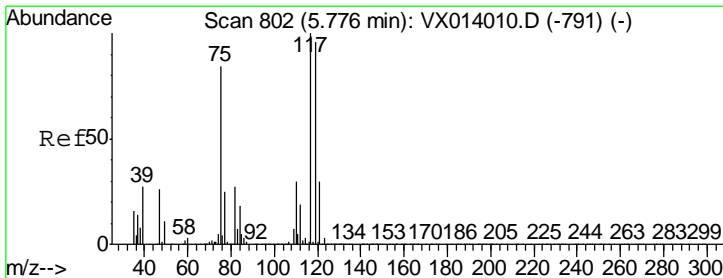
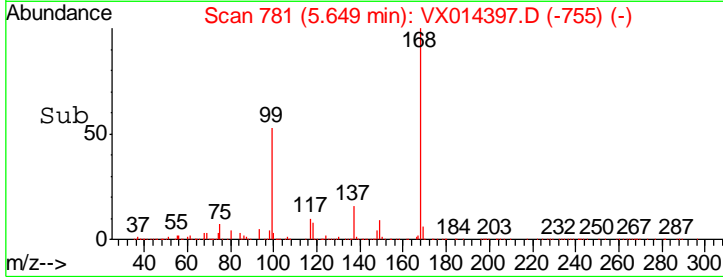
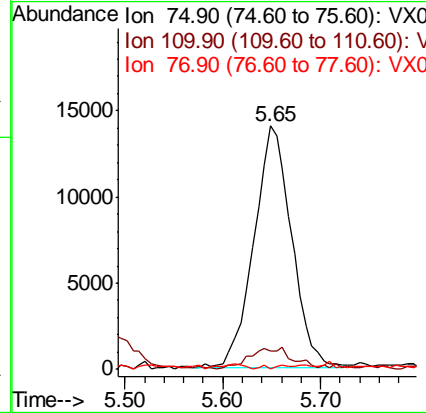
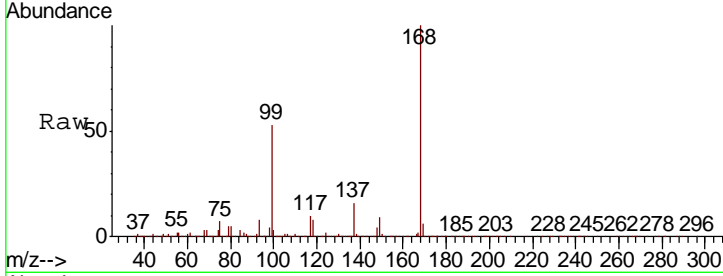




#36
 1,1-Dichloropropene
 Concen: 4.839 ug/l
 RT: 5.65 min Scan# 781
 Delta R.T. -0.14 min
 Lab File: VX014397.D
 Acq: 03 Jan 2020 13:54

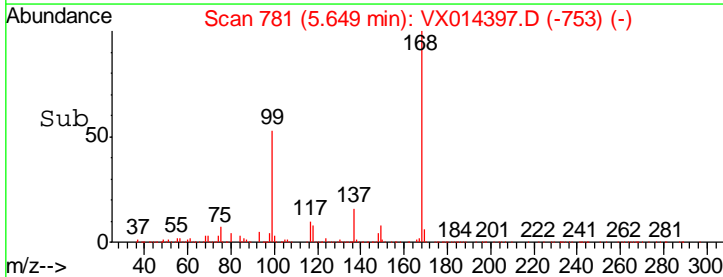
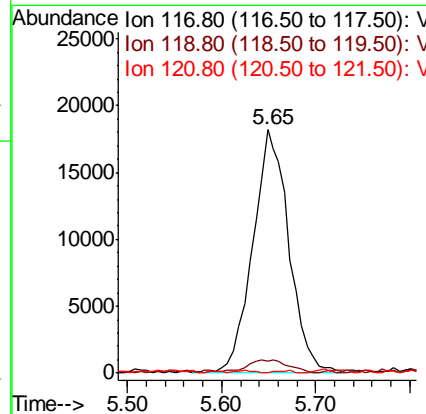
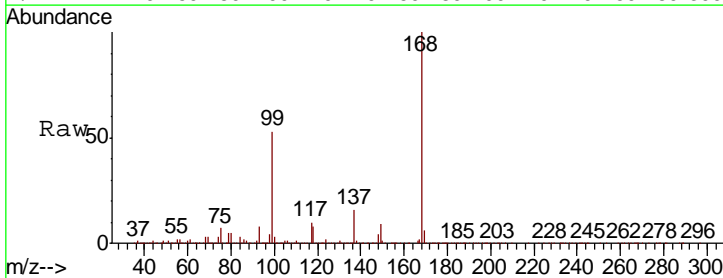
Instrument :
 MSVOA_X
 ClientSampled :

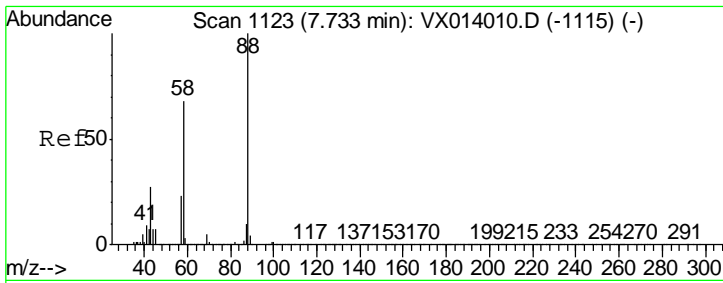
Tgt Ion	Resp	Lower	Upper
75	100		
110	0.0	18.3	54.9#
77	0.4	24.8	37.2#



#38
 Carbon Tetrachloride
 Concen: 6.922 ug/l
 RT: 5.65 min Scan# 781
 Delta R.T. -0.13 min
 Lab File: VX014397.D
 Acq: 03 Jan 2020 13:54

Tgt Ion	Resp	Lower	Upper
117	100		
119	4.4	76.2	114.4#
121	0.0	23.6	35.4#

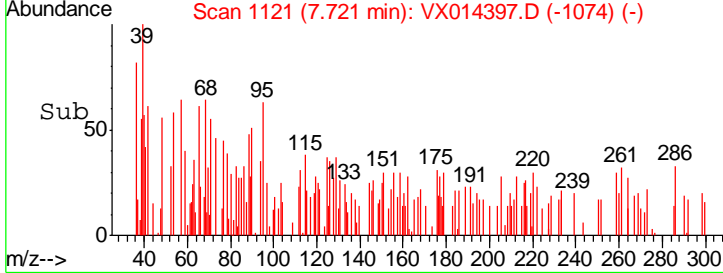
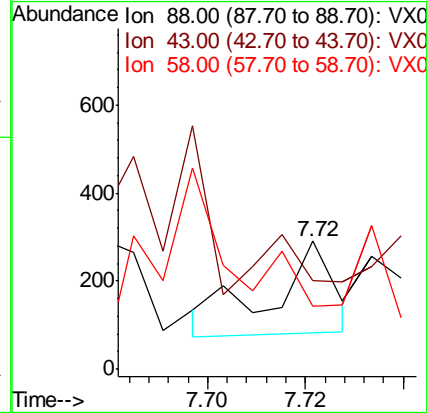
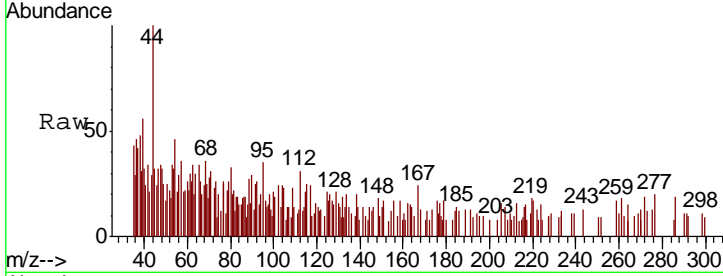




#49
 1,4-Dioxane
 Concen: 1.318 ug/l
 RT: 7.72 min Scan# 1121
 Delta R.T. -0.01 min
 Lab File: VX014397.D
 Acq: 03 Jan 2020 13:54

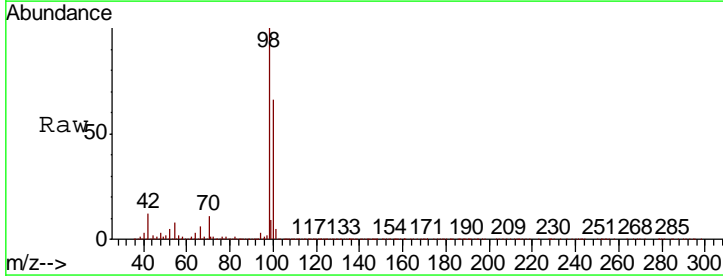
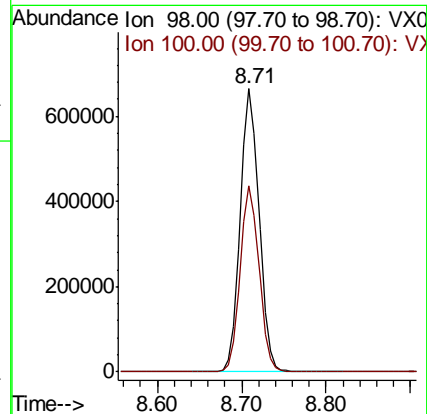
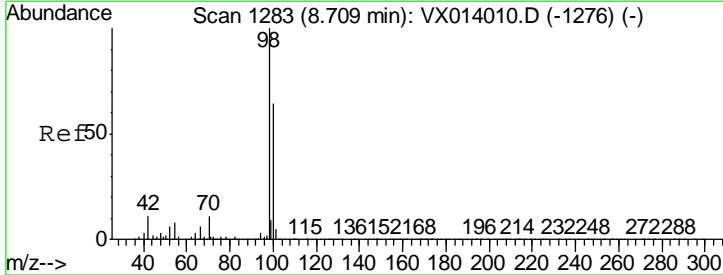
Instrument :
 MSVOA_X
 ClientSampled :

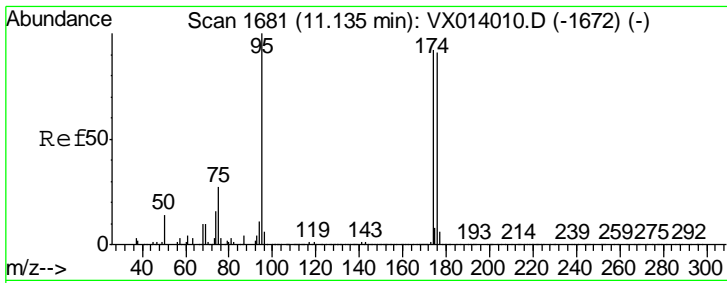
Tgt Ion	Resp	Lower	Upper
88	186		
43	0.0	26.5	39.7#
58	0.0	56.8	85.2#



#50
 Toluene-d8
 Concen: 50.134 ug/l
 RT: 8.71 min Scan# 1283
 Delta R.T. 0.00 min
 Lab File: VX014397.D
 Acq: 03 Jan 2020 13:54

Tgt Ion	Resp	Lower	Upper
98	1002271		
100	65.3	52.9	79.3

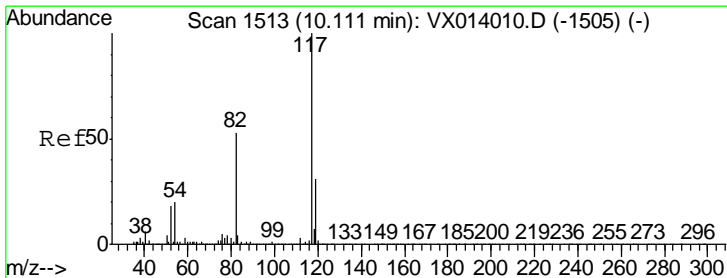
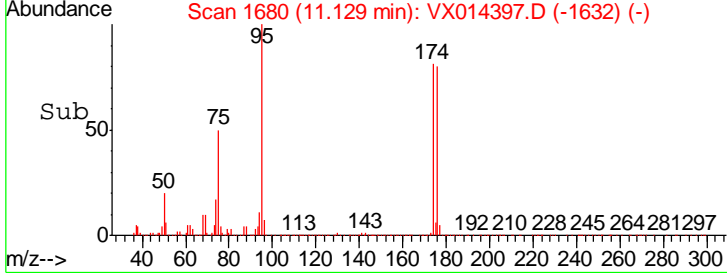
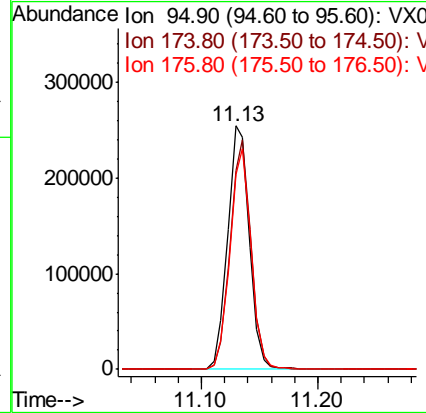
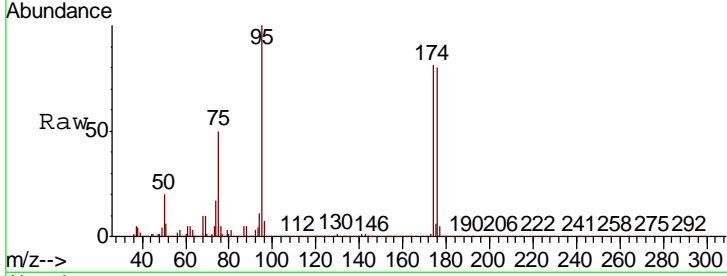




#62
 4-Bromofluorobenzene
 Concen: 44.600 ug/l
 RT: 11.13 min Scan# 1680
 Delta R.T. -0.01 min
 Lab File: VX014397.D
 Acq: 03 Jan 2020 13:54

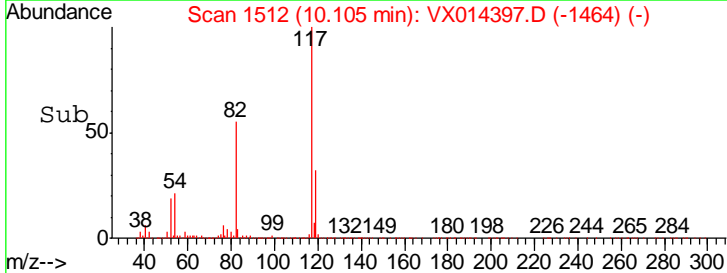
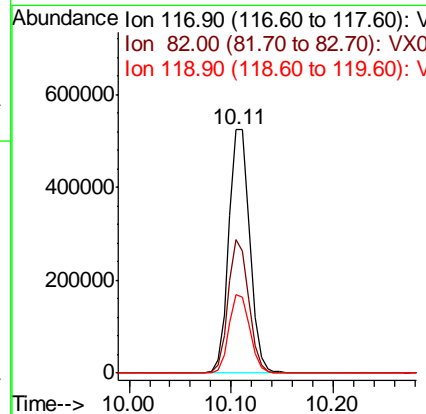
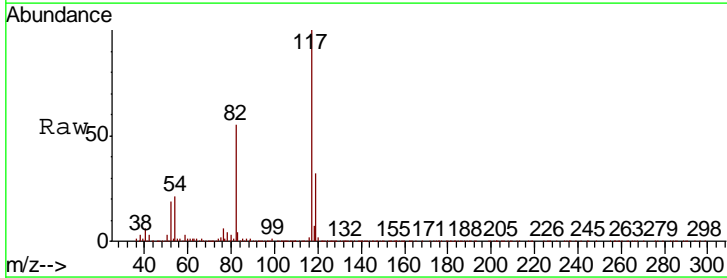
Instrument : MSVOA_X
 ClientSampled :

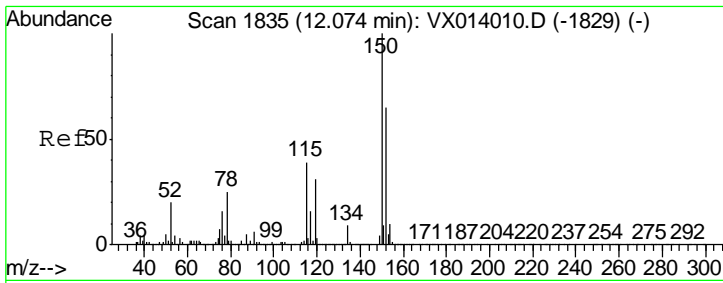
Tgt Ion	Resp	Lower	Upper
95	100		
174	91.1	0.0	175.8
176	88.7	0.0	173.0



#63
 Chlorobenzene-d5
 Concen: 50.000 ug/l
 RT: 10.11 min Scan# 1512
 Delta R.T. -0.01 min
 Lab File: VX014397.D
 Acq: 03 Jan 2020 13:54

Tgt Ion	Resp	Lower	Upper
117	100		
82	54.9	42.2	63.4
119	32.3	25.1	37.7

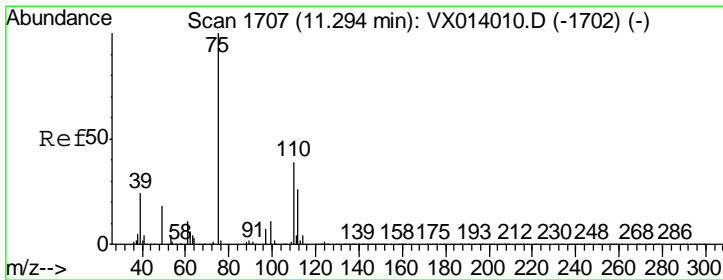
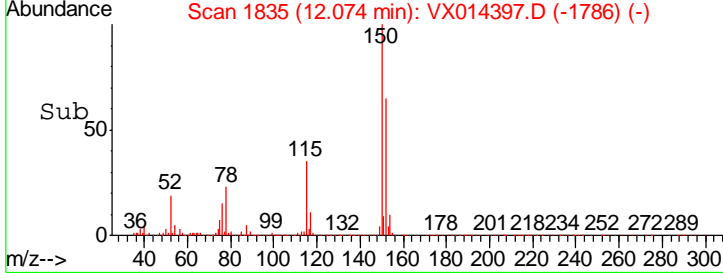
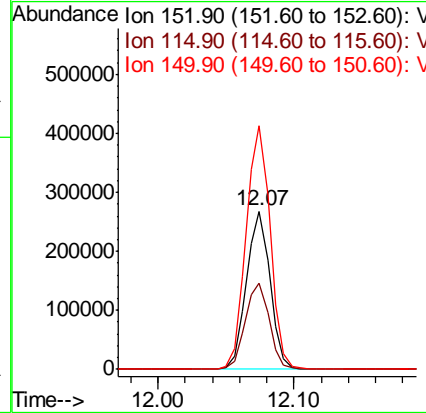
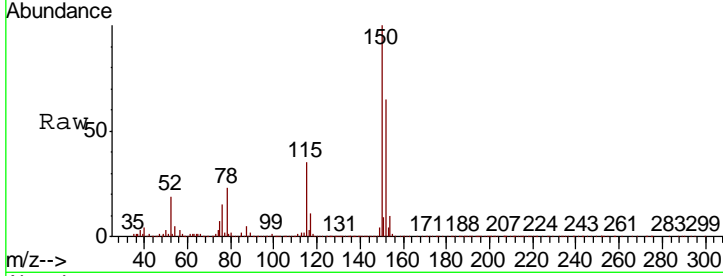




#72
 1,4-Dichlorobenzene-d4
 Concen: 50.000 ug/l
 RT: 12.07 min Scan# 1835
 Delta R.T. 0.00 min
 Lab File: VX014397.D
 Acq: 03 Jan 2020 13:54

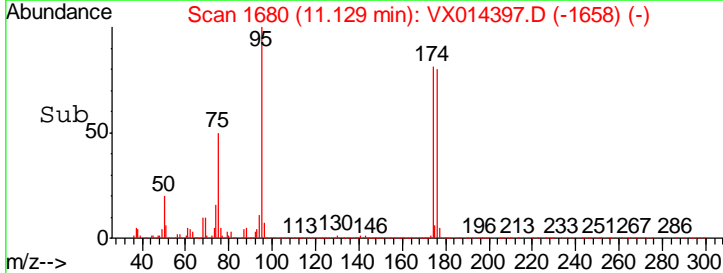
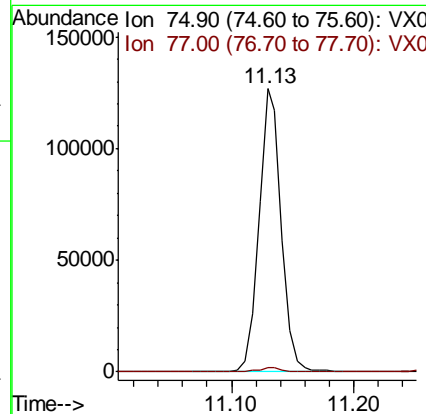
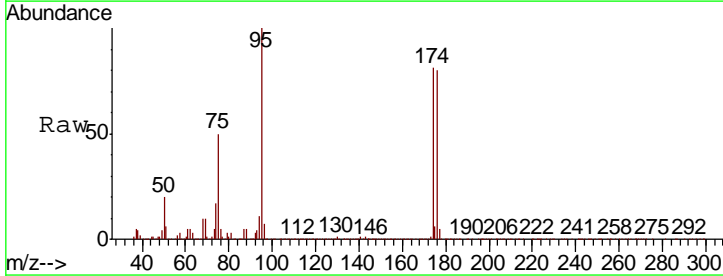
Instrument : MSVOA_X
 ClientSampled :

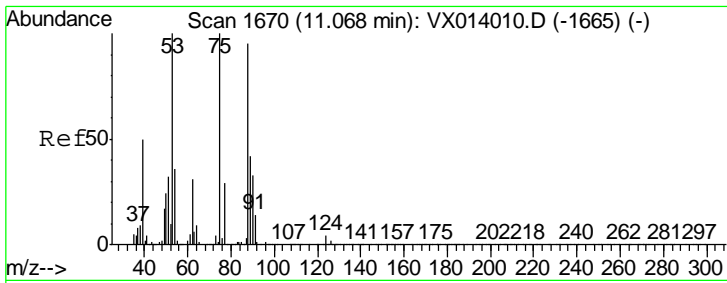
Tgt Ion	Resp	Lower	Upper
152	100		
115	55.6	38.3	114.9
150	157.2	0.0	345.4



#76
 1,2,3-Trichloropropane
 Concen: 22.710 ug/l
 RT: 11.13 min Scan# 1680
 Delta R.T. -0.16 min
 Lab File: VX014397.D
 Acq: 03 Jan 2020 13:54

Tgt Ion	Resp	Lower	Upper
75	100		
77	1.4	19.3	57.8#





#81
 trans-1,4-Dichloro-2-butene
 Concen: 64.099 ug/l
 RT: 11.13 min Scan# 1680
 Delta R.T. 0.06 min
 Lab File: VX014397.D
 Acq: 03 Jan 2020 13:54

Instrument :
 MSVOA_X
 ClientSampled :

Tot Ion	Resp	Lower	Upper
75	159715		
53	0.1	76.7	115.1#
89	0.0	34.6	51.8#

