

Data Path : Z:\VOASRV\HPCHEM1\MSVOA X\DATA\VX010320\
 Data File : VX014414.D
 Acq On : 03 Jan 2020 20:30
 Operator : JC/SP
 Sample : PB125870ZHE#03
 Misc : 5.0mL/MSVOA X/WATER
 ALS Vial : 25 Sample Multiplier: 1

Instrument :
 MSVOA_X
 ClientSampleId :
 PB125870ZHE#03

Quant Time: Jan 06 02:36:15 2020
 Quant Method : Z:\VOASRV\HPCHEM1\MSVOA_X\METHOD\82X121319W.M
 Quant Title : SW846 8260
 QLast Update : Tue Dec 17 03:01:07 2019
 Response via : Initial Calibration

Internal Standards	R.T.	QIon	Response	Conc	Units	Dev(Min)
1) Pentafluorobenzene	5.65	168	557810	50.00	ug/l	0.00
34) 1,4-Difluorobenzene	6.85	114	853792	50.00	ug/l	0.00
63) Chlorobenzene-d5	10.11	117	761747	50.00	ug/l	0.00
72) 1,4-Dichlorobenzene-d4	12.07	152	346696	50.00	ug/l	0.00

System Monitoring Compounds

33) 1,2-Dichloroethane-d4	6.05	65	295636	46.76	ug/l	0.00
Spiked Amount	50.000		Recovery	=	93.52%	
35) Dibromofluoromethane	5.49	113	249624	48.10	ug/l	0.00
Spiked Amount	50.000		Recovery	=	96.20%	
50) Toluene-d8	8.71	98	1015115	50.24	ug/l	0.00
Spiked Amount	50.000		Recovery	=	100.48%	
62) 4-Bromofluorobenzene	11.13	95	348163	47.14	ug/l	0.00
Spiked Amount	50.000		Recovery	=	94.28%	

Target Compounds

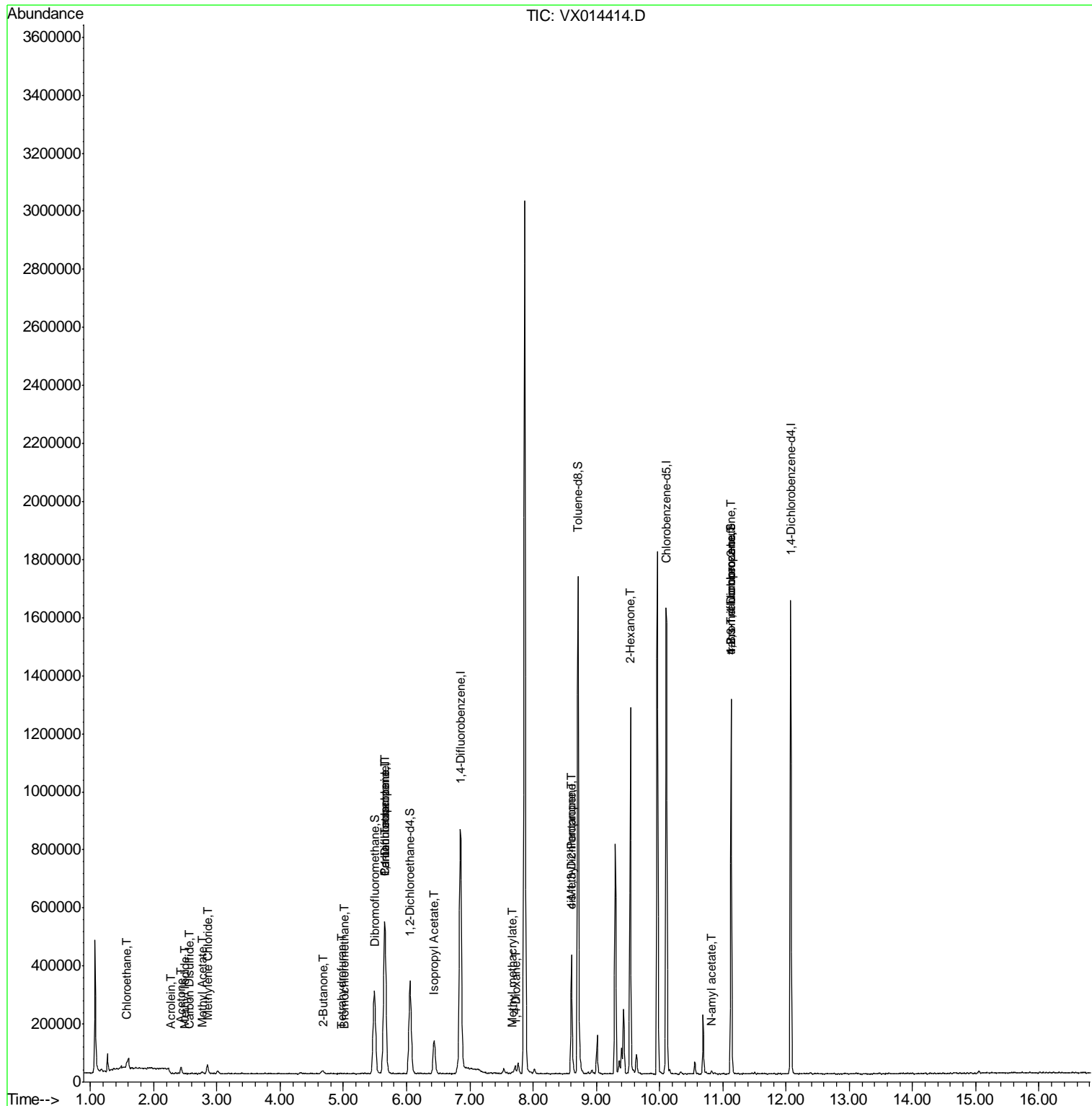
						Qvalue
6) Chloroethane	1.56	64	943	0.216	ug/l #	45
10) Methyl Iodide	2.50	142	279	2.659	ug/l #	1
13) Acrolein	2.28	56	304	0.389	ug/l #	14
16) Acetone	2.43	43	26244	6.394	ug/l	95
17) Carbon Disulfide	2.57	76	544	0.786	ug/l #	75
18) Methyl Acetate	2.76	43	7859	0.966	ug/l #	79
20) Methylene Chloride	2.85	84	15124	2.340	ug/l #	86
25) 2-Butanone	4.67	43	3865	0.764	ug/l #	72
28) Bromochloromethane	5.00	49	536	0.584	ug/l #	58
29) Tetrahydrofuran	4.97	42	649	0.229	ug/l	94
36) 1,1-Dichloropropene	5.65	75	35601	4.544	ug/l #	50
38) Carbon Tetrachloride	5.65	117	46479	6.513	ug/l #	15
43) Isopropyl Acetate	6.43	43	162481	11.349	ug/l	99
48) Methyl methacrylate	7.67	41	9413	1.343	ug/l #	16
49) 1,4-Dioxane	7.73	88	130	0.911	ug/l #	23
51) 4-Methyl-2-Pentanone	8.61	43	143853	15.999	ug/l #	50
54) cis-1,3-Dichloropropene	8.61	75	68224	7.260	ug/l #	59
59) 2-Hexanone	9.54	43	147043	20.315	ug/l #	52
74) N-amyl acetate	10.82	43	5972	0.522	ug/l #	45
76) 1,2,3-Trichloropropane	11.13	75	166096	22.068	ug/l #	39
81) trans-1,4-Dichloro-2-buten	11.13	75	166096	62.286	ug/l #	12

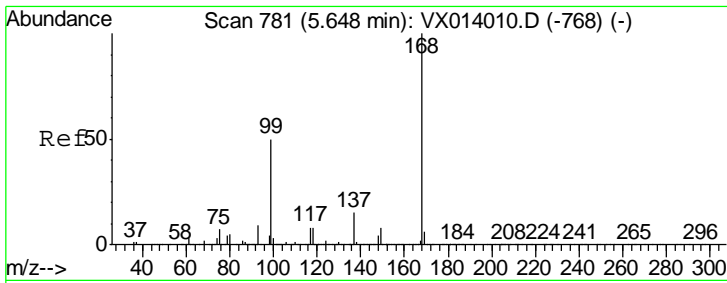
(#) = qualifier out of range (m) = manual integration (+) = signals summed

Data Path : Z:\VOASRV\HPCHEM1\MSVOA X\DATA\VX010320\
 Data File : VX014414.D
 Acq On : 03 Jan 2020 20:30
 Operator : JC/SP
 Sample : PB125870ZHE#03
 Misc : 5.0mL/MSVOA X/WATER
 ALS Vial : 25 Sample Multiplier: 1

Instrument :
 MSVOA_X
 ClientSampleId :
 PB125870ZHE#03

Quant Time: Jan 06 02:36:15 2020
 Quant Method : Z:\VOASRV\HPCHEM1\MSVOA_X\METHOD\82X121319W.M
 Quant Title : SW846 8260
 QLast Update : Tue Dec 17 03:01:07 2019
 Response via : Initial Calibration

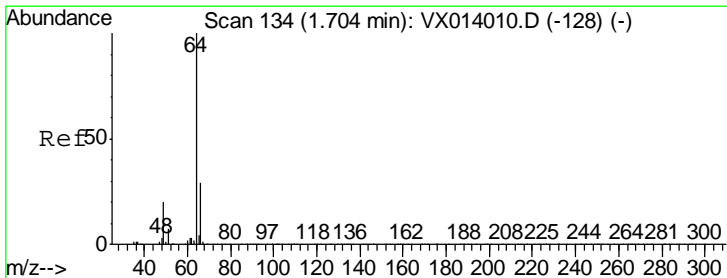
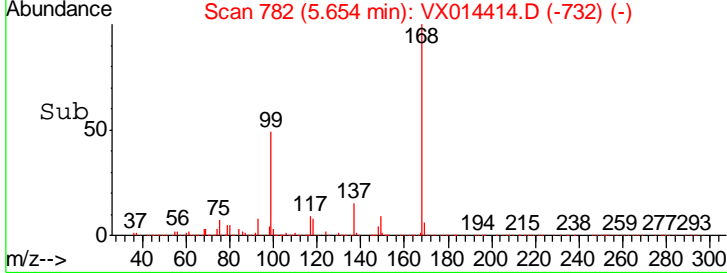
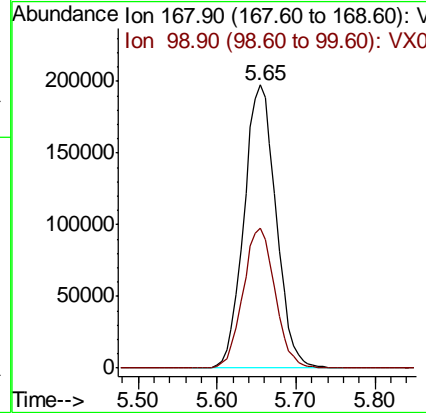
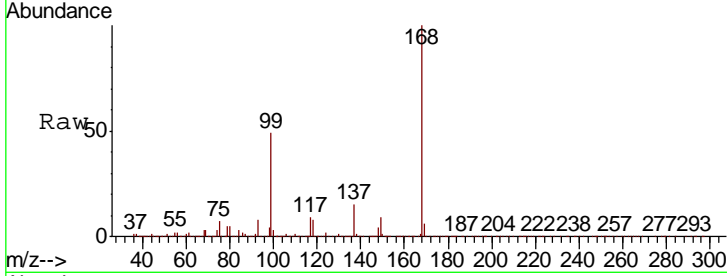




#1
 Pentafluorobenzene
 Concen: 50.000 ug/l
 RT: 5.65 min Scan# 782
 Delta R.T. 0.01 min
 Lab File: VX014414.D
 Acq: 03 Jan 2020 20:30

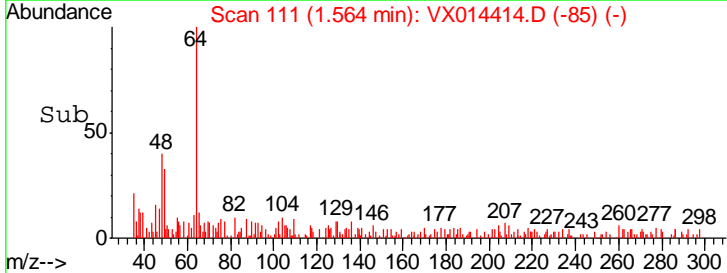
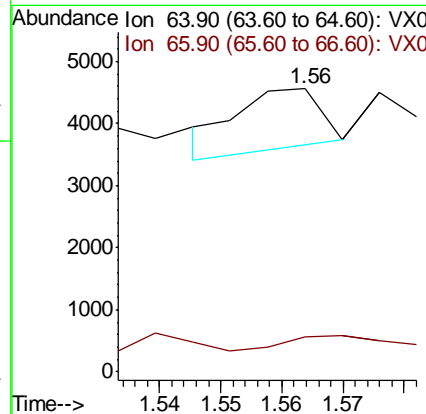
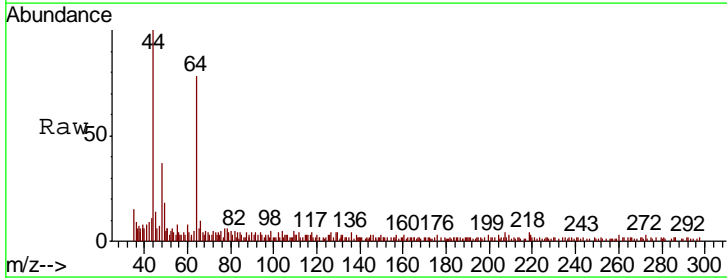
Instrument : MSVOA_X
 ClientSampleID : PB125870ZHE#03

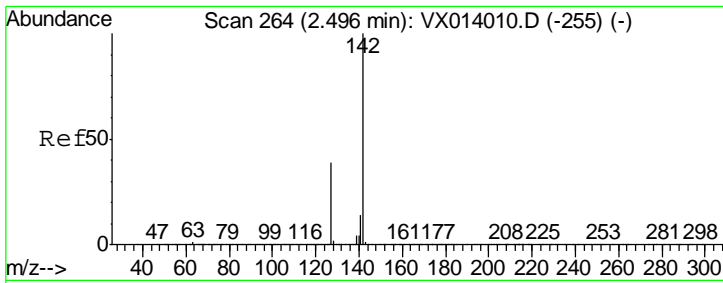
Tgt Ion	Resp	Lower	Upper
168	100		
99	49.1	40.3	60.5



#6
 Chloroethane
 Concen: 0.216 ug/l
 RT: 1.56 min Scan# 111
 Delta R.T. -0.14 min
 Lab File: VX014414.D
 Acq: 03 Jan 2020 20:30

Tgt Ion	Resp	Lower	Upper
64	100		
66	0.0	23.4	35.2#

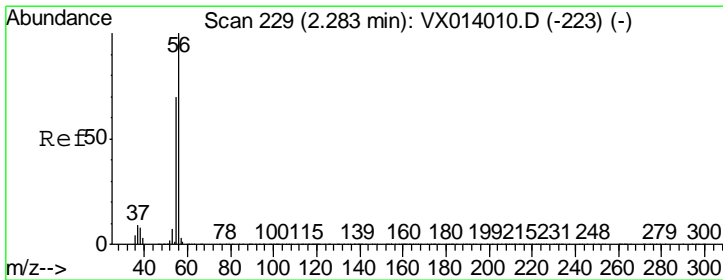
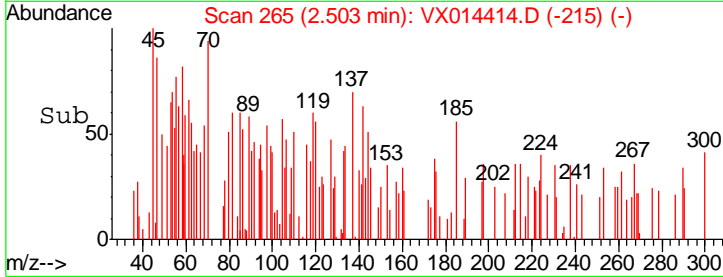
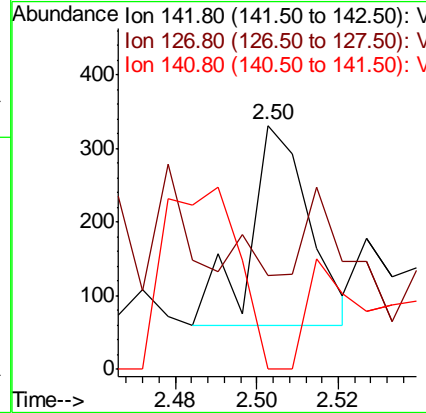
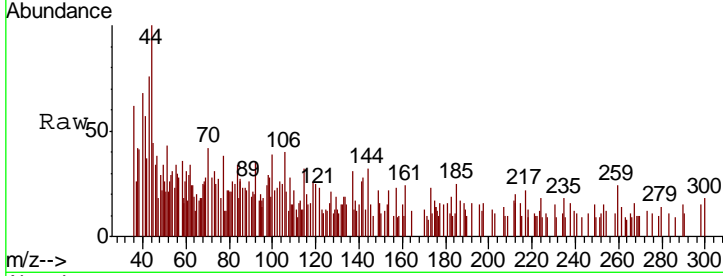




#10
Methyl Iodide
Concen: 2.659 ug/l
RT: 2.50 min Scan# 265
Delta R.T. 0.01 min
Lab File: VX014414.D
Acq: 03 Jan 2020 20:30

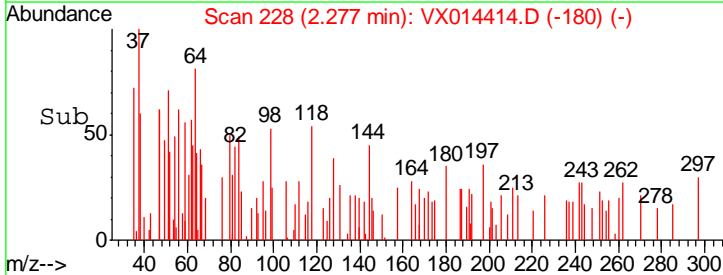
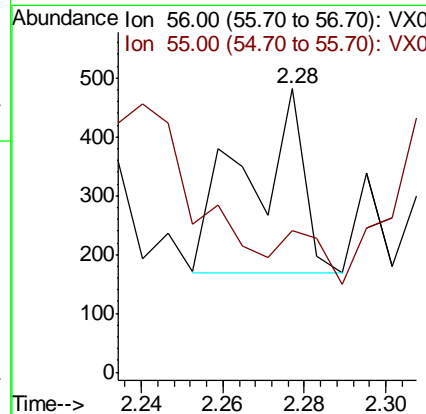
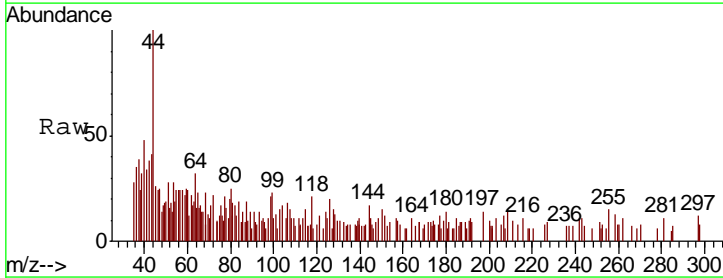
Instrument :
MSVOA_X
ClientSampled :
PB125870ZHE#03

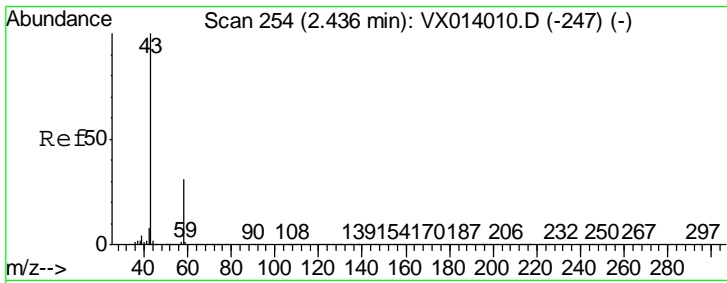
Tgt Ion	Ratio	Lower	Upper
142	100		
127	0.0	31.6	47.4#
141	111.5	11.6	17.4#



#13
Acrolein
Concen: 0.389 ug/l
RT: 2.28 min Scan# 228
Delta R.T. -0.01 min
Lab File: VX014414.D
Acq: 03 Jan 2020 20:30

Tgt Ion	Ratio	Lower	Upper
56	100		
55	0.0	56.9	85.3#

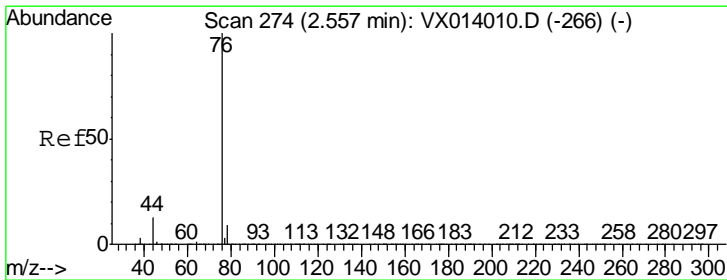
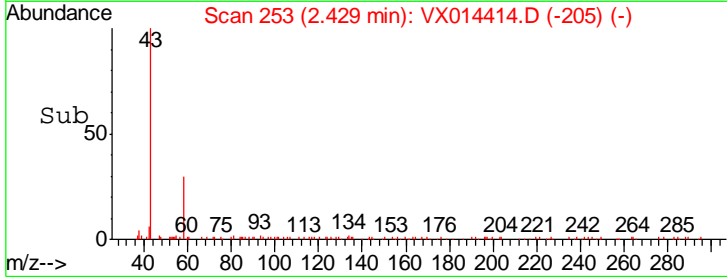
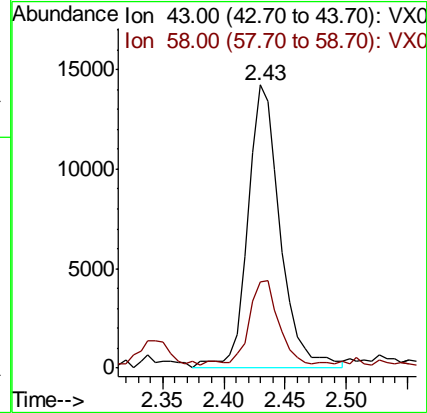
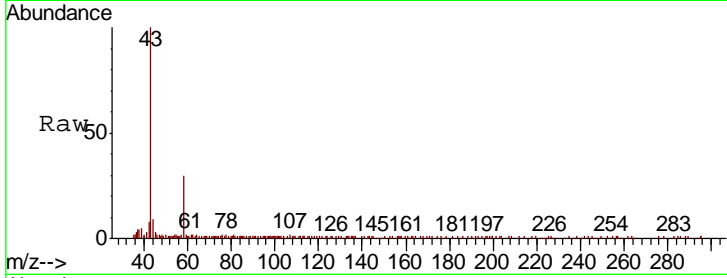




#16
 Acetone
 Concen: 6.394 ug/l
 RT: 2.43 min Scan# 253
 Delta R.T. -0.01 min
 Lab File: VX014414.D
 Acq: 03 Jan 2020 20:30

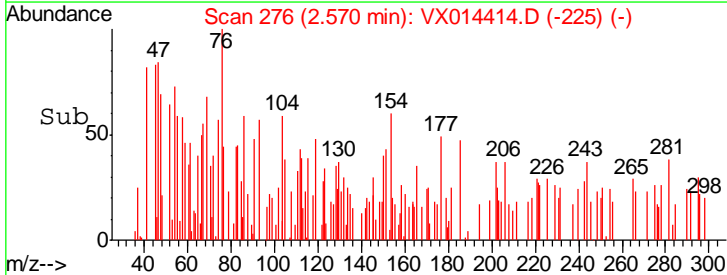
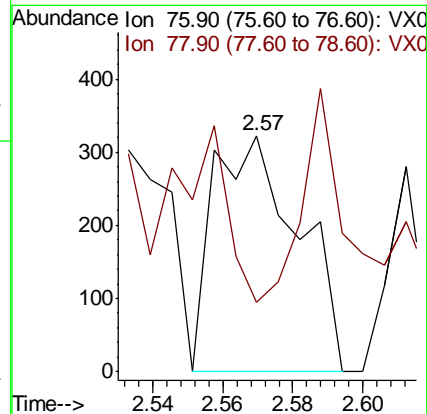
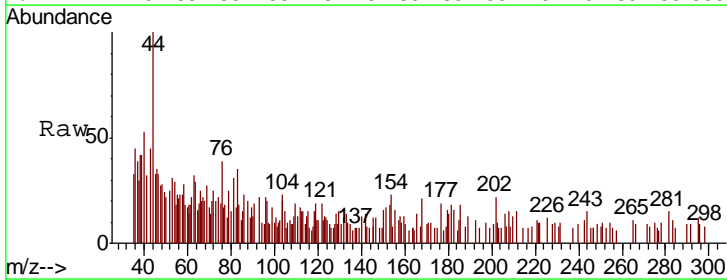
Instrument :
 MSVOA_X
 ClientSampled :
 PB125870ZHE#03

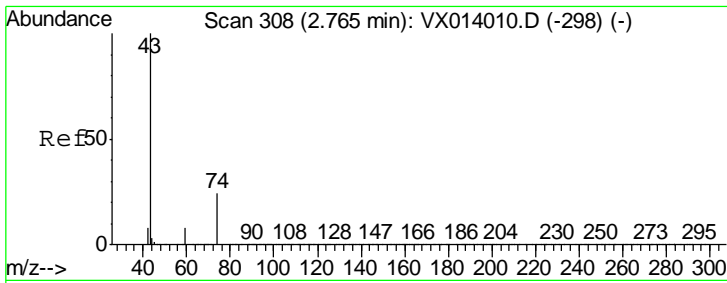
Tgt Ion: 43 Resp: 26244
 Ion Ratio Lower Upper
 43 100
 58 28.2 24.9 37.3



#17
 Carbon Disulfide
 Concen: 0.786 ug/l
 RT: 2.57 min Scan# 276
 Delta R.T. 0.01 min
 Lab File: VX014414.D
 Acq: 03 Jan 2020 20:30

Tgt Ion: 76 Resp: 544
 Ion Ratio Lower Upper
 76 100
 78 0.0 7.2 10.8#

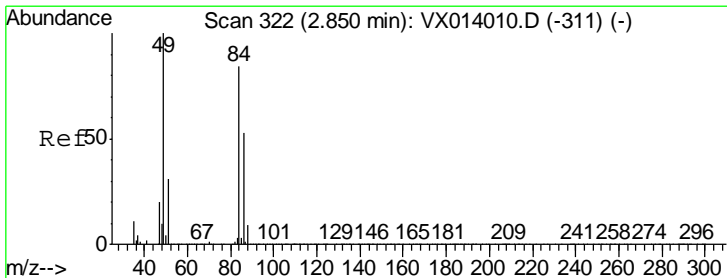
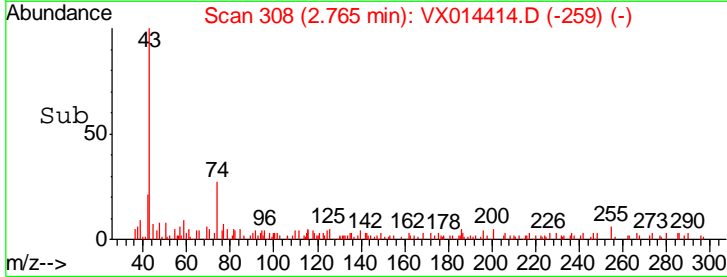
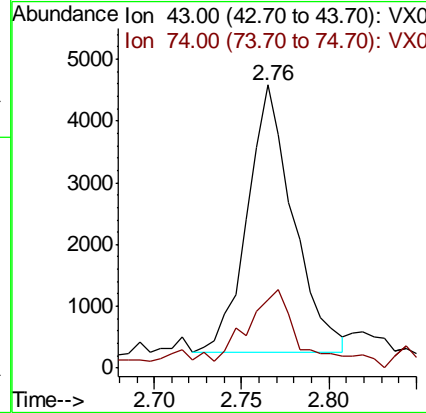
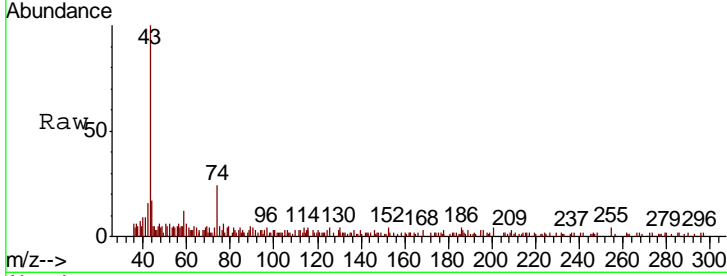




#18
 Methyl Acetate
 Concen: 0.966 ug/l
 RT: 2.76 min Scan# 308
 Delta R.T. 0.00 min
 Lab File: VX014414.D
 Acq: 03 Jan 2020 20:30

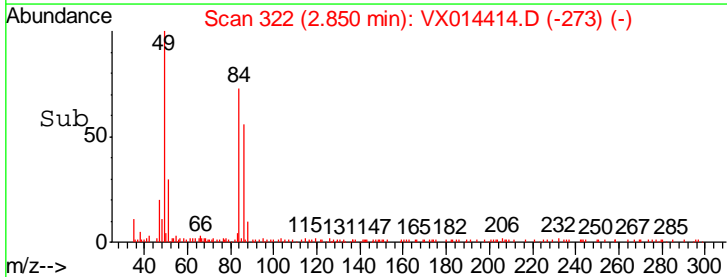
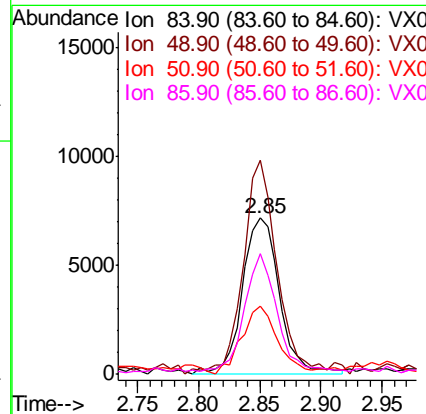
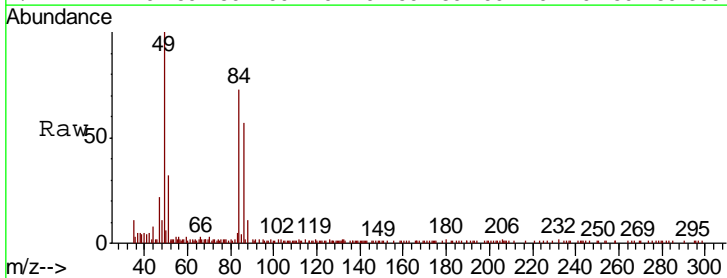
Instrument :
 MSVOA_X
 ClientSampled :
 PB125870ZHE#03

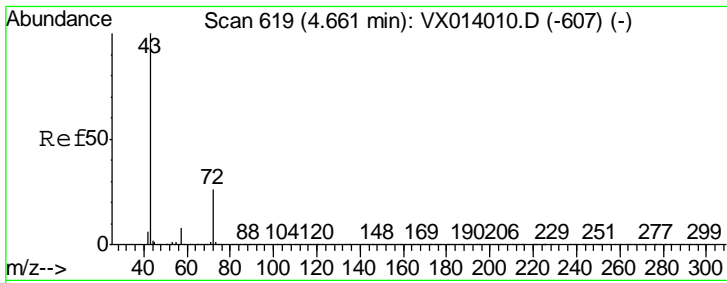
Tgt Ion	Resp	Lower	Upper
43	100		
74	34.7	19.5	29.3#



#20
 Methylene Chloride
 Concen: 2.340 ug/l
 RT: 2.85 min Scan# 322
 Delta R.T. 0.00 min
 Lab File: VX014414.D
 Acq: 03 Jan 2020 20:30

Tgt Ion	Resp	Lower	Upper
84	100		
49	135.5	95.8	143.6
51	41.4	29.8	44.8
86	76.5	50.8	76.2#

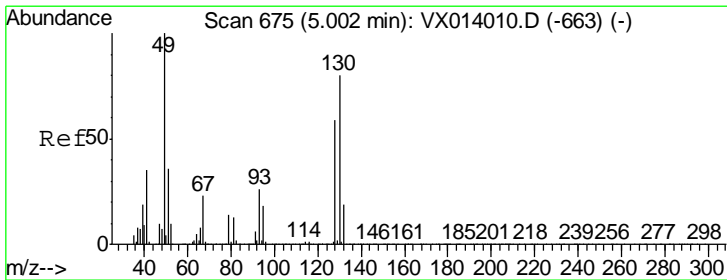
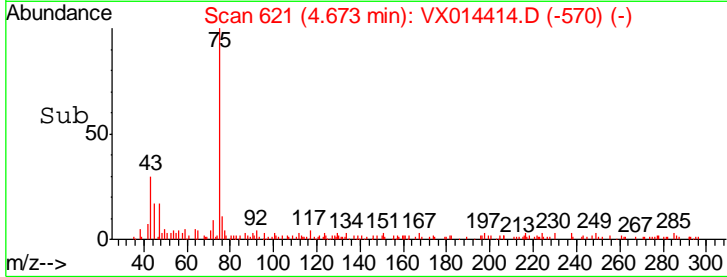
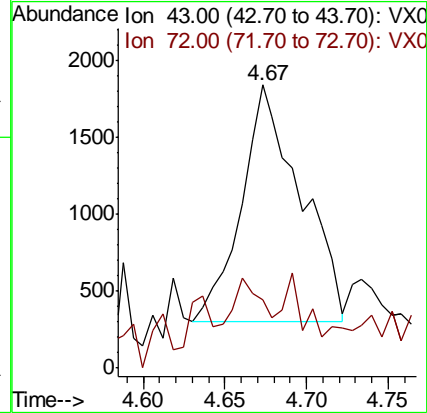
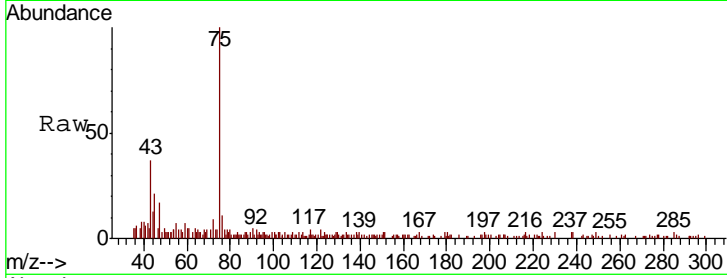




#25
 2-Butanone
 Concen: 0.764 ug/l
 RT: 4.67 min Scan# 621
 Delta R.T. 0.01 min
 Lab File: VX014414.D
 Acq: 03 Jan 2020 20:30

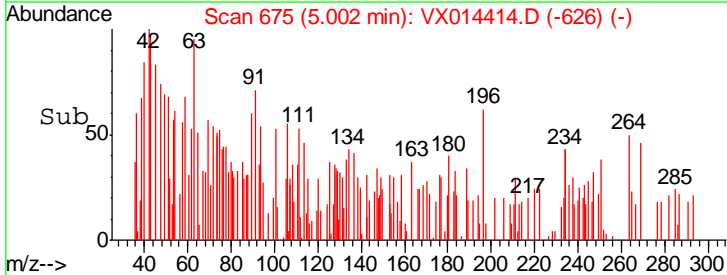
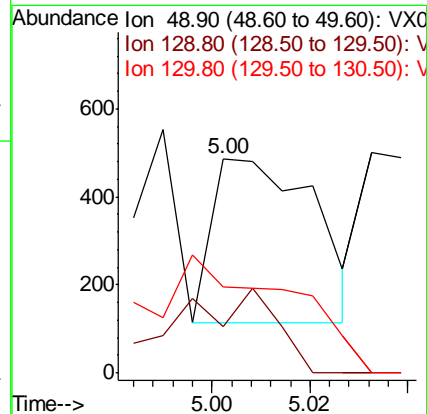
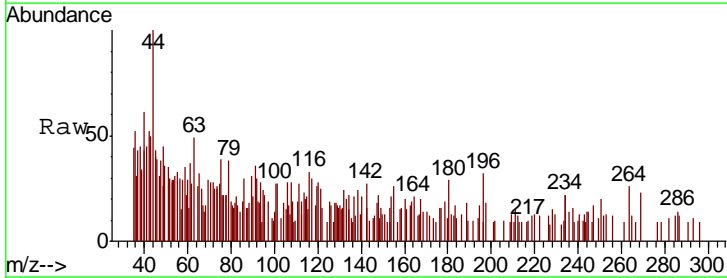
Instrument :
 MSVOA_X
 ClientSampled :
 PB125870ZHE#03

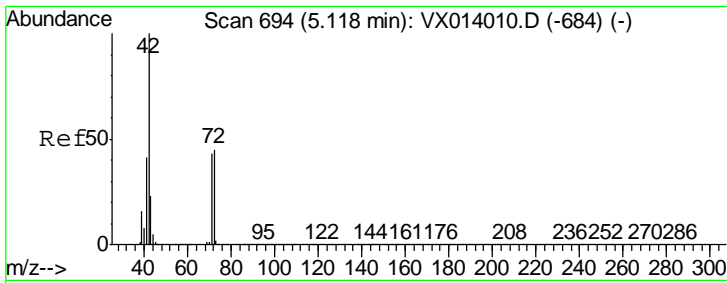
Tgt Ion	Resp	Lower	Upper
43	100		
72	11.8	21.0	31.4#



#28
 Bromochloromethane
 Concen: 0.584 ug/l
 RT: 5.00 min Scan# 675
 Delta R.T. 0.00 min
 Lab File: VX014414.D
 Acq: 03 Jan 2020 20:30

Tgt Ion	Resp	Lower	Upper
49	100		
129	44.8	0.0	5.0#
130	115.5	64.6	97.0#

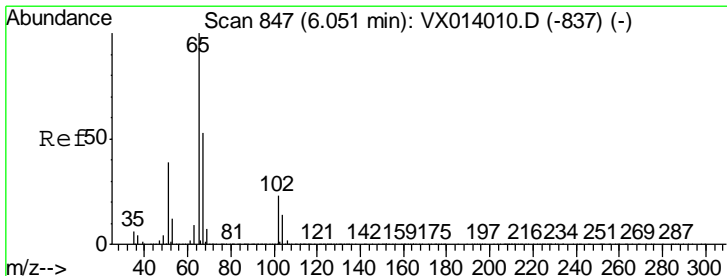
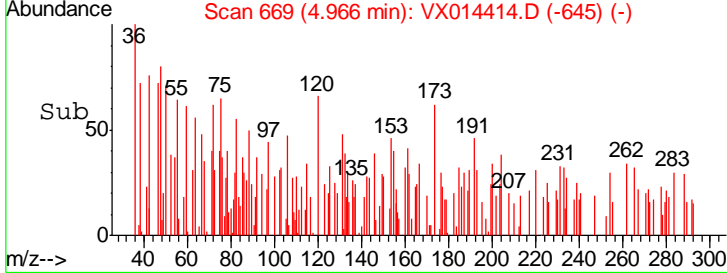
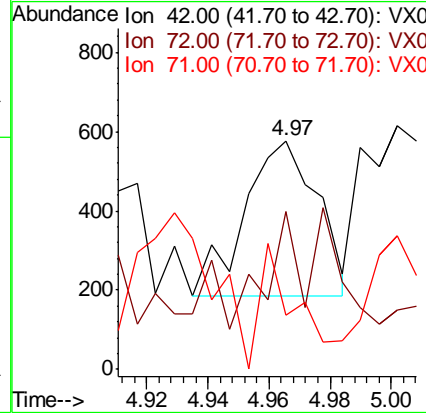
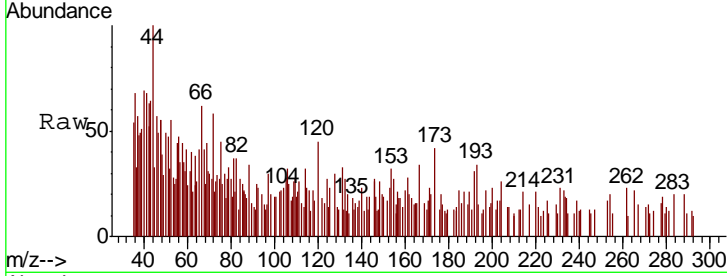




#29
 Tetrahydrofuran
 Concen: 0.229 ug/l
 RT: 4.97 min Scan# 669
 Delta R.T. -0.15 min
 Lab File: VX014414.D
 Acq: 03 Jan 2020 20:30

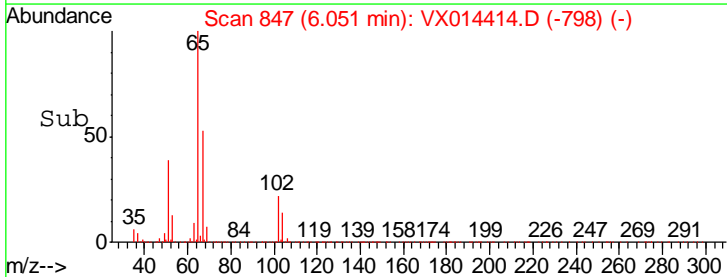
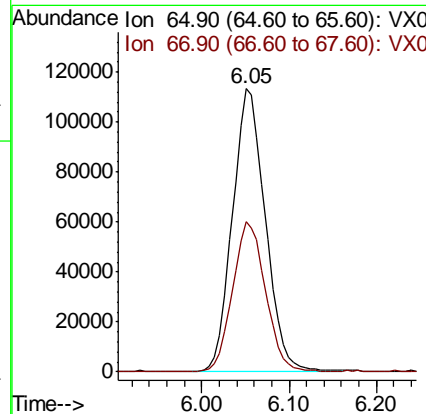
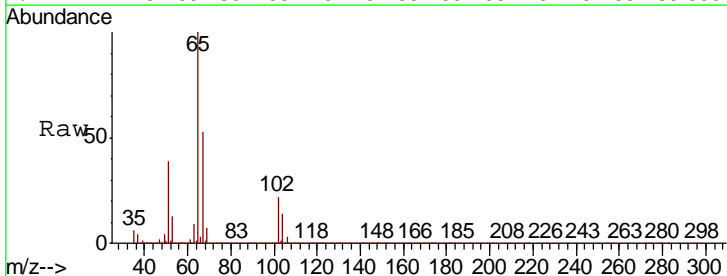
Instrument :
 MSVOA_X
 ClientSampleId :
 PB125870ZHE#03

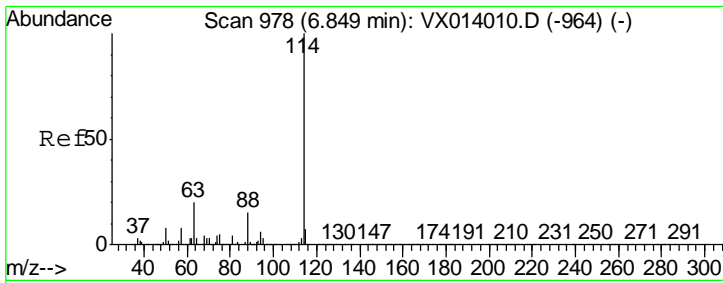
Tgt Ion	Resp	Lower	Upper
42	100		
72	39.8	35.8	53.8
71	39.0	33.6	50.4



#33
 1,2-Dichloroethane-d4
 Concen: 46.763 ug/l
 RT: 6.05 min Scan# 847
 Delta R.T. 0.00 min
 Lab File: VX014414.D
 Acq: 03 Jan 2020 20:30

Tgt Ion	Resp	Lower	Upper
65	100		
67	52.9	0.0	106.4

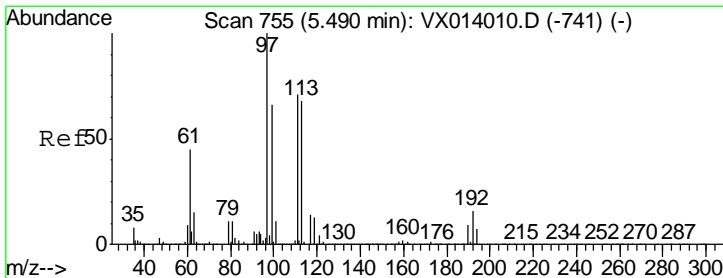
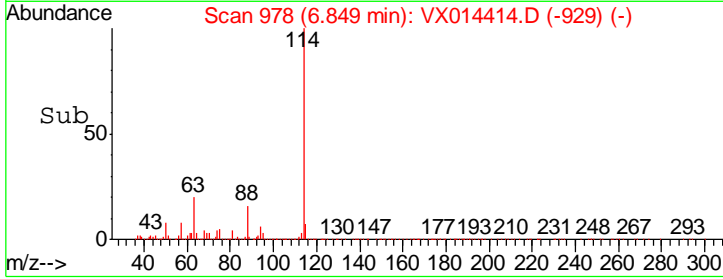
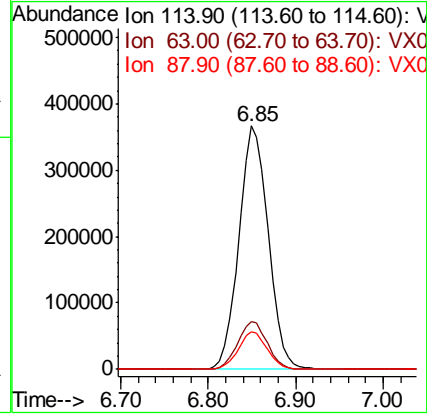
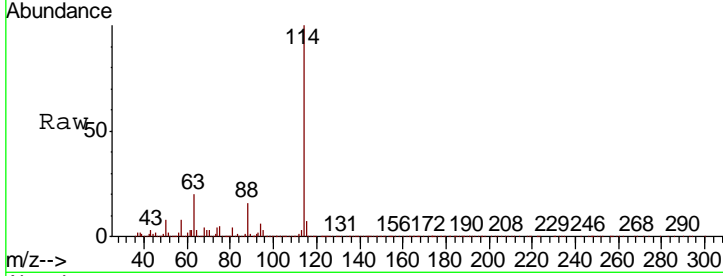




#34
 1,4-Difluorobenzene
 Concen: 50.000 ug/l
 RT: 6.85 min Scan# 978
 Delta R.T. 0.00 min
 Lab File: VX014414.D
 Acq: 03 Jan 2020 20:30

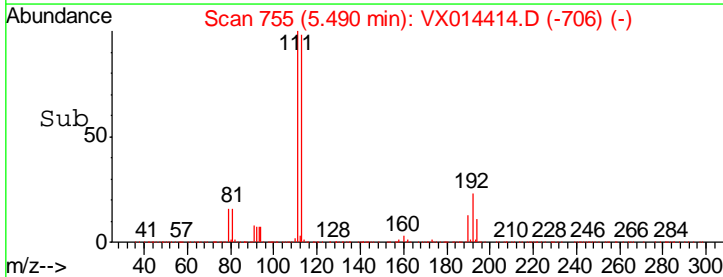
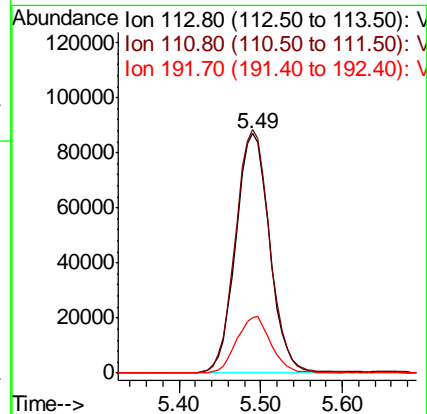
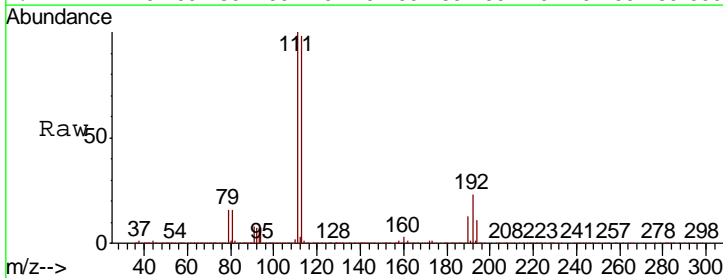
Instrument :
 MSVOA_X
 ClientSampleId :
 PB125870ZHE#03

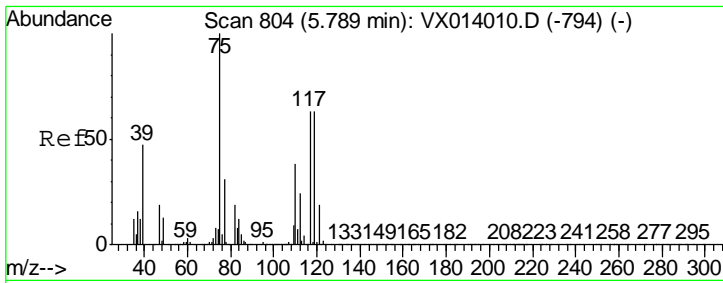
Tgt Ion	Resp	Lower	Upper
114	853792		
63	19.5	0.0	40.8
88	15.5	0.0	30.4



#35
 Dibromofluoromethane
 Concen: 48.096 ug/l
 RT: 5.49 min Scan# 755
 Delta R.T. 0.00 min
 Lab File: VX014414.D
 Acq: 03 Jan 2020 20:30

Tgt Ion	Resp	Lower	Upper
113	249624		
111	102.5	82.0	123.0
192	24.0	19.3	28.9

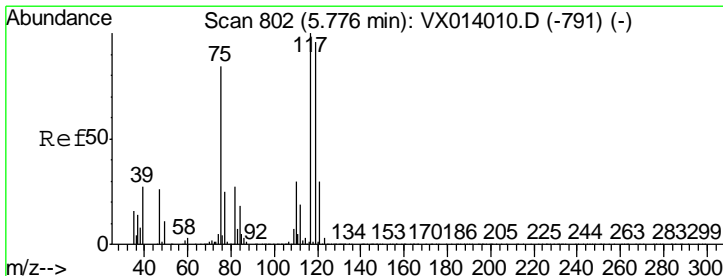
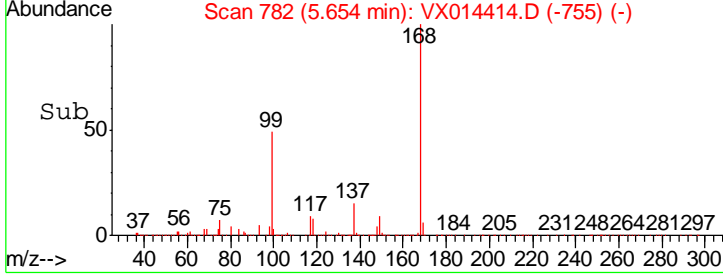
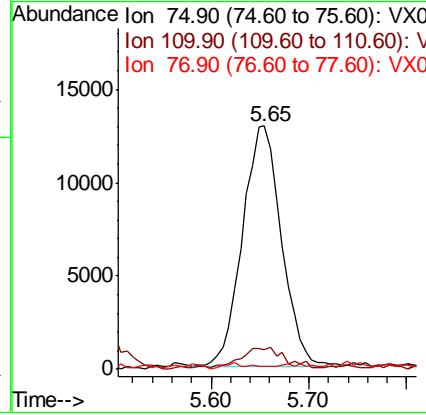
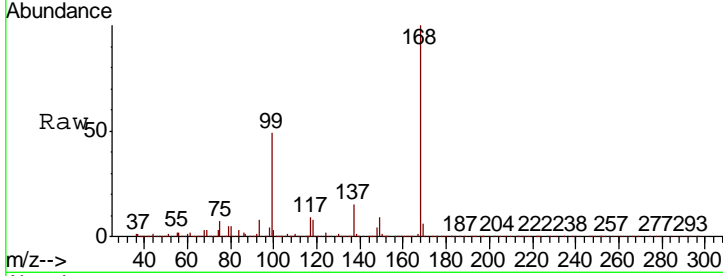




#36
 1,1-Dichloropropene
 Concen: 4.544 ug/l
 RT: 5.65 min Scan# 782
 Delta R.T. -0.13 min
 Lab File: VX014414.D
 Acq: 03 Jan 2020 20:30

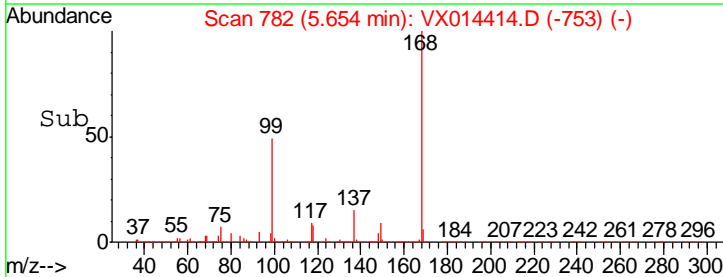
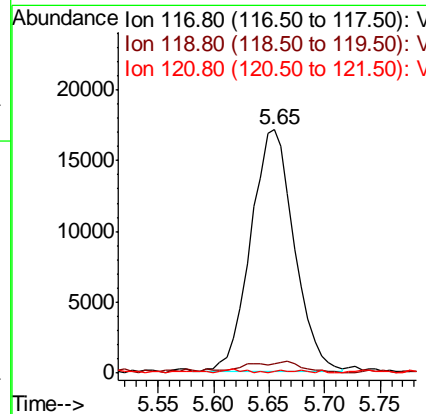
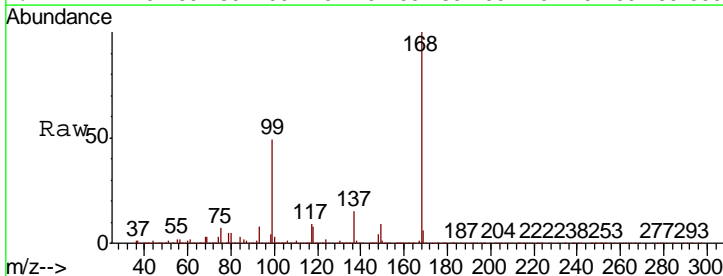
Instrument : MSVOA_X
 ClientSampled : PB125870ZHE#03

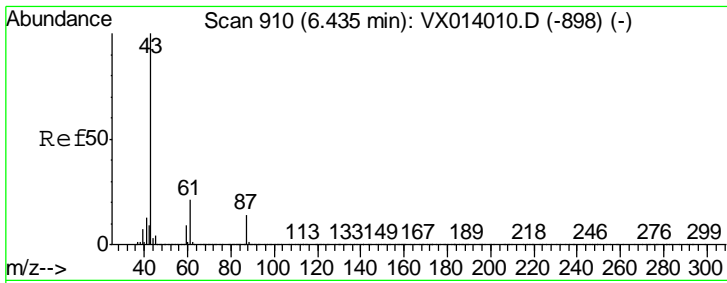
Tgt Ion	Resp	Lower	Upper
75	100		
110	9.9	18.3	54.9#
77	0.0	24.8	37.2#



#38
 Carbon Tetrachloride
 Concen: 6.513 ug/l
 RT: 5.65 min Scan# 782
 Delta R.T. -0.12 min
 Lab File: VX014414.D
 Acq: 03 Jan 2020 20:30

Tgt Ion	Resp	Lower	Upper
117	100		
119	3.5	76.2	114.4#
121	0.6	23.6	35.4#

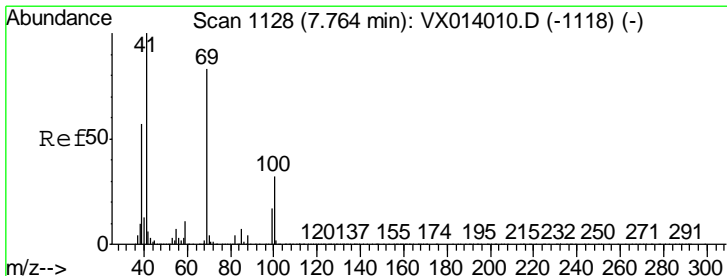
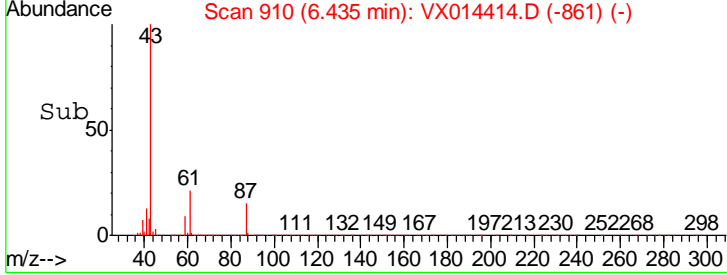
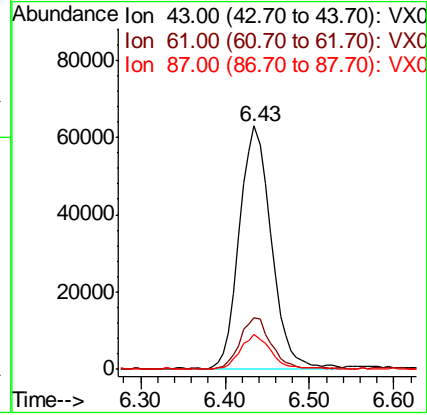
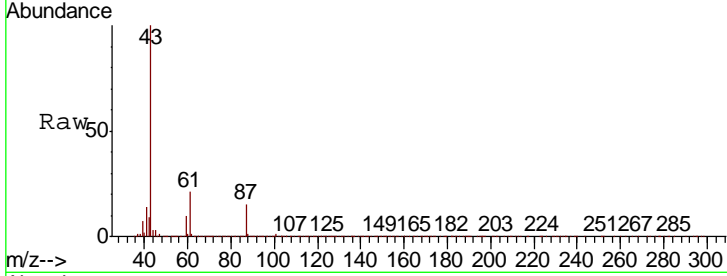




#43
 Isopropyl Acetate
 Concen: 11.349 ug/l
 RT: 6.43 min Scan# 910
 Delta R.T. 0.00 min
 Lab File: VX014414.D
 Acq: 03 Jan 2020 20:30

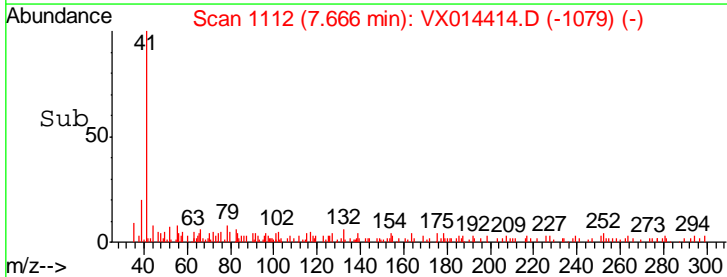
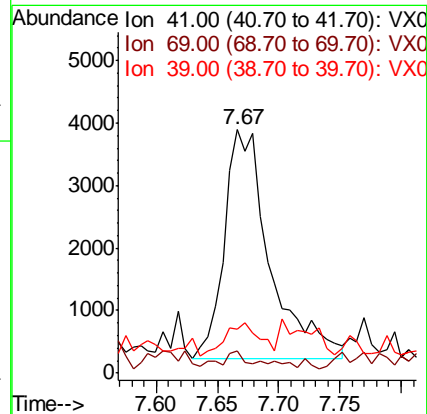
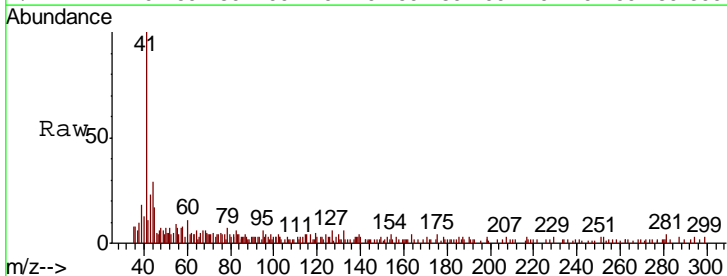
Instrument : MSVOA_X
 ClientSampleId : PB125870ZHE#03

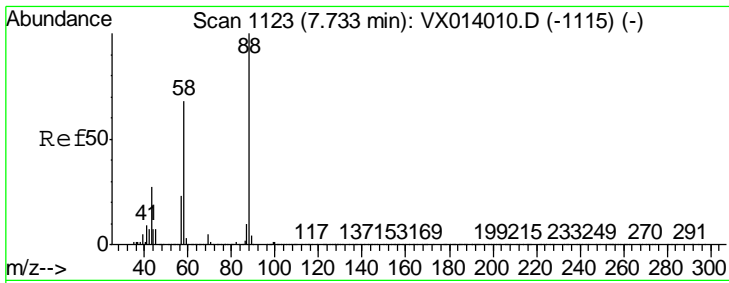
Tgt Ion	Ratio	Lower	Upper
43	100		
61	20.2	16.4	24.6
87	14.1	10.7	16.1



#48
 Methyl methacrylate
 Concen: 1.343 ug/l
 RT: 7.67 min Scan# 1112
 Delta R.T. -0.10 min
 Lab File: VX014414.D
 Acq: 03 Jan 2020 20:30

Tgt Ion	Ratio	Lower	Upper
41	100		
69	2.6	65.8	98.6#
39	0.0	44.6	67.0#

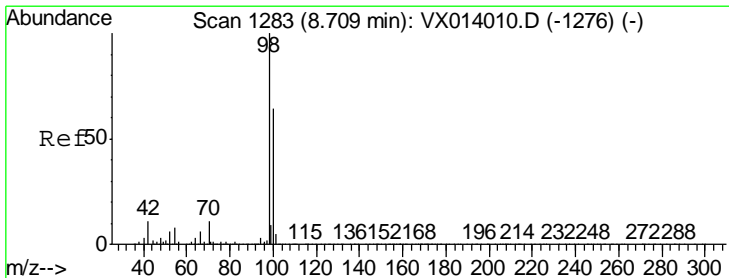
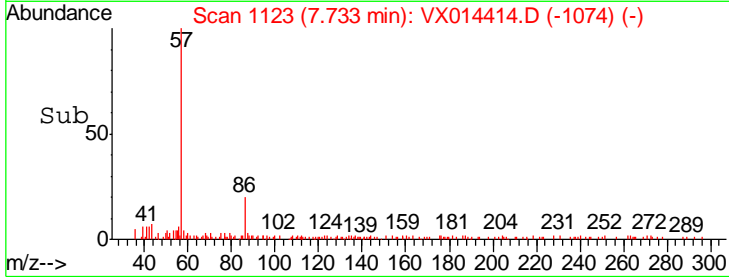
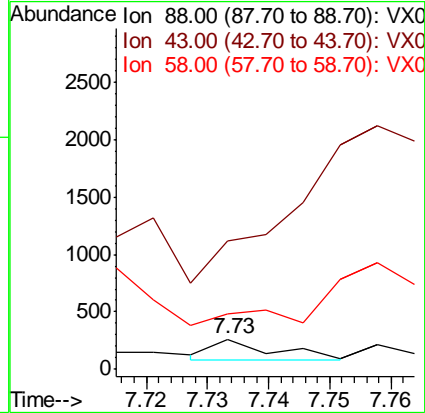
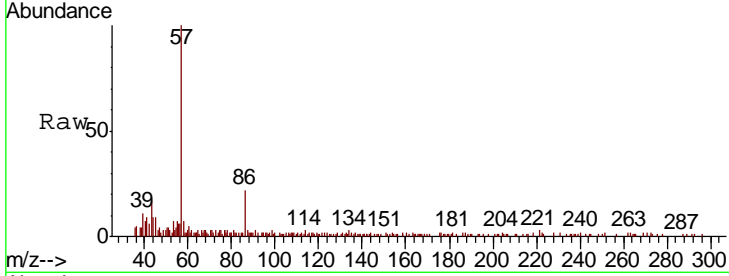




#49
 1,4-Dioxane
 Concen: 0.911 ug/l
 RT: 7.73 min Scan# 1123
 Delta R.T. 0.00 min
 Lab File: VX014414.D
 Acq: 03 Jan 2020 20:30

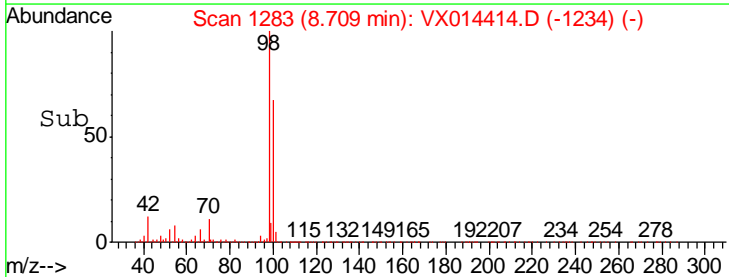
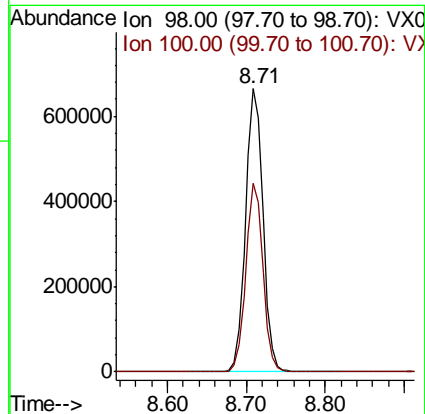
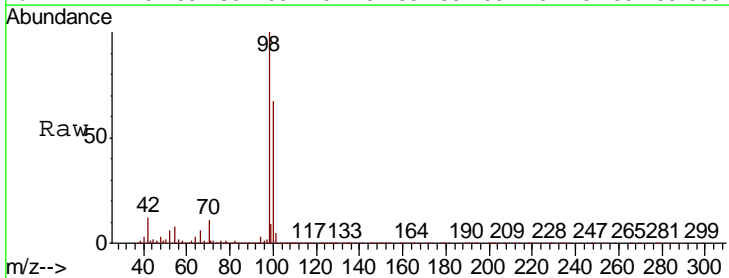
Instrument :
 MSVOA_X
 ClientSampled :
 PB125870ZHE#03

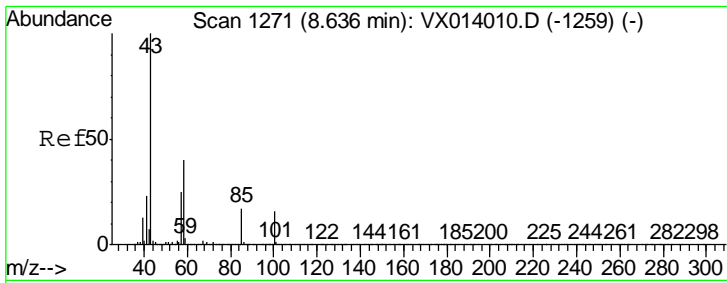
Tgt Ion	Resp	Lower	Upper
88	130		
43	0.0	26.5	39.7#
58	0.0	56.8	85.2#



#50
 Toluene-d8
 Concen: 50.237 ug/l
 RT: 8.71 min Scan# 1283
 Delta R.T. 0.00 min
 Lab File: VX014414.D
 Acq: 03 Jan 2020 20:30

Tgt Ion	Resp	Lower	Upper
98	1015115		
100	65.2	52.9	79.3

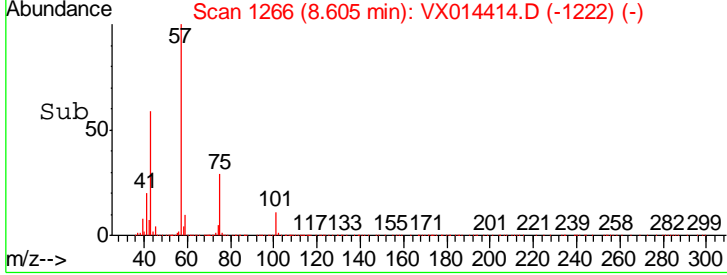
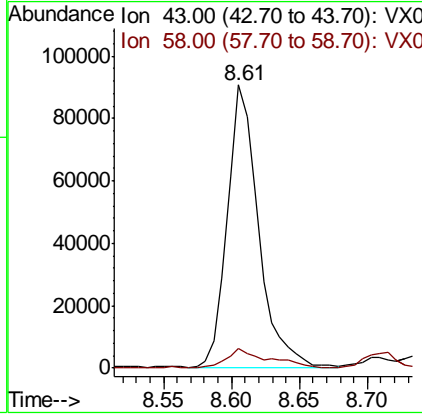
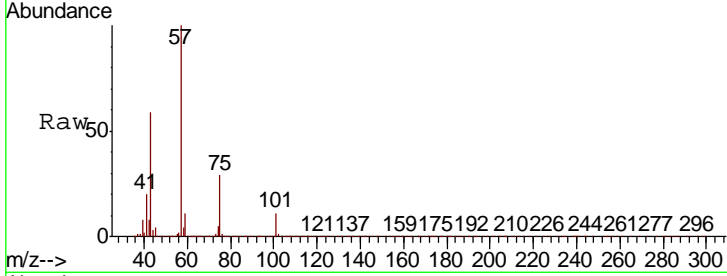




#51
 4-Methyl-2-Pentanone
 Concen: 15.999 ug/l
 RT: 8.61 min Scan# 1266
 Delta R.T. -0.03 min
 Lab File: VX014414.D
 Acq: 03 Jan 2020 20:30

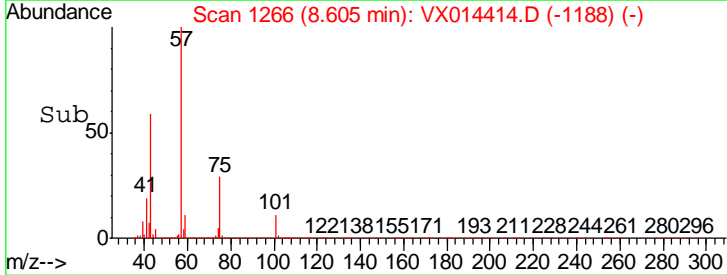
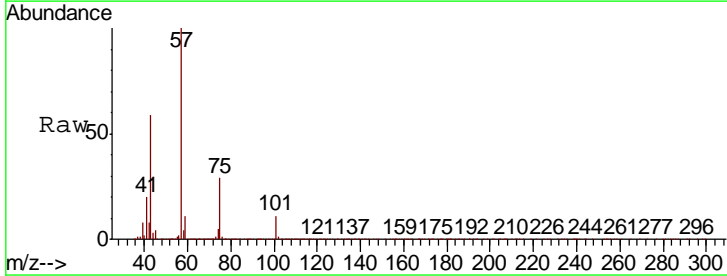
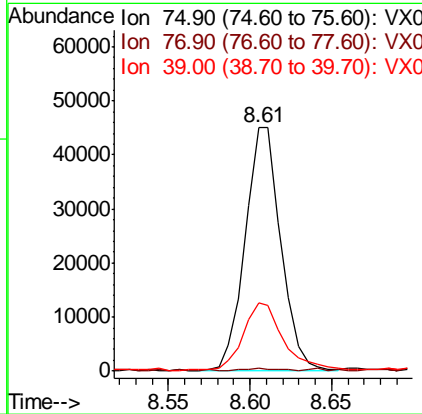
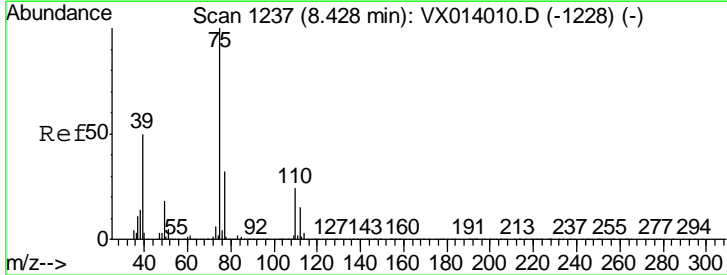
Instrument : MSVOA_X
 ClientSampled : PB125870ZHE#03

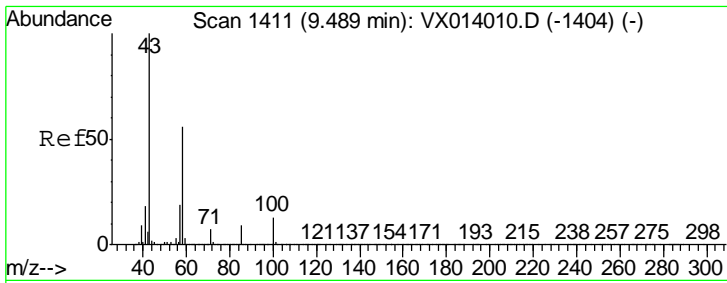
Tgt Ion	Resp	Lower	Upper
43	143853		
58	9.1	32.2	48.2#



#54
 cis-1,3-Dichloropropene
 Concen: 7.260 ug/l
 RT: 8.61 min Scan# 1266
 Delta R.T. 0.18 min
 Lab File: VX014414.D
 Acq: 03 Jan 2020 20:30

Tgt Ion	Resp	Lower	Upper
75	68224		
77	1.0	25.3	37.9#
39	27.8	39.9	59.9#

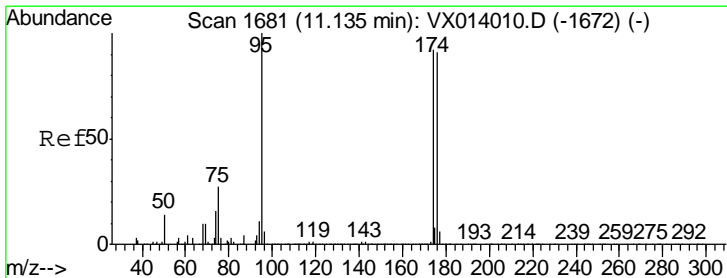
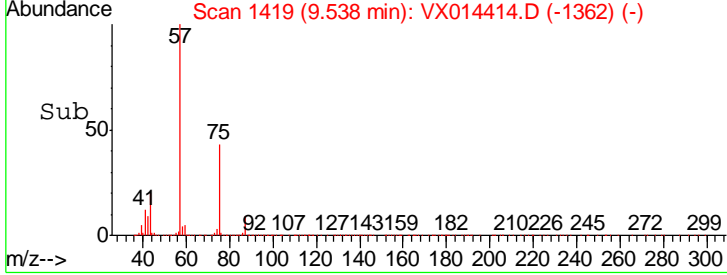
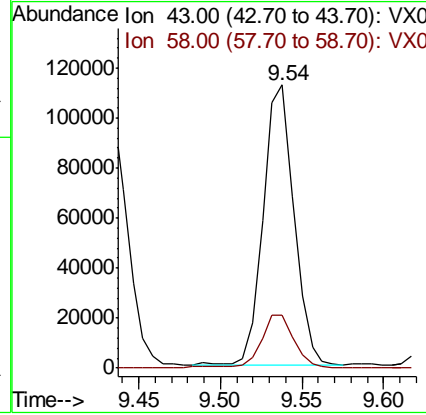
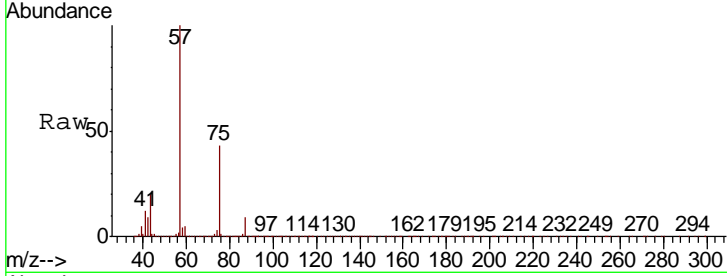




#59
 2-Hexanone
 Concen: 20.315 ug/l
 RT: 9.54 min Scan# 1419
 Delta R.T. 0.05 min
 Lab File: VX014414.D
 Acq: 03 Jan 2020 20:30

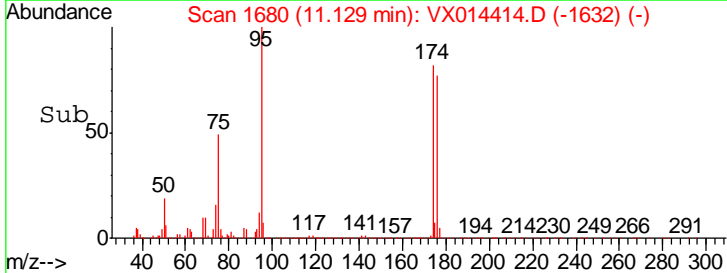
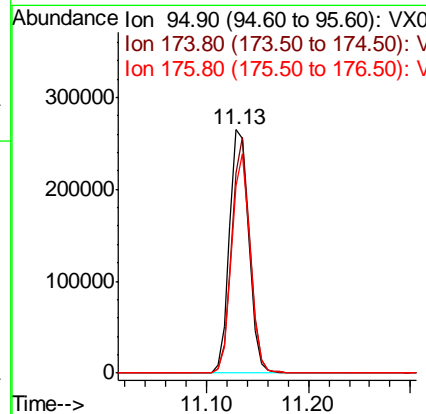
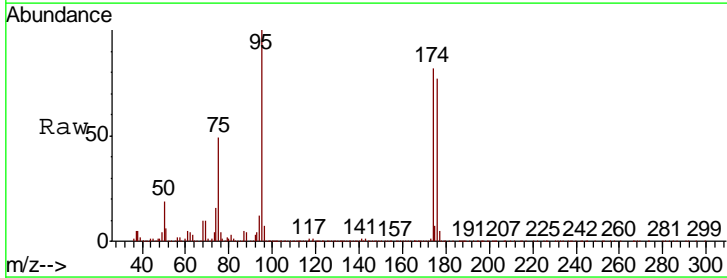
Instrument : MSVOA_X
 ClientSampleID : PB125870ZHE#03

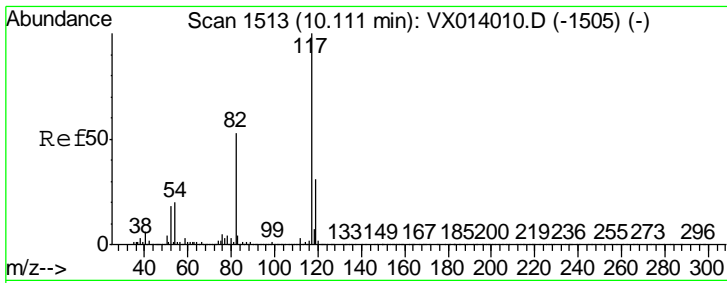
Tgt Ion	Resp	Lower	Upper
43	147043		
58	21.0	28.0	84.0#



#62
 4-Bromofluorobenzene
 Concen: 47.136 ug/l
 RT: 11.13 min Scan# 1680
 Delta R.T. -0.01 min
 Lab File: VX014414.D
 Acq: 03 Jan 2020 20:30

Tgt Ion	Resp	Lower	Upper
95	348163		
174	90.5	0.0	175.8
176	85.8	0.0	173.0

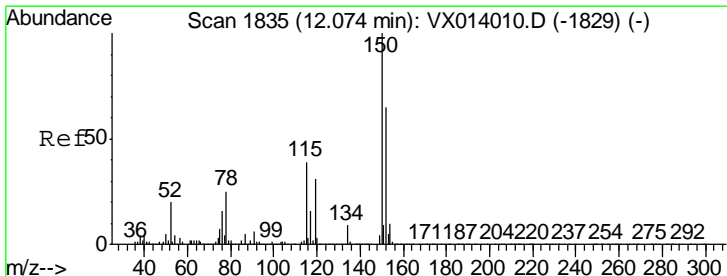
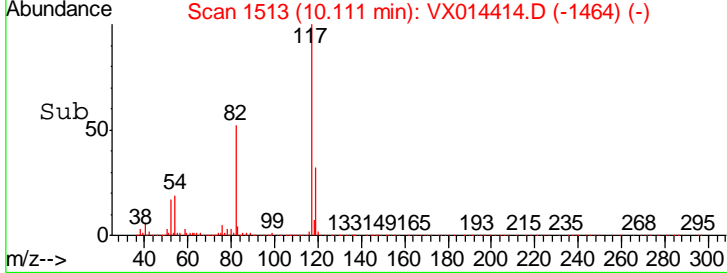
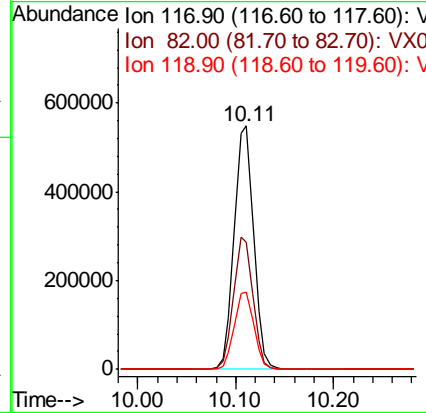
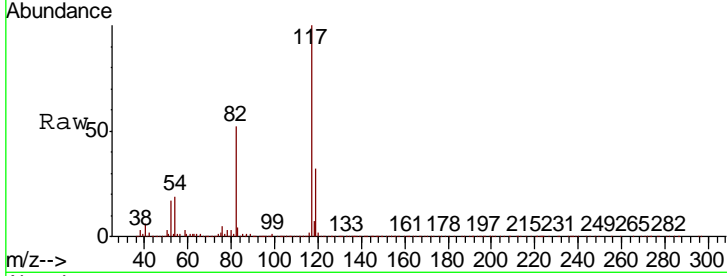




#63
 Chlorobenzene-d5
 Concen: 50.000 ug/l
 RT: 10.11 min Scan# 1513
 Delta R.T. 0.00 min
 Lab File: VX014414.D
 Acq: 03 Jan 2020 20:30

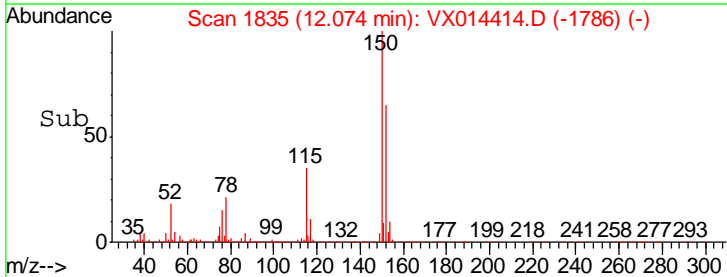
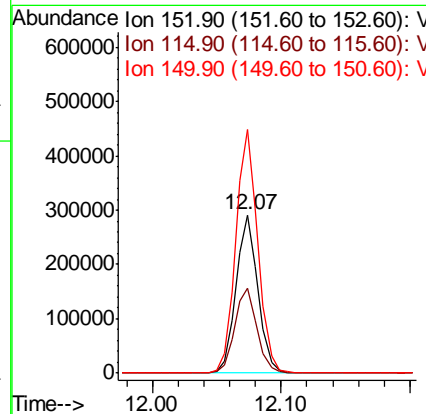
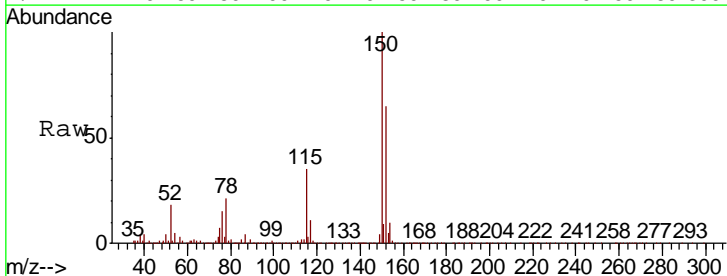
Instrument : MSVOA_X
 ClientSampled : PB125870ZHE#03

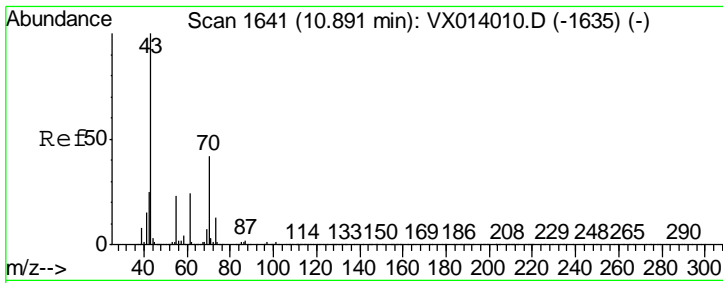
Tgt Ion	Resp	Lower	Upper
117	761747		
82	52.4	42.2	63.4
119	31.9	25.1	37.7



#72
 1,4-Dichlorobenzene-d4
 Concen: 50.000 ug/l
 RT: 12.07 min Scan# 1835
 Delta R.T. 0.00 min
 Lab File: VX014414.D
 Acq: 03 Jan 2020 20:30

Tgt Ion	Resp	Lower	Upper
152	346696		
115	54.7	38.3	114.9
150	154.3	0.0	345.4

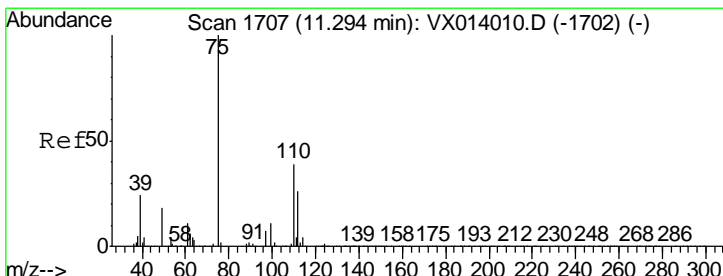
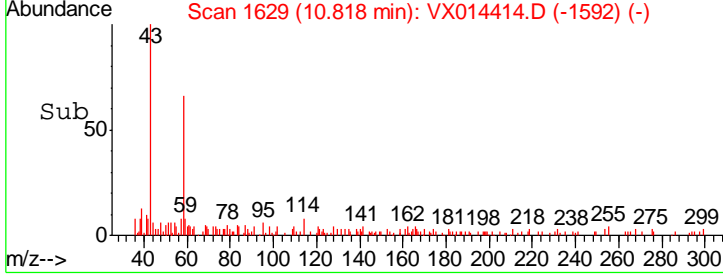
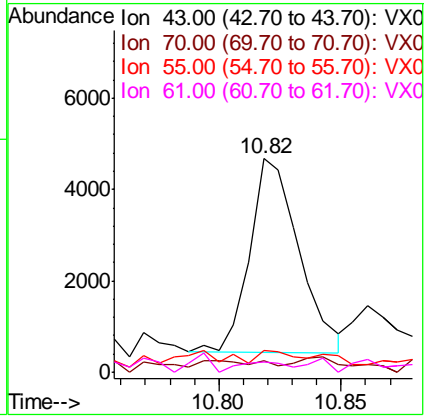
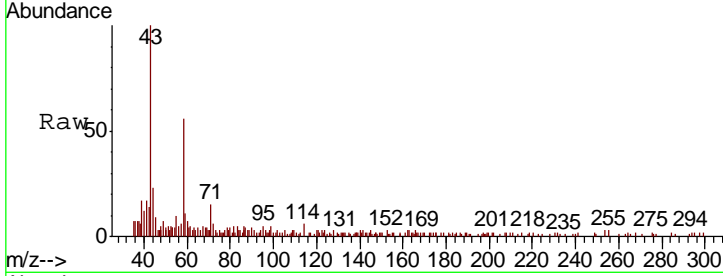




#74
 N-amyl acetate
 Concen: 0.522 ug/l
 RT: 10.82 min Scan# 1629
 Delta R.T. -0.07 min
 Lab File: VX014414.D
 Acq: 03 Jan 2020 20:30

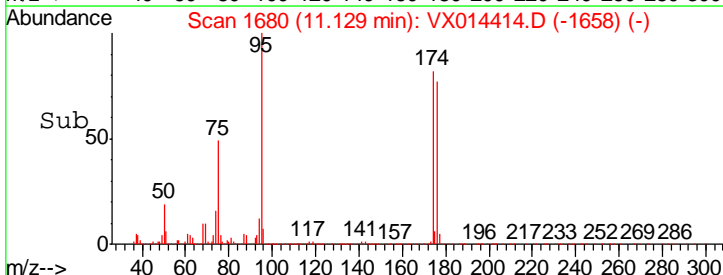
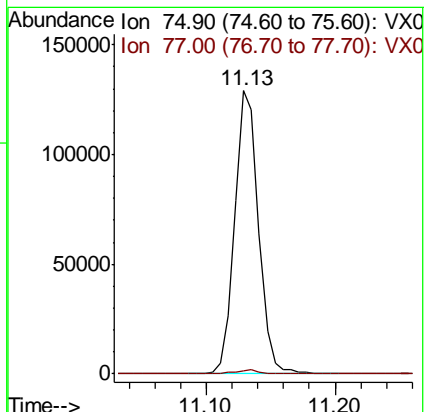
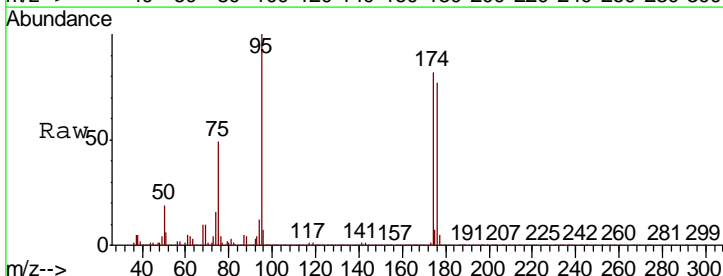
Instrument : MSVOA_X
 ClientSampled : PB125870ZHE#03

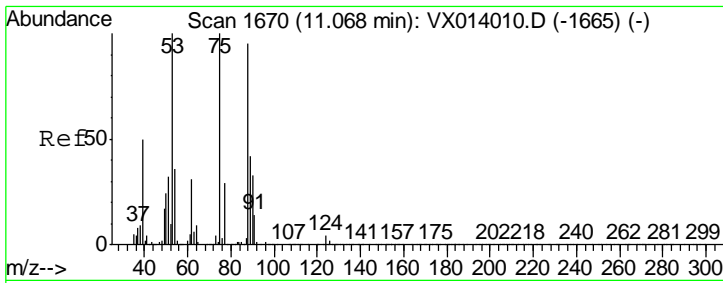
Tgt Ion	Resp	Lower	Upper
43	5972		
70	0.0	34.4	51.6#
55	5.6	19.1	28.7#
61	0.0	19.7	29.5#



#76
 1,2,3-Trichloropropane
 Concen: 22.068 ug/l
 RT: 11.13 min Scan# 1680
 Delta R.T. -0.16 min
 Lab File: VX014414.D
 Acq: 03 Jan 2020 20:30

Tgt Ion	Resp	Lower	Upper
75	166096		
77	1.8	19.3	57.8#





#81
 trans-1,4-Dichloro-2-butene
 Concen: 62.286 ug/l
 RT: 11.13 min Scan# 1680
 Delta R.T. 0.06 min
 Lab File: VX014414.D
 Acq: 03 Jan 2020 20:30

Instrument : MSVOA_X
 ClientSampleId : PB125870ZHE#03

Tot Ion	Resp	Lower	Upper
75	166096		
53	0.2	76.7	115.1#
89	0.1	34.6	51.8#

