

Data Path : Z:\VOASRV\HPCHEM1\MSVOA_X\DATA\VX010320\
 Data File : VX014412.D
 Acq On : 03 Jan 2020 19:43
 Operator : JC/SP
 Sample : PB125870ZHE#01
 Misc : 5.0mL/MSVOA_X/WATER
 ALS Vial : 23 Sample Multiplier: 1

Instrument :
 MSVOA_X
 ClientSampleId :
 PB125870ZHE#01

Quant Time: Jan 06 03:50:37 2020
 Quant Method : Z:\VOASRV\HPCHEM1\MSVOA_X\METHOD\82X121319W.M
 Quant Title : SW846 8260
 QLast Update : Tue Dec 17 03:01:07 2019
 Response via : Initial Calibration

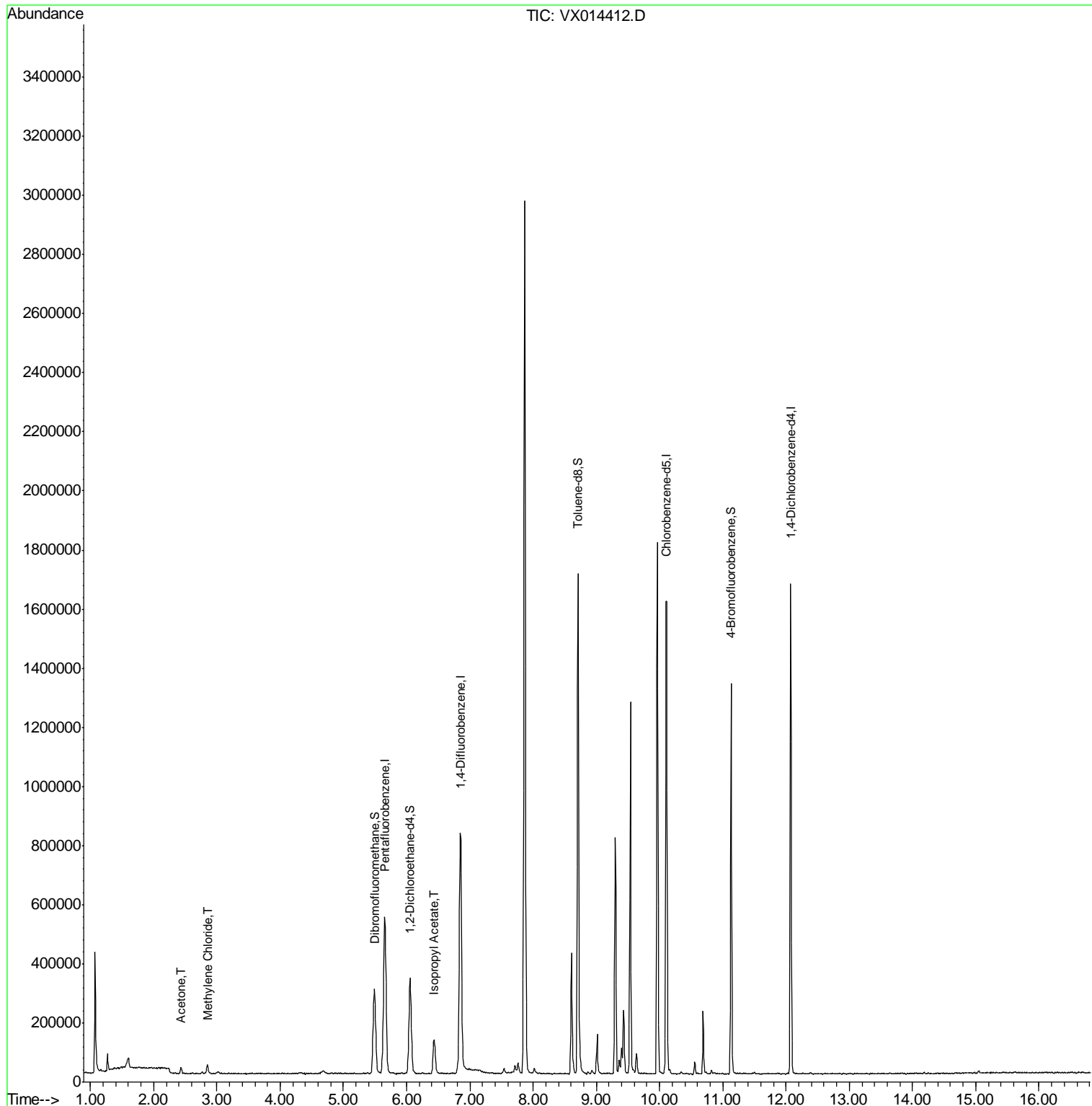
Internal Standards	R.T.	QIon	Response	Conc	Units	Dev(Min)
1) Pentafluorobenzene	5.65	168	562641	50.00	ug/l	0.00
34) 1,4-Difluorobenzene	6.85	114	853711	50.00	ug/l	0.00
63) Chlorobenzene-d5	10.11	117	768876	50.00	ug/l	0.00
72) 1,4-Dichlorobenzene-d4	12.07	152	351371	50.00	ug/l	0.00
System Monitoring Compounds						
33) 1,2-Dichloroethane-d4	6.05	65	300711	47.16	ug/l	0.00
Spiked Amount	50.000		Recovery	=	94.32%	
35) Dibromofluoromethane	5.49	113	249980	48.17	ug/l	0.00
Spiked Amount	50.000		Recovery	=	96.34%	
50) Toluene-d8	8.71	98	1012739	50.12	ug/l	0.00
Spiked Amount	50.000		Recovery	=	100.24%	
62) 4-Bromofluorobenzene	11.13	95	344708	46.67	ug/l	0.00
Spiked Amount	50.000		Recovery	=	93.34%	
Target Compounds						
16) Acetone	2.43	43	22203	5.363	ug/l	94
20) Methylene Chloride	2.85	84	15877	2.435	ug/l	91
43) Isopropyl Acetate	6.43	43	164366	11.482	ug/l	99

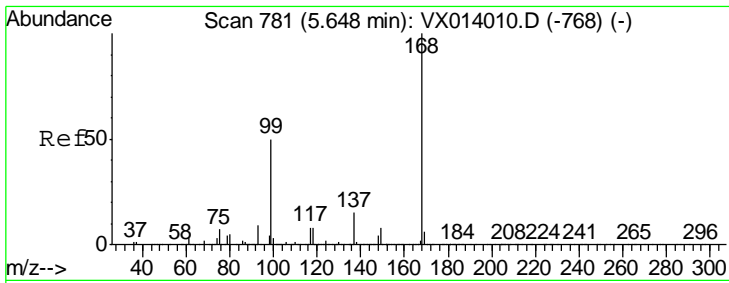
(#) = qualifier out of range (m) = manual integration (+) = signals summed

Data Path : Z:\VOASRV\HPCHEM1\MSVOA_X\DATA\VX010320\
 Data File : VX014412.D
 Acq On : 03 Jan 2020 19:43
 Operator : JC/SP
 Sample : PB125870ZHE#01
 Misc : 5.0mL/MSVOA_X/WATER
 ALS Vial : 23 Sample Multiplier: 1

Instrument :
 MSVOA_X
 ClientSampleId :
 PB125870ZHE#01

Quant Time: Jan 06 03:50:37 2020
 Quant Method : Z:\VOASRV\HPCHEM1\MSVOA_X\METHOD\82X121319W.M
 Quant Title : SW846 8260
 QLast Update : Tue Dec 17 03:01:07 2019
 Response via : Initial Calibration

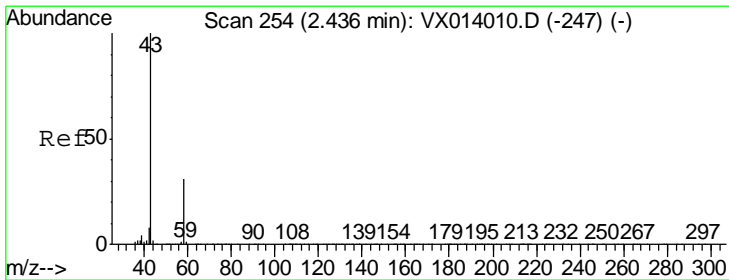
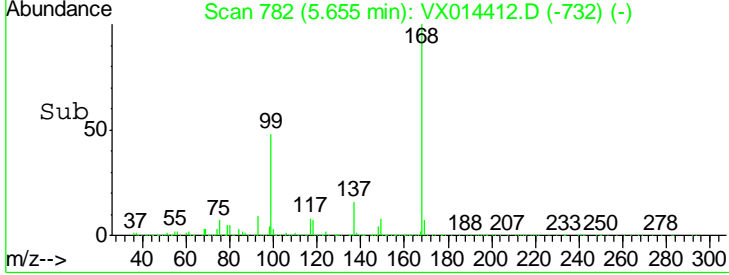
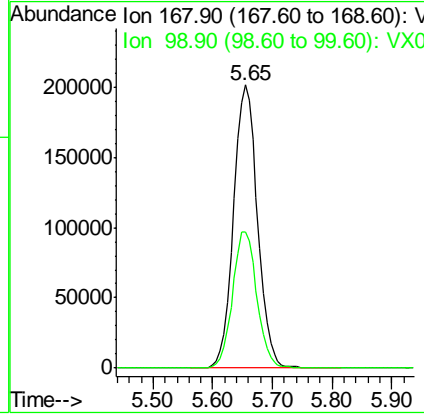
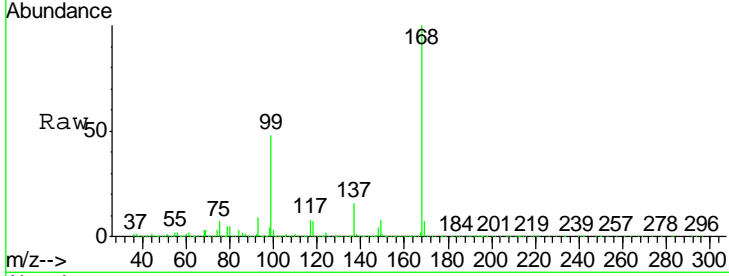




#1
 Pentafluorobenzene
 Concen: 50.000 ug/l
 RT: 5.65 min Scan# 782
 Delta R.T. 0.01 min
 Lab File: VX014412.D
 Acq: 03 Jan 2020 19:43

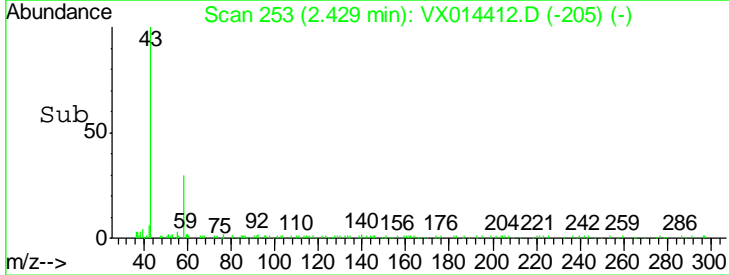
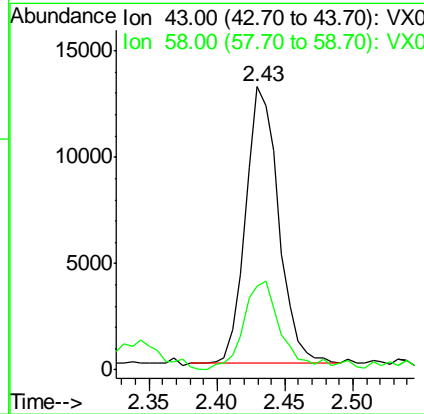
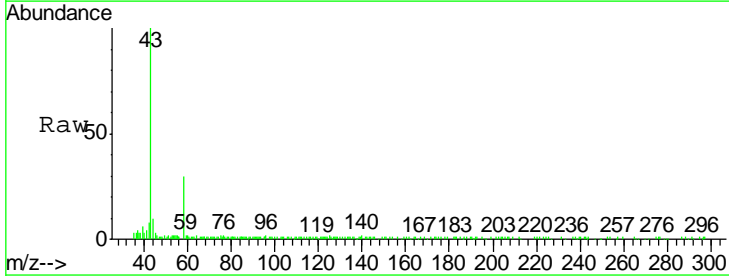
Instrument : MSVOA_X
 ClientSampled : PB125870ZHE#01

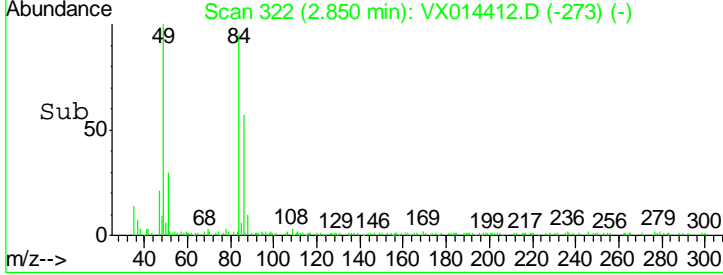
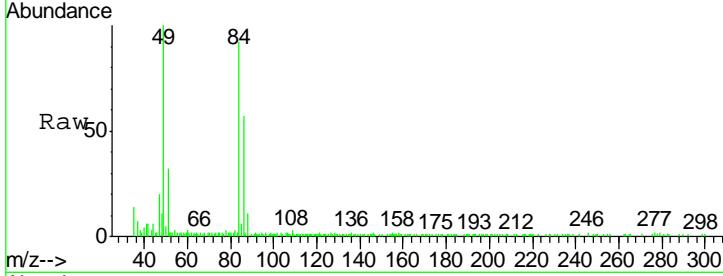
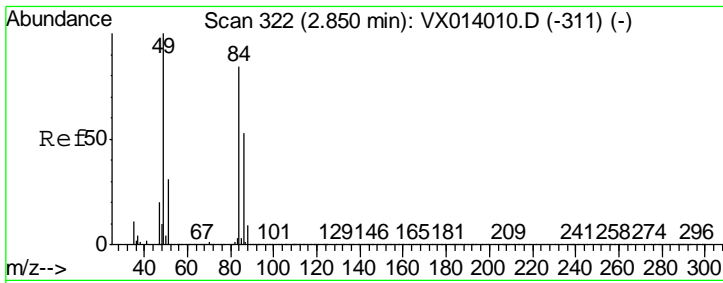
Tgt Ion	Resp	Lower	Upper
168	100		
99	48.0	40.3	60.5



#16
 Acetone
 Concen: 5.363 ug/l
 RT: 2.43 min Scan# 253
 Delta R.T. -0.01 min
 Lab File: VX014412.D
 Acq: 03 Jan 2020 19:43

Tgt Ion	Resp	Lower	Upper
43	100		
58	28.0	24.9	37.3

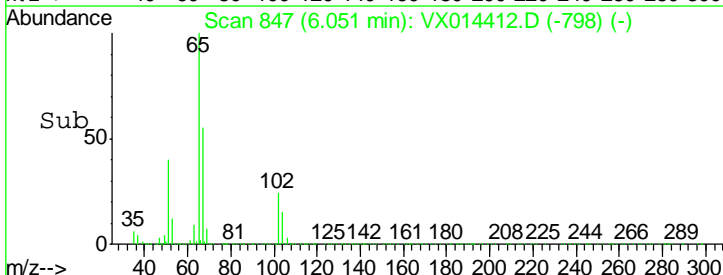
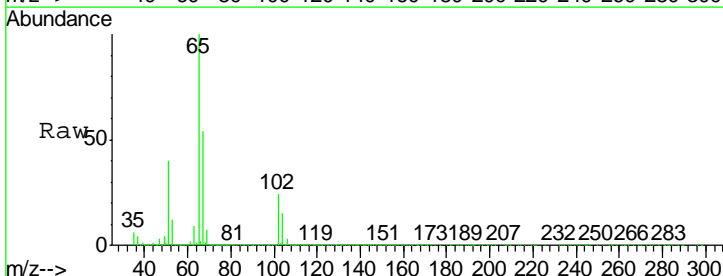
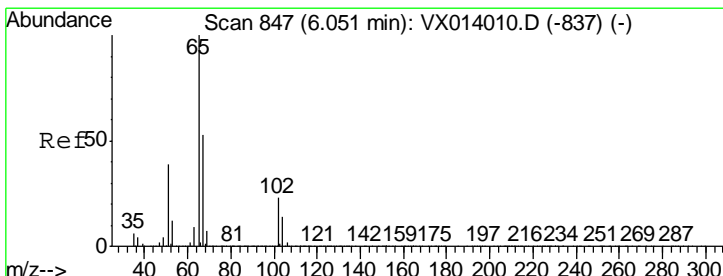
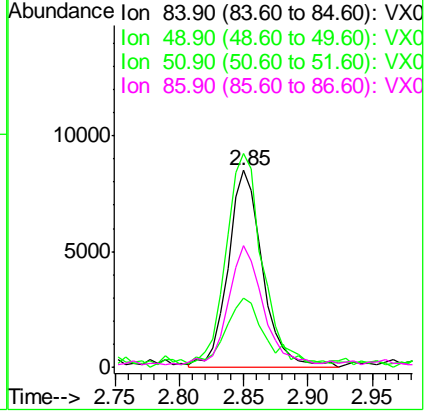




#20
 Methylene Chloride
 Concen: 2.435 ug/l
 RT: 2.85 min Scan# 322
 Delta R.T. 0.00 min
 Lab File: VX014412.D
 Acq: 03 Jan 2020 19:43

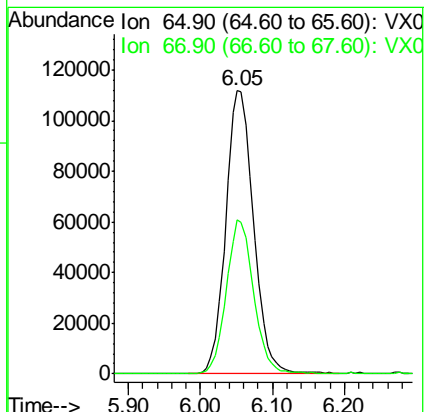
Instrument : MSVOA_X
 ClientSampled : PB125870ZHE#01

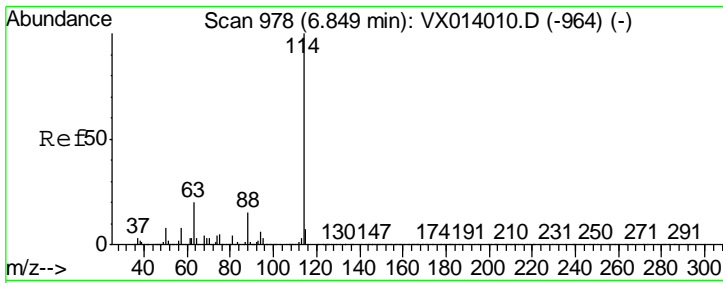
Tgt Ion	Resp	Lower	Upper
84	15877		
84	100		
49	106.6	95.8	143.6
51	32.7	29.8	44.8
86	59.6	50.8	76.2



#33
 1,2-Dichloroethane-d4
 Concen: 47.157 ug/l
 RT: 6.05 min Scan# 847
 Delta R.T. 0.00 min
 Lab File: VX014412.D
 Acq: 03 Jan 2020 19:43

Tgt Ion	Resp	Lower	Upper
65	300711		
65	100		
67	52.9	0.0	106.4

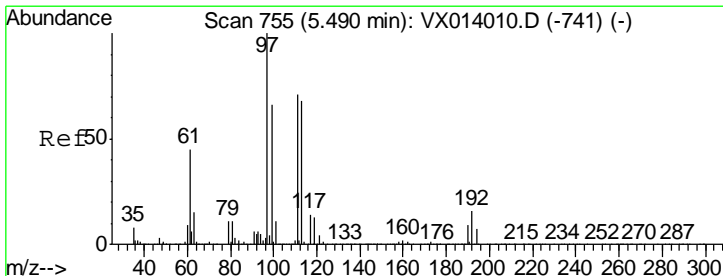
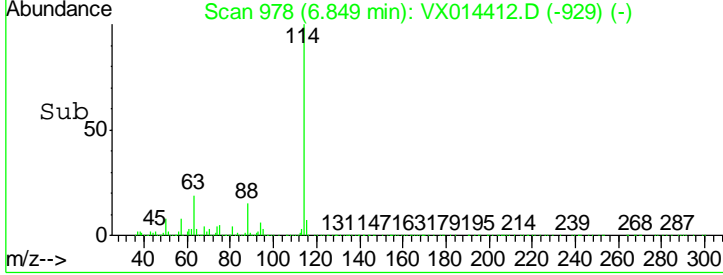
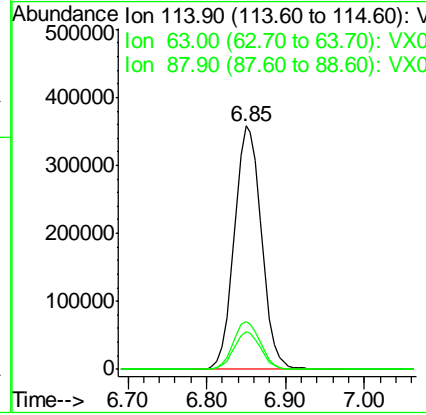
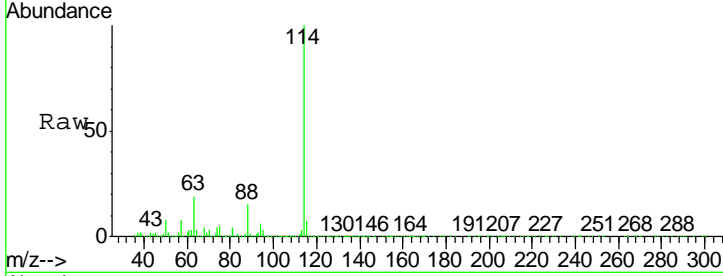




#34
 1,4-Difluorobenzene
 Concen: 50.000 ug/l
 RT: 6.85 min Scan# 978
 Delta R.T. 0.00 min
 Lab File: VX014412.D
 Acq: 03 Jan 2020 19:43

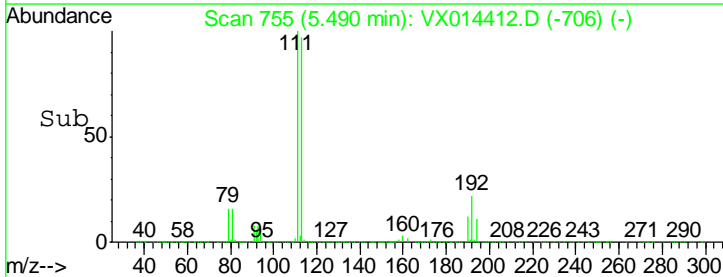
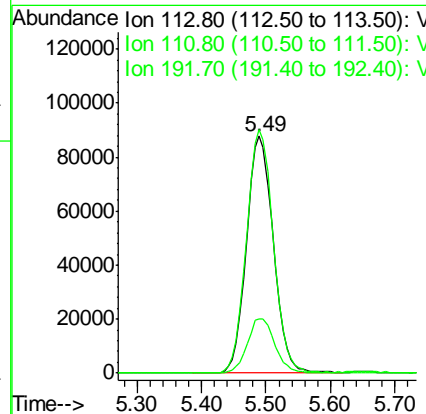
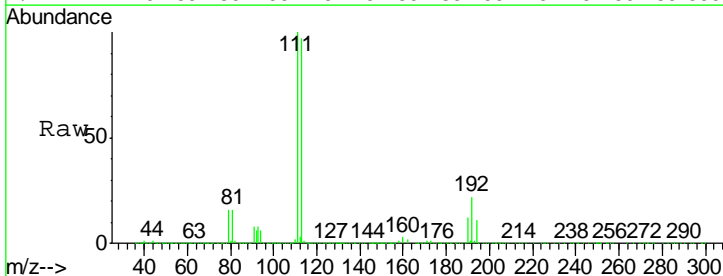
Instrument : MSVOA_X
 ClientSampleID : PB125870ZHE#01

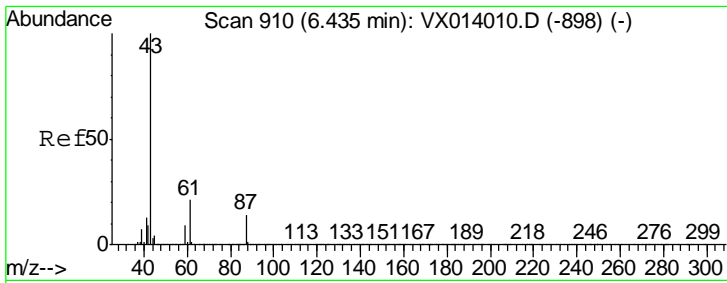
Tgt Ion	Resp	Lower	Upper
114	853711		
63	19.4	0.0	40.8
88	15.2	0.0	30.4



#35
 Dibromofluoromethane
 Concen: 48.169 ug/l
 RT: 5.49 min Scan# 755
 Delta R.T. 0.00 min
 Lab File: VX014412.D
 Acq: 03 Jan 2020 19:43

Tgt Ion	Resp	Lower	Upper
113	249980		
111	102.7	82.0	123.0
192	23.1	19.3	28.9

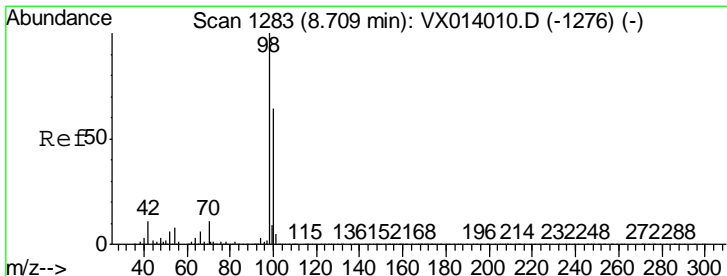
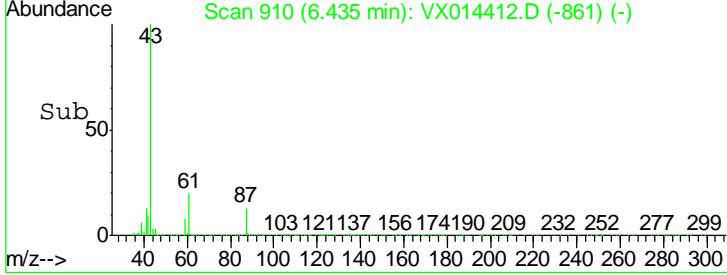
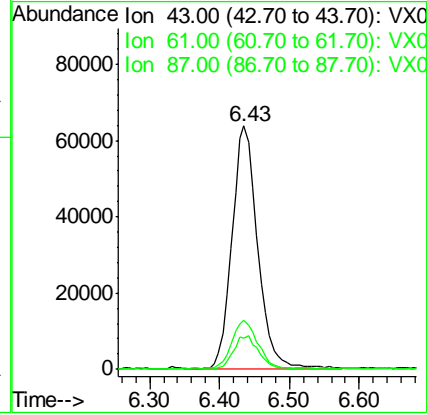
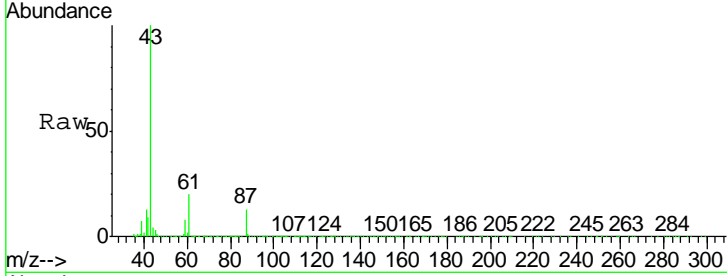




#43
 Isopropyl Acetate
 Concen: 11.482 ug/l
 RT: 6.43 min Scan# 910
 Delta R.T. 0.00 min
 Lab File: VX014412.D
 Acq: 03 Jan 2020 19:43

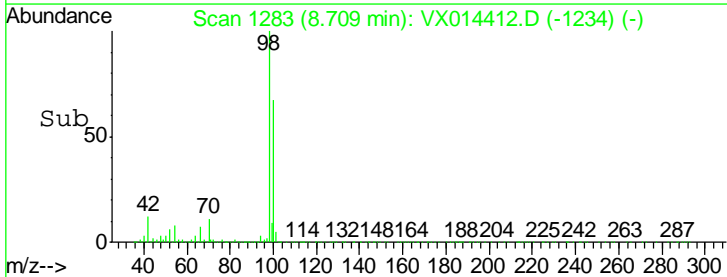
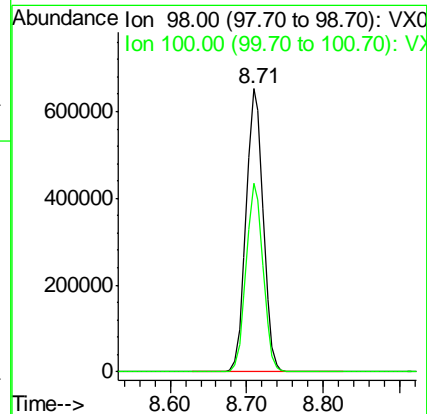
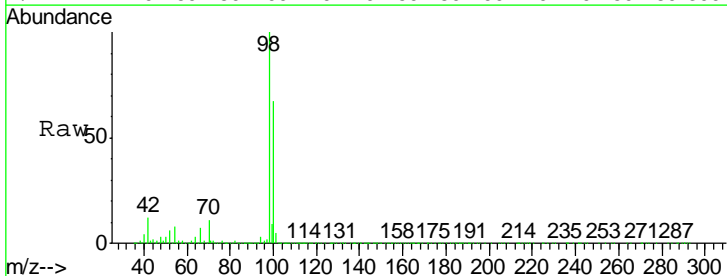
Instrument : MSVOA_X
 ClientSampled : PB125870ZHE#01

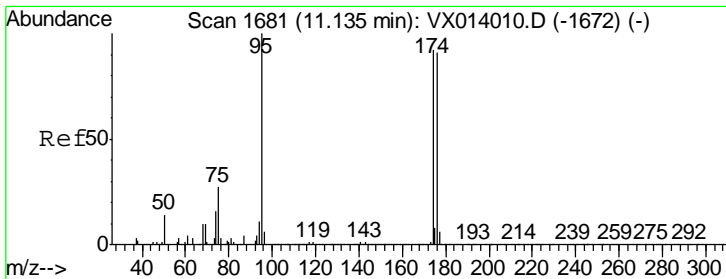
Tgt Ion	Resp	Lower	Upper
43	164366		
61	20.7	16.4	24.6
87	13.8	10.7	16.1



#50
 Toluene-d8
 Concen: 50.125 ug/l
 RT: 8.71 min Scan# 1283
 Delta R.T. 0.00 min
 Lab File: VX014412.D
 Acq: 03 Jan 2020 19:43

Tgt Ion	Resp	Lower	Upper
98	1012739		
100	65.8	52.9	79.3

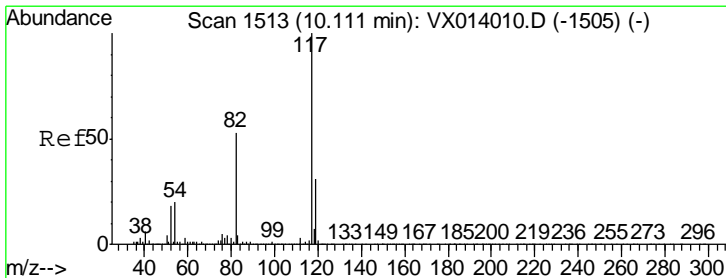
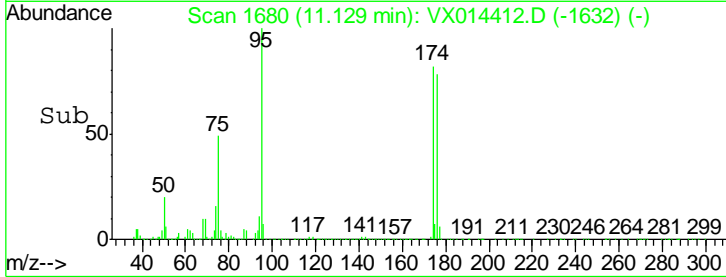
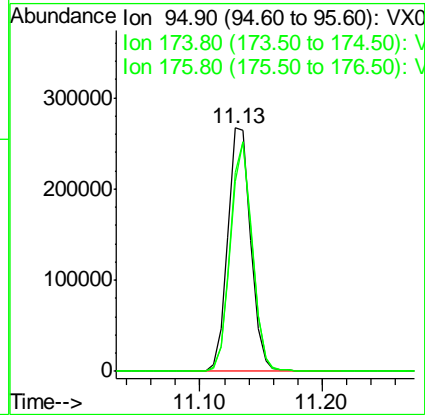
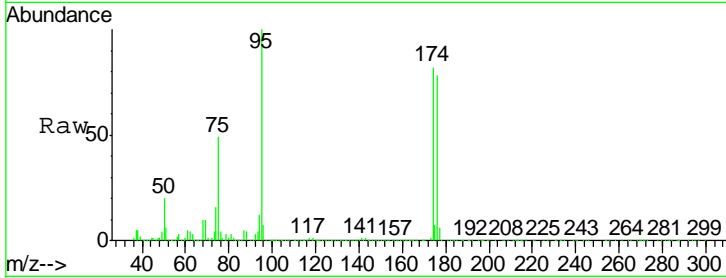




#62
 4-Bromofluorobenzene
 Concen: 46.673 ug/l
 RT: 11.13 min Scan# 1680
 Delta R.T. -0.01 min
 Lab File: VX014412.D
 Acq: 03 Jan 2020 19:43

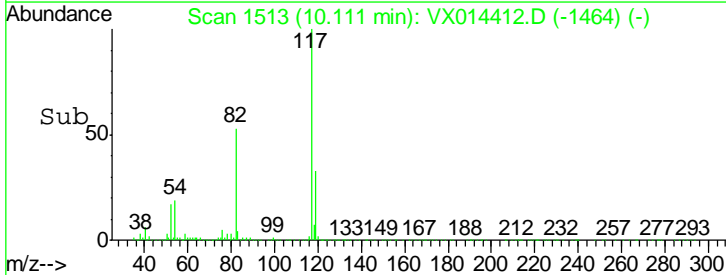
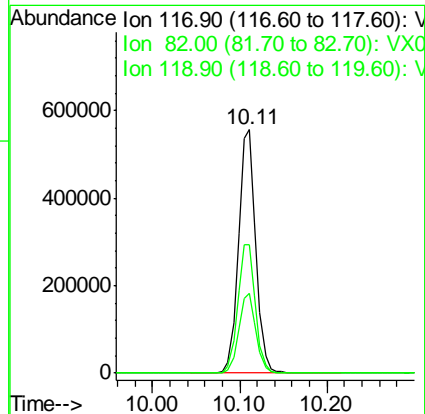
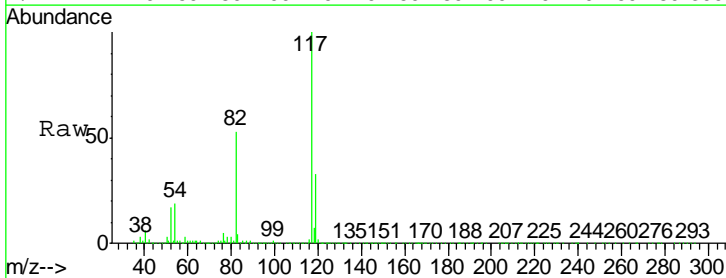
Instrument :
 MSVOA_X
 ClientSampled :
 PB125870ZHE#01

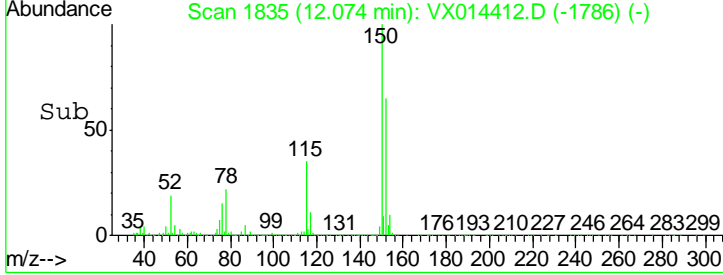
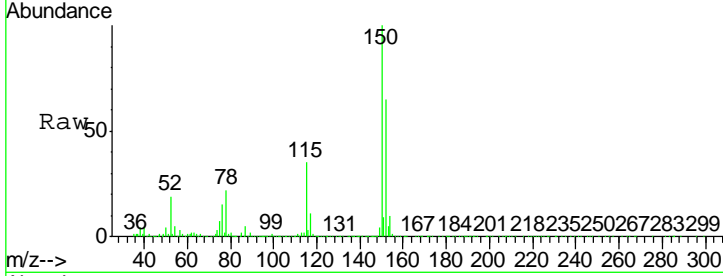
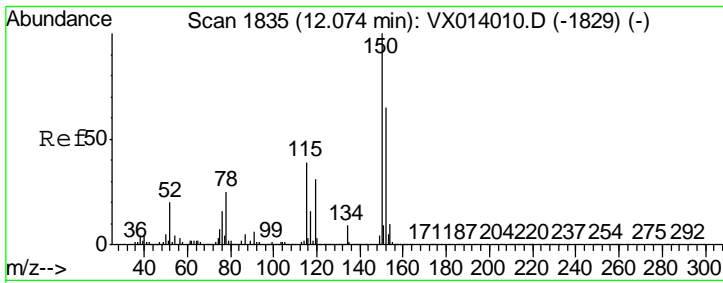
Tgt Ion	Resp	Lower	Upper
95	100		
174	90.6	0.0	175.8
176	88.6	0.0	173.0



#63
 Chlorobenzene-d5
 Concen: 50.000 ug/l
 RT: 10.11 min Scan# 1513
 Delta R.T. 0.00 min
 Lab File: VX014412.D
 Acq: 03 Jan 2020 19:43

Tgt Ion	Resp	Lower	Upper
117	100		
82	52.9	42.2	63.4
119	32.7	25.1	37.7





#72
 1,4-Dichlorobenzene-d4
 Concen: 50.000 ug/l
 RT: 12.07 min Scan# 1835
 Delta R.T. 0.00 min
 Lab File: VX014412.D
 Acq: 03 Jan 2020 19:43

Instrument : MSVOA_X
 ClientSampleId : PB125870ZHE#01

Tgt Ion	Resp	Lower	Upper
152	100		
115	54.3	38.3	114.9
150	156.4	0.0	345.4

