

Data Path : Z:\voasrv\HPCHEM1\MSVOA_X\Data\VX010322\
 Data File : VX026228.D
 Acq On : 03 Jan 2022 18:19
 Operator : JC/MD
 Sample : M5328-07 50X
 Misc : 5.0mL/MSVOA_X/WATER
 ALS Vial : 20 Sample Multiplier: 1

Instrument :
 MSVOA_X
 ClientSampleId :
 40440

Integration Parameters: RTEINT.P

Integrator: RTE
 Smoothing : ON
 Sampling : 1
 Start Thrs : 0.2
 Stop Thrs : 0

Filtering: 5
 Min Area: 3 % of largest Peak
 Max Peaks: 100
 Peak Location: TOP

If leading or trailing edge < 100 prefer < Baseline drop else tangent >
 Peak separation: 5

Method : Z:\voasrv\HPCHEM1\MSVOA_X\Method\82X123021W.M
 Title : SW846 8260

Signal : TIC: VX026228.D\data.ms

peak #	R.T. min	first scan	max scan	last scan	PK TY	peak height	corr. area	corr. % max.	% of total
1	2.057	150	159	177	rBV	941391	1511242	100.00%	18.384%
2	2.380	206	212	219	rBV	9486	15863	1.05%	0.193%
3	3.843	446	452	467	rBV3	8774	25202	1.67%	0.307%
4	4.562	561	570	581	rBV	6476	19376	1.28%	0.236%
5	5.391	692	706	721	rBV	127735	372107	24.62%	4.527%
6	5.556	721	733	748	rVV	216364	607210	40.18%	7.387%
7	5.958	787	799	809	rBV	150376	401093	26.54%	4.879%
8	6.763	921	931	945	rBV	349946	832810	55.11%	10.131%
9	8.653	1234	1241	1248	rBV	670408	1088200	72.01%	13.238%
10	8.720	1248	1252	1258	rVB	34924	54014	3.57%	0.657%
11	10.055	1465	1471	1483	rBV	700604	940734	62.25%	11.444%
12	10.299	1502	1511	1518	rBV	30544	43304	2.87%	0.527%
13	10.640	1562	1567	1572	rBV	23441	31682	2.10%	0.385%
14	11.079	1634	1639	1651	rBV	541795	695907	46.05%	8.466%
15	11.378	1684	1688	1696	rBV	19238	35534	2.35%	0.432%
16	11.616	1722	1727	1733	rBV	13558	19010	1.26%	0.231%
17	11.750	1745	1749	1759	rVB	39318	51096	3.38%	0.622%
18	12.024	1788	1794	1800	rBV	680300	826212	54.67%	10.051%
19	12.085	1800	1804	1811	rVB	20474	31113	2.06%	0.378%
20	12.219	1821	1826	1828	rBV	49842	64385	4.26%	0.783%
21	12.244	1828	1830	1833	rVB	17543	19659	1.30%	0.239%
22	12.317	1838	1842	1848	rVB4	15829	26373	1.75%	0.321%
23	12.427	1852	1860	1863	rBV	19860	25732	1.70%	0.313%
24	12.701	1899	1905	1907	rBV	9998	15702	1.04%	0.191%
25	12.920	1933	1941	1945	rBV3	7794	15816	1.05%	0.192%
26	12.963	1945	1948	1954	rVB	14796	22486	1.49%	0.274%
27	13.170	1974	1982	1986	rVB3	16242	25522	1.69%	0.310%
28	13.268	1992	1998	2000	rBV	24743	38272	2.53%	0.466%
29	13.292	2000	2002	2007	rVB2	41273	47887	3.17%	0.583%
30	13.420	2020	2023	2032	rVB	32725	47706	3.16%	0.580%
31	13.853	2088	2094	2099	rVB4	15546	27049	1.79%	0.329%
32	13.926	2100	2106	2111	rBV4	13754	21879	1.45%	0.266%
33	14.042	2121	2125	2128	rBV	22263	25002	1.65%	0.304%
34	14.231	2148	2156	2161	rVB	36440	59559	3.94%	0.725%
35	14.481	2192	2197	2207	rBV3	25957	41108	2.72%	0.500%
36	14.615	2215	2219	2221	rBV2	20738	26362	1.74%	0.321%

Data Path : Z:\voasrv\HPCHEM1\MSVOA_X\Data\VX010322\
Data File : VX026228.D
Acq On : 03 Jan 2022 18:19
Operator : JC/MD
Sample : M5328-07 50X
Misc : 5.0mL/MSVOA_X/WATER
ALS Vial : 20 Sample Multiplier: 1

Instrument :
MSVOA_X
ClientSampleId :
40440

Integration Parameters: RTEINT.P
Integrator: RTE
Smoothing : ON Filtering: 5
Sampling : 1 Min Area: 3 % of largest Peak
Start Thrs: 0.2 Max Peaks: 100
Stop Thrs : 0 Peak Location: TOP

If leading or trailing edge < 100 prefer < Baseline drop else tangent >
Peak separation: 5

Method : Z:\voasrv\HPCHEM1\MSVOA_X\Method\82X123021W.M
Title : SW846 8260

37	14.756	2239	2242	2245	rBV	20317	21016	1.39%	0.256%
38	15.182	2308	2312	2315	rBV2	11965	18009	1.19%	0.219%
39	15.493	2357	2363	2367	rBV3	19125	29037	1.92%	0.353%

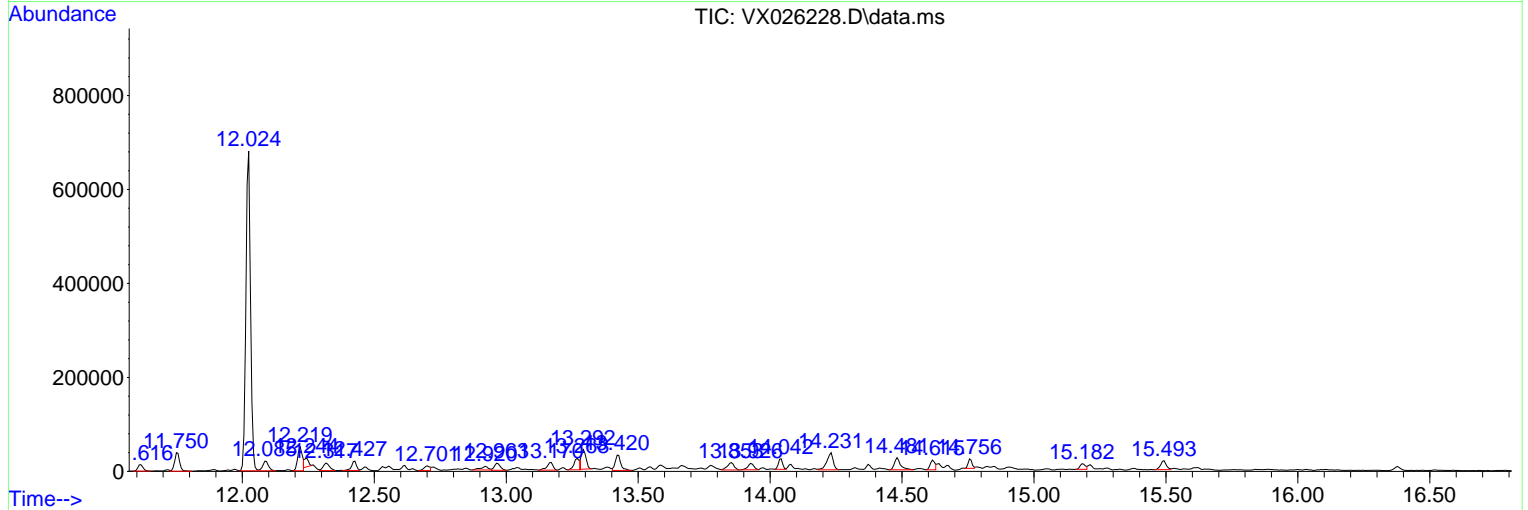
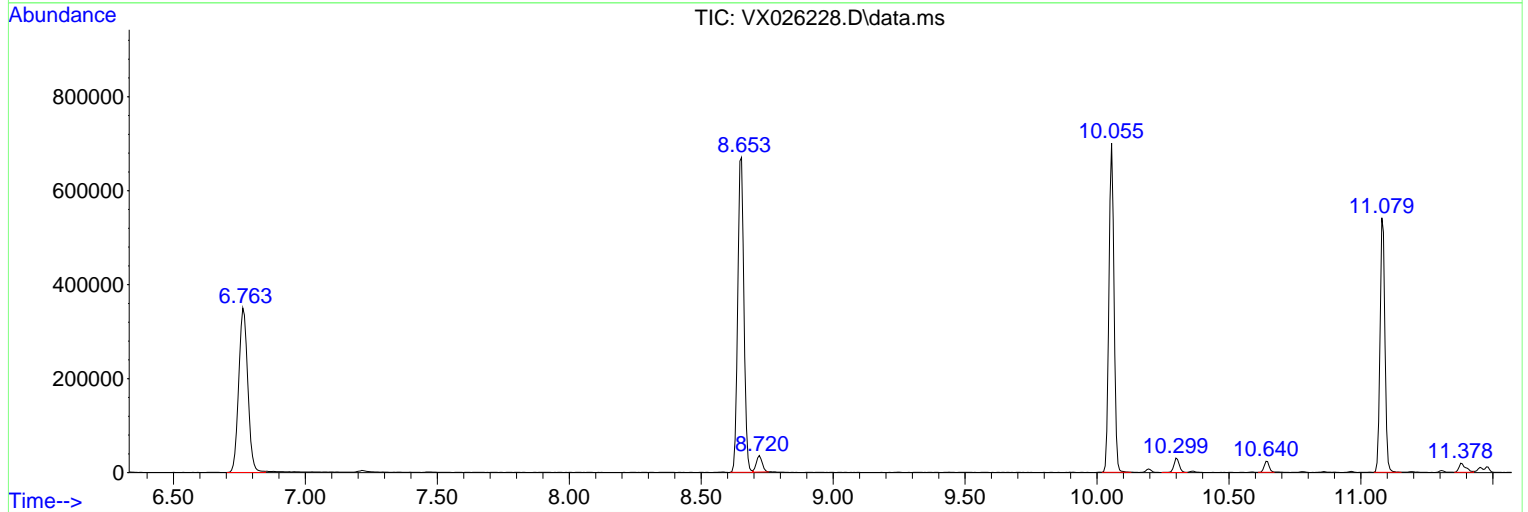
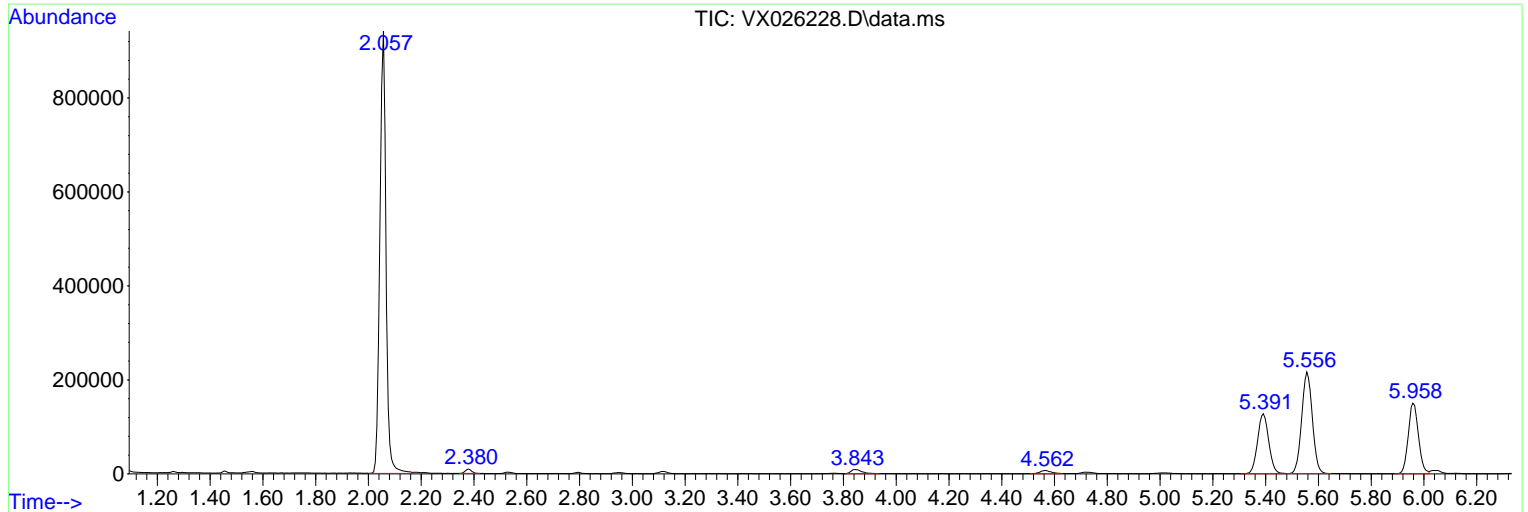
Sum of corrected areas: 8220270

Data Path : Z:\voasrv\HPCHEM1\MSVOA_X\Data\VX010322\
 Data File : VX026228.D
 Acq On : 03 Jan 2022 18:19
 Operator : JC/MD
 Sample : M5328-07 50X
 Misc : 5.0mL/MSVOA_X/WATER
 ALS Vial : 20 Sample Multiplier: 1

Instrument :
 MSVOA_X
ClientSampleId :
 40440

Quant Method : Z:\voasrv\HPCHEM1\MSVOA_X\Method\82X123021W.M
 Quant Title : SW846 8260

TIC Library : C:\Database\NIST20.L
 TIC Integration Parameters: LSCINT.P



Data Path : Z:\voasrv\HPCHEM1\MSVOA_X\Data\VX010322\
 Data File : VX026228.D
 Acq On : 03 Jan 2022 18:19
 Operator : JC/MD
 Sample : M5328-07 50X
 Misc : 5.0mL/MSVOA_X/WATER
 ALS Vial : 20 Sample Multiplier: 1

Instrument :
 MSVOA_X
 ClientSampleId :
 40440

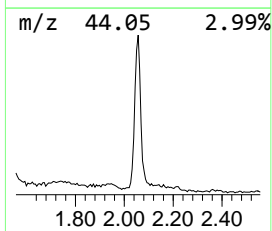
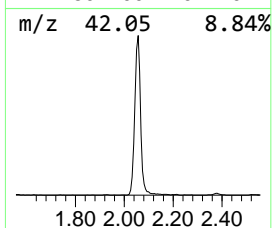
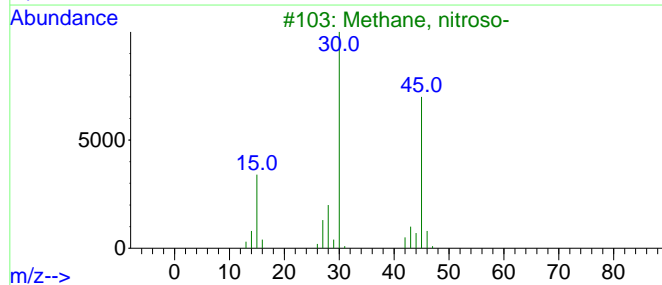
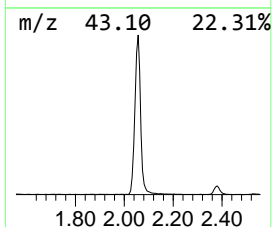
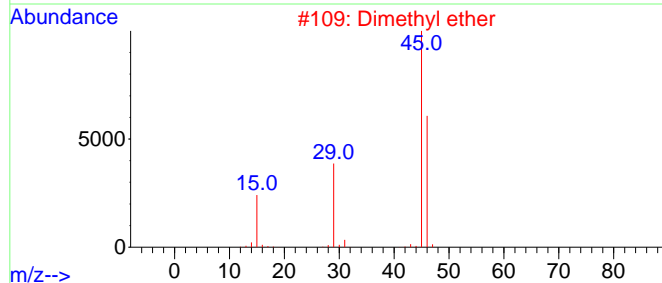
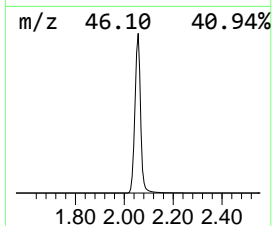
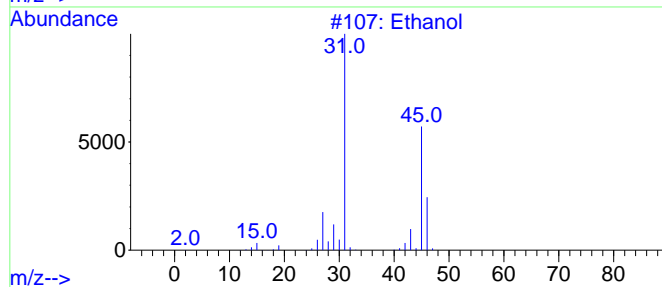
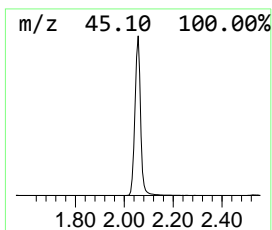
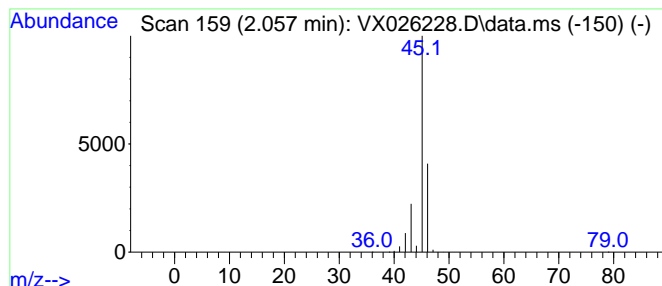
Quant Method : Z:\voasrv\HPCHEM1\MSVOA_X\Method\82X123021W.M
 Quant Title : SW846 8260

TIC Library : C:\Database\NIST20.L
 TIC Integration Parameters: LSCINT.P

 Peak Number 1 Ethanol Concentration Rank 1

R.T.	EstConc	Area	Relative to ISTD	R.T.
2.057	124.44 ug/l	1511240	Pentafluorobenzene	5.556

Hit#	of 5	Tentative ID	MW	MolForm	CAS#	Qual
1		Ethanol	46	C2H6O	000064-17-5	74
2		Dimethyl ether	46	C2H6O	000115-10-6	9
3		Methane, nitroso-	45	CH3NO	000865-40-7	4
4		Formic acid	46	CH2O2	000064-18-6	4
5		Oxalic acid	90	C2H2O4	000144-62-7	4



Data Path : Z:\voasrv\HPCHEM1\MSVOA_X\Data\VX010322\
Data File : VX026228.D
Acq On : 03 Jan 2022 18:19
Operator : JC/MD
Sample : M5328-07 50X
Misc : 5.0mL/MSVOA_X/WATER
ALS Vial : 20 Sample Multiplier: 1

Instrument :
MSVOA_X
ClientSampleId :
40440

Quant Method : Z:\voasrv\HPCHEM1\MSVOA_X\Method\82X123021W.M
Quant Title : SW846 8260

TIC Library : C:\Database\NIST0.L
TIC Integration Parameters: LSCINT.P

TIC Top Hit name	RT	EstConc	Units	Response	--Internal Standard--			
					#	RT	Resp	Conc
Ethanol	2.057	124.4	ug/l	1511240	1	5.556	607210	50.0