

Data Path : Z:\voasrv\HPCHEM1\MSVOA_X\Data\VX010422\
 Data File : VX026311.D
 Acq On : 05 Jan 2022 07:38
 Operator : JC/MD
 Sample : N1005-06
 Misc : 5.0mL/MSVOA_X/WATER
 ALS Vial : 52 Sample Multiplier: 1

Instrument :
 MSVOA_X
 ClientSampleId :

Quant Time: Jan 05 08:01:45 2022
 Quant Method : Z:\voasrv\HPCHEM1\MSVOA_X\Method\82X123021W.M
 Quant Title : SW846 8260
 QLast Update : Thu Dec 30 08:02:21 2021
 Response via : Initial Calibration

| Compound | R.T. | QIon | Response | Conc | Units | Dev(Min) |
|-----------------------------|--------|----------------|----------|----------|----------|----------|
| Internal Standards | | | | | | |
| 1) Pentafluorobenzene | 5.562 | 168 | 162702 | 50.000 | ug/l | 0.00 |
| 34) 1,4-Difluorobenzene | 6.769 | 114 | 266752 | 50.000 | ug/l | 0.00 |
| 63) Chlorobenzene-d5 | 10.061 | 117 | 229191 | 50.000 | ug/l | 0.00 |
| 72) 1,4-Dichlorobenzene-d4 | 12.067 | 152 | 85855 | 50.000 | ug/l | 0.04 |
| System Monitoring Compounds | | | | | | |
| 33) 1,2-Dichloroethane-d4 | 5.976 | 65 | 110061 | 46.758 | ug/l | 0.01 |
| Spiked Amount | 50.000 | Range 78 - 117 | Recovery | = | 93.520% | |
| 35) Dibromofluoromethane | 5.403 | 113 | 77158 | 44.491 | ug/l | 0.01 |
| Spiked Amount | 50.000 | Range 75 - 124 | Recovery | = | 88.980% | |
| 50) Toluene-d8 | 8.659 | 98 | 312799 | 48.491 | ug/l | 0.00 |
| Spiked Amount | 50.000 | Range 92 - 112 | Recovery | = | 96.980% | |
| 62) 4-Bromofluorobenzene | 11.091 | 95 | 124843 | 54.365 | ug/l | 0.00 |
| Spiked Amount | 50.000 | Range 83 - 123 | Recovery | = | 108.740% | |
| Target Compounds | | | | | | |
| | | | | | | Qvalue |
| 3) Chloromethane | 1.270 | 50 | 10626 | 5.342 | ug/l # | 70 |
| 5) Bromomethane | 1.618 | 94 | 290 | 0.224 | ug/l # | 77 |
| 6) Chloroethane | 1.697 | 64 | 555 | 0.377 | ug/l # | 42 |
| 8) Diethyl Ether | 2.136 | 74 | 1023036 | 825.839 | ug/l | 93 |
| 11) Tert butyl alcohol | 2.971 | 59 | 1516594 | 3225.870 | ug/l # | 94 |
| 13) Acrolein | 2.252 | 56 | 1688 | 10.041 | ug/l # | 14 |
| 14) Allyl chloride | 2.550 | 41 | 267160 | 75.036 | ug/l # | 67 |
| 15) Acrylonitrile | 3.111 | 53 | 4359 | 3.745 | ug/l # | 33 |
| 16) Acetone | 2.380 | 43 | 2071252 | 1624.086 | ug/l | 98 |
| 17) Carbon Disulfide | 2.520 | 76 | 7382 | 1.428 | ug/l | 99 |
| 18) Methyl Acetate | 2.709 | 43 | 277297 | 67.033 | ug/l | 99 |
| 19) Methyl tert-butyl Ether | 3.117 | 73 | 314557 | 49.985 | ug/l # | 80 |
| 20) Methylene Chloride | 2.794 | 84 | 9465 | 3.768 | ug/l | 95 |
| 22) Diisopropyl ether | 3.727 | 45 | 896257 | 131.887 | ug/l # | 1 |
| 23) Vinyl Acetate | 3.727 | 43 | 47189 | 8.745 | ug/l # | 77 |
| 24) 1,1-Dichloroethane | 3.727 | 63 | 6792 | 1.844 | ug/l # | 83 |
| 25) 2-Butanone | 4.568 | 43 | 1395096 | 785.290 | ug/l | 99 |
| 26) 2,2-Dichloropropane | 4.587 | 77 | 1577 | 0.568 | ug/l # | 52 |
| 29) Tetrahydrofuran | 5.019 | 42 | 69361 | 61.943 | ug/l # | 85 |
| 31) Cyclohexane | 5.477 | 56 | 93552 | 27.909 | ug/l | 95 |
| 37) Ethyl Acetate | 4.727 | 43 | 62261 | 19.197 | ug/l | 95 |
| 38) Carbon Tetrachloride | 5.562 | 117 | 17212 | 5.532 | ug/l # | 16 |
| 39) Methylcyclohexane | 7.385 | 83 | 50635 | 16.048 | ug/l # | 1 |
| 40) Benzene | 6.074 | 78 | 16603155 | 2079.788 | ug/l # | 85 |
| 41) Methacrylonitrile | 5.025 | 41 | 91910 | 50.183 | ug/l # | 43 |
| 42) 1,2-Dichloroethane | 6.074 | 62 | 185746 | 57.493 | ug/l # | 74 |
| 43) Isopropyl Acetate | 6.354 | 43 | 376756 | 71.276 | ug/l # | 82 |
| 45) 1,2-Dichloropropane | 7.543 | 63 | 3012 | 1.475 | ug/l # | 42 |
| 48) Methyl methacrylate | 7.720 | 41 | 71930 | 28.374 | ug/l # | 17 |
| 49) 1,4-Dioxane | 7.708 | 88 | 394209 | 8438.215 | ug/l | 89 |
| 51) 4-Methyl-2-Pentanone | 8.598 | 43 | 1211351 | 368.257 | ug/l | 99 |
| 52) Toluene | 8.744 | 92 | 9196931 | 1871.353 | ug/l | 81 |
| 53) t-1,3-Dichloropropene | 8.909 | 75 | 144218 | 44.233 | ug/l # | 44 |
| 54) cis-1,3-Dichloropropene | 8.348 | 75 | 30097 | 9.241 | ug/l # | 1 |
| 55) 1,1,2-Trichloroethane | 9.110 | 97 | 2320 | 1.149 | ug/l # | 1 |
| 56) Ethyl methacrylate | 9.086 | 69 | 524720 | 168.437 | ug/l # | 72 |

Data Path : Z:\voasrv\HPCHEM1\MSVOA_X\Data\VX010422\
 Data File : VX026311.D
 Acq On : 05 Jan 2022 07:38
 Operator : JC/MD
 Sample : N1005-06
 Misc : 5.0mL/MSVOA_X/WATER
 ALS Vial : 52 Sample Multiplier: 1

Instrument :
 MSVOA_X
 ClientSampleId :

Quant Time: Jan 05 08:01:45 2022
 Quant Method : Z:\voasrv\HPCHEM1\MSVOA_X\Method\82X123021W.M
 Quant Title : SW846 8260
 QLast Update : Thu Dec 30 08:02:21 2021
 Response via : Initial Calibration

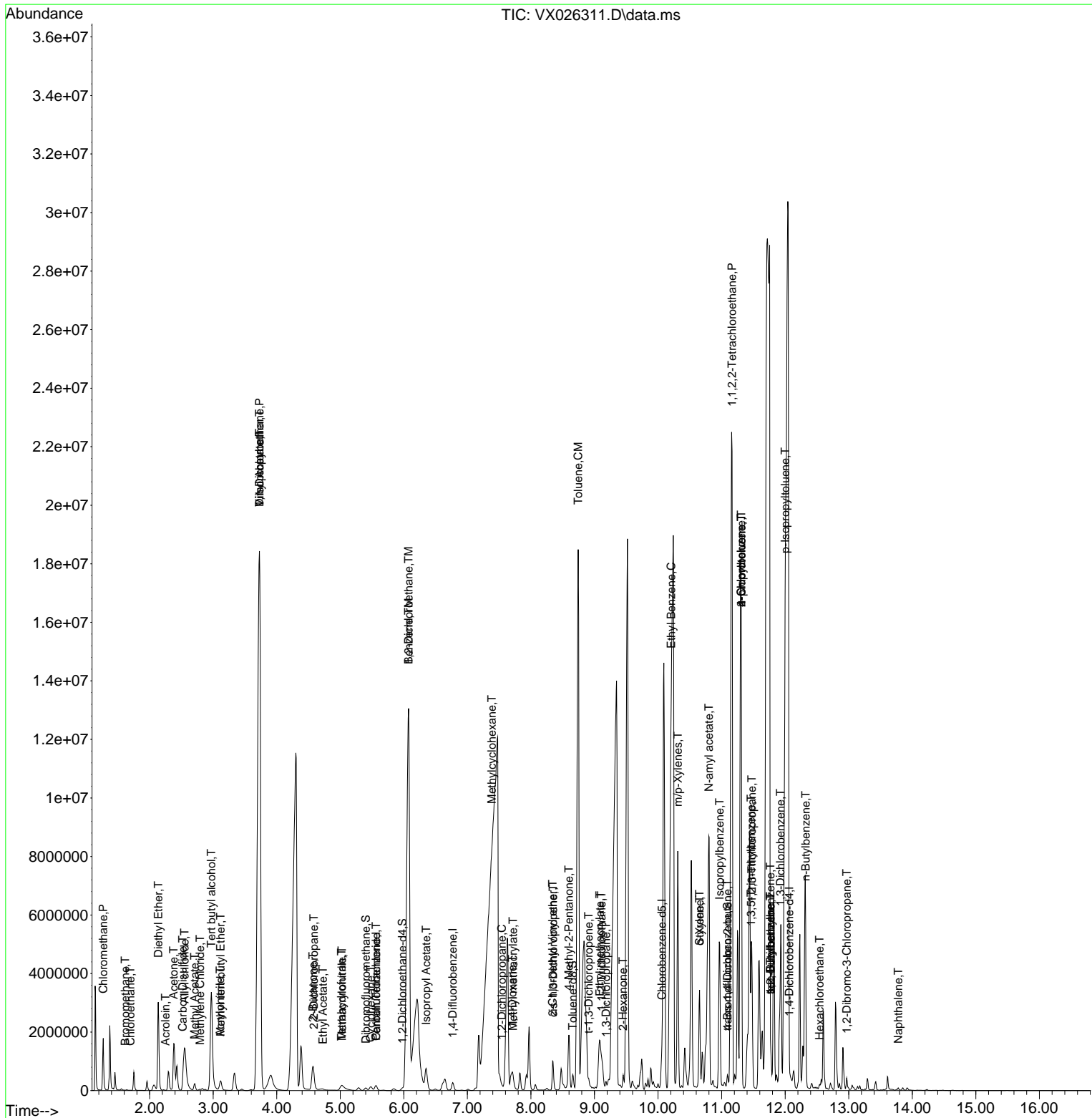
| Compound | R.T. | QIon | Response | Conc | Units | Dev(Min) | |
|-------------------------------|--------|------|----------|---------|-------|----------|-----|
| 57) 1,3-Dichloropropane | 9.183 | 76 | 6727 | 1.944 | ug/l | # | 57 |
| 58) 2-Chloroethyl Vinyl ether | 8.342 | 63 | 42017 | 34.067 | ug/l | # | 88 |
| 59) 2-Hexanone | 9.451 | 43 | 267346 | 107.295 | ug/l | | 96 |
| 67) Ethyl Benzene | 10.207 | 91 | 632068 | 70.210 | ug/l | | 98 |
| 68) m/p-Xylenes | 10.311 | 106 | 1847512 | 549.633 | ug/l | | 100 |
| 69) o-Xylene | 10.652 | 106 | 687638 | 209.080 | ug/l | | 97 |
| 70) Styrene | 10.652 | 104 | 37427 | 6.942 | ug/l | # | 1 |
| 73) Isopropylbenzene | 10.970 | 105 | 78680 | 11.790 | ug/l | | 98 |
| 74) N-amyl acetate | 10.799 | 43 | 2218982 | 724.130 | ug/l | # | 1 |
| 75) 1,1,2,2-Tetrachloroethane | 11.165 | 83 | 37760 | 16.637 | ug/l | # | 1 |
| 76) 1,2,3-Trichloropropane | 11.476 | 75 | 142898 | 68.955 | ug/l | | 95 |
| 78) n-propylbenzene | 11.311 | 91 | 94767 | 12.351 | ug/l | | 78 |
| 79) 2-Chlorotoluene | 11.311 | 91 | 94511 | 20.010 | ug/l | | 78 |
| 80) 1,3,5-Trimethylbenzene | 11.463 | 105 | 335003 | 60.490 | ug/l | | 98 |
| 81) trans-1,4-Dichloro-2-b... | 11.091 | 75 | 63758 | 89.007 | ug/l | # | 10 |
| 82) 4-Chlorotoluene | 11.311 | 91 | 94511 | 17.718 | ug/l | | 85 |
| 83) tert-Butylbenzene | 11.768 | 119 | 59577 | 11.083 | ug/l | # | 48 |
| 84) 1,2,4-Trimethylbenzene | 11.768 | 105 | 648639 | 117.216 | ug/l | | 82 |
| 85) sec-Butylbenzene | 11.768 | 105 | 648639 | 96.694 | ug/l | # | 56 |
| 86) p-Isopropyltoluene | 12.000 | 119 | 39556 | 7.073 | ug/l | # | 76 |
| 87) 1,3-Dichlorobenzene | 11.927 | 146 | 961 | 0.323 | ug/l | # | 1 |
| 89) n-Butylbenzene | 12.323 | 91 | 43110 | 8.674 | ug/l | # | 37 |
| 90) Hexachloroethane | 12.542 | 117 | 6977 | 6.247 | ug/l | # | 14 |
| 92) 1,2-Dibromo-3-Chloropr... | 12.969 | 75 | 1327 | 2.284 | ug/l | # | 2 |
| 95) Naphthalene | 13.780 | 128 | 46373 | 6.989 | ug/l | | 98 |

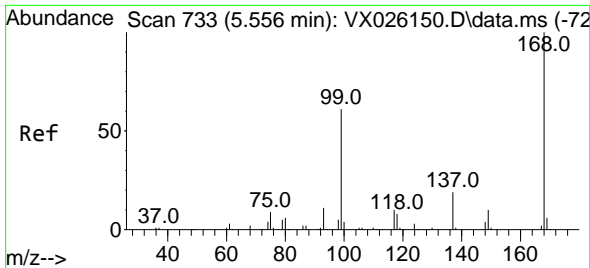
(#) = qualifier out of range (m) = manual integration (+) = signals summed

Data Path : Z:\voasrv\HPCHEM1\MSVOA_X\Data\VX010422\
 Data File : VX026311.D
 Acq On : 05 Jan 2022 07:38
 Operator : JC/MD
 Sample : N1005-06
 Misc : 5.0mL/MSVOA_X/WATER
 ALS Vial : 52 Sample Multiplier: 1

Instrument :
 MSVOA_X
 ClientSampleId :

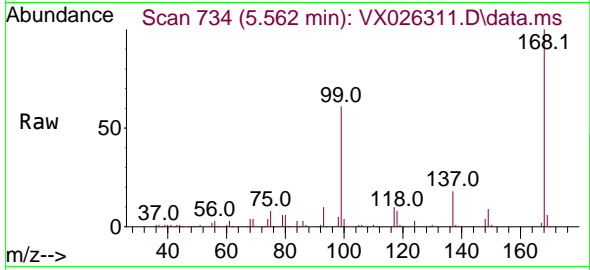
Quant Time: Jan 05 08:01:45 2022
 Quant Method : Z:\voasrv\HPCHEM1\MSVOA_X\Method\82X123021W.M
 Quant Title : SW846 8260
 QLast Update : Thu Dec 30 08:02:21 2021
 Response via : Initial Calibration



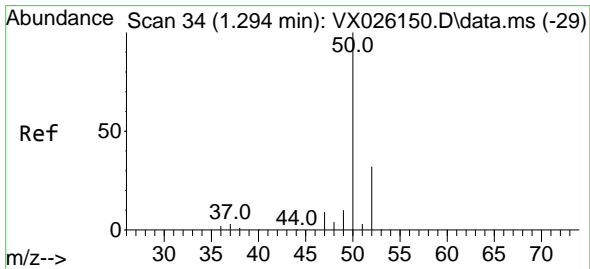
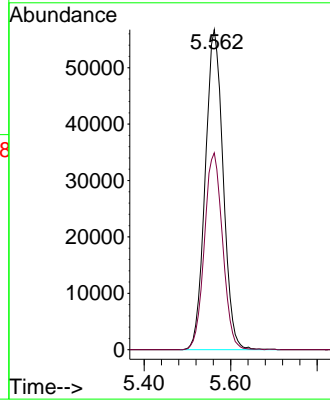
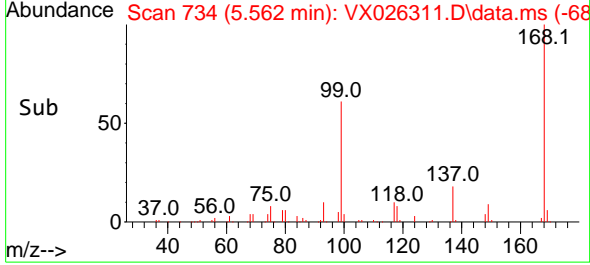


#1
 Pentafluorobenzene
 Concen: 50.000 ug/l
 RT: 5.562 min Scan# 71
 Delta R.T. 0.006 min
 Lab File: VX026311.D
 Acq: 05 Jan 2022 07:38

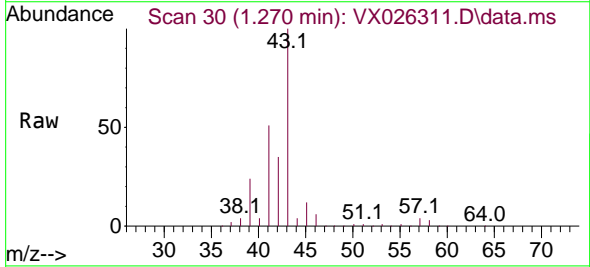
Instrument :
 MSVOA_X
 ClientSampleId :



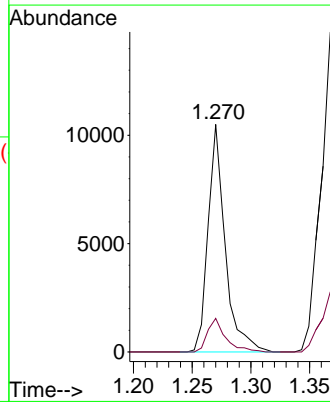
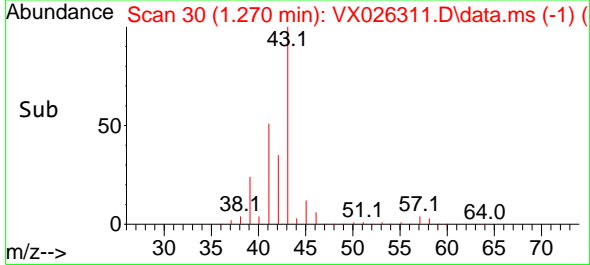
Tgt Ion:168 Resp: 162702
 Ion Ratio Lower Upper
 168 100
 99 61.5 45.8 68.8

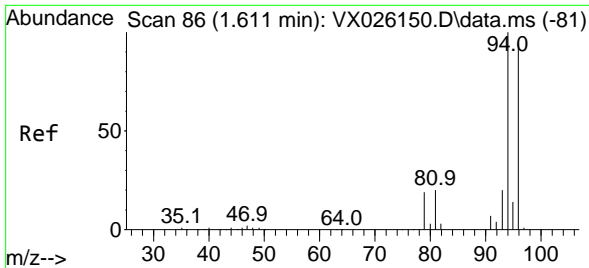


#3
 Chloromethane
 Concen: 5.342 ug/l
 RT: 1.270 min Scan# 30
 Delta R.T. -0.024 min
 Lab File: VX026311.D
 Acq: 05 Jan 2022 07:38



Tgt Ion: 50 Resp: 10626
 Ion Ratio Lower Upper
 50 100
 52 14.8 25.4 38.0#

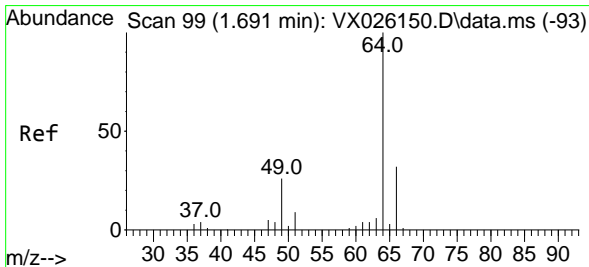
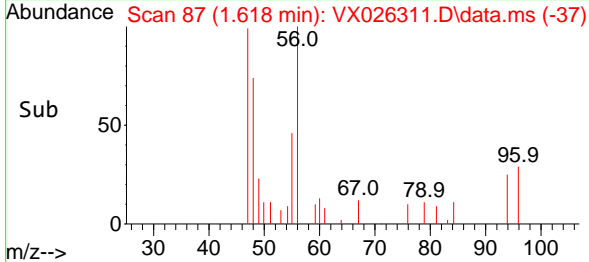
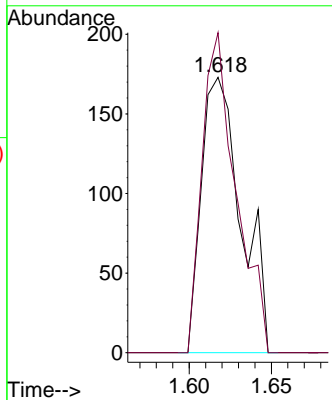
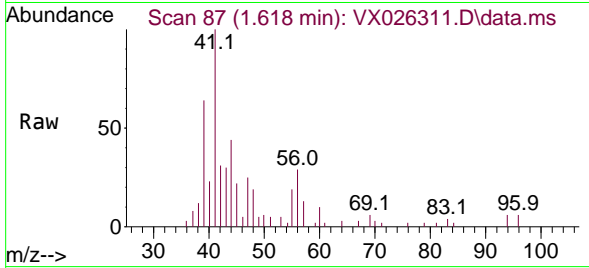




#5
 Bromomethane
 Concen: 0.224 ug/l
 RT: 1.618 min Scan# 81
 Delta R.T. 0.007 min
 Lab File: VX026311.D
 Acq: 05 Jan 2022 07:38

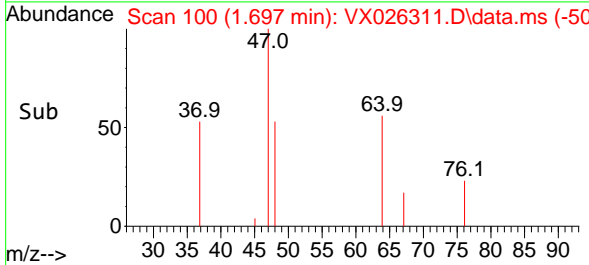
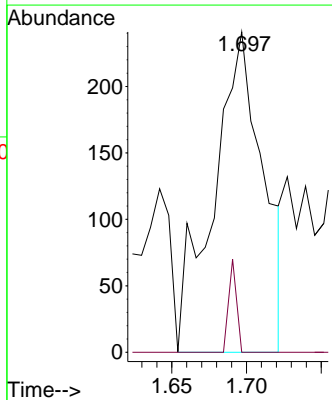
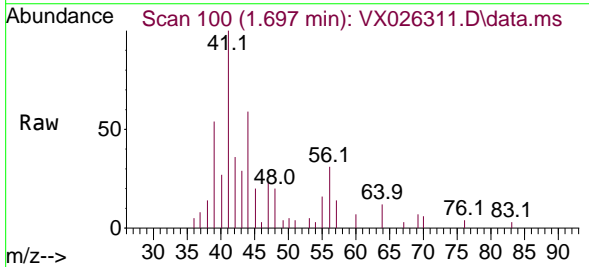
Instrument :
 MSVOA_X
 ClientSampleId :

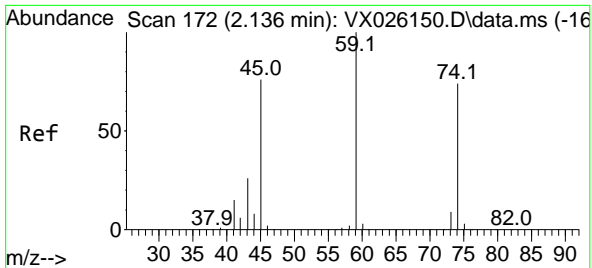
Tgt Ion: 94 Resp: 290
 Ion Ratio Lower Upper
 94 100
 96 116.2 75.0 112.4#



#6
 Chloroethane
 Concen: 0.377 ug/l
 RT: 1.697 min Scan# 100
 Delta R.T. 0.006 min
 Lab File: VX026311.D
 Acq: 05 Jan 2022 07:38

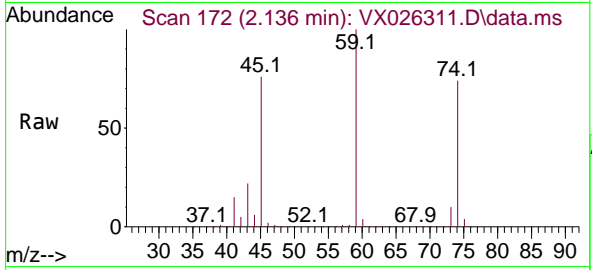
Tgt Ion: 64 Resp: 555
 Ion Ratio Lower Upper
 64 100
 66 0.0 25.9 38.9#



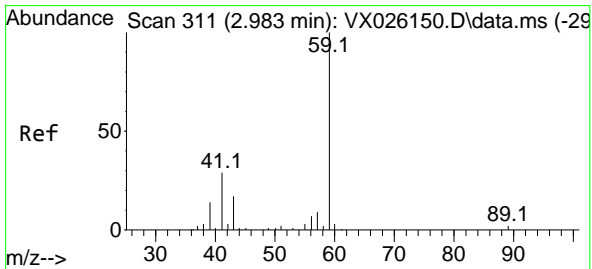
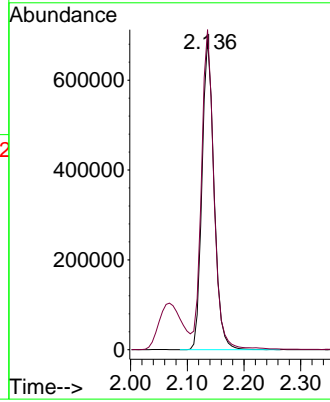
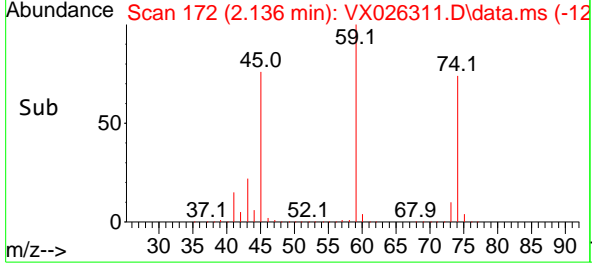


#8
 Diethyl Ether
 Concen: 825.839 ug/l
 RT: 2.136 min Scan# 11
 Delta R.T. -0.000 min
 Lab File: VX026311.D
 Acq: 05 Jan 2022 07:38

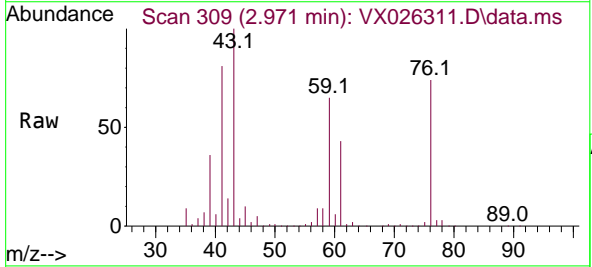
Instrument : MSVOA_X
 ClientSampleId :



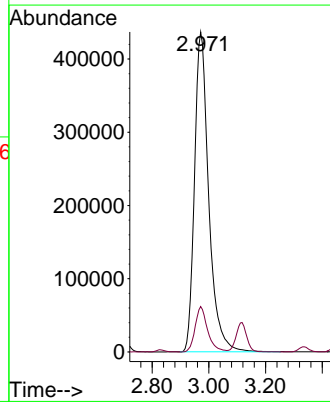
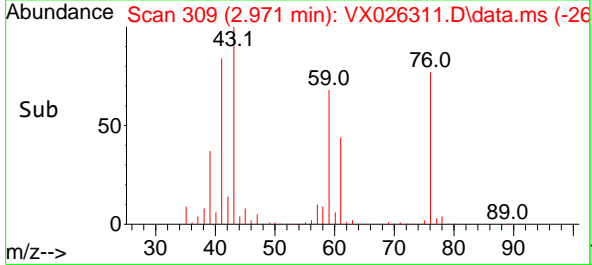
Tgt Ion: 74 Resp: 1023036
 Ion Ratio Lower Upper
 74 100
 45 107.4 50.4 151.2

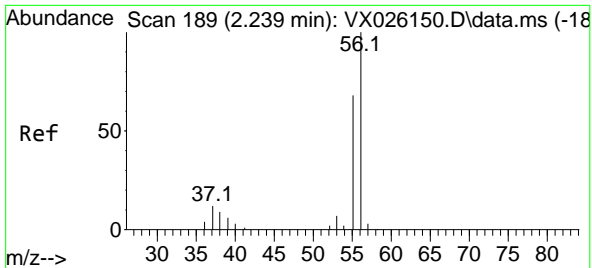


#11
 Tert butyl alcohol
 Concen: 3225.870 ug/l
 RT: 2.971 min Scan# 309
 Delta R.T. -0.012 min
 Lab File: VX026311.D
 Acq: 05 Jan 2022 07:38



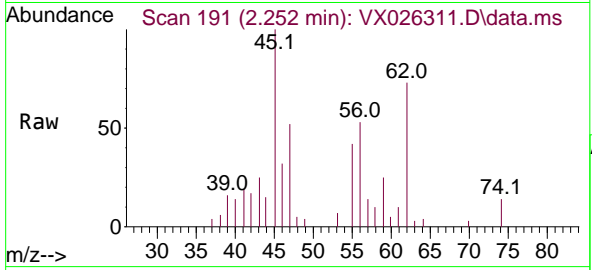
Tgt Ion: 59 Resp: 1516594
 Ion Ratio Lower Upper
 59 100
 57 12.5 8.2 12.2#



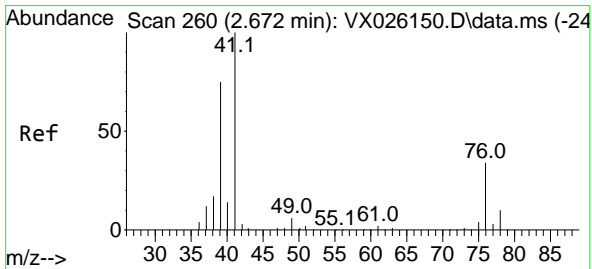
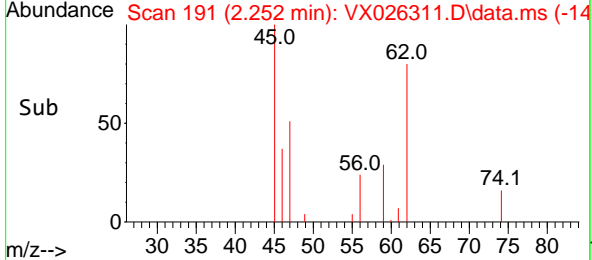
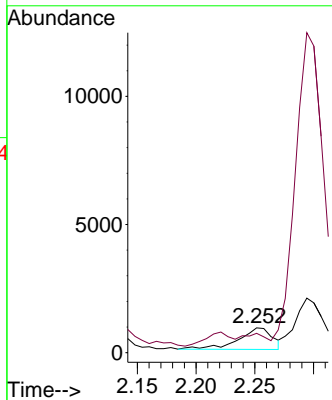


#13
 Acrolein
 Concen: 10.041 ug/l
 RT: 2.252 min Scan# 14
 Delta R.T. 0.013 min
 Lab File: VX026311.D
 Acq: 05 Jan 2022 07:38

Instrument :
 MSVOA_X
 ClientSampleId :

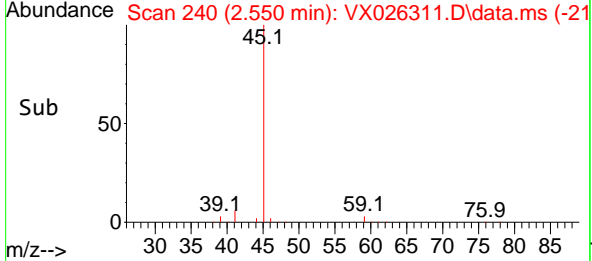
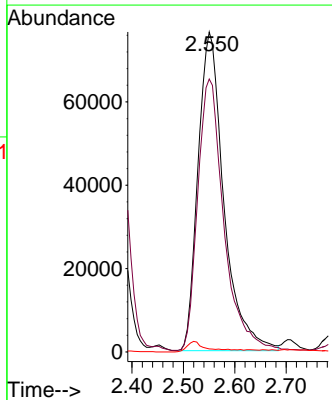
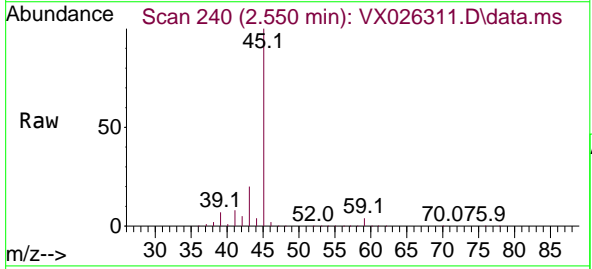


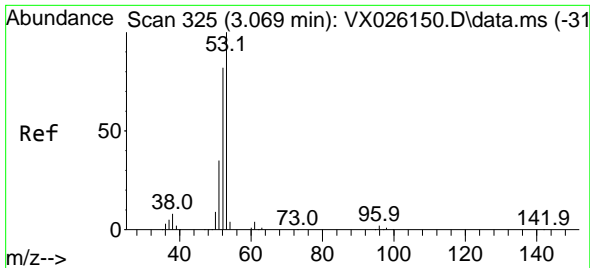
Tgt Ion: 56 Resp: 1688
 Ion Ratio Lower Upper
 56 100
 55 0.0 57.4 86.2#



#14
 Allyl chloride
 Concen: 75.036 ug/l
 RT: 2.550 min Scan# 240
 Delta R.T. -0.122 min
 Lab File: VX026311.D
 Acq: 05 Jan 2022 07:38

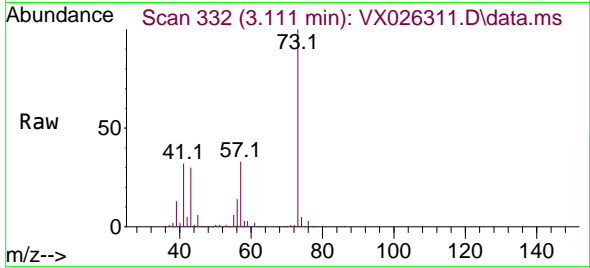
Tgt Ion: 41 Resp: 267160
 Ion Ratio Lower Upper
 41 100
 39 85.7 55.4 83.0#
 76 0.0 27.6 41.4#



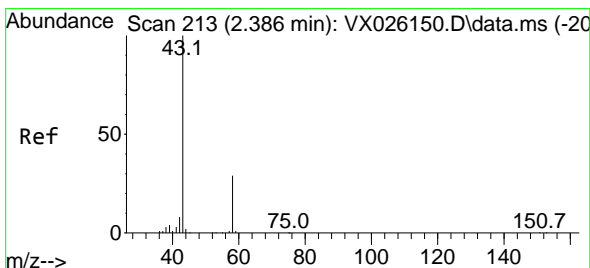
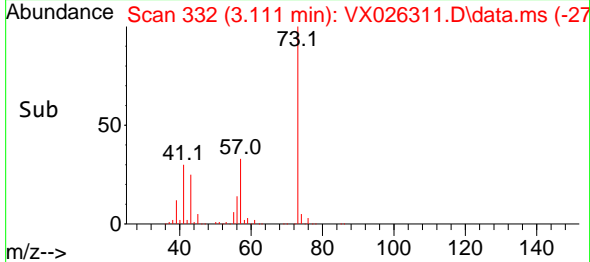
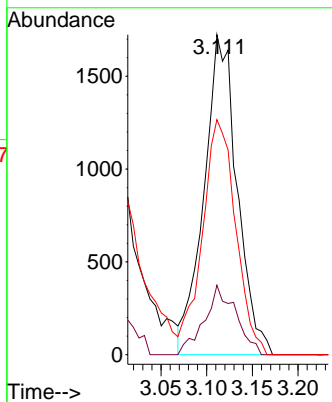


#15
 Acrylonitrile
 Concen: 3.745 ug/l
 RT: 3.111 min Scan# 31
 Delta R.T. 0.042 min
 Lab File: VX026311.D
 Acq: 05 Jan 2022 07:38

Instrument :
 MSVOA_X
 ClientSampleId :

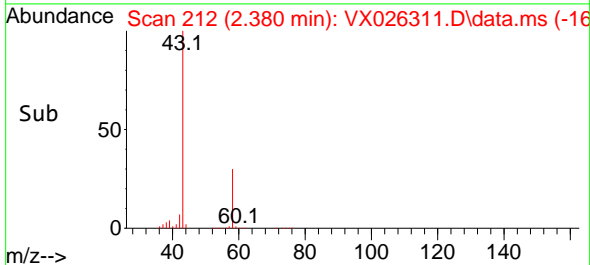
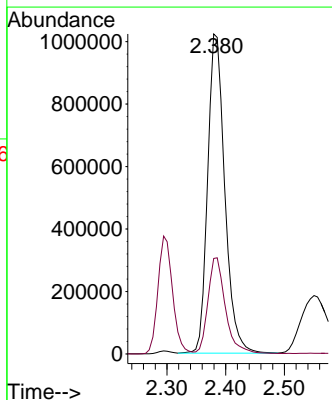
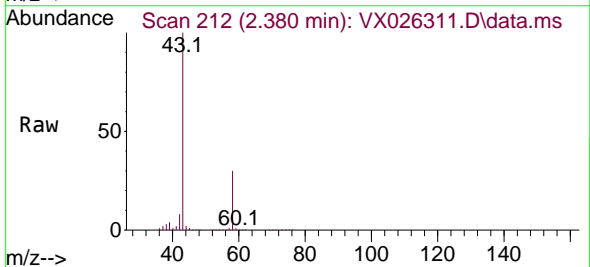


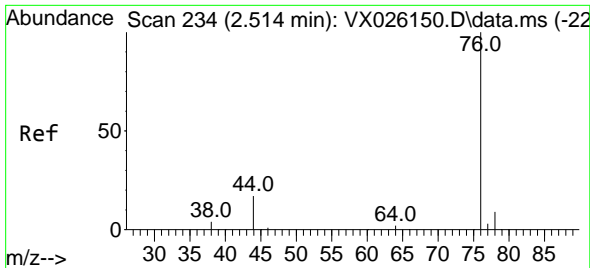
Tgt Ion: 53 Resp: 4359
 Ion Ratio Lower Upper
 53 100
 52 20.6 66.2 99.2#
 51 73.6 29.4 44.0#



#16
 Acetone
 Concen: 1624.086 ug/l
 RT: 2.380 min Scan# 212
 Delta R.T. -0.006 min
 Lab File: VX026311.D
 Acq: 05 Jan 2022 07:38

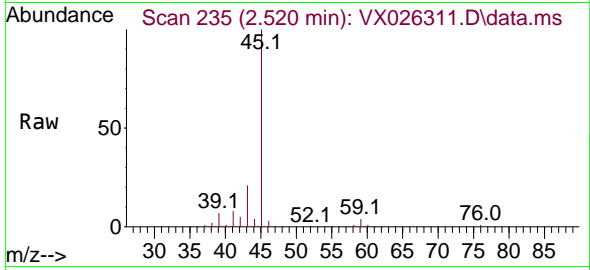
Tgt Ion: 43 Resp: 2071252
 Ion Ratio Lower Upper
 43 100
 58 29.8 24.8 37.2



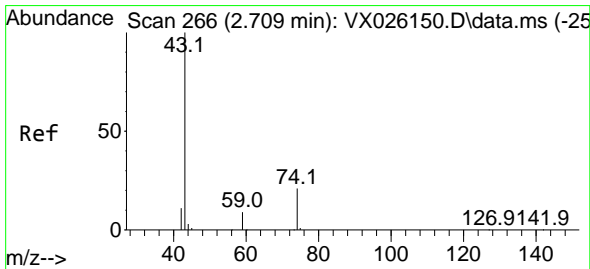
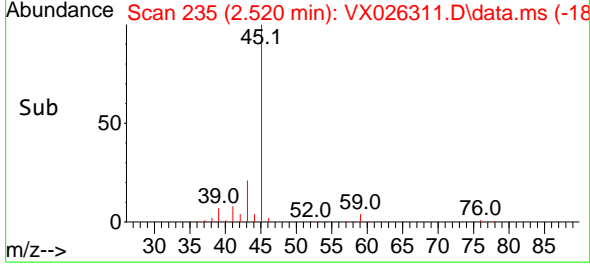
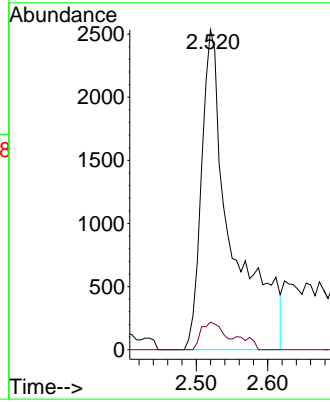


#17
 Carbon Disulfide
 Concen: 1.428 ug/l
 RT: 2.520 min Scan# 21
 Delta R.T. 0.006 min
 Lab File: VX026311.D
 Acq: 05 Jan 2022 07:38

Instrument :
 MSVOA_X
 ClientSampleId :

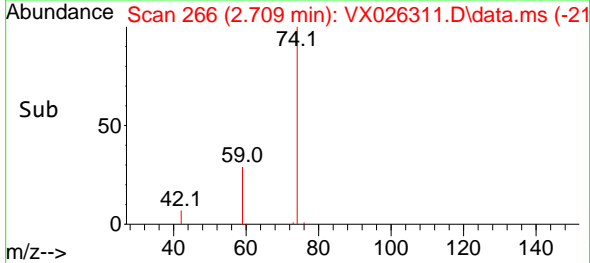
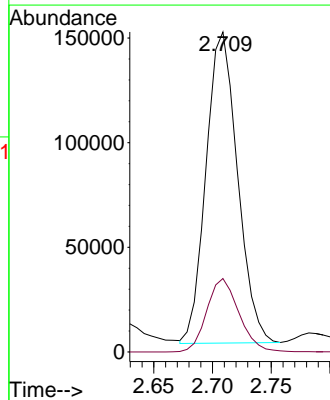
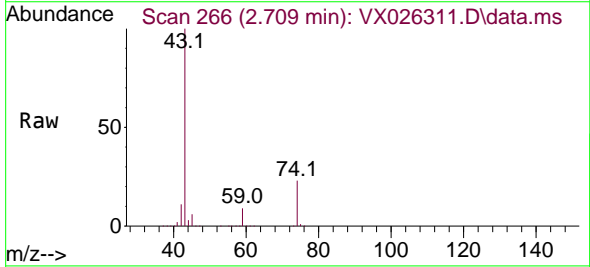


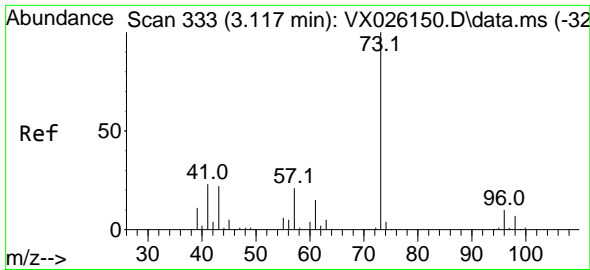
Tgt Ion: 76 Resp: 7382
 Ion Ratio Lower Upper
 76 100
 78 8.6 7.2 10.8



#18
 Methyl Acetate
 Concen: 67.033 ug/l
 RT: 2.709 min Scan# 266
 Delta R.T. -0.000 min
 Lab File: VX026311.D
 Acq: 05 Jan 2022 07:38

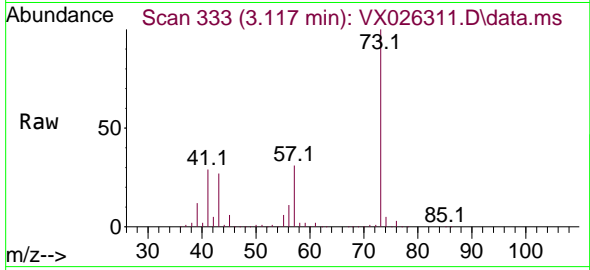
Tgt Ion: 43 Resp: 277297
 Ion Ratio Lower Upper
 43 100
 74 24.2 19.1 28.7



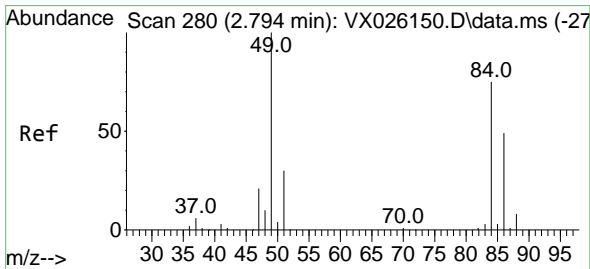
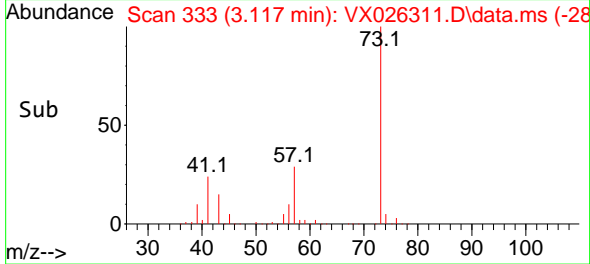
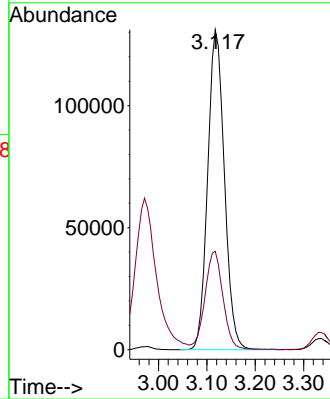


#19
 Methyl tert-butyl Ether
 Concen: 49.985 ug/l
 RT: 3.117 min Scan# 31
 Delta R.T. 0.000 min
 Lab File: VX026311.D
 Acq: 05 Jan 2022 07:38

Instrument :
 MSVOA_X
 ClientSampleId :

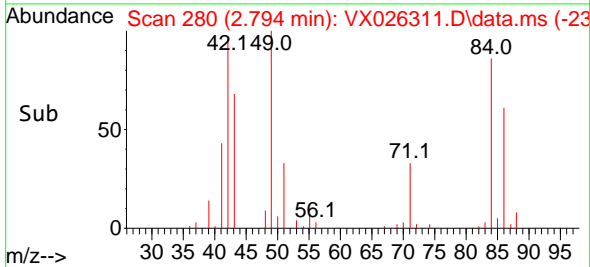
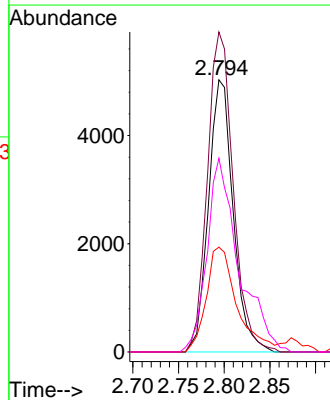
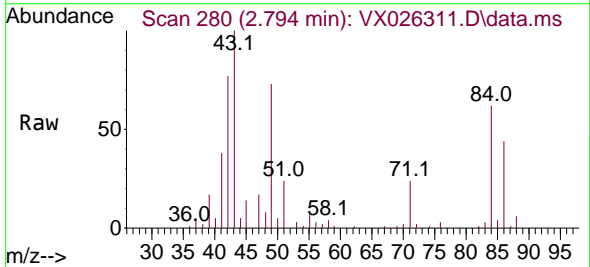


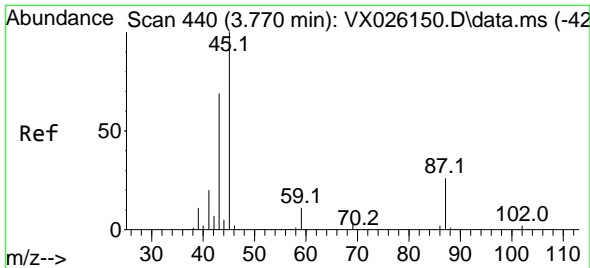
Tgt Ion: 73 Resp: 314557
 Ion Ratio Lower Upper
 73 100
 57 30.7 17.0 25.6#



#20
 Methylene Chloride
 Concen: 3.768 ug/l
 RT: 2.794 min Scan# 280
 Delta R.T. 0.000 min
 Lab File: VX026311.D
 Acq: 05 Jan 2022 07:38

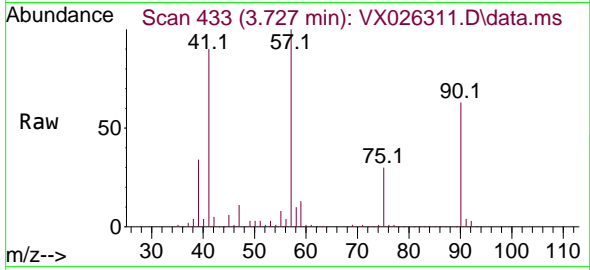
Tgt Ion: 84 Resp: 9465
 Ion Ratio Lower Upper
 84 100
 49 117.6 97.1 145.7
 51 38.5 29.3 43.9
 86 71.1 50.8 76.2



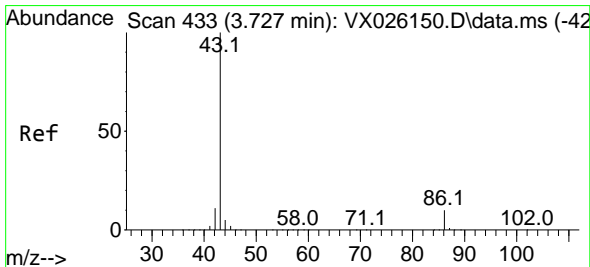
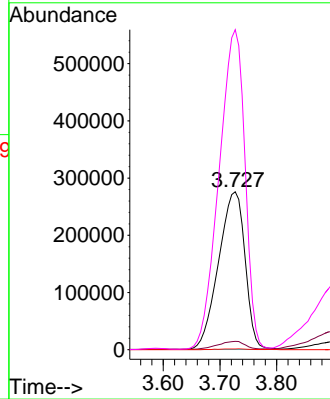
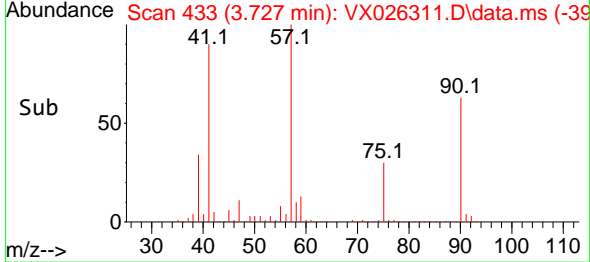


#22
 Diisopropyl ether
 Concen: 131.887 ug/l
 RT: 3.727 min Scan# 411
 Delta R.T. -0.043 min
 Lab File: VX026311.D
 Acq: 05 Jan 2022 07:38

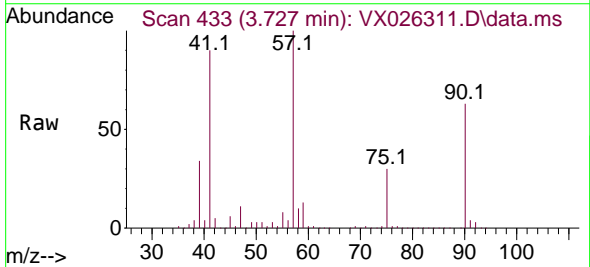
Instrument : MSVOA_X
 ClientSampleId :



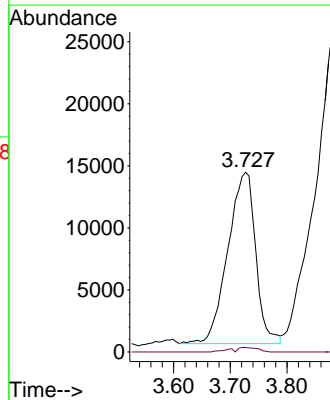
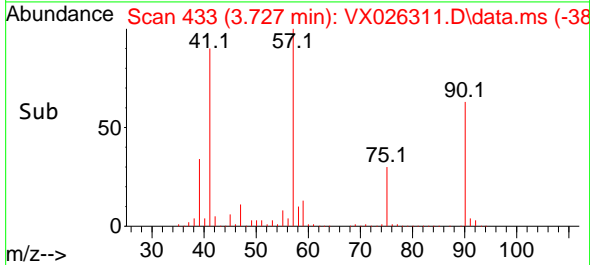
Tgt Ion: 45 Resp: 896257
 Ion Ratio Lower Upper
 45 100
 43 4.9 63.8 95.6#
 87 0.5 24.2 36.4#
 59 202.7 9.4 14.2#

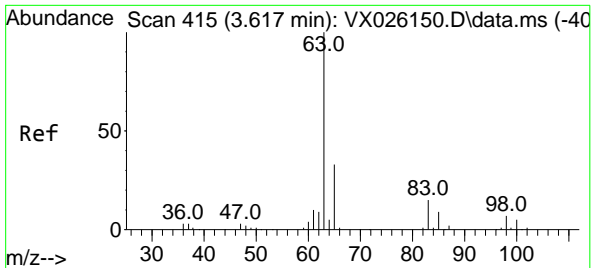


#23
 Vinyl Acetate
 Concen: 8.745 ug/l
 RT: 3.727 min Scan# 433
 Delta R.T. -0.000 min
 Lab File: VX026311.D
 Acq: 05 Jan 2022 07:38



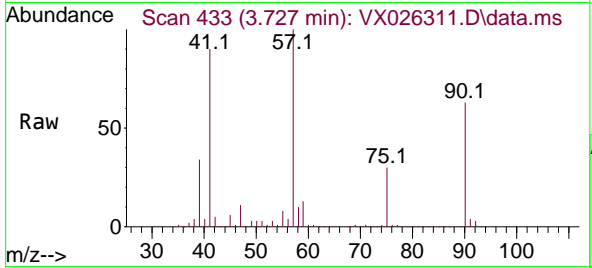
Tgt Ion: 43 Resp: 47189
 Ion Ratio Lower Upper
 43 100
 86 2.6 9.0 13.6#



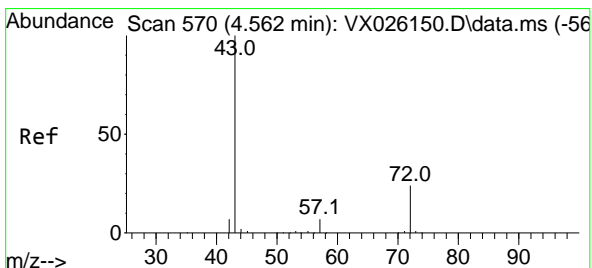
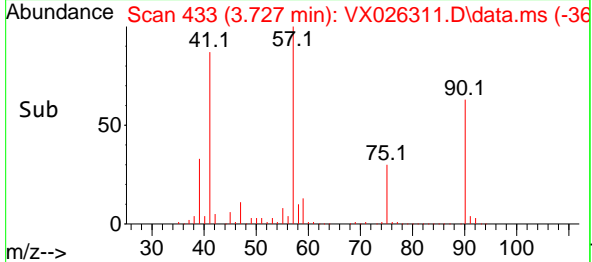
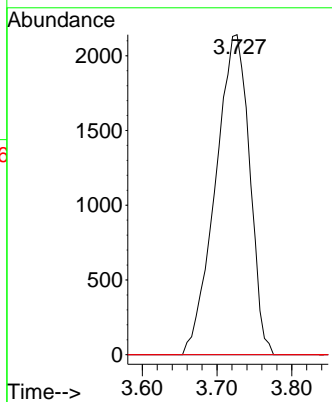


#24
 1,1-Dichloroethane
 Concen: 1.844 ug/l
 RT: 3.727 min Scan# 411
 Delta R.T. 0.110 min
 Lab File: VX026311.D
 Acq: 05 Jan 2022 07:38

Instrument : MSVOA_X
 ClientSampleId :

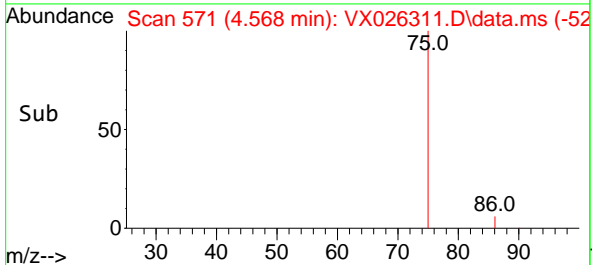
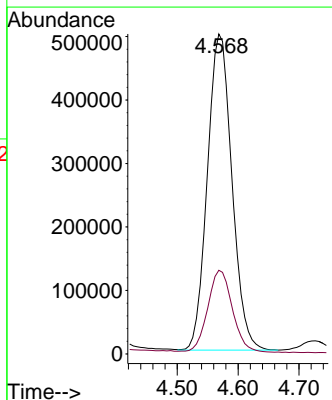
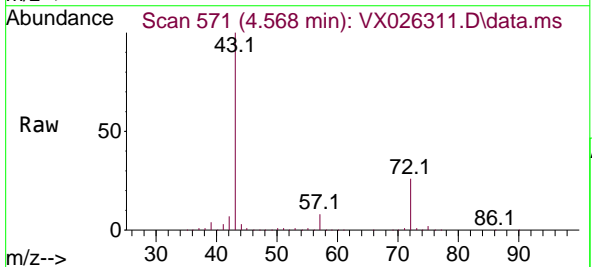


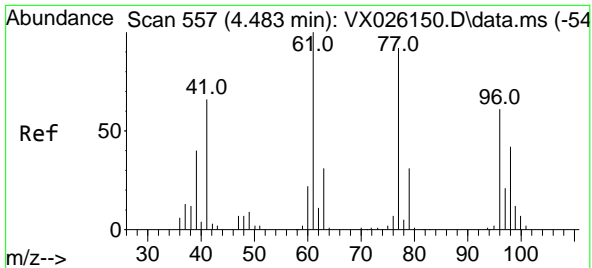
Tgt Ion: 63 Resp: 6792
 Ion Ratio Lower Upper
 63 100
 98 0.0 3.3 9.9#
 100 0.0 2.2 6.6#



#25
 2-Butanone
 Concen: 785.290 ug/l
 RT: 4.568 min Scan# 571
 Delta R.T. 0.006 min
 Lab File: VX026311.D
 Acq: 05 Jan 2022 07:38

Tgt Ion: 43 Resp: 1395096
 Ion Ratio Lower Upper
 43 100
 72 25.9 21.0 31.4

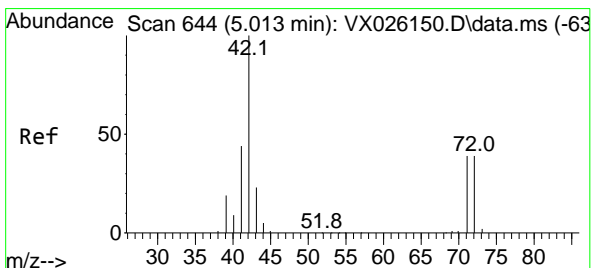
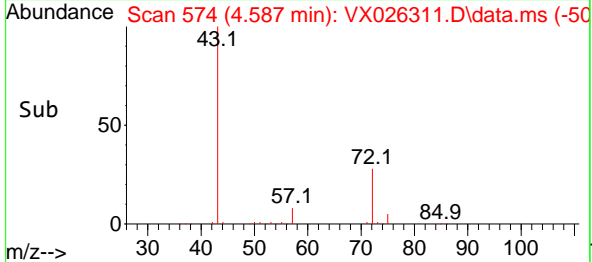
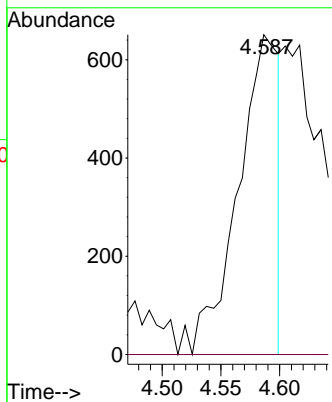
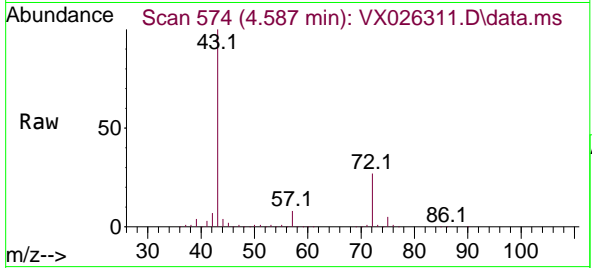




#26
 2,2-Dichloropropane
 Concen: 0.568 ug/l
 RT: 4.587 min Scan# 51
 Delta R.T. 0.104 min
 Lab File: VX026311.D
 Acq: 05 Jan 2022 07:38

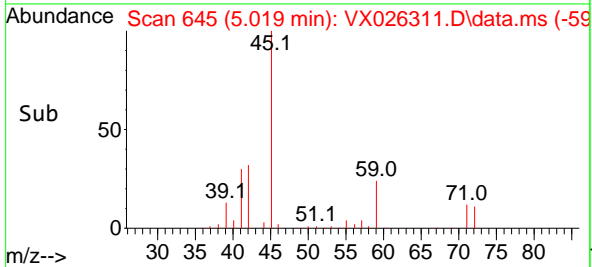
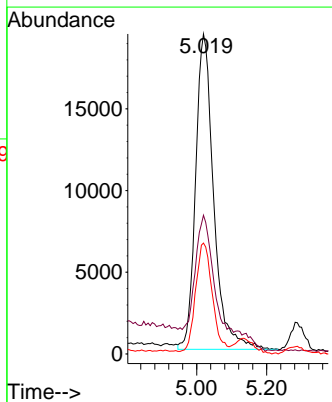
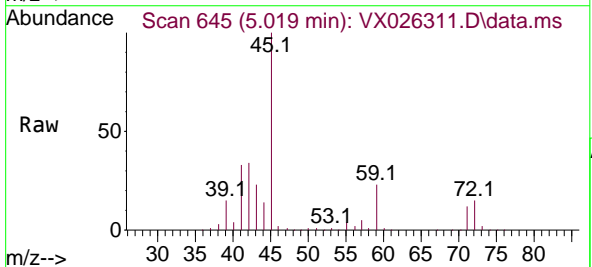
Instrument :
 MSVOA_X
 ClientSampleId :

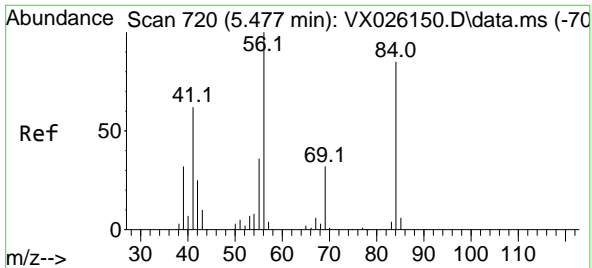
Tgt Ion: 77 Resp: 1577
 Ion Ratio Lower Upper
 77 100
 97 0.0 11.7 35.0#



#29
 Tetrahydrofuran
 Concen: 61.943 ug/l
 RT: 5.019 min Scan# 645
 Delta R.T. 0.006 min
 Lab File: VX026311.D
 Acq: 05 Jan 2022 07:38

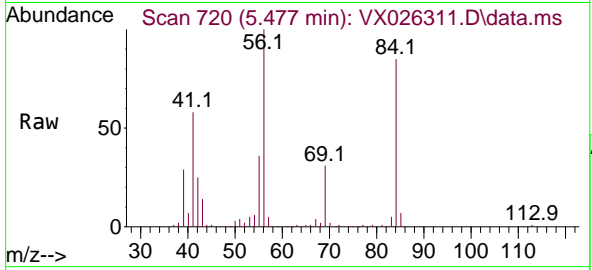
Tgt Ion: 42 Resp: 69361
 Ion Ratio Lower Upper
 42 100
 72 54.7 37.0 55.6
 71 31.3 34.1 51.1#





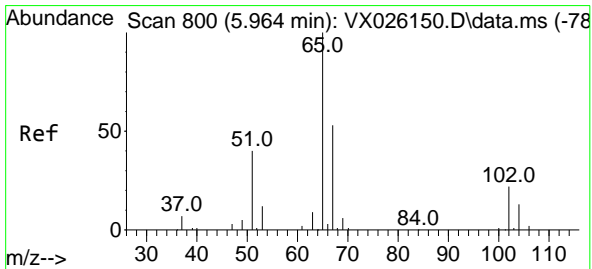
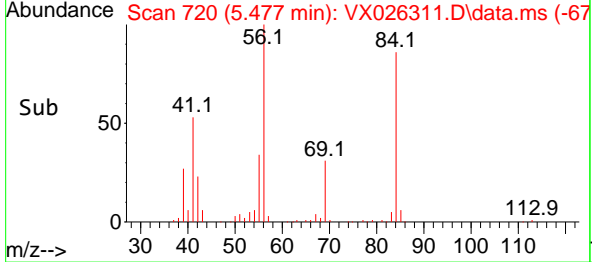
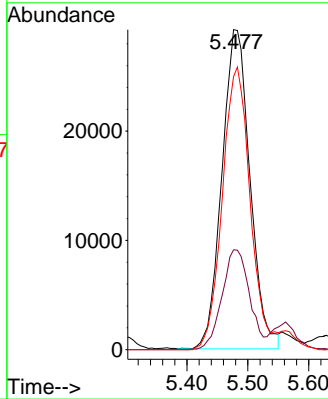
#31
 Cyclohexane
 Concen: 27.909 ug/l
 RT: 5.477 min Scan# 71
 Delta R.T. -0.000 min
 Lab File: VX026311.D
 Acq: 05 Jan 2022 07:38

Instrument :
 MSVOA_X
 ClientSampleId :



Tgt Ion: 56 Resp: 93552

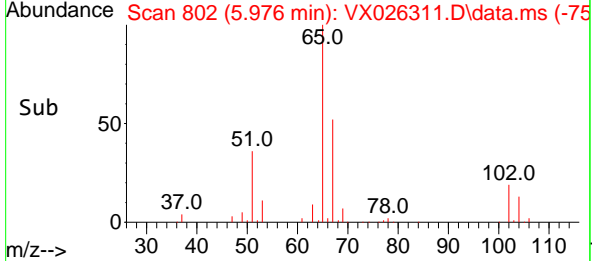
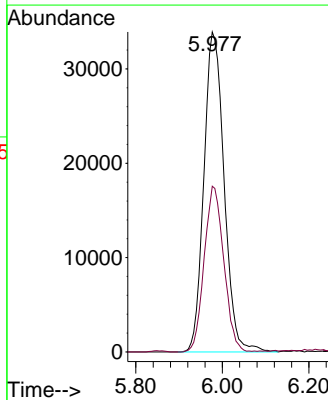
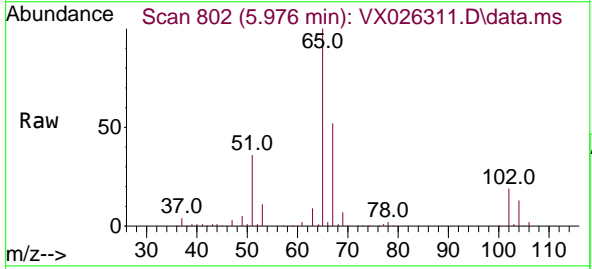
| Ion | Ratio | Lower | Upper |
|-----|-------|-------|-------|
| 56 | 100 | | |
| 69 | 31.3 | 23.9 | 35.9 |
| 84 | 85.6 | 73.2 | 109.8 |

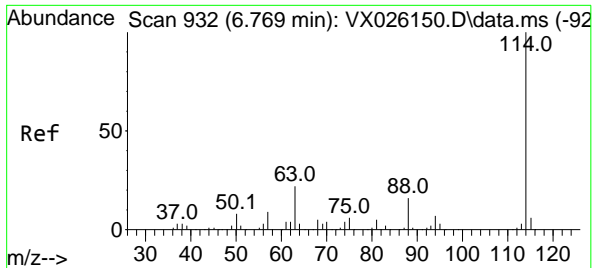


#33
 1,2-Dichloroethane-d4
 Concen: 46.758 ug/l
 RT: 5.976 min Scan# 802
 Delta R.T. 0.012 min
 Lab File: VX026311.D
 Acq: 05 Jan 2022 07:38

Tgt Ion: 65 Resp: 110061

| Ion | Ratio | Lower | Upper |
|-----|-------|-------|-------|
| 65 | 100 | | |
| 67 | 50.2 | 0.0 | 103.4 |



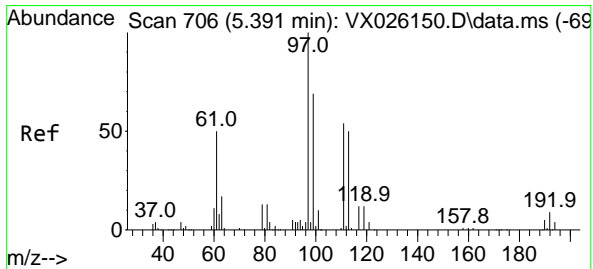
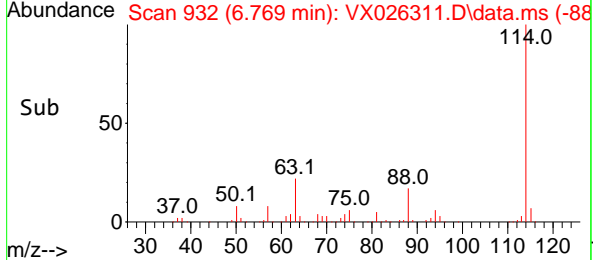
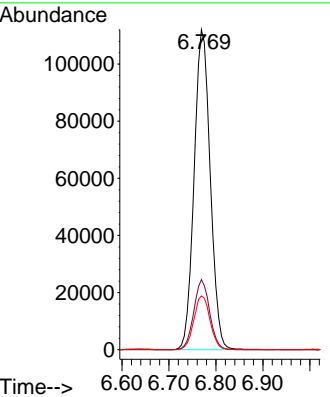
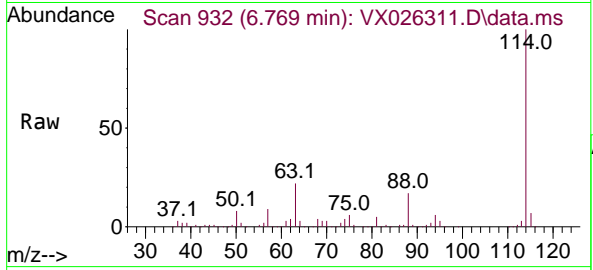


#34
 1,4-Difluorobenzene
 Concen: 50.000 ug/l
 RT: 6.769 min Scan# 91
 Delta R.T. 0.000 min
 Lab File: VX026311.D
 Acq: 05 Jan 2022 07:38

Instrument : MSVOA_X
 ClientSampleId :

Tgt Ion:114 Resp: 266752

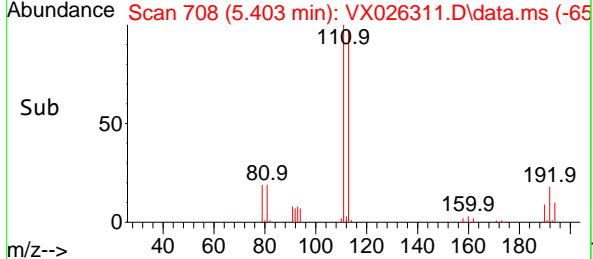
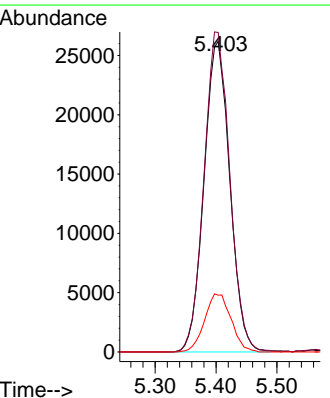
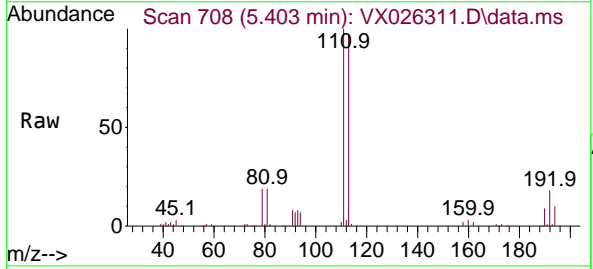
| Ion | Ratio | Lower | Upper |
|-----|-------|-------|-------|
| 114 | 100 | | |
| 63 | 21.9 | 0.0 | 40.0 |
| 88 | 16.8 | 0.0 | 30.6 |

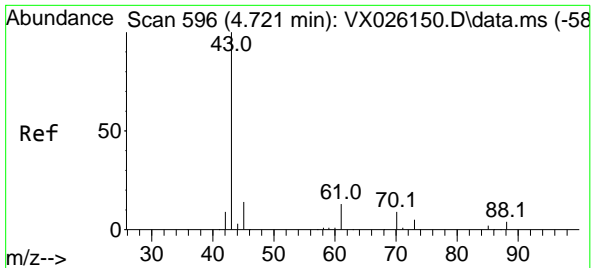


#35
 Dibromofluoromethane
 Concen: 44.491 ug/l
 RT: 5.403 min Scan# 708
 Delta R.T. 0.012 min
 Lab File: VX026311.D
 Acq: 05 Jan 2022 07:38

Tgt Ion:113 Resp: 77158

| Ion | Ratio | Lower | Upper |
|-----|-------|-------|-------|
| 113 | 100 | | |
| 111 | 103.2 | 81.8 | 122.8 |
| 192 | 19.1 | 15.0 | 22.4 |

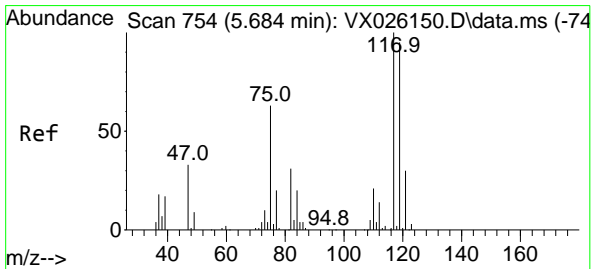
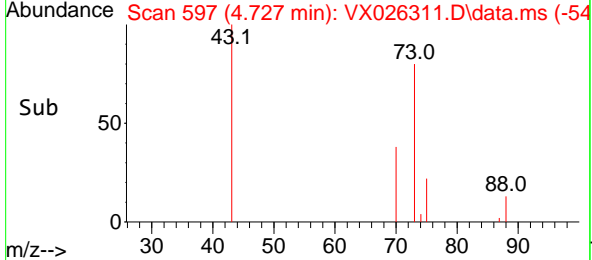
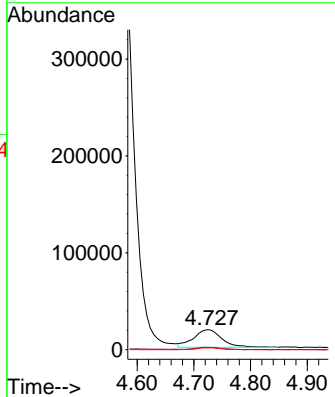
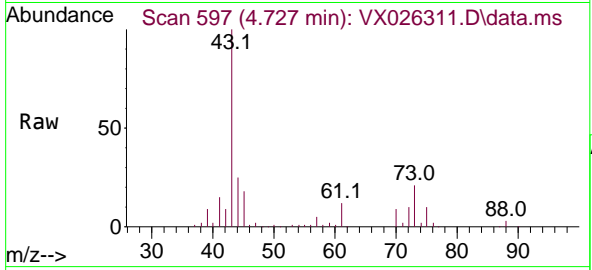




#37
 Ethyl Acetate
 Concen: 19.197 ug/l
 RT: 4.727 min Scan# 596
 Delta R.T. 0.006 min
 Lab File: VX026311.D
 Acq: 05 Jan 2022 07:38

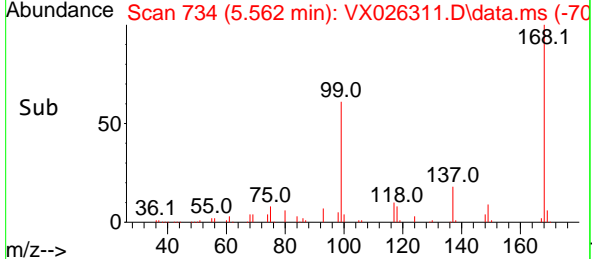
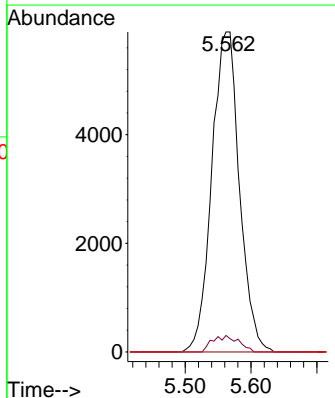
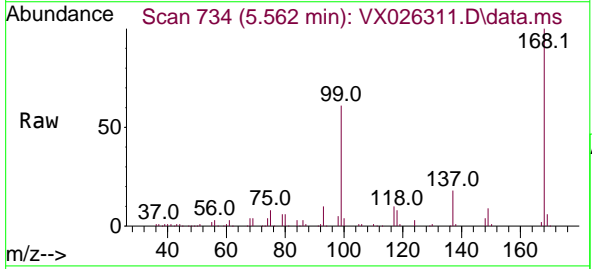
Instrument : MSVOA_X
 ClientSampleId :

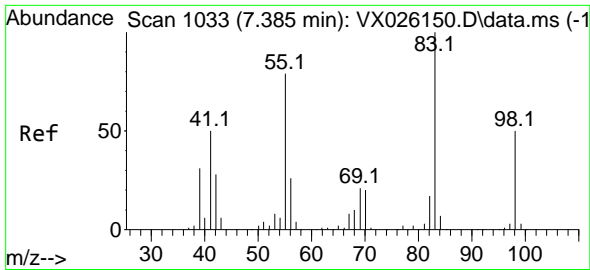
| Tgt Ion | Resp | Lower | Upper |
|---------|------|-------|-------|
| 43 | 100 | | |
| 61 | 11.0 | 10.7 | 16.1 |
| 70 | 9.3 | 8.5 | 12.7 |



#38
 Carbon Tetrachloride
 Concen: 5.532 ug/l
 RT: 5.562 min Scan# 734
 Delta R.T. -0.122 min
 Lab File: VX026311.D
 Acq: 05 Jan 2022 07:38

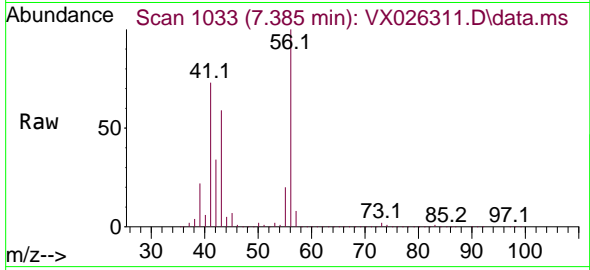
| Tgt Ion | Resp | Lower | Upper |
|---------|------|-------|--------|
| 117 | 100 | | |
| 119 | 5.1 | 77.2 | 115.8# |
| 121 | 0.0 | 23.8 | 35.8# |



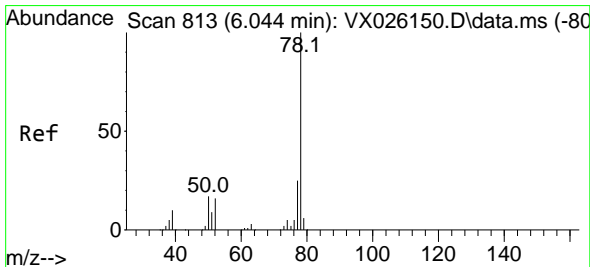
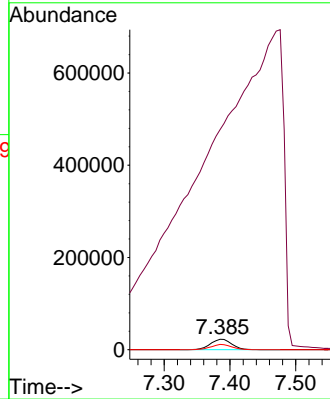
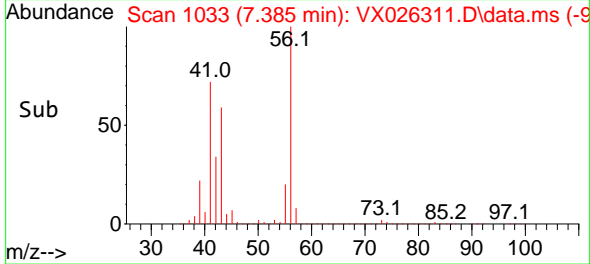


#39
 Methylcyclohexane
 Concen: 16.048 ug/l
 RT: 7.385 min Scan# 10
 Delta R.T. -0.000 min
 Lab File: VX026311.D
 Acq: 05 Jan 2022 07:38

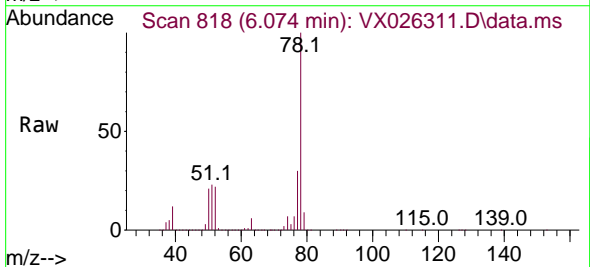
Instrument :
 MSVOA_X
 ClientSampleId :



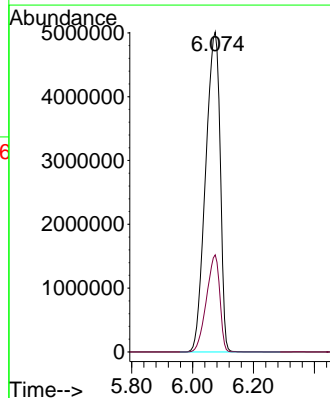
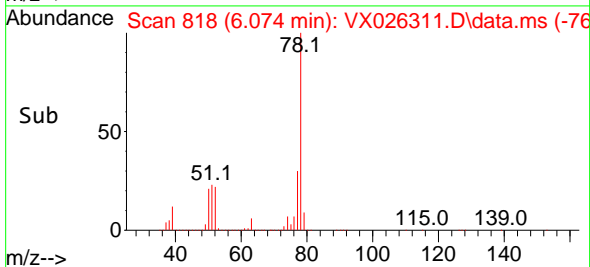
Tgt Ion: 83 Resp: 50635
 Ion Ratio Lower Upper
 83 100
 55 726.2 57.8 86.8#
 98 50.0 40.5 60.7

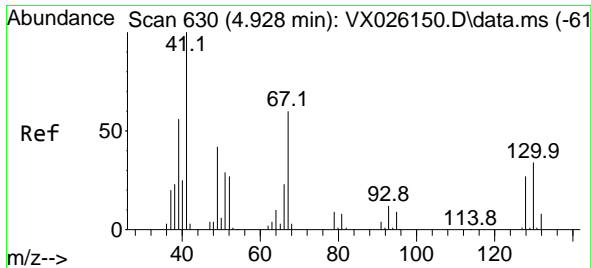


#40
 Benzene
 Concen: 2079.788 ug/l
 RT: 6.074 min Scan# 818
 Delta R.T. 0.030 min
 Lab File: VX026311.D
 Acq: 05 Jan 2022 07:38



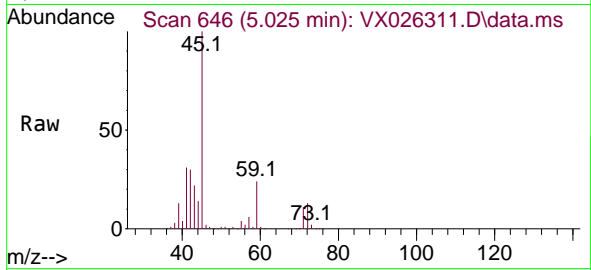
Tgt Ion: 78 Resp:16603155
 Ion Ratio Lower Upper
 78 100
 77 30.3 18.6 27.8#



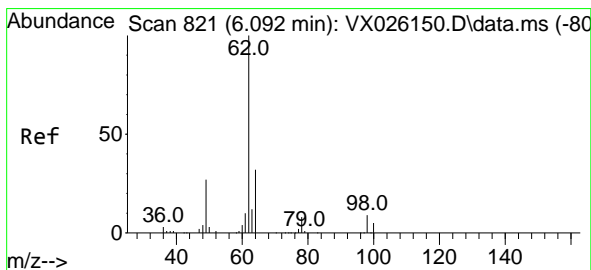
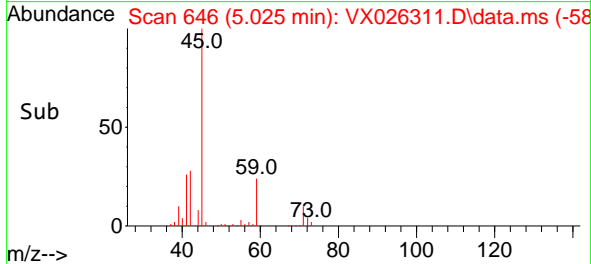
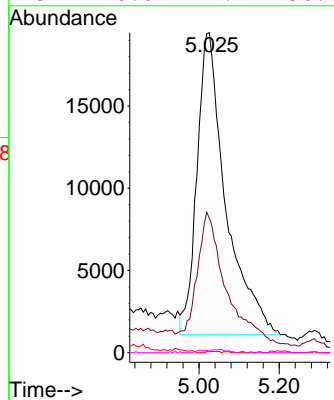


#41
 Methacrylonitrile
 Concen: 50.183 ug/l
 RT: 5.025 min Scan# 646
 Delta R.T. 0.097 min
 Lab File: VX026311.D
 Acq: 05 Jan 2022 07:38

Instrument :
 MSVOA_X
 ClientSampleId :

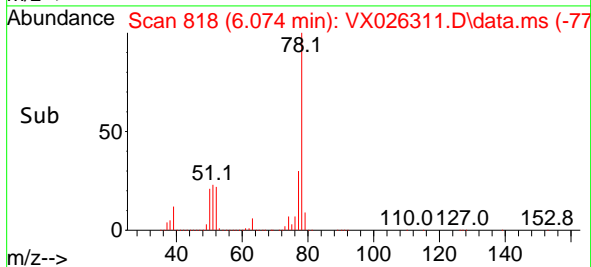
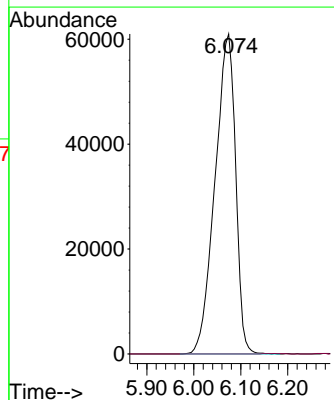
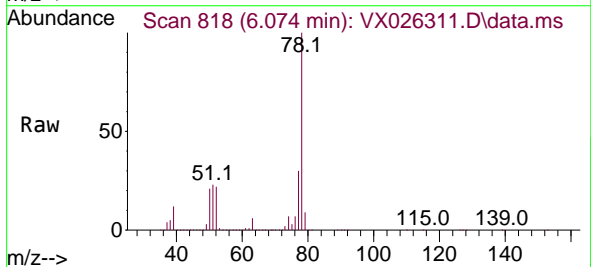


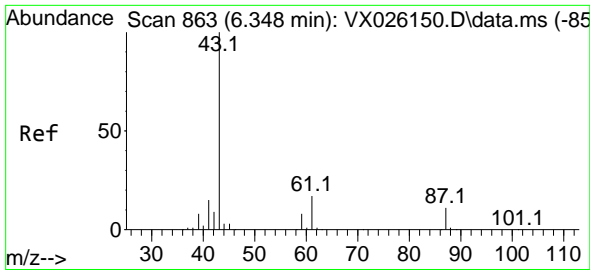
Tgt Ion: 41 Resp: 91910
 Ion Ratio Lower Upper
 41 100
 39 43.5 44.2 66.2#
 67 0.2 59.7 89.5#
 52 0.0 24.2 36.2#



#42
 1,2-Dichloroethane
 Concen: 57.493 ug/l
 RT: 6.074 min Scan# 818
 Delta R.T. -0.018 min
 Lab File: VX026311.D
 Acq: 05 Jan 2022 07:38

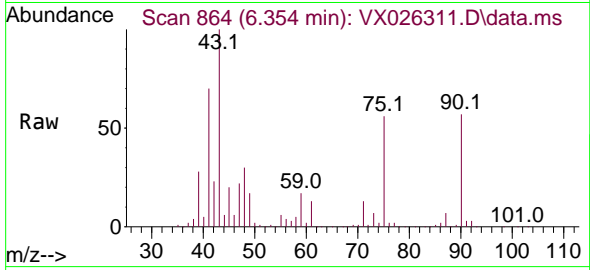
Tgt Ion: 62 Resp: 185746
 Ion Ratio Lower Upper
 62 100
 98 0.0 0.0 18.8



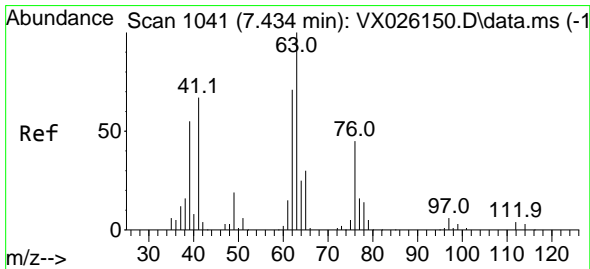
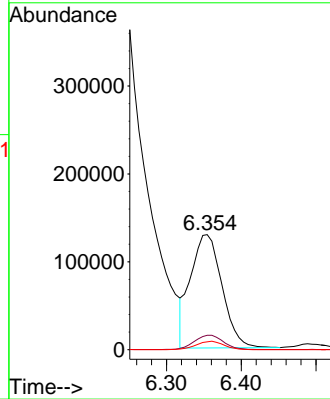
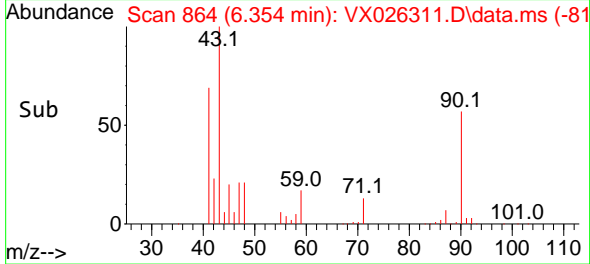


#43
 Isopropyl Acetate
 Concen: 71.276 ug/l
 RT: 6.354 min Scan# 80
 Delta R.T. 0.006 min
 Lab File: VX026311.D
 Acq: 05 Jan 2022 07:38

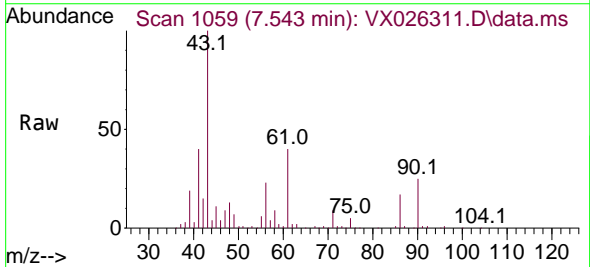
Instrument :
 MSVOA_X
 ClientSampleId :



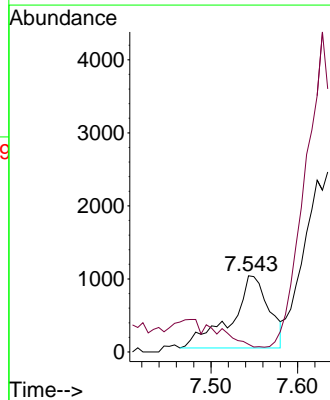
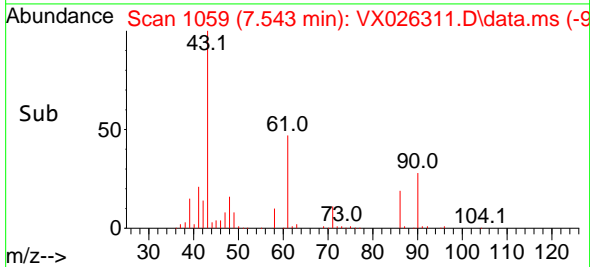
Tgt Ion: 43 Resp: 376756
 Ion Ratio Lower Upper
 43 100
 61 11.8 15.7 23.5#
 87 6.6 11.2 16.8#

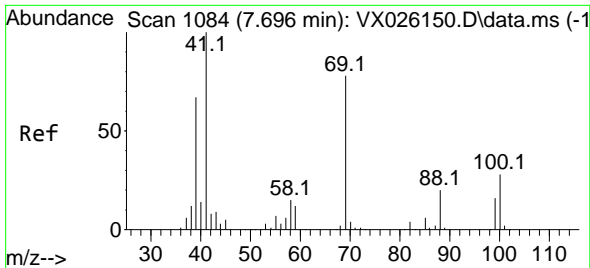


#45
 1,2-Dichloropropane
 Concen: 1.475 ug/l
 RT: 7.543 min Scan# 1059
 Delta R.T. 0.109 min
 Lab File: VX026311.D
 Acq: 05 Jan 2022 07:38



Tgt Ion: 63 Resp: 3012
 Ion Ratio Lower Upper
 63 100
 65 0.0 25.8 38.6#

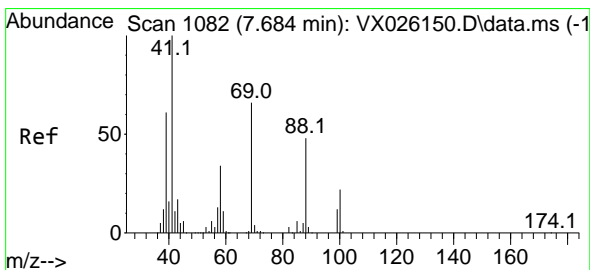
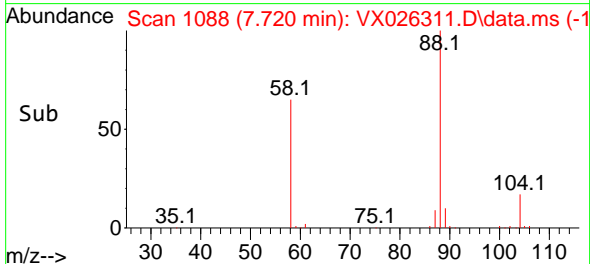
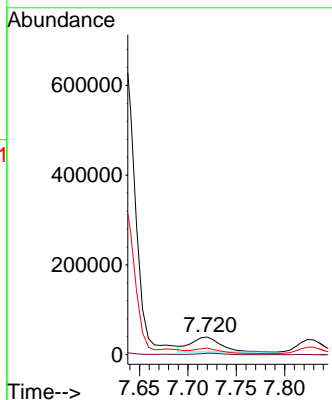
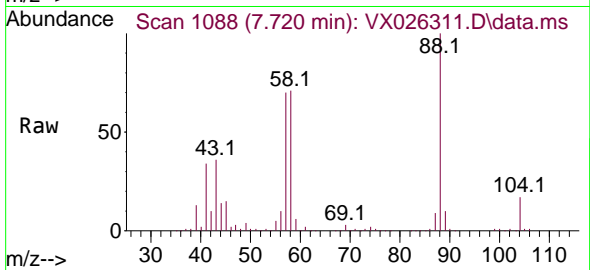




#48
 Methyl methacrylate
 Concen: 28.374 ug/l
 RT: 7.720 min Scan# 1088
 Delta R.T. 0.024 min
 Lab File: VX026311.D
 Acq: 05 Jan 2022 07:38

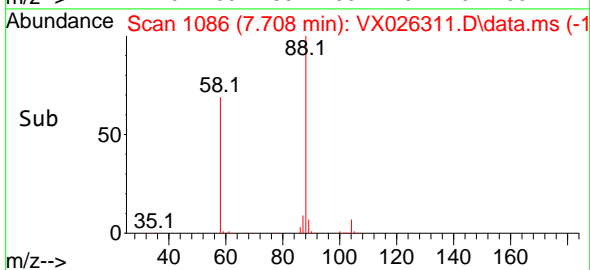
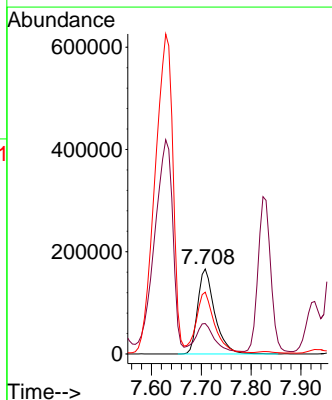
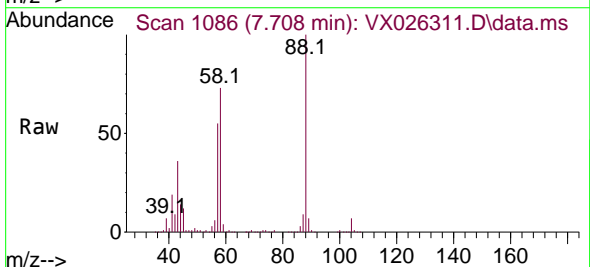
Instrument : MSVOA_X
 ClientSampleId :

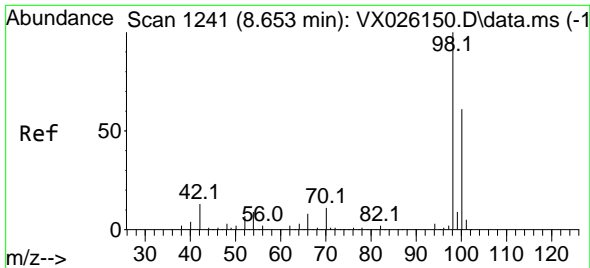
Tgt Ion: 41 Resp: 71930
 Ion Ratio Lower Upper
 41 100
 69 8.2 67.3 100.9#
 39 0.0 50.2 75.2#



#49
 1,4-Dioxane
 Concen: 8438.215 ug/l
 RT: 7.708 min Scan# 1086
 Delta R.T. 0.024 min
 Lab File: VX026311.D
 Acq: 05 Jan 2022 07:38

Tgt Ion: 88 Resp: 394209
 Ion Ratio Lower Upper
 88 100
 43 34.7 25.3 37.9
 58 74.9 51.8 77.6

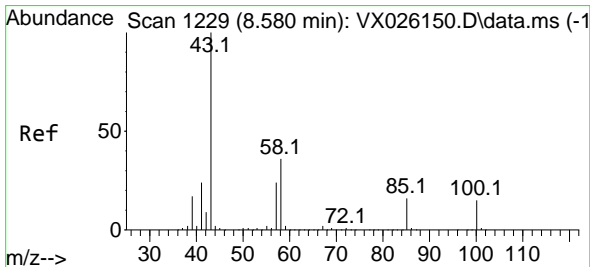
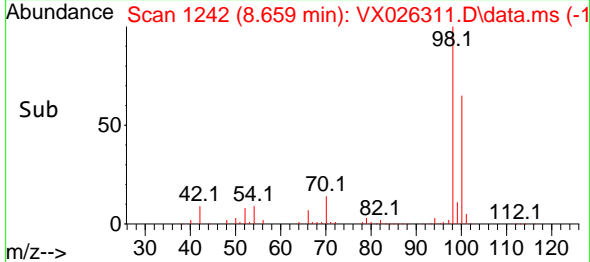
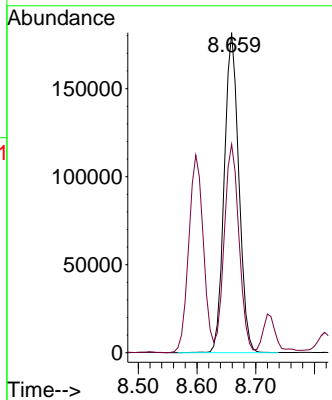
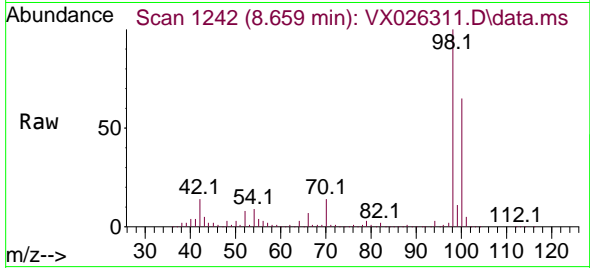




#50
 Toluene-d8
 Concen: 48.491 ug/l
 RT: 8.659 min Scan# 11
 Delta R.T. 0.006 min
 Lab File: VX026311.D
 Acq: 05 Jan 2022 07:38

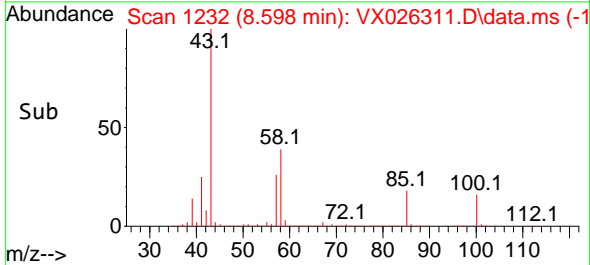
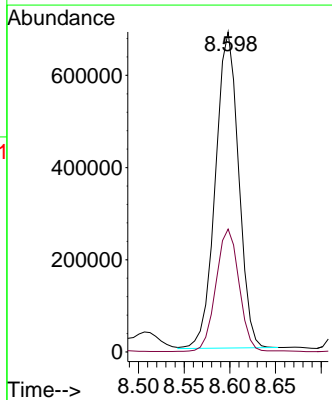
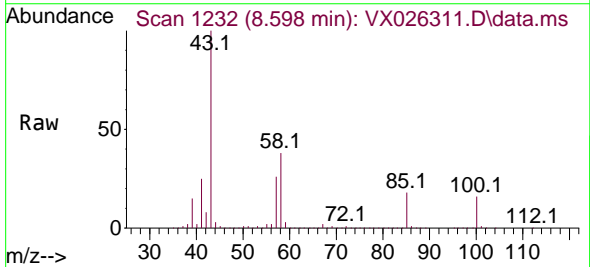
Instrument :
 MSVOA_X
 ClientSampleId :

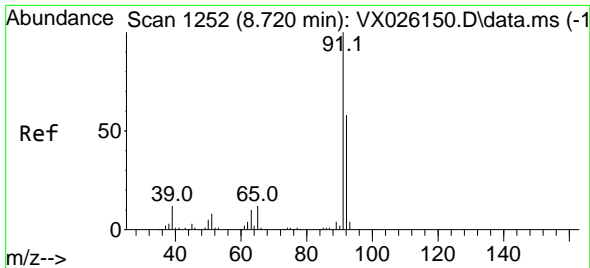
Tgt Ion: 98 Resp: 312799
 Ion Ratio Lower Upper
 98 100
 100 65.9 52.6 78.8



#51
 4-Methyl-2-Pentanone
 Concen: 368.257 ug/l
 RT: 8.598 min Scan# 1232
 Delta R.T. 0.018 min
 Lab File: VX026311.D
 Acq: 05 Jan 2022 07:38

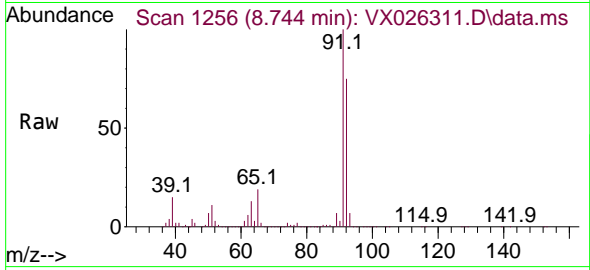
Tgt Ion: 43 Resp: 1211351
 Ion Ratio Lower Upper
 43 100
 58 39.1 30.8 46.2



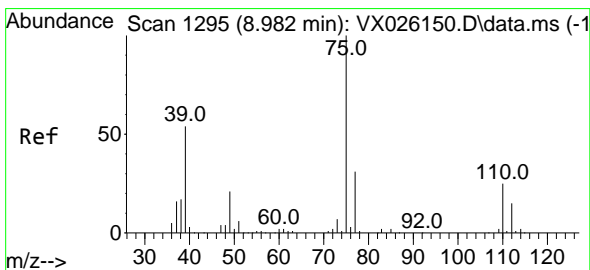
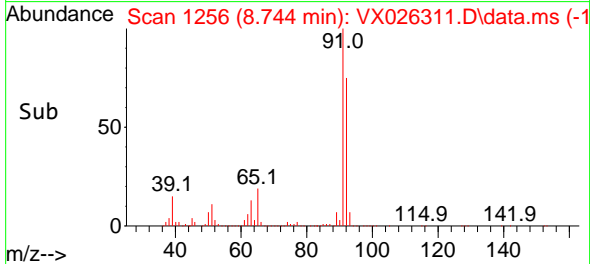
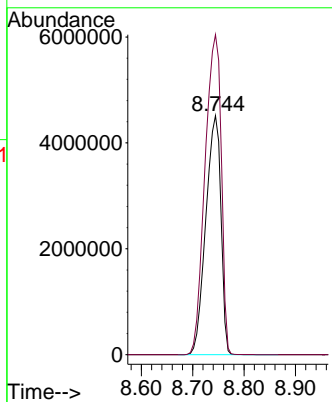


#52
 Toluene
 Concen: 1871.353 ug/l
 RT: 8.744 min Scan# 1256
 Delta R.T. 0.024 min
 Lab File: VX026311.D
 Acq: 05 Jan 2022 07:38

Instrument : MSVOA_X
 ClientSampleId :

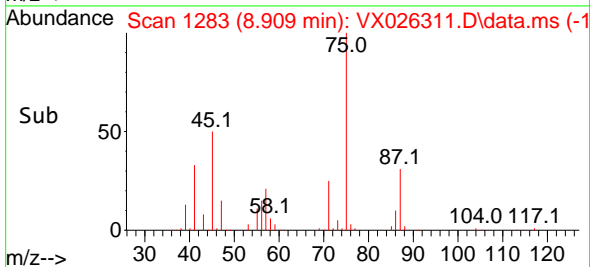
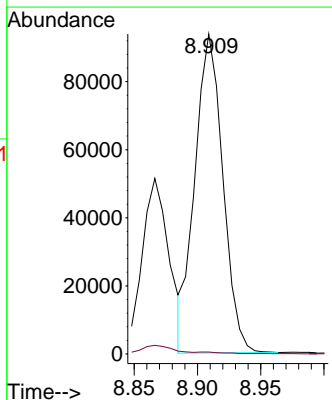
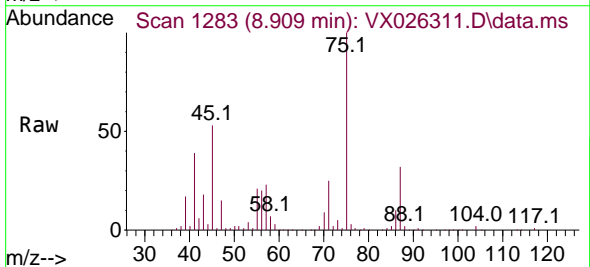


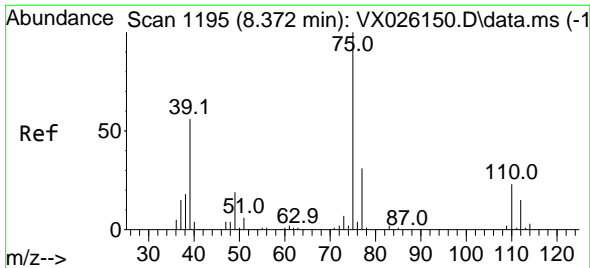
Tgt Ion: 92 Resp: 9196931
 Ion Ratio Lower Upper
 92 100
 91 144.2 136.0 204.0



#53
 t-1,3-Dichloropropene
 Concen: 44.233 ug/l
 RT: 8.909 min Scan# 1283
 Delta R.T. -0.073 min
 Lab File: VX026311.D
 Acq: 05 Jan 2022 07:38

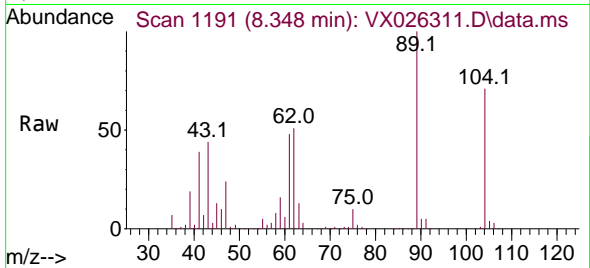
Tgt Ion: 75 Resp: 144218
 Ion Ratio Lower Upper
 75 100
 77 0.5 25.1 37.7#



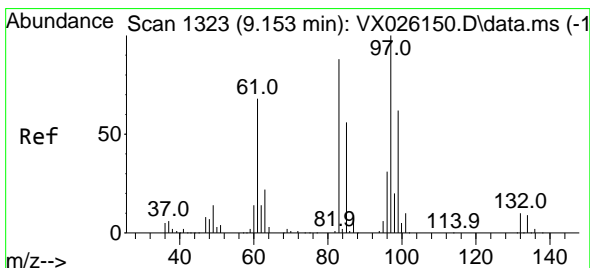
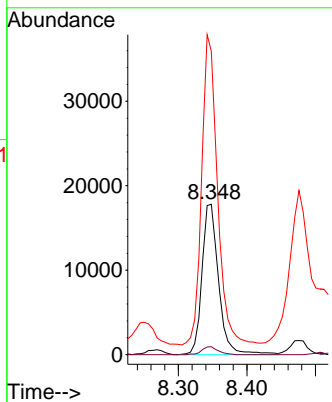
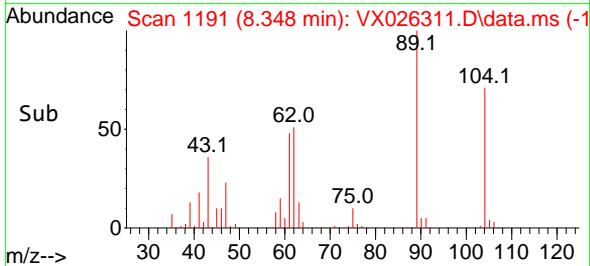


#54
 cis-1,3-Dichloropropene
 Concen: 9.241 ug/l
 RT: 8.348 min Scan# 1191
 Delta R.T. -0.024 min
 Lab File: VX026311.D
 Acq: 05 Jan 2022 07:38

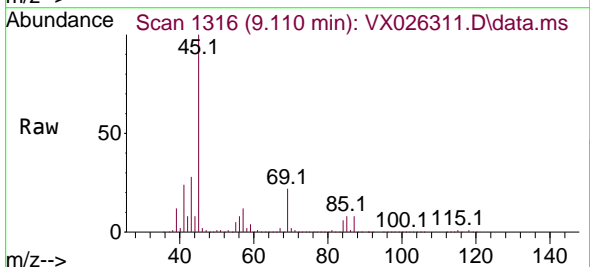
Instrument : MSVOA_X
 ClientSampleId :



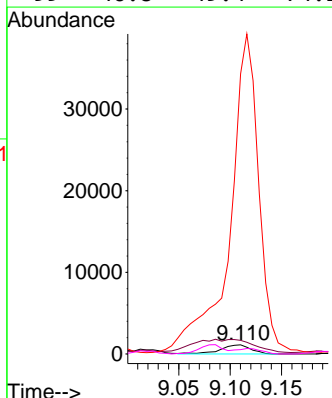
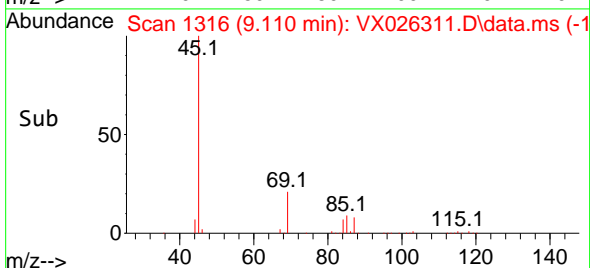
Tgt Ion: 75 Resp: 30097
 Ion Ratio Lower Upper
 75 100
 77 5.4 25.3 37.9#
 39 194.7 41.4 62.0#

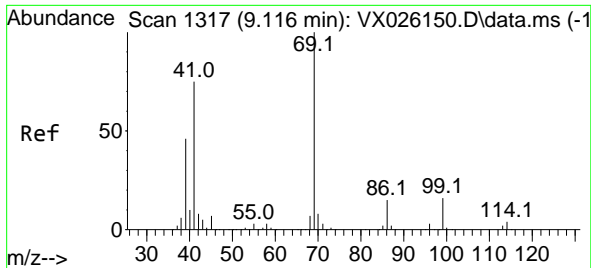


#55
 1,1,2-Trichloroethane
 Concen: 1.149 ug/l
 RT: 9.110 min Scan# 1316
 Delta R.T. -0.043 min
 Lab File: VX026311.D
 Acq: 05 Jan 2022 07:38



Tgt Ion: 97 Resp: 2320
 Ion Ratio Lower Upper
 97 100
 83 124.5 70.5 105.7#
 85 2950.9 43.8 65.6#
 99 46.8 49.4 74.2#

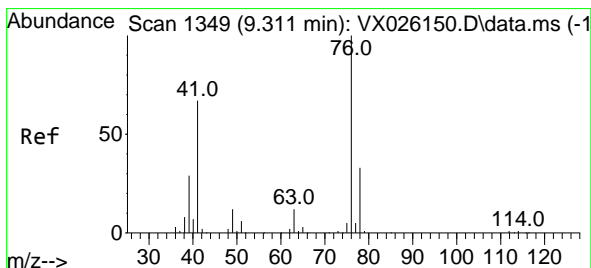
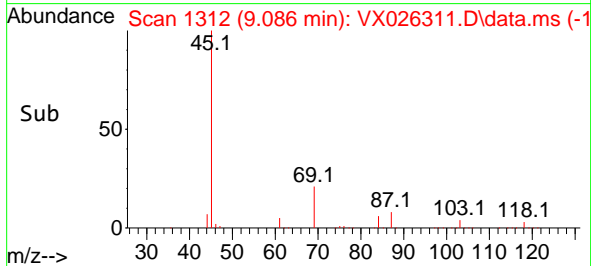
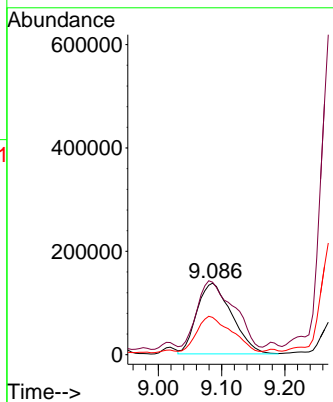
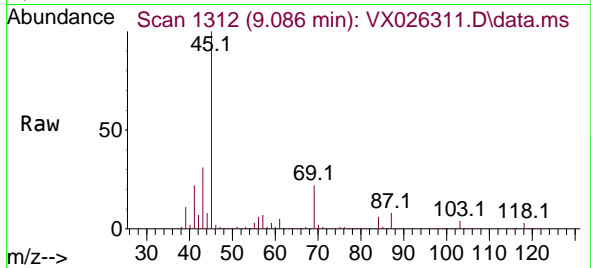




#56
 Ethyl methacrylate
 Concen: 168.437 ug/l
 RT: 9.086 min Scan# 11
 Delta R.T. -0.030 min
 Lab File: VX026311.D
 Acq: 05 Jan 2022 07:38

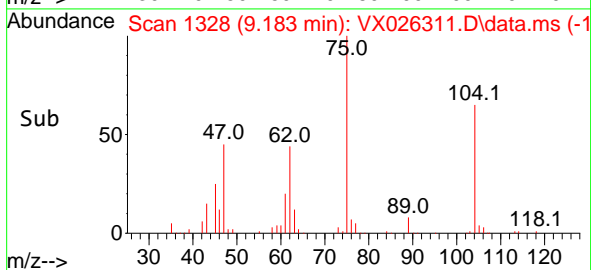
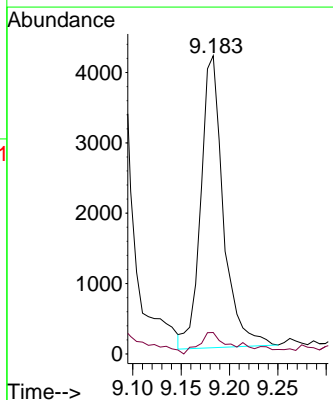
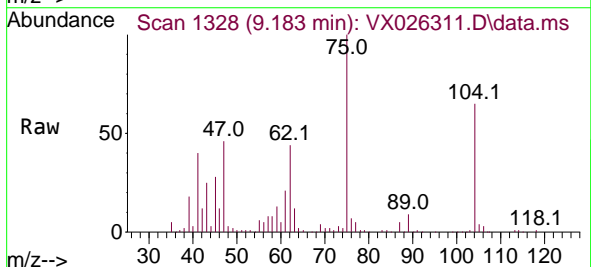
Instrument :
 MSVOA_X
 ClientSampleId :

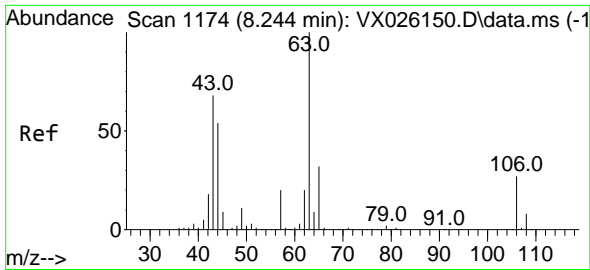
Tgt Ion: 69 Resp: 524720
 Ion Ratio Lower Upper
 69 100
 41 96.0 52.8 79.2#
 39 47.6 32.5 48.7



#57
 1,3-Dichloropropane
 Concen: 1.944 ug/l
 RT: 9.183 min Scan# 1328
 Delta R.T. -0.128 min
 Lab File: VX026311.D
 Acq: 05 Jan 2022 07:38

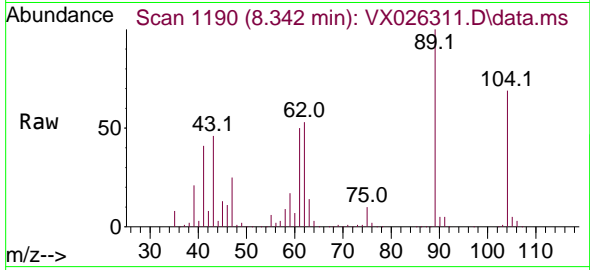
Tgt Ion: 76 Resp: 6727
 Ion Ratio Lower Upper
 76 100
 78 8.3 26.0 39.0#



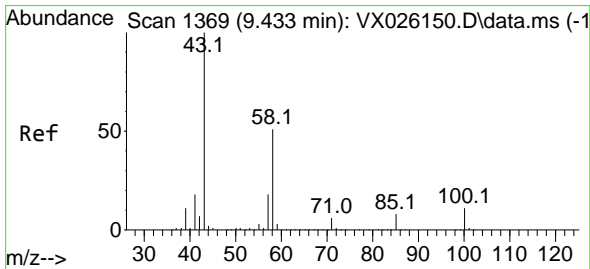
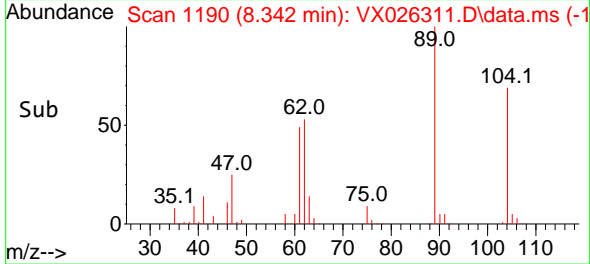
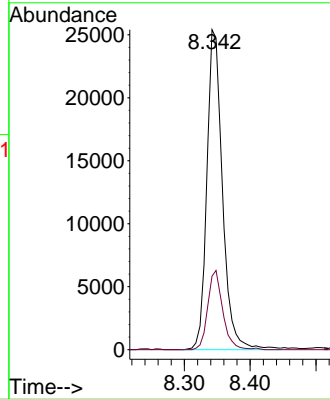


#58
 2-Chloroethyl Vinyl ether
 Concen: 34.067 ug/l
 RT: 8.342 min Scan# 1174
 Delta R.T. 0.098 min
 Lab File: VX026311.D
 Acq: 05 Jan 2022 07:38

Instrument : MSVOA_X
 ClientSampleId :

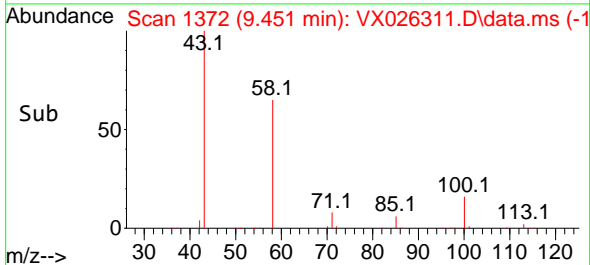
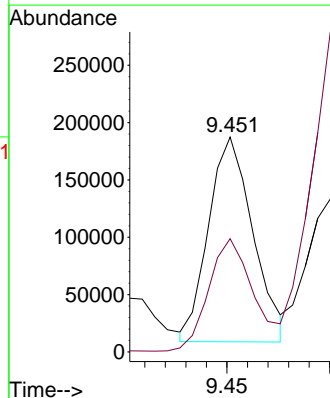
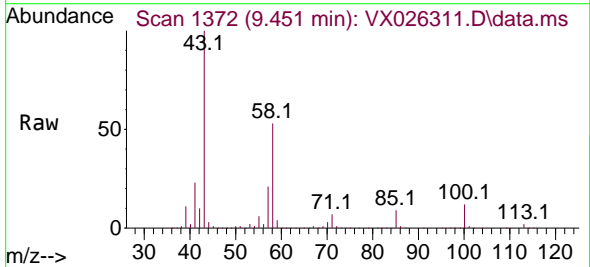


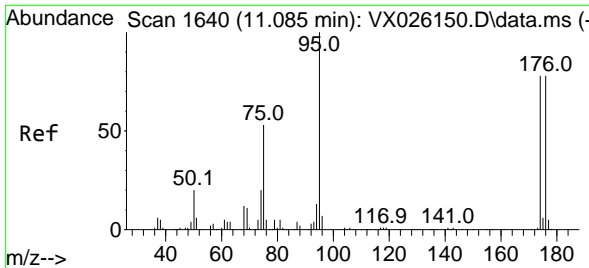
Tgt Ion: 63 Resp: 42017
 Ion Ratio Lower Upper
 63 100
 106 23.9 24.4 36.6#



#59
 2-Hexanone
 Concen: 107.295 ug/l
 RT: 9.451 min Scan# 1372
 Delta R.T. 0.018 min
 Lab File: VX026311.D
 Acq: 05 Jan 2022 07:38

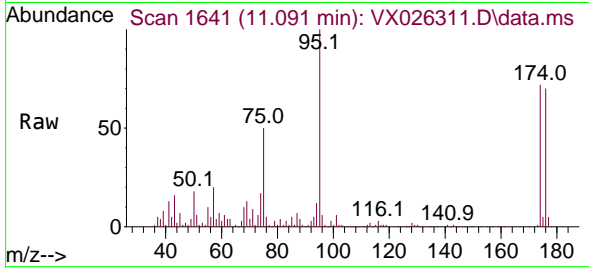
Tgt Ion: 43 Resp: 267346
 Ion Ratio Lower Upper
 43 100
 58 56.4 26.9 80.6



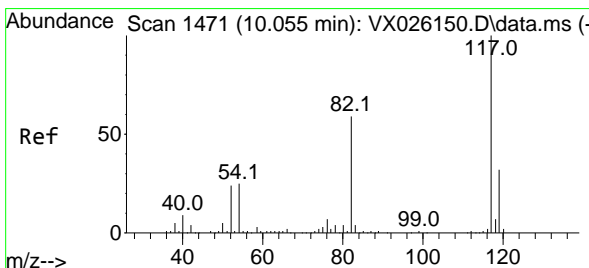
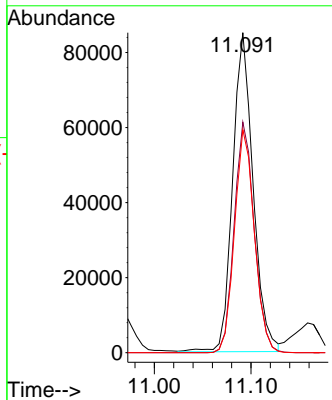
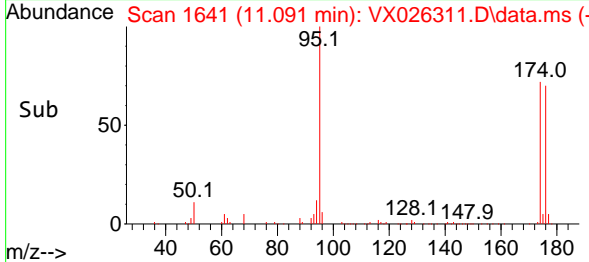


#62
 4-Bromofluorobenzene
 Concen: 54.365 ug/l
 RT: 11.091 min Scan# 11
 Delta R.T. 0.006 min
 Lab File: VX026311.D
 Acq: 05 Jan 2022 07:38

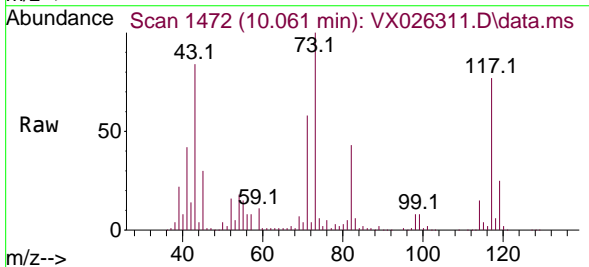
Instrument :
 MSVOA_X
 ClientSampleId :



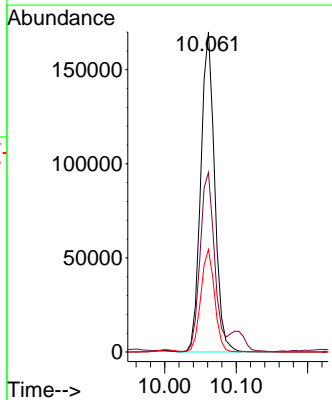
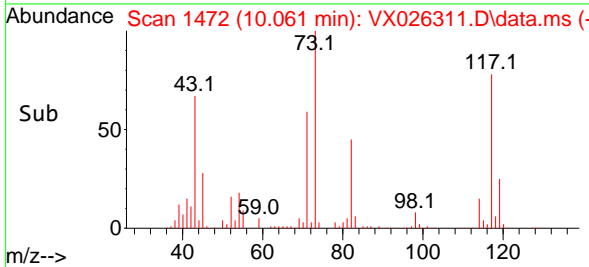
Tgt Ion: 95 Resp: 124843
 Ion Ratio Lower Upper
 95 100
 174 70.9 0.0 157.4
 176 68.1 0.0 154.6

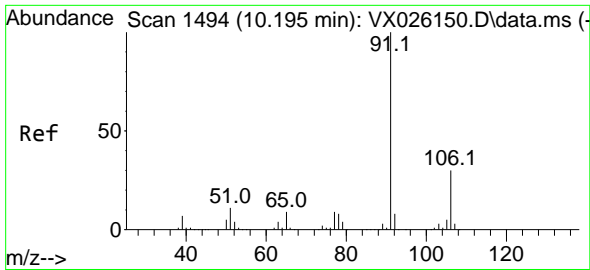


#63
 Chlorobenzene-d5
 Concen: 50.000 ug/l
 RT: 10.061 min Scan# 1472
 Delta R.T. 0.006 min
 Lab File: VX026311.D
 Acq: 05 Jan 2022 07:38



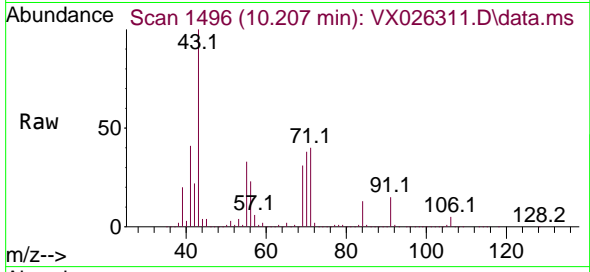
Tgt Ion: 117 Resp: 229191
 Ion Ratio Lower Upper
 117 100
 82 56.0 43.8 65.6
 119 32.0 25.2 37.8



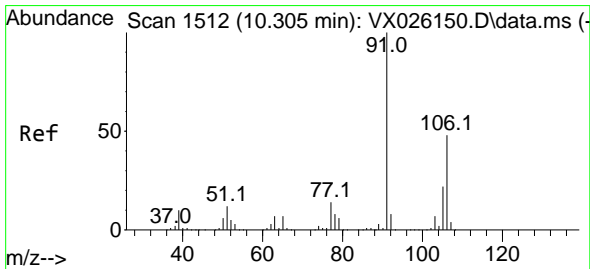
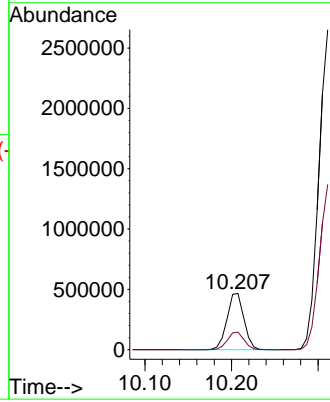
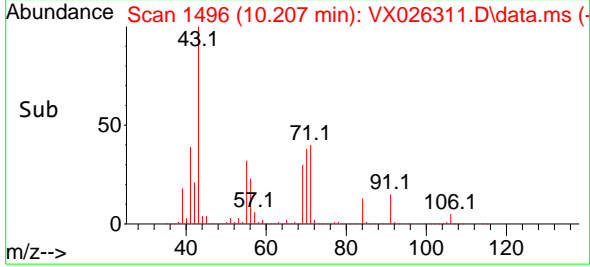


#67
 Ethyl Benzene
 Concen: 70.210 ug/l
 RT: 10.207 min Scan# 1496
 Delta R.T. 0.012 min
 Lab File: VX026311.D
 Acq: 05 Jan 2022 07:38

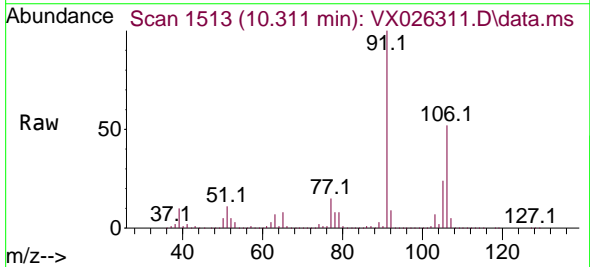
Instrument :
 MSVOA_X
 ClientSampleId :



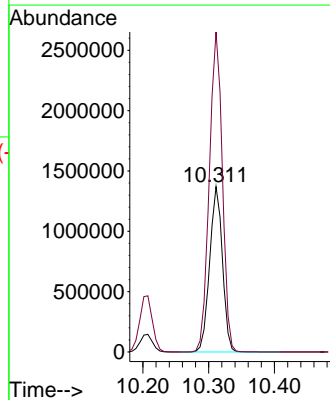
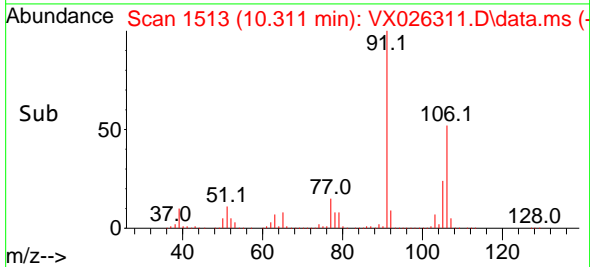
Tgt Ion: 91 Resp: 632068
 Ion Ratio Lower Upper
 91 100
 106 31.3 25.7 38.5

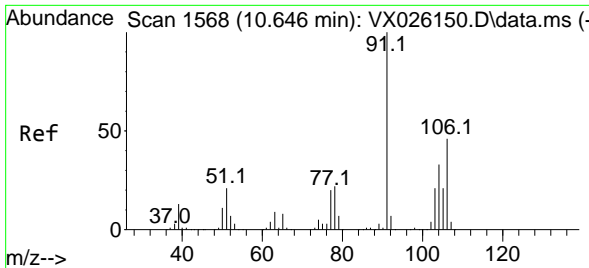


#68
 m/p-Xylenes
 Concen: 549.633 ug/l
 RT: 10.311 min Scan# 1513
 Delta R.T. 0.006 min
 Lab File: VX026311.D
 Acq: 05 Jan 2022 07:38



Tgt Ion: 106 Resp: 1847512
 Ion Ratio Lower Upper
 106 100
 91 198.0 158.6 238.0

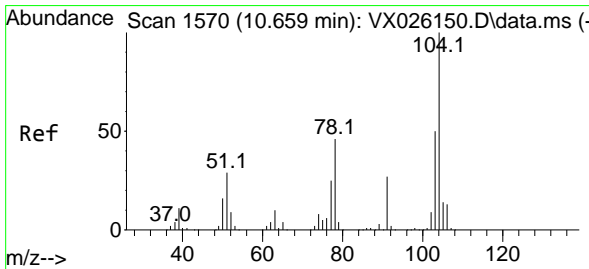
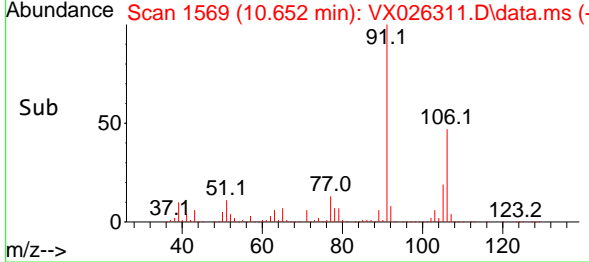
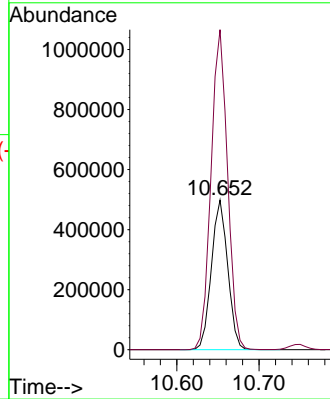
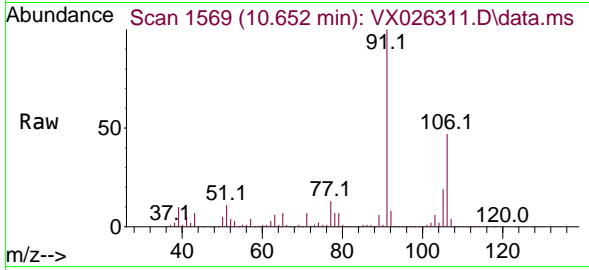




#69
 o-Xylene
 Concen: 209.080 ug/l
 RT: 10.652 min Scan# 1569
 Delta R.T. 0.006 min
 Lab File: VX026311.D
 Acq: 05 Jan 2022 07:38

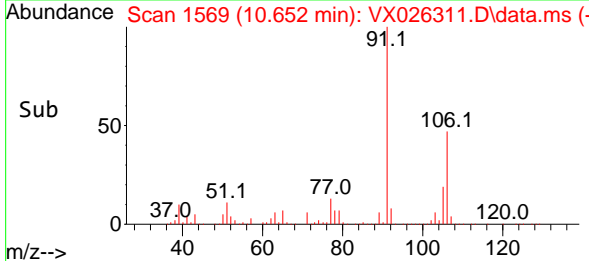
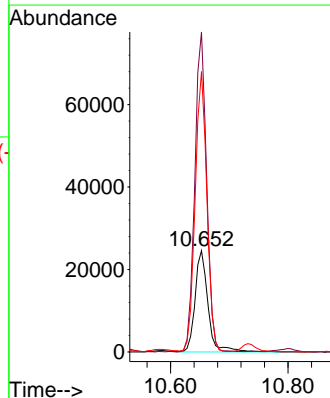
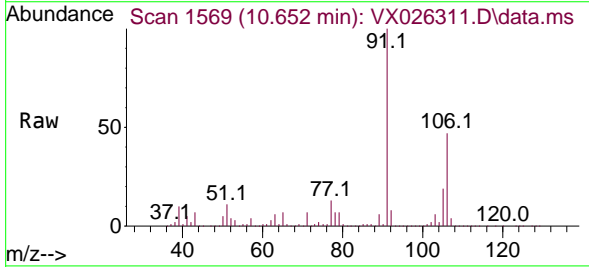
Instrument :
 MSVOA_X
 ClientSampleId :

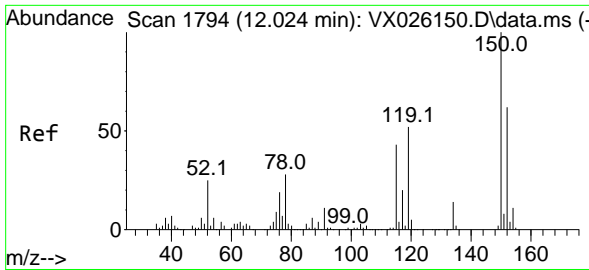
Tgt Ion:106 Resp: 687638
 Ion Ratio Lower Upper
 106 100
 91 216.3 105.5 316.4



#70
 Styrene
 Concen: 6.942 ug/l
 RT: 10.652 min Scan# 1569
 Delta R.T. -0.007 min
 Lab File: VX026311.D
 Acq: 05 Jan 2022 07:38

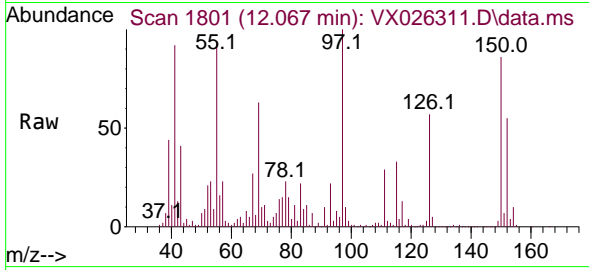
Tgt Ion:104 Resp: 37427
 Ion Ratio Lower Upper
 104 100
 78 289.6 39.8 59.6#
 103 251.0 43.0 64.6#



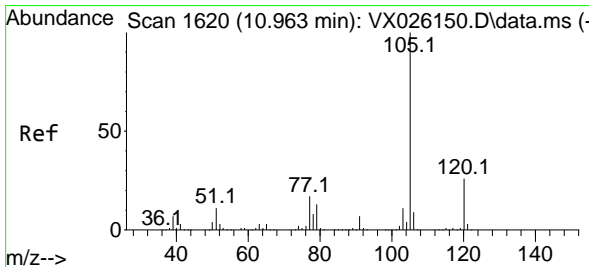
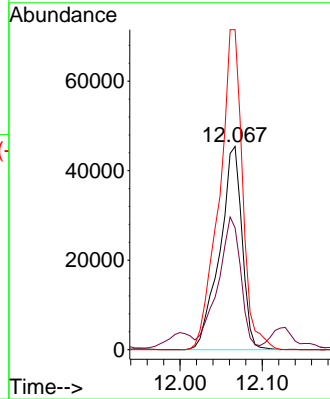
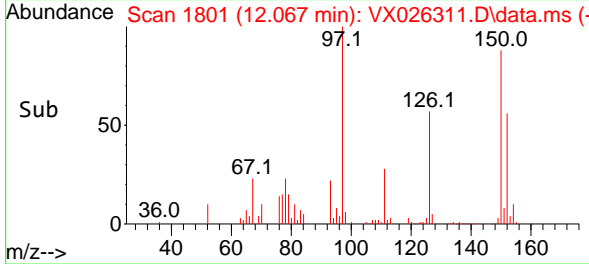


#72
 1,4-Dichlorobenzene-d4
 Concen: 50.000 ug/l
 RT: 12.067 min Scan# 1801
 Delta R.T. 0.043 min
 Lab File: VX026311.D
 Acq: 05 Jan 2022 07:38

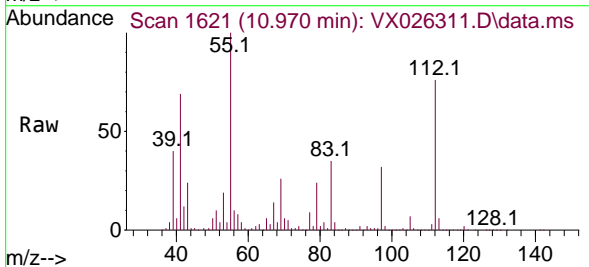
Instrument :
 MSVOA_X
 ClientSampleId :



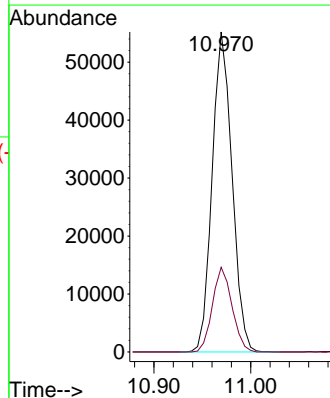
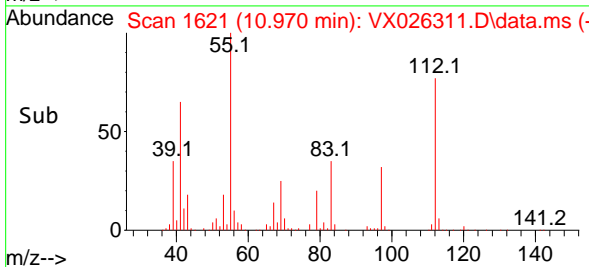
Tgt Ion:152 Resp: 85855
 Ion Ratio Lower Upper
 152 100
 115 62.5 41.3 123.9
 150 164.3 0.0 351.8

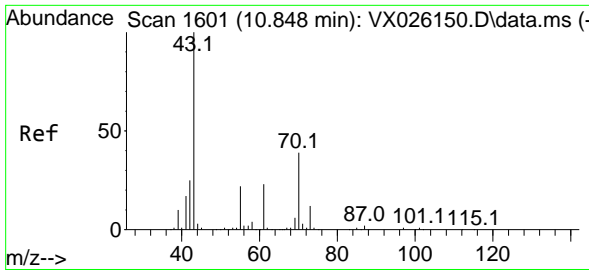


#73
 Isopropylbenzene
 Concen: 11.790 ug/l
 RT: 10.970 min Scan# 1621
 Delta R.T. 0.007 min
 Lab File: VX026311.D
 Acq: 05 Jan 2022 07:38



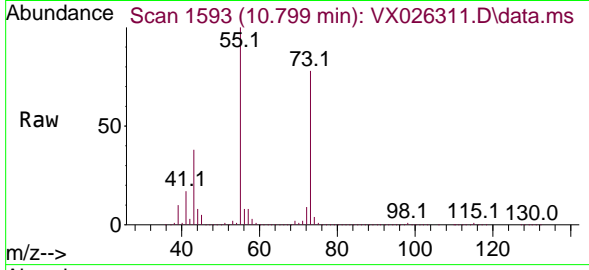
Tgt Ion:105 Resp: 78680
 Ion Ratio Lower Upper
 105 100
 120 26.0 13.6 40.7





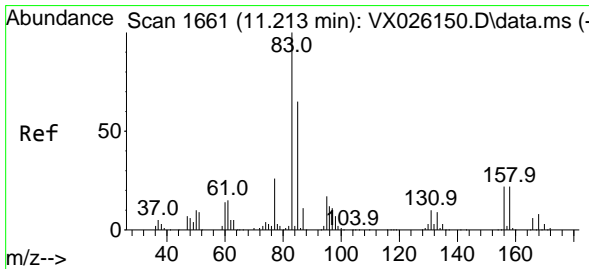
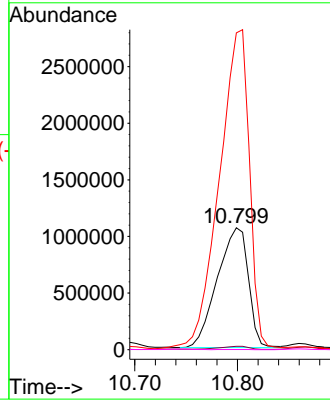
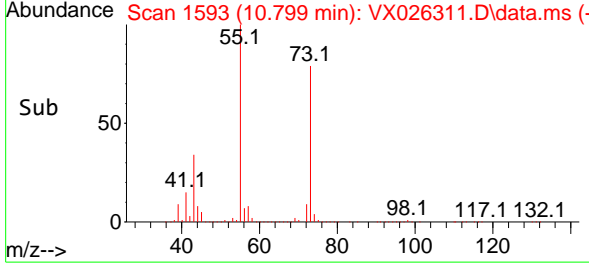
#74
 N-amy1 acetate
 Concen: 724.130 ug/l
 RT: 10.799 min Scan# 11
 Delta R.T. -0.049 min
 Lab File: VX026311.D
 Acq: 05 Jan 2022 07:38

Instrument :
 MSVOA_X
 ClientSampleId :

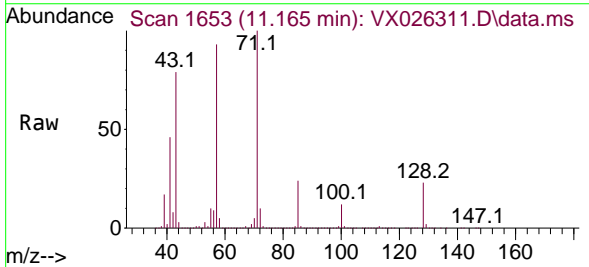


Tgt Ion: 43 Resp: 2218982

| Ion | Ratio | Lower | Upper |
|-----|-------|-------|-------|
| 43 | 100 | | |
| 70 | 2.7 | 34.1 | 51.1# |
| 55 | 258.4 | 19.2 | 28.8# |
| 61 | 0.1 | 19.0 | 28.4# |

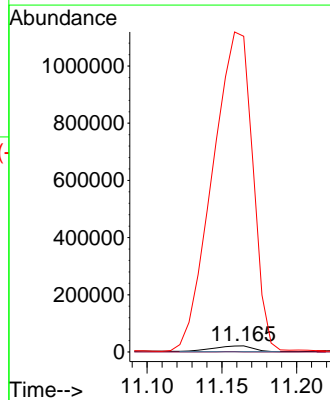
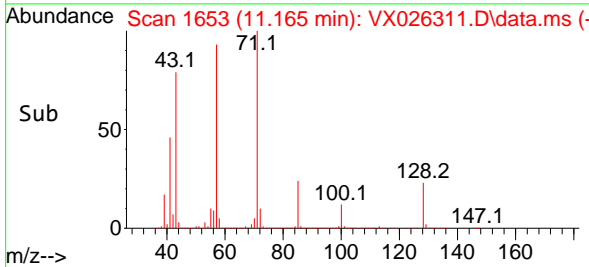


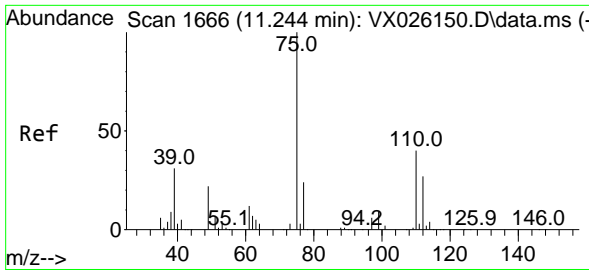
#75
 1,1,2,2-Tetrachloroethane
 Concen: 16.637 ug/l
 RT: 11.165 min Scan# 1653
 Delta R.T. -0.048 min
 Lab File: VX026311.D
 Acq: 05 Jan 2022 07:38



Tgt Ion: 83 Resp: 37760

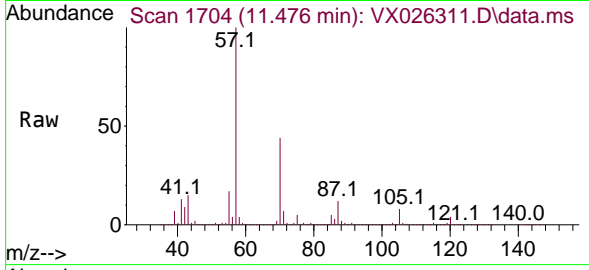
| Ion | Ratio | Lower | Upper |
|-----|--------|-------|-------|
| 83 | 100 | | |
| 131 | 2.4 | 5.1 | 15.3# |
| 85 | 5541.6 | 31.6 | 95.0# |



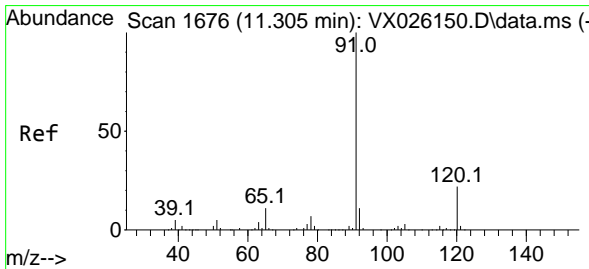
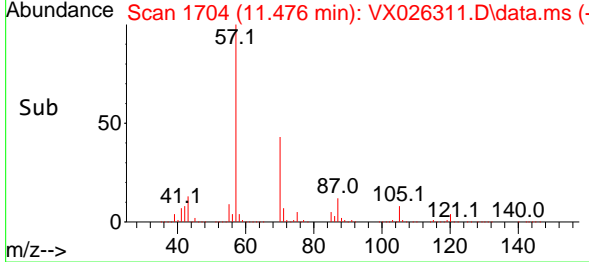
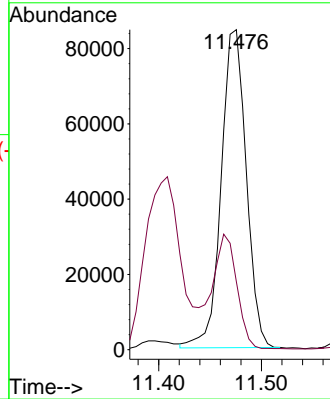


#76
 1,2,3-Trichloropropane
 Concen: 68.955 ug/l
 RT: 11.476 min Scan# 11
 Delta R.T. 0.232 min
 Lab File: VX026311.D
 Acq: 05 Jan 2022 07:38

Instrument :
 MSVOA_X
 ClientSampleId :

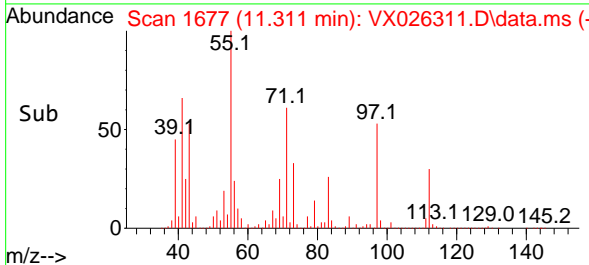
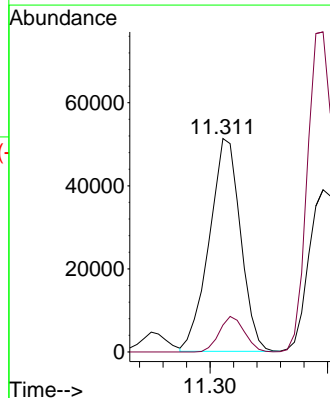
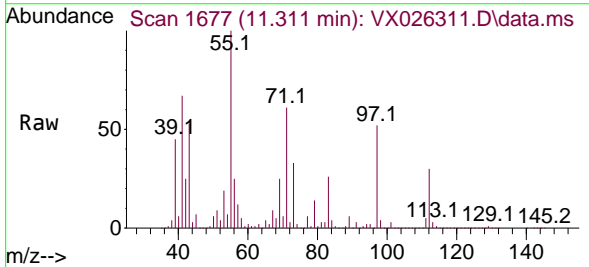


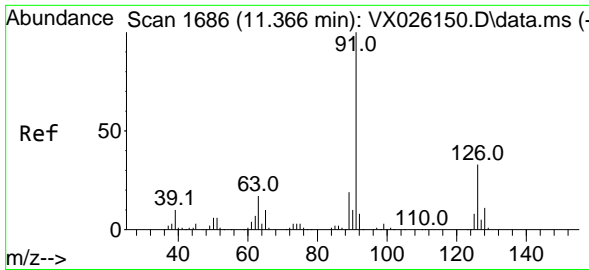
Tgt Ion: 75 Resp: 142898
 Ion Ratio Lower Upper
 75 100
 77 35.2 19.0 57.0



#78
 n-propylbenzene
 Concen: 12.351 ug/l
 RT: 11.311 min Scan# 1677
 Delta R.T. 0.006 min
 Lab File: VX026311.D
 Acq: 05 Jan 2022 07:38

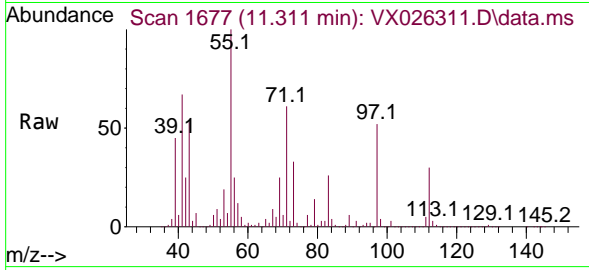
Tgt Ion: 91 Resp: 94767
 Ion Ratio Lower Upper
 91 100
 120 13.5 12.0 36.1



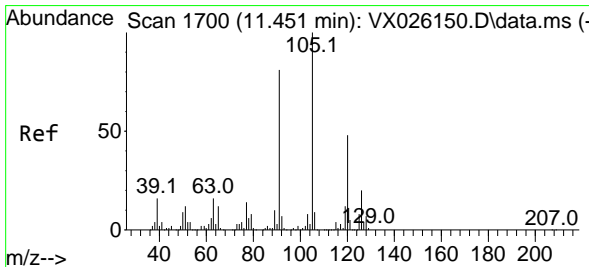
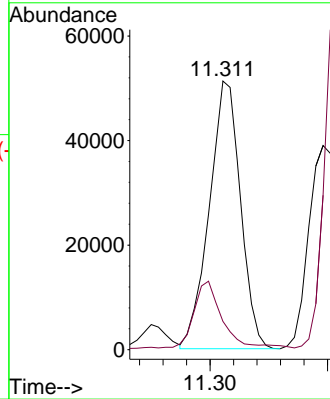
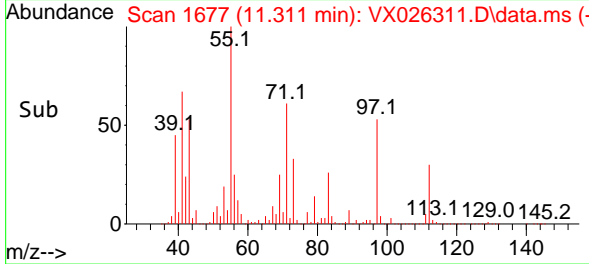


#79
 2-Chlorotoluene
 Concen: 20.010 ug/l
 RT: 11.311 min Scan# 110
 Delta R.T. -0.055 min
 Lab File: VX026311.D
 Acq: 05 Jan 2022 07:38

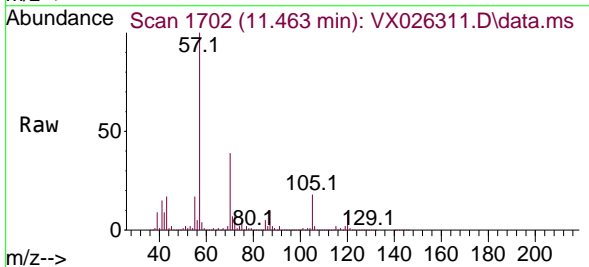
Instrument : MSVOA_X
 ClientSampleId :



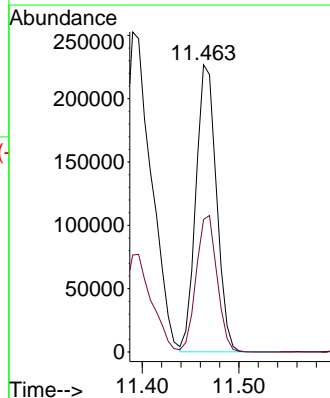
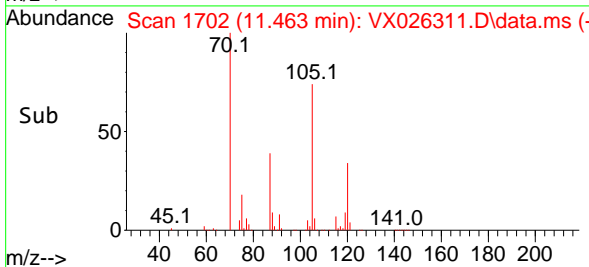
Tgt Ion: 91 Resp: 94511
 Ion Ratio Lower Upper
 91 100
 126 22.6 17.8 53.3

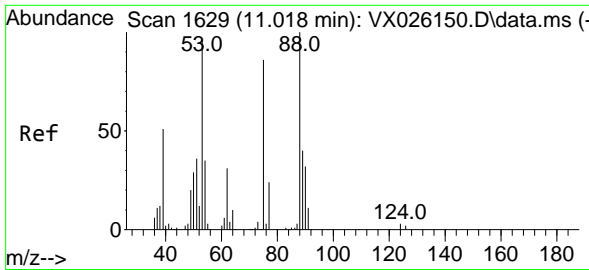


#80
 1,3,5-Trimethylbenzene
 Concen: 60.490 ug/l
 RT: 11.463 min Scan# 1702
 Delta R.T. 0.012 min
 Lab File: VX026311.D
 Acq: 05 Jan 2022 07:38



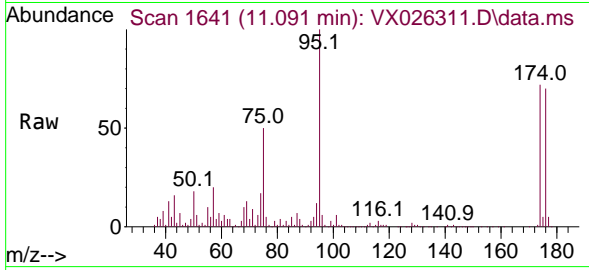
Tgt Ion: 105 Resp: 335003
 Ion Ratio Lower Upper
 105 100
 120 48.1 24.9 74.7



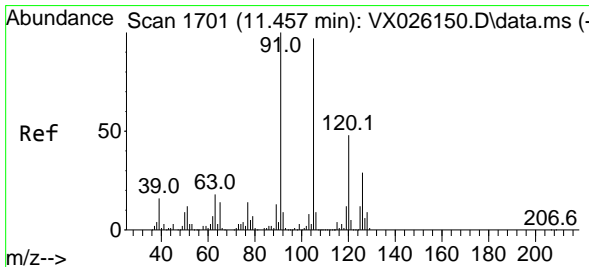
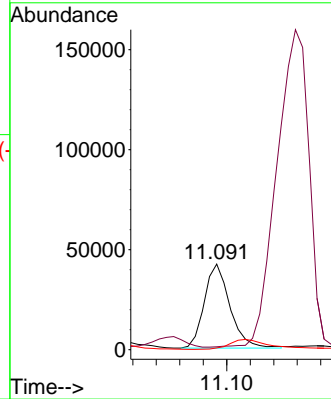
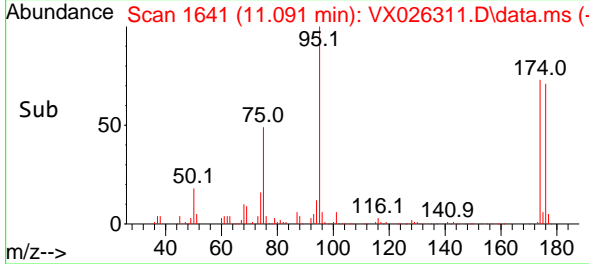


#81
 trans-1,4-Dichloro-2-butene
 Concen: 89.007 ug/l
 RT: 11.091 min Scan# 1641
 Delta R.T. 0.073 min
 Lab File: VX026311.D
 Acq: 05 Jan 2022 07:38

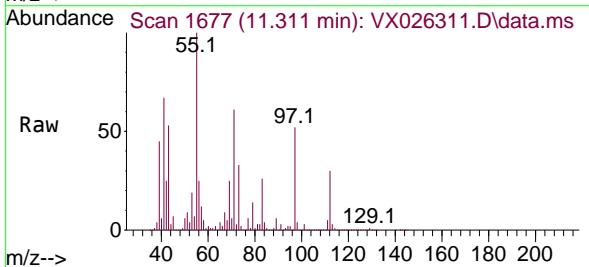
Instrument : MSVOA_X
 ClientSampleId :



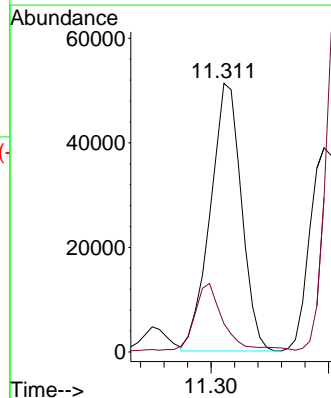
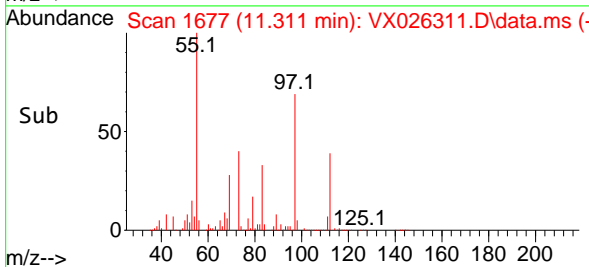
Tgt Ion: 75 Resp: 63758
 Ion Ratio Lower Upper
 75 100
 53 0.0 79.5 119.3#
 89 0.0 38.3 57.5#

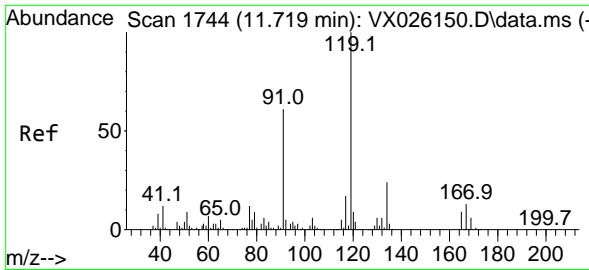


#82
 4-Chlorotoluene
 Concen: 17.718 ug/l
 RT: 11.311 min Scan# 1677
 Delta R.T. -0.146 min
 Lab File: VX026311.D
 Acq: 05 Jan 2022 07:38



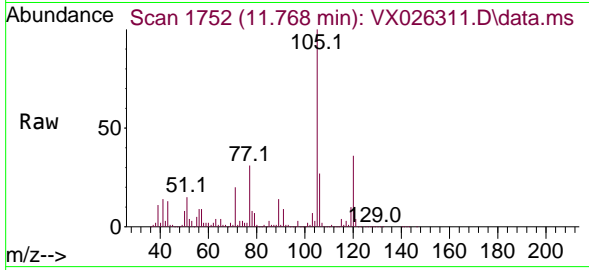
Tgt Ion: 91 Resp: 94511
 Ion Ratio Lower Upper
 91 100
 126 22.6 15.6 46.7



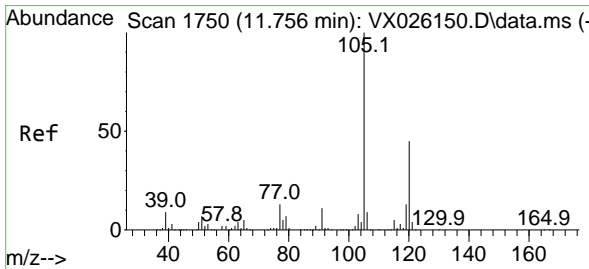
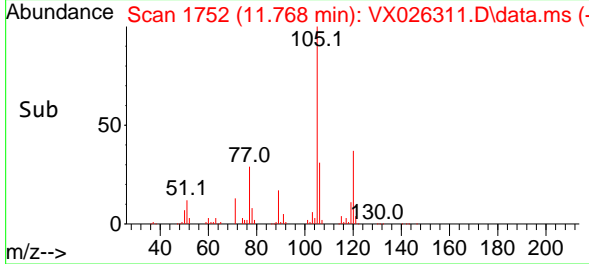
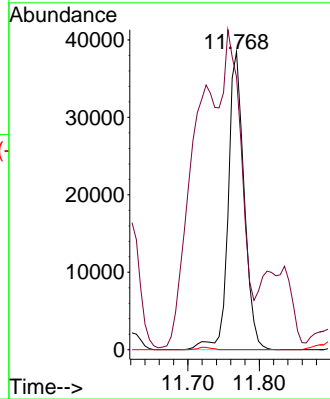


#83
 tert-Butylbenzene
 Concen: 11.083 ug/l
 RT: 11.768 min Scan# 1752
 Delta R.T. 0.049 min
 Lab File: VX026311.D
 Acq: 05 Jan 2022 07:38

Instrument : MSVOA_X
 ClientSampleId :

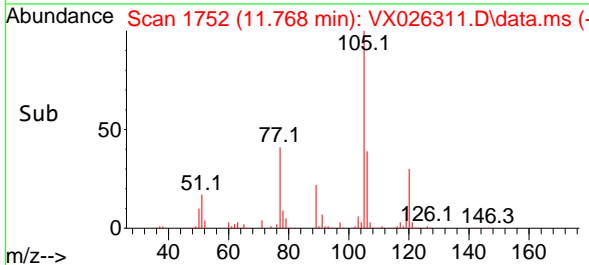
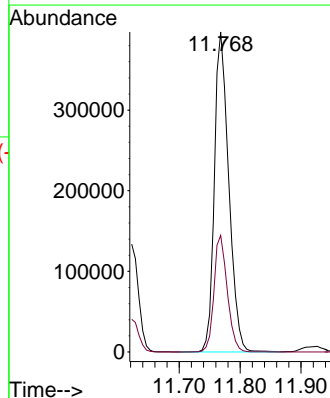
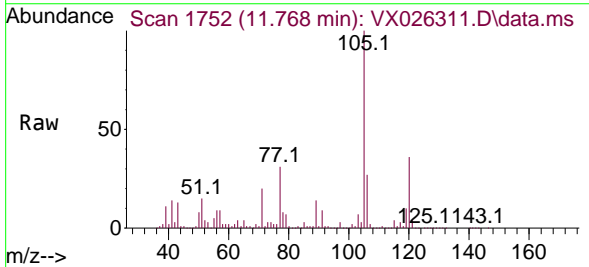


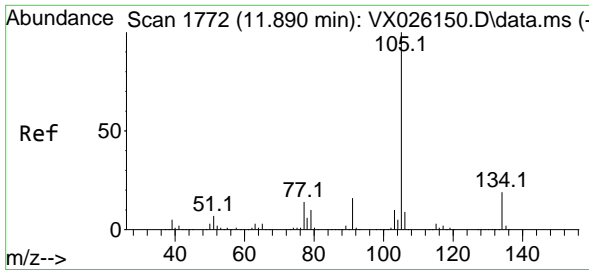
Tgt Ion:119 Resp: 59577
 Ion Ratio Lower Upper
 119 100
 91 97.2 28.7 86.1#
 134 0.0 11.9 35.9#



#84
 1,2,4-Trimethylbenzene
 Concen: 117.216 ug/l
 RT: 11.768 min Scan# 1752
 Delta R.T. 0.012 min
 Lab File: VX026311.D
 Acq: 05 Jan 2022 07:38

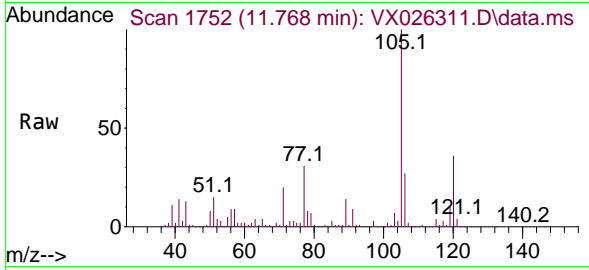
Tgt Ion:105 Resp: 648639
 Ion Ratio Lower Upper
 105 100
 120 33.7 22.9 68.7



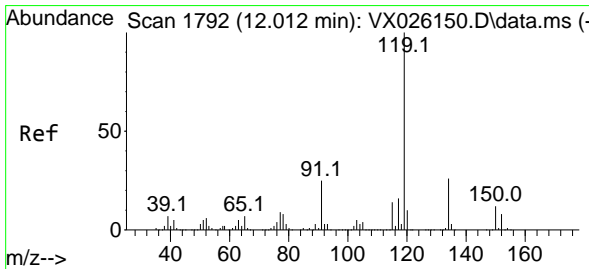
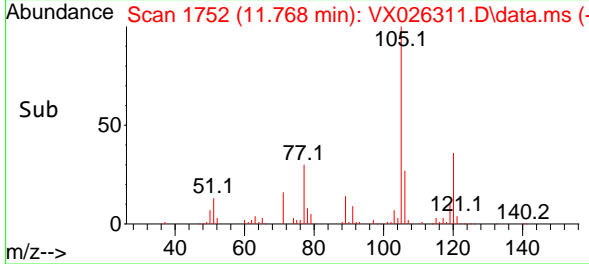
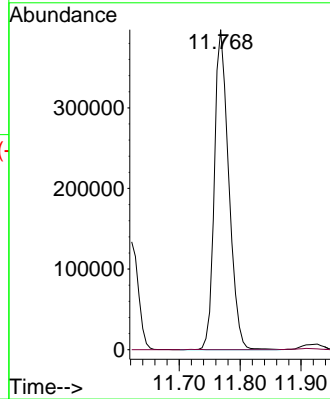


#85
 sec-Butylbenzene
 Concen: 96.694 ug/l
 RT: 11.768 min Scan# 1752
 Delta R.T. -0.122 min
 Lab File: VX026311.D
 Acq: 05 Jan 2022 07:38

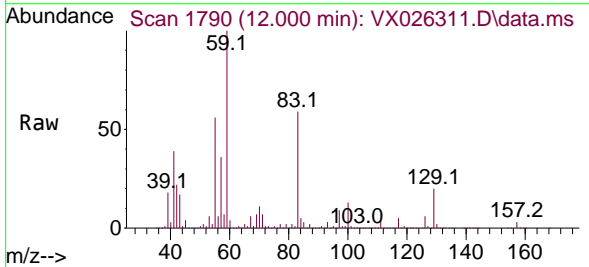
Instrument : MSVOA_X
 ClientSampleId :



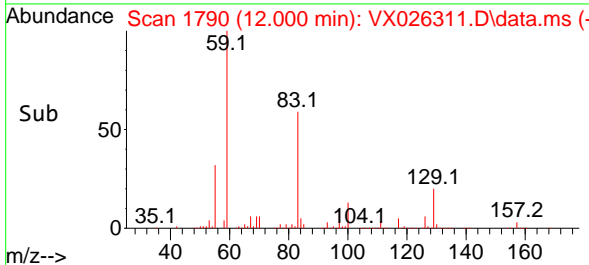
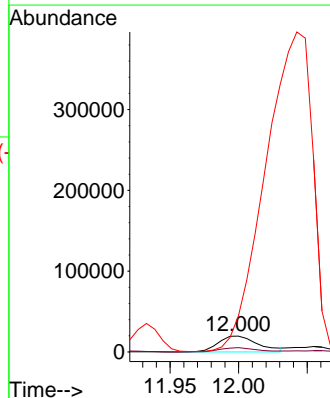
Tgt Ion:105 Resp: 648639
 Ion Ratio Lower Upper
 105 100
 134 0.0 10.4 31.1#

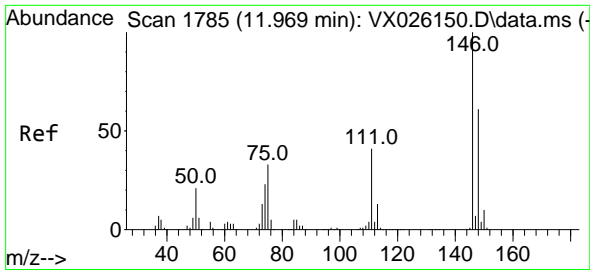


#86
 p-Isopropyltoluene
 Concen: 7.073 ug/l
 RT: 12.000 min Scan# 1790
 Delta R.T. -0.012 min
 Lab File: VX026311.D
 Acq: 05 Jan 2022 07:38



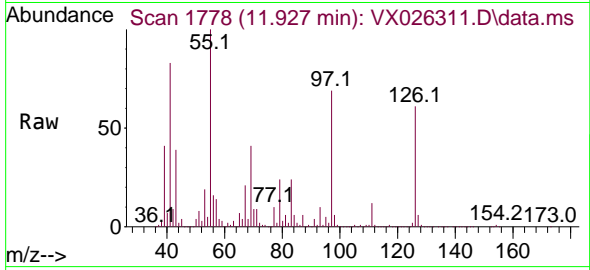
Tgt Ion:119 Resp: 39556
 Ion Ratio Lower Upper
 119 100
 134 25.2 13.2 39.6
 91 0.0 11.9 35.9#



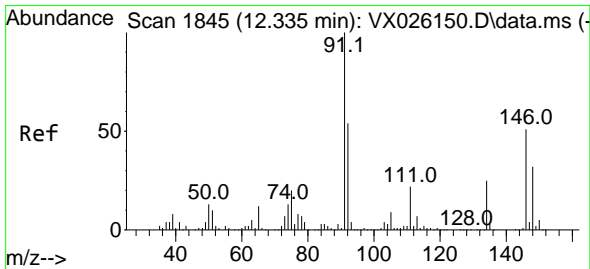
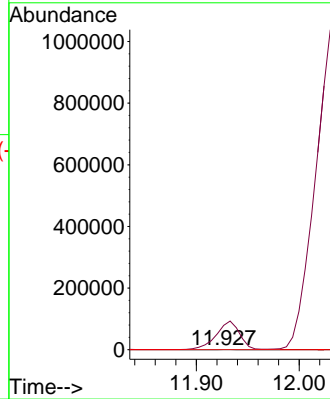
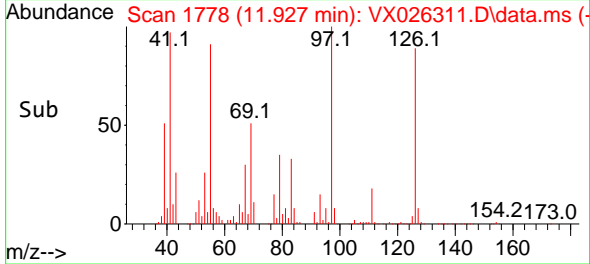


#87
 1,3-Dichlorobenzene
 Concen: 0.323 ug/l
 RT: 11.927 min Scan# 1778
 Delta R.T. -0.042 min
 Lab File: VX026311.D
 Acq: 05 Jan 2022 07:38

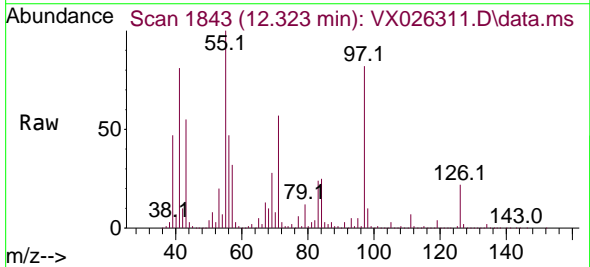
Instrument : MSVOA_X
 ClientSampleId :



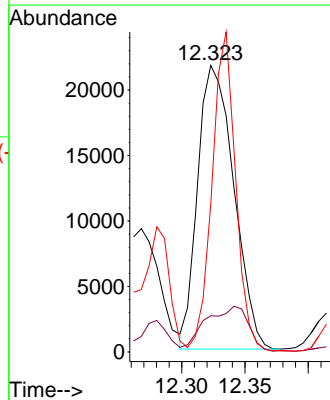
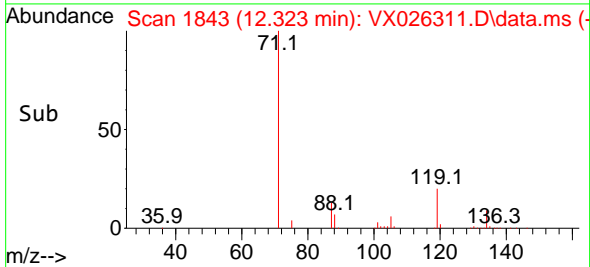
Tgt Ion:146 Resp: 961
 Ion Ratio Lower Upper
 146 100
 111 15127.7 19.9 59.6#
 148 0.0 31.9 95.5#

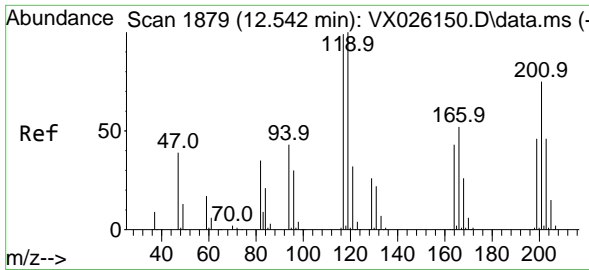


#89
 n-Butylbenzene
 Concen: 8.674 ug/l
 RT: 12.323 min Scan# 1843
 Delta R.T. -0.012 min
 Lab File: VX026311.D
 Acq: 05 Jan 2022 07:38



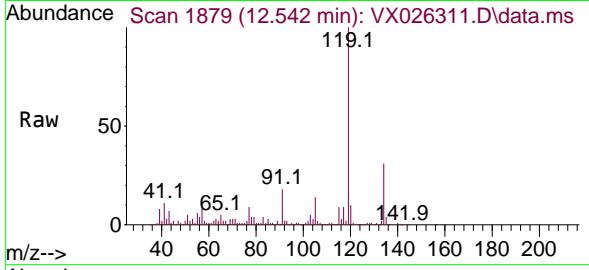
Tgt Ion: 91 Resp: 43110
 Ion Ratio Lower Upper
 91 100
 92 18.5 27.3 81.8#
 134 73.1 13.5 40.4#



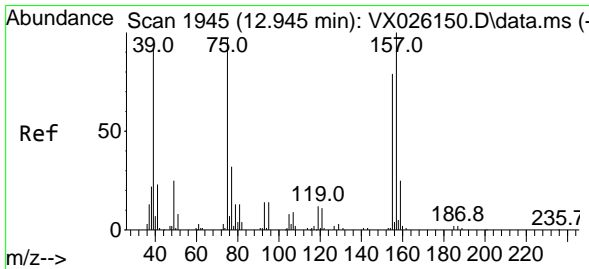
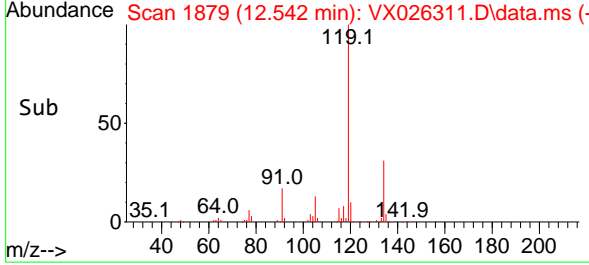
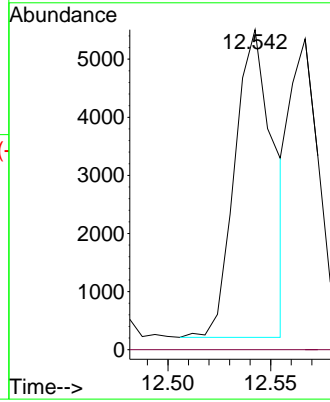


#90
 Hexachloroethane
 Concen: 6.247 ug/l
 RT: 12.542 min Scan# 1879
 Delta R.T. 0.000 min
 Lab File: VX026311.D
 Acq: 05 Jan 2022 07:38

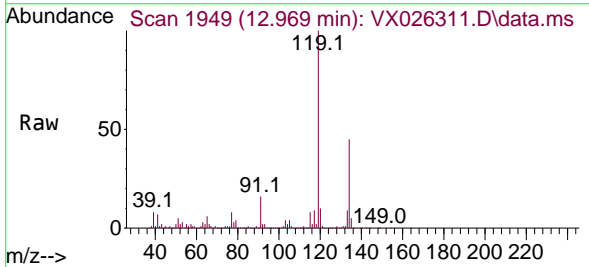
Instrument : MSVOA_X
 ClientSampleId :



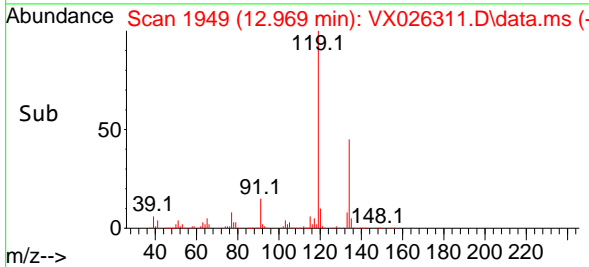
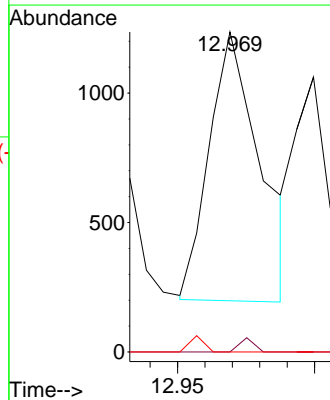
Tgt Ion:117 Resp: 6977
 Ion Ratio Lower Upper
 117 100
 201 0.0 35.4 106.3#

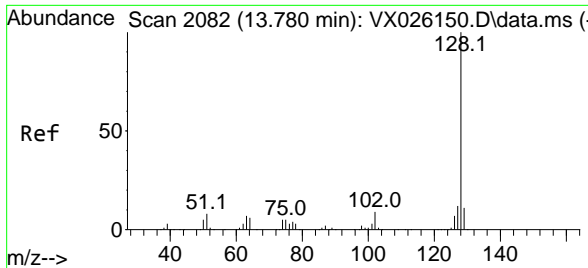


#92
 1,2-Dibromo-3-Chloropropane
 Concen: 2.284 ug/l
 RT: 12.969 min Scan# 1949
 Delta R.T. 0.024 min
 Lab File: VX026311.D
 Acq: 05 Jan 2022 07:38



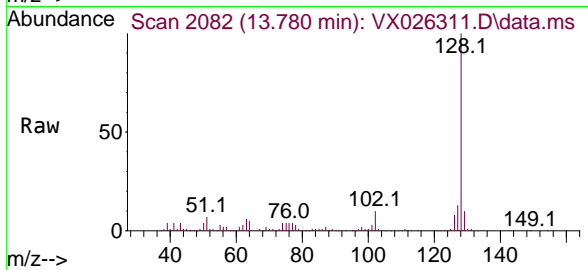
Tgt Ion: 75 Resp: 1327
 Ion Ratio Lower Upper
 75 100
 155 1.5 44.0 131.8#
 157 1.7 55.5 166.5#





#95
 Naphthalene
 Concen: 6.989 ug/l
 RT: 13.780 min Scan# 2082
 Delta R.T. -0.000 min
 Lab File: VX026311.D
 Acq: 05 Jan 2022 07:38

Instrument :
 MSVOA_X
 ClientSampleId :



Tgt Ion:128 Resp: 46373

| Ion | Ratio | Lower | Upper |
|-----|-------|-------|-------|
| 128 | 100 | | |
| 127 | 13.6 | 10.3 | 15.5 |
| 129 | 11.7 | 8.8 | 13.2 |

