

Data Path : Z:\voasrv\HPCHEM1\MSVOA_X\Data\VX010422\
 Data File : VX026294.D
 Acq On : 05 Jan 2022 01:05
 Operator : JC/MD
 Sample : PB141821TB
 Misc : 5.0mL/MSVOA_X/WATER
 ALS Vial : 35 Sample Multiplier: 1

Instrument :
 MSVOA_X
 ClientSampleId :
 PB141821TB

Quant Time: Jan 05 06:41:43 2022
 Quant Method : Z:\voasrv\HPCHEM1\MSVOA_X\Method\82X123021W.M
 Quant Title : SW846 8260
 QLast Update : Thu Dec 30 08:02:21 2021
 Response via : Initial Calibration

Compound	R.T.	QIon	Response	Conc	Units	Dev(Min)

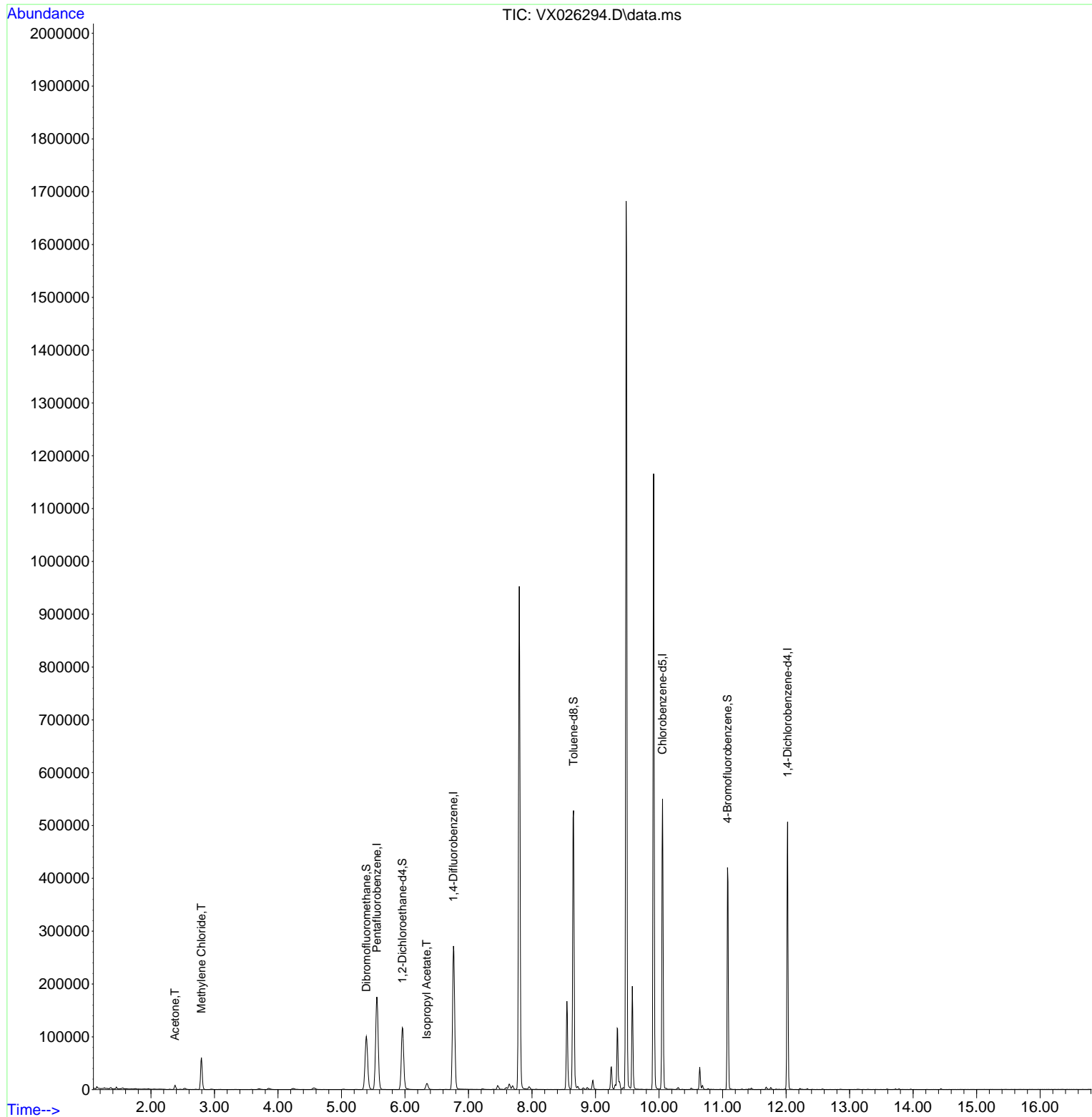
Internal Standards						
1) Pentafluorobenzene	5.556	168	158237	50.000	ug/l	0.00
34) 1,4-Difluorobenzene	6.763	114	269335	50.000	ug/l	0.00
63) Chlorobenzene-d5	10.055	117	232868	50.000	ug/l	0.00
72) 1,4-Dichlorobenzene-d4	12.024	152	96011	50.000	ug/l	0.00
System Monitoring Compounds						
33) 1,2-Dichloroethane-d4	5.958	65	117535	51.343	ug/l	0.00
Spiked Amount	50.000	Range	78 - 117	Recovery	=	102.680%
35) Dibromofluoromethane	5.391	113	88111	50.319	ug/l	0.00
Spiked Amount	50.000	Range	75 - 124	Recovery	=	100.640%
50) Toluene-d8	8.653	98	312022	47.906	ug/l	0.00
Spiked Amount	50.000	Range	92 - 112	Recovery	=	95.820%
62) 4-Bromofluorobenzene	11.079	95	115194	49.682	ug/l	0.00
Spiked Amount	50.000	Range	83 - 123	Recovery	=	99.360%
Target Compounds						
					Qvalue	
16) Acetone	2.380	43	8376	6.753	ug/l	90
20) Methylene Chloride	2.794	84	26663	12.740	ug/l	97
43) Isopropyl Acetate	6.342	43	16373	3.068	ug/l	98

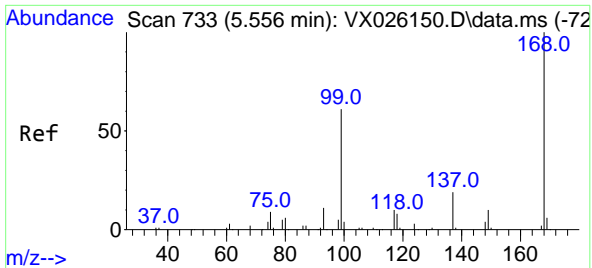
(#) = qualifier out of range (m) = manual integration (+) = signals summed

Data Path : Z:\voasrv\HPCHEM1\MSVOA_X\Data\VX010422\
Data File : VX026294.D
Acq On : 05 Jan 2022 01:05
Operator : JC/MD
Sample : PB141821TB
Misc : 5.0mL/MSVOA_X/WATER
ALS Vial : 35 Sample Multiplier: 1

Instrument :
MSVOA_X
ClientSampleId :
PB141821TB

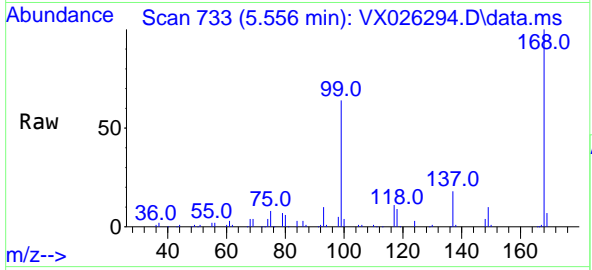
Quant Time: Jan 05 06:41:43 2022
Quant Method : Z:\voasrv\HPCHEM1\MSVOA_X\Method\82X123021W.M
Quant Title : SW846 8260
QLast Update : Thu Dec 30 08:02:21 2021
Response via : Initial Calibration



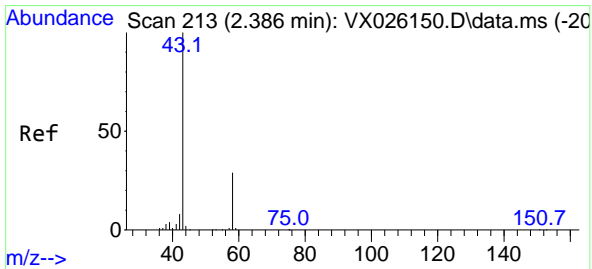
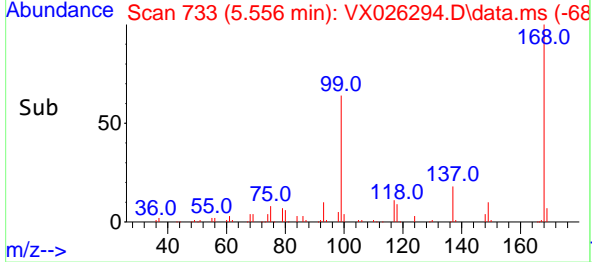
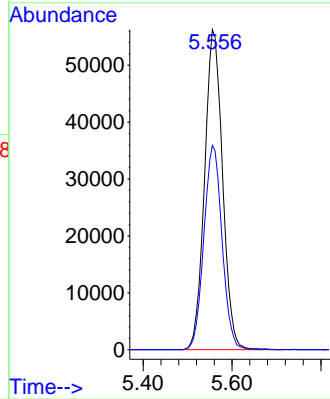


#1
 Pentafluorobenzene
 Concen: 50.000 ug/l
 RT: 5.556 min Scan# 71
 Delta R.T. -0.000 min
 Lab File: VX026294.D
 Acq: 05 Jan 2022 01:05

Instrument : MSVOA_X
 ClientSampleId : PB141821TB

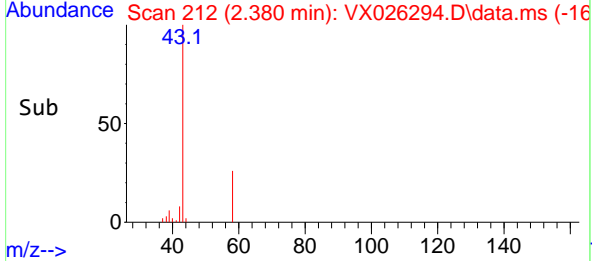
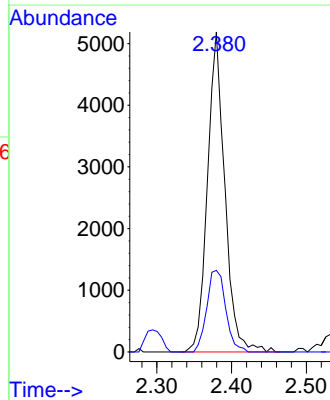
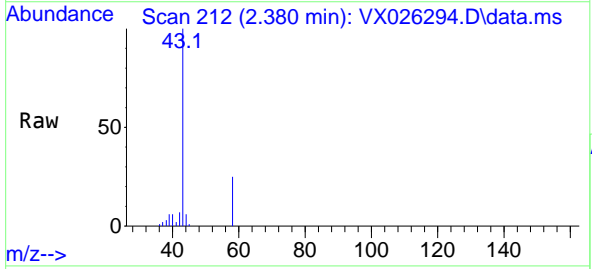


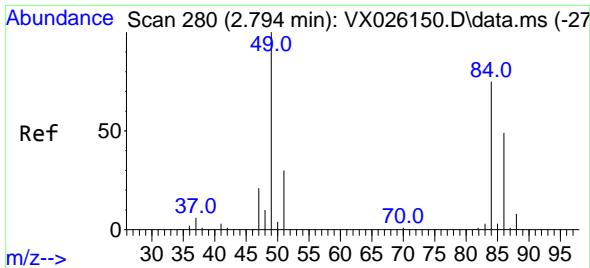
Tgt Ion:168 Resp: 158237
 Ion Ratio Lower Upper
 168 100
 99 63.8 45.8 68.8



#16
 Acetone
 Concen: 6.753 ug/l
 RT: 2.380 min Scan# 212
 Delta R.T. -0.006 min
 Lab File: VX026294.D
 Acq: 05 Jan 2022 01:05

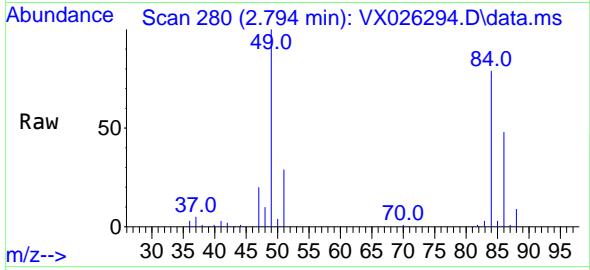
Tgt Ion: 43 Resp: 8376
 Ion Ratio Lower Upper
 43 100
 58 25.5 24.8 37.2





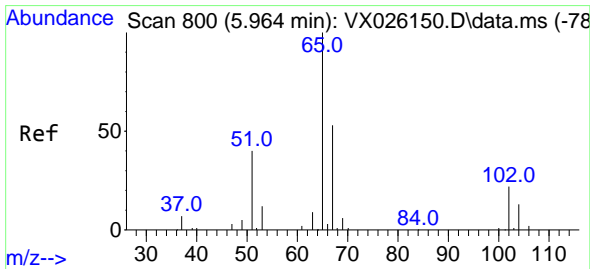
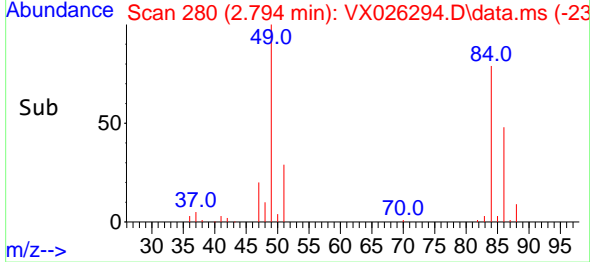
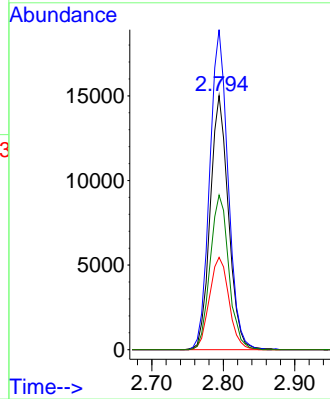
#20
 Methylene Chloride
 Concen: 12.740 ug/l
 RT: 2.794 min Scan# 21
 Delta R.T. 0.000 min
 Lab File: VX026294.D
 Acq: 05 Jan 2022 01:05

Instrument :
 MSVOA_X
 ClientSampleId :
 PB141821TB

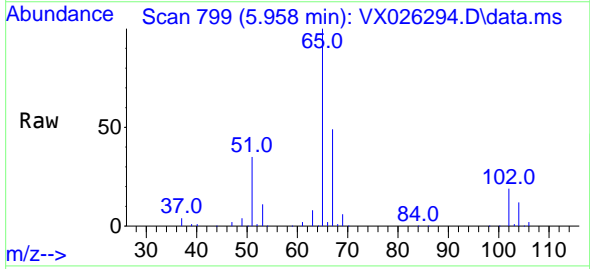


Tgt Ion: 84 Resp: 26663

Ion	Ratio	Lower	Upper
84	100		
49	126.0	97.1	145.7
51	36.3	29.3	43.9
86	60.9	50.8	76.2

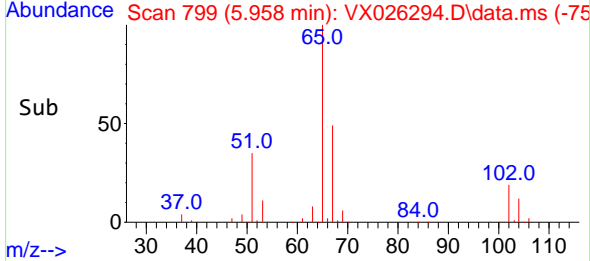
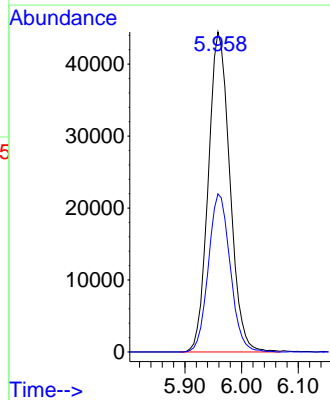


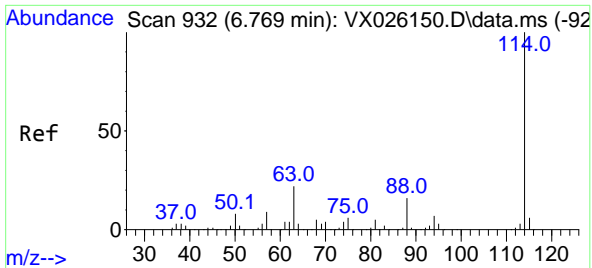
#33
 1,2-Dichloroethane-d4
 Concen: 51.343 ug/l
 RT: 5.958 min Scan# 799
 Delta R.T. -0.006 min
 Lab File: VX026294.D
 Acq: 05 Jan 2022 01:05



Tgt Ion: 65 Resp: 117535

Ion	Ratio	Lower	Upper
65	100		
67	49.9	0.0	103.4

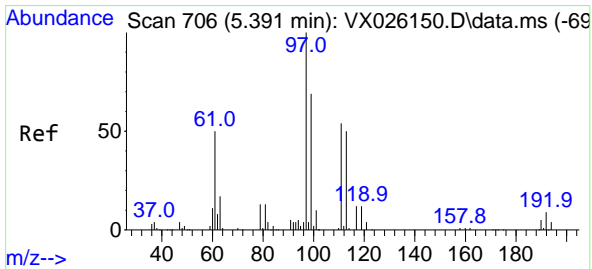
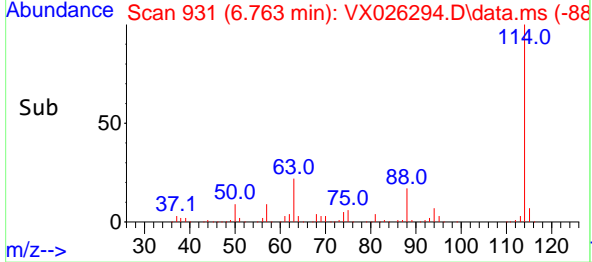
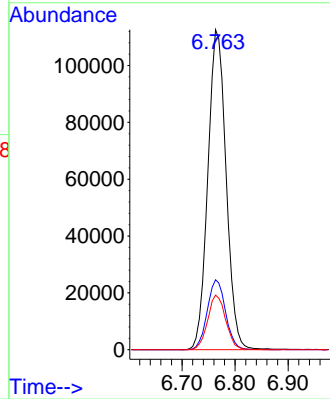
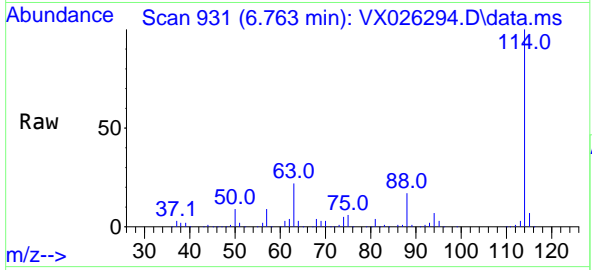




#34
 1,4-Difluorobenzene
 Concen: 50.000 ug/l
 RT: 6.763 min Scan# 911
 Delta R.T. -0.006 min
 Lab File: VX026294.D
 Acq: 05 Jan 2022 01:05

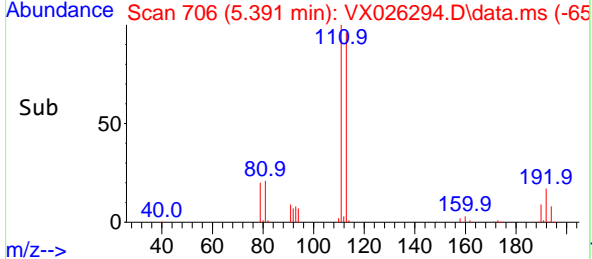
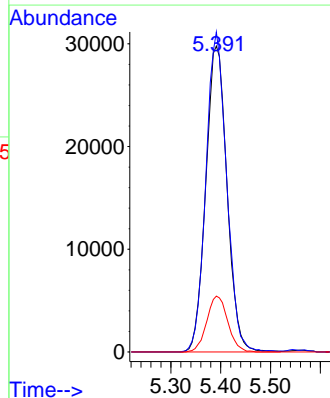
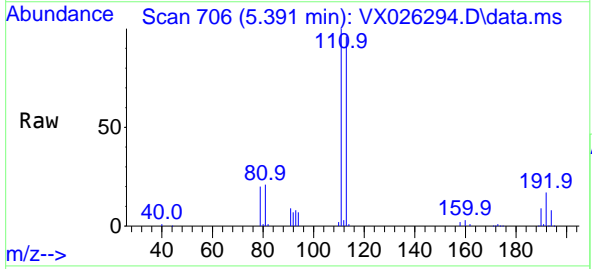
Instrument : MSVOA_X
 ClientSampleId : PB141821TB

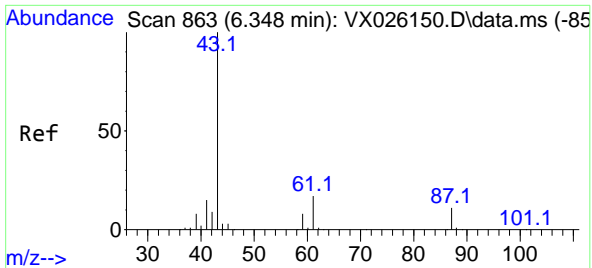
Tgt Ion:114 Resp: 269335
 Ion Ratio Lower Upper
 114 100
 63 21.9 0.0 40.0
 88 17.0 0.0 30.6



#35
 Dibromofluoromethane
 Concen: 50.319 ug/l
 RT: 5.391 min Scan# 706
 Delta R.T. 0.000 min
 Lab File: VX026294.D
 Acq: 05 Jan 2022 01:05

Tgt Ion:113 Resp: 88111
 Ion Ratio Lower Upper
 113 100
 111 101.8 81.8 122.8
 192 18.1 15.0 22.4





#43
 Isopropyl Acetate
 Concen: 3.068 ug/l
 RT: 6.342 min Scan# 80
 Delta R.T. -0.006 min
 Lab File: VX026294.D
 Acq: 05 Jan 2022 01:05

Instrument :

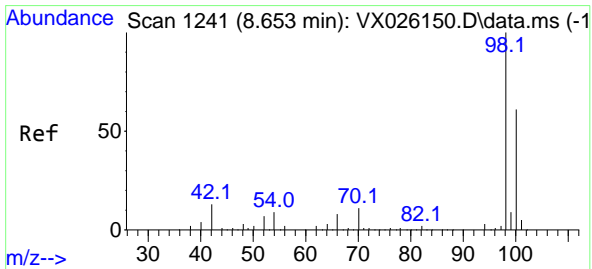
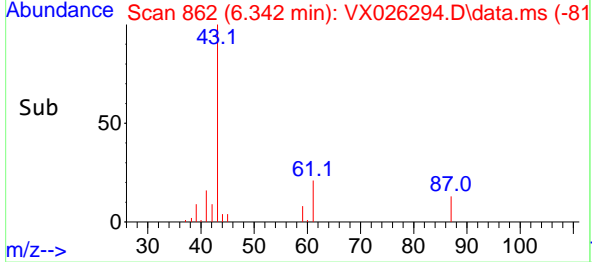
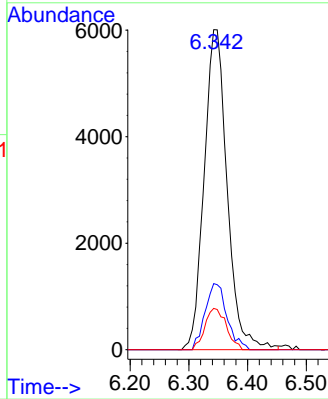
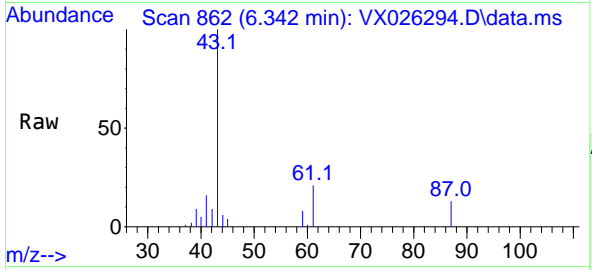
MSVOA_X

ClientSampleId :

PB141821TB

Tgt Ion: 43 Resp: 16373

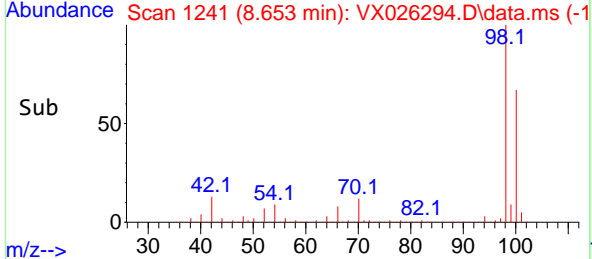
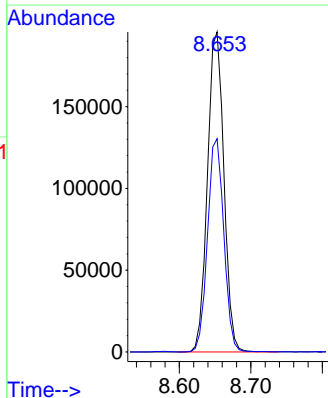
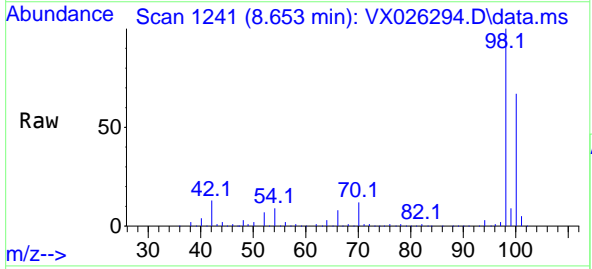
Ion	Ratio	Lower	Upper
43	100		
61	19.6	15.7	23.5
87	12.0	11.2	16.8

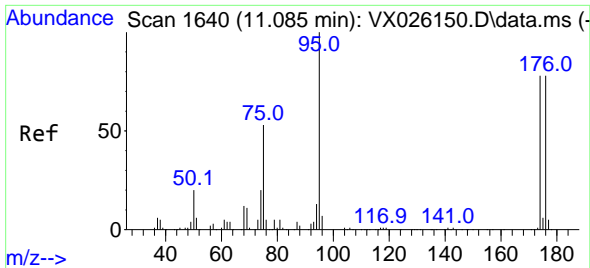


#50
 Toluene-d8
 Concen: 47.906 ug/l
 RT: 8.653 min Scan# 1241
 Delta R.T. -0.000 min
 Lab File: VX026294.D
 Acq: 05 Jan 2022 01:05

Tgt Ion: 98 Resp: 312022

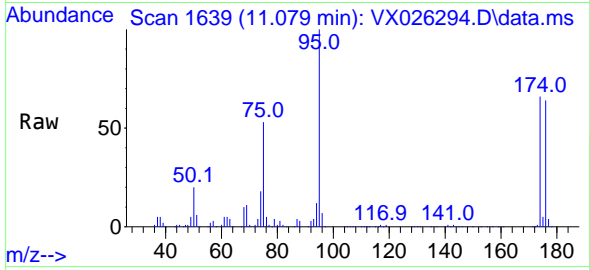
Ion	Ratio	Lower	Upper
98	100		
100	65.9	52.6	78.8



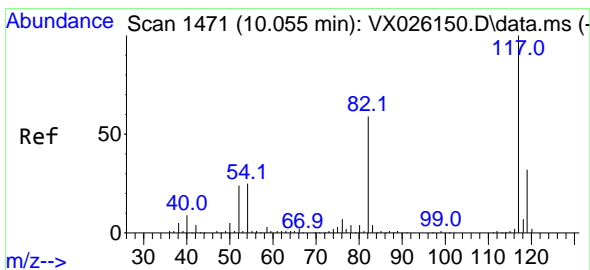
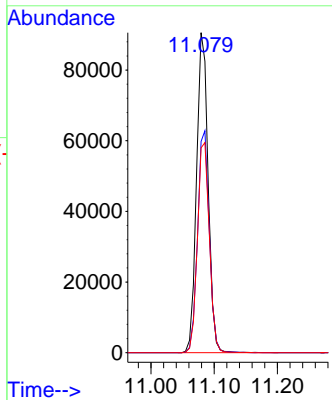
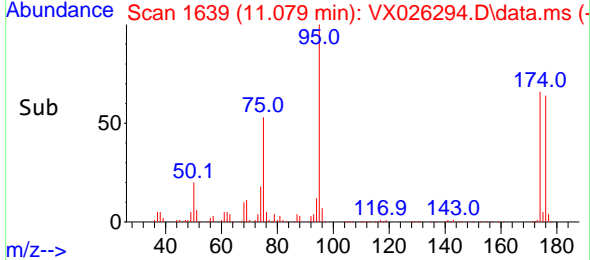


#62
 4-Bromofluorobenzene
 Concen: 49.682 ug/l
 RT: 11.079 min Scan# 1639
 Delta R.T. -0.006 min
 Lab File: VX026294.D
 Acq: 05 Jan 2022 01:05

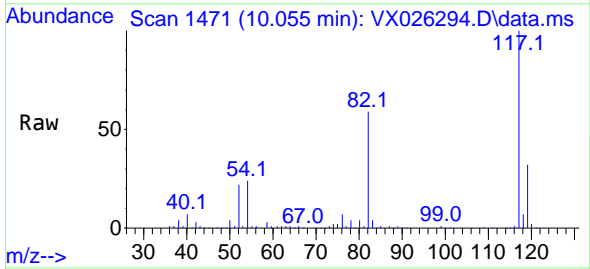
Instrument : MSVOA_X
 ClientSampleId : PB141821TB



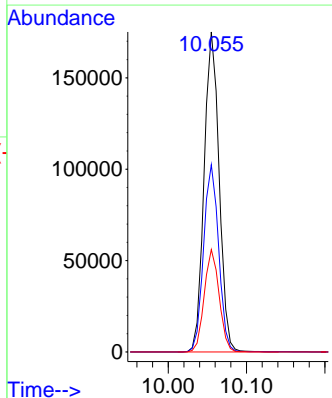
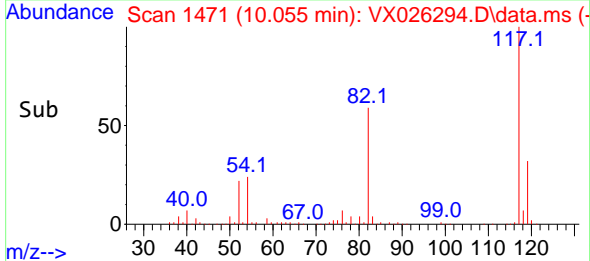
Tgt Ion: 95 Resp: 115194
 Ion Ratio Lower Upper
 95 100
 174 70.2 0.0 157.4
 176 67.8 0.0 154.6

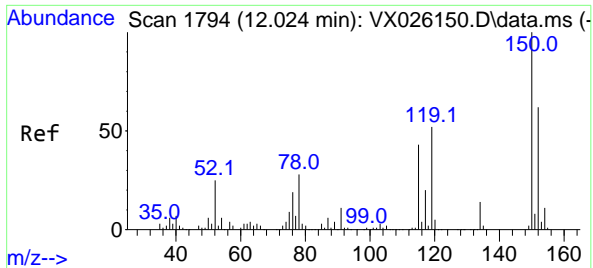


#63
 Chlorobenzene-d5
 Concen: 50.000 ug/l
 RT: 10.055 min Scan# 1471
 Delta R.T. 0.000 min
 Lab File: VX026294.D
 Acq: 05 Jan 2022 01:05



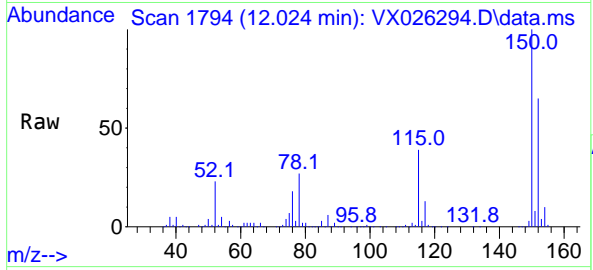
Tgt Ion: 117 Resp: 232868
 Ion Ratio Lower Upper
 117 100
 82 58.5 43.8 65.6
 119 32.0 25.2 37.8





#72
 1,4-Dichlorobenzene-d4
 Concen: 50.000 ug/l
 RT: 12.024 min Scan# 11
 Delta R.T. 0.000 min
 Lab File: VX026294.D
 Acq: 05 Jan 2022 01:05

Instrument : MSVOA_X
 ClientSampleId : PB141821TB



Tgt Ion:152 Resp: 96011

Ion	Ratio	Lower	Upper
152	100		
115	62.4	41.3	123.9
150	159.1	0.0	351.8

