

Data Path : Z:\voasrv\HPCHEM1\MSVOA_X\Data\VX010422\
 Data File : VX026275.D
 Acq On : 04 Jan 2022 16:37
 Operator : JC/MD
 Sample : M5333-08
 Misc : 5.0mL/MSVOA_X/WATER
 ALS Vial : 13 Sample Multiplier: 1

Instrument :
 MSVOA_X
 ClientSampleId :
 TRIP-BLANK

Integration Parameters: RTEINT.P

Integrator: RTE
 Smoothing : ON Filtering: 5
 Sampling : 1 Min Area: 3 % of largest Peak
 Start Thrs: 0.2 Max Peaks: 100
 Stop Thrs : 0 Peak Location: TOP

If leading or trailing edge < 100 prefer < Baseline drop else tangent >
 Peak separation: 5

Method : Z:\voasrv\HPCHEM1\MSVOA_X\Method\82X123021W.M
 Title : SW846 8260

Signal : TIC: VX026275.D\data.ms

peak #	R.T. min	first scan	max scan	last scan	PK TY	peak height	corr. area	corr. % max.	% of total
1	1.252	24	27	33	rBV	21905	21018	2.63%	0.479%
2	2.532	229	237	250	rBV	11572	23065	2.89%	0.525%
3	5.391	695	706	722	rBV2	94064	270305	33.84%	6.155%
4	5.556	722	733	751	rVB	160791	451542	56.53%	10.282%
5	5.958	788	799	813	rBV	113387	294603	36.88%	6.709%
6	6.763	920	931	943	rBV	247947	601606	75.32%	13.699%
7	8.653	1233	1241	1250	rBV	509486	798718	100.00%	18.188%
8	10.055	1465	1471	1484	rBV	529224	700307	87.68%	15.947%
9	11.079	1634	1639	1650	rBV	422598	537216	67.26%	12.233%
10	12.024	1788	1794	1801	rBV	530407	652989	81.75%	14.869%
11	13.268	1991	1998	2001	rBV2	8634	13530	1.69%	0.308%
12	14.036	2119	2124	2129	rBV	8257	10032	1.26%	0.228%
13	14.755	2238	2242	2246	rBV2	7859	8351	1.05%	0.190%
14	15.493	2357	2363	2370	rBV3	5487	8188	1.03%	0.186%

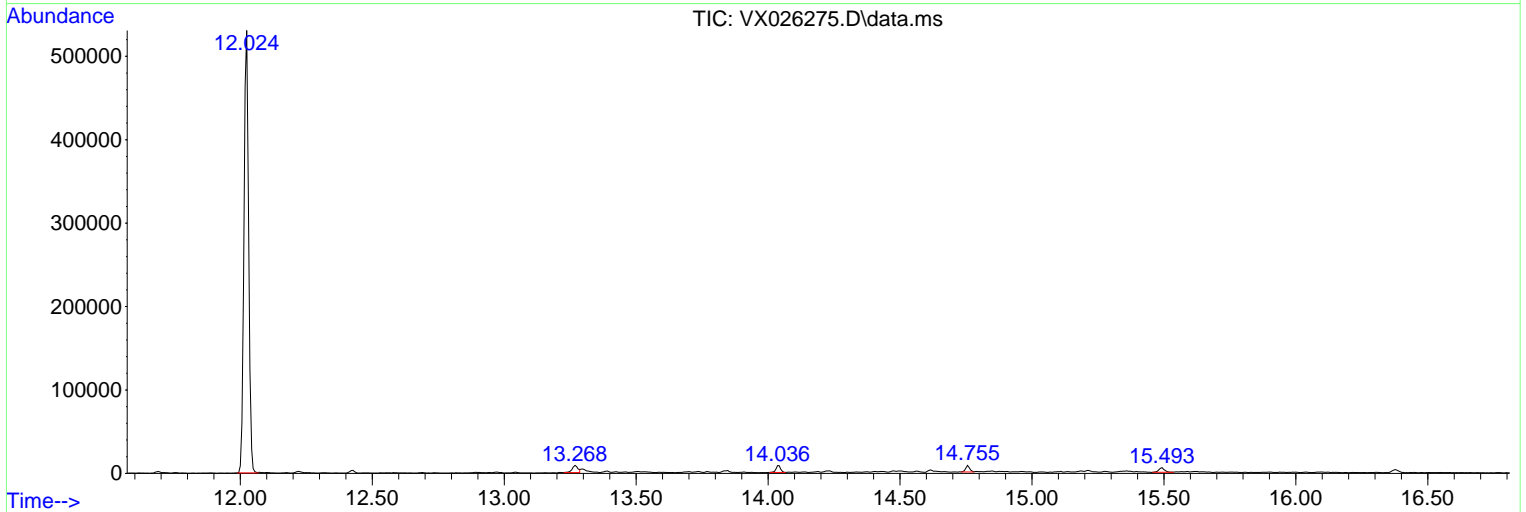
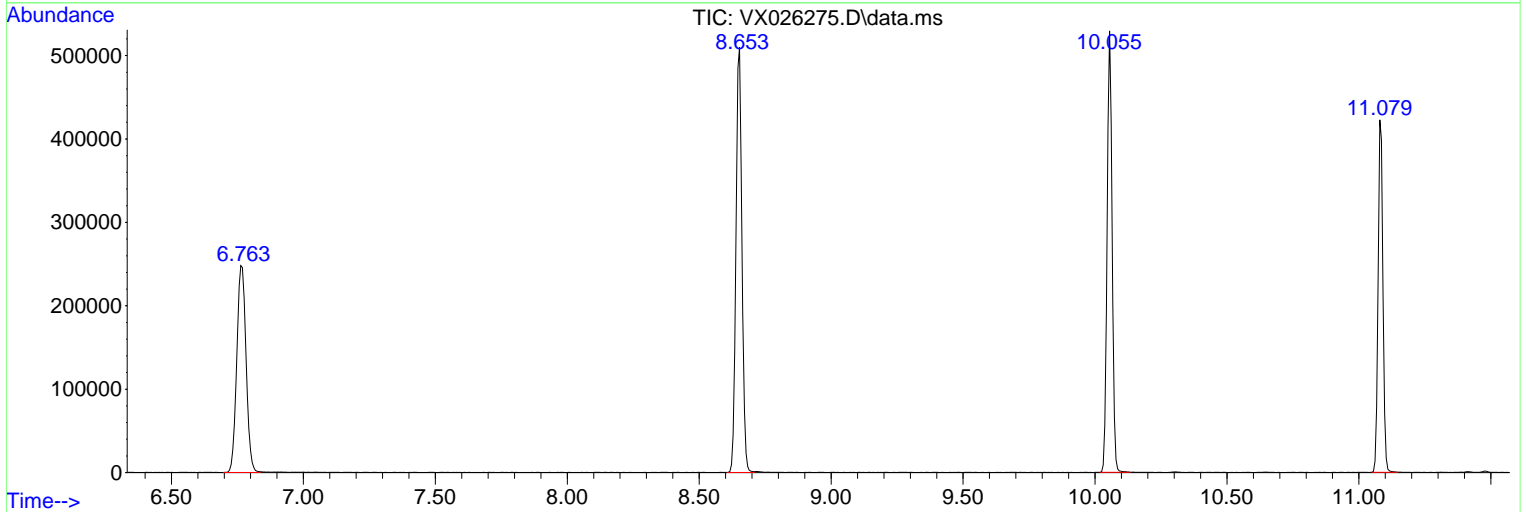
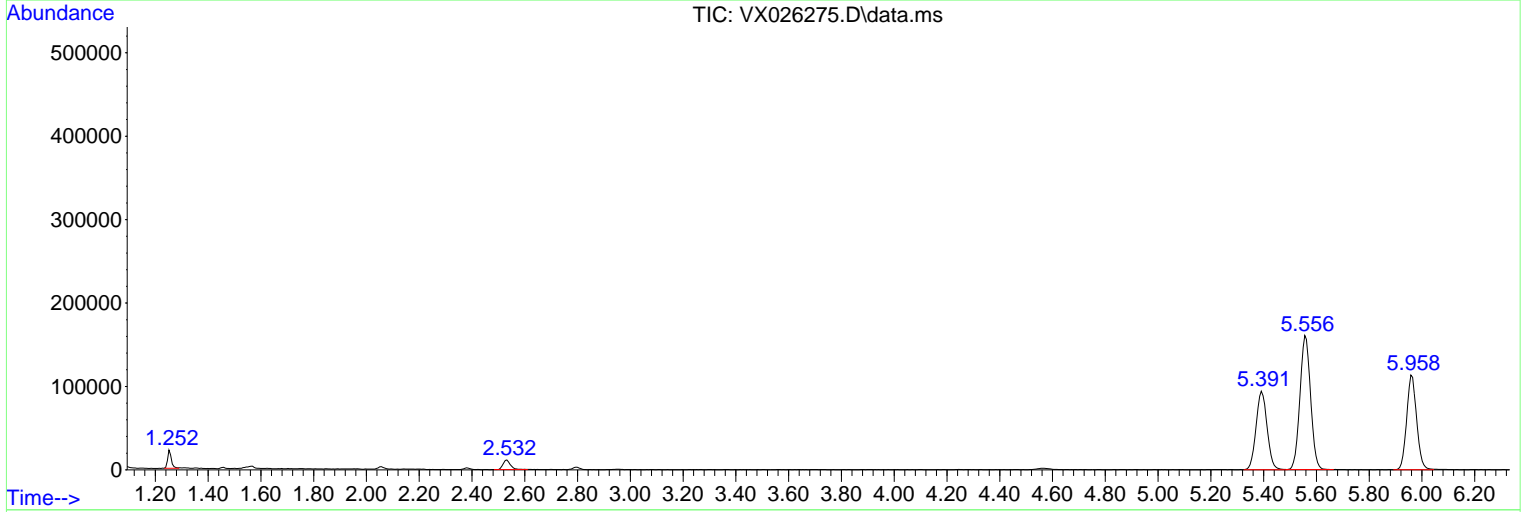
Sum of corrected areas: 4391470

Data Path : Z:\voasrv\HPCHEM1\MSVOA_X\Data\VX010422\
 Data File : VX026275.D
 Acq On : 04 Jan 2022 16:37
 Operator : JC/MD
 Sample : M5333-08
 Misc : 5.0mL/MSVOA_X/WATER
 ALS Vial : 13 Sample Multiplier: 1

Instrument :
 MSVOA_X
 ClientSampleId :
 TRIP-BLANK

Quant Method : Z:\voasrv\HPCHEM1\MSVOA_X\Method\82X123021W.M
 Quant Title : SW846 8260

TIC Library : C:\Database\NIST20.L
 TIC Integration Parameters: LSCINT.P



Library Search Compound Report

Data Path : Z:\voasrv\HPCHEM1\MSVOA_X\Data\VX010422\
Data File : VX026275.D
Acq On : 04 Jan 2022 16:37
Operator : JC/MD
Sample : M5333-08
Misc : 5.0mL/MSVOA_X/WATER
ALS Vial : 13 Sample Multiplier: 1

Instrument :
MSVOA_X
ClientSampleId :
TRIP-BLANK

Quant Method : Z:\voasrv\HPCHEM1\MSVOA_X\Method\82X123021W.M
Quant Title : SW846 8260

TIC Library : C:\Database\NIST20.L
TIC Integration Parameters: LSCINT.P

No Library Search Compounds Detected

Data Path : Z:\voasrv\HPCHEM1\MSVOA_X\Data\VX010422\
Data File : VX026275.D
Acq On : 04 Jan 2022 16:37
Operator : JC/MD
Sample : M5333-08
Misc : 5.0mL/MSVOA_X/WATER
ALS Vial : 13 Sample Multiplier: 1

Instrument :
MSVOA_X
ClientSampleId :
TRIP-BLANK

Quant Method : Z:\voasrv\HPCHEM1\MSVOA_X\Method\82X123021W.M
Quant Title : SW846 8260

TIC Library : C:\Database\NIST20.L
TIC Integration Parameters: LSCINT.P

TIC Top Hit name	RT	EstConc	Units	Response	--Internal Standard--		
					#	RT	Resp Conc
