

Data Path : Z:\voasrv\HPCHEM1\MSVOA\_X\Data\VX010625\  
 Data File : VX044593.D  
 Acq On : 06 Jan 2025 14:18  
 Operator : JC/MD  
 Sample : Q1004-04  
 Misc : 5.0mL/MSVOA\_X/WATER  
 ALS Vial : 12 Sample Multiplier: 1

**Instrument :**  
 MSVOA\_X  
**ClientSampleId :**  
 BP-VPB-190A-GW-778-780

Quant Time: Jan 06 16:04:09 2025  
 Quant Method : Z:\voasrv\HPCHEM1\MSVOA\_X\Method\82X121124W.M  
 Quant Title : SW846 8260  
 QLast Update : Thu Dec 12 04:28:14 2024  
 Response via : Initial Calibration

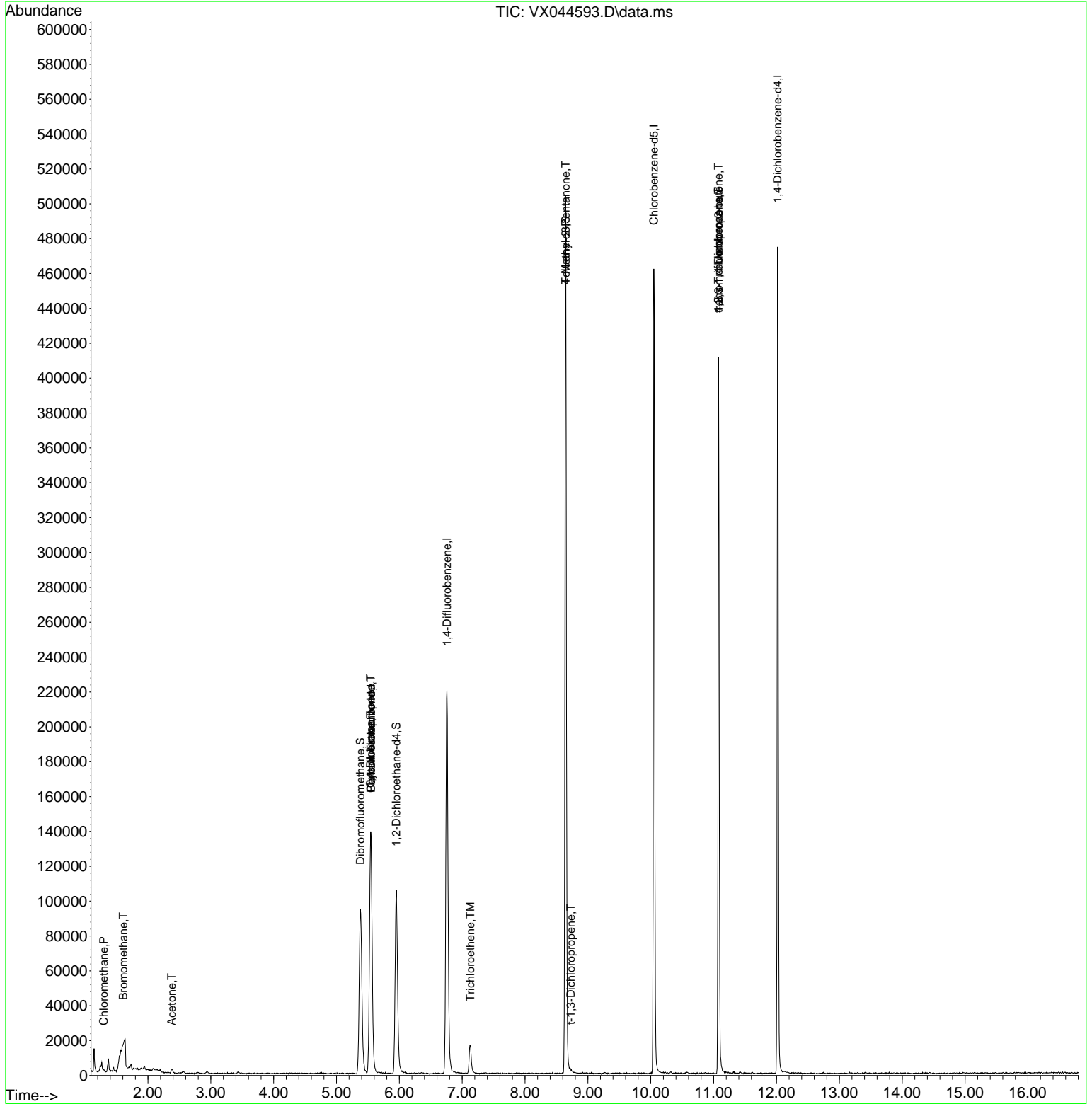
Compound	R.T.	QIon	Response	Conc	Units	Dev(Min)
-----						
Internal Standards						
1) Pentafluorobenzene	5.550	168	135125	50.000	ug/l	0.00
34) 1,4-Difluorobenzene	6.757	114	232671	50.000	ug/l	0.00
63) Chlorobenzene-d5	10.049	117	210076	50.000	ug/l	0.00
72) 1,4-Dichlorobenzene-d4	12.018	152	95481	50.000	ug/l	0.00
System Monitoring Compounds						
33) 1,2-Dichloroethane-d4	5.952	65	101966	43.038	ug/l	0.00
Spiked Amount	50.000	Range 74 - 125	Recovery	=	86.080%	
35) Dibromofluoromethane	5.379	113	82037	50.909	ug/l	0.00
Spiked Amount	50.000	Range 75 - 124	Recovery	=	101.820%	
50) Toluene-d8	8.647	98	300906	55.348	ug/l	0.00
Spiked Amount	50.000	Range 86 - 113	Recovery	=	110.700%	
62) 4-Bromofluorobenzene	11.079	95	99643	52.453	ug/l	0.00
Spiked Amount	50.000	Range 77 - 121	Recovery	=	104.900%	
Target Compounds						
						Qvalue
3) Chloromethane	1.294	50	511	0.256	ug/l	89
5) Bromomethane	1.605	94	466	0.316	ug/l #	64
16) Acetone	2.380	43	2547	2.637	ug/l	95
31) Cyclohexane	5.544	56	3064	1.198	ug/l #	28
36) 1,1-Dichloropropene	5.544	75	10539	5.059	ug/l #	51
38) Carbon Tetrachloride	5.550	117	13649	6.086	ug/l #	18
44) Trichloroethene	7.129	130	6723	4.263	ug/l	86
51) 4-Methyl-2-Pentanone	8.647	43	1428	0.552	ug/l #	1
53) t-1,3-Dichloropropene	8.726	75	22	1.006	ug/l #	41
76) 1,2,3-Trichloropropane	11.079	75	54209	25.428	ug/l #	35
81) trans-1,4-Dichloro-2-b...	11.079	75	54209	70.313	ug/l #	4
-----						

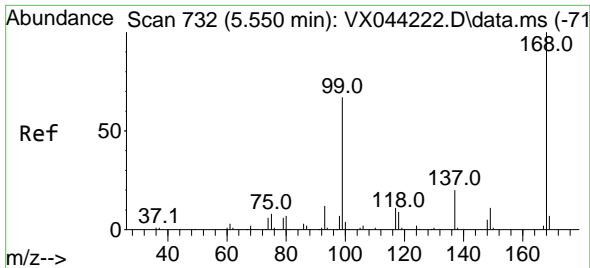
(#) = qualifier out of range (m) = manual integration (+) = signals summed

Data Path : Z:\voasrv\HPCHEM1\MSVOA\_X\Data\VX010625\  
 Data File : VX044593.D  
 Acq On : 06 Jan 2025 14:18  
 Operator : JC/MD  
 Sample : Q1004-04  
 Misc : 5.0mL/MSVOA\_X/WATER  
 ALS Vial : 12 Sample Multiplier: 1

Instrument :  
 MSVOA\_X  
 ClientSampleId :  
 BP-VPB-190A-GW-778-780

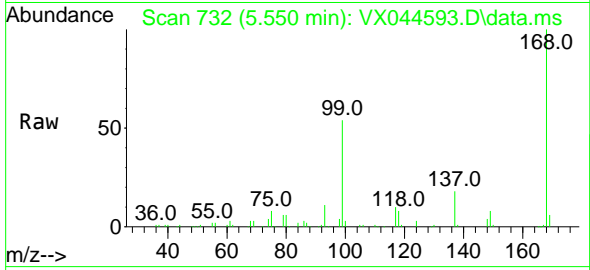
Quant Time: Jan 06 16:04:09 2025  
 Quant Method : Z:\voasrv\HPCHEM1\MSVOA\_X\Method\82X121124W.M  
 Quant Title : SW846 8260  
 QLast Update : Thu Dec 12 04:28:14 2024  
 Response via : Initial Calibration



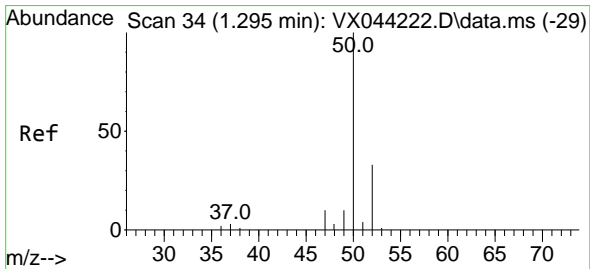
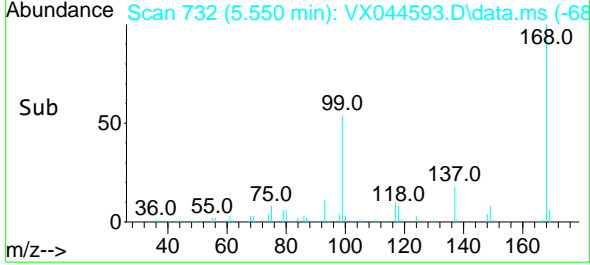
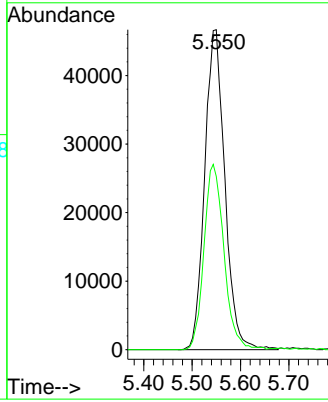


#1  
 Pentafluorobenzene  
 Concen: 50.000 ug/l  
 RT: 5.550 min Scan# 71  
 Delta R.T. -0.000 min  
 Lab File: VX044593.D  
 Acq: 06 Jan 2025 14:18

Instrument : MSVOA\_X  
 ClientSampleId : BP-VPB-190A-GW-778-780

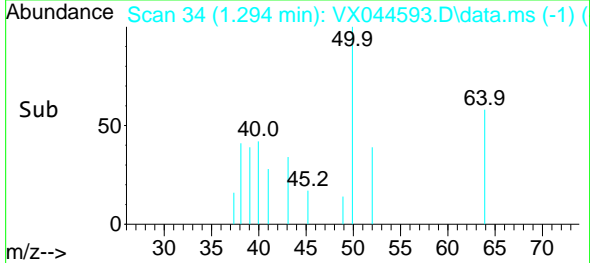
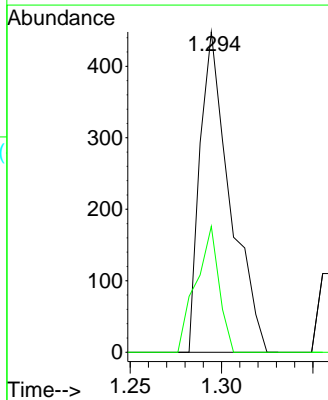
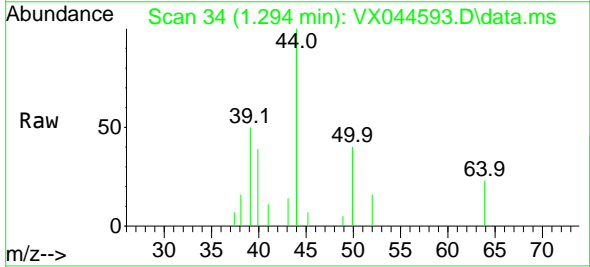


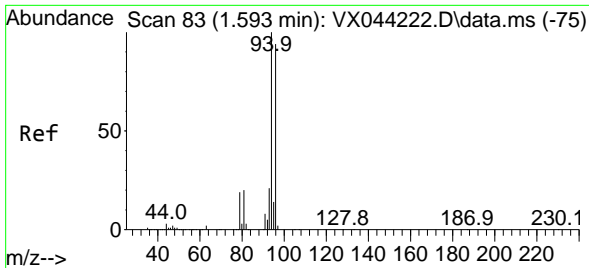
Tgt Ion:168 Resp: 135125  
 Ion Ratio Lower Upper  
 168 100  
 99 54.1 53.4 80.0



#3  
 Chloromethane  
 Concen: 0.256 ug/l  
 RT: 1.294 min Scan# 34  
 Delta R.T. -0.000 min  
 Lab File: VX044593.D  
 Acq: 06 Jan 2025 14:18

Tgt Ion: 50 Resp: 511  
 Ion Ratio Lower Upper  
 50 100  
 52 39.3 26.5 39.7

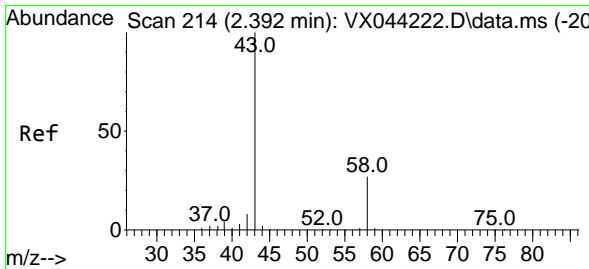
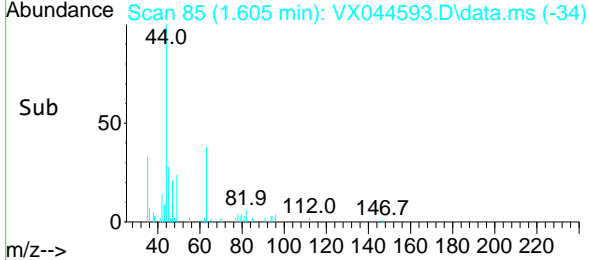
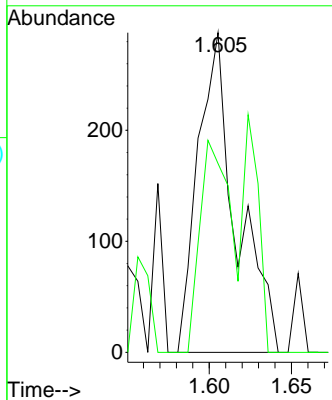
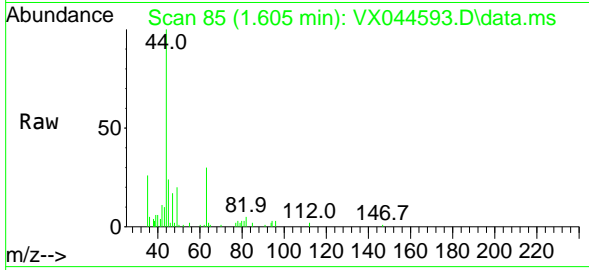




#5  
 Bromomethane  
 Concen: 0.316 ug/l  
 RT: 1.605 min Scan# 81  
 Delta R.T. 0.012 min  
 Lab File: VX044593.D  
 Acq: 06 Jan 2025 14:18

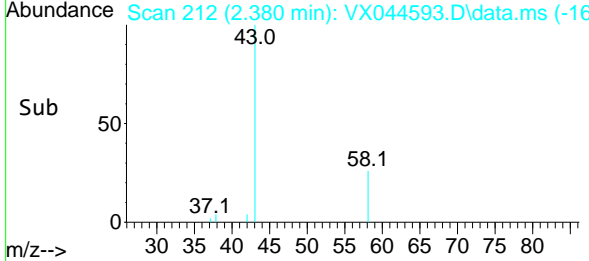
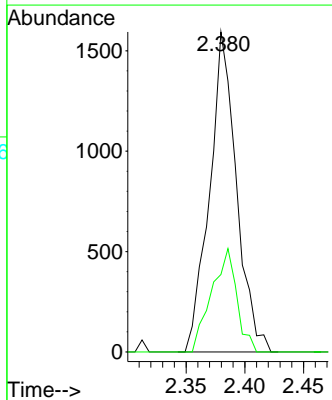
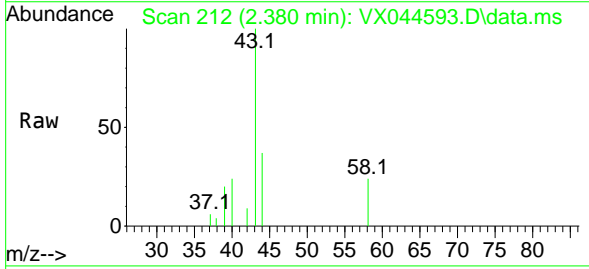
Instrument : MSVOA\_X  
 ClientSampleId : BP-VPB-190A-GW-778-780

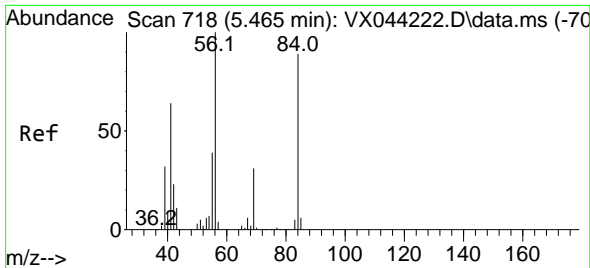
Tgt Ion: 94 Resp: 466  
 Ion Ratio Lower Upper  
 94 100  
 96 59.0 74.9 112.3#



#16  
 Acetone  
 Concen: 2.637 ug/l  
 RT: 2.380 min Scan# 212  
 Delta R.T. -0.012 min  
 Lab File: VX044593.D  
 Acq: 06 Jan 2025 14:18

Tgt Ion: 43 Resp: 2547  
 Ion Ratio Lower Upper  
 43 100  
 58 24.2 21.6 32.4

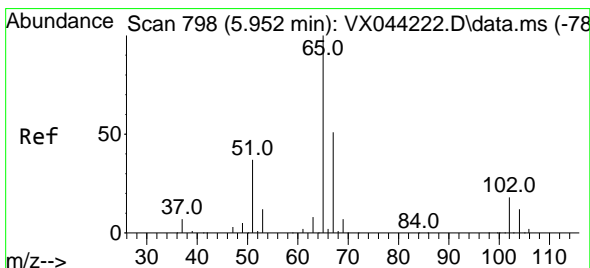
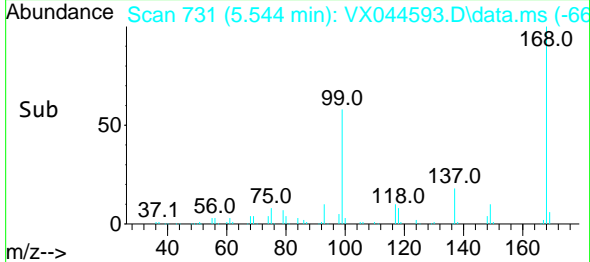
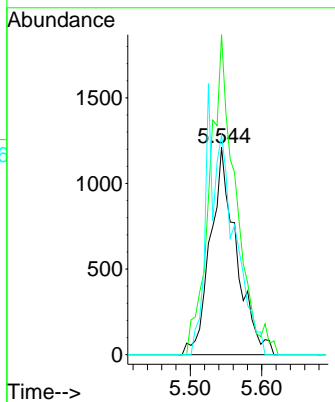
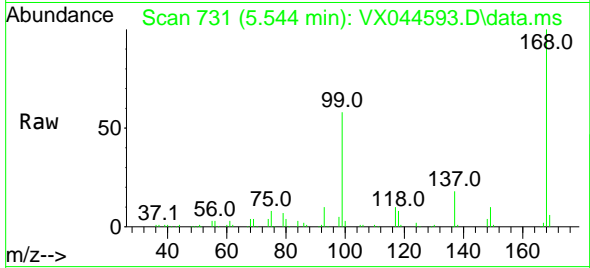




#31  
 Cyclohexane  
 Concen: 1.198 ug/l  
 RT: 5.544 min Scan# 718  
 Delta R.T. 0.079 min  
 Lab File: VX044593.D  
 Acq: 06 Jan 2025 14:18

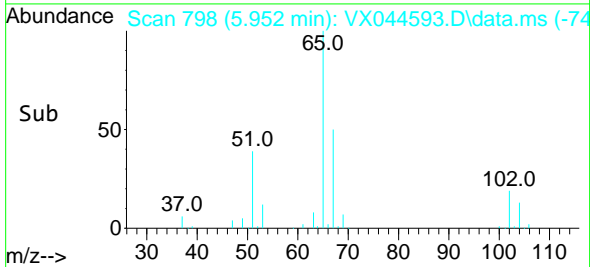
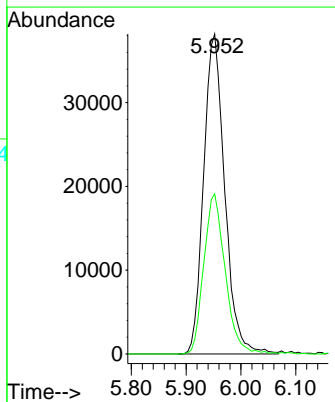
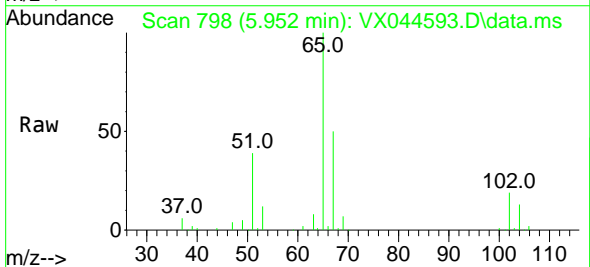
Instrument : MSVOA\_X  
 ClientSampleId : BP-VPB-190A-GW-778-780

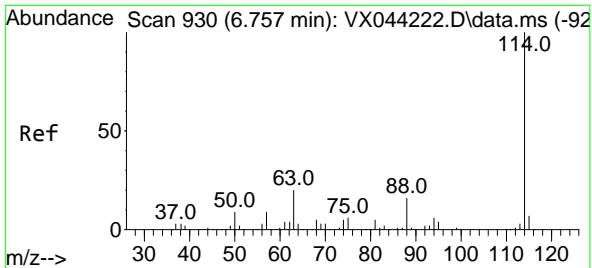
Tgt Ion	Resp	Lower	Upper
56	100		
69	154.3	24.7	37.1#
84	105.9	71.0	106.6



#33  
 1,2-Dichloroethane-d4  
 Concen: 43.038 ug/l  
 RT: 5.952 min Scan# 798  
 Delta R.T. -0.000 min  
 Lab File: VX044593.D  
 Acq: 06 Jan 2025 14:18

Tgt Ion	Resp	Lower	Upper
65	100		
67	50.7	0.0	101.6



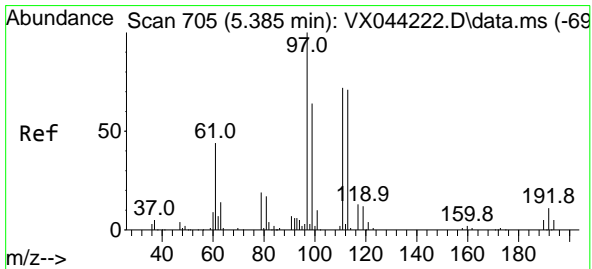
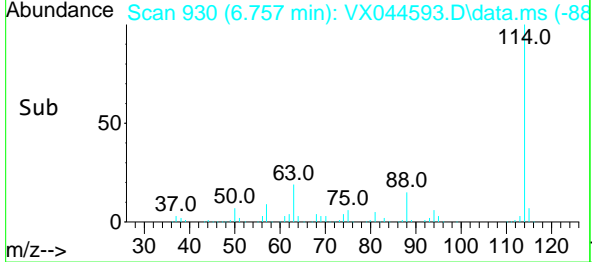
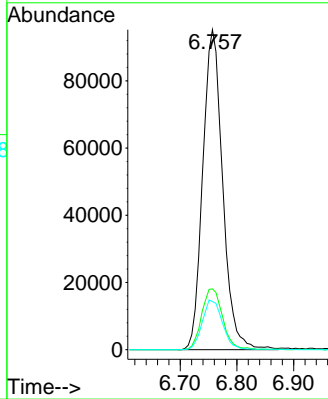
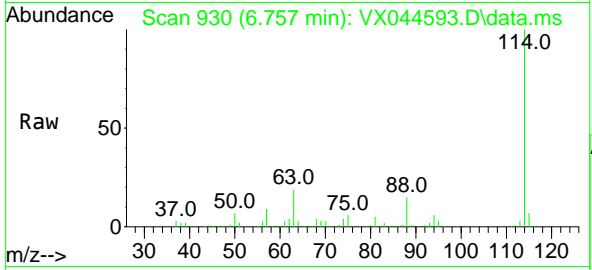


#34  
 1,4-Difluorobenzene  
 Concen: 50.000 ug/l  
 RT: 6.757 min Scan# 91  
 Delta R.T. -0.000 min  
 Lab File: VX044593.D  
 Acq: 06 Jan 2025 14:18

Instrument : MSVOA\_X  
 ClientSampleId : BP-VPB-190A-GW-778-780

Tgt Ion:114 Resp: 232671

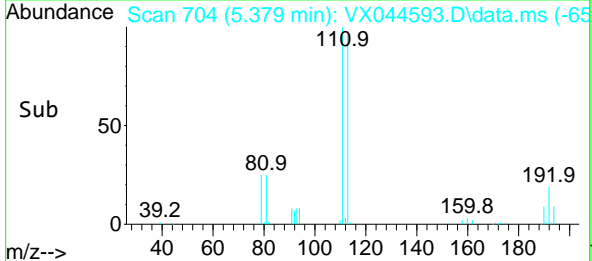
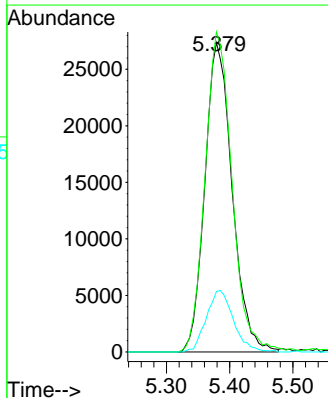
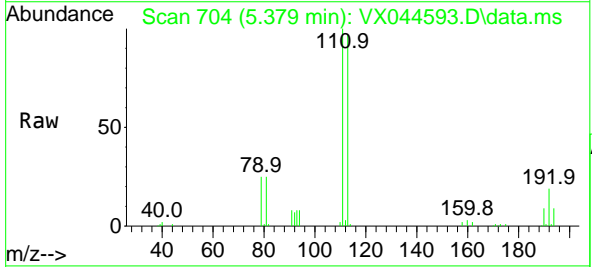
Ion	Ratio	Lower	Upper
114	100		
63	19.0	0.0	40.6
88	15.0	0.0	31.8

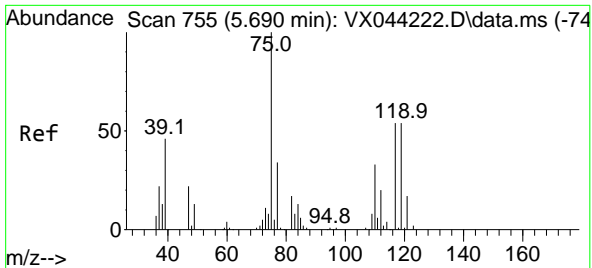


#35  
 Dibromofluoromethane  
 Concen: 50.909 ug/l  
 RT: 5.379 min Scan# 704  
 Delta R.T. -0.006 min  
 Lab File: VX044593.D  
 Acq: 06 Jan 2025 14:18

Tgt Ion:113 Resp: 82037

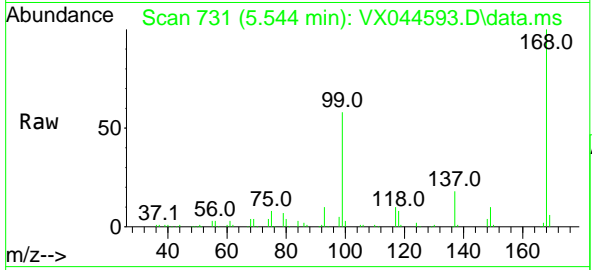
Ion	Ratio	Lower	Upper
113	100		
111	102.6	80.4	120.6
192	19.8	13.3	19.9



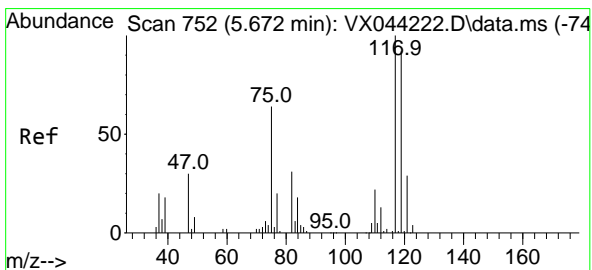
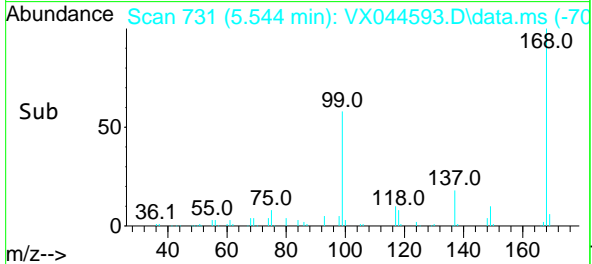
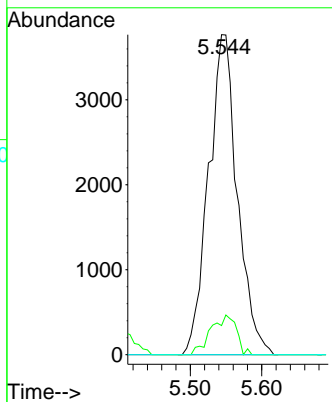


#36  
 1,1-Dichloropropene  
 Concen: 5.059 ug/l  
 RT: 5.544 min Scan# 711  
 Delta R.T. -0.146 min  
 Lab File: VX044593.D  
 Acq: 06 Jan 2025 14:18

Instrument : MSVOA\_X  
 ClientSampleId : BP-VPB-190A-GW-778-780

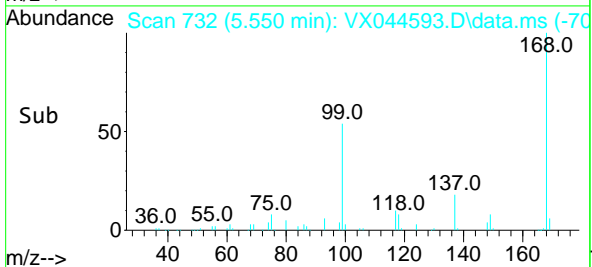
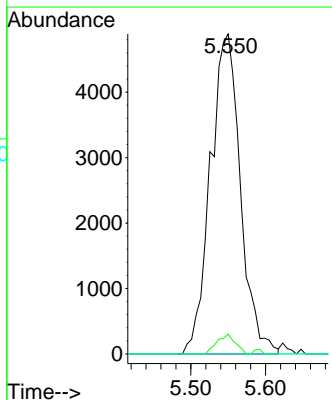
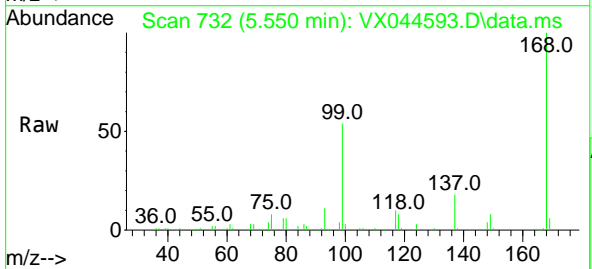


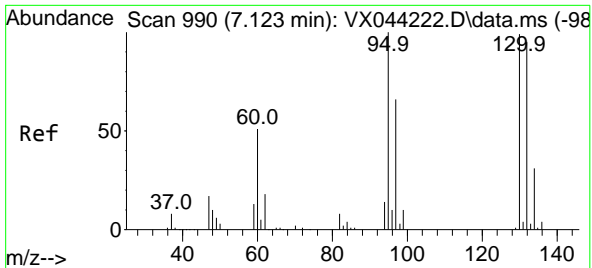
Tgt Ion: 75 Resp: 10539  
 Ion Ratio Lower Upper  
 75 100  
 110 11.0 17.3 51.7#  
 77 0.0 25.4 38.0#



#38  
 Carbon Tetrachloride  
 Concen: 6.086 ug/l  
 RT: 5.550 min Scan# 732  
 Delta R.T. -0.122 min  
 Lab File: VX044593.D  
 Acq: 06 Jan 2025 14:18

Tgt Ion: 117 Resp: 13649  
 Ion Ratio Lower Upper  
 117 100  
 119 6.2 74.2 111.4#  
 121 0.0 23.0 34.6#

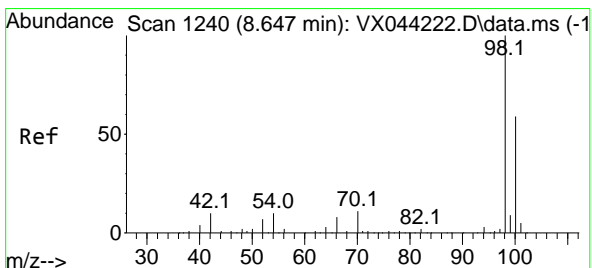
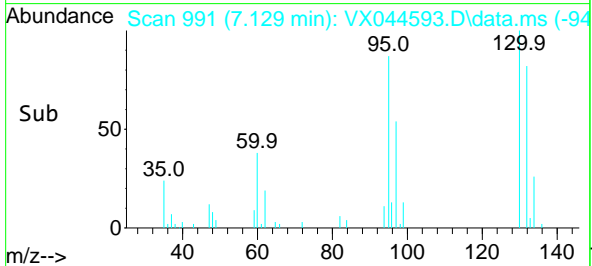
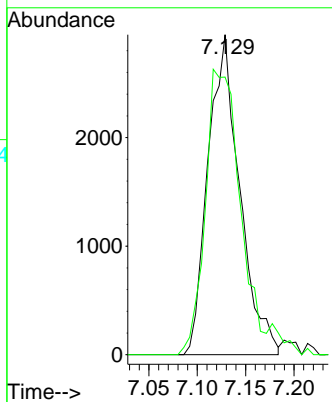
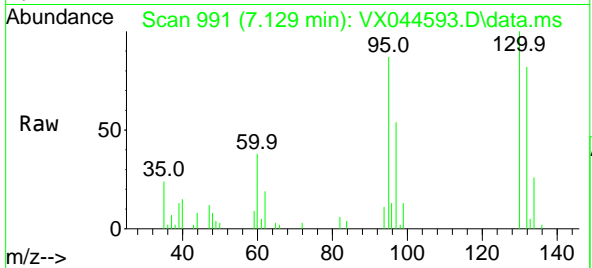




#44  
 Trichloroethene  
 Concen: 4.263 ug/l  
 RT: 7.129 min Scan# 991  
 Delta R.T. 0.006 min  
 Lab File: VX044593.D  
 Acq: 06 Jan 2025 14:18

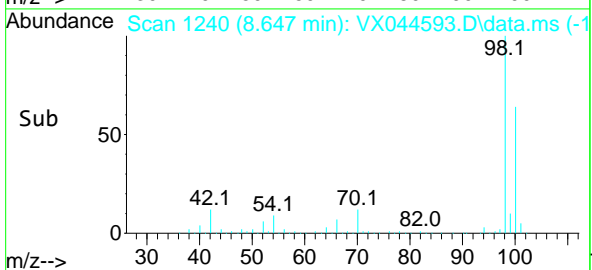
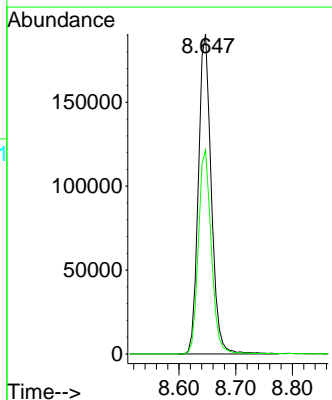
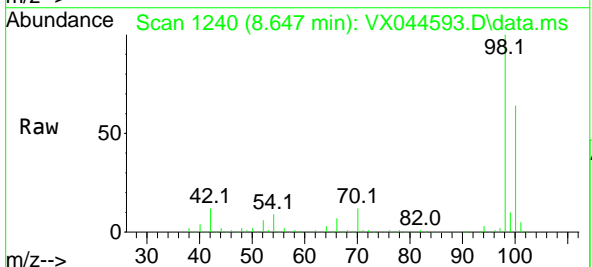
Instrument : MSVOA\_X  
 ClientSampleId : BP-VPB-190A-GW-778-780

Tgt Ion:130 Resp: 6723  
 Ion Ratio Lower Upper  
 130 100  
 95 86.7 0.0 201.4

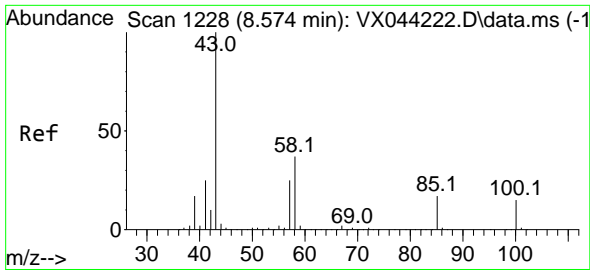


#50  
 Toluene-d8  
 Concen: 55.348 ug/l  
 RT: 8.647 min Scan# 1240  
 Delta R.T. -0.000 min  
 Lab File: VX044593.D  
 Acq: 06 Jan 2025 14:18

Tgt Ion: 98 Resp: 300906  
 Ion Ratio Lower Upper  
 98 100  
 100 64.1 51.5 77.3



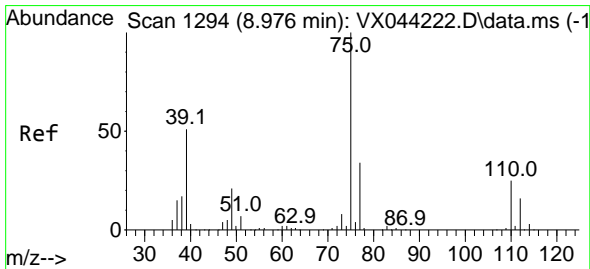
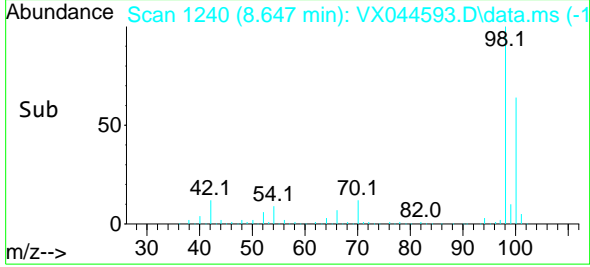
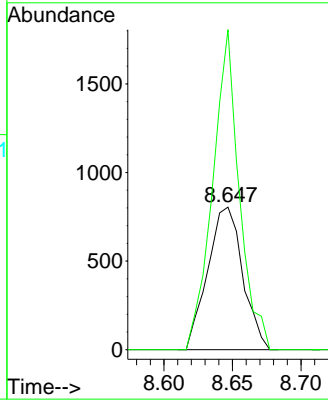
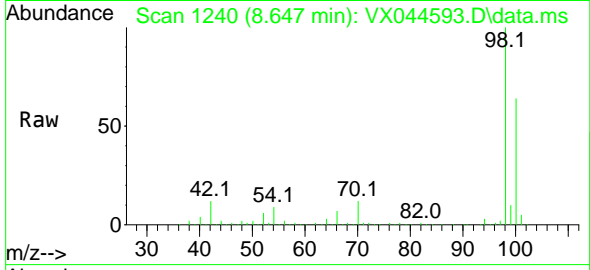




#51  
 4-Methyl-2-Pentanone  
 Concen: 0.552 ug/l  
 RT: 8.647 min Scan# 111  
 Delta R.T. 0.073 min  
 Lab File: VX044593.D  
 Acq: 06 Jan 2025 14:18

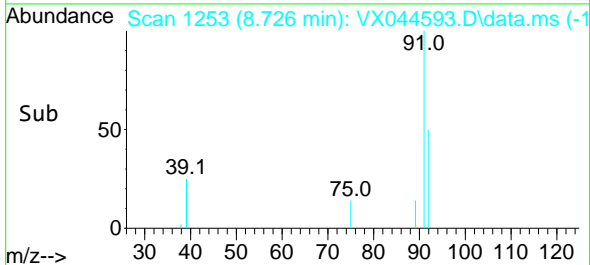
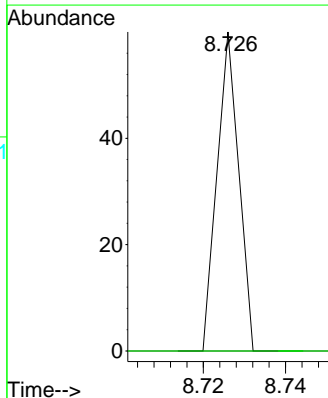
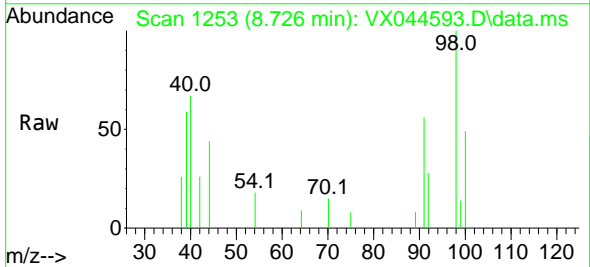
Instrument : MSVOA\_X  
 ClientSampleId : BP-VPB-190A-GW-778-780

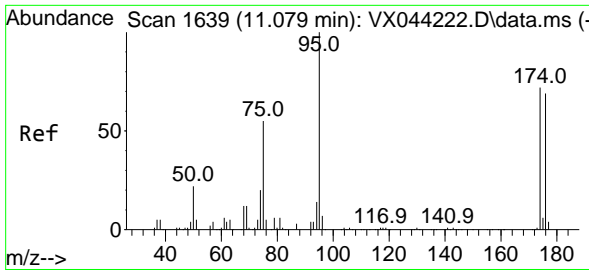
Tgt Ion: 43 Resp: 1428  
 Ion Ratio Lower Upper  
 43 100  
 58 171.0 29.4 44.0#



#53  
 t-1,3-Dichloropropene  
 Concen: 1.006 ug/l  
 RT: 8.726 min Scan# 1253  
 Delta R.T. -0.250 min  
 Lab File: VX044593.D  
 Acq: 06 Jan 2025 14:18

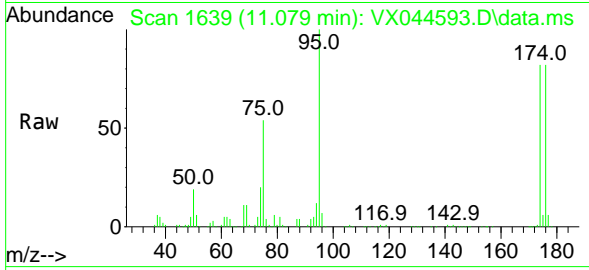
Tgt Ion: 75 Resp: 22  
 Ion Ratio Lower Upper  
 75 100  
 77 0.0 27.2 40.8#



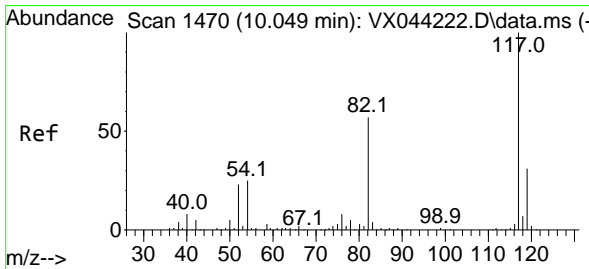
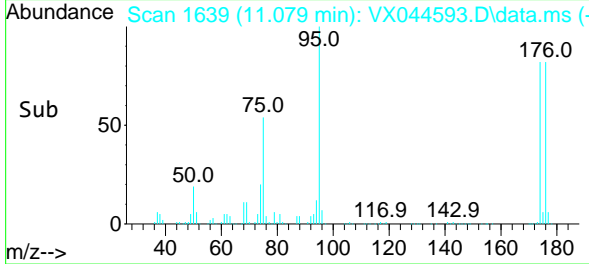
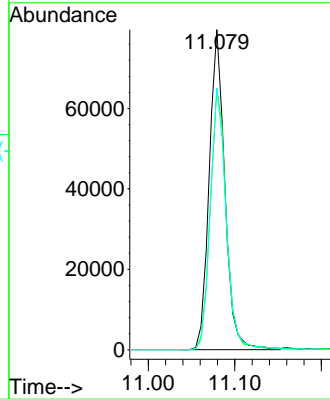


#62  
 4-Bromofluorobenzene  
 Concen: 52.453 ug/l  
 RT: 11.079 min Scan# 1639  
 Delta R.T. -0.000 min  
 Lab File: VX044593.D  
 Acq: 06 Jan 2025 14:18

Instrument : MSVOA\_X  
 ClientSampleId : BP-VPB-190A-GW-778-780

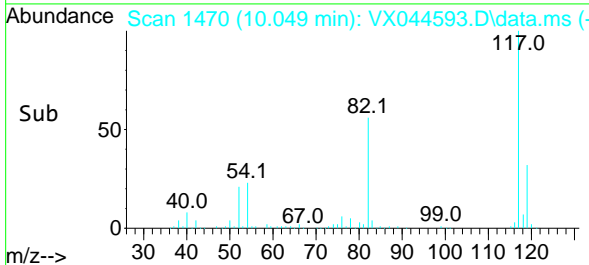
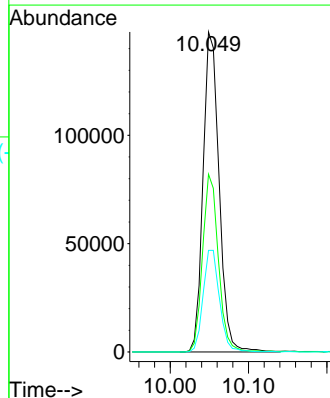
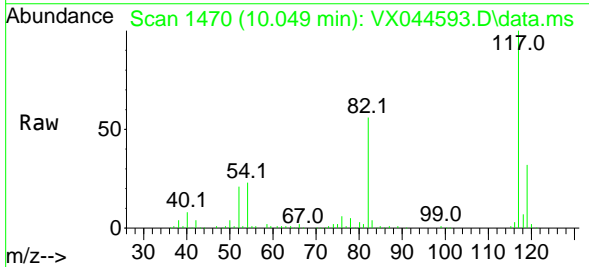


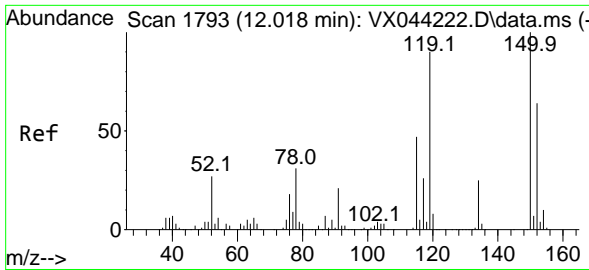
Tgt Ion: 95 Resp: 99643  
 Ion Ratio Lower Upper  
 95 100  
 174 84.4 0.0 145.8  
 176 82.5 0.0 137.8



#63  
 Chlorobenzene-d5  
 Concen: 50.000 ug/l  
 RT: 10.049 min Scan# 1470  
 Delta R.T. -0.000 min  
 Lab File: VX044593.D  
 Acq: 06 Jan 2025 14:18

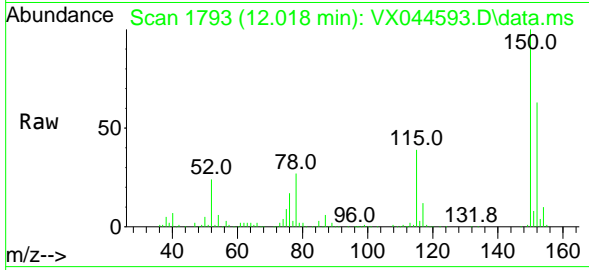
Tgt Ion: 117 Resp: 210076  
 Ion Ratio Lower Upper  
 117 100  
 82 55.5 45.8 68.8  
 119 31.8 25.0 37.4



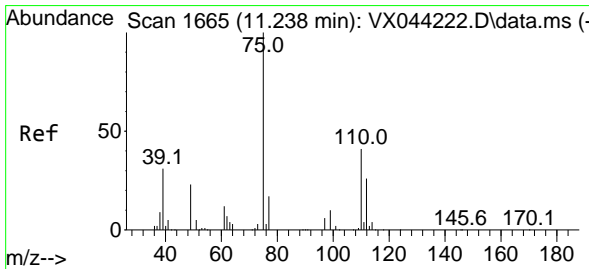
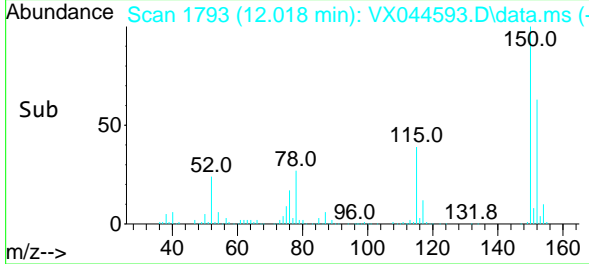
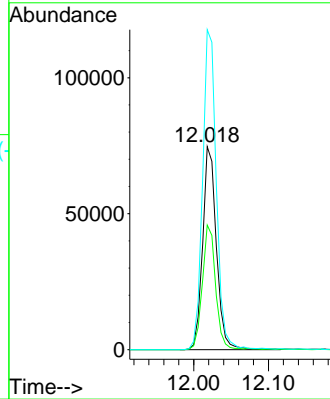


#72  
 1,4-Dichlorobenzene-d4  
 Concen: 50.000 ug/l  
 RT: 12.018 min Scan# 11  
 Delta R.T. -0.000 min  
 Lab File: VX044593.D  
 Acq: 06 Jan 2025 14:18

Instrument : MSVOA\_X  
 ClientSampleId : BP-VPB-190A-GW-778-780

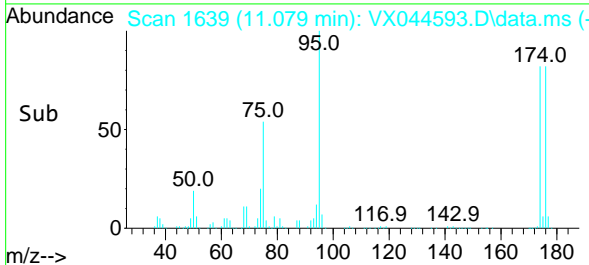
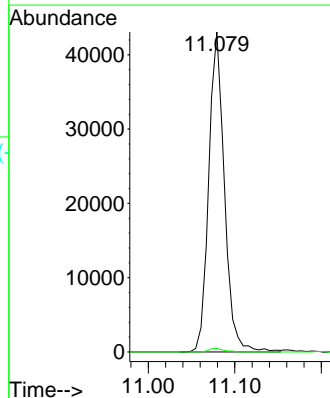
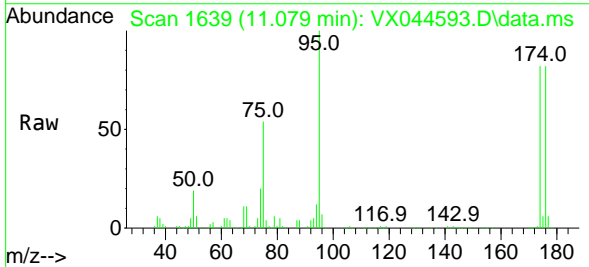


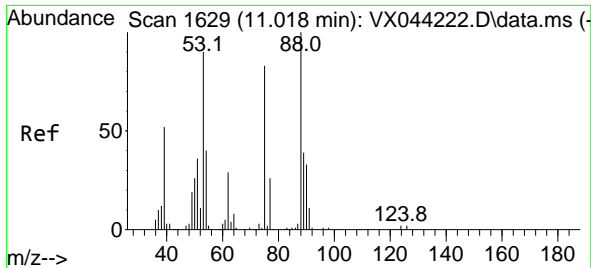
Tgt Ion:152 Resp: 95481  
 Ion Ratio Lower Upper  
 152 100  
 115 58.9 44.5 133.3  
 150 157.4 0.0 353.8



#76  
 1,2,3-Trichloropropane  
 Concen: 25.428 ug/l  
 RT: 11.079 min Scan# 1639  
 Delta R.T. -0.159 min  
 Lab File: VX044593.D  
 Acq: 06 Jan 2025 14:18

Tgt Ion: 75 Resp: 54209  
 Ion Ratio Lower Upper  
 75 100  
 77 1.1 20.9 62.7#





#81  
 trans-1,4-Dichloro-2-butene  
 Concen: 70.313 ug/l  
 RT: 11.079 min Scan# 10  
 Delta R.T. 0.061 min  
 Lab File: VX044593.D  
 Acq: 06 Jan 2025 14:18

Instrument : MSVOA\_X  
 ClientSampleId : BP-VPB-190A-GW-778-780

Tgt Ion: 75 Resp: 54209

Ion	Ratio	Lower	Upper
75	100		
53	0.0	93.6	140.4#
89	0.0	37.3	55.9#

