

Data Path : Z:\voasrv\HPCHEM1\MSVOA_X\Data\VX010923\
 Data File : VX033671.D
 Acq On : 09 Jan 2023 18:21
 Operator : JC/MD
 Sample : 01079-01RE
 Misc : 5.0mL/MSVOA_X/WATER
 ALS Vial : 18 Sample Multiplier: 1

Instrument :
 MSVOA_X
 ClientSampleId :

Quant Time: Jan 10 00:48:48 2023
 Quant Method : Z:\voasrv\HPCHEM1\MSVOA_X\Method\624X010723W.M
 Quant Title : METHOD 624 VOLATILE ORGANIC ANALYSIS
 QLast Update : Sat Jan 07 06:16:21 2023
 Response via : Initial Calibration

Compound	R.T.	QIon	Response	Conc	Units	Dev(Min)

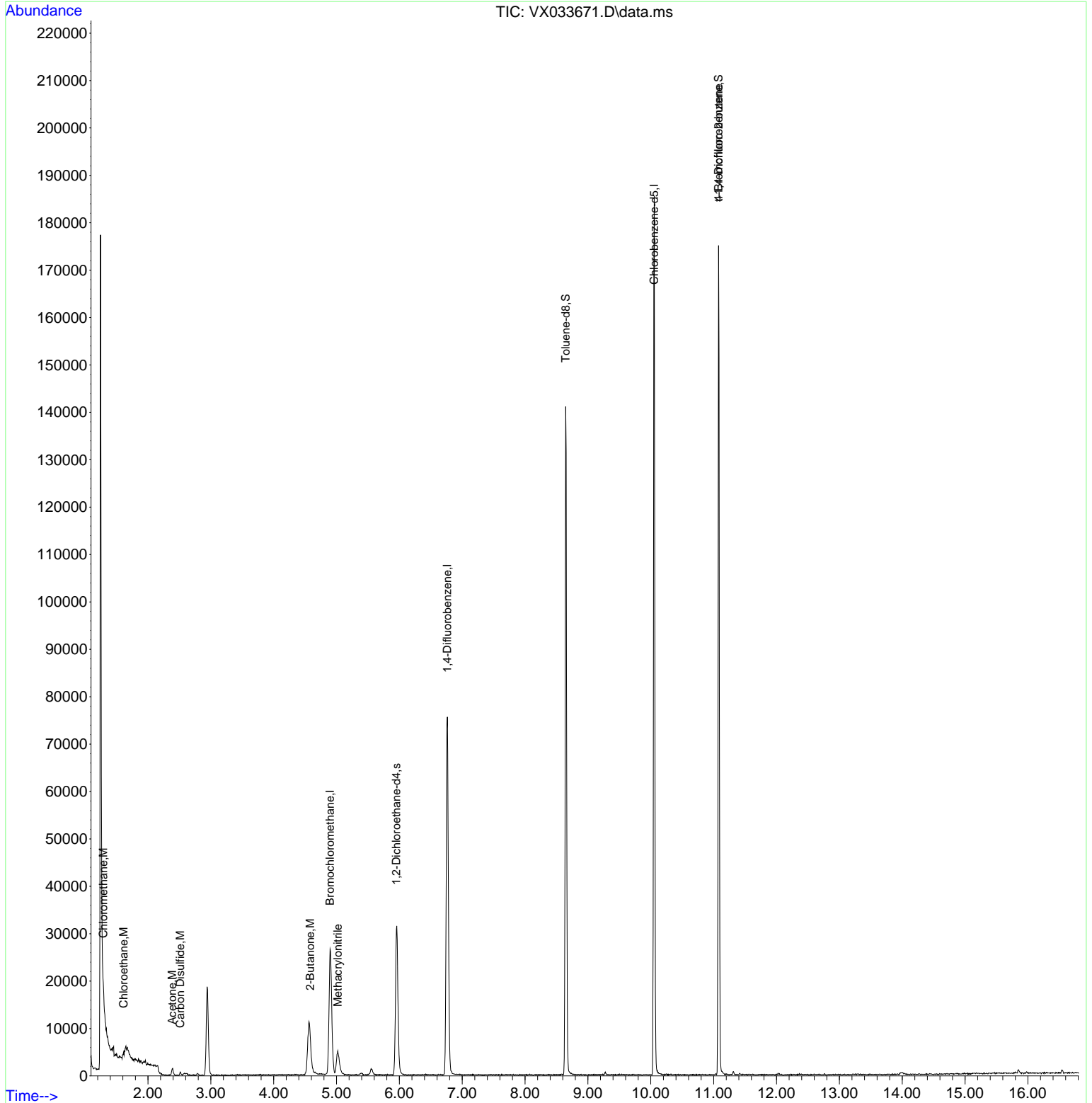
Internal Standards						
1) Bromochloromethane	4.897	128	11606	30.000	ug/l	0.00
28) 1,4-Difluorobenzene	6.763	114	80159	30.000	ug/l	0.00
57) Chlorobenzene-d5	10.055	117	85501	30.000	ug/l	0.00
System Monitoring Compounds						
27) 1,2-Dichloroethane-d4	5.952	65	31194	33.194	ug/l	0.00
Spiked Amount	30.000	Range 91 - 110	Recovery	=	110.633%#	
60) 4-Bromofluorobenzene	11.079	95	45176	29.316	ug/l	0.00
Spiked Amount	30.000	Range 63 - 112	Recovery	=	97.733%	
63) Toluene-d8	8.647	98	82984	30.327	ug/l	0.00
Spiked Amount	30.000	Range 91 - 112	Recovery	=	101.100%	
Target Compounds						
						Qvalue
3) Chloromethane	1.288	50	443	0.340	ug/l #	86
6) Chloroethane	1.611	64	911	1.324	ug/l #	44
15) Acetone	2.386	58	466	3.364	ug/l #	57
16) Carbon Disulfide	2.514	76	635	0.246	ug/l #	93
30) 2-Butanone	4.580	43	800	0.884	ug/l #	91
35) Methacrylonitrile	5.019	41	2948	2.859	ug/l #	49
77) t-1,4-Dichloro-2-butene	11.079	75	22618	45.962	ug/l #	3

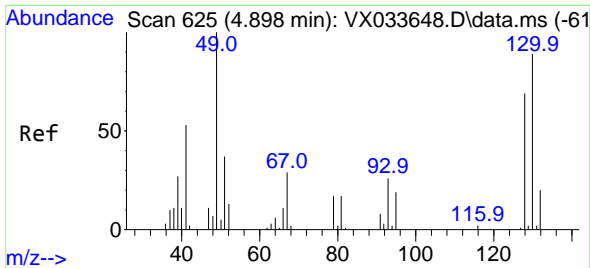
(#) = qualifier out of range (m) = manual integration (+) = signals summed

Data Path : Z:\voasrv\HPCHEM1\MSVOA_X\Data\VX010923\
 Data File : VX033671.D
 Acq On : 09 Jan 2023 18:21
 Operator : JC/MD
 Sample : 01079-01RE
 Misc : 5.0mL/MSVOA_X/WATER
 ALS Vial : 18 Sample Multiplier: 1

Instrument :
 MSVOA_X
 ClientSampleId :

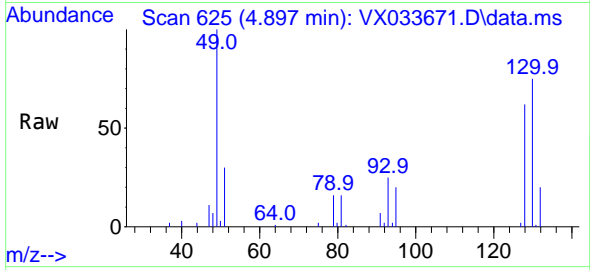
Quant Time: Jan 10 00:48:48 2023
 Quant Method : Z:\voasrv\HPCHEM1\MSVOA_X\Method\624X010723W.M
 Quant Title : METHOD 624 VOLATILE ORGANIC ANALYSIS
 QLast Update : Sat Jan 07 06:16:21 2023
 Response via : Initial Calibration





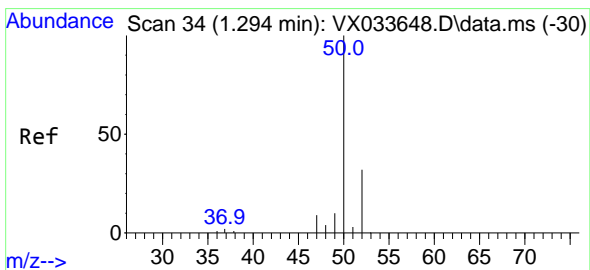
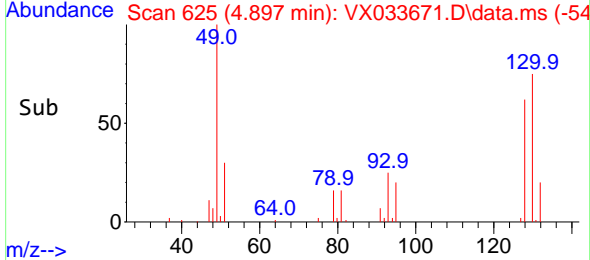
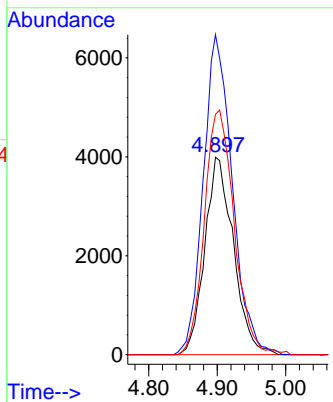
#1
 Bromochloromethane
 Concen: 30.000 ug/l
 RT: 4.897 min Scan# 61
 Delta R.T. -0.001 min
 Lab File: VX033671.D
 Acq: 09 Jan 2023 18:21

Instrument :
 MSVOA_X
 ClientSampleId :



Tgt Ion:128 Resp: 11606

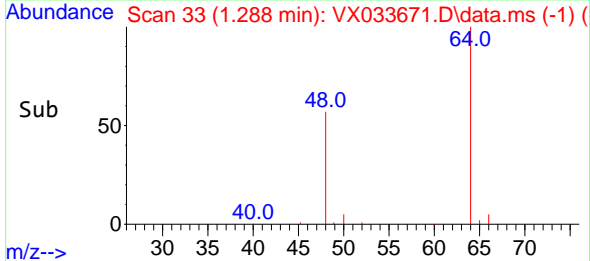
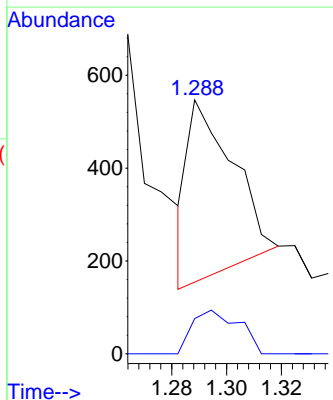
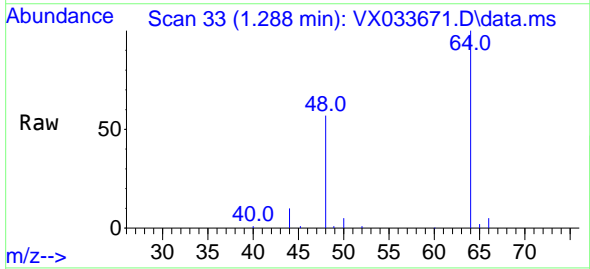
Ion	Ratio	Lower	Upper
128	100		
49	163.8	0.0	398.5
130	128.3	0.0	329.0

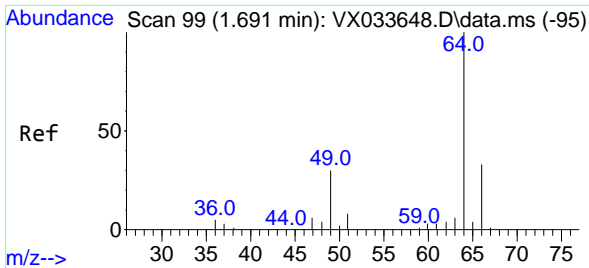


#3
 Chloromethane
 Concen: 0.340 ug/l
 RT: 1.288 min Scan# 33
 Delta R.T. -0.006 min
 Lab File: VX033671.D
 Acq: 09 Jan 2023 18:21

Tgt Ion: 50 Resp: 443

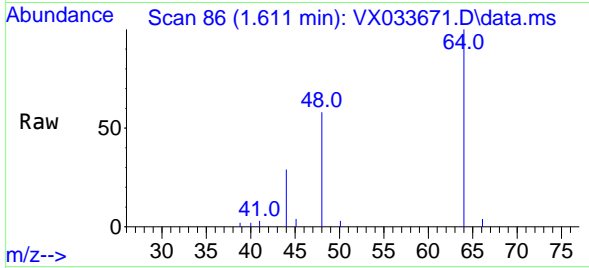
Ion	Ratio	Lower	Upper
50	100		
52	24.1	25.5	38.3#



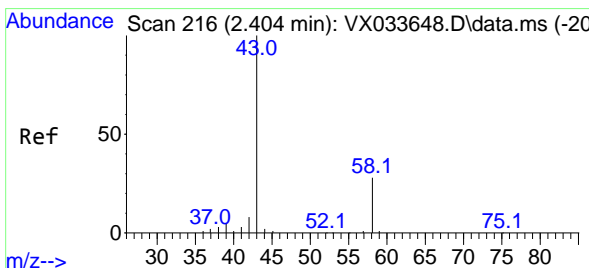
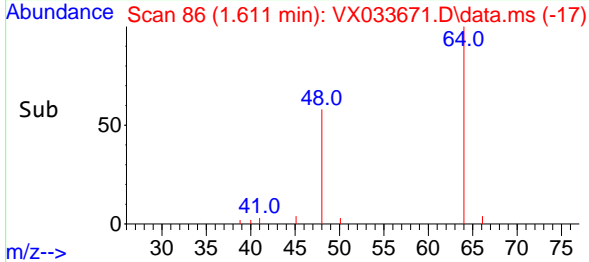
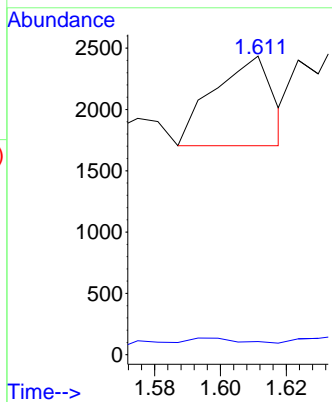


#6
 Chloroethane
 Concen: 1.324 ug/l
 RT: 1.611 min Scan# 80
 Delta R.T. -0.079 min
 Lab File: VX033671.D
 Acq: 09 Jan 2023 18:21

Instrument : MSVOA_X
 ClientSampleId :

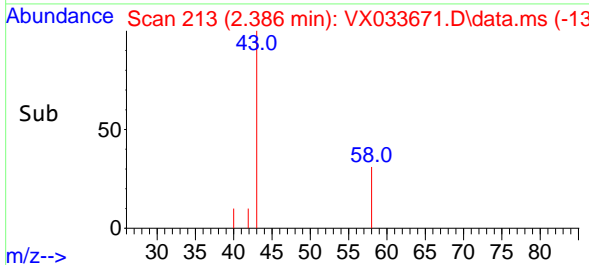
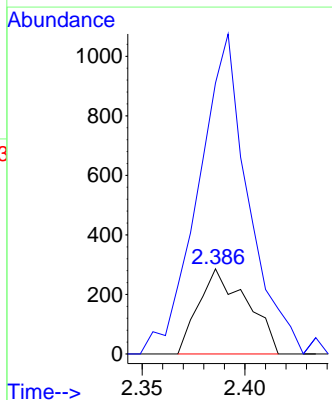
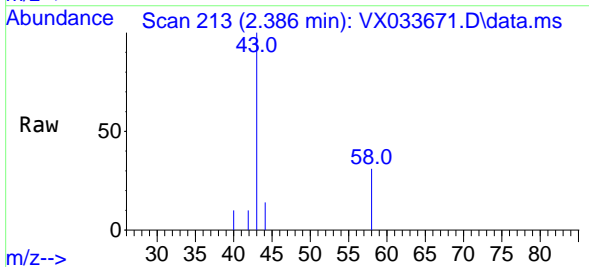


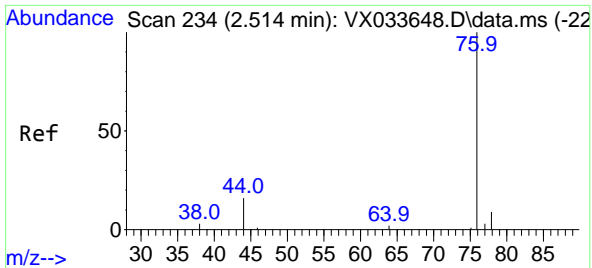
Tgt Ion: 64 Resp: 911
 Ion Ratio Lower Upper
 64 100
 66 1.8 26.6 40.0#



#15
 Acetone
 Concen: 3.364 ug/l
 RT: 2.386 min Scan# 213
 Delta R.T. -0.018 min
 Lab File: VX033671.D
 Acq: 09 Jan 2023 18:21

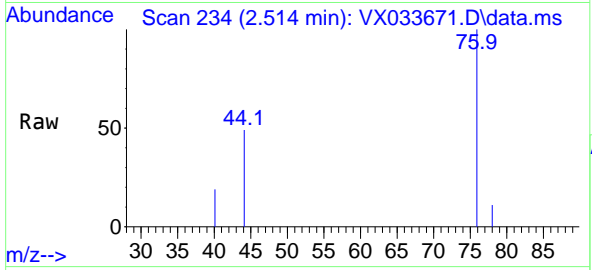
Tgt Ion: 58 Resp: 466
 Ion Ratio Lower Upper
 58 100
 43 265.0 288.3 432.5#



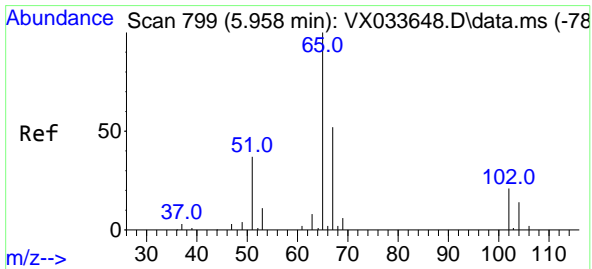
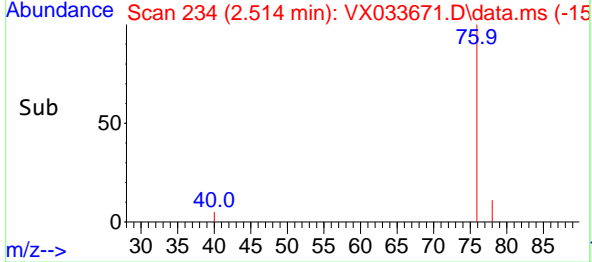
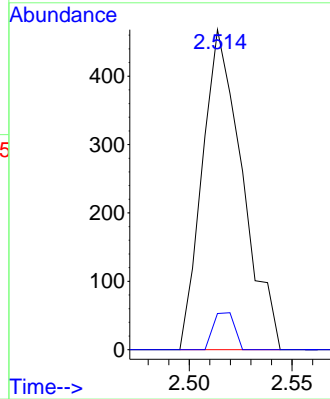


#16
 Carbon Disulfide
 Concen: 0.246 ug/l
 RT: 2.514 min Scan# 21
 Delta R.T. -0.000 min
 Lab File: VX033671.D
 Acq: 09 Jan 2023 18:21

Instrument :
 MSVOA_X
 ClientSampleId :

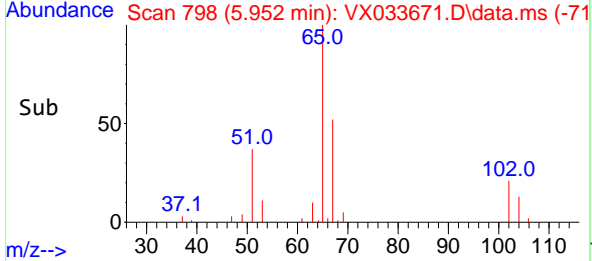
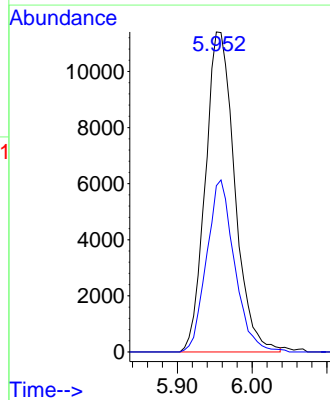
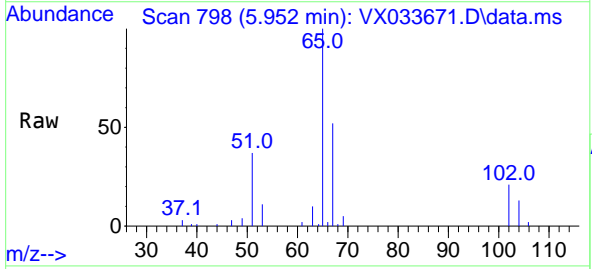


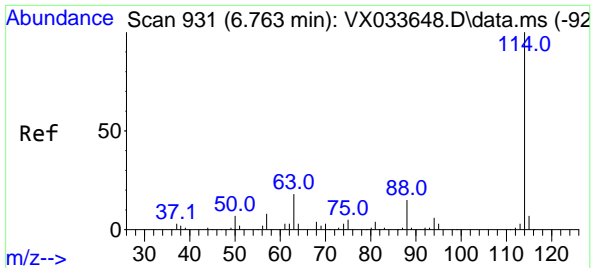
Tgt Ion: 76 Resp: 635
 Ion Ratio Lower Upper
 76 100
 78 11.3 7.0 10.4#



#27
 1,2-Dichloroethane-d4
 Concen: 33.194 ug/l
 RT: 5.952 min Scan# 798
 Delta R.T. -0.006 min
 Lab File: VX033671.D
 Acq: 09 Jan 2023 18:21

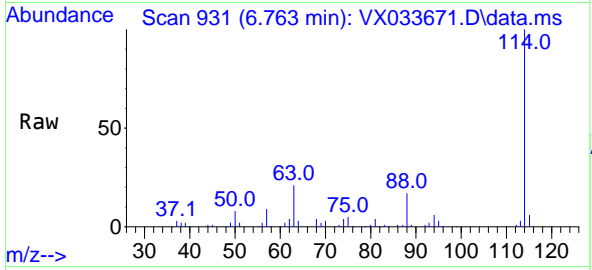
Tgt Ion: 65 Resp: 31194
 Ion Ratio Lower Upper
 65 100
 67 51.3 40.4 60.6





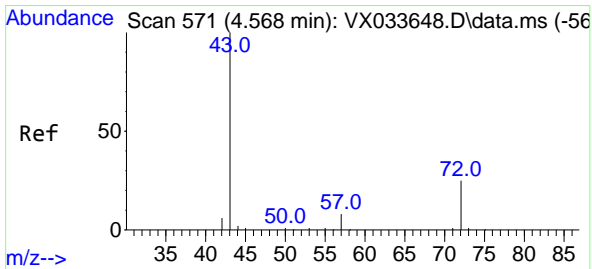
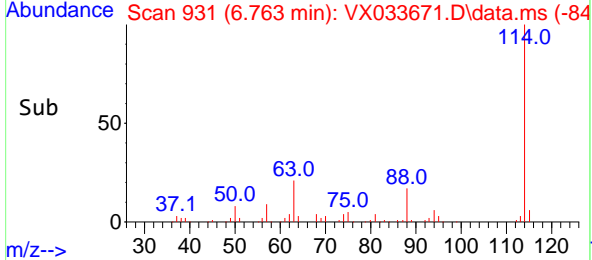
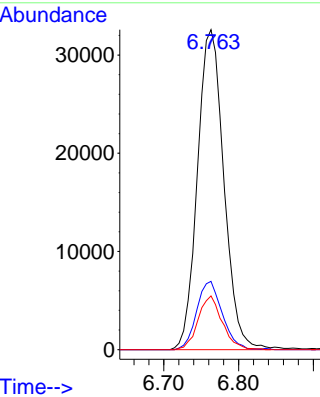
#28
 1,4-Difluorobenzene
 Concen: 30.000 ug/l
 RT: 6.763 min Scan# 91
 Delta R.T. -0.000 min
 Lab File: VX033671.D
 Acq: 09 Jan 2023 18:21

Instrument : MSVOA_X
 ClientSampleId :

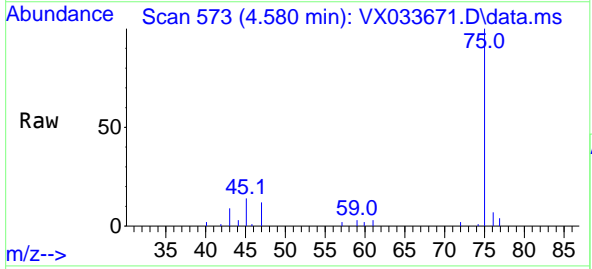


Tgt Ion:114 Resp: 80159

Ion	Ratio	Lower	Upper
114	100		
63	20.6	15.5	23.3
88	15.4	12.4	18.6

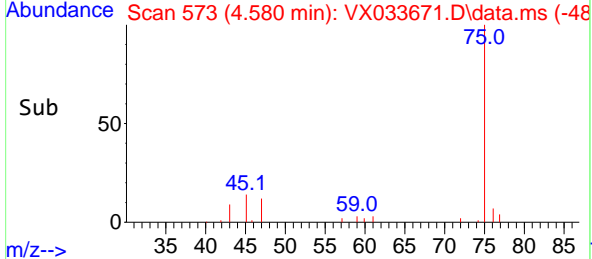
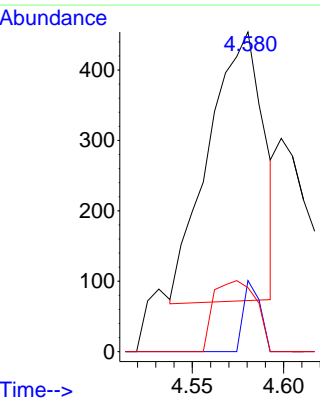


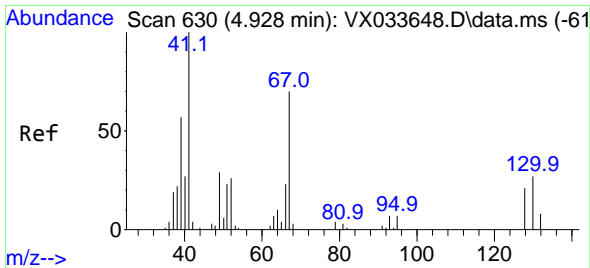
#30
 2-Butanone
 Concen: 0.884 ug/l
 RT: 4.580 min Scan# 573
 Delta R.T. 0.012 min
 Lab File: VX033671.D
 Acq: 09 Jan 2023 18:21



Tgt Ion: 43 Resp: 800

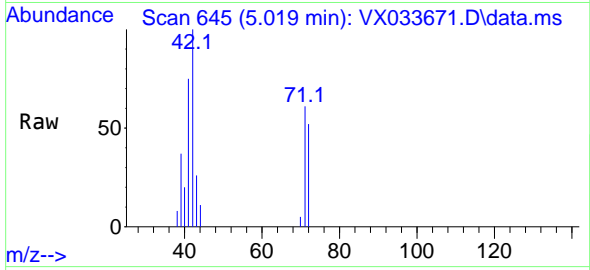
Ion	Ratio	Lower	Upper
43	100		
57	8.0	3.4	5.2#
72	20.3	19.8	29.6





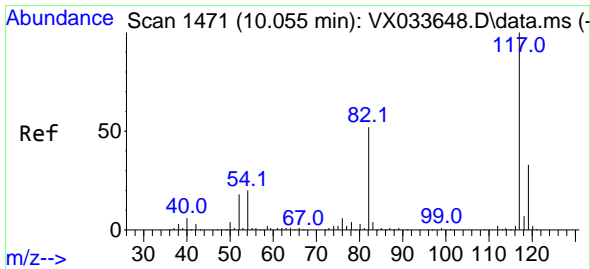
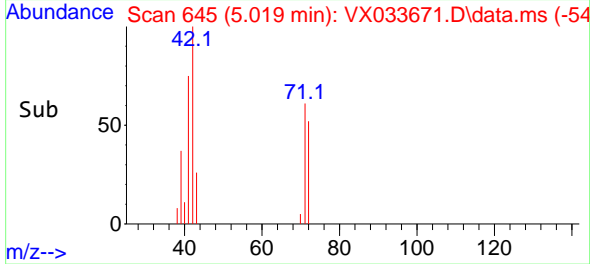
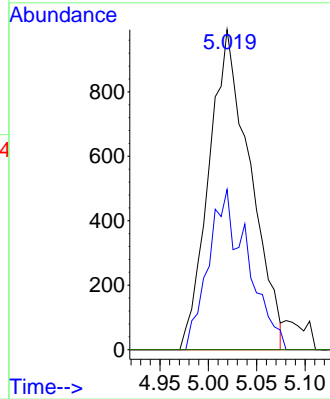
#35
 Methacrylonitrile
 Concen: 2.859 ug/l
 RT: 5.019 min Scan# 645
 Delta R.T. 0.091 min
 Lab File: VX033671.D
 Acq: 09 Jan 2023 18:21

Instrument : MSVOA_X
 ClientSampleId :

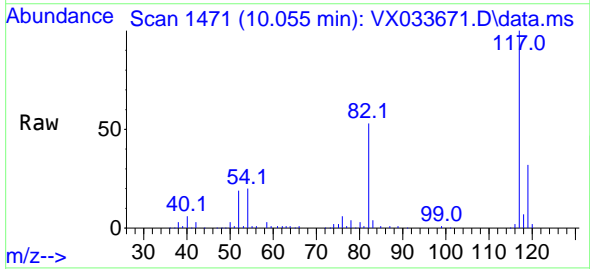


Tgt Ion: 41 Resp: 2948

Ion	Ratio	Lower	Upper
41	100		
39	50.1	28.6	85.9
67	0.0	34.8	104.3#
52	0.0	13.0	38.9#

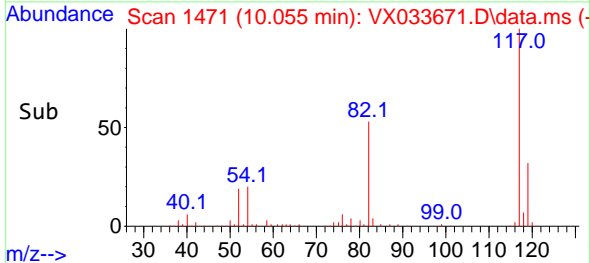
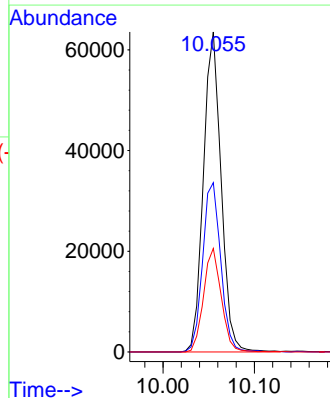


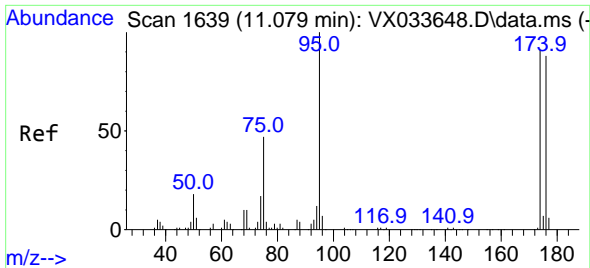
#57
 Chlorobenzene-d5
 Concen: 30.000 ug/l
 RT: 10.055 min Scan# 1471
 Delta R.T. -0.000 min
 Lab File: VX033671.D
 Acq: 09 Jan 2023 18:21



Tgt Ion: 117 Resp: 85501

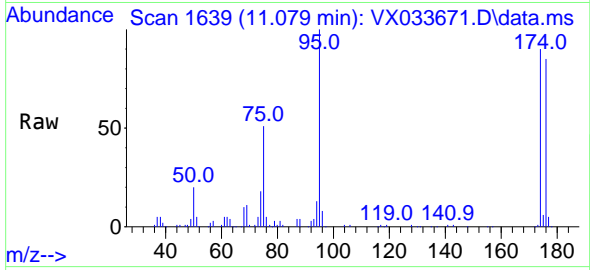
Ion	Ratio	Lower	Upper
117	100		
82	54.0	41.9	62.9
119	32.3	25.6	38.4



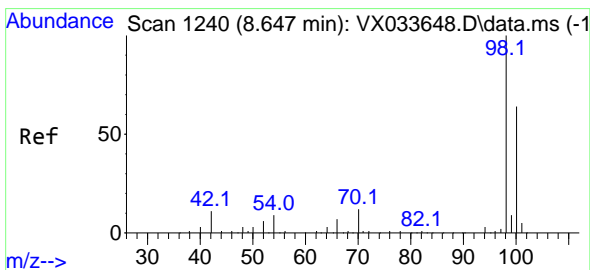
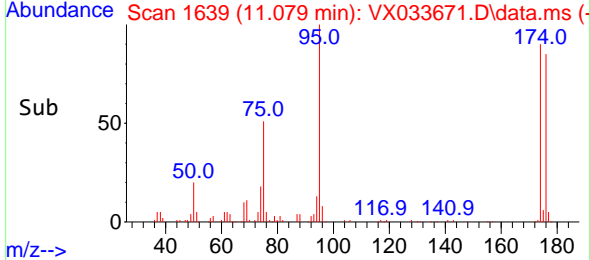
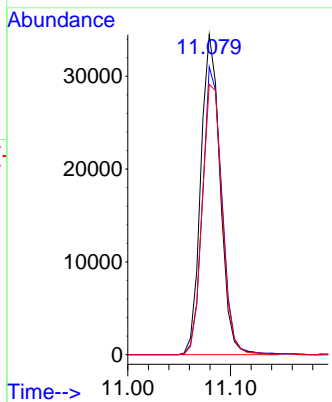


#60
 4-Bromofluorobenzene
 Concen: 29.316 ug/l
 RT: 11.079 min Scan# 11
 Delta R.T. -0.000 min
 Lab File: VX033671.D
 Acq: 09 Jan 2023 18:21

Instrument : MSVOA_X
 ClientSampleId :

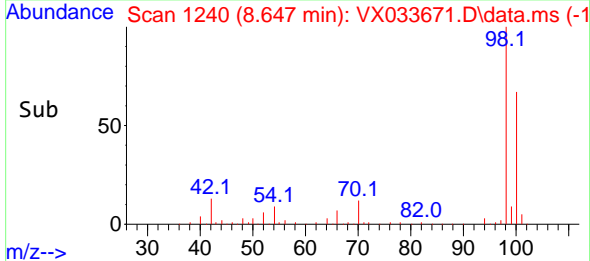
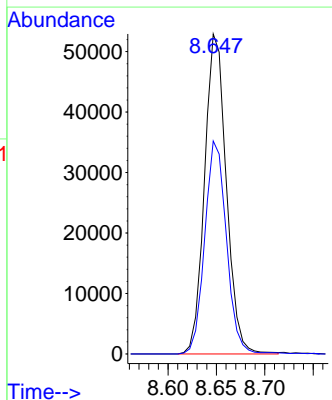
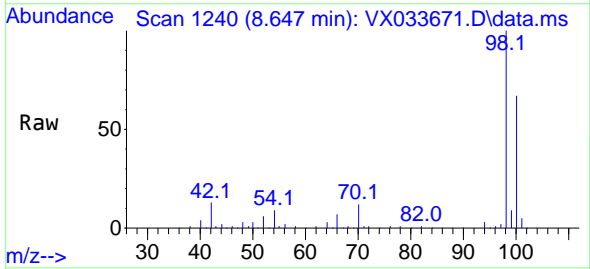


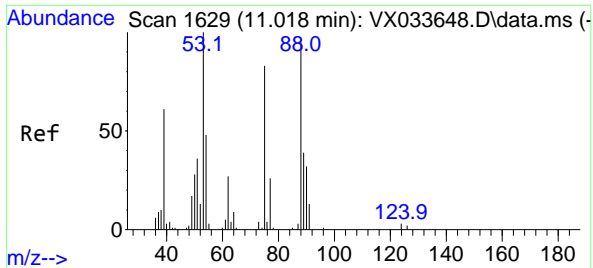
Tgt Ion: 95 Resp: 45176
 Ion Ratio Lower Upper
 95 100
 174 90.3 73.7 110.5
 176 86.8 71.0 106.4



#63
 Toluene-d8
 Concen: 30.327 ug/l
 RT: 8.647 min Scan# 1240
 Delta R.T. -0.000 min
 Lab File: VX033671.D
 Acq: 09 Jan 2023 18:21

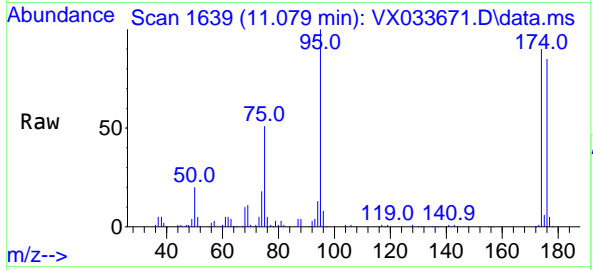
Tgt Ion: 98 Resp: 82984
 Ion Ratio Lower Upper
 98 100
 100 66.0 53.1 79.7





#77
 t-1,4-Dichloro-2-butene
 Concen: 45.962 ug/l
 RT: 11.079 min Scan# 1
 Delta R.T. 0.061 min
 Lab File: VX033671.D
 Acq: 09 Jan 2023 18:21

Instrument : MSVOA_X
 ClientSampleId :



Tgt Ion: 75 Resp: 22618

Ion	Ratio	Lower	Upper
75	100		
53	0.0	60.2	180.6#
89	0.0	23.2	69.6#

