

Data Path : Z:\VOASRV\HPCHEM1\MSVOA X\DATA\VX011020\
 Data File : VX014536.D
 Acq On : 10 Jan 2020 14:49
 Operator : JC/SP
 Sample : L1092-01
 Misc : 5.0mL/MSVOA X/WATER
 ALS Vial : 16 Sample Multiplier: 1

Instrument :
 MSVOA_X
 ClientSampleId :
 STORAGE-BLANK-SOIL-REF-6

Integration Parameters: RTEINT.P
 Integrator: RTE
 Smoothing : ON Filtering: 5
 Sampling : 1 Min Area: 3 % of largest Peak
 Start Thrs: 0.2 Max Peaks: 100
 Stop Thrs : 0 Peak Location: TOP

If leading or trailing edge < 100 prefer < Baseline drop else tangent >
 Peak separation: 5

Method : Z:\VOASRV\HPCHEM1\MSVOA_X\METHOD\82X010720W.M
 Title : SW846 8260

Signal : TIC

peak #	R.T. min	first scan	max scan	last scan	PK TY	peak height	corr. area	corr. % max.	% of total
1	1.070	27	30	44	rBV	412949	560326	23.73%	4.274%
2	1.265	59	62	70	rBV	33928	46913	1.99%	0.358%
3	1.600	109	117	121	rBV7	30124	59308	2.51%	0.452%
4	2.429	248	253	259	rBV	23002	36902	1.56%	0.281%
5	5.490	745	755	764	rBV	269253	750605	31.79%	5.726%
6	5.654	771	782	793	rBV	490387	1345568	56.99%	10.264%
7	6.051	838	847	864	rVB	301218	781960	33.12%	5.965%
8	6.849	968	978	990	rBV	744187	1731022	73.31%	13.204%
9	8.709	1277	1283	1292	rBV	1544475	2361263	100.00%	18.012%
10	10.111	1507	1513	1522	rBV	1460479	2029097	85.93%	15.478%
11	11.135	1675	1681	1689	rBV	1195406	1548287	65.57%	11.810%
12	12.074	1830	1835	1842	rVB	1519841	1827466	77.39%	13.940%
13	12.202	1853	1856	1862	rBV	20931	30797	1.30%	0.235%

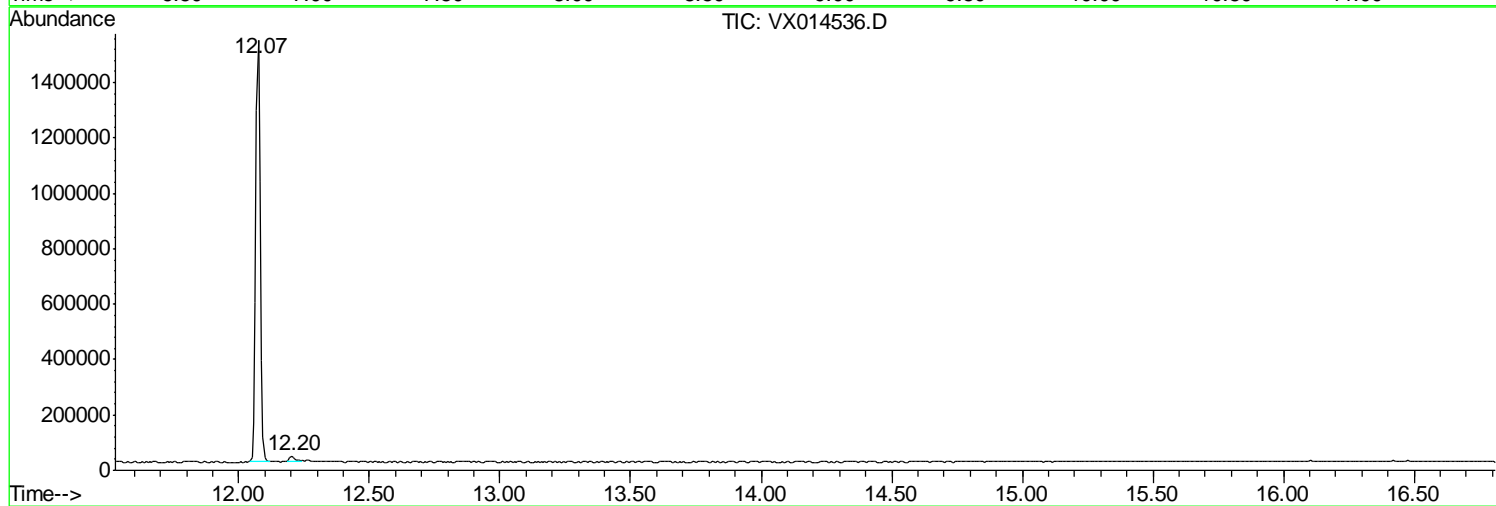
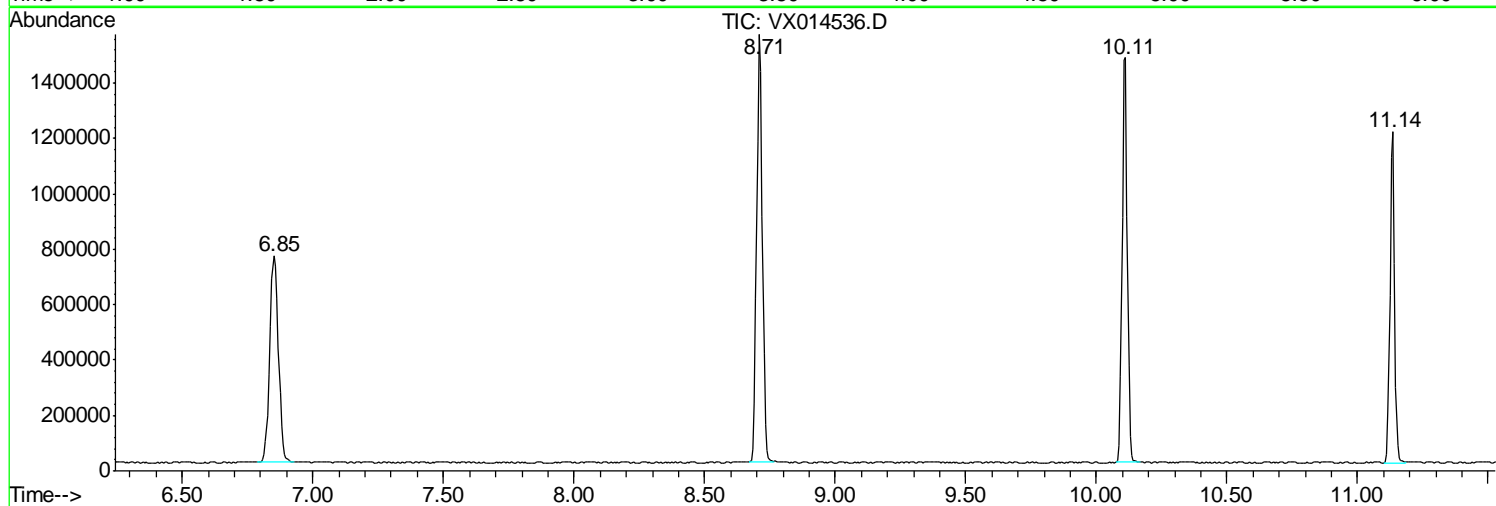
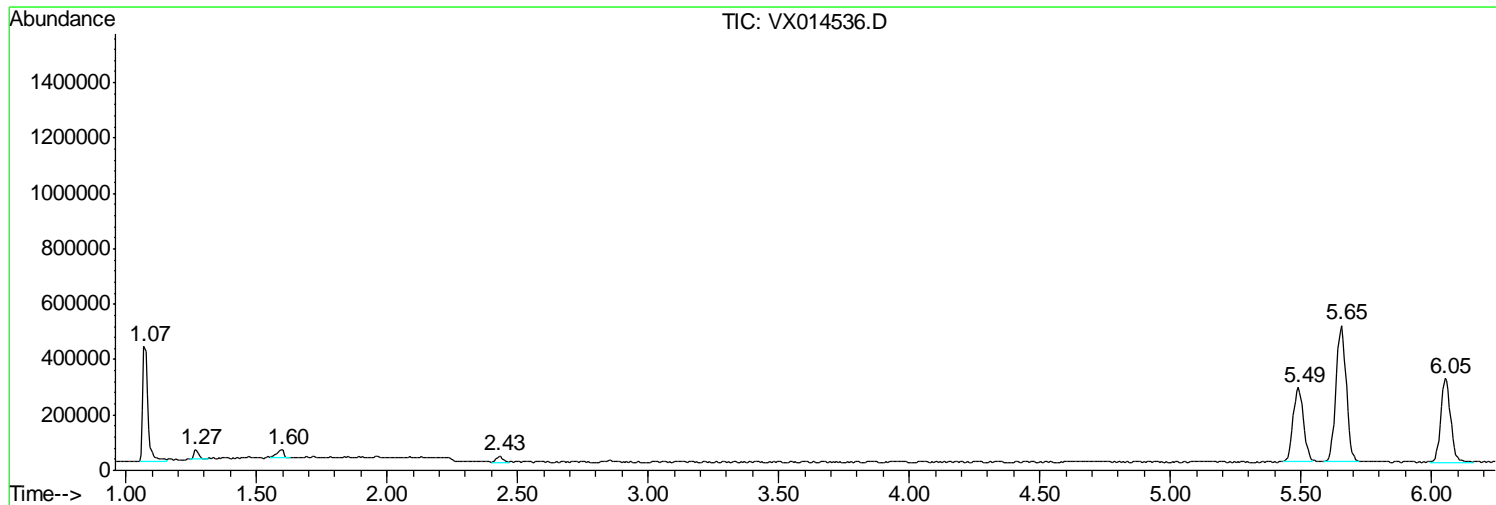
Sum of corrected areas: 13109514

Data Path : Z:\VOASRV\HPCHEM1\MSVOA X\DATA\VX011020\
Data File : VX014536.D
Acq On : 10 Jan 2020 14:49
Operator : JC/SP
Sample : L1092-01
Misc : 5.0mL/MSVOA X/WATER
ALS Vial : 16 Sample Multiplier: 1

Instrument :
MSVOA_X
ClientSampled :
STORAGE-BLANK-SOIL-REF-6

Quant Method : Z:\VOASRV\HPCHEM1\MSVOA_X\METHOD\82X010720W.M
Quant Title : SW846 8260

TIC Library : C:\DATABASE\NIST11.L
TIC Integration Parameters: LSCINT.P



Data Path : Z:\VOASRV\HPCHEM1\MSVOA_X\DATA\VX011020\
Data File : VX014536.D
Acq On : 10 Jan 2020 14:49
Operator : JC/SP
Sample : L1092-01
Misc : 5.0mL/MSVOA_X/WATER
ALS Vial : 16 Sample Multiplier: 1

Instrument :
MSVOA_X
ClientSampleId :
STORAGE-BLANK-SOIL-REF-6

Quant Method : Z:\VOASRV\HPCHEM1\MSVOA_X\METHOD\82X010720W.M
Quant Title : SW846 8260

TIC Library : C:\DATABASE\NIST11.L
TIC Integration Parameters: LSCINT.P

No Library Search Compounds Detected

Data Path : Z:\VOASRV\HPCHEM1\MSVOA_X\DATA\VX011020\
Data File : VX014536.D
Acq On : 10 Jan 2020 14:49
Operator : JC/SP
Sample : L1092-01
Misc : 5.0mL/MSVOA_X/WATER
ALS Vial : 16 Sample Multiplier: 1

Instrument :
MSVOA_X
ClientSampleId :
STORAGE-BLANK-SOIL-REF-6

Quant Method : Z:\VOASRV\HPCHEM1\MSVOA_X\METHOD\82X010720W.M
Quant Title : SW846 8260

TIC Library : C:\DATABASE\NIST11.L
TIC Integration Parameters: LSCINT.P

TIC Top Hit name	RT	EstConc	Units	Response	--Internal Standard--			
					#	RT	Resp	Conc
