

Data Path : Z:\VOASRV\HPCHEM1\MSVOA\_X\DATA\VX011119\  
 Data File : VX007024.D  
 Acq On : 11 Jan 2019 19:56  
 Operator : JC/SP  
 Sample : K1115-02  
 Misc : 5.0mL/MSVOA\_X/WATER  
 ALS Vial : 22 Sample Multiplier: 1

Instrument :  
 MSVOA\_X  
 ClientSampled :  
 S72-IDW01

Quant Time: Jan 11 22:21:39 2019  
 Quant Method : Z:\VOASRV\HPCHEM1\MSVOA\_X\METHOD\82X010819W.M  
 Quant Title : SW846 8260  
 QLast Update : Tue Jan 08 14:06:59 2019  
 Response via : Initial Calibration

Internal Standards	R.T.	QIon	Response	Conc	Units	Dev(Min)
1) Pentafluorobenzene	5.67	168	553066	50.00	ug/l	0.00
34) 1,4-Difluorobenzene	6.86	114	870513	50.00	ug/l	0.00
63) Chlorobenzene-d5	10.12	117	836285	50.00	ug/l	0.00
72) 1,4-Dichlorobenzene-d4	12.08	152	401542	50.00	ug/l	0.00

## System Monitoring Compounds

33) 1,2-Dichloroethane-d4	6.07	65	304820	52.74	ug/l	0.00
Spiked Amount	50.000		Recovery	=	105.48%	
35) Dibromofluoromethane	5.51	113	268320	48.13	ug/l	0.00
Spiked Amount	50.000		Recovery	=	96.26%	
50) Toluene-d8	8.71	98	1057283	51.81	ug/l	0.00
Spiked Amount	50.000		Recovery	=	103.62%	
62) 4-Bromofluorobenzene	11.13	95	380398	53.47	ug/l	0.00
Spiked Amount	50.000		Recovery	=	106.94%	

## Target Compounds

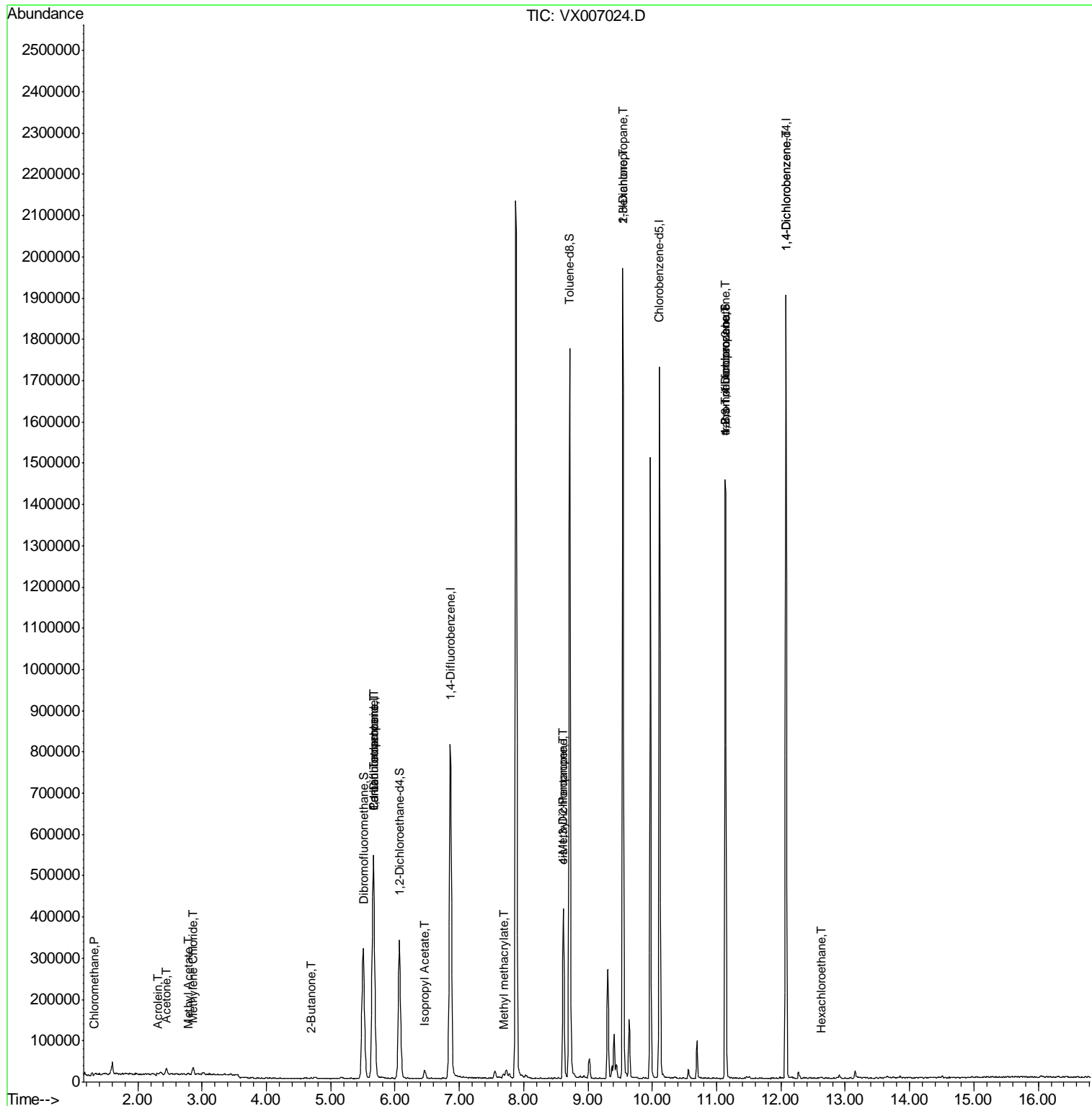
						Qvalue
3) Chloromethane	1.33	50	1389	0.263	ug/l	97
13) Acrolein	2.31	56	477	3.885	ug/l #	82
16) Acetone	2.45	43	16629	5.820	ug/l	90
18) Methyl Acetate	2.78	43	3447	0.417	ug/l #	58
20) Methylene Chloride	2.87	84	8241	0.961	ug/l	85
25) 2-Butanone	4.70	43	3084	0.754	ug/l	92
36) 1,1-Dichloropropene	5.67	75	36233	4.787	ug/l #	48
38) Carbon Tetrachloride	5.67	117	49273	6.471	ug/l #	14
43) Isopropyl Acetate	6.46	43	25622	2.002	ug/l	97
48) Methyl methacrylate	7.68	41	12076	1.837	ug/l #	12
49) 1,4-Dioxane	7.75	88	103	Below Cal	#	27
51) 4-Methyl-2-Pentanone	8.62	43	132476	16.106	ug/l #	49
54) cis-1,3-Dichloropropene	8.62	75	66472	7.816	ug/l #	64
57) 1,3-Dichloropropane	9.54	76	16461	1.691	ug/l #	44
59) 2-Hexanone	9.54	43	214382	34.202	ug/l #	51
76) 1,2,3-Trichloropropane	11.13	75	180802	22.220	ug/l #	40
81) trans-1,4-Dichloro-2-buten	11.13	75	180802	65.765	ug/l #	10
88) 1,4-Dichlorobenzene	12.08	146	833	0.207	ug/l #	1
90) Hexachloroethane	12.63	117	33	2.916	ug/l #	6

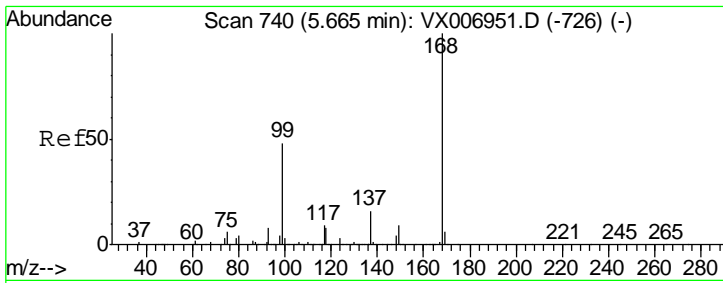
(#) = qualifier out of range (m) = manual integration (+) = signals summed

Data Path : Z:\VOASRV\HPCHEM1\MSVOA\_X\DATA\VX011119\  
 Data File : VX007024.D  
 Acq On : 11 Jan 2019 19:56  
 Operator : JC/SP  
 Sample : K1115-02  
 Misc : 5.0mL/MSVOA\_X/WATER  
 ALS Vial : 22 Sample Multiplier: 1

Instrument :  
 MSVOA\_X  
 Client Sampled :  
 S72-IDW01

Quant Time: Jan 11 22:21:39 2019  
 Quant Method : Z:\VOASRV\HPCHEM1\MSVOA\_X\METHOD\82X010819W.M  
 Quant Title : SW846 8260  
 QLast Update : Tue Jan 08 14:06:59 2019  
 Response via : Initial Calibration

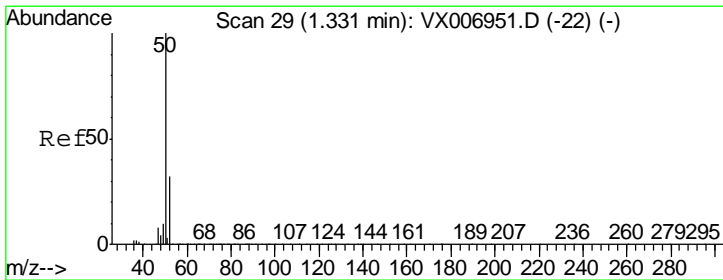
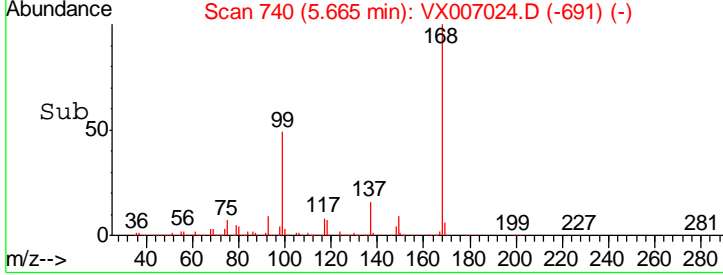
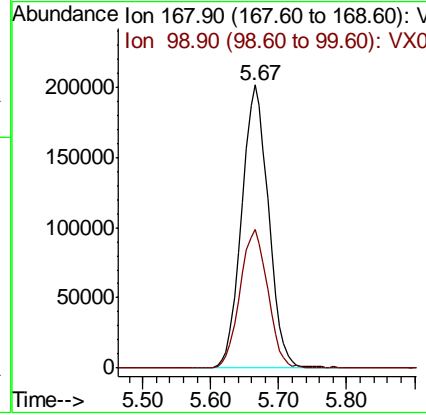
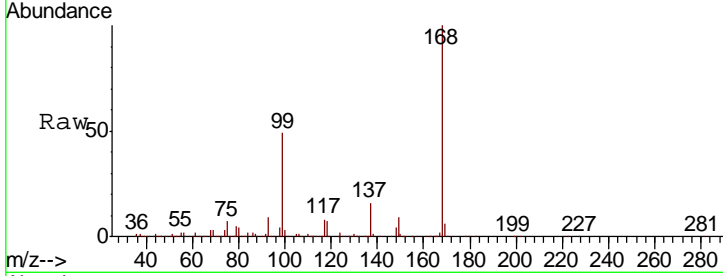




#1  
 Pentafluorobenzene  
 Concen: 50.000 ug/l  
 RT: 5.67 min Scan# 740  
 Delta R.T. -0.00 min  
 Lab File: VX007024.D  
 Acq: 11 Jan 2019 19:56

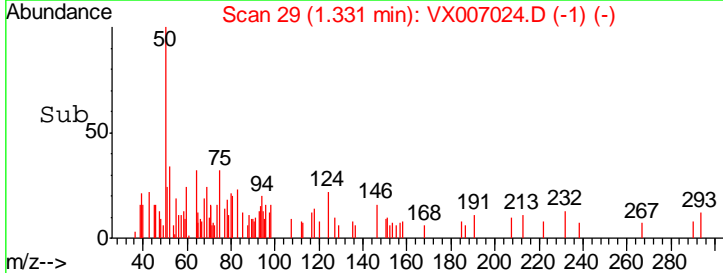
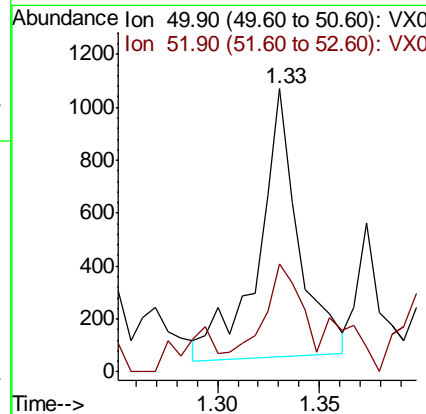
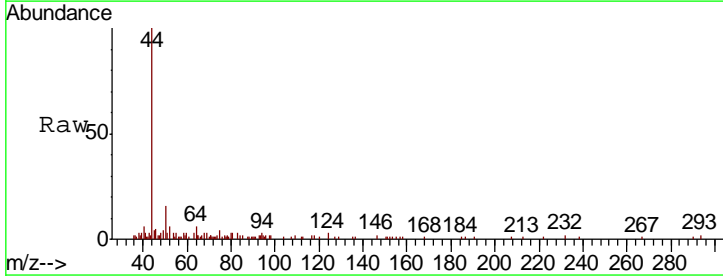
Instrument :  
 MSVOA\_X  
 ClientSampled :  
 S72-IDW01

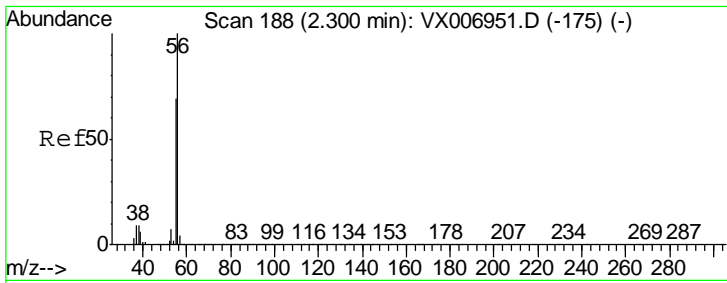
Tgt Ion	Resp	Lower	Upper
168	100		
99	49.1	41.8	62.8



#3  
 Chloromethane  
 Concen: 0.263 ug/l  
 RT: 1.33 min Scan# 29  
 Delta R.T. -0.00 min  
 Lab File: VX007024.D  
 Acq: 11 Jan 2019 19:56

Tgt Ion	Resp	Lower	Upper
50	100		
52	30.0	25.4	38.2

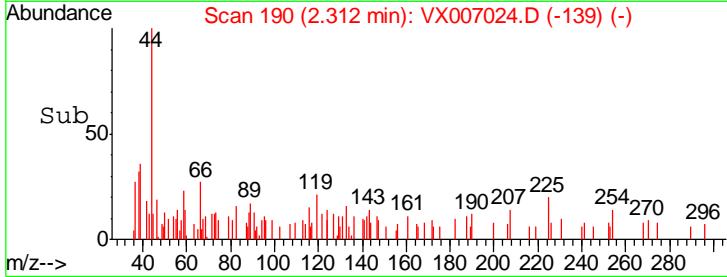
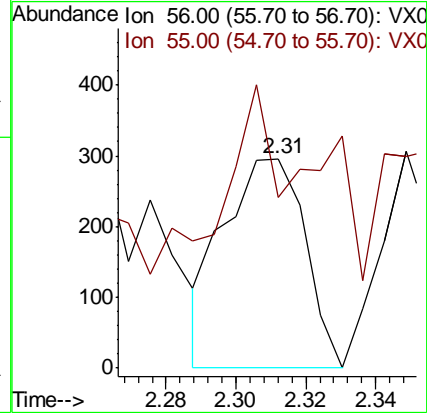
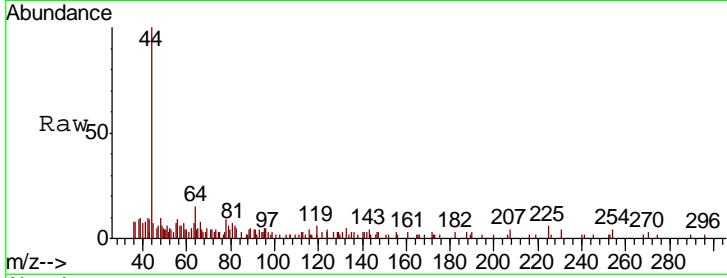




#13  
 Acrolein  
 Concen: 3.885 ug/l  
 RT: 2.31 min Scan# 190  
 Delta R.T. 0.01 min  
 Lab File: VX007024.D  
 Acq: 11 Jan 2019 19:56

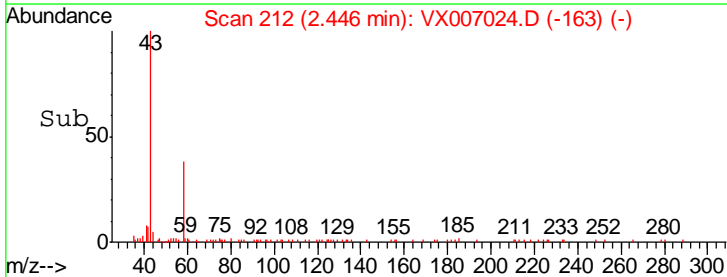
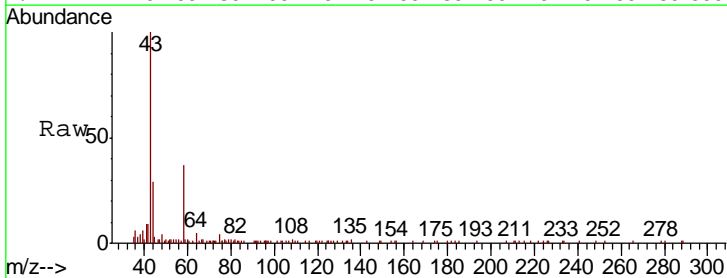
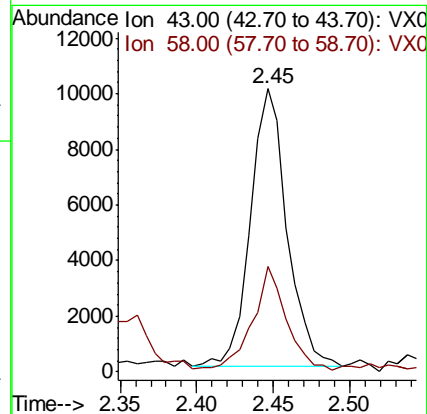
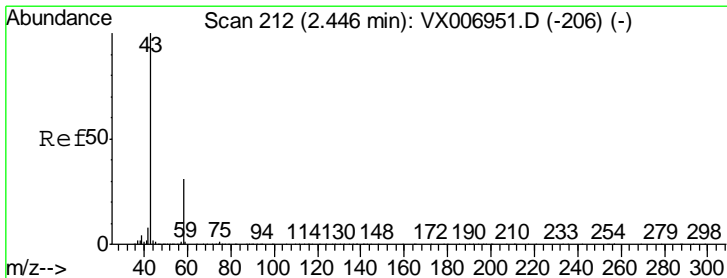
Instrument :  
 MSVOA\_X  
 ClientSampled :  
 S72-IDW01

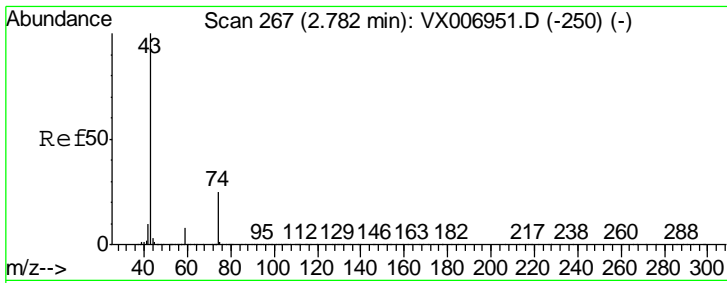
Tgt Ion: 56 Resp: 477  
 Ion Ratio Lower Upper  
 56 100  
 55 87.6 58.2 87.4#



#16  
 Acetone  
 Concen: 5.820 ug/l  
 RT: 2.45 min Scan# 212  
 Delta R.T. -0.00 min  
 Lab File: VX007024.D  
 Acq: 11 Jan 2019 19:56

Tgt Ion: 43 Resp: 16629  
 Ion Ratio Lower Upper  
 43 100  
 58 37.0 25.0 37.6

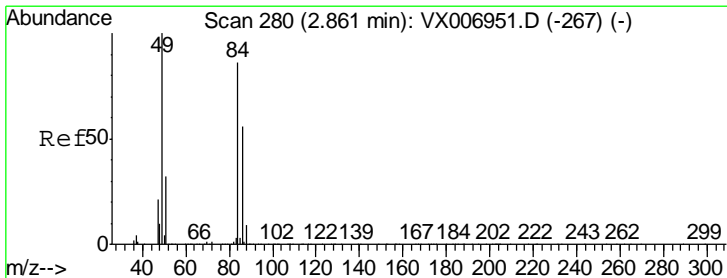
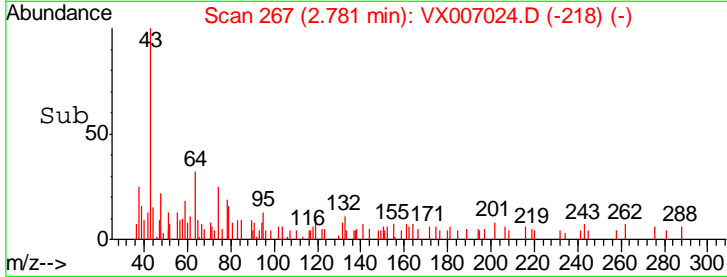
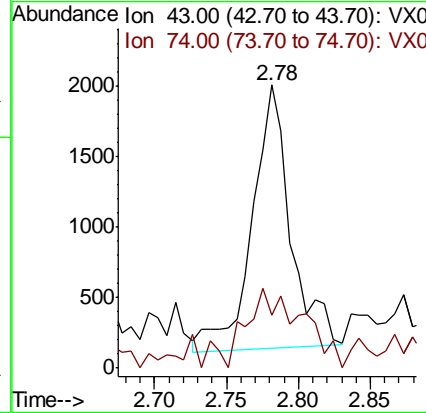
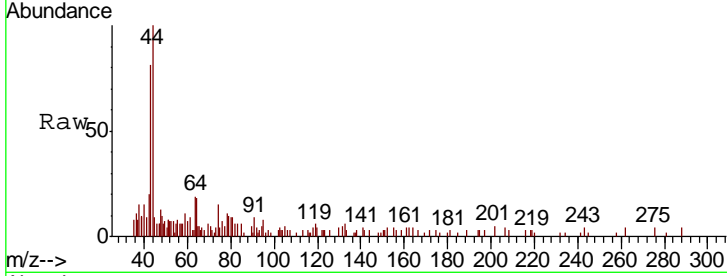




#18  
Methyl Acetate  
Concen: 0.417 ug/l  
RT: 2.78 min Scan# 267  
Delta R.T. -0.00 min  
Lab File: VX007024.D  
Acq: 11 Jan 2019 19:56

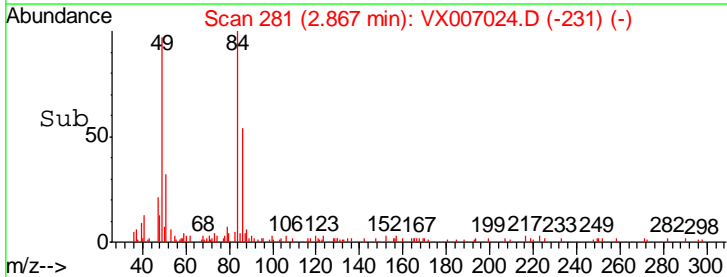
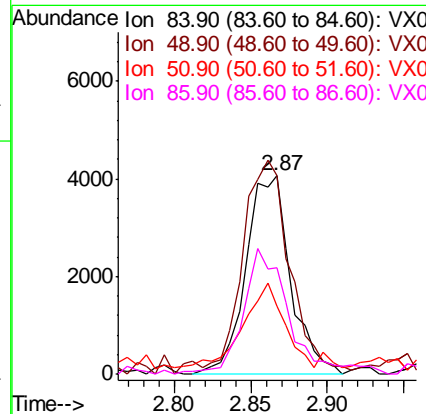
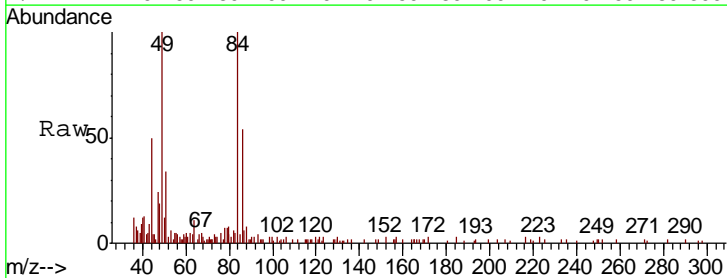
Instrument :  
MSVOA\_X  
ClientSampled :  
S72-IDW01

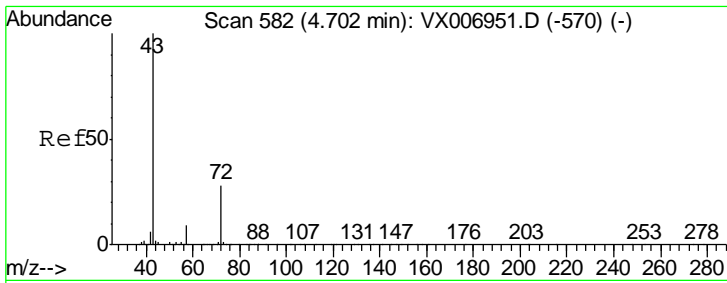
Tgt Ion: 43 Resp: 3447  
Ion Ratio Lower Upper  
43 100  
74 43.6 18.6 28.0#



#20  
Methylene Chloride  
Concen: 0.961 ug/l  
RT: 2.87 min Scan# 281  
Delta R.T. 0.01 min  
Lab File: VX007024.D  
Acq: 11 Jan 2019 19:56

Tgt Ion: 84 Resp: 8241  
Ion Ratio Lower Upper  
84 100  
49 95.7 91.8 137.6  
51 30.9 28.5 42.7  
86 52.2 50.2 75.2

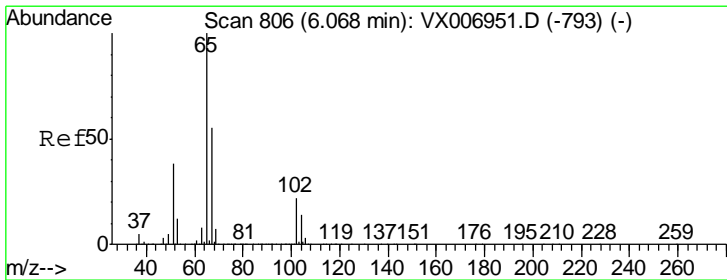
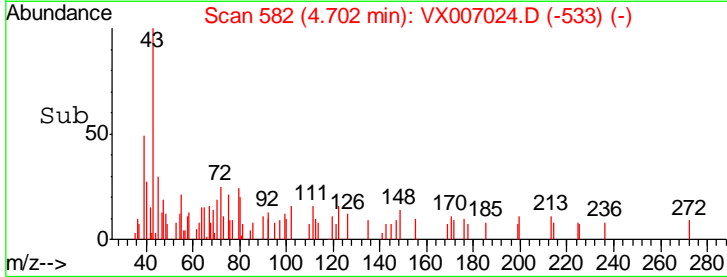
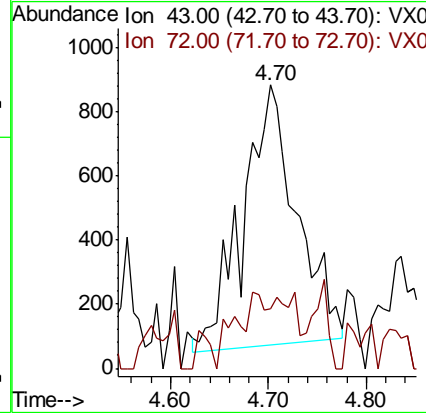
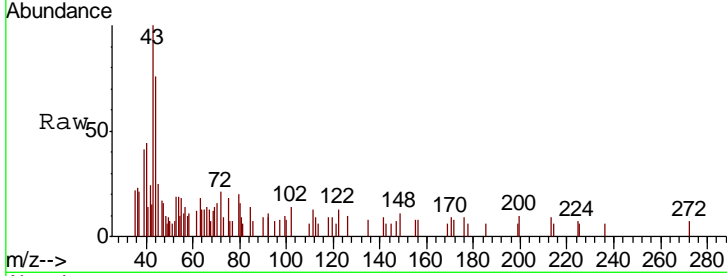




#25  
 2-Butanone  
 Concen: 0.754 ug/l  
 RT: 4.70 min Scan# 582  
 Delta R.T. -0.00 min  
 Lab File: VX007024.D  
 Acq: 11 Jan 2019 19:56

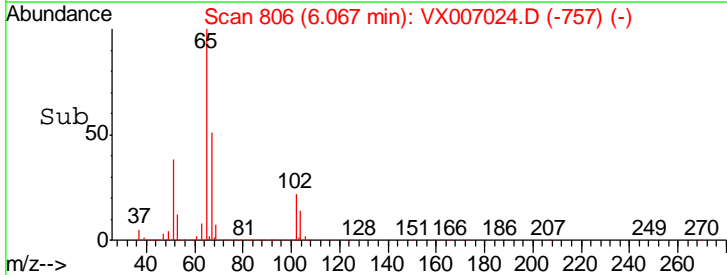
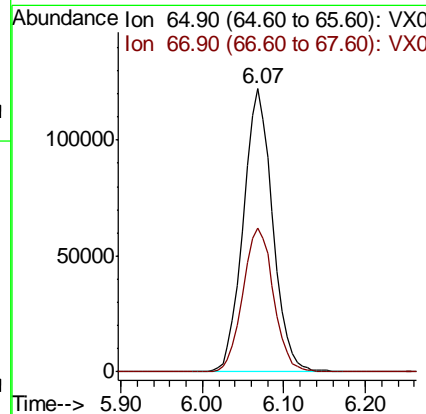
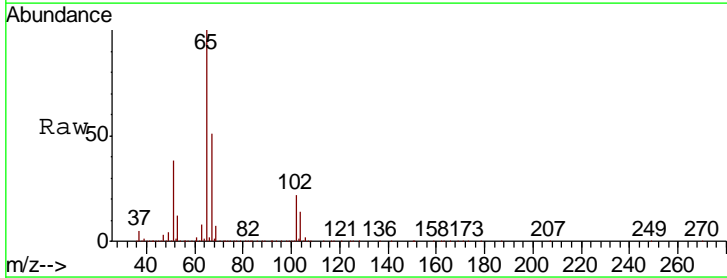
Instrument :  
 MSVOA\_X  
 ClientSampled :  
 S72-IDW01

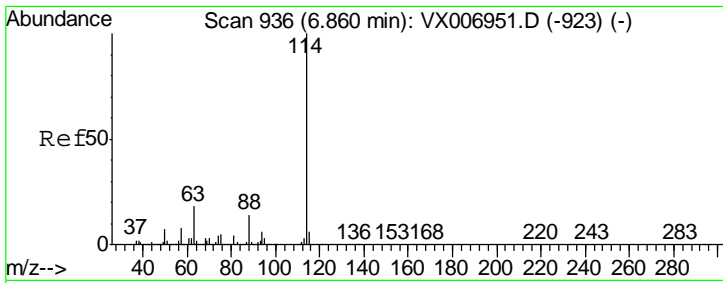
Tgt Ion: 43 Resp: 3084  
 Ion Ratio Lower Upper  
 43 100  
 72 23.7 22.4 33.6



#33  
 1,2-Dichloroethane-d4  
 Concen: 52.737 ug/l  
 RT: 6.07 min Scan# 806  
 Delta R.T. -0.00 min  
 Lab File: VX007024.D  
 Acq: 11 Jan 2019 19:56

Tgt Ion: 65 Resp: 304820  
 Ion Ratio Lower Upper  
 65 100  
 67 53.1 0.0 105.0

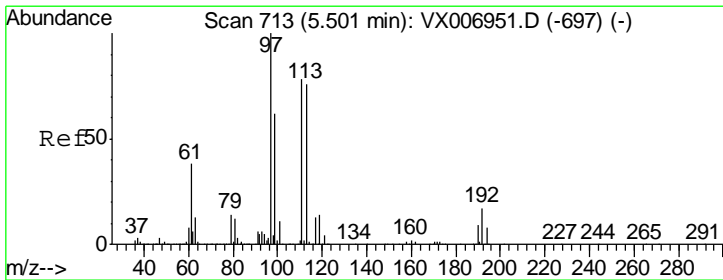
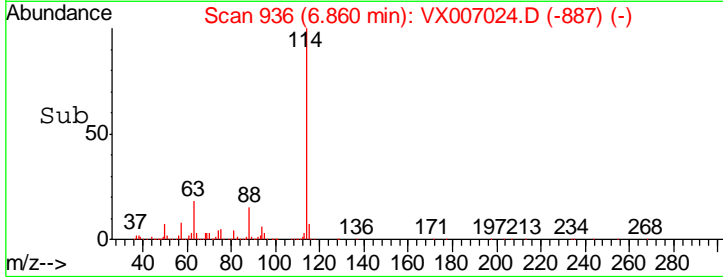
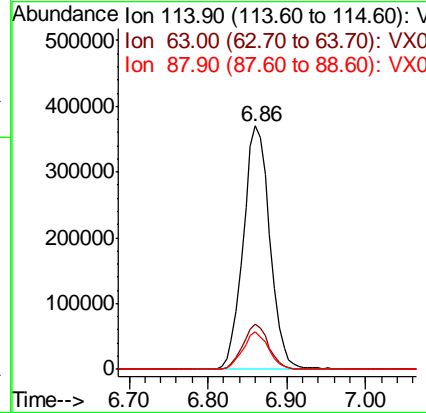
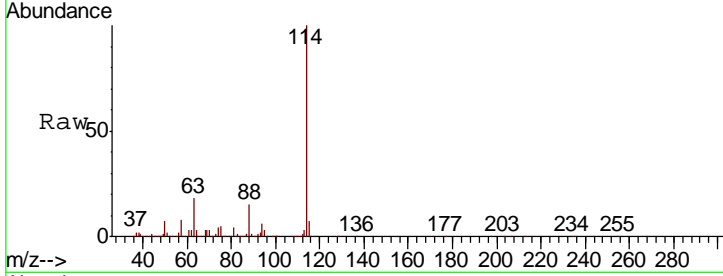




#34  
 1,4-Difluorobenzene  
 Concen: 50.000 ug/l  
 RT: 6.86 min Scan# 936  
 Delta R.T. -0.00 min  
 Lab File: VX007024.D  
 Acq: 11 Jan 2019 19:56

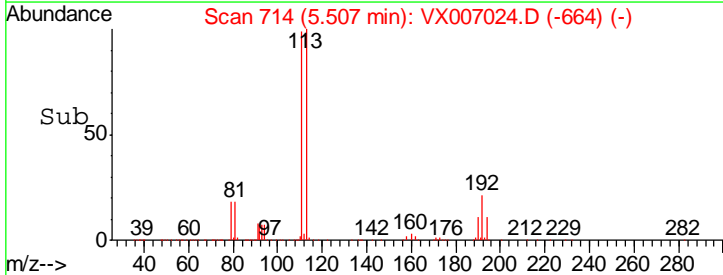
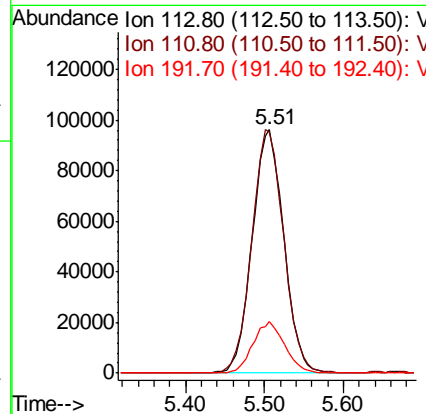
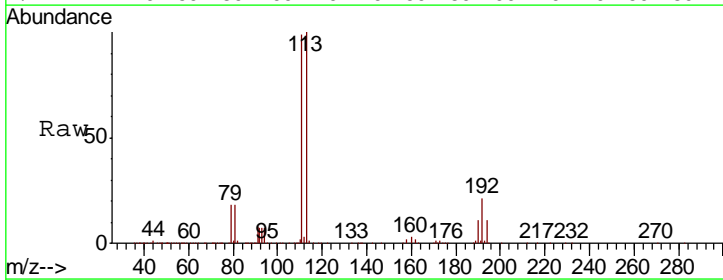
Instrument :  
 MSVOA\_X  
 ClientSampled :  
 S72-IDW01

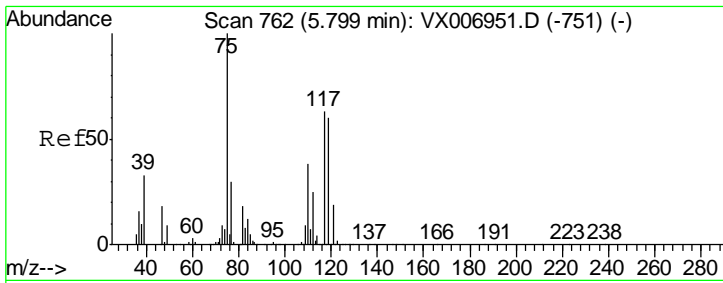
Tgt Ion	Resp	Lower	Upper
114	100		
63	18.3	0.0	34.8
88	15.2	0.0	28.8



#35  
 Dibromofluoromethane  
 Concen: 48.132 ug/l  
 RT: 5.51 min Scan# 714  
 Delta R.T. 0.01 min  
 Lab File: VX007024.D  
 Acq: 11 Jan 2019 19:56

Tgt Ion	Resp	Lower	Upper
113	100		
111	100.8	81.6	122.4
192	21.3	16.7	25.1

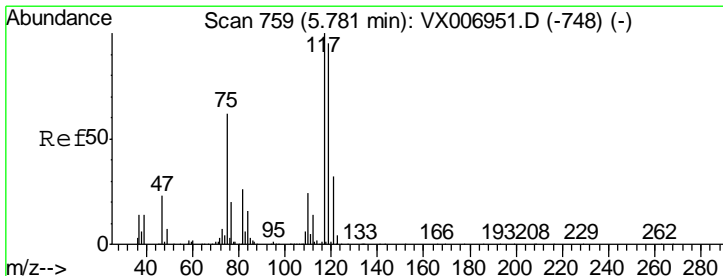
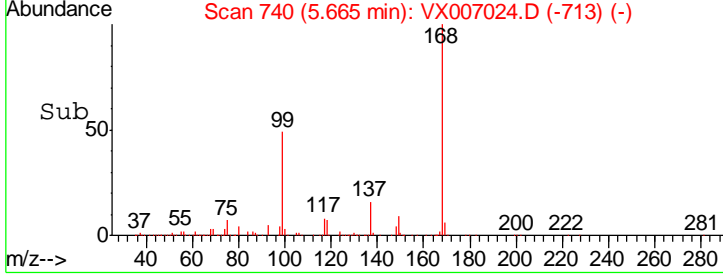
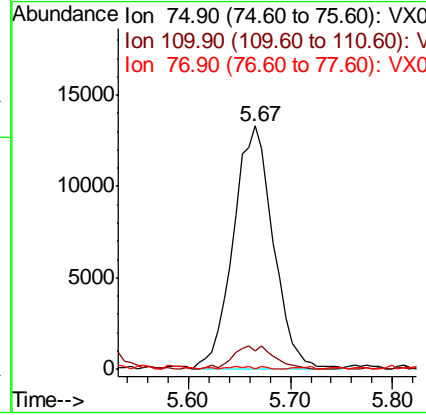
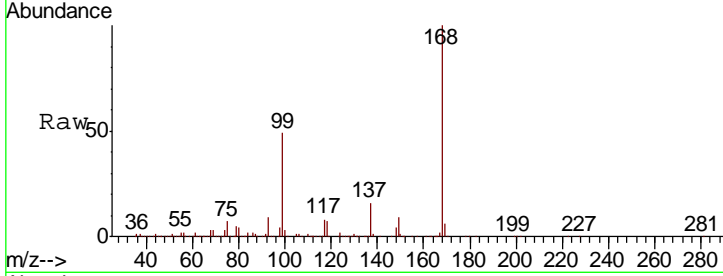




#36  
 1,1-Dichloropropene  
 Concen: 4.787 ug/l  
 RT: 5.67 min Scan# 740  
 Delta R.T. -0.13 min  
 Lab File: VX007024.D  
 Acq: 11 Jan 2019 19:56

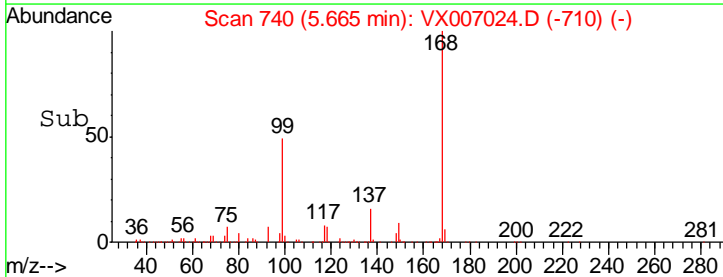
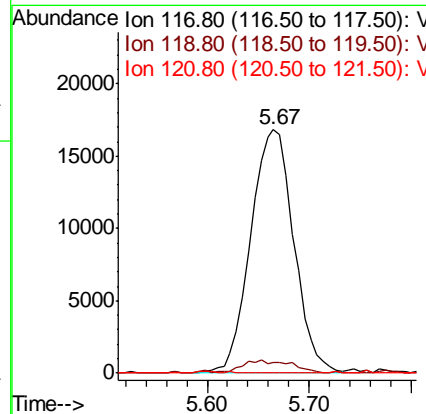
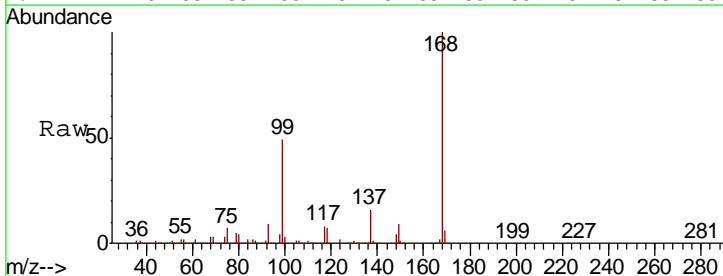
Instrument :  
 MSVOA\_X  
 ClientSampled :  
 S72-IDW01

Tgt Ion	Resp	Lower	Upper
75	36233		
110	10.2	20.2	60.5#
77	0.3	24.8	37.2#

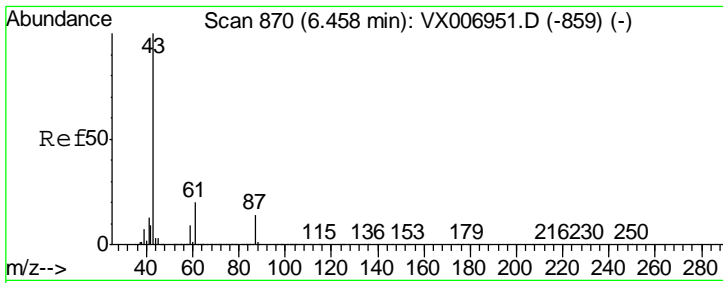


#38  
 Carbon Tetrachloride  
 Concen: 6.471 ug/l  
 RT: 5.67 min Scan# 740  
 Delta R.T. -0.12 min  
 Lab File: VX007024.D  
 Acq: 11 Jan 2019 19:56

Tgt Ion	Resp	Lower	Upper
117	49273		
119	4.5	79.4	119.2#
121	0.0	24.0	36.0#



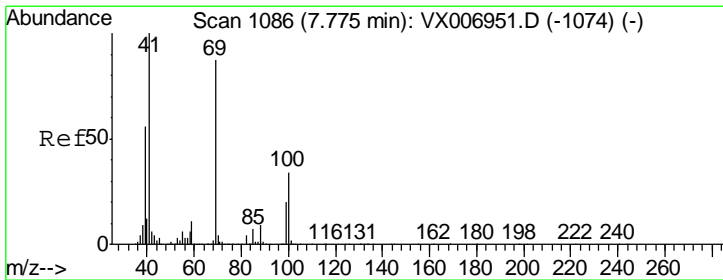
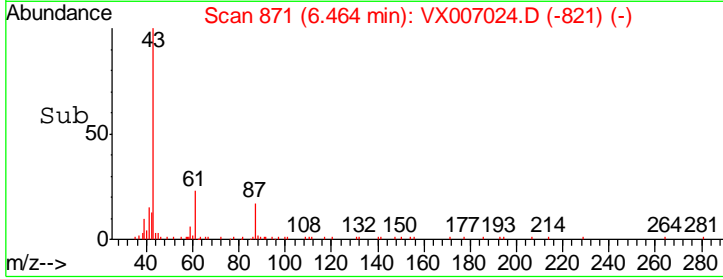
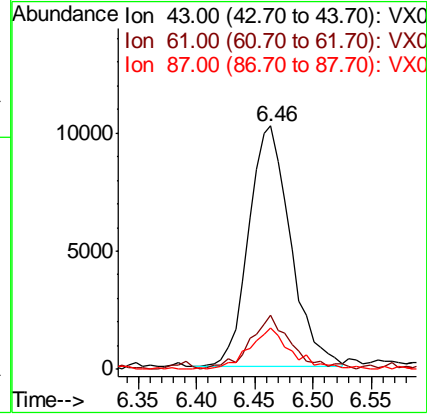
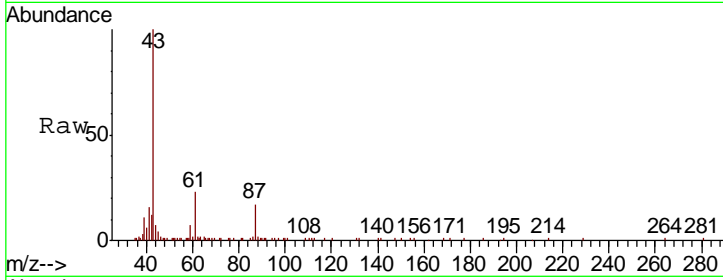




#43  
 Isopropyl Acetate  
 Concen: 2.002 ug/l  
 RT: 6.46 min Scan# 871  
 Delta R.T. 0.01 min  
 Lab File: VX007024.D  
 Acq: 11 Jan 2019 19:56

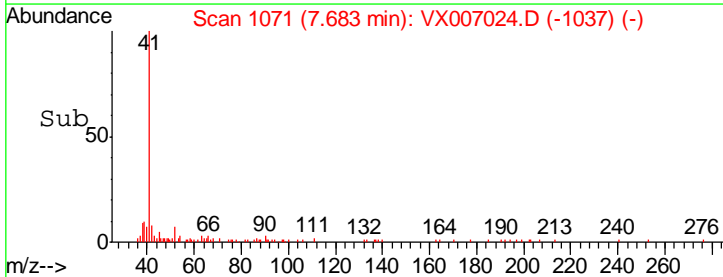
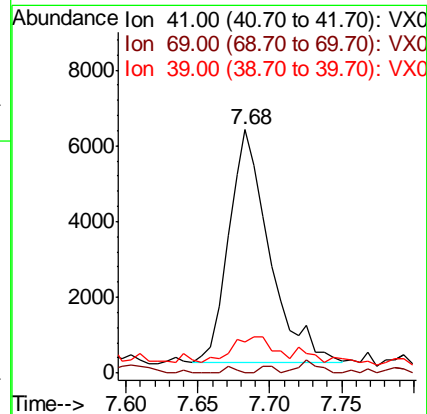
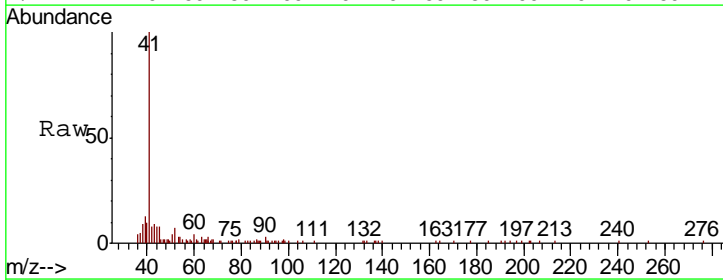
Instrument :  
 MSVOA\_X  
 ClientSampled :  
 S72-IDW01

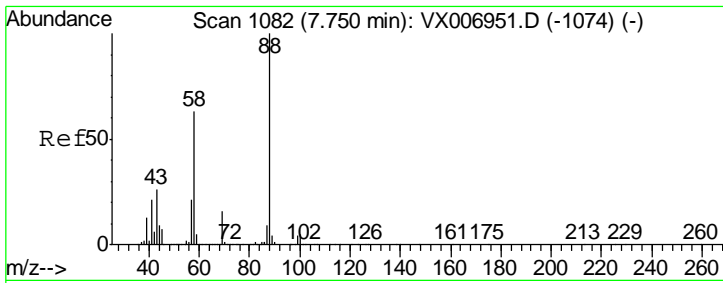
Tgt Ion	Resp	Lower	Upper
43	25622		
61	22.2	16.8	25.2
87	17.3	12.4	18.6



#48  
 Methyl methacrylate  
 Concen: 1.837 ug/l  
 RT: 7.68 min Scan# 1071  
 Delta R.T. -0.09 min  
 Lab File: VX007024.D  
 Acq: 11 Jan 2019 19:56

Tgt Ion	Resp	Lower	Upper
41	12076		
69	1.1	72.4	108.6#
39	0.0	45.8	68.8#

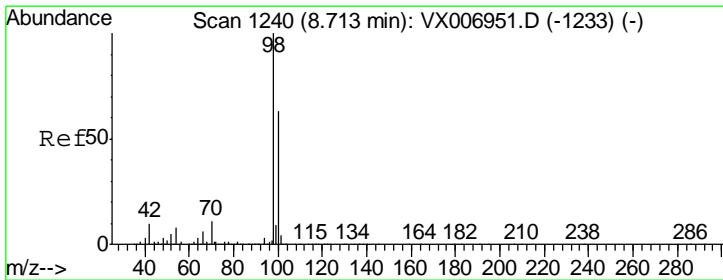
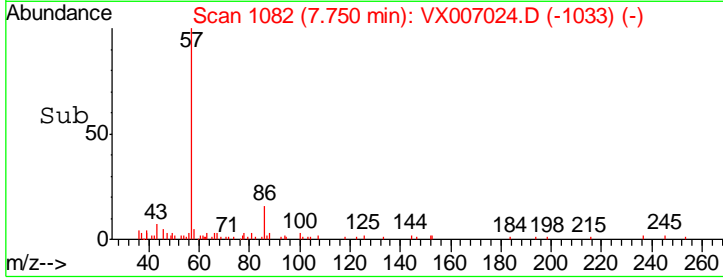
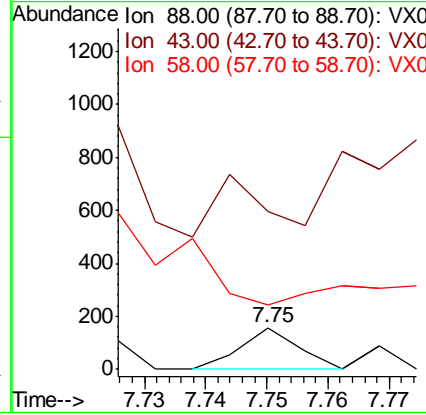
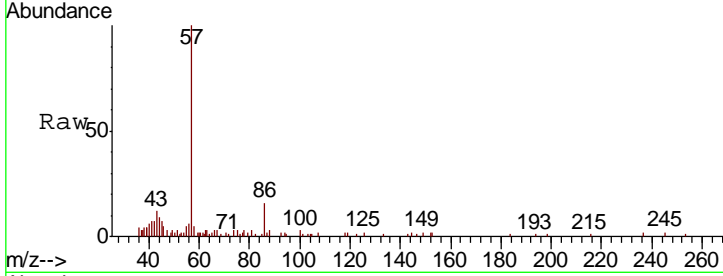




#49  
 1,4-Dioxane  
 Concen: Below Cal  
 RT: 7.75 min Scan# 1082  
 Delta R.T. 0.00 min  
 Lab File: VX007024.D  
 Acq: 11 Jan 2019 19:56

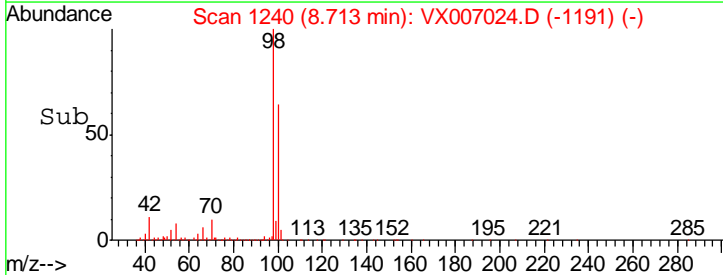
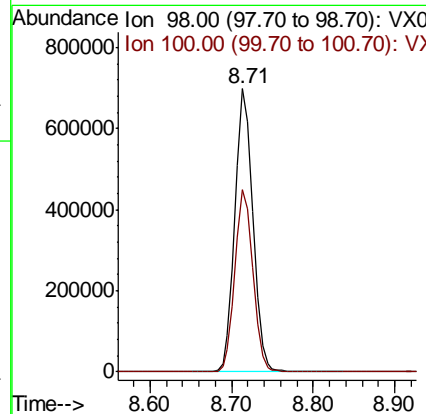
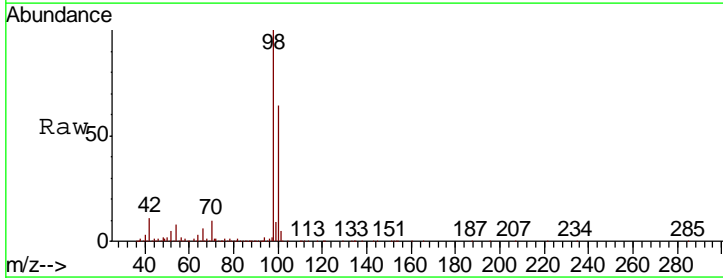
Instrument :  
 MSVOA\_X  
 ClientSampled :  
 S72-IDW01

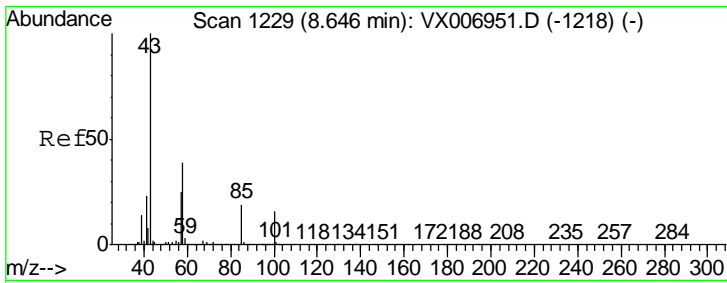
Tgt Ion	Resp	Lower	Upper
88	100		
43	0.0	22.2	33.4#
58	0.0	51.0	76.4#



#50  
 Toluene-d8  
 Concen: 51.814 ug/l  
 RT: 8.71 min Scan# 1240  
 Delta R.T. -0.00 min  
 Lab File: VX007024.D  
 Acq: 11 Jan 2019 19:56

Tgt Ion	Resp	Lower	Upper
98	100		
100	64.5	52.0	78.0

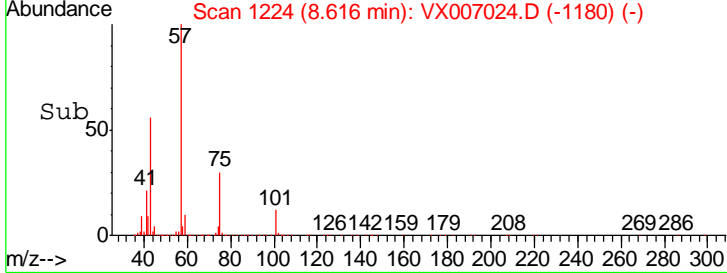
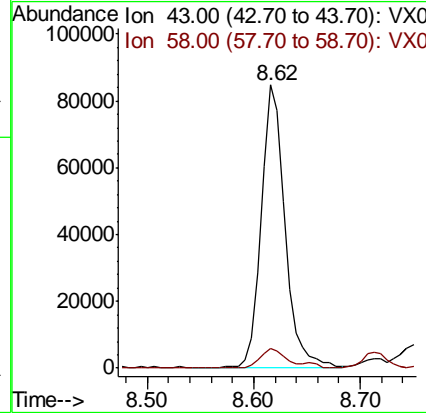
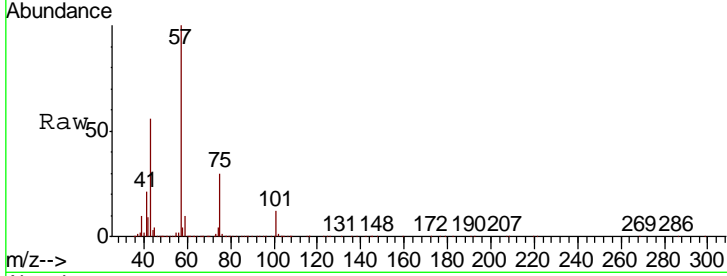




#51  
 4-Methyl-2-Pentanone  
 Concen: 16.106 ug/l  
 RT: 8.62 min Scan# 1224  
 Delta R.T. -0.03 min  
 Lab File: VX007024.D  
 Acq: 11 Jan 2019 19:56

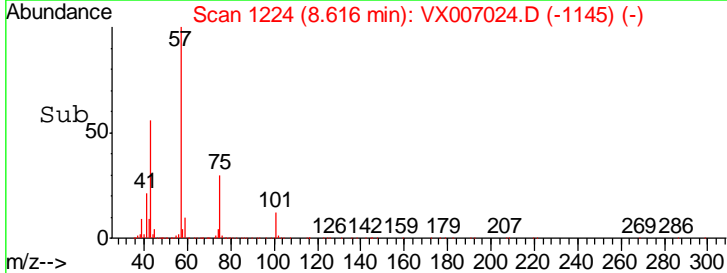
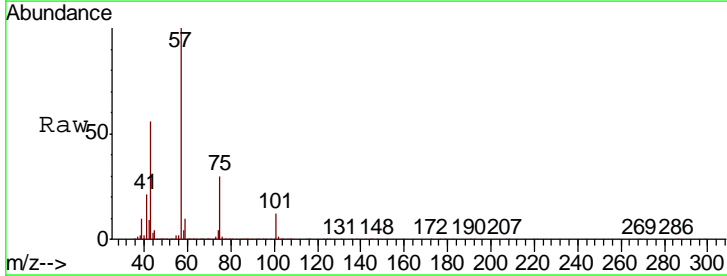
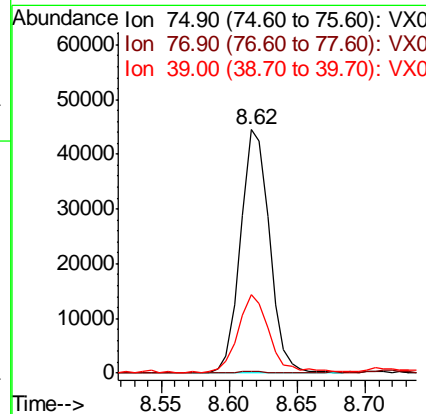
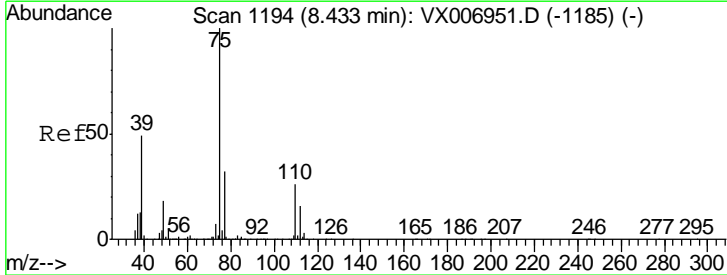
Instrument :  
 MSVOA\_X  
 ClientSampled :  
 S72-IDW01

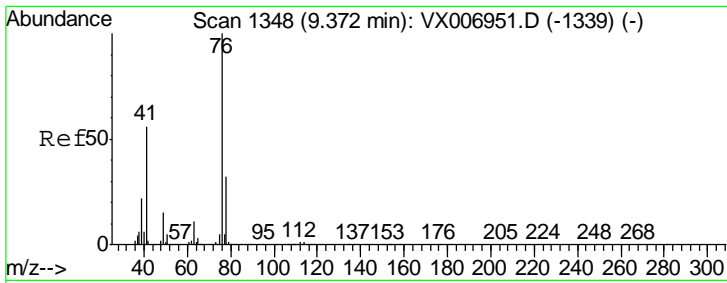
Tgt Ion	Resp	Lower	Upper
43	132476		
58	8.5	31.8	47.6#



#54  
 cis-1,3-Dichloropropene  
 Concen: 7.816 ug/l  
 RT: 8.62 min Scan# 1224  
 Delta R.T. 0.18 min  
 Lab File: VX007024.D  
 Acq: 11 Jan 2019 19:56

Tgt Ion	Resp	Lower	Upper
75	66472		
77	0.4	26.2	39.2#
39	31.7	36.7	55.1#

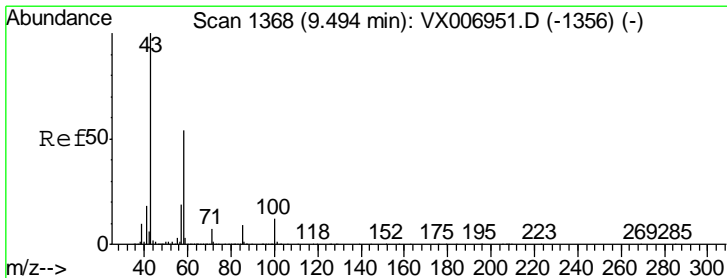
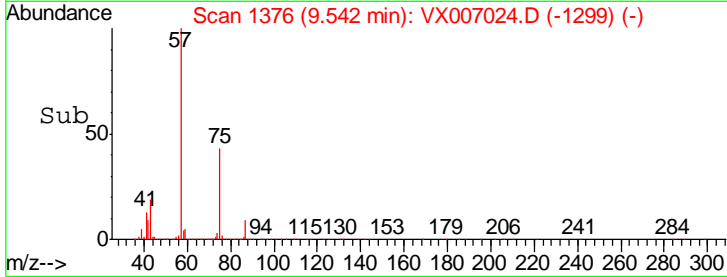
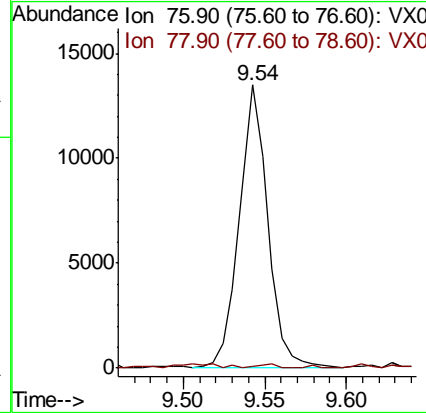
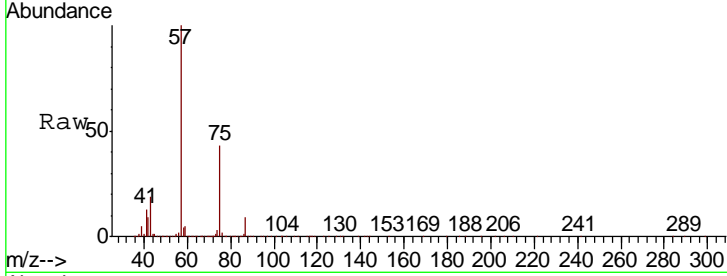




#57  
 1,3-Dichloropropane  
 Concen: 1.691 ug/l  
 RT: 9.54 min Scan# 1376  
 Delta R.T. 0.17 min  
 Lab File: VX007024.D  
 Acq: 11 Jan 2019 19:56

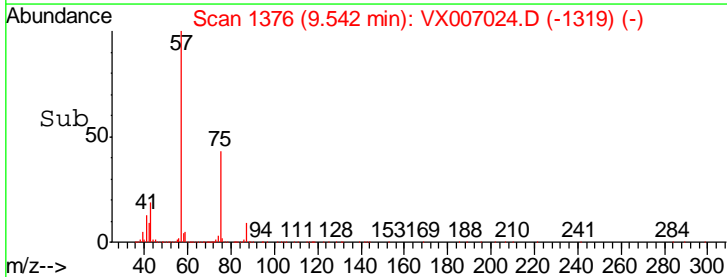
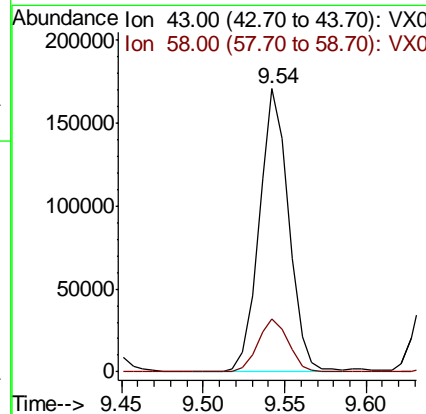
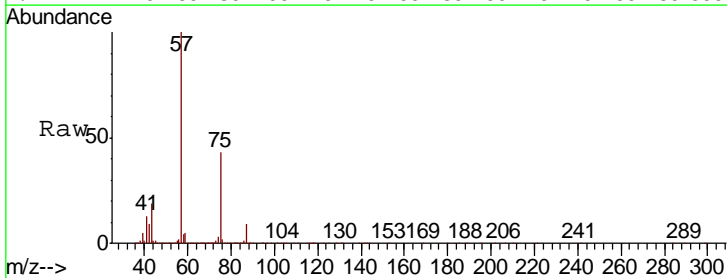
Instrument :  
 MSVOA\_X  
 ClientSampled :  
 S72-IDW01

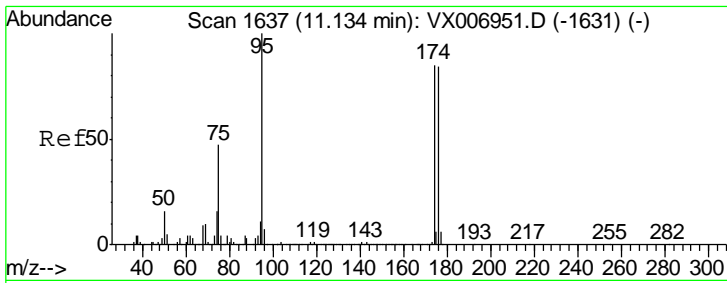
Tgt Ion: 76 Resp: 16461  
 Ion Ratio Lower Upper  
 76 100  
 78 0.9 26.0 39.0#



#59  
 2-Hexanone  
 Concen: 34.202 ug/l  
 RT: 9.54 min Scan# 1376  
 Delta R.T. 0.05 min  
 Lab File: VX007024.D  
 Acq: 11 Jan 2019 19:56

Tgt Ion: 43 Resp: 214382  
 Ion Ratio Lower Upper  
 43 100  
 58 19.5 27.7 83.1#

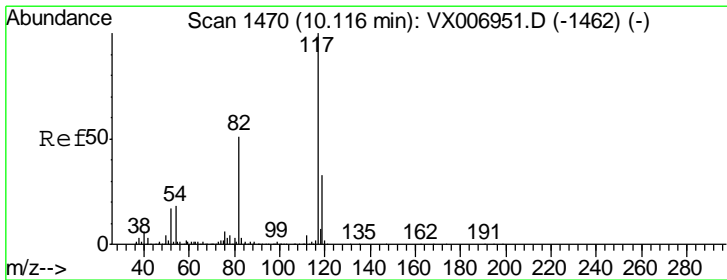
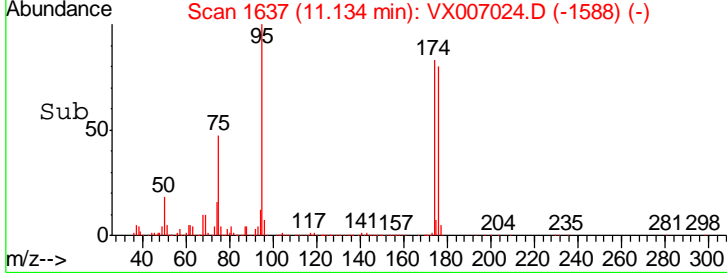
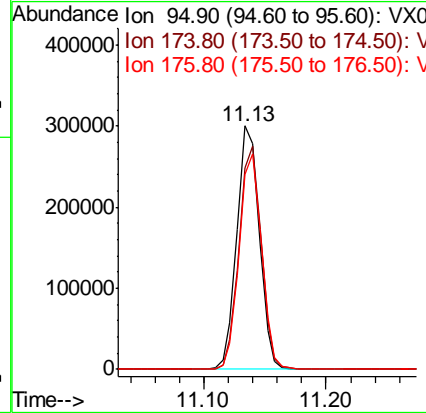
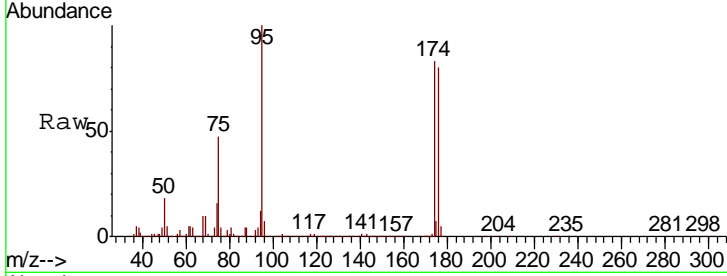




#62  
 4-Bromofluorobenzene  
 Concen: 53.474 ug/l  
 RT: 11.13 min Scan# 1637  
 Delta R.T. -0.00 min  
 Lab File: VX007024.D  
 Acq: 11 Jan 2019 19:56

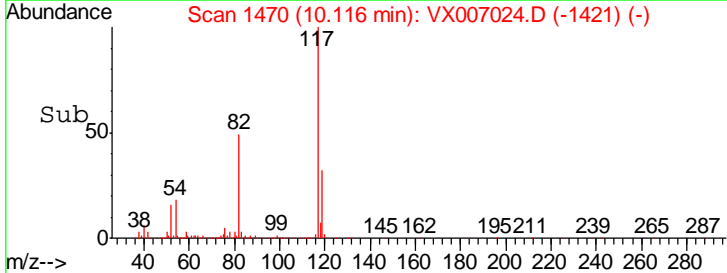
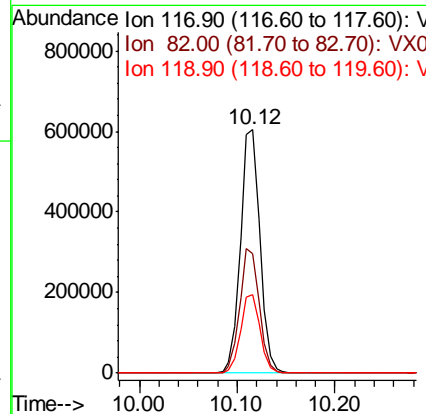
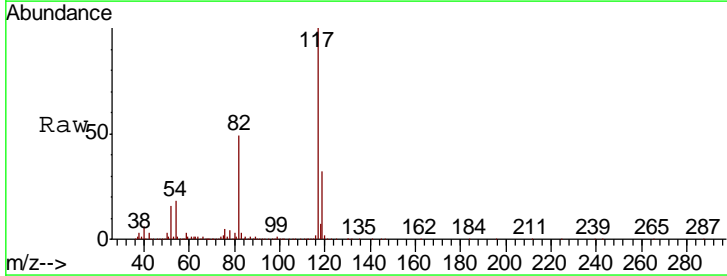
Instrument :  
 MSVOA\_X  
 ClientSampleId :  
 S72-IDW01

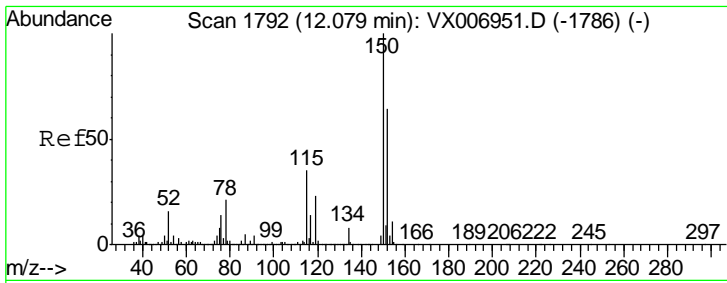
Tgt Ion	Resp	Lower	Upper
95	380398		
174	90.8	0.0	182.2
176	88.3	0.0	178.8



#63  
 Chlorobenzene-d5  
 Concen: 50.000 ug/l  
 RT: 10.12 min Scan# 1470  
 Delta R.T. -0.00 min  
 Lab File: VX007024.D  
 Acq: 11 Jan 2019 19:56

Tgt Ion	Resp	Lower	Upper
117	836285		
82	49.3	41.0	61.6
119	32.5	25.4	38.0

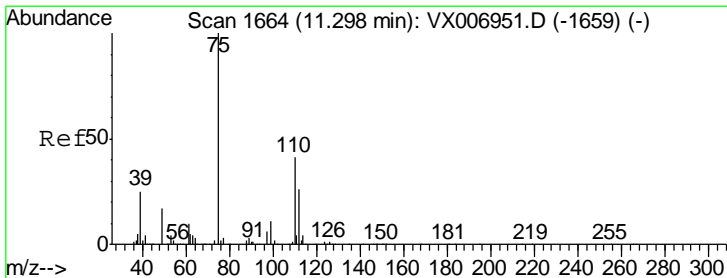
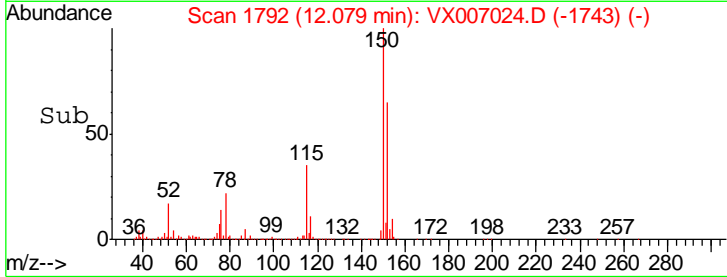
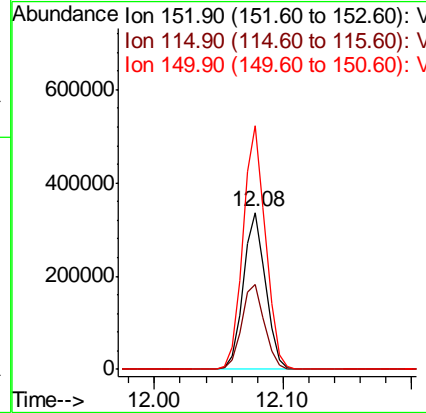
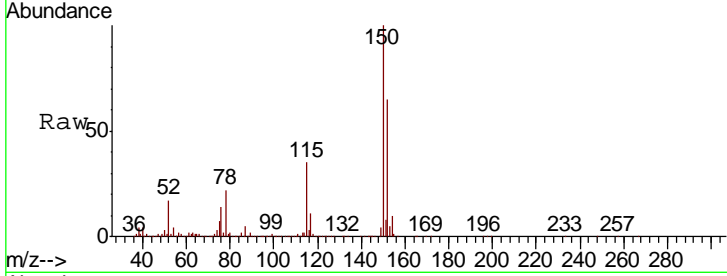




#72  
 1,4-Dichlorobenzene-d4  
 Concen: 50.000 ug/l  
 RT: 12.08 min Scan# 1792  
 Delta R.T. -0.00 min  
 Lab File: VX007024.D  
 Acq: 11 Jan 2019 19:56

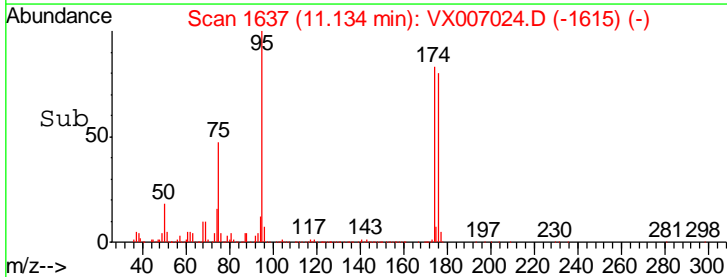
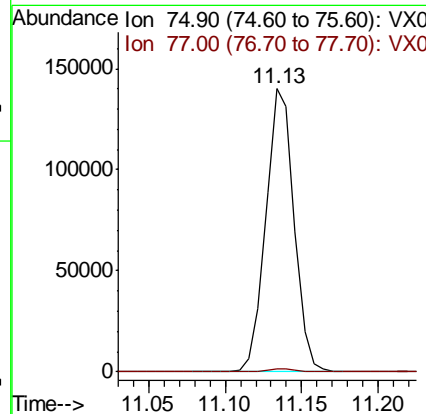
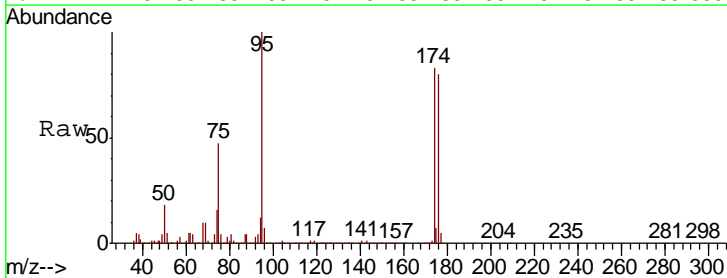
Instrument :  
 MSVOA\_X  
 ClientSampled :  
 S72-IDW01

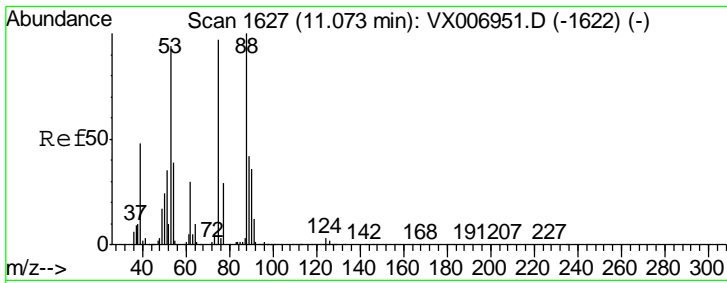
Tgt Ion	Resp	Lower	Upper
152	100		
115	55.8	39.1	117.2
150	156.6	0.0	344.8



#76  
 1,2,3-Trichloropropane  
 Concen: 22.220 ug/l  
 RT: 11.13 min Scan# 1637  
 Delta R.T. -0.16 min  
 Lab File: VX007024.D  
 Acq: 11 Jan 2019 19:56

Tgt Ion	Resp	Lower	Upper
75	100		
77	1.3	18.5	55.5#

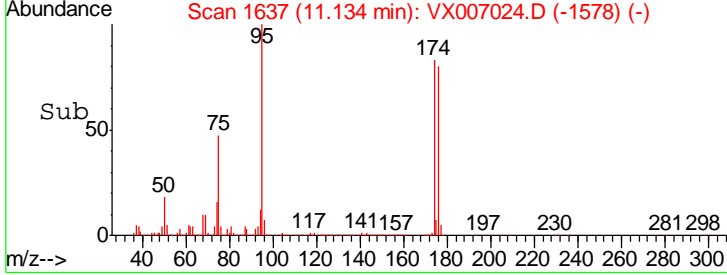
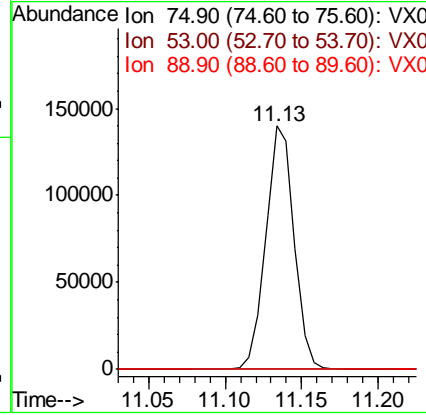
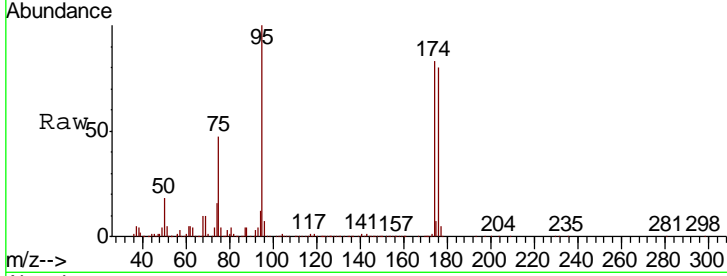




#81  
 trans-1,4-Dichloro-2-butene  
 Concen: 65.765 ug/l  
 RT: 11.13 min Scan# 1637  
 Delta R.T. 0.06 min  
 Lab File: VX007024.D  
 Acq: 11 Jan 2019 19:56

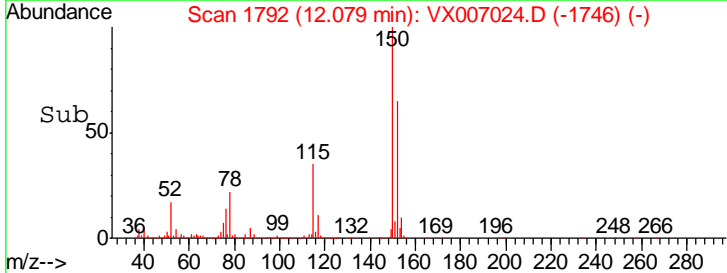
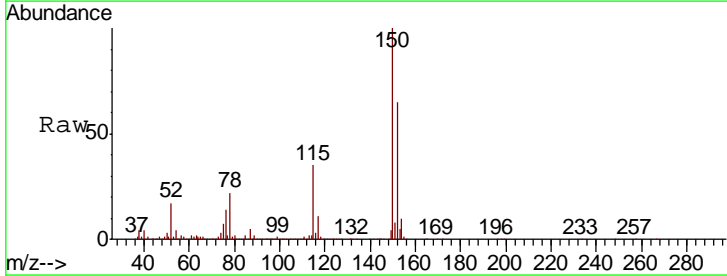
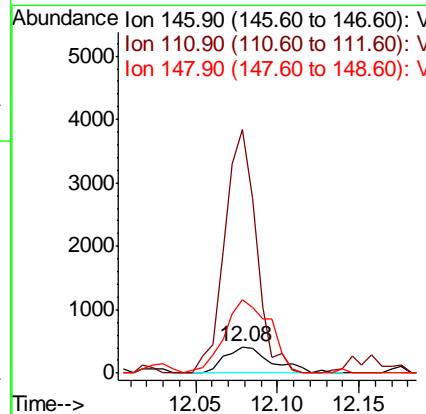
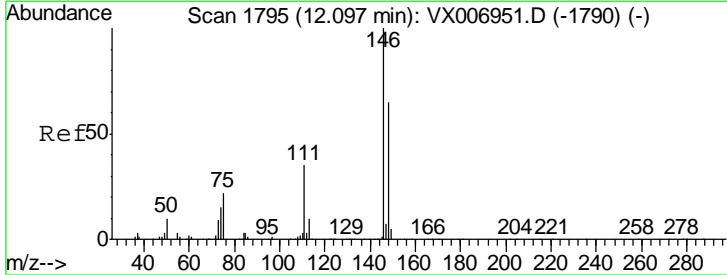
Instrument :  
 MSVOA\_X  
 ClientSampled :  
 S72-IDW01

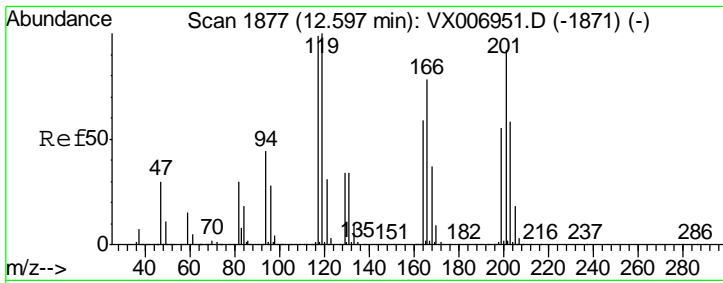
Tgt Ion	Resp	Lower	Upper
75	100		
53	0.1	79.7	119.5#
89	0.0	38.0	57.0#



#88  
 1,4-Dichlorobenzene  
 Concen: 0.207 ug/l  
 RT: 12.08 min Scan# 1792  
 Delta R.T. -0.02 min  
 Lab File: VX007024.D  
 Acq: 11 Jan 2019 19:56

Tgt Ion	Resp	Lower	Upper
146	100		
111	622.7	18.1	54.1#
148	271.8	31.9	95.9#





#90  
 Hexachloroethane  
 Concen: 2.916 ug/l  
 RT: 12.63 min Scan# 1882  
 Delta R.T. 0.03 min  
 Lab File: VX007024.D  
 Acq: 11 Jan 2019 19:56

**Instrument :**  
 MSVOA\_X  
**ClientSampleId :**  
 S72-IDW01

Tgt Ion: 117 Resp: 33  
 Ion Ratio Lower Upper  
 117 100  
 201 0.0 42.9 128.7#

