

Data Path : Z:\voasrv\HPCHEM1\MSVOA_X\Data\VX011122\
 Data File : VX026430.D
 Acq On : 11 Jan 2022 19:17
 Operator : JC/MD
 Sample : N1020-12
 Misc : 5.0mL/MSVOA_X/WATER
 ALS Vial : 22 Sample Multiplier: 1

Instrument :
 MSVOA_X
 ClientSampleId :
 MW-6

Quant Time: Jan 12 06:47:39 2022
 Quant Method : Z:\voasrv\HPCHEM1\MSVOA_X\Method\82X011122W.M
 Quant Title : SW846 8260
 QLast Update : Tue Jan 11 14:45:13 2022
 Response via : Initial Calibration

Compound	R.T.	QIon	Response	Conc	Units	Dev(Min)

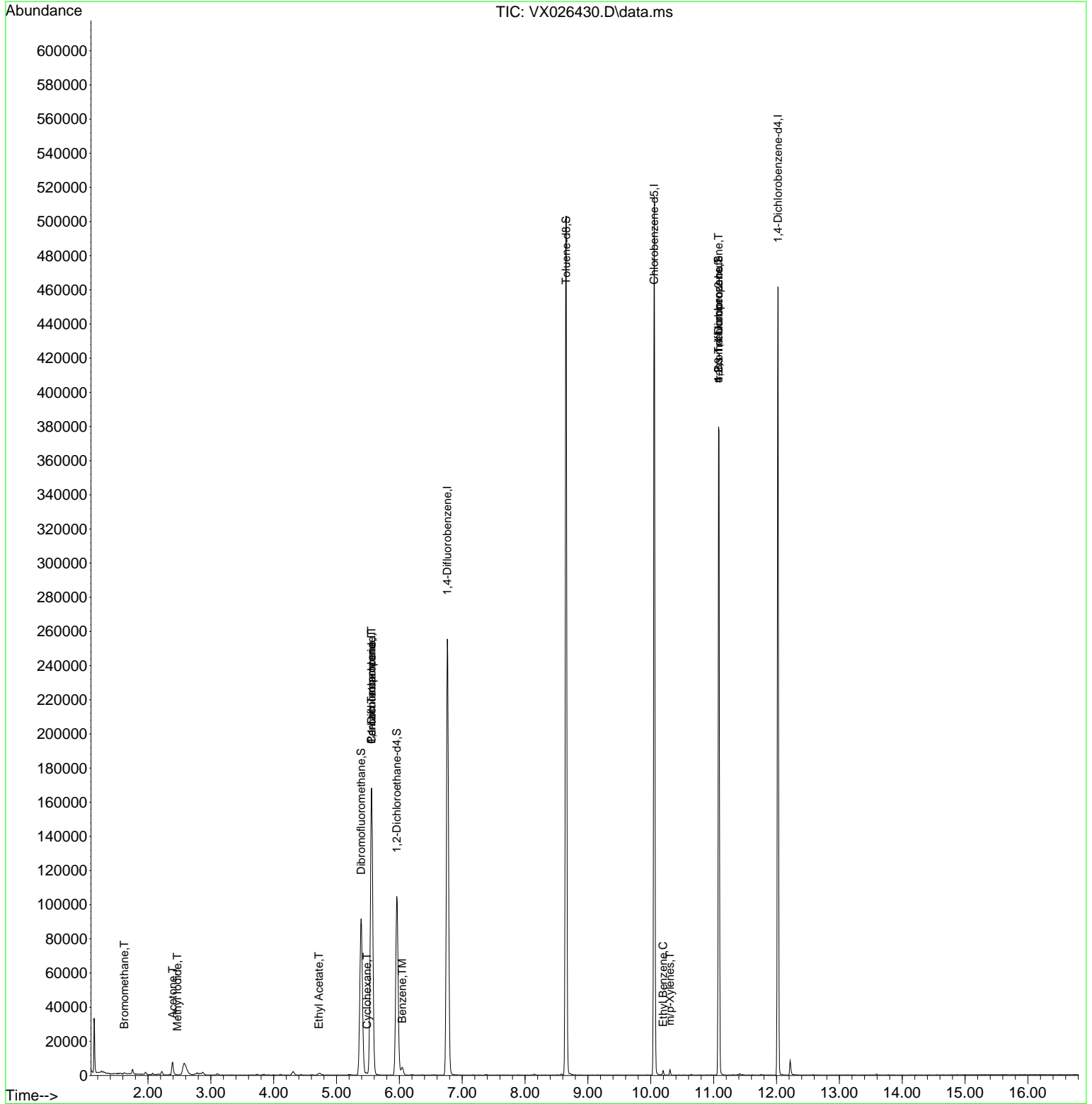
Internal Standards						
1) Pentafluorobenzene	5.556	168	152148	50.000	ug/l	0.00
34) 1,4-Difluorobenzene	6.763	114	256062	50.000	ug/l	0.00
63) Chlorobenzene-d5	10.055	117	218737	50.000	ug/l	0.00
72) 1,4-Dichlorobenzene-d4	12.024	152	91368	50.000	ug/l	0.00
System Monitoring Compounds						
33) 1,2-Dichloroethane-d4	5.958	65	105053	49.428	ug/l	0.00
Spiked Amount	50.000	Range	78 - 117	Recovery	=	98.860%
35) Dibromofluoromethane	5.391	113	80225	48.516	ug/l	0.00
Spiked Amount	50.000	Range	75 - 124	Recovery	=	97.040%
50) Toluene-d8	8.653	98	294865	49.484	ug/l	0.00
Spiked Amount	50.000	Range	92 - 112	Recovery	=	98.960%
62) 4-Bromofluorobenzene	11.079	95	107185	50.636	ug/l	0.00
Spiked Amount	50.000	Range	83 - 123	Recovery	=	101.280%
Target Compounds						
					Qvalue	
5) Bromomethane	1.623	94	211	0.265	ug/l	89
10) Methyl Iodide	2.465	142	128	4.510	ug/l #	77
16) Acetone	2.392	43	9409	8.681	ug/l	96
31) Cyclohexane	5.483	56	719	0.229	ug/l #	78
36) 1,1-Dichloropropene	5.556	75	12362	4.736	ug/l #	50
37) Ethyl Acetate	4.721	43	2489	0.943	ug/l	95
38) Carbon Tetrachloride	5.556	117	16149	6.014	ug/l #	16
40) Benzene	6.043	78	5234	0.725	ug/l	98
67) Ethyl Benzene	10.195	91	1696	0.203	ug/l	93
68) m/p-Xylenes	10.305	106	756	0.241	ug/l	87
76) 1,2,3-Trichloropropane	11.079	75	55016	27.348	ug/l #	40
81) trans-1,4-Dichloro-2-b...	11.079	75	55016	82.659	ug/l #	3

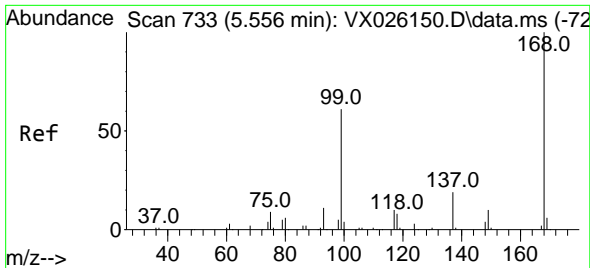
(#) = qualifier out of range (m) = manual integration (+) = signals summed

Data Path : Z:\voasrv\HPCHEM1\MSVOA_X\Data\VX011122\
 Data File : VX026430.D
 Acq On : 11 Jan 2022 19:17
 Operator : JC/MD
 Sample : N1020-12
 Misc : 5.0mL/MSVOA_X/WATER
 ALS Vial : 22 Sample Multiplier: 1

Instrument :
 MSVOA_X
 ClientSampleId :
 MW-6

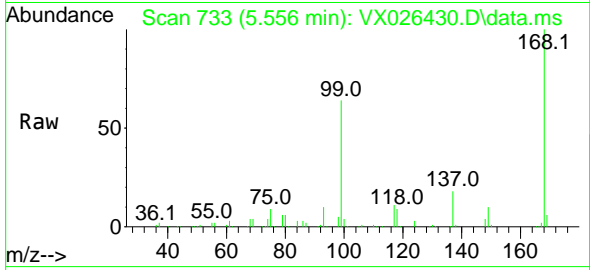
Quant Time: Jan 12 06:47:39 2022
 Quant Method : Z:\voasrv\HPCHEM1\MSVOA_X\Method\82X011122W.M
 Quant Title : SW846 8260
 QLast Update : Tue Jan 11 14:45:13 2022
 Response via : Initial Calibration



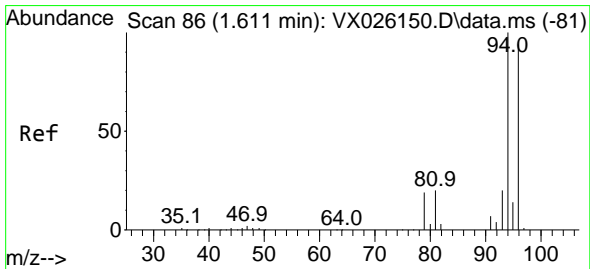
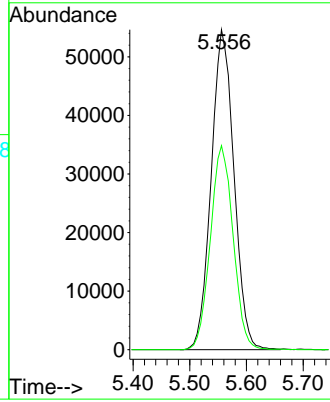
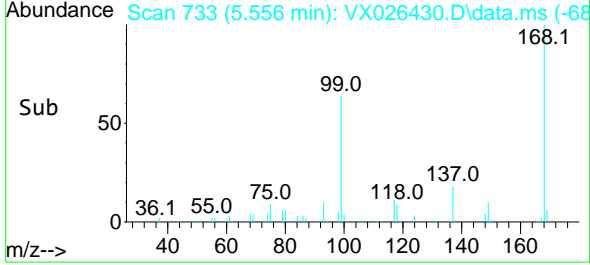


#1
 Pentafluorobenzene
 Concen: 50.000 ug/l
 RT: 5.556 min Scan# 71
 Delta R.T. -0.000 min
 Lab File: VX026430.D
 Acq: 11 Jan 2022 19:17

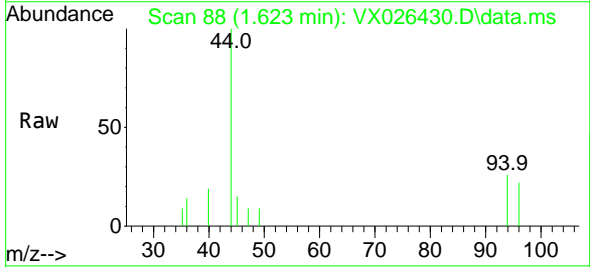
Instrument :
 MSVOA_X
 ClientSampleId :
 MW-6



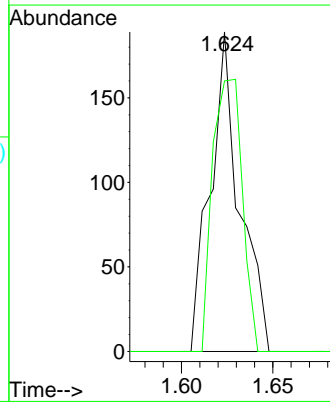
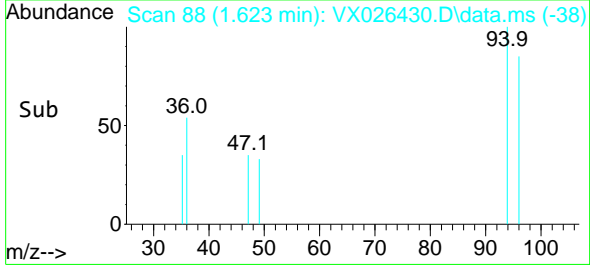
Tgt Ion:168 Resp: 152148
 Ion Ratio Lower Upper
 168 100
 99 63.7 50.3 75.5

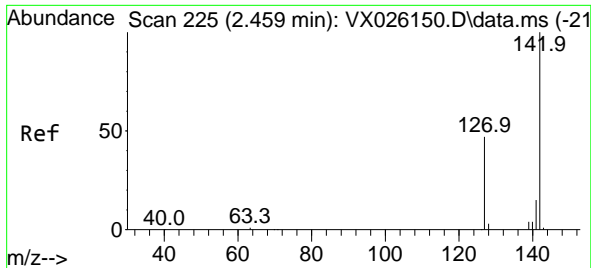


#5
 Bromomethane
 Concen: 0.265 ug/l
 RT: 1.623 min Scan# 88
 Delta R.T. 0.006 min
 Lab File: VX026430.D
 Acq: 11 Jan 2022 19:17



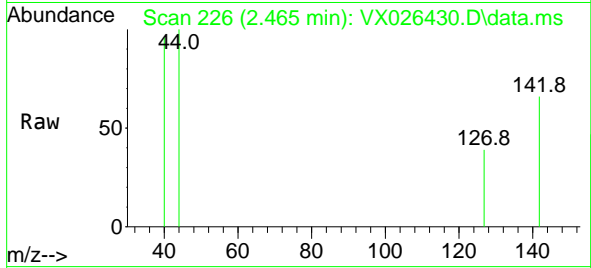
Tgt Ion: 94 Resp: 211
 Ion Ratio Lower Upper
 94 100
 96 84.7 75.9 113.9



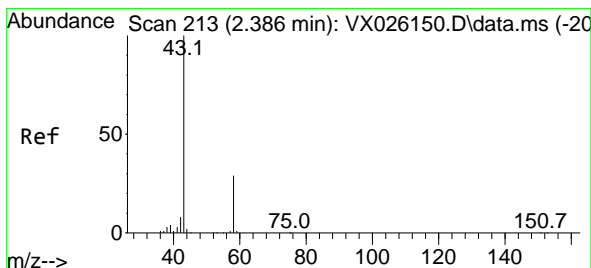
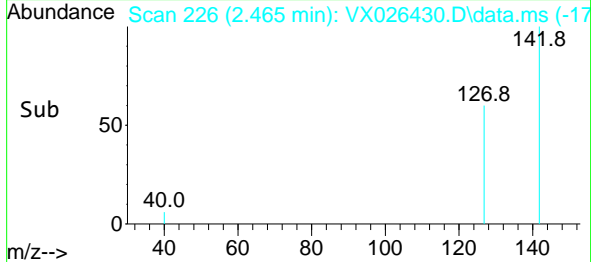
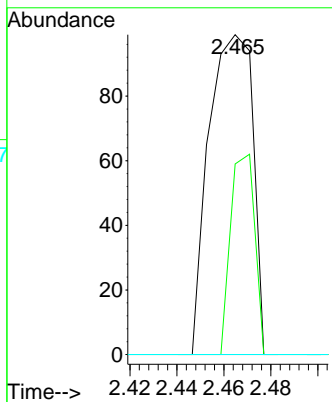


#10
 Methyl Iodide
 Concen: 4.510 ug/l
 RT: 2.465 min Scan# 214
 Delta R.T. 0.006 min
 Lab File: VX026430.D
 Acq: 11 Jan 2022 19:17

Instrument : MSVOA_X
 ClientSampleId : MW-6

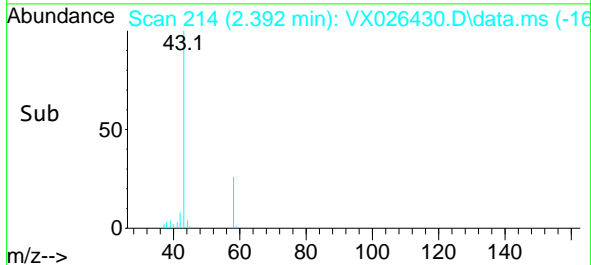
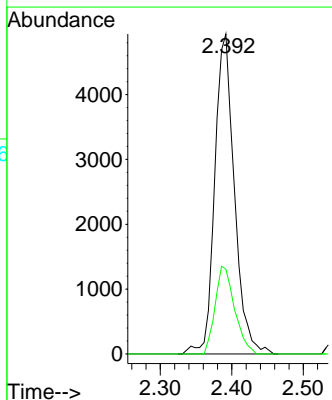
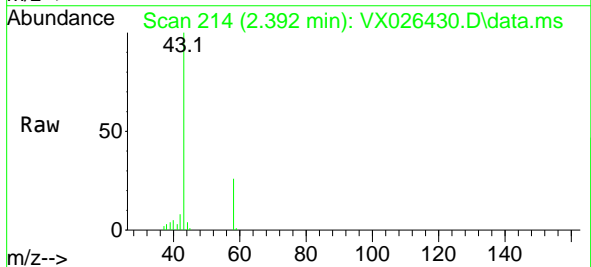


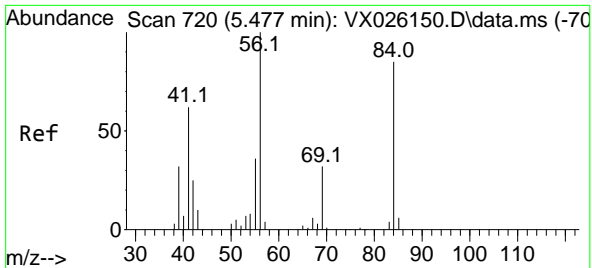
Tgt Ion: 142 Resp: 128
 Ion Ratio Lower Upper
 142 100
 127 34.4 38.1 57.1#
 141 0.0 11.2 16.8#



#16
 Acetone
 Concen: 8.681 ug/l
 RT: 2.392 min Scan# 214
 Delta R.T. -0.000 min
 Lab File: VX026430.D
 Acq: 11 Jan 2022 19:17

Tgt Ion: 43 Resp: 9409
 Ion Ratio Lower Upper
 43 100
 58 26.5 23.0 34.6



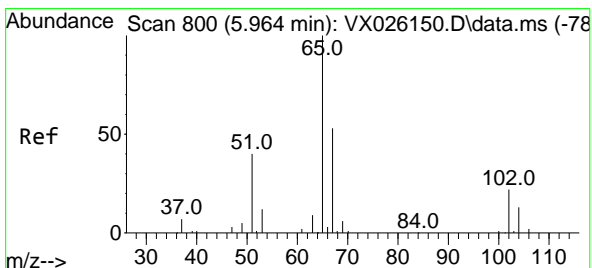
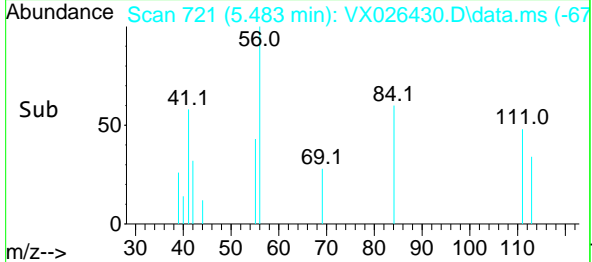
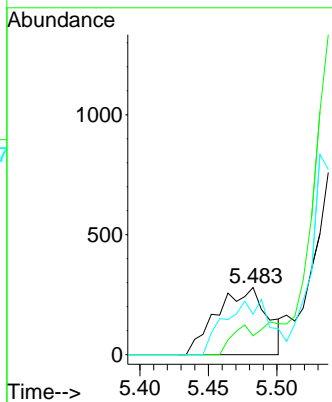
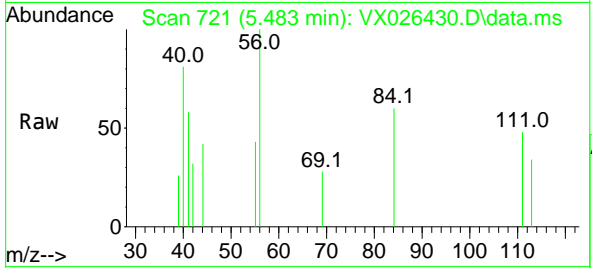


#31
 Cyclohexane
 Concen: 0.229 ug/l
 RT: 5.483 min Scan# 719
 Delta R.T. 0.006 min
 Lab File: VX026430.D
 Acq: 11 Jan 2022 19:17

Instrument : MSVOA_X
 ClientSampleId : MW-6

Tgt Ion: 56 Resp: 719

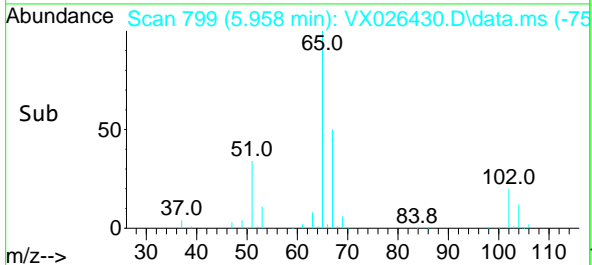
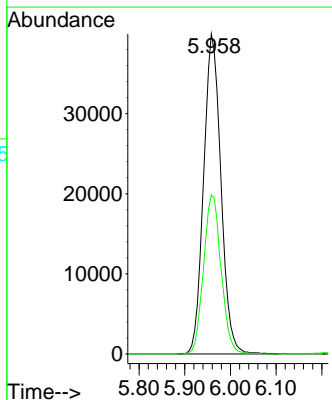
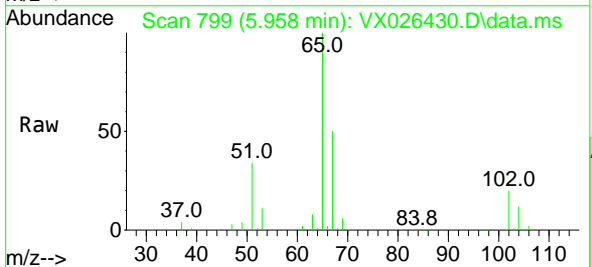
Ion	Ratio	Lower	Upper
56	100		
69	28.2	25.8	38.6
84	60.4	68.9	103.3

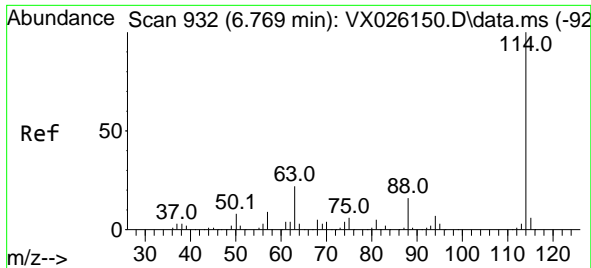


#33
 1,2-Dichloroethane-d4
 Concen: 49.428 ug/l
 RT: 5.958 min Scan# 799
 Delta R.T. -0.000 min
 Lab File: VX026430.D
 Acq: 11 Jan 2022 19:17

Tgt Ion: 65 Resp: 105053

Ion	Ratio	Lower	Upper
65	100		
67	50.3	0.0	100.8



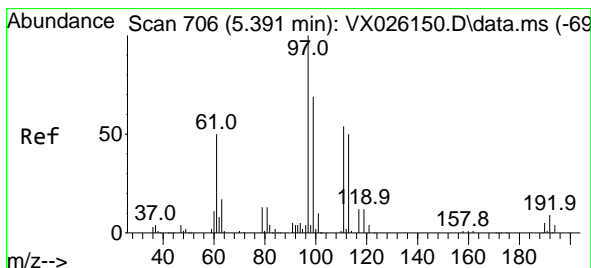
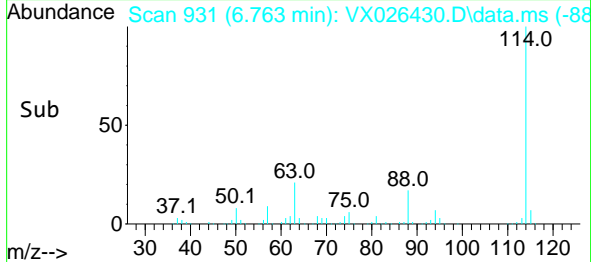
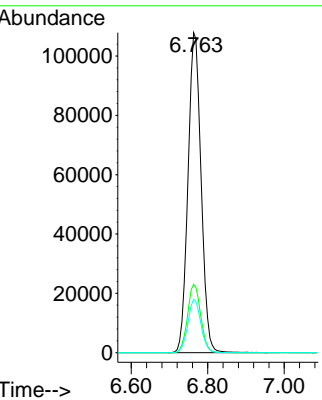
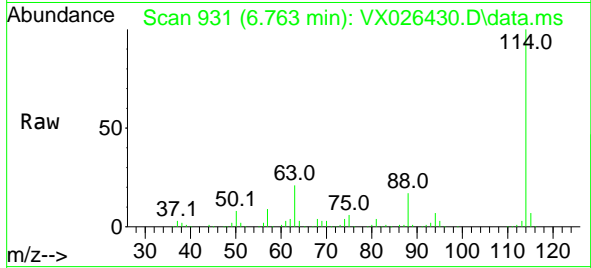


#34
 1,4-Difluorobenzene
 Concen: 50.000 ug/l
 RT: 6.763 min Scan# 911
 Delta R.T. -0.000 min
 Lab File: VX026430.D
 Acq: 11 Jan 2022 19:17

Instrument : MSVOA_X
 ClientSampleId : MW-6

Tgt Ion:114 Resp: 256062

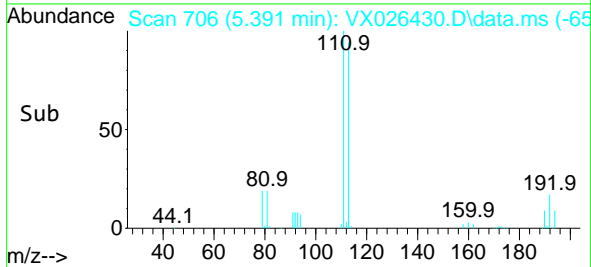
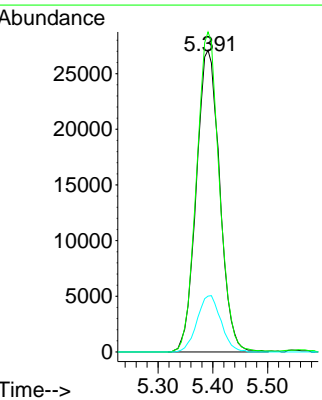
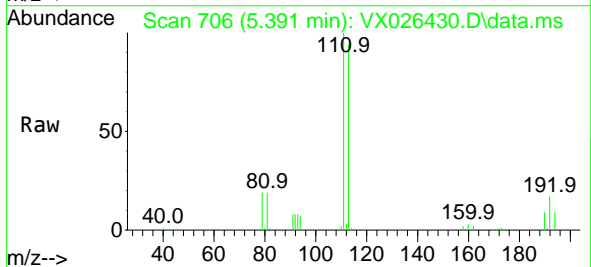
Ion	Ratio	Lower	Upper
114	100		
63	21.4	0.0	42.8
88	16.7	0.0	33.0

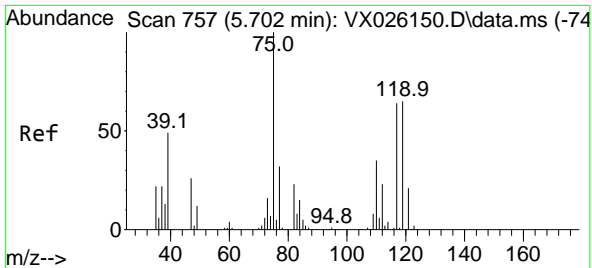


#35
 Dibromofluoromethane
 Concen: 48.516 ug/l
 RT: 5.391 min Scan# 706
 Delta R.T. -0.000 min
 Lab File: VX026430.D
 Acq: 11 Jan 2022 19:17

Tgt Ion:113 Resp: 80225

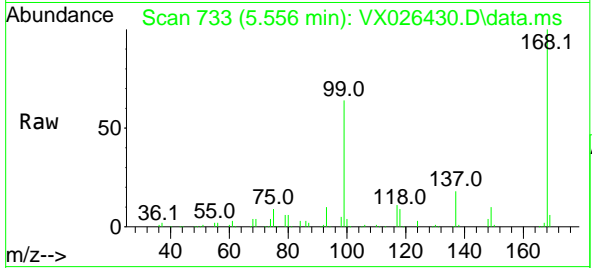
Ion	Ratio	Lower	Upper
113	100		
111	103.4	81.2	121.8
192	19.0	15.0	22.4





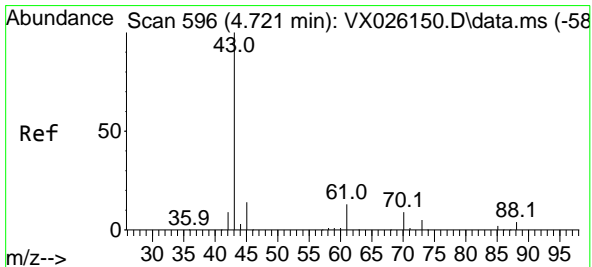
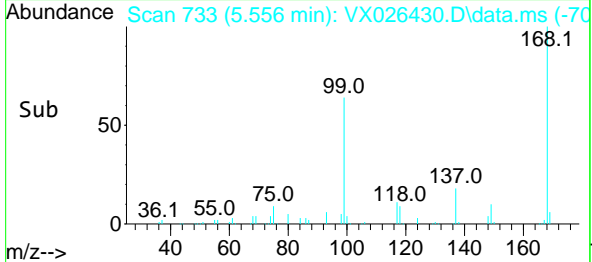
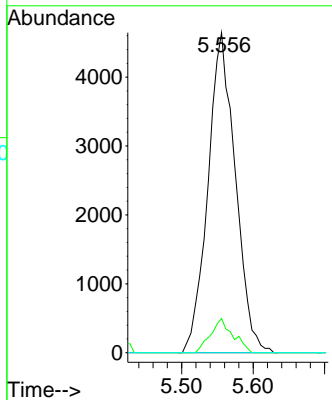
#36
 1,1-Dichloropropene
 Concen: 4.736 ug/l
 RT: 5.556 min Scan# 71
 Delta R.T. -0.140 min
 Lab File: VX026430.D
 Acq: 11 Jan 2022 19:17

Instrument : MSVOA_X
 ClientSampleId : MW-6



Tgt Ion: 75 Resp: 12362

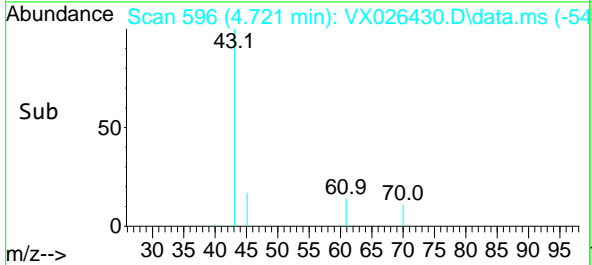
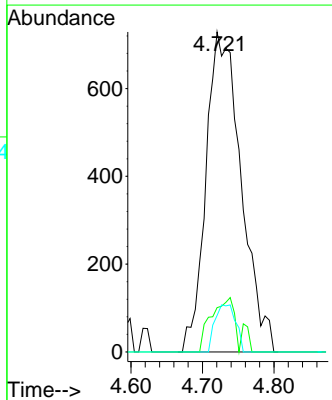
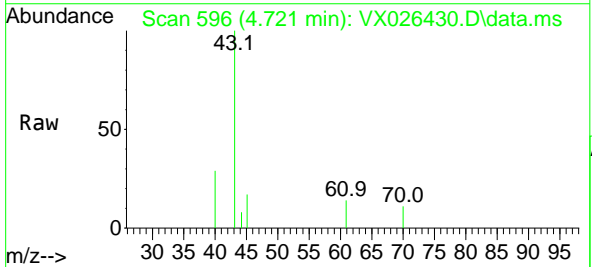
Ion	Ratio	Lower	Upper
75	100		
110	8.7	17.2	51.6#
77	0.0	24.6	36.8#

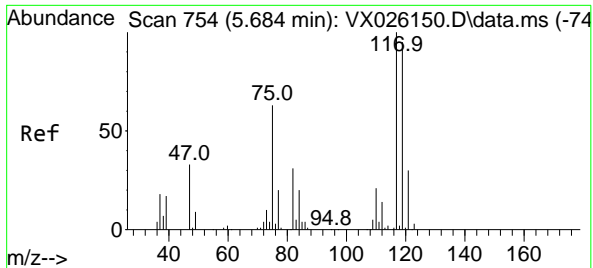


#37
 Ethyl Acetate
 Concen: 0.943 ug/l
 RT: 4.721 min Scan# 596
 Delta R.T. -0.000 min
 Lab File: VX026430.D
 Acq: 11 Jan 2022 19:17

Tgt Ion: 43 Resp: 2489

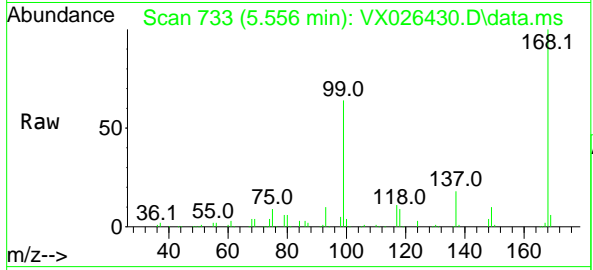
Ion	Ratio	Lower	Upper
43	100		
61	11.0	10.6	16.0
70	8.7	8.5	12.7



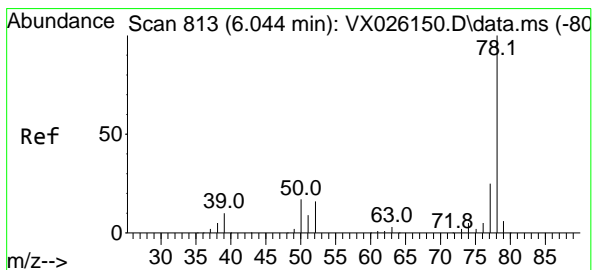
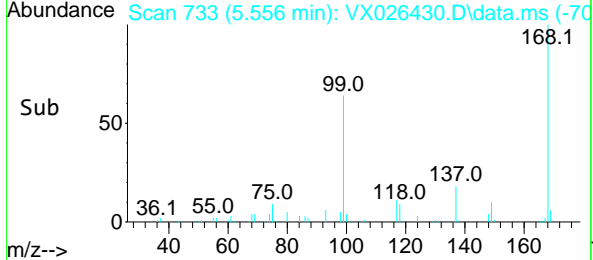
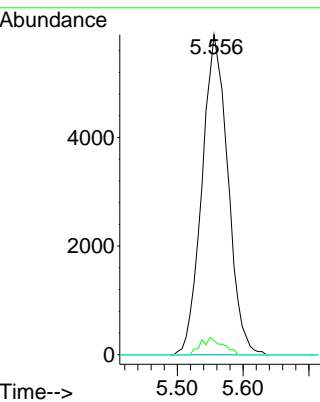


#38
 Carbon Tetrachloride
 Concen: 6.014 ug/l
 RT: 5.556 min Scan# 711
 Delta R.T. -0.128 min
 Lab File: VX026430.D
 Acq: 11 Jan 2022 19:17

Instrument : MSVOA_X
 ClientSampleId : MW-6

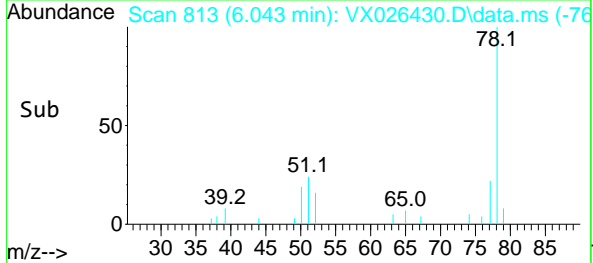
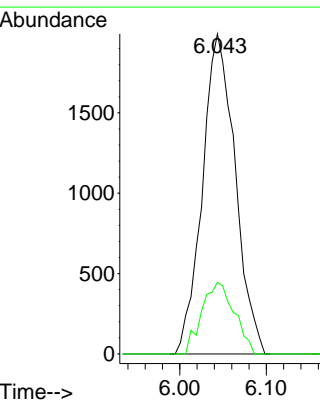
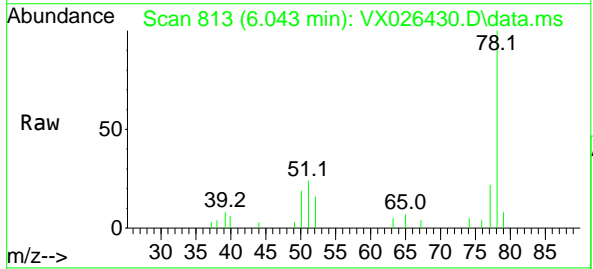


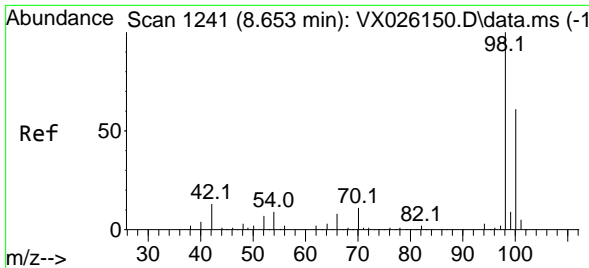
Tgt Ion: 117 Resp: 16149
 Ion Ratio Lower Upper
 117 100
 119 4.4 74.7 112.1#
 121 0.0 25.4 38.0#



#40
 Benzene
 Concen: 0.725 ug/l
 RT: 6.043 min Scan# 813
 Delta R.T. -0.000 min
 Lab File: VX026430.D
 Acq: 11 Jan 2022 19:17

Tgt Ion: 78 Resp: 5234
 Ion Ratio Lower Upper
 78 100
 77 22.4 18.9 28.3

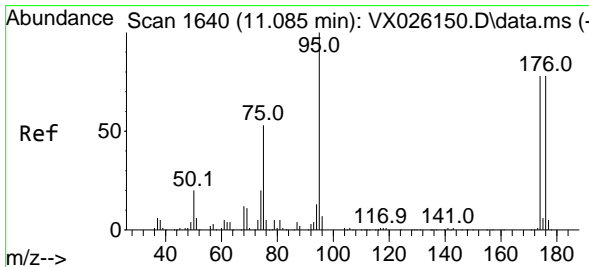
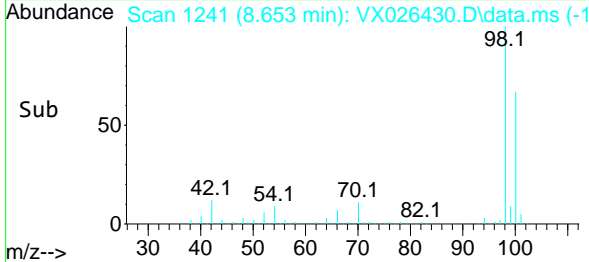
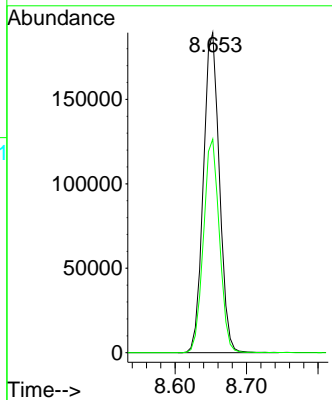
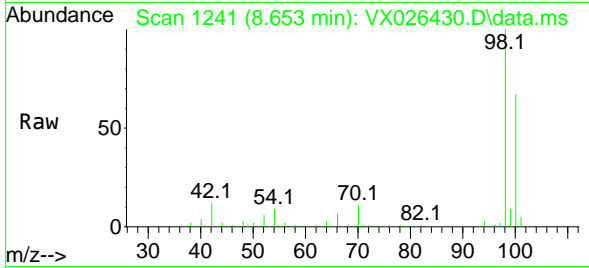




#50
 Toluene-d8
 Concen: 49.484 ug/l
 RT: 8.653 min Scan# 11
 Delta R.T. -0.000 min
 Lab File: VX026430.D
 Acq: 11 Jan 2022 19:17

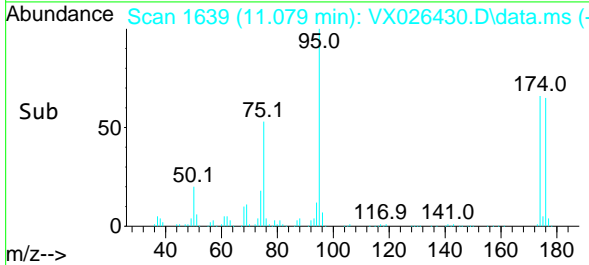
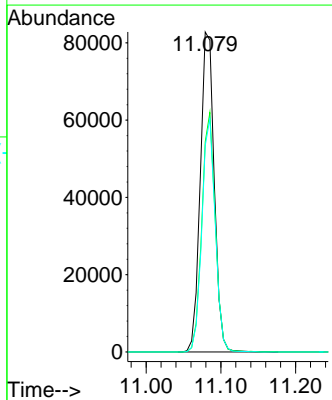
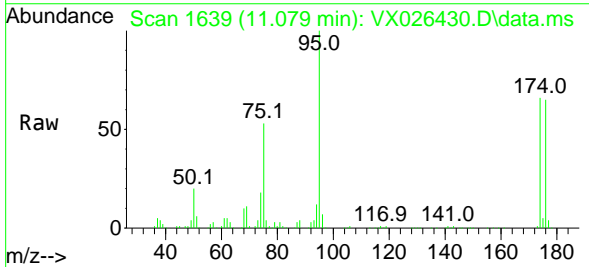
Instrument :
 MSVOA_X
 ClientSampleId :
 MW-6

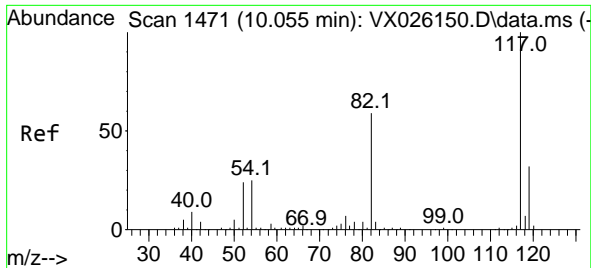
Tgt Ion: 98 Resp: 294865
 Ion Ratio Lower Upper
 98 100
 100 66.4 53.2 79.8



#62
 4-Bromofluorobenzene
 Concen: 50.636 ug/l
 RT: 11.079 min Scan# 1639
 Delta R.T. -0.000 min
 Lab File: VX026430.D
 Acq: 11 Jan 2022 19:17

Tgt Ion: 95 Resp: 107185
 Ion Ratio Lower Upper
 95 100
 174 71.7 0.0 148.6
 176 69.8 0.0 141.4

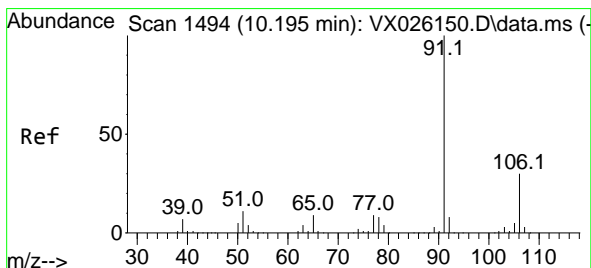
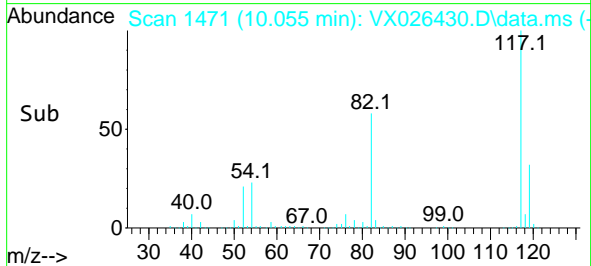
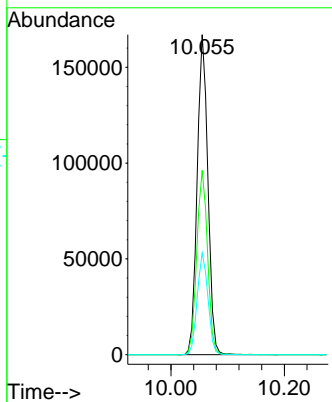
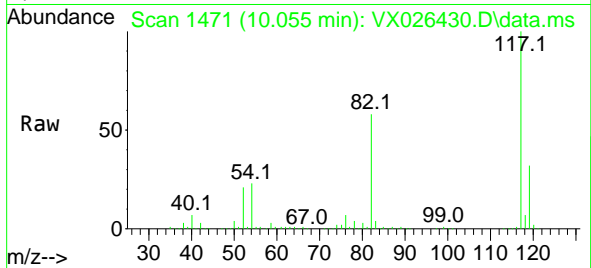




#63
 Chlorobenzene-d5
 Concen: 50.000 ug/l
 RT: 10.055 min Scan# 14
 Delta R.T. -0.000 min
 Lab File: VX026430.D
 Acq: 11 Jan 2022 19:17

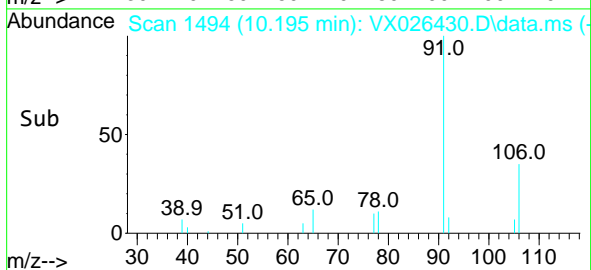
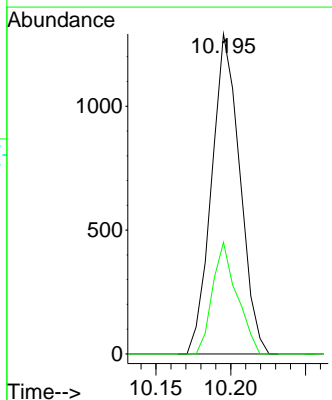
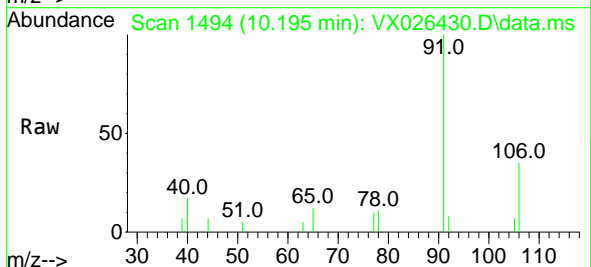
Instrument : MSVOA_X
 ClientSampleId : MW-6

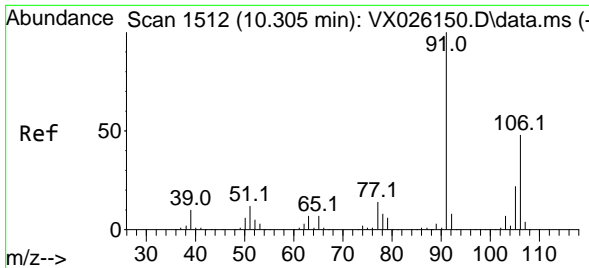
Tgt Ion	Resp	Lower	Upper
117	218737		
82	57.6	45.2	67.8
119	31.8	26.2	39.2



#67
 Ethyl Benzene
 Concen: 0.203 ug/l
 RT: 10.195 min Scan# 1494
 Delta R.T. -0.000 min
 Lab File: VX026430.D
 Acq: 11 Jan 2022 19:17

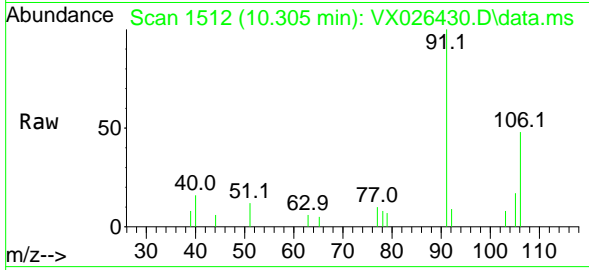
Tgt Ion	Resp	Lower	Upper
91	1696		
106	34.9	24.7	37.1



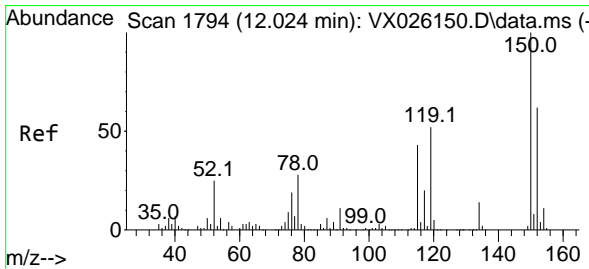
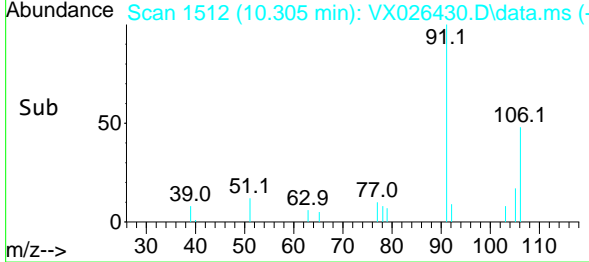
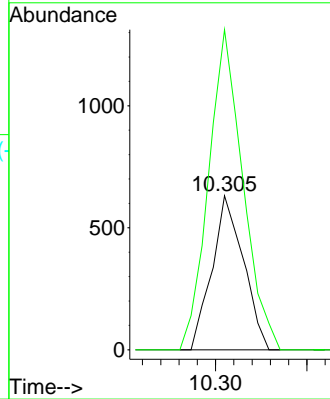


#68
 m/p-Xylenes
 Concen: 0.241 ug/l
 RT: 10.305 min Scan# 11
 Delta R.T. -0.000 min
 Lab File: VX026430.D
 Acq: 11 Jan 2022 19:17

Instrument : MSVOA_X
 ClientSampleId : MW-6

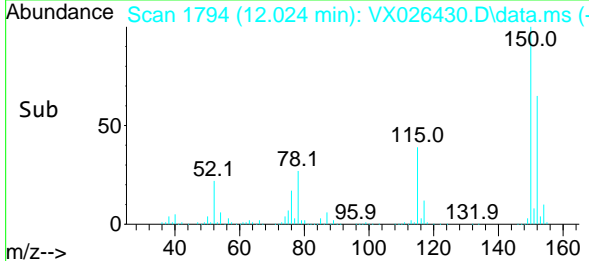
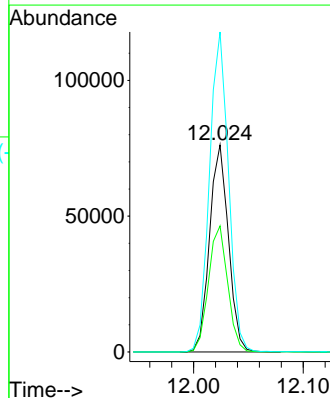
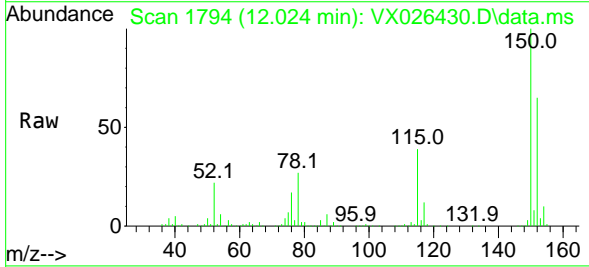


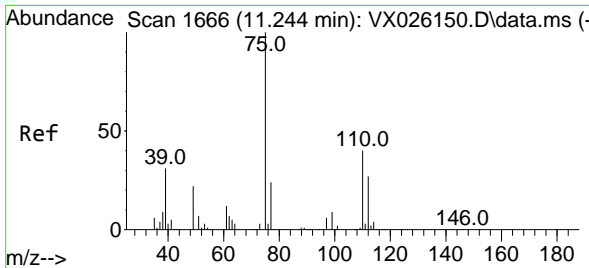
Tgt Ion:106 Resp: 756
 Ion Ratio Lower Upper
 106 100
 91 225.9 165.3 247.9



#72
 1,4-Dichlorobenzene-d4
 Concen: 50.000 ug/l
 RT: 12.024 min Scan# 1794
 Delta R.T. -0.000 min
 Lab File: VX026430.D
 Acq: 11 Jan 2022 19:17

Tgt Ion:152 Resp: 91368
 Ion Ratio Lower Upper
 152 100
 115 62.0 44.2 132.6
 150 155.9 0.0 348.2

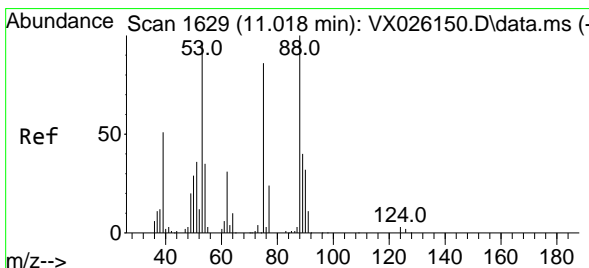
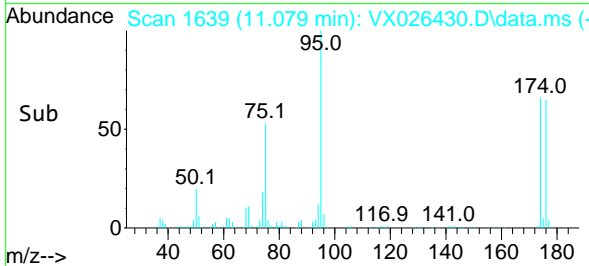
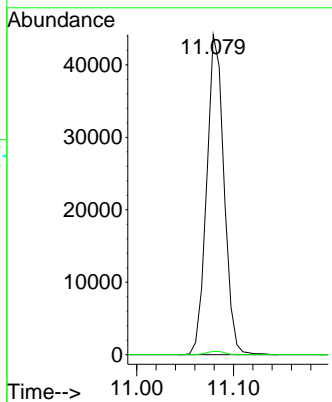
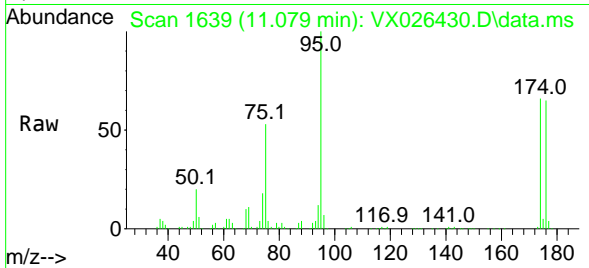




#76
 1,2,3-Trichloropropane
 Concen: 27.348 ug/l
 RT: 11.079 min Scan# 1639
 Delta R.T. -0.165 min
 Lab File: VX026430.D
 Acq: 11 Jan 2022 19:17

Instrument : MSVOA_X
 ClientSampleId : MW-6

Tgt Ion: 75 Resp: 55016
 Ion Ratio Lower Upper
 75 100
 77 1.1 18.3 54.8#



#81
 trans-1,4-Dichloro-2-butene
 Concen: 82.659 ug/l
 RT: 11.079 min Scan# 1639
 Delta R.T. 0.061 min
 Lab File: VX026430.D
 Acq: 11 Jan 2022 19:17

Tgt Ion: 75 Resp: 55016
 Ion Ratio Lower Upper
 75 100
 53 0.0 94.0 141.0#
 89 0.0 37.0 55.4#

