

Data Path : Z:\voasrv\HPCHEM1\MSVOA\_X\Data\VX011123\  
 Data File : VX033688.D  
 Acq On : 11 Jan 2023 10:38  
 Operator : JC/MD  
 Sample : VX011123WBL01  
 Misc : 5.0mL/MSVOA\_X/WATER  
 ALS Vial : 3 Sample Multiplier: 1

Instrument :  
 MSVOA\_X  
 ClientSampleId :  
 VX0111WBL01

Quant Time: Jan 12 00:19:54 2023  
 Quant Method : Z:\voasrv\HPCHEM1\MSVOA\_X\Method\82X011123W.M  
 Quant Title : SW846 8260  
 QLast Update : Wed Jan 11 14:48:42 2023  
 Response via : Initial Calibration

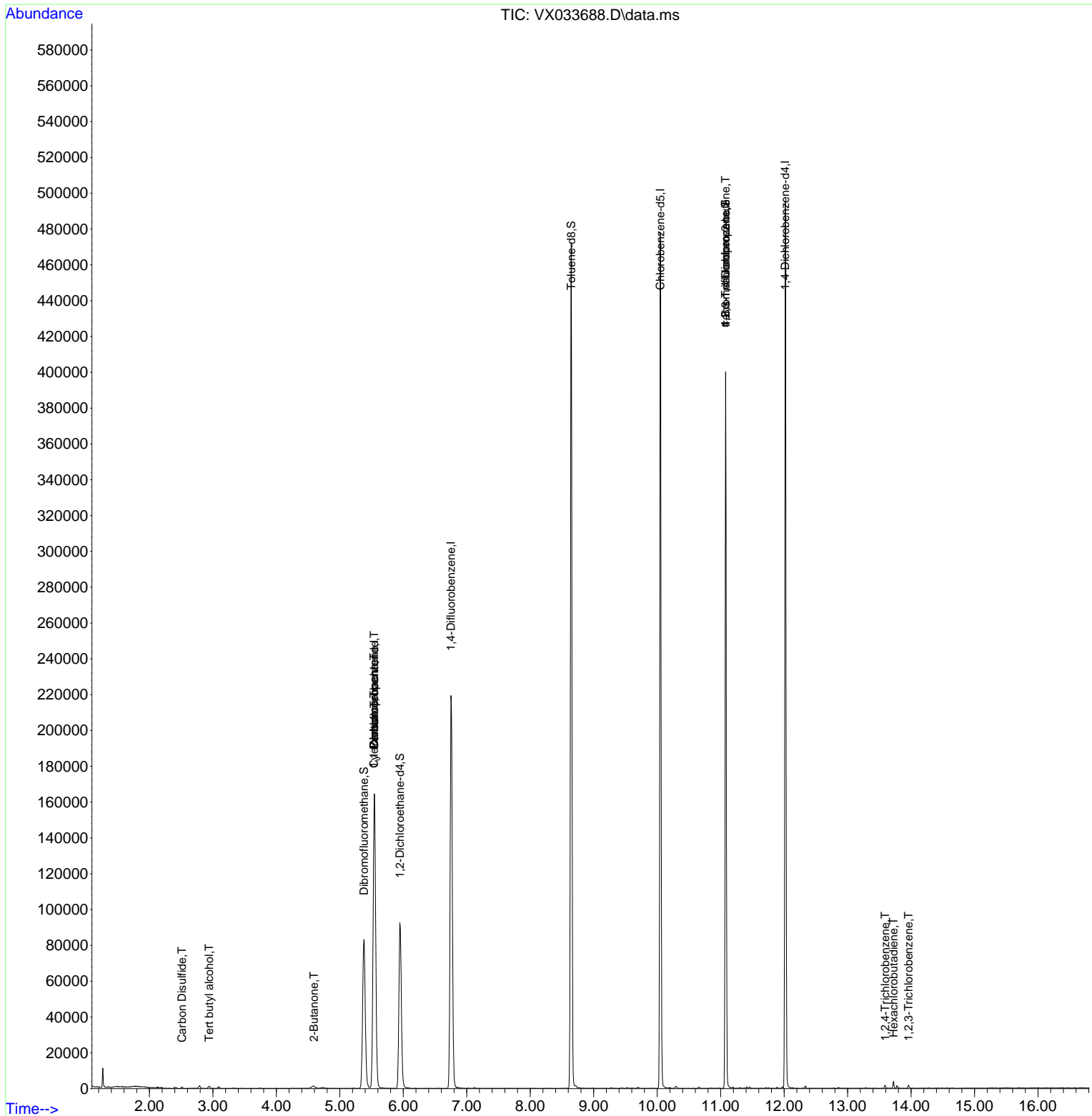
Compound	R.T.	QIon	Response	Conc	Units	Dev(Min)
Internal Standards						
1) Pentafluorobenzene	5.544	168	168509	50.000	ug/l	0.00
34) 1,4-Difluorobenzene	6.751	114	230559	50.000	ug/l	-0.01
63) Chlorobenzene-d5	10.049	117	217863	50.000	ug/l	0.00
72) 1,4-Dichlorobenzene-d4	12.018	152	108720	50.000	ug/l	0.00
System Monitoring Compounds						
33) 1,2-Dichloroethane-d4	5.946	65	90073	50.767	ug/l	-0.01
Spiked Amount	50.000	Range 78 - 117	Recovery	=	101.540%	
35) Dibromofluoromethane	5.379	113	71315	49.813	ug/l	0.00
Spiked Amount	50.000	Range 75 - 124	Recovery	=	99.620%	
50) Toluene-d8	8.647	98	284760	54.591	ug/l	0.00
Spiked Amount	50.000	Range 92 - 112	Recovery	=	109.180%	
62) 4-Bromofluorobenzene	11.079	95	99691	51.475	ug/l	0.00
Spiked Amount	50.000	Range 83 - 123	Recovery	=	102.940%	
Target Compounds						
						Qvalue
11) Tert butyl alcohol	2.940	59	805	2.612	ug/l #	86
16) Acetone	2.404	43	1138	Below Cal		98
17) Carbon Disulfide	2.514	76	1015	2.104	ug/l #	76
20) Methylene Chloride	2.794	84	737	Below Cal	#	78
25) 2-Butanone	4.593	43	773	0.667	ug/l	97
31) Cyclohexane	5.538	56	3060	1.172	ug/l #	1
36) 1,1-Dichloropropene	5.538	75	11177	5.349	ug/l #	50
37) Ethyl Acetate	4.721	43	1394	Below Cal	#	70
38) Carbon Tetrachloride	5.544	117	15330	7.084	ug/l #	14
64) Tetrachloroethene	9.263	164	109	Below Cal	#	25
73) Isopropylbenzene	10.957	105	150	Below Cal	#	48
75) 1,1,2,2-Tetrachloroethane	11.207	83	19	Below Cal	#	26
76) 1,2,3-Trichloropropane	11.079	75	49681	24.871	ug/l #	34
77) Bromobenzene	11.201	156	127	Below Cal		69
79) 2-Chlorotoluene	11.457	91	407	Below Cal		74
81) trans-1,4-Dichloro-2-b...	11.079	75	49681	77.295	ug/l #	8
82) 4-Chlorotoluene	11.457	91	407	Below Cal		81
93) 1,2,4-Trichlorobenzene	13.591	180	634	0.266	ug/l	90
94) Hexachlorobutadiene	13.725	225	684	0.585	ug/l	92
96) 1,2,3-Trichlorobenzene	13.963	180	700	0.293	ug/l	82

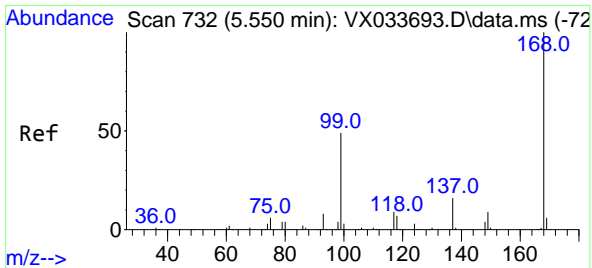
(#) = qualifier out of range (m) = manual integration (+) = signals summed

Data Path : Z:\voasrv\HPCHEM1\MSVOA\_X\Data\VX011123\  
 Data File : VX033688.D  
 Acq On : 11 Jan 2023 10:38  
 Operator : JC/MD  
 Sample : VX011123WBL01  
 Misc : 5.0mL/MSVOA\_X/WATER  
 ALS Vial : 3 Sample Multiplier: 1

Instrument :  
 MSVOA\_X  
 ClientSampleId :  
 VX0111WBL01

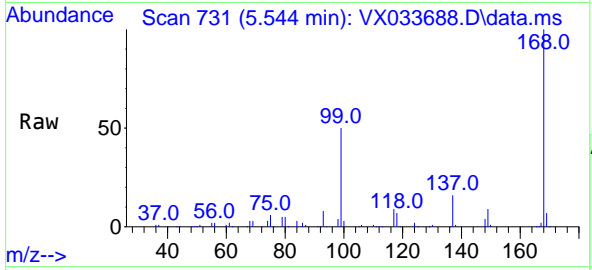
Quant Time: Jan 12 00:19:54 2023  
 Quant Method : Z:\voasrv\HPCHEM1\MSVOA\_X\Method\82X011123W.M  
 Quant Title : SW846 8260  
 QLast Update : Wed Jan 11 14:48:42 2023  
 Response via : Initial Calibration



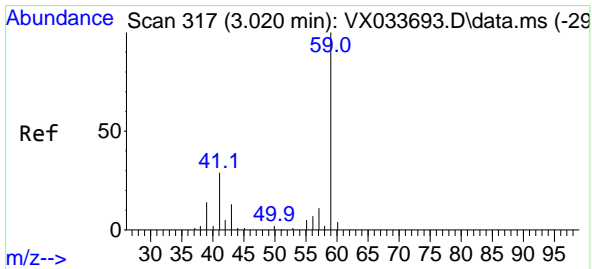
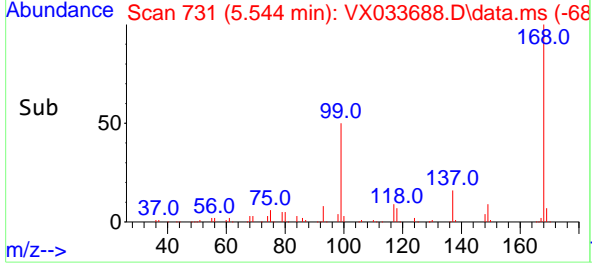
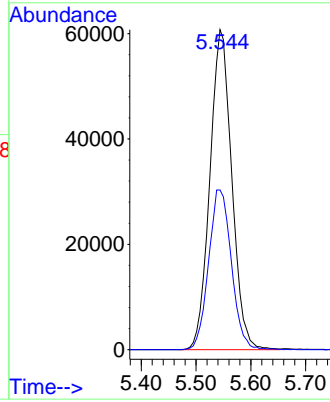


#1  
 Pentafluorobenzene  
 Concen: 50.000 ug/l  
 RT: 5.544 min Scan# 71  
 Delta R.T. -0.006 min  
 Lab File: VX033688.D  
 Acq: 11 Jan 2023 10:38

Instrument : MSVOA\_X  
 ClientSampleId : VX0111WBL01

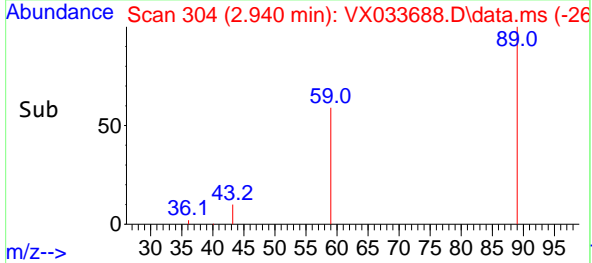
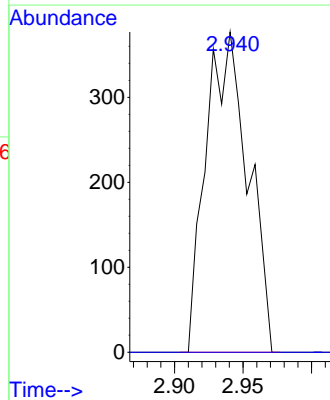
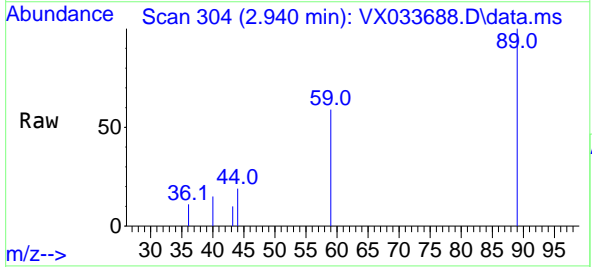


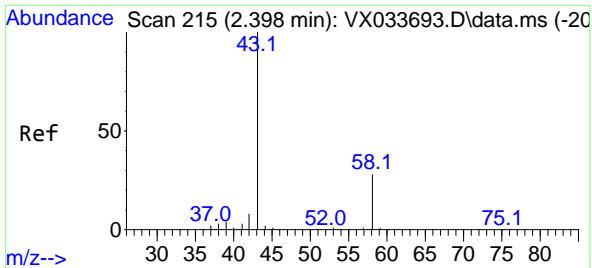
Tgt Ion:168 Resp: 168509  
 Ion Ratio Lower Upper  
 168 100  
 99 49.9 39.6 59.4



#11  
 Tert butyl alcohol  
 Concen: 2.612 ug/l  
 RT: 2.940 min Scan# 304  
 Delta R.T. -0.079 min  
 Lab File: VX033688.D  
 Acq: 11 Jan 2023 10:38

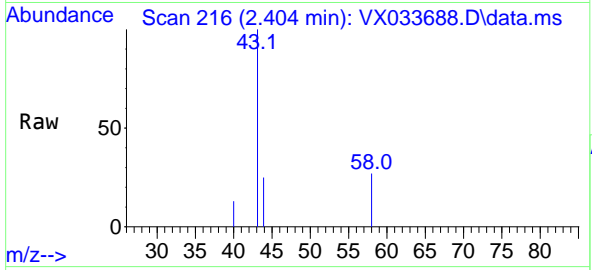
Tgt Ion: 59 Resp: 805  
 Ion Ratio Lower Upper  
 59 100  
 57 0.0 3.7 5.5#



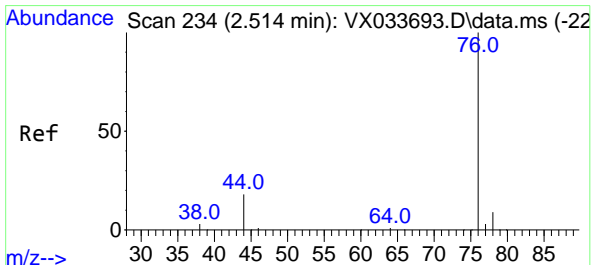
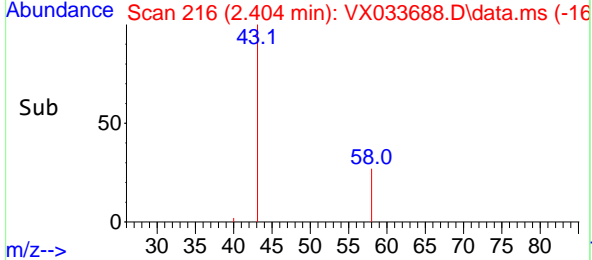
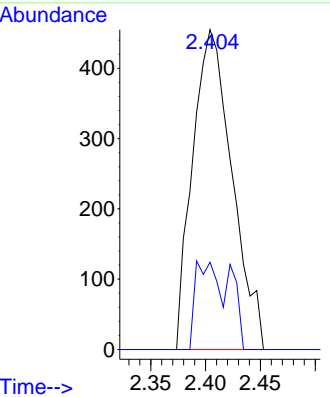


#16  
 Acetone  
 Concen: Below Cal  
 RT: 2.404 min Scan# 215  
 Delta R.T. 0.006 min  
 Lab File: VX033688.D  
 Acq: 11 Jan 2023 10:38

Instrument : MSVOA\_X  
 ClientSampleId : VX0111WBL01

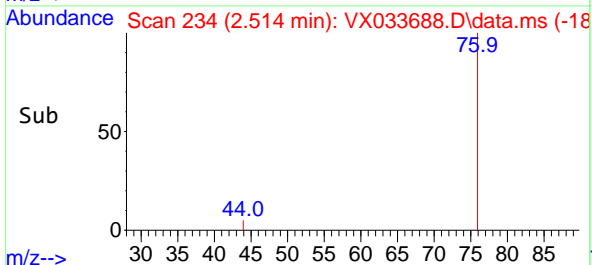
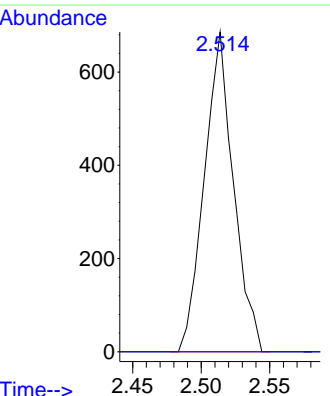
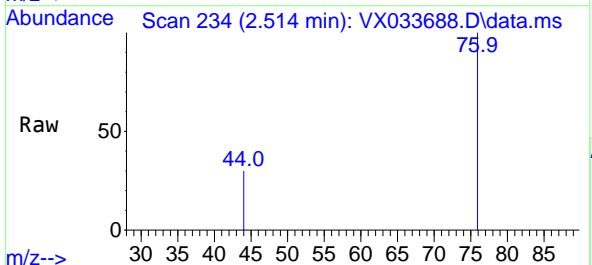


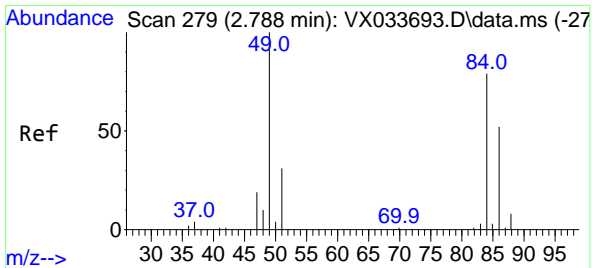
Tgt Ion: 43 Resp: 1138  
 Ion Ratio Lower Upper  
 43 100  
 58 27.3 22.6 33.8



#17  
 Carbon Disulfide  
 Concen: 2.104 ug/l  
 RT: 2.514 min Scan# 234  
 Delta R.T. -0.000 min  
 Lab File: VX033688.D  
 Acq: 11 Jan 2023 10:38

Tgt Ion: 76 Resp: 1015  
 Ion Ratio Lower Upper  
 76 100  
 78 0.0 7.0 10.6#



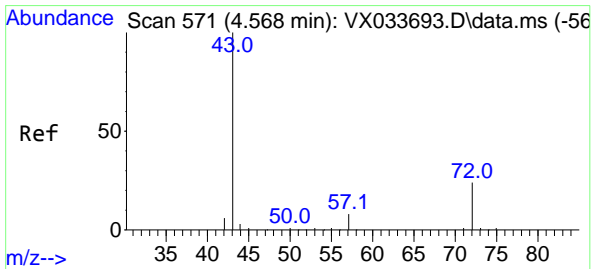
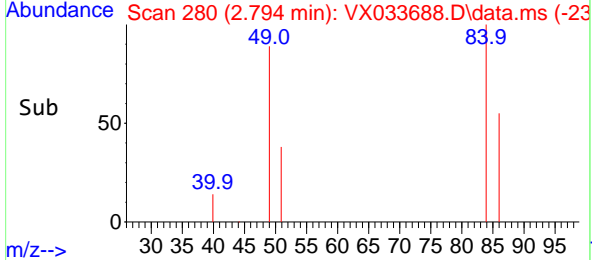
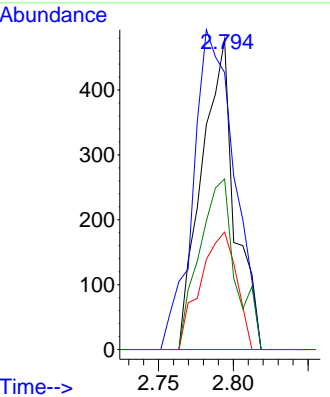
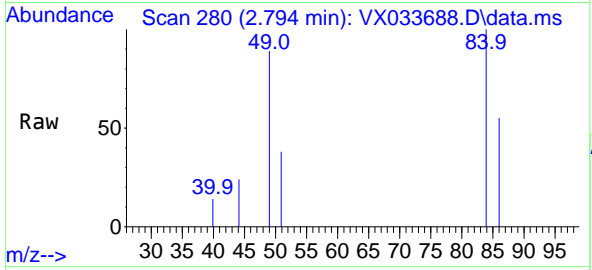


#20  
 Methylene Chloride  
 Concen: Below Cal  
 RT: 2.794 min Scan# 21  
 Delta R.T. 0.006 min  
 Lab File: VX033688.D  
 Acq: 11 Jan 2023 10:38

Instrument : MSVOA\_X  
 ClientSampleId : VX0111WBL01

Tgt Ion: 84 Resp: 737

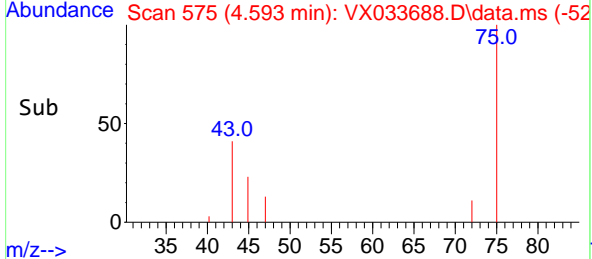
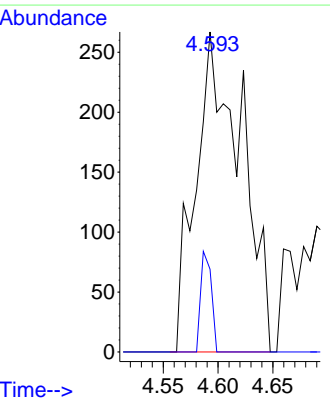
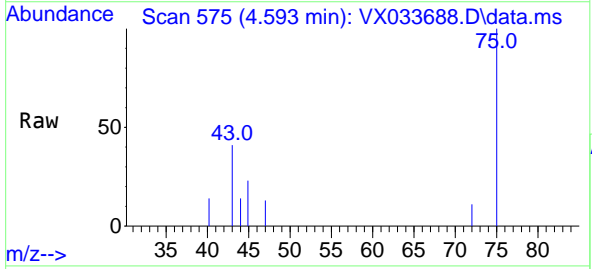
Ion	Ratio	Lower	Upper
84	100		
49	89.3	101.1	151.7#
51	37.9	31.0	46.6
86	55.0	52.6	79.0

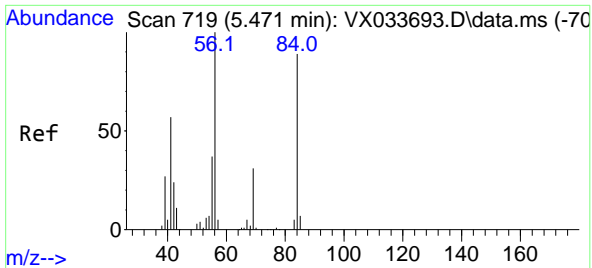


#25  
 2-Butanone  
 Concen: 0.667 ug/l  
 RT: 4.593 min Scan# 575  
 Delta R.T. 0.024 min  
 Lab File: VX033688.D  
 Acq: 11 Jan 2023 10:38

Tgt Ion: 43 Resp: 773

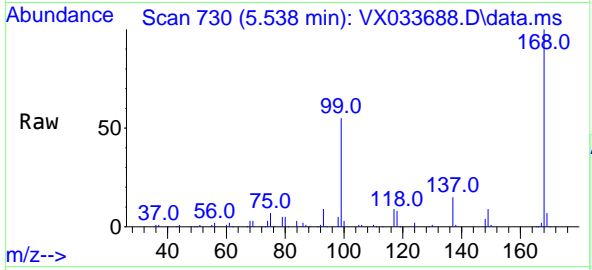
Ion	Ratio	Lower	Upper
43	100		
72	25.8	19.4	29.2



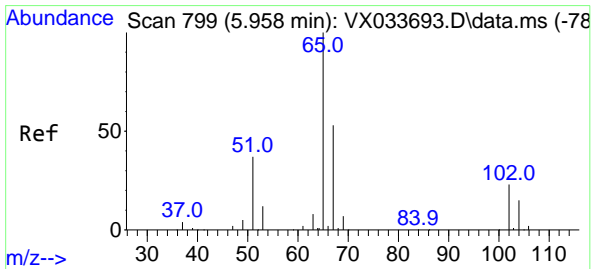
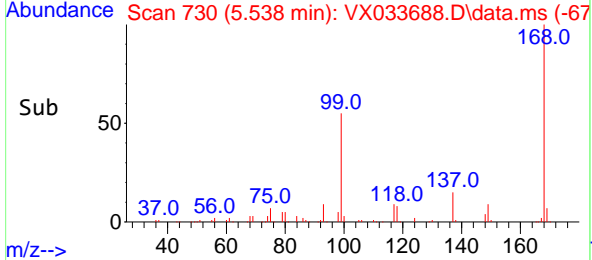
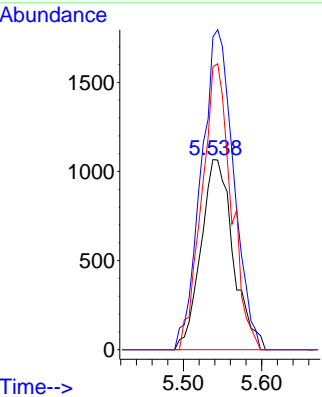


#31  
 Cyclohexane  
 Concen: 1.172 ug/l  
 RT: 5.538 min Scan# 719  
 Delta R.T. 0.067 min  
 Lab File: VX033688.D  
 Acq: 11 Jan 2023 10:38

Instrument : MSVOA\_X  
 ClientSampleId : VX0111WBL01

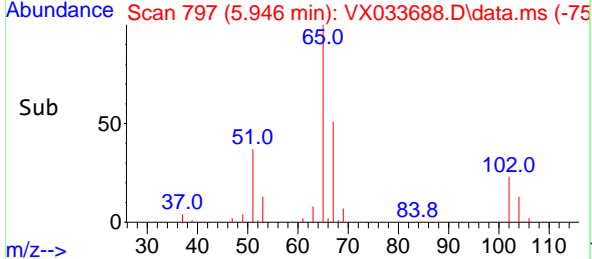
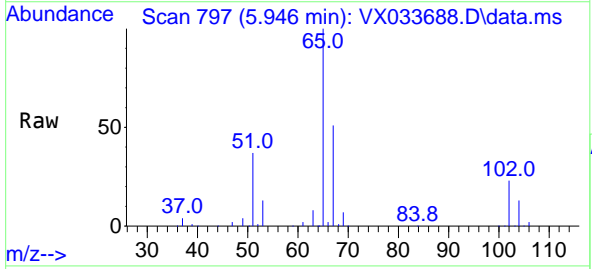
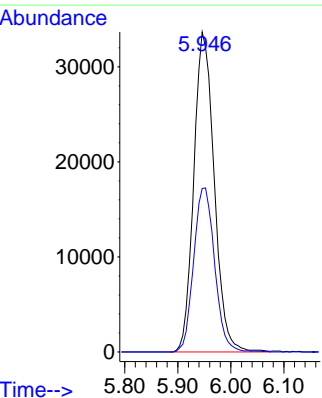


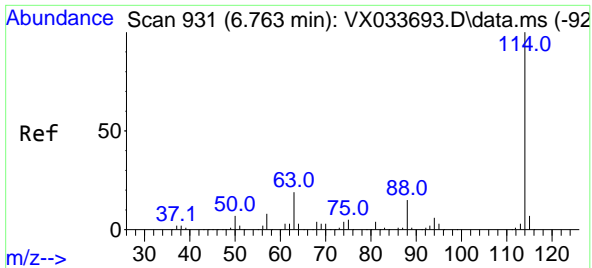
Tgt Ion: 56 Resp: 3060  
 Ion Ratio Lower Upper  
 56 100  
 69 164.6 24.6 37.0#  
 84 148.8 71.0 106.6#



#33  
 1,2-Dichloroethane-d4  
 Concen: 50.767 ug/l  
 RT: 5.946 min Scan# 797  
 Delta R.T. -0.012 min  
 Lab File: VX033688.D  
 Acq: 11 Jan 2023 10:38

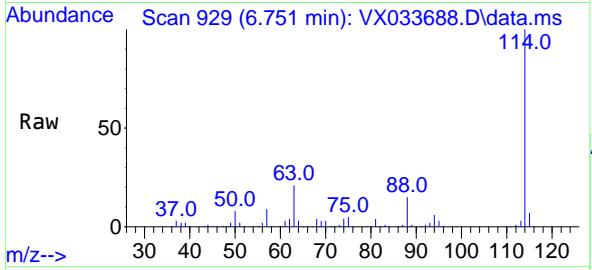
Tgt Ion: 65 Resp: 90073  
 Ion Ratio Lower Upper  
 65 100  
 67 52.7 0.0 104.8





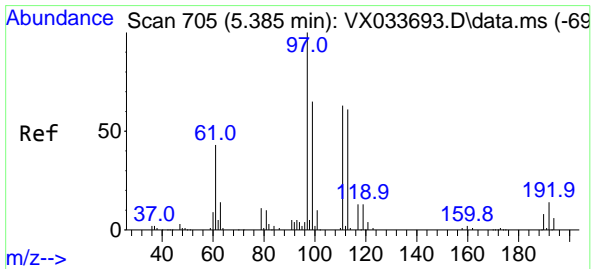
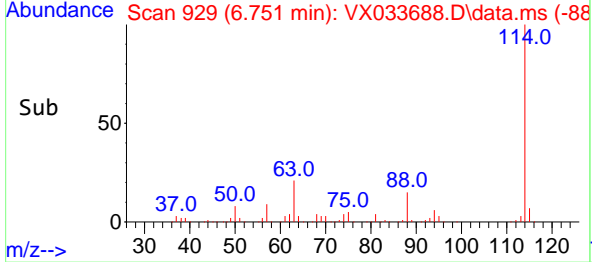
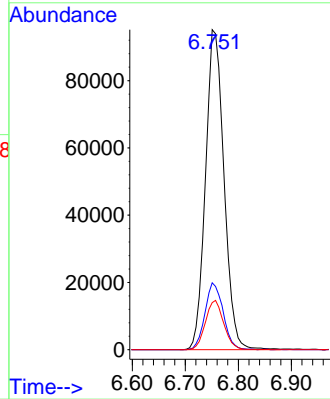
#34  
 1,4-Difluorobenzene  
 Concen: 50.000 ug/l  
 RT: 6.751 min Scan# 911  
 Delta R.T. -0.012 min  
 Lab File: VX033688.D  
 Acq: 11 Jan 2023 10:38

Instrument : MSVOA\_X  
 ClientSampleId : VX0111WBL01

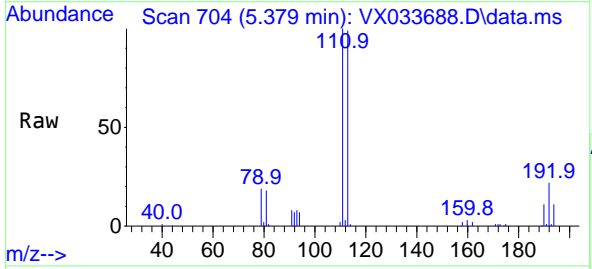


Tgt Ion:114 Resp: 230559

Ion	Ratio	Lower	Upper
114	100		
63	20.9	0.0	37.4
88	14.7	0.0	30.6

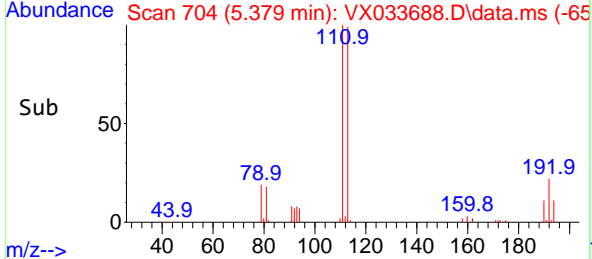
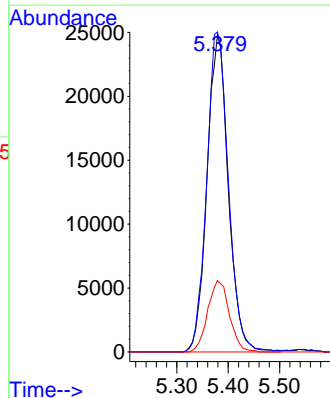


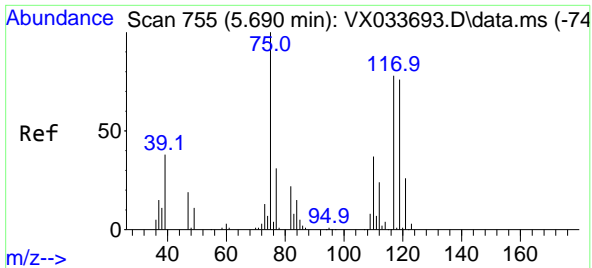
#35  
 Dibromofluoromethane  
 Concen: 49.813 ug/l  
 RT: 5.379 min Scan# 704  
 Delta R.T. -0.006 min  
 Lab File: VX033688.D  
 Acq: 11 Jan 2023 10:38



Tgt Ion:113 Resp: 71315

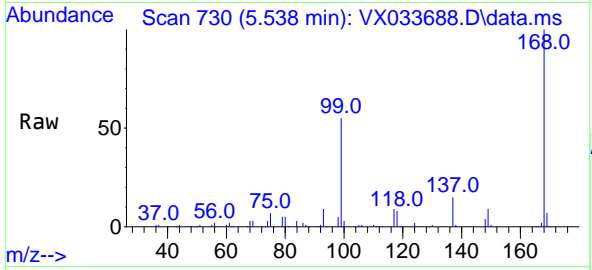
Ion	Ratio	Lower	Upper
113	100		
111	103.0	83.0	124.6
192	22.9	19.0	28.4





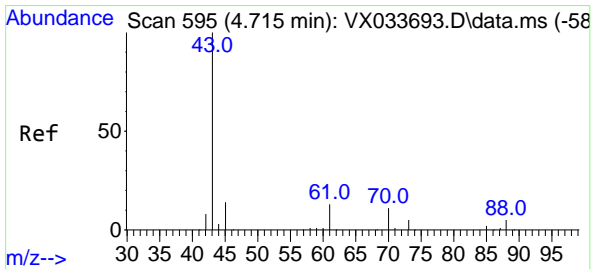
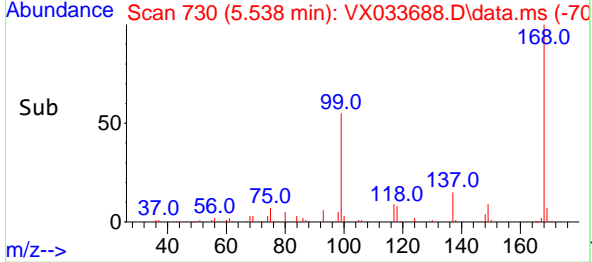
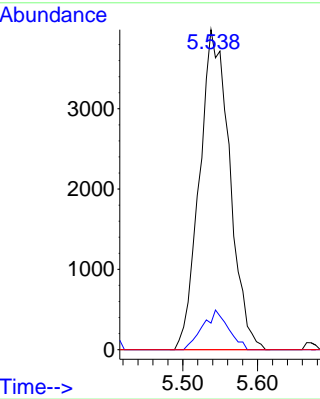
#36  
 1,1-Dichloropropene  
 Concen: 5.349 ug/l  
 RT: 5.538 min Scan# 711  
 Delta R.T. -0.153 min  
 Lab File: VX033688.D  
 Acq: 11 Jan 2023 10:38

Instrument : MSVOA\_X  
 ClientSampleId : VX0111WBL01

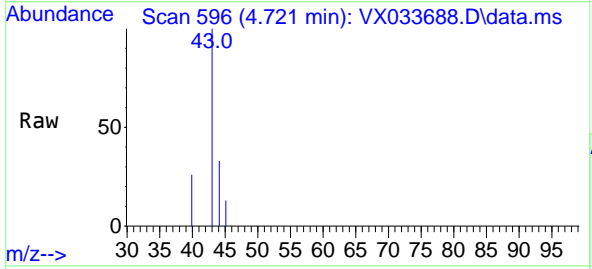


Tgt Ion: 75 Resp: 11177

Ion	Ratio	Lower	Upper
75	100		
110	10.5	18.8	56.4#
77	0.0	25.1	37.7#

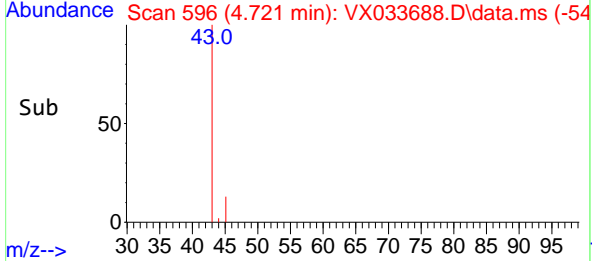
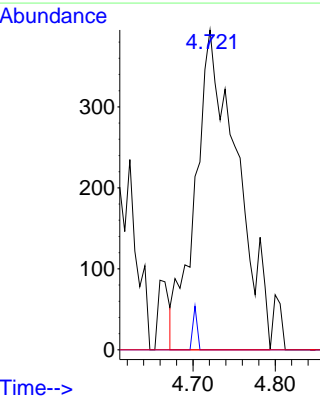


#37  
 Ethyl Acetate  
 Concen: Below Cal  
 RT: 4.721 min Scan# 596  
 Delta R.T. 0.006 min  
 Lab File: VX033688.D  
 Acq: 11 Jan 2023 10:38

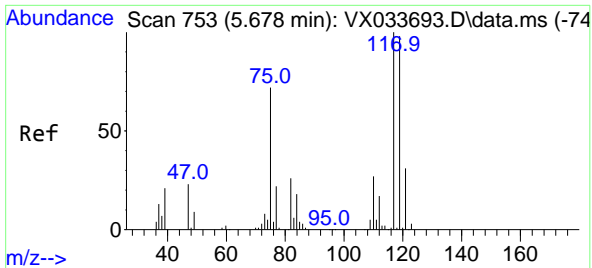


Tgt Ion: 43 Resp: 1394

Ion	Ratio	Lower	Upper
43	100		
61	1.4	11.1	16.7#
70	0.0	8.5	12.7#

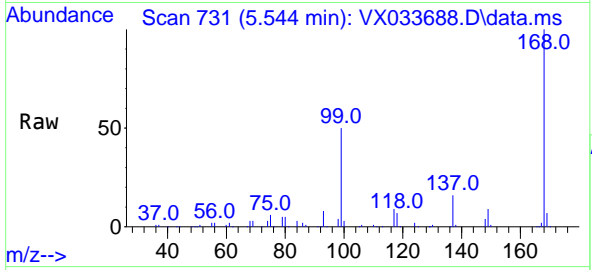




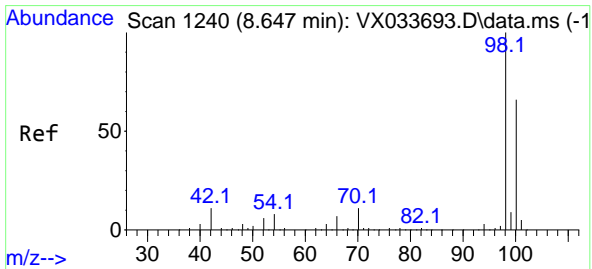
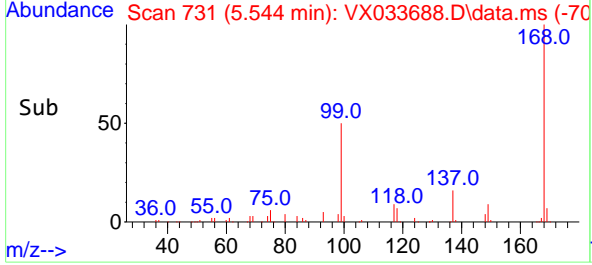
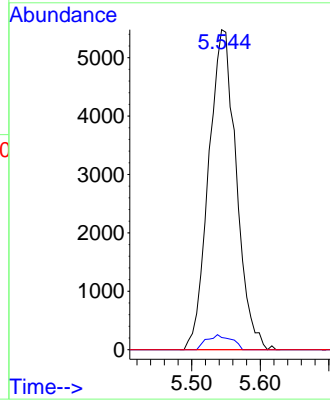


#38  
 Carbon Tetrachloride  
 Concen: 7.084 ug/l  
 RT: 5.544 min Scan# 71  
 Delta R.T. -0.134 min  
 Lab File: VX033688.D  
 Acq: 11 Jan 2023 10:38

Instrument :  
 MSVOA\_X  
 ClientSampleId :  
 VX0111WBL01

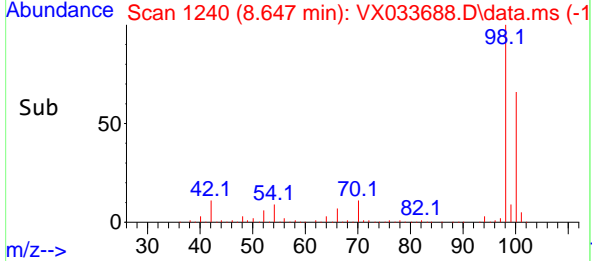
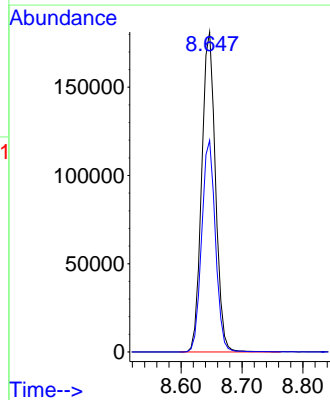
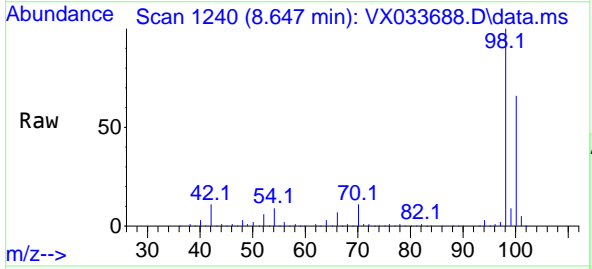


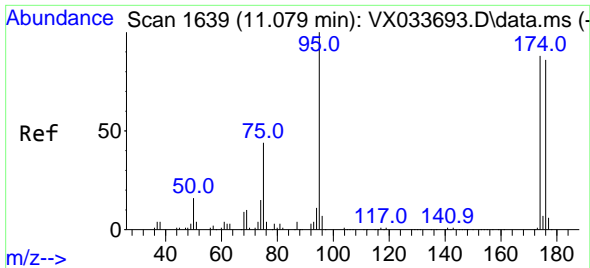
Tgt Ion:117 Resp: 15330  
 Ion Ratio Lower Upper  
 117 100  
 119 3.8 78.0 117.0#  
 121 0.0 24.4 36.6#



#50  
 Toluene-d8  
 Concen: 54.591 ug/l  
 RT: 8.647 min Scan# 1240  
 Delta R.T. -0.000 min  
 Lab File: VX033688.D  
 Acq: 11 Jan 2023 10:38

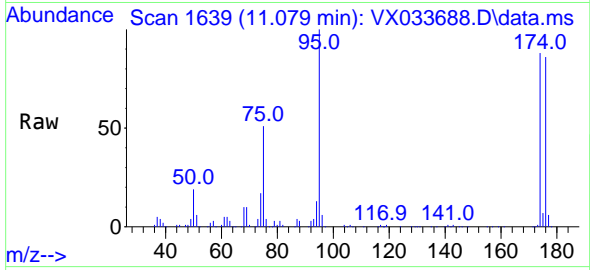
Tgt Ion: 98 Resp: 284760  
 Ion Ratio Lower Upper  
 98 100  
 100 66.0 53.6 80.4





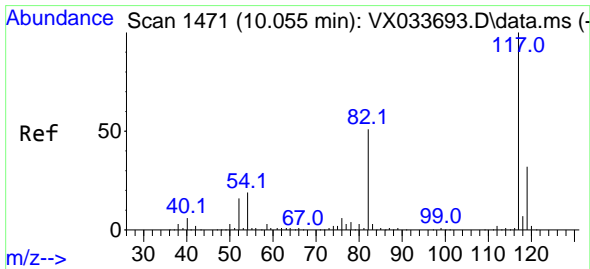
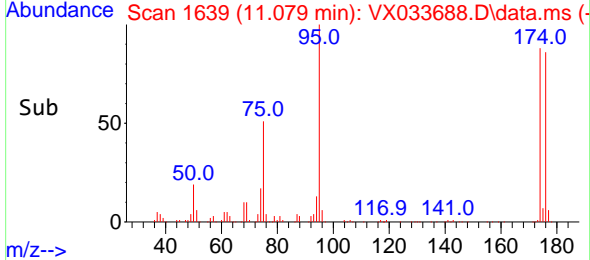
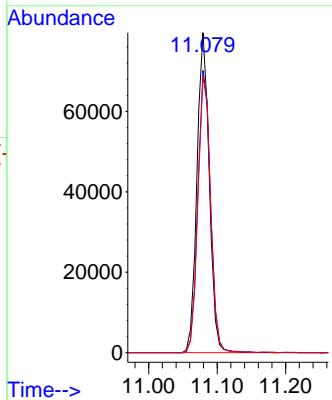
#62  
 4-Bromofluorobenzene  
 Concen: 51.475 ug/l  
 RT: 11.079 min Scan# 11  
 Delta R.T. -0.000 min  
 Lab File: VX033688.D  
 Acq: 11 Jan 2023 10:38

Instrument : MSVOA\_X  
 ClientSampleId : VX0111WBL01



Tgt Ion: 95 Resp: 99691

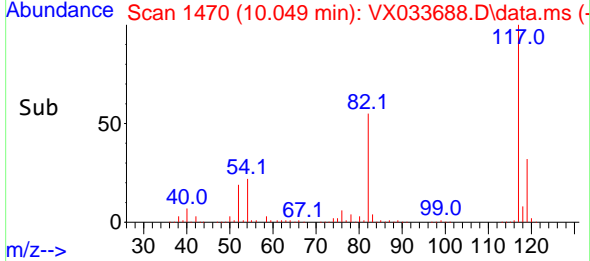
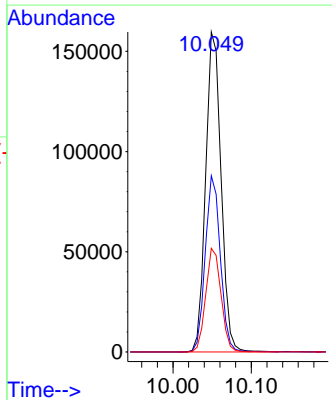
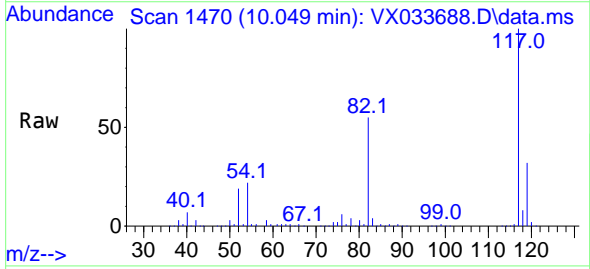
Ion	Ratio	Lower	Upper
95	100		
174	90.7	0.0	184.4
176	88.8	0.0	178.8

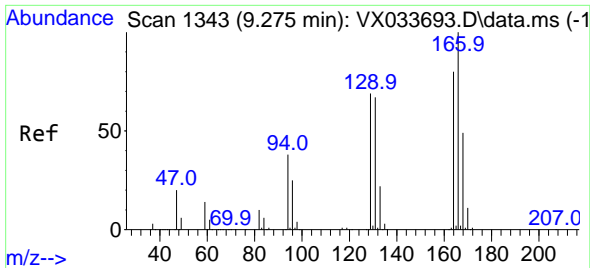


#63  
 Chlorobenzene-d5  
 Concen: 50.000 ug/l  
 RT: 10.049 min Scan# 1470  
 Delta R.T. -0.006 min  
 Lab File: VX033688.D  
 Acq: 11 Jan 2023 10:38

Tgt Ion: 117 Resp: 217863

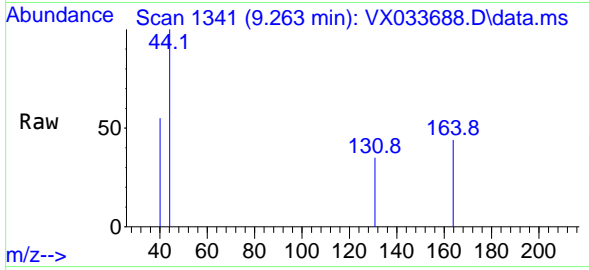
Ion	Ratio	Lower	Upper
117	100		
82	55.1	40.6	60.8
119	32.4	25.6	38.4



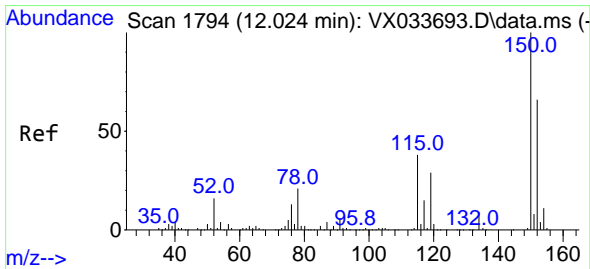
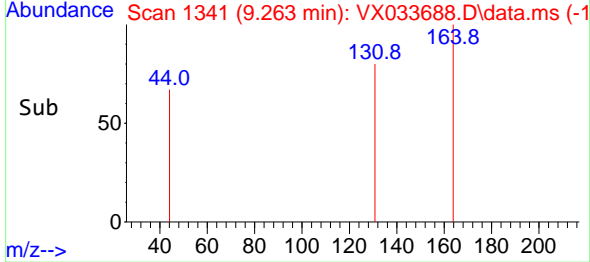
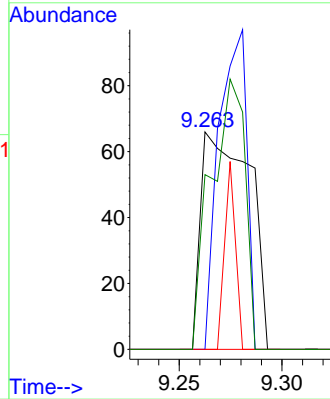


#64  
 Tetrachloroethene  
 Concen: Below Cal  
 RT: 9.263 min Scan# 11  
 Delta R.T. -0.012 min  
 Lab File: VX033688.D  
 Acq: 11 Jan 2023 10:38

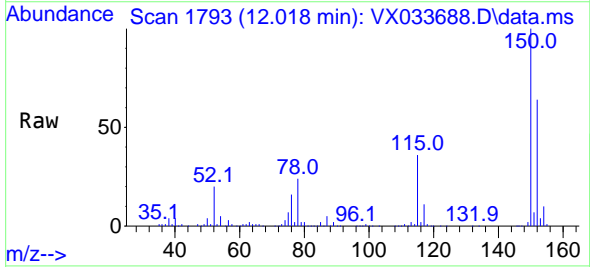
Instrument :  
 MSVOA\_X  
 ClientSampleId :  
 VX0111WBL01



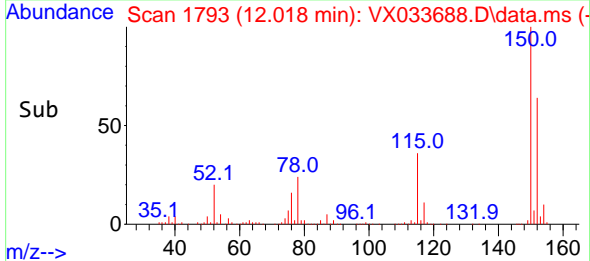
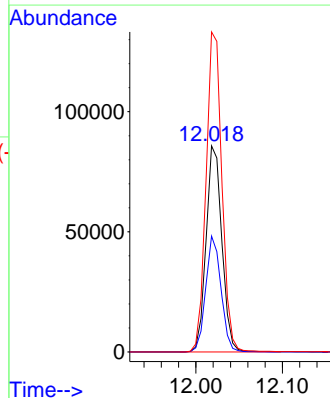
Tgt Ion:164 Resp: 109  
 Ion Ratio Lower Upper  
 164 100  
 166 0.0 100.2 150.2#  
 129 0.0 69.2 103.8#  
 131 80.3 67.2 100.8

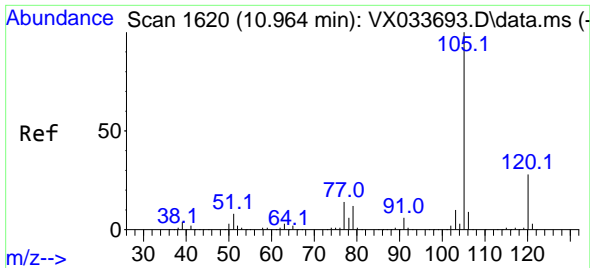


#72  
 1,4-Dichlorobenzene-d4  
 Concen: 50.000 ug/l  
 RT: 12.018 min Scan# 1793  
 Delta R.T. -0.006 min  
 Lab File: VX033688.D  
 Acq: 11 Jan 2023 10:38



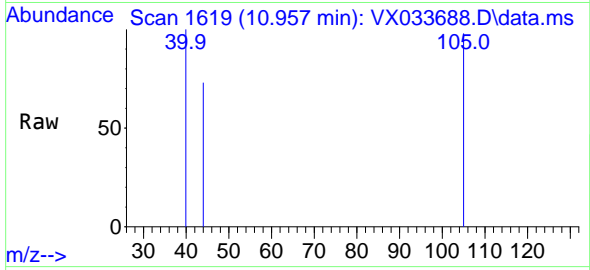
Tgt Ion:152 Resp: 108720  
 Ion Ratio Lower Upper  
 152 100  
 115 54.4 38.7 116.1  
 150 155.8 0.0 348.2



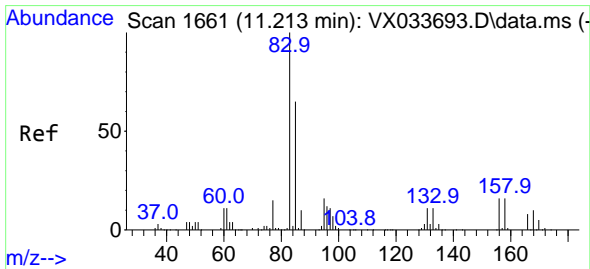
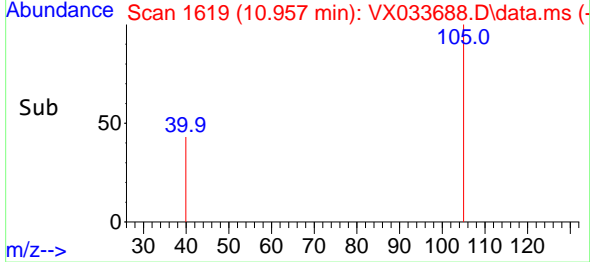
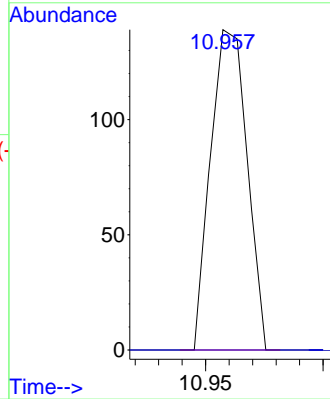


#73  
 Isopropylbenzene  
 Concen: Below Cal  
 RT: 10.957 min Scan# 1619  
 Delta R.T. -0.007 min  
 Lab File: VX033688.D  
 Acq: 11 Jan 2023 10:38

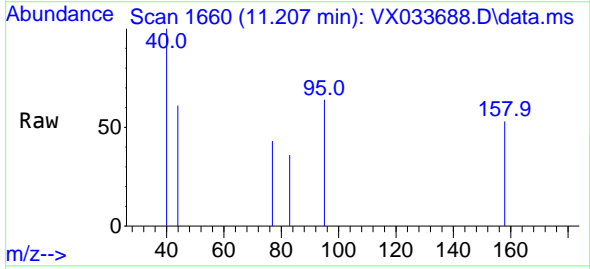
Instrument : MSVOA\_X  
 ClientSampleId : VX0111WBL01



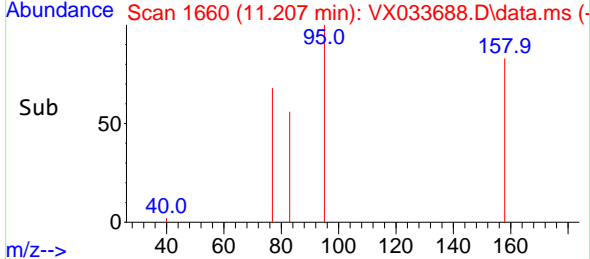
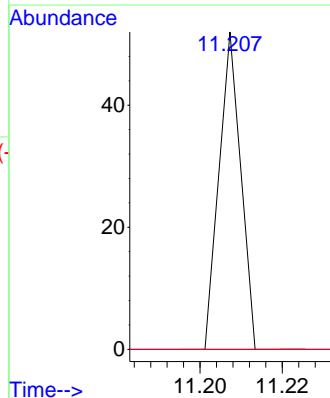
Tgt Ion: 105 Resp: 150  
 Ion Ratio Lower Upper  
 105 100  
 120 0.0 13.6 40.8#

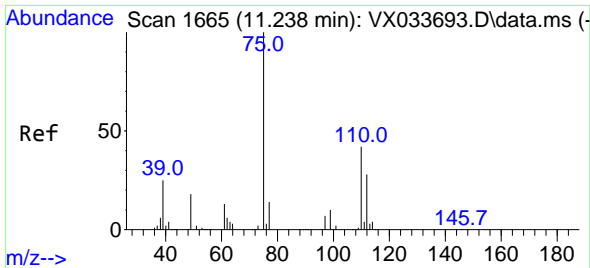


#75  
 1,1,2,2-Tetrachloroethane  
 Concen: Below Cal  
 RT: 11.207 min Scan# 1660  
 Delta R.T. -0.006 min  
 Lab File: VX033688.D  
 Acq: 11 Jan 2023 10:38



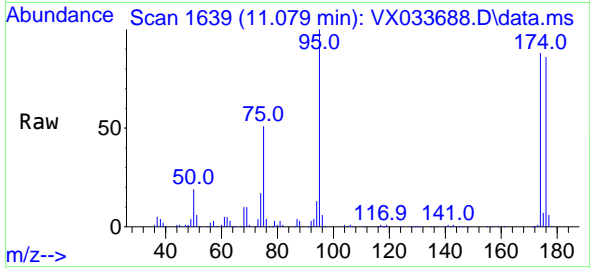
Tgt Ion: 83 Resp: 19  
 Ion Ratio Lower Upper  
 83 100  
 131 0.0 5.5 16.7#  
 85 0.0 32.3 96.9#



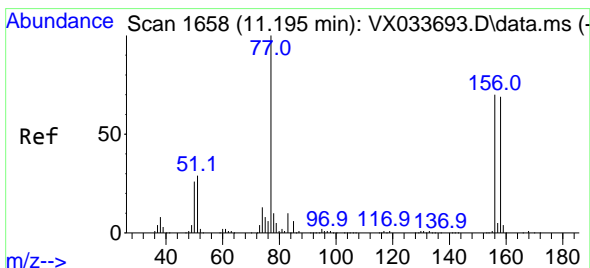
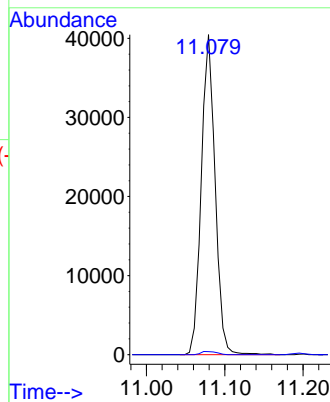
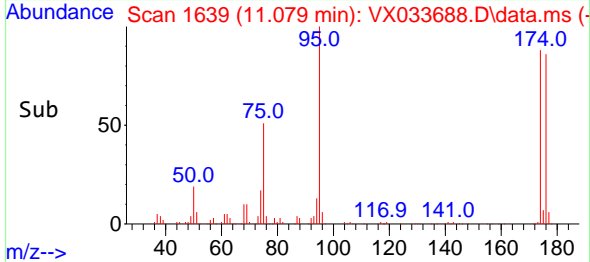


#76  
 1,2,3-Trichloropropane  
 Concen: 24.871 ug/l  
 RT: 11.079 min Scan# 1639  
 Delta R.T. -0.159 min  
 Lab File: VX033688.D  
 Acq: 11 Jan 2023 10:38

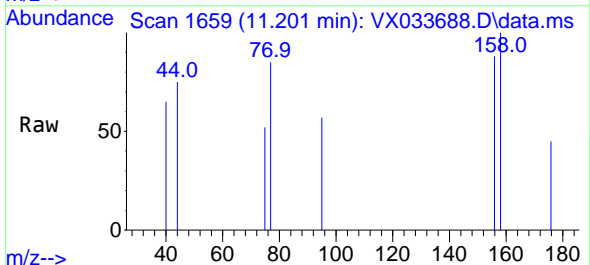
Instrument : MSVOA\_X  
 ClientSampleId : VX0111WBL01



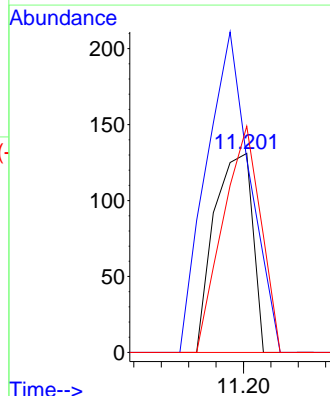
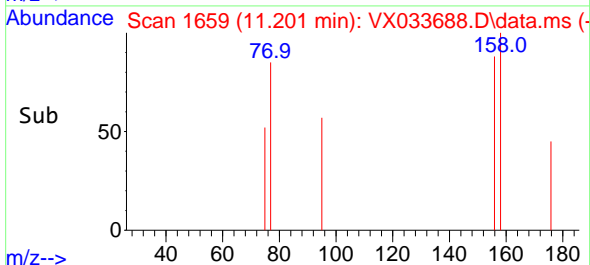
Tgt Ion: 75 Resp: 49681  
 Ion Ratio Lower Upper  
 75 100  
 77 1.1 21.8 65.4#

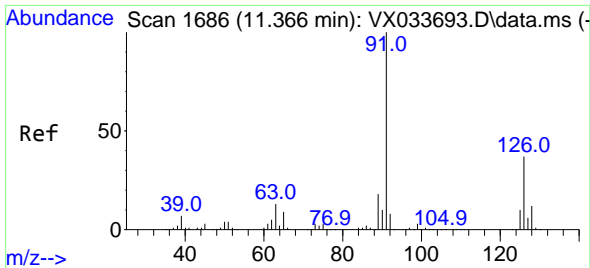


#77  
 Bromobenzene  
 Concen: Below Cal  
 RT: 11.201 min Scan# 1659  
 Delta R.T. 0.006 min  
 Lab File: VX033688.D  
 Acq: 11 Jan 2023 10:38



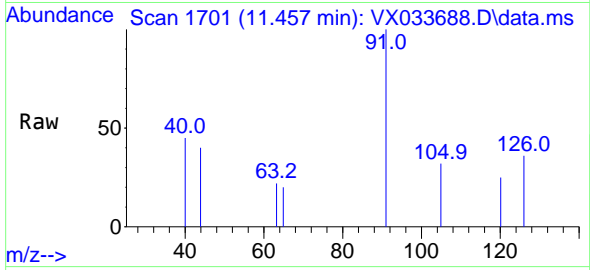
Tgt Ion: 156 Resp: 127  
 Ion Ratio Lower Upper  
 156 100  
 77 184.3 68.1 204.3  
 158 112.6 48.0 144.2



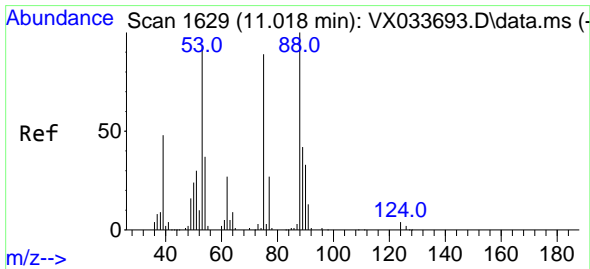
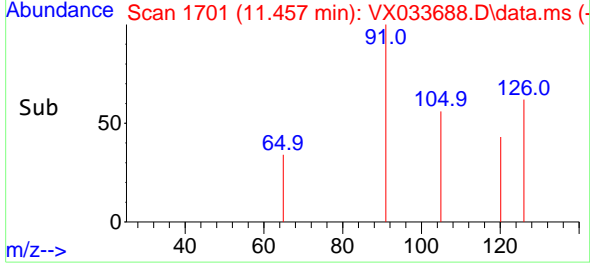
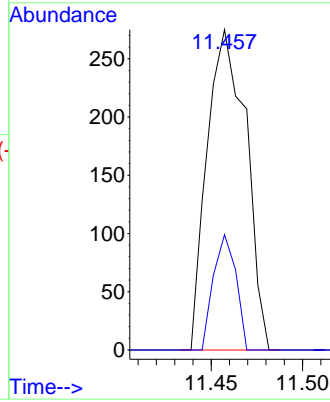


#79  
 2-Chlorotoluene  
 Concen: Below Cal  
 RT: 11.457 min Scan# 11  
 Delta R.T. 0.091 min  
 Lab File: VX033688.D  
 Acq: 11 Jan 2023 10:38

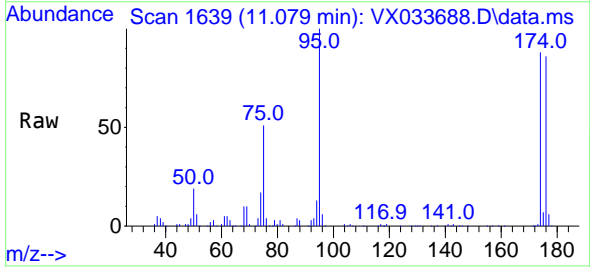
Instrument :  
 MSVOA\_X  
 ClientSampleId :  
 VX0111WBL01



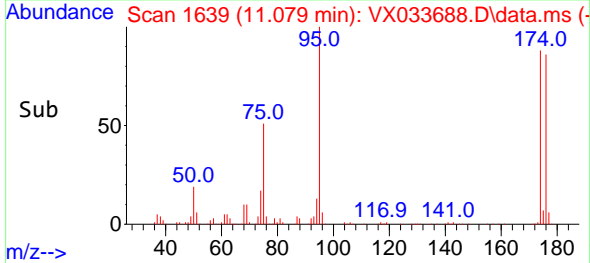
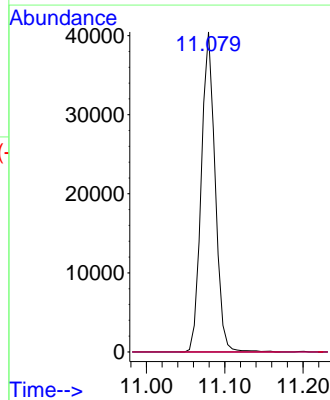
Tgt Ion: 91 Resp: 407  
 Ion Ratio Lower Upper  
 91 100  
 126 20.9 18.1 54.1

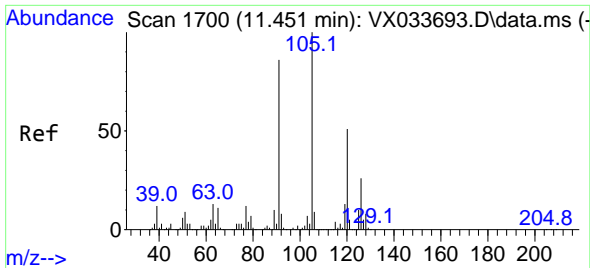


#81  
 trans-1,4-Dichloro-2-butene  
 Concen: 77.295 ug/l  
 RT: 11.079 min Scan# 1639  
 Delta R.T. 0.061 min  
 Lab File: VX033688.D  
 Acq: 11 Jan 2023 10:38



Tgt Ion: 75 Resp: 49681  
 Ion Ratio Lower Upper  
 75 100  
 53 0.0 83.0 124.6#  
 89 0.0 37.7 56.5#

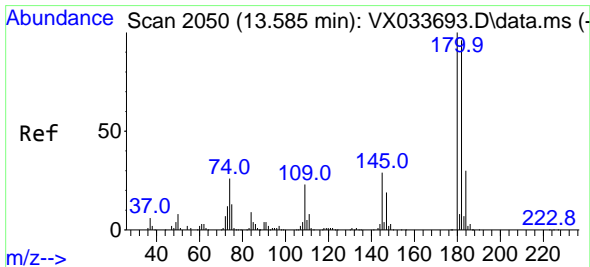
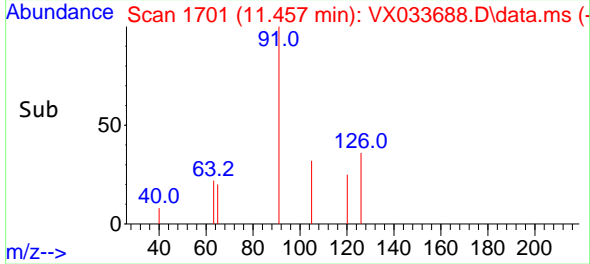
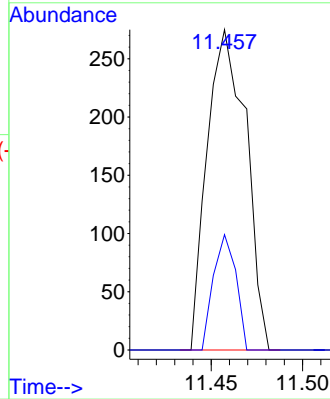
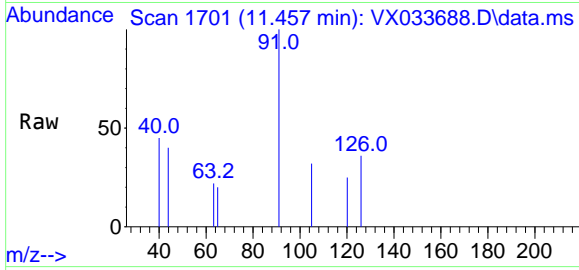




#82  
 4-Chlorotoluene  
 Concen: Below Cal  
 RT: 11.457 min Scan# 11  
 Delta R.T. 0.006 min  
 Lab File: VX033688.D  
 Acq: 11 Jan 2023 10:38

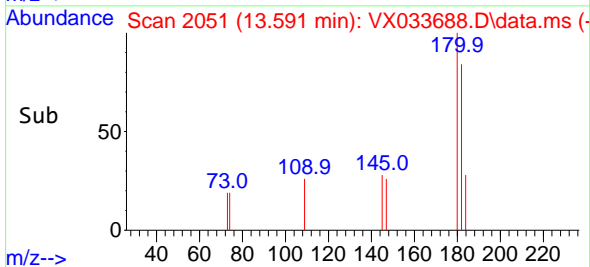
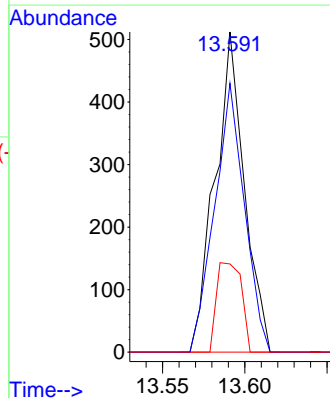
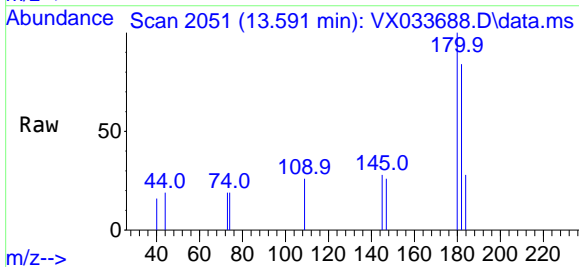
Instrument :  
 MSVOA\_X  
 ClientSampleId :  
 VX0111WBL01

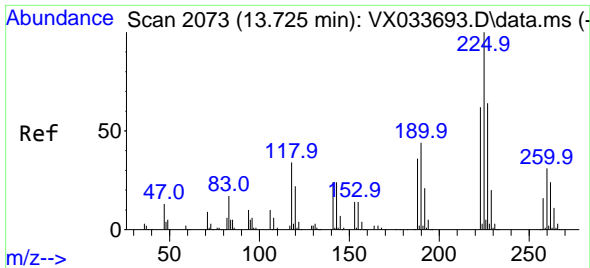
Tgt Ion: 91 Resp: 407  
 Ion Ratio Lower Upper  
 91 100  
 126 20.9 15.8 47.4



#93  
 1,2,4-Trichlorobenzene  
 Concen: 0.266 ug/l  
 RT: 13.591 min Scan# 2051  
 Delta R.T. 0.006 min  
 Lab File: VX033688.D  
 Acq: 11 Jan 2023 10:38

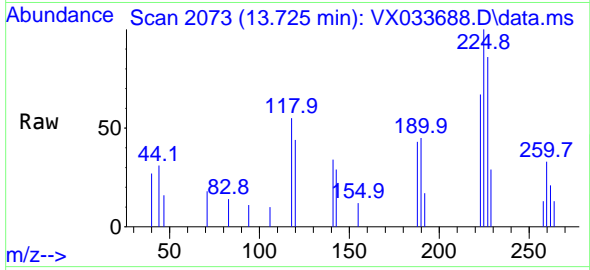
Tgt Ion:180 Resp: 634  
 Ion Ratio Lower Upper  
 180 100  
 182 85.5 47.9 143.6  
 145 23.7 14.1 42.2





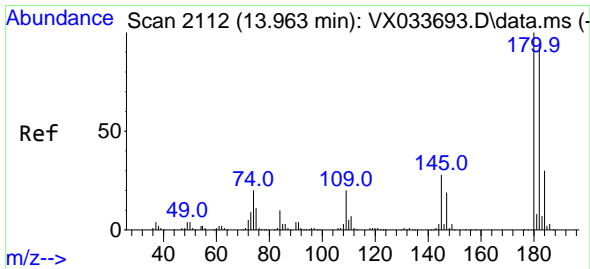
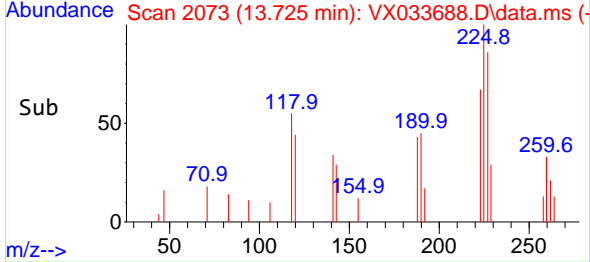
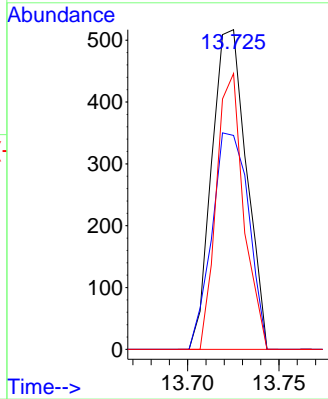
#94  
 Hexachlorobutadiene  
 Concen: 0.585 ug/l  
 RT: 13.725 min Scan# 2073  
 Delta R.T. -0.000 min  
 Lab File: VX033688.D  
 Acq: 11 Jan 2023 10:38

Instrument : MSVOA\_X  
 ClientSampleId : VX0111WBL01



Tgt Ion:225 Resp: 684

Ion	Ratio	Lower	Upper
225	100		
223	71.8	31.3	93.9
227	68.0	32.3	96.9



#96  
 1,2,3-Trichlorobenzene  
 Concen: 0.293 ug/l  
 RT: 13.963 min Scan# 2112  
 Delta R.T. -0.000 min  
 Lab File: VX033688.D  
 Acq: 11 Jan 2023 10:38

Tgt Ion:180 Resp: 700

Ion	Ratio	Lower	Upper
180	100		
182	78.3	47.6	142.9
145	19.1	15.1	45.3

