

Data Path : Z:\voasrv\HPCHEM1\MSVOA_X\Data\VX011224\
 Data File : VX039738.D
 Acq On : 12 Jan 2024 15:37
 Operator : JC/MD
 Sample : P1104-04
 Misc : 5.0mL/MSVOA_X/WATER
 ALS Vial : 15 Sample Multiplier: 1

Instrument :
 MSVOA_X
 ClientSampleId :
 TP-1

Quant Time: Jan 12 22:39:56 2024
 Quant Method : Z:\voasrv\HPCHEM1\MSVOA_X\Method\82X011024W.M
 Quant Title : SW846 8260
 QLast Update : Thu Jan 11 03:51:26 2024
 Response via : Initial Calibration

Compound	R.T.	QIon	Response	Conc	Units	Dev(Min)

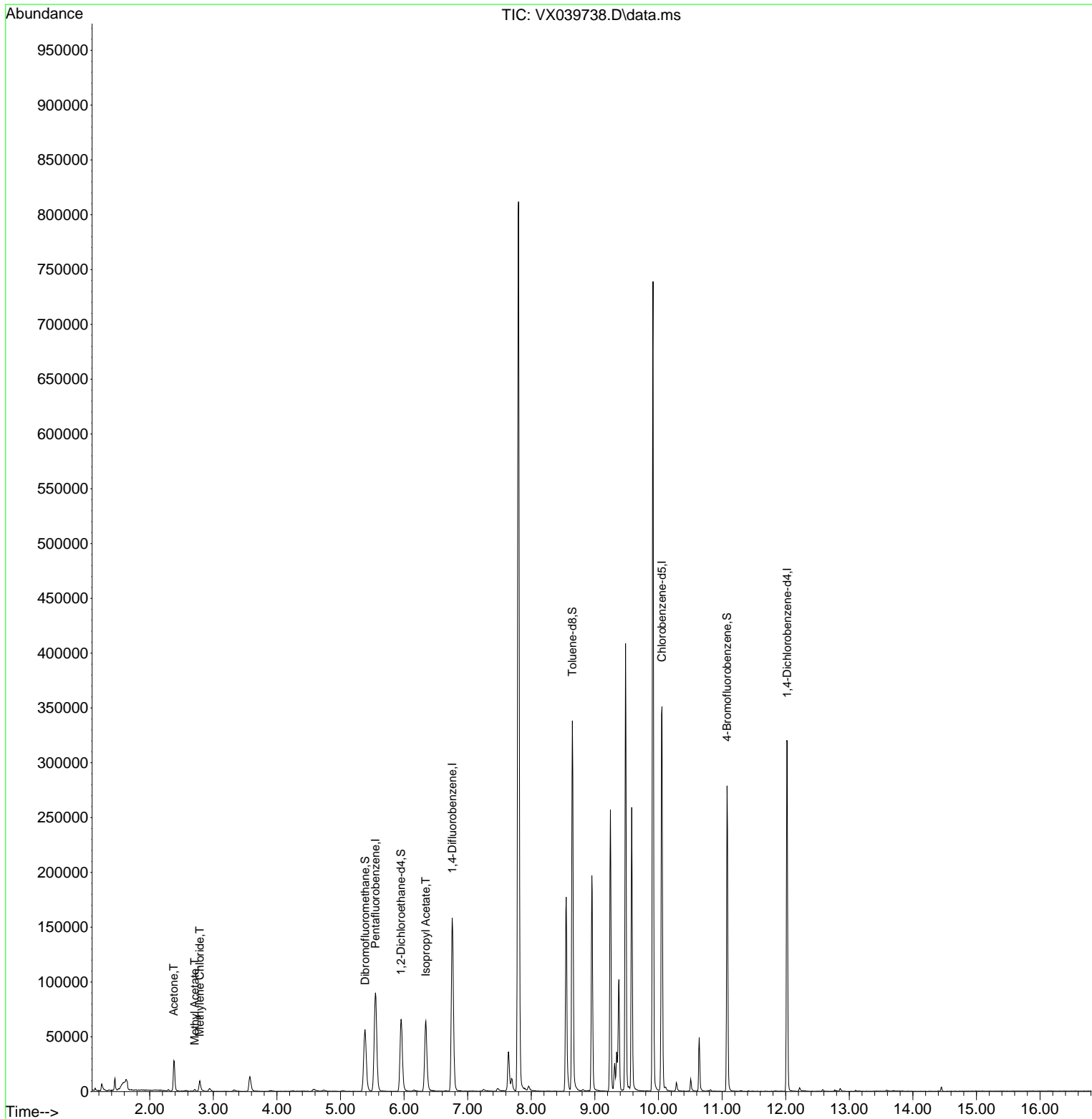
Internal Standards						
1) Pentafluorobenzene	5.550	168	81314	50.000	ug/l	0.00
34) 1,4-Difluorobenzene	6.757	114	155394	50.000	ug/l	0.00
63) Chlorobenzene-d5	10.055	117	154511	50.000	ug/l	0.00
72) 1,4-Dichlorobenzene-d4	12.024	152	65437	50.000	ug/l	0.00
System Monitoring Compounds						
33) 1,2-Dichloroethane-d4	5.952	65	61851	45.408	ug/l	0.00
Spiked Amount	50.000	Range	78 - 117	Recovery	=	90.820%
35) Dibromofluoromethane	5.385	113	49238	47.044	ug/l	0.00
Spiked Amount	50.000	Range	75 - 124	Recovery	=	94.080%
50) Toluene-d8	8.647	98	194884	49.369	ug/l	0.00
Spiked Amount	50.000	Range	92 - 112	Recovery	=	98.740%
62) 4-Bromofluorobenzene	11.079	95	75375	48.829	ug/l	0.00
Spiked Amount	50.000	Range	83 - 123	Recovery	=	97.660%
Target Compounds						
						Qvalue
16) Acetone	2.380	43	29712	38.786	ug/l	91
18) Methyl Acetate	2.709	43	2105	1.313	ug/l	96
20) Methylene Chloride	2.788	84	4820	4.160	ug/l	95
43) Isopropyl Acetate	6.342	43	89044	27.928	ug/l	99

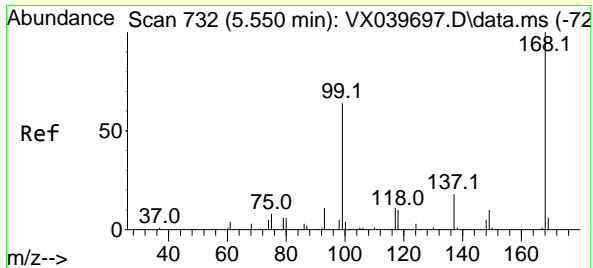
(#) = qualifier out of range (m) = manual integration (+) = signals summed

Data Path : Z:\voasrv\HPCHEM1\MSVOA_X\Data\VX011224\
 Data File : VX039738.D
 Acq On : 12 Jan 2024 15:37
 Operator : JC/MD
 Sample : P1104-04
 Misc : 5.0mL/MSVOA_X/WATER
 ALS Vial : 15 Sample Multiplier: 1

Instrument :
 MSVOA_X
 ClientSampleId :
 TP-1

Quant Time: Jan 12 22:39:56 2024
 Quant Method : Z:\voasrv\HPCHEM1\MSVOA_X\Method\82X011024W.M
 Quant Title : SW846 8260
 QLast Update : Thu Jan 11 03:51:26 2024
 Response via : Initial Calibration

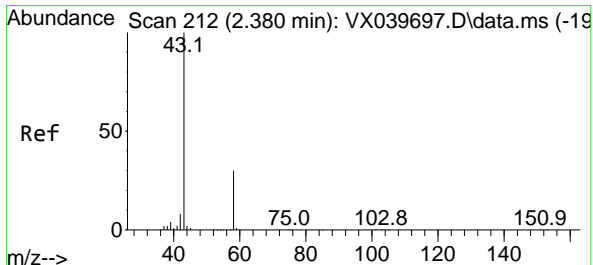
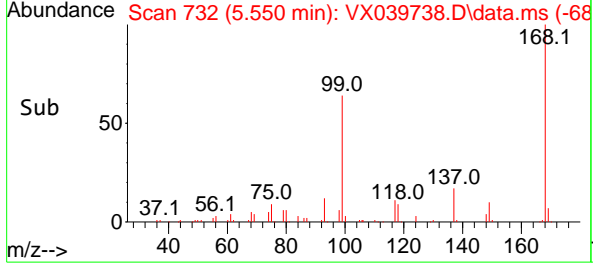
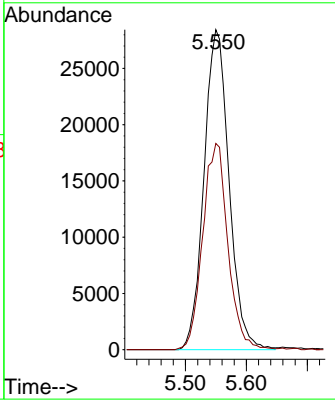
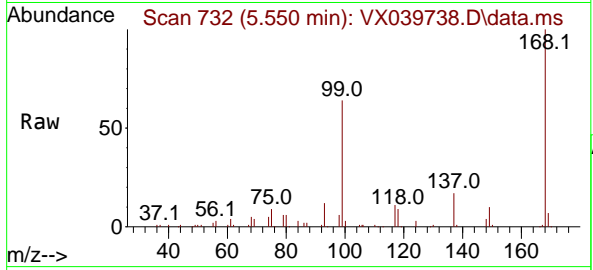




#1
 Pentafluorobenzene
 Concen: 50.000 ug/l
 RT: 5.550 min Scan# 71
 Delta R.T. -0.000 min
 Lab File: VX039738.D
 Acq: 12 Jan 2024 15:37

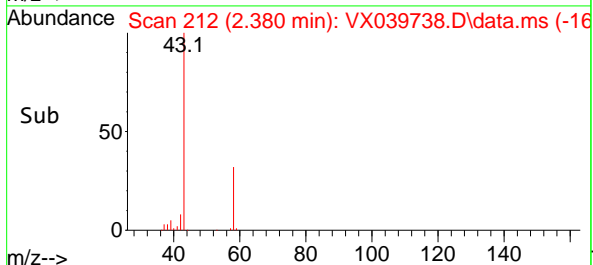
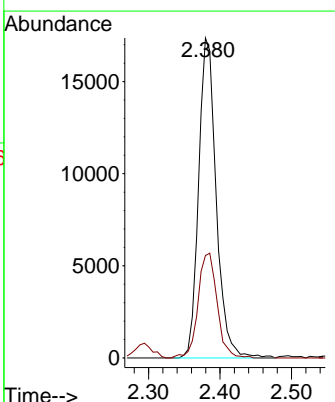
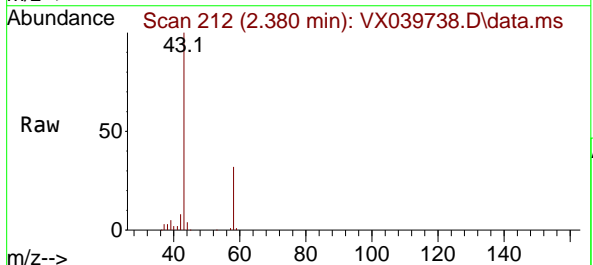
Instrument : MSVOA_X
 ClientSampleId : TP-1

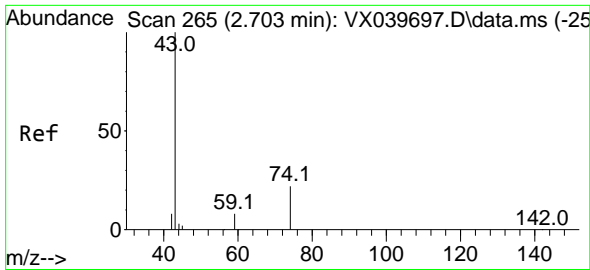
Tgt Ion:168 Resp: 81314
 Ion Ratio Lower Upper
 168 100
 99 64.5 56.6 85.0



#16
 Acetone
 Concen: 38.786 ug/l
 RT: 2.380 min Scan# 212
 Delta R.T. -0.000 min
 Lab File: VX039738.D
 Acq: 12 Jan 2024 15:37

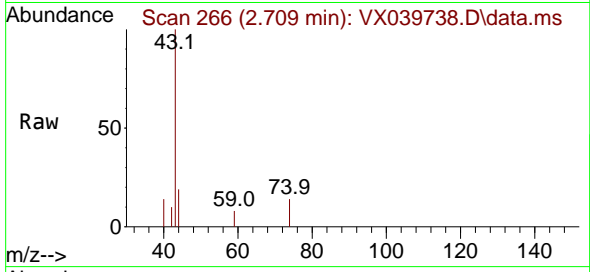
Tgt Ion: 43 Resp: 29712
 Ion Ratio Lower Upper
 43 100
 58 32.0 21.9 32.9



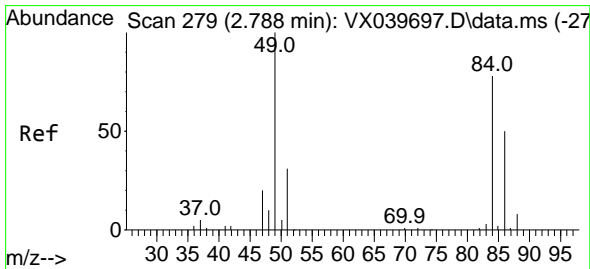
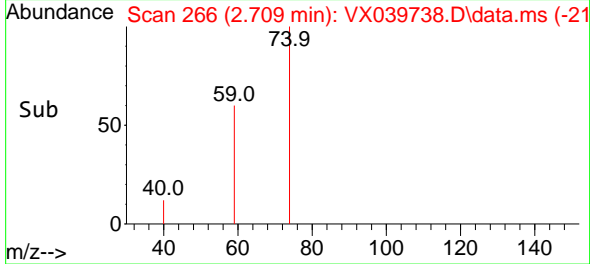
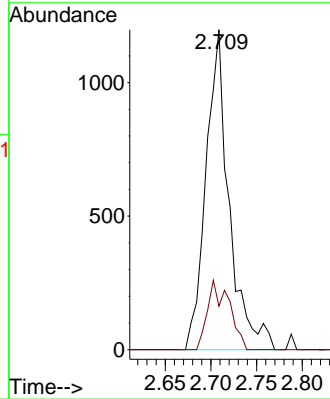


#18
 Methyl Acetate
 Concen: 1.313 ug/l
 RT: 2.709 min Scan# 20
 Delta R.T. 0.006 min
 Lab File: VX039738.D
 Acq: 12 Jan 2024 15:37

Instrument : MSVOA_X
 ClientSampleId : TP-1

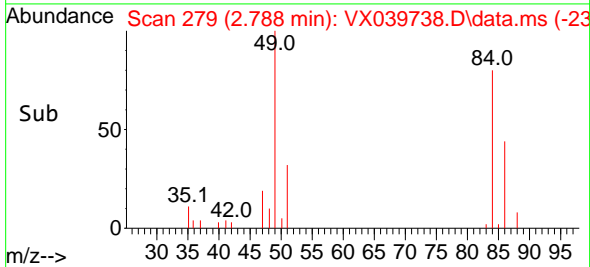
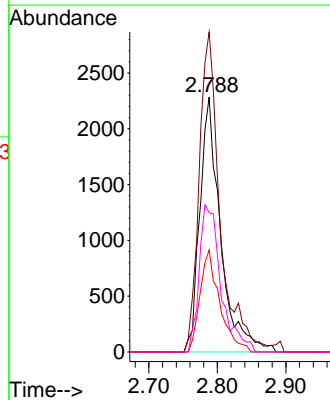
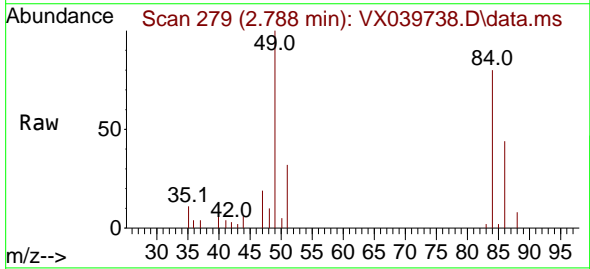


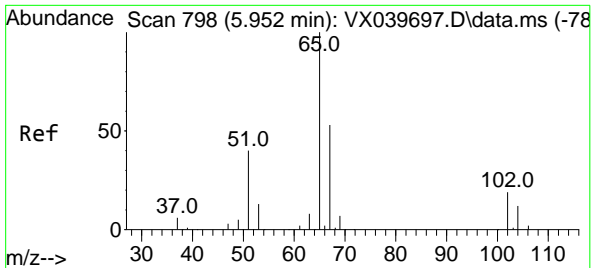
Tgt Ion: 43 Resp: 2105
 Ion Ratio Lower Upper
 43 100
 74 20.4 17.8 26.8



#20
 Methylene Chloride
 Concen: 4.160 ug/l
 RT: 2.788 min Scan# 279
 Delta R.T. -0.000 min
 Lab File: VX039738.D
 Acq: 12 Jan 2024 15:37

Tgt Ion: 84 Resp: 4820
 Ion Ratio Lower Upper
 84 100
 49 125.5 103.6 155.4
 51 40.0 33.8 50.6
 86 54.6 49.4 74.0

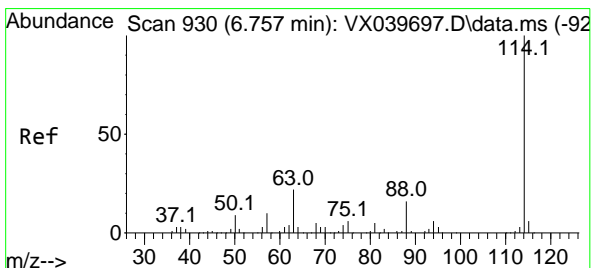
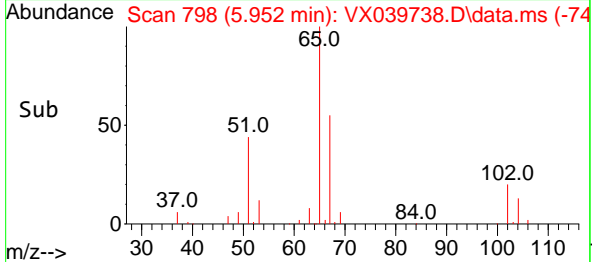
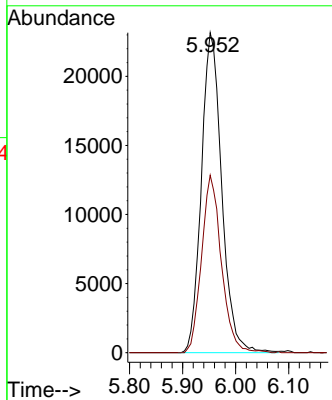
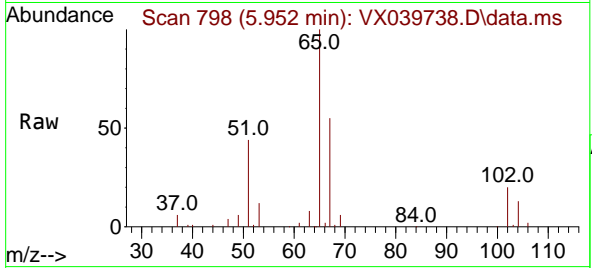




#33
 1,2-Dichloroethane-d4
 Concen: 45.408 ug/l
 RT: 5.952 min Scan# 798
 Delta R.T. -0.000 min
 Lab File: VX039738.D
 Acq: 12 Jan 2024 15:37

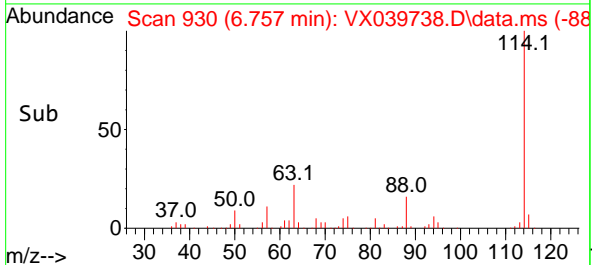
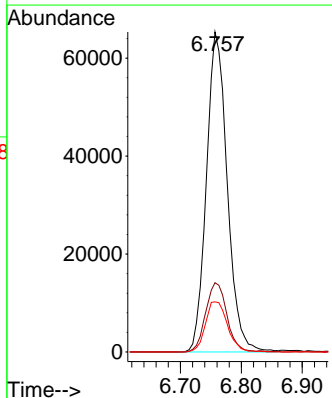
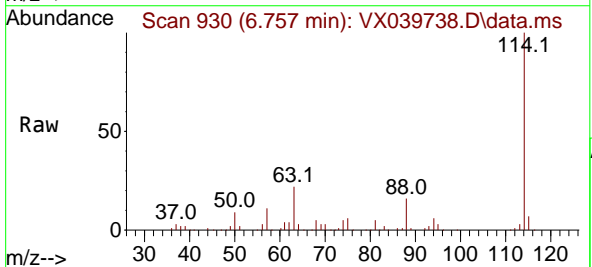
Instrument : MSVOA_X
 ClientSampleId : TP-1

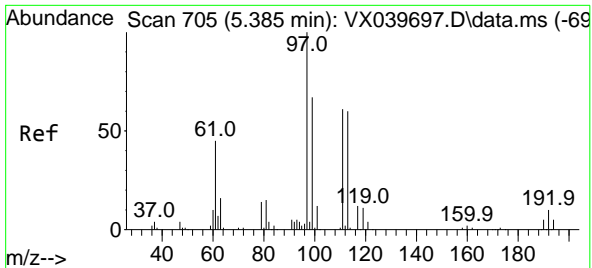
Tgt Ion: 65 Resp: 61851
 Ion Ratio Lower Upper
 65 100
 67 53.9 0.0 100.2



#34
 1,4-Difluorobenzene
 Concen: 50.000 ug/l
 RT: 6.757 min Scan# 930
 Delta R.T. -0.000 min
 Lab File: VX039738.D
 Acq: 12 Jan 2024 15:37

Tgt Ion: 114 Resp: 155394
 Ion Ratio Lower Upper
 114 100
 63 21.6 0.0 45.0
 88 15.7 0.0 36.6

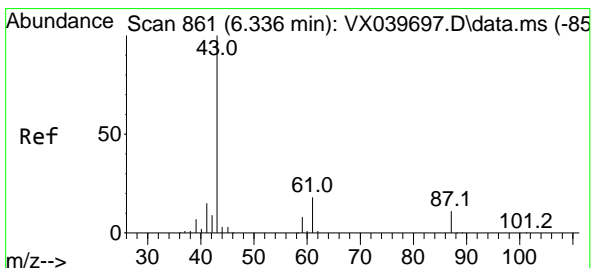
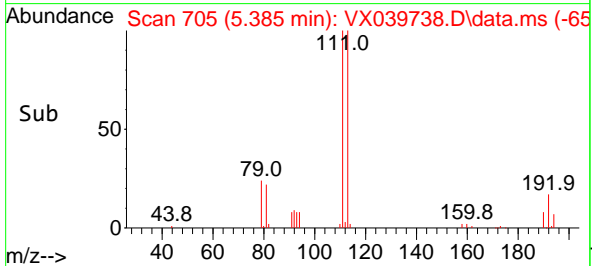
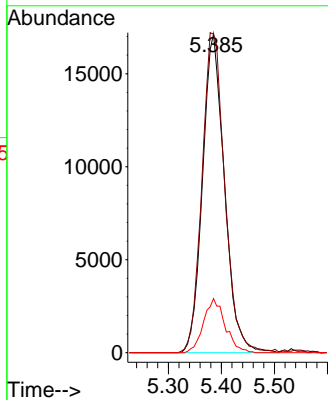
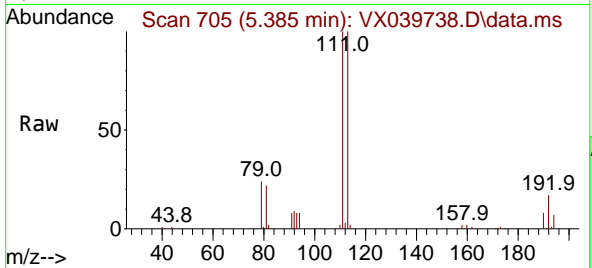




#35
 Dibromofluoromethane
 Concen: 47.044 ug/l
 RT: 5.385 min Scan# 705
 Delta R.T. -0.000 min
 Lab File: VX039738.D
 Acq: 12 Jan 2024 15:37

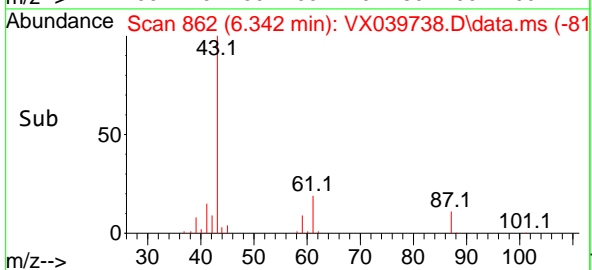
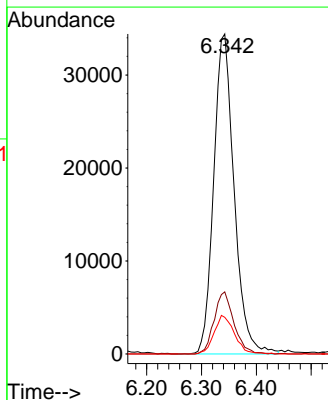
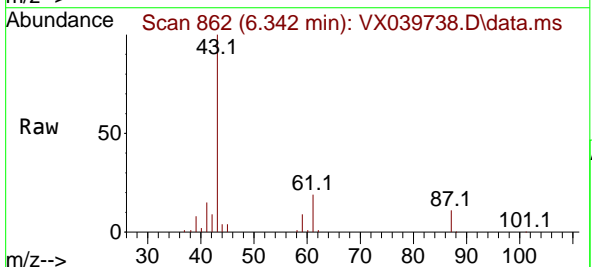
Instrument : MSVOA_X
 ClientSampleId : TP-1

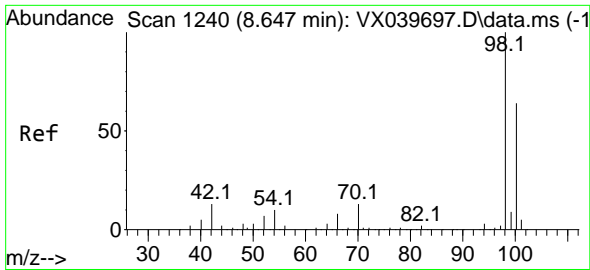
Tgt Ion	Resp	Lower	Upper
113	49238		
113	100		
111	103.6	82.9	124.3
192	16.7	13.3	19.9



#43
 Isopropyl Acetate
 Concen: 27.928 ug/l
 RT: 6.342 min Scan# 862
 Delta R.T. 0.006 min
 Lab File: VX039738.D
 Acq: 12 Jan 2024 15:37

Tgt Ion	Resp	Lower	Upper
43	89044		
43	100		
61	18.8	15.2	22.8
87	11.9	9.8	14.6

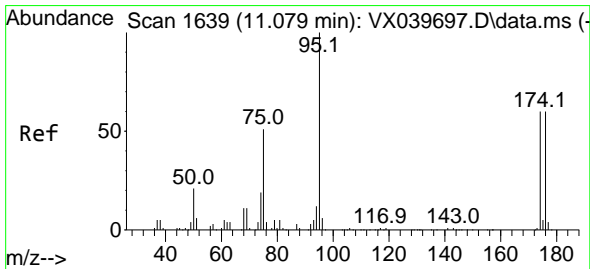
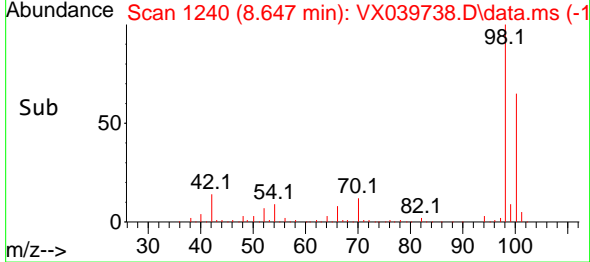
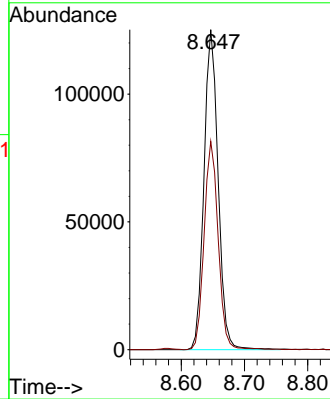
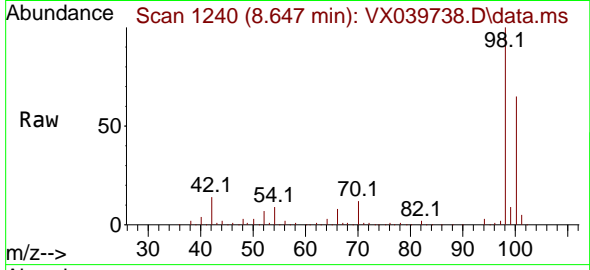




#50
 Toluene-d8
 Concen: 49.369 ug/l
 RT: 8.647 min Scan# 11
 Delta R.T. -0.000 min
 Lab File: VX039738.D
 Acq: 12 Jan 2024 15:37

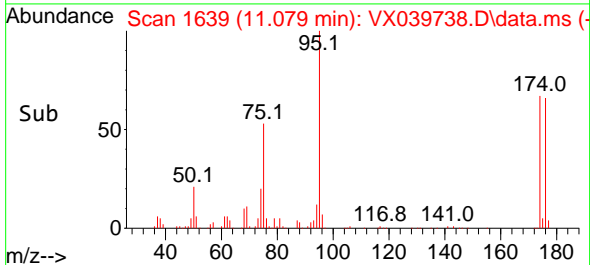
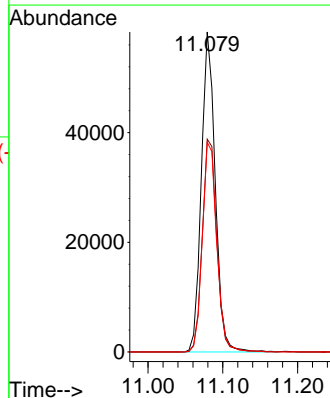
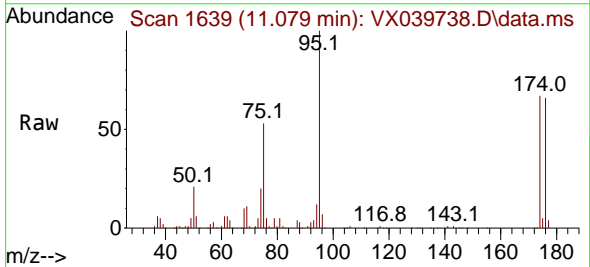
Instrument :
 MSVOA_X
 ClientSampleId :
 TP-1

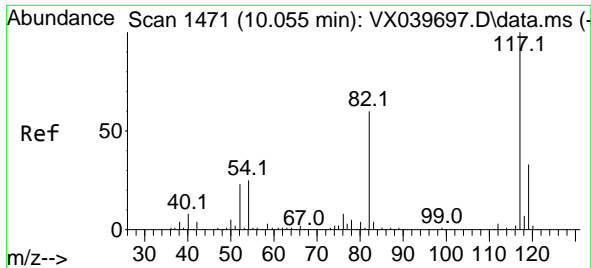
Tgt Ion: 98 Resp: 194884
 Ion Ratio Lower Upper
 98 100
 100 64.8 53.1 79.7



#62
 4-Bromofluorobenzene
 Concen: 48.829 ug/l
 RT: 11.079 min Scan# 1639
 Delta R.T. -0.000 min
 Lab File: VX039738.D
 Acq: 12 Jan 2024 15:37

Tgt Ion: 95 Resp: 75375
 Ion Ratio Lower Upper
 95 100
 174 69.4 0.0 135.6
 176 68.0 0.0 131.0



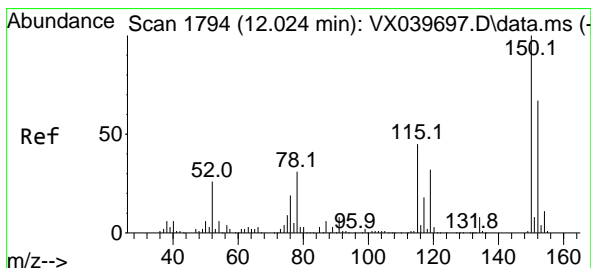
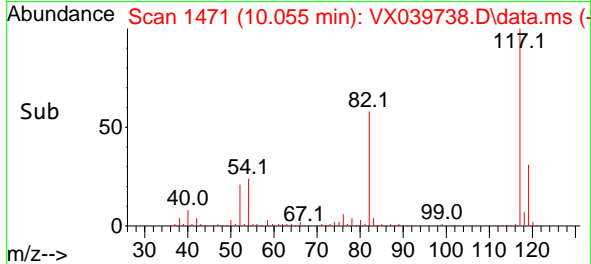
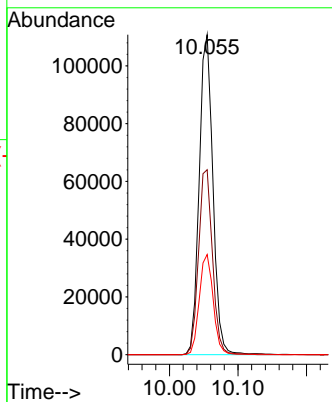
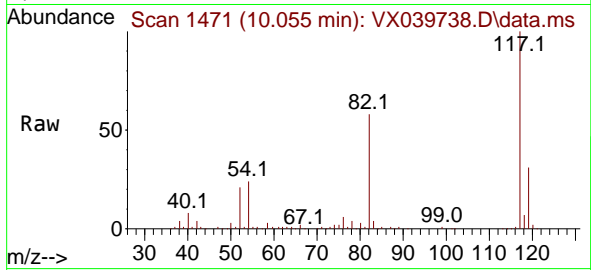


#63
 Chlorobenzene-d5
 Concen: 50.000 ug/l
 RT: 10.055 min Scan# 1471
 Delta R.T. -0.000 min
 Lab File: VX039738.D
 Acq: 12 Jan 2024 15:37

Instrument : MSVOA_X
 ClientSampleId : TP-1

Tgt Ion:117 Resp: 154511

Ion	Ratio	Lower	Upper
117	100		
82	57.8	46.2	69.4
119	31.3	25.5	38.3



#72
 1,4-Dichlorobenzene-d4
 Concen: 50.000 ug/l
 RT: 12.024 min Scan# 1794
 Delta R.T. -0.000 min
 Lab File: VX039738.D
 Acq: 12 Jan 2024 15:37

Tgt Ion:152 Resp: 65437

Ion	Ratio	Lower	Upper
152	100		
115	64.3	43.3	129.9
150	157.6	0.0	345.0

