

Data Path : Z:\VOASRV\HPCHEM1\MSVOA X\DATA\VX011419\
 Data File : VX007043.D
 Acq On : 14 Jan 2019 16:56
 Operator : JC/SP
 Sample : K1015-08
 Misc : 5.0mL/MSVOA X/WATER
 ALS Vial : 15 Sample Multiplier: 1

Instrument :
 MSVOA_X
 ClientSampled :

Quant Time: Jan 15 00:29:53 2019
 Quant Method : Z:\VOASRV\HPCHEM1\MSVOA_X\METHOD\82X010819W.M
 Quant Title : SW846 8260
 QLast Update : Tue Jan 08 14:06:59 2019
 Response via : Initial Calibration

Internal Standards	R.T.	QIon	Response	Conc	Units	Dev(Min)
1) Pentafluorobenzene	5.67	168	597976	50.00	ug/l	0.00
34) 1,4-Difluorobenzene	6.86	114	923147	50.00	ug/l	0.00
63) Chlorobenzene-d5	10.12	117	879458	50.00	ug/l	0.00
72) 1,4-Dichlorobenzene-d4	12.08	152	427562	50.00	ug/l	0.00

System Monitoring Compounds

33) 1,2-Dichloroethane-d4	6.07	65	313313	50.14	ug/l	0.00
Spiked Amount	50.000		Recovery	=	100.28%	
35) Dibromofluoromethane	5.50	113	284388	48.11	ug/l	0.00
Spiked Amount	50.000		Recovery	=	96.22%	
50) Toluene-d8	8.71	98	1117938	51.66	ug/l	0.00
Spiked Amount	50.000		Recovery	=	103.32%	
62) 4-Bromofluorobenzene	11.13	95	399788	53.00	ug/l	0.00
Spiked Amount	50.000		Recovery	=	106.00%	

Target Compounds

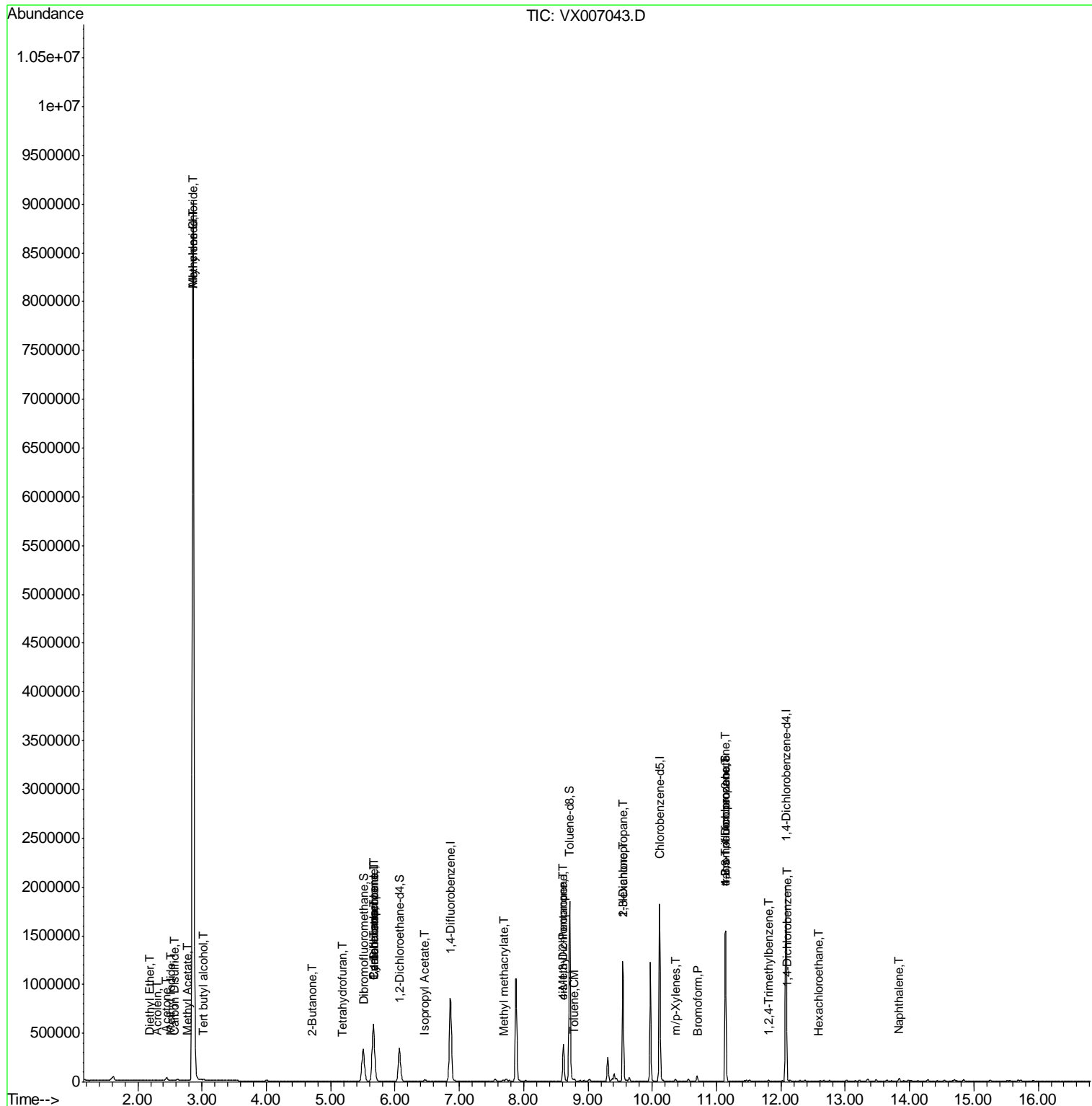
						Qvalue
8) Diethyl Ether	2.20	74	1003	0.254	ug/l	98
10) Methyl Iodide	2.51	142	1743	0.217	ug/l #	92
11) Tert butyl alcohol	3.03	59	2494	1.692	ug/l	98
13) Acrolein	2.30	56	323	3.586	ug/l #	13
14) Allyl chloride	2.86	41	144191	15.309	ug/l #	26
16) Acetone	2.45	43	30087	9.739	ug/l	100
17) Carbon Disulfide	2.57	76	3132	0.221	ug/l	99
18) Methyl Acetate	2.78	43	3988	0.446	ug/l #	75
20) Methylene Chloride	2.86	84	4159775	715.431	ug/l	95
25) 2-Butanone	4.70	43	3015	0.682	ug/l #	66
29) Tetrahydrofuran	5.18	42	2658	0.925	ug/l #	30
31) Cyclohexane	5.67	56	10241	1.162	ug/l #	1
36) 1,1-Dichloropropene	5.67	75	38023	4.737	ug/l #	44
38) Carbon Tetrachloride	5.67	117	53174	6.585	ug/l #	16
43) Isopropyl Acetate	6.46	43	21380	1.575	ug/l	99
48) Methyl methacrylate	7.68	41	12648	1.815	ug/l #	21
49) 1,4-Dioxane	7.74	88	155	Below Cal	#	1
51) 4-Methyl-2-Pentanone	8.62	43	119309	13.678	ug/l #	50
52) Toluene	8.79	92	5593	0.355	ug/l	89
54) cis-1,3-Dichloropropene	8.62	75	60381	6.695	ug/l #	63
57) 1,3-Dichloropropane	9.54	76	10486	1.016	ug/l #	45
59) 2-Hexanone	9.54	43	137001	20.611	ug/l #	51
68) m/p-Xylenes	10.36	106	3794	0.304	ug/l	100
71) Bromoform	10.72	173	95	4.742	ug/l #	28
76) 1,2,3-Trichloropropane	11.13	75	191558	22.109	ug/l #	40
81) trans-1,4-Dichloro-2-buten	11.13	75	191558	65.456	ug/l #	10
84) 1,2,4-Trimethylbenzene	11.80	105	6422	0.254	ug/l	100
88) 1,4-Dichlorobenzene	12.10	146	1576	0.255	ug/l #	1
90) Hexachloroethane	12.59	117	382	2.992	ug/l #	22
95) Naphthalene	13.83	128	18116	0.588	ug/l	95

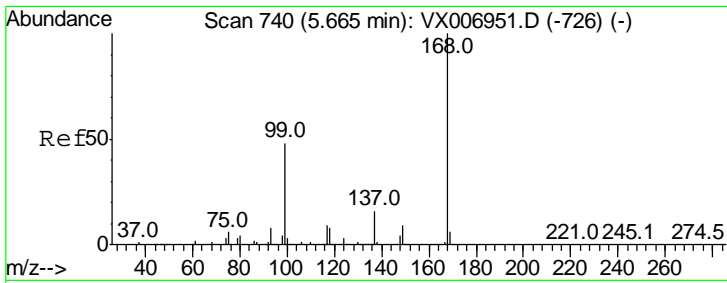
(#) = qualifier out of range (m) = manual integration (+) = signals summed

Data Path : Z:\VOASRV\HPCHEM1\MSVOA X\DATA\VX011419\
 Data File : VX007043.D
 Acq On : 14 Jan 2019 16:56
 Operator : JC/SP
 Sample : K1015-08
 Misc : 5.0mL/MSVOA X/WATER
 ALS Vial : 15 Sample Multiplier: 1

Instrument :
 MSVOA_X
 Client Sampled :

Quant Time: Jan 15 00:29:53 2019
 Quant Method : Z:\VOASRV\HPCHEM1\MSVOA_X\METHOD\82X010819W.M
 Quant Title : SW846 8260
 QLast Update : Tue Jan 08 14:06:59 2019
 Response via : Initial Calibration

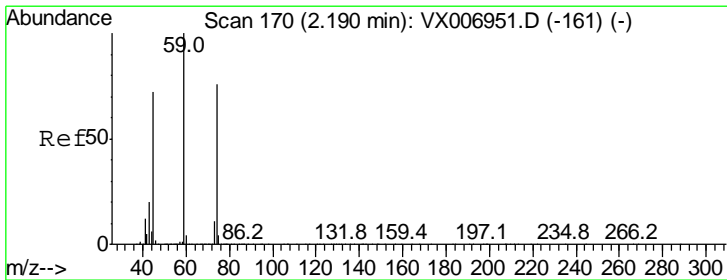
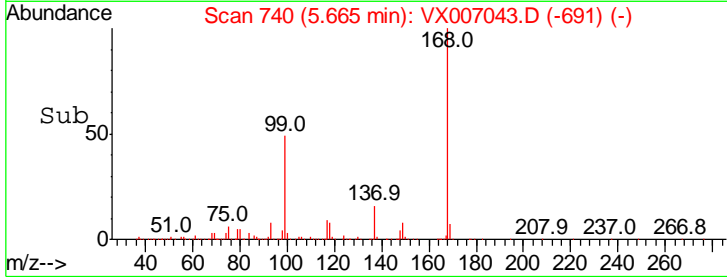
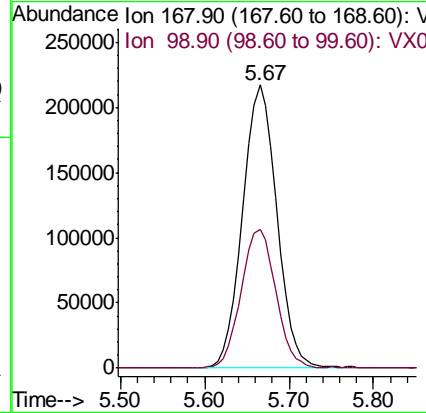
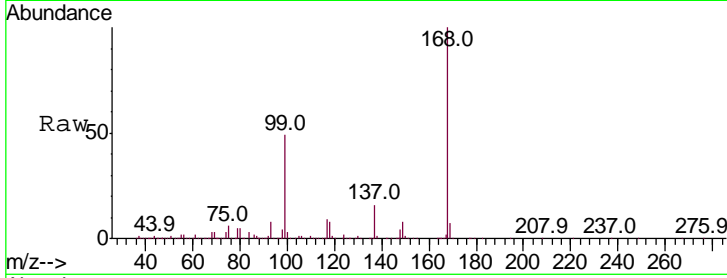




#1
 Pentafluorobenzene
 Concen: 50.000 ug/l
 RT: 5.67 min Scan# 740
 Delta R.T. -0.00 min
 Lab File: VX007043.D
 Acq: 14 Jan 2019 16:56

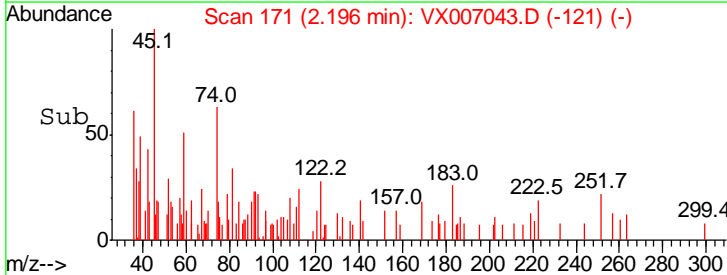
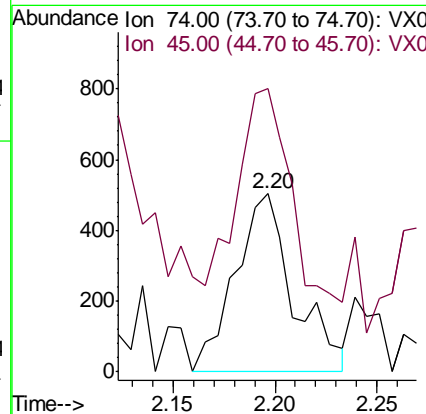
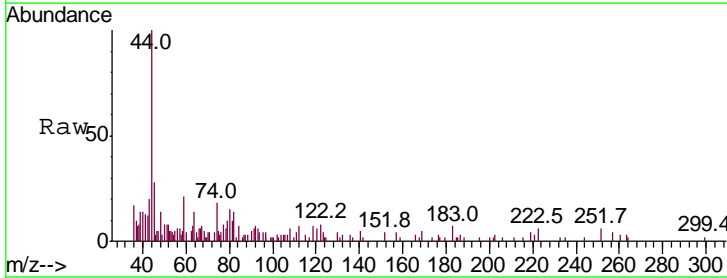
Instrument :
 MSVOA_X
 ClientSampled :

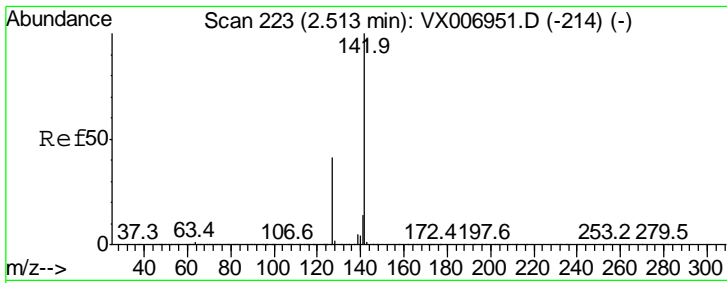
Tgt Ion	Resp	Lower	Upper
168	100		
99	48.8	41.8	62.8



#8
 Diethyl Ether
 Concen: 0.254 ug/l
 RT: 2.20 min Scan# 171
 Delta R.T. 0.01 min
 Lab File: VX007043.D
 Acq: 14 Jan 2019 16:56

Tgt Ion	Resp	Lower	Upper
74	100		
45	94.5	46.3	138.9

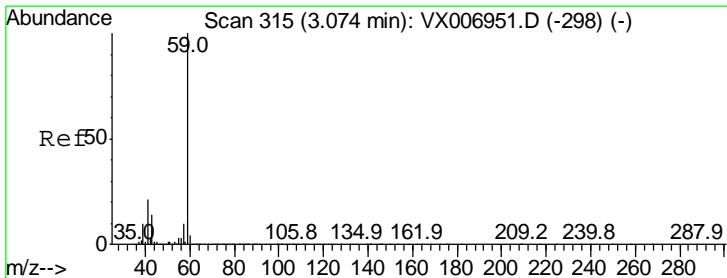
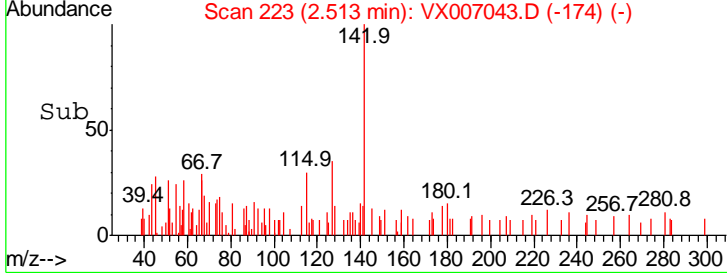
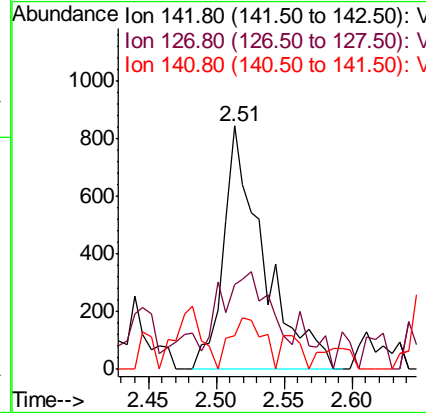
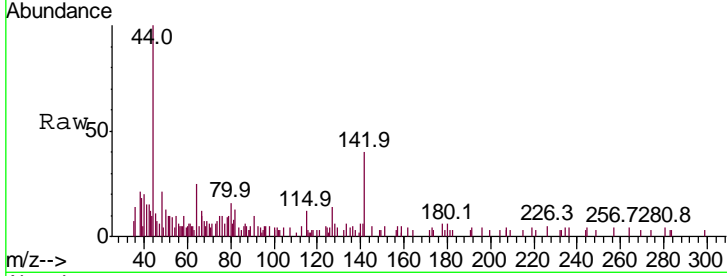




#10
 Methyl Iodide
 Concen: 0.217 ug/l
 RT: 2.51 min Scan# 223
 Delta R.T. -0.00 min
 Lab File: VX007043.D
 Acq: 14 Jan 2019 16:56

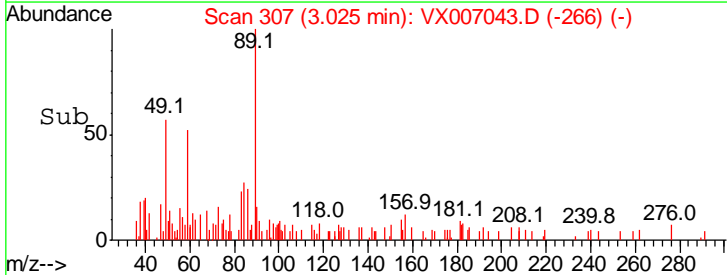
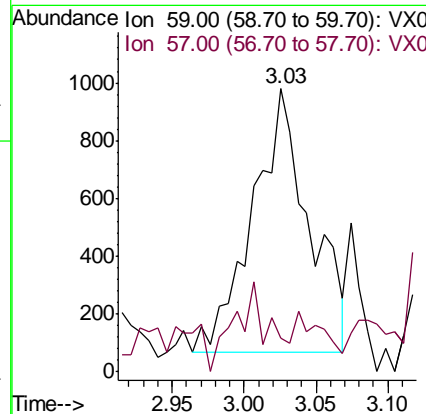
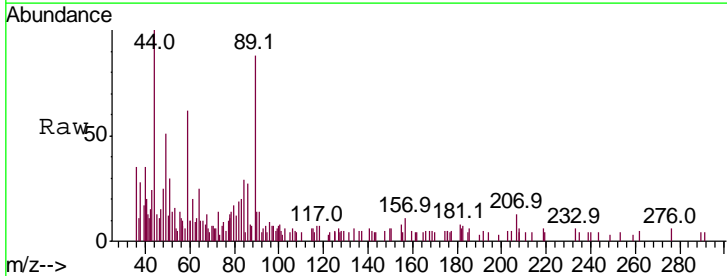
Instrument :
 MSVOA_X
 ClientSampled :

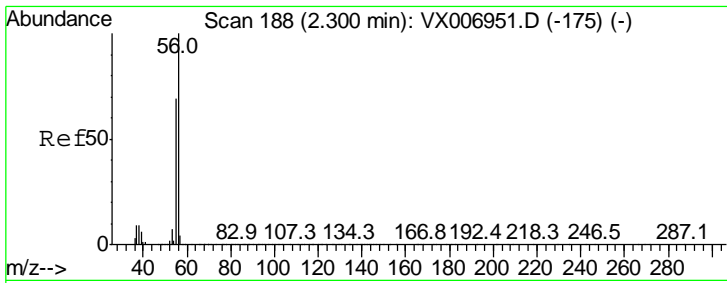
Tgt Ion	Ratio	Lower	Upper
142	100		
127	37.0	33.9	50.9
141	17.1	11.4	17.0#



#11
 Tert butyl alcohol
 Concen: 1.692 ug/l
 RT: 3.03 min Scan# 307
 Delta R.T. -0.05 min
 Lab File: VX007043.D
 Acq: 14 Jan 2019 16:56

Tgt Ion	Ratio	Lower	Upper
59	100		
57	9.7	8.5	12.7

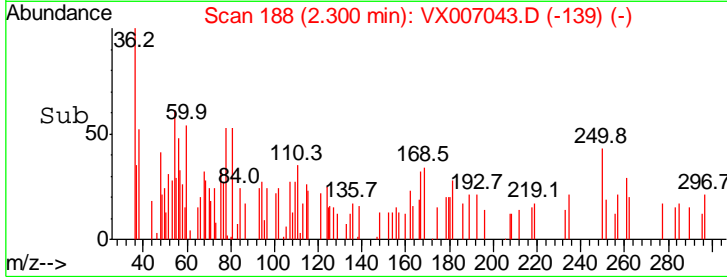
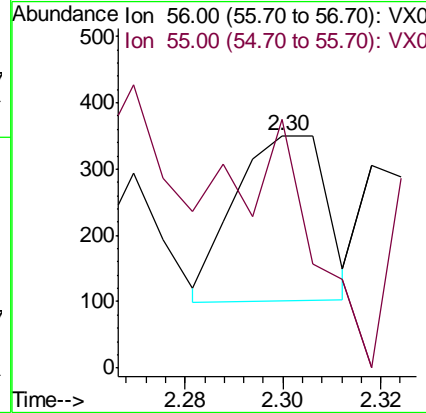
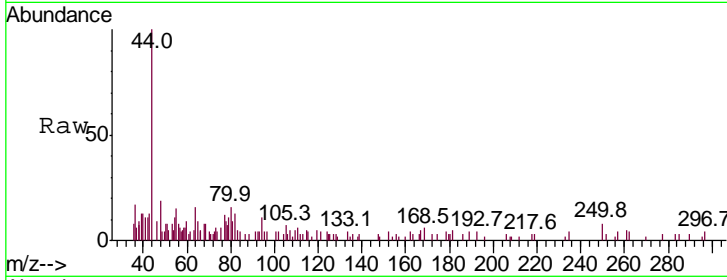




#13
 Acrolein
 Concen: 3.586 ug/l
 RT: 2.30 min Scan# 188
 Delta R.T. -0.00 min
 Lab File: VX007043.D
 Acq: 14 Jan 2019 16:56

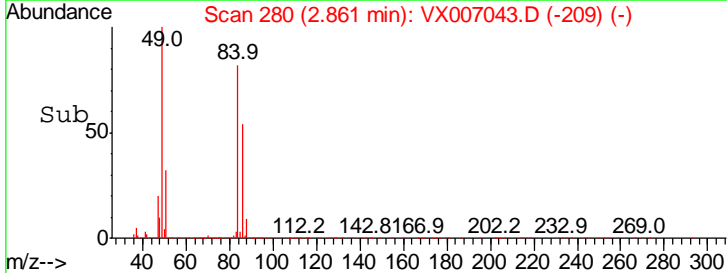
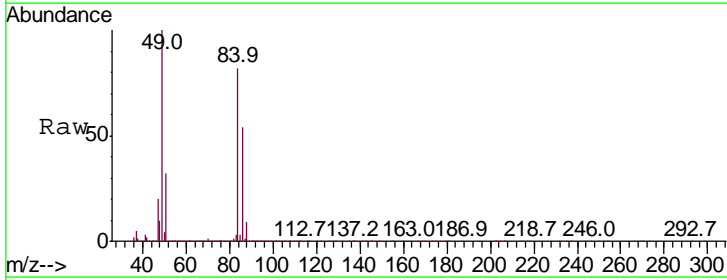
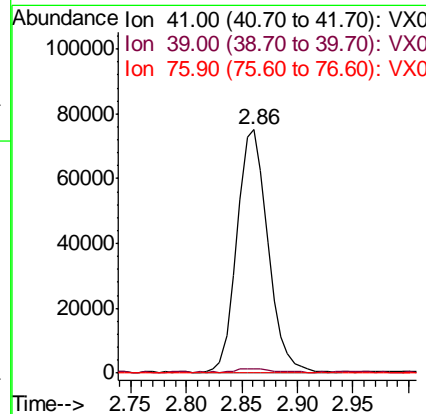
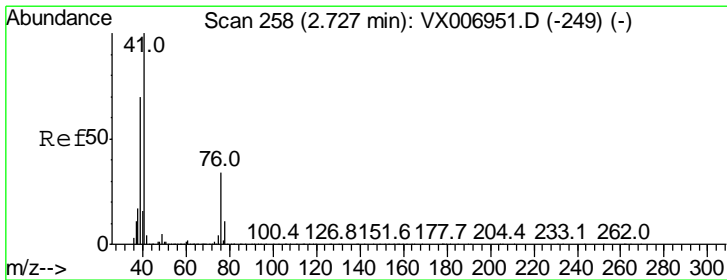
Instrument : MSVOA_X
 ClientSampled :

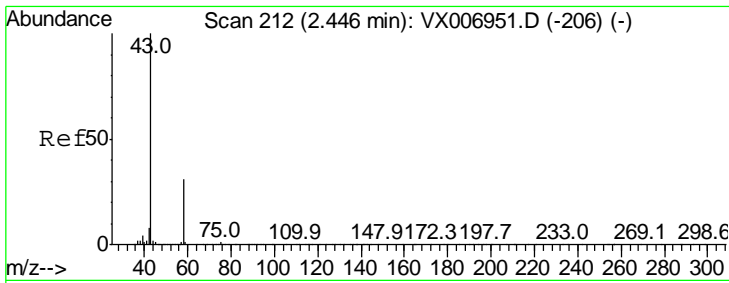
Tgt Ion	Ratio	Lower	Upper
56	100		
55	0.0	58.2	87.4#



#14
 Allyl chloride
 Concen: 15.309 ug/l
 RT: 2.86 min Scan# 280
 Delta R.T. 0.13 min
 Lab File: VX007043.D
 Acq: 14 Jan 2019 16:56

Tgt Ion	Ratio	Lower	Upper
41	100		
39	1.6	53.6	80.4#
76	0.2	27.4	41.2#

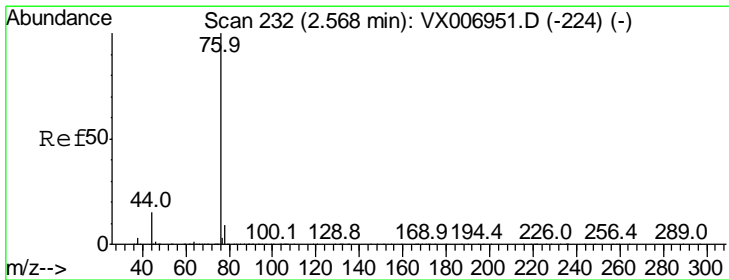
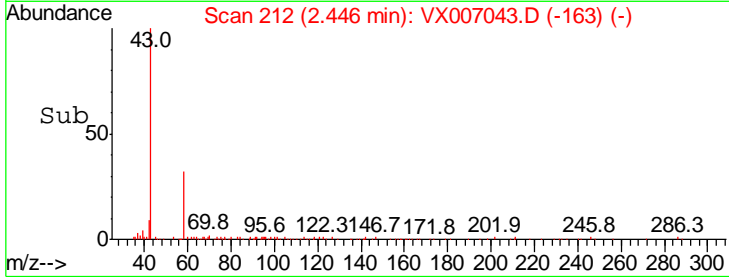
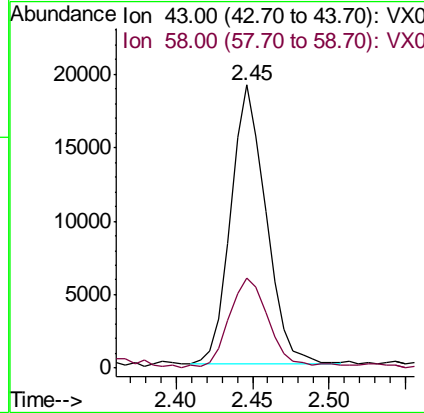
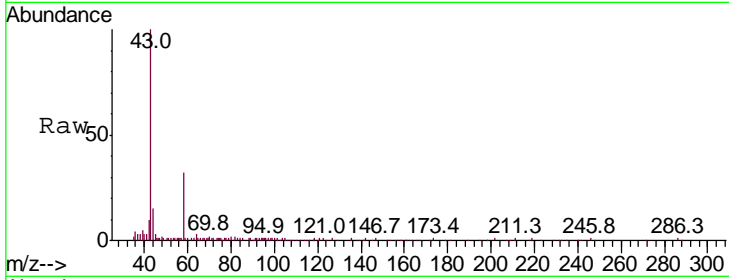




#16
 Acetone
 Concen: 9.739 ug/l
 RT: 2.45 min Scan# 212
 Delta R.T. -0.00 min
 Lab File: VX007043.D
 Acq: 14 Jan 2019 16:56

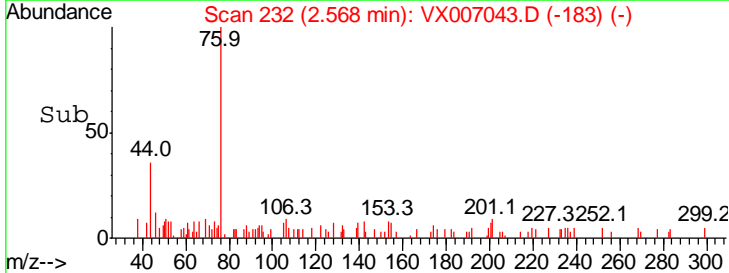
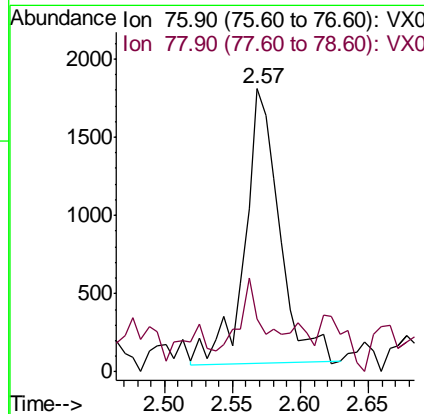
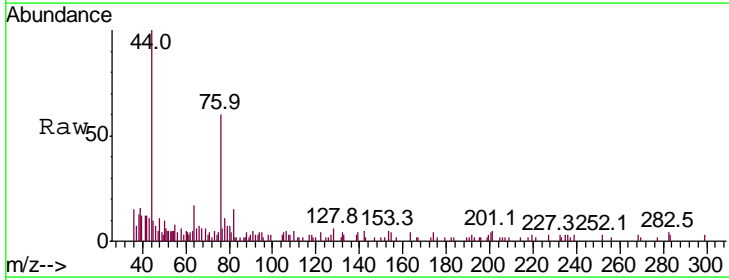
Instrument :
 MSVOA_X
 ClientSampled :

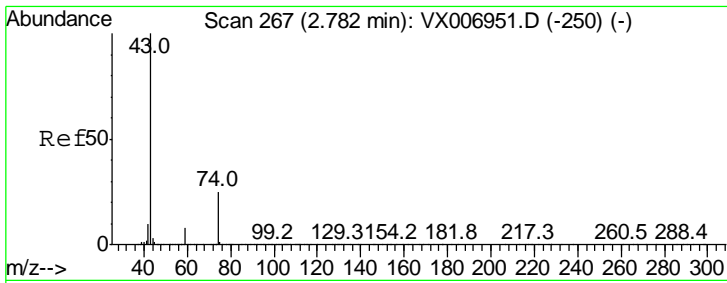
Tgt Ion: 43 Resp: 30087
 Ion Ratio Lower Upper
 43 100
 58 31.4 25.0 37.6



#17
 Carbon Disulfide
 Concen: 0.221 ug/l
 RT: 2.57 min Scan# 232
 Delta R.T. -0.00 min
 Lab File: VX007043.D
 Acq: 14 Jan 2019 16:56

Tgt Ion: 76 Resp: 3132
 Ion Ratio Lower Upper
 76 100
 78 8.4 7.0 10.6

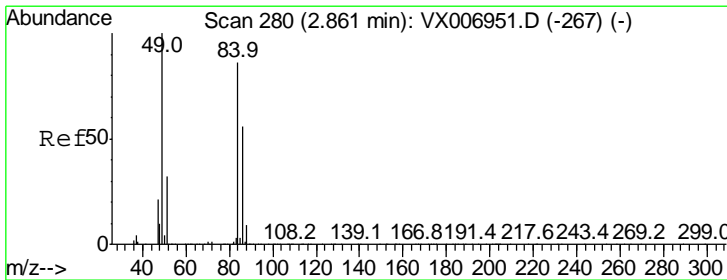
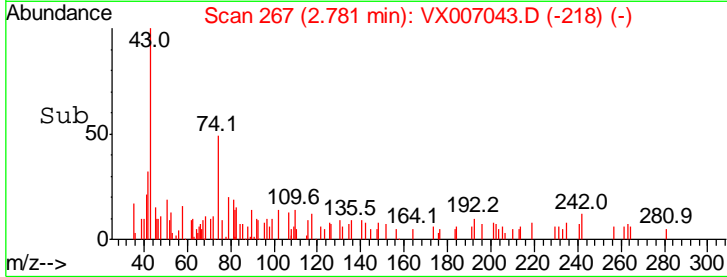
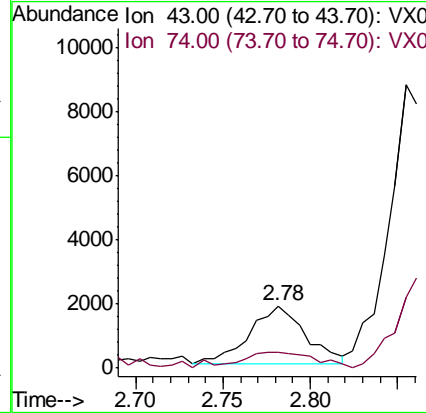
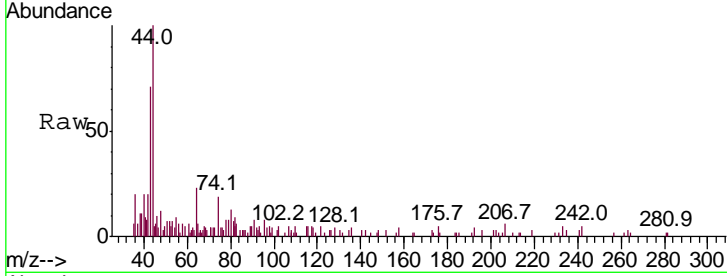




#18
 Methyl Acetate
 Concen: 0.446 ug/l
 RT: 2.78 min Scan# 267
 Delta R.T. -0.00 min
 Lab File: VX007043.D
 Acq: 14 Jan 2019 16:56

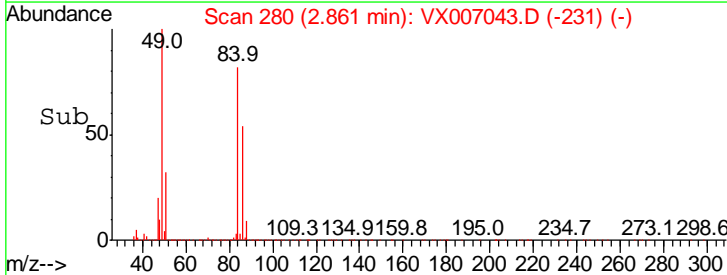
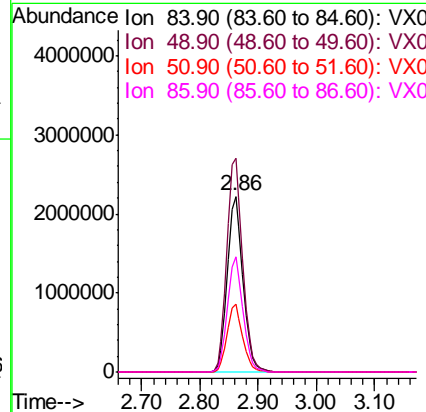
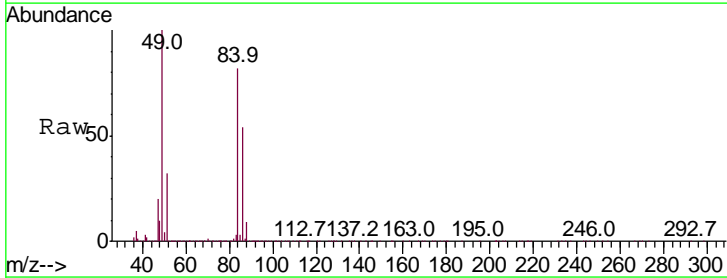
Instrument :
 MSVOA_X
 ClientSampled :

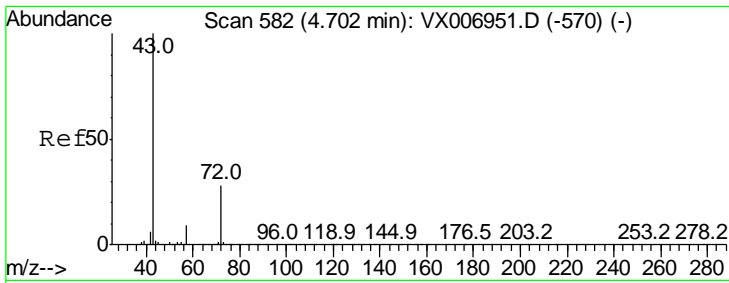
Tgt Ion	Ratio	Lower	Upper
43	100		
74	35.5	18.6	28.0#



#20
 Methylene Chloride
 Concen: 715.431 ug/l
 RT: 2.86 min Scan# 280
 Delta R.T. 0.00 min
 Lab File: VX007043.D
 Acq: 14 Jan 2019 16:56

Tgt Ion	Ratio	Lower	Upper
84	100		
49	121.4	91.8	137.6
51	38.3	28.5	42.7
86	65.6	50.2	75.2

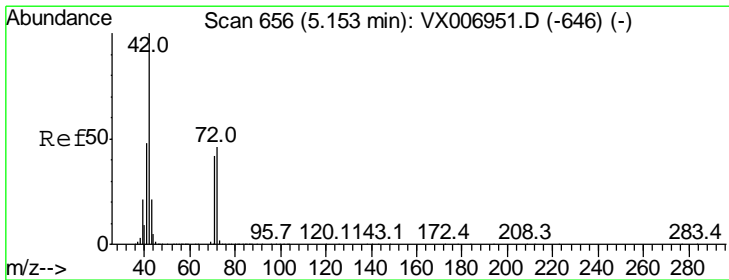
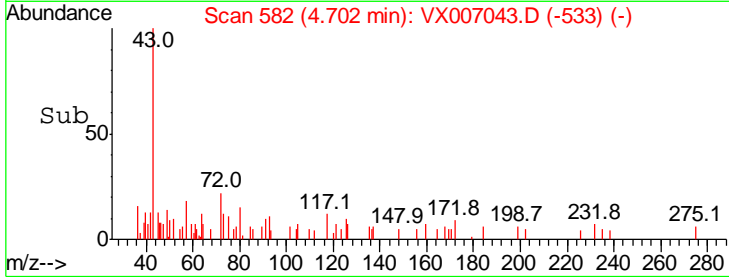
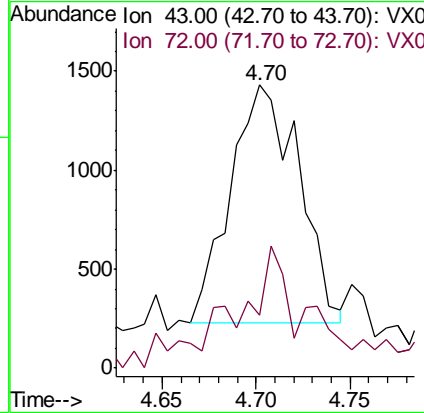
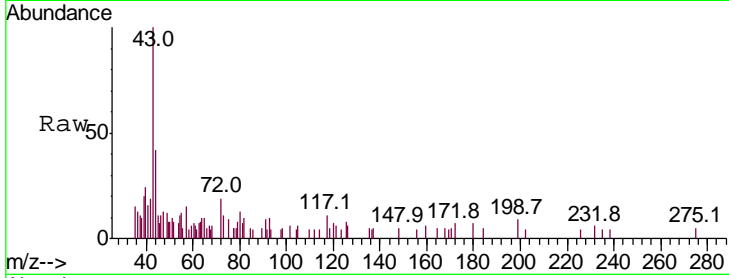




#25
 2-Butanone
 Concen: 0.682 ug/l
 RT: 4.70 min Scan# 582
 Delta R.T. -0.00 min
 Lab File: VX007043.D
 Acq: 14 Jan 2019 16:56

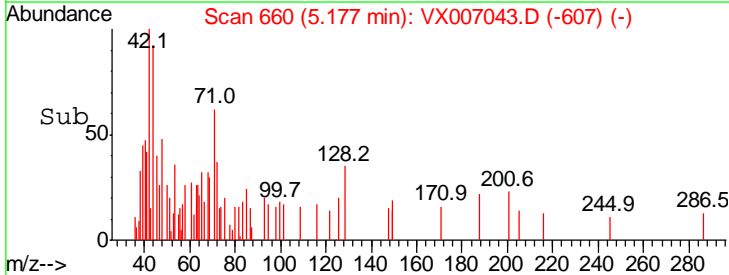
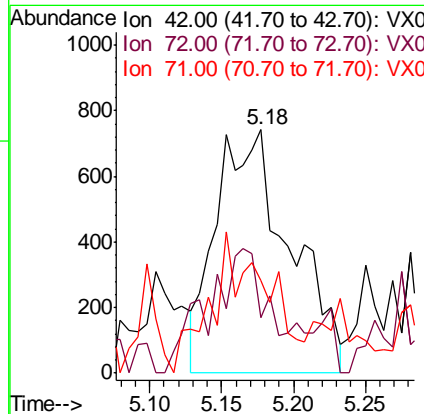
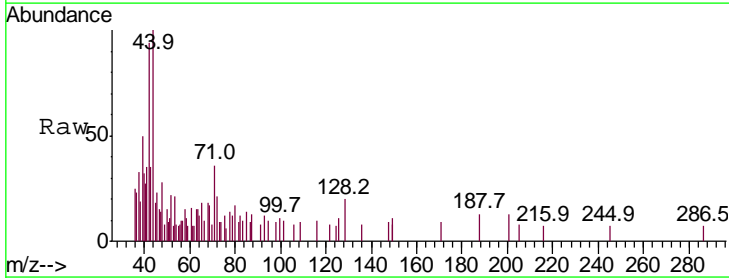
Instrument :
 MSVOA_X
 ClientSampled :

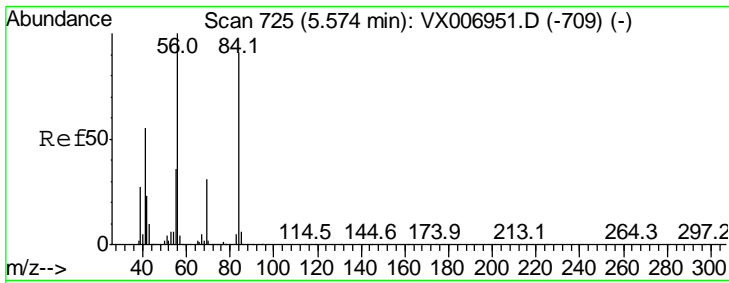
Tgt Ion: 43 Resp: 3015
 Ion Ratio Lower Upper
 43 100
 72 10.0 22.4 33.6#



#29
 Tetrahydrofuran
 Concen: 0.925 ug/l
 RT: 5.18 min Scan# 660
 Delta R.T. 0.02 min
 Lab File: VX007043.D
 Acq: 14 Jan 2019 16:56

Tgt Ion: 42 Resp: 2658
 Ion Ratio Lower Upper
 42 100
 72 0.0 38.9 58.3#
 71 0.0 36.2 54.4#

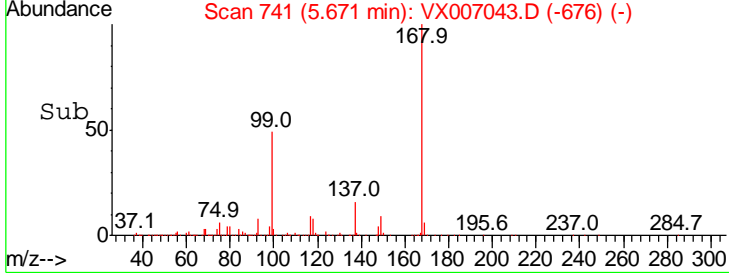
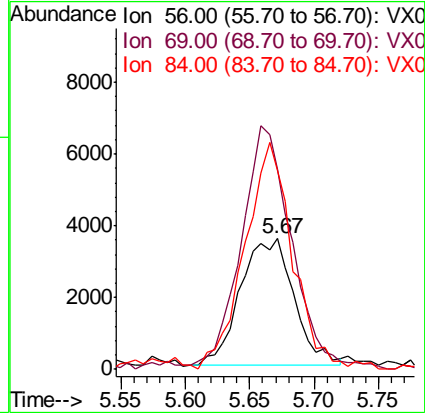
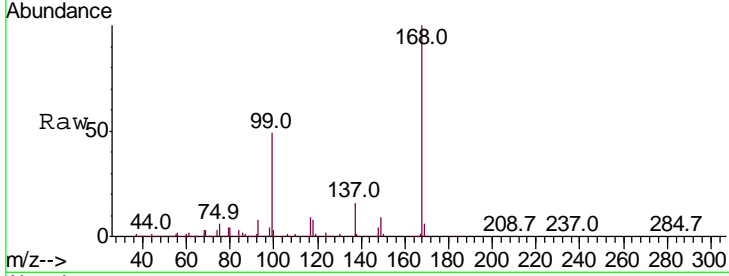




#31
 Cyclohexane
 Concen: 1.162 ug/l
 RT: 5.67 min Scan# 741
 Delta R.T. 0.10 min
 Lab File: VX007043.D
 Acq: 14 Jan 2019 16:56

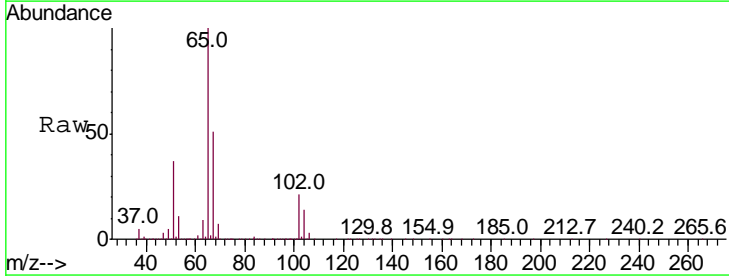
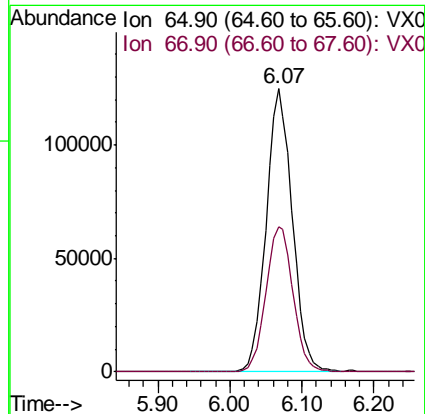
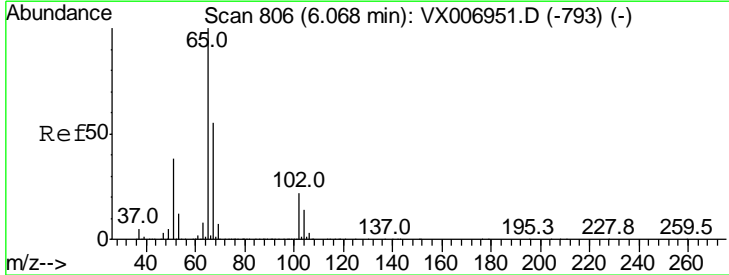
Instrument :
 MSVOA_X
 ClientSampled :

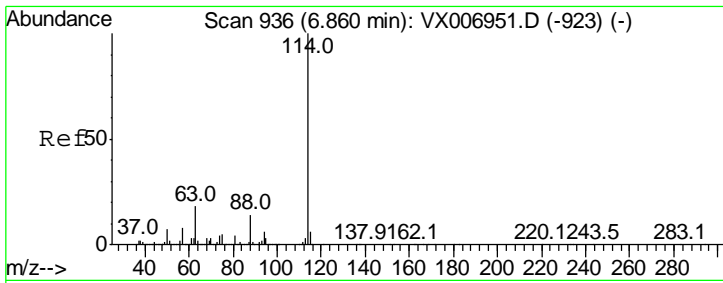
Tgt Ion	Resp	Lower	Upper
56	10241		
69	155.1	24.4	36.6#
84	159.1	70.0	105.0#



#33
 1,2-Dichloroethane-d4
 Concen: 50.135 ug/l
 RT: 6.07 min Scan# 806
 Delta R.T. -0.00 min
 Lab File: VX007043.D
 Acq: 14 Jan 2019 16:56

Tgt Ion	Resp	Lower	Upper
65	313313		
67	53.2	0.0	105.0

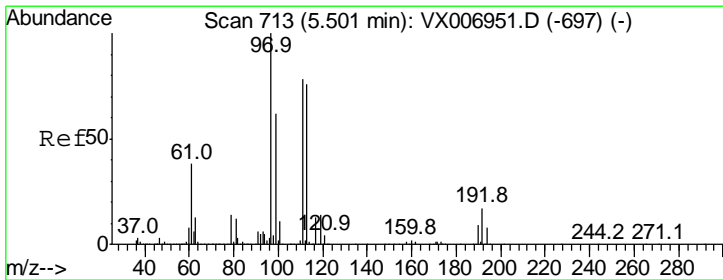
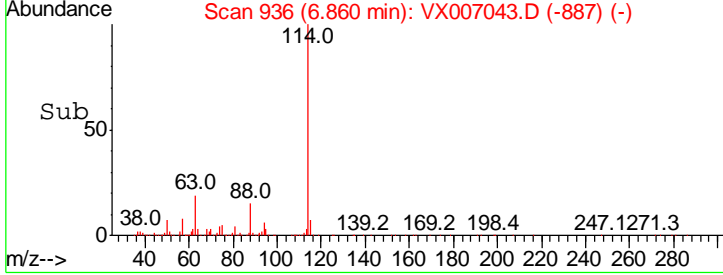
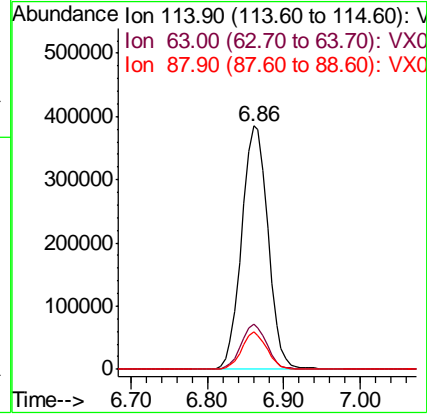
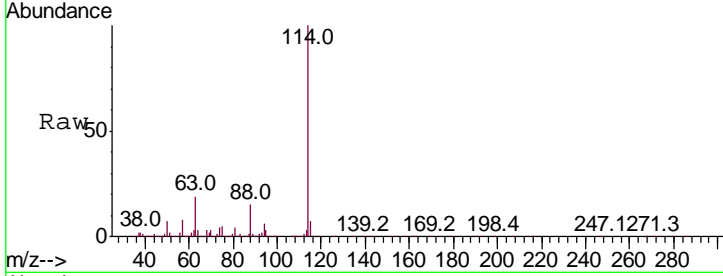




#34
 1,4-Difluorobenzene
 Concen: 50.000 ug/l
 RT: 6.86 min Scan# 936
 Delta R.T. -0.00 min
 Lab File: VX007043.D
 Acq: 14 Jan 2019 16:56

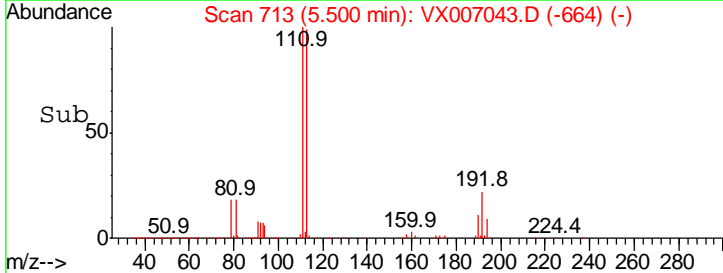
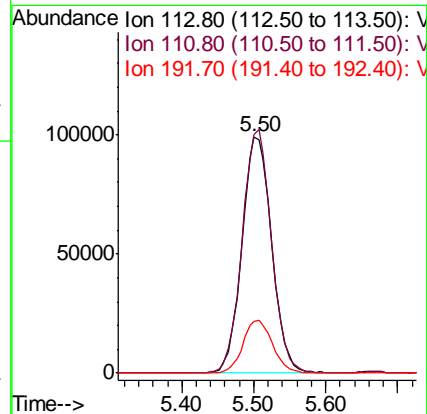
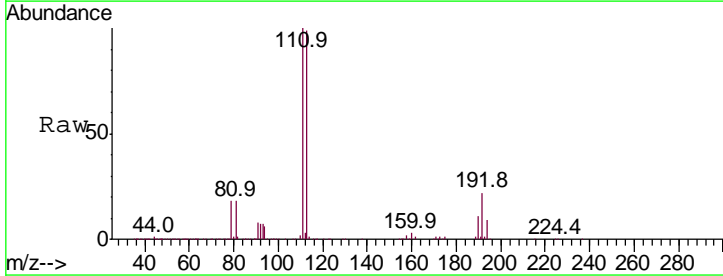
Instrument :
 MSVOA_X
 ClientSampled :

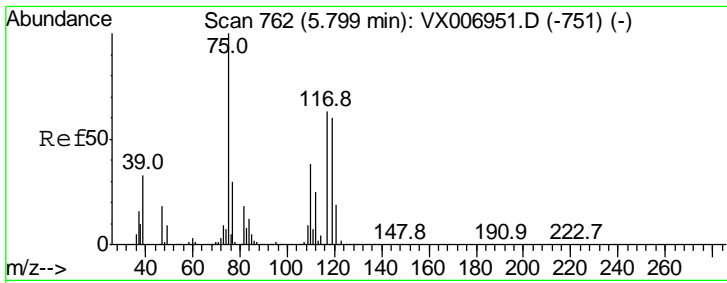
Tgt Ion	Resp	Lower	Upper
114	100		
63	18.5	0.0	34.8
88	15.3	0.0	28.8



#35
 Dibromofluoromethane
 Concen: 48.105 ug/l
 RT: 5.50 min Scan# 713
 Delta R.T. -0.00 min
 Lab File: VX007043.D
 Acq: 14 Jan 2019 16:56

Tgt Ion	Resp	Lower	Upper
113	100		
111	101.5	81.6	122.4
192	22.3	16.7	25.1

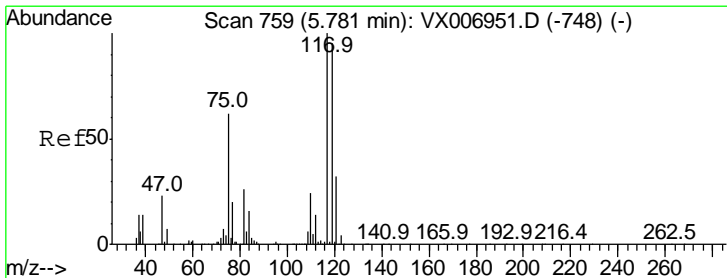
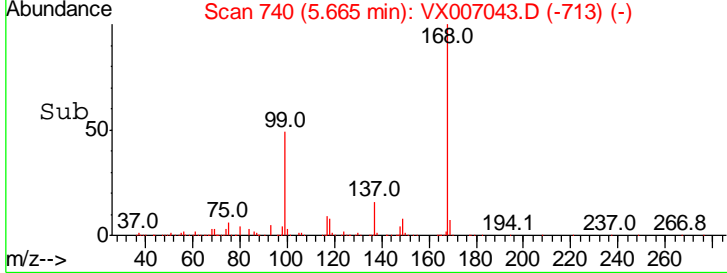
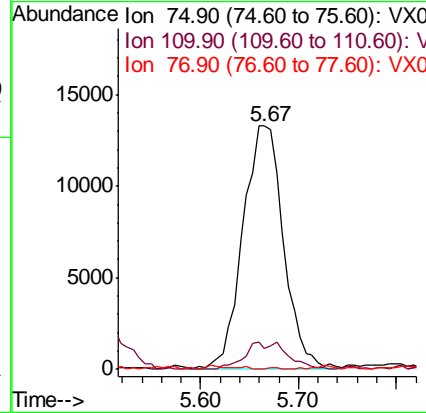
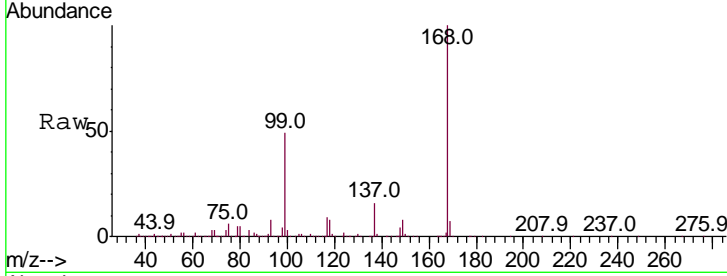




#36
 1,1-Dichloropropene
 Concen: 4.737 ug/l
 RT: 5.67 min Scan# 740
 Delta R.T. -0.13 min
 Lab File: VX007043.D
 Acq: 14 Jan 2019 16:56

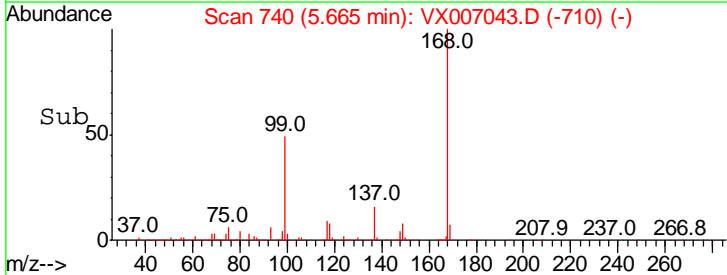
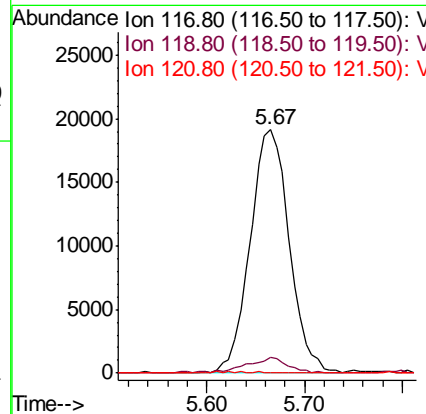
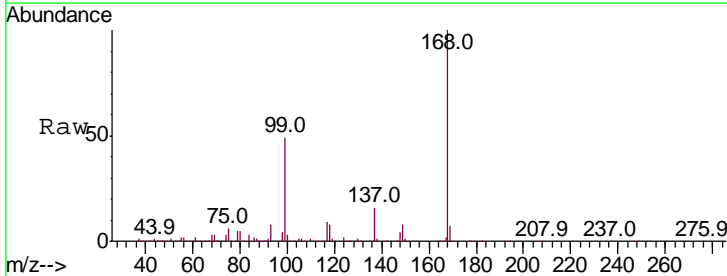
Instrument :
 MSVOA_X
 ClientSampled :

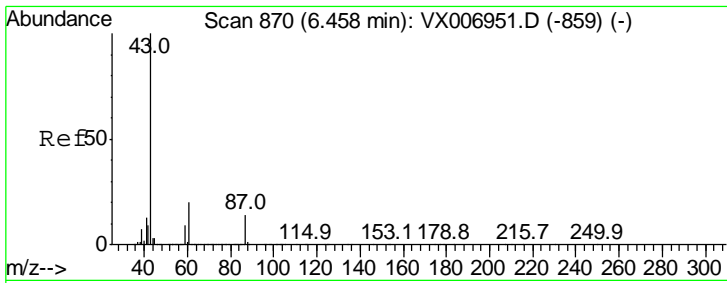
Tgt Ion	Resp	Lower	Upper
75	38023		
75	100		
110	5.8	20.2	60.5#
77	0.2	24.8	37.2#



#38
 Carbon Tetrachloride
 Concen: 6.585 ug/l
 RT: 5.67 min Scan# 740
 Delta R.T. -0.12 min
 Lab File: VX007043.D
 Acq: 14 Jan 2019 16:56

Tgt Ion	Resp	Lower	Upper
117	53174		
117	100		
119	6.6	79.4	119.2#
121	0.0	24.0	36.0#

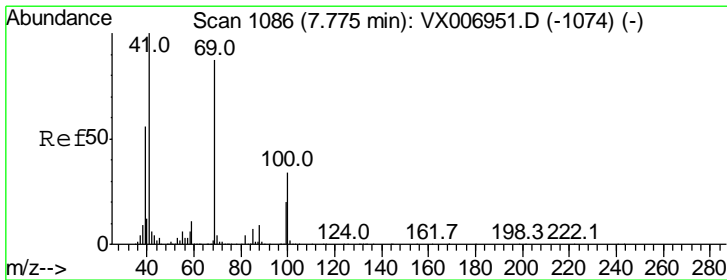
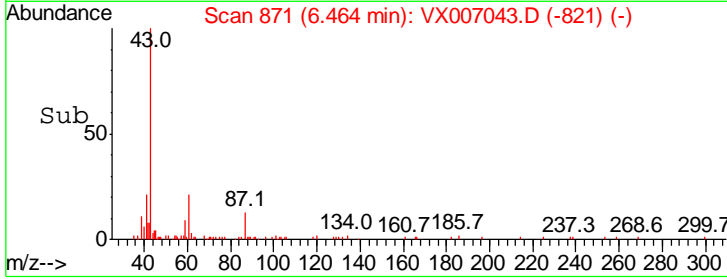
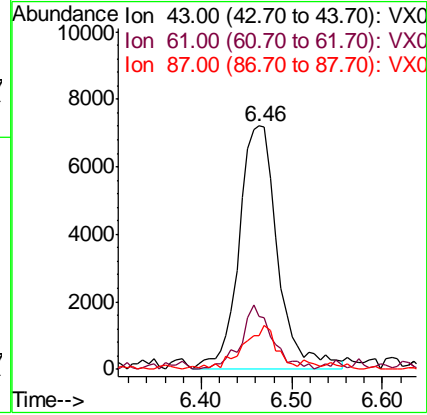
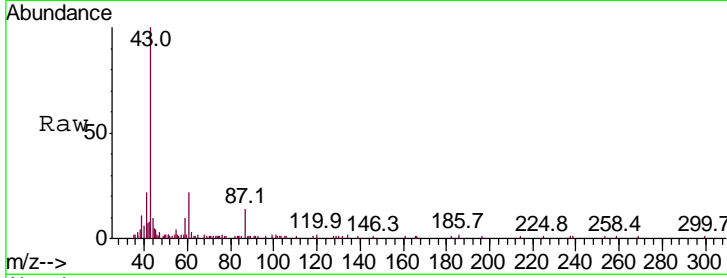




#43
 Isopropyl Acetate
 Concen: 1.575 ug/l
 RT: 6.46 min Scan# 871
 Delta R.T. 0.01 min
 Lab File: VX007043.D
 Acq: 14 Jan 2019 16:56

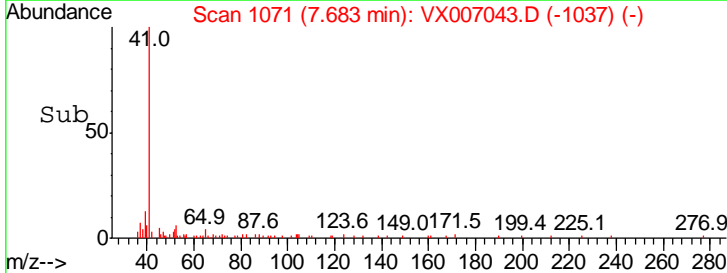
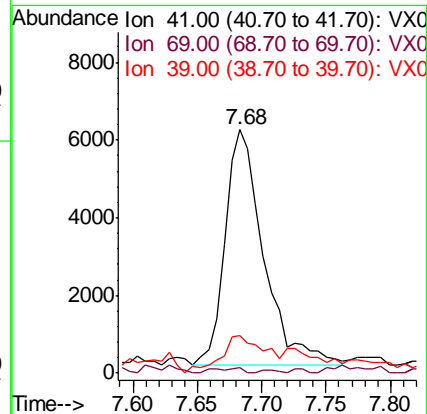
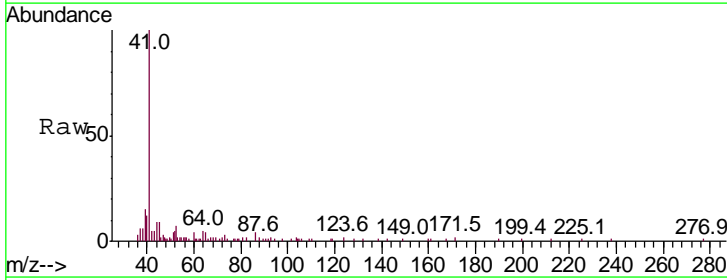
Instrument : MSVOA_X
 ClientSampled :

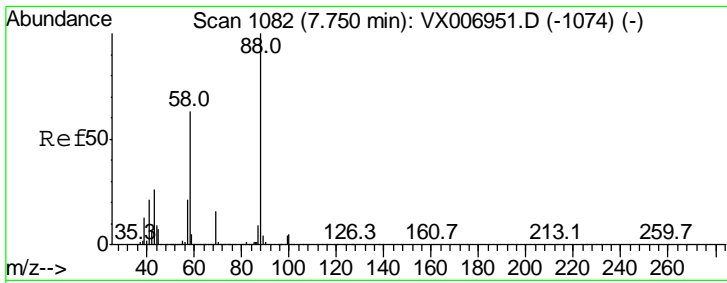
Tgt Ion	Resp	Lower	Upper
43	100		
61	21.2	16.8	25.2
87	15.2	12.4	18.6



#48
 Methyl methacrylate
 Concen: 1.815 ug/l
 RT: 7.68 min Scan# 1071
 Delta R.T. -0.09 min
 Lab File: VX007043.D
 Acq: 14 Jan 2019 16:56

Tgt Ion	Resp	Lower	Upper
41	100		
69	0.8	72.4	108.6#
39	18.2	45.8	68.8#

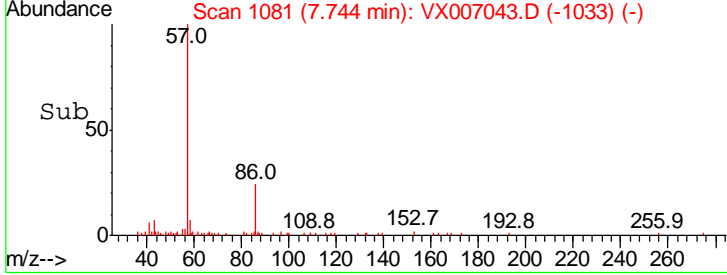
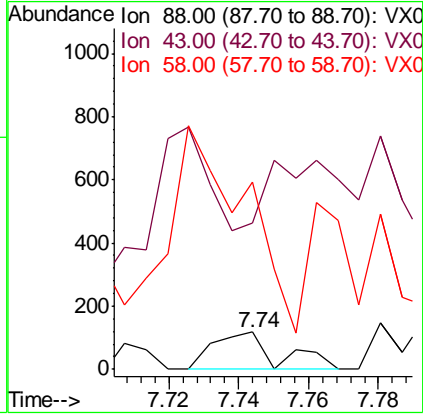
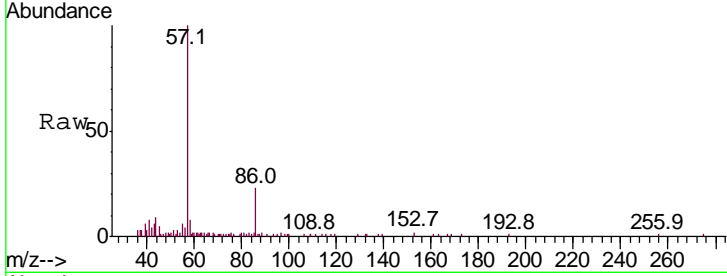




#49
 1,4-Dioxane
 Concen: Below Cal
 RT: 7.74 min Scan# 1081
 Delta R.T. -0.01 min
 Lab File: VX007043.D
 Acq: 14 Jan 2019 16:56

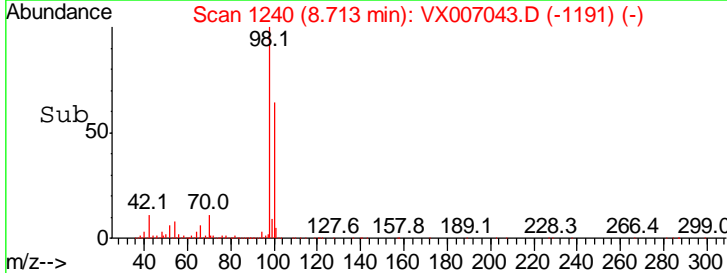
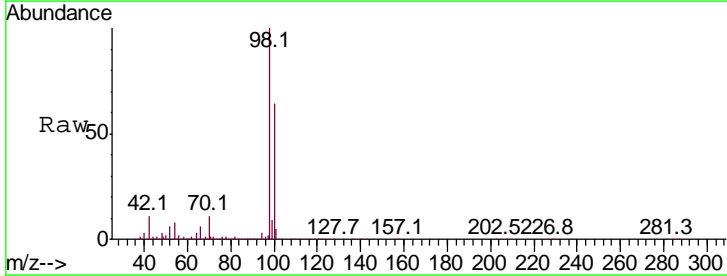
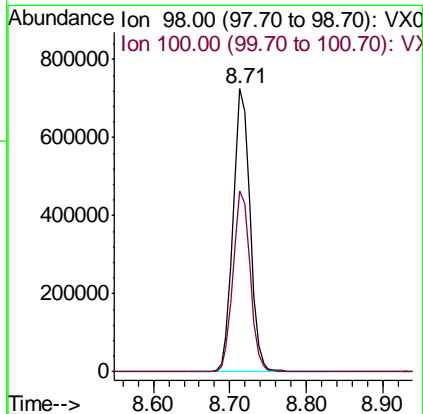
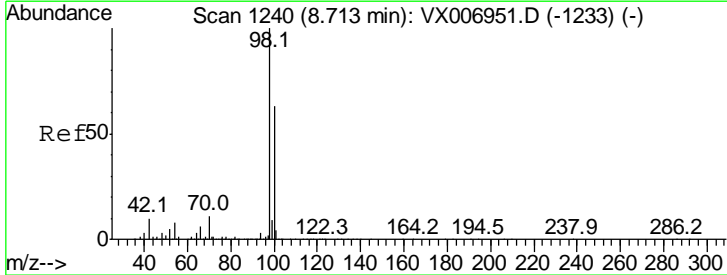
Instrument :
 MSVOA_X
 ClientSampled :

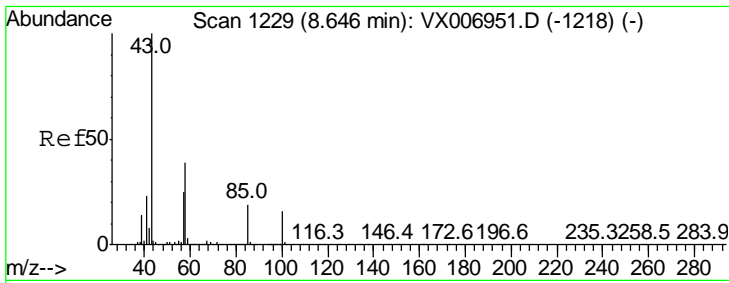
Tgt Ion	Resp	Lower	Upper
88	155		
43	0.0	22.2	33.4#
58	790.3	51.0	76.4#



#50
 Toluene-d8
 Concen: 51.663 ug/l
 RT: 8.71 min Scan# 1240
 Delta R.T. -0.00 min
 Lab File: VX007043.D
 Acq: 14 Jan 2019 16:56

Tgt Ion	Resp	Lower	Upper
98	1117938		
100	64.5	52.0	78.0

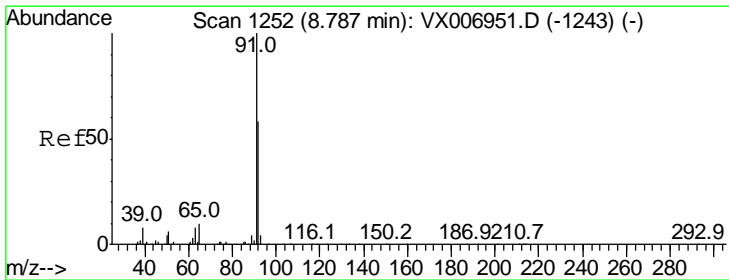
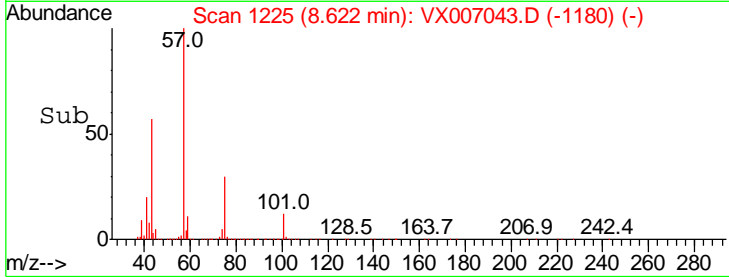
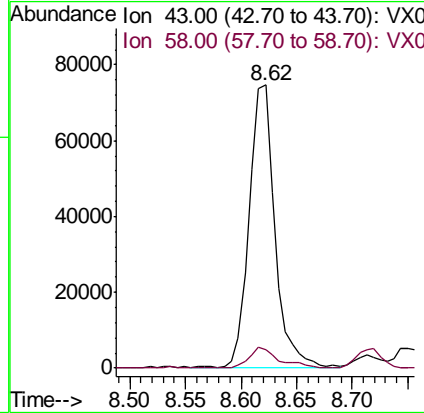
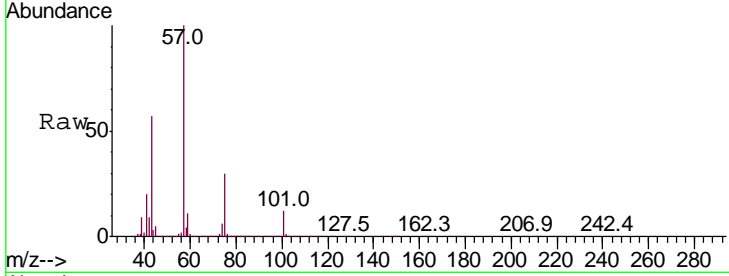




#51
 4-Methyl-2-Pentanone
 Concen: 13.678 ug/l
 RT: 8.62 min Scan# 1225
 Delta R.T. -0.02 min
 Lab File: VX007043.D
 Acq: 14 Jan 2019 16:56

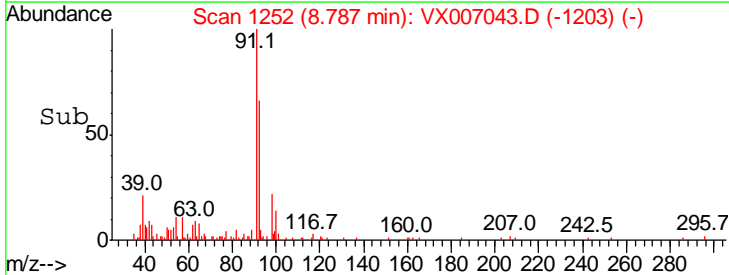
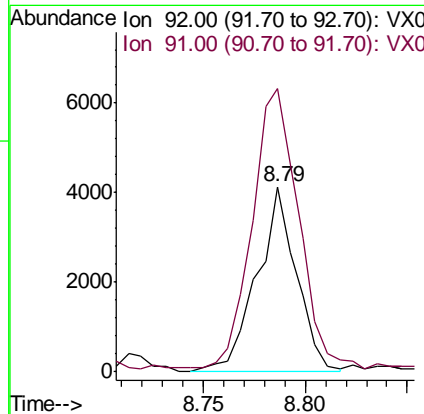
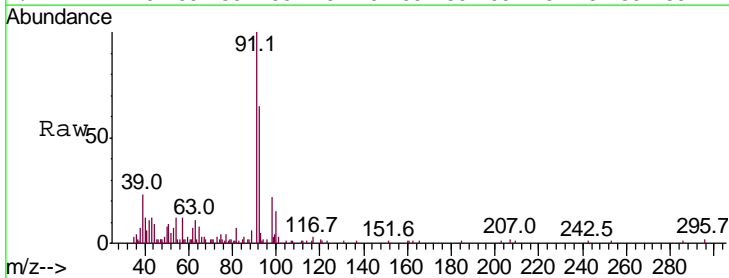
Instrument :
 MSVOA_X
 ClientSampled :

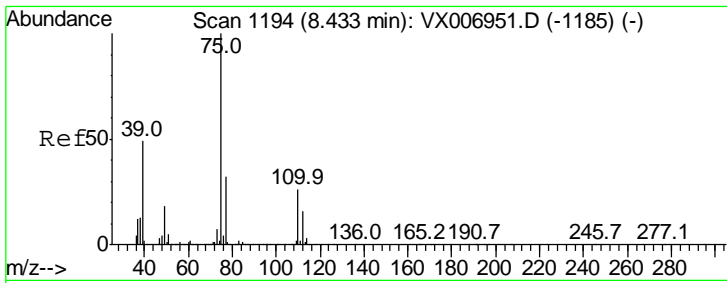
Tgt Ion: 43 Resp: 119309
 Ion Ratio Lower Upper
 43 100
 58 8.6 31.8 47.6#



#52
 Toluene
 Concen: 0.355 ug/l
 RT: 8.79 min Scan# 1252
 Delta R.T. -0.00 min
 Lab File: VX007043.D
 Acq: 14 Jan 2019 16:56

Tgt Ion: 92 Resp: 5593
 Ion Ratio Lower Upper
 92 100
 91 187.4 137.6 206.4

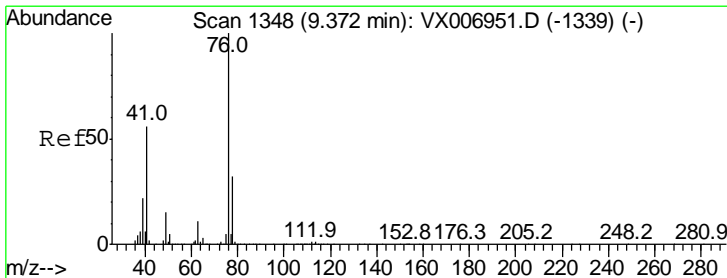
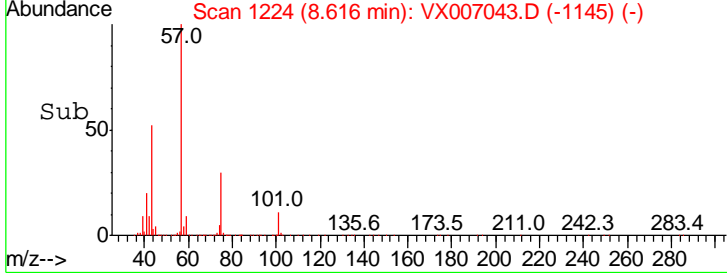
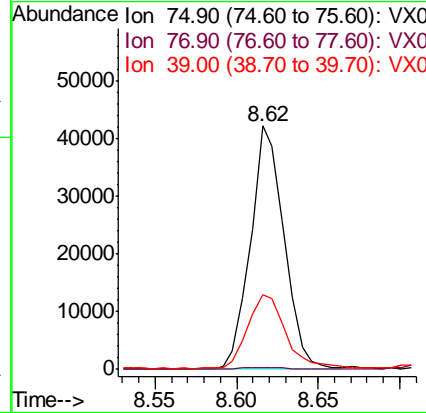
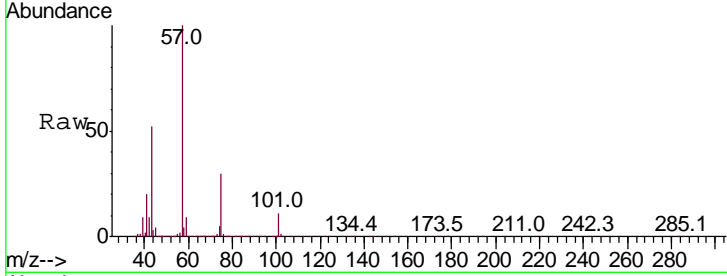




#54
 cis-1,3-Dichloropropene
 Concen: 6.695 ug/l
 RT: 8.62 min Scan# 1224
 Delta R.T. 0.18 min
 Lab File: VX007043.D
 Acq: 14 Jan 2019 16:56

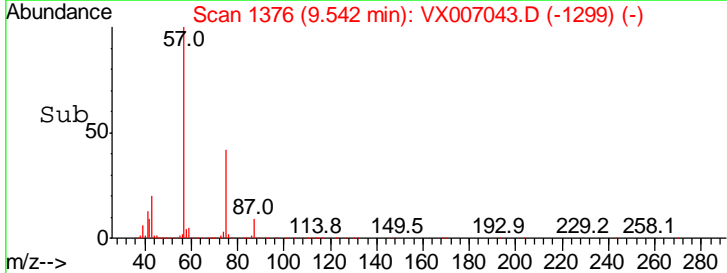
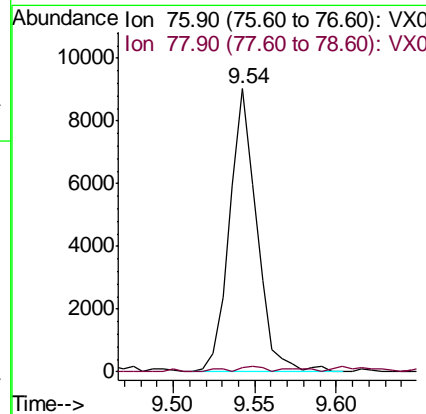
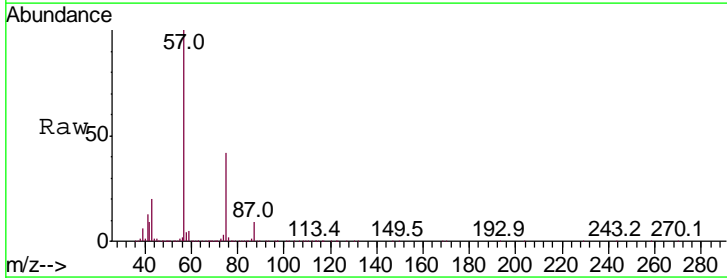
Instrument :
 MSVOA_X
 ClientSampled :

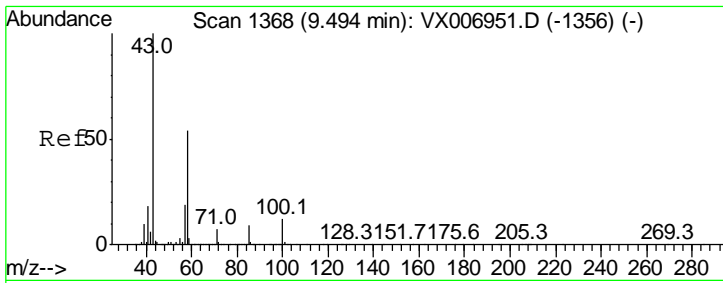
Tgt Ion	Resp	Lower	Upper
75	60381		
77	0.7	26.2	39.2#
39	30.5	36.7	55.1#



#57
 1,3-Dichloropropane
 Concen: 1.016 ug/l
 RT: 9.54 min Scan# 1376
 Delta R.T. 0.17 min
 Lab File: VX007043.D
 Acq: 14 Jan 2019 16:56

Tgt Ion	Resp	Lower	Upper
76	10486		
78	1.6	26.0	39.0#

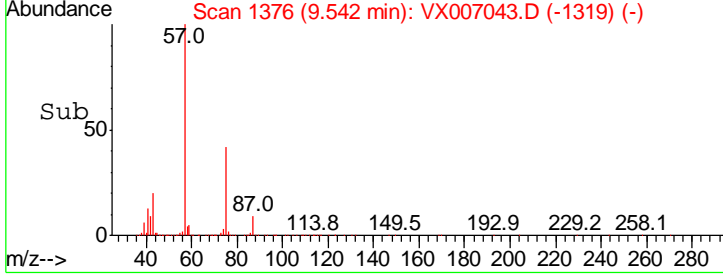
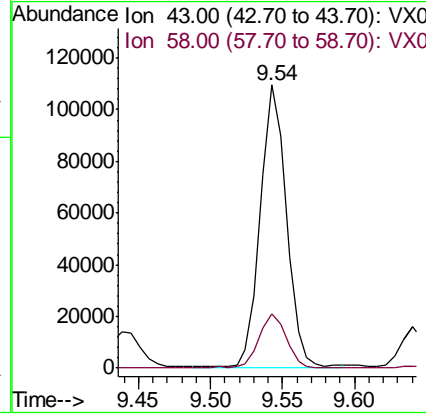
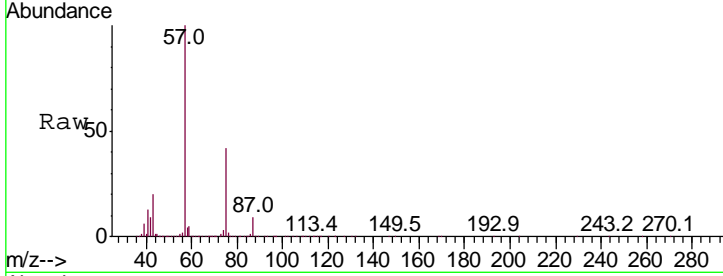




#59
 2-Hexanone
 Concen: 20.611 ug/l
 RT: 9.54 min Scan# 1376
 Delta R.T. 0.05 min
 Lab File: VX007043.D
 Acq: 14 Jan 2019 16:56

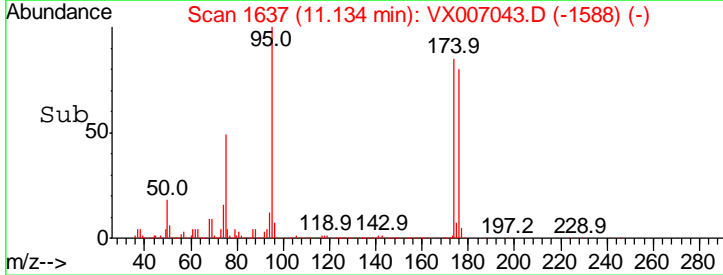
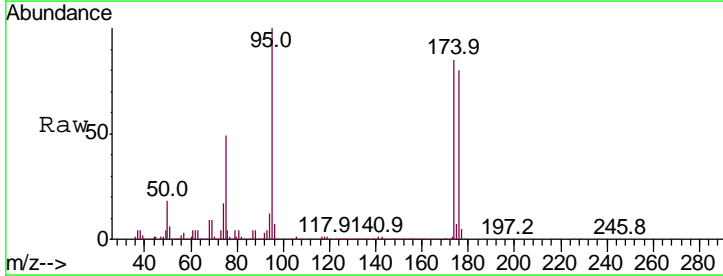
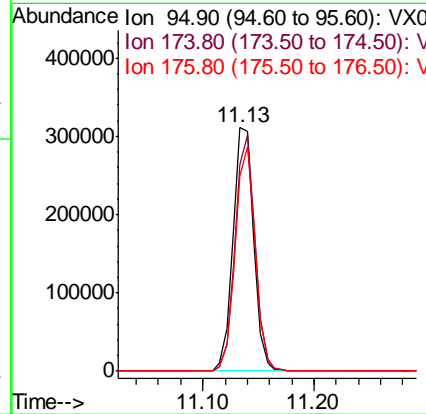
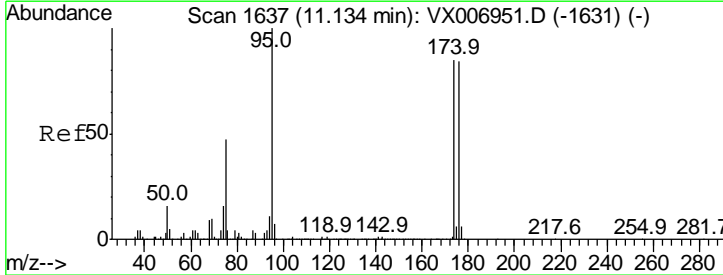
Instrument :
 MSVOA_X
 ClientSampled :

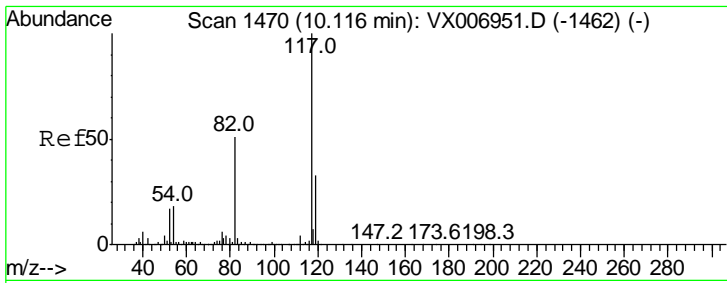
Tgt Ion: 43 Resp: 137001
 Ion Ratio Lower Upper
 43 100
 58 19.7 27.7 83.1#



#62
 4-Bromofluorobenzene
 Concen: 52.995 ug/l
 RT: 11.13 min Scan# 1637
 Delta R.T. -0.00 min
 Lab File: VX007043.D
 Acq: 14 Jan 2019 16:56

Tgt Ion: 95 Resp: 399788
 Ion Ratio Lower Upper
 95 100
 174 92.9 0.0 182.2
 176 89.2 0.0 178.8

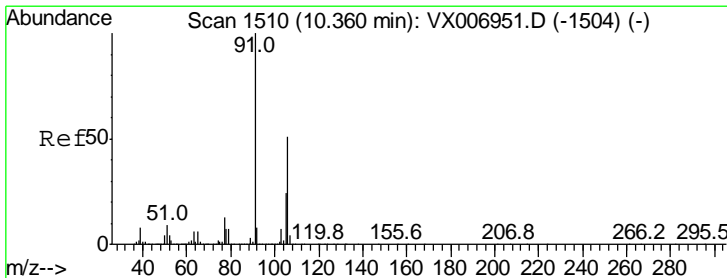
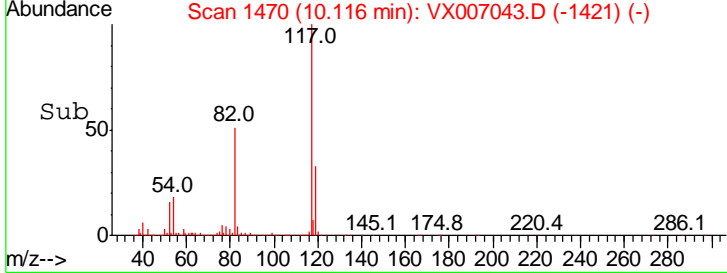
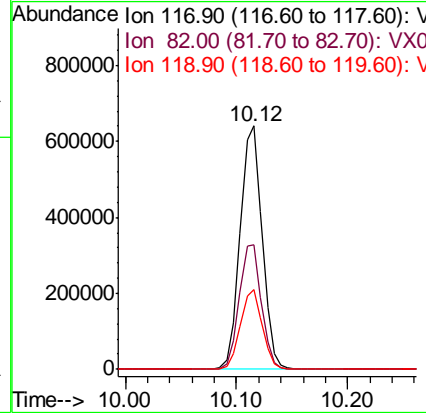
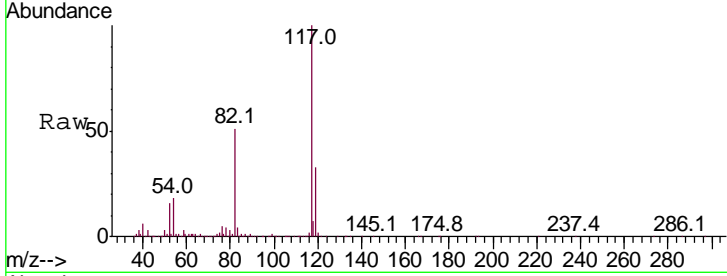




#63
 Chlorobenzene-d5
 Concen: 50.000 ug/l
 RT: 10.12 min Scan# 1470
 Delta R.T. -0.00 min
 Lab File: VX007043.D
 Acq: 14 Jan 2019 16:56

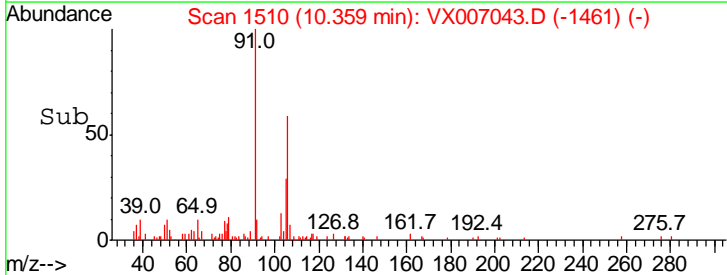
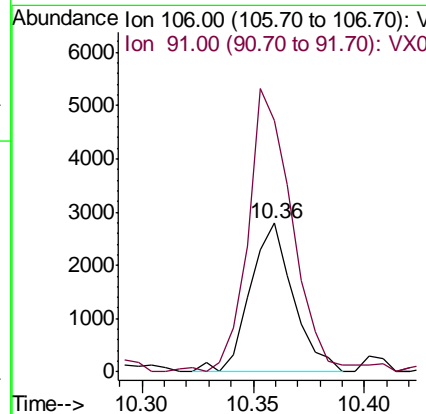
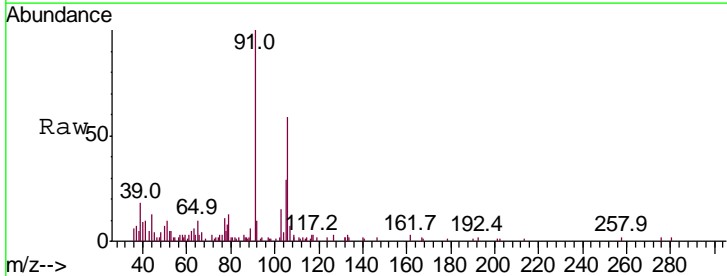
Instrument :
 MSVOA_X
 ClientSampled :

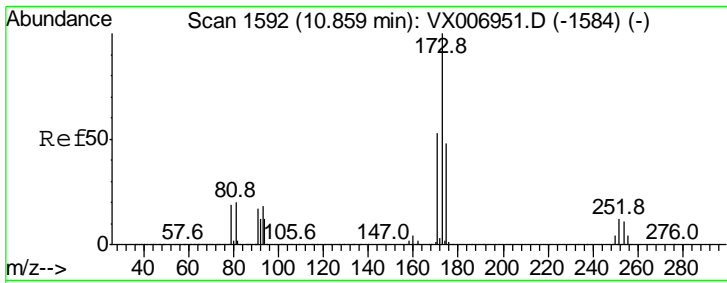
Tgt Ion	Resp	Lower	Upper
117	100		
82	51.0	41.0	61.6
119	32.8	25.4	38.0



#68
 m/p-Xylenes
 Concen: 0.304 ug/l
 RT: 10.36 min Scan# 1510
 Delta R.T. -0.00 min
 Lab File: VX007043.D
 Acq: 14 Jan 2019 16:56

Tgt Ion	Resp	Lower	Upper
106	100		
91	195.4	155.8	233.6

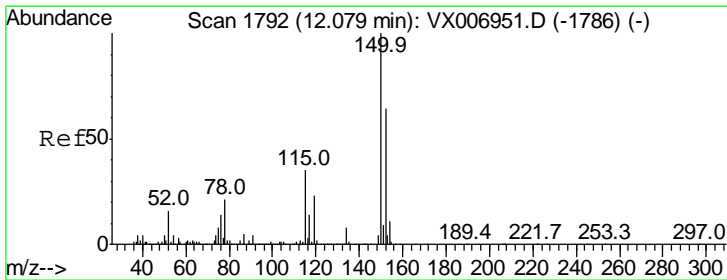
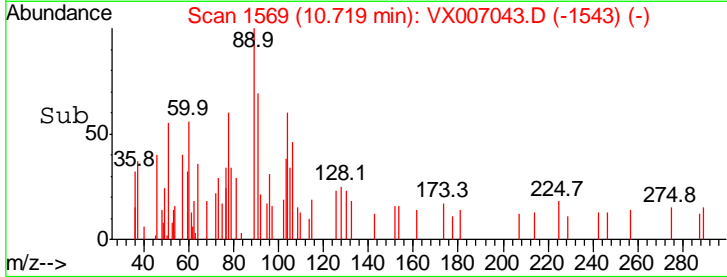
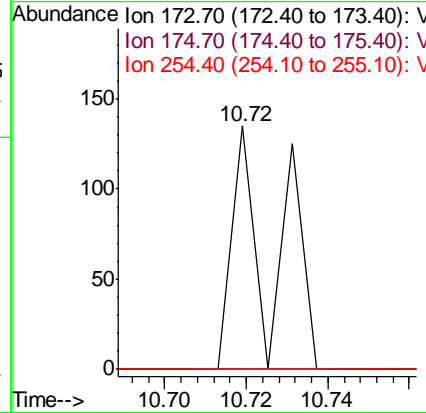
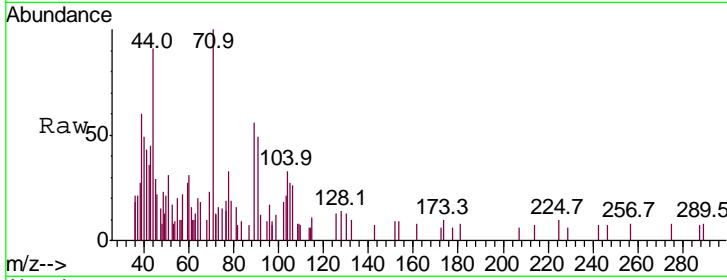




#71
 Bromoform
 Concen: 4.742 ug/l
 RT: 10.72 min Scan# 1569
 Delta R.T. -0.14 min
 Lab File: VX007043.D
 Acq: 14 Jan 2019 16:56

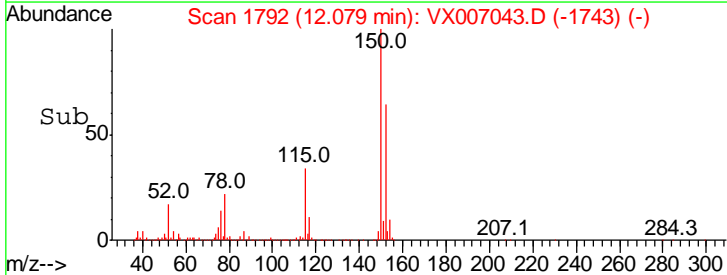
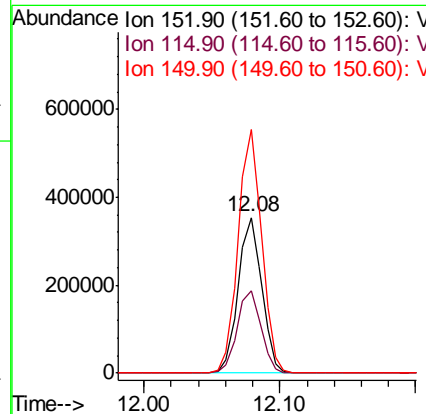
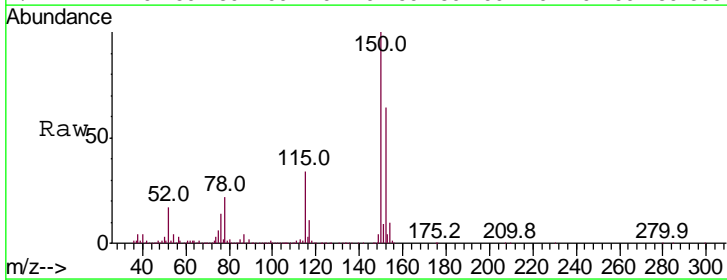
Instrument :
 MSVOA_X
 ClientSampled :

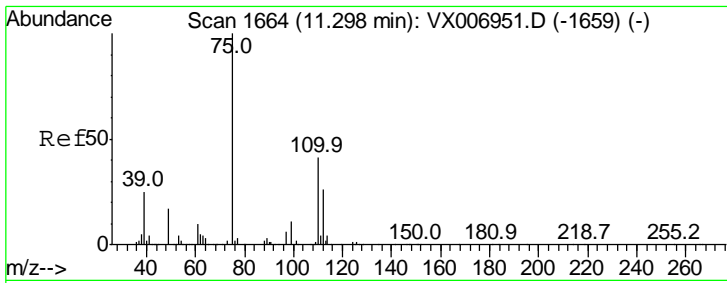
Tgt Ion	Ratio	Lower	Upper
173	100		
175	0.0	24.7	74.1#
254	0.0	0.2	0.2#



#72
 1,4-Dichlorobenzene-d4
 Concen: 50.000 ug/l
 RT: 12.08 min Scan# 1792
 Delta R.T. -0.00 min
 Lab File: VX007043.D
 Acq: 14 Jan 2019 16:56

Tgt Ion	Ratio	Lower	Upper
152	100		
115	54.5	39.1	117.2
150	155.9	0.0	344.8

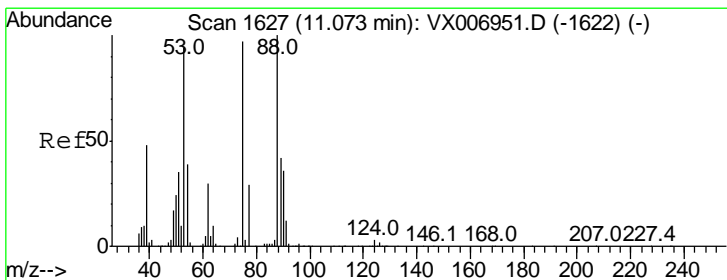
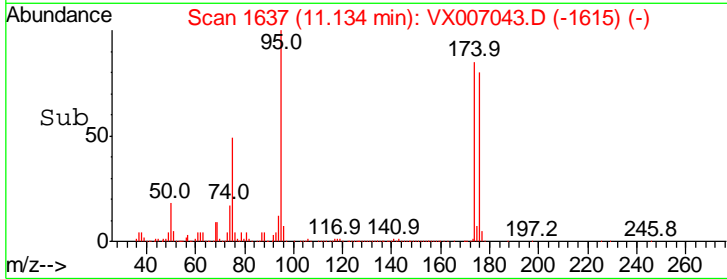
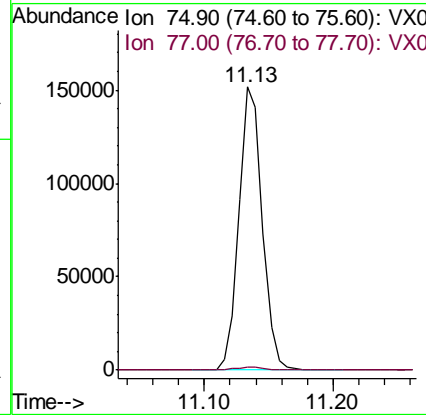
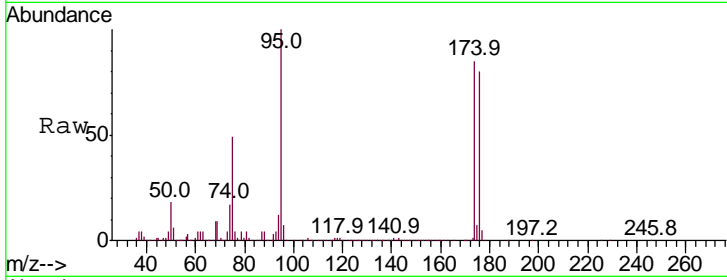




#76
 1,2,3-Trichloropropane
 Concen: 22.109 ug/l
 RT: 11.13 min Scan# 1637
 Delta R.T. -0.16 min
 Lab File: VX007043.D
 Acq: 14 Jan 2019 16:56

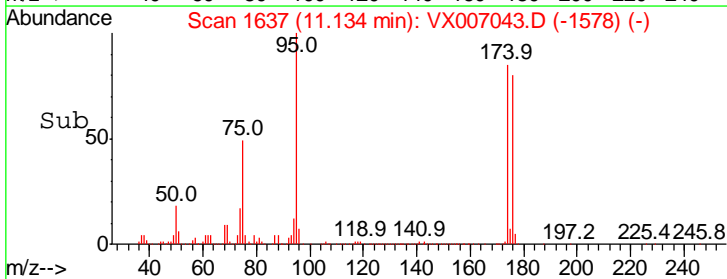
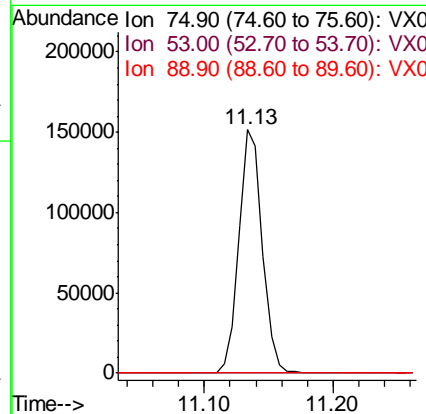
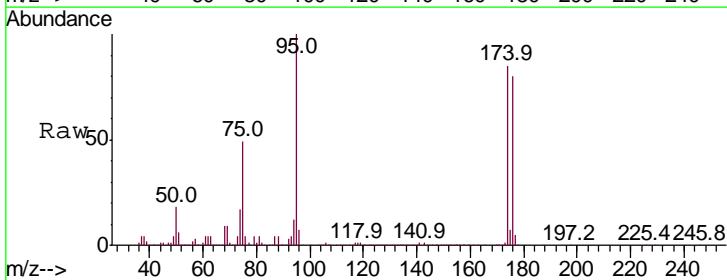
Instrument :
 MSVOA_X
 ClientSampled :

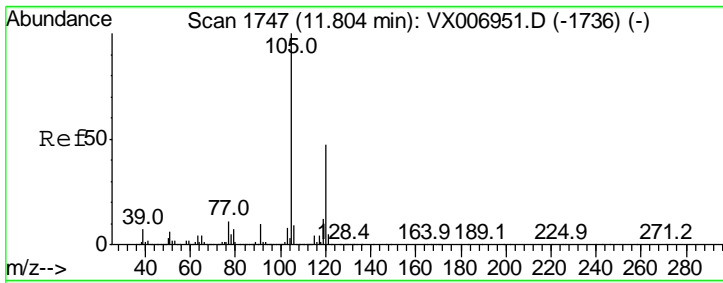
Tgt Ion: 75 Resp: 191558
 Ion Ratio Lower Upper
 75 100
 77 1.5 18.5 55.5#



#81
 trans-1,4-Dichloro-2-butene
 Concen: 65.456 ug/l
 RT: 11.13 min Scan# 1637
 Delta R.T. 0.06 min
 Lab File: VX007043.D
 Acq: 14 Jan 2019 16:56

Tgt Ion: 75 Resp: 191558
 Ion Ratio Lower Upper
 75 100
 53 0.2 79.7 119.5#
 89 0.1 38.0 57.0#

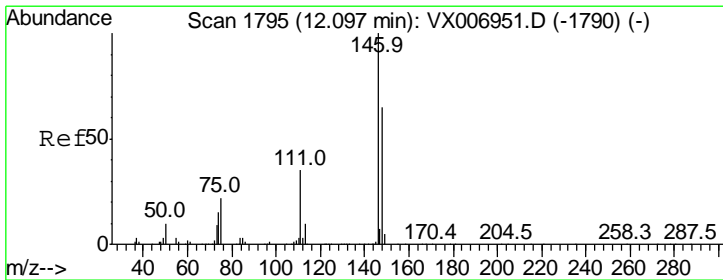
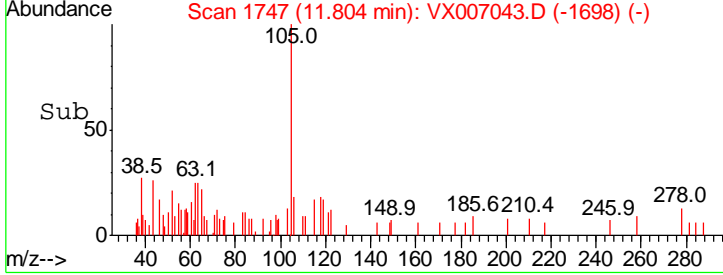
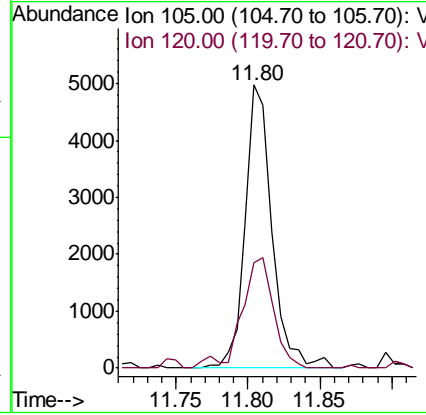
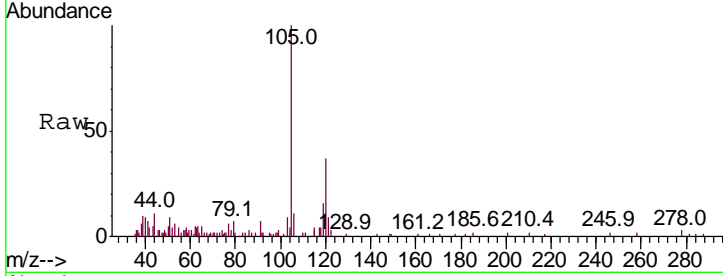




#84
 1,2,4-Trimethylbenzene
 Concen: 0.254 ug/l
 RT: 11.80 min Scan# 1747
 Delta R.T. -0.00 min
 Lab File: VX007043.D
 Acq: 14 Jan 2019 16:56

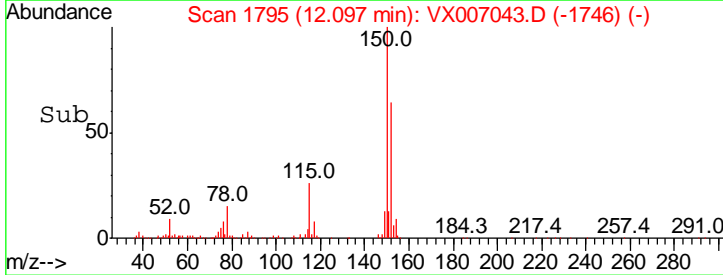
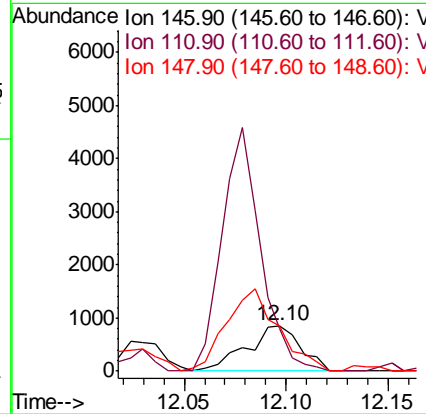
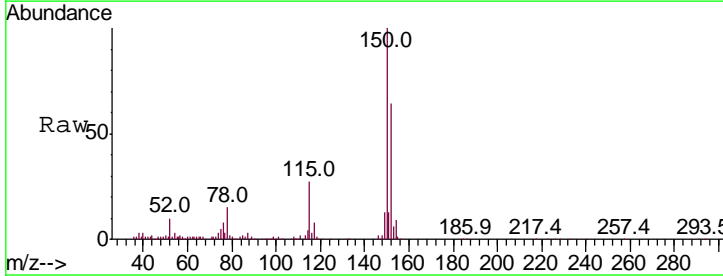
Instrument :
 MSVOA_X
 ClientSampled :

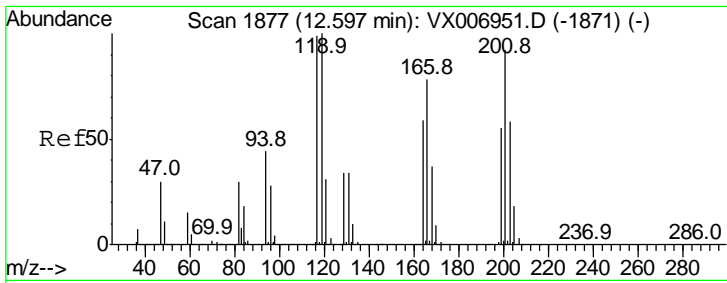
Tgt Ion	Resp	Lower	Upper
105	100		
120	46.4	23.2	69.6



#88
 1,4-Dichlorobenzene
 Concen: 0.255 ug/l
 RT: 12.10 min Scan# 1795
 Delta R.T. -0.00 min
 Lab File: VX007043.D
 Acq: 14 Jan 2019 16:56

Tgt Ion	Resp	Lower	Upper
146	100		
111	382.2	18.1	54.1#
148	173.2	31.9	95.9#

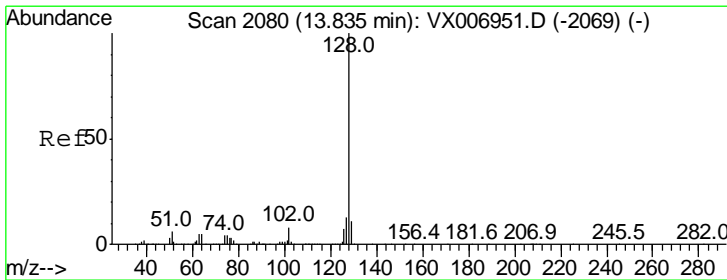
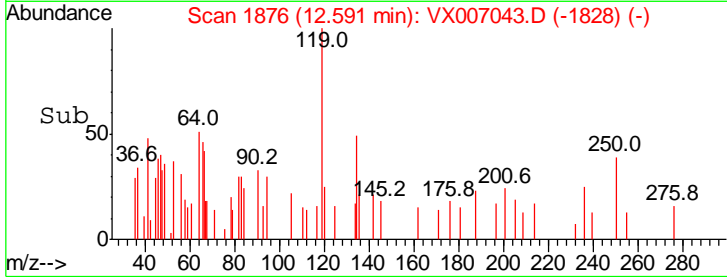
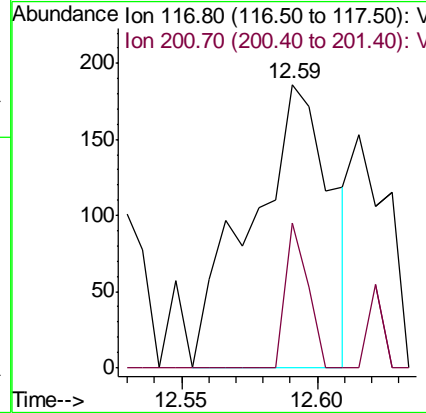
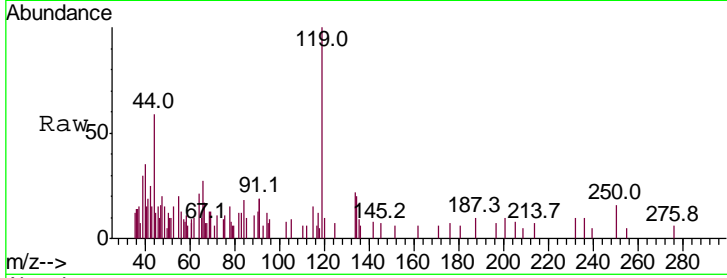




#90
 Hexachloroethane
 Concen: 2.992 ug/l
 RT: 12.59 min Scan# 1876
 Delta R.T. -0.01 min
 Lab File: VX007043.D
 Acq: 14 Jan 2019 16:56

Instrument : MSVOA_X
 ClientSampled :

Tgt Ion:117 Resp: 382
 Ion Ratio Lower Upper
 117 100
 201 14.1 42.9 128.7#



#95
 Naphthalene
 Concen: 0.588 ug/l
 RT: 13.83 min Scan# 2080
 Delta R.T. -0.00 min
 Lab File: VX007043.D
 Acq: 14 Jan 2019 16:56

Tgt Ion:128 Resp: 18116
 Ion Ratio Lower Upper
 128 100
 127 14.6 10.1 15.1
 129 12.8 8.6 13.0

