

Data Path : Z:\VOASRV\HPCHEM1\MSVOA X\DATA\VX011420\
 Data File : VX014602.D
 Acq On : 14 Jan 2020 12:55
 Operator : JC/SP
 Sample : L1116-03
 Misc : 5.0mL/MSVOA X/WATER
 ALS Vial : 8 Sample Multiplier: 1

Instrument :
 MSVOA_X
 ClientSampleId :
 KY038PS037-200113

Quant Time: Jan 15 00:54:54 2020
 Quant Method : Z:\VOASRV\HPCHEM1\MSVOA_X\METHOD\82X010720W.M
 Quant Title : SW846 8260
 QLast Update : Tue Jan 07 15:54:41 2020
 Response via : Initial Calibration

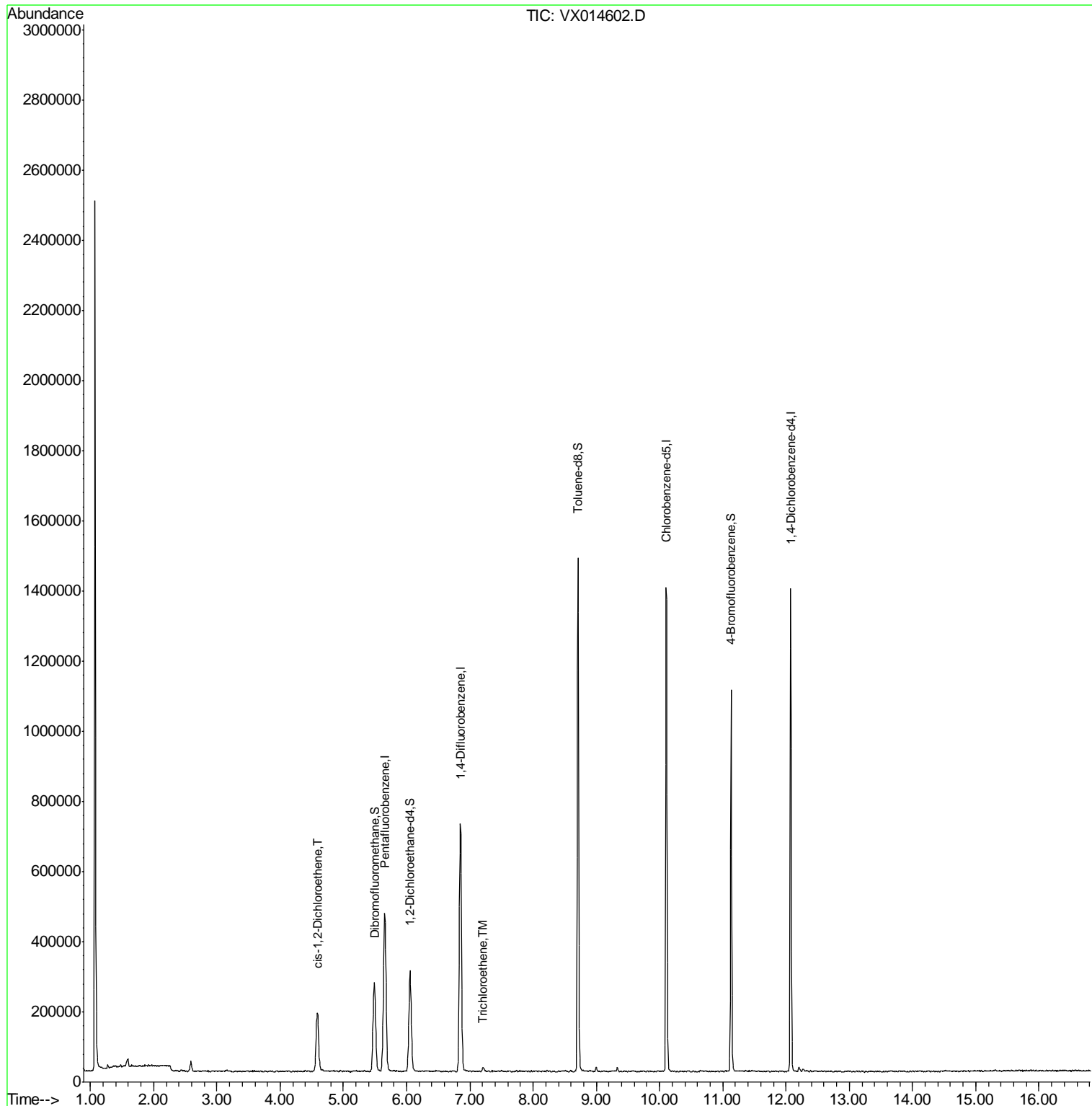
Internal Standards	R.T.	QIon	Response	Conc	Units	Dev(Min)
1) Pentafluorobenzene	5.65	168	471456	50.00	ug/l	0.00
34) 1,4-Difluorobenzene	6.85	114	734582	50.00	ug/l	0.00
63) Chlorobenzene-d5	10.11	117	662985	50.00	ug/l	0.00
72) 1,4-Dichlorobenzene-d4	12.07	152	293542	50.00	ug/l	0.00
System Monitoring Compounds						
33) 1,2-Dichloroethane-d4	6.05	65	266807	50.69	ug/l	0.00
Spiked Amount	50.000		Recovery	=	101.38%	
35) Dibromofluoromethane	5.48	113	221492	49.81	ug/l	0.00
Spiked Amount	50.000		Recovery	=	99.62%	
50) Toluene-d8	8.71	98	867456	50.27	ug/l	0.00
Spiked Amount	50.000		Recovery	=	100.54%	
62) 4-Bromofluorobenzene	11.13	95	289865	45.76	ug/l	0.00
Spiked Amount	50.000		Recovery	=	91.52%	
Target Compounds						
27) cis-1,2-Dichloroethene	4.59	96	112497	19.796	ug/l	91
44) Trichloroethene	7.22	130	4864	0.826	ug/l	95

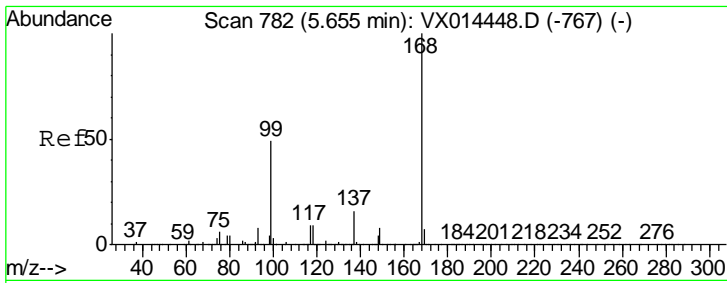
(#) = qualifier out of range (m) = manual integration (+) = signals summed

Data Path : Z:\VOASRV\HPCHEM1\MSVOA X\DATA\VX011420\
 Data File : VX014602.D
 Acq On : 14 Jan 2020 12:55
 Operator : JC/SP
 Sample : L1116-03
 Misc : 5.0mL/MSVOA X/WATER
 ALS Vial : 8 Sample Multiplier: 1

Instrument :
 MSVOA_X
 ClientSampleId :
 KY038PS037-200113

Quant Time: Jan 15 00:54:54 2020
 Quant Method : Z:\VOASRV\HPCHEM1\MSVOA_X\METHOD\82X010720W.M
 Quant Title : SW846 8260
 QLast Update : Tue Jan 07 15:54:41 2020
 Response via : Initial Calibration

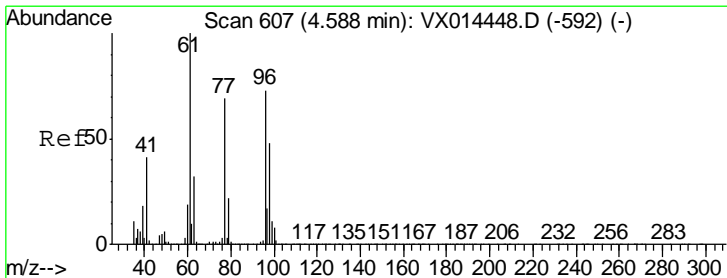
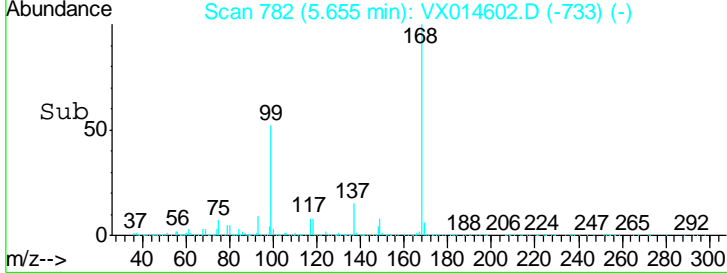
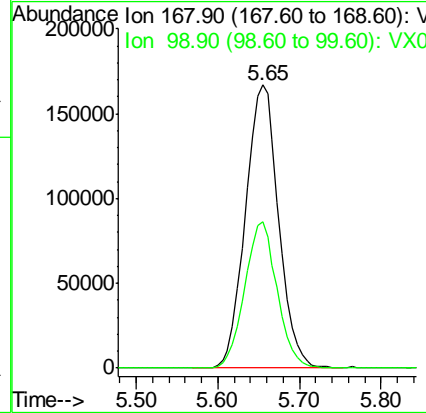
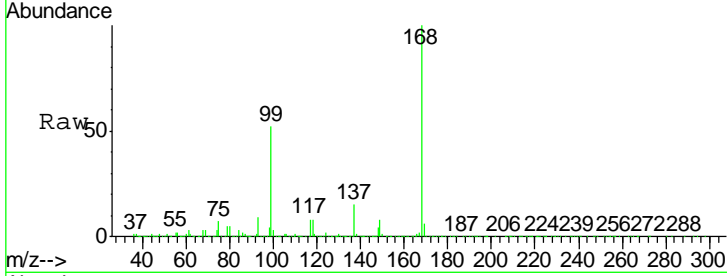




#1
 Pentafluorobenzene
 Concen: 50.000 ug/l
 RT: 5.65 min Scan# 782
 Delta R.T. -0.00 min
 Lab File: VX014602.D
 Acq: 14 Jan 2020 12:55

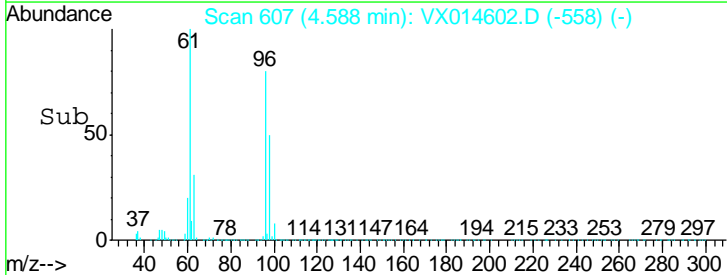
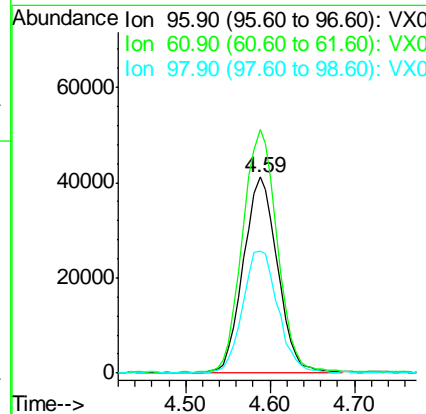
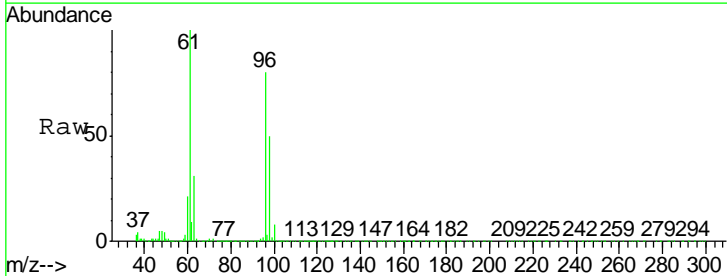
Instrument : MSVOA_X
 ClientSampled : KY038PS037-200113

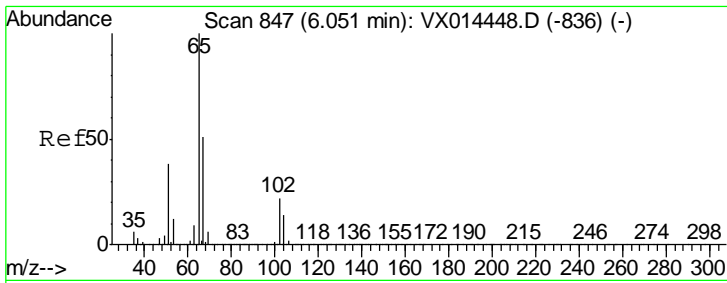
Tgt Ion	Resp	Lower	Upper
168	471456		
99	51.9	39.2	58.8



#27
 cis-1,2-Dichloroethene
 Concen: 19.796 ug/l
 RT: 4.59 min Scan# 607
 Delta R.T. -0.00 min
 Lab File: VX014602.D
 Acq: 14 Jan 2020 12:55

Tgt Ion	Resp	Lower	Upper
96	112497		
61	126.5	0.0	285.4
98	64.7	0.0	130.6

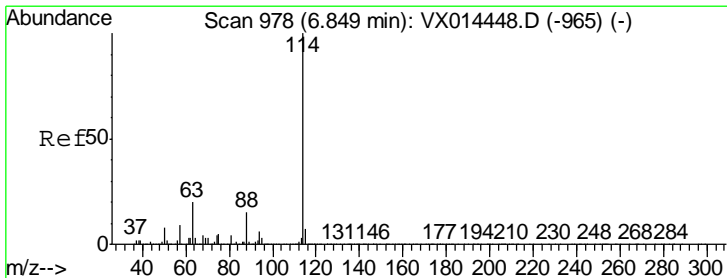
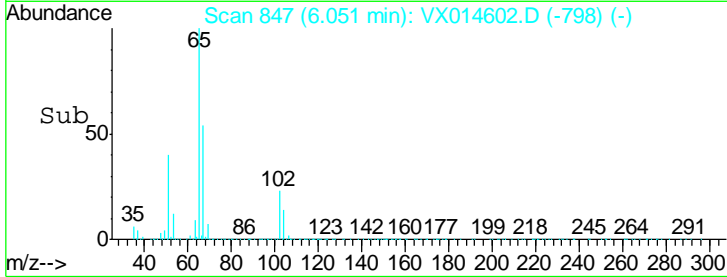
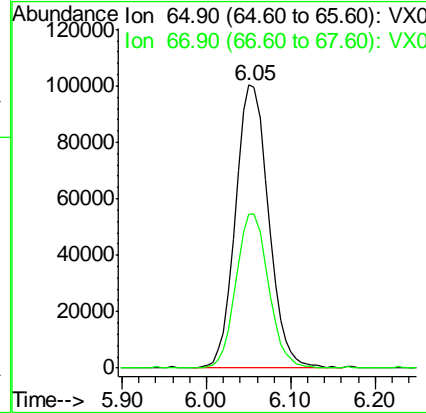
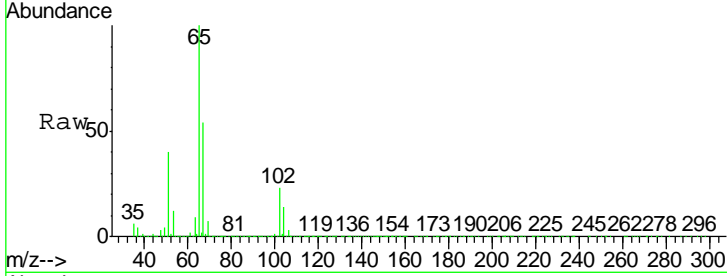




#33
 1,2-Dichloroethane-d4
 Concen: 50.694 ug/l
 RT: 6.05 min Scan# 847
 Delta R.T. -0.00 min
 Lab File: VX014602.D
 Acq: 14 Jan 2020 12:55

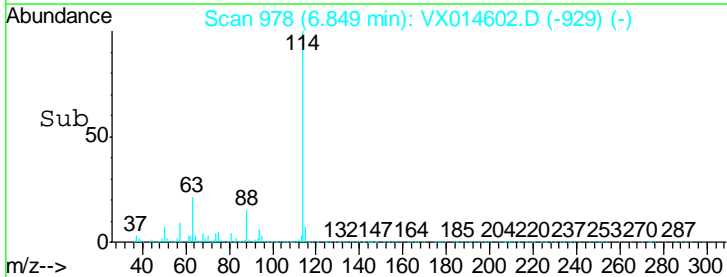
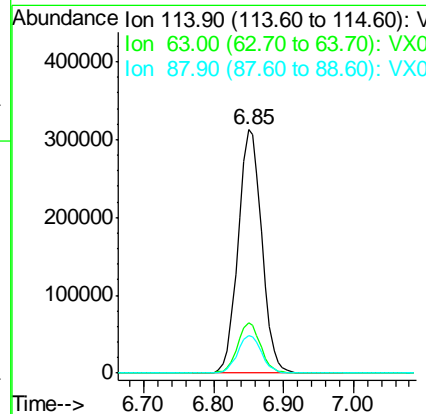
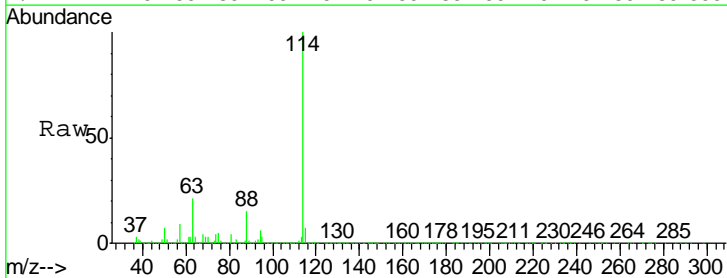
Instrument :
 MSVOA_X
 ClientSampled :
 KY038PS037-200113

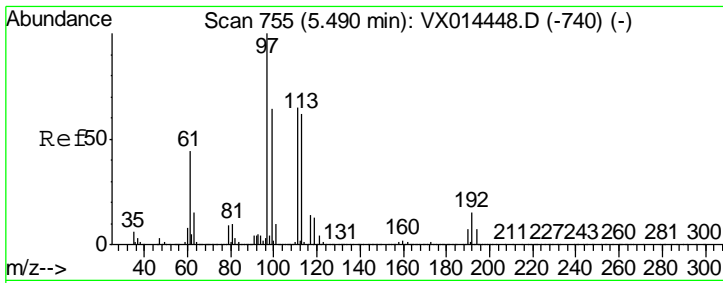
Tgt Ion	Resp	Lower	Upper
65	100		
67	53.3	0.0	106.2



#34
 1,4-Difluorobenzene
 Concen: 50.000 ug/l
 RT: 6.85 min Scan# 978
 Delta R.T. -0.00 min
 Lab File: VX014602.D
 Acq: 14 Jan 2020 12:55

Tgt Ion	Resp	Lower	Upper
114	100		
63	20.8	0.0	39.6
88	15.3	0.0	30.8

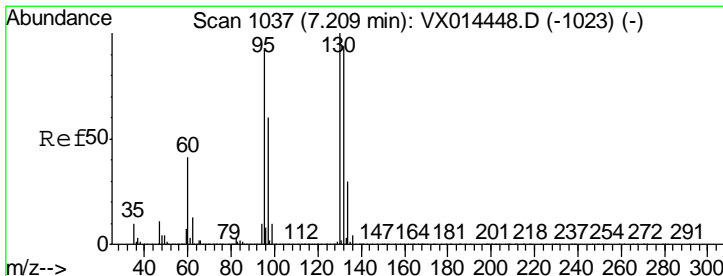
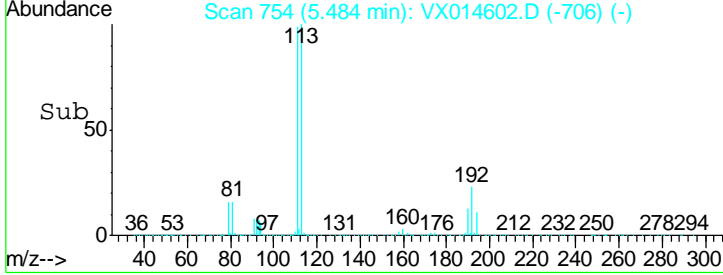
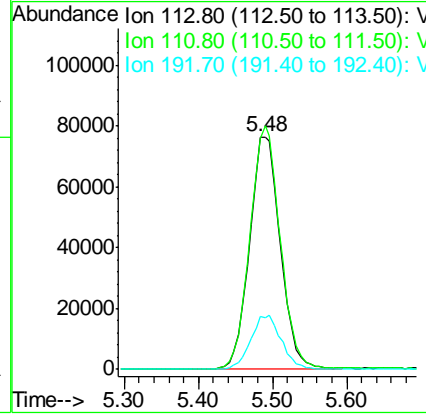
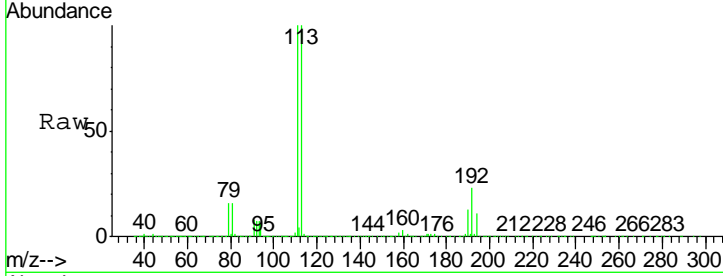




#35
 Dibromofluoromethane
 Concen: 49.810 ug/l
 RT: 5.48 min Scan# 754
 Delta R.T. -0.01 min
 Lab File: VX014602.D
 Acq: 14 Jan 2020 12:55

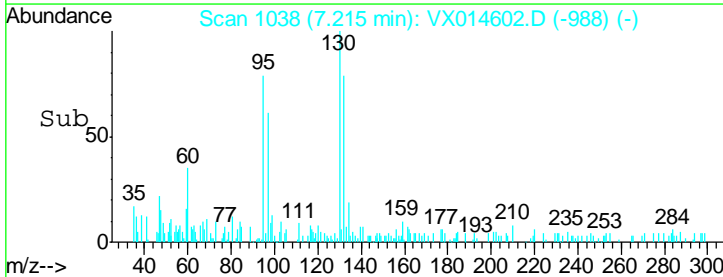
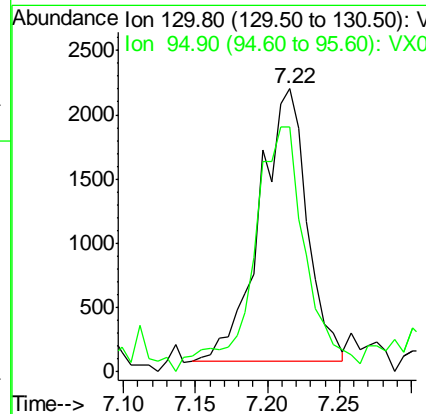
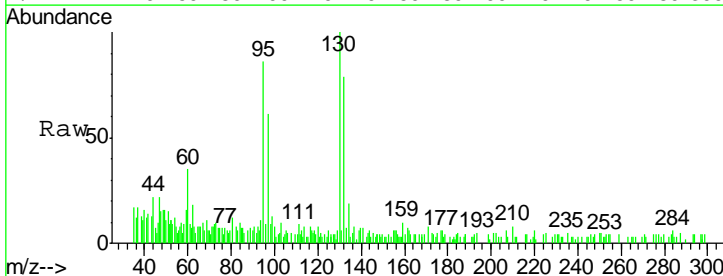
Instrument :
 MSVOA_X
ClientSampled :
 KY038PS037-200113

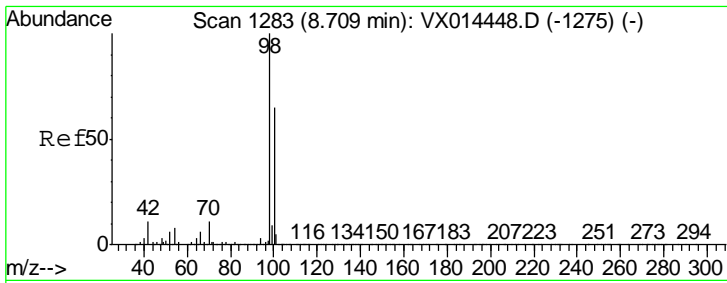
Tgt Ion	Resp	Lower	Upper
113	221492		
111	102.7	81.5	122.3
192	23.4	19.2	28.8



#44
 Trichloroethene
 Concen: 0.826 ug/l
 RT: 7.22 min Scan# 1038
 Delta R.T. 0.01 min
 Lab File: VX014602.D
 Acq: 14 Jan 2020 12:55

Tgt Ion	Resp	Lower	Upper
130	4864		
95	86.9	0.0	184.2

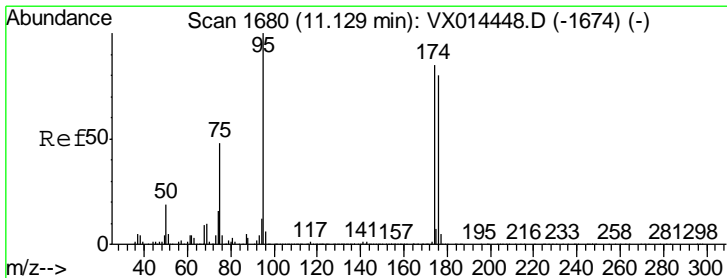
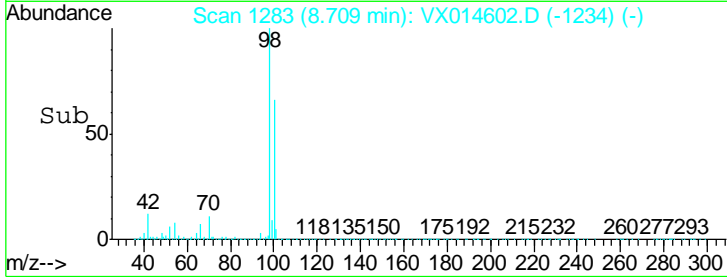
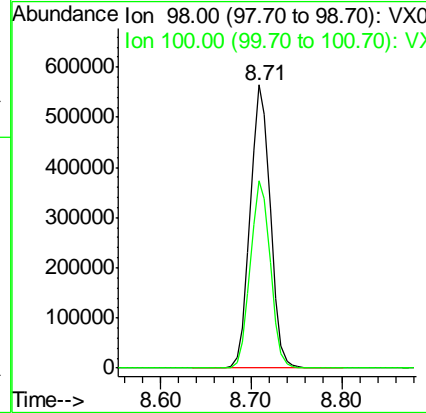
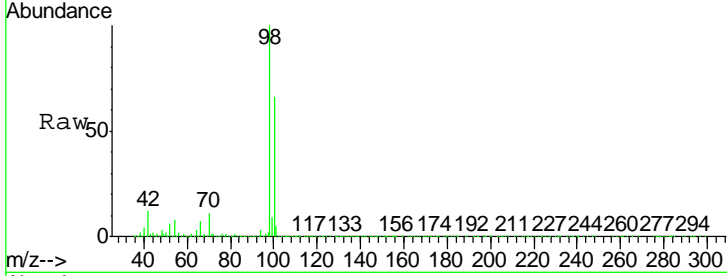




#50
Toluene-d8
Concen: 50.269 ug/l
RT: 8.71 min Scan# 1283
Delta R.T. -0.00 min
Lab File: VX014602.D
Acq: 14 Jan 2020 12:55

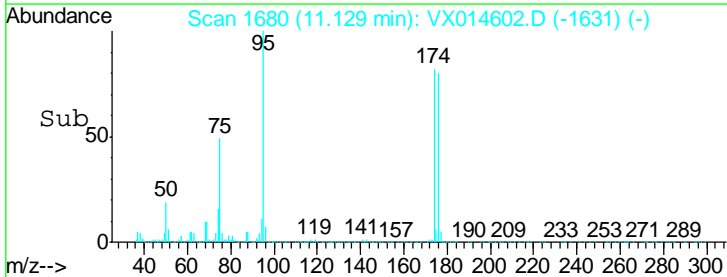
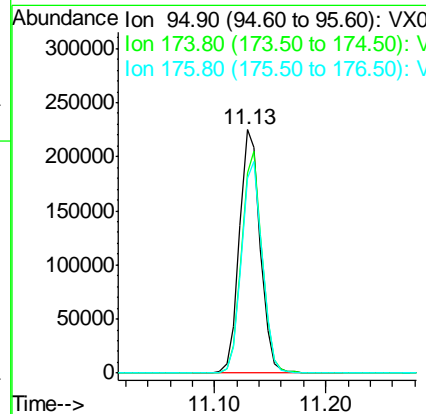
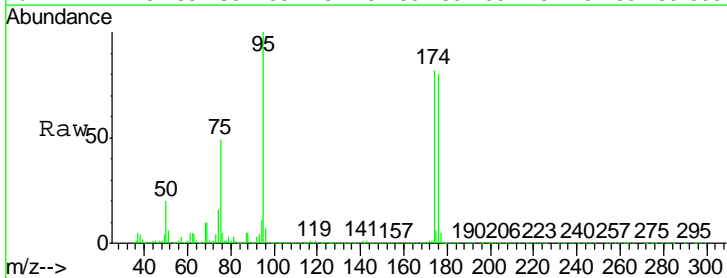
Instrument :
MSVOA_X
ClientSampled :
KY038PS037-200113

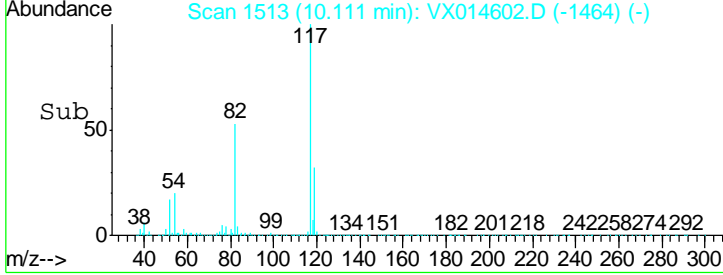
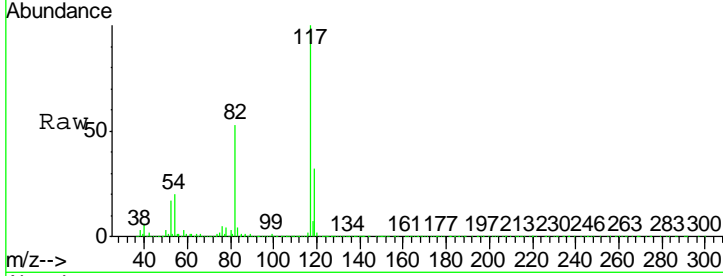
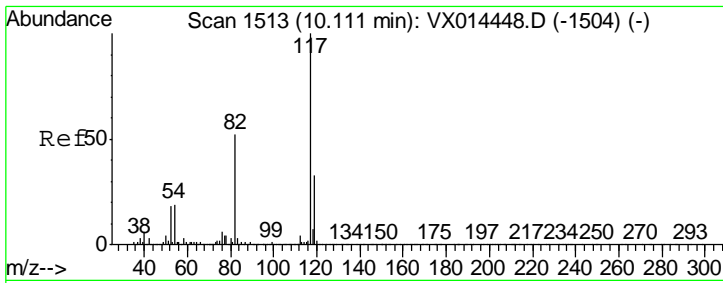
Tgt Ion: 98 Resp: 867456
Ion Ratio Lower Upper
98 100
100 65.9 53.2 79.8



#62
4-Bromofluorobenzene
Concen: 45.756 ug/l
RT: 11.13 min Scan# 1680
Delta R.T. -0.00 min
Lab File: VX014602.D
Acq: 14 Jan 2020 12:55

Tgt Ion: 95 Resp: 289865
Ion Ratio Lower Upper
95 100
174 89.3 0.0 180.8
176 87.0 0.0 172.8

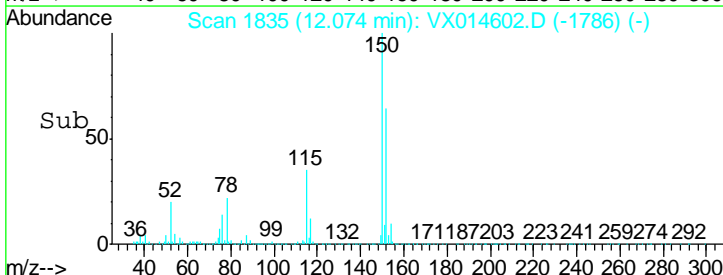
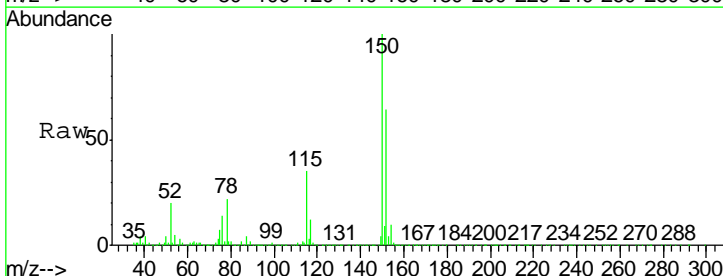
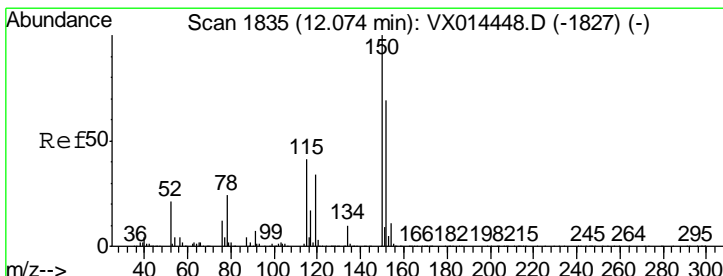
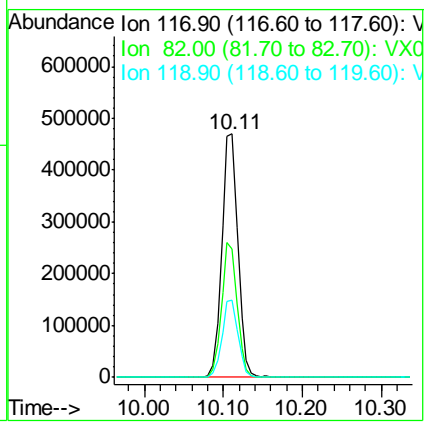




#63
 Chlorobenzene-d5
 Concen: 50.000 ug/l
 RT: 10.11 min Scan# 1513
 Delta R.T. -0.00 min
 Lab File: VX014602.D
 Acq: 14 Jan 2020 12:55

Instrument :
 MSVOA_X
 ClientSampled :
 KY038PS037-200113

Tgt Ion	Resp	Lower	Upper
117	662985		
82	52.6	41.8	62.6
119	31.9	26.2	39.4



#72
 1,4-Dichlorobenzene-d4
 Concen: 50.000 ug/l
 RT: 12.07 min Scan# 1835
 Delta R.T. -0.00 min
 Lab File: VX014602.D
 Acq: 14 Jan 2020 12:55

Tgt Ion	Resp	Lower	Upper
152	293542		
115	55.6	39.5	118.3
150	157.8	0.0	350.2

